

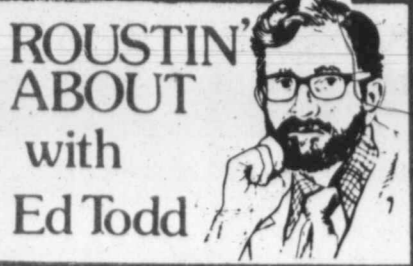
The Midland Reporter-Telegram

DIAL 682-5311, P.O. Box 1650, MIDLAND, TEXAS

Vol. 50, No. 281, Daily 15¢, Sunday 35¢

TUESDAY, DECEMBER 19, 1978
32 PAGES, 4 SECTIONS

METRO EDITION



ROUSTIN' ABOUT
with
Ed Todd

How can a vice be defined? Is it excessive coffee drinking and the claim that your day can't begin right and proper without your being "loaded" with the brew?

Being "high" on the fruit of the roasted coffee bean must be the beginning of all of America's vices and crazes.

Coffee drinking is America's No. 1 habit, choice, preference or, if you like, vice. Beer guzzling is lagging the brew by a length.

The caffeine in the perked or dripped brew and the bits of drugs that invade the system certainly are not panaceas. But it's amazing how the aromatic brew rids the mind and anxious soul of the early-morning dreads and pumps the system with courage.

Some, no doubt, find the same relief and stamina-building "fix" in the coffee-cigarette combination.

And the so-called health nuts may start the day with tiger's milk or some other wholesome juice, following that with jumps of the rope and a jog around the neighborhood.

But how can anyone forego coffee. Unthinkable.

Now, here's a suggestion, by no means original, to kick off your day at sunrise. It goes like this:

"Eat a live toad the first thing each morning...and that will be the worst thing you'll have to face all day."

By comparison, a raw egg down the gullet sounds appetizing.

How does one, then, quite properly, start off the morning?

The best way is to have experienced a satisfying and rewarding preceding day. And how best to accomplish that is something philosophers and quack self-improvement experts have been working on for centuries.

Dollar slips some more

LONDON (AP) — The dollar slipped some more and gold soared higher in Europe today as the result of the decision by the international oil cartel to raise oil prices more than expected.

"This is a very frightened market. The dollar has been under severe pressure, especially against the West German mark," a London money dealer commented. Zurich dealers also reported the dollar under very heavy pressure.

But in Tokyo the dollar rose slightly, closing at 193.35 yen, compared with 193.325 at the close of trading Monday. Dealers said the announcement of the oil-price increase was no longer being felt in the Japanese market.

Gold jumped more than \$7 an ounce in Zurich and London, Europe's two major bullion centers. It was quoted in Zurich at \$220.875 an ounce, up from \$213.125 at the close of trading Monday, and in London at \$220.35, up from \$213.



Running 3,560 gallons of water Monday for his water truck is Roy Horsey, who spreads water to cut down on dust and help pack soil ahead of earth scrapers and bulldozers at the Midland Park Mall construction site. The 750,000-square-foot

shopping center is being built at Midkiff Road and FM 868. Three major department stores will be joined by dozens of small shops to form Midland's largest shopping facility. (Staff Photo by Brian Hendershot)

Sheriff's deputies to get overtime, other benefits

By LANA CUNNINGHAM
R-T Staff Writer

Midland County commissioners Monday adopted a policy on compensatory time for the Sheriff's Department which will allow deputies for the first time to receive payment for overtime.

The Commissioners Court accepted a seven-part proposal from Sheriff Dallas Smith for his department in which his employees now can be paid for hours worked in excess of the normal 48 hour week. They previously had not been paid for those hours.

Commissioner Durwood Wright said a few years ago the Commissioners Court was considering adopting wage and hour regulations when the Texas Supreme Court ruled county and city municipalities could be exempt from these rules.

At that time, a uniform policy was proposed for all county employees which stated overtime payment had to be approved ahead of time by the court.

Commissioner Charlie Welch admonished Smith about the overtime in the Sheriff's Department saying, "You shouldn't be creating overtime situations. You should be trading things out so one man does not get a lot of overtime."

Smith replied that was not a practical solution for his department.

"You can't send a rookie out on a murder case instead of a criminal investigator just because he (the criminal investigator) has more overtime that week," he said.

Smith then went into the issue of trying to pay the Sheriff's Department employees a salary comparable with those of the Midland Police Department or the Department of Public Safety. But Wright said Smith was talking about "oranges and apples. They (the other law enforcement

agencies) are one entity and we (the Sheriff's Department) are another." Smith said his department needs the salaries to get and keep qualified men instead of losing them to the other agencies which provided better pay and overtime pay.

After a round of arguments, County

Judge Blake Hansen urged the commission to formulate a policy, and he went step by step through Smith's proposal.

Welch, though, continued to contend overtime should be approved

(Continued on Page 6A)

Economy too strong now, says Miller

By R. GREGORY NOKES

WASHINGTON (AP) — The strong growth of the economy in the final months of 1978 may be too strong, making it more difficult than ever to control inflation next year, says G. William Miller, chairman of the Federal Reserve Board.

Miller also said the 14.5 percent increase in oil prices by the Organization of Petroleum Exporting Countries will increase the risk of a recession in the United States next year, although he still thinks such an economic downturn can be avoided.

In a year-end interview, Miller told reporters it now may be feasible to trim only one-half of a percentage point from the rate of inflation next year, compared to 1978, and that a one percentage point cut is the most that can be expected.

With inflation expected to be about 9 percent in 1978, that would translate to an inflation rate in excess of 8 percent next year, well above the Carter administration's official forecast of a 6 percent to 6.5 percent rate in 1979.

A spokesman for the administration's wage and price agency said Monday the OPEC increase will add as much as 0.4 percent to the rate of inflation next year, indicating that some change in the official administration forecasts may be necessary. But he said it shouldn't cause any change in the wage and price guidelines.

"It's certainly going to make our job more difficult, but not impossible," said the spokesman, who did not want to be identified.

Miller said the economy may be growing at a rate of near 4 percent in the final three months of the year, up from 3.4 percent in the third quarter and more than had been expected. He added that this is not particularly good news, however, since an active economy is likely to keep upward pressures on prices.

The economy is expected to finish 1978 with an over-all gain for the year of about 3.75 percent. The administration is forecasting growth next

(Continued on Page 6A)

Talmadge subject of Senate inquiry

WASHINGTON (AP) — The Senate Ethics Committee, citing "substantial credible evidence" against Sen. Herman Talmadge, will conduct a full inquiry into allegations of financial wrongdoing by the powerful 22-year Senate veteran.

The Georgia Democrat said he is confident of being cleared.

There has been no similar Senate proceeding — which roughly parallels a grand jury indictment or formal court charge — since the late Sen. Thomas Dodd, D-Conn., was censured for misconduct in 1967.

The next stage following Monday's 4-1 vote will be a Senate hearing, conducted under rules similar to those in a criminal court trial and likely to begin in mid- to late January.

The committee, which approved "a formal investigation of possible improprieties for which substantial credible evidence has been found," has been conducting a preliminary inquiry for five months.

Meanwhile, a federal grand jury also has been looking into Talmadge's finances. He has not been told, however, that he is the target of an investigation.

The major allegation against Talmadge focused on a secret account at the Riggs National Bank of Washington. Established in Talmadge's name in 1973, it contained about \$26,000 in unreported campaign contributions and \$13,000 in reimbursements for Senate expenditures.

A former close aide to Talmadge, Daniel Minchew, says he established and maintained the account on Talmadge's orders. Talmadge denies knowing of the account and says Minchew is an embezzler.

\$2.8 billion available for state

AUSTIN, Texas (AP) — The 66th Legislature can exceed current spending by \$2.8 billion in 1980-81 without unbalancing the state budget, Comptroller Bob Bullock said Monday.

Bullock gives legislators more leeway than some had thought for either higher spending or a new tax relief bill.

The Legislative Budget Board's 1980-81 recommended general appropriation bill would exceed current spending by about \$2.5 billion.

The \$2.8 billion includes a predicted surplus of \$743.2 million for 1979.

Also included in the amount is \$450

(Continued on Page 6A)



Inside your R-T

IN THE NEWS: Indian parliament votes to send Indira Gandhi to jail..... 8C

LIFESTYLE: Jessie Wiseman, 98, has memories of sleigh rides and taffy pulls at Christmas..... 7B

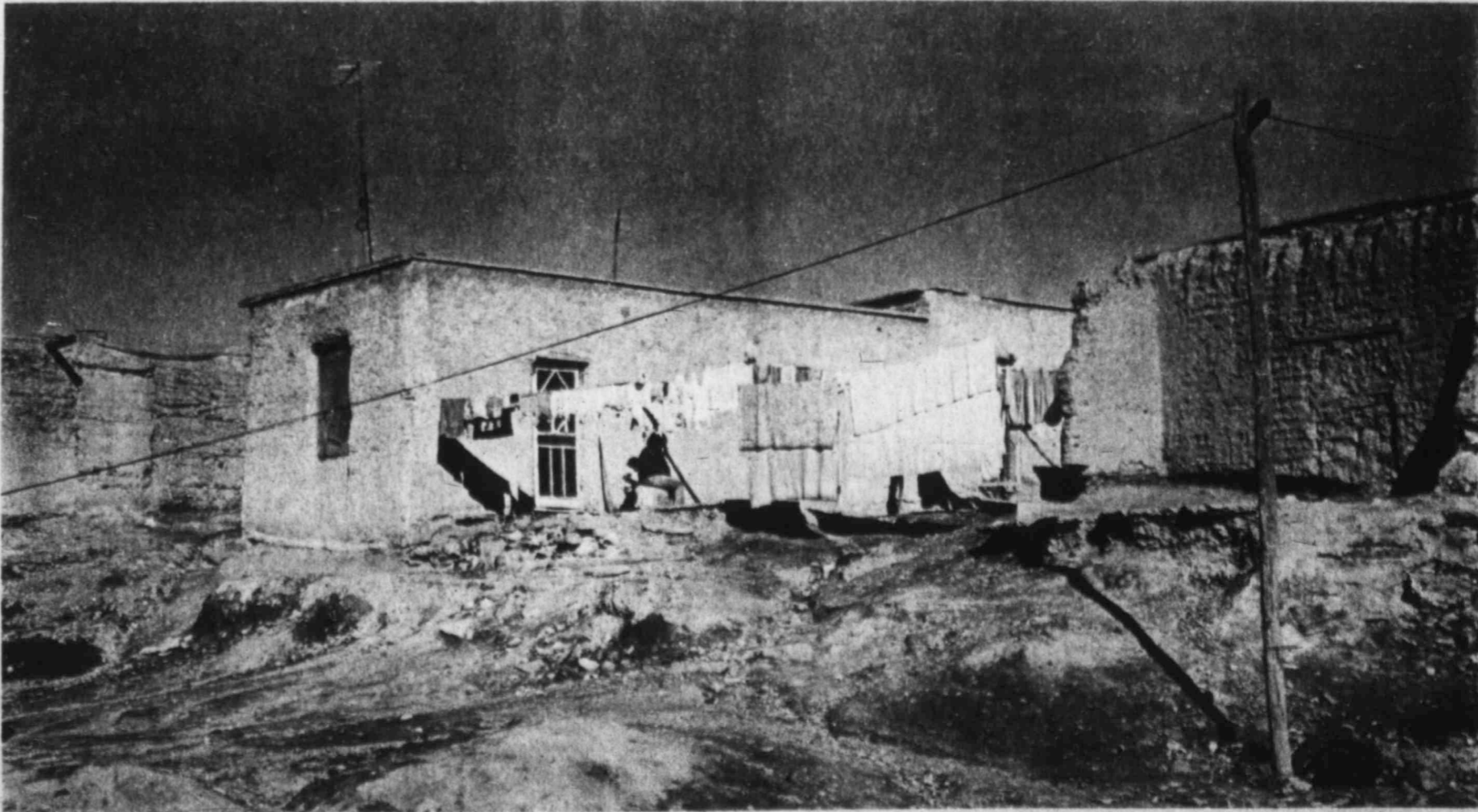
SPORTS: Fairbanks accepts Colorado coaching job to leave Patriots fatherless.. 1C

Bridge..... 5B Editorial.... 6B
Classified.. 2D Lifestyle.... 7B
Comics..... 4C Markets... 11C
Crossword.. 4C Obituaries... 7A
Dear Abby.. 8B Oil & gas... 1D
Around Town..... 7B

Weather

Cloudy tonight. Low tonight mid-30s. High Wednesday upper 50s. Details on Page 6A.

Delivery Service 682-5311
Want Ads 682-6222
Other Calls 682-5311



Poverty in Ojinaga, Mexico, takes the shape of dirt roads, adobe brick housing and little or no industry. This is a typical neighborhood of the city. Related stories and graphics on Pages 2A and 3A. (Staff Photo by Guy Sullivan)

Real Estate Listings: Houses for Sale, \$56,000, \$45,500, \$12,500, \$19,500, \$36,000, \$79,500, \$66,500, \$48,000, \$42,500, \$115,000, \$39,500, \$127,500, \$3,000, \$31,000, \$85,000, \$57-4161, Real Estate Property, Texas, All replies to Box H-1 care of Telegram, P. O. Box 7925, Dallas, Texas 75225, limiting you in real estate transactions (800) 792-2179, Mantooth and

The trip north can cost an alien \$250 — and more

Editor's note: In today's third article in a five-part series on undocumented or illegal aliens and their impact on the Permian Basin economy, the R-T reports on the smuggling of Mexican workers into Midland County.

BY GUY SULLIVAN
R-T Staff Writer

"I was smuggled into Midland years ago when I was illegal. I worked hard, earned good money and then relocated my family from Ojinaga. Today, I have my legal papers and a good job. But when I look back, remembering how bad it was...I don't know what would have happened otherwise." — A former illegal alien now living in Midland.

OJINAGA, Mexico — Day in and day out the smuggler of illegal aliens searches for another individual or group of Mexicans to make a deal with.

He hopes — with a high ratio of success — to deliver illegal aliens to employers in the Permian Basin. The trip north will cost his "customers" \$250 a piece.

That's the going rate within today's sphere of the "wetback smuggler." And the so-called free-lancer or

LOS MOJADOS: Illegal Aliens in Midland

small-time smuggler takes the same risks and finds the same fast money as does the big-time operator in this particular business.

Profits can run as high as \$50,000 a year or more, tax-free, for well-established ring-leaders. Even if they are busted by the Border Patrol, their losses are minimal.

For the worker, however, the trip north can be a more serious and dangerous matter. The "mojado" merely wants a job. But he can die while seeking it — many illegal aliens have.

"A MAJORITY OF the illegal aliens we apprehend in the Marfa sector were intended to reach the Midland-Odessa area," said a Ojinaga-area federal agent who asked not to be identified by name.

"Any big city in the country is a magnet for workers from Mexico," said the investigator.

"It's 70 miles from Ojinaga to Marfa," he said. "That's 70 miles of sagebrush, cactus and rattlesnakes with a few widely scattered water-holes."

Rather than walk, many would-be U.S. workers hitch freight train box-car rides eastward from the vicinity of El Paso, toward the Midland-Odes-

sa region's mecca of jobs.

"The dedication and determination of these people always amazes me," said the agent. "I don't know what drives them. Perhaps it's hope, desperation and hunger. When you've a family in Mexico and you can't support them there, that gets to be pretty bad."

"I guess they hope the land of milk and honey will help," he said, adding, "Whether we Americans like to think so or not, we really do live in the land of milk and honey. That's why these people come." But coming here illegally carries penalties.

AUTHORITIES POINTED out that illegal entry into America after formal deportation is a felony with a maximum penalty of two years in prison and/or a \$1,000 fine. Illegal entry by itself carries a potential six-month prison sentence or a \$500 fine as the maximum possible penalty.

Maximum penalty for smuggling people into the United States is a \$2,000 fine and/or a five-year prison sentence, said authorities. However, they noted, sentences in this regard tend to be on the light side.

"Alien smugglers usually get pretty lenient sentences. It depends upon the court involved," said one federal agent.

Federal agents are charged with stopping alien smuggling and enforcing immigration laws. Said a Marfa-based agent who also preferred anonymity: "We deal with criminals. Once we get them, only the U.S. attorney authorizes prosecutions. We work closely with Jamie Boyd of San Antonio."

The agent admitted sometimes alien smugglers will be back in business while out on bond for prior smuggling offenses. He sympathized with those being smuggled here.

"These poor people have it rough down in Mexico because there is a lot of poverty over there. Most of these people just want to come here to work."

HE INDICATED WAGES below the border are much lower than in the United States. "They work for like \$5 per day and if they have a family, that will just barely take care of feeding them. It practically takes all they earn just to eat."

About a year ago, he said, the American dollar was worth 12½ pesos in Mexico. "Now it's worth anywhere from 22 to 25 pesos."

"Here in Ojinaga, families with five to 12 members live in one room of an adobe hut or building. That's not uncommon at all," said a source who works closely with federal authorities.

He also said Mexicans coming up from the interior to Ojinaga often

arrive by commercial bus and then rent rooms in Ojinaga hotels, where they make deals with "coyotes" or smugglers.

Some have already made arrangements to cross the Rio Grande River before they arrive in Ojinaga, he said.

Not-so-clandestine meetings between smugglers and aspirant "wetbacks" take place in Ojinaga can-

tinias, hotels and even in a plaza located in front of a Catholic church.

IN SOME CASES, the source said, smugglers will arrange to pick up aliens on the American side of the Rio Grande, which easily can be crossed by wading the river, by boat and via bridges.

A railroad bridge just east of the official Ojinaga-Presidio port-of-

entry is a well-known crossing point for undocumented workers entering Texas.

Traveling up or down the Rio Grande on the Mexican side presents no problem because of the availability of commercial buses, said the source.

Also, there exist several popular jumping-off points used by illegal aliens headed for Midland or Odessa.

One of these is Lomas de Arena, where illegal aliens gather to prepare for their long journey.

Many routes beckon continuously to smugglers of alien workers. Smuggler drive a variety of vehicles, ranging from vans to pickup trucks to semi-trucks, the source said.

ONCE INTO WEST Texas, he said, (Continued on Page 3A)

Second of men charged in plot to steal submarine enters plea

ST. LOUIS (AP) — The second of two men charged with wire fraud in connection with a phony plot to steal a nuclear submarine has pleaded guilty and will be sentenced with his accomplice Friday.

James Cosgrove, 26, of Ovid, N.Y., pleaded guilty in U.S. District Court Monday. Edward Mendenhall, 24, of St. Louis County was convicted last week.

Man who took daughter from hospital sought

SAN FRANCISCO (AP) — Police are searching for a man who took his 3-year-old daughter from a hospital bed after disconnecting the intravenous tubes feeding her.

Investigators said the father, 30-year-old Gary Warren, fought with a doctor who tried to stop him and fled from San Francisco General Hospital with the girl, Donna, about 11 p.m. Sunday.

The doctor said Warren claimed he was taking the girl to another hospital.

Police said they had been looking for Warren since the girl was admitted to the hospital several weeks ago with a turkey bone in her throat. Officers said they wanted to question Warren about possible child abuse.

Both men face maximum penalties of five years in prison and \$1,000 fines.

Cosgrove and Mendenhall were arrested in October after Charles Rosene of St. Louis told the FBI of a scheme to steal the USS Trepang from its Groton, Conn., base. Undercover agents joined Rosene in negotiating with the plotters.

Testimony in the Mendenhall trial produced allegations that Cosgrove and Mendenhall contacted Rosene, whom they believed to have underworld connections, in efforts to secure at least \$250,000 to finance the theft of the Trepang.

Attorneys for Mendenhall and Cosgrove asked that their clients be given 90-day psychiatric examinations at a federal medical facility at Springfield, Mo., prior to sentencing.

Mendenhall had been scheduled to be sentenced Monday, but U.S. District Judge James Meredith postponed the action until Friday, the day set for Cosgrove's sentencing.

SANITARY plumbing-heating air conditioning
694-8871

STOP
Before You Buy Any TV-Look At Bolins Savings on RCA



COLOR TV WITH Xtended Life Classis
regular 419.95
Save \$1.95
\$368 w/T

12" DIAGONAL 100% Solid State Black & White
\$88.

Use only 60 watts of power
•Built in energy efficiency
•Automatic line tuning

Bolin Appliance MART Whirlpool
3108 CUTHBERT 694-1682

Globe's producer-director to leave post in January

ODESSA — Charles David McCally, producer-director of the Globe of the Great Southwest since its opening in 1968, will leave his position Jan. 1 to become producer of the Christian Broadcasting Network's dramatic series billed as the "first Christian soap opera."

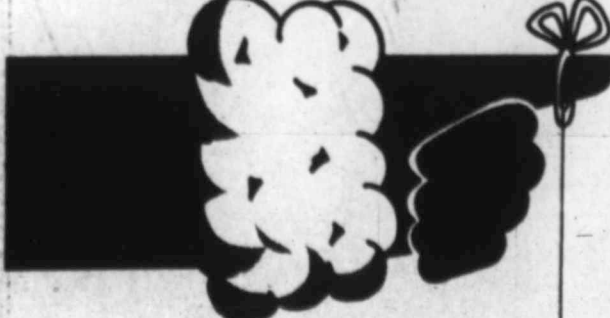
His resignation was announced by Ted Lorenz, president of the Globe's board of governors before the recent performance of "Mary of Nazareth" at the theater.

McCally began the Brand New Oprey program at the Globe which now plays to overflow crowds each Saturday night between dramatic

presentations. McCally has not only directed at the theater, but has also acted in many roles on its stage. He also has a weekly radio program of Bible readings entitled "The Story Telling Man" and has appeared in numerous television programs.

Acclaimed by the Shakespeare Quarterly as an inventive and expert craftsman, McCally has led the 10-year history of the Globe's productions to national fame. A 1970 tour by the director and a troupe of Globe actors in the Lake District of London brought international recognition to the Odessa theater.

Gift idea!



paperboy, postman, favorite teacher, neighbor, aunt tillie, classmate, banker, baker or buddy...
Everybody Loves... TACOVILLA T.M. Gift Coupon Books

\$1.00
\$2.50
\$5.00

Three locations in Midland:
902 Andrews Hwy. • 2111 N. Big Spring • 3203 Midkiff

Radio Shack
Out Front in CB by a Country Mile

SHOP THE SHACK® FOR LAST MINUTE GIFTS



GIVE A CB!

SAVE \$40 ON A YEAR 'ROUND HIGHWAY SAFETY GIFT!

COMPACT, BUT POWERFUL MOBILE!
TRC-421 by Realistic®

Buy the best for less! And remember the **ONE TIME** this winter you may need Emergency Ch. 9 it'll pay for itself! So be prepared for stormy weather, traffic tie-ups and road hazards. Highway information and other info on Ch. 19 makes driving more fun, less lonely. The Dept. of Transportation encourages CB use for highway safety. And with a built-by-us Realistic CB, help is just a call away! Adding an external speaker makes it a PA system. 11 1/2x5 1/2x9 1/4". Hurry! — only a few days before Christmas! 21-1530

59.95 Reg. 99.95

master charge VISA CHARGE IT (MOST STORES)

SMART SANTAS SHOP THE SHACK® MOST STORES OPEN LATE NIGHTS 'TIL CHRISTMAS!

MIDLAND OPEN 9 TO 9
*South 9 Meta Dr. In The Village
OPEN SUN. 1 TO 5
*Plaza Shop. Ctr. Garfield & Wadley

ODESSA OPEN 9 TO 9
*901 N. Grandview
*1 Energy Square Shop. Ctr.
*West County Plaza Shop. Ctr.
*1617 West County Rd.

Most items also available at Radio Shack Dealers. Look for this sign in your neighborhood.

Radio Shack DEALER

PRICES MAY VARY AT INDIVIDUAL STORES

"If there majority (and trailer) small nun Ellwyn Sto at El Paso U.S. border

One of the illegal immigrants of the patrol office

During 1978, a naturalized citizen claimed to be an alien smuggler

But because of wide organized smuggling gaged in 1978 and punished a slap on the wrist INS spoke

A majoring alien methods only, the best drivers of aliens.

"The driver vehicles us sees of my Jervis. "T about such To count INS comm

Wol kille

DALLAS year-old w to death M officers o parlor w said to ha ing a dist

The vic Sims of I arrested total of 41 of them in recent said.

The of back, they fired a .22 er at one distance o She was s and in the

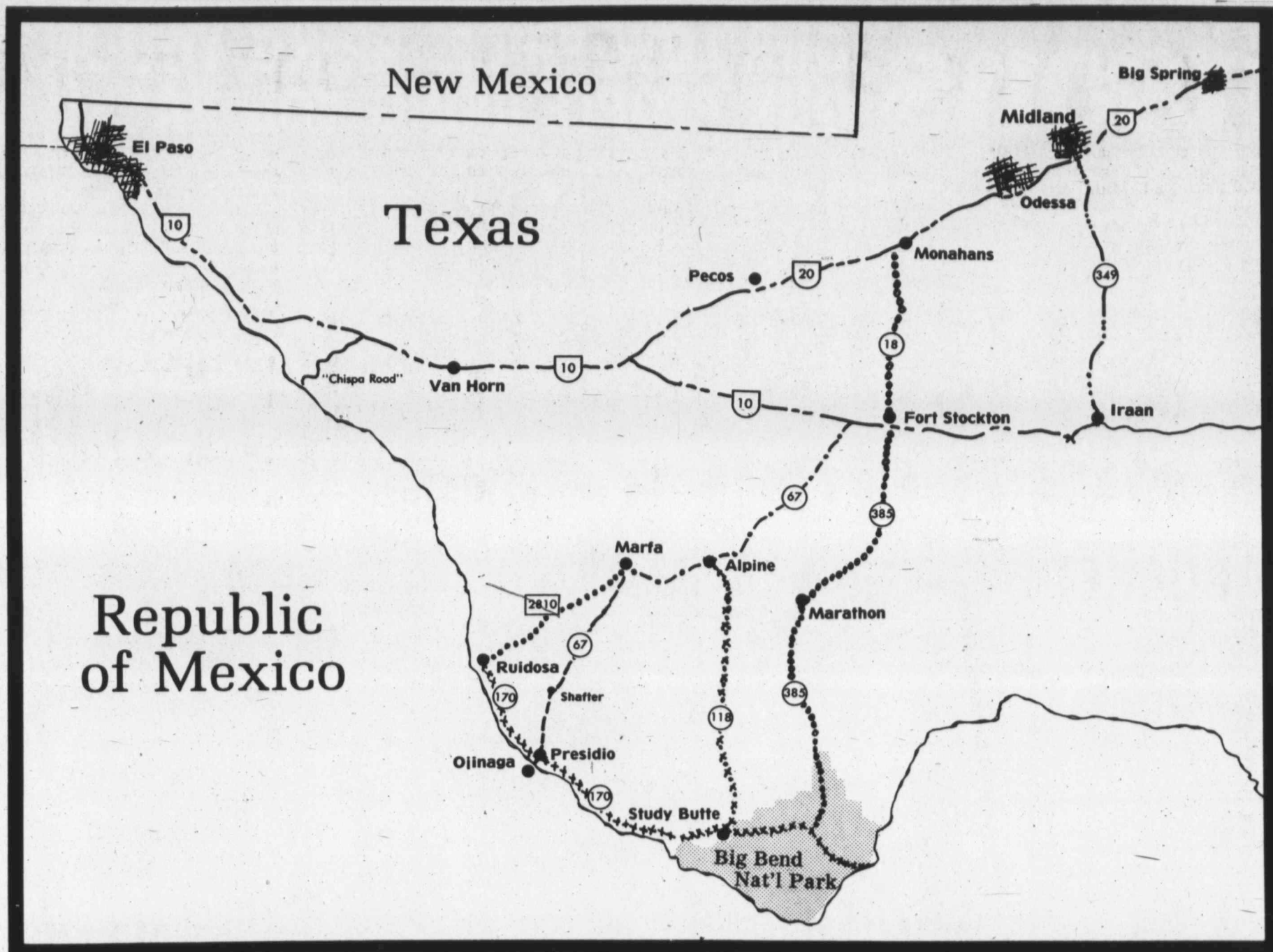
Author woman ea ning had lounge s barred f pointed h father of and fired ceiling.

Shortly nearby pi she com service, fi the floor s to the hea ee, the s police ca lities said.

The wor a fire stai drove up l taurant i shots bef on one o they said.

Soviet minist

MOSC Serge A. ter of the industry s central c ber since age 66, Monday,



Five major smuggling routes from the Mexican border wind northward into the Permian Basin. (Staff Graphics by Bruce Partain)

Hope, desperation, hunger drive them north

(Continued from Page 2A)

alien workers routinely head for Highway 90 and either go north toward Van Horn or come east into the Midland-Odessa area.

Ranch Road 2810 is a "favorite" smuggling route these days, he said. That road offers a direct route to the Ruidosa area from the international border.

"There are five major routes which go down to the river," said the source. "And these smugglers know them all because they've traveled every one of them at one time or another."

"I feel sorry for the people seeking work," said the source. "But I have no sympathy for the smugglers. To them, it's strictly business. They are just interested in making money and there are many smuggling rings operating in the Ojinaga-Presidio area."

Presidio, noted for its hot summer-time temperatures, lies nestled in an agriculturally well-developed valley. It has a population of about 3,000 people. In comparison, Ojinaga has a population of about 20,000 citizens, a direct result of its popularity as a departure point, according to authorities.

SOME SMUGGLING rings have as many as 30 persons involved, he said. "Contacts helps make the arrangements. Others help locate people seeking to make such trips. They also get in touch with American employers."

"Ojinaga is divided up into 'colonias,' or neighborhoods. It's a poor city with the main income coming from agriculture with some tourism."

He described Mexico as a nation of vast richness in terms of land and minerals. But, the source added pointedly, "You've got the rich and the poor here and no middle class."

A flood in the Presidio Valley earlier this year ravaged the Mexican side of the border. Despite obstacles presented by the flood damage, there has been no reduction in the number of "mojodas" making border crossings in that vicinity, he said.

Organized smuggling rings often feature a "lead-off car" in front of a load of alien workers in order to "tip off others in case there is a Border Patrol checkpoint," said the source.

THE BORDER PATROL frequently has a checkpoint set up along Texas 67, he added.

"Many loads of aliens smuggled into West Texas have been caught on Farm Road 170," said the same source. "Other smugglers have been

caught with loads on both Texas 118 and 385."

Farm Road 170 extends from Presidio down to Study Butte, near the entrance to Big Bend National Park.

"Most of the undocumented worker loads that get picked up in the Redford area — headed for the Permian Basin — were made up in Ojinaga," he said. "They will also try riding commercial buses along the edge of the Rio Grande River to villages like Mulatto and then be picked up (either by 'coyotes' or 'patrons') near Redford before going down FM 170 and eventually up north on 118 and 385."

From either of these highways the aliens "can go right into Midland easy," said the source.

One indication of Ojinaga's poverty is an eastside slum winkingly referred to by Anglos as "Boy's Town," a red-light district where cantinas do a swift business and prostitutes ply their trade.

The source said oftentimes families can be seen living in cardboard huts because of a lack of available housing.

"IT'S A MAJOR task to try to protect all five smuggling routes from the border," claimed one federal agent. "We just don't have the manpower to cover all these roads constantly."

On foot or by motor vehicle, the aliens must contend with a variety of barriers, including the Border Patrol and hostile landowners whose property they cross during their journey.

"In the end, when a smuggler is caught," said the source, "it's the aliens who end up being out the money they paid for the trip across the border."

Wednesday: The effect of illegal Mexican workers on Midland and Permian Basin educational and business institutions.

New effort centers on 'smugglers'

"If there is smuggling going on, the majority of it involves semi-trucks and trailers. They don't mess with small numbers of people." — Dr. Ellwyn Stoddard, University of Texas at El Paso sociologist and Mexico-U.S. border-issue expert.

One of the "worst aspects" of illegal immigration involves the smuggling of people, especially from Mexico to the U.S., according to Border Patrol officials.

During 1977, U.S. Immigration and Naturalization Service agents claimed they arrested 9,600 illegal alien smugglers.

But because of the lack of a nationwide organized effort against alien smuggling, prosecutions of those engaged in the activity were minimal and punishment was "little more than a slap on the wrist," said S.L. Jervis, INS spokesman.

A major stumbling block to arresting alien smugglers has been their methods of operation, he said. Usually, the best agents can do is arrest drivers of vehicles carrying illegal aliens.

"The drivers of these smuggling vehicles usually are low level employees of much larger rings," said Jervis. "They know little if anything about such operations."

To counter this, Leonel J. Castillo, INS commissioner, formed an Office

of Anti-Smuggling Activities to coordinate efforts against the crime. "It's begun to pay off," claimed Jervis.

The INS now has more than 100 anti-smuggling agents operating nationwide, with plans to add 164 more during 1979.

The total number of alien smuggling violations presented during the first three-quarters of 1978 amounted to a third more than for all 1977, said INS officials.

"Even more significantly," Jervis said, "the anti-smuggling unit has investigations pending on more than 400 individuals identified as top-level participants in major smuggling rings."

He said agents successfully are infiltrating organized smuggling rings and moving against leaders of such groups. But he admitted some problems persist.

"One of the greatest problems we face is the repeated use of vehicles by smugglers. Currently, the INS has no authority to confiscate vehicles used in alien smuggling," he said.

Consequently, when INS makes a smuggling arrest, the vehicle used by the smuggler must be returned to its owner.

"Often that vehicle is back in use for smuggling the next day," Jervis said.

"It seems ridiculous that vehicles

used in smuggling contraband can be taken from their owners, but those used in an even more vicious racket — the smuggling of people — must be returned."

He said that's why INS has proposed federal legislation to provide seizure authority for smuggling or transporting undocumented aliens into the United States.

"We believe this would be a significant deterrent — both to the organized smuggling rings and small-time smugglers who use vehicles a few times a month to transport illegally a small number of people at a high cost," Jervis said.

In addition, he said, INS has proposed a fraudulent document laboratory to combat fake birth certificates and other papers. "Funds for this operation have been included in the fiscal 1979 budget," he said. "We hope to have it open by next spring."

"This will aid us in identifying and

prosecuting suppliers of counterfeit and altered immigration documents," Jervis explained. "It would be another weapon in our somewhat limited arsenal to combat illegal entry."

And Congress now is aware of the problem.

A General Accounting Office report delivered to the House Select Committee on Population said, "Professional smugglers, illicit documents and schemes to obtain legal resident status are undermining U.S. immigration control efforts. Aliens entering illegally with the assistance of smugglers have on occasion received inhumane treatment from their 'benefactors.'"

President Jimmy Carter has been told by the U.S. Comptroller General's Office that such human smuggling activity has led, in some cases, to the deaths of persons seeking new lives in America.

Ten men killed in border clash

MANAGUA, Nicaragua (AP) — Nine Sandinista guerrillas and a national guardsman were killed and three guardsmen were wounded in a brief clash near the Costa Rican border Monday, a national guard spokesman announced.

The spokesman said the guerrillas came from Costa Rica and fled back across the border.

Woman killed

DALLAS (AP) — A 27-year-old woman was shot to death Monday night by officers outside a pizza parlor where she was said to have been creating a disturbance.

The victim, Sarah Fay Sims of Dallas, had been arrested 19 times on a total of 41 charges, most of them misdemeanors, in recent years, police said.

The officers fired back, they said, after she fired a .22-caliber revolver at one of them from a distance of about 40 feet. She was shot in the head and in the right side.

Authorities said the woman earlier in the evening had walked into a lounge she had been barred from and had pointed her pistol at the father of the manager and fired a bullet into the ceiling.

Shortly later, at a nearby pizza restaurant, she complained of the service, fired a shot into the floor and put her gun to the head of an employee, the son of a Dallas police captain, authorities said.

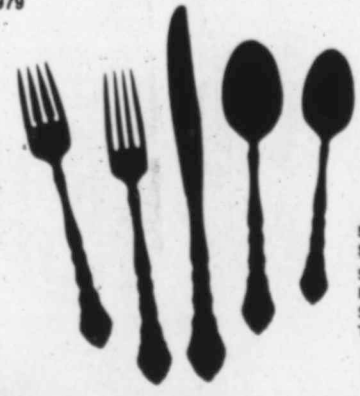
The woman ran behind a fire station as officers drove up to the pizza restaurant and fired two shots before taking aim on one of the officers, they said.

Soviet defense

minister dies
MOSCOW (AP) — Serge A. Zverev, minister of the Soviet defense industry since 1965 and a central committee member since 1966, died at age 66, Tass reported Monday.

SALE DATES: DECEMBER 26, 1978 thru JANUARY 31, 1979

ONEIDA STAINLESS
SAVE 34%



5-Piece Place Setting contains:
Salad Fork, Dinner Fork, Dinner Knife, Soup Spoon, Teaspoon

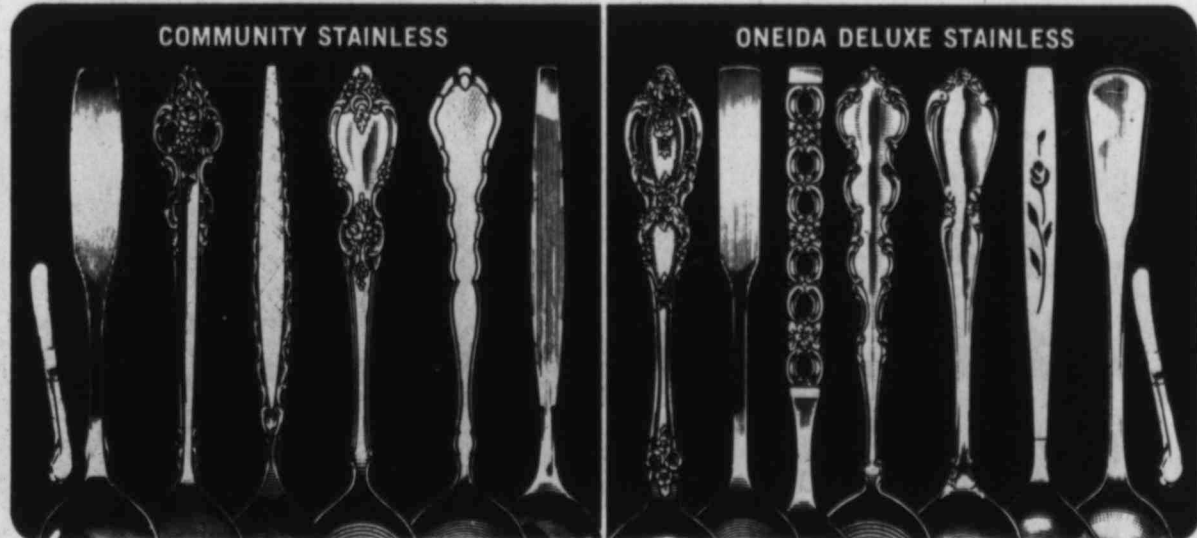
ON PLACE SETTINGS

COMMUNITY* STAINLESS AND ONEIDA® DELUXE STAINLESS

Fantastic savings on top quality tableware. Choose from many outstanding designs.

COMMUNITY STAINLESS **\$12.50** (Reg. \$19.00)
DELUXE STAINLESS **\$9.50** (Reg. \$14.50)

MADE IN AMERICA



CHOOSE FROM 6 PATTERNS: (l. to r.)
Paul Revere®, Cherboung®, Venetia®, Louisiana®, Satinique®, Frostfire®
Paul Revere Place Settings are available with Pistol or Place Style Dinner Knives.

MATCHING 5-PIECE HOSTESS SET
Serving Fork, Butter Knife, Gravy Ladle, Sugar Spoon, Pcd. Tablespoon
\$28.00 (Reg. Price)

CHOOSE FROM 7 PATTERNS: (l. to r.)
NEW! Monte Carlo®, NEW! Antares®, Applique®, Mozart®, Chateau®, Capistrano®, Independence®
Independence available with Place Style Knives and Forks or Pistol Style Knives and 3-Tine Dinner Forks.

MATCHING 5-PIECE HOSTESS SET
Serving Fork, Butter Knife, Gravy Ladle, Sugar Spoon, Pcd. Tablespoon
\$20.00 (Reg. Price)

*Trademarks of Oneida Ltd.

ONEIDA
The silver cube. Our silverware's mark of excellence.

DUNLAPS

dellwood mall

Shop Tuesday, Wednesday, Friday, Saturday 10 a.m. to 8 p.m.; Thursday 10 a.m. to 9 p.m.

Christmas just isn't Christmas without a gift from Dunlaps!



ENTER THE WORLD OF CHLOÉ PERFUME

Chloé, a fragrance as electric and intense as the man who designed it. And as one-of-a-kind as the woman who'll wear it. Parfume Lagerfeld ... Paris. Perfume from 25.00. Colognes from 14.00.

enter **Chloé**

"A woman does not put on my fragrance. She enters it."

Karl Lagerfeld

DUNLAPS

dellwood mall

Shop Tuesday, Wednesday, Friday 10 a.m. to 8 p.m.; Thursday 10 to 9, Saturday 10 to 8

DEATHS

W.I. Moore

ANSON — Services for W.I. Moore, 83, of Anson, father of Bob Moore of Big Spring and brother of Annie Phillips of Midland, were Monday in Anson Church of Christ with Tommy South, minister, officiating. Burial was in Mount Hope Cemetery directed by Lawrence Funeral Home.

Born Feb. 10, 1895, in Comanche County, he and his family moved in 1914 to Clyde, where he was reared. He married Elva Gray Dennis Sept. 29, 1917, in Clyde. The couple moved to Hamby, where they lived and farmed until 1937. They then moved to Lorraine, where they farmed until his retirement in 1962. They then moved to Anson. He was a member of the Church of Christ.

Other survivors include his wife, three daughters, a son, two sisters, 15 grandchildren and 16 great-grandchildren.

George R. Harris

GRAHAM — Services for George Robert Harris, 83, of Graham, father of Georgia Steadham of Midkiff, were Sunday in Morrison Funeral Home with the Rev. Buford Bush, pastor of Salem United Methodist Church, officiating. Burial was in Fields Creek Cemetery.

Harris died Friday in a Graham hospital.

He was born July 25, 1895, in Stephens County. He came to Graham in 1917 and was married to Ivy Lee Martin Oct. 1, 1922, here. He was a veteran of World War I and a member of the Disabled American Veterans. He was a member of the Salem United Methodist Church.

Other survivors include his wife, three grandchildren and five great-grandchildren.

Clint Keith

LUBBOCK — Services for Clint Keith, 70, of Lubbock, father of Mrs. Bill Bucy of Midland, were to be at 3 p.m. today in W.W. Rix Funeral Home with burial in Resthaven Cemetery.

Keith died Saturday night in a Lubbock hospital after a lengthy illness. He was born Dec. 31, 1907, in Oklahoma and moved to Lubbock in 1941 after living in Amarillo and Pampa. He had been a partner in McWhorter's Tire Co. and had operated Keith-Coil Tire Co.

Other survivors include his wife, a brother, two sisters, three grandchildren and four great-grandchildren.

Mary Riddle

BIG SPRING — Services for Mary Riddle, 86, of Big Spring, will be at 2 p.m. Wednesday in Larry D. Sheppard Funeral Home with burial in Trinity Memorial Park.

Mrs. Riddle died Monday in a Big Spring nursing home following an extended illness.

She was born Feb. 27, 1892, in Athens. She was married to Robert Riddle on May 7, 1918, in Athens. He

died in 1951. Mrs. Riddle had lived in Big Spring 20 years.

Mrs. Riddle was a member of Salem Baptist Church. She was a member of the Order of the Eastern Star.

Survivors include a daughter, Mrs. L.C. Gibbs Jr. of Big Spring; three sons, S.M. Riddle of Overland Park, Kan., Charlie Riddle of Fort Smith, Ark., and Robert Riddle of New Orleans, La.; a sister, Mrs. Herbert Brink of Plainview, seven grandchildren and seven great-grandchildren.

Carl C. Hicks

BIG SPRING — Services for Carl Calvin Hicks, 73, of Big Spring were Monday in Larry D. Sheppard Funeral Home with burial in Trinity Memorial Park.

Hicks died Saturday in a Big Spring hospital.

He was born Nov. 8, 1905, in Crosby County. He had lived in Big Spring 11 years. He was a retired railroad employee and a farmer. He was a Baptist.

Survivors include a daughter, Nova Ray McCarty of San Diego, Calif.; two sons, Carl Dean Hicks of Odessa and Joe Bob Hicks of Homestead, Fla.; a sister, Iva Starnes of Rotan; three brothers, Lon Hicks of Big Spring and Earl Hicks and Ed Hicks, both of El Dorado, and six grandchildren.

Betsy D. Sadler

Betsy D. Sadler, 93, of 3121 Barkley St., died Monday in a Midland hospital.

Services were to be at 3 p.m. today in Scott Funeral Home in Gatesville. Burial was to be in Gatesville.

Mrs. Sadler was born Aug. 22, 1885, in Gatesville. She had lived in Midland 10 years. She was a member of the Methodist Church.

Survivors include a son, James G. Sadler of Midland; a brother, C.K. Sadler of Gatesville, and five grandchildren.

Brenda Gordon

ODESSA — Services for Brenda Sue Gordon, 27, of Ayer, Mass., sister of Eddie J. James of Midland, will be at 2 p.m. Wednesday in Hubbard-Kelly Funeral Home. Burial will be in Sunset Memorial Gardens here.

Mrs. Gordon died Sunday in Ayer following an automobile accident.

She was born March 14, 1951, in Texas, and moved to Odessa in 1952. Mrs. Gordon, a clerk typist, recently was discharged from the U.S. Army. She was a Baptist.

Survivors include her husband, three brothers, a sister, her mother and her father.

Remell Boyd

BIG SPRING — Services for Mrs. L.C. (Remell) Boyd, 64, of Big Spring were Monday in Johnson's Funeral Home in San Angelo. Burial was in Belvedere Cemetery.

Mrs. Boyd died Saturday in Big Spring after an illness.

She was born Jan. 20, 1914, in Leander. She was married to L.C. Boyd in August 1930, in San Angelo.

Survivors include her husband; five sisters, Lorene Cade of Ozona, Thelma Mathison and Chrystal Joyce, both of San Angelo, Lola Mae Weatherford of Veribest and Agnes Wilkerson of Claysville, Tenn., and three grandsons.

McDonald family

Services for Buford Ray "Pete" McDonald, 31, his wife, Leigh McDonald, 25, and their son, Billy Ray McDonald, 6, all of Colorado City and formerly of Midland, were to be at 10 a.m. today in the Bethel Baptist Church in Midland with Dr. Roy Day, pastor, officiating. Burial was to be in Resthaven Memorial Park directed by Newnie W. Ellis Funeral Home.

They died Friday in a crash of a light plane near Texarkana on the way to Memphis, Tenn., to visit Mrs. McDonald's family.

Their daughter, Kelly Diane McDonald, 2, survived the crash, but is in critical condition in a Shreve-

port, La., hospital.

McDonald was born Nov. 17, 1947, in DeKalb. He moved to Midland in 1951. He entered the U.S. Navy in 1965 and returned to Midland after his discharge in 1968. The family moved to Colorado City from Midland three years ago.

Mrs. McDonald was born Jan. 11, 1953, in Memphis, Tenn., and was reared there. She was married to McDonald June 2, 1969, in Memphis.

Billy Ray McDonald was born Nov. 22, 1972 in Midland. He was a pre-school student in Colorado City.

In addition to his daughter, McDonald is survived by his parents Mr. and Mrs. Buford Ray McDonald of Midland and his grandmother, Gladys Harrison of Midland.

Mrs. McDonald is survived by her daughter; her parents, Mr. and Mrs. James E. Carver of Memphis, Tenn.; her grandmother, Allene Shireman of Memphis, Tenn.; five sisters, Norma Rhodes, Barbara Brook, Allene Benson, all of Memphis, Tenn., and Brenda Jordan of Somerville, Tenn., and Linda Scott of Lake Cormorant, Miss.; a half-brother, James O. Carver of South Haven, Miss., and a half-sister, Celecia Carver of Crawfordsville, Ark.

State police report scattered violence as strike continues

PITTSBURGH (AP) — State police have reported more than a dozen recent incidents of highway violence as a strike by independent steel haulers entered its sixth week.

A Maryland trucker suffered facial cuts early Monday when an object crashed through his cab's windshield while he was driving along Interstate 70 in Washington County, police said.

The truck Clement Bosley, 37, of Millers, Md., was driving also was hit by a projectile, smashing the windshield. He was treated and released at a local hospital.

Most of the incidents recorded during a 24-hour period ending at 8 a.m. Monday were tire slashings and rock throwings, police said. There were no arrests in any of the incidents.

Also on Monday, seven steel companies continued their effort in federal court here to end the shutdown by the Fraternal Association of Steel Haulers. The producers maintain the strike, which began Nov. 11, violates a 1971 injunction against the association.

The Pittsburgh-based group claims it has changed from a business association to a labor group since that court order, and the injunction no longer applies.

Debris dims hope for missing ship

HONOLULU (AP) — Hopes of finding a University of Hawaii research ship and the nine men aboard has dimmed with the discovery of debris off Hawaii Island, Coast Guard officials said.

A box brought to shore by a fisherman was identified Monday as being from the missing 94-foot Holo Holo, which had been scheduled to do oceanographic work further north on Hawaii Island's western coast.

A Coast Guard helicopter picked a rope out of the water just before dark Monday, but it has not been definitely linked to the missing ship, a Coast Guard spokesman said.

READER SATISFACTION GUARANTEED

OR YOUR MONEY BACK*

Are you startled by THIS DARING OFFER?



The Midland Reporter-Telegram makes it with confidence because today's Reporter-Telegram is—

OUR RESPONSE TO YOUR EXPRESSED VIEWS AND PREFERENCES

as communicated to us via recent surveys, reader opinion polls and through your "Letters To The Editor."



We are so sure of your satisfaction with the news, features and editorial scope, the entire content, professional integrity, objectivity and balance of this newspaper, as well as its easy-to-read typography and superior graphics,

BECAUSE THIS IS THE NEWSPAPER PRODUCT FOR WHICH YOU ASKED.

★ If within 30 days your are not completely satisfied with The Reporter-Telegram, please tell us why in writing and the subscription price you paid will be refunded.

30-DAY GUARANTEED SATISFACTION HOME DELIVERY SUBSCRIPTION ORDER

Only \$3.25 per month. (You save 40%) The Midland Reporter-Telegram P.O. BOX 1650 Midland, TX 79702

Please start home delivery to:

Name Address City

NOTICE

The Banks of Midland Will Close at 3 P.M. Friday Dec. 22nd and Remain Closed All Day Monday, Dec. 25th For The Christmas Holiday

They will be open For Business As Usual on

Tuesday, December 26th

COMMERCIAL BANK & TRUST FIRST NATIONAL METRO BANK MIDLAND NATIONAL WESTERN STATE

MEMBERS F.D.I.C.

Three file for seat

AUSTIN, Texas (AP) — Three persons have filed as candidates for the House seat to be vacated by Rep. Jim Nugent, D-Kerrville, who joins the Texas Railroad Commission on Jan. 1.

Filing on Monday as candidates in the Jan. 16 special election were Elizabeth Rohn of Kerrville, W. P. Dodson of Uvalde and Ernest Boyett of Junction.

Mrs. Rohn, 47, is a member of the State Republican Executive Committee and is a sales representative for radio station KERV in Kerrville.

Dodson is a lawyer. Boyett was executive secretary of Gov. Coke Stevenson in the 1940s and was sergeant-at-arms in the House.

All three labeled themselves conservatives. The district covers Kerr, Kimble, Mason, Gillespie, Llano, Menard, San Saba, Schleicher, Real and Uvalde counties.

Japan buying two paintings

TOKYO (AP) — The Japanese government is going to pay an American and a Belgian nearly \$1.3 million for two paintings to help reduce Japan's trade surplus, the Cultural Affairs Agency said today.

A spokesman said the government is buying a Cezanne from Eugene V. Thaw of New York for \$528,000 and a Rubens from Andre Foussoud of Belgium for \$764,000.

The government plans to spend \$7.7 million for Western art for Japanese museums to help reduce Japan's huge trade surplus. It announced previously it was buying \$4.36 million worth of paintings and illuminated books from France.

et of office

ion

ssion next link one is his view in

he said on't think ring on a

lock mar- after the ow Jones to close at decline in

ices was sury Sec- thal, who visit to ng nations, of only 5

aid he be- increase e price of controlled through it

OPEC oil much as n of gaso- of do- certain to line even

next year, will try to come to a sure we're serious a cause a big g to offset an infla-

ease sent rld money in Tokyo own 2.425 t still well t prior to ent of a \$30 ollar.

Europe's lar closed ks, down ve the low

ed, mean- s an ounce an \$7 in

ent said in nday that ricans in- ent in No- ing starts 2.1 million the ninth tarts have

oup

d Taxpay- test to the ducation, rocedures rials in the ction held

which op- t proposi- s charged ner M.L. f) federal gularities may have

d that the matter. ed are for adium and ing school

school offi- ctests until ment Mon-

telegram icking Company) and Saturday t. P.O. Box 1650, and, Texas

RY Fr. 6-Mon. 1-Mo. \$10.00 \$2.25 \$12.00 \$2.50 \$14.00 \$3.00 \$16.00 \$3.50 \$18.00 \$4.00 \$20.00 \$4.50 \$22.00 \$5.00 \$24.00 \$5.50 \$26.00 \$6.00 \$28.00 \$6.50 \$30.00 \$7.00 \$32.00 \$7.50 \$34.00 \$8.00 \$36.00 \$8.50 \$38.00 \$9.00 \$40.00 \$9.50 \$42.00 \$10.00 \$44.00 \$10.50 \$46.00 \$11.00 \$48.00 \$11.50 \$50.00 \$12.00 \$52.00 \$12.50 \$54.00 \$13.00 \$56.00 \$13.50 \$58.00 \$14.00 \$60.00 \$14.50 \$62.00 \$15.00 \$64.00 \$15.50 \$66.00 \$16.00 \$68.00 \$16.50 \$70.00 \$17.00 \$72.00 \$17.50 \$74.00 \$18.00 \$76.00 \$18.50 \$78.00 \$19.00 \$80.00 \$19.50 \$82.00 \$20.00 \$84.00 \$20.50 \$86.00 \$21.00 \$88.00 \$21.50 \$90.00 \$22.00 \$92.00 \$22.50 \$94.00 \$23.00 \$96.00 \$23.50 \$98.00 \$24.00 \$100.00 \$24.50 \$102.00 \$25.00 \$104.00 \$25.50 \$106.00 \$26.00 \$108.00 \$26.50 \$110.00 \$27.00 \$112.00 \$27.50 \$114.00 \$28.00 \$116.00 \$28.50 \$118.00 \$29.00 \$120.00 \$29.50 \$122.00 \$30.00 \$124.00 \$30.50 \$126.00 \$31.00 \$128.00 \$31.50 \$130.00 \$32.00 \$132.00 \$32.50 \$134.00 \$33.00 \$136.00 \$33.50 \$138.00 \$34.00 \$140.00 \$34.50 \$142.00 \$35.00 \$144.00 \$35.50 \$146.00 \$36.00 \$148.00 \$36.50 \$150.00 \$37.00 \$152.00 \$37.50 \$154.00 \$38.00 \$156.00 \$38.50 \$158.00 \$39.00 \$160.00 \$39.50 \$162.00 \$40.00 \$164.00 \$40.50 \$166.00 \$41.00 \$168.00 \$41.50 \$170.00 \$42.00 \$172.00 \$42.50 \$174.00 \$43.00 \$176.00 \$43.50 \$178.00 \$44.00 \$180.00 \$44.50 \$182.00 \$45.00 \$184.00 \$45.50 \$186.00 \$46.00 \$188.00 \$46.50 \$190.00 \$47.00 \$192.00 \$47.50 \$194.00 \$48.00 \$196.00 \$48.50 \$198.00 \$49.00 \$200.00 \$49.50 \$202.00 \$50.00 \$204.00 \$50.50 \$206.00 \$51.00 \$208.00 \$51.50 \$210.00 \$52.00 \$212.00 \$52.50 \$214.00 \$53.00 \$216.00 \$53.50 \$218.00 \$54.00 \$220.00 \$54.50 \$222.00 \$55.00 \$224.00 \$55.50 \$226.00 \$56.00 \$228.00 \$56.50 \$230.00 \$57.00 \$232.00 \$57.50 \$234.00 \$58.00 \$236.00 \$58.50 \$238.00 \$59.00 \$240.00 \$59.50 \$242.00 \$60.00 \$244.00 \$60.50 \$246.00 \$61.00 \$248.00 \$61.50 \$250.00 \$62.00 \$252.00 \$62.50 \$254.00 \$63.00 \$256.00 \$63.50 \$258.00 \$64.00 \$260.00 \$64.50 \$262.00 \$65.00 \$264.00 \$65.50 \$266.00 \$66.00 \$268.00 \$66.50 \$270.00 \$67.00 \$272.00 \$67.50 \$274.00 \$68.00 \$276.00 \$68.50 \$278.00 \$69.00 \$280.00 \$69.50 \$282.00 \$70.00 \$284.00 \$70.50 \$286.00 \$71.00 \$288.00 \$71.50 \$290.00 \$72.00 \$292.00 \$72.50 \$294.00 \$73.00 \$296.00 \$73.50 \$298.00 \$74.00 \$300.00 \$74.50 \$302.00 \$75.00 \$304.00 \$75.50 \$306.00 \$76.00 \$308.00 \$76.50 \$310.00 \$77.00 \$312.00 \$77.50 \$314.00 \$78.00 \$316.00 \$78.50 \$318.00 \$79.00 \$320.00 \$79.50 \$322.00 \$80.00 \$324.00 \$80.50 \$326.00 \$81.00 \$328.00 \$81.50 \$330.00 \$82.00 \$332.00 \$82.50 \$334.00 \$83.00 \$336.00 \$83.50 \$338.00 \$84.00 \$340.00 \$84.50 \$342.00 \$85.00 \$344.00 \$85.50 \$346.00 \$86.00 \$348.00 \$86.50 \$350.00 \$87.00 \$352.00 \$87.50 \$354.00 \$88.00 \$356.00 \$88.50 \$358.00 \$89.00 \$360.00 \$89.50 \$362.00 \$90.00 \$364.00 \$90.50 \$366.00 \$91.00 \$368.00 \$91.50 \$370.00 \$92.00 \$372.00 \$92.50 \$374.00 \$93.00 \$376.00 \$93.50 \$378.00 \$94.00 \$380.00 \$94.50 \$382.00 \$95.00 \$384.00 \$95.50 \$386.00 \$96.00 \$388.00 \$96.50 \$390.00 \$97.00 \$392.00 \$97.50 \$394.00 \$98.00 \$396.00 \$98.50 \$398.00 \$99.00 \$400.00 \$99.50 \$402.00 \$100.00 \$404.00 \$100.50 \$406.00 \$101.00 \$408.00 \$101.50 \$410.00 \$102.00 \$412.00 \$102.50 \$414.00 \$103.00 \$416.00 \$103.50 \$418.00 \$104.00 \$420.00 \$104.50 \$422.00 \$105.00 \$424.00 \$105.50 \$426.00 \$106.00 \$428.00 \$106.50 \$430.00 \$107.00 \$432.00 \$107.50 \$434.00 \$108.00 \$436.00 \$108.50 \$438.00 \$109.00 \$440.00 \$109.50 \$442.00 \$110.00 \$444.00 \$110.50 \$446.00 \$111.00 \$448.00 \$111.50 \$450.00 \$112.00 \$452.00 \$112.50 \$454.00 \$113.00 \$456.00 \$113.50 \$458.00 \$114.00 \$460.00 \$114.50 \$462.00 \$115.00 \$464.00 \$115.50 \$466.00 \$116.00 \$468.00 \$116.50 \$470.00 \$117.00 \$472.00 \$117.50 \$474.00 \$118.00 \$476.00 \$118.50 \$478.00 \$119.00 \$480.00 \$119.50 \$482.00 \$120.00 \$484.00 \$120.50 \$486.00 \$121.00 \$488.00 \$121.50 \$490.00 \$122.00 \$492.00 \$122.50 \$494.00 \$123.00 \$496.00 \$123.50 \$498.00 \$124.00 \$500.00 \$124.50 \$502.00 \$125.00 \$504.00 \$125.50 \$506.00 \$126.00 \$508.00 \$126.50 \$510.00 \$127.00 \$512.00 \$127.50 \$514.00 \$128.00 \$516.00 \$128.50 \$518.00 \$129.00 \$520.00 \$129.50 \$522.00 \$130.00 \$524.00 \$130.50 \$526.00 \$131.00 \$528.00 \$131.50 \$530.00 \$132.00 \$532.00 \$132.50 \$534.00 \$133.00 \$536.00 \$133.50 \$538.00 \$134.00 \$540.00 \$134.50 \$542.00 \$135.00 \$544.00 \$135.50 \$546.00 \$136.00 \$548.00 \$136.50 \$550.00 \$137.00 \$552.00 \$137.50 \$554.00 \$138.00 \$556.00 \$138.50 \$558.00 \$139.00 \$560.00 \$139.50 \$562.00 \$140.00 \$564.00 \$140.50 \$566.00 \$141.00 \$568.00 \$141.50 \$570.00 \$142.00 \$572.00 \$142.50 \$574.00 \$143.00 \$576.00 \$143.50 \$578.00 \$144.00 \$580.00 \$144.50 \$582.00 \$145.00 \$584.00 \$145.50 \$586.00 \$146.00 \$588.00 \$146.50 \$590.00 \$147.00 \$592.00 \$147.50 \$594.00 \$148.00 \$596.00 \$148.50 \$598.00 \$149.00 \$600.00 \$149.50 \$602.00 \$150.00 \$604.00 \$150.50 \$606.00 \$151.00 \$608.00 \$151.50 \$610.00 \$152.00 \$612.00 \$152.50 \$614.00 \$153.00 \$616.00 \$153.50 \$618.00 \$154.00 \$620.00 \$154.50 \$622.00 \$155.00 \$624.00 \$155.50 \$626.00 \$156.00 \$628.00 \$156.50 \$630.00 \$157.00 \$632.00 \$157.50 \$634.00 \$158.00 \$636.00 \$158.50 \$638.00 \$159.00 \$640.00 \$159.50 \$642.00 \$160.00 \$644.00 \$160.50 \$646.00 \$161.00 \$648.00 \$161.50 \$650.00 \$162.00 \$652.00 \$162.50 \$654.00 \$163.00 \$656.00 \$163.50 \$658.00 \$164.00 \$660.00 \$164.50 \$662.00 \$165.00 \$664.00 \$165.50 \$666.00 \$166.00 \$668.00 \$166.50 \$670.00 \$167.00 \$672.00 \$167.50 \$674.00 \$168.00 \$676.00 \$168.50 \$678.00 \$169.00 \$680.00 \$169.50 \$682.00 \$170.00 \$684.00 \$170.50 \$686.00 \$171.00 \$688.00 \$171.50 \$690.00 \$172.00 \$692.00 \$172.50 \$694.00 \$173.00 \$696.00 \$173.50 \$698.00 \$174.00 \$700.00 \$174.50 \$702.00 \$175.00 \$704.00 \$175.50 \$706.00 \$176.00 \$708.00 \$176.50 \$710.00 \$177.00 \$712.00 \$177.50 \$714.00 \$178.00 \$716.00 \$178.50 \$718.00 \$179.00 \$720.00 \$179.50 \$722.00 \$180.00 \$724.00 \$180.50 \$726.00 \$181.00 \$728.00 \$181.50 \$730.00 \$182.00 \$732.00 \$182.50 \$734.00 \$183.00 \$736.00 \$183.50 \$738.00 \$184.00 \$740.00 \$184.50 \$742.00 \$185.00 \$744.00 \$185.50 \$746.00 \$186.00 \$748.00 \$186.50 \$750.00 \$187.00 \$752.00 \$187.50 \$754.00 \$188.00 \$756.00 \$188.50 \$758.00 \$189.00 \$760.00 \$189.50 \$762.00 \$190.00 \$764.00 \$190.50 \$766.00 \$191.00 \$768.00 \$191.50 \$770.00 \$192.00 \$772.00 \$192.50 \$774.00 \$193.00 \$776.00 \$193.50 \$778.00 \$194.00 \$780.00 \$194.50 \$782.00 \$195.00 \$784.00 \$195.50 \$786.00 \$196.00 \$788.00 \$196.50 \$790.00 \$197.00 \$792.00 \$197.50 \$794.00 \$198.00 \$796.00 \$198.50 \$798.00 \$199.00 \$800.00 \$199.50 \$802.00 \$200.00 \$804.00 \$200.50 \$806.00 \$201.00 \$808.00 \$201.50 \$810.00 \$202.00 \$812.00 \$202.50 \$814.00 \$203.00 \$816.00 \$203.50 \$818.00 \$204.00 \$820.00 \$204.50 \$822.00 \$205.00 \$824.00 \$205.50 \$826.00 \$206.00 \$828.00 \$206.50 \$

Opening stock market report

New York Exchange

NEW YORK (AP)—Today's selected national prices for New York Stock Exchange issues:

Sales High Low Close Change

Table listing various stocks such as ACP, AMB, AMF, etc., with their respective prices and changes.

Additional listings

Table listing additional stock prices and changes, including companies like ACP, AMB, AMF, etc.

Over-the-counter

Table listing over-the-counter stock prices and changes, including companies like ACP, AMB, AMF, etc.

Additional listings

Table listing additional over-the-counter stock prices and changes.

Over-the-counter

Table listing over-the-counter stock prices and changes, including companies like ACP, AMB, AMF, etc.

Additional listings

Table listing additional over-the-counter stock prices and changes.

Over-the-counter

Table listing over-the-counter stock prices and changes, including companies like ACP, AMB, AMF, etc.

Additional listings

Table listing additional over-the-counter stock prices and changes.

Over-the-counter

Table listing over-the-counter stock prices and changes, including companies like ACP, AMB, AMF, etc.

Additional listings

Table listing additional over-the-counter stock prices and changes.

Over-the-counter

Table listing over-the-counter stock prices and changes, including companies like ACP, AMB, AMF, etc.

Additional listings

Table listing additional over-the-counter stock prices and changes.

Mutual funds

NEW YORK (AP)—Selected noon national prices for American Stock Exchange issues:

Table listing mutual fund prices and changes, including companies like ACP, AMB, AMF, etc.

Additional listings

Table listing additional mutual fund prices and changes.

Over-the-counter

Table listing over-the-counter mutual fund prices and changes.

Additional listings

Table listing additional over-the-counter mutual fund prices and changes.

Over-the-counter

Table listing over-the-counter mutual fund prices and changes, including companies like ACP, AMB, AMF, etc.

Additional listings

Table listing additional over-the-counter mutual fund prices and changes.

Over-the-counter

Table listing over-the-counter mutual fund prices and changes, including companies like ACP, AMB, AMF, etc.

Additional listings

Table listing additional over-the-counter mutual fund prices and changes.

Over-the-counter

Table listing over-the-counter mutual fund prices and changes, including companies like ACP, AMB, AMF, etc.

Additional listings

Table listing additional over-the-counter mutual fund prices and changes.

Over-the-counter

Table listing over-the-counter mutual fund prices and changes, including companies like ACP, AMB, AMF, etc.

Additional listings

Table listing additional over-the-counter mutual fund prices and changes.

Over-the-counter

NEW YORK (AP)—Closing Over-the-counter U.S. Treasury Bonds for 1978:

Table listing Treasury bond prices and changes, including companies like ACP, AMB, AMF, etc.

Additional listings

Table listing additional Treasury bond prices and changes.

Over-the-counter

Table listing over-the-counter Treasury bond prices and changes.

Additional listings

Table listing additional over-the-counter Treasury bond prices and changes.

Over-the-counter

Table listing over-the-counter Treasury bond prices and changes, including companies like ACP, AMB, AMF, etc.

Additional listings

Table listing additional over-the-counter Treasury bond prices and changes.

Over-the-counter

Table listing over-the-counter Treasury bond prices and changes, including companies like ACP, AMB, AMF, etc.

Additional listings

Table listing additional over-the-counter Treasury bond prices and changes.

Over-the-counter

Table listing over-the-counter Treasury bond prices and changes, including companies like ACP, AMB, AMF, etc.

Additional listings

Table listing additional over-the-counter Treasury bond prices and changes.

Over-the-counter

Table listing over-the-counter Treasury bond prices and changes, including companies like ACP, AMB, AMF, etc.

Additional listings

Table listing additional over-the-counter Treasury bond prices and changes.

Stocks in the spotlight

NEW YORK (AP)—Sales, 4 p.m. price and percentage change of 100 most active stocks in New York Stock Exchange:

Table listing 100 most active stocks in the NYSE, including companies like ACP, AMB, AMF, etc.

Additional listings

Table listing additional 100 most active stocks in the NYSE.

Over-the-counter

Table listing over-the-counter 100 most active stocks in the NYSE.

Additional listings

Table listing additional over-the-counter 100 most active stocks in the NYSE.

Over-the-counter

Table listing over-the-counter 100 most active stocks in the NYSE, including companies like ACP, AMB, AMF, etc.

Additional listings

Table listing additional over-the-counter 100 most active stocks in the NYSE.

Over-the-counter

Table listing over-the-counter 100 most active stocks in the NYSE, including companies like ACP, AMB, AMF, etc.

Additional listings

Table listing additional over-the-counter 100 most active stocks in the NYSE.

Over-the-counter

Table listing over-the-counter 100 most active stocks in the NYSE, including companies like ACP, AMB, AMF, etc.

Additional listings

Table listing additional over-the-counter 100 most active stocks in the NYSE.

Over-the-counter

Table listing over-the-counter 100 most active stocks in the NYSE, including companies like ACP, AMB, AMF, etc.

Additional listings

Table listing additional over-the-counter 100 most active stocks in the NYSE.

Home warranty plans popular

NEW YORK (AP)—Home repair insurance or warranty plans, some requiring no inspection of the plumbing, heating and other components covered, are spreading across the country.

One of the big benefits, already demonstrated, is the ability of the plans to promote real estate sales, since otherwise hesitant buyers are assured the cost of unexpected repair bills will be minimized.

Whether the plans can adequately protect existing homeowners on a continuing basis has yet to be demonstrated, however, since some are available for only a year and others have broad exclusion clauses.

The National Association of Realtors has already endorsed the plans of five warranty or insurance companies and says that coverage is now available in all or parts of 36 states and the District of Columbia.

In addition, "three or four major companies are in the last stages of approval," said Ken Slack, chairman of the Realtors' home protection committee. He said they have "nationwide capability."

"Personally," said Slack, an Indianapolis real estate man, "I believe that down the road every mortgage lender will require first-year protection for the buyer."

The plans vary, but in most instances either buyer or seller pays the fee. Sometimes they share the cost. In some instances only an inspection is purchased; in others, a warranty or insurance, with or without inspection.

For example, Homestead Inspection Warranty Co. of Camden, N.J., will inspect properties for \$100 up, but one-year warranties cost at least an additional \$100, depending on the property. It also offers a non-inspection warranty for \$250, but fewer components are covered.

While some Realtors are happy about the plans, which provide them with a new marketing tool, others are less than pleased, feeling the plans advertise defects that could destroy a prospective sale.

On the other hand, the existence of an inspection certificate, or a warranty or insurance policy, could help the Realtor avoid being caught in the middle, should a buyer subsequently claim he was misled.

So far, only two companies, Homestead and Certified Homes Corp. of Columbia, Md., offer Realtor-approved plans that include an inspection of the property and the components to be covered. Each company's plan has a deductible of \$100 per component and is renewable on inspection.

OC designated as test center for GED

ODESSA—Odessa College has been designated as the regional testing center for administering the General Educational Development test.

Passing the GED exam is recognized as equivalent to a high school diploma.

Ector County public schools previously were in charge of administering the test, but OC has been designated to handle the testing to relate with its adult basic education program, which offers instruction to prepare persons for the exam.

Dry Mel Whitehurst, director of counseling, and Claudia Bowser, counselor, will be in charge of supervising GED testing at OC.

During January, the GED test will be offered Jan. 4, Jan. 9, Jan. 18 and Jan. 23, beginning at 8 a.m. each test day.

Evening sessions for the tests are scheduled at 5:30 p.m. Jan. 29 and Jan. 30.

Mrs. Bowser said a person needs about 6 1/2 hours to complete the exam.

To take the test, an applicant must preregister at least one day in advance by contacting the counseling center at OC. Applicants must submit a driver's license or Department of Public Safety Identification Card, Mrs. Bowser said.

Fee for taking the test is \$10.

Persons taking the exam must be at the counseling center on the second floor of the Administration Wing at least 15 minutes prior to test time, Mrs. Bowser said.

OC will announce a schedule for each month.

Details may be obtained from Mrs. Bowser or Whitehurst at OC.

Bethlehem proud of twinkling lights

BETHELEHEM, Pa. (AP)—This little town of Bethlehem prides itself on being a holiday mecca for tourists in good taste.

No plastic Santas and gaudy trimmings here. Instead, the lamp posts, trees—even the intersections—glow softly with 80,000 twinkling white lights.

And in every multi-pane window in every home are simple, white electric candles, a tradition started by the Moravian Church to welcome the birth of Jesus.

"The white lights are in such good taste," said Mary Isabel Baker, a volunteer tour guide with the church, whose missionaries settled and named Bethlehem on Christmas Eve 1741.

"I mean how many towns do you go to at Christmas with good taste?"

Residents of this self-proclaimed "Christmas City U.S.A." are fond of saying they can always spot a newcomer.

"They might put up a reindeer or colored lights. But soon they get the message," said Mary Louise Ramon, president of Historic Bethlehem Inc., one of the town's four civic preservation groups.

But Christmas wasn't always white and twinkly in this city of 75,000, some 55 miles north of Philadelphia on the Lehigh River.

Until the mid-1850s, Bethlehem criss-crossed the entire city with multi-colored lights.

The complaints—and the cost of replacing the bulbs—grew, so city fathers opted for the low-wattage little white lights, which "don't cost more than a couple thousand dollars a year in electricity," said Bethlehem's chief electrician Maurice McNeely.

Hospital trustees to meet

Midland Memorial Hospital trustees will review an audit of the hospital's operations from April 3 to Sept. 30 at their 12:30 p.m. meeting Wednesday.

Trustees also are scheduled to hear reports on gifts to the hospital and an audit of the nursing service at the meeting.

Committee reports on hospital operations, special projects and the building program will round out the routine meeting.

Treasury Bonds

NEW YORK (AP)—Closing Over-the-counter U.S. Treasury Bonds for 1978:

Table listing Treasury bond prices and changes, including companies like ACP, AMB, AMF, etc.

Additional listings

Table listing additional Treasury bond prices and changes.

Over-the-counter

Table listing over-the-counter Treasury bond prices and changes.

Additional listings

Table listing additional over-the-counter Treasury bond prices and changes.

Over-the-counter

Table listing over-the-counter Treasury bond prices and changes, including companies like ACP, AMB, AMF, etc.

Additional listings

Table listing additional over-the-counter Treasury bond prices and changes.

Over-the-counter

Table listing over-the-counter Treasury bond prices and changes, including companies like ACP, AMB, AMF, etc.

Additional listings

Table listing additional over-the-counter Treasury bond prices and changes.

Over-the-counter

Table listing over-the-counter Treasury bond prices and changes, including companies like ACP, AMB, AMF, etc.

Additional listings

Table listing additional over-the-counter Treasury bond prices and changes.

Over-the-counter

Table listing over-the-counter Treasury bond prices and changes, including companies like ACP, AMB, AMF, etc.

Additional listings

Table listing additional over-the-counter Treasury bond prices and changes.

What stocks did

NEW YORK (AP)—Close Last Sale

Table listing stock prices and changes, including companies like ACP, AMB, AMF, etc.

Additional listings

Table listing additional stock prices and changes.

Over-the-counter

Table listing over-the-counter stock prices and changes.

Additional listings

Table listing additional over-the-counter stock prices and changes.

Over-the-counter

Table listing over-the-counter stock prices and changes, including companies like ACP, AMB, AMF, etc.

Additional listings

Table listing additional over-the-counter stock prices and changes.

Over-the-counter

Table listing over-the-counter stock prices and changes, including companies like ACP, AMB, AMF, etc.

Additional listings

Table listing additional over-the-counter stock prices and changes.

Over-the-counter

Table listing over-the-counter stock prices and changes, including companies like ACP, AMB, AMF, etc.

Additional listings

Table listing additional over-the-counter stock prices and changes.

Over-the-counter

Table listing over-the-counter stock prices and changes, including companies like ACP, AMB, AMF, etc.

Additional listings

Table listing additional over-the-counter stock prices and changes.

Over-the-counter

Table listing over-the-counter stock prices and changes, including companies like ACP, AMB, AMF, etc.

Additional listings

Table listing additional over-the-counter stock prices and changes.

Over-the-counter

Table listing over-the-counter stock prices and changes, including companies like ACP, AMB, AMF, etc.

Additional listings

Table listing additional over-the-counter stock prices and changes.

Over-the-counter

Table listing over-the-counter stock prices and changes, including companies like ACP, AMB, AMF, etc.

Additional listings

Table listing additional over-the-counter stock prices and changes.

Over-the-counter

Table listing over-the-counter stock prices and changes, including companies like ACP, AMB, AMF, etc.

Additional listings

Table listing additional over-the-counter stock prices and changes.

Over-the-counter

Table listing over-the-counter stock prices and changes, including companies like ACP, AMB, AMF, etc.

Additional listings

Table listing additional over-the-counter stock prices and changes.

Over-the-counter

Table listing over-the-counter stock prices and changes, including companies like ACP, AMB, AMF, etc.

Additional listings

Table listing additional over-the-counter stock prices and changes.

Over-the-counter

Table listing over-the-counter stock prices and changes, including companies like ACP, AMB, AMF, etc.

Additional listings

Table listing additional over-the-counter stock prices and changes.

Over-the-counter

Table listing over-the-counter stock prices and changes, including companies like ACP, AMB, AMF, etc.

Additional listings

Table listing additional over-the-counter stock prices and changes.

Over-the-counter

Table listing over-the-counter stock prices and changes, including companies like ACP, AMB, AMF, etc.

Additional listings

Table listing additional over-the-counter stock prices and changes.

Over-the-counter

Table listing over-the-counter stock prices and changes, including companies like ACP, AMB, AMF, etc.

Additional listings

Table listing additional over-the-counter stock prices and changes.

Over-the-counter

Table listing over-the-counter stock prices and changes, including companies like ACP, AMB, AMF, etc.

Additional listings

Table listing additional over-the-counter stock prices and changes.

Over-the-counter

Table listing over-the-counter stock prices and changes, including companies like ACP, AMB, AMF, etc.

Additional listings

Table listing additional over-the-counter stock prices and changes.

Over-the-counter

Table listing over-the-counter stock prices and changes, including companies like ACP, AMB, AMF, etc.

Additional listings

Table listing additional over-the-counter stock prices and changes.

Over-the-counter

Table listing over-the-counter stock prices and changes, including companies like ACP, AMB, AMF, etc.

Additional listings

Table listing additional over-the-counter stock prices and changes.

Over-the-counter

Table listing over-the-counter stock prices and changes, including companies like ACP, AMB, AMF, etc.

Additional listings

Table listing additional over-the-counter stock prices and changes.

Over-the-counter

Table listing over-the-counter stock prices and changes, including companies like ACP, AMB, AMF, etc.

THE DAY CHRIST WAS BORN

Mary accepts 'wisdom' of Christ's low birth

By JIM BISHOP

The final few miles to Bethlehem were fatiguing to Mary and Joseph. Joseph stumbled many times in the dark and, over his shoulder, he asked his wife if she was quiet. When they were two miles from Bethlehem, she said no. She felt uncomfortable, she said, but it was bearable and she had no complaint. She hoped that they would reach the inn in time.

Joseph leaned forward to pull the ass a little faster. He reached the city of David and found, to his dismay, that there were multitudes of people, some sleeping beside the road. He had not realized that there were so many who belonged to the House of David, as did he. The inn was to the left, built on a cliff of rocky soil overlooking the valley. Joseph went directly to the inn, knowing that he would find room there or he would find it nowhere.

He left Mary and the animal outside, and assured his wife that he would make arrangements. She too could see the crowds. Some families were sleeping outside the inn, against the wall. She said nothing. Joseph started to go inside, then stopped and returned.

"Under the law," he said, "you must have a midwife at once. Let me first find one." She shook her head no. The important thing, she said, was privacy. She was not worried about assistance. God had promised to take care of her, and she needed no additional help. Joseph entered the inn. The floor of the main room was full of sleeping people. The young man sought the proprietor. With supplication on his face, he begged for a small private place for his wife, who was with child. The owner listened and threw up both hands. Where? he asked. Where would you go for privacy? His own family had no room in which to sleep. Every cubit of space had been rented three days ago, and some of the transients were taking turns sleeping in one place.

MY WIFE, repeated Joseph in a tone this side of begging, is outside. She will have her first-born in an hour or two. Can you not please find a room? A little room? The owner became irritable. Every house, every field in Bethlehem was filled with people from all over Judea.

The owner's wife heard part of the plea. She called her husband aside and asked questions. The night was chill, she said. Look at the men outside the inn, sleeping with their cloaks over their noses. Why could not the young man take his wife to the cave

below, the cave where the animals were kept?

The owner shrugged. If Joseph wanted privacy, he said, the only place left was down the side path to the cave where the asses and small animals were kept. The young man was welcome to it, if one wanted to bring a baby into the world in a place like that. Joseph inclined his head. "I am grateful," he said. "I thank you."

At the age of fifteen, Mary would undergo her trial alone, untended by midwife or friend, just as, 34 years later, her son would undergo his trial alone.

Joseph dragged his feet returning to Mary. He told her the news. She was not vexatious; in fact, she seemed to be relieved. "Take me," she said. "The time grows short."

There were paths leading from both sides of the inn down the side of the cliff. In front, as on the bow of a big ship, there was an entrance to the cave, which had been carved out a long time ago. Joseph paused to light his small lamp, then led the donkey inside. He turned to look at Mary, and, in the yellow rays, he saw that she was in deep fatigue.

Joseph apologized. He said that he was sorry that the Hospice of Chamaan had no room for her, but she could see the crowds of people. He was ashamed that he had failed her in this hour.

FOR A MOMENT, Mary studied her husband. She brought a tender smile to her face. She told her husband that he had not failed her. Mary looked around at the haltered cattle, the few lambs, some asses and a camel. If it is the will of God, she said, that His son should be born in a place like this, she would not question the wisdom of it.

At the age of fifteen, Mary would undergo her trial alone, untended by midwife or friend, just as, thirty-four years later, her son would undergo his trial alone. She asked Joseph to build a small fire on the path outside the inn's stable, and to fetch some water from the goatskin. Joseph did as she directed.

Joseph collected clean straw from the feed boxes, cleaned out a stall, and arranged the straw as a bed and placed his cloak over it. Then he looked for wood outside, and found none. He went back up to the hospice, and bought some charcoal from the owner. When the water was hot, he filled a jar, and brought it to Mary

with some cloths. She was standing, hanging onto the wall of the stall with both hands.

Her head was down, and he could not see her face. In fear, he asked her to name what he could do. She said to go outside and tend the fire and heat more water and to remain there until she called him. The animals watched impassively as Mary sank to the

straw.

NO ONE CAME DOWN from the inn to ask how the young woman felt. If she prayed, no one heard except the animals, some of whom stopped chewing for a moment to watch; others of whom opened sleepy eyes to see. Joseph, sitting by the fire, had run out of prayers and promises. He looked up toward the east, and his dark eyes mirrored a strange thing: three stars, coming over the Mountains of Moab, were fused into one tremendously bright one. His eyes caught the glint of bright blue light, almost like a tiny moon, and he wondered about it and was still vaguely troubled by it when he heard a tiny, thin wail, a sound so slender that one had to listen again for it to make sure. "Joseph." It was a soft call, but he heard it at once, he picked up the second jar of water and hurried inside. The lamps still shed a soft glow over the stable, even though it seemed years since they had been lighted.

The first thing he noticed was his wife. Mary was sitting tailor-fashion with her back against a manger wall. Her face was clean; her hair had been brushed. There were blue hollows under her eyes. She smiled at her husband and nodded. Then she stood.

She beckoned him to come closer. Joseph, mouth agape, followed her to a little manger. In the manger were the broad bolts of white swaddling she had brought on the trip. They were doubled underneath and over the top of the baby.

Mary smiled at her husband as he bent far over to look. There, among the cloths, he saw the tiny red face of an infant. This, said Joseph to himself, is the one of whom the angel spoke. He dropped to his knees beside the manger. This was the messiah.

Tomorrow: The Shepherds



Mary and Joseph arrive in Bethlehem and find the inn filled to capacity, with others who have come for the census sleeping in lobbies and courtyards. Their weary search for lodging, here illustrated by a 19th century engraving, ended in a stable. (King Features Syndicate, Inc.)

Hikers still swim in deadly spring

By DENISE M. HOLT

LOS ANGELES (AP) — A few new warning signs are posted at Deep Creek Hot Springs, but hikers still stop for swims. Last summer, 10-year-old Mary Pack took just such a dip — and almost died of a rare disease so deadly that only three people in the world are now known to have survived.

A powerful microorganism in the water found its way into Mary's body last June as she swam in the tepid water. A few minutes later, Mary was unconscious.

"This little girl was very fortunate," said Dr. James Seidel of Harbor General Hospital in Los Angeles. "Usually, within three days you're dead."

Mary was rushed to nearby San

Bernardino County Hospital where a pathologist spotted a strange speck in the girl's spinal fluid. The startled physician diagnosed it as amoebic meningitis — a disease that has been reported only 100 times in history. At that time, all but two of those cases had proven fatal.

The doctor ordered the child airlifted 80 miles to Harbor General where a team of specialists won the battle to save her. Today, Mary's mother finds it hard to believe her daughter was so close to death.

"It's like she's never been sick," said Margaret Pack, 29. "She looks very healthy. She's gained her weight back; she got pretty skinny there for awhile. Even Dr. Seidel can't believe how she's come out of it with no problem."

Mary stayed in the hospital for one month. She spent the rest of the summer recuperating, and in September, she returned to school. Mrs. Pack says Mary is now doing better in school than ever before.

But Mrs. Pack is still concerned — because nothing has been done about the toxic swimming hole.

"The people don't seem to pay attention to us," said Richard Mefford, the Forest Service's area manager. He says hikers ignore the warning signs he's posted and swim anyway despite the fact the lethal organism may still be lurking beneath the surface.

Mrs. Pack thinks the rangers should do more than post signs: "They should either get it closed down or cleaned up."

MERRY CHRISTMAS FROM



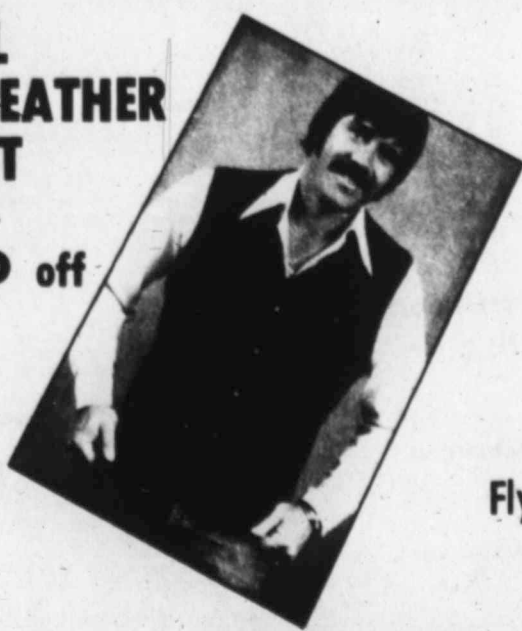
Flying B WESTERN WORLD

OPEN MON. THRU SAT. 10:00 A.M. TO 6:00 P.M.



ALL PIONEER LEATHER VEST

10% off



Give Him or Her A Gift Certificate From Flying "B" Western World

Use Our Convenient Lay-A-Way

HATS CLEANED & BLOCKED FROM THIS TO THIS \$17.95 SAVE YOUR FAVORITE OLD FELT HAT! ALLOW FROM 2 to 3 WEEKS



All Resistol Hats 10% off We Handshape Hats

VISA — MASTERCHARGE — Lay-A-Way

309 ANDREWS HWY.

MIDLAND

Pho. 563-1264

WARM WOOLY CAP \$6.50 with ear flaps large assortment of colors All sizes

Brass Spittoons \$8.00 Conversation pieces for the home or pick-up.

NAMES ALWAYS STAMPED FREE ON BELTS.

DESCRIPTION:

A 31" Coat. This blazer is the classiest. The leather does most of the talking. It does feature all double needle top stitching around collar, lapels, front and lower pocket flaps. It is single vented in the back. This is a superb fitting leather blazer. Inside welt pocket.

CRESCO MEN'S LEATHER DRESS COATS

NEW SHIPMENT LEVI SPORT SHIRTS FLANNELS AND SWEATERS SPORT SHIRTS REG. \$16.95 NOW \$9.95 FLANNELS REG. \$21.95 NOW \$14.95



SECT

Eko

WOR

By WILLI

The Los A

EKOFIS

It is the e

erving the

sea. Alcoh

booked mo

The 106

million ea

fine ocean

times by f

when 40-f

the struct

The Eko

accommod

who help

pumping c

North Sea

marvels of

The hote

and visito

bed down

network —

ships, or s

The far

linked by

men are f

ters to w

versa. A

flights lin

roleum h

Norway, I

THE EI

name com

gian fish

the Philli

sists of 30

forms, abo

kind of sl

The who

exploit th

North Sea

territory.

In the

sunk abou

complex

other bill

already p

ping abou

with the

duction to

1981.

The oil

side in E

line, and

gas, prod

fed by pi

many.

"We ar

the same

Morgan,

said rece

working a

we've sti

do."

MORG

Oklahom

ation has

the field

duction.

"There

the Gulf

added, "I

form whe

knots. Ou

drilling i

we regist

knots."

The pla

plex are

mum wea

75 feet an

The hig

cold, the

and oil s

fisk platf

work. Th

extremel

But ac

night a c

drilling t

copter we

men to t

who boar

survival

WORL

Ekofisk i

the Brava

was out

though n

no pollut

marine li

"We've

San

well

Dyco P

City No. 2

ed as a 5

to the Ho

of Gaines

east of Se

The op

pumping

33-gravit

from 5.44

gallons o

300-1.

Locatio

and 467 f

96, block

Sch

gain

Ike Lov

Enos is

(Harkey

ty, 22 mil

Operat

potential

oil, plus

a 20/64-l

from 4.18

2,187-1.

Wellsit

east lines

survey.

producer

mile west

Ekofisk Hotel serves world's biggest sea city

By WILLIAM TUOHY
The Los Angeles Times

EKOFISK CENTER, North Sea — It is the world's most costly hotel, serving the world's biggest city at sea. Alcohol is not served, but space is booked months in advance.

The 106 rooms cost more than \$1 million each to build, and each has a fine ocean view, although obscured at times by fog. And it can be unsettling when 40-foot waves begin pounding the structures still-like foundations.

The Ekofisk hotel provides sleeping accommodations for 200 oil workers who help man this vast drilling and pumping complex in the middle of the North Sea. It's one of the engineering marvels of the age.

The hotel is for selected specialists and visitors. Every night, 3,000 men bed down elsewhere in the Ekofisk network — on oil platforms, barracks ships, or supply vessels and barges.

The far-flung installations are linked by helicopter. Twice a day, 800 men are ferried from sleeping quarters to working platforms, and vice versa. Another 15 daily chopper flights link Ekofisk with Phillips Petroleum headquarters in Stavanger, Norway, 180 miles away.

THE EKOFISK COMPLEX — the name comes from a mythical Norwegian fish — is owned and operated by the Phillips Norway group and consists of 30 petroleum operating platforms, about half of which have some kind of sleeping accommodations.

The whole apparatus is designed to exploit the largest oil field in the North Sea, which lies in Norwegian territory.

In the past 10 years, Phillips has sunk about \$5 billion into the Ekofisk complex and expects to invest another billion. But the investment is already paying off: Phillips is pumping about 360,000 barrels of oil a day, with the promise of increasing production to 650,000 barrels a day by 1981.

The oil is pumped directly to Trested in England by submarine pipeline, and a billion cubic feet of natural gas, produced by the same wells, is fed by pipeline to Emdee, West Germany.

"We are drilling and producing at the same time," Forest C. (Frosty) Morgan, senior Phillips executive, said recently. "We've got 55 wells working and we're shooting for 150. So we've still got a lot of drilling to do."

MORGAN, 54, who comes from Oklahoma City, said the Ekofisk operation has made Phillips unmatched in the field of difficult offshore oil production.

"There have been offshore rigs in the Gulf of Mexico for years," he added, "but they abandon the platform when the winds get up to 60 knots. Out in the North Sea, we're still drilling in 90 knot winds. Last month, we registered one gust that hit 110 knots."

The platforms in the Ekofisk complex are designed to withstand maximum weather conditions, waves up to 75 feet and winds up to 125 knots.

The high winds and seas, the winter cold, the noise from heavy machinery and oil slick surfaces make the Ekofisk platforms a dangerous place to work. The operators, therefore, are extremely safety-conscious.

But accidents happen. The other night a contract worker fell from a drilling tower and was killed. A helicopter went down last year, taking 13 men to their deaths. Now everyone who boards a chopper must don a survival suit.

WORLD ATTENTION focused on Ekofisk in April 1977, when a well on the Bravo platform blew out. The well was out of production 45 days, although no one was hurt, and there was no pollution on shore or damage to marine life.

"We've got additional safety pro-

sonnel now to keep accidents to a minimum," Morgan said.

The drilling rights in the Norwegian sector of the North Sea were awarded to the Phillips Norway group in 1965. Experimental drilling was a slow and laborious process, particularly in winter. But in 1970, Phillips was able to confirm what had been suspected: The Ekofisk field was the largest in Western Europe.

The difficulties in exploiting the field were enormous, since it was located 162 miles from the nearest land. Operations were subject to continuous winds and wave action, and an unprecedented amount of manpower and money were needed to build Ekofisk.

It became, in fact, the world's second most costly commercial engineering project. Only the Alaska pipeline was more expensive.

Temporary drilling rigs were used until permanent stilted platforms were erected. Oil tankers were loaded from mooring buoys.

THE CENTERPIECE of Ekofisk is a mammoth concrete tank — 270 feet high, 302 feet in diameter, and weighing 235,000 tons — designed as a million-barrel oil storage vessel that would permit operations to continue when foul weather shut down tanker loading.

But as more wells came in, it was decided to pump oil and gas directly 220 miles to England and 275 miles to Germany via undersea pipe lines, with booster stations along the route.

The Ekofisk complex, with several facilities linked by bridges, now consists of a nerve center and drilling, pumping, booster and sleeping platforms. It has the capacity to move 1 million barrels of oil and 2 billion cubic feet of gas daily to refineries on shore.

Ekofisk also controls oil production from outlying Ekofisk area fields and serves as the center for a \$20 million communications network that monitors and transmits to Stavanger via satellite all pertinent data on oil and gas production and flow.

OIL EXPERTS point out that costs are rising so sharply for offshore operations that it is questionable whether undiscovered new fields in the North Sea can be profitably exploited.

Life for the roustabouts and technicians on Ekofisk is demanding, but to most of the workers, quite satisfying.

Silva, a 48-year-old Oklahoman, said, "Out here, we work 12 hours on and 12 hours off for eight days. Then back to Stavanger for eight days off. And after four trips out, you get the fifth one off."

"Most of us find that this schedule actually gives us more time with our families. Our Norwegian employees are mostly former seamen, who adapt readily to the offshore life. They find they can live most anywhere in Norway. With eight days off, they aren't restricted to living in Stavanger."

"Stavanger itself has about 3,000 Americans now. It's the center of the Norwegian oil industry. Most Americans like the area, though some of the women find it hard adapting to only a few hours of daylight during the winter months."

Until recently, Ekofisk was a man's world, and the complex was off-limits to women because of the arduous nature of the work and the lack of suitable accommodation.

But recently women have been recruited for secretarial tasks and as mechanics. Blonde, green-eyed Sofford Giorstad, 34, signed on as a receptionist at the hotel's check-in counter.

"The extra time off gives me more time to travel," she said, "and the pay is better working offshore. Besides, I like to work with men. I used to be in the accounting office, so I thought I'd try this. So far, I like it. The food is good. Too good. So I get my exercise by walking up the stairs instead of using the elevator."

In addition, the hot brines could be utilized for industrial and commercial applications.

DOE presently has a number of research contracts underway to explore this potential energy resource. One contract with H.J. Gray and Associates of Houston currently involves reworking an abandoned gas well in Cameron Parish, La., the first of a series of existing well tests under a \$7 million contract. Another includes an \$8 million contract with General Crude Oil Co. of Houston to drill, complete and test a new well in Brazoria County to a depth of approximately 17,000 feet.

This contract calls for extensive production testing of the well for up to two years to determine reservoir productivity. In addition, DOE has executed contracts with Louisiana State University and The University of Texas to conduct comprehensive assessments of the geopressure resource in Louisiana and Texas.

"The Houston Geopressured Projects Office will be managed by DOE's Nevada Operations Office for the Division of Geothermal Energy in Washington, D.C. The Director of the Geopressured Projects Office is Keith Westhusing. The new office is located in the Federal Building and U.S. Courthouse.

The new office will work closely with officials in DOE's Regional VI office in Dallas, which also has responsibility for some contracts in the geothermal/geopressured area.

San Andres well finals

Dyco Petroleum Corp. of Oklahoma City No. 2 Homann has been completed as a 5/8-mile northwest extension to the Homann (San Andres oil) pool of Gaines County, seven miles northeast of Seminole.

The operator reported a daily pumping potential of 75 barrels of 33-gravity oil, through perforations from 5,444 to 5,468 feet after 2,500 gallons of acid. The gas-oil ratio is 300-1.

Location is 3,230 feet from south and 467 feet from east lines of section 96, block G, WTRR survey.

Schleicher gains oiler

Ike Lovelady, Inc., of Midland No. 1 Enos is a new well in the Cheaney (Harkey oil) pool of Schleicher County, 22 miles northeast of Eldorado.

Operator reported a daily flowing potential of 64 barrels of 33-gravity oil, plus 1.5 barrels of water, through a 20/64-inch choke and perforations from 4,184 to 4,198 feet. Gas-oil ratio is 2,187-1.

Wellsite is 1,980 feet from south and east lines of section 4, block 1, GH&SA survey. It is the third Harkey oil producer in the multipay field and 3/4 mile west of another Harkey well.

Storage approved

FREERPORT, Texas (AP) — The Texas Railroad Commission has approved an application by the federal Department of Energy to enlarge an underground crude oil storage facility in Brazoria County.

The Freerport Shrimp Association protested the application because, it said, it opposes disposing of additional brine from the project into the Gulf of Mexico. The disposal point is 12 1/2 miles from shore, the commission said.

The expansion of the Bryan Mound salt dome facility calls for 12 new underground caverns, each capable of holding 10 million barrels of crude oil. The original project included the use of five caverns.

The facility is one of five such installations along the Gulf Coast. The other four are in Louisiana. Congress requires that the energy department receive state approval before locating or expanding a storage unit.

The program was designed to soften the economic impact of an oil boycott.

Outpost try scheduled

Anderson Petroleum, Inc., of Ozona No. 3-14-L Elmer Hoover Hatton Estate is to be drilled one and five-eighths miles northwest of Canyon sand gas production in the Ozona multipay field of Crockett County.

The project, 30 miles southwest of Ozona, is 720 feet from north and 1,215 feet from east lines of section 14, block MM, T&SL survey.

Contract depth is 7,500 feet. Ground elevation is 2,390 feet.

HOWARD OILER

Petroleum Exploration & Development Funds, Inc., of Midland No. 1 Flanagan is a new well in the Spraberry Trend Area field of Howard County.

Operator reported a 24-hour pumping potential of 82 barrels of 37-gravity oil, plus three barrels of water, through perforations from 6,444 to 6,470 feet after 2,500 gallons of acid. Gas-oil ratio is 988-1.

Total depth is 6,587 feet and 4.5-inch casing was landed on bottom. Hole is plugged back to 6,524 feet.

Location is five miles southeast of Big Spring and 990 feet from south and 700 feet from east lines of section 24, block 32, T-1-S, T&P survey.

DOE opens new office

DALLAS — The U.S. Department of Energy has opened an office in the Federal Building in Houston, to coordinate more closely the geopressured-geothermal research program work now underway on the Texas and Louisiana Gulf Coast.

"Geopressured-geothermal reservoirs along the coast consist of hot brines under high pressure at depths ranging from 8,000 to more than 20,000 feet. Brine temperatures range from 250 to more than 400 degrees Fahrenheit under pressures in the range of 15,000 pounds per square inch.

These brines may contain dissolved methane gas ranging from 20 to more than 50 cubic feet per barrel. Accordingly, these geopressured-geothermal resource areas offer potentially large quantities of natural gas as well as heat and kinetic energy to drive turbines for electricity production.

In addition, the hot brines could be utilized for industrial and commercial applications.

DOE presently has a number of research contracts underway to explore this potential energy resource. One contract with H.J. Gray and Associates of Houston currently involves reworking an abandoned gas well in Cameron Parish, La., the first of a series of existing well tests under a \$7 million contract. Another includes an \$8 million contract with General Crude Oil Co. of Houston to drill, complete and test a new well in Brazoria County to a depth of approximately 17,000 feet.

This contract calls for extensive production testing of the well for up to two years to determine reservoir productivity. In addition, DOE has executed contracts with Louisiana State University and The University of Texas to conduct comprehensive assessments of the geopressure resource in Louisiana and Texas.

"The Houston Geopressured Projects Office will be managed by DOE's Nevada Operations Office for the Division of Geothermal Energy in Washington, D.C. The Director of the Geopressured Projects Office is Keith Westhusing. The new office is located in the Federal Building and U.S. Courthouse.

The new office will work closely with officials in DOE's Regional VI office in Dallas, which also has responsibility for some contracts in the geothermal/geopressured area.

Mexico plans to keep prices at OPEC level

By GORDON D. MOTT
MEXICO CITY (AP) — Mexico says its oil prices will keep up with OPEC's next year even though it isn't a member of the cartel.

Mexican oil will definitely not be cheaper than oil from the members of the Organization of Petroleum Exporting Countries, said Juan Azpuru, export manager for PEMEX, the Mexican oil monopoly. But he said the exact price increase has not been determined.

OPEC, after a two-year price freeze, decided at a weekend meeting on a four-stage, 14.5 percent price increase for 1979. The base price of \$12.70 will go up 5 percent to \$13.33 on Jan. 1, with subsequent increases of 3.8 percent to \$13.84 on April 1, 2.3 percent to \$14.16 on July 1 and 2.7 percent to \$14.54 Oct. 1.

Mexico's oil now sells for \$13.10 a barrel, and Mexico City newspapers quoted Jorge Idaz Serrano, president of PEMEX, as saying the price will rise to \$13.70 on Jan. 1, an increase of 4.58 percent. But Azpuru said that price is "just an indication of the direct impact of the OPEC increase. It is an indication our price will not be less than \$13.70, but it is not our final price."

Asked if Mexican oil would be cheaper than OPEC's by the end of 1979, Azpuru said: "No. To date, our oil has not been cheaper than OPEC oil. It has always been higher."

"We are not tied to OPEC. We live

Corco gets good report

SAN JUAN, Puerto Rico (AP) — The Commonwealth Oil Refining Co., forced to declare voluntary bankruptcy last March, has been told it remains "a viable economic entity."

The conclusion was contained in a report prepared by a team headed by C. Howard Hardesty Jr., a former vice president and director of Continental Oil Co.

Corco filed a voluntary bankruptcy petition in U.S. District Court in San Antonio, Texas, on March 2.

A copy of the team's report was presented Monday to a Corco Board of Directors meeting in San Juan, to the court in San Antonio and to Puerto Rico's Secretary of State Reinaldo Paniagua.

A Corco spokesman said another copy will be reviewed by Corco creditors in New York on Wednesday. Corco owns an estimated \$400 million to Gulf Oil Refining Co., Exxon Corp., a group of nine banks headed by Citibank of New York, W.R. Grace and the government of Puerto Rico.

Corco, a refinery complex on Puerto Rico's south coast, is the main source of this island's multi-million dollar petrochemical industry.

Tesoro Corp. of San Antonio is the majority Corco stockholder.

Book value of the complex is placed between \$400 million and \$600 million although it has been estimated it would cost \$1 billion to build current facilities from scratch.

Sharp economic reverses capped by the Organization of Petroleum Exporting Countries' decision to balloon crude oil prices in 1973 pushed Corco into voluntary bankruptcy.

Hardesty told Corco stockholders in San Juan that the company "can be developed and maintained as a viable economic entity."

He said Corco could earn \$20 million in 1979 and that "annual earnings of \$50 million" are "a realistic target" for subsequent years, if recommendations contained in the report were followed.

Despite the recommendations, the report did not rule out a possible take-over by a third party.

To date, Corco has received offers from the Charter Company, Jacksonville, Fla., and the Arabian Sea Oil Corp.

Discovery completes

Korman Operating, Inc., of Abilene has announced completion of a Gardner lime gas discovery in Runnels County at the former J. D. Tompkins Operating Account, Inc., of Abilene No. 2-A W. A. Ashton.

It completed for a calculated, absolute open flow potential of 4,385,000 cubic feet of gas per day, through perforations from 3,748 to 3,754 feet after being washed with 500 gallons of mud acid.

The well also produces from the Dog Bend. From that pay, the well is one and three-quarters miles southwest of the Dog Bend production in the Loco Rico field.

The well is 1,000 feet from north and 2,461 feet from east lines of section 143, ETRR survey and two miles north of Benoit.

Hole is bottomed at 3,840 feet and plugged back depth is 3,720 feet.

The Gardner lime was topped at 3,748 feet on ground elevation of 1,743 feet. Other tops are Home Creek sand, 2,766 feet and Dog Bend lime, 3,366 feet.

with the competitive and market conditions in the Gulf of Mexico ... our natural market. But if the world market changes, we change with the market."

The United States takes about 85 percent of the oil Mexico exports. Exports at the end of 1977 totaled about 240,000 barrels a day. But production is expanding rapidly, and some reports say exports could reach a million barrels a day by the end of 1982.

Mexico is riding an oil boom that may make it one of the world's top oil producers. Huge new discoveries have been reported recently along the Gulf of Mexico.

President Jose Lopez Portillo announced in September that the coun-

try's potential reserves were estimated at 200 billion barrels, or 20 percent more than those of Saudi Arabia, which has OPEC's biggest reserves. PEMEX has reported new finds since then, including one field whose potential reserve it estimated at 106 billion barrels.

But the company says it is still assessing the amount of retrievable oil in the new discoveries and cannot estimate yet how much they will increase potential reserves.

The company passed a milestone last week when production exceeded 1.5 million barrels a day, Azpuru said. He said that was ahead of schedule for a six-year plan that calls for production of 2.2 million barrels a day by the end of 1980.

Three WT areas draw locations for explorers

Remuda Oil & Gas Co. of Midland No. 1 Girvin is to be drilled as a wildcat in Pecos County, three miles southeast of Girvin.

The prospector, scheduled for a 5,200-foot bottom, is 1,980 feet from north and 660 feet from east lines of section 19, block 11, H&GN survey and once location north of Tubbs production and 3/4 mile north of Clear Fork production in the Brown & Thorp, East field.

REEVES EXPLORER

Texaco Inc. No. 1-BL Reeves Fee is to be drilled as a 4,050-foot oil wildcat in Reeves County, two miles southeast of Orla.

The location is 1,980 feet from south and east lines of section 31, block 56, T-2, T&P survey and one and one-third miles northwest of Bell Canyon production. There are several dry-holes in the area.

HOWARD PROJECT

WEST-TEX Drilling Co. of Abilene No. 6 J. L. Jones Heirs has been spotted as a 7,800-foot wildcat in Howard County, two miles southeast of Vincent.

The drillsite is 800 feet from north and 467 feet from west lines of section 11, block 26, H&TC survey and 3/4

DRILLING REPORT

ANDREWS COUNTY
Marzo No. 4-B Miles; drilling 7,100 feet in lime.
Union Oil No. 3-A Southland Royalty; id 10,015 feet; flowed 71 barrels of oil, with a trace of water in 24 hours, through a 1/2-inch choke. Gas rate was 75,000 cubic feet per day.

BORDEN COUNTY
Great Western No. 1 Miller; will be drilled "light."
Delta No. 3-4 Midwest; drilling 8,300 feet in lime.

COCHRAN COUNTY
Hendrix No. 1 Beard; drilling 9,925 feet in lime and shale.
Union Texas No. 78 Slaughter; id 5,100 feet; recovering load, through perforations at 4,825-5,819 feet.
Union Texas No. 79 Slaughter; drilling 4,190 feet in lime.

COKE COUNTY
Energy Reserves No. 5-A Williams; id 8,012 feet; waiting on completion unit; set 4 1/2-inch casing at 7,800 feet.
Energy Reserves No. 1-B Williams; drilling 2,629 feet in lime and shale.

CONCHO COUNTY
Tahoe Oil & Cattle No. 1 Pebble; drilling 3,238 feet in lime.

CROCKETT COUNTY
James L. Lamb No. 2-13 Todd; drilling 300 feet in lime.
Delta No. 3-4 Meybick; drilling 8,630 feet in lime and shale.
Southland Royalty No. 1-36 Todd; drilling 822 feet in redbed and sand.
Southland Royalty No. 4-47 Todd; drilling 1,236 feet in sand and shale.
Southland Royalty No. 1-70 Todd; id 820 feet; preparing to drill ahead; mudded up 8 1/2-inch casing at id.
Mitchell No. 1-32 Hunt; id 4,415 feet; still waiting on completion unit.
Mitchell No. 1-121 Savell; id 10,770 feet; still recovering load, through perforations at 10,550-4,624 feet.

ECTOR COUNTY
Hendrix No. 1-41 Johnson; id 4,241 feet; preparing to squeeze perforations at 973-4,114 feet.

EDDY COUNTY
Orta Pecos No. 4 Gourley; moving in rotary.
Antwell No. 1 Rio; id 9,965 feet; shut in waiting on orders.
Fasken No. 2 Ross; drilling 385 feet in surface rock.
J. C. Barnes No. 2 Big Chief; id 11,847 feet; on a trip.
Coupons No. 1 Patterson; drilling 7,616 feet in lime and shale.
Southland Royalty No. 1-14 State; drilling 2,321 feet in dolomite.
Southland Royalty No. 1-16 State; drilling 8,800 feet in lime and shale.
Southland Royalty No. 1-23 State; id 11,785 feet; 4 1/2-inch casing set at id; has been completed from the Morrow formation for a calculated, absolute open flow of 1,804 million cubic feet per day, through perforations at 11,600-11,091 feet.
Mitchell No. 1 Latham; drilling 3,123 feet in lime and shale.

HOWARD COUNTY
North American No. 1 Williams; drilling 8,911 feet in lime.

IRION COUNTY
Energy Reserves No. 1-41-C Suge; id 8,012 feet; preparing to fracture treat perforations at 1,712-7,094 feet.
Union Texas No. 6-56 Farmer; id 7,350 feet; pumped eight barrels of oil and 80 barrels of water in 24 hours, through perforations at 7,005-7,134 feet.
Resources Investment No. 1-18 Cox; id 8,008 feet; rigging up pulling unit.

LAMB COUNTY
M. D. Abel No. 1 Scott; drilling at 3,885 feet in lime.

LANE COUNTY
Atlantic Richfield No. 1 Langley Greer; drilling 12,112 feet.

SEBINE PRODUCTION CO. No. 1 Yates
Sebine Production Co. No. 1 Yates; Grace, drilling 3,333 feet in anhydrite and gypsum.
Union Oil No. 1 Laguna Deep Federal; drilling 14,470 feet in side track hole.
Union Oil No. 1 Halfway-Federal; drilling 12,657 feet in lime and shale.
Britton Management Corp. No. 2 Temple; id 2,126 feet; attempting to start completion.
MGP No. 1 Santa Fe; id 5,013 feet; pumped 22 barrels and 223 barrels water in 24 hours, through perforations from 4,942 to 4,500 feet.
MGP No. 1-3 Seaman; id 8,221 feet; swabbing, no gauges, through perforations from 4,900 to 4,971 feet after acidizing with 500 gallons.
MGP No. 1 Thompson; id 4,980 feet; pumped 22 barrels oil and 21 barrels water in 24 hours, through perforations from 4,900 to 4,967 feet.
"TIGHT"
Getty No. 1-10 Clara Rojas, drilling depth not reported, cementing casing.
Getty No. 1-29 J State, drilling 1,100 feet.
Gulf No. 1-A Strage; id 13,000 feet; still shut in.

LOVING COUNTY
Mobil Oil No. 1 Abernathy; drilling 6,442 feet.

LUBBOCK COUNTY
Knox Industries No. 1 Alexander; id 5,328 feet; plugged and abandoned.
Samedan Corp. No. 1 Doss; id 9,124 feet; took drillstem test from 9,100 to 9,208 feet, had 15 minute preflow, open with weak blow increasing to fair blow, 1 hour initial shut in pressure, 1 hour final flow, re-open with fair blow increasing to good blow, no pressures available.

MARTIN COUNTY
Rial No. 1-A Burmes, drilling at 6,246 feet in lime and shale.
Mitchell Energy No. 1-13 Johnson; id 13,015 feet; moving in completion unit.
Parker & Parsley No. 1-A Powell; drilling 4,363 feet in lime and shale.

MIDLAND COUNTY
Parker & Parsley No. 1 Hutl, set pumping unit, building tank battery.
Parker & Parsley No. 1 TXL, plugged back total depth 9,143 feet, pumping load, through perforations from 8,753 to 9,102 feet.

MITCHELL COUNTY
Orta Pecos No. 1 Shaw; drilling 4,837 feet in lime and shale.

PECOS COUNTY
Hunt Energy No. 1 Sabine, drilling 21,293 feet.
Mobil Oil No. 8 Sibley, drilling 2,198 feet in lime.
Getty Oil No. 1-14 Ashland-Mendall-Caldwell, cleaning out to 886 feet.
Gulf Oil No. 2-1 Emma Lou, drilling 11,568 feet in shale and sand.
Gulf Oil No. 2 Schlosser, drilling 13,770 feet in shale and lime.
Mobil Oil No. 1-21 Montgomery, id 11,800 feet; will convert to salt water disposal well.
Mobil Oil No. 5 Nell, id 5,006 feet; cleaning to pits, through perforations from 4,746 to 4,772 feet.
Mobil Oil No. 5 Nell, id 5,006 feet; waiting on completion unit.
A. G. Hill No. 1 Trees, drilling 15,390 feet in shale and anhydrite.

REAGAN COUNTY
Knox Industries No. 1 Evans, id 8,100 feet; pumping, no gauges, through perforations from 6,396 to 7,943 feet.
Knox Industries No. 1 Slaughter, id 8,022 feet; pumping back load, through perforations at 6,525 to 7,952 feet.
Knox Industries No. 1 Watkins, id 8,100 feet; recovering load, through perforations from 6,412 to 7,982 feet.
Tamarack No. 1 Aldwell, id 8,100 feet; recovering load, through perforations from 7,997 to 8,087 feet.
Tamarack No. 2 Aldwell, id 8,100 feet; recovering load, through perforations from 6,506 to 8,054 feet.
Tamarack No. 3 Aldwell, id 8,100 feet; recovering load, through perforations from 6,506 to 8,054 feet.
Tamarack No. 1-B Aldwell, drilling 6,881 feet.
Blanco, 1-9-G University, id 2,000 feet; logging.

REEVES COUNTY
Gulf No. 3 Ligon, drilling 8,175 feet in lime and sand.

SCHLEICHER COUNTY
John H. Hendrix Corp. No. 1 ARCO-Martin; drilling 4,423 feet.

SCURRY COUNTY
Largo Oil & Gas, No. 2 Black; id 1,678 feet; waiting on completion unit, set 12 1/4-inch casing at 515 feet, set 8 1/2-inch casing at 502 feet.

STERLING COUNTY
HIMI No. 3 Sara Bude; id 8,100 feet.
R.C. Bennett, No. 1 Ray; drilling 5,328 feet in lime and shale.

TERRELL COUNTY
Mobil No. 5 Banner; id 14,600 feet; spotted 500 gallons acid from 13,900-14 feet.
Mobil No. 6 Banner; drilling 9,005 feet in lime and shale.
Mobil No. 7 Foster; drilling 1,980 feet in lime and sand.
Mobil No. 1-5 Good; drilling 11,704 feet in lime and shale in side track hole.
TERRY COUNTY
Getty Oil Co. No. 1 Hefflinger; drilling 3,805 feet.

UPTON COUNTY
Holiday Drilling No. 1 Neal; id 8,497 feet; running tubing.
Holiday Drilling No. 1-B Neal; drilling 6,800 feet.
Tippecanoe Oil & Gas, No. 1 ARCO-Martin; 10,391 feet in lime and shale.
John L. Cox, No. 1 A TM; id 4,482 feet; set 8 1/2-inch casing at id, waiting on cement.
John L. Cox, No. 4-B Felmont-Owens; id 4,488 feet; set 4 1/2-inch casing at id, waiting on cement.
John L. Cox, No. 1-B Felmont-Owens; moving in rig.
John L. Cox, No. 1 H.F. Neal Estate; rilling 4,236 feet.
John L. Cox, No. 1 Mary Wahlman; drilling 8,245 feet.

WARD COUNTY
Montano No. 1-17-A University; id 18,920 feet; trip in hole to log.
Montano No. 1 Juarez; pdd 18,646 feet; shut in.
Gulf No. 8 Cramer; id 5,100 feet; recovering load, through perforations 4,910-5,081 feet, fractured with 60,000 gallons and 67,500 gallons.
Gulf No. 8 Cramer; id 5,080 feet; waiting on completion unit.
Gulf No. 10 Cramer; drilling 1,070 feet in redbed, set 8 1/2-inch casing at 885 feet.
Gulf No. 1018 Hutchings Stock Association; drilling 1,120 feet in lime.
Gulf No. 1-QN State; id 730 feet; waiting on cement; set 13 1/8-inch casing at 140 feet.
Gulf No. 1-QP State; drilling 2,780 feet in anhydrite and salt.
Union Texas No. 1-18-28 University; drilling 2,650 feet in lime.
Gifford, Mitchell, and Wisenbaker, No. 2 Sequoyah; drilling 6,535 feet in sand and dolomite.
Getty No. 2-27-19 University; drilling 14,808 feet.
Mobil No. 1-AG State; id 6,000 feet; set 5 1/2-inch casing at id, swabbing load, through Cherry Canyon perforations 6,426-4,480 feet.
Adobe No. 11 Barstow; drilling 1,208 feet in sand and anhydrite.
Roy Kinsey No. 1 Lucia-Harvey-State; drilling 9,420 feet in shale.

WINKLER COUNTY
Getty No. 1-6-21 University id 20,326 feet.
Getty No. 1-31-21 University drilling 832 feet.
Atlantic Richfield No. 2 Wolfe; drilling 3,310 feet in anhydrite and sand and salt.
Southland Royalty No. 1 Keystone; drilling 11,112 in sand and lime.
Gifford, Mitchell, and Wisenbaker, No. 2 Roman Nose; drilling 19,356 feet in dolomite and lime.
Rial No. 1-33-D Sealy-Smith; id 10,620 feet in shale; preparing to log.

YOAKUM COUNTY
Williamson & Williamson No. 1 San Salvador; drilling 15,867 feet in lime and shale.
North American Royalties No. 1 Price; id 11,878 feet; install pumping equipment, preparing to start pumping.
Petroleum Co. No. 2 Field; drilling 7,844 feet in lime and dolomite.

mile northwest of the Vincent (lower Clear Fork) field discovery.

WARD TESTER

Mobil Oil Corp. No. 1-KK University of Texas has been staked in the Caprito (middle Delaware) area of Ward County, seven miles northeast of Quito.

Location is 660 feet from south and 1,980 feet from east lines of section 36, block 17, University Lands survey and 3/4 miles northeast of the field discovery.

RIAL PROJECT

Rial Oil Co. of Midland No. 1-68 Sealy & Smith is a new 9,200-foot operation in the Arenoso (Strawnetritus) pool of Winkler County, 15 miles southeast of Kermit.

The location is 660 feet from north and 1980 feet from east lines of section 68, block A, G&MM&A survey.

OFFSET STAKED

Hufo Oil of Midland No. 2 W. B., Byrd is to be drilled as a northeast offset to its No. 1 W. B. Byrd, lone producer in the Byrd (Strawn oil) pool of McCulloch County.

The 1,200-foot test is four miles east of Lohn and 2,070 feet from the north and 150 feet from the east lines of section 153, H&TC survey.

Letters to Santa

Dear Santa,
I've been a good girl this year, Please bring me a Dart gun set, tape player, like mom's and a doll.

Love
Stacy Reed

Dear Santa
I've been a good girl this year, and would like a box of creepy crawlers a record player and some play horses

Love
Tracey Warren

Dear Santa for Christmas I want a Bee Bee gun, and a Bat and a glove and some tube socks, and a note book, and some nfl team pencil, and a X wing fighter, and Luke Skywalker, and a superman pinball pinball, and blip, and a cantine and a star wars sace station, and a flying finnegan game, and a jam car speedway, and a tool box, and a hot streak, and a pop up pin ball, and a marx magic shot gallery and a mr. quarterback, and a jaws exciting game, and a super jack football, and a hot wheels getaway set, and a pack of marks with 20 of them, and a hot wheels sting action stunt set, and a Kiss magazine and a live two kiss record and tape, and a worken on the rail road loger empire set, and the power shop, and a Nite glow race set, and tonkas mighty off road adventure buggy and thrill a second race night riding sizzler, and a Big shogun warriors, and a verti-bird helicopter, and a flying Aces up'n away.

from
Jr. Ceniceros age 9

Dear Santa,
I am writing this letter for my little brother, he is standing here telling me what he wants for Christmas. I will put what he wants in his exact words: My name is Micha, I am 3 years old. I want a hulk & batman doll, a football, a pop up pinball, cars and trucks, a kid game, and clothes. (not really) And we will leave you Cookiesand Milk. Oh yeah! And leave me toys and fruit and nuts in my stocking. thank you!

Your Fan,
Micha Schigut

Dear Santa:
I'm 3 years old, I'm going to leave you cookies & coke. Please bring me a basketball & a basket, a gun, cowboy hat & a horse & a cow & a football helmet.

Thanks Santa Claus,
Cody Watson

Dear Santa,
I want a big choo-choo and a green machine for Christmas. Thank you.

Love,
Derek Stice
Age 7

Dear Santa
My name is Tammie James & I am 3 years old I have been a good girl. hope you are well. I go to church

Love
Lisa Houghton

Houston man awarded \$268,578

HOUSTON (AP) — A man whose arm was severed when his van hit a pothole and overturned sued the city of Houston for damages and was awarded \$268,578 Monday by a district court jury.

Mario Herrada, now 21, lost his arm

every Sun & Wed. to Kelview Height. Wood like to havevery one to visit my church.

here what I want.
1. Baby Wet-N-Care set 2. Stove & Refrigerator 3. Cooking set 4. Microwave oven 5. Baby care set 6. paper dolls 7. play hills 8. shopping cart 9. sink & range set 10. coffee set 11. basket set 12. luggage set.
Please fill my stocking with goodness and my mom & dad to will leave milk & cookies Leave our dog Booties a bone he been a very good dog.

705 Spraberry

Dear Santa,
I have been a good good girl This year. So I want you to come see me This year OK. I want this Please bike, Betty CROCKER OVEN, Jaws game, Baby christy, Record player, BEAUTY DOLL I'm leaving out some milk And cookies for you.

LOVE YOU
Stacy Booth

Dear Santa,
Hi. How are you doing? We will leave you cookies and milk. As we didn't last year. I am sorry. I would like a Ten Speed Bicycle and a Speed race and chase way set and a Star Wars dual and death Star race way set and some more Star Wars figures (like some more Storm troopers, and Ben Kenobi and some more jaws, and some Death Star Commanders)

your friend
David Nickel

Dear Santa,
These are the things i want for christmas. I have been good. lego set 1000, shogun warriors, X-wing fighter, weightlifting set, racecar set, digital watch, punching bag.

Jimmy Flippin
4602 Versailles

Dear Santa Clause,
I was a good girl this year. I want a baby for the bath, some books, and some make-up. I want some Fat gum, peanuts, & cookies in my stocking. I will leave you cookies and white milk.

Love
Lisa May

Dear Santa Clause,
I was a good boy this year. I want a shot-gun that don't cock back, Pop-up pinball, and M-M's peanuts, gum (Freshen-up), and suckers in my stocking. I will leave you cookies and white milk Santa. Be careful on your trip.

Love,
Jamie May

Dear Santa claus
Do you no what I want For Christ- mas. I want a new doll, and a new record player because my other one broke. I wood like a Book called black beauty, and I want a pony, and now my last present. all I want for Christ- mas is my two front teeth.

Lisa Houghton

Two Midlanders indicted by jury

Two Midlanders and a former Midland resident are among five men indicted by a federal grand jury on income-tax related charges.

The indictments were returned sealed by a grand jury in Midland Dec. 15 and were opened after the individuals were arrested by U.S. marshals.

Billy D. Cawthon of Midland was charged with failing to supply information on his federal income tax return for 1975, and with filing three false and fraudulent Forms W-4 and W-4E.

The maximum penalty for failing to file or supply information on a federal tax return is a \$10,000 fine and/or one year imprisonment, plus cost of prosecution.

Maximum penalty for filing a false and fraudulent Form W-4 or W-4E is a \$500 fine and/or one year imprisonment for each count.

Brezhnev marks 72nd birthday

MOSCOW (AP) — President Leonid I. Brezhnev celebrates his 72nd birthday today looking stronger and talking tougher than he has in months.

Diplomats say the Kremlin isn't planning any special fanfare and that Brezhnev probably will spend a routine business day to show he's firmly in charge.

"For a man his age he's looking pretty good," one diplomat said. A specialist in Kremlin affairs commented, "He seems to be functioning at a fairly fast clip."

On Dec. 6, Brezhnev's frequent disappearances began his day by meet-ting with public view caning at the Kremlin with prompt speculation on senior American states- his health. Last winter man W. Averell Harri- a serious bout of flu man. Then he received knocked him out of com- mercial Secretary W. Michael Blumenthal and weeks.

The list of Brezhnev's ailments grows ning, he spoke at a din- longer every year. He ner attended by several wears a hearing aid and hundred American busi- nessmen.

"Mr. Brezhnev seemed to be in good form," a U.S. Embassy spokes- man remarked, noting that the Soviet leader stayed until the dinner's end — a rare gesture of late.

formation on his 1976 tax return and filing a false and fraudulent Form W-4 with his employer.

Also indicted by the Midland grand jury were Odessans Bryan F. Pat- terson, charged with fail- ing to supply information on his 1975 and 1976 re- turns and filing a false and fraudulent Form W-4E, and Morris Reid Smith Jr., charged with failing to file income tax returns for 1974 and 1975, and with filing three false and fraudulent Forms W-4 and W-4E.

The maximum penalty for failing to file or supply information on a federal tax return is a \$10,000 fine and/or one year imprisonment, plus cost of prosecution.

Maximum penalty for filing a false and fraudulent Form W-4 or W-4E is a \$500 fine and/or one year imprisonment for each count.

Season's Greetings

As Christmas approaches, it is a pleasure for all of us to wish all of you a Holiday abounding with Health, Happiness and Prosperity...and thanks to our many friends.

-A-

HAPPIEST holidays and a prosperous New Year. Alfah Printing, 213 W. Indiana, 684-9401.

-B-

WARM wishes by the heartfelt from William Seales at Berg Motor Company, 694-7741.

-C-

MAY your Christmas be richer than ever. Merry Christmas and Happy New Year. Borden Inc., 2405 W. Missouri, 684-8224.

-D-

A friendly Hello, a wish for good cheer, a warm Merry Christmas and a Happy New Year from Adela and William Houck's Jewelry, 684-4851.

-E-

WISHING the best to you and yours, Merry Christmas and Happy New Year from all of us. Jimmy's Dixie Burger, 682-0117.

-F-

WISHING the best to you and yours, Merry Christmas and Happy New Year from all of us. Jimmy's Dixie Burger, 682-0117.

-G-

MAY the Christmas holidays be filled with brightness. General Service and Supply, 683-1051.

-H-

WISHING the best to you and yours, Merry Christmas and Happy New Year from all of us. Jimmy's Dixie Burger, 682-0117.

-I-

WISHING the best to you and yours, Merry Christmas and Happy New Year from all of us. Jimmy's Dixie Burger, 682-0117.

-J-

WISHING the best to you and yours, Merry Christmas and Happy New Year from all of us. Jimmy's Dixie Burger, 682-0117.

-K-

WISHING the best to you and yours, Merry Christmas and Happy New Year from all of us. Jimmy's Dixie Burger, 682-0117.

-L-

WISHING the best to you and yours, Merry Christmas and Happy New Year from all of us. Jimmy's Dixie Burger, 682-0117.

-M-

WISHING the best to you and yours, Merry Christmas and Happy New Year from all of us. Jimmy's Dixie Burger, 682-0117.

-N-

WISHING the best to you and yours, Merry Christmas and Happy New Year from all of us. Jimmy's Dixie Burger, 682-0117.

-O-

WISHING the best to you and yours, Merry Christmas and Happy New Year from all of us. Jimmy's Dixie Burger, 682-0117.

-P-

WISHING the best to you and yours, Merry Christmas and Happy New Year from all of us. Jimmy's Dixie Burger, 682-0117.

-Q-

WISHING the best to you and yours, Merry Christmas and Happy New Year from all of us. Jimmy's Dixie Burger, 682-0117.

-R-

WISHING the best to you and yours, Merry Christmas and Happy New Year from all of us. Jimmy's Dixie Burger, 682-0117.

-S-

WISHING the best to you and yours, Merry Christmas and Happy New Year from all of us. Jimmy's Dixie Burger, 682-0117.

-T-

WISHING the best to you and yours, Merry Christmas and Happy New Year from all of us. Jimmy's Dixie Burger, 682-0117.

-U-

WISHING the best to you and yours, Merry Christmas and Happy New Year from all of us. Jimmy's Dixie Burger, 682-0117.

-V-

WISHING the best to you and yours, Merry Christmas and Happy New Year from all of us. Jimmy's Dixie Burger, 682-0117.

-W-

WISHING the best to you and yours, Merry Christmas and Happy New Year from all of us. Jimmy's Dixie Burger, 682-0117.

-X-

WISHING the best to you and yours, Merry Christmas and Happy New Year from all of us. Jimmy's Dixie Burger, 682-0117.

-Y-

WISHING the best to you and yours, Merry Christmas and Happy New Year from all of us. Jimmy's Dixie Burger, 682-0117.

-Z-

WISHING the best to you and yours, Merry Christmas and Happy New Year from all of us. Jimmy's Dixie Burger, 682-0117.

-A-

CHRISTMAS joy and blessings for the New Year. Ghost Town Cactus and Landscaping Co., 683-5777.

-B-

LOVE—Joy—Peace—May these be your wishes for Christmas. Gingers, DeWitt Plaza, 563-3040.

-C-

TO our many friends we wish glad Christmas tidings. Golden Life Physical Therapy Center, 697-7223.

-D-

CHRISTMAS joy to you now and throughout the New Year. Kenneth Good Plumbing Company, 682-8071.

-E-

HEARTY Christmas greetings and best wishes for a year full of happiness. Dorothy Goodrum Joyce Tedder Oil Related Services, 682-8314.

-F-

SEASON'S Greetings to all our wonderful customers from Greer Plumbing, 432 Andrews Hwy.

-G-

MERRY Christmas and Happy New Year from all of us. Honda Jeep of Midland, 697-2292.

-H-

SEASON'S Greetings and all good wishes to our friends and patrons. Houck's Jewelry, 684-4851.

-I-

We salute the Holiday Season to tell you how much we treasure your friendship and loyalty. Hyltech Energy Corporation, 684-7161.

-J-

A friendly Hello, a wish for good cheer, a warm Merry Christmas and a Happy New Year from Adela and William Houck's Jewelry, 684-4851.

-K-

WISHING the best to you and yours, Merry Christmas and Happy New Year from all of us. Jimmy's Dixie Burger, 682-0117.

-L-

WISHING the best to you and yours, Merry Christmas and Happy New Year from all of us. Jimmy's Dixie Burger, 682-0117.

-M-

TO our many friends we wish glad Christmas tidings. Morris Jewelry & Gifts, 322 Meta Dr., 683-8306.

-N-

TO our many friends we wish glad Christmas tidings. Morris Jewelry & Gifts, 322 Meta Dr., 683-8306.

-O-

TO our many friends we wish glad Christmas tidings. Morris Jewelry & Gifts, 322 Meta Dr., 683-8306.

-P-

TO our many friends we wish glad Christmas tidings. Morris Jewelry & Gifts, 322 Meta Dr., 683-8306.

-Q-

TO our many friends we wish glad Christmas tidings. Morris Jewelry & Gifts, 322 Meta Dr., 683-8306.

-R-

TO our many friends we wish glad Christmas tidings. Morris Jewelry & Gifts, 322 Meta Dr., 683-8306.

-S-

TO our many friends we wish glad Christmas tidings. Morris Jewelry & Gifts, 322 Meta Dr., 683-8306.

-T-

TO our many friends we wish glad Christmas tidings. Morris Jewelry & Gifts, 322 Meta Dr., 683-8306.

-U-

TO our many friends we wish glad Christmas tidings. Morris Jewelry & Gifts, 322 Meta Dr., 683-8306.

-V-

TO our many friends we wish glad Christmas tidings. Morris Jewelry & Gifts, 322 Meta Dr., 683-8306.

-W-

TO our many friends we wish glad Christmas tidings. Morris Jewelry & Gifts, 322 Meta Dr., 683-8306.

-X-

TO our many friends we wish glad Christmas tidings. Morris Jewelry & Gifts, 322 Meta Dr., 683-8306.

-Y-

TO our many friends we wish glad Christmas tidings. Morris Jewelry & Gifts, 322 Meta Dr., 683-8306.

-Z-

TO our many friends we wish glad Christmas tidings. Morris Jewelry & Gifts, 322 Meta Dr., 683-8306.

-M-

MERRY Christmas and Happy New Year from all of us. Steak 'N' Egg Kitchen, 682-0423.

-N-

BEST wishes through the Holiday Season. Hails by Date, 311 Dodson, 682-9331.

-O-

MERRY Christmas from everyone at Nita's Cafe. Will close Dec. 23, will reopen Jan. 2.

-P-

MERRY Christmas and Happy New Year from all of us. Steak 'N' Egg Kitchen, 682-0423.

-Q-

MERRY Christmas and Happy New Year from all of us. Steak 'N' Egg Kitchen, 682-0423.

-R-

MERRY Christmas and Happy New Year from all of us. Steak 'N' Egg Kitchen, 682-0423.

-S-

MERRY Christmas and Happy New Year from all of us. Steak 'N' Egg Kitchen, 682-0423.

-T-

MERRY Christmas and Happy New Year from all of us. Steak 'N' Egg Kitchen, 682-0423.

-U-

MERRY Christmas and Happy New Year from all of us. Steak 'N' Egg Kitchen, 682-0423.

-V-

MERRY Christmas and Happy New Year from all of us. Steak 'N' Egg Kitchen, 682-0423.

-W-

MERRY Christmas and Happy New Year from all of us. Steak 'N' Egg Kitchen, 682-0423.

-X-

MERRY Christmas and Happy New Year from all of us. Steak 'N' Egg Kitchen, 682-0423.

-Y-

MERRY Christmas and Happy New Year from all of us. Steak 'N' Egg Kitchen, 682-0423.

-Z-

MERRY Christmas and Happy New Year from all of us. Steak 'N' Egg Kitchen, 682-0423.

-R-

GOOD will to all our friends and customers. Randi's Skyway Lounge, Midland Air Terminal, 563-2519.

-S-

JOY at Christmas and much happiness in the coming year. Reynolds Brothers Reproduction Co., 682-7293.

-T-

JOY at Christmas and much happiness in the coming year. Reynolds Brothers Reproduction Co., 682-7293.

-U-

JOY at Christmas and much happiness in the coming year. Reynolds Brothers Reproduction Co., 682-7293.

-V-

JOY at Christmas and much happiness in the coming year. Reynolds Brothers Reproduction Co., 682-7293.

-W-

JOY at Christmas and much happiness in the coming year. Reynolds Brothers Reproduction Co., 682-7293.

-X-

JOY at Christmas and much happiness in the coming year. Reynolds Brothers Reproduction Co., 682-7293.

-Y-

JOY at Christmas and much happiness in the coming year. Reynolds Brothers Reproduction Co., 682-7293.

-Z-

JOY at Christmas and much happiness in the coming year. Reynolds Brothers Reproduction Co., 682-7293.

Classified Advertising Dial 682-6222

OFFICE HOURS: Week Days... 8 a.m. to 5 p.m. Closed Saturdays SPACE AD DEADLINES: 5:00 p.m. Friday for Sunday 5:00 p.m. Friday for Monday 3:00 p.m. Monday for Tuesday 3:00 p.m. Tuesday for Wednesday 3:00 p.m. Wednesday for Thursday 12:00 p.m. Thursday for Friday 10:00 a.m. Friday for Saturday 12:00 a.m. Thursday for Sunday 12:00 a.m. Thursday for Monday 4:00 p.m. Friday for Tuesday 12:00 a.m. Monday for Wednesday 12:00 a.m. Tuesday for Thursday 12:00 a.m. Wednesday for Friday 3:00 p.m. Wednesday for Saturday

YES WAYNE LUNA YOU CAN STILL HAVE FUN AFTER 40 HAPPY 40th BIRTHDAY

Trying to locate those singing in the vicinity of 2500 block Sinclair last Sunday evening. Children's age group 8 to 12 years. Please call 684-8076 anytime between 9 to 5.

MARY KAY COSMETICS
Sylvia Wallace, 684-5464 Jean Watson, 684-1995

SHAKLEE PRODUCTS
Yes! We have all vitamins, cleaning products and Love