

Commissioners Issue Official Call For McCaulley - Roby Consolidation, Petitions Validated, Both Elections Will Be Held On January 20th, 1990

Fisher County Commissioners, in a special meeting last Tuesday morning, officially called for an election to take place on January 20, 1990 for the purpose of consolidating the McCaulley Independent School District with the Roby Independent School District.

The petitions, one presented to

Fisher County Judge Marshal Bennett by a group of McCaulley citizens and the other presented by Roby School Superintendent Jimmie Laurie, on behalf of the board, asked the Fisher County Commissioners Court to call a consolidation election. The McCaulley petition, filed at 10:05 a.m., Wednesday, September

20th by David Hill and David Estes, acting independently and as taxpayers, petitioned the

"We really didn't have a lot of time to spend collecting names, but we had an overwhelming number of people who wanted to sign the petition - even two or three days after it was turned over for certification"....David Estes.

court to call an election to consolidate the McCaulley School District with the Roby School

District. The petition turned in by Hill and Estes contained 57 signatures. A total of 45 names of the 57 submitted were certified by Fisher County Clerk Betty Rivers.

The second petition, filed by Roby Superintendent Jimmie Laurie, on behalf of the Roby School Board, asked the Fisher County Commissioners to call a consolidation election merging the McCaulley ISD with the Roby ISD. The Roby petition contained approximately 239 signatures, according to Fisher County Clerk Betty Rivers. "Of the signatures submitted, I certified 209 which far exceeds the 10-percent required by law", said Rivers.

In the consolidation process, the McCaulley group is asking voters within the McCaulley School District to give approval to consolidating with Roby ISD. Roby at the same time is asking voters within the Roby ISD to accept the McCaulley consolidation into the Roby District.

Judge Marshal Bennett, in a telephone interview last Tuesday morning, said there was a date in November that the election to consolidate could have been held, but it did not give the required 45-day notices as required by law. The next available date was the one selected in January.

Even though the two citizens who filed the McCaulley consolidation petition containing 57 names are members of the McCaulley School Board, the petition, according to Board Secretary David Estes, was not filed on behalf of the school but rather by interested citizens. "We really didn't have a lot of time to spend collecting names, but we had an overwhelming number of people who wanted to sign the petition - even two and three days after it was turned over for certification," said Estes.

The Roby School Board, by their action in an emergency meeting on Thursday, September 21st, have indicated their willingness to accept the consolidation.

The Roby Board, adopted a mo-

tion to hold the election. Within approximately 24 hours 239 signatures, far more than required, were turned over to officials for certification.

McCaulley's school board is made up of Jackie Jeffrey, Ricky Jeffrey, Bobby Smith, Joe Andrews, David Estes, David Hill and Randy Kelley.

Roby's school board is composed of Andy Moore, Jeff McClure, David Boyd, Dr. David Morris, Richard Gaona and Lance McWilliams.

Fisher County Judge Marshal Bennett said last Tuesday that the vote must be approved by both districts in order for the consolidation to become effective. McCaulley must approve the consolidation with Roby and Roby must approve the consolidation with McCaulley. "If either school district fails to approve the consolidation the measure does not pass," according to Judge Bennett.

Fisher County Clerk Betty Rivers indicated that one of the notifications that now must take place is approval from the Justice Department, Washington, D.C., concerning the holding of the election. She expects written notification to them to be in the mail this week and anticipates approval within 45 days.

Rotan Golf Association Meeting Is Thursday

Rotan Golf Association will have a meeting on Tuesday, October 3rd, 6:30 p.m. at the Rotan Community Center.

Gene Prevo Will Be Preaching On Sunday At Calvary Baptist

Bro. Gene Prevo of Knox City will preach again Sunday, Oct. 1 at Calvary Baptist Church, Rotan. He has preached the past two Sundays. Morning worship is at 11:00 a.m. and evening worship is at 7:00 p.m.

Roby Star-Record



ROTAN ADVANCE

VOL. 80 NO. 34

THURSDAY, SEPTEMBER 28, 1989

TWELVE PAGES 50¢ PER COPY
24¢ BY MAIL BY THE YEAR

SEPTEMBER
FISHER COUNTY
Home To
Crystal Early
Glen Gruben
Dot Harris
Anna Barrera
Farm Bureau
Kashawn Morris

Rotan Chamber Sponsoring Cutting Horse Event For Scholarship Fund

The Rotan Chamber of Commerce in conjunction with the National Cutting Horse Association,

Two County Football Players Honored As 'Players Of The Week'

Two Fisher County football players were honored this week as 'Player's Of The Week' in the Abilene Reporter News.

Joe Huitt, standout player for the Rotan Yellowhammers, was named the Big Country Player Of The Week for his outstanding performance against Spur. He rushed for over 300 yards.

Jay Helm, a member of the McMurry Indians special team, was named the McMurry special team player of the week for his performance last week in McMurry's 28-16 loss to Midwestern. A linebacker, Helm is 5'10", 180 pounds and the son of Mr. and Mrs. Leon Helm of Roby.

is sponsoring a Cutting Horse Event this Saturday, September 30, at the Fisher County Sheriff's Posse Arena west of Rotan beginning at 9:00 a.m. The event will be free of charge for spectators and a concession stand will be provided.

An amateur cutting event will be scheduled in-between the regular events in which everyone is invited to enter.

Proceeds from the event will go towards the Rotan Chamber of Commerce Scholarship Fund. A scholarship is awarded each year to a graduating senior from Rotan High School.

James Jeffrey Will Conduct Beef Cattle Clinic In County Seat

James Jeffrey of McCaulley will conduct a Beef Cattle Clinic at the County Show Barn in Roby Saturday, September 30. The Clinic will begin at 10:00 A.M.



YELLOWHAMMER BAND MEMBERS: Pictured above is Kristi Martinez and other band members as they played for the half-time show at last Friday night's football game against Spur.

Rotan City Holding Public Hearing On Proposed Tax Increase

On Thursday night the City of Rotan will hold a public hearing on a proposal to increase total tax revenues on properties on the tax roll by approximately 7 percent. The meeting is scheduled to take place at 7:00 p.m., Thursday, September 28th at the Rotan City Hall.

The tax rate is scheduled to increase from last year's 5810 cents per \$100 valuation to 61789 cents per \$100 valuation which would make the taxes on the average \$11,308 home increase from \$65.70 to \$69.87.

The public is invited to the public hearing. Taxpayers will be given the opportunity to express their opinion on the proposed 7.0 percent tax increase.

Texas Water Comm. Stops Hazardous Waste Injection Well Work

Sen. Steve Carriker, D-Roby, has been informed by the Texas Water Commission that it has stopped processing the application of Sweetwater Resources Inc. for a hazardous waste injection well in Fisher County.

Officials with the Texas Railroad Commission told Carriker that they had determined the proposed well could pose a hazard to oil and gas deposits in the region.

"Fisher County residents should be pleased with the serious attention given this application by the Railroad Commission, particularly Commissioner John Sharp," Carriker said. "While this particular application was turned down, the experience with it has pointed out the need to Fisher County residents for the law to provide for careful scrutiny of all such applications."

Rotan School Board To Hear Public Comments On Proposed Tax Hike

On Thursday night the Rotan Independent School District will hold a public hearing on a proposal to increase total tax revenues on properties on the tax roll by approximately 7 1/2 percent. The meeting is scheduled for the Rotan High School Library and is set to begin at 7:30 p.m.

The tax rate is scheduled to in-

crease from last year's 94-cents per \$100 valuation to \$1.03 per \$100 valuation which would make the taxes on the average \$12,163.00 home increase from \$67.33 to \$73.78.

The public is invited to the public hearing. Taxpayers will be given the opportunity to express their opinion on the proposed 7.5 percent tax increase.

Non-Departmental County Expenses Top Item Insurance At \$58,104.00

The second most expensive department within Fisher County to maintain, besides the Sheriff's Department - with an annual budget of \$252,910.00, is a department that actually is non-existent entitled 'non-departmental'. This department is charged with expenses that can not be directly charged to other named departments. For the year ending 1988, Fisher County had budgeted expenses in the non-departmental section of the budget listed at \$178,425.00 while actual non-departmental ex-

penses for the year amounted to \$184,144.00 or \$5,719.00 more than budgeted.

Approximately 56-percent of the total expenses for the non-departmental category are in four listed expenses. County insurance is the largest item at \$58,104; then funds paid to the tax appraisal office of \$43,018; followed by workmen's compensation of \$30,967 and funds paid the county trapper of \$10,800.

The remaining listed line items of the non-departmental budget are listed below.

| FISHER COUNTY, TEXAS STATEMENT OF REVENUES, EXPENDITURES AND CHANGES IN FUND BALANCE -- BUDGET AND ACTUAL -- GENERAL FUND For The Year Ended December 31, 1988 | | | |
|---|----------------|----------------|----------------------------------|
| | ACTUAL | BUDGET | VARIANCE FAVORABLE (UNFAVORABLE) |
| Non-Departmental: | | | |
| Water | 144 | -0- | (144) |
| Lawn Mower Repair | -0- | 200 | 200 |
| County Insurance | 58,104 | 80,000 | 21,896 |
| Historical Society | -0- | 1,250 | 1,250 |
| Workman's Compensation | 30,967 | 11,818 | (19,149) |
| Landfill Permit | 100 | -0- | (100) |
| County Suit | 3,518 | 2,332 | (1,186) |
| Election Expense | 9,285 | 6,000 | (3,285) |
| Tax Appraisal District | 43,018 | 43,300 | 282 |
| County Trapper | 10,800 | 10,800 | -0- |
| Outside Auditor | 8,650 | 8,250 | (400) |
| Commissioner and Judge Dues | 250 | 175 | (75) |
| National Association of Counties Dues | 265 | 265 | -0- |
| West Texas Council of Government Dues | 589 | 400 | (189) |
| Texas Association of Counties Dues | 685 | 685 | -0- |
| Legal Ads | 201 | -0- | (201) |
| Copy Machine | 1,247 | 3,000 | 1,753 |
| Library | 2,500 | 1,700 | (800) |
| Public Notices | 55 | 1,000 | 945 |
| Roby Firetruck | 2,769 | 1,500 | (1,269) |
| Rotan Firetruck | 2,358 | 1,500 | (858) |
| McCaulley Firetruck | 2,276 | 1,500 | (776) |
| Assoc. of Sweetwater Firefighters | 845 | -0- | (845) |
| Hi-way Patrol | 518 | 360 | (158) |
| Soft Drinks | 1,868 | 1,500 | (368) |
| Safe Deposit Box Rental | 40 | 40 | -0- |
| Longworth Lease Rental | 1 | -0- | (1) |
| Pay Telephone | 201 | 200 | (1) |
| Alcohol and Drug Abuse | 2,200 | -0- | (2,200) |
| Soil and Water Conservation | 600 | 600 | -0- |
| Propane | 68 | -0- | (68) |
| Miscellaneous | 8 | -0- | (8) |
| Freight | 14 | 50 | 36 |
| Total Non-Departmental | 184,144 | 178,425 | (5,719) |

Average Payroll Expense Per Fisher County Student Is High At \$5,058.15

For the 1987-88 school year, Fisher County teachers came in under the average in salaries paid to classroom teachers across Texas, however; they were also responsible for teaching fewer students than their counterparts across the Lone Star state. The average Texas classroom teacher in 1987-88 was paid \$25,558 while teachers in Fisher County averaged salaries of \$21,944.25. The average teacher across Texas was responsible for 17.1 pupils while the average Fisher County teacher was only responsible for 11.8 students. The figures came from the latest issue of Bench Marks 1988-89 School District Budgets In Texas, an annual publication of the Texas Research League, an Austin-based, educational corporation engaged in governmental research.

In Fisher County, the average teacher at Hobbs was paid \$21,715.00 and was responsible for 6.0 pupils; at McCaulley the average teacher was paid \$20,882.00 but the pupils per teacher were not available possibly due to McCaulley being monitored by the Texas Education Agency; at Roby the average teacher salary was \$22,338.00 with the teacher responsible for 16.0 students and at Rotan the average teacher was paid \$22,842.00 and was responsible for 13.3 pupils. The state average salary for teachers was \$25,558.00 while the average pupils per teacher across Texas was 17.1.

Administrators in Fisher County also came in under the state average for the 1987-88 year. Across Texas school ad-

ministrators averaged being paid \$38,957.00 but the average for Fisher County administrators was only \$35,625.00. Hobbs administrators had average salaries of \$34,500.00; McCaulley administrators were \$35,618; Roby-\$37,119.00 and Rotan \$35,263.00.

Aides in Fisher County had average salaries of \$9,317.25. Aides at Hobbs averaged salaries of \$7,739; McCaulley aides had average salaries of \$11,414; Roby aides averaged \$7,706 and Rotan aides averaged \$10,410 for the 1987-88 year.

Across Texas four of every five dollars spent in schools were spent for salaries. Statewide payroll expense averaged \$2,757

per student. In Fisher County the average payroll expense per student averaged \$5,058.15. At Hobbs the average payroll expense per student was \$9,273.85; at McCaulley it was \$5,545.47; at Roby \$2,570.42 and at Rotan \$2,842.87. The average for Region 14 was \$2,667.34.

For the 1987-88 school year, the salary actually paid to classroom teachers averaged \$25,558, which was 2.7-percent over the previous year. The figures for individual districts exclude career ladder supplements.

The average salary for Texas classroom teachers has doubled since 1978.

AVERAGE SALARY TEXAS CLASSROOM TEACHERS IN CURRENT AND CONSTANT DOLLARS AND PUPIL-TEACHER RATIOS

| Year | Average Salary | Price Index | In 1988 Dollars | Pupils per Teacher |
|---------|----------------|-------------|-----------------|--------------------|
| 1950-51 | \$ 3,063 | 27.8 | \$13,717 | 27.0 |
| 1955-56 | 3,867 | 30.1 | 15,995 | 26.0 |
| 1960-61 | 4,551 | 33.3 | 17,015 | 25.6 |
| 1965-66 | 5,858 | 36.8 | 19,819 | 24.1 |
| 1970-71 | 8,147 | 44.9 | 22,590 | 22.4 |
| 1975-76 | 11,348 | 62.6 | 22,569 | 19.5 |
| 1980-81 | 15,690 | 94.6 | 20,649 | 17.9 |
| 1981-82 | 17,537 | 100.0 | 21,834 | 17.9 |
| 1982-83 | 19,501 | 103.9 | 23,367 | 17.8 |
| 1983-84 | 20,117 | 108.1 | 23,169 | 17.7 |
| 1984-85 | 23,281 | 111.6 | 25,972 | 17.6 |
| 1985-86 | 24,487 | 114.3 | 26,672 | 17.4 |
| 1986-87 | 24,885 | 119.5 | 25,926 | 17.2 |
| 1987-88 | 25,558 | 124.5 | 25,558 | 17.1 |

Note: Price index for personal consumption expenditures in U.S. compiled by U.S. Department of Commerce; 1982 equals 100.

Source: Compiled from professional personnel rosters filed by local districts with the Texas Education Agency. The 1987-88 figure is an estimate by the Texas Education Agency.



State Capital Highlights

By Lyndell Williams
TEXAS PRESS ASSOCIATION

AUSTIN—Last week's shocker was a Houston pollster's report that Attorney General Jim Mattox has only eight percent support from Democrats, while former Gov. Mark White has 23 percent.

For Mattox, who's been running for governor for seven unadorned years, that figure is dimly low and casts a dark cloud on his candidacy.

Eight percent is so low it might be inaccurate, but folks have been wondering all summer why Mattox hasn't officially announced his candidacy, and supporters of other candidates are now saying that's why.

Poll Accuracy Questioned
Mattox disputed the poll the next day, saying his and other polls consistently give him higher support, he didn't say at what level it's running.

Look soon for him to release his own poll showing stronger support.

Nevertheless, the indications are good for White to run.

Not only does he register enough support to encourage a race, but White's mentor, former Gov. Dolph Briscoe, also drew seven percent in the same poll.

Briscoe, a top leader of dwindling conservative Democrats, has chosen to explore his own candidacy rather than support Mattox or Treasurer Ann Richards, who led the poll with 35 percent.

Remember, as governor, Briscoe gave protegee White his start by naming him secretary of state. Consider, theoretically, if Briscoe delivered seven percent to White, then White trails Richards today by only five points.

White, always gutsy, has taken bigger chances with less odds. Many say he'll enter the race.

Mattox shouldn't be counted out, either. Although there is some quiet party talk of trying to persuade him to shift to the U.S. Senate race against Phil Gramm, Mattox gave no indication he'll back away from the governor's race.

More Campaigning
GOP gubernatorial candidate Clayton Williams unleashed a million-dollar TV blitz to boost

name ID which touts his accomplishments of starting 28 businesses.

Williams also said he will turn the state's controversial acquisition, 215,000-acre Big Bend Ranch, into a 90-day boot camp for first-time convicts before sending them to labor for six months on community projects.

The head of Houston Lighting and Power Co. endorsed Bob Bullock for Lt. Governor in a letter on company stationery.

Bullock's Democratic primary opponent, state Sen. Chet Edwards, responded that Bullock "is in the utilities' pocket."

Schlueter Quits House
State Rep. Stan Schlueter, D-Killeen, one of several lawmakers named in news reports on excessive political contributions and how they are spent, resigned his seat to become a lobbyist. Schlueter insisted he made the decision weeks ago, and the media revelations were just unlucky timing.

Other reports said IRS agents made copies of his contribution reports at the secretary of state's office after the news broke.

Ethics Amnesty Declared
Travis County District Attorney Ronnie Earle, who heads the state public integrity unit, declared amnesty for legislators who broke ethics laws in 1988, but vowed to get them next year.

Earle said the law is too vague to pursue and, along with Lt. Gov. Bill Hobby, urged reform in the November special session.

Other Highlights
■ Former Gov. Preston Smith filed chapter 7 bankruptcy documents seeking protection against creditors, becoming the second former governor to fall victim to the economic recession.

■ Black and Hispanic groups joined to file a lawsuit challenging the manner in which Texas elects its state district judges.

The suit seeks to install single-member districts in nine urban counties and maintains that the at-large district system discriminates against minorities.

■ Lt. Gov. Bill Hobby told

a federal immigration panel its reform act is "flawed" and that economic development on both sides of the Rio Grande is the answer.

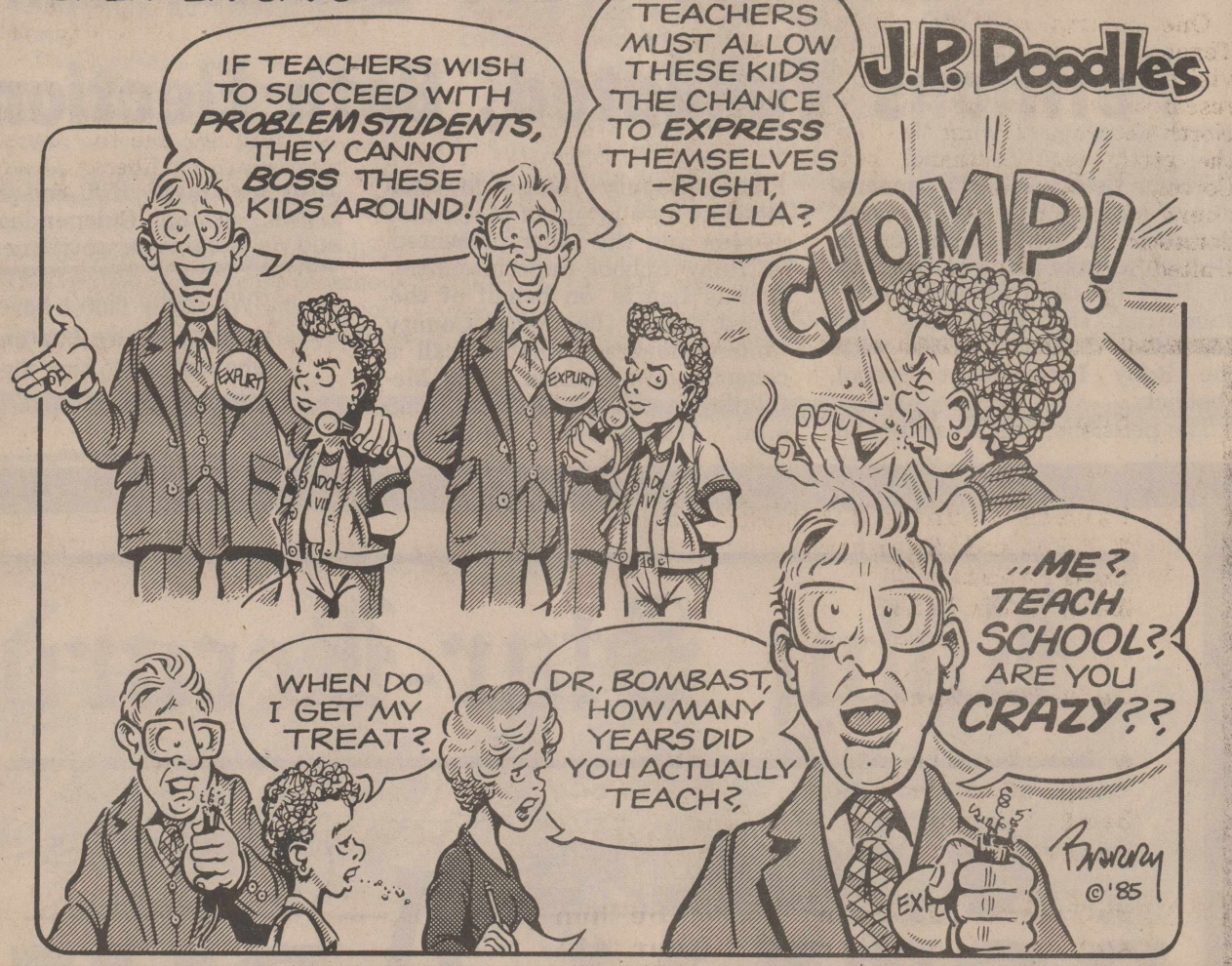
The economies of Texas and northern Mexico "are all one, and always will be, whatever pieces of paper are adopted," he said.

Congressman John Bryant, a panel member and candidate for attorney general, said the reform law was passed to stop unlimited immigration to the U.S.

■ State Sen John Montford, D-Lubbock, announced he will wait until after the Nov. 14 special session to decide on a gubernatorial race.

A Gift to the
AMERICAN CANCER SOCIETY
MEMORIAL
PROGRAM
will help in the war
against cancer.

"MEANWHILE, BACK AT THE TEACHERS' WORKSHOP, THE GUEST SPEAKER SAYS:



FISHER COUNTY CHURCH DIRECTORY

Kitten Up A Tree



Puffy has a problem. She's much better at climbing trees than she is at getting down again. Usually, someone has to get a ladder and bring poor Puffy back to earth.

People share Puffy's problem. Their fears are forever driving them to do what they can't undo. They run away from reality only to wish they hadn't. We have even coined the idiom "up a tree" to denote the dilemma of a situation from which we cannot free ourselves.

With people, it takes more than a ladder to solve the problem.

Through the centuries we have found Faith an answer to fear. Our churches cultivate courageous Christians. For with confidence in God comes confidence in ourselves.

The person who knows they are never alone doesn't run away.

Sunday
1 Kings
8:54-66
Monday
Psalm
119:49-72
Tuesday
Psalm
119:73-96
Wednesday
Psalm
119:97-120
Thursday
Psalm
119:121-144
Friday
Psalm
119:145-176
Saturday
Jeremiah
15

Scriptures Selected by
The American Bible Society

Copyright 1989, Keister-Williams Newspaper Services, P. O. Box 8005, Charlottesville, VA 22906

Attend Church Sunday

This Page Presented By The Listed Individuals & Businesses

| | | | |
|--|---|--|--|
| MISSION BAPTIST CALVARY-ROBY REV. ELI SEPEDA S.S. 9:45 a.m.-Worship 11:00 a.m. Sunday Eve. 5:30 p.m.-Worship 6:00 p.m. Wednesday Night Service 7:30 p.m. | FIRST UNITED METHODIST-ROBAN REV. TERRY LOWE Sunday School 9:30 a.m. Worship Service 10:30 a.m. Sunday Evening 6:00 p.m. | HOBBS BAPTIST CHURCH HOBBS COMMUNITY REV. P.A. MITCHUM Sunday School 9:45 a.m. Worship Service 11:00 a.m. Sunday Evening 6:00 p.m. | CHURCH OF THE NAZARENE-ROBAN REV. CLAUDE LEDBETTER Sunday School 9:45 a.m. Sunday Morning Worship 10:45 a.m. Sunday Afternoon Worship 3:00 p.m. |
| FIRST UNITED METHODIST-McCAULEY REV. LYLE REECE Sunday School 10:00 a.m. Worship Service 11:00 a.m. 2nd Wednesday Fellowship 6:00 p.m. | FIRST BAPTIST CHURCH-ROBY REV. ALVIN PETTY S.S. 10:00 a.m.-Worship 11:00 a.m. Sunday Evening Choir Practice 5:00 p.m. Worship Service 6:00 p.m. Wednesday Prayer Meeting 7:30 p.m. | FOUR SQUARE CHURCH-ROBAN REV. ROBERT KENNEDY Sunday School 10:00 a.m. Worship Service 11:00 a.m. Sunday Evening 6:00 p.m. Wednesday Night Service 7:00 p.m. | McCAULEY BAPTIST CHURCH REV. JAMES BRIGHAM Sunday School 10:00 a.m. Worship Service 11:00 a.m. Sunday Evening Service 6:00 p.m. |
| CHURCH OF CHRIST-ROBAN S.S. 9:45 a.m.-Worship 10:45 a.m. Sun. Eve. Ladies Bible Class 5:00 p.m. Worship Service 6:00 p.m. Wed. Evening Bible Study 7:30 p.m. | LITTLE ZION BAPTIST-ROBAN REV. JAMES CARRINGTON Sunday School 9:45 a.m. Worship Service 11:00 a.m. Wednesday Night Service 7:00 p.m. | ST. JOSEPH'S CATHOLIC CHURCH-ROBAN FATHER AUSTIN KITTEREDGE Sunday Morning 9:00 a.m. Mass Saturday Night Mass 7:30 p.m. | CALVARY BAPTIST CHURCH-ROBAN REV. DUTCH PARKS S.S. 10:00 a.m.-Worship 11:00 a.m. Sunday Evening Bible Study 6:00 p.m. Worship Service 7:00 p.m. Wednesday Night Service 7:00 p.m. |
| FIRST BAPTIST CHURCH-ROBAN REV. STEVE PEACE S.S. 9:45 a.m.-Worship 10:55 a.m. Church Training 5:00 p.m. Sunday Evening Worship 6:00 p.m. Wednesday Prayer Meeting 7:00 p.m. | CHURCH OF CHRIST-ROBY ERIC CUPP, MINISTER S.S. 10:00 a.m.-Worship 11:00 a.m. Sunday Evening 6:00 p.m. Wednesday Night 7:00 p.m.-Nov.-April 8:00 p.m.-May-Through October | CROSS ROADS BAPTIST-ROBAN REV. JAMES P. (PAT) ANDERSON S.S. 10:00 a.m.-Worship 11:00 a.m. Sun. Evening Training Union 6:00 p.m. Worship Service 7:00 p.m. Wednesday Night Service 7:00 p.m. | FIRST UNITED METHODIST-ROBY REV. LARRY CRUMPTON S.S. 9:45 a.m.-Worship 10:50 p.m. Sunday School 11:00 a.m. Worship Service 6:00 p.m. Wednesday Night Choir Practice 7:00 p.m. |
| SYLVESTER BAPTIST CHURCH- SYLVESTER REV. DON KITCHENS S.S. 10:00 a.m.-Worship 11:00 a.m. Sunday Evening 6:00 p.m. Wednesday Night Service 7:00 p.m. | FIRST UNITED METHODIST-SYLVESTER REV. LYLE REECE Sunday School 10:30 a.m. Worship Service 9:30 a.m. Community Dinner 6:00 p.m. On 3rd Wednesday Evenings | JOY | EMMANUEL BAPTIST CHURCH-ROBAN REV. FELIX SILVA Sunday School 10:00 a.m. Worship Service 11:00 a.m. Sunday Evening Service 5:30 p.m. Wednesday Night Worship 7:00 p.m. |

From Fisher County's Past

From The Newspapers

FIFTEEN YEARS AGO

Earl Pearson and Walter Hargrove were two mainstays in the McMurray College football program. Pearson was a 1973 Rotan graduate and was starting tight-end. Hargrove was a 1971 graduate of Rotan and was regarded as one of the Districts top defensive backs.

A group of Rotan citizens received a charter from the State of Texas to operate a non-profit corporation to be named Rotan Improvements Incorporated. The members of this corporation have bonded together for the sole purpose and intent of attempting to secure rental housing in Rotan.

TEN YEARS AGO

The members of the Rotan School Board approved the 1979-80 fiscal year budget in the amount of \$932,907.00, at a special meeting. The official budget reflected a \$188,000 fund balance (surplus) from the previous year.

Faithful efficient service to the First Baptist Church of Rotan was commemorated in a Sunday morning service with the presentation of an engraved wrist watch to Mrs. Sonnie Hammond whose recent retirement completed thirty-five years of combined service rendered by her and her late husband Claud Hammond as church custodians.

FIVE YEARS AGO

Roby School official, Jimmie Laurie, announced the formation of the new Vocational Advisory Council. The Advisory Council was to serve the Roby School District by advising the board of education and the school administration on issues relevant to the school's vocational education program.

The final phase largest single tax hike in the history of the State of Texas hit the pocket books of Texans. The state sales tax increased from 4 percent to 4 1/8 percent and many things that were exempt from the sales tax, were no longer exempt after the tax hike took effect.

LAST YEAR

The Rotan Independent School District board of trustees proposed an increase in taxes over the maximum effective rate for 1988 but the increase was not supposed to have an effect on the taxes individual property owners were to pay.

Each year a national search is conducted to identify students in the

seventh grade who are academically gifted. In order to be eligible for this program, a student must have scored in the upper three percent of the nation on his/her spring standardized achievement test. Martha Billingsly, Zachary Clark and Anita Floyd were three students chosen for the honor.

Dr. Bryan Cave Optometrist

Eye Examinations
Contact Lenses
(All Types)
Children Welcome

Cogdell Center
Snyder, TX
(915) 573-5571

Office Hours:
Mon., Wed., Fri. 9-5
Tues., Thurs. 9-6



Rotan Advance - Roby Star Record
Phone (915) 727-2543
Post Office Drawer A, Rotan, Fisher County, Texas 79546

Kim Pease Editor/Publisher
Janiece Pease Co-Publisher
Koenigsmeyer Dehman Advertising
Annette Martinez Billing/Circulation
Irene Cuervo Typewriter
Louis Ashford Job Printing

Second Class postage paid at Rotan, Texas, published every Thursday at 114 Snyder Avenue, Rotan, Texas 79546. Subscription Rates-Fisher County:\$12.00; Elsewhere in Texas-\$16.00; Out-of-State-\$18.00.

Letter To The Editor Policy-The Rotan Advance-Roby Star Record welcomes letters to the editor on subjects of interest to our readers. Short letters are most likely to be chosen for publication, but the use of any material is at the discretion of the editor. The editor reserves the right to edit letters to meet space requirements, clarify or to avoid obscenity, libel or invasion of privacy.

Upon request, editor will use initials only, but only rarely and for compelling reasons. Letters published do not necessarily reflect the editorial policies or beliefs of this newspaper. All letters must bear the handwritten signature of the writer and include the address and phone number(s) for verification purposes.

POSTMASTER-Send address correction changes to The Newspaper Office, P.O. Drawer A, Rotan, Texas 79546.

Any erroneous reflection upon the character, standing or reputation of any individual, firm or corporation will be gladly corrected when notification is given in writing to the publisher within 10 days after publication.



Area Farmers Visit Cotton Incorporated Facility In North Carolina

One hundred and nine West Texas cotton producers recently visited Cotton Incorporated's research facilities in Raleigh, North Carolina. During the tour the group saw, firsthand, how Cotton Incorporated's researchers work to strengthen domestic and foreign markets for United States upland cotton.

New cotton products and technology developed at the Raleigh Research Center are the foundations of Cotton Incorporated's marketing campaigns promoting U. S. cotton. Cotton Incorporated launches these campaigns from its world headquarters in New York City and worldwide offices in London,

Singapore and Osaka, Japan.

Cotton growers formed Cotton Incorporated nearly 20 years ago when they saw their markets deteriorating due to competition from synthetic fibers. As a quasi-governmental, non-profit organization, Cotton Incorporated receives its funding from cotton growers through per-bale

assessments.

"We take pride in the fact that this is a grassroots organization," says Hal Brockmann, senior vice-president and managing director of Raleigh and Greenville research operations. "We tell textile mill officials that cotton growers are working together to make a profit and to protect their market and make it grow."

"Cotton Incorporated is a marketing company, so our research role is to provide the creative tools to support the marketing effort," Brockmann says. "Our research focuses on meeting the constantly changing demands of consumers."

Nick Hahn, president and chief executive officer of Cotton Incorporated, adds, "Cotton's success is determined the minute a consumer makes a decision at retail."

Consumers are increasingly more aware of Cotton Incorporated's registered trademark, the Seal of Cotton. The Seal, which serves as a focal point of promotion, provides an identity for U. S. cotton fiber and attracts attention at retail. Based on current surveys, 73 percent of adult Americans recognize the Seal of Cotton on product hangtags.

Since Cotton Incorporated began tracking its market development, cotton's share of the total apparel and home furnishings market, excluding carpet, has increased from 34 percent in 1975 to 49 percent at the end of 1988. Each percentage point gain translates into approximately 130,000 additional bales

of U. S. cotton consumed.

The Texans gained information about the Cotton Research and Promotion Program from presentations on agricultural, textile and fiber quality research. The two-day agenda included tours through Cotton Incorporated's textile services, color services and fiber processing laboratories. To complete the visit, the group toured J. P. Stevens and Com-

pany's Scotland Plant in Wagram, North Carolina.

West Texas cooperatives, including Plainview Cooperative Compress, Plains Cotton Cooperative Association, Plains Cooperative Oil Mill, Farmers Cooperative Compress, Rolling Plains Cooperative Compress and local cooperative gins across west Texas, sponsored the tour.

September 10, 1989

Fisher County Hunting Cooperative
% Richard Spencer
Courthouse
Roby, TX 79543

Dear Mr. Spencer,

A big bundle of thanks is due the Hunting Co-op for our just completed dove hunt. The shoot Friday morning equaled the best I have ever had and I've been shooting doves for 50 years.

But more important than the hunt was the unmatched courtesy and genuine interest in our stay and hunt given by everyone we encountered. Special thanks to Tony for his untiring efforts in our behalf, to Doc Morris for a clean, cool room, reasonably priced and great conversation at no additional charge, for the opportunity to see and admire Mrs. Morris's exquisite art, to an un-named lady at Henry's who made one hellava steak sandwich, to Robert Morgan who was a big help in my initial phone call and to all the good folks who took the time to say "howdy"

The little storm that came up Friday night put the damper on Saturday but that is certainly not your fault; I just wish it had given you'al a lot more of your much needed rain.

It goes without saying I will recommend all of you to anyone interested in dove and/or quail hunting.

Hope to see you soon.

Sincerely,
Pat Nolan
Pat Nolan
2105 Lakecrest Drive
Grapevine, TX 76051

Dear Friends,

I would just like to say a big "Thank You" for all the cards, calls, visits, thoughts, and prayers that were given to me following my accident. Each call, card and visit picked up my spirits more and more. Once again, thank you. You'll never know just how much you all mean to me.

Sincerely,
Mary Lee Hicks

Microwave Candy Classes To Be Held In Rotan This Friday At Lions Bldg.

Get ready for the holidays by attending a microwave candy demonstration given by Lisa Hoff, West Texas Utilities Electric Living Consultant. The demonstration will be given on Friday, September 29 at the

Lions Club building in Rotan. For those on your lunch break, bring a sack lunch, drinks will be furnished.

The program sponsored by the Extension Home Economics Committee.

GET SET FOR THE SEASON
Roby Athletic Club
Homecoming Supper
Friday, October 6, 1989
Roby School Cafeteria
5:00 P.M. To 7:00 P.M.

| | |
|---------------|---------|
| Hamburgers | Dessert |
| Or | & |
| Fajitas | Drink |
| \$3.50 | |

BRENTWOOD



FALL

89

H.L. DAVIS & CO.

"The Friendly Store"

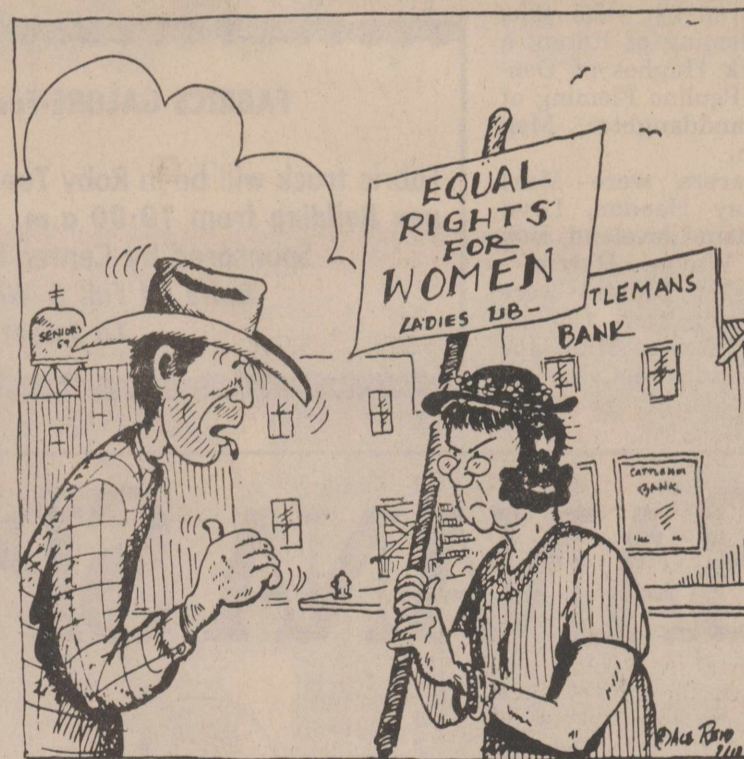
735-2591

Rotan, Texas

YOU NEED AN I.R.A.

COW POKES

By Ace Reid



"Womens Lib er no Womens Lib—I'm a cowboy —not a cowperson!!"

AN INDIVIDUAL REITREMENT ACCOUNT WITH FIRST NATIONAL BANK OF ROTAN IS AVAILABLE TO YOU...

NO MATTER WHAT YOUR TITLE! PLAN FOR THE YEARS AHEAD! COME SEE US TODAY AND FIND OUT HOW EASY IT IS TO SET UP AN I.R.A. ACCOUNT!

(SUBSTANTIAL INTEREST PENALTY IS REQUIRED FOR EARLY WITHDRAWAL.)

The **1st** National Bank of ROTAN

"Your Dependable Bank Of Service"

FDIC

ROTAN * TEXAS 79546
Area Code 915-735-2224



VICTORY AT SPUR: The Rotan Yellowhammer Football Team cheered as they accomplished their second win of the season at Spur last Friday night.

Willie "Yoke" Fleming Rites Held Sept. 22

Willie "Yoke" Fleming, 75, of Rotan, died at 3 A.M., Wednesday (September 20th) at Hendrick Medical Center in Abilene. Funeral services were at 2 P.M., Friday (September 22nd) at the First United Methodist Church in Rotan with Rev. Terry Lowe, the pastor, officiating. Burial was in the Belvieu Cemetery with arrangements by Weathersbee Funeral Home.

Mr. Fleming was born in the Pleasant Valley community of Fisher County and had been a life long resident of the Rotan area. He was the son of Walter and Elizabeth (Lee) Fleming. He graduated from Rotan High School and was a member of the First United Methodist Church. He was a U. S. Army veteran of World War II and had served on the Rotan City Council and the Fisher County Tax Appraisal Board.

He married Leona Imken April 1, 1939 at Hobbs, New Mexico. She died February 7, 1972. He married Anna Mae Hughes September 14, 1974. He was a partner in F & M Chevrolet-Buick Co. and had started working for the automobile dealership 53 years ago when it was called Hogsett-Dowell Chevrolet Co.

He is preceded in death by his only daughter, Willene, August 5, 1967. He is also preceded in death by four brothers.

He is survived by: His wife, Anna Mae Fleming of Rotan; a step-son, Mark Hughes of Denton; a sister, Pauline Fleming of Rotan; a granddaughter, Meg Field of Rotan.

Casket bearers were Murl McKinney, Jay Hendon, Loyd Messick, William Cleveland, Bob Yates, and Wayne Harris. Honorary casket bearers were Carlton Burrow, Tom Collins, Nelson Smith, Robert Hall, Joe Cowan, and Charles McCall.

County Agent's Report

by Richard Spencer

After January 1, there will be no more home study courses to obtain a Private Applicator License required to buy restricted use pesticides. If you do not have a license, it would be less time consuming to complete the home study course. Producers at some time or another will need this license. It would be wise to apply now. Many more changes are expected in the laws governing pesticides by the first of year or sooner.

Fertilizer now will help put your landscape fruit trees in good shape for winter.

Caution and common sense are the watchwords for this process, but many trees benefit from a boost before cold weather comes.

Make sure the tree is not actively growing as added fertilizer will promote more growth resulting in severe freeze damage.

Trees under three years old should not be fertilized now as they are the most likely to begin new growth.

On mature trees that are not actively growing, apply one cup of ammonium sulfate (21-0-0) around the dripline. The dripline is the edge of the tree's canopy and is usually the edge of the tree's root area.

For trees that look to be in poor health, two cups should be added.

Higher rates than those suggested could cause freeze damage, but the correct amount at the right time will make the trees look healthier and bloom better next spring.

Tourism, one of the three largest state industries including oil and agriculture, is a growing sector of our economy. In 1986, travelers spent an estimated \$17 billion in Texas, generating

300,000 jobs and producing \$942 million in state and local tax revenue.

A vast potential exists to expand tourism and recreational opportunities in urban and rural areas, as well as coastal waters. An aggressive marketing campaign is being planned to expand the share of both domestic and foreign travelers. We are not yet fully exploiting the "Texas mystique" even though the state name is recognized widely in other

states and countries, including those behind the Iron Curtain.

In the past, Texas has had little research to develop tourism resources in rural areas where economic opportunities are diverse.

Recently however, the Texas Agricultural Experiment Station developed a rural recreation and tourism initiative in cooperation with the Institute of Renewable Resources.

Twenty-Nine Members Attend 4-H Meeting

The 4-H Clovers met September 14 in the 4th grade classroom at 3:30 p.m., with Bryce Moore presiding. Talks were given on food and nutrition. Some committees were appointed. The next meeting will be on Right and Wrong Manners.

Twenty-nine members were present for the meeting: Chris Terry, Brad Atkinson, Amanda Moore,

Laura Mize, Chad Dannheim, Kelly McWilliams, Elizabeth Hohon, Amy Beauchamp, Anita Floyd, Suzanne Elmore, David Hohon, Matt Counts, Ronda Henry, Jason Gruben, Megan Cryer, Jesse Zapata, Ann Marie Coats, Kendra Kiser, Coby Moore, Tommy Hull, Patrick Buckner, Keith Freeman, Timothy Moore, Mike Counts, J.T. Elmore, Carissa

Kiser, Jeremy Stidham, Blake Stephens, Bryce Moore.

Refreshments were served by Chad Dannheim, Amanda Moore, and Amy Beauchamp.

SILVER STAR CAFE

Highway 180-West
Roby, Texas 776-2744
(Formerly Silver Spur-Roby)
Owned & Operated By The Brzezinski Family

We are proud to announce the re-opening of our completely remodeled cafe. Serving plate lunch and family style daily.

FISH & SHRIMP-ALL YOU CAN EAT

With all the fixings-Friday Evening
From 4:00 P.M.-8:00 P.M.

Take Out Window

Front & Rear Parking In Entrance
Wheel Chair Ramp In Front
*****COMING SOON*****

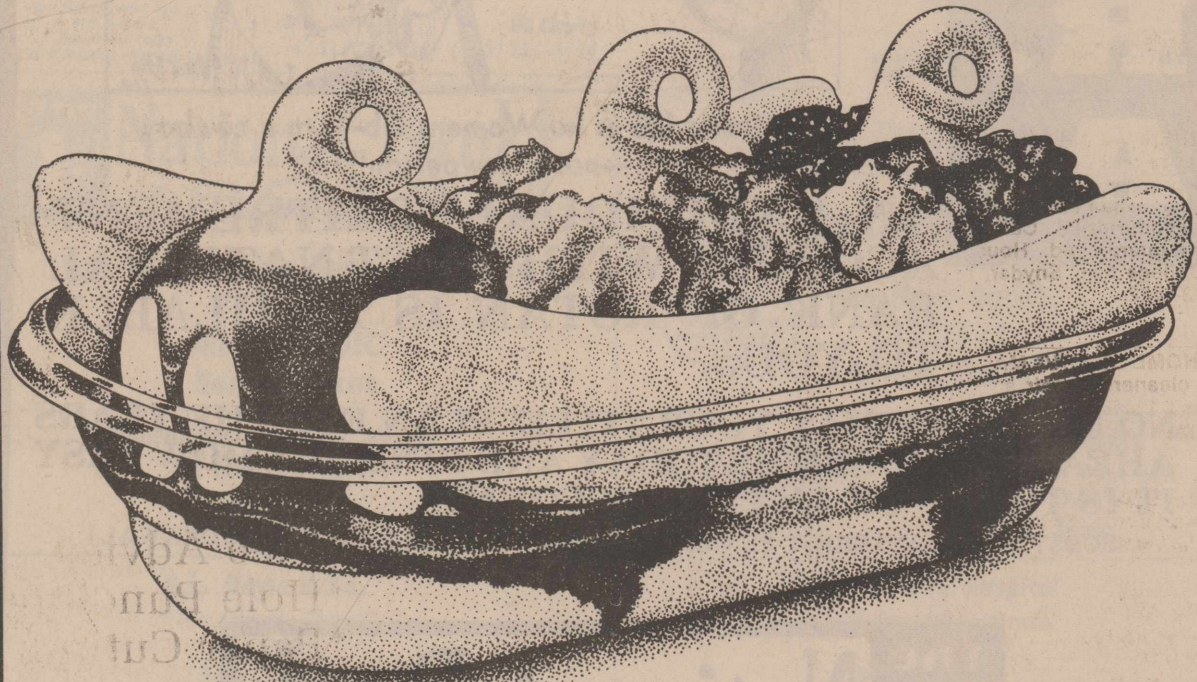
Mexican Food Wednesday Evening
Chicken & Steak On Thursday Evening

FABRICS GALORE-Fashions On Wheels

Fabric truck will be in Roby Tuesday, October 3, at the Annex Building from 10:00 a.m. to 6:00 p.m.

Sponsored by Center Extension Homemakers
Bolts Of Fall & Winter Materials
To Select From

BANANA SPLIT!



\$1.19* SALE PRICE
SEPT. 25-OCT. 1, 1989

DAIRY QUEEN soft serve, surrounded by fresh bananas. With your favorite toppings: strawberry, pineapple, and chocolate. And plenty of whipped topping, too!



*Reg. TM Am. D.Q. Corp. ©1989 Tex. D.Q. Op. Coun.
*At participating Dairy Queen stores

BOSS & BOSS
WESTERN SHOP
BOOT SHOE & SADDLE REPAIR
3105 E. Broadway, Sweetwater, Texas 75556-4793
3709 College Ave. Snyder, Tx. 75549

High Quality
Boot & Shoe Repair

Don't Give Up On Your Boots Or Shoes!
Saddle Repair Over 30 Years Experience

Simply the best value dresses in America

SABINO

Junior And Misses

-H- Western Wear
College Heights Shopping Center
Snyder, Texas

Super Special Coupons. CLIP & SAVE!

WHEN YOU CLIP AND REDEEM THESE THRIFTWAY

| | | |
|--|--|--|
| <p>SAVE UP TO 78% Bounty PAPER TOWELS BOUNTY JUMBO ROLL 2 \$1 FOR WITH COUPON FIRST 2 ROLLS THEREAFTER 89¢ EACH ROLL THRIFTWAY/LA TIENDA COUPON</p> | <p>SAVE UP TO 30% Chicken of the Sea CHUNK LIGHT TUNA TUNA 6 1/2 OZ. CAN 49¢ WITH COUPON FIRST 2 CANS THEREAFTER 59¢ EACH CAN VALUABLE THRIFTWAY/LA TIENDA COUPON</p> | <p>SAVE UP TO 60% ShurFine CONCENTRATED ORANGE JUICE SHURFINE FROZEN ORANGE JUICE 12 OZ. CAN 59¢ WITH COUPON FIRST CAN THEREAFTER 98¢ A CAN VALUABLE THRIFTWAY/LA TIENDA COUPON</p> |
| <p>Coca-Cola CLASSIC COCA COLA 6 PK. CANS \$1.59</p> | <p>Tree Top 48 OZ. APPLE JUICE \$1.49</p> | <p>Wish Bone ASSORTED FLAVORS 8 OZ. SALAD DRESSING 89¢</p> |

THRIFTWAY

WE ACCEPT FOOD STAMPS...WE RESERVE THE RIGHT TO LIMIT

AT AFFILIATED FOODS INC. MEMBER STORE

PRICES EFFECTIVE SEPT. 28-OCT. 4, 1989

SAFEGUARD MONEY ORDERS 39¢ EA.

News From South Fisher County

by Bertha Warren

As football season is in full swing I guess it is time for the fall weather we have been having. We had a light frost early Sunday morning.

Rose Makowsky had about 75

Roby 4-H Clovers To Coordinate St. Jude Hospital Bike-A-Thon

St. Jude Children's Research Hospital announced today that Terrye Gruben and the Roby 4-H Clovers will coordinate the St. Jude Children's Research Hospital "Wheels For Life" Bike-A-Thon in Roby on October 9, 1989 after school at the track field.

Founded by Danny Thomas in 1962, St. Jude Children's Research Hospital is the largest childhood cancer research-treatment-education center in America. St. Jude Hospital is

Roby Athletic Club Holding Car Wash

The Roby Athletic Club will hold a car wash Saturday, Sept. 30, 1989 at Terry's Gin, from 12:00 to 5:30 p.m.

Prices are: \$10.00/Car or Pickup; \$15.00/Suburbans and Trucks. Wash includes; vacuum, armor-all, and window clean. Come support your local athletic club.

to come by the Claytonville Community Center and wish her a happy 90th birthday Saturday. She received a card from President Bush and a large basket full of cards from other well wishers.

non-sectarian, interracial and provides medical care for over 3,200 active patients. Currently, over \$183,000 is needed each day to keep the doors open. These funds come primarily from public contributions.

The Bike-A-Thon program this year is dedicated to Ellen Marie Haynes. Five-year-old Ellen Marie, from Rossville, Georgia, developed a malignant tumor in her abdomen in June, 1986. After treatment at St. Jude Children's Research Hospital, which consisted of surgery, radiation, and chemotherapy, Ellen Marie was taken off all therapy in January, 1987. Although she isn't cured of her cancer yet, her prognosis is good.

We are grateful for the concern that Terrye and Roby 4-H Clovers has for our work and we hope the citizens of Roby will support the Bike-A-Thon to help provide the funds that are needed to preserve the world's greatest asset... "Our Children".

Everything was so nice and they displayed some of her hand work she had done over the years.

Mable Warren's guests Friday and Saturday were Ida and Roy Klett of Ft. Worth. They helped Mable do some painting and fixing up around the house.

Talked with Betty Steele Monday and she said grandson Dwelyn Smith would have a tonsilectomy Thursday. We wish him well. His parents are Britt & Pam Smith. Betty visited her doctor at San Antonio and he started her back on arm and shoulder therapy. The Steele's visited Corkey's dad last weekend at Gorman.

Brittany Ann Morgan was given a big 3rd birthday party by her parents Robert and Melody Saturday. Linda, John and B.J. Clark from Pecos came and her grandparents Dexie and Al Shipman of Graham and great grandmother Cora May Mayberry along with Bob and Betty Mayberry of McCally, and grandparents Bobby and Frances Morgan along with a host of friends helped her celebrate. Her birthday was Tues., Sept. 26th. Shawn Clark was 18 years old Sept. 22. We wish both a happy

birthday.

Erna Lee Jones and Lena Turna of Sweetwater attended the revival at the First Baptist Church in Roby Tuesday night. They also attended the 50th anniversary party for Kathleen and Jimmy Whitworth Saturday.

I talked with Kathleen Monday and she was still excited and so pleased at seeing everyone at their celebration. They had around 180 to register and received over a hundred cards plus so many nice gifts. They received a card from President Bush, Congressman Charles Stenholm, State Senator Temple Dickson, and State Rep. David Counts.

Mattie Green had hip surgery Thursday for a broken hip. She is in Rolling Plains Hospital in Sweetwater. At this writing she was doing fine. We hope she will soon be home again.

Beverly Coker is out of the hospital after being bitten by a rattlesnake. We hope she will continue to improve.

Leo and Liz Blythe of Odessa spent last weekend with Alma Blythe in Sweetwater.

Charlie and Thelma Smith visited Bill Hall who is still in the hospital in Abilene recovering from a motorcycle accident. The

Smiths received some very good news the 8th of Sept. They became great grandparents again. Cindy and Ron Ronson have a new baby girl named Christen Alyse and weighed in at 6 lbs. and 14 ozs. She was welcomed home by a big sister, 3 year old Rachel. The Ronsons

live in De Leon, Texas.

Helen Thornburg and Pat Neepner attended a meeting in Rule Monday night. Helen said the weather was so beautiful it made such a pleasant drive.

That's all for this week. Call and let us know what's going on in your world.

Before You Purchase A New Car Or Pickup... Give Us A Chance To Show You How Much You'll \$\$\$SAVE\$\$\$



111-117 South Cleveland

735-2244

Rotan, Texas



F&M Chevrolet-Buick

Complete Sales & Service

CLASSIFIED ADS

Legal Notices

The Fisher County Commissioner's Court will accept sealed bids on carpeting removed from the Fisher County Tax Office. Bids may be presented to the Fisher County Judge's Office during regular working hours on or before 10:00 A.M. Monday, October 9, 1989. Bids will be opened at 10:00 A.M. Monday, October 9, 1989. The Fisher County Commissioner's Court reserves the right to accept or reject any and or all bids submitted. 34:2tc

THE BULLET HOLE
Buy, Sell & Trade
New and used guns, reloading supplies. Written gun appraisals for insurance purposes.
1411 Hulley Sweetwater, Texas (915) 235-4483

Thank You

A special thanks to my friends and neighbors who helped me during my recent illness and who continue to do so during my recovery. The cards, phone calls, visits and concern are greatly appreciated. May God Bless each of you.
Morris & Mitzi Guelker

AUTOMOTIVE

FOR SALE: 1981 Regal Buick, good tires, clean body and interior. High mileage, \$1,750.00 Cash. Call 776-2141 before 5:00 p.m. Call 735-3370 after 5:00 p.m. 34:1tp

PETS & LIVESTOCK

FOR SALE: Mixed breed cows and calves. Call 735-2122 or 735-3223. 34:1tc

REAL ESTATE

FOR SALE: By Citizens State Bank, Roby, Texas. Commercial building in downtown Roby. Three years old. West side of square, 20'x50'. 25:ttc

UNITED FARM REAL ESTATE: 3 BR house with unattached one-car garage with laundry room, storage room and cellar. Harmon Holcomb, United Farm Real Estate, 776-2131 or 776-2626. Roby, Texas. 19:ttc

FOR SALE: Malouf Estate in Roby, very large 12 room house, formal dining, storage building, water well, 3 lots, needs some work. Good investment. Owner will carry. \$45,000.00 as is. United Farm Agency 776-2131 or 776-2626. 28:ttc

REAL ESTATE FOR SALE: Free master list and brochures at Black Investments, 107 North Garfield, Roby, Texas; 915-735-3091. 30:ttc

FOR SALE: In Roby area, 3 BR, 1 bath, with many extras. Remodeled brick home with custom kitchen cabinets and pantry. New appliances. Carpet and woodburning stove. 1,100 sq. ft. Call Tuesday thru Friday after 8:00 p.m. 776-2356, Saturday 9:00 a.m.-6:00 p.m. 235-4342. 31:4tc

FOR SALE: ATTRACTIVE & AFFORDABLE 2 BR home, 702 E. 7th, Roby, special loan-\$2,000 down. Black Investments (915) 735-3091. 32:5tc

FOR SALE: 114.5 acres East of Roby, pasture with 87.7 acres crop land in C.R.P., new owner receives \$3,500 per year for 10 years if purchased by October 1989, old house structure, 2 wells, minerals. Black Investments (915) 735-3091. 32:3tc

FOR SALE: 2 BR home, 612 E. 7th in Roby. Call 735-2374 or (806) 799-8337, LaFaye McDonald. 33:2tp

FEED & SEED

FOR SALE: Nora oats, \$4.00 per bale, 100 bale minimum. Call 735-2308 or see CleDon Coffman. 33:2tc

FOR SALE: Comine Run TAM-101 wheat seed, bulk, \$5.50 per bushel. Call 735-2944. 33:2tc

FOR SALE: Russian beardless wheat seed, Alamo-X oat seed. Frank Mitchell 776-2415. 33:2tc

GARAGE SALES

GARAGE SALE: Foursquare Church, Friday and Saturday, Sept. 29 & 30, 9:00 a.m. until ? 612 E. Forrest, Roby. 34:1tp

GARAGE SALE: 207 E. Johnston St., Roby. Starts Wednesday, Sept. 27th. 34:1tp

YARD SALE IN ROBY: Corner of North 3rd and Orange St., Friday and Saturday, 8:00 a.m. till ?? Weather permitting. 34:1tp

GARAGE SALE: Starting Wednesday, Sept. 27th, 8:00 a.m. Dan Park home, East of Fitness Trail, Roby. 34:1tp

GARAGE SALE: Thursday-Saturday, lots of baby items. 1010 East 6th, Roby. 34:1tc

FOR RENT

APARTMENTS: 1-2-3 and 4 BR apartments for rent. We are an Equal Opportunity Agency. We do not discriminate based on race, religion, creed, sex, national origin, handicap or familial status. Rotan Housing Authority, 915-735-3613 or 915-735-3614. 10:ttc

FOR RENT IN ROTAN: 3 BR, 1 bath, CH/A. Fenced yard, in nice neighborhood, large storage area. Call (915) 573-9078. 31:ttc

FOR RENT: 2 BR house with garage, very nice, call 735-3290. 34:4tp

HELP WANTED

NEED A HOUSEKEEPER: One day a week. Call Mrs. Baker, 735-2421, between 6:00 and 9:00 p.m. 34:1tp

NOTICE: Rotan Nursing Center is accepting applications for LVNs. Competitive wage scale, excellent benefits. Contact Juanita Underhill, 735-2233. 30:ttc

MISCELLANEOUS

ANTIQUES: We have fine furniture, over 400 clocks and numerous old lamps for you to purchase, plus many gift items. We also repair and refinish clocks, lamps and furniture. Call us or bring in. All work guaranteed. House of Antiques, 4008 College Ave., Snyder, Texas 79549, 915-573-4422. 27:ttc

NEW HOME SEWING MACHINES: Electrolix cleaners, repair all makes. H.B. Stevens, 1101 James St., Sweetwater, 235-2889. 27:ttc

OFFICE SUPPLIES: Call Rosemary at the Newspaper Office, 735-2562 and get them delivered direct to you. 11:ttc

NOTICE: You may use your Mastercard or Visa for your purchases or any service that we offer at the Newspaper Office. 12:ttc

IRONING: \$5.00/dozen. Vonnies Sears, 402 S. Richard Ave. 735-2430. 32:4tc

REX'S RADIATOR SHOP

Radiator Service & Repair
Cars - Trucks - Tractors

REX BEAUCHAMP, owner

Open Mon. - Fri.
After 5 p.m. & weekends
Call 776-2713 Inquire At
Buddy's Auto
Call 776-2827

EXPERT TELEVISION SERVICE: call Frank's TV in Hamlin. We are in Rotan/Roby area at least 3 times weekly to service your TV, VCR or satellite system. We also service and install antennas and are the oldest and biggest satellite dealer in the area. For any of these needs come in to Frank's TV across from the bank in Hamlin, or call 576-2122. 27:ttc

ATTENTION: Krentium Mini Blinds, 18 best selling colors, 1/2 price sale extended thru October 31st. Landes Furniture, 735-3171, Roby. 33:6tc

ATTENTION FARMERS! Increase wheat grazing and grain yields. Fertilize now while prices are down. Complete fertilizer and chemical services. McClure's, Inc. 776-2448. 32:4tc

FOR SALE: Black leather motorcycle jacket, size 12, only worn a couple of times. Like new. If interested call 735-2667. Brenda Hicks. 34:1tc

NOTICE: I will do babysitting in my home. For more information call Anitra Anderle at 735-3522. 34:1tp

NOTICE: Full time babysitting. Call Jeri Putnam 776-2892. 34:4tc

NOTICE: Will be responsible for no debts other than my own. Bobby Jack Barrington. 32:3tp

FOR SALE: 2-1,000 gallon nurse trailers, 12,000 lb. axel \$2,700 each. McClure's, Inc. 776-2448. 32:4tc

BOSS & HOSS WESTERN SHOP

BOOT SHOE & SADDLE REPAIR

1105 E. Broadway
Sweetwater, Texas 79556-4793



(915) 235-8180

13MWZ
Original Cowboy Cut®
Jeans/Official
ProRodeo® Jeans

All Mens
Denium
Wranglers
\$15.98

13 MWZ
935
936
946



FISHER COUNTY BUSINESS & PROFESSIONAL DIRECTORY

AAA Flying Service, Inc.

Herbert Lakey (915) 736-6806
Rt. 1, Box 26 Sylvester, Texas
Vance Lakey
Mobile 736-6006

Gray Fuel & Chemical

John Gray
735-2381
Rotan, Texas

Wilber Gruben Photography

Weddings, Portraits,
Anniversaries
735-2642
Rotan, Texas

Call Roy Roberson For

All Types Of Plumbing
& Plumbing Repair
735-2560

Rotan Insurance Agency

Joe Burk-Agent
735-2571
Rotan, Texas
Chris Denton-Sales
Life-Health-Auto-Home-Business
Chrys Bennett-Personal Lines
Becky Burk-Claims & Acct.
Tammy Kelley-Commercial Lines

The Farmers Mutual Protective Association Of Texas

Contact Billy Speck
735-3307, Roby, Texas
See Us For Possible Savings

Rent This Space For

\$2.00
A Week

Murphree Flying Service

735-2266
Rotan, Texas

Carrillo Exxon Service Station

310 N. Cleveland
735-8005 Rotan, TX

SCOTT FUEL

235-8606-Sweetwater, Texas Roby, Texas

*L.P. Gas

*Complete Service

Chevron Products

*Radio Dispatch Trucks

Larry's Automotive

1210 Cleveland
Rotan, Texas 735-2425

For Rent Storage Spaces

From \$17.00
Per Month
Lock It & Leave It
Rotan Self Storage
735-3171

Big 3 Pork Producers

Johnny Edmondson-Owner
776-2661
Roby, Texas

Carpet, Linoleum & Carpet Remnants

All Work Guaranteed By Professional Installers

Landes Furniture

113 Garfield Rotan, Texas



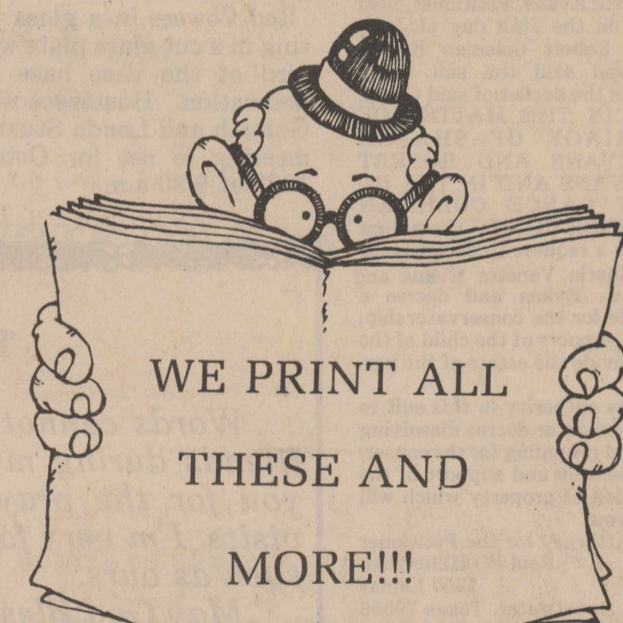
ROBY Insurance Agency

776-2361

*Auto
*Home
*Farm
*Business
*Bonds & Life

Cakes Photography

phone 915-735-2010



WE PRINT ALL THESE AND MORE!!!

- * Letterheads
- * Business Cards
- * Business Forms
- * Circulars
- * Xerox Copies
- * Envelopes
- * Mailers
- * Newsletters
- * Post Cards
- * Carbonless Forms
- * Booklets
- * Brochures
- * Programs

We Also Offer:

- * Padding
- * Free Advice
- * Folding
- * Hole Punching
- * Typesetting
- * Paper Cutting
- * Stapling

* Everything To Meet Your Printing Needs

THE NEWSPAPER OFFICE
735-2562 Rotan, Texas

Hustling Around Hobbs

by Joy Walker

I was wrong about the Hurricane as it did hit the U.S. mainland, and Charleston and Myrtle Beach, not to mention several more towns, in South Carolina sure got lots of wind and heavy rain with an estimated 2 to 3 billion dollars worth of damage. They said it wasn't as bad as in Puerto Rico and some of those islands, but it was bad enough and the wind and rain looked ter-

rible on T.V. I am glad that I don't live where those tropical storms are likely to hit. We had high winds from the north for two days, but then it settled down and Sunday was just about perfect, maybe a little cool in the early morning. We had record setting lows on Saturday night or Sunday morning, 35 degrees reported at Snyder, and some folks around here reported signs of frost. Already! But fall began on the 23rd, so we are probably going to

have cooler weather.

I read a real good article on Brad Maule in the October Soap Opera Digest, all about how many illnesses he has had while playing Dr. Tony Jones on General Hospital. It seems he has had just about everything serious a person can have.

Mr. and Mrs. J.W. Etheredge went to see the doctor in Lubbock on Thursday and Jackie Wayne got a real good report, and doesn't have to go back for

another month. He got the stitches out of his hand and will have to be taking some therapy later on. We hope that he will continue to improve. Randy and Vicky Etheredge went with them to Lubbock.

The Rudolph Martinezs have had lots of company this past week. Mrs. Macias from Fort Worth, Mrs. Rodriguez from San Benito and Mr. and Mrs. Zeke Barera from Houston have all been here visiting. They are

Louise's sisters, and they all visited with Mrs. Susie Barera in Rotan, another sister, during the week. They spent two days and two nights out here with the Rudolph Martinezs. While here, Zeke suffered mild chest pains and they had to put him in the hospital for two days. They all left here Saturday, but were here for almost a week. They sure had a good time visiting.

Mrs. Murlene Rivers visited with Bea Hardin last week. She is

from Killeen. They both visited with Mrs. Opal Phillips Tuesday, and then Friday they went to Sweetwater and ate lunch there. They also visited with Mrs. Kimmia Johnson in Rotan. Morris Hardin from Lubbock spent the day Sunday with his mother.

John and Teressa Swofford from Lubbock spent Saturday night and all day Sunday with the James Ratliffs.

Mrs. Mary Boydston is feeling a little better and was able to be at church on Sunday, she was really sick all last week. Bro. and Mrs. P.A. Mitcham from Anson ate dinner on Sunday with James and Marguerite Nettleton.

Mrs. Vida Boyer is sure doing good after her eye surgery and we hope that she will continue to improve.

Mr. and Mrs. J.C. Cave went to Brownwood Saturday morning and visited with Mr. and Mrs. Billy Carter. All three of the Carter boys were home, Randall from Fort Worth, Darren from A&M in Bryan and Barry of the home, so they got to see them all. They came home Sunday.

I had a lovely day on Wednesday, it was my birthday and Sheila brought a birthday cake to the school for lunch. I visited with Carol Ann for a short while that evening and then went to Sheila and Donnie's for supper that night. Sure enjoyed it all. I ate dinner with Carye Gruben who was home for the weekend from Texas Tech on Sunday. Also visited all through lunch with Mr. and Mrs. Andrew Williams.

Well this is all for this week. See you next Thursday.

Non-Credit Classes Being Offered At Western Texas College Campus

Courses in country/western dance, watercolor painting and antique pin cushion making will be offered through the Western Texas College Continuing Education department as the fall schedule of non-credit classes gets underway.

Key Willis and Jan Thomas will team to teach such country/western favorites as the Cotton Eyed Joe, schottische, Texas Polka and Put Your Little Foot in Thursday evening classes from Sept. 28-Dec. 17. Classes will meet from 7-9 p.m.

LaVerne Lee, Snyder artist, will teach the beginning watercolor course on Monday nights from Oct. 2-Oct. 30. Fees for the 10-hour course are \$35 and students will furnish their own supplies.

Charlotte Greene will use an antique pin cushion purchased at a garage sale as the pattern to show students how to reproduce the cushion small enough for a lapel pin or Christmas ornament or large enough for a pillow. Fees

for the 3-hour course are \$20 per person and supplies are furnished.

To enroll in any of these courses or obtain information about others on the schedule, interested persons are to call the WTC Continuing Education office at 915 573-8511, extension 240.

McCaulley 4-H Club Elects New Officers

The McCaulley 4-H met Sept. 20, 1989 in the McCaulley Teachers Workroom at 4:00 p.m. Steven Estes presided. The members elected new officers for the year.

Fourteen members were present: David Bond, Kristy Bond, Lonnie E. Green, Ronnie Andrews, Scott Andrews, Bevin Hunter, Brian Hunter, Amy Riggs, Laura Gilleland, Jason Kiser, Amber Kelly, T.J. Flanagan, Tony Flanagan, Steven Estes. Refreshments were served by Bonnie Estes.

Rotan Nursing Center News

We had some awfully cool weather this past week, so our morning walks had to be delayed. Willie Garrett has been showing his expertise in pitching horse

Secret Pal Club Holds Meeting For Month of September

The Secret Pal Club met the 20th of Sept. at the Senior Citizen building. Bingo was played and each member brought a covered dish and they received their gifts.

Members present were: Lillie Herron, Wilda Dean Reeves, Maggie Briggs, Oma Long, Opal Burch, Treasa Dycus, Chris Rackley, Florine Beard, Faye Woolsey, Wanda Kiker, Aurora Martinez, Lenora Streetman, Jeanie Horton, Annie Lee Martin, Hazel Hudnall, Gaynell Henry.

Roby Garden Clubs Begins Its 32nd Year

The Roby Garden Club held its first meeting of the 1989-90 season at 9:30 a.m., Sept. 14 at the R.E.A. building. This began the 32 years of the club. They chose the iris as their flower and some of the original members still attend.

The meeting began with dues and a business meeting. Plans for the year were discussed. Present were Londa Stuart, president, Sue Atkins, Mineola Parker, Britty Turnbow, Vera Carriker, Ava Leach, Inell Goforth, Imogene Harvey, Floy Lou Pursley and Juanita Graham.

From a table covered with a white lace tablecloth over red, were served tea, coffee, cookies, dip with carrots and celery sticks. Red flowers in a glass vase sitting in a cut glass plate with a red bird at the vase base was the decoration. Hostesses were Inell Goforth and Londa Stuart. Next meeting is set for October 12, 1989 at 9:30 a.m.

shoes and in bowling. Minnie Parker will soon be a pro at horseshoes and Pearl Price is getting very good at bowling. On Thursday we had our resident council meeting at 9:30 and topped it off with a coffee social.

After the meeting Elizabeth Smith, Ethel Adams, Dotti Read, Dorthulia Hale and Geraldine Hartsfield went to Nancy Bagwell's room and sang her happy birthday. Nancy invited us to stay and enjoy her birthday cake. Mr. Finch celebrated his birthday by going and having a big celebration at home. There were 40 great great grandchildren here to help celebrate his birthday. He came back smiling and praising the chicken and dumplings.

I would like to extend my gratitude to our visitors for coming this week. They were: Lupe Mijares who visited his father Frank; Bill and Marie Pyle visited Nancy Bagwell; Dorothy Scifers, Austin and Empress Bagwell also visited with Nancy. Other visitors for Mr. Finch were Janna, Dan, Heather and Daniel. Wanda and Mason Warren, Robert, Merel and Kristi Ryle came also. Euna Holcomb visited with Mozelle and Forrest Acker. Other visitors to our home were Euna and Mamie Rountree.

We are glad to introduce everyone to our new resident; Gladys O'Byrant.

Dotti Read
Activity Director

Hospital News

Patients admitted to the Fisher County Hospital Sept. 19 thru Sept. 25 were:

Roy Eaton— Rotan; Julee McCright— Portales, New Mexico, Blanca Ramon— Rotan; Monica Ramon— Rotan; Sherman Houghton— Hamlin; Martha Cox— Rotan; James T. Upshaw— Roby; Homer Beard— Rotan; Karla Roberts— Rotan; Leota Edwards— Rotan; Estelle Williams— Roby; Esequiel Barera— Houston; Rosanna Ramon— Rotan.

THANK YOU

Words cannot express our thanks to all our friends during my stay in the hospital. Thank you for the prayers, flowers, cards, food and visits. I'm very fortunate to live in a community such as ours.

May God Bless each and everyone of you, He has surely Blessed Us.

Beverly & Donald Coker

THANK YOU

A special thank you to the many warm and wonderful people of Rotan who shared their hearts and hospitality with the family and friends of Captain Jon Dodson and the Dodson Family of Albany, Georgia.

FIRST UNITED METHODIST CHURCH

Terry Lowe-Pastor

Sunday School-9:30 a.m.
Worship Service-10:30 a.m.
Sunday Evening-6:00 p.m.

735-2334 Rotan, Texas

Attend Church

LEGAL NOTICES

NO. 4938

IN THE MATTER OF THE MARRIAGE OF

SHARLA VANETTE EVANS, AND ROBERT COLEMAN EVANS

AND IN THE INTEREST OF LANCE COLEMAN EVANS, A MINOR CHILD

IN THE 32ND DISTRICT

COURT OF

FISHER COUNTY, TEXAS

AFFIDAVIT FOR CITATION BY PUBLICATION

STATE OF TEXAS * COUNTY OF NOLAN *

BEFORE ME, the undersigned authority, on this day personally appeared SHARLA VANETTE EVANS, to me well known and who, having been by me this day duly sworn, upon oath stated: "I am the Petitioner in the above entitled and numbered cause.

The residence of ROBERT COLEMAN EVANS, a party to such cause, is unknown to Petitioner. Petitioner has exercised due diligence to locate the whereabouts of this party and has been unable to do so."

SIGNED this 28th day of August, 1989.

Sharla Evans
Petitioner

SUBSCRIBED AND SWORN TO before me by the said Petitioner this 28th day of August, 1989, to certify which witness my hand and seal of office.

Tommie Lara
Notary Public in and for Nolan County, Texas

My commission expires: 11-21-92

CITATION BY PUBLICATION IN SUIT AFFECTING PARENT-CHILD RELATIONSHIP

To Robert Coleman Evans, Respondent, GREETINGS:

YOU ARE HEREBY COMMANDED to appear and answer before the Honorable District Court, 32nd Judicial District in and for Fisher County, Texas, at the Courthouse of said county in Roby, Texas, at or before 10 o'clock A.M. of the Monday next after the expiration of 20 days from the date of service of this citation, then and there to answer the petition of Sharla Vanette Evans, Petitioner, filed in said Court on the 13th day of July, 1989, against Robert Coleman Evans, Respondent, and said the suit being number 4938 on the docket of said Court, and entitled "IN THE MATTER OF THE MARRIAGE OF SHARLA VANETTE EVANS AND ROBERT COLEMAN EVANS AND IN THE INTEREST OF LANCE COLEMAN EVANS, A MINOR CHILD" the nature of which suit is a request to dissolve the marriage of Sharla Vanette Evans and Robert Coleman Evans and decree a divorce, provide for the conservatorship, possession and support of the child of the marriage and divide the estate of the parties.

The Court has authority in this suit to enter any judgement or decree dissolving the marriage and providing for the conservatorship, possession and support of the child and division of property which will be binding on you.

Attorney for the Petitioner Paul W. Hammeman 1305 Lamar Sweetwater, Texas 79556

Issued and given under my hand and seal of said Court at Roby, Fisher County Texas, this the 11th day of September, 1989.

Bettie Hargrove,
Clerk of District Court of Fisher County, Texas 32:3tc

Special Ford and General Motors Consignment Sale
Fresh Off The Transport - While They Last

| | | |
|--|--|---|
| <p>1987 Tempo LX</p>  <p>\$6,295</p> <ul style="list-style-type: none"> AM/FM Cass. Power Windows & Locks Auto Trans Silver 4 Dr. Top of the line Great Value | <p>1987 Ford Supercab</p>  <p>\$7,995</p> <ul style="list-style-type: none"> Great Truck Value Two-Tone Blue/Silver Tilt & Cruise Control Long Bed Auxiliary Tank Good Miles | <p>1988 Buick LeSabre</p>  <p>\$10,595</p> <ul style="list-style-type: none"> Beautiful Family Car Power Windows & Locks AM/FM Cass. Blue 4 Dr. |
| <p>1986 Oldsmobile 88</p>  <p>\$9,995</p> <ul style="list-style-type: none"> Red Leather Interior White 4-Dr. AM/FM Cass Loaded Affordable Luxury | <p>1988 GMC Supercab</p>  <p>\$12,995</p> <ul style="list-style-type: none"> Top Line Conversion Pkg. AM/FM Cass 350 Auto Trans White/Blue Loaded, Beautiful Truck | <p>1987 Tempo GL</p>  <p>\$5,995</p> <ul style="list-style-type: none"> Outstanding Value AM/FM Cass. Auto Trans Tan 4 Dr. Low Mileage |

Wilson Motors
SNYDER, TEXAS

FORD
MERCURY
LINCOLN

NEW CARS • RENTAL
USED CARS • SERVICE
FINANCING • PARTS
LEASING • BODY SHOP

Open: Mon.-Fri.: 8-5:30; Sat: 10-2
573-6351
East Hwy...Opposite The Coliseum
1-800-545-5019
(Out-Of-Town)

*On the spot financing. All units qualify for Extended Service Protection

"At first I didn't want to talk about our funerals. But, now I'm glad we did."



We chose ForethoughtSM funeral planning. It's one of those things that's so easy to put off, put out of your mind. And I guess that's what I was doing. But, once he started asking me questions about how I wanted my funeral to be, I realized how important it is for the people we leave behind to know these things. He had no idea that I wanted a simple eulogy, and just that discussion alone started us on all sorts of other topics. I found out he doesn't like organ music. We even had a few laughs.

Forethought is funeral planning... before the need arises

I thought planning our funerals together would be a terribly sad thing. But, actually, it brought us both a great sense of relief. Now we know neither one of us has all those decisions facing us in the future and we won't have to second-guess whether we did the right thing... did what the other one would have wanted. It's all planned and even paid for with the Forethought life insurance policy designed and approved specifically for Forethought funeral planning. And, because we're both between 40 and 90 years old, we can't be turned down for any reason. There's a real peace of mind that comes with having it taken care of ahead of time with Forethought.

Call or write for details today... while you're thinking about it

FORE THOUGHT.
Funeral Planning... Before the Need Arises

Weathersbee Funeral Home
111 N. McKinley
735-2255
Rotan, Texas
Member Forethought GroupSM

Name _____
Address _____
City _____ State _____ Zip _____
Phone Number _____

TAX PLANNING

Written by
Richard E. Rodgers, CPA



EMPLOYER-EMPLOYEE-CONTRACTOR

The Internal Revenue Service realizes that businesses prefer to use "independent contractors" rather than employees. The savings come through the elimination of social security taxes, other payroll taxes, and employee fringe benefits.

Some important IRS definitions are as follows:

* An employer is an individual, corporation, partnership, a trust, an estate, or other entity including tax-exempt organizations for whom an individual performs services of whatever nature as an "employee."

* An employee is an individual who performs services subject to the control of an employer both as to what services shall be performed and as to how they shall be performed.

* Independent contractor has no clear definition. Congress has not yet enacted legislation to clarify which workers will be independent contractors and which will be employees. In the meantime, a taxpayer can treat an individual as an independent contractor if: (1) there is a "reasonable basis" for not treating the worker as an employee, (2) you did not, and you currently are not treating an individual as an employee, and (3) you file your tax returns on the basis that the worker is not an employee.

In general, an independent contractor has his own tools, may work on his own premises, is subject to incurring a loss on the project, determines how the work is to be accomplished, hires his own help, works on his own schedule, and probably works for others besides you.

An employee, on the other hand, has his hours and his method of work supervised, is probably trained by the employer, probably works only for the one company, and has an ongoing relationship with the employer.

Sponsored by
JAMES E. RODGERS & COMPANY
Certified Public Accountants
20 Southwest Third Street
Hamlin, Texas

McCaulley Homemakers Hear About Self-Help Devices At Meeting

The McCaulley Home Extension Club met Tuesday, Sept. 17 in the McCaulley Methodist Church at 2:00 p.m. Eddie Brigham presided. A short business meeting with the president thanking the members for furnishing food for the refreshment booth at the Fisher Co. Fair was held.

Beth Dannheim, Fisher County Home Extension Agent, gave a very informative program on "Growing Older - Self-Help Devices for Daily Living." She

showed slides and showed actual articles to help people to help themselves as they grow older so they can have a more satisfying and useful life.

Members present were: Bessie Decker, Vickie Jeffrey, Annis Joplin, Rose Mary Minshew, Bonnie Estes, Marie Thompson, Alice Brigham, Eddie Brigham, Addie Maberry, Leslie Harwell and San Jeb and Beth Dannheim. Refreshments were served by: Vickie Jeffrey.

Special Programs Planned For National 4-H Week

A lot of special programs and activities are being planned for the week of Oct. 1-7, National 4-H Week, as Fisher County 4-H'ers join others in festivities around the nation.

Among local planned activities for 4-H Week are window displays, school exhibits, and various community service activities.

Fisher County has some 276 4-H members who are among more than 388,000 in Texas and 4.5 million across the nation who will participate in this annual youth celebration.

As we observe National 4-H Week, we recognize that the program is truly a people development program, said Beth Dannheim county 4-H program coordinator with the Texas Agricultural Extension Service. The agency is the parent organization of 4-H.

The program assists youth in developing skills that will be useful in the real world, Dannheim said.

Program concepts help boys and girls discover their strengths and weaknesses, and exposes them to activities in a variety of career fields. Additionally, 4-H helps them build positive self-concepts for directing their lives,

while learning and having fun as well. Ms. Dannheim said families can add to the fun by learning and growing together.

Volunteer leaders assisting in the 4-H program also learn new skills while sharing their expertise with young people, said Ms. Dannheim.

Through a valuable network of volunteer leaders, state landgrant

universities, state and local governments and the U.S. Department of Agriculture, 4-H continues to stimulate youth to develop life skills and explore many career options.

About 30 adult volunteer leaders work with 4-H boys and girls in Fisher County through 7 different 4-H clubs.

The 4-H'ers can choose from some 70 different project and program areas designed to help them prepare for the future, said Ms. Dannheim.

For more information about the 4-H program, contact the county Extension office located in the Fisher County Courthouse or call 776-2171.



FISHER COUNTY OFFICIALS: Pictured above are five referees from Fisher County who officiated during the seventh, eighth and junior varsity games last week. Pictured from left to right are Jeff Posey, Steve Nowlin, Mike Hull, Norvella Kennedy, Jr. and Jim Gruben.

Volunteer Program Is Adopted At Rotan Primary School

Rotan Primary School is very excited about the beginning of a Volunteer Program. Volunteers in Public School (VIPS), is a program encouraging parents and the community to become more involved in their school. Very soon the students of Rotan Primary will be bringing home a note explaining how you can contribute as a volunteer in Rotan Primary School.

Contact persons are: David A. Hargrove, Primary Principal, 735-3182; Suzie Martin, Volunteer Campus Chairman, and assistants Janie Cabral and Chris Reyes.

Give A Hoot.
Don't Pollute.



Office: 915-776-2228
Home: 915-776-2149

DEATON INSURANCE AGENCY
Life-Home-Auto-Bonds-Commercial

ED DEATON
Agent

Post Office Building
Roby, Texas 79543

NOTICE OF VOTE ON TAX RATE

The County of Fisher conducted a public hearing on a proposal to increase your property taxes by 6.77% over the effective tax rate on September 21, 1989 at 9:00 o'clock A.M.

The Fisher County Commissioner's Court is scheduled to vote on the tax rate at a public meeting to be held on September 29, 1989 at 9:00 o'clock A.M. in the Commissioner's Courtroom Fisher County Courthouse, Roby, Texas.

NOTICE OF VOTE ON TAX RATE

The Fisher County Hospital Board of Directors conducted a public hearing on a proposal to increase your property taxes by 32% over the effective tax rate on September 21, 1989 at 1:00 o'clock P.M.

The Fisher County Hospital Board of Directors is scheduled to vote on the tax rate at a public meeting to be held on September 28, 1989 at 1:00 o'clock P.M. in the Fisher County Hospital Board Room, Rotan, Texas.

Yellowhammers Tame Spur Bulldogs In 20-7 Romp

By: Jim Gruben

Joe Huitt rushed for 317 yards and scored 2 touchdowns to lead the Rotan Yellowhammers (2-0-1) to a 20-7 victory over the Spur Bulldogs.

The offensive unit picked up where it left off against Cross Plains, posting 397 yards of total offense. Quarterback Kevin Smith had a rough night in the passing department, completing only 1 pass of 10 attempts for 15 yards and no interceptions. Smith remained confident and directed a steady ground attack. In the rushing department, Kevin Smith had (6 carries for 14 yards), Brandon Alls (8-21), David Daniel (6-17-1TD), Trey Carrillo (3-15), Sammy Daniel (2 for -2), and Joe Huitt (20-317-2TD).

It was not until Rotan's third possession, following two punts by each team, that Joe Huitt broke loose on a 72-yard touchdown run. Danny Warren kicked the extra point to post a

7-0 lead with 1:16 remaining in the 1st quarter.

On Rotan's very next possession, a 5-yard touchdown run by David Daniel, was set up by a Joe Huitt 42-yard blast, down the Spur sideline. Warren's kick was successful, advancing the score to 14-0 with 10:48 remaining in the first half.

Key defensive plays were made by Joe Huitt, Brandon Alls, Chris Kennedy, Luis Garcia, Steven McQueen, Fabian Flores, Augie Alaniz, Sean Lee, J.P. Martinez, and Herman Zavala. Jessie Garcia demonstrated some aggressive tackling and recovered a fumble on the Rotan 10 yard line. If Jessie Garcia continues to improve, he may develop into an impact player by the time district starts. Danny Warren deflected two pass attempts to help stall Spur drives.

Renee Silva continued his string of three interceptions, in as many games, to shut down another Bulldog drive. Spur was

forced to punt five times and threw one interception the first half.

Spur suffered their first loss of the season Friday night and were held scoreless until 5:08 remaining in the 3rd quarter. Spur's touchdown drive covered 65-yards, taking almost 7 minutes off the game clock. Terrell Brantley's final one yard plunge, closed the margin to 14-7. The Bulldog offense displayed power and speed but the Hammers played solid defense.

Momentum shifted in the 4th quarter, when the Yellowhammer offensive team showed their ability to score from anywhere on the field. Joe Huitt's speed and good team blocking, proved to be a winning combination, as Huitt cruised 88 yards for a touchdown. Hammer's try-for-two attempt came up short, but increased the margin to 20-7 with 6:23 remaining in the game.

Rotan fumbled on their next

possession, one of three for the night, but cornerback Ruben Yanez countered with a pass interception. The Yellowhammers were able to run out the clock and seal the victory.

Yellowhammer fans, one of the best team followings in the Big Country, were out in force Friday night to support their team.

Senior Pat Moffett (6-0,260) has missed every game this season, due to a leg infection. Moffett's possible return this week will help stabilize the offensive and defensive line play.

Rotan (2-0-1) will again be on the road to play the Anson Tigers (1-2) Friday, beginning at 8 p.m. Anson won the district 7-2A

championship in 1988 but are picked to finish last in 1989. Anson lost heavily to graduation plus four other players either moved or left school. Anson's returning starters include two offensive linemen and two defensive backs. The Tigers come off a 34-0 defeat to the 7-3A Clyde Bulldogs.

Hammer Happenings by Melinda Weidler

FOOTBALL: The Yellowhammers will be competing with the Anson Tigers this Friday, the 29th, at 8:00 p.m. in Anson. Try to be there to support the Yellowhammer band and football team.

PEPRALLY: Friday, the 29th, there will be a pep rally in the High School gym at 3:20 p.m. Everyone is invited! Be there to cheer on our team.

PROGRESS REPORTS: The

first three weeks of the 1989-90 school year have come to an end, and progress reports were sent out to the parents of the students who didn't start too well. (They will be sent out after the third week of every six weeks period.) C'mon guys, get those grades up, you may regret it later!

ANNUALS: The 1989-90 annuals are being sold! They cost \$25 this year. Find someone on the annual staff and order. The

staff includes Lori Martinez, Celina Morales, Shannon Boone, Pat Moffett, Lane Landes, Stephanie Long, Shawna Speck, Kristi Martinez, Julie Parr, and Traci Hull.

HOME COMING: Friday, October 6 is our homecoming game. The junior class is selling mums: Double, basic, baby mums, boutonnières, and garters. You may have extras put on your mum.



ROTAN YELLOWHAMMERS VS ANSON TIGERS

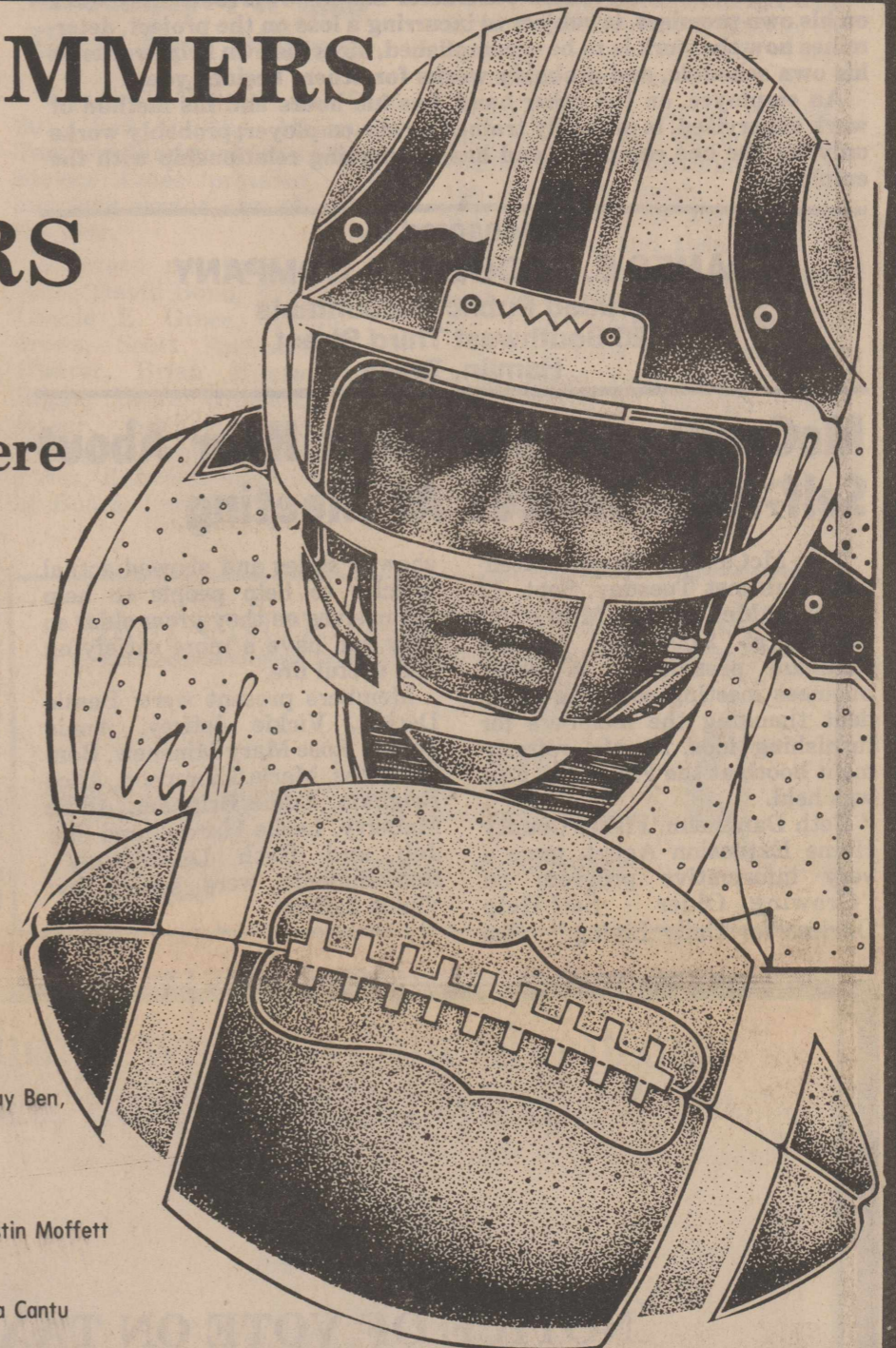
Sept. 29th-8:00 p.m.-There

| Date | Opponent | Time | H/T | Us | Them |
|----------|-----------------------|------|-----|----|------|
| Sept. 8 | O'Donell | 8:00 | T | 6 | 6 |
| Sept. 15 | Cross Plains | 8:00 | H | 55 | 0 |
| Sept. 22 | Spur | 8:00 | T | 20 | 7 |
| Sept. 29 | Anson | 8:00 | T | | |
| Oct. 6 | Marshall (Homecoming) | 8:00 | H | | |
| Oct. 13 | Throckmorton* | 7:30 | H | | |
| Oct. 20 | Roby* | 7:30 | T | | |
| Oct. 27 | Asperment* | 7:30 | H | | |
| Nov. 3 | Rescoe* | 7:30 | T | | |
| Nov. 10 | Baird* | 7:30 | H | | |

Rotan Yellowhammer Supporters

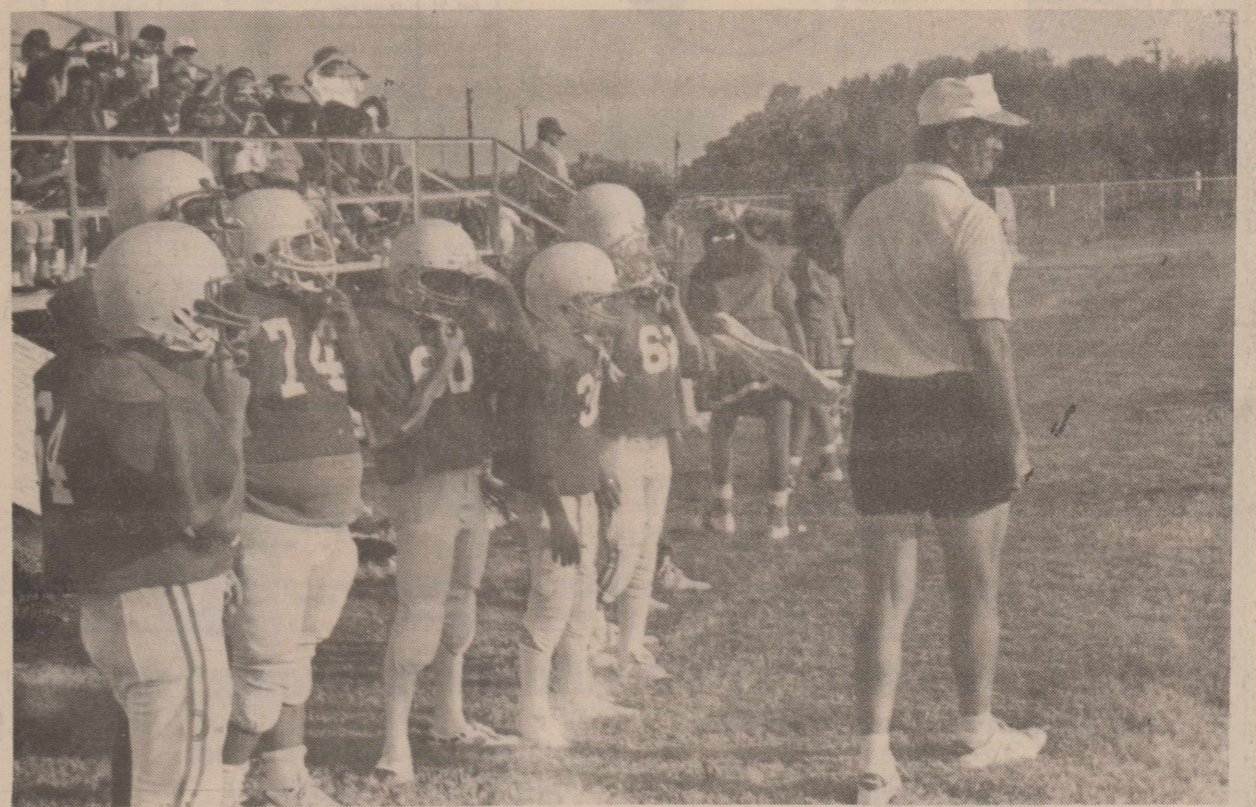
Tom & Janis Collins
John & Barbara Gray
Ken & Susan Foster
James & Diane Ratliff
Bettie Hargrove
Dr. & Mrs. Jerry Marshall & Mark
Bill & Ann Laurie Henderson
The Kim Pease Family
Neal, Donna, Dustin, Jason & Sabra Hargrove
Edward Martinez Family
Curtis, Neva & Stephen McQueen
Gary, Sandy, J.P. & Christi Nettleton
Robert, JoAnn, Robin Ann, Christopher & Phillip Kennedy

Earnest, Rhenda, Brandon, Landon, Aaron, Jay Ben, & Jeremy Ragan
Bob Harbin Family
Mary Garcia, Dolores & Jason Carrillo
Luther, Lydia & Emilio & Charlie Yanez
Jerry, Donna, Patrick, Jason, Kathleen & Justin Moffett
Billy Joe & Vera Ellen McCombs
Ken, Gloria Jones & Boys
Felipe & Louise Carrillo & Family, Felix, Sylvia Cantu
Rudy & Patsy Hamric
Irene Nowlin



| | | | |
|--|--|---|---|
| <p>The 1st National Bank of ROTAN "Your Dependable Bank Of Service" 735-2224 Member FDIC Rotan, Texas</p> | <p>City Auto Supply Rodney Tankersley-Owner 735-2242 216 W. Snyder Rotan, Texas</p> | <p>Gruben Insurance Agency *Specializing In Multi-Peril Crop Insurance Rotan, Texas Dick Gruben 735-3332 Ricky Gruben 735-3324</p> | <p>Casa Morales Restaurant 122 Snyder Avenue 735-2658 Rotan, Texas</p> |
| <p>Midwest Electric Cooperative Vesta Orr-Manager 776-2244 Roby, Texas</p> | <p>Joe Burk-Agent 735-2571 Rotan, Texas</p> | <p>Bennett B-W Walls SHOWTIME VIDEO Featuring 1,300 Movies 673-2463 Rotan, Texas (In The Old Western Auto Bldg.)</p> | <p>Landes Furniture Loys & Larry Landes 735-3171 Rotan, Texas</p> |
| <p>Clinic Pharmacy 101 S. Florence 735-2500</p> | <p>H.L. Davis & Co. "The Friendly Store" 735-2591 Rotan, Texas</p> | <p>Garcia's House Of Flowers & Sweet Temptations 113 E. Snyder Avenue 735-3449 Rotan, Texas</p> | <p>Rotan Nursing Center Sandra Givens-Administrator 735-2233 Rotan, Texas</p> |
| <p>Country Pharmacy Roby Hwy. 735-2121 Rotan, Texas</p> | <p>HAMMER FEVER-CATCH IT!!!</p> | <p>Fisher County Hospital Pete Hahan-Administrator 735-2256 Rotan, Texas</p> | <p>NuTone Cleaners 115 W. Snyder 735-2552 Rotan, Texas</p> |
| <p>Compliments Of Bart & Betty Strayhorn</p> | <p>Weathersbee Funeral Home 111 North McKinley 735-2255 Rotan, Texas</p> | <p>F&M Chevrolet-Buick Yoke Fleming Murl McKinney 735-2244 Rotan, Texas</p> | <p>Fisher County Nursing Home Doy Wheeler-Administrator 735-3291 Rotan, Texas</p> |
| <p>Dr. C.M. Callan 101 S. Florence 735-2211 Rotan, Texas</p> | <p>Rotan Flower Shop 123 N. Garfield 735-2261 Rotan, Texas</p> | <p>First Baptist Church Rev. Steve Peace-Pastor 735-3471 Rotan, Texas</p> | <p>Dr. Bennie LeBleu 101 S. Florence 735-2211 Rotan, Texas</p> |
| <p>Larry's Automotive "Complete Auto Care" 735-2425 Rotan, Texas</p> | <p>Rotan Veterinary Hospital Dr. Vick Burk 735-2491 Rotan, Texas</p> | <p>Summers Pharmacy Luther Summers-RpH 735-2442 Rotan, Texas</p> | <p>Video Village Jean Stanford-Owner 212 W. Snyder Avenue 735-2155 Rotan, Texas</p> |
| <p>Gold Bond Building Products Division Of Gold Bond Building Products Rotan, Texas</p> | <p>Taylor Food Mart #55 208 Snyder Avenue Anita Goolsby-Manager 735-2456 Rotan, Texas</p> | <p>Mom's Cookin' Inez Elrod-Owner 735-3537 Rotan, Texas</p> | <p>United Cable Television 102 S. Florence 735-2526 Rotan, Texas</p> |
| <p>S&L Shamrock Dwayne Lee Jack Smallwood 735-3500 Rotan, Texas</p> | <p>Murphree Flying Service, Inc. Fisher County Airport 735-2266 Rotan, Texas</p> | <p>Rotan Motor Company Dexter Elrod-Owner 735-2201 Rotan, Texas</p> | <p>NFS NOWLIN FARM SERVICES, INC. Jim Mark Stanley 735-2020 735-3506 735-2054 735-2371 211 N. Cleveland Rotan, Texas 79546</p> |
| <p>Builders Transport Ray Land-Manager 200 S. Garfield Avenue 735-3677 Rotan, Texas</p> | <p>Farm Tractor & Service, Inc. 411 S. Cleveland 735-2252 Rotan, Texas</p> | | |

FISHER COUNTY FOOTBALL



Garden City Downs Roby, 63-8

The Garden City Bearkats came to Roby Lion Stadium on Friday night and in the words of one Lion fan, "It wasn't pretty." The Garden City team showed it fully deserves their high state ranking in handing the Lions one of their worst defeats in many years 63-8.

Roby took the opening kickoff and moved the ball to the Garden City 38 yard line on the running of Rudy Gonzales and passing of Michael Carrion to Jeremy Terry. The Bearkats held and on 4th down the Lions faked a punt but the pass to Kenny Hefflin was incomplete and Garden City took over. The Bearkats, aided by a pass interference call against Roby and sweeps to both sides scored on an eight play drive. The PAT made the score 7-0. At this point, the strong Bearkat defense took over, forcing a Roby fumble. Garden City scored in one play and the score after the kick was 14-0. Garden City scored again in the first quarter and then took advantage of Roby fumbles to score 28 points in the second quarter to go into halftime leading 49-0.

While the story in the first half was a very good Bearkat team playing excellent football against a young, emerging Roby Lion team playing poorly, the second half was much different and improved as far as Roby was concerned.

The second half saw Roby's play improve in all areas. The offense was able to move the ball and the defense stiffened holding Garden City to just 14 points. Roby's only points in the game came on a late drive in the fourth quarter engineered by Jeremy Terry and Michael Carrion. The drive covered 70 yards and ended with a Carrion pass to Kenny Hefflin. The two point conversion

was made by Rudy Gonzales. Head Coach Steve Long, while disappointed with the Lions first half play was proud of the character and pride shown by the Lion team during the second half.

Coach Long was especially proud of the offensive effort which netted 324 yards total offense against an outstanding Garden City defense. The Lions began preparation

for this week's trip to Water Valley on Saturday morning. The Lions are determined to keep improving and to show they are a good football team. Game time is Friday at 8 p.m. in Water Valley.

IRS Tax Practitioner Workshops Being Held In Abilene

The Texas Agricultural Extension Service is cooperating with the Internal Revenue Service in offering many Tax Practitioner Workshops across the state, reports Beth Dannheim. Twenty-six General Workshops will be held in all major Texas cities. The General workshop nearest our county is in Abilene on December 4-5. There will also be fifteen Advanced Workshops offered in major cities. The General Tax Workshops will concentrate mostly on personal taxes - the Advanced Workshops' emphasis will be on business tax problems.

In addition to the General and Advanced Tax Workshops, there

will be four Partnership Taxation Workshops, four Estate Planning Workshops, four Problem Resolution Workshops, three Income Taxation of Trusts & Estates, and two Agricultural Tax Problems Workshops.

The Tax Practitioner educational program has been highly successful. Last year about 5,500 people participated in this statewide series. These practitioners reported filing more than 615,000 tax returns. For additional information, please contact Fisher County Extension Office for a brochure explaining more about the program and registration information.

Lion Tracks

By: Suzanne Maxwell

The Roby Lions will play at Water Valley this Friday, beginning at 8:00 p.m. So get up and get going, we need your support!

Homecoming is just around the corner! Oct. 6, 8:00 p.m. (here of course!!) You don't want to miss this!! It will be a lot of fun throughout the week at school and weekend!

The Senior class is selling mums, so get in touch with one of them for all the details!

The band has a really neat half-time show for Friday, so if you want to see it, better plan on going all the way to Water Valley. (It looks great!!)

Baby Girl Born To Keith And Tonni Callan Of Pennsylvania

Kayman and Colter Callan (sons of Keith and Tonni Callan), would like to announce the arrival of their sister, Kaleena Jane. Kaleena was born at Sewickley Valley Hospital in Pennsylvania on August 16th at 10:42 a.m. She weighed 9 lbs., 11 ozs., and was 21 inches long.

Grandparents are Dr. and Mrs. C.M. Callan and Mr. and Mrs. Billy Sparks. Great grandmothers are Lois Sparks of Rotan and Ina Howell of Abilene.

Cooper Insurance Agency

Specializing in
Multi-Peril Crop Insurance

September 30 is the deadline to purchase MPC1 or 1990 wheat

Contact Linda Cooper today for details

(915) 576-3193 or 576-3139
136 S. Central ~ Hamlin, Texas



Roby Lion Cubs Play Close Game With Aspermont, Next Game Is Against Rotan At Home

The Roby Cubs were defeated by the Aspermont Stingers 16-0 in their 1989 season opener at Aspermont. The contest was evenly played by both teams. The Cubs displayed a strong defense and an offense that moved the ball at will against the Stingers but stopped themselves with early season miscues all night.

The Cub's offensive line made up of Elliot Mize, Brian Dickson, Heath Taylor, Alfred Rivas, Joe Zumwalt, was able to open holes for Chris and Thomas Cortez, and quarterback Colby Moore to run through all night. Defensively the Cubs line that consisted of Mize, Dickson, plus J.T. Elmore and Chad Dannheim stopped the Stinger running game and forced

them to go to a passing game. Neither team was able to score in the first half. Aspermont got on the scoreboard in the third quarter following a drive kept alive by penalties against Roby's defense to make the score 8-0. Aspermont scored again in the fourth quarter using a passing game and end runs to make the final score 16-0 for the Stingers.

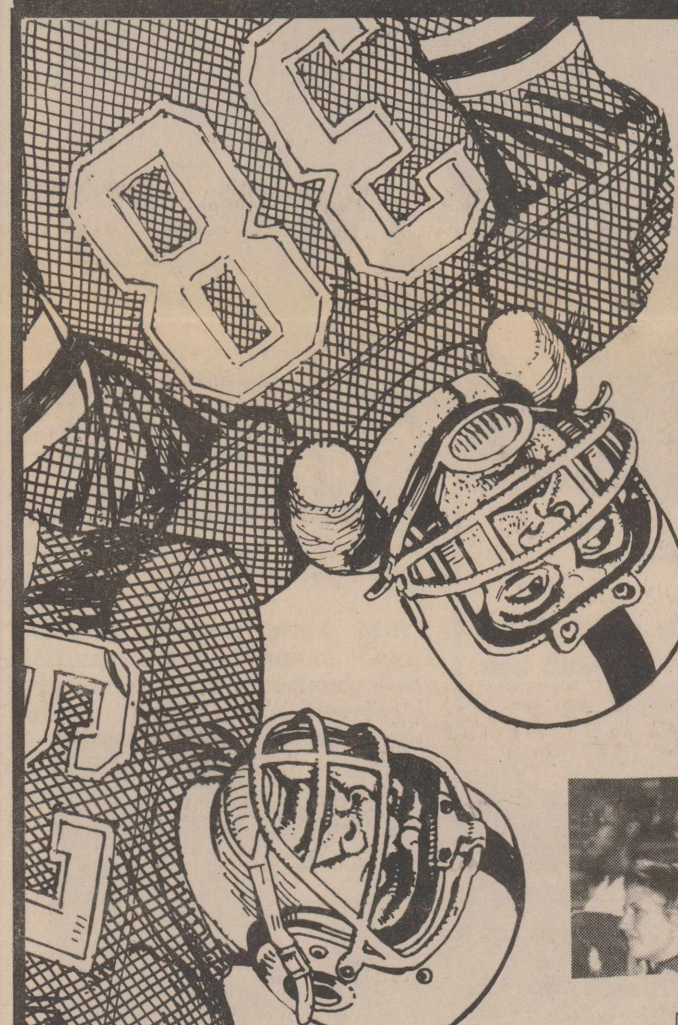
Coach Todd Bryant was proud of the efforts displayed by the Cub team. Coach Bryant felt that there was a lot of experience gained in the loss and had it not been for his team's mistakes, the score could have been different.

The Cubs next play Rotan this Thursday at Lion Stadium at 6 p.m.



You Are Invited

The children and grandchildren of Ed and Ollie Ogden would like to invite friends and relatives to a reception honoring them on their 60th Wedding Anniversary at the Capitola-Claytonville Community Center, located on FM 419 about 12 miles Southwest of Roby. Come by and have fellowship, cake and punch with them on October 7th from 2:00 to 4:00 p.m. No gifts please.



ROBY LIONS VS WATER VALLEY

Sept. 29th-8:00 p.m.-There

| Date | Opponent | Time | H/T | Us | Them |
|----------|--------------------|------|-----|----|------|
| Sept. 8 | ACRS | 8:00 | T | 40 | 7 |
| Sept. 15 | Miles | 8:00 | H | 16 | 22 |
| Sept. 22 | Garden City | 8:00 | H | 8 | 63 |
| Sept. 29 | Water Valley | 8:00 | T | | |
| Oct. 6 | Avate (Homecoming) | 8:00 | H | | |
| Oct. 13 | Roscoe* | 7:30 | T | | |
| Oct. 20 | Rotan* | 7:30 | H | | |
| Oct. 27 | Throckmorton* | 7:30 | T | | |
| Nov. 3 | Baird* | 7:30 | H | | |
| Nov. 10 | Aspermont* | 7:30 | T | | |



Roby Lion Supporters

Bettie Hargrove
The Kim Pease Family
Kiefer & Aubrey Nell Cauble
Charlie, Norma, Mike & Greg Meek
Dudley, Linda, Teresa, Tina, & Tanya McClure
Leon, Dorothy, Jay Linn, & Joe Don Helm
Mike, JoAnn, Jason, Jeremy, Chad & Paige Terry
Rudy & Patsy Hamric
Tubby, Charla, Jessica, & Timothy Moore
The Marshall Billingsley Family
Sue, Joe Paul & Karen Barrerra

Dr. C.M. Callan
101 S. Florence
735-2211
Rotan, Texas

Casa Morales Restaurant

122 Snyder Avenue
735-2658
Rotan, Texas

City Auto Supply
Rodney Tankersley-Owner
735-2242
216 W. Snyder Rotan, Texas

Dr. Bennie LeBleu
101 S. Florence
735-2211
Rotan, Texas

Citizens State Bank

Member FDIC
776-2261
Roby, Texas

TCJ AG AGENCY 915-776-2286
West Highway 100 C. Box 51
P.O. Box 458
Roby, Texas 79543
Specializing in Multi-Peril and Crop Insurance

Mile Terry (915) 776-2510 Gil Cherry (915) 235-4154

The National Bank of ROTAN
"Your Dependable Bank Of Service"
735-2224
Member FDIC
Rotan, Texas

Weathersbee Funeral Home
111 North McKinley
735-2255
Rotan, Texas

H.L. Davis & Co.
"The Friendly Store"
735-2591
Rotan, Texas

NFS 735-2371
NOWLIN FARM SERVICES, INC.
211 N. Cleveland
Rotan, Texas 79546
Jim Mark Stanley
735-2020 735-3506 735-2054

Roby Flower, Fabric & Gift Shop
Erwin, Maxine & Michelle Burk
776-2292
Roby, Texas

Farmers Union Co-op Gin
Bud Guelker-Manager
776-2237
Roby, Texas

Roby Insurance Agency
Horace Curlee-Agent
776-2361
Roby, Texas

ELMORE'S Special Fees
SERVING THE BIG COUNTRY
PHIL & BECKY ELMORE
915-993-4557
RT. 1, BOX 35
STILWELL, TX. 79560

Rotan Insurance Agency
Joe Burk-Agent
735-2571
Rotan, Texas

Silver Star Cafe
Bill & Barbara Brzezinski
776-2744
Roby, Texas

Fisher County Hospital
Pete Hohon-Administrator
735-2256
Rotan, Texas

Clinic Pharmacy 735-2500
101 S. Florence
735-2500

Country Pharmacy
Roby Hwy.
735-2121
Rotan, Texas

Catch the action!

AAA Flying Service, Inc.
Herbert Lakey (915) 736-6806
Rt. 1, Box 26
Vance Lakey-Mobile 736-6066
Sylvestor, Texas

Roby Drug
Mike Harrell-RpH
776-2431
Roby, Texas

Midwest Electric Cooperative
Vesta Orr-Manager
776-2244
Roby, Texas

Scott Fuel 776-2240
Roby
Box 1186-Sweetwater, Texas
Nubbins Convenience Store
776-2375
Roby, Texas

Landes Furniture
Loys & Larry Landes
735-3171
Rotan, Texas

Rotan Veterinary Hospital
Dr. Vick Burk
735-2491
Rotan, Texas

City Auto Supply
Rodney Tankersley-Owner
735-2242
216 W. Snyder Rotan, Texas

E.M. Citgo
Elwood Mize-Owner
106 W. Hwy. 180
776-2380

K&K Convenient Store
776-2330
Glenda, Noel, Janet, Kelli & Kayla
Roby, Texas

Home Ext. Agent's Report by Beth Dannheim

MICROWAVE OVEN FOOD SAFETY...

The majority of homemakers have learned how quickly, easily, and efficiently a microwave oven can be used to prepare food. Currently, 75% of American households own and use microwaves.

Microwaves heat food more quickly than conventional methods, but that doesn't mean that basic food safety rules don't apply. As a matter of fact, you must be even more careful when using a microwave oven.

For all its good points, a microwave cooks foods unevenly, which creates hot and cold spots in foods being heated or cooked. You must take care to ensure thorough cooking of perishable foods such as meat, poultry, fish and eggs.

The following questions are

Area Students Among 99 Enrolled At WTU

Students from 99 Texas counties are included in the Western Texas College student body this fall. An additional 37 students come from other states and five from foreign countries, bringing the total enrollment to 1,144.

Scurry County accounts for over one-third of the total with 427 students. Mitchell County is represented by 101 students for second place and Nolan County has 98.

Other Scurry County area counties with 10 or more students are Fisher with 50, Jones with 34, Haskell with 24, Taylor with 22, Stonewall with 19, Tom Green with 17, Runnels with 16, Garza and Lubbock with 15 each, Kent with 11 and Dickens and Shackelford with 10 each. Most of the students come from the West Texas area although the count-by-county shows students from the top of the Panhandle to the Rio Grande.

There are 614 full-time students and 530 part-time students. There are 321 men listed as full-time students compared to 293 women and 237 male part-time students and 293 part-time female students.

Western Texas College first opened its doors to students in the fall of 1971 with an enrollment of 649 students.

School Lunch Menus

ROBY LUNCH MENU Oct. 2 - 6, 1989

MONDAY: Steak Fingers, Gravy, Corn, Hot Rolls, Fruit.
TUESDAY: Stew, Cheese Curls, Pineapple Cobbler.
WEDNESDAY: Tacos, Cheese, Ranch Style Beans, Salad, Jello W/Fruit.
THURSDAY: Pizza, Green Beans, Salad, Choc. Chip Cookie.
FRIDAY: Hamburgers, French Fries.

ROTAN LUNCH MENU October 2-6, 1989

MONDAY: Baked Ham, Green Beans, Buttered Corn, Hot Rolls, Spice Cake, Milk.
TUESDAY: Red Beans & Sausage on rice, Vegetable Salad, Fruit, Cornbread, Butter, Milk.
WEDNESDAY: Steak & Gravy, Whipped Potatoes, Broccoli/Cheese Sauce, Hot Rolls, Butter, Jello, Milk.
THURSDAY: Beef & Macaroni Casserole, Fried Okra, Peach Halves, Cornbread Muffin, Milk.
FRIDAY: Hot Dogs W/Chili & Cheese, Tater Tots, Chilled Fruit Cup, Peanutbutter Cookie, Milk.

HOBBS LUNCH MENU October 2 - 6, 1989

MONDAY: Lasagna, Salad, Corn, Cookies, Milk.
TUESDAY: Ham, Scalloped Potatoes, Okra, Hot Rolls, Cake, Milk.
WEDNESDAY: Chicken & Dumplings, Mixed Vegetables, Sliced Pineapple, Chocolate Pudding, Milk.
THURSDAY: Tacos, Beans, Salad, Apple Crisp, Milk.
FRIDAY: Hamburgers, Fries, Lettuce & Tomatoes, Rice Fries Bars, Milk.

MCCAULLEY LUNCH MENU October 2 - 6, 1989

MONDAY: Tacos, Lettuce, Tomatoes, Cheese, Pinto Beans, Fruit Cocktail.
TUESDAY: Spaghetti & Meatsauce, Salad, Green Beans, Rolls, 1/2 Apple.
WEDNESDAY: Corn Dogs, Salad, French Fries, Peach Cobbler.
THURSDAY: Fried Chicken, Mashed Potatoes, Green Beans, Rolls, Gravy, Pineapple Tidbits.
FRIDAY: Ham & Cheese Sandwich, Lettuce, Tomato, Cheese, Potato Chips, Cookies.

asked about microwave cooking. QUESTION: A casserole was completely thawed in the microwave and left at room temperature for several hours. Is it safe to eat if I reheat it in the microwave.

ANSWER: If the casserole was left at room temperature for more than two hours, it is not advisable to eat it. Bacteria multiply rapidly at room temperature. Though reheating it in the microwave will kill some bacteria, it will not kill all bacteria responsible for causing food-borne illness. Some bacteria produce heat-stable toxins that are difficult to heat with normal heating.

QUESTION: How do you cook meat long enough in the microwave to prevent potential food-borne illness without drying it out?

ANSWER: Because microwaving can leave cold spots in food, it is very important to cook meat and poultry thoroughly. However, cooking too long will cause the meat to get dry and tough. To ensure safe, tender meat and poultry, try the following steps:

--Arrange pieces of meat uniformly and cover the dish. Steam that builds up under the cover will help kill the bacteria and cook the meat uniformly. You can use a glass or microwave ware cover or plastic wrap.

--Interrupt the cooking several times to move the food around in the dish. If your microwave does not have a turntable, interrupt the cooking several times to rotate the entire dish a quarter turn.

QUESTION: If you thaw a large bag of frozen chicken parts in the microwave and decide not to use all of the parts, can you refreeze the extra pieces?

ANSWER: This practice is not advisable because foods thawed in the microwave are subjected to temperatures that can cause parts of the food to begin to cook. It is best to cook food immediately after thawing it in the microwave. You could cook all of the chicken and then freeze some of the cooked chicken. If you don't want to do that, thaw the chicken in the refrigerator, remove the desired number of pieces as soon as you can and then refreeze the extra pieces.

Roby House Opens Its Doors As Local Retirement Center



Pauline O'Brien

Roby House, an assisted living retirement center is now open and in full operation in Roby. Formerly "The Golden Haven Nursing Home," Roby House is owned and operated by Bob and Wilma Croft, and James Tedford, brother of Wilma Croft. Bob and Wilma have two daughters living at home with them, Megan attends Roby School and is in the 6th grade and Melanie is in the 8th grade.

The Crofts operate another Retirement Center in Silsbee, Texas, "Our House" with 12 residents.

"It's a new concept, new idea that has to be tried out and introduced to the people of this area," stated Bob Croft. "We are

and want to be one big family."

The idea of a retirement center is so new, because in this area, we have nursing homes. But Roby House is not a nursing home, but rather an assisted living retirement center. Residents are completely free to come and go as they please. They are allowed to have guests anytime. Three full meals are served each day and maid service is available every day. Residents are taken to church, to the doctor and any other activities they wish to participate in.

A family room is available with a full entertainment center, lovely dining room, and activity area.

In an interview with Pauline O'Brien from Roby, and Roby House's first resident, Pauline stated, "I couldn't have found a better place to go to. It is very nice and comfortable with very nice people who are very good to me running it." Pauline's grandson Mike from San Angelo is the person who recommended Roby House to her after going to talk to the Crofts and looking at the new remodeled building. "They make you feel at home. It's the closest to home without being at home," stated Mrs. O'Brien.

Rates at Roby House are \$850 per month for a private room and \$650 for a semi-private room.

Wilma and Bob of Roby House invite you to call 776-2476 or come by and Bob will show you around the very warm and friendly Roby House.

Paid by Roby House.

The Armchair ADVENTURE



Cable turns ordinary nights at home into exciting adventures. A "click" of the remote and you're off...to the movies, a concert, your favorite sports event. Call us today and get carried away.

99¢ Premium Channel Installation when you order one or more. Offer Ends Soon!

Call 236-6375, 576-3636, 823-2361 or 735-2526

(SWEETWATER) (HAMLIN) (ANSON) (ROTAN)

UNITED CABLE TELEVISION

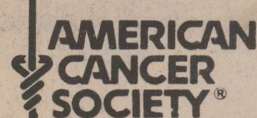
Basic Cable Installation Only \$4.95



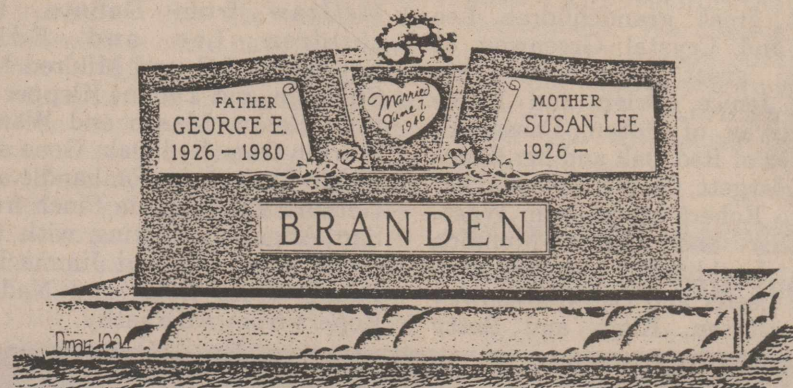
JUNIOR HIGH YELLOWHAMMERS: Coach Ted Posey holds a half-time conference with the junior high team to discuss the first half of play. The boys listen carefully, as he also gives instructions on the plays to be run during the second half.

Rotan Chamber Seeks Talent For Band

The Rotan Chamber of Commerce is gathering local talent to put together a band to perform a local concert. The band will be made up of ex-band students and will be under the direction of Betty Strayhorn. Instruments will be provided for those in need of one. For further information or to join the band please contact Janece Pease, Chamber of Commerce Activities Chairman at 735-3115 or Betty Strayhorn at 735-2447.



MONUMENTS



Weathersbee Funeral Home
111 N. McKinley
Rotan, Texas 79546
(915) 735-2255

R.H.S. HOMECOMING October 6 and 7, 1989

Schedule of Events

Friday, Oct. 6

- 8:00 pm FOOTBALL GAME (Rotan vs. Haskell) QUEEN BALLOTS at GATE
- HALFTIME - CROWNING of QUEENS
- AFTER GAME RECEPTION -(school cafeteria) HOSTED by EX. STUDENT ASSOC. OFFICERS (no charge)

Saturday, Oct. 7

- 10:30 to 11:30 am REGISTRATION - school cafeteria
 - 11:30 to 12:30 LUNCHEON -featuring SANTA FE RAGA by TAMMY NOWLIN
 - 6:30 to 8:00 pm DINNER
 - 9:00 to 1:00 am EXES' DANCE, music by PRAIRIE FIRE at MURPHREE'S hangar.
- PLEASE CALL for ADVANCED TABLE RESERVATIONS at 915-735-2356 or indicate on form below.

R.H.S. Homecoming '89

Please HELP US MAKE THIS HOMECOMING A SUCCESS! MAKE ADVANCED RESERVATIONS. FILL OUT THIS FORM, CLIP, MAIL WITH CHECK or MONEY ORDER to:

R.H.S. HOMECOMING '89, P.O. BOX 387, ROTAN, TEXAS 79546, 90 LISA NOWLIN.

Thank You!

INDICATE HOW MANY in SPACES PROVIDED:

\$15. REGISTRATION per person includes LUNCH, DINNER, DANCE _____ \$8. DANCE per person _____
\$5. LUNCHEON per person _____ \$15. DANCE per couple _____
\$8. DINNER per person _____

NAME _____
ADDRESS _____
CITY _____ STATE _____ ZIP _____
CLASS of _____ NUMBER ATTENDING _____

Eighty Take GED Test In Rotan During 1988

The American Council on Education recently released information on the number of people taking the GED Tests during 1988. According to Douglas R. Whitney, Director of the Council's GED Testing Service, "Since 1971, the GED testing program has enabled over seven million adults to obtain formal recognition of their educational development through their attainment of a high school equivalency diploma. Annually, one of every seven high school diplomas in the United States is based on results from the GED Tests. These credentials are accepted by more than 90% of U.S. colleges and universities and by most employers to satisfy requirements for a secondary education diploma."

According to Patsy Hamric, GED Chief Examiner for Rotan ISD, 80 took the GED Tests at the Rotan Test Center during 1988. This represents a 38%

change upward from 1987. 1988 was the last year examinees did not have to write an essay. Examinees were from McCaulley 11, Jayton 2, Aspermont 27, Rochester 1, Hamlin 13, Roby 8, Throckmorton 3, Old Glory 2, Peacock 3, Lubbock 1, Sylvester 1, Sagerton 1, Sweetwater 2, Rule 4, and Rotan 11. Ages of examinees ranged from 17 to 56. Examinees had attended public school from 7 to 11 years. Anyone wishing to take the GED should call Mrs. Hamric at 735-2128.

In all jurisdictions served by the GED testing program in 1988, 736,655 people took the GED Tests - 3% less than in 1987. As a result of testing conducted at 3,450 testing locations, approximately 72% of the examinees earned scores that qualified them for a high school equivalency credential. Departments and ministries of education in the United States and Canada

awarded 430,335 credentials based on GED Test results - down 9% from 1987.

Last year, 702,594 people took an English language edition of the tests; 30,601 took a Spanish language edition; and 1,808 took a French language edition. Approximately 1,652 took a special edition of the battery (i.e., audiocassette, Braille, or large print) - an increase of 88% over 1987. The special editions are

available in all testing jurisdictions.

The average age of 1988 examinees was 26.7 years. Over 30% of the examinees were 19 years or younger; 39% were between 20 and 29 years; 19% were between 30 and 39 years; and about 12% were 40 or older.

The examinees had completed an average of 9.9 years of schooling before leaving high school. Nearly half of the examinees

reported they were planning to continue their education or training beyond the high school level.

From 1973 through 1988, 423 adults have passed the GED here at the Rotan test center and most have gone on for post-secondary training as well as employment advancement.

Adult education classes will start again this fall and anyone needing the GED is encouraged to take advantage of these free

classes.

"Can you tell me how to quit smoking?"

Call the American Cancer Society
1-800-ACS-2345

G.W. Finch Celebrates 95th Birthday With 40 Of His Relatives

G. W. (Waite) Finch had help celebrating his 95th birthday Sunday. Forty of his great great, great grandchildren, grandchildren, and his children all attended his weekend. His two great great grandchildren Lee Jay and Crystal Greenway of Rotan, great grandchildren are Jay, Jenice, Brian and Lance Greenway of Rotan, Cassandra Reeder of Red Oak and her fiancé Jon Hargett, Christi Ryle and her fiancé Robert Morel from Waco, Heather and Daniel Monnich from Lockhardt, grandchildren were Lester and Carol Greenway from Rotan, Kieth and Betty

Klepper from Midland, Jana and Dan Monnich from Lockhardt, Mark Finch from San Angelo, Chrys and Pat Ruyle from Dallas, Horace and Linda Reeder from Red Oak, Michelle and Kent McGraw from DeSota, his children Lee and Edith Everheart, J.C. and Mildred McCullough, and Yvonne Klepper all from Rotan, Mason and Wanda Warren from Red Oak, Gene and Pickle Finch from Panhandle and Garland and Melinda Finch from San Angelo. Visiting with the family were J.T. and Jimma Lee Palmer from Roby and Nadine Rogers from Abernathy.



G. W. (Waite) Finch

BACK ROOM SALE

40-50-60% Off

Everything Marked Down

Also new arrival of Rocky Mountain jeans.

New sweaters and new sleepwear.

Jan's Beehive
242 South Central
Hamlin, Texas

Prices Slashed Thursday & Friday

WHILE SUPPLIES LAST

September Specials

Coupon Sale 2 DAYS ONLY Coupon Sale

MAILING PAPER (ROLL)
30 SQ. FT. 2 1/2 FT. BY 4 YDS.
WITH COUPON

REG. \$1.89 ROLL

54¢ ROLL

LIMIT 1 PER CUSTOMER
OFFER EXPIRES SEPT. 29, 1989

ALL BRASS GIFTS

IN STOCK

REDUCED

20%

2 DAYS ONLY

SELECTION STUFFED TEDDY BEARS
(4 ONLY)

REG. \$11.00 EA.

\$4.45

LIMIT ONE
OFFER EXPIRES SEPT. 29, 1989
WITH COUPON

NO EXCHANGES OR REFUNDS

SHOP FRIDAY

ALL PICTURE FRAMES

IN STOCK

REDUCED 20% OFF

WITH COUPON

COUPON SALE

PRICES GOOD

SEPT. 28 & 29 ONLY

2 DAYS

LIMIT 1 PER CUSTOMER
OFFER EXPIRES SEPT. 29, 1989

MAILING PAPER
(SHEETS) 16 SQ. FT. 2 SHEETS
2 1/2 FT. X 1 YD. 4"

REG. \$1.09 PKG.

21¢

WITH COUPON

ALL WRAPPING PAPER AND BOWS

50% OFF

WITH COUPON

SALE

ALL CHILDREN'S TOYS

IN STOCK

25% OFF

WITH COUPON

ALL FALL FLOWERS

IN STOCK

1/2 Price

WITH COUPON

SAVE

ALL BLENCO HANDMADE GLASS

30% OFF

WITH COUPON

THE NEWSPAPER OFFICE

Protect Your Packages Under Our Umbrella!!

Complete Package Mailing
U.P.S. Pickup Service

Packages brought to The Newspaper Office prior to 2:00 p.m. will be picked up that day by U.P.S. Personnel.

The Newspaper Office
735-2562
Rotan, Texas

Not A U.P.S. Agent