

Property Sales

es and
mits on

Can

TER

BUILDING
SALE

ation!
ft. at
Big

te of-
us rec-
area.
of par-

Matt Pine
1018
687-4389

Excellent retail or
ed or Midland and
highest traffic
table October 1.

located in Indus-
but outside city
retail, industrial or
new frontage, un-
all 687-5442 or

highway front-
ial property,
West North-
Market Road

wner
0089

ALL
NESS

of the newer
ers this is a
business with
and low over-
of \$105,000
inventory and
all Jack Mogle
808.

OUNDS
TION

ER FINANC-
to buy your
on at the best
e. In Midland's
ost convenient

SNOW
VELOPER
4689
W, 756-2993
N, 699-4715

FINANC-
G

commercial-
act in FAIR-
DITION. Only
and \$299.76
now for the
action just east
Hwy. 80 and
d. On premise
an 9.7.

SNOW
VELOPER
4689
W, 756-2993
N, 699-4715

TINGS

corated, beau-
2 story high

wick location
by or studio 2

us 4 bedroom
moving soon.

come in terraces,
AC and heat-
strum, possible
refric 3/2's with
rating. GREAT

82-2786
CH

vestment Property

ands
dition

ingrounds Rd

NOW!!!!

Years
Lots

682-4689
699-4715
756-2993

OSING COST

Buy Down

•Ceiling Fans

•Fireplace

•Bay Windows

9-0677

door Builders

North Midland,
sq. ft. Randy Gool,
Monarch Associates,

ty for sale near
14.

and are for sale in
areas. Prime peanut
star. Sold together

134 acres,
house, 4700 sq. ft.,
9 sq. ft. equipment
and cross-fenced,
and, 39 acres pas-
str wells, 2 earthen
production.

ACT—170
of crop land, 20
astal burmuda,
cross-fenced, 2
earthen tank. Also
production.

in Rutherford
ate Bank
Texas 76471
643-2811

COMING SUNDAY



For the art

Septemberfest, Midland's annual community art show/sale and family fair, will be held this year on Sept. 11-12. Read about Septemberfest, what it's all about and who will be there in the Sunday Lifestyle section of the Midland Reporter-Telegram.



At the start

Architect Milton Babbitt, left, and Museum of the Southwest board member Mike Collins go over floor plans for expansion of the museum. Read Sunday about the plans that will move the museum from a quiet facility to a multi-purpose complex.



From the heart

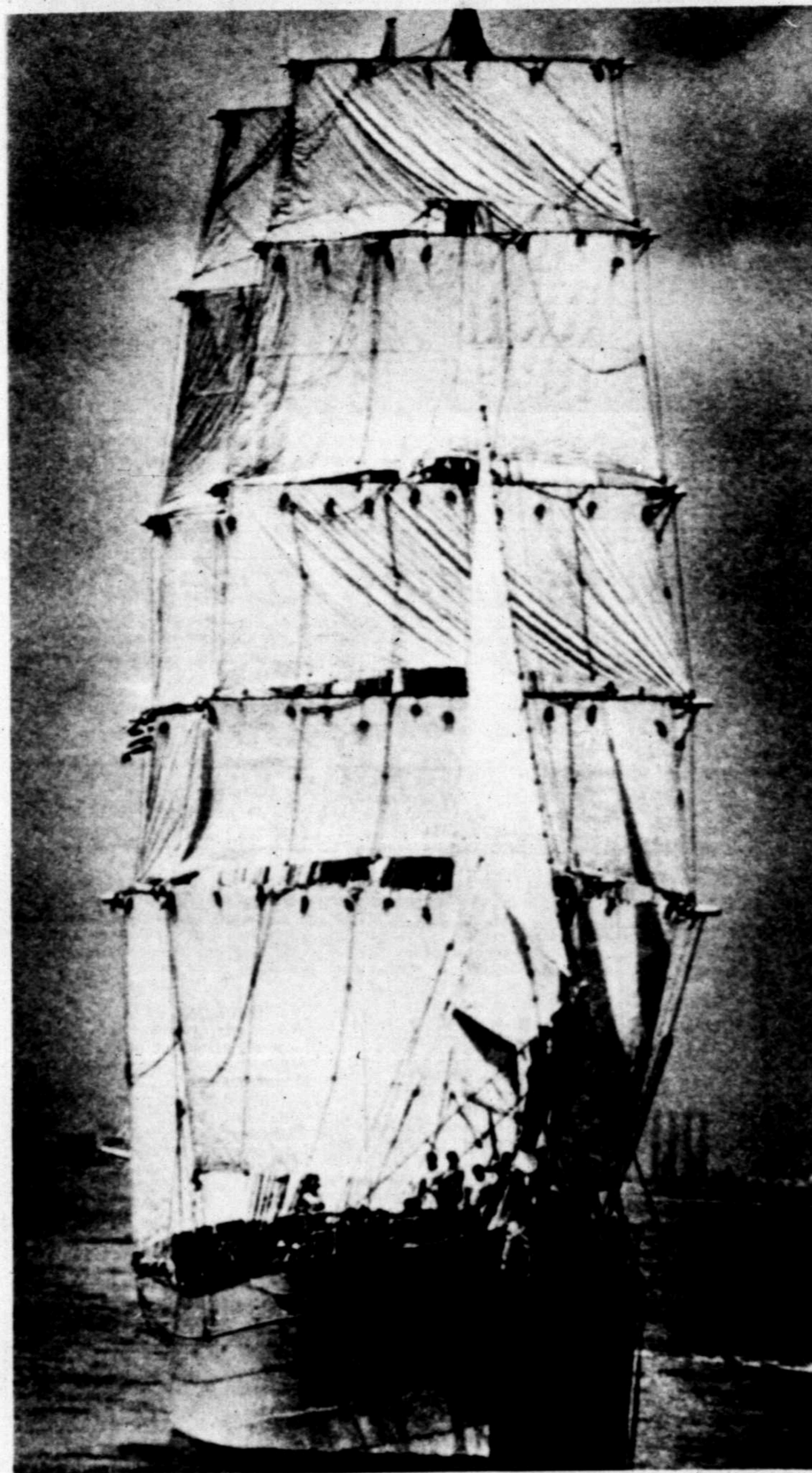
Rusty Thornsburg had a rough time surviving his first year of life because of a congenital heart defect, but today the 17-month old is on the road to a healthy, normal life. Read Sunday about the delicate heart surgery performed on Rusty and his fight for life.

The Midland Reporter-Telegram

METRO EDITION

Vol. 53, No. 177 Daily 25c, Sunday 50c

FRIDAY, SEPTEMBER 3, 1982
4 SECTIONS, 40 PAGES



Rigged for restoration

AP Laserphoto

The 1877 iron barque "Elissa," with sails raised, Thursday heads for the Gulf of Mexico with Galveston Island in the background. The

tall, square-rigged ship is a \$3.6 million restoration project of the Galveston Historical Foundation.

U.S. will stand strong for peace initiative

WASHINGTON (AP) — The United States, standing firm behind President Reagan's Middle East peace proposals despite Israel's rejection, is looking for ways to give fresh impetus to the initiative, U.S. officials say.

The officials, who asked not to be identified, said the administration will stick by the main lines of Reagan's proposals even though they conceded that minor changes are possible.

Among the moves officials were pondering was the possibility that either Secretary of State George P. Shultz or a specially appointed negotiator would make a trip to the Middle East to seek support for the proposals.

Sol Linowitz, Mideast negotiator during the Carter administration, recommended that Reagan appoint either former Secretary of State Henry A. Kissinger or former National Security adviser Brent Scowcroft as special negotiator.

In a speech Wednesday night, Reagan outlined an ambitious plan for resolving the Palestinian issue by granting the West Bank and the Gaza Strip self-government in association with Jordan. He also proposed a freeze on Israeli settlements in the two areas.

Reaction to the plan in the United States has been generally favorable, but American Jewish and Arab leaders criticized the proposals following separate meetings Thursday with Shultz.

Arab-American leaders said the main drawback is that the plan rules out creation of a Palestinian state and includes no role for the Palestine Liberation Organization.

"For the United States to take the position that they absolutely rule out a Palestinian state does nothing to bring peace," said former Sen. James Abourezk, who now heads the Arab-American Non-Discrimination League.

Before Shultz held the meetings, the Israeli Cabinet unanimously rejected Reagan's proposals on grounds that they were "one-sided, anti-Israel and contradictory to the spirit of Camp David."

Deputy Foreign Minister Yehuda Ben-Meir said the Israeli government "will not negotiate on the basis of these proposals."

Although most Arab governments withheld comment on the plan, Tunisian Foreign Minister Beji Said Essebsi said Reagan's plan should "progress from previous American positions, notably those expressed in the Camp David accords."

Battle of the ban: Allies discuss pipeline sanctions

LONDON (AP) — British, French, West German and Italian officials are meeting today to discuss U.S. sanctions against firms working on the Soviet gas pipeline amid signs a compromise may be developing between the Reagan administration and its allies.

Foreign Secretary Francis Pym said in an Independent Television News interview here Thursday night he believed American officials "are as keen as we are to end this difference.... What we've got to do is to resolve this for the sake of the (Western) alliance."

President Reagan's special trade representative, William Brock, reportedly told British Trade Minister Peter Rees Thursday that Washington was ready to drop the sanctions if the Europeans agree to pressure the Soviets by tightening credit controls and imposing closer restrictions on the export of strategic materials.

The report, carried in the Financial Times and the Daily Telegraph, did not elaborate on the British response.

The Reagan administration seeks to block construction of the 3,500-mile Siberian pipeline as a protest against the Dec. 13 imposition of martial law in Poland, which it argues was backed by the Soviet Union.

Washington also claims that the natural gas pipeline will create a European dependence on Soviet energy supplies and give the Soviets an injection of hard currency to finance military programs.

Europeans accuse Reagan of hypocrisy by selling grain to Moscow while trying to block the pipeline deals.

The Reagan administration now appears to be cutting back the restrictions originally ordered against firms defying its embargo.

Last week the U.S. Commerce Department banned all U.S. exports to two French companies, Dresser France, a subsidiary of Dresser Industries Inc. of Dallas and Crusot-Loire, after they shipped four compressors for the pipeline.

But on Wednesday, U.S. Treasury Secretary Donald T. Regan announced that sanctions against defiant firms will be limited to U.S. export of oil and gas technology.

Crusot-Loire responded to its U.S. blacklisting by announcing it would deliver 12 more filters for the pipeline next week.

Another French firm, Rockwell Valves S.A., announced Thursday it had the go-ahead from its U.S. parent company Rockwell International to manufacture and deliver a \$2.1 million order for industrial faucets for the pipeline, French newspapers said.

Unemployment holding steady

WASHINGTON (AP) — The nation's unemployment rate held steady at 9.8 percent in August, matching the highest rate of the last four decades, the government reported today. On the eve of the Labor Day holiday, some 10.8 million Americans are out of work.

Labor Department analysts cautioned against reading any good news in the new figures, which were essentially unchanged from July.

"I wouldn't necessarily use the word 'stable' at this juncture" to describe the unemployment picture, said statistician John Breggar.

Deborah Klein, another analyst with the department's Bureau of Labor Statistics, said, "I think it's important to keep in mind that, although there appears to be some stability, there are still pockets in the economy that appear very weak."

The repetition of July's 9.8 percent unemployment rate was due largely to the fact that total employment rose by 107,000, while

unemployment rose by only 15,000, after the government adjusted the figures to reflect seasonal variations.

Among adult men, the jobless rate edged up to a post-World War II high of 8.9 percent. For other population groups, unemployment remained at record post-war levels.

For all workers except those on farms, the bureau said employment fell by 210,000 in August to 89.5 million — the lowest level since April 1979. The bureau said the cutbacks were concentrated in durable-goods industries, such as autos, which lost 130,000 jobs, and in wholesale and retail trade, which was down 80,000.

In testimony prepared for the congressional Joint Economic Committee, Janet L. Norwood, commissioner of labor statistics, said, "The unemployment rate for auto workers, which had been moving downward since January, increased sharply in August, to 20.8 percent."

Rumor mill grinds out tall tales on Tall City banks

By DAVID SODAMANN and LESLIE HAINES Energy-Business Staff

The First National Bank of Midland is but the seventh largest bank in Texas; however, gossip made it number one Thursday afternoon. Not far behind was Midland National Bank.

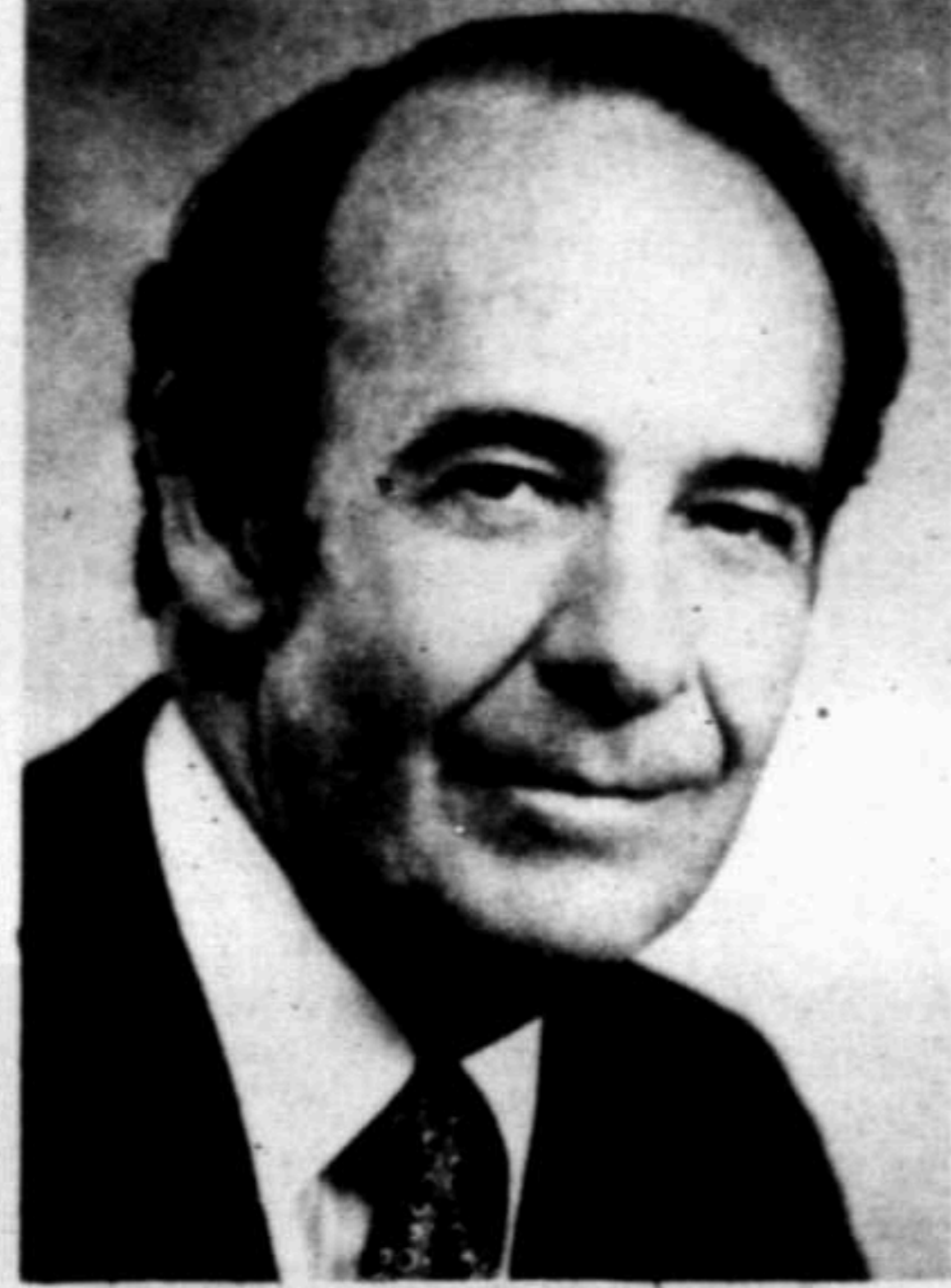
The two banks found themselves suddenly hurled into prominence when a white-hot rumor ripped through the nation's financial centers. According to the story, "a bank" in Midland had gone broke; shut its doors "just like in the thirties."

Midland's big men and big businesses are regular grist for the national rumor mill. Scarcely a week goes by without a new whopper being told.

So it didn't seem strange when a stock broker from Atlanta phoned the Midland Reporter-Telegram to say he had heard a rumor a Tall City bank had folded, and was there any truth to it?

The answer, fortunately, was a confident "no."

DURING the half-hour that followed, The Reporter-Telegram received inquiries from traders and



"You can rest assured, there is absolutely nothing to the rumor that the Midland National Bank is about to close its doors, for any reason."
— Tony Martin



"As far as we're concerned, it's just some kind of vicious rumor. I don't know where they started it; we don't know anything about it."
— Charles Fraser

other interested parties from the Chicago Mercantile Exchange, the Kansas City Board of Trade, an employee of the Farmers Commodities Corporation in Kansas City, and a local woman who would not identify herself.

It was clear this was no ordinary

big-business-in-Midland-going-broke sort of rumor.

However....

"This one's not close," said Charles Fraser, president of The First National Bank. "As far as we're concerned, it's just some kind of vicious rumor. I don't

know where they started it; we don't know anything about it.

"It's the kind of thing that scares bankers," Fraser said. "You're always scared it'll cause a run. That's the thing that's so dangerous about it."

FNB is in great shape, Fraser said. It

has attracted no official suspicion. "There's no examiners in the bank," he said.

ONE OF THE men in Midland with an ear closest to the ground is Joe Liberty, senior vice president of the brokerage firm Rauscher Pierce Refines. Liberty said he received several calls Thursday afternoon, all inquiring about the health of FNB.

Liberty said he hadn't heard the sound of weakness. "It's just incredible they'd be saying they've gone under, because you'd almost have to have a run on the bank first."

Liberty pointed out the recent failure of Abilene National Bank as an example of what he was talking about. The bank failed only after a run by depositors who had been worried by a newspaper story that suggested the Abilene bank was in trouble.

"The mood of people is really jumpy," Liberty said. "People are very nervous. If this thing persists and people start yanking some money out of there it might cause some problems."

Midland's second largest bank came close to tying FNB in Thursday's rumor

(See RUMOR, Page 2A)

INSIDE

- IN MIDLAND: Educators agree that a complete education includes fine arts.....9A
- IN AMARILLO: Other nuns think death sentence too harsh for teen convicted in slaying.....12A

Around Town.....	1B
Bridge.....	7A
Classified.....	7C
Comics.....	6A
Crossword.....	7A
Editorial.....	10A
Energy.....	6B
Entertainment.....	6C
Lifestyle.....	1B
Markets.....	7B
Solomon.....	7A
Sports.....	1C
TV Schedule.....	7A

Weather

A slight chance of thundershowers tonight. High Saturday low 90s. Details on Page 2A.

Service

Delivery.....	682-5311
Want Ads.....	682-6222
Other Calls.....	682-5311

Congress has but weeks left to tackle business legislation

By VIC OSTROWIDZKI
Hearst Washington Bureau

WASHINGTON — Congress has but a few crucial weeks left into which to tackle a crammed schedule of business-related legislation — including job training amendments, changes in the Clean Air Act, hazardous waste bills, a Regulatory Reform Act, and 13 appropriation bills.

Returning from a shortened August recess, Congress will also have to take a close look at such measures as immigration reform, the balanced budget amendment, a bill to raise the debt ceiling, and dozens of other lesser proposals before its members take off in early October for the fall campaign.

Once the November election is over, Congress may be summoned back into a lame-duck session to solve Social Security's mounting fiscal problems — most likely with another payroll tax increase and benefit cuts for future retirees.

Long before that, however, Congress

will have to decide what to do about President Reagan's veto of the supplemental appropriations bill providing \$1.1 billion to operate the government until Sept. 30.

Democratic leaders intend to make a strong effort to override the veto of the bill rather than obey the president's request for a new bill providing \$1 billion less in spending.

But if you are in a despairing mood over all of this unfinished work don't be. Something like this happens every year and this year is no exception. Appropriation bills always clog the congressional agenda near the Oct. 1 beginning of a new fiscal year.

Congress has yet to pass a single appropriation bill for fiscal 1983. Those programs and agencies which are not funded in the routine appropriation process, will have to be kept going by the use of a unique mechanism called "continuing resolution." Reagan vetoed two such resolutions for fiscal 1982.

The Clean Air Act, which technically expired on Sept. 30, 1981, has been kept

alive through congressional appropriations and the administration's promise to continue implementing the act until congressional consideration of amendments is completed.

Some bills will be enacted only under threat of adjournment. House and Senate conferees charged with reconciling the differences between the two job training bills confront a host of divisive questions, including whether state governments or employment guidance agencies should be the prime sponsors of training programs and whether stipends be provided directly to participants.

This is what may likely happen this year. Senate Majority Leader Howard Baker has already voiced his intention of putting a hold on all controversial legislation until routine matters are taken care of. Committee chairmen are fashioning compromises and members are being asked to withhold amendments when bills are brought up during the rush to adjournment.

The adjournment politics of 1982 is

likely to be neither good nor bad. Over the next few months, much will be said about the "dismal" record of Congress. You are likely to hear Congress chastised for taking an election recess with so much left undone. You will also see others question the legitimacy of the Social Security lame-duck session.

If you have a good memory you will remember you read something similar two years ago.

NUCLEAR ECONOMICALLY COMPETITIVE

A new Energy Department study claims the costs of operating nuclear and coal-fired power plants will continue to be competitive in most regions of the country for new units beginning operation in 1995.

The study, which addresses the relative economic merits of nuclear versus coal-fired electricity generation plants, compares costs of the two facilities for 10 regions to account for regional differences in labor and material costs, coal characteristics and transportation distances and costs.

In the study, nuclear power is projected to have at least a five-percent cost advantage in New England and the South Atlantic region, due primarily to the distance of these regions from major coal fields. In sections of the North Central and Southwest that are close to major coal fields, coal-fired plants are projected to have costs 28 percent below those of nuclear plants.

In other parts of the country, coal-fired and nuclear generation costs are projected to be within five percent of each other.

Projected nuclear generating costs are dominated by capital-associated costs, such as those for initial construction, while coal-fired generating costs are dominated by future coal prices.

Incidentally, the study concludes that oil and gas fired plants in all regions of the country are economically unfeasible when compared with either nuclear or coal generating plants.

CONFLICTING REPORTS?

ITEM — Americans for Energy Independence President J.C. Turner is calling for greater use of natural gas to decrease U.S. dependence on foreign oil sources. Turner writes in an article in The Journal of Commerce gas supplies are more than adequate and consumption needs to be increased.

"We now have 55 million households using natural gas to meet all or part of their energy requirements," he wrote. "Yet, there are still 15 million households that continue to use oil."

ITEM — The Consumer Federation of America has charged consumers will be charged an additional \$68.3 billion through 1990 by just the top 20 natural gas producers if old gas is decontrolled in January, 1983. Appearing before the House Subcommittee on Fossil and Synthetic Fuels, Ann Lower presented the findings of a six-month study analyzing the top 20 producers and their sales of old gas to 15 interstate pipelines. Old interstate gas is scheduled to remain regulated even after 1985 when other categories of gas will be deregulated. The Reagan administration, however, is seeking decontrol of old gas through action either by Congress or the Federal Energy Regulatory Commission.

WHO IS TO BLAME?

The Labor Department's own inquiry has revealed that for the last seven years — the entire life of the 1974 pension fund reform statute (Employee Retirement Income Security Act (ERISA)) — it has not properly enforced the law. The report concludes that the department devotes too many resources to civil violations of the law, to the virtual exclusion of giving needed attention to criminal conduct in pension and welfare plans. Another complaint charges that delays of two and three years occurred from the time an investigator reported possible criminal exploitation of a pension fund until the department decided what its response should be. Still another finding has been that even if the face of considerable evidence that pension laws had been violated, the department is usually hesitant to seek redress.

Proposal divides Interior Department

WASHINGTON (AP) — Two Interior Department agencies are squabbling over the wording of a proposed new strip-mining rule that could affect up to 1.7 million acres inside national parks in Pennsylvania to Alaska.

The National Park Service is circulating a memo saying that the rule changes proposed by the Office of Surface Mining could open up 26 national parks to strip mining.

Interior Department officials say, however, that the proposed revision is only one of several options under consideration and that a final decision will not be made until mid-November.

Environmentalists are also opposing the proposal.

"We are troubled that the agency would even consider an option that would permit development in the national parks given the repeated pledges by (Interior Secretary James) Watt that national parks will be off limits to development," said Norman Dean, attorney for the National Wildlife Federation.

Dean said the change proposed by the mining office "is flatly inconsistent with the Surface Mining Act, which clearly reflects the intent of Congress that mining will not take place in national parks."

The change is among a package of proposed revisions the Office of Sur-

face Mining is considering to rules implementing the 1977 Surface Mining Control Act.

That law requires strip-mined land to be returned to its original contours. It also puts national parks, forests and wildlife refuges off-limits to strip miners. However, Congress exempted persons who held mining rights before the law was enacted in 1977.

The squabble is over how to define the "valid existing right" referred to in the law.

The park service is urging the surface mining office to adopt a definition that would require persons to have obtained all necessary mining permits at the time the law was passed.

But the office is also considering a much less restrictive definition requiring only that prospective miners have obtained their rights to the coal at the time the law was passed.

Park service officials say the less-restrictive definition could open up 1.7 million acres of land inside parks to mining while the other definition would put virtually all land inside parks off-limits. The land in dispute is inside park boundaries but still privately owned.

The parks involved range from Abraham Lincoln's boyhood farm in Indiana to the giant Denali National Park in Alaska.

The 26 park units include nine in Alaska: Aniakchak, Bering Land Bridge, Denali, Gates of the Arctic, Katmai, Kobuk Valley, Lake Clark, Wrangell-St. Elias and Yukon-Charley.

The other parks are Allegheny Portage, Pa.; Big South Fork, Ky. and Tenn.; Bryce Canyon, Utah; Capitol Reef, Utah; Chaco Culture, N.M.; Cinnabara, Ky.; Tenn. and Va.; Dinosaur, Colo. and Utah; Fort Nessidy, Pa.; Fort Union Trading Post, N.D. and Mont.; Friendship Hills, Pa.; Glen Canyon, Ariz. and Utah; Johnstown Flood, Pa.; Knife River Indian Village, N.D.; Lincoln Boyhood, Ind.; New River Gorge, W.Va.; Obed Wild and Scenic River, Tenn.; and Theodore Roosevelt National Park, N.D.

Unemployment up

WASHINGTON (AP) — In the third highest seven-day filing binge this year, the number of out-of-work Americans filing initial claims for government benefits soared by 621,000 in the week ending Aug. 21, the government said.

The claims filed with state unemployment offices, which determine people's eligibility for the standard 26-week period of jobless benefit checks, were 13,000 higher than in the previous week, according to the figures.

DRILLING REPORT

Sponsored by THULA COX and SHARON SPIWAK
September 2

ANDREWS COUNTY
Exxon Oil Corp. No. 1 Federal DR, no report.
Exxon Oil Corp. No. 2 State University "BM", location.
Wood Petroleum Corp. No. 1 McCrea PD 11,500, location, no report.

BORDEN COUNTY
Anadarko Production Co. No. 1 Real PD 7,200, contractor Joe Nelson rig No. 2, waiting on potential.
Brasor-RKH Ltd. No. 1 Lario Griffin PD 7,400, location.
Delta Drilling Co. No. 1 A.L.C. Drum PD 8,500, "light".
Delta Drilling Co. No. 2 L.C. Drum PD 8,500, "light".
Delta Drilling Co. No. 3 Roy Reader PD 8,500, "light".
Delta Drilling Co. No. 4 Don A. Jones PD 8,500, "light".
John H. Hendricks Corp. No. 2 Patterson PD 8,400, drilling 1,825 feet, lime.
J.E.M. Production Corp. No. 1 Good PD 8,400, waiting on orders.
EK Petroleum Corp. No. 14 Fred PD 8,400, contractor Robinson Drilling, location.
RK Petroleum Corp. No. 13 Mardes PD 9,400, contractor Robinson Drilling, location.
Texas American Oil Corp. No. 1 Ethel Mitchell PD 9,700, contractor Midland rig No. 1, drilling 8,950 feet.
TXO Production Corp. No. 2 Miller PD 8,200, contractor Patterson rig No. 4, waiting on cement at 257 feet, speed 8 1/2, drilled and set 11 3/4 inch casing.
BREWSTER COUNTY
Phillips Petroleum Co. No. 1 Law PD 9,000, waiting on orders, total depth 8,950 feet.

CHAVEZ COUNTY
Delta Drilling Co. No. 1 Delta McGuffen Federal PD 11,200, "light".
Estoril Producing Corp. No. 3 Hoffman Federal PD 4,800, location.
Estoril Producing Corp. No. 4 Hoffman Federal PD 4,800, location.
Estoril Producing Corp. No. 5 Hoffman Federal PD 4,800, location.
Estoril Producing Corp. No. 6 Hoffman Federal PD 4,800, location.
Gulf Oil Corp. No. 1 East White Ranch Deep, Total depth 10,000 feet, plug back total depth 10,250 feet, rig up Jerrill WL and retrieve bombs, go in hole with 3 1/2 inch and run static gradient every 1,000 feet to 8,000 feet then every 500 feet, to 8,000 feet, rig down Jerrill WL and left well shut waiting on calculations.
Mesa Petroleum Co. No. 1 Butler State PD 3,500, contractor Dual rig No. 20, drilling 1,500 feet with fresh water at 1,000 feet per hour.
Mesa Petroleum Co. No. 1 Travis Federal PD 4,500, location.
Mesa Petroleum Co. No. 1 Travis Federal PD 4,500, location.
Mesa Petroleum Co. No. 1 Willow Creek Unit PD 4,500, location, no report.
Mesa Petroleum Co. No. 9 Willow Creek Unit PD 4,500, location, no report.

COCHRAN COUNTY
H.L. Brown Jr. No. 1 St. Clair PD 2,800, location.
Dorcy Corp. No. 1 C.B. Starnes PD 5,500, contractor Columbia Drilling Co. rigging up, will probably speed today.
Gulf Oil Corp. No. 2 M.C. Gandy PD 4,500, no report.

COKE COUNTY
Exxon Oil Corp. No. 28 Sallie Odum "E" contractor Haddonrig rig No. 2, swabbing.
The Newhall Land and Farming Co. No. 1 Scott PD 1,600, contractor D-B Drilling Co., no report.

COTTLE COUNTY
Gulf Oil Corp. No. 1 John E. Cross PD 8,100, location.

CRANE COUNTY
Amoco Production Co. No. 1 David Faskan "BX" PD 12,800, no report.
Gulf Oil Corp. No. 27 M.B. McKnight PD 8,500, no report.
TXO Production Corp. No. 4 Nellie Tucker "C" PD 4,000, location, may speed September.

CROCKETT COUNTY
Becht Exploration Inc. No. 1 Noelle State PD 7,000, drilling 1,275 feet.
Cities Service No. 1 University "CH", location.
Cities Service No. 1 University "GH" PD 8,810, location.
Estoril Producing Corp. No. 2 Shannon Estate "3R", "light".
Gulf Oil Corp. No. 1 University "3-45" PD 9,500, drilled to 2,500 feet, trip out of hole for hole in drill pipe.
Hanley Petroleum Inc. No. 1 University "35-34" A" PD 8,500, cont., "or Wes-Tex; drilling 7,400 feet, lime and shale.
Henry Petroleum Corp. No. 1 Shouback "32" PD 8,500, location.
C.F. Lawrence & Assoc. Inc. No. 1 Trapper PD 1,000, "light".
C.F. Lawrence & Assoc. Inc. No. 2 Trapper PD 1,000, "light".
Pogo Producing Co. No. 1 University "3" PD 9,500, contractor BMH rig No. 6, plug back total depth 9,700 feet, perforations 8,150-9,677 feet tubing pressure 30 pounds, casing pressure 21 pounds, fluid level 4,600 feet from surface swabbed 20 barrels fresh water with trace of oil in 4 1/2 hours, fluid level 5,600 feet from surface, pulled out of hole with packer, McCallough set cast iron bridge plug at 9,520 feet, ran in hole tubing to spot acce-

Energy Reserves Group Inc. No. 2 Ela C. Sugg PD 2,500, location.
TXO Production Corp. No. 1 George "A" PD 8,900, location, may speed September.
KENT COUNTY
B&W Energy Corp. No. 1 W.A. May PD 7,500, location, may speed September.
TXO Production Corp. No. 1 Beggs Trust PD 7,400, location, may speed September.
LAMB COUNTY
Feltmott Oil Corp. No. 1-26 Stubbfield, drilling 1,600 feet.
LEA COUNTY
Amoco Production Co. No. 1 Y.E. Ello Grande, no report.
Amoco Production Co. No. 2 State DS, no report.
Amoco Production Co. No. 3 Federal "CP", no report.
Perry R. Bass No. 34 Paker Lake Unit PD 4,800, location.
Perry R. Bass No. 58 Paker Lake Unit PD 4,800, location.
Perry R. Bass No. 57 Paker Lake Unit PD 4,400, location.
Perry R. Bass No. 57 Paker Lake Unit PD 4,400, location.
Kerry R. Bass No. 22, drilling 10,075 feet, Bone Springs.
Kerry R. Bass No. 20 Paker Lake Unit contractor MGF rig No. 2, drilling 9,307 feet, lime, shale and sand.
Bass Enterprises No. 32 Paker Lake PD 10,500, contractor McVay rig No. 8, drilling 12,854 feet, Wolfman.
Bass Enterprises No. 13 James Ranch Unit, prep'd to acidize.
Gulf Oil Co. No. 1 Penn Gas Co. PD 10,500, no report.
HNG Oil Co. No. 2 Golden Lane Federal CP PD 12,700, contractor Parker Drilling, location.
Jabilox Energy Corp. No. 1-8 State PD 8,500, location, no report.
Feltmott Oil Corp. No. 1 Eddy "E" Federal CP PD 10,500, contractor HMG rig No. 2, shut in pending on build up data analysis.
The Superior Oil Co. No. 1 Dunes State, location, no report.
The Superior Oil Co. No. 1 Mayer Federal PD 14,500, Total depth 14,400 feet, waiting on completion unit.
The Superior Oil Co. No. 2 E. Shelby Federal CP PD 10,500, contractor Warton rig No. 5, Total depth 7,500 feet, pull out of hole to run drill stem test No. 1.
J.C. Williams Corp. No. 1 Holly Federal PD 4,800, "light".
FLOYD COUNTY
H.L. Brown Jr. No. 1 W.J. Ross PD 5,900, location.
Gulf Oil Corp. No. 1 J.S. Hale Jr. PD 7,400, no report.

GAINES COUNTY
ARCO Oil & Gas No. 1 Edward A. Griffin PD 5,500, location.
Exxon Corp. No. 8 Exxon Atlantic HAJ PD 10,100, location.
Marulo Inc. No. 1 L.B. Russell PD 11,800, "light".
TXO Production Corp. No. 3-D Burke PD 5,500, contractor FWA rig No. 30, drilling 1,600 feet, lime.
TXO Production Corp. No. 1 Birdwell PD 5,500, location, no report.
TXO Production Corp. No. 1 Zeleny PD 5,500, location, may speed September.

GARZA COUNTY
Amoco Production Co. No. 2 Dillard Morris PD 9,500, no report.
Bass Enterprises No. 2A Yellowstone PD 8,100, contractor GCO rig No. 8, shut in.
Marulo Inc. No. 1-A Connell Estate PD 8,000, "light".
TXO Production Corp. No. 1-C Swenson PD 8,900, location.

GLASSCOCK COUNTY
William E. Hendon No. 1 Brunson "1F" PD 11,200, fishing.
William E. Hendon No. 1 Calverley, swabbing.
William E. Hendon No. 1 Calverley "22" PD 11,200, contractor Haddonrig rig No. 4, no report.
William E. Hendon No. 1 Powell "22" PD 11,000, contractor Britton rig No. 4, no report.
Mabee Petroleum Corp. No. 1 Powell PD 11,200, location.
Wood & Locker No. 1 Blalock "1-X" contractor JDJ, swabbed for 3 hours recovered 2 barrels condensate, 18 barrels water, fluid level 2,700-9,700 feet, shut in at noon on 8 1/2, rigged down and released pulling unit, 20 hours shut in tubing pressure 75 pounds per square inch recovered 700 of 854 barrels load water, waiting on El Paso Pipeline contract.
Wood & Locker No. 2 Nutt "25" PD 11,000, contractor BMH rig No. 2, shut in to build up pressure 120 hour shut in tubing pressure 30 pounds per square inch.

HOCKLEY COUNTY
May Petroleum-High Plains No. 1 Post Montgomery PD 10,800, location.
Mesa Petroleum Co. No. 1-14 Ellwood Trust PD 11,500, contractor Dual rig No. 4, drilling 8,125 feet with fresh water at 25 feet an hour.
HOWARD COUNTY
Hanks Energy Corp. No. 1 Crawford PD 7,000, location.
Bush Exploration Co. No. 1 Anderson PD 7,000, location.
G.W. Brock Inc. No. 1 Dickson PD 9,400, contractor Clari Hart rig No. 9, working on completion.
G.W. Brock Inc. No. 2 Hamilton PD 10,700, contractor Clari Hart, location.
Exxon Corp. No. 2 Aurelia Stafford, location.
Gulf Oil Co. No. 1 J.F. McKinnon PD 9,500, wait to move rig.
JEM Corp. No. 1 Cowden PD 10,500, contractor D-B rig No. 2, "light".
PED Oil No. 1 Finagan PD 6,500, location.
PED Oil No. 2 Martin PD 6,500, location.
H.B. Rhoads No. 1 Fisherman PD 4,000, location, no report.
REP Inc. No. 1 Anderson, "light".
Ten Oil Operating No. 1 Dianne Blanton PD 8,500, contractor Wes-Tex Drilling, location, may speed October.
TXO Production Corp. No. 1 Buchanan "A", location.

HUDSPETH COUNTY
Becht Exploration Co. No. 1 State "26" PD 7,500, "light".

IRION COUNTY

LEWIS COUNTY
Gulf Oil Corp. No. 1 Lewis State PD 12,500, waiting on completion.
Texas Inc. No. 7-C Scharbauer "D" PD 11,250, drilling 7,400 feet shale, lime, dolomite.
TXO Production Corp. No. 1 Parks Estate PD 12,700 feet, location, early September before drilling.

MARTIN COUNTY
Monsanto Oil Co. No. 1 University, location.

MENARD COUNTY
Fred G. Brown Inc. No. 1-G.R. White Estate PD 1,600, contractor NCE Drilling, no report.

MIDLAND COUNTY
Brasor Petroleum Co. No. 1 Brasor, total depth 4,475 feet.
Parker & Parsley No. 1 Houpt, shut in.
Texas Inc. No. 7-C Scharbauer "D" PD 11,250, drilling 7,400 feet shale, lime, dolomite.
TXO Production Corp. No. 1 Parks Estate PD 12,700 feet, location, early September before drilling.

MITCHELL COUNTY
Exxon Oil Corp. No. 1 L.S. Terry, PD 8,800, feet, total depth 8,700 feet, plugged, abandoned 8-29-82.
Gulf Oil Corp. No. 1 Mattie Hines, no report.

PECOS COUNTY
Estoril Producing Corp. No. 141-Elsinore Cattle Co., "light".
Exxon Oil Corp. No. 1 Pryor Estate, drilling 21,400 feet.
Exxon Oil Corp. No. 1 M. McComb Gas Unit "B", drilling 19,100 feet.
Exxon Oil Corp. No. 1 State University "EU", PD 24,000, feet, Contr. Santa Fe Drilling 21,540 feet.
Exxon Oil Corp. No. 6 Longfellow Corp., location.
Gulf Oil Co. No. 1 P.T. Higgins "34" PD 14,200, feet, ran CHL, clean pits, displaced hole w/packer fluid, pulled out of hole, laid down on drill pipe.
Gulf Oil Co. No. 1 Manzanita, PD 14,500, feet, Contr. Sharp No. 84, no report.
Gulf Oil Co. No. 1 Miriam Balfanz, no report.
HNG Oil Co. No. 1 Allison "30", PD 4,875, feet, no report.
HNG Oil Co. No. 1 Thers "40", PD 15,700, feet, total depth 12,253 feet lime, chert.
Pogo Producing Co. No. 2 Page Royalty PD 5,500, building location.
TXO Production Corp. No. 4 Aro "75", total depth 4,640 feet, s.a.m., tripping for logs, total depth the hole 4,600 feet.
TXO Production Corp. No. 1 Ester, PD 5,100, feet, PD 5,100, feet, Contr. FWA rig No. 14, "light".
TXO Production Corp. No. 1 Todd "C", location.
TXO Production Corp. No. 1 Dudley PD 4,700, location.
TXO Production Corp. No. 1 Woodward "35" PD 5,700, location.
B. W. Wiseman Jr. No. 1 Wiseman Elsinore "OCO", waiting on rotary.
Wolf Energy Inc. No. 1-A Mendel, flowing load water to pits.

PRESIDIO COUNTY
HNG Oil Co. No. 1 Alpha 21 Corp "37", PD 12,500, feet, waiting on cement.
Contr. Airo Well Servicing, location.
Texas Inc. No. 1 Widow Unit PD 7,200, "light".

REAGAN COUNTY
Monsanto Oil Co. No. 2 University 48-11, pumping, no report.

ROOSEVELT COUNTY
John L. Cox No. 1 Teazco Fee PD 20,000, feet, Contr. Sharp rig No. 58, waiting on cement.
Gulf Oil Corp. No. 2 Hamon, total depth 21,620 feet, plugged back total depth 21,613 feet, waiting on completion unit.
Gulf Oil Corp. No. 4 D.E. Perkins et al, total depth 6,500 feet, plugged back depth 6,524 feet, 24 hour pump water by FWKO, gravity 25, gas oil ratio 12,500.
Gulf Oil Corp. No. 1 Elizabeth C. Martin et vir, no report.
Roy E. Kinsey Jr. No. 1 Lindsay 225, PD 16,500, feet, drilling 12,688 feet - 100 percent shale.
Gulf Oil Corp. No. 17 J. Frost, total depth 5,811 feet, lime, sand, deviation 2 1/2 degrees at 5,254 feet, deviation at 5,811 no good, now drilling.
Orla Petro, Inc. No. 1 Burser PD 4,200, Contr. Tedco Drilling Rig No. 1, waiting on tank battery.
Texas Inc. No. 1 Reeves TXL Fee Unit, "light".
Tri-Service Drilling No. 1 Aro State "4" PD 8,800, Contr. Tri-Service Rig No. 2.

ROOSEVELT COUNTY
Gulf Oil Corp. No. 1 N.E. Elda State PD 4,500, feet, total depth 4,650 feet anhydrite, salt, deviation 1/4 degree at 4,000 feet, circulated for DST No. 1, pulled out of hole with 20 standard tight hole, trip in hole, circulated, cemented, short trip drilling to 4,050, pulled out of hole for DST No. 1, 3,200-4,050, now going in hole with test tools.

RUNNELS COUNTY
Vinson Inc. No. 3 Sam Fabian, PD 4,500, feet, shut in, waiting on reports.
W.W. West No. 8 Norman N. Bonnett, PD 4,500, feet, total depth 4,270 feet, waiting on completion unit.
W.W. West No. 8 Norman N. Bonnett, PD 4,500, feet, workover has not started.

SCHLEICHER COUNTY
Gulf Oil Co. No. 1 "TH" 1832, PD 7,875, feet, no report.
May Petroleum High Plains No. 1 Cawley, PD 6,800, feet, total depth 6,850, shut in.
May Petroleum High Plains No. 1 Tisdale et al, PD 6,800, location, no report.
Trix Oil and Gas Inc. No. 1 W.C. Pope PD 5,000, location, to speed soon.

SCURRY COUNTY
Fagan Energy Inc. No. 1 Meritt Fee PD 7,000, total depth 6,204 feet, prep to run DST No. 1.
F.W. Hothorn, No. 1 Meritt PD 7,200, Contr. West-Tex, total depth 6,919 feet, plugged, abandoned.
Texas Inc. No. 350-NCT-1 P.L. Fuller PD 6,749, "light".

SUTTON COUNTY
Westland Oil Development Corp. No. 2 John S. Allison PD 5,000, location.
STERLING COUNTY
Exxon Oil Corp. No. 1 Elizabeth Horwood, waiting on completion.
TERRACE COUNTY
Exxon Oil Corp. No. 1 Charles R. Downie, drilling 9,797 feet.
TERRY COUNTY
JEM Petroleum Corp. No. 1 Auld, PD 11,000, feet, location.
TXO Production Corp. No. 1 Graham PD 3,800, location.

TOM GREEN COUNTY
Getty Oil Co. No. 1 Edwin Book "84F" PD 5,300, swabbed, pulled packer, ran in hole w/tubing, open ends.
TXO Production Corp. No. 1 Harris "K" PD 5,700, location.

UPTON COUNTY
Holiday Drilling Co. No. 1 Neal "A" PD 12,700, location, will be a month or so.
Pogo Producing Corp. No. 1 University 23 PD 11,700, Contr. Sterling Drilling Co. No. 17, total depth 700 feet, tripping up lime, shale, 175 feet, deviation 2 1/4 degree at 596 feet, 3/4 degree at 700 feet, ran 19 joints 13 3/8" 81 pound K-50STAC, range 3 casing, shoe insert float at 682, controller on 1-3, 4th joints, cemented 400 sacks, circulated.
Lacy & Byrd Inc. No. 2X V.J. Powell "9" PD 11,200, Contr. Meyers Drilling Co., shut in for bottomhole pressure.
Texas Inc. No. 1 Davis TXL Unit PD 6,200, location.
TXO Production No. 1 University "22", PD 11,200, feet, "light".
Terra Resources No. 1 R.C. Hull, PD 11,000, feet, "light".

WARD COUNTY
Getty Oil Co. No. 1 Univ. 25-16, PD 17,500, feet, prep to move in, rig up unit.
HNG Oil Co. No. 1 Caprio "32" PD 11,000, location.

WINKLER COUNTY
Cotton Petroleum Corp. No. 1 McDaniel, "light".
Exxon Oil Corp. No. 1 Waddell Brothers et al, location.
Sage Energy Co. No. 1 Sealy & Smith "70-C", PD 11,500, contractor Sterling Drilling, location.

YOAKUM COUNTY
Mitchell Energy Corp. No. 1 Awtry-Skiles PD 6,000, Contr. B&B Rig, S. shut in, waiting on completion unit.
Gulf Oil Corp. No. 37 Mallet Land & Cattle Co. PD 10,000, no report.

FIELD TESTS

BORDEN COUNTY
Lucy, NE (Strawn), H.L. Brown Jr. No. 4-300 Miller, PD 8,500, feet, not speed up.

EDDY COUNTY
W.A. Montefel, Jr. No. 1 Ridge Federal PD 11,000, feet, Contr. MGF Rig 25.

LEA COUNTY
Scharr (Woffram), Exxon Corp. No. 3 New Mexico "DD" State PD 10,000, feet, Contr. MGE No. 23, location, testing.

LOVING COUNTY
Anna (Atoka) Forest Oil Corp. No. 1 Mable "7" 40, testing.

REEVES COUNTY
Gulf Oil Corp. No. 2 D.E. Perkins, et al, Contr. - John No. 3, total depth 5,800 feet, plugged back depth 4,900 feet, waiting on completion.
Gulf Oil Corp. No. 3 D.E. Perkins, et al, total depth 6,300 feet, plugged back depth 6,468 feet, waiting on completion.

SCHLEICHER COUNTY
Cody Bell Inverse Exploration Corp. No. 1 Cody Bell, no report.

Ford recalling '82s

DETROIT (AP) — Ford Motor Co. says the possibility of engine timing problems, causing knocking, has prompted a recall of 7,872 vehicles from the 1982 model year.

In a statement Thursday, Ford said the vehicles are F-series pickup trucks, Broncos and Econoline vans with 4.9-liter six-cylinder engines.

The problem started when Ford began to use a different crankshaft damper on the engine crankshafts, said Ford spokesman Warren LeBaron.

The new damper changed the engine timing mark, which could cause the vehicles to knock when started and damage the engines, he said.

The problem was discovered in an assembly plant test, and there have been no customer complaints or reports of accidents, LeBaron said.

At least half the recalled vehicles were still at dealers, the com-

CABLE TOOL DRILLING

Top-To-Bottom • Deepening • Lease Holding

Todd Aaron
312 N. Big Spring
915/684-8663
Midland Texas

SOUTH PADRE ISLAND VILLA DEL SOL CONDOMINIUMS

Investor Financing "Low \$100's" CSI PROPERTIES
12700 Park Central, Suite 1401
Dallas, Texas 75251 (214) 386-6381

Executive Computer Services
San Miguel Square, Suite 255
(915) 697-1742

- Computerized Bookkeeping
- Software Installation
- Contract Programming
- Custom Software
- Contract Key punch
- Bookkeeping Setup

Little and Company Discount Stockbroker

Investors who make their own investment decisions and need neither the advice or recommendations of a broker should consider using a discount broker.

COMPARE OUR COMMISSION RATES

Quantity	Little & Company	Former Fixed Rates*
100 shares at \$40	\$40.00	\$68.00
300 shares at \$20	\$50.00	\$83.50
500 shares at \$25	\$60.00	\$133.52
1000 shares at \$50	\$85.00	\$325.40
1000 shares at \$22	\$190.00	\$340.31

*Many firms have increased rates from these figures

A booklet has been prepared which provides further details. Call us for a copy.

Little and Company Investment Securities

300 W. Wall #120
Midland, Texas 79702

Texas Watts: 1-800-592-4640
(915) 682-1761