

Colorado City Record

10 Pages - 1 Section

Colorado City Record, Thursday Nov. 7, 1968.

10c Per Copy - \$5.00 Per Year



Highest Honor Won

Mrs. Witt Hines, chairman of Mitchell County Historical Survey Committee, holds the trophy presented this county as winner of the Millard C. Cope award for "Best Program of Work" in the State of Texas. Mrs. Hines accepted the trophy for the county Survey Committee in San Antonio at the annual meeting of Texas Historical Survey Committee.

County Votes Demo

★ Humphrey, Muskie Win 5 of 7 Local Precincts

Mitchell County's Democratic Party waved over the ballots Tuesday in the General Election.

Three thousand citizens went to the polls - not a record, but a strong turnout in response to the Presidential campaign.

They supported Democrat Hubert H. Humphrey with a clear majority over Republican Richard M. Nixon and American Party George C. Wallace.

For Humphrey, who triumphed in Texas but lost in an extremely close race across the nation, Mitchell County cast 1689 ballots - almost twice as many as they marked for Nixon, 893, and almost four-to-one more than Wallace's 499.

Humphrey's 1689 ballots were more than Nixon and Wallace combined - 1392.

The Democratic banner in Mitchell's voting Tuesday repeated a Democratic tradition which held solid even when the state and nation joined the tremendous victories by Dwight Eisenhower-Richard Nixon Republican tickets in 1952 and 1956.

In 1956, the county favored the Demo ticket of Stevenson-Kefauver over Eisenhower-Nixon, 1911 to 1096. Four years earlier, in 1952, Mitchell voters voted 2136 for Stevenson, 1016 for Eisenhower.

Tuesday the Humphrey-Muskie ticket won in every voting box except two - Cuthbert and Absentee.

Lorraine, Civic House and Courthouse voters provided the big margins in the Democratic triumph here.

The large number of voters came despite a unique, quiet campaign period for Mitchell County. Not a major candidate visited the county in the final weeks before the election, local organization was almost nil except for a small, ardent band of Wallace supporters who scheduled the community's only rally for a Presidential candidate.

Tuesday's total number of ballots - 3000 - was down by a large count from the 3,478 cast in 1952 and 3,178 for the 1956 General Elections.

Wallace, with his running mate, General Curtis LeMay, collared sizeable support, but did not seriously threaten the other two tickets. For comparison in the huge gain in Mitchell County support for a third party, it should be remembered that in 1956 presidential voting, the American Party with T. Coleman Andrews, as candidate, received only 12 of the 3,178 ballots cast for president.

For the rest of the ballot, Mitchell County voted even heavier for Democratic candidates, providing margins ranging as high as 5-to-1. It was in line with the overall Texas decision, just more emphatic.

See COUNTY Page 2

Teacher Quits Post Payne Resigns

Bob Payne, teacher of Physical Education at Hutchinson Elementary School, submitted his resignation Monday night of this week, effective with the opening of classes Tuesday morning.

"The only statement we can

make," said James G. McMath, superintendent and chief administrator for Colorado Independent Schools, "is that Mr. Payne's resignation is a personnel matter.

"Mr. Payne was not relieved of his duties as Hutchinson P.E. teacher," McMath added. "It was his option to resign and he submitted his resignation Monday night."

Colorado City Record learned from other sources that the P. E. teacher's resignation followed a review by the school administration of "professional conduct" involving discipline.

Those sources told the Record that the matter was brought to a head this week by an incident involving a fifth grade boy.

Sadler At Short Course

Colorado City was represented at this year's 20th Annual West Texas Regional Water Utilities Short School in Lubbock Monday through Wednesday by City Manager J. A. Sadler Jr.

About 550 persons attended this year's event which is sponsored annually by the City of Lubbock, the 10 water utilities associations of the state and the Texas State Department of Health. Training schools are required by the State Health Department before a waterworks plant operator can become certified.

Noted authorities in the field of water plant management were speakers for the meeting.

County Says 'No' To 8

Only 6 Amendments Favored Here

Mitchell County voters said "no" to eight of 14 proposed Texas Constitutional amendments in Tuesday's General Election.

Balloting, however, was close on most of the proposals except for No. 10 - which would refund retail tobacco taxes in Texas. Mitchell voters crushed that proposal 1426 against to only 556 for.

Lorraine Ex-Student Event Set

Crowning of homecoming queens Saturday evening during half-time ceremony of Lorraine-Jim-Ned football game will highlight homecoming activities at Lorraine High School.

The school's homecoming queen will be chosen from one of four class candidates - Gwen Tarrt, Rhonda Sanford, Emma Madrid and Kristi Walker.

Ex-student queen will be determined during a Saturday afternoon business session of the ex-student association.

Other activities planned for the day include an afternoon program presented by 1938 graduating class, business meeting and individual class reunions.

A noon meal will be available for \$1.25 per plate in the school cafeteria.

Ex-student association officers this week extended an invitation to all LHS exes to attend the reunion.

Local citizens favored No. 1 (state workers' pension system changes), No. 3 (University Fund changes), No. 6 (tax exemptions for anti-air pollution devices), No. 7 (decrease for state property tax), No. 12 (allowing cities and counties to issue revenue bonds for industrial development) and No. 14 (setting new office eligibility requirements for State Legislators).

Of all these, probably the one which might most quickly affect communities such as Mitchell County were the proposed amendment for industrial financing and anti-air pollution equipment for industry.

Most negative attitude against the proposed amendments was at the Cuthbert box, where voters turned down all except two of the issues.

Here is how the county voted on the proposed amendments:

No. 1 (Employees Retirement Fund of Texas) - 1187 For, 925 Against.

No. 2 (Raising Limit on State Public Assistance Payments) - 923 For, 1208 Against.

No. 3 (Investments of Permanent University Fund) - 1136 For, 919 Against.

No. 4 (Dallas Road Bonds) - For 982, Against 1050.

No. 5 (State Legislature Salary Ceiling) - For 1040, Against 1115.

No. 6 (Tax Exemption For Anti-Air Pollution Equipment) - For 1169, Against 995.

No. 7 (Reduction, Elimination of State Property Taxes) - For 1158, Against 795.

No. 8 (Streamlining Capitol Repair Procedures and Renaming Texas School for Deaf) - For 930, Against 1070.

No. 9 (Teacher Retirement Full Salary Contributions) - For 467, Against 557.

No. 10 (Texarkana Tobacco Tax Refund) - For 556, Against 1426.

No. 11 (El Paso & Tarrant County Government Consolidation) - For 390, Against 1046.

No. 12 (Authority For Cities, Counties To Issue Bonds For Industrial Development) - For 1169, Against 884.

No. 13 (Certain Tax Exemption For Warehouse Storage in Transit) - For 893, Against 1124.

No. 14 (Modifying Restrictions on State Legislator's Eligibility for Other Offices) - For 1299, Against 775.

Top State Prize For County Historical Program

Highest honor paid by the Texas State Historical Survey Committee and its private affiliate, Texas Historical Foundation, was awarded to Mitchell County Historical Survey Committee, Saturday, in San Antonio.

Mrs. Witt Hines, chairman of the county committee, accepted the trophy presented for the "Best Program of Work" in the state this year, the Millard C. Cope award.

Winning program was chosen for originality, productivity, and well-balanced organization, said Truett Latimer, executive director Texas State Historical Survey Committee.

Mitchell County was also among the Distinguished Service Award counties listed, along with West Texas counties Scurry, Tom Green, Coke, Midland, and Runnels; and was honored as one of the Quota Buster counties.

Awards were given at the Annual Meeting of Texas State Historical Survey Committee, held in the Gynter Hotel at San Antonio.

Among highlights of the two-day program was an address

at the Friday evening banquet by Governor John Connally. Banquet was in the Institute of Texas Cultures, HemisFair grounds, which delegates reached by boat.

Mrs. Deolce Parmlee, former Colorado City resident, took part on the Saturday morning program with a discussion "How to Write a County History."

Convention included a bus tour of King William Historic District, San Jose mission and other sites. It was climaxed with a buffet dinner at La Villita with entertainment featuring "A Night in Old Mexico."

Awards luncheon, in Grand Ballroom, saw 29 county survey committees named for Distinguished Service Awards, including Mitchell County; and 36 counties honored as Quota Busters, including this county.

Highest award, the Millard C. Cope trophy for "Best Program of Work" brought Mitchell County and its survey committee chairman Mrs. Hines the most prized trophy and honor of the year.

Requirements for entry were a detailed report, a scrapbook

of press publicity and photographs of historical survey events throughout the county.

In the eight-page report one item noted "Estimated man hours spent by committee members here, 1427. Amount spent by committee members from personal funds, \$840."

Report detailed committee operation, meetings, and work of the sub-committees; inter-committee, regional and public relations; activities under DSA requirements; and cooperation with the state program.

During the year of competition, 1968, the report prepared by Mrs. Hines listed four privately financed Historical markers, a plate for All Saints Episcopal Church, the Cuthbert site marker, First State Bank at Lorraine marker, and the site marker for first school and church at Westbrook.

Number of programs and speeches by committee totaled 32 during the year.

Eight Texas Historical official markers were dedicated: Founding of Colorado City, Lone Wolf Mountain, D. N. Arnett Home, W. M. Green, Grave marker, Abrams No. 1 Discovery Well, Courthouse plate, plate for Medallion at All Saints Church.

Mitchell County Historical Survey Committee reported having attended nine dedications of markers in Scurry County, and four in Coke County.

Mrs. Frank Miller, of Gall, won a first prize for the Borden County Survey newsletter.

Sub-committee chairmen of the organization in Mitchell County are Miss Martha Earnest, historical preservation; historical marker, Mrs. Roy Davis Coles; J. Ralph Lee, finance and budget; T. J. Goss, history and publicity; Sefton Pickens, tourism; Mrs. Claud Eudy, museum; Miss Violet Moeser, scrapbook.

Mrs. Hal Bennett of Lorraine, is chairman for marking veterans' graves, Mrs. C. P. Gary, historical appreciation chairman, Mrs. Hoyt Roberts, of Westbrook, Historical research.

Mrs. Bruce Johnson of Lorraine is county vice-chairman. Historical Survey Committee was organized under direction of County Judge Elmer Martin.

Saturday Date --- Estacada

So you think Vice President Humphrey had an uphill path in his presidential campaign.

Well, have a look at Coach Truman Nix's Colorado High Wolves.

They have gone to battle in eight straight 3-AAA football contests without a timeout for extra breath. They need an open date for rest and recuperation like Lake Colorado City needs a rain.

But all they have to do this week is travel up Lubbock way for a Saturday night encounter with Lubbock Estacada.

Estacada, if you lost your thinking cap, is ranked in the top 4 of Texas AAA football with an undefeated record that tells you the Lubbock power has scored the amazing total of 382 points while limiting opponents to a meager 12 points.

That kind of assignment - tackling the undisputed leader of District 3-AAA in its own backyard - isn't patty-cake stuff.

But these 1968 Wolves believe they have a chance, if they put all their cards together in the right places.

So, they are looking forward with eagerness to that 7:30 p.m. kickoff Saturday night in Lowery Field, near the traffic circle this side of Lubbock.

Coach Nix and his club will depart C-City at noon Saturday, arriving in Lubbock in time to witness the Texas Tech-TCU Southwest Conference fracas in the afternoon.

They will field just about the same gang of patched-up starters they found successful

See WOLVES Page 6



FFA Student Shows Grand Champs

Colorado High School sophomore student Steve Smith showed both the Grand Champions Duroc gilt and boar Friday during the swine show at the Home Fair in Sweetwater. Smith is a member of Future Farmers of America and his feeding coach is Frank Brownfield, vocational agriculture teacher. He is the son of Mrs. James E. Henderson, Lake Colorado City.

Test Confirms 4th Screwworm

Fourth confirmed case of screwworm infestation has been reported - by Bobby Lemons, Mitchell County Agent.

Test from a cow in the herd of Moody-Thompson, run by Jimmy Moody and Leo Thompson in the Carr Community, was affirmed by the laboratory at Mission.

"With four cases confirmed in this county, the situation could get to be an epidemic," said Lemons.

It is estimated, he explained, that for every case of screw-

worm infestation confirmed by lab test, there are four other cases not detected.

Mitchell County cattlemen are cooperating fully in the program for examining herds and for sending tests to the laboratory, Lemons said.

The agent urges that cattle raisers be continually on the alert for the infestation between now and cold weather.

Barnett Rites Held

Funeral for Mrs. Sarah Emma Barnett, 85, was conducted in First Baptist Church at Snyder, Saturday at 3 p.m., by Rev. Calvin Gustin, pastor of Oak Street Baptist Church here.

Mother of Mrs. Jessie Bunch, 745 East 9th St., Mrs. Barnett died at 7 a.m. Friday following a long illness.

Born May 3, 1883 in Alabama, she was married to W. A. Barnett at Glen Rose in 1900. The family moved to Snyder in 1923 and to Colorado City in 1960. Mr. Barnett died here in 1965.

Survivors, in addition to her Colorado City daughter, are four other daughters, Mrs. Austin Guest and Mrs. Jack Starnes, both of Odessa; Mrs. Howard Maegden of Valera.

Harold Haynie of New Iberia, La.; two sons, Alfred of Odessa, and Thurman of Dalhart; one sister, Mrs. Amanda Reynolds of Glen Rose; 23 grandchildren and 32 great-grandchildren.

Textbooks State List At School

List of textbooks recommended by the State Textbook Committee has been received in the administration office of Colorado Independent Schools.

The books are now under consideration by the State Commissioner of Education, J. W. Edgar.

Complete list will be presented to the State Board of Education for adoption at its meeting, Monday, Nov. 11.

Books adopted will be introduced into schools of the State Sept. 1, 1969, said James G. McMath, superintendent of schools here.

Any citizen or school patron who wishes to examine the list of proposed textbooks may see a copy at the administration building, Colorado High School, said McMath.

Funeral In Chapel

Mrs. Henry G. Jones, 81, died at Roof Valley Fair Lodge Monday afternoon after a long illness.

Funeral was at 10 a.m. in Nalley-Pickle Chapel at Big Spring as officiant. Burial was in Evergreen cemetery at Ballinger, Wednesday.

Born in Abilene Nov. 6, 1886, she moved to Big Spring from Ballinger in 1939.

One daughter, Mrs. Tom Guin of Big Spring, one grandson, one granddaughter, and four great-grandchildren survive.

Burial was in the cemetery at Snyder, directed by Bolger Funeral Home. Grandsons were pall bearers.

Colorado City Record

10 Pages - 1 Section

Colorado City Record, Thursday Nov. 7, 1968

10c Per Copy - \$5.00 Per Year



County Votes Demo

★ Humphrey, Muskie Win 5 of 7 Local Precincts

Mitchell County's Democratic Party waved over the ballots Tuesday in the General Election.

Three thousand citizens went to the polls - not a record, but a strong turnout in response to the Presidential campaign.

They supported Democrat Hubert H. Humphrey with a clear majority over Republican Richard M. Nixon and American Party George C. Wallace.

For Humphrey, who triumphed in Texas but lost in an extremely close race across the nation, Mitchell County cast 1689 ballots - almost twice as many as they marked for Nixon, 893, and almost four-to-one more than Wallace's 499.

Humphrey's 1689 ballots were more than Nixon and Wallace combined - 1392.

The Democratic banner in Mitchell's voting Tuesday repeated a Democratic tradition which held solid even when the state and nation joined the tremendous victories by Dwight Eisenhower-Richard Nixon Republican tickets in 1952 and 1956.

In 1956, the county favored the Dem ticket of Stevenson-Kefauver over Eisenhower-Nixon, 1911 to 1096. Four years earlier, in 1952, Mitchell voters voted 2135 for Stevenson, 1016 for Eisenhower.

Tuesday the Humphrey-Muskie ticket won in every voting box except two - Cuthbert and Absentee.

Loraine, Civic House and Courthouse voters provided the big margins in the Democratic triumph here.

The large number of voters came despite a unique, quiet campaign period for Mitchell County. Not a major candidate visited the county in the final weeks before the election, local organization was almost nil except for a small, ardent band of Wallace supporters who scheduled the community's only rally for a Presidential candidate.

Tuesday's total number of ballots - 3000 - was down by a large count from the 3,478 cast in 1972 and 3,178 for the 1956 General Elections.

Wallace, with his running mate, General Curtis LeMay, collared sizeable support, but did not seriously threaten the other two tickets. For comparison in the huge gain in Mitchell County support for a third party, it should be remembered that in 1956 presidential voting, the American Party with T. Coleman Andrews as candidate, received only 12 of the 3,178 ballots cast for president.

For the rest of the ballot, Mitchell County voted even heavier for Democratic candidates, providing margins ranging as high as 5 to 1. It was in line with the overall Texas decision, just more emphatic.

See COUNTY Page 2

Teacher Quits Post Payne Resigns

Bob Payne, teacher of Physical Education at Hutchinson Elementary School, submitted his resignation Monday night of this week, effective with the opening of classes Tuesday morning.

"The only statement we can

make," said James G. McMath, superintendent and chief administrator for Colorado Independent Schools, "is that Mr. Payne's resignation is a personnel matter."

"Mr. Payne was not relieved of his duties as Hutchinson P.E. teacher," McMath added. "It was his option to resign and he submitted his resignation Monday night."

Colorado City Record learned from other sources that the P. E. teacher's resignation followed a review by the school administration of "professional conduct" involving discipline.

Those sources told the Record that the matter was brought to a head this week by an incident involving a fifth grade boy.

Sadler At Short Course

Colorado City was represented at this year's 20th Annual West Texas Regional Water Utilities Short School in Lubbock Monday through Wednesday by City Manager J. A. Sadler Jr.

About 550 persons attended this year's event which is sponsored annually by the City of Lubbock, the 10 water utilities associations of the state and the Texas State Department of Health. Training schools are required by the State Health Department before a waterworks plant operator can become certified.

Noted authorities in the field of water plant management were speakers for the meeting.

County Says 'No' To 8 Only 6 Amendments Favored Here

Mitchell County voters said "no" to eight of 14 proposed Texas Constitutional amendments in Tuesday's General Election.

Balloting, however, was close on most of the proposals except for No. 10 - which would refund retail tobacco taxes in Texas. Mitchell voters crushed that proposal 1426 against to only 556 for.

Loraine Ex-Student Event Set

Crowning of homecoming queens Saturday evening during half-time ceremony of Loraine-Jim Ned football game will highlight homecoming activities at Loraine High School.

The school's homecoming queen will be chosen from one of four class candidates - Gwen Tartt, Rhonda Sanford, Emma Madrid and Kristi Walker.

Ex-student queen will be determined during a Saturday afternoon business session of the ex-student association.

Other activities planned for the day include an afternoon program presented by 1938 graduating class, business meeting and individual class reunions.

A noon meal will be available for \$1.25 per plate in the school cafeteria.

Ex-student association officers this week extended an invitation to all LHS exes to attend the reunion.

Local citizens favored No. 1 (state workers' pension system changes), No. 3 (University Fund changes), No. 6 (tax exemptions for anti-air pollution devices), No. 7 (decrease for state property tax), No. 12 (allowing cities and counties to issue revenue bonds for industrial development) and No. 14 (setting new office eligibility requirements for state legislators).

Of all these, probably the one which might most quickly affect communities such as Mitchell County were the proposed amendment for industrial financing and anti-air pollution equipment for industry.

Most negative attitude against the proposed amendments was at the Cuthbert box, where voters turned down all except two of the issues.

No. 1 (Employees Retirement Fund of Texas) - 1187 For, 925 Against.

No. 2 (Raising Limit on State Public Assistance Payments) - 923 For, 1208 Against.

No. 3 (Investments of Permanent University Fund) - 1134 For, 919 Against.

No. 4 (Dallas Road Bonds) - For 982, Against 1050.

No. 5 (State Legislature Salary Ceiling) - For 1040, Against 1115.

No. 6 (Tax Exemption For Anti-Air Pollution Equipment) - For 1169, Against 995.

No. 7 (Reduction, Elimination

Here is how the county voted on the proposed amendments:

No. 8 (Streamlining Capitol Repair Procedures and Re-naming Texas School for Deaf) - For 930, Against 1070.

No. 9 (Teacher Retirement Full Salary Contributions) - For 467, Against 797.

No. 10 (Texas State Tobacco Tax Refund) - For 556, Against 1426.

No. 11 (El Paso & Tarrant County Government Consolidation) - For 390, Against 1046.

No. 12 (Authority For Cities, Counties To Issue Bonds For Industrial Development) - For 1169, Against 984.

No. 13 (Certain Tax Exemption For Warehouse Storage In Transit) - For 893, Against 1124.

No. 14 (Modifying Restrictions On State Legislators' Eligibility For Other Offices) - For 1299, Against 775.

State Property Taxes - For 1158, Against 795.

No. 8 (Streamlining Capitol Repair Procedures and Re-naming Texas School for Deaf) - For 930, Against 1070.

No. 9 (Teacher Retirement Full Salary Contributions) - For 467, Against 797.

No. 10 (Texas State Tobacco Tax Refund) - For 556, Against 1426.

No. 11 (El Paso & Tarrant County Government Consolidation) - For 390, Against 1046.

No. 12 (Authority For Cities, Counties To Issue Bonds For Industrial Development) - For 1169, Against 984.

No. 13 (Certain Tax Exemption For Warehouse Storage In Transit) - For 893, Against 1124.

No. 14 (Modifying Restrictions On State Legislators' Eligibility For Other Offices) - For 1299, Against 775.

Top State Prize For County Historical Program

Highest honor paid by the Texas State Historical Survey Committee and its private affiliate, Texas Historical Foundation, was awarded to Mitchell County Historical Survey Committee, Saturday, in San Antonio.

Mrs. Witt Hines, chairman of the county committee, accepted the trophy presented for the "Best Program of Work" in the state this year, the Millard C. Cope award.

Winning program was chosen for originality, productivity, and well-balanced organization, said Truett Latimer, executive director Texas State Historical Survey Committee.

Mitchell County was also among the Distinguished Service Award counties listed, along with West Texas counties Scurry, Tom Green, Coke, Midland, and Runnels; and was honored as one of the Quota Buster counties.

Awards were given at the Annual Meeting of Texas State Historical Survey Committee, held in the Gunter Hotel at San Antonio.

Among highlights of the two-day program was an address

at the Friday evening banquet by Governor John Connally. Banquet was in the Institute of Texas Cultures, HemisFair grounds, which delegates reached by boat.

Mrs. Deolece Parmlee, former Colorado City resident, took part on the Saturday morning program with a discussion "How to Write a County History."

Convention included a bus tour of King William Historic District, San Jose mission and other sites. It was climaxed with a buffet dinner at La Villita with entertainment featuring "A Night in Old Mexico."

Awards luncheon, in Grand Ballroom, saw 29 county survey committees named for Distinguished Service Awards, including Mitchell County; and 36 counties honored as Quota Busters, including this county.

Highest award, the Millard C. Cope trophy for "Best Program of Work" brought Mitchell County and its survey committee chairman Mrs. Hines the most prized trophy and honor of the year.

Requirements for entry were a detailed report, a scrapbook

of press publicity and photographs of historical survey events throughout the county.

In the eight-page report one item noted "Estimated man hours spent by committee members here, 1427. Amount spent by committee members from personal funds, \$840."

Report detailed committee operation, meetings, and work of the sub-committees; inter-committee, regional and public relations; activities under DSA requirements; and cooperation with the state program.

During the year of competition, 1968, the report prepared by Mrs. Hines listed four privately financed historical markers, a plate for All Saints Episcopal Church, the Cuthbert site marker, First State Bank at Loraine marker, and the site marker for first school and church at Westbrook.

Number of programs and speeches by committee totaled 32 during the year.

Eight Texas Historical official markers were dedicated: Founding of Colorado City, Lone Wolf Mountain, D. N. Arnett Home, W. M. Green Grave marker, Abrams No. 1 Discovery Well, Courthouse plate, plate for Medallion at All Saints Church.

Mitchell County Historical Survey Committee reported having attended nine dedications of markers in Scurry County, and four in Coke County.

Mrs. Frank Miller, of Gall, won a first prize for the Borden County Survey newsletter.

Sub-committee chairmen of the organization in Mitchell County are Miss Martha Earnest, historical preservation; Mrs. Roy Davis Coles; J. Ralph Lee, finance and budget; T. J. Goss, history and publicity; Sifton Pickens, tourism; Mrs. Claud Eudy, museum; Miss Violet Moeser, scrapbook.

Mrs. Hal Bennett of Loraine, is chairman for marking veterans' graves, Mrs. C. P. Gary, historical appreciation chairman, Mrs. Hoyt Roberts, of Westbrook, Historical research.

Mrs. Bruce Johnson of Loraine is county vice-chairman. Historical Survey Committee was organized under direction of County Judge Elmer Martin.

Saturday Date --- Estacada

So you think Vice President Humphrey had an uphill path in his presidential campaign.

Well, have a look at Coach Truman Nix's Colorado High Wolves.

They have gone to battle in eight straight 3-AAA football contests without a timeout for extra breath. They need an open date for rest and recuperation like Lake Colorado City needs a rain.

But all they have to do this week is travel up Lubbock way for a Saturday night encounter with Lubbock Estacada.

Estacada, if you lost your thinking cap, is ranked in the top 4 of Texas AAA football with an undefeated record that tells you the Lubbock power has scored the amazing total of 382 points while limiting opponents to a meager 12 points.

That kind of assignment - tackling the undisputed leader of District 3-AAA in its own backyard - isn't patty-cake stuff.

But these 1968 Wolves believe they have a chance, if they put all their cards together in the right places.

So, they are looking forward with eagerness to that 7:30 p.m. kickoff Saturday night in Lowery Field, near the traffic circle this side of Lubbock.

Coach Nix and his club will depart C-City at noon Saturday, arriving in Lubbock in time to witness the Texas Tech-TCU Southwest Conference fracas in the afternoon.

They will field just about the same gang of patched-up starters they found successful in See WOLVES

Page 6



FFA Student Shows Grand Champs

Colorado High School sophomore student Steve Smith showed both the Grand Champions Duroc gilt and boar Friday during the swine show at the Home Fair in Sweetwater. Smith is a member of Future Farmers of America and his feeding coach is Frank Brownfield, vocational agriculture teacher. He is the son of Mrs. James E. Henderson, Lake Colorado City.

Test Confirms 4th Screwworm

Fourth confirmed case of screwworm infestation has been reported by Bobby Leinons, Mitchell County Agent.

Test from a cow in the herd of Moody-Thompson, run by Jimmy Moody and Leo Thompson in the Carr Community, was affirmed by the laboratory at Mission.

"With four cases confirmed in this county, the situation could get to be an epidemic," said Leinons.

It is estimated, he explained, that for every case of screw-

worm infestation confirmed by lab test, there are four other cases not detected.

Mitchell County cattlemen are cooperating fully in the program for examining herds and for sending tests to the laboratory, Leinons said.

The agent urges that cattle raisers be continually on the alert for the infestation between now and cold weather.

Mother of Mrs. Jessie Burch, 745 East 9th St., Mrs. Barnett died at 7 a.m. Friday following a long illness.

Born May 3, 1883 in Alabama, she was married to W. A. Barnett at Glen Rose in 1900. The family moved to Snyder in 1923 and to Colorado City in 1960. Mr. Barnett died here in 1965.

Survivors, in addition to her Colorado City daughter, are four other daughters, Mrs. Austin Guest and Mrs. Jack Starnes, both of Odessa; Mrs. Howard Maegeen of Valera.

Burial was in the cemetery at Snyder, directed by Bolger Funeral Home. Grandsons were pall bearers.

Textbooks State List At School

List of textbooks recommended by the State Textbook Committee has been received in the administration office of Colorado Independent Schools.

The books are now under consideration by the State Commissioner of Education, J. W. Edgar.

Complete list will be presented to the State Board of Education for adoption at its meeting, Monday, Nov. 11.

Books adopted will be introduced into schools of the State Sept. 1, 1969, said James G. McMath, superintendent of schools here.

Any citizen or school patron who wishes to examine the list of proposed textbooks may see a copy at the administration building, Colorado High School, said McMath.

Funeral In Chapel

Mrs. Henry G. Jones, 81, died at Root Valley Fair Lodge Monday afternoon after a long illness.

Funeral was at 10 a.m. in Nalley-Pickle Chapel at Big Spring as officiant. Burial was in Evergreen cemetery at Ballinger, Wednesday.

Born in Abilene Nov. 6, 1886, she moved to Big Spring from Ballinger in 1939.

One daughter, Mrs. Tom Gulin of Big Spring, one grandson, one granddaughter, and four great-grandchildren survive.

Barnett Rites Held

Funeral for Mrs. Sarah Emma Barnett, 85, was conducted in First Baptist Church at Snyder, Saturday at 3 p.m. by Rev. Calvin Gustin, pastor of Oak Street Baptist Church here.

Mother of Mrs. Jessie Burch, 745 East 9th St., Mrs. Barnett died at 7 a.m. Friday following a long illness.

Born May 3, 1883 in Alabama, she was married to W. A. Barnett at Glen Rose in 1900. The family moved to Snyder in 1923 and to Colorado City in 1960. Mr. Barnett died here in 1965.

Survivors, in addition to her Colorado City daughter, are four other daughters, Mrs. Austin Guest and Mrs. Jack Starnes, both of Odessa; Mrs. Howard Maegeen of Valera.

Harold Haynie of New Iberia, La.; two sons, Alfred of Odessa, and Thurman of Delhart; one sister, Mrs. Amanda Reynolds of Glen Rose; 23 grandchildren and 32 great-grandchildren.

Burial was in the cemetery at Snyder, directed by Bolger Funeral Home. Grandsons were pall bearers.

Community Calendar

THURSDAY

1:30 p. m. - Open duplicate bridge at Colorado Country Club.
 3 p. m. - Regular meeting of Hesperian Daughters Study Club in home of Mrs. A. L. Geer at 316 East 15th Street.
 3 p. m. - Fifth Anniversary tea for Zeta Delta Study Club in Villa Inn conference room will feature Mrs. W. B. Wheeler,

president of Mesquite District Federation of Women's Clubs. Zetaghian Study Club members will be special guests. president of Mesquite District Federation of Women's Clubs, as speaker. Zetaghian Study Club members will be special guests.

FRIDAY

12 noon - Noon Lions weekly luncheon meeting in Civic House.

SATURDAY

9 a.m. - Business and Professional Women's Club will be open for an all day bazaar in building north of Production Credit offices on Walnut Street.

MONDAY

2:30 p. m. - Young Homemakers Club in home of Mrs. David Scott.

COUNTY

From Page 1
 Preston Smith received 2203 votes for governor, far more than the 660 cast for Republican Paul Eggers.

Ben Barnes, in his successful race for lieutenant governor, had it even better - 2373 to 461 over Republican Doug DeCluit.

And, so it went down the ballot:
 Crawford Martin, 2246, to Republican Sproesser Wynn's 428, for attorney general.

Robert S. Calvert, 2327, to

Republican John M. Bennett Jr.'s 462, for comptroller of public accounts.

Jesse James, 2389, to Republican Manuel Sanchez' 408, for state treasurer.

Jerry Sadler, 2403, to Republican Millard K. Neptunem's 426, for land commissioner.

John C. White, 2197, to Republican E. G. Schuhart II's 470, for commissioner of agriculture.

Jim C. Langdon, 2209, to Republican Jim Segrest's 452, for railroad commissioner.

More than 15 other state, district, county and precinct offices on the ballot went to Democrats without opposition.

Re-Elected here in this group are District Judge Austin McCloud, District Attorney Weldon Kirk, County Attorney Frank Ginzler, Sheriff W. L. (Lewis) Claxton, County Tax Assessor-Collector Montie O. Hardegree, Precinct 1 Commissioner W.M. (Marcus) Vest, Precinct 3 Commissioner, J. C. (Jake) Northcutt, Precinct 5 Constable Lawrence Graham at Loraine, Precinct 3 Constable Sam Thompson, Precinct 2 Constable J. W. Plummer at Westbrook.

Newly elected in his first political campaign is A. G. (Red) Ballard, Precinct 1 constable for Colorado City - Buford.

WCSM Meets Monday

Mrs. L. E. Gressett was devotional leader Monday afternoon for a meeting of Woman's Society of Christian Service of Westbrook Methodist Church.

Attending the business and social meet were Mrs. Gressett, Mrs. Price Hendrix, Mrs. A. L. Young, Mrs. L. R. Messimer and Mrs. Joe Wigner.

BEST FOOD BUYS

Chuck Wagon No. 2 Cans

SCHILI 59¢

Del Monte, Pineapple-Grapefruit, Juice
DRINK 29 oz. Cans 19¢

Mission
PEAS 303 Cans 2 for 29¢

Rose Dale Cream Style or Whole Kernel
CORN 2 303 Cans 33¢

FLOUR

5 lb Bag **49¢**

Del Monte 303 Cans
CUT GREEN BEANS 2 for 49¢

FROZEN FOODS

Whole Sun Frozen 6 oz Cans
ORANGE JUICE 3 for 59¢

Morton's Chicken Beef Turkey
TV DINNERS each 39¢

Gandy's Pure All Flavors
ICE CREAM 1/2 Gallon 79¢

PEACHES

Gold Coast, Spiced
2 2 1/2 can for 49¢

Kimbell's Apple Jelly, Grape Jelly or
APPLE BUTTER... 3 18 oz Jars 89¢

Savings a-plenty on fine quality **PRODUCE**

White
POTATOES 8 lb Bag 37¢

Solid Green Heads
CABBAGE lb 7¢

Large Crisp Heads
LETTUCE each 19¢

Large Juicy
LEMONS 6 for 19¢

SALMON

Pink Beauty
69¢

Tall Can

SHORTENING

Kimbell's Creamy White
3 LB. CAN 49¢

Del Monte Slices, Chunks, Crushed
PINEAPPLE 2 1 1/2 Cans 49¢

Del Monte
CATSUP 20 oz Bottles 29¢

Zee 180 cts Printed
TOWELS 29¢

Folgers Mountain Grown
COFFEE lb Can 69¢

Kimbell's Sour or Dill
PICKLES Qt Jar 39¢

Dew Drop All Green
ASPARAGUS 303 Cans 31¢

Meat Buys

NO BETTER AT ANY PRICE

ROUND STEAK lb 85¢

LOIN STEAK lb 85¢

RUMP ROAST lb 79¢

Swift Premium
BACON lb pkg 63¢

Gooch's 12 oz. Package
WEINERS 39¢

It's Better
GROUND BEEF 2 lbs 89¢

EZWAY

7 A.M. - 9 P.M. SATURDAY

SUPERETTE SUNDAY THRU FRIDAY 7 A.M. - 8 P.M.

HICKORY & E. 17TH

"The Singe"

Community must "The Messiah," b the Christmas seas planning stage here

Curtis Baker, vocal music at Co School and Junior I will direct the fam with Mrs. Baker a companist, if s respond to the call

All singers in the are asked to take partative rehearsal set day evening, Nov. p.m. in the choir r orado High School.

Members of any cl school vocal group Bazaar Saturday

Gifts of all kinds jellies and home m will be featured at Business and Profes men's Club bazaar.

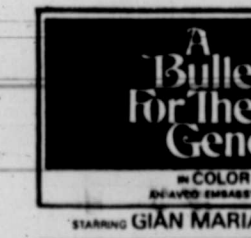
Five-cent coffee sold during the day members.

The sale will be l of Production Cred tion offices downtown Street.

Proceeds from the go into a fund scholarship present to a graduating girl High School.

PALACE THEATRE

Thurs-Fri-S Double Fea No 1 (MYA) (I



No 2 (MYA) (I

THEIR IMPOSS MISSION TO STEAL THE MOST DEVASTAY WEAPON WORLD



"IN ENEM COUNTRY" TECHNICOLOP A UNIVERSAL PIC

LONG WOLF DRIVE

Fri Sat Double No 1 (MYA) (M

SELMUR PICTURES "a minute to pray, a second to die!"

No 2 (MA) (M

the fan way

"The Messiah" Singers Wanted

Community music, Handel's "The Messiah," to celebrate the Christmas season is in the planning stage here.

Curtis Baker, director of vocal music at Colorado High School and Junior High School, will direct the famous cantata with Mrs. Baker as organ accompanist. If singers here respond to the call for voices.

All singers in the community are asked to take part in a tentative rehearsal set for Thursday evening, Nov. 7, at 7:30 p.m. in the choir room at Colorado High School.

Bazaar Set Saturday

Gifts of all kinds, jams and jellies and home made goodies will be featured at Saturday's Business and Professional Women's Club bazaar.

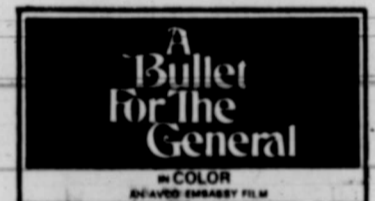
Five-cent coffee will also be sold during the day by B&PW members.

The sale will be located north of Production Credit Association offices downtown on Walnut Street.

Proceeds from the bazaar will go into a fund for B&PW scholarship presented annually to a graduating girl at Colorado High School.

PALACE THEATRE

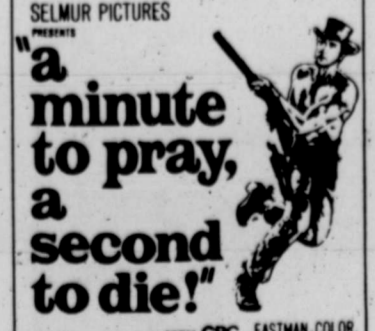
Thurs-Fri-Sat
Double Feature
No 1
(MYA) (M)



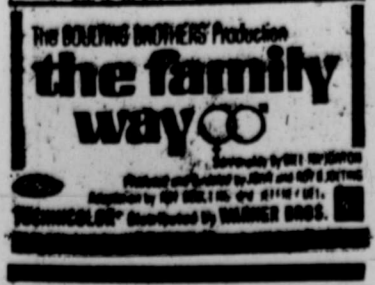
No 2
(MYA) (M)



Fri Sat Double Feature
No 1
(MYA) (M)



No 2
(MA) (M)



music-lovers — whether members of a vocal group or not — are wanted to help with the community music production.

"Scores are available," said Baker in announcing the preliminary rehearsal. "Singers who have the score among their musical libraries are asked to bring the score to the first session."

Voices of men, women, and students will be needed if "The Messiah" is to be heard here in mid-December, Baker said.

Hospital News

Following items of local interest were compiled from files of Root Memorial Hospital.

PATIENTS ADMITTED

W. V. Dillard, medical, admitted Monday.

James Shoemaker of 950 East 13th Street, medical, admitted Monday.

PATIENTS DISMISSED

Mrs. Drue Cawthron of Westbrook, medical, dismissed Saturday.

Mrs. D. J. Self, medical, dismissed Saturday.

Robert Contreras of 703 Pine Street, surgical, dismissed Sunday.

A. W. Phillips of 937 East 15th Street, surgical, dismissed Sunday.

Mrs. Jim Weddle of San Antonio, medical, dismissed Sunday.

Ruben Rivera of 1245 Cherry Street, surgical, dismissed Sunday.

Mrs. J. L. McNeil of Snyder, medical, dismissed Monday.

J. D. Sutton, medical, dismissed Tuesday.

Mrs. J. P. Nunn, medical, dismissed Tuesday.

Pair Wins Duplicate

Mr. K. E. Davis and Mrs. Verdi Kimbro of Snyder won high in games of duplicate bridge last Thursday at Colorado Country Club.

Second high scorers were Mrs. Frank Thomson and Mrs. Winnie Quinney.

Completing the list of winners for the session were Mrs. R. D. Bridgford and Mrs. W. R. Powell, high place winners.



Which One Will be Queen

One of these four class candidates Saturday evening will be presented as homecoming queen of Loraine High School during half-time activities of the Loraine-Jim Ned football game. They are, left to right, Kristi Walker, junior; Gwen Tartt, sophomore; Emma Madrit, senior; and Rhonda Sanford, freshman. Homecoming activities include registration at 10 a.m., a noon luncheon and a 2 p.m. program, followed by a business meeting.

Mrs. Halbert Named Officer For Hesperian Study Club

Mrs. Lynn Halbert was elected corresponding secretary of Hesperian Study Club Friday afternoon during a meeting in the home of Mrs. O. L. Simpson.

Mrs. Halbert was named to succeed Mrs. Perry Barber, who resigned active membership of the club.

Mrs. Barber, who was voted to the visiting membership roll, and her husband moved to Abilene where Mr. Barber will take office as first assistant to the district attorney Jan. 1.

Program for the afternoon, "Our Precious Heritage", was presented by Mrs. J. W. Watson.

She read excerpts from an address by John Ben Sheppard quoting Sheppard as saying,

"Texas is undergoing a healthy renaissance — a period of re-dedication — and it should afford us not only a time to refurbish old monuments and erect new markers, but it should be used to pay attention to what is significant in the social, political, cultural and intellectual development of our state and to examine them in their present environment."

"Love of one's state involves knowing what the state was, what it is and what it may become," Mrs. Watson quoted Sheppard, "and then working toward the resulting ideals."

She explained that historical appreciation, preservation and marking projects are signs of

See CLUB Page 4

Zeta Delta to Host Anniversary Tea

Villa Inn Conference Room Thursday afternoon will be setting for the fifth anniversary tea for Zeta Delta Study Club.

Mrs. W. B. Wheller, president of Mesquite District Federation of Women's Clubs, will be guest speaker for the 3 p.m. affair. She will speak on the topic, "Woman Power: Don't Underrate — Federate!"

Special guests will be members of Zeta Delta Study Club.

COLORADO CITY RECORD

136 Walnut, Colorado City, Texas — Zip Code 79512

JOE BELL

Publisher & Editor

Any erroneous reflection upon the character, standing or reputation of any person, firm or corporation will be corrected when such occurs in the columns of this newspaper and is brought to the attention of the management.

The Colorado City Record is not responsible for copy omissions, typographical errors or any unintentional errors that may occur other than to make proper corrections after being brought to attention. Advertising is accepted on this basis only.

Colorado City Record, published twice weekly on Thursday and Sundays, entered as second class matter at the postoffice of Colorado City, Texas under the Act of March 4, 1879.

Deep, Plush Fur Queen BATH SETS

Beautiful 7-PIECES

CHOOSE FROM PINK, BLUE, TAN, GREEN & YELLOW

Regular price is \$12.99 now it's only \$7.99



Anthony's has also received a BEAUTIFUL NEW GROUP of

100% DACRON CREPE Elegante \$2.99 yd.

It washes & wears just like the Dacron double knit we sell for 4.99. WRINKLE PROOF!!!



"If I have questions about bills, payment arrangements, or some other telephone matter, whom do I call?"



Here's the expert.

She's your telephone service representative. To many telephone users, she is the phone company.

She answers questions, provides personal number booklets, directories and duplicate bills. She helps you get new phones installed.

As a service representative, she has to be something of a lady executive, a bit of a diplomat and an expert in phone service.

And she is. She was hired from a select group of applicants and put through an extensive training program.

And she attends regular meetings to discuss customer service.

Next time you need help on a telephone problem, just call the telephone business office.

Your service representative will take it from there.

Southwestern Bell

What everyone should know about the Motion Picture Code and Ratings...



The motion picture industry announces a voluntary film rating system which will guide the public in their selection of movies. Under this system certain films will be restricted for children. This reflects a special concern for young people, as well as a serious effort to be of direct help to parents in the fulfillment of their responsibilities.

The Motion Picture Association of America, the National Association of Theatre Owners and the International Film Importers and Distributors of America fully endorse and are cooperating with this plan.

Here are the Rating Symbols...

easily recognized... with their meanings:

G Suggested for GENERAL audiences.

M Suggested for MATURE audiences (parental discretion advised).

R RESTRICTED — Persons under 16 not admitted, unless accompanied by parent or adult guardian.

X Persons under 16 not admitted. This age restriction may be higher in certain areas. Check theater on advertising.

Ruth COFFEY's



CONVERSATION CORNER

MUCH has been written and much more said deerying what is known—even in Webster's New World Dictionary—as the four-letter word.

Average reader feels sometimes that the four-letter word was born—first saw the light of day—during this new era of so-called realism in writing.

Ha. Readers who studied Decameron Tales know better.

However it came about, and whenever, the four-letter word is still with us. Too much with us, particularly in print.

The four-letter word has been promoted from barn to book. There are those who call it "literature."

Am referring, here, to the four-letter word in the usual connection. Short, dirty word of law estate.

OUR LANGUAGE, a thing of beauty to both ear and eye, also is replete with another variety of words with four letters. Absolutely no relation to the four-letter word as defined by Webster and used by John O'Hara et al.

In defense of words with four letters (remember the distinction please) let it be said that among the dearest words of all are some of the old, familiar words with four letters.

Dear, itself, is one . . . word, itself. . . home. . . rest, baby, warm, feed, fire, cook.

For no better reason than a feeling of trying to be fair (there's another of four letters) sat trying to think of all the sweet little, clean little four letter words everybody uses.

LIFE is a four letter word. Born is, too. There is care. . . hope, pray. . . pure. There is the little word good. There is, true. And there is love.

There is read and book and lamp. There is poem. . . sing. . . and song.

There is the lilt in the sound of words like dawn and dusk and moon and star. . . snow, mist and rain.

There is a valuable, should-be-respected word; work. Time and hour. There is gift. There is talk and hear.

There is the comfortable feeling that comes with use of four letter word places—city, town, farm, land. . . lake, wave, rock, path, road, yard, park.

WOMEN appreciate words like silk, gold, shop, sale, cash. . . and if the notion hits them the little word save to explain away extravagances.

Men like game. . . auto. . . putt. . . firm. . . back, rich, poor, wait

Nearly everybody looks with favor on play and show. Mail is an important small word.

So are everyday things like bath, soap, robe. . . grin. . . trip. . . like, flag, hero, vote, ring. Ah, yes, and then, there's date.

What would this world be without tree. . . bush, bird. . . rose, leaf, lawn, nest?

THOSE who love the English language for its own sake find it not too much a problem to skip the four-letter word as it is commonly known—the offensive words.

HERE for a visit with her mother, Mrs. Ollie Reid, is Mrs. August Armstrong of Pinedale, Wyoming, who also came to see August's mother Mrs. Joe Armstrong of Root Valley Fair Lodge.

The Armstrongs recently moved from Colorado to Wyoming. They are longtime subscribers to the Colorado City Record.

ISABEL RATLIFF, who entertained as her house guests last week, her brother Guy Smith and his wife of El Paso, is visiting her son Hubert and his family in Houston this week. The Smiths were enroute to New Orleans.

Sharon Harlow Gillenwater is back from Hawaii where she met her U. S. Army Warrent Officer husband, Eugene, for R&R leave from Vietnam. She's daughter of the W. C. Harlows of Thompson Ranch.

HEAR TELL that our Shirley Simpson Ballard (Mrs. Druce) is going to college again at Southwestern University. She and her family live in Georgetown. Her parents are the Ersie Simpsons.

Erick Conard, Hardin-Simmons sophomore, was among the college crowd here for Homecoming last weekend.

Spied Bob and Marcella Fee together. . . Margie Treadaway (Mrs. Kelley) on the shopping scene. . . Willie Landau. . . and Mrs. B. B. Lee.

DID YOU KNOW that Otto and Myrtle Jones drive a car with one of those personalized license plates? Saw them in one reading SPADE 2.

Did you know that Wilson and Glade (Costin) Hrbacek have moved back to C-City from Irving?

That George Womack's new wheels happen to be on a sky-blue small foreign car?

And that our Arla Joe Payne, daughter of Jimmy and Addie V., has been named to Who's Who in American Universities and Colleges. She is a geology major student at University of Texas at Arlington.

Words with four letters are another matter. Dare (that's another) anybody to try to put sentences together without a wealth of nice (ha!) words four letters long.

Tucked away in the mind must be many of them. . . beginning with soul. Soul breathed by God into His creation, the race of man.

Which brings one to wonder how in the name of comprehensible communication that word—soul, came to mean in modern circles "a sexy sound in music?"

HEAR TELL Sgt. Ronnie Blair, son of the Dual Blairs of Loraine, is home from Vietnam. His brother Larry Blair completed his year in Vietnam last summer.

Home from College

WESTBROOK — Guests last week end in the home of Mr. and Mrs. W. A. Bell were their daughters, Carole and Patricia, students of Howard Payne College in Brownwood. Mr. and Mrs. Leonard Moore and son, Kenny, of Arlington were recent week end guests of their parents, Mr. and Mrs. Gay Moore, Mr. and Mrs. Loyd Hart.

And that Doris Hines, blond daughter of Ralph Hines and granddaughter of the Witt Hines family, celebrated her 10th birthday, Monday. Her little brunet sister, Janie, celebrated with her. Janie will be seven, come January.

SEEN LATELYS different places, were the O. B. Trulocks, Jr. . . Virginia (Mrs. Toby) Dearen. . . Carol and Frank Prewitt. . . L. J. Taylor. . . and Ruth (Mrs. Douglas) Barber at the Villa. Loraine (Mrs. Nathan) Robers, too.

Saw Mae Fuller on the downtown scene. . . Puddy Neff with an armful of red and white carnations. She and her husband Rush gave flowers away to citizens who voted in General Election, Tuesday.

Caught a glimpse of Lucille Trulock (Mrs. Oren). . . The I. L. Elwoods at lunch together. . . Jess Craddock, Sr. . . George Witten.



Jean-Claude Killy talks shop... Chevrolet Sports Shop

(Freely translated from the French) "I am a man who drives for sport . . . for fun, you know? This is why I am telling you about the brave new Chevrolet and its Sports Shop. "Only in the Chevrolet Sports Shop do you find cars like the Camaro Z/28. Ah, the Z/28. Camaro with 302 V8, more muscular suspension and Hurst shifter. Only Z/28 offers 4-wheel disc brakes like Corvette, also in the Sports Shop. "You will find, too, the Camaro SS, Chevelle SS 396, Nova SS and the big Impala SS 427. "The Sports Shop. Part of the Chevrolet dealer's Sports Department at your Chevrolet dealer's. "But of course."



Jean-Claude Killy, winner of three gold medals in the 1968 Winter Olympics.

'69 Camaro Z/28

Putting you first, keeps us first.



See the Super Sports at your Chevrolet dealer's Sports Department now.

Bravo For A Signal Honor

That small, dedicated group of Mitchell County citizens who make up the Historical Survey Committee have something new to show for their year-long efforts.

That something new is a tall gold trophy for winning first prize in all Texas for their Program of Work. Prize was awarded by the Texas Historical Survey Committee. It was accepted by Mrs. Wit Hines, county chairman.

It is a signal honor to which the whole county can point with pride. For Mrs. Hines, her co-chairman, Mrs. Bruce Johnson, and to the faithful few who helped to achieve the award we'd like to be cheer leader for a loud and long "Hurrah!"

Mitchell County is rich in historical lore. . . and even richer, maybe, in good citizens who give hundreds of work hours to preserve that history for present - and future - generations.

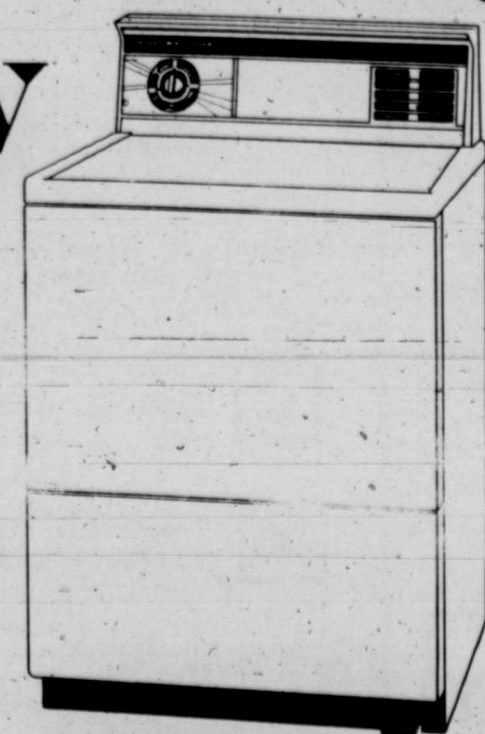
Henry Bilberry
CORNER DRUG



For the love of your life...
get an Electric Dryer

Ask your dealer about his free wiring offer now

Now's the time to get a work-saving, clothes-saving new electric dryer. An electric dryer costs up to \$40 less to buy . . . costs less to maintain. And now, with your dealer's free wiring offer, you save a lot more. See the new electric dryers at your dealer's soon . . . and save!



TEXAS ELECTRIC SERVICE COMPANY

D. W. BENSON, Manager Phone RA 8-2331

Beta E In Reg

Seven members of lon Chapter of De Gamma will be in Saturday for a reging of Alpha State

The local group w pate in the mornb presenting a demon model chapter mee

In Sweetwater for First United Method will be Mrs. Lawrence Beta Epsilon pres Lynn Halbert, Mrs. E tler, Mrs. Kenneth I Witt Hines, Mrs. O and Mrs. Margare llams.

Registration will a. m. following a co chapter presidents ors.

Mrs. Luella Merr Worth, state chairm mltee on membersh side during the mo sion. Invoation wi Ray King of Fort Wo national founder. Clark of Rotan, pr the host chapter, G will welcome De Gamma members.

Miss Gladys Park

Mrs. M Sister

BY MRS. N. F. HA Record Correspond

CHINA GROVE — M Mize is in El Paso sister, Mrs. Molly D Van Horn, who under surgery.

Recent guests in M home were Mr. and M Clevenger and f Andrews.

Mr. and Mrs. Da Stanton and Mrs. Sta ket of Colorado C recently with Mr. Jess Brown.

HIGHEST

TRADE-IN

ALLOWAN

In Town

We Are In

Need Of G

Clean Used

FRAN

MOTOR C

245 Chestnut

RAVI CHIL

WICK FOWLER

INGREDIENTS

packets of spic

Makes 1 1/2 qu

coarse-ground

Follow cooking

Package \$ 1.00

12 for \$ 10.00

CALIE



Beta Epsilon to Participate In Regional Society Meet

Seven members of Beta Epsilon Chapter of Delta Kappa Gamma will be in Sweetwater Saturday for a regional meeting of Alpha State organization.

Worth, state treasurer of Alpha State, will be principal speaker following the noon luncheon.

Presentation of attendance award will follow Miss Parker's address.

The local group will participate in the morning program presenting a demonstration of a model chapter meeting.

In Sweetwater for the meet in First United Methodist Church will be Mrs. Lawrence Ruddick, Beta Epsilon president; Mrs. Lynn Halbert, Mrs. Earline Selter, Mrs. Kenneth Lewis, Mrs. Witt Hines, Mrs. Orin Feaster and Mrs. Margaret Ann Williams.

Registration will begin at 9 a. m. following a conference of chapter presidents and directors.

Mrs. Luella Merrett of Fort Worth, state chairman of committee on membership will preside during the morning session. Invocation will be Miss Ray King of Fort Worth, international founder. Mrs. Whit Clark of Rotan, president of the host chapter, Gamma Tau, will welcome Delta Kappa Gamma members.



MISS GLADYS PARKER, speaker.



MRS. LUELLA MERRETT, to preside.

Class Plans Supper

Plans for a church and community Thanksgiving supper were begun Monday afternoon by members of Ruth Sunday School Class of Payne Baptist Church.

Date set for the annual supper was Nov. 27.

Setting for the regular monthly meeting was home of Mrs. Fred Theis. Mrs. Dennis Fortenberry presented a Thanksgiving devotion based on Deut. 8:10.

Roll call was answered by each member quoting a Bible verse.

Mrs. Mize Visits Sister in El Paso

BY MRS. N. F. HALL, Record Correspondent.

CHINA GROVE - Mrs. Stella Mize is in El Paso with her sister, Mrs. Molly Durham of Van Horn, who underwent major surgery.

Recent guests in Mrs. Mize's home were Mr. and Mrs. Clyde Clevenger and family of Andrews.

Mr. and Mrs. Dan Hall of Stanton and Mrs. Stanley Merket of Colorado City visited recently with Mr. and Mrs. Jess Brown.

Regina Jones of Lubbock was a week end guest of her grandparents, Mr. and Mrs. Pete White.

Mrs. White and Mrs. N. F. Hall visited Mr. and Mrs. Bill Buckley, Rickey and Angie of Midland.

Recent week end guests of Mr. and Mrs. N. F. Hall were Mr. and Mrs. Hollis Mize Jr. of Lubbock, J. D. Hall of Amarillo, Charlie Oliver of Westbrook and Mrs. Gladys Duncan of Coahoma.

Visiting relatives in Portales, N. M., are Mr. and Mrs. L. C. Mize.

Soft drinks, coffee and cake were served following the business session to Mrs. Henry McGuire, Mrs. Fortenberry, Mrs. Jimmy Williams, Mrs. Charles Williams and the hostess.

December's meeting will be a Christmas party in the home of Mrs. Jimmy Williams.

Visits in Odessa

Mr. and Mrs. Hoyt Roberts were in Odessa Friday and Saturday as guests of Mr. and Mrs. Dick Kennedy and daughter.

HIGHEST TRADE-IN ALLOWANCES

In Town

We Are In Need Of Good Clean Used Cars

FRANK MOTOR CO.

245 Chestnut St.

LEGAL

NOTICE TO BIDDERS

Bids will be received until 2:00 p.m. December 6, 1968 on two (2) 1969 model 4 door sedans. Specifications can be procured at the office of the City Manager in the City Hall. The City reserves the right to reject all or any part of any bid, waive minor technicalities and award the bid to best serve the interest of the City.

City of Colorado City, Texas
J. A. Sadler, Jr.
City Manager

RAVE OF REAL CHILI LOVERS

WICK FOWLER'S FAMOUS 2-ALARM CHILI INGREDIENTS with heat control. Seven packets of spices (9 ingredients) in a package. Makes 1 1/2 quarts real chili. Add 2 pounds coarse-ground meat and 8 oz. can tomato sauce. Follow cooking guide for 2 exciting hours. One Package: \$1.00; 2 for \$2.00; 6 for \$5.00; 12 for \$10.00; 24 for \$18.24. Postage paid.

CALIENTE CHILI, INC.

P. O. Box 1444
Austin, Texas 78767

Guaranteed USED CARS

1962 Thunderbird

Automatic transmission, power steering, power brakes, tilt steering wheel, air conditioned, new tires. Low mileage.

\$950.00

1963 Chevrolet

Bel Air 4 Door, 6 cylinder engine, automatic transmission. Compare the price on this one.

\$850.00

1962 Chevy 11

2 Door, six cylinder engine, standard transmission. New tires, new motor.

\$750.00

DOCKREY

MOTOR CO.

MEXICAN FOOD

Buffet Style

Thursday

6:00 P.M. to 9:00

Cattlemen's Restaurant

Inter. 20 West 720-8313

Shurfine CARNIVAL of 1968

SAVINGS A LA CART

Shurfine Frozen 6 oz. Can

ORANGE JUICE

6 for \$1

Shurfine Sliced or Halves No. 2 1/2 Cans

PEACHES

3 for 79¢

Shurfresh Saltine 1 lb box

CRACKERS

19¢

Shurfresh All Vegetable

OLEO

2 for 27¢

Cream Style Golden or Whole Kernel 303 Cans

CORN

6 for \$1

TURNIP GREENS 8 for \$1
Shurfine 303 Cans Edrly

HARVEST PEAS 5 for \$1
Shurfine 303 Cans Whole

IRISH POTATOES 8 for \$1
Shurfine White or Devils

FROSTING MIX 4 for \$1
Shurfine 303 Cans

BLACKEYED PEAS 7 for \$1
Shurfine 303 Cans Whole

FANCY TOMATOES 5 for \$1
Shurfine 46 oz. Cans

TOMATO JUICE 3 for 89¢
Shurfine 303 Cans

PORK & BEANS 8 for \$1

Quality Meats

... PRICED for your BUDGET!

ROUND STEAK lb 95¢	
T-BONE STEAK lb \$1.05	
LOIN STEAK lb 99¢	
Dankworth lb	
GERMAN SAUSAGE lb 79¢	
Fresh Frozen	Rath
CHICKEN HENS lb 35¢	BACON lb 69¢
Swift	Fresh
CAN HAM 3 lb. Can \$3.29	BOLOGNA 2 lbs \$1
Shurfine Blue Lake 303 Cans	Shurfine
CUT GREEN BEANS 4 for \$1.00	FLOUR 5 lb Bag 39¢

4 YELLOW QUARTERS

shurfresh MARGARINE

Shurfine 28 oz Jars	Shurfine Sweetmilk or Buttermilk
APPLE BUTTER 3 for 89¢	BISCUITS 6 for 49¢
Shurfine 14 oz Bottles	Shurfine 24 oz Bottle
FANCY CATSUP 5 for \$1	GRAPE JUICE 3 for \$1
Shurfine 303 Cans Chopped	Shurfine Chunk Style
TURNIP GREENS 8 for \$1	TUNA 3 for 89¢
Shurfine 303 Cans	Shurfine All Grinds
FRUIT COCKTAIL 4 for 89¢	COFFEE lb. Can 65¢
Shurfine 16 oz Jar	Shurfine
CUCUMBER CHIPS 4 for \$1	PEAR HALVES 3 for 89¢
Shurfine Red Sour 303 Cans	Shurfine White, Yellow, Devils or Spice
PITTED CHERRIES 3 for \$1	CAKE MIX 4 for \$1.00
Shurfine 303 Cans	
APRICOT HALVES 3 for 89¢	

Shurfine No. 12 Jars

STUFFED OLIVES 49¢

Shurfine 46 oz Cans

PINEAPPLE JUICE 3 for 89¢

Shurfine Qt Bottle

WAFFLE SYRUP 39¢

Shurfresh 10 oz Package

POTATO CHIPS 39¢

Extra Fancy

BANANAS Pound 10¢

Extra Good

YELLOW ONIONS lb 10¢

Best Quality

SWEET POTATOES lb 15¢

MEMBER AFFILIATED FOOD STORES

finer foods

Fuller Foods

fuller value

DON'T FORGET!

Some telephone numbers here have been changed, so when you call, look up the number in your new telephone directory.

Southwestern Bell





MRS. JERRY DALE CHITSEY, nee Martha Jane Henderson.

Miss Henderson and Chitsey Marry in Chapel Ceremony

Miss Martha Jane Henderson became the bride of Jerry Dale Chitsey of Hermleigh Saturday afternoon in Memorial Chapel in First Methodist Church.

The bride is daughter of Mr. and Mrs. Gall R. Henderson of 520 East Seventh Street.

Mr. and Mrs. E. L. Chitsey of Hermleigh are parents of the bridegroom.

Rev. Caddo Matthews, pastor of Plainview Baptist Church, read double ring vows in a four o'clock ceremony.

Chapel altar was flanked on either side by baskets of yellow and white gladioli and carnations.

The bride, given in marriage by Mr. Henderson, wore a street-length dress of white brocade satin and carried an arrangement of orchids and carnations on a white Bible.

Don Feaster, organist, played "Because" and "More".

Mrs. Jack Beane of San Angelo, sister of the groom, was matron of honor. She wore a yellow linen dress and carried a bouquet of yellow carnations.

Don Kiker of Roby was best man. Lynn Prescott was usher.

Home of the bride's parents was setting for a wedding reception.

Bride's table was covered with a white cutwork linen cloth, highlighted by an arrangement of yellow and white gladioli and carnations and a three-tiered pedestal wedding cake.

Miss Mary Beach and Mrs. Walter Herlin served champagne punch and cake.

The couple is living in San Angelo where both attend Angelo State College. The bride is a 1968 graduate of Colorado High School. Her husband was graduated from Hermleigh High School.

Out-of-town guests here for the wedding were from San Angelo, Roby, Lamesa, Snyder, Roscoe and Hermleigh.

CLUB
From Page 3
growing up and of becoming mature.

"I would like to see the Texas Federation of Women's Clubs, through its Heritage Department or appropriate Special Committee, undertake an aggressive program to mark, preserve and restore the birthplaces, the homes, the scenes of accomplishments of Texas women who have contributed to the economic, cultural, political and social life of their community, area and state," the Attorney General said.

After reviewing the address, Mrs. Watson reviewed lives of several noted Texas women - Jane Herbert Wilkinson, Cynthia Ann Parker, Mollie Arline Kirkland Bailey, Mrs. Percy V. Pennybacker, Mrs. Clara

Litiscoll and Mrs. Lyndon Johnson.

She also noted that the name of Mrs. H. B. Broaddus of Colorado City is on Jubilee Endowment Honor Roll of Texas Federation of Women's Clubs.

Miss Schell Merrell was a guest for the afternoon.

Hesperian members present were Mrs. Watson, Mrs. J. A. Sadler Sr., Mrs. John Hale, Mrs. G. D. Foster, Mrs. Sam Thompson, Mrs. Sam Wulfjen, Mrs. Otto Jones.

Also, Mrs. Jasper Wood, Mrs. E. M. Majors, Mrs. Bennett Scott, Mrs. Halbert and Mrs. Simpson.

WOLVES
From Page 1

last week in their 29-6 triumph over Slaton. That puts Quarterback Keaton Grubbs at the helm of an offensive backfield which utilize mostly Dan Steakley, Randy Parker, David Garcia and Wesley Smith.

Thankfully, the Wolves counted no new major injuries this week although Randy Nix, the fine defensive player, had a badly bruised arm which kept him out of most workout assignments, and Assistant Coach Doug Chitsey went home Tuesday with a case of flu.

Three of the top four West Texas AAA scorers are Estacado standouts - Kenneth Wallace, with 12 touchdowns and 2 extra points for a season total of 74 in 8 games; James Mosley, 12 touchdowns for 72, and Larry Miller, 6 touchdowns and 34 extra points for 70.

Benjie Kemp, the Sweetwater flash, is the No. 3 man in that top four. He has 12 touchdowns for 72, too.

One of the reasons why the Wolves are far from throwing in the towel against Estacado, is the fact they can score also. Parker has 66 points for his total, including 10 touchdowns, and Steakley has 54, all in nine touchdowns. Grubbs has four touchdowns and 14 extra points for a healthy 44.

And you have to take into consideration these three have been troubled with injuries - especially Steakley, who has been hobbled or completely lame for much of four games. Yet, they and other Wolves have scored 193 points - third only to Estacado and Sweetwater in all District 3 - AAA.

Too, the Wolves have probably the most accurate passing attack in the district which has been effective in all its games, even in defeat.

The Wolves, with a record of 5 wins, 3 losses, is now in fifth place in district standings.

Last week's results - Dunbar 47, Littlefield 0; Estacado 54, Snyder 0; Brownfield 36, Lake View 0; Lamesa 49; Levelland, 7; Colorado City, 29; Slaton 6; Sweetwater open.

This week's schedule Dunbar at Lamesa; Brownfield at Slaton; Sweetwater at Littlefield; Snyder at Levelland; Colorado City at Estacado (Saturday); Lake View open.

MEXICAN FOOD

Buffet Style
Thursday
6:00 P.M. to 8:00

Cattlemen's Restaurant

Inter. 20 West 728-8913

Find Strength For Your Life. . . In Church



Which One . . . Rotten Apple Or Good

When you reach for a red apple, you certainly do not want one that is rotten or wormy down at the core. You choose the fruit that is ripe and juicy and tasty . . . good through and through.

You want your children to be 'good apples' too. Not only good on the outside, but wholesome and decent on the inside . . . right to their hearts. Of course, you do.

Then, right now, be sure your children are developing spiritually as well as physically and mentally.

Worshipping God in home and church is the tree of life for truly good young men and women. It is the food for making them 'good apples' for every turn, every decision in life.

Worship Together This Week

This Message Sponsored By The Following Firms
In Their Interest For A Better Community

Elliott-Godwin Insurance
117 West Second

Kiker & Son Funeral Directors
340 East Third

Bodine Bros. Drive-In Dairy
Fresh Eggs & Milk Delivery To Your Door
Snyder Highway

City National Bank
Elm at E. Third

Chiropractic Health Clinic
210 East Third

Colorado Sand & Gravel
South Of Colorado City

Fina Wholesale & Retail
East 2nd At Hickory

First State Bank
193 East Second
Loraine

Roberts Butane & Appliance Co.
105 West Second St.

FIRST PRESBYTERIAN
5th & Chestnut

ST. LUKE METHODIST
1635 Walnut
Rev. Carl Oglesby

ALL SAINTS EPISCOPAL
3rd & Locust

PAYNE CHAPEL C.M.E.
700 Front St.

CENTRAL BAPTIST CHURCH
17th & Hickory
Rev. Prentice D. Smith

FIRST METHODIST
4th & Chestnut
Rev. W. M. Wilkinson

PLAINVIEW BAPTIST
4 1/2 Miles SW on Sterling Hiway
Rev. Caddo Matthews

FIRST CHRISTIAN
4th & Elm
Weems S. Dykes

KINGDOM HALL
JEHOVAH WITNESSES
826 Locust
D. R. DeJulio

FIRST ASSEMBLY OF GOD
7th & Oak
Rev. Larry Lakey

MEMORIAL MISSIONARY BAPTIST
N.A.B.A.

CALVARY BAPTIST
1025 E. 15th
Rev. Jimmy Law

FIRST BAPTIST CHURCH
Loraine, Texas
Rev. Clarence Minton

ST. JOSEPH CATHOLIC CHURCH
Loraine, Texas
Rev. Francis Arbet, O.M.I.

LIGHTFOOT ST.
CHURCH OF CHRIST
Loraine, Texas
Rev. Jerris Bullard

FIRST METHODIST CHURCH
Loraine, Texas
Rev. Cecil Tune

NORTHSIDE CHURCH OF CHRIST
Duane Johnson
Snyder Hiway

FIRST BAPTIST
3rd & Chestnut
Rev. Glenn Roenfeldt

JESUS NAME PENTECOSTAL
1/4 Mi. South - Sterling City Hiway
F. R. Johnson

CHURCH OF CHRIST
22nd & Austin
Leslie Mickey

EMMANUEL BAPTIST MISSION
4th & Pine
Rev. Sam Hill

ST. PAUL METHODIST
W. 17th & Cypress
Rev. Estevan Lara

ST. ANN'S CATHOLIC
17th & Peach
Rev. Francis Arbet, O.M.I.

MT. ZION
1404 College
Rev. R. C. Hamilton

OAK ST. BAPTIST
8th & Oak
Rev. Calvin L. Gustin

CHURCH OF GOD
18th & Hemphill
Rev. Bulganin

ST. ANN'S CATHOLIC CHURCH
17th & Peach
Rev. Francis Arbet, O.M.I.

BAILEY METHODIST
7 1/2 miles NW of Westbrook
Rev. Henry Parminter

PENTECOSTAL HOLINESS CHURCH
819 Pine St.
Rev. J. E. Rich

WESTBROOK BAPTIST
Rev. L. B. Edwards

WESTBROOK METHODIST
Westbrook
Rev. Henry Parminter

SMILEY CROCKETT
CHURCH OF CHRIST
Loraine, Texas
Rev. Archie Scarborough

NEW SALEM LUTHERAN CHURCH
Roscoe, Texas
Rev. Herbert Zimmerman

Cindy Waltrip, third queen of Colorado High time of the CHS - Slaton

Two Officers Named by Auxiliary

Two vice presidents Root Memorial Hospital were elected during 29 meeting in the hospital.

They were Mrs. Gary named second vice president and Mrs. Ben Given vice president.

Plans for Thanksgiving Christmas decorations discussed during the session.

Guest speaker for the was Charles Root, hospital administrator, who discussed duties of the volunteer.

Other guests attending Mrs. Root and Martin administrator for Root Fair Lodge.

Volunteers recently work in the hospital after a 10-hour orientation program directed by Mrs. Pender, a hospital director.

Any organization wishing direct their projects to hospital through the are asked to phone Mrs. 728-3898, according to lary spokesman.

Miss Payne Named to Who's Who

Miss Arla Joe Payne member of the first students at University of at Arlington to be in Who's Who Among Students American Universities.

Miss Payne, daughter and Mrs. James E. 1111 Walnut Street, formed of her selection national office of Who's Who in a letter from Harrison, acting president at Arlington.

She was among 39-41 ton students chosen award.

Criteria which led to of Who's Who members the honored students completed at least sixty hours, that they had a 2.0 grade point rating system, excellent participation in co-curricular activities, demonstrated leadership and citizenship.

Miss Payne, a geologist will be presented with certificate in acknowledgment of her achievement last year at an awards ceremony.

Miss Payne is a member Zeta Delta Sorority at Arlington university.

Westbrook Visits

WESTBROOK - Mr. Bill Rees of Dallas relatives and friends Westbrook Community last

Recent week end guests and Mrs. W. C. Hutch R. C. Hardin and son, Levelland.

Mrs. Clude Chambers Big Spring Oct. 29 for ing bridal reception her daughter, Miss Chambers.



Line Up of Queen Candidates

Cindy Waldrip, third from left, was crowned homecoming queen of Colorado High School last Friday evening during half-time of the CHS-Slaton football game here. Presented as can-

didates for this year's honor were, left to right, Christy Stubblefield, Vickie Cotton, Miss Waldrip, Mary Lou Wilkerson, Debbie Hendrix and Sarah Harris.

Volunteers Direct Unit Party

Seven Circuit Riders were in Big Spring last Wednesday for volunteer work at Big Spring State Hospital.

They directed games of bingo, "42" and dominoes for patients in Unit Five.

Prizes were awarded patients for bingo games.

Fresh fruit and halloween candy were served by the local volunteers.

Making the trip were Mrs. Clyde Bassham, a new member; Mrs. Jewel Richter, Miss Effie Copeland, Mrs. Ida Mae Jones, Mrs. J. P. Nunn, Mrs. Nina Farmer and Mrs. Roxie Witten.

Levingston Funeral Pending

Funeral arrangements for Q. B. Levingston, 50, are pending here and will be announced by Kiker & Son Funeral Home.

had been a patient for two days.

Levingston died Sunday in Veterans Administration Hospital at Big Spring where he

Born in Dawson June 18, 1918, he moved to Colorado City in 1925. He was a member of Mount Zion Baptist Church and a veteran of World War II.

Surviving are his mother Mrs. Vannie Williams of Colorado City; his wife Mary of California; three brothers, A. D. Williams of Stockton, Calif., Eugene Ridge and Clarence Boger, both of Colorado City; one sister Mrs. Beatrice Thompson of Littlefield.

stop!

Some telephone numbers here have been CHANGED. The new numbers are in your new telephone directory. Please use it before you call to avoid wrong numbers.

Southwestern Bell



Two Officers Named by Auxiliary

Two vice presidents for the Root Memorial Hospital Auxiliary were elected during an Oct. 29 meeting in the hospital.

They were Mrs. Gary Baker, named second vice president, and Mrs. Ben Givens, third vice president.

Plans for Thanksgiving and Christmas decorations were discussed during the morning session.

Guest speaker for the meet was Charles Root, hospital administrator, who discussed duties of the volunteer worker.

Other guests attending were Mrs. Root and Martin Weaver, administrator for Root Valley Fair Lodge.

Volunteers recently began work in the hospital and lodge after a 10-hour orientation program directed by Mrs. Doreen Pender, a hospital staff director.

Any organization wishing to direct their projects to the local hospital through the Auxiliary are asked to phone Mrs. Givens, 728-3898, according to an auxiliary spokesman.

Miss Payne Named to Who's Who

Miss Arla Joe Payne is a member of the first group of students at University of Texas at Arlington to be named to Who's Who Among Students in American Universities and Colleges.

Miss Payne, daughter of Mr. and Mrs. James E. Payne of 1111 Walnut Street, was informed of her selection by the national office of Who's Who Oct. 29 in a letter from Frank Harrison, acting president of UT at Arlington.

She was among 39 UT-Arlington students chosen for the award.

Criteria which led to selection of Who's Who members was that the honored students had completed at least six semester hours, that they had at least a 2.0 grade point rating on a 4.0 system, excellent character, participation in co-curricular activities, demonstration of quality leadership and good citizenship.

Miss Payne, a geology major, will be presented with an honor certificate in acknowledgement of her achievement later this year at an awards ceremony.

Miss Payne is a member of Zeta Delta Sorority at the Arlington university.

Westbrook Visitors

WESTBROOK - Mr. and Mrs. Bill Rees of Dallas visited relatives and friends in Westbrook Community last week end.

Recent week end guests of Mr. and Mrs. W. C. Hutchins were R. C. Hardin and son, Donnie, of Loveland.

Mrs. Clude Chambers was in Big Spring Oct. 29 for an evening bridal reception honoring her daughter, Miss Vickie Chambers.

SAFEWAY STOCK-UP SALE! SHOP! COMPARE! SEE HOW YOU SAVE AT SAFEWAY

Come in and Shop Around... Compare Safeway Low, Low Everyday Prices!
Fill your cart with the many bargains you'll find... You also get Specials Twice a Week!
Remember IT'S THE TOTAL FOOD BILL THAT COUNTS!

Biscuits 5¢
Mrs. Wright's * Sweetmilk or * Buttermilk (Limit 6, Please) 8-oz. Can

Edwards Coffee All Grinds 1-Lb. 59¢
Canned Milk Lucerne Special! 7 14 1/2-oz. Cans \$1
Peaches Highway, Cling * Sliced or * Halves Special! 29-oz. Can 25¢
Chunk Tuna Sea Trader, Light Meat 6 1/2-oz. Can 29¢
Enriched Flour Kitchen Craft (10-Lb. Bag 98¢) 5-Lb. Bag 49¢
Detergent Laundry, White Magic Special! 49-oz. Box 49¢
Liquid Bleach White Magic Gallon Plastic 39¢
Facial Tissues Truly Fine Assorted 200-Ct. Box 19¢
Par Detergent Liquid 32-oz. Plastic 38¢

APPLE PIE 24-oz. Pkg. 29¢
Bel-air, Frozen. Serve Pie a la mode!

Ice Cream Snow Star, Assorted Flavors 1/2-Gal. Ctn. 49¢

Green Peas Bel-air Special! 10-oz. Pkg. 18¢
Strawberries Bel-air Sliced 3 10-oz. Pkg. \$1
Broccoli Spears Bel-air 4 10-oz. Pkg. \$1
Orange Juice Bel-air, From Florida Special! 5 4-oz. Cans \$1

Fish Sticks Captain's Choice Special! 3 Box. Pkg. \$1
Baby Okra Bel-air, Whole 4 10-oz. Pkg. \$1
Blackeye Peas Bel-air 4 10-oz. Pkg. \$1
Meat Pies Major House, Beef * Chicken * Pork * Turkey * Ham * Sausage * Corned Beef 5 Box. Pkg. 95¢

Shasta Pure Preserves 59¢
* Peach * Plum * Apricot-Pineapple * Apricot * Grape 32-oz. Jar
Special! (Strawberry 32-oz. Jar 69¢)

Health & Beauty Aids
Hair Spray Truly Fine Can 13-oz. 49¢
Mouthwash Safeway * Herb * Amber * Blue 16-oz. Bottle 39¢
Toothpaste Safeway * Herbs * Orange * Peppermint 4 1/2-oz. Tube 59¢

Bananas 10¢
Golden Ripe! Lunch Box Favorite! Safeway Special! -Lb.

White Potatoes 49¢
Haig, US No. 1A 10-Lb. Bag

Texas Yams 2 Lbs. 29¢
Texas, Forest, Golden sweet

D'Anjou Pears 29¢
Washington's Extra Fancy -Lb.

Red Grapes 25¢
Red Emperor, US No. 1 -Lb.

Carrots Safeway 2-Lb. Ctn. 25¢
Rutabagas New Crop -Lb. 10¢
Mincemeat Brand's, Ready to Use (Condensed) 18-oz. Jar 49¢
Waldorf Dates Pitted (Non-Pitted-79¢) 1 1/2-Lb. Pkg. 89¢

Bell Peppers 3 for 25¢
Large, For salads, stuffing

Yellow Onions 3 for 29¢
Medium, US No. 1

Turnips 2 for 29¢
New Crop, Crisp Bulk

Town House
* Cut Green Beans
* Cream Style Golden Corn
* Green Peas
Special! Your Choice 5 Reg. \$1 Cans

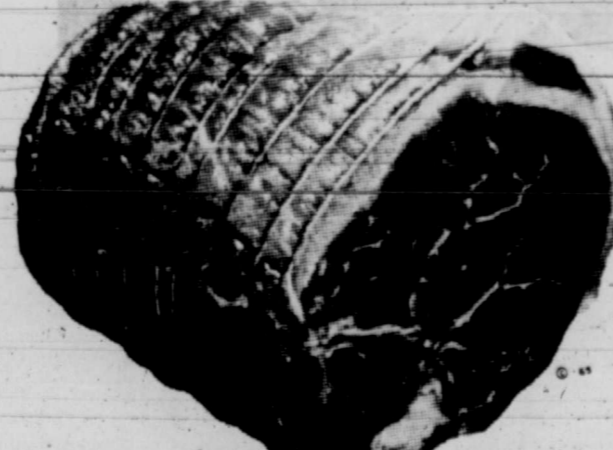
Town House
Tomato Soup Serve Soup and Crackers 10 1/4-oz. Can 10¢

Instant
Coffee Airway 6-oz. Jar 69¢
Tea Canterbury 2-oz. Jar 69¢

Busy Baker
Cookies * Sugar * Lemon * Chocolate Chip * Coconut * Oatmeal Tray Pak 14-oz. Pkg. 39¢

Zippy
Pickles * Whole Sour * Whole Dill * Fancy Sliced Dill * Whole Kosher Dill * Sliced Kosher Dill Special! Your Choice! 3 22-oz. Jars \$1

Always Fresh!
Brown 'n Serve Rolls * Twin or * Cloverleaf, Shylark Safeway Special! 12-Ct. Pkg. 2 for 49¢
Buttermilk Lucerne, Fresh, 1/2-Gal. Carton 39¢
Sour Cream Lucerne 8-oz. Ctn. 35¢



- Beef Patties** Pre-Cooked, Chicken Fried -Lb. 89¢
Ground Beef Safeway Handy Club Pak 2-Lb. Club \$1.05
Rib Steaks USDA Choice Grade Heavy Beef -Lb. 98¢
Short Ribs Lean, Meaty Beef, USDA Choice Heavy Beef -Lb. 39¢
Hamburger Steaks Ready to cook -Lb. 59¢
Boneless Steak Top Sirloin, USDA Choice Heavy Beef -Lb. \$1.49
New York Steak Heavy Beef, Boneless Strip, USDA Choice Heavy Beef -Lb. \$1.99
Pork Roast Fresh, Boston Butt Cut -Lb. 49¢
Pork Steak Fresh Butt Cut -Lb. 59¢
Lunch Meats Safety Sliced, 5 Olive * All Beef Bologna * Finest * Special * Mexican * Cheese * * Armour Style or * Safeway, All Meat Pkg. 4-oz. 35¢
Armour Franks * Safeway, All Meat Pkg. 1-Lb. 59¢
Corn Dogs Circle Y Brand, Bulk Pack Pkg. 5-Ct. 49¢

Safeway Meats are Guaranteed to Please!

Boneless Roast 79¢
* Chuck or * Shoulder, USDA Choice Grade Heavy Beef -Lb.

Smoked Picnics 33¢
Samuel's Mahawk Dry-Cure, 6 to 8-Lb. Average. * Half or * Whole -Lb. 39¢ Whole -Lb. 33¢

Ground Chuck Safeway freshly ground lean beef. -Lb. 69¢

Beef Arm Roast 79¢
Full Cut, USDA Choice Grade Heavy Beef. -Lb.

Rath Bacon 69¢
* Rath Black Hawk or * Safeway, Sliced 1-Lb. Pkg.

Thick-Sliced Bacon \$1.35
* Rath Black Hawk or * Safeway 2-Lb. Pkg.

Pork Sausage 89¢
Wingate, * Regular or * Hot 2-Lb. Pkg.

Pork Chops 69¢
Quarter Sliced Loin -Lb.

Compare These Prices!

Cake Mixes Mrs. Wright's, Assorted 15-oz. Pkg. 25¢
Toilet Tissue Truly Fine, Assorted Colors 4-Roll Pkg. 39¢
Paper Towels Truly Fine, Colors 18-Ct. Roll 29¢
Margarine Coldbrook Solids 1-Lb. Pkg. 10¢
Cleanser White Magic 14-oz. Can 13¢
Mayonnaise No Made 8-oz. Jar 63¢
Vanilla Extract Crown Colony 4 1/2-oz. Bottle 39¢
Pinto Beans Town House 1-Lb. Pkg. 52¢
Soft Drinks Crownmont Assorted Flavors * Diet or * Regular 2 12-oz. Bottles 25¢
Gelatins Jell-well Assorted Flavors Special! 12 3-oz. Pkg. \$1
Instant Breakfast Lucerne Assorted Flavors 4-Ct. Pkg. 59¢
Soda Crackers Busy Baker 14-oz. Box 29¢
Snack Crackers Busy Baker 14-oz. Pkg. 39¢
Shortening Royal Saffin (8 1/2 OZ Label) Special! 3-Lb. Pkg. 69¢
Tomato Juice Town House 44-oz. Can 37¢
Canned Drinks Crownmont Assorted Flavors * Regular or * Diet 10 12-oz. Cans 79¢
Peanut Butter Best Roast * Creamy or * Chunky 3-Lb. Jar \$1.19
Cane Sugar Candi Cane 5-Lb. Bag 56¢

FREE SALT!
You get FREE 24-oz. Box of Sea-White Salt With purchase of 4-oz. Can Crown Colony

Black Pepper 39¢
4-oz. Can

Slenderway 5 \$1
Lucerne, Assorted Flavors Safeway Special!
* Chocolate * Dutch Chocolate * Chocolate Malt * Vanilla * Strawberry 8-oz. Cans

FRYERS Everyday Low Price! Whole -Lb. 29¢
Cut-Up Fryers 35¢ Leg Quarters 39¢ Breast Quarters 45¢
Fresh or Frozen Home, Frozen -Lb. * Safeway, Inspected Fryers. -Lb.

SAFEWAY
Prices Effective Thurs., Fri. and Sat., Nov. 7, 8 and 9, in Colorado City. We Reserve the Right to Limit Quantities. No Sales to Dealers.

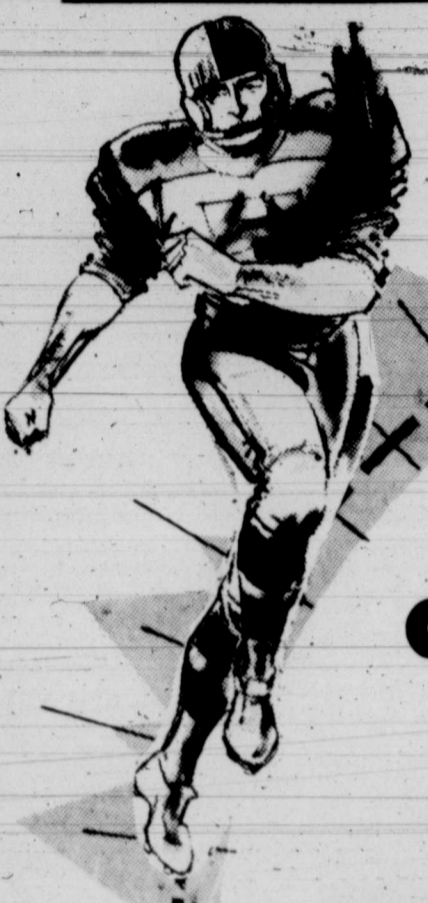
SUPPORT THE HOME TEAM



Support
The Wolves
At Every
Game

Cheer The
Wolves To
Victory.

This Page Is Sponsored By Colorado City Merchants



FOOTBALL CONTEST

**WIN
COLD C-A-S-H AWARD
PRIZES**

1ST PRIZE 2ND PRIZE 3RD PRIZE
\$10 \$8 \$5

IT'S FUN! IT'S EASY! YOU MAY WIN! DON'T LOSE OUT... ENTER TODAY AND EVERY WEEK!

Be a lucky cash winner. All you do is pick the winner. There's no need to buy, nothing to subscribe to. Enter now!

CONTEST RULES

1. One Of The Games To Be Played This Weekend Is Listed Under The Names Of The Advertisers On this Page. Read The Advertisement Carefully So That You Will Have A Complete List of the Games.
2. This Contest Is Open To Everyone Except Employees Of This Newspaper And Their Families.
3. In Case Of a Tie The Prize Will Be Divided Equally.
4. Bring Your Entry Blank To Colorado City Record Before 5:00 P. M. Friday or Mail With Postmark To The Record P. O. Box 92 Colorado City, Before 7:00 P. M. Friday.



COLORADO DRUG
24 Hrs Prescription Service
102 E. 2nd Day Phone RA 8-2665
Night Phone RA 8-3118
(1) Midland at Cooper

VILLAGE FOOD STORE
Mr. & Mrs. Earl Brock
400 East 2nd RA 8-3421
(2) Abilene at Big Spring

WESTERN AUTO Associate Store
110 Walnut RA 8-2201
(3) McMurry at Sul Ross

CORNER DRUG
Free Delivery On Prescriptions
501 Walnut RA 8-3484
(4) Brownfield at Slaton

BOB RATLIFF INS.
Fire, Auto and Casualty
152 Walnut RA 8-4371
(5) Lubbock Dunbar at Lamesa

OFFICIAL FOOTBALL CONTEST ENTRY BLANK

CLIP And Bring Or Mail To The Colorado City Record

Write your choice beside these number. Your choice must be in place. In each ad there will be a number and game.

1	2	3
4	5	6
7	8	9
10	11	12
13	14	15
16	17	18
19	20	21
22	23	24
25	26	27
28	29	

PICK THE SCORE
Colorado City _____ Estacado _____
Name _____
Address _____

G. D. FOSTER Insurance & Loans
G. D. Foster Dick Wistrand
247 Walnut RA 8-3401
(6) Snyder at Levelland

COLORADO CITY ELECTRIC CO.
Sterling City Hwy, RA 8-3478
(7) Sweetwater at Littlefield

EDDIE'S PHARMACY
Free Bill Wrapping
10th & Hickory RA 8-3478
(8) Hirschi at Bowie

BODINE BROS. Drive-In Dairy
Snyder Hwy, RA 8-3524
Fresh Eggs & Milk
(9) Stephenville at Breckenridge

HARDCASTLE REFRIGERATION
Frigidaire Appliances
163 East 2nd RA 8-2252
(10) San Saba at Brownwood

MARSHALLS VARIETY Neighborhood Self-Service Store
1044 Hickory St RA 8-3644
(11) Robert Lee at Roscoe

SAM L. MAJORS JEWELERS
Diamond Merchant 50 Years
180 E. 2nd RA 8-2502
(12) WF Washington at Graham

ROGER DELINTED Cotton Seed Co.
West IH 20 RA 8-2069
(13) Mineral Wells at Weatherford

JEFF TAYLOR ENCO SERVICE
IN 20 & Snyder Hwy.
(14) Seymour at Memphis

THOMAS BROS. Service Station
Goodyear Tires
280 Walnut RA 8-4001
(15) Haskell at Anson

LONE WOLF Electric CO-OP
Robert Lee Hwy. RA 8-4232
(16) Winters at Ballinger

JIM'S Trucktown Restaurant
Steaks-Chops-Mexican Food
Interstate 20 East 8-4325
(17) Merkel at Coleman

MARY'S FLOWERS And Gifts
708 E. 6th RA 8-3001
(18) Hamlin at Stamford

COL-TEX STATION And Wholesale Office
2nd & Hickory RA 8-3601
(19) Eastland at Cisco

BETTER CLEANERS
For Better Dry Cleaning
521 Walnut RA 8-4191
(20) Comanche at Granbury

ROBERT BUTANE Gas & Appliance Co.
183 E. 2nd RA 8-3711
(21) Hamilton at Clyde

C. C. PRINTING
Commercial Printing
154 Walnut RA 8-3701
(22) Brady at Burnet

DON HENDERSON TEXACO
US Royal Tires
Chestnut St RA 8-2022
(23) Rotan at Wylie

COLORADO STEAM LAUNDRY
Your Business Appreciated
401 Oak St. RA 8-3170
(24) Texas at Baylor

COLORADO SAND & GRAVEL CO.
South of City RA 8-4011
(25) Rice at Arkansas

VILLA RESTAURANT
Snyder Hwy RA 8-3367
(26) A&M at S.M.U.

HUDSON & SPARKS Dirt Contractor
Robert Lee Hwy RA 8-4202
(27) T.C. U. at Texas Tech

JAY ADAMS CHEVROLET CO.
E. Hwy 80 RA 8-3422
(28) Crowell at Nocona

BEAT ESTACADO
(29) Holliday at Knox City

DIAL RA 8-

HOSPITAL
ROOT MEMORIAL
HOSPITAL
Charles Root
Administrator

DOCTORS' EXCHANGE
Staffed 24 hours
RA 8-3435

Office Equip. Supplies

Wanted 1000 More
Members - Mailings Office
132 E. 2nd St.,
Colorado City, Texas.

Cleaners, Laundries

Pond & Merritt
Professional Dry Cleaners
Choice of 2 Types
Budget or Super
Dry Cleaning
283 Walnut RA

Bus. Services

We Repair A
Makes & M

Washing Machines
Dryers
Dish Washers
Air Conditioners

Call David Co
RA8-220

WESTERN AU

Electrol
R. S. (Nick) W

FREE HOME SI
AND SALES
1098 Pine PA

For Sale
DRIVE WAY GRA
YARD DIRT & GRA
Call Ewing Wilson
or RA 8-8156

Dozing Work Wan
Stock Tanks, Tree do
Water ways. Call Ro
RA 8-4557

Sewing Machine
Sales & Service
Work Colorado Cit
per week. - Write 20
St. Sweetwater, Texas
BE 4-5901 or BE
Porter Sewing Ce
Knox Porter

Mattresses
New & renovated
Springs - Save 5
Renovation - Comple
ing - All work GU
Manufactured by
Mattress - RA 8-33
rado City - GR
Westbrook.

Weeds

Spray now to contr
wild rye and many
winter weeds, Contr
before you see th
CALL RA 8-

OYLER
EXTERMINAT
SERVICE

Buy or rent sick ro
piles, complete line
service. We offer
choice of sick ro
piles at low cost of
Eddie's Pharmacy, I
Hickory.

HUNT FOODS SALE



THRIFT TIPS  **Hunt's Fruit COCKTAIL..... 5** 300 Cans for **\$1**

Gladiola FLOUR 5 lb. Bag **49¢**

Hunt's With Onions TOMATO SAUCE..... 3 Buff Cans **49¢**

Hunt's Solid Pack TOMATOES 300 Cans **5 \$1**

Hunt's Real Italian Style TOMATO SAUCE.... 8 Buff Cans **\$1**

Hunt's 6 oz Cans TOMATO PASTE..... 2 for **33¢**

NEW wesson BUTTERY FLAVOR OIL 32 oz Bottle **69¢**

wesson AMERICA'S NO. 1 COOKING OIL Big 48 oz Bottle **89¢**

PRODUCE Festival

Ruby Red Grapefruit 2 large size 25¢

Golden BANANAS lb..... 10¢

Delicious APPLES lb..... 29¢

Genuine AVOCADOS each..... 10¢

THRIFT TIPS  **Hunt's Fancy, Easy Pour CATSUP** 20 oz Bottles **3 89¢**

THRIFT TIPS  **Snowdrift** New Improved **59¢** 3 lb Can

Maryland Club COFFEE 1 lb Can..... 69¢ **\$1.37** 2 lb Can.....

Hunt's Fancy TOMATO JUICE..... 3 46 oz Cans **\$1**

Hunts No. 2 1/2 Cans PEAR HALVES 2 for **79¢**

QUALITY PORK

First Cut PORK CHOPS lb..... 59¢

Family Pack PORK CHOPS lb..... 69¢

Semi-Boneless PORK ROAST lb..... 45¢

Economical PORK STEAK lb..... 49¢

Chiffon (Asst. Colors) FACIAL TISSUE 4 200 Count Boxes **\$1.00**

Chiffon (Asst. Colors) TOILET TISSUE 4 2 Roll Pkg **\$1.00**

Pace's SLICED BACON 2 L.B. \$1.29 Pkg.

Pace's Pure Pork SAUSAGE lb..... 39¢

VILLAGE FOOD STORES

These Prices Are Good
Thurs-Friday
Saturday

We Reserve The
Right to Limit
Quantities

Conv
Corr

8 Pages - 1 Se

Christ

Gert Behanna, aut Late Liz," and one widely known and w Christian women, w 7:45-Thursday night, First Methodist Cl torium here.

Sponsoring the of countywide li members of the Mt Ministerial Allian Rev. L. B. Edward brook as president Hamilton of Color secretary.

Mrs. Behanna, more than 1,000 tal travels extensively colleges, seminai schools, jails, ment service clubs, high meeting and church

She is the only wo in the Yale Univer and has just ret Great Britain wher to university stude utties.

Her famous book Liz," is her au written under the n abeth Burns. In the story of her li lionaire's alcohol reared in the Walc in a "too rich"

She married the who asked her just from her father. riages, many drink pills later she t herself. Falling e side she had dram sion and at the age "a resurrected per

Since that time, 2 she has given away and resolved that th life shall be devot her story that oth inspired to seek Go

The book, "The has been filmed fo by the Episcopal R Foundation. Mrs. also made a num

Jail
8 D

Eight pleas o felony driving whil offenses were hea Austin McCloud l trict Court here Fi

All defendants w probation for jails fined.

Prosecuting the quent offense cas trict Attorney Wel

Assessed a pena in jail, Tomie A. 3 60, of Snyder, w probation for two charged court cc

Claude Ezra Bee Plains received a after his plea of costs of \$45, plus probation fee. Ju placed Beele on 1 one year after sen to 90 days in jail.

James Omer Ste drew 90 days in j for two years, a \$3 court costs of \$45; fee of \$10 per mon

Zemry Vaught City was given a st months in Mitche Dented probation, have to serve his pay court costs of

James Edward 1 bert Community he sentence him to 90