



# THE HART BEAT



USPS 577-740

VOLUME 17 NUMBER 20

HART, CASTRO COUNTY TEXAS NOVEMBER 8, 1979

## Kangaroos Down

## Longhorns 34-22

BY MONTY UPTON

Hart Longhorns took on the league leading Kress Kangaroos and gave them all they wanted in three periods letting up mainly in the third period. Turnovers were key factors in the game as Hart killed Kress drives in the end zone on a fumble recovery by Scott Jones and Melvin Washington, and Isaias Ponce picked off a Roo pass at the Horn 4 in the first quarter.

Following a punt return to the Horn 24, Kress got its first score on a 23 run scamper by Glen Terrell. The PAT run failed.

On Kress' first possession the second quarter, Chad Black came up with a Kress fumble at the Roo 22. Following a penalty, the Longhorns tied the game on a 25 yd pass from Derek Rich to Keith Newsom. The kick after failed. Neither team could score again despite a Hart drive to the Kress 25 as the clock ran out, leaving the score knotted.

The third period proved a disaster for the Horns as Kress drove 70 yards to score on a 2 yard run by Eddie Johnson. Michael Williams added the 2 point run. Then Hart fumbled the ball on their first play and the Roos had the ball in Horn territory at the 34. Six plays later QB Henry Amador broke for the final 4 yards to score. PAT run failed.

Forced to punt on their next series, Hart gave up the ball at their own 36. Taking 8 plays, Kress got another TD on an 18 yard Johnson run and Terrell added the 2 points in the opening seconds of the final quarter.

Hart's problems were not yet over as they had a punt blocked at their own 15. H.B. Larry Monkres got the final 2 to end Kress' scoring.

Finally the Longhorns turn had come as Marlin Marble came up with a Kress fumble on their 20. On the second play HB Isaias Ponce broke for 15 yards to score. Newsom then added the 2 point run.

Hart's final score came following a Kress punt. On the second play from the Hart 30, fullback Lorenzo Valenzuela bulled his way through the line and, refusing to go down, rambled 70 yards for the score behind a brilliant screen block of Ponce. Newsom then added the 2 point run to make the score 34-22.

Neither team was able to get in scoring distance again and time ran out with Hart in possession.

Hart takes on the Longhorns from Vega Friday night for the final home appearance this season.

HART	STATISTICS	KRESS
8	First downs	18
110	Yds rushing	291
75	Yds passing	59
185	Total Yards	350
17/5	Passes att/comp	10/3
1	Passes inter by	1
4	Opp. fumbles rec.	2
7/27.3	Punts/av.	3/37
18/121	Pen/Yds	23/170



AWAITING HARVEST - This cotton field, like others in the area, will soon be gathered and another crop year ended. This field is one that received hail damages late in the growing season.

## Sanders Win Grid Guessing Game

Suzan and Bill Sanders provided the one-two punch to the grid guessing game this week. Missing just three games each, they win first and second places. Mrs. Sanders came nearest the actual score of the Horns and Roos and nails down the top win. She missed by nine points with a 13-34 prediction. Sanders was off 16 points with 12-28 guess.

Everett Heller and Jane Alexander were still tied after the tie breaker was

counted and equally divide third place winnings. They, and six other contestants, missed four games each. Each was 22 points off with prediction of 13-21 and 6-28, respectively.

Others who missed four games were Scott Rice, 23 points off, 13-20; Linda Blackman and Robert Hawkins, 24 each, with 6-26 and 7-25 respectively; Bob Reed, 28, 7-47; Calvin Alexander, 35, 0-21 and Jean Ford, 45, 14-7.

Mrs. Sanders continues to hold onto

the season lead with 101 correct predictions for the season. Mrs. Alexander has 94; Rice, 91 and Sanders, 90.

Three contests remain to be counted and those standings are subject to change each week. No contestant should give up trying for the grand prize finish.

Three winners are named each week. Any contestant can win for the week, even one who enters the first time. Enter today - it's fun.

## Time Turns Back

### At Pep Rally

Time will turn back to the fabulous fifties Friday, Nov. 16 with a gala pep rally on that theme. All persons are invited to join in the rally to boost the Horns onto victory in their last game of the season.

All persons who were cheerleaders or twirlers in the fifties at any school, are invited to join the cheerleaders in making this a fabulous send-off.

## Coming Events

Friday Nov. 9 - No school - teacher work day.

Friday, Nov. 9 - Enchilada supper, 5:30 to 7:30 p.m. in school cafeteria.

Friday, Nov. 9 - Final home game, Longhorns vs Vega, 7:30 p.m.

Thursday, Nov. 15 - Junior High and JV football, here. First game, 5 p.m.

Friday, Nov. 16 - Final football game of season at Springlake-Earth. Game time, 7:30 p.m.

Monday, Nov. 19 - Basketball season begins with girls varsity and JV hosting Olton. First game at 6:30 p.m.

Wednesday, Nov. 21 - Schools dismiss at 2:30 p.m. for Thanksgiving holidays.

## Correction

An error was made in last week's Hart Beat in the news item concerning a fund begun for Mrs. Leonard Griswold.

Mrs Griswold is not on the kidney dialysis machine. She does have to undergo regular treatments, however.

## UIL Announces New Districts

University Interscholastic League, which governs high school athletics in the state, announced new classifications and district alignments Monday.

The realignments did not affect the composition of District 3A which now becomes District 3AA. Schools included in that district remain Bovina, Springlake-Earth, Farwell, Kress, Vega and Hart.

Most widespread change in the UIL decision affects the entire state with Class B becoming Class A, Class A to AA, Class AA to AAA, Class AAA to AAAA and Class AAAA to AAAAA.

Anton is dropping from the old Class A group to the new Class A, playing in the district with Nazareth, Amherst, Happy, Lazbuddie, Motley County, Silvertown, Smyer, Sudan, Sundown, Valley and Whiteface.

## Longhorn Band Sponsors Supper

Enchildadas are being served Friday evening prior to the Hart-Vega football game. The Longhorn Band is sponsoring the supper in the school cafeteria. Serving hours are 5:30 to 7:30 p.m.

Cost of the supper is \$3 for adults; \$1.50 for students in sixth grade and younger.

An invitation is extended to everyone.

## Turkey Shoot Slated Nov. 17

United Methodist Youth of Hart will sponsor a turkey shoot Saturday, Nov. 17 from 10 a.m. until 6 p.m. at the Hart Gun Club's range one and a half miles south of the traffic light on FM 168.

Shoots for ham and bacon will be held at various times during the day.

The youth will also give away a shotgun at 5 p.m. that afternoon. Contributions of \$1 are being taken by members of the youth group and their sponsors.

**OUT OF HOSPITAL**

Mrs. Willie Alexander came home Tuesday from Central Plains Regional Hospital in Plainview. She is doing well at home.

**DAUGHTER VISITS**

Mrs. Dave Welder, Tami Jo and Davey of Mobridge, S.Dak. came Saturday for a visit with her parents, Mr. and Mrs. Al Irons and other relatives.

**WEEKEND GUESTS**

Visiting over the weekend with Mr. and Mrs. Buster Aven were her sister and brother-in-law, Mr. and Mrs. Steve Thompson of Odessa.

**HELP WANTED - Longhorn boosters needed in stadium Friday night. Show them you care!**

**WANTED - Strong lungs and loud voices in the form of Longhorn boosters. Space available for you in Longhorn stadium. Don't be a missing person.**

**Legion Post Officers Named**

Officers for a new year were elected Tuesday night at a called meeting of American Legion Post #311. Orval Sharp was elected as Post Commander.

Other officers include L.J. Rice, vice commander; Claude Ray, adjutant; Joe Bailey, finance officer; Francisco Alvarado, Sergeant at Arms; James Kennedy, service officer; R.A. Futrell, chaplain; and Percy Hart, historian.

All veterans are encouraged to pay 1980 dues and help preserve the post's charter and to build a stronger American Legion for the community.

**IMPROVING**

Mrs. Perry Van Vliet has been taken out of ICU and is improving at Highland Hospital in Lubbock. She had undergone hip surgery and developed blood clots.

**Methodist Attend Youth Rally, Plainview District Conference**

Several members of Hart United Methodist Youth traveled to Plainview Sunday afternoon to attend a Plainview District Youth Rally. A total of 137 youths from 19 different area towns attended.

A choir from Oakland United Methodist Church in Lubbock presented a cantata, "Come Together."

Attending were Robin and Tamera Bowden, Suzahn and Cristi Rowland,

Philip Hawkins, Jim Bob Hooper, Tim Foster, Kerry Newsom, Jeff Wheeler, Suzan and Bill Sanders, Robbie Hawkins and Jackie Wheeler.

Joining the group for Plainview District Conference were the Rev. Lanny Wheeler, Bryan and Timmy and Mr. and Mrs. Gene Huntsinger. The meeting was concluded with dinner served at the church. The youth went bowling following the meal.

**Annual Harvest Festival Slated Nov. 14 By Methodists**

Preparations are in full swing for the annual Harvest Festival at First United Methodist Church. The Rev.

Wesley Putnam, pastor of First United Methodist Church of Hale Center, will be special guest and will present a worship service in song.

Women of the church have been asked to bake hams and turkeys and prepare the dressing. Others are in charge of decorating and making the church ready. Everyone who has not been asked to serve on a special committee is invited to fill in the meal with salads, vegetables and desserts.

The observance will begin at 6:30 p.m. Wednesday, Nov. 14 with supper in the fellowship hall. The worship service will follow at 7:30 p.m. in the sanctuary.

**Preston Upshaw Named Trustee**

Preston Upshaw was elected to the board of trustees of Wayland Baptist College during the annual meeting of the 2.1 million-member Baptist General Convention of Texas (BGCT) Oct. 30-Nov. 1 in Lubbock.

Upshaw, whose term expires in 1982, is a member of First Baptist Church where he serves as music director.

The BGCT owns and operates eight colleges and universities, an academy, eight hospitals and four children's homes.

This work is supported by the Convention's 4,400 churches and missions, which will give more than \$31 million this year through the Cooperative Program to help share Christ's love throughout the world.

Besides the institutions, the Convention helps support the work of more than 5,000 missionaries in the United States and 94 foreign countries.

**Smyth Rites Held Tuesday**

Services were held Tuesday afternoon in First United Methodist Church in Olton for Mrs. Annie Arie Smyth, 79, of Olton.

The Rev. Olin Cosby, pastor, officiated. Interment was in Olton Cemetery under the direction of Parsons Funeral Home.

Mrs. Smyth died Sunday in Wolfforth. She was born July 19, 1900 in Indian Territory, Oklahoma and was married to Aubrey J. Smyth Dec. 28, 1918 in Paducah. Mr. Smyth died May 14, 1977.

She had lived in the Olton community since 1952. She was a member of the Methodist Church since childhood.

Survivors include one son, Aubrey F. Smyth of Olton; three daughters, Pauline Marion and Katherine Smyth, both of Lubbock, and Bettie Roberts of Hereford; four sisters; two brothers; 11 grandchildren and seven great grandchildren.

**WATT A SAVINGS**

Caulking around windows and doors, adequate insulation in walls and ceilings, efficient heating and cooling equipment — such as a heat pump — all are ways to help you save watts.

Booklets on ways to help you save energy — and at the same time, make your home more comfortable — are available at Southwestern Public Service Company. Come by our office today.



909.12



MRS. BILL REMMENGA



## Cook Of The Week

Favorite recipes are shared this week by a recent newcomer to Hart, Mrs. Bill Remmenga. Jan and Bill moved to Hart in September from Tulia.

Bill is superintendent for Farmers Grain. Jan has been working at Pay-N-Save Grocery since moving to this community.

Jan was born in Wyoming and moved with her parents to Nebraska when she was just 13. She loves fishing and hunting and remembers happy hunts with her father when she was just a little girl.

Bowling is another of Jan's favorite pastimes.

Two dogs and a parrot complete the Remmenga household. Jan admits their feathered friend is temperamental and speaks only if he wishes.

The Remmengas are Methodists.

### MILLIONAIRE PIE

1 9 in graham cracker crust  
1 8 oz pkg Philadelphia cream cheese  
1 lg can crushed pineapple  
Powdered sugar  
1 lg Cool Whip  
1/2 c pecans  
1/2 c coconut

Mix cream cheese and crushed pineapple together. Add powdered sugar to sweeten to taste. Add Cool Whip, pecans and coconut and mix ingredients until well blended. Pour into graham cracker crust and chill for 3 hours or until set.

### TACO TWISTS

Preheat oven to 350°

1 lb hamburger  
1 can (15 oz) chili or refried beans mashed  
2 T onion flakes (dried)  
1-2 t chili powder  
3/4 c grated cheddar cheese  
1/2 c crushed corn chips  
1/4 c corn meal  
2 c Bisquick mix and 1/2 c water

Brown hamburger and drain. Add chili or beans and seasonings and mix well. Spread out cornmeal on rolling board. Mix Bisquick and water. You may need to add more Bisquick flour if mixture is too thin. Roll Bisquick mix over cornmeal to about 16x8 in rectangle. Spread hamburger mixture over dough. Spread corn chips and cheese on top. Roll up and cut in slices (like cinnamon rolls). Place side by side

in greased 13x9 inch pan. Bake 35-40 mins. until brown. Serve with your favorite hot sauce.

### EASY AU GRATIN POTATOES

3-5 med potatoes, depending on size of family  
1/2 cube oleo  
Milk  
1/2 lb Velveeta cheese  
Salt & pepper  
2 T flour

Peel and slice potatoes and put in casserole dish. In skillet, melt oleo and add 2 T flour and stir until no lumps. Add enough milk to thicken. Pour over potatoes, add cheese, salt and pepper. Cover and place in oven for 1-1 1/2 hrs at 350° or until potatoes are tender.



If you are cold  
Warm up  
With our 3 piece Toboggan Sets

Charles Place

## Anita's Kountry Kitchen



How about a good  
Hot Bar-B-Que Lunch  
Every Friday Noon

11:30-2:00

Bar-B-Que Tips  
Bar-B-Que Smoked Brisket  
Bar-B-Que Polish Sausage  
Onion Rings  
Potato Salad  
Red Beans  
Apricot Cobbler



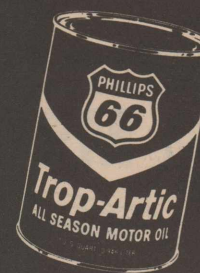
Have you tried our hamburger  
with a quarter lb. of meat

In Olton

# Cold Weather Is Here

## It's Time For Your

## All - Weather



# Trop Artic 10 - 40



# Hart Oil & Butane



# FARMERS STATE BANK



"FRIENDLY, COURTESY SERVICE"

YOU'RE TOPS ON OUR CHART HORNS!

- 1. DIMMITT
- 2. FRIONA



## PAY-N-SAVE

BACKING THE LONGHORNS AND THE LONGHORN BAND

- 3. PLAINVIEW
- 4. CORONADO

# Football

GRAND PRIZE \$50

WEEKLY PRIZES \$5 \$3 \$2



Games included are listed in ads for each team. Each team is numbered. Entries must be in form printed in the number on the team you predict score of the tie, completely, the result. Each week's entries to one of the special DEADLINE for entries. Total number of games determines counts on contest for the GRAND PRIZE. Contestants who season will receive event of a tie, flip the winner. Weekly prizes go to the most number of tie-breaker counts helping determine necessary. In case divided equally. Only one entry per Everyone is eligible.

ALL THE WAY WITH THE MAROON AND WHITE!

## HI PLAINS INSURANCE

- 9. CHICAGO BEARS
- 10. NEW YORK JETS

# FARMERS GRAIN COMPANY

WE'RE WITH YOU, LONGHORNS!



## STONE'S MOTOR SERVICE

- 5. LEVELLAND
- 6. BORGER
- 11. PITTSBURGH STEELERS
- 12. SAN DIEGO CHARGERS
- 15. MIAMI DOLPHINS



GO, MAROON GANG!!

## ENTERPRISE STUDIO OLTON

- 7. TEXAS A&M
- 8. ARKANSAS

GO HORNS

## TIDE PRODUCTS

- 13. NOTRE DAME
- 14. CLEMSON



FIGHT FOR THE MAROON & WHITE

## LS FEED

- 17. NEW ORLEANS SAINTS

# Contest



### WINNERS OF THE WEEK:

1. SUZAN SANDERS
2. BILL SANDERS
3. EVERETT HELLER  
JANE ALEXANDER

In this week's contest found on these pages. Made on the the entry newspaper. Circle the entry form of each to win. Predict the winner of game and fill in remaining blanks. Entry must be turned in on sponsoring merchants, starting is noon Friday. of correctly picked weekly winners and season total for E. With most points for the \$50 cash. In the of coin determines

to persons picking wins each week. The as a game as well as the week's winners, if of ties, prizes will be

per person is allowed. le to enter.



## HART OIL & BUTANE

ALL THE WAY, HORNS!

GO! FIGHT! WIN!

25. DUNBAR

26. DUMAS

ALL THE WAY, LONGHORNS

### HI WAY GARAGE



### THE HART BEAT



PAGE 2, NOVEMBER 8, 1979.

19. OHIO STATE

20. MICHIGAN

27. VALLEY

28. LAZBUDDIE

MAROON

HOOK 'EM HORNS!!

RLES  
ACE



### TRIPLE A PUMP CO.



### FRITO LAY -CORN HANDLING DIVISION

GO, LONGHORNS

WE BACK THE LONGHORNS ALL THE WAY

16. CLEVELAND BROWNS

21. NORTHWESTERN

22. ILLINOIS

29. SMU

30. TEXAS TECH

E  
HITE!!



Building Materials  
From Foundation  
To Finish  
Glidden Paints

### ED HARRIS LUMBER

## ENTRY FORM

NAME \_\_\_\_\_ ADDRESS \_\_\_\_\_  
CITY \_\_\_\_\_ STATE \_\_\_\_\_

CIRCLE THE NUMBER OF THE TEAMS YOU PICK TO WIN

1 2 3 4 5 6 7 8 9 10 11 12 13 14 15 16  
17 18 19 20 21 22 23 24 25 26 27 28 29 30

GUESS THE SCORE ON THIS GAME:

TIE BREAKER Hart Springlake-Earth

18. SEATTLE SEAHAWKS

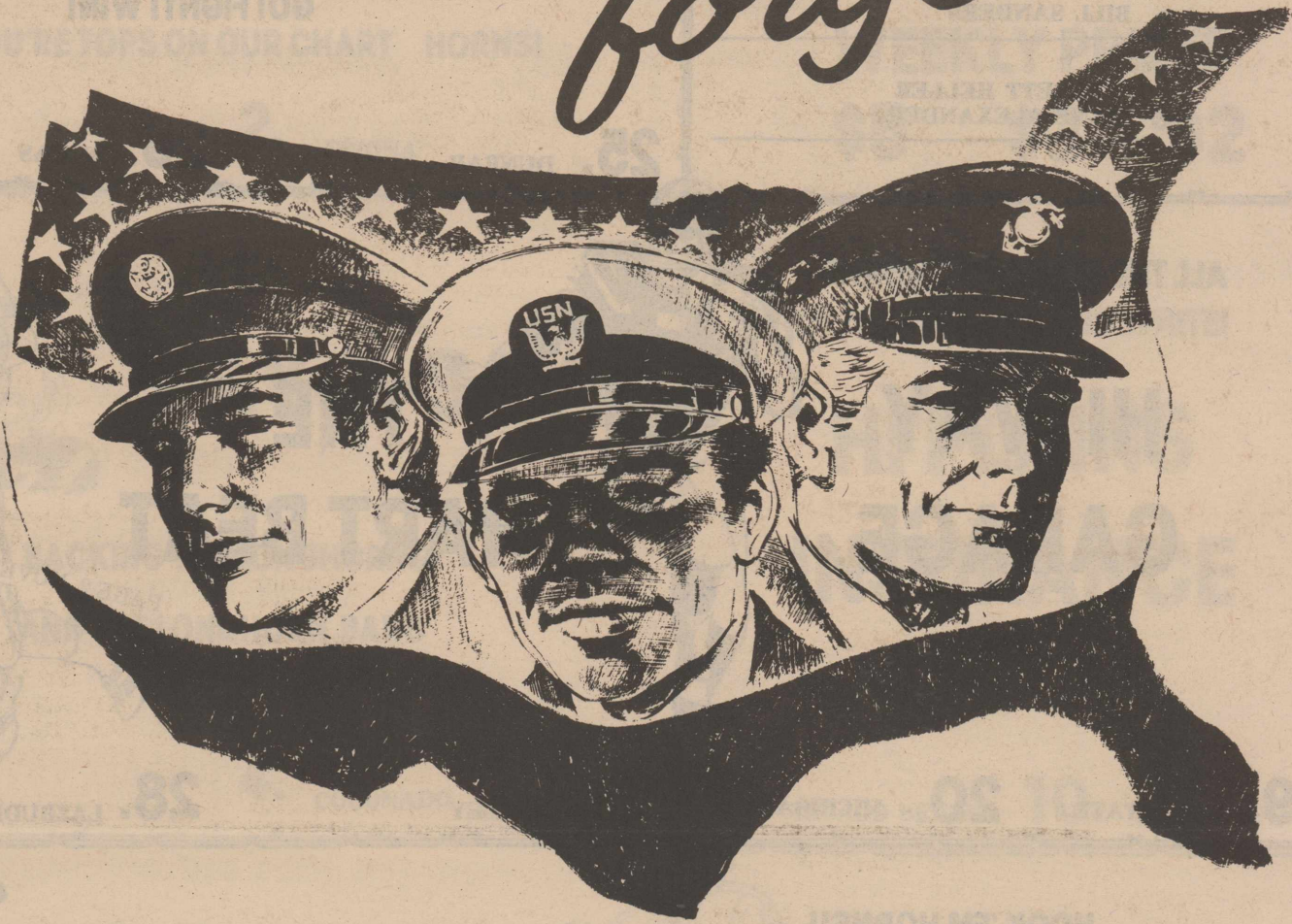
23. BUFFALO BILLS

24. GREEN BAY PACKERS

YARD

  
Veteran's  
Day\* Nov. 11

*America  
will never  
forget\*\*\**



*Let us join together in paying homage to those who served.*

*B & K Grocery*

*B & B Farm Supply*

*Farmers Grain*

*Farmers State Bank*

*Hart Aerial Sprayers*

*Hart Auto & Farm Supply*

*Hart Producers Co-op Gin*

*Frito Lay - Corn Handling Division*

*Hart Beat*

## What's Cooking At School?



NOV. 12-16

### BREAKFAST

MONDAY - Cold cereal, fruit, milk.  
TUESDAY - Hot cakes, butter, syrup, juice, milk.  
WEDNESDAY - Sausage, biscuit, jelly, juice, milk.  
THURSDAY - Sweet rolls, juice, milk.  
FRIDAY - Hot cereal, buttered toast, juice, milk.

### LUNCH

MONDAY - Pizza, tossed salad, buttered corn, apricot cobbler, milk.  
TUESDAY - Oven fried steak, hot rolls, whipped potatoes, June peas, pineapple cake, milk.  
WEDNESDAY - Pinto beans with ham, cornbread, fried okra, buttered spinach, peach cobbler, milk.  
THURSDAY - Cheeseburgers on home made bun, French fries, lettuce, tomatoes, onions, pickles, peaches, milk.  
FRIDAY - Battered fried fish, tartar sauce, cole slaw, blackeyed peas, cornbread, apple cobbler, milk.

## Card Of Thanks

A very special thanks to everyone in Hart for the visits, cards and daily prayers while I was in the hospital. Your kindness and concern were very much appreciated.

Willie Alexander

I want to thank Tom and Lavern for taking me to the hospital. I also want to thank Tom for staying with Anna at the hospital at the time of her heart attack.

May God bless them.  
Mamie McLain

I want to thank all my friends and neighbors for the calls, visits, cards and flowers I received during my stay in the hospital and at home. May God bless each and everyone.

Thaylia Irons

*Parsons  
Funeral  
Home*

*Olton*

285-2621

We do  
domestic &  
irrigation  
sales  
& repairs

**HART OF  
PLAINS  
PUMP SERVICE**

938-2590  
or  
938-2570

## Kress Teams Defeat Locals

Hart JV's lost 21-12 Thursday in a gridiron clash with Kress. The locals rushed for 180 yards while picking up 47 through the air.

Both Hart TD's came in the second quarter. Point after attempts were unsuccessful. Kress scored in the first, second and third periods.

Hart eighth graders fell 4-4 for the season after dropping a 26-6 game with Kress.

"They (Kress) were physically bigger and stronger," said Coach McBroom. "We were out-manned at several key positions."

Hart scored its lone TD in the fourth. "We played poorly the first half, but the second half was ours," says Coach Turner of the seventh grade's 6-6 battle with Kress.

"With three minutes left in the game, Kress had a fourth and 15. Junior Mancias blocked the punt and Tommy Menchaca recovered the ball in the end zone for a TD. Try for two, which would have won the game, failed."

## Sitdown Rally Held Thursday

Longhorn boosters gathered Thursday morning for a giant sitdown pep rally to boost the Mean Maroon in their final home game of the 1979 season.

Game time is 7:30 p.m. Friday with the Longhorns of Vega.

### HAS SURGERY

Kenny Hill is doing fine in St. Mary's Hospital in Lubbock where he had open heart surgery Thursday.

**MONUMENTS**  
All Granites  
White Georgia Marble & Others  
See Percy Parsons or Wayne Cole  
Call Collect 285-2621

**Your Local  
Used Cow  
Dealer**

Seven days a week dead stock removal. Please call as soon as possible. We accept collect calls. **Thank You**  
627-4247

Let Us Handle  
Your Grain

**FARMERS  
GRAIN  
COMPANY**

DeWayne Brown  
Mgr.

938-2180                      874-2452  
Kress Hiway                      Sunnyside  
938-2178  
Hart

# Classified Ads

## Hart-Kress

**HOMEOWNERS' INSURANCE - See how much you may save by insuring your HOME, CAR, LIFE and HEALTH with KENT BIRDWELL INSURANCE. 116 E. Jones St. Dimmitt, Tx. Phone 647-3427 47-tfc**

**CHRISTMAS SALES, Sarah Coventry Jewelry, now hiring, no investment, no delivery. For appointment call 938-2698 18-3tp**

**WATKINS HOME PRODUCTS - Complete line available home care, personal and farm products. Contact Janet Bontke, 293-3049 for in-home service. 9-3tc**

**WANTED - Projects for CVAE boys. Will build anything from doghouses to small tool sheds; also welding projects. Contact Don Sanders for details. 20-4tc**

**REWARD OFFERED for return of Kress senior ring taken from dressing room during Hart-Kress game. No questions asked. Box 611. Phone 684-2332. 10-1tc**

### IN MANOR

Mrs. Lena Maples moved to South Hills Manor Nursing Home in Dimmitt Thursday.

**HI-PLAINS  
INSURANCE  
AGENCY**

Hart, Texas                      938-2300

**FOR SALE - 1977 Chevrolet pickup, short, 16,000 miles. Many extras. 684-2427. 9-3tc**

**FOR SALE - 3 bedroom, 2 bath, brick house, 2-car garage. \$46,500. Call James Jackson, 938-2318. 50-tfc**

**FOR SALE - 3 bedroom FHA, brick house. 310 Ave. B. Call 938-2248. 14-tfc**

**BELINDA'S GROOMING Boutique - 2103-B W5th, 296-2404, all breeds 19-tfc**

**SUE AND CLARICE, garage and bake sale, Friday-Sunday, Nov. 9-11, 201 Ave. E., Hart. 20-1tc**

**FOR SALE - New Cable Nelson console piano. Call after 5 p.m. 684-2854. 10-1tc**

**LOST - Steer, branded rafter L on left side. 864-3626. 18-tfc**

**GARAGE SALE - Located next door to Company Store, 1 1/2 miles east of Hart on Plainview highway. Clothes, children's to adults; Christmas decorations and miscellaneous items. Saturday, Nov. 10, 10 a.m. to 6 p.m. Sunday, Nov. 11, 1:30 to 5 p.m. 20-1tc**

**HAYS  
IMPLEMENT  
CO.**

**INTERNATIONAL  
AGRICULTURAL  
EQUIPMENT**

**DIMMITT**

Stretch your heating dollars  
keep out  
**WINTER DRAFTS**

Don't get robbed of heat this winter. Repair cracks and openings now.

**WEATHERSTRIPPING**

We carry all types of weatherstripping for doors and windows to keep your home comfortable all year round.

.. As low as  
**\$1.39**

**CAULKING**

Caulking guns, tubes or by the can. Make your home air tight. Seals out drafts and dampness. Everything you need in stock.

Tubes **\$1.11**

**Ed Harris Lumber Co.**

# Fall Food Specials

SHURFRESH

PRICES EFFECTIVE NOV. 12-17

**TURKEYS** 18-22 LB LB **69¢**

ARMOUR STAR HALF

**HAMS** LB **\$1.79**

WILSON ALL MEAT

**FRANKS** 12 OZ **89¢**



GOOCH GERMAN

**SAUSAGE** 12 OZ **\$1.39**

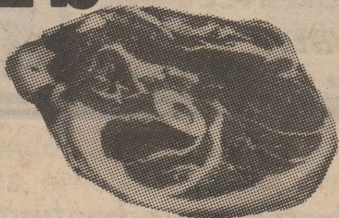
WRIGHTS

**BACON** SLICED SLAB LB **69¢**

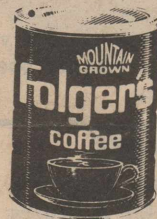
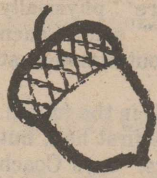
**CUTLETS** TENDERIZED **\$2.39**

ROUND BONELESS

**STEAK** LB **\$2.29**



**JELLO** 6 OZ **43¢**



**FOLGERS COFFEE** 3 LB **\$9.99**

MRS BUTTERWORTHS

**SYRUP** 12 OZ **79¢**

PRESTONE

**ANTI-FREEZE** WITH 7.50 PURCHASE GAL **\$3.69**

**ALKA-SELTZER PLUS** 20 CT **\$1.29**

GAVISCON

**TABLETS** ANTACID 32 CT **\$1.49**

**TISSUE** WHITE CLOUD 4 ROLL PAK **89¢**

**CHEF'S BLEND** FRISKIES 3 1/2 LB **\$1.59**

**KITTY LITTER** 10 LB **\$1.59**

**PINE SOL** 28 OZ **\$1.39**

## 'HARVEST TIME'

A Good Time to Save on These Foods!

KRAFT

**MACARONI & CHEESE** 7 1/4 OZ **3/\$1**

**VEG-ALL** LARSEN 303 CAN **3/\$1**

**POT PIES** MORTON **2/59¢**

BORDENS

**WHIPPING CREAM** 8 OZ **49¢**

**EGG NOG** BORDENS QT **89¢**

WELCH'S FROZEN

**CRANBERRY JUICE** 12 OZ **89¢**

**DRINKS** HI-C JUG 64 OZ **89¢**

**COCA COLA** 32 OZ 6 PAK **\$1.39**

**RICE KRISPIES** KELLOGG'S 13 OZ **89¢**

**DISH ALL** 15¢ OFF LABEL 35 OZ **\$1.19**

**Pay-n-Save**  
QUALITY AND SERVICE  
**HART**