

Help Build Ranger By Buying Here

Ranger Times

UNITED PRESS SERVICE BRINGS LATE NEWS OF THE WORLD TO TIMES READERS

RANGER, TEXAS, FRIDAY EVENING, MARCH 15, 1940

PRICE 3c DAILY (5c ON SUNDAY)

NO. 102

Buy It In Ranger And Help Business

"Mental Slayer" to seek His Release from Penitentiary

By ARNOLD DIBBLE, Staff Correspondent
FORT WORTH, Texas, March 15.—Thomas F. Whiteside, 38, known as "Mental-Slayer" and a county robber, tomorrow seeks release from the state prison.

Whiteside, who attempted to escape nearly 1000 years from convict's sentences by force, was committed as a clerk in the records office, seeks release by writ of Habeas Corpus. He appears in the court of criminal appeals here before Judge M. Rogers of Huntsville, Rogers, of the Twelfth District Court, granted Whiteside's writ and made it returnable here at the request of the district judge Willis McGee of Fort Worth.

The prisoner contends that he is being held in prison "illegally" and that his sentences were run concurrently. Whiteside, black-haired, sharp-featured and slender, was a 26-year-old attorney with a "good record" when he was accused of murdering his 24-year-old wife, as March, the mother of three children. The state charged Whiteside caused her to jump from the second-story window of her apartment on June 16, 1927.

The state said he forced her "by force, threats and threats" to jump and thus committed homicide. She died in a hospital on Aug. 8, 1927, as result of paralysis caused by a broken spinal cord. Whiteside was sentenced to 18 years imprisonment. He won a reversal on appeal, but another trial resulted in a 20 year sentence on Feb. 1, 1929. After 36 months in jail, he went to prison, but not before he had twice attempted suicide. Once he tried poison, and the other time he broke his glasses and swallowed the pieces.

After four years of prison life, Whiteside obtained a 60-day furlough for him to start Jan. 23, 1935. The narcotics habit, which Whiteside has claimed to have cured, he said, broke into the doctor's office here. He was arrested and convicted in June 1933, on charges of robbery, theft and burglary. He was sentenced to 20 years.

Whiteside charged in his application for release that the sentence handed down here and the sentence received from the state court were designed to run concurrently. He has had enough time of his murder sentence to be eligible for parole. Tarrant county officials have said that he must serve time on a sentence given here because two sentences were independent of each other.

A writ of habeas corpus was granted here last year by Judge Gregor when presented by a man magazine writer. Whiteside serving his 13 years in prison here never admitted that he murdered his wife. He said his wife jumped from the window of his back was turned. They were having a "prohibition-era" party. The state introduced evidence a butcher knife, an apple and a heavy mirror with which he allegedly threatened his wife while she lay on the sidewalk after the jump.

In the last few years Whiteside returned to writing to raise money. His stories of the "Crime-Net-Pay" variety he submitted to detective magazines. He has written poetry and his literary efforts have attracted the attention of many among the literati.

Whiteside was "ranked" in 1931 for altering commitment papers seeking off nearly 10 centuries in the sentences of convicts he saw. The forgeries, which also included crediting unearned over-credits, were caught, however, and Whiteside benefited from the prison's "fast-penalizing."

Two years ago Whiteside got a furlough and walked off from a prison farm near Sugar Land. A few days later he called a farm manager from New Orleans and said he wanted to return. He was not penalized for his escape because of voluntary return, but his trusty privileges were removed.

COUNTY MUST HELP MORE IN WPA PROJECTS

Members of the county commissioners court, in compliance with notification from the Works Projects Administration, are figuring ways and means of increasing the county's percentage of contribution in the sponsorship of projects.

The county has been furnishing a contribution of 15 per cent in sponsoring WPA projects but under an act of Congress, like other sponsors, must hereafter contribute 25 per cent of the cost of projects. The WPA furnishes the remaining percentage of cost.

The county contribution consists mainly of material and machinery. The act of congress which made mandatory the contribution of 25 per cent of a project cost by a sponsor was passed last Fall. The new act having gone into effect January 1, the WPA has advised Eastland County that its contribution of 25 per cent on projects is retroactive from that date.

Under the county-wide road project, in which there are six units operating, the WPA last month paid out \$46,000 for trucks, labor and material. For the last half of the past month the WPA paid out \$21,800 alone for labor.

PROCEEDINGS 11TH COURT OF CIVIL APPEALS

The following proceedings were had Friday in the Court of Civil Appeals, Eleventh Supreme Judicial District:

Affirmed: The Benjamin State Bank, et al, vs. Mrs. Mattie Reed, Knox, R. W. McFarlane, et al, vs. John Couger, et al, Stephens.

Reversed and Remanded: J. H. Dilbeck vs. T. A. Norwood, et al, Comanche.

Dismissed: Troy Gin Co., et al, vs. Farmers and Merchants National Bank of Abilene, Texas, Taylor. The Bankers Trust Company of New York, et al, vs. The Federal Land Bank of Houston, et al, Panola.

Motions Submitted: A. M. Ferguson, et al, vs. Joe Lee Ferguson, defendant-in-error's motion to strike statement of facts. Frona Ames, et al, vs. Doris Rice Herrington, et al, vir, motion for rehearing of appellants' D. L. Kinnard and United States Fidelity and Guaranty Co. Hartford Accident and Indemnity Co. vs. Ewell Harris, appellee's motion for rehearing. Troy Gin Co., et al, vs. Farmers and Merchants National Bank of Abilene, Texas, joint motion to dismiss. Wm. H. Harrow, et al, vs. The W. T. Rawleigh Co., appellee's motion for rehearing on motion to strike statement of facts. Frona Ames, et al, vs. Doris Rice Herrington, et al, vir, appellee's motion for rehearing. The Bankers Trust Company of New York, et al, vs. The Federal Land Bank of Houston, et al, appellants' motion to dismiss.

Motions Granted: Troy Gin Co., et al, vs. Farmers and Merchants National Bank of Abilene, Texas, joint motion to dismiss. The Bankers Trust Company of New York, et al, vs. The Federal Land Bank of Houston, et al, appellants' motion to dismiss.

Cases Submitted March 15, 1940: A. B. Edsell, et al, vs. Clara Hutchins, et al, Throckmorton. Continental Southland Savings & Loan Assn. vs. H. E. Jones, Taylor. Texas Consolidated Theatres, Inc., vs. Hiram B. Slaughter, Stephens.

Cases to be Submitted March 22, 1940: C. W. Guthrie vs. Farmers State Bank in Merkel, et al, Taylor. Rose Winkler Day vs. Sam J. Day, Eastland. F. J. Smith vs. J. A. Hood, Scurry.

Champion Steer Is Sold For \$1,800 By Sweetwater Youth

FORT WORTH, March 15.—Kenneth Lewis, Sweetwater farm boy, was \$1,800 richer today after selling his grand champion steer at the Southwestern Exposition and Fat Stock Show auction for \$2 a pound.

The street brought \$1,800 from Henry Love, Fort Worth hotel man, and was added to \$160 in prizes he had already won exhibiting the steer.

Feminine Ins and Outs of Politics



Mrs. Thomas E. Dewey, left, wife of the candidate for the Republican presidential nomination, pictured chatting with Mrs. Franklin D. Roosevelt at a stunt party in Washington.

Honor Roll for Junior College Listed by Dean

The following is the honor roll for the Ranger Junior College for the fourth six weeks of the 1939-40 term, as announced by H. L. Baskin, dean of the college:

Freshmen: Honors—Herman Bryan, Dorothy Campbell, June Ann Gregoliet, R. C. Howell, Yvonne Kribbs, Sue Turner, Juanita Warden, Nona Fay Wynn; high honors, Dorothy Byson and Billie Eldridge; highest honors, Rita Gallagher.

Seniors: Honors—Charles Hicks, June Hunt, Priscilla Miller, Geraldine Smith, Katherine Wood, Huberta Mitchell; High Honors, Anna Mae Mueller and Katherine White.

Churches Cooperate in Vesper Services

Elwood R. Priesing, head of the fine arts department of Ranger Junior College, which is to present a Vesper service at the Recreation building Sunday evening at 8:15, announced today that services in Ranger churches would start early that evening in order that the congregations could attend.

The statement said that special announcements would be made Sunday morning at the churches where services would be started earlier, would be made at the morning hour.

Odd Fellows Hold A Regular Meeting

The Ranger Odd Fellows Lodge met in regular session Thursday evening at the I.O.O.F. Hall on Elm Street, with 20 members present.

During the recess Miss Frances May Dugan, Ranger Odd Fellow Lodge mascot, was presented.

Special musical numbers were presented by a string band, composed of Thomas Stewart, E. J. Franklin and L. A. Franklin.

Six Are Killed In Charlotte Blaze

CHARLOTTE, N. C., March 15.—The Guthrie apartments were destroyed by fire here early today with a loss of six lives and \$100,000 in property damage.

The fire was believed to have started when a boiler exploded, setting fire to the building, spread with such rapidity that many of the residents were trapped.

Several were injured when they were trapped by flames and jumped from second and third story windows, and firemen rescued many who were hanging on window ledges, choking from the smoke.

Germany Turning To Balkans Now

Germany turned from the Baltic to the Balkans today in a diplomatic attack against the Allied blockade and promised a "surprise" for the Allies within the next 10 days. The Nazis also hinted, in Berlin, that there was possibility of early military action.

Nazi officials declared that an economic pact, binding Italy, Russia and Germany with the Balkans may soon develop, although reports from outside Germany were that other observers were skeptical.

U-BOAT SUNK IN A BATTLE WITH TRAWLER

LONDON, March 15.—The British Admiralty reported today that a British trawler had sunk a German submarine after a 17-hour running battle, in which depth charges and many shells were fired.

After the submarine was sunk the officers and crew were rescued and the trawler limped into port, partly damaged from the fight.

The reports stated that the crew, listening through the ship's "ears" by which undersea craft are located, heard the submarine and began dropping depth charges. The U-boat was damaged and came to the surface. The running battle then started.

The submarine, with a speed of 16 knots an hour, was outdistancing the trawler, which had a speed of only 14 knots. The trawler's captain tied down the safety valve, put on full speed and attained a speed of 18 knots, overtaking and sinking the submarine with shellfire.

Upon arrival in port it was found that the trawler had been damaged, either by the depth charges, the shells or from the severe shaking it received while attacking under increased steam pressure and at speeds for which it was not built.

The admiralty also reported that another German freighter, the 35th, was scuttled by its crew and 10 officers and 50 seamen were rescued and landed in an unnamed British port.

Group To Assist In Day Appointed

Members of committees to assist in the holding of an extension service official dairy day April 23 in Eastland were appointed at a recent meeting conducted by Ruth Ramey and Elmo V. Cook, county agents.

The members of the committees are: General—H. J. Tanner, T. E. Richardson, E. M. Anderson, Dr. C. C. Cogburn and George I. Lane, all of Eastland.

Dinner—Mrs. Josie K. Nix, Morton Valley, Mrs. Ted May of Morton Valley, Mrs. E. R. Rogers and Melba Love of Alameda; Mrs. T. E. Robertson of Flatwood; Miss Sarah Mae Barber of Staff and Miss Willie Ward of Word.

Dairy Products—Miss Ramey, Clara Brown, Callahan county home agent; Gladys Martin, Jones county home agent; Zelma Ruth Munroe, Stephens county home agent; Hattie Tacker, Taylor county home agent; Margaret Blount, assistant Eastland county home agent; El Fieda Harrison, Shackelford county home agent; Mary Sue Gissell, Palo Pinto county home agent.

Cattle Judging (to arrange for judges)—A. C. Pratt, assistant Eastland county agent; W. A. Ruhmann, assistant Taylor county agent; Ross Brison, Callahan county agent; W. R. Lacey, Stephens county agent.

Cattle (to contact breeders)—Elmo V. Cook, Eastland county agent; W. T. Magee, Taylor county agent; Floyd Lynch, Jones county agent; J. H. Jameson, Palo Pinto county agent; G. D. Everett, Erath county agent; Tom Hughes of Erath county, a dairyman, and Joe Shelton, Brown county dairyman.

Best Laid Plans Of Boys Also Go Astray

ROCKVILLE, Conn.—The best laid plans of mice, men and little boys who don't obey their teacher oftentimes go astray.

Five youngsters who thought their teacher too stern, tried to "get even" by letting the air out of the tires on her auto. They were caught and turned over to their parents, who reported "appropriate" disposition of the cases.

Blush Is Measured If There's Demand

MANHATTAN, Kas.—Development of the recording spectrophotometer, so sensitive it can measure the light of a candle a mile away, was announced here by Everett S. Lee, head of the General Electric company general engineering laboratory at Schenectady, N. Y.

The electrical device was designed to match inks, dyes, textiles and paints and to compare color uniformity where it is most necessary, such as in stamps and currency.

If there were any call for such a measurement, Lee said, it could record the relative color value of a blonde, redhead or brunette or measure the intensity of a blush.

Harley Street Doctors Find Fees Are Thin

LONDON.—The fashionable Harley Street doctors now are earning a tenth, or less, of what they did in peace time. Huge fees no longer roll in.

Oil Company Head Tells of "Bribery" Of State Employee

HOUSTON, Tex., Mar. 15.—Clifford Mooers, president of Shasta Oil Company, said today that \$5,000 in marked bank notes was paid to a Texas Railroad Commission supervisor in Midland under threat of cutting the firm's production 400 barrels a day.

Mooers made his statement in connection with a bribery charge filed against Gordon Bigham, a commission deputy supervisor stationed at Midland.

"Now that Attorney General Gerald C. Mann has released a statement to the press, I feel at liberty to say something in behalf of our company," Mooers said, "and correct a wrong impression that might be inferred from earlier newspaper accounts of the incident."

Mooers said that a man, not officially connected with the commission, had approached R. J. Kelly, vice president of Shasta, at Midland and made a statement in the presence of two company officials.

"I have just been to Austin," Mooers quoted the man, "and someone with the Railroad Commission, whose name I cannot divulge, asked me to deliver you a message."

"They said to tell you that your allowable in West Texas would be cut 400 barrels per day unless you would sweeten the pot with a payment of \$5,000 in cash."

The man refused to reveal the name of the commission employee in Austin unless Shasta agreed to pay the money, Mooers said, and Kelly told him he would give him an answer later. Kelly then informed Mooers.

"I immediately telephoned Attorney General Gerald C. Mann, who instructed me to report any further developments to him," Mooers said.

The messenger conferred later with Kelly and Paul Oles, company official, and stated that the "man in Austin" had decided to send a commission employee to contact Shasta officials.

Finally the commission employee summoned Kelly to his office, Mooers said, "and then demanded that our company pay over to him the sum of \$5,000 in currency in denominations of not over \$20 and that we agree to pay an additional \$200 per month thereafter."

"He further stated," Mooers continued, "that he would give us until the next afternoon to comply with the demand and stated that if we failed to meet the demand, our oil production allowables would be cut."

The man told Kelly that the money was to be split six ways and that he would receive no part of the \$200 a month, Mooers said.

"We were, of course, keeping the attorney general fully advised at all times and at no time did we offer encouragement."

Kelly finally paid the \$5,000 to the commission employee who was arrested by two Texas Rangers as he stepped out of the company office.

"Naturally we were, and still are, astounded by the boldness of the whole proceeding," Mooers said. "I wish to highly compliment Attorney General Mann for the efficient and prompt cooperation which he and his assistant, Ben Woodall, gave us and Colonel Garrison, the director of the Department of Public Safety, and District Attorney Bartell McDonald and State Rangers Naylor and Spain."

"I am sure the happening was a very severe shock to the three Railroad Commissioners and I am informed that they are planning a thorough investigation."

Trip Planned On Food Stamp Plan

A group working on a proposal for the adoption of the federal government food stamp plan will confer Tuesday in Dallas with James S. Allen, regional director of the Federal Surplus Commodities Corporation.

To be on the trip will be County Judge W. S. Adamson, County Auditor Don Parker and H. J. Tanner, secretary-manager of the Eastland Chamber of Commerce. Tanner filed application with the FSCC last December for the adoption of the plan.

Hatch Bill Voted Approval in Senate

WASHINGTON, Mar. 15.—After days of dispute the senate today voted 47 to 30 for the main provisions of the Hatch "clean politics" bill, which prohibits political activity by the state employees who receive part of their pay from the federal government.

U-BOAT SUNK IN A BATTLE WITH TRAWLER

LONDON, March 15.—The British Admiralty reported today that a British trawler had sunk a German submarine after a 17-hour running battle, in which depth charges and many shells were fired.

After the submarine was sunk the officers and crew were rescued and the trawler limped into port, partly damaged from the fight.

The reports stated that the crew, listening through the ship's "ears" by which undersea craft are located, heard the submarine and began dropping depth charges. The U-boat was damaged and came to the surface. The running battle then started.

The submarine, with a speed of 16 knots an hour, was outdistancing the trawler, which had a speed of only 14 knots. The trawler's captain tied down the safety valve, put on full speed and attained a speed of 18 knots, overtaking and sinking the submarine with shellfire.

Upon arrival in port it was found that the trawler had been damaged, either by the depth charges, the shells or from the severe shaking it received while attacking under increased steam pressure and at speeds for which it was not built.

The admiralty also reported that another German freighter, the 35th, was scuttled by its crew and 10 officers and 50 seamen were rescued and landed in an unnamed British port.

Mrs. Roy Baskin Speaker at Meet

A talk on "Moral and Mentally Fitted" was given by Mrs. Roy Baskin at a meeting this week of the Morton Valley Parent-Teacher Association.

Present were Meses. Baskin, Till Wheat, Josie K. Nix, Jake Garrison, W. F. Crouch, R. C. Westfall, O. N. Ramsower, Thad Henderson, H. Tankersley, R. H. Rucker, George Robinson, D. D. Franklin, J. W. Butler.

D. W. Gordon, N. E. Jensen, N. N. Smith, Cecile Eubank, J. W. Harris, Craig, McMahon, W. B. Tankersley, A. F. Beck, W. B. Peoples, J. B. Harbin, and Misses Inez Pickett, Richardson and Mr. McMahan.

Seniors Invited To JTAC Open House

Members of the senior class of Eastland High School recently received an invitation from Dean J. Thomas Davis, head of John Tarleton College, inviting them to be the guests of the Stephenville institution at a open house on April 18, in addition to the invitation from the dean, letters urging attendance were received from representatives of various Tarleton social clubs, who are sponsoring the affair.

Included in the program for the hundreds of high school students expected to attend will be a tour of the campus, lunch in the dining hall, motion pictures, a program by the music department, and a military review of the Cadet Corps.

Woman Suicides As Friends Visit Her

HOUSTON, Mar. 15.—A suicide verdict was returned today after Mrs. Blanche Usher, 25, was found shot to death in her home a few feet away from three friends, who were sitting in the dark in the next room.

Commission Probes Oil Bribery Case

MIDLAND, Mar. 15.—An auditor was sent from the Railroad Commission office at Austin today to check oil records in this district after Gordon Bigham, former commission employe, was charged with bribery.

The grand jury here said it would not investigate the charges at present.

Low Number Given Eastland Resident

One of the state's low license numbers has been assigned Milburn McCarty of Eastland, past president of the West Texas Chamber of Commerce. His automobile this year will bear the number 234.

BLANTON'S SON TESTIFIES IN GARRETT SUIT

Bill Blanton, son of Thomas L. Blanton, plaintiff in a \$40,000 libel action against Congressman Clyde L. Garrett and Garrett's secretary, J. W. Cockrill, was on the witness stand Friday morning in district court.

He was examined by both the plaintiff and defense. Direct examination of the witness was conducted by the plaintiff, his father, and cross examination by Carl Springer of the defense counsel.

The witness testified to questioning of his father that his father had only published one circular during the campaign, one in which was printed text letters from congressmen telling of Blanton's service in congress.

During cross examination, he could not identify a circular offered by the defense as an exhibit which allegedly contained references to Garrett's "tax record."

Young Blanton said he had never seen the circular or ones like it before.

The defense was allowed to read some questions and answers of depositions taken from other congressmen by Blanton. One deposition, taken by Blanton with Congressman Wilburn Cartwright giving the answers, stated Blanton had a credible record and denied that Garrett had anything to do with a road bill passage in congress.

Blanton said he wanted to read the depositions to refute allegations his record in congress was not credible.

At noon Friday other depositions were being read.

At one phase of the case Friday morning Blanton referred to matters in the case as the jury was filing out after court had been recessed by Judge B. W. Patterson.

Council Receives New Chairman At Meet In Eastland

Succeeding Mrs. Owen Hinman of Ranger, who resigned, Mrs. T. E. Robertson automatically became chairman of the Eastland County Home Demonstration Council at the monthly meeting this week in Eastland.

Mrs. Robertson had been vice chairman. Mrs. Ted May was elected to Mrs. Robertson's position by members of the council.

C. W. Mainer, county AAA administrative assistant, discussed the AAA program as regards gardens at the meeting. In the morning preceding the regular council meet Mrs. Cecil Eubanks of Morton Valley, council recreational committee chairman, conducted a recreational meeting for recreational committee members of home demonstration clubs.

Eight clubs, Morton Valley, Alameda, Staff, Ranger, Flatwood, Romney, Word and Kokomo were represented at the recreational meeting.

Redeeming Ginning Certificates Favored

ABILENE, Mar. 15.—Congressman Clyde Garrett of the 17th district has introduced a resolution in the national house of representatives proposing to redeem cotton ginning certificates issued under the invalidated Bankhead act.

E. D. Thomas, Tye, secretary of the Taylor county agricultural association, recently received a letter from the congressman enclosing a copy of the resolution.

The resolution provides "that the secretary of the treasury shall redeem all such tax-exemption or ginning certificates issued under such (Bankhead) act held by any producer which represent an amount of cotton in excess of the amount of tax-exempt cotton allotment to such producer under such act."

The resolution provides that payments would be made only to certificate holders who make application for payment within one year after date of enactment of the act, if and when it is enacted.

Three Die In Fire At Toronto Today

TORONTO, Canada, Mar. 15.—Two men and a woman were burned to death today and 20 others were injured in a hotel fire here.

SOVIET BEGINS OCCUPATION OF SEIZED SECTOR

Russian troops began, at noon today, to occupy the Karelian Isthmus, the city of Viipuri and the territory given to the Soviet Union under terms of the peace agreement with Finland.

From Moscow reports stated that the populace lined the streets, cheering their Russian "liberators," and said that the city was only slightly damaged. Finnish reports, however, stated that the city was only about one per cent intact.

More than 450,000 refugees from the evacuated area today marched into Finland, seeking new homes and places where they could live. Whole families, and in many instances, whole neighborhoods were attempting to stay together in order that they might start their new life together somewhere within Finland's reduced borders.

Stockholm newspapers, meantime, severely criticized Germany for the way the country was rejoicing over the defeat and humiliation of the Finns, and at Oslo the foreign minister of Norway stated that Germany had intervened to prevent Allied troops from going to the aid of Finland.

Diplomacy moved southeast in Europe at the conclusion of the Russo-Finnish peace conferences, with reports from London hinting at possible pacts between Russia and Italy, between Russia and Rumania and a Turkish-Russian pact.

In Spain Generalissimo Francisco Franco proposed to Italy an alliance which would prevent Russian domination from spreading into the Balkans, and possibly into Southwestern Europe as well.

London newspapers today cited a new word, "blitzpeace," which they said Germany and Russia would now try to negotiate, but that there was not one chance in 1,000 for its acceptance by either Britain or France.

In Washington it was reported that the Export-Import Bank was making loans to Finland and that two shipments of Red Cross supplies had already been sent from the United States to relieve suffering in Finland, where blizzards are hampering rehabilitation and movement of evacuated families.

Ranger Patrolmen Relieved Of Duty By Chief Pledger

Chief of Police Guy Pledger of Ranger announced today that Patrolmen G. C. (Lum) Love and W. G. Founds had been relieved of their police duties, effective immediately.

Pledger stated, also, that Rankin in Britt had been named day patrolman and that Lee Ames had been named as night patrolman, to work with Johnny Boyd, who has been on the force for a number of years.

Love has been working on the daytime for the past few years.

President Raps A Republican Senator

WASHINGTON, Mar. 15.—President Roosevelt today indirectly criticized Sen. Charles W. Tobey, republican, New Hampshire, for advising American citizens to disregard and violate the law.

President Roosevelt, through his secretary, Stephen Early, did not mention Sen. Tobey by name, but criticized senators who have been urging Americans to refuse to answer questions in the 1940 federal census. Sen. Tobey has been leader of a fight in the senate to eliminate questions on personal income.

Early stated that the information obtained ought to be kept secret, but that it was vitally important as a means of determining purchasing power in the lower income brackets and to furnish information upon which federal agencies could base their future policies and activities.

THE WEATHER WEST TEXAS—Fair tonight and Saturday. Slowly rising temperatures except extreme southeast tonight and in north and east portions Saturday. Local frost in Upper Rio Grande Valley tonight.

OWEN VISITOR Grady Owen of Breckenridge, formerly criminal district attorney in Eastland county, was a business visitor Friday in Eastland.

RANGER TIMES

TIMES PUBLISHING COMPANY, Publishers
212-214 Elm Street, Ranger, Texas Telephone 224

Published every afternoon (except Thursday, Saturday and Sunday) and every Sunday morning.

Entered as second-class matter at the postoffice at Ranger, Texas, under Act of March 3, 1879.

SUBSCRIPTION RATES

Ranger Times (One Year by Mail in Texas) \$3.00

NOTICE TO THE PUBLIC

Any erroneous reflections upon the character, standing or reputation of any person, firm or corporation which may appear in the columns of this paper will be gladly corrected upon being brought to the attention of the publisher.

Falsehoods Gather Weight

No one knows just how these things happen, but every once in a while the most innocent set of facts gets jumbled up and emerges as a national legend without a grain of truth.

Take the case of the Memphis, Tenn., dog pound, for example. When the building was first erected in 1936, with the aid of WPA, the story got around that the place was so luxurious that Memphis' canine population was openly inviting apprehension by the dog-catcher just to share the penthouse comfort of the new pound and to enjoy the shower baths which were supposed to be part of the project.

Memphis tried hard to stop that. But the story, with embellishments, kept popping up. Just the other day, it reached the halls of Congress when a representative referred to southern ladies bringing their poodles in for shower baths at the \$50,000 pound.

The facts? First of all the place cost only \$19,000 with WPA putting up \$13,000 and the city \$6,000. And there are no shower baths, except the garden hose used on badly soiled inmates. Since the dog shelter was opened,

\$15 A WEEK

BY LOUISE HOLMES

YESTERDAY: Ann goes to the party with Paul, receives a sensation. She meets Steve and Irene Temple. Steve dances with Ann. Steve's sister, Irene, is also there. Steve's sister, Irene, is also there. Steve's sister, Irene, is also there.

CHAPTER XX

ANN said, "If you're smart you won't kiss me." Steve blundered into another dancing partner and almost lost his balance. "What'll you do?" he asked, swaying, not trying to dance.

"I'll stop your face," Steve shouted with glee. "I'd be worth it—a help me—it'd be worth it."

He held her at arm's length, endeavoring unsuccessfully to focus his eyes on her tempting mouth. "I don't see how anyone so beautiful can be so mean," he said. "It's a girl," she answered.

Steve took a step and tripped. Ann looked imploringly at the stag line. Immediately four gentlemen stepped forward. A boy, wearing a bright necktie with his dark suit, tapped Steve on the shoulder.

"Nothing doing," Steve yelled. "Get out of my way." Ann nodded to the boy and he tried again. "You're wanted at the party," he said.

"Don't want a drink, Ann. Intox—intox—can't say intoxicates—me plenty." The stranger kept pace with them, tugging at Steve's shoulder.

Ann saw Paul with Irene Temple. He was scowling darkly, watching Steve, not responding at all to Irene's coquetry. "If she's so good let me dance with her," the boy insisted.

Steve crushed Ann to him. "You get out of here. Ann's my girl. I saw her first." Suddenly he was found himself dancing with her rescuer. He was very young and fair haired.

"My name is Ray—Stan Ray." "How do you do. I'm Ann Brown." "Yes, I know. The Evanston Browns?"

"No." She was ashamed of what had happened. For a moment it dampened her joy. "Will he be back?" she asked.

"Steve? No, he's finished for tonight. The Claybourne butler and the taxi driver will carry him home."

"Isn't it a pity?" "Yeah—Steve's a swell guy." He changed the subject. "Look, Miss Brown—are you dated for the week-end?"

"I'm afraid so." Cinderella must not step out of her glass slippers. "Too bad. A crowd of us are going to my dad's fishing lodge on Lake Michigan. Like to have you come along."

"It would be lovely. Another time, perhaps." "Right. I'll give you a ring."

PAUL finally freed himself from Irene Temple and cut in. He took Ann to the supper room. She sat down while he filled her plate from the immense buffet table. It was good to sit down, she hadn't realized that the little gold slippers were tired.

The plate of food was to be one of her memories. Tiny open-faced sandwiches like flowers, a fluted cup of chicken salad, huge black olives, a little boxed ice, salted almonds.

"I'm dreaming, Paul," she said. "In a minute I'll wake up and it will be creamed dried beef." He laughed. "As a casual friend, I'm going to tell you something, Ann. You're the loveliest girl here."

"Thank you, Paul." "And Steve Claybourne is a bum. If Miss Temple hadn't occupied me so thoroughly his face would now be jellied."

She put her pretty head on one side, regarding him seriously. "I didn't like it, Paul. I hated it." Ann's favor was a silver link bracelet. It fastened with an infinitesimal padlock. There was a tiny key. She was quite breathless while Paul put it on her arm.

"I'll keep the key," he said. "If you ever want to take it off you'll have to send for me." "Who's firing now?" she asked with a side glance.

He sighed and put the key in the box. "It was 2:30 when they left the hotel. Ann had never been so tired, nor so completely happy. Many things had happened, things which she had tucked away in her memory to take out later and savor to the full.

In the taxi, she said, "Tell him to drive slowly, Paul. I don't want to be a memory quite yet." "Take your time, fella," he called through the glass. As he left the quiet city, he said, "I'd like to do the craziest thing."

"What?" "I'd like to walk in the park." "Let's."

They left the cab at the corner of Garfield park. The drive started after them as they went into a shrubby lined path. It shivered. It was no concern of his if a couple went completely whacky. He drove away.

Ann and Paul found their bench near the lagoon and sat down. The night was warm and hushed. The city slept, even the park seemed to drooze.

"It's lovely, Paul," Ann said dreamily. "You think of the nicest things." They did not talk. Contentment closed around them like a warm wrap. Ann leaned closer to Paul's arm. Her golden head nodded. Finally it rested on his shoulder.

Paul put his arm around her and she sighed childishly, cuddling her head against his collar. He muttered, "Just this once—just this once."

AFTER a long time in which he did not sleep, he removed his arm. "The sun is about to put in an appearance, Ann," he said in a matter-of-fact tone.

She sat up, blinking her sleep-filled eyes. "Oh," she said, "I've missed all the beautiful time." Paul could not be truthful in saying that the time had been wasted for him. He had allowed his lips to touch her hair and her forehead and the sweetness lingered.

They walked to Murray street through the sun-flecked mist of morning. Ann lifted her skirts, the jeweled heels twinkled with every step. At Mrs. Follet's door she held out her hand.

"Why, it's Paul Hayden," she said, pretending surprise. "And Ann Brown," he returned soberly. It was as if they deliberately stripped the morning of any bits of glamour which might have clung to it, as if they stepped back into their rightful, weekday lives. They did not speak of the evening it had already become a memory.

It was after 6 when Ann slid out of her finery. She examined the alarm clock, found that it was set for 7, and lay down beside Clara. She did not sleep, nor did she feel the need of sleep.

Oddly enough, she did not dwell on her small triumphs at the Athens Club ball. She thought of Paul, his innate fineness, the rapture of his nearness when they danced. She lay with her lips pressed to the tiny silver padlock.

(To Be Continued)

Motor Buses Now Use Stage Depots

By United Press
FREDERICKSBURG, Tex.—Sleek motor buses now run into the same corral here where dusty stage coaches once delivered passengers.

preserved, shows that Gen. Robert E. Lee (then Lieut. R. E. Lee, U.S.A.) was an occasional guest. O. Henry often alighted from the stage there.

COLDS

Believe misery as 3 out of 5 mothers do. Rub throat, chest, back with VICKS VAPORUB

The GLOBE INC.



AHEAD OF THE CROWD

Earl Cragg

individualized Suits

Created especially to bring you the latest and best styles that Hollywood's most prominent male stars are wearing. The new Earl Cragg spring suits strike a brand new note for individualized apparel.

Choose yours from our big selection of punch-packed patterns.

\$27.50

The GLOBE INC.

Exciting

envy and admiration

—Your distinguished Crosby Square Shoes. Patterned after custom-made originals. They reveal their ancestry in the "Antique" treatment and smart exciting comfort. Get yours today.

\$5.00

A few styles \$6.00

Crosby Square Authentic Fashioning IN MEN'S SHOES

*As advertised in Esquire, Life and The Saturday Evening Post

Chop Food Value Is Stressed By Teacher

CHICAGO.—A pork chop a day keeps the doctor away, par-phrases Dr. C. A. Elvehjem, University of Wisconsin professor of agricultural chemistry.

Reporting on vitamin researches at the university, he placed pork at the top of a list of common foods that are rich sources of thiamin, a vitamin B ingredient which stimulates appetite and promotes growth.

"One pork chop," he said, "plies sufficient thiamin to meet the normal requirements for a day." Other rich sources of thiamin listed to include glandular meats such as liver, heart and kidney.

BETTER MEATS

at Lower Prices!

You Can Trust Our Butchers To Select The Finest Cuts!

Tell our butchers what you want and how you intend to prepare it... you'll not have to caution them about the waste and quality! For they make it a point to sell only the finest cuts, no matter what the price!

A. H. POWELL GROCERY & MARKET

WE DELIVER PHONE 103

fashions that will be leading the Easter Parade

NEW! Beautifully Fitted Smart Bags FOR SPRING Very Specially Priced!

The lovely casual and dress bags you want for Spring are here—at a very special price! Pouches, envelopes and carryalls in stunning grained leathers, patent and calf. Many have top handles!

Hats for your suit... your frocks... your dressmaker coat! Hats for every costume in your wardrobe! Pert and saucy, gay and demure... we've hats to flatter you! You'll love the new positions, tiny sailors, striking helmets! All gay with veiling, flowers, feathers! Get yours today.

Vanettes have constant elegance because they wear longer — more sheerness because they are finished with an extra dull process. See Vanette's dramatic new colors—perfect compliments to Spring ensembles.

\$2

IN CONVENIENT LARGE SIZES!

Hamill's

ARCADIA BUILDING RANGER

79c to \$1.25

Non-Run Mesh \$1.35 Lace \$1.65

NOTED AUTHORESS

HORIZONTAL

1,7 Author of "Uncle Tom's Cabin," Beecher.
11 Prima donna.
12 Sugary.
14 Marries.
16 State of bliss.
17 Suspicious.
18 To lead.
19 By means of.
20 Over.
21 Very high mountain.
22 Fabulous bird.
23 Electrified particle.
27 Blood money.
28 Occasion.
24 Secret information.
25 Small mark.
26 To discuss.
27 Capuchin monkey.
28 Noun ending.
29 Is undecided.
30 Blood.
41 To scan.
43 Meteors.
47 To add up.
50 And.

Answer to Previous Puzzle

13 Age.
15 Mysteries.
22 Kettle.
24 Uncle Tom, a slave known for loyalty or names.
26 One who names.
28 Inlet.
29 To think.
31 Neither.
32 Roman calendar day.
33 Fish.
39 To.

VERTICAL

1 To secrete.
2 To avouch.
3 Hastened.
4 Island.
5 Pitcher.
6 Pipe connection.
7 Literary critic.
8 Bird of the night.
9 To have on.
10 Rare root.
11 Her book.
12 Southern slaves before the Civil War.
13 Myself.
14 Slave known for loyalty or names.
15 Mysteries.
16 State of bliss.
17 Suspicious.
18 To lead.
19 By means of.
20 Over.
21 Very high mountain.
22 Fabulous bird.
23 Electrified particle.
24 Uncle Tom, a slave known for loyalty or names.
25 Small mark.
26 To discuss.
27 Capuchin monkey.
28 Noun ending.
29 Is undecided.
30 Blood.
31 Neither.
32 Roman calendar day.
33 Fish.
39 To.
40 Category.
41 To scan.
42 Toilet box.
43 To exist.
44 Part of a shaft.
45 Money lent at interest.
46 Perishes.
48 Consumer.
49 God of war.
51 Rigid.
52 Sun.
55 Before Christ (ababr.).
58 Myself.

THE SCULPTOR

who faithfully reproduces in stone or plaster a likeness or an ideal is an expert in one of man's oldest arts.

There really is a big difference in coffees. It will take just one cupful of ADMIRATION Coffee to prove to you that ADMIRATION is the coffee to buy for lasting satisfaction. It's the coffee that COFFEE EXPERTS will tell you is blended from the "top of the crop." It's the coffee with the fresh-from-the-oven flavor. Try it today and TASTE THE DIFFERENCE.

The "TOP of the CROP" ADMIRATION Coffee

Omar Burkett Is Seeking Post He Now Is Occupying

This issue of the paper authorizes the announcement of Omar Burkett for re-election to the office of State Representative from the Plottorial District No. 107.

His record as a state legislator maintains a standard of the kind of representative that this community needs in the State Legislature. His record is referred to as reflecting his position on matters affecting state affairs in this year's campaign.

He was either a co-author or staunch supporter of the following legislation, whether it became a law or was introduced in the 46th legislature. They are:

- Liberalization of the Old Age Assistance Law and aid for other social security requirements. This became a law.
- School aid and supplemental teacher salary payments. Now a law.
- Anti-Nepotism law.
- Delinquent Tax Adjustment Law for Commissioners Courts to adjust state as well as county and local taxes. Now a law.
- State Land Board. Passed both houses.
- Soil Conservation Law. Now on statutes.
- Road Bond District Law, setting aside money for county road bond assumption. Now a law.

Insurance Law. Now on statutes.

Burkett supported every economy move, cutting several million dollars from previous biennium appropriation.

He has aided county officials in taking care of afflicted patients, insane persons remaining in jails but a very short time before transfer to State Institutions.

He advocates stand on principles as discussed with voters two years ago when asking for election, giving himself and requiring a days work for a days pay of every person on the state payroll. Burkett was diligent and consistent in attendance at the regular sessions of the legislature. The following statement is submitted by Mr. Burkett for the attention of the voters and citizens of his district:

To the Voters of Eastland and Callahan Counties:

In submitting my candidacy for re-election to the office of Plottorial Representative of Eastland and Callahan Counties of the 107th district, I do so with a continued pledge to devote my time and service to the best interests of every person to the best of my ability. I feel that I am now even better qualified to serve you as your state representative as I have devoted all my time to problems that are facing us today from every angle. I sincerely ask your continued confidence in my ability and solicit your vote and influence in the coming July primaries.

Sincerely yours,
OMAR BURKETT.

To-Morrow--

Ranger Housewives Will Buy Coffee--

Why not put ADMIRATION COFFEE on your grocery list?

The FAMILY WILL ENJOY IT—and there is none better!

Ask your grocer for ADMIRATION COFFEE—he can supply you.

"It's Made in Texas"—and Advertised in the Ranger Times

LOOK! BUY! SAVE!

DOUBLE STAMPS

FRIDAY ONLY
WITH PURCHASE OF
\$2.50
OR MORE

SUGAR 10 POUNDS Pure Cane **45c**

CRISCO 3 Pound Can 49c

PET MILK 3 Tall or 6 Small Cans 19c

TAMALES Gold Medal 2 Cans 23c

OXYDOL Large Size 18c

KRAUT Deer Brand 3 No. 2 Cans 23c

PUMPKIN Libby's No. 2 Cans 3 for **25c**

POST TOASTIES 2 Large Packages **17c**

COFFEE Pipkin's Special 2 Lbs. **29c**

CATSUP Libby's Large Bottles 2 for **29c**

FLUFFO SHORTENING Made by Makers of Crisco 8 Lb. Cart. **69c**

Grapenuts Regular Package **12c**

CRACKERS Slightly Salted 2 Lb. Box **13c**

SYRUP Blackburn's Corn Blend No. 5 Can **25c**

CRANBERRY SAUCE Ocean Spray-Can 12 1/2c

CORNED BEEF Target 12 Oz. Can 19c

PEANUT BUTTER Tom Sawyer 2 Lb. Jar 25c

FOLGER'S COFFEE 1 Lb. 25c

"Sem" FACIAL TISSUES 500 Count 23c

RINSO LARGE PKG. 19c

LUX SOAP 3 Bars 17c

CUTRITE PAPER 40 FOOT ROLL 6c

P&G SOAP 5 GIANT Bars 19c

TEXAS KING FLOUR 24 Lbs. 77c

Canned Food SALE



Libby's Country Gent.

CORN

2 No. 2 Cans 25c

Featuring



Libby's

PEAS

2 Cans 27c



TOMATO JUICE Libby's 14 Oz. Cans 3 for **19c**

PEACHES Libby's Tall Cans **10c**

JELL-O 3 Pkgs. 14c

FRUITS and VEGETABLES on the March

From the gardens that supply us - to you - tender, delicious and dew-fresh.

TEXAS JUICY

ORANGES 3 doz. **25c**

Grapefruit 10 for **15c**

CARROTS BANANAS Nice Size Dozen 10c

3 Lge. Bunches **10c** **LETTUCE** Large Crisp Heads 2 For **9c**

FRESH GARDEN SPINACH CAULIFLOWER Each **17c**

3 Lbs. **10c** **POTATOES** Russets 10 Lbs. **15c**

APPLES Winesaps 2 Dozen **19c**

PIGGLY WIGGLY

SALAD DRESSING Per Qt. **25c**

TUNA, Cortez 2 Cans **25c** **POST BRAN** Large Box **15c**

HY-PRO Quart 15c Half Gallon 29c **MEAL** 5 Lb. Bag **15c**

SANKA or Kaffee Hag - Lb. **37c** **PORK & BEANS** Can **5c**

PIE CHERRIES 2 Can. **25c** **SUNBRITE** 2 Cans **9c**

PLYMOUTH

COFFEE The Taste Tells the Story 2 Lbs. **25c**

HAMS

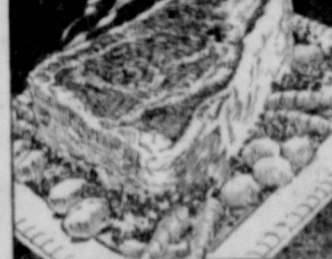
HALF OR WHOLE Pound **20c**

PICNIC CUTS

PORK ROAST Pound **15c**

OLEO 2 Pounds **25c**

CHUCK ROAST



BACON Palace Sliced **lb. 18c**

BACON Sugar Cured **5 lbs. 75c**

--FISH--OYSTERS--

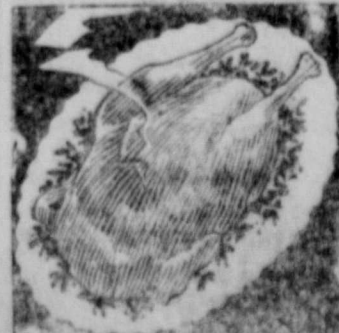
GOOD FED BEEF

7-ROAST lb. 17c

PICNIC HAM 2 to 5 Lb. Average Pound **16c**

ASSORTED LUNCH MEATS Pound **25c**

PIG LIVER Per Pound **7 1/2c**



FRESH DRESSED

HENS

★ **PIGGLY WIGGLY** ★ **FLOUR** 24 Lbs. **83c**

CONSUMER DIVIDEND EXTRA 1/3 FREE in every can of GLO-COAT

JOHNSON'S GLO-COAT FLAVOR POLISH 59¢

1 1/2 quarts for the price of 1 quart 98¢

Society Notes

New Era Club Studies Panama

Panama was the subject for study when the New Era Club met in the home of Mrs. Vernon Deffebach, Wednesday afternoon at 3 o'clock.

Mrs. J. C. Carothers was leader and opened the program with an imaginative tour from Venezuela to Panama. Mrs. L. R. Her-ring gave an interesting discussion on the Panama Canal and the Panama Conference. An instructive paper on "Conquest of the Tropics" was read by Mrs. E. H. Green and Mrs. R. V. Robinson

conducted a realistic tour of the bazaars.

In the business meeting plans were completed for a guest tea to be held at the Gholsen hotel, Tuesday afternoon from 3 to 5 o'clock. Members of Ranger clubs have been invited to attend.

Formal Opening of E. L. Martin Company Held

The formal opening of the E. L. Martin company was held Thursday evening from 7 to 10 o'clock and was attended by large crowds interested in this new and modern store.

Large baskets of snap dragons, lilies, peach blossoms and pussy willow buds and potted lilies formed fitting decorations to offset the array of spring merchandise.

As the guests entered they were registered in a guest book provided for by Mrs. Ira Wolford and Mrs. J. J. Kelly and ladies were presented corsages of panies and sweetpeas while cigars were given the men attending.

Music was furnished throughout the evening by the following Ranger musicians: Charles Osteen, Billie Ross Hodges and Jack Pear-sall accompanied by Mrs. F. S. Pear-sall, Billie Mack Meroney, Rosemary Bruce, Jane Thompson, Billie Jean Turner, David Smith, Mary Hamrick, Frances Ann Eubank, Martha Jo Oyer

Announcing the Installation of DEACO COLON-THERAPY EQUIPMENT

Also X-ray! For a more successful treatment of colon conditions, such as constipation, chronic appendicitis, and other toxic conditions of the system. We correct the misplacement of the colon.

Yours for Chiropractic Service,
DR. E. R. GREEN
209 Main Street - Ranger

H. H. VAUGHN SERVICE STATION
100% T-P Products
Distilled Water for Sale
Washing—Greasing—Storage

FOR RENT
2 - 3 and 4 Room
Furnished or Unfurnished
Apartments With Bath.
GHOLSON HOTEL



The whole family will enjoy our fine meals!

Mrs. HIGDON'S CAFE

Listen, Mister!

There is a difference in hair cuts. A good one is a cut that suits the shape of your head and helps the hair lie neatly in place. Get your next one here and note the difference.

GHOLSON BARBER SHOP

Dr. James F. Garmany
Telephone 261
GHOLSON HOTEL — ROOM 215
or TEXAS DRUG CO — TELEPHONE 264

Practice limited to Internal Medicine. Obstetrics and diseases of women and children.

TIRE SALE TO MARCH 15th

If you have a clean Used Tire you can buy a New Brunswick Tire at the following prices and your old tire—

150.20—\$4.50; 450.21—\$4.75; 475.19—\$4.95
525.18—\$5.95; 550.17—\$6.75; 600.16—\$7.95

USED TIRES . . . MOST ANY SIZE!
1 Clean '29 Chevrolet sedan for Sale or Trade!

BILL'S USED TIRE EXCHANGE
115 South Commerce Street
RANGER, TEXAS

GET appetizing variety into your meals at low cost . . . serve delicious, different breads often! The entire family will enjoy the finer texture and home-baked flavor of SCHOOLEY'S . . . and whether you serve white, rye, wholewheat, brown or raisin bread, you'll discover you add a pleasing zest to every meal!

SCHOOLEY'S BAKERY
Phone 7 - Ranger

● SERIAL STORY

\$15 A WEEK BY LOUISE HOLMES

YESTERDAY: Steve makes a scene at the dance but a pleasant stranger saves Ann from embarrassment. Paul gives Ann a favor, a tiny silver bracelet. After the dance they walk in the park. White Ann sleeps Paul kisses her lightly. With dawn, they hurry home. Ann remembers not the dance and its glimmer but Paul.

CHAPTER XXI
ANN receives orchids at the shop the following day. The satin box was tied with a wide ribbon. There was a note enclosed.

"I'm a little hazy about last night but, if my memory serves me at all, I again owe you an apology. Forgive me for behaving like a clown. Let the posies tell you that I mean it." The card was signed, "Steve."

He called at 5 o'clock, blithe as a spring breeze, rolicky sure of himself. He invited Ann to go to the theater with him and, while she could see no harm in accepting, she hesitated. It would be fun to see a good play, but not so much fun to see it with Steve. Now if it were Paul—With the thought of Paul, she made up her mind. She declined and hurried on before he could argue.

He was not accustomed to feminine rebuffs. "Say—what's the matter with me? Am I poison or something?"

Ann could scarcely tell him that she was merely a new adventure to the bored Steve Claybourne she could not explain that he only persisted in his attentions because she did not respond in kind, that he would not think of introducing her to his mother, that their paths were so widely separated that they could never meet. So she said the obvious thing.

"I don't go out with anyone but Paul."

That did it. He said, "Oh, I see."

She said, "Goodbye, Steve," and hung up the receiver.

THE weeks rolled on and Ann did not see Steve Claybourne again. She almost never thought of him. Her life with Paul worked itself into a pattern. Each Saturday night they dined together at an inexpensive restaurant and went to a moving picture show. They were utterly companionable. The slightest show of sentimentality was studiously avoided.

One evening came with a zizzling heat. Mrs. Follet's third floor was like a fiery furnace, the hat shop on the little better. Ann grew thin, the bones left her cheeks. She and Paul sat on the bench in the park, occasionally they traveled across the city to the lake.

A blundered, lousy fall was banished by an early blizzard and winter was upon the city. Acrid

smoke hung in the heavy atmosphere, the gutters were alimed with dirty slush. Then Christmas lights turned the city into a neon fairyland.

Paul gave Ann a silver bangle for her bracelet as a Christmas gift. It was a quaint little bell and tinkled when she moved her hand.

With the coming of the New Year Ann fretted over the static, changeless quality of her life. With the execution of an occasional marriage among the girls whom she had come to know there was not the slightest difference in her surroundings. Neddy and Teddy still chattered and danced their way through the days and nights. Florabelle appeared in stunning new outfits, was forever "going on a party."

Clara could talk of nothing but a certain expressionman who delivered goods to the store.

Ann's static mode of living might have gone on indefinitely except for two things. In the first place, she realized that another change in rooming houses was imminent. Clara's expressionman friend, Roy Swenson, was practically living in the apartment which the girls shared. He sprawled in one of the big chairs night after night, paying court to a most willing Clara. Ann knew that it was but a question of time until he would move in entirely, in which case, she must get out.

Secondly, spring rolled around again and Paul kissed Ann. That kiss, in the heady sweetness of spring, had a most unforeseen aftermath. Not yet had Ann admitted, even to herself, that her love for Paul had become a monstrous thing, too monstrous for any sort of peace of mind. She lay her unrest to the utter lack of progress in her ambitions.

ONE night she and Paul were sitting in the park. It was one of those humid evenings which sometimes come early in May. They were eating popcorn, each silently intent.

The bag was finally empty. Paul gave Ann his handkerchief and she wiped her hands.

"Paul," she said, "it's another year. We've been sitting on this bench and in the movies for a year."

"Yeah—I know. Last year I was making \$18. Now I've shot up to \$25. Soon I'll be having an investment broker to take charge of my surplus." He spoke lightly.

"At least you've moved up a little," she said. "I'm just exactly where I was a year ago. Oh, Paul—I thought if a girl had—"



MICKEY ROONEY AT THE ARCADIA

Political Announcements

The newspaper is authorized to publish the following announcements of candidates for public offices, subject to the action of the Democratic primaries:

- For Congress, 17th District: OTIS (OAT) MILLER of Jones County
- For Representative 107th District: OMAR BURKETT
- For Assessor-Collector: CLYDE S. KARKALITS
- For County Clerk: R. V. (RIP) GALLOWAY
- For Sheriff: LOSS WOODS WALTER EVANS
- For Criminal District Attorney: EARL CONNER, JR.
- For County Judge: W. S. ADAMSON R. L. RUST
- For County Treasurer: GARLAND BRANTON
- For District Clerk: JOHN WHITE
- For Commissioner Precinct No. 1: HENRY V. DAVENPORT
- Justice of the Peace, Precinct 2: J. N. McFATTER

SALEM NEWS

Rev. Slaughter of Eastland filled his regular appointment here today and Sunday night.

Several in this community have planted gardens and bedded sweet potatoes.

Junior Redwine of Newcastle is spending a short while with his grandmother, Mrs. R. M. Redwine. Mr. and Mrs. W. H. Sparger were in Ranger Saturday.

Earl Redwine took the 4-H club boys and girls to Fort Worth Monday.

Curtis Redwine has been in Fort Worth the past week tending to the 4-H club affairs.

Mr. and Mrs. Dos Moore visited Mrs. R. M. Redwine Sunday.

We are very glad to see work started on the Alameda school building.

Mrs. Williams and niece have returned home after visiting for the past two weeks.

Grady Redwine spent Tuesday night with the Ervin boys in the Mountain community and went with them to Fort Worth Wednesday.

Meanest Thief Is Brownwood Man

By United Press
BROWNWOOD, Tex.—Here are a couple more candidates for

bition and was willing to work; she could find a way."

He sighed. They were both in low spirits that night. Paul had come to realize that life without Ann would be as blank as a freshly plastered wall. He loved her, he wanted her, more than anything else he wanted to give her the beauty she craved. And there he was, helpless, shackled to a \$25 job.

Of course, there was a future to his job—buyer, department head, management of a store—but when—when? His soul cried out at the waiting. While he waited she would be lost to him.

"It's a rotten shame Ann, no kidding, keeping his voice at a casual level. "Have you tried to get a better job?"

"Oh, yes." But her tone betrayed her discouragement. "I've tried everywhere. Fifteen a week is the best I can do. Fifteen a week," she cried furiously. "I hate the sound of it. A living wage, barely enough to keep soul and body together, no hope, nothing ahead—"

Her voice broke and she stopped. "Let me have your handkerchief again, Paul. I must have a little cold."

At last Ann said, "You'd better, he's coming. Another day is creeping up from China."

"Yes, another day and another month and another year. We'll be old, Ann, still fighting—"

Paul spoke savagely.

ANN slipped her hand into his. "I don't care," she whispered. Suddenly she wanted Paul to take her in his arms. Suddenly she had an aching need of the comfort of his arms. His hand tightened on hers, he drew nearer on the bench.

"Ann," he said huskily. "I want to kiss you, but it's dangerous dear. We promised to be friends and if I kiss you—I won't be your friend any more."

He leaned toward her. She felt the muscle of his arm tighten.

"I don't care," she whispered. "I want to kiss you, but it's dangerous dear. We promised to be friends and if I kiss you—I won't be your friend any more."

He leaned toward her. She felt the muscle of his arm tighten.

"I don't care," she whispered. "I want to kiss you, but it's dangerous dear. We promised to be friends and if I kiss you—I won't be your friend any more."

He leaned toward her. She felt the muscle of his arm tighten.

"I don't care," she whispered. "I want to kiss you, but it's dangerous dear. We promised to be friends and if I kiss you—I won't be your friend any more."

He leaned toward her. She felt the muscle of his arm tighten.

"I don't care," she whispered. "I want to kiss you, but it's dangerous dear. We promised to be friends and if I kiss you—I won't be your friend any more."

Read all about it!

PICNIC HAMS
4 to 8 Lb. Avg.
12c

END CUTS
CURED HAM Sliced Lb. **19c**

CREAMERY **BUTTER** Pound **32c**
GOLDEN BANTAM **CORN** No. 2 Can 2 For **25c**
YACHT CLUB **SWEET PEAS** No. 2 Can **15c**

LONGHORN **CHEESE** Pound **19c**
COUNTRY GENTLEMAN **CORN** No. 2 Can 2 For **25c**
Vacuum Pack Whole Kernel **CORN** No. 2 Can **15c**

TENDERIZED
CURED HAM Half or Whole Lb. **19c**

LIBBY'S **FRUIT COCKTAIL** Tall Can **15c**
LIBBY'S **ASPARAGUS** Picnic Size **14c**
LIBBY'S **APPLE BUTTER** 26 Oz. Jar **16c**
LIBBY'S **PEARS** No. 2 1/2 Can **23c**

LIBBY'S **Pineapple Juice** 211 Size 3 Cans . . . **25c**
LIBBY'S **Tomato Juice** Tall Can 2 for **15c**
LIBBY'S CRUSHED **PINEAPPLE** Buffet Size **15c** 2 for **15c**

LIBBY'S **Tomato Juice** 46 Oz. Can **21c**
LIBBY'S **Pineapple Juice** 46 Oz. Can **31c**
NATURAL **Grapefruit Juice** 46 Oz. Can **15c**

HOT **BARBECUE** | FRESH **OYSTERS**

FISH TENDERLOIN
HOMINY
BEETS
SPINACH
TURNIP GREENS
MUSTARD GREENS
PUFFED RICE
PORK & BEANS
BLACKEYE PEAS
STAR SAUSAGE
3-MINUTE OATS
Your Choice

GRAPEFRUIT JUICE
OKRA
PIMENTOS
GREEN BEANS
RED BEANS
TOMATO SOUP
KRAUT
HAMBURGER STEAK
VEGETABLE SOUP
PEA SOUP
TOMATO JUICE
CORN
CARROTS, PEAS
OKRA and TOMATO

3 For **25c** Your Choice **5c**

O.K. GROCERY & MARKET
501 W. MAIN ST. PHONE 214 RANGER

BACKACHE, LEG PAINS MAY BE DANGER SIGN Of Tired Kidneys

If backache and leg pains are making you miserable, don't just complain and do nothing about them. Nature may be warning you that your kidneys need attention.

The kidneys are Nature's chief way of taking excess acids and poisons waste out of the blood. They help most people pass about 3 pints a day.

If the 15 miles of kidney tubes and filters don't work well, poisonous waste matter stays in the blood. These poisons may start nagging backaches, rheumatic pains, leg pains, loss of energy, getting up at night, swelling, puffiness under the eyes, headaches and dizziness. Frequent or scanty passages with smarting and burning sometimes shows there is something wrong with your kidneys or bladder.

Don't wait! Ask your druggist for Doan's Pills, used successfully by millions for over 40 years. They give longer relief and will help the 15 miles of kidney tubes flush out poisonous waste from the blood. Get Doan's Pills.

NEWLY-ARRANGED A&P GROCERY IS DESIGNED FOR BETTER SERVICE

A completely remodeled A. & P. store, under the management of Arlie Carver, is now ready to serve the public with its grocery and meat needs in a store that has been especially designed for convenience of its many customers. The interior of the store has been repainted in a two-tone color, with the upper walls and ceiling being a light cream and the lower walls and fixtures being a dark green. New electric fixtures have been added to give artificial light at times when it is needed, and the entire store is now better lighted than ever before. New arrangements and new designs in display shelves also add to the appearance of the store. The center shelves are made into sloping counters with open display room and better vision, so that everything on the shelves can be seen at a glance. At the ends of each aisle, which now run across the store instead of from front to back, signs tell that can be found in that section, and also what is to be found in the counter on the other side, on the adjoining aisle. Less wall shelves than ever before are used, as the center display

A. & P. Manager



Arlie Carver, manager of the newly-remodeled A. & P. Store in Ranger, who is inviting the public to pay the store a visit.

Asst. Manager



Fred Hughes, pictured above, is assistant manager and checker of the A. & P. Store in Ranger, which has been completely remodeled throughout.

A. & P. Clerk

Operates Market



Clifton Stringfellow, pictured above, is employed as clerk and takes care of the big stock carried by the Ranger A. & P. Store, which has been re-arranged to carry more merchandise on the shelves.



Harry Warner, owner and operator of the meat department of the Ranger A. & P. Store, who takes pride in his new quarters in the store, which have been greatly improved.

Owl Brand* SEED POTATOES BULK GARDEN SEED ONION and CABBAGE PLANTS FIELD SEED FERTILIZER PURINA STARTINA BLACKLOCK FEED STORE

CLASSIFIED

7—SPECIAL NOTICES

CUSTOM HATCHING. Dudley's Hatchery, 105 S. Marston.

FRESH BALTIMORE Oysters, pint 29c. Fresh fish 19c. CITY FISH MARKET.

\$15 weekly easily earned. Your own dresses FREE. Show new Spring Fashion Frocks. No canvassing. No investment. Send age and dress size. FASHION FROCKS, Dept. V-1973, Cincinnati, O.

STOP LEAKY ROOFS with Grip-tight Liquid Asbestos. Makes your old roof good as new. Ten year guarantee against all weather. C. C. Cross, Phone 132-J, Ranger.

TAXI—Phone 1. JIM TOLAND.

15—HOMES FOR SALE

FOR SALE: My 5-room modern home, A-1 Condition, attic cooling system. A real bargain. Located 1118 Foch St. See S. P. BOON or Phone 452 or 665W.

13—FOR SALE, Miscellaneous

BABY CHICKS. Dudley's Hatchery, 105 S. Marston.



Before you put a license plate on your new car

put a liability

C. E. MAY

Insurance in all its branches.

SEE BROWN'S Transfer and Storage — For — MOVING

CONTRACT OPERATOR T. & P. TRANSPORT Phone 635

Home Owned and Operated

Phone 60—Free Delivery

LESTER CROSSLEY'S

CLOVER FARM STORES

A FLAVOR FOR EVERY TASTE



COFFEE VALUES COFFEE Red Cup 2 Lbs. 29c

K. C. Baking POWDER 15c	Macaroni or Spaghetti 5 Oz. Pkg. 2c	CRISCO 3 Lb. CAN 43c
SUGAR 10 Lb. Bag 45c	Libby's Baby Food Regular Size Can 5c	MEAL 5 lb. Bag 15c 10 lb. Bag 27c

JELL-O 5c Any Flavor, Pkg.	Liberty Bell CRACKERS 2 Lb. Box 15c	CANDY BARS ANY 5c BAR 3 For 10c
----------------------------	-------------------------------------	---------------------------------

Glendale CATSUP 14 Oz. Bottle 9c	Evaporated PEACHES 2 Lbs. 25c	CELERY FLORIDA WASHED Per Stalk 10c
----------------------------------	-------------------------------	-------------------------------------

PURE LARD Swift's or Armour's 4 Lb. Cart. 35c	PICKLES Dill or Sour Qt. Jar 10c	SOAP Clover Farm—Granulated Per Pkg. 15c
---	----------------------------------	--

LETTUCE Large Firm 3 Heads 10c	CARROTS Fresh and Tender 2 Large Bunches 5c	APPLES FANCY WINESAP 2 Doz. 19c
--------------------------------	---	---------------------------------

ORANGES Tex. Valencias Doz. 10c	LEMONS Large Sunkist Doz. 15c	PINEAPPLE 3 No. 1 Cans 25c
---------------------------------	-------------------------------	----------------------------

Lou's QUALITY Meats	STAR SLICED BACON lb. 21c
---------------------	---------------------------

CHEESE Per Lb. 19c	STEW 2 Lbs. 15c	BOLOGNA Per Pound 10c
--------------------	-----------------	-----------------------

SALE OF BEEF MATURED BEEF THAT DELICIOUS BEEF FLAVOR Chuck Roast lb 18c

SAUSAGE 3 Lbs. 25c	ROAST PORK SHOULDER Per Lb. 12 1/2c	BACON MARKET SLICED Per Lb. 15c
--------------------	-------------------------------------	---------------------------------

BONES PORK BACK 3 Lbs. 10c	SALE OF Pork	RIBS SPARE 2 Lbs. 25c
----------------------------	--------------	-----------------------

Hold Tight! OUR NEW PICTURE IS HERE... AND IT'S GOT 800 LAUGHS!

I've got four girls on my neck... Pop turns detective... Mom gives us all a scare... and there are more thrills and heart-thrills than ever! Man to man, it's terrific!

The HARDY FAMILY, the whole kit and kaboodle of them have moved in next door to practically everybody... and live in our hearts as the most human, pesky, yet altogether lovable neighbors anybody ever had. Their latest adventures are their happiest hit!

JUDGE HARDY AND SON

with Lewis STONE • Mickey ROONEY Cecilia PARKER • Fay HOLDEN

Original Story and Screen Play by Carey Wilson Directed by GEORGE B. SEITZ

ARCADIA FRIDAY and SATURDAY



RANGER TEXAS

FRIDAY MORNING, MARCH 15, 7 A. M.

We have completely renovated, remodeled, enlarged and as a whole, made this store one of the most modern and outstanding in this community. Our success has been due entirely to your splendid patronage and support, and we wish to continue to merit the friendly spirit you have shown us in the past. Come in, shop in comfort and make this store your store.

A. M. CARVER,
Manager.

Dried FRUITS - BEANS

- Apples lb. 13c
- Apricots lb. 15c
- Peaches lb. 12½c
- Prunes lb. 5c
- Raisins ... 2 lbs. 15c
- Blackeyed Peas lb. 6c
- Navy Beans 2 lbs. 13c
- Rice 2 lbs. 12c
- Lima Beans ... 2 lbs. 15c



*A delicious NEW Jane Parker Cake awaits you now at your nearest A&P. Chocolate iced chocolate layers, creamy white filling in between!

- IONA CUT STRING BEANS 3 No. 2 Cans 25c
- IONA LIMA BEANS 2 22 Oz. Cans 15c
- FRESH GREEN AND WHITE LIMA BEANS 3 No. 2 Cans 25c
- TENDER COOKED ANN PAGE BEANS 16 Oz. Can 5c
- WITH PORK AND TOMATO SAUCE IONA BEANS 2 16 Ounce Cans 9c
- RED OR KIDNEY SULTANA BEANS 16 Ounce Can 5c
- CUT BEETS 3 No. 2 Cans 25c
- ALL BRANDS STRAINED BABY FOODS 3 Cans 23c

SAVE CASH

Buy dexo

- For Frying
- Cakes, Pastry
- Pies, Discuits

Buy dexo. It works like magic, making delicious, digestible foods every time. dexo is approved by Good Housekeeping. It is made exclusively for A&P. dexo is priced far lower than brands of comparable high quality.

3 Lbs. 41c 16c

ADDS THE MAGIC TOUCH TO THE ART OF COOKERY

- COUNTRY GENTLEMAN OR GOLDEN BANTAM A&P CORN 2 No. 1 Cans 15c No. 2 Can 10c
- IONA CREAM STYLE CORN 3 No. 1 Cans 17c 3 No. 2 Cans 25c
- A. & P. WHOLE KERNEL CORN 10c

- PURE VEGETABLE MARGARINE
- NUTLEY OLEO Pound 10c
- EXCELL SALTED SODA
- CRACKERS 2 Pound Box 15c
- PEERLESS FLOUR 48 Lb. Bag \$1 09
- SUNNYFIELD ALL PURPOSE
- FLOUR 24 Lbs. 80c 12 Lbs. 43c 6 Lbs. 25c
- PICKLES SOUR OR DILL Quart Jar 10c

- SILVER FLOSS
- SAUERKRAUT 2 No. 2½ Cans 25c
- IONA STANDARD GRADE
- TOMATOES No. 1 Can 5c 4 No. 2 Cans 25c
- COLD STREAM PINK
- SALMON Small Can 10c Tall Can 15c
- SULTANA RED
- SALMON Small Can 17c Tall Can 23c
- ARMOUR'S STAR
- CORNER BEEF 2 12 oz. Cans 33c
- DELGADO
- TAMALES No. 1½ Can 10c 2 No. 300 Cans 19c

- WASHINGTON STATE WINESAP
- APPLES 10 For 10c
 - PURE GOLD LEMONS 10 For 10c
 - TEXAS ORANGES 10 For 10c
 - SNOW WHITE HEADS CAULIFLOWER Head 12c
 - YELLOW SPANISH ONIONS 5 Lbs. 10c
 - FLORIDA CELERY 2 Stalks 15c
 - GOLDEN RIPE BANANAS Pound 5c
 - CABBAGE 3 Lbs. 5c CARROTS 2 Bu. 5c
 - TEXAS GRAPEFRUIT 5 For 10c
 - IONA SLICED OR HALVES PEACHES No. 1 Can 10c 2 No. 2½ Cans 27c
 - RED PITTED A & P PIE CHERRIES No. 2 Can 10c
 - SULTANA MIXED FRUIT COCKTAIL No. 1 Can 10c
 - DEL MONTE SLICED OR CRUSHED PINEAPPLE No. 2 Can 17c 2 No. 1 Cans 19c

WHITE HOUSE MILK

MORE FOR YOUR MONEY

Pure cow's milk from tested herds... scientifically evaporated... quality at a money-saving price.

3 Tall Cans 18c

- STANDARD GRADE
- HOMINY No. 300 3 No. 2½ Cans 25c
- A&P TINY GREEN
- PEAS No. 1 Can 10c No. 2 Can 15c
- IONA TENDER GREEN
- PEAS 2 No. 1 Cans 15c No. 2 Can 10c
- BATTLESHIP FRESH
- B. E. PEAS 3 16 Oz. Cans 25c
- CRAPEFRUIT JC. No. 2 Can 5c
- DEL MONTE
- SPINACH 2 No. 2 Cans 27c
- SILVER FLOSS
- SAUERKRAUT 3 No. 1 Cans 25c

ANN PAGE PRESERVES

1 LB. 15c

GET MORE FOR YOUR MONEY in this outstanding preserve value. Rich in the true flavor that only pure fruits can yield!

- ANN PAGE PURE FRUIT SPARKLE 3 Pkgs. 11c
- CHOCOLATE-VANILLA-BUTTERS COTCH KREMEL 2 Pkgs. 9c
- SUNNYFIELD WHEAT Bran Flakes 2 Pkgs. 13c
- SUNNYFIELD CORN FLAKES Large Pkg. 7c
- FRESH - CRISP Post Toasties 3 Large Pkgs. 25c
- QUAKER or 3-MINUTE OATS Large Pkgs. 21c 2 Small Pkgs. 19c
- SUNNYFIELD OATS Large Pkg. 15c 2 Small Pkgs. 13c
- SUNNYFIELD Pancake Flour 5c
- IONA SPAGHETTI or MACARONI 2 7 Oz. Pkgs. 9c
- ANN PAGE NOODLES 5 Oz. Pkg. 5c
- PILLSBURY or SWANSDOWN CAKE FLOUR Pkg. 25c
- SUNNYFIELD CAKE FLOUR 2½ Lb. Pkg. 15c
- PINTO BEANS 10 lbs. 49c
- POPULAR BRANDS CIGARETTES .. pkg. 15c
- CARTON \$1.49
- CHUM SALMON, 2 Tall Cans 27c

LIFE FLAVOR-FULL Coffee!

Try this choice coffee with the favor-packed coffee beans ground fresh to your order. It's grand and it's economical.

EIGHT O'CLOCK COFFEE

- 3 lb. bag ... 39c
- 2 1-lb. bags 29c

FINE QUALITY MEATS

Vernon Meat Co.'s

- HAMS Half or Whole lb. 19c
- BACON SQUARES Lb. 10c
- DRY SALT BOLOGNA Lb. 10c
- PORK Liver .. 2 lbs. 17c
- LOIN or T-BONE ROAST ... lb. 29c
- CHOPS ... lb. 15c
- Spare Ribs ... lb. 10c
- VEAL Chops ... lb. 15c
- BEEF — MORRELL'S PRIME RIB ROAST Lb. 23c
- CHUCK ROAST Lb. 18c
- PLATE or BRISKET Lb. 15c

MARKET OWNED and OPERATED BY H. WARNER

- SULTANA HIGH QUALITY
- PEANUT BUTTER 16 Oz. Jar 13c 32 Oz. Jar 25c
- ANN PAGE CREAMY SMOOTH
- SALAD DRESSING Pint Jar 17c Quart Jar 27c
- ANN PAGE—JUST HEAT AND SERVE
- PREPARED SPAGHETTI 4 16 Ounce Cans 25c