

24 New Homes Started In Tract Here

SIXTY HOUSE TOTAL IS COMPANY GOAL

Construction has started on 24 new homes in the Carl Clardy addition in the northwest section of Stanton bringing to 48, the total number of houses under construction or completed by the Martin County Construction Company, developers of a sixty house tract in that area.

Valuation of the homes at \$6,950 each was set at more than \$166,800.

Construction Company officials said the second 24 homes were due to be completed during the next sixty days.

The houses are being built in line with FHA specifications, officials of the Company said.

Already Occupied

All of the first 24 residences in the tract have been sold and most of them already have been occupied. Company spokesmen said. In charge of the carpentry is the contractor's firm of Lee and Busby.

The new construction has helped in a big way to relieve the tense housing situation in Stanton which developed several months ago when new would be residents started arriving to be near their work in this area. The situation still has not been completely relieved but is improving, said Mayor R. B. Whitaker, who also is president of the Martin County Chamber of Commerce.

During the last six months of 1951, new homes and businesses completed or in stages of completion reached more than \$1,225,000 and work is continuing at a fast pace in the new year. Included in the construction were more than 100 new residences and more than a dozen new business buildings.

CRMWD SUIT OVER WATER SET FOR FEBRUARY 25

Date for the Colorado River Municipal Water District's suit attacking an order of the State Board of Water Engineers was set for Feb. 25, at pre-trial conferences last weekend in Austin. The suit will be heard in 126th district court in that city.

This area is involved in the case to the extent that the boundaries of the Martin County Underground Water Conservation District was formed along the lines of the underground water boundaries set by the engineers.

Additional Support

Joining Martin County in the suit by friend of the court petition was the High Plains Underground Water Conservation District and the Dallam County Underground Water Conservation District. Both districts were formed according to the underground water boundaries set by the engineers.

Martin County Judge James McMorris and the attorneys for the Martin County district, Geo. Thomas, Big Spring, and Henry Russell, Pecos, attended the Austin conferences.

MORE CITIES ADOPT NATIONAL BUILDING CODE

Four cities adopted the National Building Code, 1949 edition, of the National Board of Fire Underwriters during September and October. They were North Plainfield, N. J., Waynesboro, Va., Kearney, N. J., and Panama City in Florida.

The National Building Code Abbreviated Edition was adopted during the same period by Monahans, Tex., Front Royal, Va., Salem, N. J., Ballinger, Tex., and Natchitoches, La.

M. C. ULMER DIES IN MIDLAND; SERVICES HELD

Marvin C. Ulmer, 65, prominent Midland banker and well known West Texas civic leader, was found dead Saturday morning at his home in Midland. Death was ascribed to a heart ailment from which he had suffered the last several months.

He had been a Midland resident since 1906 and was a former mayor.

Ulmer was president and chairman of the board of the First National Bank of Midland and was well known as Midland's "number one civic leader."

Alone In Residence

His body was found shortly after 9 a. m. by a bank employee who had gone to the Ulmer residence after Ulmer did not show up at the bank at his usual hour. A physician said he had been dead several hours when his body was found.

Mrs. Ulmer was in Vera Beach, Fla., at the time of his death visiting a daughter, Mrs. Hugh Corrigan, III. He was to have joined her this week for their vacation in Florida.

Services Held

Funeral services were held at 2:30 p. m. Monday in the First Methodist Church of Midland in charge of the Rev. R. Luther Kirk, pastor, and the Rev. Howard Hollowell, of Dallas, former Midland Methodist pastor. Burial was in the Fairview cemetery under the direction of the Newline W. Ellis Chapel.

Survivors include his wife, the former Helen Rountree, whom he married in Midland March 17, 1910, two daughters, Mrs. Barron Kidd, of Dallas, and Mrs. Corrigan, of Vera Beach, Fla.; a brother, Charles Ulmer, of Midland; a sister, Mrs. G. W. Raney, of Brownwood.

CRASH VICTIM DIES; BURIAL HELD HERE

Injuries received in a two car crash near Sweetwater Wednesday of last week, proved fatal two days later for Blackwell School Superintendent W. V. Stephenson, 44, former Stanton teacher and husband of the former Doris Thornton, of Stanton. One other person was killed in the accident.

Stephenson was buried in Evergreen Cemetery here at 5 p. m. Sunday in a service in charge of the Arrington Funeral Home of Stanton. Funeral services were held earlier in the First Baptist Church at Blackwell.

THREE INDICTED BY GRAND JURY IN SESSION HERE

Four indictments, naming three individuals, were returned by Martin County's January grand jury Monday.

Celestino Lumberas is charged with rape, an offense alleged to have occurred on Nov. 29 about seven miles west of Stanton. The victim is listed as a 14-year-old girl. Lumberas is in the Martin County Memorial Hospital where he has been under treatment since Dec. 21 when he was overcome by smoke during a jail fire. His bond was set at \$2,000.

Shooting Charge

J. W. Martin, 34, of Lubbock, is charged with assault with intent to murder. That indictment stemmed from a shooting on the night of Nov. 21, at which time Ray Davis, 31, of Big Spring, was wounded. Martin's bond was set at \$3,000 and the case is set for trial on Jan. 21.

Ace Warren, 20-year-old Negro, was indicted on two separate charges of burglary. He allegedly entered the home of Caldonia Daugherty on Nov. 30 and took about \$75. On the second indictment he is charged with breaking into the Negro school building on Dec. 21.

Members Listed

The grand jury made its returns Monday afternoon. Guy Elland served as foreman with these others serving as members of the panel:

C. E. Aihart, A. T. Angel, P. M. Bristow, II, J. H. Burchett, J. G. Butchee, Roosevelt Williams, Travis Yater, Coy Welch, Leo Payne, Joe McReynolds, and Otto Bearden.

BREEDLOVE TO TEST AT 12,110 FEET

By JAMES C. WATSON

Pan American Production Company, Forest Oil Corporation and Houston Oil Company of Texas No. 2 F. D. Breedlove, Northwest Martin County exploration is bottomed at 12,135 feet in porous Devonian dolomite.

It has set and cemented 51 1/2-inch oil string at 12,110 feet. As soon as the cement cures it will be drilled out and production tests will be run on the open hole interval.

Had Higher Pay

The prospector has some dolomite which logged good shows of oil cased off about 12,110 feet. That pay may be tested through perforations after the producing ability of the zone at 12,110-135 feet is determined.

No drillstem test was run on No. 2 Breedlove before the casing was run. However informed sources say the samples showed the well would produce.

This development is one location northeast of the discovery well and Devonian field. That opener was lone producer in the Breedlove-completed for a daily initial production of 2,341 barrels of 41.3-gravity oil from perforated section at 12,078-118 feet.

That zone had been washed with 600 gallons of mud acid and treated with 500 gallons of Diesel fuel.

About Flat

Location of No. 2 Breedlove is 3,300 feet from east and 1,980 feet from south lines of league 258, Briscoe County School Land survey.

It is 13 miles northwest of Tarzan. On the top of the Devonian it is reported to be approximately flat to the same point in the No. 1 Breedlove, the field opener.

Shell Oil Company is drilling below 3,541 feet in anhydrite on its No. 1 Elma L. Slaughter, wildcat in Central-North Martin County.

Projected depth is 13,000 feet for a test of the Ellenburger.

North Of Lenorah

Location is 659.7 feet from east and 1,979.2 feet from south lines of section 77, block B, Bauer & Cockrell survey and 10.12 miles north of Lenorah.

It is nine and one-half miles east and slightly south of the discovery and lone producer of the Breedlove field which is in Northwest Martin County. It is also three and one-half miles northwest of Sinclair Oil & Gas Company No. 1 Lester, a dry hole.

DeKaib Agricultural Association, Inc., of Lubbock No. 1 Kitta Belle (Mrs. Richard H.) Knox, 12,500-foot wildcat in Northwest Martin County, is drilling water wells.

North Of Tarzan

Drill site is 660 feet from north and 2,777.7 feet from west lines of league 253, Ward County School Land survey and 11 miles north of Tarzan.

The Texas Company No. 1 G. B. McClain, wildcat in Central Martin County (Continued On Back Page)

EROSION REPORTED ON 15,000 ACRES IN SOIL DISTRICT

There was from moderate to severe erosion on a minimum of 15,000 acres of land in Martin-Howard Soil Conservation District during the first 15 days of December, W. S. Goodlett, district conservationist at the Big Spring office of the Soil Conservation Service estimated.

Most of the land, he said, is situated in Midland, Martin and the western part of Howard Counties. This brings the total from moderately to severely eroded land in the district to 112,000 acres as the middle of December. No soil moisture is reported, since there has only been 32 inches of rain over the area since Nov. 1.

The greatest amount of erosion reported by any West Texas district for the same period came from the Amherst area, where conservationists said the first two weeks of December saw 57,000 acres suffer from moderate to severe blowing, to bring the total in that district to 110,000 acres.

MAN IS FINED FOR VIOLATING REGULATION W

On January 3, 1952, the United States District Court in St. Paul, Minnesota, fined Walter Lange \$1,000 and sentenced him to six months' imprisonment for violating Regulation W, Consumer Credit. The court suspended the prison sentence and placed Lange on probation for three years.

Lang's sister-in-law, Charlotte Lange, doing business as Lange Television Sales, was also placed on probation for a year and a day. The court's action followed pleas of guilty by Walter Lange and Nolo Contendere by Charlotte Lange to an information charging both with having willfully sold television sets without obtaining the cash down payments required by Regulation W and failing to keep proper records of these transactions.

BLACKWELL BOARD DELAYS ACTION ON SUPERINTENDENT

BLACKWELL, Jan. 8.—Action will not be taken for a while yet on a successor to W. V. Stephenson, school superintendent who died Friday night.

School board members have had four applicants thus far, it was reported Tuesday. It was understood that several more are planning to apply.

In the meantime, the Rev. Raymond Dyess is teaching for Mrs. Mary Lee Swindell, who was injured in the same accident as Stephenson and in which one person was killed. Arrangements also were made for other teachers to take over the superintendent's classes until another is named.

Mrs. W. V. Stephenson and her children have moved to their new home in Stanton, which they purchased from John Connell.

GUY HENSON GRADUATES FROM SERVICE SCHOOL

Recently graduated from the Aviation Electronics Technician-Electronicsman School, at the Naval Air Technical Training Center, Memphis, Tenn., was Guy Henson, airman, USN, son of Mr. and Mrs. F. W. Henson of Stanton, Texas.

Henson, who has been transferred to the Naval Air Station, Point Mugu, Calif., entered the Naval service in Oct., 1950.

Mrs. Clyde Davidson, Mrs. F. W. Schall and little son, Mike, of Midland, visited Mrs. Hila Weathers Wednesday, and did some shopping.

KOREA VETERAN VISITS

Sgt. First Class Walter S. Cross of Ft. Sill, Okla., spent a few days this week with his parents, Mr. and Mrs. Sid Cross.

He was enroute to Fort Bliss, where he is now stationed. Sgt. Cross served in Korea with the 7th Division 13 months.

JUNIOR LIVESTOCK SHOW NEXT WEEK

Sifting of capons at 9 a. m. Friday, Jan. 18, is the first scheduled activity of the 1952 Martin County Junior Livestock Show which will run through Friday and Saturday.

The annual exposition is sponsored jointly by Martin County businessmen and the Stanton Lions Club and is held in the Martin County Show Barn.

Eligible to compete in any Martin County 4-H Club or FFA member whose record book is up to date.

Cash Premiums

Cash premiums and trophies will be awarded winners in the various classes which will include special awards for showmanship by the Stanton-Midland National Farm Loan Association and for those winning champion, by the Lions Club. Breeder of the Grand Champion steer will receive the trophy awarded by the 4-H Club boys.

Most of the preliminary planning for the show has been in the hands of County Agent Ralph L. Jones. The deadline for arriving at the show grounds with capons was set at 1 p. m., Friday, and for pigs at 3 p. m., Friday. Steers must be in before 8:30 a. m. Saturday, Jones said.

The show will be climaxed with an auction sale.

CITY COUNCIL NAMES STREET FOR OFFICIAL

City councilmen here Tuesday night took up the matter of christening one of the few remaining unnamed streets in Stanton.

Located between Mason and Carpenter streets, it is 410 feet long and is the street on which Martin County Judge James McMorris is establishing his home. The council named it McMorris Street.

STANTON TEAM DEFEATS FORSAN

The Stanton Buffalo basketball team eked out one point win here Tuesday night over the Forsan High School five. The score stood 42-42 at the end of the regular play and ended 49-48 at the end of the overtime period.

High point men for Stanton were Leroy Polk, 11 points, and Eldon Hopkins and Jimmie Henson, seven points each.

The Buff teams will open district play here Friday night with three games scheduled starting at 6 p. m. with O'Donnell.

JOBS INCREASED IN NON-FARMING INDUSTRIES IN 1951

Placement through the Big Spring Office of the Texas Employment Commission to non-agricultural industry in the city and environs showed an increase of 24.9% in 1951 over 1950 according to a report released today by Leon M. Kinney, Office Manager. A total of 2374 placements were made in 1951 compared to 1900 in 1950.

Of the 2374 placements made in 1951 a breakdown by industry shows the largest percentage occurred in contract construction. Kinney stated. Following is an analysis by industry of the placement activity:

Mining (sand, gravel, oil etc), 58; Contract Construction, 788; Manufacturing, 73; Interstate Railroads, 3; Public Utilities, 82; Wholesale and Retail Trade, 596; Finance, Insurance and Real Estate, 29; Service, except private household, 268; Household Service, 431; Governmental Establishments, 46.

Due to the short cotton crop there was more than 50% decrease in agricultural placements in the three county area of Howard, Martin and Mitchell in 1951 as compared to 1950, Kinney declared. Farm placement interviewers in the area were able to make only 5272 placements to farms in 1951 as compared to 10,322 in 1950.

A SMALL BLAZE HAS BEEN IGNITED UNDER THE 1952 POLITICAL POT IN MARTIN COUNTY.

Seven candidates announced last week in The Reporter for election to various county offices and district office. Six of them are appealing to the voters for re-election, and the seventh is seeking election to office for the first time. It's quite likely, as the campaign progresses, there will be much more fuel added to the fire under the pot by more candidates announcing for office.

Announcements of these candidates has brought up a very important thing to consider by all voters of the county. January is poll tax paying time, and the 31st of this month is the last day to pay your poll tax. Before a citizen becomes eligible to vote in any election, he must have arrived at the age of 21 years, and must have a paid poll tax receipt. One can never tell what sort of an election may come up during the year that will call for a majority vote or a two-third vote to decide the issue, and it may be the very election you are most vitally interested in, to either have the opportunity to vote for or vote against. There may be some county or precinct candidate, even district, state or national, you'd almost give your right arm to vote for or against, and you're in a position to do neither, because you failed to pay your poll tax. The election could be one to vote bonds to build a new school house or good roads in your community, and wouldn't you feel sheepish sitting at home and watching all your neighbors marching to the polls to cast their votes, all because you didn't feel it was worth spending \$1.75 for a poll tax receipt? Your vote may have provided your boy or girl a comfortable and convenient school house to study their lessons in, or given you an all-weather road to travel over to market.

The "League of Women Voters"—an organization that promotes interest in getting out the votes—will ride herd on the round-up activities, trying to brand every potential Texas voter with a poll tax. As a boost to the League's campaign to get all voters to pay their poll tax, Gov. Allan Shivers, has proclaimed Jan. 9-16 as "Texas Voters Round-up Week." There are 29 local and provisional Leagues throughout Texas, whose members will be riding range in search of maverick voters, urging all voters to pay their poll tax this month, that they may be eligible to cast their votes in any and all elections that may be held this year.

Gov. Shivers said: "The Texas citizen who fails to pay his poll tax by Jan. 31, 1952, cannot vote in the important local, state and national elections during the year and will not be eligible to participate in party (Continued On Back Page)

W. C. EVERETT DIES ENROUTE TO HOSPITAL; FINAL RITES HELD

William C. (Bill) Everett, 47, Lenorah farmer, died unexpectedly Thursday evening enroute to a hospital in Big Spring after suffering a heart seizure here.

Formerly a resident of Big Spring Everett had farmed near Lenorah since 1945.

He was born in Arkansas but moved with his parents to Big Spring when he was five years old. He had lived most of his life in Big Spring except for a brief period in which he worked in a defense plant on the West Coast during World War II and the time he had spent in Martin County.

Everett was a member of the Baptist church, Stanton Masonic lodge, the chapter and council commandery at Big Spring and the Suez Temple of the Shrine at San Angelo.

Funeral services were held at 2 p. m. Saturday in the First Baptist church in Big Spring by the Rev. Charles Carter, Lakeview Baptist pastor. The Masonic lodge was in charge of last rites at the graveside in the city cemetery near Big Spring.

The Arrington Funeral Home of Stanton was in charge of arrangements.

Surviving are his wife, Mrs. Hattie Everett, and a daughter, Billie Pat Everett, Lenorah; his mother and step-father, Mr. and Mrs. J. T. Armstrong, Stanton; a sister, Mrs. Clyde Sims, Stanton; and two sisters residing in Alamogordo, N. M.; two sisters-in-law, Mrs. Sam Callahan and Mrs. Floyd Ashley, Big Spring; six brothers-in-law T. J. Hogue, Stanton; Ben Hogue and Emmett Hogue Big Spring; Amos Hogue, Vealmoor.

WHITE MOTOR CO. DONATES PICKUP TO STANTON FFA

Members of the vocational agriculture department of the Stanton school this week expressed their appreciation to B. F. White, of White Motor Co., for the new year's gift of a new Ford pickup to be used by the agriculture classes.

It is being used daily for field trips and FFA furtherance projects, Instructor E. D. Steele reported.

CAPT. POE WOODARD SERVES IN KOREA WITH 7th DIVISION

Capt. Poe Woodard, whose wife Mary, lives at 602 Broadway, Stanton, is serving with the 7th Infantry Division on the Korean front. He is a former mayor of Stanton.

His division recently has engaged in patrol activity along the snowy east-central front.

Woodard, headquarters Commandant, was recalled to active duty in October 1950. He wears the Silver Star with one Oak Leaf Cluster, Purple Heart, Presidential Unit Citation, European Theater Ribbon, and the Korean Service Ribbon with one campaign star.

CITY COUNCILMEN PASS ELECTRICAL INSPECTION LAW

An ordinance creating the office of an electrical inspector in Stanton was approved Tuesday night in action by the city council.

It provides for an annual license fee of \$50 and \$500 bond for all firms and individuals performing electrical work in the city. The action was unanimous.

FROM WHERE I SIT

By Hila Weathers
MR. RIPLEY'S BELIEVE-IT-OR-NOT has really caused our correspondence to pick up. Letters from six different States have come in, all requiring lengthy answers. And today (Monday) another letter has arrived requesting information on persons by the name of STANTON. Could any of you folks help me out? Are there any "Stanton" families living near here, or have they ever lived here? Will surely appreciate your help in answering this one letter. It seems there is a book to be published on the Stanton family, by one of the descendants now living in Atlanta,

Georgia. So, please help.
PAY YOUR POLL TAX
 IT ALSO SEEMS that Bill Bennington of KJBC, Midland Radio Station is helping put us on the map. Bill has told his many listeners all about our recent publicity, and has added some mighty fine remarks about our good town. Thanks, Bill, for "them kind words." He always comes by the office to pay us a visit, which we deeply appreciate. He is a good booster for Stanton.
PAY YOUR POLL TAX
 HORACE BLOCKER, one of our good members, and one of our leading business men, came by for a short visit the other day. Mr. Blocker was of great help to us last fall, when we were trying to locate a site for a well known

business firm. And we want to extend THANKS to Horace his help.
PAY YOUR POLL TAX
 ONE OF OUR NEW CITIZENS is Joe Bauch, formerly of Lamesa, and now connected with the Stanton Implement Company distributors of the International Harvester Products. We are doing our best in helping Mr. Bauch locate a home for his family, as they will be permanent residents. It seems that we're having several mighty fine families coming over from Lamesa—we're glad to have them, as we know that they come from an EXTRA nice town.
PAY YOUR POLL TAX
 WE MUST TELL YOU that since we made "Believe-it-or-Not" we have written answers to letters received from the following places: Burns, Oregon; Inglewood, California; Fountain City, Tennessee; Bedford, Iowa; Jacksonville, Florida; Atlanta, Georgia; Goldsboro, N. C.; and several places in Texas. And it cost only a five-cent postal card with the picture on it, and three-cent stamp. THAT'S cheap advertising, and some that couldn't be bought.

PAY YOUR POLL TAX
 AMONG OUR SCHOOL VISITORS were Lila Blocker and Pat Graham. These girls have made several visits to the office since organization, and we are interested in the contacts of other towns.
VISIT FROM SISTER
 A recent visitor in the home of Mr. and Mrs. Henry Louder was his sister, Mrs. Agnes Whitson of Midland.
PAY YOUR POLL TAX
 WE ARE HONORED TO BE ON TRY A REORTER WANT-AD.



(BIG) FISH (SMALL) FRY—
 Three-year-old Stevie Wallace has his woes as he tries to keep his small, hungry puppy from chewing on the sizable bass the young fisherman had just caught. Stevie landed the fish in the shallow waters of Cuero Municipal Park Lake in San Antonio, Tex.

'TIDELANDS DEFENSE MONTH' TO BE OBSERVED IN TEXAS

February will be "Tidelands Defense Month," in Texas, the Statewide Tidelands Committee announced this week through its Chairman, Guy C. Jackson, Jr., of Anahau.
 Attention of Texans will be called to the tidelands issue by means of newspaper advertisements and stories, radio broadcasts, magazines and other means the Chairman said.
Quit-Claiming
 Funds will be sought to carry on a national campaign for Congressional action quit-claiming the states.
 "We are faced with a determined fight in Congress this next session," Jackson said. "We must carry the facts of the tidelands case to the people of every state in the nation. We must finance the cost of sending nationally-known Texans into every state to carry the facts to the people. Then we are confident Congress will act favorably on legislation which will nullify the effects of the Supreme Court decisions."
Committees
 Representatives and member organizations of the Committee are as follows: Governor Allan Shivers, Attorney General Price Daniel, Land Commissioner Bascom Giles, Honorary Members: Texas State Bar Associations, Robert Lee Bobbitt, San Antonio; Texas State Teachers Association, Frank M. Jackson, San Angelo; American Legion, Joe Spurlock, Fort Worth; Texas Federation of Women's Clubs, Mrs. J. W. Walker, Plainview; Veterans of Foreign Wars, J. T. Rutherford, Odessa; Congress of Parents and Teachers, E. N. Dennard, Waco; Soil Conservation District Supervisors, Gail Whitcomb, Houston; Texas Water Conservation Association, J. E. Sturrock, Austin; East Texas Chamber of Commerce, Hubert Harrison, Longview; West Texas Chamber of Commerce R. P. Bludworth; South Texas Chamber of Commerce, Ray Leeman, San Antonio Daughters of the Republic of Texas, Mrs. H. C. Vandervoort, Fort Worth; Sons of the Republic of Texas, Dr. Valin R. Woodward, Arlington; County Judges and Commissioners Association,

Otho F. Dent, Littlefield; Texas Junior Chamber of Commerce, Bill Ware, Dallas; Texas Association of Commerce, Walter E. Long, Austin; Texas Press Association, Brad H. Smith, Weslaco. M. K. Weitzel, Austin, is Secretary of the Committee.
Drive For Funds
 "Monthly magazines of the participating organizations will print a four-page pamphlet in the February issue to help their members to participate in the drive for funds," Jackson said.
 The House of Representatives passed quit-claim legislation in August for 1951 by a vote of 265 to 109. The Senate is expected to consider legislation in the current session. Funds raised by the Statewide Tidelands Committee will be devoted to a national campaign to awaken the country to the danger of the tidelands decisions and to secure strong support in every state for Senate approval of a quit-claim bill.

IMMEDIATE DELIVERY!



NEW '52 1 1/2- and 2-ton DODGE "Job-Rated" TRUCKS

★ NO CREDIT RESTRICTIONS
 ★ LOW DOWN-PAYMENT
 ★ LIBERAL TRADE-IN
 ★ LONG, EASY TERMS
 See us today for a demonstration of these great extra-value trucks
ETHRIDGE & RHODES MOTORS
 302 W. Front—Highway 80 Stanton, Texas Phone 9

THOUGHTFUL SERVICE

The all-embracing services of our Funeral Home embody every refinement necessary not alone to add beauty and dignity to the final tribute, but to relieve you of all burdensome details. Should the need arise—call us for thoughtful service

ARRINGTON FUNERAL HOME
 Stanton Phone 170

CAP ROCK COOPERATIVE HOLDS ANNUAL DINNER

The annual dinner party for the Cap Rock Electric Cooperative officers, directors, employees and their families, was held Friday night in the dining room of the First Methodist Church. More than sixty persons including guests attended the gathering.

Manager O. B. Bryan introduced the program which included skits and readings by Hila Weathers, manager of the Martin County Chamber of Commerce, and L. J. Batton, of Lomax, a member of the cooperative.

ROYAN AMBASSADORS HOLD MEETING

The Hardy Royal Ambassadors Chapter met Monday at 4 p. m. in the Baptist Church.

Eight members and one visitor were present. Those who attended were Troy Holcombe, Jimmy Hamilton, London Hightower, Kenneth Kinsey, Richard Supulver, Raygand Adams, John Kinsey, Trudy Moseley, and Wayne Henley.

BOOK REVIEW SLATED

The Book Review Club will meet in the home of Mrs. B. F. Smith at 3 p. m., Tuesday. Mrs. J. E. Kelly will be the reviewer.

STRICTLY FRESH

SCIENTISTS agree that time measurements for modern atomic work must be more minute than one millionth of a second. Before we go into that, let's find out how long it takes the average citizen to duck.

The National Production Authority announces that restrictions on the use of rubber will be largely eliminated after the first of the year. Let's hope this means more rubber for dollars, instead of more dollars for rubber.

The State of Maine has hired a psychiatrist to find out why



hunters shoot each other. Wonder if he'll turn up any dumb bunnies.

A Connecticut aircraft corporation announces that it has shown the world's first helicopter powered by a gas turbine. How to run the pipelines from Washington where that type of fuel is never in short supply.

24 New Houses In Highly Restricted CLARDY ADDITION \$850

DOWN Includes All Closing Costs

CHECK THESE EXCLUSIVE FEATURES:

- VENTED HEAT
- YOUNGSTOWN KITCHEN CABINETS
- INSULATION
- DRIVEWAYS
- HARDWOOD FLOORS
- CHOICE OF COLORS
- CHOICE OF FLOOR COVERING
- PAYMENTS LIKE RENT

FHA APPROVED AND FINANCED
 SEE OUR REPRESENTATIVE ON THE GROUND, SUNDAY, 1 P. M. UNTIL DARK

Martin County Construction Co.
 SUITE 2
 210 WEST ST. ANNA
 (Over Walgreen Drug)
 (INCORPORATED)
 PHONE 9003
 STANTON, TEXAS

STANTON WALGREEN DRUG COMPANY

WALGREEN AGENCY

FOR BABY

Fresh Shipment--Just Arrived

SMA LIQUID

NOW--CAN 26c

IDEAL FOR CHILDREN----

Baby KOF

COUGH SYRUP

50c SIZE 39c

DALACTUM MILK

(For Baby)

CAN 25c

ATTENTION! DIABETICS

Save On Your Insulin

PROTAMINE ZINC

J-40 10 CC 99c

PROTAMINE ZINC

J-80 10 CC 1.89

BARCENTRATE

REGULAR \$1.40--NOW 1.25



PO-DO

SHAVE CREAM

(Brushless or Lather)

2 45c TUBES 46c

69c CAMPHO LYPTUS

CHEST RUB

Ideal For Vaporizers

4-OZ. JAR 59c

KELLER'S ANALGESIC

BALM

For Rheumatic or Neuralgic Pain

69c SIZE 59c

SARDI'S PINK ROSE

HAND LOTION

6-Oz. Bottle

TWO FOR 1.19

NEW SHIPMENT

HOSIERY

1.45 1.75 1.95

FLORAL BOUQUET OR PINE

BUBBLE BATH

WATER SOFTENER 59c

NOW IS THE TIME TO BEAUTIFY YOUR HANDS

HAND CREAM 98c PERFECTION 69c



Elizabeth Arden

puts Beauty right in your hands!

NEW ARDENA HORMONE HAND CREAM

Now Elizabeth Arden, working with modern research chemists, gives you a new formula—a rich emollient cream perfectly fortified with natural hormones to keep hands vitally younger...firmer textured...smoother. And it helps fade the brown spots from your hands!

Special Introductory Combination Package 1.95*

Includes 1 oz. glass jar Ardena Hormone Hand Cream and 4 oz. bottle Blue Grass or June Geranium Hand Lotion, Ardena Hormone Hand Cream, 2 oz. plastic jar, 2.50 4 oz. plastic jar, 4.50*

PRIMROSE HOUSE CLEANSING CREAM

\$2.00 JAR NOW



THERMOS BOTTLES

PINTS 1.39

QUARTS 2.49

ALL METAL DUST PANS ALL COLORS Reg. 39c

NOW 29c

69c SIZE Oris Antiseptic MOUTH WASH 16-Ounces--NOW

2 FOR 79c

CHOICE TEX TOILET TISSUE Three 10c Rolls 19c

3 GIANT TUBES Walgreen Ammoniated TOOTH PASTE \$1.00

\$3.50 SIZE HADACOL NOW 2.49

ASSORTED COLORS BED LAMPS Complete With Bulb 2.98



MOCK COBRA SCUFFS 3 sizes for men 98c Ladies' size 89c



HANDIEST SIZE RUBBER BANDS 15c Pack 9c Fresh stock

100 ASPIRIN PURE 5-GRAIN TABLETS. (Limit 1) 13c

ALKA SELTZER 60c SIZE 47c

CIGARETTES CARTON \$1.92

ALL POPULAR BRANDS, PKG. 21c--

DOAN'S PILLS 54c

75c SIZE. TUBE OF 40 (Limit 1)

WITCH HAZEL 23c

"WORTHMORE". FULL PINT (Limit 1)

ABSORBINE JR. 84c

\$1.25 SIZE. 8-OZ. BOTTLE (Limit 1)

15c SHINOLA LIQUID DROE POLISH Soap priced 2 1/2 25c



6-oz Size LYSOL Disinfectant 55c

75c SIZE ANACIN TABLETS Bottle 50 59c

10c DISH CLOTHS 3 1/2 25c (Limit 6)

Unguentine 55c

70c Size Sal Hepatica 63c

Carton 50 BOOK MATCHES 1,000 Lights 14c (Limit 2)

Oral or Rectal FEVER THERMOMETERS \$1.49

Walgreen Heavy MINERAL OIL PINT REG. 55c 33c

Eraser-Topped LEAD PENCILS 3 for 10c

Regular 10c Flashlite Batteries 2 for 17c

Tyson RUBBER GLOVES Non-slip fingers 49c

Tired Eyes? OCTINE Eye Lotion with cap 6-oz. bottle 55c

REG. \$2.29 12-INCH ZIPPER BAG Durable non-crush frame, choice of attractive covers. Super Value 189

Cleaning Special CHAMOIS & BIG SPONGE 10x19-in. 98c Regular \$1.29

75c ODORONO CREAM DEODORANT Special at 57c

Pt. Rubbing Alcohol Compound 29c

HAND CREAM For Men Chapans Tube 54c

Home Needs

"Mastercraft" WALL TYPE CAN OPENER Enameled finish 249c Opens cans easily and quickly--leaves no jagged edges.

CELLULOSE SPONGE "O-CEL-O" brand 33c

PLASTIC TEA APRONS Ribbon ties 29c

Quart CLOROX BLEACH 2 1/2 29c (Limit 2)

1-oz. Size TINCTURE IODINE 12c (Limit 1)

2 1/2-oz. Size LYSOL Disinfectant Effective 27c

Pack of 16 Feenamint Laxative Gum 21c

Stationery

Penway Brand EXQUISITE STATIONERY Ornid design \$1 Sale priced 49c

Linen Finish PENWAY PORTFOLIO 49c

PLASTIC RULER 12-inches long 9c

B-B PENS Ball Point. Choice of color 98c

Play With Long-Lasting PO-DO PLAYING CARDS Bridge or Pinacle 49c Full of life and snap; springy.

Practical... Good Looking ELECTRIC HEATER Takes the chill out of the air. 12-inch bowl 529c

4-oz. PEPTO-BISMOL For upset stomach 59c

POCKET KNIVES All Styles 98c

Box 10 TAMPAX Sanitary protection worn internally 39c

TOILET TISSUE Delsey 2 for 29c

STANTON WALGREEN DRUG COMPANY

PHONE 66

FREE DELIVERY ON PRESCRIPTIONS

REGISTERED PHARMACIST ON DUTY AT ALL TIMES

PRESCRIPTIONS FILLED WITH FRESH DRUGS

THE STANTON REPORTER

Published Every Thursday
BY THE PERMIAN BASIN PUBLISHING COMPANY
Stanton, Texas

JAMES E. KELLY, Editor
GARVIS P. ROSS
Managing Editor and Advertising Manager

Entered at the postoffice at Stanton, Texas, as second class mail matter.

SUBSCRIPTION RATES:
Martin County \$2.00
Outside County \$2.50

Advertising Rates On Application
TELEPHONE NO 117
211 Broadway

Any erroneous reflection upon the character, standing or reputation of any person, which may occur in the columns of THE STANTON REPORTER, will be corrected gladly upon being called to the attention of the editor.

The publisher is not responsible for copy omissions, typographical errors or any unintentional errors that may occur other than to correct in the next issue after it is brought to our attention. All advertising orders are accepted on this basis only.

Charge for card of thanks 3 cents per word. Want Ads. 3 cents per word, minimum charge 25 cents. Cash payments required unless person placing the Ad. has a monthly charge account.

All matter for publication by societies or organizations for which an admission is charged, a charge of 3 cents a word will be made.

Don't Be An Easy Mark

We are living in an age when the fine art of trying to get something for nothing is being practiced by nations, states, cities, and on down to the lowliest pick pocket and professional writers of bad checks.

Fred Johnson, Vice President of the American Stores of Philadelphia, has compiled information on the growth of the bad check racket. It reads like a fast moving story. For example, he points out that in the trading area of the American Stores a certain group of banks formerly turned back from three to five worthless checks a day. Now they turn back eighty each day. The recent crime investigations have caused certain lawless elements to switch their activities into other types of swindling, particularly the pushing of bad checks among merchants, with shoplifting, and counterfeit money as side lines.

After listing the scores of examples of the way merchants and individuals are imposed on and bilked by the bad check artists, Mr. Johnson gives some sound advice: "Checks should never be cashed on the basis of casual acquaintance, sympathy, hard luck tales, distress telegrams, vague answers, altered credentials, haste, bluffs and bluster, offended dignity, personal resentment, threats to report to the main office, or alleged friendship with an official of the company. Phoned instructions to cash checks, regardless of the source, should be disregarded."

There is no safe rule to follow. Don't cash a check for anyone you don't know or who can furnish you with absolutely satisfactory credentials.

Higher Tax Levies

This year, the American people will feel the full weight of the tax bill passed during the last session of Congress. The new and higher levies applied to individual incomes only for the last two months. It is probable that the President will ask that taxes, both individual and corporate, be increased once more—though it is highly unlikely that the present Congress will go along with that, save in the event of a major war.

The burden of taxation has increased at a very swift rate in this country. According to a new booklet on the tax problem issued by the Chamber of Commerce of the United States, the cost of government required only 7 per cent of the national income in 1880. When World War I broke out, the figure was still about the same. By 1940, it had jumped to 22 per cent. And now government is taking something like one-third of the income of the people.

As the Chamber's booklet says, "For a long time the 'ability to pay' theory has dominated tax discussions. The theory has merit, but unfortunately people have been led to believe that all government expenditures can be paid for by taxes on the 'rich' . . . The popular case for welfare state expenditures is that they will redistribute income from rich to poor. This would indeed be a simple solution to the world's social and economic ills, if only it were true. But even if steeply progressive taxes had no undesirable economic effects, this would be impossible. There simply are not enough rich people!"

It is clear, whether we like it or not, that additional tax increases must fall primarily upon people of very modest means—for the reason that they have most of the money. According to Secretary Snyder, almost 75 per cent of all personal income available for additional taxation is actually in the lowest income bracket—under \$2,000. By contrast in the over \$50,000 bracket, the income available for additional taxation amounts to less than one-third of one per cent of the total!

Fast as individual income tax rates have risen, corporation rates have risen even faster. The corporation rate was held to a ceiling of 42 per cent in the World War II. Now it is 52 per cent. Very steep excess profits taxes come on top of this. The total corporation tax runs as high as 70 per cent. There is not much room for further boosts here if an incentive-economy is to be maintained in this country, and enterprise is to be encouraged to progress.

This illustrates, in capsule form, the tremendous magnitude of the tax problem. The heart of that problem was described in these words by Senator George: "There have been frequent discussions of what the total 'take' may be without doing injury to our economy. There is no fixed limit; the limit is to be found only when the tax 'take' destroys the incentive of the people and when it leads to every conceivable effort to evade and to wasteful practices by the taxpayers themselves."

Your Stake In the Dollar

With a record amount of life insurance in their name, the American people have everything at stake in the United States dollar. Figures show that our population of 155,000,000 owns 200,000,000 life policies of seven major types. The aggregate value is \$234,000,000,000. This can only mean that the great bulk of the people have placed their faith in the security of the American dollar. In the six years which ended with 1951, the Federal Government will have collected more taxes by \$8,400,000,000 than it collected in the entire previous history of the country. And the public debt has reached \$237,000,000,000.

SEE COTTON BOWL GAME

Mr. and Mrs. Jerry Hall of Lubbock; Mr. and Mrs. Bob Haislip, Mr. and Mrs. Paul Jones, Mr. and Mrs. J. C. Sale of Stanton and Mr. and Mrs. Bud Jones of Lenora, attended the cotton bowl game at Dallas Tuesday. Hall son of Mr. and Mrs. Moran Hall, covered the game for the Avalanche-Journal of Lubbock.

MIDLAND VISITORS

Mrs. M. Davis and Mr. and Mrs. John Davis of Stanton, attended a turkey dinner in the home of Mrs. Roy Coin in Midland. Other guests were Mrs. Loy Mashburn, and Wanda, Mr. and Mrs. Allen Mashburn, Cynthia, Joy and Rusty, and Mr. and Mrs. Jefferson Davis.

A recent visitor in the home of Mrs. Edna Davidson was her brother, H. A. Hull of Lamesa.

A recent visitor in the home of Mr. and Mrs. P. T. Ross was his sister, Mrs. John Cotton of Wicks, Ark. This is the first time they have been together in ten years.

THE AMERICAN WAY



Jack Spratt could eat no fat, his wife could eat no lean, and so, betwixt them both, you see They licked the platter clean!

GOVERNOR SETS JANUARY AS 'HAND SIGNAL MONTH'

Governor Allan Shivers has urged the automobile drivers in Texas to learn proper hand signals and apply them while driving as a means of lowering the "death and injury toll on our streets and highways." This appeal is contained in an official memorandum issued by Shivers which designates January as "hand signal month" in the Lone Star State.

"The use of proper hand signals," said Shivers, "is a most effective weapon in the curbing of traffic accidents. The hand-signaling motorist is the courteous motorist. I am firmly convinced that if all drivers were courteous while at the wheel, our traffic toll would be reduced to the minimum."

Traffic Safety
"When a motorist applies hand signals in his driving, he automatically becomes conscious of all aspects of traffic safety and courtesy—the protection of pedestrians, the danger of weaving in traffic, the death-dealing results of speed, the folly of hogging the highway, the importance of yielding the right-of-way. So, I urge all motorists to acquaint themselves with the proper hand signals and to apply them diligently. The hand signal is the mark of a courteous driver; he doesn't keep the other driver guessing."

Shivers stated that a number of cities and towns in Texas have carried out campaigns on hand signals education, and in practically all cases, these points have become recognized for their "courteous drivers."

Bible Comment:
G.I.s Have Faith As Did Gideon in His Great Hour
NOT too long ago our G.I.s in Korea were fighting a desperate battle against an enemy superior in numbers and equipment. But even as the Red hordes chopped yard after yard off the shrinking Yuban beachhead, American boys had one weapon which never failed them. That one great weapon was their faith in God.

That unshakable faith in an ever present Almighty recalls the story of Israelite soldiers who were matched against the overwhelmingly superior forces of Midian. Their commander, Gideon, was called upon to deliver Israel from the enemy that "lay along the valley like grasshoppers." Even a courageous general could justifiably have called for a retreat. Gideon, bolstered by his strong faith in God, thought of a plan which certainly mystified his soldiers. He armed 300 of them with lamps, pitchers and trumpets. The sudden light from the lamps pierced the dark valley and the sound of the trumpets echoed from one valley wall to another. The superior Midian hordes thought a great army approached. They broke and ran in great confusion and Gideon won his famous victory. Gideon's faith in God and his cool courage are still shining examples for modern warriors. It was such unassailable faith as Gideon's that made it possible for American troops to hold the line in Korea until adequate replacements arrived.

From where I sit... by Joe Marsh

It's Slim's For An "Honest" Meal

Most people thought Slim Benson would probably go broke when he first started his system of letting customers figure out their own checks over at his big diner on the highway. Slim trusts them to pay for as much as they eat—you simply tell Sally, his cashier, the amount of your bill. It works, too. Take the other day when Buck Harris told Sally his bill was \$56.

Now I was right there with Buck and I knew all he had was coffee and pie which comes to a quarter. "How come thirty-five cents?" I asked Buck. "Had an extra cup of java the other day, Joe, and forgot all about it—'til now," he says.

From where I sit, most people are basically honest—and that goes for their opinions, too, even though they may be different than our own. I like a glass of beer with my dinner; you may prefer something else... but we all ought to be allowed to "figure it out" ourselves.

Joe Marsh

Ticklers By George



"Speed 'er up. For a minute I thought I was real!"



BRITISH WINGS OVER WEST COAST—Californians are glimpsing the roundel insignia of the R.A.F. for the first time since World War II as British airmen test fly new Lockheed P2V-5 Neptunes before taking delivery. The U. S. Navy sub-hunter is being made available to Great Britain and Australia through the Mutual Defense Assistance Pact. Above, a Neptune is put through its paces near Burbank, Calif.

PERSONALS

Mr. and Mrs. Derwood Brown of Andrews, visited in the home of Mr. and Mrs. Morgan Hall New Years Day. Mrs. Minnie Sims, Roberta Sims and Eula Hildreth, visited friends in Midland and Odessa Sunday. Weekend visitors in the home of Mr. and Mrs. Claude Edwards were Mr. and Mrs. C. M. Edwards Mrs. Eula Skeen of Midland; Mr. Mr. and Mrs. Leston Edwards of Snyder, and Mr. and Mrs. Donald Edwards of Kermit. Mr. and Mrs. Max Graham, of Kallspell, Mont., are visiting his parents, Mr. and Mrs. Irvin Graham.

SAVINGS FOR ALL at REXALL
Featuring products advertised by Rexall this month in LIFE • LOOK • POST • COLLIER'S • COUNTRY GENTLEMAN

Half Price! CARA NOME HAND CREAM
It's hypo-allergenic for the most sensitive skins. Beautifies, softens, protects!
BIG 10-oz. JAR REG. \$2.20 NOW \$1.10

Over 30% Off! REX-RAY HEAT PAD
Three speed switch, removable, blanket cover with snap-on fasteners. UL approved.
REG. \$4.49 NOW \$2.99 Others to \$10.75

YOU CAN DEPEND ON ANY DRUG PRODUCT THAT BEARS THE NAME **Rexall**

ANACIN TABLETS 50's **59¢**

MUSTEROLE for coughs 10-oz. jar **54¢**

WRITING PAPER linen or matching envelopes, Reg. 10¢ 2 packs for 15¢

KANTLEEK HOT WATER BOTTLE 5yr. guarantee... 3.00

PEPPERMINT PATTIES pound box... Reg. 59¢ 59¢

VAPORIZER & BENZOIN COMPOUND \$5.55 Value 4.49

REXALL ANTIHISTAMINE 15 tablets... Reg. 39¢ 23¢

BOBBY PINS Helen Cornell, black or bronze... 90 for 19¢

REXALL QUIK-BANDS... 36's 33¢

REXALL PLENAMINS multi-vitamin capsules... 72's 2.59

J. L. HALL PHARMACY
STANTON, TEXAS

PERSONALS

Sunday visitors in the home of Mr. and Mrs. Bill Ethridge were Mrs. Raynee Carroll, Mrs. Charlie Armstrong and Mrs. Nettie Romer of Midland. Mr. and Mrs. A. W. Heckler spent Sunday with his parents, Mr. and Mrs. W. F. Heckler in Coahoma, and his uncle, W. C. Heckler in Big Spring. Mr. and Mrs. W. L. Gregg and Mr. and Mrs. Revis Gregg, spent last weekend with Mr. and Mrs. Charles St. Clair in Lubbock, parents of Mrs. W. L. Gregg.

Stop Taking Harsh Drugs for Constipation

End Chronic Dosing! Regain Normal Regularity This All-Vegetable Way!
Taking harsh drugs for constipation can punish you brutally! Their cramps and griping disrupt normal bowel action, make you feel in need of repeated dosing. When you occasionally feel constipated, get gentle but sure relief. Take Dr. Caldwell's Senna Laxative contained in Syrup Pepsin. It's all-vegetable. No salts, no harsh drugs. Dr. Caldwell's contains an extract of Senna, oldest and one of the finest natural laxatives known to medicine. Dr. Caldwell's Senna Laxative tastes good, acts mildly, brings thorough relief comfortably. Helps you get regular, ends chronic dosing. Even relieves stomach sourness that constipation often brings.

Try the new 25¢ size Money back if not satisfied. Ask bottle to Box 280, N. Y. 18, N. Y.

DR. CALDWELL'S SENNA LAXATIVE
Contained in pleasant-tasting Syrup Pepsin

HIS MOVIE TIME in TEXAS
ATTEND THE TEXAS THEATRE (TWO SHOWS NIGHTLY) SATURDAY

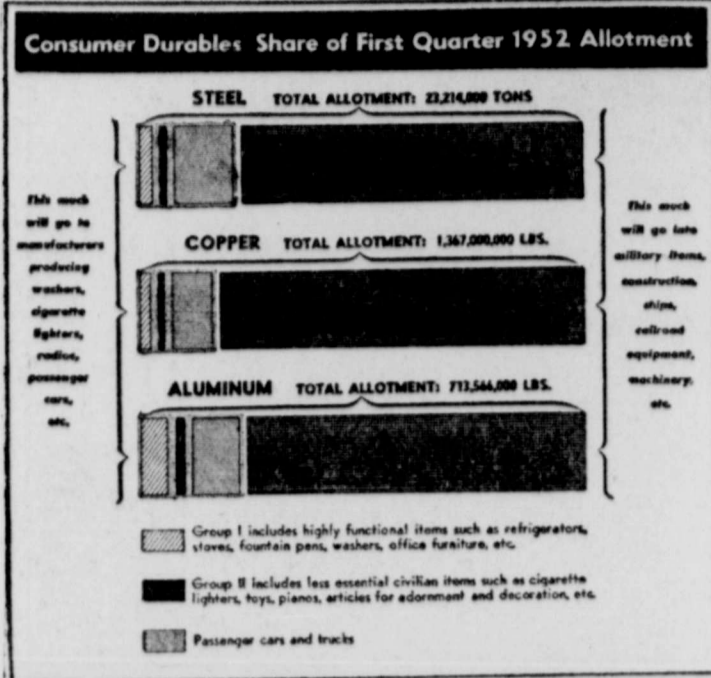
TIM HOLT LAW OF THE BADLANDS
SATURDAY PREVIEW SUNDAY-MONDAY

THE DESERT FOX
JAMES MASON FOX
TUESDAY-WEDNESDAY

VICTOR MATURE TERRY MOORE WILLIAM BENDIX
GAMBLING HOUSE

THURSDAY-FRIDAY RED HOT ROMANCE that rocks of New Orleans!
ROBERT MITCHUM - AVA GARDNER
MELVYN DOUGLAS
MY FORBIDDEN PAST
LUCILE WATSON-JANIS CARTER
TEXAS THEATRE STANTON

THE EYES OF TEXAS are on the MOVIE SCREEN!



FABULOUS SPRABERRY TREND IS 'HAPPY HUNTING GROUND'

By JOE SALMAN
Reporter-Telegram Oil Writer

"... it's going to be a world's largest oil field." That is what the Sohoian, magazine of the Standard Oil Company of Ohio had to say about the Midland Basin's fabulous Spraberry Trend—1951's hottest oil spot.

Operations of one of the company's subsidiaries, Sohio Petroleum Company, are told in words and pictures in an article titled "Happy Hunting Ground for Oil."

The story is aptly named—the writer describes the sprawling trend as something only a Hollywood scenario writer could dream up. He calls it an oil field "of unheard-of size—say 2,500 square miles in area—where nobody ever gets a dry hole—where more than 200 drilling rigs frenziedly sink holes in the ground—and get oil every time.

It took nine pages of descriptive and pictures, beginning with a four color picture on the front page, to tell the story of the now famous area, and Sohio's part in its development.

The story deals mainly with the Four Corners area of the Trend which includes parts of Midland, Upton, Reagan, and Glasscock Counties. In that area Sohio last June launched the biggest drilling program of its history. By December 31, 1951 the concern had drilled 11 producers.

The article points out that headquarters of the Spraberry boom is "hustling, bustling-at-the-seams city of Midland, long the capital of the vast Permian Basin oil field of West Texas and Southeastern New Mexico." Midland also is the center of a sheep and cattle empire embracing 12 counties and some of the biggest ranches in the southwest, the story reveals.

The writer of the article credits the Spraberry operations with increasing Midland's population by—"a couple of thousand during the past year."

Pictures illustrating the story include one of C. J. Cox, Glasscock County rancher who owns 32,000 acres in the vast Trend; Sohio personnel at work; sprawling oil fields; Sohio's Glasscock County camp and several are of scenes in the City of Midland.

Maps featuring Spraberry oil fields in the eight county Trend area accompany the article.

Among the Midlanders pictured and featured in the article are: Kelly Hood, superintendent of the Midland District, Robert F. White of the crude oil pur-

chasing department, A. J. Luigs of the transportation department Junior Geologist Ben Kamprath, Gene Young, assistant superintendent; Melvin Jorgenson, district engineer; Paul Shoffstall, assistant superintendent; Floyd S. Duge, assistant foreman.

Others pictured include Office Girls Dolores Gibson, Dorothy Etter, Norma Woolard and Avis Norris and Sanford Frogge, Bob Kelly, Bob Ray, Earl Rogers, Gilbert Ely and Champ Huddleston of the materials section.

"Happy Hunting Ground for Oil" tells of the importance of the Spraberry Trend production to the United States' recovery. It quotes figures from the Oil & Gas Journal on estimated reserves in the Trend.

The author gets technical with methods of drilling the Spraberry, gives a working definition of the Spraberry Sandstone itself and tells the whys and wherefores of recovering the oil from the highly fractured sands.

A history of the first Spraberry well and subsequent discoveries are related.

As the writer puts it—"the story would not be complete without mention of some important by-products of the sand. Spraberry has large reserves of unusually rich gas, which will yield natural gasoline and liquefied petroleum gas in a proportion three or four times that found in ordinary oil fields."

TRY A REPORTER WANT-AD

STRICTLY FRESH

SEN. Charles Tobey, N. H., urges flagging for "tax culprits" and other public officials convicted of corruption. Speaking of "tax culprits," we'll all be taking a beating come March 15.

Automotive storage battery makers have been ordered to limit production to general purpose types. At least we'll have less juice to stew in.

Rudolph Halley, quizmaster for the Senate Crime Investigating



committee, married his nurse and for a change Rudolph had to supply the answers.

REBEKAH LODGE INSTALLS NEW NOBLE GRAND

Mrs. A. C. Fleming was installed as Noble Grand of the Stanton Rebekah Lodge at the installation of officers in a formal ceremony Monday night.

Other officers installed were Mrs. Marion Yell, vice-grand; Miss Alba Cozby, chaplain; Ruby Burns, warden; Ola Shipp, musician; Mrs. Walter Graves, right supporter to the noble grand; Mrs. Tillman Morgan, left supporter to the noble grand; Mrs. Frankie Kinsey, right supporter to the vice grand; Mrs. G. A.

Bridges, left supporter to the vice grand. Mrs. Derwood Clardy, inside guardian; Mrs. Evarene Chrostopher, outside guardian; Mrs. Jack Jagers, color bearer; Mrs. Clayton Burnam, right supporter to the past noble grand; Mrs. A. T. Angel, left supporter to the past noble grand; Mrs. Maudie Mae Stewart, right supporter to the chaplain; and Mrs. Jess Angel, left supporter to the chaplain.

Mrs. Edna Davidson, outgoing noble grand, was presented a past noble grand pin.

Lack of vitamin A in the sow's ration can cause physical defects and weakness in pigs.

Livestock Life Lines

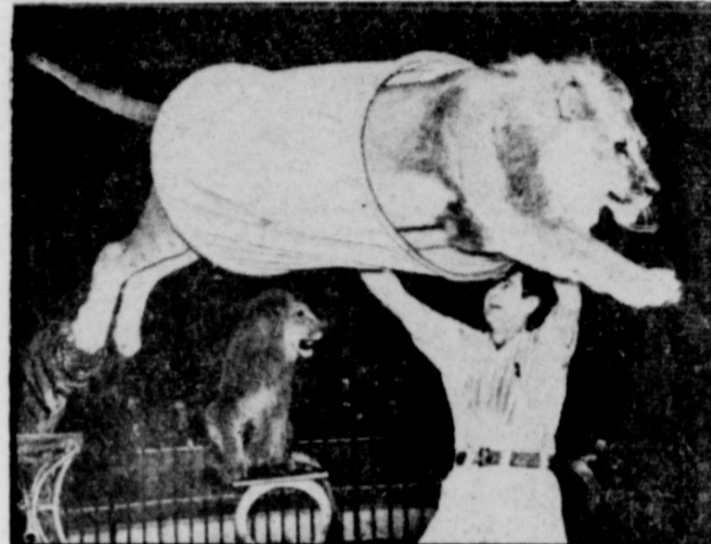
Extreme depression is a symptom of hog cholera.

Regular clipping helps to control lice on dairy cattle.

A severely high fever can cause sheep to lose their wool, just as it can cause people to lose their hair.

Pregnancy disease rarely appears among well-nourished ewes that get a grain allowance regularly.

A sound step toward preventing livestock diseases is to build barns and sheds on high, well-drained ground.



HOOP-LA!—With the accuracy of an Olympic diver, one of Knie's trained lions leaps through a cloth tube to the delight of more than 6000 English orphans and disabled children. The occasion was a special show put on for them in London by the Bertram Mills circus.



ALERT FOR REDS—This Algerian rifleman, member of the French forces fighting Communist Viet Minh troops in French Indo-China, keeps his grenade-launcher poised as he keeps a lookout for infiltrating Reds. He's guarding a field on the Phat Diem sector.

Get famous "Fire-King" glass

CUP and SAUCER

in this

MOTHER'S OATS package...

- Beautiful "Azur-ite" Blue Color!
- Lovely Modern Design
- Stands Oven Heat without cracking
- Made by Anchor Hocking Glass Corp.—famous for fine glassware

How exciting to open a big square package of Mother's Oats and find inside a beautiful, smartly designed "Fire-King" cup and saucer.

Yes, every package is a double value because money can't buy a finer quality, more delicious, more nourishing oatmeal than Mother's Oats! It's the good, hot, creamy-smooth oatmeal your family loves on chilly mornings!

Start collecting these lovely cups and saucers today! No waiting! No coupons! No money to send! Just ask your grocer for Mother's Oats with "Beautiful Cup and Saucer."

Mother's Oats offers you all-purpose selection of DINNERWARE and ALUMINUM KITCHEN UTENSILS

Products of The Quaker Oats Company

Drive the Dual-Range Pontiac

Equipment, accessories and trim illustrated are subject to change without notice.

DOLLAR FOR DOLLAR YOU CAN'T BEAT A PONTIAC!

Take the wheel yourself... for the Driving Thrill of your life!

We want you to be among the first drivers in America to personally experience a basic advancement in motor car engineering—new Dual-Range* performance.

Dual-Range performance means that Pontiac has combined a powerful high-compression engine, with GM's new Dual-Range Hydra-Matic Drive* and a new high-performance, economy axle to give you selective performance for any driving condition.

In the Traffic Range you have tremendous acceleration and snap and go! At the touch of a finger you can be in the Cruising Range, riding so smoothly, economically and effortlessly you almost feel you're coasting. Come in and drive it—for sensational new proof that dollar for dollar you can't beat a Pontiac!

*Optional at Extra Cost

THE POWER YOU WANT • WHEN YOU WANT IT • WHERE YOU WANT IT

- ① High-Compression Engine
- ② New Dual-Range Hydra-Matic*
- ③ New Economy Axle

BLOCKER-ROBNETT MOTOR & IMPLEMENT CO.
STANTON, TEXAS

Down Memory Lane

From Files of January 9 1942

Compiling the report of the condition of the First National Bank of Stanton, upon request of the Comptroller of the Currency at the close of business December 31, 1941, the statement revealed the deposits were \$1,004,763.39.

Warning to automobile owners: It is illegal for the owner of an automobile to permit a person not holding a driver's license to drive that car. This new phase of the law is intended principally to prevent parents permitting unlicensed children to drive their autos, but, of course, it applies to any other form of violation.

Saturday morning Stanton citizens awoke to find the ground covered with snow approximately an inch deep. There was no wind accompanying the fall, hence the snow was flattened out evenly over the ground. A breath of warm air followed soon after sunup and by mid-afternoon the snow had disappeared.

As per instructions received from Mark McGee, state tire rationing administrator, County Judge B. F. White, has appointed board members to serve for tire rationing. They are Poe Woodard, assistant cashier of the First Na-

tional Bank; Bill Clements of the Clements-Jones Household Appliance; and Walter Kelly, prominent farmer.

Washington, D. C. Jan. 11—Jesse N. Woody, of Stanton, has been named the nation's seventeenth ranking pistol shooter in the 1942 National Pistol Ranking list released here today by the National Rifle Association. Drawn from a field of some 15,000 eligibles from all over the country, the list of fifty hand-gunners represents the outstanding performers of the 1941 season.

Mr. and Mrs. Claude Edwards received a message last week from their son, Veston, who was stationed at Pearl Harbor, that he had arrived in San Francisco and was OK.

PERSONALS-

Recently visiting in the home of Mrs. Dan J. Saunders were her niece and nephew, Mr. and Mrs. Edgar Dill of Midland.

Recent visitors in the home of Mr. and Mrs. Ohmer Kelly were Mr. and Mrs. C. A. Denton and children, Mrs. M. S. Miller, Miss Lila Moore, all of Big Spring. Mr. and Mrs. Ohmer Kelly spent Christmas Day with Mr. and Mrs. Pat Wilson in Big Spring.

Sunday visitors in the home of Mrs. E. L. Turner were Mrs. D. G. Dawkins of Midland, Mrs. Leonard Turner of Courtney and Mrs. Addie Donelson of Lomax.

Your Home

By Frances Ainsworth

Did you know more people drink tea than any other beverage except water? As a confirmed tea drinker and teapot collector, I was delighted to learn that so many others share my preference—from two-fisted lumberjacks and explorers to the world's great philosophers and thinkers!

Both my husband and I enjoy tea for breakfast, lunch and dinner, not to mention the snacks in between. It's so refreshing, and the most economical drink in the world today, too—actually just a little over a penny a cup. Because the preparation of tea is so important to good flavor, I'd like to tell how I make it:

Rinse cup or pot with boiling water. Add tea or tea bag. Four boiling, bubbling water over tea. Let steep for 3 to 5 minutes according to strength desired. That's all there is to it. It's the easiest drink of all to make!

Of course, I always use just one brand of tea—Tetley Tea, which is an expert blend that always assures quality and flavor. The tea bags have a special filter paper, permitting water to pass through pores and contact the tea immediately.

My husband chuckles about my tea "converts." Visitors are always fascinated by my teapot collection (47 so far). Naturally, serving tea always follows. More and more of our friends are finding, as we have, that tea relaxes one physically and mentally and is the perfect refreshment for any time of day. I know you'll enjoy it, too!

JUNIOR B. T. U. HOLDS MEETING

The minutes were read of the previous Sunday's gathering and the meeting was opened with a prayer by Troy Holcombe, secretary and reporter. The class chose group members for group one and two. Making the selections were the group captains, Jerry Baugh and Lendon Hightower.

Plans were made for a party which will be held at 5 p. m. today (Thursday) in Jimmy Hamilton's home.

Jimmy is our president. A quiz program was won by group two, after which we studied the lesson, which was about Beginning with Jesus. There was a short Bible quiz and the meeting was closed with a prayer by Lendon Hightower.

Recent guests of Mr. and Mrs. James Jones were Mr. and Mrs. B. W. Clements, Larry and Billy, of Franklin, Mr. and Mrs. Harrison Bickley, Shirley and Marilyn, Mrs. J. R. Nichols of Midland, Mr. and Mrs. Elma Nichols, Jan Linda and Carol and Mrs. Wilmer Jones of Stanton.

Mr. and Mrs. P. T. Ross recently attended the funeral of his brother, O. H. Ross in Chickasha, Okla.

FAT STOCK SHOW DESIGNATES DAY FOR FARM YOUTH

Fort Worth, Jan. 10.—Twenty thousand youths from all over Texas will swarm the grounds of the Southwestern Exposition and Fat Stock Show on the first Saturday of the show, Jan. 26, which has been designated as 4-H Club day, Future Farmer day and Future Homemaker day.

Headquarters for the groups will be located in Cattle Building No. 2, one of the 17 modern buildings which comprise 32 acres under roof. The new stage, set up for special entertainment in Cattle Building No. 2, will be available for specialty acts which any 4-H Club or FFA chapter desires to present.

Judging of fat steers and fat lambs will be underway Saturday and the exposition, which opens the preceding day, will be in full swing.

The Fort Worth Show, President-Manager W. R. Watt points out, not only gives the young exhibitor a place to show his livestock but offers him an opportunity for viewing animals from over half the states, as well as foreign countries. The exhibits, representing some of the finest animals in the nation, may well be the incentive for some FFA or 4-H Club boy to produce a champion of his own, Watt stated.

Leaders of the groups have been invited to the show on their special day. They are Vannoy Stewart of Austin, FFA state supervisor; Floyd Lynch of College Station, state 4-H Club leader and Miss Josephine Pazdral of Austin, state FFA adviser.

WOMAN MARINE RECRUITER WILL VISIT ODESSA

A woman Marine recruiter will be in Odessa on Tuesday afternoon, Jan. 15, and Wednesday, Jan. 16, according to M/Sgt. Art F. Taylor of the Odessa Marine recruiting office. She is Sgt. Mary M. Crompton of the San Antonio Marine recruiting station.

M/Sgt. Taylor said that this is the first time that a woman recruiter has ever visited Odessa and that Sgt. Crompton will be in Odessa only the above two half days. He said that any young women between 18 and 31 years of age who are interested in the Marine Corps can contact Sgt. Crompton at the County Court house in Odessa.

Sgt. Crompton, Taylor said, is currently on a recruiting trip which will take her, in addition to Odessa, to Roswell, New Mexico, El Paso, and San Angelo, before returning to her San Antonio Station.

PERSONALS-

Mrs. G. B. Shelburne spent last week with her sister, Mrs. John Smith in Littlefield. Three other sisters were present, Mrs. O. B. Campbell, Mrs. Frank Campbell, and Mrs. Melvin Hardiman.

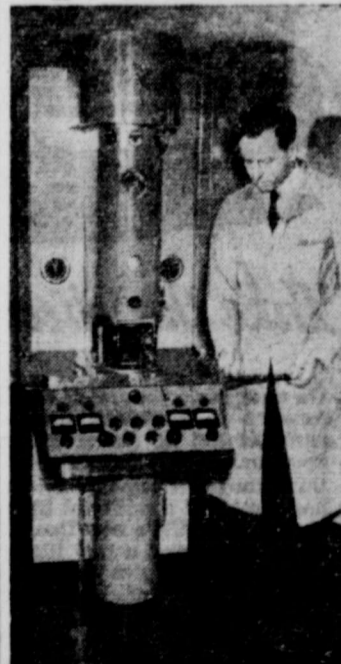
Mrs. T. J. Ware of Palestine, is visiting her daughter, Mr. and Mrs. Perry Ross.

Casey Jones of Monahans, visited Sunday with his mother, Mrs. Otle Jones.

Mr. and Mrs. James McMories attended the funeral of W. V. Stephenson in Blackwell Sunday.

Mrs. Dee McMillan of Midland, spent Sunday in the home of her parents, Mr. and Mrs. Paul Peters.

Do You Know?



This is a (a) photo enlarger (b) electron microscope (c) radar control panel

The correct answer is (b). This is the \$25,000 electron microscope recently installed in General Foods' Central Laboratories at Hoboken, N. J., to help carry on research for the benefit of the American consumer.



MADONNA OF THE BATTLEFIELD—Cpl. Frank Estrada of Los Angeles paints the Madonna and Child with home-made colors found somewhere in his Korean travels. The pensive critic is Pfc. Carlton Roseman of China Grove, N. C. Note Corporal Estrada's carbine and helmet placed with easy leaping distance.

TO:

The people of Stanton and the surrounding area THANKS For the splendid patronage you have given us since we opened for business here—

THE RITE-WAY RESTAURANT

"WHERE BETTER FOOD IS SERVED"

D. Patterson and Wife, Operators

Try Our Selection of Fine Foods The Next Time You Dine Out

SEA FOODS — MEXICAN DISHES — STEAKS COUNTER — BOOTHS AND PRIVATE DINING ROOM

Open Daily From 5 A. M. Until Midnight

THE RITE-WAY RESTAURANT

STANTON, TEXAS

STANTON ELECTRIC

FRIGIDAIRE APPLIANCES

YOUNGSTOWN KITCHENS

JOHNSON JET PUMPS

STA-RITE JET AND TURBINE PUMPS

All Kinds of Electrical Work

PHONE 288

Ezell McKaskle

T. R. Louder



Heading into Glamour...

Serenely confident and sublimely comfortable

in a *Dolores* bra...

Style 207, like all *Dolores* bras, features patented vertical stitching to a diagonal seam across the cup, which lifts up... and forward.

Finest broadcloth... About \$2.00
100% DuPont nylon... About \$2.50

FREE!! FREE!! FREE!!

ONE DOLORES NATURAL LIFT BRASSIERE TO EACH OF THE FIRST SIX LADIES MAKING PURCHASES AT OUR STORE NEXT MONDAY, JANUARY 13, 1952.

J. A. WILSON'S DRY GOODS

STANTON, TEXAS



PROVE YOUR FINANCIAL RESPONSIBILITY

under the new Texas Motor Vehicle

Safety Responsibility Law with

AUTO LIABILITY INSURANCE!

Under this new law, your driver's license and registrations will be suspended following an accident in which persons are injured or killed, or property is damaged in excess of \$100, if you fail to deposit security with the State as proof of your financial responsibility to satisfy any judgments that may result from the accident.

(*Security as proof of financial responsibility is an automobile liability insurance policy, or a bond, or up to \$15,000 in cash or in securities.)

The least expensive and most practical way to avoid suspension of your driver's license under this law, is to have an Auto Liability Insurance policy to file as security to prove your financial responsibility.

A SUBSTANTIAL DIVIDEND IS BEING PAID ON CURRENTLY EXPIRING POLICIES

EFFECTIVE DATE OF LAW JAN. 1, 1952

Get free copy of a brief analysis of this law from

FARMERS INSURANCE GROUP FARMERS INSURANCE GROUP

D. B. CROSS, AGENT
Phone 96-W
503 Broadway St.—Box 475
STANTON, TEXAS

E. L. JETER, DISTRICT AGENT
Phone 296-J—309 N. Austin
LAMESA, TEXAS

FARMERS INSURANCE EXCHANGE
The West's Leading Writer of Automobile Insurance



Two Inexpensive Dishes for Winter Dinners

BY EDNA MILES

SWEET potatoes are good for midwinter eating not only because they are inexpensive but also because they are a "yellow" vegetable, high in health-protecting vitamin A. The hard-skinned winter squashes belong in this group also, so don't overlook them in your menu planning.

Sweet Potato Pie
(4 generous servings)
One-half pound chopped veal, ¼ pound chopped pork, 3 cups seasoned mashed sweet potatoes, ¼ cup fine dry bread crumbs, 1 egg, 2 tablespoons orange marmalade, 2 tablespoons fat, ¼ cup finely diced onion, 1½ teaspoons kitchen bouquet, 1½ teaspoons salt, ¼ teaspoon pepper, ¼ teaspoon ginger, ¼ cup water, 1 tablespoon cornstarch.

Have meat dealer grind veal and pork together. Prepare about 2½ pounds sweet potatoes. Combine mashed sweet potatoes, bread crumbs, egg, and marmalade, mixing thoroughly. Line a greased 9-inch pie plate on bottom and sides with the sweet potato mixture. Melt fat over moderate heat in frying pan. Add onion and cook 1 minute. Add ground meat,



A sweet potato crust filled with chopped meat makes an inexpensive and unusual winter main course.

until potato is lightly browned and pie is thoroughly hot, about 30 minutes. Serve immediately in pie-shaped wedges. Add a crisp green salad for contrast in the meal.

Mushroom Stuffed Acorn Squash
(4 servings)

Two medium-sized acorn squashes, 1 slightly beaten egg, 3-ounce can chopped broiled mushrooms, ¼ cup chopped Brazil nuts, ¼ cup fine dry bread crumbs, 1 teaspoon salt, ¼ teaspoon pepper, ¼ teaspoon onion juice, 2 tablespoons melted butter, 2 tablespoons minced parsley. Cut squash in half lengthwise. Cut thin slice from skin side of each half so squash will stand evenly in pan. Place squash halves, hollow side down, on greased shallow baking pan. Bake in hot oven, 400 degrees F., about 45 minutes.

Meanwhile combine the egg, contents of can of mushrooms, nuts, crumbs, seasonings, onion juice, butter and parsley. Remove cooked squash from oven. Turn halves hollow side up and fill hollows with the stuffing mixture. Return to oven and cook, uncovered, until squash is completely tender, about 30 minutes longer. Serve immediately.

pulled into small pieces. Sprinkle with kitchen bouquet and cook until meat is lightly browned. Add salt, pepper and ginger. Combine and add water and

cornstarch. Cook, stirring constantly, until mixture thickens. Pour thickened meat mixture into sweet potato crust. Bake in moderately hot oven, 375 degrees F.

ATTEND NEW YEARS DINNER

Those attending a New Years dinner in the home of Mr. and Mrs. Herman Fisher on a recent Sunday, were Mr. and Mrs. Hugh Johnson of Big Spring; Mr. and Mrs. Lynn Fisher of Crowell; Ross Fisher, C. B. Fisher, of Mid-

land; Mr. and Mrs. M. H. Fisher, Mrs. Minnie Sims and Roberta, Norris Bergstrom and Mr. and Mrs. Herman Fisher, Alvis, Elvis and Larie.

HERE FROM AUSTIN
Mr. and Mrs. W. C. Glazener of

Austin, were here to attend the funeral of W. V. Stephenson. The Glazeners were intimate friends of Mr. Stephenson, as both Messrs. Glazener and Stephenson held positions in the Stanton school back in 1929 and several years following.

Mr. Glazener is with the State Game Fish and Oyster Commission, at Austin.

Prices on tugboats, 60 feet or more have been exempted from controls. Any 84 foot questions?

SORORITY WOMEN HOLD MEETING IN JONES HOME

Mrs. Ralph Jones was hostess-Thursday for a regular meeting of Delta Omega chapter of Beta Sigma Phi.

The Service Committee, Doralene Robnett and Naomi Hedrick gave a report on the Christmas basket project.

Mary Haislip gave the program topic, "Happiness Through Understanding Literature."

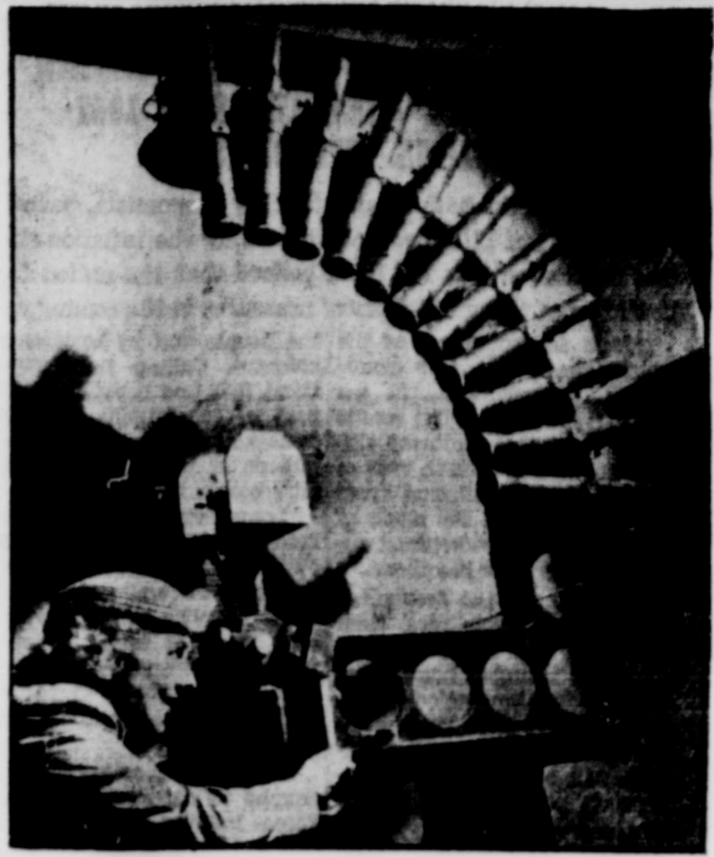
Those attending were Gloria Billington, Betty Gaddis, Ruby Neil Greenhaw, Mildred Elland, Joyce Woody, Carman Whitaker, Hallie Sale, Dorothy Riley, Louise Stallings Nadine Steele, Doralene Robnett, Mary Ruth Hall, Alyn Kelly, Mary Rogers, Dorothy Deavenport, Mary Haislip, and Mary Grace Latimer.

PVT. BOBBY TOM RECEIVES COMBAT BADGE IN KOREA

Pvt. Bobby G. Tom, of Stanton, recently was awarded the Combat Infantryman Badge for excellent performance of duty in combat with the 2nd Infantry Division.

Private Tom is serving as a member of the 23rd Infantry Regiment, a part of the 2nd Division. He was stationed at the Aberdeen Proving Grounds, Md., before his assignment to Korea.

THE STANTON REPORTER, THURSDAY, JANUARY 16, 1952



HOW NOT TO GET LOST—Theresa Peters, an airline hostess, sights through a "collimator" at her employer's repair base in Kansas City, Mo. The complicated looking mechanism is used to test the accuracy of periscope sextants with which each airliner is equipped. The sextant, with the help of the stars, is used to determine a plane's position in flight.

Philosopher Cannot Fathom Tax Collector's Illness

Dear editor:

With another year already started and nothin we can do about it, I was out here yesterday wonderin what the next twelve months will bring forth, especially in a business way, and I noticed the wind rollin a newspaper along over my pasture toward the barn and I was hopin it would blow inside so I could go out there later in the day and pick it up, and it did last night after supper I sat down to see what's goin on in the outer world and had just got through reading the comics when I began checkin up on the health of some more tax collectors.

and it did and last night after supper I sat down to see what's goin on in the outer world and had just got through reading the comics when I began checkin up on the health of some more tax collectors.

I tell you, flu is bad around here but it must not be anything compared to what them Federal tax collectors have.

Why, I know lots of people who've gotten sick in their time, a bank president who was laid up in the hospital several weeks, a preacher who was out of his pulpit three months, a doctor who had to go to the hospital a month, lots of business men who have to stay at home a week or two, farmers who have to lay around the house when they'd like to be plowin, but I have never seen any of em react like a tax collector. Resignin from their work is the last thing all my acquaintances want to do, in fact, they can't get back to their jobs fast enough to suit em, but you take a tax collector, he gets sick and the last thing he wants to hear about is his job. Just mention it and he seems to take a turn for the worse.

I tell you, medical science has

a long way to go just in doin something about the common cold and the walkin flu, but I doubt if it'll ever get around to a cure for Tax Collector's Sickness.

As I understand it, the disease is peculiar, it strikes without warnin. You can be healthy, robust, almost domineering today, but something comes up at the office and tomorrow you're flat of your back, can't answer questions, have great difficulty rememberin facts, and seem to lean more heavily on lawyers than doctors. You seem to go on the feelin if you can just get away for awhile everything will blow over.

Personally, I never have cared for much work, but I've never had to get sick to quit, and I blame sure haven't quit to get sick.

When the average man gets sick for example, it's frequently because he's been tryin to do too much, but with tax collectors it's the other way around, they haven't been collectin enough, or they been collectin enough but haven't been depositin enough, or they been collectin in the wrong place, although personally I've always felt they've collected enough from me. But the main oddity about Tax Collector's Sickness is that nobody dies from it and while it may incapacitate the individual collector for continued work in that line, somebody else always turns up to take his place. The government doesn't let the torch go out.

Yours faithfully,
J. A.

SINGING AT JOHNSONS

The New Year was welcomed in with a singing at the home of Mr. and Mrs. Ellmore Johnson Monday night.

Songs were recorded on a tape recorder and played back to the guests.

Illinois authorities have called for an end to the practice of shooting foxes from airplanes. Maybe they heard a rumor that pedestrians were setting up anti-aircraft batteries.

10-LBS.
SUGAR
79c
(Limit One)

HERE'S HOW TO GET YOUR MONEY'S WORTH

3-LBS.
KIMBELL'S Shortening
69c

MAKE ALL OF YOUR FOOD PURCHASES AT ONE OF THE FRIENDLY FOOD STORES
NO. 1 OR NO. 2

OUR DARLING
CREAM STYLE CORN, No. 303 Can 19c
DIAMOND BRAND
SPINACH, No. 2 Can 15c
DIAMOND BRAND
HOMINY, 3 No. 300 Cans 25c
KIMBELL'S
BLACKEYED PEAS, 2 No. 300 Cans 25c
KIMBELL'S
SPANISH RICE, No. 300 Can 19c

PURE FRUIT
BLACKBERRY PRESERVES, 2 Lbs. 47c
PURE FRUIT
APRICOT SPREAD, 2 Lbs. 47c
PURE FRUIT
PINECOT SPREAD, 2 Lbs. 47c
DEL MONTE
FRUIT COCKTAIL, No. 2½ Can 39c
PALM VALLEY
GRAPEFRUIT JUICE, 2 No. 2 Cans 25c

SAVORY OLEO, Lb. 19c **KRAFT KAY NATURAL CHEESE, ½ Lb.** 33c

WILSON'S
ROLL
SAUSAGE
35c
POUND

RATH'S
SUNVALE
BACON
45c
POUND

FRESH
HOME DRESSED
FRYERS
59c
POUND

PORK CHOPS
55c
POUND

NO. 1 FRESH TEXAS FRESH
YAMS, Lb. 16c **CORN ON THE COB, Ear** 10c **CUCUMBERS, Lb.** 25c
FRESH HOME GROWN FRESH YELLOW
SPINACH, Lb. 19c **BANANA SQUASH, Lb.** 19c

FRIENDLY FOOD STORES

NO. 1
PHONE 17
ALTON and DWAIN

NO. 2
Formerly TURNER GROCERY
PHONE 35



WE'RE PROUD OF OUR SERVICE REPUTATION

Remember that for the sake of safety and economy your car MUST have the best in auto service. Try us today. Drive up!

OUR CARE WILL MAKE YOUR CAR LAST LONGER!
HERZOG AND HAMILTON
Chevron Service Station

TOP ECONOMISTS IN POLL SEE RISING INFLATIONARY PRESSURES IN 1952; HIGHER SAVINGS KEY OFFSET

A group of the nation's outstanding economists, polled by the Institute of Life Insurance regarding the inflation situation and the outlook for 1952, believe that the nation faces the threat of rising inflationary pressures in the coming year.

This is the consensus of the great majority of the 28 economists who participated in the Institute symposium. The results are of more than ordinary significance at this time in view of the lull on the inflation front that has prevailed for much of this year and the widespread uncertainty over what lies ahead.

Aware though the economists were of the possibilities, their replies by and large, however, gave little feeling of hopefulness about the inflation outlook or the ability to keep it in check. As one of them put it: "Not inevitable. Can be restrained by appropriate policies."

A Diversified Group

Of the 28 economists who participated in the poll, 15 are in the business and banking worlds, seven more are associated with universities, and the remaining six are in Government. The replies were based on the assumption of no early change in the international situation and the rearmament program, and of course, no all-out war. The conclusions can be summarized as follows:

First, that inflationary pressures will be greater in 1952 than they are now.

Second, that the dominant factor in the immediate outlook is the magnitude of defense spending with its impact on the Federal Government's budget and on the economy in general.

Third, that the principal forces which to date have helped to aures touched off by Korea are aures touched off by Korea are increased taxes and higher personal savings.

Fourth, that an essential requisite (and today's "missing link") of any program to fight the mounting inflationary threat is economy in Government expenditures, in non-defense spending particularly but also in other fields, including the military.

How Replies Break down

In answer to the question about the trend of inflationary pressures from the present on through 1952, 19 out of the 28 economists said that the pressures would be greater in six months than they are now. An even larger number, 23 out of the 28, predicted that inflationary pressures would be greater a year from now than they are currently. A few qualified their forecasts of "greater" with "slightly" or "somewhat," but these were in the minority. Only two thought that inflationary pressures would be less six months or a year from now, while a few others anticipated no change.

There were a number of interesting amplifications in the answers to this question. Several economists stressed the importance of the course of international developments with special reference to their influence on the psychology of the public and the businessman and on the intensity with which the mobilization program is pursued. Another pointed up one of the major problems of the day—the record burden of taxation now borne by

the people and by business and industry. Calling the bogey of fiscal 1953 and beyond the prospect of \$90 billions of Federal outlays as compared with \$70-\$75 billions of revenues, the economist continued:

"Longer-run inflationary pressures should return in late '52 as Federal expenditures rise steadily above Federal revenues. Difficult to raise taxes above current rates; if raised, taxes are pyramided into price structure. Tax burden above 25 per cent peril-point—may become inflationary."

The second question of the poll sought to determine the major forces making for inflation and the factors that were tending to counteract them.

Factors Pro and Con

The economists' replies to the first part of this question left no doubt as to the ranking of the magnitude of the defense program, with its auxiliaries of foreign aid and plant expansion, and because of its effect on the Federal budget, as the No. 1 underlying inflationary force.

Higher taxes and increased personal savings likewise led by a wide margin as the principal anti-inflationary forces. By and large, controls were rated as of secondary importance with the exception of credit restrictions. A substantial number of the economists emphasized the contribution made by restrictive credit policies and tighter money to holding down inflationary pressures this year—a program in which the Federal Reserve System has played the leading role. An important element in this activity is the Voluntary Credit Restraint Program of the life insurance companies, commercial bankers and investment bankers.

The Problem of Stability

Looking beyond the immediate future, one of the economists made a significant observation about the basic problem of maintaining economic stability which faces the nation in the years to come. He said:

"The inflationary potential of the economy is very great, as evidenced by the course of prices in the months following the outbreak of the Korean war. At the same time, the productive power of American industry is stupendous, provided only the necessary raw materials can be made available and provided some additions can be made to the labor force."

"Changes in public psychology are of great importance in the short range. Over the longer term, we face the problem of achieving reasonably full employment without inflation. We have not yet learned how to prevent full employment and all its

Ex-GI and Dad Have Mobile Sawmill



ANIWA, WIS.—Art Halbesleben, who has operated sawmills for over thirty years, and his son Howard recently out of the Army have a unique sawmill.

Father and son have devised a rig that goes into the forest under its own power and cuts up to a million and a half board feet of lumber per year.

Son Howard's experience with Diesel engines in army service stood him in good stead. The rig he developed is equipped with a four cylinder GM Diesel. When a farmer in the vicinity wants to build a barn or a house he cuts his timber, calls in the Halbeslebens and a few odd hands and his lumber is cut to size in short order.

The rig is 44½' long and 7' 10" wide which permits it to travel over the Wisconsin highways without special license. The GM Diesel not only drives the 54" saw, the two blowers but also propels the rig over the highways and even off the road when necessary.

The engine is bolt-connected to the truck transmission when traveling and moves the sawmill along at 30 miles per hour. According to the Halbeslebens the mill can be set up on location ready to saw in 50 minutes.

Magazine Warns Householders Of Under-Insurance

Review your fire insurance coverage if you haven't done so recently is the advice Richard L. Frey offers in the October issue of Good Housekeeping Magazine.

"Nearly every home in the United States that was built more than five years ago is underinsured; and many houses built within the past five years would cost their owners an uncomfortable loss in case of fire," the writer warned in the first of a series of articles on home security directed to American women.

Although most people in the United States are aware of the rising costs in commodities all about them, Mr. Frey pointed out, very often they don't realize that spiraling prices are reflected in a parallel increase in value of their home and furnishings.

He suggested home-owners ask themselves these questions in ascertaining the present value of their houses:

"Have you made any additions to your house since you built it?"
 "Have you refinished the attic or basement?"
 "Have you installed a new heating system?"

He added: "Any of these im-

economic and political repercussions from resulting in a gradual and persistent rise in costs. So long as the outlook is full employment, or overemployment, underlying inflationary and price raising forces are likely to continue to operate although obviously the pace of our increases will vary from time to time."

PAN-AMERICAN HOLSTEIN SHOW SLATED FOR 1952

The State Fair of Texas will present the Pan-American Holstein Show as the feature of the livestock shows at the 1952 fair, Oct. 4 through 19, at Dallas.

Dates of the featured dairy show will be Oct. 10 through 17.

Premiums totaling \$10,000, the most to be offered for the Holstein-Friesian breed at any show in the country will be awarded. The premium list includes a \$500 award for each state herd exhibited at the show. Six silver trophies also will be awarded.

A goal of 250 head of cattle has been set for the show.

The show is being presented jointly by the State Fair of Texas and the Holstein-Friesian Association of America, Brattleboro, Vermont.

The champions will be named and awards made at a spectacular "Parade of Champions" which will be the climax of the show. The State Fair of Texas has developed this event as a unique type of livestock presentation over the past two years. Parades of champions held at the 1951 fair for the Pan-American National Hereford Show and in 1950 for the All-American Jersey Show excited widespread comment as something new in livestock events.

DICK R LANE DENTIST

Phone 1796 — Room 606
 Petroleum Bldg., Big Spring
 Stanton - Big Spring

EAT SHOP

112 St. Anna Street
 PLATE LUNCHES SHORT ORDERS

SAND AND GRAVEL

Processed to meet State Specifications—Delivered to door at reasonable prices.

WEST TEXAS SAND AND GRAVEL CO.
 Big Spring, Texas Phone 9000 Box 561

H. C. BURNAM

REAL ESTATE and INSURANCE (ALL KINDS)

Tax Collections Notary
 108 St. Peter Street Phones: Office 163; Res 167

SPECIALS

EVERY WEEK

ON

QUALITY GROCERIES and MEATS

FREE DELIVERY

PHONE ONE

OKARK WATER • GULF GAS AND OIL

JIM WEBB'S GROCERY

OHMER KELLY'S RAW MILK (ALL COWS TESTED)

SOME DIFFERENT BISCUITS FOR WINTER MEALS

Good hot biscuits can play a host of roles in your winter menus if you make them different. To do this, add ingredients to your biscuits or cut the dough into unexpected shapes, says home economist, Reba Staggs.

For instance, use tomato juice to moisten the dough in place of milk. These tomato biscuits make an excellent topping for stews. Cheese biscuits are another choice for serving with numerous casseroles. Deviled ham added to the biscuits gives them hearty proportions just right for winter serving.

Mince parsley added to the dough produces another tempting biscuit variation. Or cut biscuits with your doughnut cutter, bake them over a meat pie, then tuck parsley roses in the doughnut holes just before serving. If you like, use cookie cutters to make various shaped biscuits. Or cut dough with a knife into rectangles or triangles.

Remember for the finest of biscuits cut the lard (4 to 6 tablespoons) into the flour (2 cups sifted), baking powder (1 tablespoon), and salt (3/4 teaspoon) mixture until it has a fine even crumb. Add just enough milk (1 3/4 to 1 1/2 cup) to make a soft dough, then turn out into a lightly floured surface. Knead the dough gently for about 30 seconds, then pat or roll to 1/2 inch thick and cut as desired. Bake in a hot oven (450 degrees F.) for 10 to 12 minutes.



"NOT FOR ME"—This spectator Polar bear at Chicago's Lincoln Park Zoo says he'd rather watch his bottoms-up colleague cavort than take the icy plunge himself. Who can blame even a Polar bear for shuddering at the thought of a dip in that frigid water?

City Drug Store

We Fill Any Doctor's Prescription
 Accurately and Economically



Not moving a muscle till I've seen the

New CHEVROLET for '52

on display Saturday

JAN. 19

ALSUP CHEVROLET COMPANY

Phone 57 STANTON, TEXAS 219 N. St. Peter

There's **PLENTY OF GO**

In Our **Humble Esso Extra Gas**

Yes, the kind of zip that puts you out in front and **KEEPS** you there! Convince yourself. Drive up and try a tank full the next time you need gas!

Our Care Will Make Your Car Last Longer

Wheeler's Super Service
 STANTON

HAMILTON OPTOMETRIC CLINIC

ALLEN R. HAMILTON, Optometrist
 MARSHALL Q. CAULEY, Optometrist
 B. D. SANDERS, Optometrist
 CHARLES W. WEEFE, Optician
 MELVIN L. HARPER, Laboratory Technician
 JAMES F. WILCOX, Asst. Laboratory Technician
 WINNIE HARDEGREE, Office Manager
 ANIETA NAZARUK, Assistant

106 WEST THIRD PHONE 1405
 BIG SPRING

GROCERIES • MARKET • FEEDS

L. H. White, Owner

FINE FOODS...

For Your Money

Come in Today — PHONE 44 — Save On Your Groceries

WHITE'S GROCERY & MARKET



WE'LL HELP YOU SPEND AN
ECONOMICAL WEEKEND!

REGULAR SIZE BOX

TIDE

19c

EACH

(Limit Two)

PURE CANE

Sugar

79c

10-LB. BAG

(Limit One Bag)

DIAMOND

ENGLISH PEAS

3 CANS 25c

WORLD OVER

PORK & BEANS

3 CANS 25c

TOPAZ—FACIAL TISSUE QUALITY
TOILET TISSUE

2 ROLLS 35c

BRICE'S
DILL PICKLES

QUART JAR 39c

JELLO
All Flavors
2 FOR
15c

POUND

Coffee
79c

200 Count
KLEENEX
2 BOXES
35c

CRISCO

3 LB. VAC. PAIL 79c

HEARTS DELIGHT
GRAPEFRUIT JUICE

46- OZ. CAN 25c

DECKER'S
TALL KORN BACON

POUND 39c

TENDER—LEAN
CLUB STEAKS

POUND 79c

NO. 1
SALT PORK

POUND 29c

FOOD VALUES

JUICY
T-BONE STEAK

POUND 89c

Hamburger Meat

POUND 49c

BEEF RIBS

POUND 49c

Dave Foreman's



WALTZ OFTEN CALLED DAFFODIL OF MUSIC; STANTON MUSIC CLUB MEMBERS TOLD IN RECENT MEETING

By MRS. EMMET PITTMAN
The Stanton Music Club met in the home of Mrs. Edmund Tom on Wednesday, January 2, at 4 p. m.

Mrs. A. E. Pittman spoke on the subject "The Waltz." She stated that the waltz had often been called the daffodil of music for like the daffodil, it is both a delicate and hardy flower, easy to grow and occurring in musical compositions of all climates from the temperate to the torrid zone. The waltz may be a lowly ordinary song, or it may emerge from the body of a symphony orchestra Turn or Rotate

The word waltz comes from the German word "walzen" which means to turn or rotate. The first waltz came into existence in Vienna toward the end of the 18th century. Johann Strauss of Vienna was and is known as the "Waltz King" and in 1872 he was paid \$100,000 to come to Boston to conduct his "Blue Danube" with an orchestra and chorus of 20,000.

He wrote 500 compositions but they were not all waltzes. His best waltzes are "Blue Danube," "Tales from Vienna Woods," "Voices of Spring," "Artis: Life" and "The Acceleration Waltz." When we say, "the Waltz" we immediately think of Johann Strauss.

Popular Home Music

Waltz music has always been popular home music but of the four most famous waltzes, possibly only one, "The Blue Danube," can be recognized by the average person. The other three are "Invitation to the Dance" by Weber, "Waltz in A Flat" by Brahms; and "E Minor Waltz" by Chopin. Every home with a record player should have these four waltzes.

The most popular waltz in the world is "Chopsticks." It has nothing to do with those little wooden sticks the Chinese manipulate so skillfully in eating their rice. In this case chopsticks refer to a chopping-block. No one knows who the composer was or when this merry little waltz tune tinkled itself into the musical world, but it seems to be here to stay. It is so simple that people who never had a music lesson can play it. Everyone from eight to eighty years of age likes to play this popular waltz.

Guest Plays "Chopsticks"

Miss Mary Lynn Hamilton, a guest, played "Chopsticks" and a "Concert Waltz." Mrs. Pittman played "Waltz in A Flat" by Brahms. The group sang "The Waltz You Saved For Me" accompanied on the piano by Mrs. Edmund Tom. Recordings of "The Waltz of the Flowers" from the "Nut-

cracker Suite" by Tschakowsky and the "Blue Danube" by Johann Strauss were played.

Mrs. Herbert Riley was elected secretary to fill the office vacancy caused by Mrs. Bob Hoover moving out of town.

The next club meeting will be in the home of Mrs. Morgan Hall on January 16 and Mrs. P. G. Smithson will speak on the subject "The Amateur Musician."

Refreshments of fruitcake and coffee were served to Mesdames Guy Elland, Morgan Hall, Herbert Riley, Don Gaddis, Glenn Brown, James Jones, Emmet Pittman, Edmund Tom and Miss Mabel Harris.

OES MEETING SET

The District Deputy Grand Matron, Order of the Eastern Star, will be present at the February 8 meeting of the Stanton Chapter at "The Masonic" Hall.

All members are to be present at this time.

Mr. and Mrs. W. B. Harrison of Waco, visited in the home of her sister, Mrs. C. E. Crow, recently.

Mr and Mrs. G. B. Shelburne, Jr., of Kerrville, recently visited in the home of his parents, Mr. and Mrs. G. B. Shelburne.

CATTLE AUCTION SALES RECEIPTS TOTAL 510 HEAD

The cattle market was fairly strong and active at Midland Livestock Auction Co. sale Thursday. Most kinds moved briskly except better quality stocker calves. There was a good run of butcher cattle and a group of 34 mixed fat calves and yearlings consigned by F. W. Henson of Stanton, sold up to \$34.70. Other fat kinds brought \$31 to \$34.50, mediums \$27 to \$31, commons and culls \$21 to \$27.

Fat cows drew \$22 to \$24 and a few heiferish kinds higher, medium cows \$20 to \$22, canners \$13 to \$20. Bulls auctioned for \$24 to \$26.75.

Stocker steer calves cleared at \$30 to \$34 and heifer calves at \$29 to \$32.50. Best prices went for several groups of both steer and heifer calves consigned by Mrs. E. Dryden Edwards and Glenn Allen, both of Monahans.

One bunch of 18 medium age cows with light-weight calves consigned by M. F. King of Midland, were bid to \$234.50 a pair. Total receipts were 510 head.



JUST HORSEIN' AROUND— Sam Davis, former University of Miami football player, tries a block against a horse named "Drafting Beard." Davis is now a trainer at Miami's Hialeah race track where this horse with the ominous name plies his trade.

HELP YOURSELF TO Healthful Winter Comfort



WITH A MODERN SUN LAMP
to make your own summer sunshine and Vitamin D.
(Lamp fits any ordinary socket—just insert it and flip the switch.)



WITH AN ELECTRIC HEATING PAD
to provide soothing warmth all night and relieve cold weather discomforts.



WITH A MODERN HEAT LAMP
to relieve muscular aches and pains. Quick, portable heat where you want it... when you need it.

You'll discover a whole new world of comfort for only a few pennies a day when you enlist the aid of electric appliances like these to combat winter's chills and ills. See these wonderful aids to a more comfortable, healthier winter at your electric appliance dealer's NOW.



TEXAS ELECTRIC SERVICE COMPANY
Circuit Breakers, Fuses, etc.

DR. J. R. HAYWOOD
DENTIST
HOURS—
8:30 a. m. 'til 12
1 p. m. 'til 5 p. m.
Office Above Walgreen Drug
STANTON

See **J. S. LAMAR**
In First National Bank Building
For FIRE, TORNADO,
AUTOMOBILE INSURANCE
ALL KINDS OF BONDS
Will Rent or Sell Your Property



THERE'S A TRICK TO IT...

A short stay with us and your watch runs as good as new. The trick? Care and long experience on all makes of watches.

J. D. RENFRO
JEWELERS
IN STANTON SINCE 1926



Stop Damage Now! Save On Repairs

The time to repair is when the crack is still small. Avoid unnecessary cost. Prevent rotting of timbers, leaking walls and damaged rooms. Call us today for immediate service.

J. T. Berry & Son
STANTON



LONG-HAIRED "LONG HAIR"—Mezzo-soprano with the Metropolitan Opera Company Blanche Thebom, whose long tresses haven't been shown since 1938, performs a neat trick in her dressing room as she transforms herself into Prince Orlofsky for her role in "Fidelema". The transformation is completed when Miss Thebom's 89-foot-five-inches of hair, left, is placed in a wig within the jacket of the costume, right.



AIDS STRICKEN SEAMEN—Small merchant ships the we over often find themselves with an emergency case on board which needs more than just first aid. At such times the International Radio-Medical Center in Rome sends professional advice via radiotelegraph. The institute, which handles more than 200 cases a year, was founded in 1933 by Professor Guido Casati, a retired Italian Navy doctor.

Basin Supply Co.
101 SOUTH MAIN

We can outfit your CHUCKAWAGON or your CHUCKACLOSET!

- hardware
- sporting goods

Precision SAW FILING

Saws retooled, sharpened and set.

ALL WORK GUARANTEED

ALEX HAGGARD
1066 N. St. Paul Stanton

PUNCHY PARAGRAPHS

Pork-Corn Casserole

One pound of pork sausage makes six servings with the casserole. Shape bulk sausage into patties, brown them, then make a thin cream gravy with the drippings. Arrange cracker crumbs in the bottom of a baking dish and add whole kernel corn. Pour the gravy over the corn, then top with browned patties. Bake in a moderate oven (350 degrees F.) for about 30 minutes.

Beef Cube Casserole

For a tempting serving, braise cubes of beef, then serve as a table casserole topping, squeeze mashed potato through a pastry tube and swirl into rosettes. Place the casserole in your broiler just long enough to lightly brown the potatoes.

Sandwiches Changes

Sandwich spread for lunch "loters" must be kept different. Here are some ideas. To ground meat add finely minced sweet pickle, catchup, chopped celery, chopped onion, grated carrot, chopped olives. Molsten with mayonnaise.

Luncheon Sticks

Here's a clever way for that can of luncheon meat on your kitchen shelf. Make a barbecue sauce, then add the luncheon meat that's cut into thin sticks. Heat thoroughly, then serve on a bed of rice.

BUTTER AND EGGS

Butter-and-Eggs have a name that really fits them. With orange, yellow, and white blossoms, the hardy flowers look almost good enough to eat for breakfast.

It's too bad that they're not for they are plentiful in so many places. They grow along road sides and in fields, pastures, and city lots from Newfoundland to Georgia and west to California and Oregon. They have also spread to South America.

Butter-and-Eggs are not natives of this part of the world, however. The National Wildlife Federation reports that they started out in Asia and Europe and then came to the Western Hemisphere.

Roots Never Die
They don't ask for rich ground, but grow in dry, waste soil. Once they take hold, they stay year after year, for their roots never die.

Each fall the flowers produce tiny black seeds which the wind scatters far and wide during the winter months. When spring comes, new plants sprout and old ones rise up again. They grow to be from one to three feet tall, with a straight, slender stem. Reaching out from the stems are narrow leaves—each about an inch and a half long. The stems

Liver Sausage "Dunk"

Prepare this tasty "dunk" for your party snacking. Mince liver sausage, then combine it with mayonnaise, celery seed and chopped parsley. Add a bit of Worcestershire, if you like. Serve with assorted crackers and chips for eating fun.

Garnish Kabobs

Make these kabobs to garnish your next roast ham or pork platter. Cut cooked sweet potatoes into 1 inch slices, then alternate on skewers with spiced crab apples. Brush with melted butter or margarine and place on your broiler rack about 2 inches from heat. Cook for 8 to 10 minutes, turning kabobs on all sides.

Egg Foo Yung

Here's a simple meal plan with egg Foo Yung. Mix one cup of finely cut cooked meat with a No. 2 can of bean sprouts and 1/2 cup of chopped onion. Add the meat mixture to six slightly beaten eggs, then drop by spoonfuls into hot lard. Brown on all sides and serve immediately with gravy.

Onion Rings

For the best of French fried onion rings, slice onion 1/4 inch thick and separate into rings. Let rings stand in milk for about 10 minutes. Next, dip rings in seasoned flour and fry in deep hot lard (365 degrees F.) until golden brown.

are smooth, but the leaves have a fine fuzz which rubs off.

Along about July, the Butter-and-Egg blossoms appear. The flower is an inch long, with two lips above and a spur beneath. It lasts from the middle of summer until October, and reminds you of an egg nesting in a spot of butter.

If they were more rare, Butter-and-Eggs would be highly prized in flower gardens, for they are pleasing to the eye. But they grow as easily and need so little care that no one ever thinks of cultivating them. Sometimes, indeed, farmers have to treat them as weeds and clear them out of fields.

There was a time, though, when people made use of them. Butter-and-Egg plants were collected and pressed to get a juice which was valued as a skin lotion. There was also a recipe for mixing the juice with milk to produce a fly poison.

Furnish Nectar
But today, says the National Wildlife Federation, Butter-and-Egg are just wild flowers which brighten the outdoors. They furnish nectar to bees and butterflies, and they usually grow in spots which are shunned by most other plants.



"LOOK MA, I'M HANDSOME!"—Nineteen-month-old Keith Holland endures a cautious hug from Bonnie Chornenki, four months his junior, after the pair copped the titles of "Miss and Master Winnipeg." Though the Canadian beauty contest was baby-sized, they had to top 1000 entrants to win their waist-high trophies.

GIVES ROUND THE CLOCK BACON IDEAS

Why reserve bacon for breakfast? It's a three meal meat, points out Reba Staggs, home economist.

For a lunch or dinner dish choose bacon - noodle scramble. To prepare this dish, add cooked noodles to a beaten egg-milk mixture and cook in bacon drippings. Serve surrounded with light golden brown bacon strips. And remember when cooking bacon, place a single layer in a cool frying pan. Cook over low heat, turning frequently and drain excess fat as it accumulates so that the bottom of the pan is only well greased. Cook slowly until the bacon is brown and evenly crisped.

Bacon also lends flavor and heartiness to a green bean casserole or scalloped potatoes. Or add bacon bits to spinach timbales. Perhaps you've overlooked bacon cups for a special breakfast or lunch. Heat slices of bacon in a frying-pan until they become transparent, then outline muffin pans with the bacon. Break an egg in each bacon cup and cook in a moderate oven for about 10 to 12 minutes.

DR. W. R. DALE
Naturopathic Physician

1/2 Mile North of Jim Webb's Grocery on Lamesa Highway Stanton, Texas

Charter No. 8094 Report of the Condition of Reserve District No. 11

THE FIRST NATIONAL BANK

of Stanton in the State of Texas, at the close of business on December 31, 1951, published in response to call made by Comptroller of the Currency, under Section 5211, U. S. Revised Statutes.

ASSETS

Cash, balances with other banks, including reserve balance, and cash items in process of collection	\$2,389,173.05
United States Government obligations, direct and guaranteed	1,350,200.00
Obligations of States and political subdivisions	3,550.56
Corporate stocks (including \$6,000.00 stock of Federal Reserve bank)	6,000.00
Loans and discounts (including \$6,396.91 overdrafts)	924,167.78
Bank premises owned \$60,000.00 furniture and fixtures \$10,000.00	70,000.00
Real estate owned other than bank premises	15,000.00
Other assets	7,893.37
Total Assets	\$4,665,887.76

LIABILITIES

Demand deposits of individuals, partnerships and corporations	\$4,141,550.15
Deposits of United States Government (including postal savings)	7,941.23
Deposits of States and political subdivisions	181,429.25
Deposits of banks	35,583.05
Other deposits (certified and cashier's checks, etc)	23,173.75
Total Deposits	\$4,389,737.44
Total Liabilities	\$4,389,737.44

Capital Stock

(c) Common stock, total par \$100.00	100,000.00
Surplus	100,000.00
Undivided profits	50,000.00
Reserves (and retirement account for preferred stock)	26,150.32
Total Capital Accounts	\$ 276,150.32
Total Liabilities and Capital Accounts	\$4,665,887.76

State of Texas, County of Martin, ss:
I, Edwin Garland, cashier of the above-named bank, do solemnly swear that the above statement is true to the best of my knowledge and belief.
EDWIN GARLAND, Cashier
Sworn to and subscribed before me this 3rd day of January 1952.
Evelyn Woodard, Notary Public
Correct—Attest: Jim Tom, W. C. Houston, H. S. Blocker.

Buy your new car THE "SHOW DOWN" WAY

FEATURE	DODGE					CARS COSTING APPROXIMATELY				
	1100	1200	1400	1600	1800	1100	1200	1400	1600	1800
DESIGN ROSE	YES	NO	NO	NO	NO					
122 1/2" WHEELBASE						122 1/2"	130"	121"	121"	130 1/4"
WHEEL-SPIN SEATS (Driver & Passenger)	\$115 1/4	\$113 1/4	\$111 1/4	\$109 1/4	\$107 1/4	\$115 1/4	\$113 1/4	\$111 1/4	\$109 1/4	\$107 1/4
FAST-ENTRY DOORS (Over 40" Opening Height)	\$42 1/2	\$42 1/2	\$42 1/2	\$42 1/2	\$42 1/2	\$42 1/2	\$42 1/2	\$42 1/2	\$42 1/2	\$42 1/2
FULL HEADROOM (Over 37")	37 1/2"	37"	37 1/4"	37 1/4"	37 1/4"	37 1/2"	37"	37 1/4"	37 1/4"	37 1/4"

GET FREE DODGE "SHOW DOWN" BOOK ON CAR VALUE

Here's proof... free proof... that the exciting new '52 Dodge makes your money worth more. We call it the "Show Down" Way to judge car value. You get straight facts, not fancy claims. The "Show Down" Way lets you compare the '52 Dodge with cars costing hundreds of dollars more... for roominess, stability, riding comfort, safety. It's the sensible way, the money-saving way, to decide. Come in the first chance you get. See and drive the big, beautiful, new '52 Dodge. See... compare... discover... you could still pay hundreds of dollars more for a car and not get all the extra-value features this great new Dodge gives you.

Now, dependable '52 **DODGE** NOW ON DISPLAY

Ethridge & Rhodes Motors

302 WEST FRONT—HIGHWAY 80 STANTON, TEXAS PHONE 9

ANY MEAL IS A TREAT AT THE **BURGER BUGGY** MILDRED BRISTLER, Owner West Highway 80 — Stanton

COOK'S TRAILER CAMP
1002 W. Broadway — Back West High School GAS, SEWERAGE, ELECTRICITY NEW, LARGE, MODERN BATH HOUSE

AMBULANCE SERVICE Is As Near As Your Telephone PHONE 200 **EBERLEY FUNERAL HOME** STANTON-BIG SPRING Burial Insurance Funeral Directors

INSURANCE OF ALL KINDS In First National Bank Building **WOODARD INSURANCE COMPANY**

DRUGS AND ACCESSORIES FOR FALL **J. L. HALL PHARMACY** Dependable Prescription Service Since 1907

REPORTER CLASSIFIED PAGE

WANTED: Someone to do listing by the acre. See W. J. Coates, Stanton.

FOR SALE: F. Springer Grocery Store and fixtures Tarzan, Texas

FOR LEASE: 126 acres land 4 miles southwest of Lenora. Raymond Sprawls, Rt. 4, Cisco, Texas

FOR SALE: 2 1/2 acres. 350' on Highway 80, 333' deep. 9 miles west of Stanton. J. W. Branscum.

WANTED: Baby sitting in my home. Mrs. McIntosh, phone 242-W.

FOR SALE: 7 choice city lots on College St., two blocks north of school house. See J. T. Davis.

FOR SALE: 1951 Chevrolet pick-up 3/4 ton low mileage. Will sell cheap. 9 miles west on Highway 80. J. W. Branscum.

FOR SALE, LEASE OR TRADE: Two good houses in Stanton. One furnished. Sell, Lease or Trade. 803 Cincinnati, San Antonio, Texas.

FOR SALE: The following described 160 acres of land is offered for sale, until February 1st, when it will be taken off the market:

160 acres, all but 5 acres, in cultivation. Six acres of alfalfa, of which two acres are fenced hog proof. Young orchard of about 50 trees. One 8 inch irrigation well with a new pump and motor. This is a good type of farm with a red clay foundation and the owner says it does not blow.

The farm has a five room stucco, modern home, one granary 10 x 20, one granary 32 x 20, one 18 x 32 shed, one 12 x 16 shed, one 16 x 20 barn and cow shed.

In 1949, this farm made two bales of cotton per acre on 50 acres. In 1950, this farm made 42 bales on 31 acres. In 1951, he was hailed out.

The price on this farm is \$200 per acre, one-half down, the balance payable in 10 equal installments, with 6% interest.

Please arrange for appointment to see this place. Call Amos Har-

per, phone 2072 or 3377, Seminole, Texas.

An opportunity for woman, who can devote full time to sales work in Stanton, to earn fifty dollars up if qualified. Car necessary. Established business. Permanent. Can make it a career. Write Box 371, Big Spring.

LOST: FENDER SKIRT OFF BLACK 1950 MODEL CADILLAC. SEE SAM GOOLSBY.

FOR SALE: 1/2 section land. 314 acres in cultivation. See Hoyt Britton.

CARD OF THANKS

Our thanks to friends and relatives for making our 50th wedding anniversary a happy and memorable occasion. Thanks for the lovely gifts and beautiful flowers. The Ralph Kellys.

Homemakers can help avoid rough, red hands by slathering on hand cream at night and slipping on a pair of oversized cotton gloves.



HOME IS WHERE HE ROLLS IT—Unencumbered by such mundane things as refrigerators and lace curtains, Bugatti, one of the better known Parisian hobos, proudly displays his worldly possessions. The writing on Bugatti's "Rolling Home" tells us that he sleeps outside and is happy with his fate.

Ticklers

By George



"This steel furniture robs our profession of its glamour!"

Kitchen Komment

To remove rubber heel marks from the floors, rub the marks with a cotton cloth wet with cleaning fluid. Benzine or mineral spirits may be used.

To get the most food value from potatoes, cook them in their jackets. Add to their nutritional value by serving them with a bountiful supply of vitamin-enriched margarine.

Hang colored bath towels in the shade to prevent fading.

TRY A REORTER WANT-AD.

FOR SALE

NOTICE: You folks who are interested in buying lots. I have them from \$100 to \$1000 and I have houses from \$4000 to \$9,500. And you oil men check with me on acreage. I also have good location for Grocery business. Will appreciate your listings.

Fred E. Alevander

Located in J. N. Woody Barber Shop
Box 422, Stanton, Texas

POLITICAL ANNOUNCEMENTS

Charges for publication in this Column:

District and State Offices. \$20.00

County Offices. \$15.00

Precinct Offices. \$10.00

(No refunds to candidates who withdraw.)

Subject to the action of the Democratic primary Election Saturday, July 26, 1952.

For District Attorney:

ELTON GILLILAND (Reelection)

For County Judge:

JAMES McMORRIES (Reelection)

For County Treasurer:

MRS. PAULINE COOK (Reelection)

For County Clerk:

MRS. NOBYE HAMILTON (Reelection)

For County Commissioner Precinct 1:

OLIVER VAUGHN (Reelection)

For County Commissioner Precinct 2:

D. E. BLOOMER (Reelection)

For County Commissioner Precinct 3:

I. E. WELCH (Reelection)

For County Commissioner Precinct 4:

JOE FROHMAN (Reelection)

Artificial heat has been used successfully in dairy calf barns to prevent illness that often follows a sudden drop in temperature.

WEEKLY CROSSWORD PUZZLE

One of Three

- HORIZONTAL**
- 1.7 Pictured radio singer
 - 14 Bloodlessness
 - 15 Rampart
 - 16 Hindugarmant
 - 17 Cesse
 - 19 Prevaricator
 - 20 Aroma
 - 21 Ocean
 - 22 Unbleached
 - 23 Symbol for
 - 24 And (Latin)
 - 25 Companion
 - 29 Fly
 - 32 Noise
 - 33 Lever
 - 34 Sound quality
 - 35 Solar disk
 - 37 Grating homestead (sh.)
 - 38 Bone
 - 40 Pealed
 - 43 Honey makers
 - 47 Facts
 - 49 On the sheltered side
 - 50 Slave
 - 51 Of an era
 - 52 She sings with her two
 - 54 Fruit
 - 55 Migration
 - 57 Ascended

- VERTICAL**
- 1 Worker in stone
 - 2 Garland
 - 3 Dry (comb. form)
 - 4 Prince
 - 5 Symbol for nickel
 - 6 Direction
 - 7 Footless
 - 8 Back of neck
 - 9 Doctor (sh.)
 - 10 Respiratory sound
 - 11 Heroic
 - 12 One who wears
 - 13 Swagger
 - 18 Palm lily
 - 26 Bustle
 - 27 Metal
 - 28 Compass point
 - 29 Health resort
 - 30 Morsel
 - 31 Always
 - 34 Muse of comedy
 - 36 Spotted
 - 37 Clutch
 - 39 Drawing-room
 - 41 Promontory
 - 42 Obtains
 - 43 Iceberg
 - 44 Essential being
 - 45 Half-eaten
 - 46 Bristle
 - 47 Half (prefix)
 - 48 Brazilian macaws
 - 53 Babylonian
 - 55 Either

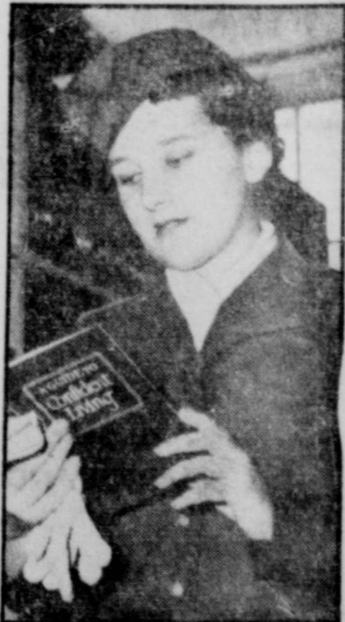
Here's the Answer



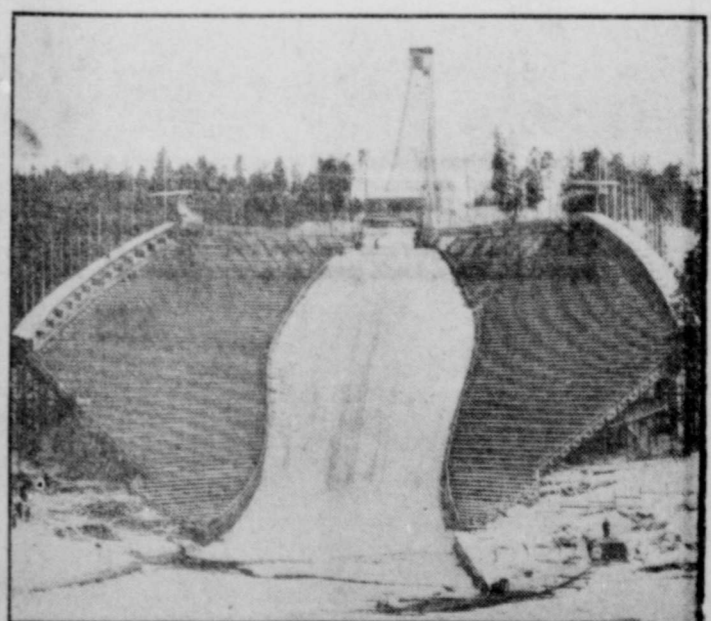
CONSUMER ADVISORY COMMITTEE—The Consumer's point of view was under discussion at a recent meeting of the National Consumer Advisory Committee with Office of Price Stabilization officials in Washington. A portion of the committee is shown here with Mrs. Chase Going Woodhouse (center), Special Assistant to Price Stabilization Director Michael V. DeSalle who serves as chairman. Members and the organizations nominating them are from left to right: Dr. Hazel Kyrk, American Home Economics Association; Samuel Jacobs, Congress of Industrial Organizations; Mrs. Gilbert F. Loeb, General Federation of Women's Clubs; Thomas X. Glancy, American Legion; Mrs. Woodhouse; Mrs. Rose Kerber, National Association of Consumers; Wallace J. Campbell, Cooperative League of the United States; Dr. Dorothy B. Ferebee, National Council of Negro Women; Dr. Persia Campbell, National Board, YWCA; Mrs. Edith Sherrard, American Association of University Women.



FOR FINGER-PAINTING—It seems humanity's perverse urge to touch paint labeled "wet" is universal. So this Japanese painter provides a clearly marked target for the probing fingers of passersby. He makes one sign reading "Wet Paint" and the other with the invitation "If you don't believe it, test here."



EIGHTH OF A KIND—WAF Pvt. Helen Callahan, 20, now stationed at Lackland Air Force Base, San Antonio, Texas, is the last of a Lymbrook, L. I., family of eight to enter military service. Seven brothers and one sister preceded Helen, who recently recovered from infantile paralysis.



THEY'LL GET A THRILL ON HOLMENKOLLEN HILL—Ski jumpers from 35 nations will try their skills on the huge Holmenkollen Ski Jump Hill when Oslo, Norway, plays host to the Winter Olympic Games this February. After leaving the lip of the jump a skier flies through the air at about 50 MPH. Right under the takeoff spot is a restaurant from which spectators can watch as the contestants zoom overhead.

Snooter—

(Continued From Page One)

conventions leading to the nomination of candidates for President."

The League of Women Voters is non-partisan, using the slogan: "Vote as you Please, but Please Vote!"

"STORMY WEATHER" IS NOT only referred to the ethereal elements — that is in Martin County, anyway — it can be found "flying" around on the ground. When I say, "Flying," on the ground, I emphasize the word with the capital letter "F". Even in offices, "Stormy Weather" is found — right in the office of the Martin County Chamber of Commerce. And I want to speak a word to the natives, that when this "Stormy Weather" gets goin' everything moveable in her path gets movin'. I'm referring to our very accommodating and efficient manager of the Martin County Chamber of Commerce, "Stormy Weathers" is only a nickname for Mrs. Hila Weathers. She cuts up at social gatherings in a way that drives home the guests with sore sides from over-exertion in laughter at the humorous readings and jokes given by Mrs. Weathers, as she did at the annual banquet given Thursday night of last week for the employees of Cap Rock Electric.

TRY A REORTER WANT-AD.

OIL REPORT

(Continued From Page One)

tin County, is drilling below 10,924 feet in Pennsylvania lime and chert. No shows of oil or gas have been found in this wildcat which could be developed for commercial production.

Location is 1,983 feet from south and 662 feet from west lines of section 38, block 36, T-2-N, T&P survey and one and one-quarter miles southeast of Lenora.

Is Drilling Deeper
Humble Oil & Refining Company No. 1 J. W. Blocker and others, wildcat in Central-South Martin County, is drilling below 5,462 feet in sand and shale.

Location is 660 feet from north and west lines of section 10, block 37, T-1-S, T&P survey and three miles northeast of Germania and six miles west and slightly north of Stanton.

Gulf Oil Corporation is at plugged back depth of 8,686 feet and is testing on the pump on its No. 3-B G. W. Glass, a one-half mile east out-post to the proven limits of the Glass multipay field of Southwest Martin County.

Oil And Water
In the last 26 hours of pumping, the project made 12 barrels of oil and 21 barrels of water.

It was drilled to total depth of 10,788 feet in shale before it was plugged back.

Location is 660 feet from south and 1,880 feet from west lines of section 10, block 38, T-1-N, T&P survey. That makes it 13 miles north of Midland and 17 miles west of Stanton.

Dickenson Plugged
Tide Water Associated Oil Company No. 1 E. B. Dickenson, Central-South Martin County wildcat,

nine miles west of Stanton has been plugged and abandoned as a dry hole.

This development was 660 feet from north and east lines of section 44, block 37, T-1-N, T&P survey.

It was completed several months ago as a flowing discovery from the Ellenburger. After being produced for a short time the Ellenburger oil was depleted and that formation made only water with slight shows of oil and gas.

Tested Several Zones
Operator then started plugging back and testing higher formations. The Fusselman, the Pennsylvanian and the Spraberry were all tested.

None of those formations yielded any signs of commercial production. The last testing was in the lower Spraberry where the plugged back total depth of 8,340 feet.

No shows for making an oil well were recovered from the testing in that zone.

Operator has not plugged and abandoned the project and will salvage as much of the equipment which had been put in the hole as is possible.

Phillips Petroleum Company is drilling below 10,846 feet in an unidentified lime and shale on its No. 1 Berry, Northwest Glasscock County wildcat.

No. 1 Berry is four and one-quarter miles southeast of production in the Germania-Spraberry field of Northeast Midland County.

—This prospector is 658 feet from west and 664 feet from north lines of section 35, block 36, T-2-S, T&P survey. It is 17 miles northwest of Garden City.

Horses wearing shoes with tightly clinched nails are easy victims of foot troubles, such as corns and lameness.

LOST VICTORY

"Without good health," says Mary Jane Moore, R. N., authority on diet in relation to health, weight and beauty, "a good figure is a Lost Victory. Unfortunately, all too many of our 'good figures' are kept that way thru 'fad' diets or reducing pills, candies, beverages, or what have you, with the result that body resistance is lowered to the danger point."

In her recently published book, **YOU CAN TOO!** Miss Moore writes, "any diet that will cause you to lose weight at a rate of more than two or three pounds a week, unless ordered for a specific emergency by a competent physician, is detrimental to the body and can prove fatal."

Miss Moore, a former hospital superintendent, wrote the book at the suggestion of some doctors who wanted an entertaining, easy to follow and factual book suitable for recommendation to their patients and she gave it such encouraging subtitles as **Acquire A Beautiful Figure, Enjoy Better Health, Increase Your Popularity, Lead A Richer Life.**

It is notable that throughout **YOU CAN TOO!** the author's suggestions — "d case histories, (called Other Women), parallel a practical and easily adapted way of life rather than the I-must - seek - the - pasture - across - the - way - as - it - is - greener - than - mine attitude. She emphasizes the fact that the individual should treat herself as a unit with the physical, emotional, mental and spiritual

working with and not against each other.

Miss Moore says, "forget dieting and practice Sensible Eating. This is easy if we will relegate food to the place that nature intended it to have, that of body nourishment, and stop using it as an emotional appeasement." She has discovered that most of the highly publicized 'diets' are impractical to follow, often distasteful and 'gopy,' while all too often they are deficient in some of the food elements that are necessary to good health.

ATTENDS INSTALLATION

Mrs. Hila Weathers attended the annual Kiwanis installations banquet at the Midland Country Club Tuesday night. Her husband, Lee Weathers was installed as a Director for the coming year.

HEY FOLKS!!

I Have Opened A Barber Shop

208 St. Peter

YOUR PATRONAGE APPRECIATED

ROY POLK

Girl Cagers Defeat Forsan Sextet

By JO JON HALL

The Stanton Girls Basketball team defeated Forsan Tuesday night 31-9. Harriett Higgins was the high point scorer of Stanton team, with Vivian Green high point scorer for the losing team. Coach Robertson says he thinks he has three of the best guards of the district. They are Beanie McCoy, Sue Standefer and Freeda Standefer.

We are also proud of the fact

that Stanton beat Coahoma last Friday night. The "A" team score was Stanton, 44, Coahoma, 28. The "B" team also won their game 32-16. This was our first game of the season with Coahoma. The high point scorer of the "B" team was Mary Ivy Henson with 18 points. Harriett Higgins was high point scorer in the "A" game with 28 points.

Stanton meets O'Donnell here Friday night for our first conference game of the season. Even though Stanton isn't picked to win District they're improving with every game and are going to be hard to handle in District play off.

New Permanent for the New Year



—and a happy New Year it will be with a soft, flattering and lasting permanent applied by our professionals

Better Beauty for All at

ATCHISON BEAUTY SHOP

MABLE ATCHISON
MARGIE DAVIS EUNICE PADGET
Stanton
Phone 134

June in January Jubilee



as seen in GLAMOUR

The full-skirted coat dress to give you Toni Todd Original's newsmaking silhouette. Trimly tapered above with convertible collar. It falls into a wonderfully flattering full skirt. In Dam River Sanforized combed striped chambray with slenderizing solid chambray panel. Navy, grey, green, red or brown against white. Sizes 12 to 20 and 14 1/2 to 24 1/2.

7.95



as seen in GLAMOUR

Heaping helpings of frosty Schiffl embroidery outline the intriguing yoke and market bag pockets of this newest Toni Todd Original. Its cut to flatter, with a figure-fitted top, convertible collar and whirlpool skirt. In J. P. Stevens Sanforized checked gingham, complemented with silky solid broadcloth. Brown, black, green, blue or red. Sizes 12 to 20.

7.95



as seen in SEVENTEEN

Spring-bright petti-pointhead embroidery borders the tucked bodice and wraps the winsome waist of this Vicky Vaughn Junior. The brief, whittled bodice and fluttery full skirt contrive to give you the delicate look he loves. In Marcus' Sugar Plum Sanforized combed chambray. Charcoal, navy, brown, rose, green or wine. Sizes 9 to 15.



as seen in SEVENTEEN

Doll waist... that's what you'll have in this Vicky Vaughn Junior with its snug little hi-riding midriff accentuated by carefree collar and winged cuffs. The rhinestone-eyed buttons wink gaily over the heavenly-full skirt... a perfect showoff for Popcorn, a crisp new Everglaze embossed cotton that's crease-resistant and pre-shrunk. Bittersweet, capri blue, lime, burnt orange, aqua or lilac. Sizes 9 to 15.

BE PRETTY AS A PICTURE IN THESE NEW COTTONS YOU HAVE SEEN IN GLAMOUR AND SEVENTEEN. WONDERFUL FABRICS AND STYLING AT A TINY PRICE.

DEAVENPORT'S

PHONE 11