

# The Slaton Slatonite

A MEMBER OF MOST FAMILIES IN THE SLATON TRADE AREA

LUBBOCK COUNTY, SLATON, TEXAS

Aug. 31, 1972

WORK



by dalton

TRY which is supposed to does get soggy around here. dry in these parts that we "General Rains" was a military variation of an old Red which he says he supposes is a military man, since wear hanging on the line "General Mills" across the seat). been welcome, but hopefully, read this, we will have had a dry weather to follow it up cotton crop. If we haven't, looking into the possibility of year.

fine, but it may be bringing never have had, and some- continue to do nicely without. ers, those pesky little critters last Texas grass and which scratch like crazy. A couple of who haven't been out of the were treated last week for The doctor who treated them to find they got them in their Slaton.

ing around turned up some of people getting chigger bites west Texas, including some who while camping at Ceta Canyon, arillo.

g alarming to those of us who wallow in the grass. Perhaps knows about bugs could tell us assumed chiggers couldn't on. Now if this should be true, they're here now can be linked rainfall, we're probably safe, be around in years to come. migratory thing, then we need nce between here and Seymour, is needed, to keep all varmints

g which we sure don't want is blister-bugs. These green, crawl down your collar in the you mash them, and then you sore. And they congregate wherever there is light. (Evil does darkness).

IN THE WOODWORK: A news that only 11 per cent of considered Sen. George McGovern. We don't know who those 11 are, but they really must be S. Rep. Wright Patman of the favors McGovern. Well, session of your sins is good. If they keep on liberalizing and appearance codes, pretty only will be permissible to go necessary for some, in order their gender (happily, not too). A little chunk of moon on display at the Panhandle- Fair...A windstorm uprooted a lot of damage on the capitol the other day. It's kind when one considers the terrific which are generated in that city ars, without hurting the capitol

## ment Sags

In Slaton Public Schools as of less than had been anticipated, at the same time last year, McClesky reported Wednesday. en of enrollment on the four owed 630 pupils at West Ward, in F. Austin, 436 at junior high, high school, for a total in the 71.

the time last year, Slaton schools 1,926, McClesky said. The un- line is mostly in high school, ay as 548 were enrolled at one

ed that if the enrollment stays it could affect whether Slaton would move into AAA classifica- been anticipated.

## Day Holiday Will served (By Some)

is coming up to a "some will observance of a holiday, as labor Day, celebrated in various about the nation.

ernment offices at all levels, and be closed Monday. Chain stores, ticularly do not close on holidays as individual businessmen facing a whether to close or not. A sses in Slaton are expected to ay, however.

## Weather

from Pioneer Nat. Gas Co.

DATE	H	LOW
Aug. 30	92 est.	68
Aug. 29	92	68
Aug. 28	92	68
Aug. 27	90	65
Aug. 26	76	65
Aug. 25	82	65
Aug. 24	100	66

Total Prec. for wk. 3.20

## Wrecks, Burglaries Investigated Here

Two wrecks, one involving two large trailer-trucks on U. S. 84 inside the city limits, were investigated by Slaton Police Dept. during the week, with other reports made on such things as liquor law violations, thefts, burglaries and outdoor toilets.

No one was injured as the trucks locked together side by side and went 100 yards or so

before going off the road about 5:17 a.m. Wednesday, coming to rest near the intersection of U. S. 84 and Woodrow Rd. Officers said their investigation indicated that Zebbie Marion Sumpter, 64, of Breckenridge, driving an empty cattle truck south, attempted to turn east from the west lane of traffic when a Pepsi-Cola truck driven by Ivan Doyle Cooper, 28, of

Lubbock, attempted to pass in the east lane.

Sumpter, accompanied by his wife, had intended to turn and go across to one of the two cafes on the east side of the four-lane road at that point. The drivers suffered only minor scratches, but damage to both trucks was believed heavy, although the cattle truck was driven away later.

Ernie Davis, principal of Slaton Junior High, reported loss of about \$125 in property and \$53 in money in a burglary at the school over the weekend. Most of the money was missing from a soft drink machine.

A 1965 Ford was reported stolen from a parking place on S. 9th St. between midnight and 3 p.m. Sunday. The owner, Stanley Abshire of Rt. 2, Post, said the keys were left in the car.

Six juveniles were charged with illegal possession of alcohol by persons under 21 over the weekend.

John Davidson, 150 S. 5th St., was treated at Mercy Hospital Saturday and a bullet was removed from his neck. He was released in good condition. A suspect was named and was questioned by officers, who were continuing their investigation.

The City-County Health Dept. filed complaints on three Slaton residents for allegedly having outdoor toilets where sewer lines were available to be connected.

At 8:20 p.m. Friday at the intersection of FM 400 south and U. S. 84 access road, a 1966 car driven by Gloria Nava of Wilson and a 1969 car driven by Robin Arthur Byars of Waxahachie were in collision. Total damage to the two vehicles was estimated at \$650.

David Cannon, 445 E. Powers, reported loss of a tape deck and seven tapes from his auto parked at 1170S. 6th last Thursday.

A tool box, wrenches, four or five Holly carburetors, fuel pump and battery were stolen from a storage house belonging to E. F. Benavides, 900 S. 8th. The missing items were taken after the lock on the building was broken.

## Grooming Code Relaxed Again

Dress and grooming code for students in Slaton schools was liberalized again last week as the board of education voted to ease restrictions in several areas to conform with the code adopted by Lubbock schools.

Main points in the revised code involve removal of any restriction on hair length for boys and allowing shirt tails to be worn outside.

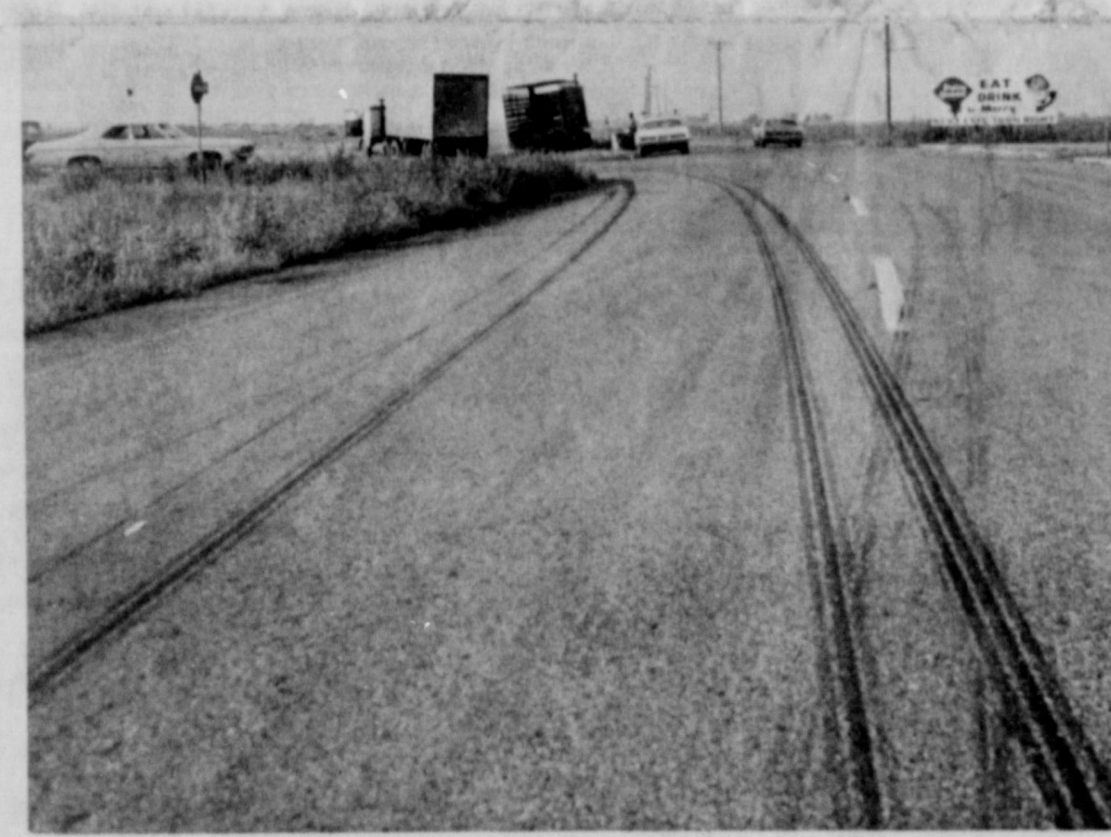
However, any student representing the school on an athletic team or in any other school-sponsored function must abide by whatever rules of appearance are set by the coach or supervisor of that function, it was reported.

Three members of the school board voted against liberalizing the code.



TRUCKS COLLIDE--Cab of the cattle truck at left is nosed over as that truck and the one at right went down the road together to a jarring stop just off the roadway at U. S. 84 and Woodrow Rd. early Wednesday. Tracks on the highway in the photo below show the path of the two trucks, which had been separated by the time this picture was made, looking south. Apparently, the only injury of note was to the dignity of the Slatonite photographer, as he slipped down in a pool of diesel fuel on the highway next to the trucks.

(SLATONITE PHOTO)



## New Special Instruction Offered In Area Schools This Year

Two new programs are being administered in Slaton, Cooper and Roosevelt schools this year, with one involving special instruction for certain students in their homes, and the other offering classes in the school for pre-school age youngsters who may have certain physical handicaps expected to cause problems when they do enter school.

"Homebound" teacher for all three of the schools is Mrs. Jerry (Nancy) Felder, who has her office in the Slaton High School. The Felders, married seven years, have a daughter, Mychele, 4 1/2. He is a sales representative for Hog Builders Supply. They moved to Slaton from Spearman, where she taught for the last seven years.

Under the Homebound program, Mrs. Felder goes to the home--or to the hospital--to give special instruction to students who are unable to attend school. "The physical, emotional and educational needs of school age children who are to receive home instruction should

be the determining factors in placing children in this program," she said. "Assignment should be made only by qualified professionals when proper medical and psychological reports certify that the pupil is unable to attend regular or special classrooms because of physical or emotional conditions."

Pupils who cannot attend school because of handicaps such as rheumatic fever, polio, heart conditions, cerebral palsy, accidents, various types of surgery, pregnancy or emotional disorders may be considered for placement in home instruction programs. If a pupil's main disability is speech, vision, hearing, minimal brain injury, language learning disabilities, or mental retardation, then he would not be eligible for home instruction since these conditions do not normally prevent classroom attendance, Mrs. Felder explained. "Facilities are provided for these under our present program in South East Lubbock County Organization (SELCO), which is all Slaton,

Roosevelt and Cooper schools."

Early Childhood Learning classes are being conducted in all three school systems through SELCO to help children with handicapping conditions in adapting to school and utilizing their maximum capabilities. These classes accept children of pre-school age who have problems in hearing, vision or speech. Also qualified for these classes are children who have physical handicaps or brain injuries from such things as accidents, fever, toxic conditions, birth injury or other causes.

Parents of children age 3, 4 or 5 who believe that their child may qualify for the Early Childhood Learning Class should contact the school office or school nurse in their respective communities. Teachers in the program are Elaine Davidson at Cooper, Marylynne Rossie at Roosevelt and Helen Feather at Slaton.

Who ever hears of jai men leading a riot? -Washington Irving



BAND OFFICERS--Shown here are Slaton High School band officers for this year. From left at Stan Meador, president; Kay Stephens, treasurer; Rodney Kuss, vice president; and Lana Dickson, secretary. (SLATONITE PHOTO)

## Tigers May Show Offensive Changes

Some offensive lineup changes are expected for the Slaton Tigers when they scrimmage against the Class A Plains Cowboys there Friday, after the offense failed to move the ball well against Levelland in a scrimmage last week.

Coach Bill Curry indicated that he would move Ron Bartley back to a running back position, where he was all-district last season, and try backup quarterback Eddie Jones at the man-under spot on the first unit. Jones was handling the ball well with the second unit when they were playing against Levelland's third unit last Friday.

Curry assessed the workout against Levelland during Monday morning's meeting of Slaton Tiger Club, when files of the scrimmage were shown. He said he was pleased with the condition of the Slaton players, who appeared to be stronger than Levelland near the end of the scrimmage. Slaton had nine boys who played both ways for 80 plays, he observed, adding that a normal regular game involves about 75 plays.

"Of course, we made a lot of mistakes," he commented. "I wasn't satisfied with how we moved the ball. . . . Defensively, we were adequate, except for a couple of lapses." However, the coach indicated he also would make a few changes on defense.

Levelland scored three times, twice on long runs and once on a interception and runback. Slaton did not score. Bartley completed three

passes and Jones four. Lupe Valdez intercepted one of Levelland's passes.

Slaton Tiger Club will meet again at 7 a.m. Tuesday in the Chamber of Commerce building, and each Monday morning throughout the season, with any interested persons invited. At Monday's session, President Joe Sparkman reported that money is beginning to come in from sales of bumper stickers and memberships. The group agreed to supply families of football players signs to erect in yards on the days of football games, identifying the home as one where a Tiger resides.

The next meeting is scheduled for Tuesday because Monday is Labor Day.

## Missions Leader Will Be Speaker

Rev. Robert O. Schmidt, director of the World Baptist Fellowship Missions, will be the special speaker at the Bible Baptist Church this Sunday. The services will be at 11 a.m. and 6:30 p.m.

The World Baptist Fellowship has missionaries in several countries as well as the Bible Baptist Seminary in Arlington. There will be a pre-service meeting at 6 p.m. for the purpose of answering any question concerning missions and missionaries.

Everyone is invited to attend, according to the pastor, Rev. H. E. Summar.



TWIRL GIRLS--Drum Major Lana Dickson, center, will lead the Slaton Tiger Band in on-field maneuvers this season. Majorettes shown here with Miss Dickson are from left, Kathie Price, Debbi Milliken, Scharla Johnston and Sheree Perdie. (SLATONITE PHOTO)

## Kenney-Ebeling Vows Read At First Church

Miss Karon Dianne Kenney became the bride of Stanley J. Ebeling at a double ring ceremony Thursday, Aug. 24, at 7 p.m. Rev. Johnny Cartrite

performed the wedding in First Baptist Church. Parents of the couple are Mr. and Mrs. Wayne Kenney of Slaton, and Mr. and Mrs.

Marshall Ebeling of Tulla.

Given in marriage by her father, the bride wore a formal gown of white chantilace over bridal taffeta, featuring a bouffant skirt designed with scalloped lace tiers cascading from a natural waistline to hemline and flowing into a cathedral length train. The fitted bodice featured long petal point sleeves and a scalloped sabbina neckline. She carried a cascading bouquet of blue miniature carnations and pom poms with a removable corsage for her going away attire.

Maid of Honor was Suzanne Kenney, sister of the bride. She wore a floor-length dress of blue dotted swiss over polished cotton featuring puffed sleeves and a natural waistline. She carried a nosegay of glamelia buiblets and feathered mums.

Mike Kenney of Slaton, and Chet Ebeling, of Tulla, lit the candles and also served as ushers. Danny Kenney of Slaton was also an usher.

A reception was held in Fellowship Hall. Rehearsal dinner was served at Furr's Cafeteria in Lubbock for the wedding party.

After a wedding trip to Rudoso, the couple will make their home in Canyon, where they both are students at West Texas State.



MRS. STANLEY EBELING

## BIRTHS

8-22-72 -- Mr. and Mrs. Leonard M. Pena, Rt. 1, Box 155, Wilson, a girl, Melinda B., born at 11:24 p.m., weighing 7 lbs. 5 1/2 oz.

8-23-72 -- Mr. and Mrs. Margarito Deleon, 925 S. 3rd, Taboka, a boy, Valentin Margarito Deleon, Jr., born at 11:30 a.m., weighing 7 lbs. 2 1/2 oz.

8-25-72 -- Mr. and Mrs. Joe Santiago, Rt. 6, Box 647, Lubbock, a girl, April Dawn, born at 12:40 a.m., weighing 8 lbs. 9 oz.

8-25-72 -- Mr. and Mrs. Phillip Maldonado, Box 512, Slaton, a boy, Jim, born at 10:48 p.m., weighing 6 lbs. 1 oz.

8-26-72 -- Mr. and Mrs. Selisiano R. Bustamante, Box 782, Wilson, a boy, Selisiano Luis Bustamante, Jr., born at 4:15 a.m., weighing 5 lbs. 11 1/2 oz.

8-27-72 -- Mr. and Mrs. James Dewitt Smith, Box 1281, Idalou, a girl, Dawn Janell, born at 11:30 p.m., weighing 8 lbs. 8 oz.

8-29-72 -- Mr. and Mrs. Raul M. Quevedo, 1104 46th, Lubbock, a boy, Andrew, born at 6:30 a.m., 7 lbs. 3 1/2 oz.

## VFW Auxiliary News Report

The Ladies Auxiliary to the Veterans of Foreign Wars met in regular session Monday night with Mrs. Leona Lamb presiding. Chaplain Dortha Fay Harris gave the opening prayer and Ethel Woods, Patriotic Instructor, led the group in the allegiance to the flag.

Six new members were accepted into the Auxiliary.

Hospital chairman Geraldine Mann gave a report on the annual visit to the Big Spring Veterans Hospital. Eight members of the Post and Auxiliary traveled to Big Spring Aug. 24, taking with them 646 handbooks and 465 pair of hose for therapy. Bingo was played for entertainment. The women took homemade ice cream, cakes, coffee and punch to the patients.

The dance sponsored by the Auxiliary Saturday night was attended by a large crowd and was deemed successful. Proceeds were donated to the District 7 Cancer Fund.

Final plans were made for the District Convention which will be held in Slaton Sept. 16 and 17.

After the meeting was over the Post joined the Auxiliary for a baked ham supper prepared by the women.

The next meeting will be held Monday, Sept. 11 at 8 p.m. Dues for 1973 are now being accepted.

### PERSONAL...

Mr. and Mrs. James Bunker of Durant, Okla. visited over the weekend in Slaton with their mother, Mrs. G. R. Evans. They also visited a brother, Lawrence Evans of Lubbock, who is seriously ill.

## Fowler-Matsler Vows Read

Mrs. Margie LaDaine Matsler and Cecil Harold Fowler, both of Buffalo Springs Lake, were united in marriage August 26 in the Carlisle Baptist Church with the Rev. Don Hancock minister of the Parkview Baptist Church, Plainview, officiating the double ring ceremony.

Parents of the bride are Mr. and Mrs. Claude Fewell, Route 8, Box 48E, Lubbock. Mr. and Mrs. J. C. Fowler, 701 82, Lubbock, are parents of the groom.

The bride given in marriage by her father, wore a Victorian gown of shuffie embroidered English net, veiled over blush pink Peau D'Sole. The basque bodice featured a deep sheer yoke outlined in white Venice lace flowers and a high duchess colored edged in the lace. Long Bishop sleeves were gathered in deep cuffs embroidered in scallops at the wrists. The softly shirred dirndle skirt was complemented at the waistline with a pleated comberbund of pink Peau D'Sole appliqued in the lace flowerlets. The hemline was encircled in embroidered scallops.

Maid of honor, Miss Peggy Davis of Lubbock, wore a samron rose formal length A-line dress with a Bateau neckline and cap sleeves. The belt and covered buttons accented an empire waistline while scallops on back waist closure and set in panel accented back fullness.

Serving as best man was Bill Fleeman of Lubbock.

Candlelighters were Mark Smith of Lubbock and Lance Cutbirth of Midland, nephews of the groom.

Ushers were Jimmy L.



Mrs. Cecil Fowler

Matsler and Jeffrey G. Matsler, sons of the bride.

Organist was Mrs. Ron Williford, Lubbock, sister of the bride and soloist was Miss Vicki M. Matsler, daughter of the bride.

A reception held at the church after the ceremony was hosted by Mmes. Benny Vittitow, Leon Callaway and L. A. Duff.

Both graduates of Lubbock High School, the bride is employed at Citizens National Bank, Lubbock. The groom also attended two years at Texas Tech and is employed at Southwestern Bell Telephone Company, Lubbock.

After a wedding trip to Colorado, Arizona and El Paso, Texas, the couple will reside on Route 1, Box 812 (Buffalo Springs Lake) Lubbock.

**FLOWERS**  
sent anywhere  
in USA -- toll charge  
only 25¢, except Sun.  
& holidays

**PAULINE'S FLOWERS**  
Slaton -- 828-6275

**Jan's**  
828-33  
Decorated Cakes  
• Birthdays  
• Weddings  
• Anniversaries  
• All other occasions

**Cat's**  
158 East  
Look for our new

**Maxine Odom James**  
**School of Dance**  
Enroll Now Classes in Tap, Ballet,  
Acrobatics & Modern Jazz  
Call 828-3696

USE OUR  
LAY-AWAY

## COATS

Introducing Our New  
**Check Point**

Pant Coats  
**COTTON  
VELOURS**  
OUR PRICE  
**\$29.75**  
Sizes 6-14  
Single or double  
breasted models

**Le Roy Knits**  
SWEATERS-SWEATER COATS  
**\$15.75 to \$67.75**

**The Gift Gallery**

# FOOT NOTES

BY MARGRET BARTLEY

Here we are again in the midst of the school year again. What is it about school starting that makes us feel so nostalgic? We see all the kids all brushed and polished hurrying off to school and parents rushing about to get them there on time. Even if you didn't like school, its something you can miss... the daily companionship of friends, the feeling of accomplishment and success from a Grade A theme, and if thought were given to the subject, the building of the adult person that we will be some day. Habits as well as friends usually carry over from school days to career days.

We who are through school sometimes think of all the things "I wish I'd done". Some of the comments I've heard include the wish that they had participated in sports, learn to play musical instruments, developed good study habits, and REALLY learned, instead of just reading over enough to get a passing grade. There are so many advantages that are there for the taking, and many more that are there for the WORKING. You say, in ten years, who will ever know? YOU WILL. What you work for today is what you ARE tomorrow.

Are there any mothers of little fourth grade girls who have a couple of hours a week to help with the Junior Girl Scout Troop for them? If you're not in the group above, and you have time and want to help, you would certainly be welcomed also. If you would be willing to help at all, please call me at 6201 between 9 a.m. and 5 p.m. We do need help and are anxious to get our little Scouts started on their year of fun and learning. Experience is not necessary. You will GET experience.

And time for a reminder to drivers: Kids don't always use the crosswalk. Kids don't always know that they shouldn't come around behind other cars. Afraid of being tardy, they may not think twice about running across the street. Auto drivers have to do some of the thinking for them. Be extra careful near schools or crosswalks when the cost of carelessness might be the life of a child.

It's that time again for the gathering of fruits and vegetables and isn't it a lot of work! But, then there is the reward of seeing the freezer or pantry shelves filled with the good stuff! And the second reward is having those goodies right at our fingertips for a great winter meal. Okra is my favorite. Even though the fuzz stings at gathering time, preparing okra for freezing is short and sweet. And does it ever taste good. I slice it into meal-size plastic bags for frying, and package small, tender ones for boiling. We also like the smaller ones pickled. Time and laziness prevents me from taking on the big preparation canning jobs. But I do know how good those things are when it is time to EAT. Hope you have a good day! (Seven of them in fact.)

**Juanita's HAIR STYLE**  
New Operator  
**EUNICE COONER**  
the COMPLETE  
hair styling salon  
1025 S. 15TH ST.  
**JUANITA APPLEWHITE, Owner**  
Phone 828-5175

For Quiet,  
Cozy  
Evenings

Long, Elegant  
Robes

Reg. \$8.

**\$6.**

For those cool days and nights ahead, you'll love these beautiful quilted satinette robes. These long, button-front robes have a front tie belt that creates an Empire look. In a variety of sleeve and collar styles and six lovely colors. Sizes 10 to 18.



And For

Busy or Casual Days

Ladies' & Teens'  
**SPORT SHOES**

**3.99** Pair



Perk up all your favorite fall fashions with these stylish lace-up shoes. Especially great with slacks or pantsuits, they have a blocky heel and square toe styling. In black, brown, tan, navy, and burgundy. At this great price, you'll want several pair to match all your fall outfits. Sizes 5 to 10

At Your Nearby

**Anthony's**  
CR ANTHONY, CO.

## Carnes Wedding Vows Exchanged

Bright and Carnes were joined in the First

Given in marriage by her father, the bride wore a formal gown of white dotted organza over white taffeta. It featured a ring neckline, fitted bodice

and long sheer sleeves, all of which were trimmed in rows of nylon lace. The full skirt was accented with a large bow in the back. She carried a bouquet of daisy poms with satin streamers attached to a white Bible, gift of her uncle and aunt, the Douglas Tiptons of Post.

Miss Jean Carnes, sister of the bridegroom, was maid of honor, and Miss Marcia Quinlan of Midland was bridesmaid. They wore long dresses of orchid and white, and carried nosegays of daisy poms.

Miss Debbie Skipper, cousin of the bride, of Clayton, Okla., lighted the altar candles.

Randy Townsend served as best man, and Don Ratliff, of San Angelo, served as groomsmen.

Mrs. Winnie Tuffing of Post was organist and accompanied Mrs. Nolan Pierce who sang "Wedding Song".

Nonnie Lynn Bright, brother of the bride, seated the wedding guests.

A reception followed the ceremony in Fellowship Hall. Misses D'Ann and Kayleen Carnes, sisters of the bridegroom assisted by Miss Clara Waugh and Mrs. Gordon Timms, of Anton, aunt of the bridegroom, presided at the reception table which was laid with a white cut work cloth and centered with a brass and crystal candelabra. Crystal appointments were used.

Miss Tomi Longtin registered the guests at the reception, and Miss Ramona Key and Don Ratliff presented wedding music.

The bride and groom are 1971 graduates of Slaton High School and will reside in Canyon where they will continue their studies at West Texas State University.

Out of town guests were from Post, Albuquerque, N.M., Del Rio, Midland, Kerrville, Troupe, Clayton, Okla., Anton, Littlefield, Lubbock, Amarillo, San Angelo and Menasha, Wis.

## Eckert, Miss Thomas Are Wed

Miss Elizabeth Eileen Thomas and Mr. Julius E. Eckert III were united in marriage during a nuptial mass at St. Mary's Catholic Church in Fox Lake, Wisconsin on Aug. 12. The church was decorated with lavender and white gladiolas for the 1 p.m. ceremony, at which Father Cyril A. Livingston officiated.

The bride is the daughter of Mr. and Mrs. Donald H. Thomas, R. R. 2, Randolph, Wis., and Eckert is the son of Mr. and Mrs. J. E. Eckert,

Jr., Slaton. The bride who was given in marriage by her father, chose an empire style gown of white voile. The bodice was overlaid with Cluny lace and the long full sleeved were gathered to cuffs of the same lace. The skirt was finished with a wide hemline flounce of Cluny lace and the chapel length veil was edged with matching lace. She wore a cameo, a gift of the groom, at the high neckline of her gown. Her flowers were a cascade arrangement of white

roses and baby's breath. Miss Marlene Crahn served as maid of honor. She wore a gown of lavender ribbed crepe, styled with an empire waist, tucked at the bodice and trimmed with delicate white lace edging. The long full sleeves were tucked at the shoulder and the skirt was finished with a deep ruffle of self fabric. She carried a colonial bouquet of white daisies, lavender carnations and baby's breath, and wore a floral headpiece to match.

The best man was Roy Bolton, of Littlefield. Ushers were David Thomas, brother of the bride and Larry Baszynski of Fox Lake, Wis.

Miss Susan Chalupnik played traditional wedding music on the organ.

Following the ceremony, a reception was held at the home of the bride. The house was decorated for the occasion in a lavender and white color scheme and the table was centered by a three tiered wedding cake with a cameo motif. Seventy-five guests were present from many points in Wisconsin and from Slaton, Lubbock, and Littlefield, Texas.

The bride is a graduate of Waupun Senior High School, Wis., and has been attending UW-La Crosse for the past two years. The groom graduated from Slaton High School and attended South Plains Junior College and West Texas State University.

Following a trip back to Texas, the newlyweds are residing in Slaton, where Eckert is employed by O. Z. Ball and Company.



MRS. JAMES W. CARNES



Mrs. Julius E. Eckert III

## From Where I Stand

By Marie King



MARY FRANCES BROWNING was in Ft. Stockton last week-end where she was a house-guest of DR. and MRS. GEORGE HOFFMAN.

MR. and MRS. CHARLES MARRIOTT remain in Sherman where they were called due to the critical illness of her mother, MRS. T. E. VINEYARD. MRS. RAY DICKIE and her sister, MISS THERESA LANE, traveled by plane to Newark, New Jersey for a recent visit with their only nephew, ROY D. LANE and family. They also visited in Atlantic City.

MRS. MARY WATSON of 445 W. Panhandle has had visitors for the past two weeks including her sister and brother-in-law, MR. and MRS. ROY BROWN of Pasadena. Accompanying them was their daughter, Sue Ann, and their two grandchildren, Cathy and Charlie. They returned to their home Tuesday.

MRS. CHARLIE TANNER and MRS. BILL BERRY visited Wednesday with Mrs. Mary Watson.

SAM CROWSON Wilson has been hospitalized in St. Mary's of the Plains Hospital in Lubbock since last Thursday for tests and treatment. He is suffering a serious illness, but is expected to be released to his home later in the week. He is the father of two former Slatonites, SAMMY CROWSON, employee of Southwestern Public

Service and BOBBY CROWSON, employee of Santa Fe Railway. Blood donations are being taken to replace six pints he received in transfusions over the week-end.

Mrs. Anna Bell Tucker had as guests recently her sister, Mrs. Foster Scott, and nephew, Harlan Brown, of Osage City, Kan. Also visiting was Mrs. Vern Johnson of Dallas, formerly of Slaton.

Mr. and Mrs. Edwin Bednarz and Mr. and Mrs. B. H. Sokoll returned last weekend from a two-week trip touring 11 states and visiting Yellowstone National Park, Lake Tahoe, Reno and Las Vegas, Nev.

In San Jose, Calif. they visited with Mr. and Mrs. Joe Schmalz, former residents of Slaton.

One of the most scenic routes was among the Redwoods of Oregon and California, they said. Also, the weather was excellent, and they had an enjoyable time.

ITEM: Foods and nutrition specialists say that variety both among and within the Basic 4 food groups is the most important single principle in assuring a proper diet. Daily recommendations include: four servings of bread or cereal, four servings of fruit or vegetables, two or three cups of milk plus other dairy products, and two 3-ounce servings of meat, fish or poultry.

Why don't manufacturers standardize directions for the use of fabric softeners?

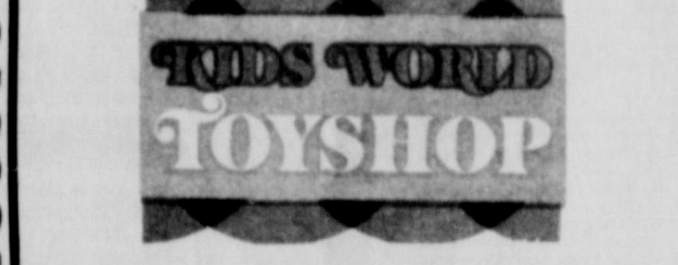
LEVIS DENIM STA PRESSED DRESS PANTS give and redeem Slaton Stamps. McWILLIAMS Dry Goods PH. 828-3907

Basically there are two types of fabric softeners: one type is added in the rinse cycle; a newer type can be used in either the wash or rinse cycle. It is very important not to add other agents such as bluing, water conditioner, etc. when using products formulated to use with the rinse cycle. That's why it's impossible for manufacturers to standardize directions for fabric softeners as well as many consumer products on the market today.

## TG & Y

Store Hours - Weekdays 8:30-6 Sat. 8:30-8

Your Family Store in Slaton



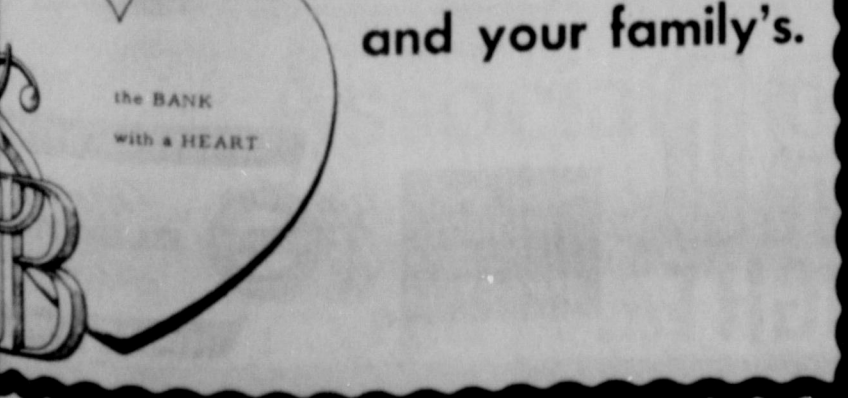
LAY-A-WAY Now For A Merrier Christmas Let Sandra Smith Help you with your Toy Lay-A-Ways!



## DRIVE WITH CARE

## ON THIS LABOR DAY HOLIDAY

Death waits for a careless driver. You can help stop many tragedies by driving safely and courteously, watching traffic and pedestrians carefully, and observing speed limits and safety signs. Be alert at all times. The lives you save may be yours



**TG & Y**  
The Family Store in Slaton  
STORE HOURS Saturdays 8:30-8 Weekdays 8:30-6

**BAYER ASPIRIN**  
100 Count **53¢**

SHAMPOO  
**Protein 21**  
9 Oz. **31¢**

Golden T Spray  
**Starch 47¢**

**FOAM CUPS**  
51 COUNT **31¢**

Golden T Long Life Light Bulbs **9¢ EA.**

ALUMINUM Foil **25¢ ROLL**

Comet Cleanser 14 OZ. **13¢**

Jergens Lotion 10 OZ. **71¢**

DRIER THAN EVER **Pampers** 15 COUNT **76¢**

# WILSON NEWS

Brenda & Sue Crowson

## CONCESSION WORKERS

The following couples are asked to work in the concession stand during the high school football games. Parents of athletes and band students are asked to work, as all the profit is used for sport and band awards. Each couple should bring eight sandwiches.

Sept. 22  
Messrs and Mmes. Stew Rice,

Caleb Vacca, Dan Cook, Tommy Bednarz and Al Clary.

Sept. 29  
Messrs and Mmes. Lynn Moore, R. L. Kahlich, Curtis Wilke, R. S. Schwertner and Kenneth Moerbe.

Oct. 6  
Messrs and Mmes. Billy Arnold, Tom Autry, John Henderson, David Peterson and Harvey Howell.

Oct. 27  
Messrs and Mmes. Lloyd Hagens, Alfred Crowson, Alvin Kitten, Orville Maeker and Mrs. Trina Cedillo.

Nov. 10  
Messrs and Mmes. Carl Herzog, Elvin Walker, B. W. Hobbs, C. L. Brieger, Carlton Wilke and Zollie Moore.

CAR WASH  
The Junior Class at Wilson is going to have a car wash on Sept. 9 from 10 a.m. to 3 p.m. The charge is \$1.50 per car, cleaned inside and out. This will help raise money for the Junior-Senior Prom. They will pick up and deliver.

CLASS OFFICERS ELECTED  
The class officers for the

year were elected last week. They include: SENIORS--President-Tony Bishop; vice pres., Greg Wied; Sec., Sylvia Trevino; Treasurer, Debbie Wuensche; Reporter, John Fields.

JUNIORS -- Pres., Dina Wilke; vice pres., Phil Kitten; Sec., Vicki Kahlich; Treas., Connie Gickhorn; Reporter, Clyde Wilke.

SOPHOMORES -- President, Rebecca Verkamp; vice pres., Cheryl Jones; Sec., Lester Walker; Treas., Michael Bednarz; Reporter, Craig Wilke.

FRESHMEN -- Pres., Gregory Bednarz; vice pres., Troy Stegmuller; Sec., Shelly Cook; Treas., Jan Wilke; Reporter, Donna Brieger.

Class favorites elected were Seniors -- Sylvia Trevino and David Hernandez; Juniors -- Don Wuensche and Beverly Hobbs; Sophomores -- Craig Wilke and Rebecca Verkamp; Freshmen -- Donny Crowson and Cindy Wuensche.

SCRIMMAGE  
The Wilson football team will scrimmage Sands Friday night at Wilson. The F. H. A. will have a homemade ice cream concession stand and will have ice cream for the boys following the scrimmage.

CHURCH NEWS  
The First Baptist Church had a back to school fellowship Sunday night. About 20 high school and junior high students attended.

BIRTHDAY PARTY  
Mrs. Clara Phillips was honored with a birthday party last Sunday on her 74th birthday. Those attending were: Mr. and Mrs. H. E. Phillips of New Deal, Mr. and Mrs. John Moody of Hereford, Mrs. Alene Nobel and Allan and Mr. and Mrs. Phillip Nobel of Post, and Mrs. Margret Bartley and family of Slaton.

BIRTHDAY CALANDER  
Aug. 31 -- Sam Gatzki, Nelita Moore.  
Sept. 1 -- Robert Ortiz, Stewart Rice, Kim Rice, Don Caraway, Kay Anderson, Mr. and Mrs. Jim Coleman.  
Sept. 2 -- Martha Gentry.  
Sept. 3 -- Tom Williams.  
Sept. 4 -- Kendra Christopher.  
Sept. 5 -- E. W. Roe, Ted Melugin, Mr. and Mrs. Ray Ehlers, Mr. and Mrs. Jackie Horton.  
Sept. 6 -- Marilyn Christopher, Frank Jones, Dural Wilson, Leonard Brieger.  
Sept. 7 -- Rebecca Verkamp.

## Nursing Home News

by Bobbie Hogue

We welcome two new Residents to our home. G. D. Ellis and Mrs. Nora Davis -- this puts us to the count of 58 residents. Mrs. Edith Drewery is a patient in Mercy Hospital, suffering a broken hip. Also Sarah Benton is a patient in

Visitors  
Mr. and Mrs. Don Caraway and Trina were in Brownfield over the weekend for a family reunion. About 50 persons attended.

Mr. and Mrs. Charles Tyler and Mrs. Dixie Coleman Friday. Mr. and Mrs. Arthur Brandt of Weimer and Petty Fliet of La Grange spent the weekend with Mr. and Mrs. Bill Klos.

Mrs. Estelle Lemon of Lubbock and Mrs. Margie Ray of Slaton spent Friday with Mrs. J. W. Lamb.

Mrs. Leona Lamb of Slaton visited Mrs. Lamb last Wednesday.

Mr. and Mrs. Frank Benak spent Friday with Mr. and Mrs. J. E. Crowder.

Donny Raymond spent last week with Mr. and Mrs. Crowder and Mrs. W. F. Raymond.

Ronnie Anders has been visiting friends in Wilson this week as he is home on leave from the service. He is enroute from Ft. Ord, Calif. to South Carolina. He will be at home with his parents, Mr. and Mrs. Lloyd Anders of Acuff until Sept. 7.

HOSPITAL NEWS  
Sam Crowson was admitted to St. Marys Hospital Friday afternoon for tests and treatment.

Mrs. R. T. Moore is recovering nicely from a broken leg and should have her cast off in two weeks.

Monday--holiday.  
Tuesday--meatloaf, creamed potatoes, green beans, lettuce, peach cobbler, rolls and milk.  
Wednesday--Spanish rice, pinto beans, salad, chocolate chip cookies, cornbread and milk.  
Thursday--Fried chicken, potatoes, corn, salad, peach half and milk.  
Friday--Chili burger, baked beans, potato chips, vegetable salad, apple sauce and milk.

HAWAIIAN TRIP  
Miss Georgia Kay Geer, daughter of Mr. and Mrs. M. D. Geer, and Miss Toni Melcher, daughter of Mr. and Mrs. C. J. Melcher, have just returned from an 8-day tour to Hawaii. They joined a tour by plane at Lubbock, and reported an enjoyable trip.  
Miss Geer is a sophomore student at Lubbock Christian College, and Miss Melcher is employed at Citizens State Bank.



## CALENDAR

AUGUST 31

Mike Brake  
Clifton Steffens  
Matilde Valderez  
Waldo Morgan  
Morris Meador  
Mrs. J. W. Henry  
Jackie Weaver  
Mrs. August Schwertner

SEPT. 1  
Howard Swanner  
Leo Henzler, Jr.  
Debra Gayle King  
Bill Wheeler  
Christine Respondek  
Sidney Mabry  
Morris Dixon

SEPT. 2  
Robert Hall Davis  
William Jones  
Alan Lewis  
Otto Heinrich  
Mrs. Jack Haire

SEPT. 3  
Rodger Kitten  
David Thornton  
David Melcher  
Pam Gordon

SEPT. 4  
Dale Wimmer  
Mrs. Melton Bruster  
Sue Bednarz  
Amelia Kathleen Rodgers  
Charles Straughan

SEPT. 5  
Howard Limmer  
Ted Melugin  
Cecl Russ  
O. D. Barnes  
Patti Smith  
Janie Thomas  
Mrs. Larry Gamble  
Clarence Johnson  
Chris Williams

SEPT. 6  
Jay McSween III  
Truman Ford  
Mrs. Hayden Jones  
Cynthia Porsch  
Brenda Heinrich  
Mrs. Deanna Ivy

## The Slaton Slatonite

DALTON WOOD, Publisher

Entered as Second Class Matter at the Post Office at Lubbock, Texas under the act of March 3, 1879. Published at 163 S. 9th St., Slaton, Texas. Notice to the Public: Any erroneous information that may appear in the columns of the Slatonite will be corrected when called to our attention. SUBSCRIPTIONS: Payable in advance. LUBBOCK, GARZA, AND CROSBY counties--\$5.00 per year. Outside these counties--\$6.00 per year. Member of West Texas Press Assn., Texas.

Member TEXAS PRESS ASSOCIATION 1972

## HI, NEIGHBOR!

The neighborhood pharmacy has always been a focal point in the community. It's a grand old American institution. Here, friends meet informally. They talk about the weather, how things are going in the sports world, discuss politics, grumble a bit about taxes. When we fill a prescription for you, it is not just a business transaction. It's an opportunity to be of helpful service to a neighbor and his family.

SLATON PHARMACY  
"The Doctor's Aid"  
Ph. 828-6815 165 S. 9th St.

SEE US FOR DEPENDABLE CAR CARE!

FREE AIR from Wilson Oil Company

Phone 628-2061 Wilson Texas

TV & ELECTRONICS REPAIRS

On the Blink? We'll Fix It in a Wink!

Service On All Makes  
MOSSER RADIO & TV  
110 Texas Ave. 828-6475

KENRICK INSURANCE AGENCY

PAY BY THE MONTH

## Our best tire is so good we guarantee the first 50,000 miles.

### Mobil brings you the Radial tire.

The tire that's tough enough to be guaranteed for 50,000 miles. That's about 12,500 round trips to the market. Or about 5,000 round trips to work. Or at least two round trips to Timbuktu from anywhere.

Mobil Radials are up to 16% wider than conventional tires, to put more rubber on the road. And the Mobil radial design keeps the tread from "squirming" sideways--the major cause of tire wear.

Mobil Radial's tread stays open to run cooler. Delivers tighter traction and surer stopping on wet pavement. And this tire even rolls easier to give you better gas mileage.

The Mobil Radial tire. See it today at your Mobil Dealer.

Ask about our EXTENDED TERMS with a Mobil Credit Card. We also honor Master Charge, BankAmericard, American Express, and Carte Blanche credit cards.

50,000

Mobil

See your Mobil dealer. He's all you need to know about tires.

BECKER BROS. MOBIL, 9th & Division, 828-7127  
MIKES MOBIL SERVICE CENTER IDALOU, TEXAS GARZA TIRE CO. POST, TEX.  
PERKINS AUTO SUPPLY & GARAGE, POST HWY., 828-6240

## SCHOOL LUNCH MENU!

Monday--holiday.  
Tuesday--meatloaf, creamed potatoes, green beans, lettuce, peach cobbler, rolls and milk.  
Wednesday--Spanish rice, pinto beans, salad, chocolate chip cookies, cornbread and milk.  
Thursday--Fried chicken, potatoes, corn, salad, peach half and milk.  
Friday--Chili burger, baked beans, potato chips, vegetable salad, apple sauce and milk.

Fresher Bun for FRESH BREAD

MRS. BAIRD

...business men, farmers, ranchers - LIGHT UP your property every night for only \$4 a month!

Reddy installs the light, maintains it and even furnishes electricity to operate it. Guard lights are automatic, on at night when you want light and off by day. Guard lights courage prowlers, make night outdoor work safer and a business-like prestige to commercial establishments.

\* Plus Applicable Sales Tax.

ASK ANY PUBLIC SERVICE EMPLOYEE

GUARD AREA LIGHT

Modern Electric Lighting FOR SO MANY PEOPLE

# All Grain For Winter Pastures

Southland has shown that individual small grain varieties are superior in forage yield rather than a particular type of small grain being outstanding in forage production. The most consistently high yielding variety has been Will barley. Will placed first or second in all seasons studied in both grazing and clipping trials. Elbon rye also has consistently given good forage yields. Tascosa wheat has also been competitive in forage yields over the three-year test period.

A comparison of the various growth periods of these small grain crops indicates that there is variation in the time of maximum growth depending upon the variety or hybrid and the years weather condition. This comparison suggests that greater forage yields may be obtained by growing a mixture of different types of small grains.

Mr. R. J. Hodges, Jr., Extension Agronomist with the aid of area agronomist has compiled a listing of some of the varieties that are adapted to the Lubbock and South Plains area and should do well in for-

age or grain production.

Wheat varieties -- Caddo, Caprock (with irrigation), Centurk, Concho, Improved Triumph, Kaw 61, Palo Duro, Scout 66, Sturdy (with irrigation), Tamwheat 101 and Tascosa.

Barley varieties -- Era, Rogers, Tambar 401, Will and Zora.

Oat varieties -- Bronco, Cimarron, Nora, Norwin, and Wintok.

Rye Varieties -- Bonel, Elbon and Gator.

Triticale is a small grain developed from crossing wheat and rye; however, it is not a hybrid such as hybrid corn or grain sorghum. When triticale first came on the market most varieties were not winter hardy as they were developed from crosses of rye and durum, which is a spring wheat. Recently, varieties with more winter hardiness have become available and appear more promising than the spring types formerly available.

at the present time, about a month earlier than normal, due to favorable temperatures and moisture conditions. Even though they are not a problem most years in West Texas they can become a serious problem and destroy seedlings hardy before they are noticed.

Where control is necessary Gross recommends an application of 1.5 to 1.9 pounds of sevin (80 percent wettable powder) or one quart of malathion (5 pounds emulsifiable concentrate) per acre. He emphasizes following directions on the insecticide label.

"Unless controlled, armyworms are capable of destroying entire fields of small grain or other crops. Therefore, early detection and action are crucial for successful control," adds Gross.

For maximum growth of winter pastures proper fertilization increases both the quality and quantity of the grass. Research by the Texas Agricultural Experiment Station has shown that fertilized grasses can produce three to four times as much forage with the same amount of rainfall or irrigation as grasses which have not been fertilized. Plant food encourages a healthy root system of grasses, such root systems are capable of obtaining both nutrients and moisture at greater depths than otherwise possible says Gross. Soil tests will provide the answer for proper rates and amounts of fertilizer.

Gross does have one word of caution for those who do plant small grain pastures early and that is to keep a close watch for fall armyworms. They are active in parts of East Texas

## Library News



The Slaton Branch Library will close Saturday, Sept. 2 and Monday, Sept. 4, in observance of Labor Day weekend. The Storytime Hour therefore, will be held Saturday, Sept. 9 from 10-11 a.m. at the library, with Mrs. R. C. Hall Jr. in charge of activities. Storytime Hour is sponsored by The Friends Club and is held the first Saturday of each month.

The Children's Workshop was held in the Coronado Lounge, University Center, Texas Tech, University, in Lubbock, Aug. 23-25th. Mrs. Polly Melugin, local librarian, attended Thursday afternoon. Linda Mounce, of the Lubbock City, County Libraries was librarian at Slaton in her absence. The programs and services for children was jointly sponsored by Texas Tech University Library, Lubbock City-County Libraries, Texas State Library Field, Services Division, and was conducted by Mrs. Celia Carroll, Children's Coordinator, Austin Public Library. Book selections for children were reviewed, film-strips shown, puppetry was discussed and puppets were displayed, on Thursday afternoon, at the workshop.

A large list of Charlie Brown's All-Stars honor roll readers in the summer reading club has arrived at the Library and is displayed in the window. The list was sent to the principals of each school and the names are posted in Lubbock City-County Library in the childrens dept. The Slaton Schools were well represented, along with readers from Cooper, Roosevelt, Wilson, and Southland in this summer's reading adventure.

Library hours at the Slaton Branch Library are 11:30 a.m. to 6 p.m. weekdays, and 9 to 4:30 p.m. on Saturdays.

## Son Of Slaton Pair Named Professor At Texas Tech

J. Duane Hoover, son of Mr. and Mrs. Jerry Hoover of Slaton, has accepted a position as professor of business administration in the Administration and Human Resources Dept. of the College of Business Administration, Texas Tech University.



J. DUANE HOOVER

An honor graduate of Monterey High School in Lubbock, Hoover and his wife the former Beth Sides, live in Lubbock. Married in June, 1967, they have no children.

Hoover, whose major field was organizational behavior and habits, holds degrees of Bachelor of Business Administration from Tech, Master of Business Administration from Tech, and has completed work

on his doctorate at Washington University, St. Louis, Mo. In high school, Hoover played football, and threw discus and shot.

His brother, Gary, is a freshman at University of Texas, Arlington. A step-brother, Thomas Winn, is a second-year student at DeVry Institute of Technology in Dallas, and a step-sister, Carla Jo Winn, is a sophomore at Slaton High School.

**Earth's Wobble!**  
At it rotates, Earth wobbles on its axis. This deviation, known as Chandler's Wobble, reaches its peak every seventh year, and some scientists believe earthquakes are more numerous in those years. The next peak year will be 1978.

## Federated Clubs Install Officers

The Federation of Women's Clubs of Lubbock County had a covered dish luncheon Tuesday at the Precinct I Club House.

Jay Jonson, secretary; and Mrs. D. R. Hall, treasurer.

Attending from Slaton were Mrs. M. L. German, Senior Civic and Culture Club delegate and Mrs. Joe Teague and Mrs. E. L. Smith.



## HUNTERS ACCIDENT INSURANCE

**\$10,000. Death Benefit**  
**\$1,000. Medical Expense**  
**7 Day coverage**  
**ONLY \$3.25**

**Complete Insurance Protection**

## Edwards Insurance

you see your doctor ...



Bring your prescription to **McQueen's Drug Store**  
Night 828-6500

**KENDRICK INSURANCE AGENCY**

**AUTOMOBILE INSURANCE**

## Sale on Sundaes

*Get those delicious sundaes made with Real DQ Ice Cream and Real homemade fruit toppings!*

Sundae NOW Only **19¢**

## Dairy Queen

**828-5443**

## Bulk Anti-Freeze

Co-op Brand - Ethylene Glycol

\$ 1.00

## Per Gallon

in your container  
or 5 gallon containers available

## Hackberry Co-op Fuel Association

5 miles South of Southland  
on Farm Hwy. #2106  
Phone 996-2755

## SELF FURNITURE'S BEST LAUNDRY BUY



**New A407 Maytag Washer**  
Cycles, temperatures, soaks for every fabric.

**BIG TUB**

**New D407 Maytag Dryer**  
**THERMO-SENSOR CONTROL**  
Shuts off automatically when clothes are dry.

**Make it a snap to care for the different miracle fabrics!**  
*No complicated settings. No guesswork. Wash & dry practically anything just right... AUTOMATICALLY!*

**MAYTAG FABRIC-MATIC WASHER AND DRYER**  
Everything you could want!

## \$40 LESS

than other Maytag pairs with comparable fabric versatility.

## SELF FURNITURE COMPANY

Carpets — Furniture — Appliances

235 W. Garza 828-6584

# Southland Six-Man Squad Opens Sept. 8

By DALTON WOOD

The Southland Eagles will scrimmage against Guthrie Friday night and should get some idea of what they will be able to do in a tough nine-game schedule which opens at home against Benjamin at 8 p.m. Sept. 8.

Coach Danny Kennedy has just two seniors on his six-man football team, but he has seven lettermen back on a 14-man squad, plus another youngster who lettered at Wilson last year.

The Eagles last year won only one game out of six, but with experienced players back are looking to better things this season. Seniors Joe Ed Eckert, 155-pounder, and Joe Beavers, 140, both were all-district backs last year.

Other lettermen are Gregg Lester, 165-pound junior quarterback and defensive halfback; Jerry Winterrowd, 150, defensive halfback and end; Ray Garza, 176, running back; Randy Thomas, 155, center; and Mark Beavers, 115, linebacker. Larry Koslan, 155-pound end, lettered at Wilson last year as a freshman.

The other members of the squad are sophomores Lee Huber, 145, linebacker, and Frankie Tuttle, 130 defensive halfback; and these freshmen: Joe Vasquez, 195, center; Lewis Bernal, 136, Kendon Wheeler, 125; and Mack Espinosa, 118, all listed as defensive halfbacks.

Kennedy, a graduate of East Central State College, Ada, Okla., is in his first year at Southland. He coached basketball at Miami, Texas, last year, and admitted that some of the rules of six-man football are new to him.

Six-man football is played on an 80-yard field with 15 yards

needed for a first down. Any player is eligible to receive a pass, but a back cannot run with the ball until it has been lateral or passed—a handoff won't do, and the quarterback can't run with it.

Kennedy said that at this stage of workouts it appears that he will line up offensively with Thomas or Vasquez at center, Eckert at right end and Koslan or possibly Winterrowd at left end. Lester and Beavers may alternate at quarterback and running back, and big Ray Garza will be the other running back.

On defense, Eckert and Koslan currently are at ends, Garza or Thomas at center, either Joe Beavers or his brother Mark at linebacker. Winterrowd and Lester are leading candidates for the defensive halfback spots. Coach Kennedy emphasized, however, that all positions are subject to change, and that all members of the squad are expected to get into the action.

This year's schedule is as follows:

- Sept. 8--Benjamin
- Sept. 15--Bula
- Sept. 22--Patton Springs
- Sept. 29--Open
- Oct. 6--Flower Grove \*
- Oct. 13--Union \*
- Oct. 20--at Fluvanna \*
- Oct. 27--Ira \*
- Nov. 3--Open
- Nov. 10--at Hermleigh \*
- Nov. 17--at Bula \*
- \* District Games

ITEM: Our nation's litter bill is more than one billion dollars a year. Picking up a ton of litter costs \$88, four times more than if it were collected as properly disposed of residential trash.

ITEM: Color is coming back to upholstered furniture. Manufacturers are introducing chairs and sofas in bright greens, bright and lemon yellows, blues and orange-red combinations.



TEAM LEADERS--Southland High School football coach Danny Kennedy holds a football as he talks with two seniors on his squad for this season. Both Joe Beavers, center, and Joe Ed Eckert were all-district performers last year. Both are backs on the six-man team. (SLATONITE PHOTO)

## Photography Helps 4-H'ers, Now, Later



SPECIAL - Kids in 4-H "learn by doing". And in 4-H photography projects, supervised by the Cooperative Extension Service, 100,000 young people are busy learning how to put it all together in an acceptable picture.

With an assist from the Eastman Kodak Company, national sponsor, the young photographers learn from their mistakes as well as their successes.

Michael Warren, of Roseboro, N.C., was one of the six national \$1,000 scholarship winners in the 1971 4-H photography program. Michael recalls the first picture he ever took.

"My first picture was of my parents. I had them change their clothes and fix their hair and then I snapped away. When the picture was developed all I had was a photograph of their legs and feet. But at least it was a clear picture of their feet", he remarked.

Today young Warren is the official photographer for his church.

Mark Malstaff, another national 4-H photography winner last year, profited from his success in the program. At age 19, he operates his own photography business, in St. Joseph County, Ind., where he takes pictures of everything from weddings to sports events.

4-H'ers in the photography program continue their interest even after they leave 4-H. Eastman Kodak found in a study of former 4-H photography winners that even though the young people were now in college,

careers, or the service, all kept a continuing interest in photography.

A 1965 national winner summed it up for all 4-H'ers in the photography program this way: "It is a medium that enables me to communicate the emotional essence of my ideas. In fact, photography is not just a hobby or a professional tool, but an extension of the communication facilities of the mind."

Incentive and recognition awards are offered to 4-H'ers who participate in the 4-H photography program. Four medals of honor are given to county winners. State winners receive an

## Fair Will Feature Horse Show

An Appaloosa horse show will be the first of three horse shows slated in conjunction with the 55th annual Panhandle South Plains Fair in Lubbock September 25-30.

The Appaloosa event, offering premiums totaling \$877,50, will be held September 28, and open horse show will be held the following day and a Quarter Horse card is slated for the final day of the week long exposition.

Casey Carnell of Corrales, N. M., will be the judge for the Appaloosas. Ken Cook will be superintendent and will be assisted by Jimmie D. Walker and Mack Heald. Bob Middleton will serve as ring steward and D'Lynn Whitten will be the secretary.

Entries fees include \$7 per horse in halter classes, \$12 per horse in performance classes and \$3 per horse in

youth classes. Premiums will be awarded as follows: first \$20; second, \$15; third, \$12.50; fourth, \$10; fifth and sixth, \$5 each.

Classes include 1969, 1970, 1971 and 1972 stallions, stallions foaled 1968 and before, grand champion stallion and reserve champion stallion; 1969, 1970, 1971 and 1972 mares, mares foaled 1968 and before, grand champion mare, reserve champion mare; 1970 and 1971 geldings, 1968 and 1969 geldings, geldings foaled 1967 and before, grand champion gelding and reserve champion gelding.

Youth classes include showmanship at halter, Western Pleasure and timed barrel racing. Added premiums of \$337.50 are offered in performance classes of Western Pleasure.



Elongated bodice and modified flare make this dress simply charming. Size 12 bust 34 without collar or sleeves takes 2 1/2 yards of 44 inch fabric.



Embroder these pretty fruit motifs on your lines. Pattern No. 704 contains four motifs as shown, plus two others.

Send 30¢ for each dress pattern, 30¢ for each needlework pattern (add 15¢ for each dress pattern, 10¢ for each needlework pattern for mailing and handling) to AUDREY LANE BUREAU, Morris Plains, New Jersey 07950.

expense-paid trip to the National 4-H Congress in Chicago, Nov. 26-30, and six \$1,000 scholarships are given to national winners in the program, by Eastman Kodak.

For more information on the 4-H photography program contact your county extension office.

## Cooper News

The Cooper Fair back in fall really classes this year. Agriculture, and enrolled in the fair.

This year the fair has many new features including livestock fairs and judging chapter will meet Monday night in the fair building. Less it falls as a rule.

The chapter discussed the activities of the fair. A special meeting for all parents or daughter in the first time. The fair will be held in the fair building on Tuesday, Sept. 12.

IF YOU WANT CARPET CALL SLATONITE

## McCormick's Watch & Clock Repair

435 W. Lynn

PHONE 828-6537



EBLEN PHARMACY for Your Drug Needs

Your doctor prescribes for you—individually. Your registered pharmacist fills that prescription—precisely. Your good health is our business. You can rely on us.

EBLEN PHARMACY Call 828-6537 for free delivery

## Service Special

### UNDERCOATINGS!

Let us clean your car underneath, tighten body bolts and spray a heavy application of undercoating

for ONLY \$19.95

ONE WEEK ONLY

Bill Adams Olds-Pontiac-GMC

Slaton

150 W. Lynn

# DON'T HOG THE ROAD

If You're

# Driving Over The Labor Day Weekend!



## BE MEEK

Drive Carefully And Return Home Safely!

SPONSORED IN THE PUBLIC INTEREST BY YOUR HOMETOWN INSURANCE AGENTS.

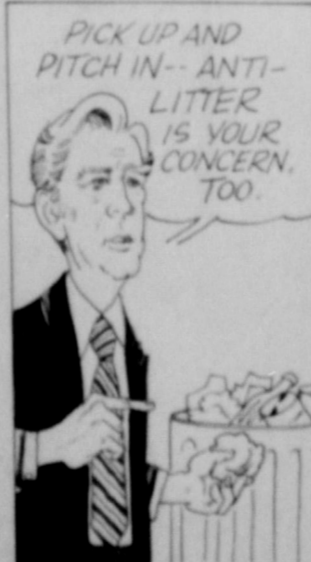
PEMBER INSURANCE AGENCY

BROWNING & MARRIOT INSURANCE-REAL ESTATE

EDWARDS INSURANCE AGENCY

KENDRICK INSURANCE AGENCY

## Mid-Town Mayor



Flowers Sent anywhere in U.S.A. PAULINE'S FLOWERS Slaton--828-6275

## SLATON TIGER

RESERVED SEAT

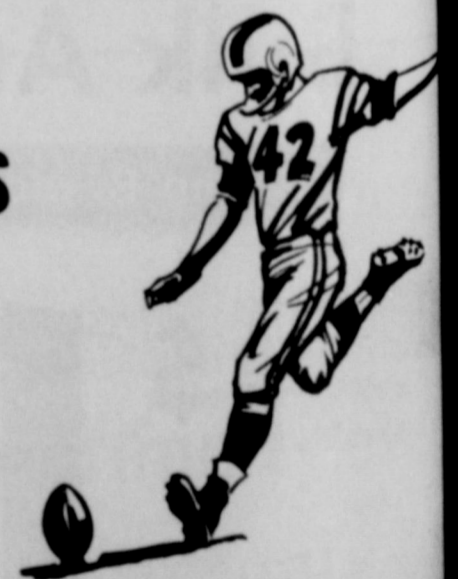
## Season Football Tickets

Seat options available now thru Aug. 31 for fans who held reserved seats last season.

Other reserved seats also available now.

4 HOME GAMES IN SEASON TICKET BOOKLET \$6.00

Tickets go on sale tomorrow to general public.



HOME GAMES

- Sept. 15--Kermit
- Oct. 13--Post
- Oct. 27--Tahoka
- Nov. 3--Cooper

# Precautions will lessen chances for bike rider

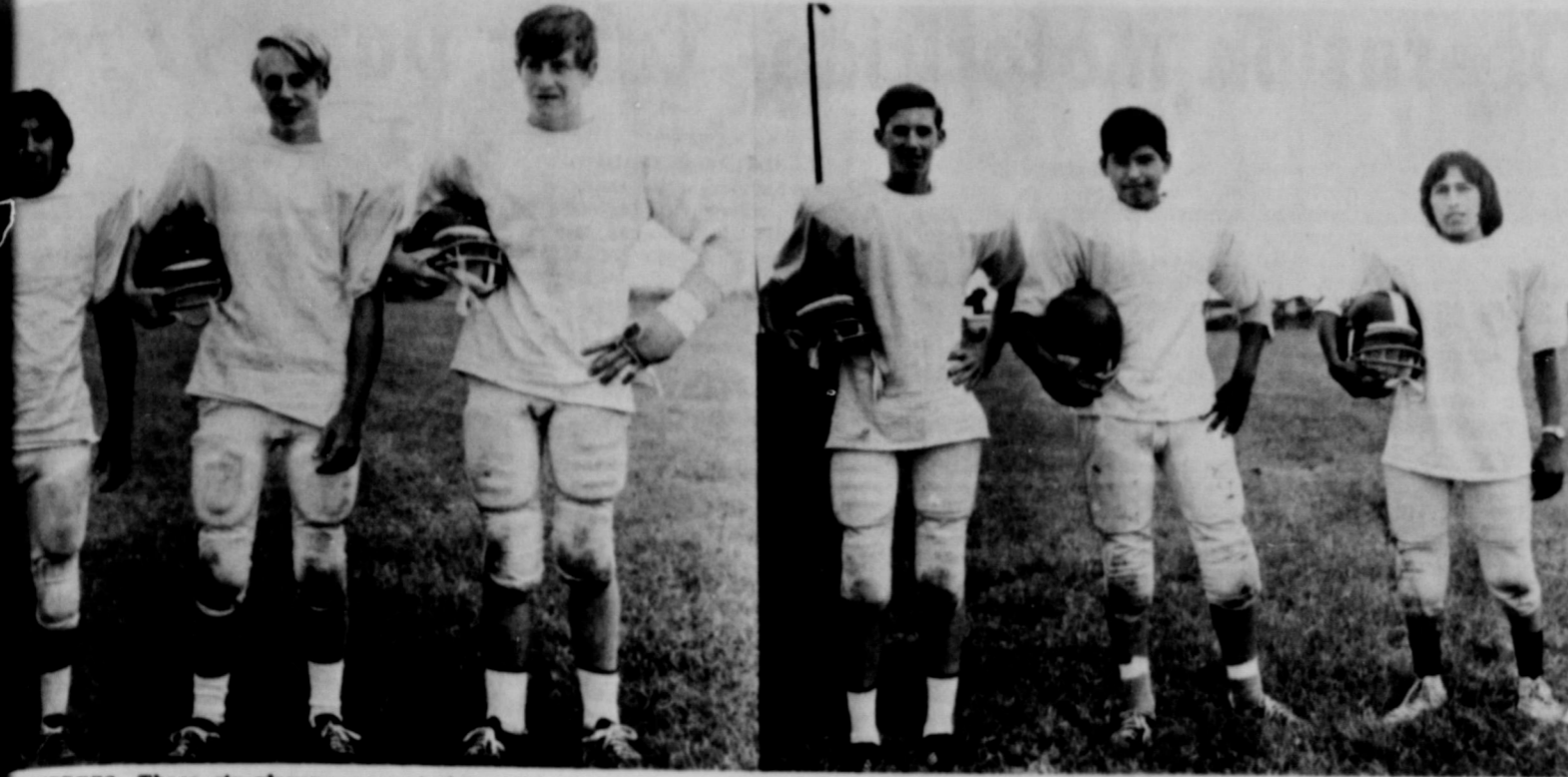
If your child is planning to bike to school, planning in advance will lessen the possibility of injury. Riders may reduce the chances of having an accident by:

1. Selecting the right size bike--one that is neither too big nor too little--and having it properly adjusted;
2. Keeping the bike in good mechanical condition;
3. Having the required safety equipment;
4. Obeying traffic rules and regulations; and
5. Following safe riding practices.

Parents do have a strong responsibility in seeing that their children know and observe safety rules and that the bicycles they buy do fit the child. A properly-adjusted bike will allow the rider's toes to touch the ground when he is sitting on the seat. His knees shouldn't hit the handle bars when pedaling or turning.

There's another important thing a parent can do--travel the bicycle route with the child, pointing out trouble areas

In Texas last year, there were 275 accidents reported to the Department of Public Safety.



**GRIDDERS**--These six players are part of the 1972 Southland all team. From left are Ray Garza, Jerry Winterrowd, Gregg Winterrrowd and Lester are likely to be regulars, as all three are junior lettermen. (SLATONITE PHOTO)

Winterrowd and Lester are likely to be regulars, as all three are junior lettermen. (SLATONITE PHOTO)



**READY**--Southland High School gridders practicing for the season include the above, from left, Lee Huber, Joe Vasquez, Dan, Mark Beavers, Frankie Tuttle and Randy Thomas. Vasquez at 195 is the team's heaviest player. Southland opens a nine-game schedule Sept. 8, playing host to Benjamin. (SLATONITE PHOTOS)

at 195 is the team's heaviest player. Southland opens a nine-game schedule Sept. 8, playing host to Benjamin. (SLATONITE PHOTOS)

## Oil and Filter Change Special

\$1.75

Also ask about our Oil and Filter Change Phillips 66 Oil Now Only 69¢ with tax **BALCH PHILLIPS 66**

Slaton, Texas



**YOU TOO, FELLA**... This steer, apparently a film critic, was unimpressed when U.S. Department of Agriculture Photographer Doug Maxwell was on location at a Springfield, Nebraska feedlot filming a news feature about modern American beef production.

**ITEM:** In many states where they are now considered adults under the law, 18 year-olds are responsible for contracts they sign.

**ITEM:** In the United States we waste about two-thirds of a pound of food a day for each person living here.

Nuclear-power plants and laboratories use a new cleanser containing lanolin and glycerin and various other emulsifying agents because it washes completely away and cannot collect in pipes. Now this same cleanser is being marketed as a new, non-abrasive hand cleaner. It is formulated like a cosmetic lotion; is said to be so gentle it can be used as a skin-care cream.

# Bill's

Mon., Tues., Wed.

Sept. 4, 5 & 6

# SALE

O. Z. Ball & Co.  
Slaton

## New Concept

IN HOME Deodorizing Spray Incense

3 FRAGRANCES TO Choose From

Gold, Frankincense and Myrrh

## PLUMB-OUT



CONCENTRATED LIQUID DRAIN OPENER - CLEANER

EATS HAIR EATS FAT **98¢**

Grand-Dad's Day SEPT. 10



**HERE'S HOW**... Ex-women's tennis champion Sarah Palfrey shows Jimmy Fernandez, 10, how to throw ball up for serve in a Mobile Tennis Program underway for 10 weeks on city play streets in New York City. Some 20,000 underprivileged youngsters are getting tennis coaching for the first time.

### IF YOU NEED A PAINTER

CALL 828-6255 SLATON LUMBER CO.

KENDRICK INSURANCE AGENCY

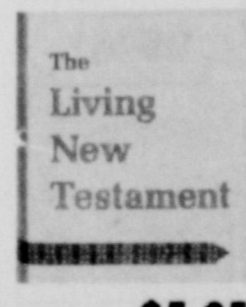
HOSPITALIZATION INSURANCE

## Come See Our New Bible Selection

The Living New Testaments



for Children \$1.95



\$5.95

We Now Have

EL NUEVO TESTAMENTO

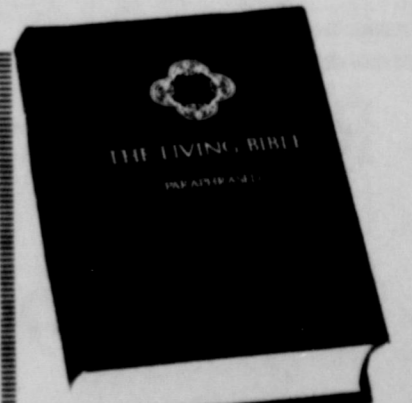
DIOS LLEGA AL HOMBRE

\$1.45

## TAYLORS BIBLE STORY BOOK

Nearly 200 Bible stories from the Old and New Testaments captivate children's interest and teach great Christian truths; written by the master of paraphrasing, Kenneth N. Taylor. Thought and discussion questions follow each story. This family reader sparkles with beautifully colored, full-page pictures by nationally famous artists, Francis and Richard Hook.

\$6.95



The entire Bible paraphrased in the clear and direct style of today's language. This skillful and scholarly contemporary version by Kenneth N. Taylor gives new understanding to every page of Scripture.

\$9.95

## Incredible

One drop per room instantly diffuses and destroys household odors--



thrifty 240 drop bottle

On Sale Now In Our Gift Shop

We Have just

Received our Velvet Scented and Regular Pants Suit And Coat Hangers.

See Us For Your STADIUM SEATS in Tiger school colors.

\$3.98

Lasater-Hoffman Hdwe.

# The Slatonite

# JOURNALISM



FATHER AND SON AT TECH -- Jesse A. Flores, left, and his father, Jesse G. Flores, are both newly registered students at Texas Tech University. Jesse A. is the oldest of eight Flores children. His father "always wanted to go to college" and became a newspaper reporter, and he is starting his first six hours of coursework in mass communications during the 1972 fall semester. (TECH PHOTO)

## Slaton Father, Son Going To College

Among Texas Tech University's newly registered students are two named Jesse Flores.

Jesse G. Flores, who enrolled for course in mass communications, has eight children and the oldest of the eight is Jesse A. Flores, who enrolled in the Texas Tech College of Business Administration.

The family lives in Slaton. Jesse G. Flores is a printer who "always wanted to go to college and be a newspaper reporter."

He's spent the last few months -- since March -- preparing to start on that goal. An eighth grade graduate, he completed courses offered through the Lubbock Opportunity Industrialization Center (LOIC) which made him eligible to take and pass the General Equivalency Diploma test, indicating his educational level is equivalent to that of a high school graduate. He also took a college entrance examination

designed particularly for the mature student, and passed that.

To help support himself and his family while he goes to school, Flores has taken a job as a technician in the instructional services area of the College of Business Administration.

Son Jesse A. Flores wants eventually to be a lawyer, and he is enrolled for a full semester's work -- 15 hours.

Mrs. Flores--Mary--works, too. She is employed with the Community Action Program in Slaton. Six children -- Jerry, Jody, Jeff, Joanna, John and James -- are in school in Slaton. Jerome is a preschooler.

Flores is the first student from the LOIC program to register for college, and LOIC counselors said that the college goal is not as common among the LOIC trainees as the desire to learn a skill.

Flores, however, is typical of the best students, they said. "He tried so hard," explained his counselor, Mrs. Sheila Hunt. "He often came from

work to class. You could tell he was tired, but he still came."

His first counselor, Miss Diana Henderson, now fiscal officer for LOIC, described Flores as an "excellent trainee," not only trying hard but attending classes with great regularity.

Flores credited the counselors and Noah Mayes, head of the pre-vocational training program, with encouraging him and urging him to go ahead and enter college.

Dr. S. M. Kenney, vice president for Academic Affairs at Texas Tech, commented on Flores' decision.

"As Texas Tech University expands its activities in the areas of adult and continuing education," he said, "obviously students such as Jesse G. Flores are among those who can benefit maximally from the opportunity to get college training at a point in life when previously no opportunity existed."

# Operation Motoricide- Labor Day 1972

Approximately 48 persons are expected to die on Texas streets and highways over the Labor Day weekend, according to estimates by the Texas Department of Public Safety.

The DPS will conduct Operation Motoricide from 6:00 p.m. Friday through midnight Sept. 4. This will be one of four 78-hour holiday periods that will be critical for all motorists.

Major C. W. Bell, DPS Region 5 Commander said that all available uniformed patrolmen will be put into action for maximum enforcement of traffic laws. Major Bell said, "Each driver should drive defensively at all times." Major Bell suggested that each individual practice driving friendly--the Texas way!

Capt. Shelton of the Driver License Service warns the unlicensed driver to not jeopardize his life, because last year seven per cent of all 3594 Texas traffic fatalities involved unlicensed drivers.

Below is a list of rules the DPS offers to drive by, in order to celebrate Labor Day next year."

Below is a list of rules the DPS offers to drive by, "in order to celebrate Labor Day next year."

1. Don't mix gasoline with alcohol.
2. Use seat belts. Your chances of survival in a major accident are five times greater when you are buckled up.
3. Slow down, drive according to the traffic, weather, vehicle condition, and your own physical condition. Lives lost do not make up for the small amount of time you think you save.
4. Obey all traffic laws.

### THIS WORLD OF OURS



Pesticides are hazardous for a variety of reasons. Some are highly suspect as possible causes of cancer. And some are regarded as potential inducers of birth defects in man. There are also indications that certain pesticides have the power to alter hereditary material, producing genetic change affecting future generations. And, many pesticides do not easily break down into less harmful components, but instead retain toxicity long after application. This tendency to persist constitutes an extremely serious problem for our environment.

DPS records show that the majority of traffic fatalities are caused by excessive speed and the drinking driver. The DPS reminds the motoring public that 0.10% blood alcohol in one's body is the presumptive level of legal intoxication under Texas law.

Approximately 500 National Guardsmen will assist the uniformed patrolmen in the Dallas, Tyler, Houston, Corpus Christi, San Antonio, and Austin areas. Many of these guardsmen will be riding in DPS patrol cars through the Labor Day weekend to enable the Department to have more units and personnel on the road.

Motor Vehicle Inspection Sergeant John Mason of Region 5 said two per cent of all fatal accidents on Texas highways are caused by mechanical failures. He strongly urges all motorists to be certain that their inspection sticker is up to date.

### DEATHS

#### Mrs. Minnie Steinhauser

Mrs. Minnie Steinhauser, 63, of Wilson died about 9:20 p.m. Friday, Aug. 18 in Lakeside Nursing Home in Lubbock, where she had been a patient about a month.

Services were held at 4 p.m. Aug. 20 in St. John Lutheran Church in Wilson with the Rev. Louis Balderach, pastor, officiating. Burial was in Green Memorial Park in Wilson under direction of White Funeral Home.

Mrs. Steinhauser was born Sept. 26, 1908 in Barlett. She married Walter Carl Steinhauser on Nov. 17, 1929 in Southland. They lived in Garza County and Lubbock County before coming to Lynn County in 1939.

She was a member of St. John Lutheran Church and served as a Sunday school teacher and officer in the American Lutheran Church Women's organization.

Survivors include three daughters, Mrs. Doris Basinger of Mercedes, Mrs. Helen Autry of Rt. 1 Wilson and Mrs. Marian Brooks of Oklahoma City, Okla.; two sons, Victor Steinhauser and Gilbert Steinhauser, both of Wilson; her mother, Mrs. Mary Wilke of Slaton; four sisters, Mrs. Gertrude Gindorf of Wilson, Mrs. Bertha Betts of Morton, Mrs. Frieda Mueller of Artesia, N. M., and Mrs. Myrtle Stabeno of Slaton; three brothers, Marcus Wilke of Kingsland, Walter Wilke of Hereford, Edmund Wilke of Southland; 14 grandchildren and a great-grandchild.

### GUEST EDITORIAL

#### LEFT OUTS

In some quarters death is used as a way to raise money for charity or some other cause. Bereaved families suggest in obituary notices that donations be made to such and such "in lieu of flowers." On the surface, this may seem like a good idea but we wonder if it also may distress some people.

Death strikes all of us dif-

ferently and to some the giving of flowers may be the highest tribute they can pay to the memory of the deceased. Confronted with an appeal for a charity, we may feel left out and confused. Should we bow to the wishes of the family or send flowers anyway?

It could be a difficult decision for some people and perhaps some way can be found to accommodate both expressions.

ITEM: Flavored yogurt accounts for 80 percent of the yogurt market.

**Choice Lots & Building Sites FOR SALE**

**SLATON LUMBER**

**Tasty-Topic**

Southwestern Spareribs  
4 to 6 pounds pork spareribs  
1/2 cup catsup  
1/4 cup water  
1 small onion, chopped  
2 tablespoons brown sugar  
2 tablespoons lemon juice  
1 tablespoon chili powder  
1 teaspoon salt  
1/2 teaspoon garlic powder

**Diamondette Jewels International, Inc.**

Diamond -- beauty & appearance of real diamonds, mounted in 14 carat gold, life-time guarantee. \$40 per carat. Write P. O. Box 232, Slaton, or phone 828-3516.

**Flowers...**

sent anywhere in USA  
Toll charge only 25¢, except Sun. & holidays

**PAULINE'S FLOWERS**  
Slaton -- 828-6275

**3 Room Group**

10 pieces

ONLY **\$199.95**

Easy Terms, All Credit Applications Taken

**Slaton Family Furniture**

828-5474 630 So. 20th  
1/2 MILE SOUTH OF THE CEMETERY

**A TRIBUTE TO LABOR** Calendar of Coming Events **September 1972** Courtesy **SLATON SAVINGS & LOAN ASSOCIATION** 100 W. Garza 828-6275

SUNDAY	MONDAY	TUESDAY	WEDNESDAY	THURSDAY	FRIDAY	SATURDAY
		<b>Star Spangled Banner</b> SEPT. 13, 1814	<b>Constitution Day</b> SEPTEMBER 17	<b>I Am An American CITIZENSHIP DAY</b> Sept. 17	1 Boy Scout Troop 125--7:30 p.m. St. Citizens--9:30 a.m. Am. Leg. Exon.--7:30 p.m.	2 PASSBOOK SAVINGS ACCOUNTS PAY STATE COMPOUNDED
3 <b>ATTEND CHURCH</b>	4 <b>LABOR DAY</b> LaSalle C of C--1 p.m. Catholic Daughters of Am.--8 p.m. Cooper Yng. Homemakers--8 p.m. Lions--noon EAF Adv. Bd.--7 p.m. Vol. Firemen--7:30 p.m. Am. Leg. Exon.--7:30 p.m. VFW AKA & VFW--8 p.m. Knights of Columbus--8:30 p.m. UTU--4 p.m.	5 B of LFAE--7:30 p.m. Slaton HD Club--1:30 p.m. VFW Act. Night--8:00 p.m. Ladies of B of LFAE--7:30 p.m. Jr. Civics Culture Club--7:30 p.m. Althea Study Club--7:30 p.m.	6 DEPOSITS MADE BY THE 10TH EARN FROM 1ST AT SLATON SAVINGS & LOAN	7 TOPS--Mercy Hosp.--7 p.m. Rotary--noon B of RT Aux.--9:30 a.m. Health Clinic--9 a.m. Jaycees--7:30 p.m.	8 Slaton at Brownfield Sp.m.	9 Story Time at Library--10:30 a.m.
10 <b>Grand Dads Day</b> SEPT. 10	11 IT'S EASY TO SAVE AT SLATON SAVINGS & LOAN	12 Roosevelt Yng. Homemakers--9 School Board--7:30 p.m. C of C--7:00 a.m. VFW Act. Night--8 p.m. OSE 585--8 p.m. RB Club--10:30 a.m. TARA--8:30 p.m. City Commission--7:30 p.m. Cade's-Parents Assn.--7:30 p.m.	13 Slaton Ministerial All.--8:30 a.m. Rainbow Girls--4:30 p.m. Garden Club--2:30 p.m. Bluebonnet Club 2:30 p.m.	14 TOPS at Mercy Hosp.--7 p.m. Rotary--noon Masons--7:30 p.m. Slaton Lodge 1094 AF&AM--7:30 p.m. Saddle Pals Riding Club--8 p.m. Jaycees--7:30 p.m. Bluebonnet Club 2:30 p.m. JV at Freshup 7 p.m. Freshman at Freshup 5:30	15 Slaton at Brownfield Sp.m.	16 Boy Scout Troop 125--7:30 p.m. St. Citizens--9:30 a.m.
17 <b>ATTEND CHURCH</b> UTU--4 p.m.	18 Lions--noon Vol. Firemen--7:30 p.m. Am. Legion Act. Night--7:30 p.m. Scottish Rite--7:30 p.m. Fast Matrons Club 7 p.m. Ins. of Pioneer Study Club--7:30	19 VFW Act. Night--8 p.m. Slaton Club 387 RAM--7:30 p.m. Council 124, R & S--7:30 p.m. Lad. Soc. of B of LFAE--7:15 B of LFAE--7:30 Slaton HD Club--1:30 Jr. Civics Culture Club--7:30 p.m. Althea Study Club--7:30 p.m.	20 \$ 1/4% INTEREST NOW BEING PAID AT SLATON S&L ON ONE TO TWO-YEAR CERTIFICATES, \$1,000 MINIMUM.	21 Am. Legion Aux.--7:30 p.m. America Legion--7:30 p.m. Friends of Library--8 p.m. TOPS at Mercy Hosp.--7 p.m. Rotary--noon B of RT Aux.--9:30 a.m. Jaycees--7:30 p.m. JV at Dunbar 4:30 Freshman at O'Donnell 4:30	22 Slaton at Littlefield Sp.m.	23 Boy Scout Troop 125--7:30 p.m. St. Citizens--9:30 a.m.
24 <b>American Indian Day</b> SEPTEMBER	25 Lions--noon Vol. Firemen--7:30 p.m. Am. Leg. Activities Night--7:30 p.m. LaSalle AKA Society--2 p.m. VFW AKA & VFW--8 p.m.	26 Roosevelt Yng. Homemakers--9 a.m. VFW Activities Night--8 p.m. OSE 585--8 p.m. VFW Activities Night--8 p.m. City Commission--7:30 p.m. Art Club--7:30 p.m. Slaton Yng. Wksk. 7:30 p.m.	27 Rainbow Girls--4:30 p.m. Bluebonnet Club 2:30 p.m. Civic & Culture Club	28 Freshman vs. Abernathy here at 5:30 p.m. JV vs. Abernathy here 7 p.m. Peak 128--7:30 p.m. TOPS at Mercy Hosp.--7 p.m. Rotary--noon Masons--7:30 p.m. Slaton Lodge 1094 AF&AM--7:30 p.m. Jaycees--7:30 p.m. Bluebonnet Club 2:30 p.m. Rotary--noon TOPS at Mercy Hosp.--7 p.m.	29 Slaton at Fortales, N.M.	30 YOU WILL BE HOW FAST YOU WILL GROW IF YOU PART OF EACH DAY

**FORREST LUMBER CO.**

12' Vinyl Armstrong Linoleum \$1.95

Benjamin Moore Paint Interior Latex \$4.50

**Winterize Now!**

For Stormdoors and sashes.

See us for your insulation.

**SECOND INCOME**

EARN \$150 TO \$400 PER MONTH

• Highest Return on Your Capital • NO SALES

• Manage Your Own Business

**U.S. POSTAGE STAMP MACHINES**

We Obtain Your Locations. Minimum Cash Investment Of \$1,595.00-up to \$5,000.00 Secured By Equipment

\* WOMEN OR MEN \* ANY AGE \* PART TIME, approximately 7 hrs. per week

\* NO OVERHEAD \* DEPRESSION PROOF \* REPEAT INCOME

New Distributorships Still Available In Many Areas Throughout This Country

SEND REFERENCES NAME, ADDRESS AND PHONE NUMBER TO:

**POSTAGE STAMPS, INC.**

300 INTERSTATE NORTH, N.W.  
ATLANTA, GEORGIA 30339  
INTERSTATE 1-75 & 1-285



# PIGGLY WIGGLY

This week's JACKPOT

\$ 200

Get your Jackpot card punched today

OPEN LABOR DAY

**Holly Sugar**  
5 Pound Bag **49¢**  
With This Coupon Good only at Piggly Wiggly Through Sept. 3, 1972  
Without coupon **65¢**  
Limit One Coupon Per Family

Farmer Jones Grade A **Medium Eggs**  
3 Dozen **\$1**  
Scott Assorted Color **Paper Towels**  
3 Jumbo Rolls **\$1**

Piggly Wiggly Assorted Flavors **Canned Drinks**  
12 Ounce Cans **1288¢**  
Piggly Wiggly, Cola and Flavors **Soft Drinks**  
No Deposit **10**  
16 Ounce Bottles

Piggly Wiggly or Dip Chips **Potato Chips**  
9-Oz. Pkg. **39¢**  
Carnation Assorted Flavors **Party Dips**  
3 8 Oz. Ctns. **\$1**  
Aug 31, Sept. 1, 2, 3.  
140 E. Panhandle

  
U. S. No. 1, White **Potatoes**  
10 Pound Bag **68¢**  
Bartlett **Golden Pears**  
Crisp, Solid Heads **29¢**  
Pound **8¢**  
**Cabbage**  
Pound **8¢**

Amphlon, Nylon Regularly 99¢ **Panty Hose** 2 Pair **99¢**  
Hytone Notebook **Filler Paper** 300 Count Package **33¢**  
Piggly Wiggly **Orange Juice**  
6 Ounce Can **19¢**

Breakfast Treat **Frozen Waffles** 5 Oz. Pkg. **10¢**  
Morton's, Apple, Cherry Peach **Fruit Pies** 20 Ounce Package **29¢**

Piggly Wiggly or Carol Ann, Sliced or Halves **Cling Peaches** 29 Ounce Can **29¢**  
Farmer Jones, Large or Small Curd **Cottage Cheese** 3 16 Ounce Cartons **39¢**  
Carol Ann **Salad Dressing** 32 Oz. Jar **29¢**  
Piggly Wiggly Paper **Napkins** 180 Count Package **29¢**  
Farmer Jones Hamburger Buns or **Hot Dog Buns** 2 8 Ct. Pkgs. **49¢**  
Del Monte **Sliced Peaches** 4 16 Oz. Cans **49¢**  
Del Monte, Crushed Chunk or Sliced **Pineapple** 3 15 1/2 Oz. Cans **39¢**  
Del Monte **Spinach** 5 15 Oz. Cans **59¢**

Sunco Broad Breasted **Turkey Toms**  
18 to 24 Lb. Avg. **39¢**  
Lb.

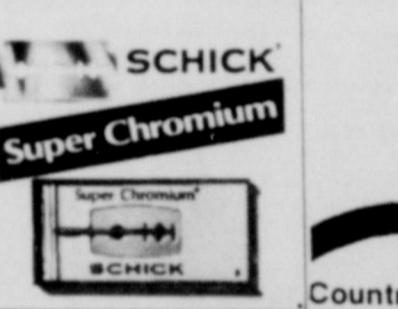
Country Manor **Boneless Canned Ham**  
3 Lb. Can **\$3.19**  
USDA Choice Beef **Chuck Steak**  
Lb. **78¢**



USDA Inspected **Whole Fryers**  
Lb. **28¢**  
Piggly Wiggly, 5 Varieties Wafer Thin **Sliced Meats**  
3 Oz. Pkgs. **3 \$1**

Farmer Jones **All Meat Franks**  
12 Oz. Pkg. **43¢**  
Family Pak, Combination of Loin & Rib-end **Pork Chops**  
Lb. **78¢**

Vaseline Intensive Care **Baby Oil** 10 Ounce Bottles **89¢**  
Schick's Double Edge **Razor Blades** 5 Count Package **39¢**

  
SCHICK **Super Chromium**

Danish **Smoked Salami** 14 Oz. Pkg. **\$1.15**  
Oscar Mayer All Meat Wieners or **All Beef Franks** Lb. **98¢**  
Moorehead Pimento or **Jalapeno Cheese** 8 Oz. Pkg. **59¢**

Tradewinds Breaded **Shrimp** 2 Lb. Pkg. **\$3.75**  
Jimmy Dean's Whole Hog **Pork Sausage** Lb. Pkg. **98¢**  
Jimmy Dean's Whole Hog **Pork Sausage** 2 Lb. Pkg. **\$1.95**

Farmer Jones **Sliced Bacon** Lb. Pkg. **89¢**  
Rath's Hickory Smoked Boneless **Half Ham** Lb. **\$1.69**  
USDA Inspected Fryer Legs or **Thighs** Lb. **59¢**

Indiana, Peeled & Deveined **Cooked Shrimp** Lb. **\$2.89**  
Tradewind's **Halibut Steak** 12 Oz. Pkg. **\$1.09**  
Glover's **Hot Links** Lb. **69¢**

**100 EXTRA** With This Coupon And Purchase of One 5 Lb. Can **SWIFT'S CANNED HAM**  
Good at Piggly Wiggly Through Sept. 3, 1972

**50 EXTRA** With This Coupon And Purchase of One 16 Oz. Bottle **CALGON BATH OIL BEADS**  
Good at Piggly Wiggly Through September 3, 1972

**50 EXTRA** With This Coupon And Purchase of One PLANTATION BRAND TURKEY BREAD **TURKEY BREAD**  
Good at Piggly Wiggly Through Sept. 3, 1972

**50 EXTRA** With This Coupon And Purchase of Two 21 Oz. Cans **GIANT AJAX CLEANSER**  
Good at Piggly Wiggly Through September 3, 1972

**SAVE 20¢** At Piggly Wiggly With This Coupon When You Buy One 6 Oz. Jar of **INSTANT FOLGER'S COFFEE**  
Price With Coupon 99¢  
Expires September 3, 1972  
Offer #6087

**75 EXTRA** With This Coupon And Purchase of One 84 Oz. **DRIVE DETERGENT**  
Good at Piggly Wiggly Through September 3, 1972

**50 EXTRA** With This Coupon And Purchase of One 2 Lb. Bag **SIMPLOT TATOR GEMS POTATOES**  
Good at Piggly Wiggly Through September 3, 1972

**50 EXTRA** With This Coupon And Purchase of One 52 Oz. Bottle **PALMOLIVE CRYSTAL CLEAR DISHWASHER DETERGENT**  
Good at Piggly Wiggly Through September 3, 1972

**Winners Of Jackpot In Previous Weeks :**  
1st Mrs. M. M. Schiuetter  
2nd Lucio C. Soto  
3rd Juanita Perez  
4th Clay Oats  
5th Erminia Pena  
6th Mrs. H.R. Donaldson  
7th & 8th No Winner  
Jackpot increases to \$200

39 LANGUAGES  
47 EDITIONS  
MORE THAN 3 MILLION CIRCULATION  
IN MORE THAN 120 COUNTRIES

**Area Men  
In Service**



Ollie Rainwater

**Ollie Rainwater**

SAN ANTONIO -- Airman Ollie V. Rainwater, son of Mr. and Mrs. Hollie V. Rainwater of 945 S. Flint St., Slaton, Tex., has been assigned to Lowry AFB, Colo., after completing Air Force basic training. During his six weeks at the Air Training Command's Lackland AFB, Tex., he studied the Air Force mission, organization and customs and received special instruction in human relations. The airman has been assigned to the Technical Training Center at Lowry for specialized training in the munitions and weapons maintenance field. Airman Rainwater is a 1971 graduate of Slaton High School.

**Fred L. Roberts**

FT. POLK, LA.--Army Private Fred L. Roberts, 18, son of Mr. and Mrs. Nolan H. Roberts, 1305 S. 11th St., Slaton, Tex., today completed eight weeks of basic training at the U. S. Army Training Center, Infantry, Ft. Polk, La. He received instruction in drill and ceremonies, weapons, map reading, combat tactics, military courtesy, military justice, first aid, and Army history and traditions. Pvt. Roberts received his training with Company D, 4th Battalion of the 1st Brigade. He is a 1972 graduate of Slaton High School.

**C.W. Harbert**

U. S. ARMY, GERMANY (AHTNC)--Army Private First Class Coleman W. Harbert, 20, son of Mrs. Ida R. McDole, 519 50th St., Lubbock, Tex., recently was assigned to the 3rd Armored Division in Germany. Pfc. Harbert is a member of the division's headquarters company and band. He entered the Army in January 1972, received basic training at Ft. Campbell, Ky., and was last stationed at Ft. Leonard Wood, Mo. The private is a 1972 graduate of Idalou High School. His father, Billy E. Harbert, lives at 3016 Colgate, Lubbock, Tex.

**Steve Angerer**

Steve Angerer, 20, son of Mr. and Mrs. A. J. Angerer of Slaton, has completed 27 weeks in an electronic instrument repair course at Ft. Gordon, Ga. and has been selected to stay on for an additional 17 week advanced course. Angerer entered the Service in January 1972. He is a 1971 graduate of Slaton High School. He and his wife, the former Marilyn Sparks of Slaton make their home near Ft. Gordon at Lot #2 Pine De Rosa, Hephzibah, Ga.

**St. Joseph's  
paper  
clips**

Sister Angelita, principal of St. Joseph's School reports that 128 students have enrolled in grades one through eight. This represents 71 families who have chosen to enroll their children in the school.

The school staff includes: Sister Angelita - principal; Room 1, Grad 1 - Sister Michall; Room II, Grade 3-4 - Mrs. Sandra Walsh; Room III, Grades 7-8 - Sister Angelita.

Departmental teachers are: Social Studies, Mrs. Linda Bochm; Language Arts, Mrs. Martha Conkling; Boys coach, Mike Roberts; Girls coach, John Armitstead.

Cafeteria personnel includes: Mrs. Dorothy Mitchell, manager; Mrs. Delta Meurer and Mrs. Josephine Hernandez, assistants.

Individualized instruction has been introduced on a minimum scale this year. All math and spelling for grades seven and eight has been individualized. Attempts to individualize other areas will be pursued in the subsequent future.

The Charlie Brown All-Star Readers for the summer program include: Belinda Abbe, Russell Abbe, Roxanne Buchanan, Matthew Ellis, John Ellis, Cynthia Frescaz, Carol Heinrich, Cheryl Heinrich, Brenda Heinrich, Darlene Heinrich, Randy Heinrich.

Michelle Jeter, Russell Kitten, Tracey Kitten, Patricia Kitten, Brenda Kitten, Darla Melcher, Johnny Mosser, Margie Mosser, Pamela Mosser, Marvin Pwonka, Edward Pwonka, Gail Scott, Kevin Sokora, Kent Schilling, Michele Schilling, Kay Wimmer, Gail Wimmer, and Lois Wimmer.

**Heavy Rain!**

When 7 inches of rain fell within 30 minutes at Cambridge, Ohio, one day in July, 1914, the air was so full of water that anyone sleeping outdoors found it virtually impossible to breathe. It was one of the severest rainstorms ever recorded in the United States.



MR. AND MRS. L. S. TURNER

**Observe Fiftieth  
Wedding Anniversary**

Mr. and Mrs. L. S. Turner will observe their 50th wedding anniversary with an open house on Sunday, Sept. 3, at 1302 Koberlin St., San Angelo, from 2 p.m. to 5 p.m.

Mr. and Mrs. Turner were married in Elkhart, Tex. on Sept. 3, 1922.

The open house will be hosted by their children including: Lella M. Russell, Huntington Park, Calif.; Mrs. R. Nenarella,

Greene, N. Y.; Mrs. Chas. Massey, Miles, Tex.; Lena L. Turner, Slaton; Ray Turner, San Angelo; Mrs. Coy Cochran, Ballinger; and Mrs. W. L. Polk, Heford.

The Turners, long time residents of West Texas, have retired from Santa Fe Railway with 26 years service. They were Slaton residents for 17 years and moved to San Angelo in 1967 where they are now making their home.

**Senior Citizens  
Club Meets**

Slaton Senior Citizens met last Friday at the clubhouse for their regular meeting. President Mrs. Fannie Patterson presided. The meeting was opened with prayer led by Chaplain Sexton. Minutes of the last meeting were read and approved.

Visitors included Rev. and Mrs. J. L. Cartrite, Mrs. Bobbie Greer, Mrs. Sandin, and Mrs. Townsend's sister and daughter and two children. Mrs. Lott has returned from a long stay in Houston. Mr. and Mrs. Abare were reported to be in Albuquerque hospital. "Happy Birthday" was sung honoring Ernest Robinson and birthday cake was served.

Song service was led by Mr. Sexton, accompanied at the piano by Mrs. Mary Taylor. Rev. Cartrite gave the devotional.

The afternoon was spent playing games and visiting.

**Hotter Than The Sun!**

A lightning bolt generates temperatures five times hotter than the surface of the sun.

**Card of Thanks**

We wish to thank the Wilson Lions Club for selecting our yard for the Yard of the Month. We certainly did appreciate it.

Mr. and Mrs. Alfred Krause

**Karlene Eastman  
Teaching in Abilene**

Approximately 50 students at Hardin - Simmons University will begin their student teaching at Abilene and area public schools this fall, according to Dr. Jack Longbotham, director of Teacher Education at H-SU. Those teaching in the Abilene Independent School District include Karlene Eastman of Slaton at Johnston Elementary teaching music.

SHOP SLATON

THURSDAY, AUGUST 31, 1972  
Read Revelation 3:15-22

stand at the door and knock; if anyone hears opens the door, I will come into his house. I make house-to-house visitation. One of pointing house calls one can have is to people doors but do not invite one in. Doors are like this in their relation to Christ. As are only as far as the door of their lives. We have not invited Christ in have a life-changing thing them when they do. It is reassuring Christ is ready to come into our lives to trans-time we invite Him. To let Him in is to open ally knowing Him. He changed and become one in Christ, we must for into our lives by faith. Only the power of as can enable us to lead a life which is Christ- Paul we can say: "It is no longer I who live, who lives in me." O Savior, come into my life that I may be able to, and on the last day You will joyfully let me Home. Amen.

FOR THE DAY:  
Christ wants on this earth is in you and me. --Jose B. Fulga, Philippines  
COPYRIGHT--THE UPPER ROOM

**Business and  
Professional Directory**

**SLATON IMPLEMENT CO.**  
Tractor & SERVICE  
Jimmy Applwhite, Manager  
828-6933

**Art Alley**  
Your Art Supply Dealer  
Slaton 828-6493

**Wendel TV**  
Quality Products  
Service you can trust. **Amana**

**FONDY'S**  
Western Leather Shop  
Slaton 828-6846

**TYPEWRITER**  
Sales - Rentals - Service  
**THE SLATONITE**  
828-6201

**BOURN CYCLE**  
Bicycles-Lawn Mowers-Small Engines  
Sales & Service  
828-3614

**Anthony's**  
C. R. ANTHONY, CO.

**"Thank You" Cards**  
Our Specialty for Brides  
**The Slatonite**

**\$500 Down Payment**  
\$142 per month  
33 years--7 1/4%  
**New Homes For Sale**  
1000,  
1010  
and  
1020  
S. 15th Street,  
in  
Slaton  
3-bedroom brick, carpet, ceramic tile, dishwasher, built-in stove, self-cleaning oven, 2 baths, paneling, 1-car garage, all brick, central heating.  
**MEDLOCK COMPANY 763-5323**

**DEATHS**

**Jimmy Dale Smith**

Services for Jimmy Dale Smith, 19, a former Post resident, were held at 10 a.m. Monday in Post Church of Christ.

Smith was killed Saturday in Arlington by an electrical shock while working on a housing project.

Officiating was S. G. Byrd, minister of the East Side Church of Christ. Burial was in Terrace Cemetery.

Survivors include his parents, Mr. and Mrs. Jimmy D. Smith of Post; five brothers, Jerry, Bobby, Wayne, Wade and Billy, all of the home; a sister, Mrs. Janice Barnett of San Angelo; and his grandparents, Mr. and Mrs. C. V. Smith of Post, Mrs. Ethel Bruton of Post, and Wade Bruton of Temple.

Pallbearers were Billy Little, James McAfee, Joe Bevers, Charlie Irvin, Dickie Hill and Ray Hahn.

**Harry L. Roddy**

Harry L. Roddy, 82, retired rural mail carrier and justice of the peace in Lynn County, died Sunday morning in Lubbock's Methodist Hospital. Services were held at 10 a.m. Tuesday in Tahoka's First Baptist Church.

Rev. George A. Dale of Lubbock officiated assisted by Rev. Jim Turner of Tahoka. Masonic graveside rites were conducted in Tahoka Cemetery. A native of Fannie County, Roddy moved to Lynn County in 1937 from Yorktown. He was a veteran of World War II and past master of the Tahoka Masonic Lodge.

Survivors include his wife; three daughters, Mrs. Mary Neel of Lubbock, Mrs. Frances Nichols of Buena Park, Calif., and Mrs. Kathryn Akin of San Angelo; son Harry L. Roddy, Jr. of Fort Worth; two brothers, Frank Roddy of Honey Grove and J. L. Roddy of Snyder; 10 grandchildren and five great grandchildren.

Members of the Tahoka Masonic Lodge served as pallbearers.

**Attend The Church of Your Choice Sunday**

**RELIGION IS NOW** - a weekly message relating the world of today to the lessons of Faith and Church...

**SLATON SAVINGS & LOAN ASS'N**  
"We Pay You To Save"

**SLATON CO-OP GINS**  
"Owned and Operated By Farmers"

**JANES-PRENTICE INC.**  
SAND & GRAVEL  
For the Construction Industry

**ACUFF FRIENDS**  
ACUFF CO-OP GINS  
"It's Your Association"

**WILSON STATE BANK**

**BECKER BROS.**  
MOBIL SERV. STA.  
405 So. 9th 828-7127

**UNION COMPRESS AND WAREHOUSE COMPANY**

**O.D. KENNEY**  
AUTO PARTS  
"Your Automotive Parts Distributor"

**The Slatonite**  
"A member of most families in the Slaton Trade Area"

**BOWNS BODY SHOP**  
100 S. 9th 828-6647

**CITIZENS STATE BANK**  
The Bank With A Heart

**WHITE'S**  
The Home of Greater Values

*Speak to the earth, and it shall teach thee. —Job XII, 8*

For generations, the good earth has fed the needs of man. We have found sustenance in the wild berries and fruit. We have turned the soil and planted seeds to sprout and grow and ripen in the warmth of the sun. The earth belongs not only to us—but to generations yet to come. We should not take the things we want and think we need without consideration, and merely because they are there. We should be concerned about pollution, about littering, about the shape of this good earth in the years yet to come.

**These Church Listings Presented as a Public Service By the Above Firms**

**Slaton Churches**

FIRST ASSEMBLY OF GOD 14th and Jean Rev. Henry Russell	TRUMP BAPTIST East Geneva Rev. M. A. Brown	CHURCH OF CHRIST 11th and Division Kenneth Burnett	FIRST CHRISTIAN 22nd & Division Rev. Nolan O. Pierce
BIBLE BAPTIST 525 West Panhandle Rev. H. E. Summar	21 st ST. BAPTIST 1010 South 21st Rev. Jack Bell	IVORY ST. CHURCH OF CHRIST 896 Ivory St. Lester Means	GOSPEL CHAPEL A.M.E. 996 Johnson St. Rev. W. L. Brown
FIRST BAPTIST 255 South 9th Rev. J. L. Cartrite	WESTVIEW BAPTIST 830 South 15th Rev. Clinton Eastman	CHURCH OF GOD 206 Texas Ave. Rev. Raymond A. Tomlin	FIRST METHODIST 305 West Lubbock Rev. Merriell Abbott
FREEWILL MISSIONARY BAPTIST Rev. E. Canady	OUR LADY OF GUADALUPE 710 South 4th Rev. Emilio E. Abeyta	CHURCH OF GOD IN CHRIST #2 7th & Jean Sts. Joe Willie Butler	TRINITY EVANGELICAL METHODIST 700 So. 19th Rev. Lina M. Prentice
MT. OLIVE BAPTIST Corner of Jean & Geneva Rev. Clifton Peoples	ST. JOSEPH'S CATHOLIC CHURCH 19th & Lubbock Magr. Peter Morsch	CHURCH OF THE NAZARENE 635 W. Scurry Rev. Jerry Rose	PENTECOSTAL HOLINESS 105 W. Knox Rev. Darryl Manning
TEMPLO BAUTISTA (Latin Baptist Mission) East Panhandle Rev. Glenn Smith	GRACE LUTHERAN 840 W. Jean Rev. Delmas L. Luedke	FIRST PRESBYTERIAN 425 W. Lubbock Rev. Don Coleman	

**Area Churches**

WILSON BAPTIST Rev. Darold Baldwin	WILSON METHODIST	CANYON UNITED CHURCH BAPTIST 1st & 3rd Sunday Rev. Curtis Jackson	ACUFF CHURCH OF CHRIST Jay Don Rogers
ST. JOHN LUTHERAN Louis Balderach	WOODROW COOPER FIRST METHODIST	METHODIST 2nd & 4th Sunday Rev. Grady Adcock	ROOSEVELT BAPTIST Rev. Oscar Newell
ST. PAUL LUTHERAN Rev. George Ascher	COOPER FIRST BAPTIST	IMMANUEL LUTHERAN Rev. Richard Owens	PLEASANT VALLEY BAPTIST CHURCH Rt. 1, Post Rev. Sherman H. Ervin



You Sew  
that many begin-  
make is to buy  
basket and then  
ment before they  
use and need.  
for minor re-  
bookies it  
household  
seam, repair  
and other  
equipment can  
be used, and it  
be the best qual-  
And that in-  
machine.



SEWING CORNER in a bedroom was designed by Margot Gunther, A.I.D. for The Singer Company. French Provincial ladies' desk is sewing machine cabinet for a Golden "Touch & Sew" sewing machine. Fabric-covered armoire holds all sewing, pressing aids—even a vacuum cleaner for easy clean-up. Small screen hides dress form.

**CONSUMERS' CORNER**

**Static in Carpeting**  
Static problems in carpeting may soon be a thing of the past. A new carpet yarn, made of polymer-based, anti-static nylon was introduced in the spring and is now available in carpets from several manufacturers. The yarn, according to its manufacturer, "provides 100 percent anti-static coverage throughout the carpet and is effective in plush and cut-pile construction. Another anti-static product is a

component to be used in carpet backings. According to its manufacturer, this component keeps static far below the levels of human sensitivity. In carpet stores, anti-static products will first appear in "commercial" carpets - those intended for high traffic areas such as in offices or stores. The surface texture is usually a level loop and can be confused with kitchen carpeting. Commercial or contract carpet will be labeled as such, and anti-static properties will be listed on the labels.

BUY AT HOME I  
SHOP SLATON



**"Hot Spots"**  
"Hot spots" in the earth's crust, where steam or hot water rise to the surface through fissures, previously were the only known areas where geothermal heat could be tapped to provide electric power. Thermal mapping now permits geologists to locate additional sources that can be reached by drilling.

IF YOU NEED A  
**PAINTER**  
CALL 828-6255  
SLATON LUMBER CO.

**WILSON'S CERTIFIED**  
*Tender Made*  
**HAMS**

BONELESS  
FULLY COOKED  
SMOKED 2 1/2-3 1/4 LBS

LB.

**1.29**

BONELESS BEEF SHOULDER

**ROAST**

UNITED'S PROTEN

**98**

lb.

SWISS "UNITED'S PROTEN BEEF"

<b>STEAK</b>	ROUND BONE CUT	LB.	<b>97</b>	¢
<b>STEAK</b>	CHARCOAL BROIL UNITED'S PROTEN	LB.	<b>89</b>	¢
<b>STEAK</b>	ROUND or SIRLOIN UNITED'S PROTEN	LB.	<b>89</b>	¢
<b>STEAK</b>	BONELESS SAVOY BROIL UNITED'S PROTEN	LB.	<b>1 29</b>	¢
<b>STEAK</b>	BONELESS MANHATTEN UNITED'S PROTEN	LB.	<b>1 48</b>	¢



BONELESS FAMILY

**STEAK**

UNITED'S PROTEN

**89**

lb.

**LUNCH MEAT**

BOLOGNA OLIVE  
PICKLE & PIMENTO  
SOUSE SPANISH

MIX or MATCH

3 6 oz. pkgs. **89**¢

**BEEF RIBS**

REG. CUT EXTRA LEAN

FOR BBQ

LB. **48**¢ LB. **68**¢

KING SIZE

**COKE**

MIT 2 THEREAFTER 39¢

**29**¢

BTL CRTN

*Farm Fresh United Produce*

RED DELICIOUS **APPLES** FANCY LB. **29**¢

WASH. BARTLETT **PEARS** SWEET & JUICY LB. **29**¢

FRESH CRISP **CARROTS** 16 oz. Cello Bag **10**¢

WHITE-GLOBE **ONIONS** LB. **15**¢

TEXAS SWEET **POTATOES** LB. **19**¢

PATIO ENCHILADA or

**MEXICAN DINNERS** REG. 49¢

**39**¢

MEMBER OF AFFILIATED **U** PRICES GOOD THRU SEPT. 2

**UNITED**

**SUPER MARKETS**

WE GIVE 1/4 GREEN STAMPS QUANTITY RIGHTS RESERVED

**Bright & Early**

FROZEN CONCENTRATE

OR IMITATION ORANGE JUICE

**4** 12 oz. CANS \$ **1 00**

**TOUCH MIX**

**10**¢

