

Wellington Leader

14 Pages

For Sixty-eight Years a Builder in Collingsworth County

25¢ Per Copy

Volume LXIX

WELLINGTON, COLLINGSWORTH COUNTY, TEXAS 79095 THURSDAY, APRIL 26, 1979

Number 40



INSPECTING

Winford McQueen of Memphis and Darrell Colson look over tires during the three-day farm equipment auction last week at the Wellington Farmer's Co-op Gin yard. Sale manager E.S. Hale, Jr. estimated that \$750,000 of equipment was auctioned last Thursday, Friday and Saturday. Equipment included trac-

tors, combines, trucks, pick-ups, tires, motorcycles, cotton trailers, hay equipment, plows and fuel tanks. A veteran farm sale observer told Hale the Wellington sale was one of the largest farm equipment auctions in the nation. Traders from ten states attended the auction.

Sup't., Coach, Band Director Resign

Track Star Ineligible In District Meet

Wellington High School track team's sprint relay, mile relay, 440 yard dash and long jump entries in the regional track meet were disqualified when one of the team's members was determined, at special school board meeting Monday night, to have been ineligible when he ran in the district track meet last week.

Defending Class A 440-yard dash state champion Robert Chambers was found not to have met the University Interscholastic League's scholarship requirement on the day of the District 2-A track meet at Shamrock Tuesday, April 17.

That determination resulted in Wellington High School disqualifying itself in every event in which Chambers participated including both relays.

In the wake of the incident and the controversy surrounding it, Superintendent E.W. Clement Tuesday morning submitted his resignation to the board effective July 1. Track coach Phil Bailey also turned in his resignation Tuesday morning. Band director Jamie Larson submitted his resignation Tuesday, April 17. Several other members of the coaching staff are considering resigning.

The school asked for a meeting with UIL officials to explain the incident, and Clement and board member Harold Wayne Moore were scheduled to meet with UIL officials in Austin Wednesday afternoon.

Track coach Phil Bailey said that the school's other regional track meet qualifiers will participate as scheduled Friday and Saturday in Odessa. Bailey also said that the disqualification would not affect the school's participation in music, literary or other athletic events.

The controversy developed when, on the morning of the district track meet, high school principal Melvin Cardwell notified Bailey that Chambers was ineligible to run because of the UIL scholarship rule.

Section 15 of UIL's Article VIII Eligibility Rules states that a student must be passing three courses seven days before the date of a contest.

Chambers is taking four courses. He had been failing an English course throughout the semester and track coach Bailey said he was aware of Chambers' trouble in that course. But Bailey said he did not know until the day of the track meet (Tuesday, April 17) that Chambers was failing in Jamie Larson's Texas history class.

After a meeting with Larson on Tuesday morning, head coach James Williams left with the impression that if Chambers turned in an overdue notebook he would be passing the course. A notebook was hurriedly put together and turned in and Chambers joined the track team in Shamrock.

Chambers participated at the meet in his events (440 yard dash and long jump) and

also ran one leg in the sprint relay and one leg in the mile relay.

But at special board meeting Monday night Larson told the board that Chambers was failing his class and that he would not change the grade to passing unless ordered to do so by the board.

The board did not order Larson to change the grade. Instead the board decided to notify the district UIL committee that one of its participants was ineligible.

In the marathon executive session lasting until 2 a.m. Tuesday the school board attempted to sort through the controversy while approximately 35 citizens waited outside the closed doors.

After the executive session, the board invited all interested parties into the board room and opened the floor to anyone who wanted to speak. The result was an emotional shouting match between citizens with varying opinions on the matter before the board called a halt and adjourned the meeting.

The top two teams in each district in each event run in the regional track meet. After Wellington disqualified itself, Bailey notified Shamrock that their third place mile and sprint relay teams and their third place 440-yard dash contestant would represent the district at the regional meet. Bailey also notified Clarendon that their third place long jump contestant would represent the district.

Three Win UIL Honors At Region

Three WHS girls won honors in UIL literary competition on the regional level at Odessa.

Maria Langford placed first in typing and will compete in the state contest.

Alta Herndon was designated as alternate in ready writing.

Kathleen Reeves placed sixth in typing.

The state UIL contest will be held next week in Austin. Maria will compete with 11 other students representing the four UIL regions in Texas.

Collingsworth Withdraws From Bi-County Jail Construction

Plans to build a two-county jail by Collingsworth and Hall Counties, to be located in Wellington, were dropped Tuesday night, April 17, when Collingsworth commissioners court voted unanimously to withdraw from the program. The action was taken in a called meeting.

Asked if there was a possibility of the commissioners reversing their vote, County Judge Bob Watson said "I guess not."

This will mean that \$237,500 in grant money the multi-

county jail project has received from the Criminal Justice Division, Austin, must be released back to that agency. These two grants represent the state's part in the project.

Action in the meeting followed a feeling that has been growing in recent months that Collingsworth would be paying more than its share of the cost of construction and operating the jail. The proportion agreed upon originally was that Collingsworth would pay 60 percent, Hall county 40

percent.

A 50-50 split had been discussed in the last regular session of the Collingsworth commissioners.

"I still think it would have been the best deal to go ahead 60-40," Sheriff John Rainey told The Wellington Leader.

"I think in the long run, Collingsworth County will be paying more than they would have in the combination. As far as I am concerned, we have a good jail, but there's lots of things the (Texas) jail commission says we have to do

that we can't do with this one, such as separating hardened criminals from first offenders. I'm afraid it's going to get us in trouble with this jail," Rainey declared.

Judge Watson said that meetings of the commissioners of both counties were set up for Tuesday night, with the Collingsworth court to then go to Memphis for a joint meeting in an effort to work out disagreements in the jail funding plan.

The Collingsworth Commis-

--See JAIL, page 2

County-Wide Coffee to Honor Dr. Kumar Friday

Dr. Prasanna K.N. Kumar, who has completed medical studies and practiced medicine in India, Great Britain, Jamaica and the United States, will visit Wellington Thursday night and Friday, April 26 and 27, upon the

invitation of some from Wellington's medical community.

He is coming in view of establishing a medical and surgical practice.

A coffee will honor Dr. Kumar Friday from 1:00 to

3:00 p.m. in the Heritage Room of Wellington State Bank in order that people of Collingsworth County and the surrounding area may meet him.

"We urge you to welcome --See DR. KUMAR, page 2

Ethel Coleman Receives Distinguished Service Award for Volunteerism

WTSU--Ten outstanding volunteer workers received Texas Distinguished Service Awards for Women April 21 at the fourth annual luncheon sponsored by the West Texas State University Office of Programs for Women.

One of these, selected from field of 172 nominees, was Mrs. John Coleman. Others included Genevieve (Mrs. T.M.) Caldwell of Clarendon; Mary Lou (Mrs. Alex) Hazelrigg, Amarillo; Agnes (Mrs. Jonnie) Howe, Panhandle; and Poppy (Mrs. Kirk) Hulsey, Tulia.

Also named were Eva (Mrs. Roy) Miller of Friona; Margaret (Mrs. William A.) Moore, Canyon; Vickie (Mrs. Perry) Moose, Pampa; Pet Mrs. Ira W. Ott, Hereford; and Ann (Mrs. R.B. Reynolds), Dalhart.

Another nominee from Collingsworth County was Auarie (Mrs. Murray) Dodson.

A special posthumous

award was given in honor of Mrs. Hanna Bluhm, who died April 8 in Amarillo. Mrs. Bluhm was well-known for her volunteer work for Northwest Texas Hospital and St. Anthony's Hospital. Accepting the award was Beulah Casperson of Northwest Texas.

Keynote speaker at the luncheon was Corinne "Lindy" (Mrs. Hale) Boggs, US Congresswoman from Louisiana, who spoke on women and volunteer service.

More than 600 women were present at the luncheon held on the WTSU campus.

Mrs. Boggs called the spirit of volunteerism as a unique American characteristic. From barn-raising in pioneer times, through wars and peace and disasters, Americans have relied on volunteer effort.

She said the jump from the industrial age to the present technological and scientific age was so rapid there was no chance to write moral

parameters for the uses and gifts of this age.

For a time, several years ago, it was believed that work done by those trained for it. This is giving way to the stronger recognition of the professional status of volunteers, the congresswoman said.

Achievements of each

winner were read as she was introduced, but only a few of Mrs. Coleman's long list of volunteer projects could be included.

For several years, she has resisted efforts to nominate her for a Distinguished Service Award. This year, she was not given the opportunity to say "no." Her name was entered.

Day-light Saving Effective Sunday

Whether they like it or not, and most do not, Collingsworth residents will move their clocks ahead one hour and wake up into daylight savings time Sunday, April 29.

That's the way it will be until the last Sunday in October.

The official time change is 2:00 a.m. Sunday.

Most businesses and offices will follow the clock on opening and closing hours. Some organizations will change the hours of meetings as the days get longer, and these will be announced to the members or persons affected by the change.

Mrs. Coleman is the only woman to serve on the Wellington City Council (three terms) and as mayor pro tem, and she also was the first woman elected to the school board at Channing.

She is a past director of the Chamber of Commerce and later was named by it as "Outstanding Woman of the Year." She served on the women's activities committee of West Texas Chamber of Commerce. For 10 years she was local civic improvement chairman.

The Texas Federation of B&PW Clubs gave her its "Nike" award for leadership of the community level, and she received the National Safety Conference award on behalf of the club. She is a past district director and state safety chairman. Besides this, she twice president of the Wellington club.

Possessing a strong dedication to integrity in govern-

--See ETHEL COLEMAN, page 2



ETHEL COLEMAN

Dist. 13 VFW-Auxiliary Comes Here

Wellington will entertain the 13th District Veterans of foreign Wars an Auxiliary convention Saturday and Sunday, April 28 and 29, with the Glynn Moore Post No. 6439 and Auxiliary unit as hosts.

Registration will start at 2:00 p.m. Saturday, and at 3:00 a special meeting will be by the District 13 commander, Dennis Holland of Dodson. He will preside at most of the meetings.

Keynote speaker for the VFW will be John Simmons of Mesquite, Department Judge Advocate. During his address Sunday at 9:30 a.m. He will stress VFW obligations and the obligation of the VFW to the community. Tony Stephens, post commander, is co-ordinating convention arrangements.

Special guests of the Auxiliary will include Naomi B. Barnett of Canyon, District 13 president, who will also speak Sunday morning. Other distinguished guests will be Betty Rose of Lewisville Auxiliary No. 9168, state conductress; Hazel Cumby of Happy, District 13 secretary-treasurer and past president; and Dorothy Gaudin of Amarillo, past district president.

A reception and social hour for the two groups will be from



BETTY ROSE



JOHN SIMMONS

7:00 to 8:00 p.m. Saturday and the dance will begin at 9:00 with Country Edition furnishing the music. It will be open to the public.

Sunday registration will begin at 8:00 a.m. and coffee and doughnuts will be served.

After the joint meeting which starts at 9:30, the VFW and Auxiliary will hold separate meetings, to start at 10:30.

Final event of the convention will be the luncheon at 12:30.

Simmons, a life member of John F. Sprague Post 6796, Dallas, is a graduate of the Law School of Southern Methodist University and is in the general practice of law in

for outstanding service.

Auxiliary members will be in charge of registration: Thursday, 2:00 to 4:00, Janell Brown and Becky Skelton; 4:00 to 6:00, Dora E. Smith and Dorothy McGill; 6:00 to 8:00 Ann Yates and Ann Bowen. Registering Sunday morning will be Alta Meadows and Wanda Barcroft.

Chairman of coffee and donuts Sunday morning will be Estelle French; and Saturday evening food chairmen, Thelma Curry and Mary Sanford.

Commander Stephens has urged all members of Glynn Moore Post to attend, or if they cannot attend, to come by and register.

Guests are expected from the 14 posts in District 13: Wellington, Tullia, Childress, Hereford, Littlefield, Plainview, Floydada, Canyon, Matador, Paducah, Silvertown, Lockney, Dimmitt and Muleshoe, and from three guest posts, Borger, Perryton and Amarillo.

This is the second time in two years the Wellington post and Auxiliary have hosted the district convention.

Remodeling of the Post home has been completed, and the last exterior work was done earlier this month.

--JAIL--

...continued from page 1

sioners, on a motion by John Robert Henard and second by Bill Lowe voted unanimously to withdraw from the plan. Judge Watson notified Hall County Judge Lester Campbell of the action and the joint meeting was not held.

At the regular meeting of the commissioners in April, the court agreed to continue the multi-county jail projects if the Commissioners of Hall County would agree to the 50-50 split on funding and operation of the jail. The original 60-40 split was agreed to by the previous commissioners court.

The present court feels that Collingsworth County would be contributing approximately \$435,000 to the project, including the present jail facilities, grounds, and approximately \$140,000 in cash. This is in comparison to Hall county's approximately \$99,000, said Judge Watson.

"They (the commissioners) felt the difference in Collingsworth County contribution, along with the continual operation of the project, that a fair split would be 50-50," he stated.

"I was personally disappointed after spending three years as project director and securing \$235,500 worth of grants which are not normally available for jail construction. The Criminal Justice Division went away out of its way to find money for us and earmark it. We have gone through Phase I and Phase II on the jail construction, which includes planning, and blueprints, and this cost approximately \$32,000 in grant money," declared Judge Watson.

The commissioners agreed Tuesday, to bring the present Collingsworth county jail into compliance with the Texas Jail Standards Commission. The commissioners also raised the charge for boarding Hall county prisoners in the Collingsworth jail to \$24.75 per prisoner per day.

"For the past 9 years, Hall county has been keeping prisoners in Collingsworth County jail, paying only the cost of the food at \$2.75 per day. Collingsworth County has been standing the actual expense of heating, cooling, utilities and miscellaneous costs such as toothbrushes, tooth paste, soap, towels, and shoes which are required. After a cost estimate was made on the prisoners, a motion was made, seconded and passed 4-0 to set the prisoner expense fee at \$24.75 per day per prisoner, effective May 1."

This is in line with the charge for boarding prisoners made in other counties in Texas. Some are higher.

Of the charge, \$22.00 will go to the court house and jail fund and \$2.75 to Sheriff Rainey for feeding the prisoners.

It has not been brought out previously that during the time Collingsworth was boarding these prisoners, this county was also liable for them. For example, if a Hall County prisoner sued for alleged mistreatment or alleged injury, it would have been Sheriff John Rainey and the Commissioners Court that would have been sued. They would have been liable both personally and as county officials.

Along with Judge Watson, all commissioners were present for the Tuesday night meeting: John Robert Henard, Joe Frank Knoll, Bill Lowe and Raymond Neeley.

Bank Deposits At \$32 Million

The two Wellington banks, Wellington State and City State, ended operations for the first quarter of 1979 with deposits of just under \$32 million, approximately \$1.5 million over deposits for the same period one year ago.

The precise figure is \$31,938. It is the highest deposit figure in the county's financial history.

This is a rise of approximately \$5 million in deposits in the last two years, from a 1977 figure of \$27 million. Furthermore, the deposits are up approximately \$7.4 million from three years ago and \$12.6 million over four years ago.

Additionally, this figure, taken at the close of business March 31, 1979, is higher than the average deposit figure for the preceding 30 calendar days, which was \$31,692, showing a continued rise in deposits.

Assets follow the same trend and the new total is \$34.8 million, a rise of nearly \$2 million over last year and around \$5.5 million in the last two years. In 9 years, since 1970, assets have risen from

\$11.5 million--one third the present figure.

Breaking down the deposit figure demand deposits total just under \$11.7 million, up about a quarter of a million from last year.

Time and savings deposits are \$20.2 million, and that represents an increase of around a million in interest-bearing deposits.

Loans and discounts at the end of business March 31, were \$19.9 million.

Cervantes began writing "Don Quixote" while in jail.

Wellington Leader

(USPS 673-980)

Published every Thursday at 913 West Ave., Wellington, Tex. 79095. Entered as second class mail Aug. 25, 1909 at the post office at Wellington, Texas. HENRY W. WELLS, Editor and Publisher. Subscription rates: \$8.00 a year inside of trade territory; \$11.00 a year outside of trade territory. Mailing address: P.O. Box 992, Wellington, Texas 79095.

--DR. KUMAR--

...continued from page 1

this distinguished doctor, whose impressive credentials and whose practice in so many parts of the world has given him invaluable experience," said Mayor Bill Hatch, who is coordinating plans for the visit.

The time of the coffee will give an opportunity for many of those attending the Greenbelt Electric Cooperative annual meeting to visit with him before going on to their own meeting.

Dr. Kumar is interested in establishing the practice of medicine and surgery in a small community, and he has indicated an interest in Texas and in this area, said Morris Barcroft, Collingsworth General Hospital administrator, who has talked with him by phone a number of times.

The 41-year-old doctor is licensed to practice medicine and surgery in West Virginia and he has already made application for reciprocal licensing to practice in Texas, Barcroft said.

The invitation to Dr. Kumar to come to Wellington is the first step in a renewed effort to bring new doctors into the community and upgrade the present medical facilities. The Chamber of Commerce is sponsoring this visit and a number of other civic and

community groups are assisting.

While he is here, he will see the town's medical facilities and hear plans for their updating.

Dr. Kumar received his medical degree from Kasturba Medical College, Managlore, South India in 1962 and took post graduate work at the Royal College of Edinburgh, Scotland, receiving his diploma in June 1970.

He has passed the ECF MG at Madras Medical Center, Madras, South India, his qualifying examination to practice in the United States, and the FLEX examination at Maryland Center, Baltimore in June 1978.

Practical experience in India included a one-year rotating internship, a year as house surgeon and locum tutor in anesthesia all at the government's Wenlock Hospital, Mangalore, South India, a teaching hospital for Kasturba Medical Center.

In England, he studied orthopedics and casualty at West Suffolk General Hospital, Bury St. Edmunds; general surgery at West Norwich Hospital, Norwich and at Cumberland Infirmary, Carlisle, and with the Gateshead Group of Hospitals, Gateshead.

He was registrar to the Wakefield Group of Hospitals, Wakefield and senior registrar in the same field at University Hospital of the West Indies, Kingston, Jamaica; Register and senior registrar in general surgery at Bridgend Hospital Bridgend.

Teaching experience of undergraduates and post graduates was at the University of Cardiff, Cardiff South Wales, and Bridgend General Hospital and University Hospital of the West Indies, Mona, Kingston, Jamaica.

He has taught post-graduate seminars to Master of Surgery students and hospital doctors and general practitioners in Jamaica.

--ETHEL COLEMAN--

...continued from page 1

ment, Mrs. Coleman is active in political work and serves as county Democratic Chairman.

She is a past 18th District president and past Division President of the American Legion Auxiliary.

There are many other areas touched by her volunteerism, but even more of her work is performed quietly, on a me-to-you basis.

She is the wife of John Coleman, former Wellington mayor.

"We Care"
First Assembly of God
806 Dalhart

Sunday School... 10:00 a.m.
Evangelistic Service... 6:00 p.m.
Wed. Night Service... 7:00 p.m.
Friday-Youth Night... 7:30 p.m.

Evangelistic Center
Pastor - Rev. J.L. Nicks

Dr. C.L. Harrison
Optometrist

Glasses fitted-Contact lenses
Office open Monday thru Friday
(but Dr. out of office on Thursday afternoon)
Hollis, Oklahoma 405/688-2274
We can accept Texas Medicaid patients.

CORRECTION

The April 19 story of West Texas Utility Company's capability in case of a tornado here, should have read "WTU has portable sub-stations that would be available," instead of "portable generators."

Peoples Choice
MEAT SEAFOOD

★ CHICKEN	PER BOX
12 Chicken Cordon Bleu, 7 oz ea	\$21.78
12 Chicken Kiev, 7 oz ea	21.30
Gourmet Chicken Assortment	
7 oz serving/4 each	
Reyal, Cordon Bleu, Kiev	21.98
★ PORK	PER BOX
Polish Korbasa Sausage Rings, 12 oz ea	11.69
Thick Sliced Bacon, 2 lb.	3.49
66 Whole Hog Sausage Patties, 1.5 oz ea	12.65
28 Center Cut Pork Chops, 5 oz ea	23.50
★ SEAFOOD	PER BOX
5 lb. Med. Headless Shrimp	\$23.40
5 lb. Jumbo Headless Shrimp	29.70
1 1/2 lb. Med. peeled/deveined Shrimp	7.48
4 lb. Jumbo hand breaded Shrimp	18.09
24 Stuffed Shrimp, 2 oz ea	10.80
2 lb. Alaskan King Crab Legs	11.76
2 lb. Lobster Tails, 6-8 oz ea	19.44

Flounder Royale, 7 oz ea \$1.89
5 lb. Scallops (Sea) \$4.75
4 lb. Breaded Scallops \$1.71
4 lb. (1/2 gal.) Shucked Select Oysters \$15.60
5 doz. Breaded Select Oysters \$13.75
24 Stuffed Crab Shells, 3 oz ea \$9.30
3 lb. Large Frog Legs, 4-8 oz ea \$11.97
5 lb. Catfish Fillets, pkg of 6 \$9.95
5 lb. Flounder Fillets, pkg of 6 \$9.95
5 lb. Cod Fillets, pkg of 6 \$9.95
5 lb. Perch Fillets, pkg of 6 \$9.95
5 lb. Red Snapper Fillets \$14.80
27 oz. Louisiana Gumbo \$3.35
Stuffed Red Snapper Fillets 10 oz \$2.97

Miscellaneous PER PKG.
5 lb. Steak House French Fries \$2.45
Shrimp & Crab Ball, 3 oz pkg \$1.39

Prices subject to change.

Where
ALLSUP'S PARKING LOT
Wellington, Texas

When
ONE DAY ONLY
Friday, May 4, 1979
11:30 a.m. - 7 p.m.

TRUCK LOAD SALE
FOOD STAMPS ACCEPTED

4125 GARDENDALE • SAN ANTONIO, TEXAS 78230 • (512) 691-1938

ALLSUP'S
CONVENIENCE STORES

SHOP AND SAVE AT ALLSUP'S!

PRICES EFFECTIVE APRIL 26-29, 1979

APRIL SHOWERS BRING SAVINGS

Frito-Lay Fantastix Snacks 59¢ BAG (REG. 69¢)	Rath's Hickory Lean 12 OZ. PKG. \$1.29	Rath's Pure Pork Sausage 1 LB. ROLL 89¢
Morton's Asstd. Pot Pies 3 8 OZ. PKGS. \$1.00	Morton's Frozen Fried Chicken 2 LB BOX \$2.99	Schilling's Black Pepper 4 OZ. CAN 99¢
Fisher's Whole Cashew Nuts 6 1/2 OZ. CAN \$1.79	GIANT SIZE TIDE BOX \$1.39	

COOKED FOOD SPECIALS
Delicious Piping Hot CORN DOGS 3/\$1.00

Borden's Cottage Cheese 12 OZ. CTN. 69¢	Borden's Hi-Protein Milk 1/2 GAL. CTN. 98¢	Borden's Asstd. Flavors Premium Ice Cream 1/2 GAL. RD. CTN. \$1.39
---	--	--

WHS Has Second High Point Total in 2-A Track Meet

Wellington High School's Skyrocket track team won the sprint relay and mile relay and took second place in total number of points at the District 2-A track meet in Shamrock Wednesday, April 18.

Robert Chambers took first place in the long jump with a jump of 22 feet 1/2 inch, and Chambers won first in the 400 meter dash with a time of 49.97.

However, it has since been determined that Chambers was ineligible to run at the track meet, (including both relays) and all events in which he participated have been disqualified.

The sprint relay team of James Thomas, Kevin Hall, Tim Anderson and Robert Chambers had a winning time of 43.7 seconds.

The mile relay team of Kevin Hall, Chris Lynch, Marty Warrick and Robert Chambers had a winning time of 3:29.

Other Wellington track team members who were not affected by the ineligibility and who will represent the district at the regional meet are:

Long jump: James Thomas, second, 20 feet, 9 inches;

110 meter high hurdles: Kevin Hall, first, 15.17 seconds;

100 yard dash: Tim Anderson, second, 10.02 seconds;

400 meter dash: Chris Lynch, second, 52.28 seconds;

300 meter intermediate hurdles: Robert Powell, first, 42.64 seconds;

200 meter dash: Tim Anderson, first, 22.6 seconds.

Other Rocket team members who placed in the district meet are:

High jump: Jon Sessions, fourth, 5 feet, 6 inches;

Long jump: Kevin Hall, fifth, 20 feet, 1 inch;

Shot put: Terry Manuel, fifth, 41 feet, 4 1/2 inches;

800 meter dash: Marty Warrick, third, 2:07.58 seconds;

110 meter high hurdles: Jon Sessions, third, 16.19 seconds;

100 yard dash: James Thomas, sixth, 10.44 seconds;

1600 meter dash: Juan Granados, third, 5:02.85 seconds.

The district meet was scheduled for Tuesday, but

after some preliminary events it was rained out. The finals were completed Wednesday afternoon. (Junior Varsity, and Junior High track meet results will appear in next week's edition).

Regional preliminary events will begin at 1:30 Friday, April 27 at Odessa College. Finals are scheduled to begin at 1:00 p.m. Saturday.

Texas "Tycoons" University Alumni

AUSTIN--Seventeen of the nation's major corporations have alumni of The University of Texas at Austin as their chief executive officers, a recent survey shows.

For example, Texas-Exes head Texaco (Fifth largest industrial corporation), Gulf Oil (eighth largest), Shell Oil (14th largest) and Tenneco (19th largest).

Other UT-trained executives are at the helms of Texas Instruments, Southwestern Life, Pennzoil, Braniff International, Texas Commerce Bancshares, American Petrofina, B.F. Goodrich, Southland, Tesoro Petroleum

City-wide Clean-up Slated Next Week

The annual city-wide clean-up begins Monday, April 30 and will continue through Friday, May 4, Tiny Taylor, city manager, has announced.

In addition to the regular pick-up of the dumpster system, it is the one time of year that city residents may get rid of trash and unwanted articles, excessive junk and dead trees and shrubs, at no expense to themselves.

This is in addition to the regular pick-up of the dumpster system.

Clean-up Week is sponsored by Collingsworth Chamber of Commerce and the City of Wellington.

"We encourage residents to clean up their premises of all trash, rubbish and refuse and put it in the alley to be picked up by the city trucks," Taylor said.

City employees will be taken off other jobs and for the one week will do only pick-up work, he added.

The free pickup will begin Tuesday, May 1, and continue through all the alleys until the entire city is covered.

Everything in the alleys is going to be hauled off, Taylor warned, and if residents have

any property or articles in the alley that they do not want hauled off, they are asked to remove it to their own yards.

Owners or lessees of vacant lots are required to clean these, removing trash, refuse, garbage and rubbish at their own expense, and to keep the weeds under control.

However, it has long been a practice of the city to keep vacant lots mowed during the growing season if the owners will keep them free of rubbish.

Dead trees and heavy junk will be moved Thursday, May 3. City equipment and community volunteers will cooperate in this one big day of cleaning up large junk items that require front-end loaders and dump trucks.

The city will also haul off dead trees but it will not dig them up. Anyone wishing this service should call the chamber of commerce office, 447-5848.

The more parents do to prepare a child for a new baby's coming, the better.

However, don't start too soon--the waiting is harder on children than adults, says Dorothy Taylor, family life education specialist

Leader Readers

Mike Rainey, Garland; Shamrock Veterinary Clinic, Shamrock; Tony Winkler, Lubbock; G.D. Milner, Amarillo; Kenneth King, Twitty; Mrs. Tom Reed, Groom; Mrs. Lester Paige, Ft. Worth; Jimmie Shields, Stinnett; Leon Shields, Willow, Okla.; Mrs. Clinton Stewart, Willow, Okla.; Jack Clark, Dimmitt; Mrs. J.C. Hunsaker, Lubbock; W.J. Thompson, Clarendon;

Mrs. D.J. Ford, Shamrock; L.E. Goswick, Amarillo; James K. Covey, Grapevine; J.V. Langford, Phoenix, Arizona;

THE WELLINGTON (TEXAS) LEADER
Thursday, April 26, 1979

COME SEE US!
When you need

- ★ Gasoline ★ Tires ★ Batteries
- ★ Flats Repaired ★ Oil Changes

and for all your plow tool needs
Nichols Tillage Tools:
Chisels - Sweeps - Furrows

Come see us even when you don't need anything
the coffee pot's always on.

Holton's Exxon

John and Johnny Holton
1101 8th Street 447-2505

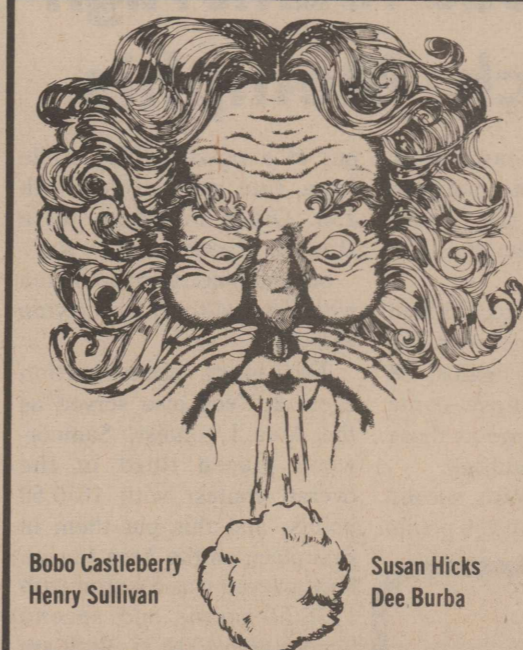
PROTECT YOUR CROP AGAINST WIND DAMAGE

See First Wellington Agency this week for information on our Wind Endorsement that can be added to our Crop Hail policies.

It means extra security for the times when wind without hail may damage your crop.

Come see us for details.

1 ST. WELLINGTON AGENCY
447-2517
802 EAST AVE.



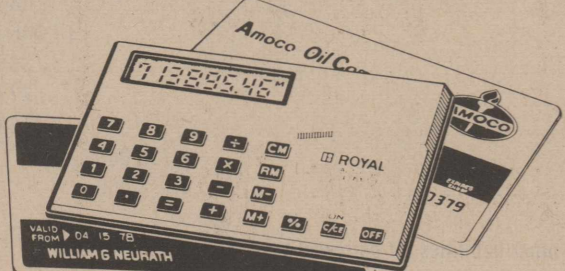
Bobo Castleberry
Henry Sullivan

Susan Hicks
Dee Burba

WHEN YOU ALWAYS BUY THE BEST FOR LESS! GIBSON'S DISCOUNT CENTER

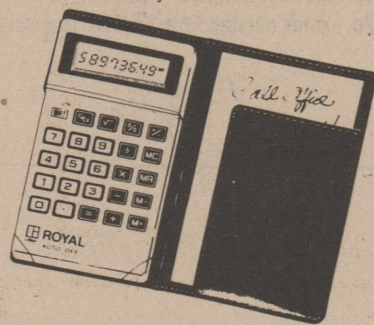
Be sure and stop by our bargain table, all items on it **1/2 price**

Royal Calculators



model LM-8
\$18⁹⁵

The fully featured credit card-size LCD calculator with memory.



ROYAL L800
Economy LCD calculator with memory
\$15⁹⁵

Ortho Sevin Dust

4 lb. bag
\$185

Van Sickle Tractor Paint

John Deere, International & OTHERS
\$9⁵⁰ gal.

Ford & Chevrolet Heavy Duty Batteries

with exchange
\$34⁵⁰



All Jogger Shoes

\$1⁰⁰ off
reg. price



Mens Work Socks

3 pr. in pkg.
\$119



Amalie Oil
heavy duty & regular

\$15⁹⁵ case



Gulf Lite Charcoal Starter

quart
79¢



Gillette Daisy SHAVER
SAVE \$1⁰⁰

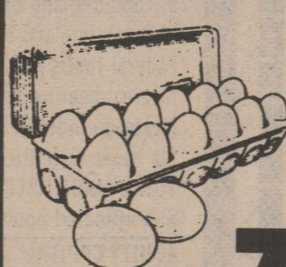
With coupon from Daisy package and 2 Daisy proofs of purchase.

reg. 88¢
59¢



Gillette Atra 10's

reg. 2.79
\$219



Grade A Extra Large Eggs

79¢ doz.

Shurfresh Mellorine

1/2 gallon
69¢

Shurfresh Bologna

12 oz.
79¢



Giant Size Tide

49 oz. (with 1.50 worth of carnation coupons inside)
\$147



Charmin Tissue

4 rolls in pkg.
89¢



Wesson Oil

24 oz.
\$117



Vaseline Intensive Care Baby Oil or Shampoo

16 oz., reg. 1.89
\$149



Breck Balsam & Protein Conditioner

reg. 1.99
\$165

Wilson Bacon

1 lb.
\$119

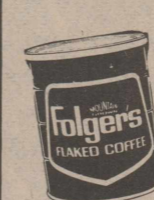


Kraft Pourable Dressings

16 oz.
Italian **\$110**
Catalina **\$115**

Thrift King Paper Towels

39¢



Folgers Flaked Coffee

13 oz.
\$209



Kraft Soft Parkay

two 8 oz. tubs in pkg.
79¢



Folgers Instant Coffee

10 oz.
\$349



Kraft Real Mayonnaise

32 oz.
\$119



COCA-COLA

6 pack cans
\$119



Kraft Velveeta Cheese

1 lb.
\$149

4-H Members to Compete on District Level Saturday

High Plains 4-hers from 18 of the twenty counties in Extension District 1 will compete Saturday, April 28, at District 4-H Round-Up. The contest will be conducted on the West Texas State University Campus.

Collingsworth County 4-Hers who will compete at District Round-Up are:

Junior division: food and nutrition "Let's Speak Out", Stacy Scott and Lesa White, "Easy, Economical Elegant Egg"; safety: Leslie Birkey and Beth Green, "Young Children and Accidents in the Home"; clothing educational activity, Teresa Benton, "It's Time for Personal Grooming"

Senior division: family resource management, Cheryl Birkey, "Woman, the Financial Wizard";

Competing in the soils judging contest will be a team composed of Lynn Tate, Russell Schaub and Dwayne Myers.

The district judging for two teams will be held at Silverton Thursday, May 3. Members of the range and grass identifi-

cation contest will be Mark Wischkaemper, Rex Paschall, Alberto Alfaro and David Tarver.

Range evaluation team members will be Lowry Schaub, Randy Breeding, Michael Bentley and Jody Knoll.

Jimmy Brown is the adult leader. All members of the soils and grass teams are from

Samnorwood.

To qualify for the State Contest a team or individual must have a first or second place win in the Senior division which is for 14 year olds and older. Juniors do not compete beyond the District level.

The State 4-H Round-Up will be held at Texas A&M University Tuesday and Wednesday, June 5 and 6.

Norwood Teams High At Tech, Memphis

Samnorwood teams took high honors in judging contests at Texas Tech, Lubbock and Memphis late last week.

The land team placed first in the Tech invitational with 710 points, competing against 38 others teams. These came from schools as large as those in Amarillo and Lubbock.

Russell Schaub was second high individual with 258 points

out of a possible 280, while Lynn Tate was seventh with 238. Other members were Dwayne Myers and J.D. Ray.

Second place went to Slaton with 669 and third to Perryton with 651.

The plant identification event at Tech also served as the Area I contest. Samnorwood placed third in the overall contest with 1670.50 points, and this put them in first place on the Area I level. First overall was Stanton with 1738.50 points and second Synder with 1702.75. Both are in Area II.

Mark Wischaemper was third high individual with 582 points; out of a possible 613; Rex Paschall fifth with 571; Alberto Alfaro tenth with 547; and David Tarver eleventh with 517.50. Twenty-three teams competed.

In Memphis, the grass and plant identification senior team placed first in its category and the junior teams second in that division.

Senior team members were Mark Wischkaemper, Rex Paschall, Alberto Alfaro and David Tarver.

Junior team members were Dale Tarver, Steve Knoll, Frank Kneeland and Johnny Blevins.

At least 150,000 species of flowering plants are known.

Primitive Baptists To Hold Services

A Fifth Sunday meeting will be held at the Primitive Baptist Church, with services starting Friday evening, April 26 and continuing through Sunday noon, April 29.

Visiting ministers will be Elder Boyd Chambers of Lampasas and Elder A.D. Wood of Glen Rose.

Services will be Friday night, Saturday morning and evening, with the final service

planned for Sunday morning.

Both evening services will begin at 7:30 p.m., the one on Saturday morning at 10:30 and on Sunday morning at 11:00.

Lunch will be served at the church Saturday and Sunday at noon, said Loyd Langley, who is helping with arrangements.

Elder Wood has visited in Wellington several times and most of the members already know him. Members of Primitive Baptist Churches in surrounding towns will attend.

The church is located at 13th and Graham Streets, with Elder V.R. Henderson of Childress as the minister.

Lunchrooms

WELLINGTON

Monday, April 30, breakfast: cooked cereal, buttered toast, fruit juice, half pint milk; lunch: sloppy Joe's on a bun, fruit juice, spinach, whipped potatoes, cookies, half pint milk.

Tuesday, May 1, breakfast: sausage, fruit, buttered toast and jelly, half pint milk; lunch: sliced turkey sandwich, lettuce with tomato slice, fruit juice, oven fried potatoes with catsup, cookies, half pint milk.

Wednesday, May 2, breakfast: scrambled egg, buttered toast and jelly, fruit juice, half

Wednesday, May 2, breakfast: scrambled egg, buttered toast and jelly, fruit juice, half pint milk; lunch: chef's salad, cheese toast, baked potato with butter, fruit, white cake with pink icing, half pint milk.

Thursday, May 3, breakfast: waffles with maple syrup and butter, half pint milk and fruit juice; creamed diced turkey, sweet potatoes, fruit juice, mixed vegetables, hot rolls with butter, peanuts, half pint milk.

Friday, May 4, breakfast: dry cereal, half pint milk, fruit juice and donut; lunch: barbecued turkey on a bun, pickles, oven fried potatoes with catsup, fruit juice, brownies, half pint milk.

1949 Quail Class Observes Thirtieth

To celebrate the 30th anniversary of graduation from Quail High School, the class of 1949 held a reunion Saturday, April 14, at 5:00 p.m. in the home economics room of the school.

Senior pictures were displayed, along with clippings and snapshots, all recalling their years at Quail. With these were several letters from those who could not be present.

Two graduates who traveled the farthest were June Howell Tofto of Lake Oswego, Oregon, and Marilyn Watkins Price of Tempe, Arizona.

Other members of the graduating class and ex-students present were Patricia DeBord Emerson of Cordell, Okla.; Maude Pendergrass Minyard of Pampa; Mearl Parker, Del City, Okla.; Calvin Tow, Amarillo, Dorothy Lee White Watson, Wellington, Aubrey Needham, Amarillo; Rosey Pettett, Choctaw, Okla.; Delores Hook Bradley, Pampa; John and Mae Patterson, Hereford; Avyrilla Clay White, Quail; Morene Childers, Wellington.

Visitors were Waldo Emerson, J.B. Minyard,

Dorothy Parker, Cliffla Tow, Karen Tow, Bobby Jack Watson, Ruby Needham, Jack Pettett, Delbert White, Louise and Delbert Timmons of Perryton, Alice Guthrie Lee of Pampa, Marjorie Wilson Barnes of Lubbock.

Mrs. Ola Parker of Wellington, Mrs. Mary Clay of Hedley, Loyd and Evelyn Parker of Dalhart, Donald Langley and Donna of Quail, Zoy and W.C. Risinger of Knox City (he is a former Quail teacher), Mr. and Mrs. Bob Sweeden of Blair, Okla., Mr. and Mrs. Pat O'Hair,

Mrs. Virgie White, Mildred and Loyd Langley, Weldon and Mildred Sullivan of Roberson, Glen and Linda Norman of Bryan, Freddy Maxwell, Tony Winkler of Lubbock, Ralph Fielding of Quail.

Letters were from former Supt. Noah Cunningham and his wife, Leitha, of Rockport; Betty Souder Lancaster of Norwood, Mo.; Carolyn Carter Musgrove of Los Angeles, Calif., and Hazel Hook Yates of Bartlesville, Okla.

Helping with plans were Audrey Needham, Patricia Emerson, Mae and John Patterson, Marilyn Price, Maud Minyard, Rosey Pettett, Calvin Tow and Avyrilla White.

Dentures at 50% to 75% savings. For information call 1-405-688-2441, or write box 151 Hollis, OK 73550.

Open Monday - Friday 9:00 to 5:00

CONSOLIDATED REPORT OF CONDITION

City State Bank
State Bank No. 1168

Federal Reserve District No. 11
Close of business-March 31, 1979

ASSETS

Cash and due from depository institutions	718,000
U.S. Treasury securities	1,657,000
Obligations of other U.S. Government agencies and corporations	00
Obligations of States and political subdivisions in the United States	146,000
All other securities	415,000
Federal funds sold and securities purchased under agreements to resell	175,000
a. Loans, Total (excluding unearned income)	4,832,000
b. Less: allowance for possible loan losses	00
c. Loans, Net	4,832,000
Lease financing receivables	00
Bank premises, furniture and fixtures, and other assets representing bank premises	36,000
Real estate owned other than bank premises	00
All other assets	146,000
TOTAL ASSETS	8,125,000

LIABILITIES

Demand deposits of individuals, partnerships, and corporations	2,240,000
Time and savings deposits of individuals, partnerships, and corporations	3,937,000
Deposits of United States Government	8,000
Deposits of States and political subdivisions in the United States	1,046,000
All other deposits	8,000
Certified and officers' checks	77,000
Total Deposits	7,316,000
a. Total demand deposits	2,738,000
b. Total time and savings deposits	4,578,000
Federal funds purchased and securities sold under agreements to repurchase	00
Interest-bearing demand notes (note balances) issued to the U.S. Treasury and other liabilities for borrowed money	00
Mortgage indebtedness and liability for capitalized leases	00
All other liabilities	80,000
TOTAL LIABILITIES (excluding subordinated notes and debentures)	7,396,000
Subordinated notes and debentures	00

EQUITY CAPITAL

Preferred stock	a. No. shares outstanding 00 (par value)	00
Common Stock	a. No. shares authorized 15,000	
	b. No. shares outstanding 15,000 (par value)	300,000
Surplus		300,000
Undivided profits and reserve for contingencies and other capital reserves		129,000
TOTAL EQUITY CAPITAL		729,000
TOTAL LIABILITIES AND EQUITY CAPITAL		8,125,000

MEMORANDA

Amounts outstanding as of report date	
a. Standby letters of credit, total	50,000
b. Time certificates of deposit in denominations of \$100,000 or more	100,000
c. Other time deposits in amounts of \$100,000 or more	00
Average for 30 calendar days (or calendar month) ending with report date	
a. Total deposits	7,203,000

I, Glenna Hernandez, Cashier, do hereby declare that this Report of Condition (including the supporting schedules) is true to the best of my knowledge and belief.

/s/ Glenna Hernandez

We, the undersigned directors, attest the correctness of this Report of Condition (including the supporting schedules) and declare that it has been examined by us and to the best of our knowledge and belief has been prepared in conformance with the instructions and is true and correct.

/s/ Richard Fournentin
/s/ Jones Singley
/s/ Louis Alred } Directors

State of Texas, County of Collingsworth, ss:

Sworn to and subscribed before me this 18th day of April, 1979, and I hereby certify that I am not an officer or director of this bank.
My commission expires 2-18, 1980,

/s/ Vaneita Null,
Notary Public

(NOTARY'S SEAL)

City State Bank

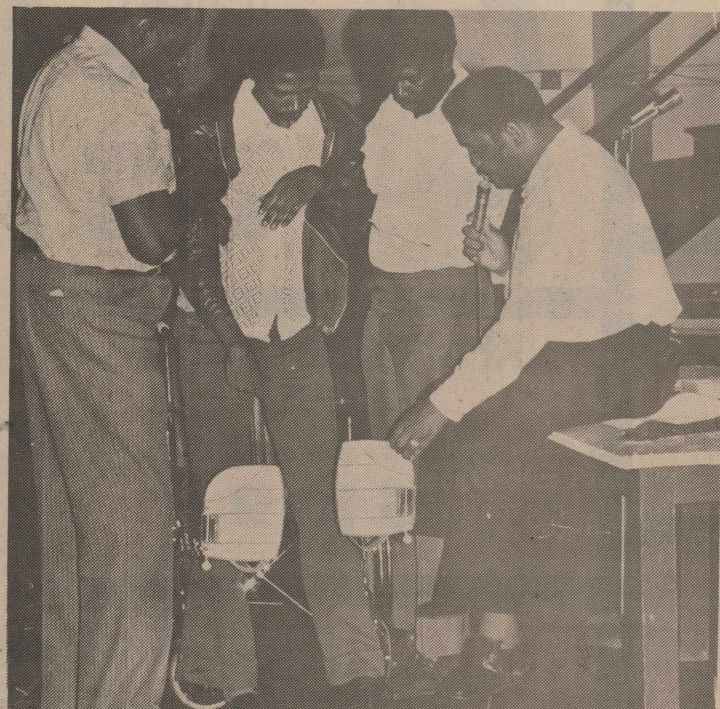
in Wellington

"Banking is our only business"

Member, F.D.I.C.

THE EVANGELIST JOSEPH JOHNSON MIRACLE CRUSADE

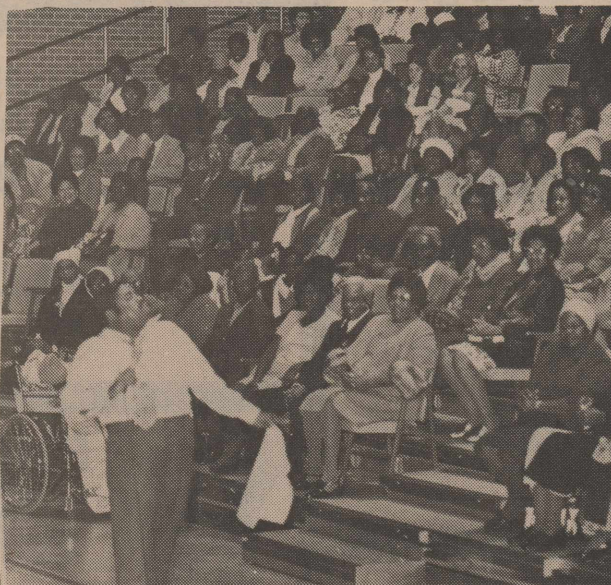
One Of The World's Leading Gospel Singers and Preacher IS COMING TO YOUR TOWN



Bring The Sick And Watch GOD In Action



1ST 5-BIG NIGHTS
Will Be Held In Dodson, Texas
STARTING
Monday Night, April 30th
Thru
Friday Night, May 4, 1979
Meeting Held At The
DODSON CHRISTIAN CENTER
Dodson, Texas
SERVICES NIGHTLY 7:30 P.M.



2ND 5-BIG NIGHTS
Will Be Held In Hollis, Okla.
STARTING
Monday Night, May 7...7:30 p.m.
Thru
Friday Night, May 11, 1979
Held In The
CIVIC CENTER OF HOLLIS
Downtown - Hollis, Okla.

—All Races Come—

Ross Inducted In International Honor Society

LUBBOCK--Joel Lynn Ross of Quail is one of 248 students at Texas Tech University who will be inducted into Phi Kappa Phi international honor society on April 16.

Ross, son of Mr. and Mrs. James Raymond Ross of Route 1, Quail is a third-year law student. He is a member of the Law Review and Phi Alpha Delta.

The prestigious organization is composed of students from all areas of academic study. Members must rank in the upper 10 percent of their graduating class or the upper five percent of their junior class.

Address Listing Begun for Census

Workers for the U.S. Census Bureau will begin compiling house-by-house address lists within the next few days in Collingsworth County.

"The purpose of the address listing program is to compile a complete list of households in the county for use next year when the 1980 census questionnaire will be mailed to each residence," said Ms. Kelly Epperson, census office manager in Dallas, Texas.

Census workers will be walking or driving on streets and roads in the county to prepare the address lists.

They will be knocking on doors and asking householders for a correct mailing address.

Ms Epperson said residents can identify the census employees by a red, white, and blue census identification card which all will carry. Census workers also will carry 11" by 16" books, or addresses registers, in which the addresses are written.

These address lists will play a vital role in the nationwide 1980 census. They will be used to produce mailing labels for the census questionnaires. Census Day is April 1, 1980.

Dorothy Johnson Named to Nursing Examiners Board

Dorothy Johnson, daughter-in-law of Dr. J. Frank Johnson, recently was appointed to the State Board of Nursing Examiners by Governor Bill Clements.

Mrs. Johnson, who is the wife of Walter Johnson, is administrator of special patient services for the Amarillo Hospital District.

She explained that the primary purpose of the board is to protect citizens. It was created by the Nurse Practice Act of Texas passed March 28, 1909.

"The law provides for a Board of Nurse Examiners. They are empowered with responsibility and legal authority for ensuring citizens competent practitioners of nursing."

"The board fulfills this responsibility by licensing qualified practitioners and controlling the practice of nursing and by establishing standards for educational programs for nursing. The Board also accredits schools of nursing," said Mrs. Johnson.

The term of the six-member group is six years. Meetings are held about every 6 weeks in Austin.

Mrs. Johnson has been a frequent Wellington visitor for as long as she has been in the Johnson family.

She has been a nurse 25 years, having received her diploma from Methodist Hospital School of Nursing in Lubbock in 1954. She also holds a bachelor or science degree in nursing from West Texas State University and a masters of science degree in nursing administration from the University of Texas at Austin.

At the time of her appointment, Mrs. Johnson reviewed some of the trends in nursing. The profession of nursing has changed along



DOROTHY JOHNSON

with the entire medical profession.

"We have a lot of new technological advances in the care of patients in medicine and nursing, she said.

"I believe we are seeing a trend in getting nurses back to the patient's bedside. It is imperative. As more nurses are trained and more are available then our goal is to return to the patient's bedside."

But a shortage of nurses still exists. In Texas they anticipate almost 3,800 students will be applicants for the State Board examinations in July, but in our mobile society nurses don't always stay in the state."

The shortage of nurses during World War II led to advancement of ancillary nursing programs, the new board member pointed out.

"They certainly are helpful in care for patients. But we are seeing a trend to primary nursing care in hospitals so one nurse will be responsible for a certain caseload of patients. And she will be responsible and accountable for their care."

Other trends in nursing include specialization and a teamwork concept in nurse-doctor relationships.

"With advances in the medical field, it is hard to be up to date in all phases of nursing and that is why you see the trend in specialization.

"We have also seen the nursing profession grow from an authoritarian concept where the nurse just followed orders to a professional type of cooperation with more of a colleague relationship between doctors and nurses."

Mrs. Johnson said as an administrator she misses the direct patient-nurse practice.

"That's the most gratifying type of practice a nurse can engage in and I do miss it. But in my present role I can now initiate change and make certain that patients in this institution can receive the best care possible and that is our goal here to make sure the patient receives the best care."

She said she is hopeful that Texas lawmakers will update the Texas Nursing Practice Act soon.

"It is antiquated and does need to be revised," she said.

Mrs. Johnson's husband, Walter, is a rancher and in the cattle feeding business. Their son, Drew, is a member of the WTSU football team and enrolled in the school of business.

Mrs. Johnson has worked with the Amarillo Hospital District since 1959. Previous duties have included responsibilities as director of nursing service and assistant director of clinical nursing.

In addition to the telephone, Alexander Graham Bell invented the grooved wax cylinder with spiral sound track for Thomas Edison's phonograph.

Eagles Take Opener From Higgins Nine

Samnorwood Eagles baseball team traveled to Higgins Thursday, April 19, to win a non-conference game 20-7.

This was the season opener. Lowry Schaub was the winning pitcher and went the full 6 innings.

The Eagles had 11 hits to score 20 runs and committed 4 errors. Schaub gave up 9 hits and walked four, and struck out 6 batters.

Pool, credited with the loss, went the first three innings for Higgins and was replaced by Blocker in the top of the fourth.

Norwood Players were Lynn Tate, Russell Schaub, Randy Breeding, Lowry Schaub, Michael Bently, J.D. Ray, Arthur Alfaro, Steve Knoll.

Frank Kneeland and Alberto Alfaro.

Name	AB	R	H	B
Tate 2b	4	2	1	1
R. Schaub ss	3	3	1	2
Breeding 3b	3	2	0	2
L. Schaub p	4	4	1	1
Bentley c	4	3	1	1
Ray 1f	4	2	2	1
Ar. Alfaro cf	5	1	1	0
Knoll 1b	4	2	3	0
Kneeland rf	2	0	0	0
Al. Alfaro f	2	1	1	0

Higgins will be at Norwood for another non-conference game Thursday, April 26 with the game beginning at 3:30 p.m.

Pal, meaning friend, is from the gypsy word for brother.

Golden Acres BRAND

"Golden Acres" is a brand name registered by Taylor Evans Seed Company, Tulsa, Texas 78088. "T.E." names or numbers are variety designations.

HYBRID FORAGE SORGHUM

"GRAZE, GREEN CHOP OR HAY"



TE HAYGRAZER

- Astonishing growth, often 2" per day
- Exceptionally drought tolerant
- Will carry 4-5 cows per acre
- Tremendous Quantities of T.D.N. per acre
- Fast recovery, unexcelled regrowth

WE RECOMMEND TE HAYGRAZER

Warrick's, Inc.

508 West Ave. 447-2404

Wellington, Texas

COME IN NOW FOR YOUR SEED NEEDS

Moore Granted Farmer Degree

Tane Moore, son of Mr. and Mrs. Bundy Moore of Dodson, was recognized Tuesday, April 17, during the 53rd annual Oklahoma State FFA convention in Stillwater, when he was awarded his State Farmer degree.

The recipients were judged on vocational agriculture projects, FFA activities, leadership, community and school activities.

Moore, a senior in Arnett School, is FFA president, and is developing a registered Spotted sow herd.

He has exhibited the grand champion and reserve champion steers in the Harmon County spring junior livestock show and also the grand champion barrow in the Harmon County Free Fair.

He plans to attend Western Oklahoma College at Altus next fall.

The largest discovery of gold was found in 1886 in the Witwatersrand gold field at Johannesburg, South Africa.

City-Wide CLEAN-UP

Residential and Business Areas During This Time

April 30 thru May 4 Fix-Up! Paint-Up! Clean-Up!

During this time residents are encouraged to clean up premises of trash, rubbish and refuse, and put in the alley for pick up by City Trucks. ONE WEEK ONLY. Trucks will start at 1st and Haskell Streets and work south. Trucks will go through all alleys one time only—they will not return to pick up trash.

Free Pick Up Tuesday, May 1

TUESDAY, MAY 1, the City Trucks will begin the Annual Free Pick Up and continue through all alleys until the entire city is covered. PROPERTY IN THE ALLEY THAT IS NOT TO BE HAULED AWAY...

Residents having property or articles in the alley that they do not wish hauled off are requested to remove these from the alley and place on their premises. The City of Wellington cannot be responsible for any articles hauled off by mistake.

Vacant Lots

VACANT LOTS...Owners or lessees of vacant lots are required to remove trash, refuse, garbage and rubbish at their own expense, and to keep weeds under control throughout the season for protection against mosquito breeding and harboring places...

However, it has long been a practice of the City to keep vacant lots mowed, where owners would keep them clean and mowable, and the City will continue this program.

Dead Trees and Heavy Junk, Thur. May 3

THURSDAY, MAY 3...City equipment and community volunteers will cooperate in one big day of disposing of dead trees, excessive junk that requires front-end loaders and dump trucks. If you have dead trees or extra heavy items to be hauled, call the Chamber of Commerce office 447-5848. The City will not dig dead trees, but they will haul away dead trees that have already been dug.

Sponsored by Collingsworth Chamber of Commerce and City of Wellington

We Don't Blame You

FOR WANTING YOUR FOOD DOLLAR'S WORTH—YOU CAN GET IT HERE

Save at Andy's Old-Fashioned Meat Market

 T-BONE STEAK \$2¹⁹ lb.	 Extra-Lean GROUND BEEF \$1³⁹ lb.	
SIRLOIN STEAK \$1⁹⁶ lb.	RUMP ROAST \$1⁶⁹ lb.	BEEF LIVER 79¢ lb.
SLICED BACON \$1¹⁹ lb.	 PORK CHOPS All cuts \$1³⁹ lb.	SALTED PORK JOWLS 69¢ lb.
ALL MEAT BOLOGNA \$1¹⁹ lb.		MARKET-MADE SAUSAGE \$1⁴³ lb.

Coming soon to Andy's Old-Fashioned Meat Market Picnic and Lake Supplies

BLOCK ICE — CRUSHED ICE — SNOW CONE ICE
★ Bread ★ Chips ★ Cokes

ANDY'S MEAT MARKET

Wellington, Texas 806/447-5063 9 a.m.-6 p.m. Hwy. 83 (across from Roberson's) Dewey Butler & son Andy
Drive up to 100 miles and save — So be sure & come — Friendly Service & Low Prices

Anniversary Party Honors Yarbroughs

The children and grandchildren of Mr. and Mrs. Fred Yarbrough surprised them with a 53rd wedding anniversary celebration Saturday afternoon, April 14, at their home in the Shinnery community.

The hosts were Mr. and Mrs. Mack Bush, Frederick and John of Tulia, and Mr. and Mrs. Reginald Lasater, Kevin and Michelle of Duncan, Okla.

Guests were served punch from a crystal bowl and coffee from a silver service, along with anniversary cake. The centerpiece was of Easter lilies.

Only relatives and few close friends attended.

These included Mr. and Mrs. Forrest Overton and Mrs. J.E. Downs, Mr. and Mrs. Earl Yarbrough, Mrs. Gracie Chambers, Mr. and Mrs. Kent Pence, all of Vinson, Mrs. Buddy Yarbrough, Mrs. Hiram Cudd and the Rev. and Mrs. J.D. Hinson of Wellington;

Mr. and Mrs. Gano Wilson, Holly, Amy and Heather of Amarillo; Mrs. Tommy Yarbrough, Yancy and Yandy of Childress; Mr. and Mrs. Jessie Ray Francis, Andy Angela and Stephen of Spearman.

Five Sisters Hold Reunion

Easter weekend house guests of Mr. and Mrs. Emory Ewing, 1800 Park Lane were her sisters.

Attending this family reunion were Mr. and Mrs. Travis (Margaret) Somerville of Denton; Mary Louise Taylor of Brownfield; Mrs. Gerald (Bertie Frances) Copeland of Canyon; and Mrs. Jesse (Barbara) West of Houston.

They are the five daughters of the late Mr. and Mrs. Bert Weaver of Quail.

Mrs. Clubb Hosts Club

Mrs. Ray Clubb entertained the Good Neighbor Club Friday, April 20.

Mrs. Robert Karnes was the program speaker and told some of her personal experiences as a Christian. Mrs. Clubb read two poems, "When Things Go Wrong" and "The Road Of Life".

Mrs. Bill Cason, president, conducted a brief business meeting.

Members present were Mrs. Ruby Ball, Mrs. Grady Van Pelt, Mrs. Violet Potter, Mrs. Coy Vaughan, Mrs. Robert Barjenbruch, Mrs. Cason, Mrs. Earl Alexander, Mrs. Merritt James, Mrs. Karnes, the hostess, Mrs. Clubb, and two guests, Mrs. A.R. Vaughan and Mrs. Estelle Black.

Mrs. Dee Coleman spent the weekend in Tulsa, Okla., visiting two sisters, Mrs. R.L. Smith and Miss Mary Sue Brock.

Some classified ads play con games, says Claudia Kerbel, consumer information specialist with the Texas Agricultural Extension Service, The Texas A&M University System. Beware of companies that run "Help Wanted" ads, then charge for training or equipment.

Besides not getting a job, you may lose money, the specialist says.

Who's New in the Wellington Area

Mr. and Mrs. Mike Harris of Tyler are the parents of a baby daughter, Brandy Lynn, born April 11. She weighed eight pounds four ounces.

Grandparents are Mr. and Mrs. Wayne Maxwell of Groesbeck and Mr. and Mrs. Neal Harris, Tyler. Great grandparents are Mr. and Mrs. Ernest Maxwell and great grandmother, Mrs. Edna Maxwell. Mrs. Harris is the former Sabrina Maxwell.

Society News

THE WELLINGTON (TEXAS) LEADER
Thursday, April 26, 1979

6

Virginia Ventura, Dr. Lancourt, Mary in San Francisco Rites

Mr. and Mrs. Louis Patterson of Dodson have announced the marriage of their daughter, Virginia Ventura, to Dr. Jerold Ezra Lancourt on Saturday, April 7. The ceremony took place at six-thirty in the evening in the bride's home in San Francisco, Calif.

The bridegroom, who also lives in San Francisco, is the son of Mr. and Mrs. Saul Lancourt of New York City.

The bride wore a floorlength gown of candlelight chiffon with the bodice embroidered in pearls. She carried a bouquet of tiger lilies.

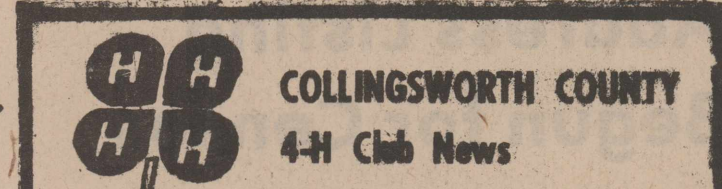
She is a graduate of Wellington High School and the University of Hawaii, Honolulu. She is a critical care marketing specialist with Extracorporeal Medic.

The bridegroom is an orthopedic surgeon in private practice in San Francisco.

During their honeymoon in Europe, Dr. Lancourt will speak at a medical meeting in Sweden. Afterward, they will be at home at 945 Corbett Street, San Francisco.

Mr. and Mrs. Patterson attended the wedding.

In the west, geothermal steam, from pockets in the earth's crust, has been tapped for years.



Busy Bells 4-H Club met twice recently.

Their first was at Carroll's Flowers, when Carroll Daves, owner, demonstrated ways to arrange a bud vase, then gave a program on plants and their care. He explained the flowers-by-phone availability.

This completed the girls six arts and craft lessons, and also began their lessons on gardening projects.

Daves gave each girl a plant and each mother a carnation.

Attending were Carla and Annie Caison, Joanie Tyson, Freinde Perez, Mrs. David Caison and Mrs. Jerry Settle.

Their second meeting, Friday, April 20, was in the office of Jean Chandler, home extension agent, who showed films on fitting collars and sleeves and on gathering.

Renee Lacy reviewed sewing terms and articles needed in a sewing box. Each girl and mother present discussed

these terms also.

The county dress revue to be held in July was discussed. As was the procedure for making a record book. Included were pattern and material selection as well as making pictures for the finished garment.

The annual bake show, to be

held in September, was discussed.

The May meeting will be in Miss Chandler's office. Renee Lacy will give pointers on modeling for the dress revue.

Girls attending this meeting were Patricia Fourmentin, Carla Caison, Annie Caison, Joanie Tyson, Cynthia Tyson, Rebecca Tyson, Renee Lacy, Kristy Settle and Freinde Perez, Miss Chandler, Mrs. Fourmentin, Mrs. David Caison, and Mrs. O.L. Tyson.

Thomas Nursing Center News

By Ilene Brinkley

Our game winner this week was Mrs. Martha Reeves.

Tuesday afternoon Sing Along was brought by Mrs. Dorothy Davis, Mrs. Ola Parker and Mrs. Pauline Masten. Our residents enjoy this very much.

Wednesday evening the children from The Church of Christ brought an enjoyable period of singing.

Friday evening the Light-house Quartet was thoroughly enjoyed by all.

Sunday morning Bible Class was brought to us by Judge Bob Watson from the Church of Christ.

Sunday evening Bible Class was brought to us by Rev. Nathan Mulder from Faith Baptist Church.

OUR VISITORS:

Visiting Bill Turner were an aunt, Mrs. Pearl McClure, from Lodi, California; brothers, Parker Turner from El Paso, Jack Turner from Durant, Okla.; sisters, Mrs. Marjorie Wolfe from Amarillo and Mrs. Kathlene Mitchell from Modesto, California.

Visiting Mrs. Eulala Garlets were a niece Miss Mildred Repass and Don Logan from Erick, Okla.

Visiting Mrs. Sallie Lancaster were her daughter and son-in-law, Mr. and Mrs. I.N. Sears and her son Junior Lancaster all of Amarillo.

The family of Mrs. Emma Jones had a reunion Sunday at the Heritage Room of the Wellington State Bank. Mrs. Jones attended this reunion.

Visiting A.M. "Short" Saunders were Mrs. Vera Mae Saunders from Hedley, also Ray and Hazel Killian from Bloomfield, N.M.

Visiting Ira Passons were a niece and her husband, Mr. and Mrs. Gaston Alexander from Celeste, also a nephew and his wife, Mr. and Mrs. Jerry Porter, from Houston, a brother-in-law and his wife, Mr. and Mrs. W.O. Pendleton, from Wheeler.

Visiting Earl Brown were

his wife, Madie Brown, also a friend, Mrs. Annie Newberry, from Childress.

Visiting Mrs. Annie Bryant was her daughter, Mrs. Lois Kelly, from Childress.

Visiting Mrs. Ura Scott were her nephew and his wife, Mr. and Mrs. Forrest Lindley, from Cedar Hill, also a sister-in-law, Mrs. Bruce Lawrence, from Hollis, Okla.

Visiting George Roberts were his daughter, Mrs. Viola Stewart, and his two daughter-in-laws, Mrs. Mary Roberts and Mrs. Georgia Mae Roberts, all of Amarillo. These also visited Walter Gentry.

Also visiting Mr. Gentry was a sister-in-law, Mrs. Virgie Atkinson, from Pampa.

Visiting Mrs. Mary Plunkett, were her son and daughter-in-law, Mr. and Mrs. Frank Plunkett, from Oklahoma City, Okla., also her daughter and son-in-law, Mr. and Mrs. Keith Jesse, from Tell.

Visiting Mrs. Pearl Franks was her daughter, Mrs. Bill Day, from Comanche.

Visiting Mrs. Ruby Tenison was her grandson, Lee Templeton, from Canyon. Mrs. Tenison also went on a picnic with one of her grandsons and his wife, Mr. and Mrs. Bobbie Harris, Ronnie, Coralene, Stevie and Robbie and a couple of their friends, Mr. and Mrs. Don Armstrong all from Pampa.

Visiting Mrs. Rowena Thigpen was a niece, Mrs. S.S. Bayless, from Hollis, Okla.

Visiting Mrs. Doshia Dix was her daughter, Mrs. Irma Richards, from Amarillo.

Visiting Mrs. Alma Clement were her daughter and granddaughter, Mrs. Opal Dunn, and Carol from Amarillo.

Visiting Mrs. A.Y. Bell were her daughter and son-in-law, Mr. and Mrs. Newton Crain, from Canyon.

Visiting Mrs. Ethel Ray was her son, Denzil Ray, from Childress.

ALL THE FISH YOU CAN EAT
Sat. 5 p.m. - 9 p.m.

8 Oz. **STEAK \$5.50**
Toast & Salad, French Fries
(Baked Potato - After 5 p.m.)

Roberson's
(formerly Carroll's)
Zeb, Pat, Shannon & Debbie
Open: 6 a.m. - 9 p.m.
Tues. through Sun.
CLOSED MONDAYS
447-2951

Deep Fried Catfish
Cole Slaw
French Fries
Hush Puppies
Rolls

\$3.50

STORE WIDE VALUES THE BEST FOR LESS! QUALITY FOODS

CALIFORNIA RED RIPE **STRAW-BERRIES 2 BASKETS \$1.00**

CALIFORNIA SUNKIST ORANGES	12 LB. BAG	39¢
WASHINGTON D'ANJOU PEARS	12 LB. BAG	49¢
CALIFORNIA ICEBERG LETTUCE	12 LB. BAG	29¢
ALL PURPOSE RUSSET POTATOES	20 LB. BAG	\$1.00
YELLOW SWEET ONIONS	12 LB. BAG	19¢

DETERGENT 10% OFF LABEL JOY LIQUID 22 OZ. BTL. 79¢

PURINA BRAND DOG CHOW 25 LB. BAG \$5.49

DAIRY & FROZEN FOOD	
COUNTRY TIME LEMONADE 3.0 OZ. CAN	69¢
FREZZER QUEEN BEEF-SLI. BEEF-TURKEY-SAL. STK.	
COOKING POUCHES 5.0 OZ. POUCH	39¢
ORE-IDA CRINKLE CUT POTATOES 5 LB. BAG	\$1.89
MORTON FR. CHICK-TURKEY-MEAT-GOAF-SAL. STK.	
DINNERS 11 OZ. BOX	59¢
SHURFRESH RICH & CREAMY SOUR CREAM 1/2 PT. CTN.	39¢
SHURFRESH ASSORTED FLAVORS MELLORINE 1/2 GAL. CTN.	89¢
SQUEEZE MARGARINE PARKAY 1 LB. BTL.	79¢

FOLGER'S FLAKED COFFEE 13 OZ. CAN \$1.89

ENRICHED FLOUR GLADIOLA FLOUR 25 LB. BAG \$5.69

PEPSI Diet or Regular Mountain Dew Country Time Big Red 6 pk cans \$5.25

HEAVY GRAIN FED BEEF BONELESS CHUCK ROAST \$1.89 LB.

NATIONAL BABY WASH EXTRA ABSORBENT PAMPER'S DIAPERS 24 CT. BOX \$5.49

SKINNER'S THIN SPAGHETTI 12 OZ. PKG. 39¢

MRS. BUTTERWORTH'S 15% OFF LABEL SYRUP 36 OZ. BTL. \$1.00

ASSORTED FLAVORS HI-C MIXES 8 QT. CAN \$1.00

HILLS BROS. REG.-DRIP-ELEC. COFFEE 1 LB. CAN \$1.99

KEEBLER ZESTA SALTINE CRACKERS 1 LB. BOX 69¢

ORANGE-GRAPE-FRUIT PUNCH NEW GLASS JUGS HI-C DRINKS 64 OZ. JUG 79¢

DUNCAN HINES LAYER ASSTD. FLAVORS CAKE MIXES BOX 69¢

FROM OUR SHELVES

SCOPE 40% OFF LABEL MOUTH-WASH 40 OZ. BTL. \$2.39

TOOTH PASTE GLEEM 3 OZ. TUBE 39¢

ALKA SELTZER 25 CT. BOX 89¢

LOTION SHAMPOO HEAD & SHOULDERS 11 OZ. BTL. \$1.99

REG./UNSCENTED ANTI-PERSPIRANT DEODORANT SURE SPRAY 2.5 OZ. CAN 89¢

EX-LAX CHOCOLATE LAXATIVE 18 CT. PKG. 89¢

REG./UNSCENTED 20% OFF LABEL DEODORANT SURE ROLL-ON 1.5 OZ. BTL. 99¢

TUBE TYPE KOTEX TAMPONS \$1.49

BEHOLD LEMON FURNITURE POLISH 12 OZ. CAN \$1.39

WISK LIQUID DETERGENT GAL. JUG \$5.99

WE ACCEPT FOOD STAMPS

THRIFTWAY

Owens & Scott Thriftway

DOUBLE CIRCLE W BLUE STAMPS
Tuesday and Wednesday
with \$2.50 Purchase or more

Ranch Style TENDERCRUST BREAD

Visiting Edgar Lockhart over the weekend were his daughter and son-in-law, Mr. and Mrs. Buck Judd, of Amarillo, also Travis Lockhart and Buford Riley.

Mrs. Lester Paige and son, Eric, of Ft. Worth visited last week with her grandmother, Mrs. S.L. Maxwell, and with other relatives and friends.

42 Club Has Easter Party

The Saturday Night 42 Club met in the Heritage room recently with Mr. and Mrs. Woody Woods and Mr. and Mrs. Herman Belew as host.

The Easter theme was carried out in the decorations. Mrs. Howard Crosby and Harold Keller won high score while Mrs. Harold Keller and J.B. Wade won low score.

Members present were Mr. and Mrs. Truman Estes, Mr. and Mrs. Keller, Mr. and Mrs. Crosby, Mr. and Mrs. Zook Thomas, Mr. and Mrs. Wade and the hosts Mr. and Mrs. Wood and Mr. and Mrs. Belew.

Verna Gail Rudy, freshman at North Texas State University Denton, visited over Easter weekend with her mother, Mrs. Edna Rudy.

Mr. and Mrs. Danny Brooks and Christy visited with his parents Mr. and Mrs. Hubert Brooks and Lynda. They also visited Mr. and Mrs. Redgie Souder, Mr. and Mrs. Manley Wood and Joe Brooks.

Society News

THE WELLINGTON (TEXAS) LEADER
Thursday, April 26, 1979

Wellington YH Members Hear PESO Consultant

Wellington Young Homemakers met Thursday, April 4, at 7:30 p.m. at Greenbelt Building.

The guest speaker was Bill Howell, who is a counselor at the Panhandle Regional Educational Service Center (PESO).

He was both humorous and informative in his discussion of teaching teachers to deal with problem children and their parents.

He explained how a normal child may progress through a number of problem steps to become the juvenile delinquent. He also told how to deal with temper tantrums, potty training, and discipline.

his talk, he had given 5.

Mrs. Reed Souder presided at the business meeting, when plans were made for the Woman of the Year tea.

Refreshments were served to Mrs. Jerry Barton, Mrs. Mike Belew, Mrs. Dennis Cudd, Mrs. Joe Harris, Mrs. Ronnie Hartman, Mrs. Don Hendrix, Mrs. Ron Hill,

Mrs. George Porter, Mrs. Redgie Souder, Mrs. Bill Spillman, Mrs. Joe Wood and Mrs. Mike Barjenbruch.

Visiting during the weekend with Mr. and Mrs. Dick Judd were his sisters and brother, Mrs. Birdie Francis, Mr. and Mrs. Dan Culp and Mr. and Mrs. Buck Judd. They also visited Denny Judd.

Mrs. Weatherly Club Speaker

Quail Friendship Club met in the home of Mrs. Truett Stovall on Thursday, April 19.

The program was presented by Mrs. Bob Weatherly. Members present were Mrs. Ira Morgan, Mrs. Pat O'Hair, Mrs. Stovall, Mrs. John Bishop, Mrs. Jennie Oatman, Mrs. Virgie White, Mrs. O.L. Hartman, Mrs. Monty Mitchell, and guests, Mrs. Weatherly.

Group Visit In Pampa

Mrs. J.A. Donley of Alma, Michigan is visiting her sister, Mr. and Mrs. Boyd Derryberry, and her brother, Sid Jackson.

Sunday they visited in the home of Edyth Jackson in Pampa. Others joining them were Mrs. Irene Readnour of Gage, Oklahoma; Mr. and Mrs. J.B. Clothier and Paul from Sayre, Oklahoma and Lynn Derryberry and Keith Derryberry of Amarillo.

1924 Study Club Hears Report on County Library

Mrs. R.C. McNett was hostess on April 19 for the membership of 1924 Study Club.

The club president, Mrs. Bill Beall, presided. In her report as delegate to the recent Top of Texas District convention, she beamed as she related the many accomplishments of the club both in quality and quantity via competition with other area women's clubs.

Mrs. Leamon Bawcom briefed club members on steps being taken to motivate the public affairs projects voted on by the club when Judge Bob Watson was speaker. Mrs. Boyd Derryberry is the club's public affairs department chairman.

Legislation chairman, Mrs. B.M. Sims, offered an update on the club's interest in authorizing a type of funding for care for abused children ineligible to receive AFDC (S.B. 139; H.B. 698.)

Federation's Role in Our Enterprise Economy (FREE)

preferred books reflecting varied interests rather than outside interests contributing large amounts of funding and also selecting the slant of the topics.

Attending were Mrs. Bawcom, Mrs. Beall, Mrs. R.R. Crawley, Mrs. Boyd Derryberry, Mrs. Chester Fires, Mrs. Charles Michael, Mrs. Reynaldo Perez, Mrs. Adolph Schmidt, Mrs. Sims, Miss Hattie D. Wells, and Mrs. McNett.

The next meeting is scheduled for May 3, 1:30, Heritage Room.

was mentioned in a comparison view, "Can We Learn from the Mayan Civilization?"

Mrs. Beall presented "About our City-County Library" with visual aids for the summer youth program-project and items about the Texas Panhandle Library System of which the local library is a member.

Mentioned were the pluses and minuses of the library's funding the support. The members agreed that they

Mrs. Tony Stephens to Head VFW Auxiliary for 1979-80

Mrs. Tony Stephens was elected president of the Auxiliary unit of VFW Post 6439 in the business meeting Monday, April 16.

She will be installed Monday, May 7 and will succeed Mrs. Don Jones.

Other officers are Mrs. Emmet Skelton, vice-president; Mrs. John R. Henard, junior vice president; Rita Lowrie, treasurer; Mrs. Donald Curry, chaplain; Mrs. B.M. Sims, conductress; Mrs. Millard Brown, Jr., guard; Mrs. Jay Tarver, Trustee I; Mrs. Keith Smith, Trustee II; and Pat Bowden, Trustee III.

The next activity in which the auxiliary participates will

be co-hosting with the VFW the 13th District Convention Saturday and Sunday, April 28 and 29.

In May, the Auxiliary will conduct the traditional Poppy Day flower sales on the official Memorial Day, May 26. Mrs. Smith and Mrs. Henard are co-chairmen.

Visiting Mr. and Mrs. Wilson Porter over Easter were three children, Mrs. Zonell Barnett and Gina of Amarillo, Mr. and Mrs. Mike Smith, Kelly and Allison of Houston, and Joe Porter and

his guest, Kim Parks, of Dallas.

HOW TO SAVE MONEY ON U.S.D.A. CHOICE GRAIN FED BEEF!

BOXED BEEF YOUR BEST BUY

HERE IS THE REASON WHY:

A new trend is sweeping the country in buying beef for home freezers. Swinging carcass beef is being replaced by vacuum packed beef portions in a box simply called Boxed Beef. With Boxed Beef you buy only the portion or portions of the beef you want to serve your family. All of the excess bone and waste plus seldom used cuts such as soup bones and boiling meat are trimmed away by skilled meat cutters in ultra-modern beef processing plants. After the beef portions are vacuum sealed with a patented process, the portion is boxed and shipped on refrigerated trucks direct to our meat locker. Next time you're thinking of a large beef purchase for your home freezer or a special occasion, such as large cook-outs and parties, ask us about the quality, value and just plain good sense in our Boxed Beef program.

THE OLD WAY TO BUY BEEF.

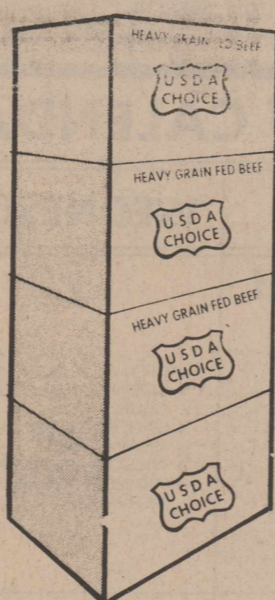


We've all seen or heard of the hanging beef carcass that used to be transported by truck and transferred to meat coolers for cutting. Only skilled butchers could cut these carcasses properly, but even then there was 28 to 32 percent waste in unuseable bone and fat. There are still some supermarkets that utilize hanging carcass beef, but the trend to Boxed Beef and its economies is sweeping the country.

DISADVANTAGES:

1. Excess bone and waste must be trimmed before cutting.
2. Thirty percent higher transportation costs—a waste of fuel energy.
3. Paying for 28 to 32 percent waste that never reaches your freezer.
4. Price per pound is less but take home meat is higher in cost.
5. Weight loss is due to open air exposure.

THE NEW WAY TO BUY BEEF.

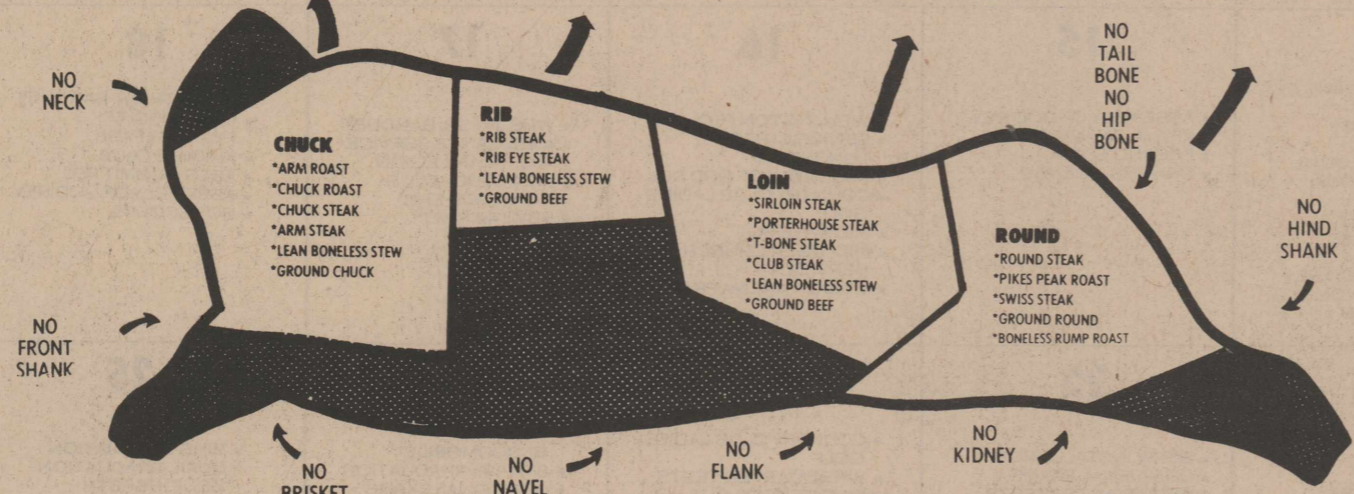


Boxed Beef is only the useable portions of the carcass skillfully trimmed and packaged through ultra-modern processing, then vacuum sealed and boxed for ease of handling. Cutting these portions to desired roasts and steaks does not require a trained butcher. In fact, many housewives across the country prepare the boneless cuts to their own requirements right in their kitchens. What a fine way to get just exactly the cuts you need and save dollars on quality beef at the same time. However, on any Boxed Beef purchase you make with us we gladly cut and wrap it to your own specifications.

ADVANTAGES:

1. Boxed Beef is naturally aged, thanks to its patented vacuum wrapping.
2. More sanitary—less bacteria.
3. You buy meat without the surplus waste fat and bone.
4. You save money in buying meat instead of bone, fat, and trimmings.
5. Quality controlled beef. Only the best beef is selected to go in the Boxed Beef program.
6. You can buy only the part of the beef that you want.

YOU ALWAYS GET WHAT YOU PAY FOR



FULL SIDE U.S.D.A. CHOICE BOXED BEEF

CHOOSE YOUR OWN PORTION -SAVE WITH BOXED BEEF:

AVERAGE WT. 75 TO 95 LB. BOX CHUCK \$1 ³⁹ LB.	AVERAGE WT. 20 TO 25 LB. BOX RIB \$1 ⁹⁵ LB.
AVERAGE WT. 40 TO 45 LB. BOX LOIN \$2 ⁰⁹ LB.	AVERAGE WT. 50 TO 65 LB. BOX ROUND \$1 ⁷⁹ LB.

ALL PRICES INCLUDE CUT & WRAPPED FOR YOUR FREEZER.

GUARANTEED 100% GROUND BEEF

You can depend on consistent quality when you purchase 100% Boxed Ground Beef. It is processed and ground only from the finest beef and made under the most rigid temperature control and sanitary conditions that are now available.

SUPERB QUALITY BOXED BEEF IS NOW AVAILABLE AT:

Owens & Scott Thriftway

1101-8th Street 447-2462 Wellington, Texas



It's a special way to say "I care"

A beautiful corsage, wristlet or hairpiece from Carroll's Flowers. We have flowers and designs just right for all of the upcoming parties and banquets. Come see our selection this week.



Carroll's Flowers

Carroll Daves, owner
1001 East Ave.
447-2345 447-2985

We call your orders anywhere, anytime
8-6 Monday-Saturday
24 Hour Phone Service



Wellington Leader

Published Every Thursday
at 913 West Avenue, Wellington, Texas 79095
H. Deskins Wells, Editor and Publisher, 1925-1976
Henry W. Wells, Editor and Publisher

Entered as second class mail Aug. 25, 1909 at the post office at Wellington, Texas, under Act of March 3, 1879.

TEXAS PRESS ASSOCIATION
MEMBER 1979

Member **NATIONAL PRESS ASSOCIATION**
Member Panhandle Press Association
Association-Founded 1885



NOTICE: Any erroneous reflection upon the character, standing or reputation of any person, firm or corporation which may appear in the columns of THE WELLINGTON LEADER will be corrected gladly upon its being brought to the attention of the publisher.

\$8.00 a year inside of trade territory
\$11.00 a year outside of trade territory

THE WELLINGTON (TEXAS) LEADER
Thursday, April 26, 1979

8

A Failure To Communicate

"What we have here is a failure to communicate."

The line is from a movie of a decade ago. It applies this week to a situation involving the Wellington High School track team.

And that failure to communicate has cost seven young men the chance to run relay races in the regional and possibly the state track meets.

There is blame enough to go around for everybody in this situation, and we will not use this space to point fingers.

What we do want to say is that the community and the school need to articulate their philosophy of education into some definite goals and guidelines. And then we need to make sure that the students, teachers, coaches and administration can all communicate with each other well enough so that everyone knows what the rules are, what has to be done to comply with the rules and when someone is out of compliance.

It may be that our philosophy is and will continue to be to pass students through the school system from first grade through graduation without ever receiving a failing grade, no matter what their performance. It may be that we will use a strict national standard to determine a satisfactory performance. Most likely, it will fall somewhere in between.

But whatever system we choose, everyone should understand it, including the students.

There is no reason for the public controversy surrounding this past week's track team events to have ever occurred.

There is no excuse to put people in a situation where desperate track team members call their parents for last minute help; where parents rush to school to try to remedy a situation about which they don't know the details; where parents are pitted against teachers, students against other students, teachers against coaches, band boosters against athletic boosters; where a school board must arbitrate technical points of eligibility.

In such a situation everyone is a loser and the community gets the black eye.

We must work together to make sure that this situation never happens again.

We have one more thought on the matter:

After the situation had been allowed to develop as far as it had, the Wellington school board chose the only logical course left open to it. The board decided to turn in the ineligibility of one of our contestants to the UIL. The board was well aware of the impact on the students involved and on the school and community. It was not an easy decision, but it was the correct one. We hope that it is one the board never has to make again.

—Henry Wells

Other Editors Say ...

A Fuel of the Future

When federal price controls finally are removed from domestic oil and gas, resulting higher prices to those fuels will make economically feasible the development of alternate fuels. One of these that has been getting increasing attention is gasohol, a mixture of gasoline and alcohol.

In Austin the other day, state political leaders and farmers watched a Texas A&M University chemical engineer, W.B. Harris, drive around the State Capitol in a car fueled by gasohol. Some legislators got a ration of gasohol to burn in their cars.

"We don't have to have an energy crisis", said Harris, indicating that sufficient alcohol fuel can be made from grains and other farm crops and from coal.

Development of this fuel for burning in cars and trucks could mean much to Texas, which is a large user of petroleum fuels. It would utilize farm crops and could help to reduce the heavy drain on the state's reserves of oil and gas.

Proposals to remove state and federal fuel taxes from gasohol during its development years should receive favorable consideration.

Dallas Morning News

STATE CAPITAL HIGHLIGHTS

By Lyndell Williams
TEXAS PRESS ASSOCIATION

AUSTIN — Gov. Bill Clements, sticking to his unpredictable ways, said this week he will veto any measures passed by the Legislature designed to raise interest rates on home mortgages.

Piling one surprise on top of another, Clements didn't just say he would but actually did veto a bill that would have let truckers set their own rates before bringing them to the Railroad Commission for approval.

Clements described the trucking legislation as "bad public policy," and said the bill could have exempted the trucking industry from state antitrust laws.

The governor saved his heaviest criticism for legislation that would have raised the home loan interest rate allowed by law from 10 to 12 percent. Clements said it took a certain amount of "audacity" on the part of the savings and loan industry "to come to the Legislature asking for more money" when S&L institutions are already reporting record-high profits.

Sen. Bill Meier, the sponsor of legislation to raise the home loan interest ceiling, predicted a recession because of Clements' move "and more probably a depression in the Texas housing industry."

But Clements said he had heard no convincing arguments to raise interest rates "when the average Texan is fighting just to keep his head above water financially."

Spokesmen for the savings and loan industry said first-time home buyers and sellers of used homes would find fewer mortgages on the market and higher down payments on those mortgages that were available.

Clements said he would consider calling a special session if there is a serious housing slump.

Consumer groups warned to beware of a "backdoor"

strategy that might be used to, in effect, get the interest rates increased by reducing the penalties for charging more than the 10 percent now allowed by the law. A bill reducing penalties for savings and loan institutions that charge more than the legal limit has already passed the House.

Meier, who last week managed to pass legislation that will weaken the Consumer Protection Act, said Clements' announcement of a veto means his legislation is "dead."

A veto can be overridden by a two-thirds vote but it hasn't been done since 1941 and up until that time, the Legislature has seen fit to overturn only 25 gubernatorial vetoes.

Teacher Pay Raises

Now that legislators know how Clements feels about interest rates, they can get on to other more pressing matters such as teacher pay raises. The governor has kept no one in the dark about how he feels on this subject.

From the outset, Clements made clear that he favored only a 5.1 percent pay boost for all state employees, including teachers.

This week, seven of the state's largest school districts sent representatives to a half-hour meeting with the governor, and Linus Wright, Dallas school superintendent, said Clements made clear "he was not going to change his position" on teacher pay raises.

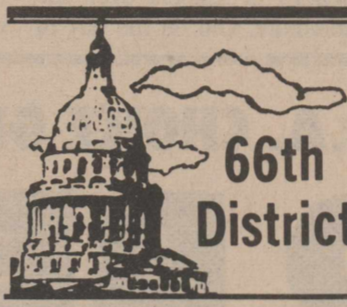
All of the superintendents said the governor's proposal of a 5.1 percent increase was unacceptable. "That is not going to be sufficient to meet the needs of our teachers," Austin superintendent Jack Davidson told reporters after meeting with the governor.



TOURING CAR

Mr. and Mrs. Ed Blain (with Allyne in the front seat) stand in front of their automobile in this Collingsworth County print from 1916. Padded leather seats, but no windows, and a small windshield were the mode of the day.

Photo courtesy Texas Tech Collection, Collingsworth County Museum



NEWS FROM THE CAPITOL
By Foster Whaley
State Representative

Most past legislatures have been stuck with one name or another and the Legislative watchdogs are already sharpening their pens in search of an apt description for the 1979 lawmakers. Several have struck a common chord and described this session as a heyday for lobbyists and earmarked this session "The Special Interest Legislature",

or "Year of the Lobbyist".

After the Sharpstown scandals of the early 1970s, the "Reform Legislatures" of 1973 passed the Lobby Control Act that required lobbyists to register with the Secretary of State and report all of their expenditures. Since that time the lobby has kept up a low profile in Austin, but this year the lobbyists are back, crowding the trough of the State Treasury seeking special favors, or some are squealing like pigs caught in a fence, protesting and trying to kill laws they consider damaging to their special interests.

Despite the legitimate claim of undue lobby influence, I think the lobby can have a constructive role in the legislative process. My personal experience with lobbyists this session has been 90

percent pleasant and beneficial. No large, downstate special interest group with particular legislative goals contributed to my campaign for office, so your representative has been able to listen to

both sides of every issue and vote by conscience rather than lobby dictates.

In fact, I have been a strong vocal opponent of some of the special interest groups.

Announcing the association of
Paul E. Emmans, D.O.
with
John L. Witt, D.O.
in clinical and surgical practice
beginning April 9
Groom, Texas

MAY CALENDAR OF EVENTS

SUNDAY	MONDAY	TUESDAY	WEDNESDAY	THURSDAY	FRIDAY	SATURDAY
<p>1</p> <p>WE WANT YOU AS OUR PARTNER IN PROGRESS. LET OUR PEOPLE OFFER YOU SOUND FINANCIAL ADVICE</p> <p>TAKE PRIDE IN YOUR COMMUNITY</p>	<p>2</p> <p>Our Staff Is Experienced in the Financial Needs of the Area. Let Us Advise You.</p> <p>SHOP YOUR FRIENDLY WELLINGTON MERCHANTS</p>	<p>3</p> <ul style="list-style-type: none"> * CITY-WIDE CLEAN-UP * UIL JR. HI. TENNIS TOURNEY * NAZARENE DIST. ASSN. * QUAIL SR. SUPPER * ASCS DEADLINE: LTA PROGRAM * VFW-AUXILIARY INSTALL * BASEBALL: MOBEETIE AT NWD * SCHOOL TRANSFER DEADLINE * ASSOCIATION OF WS * DRIVERS LICENSES * WELLINGTON YH * LAW DAY 	<p>4</p> <ul style="list-style-type: none"> * CITY-WIDE CLEAN-UP * COUNTRY CLUB LADIES CLUB * GARDEN CLUB * MIDWAY EHC * WILSON ARENA PRACT. * MIDWEEK CHURCH SERVICES 	<p>5</p> <ul style="list-style-type: none"> * CITY-WIDE CLEAN-UP * FARM BUREAU DIRECT. * NAZARENE DIST. ASS. * 1924 STUDY CLUB * RSVP 42 PARTY * NWD ELEMENTARY TO CANYON MUSEUM * NORWOOD EHC 	<p>6</p> <ul style="list-style-type: none"> * GREENBELT BANKERS BANQUET * ALL SPORTS BANQUET * KIWANIS * ASCS COMMITTEE * TEXAS TWISTERS * BOY SCOUTS * SCHOOL PICNICS: 4TH-GR. CHILDRESS 3RD-GR. PIONEER PK. * CITY-WIDE CLEAN-UP 	<p>7</p> <ul style="list-style-type: none"> * LIONS DIST. 2T-1AT AMARILLO * NATIONAL GD. DRILL * WILSON ARENA CONTEST
<p>6</p> <ul style="list-style-type: none"> * WELLINGTON YH * NATIONAL GD. DRILL * LIONS 2T-1 CONVENTION * BIG BLUFF MOTOCROSS * WILSON ARENA PRACT. * NATIONAL HOSPT. WEEK * NATIONAL NURSING HOME WEEK 	<p>7</p> <ul style="list-style-type: none"> * KINDERGARTEN PRE-ENROLL * CITY COUNCIL * WELLINGTON LIONS * NORWOOD LIONS * BAND PARENTS * SOCIAL SECURITY * NATIONAL HOSPT. WEEK * NATIONAL NURSING HOME WEEK 	<p>8</p> <ul style="list-style-type: none"> * BAND POPS CONCERT * KINDERGARTEN PRE-ENROLL * RETIRED TEACHERS * WIFE * EASTERN STAR * B&PW * HOUSING AUTHORITY * DRIVERS LICENSE * NATIONAL HOSPT. WEEK * NATIONAL NURSING HOME WEEK 	<p>9</p> <ul style="list-style-type: none"> * COUNTRY CLUB LADIES GOLF * RSVP BLOOD PRESSURE CLINIC * NAZARENE MISSIONARY SOCIETY * NORWOOD SCOUTS * WILSON ARENA PRACT. * MID-WEEK CHURCH SERVICES * NATIONAL HOSPT. WEEK * NATIONAL NURSING HOME WEEK 	<p>10</p> <ul style="list-style-type: none"> * RSVP 42 PARTY * QUAIL FHA INSTALL * 1ST METHODIST DOROTHEANS * MASONIC LODGE * DRIVERS LICENSE * NATIONAL HOSPT. WEEK * NATIONAL NURSING HOME WEEK 	<p>11</p> <ul style="list-style-type: none"> * UIL BOYS STATE TRACK MEET * JR. HI. BAND TO UIL CONTEST * QUAIL JR.-SR. BANQUET * SCHOOL PICNICS: 2ND-GR. PIONEER PK. KINDGTN.-ELLISON PK. 5TH-GR. MEMPHIS * MEN'S PROG. ORGANIZA * KIWANIS CLUB * BOY SCOUTS * NATIONAL HOSPT. WEEK * NATIONAL NURSING HOME WEEK 	<p>12</p> <ul style="list-style-type: none"> * DELTA KAPPA GAMMA * UIL BOYS STATE TRACK MEET * CLUB SCOUT BIKE RODEO * AREA FFA CONVENTION-AMARILLO * WILSON ARENA CONTEST
<p>13</p> <ul style="list-style-type: none"> * MOTHERS DAY * WILSON ARENA PRACT. 	<p>14</p> <ul style="list-style-type: none"> * KIWANIS 50TH ANNIV. BANQUET * SCHOOL BOARDS: WELLINGTON SAMNORWOOD QUAIL CHAMBER OF COMM. COMM. COURT SOCIAL SECURITY DODSON MASON'S LILLIE EHC * ASSEMBLY OF GOD REV. 1ST CHRISTIAN WOMEN 1ST BAPTIST WMU 	<p>15</p> <ul style="list-style-type: none"> * ASSEMBLY OF GOD REV. * VFW-AUXILIARY SOCIAL * FRESNO EHC * DRIVERS LICENSE 	<p>16</p> <ul style="list-style-type: none"> * WELLINGTON PTO * SENIOR CITIZEN LUNCHEON * ASSEMBLY OF GOD REV. * COUNTRY CLUB LADIES GOLF * MIDWAY EHC * MID-WEEK CHURCH SERVICES * WILSON ARENA PRACT. 	<p>17</p> <ul style="list-style-type: none"> * WHS JR.-SR. BANQUET * AMBULANCE SERVICE * AMERICAN LEGION * 1924 STUDY CLUB * NORWOOD EHC * RSVP 42 PARTY 	<p>18</p> <ul style="list-style-type: none"> * WHS 8TH GR. BANQUET * 1ST GR. PICNIC-PIONEER PARK * KIWANIS CLUB * ASCS COMMITTEE * ASSEMBLY OF GOD REV. * BOY SCOUTS 	<p>19</p> <ul style="list-style-type: none"> * ASSEMBLY OF GOD REV. * WILSON ARENA COMPETITION
<p>20</p> <ul style="list-style-type: none"> * 1ST BAPTIST CHILDREN MUSICAL * WHS SENIOR TRIP * 1ST CHRISTIAN REVIVAL * ASSEMBLY OF GOD REV. * WILSON ARENA PRACT. 	<p>21</p> <ul style="list-style-type: none"> * CITY COUNCIL * SOCIAL SECURITY * WELLINGTON LIONS * SAMNORWOOD LIONS * 1ST CHRISTIAN REVIVAL * 1ST METHODIST LYDIA AND PATHFINDER GPS. 	<p>22</p> <ul style="list-style-type: none"> * B&PW INSTALLATION * QUAIL FINAL EXAMS * WHS QUARTER TESTS * 1ST CHRISTIAN REVIVAL * DRIVERS LICENSE 	<p>23</p> <ul style="list-style-type: none"> * COUNTRY CLUB LADIES GOLF * WHS QUARTER TESTS * WHS SCHOOL OUT * QUAIL FINAL EXAMS * GRADUATION TESTS * 1ST CHRISTIAN REVIVAL * METHODIST MEN * NORWOOD SCOUTS * WILSON ARENA PRACT. * MID-WEEK CHURCH SERVICES 	<p>24</p> <ul style="list-style-type: none"> * RED CROSS BLOODMOBILE * 8TH GR. GRADUATION * QUAIL FINAL EXAMS * TEACHER WORK DAY- WELLINGTON * CLUB PACK MEETING * SR. CITIZENS 42 * DRIVERS LICENSE * LILLIE EHC * DODSON EHC 	<p>25</p> <ul style="list-style-type: none"> * WHS GRADUATION * QUAIL GRADUATION - SENIORS-8TH * TEACHERS WORK DAY- WELLINGTON * JR. HIGH PICNICS-6TH, 7TH, 8TH GRADES * KIWANIS CLUB * BOY SCOUTS 	<p>26</p> <ul style="list-style-type: none"> * QUAIL SENIOR TRIP * WILSON ARENA COMPETITION
<p>27</p> <ul style="list-style-type: none"> * SAMNORWOOD BACCALAUREATE * WILSON ARENA PRACT. 	<p>28</p> <ul style="list-style-type: none"> * MEMORIAL DAY * BANK HOLIDAY * GOVT. HOLIDAY * NORWOOD 8TH GR. PROMOTION * HOSPITAL BOARD * 4-H ROUNDUP * SOCIAL SECURITY * NORWOOD PTA 	<p>29</p> <ul style="list-style-type: none"> * SAMNORWOOD GRADUATION * SAMNORWOOD-LAST STUDENT DAY 	<p>30</p> <ul style="list-style-type: none"> * COUNTRY CLUB LADIES GOLF * NORWOOD TEACHER WORD DAY * MID-WEEK CHURCH SERVICES 	<p>31</p> <ul style="list-style-type: none"> * SENIOR CITIZENS 42 PARTY 	<p>THE WELLINGTON STATE BANK PAYS THE MAXIMUM INTEREST ON TIME CERTIFICATES OF DEPOSIT</p>	<p>SHOP YOUR FRIENDLY WELLINGTON MERCHANTS</p> <p>THE WELLINGTON STATE BANK CAN HELP YOU BE A PART OF THE FUTURE.</p>

PUBLISHED AS A PUBLIC SERVICE BY

Wellington State Bank

"Thank you for opportunity of serving your banking needs"



Each depositor insured to \$40,000



Perlite is a volcanic material that is processed into coarse particles which hold nutrients and moisture in soil. Fish live below frozen surface of ponds, the temperature is a constant 34.2 degrees F.

Piano Students in Guild Auditions

Students of three Wellington piano teachers participated in the piano playing auditions sponsored by the National Piano Guild in Memphis Thursday through Saturday, April 19-21.

These instructors were Mrs. Allen J. Peters, Mrs. Mike Barjenbruch and Mrs. Sam Thompson.

Students register as candidates for membership in the National Fraternity of Student Musicians, sponsored by the National Guild of Piano Teachers, the teacher division of the American College of Musicians.

They compete for honors on the levels of pledge, local, district, state, national or even international honors which the Guild will confer according to the number of standard classic, romantic and modern pieces each student can

creditably perform.

Mrs. Peters students included Leslie Birkey, Bradley Campbell, Suzanne Campbell, Rhonda Devoss, Leslie Hammons, Karen Joy Mote, Ronny Mack Mote, Linda Murdock, Renee Murdock, Freinde Perez, Barbara Reynolds, George Reynolds, James Reynolds, Paula Reynolds, Tommy Thomas and Toni Tramel.

Mrs. Barjenbruch's students were Dennis Cudd II, Angel Hendrix, Heather Hendrix, Stacey Fires, Andra Ingram, Stephanie Barton, DeJon Lindsey, Ginger Daniel, Shannon Hill, Robi Lou Mabery, Barry Bowen, Karen McDanel and Vanda Wood.

Students of Mrs. Thompson who participated were Dena Lacy, Shelly Thomas, Carrie Langford, Penny Wilkins, Nicole Keller, Brian Van Pelt, Wesley Reeves and Jeffrey Camp.

The judge was London-born Rodney Hoare, who now divides his time between England and the United States, where he adjudicates piano competitions and presents workshops.

Rolling Plains PCA Plans 45th Annual Meeting

The Rolling Plains Production Credit Association will have its 45th Annual Stockholders Meeting Friday and Saturday, April 27th and 28th.

Friday's meeting will be held at the City Auditorium in Childress, with registration beginning at 9:00 a.m. for stockholders in the Matador and Childress Office area.

At the Saturday section, to be held in the Stamford High School Auditorium, Stamford.

Business session at both Childress and Stamford will begin at 10:00 a.m. and will include the election of one director. The term of Board member Willard H. (Snooks) Williams of Spur is expiring. He has been nominated for re-election with Gary Bridge of Afton nominated to oppose him.

The report from the Board will be given by B.H. DeBusk of Anson, while the Manager's report will be by R.C. Cobb of Stamford. Walter Heller of Lueders will present the Nominating Committee report.

Farmer-Rancher members and guests are expected to attend from Briscoe, Childress, Collingsworth, Cottle, Dickens, Donley, Foard, Hall, Hardeman, Haskell, Jones, Kent, King, Knox, Motley, Shackelford and Stonewall Counties.

Veterans Payments \$314,195 in County

Recent statistics indicate that the economy of Collingsworth County has received a significant boost as a result of Veterans Administration payments to veterans, their dependents and their survivors.

According to J.R. Bowen, Veterans County Service Officer for Collingsworth County, VA payments for fiscal year 1978 totaled \$314,195.00. Of this amount, \$215,286.00 was paid in the form of compensation and pension; \$82,522.00 for readjustment and vocational rehabilitation; \$16,387.00 for insurance and indemnities; and nothing for direct loans.

All of these amounts were paid directly to the residents of Collingsworth County. According to the County Service Officer, in addition to materially adding to the economic health of the county, these benefits have alleviated many hardships for veterans and their families in time of need. Bowen added that his office was ready to assist any county residents who believe that they have a claim for veterans benefits.

Don't store it—sell it with a Leader Classified Ad.

Leader Readers

Jack Echols, Farmington, N.M.; A.Z. Hays, Abilene; John R. Loter, Fallon, Nevada; Mrs. R.E. Gee, Lubbock; Mrs. C.E. Roberts, Hereford; Jim Gibbons, APO, NY;

Joe Whitten, Edmond, Okla.; Della Lawrence, Paonia, Colorado; Walter S. Dodson, Plainview; Marie Berryman, Mrs. J.B.

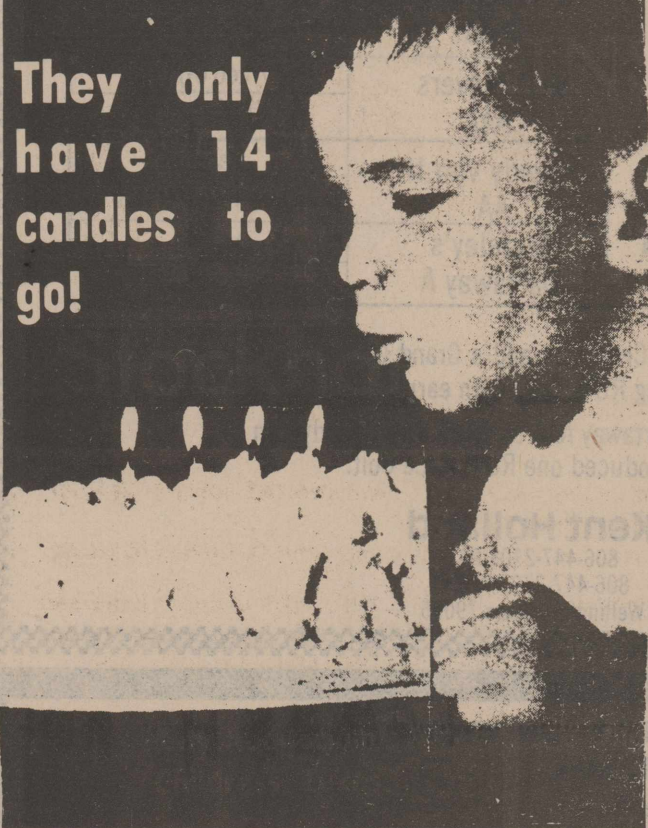
Clark, Louis Patterson, John M. Harris, D.L. Jones, Hobart Smith, Mrs. Edith Estes, Mrs. Chas. Cason, Sr., Mrs. A.C. Boverie, Mrs. Felix Hunt, Jewel Donnell, John Roberts, Gabe Wright, G.E. Haralson, Mrs. W.F. Vaughan, Jackie Barnett and Nita Brantley.

Patrick O'Dea, a football player in 1899, was called the Human Kangaroo and could kick a football 110 yards with the wind.

POOL CHESS PINBALL
Jett's Family Recreation Center
707 West Avenue
FOOSBALL DOMINOES CHECKERS

Four candles ago, his parents started saving for his college education.

They only have 14 candles to go!



FIRST FEDERAL SAVINGS & LOAN ASSOCIATION OF CHILDRESS

WELLINGTON BRANCH
815 West Ave. 447-2730



KATHY MOTE

Kathy Mote in Phi Gamma Nu

WTSU-Phi Gamma Nu professional business honor society at West Texas State University, recently inducted 14 new members.

The organization requires its members to maintain a 2.0 or better average (4.0 = A). Initiated from Wellington was Kathy Mote, freshman business major. She is the daughter of Mr. and Mrs. A.E. Mote of 1010 E. Ave.

ROLLING PLAINS PRODUCTION CREDIT ASSOCIATION 45th Annual Stockholders Meeting

Friday, April 27

STOCKHOLDERS IN THE MATADOR AND CHILDRESS OFFICES

City Auditorium
Childress, Texas

Saturday, April 28

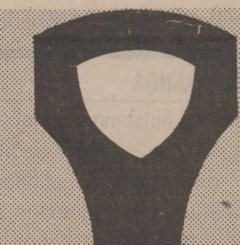
STOCKHOLDERS IN THE MUNDAY SPUR AND STAMFORD OFFICES

High School Auditorium
Stamford, Texas

- ★ Door Prizes
- ★ Registration — 9:00 A.M.-10:00 A.M.
- ★ Entertainment — 9:30 A.M.-10:00 A.M.
- ★ Business Session — 10:00 A.M.
- ★ Election of Directors
- ★ Noon Barbecue



THE GO-AHEAD PEOPLE



CUSTOM MADE RUBBER STAMPS

ALL SHAPES & SIZES

ALSO ROTARY DATERS AND ROTARY STAMPS FOR EVERY PURPOSE

WELLINGTON LEADER
PHONE 447-5493

<p>Gladiola Flour 5 lb. 79¢</p>	<p>Whole Sun Orange Juice Frozen, 6 oz. 3/\$1.00</p>
<p>Mama's Vanilla Wafers 11 oz. 49¢</p> <p>Keebler Fudge Stripe Cookies 11 1/2 oz. 89¢</p> <p>White Swan Biscuits BM/SM. 6/\$1</p> <p>Velvet Margarine 2 lb. bowl. 89¢</p> <p>Folgers Coffee 1 lb. all grinds. \$2.29</p> <p>Borden's Ice Cream 1/2 gallon round carton. \$1.29</p> <p>Automatic Dishwashing Cascade Detergent 65 oz. \$1.79</p>	<p>California Carrots 1 lb. cello \$1.00</p> <p>6 pkgs. \$1.00</p> <p>Strawberries pint. 49¢</p> <p>California Iceberg Lettuce head 29¢</p> <p>Del Monte Bananas 4 lbs. \$1.00</p>
<p>Hawaiian Punch Drink Mix assorted flavors</p> <p>unsweetened-2 qt. 10/\$1</p> <p>presweetened-2 qt. 3/\$1</p> <p>presweetened-8 qt. \$1.39</p> <p>presweetened-12 qt. \$1.99</p> <p>Charmin Bathroom Tissue 4 roll pkg. 89¢</p> <p>Purina Dog Chow 25 lb. \$5.49</p> <p>Alpo Beef Chunks Dogfood 10 lb. \$2.29</p>	<p>ALL BEEF USDA GRADED CHOICE</p> <p>SMOKED PICNICS 79¢ lb.</p> <p>Wilson Certified Bacon \$1.39 lb.</p>
<p>Smoked Pork Chops \$1.69 lb. Great for Cook-outs</p> <p>Market Made Pork Sausage 98¢ lb.</p>	<p>Oscar Mayer Spiced Luncheon Meat 8 oz. 73¢ While supply lasts!</p> <p>Kraft Jalapeno Pepper Cheese Loaf 16 oz. \$1.59</p>

We Give



City Grocery

8 a.m.-6:30 p.m. Monday through Saturday
North Side Square 447-2431 Wellington, Texas

Double on Tues. & Wed.

(We accept USDA Food Stamps)
Check our in-store specials Monday through Wednesday

Develop Family Plan for Tornadoes, DAR Told

A information campaign that will alert county residents to the need for emergency preparedness, especially from tornadoes, began Monday night, April 23, when County Judge Bob Watson was guest speaker at La Paisana Chapter, Daughters of the American Revolution.

It is important that each family develop its own plans for taking shelter, Watson said. "Not all family plans will be alike, but all should include certain things." Make advance preparations, he urged. Decide what each member should do in case of such an emergency.

Be prepared with supplies of food and water for at least three days; keep medicines where they are readily available. "If you have access to an underground shelter, place supplies in the shelter. Arrange for a safe place for valuables and important papers.

Members were urged to survey their homes and places

of employment. "You may not have access to a shelter or time to get to one. In this case, get into a closet or even the bathtub," he warned. He said some may not want to wait for the siren to seek shelter.

"Be alert to any threatening weather and to any emergency warning signal you may hear. This may be a warning device such as a siren or loud speaker. Your TV can be a great help. A radio monitor can give information. Be prepared to move to the shelter when threatening weather is in the area."

Judge Watson defined the difference in a "Tornado Watch" and "Tornado Warning."

A tornado watch is issued by the National Weather Service when atmospheric conditions are suitable for the formation of tornadoes. It is usually for a specific area 140 miles wide, 200 miles long and for a specific period of time.

A tornado warning is issued by the National Weather

Service only when a tornado actually has been sighted in the area of the warning. It is for a specific period of time.

"When this warning is issued for your area, it is time to implement your individual plan. Your immediate action can save your life," said Watson.

He gave further instructions: In homes, open some windows, then stay away from them. Take shelter in the basement or under heavy furniture in the center of the house.

In office buildings, go to an interior hallway on the lowest floor or to designated shelter areas.

Mobile homes are particularly vulnerable to overturning during strong winds and should be evacuated when strong winds are forecast. If there is no shelter nearby, leave the mobile home park for low, protected ground.

In open country, move away from the tornado's path at a

right angle. If there is not time, lie flat in the nearest depression with your hands shielding your head. Be alert for flash floods.

Mrs. Bura Handley was hostess at this meeting in Cherokee Inn dining room.

During the business meetings, members planned to have a float in the county fair in September and to hold a rummage sale.

Those present were Mrs. H.H. Bowen, Maudie Coffee, Mrs. J.D. Coleman, Mrs. Jack Davis, Mrs. Boyd Derryberry, Mrs. Handley, Mrs. Jennie Holcomb, Mrs. Rita Lowrie, Mrs. R.C. McNett, Mrs. Glen Thomas, Hattie D. Wells, Mrs. Velman Warrick, and guests, Judge and Mrs. Watson, Mrs. Ellen Donley of Lansing, Michigan and Mrs. Dottie O'Grady.



REV. S.L. YIELDING

Faith Baptist Plans Week End Revival

Revival services will be held at Faith Baptist Church from Friday through Sunday, April 27-29, with dinner served at the church Sunday at noon.

The Rev. S.L. Yielding, manager of Panfork Baptist Encampment, will be the evangelist. Tom Wilkins will lead the singing and Mrs. Drury Lacy will be the pianist.

Friday and Saturday evening services will be at 7:30 p.m., the Sunday morning service at 11:00 a.m. and the evening service at 5:30, according to Mrs. George Porter, who is helping with plans.

Rev. Yielding was a pastor of Baptist churches in Texas and Oklahoma for 27 years. He has been in crusades in 7 countries, including three crusades in Mexico, two in Spain, and one each in Guatemala, El Salvador, Korea, Sri Lanka and Chile.

Wilkins has directed singing at many revivals in the area in recent years, and Mrs. Lacy has served as church pianist as well as playing for revivals.

What's the difference between dough and batter?

Dough is any mixture thick enough to roll or knead. A mixture that is thin enough to pour or drop from a spoon is known as batter.

Red Cross Bloodmobile Here May 24

A representative of the Red River Red Cross Blood Center, Wichita Falls, will be in Wellington Thursday, April 26, to begin plans for the May 24 bloodmobile visit.

She will meet with Mrs. Ernest Harwell, chairman and representative of the B&PW Club, which is in charge of the drive.

The county's blood quota will be 118 units, which is based on the county's population.

It is one of the requirements that the county furnish this blood to the Red River Blood Center, which in turn provides all the blood and blood components needed by Collingsworth General Hospital in its patient care.

Leaking seals around bathroom fixtures are a common source of excess moisture in a house, reports Glenda Moore, housing and home furnishings specialist with the Texas Agricultural Extension Service.

1979 Sales Tax Rebate Totals \$17,590

Wellington's one percent sales tax rebate for April was up more than \$1,000 from the same month a year ago, according to State Comptroller

Bob Bullock. The city received \$2,848.11 as its allocation for the one-month period ending March 29. A year ago, the city received \$1,549.35 for the same period.

This brings 1979 payments to a total of \$17,590.25, up more than \$2,000 from the 1978 figure of \$15,492.60. This represents a 13 percent

increase. The sales tax is collected by merchants and other tax permit holders along with the state sales tax and is rebated monthly to some 916 Texas cities in which it is collected.

Some used to say the number of white spots on your fingernails was the number of friends you had.

Speed, Conformation, Pedigree

If that's what you are looking for in a stallion—

Here he is!

DARTAWAY MEYERS 365,711 Sorrel Stallion 15 1/2 Hands

Dartaway Meyers	Mr. Meyers TAAA AQHA Champ	Go Man Go TAAA	Top Deck (TB)
	Vandy's Dartaway AAA	Miss Meyers TAAA	Lightfoot Sis
		Speedy Van II AA	Leo (A)
		Moreley's Dartaway A	Star's Lou
			Vandy
			Betty Dee Garrett
			Oswald
			Charlotte Dart

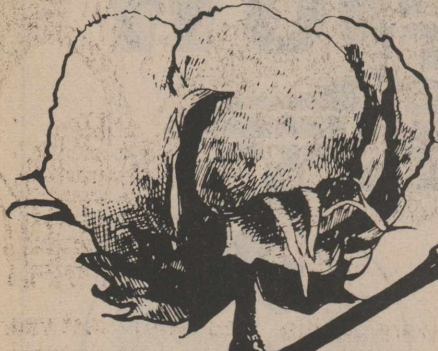
Sire: Mr. Meyers TAAA, a AQHA Champion and a Grand Champion at halter. Mr. Meyers has sired over 90 Racing ROM colts with earnings of over \$800,000.

Dam: Vandy's Dartaway AAA by TAAA Sire Speedy Van II has produced one ROM Race Colt.

Kent Holland

806-447-2708 DAY
806-447-2797 NIGHT
Wellington, Texas 79095

Certified Seed Pays



In side-by-side field tests, cotton researchers have proven that certified seed produces higher yields than farmer-saved or select seed of the same varieties. And the extra production — as high as 18% more lint — is more than enough to pay for the cost of planting the certified varieties.†

Before you plant another row of non-certified seed, consider the advantages you get from Pioneer, brand certified cotton planting seed:

- Certified cotton planting seed from Pioneer has not undergone genetic deterioration in the field. Volunteer plants and undesirable cross-pollinations have been eliminated.
- Certified cotton planting seed from Pioneer is free from pests and weeds which often accompany non-certified varieties. You can be sure of the purity and uniformity in the seed and the crop it produces.
- Certified cotton planting seed from Pioneer is carefully handled and stored to avoid contamination by other varieties. Then, if it doesn't meet high standards for germination and purity, it's not used.

Certified LX571*

Your hedge against drought. Produces top yields of high quality cotton even under tough, dry conditions.

Certified Lankart 57

Long-time favorite on dryland. Consistently good yielder with excellent fiber qualities.

Certified Lankart 611

Early-maturity favorite. Vigorous plants produce large bolls of high quality lint. Good stripper.

Pioneer Hi-Bred International, Inc.
Southwestern Division
Plainview, Texas



†For research details contact the Agronomy Service Department, Pioneer Hi-Bred International, Inc., Southwestern Division, P.O. Box 788, Plainview, Texas 79072.

*LX571 is a U.S. protected variety (Plant Variety Protection Certificate No. 7200018). Unauthorized propagation and unauthorized seed multiplication prohibited by law. This variety of cotton planting seed can be sold by variety name only as a class of certified seed. It is unlawful to sell non-certified seed of this variety.

The limitation of warranty and remedy attached to each bag of Pioneer brand seed is part of the terms and conditions of the sale thereof.

® Registered trademark of Pioneer Hi-Bred International, Inc. Pioneer is a brand name, numbers identify varieties.



GREENBELT ELECTRIC COOPERATIVE, INC.

Greenbelt Electric Cooperative, Inc. • P.O. Box 948 • Wellington, Texas 79095 • Telephone (806) 447-2536



ANNOUNCING OUR
ANNUAL MEMBERSHIP MEETING
FRIDAY, APRIL 27, 1979
BURA HANDLEY COMMUNITY CENTER

Registration 1-2 p.m.
Call To Order 2 p.m.

CONSOLIDATED REPORT OF CONDITION

WELLINGTON STATE BANK

State Bank Charter No. 69

Federal Reserve District No. 11

Close of business, March 31, 1979

ASSETS

Cash and due from depository institutions	4,494,000
U.S. Treasury securities	1,603,000
Obligations of other U.S. Government agencies and corporations	00
Obligations of States and political subdivisions in the United States	3,286,000
All other securities	27,000
Federal funds sold and securities purchased under agreements to resell	2,000,000
a. Loans, Total (excluding unearned income)	15,157,000
b. Less: allowance for possible loan losses	207,000
c. Loans, Net	14,950,000
Lease financing receivables	00
Bank premises, furniture and fixtures, and other assets representing bank premises	206,000
Real estate owned other than bank premises	00
All other assets	119,000
TOTAL ASSETS	26,685,000

LIABILITIES

Demand deposits of individuals, partnerships, and corporations	8,467,000
Time and savings deposits of individuals, partnerships, and corporations	15,467,000
Deposits of United States Government	13,000
Deposits of States and political subdivisions in the United States	588,000
All other deposits	00
Certified and officers' checks	87,000
TOTAL DEPOSITS	24,622,000
a. Total demand deposits	8,958,000
b. Total time and savings deposits	15,664,000
Federal funds purchased and securities sold under agreements to repurchase	00
Interest-bearing demand notes (note balances) issued to the U.S. Treasury and other liabilities for borrowed money	00
Mortgage indebtedness and liability for capitalized leases	00
All other liabilities	110,000
TOTAL LIABILITIES (excluding subordinated notes and debentures)	24,732,000
Subordinated notes and debentures	00

EQUITY CAPITAL

Preferred stock	a. No. shares outstanding (par value)	00
Common Stock	a. No. shares authorized	10,000
	b. No. shares outstanding	10,000 (par value)
Surplus		700,000
Undivided profits and reserve for contingencies and other capital reserves		1,053,000
TOTAL EQUITY CAPITAL		1,953,000
TOTAL LIABILITIES AND EQUITY CAPITAL		26,685,000

MEMORANDA

Amounts outstanding as of report date	
a. Standby letters of credit, total	110,000
b. Time certificates of deposit in denominations of \$100,000 or more	440,000
c. Other time deposits in amounts of \$100,000 or more	00
Average for 30 calendar days (or calendar month) ending with report date	
a. Total deposits	24,489,000

I, Estelline Glenn, Asst. V.P., of the above-named bank do hereby declare that this report of condition has been prepared in conformance with the instructions issued by the Board of Governors of the Federal Reserve System and The State Banking Authority and is true to the best of my knowledge and belief.

/s/ Estelline Glenn

We, the undersigned directors, attest the correctness of this Report of Condition (including the supporting schedules) and declare that it has been examined by us and to the best of our knowledge and belief has been prepared in conformance with the instructions and is true and correct.

/s/ J.M. Orr
/s/ Fred Cox
/s/ John Holton } Directors

State of Texas, County of Collingsworth, ss:

Sworn to and subscribed before me this 16th day of April, 1979, and I hereby certify that I am not an officer or director of this bank. My commission expires 12 - 31, 1980,

(NOTARY'S SEAL)

/s/ Patsy Martin
Notary Public

Wellington State Bank

"Thank you for the opportunity of serving your banking needs"



Member F.D.I.C.



WINNERS AGAIN

These three FFA teams won six banners in only a few days at the Texas Tech Invitational judging and the Hall-Childress Soil and Water Contest at Memphis. Land Team members, the four at left, are Lynn Tate, J.D. Ray, Russell Schaub and Dwayne Myers; next the junior grass judging team: Dale Tarver,

Frank Kneeland, Johnny Blevins and Steven Knoll; the grass judging team: Alberto Alfaro, standing at right, and kneeling from left, Rex Paschall, David Tarver and Mark Wischkaemper.

Frank Ford, Resident 74 Years, Dies

Frank Ford, 79, who lived in Collingsworth County for more than 70 years, died in a Borger hospital Monday, April 23. He had been in ill health several months and had lived with a daughter at Phillips since November.

He was a retired farmer. For much of his life, Mr. Ford lived in the Dodson area, where he was active in a wide range of community affairs. He and Mrs. Ford moved to Wellington in 1962.

Mr. Ford was born April 18, 1900, in Pike County, Arkansas, the son of the late B.F. and Laura Cash Ford. In December of that year, the family came to Comanche County, Texas, traveling in a covered wagon.

They moved to Collingsworth County in 1905 and settled in the east part of the county, more than 5 years

before Dodson was established. He attended the Kelley School.

He was married, on December 12, 1920, to Margaret Helen Gardner, whose family also came here shortly after the turn of the century.

She died January 29, 1977. Mr. Ford was a Baptist and a member of the Dodson Masonic Lodge for more than 40 years and of which he was a past master.

Funeral services were conducted at 2:30 p.m. Tuesday in First Baptist Church, with the Rev. Walter Goodnight, pastor of First Baptist Church, Phillips, officiating. Burial was in Memorial Gardens under the direction of Guy Owens Funeral Home.

Pall bearers were Truett Holland, Gene Morrow, Albert Fulcher, Bob Willis of Amarillo, Don Hood of Lubbock and Tom Birchfield.

Honorary pall bearers were Tommy Hightower, Garland Hightower, Paul Bell, Dennis Holland, Tommy Lewis and Kenneth Hudson.

Survivors are his daughter, Mrs. M.V. (Laura) Vandivere of Phillips; two sons, Lee G. Ford of Borger and Warner B. Ford of Amarillo; three sisters, Mrs. Ila Wood of Jet, Oklahoma, Mrs. Bessie Davidson of Lubbock, and Mrs. Jewel White of Amarillo; 6 grandchildren; and 5 great grandchildren.

Dr. M. V. Cobb
CHIROPRACTOR
Specializing in the examination and treatment of spinal and nervous disorders.
256-2133
310 South Main
Shamrock, Texas

Cheerleaders Named For 1979-80 Year

Cheerleader elections for the 1979-80 school year were held Monday, April 23.

Seniors named were Charlotte Barnett, daughter of Mr. and Mrs. Johnny Barnett, and Jennifer Pendleton, daughter of Mr. and Mrs. Dick Pendleton.

Kathleen Reeves, whose parents are Mr. and Mrs. Don Reeves, and Liz Brewer, daughter of Mrs. Yvonne Brewer, were junior selections, while Debbie Bergvall, daughter of Craig Bergvall, and Melanie Pendleton, also

the daughter of the Dick Pendletons, were named from the sophomore class.

Junior varsity cheerleaders also were chosen, said Mrs. Gary Brewer, sponsor.

From the sophomore class cheerleaders are Jannon Thomason, daughter of Mr. and Mrs. Troy Thomason; Renee Owens, whose parents are Mr. and Mrs. Ralph Owens; and Valerie Van Pelt, daughter of Mr. and Mrs. Don Van Pelt.

Freshmen are Cathy Crelia and Belinda Crelia, daughters

of Mr. and Mrs. Lyndon Crelia, and Shanna Urban, whose parents are Mr. and Mrs. Doug Mead.

Ballots were counted by several members of the high school faculty and these are

Fats have "staying power" in the diet because they stay in the stomach longer and take longer to digest than proteins and carbohydrates, reports Marilyn Haggard, foods and nutrition specialist with the Texas Agricultural Extension Service.

kept on file in the office of Melvin Cardwell, high school principal, said Mrs. Brewer.

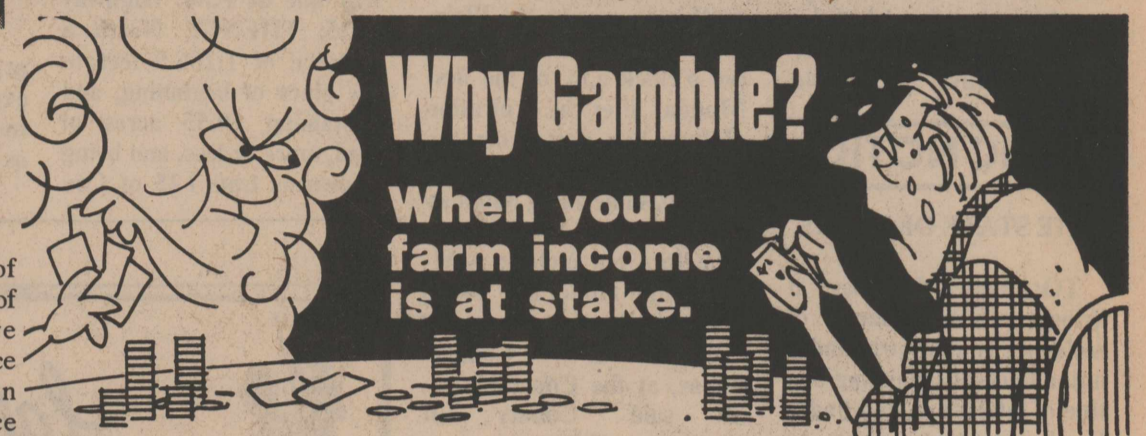
The newly elected cheerleaders will begin their duties this summer, working on fund-raising projects.

The varsity cheerleaders will attend a cheerleading camp, which they will select before the end of the current school year.

Some say showing your money to the new moon will help you grow rich.

More frequent use of portable appliances in place of major appliances will save consumers money--and reduce energy use, predicts Lynn Bourland, family resource management specialist with the Texas Agricultural Extension Service, The Texas A&M University System. She reported that almost half of the respondents to a recent survey by the Consumer Research Center, The Texas A&M University System, indicated they were not taking advantage of portable appliances they own.

Sell it with a Classified Ad.



Over one out of four of our insured farmers were dealt a "bad hand" last year and suffered a hail loss. We paid over \$5.4 million to these policyholders. Make sure you're protected. Buy Farmers Union Crop Hail Insurance now.

CROP-HAIL INSURANCE
Can you afford to be without it?

National Farmers Union Property and Casualty Company
Kirby Campbell Agency
Farmers Union Building
9th & Corsicana - Wellington, Texas 79095
447-2786 office 447-5405 home

Save to beat the band on America's most popular luggage during our Samsonite Vs. Inflation Sale! March off with Samsonite's Silhouette® luggage, Classic III® attaches and travel kits. The sale even includes Cartwheels® with recessed wheels and push-pull handles. All just in time for graduations, weddings, anniversaries and vacations!

Item	Regular Price	Sale Price
Silhouette Luggage		
Beauty Case	54.00	35.99
O'Nite	58.00	45.99
24" Pullman	76.00	55.99
26" Cartwheels	96.00	71.99
24" Companion	76.00	55.99
3-Suiter Cartwheels	98.00	72.99
Jumbo-Suiter Cartwheels	120.00	95.99
Shoulder Tote	44.00	29.99
Handi Tote	44.00	29.99
Dress Pak	54.00	41.99
40" Garment Bag	64.00	49.99
Suit Pak	54.00	41.99



Ladies' luggage in Dover White, Toffee, Wild Strawberry or Columbine Blue.
Men's luggage in Bronco Brown or Oxford Grey.

Saied's
Department Store
North Side Square 447-5747

Samsonite Vs. Inflation!
Save 20-33%



North Side Square 447-5747

Saied's
Department Store

A letter to the Graduates of Wellington, Samnorwood & Quail, from Saied's Department Store, Wellington, Texas.

Dear Graduate

Our most sincere congratulations to you from all of us at Saied's Department Store. May we wish you the best of everything in your future endeavors.

Saied's gift to each graduate of Wellington, Samnorwood & Quail, is a \$2.00 gift certificate. You may use this as a starter on a piece of Samsonite Luggage or anything else you may choose to select and put on our Graduates Table. Any one wishing to do so may pay on this gift as a graduation gift to you.

This is our 52nd year, and we're proud to be a part of this community. Having been here so long we know most of you or your families, and we want to thank you for letting us hang around for so long.

Congratulations,

Mack Saied, Jr.

PUBLIC NOTICE

NOTICE OF INTENT TO CHANGE RATES

Notice is hereby given that Greenbelt Electric Cooperative, Inc., with general offices located in Collingsworth County, Texas, whose mailing address is P.O. Box 948, Wellington, Texas 79095, has filed with the Public Utilities Commission of Texas a petition of intent to change rates to all consumers. Greenbelt Electric Cooperative, Inc. intends to change its rates as set out in its Intent to Change Rates which has been filed with the Public Utilities Commission. The date on which the change is to be effective is June 1, 1979. The requested rate schedules are expected to furnish an average rate increase of 16.1% as opposed to that furnished by the existing rate schedules of the Cooperative. 38-4c

PUBLIC NOTICE

THE STATE OF TEXAS

TO: James Mooney, if living, whose place of residence is unknown, and if not, all persons claiming any title of interest in land under Deed heretofore given to James Mooney, as Grantee, dated December 5, 1900, and recorded in Volume 3, Page 338 of the Deed Records of Collingsworth County, Texas, if living, said place or residence of Defendant is unknown to Plaintiffs, and if dead, the unknown executors, administrators, heirs and legal representatives, together with the unknown successors, heirs, and assigns or legal representatives or such executors, administrators, heirs, and legal representatives of said Defendants, including adverse claimants owning, having or claiming

any legal or equitable interest in or lien upon the real property hereinafter described; the heirs and legal representatives and unknown heirs and legal representatives of each of the above-named and mentioned persons who may be deceased; and the corporate officers, trustees, receivers and stockholders of any of the above-named and mentioned parties which may be corporations foreign or domestic, defunct or otherwise, together with the successors, heirs and assigns of such corporate officers, trustees, receivers of stockholders who own or claim to have an interest in the hereinafter described property, herein called Defendants.

TO: (SEE EXHIBIT 1)

You are hereby commanded to appear by filing a written answer to the Plaintiff's Petition at or before ten o'clock a.m. of the first Monday after the expiration of forty-two days from the date of the issuance of this citation, same being Monday the 7th day of May, 1979, at or before ten o'clock A.M. before the Honorable 100th Judicial District Court of Collingsworth County Texas, at the Court House of said County in Wellington, Texas.

Said Plaintiff's Petition was filed in said court, on the 22nd day of March A.D. 1979, in this cause, numbered 5039 on the docket of said court, and styled, Fred Cox and David Pruitt Plaintiffs, vs James Mooney, ET AL.

The names of the parties to the cause are as follows: Fred Cox and David Pruitt are Plaintiffs and James Mooney, ET AL are Defendants

A brief statement of the nature of this suit is as follows, to wit: Suit in Trespass to try title with Plaintiff's claim being based

in part on adverse possession, and concerns the title to: (SEE EXHIBIT 2)

TRACT I.

A tract of land out of Section No. Eighty-Three (83), Block No. Fourteen (14), H & GN Ry. Co. Survey, Collingsworth County, Texas, and described by metes and bounds as follows & BEGINNING at a point 50 feet West and 1,188.6 feet South of the Northeast corner of Section No. Eighty-Three (83), Block No. Fourteen (14), H & GN Ry. Co. Survey, said point being in the West right-of-way line of F.M. Highway 1035; THENCE West a distance of 185 feet to a point; THENCE South a distance of 186.5 feet to a point; THENCE West a distance of 212.2 feet to a point; THENCE South a distance of 1,070 feet to a point; THENCE East a distance of 397.2 feet to a point in the West right-of-way line of F.M. Highway 1035; THENCE North a distance of 1,256.5 feet to the place of beginning, and containing 10.55 acres of land, more or less, and being known as Lots 1-25 of Cox

Addition to City of Wellington. Blk One TRACT II

Tract of land beginning at a point 1,088.6 feet South and 245 feet West of the Northeast corner of Section Eighty-Three (83), Block No. Fourteen (14), H & GN Ry. Co. Survey; Thence West a distance of 85 ft. to a point; Thence North a distance of 150 ft. to a point; Thence West a distance of 127.2 ft. to a point; Thence South a distance of 436.5 ft. to a point; Thence East a distance of 212.2 ft. to a point; Thence North a distance of 286.5 ft. to the place of beginning and containing 1.83 acres of land. (EXHIBIT 2)

as is more fully shown by Plaintiff's Petition on file in this suit.

If this citation is not served within ninety days after the date of its issuance, it shall be returned unserved.

The officer executing this process shall promptly execute the same according to law, and make due return as the law directs. Issued and given under my



hand and the Seal of said Court, at office in Wellington, Texas, this the 22nd day of March A.D. 1979. Attest: Helen Gollighugh, Clerk, District Court, Collingsworth County, Texas

Oil & Gas

Assignment of oil and gas lease: Panhandle Petroleum, Inc. to Hulen H. Lemon: NW/4 section 60, block 16.

W/2 section 8, block 13; N/2 section 92, block 12; NE/4 section 19, block 17, less the SE/4 of SE/4 of NE/4; W/2 section 8, block 13; SE/4 section 94, block 12; S/2 section 1, block 17; W/2 section 11, block 13; W/2 section 20, block 17; W/2 section 10, block 13;

HELP WANTED

Lancer HOMES,
A Division of Lanchart, Inc.
P O Box 367 817-937-2511
CHILDRESS, TEXAS 79201

Year around steady employment is available at LANCER HOMES located at the Childress Airfield. Starting salary is \$3.00 per hour with automatic raises every 30 days for the first three months for unskilled labor. Experienced applicants will be evaluated and started in line with experience. An incentive bonus based on production is provided to all hourly employees after 30 days along with their starting hourly rate. Workers will receive paid vacations and paid holidays in addition to a group hospitalization plan and group term life insurance with an optional employee disability income insurance plan. The following jobs are open, but no experience is mandatory. Both men and women 18 years of age and over are urged to apply.

1. Plumbers
 2. Electricians
 3. Cabinet Shop Workers
 4. Cabinet Installers
 5. Carpenters
 6. Final finish touch up work
- Other miscellaneous jobs too numerous to mention are available and we can position most applicants in a job they can satisfactorily perform regardless of experience, age or talent if they sincerely want to work. Apply at the Texas Employment Commission, 119 3rd Street Northwest in Childress, Texas between the hours of 8 a.m. and 5 p.m. Monday through Friday. Please apply as early as possible as we anticipate the openings to fill early. Applicants may also apply at Lancer Homes Mobile Production plant on Saturday mornings from 8 to 12 a.m.

HELP WANTED!

Automobile SALESMAN

Sales Experience Helpful But Not Required
GOOD PAY, ETC.

CALL

SAGER MOTORS

A GM Dealership
817-937-3629
Childress, Texas
(an Equal Opportunity employer)

BUSINESS OPPORTUNITIES

FOR SALE: Peanut, candy & gum vending business in Wellington, requires \$1,435. 90 cash & few hours weekly. Texas Kandy Kompany, 1327 Basse Rd. San Antonio, Tex. 78212. Include phone no. 40-4p

FOR RENT

FOR SALE OR RENT: New and used typewriters, adding machines and electronic calculators with printed tape. Ribbons for most machines. ROY M. HORN, Typewriter Service, 1710 15th Street. 447-2580 29-tfc

FOR SALE

MOVING TO AMARILLO. CLOSE-OUT SALE. Jimmie's New and Used Furniture. East Side Square, 50 x 130 building plus all furniture plus three additional houses full of furnishings from our home. One-fourth block with home, rent house and round building. One-fourth block with large house, cellar, and fruit trees. See Jimmie Spruill, 422 North 15th, Memphis. 40-tfc

WANTED

THE STATE DEPARTMENT OF HIGHWAYS AND PUBLIC TRANSPORTATION is now receiving applications from college students desiring temporary summer employment. Applications may be made at any local Maintenance or Residency office of the SDHPT. Students must be 18 years of age, or older, and have graduated from high school. SDHPT is an EQUAL OPPORTUNITY EMPLOYER. 40-1c

Card of Thanks

We wish to express our appreciation and thanks for the kindness shown us at the passing of our loved one, for your prayers, flowers, cards, those who brought food, the kind staff at the nursing home, and Dr. Jones. May God bless each of your. The family of Ethel Harrison

FOR SALE

1976 Buick Electra 225 Yellow and White LOADED Call Mark Fires, DVM 447-5617

FOR RENT

FOR RENT: Four room house also mobile home. Willie Smith 447-2134. 39-1p

SAGEBRUSH II
2 bedroom Apts.
FOR RENT
2 to 4 persons
447-5848

SERVICES

EGGS HATCHED FOR PUBLIC: 447-5519 after 5 p.m. 40-2p

CUSTOM SWATHING and hay baling. Call Jerry Barton after 5 p.m. 806/447-5004. 40-4p

Will Do Painting
Saturdays and Evenings
Call after 4:30 p.m.
Lanny Ford 447-5002
or
Kenneth Patterson 447-2769

Turn your surplus property into cash by using Classified Ads in The Leader.

USED CARS

FOR SALE: 1973 Buick LeSabre, 1950 Studebaker Champion, 500 gallon propane tank. Phone 447-2118. 40-3p

FOR SALE: 1976 Ford 150 pickup. 300 six cylinder, four speed, long wide bed, twin tanks, excellent condition, call 493-2463. 40-2p

FOR SALE: 1973 Chevrolet pickup, air conditioned, 447-5053. 37-tfc

FOR SALE: '78 Luv pickup, air conditioner. Call or see at Duane's Exxon, 447-5696. 37-tfc

1975 Malibu Classic P.S. P.B. Air	\$2695
1974 El Camino P.S. P.B. Air	\$2595
1975 Chev. 3/4 Ton 4x4	\$2995
1974 LTD 4dr Loaded Seats-Windows	\$1795
1973 Dart Swinger P & Air Reduced	\$1295
Several older units-choice	\$495

WARREN MOTORS
R.W. Warren, Owner
Home 447-5478
Wellington, Texas 7th & West Ave. 447-2427

Tommy's USED CARS

Tom Brown, owner - 15 years experience
Bus. 447-2455 9th & Galveston
Home 493-3161 Wellington, Texas tfc

"Your business is appreciated"

Thank You!

Our sincere thanks to everyone who helped make the farm equipment auction last week a tremendous success. Your kindness & courtesy will be remembered by all of us. And we want to say a special word of thanks to everyone who brought equipment for the auction and for your patience. **E.S. Hale, Jr.**

Cruce and Long Auctioneers
Box 1921 - Plainview, Texas 79072

James G. Cruce (806) 296-7252 Donald Patterson (806) 839-2979 (752-019-0743) (752-128-0375)

James W. "Mike" Long (806) 293-8883 Jimmy Reeves (806) 864-3362 (752-019-0495)

WINCH TRUCK AVAILABLE ON SALE DAY - BRING YOUR TRUCK OR TRAILER

NASH TEXACO

VISA master charge TEXACO Hwy. 83 447-2916

Firestone
Bias Ply, Polyester Cord
DELUXE-CHAMPION®
\$19
A78-13 Blackwall. Plus \$1.69 F.E.T.

Size	Price	Size	Price
A78x13	\$19.00	600x15L	26.00
600x12	20.00	685x15	24.00
560x13	20.00	E78x14	26.00
600x13	20.00	F78x14	28.00
155/80DX13	20.00	G78x14	28.00
B78x13	22.00	H78x14	20.00
560x15	22.00	G78x15	30.00
C78x14	23.00	H78x14	32.00
D54x14	24.00	L78x15	33.00
D78x14	24.00		

Prices plus 1.69 to 2.93 F.E.T.
Tread design different than shown. WHITEWALL ADD \$3

COKES
10 oz. Six Pack 69¢

CASCOT COTTON SEED

CASCOT B-2 **CASCOT L-7**

- A close-fruiting stripper variety.
- Extremely early maturing.
- Excellent lint quality.
- Premium micronaire.
- High yielder.
- Good cold tolerance.
- Excellent seedling vigor.
- A stripper variety.
- Excellent qualities.
- Early maturing.
- Premium micronaire.
- Good cold tolerance.
- Excellent seedling vigor.

For booking contact 806/447-2608 day or night. See Wayne Martin at Martin Seed or your local gin.

CUSTOM AG SERVICE, INC.
915-737-2274 P.O. Box 97 LORAIN, TEXAS 79532

**BUYING?
SELLING?
CHECK OUT THE...**

CLASSIFIED ADS

**LOOKING
FOR A JOB?
LOOKING
FOR HELP?**

FOR SALE

TWO refrigerated air conditioners. Contact Alton Belew. 447-5441 after 5 p.m. 38-tfc

ELECTRIC RANGE FOR SALE: Frigidaire Coppertone with two ovens, one self-cleaning. Call Nancy Lindsey, 447-2106 or 447-2281. 39-tfc

FOR SALE: 1975 Oldsmobile Regency. Call 447-5720 or 447-2708. 39-tfc

FOR SALE: 1978 Free Spirit Machine by Good Times. See Debra Belew after 5 p.m. 447-2487. 39-tfc

ATTENTION AMWAY USERS: Need any Amway Products, call Mark Killian, 447-2130 after 6 p.m. or 447-2729 days. 40-tfc

FOR SALE: Carpet, green, red or tan; gold long drapes, white or green short drapes. Call Mrs. James Masten 447-2631. 40-1c

FOR SALE: Green and gold sofa. Call 447-2090. 37-tfc

TOMATO & PEPPER Plants in several varieties. Also cabbage and eggplant. Now at Livestock Supply & Western Wear. Hwy. 83, 447-2708. 37-tfc

FOR SALE: 10' x 12' red shag carpet and pad. \$50. Call 447-5788 after 5:30. 37-tfc

REAL ESTATE

FOR SALE: '73 Mobile home, 14 ft. x 65 ft. 2 bedroom. Tommy Baker. See 1/2 mile north and 1 mile west of old Lillie church after 4:30 p.m. or weekends. 40-3p

ASSUME the loan on 1975 3 bedroom mobile home. Excellent condition. Phone 447-2025. 39-2c

FOR SALE: Mobile Home. Furnished. On 3 lots. 447-2255, 447-5083. 37-tfc

FOR SALE: 3 bedroom house newly decorated at 1301 El Paso. Call owner 447-5784. 34-tfc

Home for Sale
1719 Park Lane
Call for appointment
447-2722 or 447-5844
Duggie Jameson

C.E. Caldwell Real Estate

- 2 bedroom, large living - dining area, floor furnace. Close to school.
- 2 bedroom house, wall furnace, carpet, on 4 lots.
- 2 large 3 bedroom homes, close to school.
- 2 tracts, 10 to 20 acres. Close to town, good building sites. 2 tracts on natural gas, telephone, REA and West Texas Utilities.
- Large 3 bedroom home and 11 lots.
- 45 acres, all in cultivation. 1/2 minerals go.

NEED LISTINGS ON FARMS & HOUSES
1511 - 8th Street 447-2263 or 447-5407

- 3 Bedroom, 1 1/2 bath, central heat & air, brick veneer. Nice large lot.
- 3 Bedroom, 1 1/2 bath, cellar, fenced back yard, car port. 600 sq ft in an out-building, 1800 sq ft in main house. Asbestos siding, Fruit & pecan trees.
- Nice small two bedroom frame. Recently redecorated and almost new mobile home with 3 bedrooms, 2 baths-all on 3 large lots on corner.
- 3 Bedroom house on 5 acres of land. Cellar, fenced, Hwy frontage.
- 3 Bedroom, 1 bath, with basement. Combination rock veneer & stucco const.
- 3 Bedroom, composition siding, 1 bath. Partially unfinished inside, pavement.
- Two 2 Bedroom Frames
- 3 Bedroom, 1 bath, concrete block fence and 24 x 24 Concrete block garage, central heat & window unit for air conditioning.
- 4 Bedroom house on 3 1/2 lots. 1 bedroom upstairs. A lot of room for a reasonable price.

1st. WELLINGTON Real Estate
Bobo Castleberry Henry Sullivan
447-2517 after hours call 447-2784 East Side Square

FOR SALE

FOR SALE: Slide-in camper. Call 447-5582. 40-3c

WATERLESS COOKWARE. Stainless, Multi-ply Home Demonstration kind. Never opened. Normally \$400-\$500. Selling \$175. Call 1-303-591-1331. 38-4p

ANTIQU 2-piece bed suite. Ornate sideboard; walnut wardrobe; and more. Call for appointment to see. Debbie Kane, 447-2192. 34-tfc

PEAT MOSS, lawn fertilizers and all other lawn & garden supplies now available at Livestock Supply & Western Wear. Hwy 83. tfc

TOWN & COUNTRY is the place where you always save money on shoes, clothing, sports wear for the entire family. East side square. 29-tfc

NOTICE: Will buy good used furniture. Call 447-2996 or come by Colwell Factory Outlet, 709 West Ave. 22-tfc

GREEN HOUSE now open. Tomato, pepper, broccoli, cauliflower, red and green cabbage, brussel sprouts. All bedding plants ready. ALL KINDS BULK VEGETABLE SEEDS. CARROLL'S FLOWERS. 39-tfc

TO GIVE AWAY: One spayed female Doberman. Good pet for children. 447-2750. 40-1c

REAL ESTATE

FOR SALE: 3 bedroom brick home. Utility room, kitchen, living room and dining room, den, one full bath and three quarter bath. Two car garage. Cellar. Isla Mae Morris, Phone 447-2743. 40-1c

HOUSE FOR SALE: 2 acres of land with 7 room house and cellar. 3 blocks off town section. Call 447-2358 after 4 p.m. 40-1c

FOR SALE: 3 bedroom house, southwest corner town section, City water. First house south of Cox Addition. For appointment call 447-5521 or 447-2886. 38-3c

THREE BEDROOM, newly remodeled home for sale on Haskell Street. Also newly remodeled 2 bedroom house. Call Paul Davis, 447-2203 or 447-5075. 17-tfc

FOR SALE

FOR SALE: Suzuki DS 185 in good condition. 447-2215. 40-2c

FOR SALE: Samoan Huskies. Phone 447-5843. David Moore. 40-1p

PIANO IN STORAGE: Beautiful spinet-console stored locally. Reported like new. Responsible party can take at big savings on low payment balance. Write Joplin Piano, 1516 Valeska, Waco, Texas 76710. 40-1c

FOR SALE: Complete bathroom fixtures, good. Also 2 Swat TV antennas, Tom Cunningham, 256-2983. 40-1p

TWO MALE KID GOATS and 1 Billy goat. 1 1/2 year old Boston Terrier Dog AKC registered. See Glenda or Jerry Scott, 9 miles south of Wellington. 40-2c

FOR SALE: Can order your new model automobile and save you money. See Kenneth at Colwell Gulf Station. 35-tfc

FOR SALE: camper shell for a short-wide bed. Insulated and lights. \$125. ALSO 114 gallon gas tank, \$110. 447-2351. 40-1p

WE GOOFED: Must sell steel building, 48 x 72 x 14. Never erected, at tremendous savings. 806/647-4132. 40-1c

HOUSE OF SHADES AND LAMPS: Expert lamp repair, replacement parts, shades, bulbs. New shades arriving every day. Tiffany shades and lamps. New, very latest Capiz Shell Shades and lamps. Aladdin lamps and all their parts. 2613 Wolflin Ave. Wolflin Village, Amarillo, Texas. Sell it with a Classified Ad.

Mary's White Elephants Antiques, etc.

DEBBIE KANE MARY GARBETT
1003 AMARILLO ST. WELLINGTON, TX 79095 806/447-2192 DALLAS, TEXAS 817/497-4977

Allison Equipment
Hollis, Okla.
1-800-654-0424 Toll Free

Custom Draperies
One window or whole house. Made ESPECIALLY for you. Installation FREE. Call 256-3652

Brannon's Custom Draperies
Shamrock, Texas 79095 35-tfc

GARAGE SALE

GARAGE SALE: Lots of furniture, appliances, clothes all sizes & miscellaneous. All day Saturday, April 28th. 1716 East Avenue. 40-1c

BIG GARAGE SALE: Several families, Thursday, Friday & Saturday, April 26, 27 & 28. 1507 Dalhart St. Golda Jones. 40-1c

WANTED

WANT YARDS TO MOW: Will mow regularly. Call Richard Burba at 447-2460. 38-3p

WANTED: Greenbelt Electric Co-op members to attend their 1979 Annual Membership Meeting. Around \$300.00 in door prizes, entertainment and election of directors. April 27, 1979 in the Bura Handley Community Building, Wellington, Texas. 38-3c.

NOTICE

Wellington Lodge No. 763; AF & AM Stated Meeting 7:30 p.m. Second Thursday of Each Month 916 West Avenue 17-tfc

SERVICES

SERVICE
Air conditioning
Refrigeration
Sheet Metal
Lennox Heating & Cooling
Russell Hill and
Rick Motsenbocker
Life time of experience
447-2184 and 447-2684

Farmers Market

FOR SALE: 2 Krause Hoeme Chisel plows. One 15 shank and 17 shank, both double spring loaded adjustable gauge wheels. Call 405-688-3463 after 6 p.m. 39-2c

WANT TO RENT lease or buy farm or pasture land. Phone 447-5419. 20-tfc

FOR SALE: 6 row IHC planter, 3 point & press wheels. Also set of dual wheels, 18-4x-28. Elmer Dishman, 806-874-2232 37-4p

FOR SALE: 4 breeding fees for Hay Camp Leo. \$200 each. Wayne Sweatt, 806-259-2963 or 2021. 40-2c

THE CATTLEMAN'S FEED SERVICE LOOMIX
Since 1905
Liquid Feed Supplement
• Natural Protein
• Highest Energy
• Consumption Control
• Fully Patented
Ted Nelson
Pho. 826-5650
Wheeler, Texas
Al Boyett
256-2751
Lutie, Texas TFC

Farmers Market

FOR SALE: 12 Hampshire weaner pigs. Claude Savage, phone 447-5707. 40-2p

MARTIN SEED HAS IT!

- ★ ACCO SEED 109A 1028 Three Little Indians
- ★ HEGARI
- ★ AFRICAN MILLET
- ★ ATLAS SORGO
- ★ PEAS California Black-eyed

Special CORN SEED 50¢ lb.

★★★★★★★★

MARTIN SEED
Ft. Worth Street
(2 block north of Dr. Estes Dental Office)

THE WELLINGTON (TEXAS) LEADER
Thursday, April 26, 1979

Want Ad Information

Reader Ads (Minimum Charge-\$2.00; Minimum Cash-\$1.50) per word, when paid in advance. 12¢
Additional Insertions, when paid in advance, per word. 6¢
Display advertising in Classified Section, per column inch. \$1.75
Repeat Insertion Display Ads in classified section, per column inch. \$1.10
Deadline for Want Ads—Noon Tuesday

Phone 447-5493

SERVICES

House Painting
Interior or Exterior
FREE ESTIMATES
Amarillo 353-6244 38-4p

SERVICES

COLWELL GULF STATION
Fill up Regular-Premium-No Lead. Oil change, flats, fixed, minor mechanic work, motors steam cleaned. 1208-8th St. Phone 447-5858. 22-tfc

COMMERCIAL AND RESIDENTIAL Wiring
Licensed and Bonded
Will work anywhere
All phases of wiring
DICK PENDLETON
519 17th St. Ph. 447-2155

Ditching & Backhoe Service
MICKEY BREEDLOVE
447-5461 or 447-5846

Treflan Application
DAVID CAISON
447-2672 37-4c

HELP WANTED

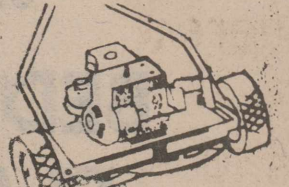
Three Mechanics
One welder, to build rack & shelves
Honest and willing to work
Contact Robert Owens
Owens Auto Salvage

Bulldozing Grubbing
John Rainey
447-2235

Big D Insulation
Paul Davis 447-2203
Emmit Skelton 447-5055

Bulldozing
Terracing
Grading
Harold Elbert

Draperies Bedspreads
Custom Window, Bathroom & Bedroom Treatments; Waterbeds; Frames; Mattresses; Heaters; Liners.
All accessories including sheets, patches, water-conditioners & cleaners.
Evelyn's Draperies
Ritz Theatre Building
East Avenue
447-2368 ttc

MONTGOMERY WARD


Power-UP your mower with a Tune-Up!
Get off to a fast clip for the mowing season! Let our trained technicians clean and adjust your mower, sharpen and balance the blades, and replace all worn parts. Call or come into Wards today!
Montgomery Ward SERVICE DEPARTMENT
806 East Avenue
447-2518

GODFREY PEST CONTROL
Licensed & Insured
See Pat Godfrey
806-259-2766
Memphis, Texas

Ferguson 66 Station
Hours 7 a.m. to 6 p.m.
Monday thru Saturday
447-9877


STORAGE SPACE
Household Items, Etc. Protected, Easy Access
Reasonable Rates - Also 4 Dome Apts. for rent
Bill Spillman
447-2525

Standing at Stud
BREEZE RIN AQHA #755478 Bright red sorrel, bald face, close up breeding to Leo #1335, King #234, Vandy #43628.
OLE SILVER CHARGE AQHA #1,299,418 close up breeding to Three Bars, Silver Thistle, Depth Charge, Johnny Dial.
Come by to see them--you'll like 'em. Go west to the barn on 9th Street.
Richard Nall, owner 806/447-2066

FOR SALE
20 Mixed Breed Cows and Calves
15 Registered Hereford Cows and Calves
20 Registered Hereford Bulls
12 months- two years
Call Mark Fires, DVM
Phone 447-5617

SERVICES
KCTX Radio 1510
Childress, Texas
Local News on the hour

SERVICES
Electrical Wiring Licensed & Bonded Triple D Electric
Dallas Holland
447-5755

Blakemore FRESH PROTEIN FED CATFISH

"DRESSED WHILE YOU WAIT"
400 NORTH MAIN SHAMROCK, TEXAS
PHONE 256-3287

Monuments
WILLIS-PELLOW GRANITE MONUMENT WORKS
Call Collect 535-2184
Granite, Okla.

EXXON

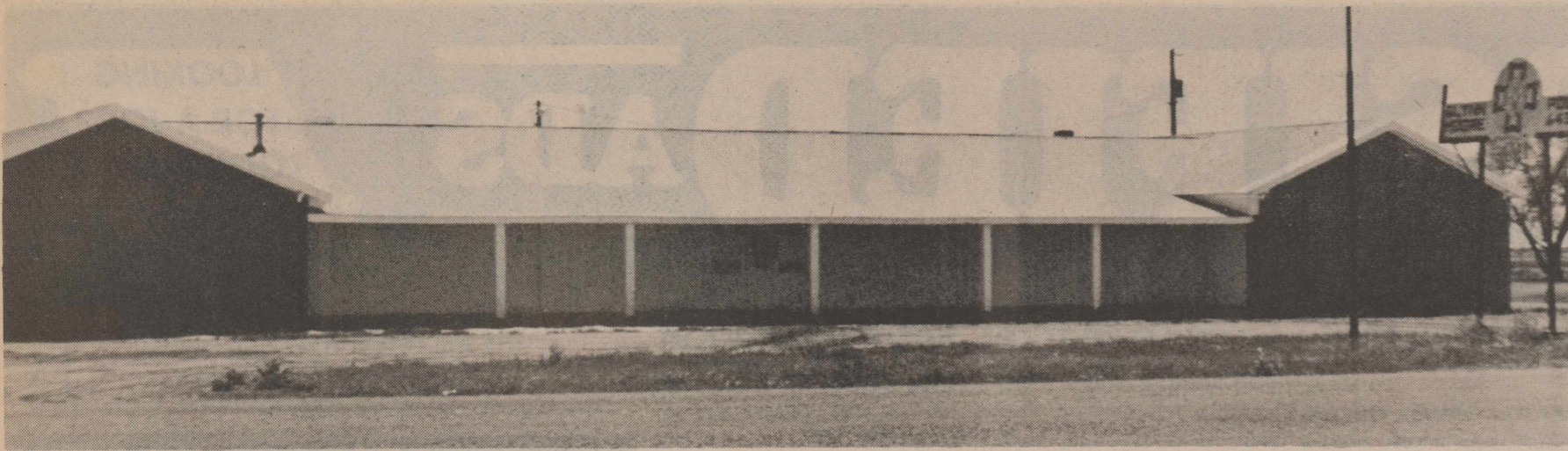
- ★ State inspection station
- ★ Tire Spin balancing
- ★ Front-end alignment
- ★ Tune-ups
- ★ Brake repair
- ★ Quality Exxon for all your agricultural & commercial needs.

Duane's Exxon
8th & Haskell
Phone 447-5696
7:00 a.m.-6:00 p.m.
Monday-Saturday
Duane Campbell

Flowers
Reflect a person's deepest feelings and express them perfectly. When sympathy arrangements are required.

Carroll's Flowers
is well experienced in each individual's needs and desires for an appropriate setting, while still remaining within an established budget.
Sprays priced from \$7.50 to \$60.00

Carroll's Flowers
Out-of-town Call Collect 24 Hours
806-447-2345
Flowers Wired Anywhere



GLYNN MOORE POST HOME
Remodeling the exterior of the home of Glynn Moore Post, Veterans of Foreign Wars was completed in time for the District 13 convention.

Greenbelt Electric Annual Meeting Set

Observing the completion of 40 years during which Greenbelt Electric Co-operative Inc. has provided power to the southeast Panhandle, approximately 400 members and their families will gather for the 1979 annual meeting Friday, April 27, at 2:00 p.m. in Bura Handley Community Center.

Registration will start at 1:30.

Although the Coop was organized in 1938, 1939

Services for Mrs. Harrison Held April 12

Mrs. Ethel Harrison, a county resident 25 years, died Wednesday, April 11, in Thomas Nuring Center, where she had lived three years.

The former Ethel Snowden, she was born July 9, 1905, in Elk City, Okla., the daughter of Theophilus and Julia Bell Snowden. She lived for a number of years in Jack County before coming to Wellington in 1954.

She and Wilford Harrison were married July 17, 1954, in Tucumcari, N.M. He died August 26, 1971.

Mrs. Harrison was a Baptist.

She had a special interest in Collingsworth County Historical Museum and was the donor of a number of items to its collections.

Funeral services were conducted at 3:00 p.m. Thursday, April 12, in Guy Owens Funeral Chapel, with the Rev. Ron Wheeler, pastor of First Christian Church officiating. Burial was in Fairview Cemetery under the direction of Guy Owens Funeral Home.

Pall bearers were Tom Wilkins, Earl Patterson, N.E. Childers, R.T. Savage, Bobo Castleberry and Raymond Ward.

Survivors are three sisters, Mrs. Vonnie McLaughlin of Ft. Worth; Mrs. Libbie Banks of Fontana, Calif.; and Mrs. Lucille Savage of Wellington; one brother, Andy Snowden of Poolville; and a number of nieces and nephews.

marked the first year of its operation. During the period, it has had only three managers, Orval Couch, now of Homer, La., George Henry, now of Floydada, and for almost a year and a half, David Pruitt.

During the business session, three directors will be elected and the membership will hear the president's report by A.J. Garland, and the manager's report, summarizing the last year's operation.

Old and new business will be taken care of.

"This is the yearly opportunity for members to inquire into and find out about the operation of their coop and to make suggestions," said Pruitt.

A musical program will be presented under the direction of entertainment chairman, Walter Camp.

Approximately \$300 in door prizes will be awarded and refreshments will be served.

During the election, members will name directors to represent Districts 3, 6 and 7, said Donald White.

These candidates with some

biographical information, have been nominated by the system's nominating committee:

DISTRICT 3: Selba Rainey, is the current director. He has been a cooperative member since 1947 and currently lives in the Samnorwood area where he is a farmer/rancher. He and his wife, Ozette, have two children, Darlene, Mrs. Albert A. Smith of Amarillo, and Joel. District 3 is in Collingsworth County.

Gary Oldham was born and raised in the Samnorwood area and currently lives three miles southwest of this community. He is a graduate of Samnorwood High School and Texas A&M University. He is a farmer/rancher, a member of Samnorwood Lions Club and Samnorwood School Board. He has been a cooperative member three years. He and his wife, LaDonna have one son, Jeremy.

DISTRICT 6: Incumbent director A.J. Garland has been nominated to return to the Cooperative's board, a post he has held for 20 years, serving many of these as president.

for clubs on Monday. The place is Prairie Dog, Texas, and the time is late summer, 1876. Melodrama lovers of the southeast Panhandle are urged to come and see how a lonely cowboy named Curley (played by Darrell Phillee of Amarillo) finally wins Miss Lilly (Nancy Stephenson of Claude) the Red Stocking Dance Hall queen.

Kathy Trimble has the role of Kate, one of the dance hall girls; Danny Morris is Sam the bartender, and Karen Caldwell is Tillie.

Melodrama Is Spring Production at CJC

Three county students will have roles in the Clarendon College spring drama department production, "How the West Was Fun", a western melodrama. Performances will be given Sunday, April 29, at 2:30 p.m. and Monday, April 30, and Tuesday, May 1 at 7:00 p.m.

Plans were announced by Miss Leslie Schaufner, director and head of the Fine Arts Department. In addition to the regular performances there will be a 1:00 p.m. matinee for students of area schools and

for clubs on Monday. The place is Prairie Dog, Texas, and the time is late summer, 1876. Melodrama lovers of the southeast Panhandle are urged to come and see how a lonely cowboy named Curley (played by Darrell Phillee of Amarillo) finally wins Miss Lilly (Nancy Stephenson of Claude) the Red Stocking Dance Hall queen.

Kathy Trimble has the role of Kate, one of the dance hall girls; Danny Morris is Sam the bartender, and Karen Caldwell is Tillie.

Red River S&L Elects Board

The first official board of directors of Red River Savings and Loan Association was held Tuesday, April 17, at a stockholders meeting in Shamrock.

Elected were Glynn Bell, Don Biggers, Phil Cates, Ernest Henderson, Raymond Moore, Johnnie Carpenter, Rex Shoulders, Don Tarver and Don Wells.

By-laws were reviewed and amended.

Resolutions of appreciation were presented to Bell for his work in helping with the organization and for his building the board table, and to Carroll Langley of Mobeetie, who serves on the institution's loan committee.

In a board meeting that followed the stockholders meeting, Bell was elected chairman, Wells treasurer and Janis Baxter secretary.

Tea was introduced to America by the Dutch.

40 years during which Greenbelt Electric Cooperative Inc. has provided power to the southeast Panhandle, approximately 400 members and their families will gather for the 1979 annual meeting Friday, April 27, at 2:00 p.m. in Bura Handley Community Center.

Fire Department. He was born at Quail and has been a member of Greenbelt Electric Cooperative since 1946. He and his wife, Opal have a daughter, Patricia Louise Day.

The other nominee is Gerald A. Bland, who lives with his family three miles east of Hedley. In addition to raising cattle, he works for the city of Hedley. He is a member of the Lions Club, volunteer fire department and American Legion. He has been a member of Greenbelt Electric Cooperative since 1946. He and his wife, Frankie Marie, have one child, Frankie Joe.

District 7 is in Donley County.

Pruitt pointed out that regardless of where a member resides in the service area, he is permitted to vote on all three directors.

Observing the completion of

Show Times
Fri-7:30 Sat-7:00 & 9:00 Sun-7:30

SHOWING
April 27, May 3

"BUCK ROGERS"

RITZ
OUR 50th YEAR

Shamrock Upholstery
NOW OPEN
125 N. Main, Shamrock, Texas
Over 30 years experience in furniture, auto, commercial, truck, tractor, caneing, re-styling, re-building, wood re-finishing, antique furniture, tuck and roll, diamond tufting. The best equipment and staffed shop in North Texas. All work fully guaranteed.

Licensed, bonded, insured. Pick-up and delivery.
CALL 806/256-3643
Frank Owens Brian Owens

Budget Prices

DEL MONTE CRUSHED OR SLICED Pineapple 3 8 OZ. CANS \$1

DEL MONTE FRUIT Cocktail 2 17 OZ. CANS \$1

Shurfine Flour 5 LB. BAG 65¢

Liquid Joy 22 OZ. BTL. 79¢

Shampoo 99¢

Scope 18 OZ. BTL. \$1.49

Shurfine Flour 10¢ OFF LABEL

Liquid Joy 10¢ OFF LABEL

Shampoo 25 OZ. TUBE/4 OZ. BOTTLE HEAD & SHOULDERS 99¢

Scope REFRESHING! 18 OZ. BTL. \$1.49

Shurfine Flour ENRICHED

Liquid Joy 10¢ OFF LABEL

Shampoo 25 OZ. TUBE/4 OZ. BOTTLE HEAD & SHOULDERS 99¢

Scope REFRESHING! 18 OZ. BTL. \$1.49

Shurfine Flour 5 LB. BAG 65¢

Liquid Joy 22 OZ. BTL. 79¢

Shampoo 99¢

Scope 18 OZ. BTL. \$1.49

Shurfine Flour 10¢ OFF LABEL

Liquid Joy 10¢ OFF LABEL

Shampoo 25 OZ. TUBE/4 OZ. BOTTLE HEAD & SHOULDERS 99¢

Scope REFRESHING! 18 OZ. BTL. \$1.49

Shurfine Flour ENRICHED

Liquid Joy 10¢ OFF LABEL

Shampoo 25 OZ. TUBE/4 OZ. BOTTLE HEAD & SHOULDERS 99¢

Scope REFRESHING! 18 OZ. BTL. \$1.49

Shurfine Flour 5 LB. BAG 65¢

Liquid Joy 22 OZ. BTL. 79¢

Shampoo 99¢

Scope 18 OZ. BTL. \$1.49

Shurfine Flour 10¢ OFF LABEL

Liquid Joy 10¢ OFF LABEL

Shampoo 25 OZ. TUBE/4 OZ. BOTTLE HEAD & SHOULDERS 99¢

Scope REFRESHING! 18 OZ. BTL. \$1.49

Shurfine Flour ENRICHED

Liquid Joy 10¢ OFF LABEL

Shampoo 25 OZ. TUBE/4 OZ. BOTTLE HEAD & SHOULDERS 99¢

Scope REFRESHING! 18 OZ. BTL. \$1.49

Shurfine Flour 5 LB. BAG 65¢

Liquid Joy 22 OZ. BTL. 79¢

Shampoo 99¢

Scope 18 OZ. BTL. \$1.49

Shurfine Flour 10¢ OFF LABEL

Liquid Joy 10¢ OFF LABEL

Shampoo 25 OZ. TUBE/4 OZ. BOTTLE HEAD & SHOULDERS 99¢

Scope REFRESHING! 18 OZ. BTL. \$1.49

Shurfine Flour ENRICHED

Liquid Joy 10¢ OFF LABEL

Shampoo 25 OZ. TUBE/4 OZ. BOTTLE HEAD & SHOULDERS 99¢

Scope REFRESHING! 18 OZ. BTL. \$1.49

Shurfine Flour 5 LB. BAG 65¢

Liquid Joy 22 OZ. BTL. 79¢

Shampoo 99¢

Scope 18 OZ. BTL. \$1.49

Shurfine Flour 10¢ OFF LABEL

Liquid Joy 10¢ OFF LABEL

Shampoo 25 OZ. TUBE/4 OZ. BOTTLE HEAD & SHOULDERS 99¢

Scope REFRESHING! 18 OZ. BTL. \$1.49

Shurfine Flour ENRICHED

Liquid Joy 10¢ OFF LABEL

Shampoo 25 OZ. TUBE/4 OZ. BOTTLE HEAD & SHOULDERS 99¢

Scope REFRESHING! 18 OZ. BTL. \$1.49

Shurfine Flour 5 LB. BAG 65¢

Liquid Joy 22 OZ. BTL. 79¢

Shampoo 99¢

Scope 18 OZ. BTL. \$1.49

Shurfine Flour 10¢ OFF LABEL

Liquid Joy 10¢ OFF LABEL

Shampoo 25 OZ. TUBE/4 OZ. BOTTLE HEAD & SHOULDERS 99¢

Scope REFRESHING! 18 OZ. BTL. \$1.49

Shurfine Flour ENRICHED

Liquid Joy 10¢ OFF LABEL

Shampoo 25 OZ. TUBE/4 OZ. BOTTLE HEAD & SHOULDERS 99¢

Scope REFRESHING! 18 OZ. BTL. \$1.49

Shurfine Flour 5 LB. BAG 65¢

Liquid Joy 22 OZ. BTL. 79¢

Shampoo 99¢

Scope 18 OZ. BTL. \$1.49

Shurfine Flour 10¢ OFF LABEL

Liquid Joy 10¢ OFF LABEL

Shampoo 25 OZ. TUBE/4 OZ. BOTTLE HEAD & SHOULDERS 99¢

Scope REFRESHING! 18 OZ. BTL. \$1.49

Shurfine Flour ENRICHED

Liquid Joy 10¢ OFF LABEL

Shampoo 25 OZ. TUBE/4 OZ. BOTTLE HEAD & SHOULDERS 99¢

Scope REFRESHING! 18 OZ. BTL. \$1.49

Shurfine Flour 5 LB. BAG 65¢

Liquid Joy 22 OZ. BTL. 79¢

Shampoo 99¢

Scope 18 OZ. BTL. \$1.49

Shurfine Flour 10¢ OFF LABEL

Liquid Joy 10¢ OFF LABEL

Shampoo 25 OZ. TUBE/4 OZ. BOTTLE HEAD & SHOULDERS 99¢

Scope REFRESHING! 18 OZ. BTL. \$1.49

Shurfine Flour ENRICHED

Liquid Joy 10¢ OFF LABEL

Shampoo 25 OZ. TUBE/4 OZ. BOTTLE HEAD & SHOULDERS 99¢

Scope REFRESHING! 18 OZ. BTL. \$1.49

Shurfine Flour 5 LB. BAG 65¢

Liquid Joy 22 OZ. BTL. 79¢

Shampoo 99¢

Scope 18 OZ. BTL. \$1.49

Shurfine Flour 10¢ OFF LABEL

Liquid Joy 10¢ OFF LABEL

Shampoo 25 OZ. TUBE/4 OZ. BOTTLE HEAD & SHOULDERS 99¢

Scope REFRESHING! 18 OZ. BTL. \$1.49

Shurfine Flour ENRICHED

Liquid Joy 10¢ OFF LABEL

Shampoo 25 OZ. TUBE/4 OZ. BOTTLE HEAD & SHOULDERS 99¢

Scope REFRESHING! 18 OZ. BTL. \$1.49

Shurfine Flour 5 LB. BAG 65¢

Liquid Joy 22 OZ. BTL. 79¢

Shampoo 99¢

Scope 18 OZ. BTL. \$1.49

Shurfine Flour 10¢ OFF LABEL

Liquid Joy 10¢ OFF LABEL

Shampoo 25 OZ. TUBE/4 OZ. BOTTLE HEAD & SHOULDERS 99¢

Scope REFRESHING! 18 OZ. BTL. \$1.49

Shurfine Flour ENRICHED

Liquid Joy 10¢ OFF LABEL

Shampoo 25 OZ. TUBE/4 OZ. BOTTLE HEAD & SHOULDERS 99¢

Scope REFRESHING! 18 OZ. BTL. \$1.49

Shurfine Flour 5 LB. BAG 65¢

Liquid Joy 22 OZ. BTL. 79¢

Shampoo 99¢

Scope 18 OZ. BTL. \$1.49

Shurfine Flour 10¢ OFF LABEL

Liquid Joy 10¢ OFF LABEL

Shampoo 25 OZ. TUBE/4 OZ. BOTTLE HEAD & SHOULDERS 99¢

Scope REFRESHING! 18 OZ. BTL. \$1.49

Shurfine Flour ENRICHED

Liquid Joy 10¢ OFF LABEL

Shampoo 25 OZ. TUBE/4 OZ. BOTTLE HEAD & SHOULDERS 99¢

Scope REFRESHING! 18 OZ. BTL. \$1.49

Shurfine Flour 5 LB. BAG 65¢

Liquid Joy 22 OZ. BTL. 79¢

Shampoo 99¢

Scope 18 OZ. BTL. \$1.49

Shurfine Flour 10¢ OFF LABEL

Liquid Joy 10¢ OFF LABEL

Shampoo 25 OZ. TUBE/4 OZ. BOTTLE HEAD & SHOULDERS 99¢

Scope REFRESHING! 18 OZ. BTL. \$1.49

Shurfine Flour ENRICHED

Liquid Joy 10¢ OFF LABEL

Shampoo 25 OZ. TUBE/4 OZ. BOTTLE HEAD & SHOULDERS 99¢

Scope REFRESHING! 18 OZ. BTL. \$1.49

Shurfine Flour 5 LB. BAG 65¢

Liquid Joy 22 OZ. BTL. 79¢

Shampoo 99¢

Scope 18 OZ. BTL. \$1.49

Shurfine Flour 10¢ OFF LABEL

Liquid Joy 10¢ OFF LABEL

Shampoo 25 OZ. TUBE/4 OZ. BOTTLE HEAD & SHOULDERS 99¢

Scope REFRESHING! 18 OZ. BTL. \$1.49

Shurfine Flour ENRICHED

Liquid Joy 10¢ OFF LABEL

Shampoo 25 OZ. TUBE/4 OZ. BOTTLE HEAD & SHOULDERS 99¢

Scope REFRESHING! 18 OZ. BTL. \$1.49

Shurfine Flour 5 LB. BAG 65¢

Liquid Joy 22 OZ. BTL. 79¢

Shampoo 99¢

Scope 18 OZ. BTL. \$1.49

Shurfine Flour 10¢ OFF LABEL

Liquid Joy 10¢ OFF LABEL

Shampoo 25 OZ. TUBE/4 OZ. BOTTLE HEAD & SHOULDERS 99¢

Scope REFRESHING! 18 OZ. BTL. \$1.49

Shurfine Flour ENRICHED

Liquid Joy 10¢ OFF LABEL

Shampoo 25 OZ. TUBE/4 OZ. BOTTLE HEAD & SHOULDERS 99¢

Scope REFRESHING! 18 OZ. BTL. \$1.49

Shurfine Flour 5 LB. BAG 65¢

Liquid Joy 22 OZ. BTL. 79¢

Shampoo 99¢

Scope 18 OZ. BTL. \$1.49

Shurfine Flour 10¢ OFF LABEL

Liquid Joy 10¢ OFF LABEL

Shampoo 25 OZ. TUBE/4 OZ. BOTTLE HEAD & SHOULDERS 99¢

Scope REFRESHING! 18 OZ. BTL. \$1.49

Shurfine Flour ENRICHED

Liquid Joy 10¢ OFF LABEL

Shampoo 25 OZ. TUBE/4 OZ. BOTTLE HEAD & SHOULDERS 99¢

Scope REFRESHING! 18 OZ. BTL. \$1.49

Shurfine Flour 5 LB. BAG 65¢

Liquid Joy 22 OZ. BTL. 79¢

Shampoo 99¢

Scope 18 OZ. BTL. \$1.49

Shurfine Flour 10¢ OFF LABEL

Liquid Joy 10¢ OFF LABEL

Shampoo 25 OZ. TUBE/4 OZ. BOTTLE HEAD & SHOULDERS 99¢

Scope REFRESHING! 18 OZ. BTL. \$1.49

Shurfine Flour ENRICHED

Liquid Joy 10¢ OFF LABEL

Shampoo 25 OZ. TUBE/4 OZ. BOTTLE HEAD & SHOULDERS 99¢

Scope REFRESHING! 18 OZ. BTL. \$1.49

Shurfine Flour 5 LB. BAG 65¢

Liquid Joy 22 OZ. BTL. 79¢

Shampoo 99¢

Scope 18 OZ. BTL. \$1.49

Shurfine Flour 10¢ OFF LABEL

Liquid Joy 10¢ OFF LABEL

Shampoo 25 OZ. TUBE/4 OZ. BOTTLE HEAD & SHOULDERS 99¢

Scope REFRESHING! 18 OZ. BTL. \$1.49

Shurfine Flour ENRICHED

Liquid Joy 10¢ OFF LABEL

Shampoo 25 OZ. TUBE/4 OZ. BOTTLE HEAD & SHOULDERS 99¢

Scope REFRESHING! 18 OZ. BTL. \$1.49

Shurfine Flour 5 LB. BAG 65¢

Liquid Joy 22 OZ. BTL. 79¢

Shampoo 99¢

Scope 18 OZ. BTL. \$1.49

Shurfine Flour 10¢ OFF LABEL

Liquid Joy 10¢ OFF LABEL

Shampoo 25 OZ. TUBE/4 OZ. BOTTLE HEAD & SHOULDERS 99¢

Scope REFRESHING! 18 OZ. BTL. \$1.49

Shurfine Flour ENRICHED

Liquid Joy 10¢ OFF LABEL

Shampoo 25 OZ. TUBE/4 OZ. BOTTLE HEAD & SHOULDERS 99¢

Scope REFRESHING! 18 OZ. BTL. \$1.49

Shurfine Flour 5 LB. BAG 65¢

Liquid Joy 22 OZ. BTL. 79¢

Shampoo 99¢

Scope 18 OZ. BTL. \$1.49

Shurfine Flour 10¢ OFF LABEL

Liquid Joy 10¢ OFF LABEL

Shampoo 25 OZ. TUBE/4 OZ. BOTTLE HEAD & SHOULDERS 99¢

Scope REFRESHING! 18 OZ. BTL. \$1.49

Shurfine Flour ENRICHED

Liquid Joy 10¢ OFF LABEL

Shampoo 25 OZ. TUBE/4 OZ. BOTTLE HEAD & SHOULDERS 99¢

Scope REFRESHING! 18 OZ. BTL. \$1.49

Shurfine Flour 5 LB. BAG 65¢

Liquid Joy 22 OZ. BTL. 79¢

Shampoo 99¢

Scope 18 OZ. BTL. \$1.49

Shurfine Flour 10¢ OFF LABEL

Liquid Joy 10¢ OFF LABEL

Shampoo 25 OZ. TUBE/4 OZ. BOTTLE HEAD & SHOULDERS 99¢

Scope REFRESHING! 18 OZ. BTL. \$1.49

Shurfine Flour ENRICHED

Liquid Joy 10¢ OFF LABEL

Shampoo 25 OZ. TUBE/4 OZ. BOTTLE HEAD & SHOULDERS 99¢

Scope REFRESHING! 18 OZ. BTL. \$1.49

Shurfine Flour 5 LB. BAG 65¢

Liquid Joy 22 OZ. BTL. 79¢

Shampoo 99¢

Scope 18 OZ. BTL. \$1.49

Shurfine Flour 10¢ OFF LABEL

Liquid Joy 10¢ OFF LABEL

Shampoo 25 OZ. TUBE/4 OZ. BOTTLE HEAD & SHOULDERS 99¢

Scope REFRESHING! 18 OZ. BTL. \$1.49

Shurfine Flour ENRICHED

Liquid Joy 10¢ OFF LABEL

Shampoo 25 OZ. TUBE/4 OZ. BOTTLE HEAD & SHOULDERS 99¢

Scope REFRESHING! 18 OZ. BTL. \$1.49

Shurfine Flour 5 LB. BAG 65¢

Liquid Joy 22 OZ. BTL. 79¢

Shampoo 99¢

Scope 18 OZ. BTL. \$1.49

Shurfine Flour 10¢ OFF LABEL

Liquid Joy 10¢ OFF LABEL

Shampoo 25 OZ. TUBE/4 OZ. BOTTLE HEAD & SHOULDERS 99¢

Scope REFRESHING! 18 OZ. BTL. \$1.49

Shurfine Flour ENRICHED

Liquid Joy 10¢ OFF LABEL

Shampoo 25 OZ. TUBE/4 OZ. BOTTLE HEAD & SHOULDERS 99¢

Scope REFRESHING! 18 OZ. BTL. \$1.49

Shurfine Flour 5 LB. BAG 65¢

Liquid Joy 22 OZ. BTL. 79¢

Shampoo 99¢

Scope 18 OZ. BTL. \$1.49

Shurfine Flour 10¢ OFF LABEL

Liquid Joy 10¢ OFF LABEL

Shampoo 25 OZ. TUBE/4 OZ. BOTTLE HEAD & SHOULDERS 99¢

Scope REFRESHING! 18 OZ. BTL. \$1.49

Shurfine Flour ENRICHED

Liquid Joy 10¢ OFF LABEL

Shampoo 25 OZ. TUBE/4 OZ. BOTTLE HEAD & SHOULDERS 99¢

Scope REFRESHING! 18 OZ. BTL. \$1.49

Shurfine Flour 5 LB. BAG 65¢

Liquid Joy 22 OZ. BTL. 79¢

Shampoo 99¢

Scope 18 OZ. BTL. \$1.49

Shurfine Flour 10¢ OFF LABEL

Liquid Joy 10¢ OFF LABEL

Shampoo 25 OZ. TUBE/4 OZ. BOTTLE HEAD & SHOULDERS 99¢

Scope REFRESHING! 18 OZ. BTL. \$1.49

Shurfine Flour ENRICHED

Liquid Joy 10¢ OFF LABEL

Shampoo 25 OZ. TUBE/4 OZ. BOTTLE HEAD & SHOULDERS 99¢

Scope REFRESHING! 18 OZ. BTL. \$1.49

Shurfine Flour 5 LB. BAG 65¢

Liquid Joy 22 OZ. BTL. 79¢

Shampoo 99¢

Scope 18 OZ. BTL. \$1.49

Shurfine Flour 10¢ OFF LABEL

Liquid Joy 10¢ OFF LABEL

Shampoo 25 OZ. TUBE/4 OZ. BOTTLE HEAD & SHOULDERS 99¢

Scope REFRESHING! 18 OZ. BTL. \$1.49

Shurfine Flour ENRICHED

Liquid Joy 10¢ OFF LABEL

Shampoo 25 OZ. TUBE/4 OZ. BOTTLE HEAD & SHOULDERS 99¢

Scope REFRESHING! 18 OZ. BTL. \$1.49

Shurfine Flour 5 LB. BAG 65¢

Liquid Joy 22 OZ. BTL. 79¢

Shampoo 99¢

Scope 18 OZ. BTL. \$1.49

Shurfine Flour 10¢ OFF LABEL

Liquid Joy 10¢ OFF LABEL

Shampoo 25 OZ. TUBE/4 OZ. BOTTLE HEAD & SHOULDERS 99¢

Scope REFRESHING! 18 OZ. BTL. \$1.49

Shurfine Flour ENRICHED

Liquid Joy 10¢ OFF LABEL

Shampoo 25 OZ. TUBE/4 OZ. BOTTLE HEAD & SHOULDERS 99¢

Scope REFRESHING! 18 OZ. BTL. \$1.49

Shurfine Flour 5 LB. BAG 65¢

Liquid Joy 22 OZ. BTL. 79¢

Shampoo 99¢

Scope 18 OZ. BTL. \$1.49

Shurfine Flour 10¢ OFF LABEL

Liquid Joy 10¢ OFF LABEL

Shampoo 25 OZ. TUBE/4 OZ. BOTTLE HEAD & SHOULDERS 99¢

Scope REFRESHING! 18 OZ. BTL. \$1.49

Shurfine Flour ENRICHED

Liquid Joy 10¢ OFF LABEL

Shampoo 25 OZ. TUBE/4 OZ. BOTTLE HEAD & SHOULDERS 99¢

Scope REFRESHING! 18 OZ. BTL. \$1.49

Shurfine Flour 5 LB. BAG 65¢

Liquid Joy 22 OZ. BTL. 79¢

Shampoo 99¢

Scope 18 OZ. BTL. \$1.49

Shurfine Flour 10¢ OFF LABEL

Liquid Joy 10¢ OFF LABEL

Shampoo 25 OZ. TUBE/4 OZ. BOTTLE HEAD & SHOULDERS 99¢

Scope REFRESHING! 18 OZ. BTL. \$1.49

Shurfine Flour ENRICHED

Liquid Joy