

WEATHER

July 10	82	60	.00
July 11	74	58	.15
July 12	86	62	.00
July 13	91	65	.00

Muleshoe Journal

'The Community Of Opportunity-Where Water Makes The Difference'

Vol. 65, No. 28

10 PAGES TODAY

Published Every Thursday At Muleshoe, Bailey County, Texas 79347

20¢

Thursday, July 14, 1988

Pledges Are Sought To Purchase Local Cemetery

MAIF Re-Groups; New Directors Elected

With outgoing Chairman Jeff Smith presiding, the Muleshoe Area Industrial Foundation was officially reorganized Tuesday evening at the Muleshoe City Hall.

Twenty-nine new members had paid \$100 yearly dues, and a new board of directors was elected from the 29 companies, businesses and individuals represented among the new membership.

Elected to the board were Clifford Black, Duane Castleberry, Duane Lloyd, Howard Watson, Troy Stegemoller, Bob Stovall and James Turnbow.

They are planning a noon meeting today, Thursday, to choose a chairman, vice chairman and secretary/treasurer.

Once a new secretary/treasurer is named, Smith will turn over more than \$16,000, currently in a CD at Muleshoe State Bank, and represent holdover funds from the former MAIF group which had not met since the late 1970s.

Prior to the election, Smith gave a brief background on the former MAIF, and said the former group was instrumental in obtaining the former Protein Processors and Valley Grain, currently located just southeast of Muleshoe off Highway 84.

The former chairman told the group of less than 20 people that Ronald Ashford and Bob Stovall had been the duo who pushed getting MAIF reorganized and regrouped.

He pledged to continue to make his knowledge available and said "I will be happy to share anything I know with the new group."

"Since I have been looking around, I have heard that people are real interested in getting the

Cont. Page 6, Col. 4



The Muleshoe High School class of 1973 will hold its 15th year reunion July 30, 1988. A family picnic will be held in the city park from 11 a.m.-2 p.m.

A dinner-dance is scheduled for the Muleshoe Country Club beginning at 7 p.m.

All classmates, teachers, and friends are urged to attend.

For more information, call Chuck Smith (272-5648), or Sharron Angeley (965-2134).

Tracy Pyle, daughter of Walter and Brenda Lackey, and a junior at Eastern New Mexico University, was on the Dean's honor list for the spring semester.

She is a junior with majors in elementary education and political science. She had a 3.8 out of a possible 4.0 for the semester.

The Women's Division of the Slaton Chamber of Commerce is sponsoring an Arts, Crafts, and Market Day on Friday, August 19.

It will be held on the lawn of Slaton City Square from 10 a.m.-8 p.m. in conjunction with Slaton's Chamber of Commerce "Back-to-School" Sidewalk Sale.

Booth space will be available for arts, crafts, fresh produce, and a variety of merchandise for \$10 each.

Information on reservations can be obtained from: Cindy Barnett, Box 166, Slaton, TX 79364, 806/828-4959.

Myrtle Creamer accompanied
Cont. Page 6, Col. 2



YOUTH BASKETBALL CAMP WELL UNDERWAY--This week, the first of two basketball camps for local youth is underway at the Watson Junior High School gym. Some 80 young people are learning the 'fine points' about basketball each day from thr Muleshoe coaches. Tuesday morning, they were learning basic handling and passing of a basketball. Another camp will be held in a couple of weeks, so if your youngster wants to get in on the action, see Coach Wade Littlefield.

(Journal Photo)

Former Muleshoe Resident Shot After New Mexico 'Copter Escape

From Amarillo Daily News Staff and Wire Reports

A former, Muleshoe, Texas, resident, one of three prisoners who attempted a daring helicopter escape from the Penitentiary of New Mexico's Main Facility near Santa Fe, was transferred to that facility after planning a similar escape from a Los Lunas jail, according to the Valencia County sheriff.

Sheriff Lawrence Romero confirmed Monday that Randy Mack Lackey, 36, was transferred from Los Lunas to the maximum security Santa Fe penitentiary in 1986 after jailers discovered Lackey was planning a helicopter escape.

A jailer learned of the plan while screening a piece of outgoing mail written by Lackey, Romero said.

He said the evidence points to Lackey as the mastermind behind Monday's Santa Fe incident, where a five-seat Aerospatiale Gazelle helicopter landed in the penitentiary's recreation yard and lifted out Lackey and two other inmates.

State police forced the helicopter to land after an 80-mile aerial chase, according to Maj. John Denko, pilot of the pursuing state police helicopter.

About 100 prisoners were in the recreation yard when the helicopter, occupied by a man and a woman, landed about 9:50

a.m., said Don Caviness, a spokesman for the New Mexico Corrections Department. Guards

Frank Ellis

Gets Honor

During the 102nd Annual Convention of the Texas Funeral Directors Association, held June 8 in Arlington, the following resolution was presented:

WHEREAS, the "Major Domino" of Muleshoe, Texas, is an eminent funeral director, having served that community in a professional capacity for more than 20 years; and

WHEREAS, that same outstanding citizen of Muleshoe has rendered valuable public service as a member of the City Council, the First Methodist Church and a participant in every enterprise conceived in Muleshoe for community betterment; and

WHEREAS, that Panhandle town of national renown has shared this funeral director and his talent for leadership with the Texas Funeral Directors Association, such leadership being exhibited as President of T.F.D.-A. in 1977-78, member or chairman of every important association and finally....and perhaps....foremost chairman of the Group Insurance Programs of T.F.D.A.; and

WHEREAS, it is the latter contribution of time and ability to T.F.D.A. Benefit Trust, having been chairman of this vital administrative body since 1977, that has most visibly demonstrated his dedication and good judgement;

NOW, THEREFORE BE IT RESOLVED that the Texas Funeral Directors Association, assembled this 8th day of June 1988, in Arlington, Texas, by this resolution express to Frank Ellis of Muleshoe, Texas our earnest appreciation for the service he performed in his long role as Chairman of T.F.D.A. Benefit Trust, a role from which he resigned this year; and be it further resolved that T.F.D.A. communicate to Muleshoe, Texas, USA:

"We send Frank back to you, but he will forever remain in our hearts."

in two towers fired on the aircraft, he said.

Caviness said Lackey, a licensed pilot, knew how to fly a helicopter. Ronni Crago, spokeswoman for the Bernalillo County Sheriff's Office, said Lackey suffered a shoulder wound during a gun battle with law enforcement officials before being recaptured at Los Lunas.

Lackey was serving a nine-year sentence at the New Mexico penitentiary for larceny over \$20,000 for stealing a Cessna airplane in January 1986.

Jerry Hicks, Bailey County's chief deputy and incoming sheriff, said the stolen aircraft was part of Lackey's escape from the Bailey County Jail in Texas.

Lackey escaped from the jail Jan. 14, 1986, after overpowering a female jailer, locking her in a cell and leaving through an outside door, Hicks said.

He said Lackey stole the airplane in Curry County and flew it to South Carolina, where he was arrested approximately one month later.

Hicks said, "He faces nine years on the stolen aircraft charge and then he faces 16 years in the TDC (Texas Department of Corrections) on drug manufacture and possession charges."

Lackey allegedly operated a drug lab in Bailey County, Hicks said.

Authorities said one of the inmates, identified as Daniel Mahoney, 30, serving a sentence of life plus 60 years out of Hillsboro, Fla., for second-degree murder, remained at large late Monday.

Mahoney fled on foot when the helicopter landed briefly at Mid-Valley Airport in Las Lunas, where Lackey was wounded and captured. Mahoney was being sought by police using dogs and officers on horseback and in airplanes, authorities said.

Dan Taylor, spokesman for the State Department of Public Safety in Santa Fe, said a woman, identified as Beverly Shoemaker, was also taken into custody at Mid-Valley.

Denko said that after leaving Mid-Valley, the Gazelle flew to Coronado Airport, a commuter

Cont. Page 6, Col. 1

It was almost standing room only at Ellis Chapel of the Chimes Tuesday evening, as more than 100 people attended a meeting in an attempt to decide what to do for local citizens to purchase the cemetery located just off Highway 84 northwest of the City of Muleshoe.

For the past several years, Bailey County Memorial Park has been in the hands of a bankruptcy court in Lubbock, after a former owner, H. D. Hunter, sold the cemetery, and the purchaser defaulted on payments.

Since that time, the cemetery has been maintained, when funds have been made available, by Cappy Gatewood.

However, recently, the bankruptcy attorney, David Langston

Plant Owner's

Annual Clinic

Set This Week

The annual homeowners Plant Clinic will be held again this year in Muleshoe on Tuesday, July 19, 1988.

Homeowners who are having problems with their landscape horticulture are asked to call the County Extension Office at 272-4583, in Muleshoe, and leave your name, address and type of problem you have.

A schedule will be developed and home visits will be made by Extension personnel to assist homeowners. Those interested in a home visit are asked to call the Extension office no later than noon on Monday, July 18, to be scheduled for a visit from the following Extension specialist from the Lubbock center:

Dr. Roland Roberts, vegetable specialist; Dr. Harold Kaufman, plant pathologist; or Dr. Pat Morrison, area entomologist.

Many different types of problems can occur to the home landscape plants, such as trees, shrubs, lawns, flowers, and vegetable plants. This is your chance to receive professional assistance on questions which you cannot answer. These home visits are free and available to everyone.

For those who work, a visit can be made to the residence, and you will be notified at a later date the diagnosis made on your particular problem. For persons expecting to be out of town, plant samples may be taken to the Extension office to be checked by the team of specialists.

Remember that noon July 18 is the final time you may schedule an appointment.

of Lubbock, cut off charge accounts for gasoline and other necessities for maintaining the perpetual care cemetery.

After a lot of discussion Tuesday evening, with a number of those present taking part in the discussion, it was decided to take pledges for funds to make an offer to the bankruptcy court to purchase the cemetery.

On Page 6, you will find a pledge form with an address to mail it to. You are encouraged to pledge any amount you can to help purchase the cemetery where it will be owned locally.

And, remember, a pledge will not cost you anything if it is turned down by the court. Your pledge will only cost after the bankruptcy judge accepts a proposal.

It was noted that the last formal submission of a purchase price was some five years ago.

One woman suggested that pledges be taken, see how much is pledged, then take an amount before the bankruptcy judge with a proposal to purchase.

One little known fact is that Langston has turned the cemetery over to a man to sell the local facility.

Coordinators of the meeting on Tuesday evening, Pat Moore and Lewis Wayne Shafer, cautioned those making pledges "do not put yourself in a bind. Pledge only what you feel you can."

Cont. Page 6, Col. 4

Sheriff Resigns;

Deputy Chosen

To Take Over

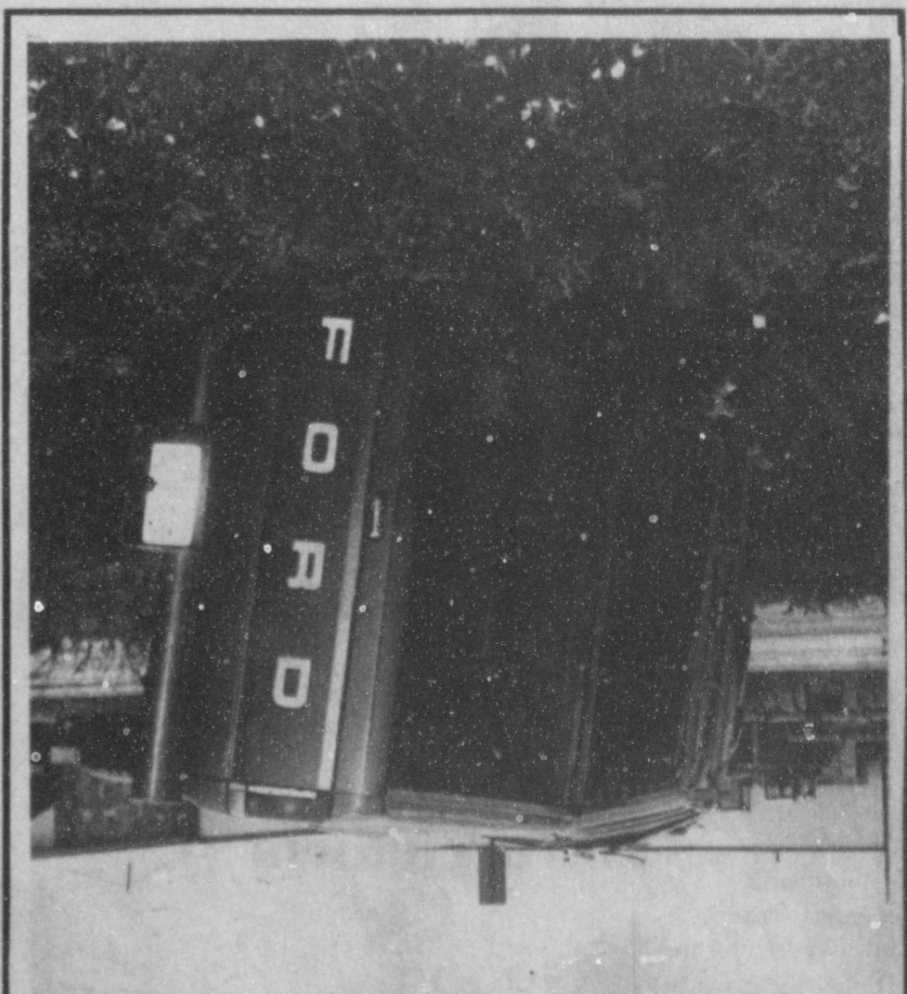
On Monday morning, Bailey County Judge Gordon H. Green received a letter of resignation from Bailey County Sheriff Bob Henderson, who indicated he was resigning effective August 1, and would be leaving Muleshoe.

He said he had accepted employment in another location.

Judge Green said that as the commissioners would be meeting that morning, and would not meet again until August 8, the commissioners voted to accept the resignation, effective at 12:01 a.m. on Monday, August 1.

Commissioners also passed an order appointing Deputy Sheriff Jerry Hicks as sheriff, effective at 12:01 a.m. on August 1.

Deputy Hicks had been scheduled to become sheriff on January 1, 1989. He received the vote in the Democratic Primaries and did not have a Republican opponent for November.



ROLLOVER IN THE RAIN--Sunday morning, three young men escaped with very minor injuries after rolling this pickup in the median in front of the Texas Highway Department. As rain was falling, it was decided that weather was a factor in the late morning accident. Checking the accident was MPD Officer Gary Maddox. (Journal Photo)



FRANK ELLIS

MULESHOE
AREA



Spring/Summer '88

BUSINESS
DIRECTORY
AND
SHOPPING
GUIDE

**We Are Now Re-Open
And Ready To Serve
All Your Dry Cleaning
Needs!**

Lambert Cleaners

123 Main 272-4726

Henry Insurance Agency, Inc.

"Serving All Your Insurance Needs"

111 W Ave. B 272-4581



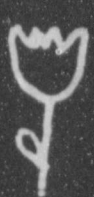
Allstate



KENNETH R. HENRY
CERTIFIED INSURANCE COUNSELOR
REAL ESTATE BROKER



Silk Flowers



- Hand Wrapped
- All Prices
- Custom Arrangements

**Potted Azaleas
\$19⁵⁰**

Muleshoe Art Loft

CAN'T FACE

Those home repair Jobs?

Remember...

It's easier to do a small job now
than to tackle a big job later!



Lenau Lumber Co.

202 E Ash Ave. 272-4222

**For The Best Mexican
Food Come To Viola's**

2002 W. Amer. Blvd. 272-3838

NO. 1—ENCHILADA PLATE

3 Enchiladas (Meat or Cheese)
with Beans **\$3.50**

NO. 2—TAMALE PLATE

4 Home Made Tamales with
Chile Con Carne **\$3.25**

NO. 3—TACOS

3 Tacos (Crispy or Soft) **\$3.00**

NO. 4—CHILE RELLENO

1 Chile Relleno Stuffed with Cheese **\$2.90**

1 Chile Relleno Stuffed with Meat **\$3.25**

(Topped with Salsa Espanola,
Cheese and Beans)

NO. 5—NOE'S SPECIAL

Meat and Bean Burrito Topped with
Chile, Cheese and Jalapeno Peppers **\$3.15**

NO. 6—CARNE GUISADA

(STEW MEAT MEXICAN STYLE)

with Beans, Rice and Corn Tortillas **\$3.65**

with Viola's Flour Tortillas **\$4.25**

NO. 7—CHILE VERDE CON CARNE

Pork Meat with Green Chile, Hot
Peppers, Onions and Spices, Beans, **\$3.65**

Rice and Viola's Flour Tortillas

NO. 8—CHALUPAS

1 Bean and Cheese **\$1.95**

1 Meat, Bean and Cheese **\$2.50**

NO. 9—VIOLA'S SPECIAL

Enchilada (Meat or Cheese), Taco, **\$3.50**

Home Made Tamale, Beans and Rice

(No Substitutions)

NO. 10 - CHIMICHANGA

(MEAT BURRITO) **\$3.25**

Deep Fried, Topped with Bean Sauce and Cheese

Many Other Menu Items Are Available.

Pick-Up Seat Exchange

Complete Seat Overhaul

Replacement
Springs



Molded
Carpets

**McCormick's
Upholstery and Drapery**

1009 S. 1st. Muleshoe, Texas 79347
806-272-4660

Chile Verde Con Carne



Pork Meat with Green Chile,
Hot Peppers, Onions and Spices,
Beans, Rice and Viola's Flour
Tortillas

\$3.65

Viola's Restaurant

2002 W Amer. Blvd. 272-3838

Jones Blair Celebration

Wall Paint 2 gal.

\$10.98

While supply last.

July 7th - 14th

Higginbotham-Bartlett Co.

215 Main 272-3351



**Combination Motors
and
Salvage**

Rt 2 Box 240

Muleshoe, Texas 79347

Gerry Pierce

Day 806-272-4458

Night 806-272-5057



Explorer

Beverage Cooler

1 Gallon **\$5⁹⁹**

1/2 Gallon **\$2⁹⁹**

Fry & Cox, Inc.

401 S. 1st 272-4511

BURRITOS

Meat **\$2.20**

Bean **\$1.75**

Meat & Bean **\$2.50**

Chili On Top **\$.75**



El Nuevo Leal's Restaurant

1542 W Amer. Blvd. 272-3294

THIS WEEK'S SPECIAL:

Crown Victoria

\$2995

Muleshoe Motor Co.

1225 W Amer. Blvd. 272-4251



HES-TEX FEED YARDS, INC.

CUSTOM CATTLE FEEDING

P.O. Box 425

Muleshoe, Texas 79347

Telephone 806/272-7555

Auto Painting-Wrecker Service

-Free Estimates-

Tractor Glass &

Windshields

Shipman & Son Body Shop

410 N 1st 272-4408



HENRY INSURANCE PRESENTED 15-YEAR AWARD--Monday morning, Doyle Umfress, left, of Dallas; and Mark Strickland, right of Lubbock, were in Muleshoe to present a 15-year plaque to Kenneth and Darlene Henry of Henry Insurance Co. For the past 15 years, Henry Insurance has been a representative for United States Fidelity & Guaranty Co, whose home office is in Baltimore, MD. (Journal Photo)

A Very Serious Concern For Texas City Leaders

WASTEWATER MANAGEMENT

Wastewater has become an increasingly serious problem for many Texas cities and counties. Some officials of municipalities are addressing the problem, but others continue to ignore it, according to a director of environmental health with the Upper Guadalupe River Authority.

"We've got to take a hard look at wastewater management," said Lane Wolters of Kerrville.

He addressed a group of bankers, realtors, engineers, city officials, county commissioners, county Extension agents and others during an On-Site Wastewater Management meeting here recently. The conference was arranged by the Texas Agricultural Extension Service in response to the growing problem of on-site wastewater management. Each Texas county, Wolter said, will be affected by House Bill 1875, passed during the last session of the Texas Legislature to regulate on-site sewage disposal systems in the state.

He urged public health officials to take the lead in anticipating wastewater management problems.

Public health officials in counties have "been comfortable with the old method of septic tank installation, the cookbook-type methods of waste disposal," he said.

Kerr County Extension Agent Jerrilyn Ray said the first step in managing on-site wastewater is to conserve water used.

When homeowners experience problems with wastewater disposal, such as with a septic system, often the most economical solution is not to put as much water in the system, Ray said.

"What that boils down to is conserving water inside the home

or business," she said.

"Water is our most valuable resource and we can't take it for granted," Ray said.

Some water use figures, she said, include:

- The average person uses 60 to 80 gallons of water per day.

- The U.S. uses about 355 billion gallons of water daily, with an equivalent of almost 2,000 gallons per person used in industry and agriculture.

- Texas' water use already exceeds the dependable (renewable) supply by about 10 percent, or 1.8 million acre-feet, per year. This deficit is overcome by mining of non-renewable aquifer supplies and reuse of discharged wastewaters.

- Unless present dependable supplies are increased, the state's water deficit could increase to as much as 13 million acre-feet per year, or 80 percent above the present dependable supply in 50 years. This is based on the average of highest and lowest official water use projections.

- It takes about 136 gallons of water to produce and transport one loaf of bread; and an average of 1,400 gallons to produce and transport a hamburger, fries and a drink at a fast-food restaurant.

- About 100,000 gallons of water are required to produce and deliver an automobile.

- Each load in the washing machine uses 30 to 60 gallons of water. The dishwasher uses from 12 to 16 gallons per cycle, while hand washing dishes uses from 8 to 20 gallons.

- About 75 percent of water used in the home is for bathroom use. The sink faucet releases about 4 to 5 gallons per minute and the shower releases about 5 gallons of water per minute. One wasted faucet drip per second can cost homeowners about 2,000 gallons of water per year.

Money Management Can Become Very Involved

Investing wisely, preventing your capital from eroding during inflationary periods and ensuring the growth of your assets in all economic environments have become increasingly difficult in recent years. The more volatile stock and bond markets make it particularly difficult for individual investors to pick securities and time purchases and sales.

We at Shearson Lehman Hutton find that, given these challenges, it is relatively easy for investors who manage their own portfolios to make any one of a number of investment errors:

- * Fail to establish clear objectives.
- * Select securities inconsistently.
- * Have too many different issues for the total size of a portfolio (over-diversification).
- * Have too few issues (under-diversification).
- * Take profits too soon.
- * Fail to take losses promptly.
- * Fail to adjust to changing markets.
- * Ignore the tax effects of investment decisions.
- * Know too little about alternative investments.
- * Often select a broker or money manager for the wrong reasons.

If you spot some of your own investment errors in this list, you may want to consider turning over some or all of your investment funds to professional money managers, and obtain the advantages of professional guidance. Probably the easiest and most affordable way to get professional expertise is to invest in "managed products" -- notably, mutual funds and unit trusts. You can search out funds and trusts that fit your investment goals, or your Financial Consultant can recommend suitable ones.

Both mutuals funds and unit trusts pool your assets with those of many other investors to buy a diversified portfolio of securities

you could not afford by yourself. Both are highly liquid investments -- that is, you can easily sell your fund shares at their current market value. However, there are several differences between these two investment vehicles.

Mutuals funds are actively managed. Securities are bought and sold regularly, according to managers' market judgments. Different types of funds are designed to meet varying investment objectives. Some funds invest primarily in stocks, while others may invest in bonds or money market instruments (such as CDs and treasury bills).

Minimum initial investments are generally \$1,000 (or less), with subsequent investments as low as \$100. In addition, open-ended mutual funds, which deal directly with investors and always stand ready to sell or buy their shares at current net asset value, offer investors the flexibility to exchange shares within the fund group, reinvest dividends and purchase additional shares.

Unit trusts are typically sold in increments of \$1,000 and are passively managed. Once the managers select the securities for the trust's portfolio (usually comprised of government bonds, corporate bonds, municipal bonds or equities) its composition is fixed. Nothing is bought, and nothing is sold. About 65% of all unit trusts invest chiefly in municipal bonds, whose income is not subject to federal income tax. A growing number invest only in municipal issues from individual states, such as New York or California, so that the income is also exempt from state and city income taxes.

More personalized portfolio management is also within your reach as your investments become more substantial. Investors with accounts worth at least \$50,000 can have their portfolios

guided by an individual investment management service. A key advantage of some exclusive services is the daily attention an individual portfolio receives, including such activities as buying/selling securities.

No matter how much you like to make your own investment decisions, you should put the professionals to work with at least part of your portfolio. Your Financial Consultant can advise you on the best ways to do this, given your assets, objectives and style of investing.

Best of Press

Words Differ

Business prophets attempt to tell us what will happen. Business profits tell us what did happen.

—Record, Columbia, S.C.

I was angry with my friend:
I told my wrath, my wrath did end.
I was angry with my foe:
I told it not, my wrath did grow.

—William Blake

Double Talk

Said one angry twin to the other:
"If it wasn't for me you'd have two heads!"

—Gospport, Pensacola

West Plains Medical Center
272-4524

JORDACHE SHIRT

\$9.95 reg. \$30.00

B. Jay's

309 Main - Clovis

Radio Shack
DEALER

JULY SUMMER MARKDOWN SALE

Tandy 1000 SX
With CM-5 Color Monitor

Save \$399⁰⁰ Reg. 1298⁰⁰

899⁰⁰

25-1052/1043

Buy a Tandy® 1000 TX and Get a CM-5 Color Monitor At No Charge!

Save \$299⁹⁵

1199⁰⁰

Reg. Separate Items 1498.95 #25-1600/1043

Auto-Dialing Cordless Telephone
ET-425 By Radio Shack

999⁹⁵ Reg. 149.95

Save \$50

Cordless convenience at 33% off! Features 60-number memory, 2-way intercom capability between phone and base. Tone/pulse dialing! #43-553

40-Channel Walkie-Talkie
TRC-216 By Realistic

999⁹⁵ Reg. 139.95

Save \$40

Now 29% off! Ready to use on all 40 CB channels—no crystals needed. Features 5 watts power for maximum range, LCD channel readout. #21-1663 Batteries extra

Die-Cast 2-Way Speaker
Minimus®-7 By Realistic

Cut 40%
299⁹⁵ Reg. 49.95

Each

Exceptional sound! 7" high. Black, #40-2030. Silver, #40-2034

Personal Cassette Player
SCP-19 By Realistic

38% Off
399⁹⁵ Reg. Separate Items 64.90

Batteries extra

Auto-reverse. With Nova®-34 headphones. #14-1033, 33-1000

Telephone Answerer
TAD-312 By DUÖFONE®

Cut 30%
699⁹⁵ Reg. 99.95

Don't miss important calls! Dual cassettes, voice activation, call-monitor, remote. #43-391

Dual-Powered Calculator
EC-414 By Radio Shack

31% Off
477 Reg. 6.95

Switches from solar to battery power in low light. #65-560

Review Calculator
EC-2015 By Radio Shack

Cut 38%
988 Reg. 15.95

Check for errors by reviewing last 32 memory entries. #65-577

AM/FM/TV-Sound Radio
Pocket Portavision® By Realistic

33% Off
199⁹⁵ Reg. 29.95

Hear VHF-TV news, sports, soaps on-the-go. #12-613 Battery extra

Wilson APPLIANCE, INC.

117 Main Street Phone 272-5531

A Radio Shack Dealer Most Major Credit Cards Welcome

SWITCHABLE TOUCH-TONE/PULSE phones work on both tone and pulse lines. Therefore, in areas having only pulse (rotary dial) lines, you can still use services requiring tones, like the new long-distance systems and computerized services. FCC registered. Not for party lines.

M-M-M!

We've Reduced Our Summer Merchandise 30%

Some items are 50% off.

Lookin' Good

206 Main Phone 272-5052

Bridal Shower Honors Laurie Lloyd

The Old Depot was the scene of a wedding shower Sunday afternoon honoring Laurie Lloyd. Mrs. Duane Lloyd and Laurie Lloyd greeted the guests between the hours of 3 and 4 p.m. Guests were registered by Lacey Lloyd.

Betty Burelsmith served thumbprint cookies, nuts, and pineapple sherbet punch from crystal appointments.

The serving table was covered with a white linen table cloth and accented with a silk floral arrangement of assorted pastel colors. The honoree's corsage consisted of silk pastel flowers.

The hostesses gift was a set of Farberware cookware. Hostesses for the occasion included: Kathy Hagins, Carolyn Harris, Brenda Clark, Jackie Jean Whitley, Gayle Turner, Claudine Embry, Betty Burelsmith, Glenda Dale, Dianne Brown, Jenean Gable, Bonnie Green, Doris Vandiver, Joyce Gist, Gayle Sisemore, Monica Henry, Marilyn Wilson and Betty Waggon.

The person who works for nothing will find himself overworked.



Laurie Lloyd



TRAIN COLLECTION--Beth Watson, a collector of many items, took part of her train collection to the Muleshoe Public Library and displayed them in a show case recently. Her collection includes a replica of the 1976 Freedom Train along with many more going back as far as the 1930's and 1940's. All of these trains are electric and in good working condition. If you are interested in trains, you are encouraged to go by the library and see these collector items.

tri-weekly service started between Lubbock and Texico. The following month, the Railroad Commission of Texas ordered regular service as a common carrier on tri-weekly basis.

\$8.99, values to 22.00, \$5.00; and Mens shoes, values to 40.00, \$14.99.

The news isn't to be confused with opinions about the news.

10 Years Ago

1978

JULY FASHION CLEARANCE

Men's sport coats, values to 48.00, \$14.99; Ladies pants and skirts, values to \$24.00, \$6.99; Ladies shorts, values to 10.00, \$3.99; Men's slacks, values to 34.00, \$14.99; Ladies blouses, values to 24.00, \$6.99; childrens dresses, values to 24.00, \$8.99; Shirts, values to 11.00, \$4.99; Ladies dresses, values to 66.00, \$18.99; Dresses 36.00, \$11.99; Shirts, values to \$12.50, \$6.99; Ladies shoes, values to 24.00,

Muleshoe Journal USPS 367-820
Established February 24, 1924, Published by Muleshoe Publishing Co., Inc. Every Thursday at 304 W. Second, Box 493, Muleshoe, Texas, 79347. SECOND CLASS POSTAGE paid in Muleshoe, Texas, 79347. U.S. Post Office approved.

TA TEXAS ASSOCIATION
Member NATIONAL NEWSPAPER ASSOCIATION WEST TEXAS PRESS ASSOCIATION

L.B. Hall President & Publisher
Sammy Hall Vice President & Controller
Curt Williams News Editor
Dorsett Beach-Advertising Manager
Lila Neo-Bookkeeping

SUBSCRIPTIONS
Muleshoe Journal and Bailey County Journal \$12.50
Muleshoe Journal and Bailey County Journal \$14.75
Muleshoe Journal and Bailey County Journal \$16.50
Elsewhere in Texas \$16.50
Advertising rate card on application

Three Way News

By Mrs. H.W. Garvin

Mr. and Mrs. D.A. Williams from Enochs visited her parents, the George Tysons, Monday.

Mr. and Mrs. Bill Dolle and Darla spent the 4th of July attending family reunions in Littlefield and Lubbock.

Josh McCarty from Logan, N.M. is visiting his grandparents, the Joe Sowders.

Mr. and Mrs. R.L. Davis visited Mr. and Mrs. George Tyson Wednesday evening.

Mr. and Mrs. James Gillentine, Mr. and Mrs. Roy Gillentine and son and Mr. and Mrs. Jimmy Gillentine from Abilene visited their mother, grandmother and great grandmother Saturday.

Mrs. J.T. Lemons from Roswell spent the week end with her daughter, the Bobby Kindle family.

Mr. and Mrs. Bill Dolle and Darla were in Lubbock Friday on business.

Mr. and Mrs. Bill Dupler and Eugena spent the week end at Monahan visiting their daughter, Mr. and Mrs. Bobby Sinclair.

JORDACHE Shorts
\$9.95 reg. \$28.00

B. Jays
309 Main - Clovis

Journal Files

60 Years Ago

1928

MULESHOE OBSERVES GLORIOUS FORTH

The Fourth was a very quiet day in Muleshoe. There was no program here and most everyone spent the day at some of the larger towns where picnics or political rallies were held.

If the Journal is not just what it should be this week, just blame it to the Fourth, and next week we will try to do better. We believe the taking of a day off once in a while is well worth the money and trouble, for, as one good citizen expressed himself this morning "You have to get out and see some of the other sections of the country in order to really appreciate your own."

50 Years Ago

1938

"QUARTER OF CENTURY PROGRESS DAY" PLANNED BY BUSINESSMEN

At the Chamber of Commerce luncheon held Friday noon of last week at the Methodist Church the matter of a big celebration to be held here, probably early in August was discussed and unanimously de-

ecided upon. It will probably be known as "The Quarter Of Century Progress Day", commemorating the twenty-fifth anniversary of the founding of Muleshoe, which occurred September 29, 1913, when the late Edward K. Warren surveyed out this townsite from leagues Nos. 624 and 625 and dedicated them for municipal purposes. It was also in that same year that the Santa Fe Railroad was built into this section of the state.

It was stated by proponents of the plan there were several features of importance that would give valid reason for such a celebration. First would be completion of paving on State Highways Nos. 28 and 214, the Gupton and Moeller brick blocks, the canning factory, the new high school auditorium and various other improvements of very recent consummation.

40 Years Ago

1948

LOCAL MARKETS

Cream---75 cents; Light hens, lb---17 cents, Heavy hens, lb---21 cents, Eggs, doz---32 cents, Hogs, CWT---\$27.50, Wheat, CWT---\$1.96, Maize, CWT---\$2.10, Kiffir, CWT---\$2.10, Hegari, CWT---\$2.19.

30 Years Ago

1958

CORNER DRUG STORE TO OPEN JULY 15

John Smith announced this week that he has leased the McCarty building and will soon open a new drug store in the location.

The store, to be known as the Corner Drug, will be completely new and will offer a complete soda fountain, package medicines, veterinary supplies, cosmetics, gifts and party lines. Opening date for the new store will be about July 15.

20 Years Ago

1968

FIRST SERVICE BEGAN IN 1913

July 4 not only marked the celebration of Independence Day but was the last day for passenger train service through Muleshoe.

The Texas Railroad Commission has approved application of the Atchison, Topeka and Santa Fe Railway to discontinue four passenger trains in the state because the company is losing money on their operation.

The train discontinuance affecting Muleshoe is Number 66-75 and 76-65 between Austin and Farwell which runs through Muleshoe. Other trains will be discontinued and they will be Gainville and Dallas and Fort Worth and Brownwood. On November 14, 1913, the

CALENDAR OF EVENTS
JULY 14-20
THURSDAY, JULY 14
HOBBY CLUB
2:30 p.m.

ODDFELLOWS LODGE
7:30 p.m.

FRIENDSHIP CLUB
2:30 p.m.

TOPS CLUB
6:30 p.m.

MULESHOE SQUARE DANCE CLUB
8 p.m.

FRIDAY, JULY 15
KIWANIS CLUB
6:30 a.m.

MONDAY, JULY 18
MOONLIGHT EXTENSION CLUB
7:30 p.m.

TUESDAY, JULY 19
ALCOHOLIC ANONYMOUS
8 p.m.

REBEKAH LODGE
7:30 p.m.

ROTARY CLUB
12 (noon)

TRIANGLE CB CLUB
8 p.m.

CITY COUNCIL
8:30 a.m.

WEDNESDAY, JULY 20
DUSTY PRAIRIE EXTENSION CLUB
2:30 p.m.

LIONS CLUB
12 (noon)

SONIC
NIFTY FIFTIES
BURGER
COMBO

Celebrate the fabulous era of the 50's at Sonic! You'll enjoy a delicious Sonic burger, an order of Sonic's famous golden brown fries and a medium Dr Pepper... a dynamite NIFTY FIFTIES COMBO MEAL for just:

\$1.99 PLUS TAX
*OR ANY OTHER SOFT DRINK

Sonic Drive-In
1633 W. American 272-3998

the Voks Company

Sidewalk and Going Out Of Business Sale

After 43 Years Of Serving This Area We Are Closing Our Doors Forever!

Everything Must Go! Up To 50% In Each Department
Over \$250,000* Worth Of Our Own Reg. Merchandise Must Be Liquidated

Shoes 2 FOR 1 Only Exception Easy Spirit Walking Shoes & 2 Styles From Nina They Are 30% off	Coats Bought Too Early To Cancel Only Our Usual Brands Jovan Regency & Other Fine Fragrances Reduced For Clearance	Furs If You Ever Wanted One: Now Is The Time SAVE SAVE
Charles of the Ritz Cosmetics 43 Years In Our Store	Dresses Up To Off 50% Our Own Brands Look Good For Less	

PANTIES-BRAS-SLIPS-HANES HOSE-ALL LINGERIE-OUR FAMOUS BRANDS UP TO 50% OFF

Thank You For The Best 43 Years Of My Life
Harry R. Vohs, Owner
418 Main Clovis, N.M.



YOUTHS PARTICIPATE IN ELECTRICITY CAMP--Nine youths and county agent, Kandi McWhorter, from Bailey County, participated in an electricity camp recently, sponsored by Southwestern Public Service Company (SPS) for 4-H members. Approximately 115 4-H'ers from throughout the South Plains attended the camp June 27-July 1 in the Sacramento Mountains south of Cloudcroft, N.M. Back row, (from left) Colin Tanksley, Wade Wheeler and Tadd Young. Front row, April Watkins, Melissa Toombs, Charla Holt, Tiffany Angeley, Carrol Copley, Holly Huckaby and Kandy McWhorter.

Enochs News
By Mrs. J. P. Bayless

The Shults had their annual family reunion at Floydada July 4th, 1988. Those present were John Sniker of Littlefield, George and Emma B. and Linda Baker of Burkburnett, Stanley, Yvonne and Cindy Sniker of Midland, Dave, Shaun and Erica Freeman of Midland, J.C. Snitke and Robert of Enochs. Ray and Wilma Shults, Pampa, Janie Drinnan of Childress, Royer and Marhue Peck, Leveland; Verlan and Corky Leavell Brownfield; Dicie and Clifford Snitker of Morton; Jody and Donya Snitker, Hether and Coble of Edmonson; Franklin and Melissa Nolte, of Lubbock; Curtis and Gwen Snitker of Hart; Bufford and Goldie Wilson of Indep. MO.

Also, Belenda Lesley of Amarillo; Callie D. Shults and Shannon; Betty Shults all of Sundown; Glen Snitker of Hart; Diane Balderas, Dimmitt; Ike and Vera Shults of Collinsville, Okla. Lee Shults of Indept. Mo. Ken and Ronda Lee of Amarillo; and Michall and Ddnul and Lovi Ann.

Mrs. Orene Hall of Anaheim, Ca; Mrs. Oleta Burris of Wellman, and Mrs. Wanda Layton all visited Mrs. Ellen Bayless Monday afternoon while they were visiting the Laytons.

Mrs. Winnie Byars and Mrs. Inez Sanders were in Lubbock Wednesday and visited Mr. and

Mrs. Jeter Fegian.

Mrs. Edward Crume and Mrs. Etta Layton visited their sister, Mrs. Juanita Snow at the Nursing Home in Muleshoe, Thursday.

Mr. and Mrs. E.N. McCall visited their daughter Mrs. Robert George at Lubbock, Thursday also drove to Slaton to the other daughters, Mr. and Mrs. Steve Mosser's to help the twin grand-children Kim and Kerry celebrate their 17th birthday. The McCall's had their birthday cake baked by Mrs. Ann Johnson at Muleshoe, it was decorated with blue and white icing with a brown pair of boots said you are one more pair.

The Autry family had their family reunion at the home of Mrs. Myrna Turney, home during the holidays, there were 55 present. Mr. and Mrs. Billy West of Tatum, N.M., Mr. and Mrs. George Autry from Pep, N.M.; and Mrs. Gene Autry of Houston, Mrs. Juanita Jackson of Clovis, N.M., one brother John was unable to attend.

Mr. and Mrs. Bill Key visited her sister and husband, Mr. and Mrs. J.P. Meek at Canadian they returned home Friday.

Mrs. Goldaan Stroud and daughter, Mrs. Sandra Dickey of Lubbock drove to Oklahoma Friday and spent till Sunday with her brothers, a sister & Mr. and Mrs. James Wyhtsitt and Bill Smith and the Clayton Smiths, Lem Smith and Bill Smith.

Who Knows?

1. By what other name was the Battle of Little Big Horn known?
2. Name the North Star State.
3. Where is the Tiber River?
4. What is measured by troy weight?
5. Who wrote "Battle Hymn of the Republic?"

Answers to Who Knows

1. Custer's Last Stand.
2. Minnesota.
3. Italy.
4. Precious metals, such as gold and platinum.
5. Julian Ward Howe.

Golden Gleams

Let not the sun go down upon your wrath.

—Ephesians 4:26

Nursing her wrath to keep it warm.

—Robert Burns

The tigers of wrath are wiser than the horses of instruction.

—William Blake

He who curbs his wrath merits forgiveness for his sins.

—Hebrew Proverb

Cursed be their anger, for it was fierce; and their wrath, for it was cruel.

—Genesis 49:7

Choosing Nutrition At The Salad Bar

The interest in healthy foods among today's on-the-go consumers has created a boom in salad bars at restaurants, fast food chains and even supermarkets.

A 1988 national survey conducted for *The Packer*, a fruit and vegetable industry publication, found that 45 percent of supermarkets now have salad bars and 51 percent of produce consumers use them at least once a month.

However, patronizing a salad bar doesn't automatically result in healthy eating.

"What people get nutritionally from a salad bar depends entirely upon the choices they make," said Dr. Alice Hunt, a nutrition specialist with the Texas Agri-

cultural Extension Service.

A salad of iceberg lettuce with dressing, for example, will be high in fiber and low in calories if you don't over-do it on the dressing, according to Hunt.

"But you can do better nutritionally by adding vegetables that are high in vitamins A and C, such as romaine lettuce, spinach, broccoli, carrots, cauliflower or green pepper," she said.

"If your salad is supposed to be an entire meal, you should also include some protein foods, such as bacon bits, shredded cheese or chopped egg," said the specialist.

"Some nutrients, such as iron, thiamin and niacin are supplied primarily by foods you don't often see at salad bars, such as meats and whole grain products. So you may want to balance out your diet by eating these at another meal during the day," she said.

Hunt said a salad bar is often

not the best place to find a low-calorie meal, unless you can show some restraint, both in serving size and what you select.

"By choosing potato and macaroni salads, gelatin, fruit salad with whipped dressings and cole slaw in addition to your vegetables, you can wind up with more calories than a regular meal," said the specialist.

To keep the calorie count down, the nutritionist suggested sticking with plain raw vegetables and diet dressings, avoiding pickled foods and the prepared salads that use high calorie dressings.

Latest Arrivals



Kristin Leeanne Barberi

AIC Geno and Karen Barberi of Clovis, N.M. are the proud parents of a daughter, Kristin Leeanne, who was born at 4:26 p.m. Wednesday, July 6 in Cannon Air Force Base, Clovis.

Kristin Leeanne weighed seven pounds and eight ounces and was 19 and half inches long. She is the first child for the couple.

Grandparents are Mr. and Mrs. Darrell Kenemer of Muleshoe and Mr. and Mrs. Eugene R. Barberi of Suffield, Conn.

Great grandparent is Lowell Walden of Earth.

Cody Garreh Black

Mr. and Mrs. Cliff Black are the proud parents of a son born at 3:37 p.m. Tuesday, July 5 in the Methodist Hospital at Lubbock.

The young man weighed eight pounds and 11 ounces and was 21 inches long. He has been named Cody Garreh.

Grandparents are Ann Moore of Plainview and Eugene and Gladys Black of Muleshoe.

Great grandmother is Mrs. O.H. Lorange of Amherst.

Sarah Dichelle Kelton

Mr. and Mrs. Roby Kelton of Plains are the proud parents of a daughter born at 11:03 a.m. Tuesday, July 5 in Methodist Hospital at Lubbock.

The young lady weighed five pounds and seven ounces and has been named Sarah Dichelle. She is the first child for the couple.

Grandparents are Charles and Dolores Harvey of Muleshoe and Mr. and Mrs. Bagwell of Plains.

Great grandparents are O.E. McMillen of Lorenzo, Alice Kelton of Muleshoe and Nell Jordan of Carlsbad, N.M.

In Fashion

A terrific looking outfit for vacationers is the jumpsuit with jacket. The jumpsuit has a camisole-style top with spaghetti straps, elastic at the waist with tapered legs. The finger-tip jacket features a shawl collar with patch pockets and push-up sleeves.

On the beach or boardwalk, coordinating cover-ups from sarongs to wrap-front jackets give swimwear a smart look. Stripes or large flowered jackets are worn with the very popular tank suits.

The gardener is now having a field day with expectations.

There's no way to accurately predict what people will do.

Three-Way News
By: Mrs. H.W. Garvin

Mrs. Ada Long and Mrs. Pearl Waltrip from Amarillo spent the week end in the community visiting and seeing after Mrs. Longs farm.

Tova Huff from Wolforth is visiting her grandparents, the Bud Huffs.

Lewis Mowyer preached at both morning and evening services at the Three Way church Sunday.

Mrs. Ada Long and Mrs. Pearl Waltrip from Amarillo were supper guests in the home of Mrs. H.W. Garvin Sunday.

Mike Strawn was a dinner guest in the Bill Dolle home Sunday. He preached at the Maple Church of Christ Sunday.

The community has received about 3 to 4 1/2 inches of rain the past week.

Summer Clearance

Shorts
Tops
35% off Select Items
Pants
Skirts

J & L Fashions
202 Main Muleshoe
Visa, Mastercard, 272-3000 Discover, Layaways

Electricity The Hidden Cost Get The Most From Your Freezer

The money saved by freezing fresh produce or food bought on sale can easily be eaten up by energy costs if you don't make good use of your home freezer.

A frost-free freezer costs about \$15 per month for electricity, depending upon its size and your local electric rates. You can keep your freezer from using more electricity than necessary by making sure it operates efficiently, according to Bonnie Piernot, a consumer economics specialist with the Texas Agricultural Extension Service.

"A freezer inside the home requires less energy than one kept in the garage because it doesn't have to work as hard to maintain its low temperature," she said.

"When the garage is the only space available, put the freezer against an inside wall, if possible, since it will be cooler there. If your garage has no ventilation, consider adding a roof vent for air circulation and lower temperatures," said Piernot.

The specialist said a full freezer runs more efficiently than one that's half empty. If you use your freezer very little, consider pulling the plug on it, buying only what you need for a short period and storing it in the refrigerator-freezer.

"Older freezers often use extra energy because they have leaky gaskets that let cold air escape," she said. "Test the rubber gasket by placing a piece of paper in the door and closing it. If you can pull the paper out without tearing it, the gasket needs to be replaced."

Depending upon the size of the freezer, Piernot said replacing a rubber gasket is about a \$15-25 do-it-yourself job.

"Don't freeze foods you eventually have to throw away. If your family doesn't eat zucchini, for example, freezing quarts of it will simply be a waste of money. Freeze foods you need and use most often and in amounts you can use within the recommended storage item," said the specialist.

For best quality in frozen foods, Piernot suggests checking the temperature of the freezer with a freezer thermometer to make sure it is at 0 degrees Fahrenheit or less.

"Invest in moisture - vapor proof plastic bags and wraps, freezer wrap, freezer containers or heavy duty foil to prevent freeze burn," she said. "Don't try to cut corners by using old plastic bread bags or containers not meant for freezing since that

will just reduce the quality of the food."

"Also label and date frozen food packages. Then keep a simple inventory of your freezer to tell you what's on hand and remind you to use packages of food within the recommended storage time," said the specialist.

Clearance Sale
up to **50% OFF**
Sidewalk Sale Saturday
Evan Picone Hose 50% OFF
Lady You-Nique
420 Main

Tankersley's
SIDEWALK BAZAAR
Unbelievable Savings UP TO **75% off**
Saturday, July 16th

INSIDE SAVE UP TO 50%	OUTSIDE SAVE UP TO 75%
--	---

- Men's Suits
- Women's Dresses
- Men's Sport Coats
- Women's Blouses
- Men's Slacks
- Women's Sportswear
- Men's Dress Shirts
- Women's Jewelry
- Men's Sport Shirts
- Women's Lingerie
- Men's Swimwear
- Women's Cotton Sweaters
- Men's Sportswear
- Men's Dress Shirts
- Women's Separates
- Men's Knitshirts
- Women's Slacks
- Men's Sport Shirts
- Women's Shoes
- Men's Shorts
- Women's Blouses
- Men's Slacks
- Women's Hosiery
- Men's Shorts

• Mastercard, American Express or Tankersley's Charge Welcome.
• All Sales Final - No Refunds Or Layaway
• No Try-ons Of Sidewalk Merchandise
• Offers Subject To Prior Sale

Tankersley's

Escape...

Cont. from Page 1

airport on Albuquerque's north side, where it hovered briefly about 20 feet in the air as police on the ground drove up the airstrip.

The craft turned south as a state police helicopter piloted by Denko joined the Customs Service UH-60 Sikorsky Black Hawk helicopter in the chase.

When the Gazelle reached Albuquerque International Airport on the southern end of the city, it tried to shake the pursuit helicopters, first trying to turn into the Customs Service craft, then trying to force the state police copter into a construction crane, Denko said.

The Gazelle landed on a ramp at the airport at 11:38 a.m. with the other two helicopters right behind, Denko said.

One man leaped out, "looked around for a second, put his hands up and flattened on the ground," he said.

Denko said the man, identified as inmate Francis Preston Mitchell, 26, did not offer resistance. Mitchell is serving a life term out of Summit County, Utah.

He said the pilot, Charles Bella, 43, of El Paso, Texas was found sitting in the helicopter, handcuffed to the controls. Authorities were investigating Bella's story that he went to Santa Fe to pick up a fare he had contracted for and was hijacked, Denko said.

The third escapee was captured also.

You can never tell when careful driving will save your life.

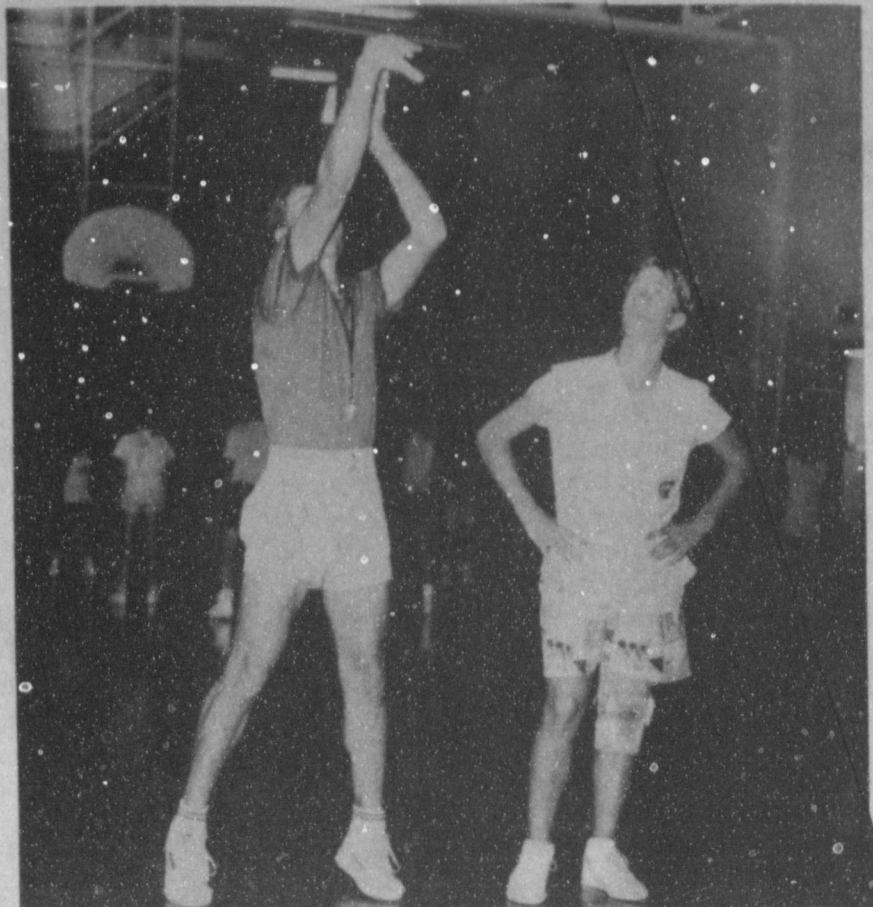
'BILLY THE KID'
Historical/Musical Drama

1988 - Second Season
Caprock Amphitheatre

In Eastern New Mexico
10 miles south of Interstate 40 (Exit 356) at San Jon
Along the top of the Bluffs of the Llano Estacado
(49 Miles north of Clovis on Hwy 209 & 469)

June 16-Aug 20

Thurs., Fri., & Sat. nights 8:30 (Mtn)
Show tickets: \$6 adults, \$3 children under 12 and \$5 for Senior Citizens (65 & over) and for groups of 15 or more. Only groups of 15+ need make reservations - 3 weeks in advance.
P. O. Box 337, San Jon, NM 88434
1-505-576-2455
B-B-Q 6:30 - Adult \$5, Under 12 \$3.50



THIS IS THE WAY TO THROW--Muleshoe basketball coach Wade Littlefield is watched very carefully at the Muleshoe Basketball Camp as he shows a young basketball player the right way to lob the basketball. The first of two camps is going on this week.

(Journal Photo)

Around Muleshoe

Cont. from Page 1

her grandson, SFC and Mrs. Randy Williams and children, Cathy and Randy Lee to Cozad, Nebraska last week.

They returned home Monday night after visiting in the homes of two of Mrs. Creamer's daughters, Mrs. Kirk (Carolyn) Herrington and Mrs. Johnny (Jan) Schneider, and other family members.

Muleshoe Young Homemakers will sponsor a blood drive Thursday, July 21, from 11 a.m.-8 p.m. in the Muleshoe Church of Christ.

According to United Blood Services in Lubbock, more blood is used at this time of year, and less is being donated. It takes 100 units of blood daily to meet the demands of the area hospitals.

"Don't Be A Chicken," is theme of this blood drive and you are encouraged to go on out to the Muleshoe Church of Christ and donate blood.

You never know when the life you save might be your own or that of a family member!

The Muleshoe Athletic Booster Club will meet at the Old Corral

on Thursday, July 14, at 8 p.m. to make plans for the coming school year.

All members are encouraged to attend.

Booster Club Reporter said "We are looking forward to a great year in all sports, and we need your support."

The KKYN/Bar None Rodeo at Plainview is set for July 21-23 and nightly performances begin at 8 p.m. in the Bar None Rodeo arena on South FM 114. C&C Rodeo Company of Childress is the stock producer again this year.

Books for entries will open July 18 from 10 a.m.-6 p.m. For entries, call 817-937-8401.

Merchants will be having sidewalk sales all three days. The rodeo parade will begin at 2:30 p.m., Saturday, July 23, in downtown Plainview.

On Friday, July 22, the Maines Brothers Band of Lubbock will play for the dance beginning at 9 p.m. and Slow Motion of Plainview will perform at the dance on Saturday night. Both dances will be held at the north end of the rodeo arena.

For more information on any of the events, call 806-293-2661.

The West Texas Bowhunters Club is sponsoring an Archery Tournament benefitting the Muscular Dystrophy Association on July 30-31 at Buffalo Springs Lake Target Range, near Lubbock.

The tournament will be a field round in which participants play on either Saturday or Sunday. Starting time is 9 a.m. each day.

Entry fee is \$15 per person. Pre-registration can be made by sending in entry fee with name, TFAA class, and tournament day (Saturday or Sunday) to: Bonnie Bewley, 5403 73rd, Lubbock, TX 79424.

Trophies and prizes, such as hunting trips will be awarded to the tournament leaders as well as door prizes throughout each day. For further information, call Mike Bewley at 793-8179.

July 15-17 are the dates set for the Portales Open Tennis Tournament, sponsored by the Portales Tennis Association. Deadline for entry is Wednesday, July 13, at 8 p.m. Fees are \$7 for singles and \$14 per team for doubles.

Entrants are limited to three events. Draws will be combined as necessary, so players are asked to indicate if they do not wish to be moved to another division.

Entry checks may be sent to Portales Tennis Association, 320 East 17th Lane, Portales, N.M. 88130.

For additional information, call Bill Wahlman at 505-356-6747.

GRAIN PRICES
YELLOW CORN. 5.02 cwt
YELLOW FOOD CORN.. call
WHITE FOOD CORN.. call
MILK.....4.31 cwt
SOYBEANS.. 7.51 cwt
NEW WHEAT.. 3.25 cwt
COMMODITY CERTIFICATES
99.5%
Prices July 12, 1988
MARKETS COURTESY OF
FARMERS CO-OP
ELEVATORS
272-4335 Muleshoe, Texas

Comptroller Rep Slates Local Visit

State Comptroller Bob Bullock said Monday that a representative from his agency will be in Muleshoe Thursday, July 21, to answer questions about Texas taxes and assist taxpayers with paperwork and problems.

"I don't want to see state taxes turn into a burden for folks who can't get to a field office. Our visits are a service we're happy

to provide to Texas taxpayers," Bullock said.

Jim Chauncy, enforcement officer, from the Lubbock field office will be at the Bailey County courthouse, in the commissioner's courtroom, from 1-3 p.m. The public is welcome and there is no charge, added the Comptroller.

"I'm sending my employees

out to help people with questions, filling out forms, and working out problems on a local, one-to-one basis. There's some things you just can't do as well over the phone or through the mail," Bullock said.

Muleshoe area taxpayers who can't attend the courthouse seminar can still get individual tax assistance by calling the Comptroller's toll-free telephone number, 1-800-252-555, from any where in Texas.

The Lubbock office, headed by David Cain, serves 24 counties, including Bailey County.

Texas A&M specialist says pari-mutuel betting will boost horse industry

COLLEGE STATION — Texas' rich and traditional horse industry will be off and running with pari-mutuel betting now approved because more money will stay in the state and be pumped into the industry, says a horse specialist at Texas A&M University.

"A lot of people have a misconception of what pari-mutuel wagering is. It means that people will be wagering among themselves and is not like a gambling casino where people wager against the house," says Dr. Gary Potter of Texas A&M's Animal Science Department.

The economic benefit of legalized pari-mutuel betting is estimated at over \$100 million a year in direct taxes paid to the state, and with the multiplier effect will run into the billions of dollars, Potter said.

The new law will also promote additional research, particularly research on horses relating to physical fitness, health and the general well-being of the horse and the demand will also increase for college-trained students, Potter added.

Industrial Foundation

Cont. from Page 1

Industrial Foundation started up again. Businesses in town are ready to expand, and I would urge to explore the possibility of expanding local businesses first, then looking around for new industry."

The 39 new members of the Muleshoe Area Industrial Foundation and their representatives include: Clifford Black; Southwestern Public Service Company; Ronald Montgomery; Dave Marr, Jr.; Poyner's Home & Auto, Paul Ponor; Valley Grain Products, Inc.; James Turnbow; Harvey Bass Appliance, Harvey L. Bass; and Harrett Produce Company, J. Bruce Barrett.

Also, Farmer's Cooperative Elevator, Robert Johnson; Wied-

Pledges Sought...

Cont. from Page 1

This plea was made to older people who live on only Social Security, and do not have large amounts to pledge. It also was a plea to those on other fixed incomes.

Despite a few raised voices at times, the people were all of one accord--Bailey County Memorial Park Cemetery needs to be owned locally -- with local control.

Immediately following the meeting, pledge cards were being turned in as an effort is being made to collect as many pledges as possible for presentation to the court in Lubbock.

After a Muleshoe Journal story on June 23, funds were again made available to maintain the cemetery, and Gatewood is continuing to keep it mowed and the grave markers clean.

Be sure to get your pledge in, any amount \$5 or \$500 can and will help purchase the cemetery by local people.

I PLEDGE \$ _____ TO THE FUND TO PURCHASE THE BAILEY COUNTY MEMORIAL PARK CEMETERY. I UNDERSTAND IF OUR OFFER IS NOT ACCEPTED, BY THE TRUSTEE, THEN THIS PLEDGE IS NOT BINDING.

NAME: _____

ADDRESS: _____

TELEPHONE: _____

MAIL TO: Box 403, Muleshoe, Tx 79347

B & B Medical Supply Inc.

Now Open
For All Your Medical Supply Needs.

It is no longer necessary to go out of town. If you're receiving service from another supplier and would like to change to a home town company Please Call.

Respiratory and Hospital Equipment For Your Home!

Oxygen
Breathing Machines
Wheelchairs
Walkers
Canes
Crutches
Hospital Beds and accessories
Bathroom Aids
Diabetic Aids
Ostomy Supplies
Incontinent Care Items

We are a Medicare participating supplier filing all insurance claims.
Free Delivery — 24 Hour Service

Mark Benedict
Respiratory Therapist
516 S. 1st Call Collect 272-3707
Covering Muleshoe And Surrounding Area

The West Texas Bowhunters Club is sponsoring an Archery Tournament benefitting the Muscular Dystrophy Association on July 30-31 at Buffalo Springs Lake Target Range, near Lubbock.

The tournament will be a field round in which participants play on either Saturday or Sunday. Starting time is 9 a.m. each day. Entry fee is \$15 per person. Pre-registration can be made by sending in entry fee with name, TFAA class, and tournament day (Saturday or Sunday) to: Bonnie Bewley, 5403 73rd, Lubbock, TX 79424.

Trophies and prizes, such as hunting trips will be awarded to the tournament leaders as well as door prizes throughout each day. For further information, call Mike Bewley at 793-8179.

July 15-17 are the dates set for the Portales Open Tennis Tournament, sponsored by the Portales Tennis Association. Deadline for entry is Wednesday, July 13, at 8 p.m. Fees are \$7 for singles and \$14 per team for doubles.

Entrants are limited to three events. Draws will be combined as necessary, so players are asked to indicate if they do not wish to be moved to another division.

Entry checks may be sent to Portales Tennis Association, 320 East 17th Lane, Portales, N.M. 88130.

For additional information, call Bill Wahlman at 505-356-6747.

GRAIN PRICES
YELLOW CORN. 5.02 cwt
YELLOW FOOD CORN.. call
WHITE FOOD CORN.. call
MILK.....4.31 cwt
SOYBEANS.. 7.51 cwt
NEW WHEAT.. 3.25 cwt
COMMODITY CERTIFICATES
99.5%
Prices July 12, 1988
MARKETS COURTESY OF
FARMERS CO-OP
ELEVATORS
272-4335 Muleshoe, Texas

CARQUEST AUTO PARTS STORES

HOT JULY SALE

3M Super Weather Strip Adhesive 2.99
Berryman B-12 Chemtool 1.79
Oscillating Fan 9.99
Original Formula N° 7® Rubbing or Polishing Compound 1.49
WORLD PARTS AUTO PARTS FOR IMPORTS 5.00 OFF

Available at participating CARQUEST Auto Parts Stores listed below

Muleshoe Auto Parts
217 N. First Muleshoe 272-4596
Right Parts • Right Price • Right Advice

'88 Muleshoe Youth Baseball Season Nears End

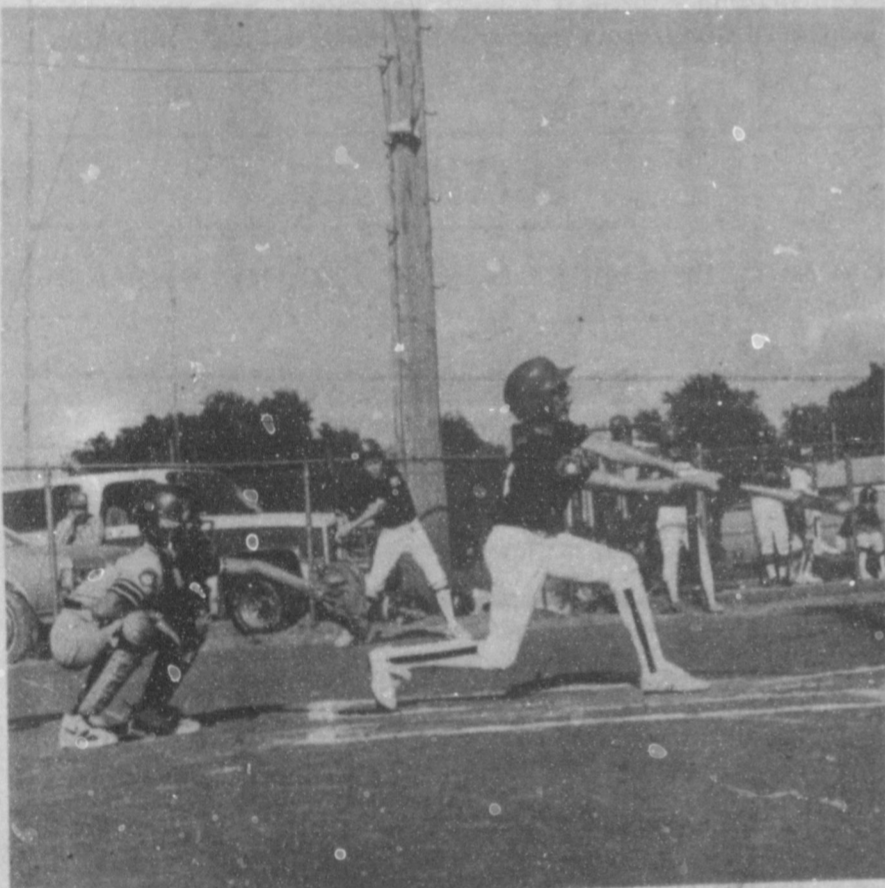
All-Star Action Getting Underway



WINNER OF TOURNAMENT---Mario Deloyas, Danny Pollard and Herbert Olivarez coached the Bears, sponsored by First Bank. The team was second for the season, but came back and won the Mustang League Tournament. Pictured (not in order) are team members Jarrod Redwine, Cyrus Norman, Rolando Estrada, Joe Bob Orozco, Coleman Strahan, Marcus Mann, Douglass Field, Stefan Sutton, Aaron Favor, Yoel Reyes, Ray Lee Rincon, Kenneth Gilbreath and Damon Davenport. (Journal Photo)



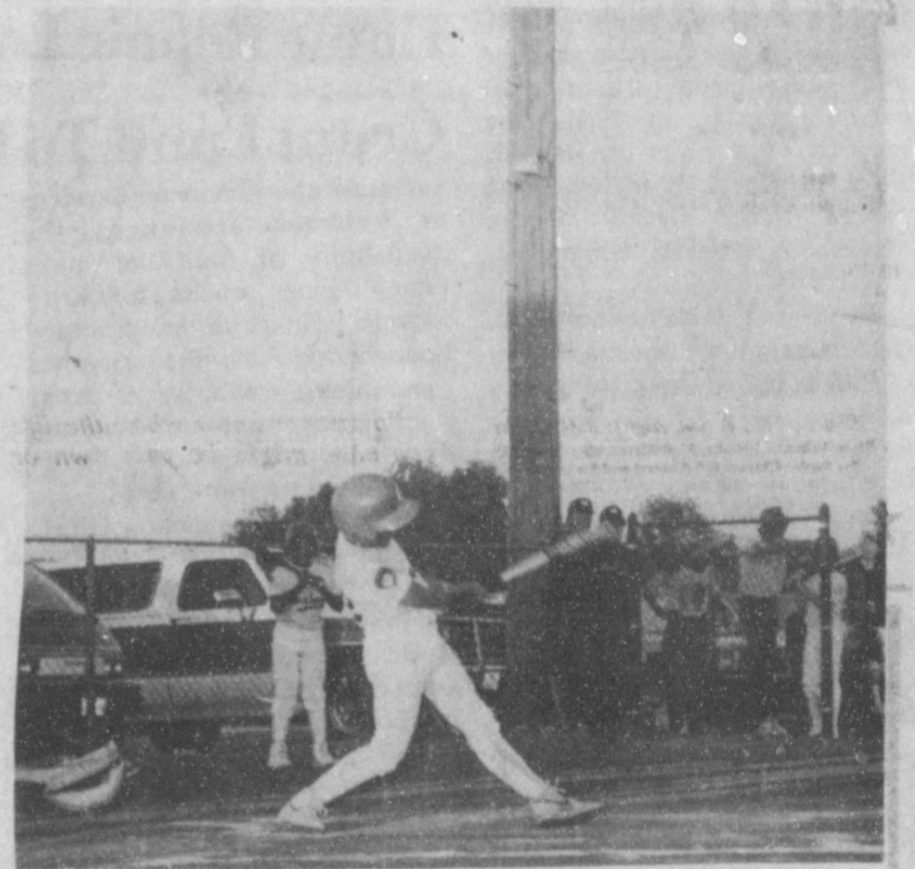
FIRST PLACE PINTO LEAGUE TEAM---G&S Chimney Sweep sponsored the Pinto League first place Purple team this year. Coaches were Mike Lopez and Joe Henry Camarillo. Team members, (not in order) were Eric Posadas, Nikki Sutton, Bonnie Hall, T.J. Brown, Blake Gartin, Michael Lopez, Martin Oliver, Chris Reyna, Krista Bray, Nick Hall, Jeremy Johnson, Melissa Aguirre and Trae Fahtrapp. (Journal Photo)



IT'S A SWING--AND UNFORTUNATELY, A MISS---Chad Freeman gets 'E' for effort when he made a great swing, and a slight miss during the All-Star Game at Bovina Monday night. The 12-year-old All-Stars from Muleshoe defeated Bovina, 8-7. (Journal Photo)



HEADED FOR HOME---Chad McCormick races around the base headed for home at Bovina Monday night. This week, the Muleshoe Youth Baseball All-Stars are competing in a tournament at Bovina. Chad is a member of the 12-year-old All-Star Team. (Journal Photo)



ELEVEN-YEAR-OLD ALL STARS IN ACTION---This unidentified player from Muleshoe was one of the 11-year-old All-Stars who competed in Bovina Monday night during the annual All-Star Tournaments. Action continues this week. (Journal Photo)



UNDEFEATED FIRST PLACE BRONCO TEAM---The Kiwanis Club sponsored the undefeated K Bars, who won the Bronco League. They were coached by Carl Gable and Ronnie Bunch. Team members (not in order) were Pedro Nunez, Chad Freeman, Michael Nash, Levi Obenhaus, Jamie Williams, Preston Gable, Josh Slayden, Corey Dodd, Chad Johnson, Leroy Rojas, Albert Garcia, Michael Jaramillo and Ruben Jaramillo. (Journal Photo)



FIRST PLACE MUSTANG TEAM---Winning first place for the season, and second place in tournament action were the Fireballs, sponsored by Pay-N-Save and coached by Derrel Embry and Derrell Matthews. (Not in order) team members were Scott Stockman, Isaac Miramontez, Harvey Alfaro, Aaron Purdy, Kyle Embry, Kendall McDaniel, Jerome Clemmons, Rico Aguirre, Scotty Mills, Luke Bruns, Jarrod Fuller, Zack Matthews and Gerardo Loya. (Journal Photo)



DIMPLE SIMS

**Dimple Sims
Funeral Services
'Held Tuesday**

Funeral services for Dimple Dee Sims, 67, were held at 11 a.m. Tuesday, July 12 in Ellis Funeral Home Chapel of the Chimles with the Rev. Richard Edwards, pastor of the First United Methodist Church, officiating.

Burial was in Bailey County Memorial Park under the direction of Ellis Funeral Home. Muleshoe Rebekah Lodge will conduct graveside services. Mrs. Sims died at 6:37 a.m. Saturday in St. Mary's Hospital at Lubbock.

Born Sept. 2, 1920, in Dimmitt, Mrs. Sims had been a resident of Muleshoe since 1945, moving here from Big Square Community. She was a home maker and retired rural route mail carrier, retiring in 1984. She married Oron Sims on Dec. 5, 1946, in Clovis, N.M. She was passed Noble Grand of the Muleshoe Rebekah Lodge No. 114, I.O.O.F.

Survivors include her husband, Oron; a daughter, Rosetta Bishop of Clovis, N.M.; two sisters, Eris Kennedy of Lubbock and Iona Elliott of Logan, N.M.; two brothers, Gerald L. James of Camoga Park, Calif. and C.W. James of Comanche; a granddaughter, Vanda Thorp of Roswell, N.M.; a grandson, Darren Bishop, of Sacramento, Calif.; a great grandson, Jordan Bishop of Sacramento, Calif.

**Patients At
West Plains
Medical Center**

JULY 9
Kathy Foster
JULY 10
Ricky Page, Sarah Mitchell and
Baby Boy Mitchell

**Make sure your equipment
is ready to make hay when
you're ready to make hay**

The hay-making pros at John Deere have all the parts you need to keep your John Deere mower, rake and baler in top condition. They're all top quality, all at everyday low prices.

New Dura-Cut™ knife sections, for instance, are double heat-treated, chromed, and have deeper serrations for longer life. For optimum raking performance, count on John Deere highly flexible rubber-ball rake teeth to pick up all your crop. And to ensure smooth power delivery for mowing, conditioning, baling or chopping, install our top quality U-joint kits.

Check over your equipment, then check out our prices. For the price of most imitations, you can own the real thing. See us today.



**LEADERSHIP
YOU CAN COUNT ON**

Dent & Co.
W. Hwy. 84 Muleshoe 272-4296

**SPS Decreases Rate
To City, Rural Users**

Customers in Texas cities served by Southwestern Public Service Company (SPS) soon should receive their second electric-rate decrease of the year. Also, SPS's rural customers should have their rates lowered to match rates within city limits, SPS announced early this week.

The decreases in effect and proposed total \$20.6 million, or 4.3 percent, and reflect lower SPS expenses resulting primarily from federal tax reform, said Sam Hunter, SPS vice president of rates and economic research.

The proposed decreases were agreed to Friday, July 8, by SPS, the staff of the Public Utility Commission of Texas (PUCT), the state's Office of Public Utility Counsel, the Texas Industrial Energy Consumers and the U. S. Department of Energy.

Details of the agreement are being worked out, and once approved, the reduction would be considered effective as of July 8, Hunter said. Approval from city and state regulators is expected within 35 to 60 days. A customer's first bill on which the reduction is calculated would include a credit recognizing the effect of the lower rate since July 8.

"This timing allows our customers to, in effect, receive lower rates even before the regulatory process is complete," Hunter said. "We worked out this arrangement in order to extend lower rates to all of our customers as soon as possible."

Because of an earlier agreement between SPS and the Texas cities it serves, customers within city limits received a 3.1 percent decrease effective March 28. Upon approval from the cities, these customers will receive an additional 1.2 percent decrease, Hunter said, to match the rural deduction of 4.3 percent.

In Texas, cities have original jurisdiction over rates within their city limits. The PUCT regulates rates in rural area SPS will file with the PUCT for approval of the rural rate decrease and with 74 Texas cities it serves for approval of the rate decrease within city limits.

The percentage of rate decrease varies slightly among types of electric customers. Residential customers will receive a net 5.2 percent decrease compared to rates in effect at the first of the year.

A monthly electric bill for a rural residential customer using 1,000 kilowatt hours would drop \$4.09, from \$73.51 to \$69.42. The bill for a customer within the city limits using 1,000 kilowatt hours dropped \$3 on March 28 and should decline another \$1.09, resulting in a bill of \$69.42.

"These rate reductions represent a cooperative effort among all parties," Hunter said. "We believe these rate decreases can help stimulate economic development and enhance opportunities for growth in our service territory."

**Home Repair Loan,
Grant Fund To End**

Guadalupe Economic Services of Lubbock announces the availability of funds to make major home repairs for low-income, elderly or handicapped homeowners in the counties surrounding Lubbock. A grant from Farmer's Home Administration is making these funds available to the rural areas.

Margy McMennamy, GESC Housing Director, states that this money can be used for such repairs as roofing, plumbing, electrical rewiring and handicap accessibility. A total of \$10,000 per home is available depending on the value and condition of the home before repairs are begun.

Only 55 percent of the value can be spent for repairs and the house must be brought up to standards with the money invested, or the house will not be considered for the program. The first \$5,000 is repayable in the form of a five percent loan; the remaining amount used for thermal improvements will be a grant to the homeowner.

Applicable counties are Bailey, Lamb, Floyd, Motley, Cochran,

Crosby, Dickens, Castro, King, Yoakum, Terry, Lynn, Garza, Deaf Smith, parmer, Swisher, Dawson, Hockley and Gaines. Portions of Hale County (excluding the City of Plainview) and the Southeast Quadrant of Lubbock County (Idalou and Slaton) are also included.

Ms McMennamy explained that this rehab program has been in existence for two years and is coming to a close at the end of September, 1988. Anyone wishing to apply should do so immediately.

Applicants must have an appointment and applications will not be taken unless the homeowner brings with him the following: 1) Proof of ownership, must be living in the home one year prior to application. 2) 1987 Income Tax Returns and, 3) copies of property tax receipts - property taxes must NOT be delinquent.

For further information or to schedule an appointment, call Ms McMennamy or GESC Housing Counselor, Francisco Carrillo at 806-744-4416 locally or from outside Lubbock, 1-800-666-4372.

**Ellen Goforth
Funeral Services
Set Today**

Funeral services for Ellen Goforth, 89, of Lubbock will be held at 11 a.m. today, Thursday, July 14 in the Ellis Chapel of the Chimes with the Rev. Barry Bradley, pastor of the First Baptist Church of Muleshoe, officiating.

Burial will be in Bailey County Memorial Park under the direction of Ellis Funeral Home of Muleshoe. Mrs. Goforth died at 8 a.m. Tuesday in University Manor at Lubbock.

A native of Grapevine, TX, she was born July 29, 1898, and moved to Lubbock in 1987, from Muleshoe where she had lived for two years, moving here from Hale Center. She was a homemaker and a member of the Muleshoe Primitive Baptist Church. She married Joseph William Goforth on Nov. 21, 1915, in Wellington. He died March 6, 1987.

Survivors include a son, Ernest Goforth of Springlake; three daughters, Edith King of Holbrook, Ariz., Nora Huddleston and Betty Nesbitt, both of Lubbock; 16 grandchildren; and 35 great grandchildren.

She was preceded in death by a daughter, Francis King on Sept. 27, 1985.

Lazbuddie FFA Students, Teacher At Convention

Five thousand Texas FFA members and guests are expected to attend the 60th annual convention of the Texas Association of Future Farmers of America, July 13-15, 1988, at the San Antonio Convention Center, San Antonio. Attending from the Lazbuddie FFA chapter are Tim Lust, Scott Mitchell, Sheldon Mason, Steve Bradshaw and chapter advisor, Rick Copp.

The FFA is composed of students who are studying Agricultural Sciences in the public school in preparation for a variety of careers in Agriculture and Agribusiness. Agricultural Sciences is well known for providing learning experiences to students through the FFA with the theme this year "FFA-Agriculture's New Spirit."

The ultimate objective is to produce future leaders for American agriculture with its vital role of producing food and fiber. Texas now has more than 900 FFA chapters with over 53,000 active members and more than 500,000 former members.

During the convention, over 2,000 award winners will be recognized with more than 1,500 members receiving the Lone Star Farmer Degree, the highest level of recognition by the state association. Educational scholarships totaling more than \$525,000 will be presented to many of the members in attendance.

Walter York, executive secretary, reports that deserving adults who have supported the FFA and its activities will be recognized by the presentation of Honorary State Farmer Degrees, Distinguished Service Awards, VIP awards, and the Blue and Gold Award.

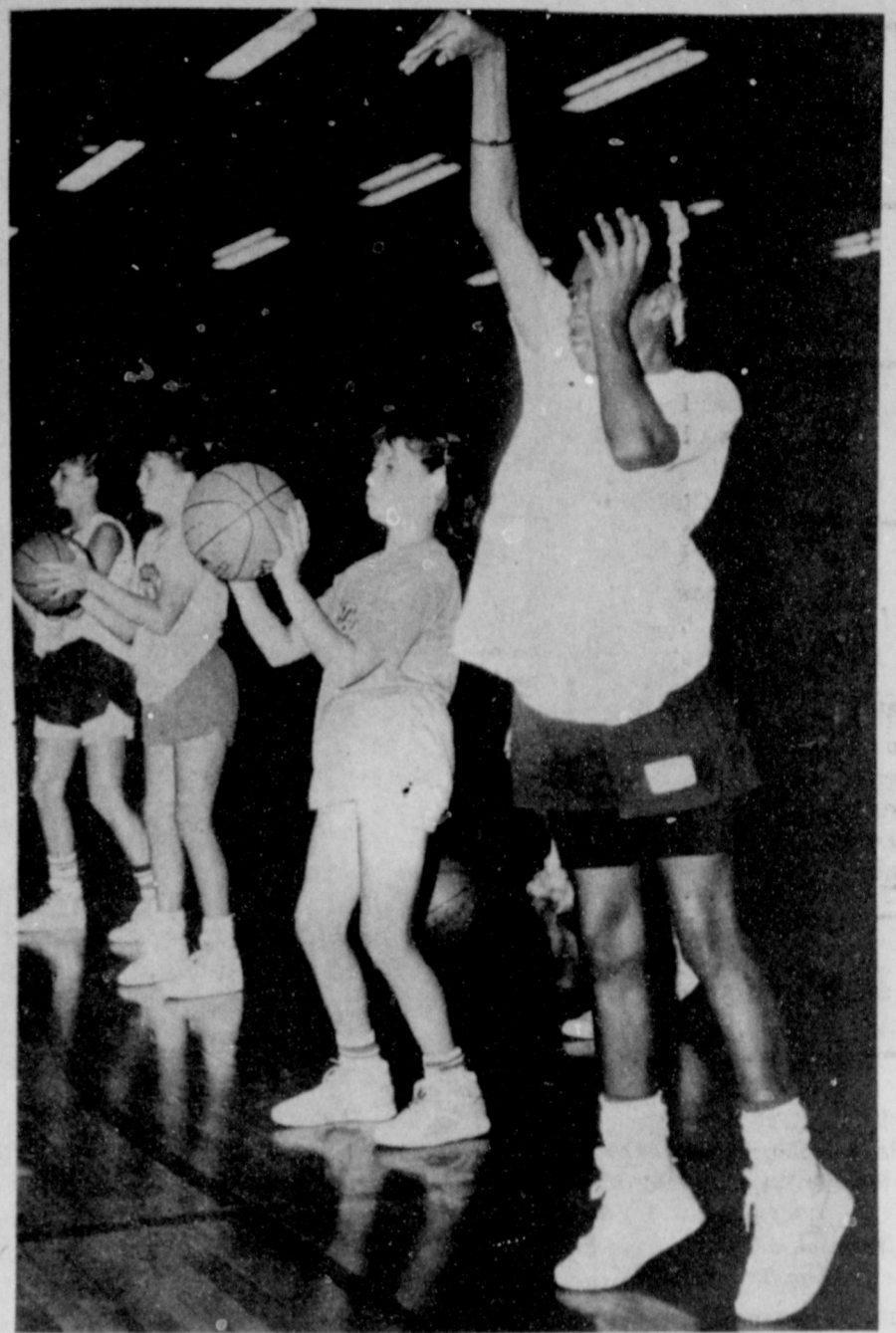
Outstanding nationally known motivational speakers scheduled during the three-day convention include Stan White, Stephenville and John Curdele, Ames, Iowa.

In addition, Kelli Evans, national president, Lincoln, NE will address the convention on Thursday night during the Stars Over Texas Award Program.

Toby Miller, state president from Whitharral FFA Chapter, Whitharral, will preside at the general sessions.

These sessions will include the election of the 1988-89 state president from the state officer candidates nominated by the 10

area associations. Those in attendance will hear and recognize the Outstanding Public Speaker, who will represent Texas at the National FFA Convention in Kansas City, MO. 1988-89.



PRACTICE, PRACTICE, PRACTICE--They're dedicated and working hard. Just a small portion of the girls taking the summer basketball camp at Watson Junior High School. Their concentration is evident as they prepare to release their basketballs. (Journal Photo)

NOTICE
discount on Gill Construction mentioned
in newspaper insert will be extended to
July 25, 1988.

"A GREAT DISCOVERY!"

Discover how easy it is to buy or sell. You don't have to go on a safari to hunt down Big Bargains. They're right here in your Classified section. No matter what your needs, rely on what thousands of readers are doing...shopping the Classifieds. It's an easy way to make "A Great Discovery!"

Muleshoe/Bailey County Journals
304 W. 2nd 272-4536

Leaf Through Classifieds

Call 272-4536

CLASSIFIED RATES
Per Word.....\$.15
Minimum Charge \$2.30

Consecutive Insertions
Minimum Charge \$2.00

CLASSIFIED DISPLAY RATES
\$1.75
Per Column Inch

DEADLINES
12 noon Tues.
For Thursday Paper
12 noon Friday
For Sunday Paper
We reserve the right to classify, revise, or reject any ad. Not responsible for any error after ad has run once.

3. Help Wanted

FULL TIME or part time LVN needed. All shifts. Superior rated facility contact Jo Blackwell; adm. or Mary Johnston (RN - DON) Prairie Acres 201 E. 15th Friona, Tx. 247-3922. p3-28s-2tc

4. Houses For Rent

FOR RENT 4 bdrm, 3 bath, 4000 sq. ft. living space in country. Contact Carl Gable 272-3315. g4-25t-tfc

8. Real Estate

FOR SALE, LEASE, OR RENT: Building on West American Blvd. 30 x 70 approx. 2000 sq. ft. call 272-5411 or Mulshoe Flea Market. L8-28t-2tc

ATT: 1st time home buyers. 2 & 3 bdrm mobile homes. No credit needed. We deliver. Call 806-894-8187. 8-25t-8tpts

AMERICA REDI-Homes 10000 19th Street West Lubbock, Tx: New Homes For Sale: Three bedrooms, two baths, living room, dining room, utility room, air conditioned. No money down. 100% financing. To be moved. Call (806) 885-4505. 8-27s-8tp

FOR SALE by owner Richland Hills 3 bdrm, 2 bath, fireplace, stormwindows, central air & heat large storage building. 272-5194. f8-27t-16tc

NICE 3 bedroom, 2 bath house, 2 miles west of Mulshoe. With large barn. Nice location. Call 946-3340. d8-25s-tfc

4 BEDROOM HOME in good location. Fenced in yard with storage building. 1621 W. Ave. C. Call 894-3889. s8-15s-tfc

REPOS. 2 & 3 bdrm mobile homes. No credit needed. Low down payments. Low monthly payments. Call 806-894-7212. 8-25t-8tpts

4 BDRM home in good location fenced in yard with storage building. 1621 W. Ave C. Call 894-3889. s8-15t-tfc

BUY GOVERNMENT seized vehicles from \$100. Fords, Chevys, Corvettes, etc. for info call (213) 925-9906 Ext 2841. 9-27t-4tpts

10. Farm Equip. For Sale

EQUIPMENT for sale 2 tractors, 2775 Massey, tub grinder, road grader, 3 feed trucks, terex payload & other equipment. 272-3315. g10-25t-tfc

8. Real Estate 8. Real Estate

Henry Realty

111 W. Ave. B Mulshoe 272-4581

JUST LISTED-2 Bdrm., 1 bath, large utility, nice fenced yard in Country Club Addition. Owner financing available. *****

ONE ACRE sites for home construction. 3 miles East of Mulshoe on Hwy. 3 lots remain. *****

3 Br., 2 bath, spacious home outside city limits, near city on highway. 29'x40' metal building. Lot 85'x620'. *****

3 Br., 1 bath, completely remodeled, edge of city on highway. *****

OUTSIDE city limits, 3 bdrm, 2 bath, utility, new kitchen, carport, built in oven & cooktop, wood burning fireplace, 2 car garage with one electric opener, house sits on 1 acre lot. *****

4 Bdrm., 2 Bath, 2 Car Garage, Central Heat/Air, Large Utility, Carpet, near down town. Excellent condition. *****

FOR LEASE, 2 bdrm, 1 bath, rock home near high school in excellent condition. *****

Kenneth R. Henry
Broker
272-4581

Judy Coker
Agent 965-2468

Think Classified!

116 E. Ave C BINGHAM & NIEMAN REALTY 272-5285 or 5286

PRICES REDUCED UP TO \$7,000 on 2 & 3-1-1 Brick Homes, Cent. heat, Energy Efficient. PRICED FROM \$23,500!! Approx. \$600.00 total move-in, payments based on income for qualified Buyers!!!

RICHLAND HILLS
IMMACULATE 3-2-2 Brick, corner lot, Cent. A&H, built-ins, FP, loads of storage & closet space, much more! *****

PRICE REDUCED-3-1-1 Brick, Cent. heat, Evap. air, built-ins, fenced yard.... *****

MAKE OFFER 3-1-1/2 Home, Cent. heat, evap. air, built-ins, fenced yard, detached storage-garage. Nice locations. \$30's *****

HIGHLAND & STEWART
JUST LISTED-VERY NICE-3-2-2 Brick, Cent. A&H, newly remodeled kitchen with built-ins, storm windows, fenced yard, storage bldg. and much more!!!! *****

NICE 3-2-2 Brick Home (2 story), on corner lot, Cent. A&H, built-ins, and much more. LET'S LOOK TODAY!!! *****

JUST LISTED-3-2-1 carport Brick, Cent. A&H, built-ins, fenced yard, & much more. PRICED TO SELL!!! *****

JUST LISTED-Nice 5-3 Brick Home, Cent. A&H, built-ins, utility earthenware carpets, covered patio, fenced yard, & much more. \$60's!!!! *****

HIGH SCHOOL
3-2-1 Brick+2 carport, Cent. A&H, built-ins, fenced yard, Eff. Apt. or workshop & storage area. \$40's!!!! *****

JUST LISTED-Very well kept 3-1-1/2 Home, Cent. heat, nice carpets, storm windows, storage bldg. & more. \$40's!!!! *****

3-1-1 home, corner lot, Cent. A&H, built-ins. \$30's..... *****

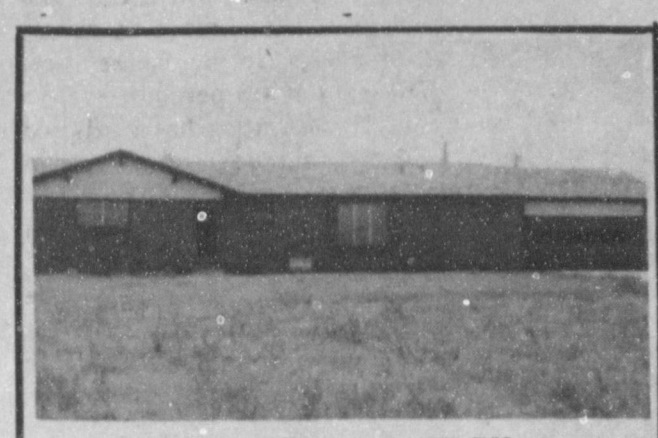
3-1-1 home, nice carpets, floor furnace, evap. air, built-ins, storage & more. \$30's!!!! *****

IMMACULATE-3-2-1+2 carport, Brick Home, Cent. A&H, built-ins, nice finished basement with fireplace, sprklr. sys., & much more!!!! *****

8% A.P.R. FINANCING TO QUALIFIED BUYER on this 3-2 Brick, Cent. A&H, built-ins, 2 fireplaces, nice large rooms, sprinkler sys!!!! *****

DIANNE NIEMAN, BROKER

8. Real Estate 8. Real Estate



FEATURED THIS WEEK BY:

Whitt-Reid Real Estate

Featuring this week, this beautiful country Home 1 mile South East of Mulshoe on HiWay #84 3 Bedroom, 2 bath, Brick, Central Heat & Air Cond. Fireplace, with over 1700 Square feet living space Double Car Garage on 1/2 acre of land. Reduced to \$48,500...SELLER SAYS SELL!!!!

BROKER AND CERTIFIED REAL ESTATE APPRAISER
CALL ROY
HOME 272-3058

OR THURSIE 272-5318 OR GEORGE 272-4047

J. Sudderth Realty, Inc.
109 FIFTH STREET
(806) 481-3288 (806) 481-9194
FARWELL, TEXAS
Realtors/Certified Appraisers
WE NEED FARM LISTINGS.

8. Real Estate 8. Real Estate

JAMES F. HAYES & CO. AGRICULTURAL REAL ESTATE

Vic Coker-Agent
806) 965-2468

* 160 ACRES South of Clovis lays good, good water, good Center Pivot Sprinkler Fully **SOLD**. A nice one!

2 LABORS SOUTH OF MULESHOE Longview Area, Good Soil, fully allotted Call for more details. *****

460 ACRES WEST OF BOVINA on State Line. 300 gallon, good soils, 70 Acres of grass, **SOLD** good allotments, terms available! *****

313 ACRES on Parmer County-Castro County line. 2 wells, 2 tailwater pits, good allotments, steel barn, terms available. *****

2-160 Acre tracts northwestern Lamb County good water-2 wells on each farm good soil; lay good, Immediate possession. *****

1-210 Acre Farm-Lamb County: Steel barn & other improvements, 2 wells lots of underground pipe good soil & lays good. Immediate possession available. *****

120 Acres - Bailey County - West of Mulshoe. Allotted, will accommodate a circle sprinkle. Some terms possible. *****

640 ACRES NORTH OF LAZBUDDIE- ON PAVEMENT, 1 sprinkler, good soil water, some grass. *****

80 ACRES East of Mulshoe with center pivot sprinkler, wheat & alfalfa, good opportunity. *****

107 ACRES East of Mulshoe, center pivot sprinkler, many improvements, wheat & alfalfa. NICE *****

2311 Acres Lamb County Southeast of Earth. 1100 Acres **SOLD**, 1200 Acres grass, 2 electric **SOLD** Pads for 4 more sprinklers. Excellent water. Terms Available. *****

15,000 head capacity feed yard with rolling stock. 200 Acres **SOLD** of water. Rare opportunity. *****

* In cooperation with a New Mexico Broker.
Call Vic for Farm & Ranch Appraisals

15. Misc. 15. Misc.

Storm Cellars
Concrete & Iron Reinforced Ref. In Mulshoe.
Lynn Miller
Littlefield, Tx 385-6801

11. For Sale Or Trade 15. Misc.

FOR SALE: 172 Acres 100 A. Cotton, 72 A. Wheat \$300.00 A. 272-3256. g11-25s-8tc

RABBITS for sale have papers. Rex & some satins. Jrs. & Srs. reasonable call 965-2722. h11-28s-4tc

1985 Starcraft pop-up camper w/awning ref. & thermo. controlled heat. Used 3 times like new. See 1907 W. Ave F. 272-3015. b11-26s-tfc

GARAGE SALE MOVING SALE. Children's clothes, men's clothes, furniture, children's beds, chest of drawers, humidifier, coffee table, stereo cabinet, kerosene heater, piano. 1909 W. Ave G. July 15 & 16. f15-28t-1tc

GARAGE SALE baby walker, swing and clothes. Boy's bike. 1983 Chev. farm pickup. Thurs.-Sat. 9:00 a.m. Needmore. 15-28t-1tp

PICTURES and orders from Photography by Lonnie can be picked up at Photography by Oecia. 512 Phelps, Littlefield, Tx 385-5159. 15-28s-8tp

Our idea of a pleasant life is to have more income than expense, and little or no work to do.

MID-SUMMER Savings

COOK'S WHOLE
SMOKED PICNICS
6-8 LB. AVERAGE

88¢

LB.

SLICED HALF OR WHOLE
LB. 98¢



WRIGHT'S HICKORY SMOKED SLICED
SLAB BACON

\$1.29

LB.

<p>HILLSHIRE FARM SMOKED/ BEEF SMO/ POLISH SAUSAGE GREAT FOR THE GRILL LEAN TRIM FAMILY PAK 8-11 ASST. PORK CHOPS LEAN TRIM COUNTRY STYLE PORK RIBS</p>	<p>LEAN TRIM CENTR CUT PORK CHOPS PURDUE GROUND TURKEY MEAT 1 LB. ROLL CHEF'S PANTRY PRE-COOKED CHICKEN FRIED PATTIES</p>	<p>\$2.29 \$1.69 \$1.69</p>	<p>\$2.29 89¢ \$1.29</p>
--	--	-------------------------------------	---

 <p>MARGARINE QUARTERS BLUE BONNET 1 LB. BOX</p> <p style="font-size: 48pt; font-weight: bold;">39¢</p>	 <p>ENRICHED SHURSAVING FLOUR 5 LB. BAG</p> <p style="font-size: 48pt; font-weight: bold;">69¢</p>	 <p>SHURSAVING HOMO MILK GALLON</p> <p style="font-size: 48pt; font-weight: bold;">\$1.89</p>	 <p>FOR THE BATHROOM DELSEY TISSUE 4 ROLL PKG.</p> <p style="font-size: 48pt; font-weight: bold;">89¢</p>	 <p>PAPER TOWELS HI-DRI JUMBO ROLLS</p> <p style="font-size: 48pt; font-weight: bold;">2 \$1</p> <p>FOR</p>
 <p>TENDER CRUST SPLIT TOP WHITE BREAD 1 1/2 LB. LOAF</p> <p style="font-size: 48pt; font-weight: bold;">59¢</p>				

<p>45¢ OFF LABEL DOWNY SOFTENER 64 OZ. BTL.</p> <p style="font-size: 48pt; font-weight: bold;">\$1.99</p>	<p>FRITO LAY® CHEETOS SNACKS 1.59 SIZE</p> <p style="font-size: 48pt; font-weight: bold;">\$1.09</p>
--	---

FROZEN

BETTY CROCKER ASSORTED
SOFT SUNDAE
6 PACK BOX

\$2.29

BETTY CROCKER BROWNIE
SUNDAE
6 PACK

\$2.59

ORE-IDA FRIES OR GOLDEN
CRINKLES
2 LB. BAG

\$1.49

BANQUET ASST.
CREAM PIES 14 OZ. BOX **99¢**
GREEN GIANT ASST.
PASTA ACCENTS 16 OZ. BOX **\$1.69**

<p>AUNT JEMIMA ORIG. PANCAKE MIX 2 LB. BOX</p> <p style="font-size: 48pt; font-weight: bold;">99¢</p>	<p>AUNT JEMIMA BUTTERLITE/LITE PANCAKE SYRUP 24 OZ. BTL.</p> <p style="font-size: 48pt; font-weight: bold;">\$2.19</p>	<p>40¢ OFF LABEL W/ FABRIC SOFTENER FAB DETERGENT 42 OZ. BOX</p> <p style="font-size: 48pt; font-weight: bold;">\$1.69</p>
<p>POST TOASTIES 18 OZ. BOX 99¢</p>	<p>POST RAISIN BRAN 25 OZ. BOX \$2.89</p>	
<p>PURINA DOG FOOD CHUCK WAGON 20 LB. BAG</p> <p style="font-size: 48pt; font-weight: bold;">\$8.99</p>	<p>PILLSBURY PLUS ASSORTED CAKE MIX 18 OZ. BOX</p> <p style="font-size: 48pt; font-weight: bold;">89¢</p>	<p>PILLSBURY ASSORTED R.T.S. FROSTING 16 1/2 OZ. CAN</p> <p style="font-size: 48pt; font-weight: bold;">\$1.49</p>

CALIFORNIA SWEET JUICY
PEACHES OR NECTARINES

89¢

EXTRA LARGE SIZE

12 OZ. NO RETURN BOTTLES
IBC ROOTBEER
6 PACK **\$1.99**

ALL TYPES
COCA-COLA
2 LITER BOTTLE **99¢**

TEXAS FRESH ZUCCHINI OR
YELLOW SQUASH

39¢

LB.

DAIRY DELIGHTS

KRAFT CHILLED
ORANGE JUICE
64 OZ. JAR

\$1.99

PILLSBURY ASST.
BISCUITS
7 1/2 OZ. CANS

5.99¢

SHURSAVING
CHEESE SINGLES
12 OZ. PKG.

89¢

HEALTH & BEAUTY

DISPOSABLE
BIC LIGHTERS 2 FOR **\$1**

SHAMPOO & CONDITIONER
PERT PLUS 7 OZ. BTL. **\$1.99**

TOOTHPASTE
ULTRA-BRITE LARGE TUBE **89¢**

SUPPOSITORIES
TRONOLANE 10 CT. PAK **\$3.19**

TRONOLANE CREAM **\$3.19**

JUMBO ITALIAN SWEET
RED ONIONS 3 LBS. **\$1.00**

CALIFORNIA FRESH GREEN
BEANS LB. **79¢**

NEW CROP TEXAS PREMIUM RED
POTATOES 4 LBS. **\$1.00**

CALIFORNIA FRESH GREEN
ONIONS 5 BUNCHES **\$1.00**

HEFTY TALL
KITCHEN BAGS
30 CT. BOX **\$2.69**

Automatic Dish Deter.
PALMOLIVE
50 OZ. BTL. **\$1.79**

40¢ OFF LABEL LIQUID
PALMOLIVE
22 OZ. BTL. **99¢**

THRIFTWAY

WE ACCEPT FOOD STAMPS...WE RESERVE THE RIGHT TO LIMIT

"WE CARE"

AFFILIATED FOODS INC. MEMBER STORE
PRICES EFFECTIVE JULY 10-16, 1988

BORDEN BUTTER MILK 1/2 GAL. **\$1.09**

BORDEN ICE CREAM
CRACKER JACKS 6 PK. **\$1.79**