



PET-OF-THE-WEEK---C. M. Owen is really enjoying his Christmas present, a pet parakeet. He has named him Joe and is working at teaching him a few "tricks", but so far,

no luck. He loves to leave his cage but Owen says it's "too hard to get him back in."

Some Local Politicos Not Running Again

City, School Elections Set

Two local elections will bring Olton voters to the polls this year to name two school board members, two city councilmen, and a mayor.

Terms of Roy Roberts and Fred Hicks, school board members, will expire this year as will terms of City Councilmen Bill Kemp and Russell Rucker and Mayor Bill Thomas.

School board election is held the first Saturday in April, with the deadline for filing March 4. City election will be held Tuesday April 6 with filing deadline set March 6.

No candidates had filed for either election as of Wednesday. Hicks said Tuesday that he definitely would not seek re-election, adding:

"I believe I'll let somebody else try it this time."
 Board Member Roberts also said he didn't think he would run for a spot on the board this year.

"You can say I'm pretty sure I'm not going to run," Roberts said.

Both Roberts and Hicks will have served two three-year terms on the board.

In the city election, Mayor Thomas, contacted this week, said he is undecided as to whether he will seek re-election.

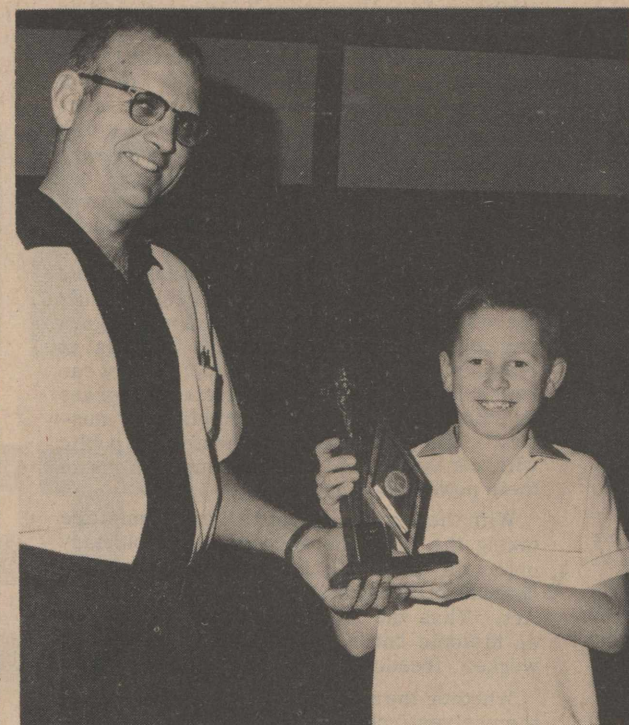
"I haven't fully made up my mind," Thomas noted, "but, at this time, I'm leaning toward not running."

Councilman Kemp also said he is undecided as to whether he will seek to retain his seat on the council.

"I just don't know at this time," Kemp said.

The Enterprise was unable to contact Councilman Rucker, who is out of town and not expected back for several weeks.

Both of the councilmen and the Mayor will finish their first two-year term of office this spring.



KENNY JONES, a fifth grader who really concentrates on his bowling, recently pulled off a game that would make any grown-up proud. Kenny, bowling in the TABY league at Olton Bowl, was presented a trophy by Operator H. C. Stewart for a 201 game, about twice the youngster's average. Kenny is the son of Mr. and Mrs. Doug Jones.



Adrian Food Changes Hands

The purchase of Adrian Food by a Levelland man was announced this week.

New owner is Melvin Raines, who will call the store Raines Grocery.

Raines had been with Lowe & Co., Littlefield candy distributor, since 1953. He served as a salesman with the company.

He and his wife, Arleta, will operate the store. They have two sons, Tommy, 9, and Mark 8 months, and a daughter, Peggy, 8. They are Baptists.

Raines announced that the grocery will be open seven days a week, from 7 a.m. to 7 p.m.

The store was purchased from John Adrian, who operated it the past 16 months. Prior to that the store was known as Gray Grocery for many years and was operated by Virgle and Ruby Gray.



MELVIN RAINES

'We The Parents' Course Slated

"We The Parents," a PTA sponsored study course, will get underway here Monday night at 7:30 p.m. in the school cafeteria.

The five-session course was originally scheduled to start last Monday.

The five sessions will consist of a panel discussion of ground rules for social life of pre and early teens, social activities and personal appearance, manners, dating and driving and a final session for a general discussion of the first four meetings.

March Of Dimes Plan Announced

The 1965 March of Dimes Campaign is now underway in Olton with donation containers placed in local businesses.

Ralph Glover, campaign director, said the local drive would extend through the middle of February.

Mrs. Andrew Stroebel, representing Bykota Study Club, is in charge of the Mother's March. No date had been set Wednesday for the march.

WEATHER REPORT

DATE	HIGH	LOW	PREC.
JAN. 14	60	26	0
JAN. 15	58	33	0
JAN. 16	56	30	0
JAN. 17	68	28	0
JAN. 18	65	26	0
JAN. 19	65	31	0
JAN. 20	55	28	0

County Vets Get \$19,250 In Dividends

Some 400 of Lamb County's veterans will be receiving Government checks this month, in line with a decision by President Johnson to speed up dividend payments to holders of GI insurance.

They will share in an advance payment of \$224,500,000. That sum will go to veterans of World War I and World War II.

None of the 262 County residents who served in the Korean engagement will be on the receiving end because their insurance policies do not call for annual dividend payments.

Most of the recipients are holders of National Service Life Insurance, issued to those who served in the second World War. The World War I vets have U. S. Government Life Insurance.

Acceleration of the payments, which would not be due otherwise until the anniversary dates of the policies, will add nearly a quarter of a billion dollars to the amount of cash in circulation at this time. The business activity that it will generate is expected to be several times that much.

The Presidential order will affect 4,610,000 veterans, or about one out of every five throughout the nation.

The 400 in Lamb County who will participate will receive an estimated \$19,250.

Those who were in the first World War will get \$69 each, on the average, and the others, approximately \$48 each. The amounts, in individual cases, will go above or below these figures, depending upon the size of the policy held.

The Veterans Administration states that no applications need be made in order to get these checks. They will go out automatically.

The dividends represent a return to the policyholders of a portion of their premium payments. The refunds are made possible because the death rate among GI's is running lower than was expected when the rate base was established.

Other benefits for veterans also went into effect as of Jan. 1. Under a new bill passed by Congress, veterans with non-service-connected disabilities will get bigger pensions. About 1,300,000 veterans or their families will gain by it.

Another measure increases the amount of money veterans or their dependents may earn and still be eligible for pensions. It also provides for cost-of-living increments for most pensions.

Olton Area Gins Roll Up Record Of 55,882 Bales

For the third time in the past four years, the Olton area's gins turned out more than 50,000 bales of cotton, a check by the Enterprise revealed this week.

The 1964 total came to 55,882 bales, topping the 1961 record year by more than 3,000 bales.

The final count of 55,882 is based on reports from Olton Co-Op Gin, Jack Straw Gin, Circle Gin, Hart Camp Co-Op Gin, Thompson Gin, Smith Gin and Farmers Gin.

The same gins turned out 52,500 bales in 1961 and 50,373 bales in 1962.

Report from the relatively poor year of 1963 came to 38,000 bales.

The count in 1960 was estimated at 41,000 bales for the same seven gins.

While the 1964 crop represented more production than ever before, its dollar-value probably was on a par with that of 1961 and 1962, when cotton prices were slightly better.

SHOCKING NEWS ---

Brides Of Tomorrow May Need Computers

"The future belongs to electricity."

At least this is the view expressed by Ralph Glover, southwestern Public Service manager here, in a talk to Lions Club members Tuesday noon. "More and more of the machines, tools and appliances that we use in our industry, on our farms and in our homes will be powered -- for progress -- by electricity," Glover explained.

Speaking of homes of the future, he noted:

"The brides of tomorrow are not only going to have to promise to love, honor and obey, but to take correspondence courses in electronics, computers and electrical engineering."

Saying that an all-electric America is just over the horizon, Glover commented that electricity is the most perishable product in the world.

"It is created and used in the same instant," he said. "You can't make it in advance or store. You can't see it and we're not even sure we know what it is."

"It's also rather like a good wife -- you never miss it until it isn't there."

Glover noted the growth of the electric company and said that it directly related to the growth of the area it serves. "If you grow, we grow."

In explaining how electricity "works", Glover gave this example:

"The thing that makes it possible for the second hand on your electric clock to record the passage of one minute of time when it makes a complete revolution is the fact that the giant generators in our power

plants have made 3600 revolutions in that same minute."

He added that there is no set timetable as to when more electric power is going to be needed.

"A dark cloud coming across the sky might well result in more lights coming on ... and create a need for more electricity."

"If a cool shower followed the dark cloud... on a hot summer day... it could reduce the irrigation and air conditioning requirements rather quickly."

He compared the generators to an automobile, saying if you want to go 60 miles an hour up a hill, you have to accelerate to maintain the same speed that you were doing on a flat stretch.

"In other words, under all circumstances... the automatic dispatching system is using the best ... combinations... to overcome other increased costs."

He spoke briefly on the company's research program in the field of nuclear energy, saying it is the largest privately-financed research activity in that field.

"I am firmly convinced," he said, "that with the possible exceptions of the ministry and teaching there is no better way to serve your fellow man. Someone in our industry is always at work -- 24 hours of the day, every day of the year."

He also pointed out that the industry is the nation's largest taxpayer.

In conclusion, Glover went back to the electric clocks and told a story that happened three summers ago when the largest generator in service stopped working.

He said that hardly anyone was aware of it except the elec-

tric clocks, which were all a half second slow.

However, a master clock, tied in with the naval observatory, always has the right time. A check show that it was a half second ahead of a normal electric clock.

"They didn't want people to be a half second late for appointments that day," Glover explained, "so they increased the frequency slightly -- worked the machines a shade faster -- and corrected all the clocks."

Gardenhire was elected by the board without its considering applicants from outside the system.

The 33-year-old principal, who came to Hart July, 1964, from O'Donnell, was given a two-year contract as superintendent effective July, 1965.

Kennedy, who has served the Hart system longer as superintendent than any other man with his seven-year tenure, was administrator during years which saw Hart almost double its enrollment.

Enrollment was 349 in 1958-59, Kennedy's first year at Hart. Today, students number 671.

POLL TAX DEADLINE ONLY FEW DAYS AWAY

With elections set by both the local school board and city council, Olton voters are reminded that a poll tax receipt will be necessary to vote in both these elections.

Deadline for paying poll tax is Jan. 30, only nine days away.

Reports from the city hall this week were that traffic in paying the tax is picking up but is still slow.

However, some residents paid the tax the latter part of last year.

Speaker Switch Will Aid Area, Says Clayton

Representative Bill Clayton, home at Springlake last week-end after the opening of the legislature, said he believes the Panhandle area stands to gain from the sudden shift in the speaker of the house post.

The representative of the 91st district, which includes Lamb County, cited the redistricting tangle--which he and most other legislators place at the top of the "problem" list-- as probably the major area where West and Northwest Texas will gain from the unexpected change in speakers.

Clayton said most of the area legislators are well acquainted with the new speaker, Rep. Ben Barnes of De Leon, a small town in west-central Texas' Comanche County.

The surprise resignation of Speaker Byron Funnell of Tyler, who was appointed by Gov. John Connally to the Texas Railroad Commission left planning by the legislators in shambles, Clayton said.

However, Clayton sees the outcome as advantageous.

The Springlake representative confirmed a release by a taxpayers educational association that he will introduce a house concurrent resolution petitioning Congress to retain the Taft-Hartley Act," Clayton explained.

"If that section is repealed by Congress, then it will outlaw our own Texas right-to-work law. Texas is one of 20 states that have the law."

Hart School Names New Superintendent

Paul Kennedy, superintendent of Hart schools since 1958, has resigned the position effective July 1 and the school board has named W. A. (Andy) Gardenhire, high school principal, to succeed him.

Kennedy, 54, said he is leaving the administrative phase to enter the teaching field and devote more time to stock farming interest he holds.

Gardenhire was elected by the board without its considering applicants from outside the system.

The 33-year-old principal, who came to Hart July, 1964, from O'Donnell, was given a two-year contract as superintendent effective July, 1965.

Kennedy, who has served the Hart system longer as superintendent than any other man with his seven-year tenure, was administrator during years which saw Hart almost double its enrollment.

Enrollment was 349 in 1958-59, Kennedy's first year at Hart. Today, students number 671.

Hart's superintendent-elect, Gardenhire, is a Memphis, Texas product, having completed high school there before going to Texas Tech and West Texas State University.

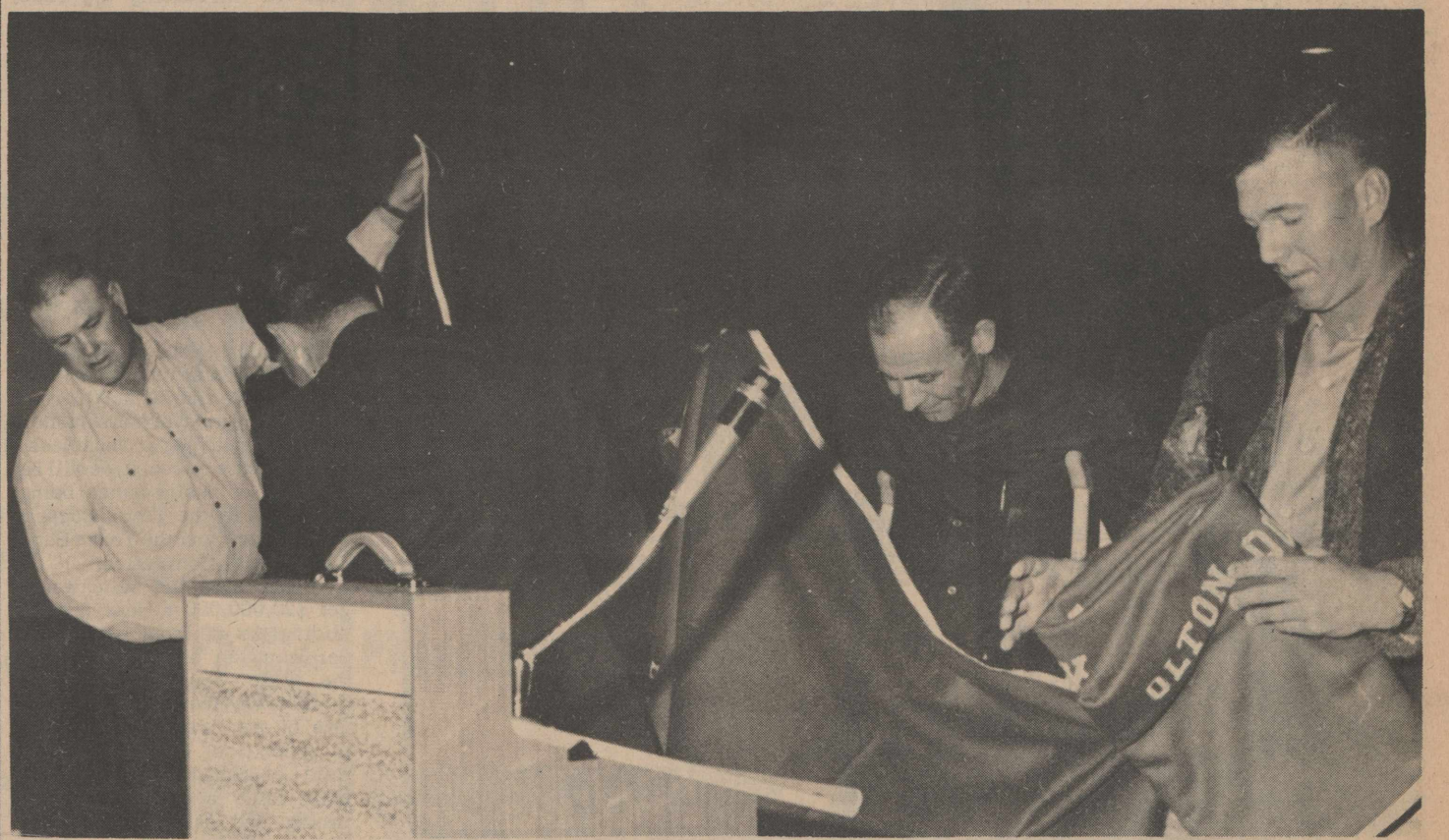
He received a bachelor of science degree from WTSU at Canyon. He also holds a master of education degree from the Canyon school.

Dairy Mart Sets Grand Opening

Dairy Mart will have its grand opening under new management Tuesday with Bill Perkins as new owner and Bonnie Brown, manager.

Free coffee and doughnuts will be served from 10 a.m. to 4 p.m., and free cokes will be served to "teens" after 4 p.m. during the Tuesday opening.

The business will be closed on Mondays and will open at 10 a.m. on other weekdays and 1 p.m. on Sundays.



THREE OLTON SCHOOL BOOSTERS received blue-and-white blankets in appreciation for their support to the school athletic program during the half at the Olton-Floydada game here last

Friday night. From left are Delmer Givens, Dub Hall and R. V. Allcorn, all former presidents of the Quarterback Club. Making the presentation was Johnny Clark Jr., superintendent.

The Olton Enterprise

Published each Thursday at Olton, Texas, 79064.

Entered as second class matter at the post office at Olton, Texas under the act of Congress, March 3, 1879.

Any erroneous reflection upon the character, firm or corporation which may appear in the columns of The Olton Enterprise, will be gladly corrected upon being brought to the attention of the publisher.

Subscription rates: \$3.50 per year in Lamb and neighboring counties; \$5.00 per year elsewhere.

Member Since 1964
TEXAS PRESS ASSOCIATION

Bill Turner, Editor & Publisher
Amy Turner, News Editor
Rose Schenk, Society Editor
Leah Cross, Composer
Sue Cannon, Operator

NATIONAL EDITORIAL ASSOCIATION
AFFILIATE MEMBER

EDITORIAL

Union Power Play

A major test of the political power of the big union bosses will come in the 89th Congress on the issue of repeal of Section 14(b) of the Taft-Hartley Act. For some time the national union leaders have been sharpening their knives for an attack on 14(b), which has stood as a barrier against the extension of their compulsory membership power to every wage earner in America.

The section of the Taft-Hartley Act under attack affirms the authority of states to pass laws banning the type of union contract that forces every employee either to join and pay tribute to the union or else be fired from his job.

Commonly known as Right to Work laws, such statutes are in effect in 20 states, including Texas, and movements to enact similar legislation are under way in several other states.

In the Texas legislature, a house concurrent resolution petitioning Congress to retain the Right-Work section of the Taft-Hartley Act will be introduced by Rep. Bill Clayton of Springlake.

E. Clay Lafield of Austin, executive director of the Taxpayers Educational Association, Inc., has said he expects the resolution to have strong support.

He expressed the hope that Texas would lead the fight to impress upon Congressmen the importance of continuing the authority with states of having Right-To-Work laws on their books.

After pouring millions of dollars derived from compulsory dues dollars into the last congressional campaign, the union bosses believe they are in a strong position to demand that the Congress eliminate Section 14 (b)'s restraint on their power to force unwilling workers into the union fold. Their ambition is to destroy, in one fell swoop, the laws of 20 states guaranteeing worker freedom from union boss rule and curtail the growing voluntary unionism movement.

The union leaders are asking members of Congress, in return for union political support, to turn their backs on public opinion

on the issue of voluntarism versus compulsion in labor unions. Public opinion polls, including those made by the unions themselves, show that the majority of the American people believe that no citizen should be forced to join a union in order to hold his job. A nation-wide poll by Opinion Research Corporation in 1964 showed that 67 percent of the public believes in the voluntary unionism principle -- a new high since the polls on this issue were started several years ago. The ORC poll also showed that a majority of union members, as well as the general public, believe that unions have grown large enough or are too large now.

Despite this tide of public opinion against them on the compulsory membership issue, the officials of the AFL-CIO have assigned number one legislative priority to repeal of 14(b) and have expressed confidence they can ram a repeal bill through a reluctant Congress by using the full force of their political "muscle." They, no doubt, are hoping the public will not awaken to the full implications of their power play until it is too late.

With the National Right to Work Committee taking the lead, the supporters of voluntary unionism are mobilizing their full forces for defense of Section 14(b) of the Taft-Hartley Act. Thus the stage is set for what may be an historic battle in the 89th Congress for worker freedom from big union tyranny.

Whether the union bosses succeed in freeing themselves from any restraint on their compulsory membership power, or are stopped in their drive to bring more working men and women under their domination, depends upon the extent to which the American people speak out. If the people do not express their will on this issue to their representatives in the Congress, the fight for freedom could go by default. The threat is a serious one, and the time is now, if ever, for those who believe that union bosses must not be allowed to dictate the actions of Congress -- as well as those of individual wage earners -- to make their voices clearly heard in Washington.



GUIDING PLAN

PHILOSOPHER

Can't Estimate His Costs Either

(Editor's note: The Running Water Philosopher on his Careless Weed farm on Running Water Draw reviews the highway situation this week.

Dear editor:

According to an article I read in a newspaper last night while my television set was having cable trouble, the Bureau of Public Roads has discovered it has underestimated the cost of the vast interstate highway system which is supposed to span the United States by 1972 by about \$6,000,000,000 or 6 billion, to spell it out in case the Olton Enterprise doesn't have that many zeroes in its plant.

Originally, they've figured the 41,000 miles of super-highways would cost \$4 billion, or a billion dollars a thousand miles, but due to rising costs, such as higher costs of land as everybody knows farm land is worth more in a highway than in cultivation, the cost has risen to about 47 billion dollars.

I know how these things are. You start out a year in January figuring it'll cost so much to get by on, but by the time September rolls around you find so many unexpected things have piled up your estimate was no better than the United States Bureau of Public Roads.

But what interested me in the highway article was the statement that the vast system was "designed to handle traffic 20 years beyond the design period."

As I understand it, the project is supposed to be completed in 1972, however they've been working on it for several years already, with 19,000 miles open to traffic, and 22,000 still to go. What this means is that by the time they get the last of it

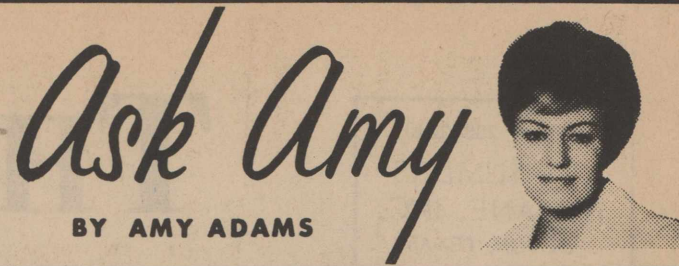
built, the first of it will be 20 years old and already out of date. It'll be like a woman wearing a 1965 hat and 1945 shoes. In other words, we're building new cars faster than we can build roads to run them on and the future looks dark unless we can step up the rate of accidents.

I don't like to stand in the way of progress, sit, maybe, but not stand, but it is hard for me to figure out a place a thousand miles from here which it's worth a billion dollars worth of highway to get to. Certainly I can't imagine anybody that

far from here willing to spend that kind of money to reach this place.

This figures out to be \$1,000,000 a mile, but I guess there's some satisfaction in realizing, after you've driven 60 minutes at 60 miles an hour, you've just ridden over \$60,000,000 worth of comfort, although to tell the truth I can get almost the same comfort, sitting in a four-dollar rocking chair out here on this Careless Weed farm.

Yours faithfully,
J. A.



Ask Amy
BY AMY ADAMS

IT'S CHEAP!

Dear Amy:
I have never written to a newspaper column before so this is something new to me. I have two questions I would like to ask you as I have been faced with these problems many times. Do you consider it 'cheap' if you let a boy you don't know put his arm around you in the movies and start a conversation? Do you act 'cheap' if you accept a date with him? The majority of the girls I know don't consider anything wrong with it and do not think that it ruins one's reputation in any way.

Dear Bonnie:

The majority of the girls you know are misinformed. Girls who are discriminating would not 'pick up' a strange boy in a movie (or anywhere else for that matter) and allow themselves to be boy-handled. There are legitimate ways to meet boys and this isn't one of them!

Dear Amy:
Where I work the employees get health check-ups twice a year. I had mine last week and to my surprise they found I had Diabetes. I haven't told my wife because she is not in the best of health herself and gets excited easily. I love her very much and I don't want her to worry. Shall I keep my problem to myself for a while or tell her?

Dear Mr. D.:
Tell her as soon as possible. Your illness is her problem, too. You will find a woman is strong when you need her the most!

Dear Amy:
I like to cook very much making big meals for the rest of the family. There's just one thing about it though--every time I intend to make a nice meal, I'll go to change into some cooking clothes and in the time it takes me to change, the rest of the family has filled themselves with ice cream, cake, sandwiches, and other things and won't eat the big, nice, healthy meal I intended to make for them. I tell them ahead of time I'm going to fix a meal. What can I do to make them eat my meal first?

Dear Cook:
Here's some food for thought: Learn to become a quick change artist . . . or improve your cooking!

Dear Amy:
My husband is never home during waking hours except to change into clean clothes and grab a bite to eat. He doesn't seem to know or care when mealtime is . . . then he wants me to cook at midnight.

He says he goes out because I'm not sweet and charming. How can one be sweet and charming 24 hours a day with 3 children, a house and yard to care for--but no one to care for her? Besides, he goes if I'm charming or not, I've tried it. The only difference is then he kisses me good-bye. What does a wife do with a wandering husband?

Dear Mrs. M. L.:
A husband who is happy at home doesn't seize every opportunity to run away from it. If you want a full-time husband, get part-time help to care for the house and yard. Expend your time and energy learning to be sweet, charming and attractive permanently. Listen to his troubles, but don't tell him yours. Let him know he is the most important thing in your life. Then he will have nothing to wander away for.

Dear Amy:
I am a girl 15 years old and I have two boyfriends. I thought that having two boyfriends would be all right until the other day. They happened to come to the house at the same time and almost got into a fight. They both say I'll have to do something about the other one. What should I do?

Dear Anxious:
The boy who is burning with love undoubtedly will make a 'fue' of himself. Take the heart out of the argument and drop them both!

Address all letters to:
AMY ADAMS
c/o THIS NEWSPAPER
For a personal reply enclose a stamped, self-addressed envelope.

DOWN MEMORY LANE

10 YEARS AGO IN OLTON

Hillcrest Addition, a 40-acre tract at the western outskirts of Olton has been annexed to the city.

Approximately 2,000 out-of-town visitors and home folk, toured the new Olton State Bank building during its formal opening this week.

The old bank building is being remodeled and will be occupied by Kelly's Men Store soon.

Officers and employees of the Olton State Bank were special guests at the Legion Hall with entertainment for the occasion by La Nelda Maxey, a pantomimist, and musical numbers by Kay Granberry and Pat Harborn.

Approximately 50 third-graders were featured Friday at the PTA meeting in the presentation of "The Year On Parade," under the direction of Mrs. Eldon Franks, Mrs. Glenna Fanning and Mrs. Fred Gordon.

Attending the State Soil Conservation District meeting recently held in San Antonio were Thurlie Branscum, Wallace Gosdin, C. E. Jones, and E. C. Jones.

Miss Loy Goynne was installed Monday night as Worthy Advisor of the Olton Rainbow Assembly.

FIVE YEARS AGO IN OLTON
Gayle Machen and David Morrison have been selected by the faculty as the students most likely to succeed.

Every telephone in the Olton exchange was dead for a period of about a half hour Thursday morning.

Friday night Mustangs boys and girls basketball teams split a twin bill with Lockney.

Bill Austin and Jerry Meyer, students at ENMU, participated in a special band concert at the college Sunday.

Leading the Olton delegation at the Levelland Lions Club midwinter conference this week was Lous Hair, deputy district governor.

Jerry Mathis, Roy Neal Jones, Gerry George and Jarold Simmons, members of the Olton FFA chapter swine judging team, won first place in Lubbock Saturday.

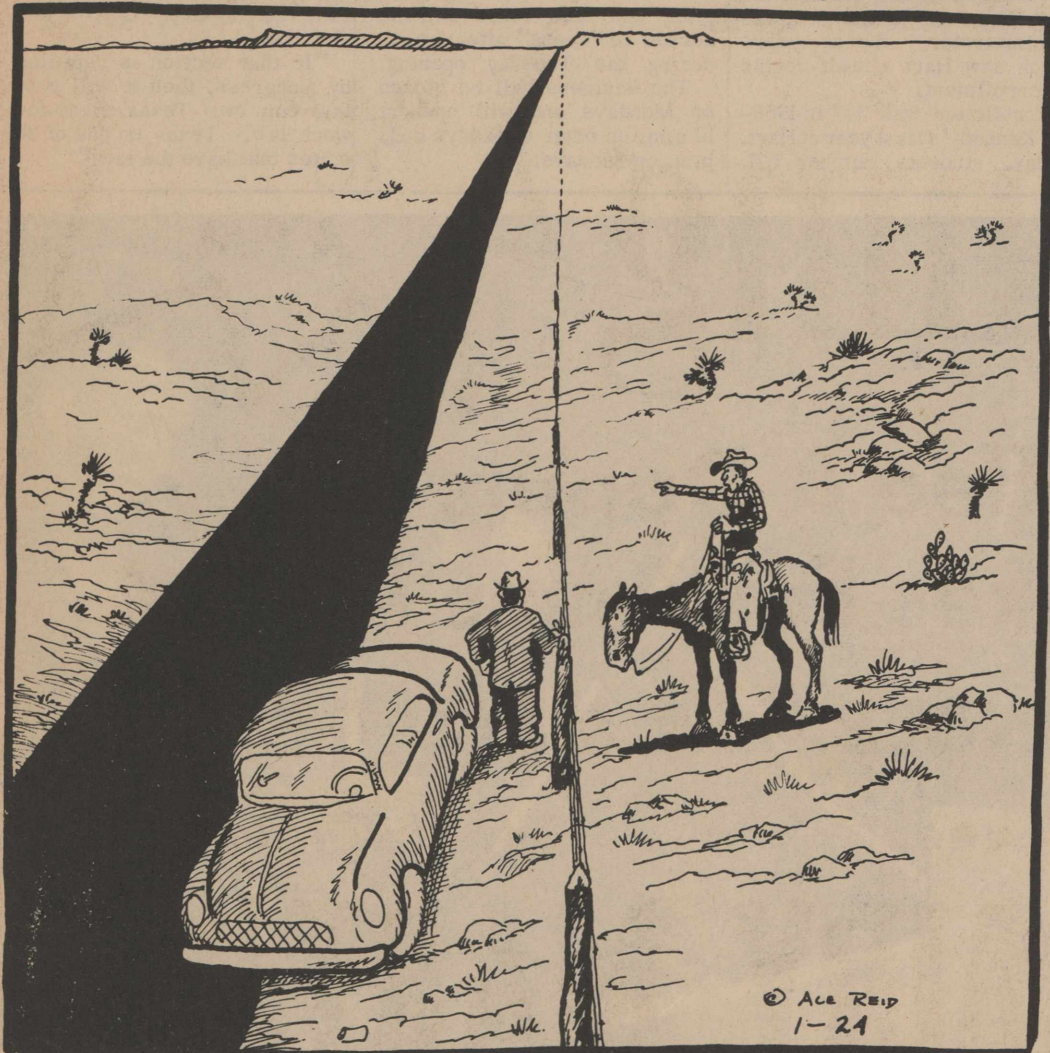
Johnny Beth Crawford, Olton High School senior, has been selected to receive the Daughters of American Revolution Award for 1960.

Wayne Cooper, manager of Olton Chamber of Commerce and Agriculture, has been named to Lamb County Committee on soil fertility.

Four outstanding band students were named to the all-regional band and they are Harvie Jordan, bass horn, Robert Priest, baritone; Ronnie Fancher, trombone; and Lester Hines, trombone.

COW POKES

By Ace Reid



"The Anderson place? Go about 47 miles, second house on the right . . . can't miss it!"

BETTING BILL SHOWN--The battle over whether Texans are going to bet on horse racing has begun again. This time Rep. Maurice Pipkin of Brownsville is introducing the race track betting bill. Last session Rep. V. E. (Red) Berry of San Antonio couldn't get it through the Legislature.

Pipkin's bill would allow both Thoroughbred and Quarter Horse racing on licensed tracks. Also, the city, county, and the state could collect taxes from the track operators. Before a track could be licensed in a county, voters in that county would have to call and approve a referendum.

The bill is backed by Texas Racing Association, which has raised more than \$150,000 from some of the most prominent men in Texas ranching and business. Opposing the association will be a group of businessmen being organized by the Texas Council of Churches and the Texas Baptist General Convention.

Pipkin said the state would get \$20,000,000 a year from a sliding tax of from four to six per cent on all bets and that the state would get millions more from increased tourism. One of the first men to speak in opposition, Rep. J. C. Whitfield of Houston, said, "The plain facts are that legalized racing and gambling not only damage the moral fabric of our people, but that the revenues they bring in are more than offset by losses in other, more legitimate fields of commerce."

You're Invited To Attend A

FARMERS MEETING

THURSDAY - JAN. 28TH

AT THE

OLTON LEGION HALL

ON

TREFLAN FOR WEED CONTROL IN COTTON

This is an important meeting for every Cotton Farmer in the area. It is an informational meeting to show how to and how not to get results with this pre-emergence chemical, and to answer questions. A special representative of Treflan will show colored slides of methods and results of 1964 on the South Plains. He will hold a question and answer period.

Treflan is a good weed control chemical, and used properly, will cut many dollars off cotton production. Here are some advantages:

1. Eliminate the hoe bill and our dependence on the bracero.
2. Eliminate several plowings.
3. Prevent replanting for weed control.
4. Eliminate losing cotton crops in case of rains at planting.
5. Prevent soil packing by not having to get in to fight weeds when soil is too wet.
6. Prevent stunting cotton by dirting it too much in order to fight weeds.
7. Prevent clodding soil by too wet plowing.
8. Prevent loss of cotton caused by hoe hands.
9. Prevent loss of cotton by weeds using plant food and moisture.
10. Allow more shallow planting in warmer soil, thus quicker germination.



FREE COFFEE & DONUTS

COME AND BRING YOUR NEIGHBOR

Sponsored By



OLTON FARM SUPPLY

Phone 285-2404

Don Spain, Owner

Olton, Texas

Hart Camp Happenings

BY MRS. EDWIN OLIVER

Sunday dinner guests in the Glenn Leggett home were two of his sisters and their families, Mr. and Mrs. Edwin Lott and Kay Lynn, Whitharrell, Mr. and Mrs. Salom Lee and Mike, Shallowater, a nephew and family, Mr. and Mrs. Jimmy Lott and sons, Shallowater. Also Sammy Pair and Barbara Burns of Whitharrell.

Mr. and Mrs. Glenn Leggett and Barbara Burns accompanied the Leggett's son, Preston, to Lubbock Monday afternoon where he left by bus for Amarillo to be sworn into the air force. He flew by plane to Lackland Air Force Base in San Antonio Tuesday where he will have his basic training.

Monday night supper guests in the M. W. Wheeler home were their son and family, Mr. and Mrs. Sammy Wheeler and children, Lubbock.

Mr. and Mrs. David Metcalf, Fieldton, have moved back to this community. They are now living in the former T.S. Tyler home. Mr. Metcalf will still farm as well as being associated with Presto Pointer of Spade in spraying Treflan.

Mr. and Mrs. Bill Elliot, Littlefield, visited Tuesday afternoon in the home of her sister and family, Mr. and Mrs. I. A. Smith, Mary Bess and Helen.

Sunday night guests in the J. W. Wells home were her brother and family, Mr. and Mrs. Aubrey Neinst and Children, Spade. Also Mr. and Mrs. Bill Nicholas, Littlefield.

Mr. and Mrs. James Duke, Spade, visited Sunday afternoon in the L. A. Smith home.

Mrs. Bobby Stillwell received word last week that her brother, Calvin Vincent, Lubbock, had suffered a heart attack and was hospitalized in St. Mary's Hospital in Lubbock. He has been allowed no company.

Mrs. H. C. Janes, Sundown, spent the day Monday with her daughter and husband, Mr. and Mrs. Joe Caddell.

A WMU meeting was held Monday morning at the Baptist Church. A chapter of the current Mission Study Book, "Winds of Change", was reviewed by the Mission Study chairman, Mrs. Elma Burleson. Ladies present were Mrs. Elma Burleson, Dewey Parkey, Blanton Martin, M. W. Wheeler, L. W. Sullivan and Bobby Stillwell.

Mr. and Mrs. Jerry Wells and children, Levelland, spent Saturday night with his parents Mr. and Mrs. J. W. Wells.

Mrs. Bobby Stillwell had minor surgery on her neck Tuesday morning in the Littlefield Hospital.

Mr. and Mrs. L. A. Smith, Mary Bess and Helen and Wanda and Teresa Neeley attended the basketball game at Olton Friday night.

Mr. and Mrs. Emmet Rogers had their house moved from the farm Tuesday to Plainview where they will live. He has quit farming and will be employed in Plainview.

Suzanne Martin and girl friend, Cindy Cross, Olton, spent Saturday night in Lubbock with Suzanne's aunt, Eulalie Davies. They returned home Sunday morning.

Mr. and Mrs. Wayne Loman, Brad and Greg, Paul's Valley, Okla., spent Saturday through Monday here with his parents, Mr. and Mrs. Willard Loman and Judy.

Mr. and Mrs. Louis Ball left last week for California to spend a couple of weeks with relatives.

Mr. and Mrs. Charles McKeown and children and Mr. and Mrs. Pat Moberly, Lubbock were supper guests of the James Balls, Sunday night.

Randy Sorensen, son of Mr. and Mrs. Kenneth Sorensen, had surgery on his mouth last Tuesday in the Methodist Hospital in Lubbock. Several stitches were take in his lip to close a wound caused by electrical burns suffered recently. when he is older, skin grafting will have to be done. He suffered the burns when he tried to pull a plug from a record player with his teeth.

Mrs. Dewey Parkey, Mrs. Elma Burleson, Mrs. Blanton Martin and Mrs. Bobby Stillwell attended the Liano Altos Associational Quarterly Meeting at the Sunnyside Baptist Church last Thursday. They were accompanied to Sunnyside by Mrs. A. L. Swaggerty and Mrs. Marvin Qualls of Fieldton.

Judy and Connie Cannon, Cotton Center, have spent the last few days here with their grandparents. Mr. and Mrs. Ray Johnson while their mother, Mrs. Romie Cannon, has been hospitalized in the Medical Arts Hospital in Littlefield.

Mr. and Mrs. Omer Neeley have spent some time in Lubbock the last few days with his grandfather, Hilery Handley, Anton, who fell and broke his hip. He is hospitalized in St. Mary's Hospital in Lubbock.

Several members of the local Baptist Church went to Knight's Rest Home in Littlefield Saturday night and sang for the patients. Those attending were Mr. and Mrs. M. W. Wheeler, Mr. and Mrs. D. R. Leonard, Shirley and Brenda, Mr. and Mrs. Blanton Martin, Rev. and Mrs. Bobby Stillwell and children, Mrs. Dewey Parkey and Debe Oliver.

Mr. and Mrs. Nolan Hukill and sons, Gary and Gordon, attended a fish fry Thursday night in the home of her mother, Mrs. Pearl Jones, Littlefield. Mr. and Mrs. Aubrey Jones, Amherst, who is a sister and brother-in-law of Mrs. Hukill, were also present. They caught the fish at Brownwood Lake.

GO-TOGETHER FOOD SPECIALS

FRUIT COCKTAIL	303 CAN KIMBELL	2 FOR 35c
GREEN BEANS	303 CAN KIMBELL CUT	2 FOR 29c
SHORTENING	JEWEL 3 LB. CAN	59c
AQUA NET	HAIR SPRAY	55c
TUNA	FLAT CAN DEL MONTE	25c

Rejoice! a cracker box that won't make you mad!

NEW CRISP LOCK TOP

1 LB. BOX SUPREME **29c**

APPLES	NO. 2 CAN KIMBELL PIE SLICED	2 FOR 45c
PEARS	KIMBELL HALVES 303 CAN	2 FOR 43c
ORANGE DRINK	46 OZ. CAN CIRCUS	2 FOR 49c
SPINACH	DEL MONTE 303 CAN	2 FOR 29c
BEANS	300 CAN RANCH STYLE	2 FOR 29c

FREE

5 Lb. Bag Imperial Sugar With Purchase Of 4 Westinghouse Light Bulbs

ALL BRANDS CIGARETTES CRT. **\$2.69**

CHILI	ELLIS (NO BEANS) 24 OZ. CAN	49c
PRESERVES	ZESTEE PEACH 18 OZ. GLASS	29c
PREM	12 OZ. CAN SWIFT	39c
KIMBELL FLOUR	25 LB. KIMBELL	\$1.89
COFFEE	1 LB. CAN KIMBELL	65c
DETERGENT	GIANT BOX JOHNSON GLADE	53c
AIR FRESHENER	7 OZ. CAN	47c

WHO'S NEW



Mr. and Mrs. Don Allford, Lubbock, became parents of their first son Saturday Jan. 16 in the Methodist Hospital in Lubbock. The boy was named Howard Garland and weighed 7 pounds and 10 and a half ounces. Grandparents are Mr. and Mrs. C. D. Kirkpatrick and Mr. and Mrs. Howard Allford, Lubbock. Great-grandparents are Mrs. Myrtle Mc Namara, Springlake and Mr. and Mrs. Garland Bell, Lubbock.

A girl named Senovia Alicia was born to Mr. and Mrs. Simon Martinez Jr. Jan. 18. The baby weighed 7 pounds and 4 ounces at birth.

Mr. and Mrs. Manuel Ramos, Edmondson, became parents of a girl named Connie Frances, born Jan. 14 and weighing 7 pounds and one-fourth ounces.

A son named Jimmy was born Jan. 16 to Mr. and Mrs. Eugene Garcia of Olton. The boy weighed 6 pounds and 12 ounces.

Mr. and Mrs. Rolando Flores, Halfway, became parents of a daughter Jan. 17. The girl was named Grasiela and weighed 8 pounds and 8 ounces.

A son was born to Mr. and Mrs. Filemon Rodriguez, Jan. 17 in the Olton Community Clinic. The boy is named Rene and weighed 7 pounds at birth.

Mr. and Mrs. Donald Oursbourn became parents of a son Monday Jan. 11, in the Littlefield Hospital. The boy was named Danny Shawn and weighed 6 pounds and 12 ounces. Grandparents are Mr. and Mrs. Gordon Thomas and Mr. and Mrs. Aubrey Oursbourn. Great-grandparents are Mrs. Annie Campbell and Mr. and Mrs. Joe Oursbourn of Richland, Mo.

A daughter was born to Mr. and Mrs. Benny Quintero, Hart Jan. 13, weighing 6 pounds and 3 ounces and is named Linda.

Mr. and Mrs. Russell Tubb became parents of a son Sunday Jan. 17. The boy weighed 7 pounds and 8 ounces and is named William Floyd.

CARD OF THANKS
Mr. Merejildo Castillo and family wishes to express their sincere thanks to Archie Tinkle, Paul Nafzger, Manuel Hernandez of Olton and Dr. R. B. Blalock and Dr. Edward Ferguson of Galveston for being so much help in the past nine months while Mr. Castillo was struggling to regain his eyesight. May God bless them.
Merejildo Castillo and family

ORANGE JUICE	12 OZ. CAN LIBBY	45c
ENCHILADA DINNERS	12 OZ. PKG. PATIO	39c

SIRLOIN STEAK	CHOICE PEN FED BEEF	73c
BEEF RIBS	CHOICE PEN FED BEEF MEATY	29c
BACON	1 LB. PKG. CORN KING	53c

SPARE RIBS	LEAN & MEATY PORK	19c
BOLOGNA	1 LB. PKG. WILSON ALL MEAT	47c

CALF LIVER	FRESH	25c
STEAK	CHOICE PEN FED BEEF T-BONE	79c

LETTUCE	FANCY	9c
GRAPEFRUIT	TEXAS RED	9c
APPLES	RED ROME	9c
ONIONS	COLORADO YELLOW	5c
TOMATOES	NO. 1	21c

SPECIALS BEGIN FRIDAY, JANUARY 22, 1965

DOUBLE GUNN BROS. STAMPS EVERY WEDNESDAY

Phone 285-2250

CASH WAY FOOD STORE

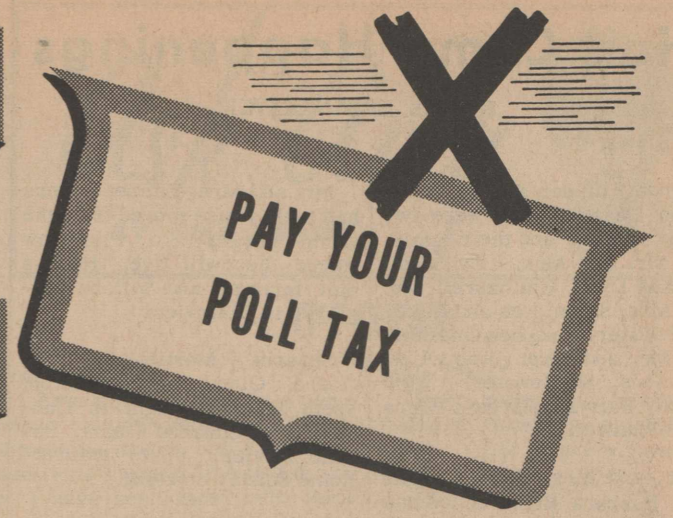
Free Delivery

1964

We Use HOW Service Plan



TO VOTE



**Only 10 Days Remain
For You To
Qualify To Vote!**

**DEADLINE
JAN. 31, 1965**

**BE ABLE TO VOTE
IN
LOCAL ELECTIONS**

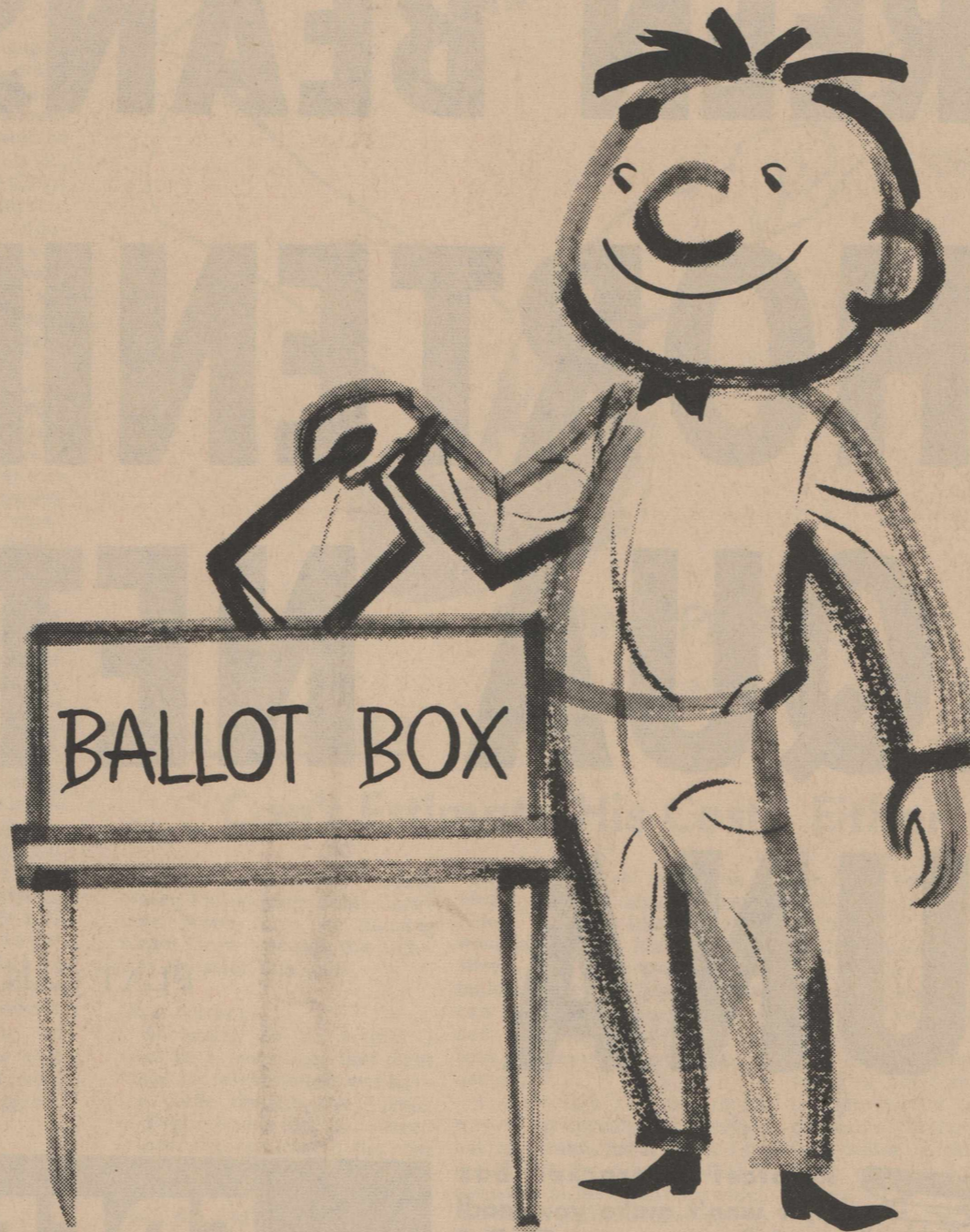
★ **CITY ELECTION - APRIL 6**

MAYOR, TWO COUNCILMEN TO BE ELECTED

★ **SCHOOL BOARD ELECTION - APRIL 3**

TWO TRUSTEES TO BE ELECTED

★ **ANY CALLED ELECTION**



Mayor's Proclamation

WHEREAS, under the laws of the State of Texas, all citizens desiring to vote in elections held in the year 1965 must qualify by paying the poll tax or obtaining a certificate of exemption from the poll tax by January 31, 1965; and

WHEREAS, it is the patriotic duty of every citizen to participate in the processes of self-government by meeting his obligations to his government and preparing himself to vote; and

WHEREAS, our right to vote is the most basic of our constitutional freedoms, secured in battle by our forefathers and defended in every generation by brave men willing to shed their blood to protect this right, which is the cornerstone of our liberties and is now under attack by a ruthless communistic society which has never permitted free elections; and

WHEREAS, the widest possible participation in elections is a proud sign of civic health and of a citizenry dedicated to the defense and the exercise of our American way of life.

NOW, THEREFORE, I, as Mayor of the City of Olton do hereby proclaim the week January 24 to January 31, 1965 as

QUALIFY TO VOTE WEEK IN OLTON

and urge that all our citizens who are eligible to vote proceed promptly to pay their poll taxes or obtain their certificates of exemption in order that they may be qualified to vote. A people that does not exercise its rights stands in danger of losing them. I hope, therefore, that every eligible citizen of the City of Olton will be qualified voter and will cast his vote in 1965.

W.E. (Bill) Thomas
Mayor, City of Olton

PAY YOUR POLL TAX

This Message Sponsored By The Following Firms

Who Urge You To Qualify To Vote!



<p>OLTON STATE BANK</p> <p>MEMBER F.D.I.C. OLTON, TEXAS</p>	<p>BRYANT-GILES IMPLEMENT</p> <p>YOUR IH DEALER OLTON, TEXAS</p>
<p>HOWARD HALL INSURANCE AGENCY</p> <p>YOUR OLTON INSURANCE AGENT FOR THE PAST 15 YEARS</p>	<p>OLTON GRAIN CO-OP, INC.</p> <p>WE STORE AND MERCHANDISE ALL KINDS OF GRAIN</p>
<p>OLTON BUTANE CO.</p> <p>BUTANE - PROPANE - MOTOR OILS GASOLINE - DIESEL</p>	<p>ED THOMPSON IMPLEMENT</p> <p>YOUR JOHN DEERE DEALER OLTON, TEXAS</p>
<p>HIGGINBOTHAM- BARTLETT CO.</p> <p>RUSSELL STRAIN, MGR. "GOOD LUMBER"</p>	<p>THE OLTON ENTERPRISE</p> <p>COVERING OLTON LIKE THE SUNSHINE</p>



News Of Interest To Women

Heflin, Conder Vows Said In Ceremony At Plainview

The Parkview Baptist Church of Plainview was the scene Friday evening at 7:30 p.m. for the wedding of Miss Linda Kay Heflin and Johnny Mack Conder.

The double ring ceremony was officiated by the Rev. Clayton Watkins.

Parents of the couple are Mr. and Mrs. J. B. Heflin, Plainview, and Mr. and Mrs. Gene Conder, Olton.

Given in marriage by her father, the bride chose a dress of white lace and organza featuring a basque bodice enhanced with a portrait neckline and wrist-length tapered sleeves. Her fingertip circular veil of Belgian lace, featuring a pattern of cascading lace flowers, was attached to a white satin pillbox by a satin bow and a shoulder-length veil of illusion was fastened to the front of the headpiece.

She carried a bridal bouquet of gardenias and stephanotis arranged atop her white Bible. Miss Donna Goodgion attended the bride as maid of honor. She wore a royal blue sheath with white accessories and a corsage of white carnations completed her ensemble.

Attending the bridegroom as best man was his brother, Audie Conder of Abilene. Ushers were Joe Martin and Rob Heflin of Floydada.

Leon Myers, soloist, accompanied by Gil Jordan, furnished the wedding music.

A reception followed in the church parlor. The table was laid with a white lace cloth over blue centered with a floral arrangement of blue carnations.



MRS. J. M. CONDER

For traveling, the bride chose a tailored suit of blue wool with matching accessories.

The bride is a 1964 graduate of Plainview High School and is employed by Southwestern Bell Telephone Co. The groom is a graduate of Olton High School and is employed by a radio station at Post.

The couple will reside in Lubbock after a short wedding trip.

Relatives attending from Olton were Mr. and Mrs. Gene Conder, parents of the groom; three aunts, Mr. and Mrs. Marshall Franks of Skellytown, Mr. and Mrs. C. W. Whittemore of Rule; Mrs. Myrtle Moore of Stanford and Mrs. Audie Conder of Abilene.

Cox Family Is Honored With Party

The Carroll Cox family was honored with a "going away" party Saturday Jan. 16 in the home of Mr. and Mrs. Leo Ross Bryant.

Hosts and hostesses for the occasion were Mmes. and Messrs. Frank Cornelius, Earl Robertson, Howard Hall, Owen Norfleet, David Poteet, Preston Sampler, David Maxey, Murrie Machen, Douglas Giles, Basil Sherman, Earl Hysinger, Fred Smith, Major James, A. D. Melton, Joe Turner, Cecil Gallaway, H. B. Maxey Jr., Jess Parker, Laus Hair, W. B. Dickenson Sr., Clifton Hines, Elmer McGill, Bill Weaver, Jack Straw, E. C. Jones, Elbert Hooper, Sam Clark, Paul Nafzger, Mrs. Alice Willis and Elmer Machen.

Out-of-town guests were Cox's parents, Mr. and Mrs. Parmer Cox, and his sister and family, Mrs. T. G. Hall, Tommy Carol and Bobby, all of Plainview; Mr. and Mrs. D. M. Granbery, Kress; and Mrs. Alice Willis of Littlefield.

Burrow Child To Be Honored

A pink and blue shower will honor Holly Jelynn, new daughter of Mr. and Mrs. John Lynn Burrow, Wednesday Jan. 27 in the home of Mrs. Frank Struve. Calling hours will be from 2:30 to 5 and the public is invited.

Recipe Of The Week

Mr. and Mrs. Grady Cope, both fifth grade teachers in Olton School, give us our recipes this week.

Mr. and Mrs. Cope share an enthusiasm, not only for teaching and cooking, but a number of hobbies including gardening, fishing, baseball and traveling.

Their garden, admired locally for its abundance of flowers and vegetables, takes up a lot of the couple's spare time.

One of Cope's favorite hobbies is fishing, but he admits he doesn't like to eat them..... just catch 'em.

Mrs. Cope commented that her husband doesn't care to eat any type of fish but she "slipped in" some shrimp in her Tomato Shrimp Salad recipe, and "he likes that."

One of her favorite recipes is her Chicken Casserole, printed below.

Cope prefers to cook desserts and his two favorites printed here are Coconut Kisses and Eagle Brand Milk Cookies.

Mr. and Mrs. Cope have lived in Olton for the past three and a half years, moving here from the Gulf Coast.

They are members of the First Baptist Church.

Mrs. Cope is also a member of Phi Theta Kappa and Alpha Chi.

TOMATO SHRIMP SALAD
1 c. tomato soup (any good brand)
1 envelope Knox gelatin
1/2 c. cold water
1 c. mayonnaise
1 can shrimp, cleaned and mashed
1 c. chopped celery, green pepper and onion.

Boil soup. Add gelatin which has been dissolved in ice water. Cool that mixture. Add other ingredients; mix well; and mold. Refrigerate about a day before serving on lettuce with choice crackers.

COCONUT KISSES

2 egg whites, beaten stiff
1/4 tsp. salt
1/2 c. sugar
2 c. crisp corn flakes
1/2 c. walnuts, or pecans
1 c. moist shredded coconut
1/2 tsp. vanilla

Mix whites, salt, and sugar until sugar is dissolved. Fold in other ingredients. Drop from spoon onto well-greased tins. Bake in moderate oven 15 or 20 minutes. Place tins on wet towel; remove cookies with spatula immediately. Makes about 2 dozen cookies.

EAGLE BRAND MILK COOKIES

1 stick margarine
1 cup graham cracker crumbs
1 can coconut
1 small package chocolate chips
1 can Eagle Brand Milk

Melt margarine in rectangular pan. Add cracker crumbs, coconut, and chocolate chips. Pour milk over this, and bake in oven 325 degrees for about 25 minutes.

Estes Bartletts Feted At Dinner

Mr. and Mrs. Estes Bartlett and new son, Monte Wayne, one-month old, of Barnsdall, Okla., were honored with a dinner in the home of Mrs. Bartlett's parents, Mr. and Mrs. J. A. Stiles, Sunday Jan. 17.

The Bartletts arrived Friday and returned home Monday. They have a daughter, who was unable to attend.

Out-of-town guests attending the buffet luncheon were Mr. and Mrs. Dwayne Stiles, Loretta Lynni, Fay and Sandra Ford, Mr. and Mrs. Lewis Stiles and family, Mr. and Mrs. Almer Lee Ford and family, Amarillo; Mr. and Mrs. Kenny Shultz, Groom; Mr. and Mrs. Jim Wayne Glasscock and family, Mr. and Mrs. Louie Hill and family, Earth; Mr. and Mrs. Glen Gipson and Paula, Lockney.

Those attending from Olton were Mr. and Mrs. Mac Keating and Max Glenn and son Cleve, Mr. and Mrs. Robert Akin and family, Mr. and Mrs. Frank Adams, Mr. and Mrs. Ray Gabehart, Steve, Sherry, David Kersh and Garland Rose.

Golden Age Meeting Set

The Olton Garden Club will sponsor the Golden Age social Thursday Jan. 28 in the American Legion Hut. The social will begin at 2:30 p.m.



MR. AND MRS. GRADY COPE

COMMUNICATIONS Your Tool for Progress

Old Mother Hubbard never had it so good

A bare cupboard in her day posed quite a problem. But the modern homemaker has many advantages — wonderful food stores, fast transportation, and communications. Food stores in several towns we serve use modern communications to help housewives shop and to increase food sales. They record daily specials on our ELECTRONIC SECRETARY® phone answering unit. A shopper telephones and receives the list of specials automatically through electronics. For full information about how our many communications services can be your Tool for Progress, please call our Business Office.

GENERAL TELEPHONE

'65 Chevelle by Chevrolet

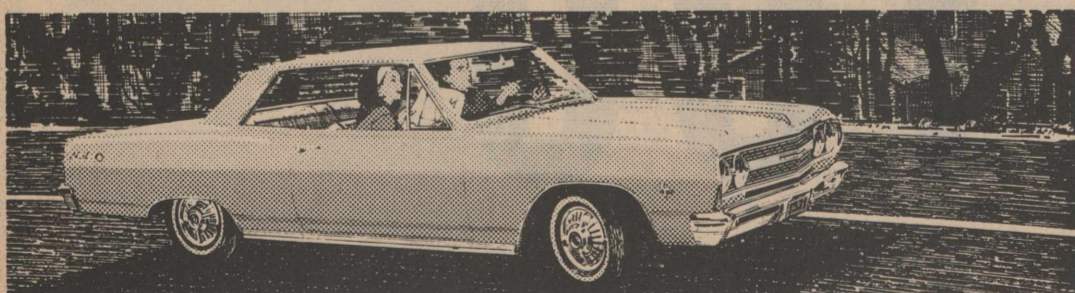
Chevelle Malibu Super Sport Coupe



(discover the difference)

Find out what 350 hp feels like

in America's favorite intermediate size car



Next time you're feeling low, come on in and plunk yourself down in the bucket seat of a Chevelle Malibu Super Sport. Flick the ignition—bring that special-order 350-hp power plant to life. Then go find a road and try not to smile.

We think it's the greatest pep pill since weekends—and that goes for the other Chevelle V8's too. The 195-hp. And the 250- and 300-hp jobs we can order for you.

And of course if power doesn't sell you right off, maybe Chevelle's short turning radius and overall handling ease will. Or its Full Coil suspension ride. Or its all-vinyl, carpeted interior. Or maybe it's just plain old Chevelle value.

discover the difference



Drive something really new—discover the difference at your Chevrolet dealer's Chevrolet • Chevelle • Chevy II • Corvair • Corvette

42-6333

THOMPSON CHEVROLET CO.

Phone 285-2646

Olton, Texas

Ladies Bible Class Meets

The Ladies Bible Class of the Main Street Church of Christ met for their regular meeting Wednesday Jan. 20 at 10 a.m. Mrs. I. B. Holt taught the lesson.

Ladies attending include mmes. Elmo Bryant, Glen Exter, Lem Roberson, Ed Thompson, Bud Huckabee, C. T. Hulsey, Marcus Breland, Willie Gene Green, Bob Harper and Miss Helen Locke.

having a party?

Paper Napkins

Matches

Monogrammed

To Order

ONE DAY SERVICE

CONSUMERS

Grand Opening

Tuesday

10 A.M. TO 4 P.M.

Free Coffee & Donuts

Free Cokes For Teens After 4

OPEN UNDER NEW MANAGEMENT

Bill Perkins, Owner **Bonnie Brown, Mgr.**

DAIRY MART

OPEN 10 A.M. WEEKDAYS, 1 P.M. SUNDAYS, CLOSED MONDAY

REDISTRICTING PLANS SEEN -- A committee of the Texas Legislative Council, which is made up of representatives from both houses of the Legislature, has prepared two plans for congressional redistricting.

According to a Houston federal court order, the Legislature must redraw the present 23 districts so that their populations will vary no more than five per cent from the mathematical average of 416,508 and

they must do the job by Aug. 1. Both plans would give South Texas a new congressman. They would have a district from Laredo to South San Antonio and from Del Rio to Zapata. Also, both plans would put

parts of Dallas, Tarrant and Bexar counties with other counties to equalize district populations. This reshuffling would require some current congressmen to run against each other if they want to be re-elected in 1966.



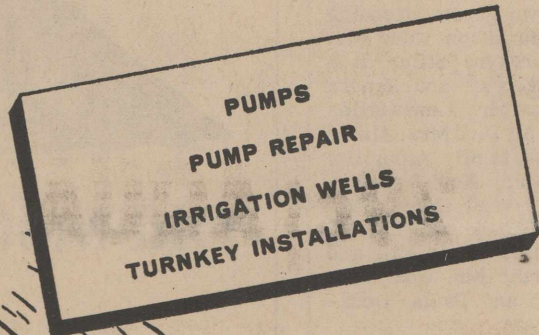
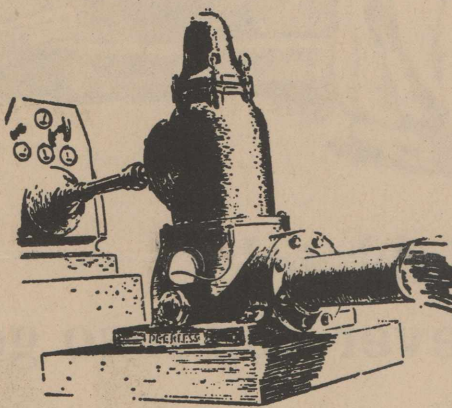
America's Leading Brand

FOR SKILLED PUMP SERVICE

Satisfaction, speed, and economy let Peerless, the High Plains' leading pump repair experts, add new life to your old pump. Peerless will bring your pump (any make, any age), up to the peak efficiency that cuts your water costs to the bone. Peerless pump repair and replacement service is nation-wide and is endorsed by hundreds of your neighbors. Remember, there's no charge or obligation for technical advice or estimates. So come in or call on us now to figure on your next job.

FOR NEW PUMPS

There's no economical substitute for Peerless-America's largest selling deep well turbine pump. Now Peerless offers new interchangeability in pump head sizes, new shafting specifications for longer shaft life and new bowl unit improvements for high efficiency. These advanced design features bring new Peerless pumps to an all-time high in dependable pump performance, providing a new low in water producing costs. Yes, Peerless is your best deep well pump buy. Write for illustrated pump bulletins today. Or call for Peerless pump service at address shown below.

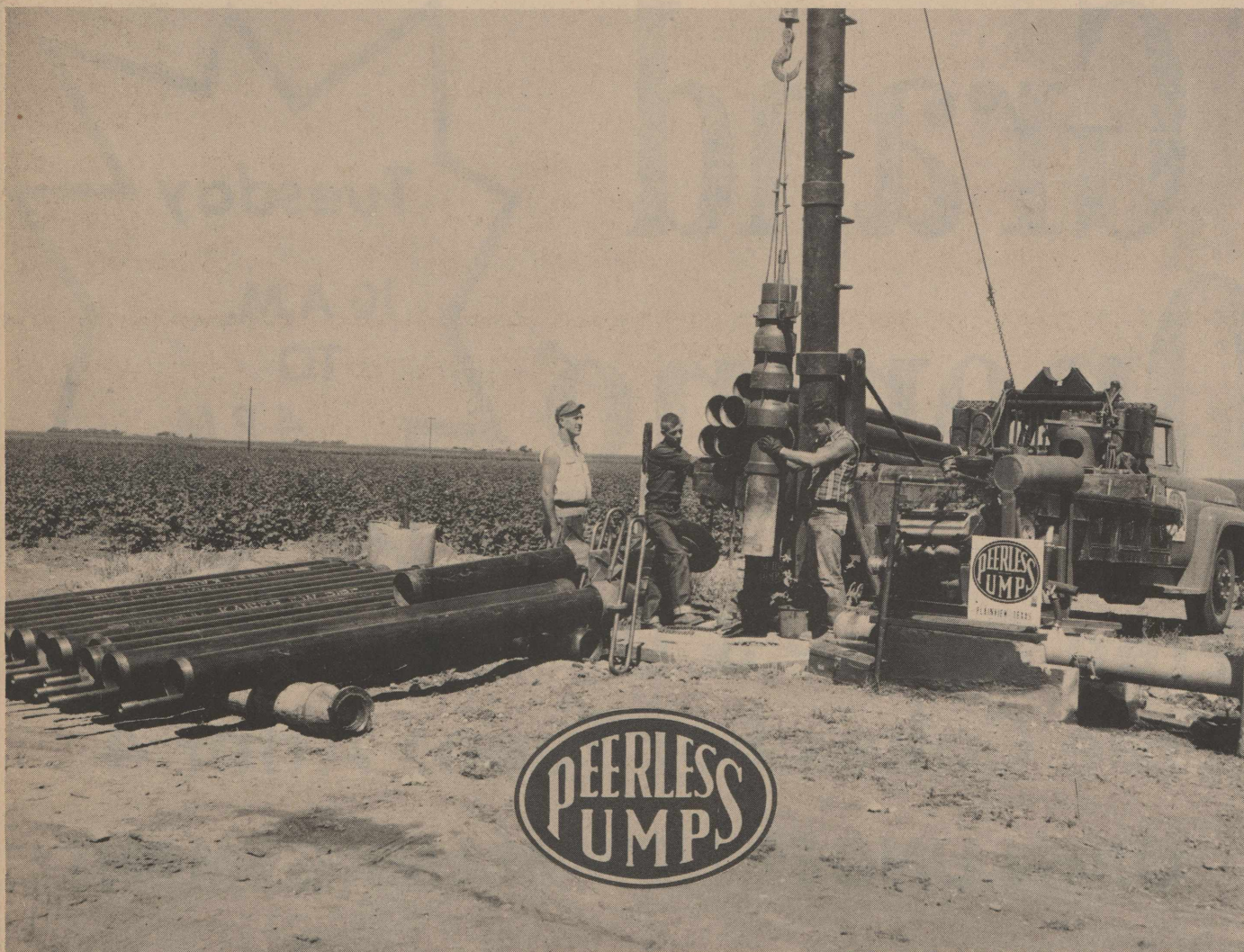


LOOK TO THE LEADER—
LOOK TO...

PEERLESS PUMPS

DROP IN AND ASK FOR YOUR FREE

PEERLESS BULLETIN AND PUMP SLIDE RULE



PEERLESS PUMP

FMC Corporation

AMARILLO HIGHWAY

PLAINVIEW, TEXAS

Society NEWS

Cheryl Duncan Honored With Bridal Shower

The home of Mrs. Preston Sampler was the scene Saturday Jan. 16 for the bridal shower honoring Mrs. Robert Gary Duncan, the former Miss Cheryl Ann Poteet.

Mrs. Sampler greeted the 208 guests and they were registered by Misses Coye McGill, Lindy Ray, Tanya Bryant and Bobbie Tollett. The gifts were registered by Mrs. Arno Hall, Mrs. John Campbell and Mrs. Norris Sampler.

The honoree and her special guests, her mother, Mrs. Clovis Poteet, and the groom's mother, Mrs. Robert J. Duncan, were presented with corsages of carnations.

The reception table was laid with a white linen cloth centered with a white floral arrangement of bridal wreath, snapdragons and carnations. White streamers were on the table with the first names of the honoree and her husband inscribed in silver. A silver tea service with china and silver appointments completed the decorations on the table.

Individual decorated wedding cakes and tea were served by Misses Kathy Kidd, Marty Roberts, Susan Norfleet and Cherry Caddell.

The 116 hostesses presented the new bride with a silver water pitcher and bread tray, a walnut tea cart, vacuum cleaner, pole lamp, 10 place settings of sterling, electric skillet, ice cream freezer, rubber plant and stand, card table and chairs, king-size bedspread, dish towels, candy dish and a linen table cloth.

Out-of-town guests were Mrs. Arno Hall, Ray Fargson, Claude Fargson, Lillie King, Plainview; Mmes. Jim Wayne Glasscock, Dean Jones and daughter, Tamera, Earth; Mrs. Glen Gibson and Paula Gibson, Lockney; Mrs. D. M. Granberry and Mrs. Junior McNally, Kress; Mrs. Dewey Hukill, Lubbock; Mrs. Bill Pierson and Debbie Pierson, Petersburg; Mrs. Major Dirk and Kathleene, Mrs. Leroy Measles and Jenny and Mrs. Beulah Measles of Tulia.

Club Meets In Bley Home

Mrs. C. E. Bley and Mrs. Roy Dobbs of Lubbock were host to the regular meeting of the Olton Garden Club Thursday Jan. 14 in the home of Mrs. Bley.

Mrs. B. C. Cooner brought the devotional thoughts. Roll call was answered with a bible verse expressing joy and gladness.

Mrs. H. G. Walker reviewed the book "Flowers of the Holy Land". Mrs. John Lambright and Mrs. C. M. Owen were also on the program. They brought floral arrangements illustrating the new year with Bible verses.

Refreshments of eskimo pie, cheese ritz, spiced tea, nuts and coffee were served to Mmes. Jack Allcorn, George Bohner, George Brown, H. B. Carson, B. C. Cooner, L. G. Elkins, Roy Hooper, John Lambright, Idell Lewis, C. M. Owen, C. W. Phillips, Preston Sampler, H. C. Walker, J. G. Estes and L. B. Cowart.

The main project of the club is to have a clubhouse. They also help sponsor the Teachers Appreciation Banquet and the Golden Age Social once each year.

Charlene Moore Circle Meets

The Charlene Moore Circle of the First Baptist Church met for their regular meeting Tuesday Jan. 19 at 9:30 a.m.

Mission Study was the program subject. Mrs. L. G. Elkins taught the lesson, "Winds of Change." Prayer calendar was brought by Mrs. C. W. Phillips, who also led the prayer.

Ladies attending include Mrs. L. O. Langley, Mrs. J. F. Miller, Mrs. R. G. DeBerry and Mrs. D. S. Price.

Program for the next meeting Tuesday Jan. 26 at the church will be "Royal Service."

Mrs. Arnold Is Honored

Mrs. Clem Arnold was honored with a bridal shower in the home of Mrs. Owen Norfleet Wednesday Jan. 13.

Mrs. Arnold is the former Miss Sandra Johnson, daughter of Mr. and Mrs. Leurel Johnson. Corsages of pink carnations were presented to the honoree and special guests, her mother and the mother of the groom, Mrs. Stella Machen.

Miss Gayle Gunter registered the guests and they were presented to the honoree and special guests by Mrs. Norfleet, Mrs. A. C. Light Jr., and Mrs. Tracy Critchfield.

An arrangement of pink roses centered a white linen cloth on the serving table. Individual white cakes with pink trim were served with strawberry punch from crystal and silver appointments. Napkins with "Sandra and Clem" inscribed in silver finished the decor.

Presiding at the table were Miss Susan Norfleet and Miss Barbara Johnson.

Other special guests were grandmothers of the bride, Mrs. Henry Gavett and Mrs. Joe Johnson of Olton; her great-grandmother, Mrs. H. F. Bolin of Plainview; and her aunt, Mrs. Jack Hawkins of Amarillo.

The hostesses presented the honoree with a set of mixing bowls, electric mixer, pieces of china, eleven piece set of cookware, a pair of lamps, and eight place settings of stainless steel.

Hostesses were Mmes. Norfleet, Roy Roberts, Ed Workman, C. E. Kessler, Marvin Huguley, A. G. Huguley, Don Huguley, Tracy Critchfield, Jim Speer, Howard Hall, Charles Sullivan, O. E. Patterson, Leo Smith, Tom Critchfield, A. C. Light Jr., Gene Cottrell, W. C. Gunter, C. D. Kirkpatrick, Lonnie Smith, Glen Patterson, Herman Meyer, Eva Smith and Mrs. Tom Billy Hankins.

Esther Class

Hosts Dorcas

The Esther Sunday School Class of the First Baptist Church was host to the Dorcas Class Tuesday evening Jan. 19.

A regular monthly meeting of business and fellowship was held.

The theme of the program was "The Greatness of God."

Opening prayer was given by Mrs. L. G. Elkins. Mrs. Jim Kemp gave the poem "The Song of the Mystic" by Abram Jr. Ryan.

Mrs. Rufus DeBerry sang "How Great Thou Art" by Stuart K. Hine. She was accompanied on the piano by Mrs. W. B. Smith Jr.

The devotional of the greatness of God was carried out by Mrs. Elkins and scripture was taken from the book of Ezekiel, Chapter 37.

Quiz games were held by the group.

A quotation was read by a member on "What Per Cent Am I."

Following the business meeting, Mrs. Bob Worley gave the blessing and closing prayer.

Refreshments of party dip, cake with whipped cream coffee and punch were served to Mmes. R. W. Malone, Jim Kemp Theo Hackler, Frank Adams, Witt Lacewell, W. B. Smith Jr., Bob Worley and Rufus DeBerry by hostesses, Mrs. Brent Burrow and Mrs. L. G. Elkins.

Mrs. Aikman Heads Club

Mrs. Bailey Hair was hostess to the Olton Study Club Monday Jan. 18 in the home of Mrs. Brent Burrow.

Mrs. Jim Williams brought the devotional.

A panel discussion on grooming and clothes was given by Mrs. Jack Straw, Mrs. Jim Fuller, Mrs. G. T. Sides and Mrs. J. L. Carson Jr.

Following the program a business meeting with election of officers was held.

Elected were Mrs. Roye Aikman, president; Mrs. Raiford Daniel, vice-president; Mrs. Joe Turner, recording secretary; Mrs. G. T. Sides, parliamentarian; Mrs. Barton Prestridge, federation counselor; Mrs. Paul Burrus, reporter; and Mrs. J. L. Carson Jr., critic.

Members present were Mmes. Roye Aikman, Brent Burrow, H. B. Carson, J. L. Carson Jr., Frank Cornelius, Raiford Daniel, J. E. Fuller, Bailey Hair, Carl Hooper, Barton Prestridge, Basil Sherman, Truitt Sides, C. S. Silcott, Ray Slaten, Marshall Stone, Jack Straw, Joe Turner, Jim Williams and Bill Yates. There was one guest, Mrs. Guy Willis of Littlefield.

Refreshments of salad, crackers, chocolate cake, and hot punch were served.

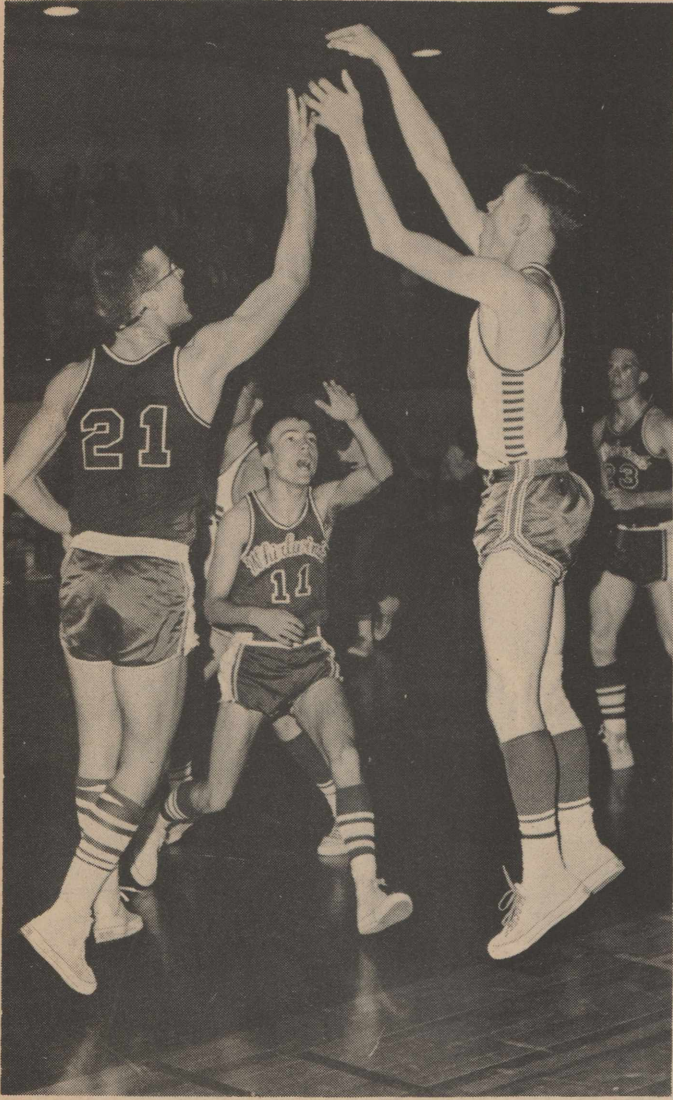
WE WANT TO TAKE THIS MEANS OF SAYING - - - -

THANK YOU

FOR YOUR CO-OPERATION

IN OUR GOOD GINNING SEASON IN 1964

OLTON CO-OP GIN



OLTON'S CHARLES CHURCH goes up for a basket in the Mustangs' 60-48 loss to Floydada here last Friday night.



SUSAN NORFLEET, Filly forward, tries a left-handed shot against Floydada. The Fillies dropped the district game, 47-42.

Floydada, Friona Top Cagers

A victory in District 3-AA play narrowly escaped both the Olton Mustangs and the Fillies here last Friday night, as they battled favored Floydada teams off their feet.

But the Mustangs lost their game to the Whirlwinds, 60-58, and the Fillies were nudged out, 57-42. Both Olton teams gave one of their best efforts of the year, however.

Tuesday night it was back to the salt mines for both local teams, as the boys fell to Friona, 74-27, and the girls lost to the defending champion Friona lasses, 67-43. Both games were on foreign soil.

But things are looking up for Olton Teams. Friday night they travel to Lockney, where the Longhorn teams also seem to be having their troubles.

Olton and Lockney both are winless in district play and both

would like to relegate the other to the league basement.

The girls game will start at 7 p.m. and the boys game is immediately thereafter.

Next Tuesday night, Olton will travel to Dimmitt, for a rematch with the strong Bobcat teams.

While the varsity was having its problems last week, the Olton freshmen girls won a battle over Lockney here Monday night, 39-26.

Lynn McGill led the scorers with 15 points, while Shirley Johnson had 12, Vickie Neinst 9 and Lynda Blackwell 2. Jane Ann Duncan came up with six rebounds, while Robbie Langford had four, Sherry Moss three and Sharon Schreier two.

Next game for the freshmen is Thursday night, Jan. 28, when they play Cotton Center here. Against Floydada, the Olton

varsity boys were even at 11-11 after the first period but trailed at halftime by five, 29-24. They cut the Whirlwind margin to three after three quarters, 44-41 and tied the count at 56-56 with a minute to play.

But Floydada's Dale Lutrick tallied a pair of buckets to give the Whirlwinds the victory and Joe Priest's last second bucket brought the margin to 60-58.

Jerry LaFrance led Olton with 16 points, while Priest had 15, Charles Church 11 and Darrell Glover and Dennis Givens, 8 each.

Kerry Bearden led Floydada with 17, while Keith Teague got 16 and Lutrick 14.

In the Fillies game with Floydada, the Olton fems led 42-39 with two minutes to play, after playing catch-up all night. But the Floydada team came

on strong in the final minutes for a 47-42 win.

Sherry Caddel led Olton with 25, while Karen Hipp got 14 and Susan Norfleet three.

Kathy Kidd led the defensive unit with six rebounds while Laura Akin and Renay Berry each had three.

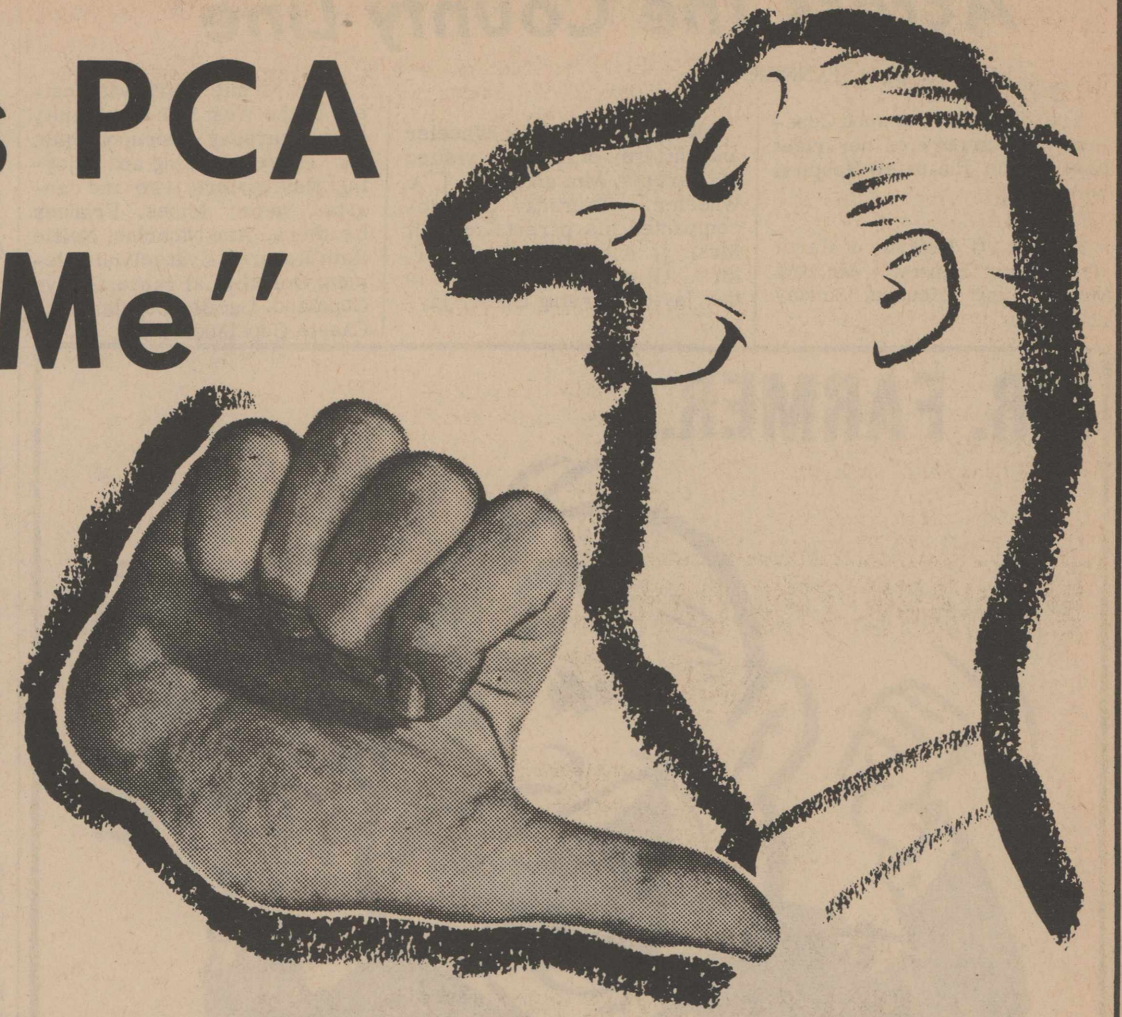
Against Friona, the Mustangs fell behind 25-6 at the end of the first period and the gap grew wider.

Church was high for Olton with eight, while LaFrance had six and Roger Thompson five.

Larry Buckley paced Friona with 12, while Danny Murphee and Gene Weatherly each had 10. Olton girls fared somewhat better, losing 67-43, as Sherry Caddel led the scoring with 26, Karen Hipp picked up 11 and Susan Norfleet six.

Francine Struve and Renay Berry each had three rebounds.

"It's PCA For Me"



And For A Lot More Olton Area Farmers, Too!



Many farmers in this area of big business farming have found Plainview PCA meets their needs.

Your PCA is ready to help you work out a sound, low cost credit plan.

SOUND
DEPENDABLE
AGRICULTURAL
CREDIT

Plainview Production Credit Assn.

Bob Harber, Olton Office Manager

OFFICES IN: PLAINVIEW, OLTON, TULIA, MULESHOE, FLOYDADA, DIMMITT, SILVERTON, FRIONA, LITTLEFIELD

YOU'RE INVITED TO ATTEND

OUR FORMAL OPENING THIS WEEK

HART BRANCH OF TIDE PRODUCTS, INC.

★ FERTILIZER

★ HERBICIDES

★ INSECTICIDES

★ FUNGICIDES

WEEK OF **JAN. 18** THRU **23** 8 A.M. to 5 P.M.

ALL DAY ANY DAY DURING THIS WEEK

- ★ Bring The Whole Family
- ★ Refreshments Served
- ★ Door Prizes-Deer Rifle & Lawn & Garden Fertilizer

NEW CONCEPTION IN FERTILIZER . . . Tide's Prescription-Mix fertilizer is blended from high analysis raw materials to fit your exact plant requirements

HOW TIDE'S TILT BOX SERVES YOU . . . Tide's Tilt Box pictured at the right, is an air tight, all weather container. It keeps your fertilizer dry, fresh and free flowing. This Tilt Box puts 14,000 pounds of fertilizer where you want it . . . at the most convenient location to the field and high enough to make loading any type of application equipment easy.

TIDE SERVICES . . . Tide grower services and products are planned to save time and labor . . . help take the guesswork out of farming. Agricultural consultants, Free Soil Tests, Tissue Tests, Tide's custom-designed, weather-proof, delivery and storage equipment, and modern application equipment cut your production cost.

ECONOMICAL . . . Ease of handling fertilizer in Tide equipment reduces cost . . . saves time and labor. One man can fill an applicator or a spreader in 2 to 3 minutes with Tide Fertilizer, simply by opening a gate. With "Prescription Mix", you buy only the Nitrogen, Phosphate and Potash and or the trace elements your soil tests indicate you need. High analysis fertilizer cuts material handling costs. No bags to handle (unless you want it bagged), and no storage problem, as Tide's Tilt Box, holding 14,000 plus pounds provides moisture tight delivery and storage on the turnrow.

Hart Branch Of Tide Products, Inc.

THE LATEST TYPE OF AMMONIA APPLICATION EQUIPMENT

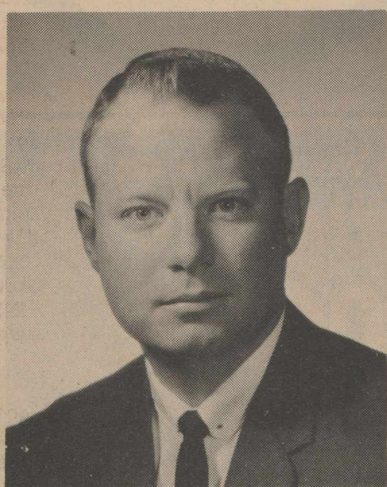
COME BY FOR COFFEE ANY TIME-ANY WEEK DAY

Hart, Texas

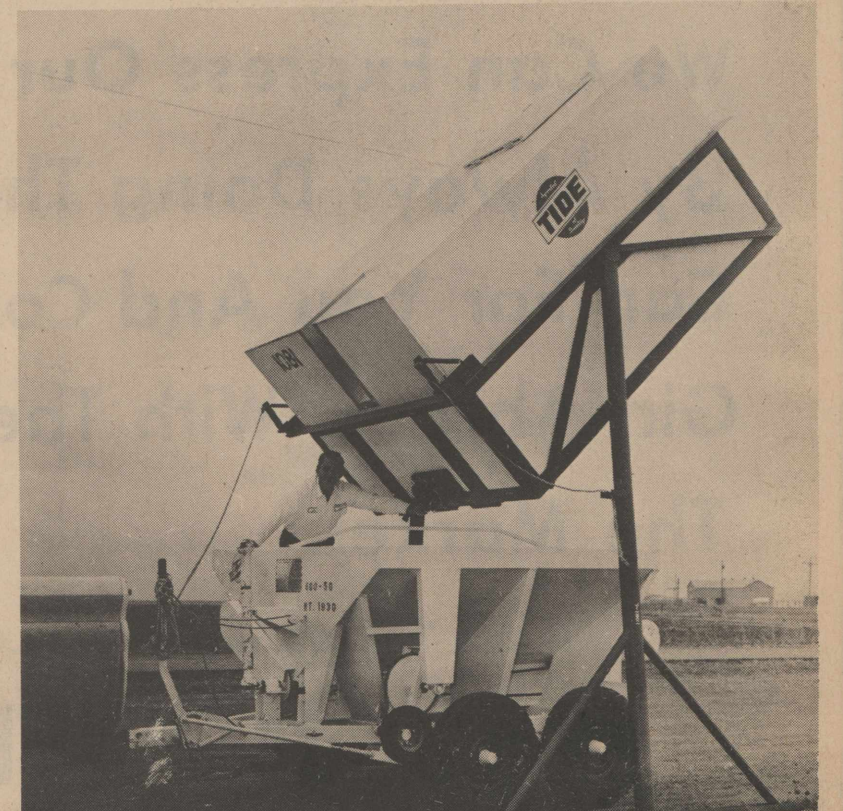
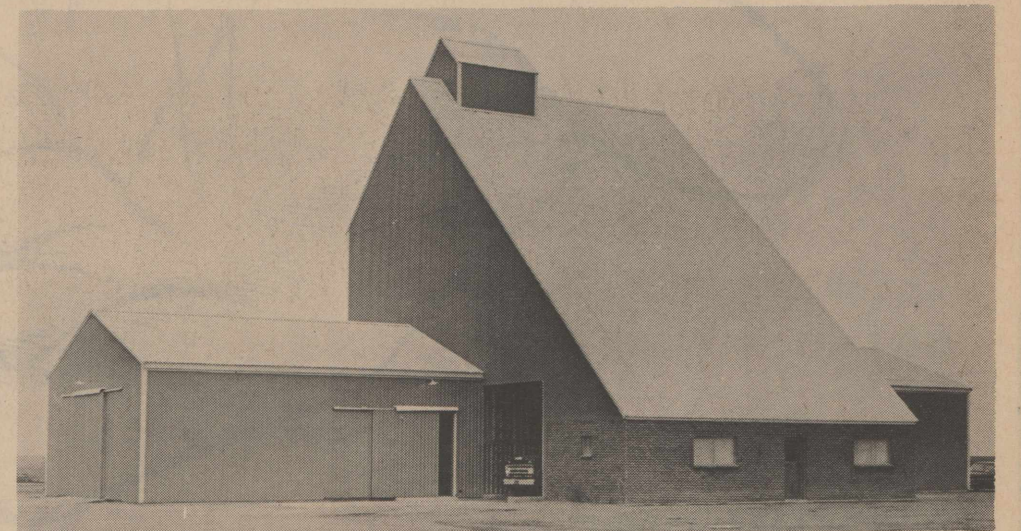
Phone 938-3595



CLARENCE KERNS
BRANCH MANAGER



JOHN BANNWORTH
PLANT SUPERINTENDENT



Across The County Line

BY MRS. C. D. TANNER

Tuesday Mrs. Derwood Copeland had surgery on her right hand at the Plainview Hospital and Clinic.

Mrs. R. O. Dickson of Earth visited her nephew, Mr. and Mrs. Benny Dickson, Sunday afternoon.

Mr. and Mrs. Jack Wheeler and children of Lubbock visited his parents, Mr. and Mrs. J. A. Wheeler. Thursday they accompanied his parents to visit Mrs. J. A. Wheeler's sister, Mrs. Allie Smith, a patient in the Jayton Nursing Home, Jayton.

Mrs. Fannie Clark was hostess to the West Side Community Club Thursday afternoon, Jan. 14. Those attending and enjoying playing forty-two and canasta were Mmes. Frances Leathers, Ann Nicholas, Nellie Ruth Roberts, Evangelynn Coleman, Dorothy LaFrance, Gladys Copeland, Lucille Copeland and Cassie Copeland.

Mr. and Mrs. Erschel Johnson and family and Sam Roden of Plainview were guests Sunday of Mrs. Johnson's brother, Mr. and Mrs. Jimmie Evans, Lubbock.

Through the past week Mrs. Fred Bass went to Dallas to be with her sister-in-law, Mrs. Mona Calloway, Dallas, a patient in the Baylor Hospital, who had suffered a broken hip and burns. Mrs. Bass also accompanied her niece, Miss Margie Ford of Honey Grove, to a hospital for surgery at Paris, Tex. Saturday she attended the funeral of a close friend of the family, Loy Arnold, at Wichita Falls.

Mr. and Mrs. Derwood Copeland went to Morton Saturday and spent the week end with her parents, Mr. and Mrs. J. R. Chandler.

Monday guests in the Derwood Copeland home were Mr. and Mrs. Herman Bell, Plainview and their daughter, Mrs. Brannon Busby of Slaton.

A Sunday visitor of Mr. and Mrs. L. M. Alexander was her cousin, Mrs. Mabel Haws, Lubbock.

Gary Johnson, son of Mr. and Mrs. Joe A. Johnson, and a junior at Texas Tech, has been selected on the Intramural all-star football team representing the Sigma Chi Fraternity. He earned the position as a flanker. Twenty-two men were selected from the fraternities on the Tech campus. They will play the winner of Intramural football league Saturday at 2 p.m.

Other recent guests in the J. A. Wheeler home were Mr. and Mrs. J. B. Palmore, Dublin.

Jan. 16, Victor, Vinci, and Darla Burrows of Amarillo spent the day with their aunt, Mr. and Mrs. F. B. Coleman and family.

Sunday, Mr. and Mrs. Charles Brothers and family visited her mother, Mrs. S. M. Breland

Mr. and Mrs. M. S. Bush of Littlefield were guests Saturday night in the home of Mr. and Mrs. James A. Johnson.

Sunday, Mr. and Mrs. James A. Johnson visited Mr. and Mrs. O. S. Lambeth of Anton.

A. K. Kirby of Hale Center is visiting in the home of his daughter and family, Mr. and Mrs. R. A. Burgess.

Recent visitors with Mr. and Mrs. Marcus Breland and family were Mrs. Breland's parents, Mr. and Mrs. Wayne Watts of Gainesville.

Mrs. Dan Cure and Susan, accompanied by Mrs. Bob Price of Las Vegas, Nevada, visited over the week-end with Mrs. Cure's parents, Mr. and Mrs. C. B. Price, Rankins.

A nursery, under the supervision of the Young Married Peoples' Sunday School Class, has been organized at the Valleyview Church to accommodate all children under three years of age during morning church services.

Luie Vaughn of Neosho, Mo. was transacting business in the community last week. Another visitor in the home of Mr. and Mrs. J. D. Rodgers was his brother, A. C. Rodgers, Amarillo.

Mr. and Mrs. Don Findley, Lubbock, visited the Wendell Breland family Sunday afternoon.

Mr. and Mrs. P. R. Skelton drove to Sudan and visited Mr. and Mrs. Jack Nobletts and family Sunday.

Mr. and Mrs. L. V. Howell Jr. flew to Phoenix, Ariz. for a nine-day visit with their parents, Mr. and Mrs. L. V. Howell Sr. and Mr. and Mrs. L. R. Ridgeway, returning home Jan. 17. While their parents were gone, Randy, Matt, and Terry stayed with Mr. and Mrs. Delbert Howell and attended school. While gone, the L. V. Howells spent two days in Las Vegas, Nev.

VACATIONING

Mr. and Mrs. Paul Burrus are now vacationing in Truth or Consequences, N. M. and will visit in Phoenix, Ariz. before returning home.

VISITS MRS. HYSINGER

Jan Carson spent last week visiting in the home of her aunt, Mrs. H. A. Hysinger.

Surface temperature of the sun averages 10,000 degrees Fahrenheit.



CUB SCOUT DISPLAY -- Vic Allcorn, son of Mr. and Mrs. Gerald Allcorn, and Alfonso Mosqueda, son of Mr. and Mrs. John A. Mosqueda, pose in front of the Cub Scout display in H. P. Webb Elementary. National Boy Scout Week is Feb. 7 through 13.

ATTEND CAMPERS CARAVAN

Mr. and Mrs. Tom Smith attended the Campers Caravan Club at the Plainview Shelter House Saturday evening and Sunday of last week.

BRIDGEPORT VISITORS

Mr. and Mrs. Johnny Floyd of Bridgeport visited in the home of Mr. and Mrs. Merrill Brigrance Friday night. They returned home Saturday.

VISITS IN CLOVIS

Mr. and Mrs. John Schenk and Jimmy and Mrs. Leon C. Byrd and daughter spent Sunday in Clovis visiting Dr. Koemia Schenk.

MR. FARMER...



We Have A Complete Stock of Amalie Oil

Regular, H.D. and L.P.G. At No Price Change

CONSUMERS

MAIN STREET

OLTON

JANUARY STOCK-UP SALE

BUY NOW and SAVE!

EGGS GRADE A 3 DOZ. \$1	PEACHES KIMBELLS 2 1/2 CAN 4 FOR \$1	TUNA KIMBELLS LIGHT MEAT 5 FOR \$1	COFFEE KIMBELLS LB. 69c	CAKE MIX BETTY CROCKER 3 FOR \$1
CRACKERS NABISCO LB. BOX 27c	FRUIT COCKTAIL KIMBELLS 303 CAN 5 FOR \$1	MELLORINE ALL BRANDS 1/2 GAL. 39c	MILK KELLY GAL. 79c	SOFT LOTION REG. \$1 SIZE 39c
CATSUP DEL MONTE 20 OZ. BOTTLE 25c	AQUA NET LG. CAN 49c	TOMATO JUICE HUNTS 303 CAN 3 FOR 29c	FRYERS GRADE A LB. 29c	

BEEF RIBS 5 LBS \$1	PORK ROAST LB. 39c	HAMBURGER 3 LBS \$1
-------------------------------	------------------------------	-------------------------------

Double S & H Green Stamps On Wed. With Purchase of \$2.50 Or More.

RAINES GROCERY

MELVIN RAINES, OWNER
OPEN 7 DAYS A WEEK 7 A.M. TO 7 P.M.

Phone 285-2414 Free Delivery

We Wish We Could Shake Your Hand Individually - - - And Express Our Appreciation For Your Past Business.

However - - We Can Express Our Appreciation To You By Always Doing The Very Best Job We Can For You And Continuing To Keep Our Gin Abreast With The Best Equipment On The Market.

Thank You All - - This Year - - And Look For Us Next Year Too!

JACK STRAW GIN CO.

JACK STRAW - W.C. GUNTER



DR. D. F. OWEN

D. F. Owen Is Agronomist At Pantex Research Farm

Dr. Douglas Farrar Owen, a 33-year-old native of Olton, has been named agronomist with the Texas Tech Research Farm's Killgore Beef Cattle Center at Pantex, near Amarillo.

Owen received a B. S. degree in agronomy from Texas Tech in 1951. After serving in the U. S. Army, he joined Western Cottonseed Co.

The soil scientist served as agronomist at the High Plains Research Foundation, Halfway, from May of 1957 through September of 1959.

He worked in soil fertility, dealing particularly with cotton, wheat and sorghums.

Owen entered the Oklahoma State University graduate school in the fall of 1959 and concentrated his studies in plant breeding.

He received an M. S. degree from OSU in 1961 and completed his Ph. D. degree in plant breeding and genetics there in 1964.

A member of Alpha Zeta, agriculture honorary society, and Sigma XI, national research honorary, Owen also holds memberships in the American Society of Agronomy and the Crop Science Society of America.

Owen will now spend a considerable amount of time in laboratories which are part of the new \$550,000 Killgore Beef Cattle Center at Pantex.

His duties involve general crop production management on the largest acreage of land operated by the college.

He also has charge of agronomic research at Tech's research installation at Pantex. In this connection, he will coordinate his efforts with agronomy department staff members working on the main campus in Lubbock.

He is the son of Mr. and Mrs. C. M. Owen of Olton.

Demonstration Workshop Held For Lunchrooms

A demonstration workshop for the school lunchroom program was held in the Plainview High School Wednesday Jan. 13 at 3 p.m.

"Tray-ful Ideas" was the program topic.

Miss Dot Buhr, director of the California school lunchroom program for the California Raisin Advisory Board and Pineapple Growers Association of Hawaii, presented the program.

Attending from Olton were Mmes. W. C. Dennis, Frank Farrar, Tanner Grimes, Ruby Ozment, Rex Sherry, Lloyd Sweat, Weldon Priest, James Gallagher, Denver Offield, Melvin Mitchell, James Huggins and Ray Slatten.

Community Hospital

ADMISSIONS

Jan. 16 -- Bob Ball, Olton, medical.

DISMISSALS

Jan. 14 -- Maggie Walker, Olton, medical.

Jan. 16 -- Imogene Hall, Olton, medical.

Jan. 18 -- Bob Ball, Olton, medical.

WSG Supper Held Jan. 12

The Wesleyan Service Guild of the Methodist Church met Tuesday Jan. 12 in the Fellowship Hall for a salad supper.

The program, "Spanish American Visitors Speak", was led by Mrs. Gene Trotter. Also on the program were Mrs. Gerald Bizzell, Mrs. R. H. Campbell, Mrs. Glen Singleterry, and Mrs. C. C. Hardaway.

Also attending were Mrs. Rex Chitwood, Mrs. Roye Aikman, Mrs. Bob Daugherty, Mrs. Jim Williams, Mrs. Raiford Daniels, Mrs. Gene Riddle and two guests, Mrs. Edith Walling and Mrs. Roy Carder.

CARD OF THANKS

We wish to thank each of you for your sympathetic kindness, flowers, food and service in the passing of our sister and aunt, May God bless all of you.

The G. F. Parker family
The L. C. Parker family

OLTON SUPER SAVE

DOUBLE GUNN BROS. STAMPS WEDNESDAY

WITH PURCHASE OF \$2.50 OR MORE

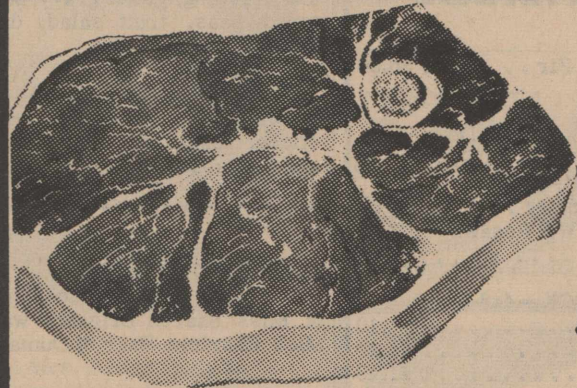
FREE DELIVERY

PHONE 285-2787



1964

NO CHARGE FOR MONEY ORDERS



ROUND

STEAK 73^c LB.

WILSON'S BACON CRISPRITE LB. 39^c

THRIFTY-T-BEEF STEAKS

PORK LIVER LB. 19^c

BLUE MORROW 1 1/4 LB.

We will serve FREE samples Wed. only.

79^c

PORK STEAK LB. 39^c

CHUCK STEAK LB. 49^c

BISCUITS 25^c CANS

WHITE SWAN

EGGS USDA XIT MED. 3 DOZ. \$1

OLEO DECKER'S QUALITY SOLID EACH 15^c

OLEO DECKER'S KORN KIST 1 LB. PURE CORN OIL 29^c

AQUA NET CAN 55^c

SHORTENING 49^c CAN

MRS. TUCKER'S 3 LB.

PRESERVES BEST MAID APRICOT, PEACH, GRAPE, RED PLUM 3 FOR \$1

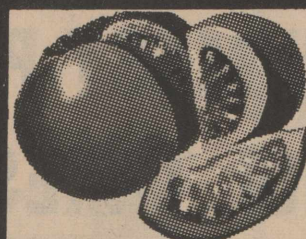
PINEAPPLE GEISHA NO. 2 CAN 5 FOR \$1

SUGAR IMPERIAL PURE CANE 5 LB. BAG 49^c

COFFEE FOLGER'S REG. OR DRIP LB. 69^c



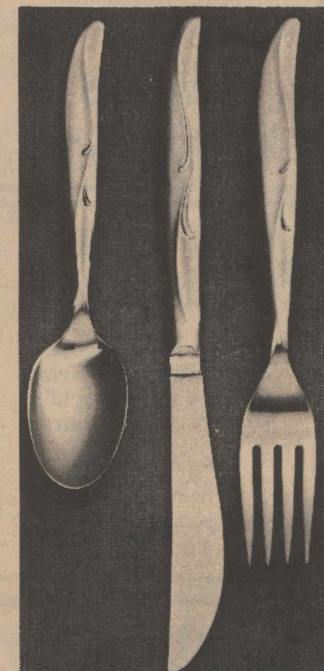
GLADIOLA FLOUR 39^c 5 LB. BAG \$1.69 25 LB. BAG



LETTUCE LB. 10^c

TOMATOES PKG. 10^c

POTATOES IDAHO RUSSETS 10 LB. 69^c



TABLEWARE
A 3-PIECE PLACE SETTING WILL BE GIVEN

FREE

WHEN YOU ACCUMULATE \$29.00 WORTH OF CASH REGISTER TAPES FROM OLTON SUPER SAVE

B is for BALANCE

The exactitude with which your druggist uses his balance or pharmacist's scale can mean the difference between sickness and health. Precise compounding of prescriptions is one of the ABC's of pharmacy!



OLTON DRUG

OLTON, TEXAS

CHECK OUR EVERYDAY LOW PRICES ON IN-STORE SPECIALS

WANTED ADS

Rates on classified advertising are: 6 cents per word first insertion; 3 cents per word second insertion, and each additional consecutive insertion. Minimum 50 cents first insertion, 25 cents additional insertions. The Enterprise is not responsible for mistakes after first insertion. Please read your ad.

All classified accounts are due and payable 10th of month following insertion. A flat rebilling fee of \$1.00 will be charged for all accounts 30 days past due and for all successive rebillings.

FOR SALE

FOR SALE: Trash barrels delivered. \$3.00 Price Wrecking, 285-2235. 48-tfc

FOR SALE: Reasonable, three bedroom, two bathroom, fenced backyard, and double garage. Call 285-2983 or 285-2123. 16-tfc

FOR SALE: 2 houses, 5 lots on West 7th. Phone 285-2544. 22-tfc

FOR SALE: 1962 Massey Ferguson Diesel tractor. Good condition. Also a 3.2 Oliver breaking plow. Phone 285-2718. 44-tfc

FOR SALE: Texas Ruby Red Grapefruit at Dennis Builders. Supply. Sack or box. 48-tfc

FOR SALE: Picture frames, artists supplies of all kinds. Consumers. 38-tfc

FOR SALE: Texas Ruby Red Grapefruit, sack or box, H. L. Dennis, 285-2144. 48-tfc

FOR SALE: Registered Angus Bulls. Merrill Brigrance 285-2788. 47-23tp

FOR SALE: Three adjoining 25 foot lots, abstract and title clean. Three other adjoining lots also for sale. Contact K. Salmann, 285-2100. 49-tfc

FOR SALE: 4 room house with bath on East 10th. Priced for quick sale. Phone 285-2869. 49-tfc

FOR SALE: 3 bedroom, fully carpeted home. Hillcrest addition. Carport, office building, storm cellar, workshop. Fenced backyard, nice shrubbery and lawn. See J.F. Vance. 50-2tp

FOR SALE: New FHA home under construction -- 1414 9th Street. Three bedroom, two bath, attached garage, built-in cooking. Move in \$550.00, long term loan. Call A. J. Stevens Co. Collect -- Lubbock, SH 7-2288. 49-tfc

FOR SALE: Quarter section, 57 acres cotton base, 70 acres maize base. Improvements fair. On Paving. Perfect water and irrigation system. Priced to sell. Good terms. See or Phone Hi-Plains Real Estate 285-2186. 50-tfc

Monuments
Winnboro Blue Granite
White Georgia Marble
and others
See Percy or Connor
Parsons
Phone 285-2621 or 285-2767

Sewing Machine
"Repossessed 1964 Singer sewing machine in optional 4 drawer walnut cabinet, equipped to blind hem, zig-zag, fancy stitches, etc. 5 payments at \$7.22 or will discount for cash. MUST HAVE GOOD CREDIT. Write Credit Manager, 1114-19th Street, Lubbock, Texas."

WHY PAY RENT
We Have Some Good Farms
On Good Terms,
J. M. Hamby Real Estate
South 385 Highway;
Hereford, Texas
Off. Res.
EM 4-3566 EM 4-2553

Irrigation & Domestic Wells
Driller Has
10 Yrs Experience
Your Business Appreciated
Davis Bros. Drilling Co
Phone 285-2541 or 285-2481

TRUCK SEATS
EXCHANGED
15 MINUTE SERVICE
McCORMICK'S
TRIM SHOP
PHONE 385-4555 LITTLEFIELD 227 MAIN

FOR SALE

FOR SALE: 1957 Chevrolet V-8 fully equipped, Phone 285-2997. 45-tfc

THE CITY OF LITTLEFIELD HAS FOR SALE: 80 acre farm, located approximately three miles northeast of Littlefield. In good irrigation district, no wells dug. No minerals but owner has water rights. Approximately 28.3 acres of cotton allotment and 24.9 acres of feed allotment. 77.3 acres presently in soil bank at \$15.40 per acre. A new owner has option of leaving acreage in soil bank or cancelling. Price per acre is \$351.11. Contact the City Manager at the City Hall of the City of Littlefield, Phone 385-4411 for further information. 50-2tc

FOR SALE: 3 bedroom home 2 miles east of Olton on Plainview Highway. 2 acres of ground with it. Phone E. M. Hasha 285-2754 or see him at Hasha's Cafe across from Co-op Gin. 49-tfc

FOR SALE TO BE MOVED: 2 room house with bath. Barn 10 feet by 32 feet with 10 foot shed 16 foot cattle feeder and 3 beehives. B. C. Cooner. 50-2tp

FOR SALE: 3-bedroom home with garage. Corner of Avenue A and 9th. See or Call C. B. Fancher -- 285-2329 or Cloys Fancher -- 285-2809. 51-tfc

FOR SALE: 1956 International 400 with 4 row equipment, wheel spreaders, roll-over plow, buggy top shade tractor warmer, crustbuster, sandfighter, 1959 Chevrolet pickup, long wheel base, on butane, single front wheel, 10 ply tire, quick hitch prongs. All for \$2,250. Call 385-4076 in Littlefield after 6 p.m. 51-tfc

FOR SALE: 3 bedroom house. 307 East 5th. See Truitt: Sides. 285-2924. 50-tfc

FOR SALE: Cement mixer, wheel barrow, hog self-feeder and automatic waterer. Phone 285-2177 W. D. Holley. 51-2tc

FOR SALE: --4 row Dempster knife-planter. Eversman flat-type float. Phone 285-2589. 51-4tc

FOR SALE: 4 bicycles, dish cabinet and bath tub. Contact Patsy Mills 285-2852. 51-2tp

FOR SALE: Used fence charger, International wheat chopper. Contact Pete Timmons at 285-2646. 51-tfc

FOR SALE: Ford equipment, Cultivator, 7 foot Haney, 2-bottom plow, 7 foot scalloped disc and other miscellaneous items. See T. G. Butler. 51-2tp

FOR SALE: 1951 model, 35 foot Terra Cruiser mobil home. Call 285-2631 for information. 51-2tc

IT PAYS TO ADVERTISE IN THE OLTON ENTERPRISE

FOR ALL GEAR HEAD Service and Repair SEE W. M. Whitesides
207 East 5th Street
PLAINVIEW, TEXAS

GEARHEAD REPAIRS
BYRON JACKSON
PUMP REPRESENTATIVE
MACHINE WORK OF ALL KINDS
Edwards Machine Shop

HI PLAINS REAL ESTATE
We always have good city property or farms for sale in the world's best Irrigation District
P. A. Nafziger
Phone 285-2186
P. O. Box 525
OLTON, TEXAS

FOR RENT

FOR RENT: At Circle. 3 bedroom, bath and half house. 285-2462. 51-tfc

FOR RENT: Furnished three room, bath house, L. G. Elkins. 285-2462. 51-tfc

FARM FOR LEASE -- 160 acres with 2 irrigation wells, 9 miles northwest of Olton. Milford Lambright. Phone TR-2765, Stinnett, Texas. 50-4tc

FOR RENT: Modern 2 bedroom house, \$40 month. 2 miles west, three-fourths mile north. Calvin Horn. 50-tfp

FOR RENT--Furnished House, 1105 South Main or see Mrs. W. C. Dennis. 50-tfc

WANTED

Custom flat breaking, \$3.50 per acre to 10 inches deep. Emmett Rogers, Fieldton AN2-4342. 37-tfc

WANTED: To rent or buy 2 bedroom home, Bill Kelly 285-2555, after 6, 285-2358. 50-tfc

WANTED: Custom breaking See William DeBerry 49-3tp

WANTED: Custom flatbreaking \$3.50 an acre, guaranteed 10 inches deep. Stephen Smith. 285-2454. 49-tfc

WANTED: To make buttons, button holes, buckles, belts, children's garments, Dress making. Willena Gordon. 285-2401. 49-tfc

WANTED: General farmhand. Prefer elderly man in 40s. \$40 per week, \$1.00 per hour overtime. See P. A. Nafziger, 1111 W. 8th St. Olton. 51-2tc

HAPPY ANNIVERSARY

JANUARY 23
Mr. and Mrs. F. B. Coleman

JANUARY 24
Mr. and Mrs. Billy Griffith

JANUARY 25
Mr. and Mrs. Dean Harris

JANUARY 27
Mr. and Mrs. Junior Muller

DAUGHTER VISITS
Mr. and Mrs. Don Gregory and Keith of Dimmitt visited Sunday with her parents Mr. and Mrs. E. C. Jones and her grandparents Mr. and Mrs. C. M. Owen.

JANUARY 21
Roy Hendricks
Mrs. L. W. Howard

JANUARY 22
Jack Thomas

JANUARY 23
Neil Andrew
Barry Cowart
Mrs. C. M. Owen

JANUARY 24
Mrs. H. A. Hysinger

JANUARY 25
Mrs. W. E. Miller
Marshall Stone

JANUARY 26
Tom Billy Hankins Jr.
T. J. Smith
Mary Wheeler

JANUARY 27
Mrs. Basil Sherman
Alva Marie Roberson

JANUARY 28
Mrs. C. E. Bley
Louise Clark

JANUARY 29
Wilton Bodkin
Mrs. W. B. Dickenson

JANUARY 30
Mr. and Mrs. F. B. Coleman

JANUARY 31
Mr. and Mrs. Billy Griffith

JANUARY 32
Mr. and Mrs. Dean Harris

JANUARY 33
Mr. and Mrs. Junior Muller

DAUGHTER VISITS
Mr. and Mrs. Don Gregory and Keith of Dimmitt visited Sunday with her parents Mr. and Mrs. E. C. Jones and her grandparents Mr. and Mrs. C. M. Owen.

JANUARY 23
Mr. and Mrs. F. B. Coleman

JANUARY 24
Mr. and Mrs. Billy Griffith

JANUARY 25
Mr. and Mrs. Dean Harris

JANUARY 27
Mr. and Mrs. Junior Muller

DAUGHTER VISITS
Mr. and Mrs. Don Gregory and Keith of Dimmitt visited Sunday with her parents Mr. and Mrs. E. C. Jones and her grandparents Mr. and Mrs. C. M. Owen.

JANUARY 23
Mr. and Mrs. F. B. Coleman

JANUARY 24
Mr. and Mrs. Billy Griffith

JANUARY 25
Mr. and Mrs. Dean Harris

JANUARY 27
Mr. and Mrs. Junior Muller

DAUGHTER VISITS
Mr. and Mrs. Don Gregory and Keith of Dimmitt visited Sunday with her parents Mr. and Mrs. E. C. Jones and her grandparents Mr. and Mrs. C. M. Owen.

JANUARY 23
Mr. and Mrs. F. B. Coleman

JANUARY 24
Mr. and Mrs. Billy Griffith

JANUARY 25
Mr. and Mrs. Dean Harris

JANUARY 27
Mr. and Mrs. Junior Muller

DAUGHTER VISITS
Mr. and Mrs. Don Gregory and Keith of Dimmitt visited Sunday with her parents Mr. and Mrs. E. C. Jones and her grandparents Mr. and Mrs. C. M. Owen.

JANUARY 23
Mr. and Mrs. F. B. Coleman

JANUARY 24
Mr. and Mrs. Billy Griffith

JANUARY 25
Mr. and Mrs. Dean Harris

JANUARY 27
Mr. and Mrs. Junior Muller

DAUGHTER VISITS
Mr. and Mrs. Don Gregory and Keith of Dimmitt visited Sunday with her parents Mr. and Mrs. E. C. Jones and her grandparents Mr. and Mrs. C. M. Owen.

JANUARY 23
Mr. and Mrs. F. B. Coleman

JANUARY 24
Mr. and Mrs. Billy Griffith

JANUARY 25
Mr. and Mrs. Dean Harris

JANUARY 27
Mr. and Mrs. Junior Muller

DAUGHTER VISITS
Mr. and Mrs. Don Gregory and Keith of Dimmitt visited Sunday with her parents Mr. and Mrs. E. C. Jones and her grandparents Mr. and Mrs. C. M. Owen.

JANUARY 23
Mr. and Mrs. F. B. Coleman

JANUARY 24
Mr. and Mrs. Billy Griffith

JANUARY 25
Mr. and Mrs. Dean Harris

JANUARY 27
Mr. and Mrs. Junior Muller

DAUGHTER VISITS
Mr. and Mrs. Don Gregory and Keith of Dimmitt visited Sunday with her parents Mr. and Mrs. E. C. Jones and her grandparents Mr. and Mrs. C. M. Owen.

JANUARY 23
Mr. and Mrs. F. B. Coleman

JANUARY 24
Mr. and Mrs. Billy Griffith

JANUARY 25
Mr. and Mrs. Dean Harris

JANUARY 27
Mr. and Mrs. Junior Muller

DAUGHTER VISITS
Mr. and Mrs. Don Gregory and Keith of Dimmitt visited Sunday with her parents Mr. and Mrs. E. C. Jones and her grandparents Mr. and Mrs. C. M. Owen.

Happy Birthday

JANUARY 21
Roy Hendricks
Mrs. L. W. Howard

JANUARY 22
Jack Thomas

JANUARY 23
Neil Andrew
Barry Cowart
Mrs. C. M. Owen

JANUARY 24
Mrs. H. A. Hysinger

JANUARY 25
Mrs. W. E. Miller
Marshall Stone

JANUARY 26
Tom Billy Hankins Jr.
T. J. Smith
Mary Wheeler

JANUARY 27
Mrs. Basil Sherman
Alva Marie Roberson

JANUARY 28
Mrs. C. E. Bley
Louise Clark

JANUARY 29
Wilton Bodkin
Mrs. W. B. Dickenson

JANUARY 30
Mr. and Mrs. F. B. Coleman

JANUARY 31
Mr. and Mrs. Billy Griffith

JANUARY 32
Mr. and Mrs. Dean Harris

JANUARY 33
Mr. and Mrs. Junior Muller

DAUGHTER VISITS
Mr. and Mrs. Don Gregory and Keith of Dimmitt visited Sunday with her parents Mr. and Mrs. E. C. Jones and her grandparents Mr. and Mrs. C. M. Owen.

JANUARY 23
Mr. and Mrs. F. B. Coleman

JANUARY 24
Mr. and Mrs. Billy Griffith

JANUARY 25
Mr. and Mrs. Dean Harris

JANUARY 27
Mr. and Mrs. Junior Muller

DAUGHTER VISITS
Mr. and Mrs. Don Gregory and Keith of Dimmitt visited Sunday with her parents Mr. and Mrs. E. C. Jones and her grandparents Mr. and Mrs. C. M. Owen.

JANUARY 23
Mr. and Mrs. F. B. Coleman

JANUARY 24
Mr. and Mrs. Billy Griffith

JANUARY 25
Mr. and Mrs. Dean Harris

JANUARY 27
Mr. and Mrs. Junior Muller

DAUGHTER VISITS
Mr. and Mrs. Don Gregory and Keith of Dimmitt visited Sunday with her parents Mr. and Mrs. E. C. Jones and her grandparents Mr. and Mrs. C. M. Owen.

JANUARY 23
Mr. and Mrs. F. B. Coleman

JANUARY 24
Mr. and Mrs. Billy Griffith

JANUARY 25
Mr. and Mrs. Dean Harris

JANUARY 27
Mr. and Mrs. Junior Muller

DAUGHTER VISITS
Mr. and Mrs. Don Gregory and Keith of Dimmitt visited Sunday with her parents Mr. and Mrs. E. C. Jones and her grandparents Mr. and Mrs. C. M. Owen.

JANUARY 23
Mr. and Mrs. F. B. Coleman

JANUARY 24
Mr. and Mrs. Billy Griffith

JANUARY 25
Mr. and Mrs. Dean Harris

JANUARY 27
Mr. and Mrs. Junior Muller

DAUGHTER VISITS
Mr. and Mrs. Don Gregory and Keith of Dimmitt visited Sunday with her parents Mr. and Mrs. E. C. Jones and her grandparents Mr. and Mrs. C. M. Owen.

JANUARY 23
Mr. and Mrs. F. B. Coleman

JANUARY 24
Mr. and Mrs. Billy Griffith

JANUARY 25
Mr. and Mrs. Dean Harris

JANUARY 27
Mr. and Mrs. Junior Muller

DAUGHTER VISITS
Mr. and Mrs. Don Gregory and Keith of Dimmitt visited Sunday with her parents Mr. and Mrs. E. C. Jones and her grandparents Mr. and Mrs. C. M. Owen.

JANUARY 23
Mr. and Mrs. F. B. Coleman

JANUARY 24
Mr. and Mrs. Billy Griffith

JANUARY 25
Mr. and Mrs. Dean Harris

JANUARY 27
Mr. and Mrs. Junior Muller

DAUGHTER VISITS
Mr. and Mrs. Don Gregory and Keith of Dimmitt visited Sunday with her parents Mr. and Mrs. E. C. Jones and her grandparents Mr. and Mrs. C. M. Owen.

JANUARY 23
Mr. and Mrs. F. B. Coleman

JANUARY 24
Mr. and Mrs. Billy Griffith

JANUARY 25
Mr. and Mrs. Dean Harris

JANUARY 27
Mr. and Mrs. Junior Muller

DAUGHTER VISITS
Mr. and Mrs. Don Gregory and Keith of Dimmitt visited Sunday with her parents Mr. and Mrs. E. C. Jones and her grandparents Mr. and Mrs. C. M. Owen.

JANUARY 23
Mr. and Mrs. F. B. Coleman

JANUARY 24
Mr. and Mrs. Billy Griffith

JANUARY 25
Mr. and Mrs. Dean Harris

JANUARY 27
Mr. and Mrs. Junior Muller

DAUGHTER VISITS
Mr. and Mrs. Don Gregory and Keith of Dimmitt visited Sunday with her parents Mr. and Mrs. E. C. Jones and her grandparents Mr. and Mrs. C. M. Owen.

JANUARY 23
Mr. and Mrs. F. B. Coleman

JANUARY 24
Mr. and Mrs. Billy Griffith

JANUARY 25
Mr. and Mrs. Dean Harris

JANUARY 27
Mr. and Mrs. Junior Muller

DAUGHTER VISITS
Mr. and Mrs. Don Gregory and Keith of Dimmitt visited Sunday with her parents Mr. and Mrs. E. C. Jones and her grandparents Mr. and Mrs. C. M. Owen.

JANUARY 23
Mr. and Mrs. F. B. Coleman

JANUARY 24
Mr. and Mrs. Billy Griffith

JANUARY 25
Mr. and Mrs. Dean Harris

JANUARY 27
Mr. and Mrs. Junior Muller

DAUGHTER VISITS
Mr. and Mrs. Don Gregory and Keith of Dimmitt visited Sunday with her parents Mr. and Mrs. E. C. Jones and her grandparents Mr. and Mrs. C. M. Owen.

JANUARY 23
Mr. and Mrs. F. B. Coleman

JANUARY 24
Mr. and Mrs. Billy Griffith

JANUARY 25
Mr. and Mrs. Dean Harris

JANUARY 27
Mr. and Mrs. Junior Muller

DAUGHTER VISITS
Mr. and Mrs. Don Gregory and Keith of Dimmitt visited Sunday with her parents Mr. and Mrs. E. C. Jones and her grandparents Mr. and Mrs. C. M. Owen.

JANUARY 23
Mr. and Mrs. F. B. Coleman

JANUARY 24
Mr. and Mrs. Billy Griffith

JANUARY 25
Mr. and Mrs. Dean Harris

JANUARY 27
Mr. and Mrs. Junior Muller

DAUGHTER VISITS
Mr. and Mrs. Don Gregory and Keith of Dimmitt visited Sunday with her parents Mr. and Mrs. E. C. Jones and her grandparents Mr. and Mrs. C. M. Owen.

JANUARY 23
Mr. and Mrs. F. B. Coleman

JANUARY 24
Mr. and Mrs. Billy Griffith

JANUARY 25
Mr. and Mrs. Dean Harris

JANUARY 27
Mr. and Mrs. Junior Muller

DAUGHTER VISITS
Mr. and Mrs. Don Gregory and Keith of Dimmitt visited Sunday with her parents Mr. and Mrs. E. C. Jones and her grandparents Mr. and Mrs. C. M. Owen.

Weed Control Meeting Slated

Olton Farm Supply will sponsor an area-wide farmers meeting on chemical control of weeds in cotton. Owner Don Spain announced this week. The session is scheduled Thursday, Jan. 28, at 7:30 p.m. in the Olton Legion Hall. Refreshments will be served. Industry representatives will be on hand to discuss new chemicals for control of weeds in cotton and to answer questions.

SW



JUST THE BEGINNING --- Diana Lynn Smith, first grade student in Mrs. Eloise Gallaway's room, looks over some work as she finishes her first school semester. She is the daughter of Mr. and Mrs. Lonnie Ray Smith.

First Baptist Department Has Birthday Party

The Extension Department of the First Baptist Church was host to a group birthday party in the home of Mrs. A. C. Brigrance, Wednesday Jan. 13.

The party honored the teachers, members and ex-members of the T. E. L. Sunday School class having birthdays in the month of January.

Honorees were Mrs. A. C. Brigrance, teacher of the class for 26 years, Mrs. Nellie Turner, Mrs. W. P. Hedges, Mrs. Virginia Parkey and Mrs. Lillie McGill.

A short devotional entitled "The Mature Years" was given by Mrs. L. G. Elkins. She also read two poems, "How I Know I'm Getting Old" and "God Bless You".

Refreshments of cake and punch were served to Mmes. Brigrance, Nellie Turner, Maude Funderburk, Virginia Parkey, Eula Wilks, J. L. Carson Sr, B. B. Huguley, T. D. Lewis, and two guests, Mrs. C. M. Owen, who's birthday is also in January, and Mrs. Carmelia Price, mother of Durward Price who is visiting here.

The Extension Department's project is taking Sunday School into the homes of those unable to attend.

Hostesses present were Mrs. Rufus DeBerry, sponsor, assisted by Mrs. B. C. Cooner, Mrs. Homer Curry, Mrs. C. C. Solesbee and Mrs. L. G. Elkins.

SCOUT NEWS



Learning to sew was the program of the meeting of Troop 271 Tuesday Jan. 19 at the American Legion Building.

There was one guest, Nan Wilks.

Members attending were Lisa Coleman, Kathy Turner, Kay Johnson, Teresa Wilks, Fredda Williams, Brenda Leathers, Kathy Gary, Brenda Criswell, Sherree Coleman, Teresa Neelley, Dianne Snider, Kay Huguley, Sharon Rodgers, Judie Truelock and leaders present were Mrs. J. W. Johnson and Mrs. Dwayne Wilks.

Boy Scout Week Set

Plans for Boy Scout Week, Feb. 7-13, were underway here this week with the Blue and Gold Banquet set Friday Feb. 12 at 7 p.m. in the school cafeteria.

Olton Boy Scout and Cub Scout leaders will host the Haynes District Roundtable Feb. 15 at 7:30 p.m.

They will also have a display during the week in Kelley's store window.

Monthly pack meeting of Cub Scout 220 is set Jan. 26 at 7:30 p.m. at the Legion Hut.

Mrs. Roper Named Head Of Kimichi

Mrs. Danny Cure was hostess to the Kimichi Study Club Thursday Jan. 14 for their regular meeting.

A business meeting was held with the election of officers for 1965-66.

Officers elected are as follows: Mrs. Randall Roper, president; Mrs. Steve Lee, vice president; Mrs. Jim Moss, recording secretary; Mrs. Gary DeBerry, corresponding secretary; Mrs. Elmer Houston, treasurer; Mrs. T. J. Smith, parliamentarian; Mrs. Houston Hamby, historian; and Mrs. Mack McGill, federation counselor.

The Tammy doll recently raffled was won by Mrs. Tommy O'Neal.

Refreshments of fingertip sandwiches, fritos, dip, cherry cream pie, spiced tea and cokes were served to Mmes. Harlan Carson, Danny Cure, Gary DeBerry, Royce McFadden, Mack McGill, Houston Hamby, Elmer Houston, Steve Lee, Jim Moss, Randall Roper, T. J. Smith and Lennon Young.

"Running Water Draw Development" will be the program of the next meeting Thursday Jan. 28 in the home of Mrs. Harlan Carson.

MRS. THOMAS HOSTS CLUB

Mrs. Harry Thomas was hostess to the regular meeting of the Olton Home Demonstration Club Tuesday Jan. 19 at 2 p.m.

The topic for discussion was arthritis, "Its Treatment and Problems."

Appearing on the program were Mrs. Z. D. Miller, leader, and Mmes. Dan Adair, Lester, Kennedy, Harry Thomas, Fred Shaw, Jim Speer, Lloyd Blackwell and L. O. Langley. Each member present also joined in the discussion.

Mrs. Lee Simmons was elected president after the resignation of Mrs. Paul McFadden.

A report was given by Mrs. Simmons on the results of the luncheon served at a farm sale recently.

ATTENDS PARTY

Mr. and Mrs. T. G. Butler spent the weekend in Lockney in the home of their daughter and family Mr. and Mrs. Austin Merriweather. While there they had a birthday party for their granddaughter Melinda.

Ladies present included Mmes. Alfred Allen, Tom Smith O. T. Crosby, C. C. Solesbee and Miss Ann Warren.

Mrs. Jim Speer will be host to the next meeting Tuesday Feb. 2. The program will be a discussion of "Dangers of Immoral Influences."

New Century Bowling Party Held Wednesday

New Century Study Club members met for a bowling party Wednesday afternoon at Olton Bowling Center.

Team captains were Mrs. C. J. Dorris, Mrs. Leo Smith, Mrs. Ed Thompson and Mrs. Johnny Clark Jr.

Other members present were Mmes. Archie Sorley, Wilton Bodkin, Fred Thompson, Forrest Latimer, Elmer McGill, J. L. Snider, Don Spain, A. J. Spain, Bob Burgess and Bill Turner.



FIRE CALL --Olton volunteer firemen are shown above fighting a fire at the Jack Thomas farm north of Circle, Tuesday afternoon. The fire apparently started in corn cobs surrounding a butane tank.

How Does it Feel to Change to MOORE'S ?

GREAT!

Tired of the same old shopping routine? Then change to MOORE'S for a great new experience in food buying! For great things are always happening at MOORE'S FOOD - great big selections... great big values... and a great big effort to provide the kind of market and the kind of service that make your shopping a pleasure instead of a chore. Make a change for the better - change to MOORE'S

<p>USDA HEAVY CHOICE BEEF</p> <p>ROUND STEAK 79^c LB.</p>	<p>USDA CHOICE BEEF</p> <p>GROUND BEEF 3 LB. BO SR \$1</p>	<p>WILSON'S CERTIFIED</p> <p>BACON LB. 59^c</p>
<p>FLOUR 25 LB. SACK \$1.69</p> <p>PEERLESS PRINT</p>		<p>KIMBELLS</p> <p>TEA BAGS 16 COUNT 15^c</p>
<p>SUGAR 10 LB. 79^c</p> <p>IMPERIAL PURE CANE WITH \$5.00 OR MORE PURCHASE</p>		<p>CABBAGE LARGE FIRM HEADS LB. 5^c</p>
<p>AWAKE BIRDSEYE 9 OZ. 2 FOR 69^c</p>	<p>POT PIES MORTON'S FROZEN CHICKEN OR BEEF 6 FOR \$1</p>	<p>POTATOES NO. 1 RUSSET 10 LB. 79^c</p>
<p>DIAMOND 12 OZ. BOTTLE CATSUP 5 ^c</p> <p>WITH \$5.00 OR MORE PURCHASE</p>	<p>LOWER EVERYDAY PRICES</p> <h1 style="font-size: 2em;">MOORE'S SUPER MARKET</h1> <div style="text-align: right; font-size: 3em; border: 2px solid black; border-radius: 50%; width: 40px; height: 40px; display: flex; align-items: center; justify-content: center; margin: 0 auto;">M</div>	

If you want to mix business



with pleasure



Your Ford Dealer has the truck that's right for you!

Whether you're on the job, or off on a family outing, Ford's Twin-I-Beam comfort makes it the best pickup for you. Two front axles smooth the roughest roads. Each front wheel is suspended independently on

forged I-beam axles and heavy-duty coil springs cushion the ride for comfort you never found in a tough truck before. Find out for yourself what two front axles do for pickup ride—on or off the job!

'65 FORD
TWIN I-BEAM
PICKUPS

Come in and test the ride that's tailored for **TEXANS**

FISHER FORD CENTER

Lions District Meet Slated

More than 1000 Lions representing 57 Clubs in District 2-T2 will assemble in Lubbock this weekend for their two-day midwinter conference.

Heading the program will be Herb Petry, chairman of the Texas Highway Commission, plus entertainment acts from throughout the area.

A full fledged circus directed by Billy Go-e The Clown and the popular folk singing group, "The Continentals," will perform.

Activities start Saturday evening Jan. 23 with the circus

and all events will be held at the Ko Ko Palace.

Attending from Olton will be Mr. and Mrs. Percy Parsons, Mr. and Mrs. Charles Polk, Mr. and Mrs. Basil Sherman, Mr. and Mrs. Laus Hair, Mr. and Mrs. Joe Turner, Mr. and Mrs. James Hall and Mr. and Mrs. George Redinger of Plainview.

CALIFORNIA VISIT

Mr. and Mrs. J. L. Carson Jr. returned Sunday from a 10-day visit in the home of their son and family, Mr. and Mrs. Don Carson and Julie, who live in Stockton, Calif. They made the trip by train.

First Methodist Revival Slated

A revival is scheduled at the First Methodist Church here starting Sunday Jan. 24.

Services will be held at the regular time that Sunday and at 7 a.m. and 7 p.m. Monday through Friday.

Preacher for the revival will be the Rev. Lyman Wood, pastor of Wesley Methodist Church, Borger.

Music director will be the Rev. Albert Lindley, pastor of The First Methodist Church, Earth.

The public is invited to the services.

YOU'RE IN THE ARMY NOW



Church Report Given For Year

A year-end report from the Church of the Nazarene here this week showed that all indebtedness on the church property has been paid, membership has grown from 40 to 54 and the average attendance in Sunday School has increased from 57 to 70.

Under consideration at present is a complete reorganization of the Sunday School departments.

Repair on the church and work on the lawn is also underway. Pastor of the church, the Rev. Gerald V. Davis, has accepted a unanimous vote of the congregation to remain as pastor for another year.

Huckabee To Give Review

Malcom Huckabee, assistant professor psychology, will give a review Feb. 4 on Nevitt Sanford's "New Approach to Liberal Education" as part of a 1965 lecture series at Judson College, Marion, Ala.

Huckabee, whose doctoral dissertation is on "Cognitive Attitudes as Residual Factors in Adaptive Level," will give an article on the role of research in a liberal arts program.

Huckabee is a native of Olton and holds degrees from Mississippi College, Southwestern Baptist Theological Seminary and Texas Christian University.

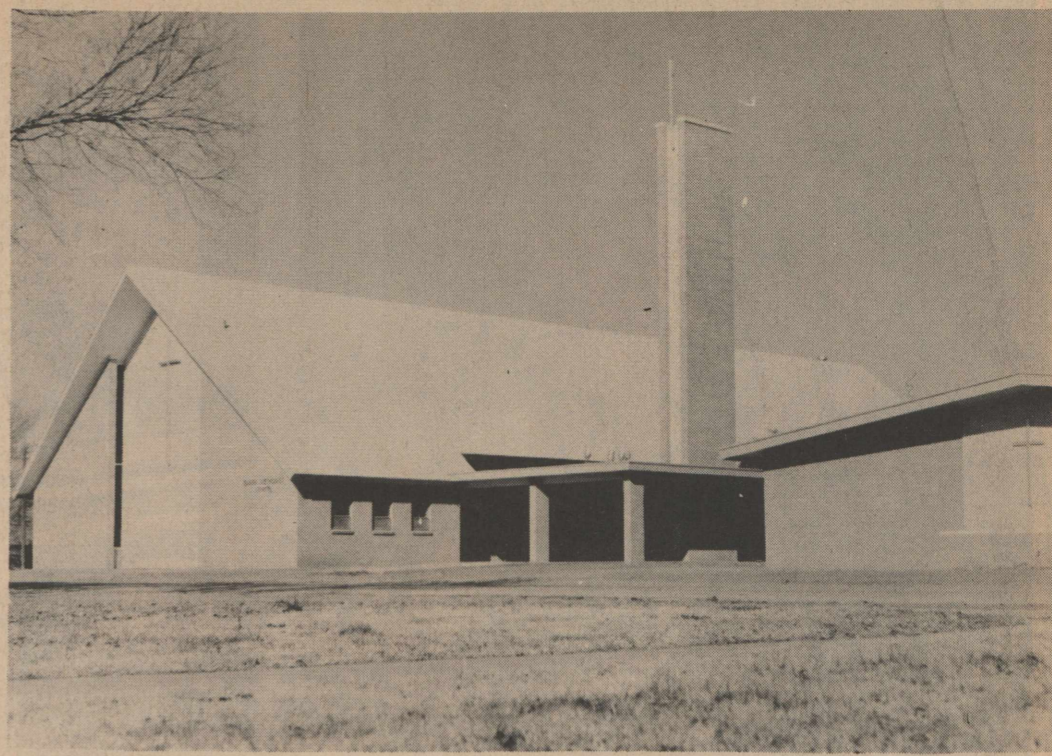
He has done further study at the University of Edinburgh, Scotland and is completing doctoral study at the University of Southern Mississippi.

BOOKMOBILE

Bookmobile will be in Springlake Thursday Jan. 28 from 11 to 11:45 a.m.

SISTER VISITS

Henry Cowart's sister and husband Mr. and Mrs. Merl VanPelt of Corona Del Mar, California were recent visitors in his home and the home of Mrs. L. B. Cowart.



EARTH METHODIST CHURCH will have its formal opening and first service of worship in its new sanctuary Sunday Jan. 24. Service will begin at 10:45 a.m. and open house will be held at 3 p.m. Everyone is invited to attend.

First newsreel showed arrival of delegates to a French national photographers convention in 1895.

The house cat is believed to be a cross between the sacred cat of Egypt and the European wildcat.

STRIKES 'N SPARES

Standings in the Majorette Bowling League this week are as follows:

A. C. Light Custom Work, 48-24; Howard Hall Insurance, 47-25; Olton State Bank, 44 1/2-27 1/2; Phillips Plumbing and Ditching, 38-34; Lesters Cleaners, 32-40; Lois Beauty Shop, 30 1/2-41 1/2; Green Earth, Fertilizer, 24-48; and Fisher Ford Center, 24-48.

Olton State split 2 and 2 with Hall, Light took 4 from Lester, Phillips won over Lois and Green Earth took 3 from Fisher.

Nora Lee Martin had high individual game and series with 179 and 497. Elda Phillips came in second with 177 and 490. Mrs. Martin took third high game with 175 and Sandy Kersh came in third in the series with 486.

Light was high team with 602 and 1748. Second places went to Hall with 589 and 1697 and third spots went to Olton State, 583 and 1688.

In the Ten Pin Bowling League Truelock & Martin went down 3 1/2 to Circle Gin, Chitwood Insurance took 4 from Thomas Speed Wash, Parley's Barber Shop won 3 from Cashway Food and Thompson Gin took 3 from Walter's Department Store.

Standings are: Circle Gin, 13 1/2 -- 2 1/2; Thompson Gin, 11-5; Chitwood, 9-7; Parleys, 9-7; Cashway, 8-8; Walters, 5-11; T & M, 4 1/2-11 1/2; and Speed Wash, 4-12.

Circle had high team game, 647, and second high series, 1830. Parleys had high series, 1883, and second high game, 645. Chitwood came in third in high games, 644, and Cashway had third high series with 1805.

For the women, Laveta Phillips, 180, had high game and third high series, 455. Nora Lee Martin had high series, 497, and second high game, 175. Mary Dennis had second high series, 470 and Mattie Critchfield had third high game, 164.

For the men, Lennon Young had high game with 195 and Tracy Critchfield had high series, 528, and second high game, 195. Robert Dennis had second high series, 499. Jim Brown took both third places with 188 and 488.

Standings in the Ladies Leisure Bowling League are: Jeffery Lumber, 4-0; Moore's Food, 3-1; Super Save 3-1; Dennis Builders, 2-2; Hamill's Restaurant, 2-2; Three Way Grain, 1-3; Straw 1-3; and Olton Drug, 0-4.

Three-Way lost 3 to Moore's Dennis and Hamills split 2 and 2, Jeffery took 4 from Olton Drug and Super Save won 3 from Straw.

Jeffery had high game and series with 682 and 1869. Moore's took second high series, 1756, and third high game, 635. Hamill's had second high game with 648 and Three-Way had third high series, 1724.

Frances Leathers had high individual game, 215, and second high series, 493.

Laverne George came in first in the series and second high in games with 514 and 197. Mae Neinst had third high game, 196, and Prudy Jeffery had third high series, 478.

Standings in the Aces Mixed Bowling League are: Shelby Insurance, 41 1/2-22 1/2; Consumer, 36 1/2-27 1/2; Hart Camp Co-Op Gin, 36-28; Citizen's State Bank, 35-29; Anita's Styleart, 2-33; Dorris Machinery, 26-30; Farmers Gin, 24-36; and Team #1, 22-42.

Consumers took 4 from Team #1, Anita's won 4 from Citizen's State, Farmers Gin won 3 over Hart Camp and Shelby and Dorris split 2 and 2.

Consumers had high team game and series with 673 and 1959. Anita took second places with 667 and 1927 and Farmers Gin came in third with 666 and 1855.

For the women, Georgia Stockard had first and second high games, 188 and 182, and high series, 550. Ruth Dorris had second high series with 505 and third high game with 180. Laveta Phillips had third high series, 501.

For the men, Pody Welch had high series, 542, and third high game, 196. Jake Mitchell had high game with 203. Second places went to Clarence Neinst with 199 and 518. Wesley Neinst was third high in the series with 510.

HINN Soybean Now Released

The first soybean for the High Plains of Texas has passed the rigorous growing season of 1964 with flying colors. The HINN soybean, developed by the High Plains Research Foundation at Halfway was released to farmers from Lubbock to the top of the Panhandle.

The HINN was developed to give Texas a better soybean as well as another high yielding cash crop, and was released to Texas Certified Seed Growers early in 1964. Over 6,000 bushels were turned over to farmers to get this new soybean into production throughout the irrigated belt of the Plains.

Desirable qualities of the HINN soybean are: generally a higher yield over other varieties grown in West Texas; good standability, that is, the beans will not fall down or lodge; has a high degree of shatter resistance; fruits high off the ground, about four to six inches, for better harvesting. All of these qualities of the HINN make it a soybean much sought after by the area farmers.

The HINN was developed by Dr. Earl H. Collister, Director of the High Plains Research Foundation. Later work was taken up by Barry Love, agronomist for the Foundation. The first selections of the new bean were made in 1959. In keeping with the Foundation's policy of doing research that will help the agricultural economy, the soybean was released to Certified Seed Growers from throughout the West Texas area.

Highest yield reported to the Foundation for the year of 1964 came from Ewald Quebe, a farmer near Lockney, with a field average yield of 45 bushels per acre. Average yields from the total area in which the HINN was released ranged from 30 to 35 bushels.

Dr. Collister has reported that under optimum conditions at the Foundation, yields were up to 53.4 bushels per acre. Net returns from this yield were \$119.88 per acre.

One new aspect that has been developing from the HINN soybean is the current study underway by the American Soybean Association to test the HINN for human consumption. Dr. Collister stated, "It's sheer speculation at this time, of course, but if the tests do prove out, it will put the HINN soybean in a premium category on the world market."

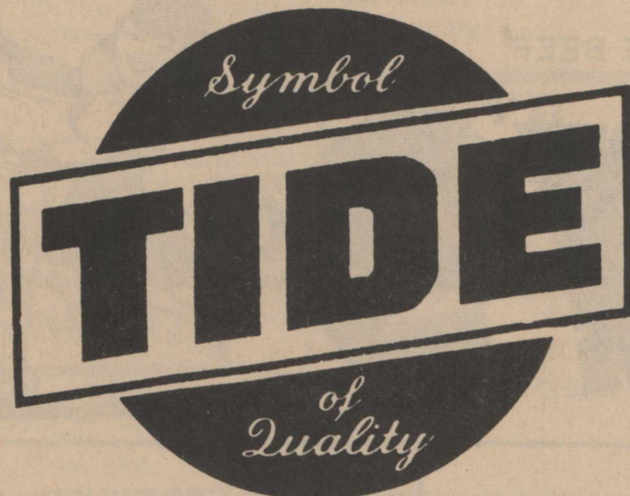
Certified growers who wish to plant the HINN soybean for 1965 may contact the High Plains Research Foundation, Box 1267, Plainview. This year's supply of good quality, high germination (89 to 96 percent) will be allocated on a first-come basis.

WE HAVE THE CARS... AND WE WANT TO TRADE!



"A Good Deal For A Good Deal Less" FISHER FORD CENTER, INC.

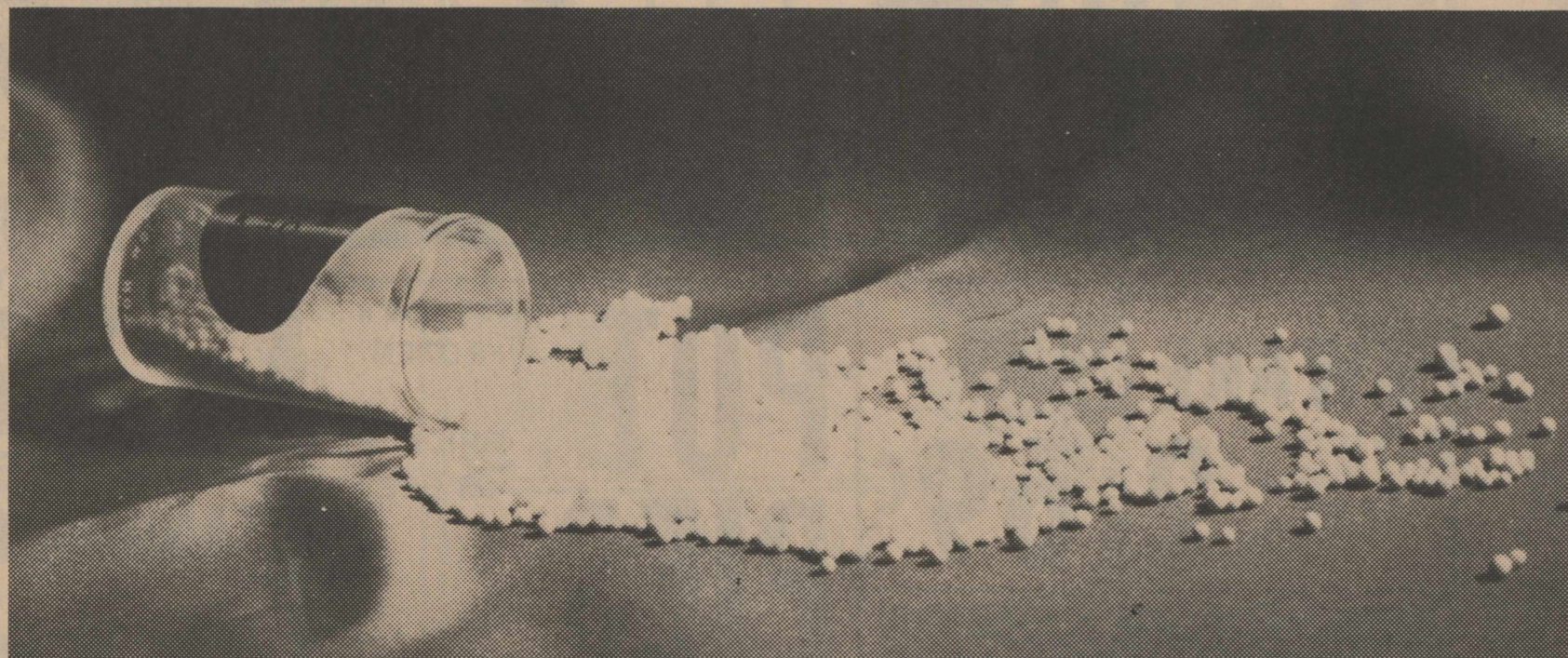
SEE US FOR INFORMATION ON ALL MODELS FOR 1965. COME BY AND SEE THE MOST BEAUTIFUL CAR ON THE MARKET FOR 1965



OUR CONGRATULATIONS TIDE ON YOUR NEW OFFICE

Farmers throughout the high plains are familiar with the symbol of quality that Tide products carry. Tide not only brings profit proven products but a proven concept of modern farm service. We are proud to be associated with a progressive company like Tide and look forward to the fine services and products they will provide.

National Sulphur supplies Tide with prilled sulphur, 99.5% pure elemental sulphur, one of the many fine materials that go into Tide's famous prescription blend fertilizers. Yes, good products, excellent equipment and dependable service give you the best in your profit building fertilizer program.



PRILLED SURPHUR... MANUFACTURED ONLY BY



NATIONAL SULPHUR COMPANY
MIDLAND, TEXAS