

Kim's Korner

By Kim Pease

A FEW WISHES FOR 1993:

As 1992 comes to a close, I have a few personal observations to make and a few items to post on the Fisher County Wish List.

First, I wish there were more volunteers like Garland Moore of Roby in Fisher County. He quietly goes about his business of volunteer work at the Fisher County Clothes Closet without a lot of fan-fare. We need more willing volunteers like him. I also think we need more volunteers like the ones keeping the Roby Library Station open.

Fisher County folks need to take on an attitude that people living here are not Rotan and Roby and 'all others' but that we're family. This county is far too small to be divided on anything, but a lot of folks still shy away from togetherness.

I wish a long honeymoon for Sheriff Gene Pack. We're going to all be glad in just a short time that Pack was elected by the majority of county folks as Sheriff. I understand he's going to be pulling an 8-hour or more patrol shift, just like a deputy. He has high hopes that he'll be able to operate the Sheriff's office more efficiently with the same four deputies and a chief deputy.

I wish Rotan 'city fathers' could figure out a way to seal coat some of the existing paved streets and pave some unpaved streets within the city limits. Seems a shame that we don't have someone with a little vision who is willing to step forward with a plan.

I wish more folks had the courage to open a small family owned business like Zanna Anderson did with the Lion's Den in Roby. We need more businesses in Rotan and Roby.

I wish more Fisher County folks would support the Theatre on the Brazos in 1993. Volunteers there are doing a marvelous job, but the community is not supporting the plays with attendance like they should.

I wish someone would figure out how to utilize the great brain power of retired home folks like Dr. Bennie LeBleu, Lynn Randolph, Jimmie Laurie and others who have much to contribute to society - if only asked to serve in a challenging capacity.

I wish the Rotan water tasted better.

I wish the Courthouse was cleaner and more eye appealing. Seems it always looks like it needs to be cleaned and polished. It is a beautiful structure but will go down fast if not maintained properly.

I wish the Rotan street signs were re-done or removed. They are not attractive and are a source of irritation.

I wish someone would put in a drug store with a fountain where a guy could get a coke float.

I wish more men had the guts to get a haircut like Arnie Goodwin.

I wish Bill Brzezinski would serve Italian spaghetti and lasagna on an all you can eat buffet one night a week.

I wish the powers-to-be would discontinue Sunday and Wednesday night non-church related meetings before they become an issue and lines are drawn in the sand.

I wish some Fisher County store would start stocking peanut butter filled pretzels.

I wish we had six more Suzie Day's in Rotan and a few in Roby.

I wish Rotan school children raising the flag in the morning

were supervised by an adult. It pains my heart to see the youngsters drag the flag on the ground attempting to raise it.

I wish we could have a fireworks display every 4th of July.

I wish I didn't have to explain what a Yellowhammer was to every stranger I meet at a sporting event.

I wish Rotan had a Nubbia's Convenience Store.

I wish everyone could enjoy warm home-made bread, the crackle of a fire, the smell of fresh strawberries, lemon meringue pie, a golf hole-in-one, the closest parking space, a fresh cup of coffee from McDonald's, a good fitting cotton sweater and perfect Bisquick biscuits.

I wish more Fisher County folks cared more about attending Fisher County Commissioners Court, school board meetings, hospital board meeting and City Council meetings at Rotan and Roby.

I wish Nolan Ryan would pitch long enough to set himself in the record books so that at least one of his records would stand forever.

I wish the manufacturers of perfume and cologne would quit stinking up Texas Monthly with a sample.

I wish Penny Jo's at Rotan would never run out of onion rings.

I wish people who made a promise would keep that promise and that people who were upset would think for 10 seconds before exploding.

I wish everyone could taste a Drake's Coffee Cake and a hot cup of coffee.

I wish the manufacturers of oxford cloth button down shirts would just give me two choices - blue and white.

I wish everyone could enjoy Italian lemon ice, butter fried ham slices on Saturday morning, scrambled eggs with peppers and onions, blueberry muffins and rice and gravy with lots of pepper.

I wish John's Hamburgers were available on Sunday's.

I wish that the political powers to be in Austin could get their heads together and come up with a school finance bill that was acceptable to 51% of the people.

I am glad that Fisher County didn't give up and lay-back and let the Sweetwater Resources folks build a waste disposal well South of Roby. That victory was good.

I am sad that friends like Clay Fowler, Ed Deaton, Robert Phillips, Yoke Fleming, Emory Keener, Kirmet Terry, Ted McArthur, Raleigh Springer and H. Govan aren't here to cut-up with and laugh with.

I'm happy for church stained glass windows, sugar cookies, baseball, city managers, Sal Hernandez, hot roasted peanuts, vacations, butterflies and family pictures.

I am glad we can enjoy the story of Noah's Ark, family gatherings on Sunday, fresh orange juice, hunting arrowheads, garage sales, baby birds, Bonnie Duke House's special stew, fireworks, fried potatoes and onions cooked in an iron skillet on a fishing trip and the old Coca-Cola Santa.

I wish that people who served in public office realized that they worked for the public and that the folks paying their salary didn't make up the enemy.

I wish secretaries who answered the phone didn't ask "Who is calling".

I wish I could write a column for this paper at age 72.

Law Enforcement Fee Reduced By \$25,000 Fisher County Commissioners Vote To Accept Rotan Proposal On Split Vote

Fisher County Commissioners forced Judge Marshal Bennett to break a tie vote last Wednesday morning when two commissioners voted in favor of accepting the \$33,000 police contract proposal from the City of Rotan and two voted against accepting the contract.

The City of Rotan paid \$58,000 to Fisher County for law enforcement protection during 1992. With a diminishing tax base, the Rotan City Council members offered to pay Fisher County \$33,000 for 1993 and permit the unlimited use of the Rotan landfill facilities to county residents without charge.

Commissioners Gene Terry and Jay Hendon indicated their opposition to the offer by voting not to accept the \$33,000 for 1993.

Commissioners Billy Henderson and Charlie Meek voted in favor of accepting the Rotan

Commissioners Gene Terry And Jay Hendon Vote in favor of not accepting proposal, Commissioners Billy Henderson and Charlie Meek vote to accept and Judge Marshal Bennett breaks tie by voting to take the \$33,000 offer by Rotan for law enforcement services for 1993.

proposal.

Gene Terry was in favor of just letting Rotan keep their \$33,000. "Let them (Rotan) hire two night patrolmen and cover the town at night and the county will take care of it during the day", said Terry.

Judge Marshal Bennett asked the commissioners to give strong consideration to accepting the Rotan proposal.

Commissioner Billy Henderson agreed, "I agree with Marshal, take the \$33,000 for a year, see what Gene Pack does and look at it again next year", commented Henderson.

Commissioner Jay Hendon was not in favor of the Rotan

proposal and said that "Now is the time to tell them."

Sheriff Elect Gene Pack was present for the meeting and indicated that he thought he could shave \$20,000 from the Sheriff's Department budget in 1993.

"Eighty five percent of the calls involving the need for Fisher County Sheriff's Department assistance originates in Rotan", according to Pack.

Jay Hendon said "the city (Rotan) is not giving us (Fisher County) what they need to give us."

Toward the end of the discussion on accepting the \$33,000, Gene Terry said he

wanted to give Pack a chance but that he hated to tie the county down.

Commissioner Hendon indicated that he felt Rotan would pay more than the \$33,000 offered. "I think they would pay \$10,000 more. They don't expect us to accept the \$33,000," he said.

Commissioners were apparently on the verge of settling a long going misunderstanding concerning time off, complimentary time for members of the Fisher County Sheriff's Department. The commissioners were going to pay approximately \$4,600 in comp. time to members of the deputy force as soon as Sheriff Counts certified the hours as being correct.

Commissioners discussed a request from the Fisher County 4-H organization to lower the ceiling in the Pink Building. No immediate action was taken.

Roby Star-Record



ROTAN ADVANCE

JANUARY
FISHER COUNTY
Home To

Michael Horne
William Cleveland, Jr.
Lisa Coffman
Alford Carey
Fisher County Hospital
Raymond Barrera

VOL. 82 NO. 48
THURSDAY, DECEMBER 31, 1992
TWELVE PAGES
50¢

PER COPY
24¢ BY MAIL
BY THE YEAR



WE'D LIKE TO RING IN THE NEW

But before we do, we at The Newspaper Office want to take this opportunity to thank all our friends both old and new for letting us be a part of your 1992.

We feel proud and privileged to serve such a fine county as this one. We look forward to your continued support as we both enter 1993. Now, let's go ahead and celebrate.

Kim Pease, Janece Pease, Rosemary Donham, Irma Guerra, Jeff Klein.



State Capitol Highlights

By Lyndell Williams
Texas Press Association

AUSTIN — Texas Land Commissioner Garry Mauro rocked the State Capitol last week by announcing that he had filed for personal bankruptcy, listing debts of more than \$4 million.

A second Republican Congressman, Jack Fields of Houston, filed as a candidate in the yet-to-be-announced special election to replace U.S. Sen. Lloyd Bentsen.

Texas Democrats continued urging Gov. Ann Richards to appoint herself as Bentsen's interim successor and run as their party's choice in the election sometime this spring.

Meanwhile, Richards visited with six more men about the senate seat: Congressmen John Bryant, Jim Chapman and Mike Andrews; Railroad Commissioner Robert Krueger former Lt. Gov. Bill Hobby and Travis County District Attorney Ronnie Earle.

However, the governor told reporters she is not close to a decision on Bentsen's successor.

Many Capitol insiders are prone to consider Richards as the inevitable choice, particularly since speculation about Richards as the

new senator has been making the Capitol rounds since August, well before the election.

Mauro's Real Estate Busts

Mauro told reporters he blamed the 1986 real estate trust for the devaluation of his trust fortune once worth almost \$10 million.

He said he now has no checking account, his \$77,000 state salary and a homestead worth more than \$300,000, after spending all other assets to pay creditors.

By filing Chapter 7, Mauro is walking away from payment of the remaining debts.

Mauro to Washington?

Ironically, Mauro manages the state's public lands trusts and the Permanent School Fund; now that his own trust is bankrupt, he is certain to relive his bankruptcy past if he seeks re-election in 1994.

Mauro, now beginning his 11th year as land commissioner, served as Texas campaign manager for President-elect Bill Clinton, and a protege of Lt. Gov. Bob Bullock.

He declined to press for a Washington appointment to keep his financial troubles out of the head-

lines, particularly any linking him to Clinton.

But Mauro's political fortunes in Texas are viewed as in a nosedive; many think he may soon resign for a post in Washington, D.C., or use his connections to build a new beginning as a lobbyist there.

State Children in Poverty

One in every four Texas children is born into poverty, the state Health Commissioner David Smith said last week, calling for investment in youngsters' well-being.

Smith cited statistics that were part of an annual report by the Children's Defense Fund. The report said that nationally, one in every five children lives in poverty.

Smith said that for black and Hispanic children, the number born into poverty is one out of two. One in every four Texas children has no medical insurance.

Citing figures from other recent studies, Smith said 30 percent of Texas' 2-year-olds are fully immunized against childhood diseases, compared to a national average of 60 percent.

He challenged the state to invest in children's health. Childhood

immunizations should be free and available to all Texas children, Smith said.

That would cost about \$50 million a year in state and federal funds — \$15 million more in state money than the Texas Department of Health's current budget for vaccine and immunizations.

Perot Watchdog Group

Ross Perot will turn his supporters' organization into a non-profit watchdog group next month and lead a drive for new members, the top aide in his independent presidential campaign has announced.

"The intention is to disseminate information to the public on policy issues and to encourage citizen involvement," said Clay Mulford, general counsel of Perot's campaign.

He said Perot will not try to form a third political party as some supporters have urged.

Perot will be the group's first national chairman, Mulford said.

Speeches, TV appearances and perhaps a direct mail campaign will be used to seek members, who are likely to be charged \$15 annually. Perot drew about 19 percent

of the vote, the most any third-party presidential candidate since Theodore Roosevelt in 1912.

Other Highlights

Resumes have already begun pouring into Henry Cisneros' San Antonio offices from Democrats eager for a position with the Department of Housing and Urban Development. Effective Dec. 21, Cisneros took a leave of absence from his assets management company, which manages \$525 million in pension funds and other assets.

A South Texas University regent has called for an audit of the marching band after some members stole \$22,000 worth of electronic equipment during a recent visit to Japan, and revelations that 28 of the 120-member band on the trip were not TSU students.

San Antonio mayor Nelson Wolff says he has received assurances from University of Texas System Chancellor William Cunningham that a UT-San Antonio inner-city campus will be built.

Legislature's Special Session Unable To Adopt Finance System

by Bob Bullock

Why was the Legislature's special session unable to adopt a new public school finance system?

In a word, because of "recapture". In school finance language, recapture means taking some amount of local property tax money away from wealthy school districts and sharing it with the statewide system.

In the end, opposition to even a limited recapture killed all chances of passage of a constitutional school finance bill in the special session. A majority of the Legislature favors recapture, but the opposition had just enough strength to bring the session to a standstill.

Unfortunately, those who opposed recapture chose the wrong place and the wrong time to make their stand.

Their argument is not with me or the Governor or the rest of the Legislature. Their argument is with the Texas Supreme Court--and it is an argument they can't win.

Some of the Court's rulings on school finance have left questions unanswered, but the unanimous opinion of the Court in the 1991 Edgewood case is crystal clear as to the court's insistence that taxable property wealth must be considered on a statewide basis.

The Court said it cannot tolerate the wide variances that exist now in local tax rates and the wide discrepancies in the amounts of spendable money available to the local districts as a result of pockets of wealth and pockets of poverty.

Read what the Court said: "The current system insulates concentrated areas of property wealth from being taxed to support the public schools. The result is that substantial revenue is lost to the system."

The Court in this unanimous opinion pointed out that if the property in these areas of concentrated wealth was taxed at substantially the same rate as the rest of the property in the state, the system could have hundreds of millions of additional dollars at its disposal.

In reference after reference, the Court is emphatic that the public school system is constitutionally a state system and not just a collection of 1,000 independent local districts.

The Court said there are several ways an equitable state system can be achieved by taking into account the total property wealth of the state. The Court left the choice of ways to the Legislature.

Among those choices, the recapture concept was chosen simply because it has been acceptable to past Legislatures and to the public more than other

alternatives such as a statewide property tax or school district consolidation.

The limited recapture plan as proposed touched only 10 percent of the districts with only 6 percent of the students and affected only 2.5 percent of the total school spending--but it would have satisfied the Court's demand for equity.

Those who opposed recapture proposed nothing in its place. In short, they thumbed their nose at the Supreme Court.

They can disregard my opinion as unimportant, but they cannot disregard the fact that the Court still has jurisdiction and the Court has the state under a June 1 deadline to close the gap between wealthy and poor districts.

The anti-recapture blockade has cost us valuable time. I have wanted Texans to vote on a school plan. To set up an election takes time. Now your chance to vote on something early next year is gone.

The Legislature must move quickly in its Regular Session to set up a spring election--woefully close to the deadline when the Court seems likely to either shut down or take over the schools, rich and poor alike.

It hurts to think that vested interests and those who play politics with public school finance would let that happen just to defy the Texas Supreme Court.

MEMBER 1993
TEXAS PRESS ASSOCIATION
608-100USPS
ROTAN ADVANCE
ROBY STAR RECORD
PHONE (915) 735-2562
(915) 735-2278
POST OFFICE DRAWER A
ROTAN, TEXAS 79546

Kim Pease
Editor/Co-Publisher
Janece Pease
Office Manager/Co-Publisher
Rosemary Donham
Advertising
Irma Guerra
Typesetter

Second Class Postage paid at Rotan, Texas - Published Every Thursday at 114 Snyder Avenue, Rotan, Texas 79546

SUBSCRIPTION PRICES
FISHER COUNTY - \$15.00
WITHIN TEXAS - \$17.50
OUTSIDE TEXAS - \$20.00

POSTMASTER
Send Address Correction Changes to:
P.O. Drawer A
Rotan, Texas 79546

Any erroneous reflections upon the character standing or reputation of any individual, firm or corporation will be gladly corrected when notification is given in writing to the editor within 10 days after publication.

Fisher County Church Directory

First National Bank of Rotan
Member FDIC
Rotan, Texas

City Grocery & Deli.
S. Hwy 180 - Roby, Texas
776-2225
Kiefer & Aubrey Nell

Bart Strayhorn
735-2231
Rotan, Texas

City Auto Supply
735-2242 - Rotan, Texas

United Artists Cable Television
735-2526
Rotan, Texas

Rotan Insurance Agency
735-2571

Circle C Grocery
735-2574
Rotan, Texas

H.L. Davis & Co.
"The Friendly Store"
Bill & Elaine Day

Rotan Masonic Lodge #956
Meets 3rd Thursday

Theatre On The Brazos

Are You Ready?

Midnight . . . New Year's Eve. Confetti flies! Laughter resounds! This is the long awaited moment. It is a new beginning. Everyone is confident. Resolutions have been made for weeks. This year will be different! Are you ready? This year can be different with God's help. We can keep those resolutions with the strength which God provides, long after New Year's Day has come and gone. Life is unpredictable, and reality may attempt to weaken our resolve. Without His help we are as helpless as babes, yet when we trust in God, we are promised that "Old things are passed away; behold, all things are become new." (2 Corinthians 5:17) Listen! Hear the church bells ring throughout the city, a most important signal of this new start. Harken to those bells each Sabbath of the coming year. Walk with God. You will *always* be ready.

Copyright 1992, Keister-Williams Newspaper Services, P.O. Box 8005, Charlottesville, VA 22906
Scriptures selected by the American Bible Society

Clinic Pharmacy
735-2500
Cleburne Murdoch-RpH
Rotan, Texas

Rotan Nursing Center
735-2233
Rotan, Texas

Landes Furniture
Larry & Beverly Landes
735-3171
Rotan, Texas

Tuesday Revelation
21:1-8

Wednesday Revelation
21:9-27

Thursday Revelation
22:1-21

Friday Matthew
4:18-22

Saturday Matthew
8:18-22

Rotan Nursing Home
Carl Hilt-Administrator
735-3291
Rotan, Texas

Citizens State Bank
776-2261
Member FDIC
Roby, Texas

The Newspaper Office
*Gifts
*Office Supplies
*Printing
*Rubber Stamps
Kim & Janece Pease
735-2562
Rotan, Texas

United Caprine News
Rotan, Texas

JOY

<p>St. Joseph's Catholic Church Rotan, Texas Father Austin Kittredge Sunday Morning 9:00 a.m. Mass Saturday Night 7:30 p.m. Mass</p>	<p>Little Zion Baptist Church Rotan, Texas Rev. John L. Martin Sunday School 9:45 a.m. Worship Service 11:00 a.m.</p>	<p>Foursquare Church Rotan, Texas Rev. Robert Kennedy Sunday School 10:00 a.m. - Worship 11:00 a.m. Sunday Evening Service 6:00 p.m. Wednesday Night Service 7:00 p.m.</p>	<p>Cross Roads Baptist Church Rotan, Texas Rev. Keith Berryman S.S. 10:00 a.m. - Worship 11:00 a.m. Worship Service 7:00 p.m. Wednesday Night Service 7:00 p.m.</p>
<p>Church Of The Nazarene Rotan, Texas Rev. Jack Jones Sunday School 9:45 a.m. Worship Service 10:45 a.m. Sunday evening & Wed. Evening 8:00 p.m.</p>	<p>First Baptist Church Roby, Texas Rev. Tobey Clements S.S. 10:00 a.m. - Worship 11:00 a.m. Sunday Church Training 5:00 - Worship 6:00 p.m. Wednesday Prayer Meeting 7:30 p.m. Wednesday Night Choir Practice 8:00 p.m.</p>	<p>Hobbs Baptist Church Hobbs Community Rev. Dee Threath Sunday School 9:45 a.m. Sunday Morning Worship 11:00 a.m. Sunday Evening Worship 6:00 p.m.</p>	<p>First United Methodist Sylvester, Texas George Chambers, Minister Sunday School 10:00 a.m. - Worship 9:30 a.m. Community Dinner 6:00 p.m. Each Third Wednesday Night</p>
<p>McCaulley Baptist Church McCaulley, Texas Rev. Dutch Parks Sunday School 10:00 a.m. Worship Service 11:00 a.m. Sunday Evening Worship 6:00 p.m.</p>	<p>First United Methodist Rotan, Texas Rev. Ron W. Dunaway Sunday School 9:30 a.m. Worship Service 10:30 a.m. Sunday Evening Worship Service 6:00 p.m.</p>	<p>Church Of Christ Roby, Texas Darrell Hart S.S. 10:00 a.m. - Worship 10:45 a.m. Sunday Evening Service 6:00 p.m. Wednesday Night 8:00 p.m.</p>	<p>First United Methodist Roby, Texas Rev. Ron Kelly S.S. 9:45 a.m. - Worship 10:50 a.m. Sunday Night Worship Service 6:00 p.m. Wednesday Night Choir Practice 6:30 p.m. Wednesday Night Bible Study 7:30 p.m.</p>
<p>Church Of Christ Rotan, Texas Dan Morris S.S. 9:45 - Worship Service 10:45 Sunday Night Worship 6:00 Wed. Night 7:30 Ladies Bible Class - Wed. 9:30 a.m.</p>	<p>Attend The Church Of Your Choice This Sunday</p>	<p>First Baptist Church Rotan, Texas Rev. Joe Vernon S.S. 9:45 a.m. - Worship Service 10:45 a.m. Sunday Evening Worship 6:00 p.m. Wednesday Prayer Meeting 7:00 p.m.</p>	<p>Emmanuel Baptist Church Rotan, Texas Sunday School 10:00 a.m. - Worship 11:00 a.m. Sunday Evening Service 6:30 p.m. Wednesday Night Worship 7:00 p.m.</p>
<p>Calvary Baptist Church Rotan, Texas Rev. Gene Prevo S.S. 10:00 a.m. Worship 11:00 a.m. Sunday Evening Worship 6:00 p.m. Wednesday Night Service 7:00 p.m.</p>	<p>Mission Bautista Calvario Roby, Texas Rev. Eli Sepeda S.S. 9:45 a.m. Worship 11:00 a.m. Sunday Evening Worship 6:00 p.m. Wednesday Night Service 7:30 p.m.</p>	<p>First United Methodist McCaulley, Texas George Chambers, Minister Sunday School 10:00 a.m. Worship Service 11:00 a.m. 2nd Wednesday Fellowship 6:30 p.m.</p>	<p>Sylvester Baptist Church Sylvester, Texas Rev. Jim Reid S.S. 10:00 a.m. - Worship 11:00 a.m. Sunday Evening 6:00 p.m. Wednesday Night Service 7:00 p.m.</p>

Where To Purchase The Rotan Advance - Roby Star Record
* Allsup's Conv. - Rotan
* Circle C Gro. - Rotan
* City Grocery - Roby
* Nubbin's Conv. - Roby

Fisher County PUBLIC RECORDS

From The Public Records In The Fisher County Court House

November 1992

WARRANTY DEEDS AND AS- SUMPTIONS

T F Williams to Lloyd Hicks; Opal L Smith to Glenn Smith and Annette S Watson; Floyd & Billie Bryant to Veterans Land Bd of Tx; Riley J Anderson, Jeff Anderson Estate, Thomas A Anderson and John Anderson to Riley J Anderson Trust, Thomas A Anderson Trust and John C Anderson Trust; Dora R May to Delbert J Helms; Helen Perales (AIF), Connie Laviolette, Katy L Garcia, Joe Perales, Freddy Perales, Louis Perales, Pete Perales Jr., Luci Kenny, Mary J Phillips, Johnny Perales,

Ales Perales, Wm. P Strodtman and Sandi S White to PL Ulstead; Buck and Alice Hughs to George Price; Pete Jr and Linda Perales to Mary J Phillips; Peggye J Bonds to George B Bonds, Candice W Bonds, Davis D Bonds and Gena Bonds; Ellen V Deaton and Robert Deaton Jr Estate to Bradley and Tanya Thiessen; Garland Upshaw, Normer Upshaw, and Velma Upshaw Estate to Adolfo and Enequina Medrano; Dortha and Donald Forbes to Shirley and Tommy Driver; Chester M Callan and Nadine Callan Estate to Chester M Callan, Jack K Callan and Charlotte C Lancaster; L H Milner to David C Milner.

Crimestrike And NRA Responds To Plea For Denial Of Parole Of Bruton

A dangerous offender has been denied parole, thanks to a program called Crimestrike and the Texas members of the National Rifle Association of America.

Charles Edward Bruton physically assaulted Susan Bromberg. Shot at her three times. Victimized her 11 year old daughter in one of the worst cases of sexual assault in Dallas County. When she learned he was up for parole after serving three years of two ten year sentences, she called Crimestrike for help. A division of NRA, Crimestrike placed special advertising in NRA magazines destined for Texas members, and they responded.

Hundreds called and wrote the Texas Board of Pardons and Paroles. On September 14, Bruton's parole was denied.

"This is a great victory for a family, and it's a clear sign that citizen involvement--one of the five elements of the Texas Crimestrike initiative--is essential if we are to break the back of violent crime in Texas," said Steven J. Twist, Special Counsel to Crimestrike.

Bromberg assisted Twist's August 13, 1992 launch of the initiative in Dallas. Bromberg and Twist were joined by Lori Bible whose sister, Colleen Reed, was allegedly abducted and

murdered by paroled killer Kenneth McDuff.

Twist used the parole victory to once more express grave concern over the apparent direction of the Texas Punishment Standards Commission. In his August 13 news conference, Twist attacked what he considered a "dangerous managing-to-existing resources mentality" on the part of TPSC. That evoked a mocking reply from TPSC commissioner Carl Reynolds who asked if the NRA thought prisons grew on trees.

When you think of a person getting disability benefits from the government, what image comes to mind? You probably think of a person who has lost the ability to work as a result of a medical condition or injury. Although that is a possibility, it hardly paints a complete picture. For example, there are about 6 million people with a variety of physical and mental impairments who receive disability benefits from Social Security. About 3 million of them are getting Supplemental Security Income (SSI) benefits and more than 450,000 of current SSI beneficiaries are children with disabilities.

SSI, which is administered by Social Security, makes monthly payments to people with low incomes and limited assets who are 65 or older, or to people who have a disability, including children. Of course, most children don't have income and assets of their own, but we consider those of the parents for children under age 18 when deciding if they are eligible for SSI. The SSI

payment rates vary on a number of factors and can get quite complicated, so I suggest anyone with limited income and resources who has a child with a serious disability should contact our office.

A child is considered "disabled" for SSI purposes if he or she has an impairment that limits his or her ability to function and perform daily activities similar to those that healthy children in the same age range usually do.

Disability claims can take several months to process. But there are special rules that allow us to make immediate payments to parents of children with severe disabilities.

There is also a possibility that children who were turned down for SSI in the past may now be eligible. If your child was turned down for SSI disability benefits between January 1980 and February 1990, or if your child's benefits were stopped for medical reasons,

check with our office about having the claim reviewed again using the new rules.

You can apply for SSI for your child by calling our office at 698-1360 for an appointment. You can expedite the claims process if you have the child's Social Security number and birth certificate available when you apply. You also will need to provide records that show your income and assets. In addition,

bring along the names, addresses, and telephone numbers of all doctors, hospitals, clinics, and other specialists your child has visited.

If you'd like general information about SSI benefits for children, call our toll-free number 1-800-772-1213 business days between 7 a.m. and 7 p.m. and ask for a copy of the pamphlet, Social Security And SSI Benefits For Children With Disabilities.

TREES FOR SALE



The Upper Clear Fork SWCD Will Be Selling Trees Through January. If Interested Call (915) 735-3411 Or Come By The Soil Conservation Service



A.A. Meeting

Each Wednesday 8:00 P.M.
All Welcome
Hobbs Co-Op School
Annex Building
For More Info Call
Danny B. 735-3570

SUMMERS PHARMACY

202 N. Cleveland 735-2442 Rotan, Texas

Candy - For All Occasions

We Honor: Blue Cross/Blue Shield,
Behrens-PRNRY, Texas State Medicaid

PRESCRIPTIONS-Night Or Day
FREE DELIVERY

We Said We Would Open In August (But What Year????)



**SPECIALIZING
IN PIZZA**



Guess What?? It's Open

The Lions Den

In Roby- 776-2655 - Located Next To Central Lumber
Featuring A Game Room

Grownups Can Enjoy Good Food While The Kids Play Games

Also Serving Hamburgers, French Fries, Onion Rings, Submarine Sandwiches & Much More

Good Clean Fun For The Whole Family

Open Monday Thru Saturday 11:00 a.m. Until ?

We Will Be Closed On Sunday

To clarify any confusion
Billy Joe Green was not fired
from H.L. Davis & Co.

He gave notice on November 27th
that December 24th would be
his last day.

**Our January Clearance
Sale Begins January 6th
at 9:00 a.m. and will
continue through
January 9th.**

**Don't Miss Our
Sale Of The
Year !!!**

H.L. Davis & Co.

"The Friendly Store"

735-2591

Rotan, Texas

MONEY

WORKING

AT

HOME

Happy
NEW YEAR

WE

are sending your way a cherry
WISH

for the coming New Year and
years to follow. May

YOU

enjoy health, prosperity and
peace of mind and may

ALL

your wishes come true. It has
been a pleasure and

A

privilege to serve you and
we will be

HAPPY

if we can continue serving you
and your friends in the

NEW

year ahead. Please accept our
wishes for a Happy New Year.

The **1st** National Bank
of **ROTAN**



"Your Dependable
Bank Of Service"

FDIC

Area Code 915-735-2224

ROTAN • TEXAS 79546

Open Letter To Rotan Residents From Glen And Belinda Cantu

Dear Family and Friends:
 Since New Year's is almost here again we thought we'd write a short update on the latest here in Barranquilla so you can be praying for us during this season.

We have a praise item. Our mission, El Camino, was able to rent a much bigger house this past month as the other house was already too small for our growing group. This house is strategically located on a major street and alongside a major bus route. We are thankful to the Lord for providing this great house for us.

We have another praise item: Our daughter, Elizabeth, was able to come home for a 10 day break in October and we were able to travel to Rubio for Thanksgiving to visit her. Both visits were a blessing to us as we saw how happy she is at Christiansen Academy. While in Rubio, we were able to meet all her friends and many other parents as well. We thank the Lord for taking care of Elizabeth in her new school.

We ask prayer for the following: Continue to remember Roberto and Moris Cervantes. They are continuing in their EE training and both are doing really well although Roberto has had some problems arriving on time because his boss tells him to stay late when he has EE. The other member of the group, Pedro Ardila, asked to be excused from the training for this semester because of some personal problems but would like to begin again the next semester. Pray that the Cervantes continue to be faithful witnesses wherever they go and that the Lord give Moris more boldness as she presents the gospel. Pray also that Pedro be able to start his training again early next year.

Please pray also for continued growth in those that are being discipled

so that they may look to the Bible for the truth and not listen to false teachings.

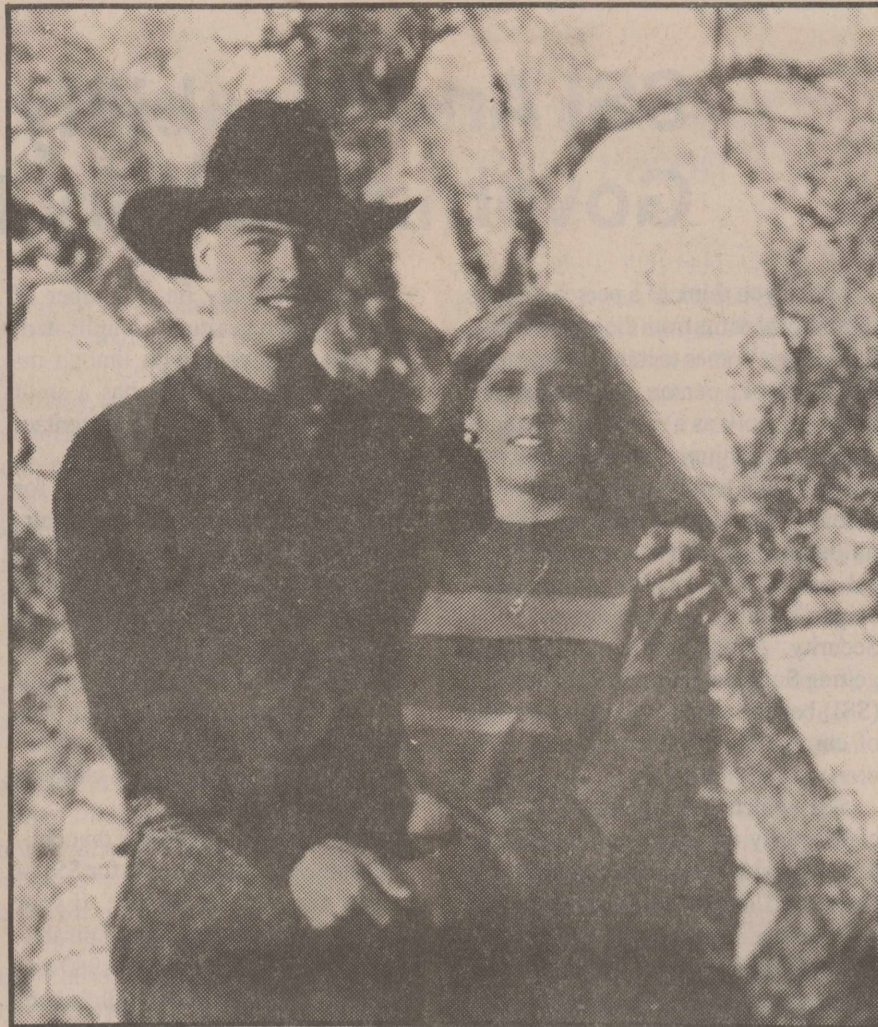
Another prayer request is for the Regional Choir that Glenn directs. The choir is preparing to present "Salmo 133" by Leslie Gomez at Barranquilla's main Theater sometime during the week of Dec. 14 during the area wide Choir Festival that is held here every two years. Many other choirs will be presenting music but this is the only evangelical choir that will be participating in this event. Pray that the Lord would use the message of Psalm 133 to touch hearts through the singing of the choir.

Finally, pray that the Lord would show us whom He has prepared to receive His Word and that we be obedient to His guidance. Pray also for Colombia, our children and our safety.

Remember these prayer requests as so many celebrate Christ's birth all over the world. Thank you all for your continued prayers and support.

In Christ, Glenn and Belinda Cantu Foreign Exchange Student Program

Could your family use a bit of cultural diversity? American Intercultural Student Exchange is seeking American families who are interested in hosting a foreign exchange student in their home for the 1993-94 school year. Students ages 15 through 18, have their own spending money and medical insurance. Host families provide room, board, and a warm family environment. Families may request a student from over 20 countries in Europe, Asia, South America, and Australia. All exchange students are in excellent health, are fluent in English, and have met the academic standards set forth by A.I.S.E.



Angelina May Brzezinski And James Bryan Berryman

Angelina May Brzezinski To Wed James Berryman Of Sweetwater

Mr. and Mrs. William Brzezinski of Roby would like to proudly announce the engagement of their daughter, Angelina May Brzezinski to James Bryan Berryman of Sweetwater.

The bride-elect is a 1991 graduate of Roby High School and is currently a student at Angelo State University.

The groom to be is a 1989 graduate of Sweetwater High School, and is employed by Southwest Coca-Cola in Sweetwater.

Grandmothers of the bride-elect are Florence Fountaine of Connecticut, and

Stella Brzezinski of California. Grandparents of the groom to be are: Mr. and Mrs. Robert Berryman of O'Brien and Mr. and Mrs. C.D. Davidson of Whiteface.

The wedding day will be announced at a future date.

GOING AWAY CELEBRATION HONORING JEAN PENALUNA

MISSIONARY TO RUSSIA

MONDAY NIGHT, JANUARY 4, 1993
 FISHER COUNTY COURTHOUSE ANNEX
 ROBY, TEXAS
 7:00 P.M.

JEAN PENALUNA DEPARTS FOR VALDAMAIRE, RUSSIA ON JANUARY 6, 1993 FOR A ONE YEAR TOUR AS A MISSIONARY WITH THE COMMISSION AS PART OF THE OMS INTERNATIONAL ORGANIZATION.

THIS SEND OFF CELEBRATION IS BEING ORGANIZED TO EXPRESS OUR APPRECIATION TO JEAN AND TO WISH HER SUCCESS IN HER CALLING.

Refreshments Will Be Served

Sponsored By Big Country Men For Missions

PLEASE ATTEND

After CHRISTMAS CLEARANCE

SPECIAL

75% Off Table

Selected Gift Items

All Christmas 1/2 Price

Awfully Good Gifts   

The Newspaper Office

114 East Snyder Ave. • (915) 735-2278 • Post Office Drawer A • Rotan, Texas 79546



ALLSUP'S

YOUR NEW YEARS EVE PARTY HEADQUARTERS

FAMOUS ALLSUP'S BURRITOS

2 FOR 99¢

HOMOGENIZED ALLSUP'S MILK GALLON

\$1.99



PRICES EFFECTIVE DEC. 30, 1992 THRU JAN. 5, 1993

SAUSAGE, EGG & BISCUIT EACH

79¢



VALLEY FARE BATHROOM TISSUE 4 ROLL PKG.

79¢

DECKER MEAT BOLOGNA 12 OZ. PKG.

79¢



DECKER MEAT FRANKS 12 OZ. PKG.

59¢



OPEN NEW YEARS DAY FOR YOUR SHOPPING CONVENIENCE

ALL TYPES PEPSI-COLA 12 OZ. CANS \$1.99

6 PACK PEPSI MELLO CRISP 16 OZ. BACON 89¢

SHURFINE 20 LBS. DOG FOOD \$3.69

VALLEY FARE PAPER TOWELS 2/\$1.00

COMBO OF THE MONTH

2 PIECE CHICKEN, 3 POTATO WEDGES & A TALLSUP FOR ONLY \$1.99

HOTFOODS MENU	
BARBECUE BEEF SANDWICH	99¢
BARBECUE PORK RIBS (LB.)	\$3.99
BARBECUE WHOLE CHICKEN	\$3.99
ALL SUP'S BURRITO	79¢
BORRITO	99¢
BURRITO BEEF & SALSA	\$1.19
DELICIOUS CHEESEBURGER	89¢
CHICKEN FRIED STEAK	\$1.59
3 COUNT CHICKEN STRIPS	\$1.49
W/POTATO WEDGES/ CHICKEN (2 PC) BISCUT	\$1.99
3 PIECE BOX CHICKEN	\$5.99
BEEF & CHEESE CHIMCHANGA	\$1.19
BEADY CORN DOG	69¢
DELICIOUS HAMBURGER	69¢
WILSON HOT LINKS	99¢
SAUSAGE ON A STICK	\$1.39
SAUSAGE & BISCUIT	79¢
SAUSAGE EGG & BISCUIT	99¢
SAUTEYA SAUSAGE	\$1.09
4 COUNT STEAK FINGERS	\$1.00

CALL IN ORDERS WELCOME CHECK OUR WEEKLY SPECIALS

Roll Of Pastors Serving Roby United Methodist Church 1886-1993

- J.W. Dickson 1886-1887
- M.L. Moody 1887-1888
- A.K. Miller 1888-1889
- J.H. Chambliss 1889-1890
- J.E. McClesky 1890-1891
- J.L. Davis 1891-1892
- N.B. Bennett 1892-1893
- M.L. Moody 1893-1894
- L.W. Dennis 1894-1895
- J.T. Trimble 1895-1898
- I.L. Mills 1898-1899
- A.B. Roberts 1899-1900
- I.C. Mills 1900-1901
- T.N. Lowery 1901-1902
- M.H. Hudson 1902-1904
- J.L. Hollers 1904-1906
- J.G. Irvin 1906-1908
- J.W. Childress 1908-1909
- C.S. Cameron 1910-1911
- T.W. Sharp 1911-1912
- I.N. Anderson 1912-1913
- J.D. Crockett 1913-1915
- S.H. Young 1915-1919
- O.B. Annis 1919-1920
- H.N. Nichols 1920-1922
- R.V. Tooley 1922-1923
- J.E. Boyd 1923-1925
- E.L. Yeats 1925-1928
- O.C. Coppage 1928-1929
- J.N. Scoggins 1929-1932
- L.B. Smallwood 1932-1925
- Elmer Crabtree 1935-1939
- Cecil Fox 1939-1940
- C.W. Parmenter 1940-1944
- C.R. LeMond 1944-1946
- T.B. Armstrong 1946-1947
- D.W. Binkley 1948-1949
- E.B. Thompson 1949-1951
- Phill P. Gates 1951-1952
- E.L. Patterson 1952-1955
- E.R. McGregor 1955-1958
- J.E. Kirby 1958-1960
- E. Hardy Cole 1960-1962
- H.O. Abbott 1962-1965
- Walter White 1965-1966
- R.H. Meixner 1966-1970
- Homer Salley 1970-1972
- Ray Johnson 1972-1973
- Steve Harper 1973-1975
- Kenneth James 1975-1976
- Luther Baker 1976-1978
- Loren Gardner 1978-1983
- Wayland Dowden 1983-1984
- Warren Schoenecker 1984-1987
- Jim Hawthorne 1987-1989
- Larry Crumpton 1989-1992
- Ron Kelley 1992-Present

County Agents Column

By Richard Spencer

One of the most effective ways to attract birds to your backyard for winter viewing is to set up feeding stations. While feeding stations are meant only to supplement natural food sources, they do have a concentrating effect on local bird populations. Feeding stations should be stocked with a variety of foods in order to attract the widest variety of bird species.

Foods used at winter feeding stations usually fall into three categories: seeds, fruits, and suet. Sunflower seeds, millet, corn, milo, peanut kernels, etc., are examples of some popular seeds. Offering a variety of seed types increases the variety of birds using a feeding station. Seed mixes may be custom blended at home or many are commercially available.

Some birds readily consume fruit when it is made available. Apples, orange slices, grapes, and raisins placed on the ground, on trees, or on platforms at various heights may be used to attract birds such as mockingbirds, and cardinals. Oftentimes birds will not use fruit until it is partially decayed.

Webster defines suet as the hard fat from beef and mutton that yields tallow. Suet can usually be obtained free of charge from your local butcher shop. Suet usually offered to birds by putting it in small baskets made of hardware cloth and attaching it to a tree or a post. The baskets not only keep the suet together, but also prevent raccoons and possums from running off with the goods. Birds that often use suet and benefit from its high energy content include woodpeckers, and wrens.

Another important, yet often overlooked, component of feeding stations is water. Providing water for drinking and bathing is often more attractive to birds than providing food. This can really be a challenge during extreme winter weather.

There are several points to remember when considering feeding stations. First, a feeding station alone will not

attract large numbers of birds. The general landscape should also be attractive to birds. This means having a variety of shrubs, hedges, flowers, etc., in the area. Secondly, the area should not have an abundance of domestic predators. We do not want to attract birds to a feeding station only to have

them serve as dinner for the local house cat. Lastly, once a winter feeding program is initiated, it is important to maintain it, especially during extremely cold and/or snowy weather. The birds concentrated by feeders are more dependent on the feeding stations during these critical times.

Three Hospitals Receive Grants For Health Care

Congressman Charles Stenholm is pleased to announce that three hospitals in the 17th Congressional District have been authorized to receive rural grants from the Rural Health Care Transition Grant Program.

The Olney Hamilton Hospital District in Olney and the Concho County Hospital in Eden have each been authorized to receive \$50,000. Hamilton Hospital will use their grant to establish a rural health clinic in Archer City, while the Concho County Hospital will use the funds to expand access to medical care by employing an additional physician.

Eastland Memorial Hospital in Eastland will receive \$49,098 to reno-

vate their intensive care unit.

The Rural Health Care Transition Grant Program is in its fourth year of funding, and is one of the early initiatives of the House Rural Health Care Coalition (RHCC), of which Stenholm is the Co-Chairman.

"One of my goals is to keep rural hospitals in operation, and I have been pleased with the success of this grant program in the 17th District," Stenholm said. "I believe it will continue to enable hospitals to expand their services and to remain open for business."

The program is administered by the Health Care Financing Administration (HCFA).

Agriculture Disaster Payments Under Phase II

Producers applying for U.S. Department of Agriculture disaster payments under Phase II of the Disaster Assistance Program will be able to receive payments in a more timely manner. President George Bush had the USDA extend the disaster sign-up and ensure that producers who qualify for benefits under Phase II and Phase III of the Disaster Assistance Program will receive a payment rate of 50.04 percent of the payments for crop losses approved for coverage.

U.S. Sen. Phil Gramm said, "This

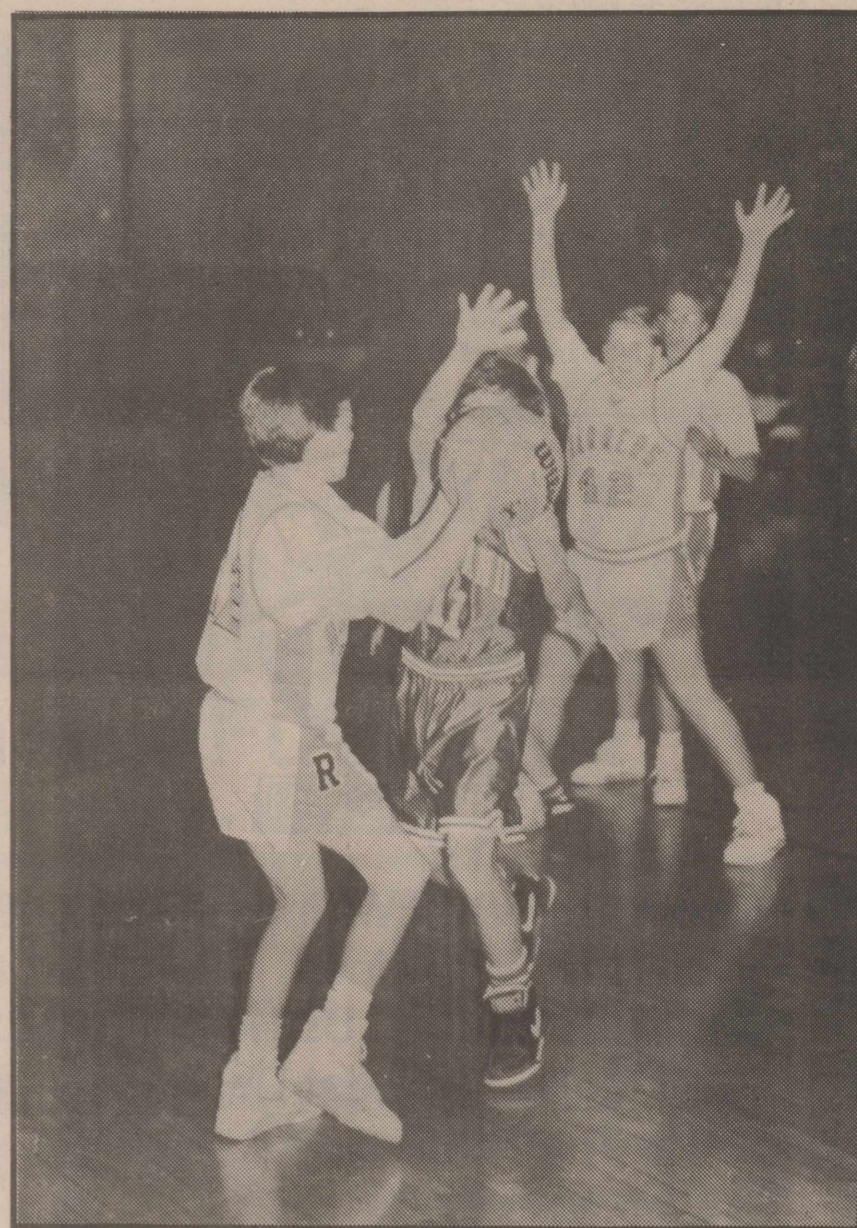
streamlined approach will immediately provide funds for losses suffered in recent years. This will enable producers to meet current obligations and prepare for the new crop year. The stability of agriculture is important to every American."

The Agricultural Stabilization and Conservation Service is extending the period for producers to file for benefits under Phase II of the program to Feb. 12, 1993, for those crops planted in 1991 for harvest in 1992.

Legal Notice

Effective January 1, 1993, the City of Rotan will assess a \$10 service charge on all returned checks and bank drafts.

48:lrc



HEY HERE I AM: Michael Hull (#42) holds his hands high to prepare for a catch from Zach Burnes in recent basketball action. The Hammers have had a rest for the Holidays but will be in action again December 31st-January 2nd at the Jayton Tournament.

THANK YOU

I would like to thank each and everyone for their love, cards, flowers and prayers during the recent loss of my mother.

A very special thanks to Hank, Susie, Bill and Elaine Day for their love and support.

Thank you,
Cindy Robertson

Hustling Around Hobbs

by Joy Walker

Well I hope everyone had a wonderful holiday and the weather wasn't too bad, a little cold, but okay.

All of the Ratliff family got together for Christmas dinner and their tree Sunday, so they had a big crowd.

Melody and Kassie Parrish from Lytton Springs spent Saturday through Friday here. Mark came on Wednesday. We have done lots of visiting with Carol and Wilber Gruben, and Sheila and Donnie Gruben, although Sheila and Donnie were in the field part of the time. Evette Gruben from Lewisville came home Monday and we all went to Abilene on Tuesday. Christmas Eve we met at Sheila and Donnie's for supper and the big tree. Those present were: Donnie and Sheila, Carol and Wilber, Greg Gruben from Crane and Shawna Williams from Odessa, Evette

Gruben and Robert Ramey from Lewisville, Carye Gruben and Chris Coke from Lubbock, Donnie Carl Gruben and Julie Pease, Mark, Melody and Kassie and I. Santa Claus came to see Kassie and was she excited, gave him a big hug and kisses. We have all this on tape, so will enjoy seeing it after the holidays.

This is all the news for this week as I went to Austin on Christmas day for a few days but will be back Monday or Tuesday. Will get more news of all the Christmas guests next week. Happy New Year's to all.

Notice

The deadline for Classified Advertising is Noon on Tuesday of each week.

NOTICE

All Christmas Items

50% Off

Special Table
Regular Items

75% Off

Awfully Good Gifts
The Newspaper Office



Winn's \$ DOLLAR DAY \$ Winn's \$ DOLLAR DAY \$ Winn's \$

This Week's Specials

Winn's

YOUR CONVENIENT VARIETY STORE. PRICES GOOD NOW THRU JAN. 3, 1993

\$1.00

CROSSWORD PUZZLES

TRANSPARENT TAPE

PHOTO ALBUMS

ASSORTED POTPOURRI

KITCHEN UTENSILS AND MUCH MORE

\$2.00

COUPON SAVER

ONE YEAR DIARY

DISH TOWELS

ASSORTED NIGHT LIGHTS AND MORE!

\$3.00

POT HOLDER MITT SET

SHADOW BOX PHOTO FRAMES

STEAK KNIFE SET

FELT PEN SET

COTTON DOILIES AND MORE

SPECIAL FABRIC ASSORTMENT \$1.00 YD.

ALL SIMPLICITY PATTERNS 50% OFF

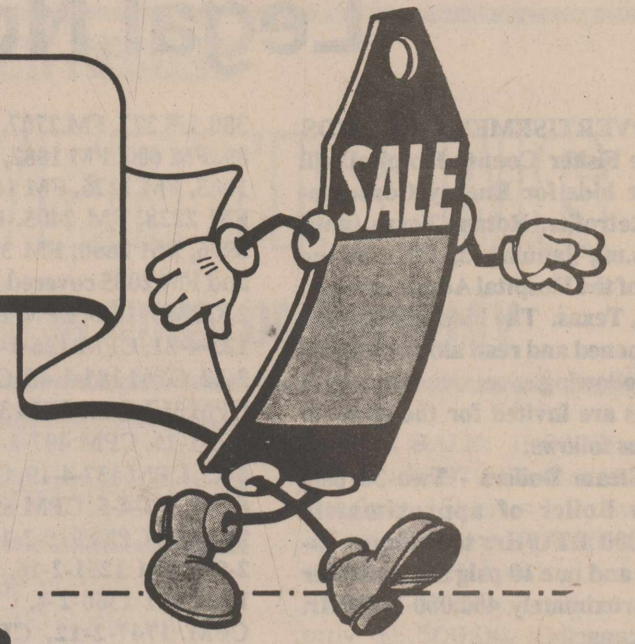
MFG. SUGGESTED RETAIL

110 W. Snyder Avenue 735-2162 Rotan, Texas 79546
8:30 a.m.-5:30 p.m. - Monday - Saturday
1:00-5:00 p.m. - Sunday

Winn's \$ DOLLAR DAY \$ Winn's \$ DOLLAR DAY \$ Winn's \$



JANUARY \$ALE DAYS\$



Warm up your winter with some of the hottest values in town!

H. L. Davis & Co., Inc.

735-2591

116 W. Snyder

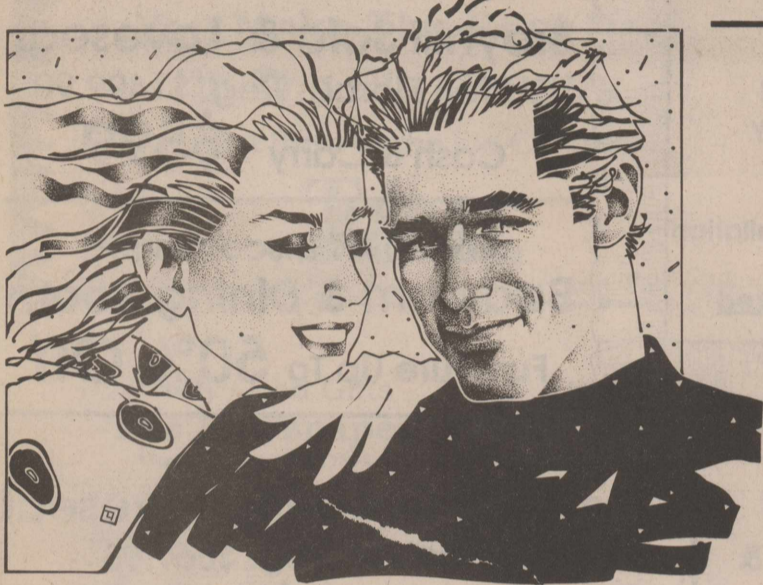
Rotan, Texas

We Are Having Our Usual January Clearance Sale

Beginning Wednesday, January 6th And

Continuing Until 5:00 p.m., Saturday, January 9th

Beginning January 2nd New Store Hours Will Be From 9:00 a.m. To 5:00 p.m., Mon.-Sat.



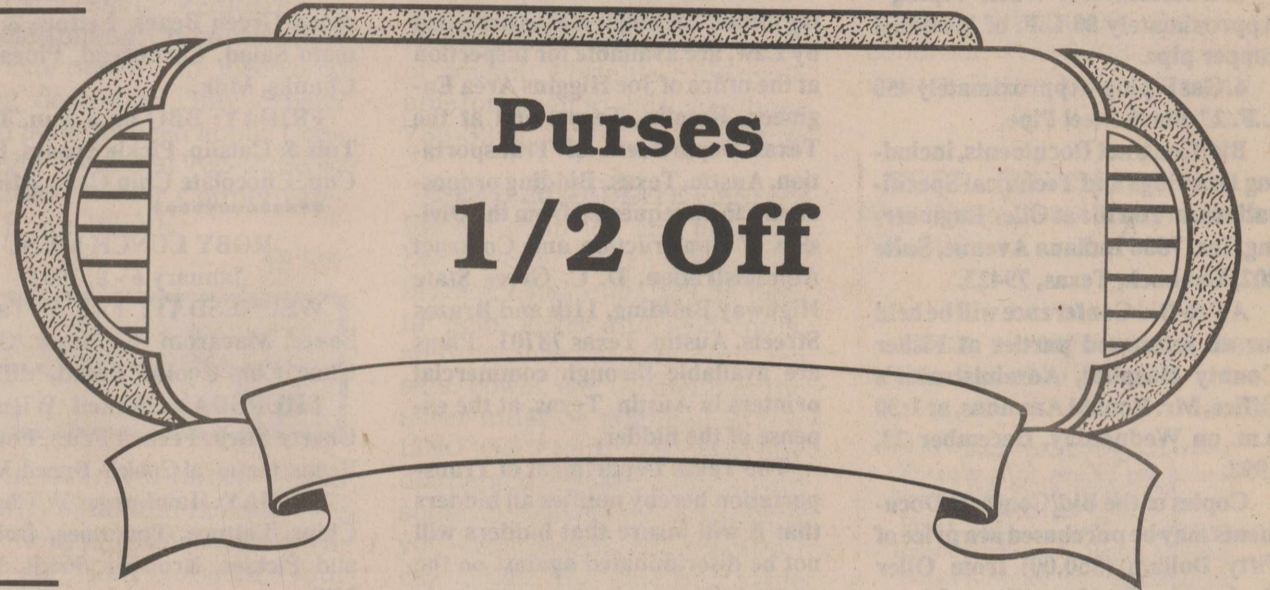
Mens Wear

1/3 Off

Some Select Items

Western Flannels

1/2 Off



Purses

1/2 Off

**Mens & Boys
Jeans**

\$2.00 Off

Many Other Items

1/2 Off

& Specially Marked Prices

Ladies Jeans

Rocky Mountain

Bugle Boy Jr.,

Palmetto

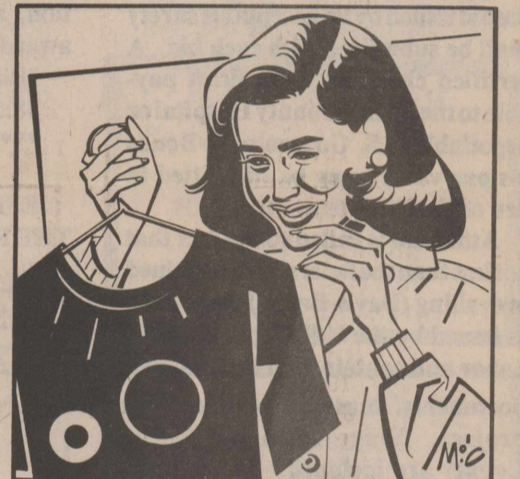
\$5.00 A Pair Off

Some Select Jeans

1/2 Off

**Ladies &
Junior
Blouses**

1/2 Off



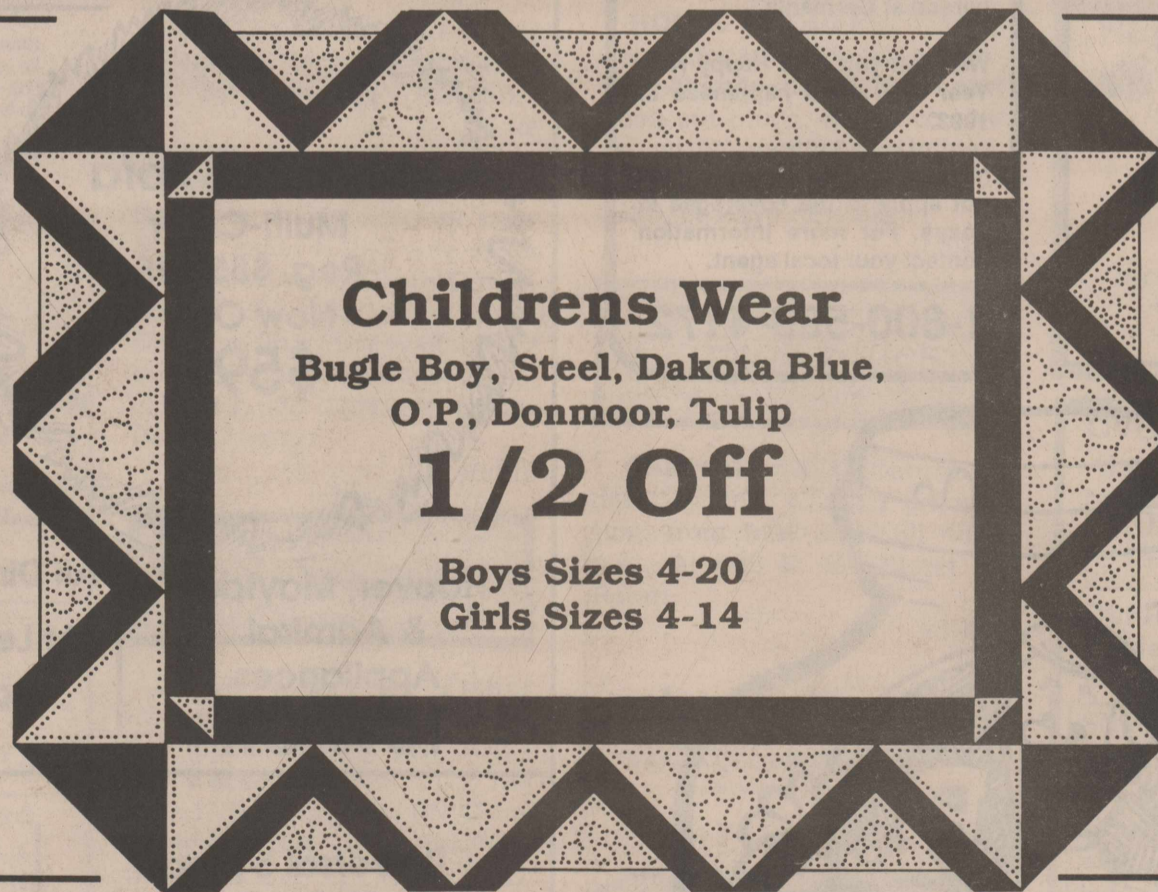
**Ladies & Jr.
Dresses**

Melissa, Brenner,

Leslie Luck,

J. Arthur

1/2 Off



Childrens Wear

Bugle Boy, Steel, Dakota Blue,

O.P., Donmoor, Tulip

1/2 Off

Boys Sizes 4-20

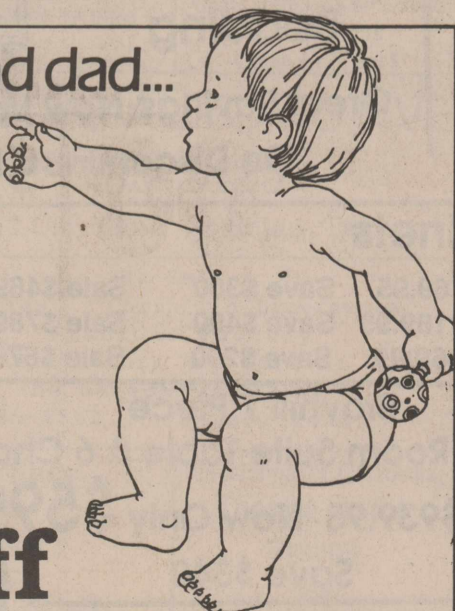
Girls Sizes 4-14

**Material
1/2 Off**

**Gowns & Robes
1/2 Off**

Hey, mom and dad...

LOOK!



**Infant &
Toddler
Wear**

1/2 Off

**Ladies &
Jr. Casual Wear**

Peter Popovich, Palmetto,

Casual Isle, Extrovert, P.K. Gold

1/2 Off

**Some Select
Shoes**

Calico, Nine West

1/2 Off

**Nike, Reebok,
Keds**

Shoes

\$5.00 Off

Leather

Mens, Womens,
Childrens

\$3.00

Off Canvas



Legal Notices

ADVERTISEMENT FOR BIDS

The Fisher County Hospital will receive bids for Energy Conservation Retrofits, Rotan, Texas, until 2:00 p.m., January 5, 1993, at the office of the Hospital Administrator, Rotan, Texas. The bids will be publicly opened and read aloud immediately following.

Bids are invited for the items of work as follows:

1. Steam Boilers - Two 30 psig Steam Boiler of approximately 1,500,000 BTU/Hr. total input capacity and one 10 psig Steam Boiler of approximately 400,000 BTU/Hr. input capacity.

2. Domestic Hot Water Heater - One Domestic Hot Water Heater of approximately 75,000 BTU/Hr. output capacity.

3. Circulating Pumps - One Centrifugal Pumps for the Hot Water Heater.

4. Steam Heating System and Condensate Return Piping - Various sizes (1 1/2" through 4" dia.) of insulated steel pipe.

5. Domestic Hot Water Piping - Approximately 80 L.F. of insulated copper pipe.

6. Gas Piping - Approximately 450 L.F. 2" Black Steel Pipe.

Bid/Contract Documents, including Drawings and Technical Specifications, are on file at Oller Engineering, Inc. 7806 Indiana Avenue, Suite 202, Lubbock, Texas, 79423.

A Pre-Bid Conference will be held for all interested parties at Fisher County Hospital, Administrator's Office, Mr. Ronald Ammons, at 1:30 p.m. on Wednesday, December 23, 1992.

Copies of the Bid/Contract Documents may be purchased at a price of Fifty Dollars (\$50.00) from Oller Engineering, Inc. for each set of documents obtained.

A bid bond in the amount of 5% of the bid issued by an acceptable surety shall be submitted with each bid. A certified check or bank draft payable to the Fisher County Hospital or negotiable U.S. Government Bonds (as par value) may be submitted in lieu of the Bid Bond.

Attention is called to the fact that not less than the federally determined prevailing (Davis-Bacon) wage rate, as issued by the U.S. Department of Labor and contained in the contract documents, must be paid on this project. Wage rates for Fisher County are included. In addition, the successful bidder must ensure that employees and applicants for employment are not discriminated against because of their race, color, religion, sex or national origin.

The Fisher County Hospital reserves the right to reject any or all bids or to waive any informalities in the bidding.

Bids may be held by the Fisher County Hospital for a period not exceed 30 days from the date of the bid opening for the purpose of reviewing the bids and investigating the bidders' qualifications prior to the contract award.

Fisher County Hospital
47:2c

REQUEST FOR PROPOSALS

Rotan Independent School District gives public notice that it is requesting proposals from interested and qualified local companies for the following project:

Implement Operational Cost Reduction Measures at Rotan Independent School District on a Performance Contracting Basis

Rotan ISD plans to select a qualified contractor for the purpose of obtaining optimum cost of operations savings via facility improvements.

Copies of the request for proposal (RFP) are available from:

Dr. Nolan L. Kinsey, Superintendent

102 North McKinley Avenue
Rotan, Texas 79546
(915) 735-2332

Rotan (Texas) Independent School District

Proposals are due 1:00 P.M. January 11, 1993

At Superintendent's Office
102 North McKinley Avenue
Rotan, Texas 79546
47:2c

REQUEST FOR BIDS ON TEXAS HIGHWAY CONSTRUCTION

Sealed proposals for 283,499 miles of seal coat on BI 20-P, FM 2945, SH 283, SH 6, SH 36, US 180, FM 57, US

380, US 277, FM 2707, FM 1235, FM 89, FM 600, FM 1082, FM 1086, FM 1085, FM 1226, FM 1661, FM 1835, FM 2228, FM 2405, FM 2408, FM 2976, FM 2660, FM 3116, FM 2047 and FM 2035 covered by CPM 6-17-2, CPM 7-13-3, CPM 106-6-27, CPM 125-4-21, CPM 126-1-28, CPM 126-2-12, CPM 181-1-48, CPM 296-3-30, CPM 317-2-10, CPM 317-3-10, CPM 360-1-15, CPM 407-6-34, CPM 437-3-13, CPM 437-4-19, CPM 452-2-28, CPM 663-4-5, CPM 699-1-30, CPM 972-6-8, CPM 975-2-14, CPM 1250-2-9, CPM 1251-2-16, CPM 1360-1-18, CPM 1360-2-4, CPM 1654-3-5, CPM 1747-2-12, CPM 1747-3-5, CPM 2108-1-8, CPM 2282-1-3, CPM 2286-1-5, CPM 2536-1-7, CPM 2647-1-4, CPM 2721-2-7, CPM 2856-1-4, CPM 2997-1-6 and CPM 2997-2-3 in Taylor, Callahan, Stonewall, Shackelford, Fisher, Jones, Haskell, and Nolan Counties will be received at the Texas Department of Transportation, Austin, until 1:00 p.m., January 13, 1993, and then publicly opened and read.

Plans and specifications, including minimum wage rates as provided by Law, are available for inspection at the office of Joe Higgins Area Engineer, Hamlin, Texas, and at the Texas Department of Transportation, Austin, Texas. Bidding proposals are to be requested from the Division of Construction and Contract Administration, D. C. Greer State Highway Building, 11th and Brazos Streets, Austin, Texas 78701. Plans are available through commercial printers in Austin, Texas, at the expense of the bidder.

The Texas Department of Transportation hereby notifies all bidders that it will insure that bidders will not be discriminated against on the ground of race, color, sex or national origin, in having full opportunity to submit bids in response to this invitation, and in consideration for an award.

Usual rights reserved.
48:2c

NOTICE
EFFECTIVE JANUARY 1, 1993,
THE ROTAN MUNICIPAL LAND-

Social Security Administration
Jan., Feb., Mar., 1993
Fisher County Schedule
Rotan

Tuesday, 1:30 p.m.,
January 12th
Tuesday, 1:30 p.m.,
February 9th
Tuesday, 1:30 p.m.,
March 9th

Roby

Thursday, 2:00 p.m.
No Service Set

FILL WILL BE OPEN TO ALL FISHER COUNTY RESIDENTS FREE OF CHARGE. PROOF OF FISHER COUNTY RESIDENCE WILL BE REQUIRED. CHARGES WILL CONTINUE TO APPLY TO OUT OF COUNTY RESIDENTS AND COMMERCIAL OPERATORS. LANDFILL HOURS WILL BE 8:30 A.M. TO 5:30 P.M. MONDAY THRU FRIDAY AND 8:00 A.M. TIL NOON ON SATURDAYS.
48:1tc

Lunch Menu

ROTAN LUNCH MENU
January 4 - 8, 1992

MONDAY: Bean Chalupas, Buttered Corn, Lettuce & Tomato Salad, Chilled Fruit, Milk.

TUESDAY: Fried Chicken & Gravy, Whipped Potatoes, English Peas, Hot Rolls, Jello, Milk.

WEDNESDAY: Corn Dogs & Mustard, Cheese Nachos, Ranch Style Beans, Fresh Fruit, Cinnamon Rolls, Milk.

THURSDAY: Crispy Tacos, Seasoned Green Beans, Lettuce & Tomato Salad, Cornbread, Pineapple Chunks, Milk.

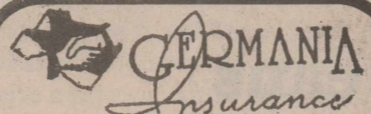
FRIDAY: BBQ on a Bun, Tater Tots & Catsup, Pickle Spears, Fruit Cup, Chocolate Chip Cake, Milk.

ROBY LUNCH MENU
January 6 - 8, 1992

WEDNESDAY: Fish W/Tartar Sauce, Macaroni & Cheese, Okra, Choc. Chip Cookie, Bread, Milk.

THURSDAY: Baked Wieners - Cheese Stick, French Fries, Pork & Beans, Oatmeal Cookie, Bread, Milk.

FRIDAY: Hamburger W/Cheese, Chips, Lettuce, Tomatoes, Onions, and Pickles, Brownie, Fruit, Bun, Milk.



You may have seen TV ads for Life Insurance for only \$1.00 a week. Have you wondered just how good a deal this might be?

The maximum coverage offered is \$7.00 a week for a male, age 49, that buys \$12,383.00 of term coverage.

The same \$30.00 a month could buy \$25,000.00 of permanent coverage for a male, age 49, non-smoker.

Don't be misled by TV ads. Talk to a professional Life Insurance person at Germania.

We wish you all a Happy New Year and much happiness in 1993.

*Occasionally this column will not apply to the coverages in Texas. For more information contact your local agent.

1-800-588-4172

CLINIC PHARMACY
735-2500
CALL ON US FOR ALL YOUR PRESCRIPTION NEEDS

- *Computer Printouts for Insurance or IRS
- *We Fill Any Doctor's Prescriptions
- *We Serve Fisher & Surrounding Counties With Competent-Competitive & Caring Prescription Service
- *We Deliver In Roby & Rotan

Wall to Wall
SAVINGS
January
CLEARANCE
Landes Furniture

735-3171 113 N. Garfield Rotan, Texas
This is the time to buy. The lowest prices of the year. Many Super buys for the person wanting to SAVE. Everything discounted. This is the time for us to "clean out" and our customers to "clean up" with good buys!

We Accept MasterCard, Visa, Discover, Norwest Financing, Or Revolving Charge Available

Broyhill Sofa & Loveseat
Cotton Floral Reg. \$1499.90
Cash & Carry **\$599**

Group Of Discontinued Bedroom & Dining Room Furniture Up To **50% Off**

Carpet & Vinyl
Closeout On 3 Colors Vinyl Only \$3.99 Yd. Cash & Carry
Gray Commercial Carpet \$4.29 Yd. Cash & Carry
Residential Carpet W/Pad & Installation \$11.95 Yd.
Remnants Super Buys As Marked

Group Of Lamps 1/2 Price
Pictures, Floral Arrangements & Decorative Items

Benchcraft Reclining Loveseat
Blue Velvet Reg. \$869.95
Great Buy **\$499**

Leather Sofa & Loveseat
Cream Color Reg. \$1639
Both Only **\$799**

Broyhill Loveseat
Reg. \$829.95
Save 50%
Cash & Carry **\$414**

Universal Solid Cherry Bedroom Group
Reg. \$2939.80
Sale **\$1999**

La-Z-Boy Sofa
Multi-Color
Reg. \$859.95
Now Only **\$599**

5 Piece Bedroom Group
By Singer
Reg. \$1319.80
1 Only **\$899**

Hoover, Maytag, & Admiral Appliances
10% Off

All Dining Room Groups
At Least **20% Off**
Including Tell City

Spring Air Bedding
Great Savings-Now Up To **40% Off**
On Discontinued & Odd Sets

China Cabinets

Universal	Reg. \$769.95	Save \$300	Sale \$469
Singer	Reg. \$1189.95	Save \$400	Sale \$789
Broyhill	Reg. \$969.95	Save \$290	Sale \$679

Broyhill 7 Piece Dining Room Suite Table & 6 Chairs
Reg. \$939.95 Now Only **\$599**
Save \$340

Broyhill Flat Top Desk
Reg. \$319.95
Now Only **\$189**
40% Off

Oh Baby! What a Sale!
La-Z-Boys Starting At **\$299**

Recliners Only **\$169**

Swivel Rockers **\$149**
As Low As

ATTENTION!

EXTRA! EXTRA!

**NOTICE OF
SUBSCRIPTION
EXPIRATION**

Most Subscriptions To

**The Rotan
Advance/Roby
Star Record**

Expire On

December 31, 1992

**Please Renew All
Subscriptions Now**

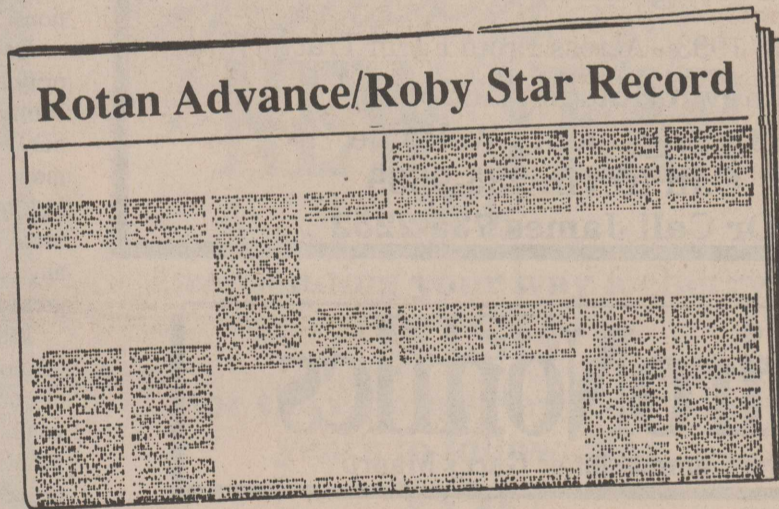
**Fisher County
& Surrounding
Areas
\$15.00 Year**

**Texas
Subscriptions
\$17.50 Year**

**Out
Of
State
Subs**

**\$20.00
Year**

Renew
Now
So
You
Won't
Miss
A
Single
Issue



**Please Fill Out This Form And Mail To
The Newspaper Office
P.O. Drawer A
Rotan, Texas 79546**

Please Place Your Mailing Label From Your
Rotan Advance/Roby Star Record
In This Box

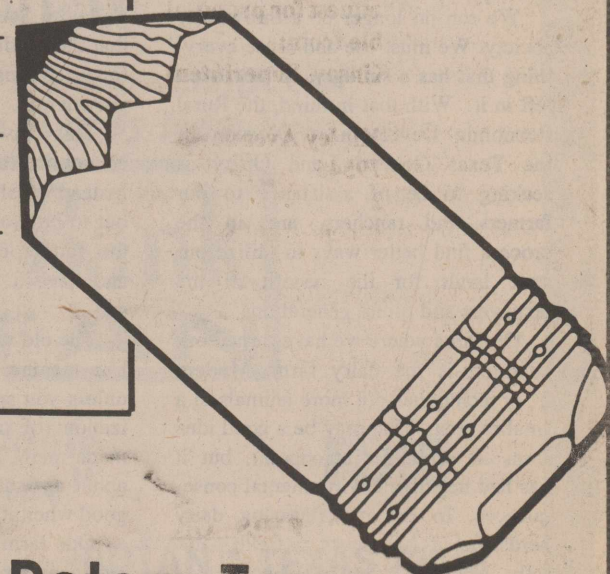
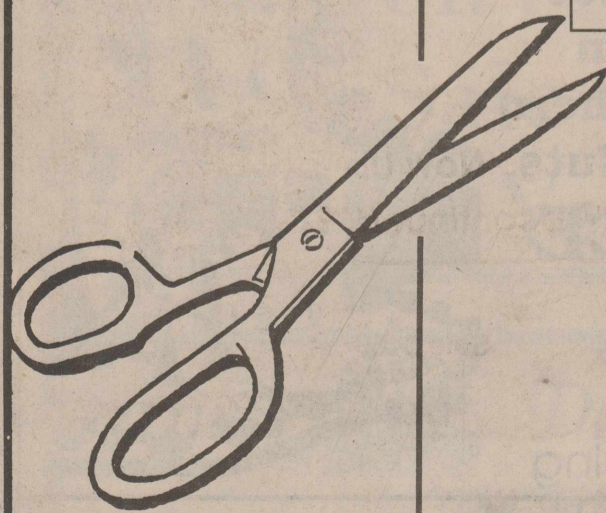
Or Write Your Expiration Code Number In
This Box

Return Form

Name _____

Address _____

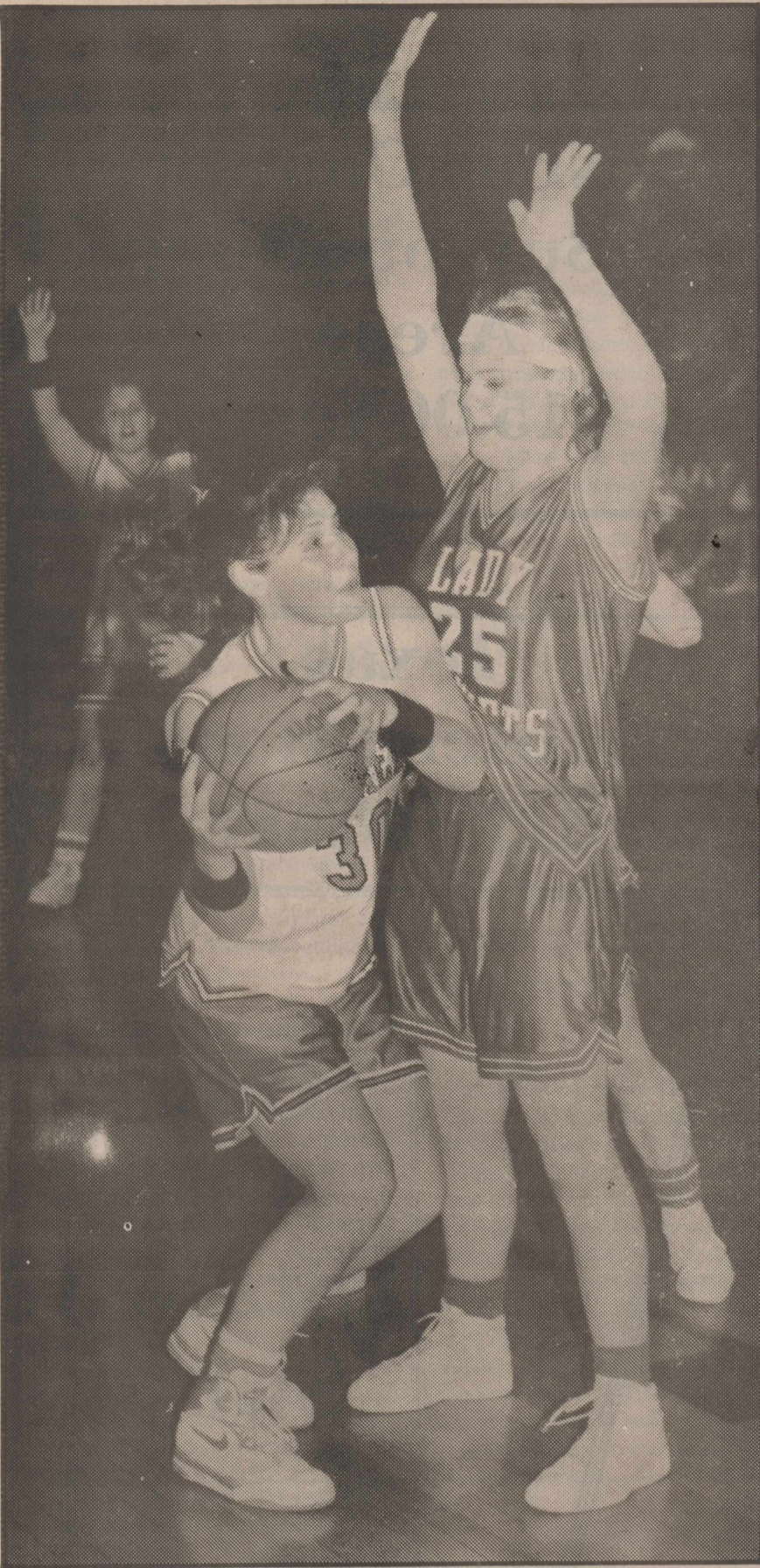
City _____ State _____ Zip _____



The Newspaper Office

735-2562

Rotan, Texas



TOWERING HEIGHT: Jody Price, left fights off a tall Lady Hornet during recent basketball action by the Lady Hammers. Cassidy Early waves high in the background ready for the ball to be passed as soon as Jody makes her way around all the height of the Lady Hornet.

Congressman Charles Stenholm Sends Message To Bill Clinton

I remember election night 1978. Although I was enormously excited to face the challenges of a newly elected member of Congress, I tasted a bitter-sweet joy, wishing that my parents could be present to share in that amazing moment. They both had passed away years earlier, but I easily could imagine what they would have said to me that night: "Son, just remember who you are, where you come from and the people who brought you here."

There is no better advice I could give to President-elect Bill Clinton and the Democratic Party today.

The "New Democrat" persona with which Bill Clinton fired the imagination of Middle America may not be so novel. Often, what appears to be a new model is really a classic design, rediscovered.

For a dozen years, the members of the Conservative Democratic Forum have been just this kind of "New Democrat," representing the Main Street America views that elected Bill Clinton. We have a history of developing fresh ideas like those Bill Clinton has talked about, rejecting the tired, predictable refrains of both the right wing of the Republican Party and the left wing of our own. In recent years, we have proposed alternative approaches to health care, child care, congressional reform, the budget process, welfare reform, campaign finance and other issues.

While we old hands think we have been "New Democrats" for quite awhile, what is different this year is to have this sort of leadership at the top of our party. After a 12 year drought, our party has remembered what America believes in, and we in the CDF were comfortable campaigning for this Democratic ticket.

We at CDF, look forward to working with our new president and invite him to work with us on those issues that show we Democrats remember who we are and where we came from.

First, we believe the best medicine we can give our country's ailing economy is to put our fiscal house in order. A recent GAO report concluded that continued deficit spending "will damage our competitiveness and influence in the world and hamper our ability to address pressing national needs....Continued deficits are likely to seriously inhibit the growth of the economy under current and...foreseeable economic conditions."

Deficit reduction needs to be a priority in the first 100 days and beyond. Whittling down the burden of debt on our economy would provide more money for job creation and investment. Indeed, reducing our deficit would do more to strengthen our economy than any other step the president and Congress can take.

Is that what the people who brought Clinton to office believe? In CNN election exit polls, 56 percent of the voters said that reducing the deficit should be the top priority of the next president, easily surpassing demands for new domestic programs or tax cuts.

We applaud President-elect Clinton's commitment to reduce the cost of operating the executive branch by 25 percent, and we support comparable self-discipline by Congress. The sacrifices necessary to balance the budget must begin at home—in Congress and the White House. Similarly, a modified line-item veto—which would require Congress to vote, with majority rule, on presidential proposals to eliminate specific spending items—should also be a part of our strategy to reduce the deficit. While much more is required for deficit reduction, both of these steps would do a good deal to restore the confidence of the American people in their governmental institutions.

Second, we should adopt a balanced budget amendment as an enduring constitutional guarantee that we will adhere to a deficit reduction plan. In the past, a changing cast of characters, new statutes or one more summit agreement have failed to offer anything but false hopes. Congresses and presidents, wanting to write home about how fiscally responsible they are, have begun ever "reform" plan by postponing the tough decisions for another couple of years, and have found a way to avoid the pain before the day of reckoning arrived. A constitutional amendment would force Congress and the president to make the tough choices to reduce the deficit and stick by those choices.

In overwhelming numbers, the public has expressed its support for a constitutionally protected right to a bal-

anced budget, illustrating again that good policy is good politics. The people know that our crushing national debt is robbing their quality of life, depriving them of the liberty that economic opportunity brings and certainly is stealing their property, with \$300 billion of their tax dollars thrown down the drain this year in interest payments. Our children and grandchildren deserve a constitutional amendment to restore long-term responsibility to our budget process.

Third, CDF members want to show that our party is able to respond constructively and with long-term wisdom—not a short-term fix—to our health care needs. An old adage observes that to every complex problem there is a simple solution—and it is usually wrong. Nowhere is that more true than in the health care debate. Simply shifting the costs elsewhere, as "pay or play" plans would have us do, or pretending that arbitrary caps will magically attack the systemic causes of health care costs, as global budgets purport, is not the visionary response the public deserves. Rather, we should enact managed competition mechanisms that empower consumers to make good decisions, embrace individuals now left out of the health care umbrella, encourage high quality and utilize the positive aspects of our current system. Players in the health care field must realize that if they do not make this last attempt at free-market competition work in bringing down health care costs, the heavy hammer of government intervention will be on their heads.

Finally, we must insist that meaningful, non-cosmetic reforms of Congress occur this year. Nothing speaks to the breach of confidence Americans feel toward Congress more than the primary and general election cycle we have just completed. The public simply will not tolerate "business as usual" from its elected officials, whether the business involves the daily operations of Congress or an incumbent's unfair financial advantage in campaigns. In setting out his own transition team ethics rules, President-elect Clinton has provided us a noteworthy model. It's up to Congress to follow with our own serious campaign finance and congressional reforms.

The Democratic Party has been handed a golden opportunity. We are fully responsible for running the government and, rightfully, we will get the credit or blame for the results. At this high mark, we have political capital to invest in each of the four areas just mentioned. Unlike the outgoing administration—which, during record high levels of approval, had enormous political capital and allowed it to dissipate through inaction—it is up to us to show that we can govern, that the gridlock is over and that progress will be made. The decisions will not be easy, but if we are not able to make them during this next year, when will we ever be able to do so?

OBITUARIES

Bertha Allen

Bertha Allen, 84, of Rotan, died Wednesday, December 23, 1992, at Rotan Nursing Center. Funeral services were at 2 p.m., Saturday at Weathersbee Funeral Chapel with Rev. L. W. Hatfield officiating. Burial was in the Belview Cemetery under the direction of Weathersbee Funeral Home.

Mrs. Allen was born January 21, 1908 at Hillsboro, the daughter of the late Grover and Lillian Terrell. She married R. O. "Bob" Allen, January 10, 1925 at Hamlin. They moved to Rotan in 1944 from Bisbee, Arizona, and have made their home here since. Mr. Allen died January 18, 1978.

Mrs. Allen was a member of Calvary Baptist Church and was a member of the Eastern Star.

She is survived by:

2 daughters- Mae Pharris of Lake Proctor, Juanita Underhill of Rotan; 1 son- James Allen of Marietta, Ohio; 2 sisters- Ruth Smith of South Lake Tahoe, California and Elizabeth Payne of Hamlin; 9 grandchildren; 22 great grandchildren.

Pallbearers were: Earl Kiker, Tye Harrison, Allen Hull, Dennis Pharris, James Allen, Jr., Del Ray Helms, Carroll Murphree, Ken Myers.

Effie Thursea Teague

Effie Thursea Teague, 92, passed away Saturday. Memorial graveside services will be at 2:00 p.m., Saturday, January 2, 1993 at Hamlin East Cemetery, Hamlin, Texas. Foster Adams Funeral Home, Hamlin, Texas is in charge of local arrangements.

Mrs. Teague was Past Worthy Matron for Order of the Eastern Star and a member of the Arlington Heights United Methodist Church.

She is survived by son and daughter-in-law - Ira Edgar, Jr. and Bridget Gladden of Fort Worth; a sister- Rose Mary Minshew, McCaulley, Texas; grandsons- Guy Gladden, Blackfoot, Idaho, Barry Gladden and Darrel Gladden of Fort Worth; granddaughter- Lynn Geis of Fort Worth; great grandchildren- Jennifer Sczenciak, Arlington, Nicholas and Shannon Geis of Fort Worth, Nathan Gault and Sarah Gladden of Fort Worth.

City Gro & Deli

776-2225 Roby, Texas

Double Coupons Everyday

Reserve The Right To Limit Quantities

Open Till 9:30 Monday Thru Saturday

Prices Effective Dec. 31, 1992 Thru Jan. 6, 1993

Cello 1 LB. Carrots 2/59¢		Green Cabbage 19¢ LB.		Wrights Thick Slice Bacon \$1.19 LB.
Gandy's 12 Oz. Cottage Cheese 99¢		Palmolive (Sensitive Skin) 22 Oz. Dish Liquid \$1.19		Rreece's 18 Oz. Peanut Butter \$1.99
Lays Reg. \$1.49 Potato Chips \$1.19		Boston Butt Roast 99¢ LB.		Fab New 10 Use Ultra Detergent \$1.99

11th Annual Rotan Consignment Auction

January 23, 1993 - Across From Farm Tractor, Inc.

Kevin Hutson-Auctioneer

Consignments Welcome

Call Kevin 235-9639

Or Call James 735-2252

EnviroNomics

by Texas Land Commissioner Garry Mauro

New process reuses rural waste

People the world over are becoming more and more conscious that our resources are not boundless. This is why we see the strong surge of interest in recycling and in buying recycled products. It is also why more and more business people, government leaders and resource planners are looking at "sustainable development" as a way to revitalize rural areas.

Sustainable development means using what we need without stealing from future generations. The concept aims at preserving and even reviving the resource base. Nowhere is the need more apparent for achieving this goal than in our rural areas where we see declining water tables, exhausted soils, dwindling oil reserves and rangeland that supports fewer and fewer animals.

We can no longer be a throwaway society. We must use and reuse everything that has a smidgen of utilization left in it. With that in mind, the Rural Economic Development Division of the Texas General Land Office is seeking to be of assistance to our farmers and ranchers, and in the process find better ways to utilize our state lands for the benefit of the taxpayers and future generations.

One area where we have turned our attention is the dairy farm. Modern dairy techniques put more animals in a smaller area. That may be a good idea from an economic standpoint, but it has had negative environmental consequences. In the past, grazing dairy herds spread their waste on fields naturally. Now, the waste is concentrated and has to be stored in holding ponds which can flood and pollute nearby streams.

One way to overcome this problem and provide a profit at the same time is by using an AgKone, a device that spins out liquids and produces a dry product which can be bagged and sent to markets. The material is an inexpensive substitute for imported peat moss and is in demand by gardeners around the country. Currently, sphagnum peat moss from Canada is selling for about \$40 per cubic yard while the processed substitute will sell for about \$15 per cubic yard.

AgKone is made by a Stephenville company. The process has been tested at Texas A&M and found efficient in coping with waste solids that accumulate in holding ponds. The remaining solids are easily pulverized and relatively odor-free. Tests at Tarleton State University confirmed that the product was a good substitute for peat moss as a component in a growth mix.

This gives the rural area an economic development advantage. Instead of shipping the raw material out to be processed by a middle man, the farmer can process the material and have a product that is ready to sell.

The old saying still goes: Money is like manure. It doesn't do any good unless you spread it around. Specialization of modern agriculture has made many forget that essential truth about agricultural waste—that it does good when it is spread around.

Our farm forebearers never threw away anything that could be reused for some worthwhile purpose. It is time for us to relearn—or recycle—that lesson.

Beautiful Rugs And Afghans

From The Rug Barn
Made Of 100% Cotton



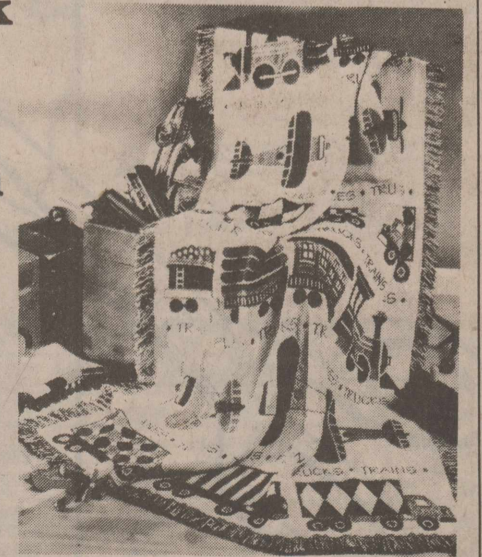
Buy Any Throw Or Rug In Stock And Get A Can Of Southern Style Nuts FREE

Free Gift Wrapping

Awfully Good Gifts

The Newspaper Office

114 East Snyder Ave. • (915) 735-2278 • Post Office Drawer A • Rotan, Texas 79546



Players And Coaches Pleased After First District Game Against Jim Ned Indians

by Larry Markham

The holiday season brought about pleasant surprises to some and disappointment to others on the basketball court. In a week which included district game number one for the Yellowhammers, both players and coaches were pleased with the results of their efforts.

Rotan started things off versus Hobbs with a Tuesday afternoon contest. Clinton Williams had the hot hand for the Hammers, scoring 25 points. A let down on the defensive end of the court, however, resulted in a 62-59 loss.

The Hammers returned to Aspermont on Friday night looking to turn things around. Despite Bryan Baker benched due to illness, a super defensive effort produced a low scoring victory as Rotan clinched it 45-42. Eric Smith and Joey Powell showed a lot of hustle on defense shutting down the Aspermont attack. Clinton Wil-

liams with 18 points and Joey Powell with 9, led the Hammers offensively. Coach Burleson praised his entire squad stating "this was by far their best effort overall."

With a win over Aspermont in hand, the Hammers took on a tough Jim Ned team for their first district game. The Rotan varsity squad consisting of Williams, Marshall, Mercer, Alaniz, and Powell backed up by Baker, Daniel, Smith, and Carreon continue to show improvement on both ends of the court as they enter tough district competition. Rotan proved they were for real as the halftime score read 26-25. An outstanding effort kept Rotan in the game through 3 1/2 quarters. Leading in scoring were Williams (14), Eric Smith (9), and Powell with 8 points. The bench kept up the tempo as they continued the outstanding effort displayed by the starters. In spite of the much im-

proved play by the Hammers, Jim Ned lit up the board scoring 21 points in the 4th quarter to outscore Rotan 63-54.

Rotan will travel to Jayton for a three day tournament on the 31st, 1st, and 2nd. The Hammers will open against Jayton at 8:30 on Thursday

evening. Rotan, 4-7 overall and 0-1 in district play, appear to be improving their game each week. Coach Burleson stated the guys are working hard and playing hard. And despite playing in a tough district he feels his squad is going to surprise some folks.



WITNESSES TO HOLE IN ONE: The above participants were witnesses to the hole in one made by David Cummings at the Rotan Golf course. Left to right are: Matt Ryan, David Cummings, President, Don Weaver, Willie Martin, Shorty Hamlin and Merle McKinney.



PRESENTED TROPHY: Don Weaver, right, presents David Cummings a trophy for hitting a hole in one on Tuesday, December 22nd at the Rotan Golf course. Cummings was presented with a trophy as well as a one year membership to the Rotan Golf course.

Emergency Farm Loans Available From (FmHA) For Farmers

Applications for emergency farm loans for losses caused by excessive rain and drought, are being accepted at the Farmer's Home Administration (FmHA) office located in Rotan, TX.

Fisher County is one of 8 counties in Texas recently named by Secretary of Agriculture Edward Madigan as eligible for loans to cover part of actual production losses resulting from the excessive rain, and drought.

Farmers may be eligible for loans of up to 80 percent of their actual losses or the operating loan needed to continue in business or \$500,000, whichever is less. For farmers unable to obtain credit from private commercial lenders, the interest rate is 4.5 percent.

A farmer must have suffered at least a 30 percent loss of production to be eligible for an FmHA emergency loan. Farmers participating in the ASCS or Federal Crop Insurance Program will have to figure in proceeds from those programs in determining their loss.

Applications for loans under the emergency designation will be accepted until August 3, 1993.

FmHA is a credit agency of the U.S. Department of Agriculture. The FmHA office in Rotan, TX is open from 8:00 a.m. to 4:30 p.m. Monday through Friday. The office is located at 111-B North Garfield, Rotan, Texas.

Workers Compensation Dropped Due To Premium Increases

by Larry Milner, President and CEO of the Texas Chamber of Commerce

Workers' compensation is intended to provide compensation for medical costs and lost wages for workers injured on the job. The Texas system is voluntary and employers choosing to participate in the system do so to eliminate their financial exposure in lawsuits for ordinary negligence. However, many companies were forced to drop their coverage during the 1980s due to exorbitant premium increases.

In December 1989, the Texas Workers' Compensation Act was passed. This act was intended to provide stability to the system and slow the accelerating annual rate increases. Even today, Texas businesses continue to face unacceptably high rates and many argue that all the problems with the system have not been worked out. To accurately measure the success of the reforms, however, you really need to put the new law in the context of where we were under the old law.

Where we were

Prior to the 1989 reform legislation, workers' comp rates increased well over 200 percent from 1985 to 1990. These increases caused Texas employers to choose between going out of business or going bare for workers' comp, leaving the employer and his employees unprotected.

Employers were frustrated with a system they saw as irrational, while benefits to injured workers were unfair and inadequate for those with serious, debilitating injuries. The old law fostered controversy and abuse.

Reform brought stability

The new law took effect Jan. 1, 1991, and it is doing its job—lowering costs and getting higher weekly benefits to injured workers more quickly. The system is more understandable, eliminates the old law abuses, and decreases controversy.

Challenges still ahead

Sound good? Unfortunately, there are still threats to our achievements. The constitutional challenge continues through the appeals process and will ultimately be determined by the Texas Supreme Court. This is a continuing threat to stabilization of the Texas comp market: insurance carriers and employers cannot return to the old system with its attendant costs and problems. And, those who opposed the law are building steam for the 1993 Legislature even as you read this.

What's happening in other states?

Other states are experiencing major workers' comp problems and are trying to pass real reform legislation. Unfortunately, most of the other states have not been as successful as Texas. Here are some examples of 1991 rate increases:

* Alabama- 18 percent increase in April 1991, and 30 percent in November 1991

* Oklahoma- 22.8 percent increase, followed by a requested increase of more than 43 percent for 1992

* Arkansas- 15 percent increase

* New Mexico- 27.1 percent increase

All eyes on Texas

The eyes of every state in the nation are on us because the new Texas comp system is a model for workers' comp reform across the country. But most employers don't judge the success of a workers' compensation system by statistics—they judge by how much it cost

them. Unfortunately, thus far only a few carriers have filed for rate decreases while the vast majority of carriers have filed increases.

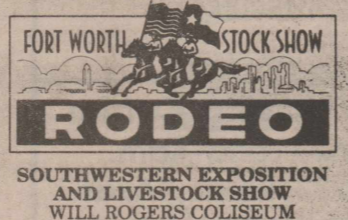
The rate increases from insurance companies are disappointing in light of the downward cost trends documented under the new system. Pressure is building for carriers to accept the good news and pass their savings on to consumers. In the meantime, we must work together to maintain the positive trends the new law has brought to Texas. The future for Texas workers' compensation is bright, but that will be overshadowed if we don't repel major attacks on the heart of the reform system.

If your business is still encountering difficulties with the workers' compensation system, I encourage you to call or write the Texas Chamber of Commerce in Austin. We'd like to know specifically which areas continue to serve as obstacles for Texas employers.

Fort Worth Stock Show Rodeo rides again. Jan. 22-Feb. 7.

To order tickets by mail, send cashier's check or money order, plus \$3 extra per order for postage to: P.O. Box 150, Fort Worth, TX 76101. Charge on MasterCard or VISA by calling 817/877-2420. Tickets also at Rainbow TicketMaster locations by calling toll-free in Texas, 1/800/725-7200. Convenience and other charges are added at Rainbow locations and are non-refundable.

28 Rodeo Performances:
8 PM JAN. 22 - FEB. 7 \$12 FRI. NIGHTS AND ALL WEEKEND PERFORMANCES
2 PM JAN. 29 - FEB. 7 \$10 MON. - THURS. NIGHTS AND WEEKDAY MATINEES
10 AM JAN. 30



Fort Worth Star-Telegram WINN-DIXIE THE BEST PEOPLE KVVU

COPIES

Single Copies 25¢ Each

2 To 25 Same Copies 15¢ Each

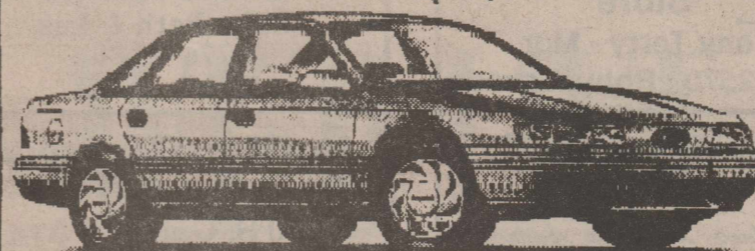
26 To 100 Same Copies 10¢ Each

The Newspaper Office

735-2562
Rotan, Texas

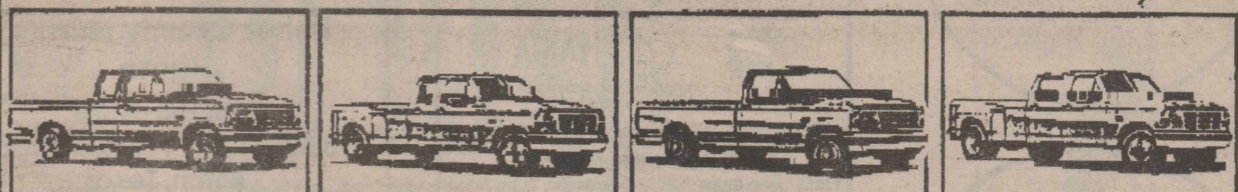
WILSON MOTORS

WE RESOLVE TO SAVE YOU MONEY!



1993 Ford Taurus GL #26F

MSRP \$18,981
Factory Discount \$700
Wilson Discount \$3,131
Rebate \$500
Sale Price \$14,650



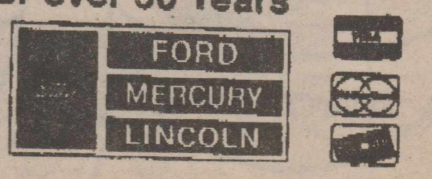
1993 Ford 3/4 Ton	1993 Ford 1 Ton	1993 Ford 3/4 Ton	1993 Ford 1 Ton
Supercab, 7T, 351, 5 spd, 4.10, axle, cruise, tilt, A/C	Dually Supercab, #42T, Diesel, 5 spd, loaded	Reg. Cab, 351, 5 spd, 4.10, ST, axle, A/C, Sup, Eng. Cool	4X4 Crewcab, #38T, Diesel Auto, XLT, Pow W&L, A/C
MSRP \$19,794	MSRP \$22,996	MSRP \$17,612	MSRP \$28,987
Fac. & Wilson Discount \$2,244	Fac. & Wilson Discount \$2,771	Fac. & Wilson Discount \$1,912	Fac. & Wilson Discount \$3,787
TSCRA/Farm Bureau Rebate \$500	TSCRA/Farm Bureau Rebate \$500	TSCRA/Farm Bureau Rebate \$500	TSCRA/Farm Bureau Rebate \$500
Sale Price \$17,050	Sale Price \$19,725	Ford Rebate \$300 Sale Price \$14,900	Sale Price \$24,700

QUALITY USED VEHICLES

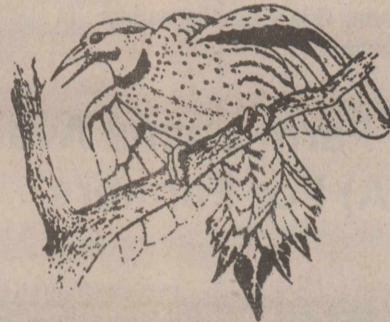
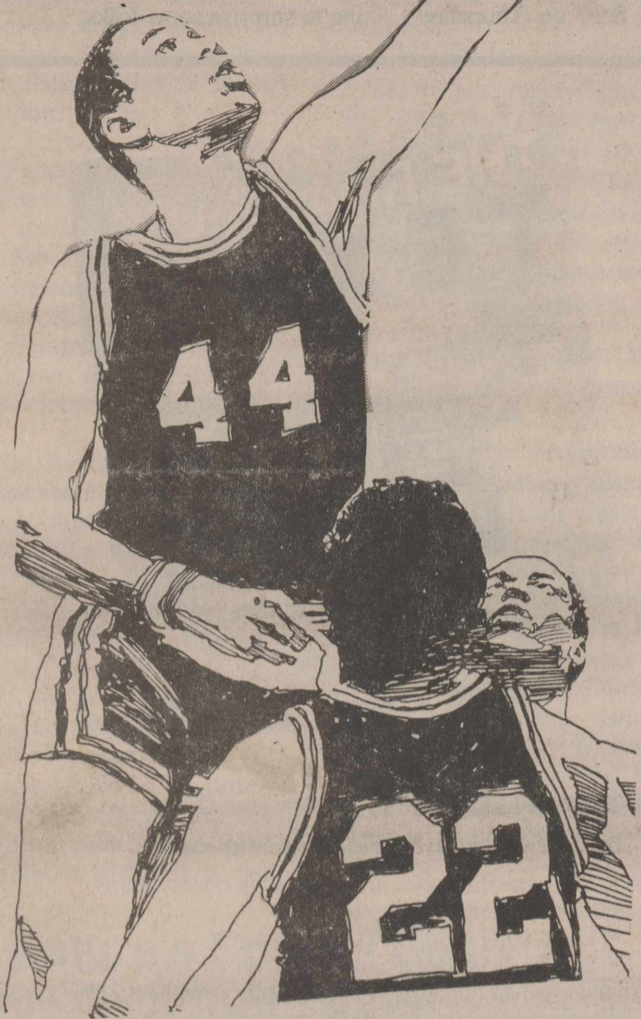
1990 Buick Skylark \$6,635	1989 Ford Tempo \$5,950
1989 Merc. Gr. Marquis \$7,895	1989 Honda Accord \$8,950
1992 Lincoln Town Car \$22,795	1991 Supercab #9271T \$11,890
1992 Chev. Ext. Cab \$13,310	1989 Ford Aerostar Van \$7,995
1991 Ford Escort #76C \$8,475	

WILSON MOTORS

Wilson's Guarantee: "We Won't Be Undersold On F Series Pickups"
Your Transportation Headquarters for over 30 Years
East Hwy. 180 Across from Coliseum
Snyder, Texas
915-573-6352 1-800-545-5019



Support Our Fisher County Basketball Teams



ROBY HIGH SCHOOL BASKETBALL SCHEDULE 1992-93

Nov. 17	Coleman	Here	5:00
Nov. 20	Hamlin	There	4:00
Nov. 24	Winters	Here	4:00
Dec. 1	Winters	There	4:00
Dec. 3-4-5	Roby Roundball Classic		
Dec. 8	Hamlin	Here	4:00
Dec. 10-11-15	Roscoe Varsity Tournament		
Dec. 10-11-12	Winters J.V. Tournament		
Dec. 18	Munday	Here	5:00
Dec. 29	A.C.H.S.	There	4:00
Dec. 31-			
Jan. 1-2-	Hamlin Varsity Tournament		
Jan. 5	Motley Co.	There	4:00
Jan. 8	Aspermont	There	4:00
Jan. 12	Spur	There	4:00
Jan. 15	Motley Co.	Here	5:00
Jan. 19	Spur	Here	4:00
Jan. 22	*Bronte	There	4:00
Jan. 26	*Robert Lee	Here	4:00
Jan. 29	*Roscoe	There	4:00
Feb. 2	*Bronte	Here	4:00
Feb. 5	*Robert Lee	There	4:00
Feb. 9	*Roscoe	Here	4:00

*Denotes District Games

ROTAN HIGH SCHOOL BASKETBALL SCHEDULE

Nov. 10	Munday	Here	5:30
Nov. 13	Highland	There	6:00
Nov. 17	Munday	Here	6:00
Nov. 20	OPEN		
Nov. 24	Munday	There	4:00
Dec. 1	Knox City	There	4:00
Dec. 3, 4, 5	Aspermont Tournament & Haskell Tournament		
Dec. 8	Highland	Here	4:00
Dec. 10, 11, 12	Highland Tournament & Winters Tournament		
Dec. 15	*Stamford	There	5:00
Dec. 18	Aspermont	There	4:00
Dec. 22	*Jim Ned	Here	4:00
Dec. 31-	Jayton Tournament		4:00
Jan. 2		There	4:00
Jan. 5	*Hamlin	Here	4:00
Jan. 8	*Haskell	There	4:00
Jan. 12	*Anson	Here	4:00
Jan. 15	*Winters	There	4:00
Jan. 19	*Hawley	There	4:00
Jan. 22	*Stamford	Here	4:00
Jan. 26	*Jim Ned	There	4:00
Jan. 29	*Hamlin	Here	4:00
Feb. 2	*Haskell	There	4:00
Feb. 5	*Anson	Here	4:00
Feb. 9	*Winters	There	4:00
Feb. 12	*Hawley	Here	4:00
Feb. 16	*Stamford	There	5:00

*Denotes District Games

Tri-County
Sprayers, Inc.
1-800-642-0016
Rt. 1, Box 26, Sylvester, Texas
Herbert & Barbara
Lahey

Citizens
State Bank
Member FDIC
Cecil King - President
776-2261
Roby, Texas

Wynelle's Beauty
Shop
Hair Care For The
Whole Family
776-2233
Roby, Texas

LAWRENCE HALL
CHEVROLET • OLDS • BUICK
Anson 823-3261
Anson, Texas

Scott Fuel
776-2240 - Roby, Texas
Box 1188 Sweetwater, Texas
& Nubbins Convenience
Store
776-2375
Roby, Texas

Midwest Electric
Cooperative &
Employees
Vesta Orr - Mgr.
776-2244
Roby, Texas

Landes Furniture
Larry & Beverly Landes
735-3171
Rotan, Texas

Terry's Farm
Store
Tony Terry - Mgr.
776-2570 Roby, Texas

City Auto Supply
735-2242
Rodney, Laura & Andrea
Rotan, Texas

GERMANIA
Insurance
GLENN BIKEN, LUTOP
(915) 235-4172
Toll Free 1-800-588-4172
1101A Lamar Street Sweetwater, Texas 79556

Gray Fuel &
Mobil Chemical
John Gray
735-2381 Rotan, Texas

WILSON MOTORS
Wilson's Guarantee: "We Won't Be Underpaid On F
Series Pickups"
Your Transportation Headquarters For Over 30 Years
(915) 873-6352 Or 1-800-545-5019
East Hwy. 180 Across From Coliseum
Snyder, Texas

FISHER COUNTY
FARM SUPPLY
106 N. 5th Roby, Texas
(915) 776-2276
Bryan, Rhonda, Brandon & Kim

Martin's Feed &
Garden
735-3261 Rotan, Texas
Rhonda & Preston Martin - Mgrs.

Angel Care, Inc.
117 W. Snyder
735-2512
Rotan, Texas

Central Lumber
& Mercantile
Zana Beth & Les
776-2371
Roby, Texas

Builders Transport
735-3677
200 S. Garfield Ave
Rotan, Texas

Fisher County Nursing
Home We ♥ Our
Residents
Carl Hilt-Adm.
735-3291 110 W. Johnson
Rotan, Texas

Lees Shamrock
Dewayne Lee - Owner
735-3500
Rotan, Texas

NFS
NOWLIN FARM SERVICES, INC.
Phone 735-2371
211 N. Cleveland
Rotan, Texas 79546

TOLIVER
CHEVROLET
OLDSMOBILE
Sweetwater, Texas
235-4384

J.N. Welding &
Wrecker Service
735-3079
Gerald Turnbow-Owner
Rotan, Texas

City Janitorial
Supply
102 McCaulley
Monte Neighbors
235-1128
Sweetwater, Texas
Backing The Lions
& Hammers

Silver Star Cafe
Bill & Barbara Brzezinski
776-2744
Remember Our Gift Shop
Roby, Texas

Jim & Judy
Sweeney
Owners
June Wright
Mgr.
FLOWER
SHOP
P.O. Box A Roby, TX 79543 (915) 776-2292
1-800-660-0974

Dr. C. M. Callan
735-2211
Fisher County Doctors Clinic
Rotan, Texas

Weathersbee
Funeral Home
735-2255
Rotan, Texas

Rotan Nursing Center
Juanita Land-Adm.
735-2233 Rotan, Texas
Medicare - Medicaid Approved
Licensed Physical Therapist On Staff

Murphree Flying
Service
735-2266 Rotan, Texas
Randy, Sheila, Brandi, Bradley
& Cody

Larry's Automotive
Larry Callan-Owner
735-2425
Rotan, Texas

Fisher County Hospital
735-2256
Home Health
735-2687
Clinic
735-2235 or 735-2124
Rotan, Texas

Lucy's Tone N Trim
& Videos
Lonnie & Lucy Starnes
735-3514 Rotan, Texas

CLINIC PHARMACY
Cleburne Murdoch-R.P.H
735-2500
Rotan, Texas

H.L. Davis & Co.
The Friendly Store
735-2591
Rotan, Texas

Rotan Insurance
Agency
Randy Pat Murphree - Agent
735-2571 Rotan, Texas

Compliments Of
Dr. Jerry Marshall

City Grocery & Deli
Kiefer & Aubrey Nell Caudle
776-2225
Roby, Texas

Rotan Veterinary
Hospital
Dr. Vick Burk
735-2491 Rotan, Texas

Stamford Paint &
Body
Chil Anders - Owner
773-5439 Stamford, Texas

735-2246
Rotan, Texas
THROTTLEWAY
Hrs.: Mon.-Sat.
8:00 a.m.-7:30 p.m.

National Bank
- ROTAN
Your Dependable Bank
Of Service
Member FDIC
735-2224
Rotan, Texas

Higginbotham-Bartlett
Lumber Co.
735-2215
Rotan, Texas

Big 3 Pork
Producers
Johnny Edmondson-
Owner
776-2661
Roby, Texas

Circle C
Grocery
711 N. Cleveland
735-2574
Rotan, Texas
E. Hwy. 57
993-4523
Sylvester, Texas

Rotan Flower
Shop
735-2261
Rotan, Texas

735-2526
1-800-725-6375
TCI Cablevision of
West Texas
We're taking television into tomorrow.
Rotan, Texas