

DAWSON COUNTY COURIER

VOL. 11

Member of the (AP)

Lamesa, Dawson County, Texas, Monday, January 5, 1942

Member of the (AP)

Number 103

Lamesa Banks Set New Record

WAR FLASHES!!!

(By the Associated Press)

WASHINGTON — President Franklin D. Roosevelt today set February 16 for the registration of all male citizens and most aliens of the nation between the ages of 20-44 who were not registered previously.

Men in this age group will be subject to military service. The date was fixed by presidential proclamation. The proclamation made no mention of the registration of men between the ages of 45 and 64, who are to be registered later, but who will be exempt from service with the armed services of the nation under the provisions of present legislation.

The War Department announced today that General Douglas MacArthur's Philippine army had repulsed a Japanese attack with heavy enemy losses. General MacArthur estimated at least 700 enemy killed. War Department officials said that "this is one of the most serious reverses suffered by the Japanese invaders since the war began."

In announcing the recapture of Belev in the Red Army drive west of the Oka River, a Soviet communique asserted that the German army had been thrust back 100 miles from their advance against Moscow. The Soviet drive appeared to menace the Nazi wing southwest of the Red Capitol.

Roosevelt will deliver to Congress in person his message on the state of the Union, at a joint session of the Senate and House, to be assembled in the House chamber. On basis of plans worked out today with congressional leaders, and according to plans worked out shortly before the opening of the second session of the 77th Congress, Roosevelt will probably request between 15 and 18 billion dollars in special appropriations for the Army and Navy.

Japanese forces, flushed with their initial successes, massed strength today to storm the American redoubts in the Philippines, but there were simultaneous indications that the Allies might be ready to take the offensive against Japan on the Asiatic mainland.

To Close Post Office Lobby At Nine P. M.

An announcement by Owen C. Taylor, postmaster of the Lamesa Post Office will be made immediately, at night, instead of the usual 11 o'clock time. Due attention is called to this announcement, as it has been the custom of many patrons of the local office to come after their mail after closing time at night. The lobby will be locked and all lights turned out at the new time in the future.

Wreckage Left By Blast Last Thursday



Pictured here are workmen searching through the debris left by the explosion which wrecked the new Bernie Holt Building on the southeast corner of the square in Lamesa last Thursday morning about eight o'clock. One man, Allen Blake, was killed, and another, Suttle Purcell, is in a serious condition in a local hospital. The blast was presumed to have been caused by an overnight accumulation of gas.

Week Of February 8th Is Scheduled To Be Start Of National Registration

WASHINGTON, Jan. 4 (AP) — The week of Feb. 8 was reported Sunday to be officially favored for the first of a series of registration dates at which an estimated 25,000,000 additional men are to be enrolled for possible military or other service in the war effort.

Under tentative plans, men between 18 and 20, and between 36 and 64, are to be registered in several age groups, the oldest probably last. Feb. 10 was believed in informed quarters to have been recommended for the first of the staggered dates.

Details of the arrangements to enlarge the Nation's reservoir of manpower available for military and other duties are to be announced through the White House in connection with President Roosevelt's formal proclamation of the new registration dates.

Since Congress made all men between 18 and 64 eligible for war services of some kind—with those between 20 and 44, inclusive, liable for military service — local draft boards have been speeding to completion the reclassification of some 17,500,000 men previously enrolled.

Selective service officials said existing machinery, expanded as needed by voluntary workers, would be used to enroll the additional men. Registration cards are to be unchanged, but a new questionnaire has been drafted for possible use to determine more specifically individual qualifications.

An indication that the army was receiving substantial augmentation from another source came during

(Continued on Back Page)

More Candidates Toss Hats Into Political Ring

Action on the political front picked up considerably over the weekend, with three of the present district and county office holders asking for re-election.

The four men seeking re-election are Louis B. Reed, Judge of the 106th Judicial District; A. M. (Buck) Bennett, Sheriff of Dawson County; R. W. (Buster) Herndon, Tax Assessor and Collector, Dawson County; and J. F. O'Brien, Commissioner of Precinct 3. All of these men will make formal announcements of their candidacies later.

It is expected that several other entries in the political derby will be listed before the week is out, as the political bug is reported to have bitten several local men.

As yet no candidates have appeared for the City of Lamesa offices, the election for which is held in April.

VISITS HERE

Mr. and Mrs. W. J. Stanfield spent the holidays in Sipe Springs. Mrs. J. W. Warren, her sister from Smithburg, Md., and Miss Effie Foster, from Sipe Springs, and a nephew Mervin Foster, from Clyde, Texas, spent several days the past week with her sister, Mr. and Mrs. W. J. Stanfield.

—BUY DEFENSE BONDS - STAMPS—

Defense Guard Meeting Nights Are Changed

At the last meeting of the Dawson County Home Defense Guard unit last Friday night, it was decided to change the meeting nights to Monday and Thursday in the future so as to cause as little interference with other affairs as possible.

It is planned to divide the company into squads and platoons for the first time at the Monday night meeting this week, as the first rush of enrollees has slowed down, and only those intending to remain in service attending the meetings. Many men who signed up originally have never attended a meeting and these have been dropped from the rolls.

Friday night the group was instructed in the preliminary military maneuvers, such as the different individual and squad movements, and, although the weather was quite cold, a large number of members was present.

RED CROSS WAR FUND REACHES \$2,000 MARK

According to John Allen, secretary treasurer of the Dawson County Chapter of the American Red Cross, a total of \$2,000 has been contributed in this county to that organization's Emergency War Relief Fund.

The quota for this county is \$3,200 and it is fully expected that this amount will be reached within the next few days.

Mr. and Mrs. J. R. Leunberger and Mrs. Elmer Ireton spent Sunday in San Angelo, visiting with Mr. Ireton, who is in a hospital there.

Statements Show \$3,283,380.53 On Deposit Dec. 31

That the Lamesa banks are in the best shape in their history is evidenced by figures shown in their regular quarterly statement, issued at the close of business December 31, 1941.

Combined assets at the two Lamesa banks showed a total of \$3,537,082.41. Loans and discounts were at their lowest mark in several years, with only \$472,913.19 recorded. At the close of business on Oct. 1, 1941, loans totaled \$1,255,093.90.

Deposits as of December 31 added up to the staggering sum of \$3,283,380.53 as compared with \$1,503,542.09 on October 1, and \$1,961,888.09 on December 31, 1939. Loans at the close of business in 1939 totaled \$529,998.12.

Previous high was at the close of business, December 31, 1937, when deposits reached \$2,713,469.00 with loans of \$228,861.00 and total resources of \$2,921,617.00.

According to local bankers the peak in deposits was reached several weeks ago, but many dollars worth of Defense Bonds have been purchased since that time, bringing the amount of total deposits down considerably.

Sheriff Bennett Warns Against Tire Thieves

Taking cognizance of the fact that so many automobile tires and tubes are being stolen over the country since tire rationing went into effect, Sheriff Buck Bennett is this week issuing a warning to all automobile and truck owners of this county.

While as yet no reports of tire thefts have been made in this county, it is only natural to presume that one of these nights a gang of thieves will hit this area. To forestall this, and to take all precautions against such an event happening, the sheriff made the following statement:

Notice to All Tire Dealers and Citizens of Dawson County:

Since war conditions has forced

(Continued on Back Page)

Suttle Purcell Remains In A Serious Condition

Reports from a local hospital indicate that the condition of Suttle Purcell, injured in the gas explosion that rocked Lamesa last Thursday morning, is very grave.

According to hospital attaches, Purcell is suffering from gas gangrene which has reached a serious stage. He underwent the amputation of an arm at the shoulder Sunday, and it was said that he was to undergo another operation Monday afternoon.

Mr. Purcell suffered fractures of both arms and legs, as well as numerous cuts about the body and a number of serious burns.

THE DAWSON COUNTY COURIER

MEMBER OF THE (AP) ASSOCIATED PRESS
The Associated Press is exclusively entitled to the use for publication of all news dispatches credited to it, or not otherwise credited in this newspaper, and also the local news published herein.

Entered at the Post Office at Lamesa, Texas, as second class mail, under the Act of 1879

Any erroneous reflection upon the character of any person or firm appearing in these columns will be gladly and promptly corrected upon being brought to the attention of the management.

SUBSCRIPTION PRICE
In Dawson and Adjoining Counties, per year \$2.00
Outside of Trade Territory, per year \$3.00

JOE ALEXANDER Publisher

--Classified--

CHEVROLET

SPECIALS FOR THIS WEEK -

TWO 1938 CHEVROLET
YOUR CHOICE ONLY **\$450**

VAUGHN CHEVROLET

For Sale!

FOR SALE: W. C. Model Allis Chalmers tractor with starter and lights; 2 row equipment and knifing attachment. Good shape. Six miles south and one mile west of Stanton Highway - Isreal Spikes 101-103 p

FOR SALE: 37 V-8 coupe or trade for equity in late model car. Must be a bargain. - James Johnson, Higginbotham - Bartlett Co. 102-103 p

FOR SALE: Clean 1940 Special Deluxe Chevrolet Coach. 1940 Hudson Super Six Coach. 1937 4-door sedan Plymouth - Painter and Mayfield 102-105 c

FARM BARGAINS

1/2 sections, sections from \$15 to \$35 per acre. Possession. See or write -
P. L. PAYNE
Dial 7944 Lubbock - 1921-16th st 96-103 pd.

FOR SALE Royal Portable Typewriter, A-1 condition - See Buster Herndon at Tax Collector's office. 102-103 p

FOR SALE: 23 white face heifers - R. T. Bedwell, 5 miles south of Lamesa. 102-105 p

FOR SALE: New 2-room house, size 12 x 24. - W. M. Deatherage. Owen Jones place 6 miles southeast of Lamesa 104-105 p

FOR SALE or Trade: Dawson Courts Tourist camp. Would accept tractor trade in if in good condition. Elmo Smith, Lamesa Salvage Co. 102 tfc.

SEE
Geo. Parrott
for
INCOME TAX REPORTS
97 tfc

FOR SALE: Farmall tractor. Would rent old place with it. George Lightfoot. 100-103 pd.

FOR SALE - four room house with bath, well improved, 75 foot front on pavement, a real bargain, See M. E. Boren. 94 tfc

FOR SALE: Improved farms 160 to 640 acres, located 45 miles west of Littlefield, Texas. \$9.00 to \$20.00 per acre, good terms. No better land on the Plains. Come at once. Some of this land will be taken off the market January 1. J. N. Killion and DuBose Brothers. 100-101 pd.

FOR SALE: 125 young laying hens lots of other stuff - T. M. Key, 3 miles West Lamesa on Seminole highway. 103 1tp

FOR SALE: 320 acres of land, 290 in cultivation. 1 five room house and 1 three room house on place. Plenty good water, 12 miles west O'Donnell - W. L. Devore, Rt. 2 O'Donnell, Texas. 103-2 p

FOR SALE: F-12 Farmall tractor good condition. Priced \$400. Also living room suite and sewing machine at a bargain - Kelley Bockman, 4 miles south Lamesa. 103-104 p

For A Complete Beauty
Service Visit
HOTEL BEAUTY SHOP
"Hair Styling That Pleases"

For Rent

FOR RENT: Unfurnished room at 410 S. Austin - See T. R. Koen at Covington Laundry. 103-104 p

FOR RENT: Front bedroom, cut side entrance, adjoining bath - Mrs. C. E. Martin, 1002 North 5th. 101-104 p

FOR RENT: Two furnished apartments, available now. - See Jack Greene, South 4th and Dallas. 93 tfc

TOP PRICES PAID
FOR HOGS
EVERY FRIDAY AND
SATURDAY
LEE BILLINGSLEY
Come in by Saturday noon
Phone 238 Lamesa, Texas

Lost and Found

LOST: Ladies pigskin gloves, leave at Courier office. 103-104 p

LOST: Light tan leather bill fold, with name, Sheldon Land, contained money, other articles, return to Courier office. 103-104 c

STRAYED: To my place 3 mules, one brown, 1 sorrell and 1 black, also a bay horse - A. S. Riddell 2 miles south, 2 miles east Midway, or Rt. B. Lamesa. 103-104 p

STRAYED TO My place, a 200-lb. sow, black and white spotted - Paul Boggan, Harmony School. 102-103 p

FOUND: Small black zipper purse. Owner may have it by paying for this ad. 100 tfc.

Miscellaneous

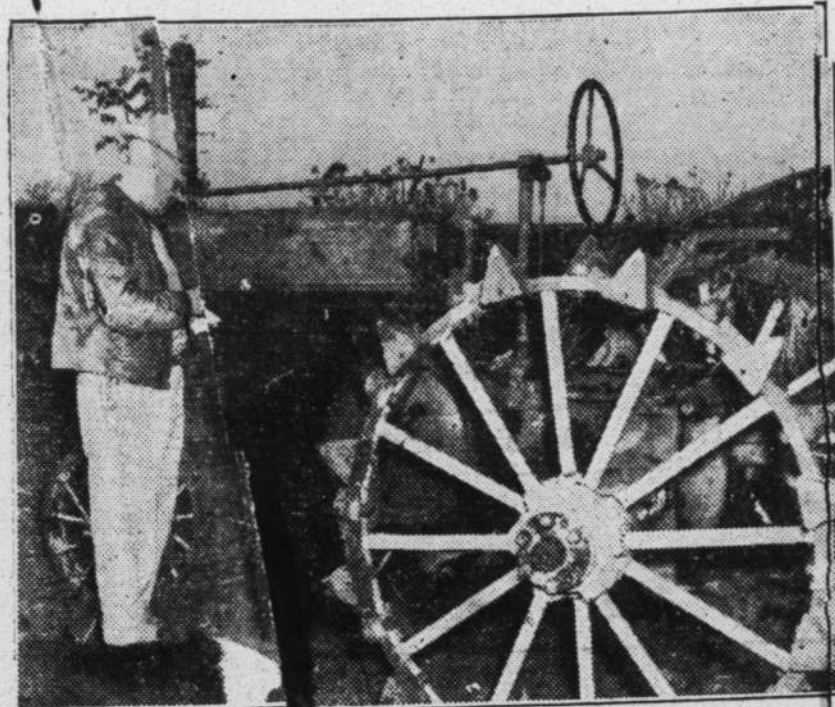
WET WASH 35c and 50c. Bring soap. Ironing done on ironer 50c dozen. - Thomass Laundry, south of Y on old Big Spring highway. 103-104 p

SEE US FOR Expert radio service and best radio tubes at reasonable prices - Dyer Hardware and Auto Supply 39 - tfc

LOANS
City, Farms and Ranches
V. O. KEY
406 N. 1st - Phone 115

CATTLE AUCTION
EVERY MONDAY
Beginning at 11 a. m.
Highest Prices - Quickest Service
**DAWSON COUNTY AUCTION
AND COMMISSION
COMPANY**
Livestock and Commission
Phone 164

New Parts for Old



L. F. Johnston, chairman of the Tarrant County USDA Defense Board, follows his own advice "to repair farm machinery now" by listing the parts needed on his old tractor which will be needed to produce defense food under the Farm Defense Program in 1942.

18 Counties Had Mattress Program

Eighteen of the 206 Texas counties have completed their work under the Department of Agriculture's cotton mattress demonstration program, according to Mildred Horton, Extension Service vice director and state home demonstration agent, and R. T. Price, field manager large for the State AAA office.

Counties completing a mattress include Tyler, Carson, Refugio, Kleberg, Marion, Rankin, Childress, Lubbock, Montague, Callahan, Bandera, Baylor, Newton, Austin, Galveston, Walker, Washington, and Brooks.

Since the first mattress was made under the program in Austin County, in the early spring of 1940, 522,674 have been delivered to low-income Texas families. Deliveries of cotton comforts total 179,153 before the program is finished in the state.

FOR TRADE: Excellent 1940 model Special Deluxe Chevrolet with radio, heater and spotlight, driven only 18,000 miles. Prefer Chevrolet pick-up not older than 1936 model. See Pool Johnson at Gulf Station on Highway. 103-104 c

Wanted

WANTED TO TRADE: Florence oil stove for feed grinding mill - L. O. Followill, Rt. A, Klondike Community. 103-104 p

WANTED: Married man that can do anything on farm, house to live in - E. Eason, O. K. Community, See me at once. 103-104 p

WANTED: Will pay cash for several miles of good used barb wire. - L. M. Estes, Rt. 4, Lamesa 102-103 p

WANTED TO RENT place, also to buy equipment - Earl Gray, 402 N. Fourth and Cleveland Street, Lamesa, Texas. 102-105 p

WANTED To buy your old hangers will pay 50c per 100 - Scott's Dry Cleaners. 101 tfc

WANTED To buy your old hangers will pay 50c per 100 - Scott's Dry Cleaners. 101 tfc

WANTED: All kinds of furniture repairing, refinishing, upholstering. Spray gun painting of all kinds. See Stone at Davis Furniture Co. 48 tfc

WANTED! JUNK TIRES! Will pay 5c each for any tire with two beads, regardless of condition!
MILLER TIRE CO.
71 tfc

C. A. STROUD
INCOME TAX REPORTING
AUDITS - SYSTEMS
Phone 689 P. O. Box 1017
MIDLAND, TEXAS
89 tfc

The Air Corps Recruiters To Visit Texas Cities

"Itinerant Boards" to visit towns in January.

The "streamed lined" recruiting of the Aviation branch of the Army reflects the quickened tempo caused by the war. No longer is it content to sit back in recruiting stations and wait for young men to come to it. Today it brings the information - and the examining board - to the communities, and gives the young men of Childress, or Pampa, or Amarillo, or Borger - Big Spring or Marfa the same facilities he would have if he went to Dallas or San Antonio.

Starting in January, the Aviation Procurement team from Fort Bliss and the Itinerant Aviation Cadet Examining Board from Goodfellow Field will cover the following "circuit":

- Amarillo, Texas, Elks Club House January 5, 6 and 7.
- Childress, Texas, Municipal Bldg., January 8, 9 and 10.
- Pampa, Texas, Army Recruiting Station, January 12, 14 and 16.
- Borger, Texas, American Legion Hall, January 13, 15 and 17.

Present will be a recruiting office to explain requirements to men who want to learn to fly, or men who want to be Navigator-Bombardiers. All present, a flight surgeon to give the physical examination, Air Officers, to "size up" candidates and see if they are good air corps material.

Those who qualify, are then enlisted on the spot, and given a furlough for thirty days, so that they can know they are "In the Air Corps" and still have time to finish up business matters.

Those who pass the physical examination, but must take mental examinations later, are given help in arranging to meet the mental examination requirements. They are given letters to their local Boards, requesting deferment until the next examination is "past."

In word, today, the Air Corps comes to you. It wants the cream of the crop in every community. Active, eager, aggressive young men, of High School education or better, who want to fly. And it is willing to come to help them get their opportunity.

A good grain mixture to use when dairy cows are grazing on small grain pasture is 600 pounds of ground ear corn and 100 pounds of cotton seed meal. Feed a cow three pounds of this daily for each gallon of milk she gives.

-HELP THE RED CROSS-

A marine and bluejacket alternate in always guarding the tomb of John Paul Jones at the Naval Academy.

-HELP THE RED CROSS-

at least 600,000 mattresses will have been made, Miss Horton estimates, and pericals have stopped deliveries of these materials to counties in recent months.

NAVY REDUCES MINIMUM AGE REQUIREMENT FOR NAVAL RESERVE TO NINETEEN YEARS

Launching a drive to procure thousands of deck and engineering officers to man the rapidly growing two-ocean fleet, the Navy Department opened Class V-7 of the Naval Reserve to senior and junior college men and reduced the minimum age limit from 20 to 19 years, Captain T. A. Thompson, Jr., Commandant of the Eighth Naval District, announced.

At the same time, Naval Reserve Recruiting officers were ordered at top speed in enlisting college graduates for immediate appointments as Reserve midshipmen inasmuch as lowering of the age limit to 19 will open enlistments to a field heretofore just under the minimum age limit. The quota for such college graduates or seniors has been set at 850 for the Eighth Naval District with a like quota of 850 for college juniors. In past recruiting efforts for V-7 volunteers, the Eighth Naval District has consistently met its quotas ahead of time.

Under the new plan regularly enrolled college juniors and seniors may be enlisted prior to graduation provided they submit a certificate from the registrar of the school attended that upon graduation they will have completed the required studies. Such men will be continued on inactive duty until they have completed the work required for the college degree. Then they will be appointed midshipmen and sent to special Navy schools for training in Navy science. Upon graduation, they will be commissioned Ensigns in the Naval Reserve, eligible for sea duty.

All candidates will receive approximately 30 days elementary training at some navy activity prior to assignment to a Reserve Midshipman School. While undergoing such training, they will be furnished, at no expense to them, their initial outfit of uniform, clothing and the necessary equipment. In their enlisted capacity, they will be given an insight into life aboard ship and will be instructed in the fundamentals of military discipline and of naval customs and usage.

Launching a drive to procure 2,500 aviation pilots each month for combat fliers in the aviation wing of the U. S. Navy, the Navy Department has extended enlistments in the Naval Reserve Aviation class to include sophomores in college and announced that all men enlisting as volunteers in Class V-5 will be eligible for active duty at the end of their current school year.

The enrollment of sophomores in college as potential candidates for commissions in the Naval Reserve Aviation is the result of an effort by the Navy Department to build up the pool of able-bodied young men to take the place of the thousands of young Navy pilots now passing through Naval Air Training Stations for duty with the fleet.

Candidates for appointment as Aviation Cadets must:

(a) Be a male citizen of the United States for a period of at least ten years.

(b) Be not less than twenty years of age, and have not reached his twenty-seventh birthday at the time of enlistment as seaman, second class.

(c) Agree to remain on active duty four years, including period undergoing training as aviation cadet unless sooner released by the Navy Department.

(d) Be unmarried, must not have been previously married, and must agree to remain unmarried until expiration of two years from the date of entering upon active duty.

(e) Be educationally, normally, physically and psychologically qualified.

College juniors and seniors, after enlistment in Class V-5, may be deferred from call to active duty until completion of their current year, if they so request. Thereafter they will be assigned to active training duty in the earliest class in which they can be accommodated.

—HELP THE RED CROSS—

—BUY DEFENSE BONDS - STAMPS—

4-H ELECTRICIAN



ENTERPRISE shown by Edwin L. Hall, 16, of Anton, Lamb county, in using electricity in the home and on the farm won him a place in Texas' delegation to the recent 20th National 4-H Club Congress in Chicago. Competing in the sixth national 4-H rural electrification contest conducted by the Extension Service, the boy wired his home for electricity, spliced wires, repaired light sockets, and worked on an electric motor. With two other club members, the boy presented a radio program on "Rural Electrification's Part in National Defense." He was awarded the Chicago trip by the Westinghouse company, which also provides six \$200 scholarships as prizes for national winners.

—BUY DEFENSE BONDS - STAMPS—

Social Security Payments Being Made To Many

At the end of September 1941, twenty-one months after the beginning of operation of the Federal old-age and survivors insurance plan of monthly payments, 11,744 individuals in Texas were receiving checks for insurance amounting to \$187,519 each month, it was announced today by William C. Stephenson, acting manager of the Big Spring office of the Social Security Board. Beneficiaries include retired workers over age 65, aged wives, young and aged widows, dependent children, and dependent parents.

Benefit rolls are growing month by month as more workers retire or die, Stephenson said.

According to the type of beneficiary, the following payments were being made in Texas through September 30, 1941:

Retired workers over age 65, 4,870, \$99,374; wives of retired workers who are over age 65, 1,041, \$11,184; widows of deceased wage earners who are over age 65, 188, \$3,603; widows under 65 with dependent children of deceased wage earners in their care, 1,547, \$28,074; dependent children, 4,050, \$44,751; dependent parents, 48, \$533.

Total 11,744, with \$187,519.

The above figures do not include the claims of persons who were receiving insurance payments during some part of the year which later were discontinued due to death, return to covered employment by retired workers, earnings in covered employment by other beneficiaries, marriage of widows and young people, and attainment of age 18 by dependent children.

It was pointed out by Stephenson that widows of insured workers may receive insurance benefits regardless of age while they have in their care dependent children of the wage earner under age 18. Dependent children also receive payments

Cotton Prices To Go Up

The trend of cotton prices is expected to be up rather than down, in the months ahead, despite the upset condition of the world cotton market, according to Dr. A. B. Cox, director of the University of Texas Bureau Research.

Entrance of this country in the war, on December 7, scarcely produced a ripple in the domestic cotton market, primarily because export markets had already been closed for some time, Dr. Cox observed, and because the price of American cotton is sustained by a government loan of about 6 1-2 to 7 cents a pound above world markets for comparable qualities of foreign growth.

Because cotton prices in the United States are tied to the general price level through the Commodity

in case the insured worker either dies or retires. The widow's benefit is three-fourths that of the wage earner's, and the child's benefit is one-half. The monthly payment to wives and to dependent parents is one-half of that of the wage earner's primary insurance payments. Dependent parents receive payments only in case the wage earner dies and leaves no widow or unmarried children under age 18, Stephenson stated.

Credit Corporation, the general price level rise is promising an increase in cotton price level, Dr. Cox wrote.

The loss of the Far Eastern market as a result of Japan's attacking the United States and Great Britain caused substantial declines of cotton prices in these countries and the lowest parity price with American on record, he said. Carryovers in India and South America are destined to be excessive at the end of this cotton year.

It takes 30 dozen eggs to make 10 pounds of dried eggs.

LIVESTOCK OWNERS

Free Removal of Dead Animals

—Call—

McGuire's Ser. Station

PHONE 500 Collect

LAMESA, TEXAS
Open All Night

Grade "A" Pasteurized Milk

Cultured Buttermilk - Whipping Cream
Creamed Cottage Cheese - Espuela Ice Cream and Butter

"OUR PRODUCTS MUST PLEASE"

LAMESA CREAMERY

PHONE 295

BUSINESS DIRECTORY

WHERE TO GET IT IN LAMESA . . .

Read the Business Directory every issue to find out where to get what you want in Lamesa. This feature page of the Courier is the handy way to find service and merchandise of all kinds. And it's

interesting, too! Bet you didn't know there were some of these businesses! There are ads to interest business men, housewives, and children . . . so make it a habit to read every ad every week!

SEE . . .
Speck Furniture
For New and Used Furniture! Phone 94-M

FOR QUALITY PRINTING
The Courier
PHONE 102

Home Builders Supply
Planing and Mill Work
PHONE 10-M

FOR HIGH CLASS JEWELRY SEE
ADAMS' EXCLUSIVE JEWELRY STORE

C. E. MARTIN MOTOR CO.
WRECKED BODY REPAIR SERVICE
No Wreck Too Large or Small
WASHING - GREASING PHONE 451-J

Forrest Lumber Company
Complete line of Building Materials and Well Supplies

Caldwell Shoe Shop
Leather Goods - Saddles Riding Equipment
All Work Guaranteed!

USE THE
Want Ads
IF YOU HAVE SOMETHING TO BUY, SELL OR TRADE!

BROWN'S STEAM LAUNDRY
PHONE 369-J
Pickup & Delivery 1-2 Block North of Post Office
HELPY SELFY LAUNDRY IN CONNECTION

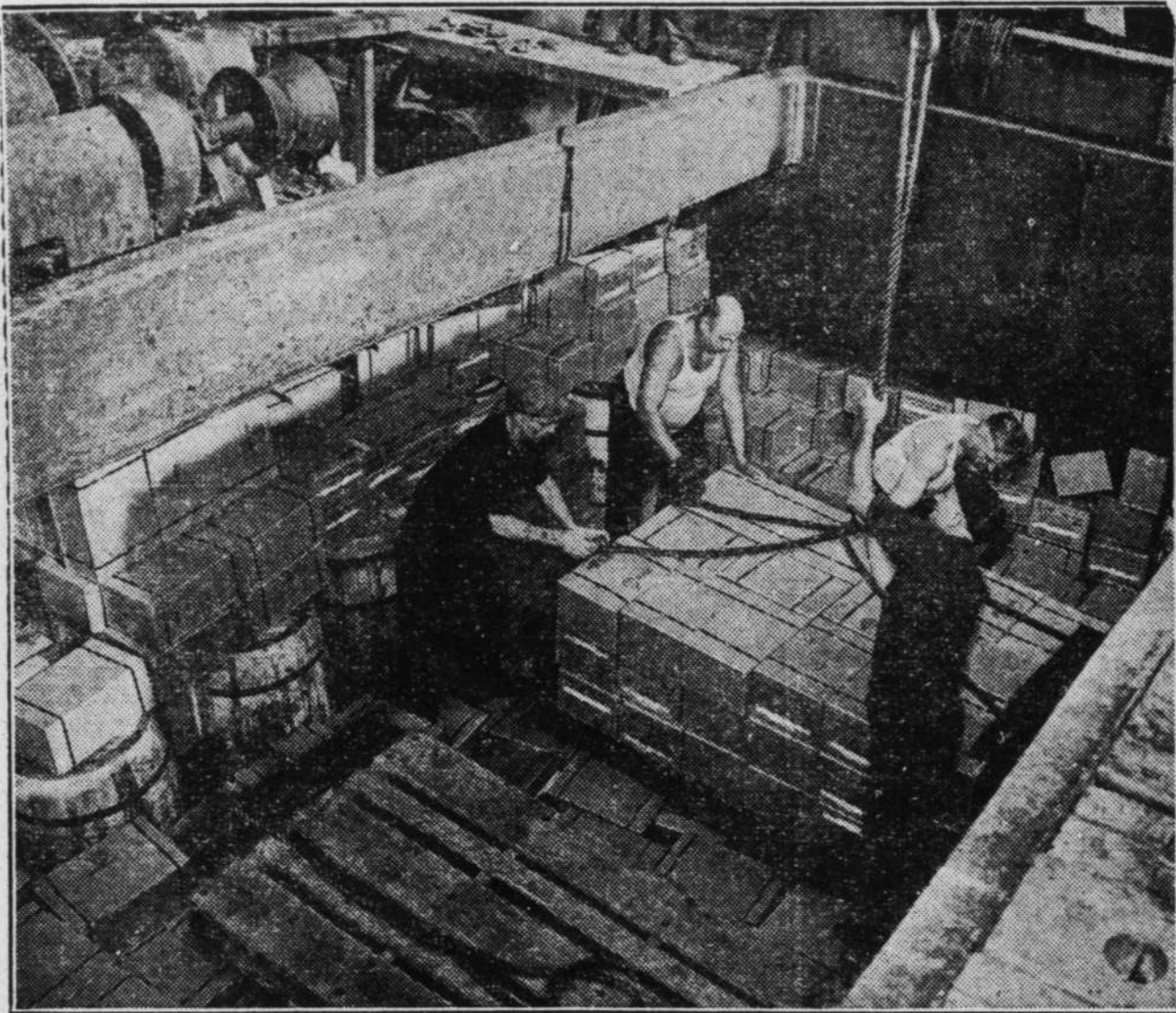
PANHANDLE PETROLEUM PRODUCTS
Cope Oil Co.
DAYTON TIRES
Diamond 760 Motor Oil

SEE US FOR SPECIAL ORDERS OF CAKES, PIES, BREAD AND COOKIES
CAMPBELL'S GROCERY, MARKET AND BAKERY
BLUE RIBBON AND VITAMELK BREAD

LAMESA TIN AND RADIATOR SHOP
Radiators Repaired By Men Who Know How!
All Work Guaranteed
If It Is Made Of Sheet Metal We Make It!
310 N. 2nd St - H. L. Crouch

Cavern Cafe
Just A Good Place To Eat
West Side Square

Evaporated Milk Being Shipped to England



Here's the way America is shipping food to Britain. This picture shows cases of evaporated milk, fresh from production in the Middle West, being loaded by dock workers into the hold of a British ship at an unnamed eastern port. Huge quantities of American farm products, especially dairy, poultry, and pork products, are being shipped to England regularly, easing the food shortage and giving the people strength to carry on their battle for freedom.

MEN HEADING FORCES IN EAST STRESS MILITARY BACKGROUND

By the Associated Press

With Britain's Gen. Sir Archibald P. Wavell as supreme commander, the armed forces of the united nations in the Southwest Pacific were placed Saturday under the direction of a British-American staff, while Generalissimo Chiang Kai-Shek took over operations in the Chinese theater.

Here are the men who will direct this anti-Axis offensive on the vast, far-flung front:

WAVELL

General Sir Archibald Percival Wavell—entrusted with the task of marshaling all land, sea and air forces, this hard-bitten Scot lives up to his own ideal of a commander in chief—A man who should have the spirit of adventure and a touch of the gambler.

Third General in Family

Third successive general in three generations of his family, he was hailed as master of war by Prime Minister Winston Churchill for the sixty-day campaign in which his army of the Nile routed the Italians in Africa just a year ago. His highest compliment, perhaps, came from Field Marshal Gen. Wilhelm Keitel, chief of the German general staff, who called him "the only good general Britain has."

An unorthodox fighter who scorns the British army's tradition spit and polish in favor of mental liveliness and independence of thought, Wavell has won world-wide renown as a master strategist by the daring and craftiness of his operations—tactics which often shocked older and more conservative British Generals.

Wavell, born May 5, 1883, began his army career with the famous Scottish Black Watch which he joined in 1901, in the late phases of the Boer War. In 1908 he fought on India's frontier, for which he won his second decoration, and first caught the eye of military experts while liaison officer with the Russian army in the Caucasus in 1916, after serving two years in the thick of the fighting in France.

Learns Desert Tactics

But it was as a close friend of the fabulous Lawrence, of Arabia, and as an aid to Field Marshal Lord Edmund Allenby in Palestine and Syria that Wavell, who lost an eye in the World War, learned the tactics, which made him such a brilliant desert campaigner.

Typical was the execution of one

of the World War's greatest bluffs against the Turks. In order to weaken the Turkish lines in front of Bersheba, Allenby and Wavell ordered their troops to drag logs back and forth over a vast stretch of desert.

The resulting clouds of dust led the Turks to believe large bodies of troops were on the move. They shifted their strength to meet this new "threat," and left their key defenses undermanned.

It was with similar maneuvers adapted to mechanized warfare—swift, secret movements in the night, concealment by day, surprise flank attacks, close co-operation with fleet and air force—that Wavell's army of the Nile routed the Italians from entrenched positions 130 miles within Egypt and advanced 500 miles through country almost devoid of food and water. When his forces subsequently were driven out of Libya, Wavell took the entire blame on himself, saying he had not made adequate preparations for an Axis counter attack, which came a month sooner than he had expected.

Last July 2 Wavell was shifted to India, exchanging commands with Gen. Sir Claude Auchinleck, in a shift interpreted then as indicating a possible German drive on India. In his new command he had charge of the four-day offensive in which British and Russian troops conquered Iran, freeing one of the chief British and United States supply lines to Russia.

Last month, Wavell and his new deputy commander, Major Gen. George H. Brett chief of the United States Army Air Corps, visited Chungking and formed an ABC military council with China's Generalissimo Chiang Kai-Shek.

CHIANG KAI-SHEK

Tall, slender Generalissimo Chiang Kai-Shek, the man chosen to direct all allied land and air forces in China, during four and a half years of resistance to Japanese invaders has become recognized as one of the world's greatest military strategists, but the charged and frustrated Tokyo war lords he is "the Chungking Frankenstein."

Against an invader overwhelmingly superior in guns and equipment his forces have fought on under crushing odds, fired by the inspiration of this great leader, who

took a China, divided against itself, and unified it where all others have failed.

And the incident—as Tokyo called it—which started by the shots, fired across Peiping's old Marco Polo bridge, the night of July 7, 1937, has been merged into a world war against the imperialistic ambitions of Japan, and of its German and Italian Axis partners as well.

Chiang, who today assumes a major role in the leadership of this anti-Axis combine, brings with him a career of paradoxes.

He waged a score of devastating civil wars to bring internal peace; then internal peace brought on foreign war.

True, China has lost much of its most productive territory, but today it is a country of 450,000,000 people, standing solidly behind Chiang.

Disaster for China

Militarily, the war with Japan was disastrous for China from the start. Its sea coast provinces have been over run by the invader; twice Chiang has been driven from his capitals.

But, when the war broke out in Europe in 1939, and when Japan later entered an open military alliance with Germany and Italy, the course of international events began to swing in China's favor.

The United States openly opposing Japan's military expansion and conquest gave China large-scale material and financial assistance, long before the stab-in-the-back upon Pearl Harbor plunged that great country into the conflict at China's side.

Great Britain, meanwhile, had halted its policy of appeasement toward Japan at Chiang's expense and Soviet Russia supplied the Generalissimo with war materials and technical aid, though he consistently opposed communism in China.

Despite his many high offices—the presidency of the National Military Affairs Commission, the leadership of the Kuomintang (Government party), presidency of the peoples' political council and the executive Yuan of the National Government, among other posts,—Chiang is not a dictator in the European sense.

Without his people's loyalty, his regime would have collapsed long ago.

Wife, Mother Influence Him

Chiang's career has been influenced largely by his devoted mother and wife—attractive, dynamic, American-educated Mei-Ling Soong. Talented Madame Chiang Kai-Shek, like her husband, has become

Don't Hoard Beef Cattle Says USDA Defense Board

Hoarding of beef cattle can be just as serious and just as disastrous as the hoarding of any other vital defense materials.

That's the warning B. F. Vance, chairman of the Texas USDA Defense Board, issued in making public a letter from Secretary of Agriculture Claude R. Wickard urging increased beef marketings.

"Increased beef marketings with prices at present levels will benefit not only the cattlemen but the national defense program as well," the defense official pointed out. "We are now near the record peak of 74,000,000 head of cattle reached just prior to the disastrous drought of 1934. At the present rate of increase we will reach that figure in another month or two. The danger of holding excessive numbers and bringing on several years of ruin-

a symbol of modern China. She has contributed a Western outlook to his purely oriental training and has been credited with being his chief advisor in foreign affairs.

Chiang, born in 1883, in Fukien Province of a family which for generations controlled the local salt monopoly, was educated at the Chinese Government Military School and in 1907 enrolled in the Tokyo Military Academy.

He soon came under the influence of Dr. Sun Yat-Sen, father of Modern China, and inherited the enthusiasm of that greater leader for democratic ideals.

One of the most stirring episodes in his career occurred in 1936 when he was kidnapped by "young marshal" Chang Hsueh-Liang, whom he had sent to the northwestern provinces, to clean out communists entrenched there.

Chang and his officers fraternized with the Reds and were won over to the latter's view that the time was ripe then to fight Japan, instead of waiting until China was better prepared, as advocated by Chiang.

Chiang flew to Sian to take the young marshal to task, only to be taken prisoner. Madame Chiang Kai-Shek followed him to Sian to live and die with him.

For thirteen days Chiang's life hung in the balance, until finally on Christmas Day, his captors became convinced that he alone would save China, and released him.

Increased Dairy Production In Nov

If it takes increased dairy production to keep an army in good spirits and on the move, Texans were rising to the call of the times during November.

Dairy production in the state increased during November, the University of Texas Bureau of Business Research reported indicating a 55 per cent hike in American cheese production, a 28.1 per cent gain in ice cream manufacture and a 5.2 per cent increase in creamery butter output during the month. All comparisons are based on the same month for 1940.

Condensed milk production was up 160.9 per cent over November, 1940, and powdered milk output gained 49.5 per cent.

Miss Bennie Speck, of Abilene, spent the holidays here visiting with her parents and other friends and relatives.

ous prices can be headed off only by increased marketings."

Vance cited four things recommended by Secretary Wickard to ranchmen:

1. Market more cows and helpers to prevent further increases. The goal for cattle slaughter next year cannot be reached unless a larger proportion of breeding animals are marketed.

2. Pay off indebtedness now while prices and demand are good so as to avoid the danger of having to pay big debts at low prices later.

3. Improve breeding herds by culling out and selling undesirable animals while demand is good.

4. Keep livestock in balance with normal feed supplies. Range conditions and feed supplies have been unusually good this year. Drought can cause a lot of loss if there is not feed reserve available, or if ranges are over-grazed.

The 1942 Farm Defense Program goals call for slaughter of beef animals in Texas of 3,776,431 head, while the National goal calls for slaughter of about 28,000,000 head. Meeting the goal will make the long time position of the cattle industry more secure and help supply the increasing need for meat, Vance declared.

"The nation's workers and armed forces in 1942 will need more meat than ever before," the USDA official said, "and it is the job of the cattle producers to see they get it. There is danger ahead for beef cattle producers if herds continue to increase"

Biddy Goes to Work Early



America will need millions of eggs this winter, as part of the "defense food" production. Kathryn Hines, pretty 4-H club girl, shows biddy that soldier hours will be expected. Many poultry producers follow this practice of turning on electric lights in laying houses early in the morning during winter months. The practice compensates for the fewer hours of daylight and gives hens a full day of eating and laying.

Tornadoes Open District Basketball Race With Big Spring Here Tuesday Night

The Lamesa High School Golden Tornadoes basketball team open their district 3-AA championship play here Tuesday night with the Big Spring High School Steers furnishing the opposition. The game will be played in the High School gym with the starting time set for 7:30 p. m.

The Lamesa quintet has been established as the dark horses of the race this year, as they are comparative strangers to most of the members of the district in basketball, having played in the district to the north until this year. Abilene, San Angelo, Sweetwater, and Odessa, have been established as co-favorites to take the title.

While not so much has been heard on the basketball situation in Lamesa this year, it is reported that all of the schools of the district are enthusiastically entering into the competition, and the rivalry is expected to wax warm among the member schools.

In the Tuesday night game, the Lamesa and Big Spring offenses will be exactly the opposite. Lamesa features a slow breaking, close

guarding style of play, while Big Spring is the exponent of the fast breaking, wide offensive.

It is expected that this game of the opposites will be one of the most interesting of the season to watch, and that a full house will be on hand to see the affair.

Lamesa's next conference game will be with Abilene in that city on Friday night, while both games next week will be in the Lamesa gym, with Odessa furnishing the opposition on Tuesday night and Sweetwater Friday night.

Sale Of Dairy Cattle Averages \$91.47 Per Head

A herd of 50 dairy cattle averaged \$91.47 when sold at auction last Wednesday on the Whit M. Barrow farm one mile north and two miles east of Lamesa.

Auctioneers were Kenneth Bozeman of Lubbock and H. H. Barron of Lamesa, with E. E. Barron, Sol Cleveland and Buck Kirksey acting as clerks.

Most of the buying was done by out of town dairies, with the Lawson dairy farm of Lubbock, Fuch Dairy and Anderson Dairy, both of Abernathy, and dairy farms of Big Spring doing the heavy buying.

It is reported that this was one of the most successful dairy cattle sales ever held in this part of the state, with the prices paid being well above the average.

Tire Quotas For Dawson County Are Announced

The Dawson County Tire Rationing Board as appointed over the week end, is composed of Elmer Barron, Dixie Kilgore and Stancell Clements. These men will determine the qualified buyers of all new tires and tubes for this county.

January quotas for Dawson county motor vehicle owners have been set at 106 tires and 89 tubes according to announcement transmitted through the office of Gov. Coke Stevenson in Austin Thursday. The quotas were received from the Office of Production Management shortly after the governor announced appointment of Mark McGee of Fort Worth, member of the Texas Technological college board of directors and former adjutant general, as state tire rationing officer.

According to Associated Press dispatches, Dawson county's allotment for January will be: For passenger cars, motorcycles and light trucks, 36 tires and 30 tubes; for trucks and buses, 70 tires and 59 tubes.

Quotas for other South Plains counties were as follows:

- Andrews, quota for passenger cars, motorcycles and light trucks, 3 tires and 2 tubes; for trucks and buses, 7 tires and 6 tubes.
- Bailey, 13, 11, 34, 28.
- Borden, 1, 1, 3, 3.
- Briscoe, 8, 7, 24, 20.
- Castro, 8, 7, 28, 23.
- Cochran, 7, 6, 17, 14.
- Crosby, 19, 16, 46, 38.
- Dickens, 15, 13, 38, 31.
- Floyd, 24, 20, 62, 52.
- Gaines, 23, 19, 47, 39.
- Garza, 14, 12, 23, 19.
- Hockley, 26, 26, 43, 36.
- Lamb, 39, 33, 75, 63.
- Lubbock, 130, 109, 218, 181.
- Lynn, 26, 22, 49, 41.
- Motley, 9, 8, 26, 22.
- Scurry, 26, 22, 50, 42.
- Swisher, 18, 15, 60, 50.
- Terry, 23, 19, 52, 43.
- Yoakum, 13, 11, 24, 20.

have to do," Vance said. "I believe the marketing quota vote is proof that cotton farmers understand the situation and intend to do their part."

Gives Income Tax Information

WHO MUST FILL A RETURN? Every single person having a gross income of \$750 or more; every married person, not living with husband or wife, and having a gross income of \$750 or more; and married persons living with husband or wife, who have an aggregate gross income of \$1,500 or more.

WHEN MUST RETURNS BE FILED? For the calendar year of 1941 on or before March 16, 1942. For the fiscal year, on or before the 15th day of the third month following the close of the fiscal year.

WHERE AND WITH WHOM MUST INCOME TAX RETURNS BE FILED? In the internal revenue district in which the person lives or has his chief place of business, and with the collector of internal revenue.

HOW DOES ONE MAKE OUT HIS INCOME TAX RETURN? By following the detailed instructions given on the income tax blanks, Form 1040 and Form 1040A (optional simplified form).

WHAT IS THE TAX RATE? A normal tax of 4 per cent on the amount of the net income in excess of the allowable credits against net income (personal exemption, credits for dependents, interest on obligations of the United States and its instrumentalities and earned income credit) in the computation of the normal tax net income; and a graduated surtax on the amount of net income in excess of the allowable credits (personal exemption and credit for dependents) against net income in the computation of the surtax net income.

Mr. and Mrs. E. E. Luck and daughter, and Mr. and Mrs. Stone and son, of Stamford, were guests Sunday of Brother and Mrs. O. H. Tabor.

Woman's Page

DARLENE MAYFIELD CELEBRATES FIFTH BIRTHDAY SATURDAY

Mrs. G. B. Mayfield honored her daughter, Darlene, on her fifth birthday with a party at their home 911 North 3rd Street, Saturday afternoon from 3 until 5 o'clock.

They were served sandwiches, potato chips, birthday cake and hot chocolate. Favors were air planes, cars and balloons.

Guests attending were Sue Cox, Mary Lou English, Carolyn McMullin, Barbara Judie Marlon, Bobby Jack Middleton, John V. and Pamela Price, Don Gresham, Gary Mitchell, Duane and Charlene Whitlow, Marlynn and Dennis Lamphere, Ned Culp, Sue Stanley, David Mullins and the honoree, Darlene Mayfield.

MRS. HERBERT CAUDLE HOSTESS TO CLUB THURSDAY AFTERNOON

Mrs. Herbert Caudle was hostess to members and guests of the Thursday 42 Club Thursday afternoon, at her home.

During the afternoon games of 42 were enjoyed with a delicious plate being served at the conclusion. The entertaining rooms were attractively decorated with large bouquets of fall cut flowers.

Guests attending were Mesdames Conder, Ivey, A. H. Smith, Bill White, Lee Billingsley, M. E. Boren, Walter Barfoot, Irvin Wright, Dee Hull, Walter Jones, Ross Gibson and Ross Boardman.

YOUNG PEOPLE OF CHURCH OF CHRIST ENJOY NEW YEAR PARTY

The Young Peoples Department of the Church of Christ were entertained with a New Year Eve party Thursday evening at the church with Brother and Mrs. O. H. Taber, pastor and wife, as hosts for the occasion.

Various games were enjoyed during the evening after which sandwiches, olives and hot chocolate were served to the guests. About 50 guests were present.

JOHN LEUENBERGER JR. HONORED ON 12TH BIRTHDAY FRIDAY

Mrs. J. R. Leuenberger honored her son, John, Jr., with a surprise birthday party Friday at their home on his 12th birthday.

Various games and contests were enjoyed during the evening after which a delicious refreshment plate consisting of potato chips, sandwiches pickles, candy cake and hot chocolate. Favors were small American flags.

Guests attending were Avalon Barkhurst, Jean Dyer, Nancy Hollingsworth, Ann McGuire, Jimmie Lee Cotten, Roynell Kayal, Emma Ruth Dugger, Patsy Ann Purcell, Joyce Cole, Flora Jane Leuenberger, Bubba Cotten, Jimmie Alldridge, Loraine and Gene Morris, George B. Hart, Gene Ireton, Marshall Field, Leon Johnson, Harry Land and John Leuenberger, Jr.

DARLENE SPRAWLS HONORED ON THIRD BIRTHDAY SATURDAY

Mrs. Darwin Sprawls honored her daughter, Darlene, on her third birthday, with a party at their home Wednesday afternoon.

Various games and contests were enjoyed during the afternoon. Favors were candy animals. The rooms were attractively decorated with vari-colored balloons.

Guests attending were Tommie and Katherine Koger, Sonnie Baldwin, Linda and Mike Jones, Don Renner, Sarah and Nora Nell Hollingshead, Nickey Williams and Carl Bowen Cox.

Ice cream and birthday cake were served to the guests.

Clyde Branon and children, Sally and Tom, left Wednesday for Dallas, where they attended the Cotton Bowl football game and visited with friends and relatives. From there Sally will return to Denton, where she is a student of T. S. C. W.

BILLIE CHAFFIN BECOMES BRIDE OF ELBERT HARVICK

The marriage of Miss Billie Chaffin, daughter of Mr. and Mrs. Norman Chaffin, and Elbert Harvick, son of Mr. and Mrs. N. W. Harvick, took place December 27, at the home of Rev. and Mrs. Cole.

Rev. Cole, pastor of the First Baptist Church, read the impressive single ring ceremony.

The bride was attractive in a blue dress with black accessories and a corsage of ranunculus toned in yellow.

Immediately after the ceremony the couple left for Los Angeles, California, where they will make their home.

MARRIAGE LICENSE

John Touchstone and Harrietta Blewett, January 3.

Jeels Henry and Mrs. Pearlina Price, January 1.

Horace Brown and Leotte Gragestone, December 31.

THEATRE PROGRAM...

PALACE

ADMISSION 11c and 30c

Tues. - Wednesday
JANUARY 6-7

Humphrey Bogart - Mary Astor

"Maltese Falcon"

Thursday - Friday
JANUARY 8-9

Charles Boyer - Paulette Goddard

"Hold Back The Dawn"

MAJESTIC

ADMISSION 11c and 22c

Tues. - Wednesday
JANUARY 6-7

"Jungle Man"

—with—
Buster Crabbe

Thursday Only
JANUARY 8

A COMEDY!
"Sing For Your Supper"

—with—
Buddy Rogers - Jinx Falkenburg

TOWER

Admission 11c and 22c

Tues. - Wednesday
and Thursday

JANUARY 6-7-8

Another Big Picture!
"Oklahoma Kid"

—with—
James Cagney



A BOND OF UNITY.—The handclasp of sincerity and partnership is used by artist John C. Atherton, of Bridgefield, Conn., to depict the close cooperation of the American people and their Government in financing the Defense Program through the sale of Defense Savings Bonds and Stamps. This poster was awarded first prize at the Museum of Modern Art exhibit in New York out of a large number of submitted drawings, and is being used on posters by business firms in advertising, and in numerous other forms to promote the sale of Defense Bonds and Stamps.

Dairymen's Winter Problem

Dairy cows left to shake and shiver in the cold and wet of the open field during winter have little reserve remaining with which to make milk, says E. R. Eudaly, dairyman of the A. and M. College Extension Service. An open faced shed facing south will keep cows dry and warm, and everything which adds to their comfort adds milk to the bucket. National defense, Eudaly adds, justifies every precaution to prevent a drop in milk production this winter.

Dairy cows also need plenty of hay, bundle feed, straw or other dry roughages, and if possible, some silage. The more roughage the cow eats the less grain mixture is required. As a cow on dry feed puts about one-fifth of the water she drinks into the milk product, sufficient for her needs should be provided. It is desirable to warm the water during cold, bad weather.

Cows cannot maintain good production without an adequate supply of vitamin A, which is obtained from green feed, even though the ration is perfectly balanced as to protein, carbohydrates, mineral and water. When getting more than they need, cows can store enough vitamin A to last 60 to 90 days, depending upon the amount of milk they are producing. This is an important reason why they need oats or some other green pasture during the winter.

Eudaly says that farmers who have no hay containing some green, or silage, can supply their cows with enough vitamin A to maintain production by feeding one pound of alfalfa leaf meal daily, four pounds of peageens, alfalfa hay, or any other peageen hay daily, or six pounds of yellow variety sweet potatoes.

As most of the roughage furnished to cows in Texas is low in protein, grain mixtures will have to be high in that element in order to supply the amount needed. Protein is the only element in feed which stimulates milk production. Cows getting sorghum cane hay, Johnson grass hay, grain sorghum, bermuda grass hay, prairie grass or other hays should be fed a grain mixture which will analyze 20 to 22 per cent protein, depending upon the quality of the hay.

Attends Defense Garden Meeting

Details on the new National Defense Garden Program launched last week will be available upon the return from Washington, D. C., of C. Hohn, assistant state agent and project leader in land use planning for the A. and M. College Extension Service. Mr. Hohn attended the defense garden conference called on December 19-20 by Secretary of Agriculture Claude R. Wickard and Director of Defense Health and Welfare Services Paul McNutt.

The meeting was called to make plans for reaching the nation's goal of 5,760,000 farm gardens in 1942, which represents an increase over 1941 of 1,300,000, according to Jennie Camp, Extension Service specialist in home production planning. Increased emphasis will also be given to school and community gardens. Approximately 9,000 school garden projects were operated during 1941 in connection with the community school lunch program, and the Department of Agriculture's garden committee hopes this figure will be multiplied several fold in the spring.

Early descriptions of the new defense garden program point out that there will be no return of the "backyard garden" movement of the last World War. Experts believe that from the standpoint of efficiency and conservation of seed supplies, fertilizer, and spray materials, vegetable production is usually better handled by farmers and suburban gardeners who have adequate space, resources and experience.

Community gardens will be recommended where suitable soil and adequate transportation facilities prevail, Miss Camp says. The 1942 goal calls for better gardens as well as more gardens, and in attaining this objective the county extension agents will help garden growers know what varieties to select, planting times for gardens, and how to fertilize or combat insects.

Within a little more than a year the U. S. will have the largest and most modern tank - ship fleet in the world.

Further information may be had by writing the Extension Service.

Condensed Statement of the Condition of
The First National Bank of Lamesa
LAMESA, TEXAS
As Made to the Comptroller of Currency as of the close of business
December 31, 1941

	RESOURCES		
CASH AND EXCHANGE		\$1,045,804.08	
Loans and Discounts		234,083.58	
Government Cotton Loans		244,318.39	
Bills of Exchange		178,125.51	
U. S. Municipal Bonds and Warrants		127,494.41	
Banking House		15,400.00	
Furniture and Fixtures		2,850.00	
Federal Reserve Bank Stock		3,000.00	
Other Real Estate		1.00	
Other Assets		1.00	
		\$1,851,077.97	
	LIABILITIES		
DEPOSITS		\$1,702,376.09	
Capital Stock		50,000.00	
Surplus		50,000.00	
Undivided Profits		43,101.88	
Dividends Unpaid		5,000.00	
Reserve for Taxes		600.00	
		\$1,851,077.97	

The above statement is correct,
M. E. BOREN, Cashier.
DIRECTORS: E. R. Yates, J. W. Bryant, W. K. Crawley, J. E. Barron, M. E. Boren

—BUY DEFENSE BONDS - STAMPS— —HELP THE RED CROSS— —BUY DEFENSE BONDS - STAMPS—

DAN DAVIS

PIGGLY WIGGLY

SELLING QUALITY GROCERIES CHEAPER!!

JELLO ANY FLAVOR **4 1/2c**
LIMIT 4 PKGS. EACH

FRESH STRAWBERRIES, Pint **17 1/2c**

Radishes, Onions, Turnips, Mustard and Collards!!!

LARD ARMOUR'S STAR **53c**
4 LB. CARTON

HERSHEY SYRUP, Pound Can **10c**

THOMPSON MALT, Pound Can **39c**

POST TOASTIES Reg. Size **7 1/2c**
Box

BREAD, Home Baked, per loaf **7 1/2c**

CHOCOLATES, Pound Cherry Center **19c**

FISH FRESH SHIPMENT OF PERCH,
CATFISH AND OYSTERS!

BRING US YOUR CREAM AND EGGS!!!

WE RESERVE the RIGHT to LIMIT QUANTITIES

—BUY DEFENSE BONDS - STAMPS—

Magic: Five Quarts Equals One



The magic of modern dairy industry makes it possible to shrink five quarts of fluid milk into one quart of dried milk. Add water and the dried milk powder becomes fluid again. Dried milk is in great demand for export to friendly nations abroad. It takes little space in the holds of ships, stays sweet without refrigeration, and can be used as a substitute for fresh milk for children. The U. S. Department of Agriculture has placed dried milk high on the list of "defense foods" whose increased production is sought during 1941 and '42.

We're In It - Let's Win It!

Every citizen in the United States can and should do his part.

Here are some food facts:

The President of the United States says, "There is enough food for all of us and enough left over to send to those who are fighting on the same side with us."

There is no occasion for fear of food shortages or runaway prices, due to the declaration of war with Japan, Germany and Italy.

Adequate supplies of all necessary foods are available to meet normal needs in addition to supplying our Allies.

Consumers buying more than normal requirements create a false demand with temporary dislocations, in supply and price.

We Pledge:

1. To maintain efficient, economical food distribution;
2. To avoid speculation and unjustified price increases;
3. To maintain stocks of dependable quality foods and to advise customers of substitutes should temporary shortages develop;
4. To co-operate with government, producers and consumers.

What you as a consumer can do—

1. Buy the same quantities you usually buy;
2. Disregard rumors, which may be spread by agitators or enemy agents;
3. Reduce waste to a minimum.
4. Co-operate with local Civilian Defense Committees.

Nationwide co-operation in this emergency will speed the day of victory and peace.

Easy Way To Control Ox Warble

An inexpensive method, developed recently, for controlling cattle grubs, also known as ox warble, has proved highly successful, according to Cameron Siddall, entomologist of the A. and M. College Extension Service. The grub is the offspring of the pestiferous heel fly.

The treatment comprises a mixture of rotenone, soap and water. During the time the grubs are present in the backs of the animals it is sprinkled on the affected parts, which is then scrubbed vigorously with a stiff, fiber-bristle brush. Another treatment is dusting on the backs of the infected animals a mixture of equal parts of rotenone and wettable sulphur, which requires no rubbing. Good results are also had by dipping cattle in a mixture of rotenone and wettable sulphur.

Treatments should be started as soon as the first grubs are noticed. Since they migrate from internal areas to the backs of cattle over a period of two to three months, one application is not sufficient to kill

Tips On Buying Good Blankets

Buying blankets isn't as simple as it used to be.

For instance the trend toward higher prices (brought on by the international situation and other factors) is particularly evident in blankets, and in addition, wool is scarce, not plentiful. Since many manufacturers have begun to simplify color patterns and make fewer sizes in order to save labor and material, now the selection offered the consumers is not nearly so varied as it once was.

Mrs. Bernice Claytor, Extension Service specialist in home improvement, offers these buying tips on buying blankets.

Be sure to study the label to see if the blanket is all wool, part wool or all cotton. The more wool there is in a blanket, the warmer the blanket, if the wool is of good quality.

Be sure to hold the blanket up to the light. That will show if the nap is even all over the blanket. There shouldn't be any thin spots. While holding it up, you can check and see if the underlying weave is regular.

The blanket should also be finished at the ends, and the bindings should be sewn on tightly. To be safe, measure the blanket. For a double bed, get a blanket at least 72 x 84 inches to allow length and width for tucking in. For a single or twin bed a blanket 66 x 84 is satisfactory.

Luzon, the most American of the 7,000 Philippine islands, is about as big as Virginia.

La Paz, Bolivia, nearly 12,000 feet above sea level, is the highest capital in the world.

at one time all of the grubs which may be found in an animal.

The adult of this parasite is known as the heel fly. In the spring it deposits eggs on the hairs of the legs and under the body of cattle. After hatching, the grubs burrow into the skin and in the next seven or eight months work their way through muscle layers and localize under the skin at the animals' back. After approximately 5 weeks there they emerge through holes cut in the skin, drop to the ground, and, upon reappearing as flies five to six weeks later, complete their life cycle in about 12 months.

There is no practical way of destroying the adult flies or preventing deposit of eggs by using repellent sprays. But Siddall points out that if the grubs are killed in that stage, development of another generation of adult flies is prevented. In many cases, he adds, the backs of the animals become swollen and sore a few days after the treatment, but the soreness disappears in a week or 10 days and the cattle suffer no permanent ill effect.

Now Is Time To Plant Trees

December and other months thru the dormant season offer the best opportunity for planting forest trees, according to C. W. Simmons, farm forester for the A. and M. College Extension Service. He says sub-marginal lands, cut-over, or burned acres cannot be put to a better use than sound farm forestry.

The 1942 AAA program recognized the value of planting trees and payments are made at the rate of \$4.50 per acre for pines and \$6 per

acre for other trees. About 1,000 pines per acre with a 6 x 8 spacing or 700 trees of other varieties with 8 x 8 spacing are required for compliance. A 65 per cent survival is necessary also. A special forestry allowance of \$15 is available for tree planting in addition to the regular soil building allowance.

Farmers interested in tree planting can consult their county agricultural agents on how to obtain trees from Indian Mound Forestry Nursery operated near Alto by the Texas Forestry Service. Approximately three and one-half million seedlings are available for distribution from the nursery.

Among the varieties available are

slash pine, longleaf pine, loblolly pine, shortleaf pine, black walnut, black locust, red mulberry, Chinese elm, and Russian olive. The last two are suited especially to wind-break and shelter belt planting in West Texas, since they are drought resistant.

The trees are for forestry purposes only, so no trees can be used or resold for ornamental plantings, Simmons says.

What is believed to be the world's largest REA network connects areas in Wisconsin, Minnesota and Iowa. It serves more than 20,000 farms, and eventually is expected to furnish the power to 50,000.

Statement of the Condition of

The Lamesa National Bank

LAMESA, TEXAS

At the Close of Business December 31st, 1941

RESOURCES

Loans and Discounts	\$ 238,829.61
Overdrafts	58.38
Banking House, Furniture and Fixtures	15,000.00
Stock Federal Reserve Bank	2,700.00
Bonds, Warrants and Securities	\$ 94,099.75
Bills of Exchange and C. C. C. Cotton Loans	587,115.90
CASH	748,200.80
TOTAL CASH QUICKLY AVAILABLE	1,429,416.45

\$1,686,004.44

LIABILITIES

Capital Stock	\$ 50,000.00
Surplus and Profits	55,000.00
DEPOSITS	1,581,004.44

\$1,686,004.44

The above statement is correct.

Lanan Bissett, Cashier.

MEMBER OF THE FEDERAL DEPOSIT INSURANCE CORPORATION

NOTICE TO ALL GARAGES AND REPAIRMEN

DUE TO THE NATIONAL EMERGENCY WE ARE DISCONTINUING ALL DISCOUNTS ON OUR ENTIRE STOCK OF PARTS AND ACCESSORIES!

VAUGHN CHEVROLET

Football Players Enlist In U. S. Navy



This was the scene between halves of the Cotton Bowl game New Year's Day, as the Naval oath of enlistment was given 30 athletes, including three players. The three in football uniforms at left of front row, left to right: Martin Ruby, Texas A. & M.; Paul Spencer, Alabama; Sam Porter, Texas A. & M.

District Football Schedule For 1942 Is Announced

District 3AA executive committee men at their mid-winter meeting in Big Spring Saturday, adopted a measure intended to prevent eligibility questions arising during the football season and sanctioned the organization of an official's association from which grid arbiters will be selected to work next fall's games.

Spurred into action to prevent a recurrence of such cases as the November ruling which pitched the Odessa Bronchos out of the district championship running because of the ineligibility of a player, the district dads pledged themselves to do their investigating before the pig-skinners started in battling for keeps.

The group voted to exchange eligibility blanks on all players by June 10. Last year the blanks were exchanged on Sept. 1, giving the school authorities little time to check on their rivals before the start of the season.

A special meeting of the committee will be called at Big Spring on Aug. 29 to discuss the eligibility of any gridlers who might be questioned. If any further investigation is needed at that time, the chieftains are prepared to huddle again before the boys kick off on the conference race.

The schedule for the 1942 district campaign is as follows:

Oct. 2—Lamesa at Odessa; San Angelo at Midland.

Oct. 9—Odessa at Big Spring; Colorado City at San Angelo; Midland at Sweetwater; Lamesa at Abilene.

Oct. 16—Sweetwater at Colorado City; Abilene at Odessa; Big Spring at Lamesa.

SEE US NOW!

A few of those good International Oil Heaters and Hearth-Glo Gas Heaters at Special Prices . . . Good Golden Arrow Kelly Sweeps . . . Purolator and AC Filters . . . Perfect Circle Piston Rings Car Heaters . . . Good Milch Cows . . . "Where Your Money Buys More"

Dyer Hdw. And Auto Supply

Lamesan's Kin Dies At Brady

Mrs. Tom Galloway, a sister of Dixie Kilgore, passed away Saturday at her home in Brady.

Funeral services were held Sunday at Coleman, Texas.

Others attending the funeral from Lamesa besides Mr. and Mrs. Kilgore were Mr. and Mrs. M. Q. Mai in, Mrs. R. E. Simpson and Homer Simpson.

PERSONALS

Mr. and Mrs. G. F. Moreland, Mr. and Mrs. Bill Talbert, Jenkins Moreland and J. D. Campbell spent Sunday in Artesia, New Mexico, visiting with relatives and friends.

Mr. and Mrs. Cecil Hill, of Lubbock, spent Sunday here visiting with friends and relatives.

Mr. and Mrs. Baker and Pat, of Midland, spent Sunday here visiting in the home of Mr. and Mrs. Earnest Gambill.

Mr. and Mrs. C. A. Eiland and daughters, Peggy and Sarah, spent the week-end at Munday visiting with friends and relatives.

Mr. and Mrs. J. H. Pierce and Miss Elizabeth Duff and J. C. Duff spent Sunday in Hobbs, New Mexico, visiting with friends and relatives. J. C. Remained there where he will enroll in school.

Miss Georgia Mae Williams returned to her home in Ozona after spending the holidays here visiting with her parents, Mr. and Mrs. Ray Williams.

Mr. and Mrs. Roy McKinnon and son, of Edenburg, spent the week-end here visiting with friends and relatives.

Oct. 23—Lamesa at San Angelo; Big Spring at Midland; Sweetwater at Abilene.

Oct. 30—Odessa at San Angelo; Colorado City at Big Spring; Midland at Abilene; Sweetwater at Lamesa.

Nov. 11—Sweetwater at Odessa; San Angelo at Big Spring; Midland at Lamesa; Colorado City at Abilene.

Nov. 20—San Angelo at Sweetwater; Abilene at Big Spring; Midland at Colorado City.

Nov. 26—Lamesa at Colorado City; Big Spring at Sweetwater; Abilene at San Angelo; Odessa at Midland. Only the Odessa-Colorado City game has not been definitely set. The two teams will play in Colorado either Sept. 25 or Oct. 23.

Registration-

(Continued from Front Page) the day from J. J. McEntee, director of the Civilian Conservation Corps. He reported that since declaration of a limited emergency in May, 1940, about 100,000 CCC enrollees had left the corps either to join the armed forces or take private jobs. He did not specify the number which had joined the armed forces.

Sheriff Bennett-

(Continued From Front Page) our Government to ration the sale of Automobile, truck and tractor tires, there has been a wave of tire thefts of major proportions sweeping our country. Fortunately, to date, we have had very little tire thefts in proportion to other parts of the country.

We are asking all citizens and tire dealers to band together in an attempt to hold such tire thefts to minimum and with that in view, we are asking all citizens to:

1. Get the name, address and car number of any one not a regular local dealer, who offers for sale any tires, tubes, or wheels.
 2. Write down the serial numbers of all the tires you own personally.
 3. Report to the Sheriff's Department as soon as possible any offers to sell such tires, wheels or tubes.
- If you will assist in this manner, we will make tire thieves wish they had not come here. If you fail to

Maydie Lou Ivey Dies Saturday

Maydie Lou Ivey, year old daughter of Mr. and Mrs. Dan Ivey, passed away at their home Saturday.

Funeral services were held at the Higginbotham Funeral Chapel Sunday afternoon at 3 o'clock, with Rev. E. F. Cole, pastor of the First Baptist Church, officiating.

Survivors include her parents, Mr. and Mrs. Dan Ivey, one brother, Dan Lee, 3, and grandmother, Mrs. Rena Brese.

Allen Blake Is Buried Saturday

Funeral services were held Saturday for Allen Blake, 36, a carpenter, at Shamrock, Texas.

Mr. Blake died here Tuesday morning from injuries received in a gas explosion. Mr. Blake had made his home in Lamesa for several years.

Survivors include his wife, Mrs. Allen Blake; his mother, and five brothers, Robert, Tommy, Floyd, J. W. and Cecil.

so co-operate you may be the next one to lose your tires.

Thanking you for your earnest co-operation in this matter and trusting that you will all assist, I am

Yours very truly,
(signed) A. M. Bennett, Sheriff

—BUY DEFENSE BONDS - STAMPS—
—HELP THE RED CROSS—

JANUARY CLEARANCE SALE!

We have marked down every item in our store for this great January Clearance Event! If you need some item that is not listed in this ad, we ask you to come in and inquire about it, as space will not permit us to list everything that we would like to tell you about.

1/2

PRICE!

ON ALL

Winter Coats and Suits!

ONE RACK DRESSES SPECIALLY PRICED Silk, wool and rayon

—AT—

1.97

- 1/2 PRICE on All WINTER DRESSES . . .
- 1/2 PRICE on All Corduroy Slacks - Jackets
- 1/2 PRICE on All Children's Merchandise .
- 1/2 PRICE on All Winter FELT HATS . . .
- 1/2 PRICE on all Skirts and 1 group Blouses
- 33 1/3 Pct. OFF on one group SWEATERS . .
- 33 1/3 Pct. OFF on ALL ROBES . . .



Prices In Underwear Department Greatly Reduced!

25% OFF IN BABY DEPARTMENT!
25% OFF ON BAGS AND GLOVES!

25% OFF ON COSTUME JEWELRY!
25% OFF ON ALL GIFT ITEMS!

ANKLETS AND KNEE SOCKS GREATLY REDUCED!

NO EXTRA CHARGES FOR ALTERATIONS!

THE VOGUE

Northeast Corner Square

Lamesa, Texas