


Courier Advertisers, are getting more "Paid in Advance" Circulation throughout the Lamesa trade territory for their advertising dollar, than ever before. Complete list of subscribers available at the office, upon request. Ask your customers if they read the Courier.

One battle won does not win a war. We've got tougher times ahead.

Buy More War Bonds

For Freedom's Sake



DAWSON COUNTY COURIER

"WHERE TEXANS ARE TEXANS"

Volume 14

Member of (AP)

Lamesa, Dawson County, Texas, Monday, April 10, 1944

AP News and Pictures

Number 27

Locals Cop Tennis Honors and Win In Mile Run Event

The tennis team of the Lamesa Golden Tornados roared to three tennis championships in the Class AA area meet with the Lubbock Westerners Saturday afternoon, winning girls doubles and singles and boys singles in almost a clean sweep of the meet.

Jerry LeMond and Delbert Cooper, Westerner boys doubles team, salvaged one event from the meet, beating Wayne Roberts and Murphy Horton in the boys doubles 6-2, 6-2, 6-1.

From there on, the story was all Lamesa as Dot Burlison and Joan Phinizy brought Lamesa the girls doubles in a long, hard fought battle with Francys Peters and Jau-nice Bagwell of Lubbock.

The Lamesa girls split the first two sets of the match with close scores, but hit a championship form in the finish to gain the victory. The victory scores were 6-4, 5-7, 6-2.

In the singles, Virginia Broyles and Glen "Bottles" White hanging up wins over Lubbock's Betty Nance and Billy Walker.

Virginia Broyles continued her fine play to romp to the girls singles with 6-1, 6-1, scores over Nance with a show of championship form that the Lubbock girl was never able to match.

The boys singles match was forced to four sets before Walker was beaten out, 6-2, 3-6, 6-1, 6-0. White started off on even terms with Walker and through the first two sets the battle was nip and tuck, but White began to gain the advantage in the last two sets and was never hampered in the strong finish.

In the field and track events of the district meet held at Lubbock Saturday, April 8 in which Lamesa participated, Lubbock took high honors, by battering the old district marks in the two relays, the 440 yard dash and the low hurdles.

Lamesa was the only one entered against the Westerners, and did not have a full list of entries.

Ernest Hawkins, Lamesa miller, came from behind with a great finish to capture the mile run for the only Lamesa first place of the meet. It was one of the most spectacular finishes of the meet and was romped off in 5 minutes 4 seconds.

Lamesa entered the 220 yard dash in which their entry McBrayer took third place. McBrayer also took third place in the 440 yard dash. In the 880 yard run with Billingsley representing the locals, Lamesa took fourth place.

Senator Truman Visited Here Fri.

Senator Harry S. Truman, of Missouri, stopped in this city for an hour Friday, April 7, en route to Lubbock, where he was the chief speaker at the Democratic rally held there Saturday.

He was accompanied by Senator G. H. Nelson and Arch Underwood of Lubbock.

An informal reception was held at Carl Rountree's office here for the visitors. Approximately 20 men gathered at that office at 6:30 p. m. to visit and talk with the guests.

Miss Tommy Belt and Mrs. L. J. Belt of Lubbock spent the week end here visiting with relatives.

Hancock Nursing Class Organized On Wed. Morning

Mrs. David T. Carter, Jr., Red Cross Home Nursing Instructor, organized a class at Hancock Wednesday morning, April 5.

The following group of women enrolled in the Hancock class: Mesdames J. H. Adkins, Earl Houston, T. H. Boyd, W. W. Weaver, L. E. Corbin, Jewel Hughes, Bob Butchee, Buster Davis, A. E. Hale, Oscar McLendon, E. M. Adair, S. B. Hodge, Ben Dopson, Hollies Kinnison, O. E. Boatright, Bural Cox, George Filpot, and Lee Hancock. Also Misses Vida Adkins, Mervine Thurman, Doris Fillpot, Maxine Hamilton, Pat Bridges, Mona Rogers, Mary Lynn Bell, and Joyce Fillpot.

The regular Red Cross Home Nursing classes at Hancock will meet each Wednesday from 9:30 until 11:30 a. m., at the school.

\$21,761.75 Bonds Sold In County Up To March 31

Dawson County War Bond chairman, Carl Rountree, received a communication from State Headquarters, War Finance Committee of Texas, stating that Series E, F, and G War Savings Bond sales for this county as reported by the Federal Reserve Bank of Dallas, as Fiscal Agents of the U. S. Treasury, amounted to \$21,761.75 for the monthly period ending March 31.

The communication stated further that the April quota for Dawson County amounted to \$52,800.00.

New Ruling Set On Tire Inspection

Compulsory periodic inspections of tires on passenger cars will be discontinued after April 20, J. Doyle Settle, District Rationing Executive, has announced. Motorists must continue to have inspected any tire they wish to replace.

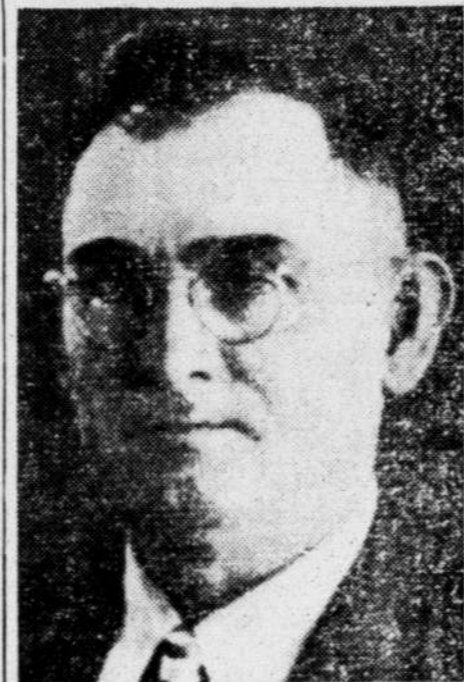
Inspection of truck tires will continue as before.

It is important that motorists retain their tire inspection records because OPA will continue the use of them in issuing gasoline rations, Settle stated.

Discontinuance of these inspections does not mean that the tire picture has become any brighter. It simply means that the inspection program has fulfilled its primary objective—to make motorists conscious of the extreme need for tire conservation and care, the official said.

Settle also pointed out that a shortage of civilian passenger tires still exists and production this year will run below civilian needs. According to latest estimates of the Office of Rubber Director, 22 million tires will be produced for civilians this year as compared with more than 34 million new replacement tires produced in 1941.

J. M. Peterson, A Pioneer Farmer, Sets Fine Record



J. M. Peterson, pioneer farmer of this county, set an enviable record during the past month by producing and selling a particularly large amount of products from his 960 acre farm.

During the month of March, Peterson produced 50,007 pounds of milk, sold 360 dozen eggs, and sold 200 pounds of pork. He keeps on his farm 150 head of dairy cows and calves and 700 laying hens.

Mr. Peterson, who came to this county in 1907, practices a balanced farm program. On his farm which is located 6 miles southeast of town, he raises 135 acres of wheat, 265 acres of cotton, peanuts, and the remainder in sudan and grain sorghums.

He states, "Up to this time I have had no labor problems, and hope that I won't."

New Registrants Are Listed Here By Local Board

A list of the new draft registrants, compiled by the local Selective Service Board and released March 30 follows. This group includes men who have reached the age to enter the armed forces.

The men and their corresponding order numbers are: Carl Gerald Brown, 11580; Oman Earl Barrett, 11581; L. J. Wilcox, 11582; Edwin Lamar Rinewalt, 11583; Curtis Blake Baker, 11584; Melvin C. Burdine, 11585; Louis N. Urdailez, 11586; Ellis Dwayne Swafford, 11587; Coleman G. Eudy, 11588; Harold Emory Thomason, 11589; Wilson McPearson Houston, 11590.

Pfc. Marvin Calhoun Arrives Overseas

Mrs. F. E. Towns, has received a letter from her son, Pfc. Marvin Russell (Rusty) Calhoun, stating that he has arrived overseas safely. He is now stationed in England, and writes that he is doing fine.

Pfc. Calhoun, a member of the air corp, was stationed at Lubbock for 15 months before he was assigned overseas duty.

He is a graduate of the Lamesa High School, where he played football in 1940 and 1941.

How To Fill Out Forms Of Estimated Tax Declaration

26 Men Receive 1-A Classification Thursday, April 4

The local Selective Service Board met Thursday, April 6, and made a large number of re-classifications:

Men designated 1-A include Lowry Loveless, Charles Bryan, John Shofner, Horace Teague, James Lindy, Eugene Watson, Cecil Jones, Elmer Levocoy, Lloyd Fincher, Leone Westfall, William Stanley, William Osborne, J. B. Johnson, Leroy Gilmore, Carr Spraberry, Sam Christopher, Leonard Moore, Irmel Wallace, Joseph Adkins, William Gentry, Milton Buchanan, Henry Mayfield, Cecil Teal, J. I. Fowler, Lawrence Robinson, and Vernie Weir.

Both Horace Pate and Tom Stringer are 1-C inducted, which means that they are already in the armed forces.

These were classified 2-A, Herman Stanley, William Collier, Loyd Gordon, D. W. Gregston, Ralph Ran-son, Therman Crouch and Albert Williams.

Hudson Ellison, Jack Hughes, Fred Damron, Albert Watson, James Blessing, are now 2-B.

Walter Schutza and Raymond Esparaza are 2-C; John Jones is 4-D; Johnnie Head and Juan Carrisales are 4-F. Bentura Jo Josa is 1-A-H.

Pvt. C. Barkhurst Spoke At Lions; R. Young Gave Solos

Richard Young, local band director, and wife entertained at the Lions Club Thursday, April 6, with several musical numbers. Director Young played three cornet solos, accompanied at the piano by his wife.

Pvt. Clayton Barkhurst, a member of the marine Corps, who is visiting with his parents here after 18 months overseas, related some of his experiences in Tarawa. Pvt. Barkhurst was in the first raid on Tarawa.

Guest for the meeting was A. C. Kincaid, manager of the Bryant-Link Store at Snyder.

County Gets New Lumber Quota

Officials at the local AAA office, report that Dawson County has received its AA-2 soft wood lumber quota for the second quarter of this year.

The quota amounts to 150,000 board feet of AA-2 soft wood lumber. Issuing of the lumber began Saturday, April 8.

The lumber is for producers of Dawson County for essential agricultural construction, farm maintenance and repair. It can be used for most any purpose except for farm dwellings.

Miss Mary Ellen Tarter of Tech, Lubbock spent the week end here visiting with her parents, Mr. and Mrs. John Tarter.

Certain taxpayers are required by law to make a declaration of estimated income and victory taxes for 1944. Persons who are not outside of the continental United States on April 15, 1944 must file their declarations on or before that date, except certain farmers may elect to wait until December 15, before they file. The taxpayers who file are those that are not kept up to date on their income tax payments by withholding from wages.

They owe additional tax either (a) because their wages are not subject to withholding or are high enough so that they are subject to tax rates that are higher than the withholding tax, or (b) because they have other income—such as rents, dividends, interest, or profits from property or stock transactions—from which no tax is withheld. After the close of the year, an annual income and victory tax return shows the actual figures of income, deductions, tax liability, and payments for the year.

The form on which the declaration of estimated tax for 1944 is to be made, Form 1040-ES, is a short slip 3 3/4x8 inches, and is the only form that needs to be filed by the taxpayer. Copies of the form have been mailed to all persons who filed declarations for 1943, together with two alternative work sheets furnished for their convenience. Other persons may obtain forms from any Collector of Internal Revenue upon request. The taxpayer needs to use only one of these work sheets, whichever may be the one best suited to his circumstances, and should retain it for his personal record.

Filling out the work sheet is a process similar to the making of a regular return, except that it deals with estimates instead of actual figures. There is first estimated the total of all income which may be received in 1944 based on past experience in regard to salary, interest, dividends, rentals, sales, etc. and future probabilities.

The approximate amount of tax due on that income is then determined. In a short-form work sheet it is necessary only to enter the amount of estimated total income from all sources, including the NET profits from farming and other business, deduct an allowance for the personal exemption status, and insert the appropriate amount of income tax as shown in the table on the back of the form. This form has no entries for deduction of expenses, since the income taxes (normal tax and surtax) indicated in the table were computed after making allowance for average deductions, such as interest, taxes and contributions, approximating 8 per cent of the net income after deduction for personal exemption. In order to give effect to these deductions without actually showing them in the form, the amounts used for personal exemption and credit for dependents are increased, so that they are larger than the figures used for the making of estimates. In determining the victory tax, there is deducted from the total income a specific exemption, and a tax of 3 per cent of the balance is computed and entered in the proper space. The total of the income tax plus the victory tax is then entered in line 1 on the face of the declaration.

An alternative form of work (Continued on Back Page)

TOWN AND FARM IN WARTIME

FOOD RATIONING NEWS

From now on all food stamps will be good indefinitely, unless advance notice of expiration is given, the Office of Price Administration has announced. Housewives may budget their food purchases on the basis of three Red 10-point stamps every second Sunday and five Blue 10-point stamps the first of every month. To release cold storage space for other food, all frozen fruits and vegetables will not be rationed through April 29. Lard will remain unrationed, ready-to-eat hams will be one point lower, "dry-cured" hams are to be only one point above fresh hams, and other meat point values will remain almost unchanged. Food expected to be in good supply over most of the country during the next three months are potatoes, cabbage, spinach, lettuce and other leafy greens, carrots, beets, citrus fruits, canned green and wax beans, tomatoes and other fresh vegetables, frozen vegetables, shell eggs, fluid milk, bread, flour, noodles and spaghetti. The War Food Administration says each civilian will have on the average 132 pounds of meat in 1944, or one pound more than he had on the average during the decade, 1931-1940.

DRAFT RECLASSIFICATIONS

In an effort to assure a continuing supply of young men for the armed services without inducting those who are indispensable in war activities, the national selective service system has ordered preinduction physical examinations for all class II-A and II-B occupationally deferred registrants under 26 who have not been physically examined. Local boards have been ordered to review cases of registrants under 26 in classes III-A, II-A, II-B, II-C, and III-C before reconsidering registrants 26 through 37 years of age. Registrants under 26 in III-A, II-A, II-B and III-C are to be reviewed, and if such action is warranted are to be reclassified regardless of existing deferment termination dates. Registrants under 26 found unfit for military service or fit for limited military service only, may be reclassified into II-A or II-B provided they are contributing to war production or war supporting activities.

MORE NEWS ABOUT TIRES

More tires will be rationed for small trucks and farm tractors and implements in April than in March, but substantially fewer in April, last year, OPA says. April quotas of new and used passenger tires are the same as for March, and the new

passenger tube quota is 7.2 per cent over March. Meanwhile the War Food Administration urges farmers to withhold appeals for conversion of tractors from steel wheels to rubber tires except in cases of extreme hardship, and suggests that many old tractor tires can be reconditioned. Standard sizes of civilian highway truck tires will now have 35 per cent less crude rubber and more synthetic, according to the Office of the Rubber Director, which says that the synthetic program can fulfill our military requirements for tires.

PLANS FOR FARM TRANSPORTATION

Plans for getting farm products to market and supplies to farms by motor truck include use of one farmer's truck to do what several farmers' trucks did, the Office of Defense Transportation says. Wasteful practices ODT frowns upon include—transporting farm products beyond nearest practicable market; operating empty vehicles when a full or partial load is available; operating with less than a full load where a regular collection service is available; operating in scheduled service over highways likely to cause undue wear; use of a heavy or large vehicle when a lighter one is available and suitable; and hauling persons when other transportation is available. ODT and WFA officials are now explaining the ODT program in a series of regional meetings.

YOU MAY AMEND TAX DECLARATION

While declarations of estimated 1944 income tax and first quarterly payments are due by April 15, amended declarations and payments may be made on or before the fifteenth day of the last month of any succeeding quarter—June 15, September 15 and December 15, the Bureau of Internal Revenue explains. When an amended declaration is made, any increase or decrease in estimated tax should be spread evenly over the remaining instalments. Penalties are provided for failure to file a required declaration in time, failure to pay any instalment of estimated tax on time, and substantial underestimation of tax.

NEW JUVENILE MANUAL PUBLISHED

A new manual, "Techniques of Law Enforcement in the Treatment of Juveniles and the Prevention of Juvenile Delinquence," has been published by the Federal Se-

Regular Nip Keeps Tiny Baby Healthy

BATON ROUGE, La. (AP) — Baby Betty Sue Beeson, believed to be Baton Rouge's smallest baby and certainly its tiniest "imbiber," hasn't been much affected by the national liquor shortage.

Betty Sue weighed two pounds and three ounces at birth. For a month she had alternate feedings of milk and whisky-and-water—and, according to hospital nurses, liked the latter better. Now she weighs nearly four pounds.

The daughter of Mr. and Mrs. Luther W. Beeson is still in the hospital's oxyginaire, but is expected to be taken home when she reaches six pounds, probably early this year.

Blood Donating Tables Turned

NAMPA, Idaho (AP) — Tables were turned recently and, instead of a civilian donating blood to the armed forces, a member of the armed forces donated blood to a civilian, thereby saving a life. In answer to a newspaper-radio plea for blood of the rare type AB, Private Lucille Mosgar, 24, WAC aerial photographer stationed at Hill Field, took time off from

her duties and gave a transfusion, credited with saving the life of Mrs. Tod Streshly, Nampa, Idaho, housewife.

Violinist Gives An English Lesson

COLUMBIA, S. C. (AP) — "Mr. Menuhin," an admirer told the great violinist, Yehudi Menuhin,

at a reception here, "your concert was one of the few times in my life when I have seen absolute perfection."

Mass production of automobiles in the United States began in 1900.

"Madame," the artist replied, "I would rather you said that you had heard perfection."

LAWN MOWERS
SHARPENED and ADJUSTED

\$1.50

VIGORO
FERTILIZER
For Grass . . . Shrubs
Flowers and Garden

ALLEN HARDWARE

GIVE THEM A GOOD START WITH TEXO STARTER

The market is temporarily glutted with eggs. This is caused only by lack of storage space. Eggs will again be high priced and that very soon. Feed your flock well now and they will amply repay during the balance of the year.

GET THEM STARTED WITH TEXO AND KEEP THEM LAYING WITH TEXO

ITS TIME FOR FIELD SEED

We have a good stock of the following:—

Certified Arizona Hegari
Certified Dunns Plainsman
Certified Dunns Martin
State Tagged African Millet
Certified Kaffir
State Tagged Native Plainsman
State Tagged Native Red Top Cane
Certified Northern Star Cottonseed
Certified Dunns Western Prolific Cottonseed
Native Ballew Milo
State Tagged Native Kaffir

We pay CASH for eggs . . . Highest prices paid

Feed the famous TEXO line—A complete stock on hand

DARRELL-HESSLER

LIVESTOCK SUPPLY CO.

TELEPHONE 358

801 SOUTH DALLAS STREET

LAMESA, TEXAS

BUY NOW WHILE WE HAVE SOME OF THE "HARD TO GET" ITEMS AS

BATTERIES

for any make car or tractor



OIL AND GREASE IN DIFFERENT SIZE CONTAINERS.

Grease Guns

Belts of all Kinds and

Belt Dressing

ENGINE AIR Pumps

Cream Separators

BUSTER POINTS . . . KNIVES AND SWEEPS

Front Tires, Tubes for Tractors on Hand

EARNEST & NIX IMPLEMENT COMPANY

Texas Receiving More Farm Tractors Than Other States But Need Exceeds Supply; Check Up Urged By Farmers

WASHINGTON, D. C. — Correspondence from Texas farmers arriving in offices of Texas Congressmen in Washington indicates a growing concern over the farm machinery situation. There is also the feeling that Texas has not been allotted its fair share of present farm machinery production, particularly farm tractors.

Rep. George Mahon has appealed to the War Food Administration officials for a more liberal allocation of farm tractors, and for an explanation of the whole farm machinery outlook — admittedly a very serious problem, and closely linked to the war effort.

For the ten-months period ending July 1, 1944, Texas is scheduled to receive 10,894 new farm tractors, out of the national farm tractor production for the period estimated at 156,000. New farm tractors produced for the 1944 crop year, and scheduled for delivery prior to July 1st, are estimated to exceed by four times the production for a similar period last crop season. But the supply of new tractors will be far from adequate.

Farm tractor manufacturers have authority to deliver into states of their own selection 80 per cent of their production, the WFA having authority to distribute the remain-

ing 20 per cent. The WFA has allocated about one-half of the 20 per cent reserve, Texas having received only 558 tractors from this reserve, a smaller proportion than many of the other farm states. WFA in refusing to allocate additional tractors to Texas from the reserve claims that a greater need exists elsewhere, which Texas producers and officials deny.

It is pointed out that Texas is, however, receiving more new tractors for the present crop year than any other state. The nearest approach to the Texas allotment of 10,894 is the Iowa allotment of 8,857. These figures include allotments from the reserve.

Farm tractors are now being produced at the rate of 20,000 per month. Production is being retarded not by a shortage of steel, the steel supply being adequate, but by a shortage of component parts, such as bearings and engines, which are in great demand in the construction of landing craft and invasion equipment. The same difficulty is also hampering the production of other farm machinery.

Of interest to West Texas is the fact that this crop year Texas is expected to get 2200 new combines as compared to about 1100 new combines delivered in Texas last

Chicks Raised Early Are Best

Early hatched chicks are the most profitable says Ted Martin, poultryman for the Texas A. and M. College Extension Service, in discussing some problems of replacements in the poultry flock.

Early chicks grow faster and have lower mortality due to less disease, especially coccidiosis. Comparably, late hatched generations usually cost slightly less, brooding expense is smaller and pullets are less likely to molt in the fall. But the earlier born have the further advantages of producing higher priced eggs in the late summer, fall and winter, and lower laying house mortality. Moreover, the cockerels among the early birds are in line for the spring market when prices for fryers are highest.

Urging poultrymen to use the best management practices this year, Martin suggests that chicks should

year.

Farm machinery production is subject to unanticipated setbacks and various uncertainties but WFA officials express the hope that many items will be delivered on schedule. As one War Production Board official put it, the only certainty about the program for the new farm machinery is that there is not going to be enough of it.

No One Out of Step

FORT OGLETHORPE, Ga. (AP) — WACs learn quickly
The first time they marched in a Saturday parade and only 10 days after they had been activated as a company, the 144 members of Company 1, 21st Regiment at the Third Training Cen-

come only from pullorum tested stock. They should be obtained from a recognized breeding farm or hatchery which uses eggs from supervised flocks whose parent stock was bred for livability, high production and hatchability, large egg size and uniform standard quality.

Good management begins even before the chicks arrive by having brooder house and equipment ready for their reception. And sanitation should be practiced systematically thereafter. The house should be cleaned as often as needed, depending upon the weather, the number of chicks and the type of litter. Good results have been obtained at the Texas A. and M. College poultry farm by cleaning daily under the hover or where the chickens roost, and removing all of the litter from the house twice weekly. Ground where chicks are to run should be clean.

Equally important is an abundance of fresh air without drafts in the brooder house. Chicks require uniform heat, but a hot brooder house is not conducive to proper growth.

ter here won the blue ribbon for excellence.

WE HAVE IT

- Saddle Cinches
- Riding Bridles
- Harness Snaps
- Harness Rings
- Collar Pads
- Hame Strings
- Horse Halters
- Rope
- Tie Out Chains
- Cow Hobbles
- Bull Rings
- Cattle Leaders
- Hog Rings
- Hog Wire
- Electric Fencers
- Wheel Barrows
- WIRE CLOTHES LINES

Dyer Hardware & Auto Supply

"where your money buys more"

USE OUR POPULAR LA-MESA BRAND FEEDS

Prices per 100 Lb. F.O.B. Our Dock

EGG MASH	\$3.45
EGG MASH PELLETS	\$3.75
CHICK STARTER	\$3.95
GROW MASH	\$3.65
18% DAIRY FEED	\$3.00
LIVESTOCK MINERAL	\$3.60
32% EGG MASH SUPPLEMENT	\$4.45
32% PIG-N-HOG SUPPLEMENT	\$4.10

Our Feeds will give you good feeding results.

WHY PAY MORE?

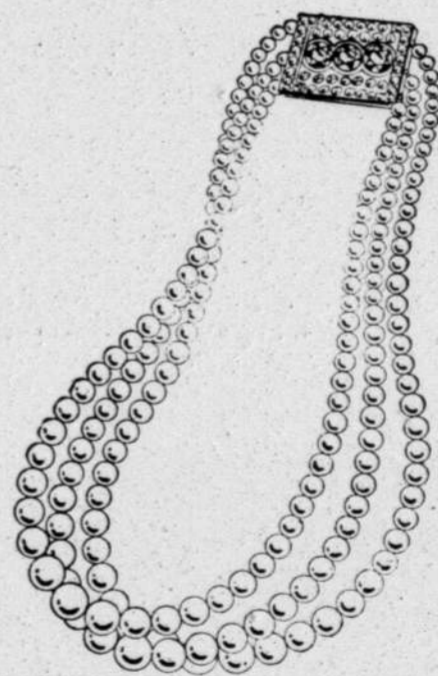
You can buy our feed from the following LAMESA DEALERS:—

- FARMERS FEED STORE
(First Door North Richardson Store)
- BECKHAM BROS.
- ROBERTS GROCERY
- AND AT OUR MILL
- HENNINGSEN**

LAMESA INC.
FEED DIVISION
PHONE 622-J



Jewelry



Spring

TONICS

FOR THAT TIRED FEELING



BRING YOUR PRESCRIPTIONS TO US
—: RELIABLE PHARMACISTS :—

Dal Paso Drug
TELEPHONE 363

Locals Score 106 In The Literary Events At Meet

Lamesa High School yielded to Lubbock High in their first meeting of The University Interscholastic League under the new Conference Plan last Saturday by a score of 183 to 151.

The Literary event score was Lubbock 132 to Lamesa's 106 with track and field and tennis making up the additional scores.

Lubbock will take contestants in boys and girls debate to the regional meet along with contestants in Ready Writers, boys declamation, boys extemporaneous speech, typing and shorthand, slide rule and track and field and boys doubles in tennis.

Lamesa will represent this conference in three declamation contests, junior boys, junior and senior girls, One Act Play, and will have contestants in typing and shorthand in combination with Lubbock delegates. Girls Extemporaneous Speech will be contested by Betty Stephens of Lamesa. Yvonne Middleton of the Lamesa school will enter typing and shorthand with Betty Hill and probably Patsy Rountree entering the shorthand event.

Fred Flaniken Has Graduated As 2nd Lt.

Word has been received that Fred M. Flaniken, son of Mr. and Mrs. J. R. Flaniken, who reside at 212 Taft Street, has won his silver bombardier wings, and has been commissioned second lieutenant.

Lt. Flaniken who graduated at the Childress Bombardier School, attended Texas A. & M. College. He is a graduate of Lamesa High School.

CENTRAL H. D. CLUB TO MEET APRIL 14

The Central Home Demonstration Club will meet with Mrs. Claud Gowen, April 14, at 2:30 p. m. Mrs. Myrtle Negy will give a demonstration on "Finishing Floors and Woodworks."

Sgt. and Mrs. Raymond Bryant of Del Rio spent the week end here visiting with relatives and friends.

NEWS FROM County Agents

LEE R. POOL

County Agricultural Agent MYRTLE DICKIE NEGY

County Home Demonstration Agent

The newest bulletin on our desks is a description of and plan for building an electric lamp heated hot bed. The advantages of the electrically heated hot bed are listed as: (1) Higher percentage of seed germination, (2) automatic temperature control at any desired temperature, (3) better quality of plants because of uniform temperature, (4) rate of growth can be controlled, (5) requires less labor, (6) beds may be used more than once each season and (7) hot beds may be converted into cold frames with a simple turn of the switch.

An earlier garden can be secured by starting such vegetables as cabbage, tomatoes, cauliflower and peppers in a place protected from cold and later transferring the plants to the open garden. A hot bed provided with some form of supplementary heat is ordinarily used for this purpose. One of the most commonly used heats for farm hot beds is green manure. Plans for this type of hot bed are also on our bulletin board.

This electric hot bed sounds interesting. The bulletin has been prepared by J. F. Rosborough, Horticulturist, Extension Service and P. T. Montford, Research Associate, Agricultural Engineer Department, Texas A. and M. College.

Introducing their subject the authors say, "Electricity has been used successfully for many years as a source of heat in hot beds and cutting benches. The most common method of applying electrical heat in the past has been with specially designed cables buried a few inches beneath the surface of the soil in the bed. Due to war time restriction on critical materials, the soil heating cable is not now generally available. Tests conducted in Texas and in several other states have demonstrated that ordinary electric light globes suspended in the air above the hot bed soil provide a satisfactory source of heat."

Cost of building a bed 3x6 feet covered with paraffined cloth or cellophane is estimated at \$10.50

(this includes heating unit and thermostat) and the cost of operating is said to vary, depending upon temperature maintained in the bed, outside temperature conditions and length of growing period. A bed 3x6 feet was operated during January and February of this year at A. and M. College for 4 cents per day.

There will probably be a limited supply of these bulletins but any person wishing to build a hot bed to be heated with electric bulbs can get the directions from this office.

Misses Ann and Bettye Hurt of Tech, Lubbock spent the week end here visiting with their parents, Mr. and Mrs. Swanson Hurt.

Committee Lists Machinery Left

According to information received Saturday from Dawson County Farm Machinery Rationing Committee; this county has the following machinery remaining in their 1944 quota: five tractors, two mowers, one combine, eleven row binders, five grain drills, and four side delivery rakes.

Officials state that the remaining tractors were allotted to persons in this area Saturday, April 8 at a meeting of the Farm Machinery Rationing Committee.

LET'S ALL BACK THE ATTACK!

County Agent Goes To District Meeting

Lee R. Pool, county agent, attended a district meeting of the county agents of district two Saturday, April 8, at Lubbock.

The meeting was presided over by K. J. Edwards, district agent, and E. C. Martin, acting vice-director of Extension Service, A. and M. College.

The importance of a wide-spread Victory Garden program was emphasized.

Miss Sally Branon a student at T. S. C. T., Denton, spent the Easter Holidays here visiting with her parents, Mr. and Mrs. Clyde Branon.

Look Through These Want Ads for Hard to Get Items as Radios, Pre-War Ranges, Heaters, Couches, Chairs —See Them at

JOBE & EARNEST FURNITURE

FOR SALE Used Studio Couch and Chair, in light tapestry, with pre-war springs.

FOR SALE Walnut Drum Table. Good condition.

FOR SALE Walnut Cocktail Table. Good condition.

FOR SALE Two Occasional Chairs with springs. These Chairs are in extra good condition.

FOR SALE Four Drawer Chest. Walnut finish. A real buy.

FOR SALE Used Heater, extra good condition. No certificate required

FOR SALE Late Model Philco Radio. Electric console model. Like new.

FOR SALE Five Burner Oil Stove. Built in oven.

FOR SALE Four piece Bedroom Suite. Extremely modern. Extra large 52 inch mirror. Light finish.

FOR SALE Five piece Dinette Suite in Bird's Eye Maple. A real bargain.

FOR SALE Bridge Table, good as new.

FOR SALE All Metal Coolerator. Late model.

FOR SALE Used Bath Heater. No certificate required.

FOR SALE Four piece used Maple Bedroom Suit. A real buy.

FOR SALE 350 light blue Wool Blankets from Lamesa Flying School. A real buy in blankets \$5.00 each.

FOR SALE Pillows. Several different types.

FOR SALE Used Office Desks and Chairs from Lamesa Flying School.

FOR SALE Used pre war Range. White table top with lid, heat control, pilot lights, insulated oven, etc.

FOR SALE Mattresses, baby, half-size, full size—Sealy, Simmons, Englander, etc.

FOR SALE Platform Rockers with springs. A real buy at \$21.95

FOR SALE Window Shades with Rollers. You can get brackets with these shades.

FOR SALE New Baby Beds in Walnut or Maple finish at \$9.95

FOR SALE New Hot Water Heaters.

GET THE HABIT COME TO RANDALS FIRST

50 and 100 Foot Steel Tapes
Carpenter Clamps—Tractor Filler Cans
Flash Light Batteries

Cream Cans	Oak Water Kegs
Milk Strainers	Boomers
Brooders	Tackle Blocks
12 Ft. Tree Pruners	Baby Buggies
Bit Braces	Congoleum Rugs
Hammers	Fence Chargers
Drill Bits	Fly Sprayers
Bench Grinders	Miter Boxes
Lamp Cord	Drawing Knives

Plumbing Fixtures
Rubber Heels and Soles 20c pair

COME IN AND SEE US WE MIGHT HAVE IT.

RANDALS

HARDWARE COMPANY

SEEDS

We have nearly a complete assortment of Field and Bulk Garden Seeds:

CERTIFIED SEEDS—

ARIZONA HEGARI
TEXAS HEGARI
BLACK HULL KAFIR
PLAINSMAN & MARTIN'S MILO
BEAVER MILO (a new milo for West Texas, looks exactly like 'goose neck' but does not crook and is a combine milo.
WESTERN PROLIFIC COTTONSEED
ALSO NEW STRAIN WESTERN PROLIFIC
SHARP'S CERTIFIED HALF-AND-HALF COTTONSEED. One year from Certified, Recleaned, tagged and State Tested
TEXAS HEGARI
BLACK HULL KAFIR
PLAINSMAN MILO
MARTIN'S MILO
TEXAS RED MILO

ALSO—

AFRICAN MILLET
RED TOP CANE
SEEDED RIBBON CANE
SUDAN SEED
SURE CROPPER CORN
BALLEW MILO

GARDEN SEEDS—

Beets, Pepper, Tomato, Cucumber, Lettuce, Kentucky Wonder Beans, Stringless Green Pod, Golden Wax Beans, Radishes, English Peas, Carrots, Spinach, Sweet Corn, Swiss Chard, Pumpkin, Squash, Mustard, Parsley, Kale, Cabbage, Egg Plant, Castor Beans, Okra, Cantaloupe, and the following Watermelon Seeds: Florida Giant, Halbert Honey, Georgia Sweet, Cletex, Irish Grey, Kleckley's Sweet, Stone Mountain, Georgia Rattlesnake and Yellow Meat Golden Honey.

BECKHAM BROS.

SEED & GRAIN COMPANY

South Fifth and Dallas Streets Phone 10-J
24-31 c

ORDER OF EASTERN STAR TO OBSERVED FRIENDSHIP NIGHT

There will be a stated meeting of Lamesa Chapter No. 363, Order Eastern Star, on Thursday, April 13, at 8 p. m., in the Masonic Hall.

The annual Friendship Night will be observed with several neighboring chapters being represented. A number of Grand Officers will also attend.

Mrs. Flora Leuenberger will be chairman of the refreshment committee. All members are urged to be present and all visitors are welcome.

PERSONALS

Mr. and Mrs. Owen Taylor and children spent the week end at Roswell, New Mexico, visiting with A-C Owen Taylor, Jr.

Jimmie Earl Temple of Tech, Lubbock, spent the week end here visiting with her father, T. E. Temple.

Miss Jimmie Jean Baldwin of Tech, Lubbock, spent the week end here visiting with her parents, and other relatives.

Miss Earnestine Gambill of Tech, Lubbock, spent the Easter Holidays here visiting with her parents, Mr. and Mrs. Earnest Gambill.

Mrs. Dick Cozby and Miss Iva Lea McKay of Lubbock, spent the Easter Holidays here visiting with Mrs. W. O. McKay and Mrs. Gene Barrett.
LET'S ALL BACK THE ATTACK!

The Moscow declaration does not cover the misdeeds of the Japanese, but the U. S. is on record with a promise that they will be taken care of too. Last April the State Department told Japan in a note transmitted through the Swiss government that the execution of some of the American flyers, who were forced down after the bombing of Tokyo was an act of "criminal barbarity." The note warned that this country "will visit upon the officers of the Japanese government responsibility for such uncivilized and inhuman acts the punishment they deserve.

Neither the Moscow declaration nor the American note to Japan are part of international law, which is made up of formal agreements signed by all or most of the civilized nations of the earth. However, they set precedents which fill a big gap in international law, and it is precedent — bolstered by practical application — that eventually makes a large body of our laws, both national and international.

Mr. and Mrs. Quntion Collins and Mrs. J. F. Aycock spent the week end at Merkel visiting with relatives.

Ensign and Mrs. Harold Williams who have been stationed in New Jersey for the past several months visited here several days this week with his parents, Mr. and Mrs. Ray Williams. Ensign and Mrs. Williams were enroute to San Diego, California.

Sgt. Skeet Noret of Lubbock spent the week end here visiting with his parents, Mr. and Mrs. Ed Noret.

Miss Doris Ragsdale of Tech, Lubbock spent the week end here visiting with her parents, Mr. and Mrs. Gus Ragsdale.

Miss Billie Grace Webb of Tech, Lubbock, spent the Easter Holidays here visiting with her parents, Mr. and Mrs. W. T. Webb.

Miss Helen Ruth Cope of Midland spent the week end here visiting with her parents, Mr. and Mrs. Nelson Cope.

Mrs. Cecil Stuart returned this past week from Altus, Oklahoma, where she has spent the past several months.

Mrs. Ed Tinsley is employed at Dr. J. M. Harrington's office. She is replacing Mrs. Wright Boyd, who has been working there for several weeks, and who is going to Del Rio where her husband is stationed.

Mr. and Mrs. C. W. Tarter and children of Sweetwater are visiting his parents, Mr. and Mrs. C. E. Tarter of this city.

In some places of the desert of Atacama of north Chile no rain is ever known to have fallen.

LET'S ALL BACK THE ATTACK!

WHY NOT BUY THE BEST?

Swift's Premium Quality Chicks

Most of our flocks are headed by R.O.P. Sires with egg records up to 340 eggs. It costs no more to feed a good layer than a poor one.

WE ALSO HAVE

Swifts High Quality Feeds

20% Protein Laying Mash	\$3.75
Chick Mash	\$3.85
35% Protein Hog Supplement	\$4.15

Bring us your Poultry, Cream and Eggs
We pay highest market price at all times

Swift Service Satisfies

SWIFT & CO.

213 NORTH MAIN LAMESA, TEXAS
Second Door South Hatch Grocery

Crimes (War) and Punishment

By HERMAN R. ALLEN

WASHINGTON — A new principle of international law — punishment of war criminals — is in the making. The hanging of four men by the Russians is the first practical recognition of the principle, decided upon at the U. S.-British-Russian conference at Moscow.

A "Statement on Atrocities" issued by the Moscow conferees said that after Germany surrenders: "German officers and men and members of the Nazi party who have been responsible for or have taken a consenting part in . . . atrocities, massacres and executions will be sent back to the countries in which their abominable deeds were done in order that they may be judged and punished according to the laws of these liberated countries."

The "abominable deeds" referred to are, of course, acts in defiance of the international laws of war as set down in the Hague conventions, the Geneva convention and so on. Executions of proven spies and of civilians who have actually engaged in practices themselves forbidden by the laws of war would not be included. But the execution of masses of hostages for the act of one man, the slaughter of innocent women and children, the wiping out of the Czech village of Lidice — all these certainly would be included, and with a vengeance.

Actually the new principle was first hit upon after World War I, but the Allies failed to follow through on it and it never really became established.

The "amnesty clause" customary in peace treaties before 1918 was dropped from the Treaty of Versailles. Instead of forgiving those responsible for atrocities, Article 228 of the treaty provided: "The German government recognizes the right of the Allied and Associated Powers to bring persons accused of having committed acts in violation of the laws and customs of war."

More than 800 German culprits were listed for trial, including Crown Prince Frederick Wilhelm and other of the Kaiser's sons, Generals von

Hindenberg and Ludenoff and former Chancellor von Bethmann-Hollweg. But the Germans persuaded the Allies to let them try the 800 themselves. The Allies reserved the right to pass on the decisions.

Many of the accused had fled to Switzerland, but 46 were finally ordered brought to trial in Leipzig. Of these, five were convicted. Two received the maximum of four years in prison but escaped in six months, probably helped by their guards.

It's this sort of business that the Allies are determined to get around this time.

AT THE THEATRE

PLAYING DATES

TUES.
April 11

WED.
April 12

THURS.
April 13

PALACE THEATRE

America's Top Radio
Comedienne!
JOAN DAVIS

—in—
"BEAUTIFUL BUT BROKE"

A Frisky, Funny Riot of
Entertainment!
—with—
JANE FRAZEE
JOHN HUBBARD

"LOST ANGEL"
—with—
MARGARET O'BRIEN
JAMES CRAIG
MARSHA HUNT
PHILIP MERIVALE

MAJESTIC THEATRE

Six Months without Dames
. . . and 2 Days to Catch Up!

MARTHA O'DRISCOLL
NOAH BEERY JR.

—in—
"WEEK
END
PASS"

—with—
LEO DIAMOND and his
HARMONAIRES
MAYRIS CHANEY DANCERS
DELTA RHYTHM BOYS

BELA LUGOSI
—in—
"VOODOO MAN"
—with—
JOHN CARRADINE
GEORGE ZUCCO

TOWER THEATRE

A Beautiful Girl!
A Dangerous Mission!
ROBERT DONAT

—in—
"THE
ADVENTURES
OF TARTU"

—with—
VALERIE HOBSON
WALTER RILLA
GLYNIS JOHNS

THE DAWSON COUNTY COURIER

ASSOCIATED PRESS NEWS AND PICTURES

The Associated Press is exclusively entitled to use for publication of all news dispatches credit to it, or not otherwise credited in this newspaper, and also the local news published herein.

JOE ALEXANDER Owner and Publisher

Entered at the Post Office at Lamesa, Texas, as second class mail, under the Act of 1879

Any erroneous reflection upon the character of any person or firm appearing in these columns will be gladly and promptly corrected upon being brought to the attention of the management.

Subscription Price

In Dawson and Adjoining Counties, per year \$3.00
Outside of Trade Territory, per year \$4.00

--Classified--

BROWN'S STEAM LAUNDRY

PHONE 369-J
PICKUP AND DELIVERY
1/2 BLOCK NORTH OF POST OFFICE

For Sale or Trade

FOR SALE: 50 White Leghorn and 100 Ancona Hens. Have been culled. \$1.00 each. TOM TAYLOR, 3 miles west Lamesa High School. 27-28 pd

FOR SALE: One Allis-Chalmers, two row tractor, 1938 model. J. J. HANDLEY, JR. Fairview Community. 27-28 pd

FOR SALE: One good as new Perfection Kerosene Water Heater, 15 gallon capacity. J. FRED DAHNKE, Ackerly. 27-28 c

FOR SALE: Recleaned Plainsman Malze, \$3.00 hundred. E. B. HONEYCUTT, 4 miles north Lamesa, Rt. D. 27-34 pd

FOR SALE: Good milk cow. R. W. KELLEY at Kelley. Implement Co. 27-28 c

FOR SALE: Kerosene Refrigerator, 4 fresh Jerseys. C. P. AMOS, Grandview School. 27-28 pd

FOR SALE: 3-4 bed with springs and mattress. O. M. MURPHY, Rt. A. 27-30 c

FOR SALE: Kerosene Hot Water Heater. LAMESA APPLIANCE. 27-30 pd

FOR SALE: 18 foot trailer house. Good condition. J. L. SCHOOLER, 10 miles south, 8 east, Rt. B, Lamesa. 27-28 pd

FOR SALE: Light Trailer. See at HIGGNBOTHAM-BARTLETT 27-28 c

FOR SALE OR TRADE: 1937 Ford Truck, fair tires. Located at O. C. RICHARDSON SERVICE STATION, Clyde Check. 26-29 pd

FOR SALE: 5 burner oil cook stove, good condition, cabinet model. CHESTER HORN, 912 South 5th Street, Lamesa. 26-27 pd

FOR SALE: Five rooms good furniture, including Electrolux, gas range, inner spring mattress. Can be seen at 1013 NORTH FIFTH, after 5 p. m. 26-27 pd

FOR SALE: Fry's Supreme blood tested Chicks, now \$9.95 per hundred. Immediate delivery most breeds. HEATH BROILER PLANT 26 tfc

FOR SALE: About 200 White Leghorn Hens. MRS. ROY MYERS, Rt. A. 26-27 pd

NOTICE OF SALE OF WOODEN GRAIN BINS — Bids will be received until 2:00 p. m., on April 17, 1944 at the office of Lynn County A.C.A. Bin size 14x16x10. Bid forms list of bins and instructions can be obtained at the Dawson County A.C.A. office. Only farmers eligible for bins. 26-29 c

FOR SALE: 1937 Ford Tudor, good shape, new rubber. JACK MEADOWS, Blue Bonnett Cafe. 26-27 pd

FOR SALE: First year Half and Half Cottonseed, \$1.50 bushel. MORRIS MARTIN, 2 miles southeast Munger. 23-30 pd

FOR SALE: Milk goat, cheap. MRS. I. R. KIRKSEY, 908 North 2nd. 26-27 pd

FOR SALE: 3 good Jersey milk cows with white face calves, two miles north Lamesa on Glover place. JIM THOMAS. 26-27 pd

FOR SALE: 60 ten weeks old White Leghorn and Hi-Bred Pullets. 505 SOUTH MAIN. 26-29 pd

FOR SALE: 20 registered Hereford Yearlings, a good chance to start a good herd. C. W. SHAFER, Midway Community, Rt. B. 25-28 pd

FOR SALE: New small Howard Piano and other household goods. CORNER NORTH FIFTH AND LYNN. 26-27 pd

FOR SALE: Palomino Stallion \$250, 4 years old. Write JOHN DAVIS, Rt. 1, Seagraves. 26-29 pd

FOR SALE: 1936 Master Chevrolet Sedan, good motor, 4 new tires. Call 579 or 1109 SOUTH FIRST STREET. 26-27 c

FOR SALE: 1941 Chevrolet Coupe, excellent condition, practically new rubber, well equipped. JACK MEADOWS, Blue Bonnett Cafe. 26-27 pd

FOR SALE: One 8 foot Moline Combine. See T. J. HOLLOWAY, Tarzen, Texas. 26-27 pd

FOR SALE: White Overalls in most sizes. A. G. WAUGH CO., "The House of a Million Auto Parts." 212 South Dallas. 86 tfc

FOR SALE: Small Brooder House. Inquire at TEXAS SHINE PARLOR. 27 tfc

PROPER MIXING
Helps You Get Best Results from Your Grain Ration
See Us for Grinding and Mixing

FIRESTONE FEED & POULTRY

Blackeye Pea Seed FOR SALE

\$5.50 per 100 lbs. CALIFORNIA TYPE
Get your requirements early as we are selling large quantities to other counties.

O. H. MORRIS 22 tfc

QUALITY TIRE SHOP

Vulcanizing—Re-Capping Grade 3 Tires, Truck and Tractor Tubes
We repair tires, tubes, rubber boots, hot water bottles, overshoes etc.

H. M. ANTHONY ON HIGHWAY Across From Cope Oil Co.



Call whenever convenient You are always welcome. Large stock to select from.

SOUTH PLAINS MONUMENT COMPANY
2909 Ave. H. Lubbock Our 28th Year.

Dr. G. D. Stallworth

GRADUATE VETERINARIAN A. & M. COLLEGE OF TEXAS
General Farm & Ranch Practice Available Day and Night
Residence Phone 34M 307 North Miller St. OFFICE AT HOME 4 tfc

AWNINGS AND TARPAULINS

Made and Repaired All Kinds BINDER CANVAS REPAIRING
A. E. QUEST & SONS
2219 Ave. H. Res. Phone 2-3864 Lubbock, Texas

WE HAVE RADIATOR CORES FOR TRACTORS AND CARS.

Lamesa Tin & Radiator Shop
Phone 64
If It's Made of Sheet metal We Make It or Repair It

SHORTHAND in 6 Weeks at Home

Famous Speedwriting system, no signs or symbols. Easy to learn and use. Fast preparation for a job. Surprisingly low cost. 10,000 taught by mail. Used in leading offices and Civil Service. Write for free booklet.
Speedwriting
BENSON SCHOOL OF COMMERCE CLOVIS, NEW MEXICO

LAYING HENS FOR SALE: Few fine Rhode Island Reds. Reasonable. PHONE 540. 26-27 pd

FOR SALE: 320 acres 6 miles southwest Welch, 239 in cultivation. Fair improvements, good water, \$12.50 per acre. ALLEN GILLET. 25-28 pd

FOR SALE OR TRADE: Two building lots. C. K. LAND, 1006 South Fourth Street. 26-27 pd

FOR SALE: Good fresh cat fish, trout and buffalo, daily. W. H. BRIGHAM, east of Oil Mill. 23-23 pd

FOR EARLY CHICKS come to DAVIS & WHEAT SANITARY HATCHERY. Chicks now available 6 tfc

FOR SALE: Clean, regular Farmall Tractor, good equipment, good tires. Priced \$600. E. J. EMFINGER, 4 miles south on Stanton Road and 3 miles west. 25-28 pd

FOR SALE: Medium size McCormick-Deering Feed Mill, used one season. J. E. AIRHART, 1-2 mile west Sparenberg. 25-23 pd

FOR SALE: Registered Hereford Bulls. JOHN C. BARRON. 16 tfc

FOR SALE: 1939 Tudor Ford, 5 good tires, good condition, \$700.00. W. E. BEAM, Patricia. 24-27 pd

FOR SALE: 1936 4 door V-8, four extra good tires, complete new overhaul. JACK BARROW or JIMMIE COTTEN. 24-27 pd

FOR SALE: Good 5 room house on North Fourth Street. Inquire at MILLER TIRE COMPANY, or phone 354-W. 18 tfc

FOR SALE: Few good milk cows and springer heifers. JOE SNELL-GROVE, 15 miles up Lubbock highway and 1-2 mile west. 24-27 pd

FOR SALE: Plenty of Wamo Hog Supplement and Certified Hybrid Seed Corn. RED CHAIN FEED STORE. 26 tfc

FOR SALE: Several A. R. Wood Butane Brooders. HEFFERNAN GAS EQUIPMENT CO. 26-27 c

FOR SALE: Good smooth mouth work mule. BILL DRENNAN, 2 1-2 miles north Woody. 19 tfc

FOR SALE: Good improved farms and ranches from \$8.50 to \$30.00 per acre. Write me for new printed list. I have one ten section ranch entirely too cheap. I am located thirty miles northwest of Morton, Texas at Causey, New Mexico. JOHN KILLION, the land man. 23-28 c

FOR SALE: Milking Shorthorn Durham Bulls. DELL BARRON, Rt. 2. 13 tfc

FOR WALLPAPER and paints see EILAND - BURNETT LUMBER CO. 97 tfc

FOR SALE: 2 room house on pavement. Oscar MCKENNEY, 1404 South First. 21 tfc

JUST RECEIVED: Large shipment of all kinds of wall paper. EILAND - BURNETT LUMBER CO. 97 tfc

PLENTY of lumber. See RANDALS LUMBER CO. 20 tfc

FOR SALE: 400 bushels of No. 14 D and P. L. Cottonseed, \$2.00 bushel. 24 bales all ginned together, first year from certified seed. J. L. KIDD, Jr., 3 miles north, 1-2 west of Ackerly. 18 tfc

FOR SALE: Several good Jersey milk cows and springer heifers. W. M. YATES at M. C. Lindsey's office. 11 tfc

COTTONSEED: Have a few tons of Western Prolific Cottonseed for sale, first year from Certified seed. O. H. MORRIS. 14 tfc

FOR SALE: 160 acre farm, 10 miles north Lamesa. 400 acre farm, 6 miles north Welch. V. O. KEY. 1 tfc

FOR SALE: Combine belts for all makes of Combines. EARNEST & NIX IMPLEMENT CO. 66 tfc

GRAIN BAGS: All kinds of burlap bags for sale. East of railroad at Mule Pen. J. C. BILLINGSLEY AND SON. 85 tfc

REAL ESTATE

For Farms and Ranches see me.
W. L. HOLT
Grocery and Station
302 North Fourth
Phone 419-M



FRY'S SUPREME QUALITY CHICKS

This year it's more important than ever to get the BEST CHICKS POSSIBLE. Fry's are super culled for high egg production and fast growth.

PLACE YOUR ORDER NOW

HEATH Broiler Plant

WANTED Market and Groceryman

Ideal Working Conditions. No Sunday work. EXPERIENCE very helpful, would consider man with limited experience if you want to learn the Mercantile business. Apply—

Richardsons Store

22 tfc

6% LOANS

O. J. RESIDENCES—COMMERCIAL BUILDINGS

(New Construction or Direct Loans)

LIBERAL APPRAISALS And Quick Settlements
AUTOMOBILE LOANS —and—
INSURANCE

M. Q. MARTIN

INSURANCE AGENCY
PHONE 108-M LAMESA

LIVESTOCK Owners

FREE REMOVAL OF DEAD ANIMALS —CALL—

McGUIRE'S Service Station

PHONE 500 COLLECT
LAMESA, TEXAS
OPEN ALL NITE

FOR MAGNETO...

Starter... Generator... Motor
Tune-up—Carburetor or Fuel Pump
Repairs See Us.

DELCO BATTERIES—
AUTO-LITE BATTERIES



Walker Battery & Electric
Factory Trained Men
213 NORTH FIRST PHONE 228



FOR RENT

FOR RENT: 2 room furnished apartment with bath. 302 NORTH WASSON. 27-28 pd

FOR RENT: 2 room furnished apartment for adults only. Close in. 306 North Main. 27-28 c

FOR RENT: Bedroom and furnished apartments. MAGEE APARTMENTS. 411 North Main. 27-28 pd

FOR RENT: Bedrooms. Close in, men only. 212 NORTH TRAVIS. Call after 6 p. m. 27-28 pd

FOR RENT: Bedroom, nicely furnished. 702 Wasson. MRS. J. S. STIEFEL. 27-28 pd

FOR RENT: Nice furnished apartment. Bills paid. 905 NORTH FIRST. 26-27 pd

FOR RENT: 6 room farm house, 6 miles northeast Lamesa, W. J. BECKHAM. Phone 10-J. 26-27 c

FOR RENT: Furnished bed rooms MRS. LELA HOUSER, 409 North Main Street. 78 tfc

CUSTOM GRINDING: We have installed electric mills and can do custom grinding and mixing at any time—Why pay more? FIRESTONE FEED & POULTRY. 4 tfc

WANTED

FARM HAND WANTED: Write W. O. REEVES, Rt. C. 27-30 pd

WANTED: Paper hanger to paper 2 rooms. 404 Wasson. MRS. ELLA WADE. 27-28 pd

HELP WANTED: Cook at PLAZA HOTEL. Experience not necessary, but helpful. 27 tfc

WANTED: Man, experience not necessary. LAMESA TIN AND RADIATOR SHOP. 26 tfc

WANT TO RENT: 4 or 6 room house. Grocery business, will be permanent. 612 SOUTH SIXTH. 26-29 pd

HELP WANTED: Middle age lady to keep my 2 children at my home while I work. Call 579 or 1109 SOUTH FIRST STREET. 26-27 c

WANTED: Man to do janitor work. Call at 910 NORTH FIRST or Phone 516-J. 26-27 c

WANT TO RENT: 4, 5 or 6 room unfurnished house. Permanent resident. Call SANTA FE RAILROAD CO. 25-28 pd

WANTED: White housekeeper. Apply after 5:30 p. m. at 205 NORTH BRYAN. 25 tfc

WANTED: Paper hanger to paper 4 rooms and paint woodwork. MRS. F. L. McCASLAND, Rt. C, McCarty. 24-27 pd

WANTED TO BUY: Medium size coaster wagon in good condition. Write WALTER LENTZ, Sparenberg. 24-27 pd

WANTED: To borrow desk and filing cabinet for down town Red Cross Office. See DUD ARNETT. 95 tfc

WANTED

Poultry and Eggs
 No. 1 Fryers, 2 to 3 lbs. . . . 28c
 No. 1 Broilers, 1½ to 2 lbs 24c
 No. 1 Light Hens 19c
 No. 1 Heavy Hens 21c
 No. 1 Old Cocks 12c

HEATH Broiler Plant

NOTICE: Ladies are you doing your part for the war effort. Henningsen Lamesa, Inc., needs more than 100 additional ladies to work in the egg cracking department. If interested apply at the office of HENNINGSEN LAMESA, INC. 14 tfc

LET'S ALL BACK THE ATTACK!

BOOKS —AT— TOWNSENDS Where Fine Books Are Available

PLENTY OF HOG
Supplement
—SEE—
Lee Billingsley

For A Complete Beauty
Service Visit—
HOTEL BEAUTY SHOP
"Hair Styling That Pleases"

For Used Cars
IN FIRST CLASS CONDI-
TION . . . Or any kind of
mechanical work. COME
TO—
**PAT'S
Repair Shop**
Across Street From Earnest
& Nix Implement

WE BUY
All kinds of Used
Furniture. See us
before you sell.
**Jobe & Earnest
Furniture Co.**

WANTED!
—YOUR—
Cream, Eggs and Poultry
"Premiums On Fryers"
For Better Prices See—
**FIELD
Poultry & Egg**
Located in Old Triple A Building
Across from Methodist Church

TOP PRICES PAID
FOR HOGS
EVERY FRIDAY AND
SATURDAY
• • • • •
Lee Billingsley
Come in by Saturday Noon
Phone 238 Lamesa, Texas

LOANS
O. H. Morris
ON YOUR HOME OR
BUSINESS BUILDINGS
AT 6%.
We charge no brokerage or
commission. Liberal options for
prepayment.

WHEN IN NEED OF—
Chicken Feed . . . Stock Feed
OR ANYTHING IN THE FEED LINE
We Appreciate Your Business
BRING US YOUR POULTRY AND EGGS
FARMERS FEED STORE
G. H. CALLAWAY 3 doors north of First National Bank 24 tfc

POLITICAL Announcements

The following are candidates for office, subject to the action of the Democratic Primary on July 22nd, 1944:

FOR CONGRESS:
George Mahon, re-election
C. L. Harris

Representative 119th District
Geo. W. Neill, of Brownfield

COUNTY JUDGE:
Kilmer B. Corbin, re-election
second term

COUNTY CLERK:
Howard Humphrey

TAX ASSESSOR-COLLECTOR:
R. W. (Buster) Herndon

SHERIFF, DAWSON COUNTY:
A. M. (Buck) Bennett

COUNTY SUPERINTENDENT:
P. K. Humes, unexpired term

COUNTY TREASURER:
Mrs. Roxie Gaines,
re-election, second term

PUBLIC WEIGHER, PRECINCT 1:
Mrs. G. W. Wyatt

DISTRICT ATTORNEY
Karl Cayton

DISTRICT CLERK:
W. W. Petteway, (re-election)

**JUSTICE OF THE PEACE,
PRECINCT 1:**
D. M. Campbell, re-election.

COMMISSIONER PRECINCT 1:
J. A. (Alvin) Hogg
Re-election, second term

COMMISSIONER PRECINCT 2:
G. C. Aten, second term
R. L. (Bob) Butchee, re-election
second term

COMMISSIONER PRECINCT 3:
J. F. O'Brien (re-election)
Hazel Hancock
Frank Lane

COMMISSIONER PRECINCT 4:
J. E. Debnam, re-election
W. W. Beeman

Lost and Found

LOST: Ration Books 3 and 4. NORMAN M. MONTGOMERY. Return to Courier. 27-30 pd

NOTICE: I still have enough material to build 4 cabinets. E. B. HONEYCUTT, Rt. D, 4 miles north Lamesa. 27-28 pd

LEFT IN MY SHOP last week new car tags. Owner may have same by paying for ad. MARIE HOOVER. 26-27 c

LOST: 200 foot surveyors steel tape. Reward for return to COURIER OFFICE. Lost southwest of Lamesa. 26-27 pd

Miscellaneous

ATTENTION FARMERS: It will pay you to see JOHN A. KING at Kimbell Milling Company plant if you have any kind of grain or maize heads for sale. JOHN. A. King. 25-32 c

INVESTIGATE THE VALUE OF HIGGINBOTHAM SECURITY BURIAL INSURANCE, Phone 223, 403 North Austin Street. 25 tfc

FOR MACHINE made Buttonholes call 417-M. MRS. GRADY SCOTT 307 South Dallas. 17-25 c

LET'S ALL BACK THE ATTACK!

PERMANENT WAVE, 59c! Do your own Permanent with Charm-Kurl Kit. Complete equipment, including 40 curlers and shampoo. Easy to do, absolutely harmless. Praised by thousands including Pay McKenzie, glamorous movie star. Money refunded if not satisfied. BRYANT PHARMACY. 27-29-31-33-35-37-39-41-43-45 pd

Twice as much steel has been allotted to production of small tools in 1944 as in 1943.

LOANS
City, Farms and Ranches
V. O. KEY
406 N. 1st :-: PHONE 115

WHEN IT'S AN Exide YOU START

UNITED SERVICE MOTORS

Battery, Generator and Starter—
—:SPECIALIST:—
WHITLOW BATTERY AND ELECTRIC
FIRST DOOR NORTH OF CITY HALL

**LAMESA STEAM
LAUNDRY**
Phone 141
"A Service For Every Need"

NOTICE — CUSTOM GRINDING

We have recently installed a grist mill to make meal out of corn. E. A. Twedt and experienced grist mill operator will be in charge. We will grind on Friday and Saturday each week. Give us a trial. Located at—

Lee Billingsley Hog Pen
29 tfc

**COMMERCIAL
AND
TRUCK TIRES
AND TUBES
FRONT TRACTOR
TIRES
PASSENGER
TIRES
4 AND 6-PLY
ALSO TUBES**

**B. E. NEEDLES
AND SON**
1502 Avenue H Lubbock, Texas

Farmers Urged To Buy Calcium Arsenate Now

When the boll weevil or the cotton leaf worm moves in on the cotton field, will you have the calcium arsenate to kill off the pest? Or will you have to stand by and watch your crop destroyed?

There's plenty of calcium arsenate this year, but it will not help the farmers as long as it is in a warehouse hundreds of miles away. With transportation tight and labor short, the cotton crop may be gone before a supply of dust can be moved into an infested area from a distance.

All over the cotton country, distributors and dealers are filling up their warehouses with calcium arsenate. But those warehouses cannot begin to hold enough to quell a serious infestation in any given area. In peacetime, the supplies held by dealers and distributors will usually hold the line against weevil or worm attack until more ammunition can be moved in, but wartime is different.

No cotton grower can be certain of getting the calcium arsenate he needs, when he needs it, unless he lays in a supply on his own place now.

Many of the big cotton growers have already bought their supplies. The small grower cannot afford to take chances any more than the big grower can. War Food Administration officials point out that those who do take the chance on calcium arsenate are "flirting with lightning." They may lose a crop, and the nation may lose important war materials—lint and seed.

Cotton growers can buy enough calcium arsenate for the first three applications without fear of depriving their neighbors. In fact, they will help their neighbors by preventing a last minute rush. In this respect, they are more fortunate than most other farmers who use insecticides. The supplies of most other insecticides will be adequate but not large enough to permit growers to stock up in advance to meet their requirements.

Mr. and Mrs. B. K. Gambill and daughter, Rosemary of San Angelo spent Monday here visiting with Mr. and Mrs. Earnest Gambill.

How To File—

(Continued From Page One) sheet is intended for taxpayers whose probable income is over \$10,000 and for those with smaller incomes who expect to have usually large deductions or who otherwise desire to make a more detailed computation of their tax. This work sheet permits an estimate of each separate item of the income and allowable deductions, with an exact computation of the tax upon the resulting estimated net income, after allowance for personal exemptions and credit for dependents. In general, the items on this work sheet relative to income, deductions and tax are the same as on the final return which is usually filed after the close of the year. A table is included showing the combined normal tax and surtax rates applicable to the various income brackets. The total of the income tax (normal tax and surtax) plus the victory tax is then entered in line 1 on the face of the declaration.

The law also permits taxpayers to estimate the tax by computing it on last year's income at this year's rates and exemptions, provided the payments are made on time. Amended declarations may be filed on or before any installment date up to December 15.

Having entered the estimated total tax on line 1 of the declaration, there is now deducted from this figure the amount of tax which may reasonably be expected to be paid at the source during 1944 by withholding from wages (for instance, multiply the amount withheld each payday by the number of paydays during the year.)

The balance is the amount, referred to in the law as the "estimated tax for the taxable year," which is payable directly to the Collector of Internal Revenue in quarterly installments. When an amended declaration is filed, there may also be deducted the payments previously made on the estimated tax. If a taxpayer had an overpayment for 1943 he may have elected to apply it as a credit against the 1944 estimated tax, in which case it will be treated as a payment on the first installment of the estimated tax, and if the credit is larger than that installment, the remaining credit may be applied against the next installment, and so on.

Farmers, 80 per cent of whose gross income is derived from farm-

3 Local Students Presented Rotary Program Friday

Declaimers of Lamesa High School presented the program at the regular meeting of the Rotary Club, Friday, April 7.

Students who presented their declamations were Ann McGuire, Jimmy Little, and Kent Williams.

Guests at the meeting were Marine Privates Clayton Barkhurst and Jackie Vaughn, who have returned from duty in the Pacific area. Pvt. Barkhurst told of his experiences on Tarawa.

McCarty Club To Meet On Tuesday

Women of the McCarty Community will meet at the home of Mrs. L. F. Kennedy Tuesday, April 11, at 2:30 p. m., for a kraut making demonstration, which will be given by Mrs. Mrytle Negy, county home demonstration agent.

This group was not an organized club last fall when these demonstrations were being given over the county.

Mrs. J. N. Ranson, secretary of the club, says that women in Lamesa and other communities who have missed seeing the demonstration are cordially invited to attend.

Miss Mary Francis Barnard of Tech, Lubbock, spent the week end here visiting with her parents, Mr. and Mrs. A. G. Barnard.

LET'S ALL BACK THE ATTACK!

ing, may elect to wait until December 15 to file a declaration for 1944. They will pay their entire estimated tax in a lump-sum at that time, without the privilege of installments.

Roof Fire Did Little Damage Saturday

The local fire department answered a call Saturday morning, April 8, at the Rock Station. The wiring in the roof of the ceiling caught fire at that place.

According to Luther Standefer, fire truck driver, there was more water damage than fire damage.

LET'S ALL BACK THE ATTACK!

O. C. Lawler, C.M. 3-C Is At North Carolina

Orval C. Lawler C.M. 3-C, whose wife Alice resides at 1302 South First, is now at Wilmington, North Carolina, where he is receiving further training before being assigned to his ship.

He has been in the Navy since January 4 of this year, and has received training at Tiburon and San Diego, California.

NOTICE

TO THE EGG PRODUCERS OF THIS TRADE TERRITORY

We have lined up with the government egg buying program and are paying—

TOP PRICES FOR GRADE 1 EGGS

SWIFT & COMPANY

213 North Main

Phone 470-J

Our Clothes Stylist

W. P. Russell

from

The Storrs-Schaefer Co.

CUSTOM TAILORS
Cincinnati

will be here

Fri., April 14

Check this date on your desk calendar



Then come in and inspect the new Spring and Summer 1944 fabrics.

HURT'S

Penney's
J. C. PENNEY CO., INC.



ONE LOT LADIES HATS

Reduced To
Clear

AFTER EASTER CLEAR-AWAY

ALL OF OUR BETTER COATS and SUITS

Reduced To Clear

15.00 each

Fine Quality 100% Wool Shetland type weaves, and Flannels in pastel colors.

ONE LOT COATS and SUITS

Re-priced To

13.00

This season's styles and fabrics, lots of service and satisfaction in these garments.

