

WEATHER			
	Bar.	rain	temp.
Nov. 11	30.27	.56	2 62 43
Nov. 12	30.06	t	4 72 58
Nov. 13	30.10	.24	2 75 62
Nov. 14	30.09	.07	2 78 65
Nov. 15	30.00	0	6 80 71
Nov. 16	30.05	0	1 74 63
Nov. 17	30.06	1.53	4

The Rockport Pilot

THE ONLY NEWSPAPER PUBLISHED IN ARANSAS COUNTY

Vol. No. 91

ROCKPORT, ARANSAS COUNTY, TEXAS, THURS DAY, NOV. 17, 1960

No. 33

Along The Waterfront



A guest using the Forest Park Cottage pier, caught a 70 pound drum there this week.

Four couples from Clinton, Okla., the Blunks, Bruces, Gaugers and Hoffmans, all brought in nice catches of fish today.

Jerry Hodges of Sastland hit the jackpot, he brought in ten reds, weighing from four to eight pounds.

Homer Vickery of Arkansas City, Kans., brought in 20 nice trout this morning.

Caspary - Wendell Say Motel Would Have Large Payroll

Caspary and Wendell, queried about the size of the payroll if their expected motel is built, said that it would probably run close to \$100,000 a year for permanent employees alone.

However, they stressed the fact that this estimate was probably low, and that only the chain that will run the place if it is built can furnish an accurate estimate of the payroll and the money that will be spent locally for various services.

Delo Caspary did point out, however, that the improvement on the seven acres which the firm wishes to lease would bring in about \$7800 in city, county, and school taxes annually, if the motel is built.

"A motel of the kind we are trying to build would bring in \$4,000 a year to the Navigation District in rent; around \$3,000 a year to the city in taxes; \$2,500 in taxes to the school district and about \$2,300 in county taxes, for a total of close to \$1,000 a month. "And this is new money; it will come from pockets of the guests at the motel, and give the area's economy a boost."

"Besides taxes," he continued, "there is roughly \$100,000 in payroll and a considerable amount for services and supplies, and an intangible benefits in a number of other ways."

"The city will sell water, its most profitable source of revenue besides taxes; it will collect intangible taxes in the way of sewage and garbage charges; and the whole area will receive a lot of advertising because the motel will be chain operated."

"Every bit of publicity the chain puts out will rebound to the benefit of Rockport, Fulton and Lamar. Add to this the fact that most of the permanent employees will probably come from this area, and that all of them will live here, and that their income will be spent here."

"This is money that will come from out-of-town, brought here by guests, many of whom would not come unless reached by advertising such as the chains do. This money will be a boost to Aransas County."

ROCKPORT FUN TRIP SCHEDULED FRIDAY

A Corpus Christi YMCA fun trip is scheduled Friday, Nov. 25. The group will leave from the YMCA by chartered bus at 8:30 a.m. for Rockport to visit the Marine Laboratory.

Highlights of the trip will include visits of the world's largest shrimp fleet in Aransas Pass and of the Aransas Federal Wildlife Refuge at Austwell.

ARANSAS DRAWS PHILLIPS TEST

Phillips Petroleum Co. No. 77 Copano Bay State, proposed 7,100-foot Aransas County West Fulton Beach (A-5 and B) Field test seven miles northwest of Rockport, is 600 feet from the north line and 1,000 feet from the west line of State Submerged Tract 45.

Located on a 6,073-acre lease, the project is 982 feet west of the No. 26 but will be completed in a different reservoir. There are 66 wells on the lease.

Nat'l Commander Of VFW Expected Here November 23

Ted Connell, Commander-in-chief of the Veterans of Foreign Wars of the United States, will be guest of honor here at ceremonies during the afternoon of Nov. 23, and featured speaker at a dinner sponsored by the local post that night.

According to Chester Johnson, commander of Stewart-Wendell Post 3904 of Rockport, Connell will arrive shortly after lunch and take part in a parade which will form at the Marine Laboratory, ending its line of march at the VFW Hall on Market Street.

Expected for the parade, Rockport's first in some 30 years, according to Johnson, are the CNAVANTRA Band from the Naval Air Station, the Shrine Motorcycle Patrol, a Marine Color Guard, and a girl's drill team from Corpus Christi, as well as hundreds of veterans and their wives from the surrounding area.

Following the parade there will be a reception at the VFW Hall, at which Johnson says he expects Congressman John Young, Victor Aflerbach, Departmental Commander, VFW of the U.S., B. L. Dorris, senior departmental service officer, VFW; Carter Youns, Jr., Vice Commander, Department of Texas, VFW; and officers and members of VFW units within this district as well as from other parts of South Texas.

There will be a social hour at Big Tree Lodge from 6:30 to 7:30 p.m., and this will be followed by a dinner, at which Connell will be the featured speaker.

Union Services To Be Held By Local Churches

A Union Thanksgiving Services will be held by Rockport and Fulton churches on Nov. 23, at 7:30 p.m., in the new First Baptist Church.

Song leader and in charge of special music will be Rev. George Merriman, of the Fulton Baptist Church.

Worship leader and host will be Rev. C. Wilson Brumley, pastor of the First Baptist; Rev. Cecil Lang, pastor of the First Presbyterian, will be the speaker for the occasion. Assisting with the program will be Rev. A. L. Bankert, pastor of the First Methodist Church, and Mr. Harry Carter, lay minister of St. Peter's Church.

The service is held at the First Baptist Church again this year in order that the community might worship in the new sanctuary, and rejoice with the congregation in their beautiful new church.

P-TA Holds Monthly Meeting

The November meeting of the Rockport Parent-Teacher Association was held Nov. 16, at 3:45 in the Elementary School auditorium.

Mrs. C. E. Nickerson, president, called the meeting to order. Rev. C. H. Lang Jr., gave the opening prayer. Mrs. Jack Sparks gave the treasury report.

The sixth grade students sang Thanksgiving songs under the direction of Marian Venable, music director. They sang an encore of "Battle Hymn of the Republic."

Mrs. Cecil Lang gave a report on the Halloween Carnival, which showed a profit.

Mrs. C. E. Nickerson called upon Mrs. S. F. Jackson to say a few words about the P-TA yearbook. Mrs. Jackson spoke of the years of loyalty so generously given by Mr. and Mrs. Fred Diederich to the Parent-Teacher Association. This yearbook is gratefully dedicated to Mr. and Mrs. Fred Diederich, who have been a mainstay of this Parent-Teacher Association, having given unselfishly of themselves over the years for the betterment of students and schools in Aransas County. This dedication came as a complete surprise to the Diederichs. Mrs. Diederich was presented with a yearbook and a mum corsage. Her daughter, Mrs. Charles Garrett, pinned the corsage on Mrs. Diederich.

An announcement was made for used clothing. Anyone having clothes for the school children, please take it to the school office.

Mrs. A. B. Chernosky, program chairman, introduced Rev. Lang, who spoke on "Family Life Together." Rev. Lang said our family life is the same strong core it has always been and is based upon a strong bond of love.

Room count was won by Mrs. Eller, first grade.



CHRISTMAS SEALS, THE GOVERNOR AND MARY ANNE—Christmas Seals have a special meaning to Mary Anne Copeland, 5, of Austin this year since Christmas Seals provide funds to fight tuberculosis—and tuberculosis is the special enemy which took her father away from her last Christmas. She and her father, E. B. Copeland, (left), visited Governor Dan Claitor upon the occasion of his proclaiming the period November 14 to December 24 as "Christmas Seal Days in Texas". Mr. Copeland was a truck driver for the city of Austin before he became ill with tuberculosis. Released from a TB hospital in January, he is presently restrained by medical advice from working for more than two hours each day. He is very grateful, however, that he will be able to spend this Christmas with Mary Anne, her mother and two brothers. Governor Dan Claitor recently appointed a statewide committee on tuberculosis to coordinate activities of all organizations concerned with the disease. Said Governor Claitor in his proclamation, "Texas has a vulnerable spot as far as tuberculosis is concerned. This State has not attained relative freedom from the disease as have a few of our sister states. . . . Through Texans' purchase of Christmas Seals each year, funds have been provided to aid in research and to improve patient care. . . . Therefore, I, as Governor of Texas, do hereby designate November 14 to December 24 as Christmas Seal Days. . . . and urge all citizens to make a sound investment in their own and their fellow citizens' health by buying and using Christmas Seals during the holiday season."

ACHS Pirate Band to Victoria

The Aransas County High School band will go to Victoria next Tuesday evening to take part in the University Interscholastic League marching contest. Bands do not compete against each other but rather against a set of standards. A band must perform a number or required movements plus a special routine so that the band is on the field not less than five minutes nor more than eight minutes.

The band will also stand inspection prior to marching. Bands will be inspected for neatness, condition of instruments, stationary commands, and alertness to instructions.

The Aransas County band will perform at 7:10 p.m. at Patti Welder Stadium in Victoria.

Judging the bands will be: Gene Braught of Del Mar College, Doug Williamson of Pleasanton High School, Francis Cox of Cameron High School, and Ed Holt of Travis High School in Austin.

A twirling contest will be held in the afternoon with 13 students from ACHS taking part. Twirling solos will be DeRema LeFevre, Pat Elder, Suzanne Keith, Pamela Court, Linda Eller, Fay Snyder, Annette Gardner, Sherry Brundrett, and Linda Johnson. A twirling trio will be performed by DeRema LeFevre, Pat Elder and Suzanne Keith.

SETH STEELE HAS CONTRACT FOR HUMBLE STATION

Seth Steele has the contract for one of the better type Humble service stations, to be built at Church and Market as soon as the weather permits. Contract price was around \$26,000.

The gas tanks are in, and Steele said he is set to go, once the ground dries out enough for them to be buried. He anticipates completing the job by February.

On the education building for the First Methodist Church, he said, the slab has been poured, but work is held up for better weather. Completion date on this is early January.

REVIVAL TO START AT PENTECOSTAL CHURCH

A two weeks revival meeting will start at the local Pentecostal Church of God on Sunday, Nov. 20. The speaker is the new pastor, Rev. H. F. Smith. Everyone is invited.

JUNIOR HIGH DANCE SLATED

The dance this week will be a Junior High dance. No high school students above the 10th grade will be admitted.

Next week, Nov. 26, the "Clues" from Woodsboro will be back over to play for the senior dance.

October Shrimp Catch Half That Of Last Year

October shrimp landings in the principal ports of Texas totaled approximately 6,655,100 pounds, according to C. E. Nickerson, U.S. Fish and Wildlife Service statistician for the area.

This is a very sharp drop, he said, compared to the 9,099,400 pounds landed during the same period a year ago, and a decrease of 1,817,848 pounds from September.

He attributed the drop to persistent reports of exceptionally good yields on the Campeche and Florida grounds, causing a large proportion of the shrimp trawlers to leave the Texas coast for these areas by the middle of October.

The following figures, he said, will give comparisons by major areas during October, 1960, and October, 1959, respectively, in pounds of heads-off shrimp:

Freeport and Matagorda, 2,032,200 compared to 2,744,800; Galveston and Sabine, 1,313,100 compared to 1,567,800; Coastal Bend, 1,531,000 pounds compared to 2,578,500; Brownsville, 953,000 as against 1,255,100; Port Isabel, 826,800 against 953,000.

Nickerson said that shortly after most of the vessels had left the Texas coast, good catches of white shrimp began appearing in shore from north of the Aransas Pass bar to Sabine.

There were a few days lost because of inclement weather, but it was not an important factor in determining production of the Gulf, Nickerson said. Heavy rains were apparently the cause of the white shrimp leaving the bays, according to most fishermen, but Nickerson pointed out that small whites remained inside.

Campeche shrimp started arriving in October, via returning vessels.

Ex-vessel prices ranged from 62c to 69c for 15/20 count headless shrimp during the month, with some areas paying 2 cents more for white shrimp destined for the fresh market.

Crab production was fair during the month, but demand was slow and prices dropped at the wholesale level. Fishermen received 4 cents a pound for live crabs. The over-all production was slightly higher with 256,300 pounds of live-weight crabs produced in October compared to 228,400 pounds in September.

Considerable oyster planting was done, and there was some production from private reefs planted last year.

Heavy rains during the month may cause extensive damage from Matagorda Bay south, Nickerson said, as reports placed the mortality of oysters up to 80% caused by silting from the Guadalupe and dropping salinities. Shucking houses are sustaining considerable loss due to bleeding, as the oysters are swollen from absorption of fresh water. Some dealers are claiming losses of 25% or higher.

Finfishing has picked up, with higher prices for trout, redbfish, and inshore fishes, although there was no raise in snapper prices.

Employment in some areas gained with the increase of small white shrimp creating a need for dock-side headers. There was also some increase in employment in oyster-shucking houses. Personnel in the crap plants remained about the same. On the big trawlers, many captains dropped their third man, and the closing of the Florida shrimp houses in Texas caused another decline in employment.

CPL MANAGER BREAKS LEG

Byron Hardeman, Central Power and Light manager here, fell Wednesday when stepping off the curb, and broke his ankle. He expects to be confined about two weeks.

BAKE SALE

The WSCS members will hold a bake sale Saturday, Nov. 19. This is one of their projects for the year.

Displays will be at West's Super Market, and in the vacant Bracht bldg., next to postoffice.

Remember the date, Nov. 19, 9:30 a.m.

Mr. and Mrs. J. T. Hord, former residents, have returned for the winter from Creede, Colo., where they have been for the past five years.

New Post Office To Open Monday

Building Accepted Thursday Morning By Post Office Department, Move to Be Made After Morning Mail Is Distributed Sunday

Postmaster Jimmy Simmons received word this morning (Thursday) that Rockport's new post office had been accepted and that, while dedication ceremonies will be held later, an immediate move should be made from the old to the new building.

As a result, he has scheduled the move for Sunday afternoon and evening, after 1 p.m. Box holders may obtain their mail Sunday until 1 o'clock in the afternoon, at the old building, after which time the doors will be closed, and the next mail delivery will be made in the just-com-

pleted building at the corner of Church and Market Streets, on Monday morning.

Simmons said that after 1 p.m. Sunday, the only place that outgoing mail could be deposited would be in the outside mail box at the old location, until the new office opens its doors for the first time on Monday, Nov. 21.

The contract for the new building was awarded in February to Ernest B. Klein, of 2330 West Holcombe Street, Houston, and at first it was believed that the structure would be finished in July.

The new building has an inside area of 3960 square feet, with additional platform space of 240 square feet. Around the building is a paved parking and maneuvering area of 5625 square feet.

Sidewalks, ramps and landscaping occupy another 1,000 square feet on the site.

The new building faces Church Street, with a big lobby occupying the front and part of the Market Street side as well. It includes an office for the postmaster, necessary storage and mechanical space, a mail vestibule at the rear and the necessary sanitary facilities.

Construction is of masonry, steel, aluminum and glass, with most of the Church Street side occupied by huge windows. The interior is finished in hardened concrete, ceramic tile, and plaster, with vinyl floors. Acoustical tile has been used for the ceiling, and the outside trim is brick and aluminum. The building is equipped with refrigerated air conditioning.

Council Buys Truck, Approves Annual Audit

The City Council, at its regular meeting, awarded Commercial Motors of Aransas Pass a contract for purchase of a flat bed truck on a bid of \$3,285, discussed drainage problems for several hours, and approved the annual audit, presented by Seale, McCarty and Millikin of Beeville.

Disbursements from the sewer and water fund amounted to \$114,650 last year, or approximately \$25,000 more than the revenue received. This difference was made up by wiping out the beginning of the year balance of \$15,198, by transfer from various other funds \$10,110, leaving, at the end of the fiscal year only \$334 available.

Most of the expenditures were for water well improvements, additional sewer lines, and for salaries and maintenance.

Receipts in the general fund amounted to \$33,665. Of this \$32,870 came from taxes, permits and various other items; \$771 came by transfer from the old school refunding bond fund, and \$24 from the defunct corporation court account.

Salaries, utilities, maintenance, etc., accounted for \$7047 of the expenditures; street lights took up \$4230; insurance and bonds absorbed \$1422, and social security for city employees amounted to \$1934.

Officials fees took \$4704; the fire department needed \$2,633; \$3,000 from the general fund was transferred to the water and sewer account, and \$2841 to the street maintenance fund.

Outstanding indebtedness on curb and gutter assessments still amounts to \$5498 which, when collected, will be applied against the city street bond issue of a couple of years ago.

Ingleside Grabs District Crown

Undeclared Ingleside rolled to its 10th straight win of the year Friday, blasting the Aransas County Pirates, 40-0, to wrap up the District 31A crown.

The Mustangs will meet Rio Hondo Friday at Kingsville in a bi-district playoff clash. Rio Hondo is winner of District 32A.

Ingleside opened scoring early in the first quarter when tackle Alfred Goff blocked a Pirate punt on the Aransas County 30-yard line. The Mustangs scored seven plays later with fullback Johnny Eubanks bucking over from the two. Wilbur McDonald, halfback, ran over the extra points.

Late in the same quarter, halfback Glenn McDonald intercepted a Pirate pass and raced 55 yards to score.

Halfback Larry Jones added the third Pony score early in the second quarter, sweeping left end for five yards. Tommy Haskin booted the extra points for a 21-0 lead.

Midway of the stanza, quarterback Bob Kilpatrick passed to Wilbur McDonald for 15 yards and a touchdown.

Just before the half, Glenn McDonald intercepted his second Pirate pass of the night and went 30 yards for a score. Fullback W. A. Cowan kicked the point.

The final Ingleside score came midway of the fourth quarter when Cowan drove over from the six-yard line after Jones had raced 65 yards.

Dancing School Opens Here

Miss Reta Gaugler of Corpus Christi is opening her school of the dance for the first year in Rockport, adding this to her classes in Portland, Woodsboro and Refugio, where she has taught for the past four years.

She will teach tap and ballet dancing here, and still has room in her class for a few more students.

Those now enrolled are: Mellinee Landrum, Renee LaBounty, Molly Wright, Laurie Sue Little, Donna Sue Bracht, Carolyn Honeycutt, Paula McClain, Molly Jackson, Claude Fry, Marcy Wendell, Kevin Picton, Jerry Lynn Bowling, Patricia Bowling, Terry Smith.

The dancing classes are held in Rockport every Tuesday. An annual recital is always held in May.

Miss Gaugler formerly taught with Miss Ella Iise of Corpus Christi, and also taught in Robstown and Aransas Pass for a short time, and was a teacher of ballroom dancing with Continental in Corpus Christi. She has been teaching for six years, and has attended several dance conventions of the DMA and TATA Associations in Dallas and Houston. She is also a former member of the Civic Ballet of Corpus Christi, and has danced frequently on programs of civic shows throughout South Texas.

SADIE HAWKINS DAY OBSERVED

Sadie Hawkins Day was observed in Dogpatch and at the Aransas County Youth Center last Saturday night.

Most of the young people wore costumes befitting the characters of Dogpatch, and their first reward was getting into the dance at a cheaper rate than the "flatland tourists" who wore regular non-costume clothes. The contest of King and Queen of Dogpatch was won by Milton (Lil Abner) Court and Judy (Daisy Mae) Deason.

Kick-a-poo joy juice and cookies were served to young people who came out for the dance. A special feature of the evening was a boys' and girls' jitterbug contest which was won by Kenneth Meier and Ann Cassell. Also Marrin' Sam (Jimmy Lukehart) held "the chase." All the Dogpatch girls that caught a man were married up in true Dogpatch fashion.

The sponsors for the evening were Mr. and Mrs. Raymond Owens and Mr. and Mrs. Bob Morrison. The refreshments were served by Kathy McClellan and Frances LeBlanc.

Thanksgiving's Special

SPECIALS FOR 1 WEEK

Nov. 17 thru Nov. 23

NO. 1 GRADE A TURKEYS

7-14 Lb. Hens pound

15-20 Lb. Toms pound

50¢ 45¢ ROE'S

Fresh-Dressed, Broad Breast

Fresh—Lean and Meaty

SPARE RIBS lb. 39c

- Rath's Blackhawk **BACON lb. 55c**
- Cedar Farm Thick **BACON 2 lb. pkg. 95c**
- Rath's Blackhawk **FRANKS lb. 49c**
- Wisconsin **CHEESE lb. 55c**
- Virginia Reel **SAUSAGE lb. 59c**

McCORMICK SPICES For HOLIDAY BAKING

- Assorted Food Colors 23c
- Vanilla 2 oz. 55c
- Cinnamon 19c
- Nutmeg 43c

Thanksgiving **HEINZ 57 FARM JOURNAL**

GREATEST Sale AT POPULAR PRICES

Heinz **TOMATO SOUP** 2 for 23c

Heinz **KETCHUP** 14 Oz. Bot. 25c

Heinz **CHICKEN NOODLE SOUP** 13c

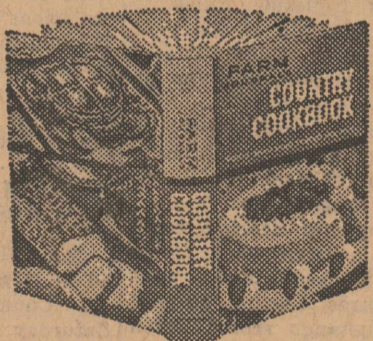
Heinz **VEGETABLE SOUP** 17c

Heinz **WHITE VINEGAR** Qt. Bot. 33c

57 SAUCE 29c

India or Sweet **RELISH** 27c

FARM JOURNAL'S **COUNTRY COOKBOOK**



1000 Tested Recipes • 464 Wonderful Pages \$1.89
32 Color Pages • Thousands sold at \$5.95 ONLY

With Purchase of Any 5 Heinz 57 Products

USE THIS COUPON

purchaser's name and address

This is to certify that the above customer of our store has purchased the Farm Journal's Country Cookbook for \$1.89 with 5 Heinz products during the Heinz - Farm Journal All Star Valu Sales sponsored by the Groce-Wearden Company of Texas.

OFFER EXPIRES DEC. 24, 1960

ROE'S FOOD STORE
ROCKPORT, TEXAS

Fresh Lean and Tender

PORK ROAST lb. 39¢

Swift's — 10-12 Lb. Average **PREMIUM HAMS lb. 55c**

Half or Whole **BAR-S HAMS lb. 89c**



FRESH FRUITS AND VEGETABLES

Frozen Foods

- Libby's 10 Oz. **BRUSSELS SPROUTS 29c**
- Libby's 10 Oz. **BROCCOLI SPEARS 24c**
- Libby's 10 Oz. **CAULIFLOWER 24c**
- Valley Gold 1/2 Gal. **MELLORINE 49c**
- Harris 3 Qts. **ICE CREAM 1.00**

CELERY

stalk 12c

Texas ORANGES

5 lb. bag 35c

Louisiana YAMS

2 lbs. 25c

No. 1 Colo. White POTATOES

10 lb. bag 49c

- Libby's 303 Can **PUMPKIN** 2 for 29c
- Comstock No. 2 Can **PIE APPLES** 24c
- Hunt's Spiced No. 2 1/2 Can **PEACHES** 29c
- Red Bird 2 1/2 Can **YAMS** 24c
- Rainbow Sweet Midget 12 Oz. **PICKLES** 39c
- Winslow Green No. 1 Can **ASPARAGUS** 20c
- Monarch Cut 303 Can **GREEN BEANS** 21c
- Del Monte 303 Can **PEAS** 20c
- Kounty Kist Whole Kernel 12 Oz. **GOLDEN CORN** 2 for 35c
- Instant 15 Oz. **MINUTE RICE** 39c

Swansdown's New Premium

CAKE MIX Except Angel Food 3 For 89¢

- 5 Lbs. **SUGAR** 53c
- Gladiola 5 Lbs. **FLOUR** 45c
- 3 Lbs. **SNOWDRIFT** 73c
- Qt. **KRAFT OIL** 49c
- Maryland Club Lb. **COFFEE** 69c
- Instant Maxwell House 10 Oz. **COFFEE** 1.29
- Baker's Instant 8 Oz. **COCOA MIX** 25c
- NBC Premium Lb. Box **CRACKERS** 27c
- Sunshine New Serv-Krisp 10 Oz. Box **HI HO** 25c
- Quaker, White or Yellow 18 Oz. **CORN MEAL** 2/35c
- Texas Magic 8 Oz. **TOMATO SAUCE** 3/25c
- Sliced Minute 8 Oz. Box **POTATOES** 29c
- Liquid 22 Oz. **LUX** 59c
- Pint **HANDY ANDY** 35c
- Giant **TIDE** 69c

Baker's, 4 Oz. Can **COCONUT** 2 for 39c

Eatmore, 300 Can **CRANBERRY SAUCE** 19c

All Flavors **JELLO** 3 for 25c

Baker's 6 Oz. **Chocolate Chips** 2/49c

DREAM WHIP 2/45c
Reynold's Reg. Roll **FOIL** 33c
Scott Dinner Box **NAPKINS** 25c
Northern Jumbo Roll **TOWELS** 29c
Northern Roll **TISSUE** 3/25c

OLEO lb. 15¢

Please Limit 3 With Order

Inspiring Speech Given at FHA Area Meeting

Last Saturday, more than 1,900 girls attended the FHA Annual Area X meeting in Corpus Christi. FHA members from Districts A, B, C, and D were present at this meeting.

Special music was provided by the Mary Carroll Stage Band. Judy Lindsey, Darlene Fitzman, and Sylvia Obregon let the group singing in the morning session; Seth Pealer, Darlene Fitzman and Sylvia Obregon, the afternoon session.

Dr. E. L. Harvin, president of Del Mar College, gave the welcome address and Mr. George Broad, director of instruction in the Corpus Christi school district, gave the greetings.

Glenda King, outgoing area president from Alice, installed the new officers. Mary Delle Hance, incoming area president from Laredo, recognized three adult sponsors as honorary members.

Dr. J. C. Jernigan, dean of Texas A & I College in Kingsville, gave an inspiring speech on "Home — The Hub of World Peace."

Marjorie Gips was in charge

of the devotional, which was the most beautiful part of the program.

James Prewitt, past state president of FFA, gave a speech on Civil Defense.

Those attending the meeting from our chapter were Mary Ann Barber, Jane Benningfield, Nina Ann Fields, Sandra Gardner, Mary Kathryn Gray, Linda Johnson, Joyce Lewis, DeRema LeFevre, Phyllis Meador, Carol Sue St. John, Patty Townsend, Betty Stryker, Pat Webb, Barbara Wright and Mrs. Marvin Rice, the sponsor.

DeRema LeFevre was the voting delegate from our chapter.

SCHOOL LUNCH MENU

Monday, Nov. 21: Spaghetti with meat, blackeyed peas, tossed green salad, Italian dressing, French bread, butter, brownies, milk.

Tuesday, Nov. 22: Baked beans, mixed greens, cottage cheese salad, cornbread, butter, ice cream, milk.

Wednesday, Nov. 23: Roast turkey, giblet gravy, cornbread dressing, buttered succotash, cranberry relish, hot rolls, butter, banana cream pie, milk.

A CHALLENGE TO TEXANS

(A guest editorial by Walter H. Richter, executive director of the Texas Rehabilitation Center, Gonzales Warm Springs Foundation.)

One of the most frustrating experiences a person can have is to find himself paralyzed, helpless, and dependent. This is true of the paraplegic — someone paralyzed from the waist down. It is even more true of the quadriplegic—a person paralyzed in all four extremities. Certainly it is also true of the hemiplegic—the stroke victim with one side immobilized.

There are an estimated 20 to 30 thousands of such severely disabled persons in Texas. Less than two per cent of the civilian paraplegics alone, if we can believe one qualified spokesman for the handicapped, have received rehabilitation services.

Another authoritative source, following a survey of rehabilitation in Texas, observed that the needs of disabled Texans are "far beyond the reach of present resources and programs."

The majority of these neglected and forgotten citizens can be restored through the various disciplines of rehabilitation to partial or even complete self-sufficiency. Many can become qualified for gainful employment. Others, by acquiring a measure of independence, can relieve other members of their families for employment.

The practical economic aspects of intensive rehabilitation, costly though it may seem, are inescapable. More important, however, are the humanitarian benefits — and they are without limit.

It seems urgent, even imperative considering the needs and the potential results, that all thoughtful, concerned Texans lend a hand to programs of intensive, long-term care for our severely handicapped fellow citizens. Adults as well as children.

This appeal is specifically for assistance for the non-profit, non-sectarian program at the Texas Rehabilitation Center, Gonzales Warm Springs Foundation. It treats young and old alike and many different types of disabilities. It is one of very few such in-patient facilities in the Southwest.

The charity portion of the Center's program runs between \$25,000 and \$30,000 per month—a difficult burden for a few to carry, a relatively simple one if many pitch in to help.

A long list of seriously handicapped Texans are waiting to be admitted. Almost without exception, they will need a great deal of financial assistance.

Only if many Texans support this program will the needs of these applicants — and others shackled to wheel and chair—be properly served. Your contribution mailed to TRC, Gonzales, Texas, will be profoundly appreciated.

FAMILY INSURANCE NOW PAYABLE AFTER ONE YEAR OF MARRIAGE

The wife, husband, or stepchild of a retired or disabled social security beneficiary can now receive benefits after the worker's marriage has lasted one year, according to H. M. Cleveland, District Manager of the Corpus Christi Social Security office.

Before September, a worker must have been married for at least three years before his wife, husband, or stepchild could qualify for the family insurance payments.

Anyone who feels that he may be eligible for benefits under these provisions of the law should get in touch with the Social Security Administration, 530 South Water Street, Corpus Christi, Texas.

CLENDENING'S BARGAIN DAYS SPECIALS

Aransas Pass

Chenille BED SPREADS in green, white, blue brown and yellow 4.88	Roger Brief NYLON PANTIES In pink, blue, red and white 1.00 ea. 2 for 1.50	Men's Fruit of the Loom SHORTS 49c ea. 3 for 1.33
Quadriga PRINTS 27c and 37c yd.	Ladies NYLON SLIPS With lace tops, in red white, tan and black 6.98 Value 4.87	T-SHIRTS, SHORTS AND BRIEFS 69c ea. — 3 for 1.79
TOWELS 69c Value 49c 1.00 Value 69c 1.59 Value 1.00 1.98 Value 1.25	BLANKETS 3.50 Value 3.00 3.98 Value 3.00 4.98 & 5.00 Value 3.25 6.98 Value 4.50 8.98 Value 6.98 11.98 Value 7.25	Boy's BRIEFS, T-SHIRTS 49c ea. — 3 for 1.32
WASH CLOTHS 39c value 29c	PLAYTEX BRAS Cotton 2 for 3.99 Strapless 5.00 Longline 6.50	Men's STRETCH SOX 3 for 1.00
Birdseye DIAPERS 2.00	Girls' BOBBY SOX 2 for 87c	Arrow COLORED HANDKERCHIEFS 3 for 1.10
DICKIES 13¾ oz. Blue Jean 3.98 Value 3.25		

Do Your Christmas Shopping Early and Use Our Lay-Away

HOMEOWNER'S POLICIES
Have Revolutionized Home Insurance Programs
See Us for the Best
Beasley Insurance Agency

WATCH TROUBLES?
QUICK, EFFICIENT SERVICE
TO ALL MAKES
24 to 48 Hour Service on Most Jobs
REASONABLE PRICES
Manning's Jewelers
Next to Rialto Theatre Phone PL 8-3422 - Aransas Pass

- SPECIALS -
FRIDAY AND SATURDAY

VAT 69 Fine Scotch Whiskey 86.8 Proof	Fifth 5.10
FLEISCHMAN VODKA 80 Proof	Fifth 3.00
BELLOWS CLUB BOURBON 4 Years Old—86 Proof Kentucky Straight Bourbon	Fifth 3.50
OLD GLENMORE Straight Bourbon—86 Proof Kentucky Premium	Fifth 4.10
Hiram Walker TEN HIGH BOURBON 5 Years Old—86 Proof	Fifth 3.50
Hiram Walker IMPERIAL 86 Proof Blended Whiskey 6 Years Old	Fifth 3.50 Pint 2.35
J. W. DANT Bottled in Bond, 100 Proof Sour Mash Straight Bourbon	Fifth 4.25

Georgia's Pkg. Store
Corner Market St. and Highway 35

FULTON LUMBER COMPANY
Incorporated
FIFTH & BROADWAY IN FULTON, BEACH, TEXAS

COMPLETE SUPPLIES

- Lumber & Building Materials
- Pittsburg Paints & Z-Spar Marine Products
- Hardware & Metal Goods
- Doors, Windows, & Roofing Materials

SO 4-6462

WEEKENDERS — CALL SO 4-6320 FOR SATURDAY SUNDAY SERVICE

NEW TEMPEST
AMERICA'S ONLY FRONT ENGINE ↔ REAR TRANSMISSION CAR
155 H.P. FROM FOUR CYLINDERS*

*With optional 4-barrel carburetor and automatic transmission.

The new-size Tempest is primed to scoot on less gas! Five hot versions of the Trophy 4 engine. 110 to 155 h.p. Any choice will move out in a hurry, sail up a steep hill in high gear, has the power for quicker, safer passing.

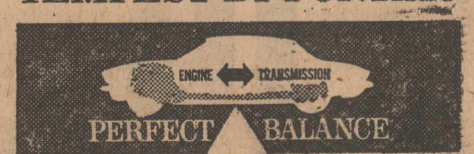
Front engine is balanced by rear transmission. (Standard shift or extra-cost automatic.) Takes weight off the front. Easy steering. Longer tire life. Adds ballast in the rear. Improves traction and braking. No big

floor hump. Foot room and leg room for six men. Independent suspension at all 4 wheels. Most other cars only have it in front. Wide-Track, too. The Tempest wheels are set farther apart than the wheels of other new-size cars. Gives a solid stance. Secure cornering. There's a 4-door sedan and a station wagon.

Prices come close—or even beat—the tags on the compacts. If you're figuring on a new car—figure on a new Tempest.



THE HOT TOPIC IS THE NEW TEMPEST BY PONTIAC



THE NEW TEMPEST IS SOLD AND SERVICED BY YOUR LOCAL AUTHORIZED PONTIAC DEALERSHIP

JUSTIN SNYDER PONTIAC CO.

114 W. Yoakum

Aransas Pass, Texas

Welcome to Rockport — Ted C. Connell, National Commander-in-Chief, Veterans of Foreign Wars

FOR AN OLD-FASHIONED

Thanksgiving

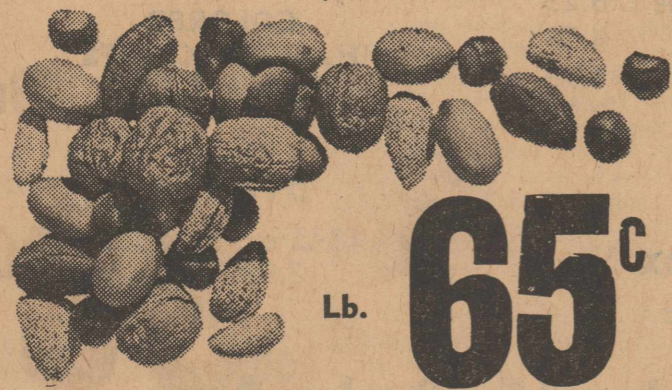
Frozen Foods

6 oz. Treesweet Orange
JUICE
2-35c

Morton's Mince or Pumpkin
PIES
43c

Swanson TV Turkey
DINNER
63c

Frigid Dough Apple, Cherry, Peach
PIES
37c



Lb.

65^c

YOUR CHOICE
1 LB. BOX WALNUTS, PECANS, BRAZIL NUTS OR MIXED NUTS

No. 1 Russet 10 lb. bag
POTATOES 59c

Green Onions or bunch
RADISHES 5c

California Pascal 2 stalks
CELERY 25c

Wisconsin Fresh lb. box
CRANBERRIES 25c

Texas 5 lb. bag
GRAPEFRUIT 29c

1/2 Gal. **CLOROX** 35c

Northern **TOILET TISSUE** 3 for 25c

Northern Cello Wrap **NAPKINS** 2 for 25c

24" x 12" **REYNOLDS WRAP** 29c

Northern, Reg. **TOWELS** 2 for 35c

Borden's Reg. 3 Qts. ICE CREAM 89c	5 Lbs. SUGAR 53c
Sun Spun Qt. SALAD DRESSING 43c	Rainbo, Butter Krust or Holson Brown-n-Serve Pkg. ROLLS 25c
Towie Qt. Jar SALAD OLIVES 57c	Large Can WOLF CHILI 69c
Whitfield's Sweet Midget 12 Oz. PICKLES 39c	Del Monte Cut 303 Can GREEN BEANS 23c
3 Lbs. CRISCO 79c	Del Monte 14 Oz. CATSUP 19c
Free Turkey Lacing Kit	

NOTICE

This Ad Good for Nov. 17-18-19-21-22-23-25-26
We Will Be Closed Thanksgiving, Nov. 24



No. 2 1/2 Can Red Bird
SWEET POTATOES
21^c

MELLORINE, 1/2 gal. Valley Gold 49c

Borden's Butter Milk Qt. 25c

Borden's Sour Cream 1/2 Pt. 29c

Valley Gold Whipping Cream pint 35c

Your Choice **BISCUITS** 2 for 19c

Welch's Grape 20 Oz. JELLY 33c	Blue Bonnet OLEO 25c
Del Monte 303 Can FRUIT COCKTAIL 2/49c	None Such 9 Oz. MINCE MEAT 25c
NBC Sunshine or Supreme, Lb. Box CRACKERS 27c	Liberty Lb. Jar FRUIT CAKE MIX 59c
Morrell 12 Oz. Can LUNCHEON MEAT 39c	Delight DOG FOOD 3/25c

Home Center

Ladies' Eiderlon Pajamas 2.19	Men's Solid or Print Reg. 69c Shorts 59c
Little Boy's — Sizes 2-3 Flannel Shirts 79c	10 Gal. Plastic Trash Cans 3.89

— CHRISTMAS CARDS GALORE — SHOP EARLY —

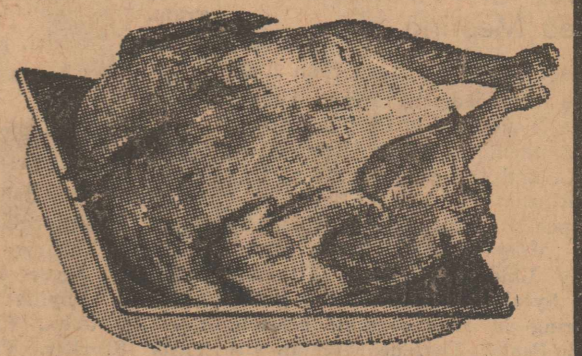
We have a beautiful selection of Christmas Gifts for all the family — Shop now, while stock is complete

Economy CREST 53c	100 Size ANACIN 99c	Woodbury LOTION 49c
------------------------------------	--------------------------------------	--------------------------------------

Armour's Star Young Tom

TURKEYS Lb.

39^c



US Choice Heavy Beef **SHOULDER ROUND STEAK** lb. 59c

Big Tex **BACON** lb. 49c

Big Tex Thick Slice **BACON** 2 lb. pkg. 95c

Fresh **PORK ROAST** . lb. 35c

First Cut **PORK CHOPS** . lb. 49c

All Meat **BOLOGNA** . . . lb. 49c

Swift's Premium **FRANKS** lb. 49c

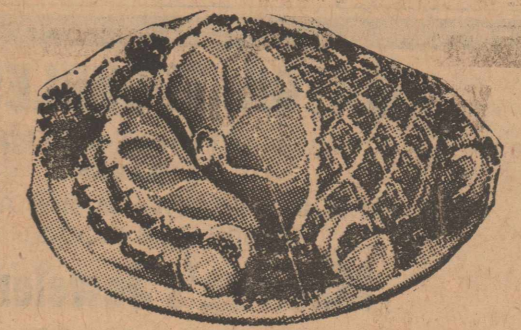
Fresh Ground **HAMBURGER** 2 lbs. 89c

US Choice Heavy Beef **CHUCK ROAST** lb. 49c

Samuel's Sugar Cured Whole or Half Shank

Hams Lb.

49^c



Del Monte, 303 can

PEAS **15^c**

Limit 3 with Order Please

FRUIT CAKE MIX — SHOP NOW WHILE STOCK IS COMPLETE

300 Can Ocean Spray Cranberry **SAUCE** 23c

Asst. **JELLO** 3-25c

Our Value 303 Can **TOMATOES** 2-29c

20 Oz. Jolly Time White or Yellow **POP CORN** 29c

COFFEE

Admiration lb. 63c
2 Lb. Can Folger's 1.29

Light Crust — 5 Lbs.

Reg. Size Quaker White or Yellow **CORN MEAL** 2-35c

Duncan Hines White or Yellow Devils Food **CAKE MIX** 2-69c

303 Can Libby's Pumpkin **CUSTARD** 2-27c

No. 2 Can Lucky Leaf Apple Pie Mix **FILLING** 29c

Starlite **SHORTENING** 3 Lb. Can 65c

Baker's 7 Oz. Pkg. **COCOANUT** 29c

Brown or Powdered **SUGAR** 2-27c

Del Monte, Mary Washington **GREEN SPEARS ASPARAGUS** 300 Size 39c

4 Oz. Frank's **BLACK PEPPER** 39c

Decker's **OLEO** 2 lbs. 29c

FLOUR **35^c**

Limit 1 Box With Order



Campbell's **Tomato SOUP**
10^c



CINDY COURT PARTY HONOREE

Cindy Court was honored by her mother with a birthday party Saturday, Nov. 12, on her tenth birthday. It was held at her home. Games were played and prizes were given to Sharon and Jean Court, Cathy Deason and Mary Sorenson.

The table was laid with a white cloth covered with crocheted. An arrangement of Confederate roses decked the center.

Refreshments were served to the following guests: Cathy Deason, Mary Sorenson, Donna Sparks, Courtney Johnson, Donna K. Wright, Marilyn Krogsgaard, Sharon and Joe Ann Court, Mellinee and Valerie Harwick, Kaye Sparks, Lisa Rhonda, and Kimberly Sparks, Susan Menke, Pam Court and the honoree, Cindy Court. Also present were Mrs. J. M. Sparks, Sr., Mrs. Jimmy Sparks and Mrs. Jack Sparks.

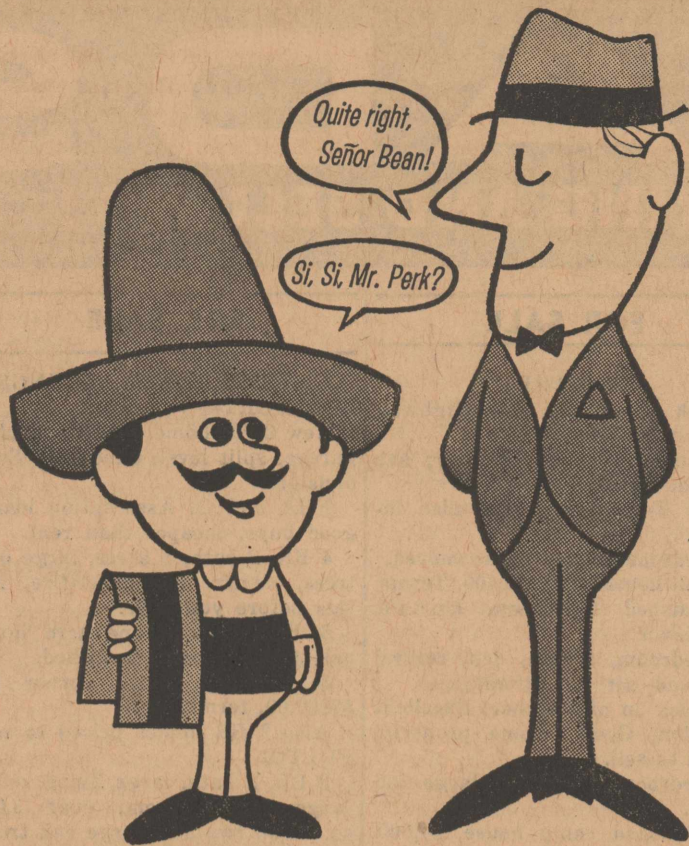
CUB SCOUT DEN 6 MEETS

Cub Scout Den 6 met at the home of their den mother, Mrs. Clark, for their regular meeting on Tuesday afternoon. Denner Eddie Cole called the meeting to order. Roll was called and dues collected.

Plans were made for the skit to be presented at Pack Night on Nov. 29.

Refreshments were served by Mrs. Clark to the following cubs: Chris Stevenson, Eddie Cole, Don Wright, Joe Blackburn, Jimmy and Dennis Clark and James Court.

Car Radios Home Radios Record Players Tape and P.A. Systems Repaired by Van Etten's TV SO 4-8542



SALVATION ARMY CAMPAIGN DRAWING NEAR TO CLOSE

The 1960-61 Annual Campaign for operating funds used by the service unit committee of the Salvation Army is now being concluded in Rockport. Committee members and campaign workers report that only a few final cards are unreported.

The school appeal, which is teaching the responsibility in giving that others may be comfortable, will conclude the present campaign. Supt. J. D. Gray, committee member, said that within the next week each child would be offered an opportunity to be a part of the assistance given by the committee.

Local citizens not yet having a part, and desiring to make a contribution, may leave their dollars at the First National Bank, or hand it to any committeeman, Treasurer Shivers said.

IT'S BACK TO VAUDEVILLE WITH ADMIRATION COFFEE

Remember the good old days of vaudeville? Do the routines of the "song and dance" teams have a familiar ring? Well, shades of vaudeville are here again, and whether or not you're an old hand at this sort of thing, you're sure to get a kick out of the current Admission Coffee advertising.

It all started when those two, intrepid Admission Coffee salesmen, Mr. Perk and Señor Bean, got together out on the road. Over cups of Admission, with a tinkling refrain in the background, they found themselves talking about their favorite subject. From this meeting came the whimsical situations which can now be heard on the radio, seen on your television set, or followed in comic strips featured in your newspaper.

These fellows have a slightly different viewpoint. Mr. Perk is a practical-minded coffee man, serious in his convictions about the superiority of Admission's packaging and freshness. Señor Bean is a warm, bubbling gentleman who is primarily concerned with how good Admission Coffee tastes.

Stemming from their funny experiences while selling Admission, the warmly amusing banter of Mr. Perk and Señor Bean is created to make you laugh all the way to the grocery store.

CHRISTIAN SCIENCE SERVICES

Sunday School and Church, 11 a.m. Wednesday, 8 p.m. Reading Room Thursday, 2 to 4 p.m. Wilson and McCampbell St., Aransas Pass

GO TO CHURCH SUNDAY

ST. PETER'S EPISCOPAL CHURCH Harry Carter, Minister in Charge Holy Communion and Sermon, first Sunday each month, at 7:30 p.m., other Sundays, Morning Prayer and Sermon at 9:00 a.m. Church School each Sunday at 10:15 a.m. Choir rehearsal is each Wednesday at 7:30 p.m. The Episcopal Church Women meet the first Thursday at 4:00 p.m., and the Bishop's Committee on the second Thursday at 7:30 p.m.

SACRED HEART CATHOLIC CHURCH Very Rev. G. J. O'Doherty, Pastor Masses: Sunday, 7 a.m., 9 a.m., 6 p.m.; Holy Days, 8 a.m., 7 p.m. weekdays. Monday, Tuesday, Friday, 8 a.m. (7 a.m. June, July, Aug.) Wednesday 5 p.m. Thursday, 11:30 a.m. Saturday, 7 a.m. Friday night Novena devotions at 7 p.m. Confessions, Saturdays from 4:30 to 6 and 7 to 8 p.m. Vigil before Holy Days and Thursdays before First Fridays, 4:30 to 6 p.m.

FIRST BAPTIST CHURCH Rev. C. Wilson Brumley, Pastor Sunday School, 9:45 a.m.; preaching service 10:45 a.m. and 7:30 p.m.; Training Union, 6:30 p.m.; prayer service, Wednesday, 7:45 p.m.; Sunday School workers meeting, Wednesday, 7 p.m.; Women meet every Monday. Monday: 4 p.m., YWA 7:30 p.m. BWC, Tuesday, 9:30 a.m.; S.B. and WMS, 3:15 p.m.; SE and WMS, 4:30 p.m.; Int. GA, Wednesday, 4 p.m.; Jr. GA.

CHURCH OF CHRIST N. E. Hicks Bible class, 10 a.m.; morning worship, 10:50 a.m.; Sunday evening class, 6:30; Sunday evening worship, 7:30; Wednesday night service, 7:30; ladies Bible class, Thursday, 9:30 a.m., and men's Bible class at 7:30 p.m.

FULTON BAPTIST CHURCH Rev. George Merriman Sunday school, 9:45 a.m.; preaching service, 11 a.m.; Training Union, 6:30 p.m.; evening service, p.m.; mid-week prayer service, Wednesday, 7:30 p.m.

FIRST ASSEMBLY OF GOD M. R. Crawford, Pastor Sunday school, 9:45; Preaching service, 11 o'clock; Evening Evangelistic service, 7:30; Week night service Wednesday, 7:30 p.m.

FIRST PRESBYTERIAN CHURCH Cecil H. Lang, Jr., Minister Sunday School, 9:30 a.m.; Worship Service, 11 a.m.; Senior Young People and Pioneer Young People, 6 p.m.; Deacon's meeting, first Tuesday, 7:30 p.m.; choir rehearsal Wednesday, 7:30 p.m.; Session meeting, first Thursday, 7:30 p.m.; Women of the Church Visitation, first Thursday; Women of the Church Circles, second Thursday; Men of the Church Suppers, third Thursday, 6:30 p.m.; Women of the Church Board and General Meeting, fourth Thursday, 2:30 and 3 p.m.

METHODIST CHURCH Rev. A. H. Bankert, Pastor Sunday school, 9:30; morning worship, 10:50; evening worship, 7:00; Methodist Men, 3rd Thursday, 7:30; WSCS, general meeting, 1st Thursday, 3 p.m. The Wesleyan Service Guild First Methodist will meet regularly each second and fourth Tuesdays of each month. MYF, Sunday, at 6:00 p.m.

CALVARY BAPTIST CHURCH Pastor, Boyce Laqua Sunday school, 9:45 a.m.; preaching, 10:45 a.m. Training Union 6:00 p.m. Evening Worship, 7:00 p.m. Prayer Meeting, 7:00 p.m. Wednesday. Brotherhood, first Thursday, 7:00 p.m.; WMU, first Tuesday, 7:00 p.m.

ROCKPORT BAPTIST MISSION Pastor, Abraham Aldape Sunday School, 9:30 a.m.; morning service, 11:00 a.m.; training union, 7:00 p.m.; evening service, 8:00 p.m.; prayer service, Wednesday, 7:00 p.m.

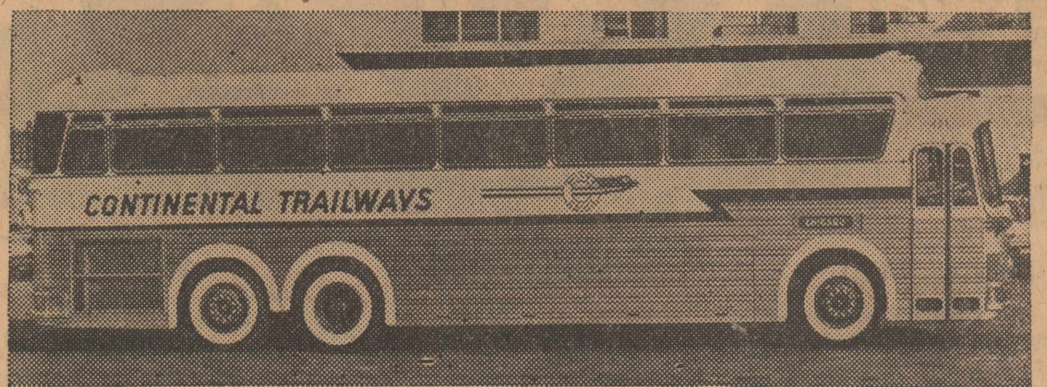
FIRST CHRISTIAN CHURCH Aransas Pass Rev. H. D. Crone, Pastor Bible school, 9:45; morning worship, 10:50; evening worship, 7:30; prayer and Bible study, Wednesday, 7:00 p.m.

PENTECOSTAL CHURCH OF GOD Rev. H. F. Smith, Pastor 1 block north of Joe's Trailer Park Sunday School, 10 a.m. Morning Worship, 11 a.m. Night Service, 7:30 p.m. Prayer Meeting, Wednesday, 7:30 p.m. Young People's Service, Saturday, 7:30 p.m.

The Above Directory of Churches Is Sponsored by the Following Merchants

- Rockport Electric Co. First National Bank Roaten Drug Store Anderson Service Station Western Auto

CONTINENTAL TRAILWAYS NEW SILVER EAGLE BUS



Silver Eagle - Pictured above is one of a fleet of new Silver Eagle buses soon to be placed in service by Continental Trailways, and which was on exhibit at Ray's Filling Station Tuesday. Silver Eagles, which feature rest rooms, hi-fi music and foam rubber lounge chair seats, will be used in through service routes. The company has purchased 100 of them at an approximate cost of \$100,000 each. A total of fifteen of the big, high-level buses will be placed in service within the next 30 days, operating on Continental's through service between Dallas-Houston-Brownsville and Dallas-San Antonio-Brownsville.

REBEKAH LODGE HAS SHORT SESSION

The Rockport Rebekah Lodge had a short meeting on Thursday, Nov. 10, at 7:30 p.m., with Mrs. Velma Elder, noble grand, presiding.

The members then went to Aransas Pass to join the other lodges of District 56 in a joint meeting.

The Theta Rho Club is giving a tea for their mothers, their friends and members of the Rockport lodge at the IOOF Hall on Saturday, Nov. 19 at 2 p.m.

ROTARY HEARS BAILEY TALK

Travis Bailey gave a talk on the Rotary Foundation at the club's regular luncheon. Terry Leary gave a career report on career week for high school students. The club voted to sponsor this activity. Seniors at the luncheon were Joel Meador and Roger Beasley. Visitors included Dick Hatch from Aransas Pass; Judge John Miller of Sinton; Jim Lindsay, Oklahoma; Bill Rumpf, Ingle-side; Mr. and Mrs. George Gillam, Corpus Christi.

MRS. MUNDINE TO ENTERTAIN

Mrs. Sherman Mundine will entertain the Good Neighbor Club at her home in Rockport, on Nov. 23, at 2 p.m.

Making holiday arrangements for the table and home is the work project, each member to bring her own material to work with, and exchange ideas with the others.

Cars driven by Simon Lee Sorenson and W. G. Terry collided last Friday afternoon on Highway 35 north. Fortunately no one was seriously injured. Sheriff A. C. Shivers and Deputy Sheriff Sherman Mundine investigated the wreck.

BEAM THE WORLD'S FINEST BOURBON SINCE 1795

Advertisement for BEAM bourbon featuring images of bottles and gift boxes. Text includes 'Gifts sparkling with splendor—in the best of taste—for the people you like best' and 'KENTUCKY STRAIGHT BOURBON WHISKIES DISTILLED AND BOTTLED BY THE JAMES B. BEAM DISTILLING CO., CLERMONT, KY.'

Building a Home?

SO 42463



SO 42463

No matter what style of house you are building — all home plans call for the best in building materials! Come in, let us give you free estimates and friendly assistance.

CALL US FOR INFORMATION ON ABC HOME REPAIR LOANS UP TO \$2,500.00 — NO DOWN PAYMENT

Rockport Lumber Co.

Member of Texas Lumbermen's Association

Closing Out

SALE

NOW IN PROGRESS

Edge Plumbing & Hardware Is

Closing Out

THEIR HARDWARE MERCHANDISE

Everything Must Go!

Come In For

MANY BARGAINS

ALL ACCOUNTS CLOSED — CASH ONLY

Building For Rent

EDGE PLUMBING and HARDWARE

P. T. Johnson, Liquidator

Phone SO 4-6771

Rockport



WANT ADS

WHERE MORE PEOPLE DO MORE BUYING AND SELLING!



DEN ONE HAS MEETING

Den One held its regular Tuesday meeting at the home of Den Mother Mrs. Steve Kelsay. The meeting opened with the pledge of allegiance to the flag and roll call by the cubs middle names.

After a short business meeting the pack worked on gifts for their mothers. Refreshments were served by Larry Hobbs to Duke and Roy Earton, Billy Kelsay, David Matinez, Al Johnson, Richard Anderson and Bobby Harris.

The meeting closed with the cub living circle and the cub scout promise.

AUTO WASH
Be the first to enjoy this amazing opportunity. Become part of the Multi-Million Dollar Auto Wash Industry. Enjoy these advantages as an owner of a coin operated automatic car wash; No land to lease; no building to buy; no fixed overhead; no labor problem. No Experience Necessary. Can be handled part time. Please apply only if you have a sincere desire to be in business for yourself and can make a total investment of \$2,590. Fast Car Wash Company, 5009 Excelsior Boulevard, Minneapolis 16, Minnesota. p33

3 Bedroom Home
- in -
Little Bay Shores
F.H.A.
Only \$400.00 Down

SEE OR CALL
Mrs. R. B. Sipe
SO 4-2603 Rockport ctf

FOR FULL PLEASURE OF LIVING OR VACATION START WITH A HOME

See
Seth H. Steele
Designer and Builder of
"Custom-Built Homes"

Planning - Financing - Building
1146 Ruby St. - P. O. Box 595
Phone SO 4-2482
ROCKPORT, TEXAS ctf

MISCELLANEOUS

EARL'S DRIVE IN Grocery and ice house, open until midnight. Boat stalls. Business route, Highway 35, South. ctf

DO YOU have a drinking problem? Write Alcoholics Anonymous, Box 326 or call SO 4-6488.

Place your orders for 1961 advertising calendars, now. Ask to see our complete line of samples, all sizes, all prices, SO 4-2192, The Rockport Pilot. ctf

"FOR TRADE" Will take Aransas County property of like value for these Texas properties—
1—Eight Room Residence, North San Antonio, Value \$15,000.00, equity \$5,500.00.
1—Seven Room Residence and 3 lots, Frid St., Lockhart, Value \$7,000.00.
70 Acres in Lockhart, City Limits, with 48 acres of black farm and pasture land, Value \$21,000.00. Call or write COCHRAN REALTY COMPANY, Rockport, Texas. c33

WANTED: Person for profitable Rawleigh business in Aransas Co. Good living at start. Write Rawleigh's, Dept. TXK-2450-101, Memphis, Tenn. p35

CIRCLE THREE HAS MEETING
Circle Three of the Presbyterian Church met in the church assembly room with seven members and one visitor present.

Mrs. Charles Roe Jr., presided. The lesson was given by Mrs. Grace Culley. The emphasis on stewardship was brought by Mrs. Clara Brymer. Refreshments were served by Mrs. C. J. Roy.

LOCAL PEOPLE GUESTS AT SILVER WEDDING
Mrs. Roy Hinton and Mrs. Seth Steele were Sunday guests of Mr. and Mrs. James Herring in Corpus Christi, where they attended the silver wedding anniversary of Mr. and Mrs. Paul Bluntzer.

BUILT ON YOUR LOT!

2 Bedroom Home
Completely Finished
Only \$4,950
\$43.13 per month

or

3 Bedroom Home
Completely Finished
Only \$5,950
\$51.84 per month

FRED A. BRACHT, Jr.
SO 4-6232 Rockport

SERVICES

DIRT HAULING—Shell, Sand and gravel. Tractors and dozers. "Dudley" Bracht Trucking Co. Phone SO 4-2169. ctf

BULLDOZER — Dragline excavating, clearing, leveling. W. F. Bartlett, Phone PL 8-2825. Aransas Pass ctf

PIERSON MASONRY CO., concrete finishing, block, plastering and form work. Call SO 4-6105 for free estimate. Bill Pierson. ctf

SEPTIC TANK SERVICE. Reasonable rates. Call PL 8-2508, Aransas Pass, collect. ctf

SLOCUM ELECTRIC SERVICE: Anything electrical. Contracting and service work. Call SO 4-2606 for immediate service. ctf

HOOVER RADIO-TV SERVICE. Phone SO 4-6202. Three miles west on Farm Road 881. 12ctf

REPAIRS on lawn mowers, air-cooled engines, pumps, etc. C. C. Rivers, SO 4-2015 or SO 4-2973. ctf

SANDY LOAM Black dirt, fill dirt, dragline to let on contract or rent, also dump truck service. Call PL 8-2508, Aransas Pass. 22ctf

ELECTRICIANS: Contracting, repairs, maintenance, electric materials. Phone SO 4-6400; 613 Austin St., A. L. Ballou, Rockport. ctf

WATER WELLS: Drilling, air jet cleaning, repairs, pumps, casing, etc. Phone SO 4-6400; 613 Austin St., A. L. Ballou, Rockport. ctf

WELDING: Shop and portable. Call Doug Carroll, SO 4-6636. ctf

WATER WELL Drilling or repairing. Machine Drilled. Call Milton Mundine, SO 4-2490 or Carl Hardin, SO 4-6360. ctf

CERAMIC, Precast Terrazo, Quarry Tile, Formica, Floor Covering. Call Reyco, SO 4-2202, Bill Reynolds. ctf

SEPTIC TANK CLEANING. Call collect 555-W, Ingleside. Willie Carson. ctf

WANTED: Experienced Service Station man. Apply Mike's Service Station. ctf

RETIRED COUPLE would like to care for home, or estate for all, or part of winter. Best of references. Harry G. Burke, Goodland, Minn. p34

3 NICE LOTS \$790.00
See or Call
Mrs. R. B. Sipe
SO 4-2603

FOR SALE

FOR SALE: 50 gal. oak barrels, \$3.50 each. SO 4-8550, or see J. C. Thompson, Thompson's Spa. ctf

GOOD USED AUTOMATIC washers, refrigerators, used TV's. Rockport Electric Co. ctf

LARGE STOCK mower blades, Clinton, Briggs & Stratton, Lawson. Power Products lawn mower parts. Western Auto. ctf

FOR SALE: Six lots, \$1,800. Call SO 4-6570. ctf

USED CARS: We still have some real bargains in good used cars. Auto Service Co. SO 4-2505. ctf

FOR SALE: Used refrigerators, \$40.00 and up. Western Auto. ctf

SHOP for a nice selection of sweaters and coats at J. M. Sparks & Son. ctf

CLOSE OUT PRICES on all air conditioners. Prices start at \$144.00. Rockport Electric Co. ctf

FOR SALE: 3 bedroom air conditioned home, Little Bay Shores Addition. My equity \$1,600.00. \$73.60 monthly payments. See or call Wm. Welch, SO 4-6888 or SO 4-2662 about terms and loan assumption. ctf

TWO-BEDROOM HOME, 1 1/2 baths, double garage, corner lot. Close to downtown. By Owner. SO 4-2617. ctf

FOR SALE: 33' Travelmaster house trailer. 2 bed rooms, full bath, furnished, \$1,400.00. Call SO 4-2911. ctf

FOR SALE: Three decker chicken brooder, also assortment of chairs, bedding, etc. Oleander Court. ctf

FOR SALE: House and 3 lots on Highway 35. \$800 down, balance like rent. David Hawes. c35

JUST LIKE NEW: 1960 model 32 foot all aluminum Gardner Trailer Park, Fulton. Write or phone Russell Blair, Bandera, Texas. c33

FISHERMAN'S BARGAIN: 14' boat, 7 1/2 motor, trailer, \$175. See Chaney, Taylor Oak Trailer Park. p33

MRS. COX HONORS MRS. BARNHILL
Mrs. John Cox honored Mrs. W. B. Barnhill with a luncheon at the Privateer's Country Club in Corpus Christi Tuesday.

All decorations were used, and the centerpiece was composed of giant chrysanthemums and autumn leaves.

Driving over from Rockport for the luncheon were Mrs. A. C. Glass, Mrs. Travis Bailey, Mrs. William Natt Sanders, Mrs. Roy Hinton, Mrs. E. T. White, Mrs. Newell Boughton, Mrs. F. M. Prescott, Mrs. Rae Glass Smith, Misses Mabel and Genevieve Bracht and Mrs. Charles Russell.

FOR SALE

ROCKPORT
Block of 16 lots near Highway 35. Only \$3,500.
Summer home on the bay; has riparian rights.
New 3-bedroom home, nice location.
2-Bedroom house to be moved. Small house. Only \$3,400. Terms. Furnished 2-bedroom house. \$500 down.
3-Bedroom, 2-bath, den, central heat and air conditioning.
Duplex on nice corner. Excellent condition. Good income property. Priced to sell.
2-Bedroom house on large lot, \$4,500.
Unfinished camp house, \$1,000. Lots of lots and acre tracts.

FULTON
2-Bedroom house, \$7,500. Lots with large oak trees.
6 Lots near the harbor; excellent motel site.
2 Nice corner lots, \$1,100 each. Furnished home, view of bay. Only \$500 down.
Waterfront lots, 1,500 up.
Large tract of waterfront land. Weekend cottage, finish inside. List Your Property With **MRS. R. B. SIPE** Phone SO 4-2603 Rockport 1/2 Block North of Market Street on Highway 35

FOR SALE: Two pair Chicago roller shoe skates, boys size 7, girl's 5, \$10 pair. Like new. One high quality boat or airplane compass, new \$10. 512 Austin St. p33

FOR SALE: 3 S.E. Corner lots, 150 x 150. Bargain at \$600. Call SO 4-2464. ctf

JUST ARRIVED: Beautiful Berkshire lingerie and hosiery, boy's bulky knit sweaters, men's robes and Thermal underwear. J. M. Sparks & Son. ctf

CALVARY WU MEETS
The WMU of Calvary Baptist Church met Tuesday with 11 present. Mrs. Wellman opened the meeting with prayer. Mrs. Collum led the mission study, "Across the Bridge," on Spanish America. Mrs. Boyle closed the short business meeting with a prayer.

Mrs. E. B. Crawford gave a talk on the adoption of an emblem for the WMU during the 25th Anniversary year.

Members were told that a week of prayer for foreign missions will start on Nov. 28.

The next meeting of the circle will be at the home of Mrs. E. B. Crawford.

Those present were Mrs. John Boyle, Mrs. E. B. Crawford, Mrs. Hollis Collum, Mrs. John Green, Mrs. P. W. Whittley, Mrs. Flora Wellman, Mrs. Arledge, Mrs. A. B. Brock and daughter Catherine and Mrs. Myrtle Sanders.

FOR SALE

COMPARE THESE LISTINGS:
ROCKPORT—
New 3 BR home, 2 baths, double garage, split level, Shadyside Sub-division.
FHA and GI Assumption loans, good buys, cheaper than rent.
4 BR, 2 bath, 5 acres, large oak trees, owner must sacrifice, see this before you buy.
3 BR, 2 bath, one acre large oak trees, partly furnished.
3 BR, one bath, corner lot \$7800.00, terms.
Also 2 BR homes priced to sell.

FULTON—
3 BR, 2 bath, large living room, large family room, over 3,000 sq. ft. on two lots, large oak trees.
3 BR, 2 bath home, 90' x 150'—like new.
2 BR, 1 bath home, 2 lots, large oak trees.
3 BR, 1 bath homes on one lot priced to sell!
3 BR, 2 bath, furnished, corner lot.

COPANO
Furnished home, view of bay. Only \$500 down.
Waterfront lots, 1,500 up.
Large tract of waterfront land. Weekend cottage, finish inside. List Your Property With **MRS. R. B. SIPE** Phone SO 4-2603 Rockport 1/2 Block North of Market Street on Highway 35

FOR SALE: Two pair Chicago roller shoe skates, boys size 7, girl's 5, \$10 pair. Like new. One high quality boat or airplane compass, new \$10. 512 Austin St. p33

FOR SALE: 3 S.E. Corner lots, 150 x 150. Bargain at \$600. Call SO 4-2464. ctf

JUST ARRIVED: Beautiful Berkshire lingerie and hosiery, boy's bulky knit sweaters, men's robes and Thermal underwear. J. M. Sparks & Son. ctf

ST. AUGUSTINE GRASS for lawns. See J. E. Tedford Nursery. ctf

FOR SALE BY OWNER: Nice shaded lot, 50 x 125, close in Fulton. Call SO 4-2692, after 4 p.m. ctf

FOR SALE: 18 foot outboard cabin cruiser, two 35 h.p. Evinrude Larks, boat well and all equipment to go. Excellent fishing outfit. Sell motors, boat or complete outfit. Good condition. C. L. Utz, Fulton, Texas. SO 4-6336. ctf

FOR SALE: Used Lawn Mowers, \$15 and up. Western Auto. ctf

TROOP 89

Cindy Courts called the meeting to order. Janet Townsend called the roll, and when she called our name we said a rule. After that, Janet read the minutes.

Mary Sorenson served refreshments and then we worked on our handbook until it was time to go. — Reporter, Donna Kay

FOR RENT

FOR RENT: Furnished house. Also unfurnished house. Furnished apartment, bills paid. Mrs. R. B. Sipe, phone SO 4-2603. ctf

FOR RENT: 2 bedroom unfurnished cottage, by owner. SO 4-6798. ctf

FOR RENT: Furnished cottage downtown, two bedrooms, kitchenette, carport, utilities paid, yard kept, \$60 month. SO 4-2475. ctf

FOR RENT: 2 bedroom apartment, nicely furnished, upstairs, air conditioned. SO 4-6379. ctf

FOR RENT: 2 bedroom unfurnished house, one block of Fulton Elementary School. Miller Realty Co. SO 4-6473. ctf

FOR RENT: 2-bedroom unfurnished house, all bills paid, \$50 month. Call TE 5-1549 collect, Corpus Christi. ctf

FOR RENT: Furnished house, downtown, \$60 per month, bills paid. SO 4-6625. ctf

WORK OF A PARENT NOW COVERED BY SOCIAL SECURITY

The wages of a parent who works in a business for his son or daughter will be covered by social security starting next year, says H. M. Cleveland, District manager of the Social Security Administration in Corpus Christi.

This recent change in the law does not apply to work in the private home of one's child; such work is still excluded.

"The new provision, applies when there is a bona fide employment relationship between the owner of a business and his parent," he explained. "In such a case the wages which are paid for services rendered are credited to the parent's account the same as an unrelated worker's wages are credited."

The wage credits which a parent earns will be used to determine his right to receive retirement, disability, and family insurance benefits.

The first social security tax return and wage report to include the wages of a parent will be due in the month of April 1961 for the first quarter of next year.

Those who do not have a social security account number card can secure one from the Social Security Administration, 530 South Water Street, Corpus Christi.

Naturalized citizens of the United States are entitled to all privileges except that of becoming president.



Listings appreciated
MILLER REALTY
Phone SO4-6473
Office Downtown
Rockport

See Us Before You Buy!

We Offer a Choice of the Best Real Estate Values in Aransas County

Cochran Realty Company
On Highway 35, 3 Miles North of Rockport
Office Phone SO 4-6335 — Res. Phone SO 4-2977

BAYVIEW CLINIC
Announces the Association
- of -
Dr. Howard Gault
for the
Practice of Internal Medicine

Clinic Ph. SO 4-2662 — Hosp. Ph. SO 4-6116

- SIOUX-STEEL
ALL PURPOSE BUILDING

THE SIOUX STEEL CO.
MANUFACTURERS OF
- SIOUX -
STEEL PRODUCTS
REG. TRADE MARK
SIOUX FALLS, S. D.

BASIC BUILDING - 10' x 20' with 10 Ft. adding sections available. Adaptable garage, workshop, storage building, bathhouse, lake cottage, and many other useful purposes.

ONE PIECE ARCHED ROOF

STURDY ANGLE FRAME CONSTRUCTION with all parts marked for easy assembly.

ALL HOLES PRE-PUNCHED for easy assembly.

EXTRA EQUIPMENT INCLUDES:
3' x 6' 8" Walk-in Door
20' x 28" Windows, Factory installed
8' x 8" Louvres, Factory installed

FACTORY ASSEMBLED DOOR-END GABLE for simpler erection.

BOLTED CONSTRUCTION using Hex Head Bolts for a more rugged sturdy building.

EXCLUSIVE - SIOUX-RIB DESIGN of 26 gauge galvanized sheets offers additional strength and beauty.

SWING-OUT DOORS 8' wide by 6' 8" high.

SEE THIS BUILDING ON DISPLAY AT OUR YARD

STRENGTH - UTILITY - ECONOMY .. Total Price **449⁵⁰** Or Nothing Down **\$14.47 per month**

CHAS. T. PICTON LUMBER CO.
Try a Hometown Merchant First
Phone SO 4-2331 Rockport

Financial Statement -- City of Rockport

STATEMENT OF RECEIPTS AND DISBURSEMENTS FOR THE FISCAL YEAR ENDED SEPTEMBER 30, 1960

GENERAL FUND	
Bank Balance, October 1, 1959	\$ 1,955.44
RECEIPTS	
Ad Valorem Taxes, Penalty and Interest	\$ 25,940.87
Gross Receipts	5,576.68
Occupation Tax, Permits and Other Fees	1,353.00
Transfers - Schoolhouse Bond Fund and Corporation Court	795.27
Total Receipts	33,665.82
TOTAL FUNDS AVAILABLE	\$ 35,621.26
DISBURSEMENTS	
Officials' Fees	\$ 4,704.00
Office Expense and Building Maintenance	6,238.79
Social Security	1,934.00
Insurance and Bonds	1,422.39
Equalization Board, Printing and Other Administrative Expense	2,784.51
Fire Department	2,633.28
Street Lights	4,230.25
Office Equipment Purchased	808.24
Transfer - Street Maintenance Fund	2,841.48
Transfer - Water and Sewer Revenue Account	3,000.00
TOTAL DISBURSEMENTS	30,596.94
Bank Balance, September 30, 1960	\$ 5,024.32

STREET MAINTENANCE FUND	
Bank Balance, October 1, 1959	\$ 561.91
RECEIPTS	
Taxes - Drain Pipe and Culverts	\$ 10,836.94
Transfer - General Fund	2,841.48
TOTAL RECEIPTS	13,678.42
TOTAL FUNDS AVAILABLE	\$ 14,240.33
DISBURSEMENTS	
Street Wages, Supplies and Maintenance	\$ 11,240.33
Payments to County on Paving	3,000.00
TOTAL DISBURSEMENTS	14,240.33
Bank Balance, September 30, 1960	\$ 0

WATERWORKS AND SEWER SYSTEM	
Bank Balance, October 1, 1959	\$ 15,198.70
RECEIPTS	
Water System	\$ 52,118.44
Sewer System	23,685.03
Garbage Collection Fees	13,983.25
Transfer - Meter Deposit Fund and General Fund	10,000.00
TOTAL RECEIPTS	99,786.72
TOTAL FUNDS AVAILABLE	\$114,985.42
DISBURSEMENTS	
Water System	
Salaries	\$ 12,063.20
Supplies, Maintenance, Office, Truck, Electricity and Other Operating Expenses	14,535.15
Transfer to Sinking Fund	18,336.55
Capital Outlay	15,593.74
TOTAL DISBURSEMENTS	\$ 60,528.64
Sewer System	
Salaries	\$ 6,096.39
Supplies, Maintenance, Truck and Other Operating Expenses	3,782.39
Capital Outlay	28,980.16
TOTAL DISBURSEMENTS	38,858.94
Garbage	
Salaries	\$ 12,225.95
Truck Expense and Insurance	3,037.41
TOTAL DISBURSEMENTS	15,263.36
TOTAL DISBURSEMENTS	114,650.94
Bank Balance, September 30, 1960	\$ 334.48

STREET IMPROVEMENT BOND SINKING FUND	
Bank Balance, October 1, 1959	\$ 3,497.10
RECEIPTS	
Current Taxes	\$ 9,698.13
Transfer - Curb and Gutter Escrow	16,218.67
TOTAL RECEIPTS	25,916.80
TOTAL FUNDS AVAILABLE	\$ 29,413.90
DISBURSEMENTS	
Bonds No. 6-10, 11-15, 21-25, 31-35 and 41	\$ 21,000.00
Interest	2,798.67
TOTAL DISBURSEMENTS	23,798.67
Bank Balance, September 30, 1960	\$ 5,615.23

SCHOOLHOUSE REFUNDING BONDS	
Bank Balance, October 1, 1959	\$ 1,813.77
RECEIPTS	
TOTAL FUNDS AVAILABLE	\$ 1,813.77
DISBURSEMENTS	
Bond No. 8	\$ 1,000.00
Coupons No. 37 and No. 38	42.50
Transfer of Balance to General Fund	771.27
TOTAL DISBURSEMENTS	1,813.77
Bank Balance, September 30, 1960	\$ 0

STREET IMPROVEMENT BOND CONSTRUCTION FUND	
Bank Balance, October 1, 1959	\$ 2,576.19
RECEIPTS	
State of Texas - Refund of Deposit	2,181.96
TOTAL FUNDS AVAILABLE	\$ 4,758.15
DISBURSEMENTS	
Curb and Gutter Payment	1,082.90
Bank Balance, September 30, 1960	\$ 3,675.25

SPECIAL ACCOUNT (CURB AND GUTTER)	
Bank Balance, October 1, 1959	\$ 5,708.18
RECEIPTS	
Payments on Curb and Gutters	12,474.17
TOTAL FUNDS AVAILABLE	\$ 18,182.35
DISBURSEMENTS	
Transfer to Sinking Fund to Purchase Bonds	16,218.67
Bank Balance, September 30, 1960	\$ 1,963.68

WATER AND SEWER REVENUE BOND SINKING FUND	
Bank Balance, October 1, 1959	\$ 3,531.25
RECEIPTS	
Transfer - Water and Sewer System	\$ 18,336.55
Interest on Investments	150.00
TOTAL RECEIPTS	18,486.55
TOTAL FUNDS AVAILABLE	\$ 22,017.80
DISBURSEMENTS	
Bonds No. 26-32	\$ 7,000.00
Coupons No. 11-12	6,912.50
TOTAL DISBURSEMENTS	13,912.50
Bank Balance, September 30, 1960	\$ 8,105.30

SEALE, McCARTY & MILLIKIN
Public Accountants
Beeville, Texas

October 21, 1960

The Honorable Mayor
and City Council
City of Rockport, Texas

Gentlemen:

An examination has been made of the books and records of the City of Rockport, Texas, for the fiscal year, October 1, 1959, to September 30, 1960. We have examined the accounting procedures of the city, and, without making a detailed audit of all transactions, have examined or tested accounting records and other supporting evidences by methods and to the extent we considered appropriate. Our examination was made in accordance with generally accepted auditing standards applicable in the circumstances, and included procedures considered necessary.

General Account

The taxes collected, as well as various other fees, were traced to the depository. The General Account in the First National Bank, Rockport, Texas, was made up of four funds: General, Street Maintenance, Street Improvement Bonds Sinking Fund, and Schoolhouse Refunding Bonds Sinking Fund. The last of the Schoolhouse Refunding Bonds was paid during the year and the balance of \$771.27 was transferred to the General Fund. Also, there had been \$24.00 left in the Corporation Court Account that was transferred to the General Fund.

Construction Fund

The only activity in this account was a refund of deposit from the State Comptroller and the payment for curb and gutter work to the contractor. There is a balance of \$3,675.25 left in this account that we think could be transferred to the General Fund to be applied on the money expended by the General Fund for this project in the year 1958-1959. The city attorney should give you a ruling on this.

Tax Assessor-Collector

Schedules are shown for the 1959 tax roll, delinquent taxes and distribution of collections.

Bonded Debt

The total bonded debt at September 30, 1960, was \$249,000.00. Of this amount, \$54,000.00 are tax bonds and \$195,000.00 are revenue bonds. All paid bonds and coupons redeemed during the period were examined. Bonds in the amount of \$16,000.00 were called and paid ahead of schedule. These were Street Improvement Bonds paid for with curb and gutter collections.

Maturity schedules are shown for two outstanding issues.

Waterworks and Sewer System

A schedule of receipts and disbursements is shown for the operation of the Water and Sewer System. The amount of \$44,573.90 was expended on permanent improvements to the system.

Other

Investments in Certificates of Time Deposits, First National Bank, Rockport, Texas, are held by the Water and Sewer Revenue Interest and Sinking Fund in the amount of \$15,000.00.

The books and records of the City of Rockport are in excellent condition.

In our opinion, the accompanying statements of cash receipts and disbursements, together with the related schedules present fairly the cash transactions of the City of Rockport, Texas, which occurred during the fiscal year ended September 30, 1960.

Respectfully submitted,
SEALE, McCARTY & MILLIKIN
By W. D. McCarty

ORDINANCE

BE IT ORDAINED BY THE CITY COUNCIL OF THE CITY OF ROCKPORT, TEXAS:

(1.) That each individual, company, corporation or association owning, operating, managing or controlling any telephone line or lines, or any telephones within this city charging for the use of same, shall make quarterly, on the first day of January, April, July and October of each year, a report to the City Clerk, under oath of the individual, or of the president, treasurer or superintendent of such company, corporation or association, showing the gross amount received from all business within this city during the preceding quarter in the payment of charges for the use of its lines, telephone and telephones, and from the lease or use of any wires or equipment within this city during said quarter. Said individuals, companies, corporations and associations, at the time of making said report, shall pay to the City Clerk, and there is hereby levied upon said individuals, companies, corporations and associations, an occupation tax for the quarter beginning on said date, equal to 2% of the gross receipts, as shown by said report, received from doing business within this city. Nothing herein shall apply to any telephone line or lines owned and operated by a cooperative, nonprofit membership corporation.

(2.) Every person, company, firm, partnership or unincorporated company or association, required to pay such tax on gross receipts, shall be required to have a permit to transact such business, to be issued by the City Clerk. The permit shall show that the applicant has paid the gross receipts taxes prescribed by this ordinance. The City Clerk after determining that such taxes have been paid, shall then issue a permit to transact business, authorizing the party to whom issued to transact business until the 31st day of December of the current year, after which date new permits for each year must be obtained, as in the first instance.

(3.) Within 30 days after gross receipts taxes may become due by any one transacting or authorized to transact business hereunder, if such tax remains unpaid the City Clerk shall notify the delinquent taxpayer that his tax is unpaid and that unless the tax is paid to the City Clerk within 10 days from the date of such notice

the permit to transact business of the delinquent will be suspended by the City Clerk. After the permit to transact business has been suspended, it shall be unlawful for the delinquent to continue to transact business.

(4.) Any person, company, firm, partnership, corporation, unincorporated company or association, transacting business in this city, upon which a gross receipts tax is required by ordinance to be paid, without having first obtained a permit to do so, or transacting such business after its permit so to do has been suspended shall be liable to a penalty of not less than \$50.00 nor more than \$200.00 daily for each day's business which is transacted in violation of this ordinance.

(5.) This ordinance shall take effect upon its passage, and this ordinance shall be published in full one time in the ROCKPORT PILOT the official newspaper of the City of Rockport.

PASSED AND APPROVED THIS THE 14th day of November, 1960.

HERMAN C. JOHNSON
Mayor of the City of Rockport, Texas

ATTEST:
Jeane M. Tuer
City Secretary

WOMAN'S CLUB HOLDS CARD PARTY

The Woman's Club of Aransas County held its weekly Tourist Card Party on Monday, Nov. 14, in the Woman's Club building. Each Monday a card party will be held for the many winter guests who visit Rockport each year.

The center table was decorated with a cut work over a red background. A dried flower arrangement was used for a centerpiece and the gifts were decorated in a similar manner.

The following won prizes for bridge: Mrs. C. H. Whiteley, Mrs. Betty Carnder, Houston, and Mrs. Sally Smith. Prizes for canasta were won by Mrs. Tom Luker. Mrs. S. M. Spires and Mrs. Birch Addington. Bingo prize was won by Mrs. McConnell of Dallas.

Mrs. A. B. Chernosky and Mrs. S. L. Hilyard were hostesses and refreshments were served midway in the afternoon. Mrs. R. C. Naper presided at the coffee service.

Next Monday, Nov. 21, at 2 p.m. another Tourist Party will be held. All winter guests and cordially invited to attend.

Yellow Rose Is Anniversary Gift For Girl Scouts

A charming tribute will be paid to the Girl Scouts of America in honor of their approaching 50th anniversary. This week, a beautiful golden rose—named the Girl Scout Rose—will be introduced to the American public and to Girl Scouts convening for their 35th convention in St. Louis Mo.

The first bouquet of Girl Scout Roses will be presented to the president of the organization, Mrs. Charles U. Culmer. The city of St. Louis will receive a gift of rose bushes to start a Golden Blossom Girl Scout Garden at the City Hall Plaza.

The Girl Scout Rose, which bears clusters of up to 15 blossoms on each stem, was developed by the eminent hybridist, Eugene Boerner, director of research for Jackson & Perkins Co., one of the world's leading nurseries. Despite its delicate appearance, it will grow anywhere in America—even in deserts of the West and the frozen earth of Alaska. Since Girl Scouts, as well as roses, flourish in these climates, by the summer of 1962 all of our vast country will be abloom with Girl Scout Roses and other golden blossoms.

The rose is part of a program called "Blossoms for the Birthday Years," and, in celebration of their 50th birthday and as a token of their pledge to "Honor the Past—Serve the Future," Girl Scouts will beautify their surroundings by planting it and other blooms.

From the tiniest 7-year-old Brownie to the most knowledgeable 17-year-old Senior, Girl Scouts will "scout their neighborhoods," looking for suitable sites on which to start Golden Blossom Girl Scout Gardens. Village squares, shopping centers, parks, hospital and library grounds, city halls, old peoples' homes, church and synagogue grounds—all will be beautified by the girls in green. A golden crop of crocuses, tulips, azaleas, daffodils, chrysanthemums, sunflowers, marigolds—and roses, of course—will enliven the Girl Scout colors, green and gold, on the landscape.

Girl Scouts who live in large cities will take part in this program, too. They will plant window boxes with yellow nasturtiums and cucumber, tomato, and squash plants, all of which have yellow flowers. They will prepare terrariums with small yellow blossoms and bring them to shut-ins in hospitals and other institutions. They will take raw materials—seeds, pots, etc.—to orphanages and teach the youngsters how to grow and care for plants. They will, in short, use all their ingenuity to bring the joy of growing things to all.

Gardening has always been an important activity in Girl Scouting. In 1917, Juliette Gordon Low wrote: "Now what about the gardens, for it goes without saying that Girl Scouts must have gardens. Getting right down and smelling the fresh soil is good for anyone. It is mother earth's own breath. Watching the growth of our seeds is a veritable joy of joys.

If the gardens planted by Girl Scouts flourish as the 50-year-old organization has, all America will enjoy the experience of watching beauty bloom.

Skidmore Sprouted During Railroad Age

During the railroad building age in South Texas, Skidmore sprouted from the prairie as the old San Antonio and Aransas Pass Railroad was extended south from Beville.

The original Skidmore was a cousin of Stonewall Jackson from Virginia who settled in Texas before the Civil War, in which he and two sons served with the Confederate forces.

After the war old Samuel Syle Skidmore—to give him his full name, following an eight-year resi-

dence in Rockport, moved to southern Bee County where he died about a year before the rails reached his land in 1885.

The Skidmore boys (Tom, O. S., Cal, M. A., and Frank) became famous for their hay, and the latter gained state-wide attention for his use of barbed wire in 1877.

When pioneer railroad builder Uriah Lott pushed his rails south, Frank O. Skidmore was one of the largest cattlemen in the section and in accordance with his father's wishes, donated the right-of-way across the Skidmore lands, and then went one step further.

He donated every alternate block in his newly-platted town of Skidmore, eleven miles south of Beville, as a bonus to the railroad.

F. B. Seymour, the first doctor, arrived with the railroad, as did William Miller, who opened a store, and Thomas R. Atkins who opened a hotel and added a news paper later.

Around 1890 the Rusek boys—Joseph and Frank—started a general store and real estate business. In the early 1900's, Skidmore has close to 3,000 people, with eight stores, three saloons; two drug stores, three garages, three churches, a lumber yard, bakery, two gins, a newspaper and a bank.

Several times the town has been severely damaged by fire. Four businesses were wiped out in 1900, including a drug store, grocery, hotel and the Turner block, when the "bucket brigade" was unable to control the flames.

A year later, three more, including the rebuilt Turner block, went up in smoke; but all of them built again. The east side of main street burned in 1913; the Mayo Hotel blazed in 1918; the Farmer's Mercantile Company burned in 1929, with a loss of \$40,000.

Then, in 1942, a hurricane took a crack at Skidmore, leaving the bank and other buildings in ruins. In 1948, the town had nineteen businesses and about 1,000 people.

Today the little town of 700, second largest in Bee County, has

a small fire department, lumber yard, drug store several cafes, a beauty shop, three churches, three schools, a grocery store or two, Central Power and Light and the San Patricio Electrical co-op, along with a couple of service stations and a county building.

DUCK IDENTIFICATION LEAFLET AVAILABLE HERE

"Know Your Ducks," a Field Guide for the Hunter, the duck identification leaflet developed by the Fish and Wildlife Service, Department of the Interior, is now available, according to Larry Glover of the Bureau of Sport Fisheries and Wildlife.

The leaflet is designed to help the hunter identify the most commonly sought species of ducks. It is especially appropriate at this time since two species, the redhead and canvasback ducks, are on the fully protected list. The leaflet is entirely pictorial except for a minimum amount of reading matter to point out the characteristics of each essential to identification. The leaflet can conveniently be carried in the pocket. There is no charge.

Of the 23 species shown, there are 17 pairs, drake and hen, and 6 lone drakes. The lone drakes represent the least hunted of the 23 species. The 17 pairs are: mallard, black, pintail, widgeon, gadwall, shoveler, blue-winged teal, greenwinged teal, wood duck, hooded merganser, redhead (no open season), canvas back (no open season), scaup, ringneck, goldeneye, buffhead, and ruddy. The lone drakes show: old squaw, white-winged scoter, American scoter, surf scoter, American merganser, and red-breasted merganser.

These leaflets may be secured by hunters at Sporting Goods dealers.

To protect the life of the President and to suppress counterfeiters are the two statutory duties of the U. S. Secret Service.

HOW FAST DO SNAILS RUN?

A lot of people have made cracks about a snail's pace, but only one or two have been interested enough to find out what is really meant by the saying.

Just how fast is a snail, anyhow?

John Oughton and Ernest Roscoe, Canadian and American scientists, have come up with some interesting figures. Between them they tried out 21 species of snails and slugs (which are snails without shells) looking for the gastropod equivalent of Man-of-War.

The slowest snail was checked about one half inch a minute, or 0.000192 miles an hour, and could traverse a mile in 35 hours and 12 minutes if it didn't get tired or its mind wander.

At the other end of the scale was a slug that galloped home at the rate of 20 inches a minute, or 0.00758 miles an hour. This gentleman could cover a mile in 5 hours and 29 minutes, provided he was a distance runner and no morning glory ready to fold after a fast workout.

When recorded speeds for sixteen species were averaged, the answer was 6.5 inches a minute, or 0.00248 miles an hour, depending on individual performances, temperatures, type of terrain, direction of travel with respect to

the pull of gravity and a number of other factors.

And while any questions about the speed of snails is largely academic, there are times when the answer can be extremely important.

Every deliberate, well-armoured and unconscionably numerous sea snails eat up from \$5,000,000 to \$6,000,000 oysters. Since the voracious mollusks have few natural enemies and have resisted human efforts to control them, the oysterman's best bet is to plant new, clean beds at a "safe" distance from snail-ridden territory.

To define that distance by clocking the snail's much quoted but little-known pace, U. S. Fish and Wildlife Service biologists have conducted studies, in which they discovered that the sea-going members of the family are no faster than their land-borne cousins. Marine snails' paces ranged from 2 to 23 feet an hour.

Mr. and Mrs. Al Smith, guests at Taylor Oaks, left for Robstown this Tuesday, when they received word their son Perry of Corpus Christi, had received a serious leg injury when gored by a bull in a stock pen. Perry is in the hospital at Robstown.

The width of United States ships is determined by the Panama Canal, and the height by the Brooklyn Bridge.

HINTON'S BAR-B-Q

ALSO "TO GO" ORDERS

MRS. ROY HINTON, Mgr. SO 4-2171 p36

Excellent Values In

APPLIANCES

8 CUP ELECTRIC COFFEE POT
ELECTRIC POP-UP TOASTER
* ELECTRIC GRIDDLE
* ELECTRIC DEEP FAT FRYER
* ELECTRIC SKILLET

YOUR CHOICE

12⁹⁵

* Probe Control Unit, \$3.95 Extra

DO YOUR CHRISTMAS SHOPPING EARLY - at -

YOUR PRESCRIPTION STORE
ROATEN WALGREEN DRUG

Druggists: Shelley Roaten, Joe Wright
Phone SO 4-2311
Member of Chamber of Commerce
TRADE AT HOME

Skidmore Sprouted During Railroad Age

During the railroad building age in South Texas, Skidmore sprouted from the prairie as the old San Antonio and Aransas Pass Railroad was extended south from Beville.

The original Skidmore was a cousin of Stonewall Jackson from Virginia who settled in Texas before the Civil War, in which he and two sons served with the Confederate forces.

After the war old Samuel Syle Skidmore—to give him his full name, following an eight-year resi-

as seen on TV

stand
stoop
sit

it won't ride up!
playtex girdle
with new cool cotton lining

You can bend, stretch, stoop, sit. Your Playtex Girdle won't ride up because it stretches seven different ways. Now every Playtex Girdle has soft, cool, cotton lining for all-day comfort. Try the new Playtex Girdle and enjoy the perfect figure control and perfect freedom that only Playtex with seven-way stretch can give.

- Playtex Living® Girdle Girdle or panty girdle \$6.95
- XL (girdle only) \$7.95
- Playtex Magic Controller; girdle or panty girdle \$8.95
- XL \$9.95
- Playtex® Mold 'n Hold Zipper Girdle; girdle or panty-girdle \$10.95
- XL (girdle only) \$11.95

Please send me the following Playtex girdles.

living girdle	style	size	price	how many
magic controller		waist hips		
hold 'n hold		waist hips		
		XL large waist 35-40; hips 44-50		

name _____ please print
address _____
city _____ state _____
 check money order charge c.o.d.
© 1960 BY INTERNATIONAL LATEX CORPORATION PRINTED IN U. S. A.

Fulton Lumber Co., Inc.

Fifth & Broadway — Fulton Beach, Texas

SO 4-6462 P. O. Box 208

General Contractor

Designer and Builder of Homes that Belong Near the Sea
Specializing In Residential, Vacation, and Retirement Housing
With a "HOLIDAY ATMOSPHERE"
CUSTOM REMODEL & ADD-ON SERVICE

ALL FINANCING AVAILABLE

Randal Stivers, President

ctf

TOWNSEND'S DRESS SHOP

Rockport, Texas

ROCKPORT YOUTHS REGISTER WITH DRAFT BOARD

Five Rockport youths have registered with the local draft board

in Sinton on reaching their 18th birthdays. They are Morris G. Gregory, Joe H. Garza, Guadalupe Arispe, Jr., Frank D. Brooks, and Jimmy L. Owens.

A car driven by Sherman Munday collided with another near Tivoli last week. Sherman had a badly bruised leg, but no one was seriously injured.

MARENE DOSHIER CIRCLE MEETS WITH MRS. WATKINS

The Marene Doshier Circle of the First Baptist Church met Tuesday at the home of Mrs. Frances Watkins. A short business session was followed by a program, directed by Mrs. C. Wilson Brumley.

Refreshments were served to Mrs. Woody Jackson, Mrs. Frances Watkins, Mrs. Alice Thompson, Mrs. C. W. Brumley, Mrs. Wilson, Mrs. Mabel Thompson, and Mrs. Donald Lashley.

NOTICE OF THE SALE OF REAL PROPERTY THE STATE OF TEXAS

COUNTY OF WHARTON

By virtue of an execution issued out of the 130th Judicial District Court of Wharton County, Texas, on a judgment rendered in said Court on the 22nd day of April, 1960, in favor of the Security Bank and Trust Company against Albert Faetche, Jr. and Marie Faetche in the case of Security Bank and Trust Company vs. Albert Faetche, Jr. and Marie Faetche, Number 16,008, in said Court, I did on the 2nd day of September, 1960, at 10:00 o'clock a. m., levy upon the following described real estate situated in Aransas County, Texas, as the property of said Albert Faetche, Jr. and Marie Faetche, to-wit:

Being Lots Number 15 and 16 in Block Number 2 of the Town Site of Fulton, Aransas County, Texas.

and on the 6th day of December, 1960, being the first Tuesday of said month, between the hours of 10:00 o'clock a. m. and 4:00 o'clock p. m. on said day, at the Court-house door of said County, I will offer for sale and sell at public auction, for cash, all of the right, title, and interest of the said Albert Faetche, Jr. and Marie Faetche in and to said property.

Dated at Rockport, Texas, this the 2nd day of November, 1960.

A. C. SHIVERS, Sheriff
c83 Aransas County, Texas

ALMA ROHM CIRCLE MEETS WITH MRS. BALLOU

The Alma Rohm Circle met Tuesday with Mrs. Alice Ballou for a Royal Service Program.

Taking part in the program were Mrs. Coy Casey, Mrs. R. M. Means, Mrs. Leona Farrow, Mrs. Alice Ballou, Mrs. Lillie Calvert.

After a short business meeting, Mrs. Ballou served refreshments to Mrs. R. M. Means, Mrs. Coy Casey, Mrs. Leona Farrow, Mrs. Lillie Calvert, Mrs. Floy Rooke, and Mrs. Ed Beasley.

The WMU will meet at the church next Tuesday for an executive meeting and Bible study.

ARANSAS GASSER HAS 56 MILLION

Phillips Petroleum Co. No. 9 Copano Bay State, Aransas County West Fulton Beach Field well in Copano Bay State Tract 67, has been completed for a daily open flow of 56 million cubic feet of gas plus one barrel of 59.4 gravity condensate to 37,000 cubic feet of gas.

Production was through perforations from 7,040-50 feet in 5 1/2-inch casing at 7,843 feet with total depth 8,050 feet. Flowing pressure on an adjustable choke was 2,363 pounds and shut-in pressure was 2,405 pounds.

PRESBYTERIAN CIRCLE MEETS WITH MRS. LANG

Circle No. 4 of the Women of the First Presbyterian Church met in the home of Mrs. Cecil Lang, Jr., at 9:30 a. m. on Nov. 10. Two guests, Mrs. Homer Vickery from Arkansas City, Kans., and Mrs. Fred Cloberdants, were present at the meeting along with eight members. Mrs. Ralph Matern, the Circle Chairman, presided.

Mrs. Jerald Brundrett led the group in the Bible study of Philipians 1:3-11.

The Circle voted to provide food, clothing, and toys to a needy family as a Christmas project. The chairman announced that the December meeting would be the Christmas party at the home of Mrs. Charles Roe, Sr. The January meeting will be held in the home of Mrs. Gene Bird, and Mrs. Cecil Lang will lead the Bible study.

CHURCH OF CHRIST HAS VISITORS

The local Church of Christ had a number of visitors this week. Among them were Mrs. Ethel Allen, St. Louis, Mo.; Mrs. R. L. Frederick, Frederick, Okla.; Mr. and Mrs. R. Watson, San Antonio; Mr. and Mrs. Z. M. Burdick, San Antonio; W. E. Vermillion, O'Donnel, Texas; Mrs. H. L. Watson, Davidson, Okla.

PRESBYTERIAN CIRCLE TWO HAS MEETING

Circle Two met in the Presbyterian Church Nov. 10 at 3 o'clock. The meeting was called to order by Mrs. O. R. Hiller.

Mrs. Hugh Morrison led the Circle in an inspiring lesson called "I Hold You In My Heart."

Mrs. Richard Happer gave the emphasis on "Stewardship." Mrs. Leon Bateman served refreshments.

PRESBYTERIAN CIRCLE ONE HAS MEETING

Circle No. 1 of the Presbyterian WOC met on Thursday morning Nov. 10 at the home of Mrs. Clifton Tidd.

Refreshments were served on arrival to the following members: Mrs. Jimmy Little, Mrs. Lily Fahr, Mrs. Pat Greene, Mrs. Travis Bailey, Mrs. Lawrence Miller, Mrs. James Lathrop and Mrs. Ted R. Little.

After a short business session, the Bible lesson was studied with Mrs. Pat Greene as moderator. The Stewardship emphasis was given by Miss Lily Fahr. The meeting closed with the Mizpah Benediction.

Mrs. W. H. Hogue and Mrs. Gladys Alekna spent last weekend in San Antonio.

**STOP - LOOK - ATTENTION
BIG BANKRUPT
NEW FURNITURE
AUCTION**

TOMORROW - Friday Night - 7:30 to 9:30 P.M.

ALSO SATURDAY NIGHT, 7:30 P. M. (Last Night)

BOUGHT OUT, OUT OF TOWN DISTRESS STOCK

Our Walls are Bulging. Need the Room

ENTIRE FURNITURE MUST GO! TO Bare Walls

Buy at Auction and Save — Tremendous Values

• 3 PC. BEDROOM SUITES. • 2 PC. INTERNATIONAL LIVING ROOM SUITES. ALSO 2 PC. SECTIONALS. • ASSORTED TABLE & BED LAMPS. • BOX SPRINGS AND INNERSPRING MATTRESSES, SINGLE AND DOUBLE. • 5 AND 7 PC. DINETTES. ASSORTED COLORS BY BERKSHIRE HOUSE CO.

**FREE Drawing For Valuable Prizes
No Purchase Necessary to Win**

ARANSAS DISCOUNT FURNITURE CENTER

324 SO. COMMERCIAL, ARANSAS PASS. J. H. GOLDIE, BONDED AUCTIONEER
FREE DELIVERY—CASH IF YOU HAVE IT—CREDIT IF YOU NEED IT

YES WE HAVE:

Men's and Boy's Caps, all kinds 69c up

Gloves, work, hunting, etc. 35c up

Complete Line Hanes Underwear

Small Hardware Items

Small Electrical Supplies

Westinghouse Lamps, 15 w to 300 w, also special lamps, sewing machine, spotlight, three-way, etc.

3 Only, 6 ft. Wooden Step Ladder \$5.95

Mirrors: All sizes, shapes, with and without Frames.

16 Piece Set Oven Proof Dishes, Golden Wheat Pattern, while they last \$3.98

We Also Have a Bargain Table.

JONES VARIETY, Inc.

MR. AND MRS. J. H. SLOCUM
Owners and Managers

Concrete Contractor

Gene Everett

Anything In Concrete

SO 4-6208
ROCKPORT

ctf

WILBORN'S

SHOE REPAIR

504 Austin St.
Rockport, Texas

p15

SEWING AND ALTERATIONS

EVELYN'S

FABRIC SHOP
PHONE SO 4-6773
Across from
Fulton Washateria

p34

MITCHELL'S JEWELRY



PHONE SO 4-6542

Watches, Diamonds
Jewelry
Engraving
Rockport

CATTLE

AND

HOG

AUCTION

12 NOON

Every Thursday

Robstown Livestock Commission Co.

P. A. Lynch & James Brice

WE WANT YOUR BUSINESS!

ctf

ARANSAS COUNTY, TEXAS

Balances, Receipts and Disbursements

For the Month of October, 1960

Fund	Balance 10-1-60	Receipts	Total	Disbursements	Balance 10-31-60
General	\$ 3,534.84	\$ 33,457.23	\$ 36,992.07	\$ 8,692.90	\$ 28,299.17
Road and Bridge	7,240.00	23,749.29	30,889.29	9,062.73	21,926.56
Jury	527.69	230.35	758.04	166.92	591.12
Permanent Improvement	97.13		97.13		97.13
Mosquito Control	5,363.58	36.74	5,400.32	302.82	5,097.50
Farm to Market and Flood Control	3.74	1,013.51	1,017.25	1,012.50	4.75
Road and Bridge Special Auto	937.97	147.51	1,085.48		1,085.48
Courthouse and Jail Interest and Sinking	990.60	5,363.87	6,354.47		6,354.47
Airport Special No. 1	34,444.15	958.22	35,402.37	488.85	34,913.52
Library	757.87	2.23	760.10	223.46	536.64
Social Security	1,502.32	275.59	1,777.91		1,777.91
Road and Bridge Machinery Equipment	274.18		274.18		274.18
TOTALS	\$ 55,674.07	\$ 65,234.54	\$120,908.61	\$ 19,950.18	\$100,958.43

Bonded Debt Outstanding:
Courthouse and Jail Bonds \$275,000.00

Certificates of Deposit in First National Bank, Rockport, Texas, total \$61,000.00 as follows:

	Three Months @ 2% Due Jan. 11, 1961	Due Dec. 8	Six Months @ 2 1/2% Due 4-11-61	Due 3-13-61
Jury	\$ 2,000.00	\$ 7,000.00		
Permanent Improvement		3,000.00		
Courthouse & Jail I. & S.		25,000.00	10,000.00	
Mosquito Control				14,000.00

NEW BOOKS IN COUNTY LIBRARY

Adult Fiction: Harper Lee, To Kill a Mockingbird; Vern Sneider, King from Ashtabula; Nicholas Monsarrat, Nylon Pirates; C. S. Forester, Young Hornblower; Kenneth Dodson, China Pirates; John Hersey, Child Buyer.

MRS. ARTHUR BRACHT HOSTS BRIDGE CLUB

Mrs. Arthur Bracht was hostess to the Wednesday Bridge Club last week at her home in Fulton. Blooming pot plants were used as decoration and a dessert course was served.

THREE SW CONFERENCE GAME BROADCASTS ON SATURDAY, NOVEMBER 19

Broadcasts of three Southwest Conference games and the live NCAA telecast will be sponsored Saturday by the Humble Company.

DISABLED WORKERS UNDER 50 WILL RECEIVE CHECKS IN DECEMBER

The first social security disability insurance checks under the new law will reach several hundred beneficiaries in this area before Christmas, according to LeRoy H. Fuhrmann, Field Representative of the Social Security Administration in Corpus Christi.

Aransas County Once Rented Courthouse

For 10 years after its organization in 1871, all the affairs of Aransas County were conducted in rented quarters in Rockport.

courthouse during week days and as a community hall on week-ends. Come Saturday night and the judge's bench was pushed aside and fiddlers took over where justice may have held sway during the week.

judge to sell the downtown building. Seventeen years later it was sold by special warranty deed to W. F. McMullen for \$1,000 cash and \$500 in Aransas County scrip.

Easy Terms or Rental Purchase Plan Typewriters, Adding Machines, Cash Registers Ribbons, Repairs Thompson's Business Machines PL 8-3773 - Hiway 35 at No. Lamont - Aransas Pass

ROOF LEAK? PATCH WITH NON-ROT FIBER GLASS AND REFINISHED LIKE NEW AND COST 2/3 LESS Free Estimates SO 4-6885

Announcing... The Opening Of Doris' Cafe FORMERLY JOHNNY'S CAFE Highway 35, North SHORT ORDERS BEER - COLD DRINKS - COFFEE DORIS HAM, Manager

DEN 3 HAS MEETING

Den 2 held their regular meeting this week, in standard form, after which Mrs. Francis Tedder served refreshments to Larry Cobb, Stanley Shults, Sonn Roy, Marvin Cobb, Phil Tedder, Addison McCandless, Danny Stephens, Bob Shaver, Flip Caraway, Steve Caraway, den chief, Mike Tedder and den mother, Mrs. Faye Shaver. The cubs practiced their skit for the Nov. 29th Pack meeting.

DEAR BOATMAN:

Have you ever visited us at MARINELAND OF ROCKPORT? Should you? YES. We carry one of the largest selections of top-name boats on the Gulf Coast. Because we operate in a small town and have draw our trade from other areas, we know we have to save our customers plenty to justify the trip over to see us.

NICK SEZ

1956 Ford Fairlane Town Sedan. Power steering, automatic transmission, low mileage. Original throughout. Local owner. 1,195.00

WESTERN NATURAL SLATES

An 8,500-foot Aransas County wildcat has been scheduled 10 1/2 miles northeast of Lamar. Western Natural Gas Co. No. 30 St. Charles Ranch is located 970 feet from the south and 1,350 feet from the west line of Aransas County School Land Survey, A-7. Location is on a 40-acre lease.

RIALTO THEATRE

Aransas Pass Thursday, Nov. 17 Jeffrey Hunter and Pat Crowley In Key Witness Friday and Saturday Nov. 18-19 Curt Jurgens and Victor Shaw In I Aim at the Stars - also - Leo Gorcey and Huntz Hall In Triple Trouble Sunday, Monday, Tuesday Nov. 20-21-22 Gina Lollobrigida and Dale Robertson In Fast and Sexy

WESTERN NATURAL SLATES

1957 Ford Fairlane 500, low mileage, original paint, local owner, radio, heater, standard transmission. 1,295.00

NICK SEZ

1956 Ford Custom 4-door, V-8. Local owner. Heater, overdrive, low mileage. 895.00



E. H. (Nick) CARTER Our Rockport Representative Phone SO 4-2309

Commercial Motor Co. Phone PL 8-4361 Your Friendly Ford Dealer New and Used Cars and Trucks ARANSAS PASS

What Does Your Pen Say? Given a chance, it can write some mighty nice things about you. Then your pen can say, here is a wise man. He knows that a check is economical, safe and convenient. He does business the efficient way. Do you? CHECK ON THE FRIENDLY THE FIRST NATIONAL BANK Rockport, Texas Member Federal Deposit Insurance Corporation Member Chamber of Commerce

WESTERN AUTO SAFETY SERVICE BRAKE PEDAL LOW CAR PULL TO ONE SIDE FRONT END SHIMMY TIRE WEAR UNEVEN Let Us Correct These Conditions HERE'S WHAT WE DO... ADJUST BRAKES CORRECT WHEEL ALIGNMENT BALANCE FRONT WHEELS ALL THIS WORK FOR ONLY 9.95 EASY PAYDAY TERMS Car Safety Headquarters WESTERN AUTO ASSOCIATE STORE Rockport