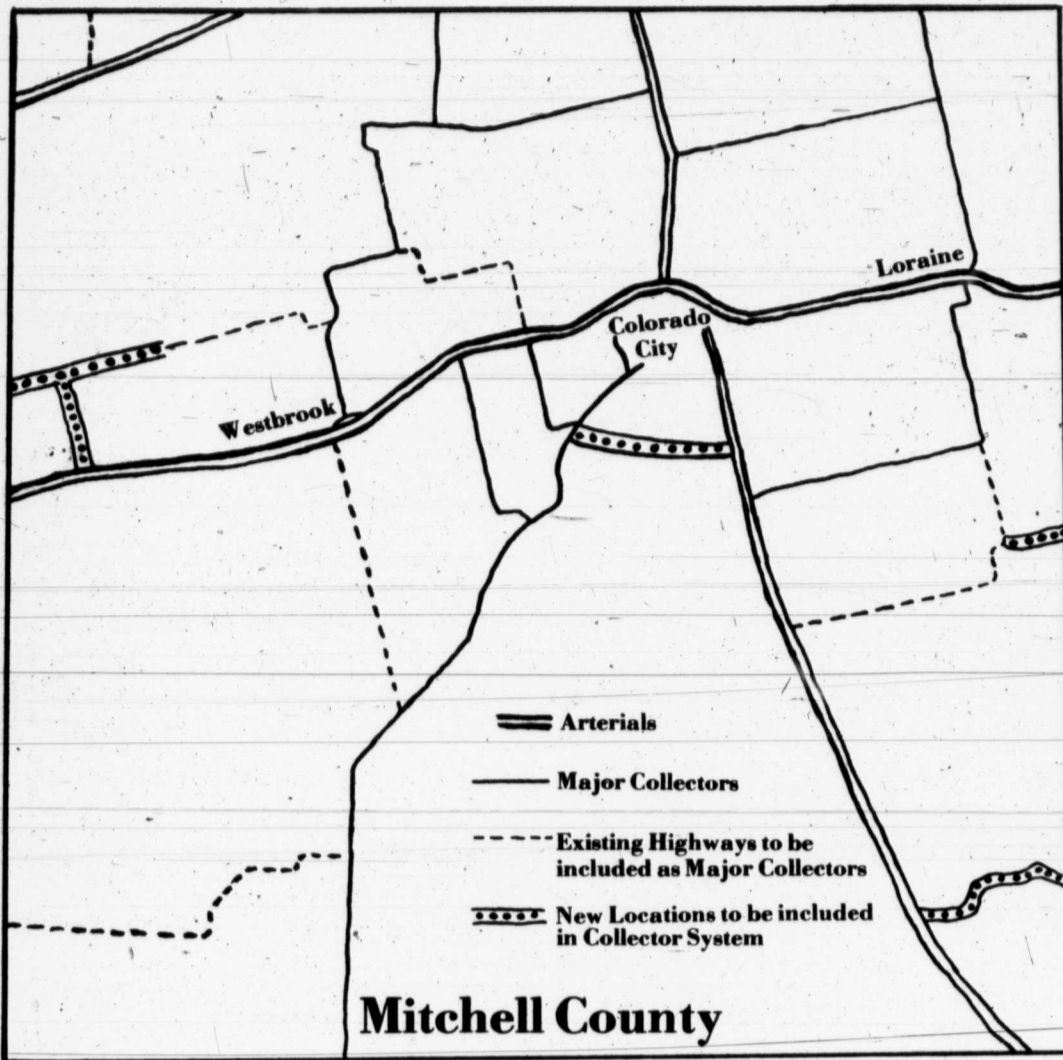


# Colorado City Record

10 Pages - 1 Section

P. O. Box 92, Colorado City, Texas 79512 Sunday, March 23, 1975

15c



## Priority Listing Made

# County Roads May Get Improvements

Federal highway funds which were impounded by former President Richard Nixon may be made available to state and county highway departments soon, enabling a continuation of the Farm to Market paving program.

Mitchell County Judge Bill Carter met with District Engineer for the State Highway Department, Roger Welsch of Abilene, recently and together they made a priority listing of road needs for the county. Welsch indicated to Carter that funds would be available by 1976 to continue the Farm to Market paving system which

had been encouraged by previous administrations and suggested the priority listing be made.

As indicated on the map at left, the number one priority was designated to be the road connecting Lake Colorado City with Lake Champion. Judge Carter said that a road would be constructed from Hwy. 208, two miles north of Champion Creek, west to connect with Hwy. 163 at the entrance to Texas Electric's Morgan Creek Power Plant.

Another high priority item, not shown on the map, but

which Carter said was certainly one of the first things the county road system needs, is to construct a low water crossing on the Interstate 20 access road at the Colorado River.

The construction of such a low water crossing has been recommended to the State Highway

Department through the local highway department and the Abilene district office. It has also been placed on a priority list on a statewide basis listing needed improvements to the Interstate Highway system, according to Welsch's assistant, Bob Lindley.

Lindley said that federal funds from a separate source are available on a limited basis for these Interstate system improvements.

Other improvements to the county system would include paving a road east from near Silver on Hwy. 208 to the Sun Oil Co. Nena Lucia unit and on east to Maryneal.

Another proposal, the right of way not having yet been purchased, would be paving a road to connect the dead-end pavement near Carr Church west to oil fields in east Howard County.

Last on the priority list would be the pavement of a dead-end road into the Narrel Road (unpaved) east of Loraine.

According to figures obtained from Welsch's office, there are 59.78 miles of principal arterial roads in the county, including Interstate 20 and Hwy. 208, making 8.45 per cent main routes.

Major and minor collectors, including both state and county paved roads, make up 184.78 miles in the county, 23.29 per cent.

Unpaved county roads make up 482.93 miles, a little over 68 per cent of the road system in the county.

In a subsequent letter to Carter from Welsch, he stated: "The Federal Aid secondary system will consist of rural major collector routes. The effective date for realignment of Federal Aid systems is July 1, 1976."

The map of the present and proposed road system in the county was included with the letter asking for further recommendations.

Carter said the county commissioners will study the proposals and, since they have already discussed these road problems in many previous meetings, will make the added recommendation for a low water crossing over the Colorado River.

Department through the local highway department and the Abilene district office. It has also been placed on a priority list on a statewide basis listing needed improvements to the Interstate Highway system, according to Welsch's assistant, Bob Lindley.

Lindley said that federal funds from a separate source are available on a limited basis for these Interstate system improvements.

Other improvements to the county system would include paving a road east from near Silver on Hwy. 208 to the Sun Oil Co. Nena Lucia unit and on east to Maryneal.

Another proposal, the right of way not having yet been purchased, would be paving a road to connect the dead-end pavement near Carr Church west to oil fields in east Howard County.

Last on the priority list would be the pavement of a dead-end road into the Narrel Road (unpaved) east of Loraine.

According to figures obtained from Welsch's office, there are 59.78 miles of principal arterial roads in the county, including Interstate 20 and Hwy. 208, making 8.45 per cent main routes.

Major and minor collectors, including both state and county paved roads, make up 184.78 miles in the county, 23.29 per cent.

Unpaved county roads make up 482.93 miles, a little over 68 per cent of the road system in the county.

In a subsequent letter to Carter from Welsch, he stated: "The Federal Aid secondary system will consist of rural major collector routes. The effective date for realignment of Federal Aid systems is July 1, 1976."

The map of the present and proposed road system in the county was included with the letter asking for further recommendations.

Carter said the county commissioners will study the proposals and, since they have already discussed these road problems in many previous meetings, will make the added recommendation for a low water crossing over the Colorado River.

## TV Log Continued

The TV log is back in this issue of the Record, by popular demand.

Last week, the log was deleted from the pages of the Record after a number of people had requested that space used by the log be devoted to more news.

However, in deleting the TV log, the Record asked that readers call in their opinion about whether or not the log should be continued.

Of all the calls and visits received by the Record regarding the TV log, all were in favor of continuing the television schedule.



Top Spellers

Jodie Bolin, second left, won the Mitchell County Spelling Bee Thursday afternoon in the Civic Center, correctly spelling the word "sabotage" for the title of champion speller. Other contestants in the event who placed in the top

five were, from left, Otis Ruffin, 4th; Jodie Bolin, 1st; Allison Haggerton, 3rd; Charlotte Bradbury, 2nd, and Toni Hutto, 5th. Miss Bolin will compete in the Regional contest in Lubbock, Saturday, April 5.

# Kiwanis Clubs Apply For Grant

The Kiwanis Clubs in Mitchell County and Scurry County have joined in making application for a grant for transportation equipment to aid the elderly in both counties.

The joint application, submitted to the Texas Highway Department through the West Central Texas Council of Governments, asks for two 12-passenger vans, one for Snyder and one for Colorado City.

James Campbell, city manager of Colorado City, informed the Kiwanis Club of the funds, stating that \$932,000 has been allocated to the state of Texas for aiding elderly and handicapped persons in the state.

Campbell said the allocation is strictly for private non-profit organizations and not for any governmental body.

The \$932,000 to Texas from federal sources is being administered through the State Highway Department, he said, but applications are to be handled through the various COG offices throughout the state.

Funds are being made available through the Mass Urban Transit Administration to places needing aid in moving traffic from place to place, with this specific fund set up as aid to the elderly and handicapped.

Since Colorado City has no means of transporting elderly persons to attend to their errands, no taxi service they can phone to take them to doctors offices or shopping, there is a possibility the application will be approved.

Both the Association of Retired Persons and the Retired Teachers Association have met with the city council and commissioners court asking that some means of transportation be made available to elderly persons in the city.

With the almost certain possibility of setting up a Senior Citizens Center at Wallace School through the co-operation of Western Texas College in Snyder and the Mitchell County commissioners court, Campbell said that the prospect for getting transportation through this grant looked brighter.

"There will be someone at the Center through the city capable of making arrangements for people to use the van," he said, "and the fact that this person would be responsible for it is a plus in our favor."

Combined cost of the two vans for Snyder and Colorado City is a little over \$12,000, he said.

responsible for it is a plus in our favor."

Combined cost of the two vans for Snyder and Colorado City is a little over \$12,000, he said.



At Root Lodge

Donald Boyd's first day on the job as new administrator of Root Valley Fair Lodge was Tuesday. He succeeds Martin Weaver who died Feb. 6, apparently of a heart attack. Boyd opened the Stanton View Manor Nursing Center as administrator and also the Westview Manor Nursing Center in Odessa. The Snyder native is in the process of moving to Colorado City from Odessa.

## Game Banks Over \$150 For Boys

Colorado City's "Schoolmen" just wouldn't be denied Thursday night as they clashed with the Mitchell County "Law" in a basketball game to raise funds for the Mitchell County Boys Club.

The game was a success in raising funds for the Boys Club as some \$150 to \$175 was brought in.

"The Law" immediately asked for a rematch which is expected to be played next year.

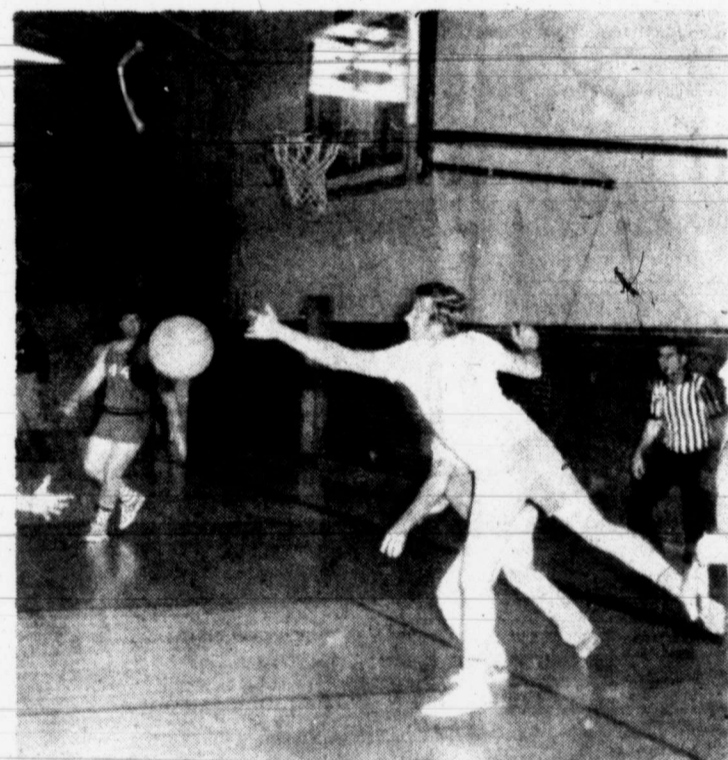
School officials, led by members of the coaching staff, took control of the game early and led by 16-8 at the end of the first quarter. Members of the school team hit almost every shot they made. Final score was 72-46.

"The Law" got a little unofficial help by a rough looking character with a mustache, and

Smokey the Bear Hat. He fired his cap pistol almost every time the "schoolmen" took a free shot. That "character" was Highway Patrolman Buddy Hertenberger, although few could recognize him. He delighted in pointing out to the crowd how overweight some of the players were.

Sheriff Bill McGuire, president of the Boys Club, expressed his appreciation to everyone for coming out and helping the Boys Club.

Leading scorers for the "Schoolmen" were Mike Easterwood and Mel Gierhart who each had about 16 points. Leading scorer for the "Law" was Frank Biggers, who delighted the crowd by "stuffing" the ball in the basket several times. Biggers scored more than 20 points.



Hand-Off!

Ronnie Aston, a member of the "Law" squad, makes a picture-perfect hand-off to another team member during Thursday night's Boys Club benefit game between the "Law" and the "Schoolmen" in Wolves Gym. A "Secret Weapon," Highway Patrolman Buddy Hertenberger, disguised as Smokey the Bear, looks on in the background. The combined efforts of all "Law" squad were not enough to defeat the "Schoolmen" as they took a 72-46 victory. Winners of the game were boys who belong to Mitchell County Boys' Club, as over \$150 was raised by the game.

## Contract Awarded For Post Office

The U. S. Postal Service has awarded a contract to build and lease a new post office building in Loraine.

Contract went to Charles Hampton of Jefferson, lowest of four bidders.

The building will contain 1,400-square feet of floor space on a site containing 39,000-square feet, or 3/4 acre, at the corner of Main and Colorado Streets.

Mrs. Ruth Butler, Loraine postmistress, said that the proposed building site is located

on the southeast corner of the intersection, north of the present post office building which is leased from the Masonic Lodge.

The postal service holds an option on the site owned by Higginbotham-Bartlett of Lubbock, purchased earlier at a cost of \$3,750.

The building when completed will be leased to the postal service for a basic period of 10 years, with option of 20 additional years.

The building will require five to seven months for completion.



March Display

Library assistant Geneva Davilla stands beside the March painting on display in Mitchell County Library. Members of the Brush and Palette Club show one of the paintings each month of club members. Mrs. Bernice Hilliard created this watercolor of oriental poppies. Also on display in the front showcase this month is a collection of James Payne, showing different forms of bulls, some from Spain, Greece and Mexico. There is also an exhibit of paintings in the Hesperian Room featuring works of area artists.

## Pace Wildcat Staked In County

Tri-State Oil & Gas Inc. of Houston will drill the No. 1 T. H. Pace, a 3,300-foot wildcat in northwestern Mitchell County.

Site is seven miles northwest of Westbrook, two and one-fourth miles west of the Sharon Ridge multiphase field and one and one-half miles east of the Westbrook field.

Location is 660 feet from the north and 1,980 feet from the west lines of 5-27-Texas and Pacific survey, Abstract 478.

## Woodland Benefit Show Tomorrow

The musical benefit show for Woodland School begins at 8 p.m. tomorrow in Colorado High School auditorium and will continue until 10 p.m.

Tickets to the event have been sold in advance by members of Teens Aid the Retarded, or admission can be paid at the door,

\$1 each ticket, said drive chairman Eddie Swinney.

Theme of the program is "Pay Off the Bus," as all proceeds will go toward paying off the note on the Woodland School bus purchased last fall with a note for \$5,000. About half the amount has been paid, so goal for the benefit show has been set at \$2,500.

## Crop Payments Over \$2 Million

From 95 to 98 per cent of low yield and disaster payments have been made to Mitchell County farmers for their 1974 crops, according to figures obtained from the Agriculture Stabilization and Conservation Service office here.

Payments totaling \$2,066,079, 56 have been made to date, with only a few more to be completed. Amarie Hall, program assistant for low yield and disaster payments, said that the few still lacking need to bring in Social Security numbers or signatures or something of that nature.

A breakdown of the over \$2 million total shows the following amounts:

- Prevented Cotton, 74 farms, \$177,563.99.
- Low Yield Cotton, 598 farms, \$1,401,907.12.
- Prevented Feed Grain, 179 farms, \$163,321.59.
- Low Yield Feed Grain, 518 farms, \$285,993.82.
- Prevented Wheat, 75 farms, \$19,071.28.
- Low Yield Wheat, 135 farms, \$27,221.76.

## Cancer Crusade Day Set April 8

Final plans for the county-wide Cancer Crusade were made during a meeting of Mitchell County Cancer Society members, meeting Wednesday in the Community Room of City National Bank.

Drive Chairmen Joy Piland and Jan Lemons reported on completion of plans for the drive set for Sunday, April 6 through April 8, Crusade Day. Memorial services are planned by a number of area churches April 6.

## Agriculture Day Set For Monday

"Almost Everything Starts on a Farm" is the theme of American Agriculture Day, set tomorrow for the first Monday of spring.

Purpose of the recognition day is to help city dwellers to understand the importance of agriculture to the economy and the impact of domestically produced food and fiber on their way of life.

American Agriculture Day is being sponsored in Texas by the Cowbelles, an auxiliary of the American National Cattlemen's Association.

Local industries and businesses around the state are planning various functions to honor agricultural producers.

To highlight American Agriculture Day in Texas, the Cowbelles will have their state convention with the Texas and Southwest Cattle Raisers Association in Austin, March 23-25.

State Agriculture Commissioner John C. White commended the program. "The Texas Department of Agriculture certainly supports this new venture and hopes that it is a success."

"Texas is an agricultural state," White said. "When a feedlot closes or a rancher goes out of business, our economy is hurt. Even though current financial losses increase daily, the damage is not evident to the masses of urban consumers because there are surpluses of beef cattle on the market and most cattlemen are hanging on," he stated.

M  
A  
R

2  
3

7  
5

Call 728-3431 To Place a Record Classified Ad.

**COLORADO DRUG**  
102 East 2nd Phone 728-2665  
**Will Be Open Sunday**  
**2 - 4 P.M.**

**NOW at Security Corner**  
**Heavy Macrame Cord**  
Hand-Made Items---- \*Jewelry  
\*Bisque Eggs  
\*Butterflies on Velvet  
\*Handpainted China  
\*Pottery  
\*Domino Counters  
All From Local Artisans  
**Security Corner**  
Dennis & Jennie Wright  
1032 Hickory 728-5251

**AUCTION**  
**Thursday, March 27**  
Sale Begins Promptly At 10:00 A.M.  
Colorado City Highway  
SNYDER, TEXAS  
*Be With Us As A Buyer, Seller or a Visitor*  
We Will Have A Wide Variety of Tractors, Plows, Cultivators, Discs, Hand Tools, Boomers, Chains and Miscellaneous Implements.  
*We Are Not Responsible For Accidents*  
WE SELL FOR PUBLIC ANY ITEM — SALES TAX WILL BE COLLECTED.  
COMMISSION: 10% on items \$100.00 or less; 5% on items over \$100.00 with \$10.00 minimum. No item sold for less than 50c commission. No charge on no-sale items.  
**Snyder Sales & Auction Company**  
BRUCE EVANS Res. Phone 573-8237  
BILL DAVIDSON Phone 573-2477  
BUCK WOOLVER Phone 573-9863  
GERALD LAWRENCE Phone 515/673-8527 Abilene Texas  
SNYDER, TEXAS  
Located Colorado City Highway — Phone 573-3201  
We Buy — Sell — Trade — 6 Days Each Week



**Westbrook Girls Track Team**  
Westbrook High School girls track team members are from left to right standing Julie King, Pansy Hale, Janice Ritchey, and Brenda Matlock. Kneeling from left to right are Carolyn Hubbard, Pandora Moore, Mary Martinez, Julia Sweatt and Mary Alaniz.



**David Autry Named On Honor Roll**

David T. Autry, son of Mr. and Mrs. Jacob B. Autry, of Colorado City was named to the Distinguished Student list and "A" honor roll. He is a freshman general agriculture major.

**Club's Honorees**  
The Self Culture Club's 50th Anniversary, held Friday in the Civic Center, honored three of the oldest members of the club. The club honored Mrs. John Brown, left, Mrs. C. P. Gary, center and Mrs. L. B. Elliott. The "honorees" are shown above reviewing the club's old yearbook.



**Club's 50th Anniversary**  
Mrs. John Berry spoke at the Self Culture Club's 50th anniversary held Friday in the Civic Center. Mrs. John Berry, president of the Mesquite District Federation of Women's Clubs, spoke on Friendship, The Golden Key. Presenting Mrs. John Berry with a gift is Mrs. Billy Culwell and Mrs. L. B. Elliott.

**News From Root Memorial Hospital**

**PATIENTS ADMITTED**

March 18  
Woodrow Wilson, City, medical; Kim Parker, City, medical.

March 19  
Cary (Shim) Swann, City, medical; Mrs. Gladys Sullivan, Snyder, medical; Mrs. Vivian Ann Hill, City, medical; Mrs. Goldie West, Snyder, medical.

March 20  
Mrs. Mineola Floyd, City, medical; Mrs. Linnie E. Williams, City, medical; M. E. Essery, Snyder, medical; Mrs. Maurine Myers, City, medical; William Ernest Robertson, City, medical.

**PATIENTS DISMISSED**

March 18  
James E. Gresham, Coahoma, medical; David Sean Neal, City, medical; Shim Swann, City, medical.

March 19  
Miss Mary Broaddus, City, medical.

March 19  
Miss Amelia Darden, City, medical; Mrs. A. Modine Johnston, Ira, medical.

March 20  
Kimberly Dawn Parker, City, medical; Mrs. Vivian Ann Hill, City, accident; Allen Barrera, Loraine, medical.

**Colorado City Record**  
**MAC McKINNON**  
Publisher  
Published every Sunday and Thursday morning by Colorado City Record at Colorado City, Texas. Second class postage paid at Colorado City, Texas. Mailing address, Colorado City Record, P.O. Box 92, Colorado City, Texas 79512

**Look Who's New**  
Amy, daughter of Mr. and Mrs. John V. Del Real of Colorado City was born in Root Memorial Hospital March 15 weighing 7 lbs. 9 ozs.

**DRS. BLUM And NESBITT OPTOMETRISTS**  
1825 25th St. Snyder Phone 573-3992  
Office Closes Noon Wed. & Sat.

**PALACE THEATRE**  
OPEN 7:30 START 7:45  
Sunday & Monday  
**THAT'S ENTERTAINMENT**  
**"ONE OF THE BEST"**  
—Rex Reed  
Released thru United Artists

**Tips From The City Of Colorado City**  
City residents are reminded that water bills are to be paid in full on or before the due date.

**We Salute The Girls Athletic Association At Colorado High School**

Leaders of the Girls Athletic Association, pictured above from left, are Cheryl Sayger, Linda Jackson and Kelly Moore. Sponsor is Girls Athletic Director Carol Dakan.

*We're Proud Of The Work You're Doing!*

Kiker-Seale Funeral Home	Dairy Queen
CITY NATIONAL BANK	Col-Tex Service Station
Colorado City Record	
Lone Wolf Electric Co-op	
Chiropractic Health Clinic, Inc.	

**Over the fence or across the desk...**

*either way, we'd like to talk with you about your financial needs.*

*Let's get together soon.*

**THE CITY NATIONAL BANK** COLORADO CITY, TEXAS  
*... Since 1900*

**Chin**  
By MRS. N. Record Corr  
Mr. and Mrs. Ira recently visited Mrs. T. J. Webb  
Sunday guests Pete White were Elmer Rainey of  
Mrs. Girlie H. City visited Mr. last week.  
Mr. and Mrs.  
**Cowen's**  
Step into the shop, start a dance a skirt in shiny w  
248 Walnut  
**Gift**  
Say "Ha"  
**Pa**  
SE DELI  
**FREE**  
**Choco**  
CL  
**Plus**  
Also For **Alabe**  
Th  
G  
Co  
501 Wal

## China Grove News

By MRS. N. F. HALL  
Record Correspondent

family from Midland recently visited Mr. and Mrs. O. N. Laster.

\*\*\*

Mr. and Mrs. Billy Adams and family of Abilene recently visited Mr. and Mrs. Ed Adams.

\*\*\*

Sunday guests of Mr. and Mrs. Pete White were Mr. and Mrs. Elmer Rainey of Colorado City.

\*\*\*

Recent guests of Mr. and Mrs. N. F. Hall were Mr. and Mrs. Hollis Mize, Naomi and Brandy of Plainview, Mr. and Mrs. Ralph Singletarie of Amarillo, Charles Ray Dunn of Colorado City and Freddie Harris of Sweetwater.

\*\*\*

Mr. and Mrs. Billy Ray and



### Play Practice For Westbrook

Westbrook's one act play titled "The Devil On Stilts," was performed before the public Thursday night. This play revolves around a love affair. Julia Swatt, center, fusses at Susie Hogue, seated, for the denial of knowing Mr. Craig as Kathy Parsons looks on. This Thursday night presentation was a practice for the UIL competition which will be held April 1 in Hobbs.

### Sanchez Dies Here Monday

Francisco Sanchez, 86, of Colorado City, retired farmer, died at 2 a.m. Friday in Root Memorial Hospital after a lengthy illness. Mass will be celebrated at 10 a.m. Monday in St. Ann's Catholic Church.

Father Busch will officiate. Burial will be in Mitchell County Cemetery, directed by Kiker-Seale Funeral Home.

Rosary will be said at 8 p.m. today in Kiker-Seale Funeral Home Chapel.

### Students Attend Forum At Odessa

The Colorado City High School Council attended the West Texas Forum at Permian High School in Odessa Saturday, March 15.

The forum began with an assembly in which the people attending were divided into different sections or groups. Each group participated in the Junior Olympics and a rap session, discussing problems in high schools. Lunch was served in the high school cafeteria.

Other offices elected were Big Spring, president; Crane, secretary and Andrews, parliamentarian.

Attending the forum from Colorado City were Mark Reynolds, Roger Roenfeldt, Michael Brooks, Gerald Hill, Robert Rivera, Kevin Herm, Louis Rios, Irma Alvidrez, Kelly Moore, Lou Ann Griffin, Ginger Noel, Jean Ann Gray, Shelia Shaw, Shelia Hardoe with sponsors Miss Wilson and Mr. and Mrs. Simmons also attending.

We Sell Our Paper Twice A Day Through Classified Ads. Phone 728-3413.

# SPECIAL

## MONDAY & TUESDAY MARCH 24 & 25

Until 2 p.m.

# CHICKEN FRIED STEAK PLATTER

# \$1.29



Hiway 208

728-2082

Cowen's



Step into fashion with this fun young wedge. A wrapped up band and quarter strap start a great look and the covered wedge completes it. Dress up pants or darts a skirt, for great looks the wedge way. In shiny white. 11 1/2"



248 Walnut

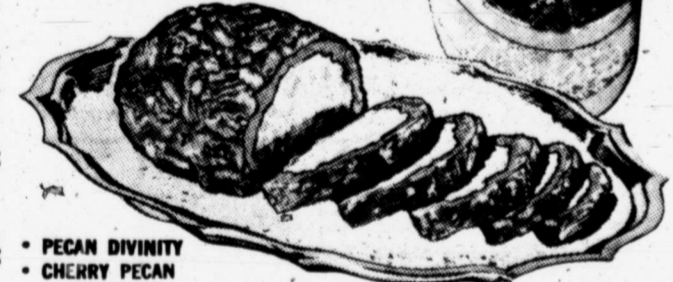
728-3351

## Gift Inspirations for Easter



Say "Happy Easter" with

**Pangburn's**  
Slice-N-Serve  
DELUXE CANDY EGGS



• PECAN DIVINITY  
• CHERRY PECAN  
• MILLIONAIRES

Happy Easter dessert and delightful party treat. Pangburn's finest... big, luscious molded Easter Eggs.

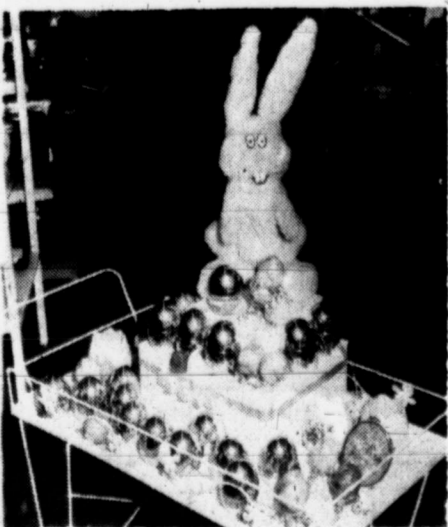
### FREE EASTER BASKET & GRASS

With The Purchase Of  
**Chocolate Coconut Egg Or  
Chocolate Rabbit**

\$1. \$1.29

### Plush Easter Rabbits, Ducks & Chicks

Also For Your Special Easter Gift Giving:  
**Alabaster Eggs From Italy,  
The Aquarius Cologne  
Golden Egg & China  
Cracked Egg Vases**



## Corner Drug

501 Walnut

728-3484

Born June 4, 1888, in Mexico, Sanchez married Petra Gamba in 1923 in Bastrop. They moved to Mitchell County in 1958. He was a member of St. Ann's Catholic Church.

Survivors include his wife; six daughters, Reynalda Sanchez of the home; Mrs. Dorothy Silveira, Mrs. Minnie Garza and Mrs. Josie Lara, all of Colorado City; Mrs. Josephine Lomely of West Virginia and Mrs. Maria Garcia of Loraine; seven sons, Danny of the home, Joe of Colorado City, Antonio of West Virginia, Jesse of San Antonio, Juan of Friona, Frank Jr., and Paul, both of North Judson, Ind.; 73 grandchildren and 34 great grandchildren.

Get Rid Of  
Unwanted Items  
with a Record  
**WANT AD**  
Phone 728-3413

MODE O'DAY introduces exclusive new



## beautiful blenders

**SPECIAL 10% SAVINGS FOR TEN DAYS ONLY!**

Come see our own California-designed matchable-mixable coordinates... silky-soft polyester shirts in enchanting prints... snag-free polyester pants in solid colors. Everything packable, washable, instantly wearable for the way you live today.

- ★ Summer's prettiest colors in your size are in stock right now
  - ★ Collect a wardrobe of Beautiful Blenders today at special 10% savings. Use our no-cost Layaway to make savings easier
  - ★ Buy a Beautiful Blender shirt and pant at 10% off regular prices
  - ★ 10% off each additional Beautiful Blender item you buy at the same time
- |  |              |
|--|--------------|
| Short sleeve shirt, reg. 10.99                 | <b>9.89</b>  |
| Long sleeve shirt, reg. 12.99 (sizes 34 to 46) | <b>11.69</b> |
| Pants, 12-20, reg. 10.99                       | <b>9.89</b>  |
| Pants, 32-40, reg. 11.99                       | <b>10.79</b> |

## mode o'day

129 E. 2nd

728-3207

# SPRING SALE

**MONDAY, TUESDAY & WEDNESDAY  
3 DAYS ONLY**

Just Arrived  
Famous Brand Names Houndstooth Checked

**JEANS** Reg. \$10.95 **\$7.95**  
Now

Over 2,000 Pairs To Choose From



One Group Women's

## PANTS & BLOUSES 1/2 Price

Group Of Men's  
**WESTERN SHIRTS**

Long Sleeve Buttons & Snaps

Values To \$13.95 **\$6.95**  
Now

LEVI

PRIOR

HBARC

Bob & Kathy  
Bowers

## BOWERS Z BAR B WESTERN WEAR

Bill & Jodie  
Bowers

East Interstate 20

728-5874

M  
A  
R

2  
3

7  
5

# Methodist Church Presents Concert

Mrs. Ted Dotts of Pampa, and formerly of Colorado City, will be presented in an organ concert at the First United Methodist Church in Colorado City today at 6 p.m.

Mrs. Dotts, the former Betty Schewbert, is a graduate of McMurry College where she studied organ under Dr. Francis Hinkel for four years. She later returned to McMurry for two years of graduate study under Dr. Hinkel and did further graduate study at SMU. She has taught both piano and

organ and has given a number of concerts in churches of the Northwest Texas Methodist Conference.

Mrs. Dotts' father, the late Dr. J. E. Schewbert, was pastor of the United Methodist Church in Colorado City for four years. During this time, Mrs. Dotts attended Colorado Junior High School.

Members of the First United Methodist Church invite others of our community to come to the organ concert by Mrs. Dotts.

# Local Easter Seal Appeal Report

Mitchell County's Easter Seal Representative reported today that the 1975 Easter Seal Appeal of the Easter Seal Society for Crippled Children and Adults is going well but urged all citizens who have not responded to the Appeal to do so.

George Womack of Colorado City serves as Easter Seal Appeal Treasurer for the County.

The 1975 Easter Seal Appeal will finance the Easter Seal Society's rehabilitation program for crippled children and adults in Texas. Last year the Society helped 20,152 persons through its program of assistance in finding and making effective use of services for the disabled and their families.

The Easter Seal Society helps support 17 treatment facilities in Texas where children and adults not eligible for other assistance are treated. These centers offer physical therapy, medical diagnosis, speech and hearing programs and related services to help the disabled build happier and more useful lives.

The Easter Seal Representative is the person to contact for services from the Easter Seal Society. He can be contacted at City National Bank for the request form to be sent to the Texas Seal Society to determine the needs of the disabled person. The Society will provide the services or will direct the handicapped person to the best resources available to help him.

Contributions to the Easter Seal Appeal should be sent as soon as possible. The Annual Spring Appeal continues through Easter Sunday.

*The Record Serves Its Readers Proudly*

# TELEVISION SCHEDULE

Cable Reception Channel Numbers are listed at top.

March 23 - March 29

## SUNDAY DAYTIME

CABLE	CH 2	CH 3	CH 4	CH 5	CH 7	CH 8	CH 9	CH 11	CH 12
DAY TIME	KMID-2 NBC	KDFW-4 CBS	KXTX-39 IND	KTVT-11 IND	KMOM-4 KWAB-4 ABC-CBS	WFAA-8 ABC	KRBC-9 NBC	KCBD-11 NBC	KTXS-11 ABC-CBS
7:00		Words of Life Bible Says	Washington Debates		America Sings Seago Bros.	Sharing Faith Dimensions		Old Time Gospel Hour	Truth
8:00	Rex Humbard	Baptist Church Episcopal Church	Souls Life Temple	Town Hall Discovery	Place To Talk Church of Christ	Ring J. Robison	Bible Class	Discovery J. Robison	Old Time Gospel Hour
9:00	Oral Roberts Music & Word	Point of View Hilland Park	Gospel Hour	Divine Plan K. Kuhlman	Ad. Foghorn Korg	Norman Peale Korg	Oral Roberts Faith Today	Rex Humbard	Baptist Church Place to Talk
10:00	Discovery Light	Presby. Church Face Nation	Hour of Power	First Baptist Of Dallas	Gooper & Ghost Make A Wish	John's Gospel Make A Wish	Discovery Devotions	Oral Roberts K. Kuhlman	Gooper & Ghost Make A Wish
11:00	First Baptist	Crossroads Inquiry	Dimension Panorama	First Method. Of Ft. Worth	Kalediscopo Friends of Man	Hour of Worship	Bible Hour Meet the Press	Living Religion Better Life	Kalediscopo Insight
12:00	Armstrong Astros Baseball	National Invitation	Real Estate Peace Lutheran	Point of View Astro	Directions Iss. & Answ.	Directions Issues & Answ.	Jimmy Dean Blue Marble	Armstrong Meet Press	Directions Issues & Answ.
1:00		Tourney Basketball	E. Angley	Baseball Astros	Superstars	Superstars	World Championship	World Championship	Superstars
2:00		NBA On CBS New York	Victory Voice J. Swaggert	VS Minnesota	Auto Racing	Atlanta 500	Tennis	Tennis	Auto Racing
3:00	NHL Hockey	Knicks AT Boston	Passing Thru Happy Hunters	Ward Fishing Outdoors	Wide World	Wide World	NHL Hockey St. Louis	NHL Hockey	Atlanta 500 Wide World
4:00		Celtics Outdoors	T & S Alamo Good News	Land of The Giants	Of Sports	Of Sports	AT Vancouver		Of Sports
5:00	News	Sixty Minutes	Com. Church Songs	Tarzan	P. Wagoner Spring Street	Dead or Alive Forum	News	News	Armstrong CBS Reports

## SUNDAY

CABLE	CH 2	CH 3	CH 4	CH 5	CH 7	CH 8	CH 9	CH 11	CH 12
TIME	KMID-2 NBC	KDFW-4 CBS	KXTX-39 IND	KTVT-11 IND	KMOM-4 KWAB-4 ABC-CBS	WFAA-8 ABC	KRBC-9 NBC	KCBD-11 NBC	KTXS-12 ABC-CBS
6:00	Wild Kingdom Disney	News Cher	Clear & Free Chris Panos	Movie Abbott & Costello Wistful Widow	Lifestyle \$6 Million Man	News 8 6 Million	Wild Kingdom Disney	Report World of	Two Irelands Six Million
7:00	Mystery Movie	Kojak	Emphasis '75 Deaf Hear	Of Wagon Gap	Sunday Movie	Dollar Man Jacob & Joseph	Mystery Movie	Disney Mystery Movie	Dollar Man Movie
8:00	Ellery Queen	Mannix	700 Club	Movie Gunfighter	Jacob & Joseph	Joseph	Ellery Queen	Ellery Queen	Story of Jacob & Joseph Report
9:00	Nashville	History	Challenge	Outdoors	Inside TV	Police Surgeon	H. Squares	Joseph Report	Movie
10:00	Big 2 News ITA Pro	News News	Words J. Swaggert	News Movie Cont'd.	News Help Line	News Que Pasa	News Championship	Wrap-Up 11 Theatre	Movie
11:00	Track Classic	Dragnet Movie	Panorama	Tomorrow News	Movie Moon & Szipence	Movie Treasure of	Wrestling	ITA Track Classic	
12:00		Jazz Singer		Sign Off		San Gennaro			

## MONDAY thru FRIDAY

CABLE	CH 2	CH 3	CH 4	CH 5	CH 7	CH 8	CH 9	CH 11	CH 12
DAY TIME	KMID-2 NBC	KDFW-4 CBS	KXTX-39 IND	KTVT-11 IND	KMOM-4 KWAB-4 ABC-CBS	WFAA-8 ABC	KRBC-9 NBC	KCBD-11 NBC	KTXS-12 ABC-CBS
7:00	Today Show	CBS News	Bugs Bunny Mighty Mouse	Slam Bang	A.M. America	A.M. Show	Today Show	News Today Show	A.M. America
8:00		Capt. Kangaroo	Bozo Dennis Menace	New Zoo Revue The Munsters					
9:00	Celeb. Sweeps Fortune	Jokers Wild Gambit	Hazel Father Knows	Dealers Choice TV Bingo	Zoo Revue Not Women Only	Mike Douglas	Sweepstakes Fortune	People, Places Fortune	Jokers Wild Henry's Den
10:00	High Rollers H. Squares	Now You See it Love of Life	Eddie's Father Lucy Show	It Takes A Thief	My Children Brady Bunch	Brady Bunch	High Rollers H. Squares	High Rollers H. Squares	Brady Bunch
11:00	Jackpot Blank Check	Young & Rest. Search Tom.	Andy Griffith Flipper	Perry Mason	Password Split Second	Password Split Second	Jackpot Blank Check	Jackpot Blank Check	Young & Rest. Split Second
12:00	Contact 2 Survive Marr	NEWS World Turns	700 Club	Noon News Cartoon Carnival	Com. Cal. Make A Deal	My Children Make A Deal	NEWS Survive Marr.	Sweepstakes Survive Marr.	My Children World Turns
1:00	Days of Lives Doctors	Guiding Light Edge of Night	700 Club Manna	Movie	Pyramid Show Down	Pyramid Showdown	Days of Lives Doctors	Days of Lives The Doctors	Pyramid Showdown
2:00	Another World	Price is Right Match Game	New Day Bugs Bunny		Gen. Hospital Life To Live	Gen. Hospital One Life	Another World	Another World	Gen. Hospital Life To Live
3:00	Somerset Beaver	Tattletales Merv Griffin	Little Rascals Hazel	Popeye Speed Racer	Money Maze Lost in Space	Dialing For Dollars	Somerset Jackpot Movie	Somerset Hillbillies	Money Maze Make Deal
4:00	Flintstones Big Valley		Father Knows Room 222	Mickey Mouse Gilligan's Island	Daniel Boone	Movie		Gomer Pyle Ironside	Gambit Price is Right
5:00	NBC News	News CBS News	Star Trek	I Love Lucy Dick Van Dyke	ABC News	ABC News Partridge Fam	News	Report	Match Game ABC News

## MONDAY

CABLE	CH 2	CH 3	CH 4	CH 5	CH 7	CH 8	CH 9	CH 11	CH 12
TIME	KMID-2 NBC	KDFW-4 CBS	KXTX-39 IND	KTVT-11 IND	KMOM-4 KWAB-4 ABC-CBS	WFAA-8 ABC	KRBC-9 NBC	KCBD-11 NBC	KTXS-12 ABC-CBS
6:00	Big 2 News Truth or Cons.	News Candid Camera	Hogan's Heroes Gomer Pyle	That Girl The FBI	News Tell The Truth	News 8	News P. Wagoner	Report Sanford & Son	Report All in Family
7:00	Double Feat. Runaway	White Seal Dr. Seuss	700 Club Part I	Rifleman	Rookies	Rookies	Double Feat. Runaway	Double Feat. "Rivermen"	Rookies
8:00	Barge &	Mitzi & A Hundred Guys	700 Club Goodmans	Family Affair Hillbillies	S.W.A.T.	S.W.A.T.	Barge	Crossfire	S.W.A.T.
9:00	Crossfire	Medical Center	Waters Fam.	Movie Ticklish Affair	Caribe	Caribe	Crossfire		Caribe
10:00	Big 2 News Tonight Show	News Hitchcock	Big Valley	News Movie Cont'd.	Late News Wide World	News 8 Mod Squad	News Tonight Show	Wrap-Up Tonight Show	Report Wide World
11:00		Movie Please Don't	Bonanza	Movie 11 Sherlock Holmes	Entertainment	The Scene			Entertainment Henry's Den
12:00	Tomorrow	Eat Daisies		Scarlet Claw		Wide World Entertainment	Tomorrow	Tomorrow	

## TUESDAY

CABLE	CH 2	CH 3	CH 4	CH 5	CH 7	CH 8	CH 9	CH 11	CH 12
TIME	KMID-2 NBC	KDFW-4 CBS	KXTX-39 IND	KTVT-11 IND	KMOM-4 KWAB-4 ABC-CBS	WFAA-8 ABC	KRBC-9 NBC	KCBD-11 NBC	KTXS-12 ABC-CBS
6:00	Big 2 News Truth or Cons.	News Minority Sp.	Hogan's Heroes Gomer Pyle	That Girl The FBI	News Tell The Truth	News 8	News Make A Deal	Report Laredo	Report M. T. Moore
7:00	Adam 12 Movie	Good Times M*A*S*H	700 Club Part I	Rifleman	Huck Finn	Huck Finn	Adam-12 Premiere Movie	Premiere	Huckleberry Finn
8:00	Disappearance Of Flight 412	Hawaii Five-O	700 Club Charisma	Family Affair Hillbillies	Movie	Movie of Week	Disappearance Of Flight 412	Disappearance Of Flight 412	Movie
9:00	Police Story	Barnaby Jones	New Day K. Kuhlman	Movie Angel Wore Red	Pretty Boy Floyd	Story of Pretty Boy	Police Story	Oral Roberts Spring Event	Story of Pretty Boy
10:00	Big 2 News Tonight Show	News Hitchcock	Big Valley	News Movie Cont'd.	News Wide World	News 8 Mod Squad	News Tonight Show	Wrap-Up Tonight Show	Report Wide World
11:00		Movie Kid Rodelo	Bonanza	Movie 11 Black Veil	Entertainment	The Scene			Mystery
12:00	Tomorrow			For Lisa		Wide World Entertainment	Tomorrow	Tomorrow	Henry's Den

**GET READY FOR SPRING NOW**

Good Supply Of

**TREFLAN SANCAP**  
**CAPAROL MILO-GARD**

Good Supply Of All

**HERBICIDES**

Good Supply Of

**TAMCOT SP 37 & SP 131**  
**CERTIFIED COTTON SEED**

**TENIK 150 G**  
**INSECTICIDE FOR COTTON**

**CUSTOM AG SERVICE, INC.**

737-2200 Loraine

# You're somebody at Everybody's Bank

Each one of you is special. You're somebody! So naturally you want a bank that knows it... a bank where your unique needs and goals determine the services and advice you receive. Well, that's the kind of banking you get from us, in a great big way. And it's our capacity to serve so many on this person-to-person basis that makes us "Everybody's Bank." Not just anybody's. Yours.



**Roscoe State Bank**

117 Cypress Street  
Roscoe, Texas

# FOR MITCHELL COUNTY

Antenna Reception Channel Numbers listed beside the station's call letters.

## WEDNESDAY

CABLE	CH 2	CH 3	CH 4	CH 5	CH 7	CH 8	CH 9	CH 11	CH 12
TIME	K MID-2 NBC	KDFW-4 CBS	KXTX-39 IND	KTVT-11 IND	KMOM-4 KWAB-4 ABC-CBS	WFAA-8 ABC	KRBC-9 NBC	KCBD-11 NBC	KTXS-12 ABC-CBS
6:00	Big 2 News Truth or Cons.	News Laurel & Hardy	Hogan's Heroes Gomer Pyle	That Girl FBI	News Tell The Truth	News 8	News Hank Thompson	Report Wild Kingdom	Report M*A*S*H
7:00	Little House On The Prairie	Charlie Brown Easter Promise	700 Club Part I	Rifleman	My Mamma Movie	My Mamma Movie of Week	Little House On The Prairie	Little House On The Prairie	My Mamma Movie
8:00	Lucas Tanner	"	700 Club George & Diane	Family Affair Hillbillies	Girl Most Likely To	Girl Most Likely To	Lucas Tanner	Lucas Tanner	Girl Most Likely To
9:00	The Law	Tony Orlando Easter Show	Manna Ministers	Movie Happy Road	Get Christie Love	Get Christie Love	The Law	The Law Part II	Get Christie Love
10:00	Big 2 News Tonight Show	News Hitchcock	Big Valley	News Movie Cont'd.	News Wide World	News 8 Mod Squad	News Tonight Show	Wrap-Up Tonight Show	Report Wide World
11:00	"	Movie The Vatican	Bonanza	Movie 11 13 W. Street	Entertain.	"	"	"	Special
12:00	Tomorrow	Affair	"	"	"	The Scene	"	"	"
12:30	Tomorrow	"	"	"	Wide World Entertainment	"	Tomorrow	Tomorrow	"

## THURSDAY

CABLE	CH 2	CH 3	CH 4	CH 5	CH 7	CH 8	CH 9	CH 11	CH 12
TIME	K MID-2 NBC	KDFW-4 CBS	KXTX-39 IND	KTVT-11 IND	KMOM-4 KWAB-4 ABC-CBS	WFAA-8 ABC	KRBC-9 NBC	KCBD-11 NBC	KTXS-12 ABC-CBS
6:00	Big 2 News Truth or Cons.	News Young 4	Hogan's Heroes Gomer Pyle	That Girl The FBI	News Tell The Truth	News 8	News \$25,000	Report Adam 12	Report Horton
7:00	Oral Roberts	Waltons	700 Club Part I	Rifleman	Barney Miller Karen	Barney Miller Karen	Sunshine Bob Crane	Sunshine Bob Crane	Barney Miller Karen
8:00	Mac Davis Show	Perry Como Spring Special	700 Club Good News	Family Affair Hillbillies	Streets of San Francisco	Streets of San Francisco	Mac Davis Show	Mac Davis Show	Oral Roberts Spring Event
9:00	Petrocelli	Curse of the Hope Diamond	Teach In	Movie Soldiers	Harry O	Harry O	Petrocelli	Movin' On	Harry O
10:00	Tonight Show	News Hitchcock	Big Valley	News Movie Cont'd.	News Wide World	News 8 Mod Squad	News Tonight Show	Wrap-Up Tonight Show	Report Wide World
11:00	"	Movie Where Were	Bonanza	Movie 11 Silver Whip	"	"	"	"	Special
12:00	Tomorrow	You When the Lights went out	"	"	"	The Scene	"	"	"
12:30	Tomorrow	"	"	"	Wide World Entertainment	"	Tomorrow	Tomorrow	"

## FRIDAY

CABLE	CH 2	CH 3	CH 4	CH 5	CH 7	CH 8	CH 9	CH 11	CH 12
TIME	K MID-2 NBC	KDFW-4 CBS	KXTX-39 IND	KTVT-11 IND	KMOM-4 KWAB-4 ABC-CBS	WFAA-8 ABC	KRBC-9 NBC	KCBD-11 NBC	KTXS-12 ABC-CBS
6:00	Big 2 News Truth or Cons.	News Thrillseekers	Hogan's Heroes Gomer Pyle	That Girl The FBI	News Tell The Truth	News 8	News Nashville	Report Emergency!	Report Goodtimes
7:00	Sanford & Son Chico & Man	Love Nest We'll get by	700 Club Part I	Rifleman	Night Stalker	Kolchak-The Night Stalker	Sanford & Son Chico & Man	Chico & Man	Kolchak-The Night Stalker
8:00	Greatest Story Ever Told	Movie "Force Five"	700 Club Spring Street	Family Affair Hillbillies	Hot 1 Baltimore Odd Couple	At Issue Mayoral Cand.	Greatest Story Ever	Greatest Story Ever	Hot 1 Baltimore Odd Couple
9:00	"	"Stat"	Preacher Emphasis '75	Movie The Robe	Baretta	Baretta	Told	Told	Baretta
10:00	Big 2 News Tonight Show	News Hitchcock	Big Valley	News Movie Cont'd.	News Wide World	News 8 Great Movie	News Tonight Show	News Tonight Show	Report Wide World
11:00	"	Movie Watusi	Friday Night Movie	Movie 11 Horror Island	Entertain.	Song of Bernadette	"	"	In Concert
12:00	Midnight Special	"	The Nevadan R. Scott	Movie Hideout	"	"	Midnight Special	Midnight Special	"

## SATURDAY DAYTIME

CABLE	CH 2	CH 3	CH 4	CH 5	CH 7	CH 8	CH 9	CH 11	CH 12
DAY TIME	K MID-2 NBC	KDFW-4 CBS	KXTX-39 IND	KTVT-11 IND	KMOM-4 KWAB-4 ABC-CBS	WFAA-8 ABC	KRBC-9 NBC	KCBD-11 NBC	KTXS-12 ABC-CBS
7:00	Addams Family Chopper Bunch	Martian Speed Buggy	Bullwinkle Circus Boy	"	Yogi's Gang Bugs Bunny	Yogi's Gang Bugs Bunny	Addams Family Chopper Bunch	Addams Fam. Chopper Bunch	Yogi's Gang Bugs Bunny
8:00	Emergency Run, Joe, Run	Jeanie Pebbles	Around World Lone Ranger	"	Gilligan	Kong Phooey Gilligan	Emerg. plus 4 Run, Joe, Run	Emerg. plus 4 Run, Joe, Run	Kong Phooey Gilligan
9:00	Mexico Tejano	Scoby-Doo Shazam!	Saturday Morn. Movie	Better Living Big Blue Marble	Delvin Lassie	Devlin Lassie	Land of Lost Sigmund	Land of Lost Sigmund	Devlin Lassie
10:00	Star Trek	Dinosaurs Hudson Bros.	Cassanova's Big Night	Home Fix-It Consumer	Super Friends	Super Friends Schoolhouse	Pink Panther Star Trek	Pink Panther Star Trek	Super Friends Schoolhouse
11:00	Jetsons Go	Globetrotters Fat Albert	Untamed World Friends	Experience PTA	The Days Bandstand	The Days Gunnysack	Jetsons Go!	Jetsons Go!	Mulligan Stew American
12:00	Armstrong Asmb. of God	Children's Film Festival	Laramie	Signs Voters Digest	German Scene	Capitol Gallery News 8	Blue Marble Sportsman	Survival Going On	Bandstand Friends
1:00	Big Marble Jimmy Dean	McHale's Navy Animal World	Cowtown Rodeo	Los Tiempos News in Review	Amer. Angler Water World	A. Steelman National	Jimmy Dean Traveler	Jeanie People, Places	Saturday Movie Matinee
2:00	NCAA College	Outdoors Women's Tennis	Sugarfoot	Report Outdoorsman	Outdoorsman Pro Bowlers	Geographic Pro Bowlers	NCAA Basketball	NCAA College	Pro Bowlers
3:00	Basketball Championships	Champions	Bonanza	Fiesta Mexicana Darrel Felts	"	Tour	Championships	Basketball Championships	Tour
4:00	"	Heritage Classic	Big Valley	Cowboy Weaver Jim Newton	Wide World of Sports	Wide World of Sports	"	"	Heritage Classic
5:00	Jimmy Dean, News	News	Star Trek	Lawrence Welk Show	Report	Report	"	"	Charlie Brown Report

## SATURDAY

CABLE	CH 2	CH 3	CH 4	CH 5	CH 7	CH 8	CH 9	CH 11	CH 12
TIME	K MID-2 NBC	KDFW-4 CBS	KXTX-39 IND	KTVT-11 IND	KMOM-4 KWAB-4 ABC-CBS	WFAA-8 ABC	KRBC-9 NBC	KCBD-11 NBC	KTXS-12 ABC-CBS
6:00	Nat'l Geograph. Alaska	News 4 Country	Hogan's Heroes Major Adams	W. J. Bryan Police Surgeon	Lawrence Welk Show	News 8 At Issue	Lawrence Welk Show	P. Wagoner Lawrence	Hee Haw
7:00	Emergency	All in Family Jeffersons	Film Festival	Wilburn Bros. Nashville Music	Kung Fu	Kung Fu	Emergency!	Welk Show Nashville	Kung Fu
8:00	Movie Greatest Story	M. T. Moore Bob Newhart	The Lesson	Buck Owens P. Wagoner	Movie Ten	Saturday Movie Special	Movie Special Greatest	Movie Greatest	Movie Special Presentation
9:00	Ever Told	Carol Burnett Show	Sportsman Chall. Truth	Lancer	Commandments Part I	The Ten Commandments	Story Ever Told Part II.	Story Ever Told Part II	The Ten Commandments
10:00	News, Weather Boo Theatre	News Twilight Zone	River of Life Panorama	Saturday Night Wrestling	News Movie	News 8 Movie	News Tonight Show	Report Movie	Mitzi
11:00	Invisible Man Returns	Movie King Richard	Washington Debates	Roller Game	Road To Glory	Barabas	"	Strategy of Terror	Perry Como
12:00	Rock Concert	& The Crusaders	"	"	"	"	"	"	"

## YOUR TV CABLE DIAL

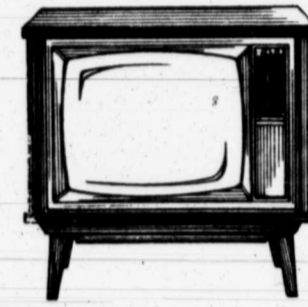
TO RECEIVE	STATION	CITY	NETWORK	TUNE TV TO
CH 2	KMID-TV	MIDLAND	NBC	CH 2
CH 4	KDFW-TV	DALLAS	CBS	CH 3
CH 39	KDTV-TV	DALLAS	IND.	CH 4
CH 11	KTVT-TV	FT. WORTH	IND.	CH 5
CABLE 6	LOCAL ORIGINATION			CH 6
Local High School Sports—News—Special Events—Weatherboard Background Music Via KVMC Radio and at Night FM Music.				
CH 4	KWAB-TV	Big Spring	ABC	CH 7
CH 8	WFAA-TV	DALLAS	ABC	CH 8
CH 9	KRBC-TV	ABILENE	NBC	CH 9
CH 11	KCBD-TV	LUBBOCK	NBC	CH 11
CH 12	KTXS-TV	SWEETWATER	ABC	CH 12

Please Check Your Area Newspapers for Your Favorite Programming

## FRONTIER TV CABLE SERVICE

405 Elm — Box 886 24 Hour Telephone No. 728-3600

Electricity is a valuable



commodity that is

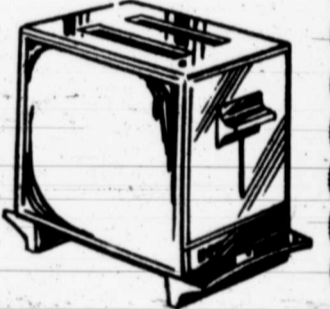
worth using wisely.

That's why we have a specialist to

help you in the proper use of

your electric appliances

and equipment.



TEXAS  
**ELECTRIC SERVICE**  
COMPANY

B. B. HARDEE, Manager, Phone 728-2331

## TV PREVIEW

March 23 Thru March 29

### Sunday

...NBC...NBC SUNDAY MYSTERY  
MOVIE—NBC WORLD PREMIERE:  
"ELLY QUEEN"  
Starring James Hutton in the title role as  
one of America's favorite fictional  
detectives Ray Milland. David  
Wayne, Kim Hunter and Monte  
Markham also star. Ellery and his  
father, Inspector Queen (Wayne), try  
to solve the slaying of a fashion  
designer who leaves a very strange  
clue in her final moments of life.

### Monday

...CBS...DR. SEUSS' "HORTON  
HEARS A WHO!"  
Animated musical adaptation of the  
internationally popular children's  
story about a kind-hearted elephant,  
with actor Hans Conried narrating. As  
leading "man," the helpful elephant  
goes to the rescue of the harassed  
hamlet of Whoville and his resident  
Whos. (R)

### Tuesday

...ABC... "HUCKLEBERRY FINN"  
Mark Twain's classic story of a boy  
who runs away from a persecuting  
father and a good widow who wants  
to make him respectable. Ron Howard,  
star of ABC's "Happy Days," stars in  
the title role along with Antonio  
Fargas, Jack Elam and Merle  
Haggard.

### Wednesday

...CBS...IT'S THE EASTER  
BEAGLES CHARLIE BROWN  
Animated special based on the Charles  
M. Schulz cartoon characters. As  
Charlie, Lucy, Peppermint Patty,  
Marcie, Sally and Snoopy busy  
themselves with the accoutrements of  
Easter-time celebration—colored  
eggs, candy baskets, new shoes—  
Linus protests that they're wasting  
their time. "because," proclaims the

### Thursday

...NBC...THE PERRY COMO  
SPRINGTIME SPECIAL  
Musical variety special starring Perry  
Como and guest stars Olivia Newton-  
John, Pat Boone, with Shirley Boone,  
Laury Boone, Debby Boone, Lindy  
Boone and Cherry Boone. Bob  
Newhart is the special guest star.

### Friday

...CBS...THE LEGENDARY  
CURSE OF THE HOPE DIAMOND  
Starring Samantha Eggar, Bradford  
Dillman, Claudine Longet, Robert  
Clary and Oscar Homolka. Rod Serling  
narrates. The dramatization of the  
history of the fabulous Hope diamond,  
and the bizarre, tragic events which  
befell many of its former owners.

### Saturday

...CBS...ALL IN THE FAMILY  
Three weeks  
paycheck and the ever-rising cost of  
living are taking their toll on the  
Bunker budget. Third of a four-part  
episode. (R)

### Sunday

...ABC...THE ABC SATURDAY  
NIGHT MOVIE—"THE TEN  
COMMANDMENTS" Part I  
Starring Charlton Heston as Moses, along  
with Yul Brynner, Anne Baker,  
Edward G. Robinson, and Yvonne  
DeCarlo. C. B. DeMille's massive  
spectacle of the story of Moses and the  
exodus from Egypt. (R)

### Westbrook Area News

By MRS. ALTIS CLEMMER  
Record Correspondent

Mr. and Mrs. Paul Byrd were in Lubbock Tuesday where Mrs. Byrd received a medical check-up.

Mrs. C. L. Eastman of Stanton, formerly of Westbrook, is seriously ill in M. D. Anderson Hospital in Houston. The Rev. C. L. Eastman now Supt. of Permian Basin Baptist Encampment near Stanton pastored First Baptist Church in Westbrook in 1953-57.

Mrs. Don Henderson will return home Friday from Little Rock, Ark., where she has been visiting the Jimmy Hendersons since March 13. The Jimmy Hendersons will accompany her home to attend the Golden Wedding Anniversary celebration Sunday of her parents, Mr. and Mrs. Elmer Pickens.

Sunday guests of Mr. and Mrs. Dalton Conaway were Mr. and Mrs. Andy Hancock, Jerry and Phillip and Mr. and Mrs. Rusty Garner of Midland.

Mrs. Curtis Clemmer will spend Thursday thru Sunday with the Phillip Andersons in Plainview.

Mr. and Mrs. J. K. Williamson spent Sunday in Fort Stockton as guests of the Milton Williams.

Mr. and Mrs. Altis Clemmer were in Abilene Tuesday to attend funeral services for her aunt, Mrs. J. B. (Meda) Johnson. Services were at 2 p.m. at the Elliott-Hamel Chapel. Mrs. Johnson was a sister of Mrs. Clemmer's father, T. L. Ramsey who passed away February 7.

Mr. and Mrs. J. K. Williamson visited in Fort Stockton Sunday as guests of his nephew, Milton Williamson and family.

### Janie Miles Rites To Be Held Today

Mrs. Janie Miles, 71, of Colorado City, died at 6:30 p.m. Sunday in Root Memorial Hospital after a lengthy illness. Services will be at 2 p.m. today in King Solomon Baptist Church. The Rev. Henry Lee, pastor, will officiate. Burial will be in Mitchell County Cemetery, directed by Kiker-Seale Funeral Home. Born March 15, 1904, in Walton, she married George Miles and he preceded her in death. Mrs. Miles was a 35-year Colorado City resident. Survivors include a daughter, Mrs. Ethel Mae Harris of Las Vegas, Nev., and three sons, George and Tommy, both of Colorado City and L.E. of Midland.

### Smith Places In ILPC Friday

The Interscholastic League Press Conference honored more than 600 Texas junior high and high school students Friday evening, March 21, for their outstanding work on school newspapers and yearbooks.

The students were recognized at an awards dance during the 48th annual state convention of the ILPC at the University of Texas.

Sally Smith daughter of Mr. and Mrs. Jack Smith of Colorado City, was among the many winners who received first-place Individual Achievement Awards. She placed with editorial writing, Class AA.

### Price Dies Sunday In Abilene

The Rev. John Wesley Price, 79, formerly of Loraine, died at 5 p.m. Sunday at the Hendrick Memorial Hospital in Abilene.

He was born Sept. 19, 1895 in San Marcos and attended San Marcos College. He traveled to Abilene in 1914. He enlisted in the army in 1917 and served in a motorcycle company in France for three years.

The Rev. Price served numerous pastorates of the Northwest Texas Conference. He was statistical secretary of the conference for 10 years and was secretary-treasurer of the Methodist Brotherhood for 20 years. He retired in 1961, but continued to preach until 1971. He was assistant pastor of the First Methodist Church in Abilene in 1938 and 1939. He also served in Loraine.

Survivors include his wife of the home, a daughter, Mrs. Fred Langley of Kingfisher, Okla., a son, John W. Price Jr. of Alamogordo, N.M. and seven grandchildren.

### Choir Boosters Plan Bake Sale

Colorado City Choir Boosters will hold a bake sale at Fuller Foods Sunday, March 30 beginning at 9 a.m.

Proceeds will go to the help of high school's choir going to contest in Amarillo.

**REAL ESTATE TOONS**  
BY W. H. COX




Why Go On Living In A TENT? The Homes We Sell Are "HEAVEN-SENT"

**W. H. Cox Agency**  
Real Estate and Insurance  
260 Walnut  
Colorado City

**Henry Block has 17 reasons why you should come to us for income tax help.**

Reason 1. We are income tax specialists. We ask the right questions. We dig for every honest deduction. We want to leave no stone unturned to make sure you pay the smallest legitimate tax.



**HENRY BLOCK**  
THE INCOME TAX PEOPLE  
299 Elm  
9 A.M. - 6 P.M. Weekdays  
9 A.M. - 5 P.M. Saturdays  
Phone 728-2804  
NO APPOINTMENT NECESSARY

# Sancap

## for cotton.

### Stops problem weeds on sandy soils.

Sancap® was developed to solve your weed problems on your soils. Sand, loamy sand, fine sandy loam.

It stops problem weeds like carelessness and Russian thistle.

And Sancap stops them when your cotton needs protection most, when it's just starting out.

Stops them without hurting your cotton. And without loss of soil moisture through incorporation.

Just apply Sancap preemergence, at planting or within two days after.

Then watch your cotton come through. Clean and strong.

Ask your dealer about Sancap for your sandy soils.

Or ask us.

Agricultural Division, CIBA-GEIGY Corp.,  
P.O. Box 11422, Greensboro, NC 27409

Sancap. The first and only herbicide made for sandy soils.

CIBA-GEIGY

Col  
E. Hwy. 80  
L  
Loraine  
Jay  
E.  
Ch  
China Grov  
S. O.  
E. Hwy. 80  
W. Inter. 20

# “Almost Everything Starts On The Farm”

Is The Theme For

## American Agriculture Day The First Monday Of Spring, March 24.

One U.S. farmer today produces enough food & fiber for about 60 persons at home & abroad.

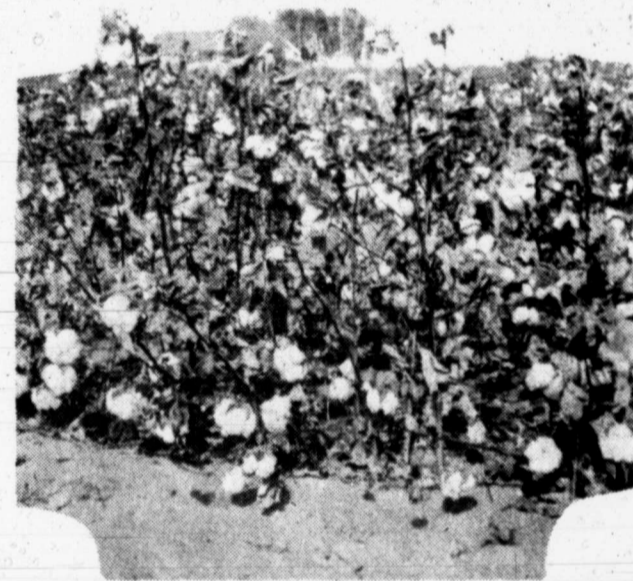
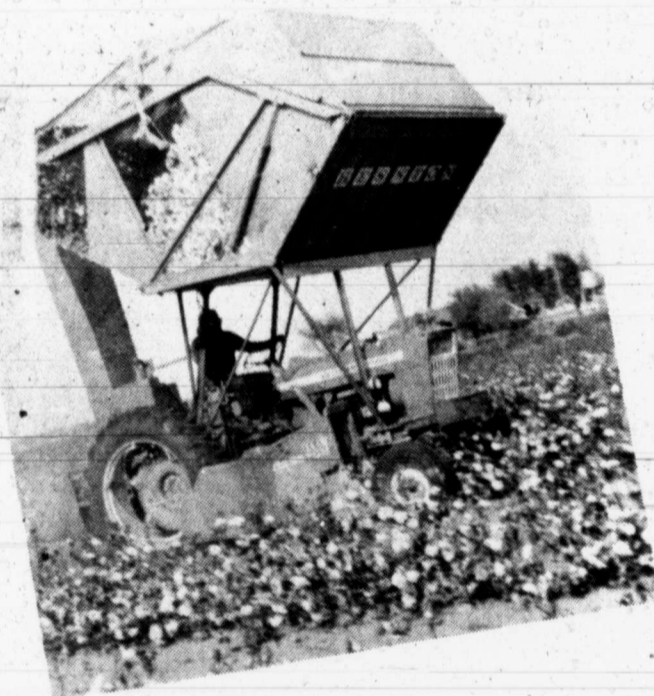
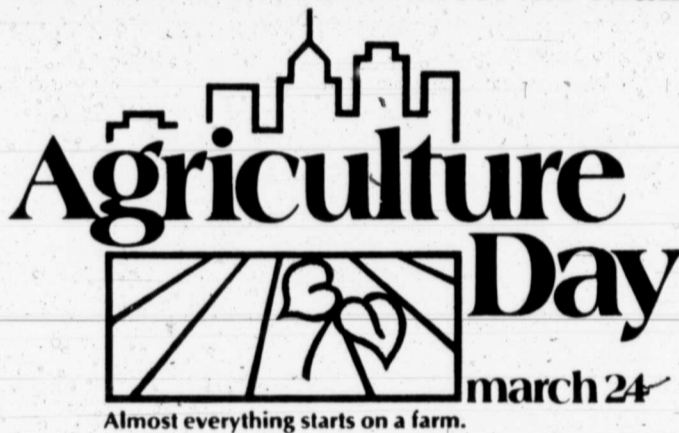
★ Meat ★ Poultry ★ Dairy Products ★ Fruits & Vegetables ★ Cotton Textiles

★ Corn & Soybean Oils ★ Wheat ★ Peanuts ★ Sugar ★ Leather ★ Pharmaceuticals





★ Cosmetics & Soaps ★ Candy ★ Coffee ★ Inks ★ Rubber ★ Cement ★ Emergency & Convenience Foods

The wholesome food and improved fiber supplies raised by farmers and ranchers are the strength of America. And despite the problems besetting agriculture today, farmers will continue to meet the challenges of the seventies and beyond.

"The best tribute anyone can pay to Texas cattle producers is to enjoy some good Texas beef for dinner March 24," Texas Commissioner of Agriculture, John C. White.



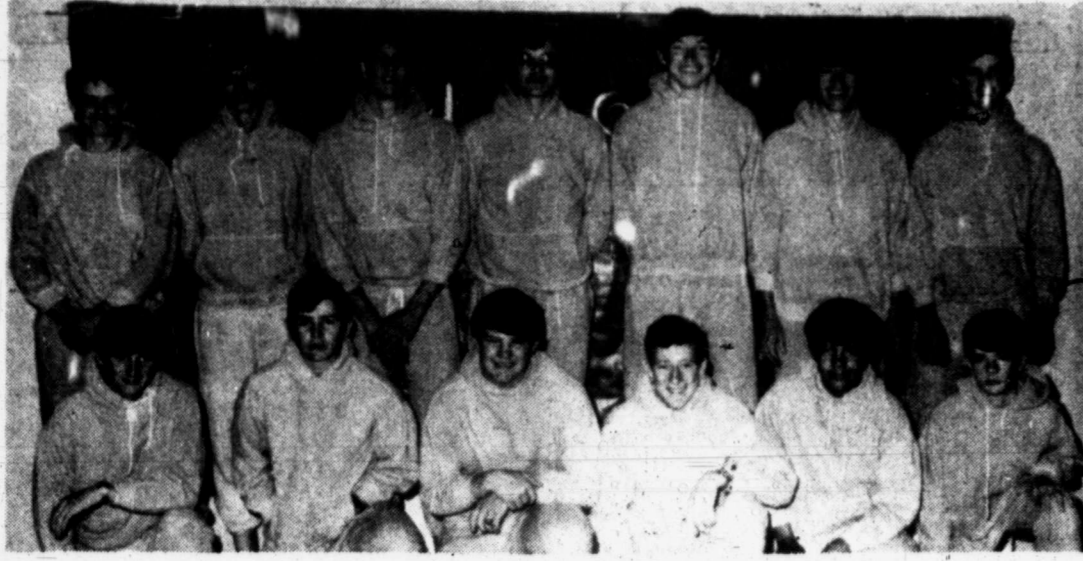
These Mitchell County businesses are sponsoring this tribute to the county's farmers and ranchers:

<b>Colorado City Livestock Auction</b> E. Hwy. 80 728-2603	<b>Colorado City Record</b> 156 E. 2nd 728-3414	<b>C &amp; W Distributing Co. &amp; M. D. Williams Pump Co.</b> Snyder Hwy. 728-2562
<b>Linam Implement Co.</b> Massey Ferguson & Minneapolis Moline Loraine Complete Tractor Service 737-2290	<b>Blassingame Exxon</b> Complete Car Care Inter. 20 728-5231	<b>TEXAS ELECTRIC SERVICE COMPANY</b> B. B. HARDEE, Manager, Phone 728-2331
<b>Jay Adams &amp; Joe Weaver</b> Chevrolet-Oldsmobile Sales & Service For The Best Deal Every Day E. Hwy. 80 728-3422	<b>M&amp;T Food Service</b> 102 Oak 728-2501	<b>Beasley Feed &amp; Seed</b> E. Hwy. 80 728-2091
 <b>Wood's Cowboy Boots</b> E. Inter. 20 728-3722	 <b>Sweetwater Production Credit Association</b> 102 W. 2nd Eddie Mitchell, Manager 728-5021	<b>Kiker-Seale Funeral Home</b> 340 E. 3rd 728-2622
<b>China Grove Co-op Gin</b> Fuel & Farm Supplies China Grove Community 728-5489	<b>Better Cleaners</b> 521 Walnut 728-5191	 <b>Costin Implement Co.</b> Ford Tractor Dealers Complete lines of Ford & Hesston Farm Equipment 728-2031
<b>S. O. Lamb &amp; Sons Trucking</b> Livestock-Feed & Agriculture Hauling Texas & New Mexico Permits Insured Trucks E. Hwy. 80 728-5873	<b>First State Bank</b> Loraine 737-2211	<b>Neff Trucking Service</b> Local or Long Distance Hauling Sheppard Community 728-2071
<b>Rogers Delinted Cottonseed Co.</b> Thimet & Demosan Treating W. Inter. 20 728-2069	<b>Colorado Feed &amp; Seed</b> Feed-Fertilizers-Seed-Sprays 1st & Pine 728-5071	 <b>Lone Wolf Electric Co-op</b> Robt. Lee Hwy. 728-5232
	<b>Farm Bureau Insurance</b> J. D. Hill, Jr., Jerry Putman & Don Tidwell Agents 130 Walnut 728-3408	

M  
A  
R

2  
3

7  
5



### Westbrook Boys Track Team

Westbrook High School boys track team members are from left to right standing Gerald Colbert, Tomy Whitesides, Rodney Moore, Glenn Rich, Bobby Matlock, Jim Anderson and Steve Rollins. Kneeling are from left to right Jeff Beard, Gary Rich, Bobby Moody, Ronnie Diese, Don Duran and Roy Geiger.



### B&PW Seminar Speaker And Host

The Business and Professional Women's Club held its annual seminar Saturday. Standing from left to right are Margaret Oyler, Seminar chairman, Kay Kelly, seminar's speaker, Aldred Pickens, Colorado City B&PW president and Opal Keenan, District Director of B&PW of Sweetwater and is also speaker.



### Welcoming Committee

The Business and Professional Women's Club held its annual seminar last Saturday. The welcoming committee for the special occasion is from left to right James Campbell, Colorado City Manager, Aldred Pickens, Colorado City B&PW president and Margaret Oyler, seminar chairperson.

### Hall Hosts Dunn Canasta Club Thursday

The Dunn Canasta Club met Thursday afternoon at the Dunn Community Center with Flossie Hall as hostess. Members present were Ilene West, Alma Williams, Gladys Smith, Lorena Mattson, Luoe Crabtree, Ivy Byrd, Nora Oschner, Bertha Ellix, Bertha Cotton, Hettie Taylor and Mae White.

### Claxton Lodge News

By Cordelia Davis  
Mr. and Mrs. J. A. Moody came to visit Mrs. Moody and Mrs. Henderson Monday. Mrs. Johnnie White visited her mother, Mrs. Jewell McFarland, Monday afternoon. Mrs. Clara Langford's brother, Bill Claxton and Mr. and Mrs. Marvin Claxton, visited her Tuesday afternoon. Rev. and Mrs. James Patterson of Roscoe visited his mother, Opal Barker. Mrs. Mary Wise's daughter and grandson visited her Monday. Carter Abernathy went to Midland to visit relatives over the weekend. Paul Wetterling's sister from New Mexico visited him Saturday. Mrs. Mozell Richardson of Gatesville visited her sister, Mrs. Alva Ament. Mrs. L. C. Mize visited her father, O. W. Britton, Wednesday. Winnie Combs went to Sweetwater to attend the funeral of Ed Combs Wednesday. Ed Combs is Harold Combs' brother. Mrs. Jewel Fletcher's daughter, Lora, comes to the lodge to visit everyday. Mrs. Amelia Darden was admitted to the lodge Wednesday. Marvin Claxton visits the lodge quite frequently. Mr. and Mrs. J. A. Moody came to visit Mrs. Willie Moody and Mrs. Henderson Monday. Mrs. Gertie Lemons had a visitor, Alma Pylant, her daughter, from Ackerly this week. Susan Barr, director of nurses has moved to her new office in the lodge. Paul Wetterling and Cordelia Davis went to town with Doris Clawson Wednesday. Susan Barr took Cordelia Davis to the dentist to have dental work Tuesday morning. Marcelene Cox is our new bookkeeper in the lodge. Delia Smith had a visitor Wednesday, Mr. and Mrs. Leo Payne of Stanton. Jewel Baird had a visitor Wednesday afternoon, Mrs. M. A. Donahoo, her sister. Mrs. Gertie Lemons' son, Bob Lemons, visited her Thursday. Mrs. Homer Hart of Loraine visits her mother, Mrs. Clara Langford everyday. Mrs. Odelle Harrell is working two days to help serve the medicine until we can get someone to take her place. Rev. Jessie Hodge of St. Luke Methodist Church preached in the lodge Thursday evening at 7 p.m. Ten patients and four visitors attended the services.

### Adams Hosts Buford HD Club Monday

The Buford Home Demonstration Club had their monthly meeting in the home of Mrs. Pot Adams Monday, March 10, at 2:30 p.m. Each club member brought something they were making, such as crochet embroidering and piecing quilts. There were six members present. The next meeting will be in the home of Mrs. Don Blessingame, Monday.

### Galvan Honored At Gift Party

Miss Edna Galvan, bride-elect of Angel Aguirre of Abilene was complimented at a pre-nuptial gift party at the home of her mother, Mrs. Victor Galvan Saturday afternoon, March 15.

Co-hosting the affair were Nancy Smith, Gloria Munoz and Rita Galvan.

Punch and cookies were served and a miscellaneous array of gifts were presented to the honoree.

Cowen's

Softly gathered uppers shine in white.

Gather your wedge for this Spring in soft, soft style for a classic fling. Perfect for pants and great with skirts. It goes here n there is a fashion expert.

connie

248 Walnut 728-3351



### Congratulations

Doris Clawson, left, and Elaine Fugate, activity directors at Claxton Lodge, recently completed a short term course for activities personnel at long term care facilities. This picture was taken in a new activities room at Claxton Lodge that was recently completed for the pleasure of Lodge residents. This type of facilities and personnel such as Mrs. Clawson and Mrs. Fugate are among the many, many reasons that residents are proud to call the Lodge home.

### CLAXTON LODGE, INC.

"WHERE EVERYBODY IS SOMEBODY"

Colorado City's Newest Nursing Home

1941 Chestnut

728-5247

### Low--Low--Low Prices on your FARM BUREAU SAFEMARK PRODUCTS

\* Few Examples of Member's Cost \* All Prices Include Excise Tax, But Not Sales Tax

#### PASSENGER TIRES

HR78-15 Steel Belted Radial-W-TBL ..... \$ 43.10  
G78-14 Regular Tread-4 Ply-Polyester-W-TBL ..... \$ 24.05  
G78-15 Belted-4 Ply-Polyester 2 Ply Fiberglass-W-TBL ... \$ 28.95

GUARANTEED FOR LIFE OF TREAD FOR MANUFACTURER'S DEFECTS AND ROAD HAZARDS

#### TRUCK TIRES

Super FMS (Highway) Tube Type-Premium Nylon  
7.00 X 15 6 Ply Rating ..... \$ 33.60  
FMS (Mud & Snow) Tube Type-Premium Nylon  
7.00 X 15 6 Ply Rating ..... \$ 35.50

GUARANTEED FOR LIFE OF TREAD FOR MANUFACTURER'S DEFECTS AND FOR FIRST 25% OF TREAD WEAR AGAINST ROAD HAZARDS.

#### FARM TIRES

15.5 X 38 6 PR Rear Tractor-Multi Angle-Nylon ..... \$131.65  
6.00 X 16 6 PR Front Tractor-Dual Rib-Nylon ..... \$ 23.15  
6.00 X 16 6 PR Front Tractor-Tri-Rib-Nylon ..... \$ 24.55

GUARANTEED AGAINST MANUFACTURER'S DEFECTS FOR 24 MONTHS.

### Matlock's Butane & Farm Supply

1209 West Point

728-3041



Contact the County Farm Bureau Office at the following servicing agent! Information on full line of all types. Be sure to have your Farm Bureau membership card with you when purchasing products.

Are you insured against the MAIN HAZARDS OF HOMEOWNING?

What if someone trips on your front steps and sues you... or a tree crashes onto your roof... or a burglar breaks into your home... or a defective wire sets your rugs and furniture afire... would you be protected?

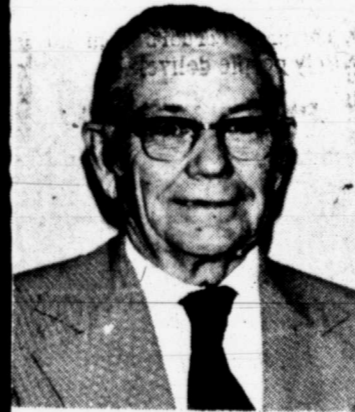
If you're not sure, see us for a Home Security Checkup!

**BOB RATLIFF INSURANCE**

YOUR Independent AGENT SERVES YOU FIRST

152 Walnut 728-5371

## The Golden Rule Is Positive



Wilton E. Lynn

Pastor

Loraine First United Methodist Church

Loraine

"Therefore all things whatsoever ye would that men should do to you, do you even so to them: for this is the law and the prophets." Matt. 7:12.

There it is in King James English - the Golden Rule from the lips of Jesus. It has been expressed many times before by religious teachers but usually in the negative form. Jesus' expression of the Golden Rule is positive. More important he teaches us that doing good constructively is better than avoiding sin negatively. In fact he tells us that the difference is so important that "this is the law and the prophets."

I am persuaded that earnest practice of the Golden Rule, especially on the part of those who profess to be Christians, would do much to alleviate stress and strain of living in these times. We are so concerned with how to get to heaven, with whether we have the gifts of the Holy Spirit, with how to build up the membership, with how to save the country, and all the other things we are concerned about that we neglect to "Be ye kind to one another, tenderhearted, forgiving one another, even as God in Christ also forgave you." We need to attend to the other things, but we dare

not let the practice of the Golden Rule go undone. It is not just a saying or a teaching, it is the divine command of our Lord.

We like to use one another. We like for the other fellow to serve us when we are unwilling to treat him like we want to be treated. And then we wonder why life is not more satisfying. Life is not so much a collection of once-and-for-all decisions as it is a matter of continuing choices. To choose to practice the Golden Rule is the noblest choice of all. It is not easy but, by the grace of God, it can be done.

### Sponsored By The Following Business Firms:

Corner Drug

Claxton Lodge

We Care

Villa Restaurant

Bill & Faye Bloomer

Bodine Bros. Dairy

Fresh Eggs & Milk To Your Door

First Baptist Church

Colorado City Record

Col-Tex Service Station

Kiker - Seale Funeral Home

Texas Electric Service Co.

Colorado Lumber & Supply

Lumber & Building Material Lennox-Payne Heating & Air Conditioning

**Business Service**

Roto-Tiller Re

**Sam's**  
Snyder Hwy & 728-8111

**ELECTRO**  
Vacuum Cle  
Shampooe  
Prompt Ser  
R. S. & Eva  
1098 Pine

Remodeling, Repair Room, Roofing, Co Block Work. All Work guaranteed. Phone A-573-8441 in Snyder. Call for out of charge day or night.

J's Roofing. Free Phone 573-6983.

BUY OR RENT sick Complete Line - P vice. We offer wid sickroom needs at rental. EDDIE'S P 10th & Hickory St.

**CORNER**  
Rick & Joe I Service 24 - A Day

**DRS EXCHA**  
Staffed 24 H 728-5861  
Dr. John H. Chin K. Cowan, Dr. W. and Dr. Joe Terr

**RADIO L**  
(25 years exp) We service any model T. V., creos, small appli 235 Concho Phon

Custom farming, and dirt work. Ph Scott, 235-3877 or or 235-9655.

Need an experie I do any kind of or repairs. Free e one 1-573-5965 ce der.

**Steam Ce Cleani**  
Junior Rios Car 3000 Ave. J Sny Phone 573-

Rent, Lease Case Backholes e by Day, Week MATL case SU

**HOSPI**  
Root Memoria CHARLES Adminst

**Flo's Beau**  
6 Expert Bea To Serve 271 Elm

WESTERN MAT Buy DIRECT Fro Mattress Renovate 1 Save 50% N Mon. - Fri. 8 a. In Colorado City Thursday. Call For Con Service 728-3373 In Loraine 737



## Mearse Hosts Ruth Class Thursday

Mrs. Homer Mearse was hostess for the Ruth Class of the First Baptist Church in Loraine Thursday, March 13th.

Mrs. Clara Butler, president, presided over the meeting which opened with the group singing the class song, "I Love Thee", and a Prayer by Mrs. Butler. Mrs. Edwin Hallmark read from the book "Daily Light" and gave scriptures on this subject. She also read a letter from Mrs. Thomas Kennedy who, with her family are in the states on furlough before returning to Africa where they have been missionaries for many years.

Mrs. Butler read the poem "He Stands By Me".

Mrs. L. E. Crutcher read the minutes of the last meeting and gave the treasurers report. Mrs. Dexter Taylor, teacher and group leader gave reports.

During the social hour Mrs. Harvey Leach directed recreation and the hostess served refreshments to Mmes. H. H. Hays, Taylor, Henry, Neil, A. G. Mercer, Leach, H. G. Denson, A. G. Furlow, Crutcher, Hallmark, Butler, Vada Preston, Hal Bennett, M. D. Cheek and Roy Baird.

## School Menus

**COLORADO CITY**  
MONDAY- Beef spaghetti, lettuce wedge, buttered carrots, peanut butter bars, Texas toast and milk.

**TUESDAY**- Fish burger on homemade bun, tartar sauce, macaroni and cheese, English peas, banana pudding and milk.

**WEDNESDAY**- Corn chip pie, whole kernel corn, tossed salad, pineapple cake, crackers and milk.

**THURSDAY**- Chicken fried steak with cream gravy, mashed potatoes, green beans, hot rolls, syrup and milk.

**FRIDAY**- Cheeseburgers, lettuce, tomatoes, pickles, onions, French fries, Jello with fruit and milk.

## Witnesses' To Commemorate Lord's Meal

More than 110 people are expected to assemble with Jehovah's Witnesses from this commemoration of the Lord's Evening Meal.

"This is the most important event of the year for us as we meet to reflect on what Jesus Christ was and did for all of us," said Ed Levesque, presiding minister for Jehovah's Witnesses. "This is the only celebration Jesus commanded his followers to observe and we do so annually on the same date instituted by Jesus. This year it falls on March 27. Though, a simple arrangement, the Lord's Evening Meal is filled with great significance for Christians. The use of red wine and unleavened bread as emblems helps us to recall and have impressed on our minds the value of the ransom sacrifice of Jesus more than 1900 years ago," added Levesque.

The event will be held at the Kingdom Hall of Jehovah's Witnesses located 1431 Austin St. and beginning at 7:30 p.m.

**LORAIN**  
Easter Vacation Holiday thru March 31.

**WESTBROOK**  
Easter Vacation Holiday thru March 31.

**STATE PARK**- Brooks Dorn of the lake caught 2 yellow cats weighing on an average of 4-7 lbs. each.

**Mr. and Mrs. Bynum** of Colorado City caught several frying-size crappie.

**Mr. and Mrs. Leonard Henderson** of Colorado City caught several frying size crappie.

**LAKEVIEW CAMP**- Joe Perez of Snyder caught eight frying-size crappie, and a perch weighing 1/2 lb. on the Fish-A-Rama.

**Mr. and Mrs. Blackledge** and **Mr. and Mrs. Duncan** of Colorado City caught several frying-size crappie on the Fish-A-Rama.

**Mr. and Mrs. Brummett** of Big Spring caught 20 crappie and channel cats on the Fish-A-Rama.

**LOUIE'S LAKESIDE LODGE**- Morris Sheed of Seminole caught one 18 lb. yellowcat.

**Robert Smart** of Big Spring caught two 11 lb. yellow cats and two 7 lb. yellowcats.

**Jim Trimble** of Stanton caught nine yellowcats weighing on an average of 3-11 lbs. each and one 11 lb. crappie.

**Marilyn Mitchell** and **Mary of Lubbock** caught a 12 lb. yellowcat and a 4 lb. yellowcat.

**Brooks Dorn** of the lake caught several yellowcats.

# VALUES \$ that do more for your food budget

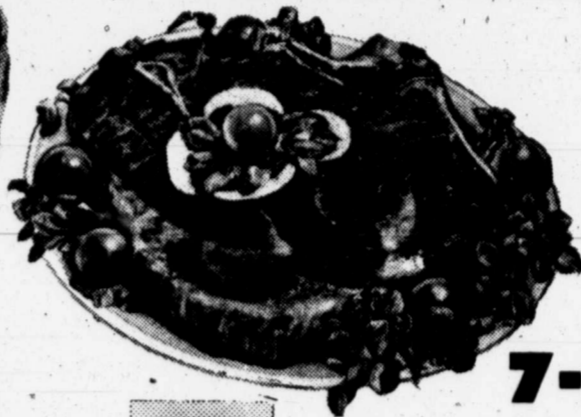


Double S&H Green Stamps Tuesday Afternoon AND All Day Wednesday PLUS, These Specials Are Good Beginning Today (Sunday) Thru Wednesday.



Decker's Whole **PICNICS...Lb. 49¢**

Decker's Sliced Halves **PICNICS Lb. 65¢**

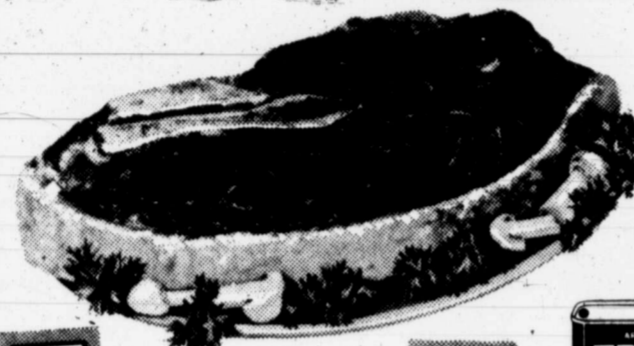


**HEAVY BEEF CHUCK ROAST Lb. 69¢**

**7-BONE ROAST.....Lb. 79¢**

**ARM ROAST.....Lb. 89¢**

**SIRLOIN STEAK.....Lb. \$1.49**



Shurfresh Vac. Pac **BACON .....Lb. \$1.19**

Armour **TREET..... 12 Oz. 89¢**



Shurfine **TUNA 6 Oz. Can 57¢**



Van Camp **PORK & BEANS..... 3 303 \$1**

Allen **TOMATOES... 3 303 \$1**

Shurfine **FRUIT COCKTAIL..... 2 303 79¢**

Heart's Delight Sliced Or Halves **PEACHES..... 3 303 \$1**

Ranch Style **CHILI..... 19 Oz. 89¢**

Gebhardt's Jumbo **TAMALES..... 8 Count 59¢**

Shurfine **VIENNA SAUSAGE 3 4 Oz. \$1**



Ranch Style **BEANS.... 3 303 \$1**

Stokely's **CORN..... 3 303 \$1**



Green Giant Whole **GREEN BEANS..... 3 303 \$1**



Morton's Frozen Apple Or Peach **FRUIT PIES 24 Oz. Pies 59¢**



Morton Frozen Beef, Chicken Or Turkey **POT PIES 4 8 Oz. \$1**



Shurfine **COFFEE..... 2 Lb. Can \$1.78**



Kraft Parkay Quarters **MARGARINE 1 Lb. Pkg. 49¢**



Blackburn's Crystal White **SYRUP 32 Oz. Jar 89¢**



Premium Pearl Small **EGGS Doz. 39¢**



Tender Crust Brown & Serve **ROLLS 3 12 Count \$1**



VO5 Normal Or Dry Hair **SHAMPOO 7 Oz. Bottle 79¢**

Northern Jumbo Assorted **TOWELS..... 2 Rolls 89¢**

Ban Roll-On **DEODORANT..... 1 Oz. Bottle 79¢**

Lisa Mornay Creme Bath, Pink Or Honey **BUBBLE BATH.... 32 Oz. Bottle 79¢**

Miss Breck Regular Or Super Hold **HAIR SPRAY..... 13 Oz. Can 89¢**

U.S. No. 1 Russet **POTATOES 5 Lb. Bag 49¢**

California Large Zipper Skin **TANGERINES... Lb. 29¢**

Firm Green Heads **LETTUCE..... Each 33¢**

**RADISHES 6 Oz. Cello Bag 10¢**

**BRITANNICA JUNIOR**  
THE MOST FAMOUS STUDENT REFERENCE EVER PUBLISHED. SAVE OVER 75% - START YOUR SET NOW.  
This Week: VOLUME NO. 9  
**\$2.99** WITH A \$5 PURCHASE  
VOLUMES OFFERED PREVIOUSLY ALSO ON SALE NOW - COLLECT THE ENTIRE 25 VOLUME SET

**a good reason to INSURE with US..**

**No overlapping coverage.**  
When purchasing separate policies from different companies overlapping coverage is bound to occur. There is no need to buy more coverage than you need. See us for a complete residential insurance plan.  
For additional information, call us!

**G. D. FOSTER INSURANCE**  
G. D. Foster  
246 Walnut 728-3401

**Fuller Foods**  
finer foods fuller values