



DAWSON COUNTY COURIER

WHERE TEXANS ARE TEXANS

Volume 13 Member of (AP) Lamesa, Dawson County, Texas, Monday, May 17, 1943 AP and Wide World Number 37

Ceiling Prices For All Meat Cuts Announced By OPA

Specific cents-per-pound ceiling prices for all cuts and grades of beef, veal, mutton and lamb that will become effective May 17 were announced today by Howard R. Gholson, director of the Lubbock District Office of Price Administration.

As the specific prices are tied to five grades of meat, retailers are required to post the grades they display in their stores and segregate the various grades in their display. Thus, consumers will be able to check compliance with the ceiling, it was pointed out.

As recently forecast, the new prices represent a reduction in most cases of from one to 3 cents from ceilings originally scheduled to take effect April 15, Gholson said. Further and more substantial reductions in these prices will be made June 1 in accordance with the general rollback of prices recently disclosed by Administrator Prentiss M. Brown. Prices announced today will reduce slightly the retail prices of meats as shown in the February, 1943, cost-of-living index, and the decrease from the March and April index prices is expected to be even greater, according to Director Gholson.

Revision of the April 15 prices was made to effectuate the policy established by the president's "hold the line" order of April 8.

Because certain large-volume handlers of meat under flat dollars-and-cents ceilings customarily operate with margins lower than those provided for by the regulation, the district OPA director stated that these sellers were being requested to maintain prices at a minimum of 10 per cent under the flat ceilings established by this regulation. The effect of this for the consumer is to maintain prices substantially below the ceiling prices in these establishments. A further revision of the order to establish special classifications for large-volume handlers of meat now is under consideration.

Today's announcement shows:

1. Prices of all beef steaks and roasts and several types of beef stew meat are reduced from those established in the original regulation.

2. Mutton and lamb prices are reduced in some instances.

3. Retail ceilings for wholesale cuts generally are lowered.

4. Additional cuts of beef, veal, mutton and lamb are given specific ceiling prices for the first time.

Gholson said the provision carries forward the logical implication of the regulation which is Maximum Price Regulation No. 355 covering retail ceiling prices for beef, veal, mutton and lamb.

"Retailers already are required to separate the different grades of meat they display," Director Gholson said. "Today's action, which we call amendment 2 to price regulation 355, affords them an opportunity to keep check on the separation and to assist their customers."

Gholson said all meat is placed into five grades and appropriately marked at the time of slaughter. The practice of grading meat, he continued, has been carried on in the industry for many years and by the Department of Agriculture since 1926. The wholesale prices of meat are fixed according to grades and different prices for different grades.

There are two broad divisions of retail stores, those with a comparatively small volume of sale, which are in class 1 and 2, and those with

Mrs. Jap Randle New Health Nurse

Mrs. Jap Randle, who has been nursing in local hospitals for a number of years, has recently been appointed Dawson County Health Nurse, and will leave Wednesday of this week for Dallas to complete a course in public health nursing.

Mrs. Randle resigned her position at the Lamesa General Hospital last week, and after a month's course in Dallas will return here July 1, to take up her new duties as Public Health Nurse.

GAINES COUNTY PIONEER SERIOUSLY ILL IN LUBBOCK

Jim Williams, 74, of Seagraves, pioneer Gaines County rancher, underwent amputation of his left leg last Thursday in a Lubbock hospital. A disease of the arteries necessitated the amputation. He withstood the operation satisfactorily, but was in a serious condition, it was reported.

—BUY WAR BONDS AND STAMPS—

a large volume of sale are in class 3 and 4. Following is a list of certain selected cuts and retail ceiling prices for beef, veal, mutton and lamb, cured and frozen, for the Lubbock District:

Cut	Class 1, 2		Class 3, 4	
	Pound	Prices	Pound	Prices
BEEF—Grades AA to D AA to D				
Porterhouse, T-bone				
Club Steaks	.64	.39	.61	.37
Rib	.38	.25	.36	.24
Sirloin	.59	.36	.56	.35
Standing Rib Roast, 10 inch cut	.38	.25	.36	.24
Rump Roast (Bone In)	.32	.18	.31	.17
Rump Roast (Boneless)	.52	.32	.50	.30
Rump Roast				
Short Rib Stew	.23	.18	.22	.17
Brisket Stew (Bone In)	.29	.23	.28	.21
Brisket Stew (Boneless)	.39	.30	.37	.28
Shank (Bone In)	.21	.17	.20	.16
Shank (Boneless)	.29	.25	.27	.23
Soupbone	.03	.03	.03	.03
Ground Beef	.30	.30	.29	.29
VEAL—Grades AA to D AA to D				
Loin Chops	.48	.30	.46	.28
Round Steak (Cutlets)	.53	.36	.51	.34
Sirloin Steak or Chops	.41	.28	.39	.26
Rump, Sirloin Roast (Bone In)	.38	.25	.36	.24
Rump, Sirloin Roast (Boneless)	.55	.36	.52	.35
Loin Roast	.48	.30	.46	.28
Rib Roast	.44	.30	.42	.29
Round Roast	.53	.36	.51	.34
Breast (Bone In)	.22	.15	.21	.14
Breast (Boneless)	.32	.22	.31	.20
Ground Veal	.33	.33	.32	.32
LAMB—Grades AA to C AA to C				
Loin Chops	.66	.51	.64	.59
Rib Chops	.50	.40	.48	.38
Leg or Sirloin	.50	.40	.48	.38
Leg Roast	.43	.32	.41	.31
Sirloin Roast (Bone In)	.50	.40	.48	.38
Loin Roast	.66	.51	.64	.59
Rib Roast	.50	.40	.48	.38
Ground Lamb	.35	.35	.33	.33
MUTTON—Grades S to R S to R				
Loin Chops	.37	.32	.35	.30
Rib Chops	.25	.19	.23	.18
Leg Roast	.26	.22	.25	.21
Sirloin Roast (Bone In)	.23	.19	.23	.18
Loin Roast	.37	.32	.35	.30
Rib Roast	.25	.19	.23	.18
Ground Mutton	.20	.20	.19	.19

Thirty-Four Men Reclassified By Local Draft Board

Thirty-four men received new classifications at meetings of the Selective Service Board last Wednesday and Thursday nights.

Men designated for local physical are Walter Smith, Jr., Alberto Esparza, Melvin Todd, Manuel Ramirez.

Men given 3-C classification are, D. C. Duncan, William Callendar, Paul Vandivere, Marcus Brooks, Harry Houston, Herschel Turner, Dock Gillispie, Thomas Echoes, James Hogue, Earnest Ham, Earnest Rodgers, William Harmon, Juan Robles, Ysidro Criajardo, John Williams, Buford McCasland, Earl Cornett.

2-C classifications, Earnest Hogg, Jr., Carroll Davis, Billie Truitt, Eugene Payton, L. D. Ham, Jr.

Everett Ables, 3-A; Matthew K. Crawford 4-F; Britt Poston, 2-B; Junior Blakes 4-F; Elest Whitaker 4-F; Ralph Gray, Inducted; Andrew Stevenson Inducted; and Frank Pennington, Inducted.

PVT. ROBERT D. OAKS AT CAMP CHAFFEE, ARK.

Pvt. Robert D. Oaks, who joined the U.S. Army on March 16, has arrived at Camp Chaffee, Arkansas, where he is assigned to the 1850th Service Unit. He is the son of Mr. and Mrs. Fred Oaks of Ackerly. He attended the Flower Grove School, graduating in 1942.

MAYOR AND MRS. JOBE ATTEND RELATIVES FUNERAL

Mayor and Mrs. Charnell Jobe and daughter, Angeline, went to Seranton, Eastland County, Saturday to attend the funeral of Mr. Jobe's brother-in-law, W. E. Farris.

Nylon is being used as surgical sutures instead of silk.

Noted Chinese Teacher To Talk To Local Women Tues.

M. L. Cohorn Dies Last Saturday

M. L. Cohorn, aged 61 years passed away at his home 8 miles west of Lamesa on Saturday, May 15. Funeral services were held on Sunday afternoon at 3:30 p. m., at the Higginbotham Chapel, with Rev. I. C. Hull officiating. Burial was made in the Lamesa Cemetery.

Mr. Cohorn is survived by seven brothers, one sister and two daughters.

Lt. Robert Smith Awarded Medal

Second Lt. Robert H. Smith of Lamesa has been awarded the Air Medal by the U. S. War department for valor and exceptional performance in action with the Eight Air Force in England, a United Press dispatch announced last Thursday.

Lt. Smith's wife, the former Miss Elizabeth Lee Davis resides here.

Legion Auxiliary To Meet Tuesday

The American Legion Auxiliary will have a meeting on Tuesday night, May 18, beginning at 8:30 p. m. The meeting will be held at the Legion Hall.

Delegates to the District Convention will be elected at the Tuesday night meeting, and other important business transacted.

All Auxiliary members are requested to be present.

Dr. B. C. Ling, an outstanding Chinese Language teacher at Texas Technological College, will speak to Lamesa mothers and daughters, Tuesday afternoon at the Recreation Hall in the City Park, beginning at 4 o'clock. Dr. Ling will use as her subject, "The Women's Place in China: Past, Present, and Future."

Dr. Ling's appearance in Lamesa is being sponsored by the Lamesa Delphian Club. A musical program will also be heard during the afternoon, with refreshments being served at the conclusion.

Lamesa women are fortunate in getting the opportunity to hear Dr. Ling, she is one of the outstanding women of China, and has been compared with Mme. Chiang Kai-Shek. She was born in the southern part of China and received her primary and secondary education in that country. She came to the United States in the Fall of 1927 to enter Wellesley College, Wellesley, Massachusetts. She received her A. B. degree from that college four years later. She did post-graduate work in the Department of Psychology, University of Michigan receiving a Ph. D. degree in February 1939. From the Fall of 1939 to the Summer of 1941 she was a post-doctoral research fellow in the Yale Clinic of Child Development, School of Medicine, Yale University.

Dr. Ling came to Texas Technological College in February 1942 as a member of the research staff. At present she is engaged in an experimental study entitled "The Psychophysical Development of the Pre-school Child."

Dr. Ling can not divulge much information concerning her family history and her life in China, except to say that both her eldest brother and sister are holding key positions in free China. Her parents and two brothers are at present stranded in occupied China. For this reason she cannot give out information which might identify her as a member of her family.

Every woman in Lamesa is invited to attend this program and bring their daughters. A small admission charge of 25 cents will be charged.

NOTICE

According to the Dawson County War Price and Rationing Board, instructions for issuing canning sugar have not been received, therefore sugar for this purpose cannot be issued.

The public is asked please not to call at the rationing office as they will be notified as soon as this information is received.

Mr. and Mrs. Mike Barrett and daughter of Brownfield spent the week end here visiting with his parents, Mr. and Mrs. J. M. Barrett.

Joe Spikes, Eldrid Scott, Joe Lee Kelly and George Norman spent the week end at Menard, visiting with friends.

Mr. and Mrs. B. J. Baskin left Sunday for Amarillo where they will visit with friends and to Bryan where they will attend the graduation exercises at A. and M.

Mrs. J. E. O'Quin and Mrs. Merle Allsup of Gustine left this past week for Rudlosa where they will spend several weeks vacationing.

—BUY WAR BONDS AND STAMPS—

Texas Family All Out For Victory



Mrs. U. S. Strickland (left) and her daughter, Louis Lee, of Odessa, Tex., became the last two of their family of five to join the armed forces when they joined the WAACs. Strickland is a sergeant with the U. S. engineers and his two sons are on foreign duty with the Marines. The mother and daughter are shown taking the oath in a special ceremony at the South Plains Army Flying School at Lubbock, Tex.

WARNING!!

(GET YOUR HEATERS NOW)

Have information that all household gas and oil heaters are soon to be frozen. It will then take lots of red tape to get one. We have a few choice gas and oil heaters left at special prices. Better get one now.

Dyer Hardware & Auto Supply

"where your money buys more"

For Graduation

- LOVELY MIRRORS
- BETTER BILLFOLDS
- FULLER MILITARY HAIR BRUSHES
- FULLER CLOTHES BRUSHES
- FULLER BRISTLE COMBS
- FULLER COMPLEXION BRUSHES
- FISHING SUPPLIES
- ARCHERY SETS
- FLOURESCENT LAMPS
- ZENITH RADIOS—

All At Prices You Can Afford To Pay.

Dyer Hardware & Auto Supply

"Where your money buys more"

Food Forecast For Year 1943

Beef animals, sheep and lambs, and pigs on Texas farms and ranches on January 1, 1943, were at an all-time high, according to figures released by V. C. Childs, principal agricultural statistician for the Austin office of the U. S. Department of Agriculture. Moreover, the number of chickens on Texas farms stood 17 per cent above a year ago and 44 per cent above the ten year average. The average one hundred hens produced 1,047 eggs in February of this year compared with 985 in the corresponding month a year ago.

Employing these figures for an analysis of the current year's food outlook, C. E. Bowles notes also an intention by Texas farmers to increase acreages in cereals and feed for 1943. He is the specialist in organization and cooperative marketing for the A. and M. College Extension Service. For example, Bowles says, sweet potato acreage promises to be 56 per cent above 1942. Regardless of reduced labor and shortages of machinery and equipment, farmers plan to plant two per cent more corn; four per cent more barley and rice; 15 per cent more peanuts, and increase the acreage of all sorghums 11 per cent above last year.

Unusually good calf crops and reduced death losses more than offset the increase of 29 per cent in marketing of Texas cattle and calves during 1942 over those of the preceding year. Indications are that the 1943 spring pig crop will be about 30 per cent larger than that of a year ago, which in turn was 44 per cent greater than the 1941 spring production.

"Farmers were assisted in their patriotic efforts to meet the war needs for meat by bumper grain crops on the Plains, and by attractive prices for livestock," Bowles says. "But it should be pointed out

Railroad Finds A Loose Liver

ST. LOUIS (AP) — At the St. Louis station's lost and found department they have a suitcase filled with liver sausage—or they did until it began to turn sour—and a fellow's pants. Those are just a couple of the items that have turned up recently. Boss Checker L. J. Meyer says "it must be the war; people leave their belongings right and left."

Bird Gives Shaver The Air

OKLAHOMA CITY (AP) — H. G. Hatfield has music when he shaves each morning—and he doesn't have to whistle to himself either. The Hatfield canary—which has the run of the house—has formed the habit of flitting in and perching on his shoulder the minute he picks up his shaving brush. There it sits through the whole precarious operation, singing whatever airs canaries sing and hitting a sour note only when Hatfield playfully dabs a little lather on its beak.

A GOOD GUY FOR WOOD INSTRUMENTS

NEW YORK (AP) — Abe Lyman, orchestra leader, speaking: "A fella comes to me to see about a job playing in the band. I says: 'How old are you?' Instead, the guy says: 'Kick me.' I kick him, and he's got a wooden leg. That's good enough for me."

—BUY WAR BONDS AND STAMPS—

that farmers now are squeezed between skyrocketing feed prices and ceiling prices on meat. Farmers will need extra labor for peak requirements, as well as favorable seasons. Given these, they will do their part to reach the war food goals set."

Mr. and Mrs. B. P. Middleton and son Bobbie spent the week end at Stanton visitin with relatives and friends.

Sgt. Clyde Bailey of Camp Barkley, Abilene, spent the week end here visitin with his wife and other relatives.

Special Value

FOR A LIMITED TIME ONLY



Barbara Gould
CLEANSING CREAM
\$2 jar for \$1.25 PLUS TAX

There's a Barbara Gould Cleansing Cream especially created to cleanse your type of skin... leaving it soft and smooth, with natural moisture. Get several jars at this low price—today.

SPECIAL for Dry or Normal Skin
CREAM POMPON for all Skin Types

BOONE DRUG

You BE THE JUDGE AT THE STARTLING

BPS FLATLUX

DEMONSTRATION YOU WON'T CONFUSE



WHEN YOU SEE THIS NEW SENSATIONAL OIL PAINT THAT COVERS MOST ANY INTERIOR SURFACE IN ONLY ONE COAT



A BPS Color Expert will be at our store on the Demonstration Date shown below . . . Let him show you the many advantages of BPS FLATLUX

- Costs no more than ordinary water paint . . . because of its extra spreading capacity
- Has no Objectionable Paint Odor
- Ready for Use—Just as it comes
- Dries Quickly—Washes Easily

**Demonstration May 21-22
CICERO SMITH LUMBER CO.**

WANTED

**One Million Pounds
Cane Seed**

Henningesen Lamesa Inc.

Feed Department

50 to 100 SHAVES
FROM ONE RAZOR BLADE
by daily conditioning with
SPEE-D-HONE



Save up to
\$10.00 a Year
on Razor
Blades!

Only
10¢
EACH

BETTER SHAVES! SAVE MONEY!
Get Speed-Hone at your Dealer's today
Distributed by CURTISS CANDY CO., Chicago, Ill.

CLYDE BOSTIC
Representative 37-38 pd

THEATRE PROGRAM

PALACE

Admission . . . 11c and 30c

Tues. - Wednesday

MAY 18 and 19
A Comedy Drama

**"Margin For
Error"**

—with—
MILTON BERLE and
JOAN BENNETT
Also News and Comedy

Thursday - Friday

MAY 20 and 21
The picture you've been
waiting to see—

**"Immortal
Sergeant"**

—with—
HENRY FONDA and
MAUREEN O'HARA
Also News and Comedy

MAJESTIC

Admission . . . 11c and 22c

Tues. - Wednesday

MAY 18 and 19
Time out for laughs

**"She Has What
It Takes"**

—with—
JINX FAULKENBURG
and TOM NEAL
Also News and Comedy

Thursday Only

MAY 20TH

**"The Miracle
Kid"**

TOWER

Admission . . . 11c and 22c

Tues. - Wednesday
and Thursday

MAY 18-19-20

A film to thrill you with its
great scenes

IN TECHNICOLOR
**"Song Of The
Island"**

—with—
JACK OAKIE and
BETTY GRABLE

Prisoners' Knives To Stab Japs

HOUSTON, Texas (AP)—Prisoners in the Harris County jail are helping Texas soldiers and marines come out on top in hand-to-hand scraps with the Japs.

A score of illegal "frog-stickers" and one hand-made dirk taken from prisoners have found their way into a box of knives contributed by Sheriff Neal Polk to the "Save a Life With a Knife" drive.

The knives will go to Texas soldiers and marines in the South Pacific where jungles are so dense rifles and bayonets are virtually useless in hand-to-hand combat.

WOMAN 78, CALLS DOCTOR FOR FIRST TIME

CENTRAL, S. C. (AP) — Mrs. J. A. Hunnicutt, 78, regretted calling the doctor about as much as she regretted becoming ill. It was the first time she had ever had medical attention.

Lt. O. C. McBride of Brownwood, spent the week end here visiting relatives and friends.

About three-fourths of all sports turer goes to members of the ceiving pre-induction military equipment now being manufac- armed services and to those re- training.

CLOSING NOTICE

Due to the shortage in photographic supplies we are closing our Studio for the summer.

If you have finished pictures in the Studio, please call for them this week. We still have all negatives made since June 1937. if you want re-prints from these place your orders soon.

ROGERS STUDIO

Special Ground Wheat For Hog Feed

\$1.50 per 100 lb. sack

This Ground Wheat on display at our Retail Feed Store Look this Ground Wheat over and buy enough to finish out your hogs.

BRING US YOUR—

Cream Eggs Poultry

Henningesen Lamesa, Inc.

CREAMERY

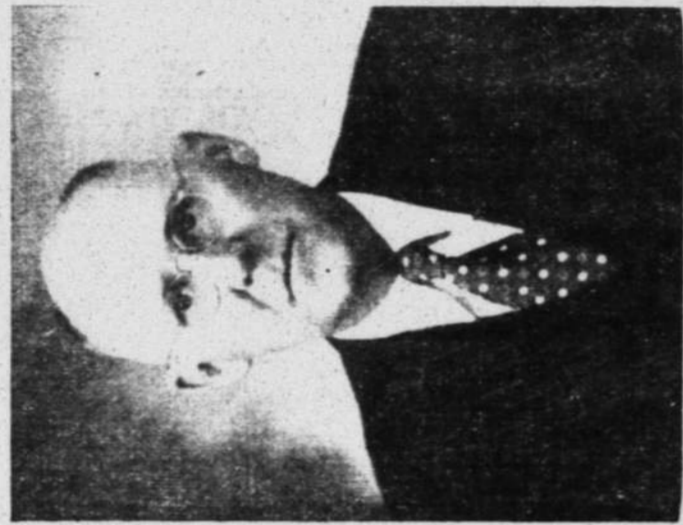
—: BUY WAR BONDS EVERY PAY DAY:—



FIRST ROW: Dale Aldridge, Billy Louise Archer, J. P. Ashin, Glenna Faye Bailey, Lotta Bess Baldwin.
 SECOND ROW: Elton Bankhead, Gerald Barkhurst, Earlene Barron, Frances Barron, Helen Barron.
 THIRD ROW: V. O. Barron, Frances Bartlett, Earl Beaird, Sarah Billingsley, G. D. Boldin.
 FOURTH ROW: Weldon Bratcher, Douglas Brown, Ruby Loyce Brown, A. J. Broyles, Eva Burkett.
 FIFTH ROW: Erma Jane Burks, Charles Bussell, Betty Cantrell, Bill Carpenter, Wanda Carroll.
 SIXTH ROW: Jo Marie Chamley, Jan Cox, Jeanelle Davis, Ruth Davis, Netha Denson.
 SEVENTH ROW: Merlene Dickenson, Rex Dunn, Geneva Earnest, Edith Esmond, La Vrae Esmond.



HENRY NORRIS
Principal



V. Z. ROGERS
Superintendent



FIRST ROW: Ina Jackson, Elwanda James, Jackie Jernigan, Dorothy Lee Jeter, Bill Jordan, Joe Lee Kelly.
 SECOND ROW: Bonnie Faye Kern, Raymond LaFayette, Sarah Land, Sheldon Land, L. D. Langham, Reba Long.
 THIRD ROW: Howard Love, Wayne Love, Dale McLroy, Betty Jo McKee, H. L. McQueen, Ann Manning.
 FOURTH ROW: Lovene Mitchell, Lorraine Morrow, Billy Joe Norris, Raymond Orson, Edna Page, Gerald Parsons.
 FIFTH ROW: Maxine Peterson, Tucker Prinzy, Frances Pittman, Charles Privitt, Kenneth Pruitt, Doris Ragsdale.
 SIXTH ROW: Laverne Ray, Emma Jean Read, Donald Reeves, Betty Renner, Raymond Renner, Fern Richardson.
 SEVENTH ROW: Garland Sanders, Evelyn Scott, Lawrence Shill.

Congratulations 1943 Seniors OF LAMESA HIGH SCHOOL

To the Class of '43... Our congratulations! You're a fine crowd of spirited young people.

We know you... we like you... and we're proud of you.

To the Class of 43... Our congratulations! You're a fine crowd of spirited young people.

We know you like you... and we're proud of you.

To each of you, we extend our most sincere good wishes!

lene Barron, Frances Barron, Helen Barron.
 THIRD ROW: V. O. Barron, Frances Bartlett, Earl Beard, Sarah Billingsley, G. D. Boldin.
 FOURTH ROW: Weldon Bratcher, Douglas Brown, Ruby Loyce Brown, A. J. Broyles, Eva Burkett.
 FIFTH ROW: Erma Jane Burks, Charles Bussell, Betty Cantrell, Bill Carpenter, Wanda Carroll.
 SIXTH ROW: Jo Marie Chamley, Jan Cox, Jeanelle Davis, Ruth Davis, Netha Denson.
 SEVENTH ROW: Merlene Dickenson, Rex. Dunn, Geneva Earnest, Edith Esmond, La Vrae Esmond.
 EIGHTH ROW: C. G. Eudy, Leigh Faires, Pauline Ferguson, Allene Flowers, Lee Roy Gaultney.
 NINTH ROW: Jonita Glaze, Gladys Grawunder, Kenneth Hamilton, Troy Haney, George Hansard.
 TENTH ROW: Patsy Harris, Glenn Hillman, Anne Hurt, Helen Inman, Mozelle Isaacs.

ony Lee Jeter, Bill Jordan, Joe Lee Kelly.
 SECOND ROW: Bonnie Fave Kern, Raymond LaFaitte, Sarah Land, Sheldon Land, L. D. Langham, Reba Long.
 THIRD ROW: Howard Love, Wayne L. McMillroy, Betty Jo McKee, H. L. McQueen, Ann Manning.
 FOURTH ROW: Lorene Mitchell, Lorraine Morrow, Billy Joe Norris, Raymond Orson, Edna Page, Gerald Parsons.
 FIFTH ROW: Maxine Peterson, Tucker Primizy, Frances Pittman, Charles Privitt, Kenneth Pruitt, Doris Ragsdale.
 SIXTH ROW: Laverne Ray, Emma Jean Read, Donald Reeves, Betty Renner, Raymond Renner, Fern Richardson.
 SEVENTH ROW: Garland Sanders, Evelyn Scott, Lawrence Shillingburg, Ernest Smith, Walter Smith, Janell Spencer.
 EIGHTH ROW: Marvin Standefer, M. L. Standefer, Bobby Stanfield, Billy Jo Strickland, Peggy Sue Sumpter, Ruthye Tabor.
 NINTH ROW: Kenneth Tankersley, Mary Ellen Tarter, Owen Taylor, Bonnie Tolbert, Billye Treadway, Bobbie Lou Turnbow.
 TENTH ROW: John Waddell, Billie Sue White, Nadine Wilson, June Winnet, Mavis Womack, Claude Yates.

B. F. Goodrich Silvertown Store	E. R. Yates Hardware	Dyer Hardware & Auto Supply	G. F. Wacker Stores 5c to \$5.00
Crawford's Home & Auto Supply	R. W. Kelly Implement	The Fair Store	Lamesa Steam Laundry
Caldwell Shoe Shop	Clark-McDonald Drug	Firestone Feed & Poultry	Wright's Conoco Service
Caldwell & McCarty Dry Cleaners	Taylor-McCall Drug	Earnest & Nix Implement	O K Rubber Welders
First National Bank Of Lamesa	Higginbotham-Bartlett Co.	Wilkes Cleaners	Boyd Motor Company
Lamesa National Bank	O. H. Morris & Son	Morris Pharmacy	Bryant-Link Company
Modern Beauty Shop	M. O. Martin Insurance	Cavern Cafe	J. C. Penney Co.
E. C. Adams Jeweler	Texas Electric Company	Bill's Cafe	Hull's Grocery
Lamesa Creamery	Painter & Mayfield—Implements	Pat's Garage	The Vogue
T. B. Fulkerson	Gambill's 5c to \$5.00 Store	Cicero Smith Lumber Co.	Jesse Carroll Insurance
Lamesa Tin & Radiator Shop	Red Chain Feed Store <small>LEE P. BURGER, OWNER</small>	Forrest Lumber Co.	Burns Grocery
Boothe's 5c to \$1.00 Store	Allen Hardware Co.	Rogers Studio	Howard Humphrey <small>COUNTY CLERK DAWSON COUNTY, TEXAS</small>
Jordan Trucking Co.	Boone Drug	Palace Beauty Salon	Buster Herndon <small>TAX ASSESSOR-COLLECTOR</small>
Huddleston Drug	Speck Furniture	Dal-Paso Drug	P. K. Humes <small>COUNTY SCHOOL SUPERINTENDENT</small>
City Barber Shop	Globe Dry Cleaners	Pruitt's Shoe Shop	A. M. (Buck) Bennett <small>SHERIFF DAWSON COUNTY</small>
Bernie Holt	Vaughn Chevrolet Co.	Modern Dry Cleaners	Kilmer B. Corbin <small>COUNTY JUDGE DAWSON COUNTY</small>
Hurt's	Ashley's Electric Shop	Scott's Cleaners & Laundry <small>LAMESA PHONE 250 TEXAS</small>	Arnett Motor Co.

THE DAWSON COUNTY COURIER

MEMBER OF THE (AP) ASSOCIATED PRESS
WIDE WORLD FEATURES

The Associated Press is exclusively entitled to the use for publication of all news dispatches credited to it, or not otherwise credited in this newspaper, and also the local news published herein.

JOE ALEXANDER Publisher

Entered at the Post Office at Lamesa, Texas, as second class mail, under the Act of 1879

Any erroneous reflection upon the character of any person or firm appearing in these columns will be gladly and promptly corrected upon being brought to the attention of the management.

SUBSCRIPTION PRICE

In Dawson and Adjoining Counties, per year \$2.00
Outside of Trade Territory, per year \$3.00

--Classified--

BROWN'S STEAM LAUNDRY

PHONE 369-J
PICKUP AND DELIVERY
1/2 BLOCK NORTH OF POST OFFICE

For Sale Or Trade

FOR SALE: Brooder House and lots of other things. MRS. L. O. FOLLOWILL, Rt. A, Box 222 Klondike Community. 36-37 pd

FOR SALE: 400 acres cultivated, 200 sandy, 200 sandier, 6 miles North Welch. V. O. KEY. 37 tfc

FOR SALE: 2 row John Deere Planter, good shape. A. H. HANCOCK, Rt. D. 37-38 pd

FOR SALE: 2 extra good work horses, 5 and 7 years old. KELLY IMPLEMENT CO. 37-40 chg

FOR SALE: 2 Jersey milch cows. Fresh. C. P. AMOS, 3 1-2 miles west. 37-38 pd

FOR SALE: Weaning pigs, Electric Coca Cola Box, Electric Fencer. J. S. FRANKLIN, Wilson Store. 37-40 pd

FOR SALE: 275 White Leghorn pullets. Good bath tub and fixtures. A. L. EDWARDS, Dewey Davis Farm. 37-38 pd

FOR SALE: Good Jersey bull, subject to register, 16 months old, weight about 750 pounds. ARNETT WHITED, 4 miles west Union, Rt. 4. 37-38 pd

FOR SALE: Peach green and Mask Love birds, face, yellow, Azure cobolt, blue parakeet, Zebra Finch Also Parakeet nest box and bird supplies. WILLIE McCUTCHAN, 409 North Fourth. 36-38 chg

FOR SALE: One 2 row combine, one team binder, one 2 row John Deere Team Planter, one 2 row Team cultivator, one 1 row Team Cultivator, 8 heavy type Brood Mares in foal or with young colts, 5 yearling mules, one 3 year old, three 2 year old and one 1 year, 2 milch cows, 2 stocker cows white face, 3 Feeder steers white face, 3 yearling white face heifers, 200 White Leghorn hens 1 year old, 10 tons of corn, and several tons of other feed. SLATER H. JOHNSON, 1 1-2 miles south of Patricia, 35-36 pd

FOR SALE OR TRADE: My home, located 3-4 mile northeast of Courthouse. If you want a good home see me. LOO RANDALS. 36-39 pd

FOR SALE: 24 white hogs, also good day, with youngenrou2b xv(7Bv jersey cows 3 to 4 gallons milk a day, with young calves. R. J. DEATHERAGE, Ackerly Rt. 1, 18 miles out on Stanton Highway. 35-38 pd

FOR SALE: 200 bushels of original Georgia Half and Half. \$1.50 bushel. 100 bushels Von Roeder seed \$1.00 bushel. AMOS PAINTER, Rt. A. 36-39 pd

PLENTY of good fresh flash light batteries. ASHLEY ELECTRIC SHOP. 36-37 chg

FOR SALE: 1939 Chevrolet, excellent condition, five extra good tires, also Butane bottle and regulator. Inquire at 607 NORTH SECOND STREET. 34-37 pd

FOR SALE: Baby chicks Blood Tested White Leghorn's, from a high egg production strain Book now for May Delivery. HEATH BROILER PLANT, 302 South Houston 22 tfc

FOR SALE: 4 Shorthorn Durham Heifers, one registered Shorthorn Cow. R. H. KINNISON, near Arvanna Gin 36-37 pd

FOR SALE: Several head of Jersey cows with young calves. W. MATTHEW, on section with Klondike store. 34-37 pd

FOR SALE: Gasoline, Groceries, and Auto Service on Sunday from 9 a. m. till 9 p. m. W. L. HOLT GROCERY AND STATION. 26 tfc

LARGE shipment Power-Flo Motor Driven Pumps, \$3.95 up. DYER HARDWARE & AUTO SUPPLY. 34 tfc

FOR SALE: Royal Standard typewriter. Good condition. O. M. LAND, 1006 South 4th. 34-37 pd

FOR SALE: Several farms and a few small ranches and city property. Before you buy see WADE H. BARTLETT, 506 North Third, Lamesa. 75 tfc

FOR SALE: 2560 acres; Real Farm and Stock Farm, lots of mesquite and mesquite grass. Fine well in center of 4 sections, 2 sections joining Highway. Some minerals. 18 miles west Seminole, \$5 acre. Easy terms. See B. W. FIELD, Seminole, Rt. 3. 32-37 pd

FOR SALE: Try a few settings of my Red Eggs from a hen's setting to incubator setting. Come and see my \$25.00 Red Cockerels. H. G. WATKINS, McCarty community. 29-39 chg

BUY YOUR Stock Serums and Vaccines at the same old place, where you know you get Only the Best Always. BRYANT PHARMACY. 30-37 chg

GRAIN BAGS: All kinds of burlap bags for sale. East of railroad at Mule Pen. J. C. BILLINGSLEY AND SON. 95 tfc

FOR SALE: 1000 bushels of Hi-breed half and half cottonseed. B. F. PAINTER at Painter and Mayfield. 25 tfc

FOR SALE OR TRADE: Complete line of groceries and meats. Give us a trial. SELLERS GROCERY, Phone 212. 73 tfc

FOR SALE: One 32-Volt 750 Watt Wincharger. BARNEY MCKINNEY. 22 tfc

FOR SALE: Plenty of rolling sand fighters and plenty of two and four row stalk cutters. SPENCER MACHINE SHOP. 11 tfc

FOR SALE: Plenty of go-devil knives. SPENCER MACHINE SHOP. 11 tfc

FOR SALE: National Cash Register, practically new. CALDWELL HARNESS SHOP. 22 tfc

SEVERAL GOOD FARMS: A few of which possession can be had at once and others the buyer will get the rent. I advise buying now if you wish to buy this year. D. P. CARTER, Brownfield Hotel Lobby, Brownfield, Texas. 34 tfc

FOR SALE: 4 and 5 foot Go Devil Knives. E. R. YATES HARDWARE. 34-37 chg

WE HAVE IT! What? AAA Pyrethum Fly Spray and Rotenone Insect Dust. Why let insects destroy that Victory Garden? Rotenone Dust is non-poisonous and very effective. My Fly Spray is Pyrethum, and fortified with other active killing ingredients. G. FRANK SMITH, "The Watkins Man," near Club house on Big Spring Road 36-37 pd

FOR SALE: Black Hull Kaffier Seed. J. D. GARNER strain. OLAN WISE, south Roy's Cafe. 33-38 pd

FOR SALE: Ethel's place located on NORTH FIRST doing good business. 34-37 pd

FOR SALE: 5 nice building lots, approved by F. H. A. J. C. HART, 702 North 4th. 36-37 pd

FOR SALE: 22x30 warehouse, can be moved. C. E. MARTIN. 36-37 pd

FOR SALE: Four room house with bath. 1409 North First, MRS. G. W. Wyatt, at Public Scales. 36 tfc

6% LOANS

ON RESIDENCES—COMMERCIAL BUILDINGS

(New Construction or Direct Loans)

LIBERAL APPRAISALS
And Quick Settlements
AUTOMOBILE LOANS

—and—
INSURANCE

M. Q. MARTIN

INSURANCE AGENCY
PHONE 108-M LAMESA

TOP PRICES PAID
FOR HOGS
EVERY FRIDAY AND SATURDAY

Lee Billingsley

Come in by Saturday Noon
Phone 238 Lamesa, Texas

HIGH CLASS REPAIRS

FOR STARTER . . . GENERATOR . . . MAGNETO
. . . CARBURETOR OR FUEL PUMP REPAIRS
AND SERVICE.

—SEE—

Walker Battery & Electric

Across Street East of City Hall

ANNOUNCING.....

I HAVE PURCHASED THE—

City Confectionery

from Elmer Boyd. The same personnel will be employed in the future as in the past.

WE WOULD APPRECIATE YOUR PATRONAGE

Clarence (Peanuts) Gaines

GRADE "A" RAW MILK—CREAM—BUTTERMILK

SHILLINGBURG DAIRY

PHONE 510-M

32tfc.

WE HAVE A CARLOAD OF—

BLACKSMITH COAL

ALABAMA DOUBLE WASHED

Also a carload of No. 1 Government wheat, which we are grinding into Wheat Short — Better than Bran—but sells for the same price.

KIMBELL MILLING CO.

ACROSS STREET FROM PUBLIC SCALES. 31-38 pd

TIRE SPECIALS

600-16—6 ply \$15.00

650-16—6 ply \$17.50

700-16—6 ply \$20.00

GRADE II TIRES

475-19 \$ 7.50

525-18 \$ 7.50

B. E. NEEDLES

1502 Avenue H Lubbock, Texas

BUY YOUR FEED

—FROM—

HENNINGSEN LAMESA, INC.

Our Prices Are Right!

FOR SALE: State Certified Sudan, Higeria and Milo Seed. Also other planting seed. OLAN WISE, South of Roy's Cafe. 36-43. pd

PLENTY OF HOG Supplement
—SEE—
Lee Billingsley

BRING US YOUR TIRES AND TUBES FOR VULCANIZING BEST MATERIAL AND WORKMANSHIP
HOLT TIRE CO.—Phone 79-M
36 tfc

Cavern Cafe
Will be closed all day Sunday until further notice
OPEN EACH WEEK DAY AT—
5:30 A. M.

LOANS
City, Farms and Ranches
V. O KEY
406 N. 1st :--: PHONE 115

COTTON SEED
Georgia Hi-Bred; Pedigreed
Just Arrived
H. E. TOLIVER
at SnellJacobs Gin Lamesa
Delinted 36-39 pd

For A Complete Beauty Service Visit—
HOTEL BEAUTY SHOP
"Hair Styling That Pleases"

LOANS
ON YOUR HOME OR BUSINESS BUILDINGS AT 6%.
We charge no brokerage or commission. Liberal options for prepayment.

O. H. Morris

Lawn Mowers Sharpened AND Adjusted \$1.50
Allen Hardware
28-35 chg

Dr. G. D. Stallworth
GRADUATE VETERINARIAN
A. & M. COLLEGE OF TEXAS
General Farm & Ranch Practice
Available Day and Night
Phone 34M 307 North Miller St.
4 tfc

Lamesa Tin & Radiator Shop
If it is made of sheet metal we make it—or repair it.
Radiator repaired, recored and cleaned out.
53-tfc.

FOR SALE: Certified and state tested seeds. High bred, Western prolific, Kasch and Half and Half cottonseed. Bulk Garden Seek. Ceresan and Copper Carbonate for treating. Plenty of "Red Chain Feed" and "Gold Chain Flour and Meal." RED CHAIN FEED STORE, Lee P. Burger, owner. 37-38 pd

FOR SALE: 1940 4-door V-8, good rubber, extra clean throughout, \$850. DON ALTMAN, 702 North Fourth. 37-40 pd

SEE OUR new line of colorful waste baskets, 59c. ASHLEY ELECTRIC SHOP. 36-37 chg

FOR SALE: California Blackeyed Pea Seed. PAINTER & MAY-FIELD. 32-39 tfc

FOR SALE: Tomato plants, four kinds, 208 South Third, MRS. R. E. ESTES. 35-38 pd

FOR SALE: at OATES CAR LOT: Chevrolet four door Fleetline with custom Craft white side wall tires, radio and heater. 36 tfc.

FOR RENT

FOR RENT: Furnished trailer house, air conditioned, \$3.50 per week. Bills paid. 1108 NORTH 4TH. 37-39 pd

FOR RENT: Southeast bedroom adjoining bath and outside entrance. Inquire at 305 NORTH THIRD. 36-37 pd

SEE OUR new Table and Vanity Lamps. ASHLEY ELECTRIC SHOP. 36-37 chg

FOR RENT: Nicely furnished two room apartment with both frigidaire and garage to couple only. J. C. HART, 702 North 4th St. 36 tfc

FOR RENT: One small house and one trailer house both furnished. Close in. S. R. SIMPSON. 25 tfc

FOR RENT: Furnished bed rooms. MRS. LELA HOUSER, 409 North Main Street. 78 tfc

FOR RENT: Furnished Apartment. JACK GREEN, South 4th and Dallas. Phone 154. 28 tfc

—BUY WAR BONDS AND STAMPS—

PLENTY OF

Genuine Dodge and Plymouth and Dodge Truck Parts available.

BRING YOUR TRUCK OR CAR to your Dodge Dealer for Repairs.

Plenty of First Line Tires in stock.

Arnett Motor Co.
PHONE 136
18 Years in Lamesa
37 tfc

GOOD NEWS!

After March 1, all motorist are eligible for recapping without certificate or any red tape whatever. Make an appointment with us now for your recap work, after that date. We use the Bacon Equipment, the very latest type, known as the best in the world, for tire recapping. With this type of equipment and our skillful labor you can not get a better job. We have not had a single tread to peel in over 3 years, and so why should you send your tires out of town and take a chance of them being lost or mischanged for junk tires. We recap your tires while you wait.

MILLER TIRE COMPANY
10 tfc

FOR RENT: 1 two room furnished apartment, 2 room unfurnished. Private baths, 410 SOUTH AUSTIN. 37-38 pd

FOR RENT: Nicely furnished southeast bedroom, adjoining bath and outside entrance. Phone 209 or call at 509 SOUTH THIRD, before 9 a. m. or at 1:30 p. m. 37-38 chg

FOR RENT: 2 room furnished apartment for adults only. 306 NORTH MAIN. 37 tfc

WANTED

WANTED: Clean Cotton Rags at the COURIER OFFICE. 37 tfc

WANTED: Rationing Board would like to borrow a small safe to lock up papers in. See R. C. MOORE. 37 tfc

WANTED: Children to care for in afternoon's or evenings, MRS. R. C. FATE, 312 North Dallas St., Apt. 4, Sunset Lodge. 37-38 pd

WANTED TO RENT: 4 or 5 room modern house with place for chickens, Long term renters if satisfactory. Call FRANK GIBSON at 43 37 tfc

WANTED: Will pay cash for two or three Butane Bottles. Also Butane Tank. T T. FISHER, Box 596 Lamesa. 36-39 pd

WANTED: Used bath tub, butane water heater. Must be in good condition State size and price. C. B. MORRISON, O'Donnell. 36-37 pd

WANTED: Beauty Operator at ROBERTS BARBER & BEAUTY SHOP. 36 tfc

WANTED: Furniture repairing, upholstery and refinishing, will lay any kind of floor coverings. See AMOS STONE at Davis Furniture Co. 24 tfc

WANTED: To buy your eggs, top prices. SELLERS GROCERY AND MARKET, Phone 212. 73 tfc

POULTRY WANTED

No. 1 Fryers, 1 1/4 to 2 1/2 28 c lb
No. 1 Broilers 1 1/4 to 1 3/4 24c lb
No. 1 Light Hens 19c lb
No. 1 Heavy Hens 4 1/2 up 20c lb

HEATH BROILER PLANT

—NOTE—
Due to Government regulations we are not permitted to exceed 28c lb. on fryers. See OPA Maximum Price Regulation No. 169.

Mrs. Jim Waltrip spent Monday in Lubbock buying merchandise for Bryant-Link Co.

Mrs. Grace Thomas of Ballinger is visiting here this week with relatives and friends.

Miscellaneous

ANOTHER nice Jersey Bull calf goes to Fred E. Davis, Snyder, Texas. When are you going to get yours. J. M. PETERSON. 34-41 pd

WILL DO fence building, lawn mowing and yard work of all kinds. W. T. PHIPPS, 1601 North Second and Garfield. 34-37 pd.

FREE! If excess acid causes you pains of Stomach Ulcers, Indigestion, Heartburn, Belching, Bloating, Neusea, Gas Pains, get free sample Udga, at BRYANT PHARMACY.

NOTICE: High School Graduates, We have plenty of calling cards on hand. Give us a trial. COURIER OFFICE. 22 tfc

NOTICE: All permits for hunting and fishing on the Dean Ranch have been cancelled. There are so many people fishing on the tanks that the cattle are not watering. I have been instructed to stop all trespassing on this ranch. ROSCOE HOLTON. 30-37 chg

Lost and Found

LOST: Red and black spotted sow, weight about 250 or 275. Notify PED ALDRIDGE at Post Office or Doc Aldridge, Rt. D. 35 tfc

LOST: 2 grey hounds, one tan and other tan with white strip down its head ALVA PEARSON, Lamesa, Rt. A. 36-37 pd

NOTICE — CUSTOM GRINDING

We have recently installed a grist mill to make meal out of corn. E. A. Twedt and experienced grist mill operator will be in charge. We will grind on Friday and Saturday each week. Give us a trial. Located at—

Lee Billingsley Hog Pen
29 tfc

Will your present car last you five more years. If not see the good 1941 Chevrolets and Fords at—

VAUGHN CHEVROLET CO.

Good used cars will not be available at any price but for a short time.

No new cars have been built since January 15, 1942, and will not be until twelve months after peace.

VAUGHN CHEVROLET

Mrs. R. E. Simpson, Mrs. Henry Stafford, and Mrs. Leck Cowden left Thursday for Pasadena, California, where they will attend the wedding of Miss Evelyn Storey and Cadet Homer Simpson on May 22, at Little Church "Heather." Mrs. Cowden will also attend the West Coast Market while there.

LIVESTOCK Owners
FREE REMOVAL OF DEAD ANIMALS
—CALL—
McGUIRE'S Service Station
PHONE 500 COLLECT
LAMESA, TEXAS
OPEN ALL NITE

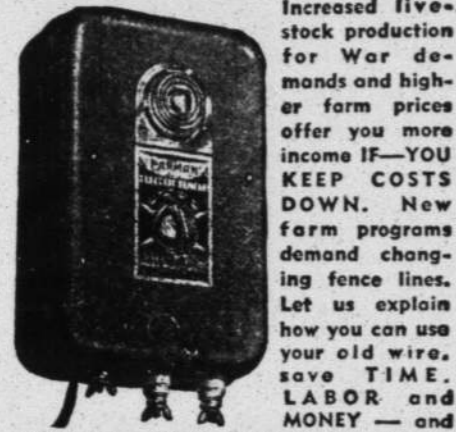
WE BUY ALL KINDS OF— USED FURNITURE
SEE US BEFORE YOU SELL
JOBE and EARNEST
NEW AND USED FURNITURE
18 tfc

Cpl. Norris Sellers of Del Rio spent the week end here visiting with his parents, Mr. and Mrs. R. R. Sellers.

—BUY WAR BONDS AND STAMPS—



HERE'S YOUR EXTRA HIRED HAND



MAKE YOUR FARM EARN MORE with efficient, low-cost PARMAK Electric Fencing.

★ 5-YEAR SERVICE GUARANTEE ★
★ WORLD'S LARGEST SELLER ★
★ IMMEDIATE DELIVERY ★

Dyer Hardware & Auto Supply
"where your money buys more"

TORNADO CLUB HOSTS TO COSTUME PARTY FRIDAY EVENING

The Tornado Club of the Lamesa High School entertained Friday evening at the City Municipal Building for Members and Exmembers of the Lamesa Golden Tornado football squad.

Honor guests, members and their dates were all dressed in Cowboy and Indian costumes. The entertaining rooms were decorated with brands, signs and saddles which aided in carrying out the cowboy motif.

As a special treat the group first attended the movie at the Grammer School building of last years Navy and Notre Dame football game, where Bob Crawley who played with Navy, a former members of the Tornado Squad, was one of the outstanding players.

After the movie the group went to the club house where upon entering each guests was given a card bearing the name which he was to go by during the evening. Various games, contests and dancing were enjoyed. Musical selections were given by a quartet composed of Chas. Privett, Robert Kirk, Bill Taylor and Owen Taylor who sang "You Are My Sunshine," a trio composed of Glenn White, Murphy Horten, and Jimmie Billingsley sang "My Rubber Dolly" and Gus White sang as a solo "Tumbling, Tumble Weeds", they were all accompanied by Miss Donnie Yeager.

Newly elected officers of the Tornado club are Wayne Roberts, Pre-

sident; Earnest Hawkins, Vice President, Robert Kirk, Secretary-Treasurer; Bill Taylor, Reporter; and Sgt. of Arms, George Norman, W. B. Adair and Paul Britt with C. V. Hill, Coach of the Tornadoes, as sponsor.

About 75 members and guests attended.

PYTHIAN SISTERS HOLD REGULAR MEETING MAY 6

The Pythian sister met Thursday evening May 6, in their regular meeting at the K. P. Lodge Hall.

Officers present were Edna Merle Smith, Past Chief; Christine Agee, E. S.; Willie Goen, E. J.; Lora Barrett, Manager; Mistress of Records and correspondents, Lucille Emory; Mistress of Finance, Willie Mae Privett; Protector, Katie Lou Ashley. Other members present were Clara Mae Wilson, Berma Pruitt, Margaret Norris, Myrtle Mitchell.

The Past Chief Edna Merle Smith was representative to the Grand Temple Session which was held in Fort Worth on May 11-12.

All members are urged to attend meetings more regularly.

Pfc. Robert Carter of Sheppard Field, Wichita Falls spent the week end here visiting with relatives and friends.

Mrs Lloyd Galde and son of Hamberg, New York, are visiting here in the home of Mr. and Mrs. W. J. Beckham.

Mrs. W. S. Cox of Dalhart is visiting here this week with her parents, Mr. and Mrs. Shearer.

Grade "A" Pasteurized Milk

Cultured Buttermilk — Coffee Cream
Espuela Ice Cream and Butter

"OUR PRODUCTS MUST PLEASE"

LAMESA CREAMERY

PHONE 295



Dig in and win

Buy more

War Bonds and Stamps

HURT'S

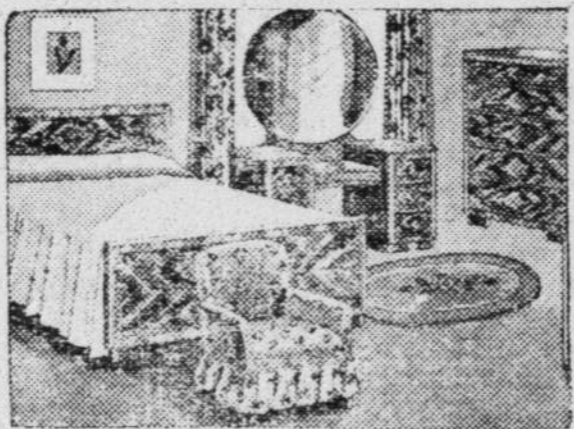
Headquarters For Graduation Gifts



SPRING

is Knocking at your Door and Suggests Something New for Your Home

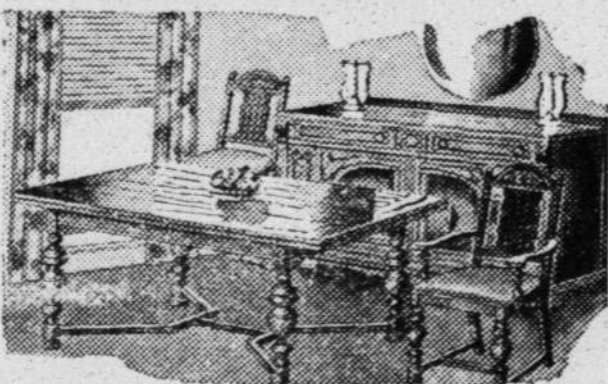
GOOD FURNITURE STILL AVAILABLE



4-Piece Bedroom Suite

In Bleached Walnut finish. Bed, Vanity, Chest and Bench, Kiln Dried, Dovetail construction. Modern in every respect

\$59⁹⁵



Carved Oak Dining Room

Dine in the rich manner of the old English Barons! Table, 5 side-chairs, armchair, and buffet

\$169⁵⁰

UP TO A FULL YEAR TO PAY—ASK ABOUT IT

JOBE & EARNEST FURNITURE

"YOU'VE DONE YOUR BIT NOW DO YOUR BEST!"



DURING the first year of our toughest war, we—

Trained a lot of men—made a lot of fighting tools—built a lot of shipping.

And to help pay for it all, we bought War Bonds. Altogether, 50 millions of us bought War Bonds. And nearly 30 millions of us started putting, on the average, 10 percent of our pay into War Bonds every payday through the Payroll Savings Plan.

That was a good start. But, it was *only* a start. What we did in '42 is not enough for '43!

We've got to do more fighting this year. We've got to do more building, more training, more shipping—and more saving.

We've got to buy *more* War Bonds.

Is that too much to ask? Many of us are making more money than we have made for years. The things we'd like to buy with that money have either disappeared or are as "scarce as hen's teeth." So, why not put that money into War Bonds at good interest—\$4 for every \$3 when the Bonds mature? Money to help pay for the war—keep prices down—provide peacetime jobs and peacetime goods and a generally decent world for all of us when the war is won.

Chances are, you're already in the Payroll Savings Plan—buying War Bonds—doing your bit. But don't stop there. See if you can't boost your ante!

Do your best!

YOU'VE DONE YOUR BIT --- NOW DO YOUR BEST!

— BOOST YOUR BOND BUYING THROUGH THE PAYROLL SAVINGS PLAN —

This advertisement is a contribution to America's all-out war effort by

LAMESA CREAMERY