

# The Midland Reporter-Telegram

METRO EDITION  
Vol. 53, No. 223 Daily 25¢, Sunday 50¢

TUESDAY, OCTOBER 19, 1982  
4 SECTIONS, 32 PAGES

## Talks likely to center on withdrawal

WASHINGTON (AP) — President Reagan hoped to find a formula for a speedy withdrawal of Israeli and other foreign troops from Lebanon as he met today with Lebanon's new president, Amin Gemayel.

Reagan has put out the word to his Mideast negotiators to press for withdrawal of all foreign troops by the end of the year. That includes not just Israelis, but also Syrians and Palestinians.

"The president has told us to get them all out as soon as possible," a senior administration official said Monday.

But the official, asking not to be identified, said, "We are going to be guided primarily by what the Lebanese think is possible."

He said a withdrawal this year "will be complicated and it will be difficult. Nevertheless, I think that it can be done quickly if the will is there on all sides."

Gemayel, 40, was holding two meetings with Reagan, one a working breakfast, followed by a meeting with the president and other officials in the Cabinet room. He also planned to meet separately with Secretary of State George Shultz and Defense Secretary Caspar Weinberger before leaving Washington tonight for Paris.

Gemayel addressed the U.N. General Assembly Monday where he demanded "the immediate and unconditional withdrawal of all non-Lebanese foreign forces from Lebanon."

He also hailed U.S. efforts to rid his country of the foreign armies that have turned Lebanon into "an arena for terror and violence."

Gemayel addressed the Security Council later in support of his government's request for a three-month extension of the mandate of the 7,000-man U.N. peacekeeping force in southern Lebanon. The administration is supporting a two-month extension.

The administration has favored an expanded U.N. force to secure the Israeli border, while Israel wants a refurbished Lebanese army to do the job.

While it isn't enthusiastic, Washington also hasn't flatly ruled out the possibility of a multinational force, including U.S. troops, in the area.

The sessions with Gemayel are partly a follow-up to meetings last week

between Shultz and Israeli Foreign Minister Yitzhak Shamir, who discussed an Israeli withdrawal plan that includes a Lebanese-Israeli security agreement for their border.

Washington had some objections, and Gemayel is expected to also oppose some aspects, particularly Israel's proposal to integrate the Israeli-supported right-wing militia of Major Saad Haddad into the Lebanese army to help protect the border.

Israel's demand for a prior withdrawal of the remaining Palestinian troops in Lebanon — ahead of Israeli and Syrian forces — also is complicating the outlook for a speedy withdrawal.

Depending on what emerges in the talks with Gemayel, Shultz may see Shamir in New York this weekend for another round of talks with the Israelis.

But the senior official, who didn't want to be identified, said even if the Israelis and Lebanese agree, a final accord must also be accepted by Syria and the Palestine Liberation Organization, and they would need to be consulted.

He said Reagan's special Mideast envoy, Morris Draper, would return to the region soon. An Arab League delegation is due in Washington on Friday.

The visit to Washington is the first trip outside Lebanon for Gemayel since he was elected president on Sept. 21 following the assassination of his brother, Bashir, who was elected earlier.

The focus of the meeting will be twofold: to help arrange the withdrawal of foreign forces and to set the stage for future relations between Washington and Beirut.

The senior official he thinks Gemayel "is determined to make a reality out of a vision for his country" and to put the period of "great tragedy" for his country behind him.

Gemayel may also appeal for more emergency financial aid from Washington to help rebuild his war-ravaged country. The United States has so far approved \$110 million in aid, but Gemayel has estimated damage from the war at up to \$15 billion.

While in Washington, he planned to meet with the A.W. Claussen, the president of the World Bank, which is coordinating the rebuilding effort.



King Cotton

Federico Enriquez Jimenez, 32, guides cotton through the gin stands at the Farmers Cooperative Cotton gin in Stanton. The tour of the gin was

just part of the show during Martin County's Agricultural Appreciation Day and Media Tour Monday. See story and photos, Page 1C.

## Photo may solve cyanide killing

CHICAGO (AP) — Investigators in the Tylenol poisoning case say they may have an "extremely significant" clue in a surveillance photo that may show a prime suspect watching one of the victims buying the tainted drug.

The photograph, made public Monday, was taken by a surveillance camera in a Chicago drug store where one of the victims, 35-year-old Paula Prince, bought a bottle of Extra-Strength Tylenol containing cyanide-tainted capsules.

In the photo, Miss Prince is standing near a checkout counter in the store. In the background, looking toward her, is a bearded man resembling Theodore Elmer Wilson, who along with his wife, Leann, was described Monday as a "prime suspect" in the case. Miss Prince later died.

Sources close to the investigation, who declined to be identified, said such a photo could be the case's first real homicide clue — an indication the culprit was interested in its outcome and its victims.

The couple is the target of a nationwide search. Authorities say Wilson was more than a dozen other names, including James W. Lewis and Robert Richardson. He was known as Richardson in Chicago.

He faces federal charges in a \$1 million extortion plot connected to the killings. His wife has been charged with

using a fraudulent Social Security number in applying for a job.

Wilson was indicted in a 1978 murder in Kansas City, but the charges were dropped, officials say.

Illinois Attorney General Tyrone Fahner, heading the Tylenol poisoning task force, said the picture would be an "extremely significant" clue if the man in the picture is identified as Wilson.

"If it turns out it is, it's dramatic as hell, if you put it together with the \$1 million extortion letter, the connection to the murder in Kansas City and the fact that this guy used 17 aliases," Fahner said Monday night.

"It could be a tremendous stroke of irony that the person (in the picture)...turns out to be Paula Prince and behind her it turns out to be the man who salted those capsules," Fahner said.

Investigators have other photographs that provide a clearer image of the man in the published photo, Fahner said. Experts are using computer techniques to enhance and enlarge the images, he said.

"If the photo has Wilson in it, that's big, important stuff," Fahner said. "If it turns out not to be, we're right back where we started."



Theodore Wilson

## Will Braniff venture get off ground?

GRAPEVINE, Texas (AP) — Braniff International finally has a partner to help it regain its wings, but some analysts think the tentative venture with Pacific Southwest Airlines may never get off the ground.

Braniff and PSA announced their preliminary agreement Monday, five months after fare price-cutting, soaring fuel costs and unprofitable routes forced Braniff to file for bankruptcy protection, grounding its aircraft and employees.

The new venture would fly 25 to 30 planes on as-yet unannounced routes under PSA's name, probably beginning next spring, said PSA chairman William Shimp.

Both PSA, the nation's 14th-largest carrier based in San Diego, and Braniff, which had been No. 8 in the country, would donate capital to the eight-year venture, that could be renewed for another eight.

But first the agreement must win approval from federal regulators, Braniff's creditors and U.S.

Bankruptcy Judge John Flowers, who has supervised operations since Braniff filed for protection May 13.

The four unions that represented Braniff's 9,000 former employees also will be asked to make major wage-and-benefit concessions, PSA and Braniff said.

In exchange, about 1,500 former Braniff employees, including about 300 pilots and 300 flight attendants, would be rehired to fly Braniff planes repainted with PSA's smile-on-the-nose logo — using some of Braniff's 411 landing slots and other ground facilities.

For analysts, the question was whether the combined airline would put smiles on passengers' faces.

"This thing is something less than a lead-pipe cinch to get off the ground," said Charles H. Hanneman, an airline industry analyst with Thomson McKinnon Securities Inc. of New York.

"The outlook for the industry generally is poor, and I assume that they will be trying to fly the high-density

routes, and these certainly will be highly competitive by the time they get started," said Elliot Fried, executive vice president of Shearson-American Express.

As far as travelers are concerned, there would be no difference between PSA and the joint venture, although they actually would be two separate airlines, company officials said.

While acknowledging "a lot of hurdles ahead," Braniff chairman Howard Putnam said, "all of us at Braniff are extremely pleased and enthusiastic."

Braniff's financial officer, Philip Guthrie, said Braniff had talked about the venture with some of its unions and they reacted positively. He didn't specify which unions.

He acknowledged that Braniff, which owes its creditors \$1 billion, had talked to eight other airlines about a joint venture and in August had "come very close" to an agreement with one unspecified airline. But the deal fell through because of labor issues, he said.

L.T. Faircloth of the International Association of Machinists and Aerospace Workers said "there very well could be problems" with the latest agreement.

Putnam "is making some very harsh statements about wages and working conditions, and he's never talked to us at all," Faircloth told Dallas radio station KRLL.

Braniff workers "have been abused, they've been misled, they've been misled. It's my opinion that when Mr. Putnam first came to Braniff, the people were behind him 100 percent, but I think they've lost all faith and confidence in his leadership at this time."

Hanneman also said the unions could torpedo the agreement.

"PSA had a lengthy and costly pilots' strike in 1980, and this thing calls for wages and working conditions well below union scale," he said. "The Braniff people might agree to some pretty cost-efficient contracts because it's better than the unemployment line, but there might be repercussions at PSA."

## Alternatives explored to pipeline sanctions

WASHINGTON (AP) — President Reagan says the United States is exploring alternatives to the anti-Soviet pipeline sanctions that have penalized U.S. manufacturers and angered America's European allies.

Reagan made his comments Monday night in a televised question-and-answer session with Republican candidates and their supporters beamed to fund-raising gatherings across the country.

"We sent representatives to Europe to talk to our allies about some other things that we believe could be more punishment to the Soviet Union than these sanctions," the president said.

"We couldn't get agreement on them," Reagan said, "but we're trying again. If we can get a better set of restrictions, other than the sanctions, we will be willing to lift those sanctions."

The sanctions, he said, weren't meant to be the principal means of punishing the Soviet Union for its crackdown on the Polish labor movement.

The Republican supporter from Joliet, Ill., who asked the prearranged question, posed it in the context of the harm the sanctions are doing to Caterpillar Tractor Co.

The administration's sanctions ban the sales of U.S. technology to the Soviets for construction of the natural gas pipeline to link Western Europe to the Siberian gas fields.

After Reagan expanded the sanctions to include American subsidiaries and licensees abroad, the European allies defied the U.S. measures and ordered their companies to deliver U.S.-developed technology to the Soviets.

### INSIDE TODAY

Helping hand

Jane Dresser, a certified clinical psychiatrist specialist, will be a counselor for a new mental health comprehensive program at Midland Memorial Hospital that will offer help to all patients.

— Page 1C

Bridge.....5C	Entertainment.....7A
Classified.....7C	Lifestyle.....3C
Comics.....4C	Markets.....7B
Crossword.....5C	Obituaries.....2C
Editorial.....6A	Sports.....1B
Energy.....6B	TV Schedule.....5C

Weather Service

Fair and colder tonight with low in mid-40s. Cool Wednesday. Details on Page 2A.

Delivery.....682-5311  
Want Ads.....682-6222  
Other Calls.....682-5311

## Local candidates gather informally

By LANA CUNNINGHAM  
Staff Writer

Faces — not issues — were the drawing cards Monday night to a local candidates reception at Energas sponsored by the Permian Basin chapter of Texas Women's Political Caucus.

It was set up to give the public a chance to meet Midlanders running for local offices. But since few of the public appeared it turned into a congenial face-to-face meeting for candidates and their opponents and a chatting session for unopposed persons.

Even for those who whiled away the time staring at their opponents, the conversation steered away from issues.

The "public" consisted primarily of members of TWPC and League of Women Voters.

Appearing at the gathering were the unopposed candidates: Vann Culp, 238th District judge; J. Scott Henderson, county attorney; Barbara Culver, 318th District judge; and Win Brown, county commissioner precinct 4. The opposing sides were Democrat Madge Wallis and Republican Vivian Wood for district clerk; Robert H. Pine and Bob Coonce (who bowed out citing an anniversary celebration in New Mexico), justice of the peace, precinct 1, place 2; Wallace Craig and Charlie Welch, county commissioner precinct 2.

Conversation ranged from school desegregation to having babies.

Judge Culver mentioned a movement in Austin to set up election of judges on a non-partisan basis. One proposed bill calls for election of judges on a local basis, she explained. The reason, she surmised, was that more and more Republicans are being elected to those posts normally held by Democrats.

A leader in the local Republican party, she offered her predictions of outcomes on statewide races, noting that this year "we have candidates who have more than just the Republican label. I think at least half of our statewide candidates will win."

Craig, the Republican trying to unseat Democrat Charlie Welch from his two-term grip on the county commissioner's seat, said people had not discussed issues with him at the reception.

Calling himself a conservative, the former school board member said he is running only on his qualifications and does not want to get into a mud-slinging campaign, such as is going on in the gubernatorial race between Bill Clements and Mark White.

"Things ought to be positive. I'm running on my credentials only," he added.

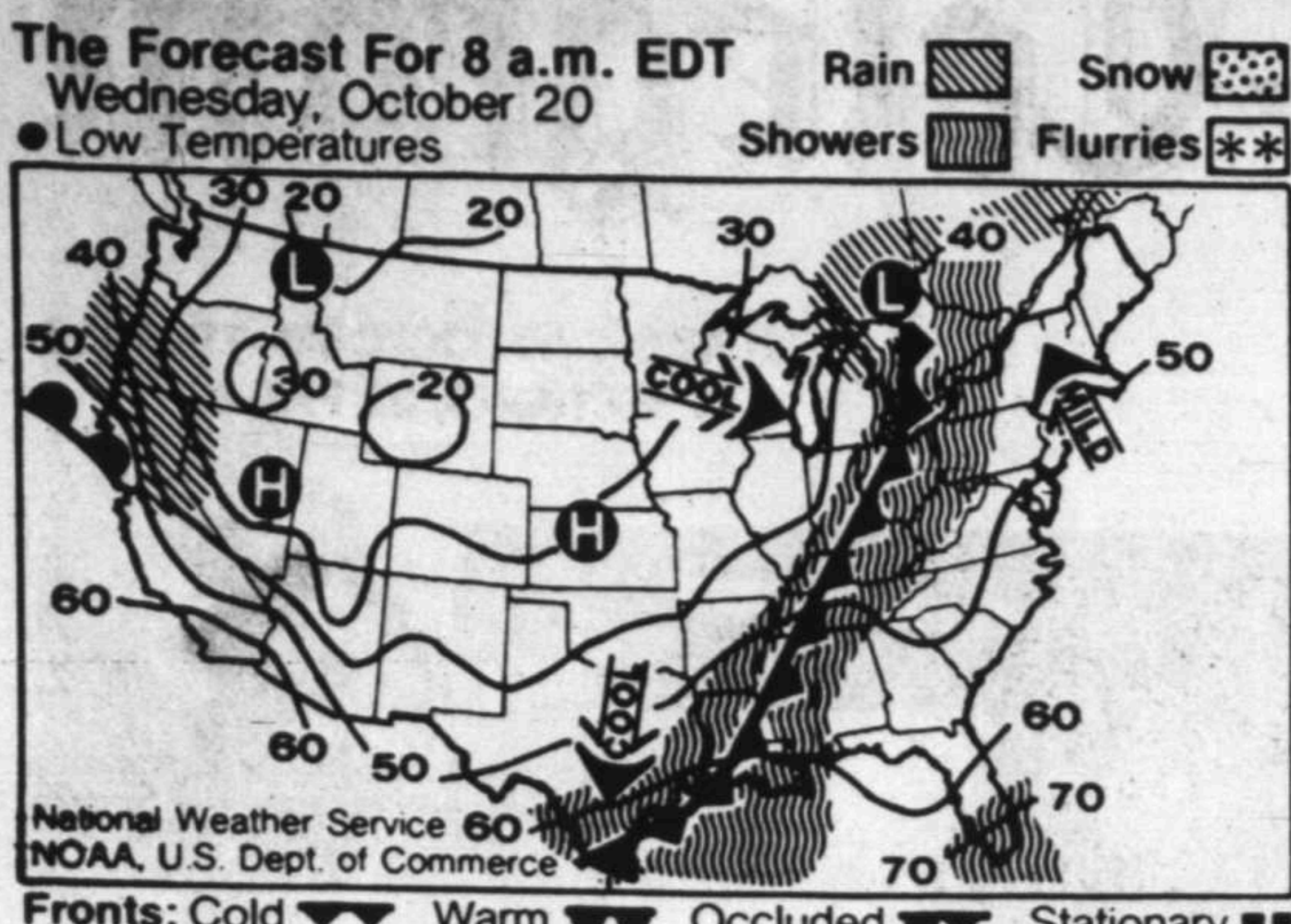
The reception was the first major political function sponsored by the Caucus since it was formed in August. Tamara Oatman, caucus president, said the organization has about 40 members — Republican, Democrats, old, young, black, brown and white — "which is phenomenal for a new caucus," she said of the number.

"Our goal at this point is to educate women and eventually they will want to run on their own."

Women could begin to make a difference in outcome of elections, she said. At a recent caucus meeting, one of the members who is doing a phone

(See CANDIDATES, Page 2A)

# WEATHER SUMMARY



Showers are forecast Wednesday from the Gulf to the Great Lakes and for the central Pacific Coast, according to the National Weather Service. Most areas will be sunny and cool.

## Cool, brisk winds forecast for area

The summertime temperatures Monday and Tuesday should give way to cool fall weather with brisk winds tonight and Wednesday, according to the National Weather Service forecast.

Tonight should be fair and colder with a low plummeting into the mid-40s and northeasterly winds at 10-15 mph. Wednesday's high should only reach the upper-60s with winds from the northeast and east at 10-15 mph.

Monday's high of 89 degrees narrowly missed the record high 90 set in 1936. The overnight low of 54 was a full 19 degrees warmer than the record low 35 set in 1966.

No precipitation in the last 24 hours leaves monthly and yearly rainfall totals at 1.01 and 12.63 inches. Sunset tonight is at 7:12 p.m. and sunrise Wednesday is at 7:56 a.m.

## Midland statistics

**WEATHER FORECAST**

Fair and cooler tonight with a low in the mid-40s and northeasterly winds at 10-15 mph. Fair and cool Wednesday with a high in the upper-60s and winds northeast-east at 10-15 mph.

**NATIONAL WEATHER SERVICE READINGS**

Yesterday's High: 89 degrees  
Overnight Low: 54 degrees  
Sunset today: 7:12 p.m.  
Sunrise tomorrow: 7:56 a.m.

**Precipitation:**  
Last 24 hours: 0.00 inches  
This month to date: 1.01 inches  
Year to date: 12.63 inches

**LOCAL TEMPERATURES:**

7 a.m.	50	8 p.m.	38
8 a.m.	56	9 p.m.	32
9 a.m.	57	10 p.m.	27
10 a.m.	57	11 p.m.	27
11 a.m.	57	Midnight	27
12 p.m.	57	1 a.m.	27
1 p.m.	57	2 a.m.	27
2 p.m.	57	3 a.m.	27
3 p.m.	57	4 a.m.	27
4 p.m.	57	5 a.m.	27
5 p.m.	57	6 a.m.	27

**SOUTHWEST TEMPERATURES:**

Ablene	57	L	38
Abilene	57	L	38
Amarillo	57	L	38
El Paso	57	L	38
Fort Worth	57	L	38
Houston	57	L	38
Lubbock	57	L	38
Marfa	57	L	38
Odessa	57	L	38
Wichita Falls	57	L	38

## Border states forecasts

**Louisiana:** Partly cloudy through tonight becoming cloudy Wednesday. Widely scattered thunderstorms southeast with scattered showers and thunderstorms most section Wednesday. Turning cooler north Wednesday. Highs 70 to 82. Lows 53 north to 60 along the coast. Highs Wednesday 66 to 80.

**Arkansas:** Partly cloudy, breezy and warmer with a chance of showers through tonight. Partly cloudy and cooler Wednesday with a chance of morning thundershowers extreme eastern sections. Highs 75 to 82. Lows 42 to 50. Highs Wednesday 65 to 72.

**Oklahoma:** Mostly cloudy and turning cooler northwest and partly cloudy and warm elsewhere. Scattered thundershowers mainly east. Clearing northwest and partly cloudy elsewhere tonight with thundershowers ending east. Cooler tonight. Fair and cooler Wednesday. Highs middle 50s Panhandle to upper 60s southeast. Lows tonight low 30s north-west to mid 40s southeast. Highs Wednesday in the 60s.

**New Mexico:** Fair, breezy and turning cooler through tonight. Partly cloudy and cooler statewide Wednesday. Highs 50s and 60s mountains and north and 70s to 82 elsewhere. Lows 20s and 30s mountains and north to 40s elsewhere. Highs Wednesday 50s mountains to the 60s and 70s lower elevations.

## Texas temperatures

Temperatures indicated previous day's high and low as of 7 a.m.

Ablene	87	65	00
Alice	89	64	00
Amarillo	85	67	00
Austin	85	68	00
Brownsville	80	66	00
Brownsville	80	67	00
Childress	90	61	00
College Station	83	64	00
Corpus Christi	87	68	00
Dallhart	80	67	00
Dallas	80	66	00
Del Rio	89	64	00
El Paso	85	60	00
Fort Worth	85	66	00
Galveston	80	69	00
Houston	85	65	00
Longview	82	63	00
Lubbock	86	68	00
Lufkin	82	60	00
Marfa	85	64	00
McAllen	85	66	00
Midland	89	64	00
Palacios	85	68	00
San Angelo	86	61	00
San Antonio	86	67	00
Schrotoport, La.	80	59	00
Stephenville	85	66	00
Texasrkan	80	63	00
Victoria	87	67	00
Waco	87	68	00
Wichita Falls	90	62	00
Wink	90	51	00

## Extended forecasts

**West Texas:** Partly cloudy Thursday becoming fair Friday and Saturday with a slow warming trend through the period. Highs Thursday near 70 Panhandle to upper 80s Big Bend valleys warming to mid 70s Panhandle to mid 80s in the Big Bend by Saturday. Lows Thursday upper 30s Panhandle to near 60 Big Bend moderating to the lower 40s Panhandle to lower 60s Big Bend valleys by Saturday.

**North Texas:** Partly cloudy and mild with a chance of showers Thursday. Highs 70s. Lows 50s.

**South Texas:** Mostly cloudy with a chance of rain Thursday. Decreasing cloudiness and rain ending Friday, becoming generally clear Saturday. Highs 60s north to near 80 south. Lows 50s and 60s Thursday cooling to the 40s and 50s Friday and Saturday.

## Texas area forecasts

**West Texas:** Fair and cooler through Wednesday. Highs 60s Panhandle to 80 south to 92 Big Bend. Lows 30s Panhandle and mountains to 52 extreme south. Highs Wednesday 60 north to near 80 Big Bend.

**North Texas:** Decreasing cloudiness and turning cooler this afternoon through tonight. A chance of thundershowers through tonight. Fair and cooler Wednesday. Highs 83 to 88. Lows 42 north-west to near 60 southeast. Highs Wednesday 60 north-west to 70 southeast.

**South Texas:** Partly cloudy with a chance of thundershowers in the north tonight. Cloudy and turning cooler Wednesday with a chance of rain north and thundershowers south.

# Deputies to guard padlocked church

LOUISVILLE, Neb. (AP) — Deputies will guard the padlocked Faith Christian Church indefinitely to enforce a court order barring the operation of a non-certified school in the basement, the sheriff says.

Cass County Sheriff Fred Tesch said the church, the scene of a scuffle Monday between police and 85 weeping and praying protesters, will not be allowed to open, even for worship services.

However, the county prosecutor said the church will be opened for religious services Wednesday and closed again.

Tesch, three deputies and 12 Nebraska State Patrol troopers entered the church shortly after 6 a.m. Monday and told the supporters of the fundamentalist church to leave the building.

The orders were drowned out by praying and wailing from the occupants, who knelt on the floor between pews as the officers entered the church.

"I've seen a lot of anti-war demonstrations and other things," said State Patrol Capt. Raymond Syslo, a 33-year-old veteran of the patrol. "I'm not sure I've ever seen anything like this."

"I didn't expect to have the resistance at the door," Tesch said as the church was padlocked for the second time in a little more than a year. There were no injuries in the scuffle and no one was arrested.

"I would not like to see my officers or any other officers go through what we went through tonight. They always told us they were not violent people."

The sheriff said that if the church is opened for services Wednesday, "we can assume it will be a reoccurrence of this morning on a much larger scale." Tesch said he will report what happened at the church to Cass County Attorney Ron Moravec and Cass County District Judge Raymond Case.

Moravec said he didn't want to comment on Tesch's remarks about not allowing the church to be opened for worship. He said lawyers on either side



Law officers Monday remove fundamentalist Dennis Corie of Altoona, Penn., from the Faith Baptist Church of Louisville, Neb. The officers were acting

under a court order to close the non-certified Faith Christian School, located in the basement of same building.

can request that the order be changed but for now, the padlocking and reopening for worship will continue indefinitely.

Tesch said he plans to meet with Case to request a change in the court order so the church cannot be reopened for worship. Case said he "probably wouldn't favor" changing his order.

"I don't feel confident about closing

it down for church services," Case said. "That would be something I probably wouldn't favor, but I don't want to give a flat yes-or no. I have to consider both sides."

Several supporters of the church said school classes were held elsewhere Monday and would continue to be held, but they did not disclose the location.

The pastor, the Rev. Everett Sileven, has completed half of a four-month jail

sentence for defying an order to close the school. The dispute over the Faith Christian School, which refuses to use state-certified teachers, has been going on for five years.

The most recent order to padlock the church came last Thursday from Case. The judge said he could wait no longer for voluntary closure of the school and directed Tesch to padlock the church doors by Monday.

# Bush completes Texas campaign trip

DALLAS (AP) — Vice President George Bush ended three days of politicking and backpadding in Texas with a rousing rally here featuring about 1,700 supporters of Texas Gov. Bill Clements.

The vice president, who has been on the road since Labor Day trying to shore up support nationally for GOP incumbents and hopefuls, repeatedly chastised Democrats for trying to handcuff Reagan and return to "the failed answers of the past."

"The president's achievements just must not be cut and that's what's at stake in a lot of these congressional elections," Bush said.

"I think the national Democratic leaders are totally devoid of any new answers as to how to solve the problems facing our country," the vice president said. "All they want to do is tear down a decent, honorable, strong president of the United States, and that is not going to work."

"These personal attacks on (Reagan's) lacking compassion really are the ones that get to me the most," Bush said. "They are unconscionable. They are untrue. They are unfair, and I pray that the people that say them know it." Bush traveled to the West Texas town of Pecos Saturday to campaign for Pat Haggerty, a Republican candidate for Congress.

Sunday, Bush appeared in Grapevine at a \$150-per-plate fund-raising dinner

on behalf of Republican congressional candidate Jim Bradshaw.

Monday, the vice president addressed a meeting of the National Alliance of Business, a geophysicists group and then met with three representatives of the Hispanic group SER-Jobs For Progress before attending the Clements' \$7-per-plate luncheon at a Dallas hotel.

Clements noted the importance of White House support as his tight gubernatorial race with his Democratic challenger, Attorney General Mark White, enters its final two weeks.

"This gubernatorial election will set an all-time historic record for Texas ticket-splitting, Democratic crossovers and independent voting," Clements said.

Flanked by 20 supporters including business and civic leaders, Dallas Cowboys tight end Billy Joe Dupree and an Eagle Scout, Clements said he had improved public education, cut taxes, cut down on crime and trimmed state government.

"We are nationally renowned for our great job climate and as long as I'm governor, that's a reputation that Texas is going to keep," Clements said.

Bush likened Texas' top administrator to Reagan, and said both have boosted the pocketbooks of their constituents.

"Today we have a president, just like

the governor of Texas, who offers hope, who talks about growth and opportunity and incentive and excellence," Bush said.

Bush, who has headed the administration's South Florida anti-narcotics task force, said Clements' War On Drugs legislation was a model for the nation.

"Bill Clements has signed the hardest-hitting crime package since World War II," Bush said. "It's a hallmark, it's a landmark for a country crying out for liberty."

More than 200 people demonstrated peacefully in this Nuevo Leon state capital as they started a "legal defense fund" for Ricardo Aldape Guerra, a Mexican illegal alien sentenced to die in Texas for murder.

The government newspaper El Nacional said the demonstration took place Sunday night in the Monterrey neighborhood where Guerra once lived. It quoted an uncle of the convicted man, Dagoberto Guerra Cuella, as saying he was sentenced to death because he was an undocumented worker.

"It seems that the authorities of the United States are interested in punishing a Mexican so that undocumented workers think about it and return to their country," the newspaper's Monday issue quoted the uncle as saying.

The amount collected for the legal defense fund was not immediately disclosed. The newspaper also said Guerra's family has sent President Jose Lopez Portillo a telegram appealing for his intervention, but the text was not disclosed.

A state court jury in Houston sentenced Guerra last Thursday to die by injection instead of receiving a life sentence. Guerra, 20, was convicted for shooting a police officer and a passing motorist dead on July 13 when he was stopped on a traffic violation.

The death sentence automatically is appealed under Texas law. The newspaper quoted the uncle as saying Guerrilla sold his bicycle and traveled to the United States on April 30, leaving a note behind to his parents saying he had gone to look for work.

MEXICO CITY (AP) — The second of six coast guard cutters, the Jose Azueta, built for the Mexican navy in Spanish shipyards at Cadiz, was being delivered at Veracruz and assigned to the Gulf of Mexico patrol task force.

It joined the Virgilio Uribe, which was delivered last month. A navy spokesman here said a third cutter, named after famed Mexican navigator Pedro Sain de Barand, is expected in November and the other three by the end of the year.

The cutters are of the Falcon class, 90 meters long, carry a reconnaissance helicopter, are armed with a 40mm cannon and have a full complement of 52 men. They have a maximum speed of 22 knots and will be used mainly to keep foreign boats from fishing illegally in Mexican-claimed waters.

MEXICO CITY (AP) — A large exhibit of Pablo Picasso's works will be held here from Nov. 16 to Jan. 31 at the capital's Rufino Tamayo Museum, sponsored by Mexican First Lady Carmen Romano de Lopez Portillo.

Museum director Alberto Laurell said 170 oil paintings, drawings, ceramics and sculptures by the late Spanish painter are included in the show. He said 39 of them were shown here under

heavy security last week from the National French Library's Picasso Museum in Paris.

The exhibit, organized with the personal cooperation of French President and Mrs. Francois Mitterrand, will be named "The Picassos of Picasso" because many of them belonged to the painter's private collection.

It includes paintings such as "Jacqueline," "Barefoot Woman," "Seated Woman," "Olga Kokova," "The Acrobat" and "Painter and his model." The Tamayo museum is named after Rufino Tamayo, 83, a renowned Mexican painter and a great admirer of Picasso.

MEXICO CITY (AP) — Tourism Secretary Rosa Luz Alegria announced she is leaving on a tour this week to talk to Mexican ambassadors and consuls in the United States and Western Europe in an effort to revive the nation's flagging tourist industry.

Ms. Alegria said her trip will include New York, Paris and Frankfurt and discuss with Mexican officials plans for launching a massive promotion campaign of the country's resorts.

She gave no details of her trip at a news conference over the weekend but claimed there is confusion in people's minds about the situation in Mexico, probably as a result of misinformation.

Mexico is suffering its worst recession this century, and the peso was devalued twice since Feb. 17, from 24 to 70 to the dollar making it a bargain for tourists with dollars to spend. Tourism is this country's second biggest earner of foreign currency after oil exports.

However, foreign visitors have been staying away because of the world recession and because were scared off by reports authorities would force them to change all their dollars into pesos under strict exchange controls imposed in August.

In many cases, tourists were not allowed to change pesos they had left over for dollars, as the government had originally promised.

# Regan says Reagan has 'right antidotes'

WASHINGTON (AP) — Treasury Secretary Donald T. Regan says top government officials worry about the possibility of the economy sliding "into a deeper recession or even a depression." But he believes President Reagan has the "right antidotes."

Regan said concern over the recession prompted the Federal Reserve Board to loosen its grip on the nation's money supply this past summer, and it was this move that led to a decline in interest rates and the three-month surge on Wall Street.

The Fed, the nation's central bank, "is worried about the economy the same as we are," Regan said Monday in an interview with The Associated Press. "We're (the administration) very worried because we worry about such things as unemployment. We worry about such things as having a sustained recovery in this country."

Regan said the Federal Reserve's policy-makers, who have been dampening inflation by restricting the growth of money and credit, "worry that if things don't go according to schedule, that if the recession becomes worse and goes more into a deeper recession or even a depression, that we would then have to take other steps."

"But I don't forecast that. They don't forecast that, but they have to worry about it," Regan said, noting, "I didn't say the Fed was scared. They're a difference between worry and being scared."

"They have to always look to see what else could happen. What is the worst that could happen," Regan said. Regan said the central bank decided to let the money supply exceed the bank's growth targets for a while rather than try to force the money supply down abruptly.

"Now, why are they doing that? They are doing that because obviously they can see the condition of the economy as well as you and I can," Regan said, "and their reasoning is that if they err on the up side slightly, that isn't all that bad."

What Regan did not say was that if the Fed had decided to slow money growth to bring it back within its targets, interest rates might have gone higher and an already fragile economy might have suffered an even more severe shock.

The bond markets "started to catch on to this in July, that the Fed was on this course," he said. "Now, that being the case, interest rates started to come down. That's the barometer the stock market finally saw."

"The stock market is the best of the leading indicators," Regan added. "It's not infallible, but it has, on balance, predicted with a relative degree of accuracy recovery periods."

1019, an 18-month high.

Many private analysts contend that the Fed's decision to loosen its grip on the money supply brought the economy back from the brink of a depression. These analysts consider the action a major shift in policy from fighting inflation to encouraging a recovery.

Fed Chairman Paul A. Volcker, however, has insisted that the bank is not changing policy but is merely making temporary adjustments for technical reasons.

Regan agreed Monday, saying: "I really don't think the Fed has changed policy." He also rejected accusations that the Fed is playing pre-election politics with the administration by forcing interest rates down. "I don't suspect if we beat them over the head that politically they would react," he said, suggesting that the bank's motivation is based on its concern about the economy.

Asked how the administration intended to fulfill the president's pledge to help everyone who wants to work find a job, Regan said: "The best thing the federal government can do is create the (economic) atmosphere and then let the private sector take over and do it. I don't think the federal government should get into the act of actually hiring people itself in order to make sure people are employed."

While conceding continuing concern about further economic deterioration, the treasury secretary said he personally believes the country is at the threshold of a long-term recovery and low inflation.

Regan, who has been predicting since last winter that a recovery was imminent, said he remains optimistic that the economy would begin growing at a 3.5 percent to 4 percent annual rate this fall and sustain that expansion for several years without rekindling inflation.

If inflation stays down, he said, "and we keep the money supply in a slow, steady mode, we could prolong this recovery."

The nation's basic industries continue to suffer, he noted, but service industries, which now account for the bulk of the economy, are still growing and prospering, he said.

# Rain, snow sweep nation

By The Associated Press

Rain and light snow swept across the northern Midwest early today and some showers continued in the Southeast.

Light snow fell over much of the north-central United States and the northern half of the Plains. Rain and snow prevailed in the Dakotas, with showers and thundershowers scattered over the central Plains to the upper Great Lakes.

There also were many thundershowers across the northern part of lower Michigan and southeastern Wisconsin. A few showers also lingered along the southern Atlantic Coast, and skies were mostly fair elsewhere.

**The Midland Reporter-Telegram**  
(USPS 461-900)  
Published by Midland Newspapers, Inc. evenings (except Saturday and Sunday) and Saturday and Sunday morning, 201 E. Illinois Street, P.O. Box 1080, Midland, Texas 79702.  
Second Class Postage Paid at Midland, Texas

**HOME DELIVERY**

Paid-In-Advance

1-Yr. 6-Mos. 1-Mo.	\$40.00 \$24.00 \$4.00
Evenings and Sunday	\$30.00 \$18.50 \$3.25
Evening Only	\$31.00 \$19.50 \$3.50
Sunday Only	\$32.00 \$20.00 \$3.75

**MAIL RATES IN TEXAS**

1-Yr. 6-Mos. 1-Mo.	\$72.00 \$38.00 \$6.00
Evenings and Sunday	\$54.00 \$27.00 \$4.50
Evening Only	\$55.00 \$28.25 \$4.75
Sunday Only	\$56.00 \$29.50 \$4.90

**MAIL RATES OUTSIDE TEXAS**

1-Yr. 6-Mos. 1-Mo.	\$75.00 \$37.50 \$6.25
Evenings and Sunday	\$60.00 \$34.50 \$5.75
Evening Only	\$61.00 \$35.75 \$5.90
Sunday Only	\$62.00 \$37.00 \$6.00

Foreign and other rates furnished upon request. All subscriptions payable in advance. All subscription rates revised October 1, 1978.



Cornell cheerleaders Jenny Baker, left, and Jeanne Veillette attempt to get back their pom-pom from a dog that wandered onto the field during the Cornell-Brown football game. After some persuasion the girls were successful at retrieving their pom-pom.

# NFL negotiators may take recess

COCKEYSVILLE, Md. (AP) — Sources close to both sides in the 29-day-old National Football League players' strike say a cooling-off period in the talks may be called as early as tonight by mediator Sam Kagel to keep the stalled negotiations alive.

Two members of the owners' executive committee and a union source close to the talks said the recess could last for several days.

"I would expect the talks to break off Tuesday or Wednesday, with Kagel calling them back to the table within a couple of days," the union source told The Associated Press.

The two members of the owners' executive committee, who requested anonymity, agreed that a cooling-off period was in order. "I wouldn't call it breaking off; it is more like a recess," said one.

The union and Management Council have been meeting under Kagel's direction since last Tuesday. Since then, some progress has reportedly been achieved in non-economic issues. But the union's demands for a wage scale, central salary fund and percentage of the league's television revenues have barely been touched upon.

A news blackout was placed in effect by Kagel when he arrived last Tuesday and was pierced last Saturday when both sides argued over which one was stalling. On Monday night it was all but shattered when they were reduced to public name-calling in the lobby of the hotel where the talks are being conducted.

The day began with union chief Ed Garvey, union president Gene Upshaw, owners' top negotiator Jack Donlan and his aide Sargent Karch meeting without Kagel to discuss the union's proposed wage scale.

The negotiations then recessed, Garvey taking advantage of the break to return to Washington, D.C., for a conference at union headquarters with several player representatives.

The talks were supposed to resume at 7:30 p.m. But at that time the union, according to one of its spokesmen, requested a one-hour delay.

At 8:30, the union asked for another one-hour delay.

At 9:30, Kagel took matters into his own hands and put off further talks until today.

Within minutes, Donlan strolled through the hotel's lobby and was inundated by newsmen. "We waited all day for a meeting," he told them. "Obviously they had something better to do."

And Jim Miller, the Management Council's public relations director, said, "We were ready to meet at 4:30, 7:30 and 9:30 and we are still ready to meet. Time isn't a luxury."

Barely 30 minutes after Donlan's appearance, Garvey showed up. He was surrounded by the same swarm of reporters. Asked whether he was prepared to resume negotiations, Garvey replied, "We're ready to go right now." And when asked why the talks weren't, therefore, being conducted, Garvey joked: "I suspect both sides are watching the all-star game."

There weren't that many others watching it — in person, anyway. The 70,000-seat Memorial Coliseum in Los Angeles had an announced crowd of only 5,331 fans in attendance to see the American Conference West team beat the National Conference West (with a liberal sprinkling of players from other divisions on both squads) 31-27.

During the Garvey-Upshaw/Donlan-Karch conference, sources on both sides agreed a settlement was unlikely at this time, all but assuring that a fifth regular-season weekend of football would be wiped out.

"There is a growing feeling among the participants this is going nowhere," said a union source. And a member of the Management Council said the talks seem to be heading "not toward an agreement."

Garvey said Monday night he hoped the Management Council would change its stance on the wage scale — and insisted the union would not. "There is no possibility of us getting off the wage scale," he said.

# Patriots phone players to warn them of lost wages if injured in NFLPA games

By HOWARD ULMAN  
AP Sports Writer

BOSTON (AP) — Telephone calls informing three New England Patriots they wouldn't be paid by the club if they were hurt in a game staged by the players' union weren't threats to persuade them to skip the contest, says Patriots' assistant general manager Patrick Sullivan.

He said Monday that the club just wanted to let the players know what they could expect if they were hurt in Sunday's game arranged by the National Football League Players' Association.

Sullivan said he called Ken Fishkin, the agent for linebacker Steve Nelson, and John Staveley, who helped negotiate the contract for center Pete Brock. His father, club owner Billy Sullivan, called quarterback Steve Grogan, he added.

Patrick Sullivan said the calls weren't intended to influence the players not to play "because I knew they would (play) anyway."

"I just wanted it to be clear in their mind that if they were injured they knew exactly where we stood on this thing."

None of the three players was hurt in the game.

The Boston Globe reported Monday that the team's owners threatened to void the guaranteed part of the players' contracts if they were hurt in Sunday's game.

"We never threatened them. We don't threaten our players," Patrick Sullivan said. "What was told to them was if there were a case of an injury and the strike was settled this week and because of that injury Steve Grogan or Pete Brock or Steve Nelson couldn't play next week, we wouldn't be responsible for paying them."

Billy Sullivan, according to his son, told Grogan, "he was disappointed in the fact that Steve had said he had a commitment to the union. My father said he thought he (Grogan) had a commitment to the Patriots and fans... and if you're injured where does that leave the Patriots and the fans of the Patriots?"

Grogan refused to comment on the call from Billy Sullivan, the Globe reported, and said, "I may be able to explain it sooner or later, probably sooner."

Brock said the call "didn't really do anything to me. I was going to play and I played," according to the newspaper.

"I would not interpret anything Patrick said to me as in any way resembling a threat," Fishkin said Monday.

Of the eight Patriots in Sunday's game, only Grogan, Nelson and Brock were called, Patrick Sullivan said. The others were tight end Don Hasselbeck, the team's player representative, wide receiver Stanley Morgan, running back Mose Tatupu, and defensive backs Mike Haynes and Raymond Clayborn.

Hasselbeck said Monday, "Why are they calling when no one else in the league is calling, and they only call certain players?"

Sullivan said the three players were called because "we consider them our leaders."

Patrick Sullivan said that club officials would not punish the eight Patriots for playing Sunday.

## Akers says SMU better than Sooners

AUSTIN, Texas (AP) — Coach Fred Akers of Texas said Monday that undefeated Southern Methodist has "all its firepower back" and is better than last year when the Mustangs won the Southwest Conference football championship with a 10-1 season record.

The only loss last year was to Texas 9-7, so this year's regionally televised game has special significance for Southern Methodist, which is 6-0 and was ranked No. 5 in the nation.

Akers told his weekly news conference he thinks Southern Methodist is better than Oklahoma.

**We need VIVIAN WOOD**  
For District Clerk

Oct. 19

**DEAR MIDLAND VOTER:**  
As a former employee in the Midland County District Clerk's Office, I feel obligated and qualified to answer questions concerning this office.

**1. QUESTION: Why does Midland County need a new District Clerk?**  
**ANSWER:** The office is run inadequately and is not keeping up with our growing community and the demands of our judicial process.

**2. QUESTION: Why is the office inefficient?**  
**ANSWER:** One reason is the constant turnover of personnel in the office. There have been approximately 34 persons terminate their employment in the past 3 1/2 years.

**3. QUESTION: How does this turnover compare with other Midland County Offices?**  
**ANSWER:** A similar county office lost only 3 people in the same time period. In fact, our Midland County District Clerk's Office has the highest employee turnover rate of any District Clerk's Office in the major cities of West Texas.

**4. QUESTION: Are there problems in the present accounting system?**  
**ANSWER: YES!** The present system closes the books five days out of every month. This restricts the flow of monies and causes delays and inconveniences to you, the taxpayer.

**FOR THESE REASONS, I am urging concerned citizens to join with me in electing a qualified, experienced and effective District Clerk—**

..... **VIVIAN WOOD**

Sincerely,  
*Barbara Dalton*  
Barbara Dalton

Paid Political Ad By The Committee to Elect Vivian Wood-Midland Box 8462



**FOOD STORES**

**"KICK-OFF"**  
The Football Season with a **HOMECOMING FOOTBALL MUM CORSAGE** from **M-SYSTEM Floral Depts.**



When you say it with **FLOWERS** say it with **OURS!**



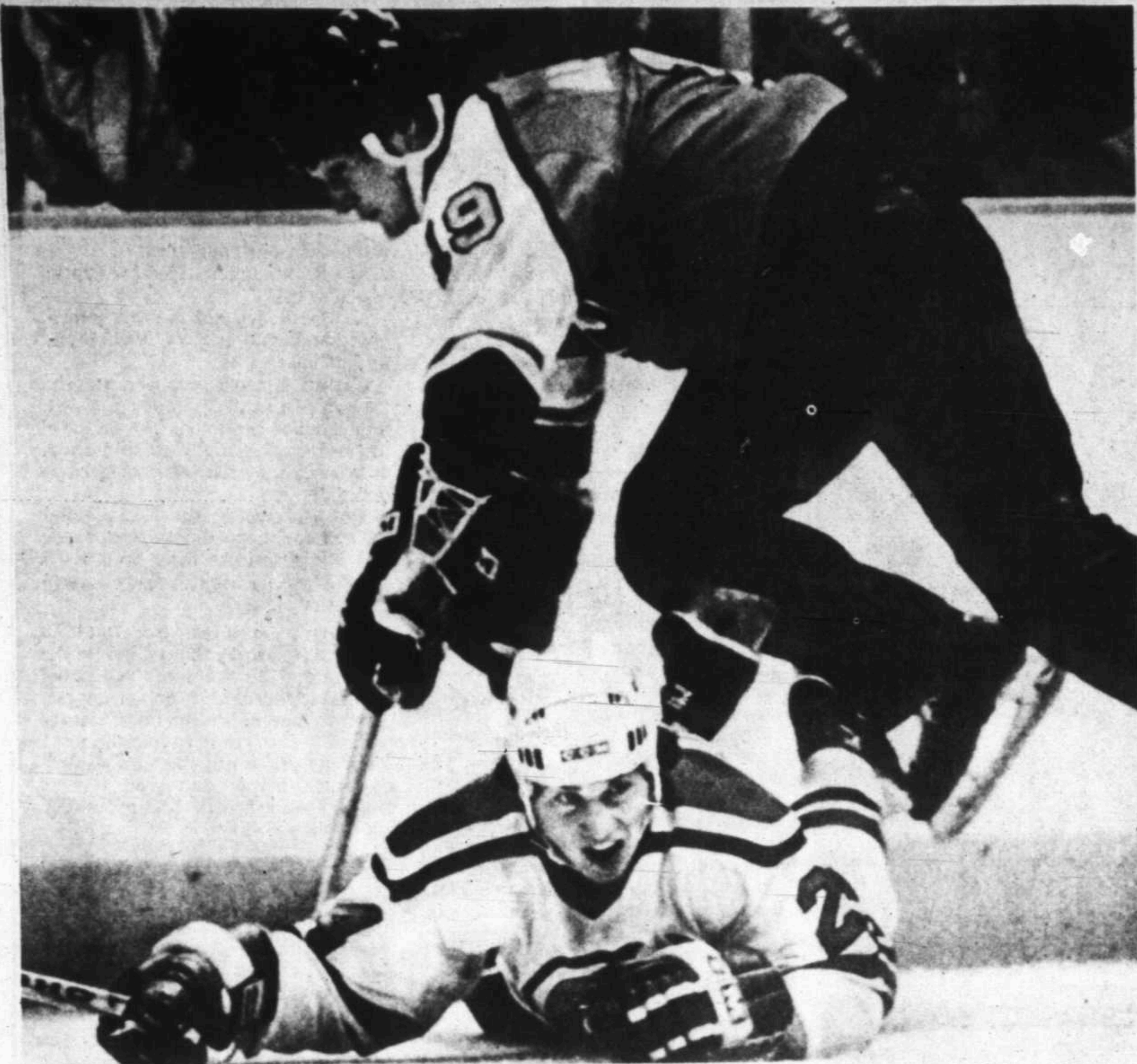
**MUMS**

Starting at only **\$4.99 UP**

**2 Floral Dept. Locations:**

- 400 MIDLAND DRIVE  
Ph. 694-5422
- NORTHLAND SHOPPING CENTER  
Ph. 682-6394

Laserphoto  
 Certified  
 ment of  
 to close  
 Faith  
 s to use  
 n going  
 lock the  
 Case.  
 o longer  
 ool and  
 church  
 a per-  
 teagan's  
 nership  
 employ-  
 o busti-  
 o create  
 mess all-  
 said the  
 "a ter-  
 oyment  
 e  
 lie  
 om the  
 Picasso  
 the per-  
 sident  
 will be  
 icasso"  
 d to the  
 Jacque-  
 Seated  
 e Acro-  
 L."  
 ed after  
 d Mexi-  
 airer of  
 n Secre-  
 ed she is  
 talk to  
 is'in the  
 rope in  
 flagging  
 include  
 urt and  
 lans for  
 on cam-  
 rip at a  
 end but  
 people's  
 Mexico,  
 mation.  
 worst  
 he peso  
 7, from  
 t a bar-  
 spend,  
 nd big-  
 y after  
 ve been  
 world  
 ared off  
 I force  
 ars into  
 ontrils  
 ere not  
 had left  
 ent had  
 gram  
 enings (ex-  
 nd Sunday  
 0, Midland,  
 No. 1 Mo.  
 \$24.00 \$4.00  
 \$38.00 \$6.00  
 \$19.50 \$3.25  
 \$15.00 \$2.50  
 No. 1 Mo.  
 \$38.00 \$6.00  
 \$27.00 \$4.50  
 \$25.25 \$4.25  
 No. 1 Mo.  
 \$37.50 \$5.25  
 \$34.50 \$5.75  
 \$27.00 \$4.50  
 \$25.25 \$4.25  
 All sub-  
 scription rates



Philadelphia Flyer Ray Allison tries to regain control of the puck as he steps over a downed Aaron

Broten of the New Jersey Devils during their game in the Meadowlands Monday night.

AP Laserphoto

# Devils off to good start

By MIKE EMBRY  
AP Sports Writer

New Jersey Coach Billy MacMillan isn't surprised by the strong start of his Devils. The team simply needed a change of scenery after last season's Rocky Mountain lull.

The Devils beat the Philadelphia 3-1 Monday night to improve their National Hockey League record to 3-1-3. It's the best-ever start for the franchise, that also called Colorado and Kansas City home before moving to East Rutherford, N.J., this season.

"With this fresh place in New Jersey," MacMillan said, "the boys feel they are wanted."

The Devils, playing as the Colorado Rockies, finished 18-49-13 last year, the worst record in the NHL.

"I'm starting to believe a little bit in this team," MacMillan said. "I'm

pleased. They carried their assignment to the letter. I'm surprised, but I did say before the season our team was better than their record of last season."

Right wing Bob MacMillan led the Devils with two goals in the first two periods and center Don Lever added an insurance goal in the final period.

The Flyers, 5-2, went ahead 1-0 at 3:36 of the first period when defenseman Behn Wilson backhanded a shot past Devils' goalie Glenn Resch on a power play.

MacMillan tied the game on a rebound of a shot by Dave Hutchinson and gave the Devils the lead in the second period after a shot by Aaron Broten bounced off his ankle and past Flyers' goaltender Rick St. Croix.

Lever's score came midway through the third period on a power-play goal off a rebound of a shot by MacMillan.

North Stars 4, Blues 3  
Just when Blues' goalie Mike Liut thought everything was under control, Minnesota's Tom McCarthy pulled a net trick.

With two and a half minutes to play, Liut thought he was flipping the puck safely out of his zone. But it hit Minnesota's Dino Ciccarelli on the shin pad and bounced over the net.

McCarthy saw the puck, batted it out of the air and into the net to give the North Stars their winning goal. Liut couldn't believe it.

"I've never seen a play like that," he said. "We've got a good team and so do they. But they got a break tonight that nobody deserves. You just can't believe it. One minute the puck's behind the net and the next some guy bats it out of the air and into the net."

# Andrews upsets Sweetwater with 24-point second half

The Andrews Mustangs didn't allow Sweetwater to run a play until they scored two touchdowns to start the second half of their District 2-4A clash.

Andrews, down 14-0 at the half, shut-down the Sweetwater attack and capitalized on four fumbles in route to a 24-14 upset victory.

Monahans (2-1) rolled up 493 yards of offense in crushing Lamesa (0-3) 44-0.

Pecos (1-2) won its first conference game with a 21-0 shutout over Snyder (1-2).

The Golden Cranes are alone atop District 6-AAA. After only two weeks of conference play, Crane is the only unbeaten team while four teams are tied for second.

But the going has been tough for the team that seemed invincible in pre-district games. The average score in a Crane outing was 19-4, which included three shutouts. But district opponents have been taking pot-shots at the once mighty bird and the Golden Cranes have been fortunate to escape with two one-point victories. First it was Sonora, 15-14, then last week Coahoma scared the bird to the tune of 19-18. The loss left Coahoma alone in the cellar at 0-2.

Sonora handed Ballinger its second loss of the season 7-0. Both of the Bearcat losses have been shutouts. After suffering its first loss of the year two weeks ago, Ozona came back to beat Colorado City 26-21. All four teams are tied at 1-1 in district play.

In District 8-AA the beginning of league play was a revival for the top teams.

The Stanton Buffaloes, 2-3 in pre-dis-

trict games, have apparently found a new offense just in time for the beginning of conference play.

After scoring only 32 points in their first five pre-district games, Stanton beat Eldorado 29-6 to open conference play, followed by a 43-0 romp over Miles Friday. The Buffaloes' previous high was a 15-point output against Tahoka.

Regan County remained tied with Stanton for the league lead by downing Eldorado 28-15. The Owls were 0-4-1 before their first two district games.

McCamey took advantage of seven turnovers and upset the Wall Hawks 21-12. Both teams are now 1-1 in league action.

In district 6-A the Wink Wildcats beat Buena Vista 59-8 to keep their record spotless at 6-0.

Iraan gave up its first points in a district game but held on to down Rankin 10-7. Iraan stayed tied with Wink for the district lead at 3-0.

Rankin and Buena Vista fell to 1-2 in loop play along with Sanderson which dropped a 20-18 decision to Grandfalls.

With the victory Grandfalls, the surprise team in the early going, raised its record to 2-1.

Balmorhea (0-1-2) got as close as possible to winning its first game of the season with a 7-7 tie against Fort Davis (1-1-1).

After losing their first five games the Greenwood Rangers are on another streak. Greenwood made it three in a row and improved its District 7-A record to 3-1 with a 21-7 decision over Irion County. Irion County joined

Water Valley, 48-20 losers to Robert Lee (1-3), in the cellar with a 0-4 mark.

Eden and Garden City set up this weeks showdown as they both posted shutouts improving their records to 4-0. Eden handed Sterling City (3-1) its first district loss 21-0 while Garden City beat Bronte (1-3) 20-0.

# Sutton shows renegade side

(Continued from page 1B)

and his career has been followed by controversy.

When he was with the Dodgers, he had a celebrated brawl with Steve Garvey. When he arrived in Houston, he said he never wanted to go back to California. He wanted to raise his kids in the country and wear blue jeans.

Then he built a large house in California, and his welcome began to get worn out.

He's been accused of throwing illegal pitches, of scuffing up the ball.

When the Brewers clinched the pennant, Baltimore's Jim Palmer showed a scuffed ball to home plate umpire Don Denkinger. So Denkinger took a walk to the mound to speak with Sutton. The ump told the pitcher that Palmer had showed him a scuffed ball and if he found another one there would be trouble.

Replied Sutton:

"Fine. If I find one I'll give it to you to throw out."

## WEST TEXAS SPORTS

### Play under way in MTC Fall USTA Masters play

Play got underway today in the Midland Tennis Club's 22nd annual Fall Tournament at Midland College courts. Finals in the USTA Texas Segment Masters will be held Sunday at the Racquet Club.

Today's play began at 11:30 a.m. with three singles matches to be followed by three more singles while two singles and doubles will be played after 4 p.m. A light lunch will be served at courtside for fans who wish to take in a match during their lunch hour.

The same schedule is on tap for Wednesday while Thursday, four singles are scheduled for 11:30 a.m. with four more to follow and doubles slated after that.

Friday, quarterfinals begin with three singles at 11:30 a.m. and one after 4 p.m., to

be played at the same time the doubles field is narrowing.

Semifinals are 11:30 Saturday, followed by the doubles.

Admission is free to all matches.

The tournament is sponsored by the First National Bank and the prize money this year was raised from \$7,500 to \$10,000.

### Lee JV places second

Midland Lee's Junior Varsity volleyball team took second place in the District 4-5A tournament, losing to Abilene Cooper, 12-15, 13-15 in the finals. Lee gained the finals with victories over Abilene, 15-8, 15-4 and, San Angelo 15-10-8-5 and 15-6.

### Tulsa may lose TL champions

TULSA, Okla. (AP) — One of Oklahoma's two professional baseball teams may lose its stadium lease if a contract dispute cannot be settled by the end of this month, officials said Monday.

"There is a possibility there may not be baseball in Tulsa next season unless things can be worked out," said John Zink, chairman of the Tulsa County Fairgrounds Trust Authority.

The authority voted Monday to file a petition seeking termination of the lease on Sutton Stadium, which is located on the fairgrounds and used by the Tulsa Drillers of the Class AA Texas League.

# What's So Great About Our 500 Account? No Surprises.

We know there are a lot of checking accounts around. Each one has a claim to fame. But watch out for the hidden maintenance fees you never know about until you see your first monthly statement. That's when it hurts. And that's when it's too late. But not at Security National Bank. When you open a 500 Account, you'll have all the facts in front of you. No surprises.

✓ You earn 5 1/2% interest when your balance is \$500 or more.

- ✓ You can open your account with only \$100.
- ✓ You don't have to maintain a minimum balance.
- ✓ You pay no service charges.
- ✓ There are no maintenance fees.
- ✓ All you pay for are your checks.

Our only surprise is this. We're the first bank in Midland to open our drive-in and lobby on Saturdays. From 9 a.m. to 1 p.m.

Come by and see us for a free demonstration of our 24-hour teller.

## Security National Bank

Midland

When you need security, you need Security National Bank.

Loop 250 at Midkiff/Midland (In the courtyard at Midland Park across from the mall)

**BANKING HOURS:** Lobby: Mon.-Thurs. 9-3, Fri. 9-6, Sat. 9-1. Drive-In: Mon.-Fri. 8-6, Sat. 9-1.

Member F.D.I.C.

ACF 2.76  
AMF 1.38  
AMR Cp  
ASA  
ASB 36  
AblLab 24  
AetnL 252  
AirPrd 20  
Alcan 20  
Alitair 1.40  
AllgPw 2.40  
AllgCp 2.40  
AllStr 1.80  
AlliCh  
Alcoa 1.80  
Amas 20  
AmHes 1.10  
AmGr  
ABrand 3.50  
ABotst 1.00  
AmCan 2.90  
ACyan 1.75  
AEPW 2.26  
AmExp 2.30  
AFamil 2.00  
AHome 2.20  
Alisp 2.84  
AmMot  
ANatR 2.3  
AmStd 2.20  
ATT 5.40  
AMPIn 1.40  
Ancho 1.3  
Anthy 44b  
ArchIn 14b  
ARPS 2.52  
Armo 1.20  
ArmWin 1.10  
Asaro  
AsH 2.40  
AsH 2  
AilRich 2.40  
AtlasCp 2.5e  
AveCo 1.20  
AveCo 1.20  
Avon 2  
Avon 2  
BkInfl 22  
Bald 26  
BallyM 20  
BaltCE 2.84  
BangP 20  
BnkAm 1.52  
Bausch 1.56  
BaxTr 46  
BeaFD 1.50  
Beker  
Bellew 36  
Bendix 3.32  
BentCp 2  
BentG 1  
BestP 2  
BethSt 1  
Beverly 40  
BlairD 78  
BlkRch 1.92  
Boeing 1.40  
BoiseC 1.90  
Borden 2.22  
BorgW 11.52  
BoiseD 2.8  
BuckE 88  
BritM 2.10  
BritP 1.83e  
Browk  
BuckE 88  
BurrH 1.52  
BurrH 2.00  
CBS 2.80  
CGNA 02.30  
CFC 2.10  
CSX 2.84  
Camar  
CFL 6.40  
Camp 2.10  
CapCo 20  
Caring 8.28  
CarPw 2.40  
CarPw 2.40  
CastlC 1.52  
CastlC 20  
CairP 1.50

Adobe  
Core Lab  
Dorchester  
Houston Oil &  
Sage Energy  
Texas Amer. Ex

Over the  
Quota  
NASDAQ ar  
interde  
approx  
interde  
change t  
Prices o  
retail m  
down or  
(This C  
piled l  
Americ

Alta Energy  
Amerex  
American Quas  
Bell Petroleum  
Bennett Petrole  
Black Dome Ex  
Byvoors  
Tom Brown, Inc  
Cameo Minerals  
Circle Seven  
Communication  
Consolidated Pe  
Coors  
Dawson Geophy  
Delta Drilling  
Energy Reserv  
Exploration Co.  
First National B  
Flare, Inc.  
Forest Oil Corp.  
Hess Lovelady  
MAD  
MGF Oil  
Mid-America Pe  
Midland SW Co  
Mineral Develop  
Mue Air  
Natura Energy  
Occuoning In  
Paradise Petrole  
President Steyn  
Templeton Ener  
Tippary  
Tucker Drilling  
Vial Beets  
Welton  
Western Deep L

Today's leading stock market report

Stock market gains

BUSINESS MIRROR Loans on equity in homes popular

By JOHN CUNIFF

NEW YORK (AP) — Seldom do you see or hear advertisements urging you to take a second mortgage on your home, and yet the practice is proliferating, perhaps to the extent of being the only growth sector in the home financing industry.

Anxious sellers are using them to encourage buyers, owners are relying on them to cover balloon payments on first mortgages or to finance education, and lenders of various sorts find them a more secure form of making loans.

One lender, Advance Mortgage Corp., estimates that the dollar volume of second mortgages doubled between 1979 and 1981, while first mortgages, the traditional vehicle of home financing, were cut in half.

Dollar figures are difficult to assemble, but Walter Blass, Advance's executive vice president, estimates that in 1979 new first mortgages totaled \$180 billion and second only \$9.5 billion. A year later, he says, newly made first mortgages fell to \$93 billion while second mortgages rose to \$19 billion.

Blass believes the trend has accelerated this year. Effectively disguising the second-mortgage practice has been the tendency of both lender and borrower to refer to such financing by the euphemism "home equity loan" in an attempt to avoid the stigma of the generic description.

By whatever name they are called, the National Association of Realtors estimates that far more than half of single-family home sales in the past couple of years were facilitated by such loans to buyers from sellers.

They have also helped California homeowners retire big short-term loans — so-called balloon mortgages that were issued for two or three years by sellers eager to move their properties. And they have made it possible for homeowners to finance a variety of costly expenditures, including college tuitions.

The basic change that has made such loans possible was the tripling in value of the U.S. housing stock between 1970 and 1980, when it reached about \$4 trillion, with un-mortgaged equity of about \$3.1 trillion.

But other factors too have been involved, including a change in the U.S. Bankruptcy Code in October 1979 that sharply increased the lender's risk on signature loans. After that, many consumer finance companies moved into second mortgages and away from their traditional business in small loans.

Blass estimates that since 1977 the small loans outstanding among consumer finance companies have increased barely 10 percent while second mortgages outstanding have multiplied five times. Spurred also by the rise of bank credit cards, which often fill the same function as personal loans, several consumer finance firms have been cutting the number of offices.

In 1973, banks and thrift institutions were given the right to make second, and private mortgage insurance followed. A secondary market, essential for mortgage banker participation, began developing in 1980.

The result of all the changes has in effect been a savings bank for homeowners. "For most Americans the equity in their home has become their principal savings," Blass says. "The only way to withdraw this nest egg without selling their home and having to look for another is a second mortgage."

But the practice also has many critics, particularly those who fear that the housing values on which loans are based might shrink. And there have been collection problems, especially when lenders fail to determine if the borrower doesn't already have several other loans on the same property.

When stock is owned by two people as tenants in common and one dies, the dead person's share does not automatically go to the surviving tenant. The dead person's share goes into his or her estate. It is then distributed according to the dead person's will, or, if there's no will, by the "intestacy" laws of the state in which he or she lived.

Which of these two forms is better? That depends on the wishes of the joint owners. If each wants the other to get full ownership, joint tenancy is the logical thing. But, if one of the owners wants someone else to inherit his or her share, tenants in common fits the bill.

Standard & Poor's index of 400 industrials rose 3.63 to 152.90, and S&P's 500-stock composite index was up 3.16 at 136.73.

At the American Stock Exchange, the market value index gained 4.25 to 318.13. The NAS-DAQ composite index for the over-the-counter market closed at 206.61, up 2.15.

Q. I understand the joint ownership of stock between spouses. But, how about others, such as a father and son or two brothers? In such a case, would it be better to have the stocks in "joint tenancy" or as "tenants in common"? Would the wording be "John Doe and-or Robert Doe"? Would it be needed by each?

A. Any two, or even more, people — related or not — can own stocks jointly in the two forms you mention. There's a third form of joint ownership, called "tenants by the entirety." That form, however, can be used only by husband and wife — no one else.

When two people have stock in joint tenancy, it is registered in both names as "joint tenants with right of survivorship." When one dies, the survivor automatically owns the stock.



Doyle

New York Exchange

NEW YORK (AP) — Today's selected national prices for New York Stock Exchange issues:

Sales High Low Last Chg.

Table with columns for stock symbols (e.g., ACF, AMP, ASA) and their prices.

Table with columns for stock symbols (e.g., ACF, AMP, ASA) and their prices.

Table with columns for stock symbols (e.g., ACF, AMP, ASA) and their prices.

Table with columns for stock symbols (e.g., ACF, AMP, ASA) and their prices.

Table with columns for stock symbols (e.g., ACF, AMP, ASA) and their prices.

Table with columns for stock symbols (e.g., ACF, AMP, ASA) and their prices.

Table with columns for stock symbols (e.g., ACF, AMP, ASA) and their prices.

Table with columns for stock symbols (e.g., ACF, AMP, ASA) and their prices.

Table with columns for stock symbols (e.g., ACF, AMP, ASA) and their prices.

Table with columns for stock symbols (e.g., ACF, AMP, ASA) and their prices.

Table with columns for stock symbols (e.g., ACF, AMP, ASA) and their prices.

Table with columns for stock symbols (e.g., ACF, AMP, ASA) and their prices.

Table with columns for stock symbols (e.g., ACF, AMP, ASA) and their prices.

Table with columns for stock symbols (e.g., ACF, AMP, ASA) and their prices.

MUTUAL FUNDS

NEW YORK (AP) — The following quotations, supplied by the National Association of Securities Dealers, Inc., are the prices at which these securities closed today.

Table with columns for fund names (e.g., ABC, DEF) and their values.

Table with columns for fund names (e.g., ABC, DEF) and their values.

Table with columns for fund names (e.g., ABC, DEF) and their values.

Table with columns for fund names (e.g., ABC, DEF) and their values.

Table with columns for fund names (e.g., ABC, DEF) and their values.

Table with columns for fund names (e.g., ABC, DEF) and their values.

Table with columns for fund names (e.g., ABC, DEF) and their values.

Table with columns for fund names (e.g., ABC, DEF) and their values.

Table with columns for fund names (e.g., ABC, DEF) and their values.

Table with columns for fund names (e.g., ABC, DEF) and their values.

Table with columns for fund names (e.g., ABC, DEF) and their values.

Table with columns for fund names (e.g., ABC, DEF) and their values.

Table with columns for fund names (e.g., ABC, DEF) and their values.

Table with columns for fund names (e.g., ABC, DEF) and their values.

MUTUAL FUNDS

NEW YORK (AP) — The following quotations, supplied by the National Association of Securities Dealers, Inc., are the prices at which these securities closed today.

Table with columns for fund names (e.g., ABC, DEF) and their values.

Table with columns for fund names (e.g., ABC, DEF) and their values.

Table with columns for fund names (e.g., ABC, DEF) and their values.

Table with columns for fund names (e.g., ABC, DEF) and their values.

Table with columns for fund names (e.g., ABC, DEF) and their values.

Table with columns for fund names (e.g., ABC, DEF) and their values.

Table with columns for fund names (e.g., ABC, DEF) and their values.

Table with columns for fund names (e.g., ABC, DEF) and their values.

Table with columns for fund names (e.g., ABC, DEF) and their values.

Table with columns for fund names (e.g., ABC, DEF) and their values.

Table with columns for fund names (e.g., ABC, DEF) and their values.

Table with columns for fund names (e.g., ABC, DEF) and their values.

Table with columns for fund names (e.g., ABC, DEF) and their values.

Table with columns for fund names (e.g., ABC, DEF) and their values.

MUTUAL FUNDS

NEW YORK (AP) — The following quotations, supplied by the National Association of Securities Dealers, Inc., are the prices at which these securities closed today.

Table with columns for fund names (e.g., ABC, DEF) and their values.

Table with columns for fund names (e.g., ABC, DEF) and their values.

Table with columns for fund names (e.g., ABC, DEF) and their values.

Table with columns for fund names (e.g., ABC, DEF) and their values.

Table with columns for fund names (e.g., ABC, DEF) and their values.

Table with columns for fund names (e.g., ABC, DEF) and their values.

Table with columns for fund names (e.g., ABC, DEF) and their values.

Table with columns for fund names (e.g., ABC, DEF) and their values.

Table with columns for fund names (e.g., ABC, DEF) and their values.

Table with columns for fund names (e.g., ABC, DEF) and their values.

Table with columns for fund names (e.g., ABC, DEF) and their values.

Table with columns for fund names (e.g., ABC, DEF) and their values.

Table with columns for fund names (e.g., ABC, DEF) and their values.

Table with columns for fund names (e.g., ABC, DEF) and their values.

MUTUAL FUNDS

NEW YORK (AP) — The following quotations, supplied by the National Association of Securities Dealers, Inc., are the prices at which these securities closed today.

Table with columns for fund names (e.g., ABC, DEF) and their values.

Table with columns for fund names (e.g., ABC, DEF) and their values.

Table with columns for fund names (e.g., ABC, DEF) and their values.

Table with columns for fund names (e.g., ABC, DEF) and their values.

Table with columns for fund names (e.g., ABC, DEF) and their values.

Table with columns for fund names (e.g., ABC, DEF) and their values.

Table with columns for fund names (e.g., ABC, DEF) and their values.

Table with columns for fund names (e.g., ABC, DEF) and their values.

Table with columns for fund names (e.g., ABC, DEF) and their values.

Table with columns for fund names (e.g., ABC, DEF) and their values.

Table with columns for fund names (e.g., ABC, DEF) and their values.

Table with columns for fund names (e.g., ABC, DEF) and their values.

Table with columns for fund names (e.g., ABC, DEF) and their values.

Table with columns for fund names (e.g., ABC, DEF) and their values.

MUTUAL FUNDS

NEW YORK (AP) — The following quotations, supplied by the National Association of Securities Dealers, Inc., are the prices at which these securities closed today.

Table with columns for fund names (e.g., ABC, DEF) and their values.

Table with columns for fund names (e.g., ABC, DEF) and their values.

Table with columns for fund names (e.g., ABC, DEF) and their values.

Table with columns for fund names (e.g., ABC, DEF) and their values.

Table with columns for fund names (e.g., ABC, DEF) and their values.

Table with columns for fund names (e.g., ABC, DEF) and their values.

Table with columns for fund names (e.g., ABC, DEF) and their values.

Table with columns for fund names (e.g., ABC, DEF) and their values.

Table with columns for fund names (e.g., ABC, DEF) and their values.

Table with columns for fund names (e.g., ABC, DEF) and their values.

Table with columns for fund names (e.g., ABC, DEF) and their values.

Table with columns for fund names (e.g., ABC, DEF) and their values.

Table with columns for fund names (e.g., ABC, DEF) and their values.

Table with columns for fund names (e.g., ABC, DEF) and their values.

MUTUAL FUNDS

NEW YORK (AP) — The following quotations, supplied by the National Association of Securities Dealers, Inc., are the prices at which these securities closed today.

Table with columns for fund names (e.g., ABC, DEF) and their values.

Table with columns for fund names (e.g., ABC, DEF) and their values.

Table with columns for fund names (e.g., ABC, DEF) and their values.

Table with columns for fund names (e.g., ABC, DEF) and their values.

Table with columns for fund names (e.g., ABC, DEF) and their values.

Table with columns for fund names (e.g., ABC, DEF) and their values.

Table with columns for fund names (e.g., ABC, DEF) and their values.

Table with columns for fund names (e.g., ABC, DEF) and their values.

Table with columns for fund names (e.g., ABC, DEF) and their values.

Table with columns for fund names (e.g., ABC, DEF) and their values.

Table with columns for fund names (e.g., ABC, DEF) and their values.

Table with columns for fund names (e.g., ABC, DEF) and their values.

Table with columns for fund names (e.g., ABC, DEF) and their values.

Table with columns for fund names (e.g., ABC, DEF) and their values.

MUTUAL FUNDS

NEW YORK (AP) — The following quotations, supplied by the National Association of Securities Dealers, Inc., are the prices at which these securities closed today.

Table with columns for fund names (e.g., ABC, DEF) and their values.

Table with columns for fund names (e.g., ABC, DEF) and their values.

Table with columns for fund names (e.g., ABC, DEF) and their values.

Table with columns for fund names (e.g., ABC, DEF) and their values.

Table with columns for fund names (e.g., ABC, DEF) and their values.

Table with columns for fund names (e.g., ABC, DEF) and their values.

Table with columns for fund names (e.g., ABC, DEF) and their values.

Table with columns for fund names (e.g., ABC, DEF) and their values.

Table with columns for fund names (e.g., ABC, DEF) and their values.

Table with columns for fund names (e.g., ABC, DEF) and their values.

Table with columns for fund names (e.g., ABC, DEF) and their values.

Table with columns for fund names (e.g., ABC, DEF) and their values.

Table with columns for fund names (e.g., ABC, DEF) and their values.

Table with columns for fund names (e.g., ABC, DEF) and their values.

# COMPLETIONS

## ANDREWS COUNTY

**Fishes (Parker)**  
David & Inez G. Fishes Inc. No. 9 Fee "Z" A", 600 ft. 3,500 ft. of lease, sec 26, blk 42, G&M&B&A, 14 s Andrews, TD, 10,500, PD 10,000, Elev. 3,074.

Casing: 5 1/2 inch at 10,500. Perforations: 10,130-10,194. Formation tops Grayburg 4,663, Atoka "B" 10,134. Acid: 15,000 gallons.

Potentialized 274.05 barrels oil, 271 Mcf of gas daily on 12/64 inch choke. Gravity 30.3. Gas/oil ratio 950.

## CRANE COUNTY

**Sand Hills (Juddkins)**  
Gulf Oil Co. No. 2, 1224 W.N. Waddell et al. 2,300 ft. 20,345 ft. sec 10, blk 126, PSL, 10 s Monahan, TD 3,100, Elev. 2,540.

Casing: 5 1/2 inch at 3,148. Perforations: 2,777-3,038. Acid: 3,000 gallons. Frac: 60,000 gallons, 100,000 pounds sand.

Potentialized 1,020 Mcf of gas daily. Gravity 40.1. Bottom hole temperature 107 at 2,850.

**Sand Hills (McKnight)**  
Lyn-Sun Co. No. 2 Redland; 900 ft. 2,310 ft. of lease, sec 2, blk 827, PSL, 10 s Crane, TD 3,200, PD 3,000, Elev. 2,330.

Casing: 4 1/2 inch at 3,200. Perforations: 3,047-3,204. Formation tops Juddkins 2,894, McKnight 2,808. Acid: 2,500 gallons. Frac: 30,000 gallons and 100,000 pounds sand.

Potentialized 28 barrels oil, 94 Mcf of gas, 127 barrels water on 30/64 inch choke daily. Gravity 31.9. Gas/oil ratio 3261.

## HOWARD COUNTY

**Moore (San Andres)**  
Glenn H. Raines Jr. No. 5 Quinn; 330 ft. 1,650 ft. of sec 11, blk 34, TPRR, 7 s Big Spring, TD 3,200, PD 3,200, Elev. 2,467.

Casing: 4 1/2 inch at 3,200. Perforations: 3,194-3,220. Formation tops Grayburg 2,900, San Andres 3,100. Acid: 1,500 gallons.

Potentialized 8 barrels oil, 1 Mcf of gas daily. Gas/oil ratio 230 cubic feet to 1.

Glenn H. Raines Jr. No. 8 Quinn; 1,650 ft. 2,300 ft. of sec 11, blk 34, TPRR, 7 s Big Spring, TD 3,200, PD 3,180, Elev. 2,457.

Casing: 4 1/2 inch at 3,200. Perforations: 3,198-3,218. Formation tops Grayburg 2,900, San Andres 3,100. Acid: 1,500 gallons.

Potentialized 2 barrels oil, 1 Mcf of gas daily.

Glenn H. Raines Jr. No. 4 Quinn; 1,650 ft. 1,650 ft. of sec 11, blk 34, TPRR, 7 s Big Spring, TD 3,200, PD 3,210, Elev. 2,467.

Casing: 4 1/2 inch at 3,200. Perforations: 3,194-3,220. Formation tops Grayburg 2,900, San Andres 3,100. Acid: 1,500 gallons.

Potentialized 7 barrels oil, 1 Mcf of gas, 1 barrels water daily. Gas/oil ratio 1781.

Glenn H. Raines Jr. No. 2 Quinn; 1,650 ft. 330 ft. sec 11.

blk 34, T&P, 7 s Big Spring, TD 3,225, PD 3,285, Elev. 2,463.

Casing: 4 1/2 inch at 3,225. Perforations: 3,173-3,200. Formation tops Grayburg 2,900, San Andres 3,100. Acid: 2,000 gallons.

Potentialized 8 barrels oil, 1 Mcf of gas, 1 barrel water daily. Gas/oil ratio 1,200.

Republic Mineral Corp. No. 10A Creighton, C.W. "A", 850.8 ft. 2,315.5 ft. sec 29, blk 33, T-1-N, T&P, 2 s Big Spring, TD 3,250, PD 3,250, Elev. 2,480.

Casing: 4 1/2 inch at 3,250. Perforations: 2,962-3,015. Formation tops San Andres 2,860-2,250. Acid: 3,700 gallons. Frac: 10,000 gallons WF 40, and 24,000 pounds sand.

Potentialized 42 barrels oil, 13 Mcf of gas, 31.6 barrels water daily. Gravity 29.8. Gas/oil ratio 3271.

Republic Mineral Corp. No. 5A C.W. Creighton "A", 333.5 ft. 2,313.3 ft. sec 30, blk 33, T-1-N, T&P, 2 s Big Spring, TD 3,250, PD 3,250, Elev. 2,469.6.

Casing: 4 1/2 inch at 3,250. Perforations: 3,016-3,070. Formation tops San Andres 2,850-2,250. Acid: 3,750 gallons. Frac: 10,000 gallons and 24,000 pounds sand.

Potentialized 28.2 barrels oil, 13 Mcf of gas, 14.8 barrels water daily. Gravity 30. Gas/oil ratio 461.

Republic Mineral Corp. No. 6A C.W. Creighton "A", 993.5 ft. 2,307.4 ft. sec 30, blk 33, T-1-N, T&P, 2 s Big Spring, TD 3,250, PD 3,250, Elev. 2,478.3.

Casing: 4 1/2 inch at 3,250. Perforations: 2,960-3,056. Formation tops San Andres 2,843-2,250. Acid: 3,750 gallons. Frac: 10,000 gallons and 24,000 pounds sand.

Potentialized 24.8 barrels oil, 11.5 Mcf of gas, 29.2 barrels water on 30/64 inch choke daily. Gas/oil ratio 4641.

Luther N. (Canyon Reef)  
Mellon Drilling and Exploration No. 1 Stanley; 1,900 ft. 1,207.4 ft. sec 6, blk 33, T-1-N, T&P, 18 s Big Spring, TD 3,245, PD 3,000, Elev. 2,756.

Casing: 4 1/2 inch at 3,245. Perforations: 6,701-6,707. Formation tops Yates 2,500, Penn 6,658. Perforations: 1,000 gallon. Frac: 40,000 gallons and 100,000 pounds sand.

Potentialized 14 barrels oil, 21 barrels water daily. Gravity 30. Gas/oil ratio 981.

latan, E. (Howard)  
Amoco Production Co. No. 23 Mrs. Cora Lee Echols B; 302 ft. 1,160 ft. sec 6, blk 30, T&P, 2.5 s Coahoma, TD 3,100, PD 2,600, Elev. 2,290.

Casing: 5 1/2 inch at 3,100. Perforations: 2,512-3,060. Formation tops Clearfork top 2,512-2,582. Acid: 1,500 gallons.

Potentialized 6 barrels oil, 1 Mcf of gas, 500 barrels water daily.

## MARTIN COUNTY

**Spraberry (Trend Area)**  
Harvey Heiser No. 1 Kuhlman Farms; 900 ft. 1,400 ft. sec 24, blk 36, T-2-N, T&P, 18 s Stanton, TD 8,896, Elev. 2,643.

Casing: 4 1/2 inch at 8,896. Perforations: 7,200-8,653. Formation tops Clearfork 5,740, Lower Spraberry 7,700. Acid: 4,000 gallons. Frac: 140,000 gallons and 400,000 pounds sand.

Potentialized 18 barrels oil, 15 Mcf of gas on 1/4 inch choke daily. Gravity 43.0. Gas/oil ratio 981.

**Mitchell County**  
Jameson N. (Odum)  
Sun Exploration & Production Co. No. 44 V.T. McCabe; 3,147.5 ft. 4,180 ft. of the L shaped corner, sec 22, blk 1-A, H&TC, 4 s Silver, TD 1,111, PD 1,111, Elev. 2,123.

Casing: 5 1/2 inch at 7,111. Perforations: 6,826-6,896. For-

mation tops Jameson Sand 5,885, Ellenburg 7,070. Acid: 600 gallons.

Potentialized 120 barrels oil, 465 Mcf of gas daily on 14/64 inch choke. Gravity 47.7. Gas/oil ratio 4,501.

## WINKLER COUNTY

**GPM (S&W)**  
The Anschutz Corporation No. 1622 Wheeler; 600 ft. 600 ft. of lease, sec 22, blk B-4, PSL, 10 s Kermit, TD 8,550, PD 8,463, Elev. 2,518.

Casing: 5 1/2 inch at 8,550. Perforations: 8,108-8,494. Formation tops Yates 2,704, Penn. 8,100. Acid: 15,000 gallons and 30,000 gallons water with Nitrogen.

Potentialized 20 barrels oil, 337 Mcf of gas, 79 barrels water daily on 40/64 inch choke. Gravity 410. Gas/oil ratio 11,211.

## DEVELOPMENT WELLS

**CRANE COUNTY**  
Edwards Field: Southland Royalty No. 7-36 Edwards Field Grayburg Unit; 2,310 ft. 990 ft. sec 33, blk 44, T-3-S, T&P Survey, 9 s Penwell, 3,800.

Same: Southland Royalty Co. No. 7-37 Edwards Field Grayburg Unit; 1,650 ft. 1,650 ft. sec 33, blk 44, T-3-S, T&P, 9 s Penwell, 3,850.

## ECTOR COUNTY

Harper E. C. Bennett Co. No. 2 Shell-Cowden; 990 ft. 330 ft. sec 30, blk 43, T-2-S, T&P, 6 w Odessa, 4,500.

Edwards Field: Southland Royalty No. 6-10 Edwards Field Grayburg Unit; 1,650 ft. 2,310 ft. sec 33, blk 44, T-3-S, T&P, 9 s Penwell, 3,800.

Same: Southland Royalty No. 6-11 Edwards Field Grayburg Unit; 1,650 ft. 2,310 ft. sec 33, blk 44, T-3-S, T&P, 9 s Penwell, 3,800.

Same: Southland Royalty Co. No. 7-38 Edwards Field Grayburg Unit; 2,310 ft. 2,310 ft. sec 33, blk 44, T-3-S, T&P Survey, 9 s Penwell, 3,820.

## HOWARD COUNTY

Howard Coastal Oil & Gas Corp. No. 8-J Cooper; 1,650 ft. 2,310 ft. sec 94, blk 28, WANW Survey, 167 s Big Spring, 2,550.

## EXPLORATORY WELLS

**CROCKETT COUNTY**  
Wildcat: Conoco Inc. No. 25 J.M. Shannon "A"; 2,010 ft. 2,009 ft. sec 21, blk UV, G&C&F, 18 s Orona, PD 8,496.

**DICKENS COUNTY**  
Wildcat: Oklahoma-Marlin Oil Co. No. 1 Moss-Ranch; 600 ft. 600 ft. sec 13, blk 1, R.R. Hanna, 1 s Bon-Dickens, 8,000.

**HALE COUNTY**  
Wildcat: J.M. Welbourne No. 1 Matthews; 1,980 ft. 600 ft. sec 22, blk CL, ELARR, 6 W Petersburg, 9,301.

**LUBBOCK COUNTY**  
Wildcat: New Reserves Group Inc. No. 1 DeBusk; 1,980 ft. 600 ft. sec 5, blk D-7, ELARR, 2 ne Idalou, 1,000.

**PECOS COUNTY**  
Wildcat: The Superior Oil Co. No. 1 University "19-10"; 1,340 ft. 1,380 ft. sec 10, blk 19, ULS, 7 s Bakersfield, 7,900.

Howard Glascock Coastal Oil & Gas Corp. No. 9-J Cooper; 900 ft. 2,310 ft. sec --, blk --, 2,500.

## LOVING COUNTY

Dimitri Cherry Canyon: Mobil Producing TX & NM No. 4 W. D. Johnson, et al.; 1,750 ft. 600 ft. sec 40, blk 33, T-2 T&P Survey, 6,700.

## MARTIN COUNTY

Spraberry (Trend Area): John L. Cox No. 1 Billy McMorris; 1,320 ft. 900 ft. sec 26, blk 37, T-2-N, T&P, 1 s Taran, 9,400.

## MITCHELL COUNTY

Dixon (Ellenburger): Texas International Petroleum Co. No. 24 Edwin Parks; 950 ft. 650 ft. sec 1, blk 12, H&TC, 5 s Silver, 7,400.

## REEVES COUNTY

Jim Burner (Delaware 3,800): Continental Oil Co. No. 12 W. D. Bell "48"; 307 ft. 407 ft. sec 44, blk 37, T-1 T&P Survey, 6 s Burda, 4,100.

## WARD COUNTY

Burkholder (Fusselman): Union Texas Petroleum Corp. No. 1 China Lake 208; 1,960 ft. 1,320 ft. sec 206, blk 24, H&TC, 5 ne Bartow, 17,200.

# Focusing on alternatives might dent joblessness

WASHINGTON (AP) — Focusing on energy conservation and shifting the nation's focus from oil to renewable fuel resources could make a "significant" dent in unemployment, an energy analyst has predicted.

Leonard Rodberg, a professor at Queens College in New York, predicted Monday that 2.2 million jobs could be directly created and another 4.9 million indirectly within 10 years of such policy shifts.

Promoting conservation programs such as home weatherization and speeding the development of solar, wind and other alternative energy resources would help cut the nation's 10.1 percent jobless rate, Rodberg said.

The current emphasis on oil and mineral exploration takes work away from the cities, where unemployment is worse here said

Rodberg, who works for his college's Center for the Biology of Natural Systems, said the world's oil reserves will be depleted within a century, so shifting to alternative energy sources might as well be accomplished as soon as possible.

"They are energy sources that can employ substantial numbers of people," he told a coalition of Northeastern and Midwestern congressmen. "It could make a significant dent in unemployment."

Conservation efforts and the use of alternative fuel sources have the added effect of saving consumers money by reducing utility bills, Rodberg argued.

He said the money saved will give consumers more to spend, thereby helping the job market grow throughout the economy.

The four men are accused of sending letters to Gulf officials Sept. 28 after five bombs were placed inside the plant near Baytown. The FBI caught the people a week later in Colorado.

# Gulf bomber switches jails

HOUSTON (AP) — Timothy K. Justice, 30, who has admitted placing five bombs inside a Gulf Oil Chemical Co. plant near here in a \$15 million extortion attempt, has been transferred here from Durango, Colo. under an assumed name.

Justice, of Durango, was placed by U.S. marshals in the downtown jail's maximum security unit early Sunday under the name of John Lowe.

U.S. Atty. Dan Hedges refused to confirm the transfer but Sheriff's

Major Larry Frazier said Justice was placed in an isolation unit in the county jail.

The other defendants are John McBride, 46, jailed in Durango, and Michael Allen Worthing, 34, and Theodore McKinney, 45, both jailed in Phoenix, Ariz.

Justice, of Durango, was placed by U.S. marshals in the downtown jail's maximum security unit early Sunday under the name of John Lowe.

U.S. Atty. Dan Hedges refused to confirm the transfer but Sheriff's

# DRILLING REPORT

Scouted by THULA COX and SHARON SPIWAK

## ANDREWS COUNTY

**Amoco Production Co. No. 1 David Fishes "CE";** location. No. 1 Avertit A PD 12,000, location.

**Exxon Oil Corp. No. 1 State University "CG";** location.

**Exxon Oil Corp. No. 2 State University "BM";** location.

**Flag-Redfern Oil Co. No. 1 University "8";** location.

**Hilliard Oil and U.S. 1 U.S. 16.5 PD 12,500; drilling 4,275.**

**Woods Petroleum Corp. No. 1 McCrea PD 11,500; location.**

## BORDEN COUNTY

**Delta Drilling Co. No. 1-A L.C. Drum PD 8,500; "light";** completed as producer, final report.

**Delta Drilling Co. No. 2-A L.C. Drum PD 8,500; "light";** completed as producer, final report.

**Delta Drilling Co. No. 3 L.C. Drum PD 8,500; "light";** completed as producer, final report.

**Delta Drilling Co. No. 4 L.C. Drum PD 8,500; "light";** completed as producer, final report.

**Delta Drilling Co. No. 5 L.C. Drum PD 8,500; "light";** completed as producer, final report.

**Delta Drilling Co. No. 6 L.C. Drum PD 8,500; "light";** completed as producer, final report.

**Delta Drilling Co. No. 7 L.C. Drum PD 8,500; "light";** completed as producer, final report.

**Delta Drilling Co. No. 8 L.C. Drum PD 8,500; "light";** completed as producer, final report.

**Delta Drilling Co. No. 9 L.C. Drum PD 8,500; "light";** completed as producer, final report.

**Delta Drilling Co. No. 10 L.C. Drum PD 8,500; "light";** completed as producer, final report.

**Delta Drilling Co. No. 11 L.C. Drum PD 8,500; "light";** completed as producer, final report.

**Delta Drilling Co. No. 12 L.C. Drum PD 8,500; "light";** completed as producer, final report.

**Delta Drilling Co. No. 13 L.C. Drum PD 8,500; "light";** completed as producer, final report.

**Delta Drilling Co. No. 14 L.C. Drum PD 8,500; "light";** completed as producer, final report.

**Delta Drilling Co. No. 15 L.C. Drum PD 8,500; "light";** completed as producer, final report.

**Delta Drilling Co. No. 16 L.C. Drum PD 8,500; "light";** completed as producer, final report.

**Delta Drilling Co. No. 17 L.C. Drum PD 8,500; "light";** completed as producer, final report.

**Delta Drilling Co. No. 18 L.C. Drum PD 8,500; "light";** completed as producer, final report.

**Delta Drilling Co. No. 19 L.C. Drum PD 8,500; "light";** completed as producer, final report.

**Delta Drilling Co. No. 20 L.C. Drum PD 8,500; "light";** completed as producer, final report.

## CHAVES COUNTY

**Delta Drilling Co. No. 1 Delta McGuffin Federal PD 11,500; "light";** completed as producer, final report.

**Estoril Producing Corp. No. 2 Hoffman Federal PD 14,300; Total depth 14,825 feet, waiting on completion unit.**

**Estoril Producing Corp. No. 3 Hoffman Federal PD 14,300; Total depth 14,825 feet, waiting on completion unit.**

**Estoril Producing Corp. No. 4 Hoffman Federal PD 14,300; Total depth 14,825 feet, waiting on completion unit.**

**Estoril Producing Corp. No. 5 Hoffman Federal PD 14,300; Total depth 14,825 feet, waiting on completion unit.**

**Estoril Producing Corp. No. 6 Hoffman Federal PD 14,300; Total depth 14,825 feet, waiting on completion unit.**

**Estoril Producing Corp. No. 7 Hoffman Federal PD 14,300; Total depth 14,825 feet, waiting on completion unit.**

**Estoril Producing Corp. No. 8 Hoffman Federal PD 14,300; Total depth 14,825 feet, waiting on completion unit.**

**Estoril Producing Corp. No. 9 Hoffman Federal PD 14,300; Total depth 14,825 feet, waiting on completion unit.**

**Estoril Producing Corp. No. 10 Hoffman Federal PD 14,300; Total depth 14,825 feet, waiting on completion unit.**

**Estoril Producing Corp. No. 11 Hoffman Federal PD 14,300; Total depth 14,825 feet, waiting on completion unit.**

**Estoril Producing Corp. No. 12 Hoffman Federal PD 14,300; Total depth 14,825 feet, waiting on completion unit.**

**Estoril Producing Corp. No. 13 Hoffman Federal PD 14,300; Total depth 14,825 feet, waiting on completion unit.**

**Estoril Producing Corp. No. 14 Hoffman Federal PD 14,300; Total depth 14,825 feet, waiting on completion unit.**

**Estoril Producing Corp. No. 15 Hoffman Federal PD 14,300; Total depth 14,825 feet, waiting on completion unit.**

**Estoril Producing Corp. No. 16 Hoffman Federal PD 14,300; Total depth 14,825 feet, waiting on completion unit.**

**Estoril Producing Corp. No. 17 Hoffman Federal PD 14,300; Total depth 14,825 feet, waiting on completion unit.**

**Estoril Producing Corp. No. 18 Hoffman Federal PD 14,300; Total depth 14,825 feet, waiting on completion unit.**

**Estoril Producing Corp. No. 19 Hoffman Federal PD 14,300; Total depth 14,825 feet, waiting on completion unit.**

**Estoril Producing Corp. No. 20 Hoffman Federal PD 14,300; Total depth 14,825 feet, waiting on completion unit.**

## COCHRAN COUNTY

**H.L. Brown Jr. No. 1 St. Clair PD 3,000; location.**

**H.L. Brown Jr. No. 2 M.C. Gandy PD 4,000; no report.**

**H.L. Operating Co. No. 1 Drennan PD 3,100; location.**

## COKE COUNTY

**Exxon Oil Corp. No. 94 Sallis Odem "B";** location.

## CRANE COUNTY

**Amoco Production Co. No. 1 David Fishes "B";** PD 12,000; no report.

**Gulf Oil Co. No. 27 M.B. McKnight PD 8,500; no report.**

**The Superior Oil Co. No. "12" J. McGee PD 8,900; location.**

**TXO Production Corp. No. 4 Nellie Tucker "C";** PD 4,000; location.

## CROCKETT COUNTY

**Beach Exploration Inc. No. 1 Noche-State PD 7,000; Total depth 6,740 feet, waiting on completion.**

**Cities Service Co. No. 1 University "CH";** location.

**Cities Service Co. No. 1 University "CH";** location.

**Estoril Producing Corp. No. 2 Shannon Estate "9";** "light".

**Gulf Oil Co. No. 1 University "B-48" PD 9,500; trip in hole with bit, tag at 7,828 feet, drilled 17 feet, hard cement, retriever and 91 feet of cement of 8,834 feet.**

**Henry Petroleum Corp. No. 1 Shoubrook "2C";** PD 8,000; location.

**C.F. Lawrence & Assoc. Inc. No. 2 Trapper PD 1,600; "light".**

**Pogo Producing Co. No. 1 University "F" PD 9,500; contractor BMH rig No. 4, ran in hole with 2 3/8 inch tubing to 5,700 feet. Howe spotted 100 gallons acetic acid from 5,700-5,800, galled out of hole with tubing. McCallough perforations 5 1/2 inch casing from 8,063-8,081 feet, ran 5 1/2 inch RTTS packer on 2 3/8 inch tubing, set packer at 6,815 feet.**

## CULBERSON COUNTY

**TXO Production Corp. No. 7 Cat-claw State "A" PD 3,000; location.**

**TXO Production Corp. No. 8 Cat-claw State "A" PD 3,000; location.**

## DAWSON COUNTY

**Exxon Corp. No. 3 Bill Weaver; no report.**

**Hilliard Oil & Gas Inc. No. 1 Nix; drilling 6.91 feet.**

**RK Petroleum Corp. No. 1-21 Akeley PD 11,700; "light".**

## BAG Energy Inc. No. 1 Ratiff "B"

PD 11,400; location, waiting on rig. William E. Hendon No. 2 Caverly "2"; PD 11,200; location.

**Maber Petroleum Corp. No. 1 Powell PD 11,200; "light".**

**Wood & Locker No. 2 Nutt "25" PD 11,500; contractor BMH rig No. 2, plug back total depth 8,555 feet. Flowed 105 barrels oil, 0 water, 8 Mcf in 24 hours on 24/64 inch choke. TCF 50-150 lbs recovered 478 barrels oil and 680 of 4,285 barrels load water.**

## HOCKLEY COUNTY

**Robert Griffin No. 1 Elephant Hunt PD 15,500; location.**

**May Petroleum-High Plains No. 1 Post Montgomery PD 10,500; drilling 9,265 feet.**

**TXO Production Corp. No. 1-N Reed PD 10,000; location.**

**Blanks Energy Corp. No. 1 Crawford PD 2,200; location.**

**Bush Exploration Co. No. 1 Anderson PD 2,500; no report.**

**Exxon Oil Corp. No. 2 Hamilton PD 16,700; contractor Clint Hart; drilling 8,633 feet.**

**Perry & Bass No. 34 Paker Lake Unit PD 4,000; waiting on rig.**

**Perry & Bass No. 35 Paker Lake Unit PD 4,000; waiting on rig.**

**Perry & Bass No. 36 Paker Lake Unit PD 4,000; waiting on rig.**

**Perry & Bass No. 37 Paker Lake Unit PD 4,000; waiting on rig.**

**Perry & Bass No. 38 Paker Lake Unit PD 4,000; waiting on rig.**

**Perry & Bass No. 39 Paker Lake Unit PD 4,000; waiting on rig.**

**Perry & Bass No. 40 Paker Lake Unit PD 4,000; waiting on rig.**

**Perry & Bass No. 41 Paker Lake Unit PD 4,000; waiting on rig.**

**Perry & Bass No. 42 Paker Lake Unit PD 4,000; waiting on rig.**

**Perry & Bass No. 43 Paker Lake Unit PD 4,000; waiting on rig.**

**Perry & Bass No. 44 Paker Lake Unit PD 4,000; waiting on rig.**

**Perry & Bass No. 45 Paker Lake Unit PD 4,000; waiting on rig.**

**Perry & Bass No. 46 Paker Lake Unit PD 4,000; waiting on rig.**

**Perry & Bass No. 47 Paker Lake Unit PD 4,000; waiting on rig.**

**Perry & Bass No. 48 Paker Lake Unit PD 4,000; waiting on rig.**

**Perry & Bass No. 49 Paker Lake Unit PD 4,000; waiting on rig.**

**Perry & Bass No. 50 Paker Lake Unit PD 4,000; waiting on rig.**

**Perry & Bass No. 51 Paker Lake Unit PD 4,000; waiting on rig.**

**Perry & Bass No. 52 Paker Lake Unit PD 4,000; waiting on rig.**

**Perry & Bass No. 53 Paker Lake Unit PD 4,000; waiting on rig.**

**Perry & Bass No. 54 Paker Lake Unit PD 4,000; waiting on rig.**

**Perry & Bass No. 55 Paker Lake Unit PD 4,000; waiting on rig.**

**Perry & Bass No. 56 Paker Lake Unit PD 4,000; waiting on rig.**

**Perry & Bass No. 57 Paker Lake Unit PD 4,000; waiting on rig.**

**Perry & Bass No. 58 Paker Lake Unit PD 4,000; waiting on rig.**

**Perry & Bass No. 59 Paker Lake Unit PD 4,000; waiting on rig.**

**Perry & Bass No. 60 Paker Lake Unit PD 4,000; waiting on rig.**

**Perry & Bass No. 61 Paker Lake Unit PD 4,000; waiting on rig.**

**Perry & Bass No. 62 Paker Lake Unit PD 4,000; waiting on rig.**

**Perry & Bass No. 63 Paker Lake Unit PD 4,000; waiting on rig.**

**Perry & Bass No. 64 Paker Lake Unit PD 4,000; waiting on rig.**

**Perry & Bass No. 65 Paker Lake Unit PD 4,000; waiting on rig.**

**Perry & Bass No. 66 Paker Lake Unit PD 4,000; waiting on rig.**

**Perry & Bass No. 67 Paker Lake Unit PD 4,000; waiting on rig.**

**Perry & Bass No. 68 Paker Lake Unit PD 4,000; waiting on rig.**

**Perry & Bass No. 69 Paker Lake Unit PD 4,000; waiting on rig.**

**Perry & Bass No. 70 Paker Lake Unit PD 4,000; waiting on rig.**

**Perry & Bass No. 71 Paker Lake Unit PD 4,000; waiting on rig.**

**Perry & Bass No. 72 Paker Lake Unit PD 4,000; waiting on rig.**

**Perry & Bass No. 73 Paker Lake Unit PD 4,000; waiting on rig.**

**Perry & Bass No. 74 Paker Lake Unit PD 4,000; waiting on rig.**

**Perry & Bass No. 75 Paker Lake Unit PD 4,000; waiting on rig.**

**Perry & Bass No. 76 Paker Lake Unit PD 4,000; waiting on rig.**

**Perry & Bass No. 7**

# Nation's economic woes also beset farmers

By ED TODD  
Staff Writer

STANTON — Cotton farmers left the farm at harvest time and gathered in town to mingle with the press corps. Then, they all went out into the field.

The farmers' mission was to give newsmen a glimpse into agriculture and its woes in these trying times. They wanted to get agriculture's message out to the public. And conservationist Alvin Riddle, who was figuring a better way to get the message across, suggested that each newsman join up with a farmer to get straight answers to questions.

"For the farmers' benefit," quipped Knott farmer T. Paul Hopper, "can we have about 10 minutes together, so we can practice our answers?"

No deal.

But the Texas Agricultural Extension Service (TAEX) agents and specialists, as well as a U.S. congressman, came up with some answers anyway. Probably not to their surprise, farmers, who often harp about the changing weather and the depressed marketplace, aren't loners in the economic slump.

The waning agriculture industry is but a symptom of the economic ill winds.

"Our country is in deep economic trouble," said farmer-congressman Charles Stenholm of Stamford in addressing more than 100 farmers, the professionals and newsmen after farmers had accompanied the media on a tour of a cotton farm, a gin and a compress on Martin County's Agricultural Appreciation Day and Media Tour on Monday.

"WHEN WE FIND the answers to one of them (problems with the country and with agriculture), we're going to find the answers to both."

Stenholm noted the economic decline of agriculture and the country, suspected a relationship and cited the "growing bankruptcy" in the 50 states. Agriculture, after all, accounts for 20 percent of the gross national product, he said. "There are no simple solutions."

But the congressman observed that one of the farmers' main goals — increased productivity — and his efficiency at his life's work is working against him. Farmers are "being too productive," Stenholm said, and the subsequent surplus of farm goods, including cotton, makes for oversupply, which drives prices



Melissa Snell, 3, and Justin Burch, 2, engage in a sort of looking game Monday following a style show featuring cotton garments in Martin County's Agricultural Appreciation Day. The 84 cents on Justin's big cot-

ton boll represents the farmer's share of the cotton which was made into an article of clothing — a woman's dress.

downward and puts profits out of reach of the farmers. The congressman suggested that limiting their production would give farmers an active role in the now out-of-kilter supply-demand scales.

"We have to cut down on how much we are producing...to get sup-

ply in line with demand...or we are going to produce ourselves into bankruptcy."

AS IT IS widely practiced now, agriculture is on its "dying death-bed," Stenholm said.

"We (farmers) are our own worst

enemy," he said following the noon barbecue in the Martin County Community Center. "And you can't blame this one on Jimmy Carter."

"At the time we're fighting the battle, we're losing the war."

In exhorting the farmers to do for themselves, Stenholm noted that

there are a lot of things "we know that just ain't so." He cited a few examples:

—The middlemen are making excessive profits to the detriment of the farmers. Not so, he said. "We've been chasing the wrong rabbit. Everybody has got to make a profit."

The problem is not that the middleman is making too much; the bottom man is making too little."

—The answer to agriculture's woes is solely in the free-market system. "Oh, how I wish that were so."

—A solution would be to get government out of agriculture. "Oh, I wish that were possible."

"There are solutions to our problems in our system of government. If we are wrong, we don't stay wrong very long." And with that, he noted a bumper sticker which he said he could appreciate: "Don't Reelect Anyone."

THE CONGRESSMAN said farmers could take same advice from Gulf Oil Corp. "They no longer want to be the biggest. They want to be the best. Being biggest doesn't mean you're the best."

"What it takes to be a successful farmer — I'll tell you in two seconds — is an oil well," he said, joking or not.

"Our whole country's got economic problems — not just the farmer. The whole world is sick."

"As farmers, we need our bankers lobbying with us. We've got lots of things in common with the oil industry; we've got something they've got: Folks don't like them, either."

In a forum of farmers following Stenholm's speech, E.D. "Wimp" Holcomb of Plains Cotton Growers Association said he agreed "wholeheartedly" with Stenholm's suggestion that farmers reduce their planted acreage to benefit from the supply-demand law by getting more for their products. Holcomb said he would rather plant 50 acres of cotton and get \$1.25 a pound for his lint than plant 100 acres and get 50 cents a pound.

And a benefit in decreased cotton acreage could be crop rotation, Holcomb said.

"We all need to go to rotating our crops and build our soil back up; we all know it."

EARLIER IN THE DAY, the farmers, the newsmen and the professionals climbed aboard three yellow school buses for a four-stop field tour.

—Stop No. 1: Wayne Cook's dryland cotton farm. "We try and gather what little bit's there," Cook said. He said he might get three-quarters of a bale per acre. This year, cotton is expected to bring

(See FARMERS, Page 2C)

# New program benefits everyone in hospital community

By GAIL BURKE  
Staff Writer



Jane Dresser and Alan Schroeder are teaming up as counselors for a new mental health comprehensive program at Midland Memorial Hospital that will offer help to all patients. Ms. Dresser is a certified

clinical psychiatrist specialist and Schroeder, a master's-prepared social worker, heads MMH's social development program.

As part of a comprehensive mental health program at Midland Memorial Hospital, a group therapy session was initiated for psychiatric patients, and now it will be extended to all hospitalized patients.

According to Jane Dresser, MMH's new clinical psychiatric nurse specialist, there has been a need for a mental health program dealing with stress-related problems at MMH for all patients.

Psychiatrists, Ph.D. psychologists, master's-prepared social workers and master's-prepared certified specialists in psychiatry are the only four professional health personnel recognized by the National Institute of Mental Health to counsel patients, according to Ms. Dresser.

Alan Schroeder, who is a master's-prepared social worker and director of the MMH social service department, is co-leading the two-week-old counseling program with Ms. Dresser.

THIS PROGRAM will be extended to anyone needing to alleviate stress, including patients and families who may have anxieties or concerns about a disease or operation.

"Someone who we could counsel could be a patient with kidney failure who is put on dialysis, the patient and family may be distressed," Ms. Dresser said. "An oncology patient or a patient with diabetes may need help. We will be here to help people to learn more adaptive and comfortable ways to handle the stress in their lives."

Schroeder and Ms. Dresser are presently working with the group therapy counseling session for psychiatric patients, but they said this group will be extended to other patients.

"For example, let's take a 44-year-old man admitted to the hospital by his physician for an evaluation," Schroeder said. "The man's physical workup may result in no signs of physical ailment, but he's still a nervous wreck. He has mental stress."

"HE'S A workaholic, pushing himself 12 hours a day and neglecting his family and maybe drinking too much. His body says stop, showing signs of a physiological problem. He's got to make some decisions — less work, more time with his family, ease up on the drinking."

"We would deal with this kind of a problem in this group," Schroeder said. "We would help him to learn to relax and get back in touch with his family."

Ms. Dresser said that in the past the psychiatric patient has been isolated. She added that this program would help to get away from the negative thoughts about the "mentally disturbed," making people realize that anyone can encounter a problem, such as stress, which can be helped through counseling.

"We're not trying to duplicate any other services in the community," Ms. Dresser said. "There are no programs for in-patients. If a nurse or a physician saw that a patient was depressed — over a disease or surgery — there wasn't anybody to help the patient. Now there will be."

OTHER THAN the individual and group therapy, Ms. Dresser said she also will initiate an occupational therapy program for psychiatric patients. Occupational therapy is usually known for introducing crafts to help patients overcome a physical problem. She added that there are not any Midland programs which include occupational therapy or recreation for psychiatric patients.

She said different types of crafts can be used for psychiatric patients, just as they are used to help someone physically impaired.

"We can use crafts in different ways to build defenses when they are needed, help people organize themselves and relax if they're too organized. Also the crafts would give an outlet for anger and depression for those who do not know how to release these feelings."

"Another service is a recreation program," she added. "People with high level stress don't know how to relax. Eventually, I would like to get psychiatric patients out

(See MMH'S NEW, Page 2C)

# UIL-influenced activities part of many students' lives

By HALLYE JORDAN  
Staff Writer

It affects students from the all-star athlete to the behind-the-scenes prop manager of the one-act play.

The University Interscholastic League touches almost every aspect of Midland's high school activities, especially during the spring semester, according to Maridell Fryar, Midland Independent School District coordinator of fine arts and speech.

"We have some kind of UIL event probably every month," Mrs. Fryar said, "and in the spring there are a number of events each month. March and April are full of them."

National High School Activities Week, which runs through Sunday and is being chaired by former President Gerald Ford this year, is established to salute outstanding students who voluntarily participate in extracurricular activities, according to a release issued by the UIL.

"These activities offer experience in human relations as well as physical and emotional development," Ford said. "They are paramount to youth's total education, yet consume less than 1 percent of the school's total budget."

"A student's success in extracurricular activities is a better predictor of adult success than pre-college test scores or academic grades," said UIL director Dr. Bailey Marshall. "There also is evidence that students

involved in extracurricular activities are less likely to be absent from class. The activities program is a tool to keep students in school and interested."

This year, more than 1.5 million Texas public school students will voluntarily participate in a UIL event, according to the release. The UIL estimates that one out of every two graduating seniors voluntarily participates in a UIL-sponsored event sometime during his high school career.

Although statistics on the number of MISD students participating in UIL contests were not available, Mrs. Fryar contended that a large number of students do participate in events at the district, regional and state level.

Between mandating eligibility requirements for the high school athlete to ruling on materials to be covered during speech contests, the UIL serves a necessary function.

"It is a very expensive state activities league," Mrs. Fryar explained. "Primarily it controls events that go to the state level. The whole notion is to make things equally fair between schools and while a lot of people get angry (with certain limitations set down by the UIL, such as college athletic recruitment and high school eligibility), in a state as large and diverse as Texas, we need them."

Besides athletic events, high school students participate under UIL sponsorship in what Mrs. Fryar referred to as "literary events." Those events include science, mathematics, journalism, speech and drama. Speech is

divided into debate, prose, extemporaneous speaking and one-act play competitions. Journalism includes contests in feature writing, editorial writing and headline writing. English is broken down into ready-writing, or expository writing, and spelling, she explained.

Also under UIL sponsorship are music events such as choir, band and orchestra contests in marching, concert, sight reading and solo-ensemble.

UIL also sponsors competitions on the elementary and junior high school levels, although Midland's students don't participate until they reach high school, Mrs. Fryar said.

UIL records show students who take part in extracurricular activities score higher in achievement and college entrance examinations, have a much lower drop-out rate and achieve higher college grades than those who do not participate in these contests, the news release stated.

But the UIL also serves in keeping school districts with different budgets on an equal basis, Mrs. Fryar pointed out. She explained that districts that have more money could afford to have more benefits for their students, thereby moving ahead of competition from other less financially-able districts.

"If there was no control from the UIL we would have abuses and kids being exploited by people wanting to win," she said.

**DEATHS**

**Allie L. Thorne**

Services for Allie L. Thorne, 70, of Midland were Monday at the Newnie W. Ellis Funeral Home chapel, with burial in Resthaven Memorial Park.

Mrs. Thorne died Saturday night at a Midland hospital. She was born March 7, 1912, in Clarksville. She spent her early life in Ranger and attended schools there. She married U.E. Thorne in 1932 and the couple moved to Pampa, where they lived for 12 years. They moved to Midland in 1960 after having lived in Dallas and Breckenridge. She was a member of the Presbyterian Church.

Survivors include her husband, a son, Gerald W. Thorne of DeRidder, La.; a daughter, Karla Cowden of Midland; a brother, Lowe Wallace of Azle; two sisters, Iva May Hooks of Ranger and Betty Lewis of Irving; and three grandchildren.

Pallbearers were to be Wright Cowden Jr., Bill Clay of Odessa, Foy Hadcox of Borger, Wright Cowden Sr., Eddie Marcum of Pecos and Cowden Oliver. Honorary pallbearers were to be Nickey R. Ingram and Michael Imber.

**Charles Garmon**

Services for Charles "Buddy" Garmon, 49, of 801 S. Weatherford St. were to be at 11 a.m. today in the Newnie W. Ellis Funeral Home chapel, with burial to follow in Resthaven Memorial Cemetery.

Garmon died Saturday afternoon in a Midland hospital.

He was born July 23, 1933, in Mount Pleasant. He was raised in Clarksville and Detroit, Mich. He moved to Midland in 1948, where he was employed by Banners Milk Co. He served with the U.S. Army from 1950 to 1952. He had also been employed by Snowwhite Laundry and Gene Shelburne's City Transfer and Storage Co. He was employed by Gibson's at the time of his death.

Survivors include three sons, Jessie Lopez, Monty Ray Garmon and Buddy Garmon, all of Midland; a daughter, Mrs. Terry Ann Oliver of Midland; his parents, Mr. and Mrs. Floyd Garmon of Midland; three sisters, Linda Reed of San Antonio, Mrs. Richard (Catherine) Rector of Corpus Christi and Mrs. Thomas (Charlotte) Manley of Midland; and two grandchildren.

**George E. Davis**

George E. Davis, 78, of 2000 N. Main St. died early Sunday in a Midland hospital.

Services were to be at 3 p.m. today at the Newnie W. Ellis Funeral Home chapel with the Rev. Kenneth James, associate minister of St. Luke's United Methodist Church, officiating. Burial was to follow at Evergreen Cemetery in Stanton under the direction of Ellis Funeral Home.

Davis was born March 4, 1904, in Taylor County. He spent his early years in Taylor County, moving to Stanton in 1923 with his parents. He farmed for many years and also was an electrician. He also was a former sheriff of Martin County. Davis served in the Army during World War II. He moved to Midland three years ago.

Survivors include a daughter, Cindy Sides of Austin; a brother, John Davis of Keller; four sisters, Jewel Hancock, Bettie Huggins, Belle Mashburn and Ida Mashburn, all of Midland; a granddaughter and several nieces and nephews.

**Ina Bassham**

Ina Bassham, 64, of 4620 Mercedes died Sunday at her residence after a lengthy illness.

Services were to be at 10 a.m. today at the Westside Church of Christ with Don Mitchell officiating, assisted by F. Dale Simpson. Burial was to follow at Resthaven Memorial Park under the direction of Newnie W. Ellis Funeral Home.

Mrs. Bassham was born June 5, 1918, in Fannin County. She was raised in Wolfe City and married Roy E. Bassham Oct. 18, 1934, in Colorado City. They resided there for six years, moving to Midland in 1940. Mrs. Bassham was a retired seamstress at Julian Gold.

**Services today for retired judge**

HALLSVILLE (AP) — Funeral services were planned today for Sam B. Hall Sr., Texas' oldest retired judge and the father of a Texas congressman, who died here at age 94.

Services were set for 10:30 a.m. today at Eastern Hills Church of Christ in Marshall, followed by interment in Greenwood Cemetery of Marshall.

**Midland attorney named to advisory committee**

AUSTIN — Midland attorney Michael Williams has been appointed to the Advisory Committee for Child Support Enforcement for the Texas Department of Human Resources.

Williams joins 175 other Texas citizens who serve on the department's 11 advisory groups, assisting the Board of Human Resources and the department's staff in the delivery of human services.

"These 175 citizen-advisors render a valuable service to the department in providing their expertise and experience in helping shape the programs that assist 1.5 million Texans annually," said Frederick Rehfeldt, M.D., chairman of the Board of Human Resources, which approved the appointment.

Purpose of the advisory committee on which Williams will serve is to recommend plans and objectives and devise strategies in the agency's child support enforcement program.

In a representative month, the Department of Human Resources will locate about 500 absent parents and collect \$1.2 million in child support payments through voluntary or court-ordered action.

She was a member of the Westside Church of Christ.

Survivors include her husband of Midland; two daughters, Mrs. David (Jo Ann) Rigney of Lake Charles, La., and Mrs. Paul (Donna) Camp of Amarillo; three brothers, Houston C. Lindsey, W.A. "Buddy" Lindsey and Johnny R. Lindsey, all of Colorado City; and five grandchildren.

The family requests that memorials be directed to Hospice of Midland, P.O. Box 2621, Midland.

**William Olliff**

William "Bill" Olliff, 81, of 807 S. Weatherford St. died Saturday in a Midland hospital after a lengthy illness.

Services were Monday in the Newnie W. Ellis Funeral Home chapel under the direction of Ellis Funeral Home. Burial was in Fairview Cemetery.

Pallbearers were John Foster, Barney Hightower, Burton Cain and Gerald Yarbrough.

**Gladys Arrington**

MILES — Services for Mrs. Elton (Gladys) Arrington, 70, of Miles, sister of Mrs. Eddie Autry of Midland, were held Saturday in San Angelo. Burial was in Miles Cemetery directed by Johnson's Funeral Home in San Angelo.

She died Friday in a San Angelo hospital.

Mrs. Arrington was born Nov. 24, 1911, in San Angelo. She married Elton Arrington Oct. 27, 1934, in San Angelo and was a member of Veribest Baptist Church.

Other survivors include her husband, a son, a daughter, two brothers and eight grandchildren.

**R.B. Henderson**

PAULS VALLEY, Okla. — Services for R.B. Henderson, 64, of Ramona, Calif., and formerly of Midland, will be at 2 p.m. Wednesday at Pauls Valley Cemetery in Oklahoma directed by Stuffle Bean Funeral Home.

He died Friday at his residence in California.

Henderson was born Sept. 22, 1918, in Oklahoma. He was retired from the U.S. Marine Corps. While in Midland, he was active in the Pecan Growers' Association and did volunteer work with senior citizens.

Survivors include his wife, a daughter, several brothers and sisters and three grandchildren.

**Bertha Johnson**

Services for Bertha Johnson, 59, of Midland were to be at 2 p.m. today in Colorado City Cemetery directed by Dennis Funeral Home of McCombs.

Mrs. Johnson died Friday in Midland. She was a lifelong resident of Midland.

**Telesforo Mendoza**

STANTON — Services for Telesforo Mendoza, 84, of Stanton were to be at 2 p.m. today at St. Joseph's Catholic Church of Stanton, with burial in St. Joseph's Cemetery under the direction of the Gilbreath Funeral Home.

Mendoza died Sunday morning in a Stanton hospital.

He was born Jan. 5, 1898, in Mexico and moved to Stanton three years ago from Aguilar, Colo. He was a retired coal miner.

Survivors include six cousins and a nephew.

**D.W. 'Dub' Rankin**

BIG SPRING — Services for D.W. "Dub" Rankin, 71, of Big Spring will be at 2 p.m. Wednesday in Nalley-Pickle Rosewood Chapel. Burial will be in Trinity Memorial Park in Big Spring.

Rankin died Monday morning in a Big Spring hospital.

He was born March 3, 1911, in Eastland. He moved to Big Spring with his parents in 1913. He graduated from Big Spring High School. He married Velma Holden on Dec. 11, 1934, in Big Spring. Together they owned and operated the Hilltop Greenhouse from 1959 to 1973. She died Nov. 21, 1981. He worked for the Texas & Pacific Railroad for 30 years and was a member of the National Association of Retired Railroad Employees. He was a member of the Baptist Temple church.

Survivors include two daughters, Jan Huff and Cookie Elliott of Big Spring; three sisters, Hazel Tucker and Nell Rose Cooper of Austin and Mrs. Barclay (Florine) Canova of Amarillo; four grandchildren, a great-grandchild and five nephews.



Staff Photo by Ed Todd

Lenora cotton farmer Charles McKaskle, 45, and his spouse, Jan, 40, received the Martin County Farm Family of the Year Award on Monday in the county's Agricultural Appreciation Day.

**Farmers hurting as result of economic hard times**

(Continued from Page 1C)

between 48 and 52 cents per pound. —Stop No. 2: Farmers Cooperative Cotton Gin: "We expect to gin 10,000 to 12,000 (bales this year)," said gin manager Ron Riley. "But," he said of cotton production throughout the county, "with the kind of crop we've got, that's anybody's guess." Riddle, who's the U.S. Soil Conservation Service's conservationist for Martin County, said that in 1981 the county produced about 160,000 bales of cotton. "That was a pretty good year." In 1982, however, the yield may be on 80,000 to 85,000 bales. "We had too much hail (last of May and June), and some of the fellows had to plant five times."

Near the gin, which turns out between 13 and 14 bales per hour, Jimmy Nail of Lubbock demonstrated the Telcot Computer Marketing System, which can tell the farmers the grade, staple and micronaire of the cotton, and, among other things, the market prices.

"IT GOES ON and tells the sports, general news and the weather. It's basically an information tool," Nail said. He surveyed the Telcot tube: "Unfortunately, you see some 'no sales.' We just have the economic situation where we don't have buyers this time — not only in the United States but throughout the world."

—Stop No. 3: West Texas Industries Compress. Here bales of cotton from the gin are compressed to "universal density" — to about half the size of gin-density cotton — for shipping and milling convenience, explained Bob Klatt, compress manager. Once compressed, up to 32,000 bales can be stored in the warehouse and another 55,000 bales can be stored in the yards.

When it rains or the sand blows, the cotton is supposed to be protected under certain standards. Farmer Hopper seemed to wonder about that. "That works about like telling your wife to do something," he said. "Give her your MasterCard and tell her not to use it."

—Stop No. 4: Texas Electric Service Co.'s Reddy Room. There, the touring party viewed a film and color slides of cotton production and of the American Cotton Growers plant, a Littlefield textile mill which produces denim from cotton supplied by 3,500 cotton producers in 25 cooperatives. "It's the Cadillac of the world," said St. Lawrence farmer Clifford Hoelscher.

All of the mill's No. 1 denim goes to Levi Strauss & Co. for making denim products, including blue jeans. (A 480-pound bale of cotton, worth about \$240 to the farmer, can yield about 330 pairs of men's jeans valued at the retail level at \$3,564, or 1,217 T-shirts worth \$1,716, or 180 bib overalls worth \$1,834.)

St. Lawrence farmer Wilbert Braden, representative to the National Cotton Council, noted that efforts are being made to put in a farmer-owned High-Volume Instrument Classing system for classifying cotton at Abilene. "It's going to be a long, hard row." The electronic system, as opposed to the older mechanical system, will be "more consistent on your (fiber) strength," which is a critical factor to textile mills, "and also you get a little better premium for your cotton."

Cost of instrument classifying is about \$1.10 per sample cut out of a bale. The older method costs 67 cents a sample. But the rub is in the system's cost — about \$100,000 — per High Volume Instrument line. Farmers must bear the cost of the new system, Braden said.

Cost of farming is forcing some producers out of business, observed Hoelscher, who is executive director of the St. Lawrence Cotton Growers Association. "We're having more farm sales and liquidations than we've ever had, and the bigger you are, the more it costs to produce a bale."

That farmers are in troubled times was reaffirmed by Upton County farmer Frank Evridge. "Farmers aren't worried about making money," he said. "They're worried about surviving."

**Odessan charged in man's murder**

ODESSA — An 18-year-old man has been charged with murder in the Monday morning shooting death of Odessan Juan Carlos Bates.

David John Dutchover of 313 Geneva St. was in jail this morning under bonds totaling \$50,000. He is charged with shooting Bates, 20, in the chest during an argument about 3:30 a.m. Monday. Witnesses told police Bates was shot with a stolen handgun; the men were arguing about.

Dutchover is also charged with burg-

larizing the Foodway grocery store at 826 W. Clements shortly before the murder. He is alleged to have broken a window and stolen some beer from the store. He then invited several people to his house for a party, where the shooting took place, according to police.

Municipal Court Judge Otis Moore set bond of \$40,000 on the murder charge and \$10,000 on the burglary charge. Dutchover walked into the sheriff's office and surrendered about 7:30 a.m. Monday.

**American Heart Association awards given at workshop**

The American Heart Association Texas Affiliate recognized individuals and divisions at its Permian Basin Region Leadership Workshop recently.

Dr. Brian Mohr, Midland County program chairperson, presented the awards for outstanding efforts during the 1981-82 year.

The heart and torch award was presented to Kay Bivens of Midland County and Mary Frances Harkins of Terrell County for setting new campaign records in their counties. Awards of achievement were given to Moody Conner of Andrews County, James McLeroy of Borden County and Page Eiland of Martin County.

The outstanding program was awarded to Nettie Gonzales of Pecos County for education efforts and an honorable mention was presented to Susie Wilmetth. Recognition to those who have given five years of service included James McLeroy, Borden County; and Helen Bizzell, Richard Palmer and David Rickey, all from Howard County.

The outstanding division for the year was Andrews County. The county was judged on the basis of achievements in program, fund-raising and publicity. The county raised \$12,906 in its campaign and conducted many educational programs which included CPR, high blood pressure awareness, youth education and teacher in-services.

(Continued from Page 1C)

Bowling and (on) other outings. "Bowling is excellent therapy for people who can't release their anger. This type of program is an essential aspect, if we intend to have a comprehensive program. People need ways to handle their stress other than drugs and alcohol," she said.

ALTHOUGH THE occupational and recreational therapy programs are still in the early stages of development, Ms. Dresser said because there is a need for such services, they will be successful.

Future plans include a film series for all hospitalized patients. She said patients who are not bedridden can get bored staying in the hospital for any length of time.

Along the same line, but in a more educational atmosphere, Ms. Dresser will begin a comprehensive course in psychiatric care Nov. 2 for the hospital staff and mental health professionals. It will include films on safety, medicine, theory, psychopathology and treatments.

"After the program, we hope that people will have a thorough understanding of what and why they are doing (with the psychiatric patients)," she said.

Ms. Dresser will be on call for any nursing personnel or physicians who may need her to talk to a patient.

She said reception from the patients and physicians has been positive, adding that this is an indication that an in-house psychiatric specialist was needed.

**BIRTHS**

MIDLAND MEMORIAL HOSPITAL

Oct. 15, 1982  
Mr. and Mrs. Randall Joseph Scott, 1310 Pueblo St., a boy.

Mr. and Mrs. Daniel Andrew Nevin, 3001 N. Midland Drive Apt. C4, a girl.

Oct. 16, 1982  
Mr. and Mrs. Rafael Rodrigo Melendez, 2305 S. Fort Worth St., a boy.

Mr. and Mrs. Julian Jose Jurado, 808 1/2 S. Marienfeld Ave., a girl.

Mr. and Mrs. Franklin Earl Rice, 3113 Delano Ave., a boy.

Mr. and Mrs. Gerard Elias Navarrette, Route 3 Box 389-B, a boy.

Mr. and Mrs. Gregory Gene Larson, 4715 W. Wadley Ave., Apt. 606, a boy.

SALE PRICES GOOD THRU THURSDAY

**WOLFE NURSERY**

HOURS  
9-6 MON.-SAT.  
10-6 SUN.

**Garden Mums**

Instant fall color. This popular bedding plant is bursting with colorful buds of yellow, red, pink, white, purple, and bronze. 6" Pot Reg. 2.99  
**SALE PRICE 1.97** While Quantities Last!

**SHRUBS**

**EVERGREEN SHRUBS**  
Special Group of 1 gallon shrubs. Values to 2.99. Select from Wax Ligustrum, Assorted Gardenia, Burford Holly, Japanese Boxwood, Dwarf Burford Holly, Dwarf Chinese Holly and Photinia.

**1.88**

**TROPICALS**

Beautiful plants for your home or office. Select from Ficus Benjaminia, Schefflera, Assorted Dracaenas, Sanseveria, Assorted Palms, and more. 6" Pot Values to 5.99  
**SALE PRICE 3.88**

**PLASTIC PLANTER WITH SAUCER**

Convenient planter for repotting your tropicals. 6 1/2" Pot Reg. 99c  
**SALE PRICE 66c** #542919

**PLASTIC SAUCERS**

Protect your carpet and furniture from water stains with convenient saucers. 5" Size Reg. 19c **Now 6c** 6" Size Reg. 29c **Now 8c**

**HOLLAND BULBS**

**TULIPS**—Color for early spring! Assorted colors. Reg. 19c **SALE PRICE 6 for 100**

**KING ALFRED DAFFODILS**

Reg. 29c each  
**SALE PRICE 5 for 100**

**BULB BOOSTER FERTILIZER**—9-9-6 analysis specially formulated for the growth of bulbs. 3 lb. **3.29**

**BULB PLANTER**—Make bulb planting easy! Planter is marked with depth instructions for each variety. #31-9509. Reg. 3.99 **SALE 2.88**

**LAWN & GARDEN CARE**

**VITAL-7 WINTERCOAT**  
12-4-10 analysis specially formulated to promote winter hardiness and quick spring green-up. Covers 3,000 Sq. Ft. Reg. 9.99  
**SALE PRICE 7.88**

**PEAT MOSS**  
Adds organic back into the soil for use by the plants. 40 Lb. Reg. 2.99  
**SALE PRICE 2 for 5.00**

VISA MASTERCARD WOLFE NURSERY 100% GUARANTEE ON EVERYTHING YOU BUY AT WOLFE RETURN REFUNDABLE WITH RECEIPT FOR FULL REFUND

LET OUR EXPERTS HELP YOU  
127 NORTHLAND SHOPPING CENTER  
AT SCHARBAUER DRIVE AND AVENUE "A"  
684-7804

The exercise wear you've been looking for: Danskin, R&R and Caviar

**The Islands**  
SWIMWEAR SHOP  
MIDLAND PARK MALL  
697-5621

12% Financing 5 Yr. Fixed Rate

**Las Colinas**  
in trinity estates

An Exclusive Lifestyle Inside The Gates

Epitome of condominium communities, swim, jog, house entertaining, hot tubs, one bedroom-1 1/2 bath-den to 2 bedroom-2 1/2 baths-den. Model homes open daily til dusk.

Entrance Godfrey at Wadley.  
\$70,000 to \$90,500. 694-3934.

• Available for limited time- 80% financing at 12% 5 year fixed rate  
• With 90% financing-13% 5 year fixed rate.  
• With 95% financing- 13% 5 year fixed rate.



Amid the middle-class sprawl of California's Simi Valley, Hollywood has transformed grasslands into the largest sheep ranch in Australia, circa 1932, for a television miniseries based on

the best-selling novel, "The Thorn Birds," by Colleen McCullough. The 9 1/2-hour movie, to be broadcast on ABC-TV, is the story of an ambi-

tious priest, Father Ralph de Bricassart, who befriends the matriarch of a wealthy landowning family.

# Simi Valley transformed to Drogheda

Los Angeles Times-  
Washington Post News Service

SANTA SUSANA, Calif. — There's a little bit of magic going on in the Simi Valley, northwest of Los Angeles. On one hand are the suburbs — freshly minted tract homes with front lawns barely out of infancy. Young families on the way up.

But as you drive a little farther, suburbia disappears and you're suddenly in the middle of another country. There are grasslands and hills and narrow, winding roads that don't appear to lead anywhere. It is as though you have just said goodbye to Mr. and

*"When you're doing a project on this scale, you have to carry more details in your head, because as you grind on, the pre-production phase just recedes into the background. But this is an exciting, once-in-a-lifetime kind of thing. And, fortunately, we've been given the time and the budget to give it some sweep. I've never believed in approaching TV as TV — the idea that it necessarily has to be less. We're shooting a story, a film. We've got a terrific cast, a terrific script, so why lessen your sights just because it's television?"*

Mrs. Ward Cleaver and said hello to...Australia.

Suddenly, on the horizon appears the largest sheep station in New South Wales, Australia, circa 1932 — a place called Drogheda — where assembled cast, crew and spectators have gathered for "The Thorn Birds," a nine-hour ABC miniseries adapted from Colleen McCullough's best seller.

Spanning 50 years and three generations, "The Thorn Birds" is the story of an ambitious priest, Father Ralph de Bricassart, who is sent to Australia where he befriends the powerful matriarch of a wealthy landowning clan. Through the years — not to mention many twists and turns of plot — De Bricassart comes to terms with his love of God and his passion for the beautiful, spirited granddaughter of the clan, Meggie Cleary.

Richard Chamberlain stars as Father Ralph, with Rachel Ward as Meggie, Barbara Stanwyck as Mary Cleary Carson, the leader of the clan, and Richard Kiley, Jean Simmons, Piper Laurie, Bryan Browne, Philip Anglim and Earl Holliman rounding out the large cast.

DARYL DUKE, talented Canadian director whose credits include "Payday," "The Silent Partner" and an Emmy-winning episode of the late, lamented "Senator" TV series, will oversee this entire nine-hour saga.

And Stan Margulies and David L. Wolper, who were responsible for "Roots," are the

executive producers.

"Thorn Birds" was originally bought as a theatrical feature," Wolper said on the Simi location the other day. "Three directors — Herb Ross, Arthur Hiller and Peter Weir, an Australian — took a crack at it, but no one could bring it in at 2 1/2 hours. We originally had it scheduled for eight hours and had to add another hour ourselves!"

With a \$20 million budget and four-month shooting schedule, Wolper and Margulies had some original thoughts about using actual Australian locations for the filming. But cost and inconvenience ruled otherwise.

"It would have been another \$2 million just to transport the company to Australia," Margulies said, "plus the fact that there were no sound stages available. So when we began scouting locations here, I was struck by the fact that this area of the Simi Valley — with its untrammeled wide-open spaces — very closely resembled the New South Wales described in 'Thorn Birds.' For another part of the picture — I was in Queensland recently and was struck by the fact that it so much resembled Hawaii. So we'll be doing three weeks' work in Hawaii on our next location."

The re-creation of Drogheda was a \$2 million project in itself. An Australian sheep station is a self-contained entity — almost a small town — where the nearest signs of civilization may be 40 miles away.

THE MAIN house, visible from a makeshift road that was carved out of the landscape, is what the Cleary family calls home. Befitting wealthy landowners, three large water towers are telltale signs of prosperity. So is the imported stone and the pride of the landscape — the rose garden.

"We originally brought in real rosebushes for the garden," Margulies said, "but the plants couldn't take the weather. So it's a mix of real roses and silk replicas."

Behind the house are the sheep pens — housing 500 sheep imported for the occasion. "A real sheep station will have maybe 200,000," Wolper said, "but on a 21-inch screen, 500 will look mighty impressive."

Then comes what Margulies calls "the key building in Drogheda" — the shearing shed. "It's entirely functional," he said, "though it isn't built on the massive scale of an actual sheepshearing station. I guess you could call it a fixer-upper."

THIS DAY is the wedding of Meggie to Luke O'Neill (Bryan Browne), and things are a bit on edge around the set.

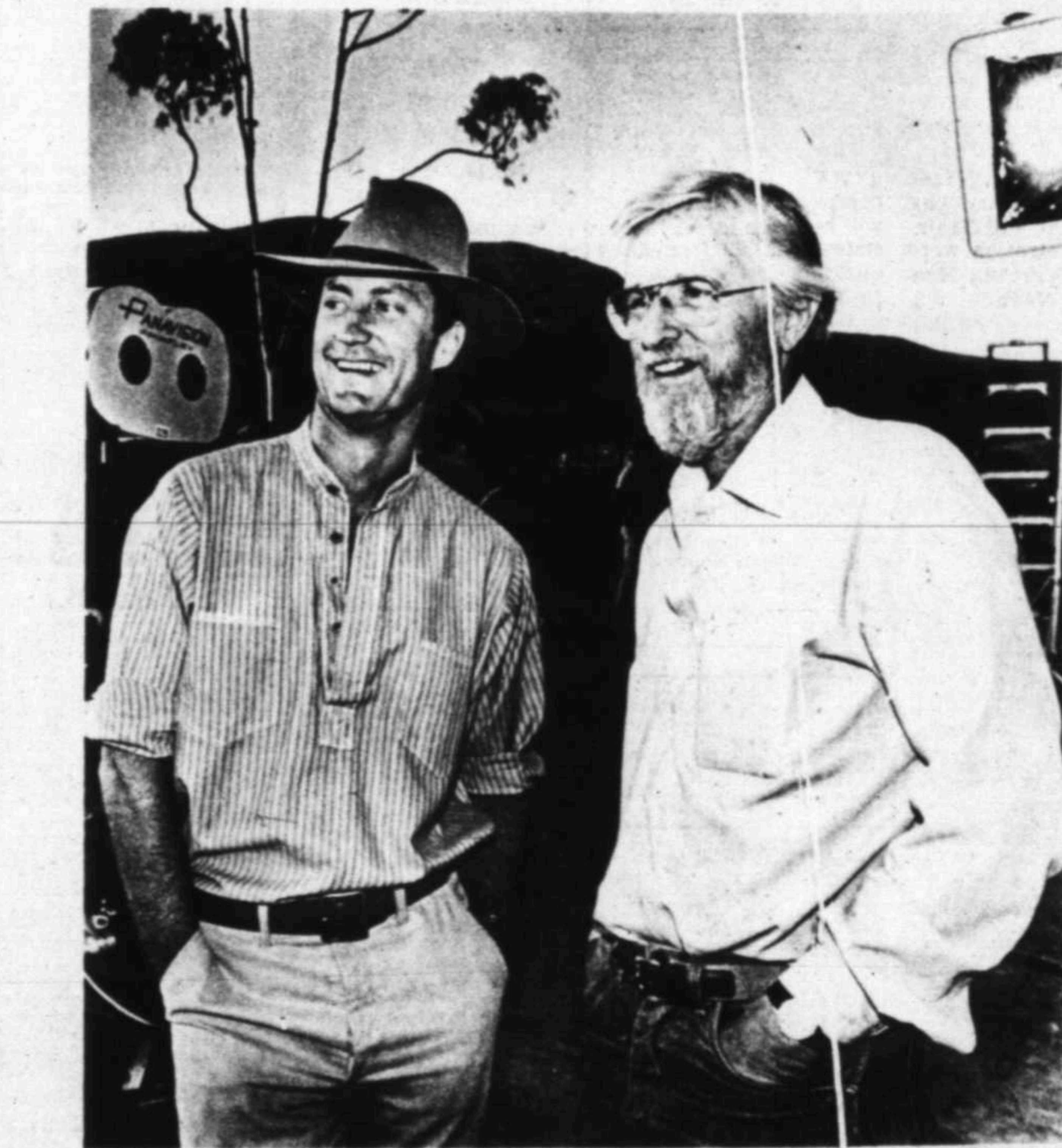
"I think everyone's a little nervous about the wedding," said Browne, the Australian actor who made his first significant splash in "Breaker Morant" and then starred on PBS' "A Town Called Alice."

"I mean...what if the marriage works? What if we really get on well?" Browne deadpans. But then the script would be in for a major overhaul. "Actually," Browne said, "I'm quite confident that this marriage doesn't have a chance."

Daryl Duke, the tall, soft-spoken director, doesn't betray any tension.

"When you're doing a project on this scale, you have to carry more details in your head," Duke said, "because as you grind on, the pre-production phase just recedes into the background."

"But this is an exciting, once-in-a-lifetime



Actor Bryan Browne, left, who portrays Luke O'Neill, converses with director Daryl Duke on the Simi Valley set of "The Thorn Birds." Richard Chamberlain stars as Father de Bricassart.

kind of thing. And, fortunately, we've been given the time and the budget to give it some sweep. I've never believed in approaching TV as TV — the idea that it necessarily has to be less. We're shooting a story, a film. We've got a terrific cast, a terrific script, so why lessen your sights just because it's television?"

WOLPER SAID that Richard Chamberlain was their only choice for the pivotal role of Father Ralph de Bricassart.

"He was absolutely the only person we had in mind. And, fortunately, he wanted to do it as much as we wanted him."

The role of Meggie, however, produced a few obstacles. "A lot of very good actresses wanted that role," Margulies said, "and it finally boiled down to two, Rachel Ward and Jane Seymour. When Rachel first came in to read, she looked terrific but her first reading wasn't that good at all. Still, we really liked her looks and the second time she came in, she knocked us out. In the end, the only difference between Jane and Rachel was that Rachel had a little more of that vulnerable quality we were looking for."

cassart. The rest of the cast includes Barbara Stanwyck, Rachel Ward, Richard Kiley, Jean Simmons, Piper Laurie, Philip Anglim and Earl Holliman.

Then there's Barbara Stanwyck, making her first television appearance since the demise of "The Big Valley."

"We knew she had retired," Margulies said, "but when we thought about casting the role of Mary Carson, Stanwyck immediately came to everyone's mind. We knew we couldn't approach her if we didn't have a script. So we brought in show No. 1. She read it, liked it and wanted to see the rest of the show to make sure the quality was as good. That finally convinced her."

The nine hours of "Thorn Birds" will remain relatively faithful to the book, although some changes have been made in the translation to film, said Carmen Culver, who adapted the book.

"ESSENTIALLY, everything will be there except the World War II years," said Culver. "In terms of our central characters, those years were rather sketchy."

"But the real problem in adapting any best seller is to remain true to the book's audience, not necessarily the book itself. You have to figure out where those heartbeats are."

LEGAL NOTICES

ORDINANCE NO. 6094  
AN ORDINANCE AMENDING CHAPTER ONE, TITLE XI, OF THE CITY CODE OF MIDLAND, TEXAS, BY PERMITTING THE PROPERTY DESCRIBED IN SECTION ONE HEREOF, WHICH IS PRESENTLY ZONED "PLANNED DISTRICT" FOR RECREATIONAL USE, TO BE USED AS A "PLANNED DISTRICT" FOR A HOUSING DEVELOPMENT, PROVIDING FOR SUCH USE TO BE SUBJECT TO CERTAIN SPECIAL CONDITIONS AND RESTRICTIONS AS SET OUT HEREIN, PROVIDING THAT THE PROPERTY SHALL BE IMPROVED ACCORDING TO THE ORDINANCES AND OTHER SPECIFICATIONS SET OUT AND REFERRED TO HEREIN, CONTAINING A CUMULATIVE CLAUSE, CONTAINING A SAVINGS AND SEVERABILITY CLAUSE, AND ORDERING PUBLICATION.

GENERAL PENALTY, CONTINUING VIOLATIONS: Whenever in this Code or in any ordinance of the City an act is prohibited or is made or declared to be unlawful or an offense or a misdemeanor or wherever in such Code or ordinance the doing of any act is required or the failure to do any act is declared to be unlawful, where no specific penalty is provided therefor, the violation of any such provision of this Code or any such ordinance shall be punished by a fine of not exceeding two hundred (\$200.00); provided, however, that if the minimum or maximum penalty provided by this Code for any such offense is less or greater than the maximum penalty provided for the sale or similar offense under the Laws of the State, then the minimum or maximum penalty for violation as provided by State Statute shall be minimum or maximum penalty under this Code. Each day any violation of this Code or of any ordinance shall continue shall constitute a separate offense.

Any person who shall aid, abet or assist in the violation of any provision of this Code or any other ordinance shall be deemed guilty of a misdemeanor and upon conviction shall be punished in the preceding paragraph.

In any prosecution for the violation of any provision of this Code, it shall not be necessary for the complainant to negative or for the State to prove any exception contained in this Code concerning any prohibited act provided, however, that any such exception made the rein may be urged as a defense by the person charged by such complaint.

CITY OF MIDLAND  
J. W. McCullough  
City Secretary  
October 19, 1982

ORDINANCE NO. 6095  
AN ORDINANCE AMENDING CHAPTER ONE, TITLE XI, OF THE CITY CODE OF MIDLAND, TEXAS, BY PERMITTING THE PROPERTY DESCRIBED IN SECTION ONE HEREOF, WHICH IS PRESENTLY ZONED "LOCAL RETAIL DISTRICT" TO BE USED AS A "PLANNED DISTRICT" FOR AN OFFICE OR SHOPPING CENTER, PROVIDING FOR SUCH USE TO BE SUBJECT TO CERTAIN SPECIAL CONDITIONS AND RESTRICTIONS AS SET OUT HEREIN, PROVIDING THAT THE PROPERTY SHALL BE IMPROVED ACCORDING TO THE ORDINANCES AND OTHER SPECIFICATIONS SET OUT AND REFERRED TO HEREIN, CONTAINING A CUMULATIVE CLAUSE, CONTAINING A SAVINGS AND SEVERABILITY CLAUSE, AND ORDERING PUBLICATION.

GENERAL PENALTY, CONTINUING VIOLATIONS: Whenever in this Code or in any ordinance of the City an act is prohibited or is made or declared to be unlawful or an offense or a misdemeanor or wherever in such Code or ordinance the doing of any act is required or the failure to do any act is declared to be unlawful, where no specific penalty is provided therefor, the violation of any such provision of this Code or any such ordinance shall be punished by a fine of not exceeding two hundred (\$200.00); provided, however, that if the minimum or maximum penalty provided by this Code for any such offense is less or greater than the maximum penalty provided for the sale or similar offense under the Laws of the State, then the minimum or maximum penalty for violation as provided by State Statute shall be minimum or maximum penalty under this Code. Each day any violation of this Code or of any ordinance shall continue shall constitute a separate offense.

Any person who shall aid, abet or assist in the violation of any provision of this Code or any other ordinance shall be deemed guilty of a misdemeanor and upon conviction shall be punished in the preceding paragraph.

In any prosecution for the violation of any provision of this Code, it shall not be necessary for the complainant to negative or for the State to prove any exception contained in this Code concerning any prohibited act provided, however, that any such exception made the rein may be urged as a defense by the person charged by such complaint.

CITY OF MIDLAND  
J. W. McCullough  
City Secretary  
October 19, 1982

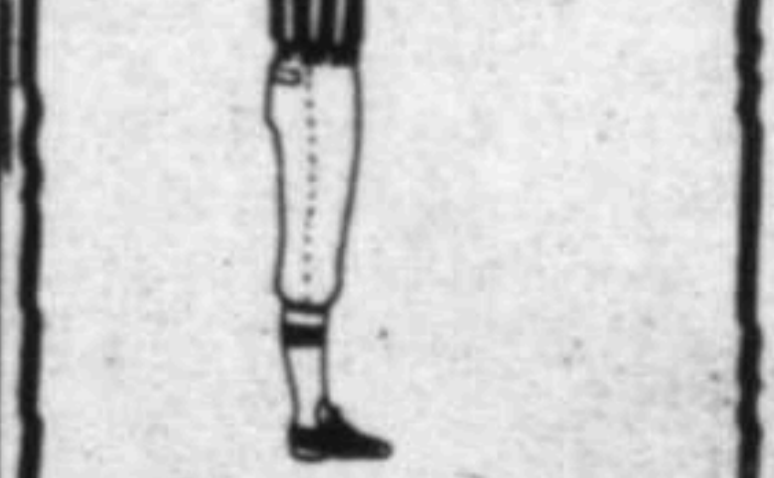
ORDINANCE NO. 6096  
AN ORDINANCE CHANGING THE ZONING USE CLASSIFICATION OF CERTAIN PROPERTIES DESCRIBED IN SECTION ONE HEREOF, WHICH IS PRESENTLY ZONED "LOCAL RETAIL DISTRICT," BY PERMITTING SAID PROPERTY TO BE USED UNDER A SPECIFIC USE PERMITTED FOR THE OPERATION OF A NIGHTCLUB, MAKING SAID PERMIT SUBJECT TO CERTAIN CONDITIONS AND RESTRICTIONS CONTAINED HEREIN, AND ORDERING PUBLICATION.

GENERAL PENALTY, CONTINUING VIOLATIONS: Whenever in this Code or in any ordinance of the City an act is prohibited or is made or declared to be unlawful or an offense or a misdemeanor or wherever in such Code or ordinance the doing of any act is required or the failure to do any act is declared to be unlawful, where no specific penalty is provided therefor, the violation of any such provision of this Code or any such ordinance shall be punished by a fine of not exceeding two hundred (\$200.00); provided, however, that if the minimum or maximum penalty provided by this Code for any such offense is less or greater than the maximum penalty provided for the sale or similar offense under the Laws of the State, then the minimum or maximum penalty for violation as provided by State Statute shall be minimum or maximum penalty under this Code. Each day any violation of this Code or of any ordinance shall continue shall constitute a separate offense.

Any person who shall aid, abet or assist in the violation of any provision of this Code or any other ordinance shall be deemed guilty of a misdemeanor and upon conviction shall be punished in the preceding paragraph.

In any prosecution for the violation of any provision of this Code, it shall not be necessary for the complainant to negative or for the State to prove any exception contained in this Code concerning any prohibited act provided, however, that any such exception made the rein may be urged as a defense by the person charged by such complaint.

CITY OF MIDLAND  
J. W. McCullough  
Secretary  
October 19, 1982



FIRST DOWN  
Down with high prices! Classified Ads are first in bargains.  
★ PLACE WANT ADS TODAY BEFORE 4  
GET ACTION TOMORROW!  
Dial 682-6222  
Open Mon-Fri, 8-5

# Want Ads Action Now...USE WANT AD POWER!

## DIAL 682-6222 • BUSINESS HOURS 8 TO 5 MONDAY thru FRIDAY

OPEN SATURDAY MORNINGS FROM 8 TO 10 FOR CORRECTIONS & CANCELATIONS ONLY. Please check your ad the first day it is published. No credit allowed for errors after the first insertion.

### LEGAL NOTICES

**ORDINANCE NO. 6092**  
AN ORDINANCE AMENDING CHAPTER 11, TITLE XI, OF THE CITY CODE OF MIDLAND, TEXAS, BY PERMITTING THE PROPERTY DESCRIBED IN SECTION ONE HEREOF, WHICH IS PRESENTLY ZONED "PLANNED DISTRICT" FOR RECREATIONAL USE TO BE USED AS A "PLANNED DISTRICT" FOR AN OFFICE CENTER PROVIDING FOR SUCH USE TO BE SUBJECT TO CERTAIN SPECIAL CONDITIONS AND RESTRICTIONS AS SET OUT HEREIN, PROVIDING THAT THE PROPERTY SHALL BE IMPROVED ACCORDING TO THE ORDINANCES AND OTHER SPECIFICATIONS SET OUT AND REFERRED TO HEREIN ADDING TO THE FIRE DISTRICT CONTAINING A CHIMNEY CLAUSE, CONTAINING A SAVINGS AND SEVERABILITY CLAUSE, AND ORDERING PUBLICATION.

**GENERAL PENALTY: CONTINUING VIOLATIONS:** Whenever in this Code or in any ordinance of the City an act is prohibited or is made or declared to be unlawful or an offense or a misdemeanor or where in such Code or ordinance the doing of any act is required or the failure to do any act is declared to be unlawful, where no specific penalty is provided therefor, the violation of any such provision of this Code or any such ordinance shall be punished by a fine not exceeding two hundred (\$200.00), provided, however, that if the minimum or maximum penalty provided by this Code for any such offense is less or greater than the maximum penalty provided for the same or similar offense under the Laws of the State, then the minimum or maximum penalty for violation of this Code shall be the minimum or maximum penalty provided by the Laws of the State, but in no event shall the minimum or maximum penalty for violation of this Code be less than the minimum or maximum penalty provided by this Code.

**CITY OF MIDLAND**  
J. W. McCullough  
City Secretary  
October 19, 1982

### LEGAL NOTICES

**ORDINANCE NO. 6099**  
AN ORDINANCE AMENDING CHAPTER 11, TITLE XI, OF THE CITY CODE OF MIDLAND, TEXAS, BY PERMITTING THE PROPERTY DESCRIBED IN SECTION ONE HEREOF, WHICH IS PRESENTLY ZONED "PLANNED DISTRICT" FOR RECREATIONAL USE TO BE USED AS A "PLANNED DISTRICT" FOR A SHOPPING CENTER PROVIDING FOR SUCH USE TO BE SUBJECT TO CERTAIN SPECIAL CONDITIONS AND RESTRICTIONS AS SET OUT HEREIN, PROVIDING THAT THE PROPERTY SHALL BE IMPROVED ACCORDING TO THE ORDINANCES AND OTHER SPECIFICATIONS SET OUT AND REFERRED TO HEREIN ADDING TO THE FIRE DISTRICT CONTAINING A CHIMNEY CLAUSE, CONTAINING A SAVINGS AND SEVERABILITY CLAUSE, AND ORDERING PUBLICATION.

**GENERAL PENALTY: CONTINUING VIOLATIONS:** Whenever in this Code or in any ordinance of the City an act is prohibited or is made or declared to be unlawful or an offense or a misdemeanor or where in such Code or ordinance the doing of any act is required or the failure to do any act is declared to be unlawful, where no specific penalty is provided therefor, the violation of any such provision of this Code or any such ordinance shall be punished by a fine not exceeding two hundred (\$200.00), provided, however, that if the minimum or maximum penalty provided by this Code for any such offense is less or greater than the maximum penalty provided for the same or similar offense under the Laws of the State, then the minimum or maximum penalty for violation of this Code shall be the minimum or maximum penalty provided by the Laws of the State, but in no event shall the minimum or maximum penalty for violation of this Code be less than the minimum or maximum penalty provided by this Code.

**CITY OF MIDLAND**  
J. W. McCullough  
City Secretary  
October 19, 1982

### LEGAL NOTICES

**ORDINANCE NO. 6092**  
AN ORDINANCE AMENDING CHAPTER 11, TITLE XI, OF THE CITY CODE OF MIDLAND, TEXAS, BY PERMITTING THE PROPERTY DESCRIBED IN SECTION ONE HEREOF, WHICH IS PRESENTLY ZONED "PLANNED DISTRICT" FOR RECREATIONAL USE TO BE USED AS A "PLANNED DISTRICT" FOR A SHOPPING CENTER PROVIDING FOR SUCH USE TO BE SUBJECT TO CERTAIN SPECIAL CONDITIONS AND RESTRICTIONS AS SET OUT HEREIN, PROVIDING THAT THE PROPERTY SHALL BE IMPROVED ACCORDING TO THE ORDINANCES AND OTHER SPECIFICATIONS SET OUT AND REFERRED TO HEREIN ADDING TO THE FIRE DISTRICT CONTAINING A CHIMNEY CLAUSE, CONTAINING A SAVINGS AND SEVERABILITY CLAUSE, AND ORDERING PUBLICATION.

**GENERAL PENALTY: CONTINUING VIOLATIONS:** Whenever in this Code or in any ordinance of the City an act is prohibited or is made or declared to be unlawful or an offense or a misdemeanor or where in such Code or ordinance the doing of any act is required or the failure to do any act is declared to be unlawful, where no specific penalty is provided therefor, the violation of any such provision of this Code or any such ordinance shall be punished by a fine not exceeding two hundred (\$200.00), provided, however, that if the minimum or maximum penalty provided by this Code for any such offense is less or greater than the maximum penalty provided for the same or similar offense under the Laws of the State, then the minimum or maximum penalty for violation of this Code shall be the minimum or maximum penalty provided by the Laws of the State, but in no event shall the minimum or maximum penalty for violation of this Code be less than the minimum or maximum penalty provided by this Code.

**CITY OF MIDLAND**  
J. W. McCullough  
City Secretary  
October 19, 1982

### LEGAL NOTICES

**ORDINANCE NO. 6099**  
AN ORDINANCE AMENDING CHAPTER 11, TITLE XI, OF THE CITY CODE OF MIDLAND, TEXAS, BY PERMITTING THE PROPERTY DESCRIBED IN SECTION ONE HEREOF, WHICH IS PRESENTLY ZONED "PLANNED DISTRICT" FOR RECREATIONAL USE TO BE USED AS A "PLANNED DISTRICT" FOR A SHOPPING CENTER PROVIDING FOR SUCH USE TO BE SUBJECT TO CERTAIN SPECIAL CONDITIONS AND RESTRICTIONS AS SET OUT HEREIN, PROVIDING THAT THE PROPERTY SHALL BE IMPROVED ACCORDING TO THE ORDINANCES AND OTHER SPECIFICATIONS SET OUT AND REFERRED TO HEREIN ADDING TO THE FIRE DISTRICT CONTAINING A CHIMNEY CLAUSE, CONTAINING A SAVINGS AND SEVERABILITY CLAUSE, AND ORDERING PUBLICATION.

**GENERAL PENALTY: CONTINUING VIOLATIONS:** Whenever in this Code or in any ordinance of the City an act is prohibited or is made or declared to be unlawful or an offense or a misdemeanor or where in such Code or ordinance the doing of any act is required or the failure to do any act is declared to be unlawful, where no specific penalty is provided therefor, the violation of any such provision of this Code or any such ordinance shall be punished by a fine not exceeding two hundred (\$200.00), provided, however, that if the minimum or maximum penalty provided by this Code for any such offense is less or greater than the maximum penalty provided for the same or similar offense under the Laws of the State, then the minimum or maximum penalty for violation of this Code shall be the minimum or maximum penalty provided by the Laws of the State, but in no event shall the minimum or maximum penalty for violation of this Code be less than the minimum or maximum penalty provided by this Code.

**CITY OF MIDLAND**  
J. W. McCullough  
City Secretary  
October 19, 1982

### 01 Lodge Notice

Midland Commandery No. 84 KT 1600 W. Wall Street. Hold its monthly stated convocation first Thur. of each month beginning at 7:00 p.m. Practice drill in open and closing are now being conducted each Wed. night Officers and members of the drill team are urged to attend, time 7pm. Commander, W. H. Bowen; Secretary, George H. Medley.

Acacia Lodge A.F. & A.M. No. 1414. 1100 Upland. Stated communications 2nd & 4th Tuesday, 7:30 pm. All masons welcome. Floor school every Monday night. Monday October 18th, work in E.A. degree, Monday 25th, work in Master Degree. J.C. Largent, W.M. Glenn Filippin, Secretary.

MIDLAND Shrine Club monthly meeting Friday, October 15, Eagles. Lodge Refreshments 6:30, dinner and information 7:30. For more information contact Dave Smelser, 682-6934 or 682-2585.

Midland Lodge No. 623 A.F. & A.M., 1600 W. Wall, 682-3292. Next stated meeting Thursday, Oct. 14, 7:30 p.m. Certificate exam, Saturday Oct. 16, 9 a.m. Covered dish lunch by Eastern Star Ladies for Masons and Wives. Floor school 8:00 am Saturdays. All Masons invited. H.S. Elliot Master. Wayne Reddin Secretary.

**03 Personal**  
Tired of seeing "COPY CAT" ADS? DON'T SET-TLE FOR "COPY" COME TO THE PROFESSIONALS AT...  
**AUTO VALET**  
FOR THE ORIGINAL MAINTENANCE AND PROTECTION PROGRAM YOUR VEHICLE NEEDS! INSTEAD OF HERDING YOUR VEHICLE THROUGH LIKE COWS IN A BARN, WE'LL CARE FOR YOUR CAR AND IN-DIVIDUAL BASIS-GIVING IT THE ATTENTION IT DESERVES! IF YOUR VEHICLE IS SPECIAL TO YOU, TREAT IT TO THE BEST IN PRODUCT AND SERVICE FOUND ANYWHERE!

REMEMBER, YOU GET WHAT YOU PAY FOR SO COME! WE'RE CONFIDENT YOU'LL COME TO THE PROFESSIONALS WHO CARE ABOUT YOUR INVESTMENT! WE STAND BEHIND OUR PRODUCTS AND SERVICE AND OUR SUPERIOR WRITTEN GUARANTEES.

694-8706  
1112 S. Midland Dr.  
**FREE PICKUP AND DELIVERY**

**WANT ADS**  
Dial 682-6222

### 03 Personal

**VILLAGE CAR WASH**  
604 ANDREWS HWY., 684-9485  
A COMPLETE DETAIL APPEARANCE CENTER SPECIALIZING IN:  
• Wash and Wax and hand dry  
• Polishes  
• Simoniz Paste Wax-Hand Waxed  
• Vinyl Tops  
• Tar Removal  
• Steam Interior Cleaning  
• Scotch Guard Treatment  
• Degreased and  
• Trucks, Vans, Motorhomes Hand Washed  
• Specialty Chrome or Wire Wheels  
• Pickup and Delivery Service- No Charge

A Superior Job at an affordable price.  
**COMPARE**

The car appearance people who care since 1969

**WANT ADS**  
Dial 682-6222

**WANT ADS**  
Dial 682-6222

**WANT ADS**  
Dial 682-6222

**WANT ADS**  
Dial 682-6222

**WANT ADS**  
Dial 682-6222

### 03 Personal

**WANT ADS**  
Dial 682-6222

**WANT ADS**  
Dial 682-6222

**WANT ADS**  
Dial 682-6222

**WANT ADS**  
Dial 682-6222

**WANT ADS**  
Dial 682-6222

**WANT ADS**  
Dial 682-6222

**WANT ADS**  
Dial 682-6222

**WANT ADS**  
Dial 682-6222

### 03 Personal

**WANT ADS**  
Dial 682-6222

**WANT ADS**  
Dial 682-6222

**WANT ADS**  
Dial 682-6222

**WANT ADS**  
Dial 682-6222

**WANT ADS**  
Dial 682-6222

**WANT ADS**  
Dial 682-6222

**WANT ADS**  
Dial 682-6222

**WANT ADS**  
Dial 682-6222

### 03 Personal

**WANT ADS**  
Dial 682-6222

**WANT ADS**  
Dial 682-6222

**WANT ADS**  
Dial 682-6222

**WANT ADS**  
Dial 682-6222

**WANT ADS**  
Dial 682-6222

**WANT ADS**  
Dial 682-6222

**WANT ADS**  
Dial 682-6222

**WANT ADS**  
Dial 682-6222

## WHO'S WHO FOR SERVICE WHO'S WHO FOR SERVICE WHO'S WHO FOR SERVICE

### Air Cond. Service

**PREPARE FOR WINTER**  
Heating systems checked  
Duct-work inspections  
Furnaces cleaned  
Special \$25

**Lyon's Sheet Metal**  
699-0575

Air conditioners drained and covered. Furnaces cleaned and serviced. All sizes to furnace filters, furnace controls and parts. Air conditioner covers and new furnaces, humidifiers.

**JERRY'S SHEET METAL**  
700 N. Ft. Worth 684-4495

**WINTER CHECK**  
• Clean Furnace Heat Exchanger  
• Oil Blower Motor  
• Check Electrical Connections  
• Check for Furnace Gas Leaks  
• Check Attic Duct Work & Insulation

\$24.95 additional materials extra. 694-1468  
ALL SEASONS HEATING & AIR CONDITIONING

**Appliance Repair**  
STEVE'S APPLIANCE REPAIR  
Refrigerators Washers Freezers  
Stoves Dishwashers Dryers

\$5.00 OFF  
ALL SERVICES GUARANTEED

**APPLIANCE REPAIR**  
Refrigerators Freezers Dryers  
Washers and Ranges  
Service on main brands.

Wood & Son Appliance  
3310 Bankhead Hwy.  
697-2363

**Auto Repair**  
SAVE time and money  
Mr. Wrench  
Road Service

On the road or your home or work. Tune ups, brake jobs, carburetors and engines overhauled. 682-0875. Beeper, 688-6094.

TUNE-UPS, brake jobs, major mechanic work. E. W. Auto, 1704 West Center, 682-8702.

WANT a fixed right the first time? Call Fleet Repair and Service. Quality auto repair and truck repair. 687-4871 or 687-5514.

NOW open. S&L Auto Repair Shop. Tune ups, starters, generators, alternators, brakes, overhaul engine, oil change, greases, etc. 684-9951. 401 N. Terrell.

**Bookkeeping & Taxes**  
EXPERIENCED Accountant Bookkeeping and tax service. 694-4112.

BUSINESS statements, record keeping, financial statements. Will do at home or your office. Call for appointment. 682-8256.

COMPUTERIZED Bookkeeping Service. All typing needs, word processor. Call after 4, Monday thru Friday or anytime on weekends. 694-4558.

ALL TAX RETURNS, Sales Tax, Payroll Tax, Income Tax. Also Bookkeeping Services. Alison Barker, 687-3627.

### Carpet

CARPET cleaning and upholstery. Free estimates. Call 694-1067.

CENTRAL Carpet Cleaning. Guaranteed lowest prices and highest quality. Special, any 2 rooms, \$38. Call 697-5330 or 697-4300 after 6.

HOUSE Plans, blue prints drawn to suit you. Large or small. Prices of experience. W. D. Lindley, 3854.

DRAFTING and Design. All types. The Drafting Board, 682-0483.

**Electric Service**  
CEILING fans, residential remodeling and service calls. D & D Electric, 683-5669 or 686-8074.

CROW Electric Company. Service, remodeling, residential, commercial. Bonded and Insured. 697-4273.

**RITE-WAY ELECTRIC**  
Residential-Industrial  
Mobile Homes-Commercial  
Licensed-Bonded  
683-7995

**A & A ELECTRIC**  
Commercial-Industrial  
Residential-Remodeling.  
A complete wiring service for all your needs.  
694-8188

**Floor Service**  
FOR all types of floors. Cleaning, sealing, reconditioning, particularly Mexican tile, tile and grout. Call for estimate. Call 683-9180. Free estimates.

C & H Contractors. Concrete, room additions, no job too big or too small. Free estimates. Call 697-7381.

Tim Arterburn will do your custom concrete. Fifteen years experience on house slabs and metal building slabs. No job too big or small. Call 697-7651.

**INDEPENDENT Concrete Workers of Midland** would like to help you with any of your concrete needs. Free estimates. We're licensed, bonded, insured. All service guaranteed. 683-5307.

**BROWN BUILDING SYSTEMS**  
Will do any kind of concrete slab work. Work guaranteed. Free estimates. Also specializing in exposed aggregate. 683-2412

JESUS IS LORD OHNI-ROCK Concrete Co. All types of concrete. (New) printed concrete. 683-8479.

**CONCRETE-CONSTRUCTION.** Foundations, driveways, walks, patios, pool decks, steps, etc. No specializing in block building, fences, and toolheads. Call A.C. Ojigan 694-7012.

**CONCRETE work wanted.** All types slabs, patios, drives, crockers, flower beds. 20 years experience. Local references. Free estimates. Call Jerry at 699-5357.

**CROWN GUNITE AND CONSTRUCTION**  
Complete concrete service Residential and Commercial Backhoes, Bobcats  
Dummys, Concrete pumps  
Ready mix. Swimming pool work  
Over 100,000 yards installed since 1963  
Free estimate  
Crown Gunite and Construction, Inc  
687-0171

**Dirt Work**  
DIRT, trash hauling, lot cleaning, level ing, gravel work, flower beds, trim ming and miscellaneous. 687-4024.

ALL types of backhoe work. Will be glad to estimate. 11 years of business experience with backhoe. 682-5203.

### Dirt Work

R & H Trenching Service. Water, gas, electric lines. Call 699-4008 or 684-9372.

DITCHING Service. 4" to 10" ditch. 684-6146.

**Drafting Service**  
HOUSE Plans, blue prints drawn to suit you. Large or small. Prices of experience. W. D. Lindley, 3854.

DRAFTING and Design. All types. The Drafting Board, 682-0483.

**Electric Service**  
CEILING fans, residential remodeling and service calls. D & D Electric, 683-5669 or 686-8074.

CROW Electric Company. Service, remodeling, residential, commercial. Bonded and Insured. 697-4273.

**RITE-WAY ELECTRIC**  
Residential-Industrial  
Mobile Homes-Commercial  
Licensed-Bonded  
683-7995

**A & A ELECTRIC**  
Commercial-Industrial  
Residential-Remodeling.  
A complete wiring service for all your needs.  
694-8188

**Floor Service**  
FOR all types of floors. Cleaning, sealing, reconditioning, particularly Mexican tile, tile and grout. Call for estimate. Call 683-9180. Free estimates.

C & H Contractors. Concrete, room additions, no job too big or too small. Free estimates. Call 697-7381.

Tim Arterburn will do your custom concrete. Fifteen years experience on house slabs and metal building slabs. No job too big or small. Call 697-7651.

**INDEPENDENT Concrete Workers of Midland** would like to help you with any of your concrete needs. Free estimates. We're licensed, bonded, insured. All service guaranteed. 683-5307.

**BROWN BUILDING SYSTEMS**  
Will do any kind of concrete slab work. Work guaranteed. Free estimates. Also specializing in exposed aggregate. 683-2412

JESUS IS LORD OHNI-ROCK Concrete Co. All types of concrete. (New) printed concrete. 683-8479.

**CONCRETE-CONSTRUCTION.** Foundations, driveways, walks, patios, pool decks, steps, etc. No specializing in block building, fences, and toolheads. Call A.C. Ojigan 694-7012.

**CONCRETE work wanted.** All types slabs, patios, drives, crockers, flower beds. 20 years experience. Local references. Free estimates. Call Jerry at 699-5357.

**CROWN GUNITE AND CONSTRUCTION**  
Complete concrete service Residential and Commercial Backhoes, Bobcats  
Dummys, Concrete pumps  
Ready mix. Swimming pool work  
Over 100,000 yards installed since 1963  
Free estimate  
Crown Gunite and Construction, Inc  
687-0171

**Dirt Work**  
DIRT, trash hauling, lot cleaning, level ing, gravel work, flower beds, trim ming and miscellaneous. 687-4024.

ALL types of backhoe work. Will be glad to estimate. 11 years of business experience with backhoe. 682-5203.

### Home Repairs, Remodeling

**SMALL CONTRACTOR NEEDS WORK**  
Prices will never be better. Room additions. Shell or complete, any type remodeling. New homes frame-up any part or complete.

**Garages Enclosed Patios Porches Carports**  
You Name It We Do It!!!  
25 Years Experienced  
Member of Contractors Bureau.  
Bonded & Insured  
Dick's Construction  
684-8877  
Call Anytime

All types of Remodeling, Carpentry and ceiling repairs, blown ceilings, paperhanging, drywall, texture, tile, roofing, painting, siding and out. A.P. Remodeling, 682-7711.

Formica Counter Tops, Ceramic Tile, And Flooring. Expert craftsmanship and minimal inconvenience. Call Roy Thomas, 682-9210.

**GENERAL Contractor.** Painting, remodeling and acoustic ceilings. Free estimates. Good prices. 694-5136.

All types of Remodeling, Carpentry and ceiling repairs, blown ceilings, paperhanging, drywall, texture, tile, roofing, painting, siding and out. A.P. Remodeling, 682-7711.

MIDDESSA A Frame Housing. We do painting, Addition cabinets, roofing, remodeling and acoustic ceilings. Free estimates. 699-4269 or 699-4271.

JACK OF SOME TRADES-Will do small remodeling jobs. Painting, minor repairs, moving and some carpentry work. CHEAPE. 683-7054.

Hardin & Son Remodeling. Room additions, carpentry, and roofing. No job too small. Free estimates. Call Don at 697-5175 after 6:00.

**REMODELING Houses and Trailer Homes.** Steps, porches, patios, add on rooms, skirting, carports, storage buildings. For estimates call Benny Stone, Stanton 756-2326.

Mark X Homes and Construction. Mark of quality. Lived in Midland 25 years, over 16 years experience with homes, remodeling and commercial. 694-1306 or 686-0920 after 5:30 and weekends.

GET SMART. Small maintenance and repair team. Electrical, plumbing, painting, wallpaper, structural, automotive, etc. Can do, will do. Call for estimate at 694-7811.

**Richard Allen Const. Roofing - Home Repairs Room Additions - Garages**  
Licensed and Insured  
"Don't Fuss, Call Us!"  
699-6087  
697-6965

Have Your Construction Work Done By One of Midland's Oldest Building Contractors.

**HILL CONSTRUCTION CO.**  
In Business in Midland for 44 Years.  
No Job Too Small or Too Large.  
Please Call 694-5344  
or 699-4251

**LISAK ENTERPRISES**  
Specializing  
In All Your Home Improvement Needs: Kitchens, baths, counter tops, cabinets, etc. Commercial and residential.  
"IF WE DON'T DO IT, YOU DON'T NEED IT!"  
Free estimates. 687-3179

**UNDERTAKER UNDER TAKES MOST ANYTHING**  
Fence repair, wood & chain link, porches and deck, skirting, yard work, small remodeling jobs, small mobile home repairs and repairs. Free Estimates.  
CALL  
684-5738  
After 3:00 P.M.

**AZTEC BUILDERS Remodeling**  
Carpentry tape bed, painting, ceramic tile, dry wall, concrete work, commercial and residential. Free estimates.  
687-4665

### Lawn & Garden Service

**Sod Father Lawn Services**  
By Chuck's Lawn Service  
687-5289

hydro mulching, plugging, roto tilling, No Grass

**CREATIVE LANDSCAPING & GRADING**  
Landscape Designing  
Planting Crews  
Timber Walls & Beds  
Rock Gardens  
Ramp-Tilling  
Commercial

Top Soil & Fill dirt  
Slab Grading  
Final Grading  
Trash Hauling  
Culch Driveaway  
Residential

**FREE ESTIMATES**  
699-6802 Anytime  
BOB BOEVER

**Home Repairs, Remodeling**  
Very reasonable painting, remodeling, plumbing, electrical, air conditioning, roofing, 28 years Midland. References. Free estimates. 687-6509.

TALL CITY TILE, all types ceramic tile work, both, kitchen and floors. 21 years experience. 699-4269 or 699-4271.

Jensen Enterprises-Remodeling. Home repairs, fence repairs, painting. No job too small. Your satisfaction is our main concern. 694-2490.

**REPAIR WORK.** We do it all, plumbing, electrical, carpentry, painting, taping, texturing, and wallpapering. 687-6274.