

# Colorado City Record



10 Pages - 1 Section Vol. 77 No. 22 Pub. No. 122800

P.O. Box 92, Colorado City, Texas 79512 Thursday, March 18, 1982

25¢

## Board Purchases Insurance Monday

The Board of Trustees of the Colorado Independent School District met in regular session Monday evening to discuss, among other things, the insurance for the buildings owned by the district. Four local insurance companies were chosen to carry the protection for the CISD including Lovell-Carr Insurance Company, State Farm Insurance Company, Ratliff Insurance Company and Elliott-Godwin Insurance Company. The total cost for insuring the buildings and contents for the 1981-82 year will be \$26,269.

In other business, the board approved policy changes pertaining to maintenance and custodial salaries. This policy has been amended to eliminate the Maintenance Supervisor's position; to replace the supervisor's position with the title of Maintenance Coordinator; add the position of Maintenance skilled labor; and changed the salary for the painter-electrician to the same as the salary for a skilled laborer.

Board members approved the school calendar for the 1982-83 school year and were forced to adopt some changes in the current calendar because of closures caused by inclement weather. The days missed on January 12, 13 and February 5 will be

made up on in-service days, while the day missed on January 14 is to be made up on a holiday scheduled for April 12.

The board also approved textbooks for classroom use next year, approved the written plan of action for the program for gifted and talented students and nominated local attorney, Tom Rees to run for the Board of Directors of the Region XIV Education Service Center.

The Trustees also approved the band's scheduled trip to Six Flags Over Texas in which the Wolf Band will compete for ratings and "Best of Class" awards. Expenses for the trip will be paid by band members

and the booster club.

Also in Monday's meeting, the school board approved the naming of Mrs. Pam Favors, Mrs. Mavis Marsh and Mrs. Margie Wulfjen as clerks and Mrs. Mary Molina as alternate judge in the School Trustee Election on April 3.

The board also approved a basic contract change in the contracts for teachers. The change is to comply with Senate Bill 341.

Finally, members voted to extend the contract to Pritchard and Abbott for the preparation of the school district's tax roll for the upcoming year.

### Bagwell, Groves To Host Art Exhibit

There will be a two person art show sponsored by the Brush and Palette Club March 20 through 27 at the Hesperian Room in the Mitchell County Library.

The reception will be March 20 from 2 until 4 p.m., hosted by the Brush & Palette Club. The featured artists will be Peggy Blackwell and Jacki Groves.

JACKIE GROVES and Peggy Blackwell are showing some of their artwork that will be featured at the Art Show March 20-27 in the Hesperian Room of the Mitchell County Library sponsored by the Brush & Palette Club.



### Evaluation To Be Offered By WCTEC

The Early Childhood Staff of West Central Texas Education Cooperative will be testing, three, four and five-year-old children Tuesday and Wednesday, March 23rd and 24th, at the Plan "A" Office in the Colorado City School Administration Building.

This evaluation is for children with possible difficulties in the areas of speech, language development, hearing, delayed learning or learning disabilities, physical and/or mental development. The screening tests will take about 30 minutes.

This is a free service offered to all children in the Mitchell County area, Ira and Hermleigh school districts.

Appointments for a free pre-school evaluation may be made by phoning 728-3330.

Peggy has been painting for two years and is mainly self taught, however, she took basic lessons from Jean Hensley of Big Spring. Her work consists mainly of landscapes, florals and still life done in oils, water colors and charcoal. This will be her first show. She is the daughter of Mr. and Mrs. T. B. Landers of Bonham.

She has lived in Colorado City for five years and is married to Rod, an operations supervisor for Gulf

Refining Co., of Colorado City. A mother of two active teenagers, Traci, a freshman and James, a junior, both attend Colorado High School.

Her hobbies include her family and being a homemaker, painting, crafts, needlework, sewing and cooking.

Jacki has been painting for five years and has studied under Sallie Carter, Martha Robbins and Christian Siedler. Her work mainly consists of Indians, wildlife and landscapes.

She has lived in Colorado City for nine months and is married to Bill, a sales manager of Dowell, Inc., in Colorado City. She is also a homemaker and the mother of two-year-old Shad. She was born in Rotan and is the daughter of Jack and Ella Smallwood.

### Casey Seeks Post In April Election

Larry Casey, of Westbrook, announced Monday that he would seek a position on the Westbrook School Board in the upcoming election.

This is Casey's first attempt at public office in the eight years that he has been a resident of Westbrook. Casey and his wife, Barbara, have two children, Chad, 9 and Cody, 6. The Casey family attends the Baptist Church in Westbrook.

"I'm very proud of the School system we have in Westbrook. I think it's an excellent school," states Casey. "Being a parent, I would like to get involved in supporting our school and our community."

"I would appreciate the voters' considering me for this position on the school board in the upcoming election," he concluded.



Larry Casey

### Westbrook Schools To Present D.A.R.E.

The Westbrook High School will present Marilyn Golightly, Region 3 coordinator of the Drug Abuse Research and Education Program (D.A.R.E.), Monday, March 22, at 7:30 p.m., in the Westbrook High School Auditorium.

Golightly and the D.A.R.E. program seek to present a very positive approach to the drug related problems our children face in their every day lives. All concerned parents in the community are encouraged to attend the meeting in Westbrook. There will be a supervised play area for children ages 4 and up furnished.

Colorado City residents will also be given the benefit of the D.A.R.E. program. CISD schools will dismiss one hour earlier than usual Monday to allow the teachers to hear Mrs. Golightly's message.

An informal visiting time for any concerned parent who would like to ask questions is set up at Homestate Savings from 4:00-5:30 Monday, also.

The Drug Abuse Research and Education program is sponsored by the Texas War on Drugs Committee.

## Police Report

The Colorado City Police Department reports the following from last week: In one incident, approximately \$18 worth of gasoline was stolen from a vehicle parked at the residence of Laura Grantland at 742 Chestnut. About 15 gallons of fuel were taken. Chief Jimmy Roundtree investigated the March 9 incident.

Also on March 9, Donna Bell, of 1333 Pine, reported the theft of a black BMX bicycle valued at approximately \$100. Chief Jimmy Roundtree investigated the theft.

At about 10:49 p.m., March 9, Patrolman Frank Gill discovered what was believed to be an attempted burglary at Colorado Feed and Seed. The evidence of a break-in was an open door.

On March 12 at 11:32 a.m., a 1980 Ford pickup driven by Kenneth Rayburn Rich of 1805 Chestnut, was in collision with a 1979 Ford pickup driven by Jose Larez of 403 Cypress. The incident took place at

the intersection of 2nd and Oak Streets. No injuries were reported by investigating officer Lt. Jesse Dominguez.

Shortly before 2 p.m., on March 12 at Exit 217 off Interstate Highway 20 onto the south service road, a 1981 Ford pickup, driven by Charlie Bennett Lightfoot of Box 1147, Colorado City, was in collision with a 1979 Peterbilt truck-tractor pulling a flat-bed trailer driven by Troy Clifford Yancey of 316 Campus, Dallas. Lightfoot was taken to Root Memorial Hospital by Mitchell County Ambulance Service. Chief Jimmy Roundtree was the officer at the scene.

A 1973 Ford pickup, driven by Donald Glenn Green, of Box 354 in Colorado City, was in collision with a 1982 Chevrolet 2-door driven by Jeffrey Clay Lewis of Route 3, Colorado City. The accident occurred on highway 208, north of the service road. Chief Jimmy Roundtree investigated and no injuries were reported.



KIWANIS CLUB member Steve Morris, unloads part of the equipment to be sold at the Kiwanis Club consignment auction slated for Saturday. For more details and a listing of the equipment to be auctioned, see page 9.

### Argument Ends In Shooting: Weekend Violence Claims Life

The Mitchell County Sheriff's Department reports that at approximately 11:30 a.m., on Saturday, March 13, Gary Jones, 34, of Colorado City, was shot in the upper right chest at a residence about one mile northeast of Colorado City.

Jones was transferred from the residence to Root Memorial Hospital by private vehicle where he died a short time later.

The body was sent to the Southwestern Institute of Forensic Scientists in Dallas for an autopsy.

Jim Jones, 63, of Colorado City, was arraigned before Justice of the Peace Henry Doss on Monday,

March 15, where he was charged with murder. Bond in the case is set at \$20,000. Jones was still in custody at press time Tuesday.

A sheriff's department spokesperson states that it appears the shooting took place as the result of an argument.

### Kiwanians Set To Auction Equipment

The Colorado City Kiwanis Club's Consignment Farm Equipment Auction is slated for this coming Saturday beginning at 10 a.m., in the Mitchell County Fair Grounds, located one mile west of Colorado City on business Highway 80.

The auction will have numerous items including a 1980 John Deere 4840 diesel tractor, 1980 Ford TW-20 tractor, 1980 Hamby folding eight row cultivator and two half-ton pickups, to name only a few of the items to be auctioned off. For a more detailed outline of items to be auctioned see their ad on page 9 of the RECORD.

There will be a loader available to load and unload equipment. Grady Morris will be the auctioneer.

For more information, contact Mac or Steve Morris at 728-2031 or 728-3742.

### Bullock's Office For "Federalism"

State Comptroller Bob Bullock said recently the Comptroller's office is fully capable of bringing in the money in 1983 and 1984 to take over costs of the food stamp and dependent children programs without new state taxes.

Bullock noted that Texas voters would first have to raise the present \$80 million welfare spending limitation in the constitutional amendment election of November 1982.

"We, in the Comptroller's office, will meet President Reagan's challenge of 'New Federalism' just as we have met other challenges, by increasing efficiency, dedication and hard work," Bullock said.

For the past four sessions of the Legislature, the Comptroller's office has increased tax collections to pay for new and expanded services authorized by the Legislature without deficit spending.

He noted that in 1981, Texas' population increased 1.9 percent and that inflation was 8.9 percent but that state tax collections by his office increased 23.2 percent over 1980.

"This additional 12.4 percent—or \$900 million—over and above population increases and inflation in 1981 just didn't blow in with a blue norther," Bullock said.

Approximately 1.2 million Texans take part in the food stamp program and 296,000 mothers and children receive help from the aid to families with dependent children program.

## Lone Wolf Relays Scheduled

The Lone Wolf Relays for high school aged boys and girls will be held Saturday, March 20, at the Wolf Stadium. The preliminaries begin at 9 a.m., with the field events beginning at 1 p.m., and the finals taking place at 4:30 p.m. The teams entered include boys' teams from Rotan, Spur, Merkel, Winters, Lubbock (Roosevelt), Post, Crisbyton, Rotan, Spur, Merkel, Winters, Fr-

ship, Idalou and Colorado City. Boys' Division Records to date are: Pole vault-Dixon, Breckenridge, 14', 1979. Long jump-Sanders, Breckenridge, 23'11", 1979. High jump-Boles, Eastland, 6'8", 1979. Shot put-Devorce, C-City, 58'2 1/2", 1971. Discus-Funderberg, Breckenridge, 164'7", 1979. Records Yards 440 relay-Sweetwater, 1969, 43.0. 880 run-Campbell, C-City, 1967, 2:01.7. 1200 run-Kieschnick, Vernon, 1974, 14.8. 100 dash-Steakley, C-City, 1969, 9.6. 440 dash-Williams, Sweetwater, 1969, 50.0. 330 ih-Kieschnick, Vernon, 1973, 40.7.

220 dash-Bracy, C-City, 1971, 21.9. Mile-Stalling, Stanton, 1968, 4:34.8. Mile relay-C-City, 1967, 3:28.0. Records Meters 400 M relay-Breckenridge, 1979, 44.0. 800 M run-Lazano, Clyde, 1979, 1:57.97. 110 M HH-Gee, Coahoma, 1979, 14.96. 100 M dash-Sanders, Breckenridge, 1979, 9.95. 400 M run-Sanders, Breckenridge, 1979, 51.17. 300 M ih-Sanchez, C-City, 1979, 40.06. 200 M dash-Williams, Post, 1979, 22.61. 1600 M run-Dean, Breckenridge, 1979, 4:44.95. 1600 M relay-Post, 1979, 3:29.38. 3200 M run-Gonzales, Stamford, 1981-11:21.0.

## Senior Americans Enjoy The Texas Green Thumb Program

To recognize the importance of meaningful employment for senior Americans, the U.S. Department of Labor has announced March 14-21 as "Older Worker Week." Texas Farmers Union Green Thumb, a rural senior employment program, is encouraging both public and private employers to join them in honoring older employees during this week.

Older Worker Week is an annual event designed to spotlight the valuable qualities of the mature worker. Green Thumb employs about 1,000 senior Texans in 107 counties. Sponsored by Texas Farmers Union, the program provides part-time work opportunities for people over 55 who are "loaned" to non-profit organizations to provide needed services in rural communities.

Green Thumb State Director Diane Parrish says "Older workers value job security while younger workers tend to change jobs frequently. The fact that older Americans lived through the Great Depression while younger workers grew up in an affluent age perhaps affects the way each sees the need for security. Consequently, there seems to be less job dissatisfaction among older workers."

The increasing number of retirees returning to the workforce and employers' favorable receptiveness to their return is evidence of a

changing trend in American society. Only a few years ago, 65 was considered to be the traditional retirement age. Mandatory retirement policies were accepted without question and complied with automatically by almost everyone. But today, 79 percent of workers ages 55-64 and 73 percent of those over 65 say that they prefer at least part-time employment to total retirement according to a National Council on Aging survey.

Sen. Richard Lugar (Ind.), says "For most Americans, work means everything. It's a definition of our lives, the way in which we serve others. To be cut off arbitrarily by law or regulation is devastating."

Surveys have shown that maximum intellectual function is achieved between the ages of 40 and 65. Older employees can evaluate tasks and project outcomes more accurately than can young workers. The wisdom gathered through experience would appear to account for this. Recognizing this fact, many employers are taking a second look at the mature worker when openings are available in their companies. John Deere (farm equipment manufacturer) hires retirees to guide 14,000 tourists that come to the plant yearly. Union Carbide, Connecticut General Life Insurance and Bankers Life and Casualty Company

are among the growing number of businesses who are actively recruiting older employees.

"Hiring the experienced is good business," says Green Thumb Director Parrish. "Green Thumb helps locate jobs for older workers in the private job market," she says, "and when looking for openings, we find that the ticking off of birthdays is the least important measure of a person's true value to an employer."

Texas Farmers Union Green Thumb is an equal employment opportunity, affirmative action employer with a state office in Waco. For more information, contact Green Thumb, P.O. box 7898, Waco, Texas 76714 (phone 817-776-4700).

## MEMBER 1982 TEXAS PRESS ASSOCIATION Colorado City Record

156 E. 2nd 728-3413 728-3414  
 Phil Riddle ..... Publisher  
 Lulu Turner ..... Editor  
 Connie Thompson ..... Editorial Assistant  
 Martha Martinez ..... Advertising Layout Director  
 Patricia Denson ..... Classified & Typesetter  
 Viola Aycock ..... Secretary

Published every Monday and Thursday morning by Colorado City Record, Colorado City, Texas. Second class postage paid at Colorado City, Texas. Mailing address, Colorado City Record, P.O. Box 92, Colorado City, Texas 79512.

Subscription rates in Mitchell County are \$10.00 per year and outside Mitchell County \$15.00 per year.

Any erroneous reflection upon the character, standing or reputation of any person, firm or corporation will be corrected when such occurs in the columns of this newspaper and is brought to the attention of the management.

The Colorado City Record is not responsible for copy omission, typographical errors or any unintentional errors that may occur other than to make proper correction after being brought to attention. Advertising is accepted on this basis only.

### DEADLINES

Deadlines are necessary in order to publish accurate facts with as few typographical errors as possible. Your cooperation will be appreciated.

Deadline for Monday's paper for news and advertising (including Classified Ads) is noon Friday. Deadline for Thursday's paper for news and advertising (including Classified Ads) is noon Tuesday.

### HOMEOWNERS POLICY

PHONE: JERRY PUTMAN 137 W. 2nd 728-3062  
 State Farm Fire and Casualty Company

## It's BIG NEWS..

**MONEY MARKET CERTIFICATE SIX MONTH CERTIFICATES**

**13.212%**

(Effective March 16 Through March 22)

**2 1/2 YEAR MONEY MARKET CERTIFICATES**

**13.85%**

(Effective March 16 Through March 29)

**ALL SAVERS TAX EXEMPT** ..... Effective February 23 **10.79%**

We Now Have 2 Drive-Thru Windows Open Mon. - Fri. 8:30 A.M. - 6 P.M.

**The City National Bank**

Member FDIC

228 Elm

728-5221

## Large Selection



Rock of Ages offers you a choice of 6 different colored granites. Whatever your requirements may be, complete satisfaction is assured with Rock of Ages.



**Bernice Hilliard**

529 E. 14th

728-3946



**QUALITY? YES! PRICE? YES!**

# BUT VALUE ABOVE ALL

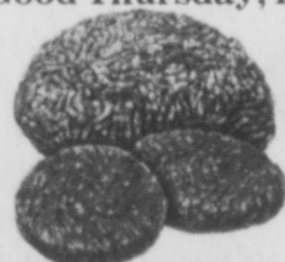
**At E-Z Way Superette**

Specials Good Thursday, Friday & Saturday

We Redeem Food Stamps



**Gooch's German SAUSAGE**  
 12 Oz. Roll **\$1.19**



**It's Better GROUND BEEF**  
 Lb. **98¢**



**Kraft 1000 Island SALAD DRESSING**  
 8 Oz. Jar **69¢**

**Gooch's SAUSAGE**..... 1 Lb. Roll **98¢**

**Boneless STEW MEAT**.... Lb. **\$1.69**

**Beef LIVER**..... Lb. **49¢**

**Green Giant Whole Kernel CORN**..... 3 12 Oz. Cans **\$1.19**

**Baking HENS**  
 Lb. **59¢**

**Aunt Jemima SYRUP**  
 24 Oz. Btl. **\$1.49**  
**Vlasic Kosher DILL PICKLES**  
 48 Oz. Jar **\$1.19**

**Kraft Macaroni & Cheese DINNERS**  
 2 7 1/2 Oz. Bxs. **69¢**

**Swift VIENNA SAUSAGE**... 2 5 Oz. Cans **89¢**

**Del Monte TOMATO SAUCE**... 3 8 Oz. Cans **69¢**

**Longhorn Cheddar CHEESE**..... Lb. **\$1.89**

**Borden's BUTTERMILK**..... 1/2 Gal. Crtn. **93¢**

**Kraft BAR-B-Q SAUCE**..... 18 Oz. Jar **69¢**

**Strawberry JELLY**..... 18 Oz. Jar **\$1.09**

**Hunt's FRUIT COCKTAIL**  
 15 Oz. Can **59¢**

**Land O Lakes Quarters OLEO**..... 1 Lb. Pkg. **49¢**

**Tony's "Red Baron" Assorted PIZZA**..... Pkg. **\$2.29**

**Hershey's Plain, Almond, Reese's Cup Or Kit Kat CANDY**..... Pak **98¢**

### FRESH PRODUCE DAILY

**Best Way STRAWBERRIES**..... 10 Oz. Box **59¢**



**Gladiola All Purpose FLOUR**..... 5 Lb. Bag **79¢**

**Russet POTATOES**  
 10 Lb. Bag **\$1.29**

**Morton's Lemon, Chocolate Or Coconut CREAM PIES**  
 12 Oz. Pkg. **98¢**

**Fireside VANILLA WAFERS**..... 12 Oz. Pkg. **59¢**

**Fresh Green ONIONS**..... 1 Lb. Bag **19¢**

# E-Z WAY

Superette  
 At 17th & Hickory 7 A.M. To 8 P.M. Daily

**Franklin CRUNCH N MUNCH**... 5 Oz. Box **59¢**

**CARROTS**... Bnch. **29¢**

**Lipton's INSTANT TEA**  
 2 Oz. Jar **\$1.69**

**Vine Ripe TOMATOES**  
 Lb. **49¢**

**Kraft Miniature MARSHMALLOWS**... 2 6 1/4 Oz. Pkgs. **59¢**

**Delsey BATH TISSUE**..... 4 Roll Pkg. **98¢**

## Loraine Personals By Ida Baird

Mr. and Mrs. W. R. McNeer returned home Friday after being in Tyler past six weeks where Mrs. McNeer underwent major surgery. We there they visited the homes of her brother and three sisters after she was dismissed from the Tyler hospital.

Mr. and Mrs. Harold Martin spent last week, Wednesday until Sunday in Abilene, visiting in the homes of two sons, Mr. and Mrs. Mer-

rill and Mr. and Mrs. Don Martin.

Mr. and Mrs. Charlie Harris had as their guests last week Saturday until Wednesday his sister and husband, Mr. and Mrs. Cecil Keehan from Jeffersonville, Indiana. Harris accompanied them to Paradise Valley, Arizona and visited Mr. and Mrs. Terry Henderson. While there they attended a drag race in California in which Henderson participated. They returned

to Loraine Monday and on Tuesday, Harris accompanied them and visited relatives in San Angelo. They left for their home Thursday. Mrs. Ruby Reese of Snyder visited in their home Friday night.

Mr. and Mrs. Jackie Walker accompanied by their daughter-in-law, Mrs. Mike Walker and Zach of Abilene, visited from Monday until Wednesday in Greenville with her sister and family, Mr. and Mrs. Ray Harmon. Mike was there for the visit on Monday night.

Mrs. Cullen Payne accompanied her brother

and wife, Mr. and Mrs. Otho Scarborough of Colorado City, and attended the funeral of their aunt, Mrs. Maggie Thomason, 83, at Royce City on Tuesday. Mrs. Thomason died after a long illness.

Mr. and Mrs. Kenneth Butler spent Tuesday and Wednesday in Eunice, New Mexico visiting in the home of Mr. and Mrs. Kat Irwon. Their daughter and children, Mrs. Max Irwin, Tama and Scott of Houston, were there visiting and returned home with the Butlers Wednesday for several days visit here.

## Loraine Cemetery Working Day Surmised As A Huge Success

It had been said by some a cemetery working in Loraine couldn't be a success, as it had been tried and failed because of cooperation. The working at the cemetery Saturday, March 13th, proved this statement wrong. The event proved to be a history making success, stated Mayor Royce Beights.

Beights stated the working was set after discussion at a recent City Council meeting and Helen Williams was asked to head the plans. Helen somehow knows how to inspire others to help in a worthwhile project and got the ball rolling by advertising, announcements and word of mouth.

The town turned out in great numbers, some Mexican men were there by 7:30 a.m., and at times there were 75-100 people working with plows, mowers, hoes, rakes and even brooms. All had a hand, those who couldn't cut weeds, watched fires, raked, etc.

Kiker had set up a tent, merchants and individuals furnished Cokes, coffee, sandwich meats, etc. Others gave money to purchase what was needed to add to the lunch. More than enough was donated and this has been added to the general cemetery fund.

This was not only a work day, but a fine fellowship day for all. Most of the local candidates were on hand, making it seem like an

old time political rally. Beights and Mrs. Williams say a big thanks to all those who helped to make this project a big success.

Recent donations to the Loraine Cemetery fund included: Mrs. Elsa Freeman, Mrs. Margaret Brame, Mr. and Mrs. W. H. Gunn, Mrs. L. B. Baird, David Collier, Mrs. Vera Inmon, Mr. and Mrs. E. P. Hallmark, Memorial Fund in memory of Mrs. Beatrice Bruce by the Coffee Club, Mrs. S. E. Meadows, Mrs. Virgil Walker, Mrs. W. F. James, Mrs. Stella Bennett, Mr. and Mrs. Bobby Graham, Mr. and Mrs. Herbert Mearse, Mr. and Mrs. Bud Hill, Mr. and Mrs. Dub Wood-

dell, Mr. and Mrs. Ralph Lankford, Mr. and Mrs. Troy Jones, Mr. and Mrs. Ray Preston, and The First State Bank of Loraine.

**\$100 VA**

VETERANS  
Move into a NEW home for just \$1 total cost!  
No Closing costs.  
No Down payment.  
\$1 does it all!

OPEN SATURDAY

Abilene Mobile Homes  
4618 North First  
672-6466

## THANK YOU

The Loraine City Council would like to thank the citizens of Loraine and surrounding area for their cooperation and very successful cemetery working.

We appreciate the donations and cooperation in making the Cemetery Working successful.

Loraine City Council

## First Baptist Church Hosts Class Social

Mrs. Frances Porter, teacher of the Ruth Sunday School Class of First Baptist Church of Loraine, was hostess for the class social and business meeting on Thursday, March 5.

Mrs. Clara Butler presided and gave the opening prayer.

Mrs. Charlie Harris brought the devotional on the subject, "Faith

for Life's Dark Hours." She brought out the truth that none are exempt of troubles in this life, but the attitude we take toward our troubles determines what our strength and our happiness will be. Our dependence on God and not ourselves is what counts, she said.

Mrs. Eathel Mearse read minutes and Mrs. Harris gave the treasurer's report.

Mrs. Edwin Hallmark directed a Bible quiz game and Mrs. Vada Preston gave the group leaders report.

Projects in the interest of the class were discussed and the hostess served a sandwich plate, cookies and frosted lime punch to one visitor, Dorothy Haltom and members Mmes. Lois Hobbs, Harris, Preston, Pauline Smiley, Mearse, Hallmark, Butler and Ida Baird.

## Narrell Takes A Step Up

Haliburton Services has promoted Don D. Narrell to manager of the technical oil field services firm's Midland division. The division serves the petroleum industry throughout West Texas, including the Permian Basin and all of New Mexico.

The former manager of Midland, Gayle Pruet, is retiring after a 39 year career with Haliburton.

Narrell is a graduate of Loraine High School, obtained a BS degree in education at Texas Christian University before joining Haliburton Services as a field trainee in 1953. A member of the Society of Petroleum Engineers of AIME and the American Petroleum Institute, he has been an assistant division manager at Midland for the past six years and has had extensive operational and administrative experience at several locations in the Permian Basin.

Don is the son of Mr. and Mrs. W. H. Narrell.

## Compton, Wheeler And Cosgrove Celebrate

Mr. and Mrs. Jack Compton of Midland, Mr. and Mrs. Mason Richburg of Abilene and Mrs. Melissa Cosgrove and children of Bedford, shared March birthdays in the Raymond Wheeler home Sunday.

Honorees were Gloria

## Culwell Speaks To Loraine B & P W

Joy Culwell of Colorado City was guest speaker for the Loraine B&PW Club when they met in regular meeting Monday night.

Mrs. Culwell talked on the subject "How to Be Happy." She gave several hints on this subject in a serious vein and also kept the talk humorous, declaring we can make ourselves happy or miserable.

Compton, Melissa Cosgrove and Mrs. Wheeler.

Others visiting in the afternoon were Mr. and Mrs. Stacy Pendergrass from Temple City, California. The Pendergrasses' are visiting relatives in Loraine, Colorado City, Sweetwater, Roscoe and the surrounding area. They came to attend Mrs. Mattie Pendergrass' funeral (his mother) which was held March 13th. Mrs. Pendergrass died on March 11th.

WANT AN OIL & GAS LEASE ON YOUR ACREAGE? CALL TODAY ON OUR NICKLE.

CALL TOLL FREE 1-800-592-1446 9 a.m. to 5 p.m. weekdays

OIL & GAS ASSOCIATES, P. O. DRAWER 952 MIDLAND, TEXAS 79702

**NORDIC STOVE SALE ON ALL STOVES \$100 OFF**

FREE STANDING STOVES & FIREPLACE INSERTS Of Roscoe Wood Stoves

14 Miles East Of Colorado City - Exit 230 North Side Phone 766-3948 For Appointment Day Or Night

## SHOP NO FRILLS FOR NO NONSENSE FOOD SAVINGS SPECIALS GOOD FRIDAY & SATURDAY

- Golden Ripe BANANAS..... Lb. 39¢ Or 3 Lbs. \$1
- Washington Extra Fancy APPLES..... 3 Lb. \$1.19
- U.S. No. 1 Medium Yellow ONIONS..... Lb. 29¢ Or 4 Lbs. \$1
- California Cello CARROTS..... 1 Lb. \$1
- Russet POTATOES..... 10 Lb. \$1.39
- Gandy's Slim & Trim ICE MILK..... 1/2 Gal. \$1.59
- Gandy's SLIM & TRIM..... 24 Oz. \$1.59
- Del Monte Early Garden SWEET PEAS..... 2 303 Cans 89¢
- Double Luck Cut GREEN BEANS..... 3 303 Cans 89¢
- Kraft Macaroni & Cheese DINNERS..... 3 7 1/4 Oz. \$1
- Folger's COFFEE..... 1 Lb. \$2.59
- 12 Oz. Cans COCA-COLA..... 6 Cans \$1.59 Plus Tax
- Sliced SLAB BACON..... Lb. \$1.29
- FRESH LEAN PORK CHOPS END CUTS..... Lb. \$1.39 CENTER CUTS..... Lb. \$1.49
- GOOD BEEF ROUND STEAK FULL CUT BONELESS TENDERIZED Lb. \$1.99 Lb. \$2.29 Lb. \$2.79
- GOOD BEEF ROAST CHUCK ARM 7-BONE Lb. \$1.09 Lb. \$1.29 Lb. \$1.49

Green's Lil Souper

Loraine 737-2612

**TONIGHT YOU CAN BE RICHER THAN YOU WERE THIS MORNING!**

Simply save some money with our help. Hour after hour, day after day, week after week your earnings keep adding to your wealth, payable like clockwork.

These days, the dollars you place in our care enjoy powerful earning power plus security that is hard to equal. In any amount, your account is welcome.

## First State Bank

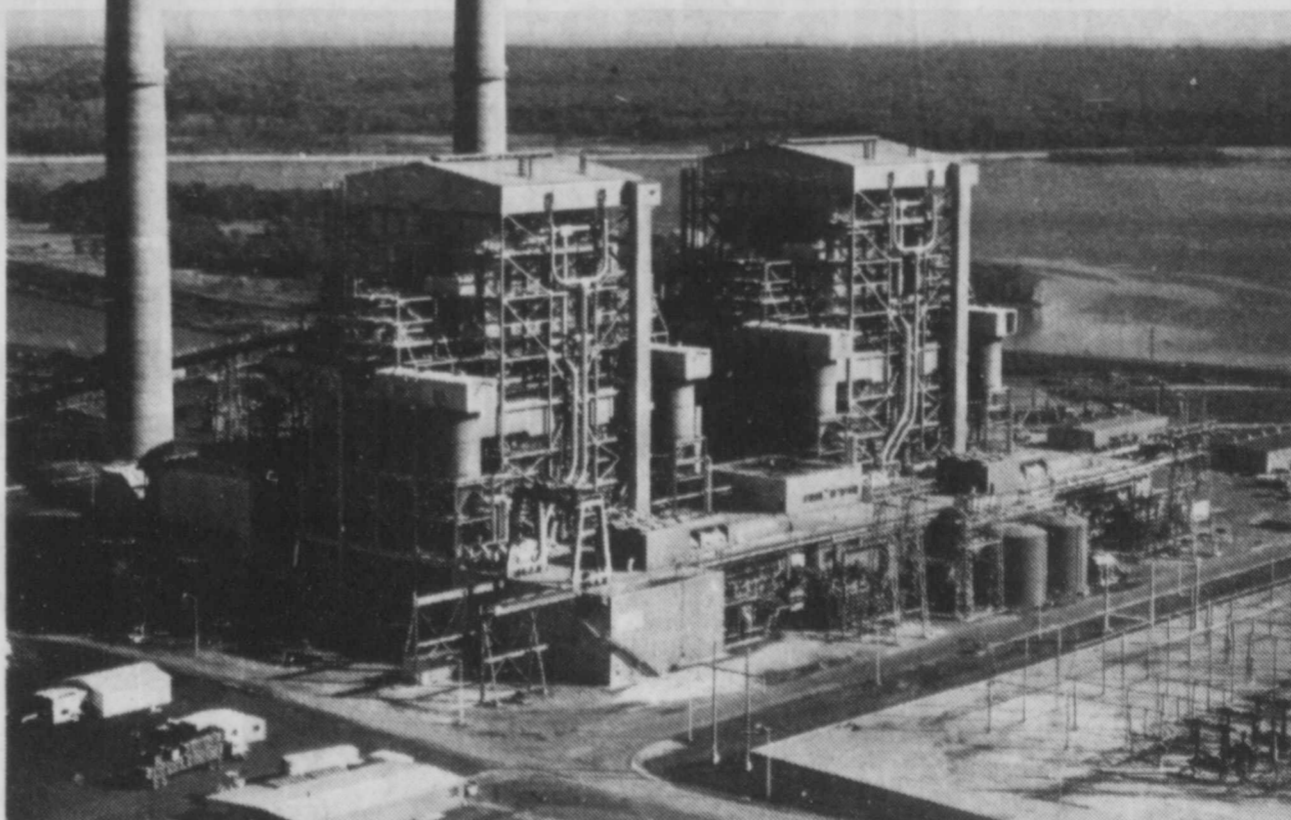
Member FDIC

Loraine

737-2211

No question, electricity costs more now...

## Let's see why.



When this lignite-fueled plant was built in 1971-72, it cost \$125 per kilowatt of generating capacity. Because of inflation and new regulations, this figure was up to \$460 on a unit completed in 1981, and will climb to more than \$1,000 in a few more years.

We Americans have always liked getting our money's worth on whatever we buy, and electricity is no exception. None of us like what's happened to our bills over the past 10 years.

The typical residential customer uses about 25% more electricity than 10 years ago, even with conservation.

But there's a bigger difference than that in our bills, and it's because the actual cost per kilowatt hour is now about 2 1/2 times what it was that same 10 years ago.

Before 1970, kilowatt hour costs had been moving downward.

In those days we were building low cost plants to run on cheap fuel. But in the '70s, fuel stopped being cheap and the cost of building all power plants skyrocketed.

From 1971 to 1981, the price of natural gas went to 10 times what it had been, and the ends not in sight. That's why the plants your electric company has built and must build to meet customer needs use less expensive fuels like lignite coal and uranium.

The increasing cost of these plants, however, reflects the effects of inflation and new regulations. A million-kilowatt lignite-fueled gener-

ating plant which cost \$125 million in 1971 would cost more than eight times as much (more than one billion dollars) if we started building it this year!

We don't like the way the price of electricity has gone up any more than you do. We do think it's important for you to know why it's gone up.



B. B. HARDEE, Manager, Phone 728-2331

## It's Crappie Fishing Time

The crappie is one of the all-time favorites of Texas anglers. Depending on the area of the state, this panfish is also called calico bass, white perch or sac-a-lait. Regardless of the name, the immense popularity of the crappie is widespread among young and old alike. One reason for the well deserved status is the simplicity of equipment needed to catch this fish. More crappie fall victim to the cane pole and minnow than all other angling methods combined, says Billy Higginbotham, fisheries specialist for the Texas Agricultural Extension Service. Additionally, the schooling tendency of crappie provides the angler with almost non-stop action once a school is located. Perhaps the best explanation for the crappie's large following comes with its eating qualities. Many Texans proclaim that no other fish comes close.

Crappie are members of the sunfish family, and therefore, are first cousins to the largemouth bass and bluegill. Two distinct species of crappie exist and both of these, the black and white, are found in Texas. Their common names, indicating color, are not always a good key to distinguish between the species. For positive identification, Higginbotham suggests counting the hard spines on the dorsal fin. Black crappie have seven or eight dorsal spines, while white crappie have six spines. The black crappie prefers the clear, slightly acidic waters found in many East Texas lakes. However, the range of this species has been expanded to the west and south. The white crappie originally ranged in the central and western portions of the state, but widespread stocking programs have resulted in large populations in the eastern portions of Texas as well. Black crappie spawn slightly before white crappie in the spring. When water temperatures warm to about 60 degrees, the black crappie begins spawning activities. White crappie do not begin spawning until water temperatures

reach 65 to 70 degrees. Although natural hybridization between the species has been documented, the difference in peak spawning periods probably serves to reduce the incidence of hybridization. When the water temperatures warm in the spring, the spawning migration toward shallow water begins. Both species build nests in water from one to eight feet deep, usually in gravel or on hard bottom. If these types of bottoms are not readily available, tree roots and submerged vegetation may serve as spawning sites. Fry normally hatch in about five days and after the yolk sac is absorbed, fry feed actively on microscopic animals called zooplankton. As growth continues, insects and small fish make up the bulk of the diet. During the summer, fall and winter months, crappie tend to school in the deeper, more open areas of lakes. Growth rates of crappie vary due to water conditions and available food, but generally len-

gths of three to five inches are normal at one year of age and seven to eight inches the second year. The normal life expectancy for crappie is about six years, but individuals eight years old have been reported. Crappie are most vulnerable to fishing during the spawning season. A feathered jig, tiny spinner or a well-placed minnow hooked lightly through the back are all successful angling methods in the spring. During other times of the year, look for crappie concentrated and suspended over deep water structure. A depth finder can become a real asset in locating crappie under these conditions. Once crappie are located, spinners, jigs and minnows, fished in the day or by lantern at night, are all proven fishing methods. The current state record for white crappie is four pounds, nine ounces. The category for black crappie is open, with a four pounder or larger needed for entry. Large female crappie of both species have been known to contain 100,000 eggs or more prior to spawning. Due to the prolific spawning ability of the crappie, stocking into small bodies of water is not recommended, Higginbotham says. In most situations, small ponds do not provide enough food for the abundant young crappie. As a result, stunting usually occurs and few young ever reach a desirable size. Crappie season is just around the corner, so plan now to make a trip for these popular species. You may just become one of many who have proclaimed crappie as king.

## VFW Ladies' Auxiliary Seeks Help To Compile Veteran History Book

The VFW Ladies' Auxiliary Post No. 9178 met last week for the regular meeting. President Estelle Rivera presided. Donations were made to the V.A. Hospital Birthday Fund, the Circuit Riders and Bilingual.

Book for the service men of Mitchell County and again the ladies are asking the public to get their pictures with name, rank and where they served in the service for the book. This information and the pictures can be left at the VFW Club, with Shirley Delaney at the City National Bank or with me-

bers of the Ladies' Auxiliary. If you will put your name and address on the back of the pictures, they will be returned to you. The ladies are having a garage sale March 18, 19 and 20 at 920 E. 16th St. They would appreciate any donations. This is a fund-raising project for them to continue their projects.

Members attending the meeting were Estelle Rivera, Mary Bell, Virgie Mosley, Martha Lou Wilson, Peggy Falkenberg, Edith Haddad, Ann Ingram, Nellie Blum, Mae Barr, Dorothy Clark, Margie Caswell and Audrey Wilson.

# Kirschbaum Clothiers

## Spring's Number 1 RED Color

SAVE SAVE SAVE

# 25% OFF

All Red Clothing In Stock  
Thursday, Friday & Saturday

## Kirschbaum's

123 W. 2nd 728-8463

**COUPON**

**\$100 OFF**

On Selected Full Size  
**MATTRESS & BOX SPRINGS**

(Coupon Good At Britton's Thru March 20)

# No Service Charge Checking..

and we'll PAY YOU 5 1/4% TO CHECK WITH US!

Why pay a bank to keep and use the money in your checking account when you can have a Homestate Savings checking account WITHOUT SERVICE CHARGE... and earn 5 1/4% on your daily balance.

At Homestate Savings you can have a NO SERVICE CHARGE interest bearing checking account if you have a:

- HOMESTATE SAVINGS IRA ACCOUNT
- HOMESTATE SAVINGS KEOGH RETIREMENT ACCOUNT
- HOMESTATE SAVINGS 6 MONTH MONEY MARKET CERTIFICATE
- HOMESTATE SAVINGS JUMBO CERTIFICATE OF DEPOSIT (will also receive FREE PERSONALIZED CHECKS)

OPEN YOUR INTEREST BEARING CHECKING ACCOUNT AT ANY OF THE FOLLOWING OFFICES:



WE'RE HERE TO HELP WITH OFFICES IN:

SWEETWATER: 208 Elm/236-6364 ABILENE: 1209 East South 11th/673-8339  
BIG SPRING: Coronado Plaza/263-0251 COLORADO CITY: 2205 Hickory/728-2667  
ROTAN: 302 West Snyder/735-2273 HAMLIN: 443 So. Central Avenue/576-2631  
ROSCOE: Broadway and Main/766-3998 SNYDER: Opening Soon

Patricia Denson



# GUARANTEES RESULTS

## In Record Want Ads!

### 3 Lines 3 Times \$3

If You Don't Sell Your Offering, Phone Patricia & She Will Run Your Ad Three More Times At No Cost To You!

This Offer Limited To Items Of A Personal Nature Only (Excludes Businesses, Real Estate & Rent Ads).

**NO REFUNDS AT THIS LOW PRICE**

# Colorado City Record

156 E. 2nd -- P.O. Box 92 728-3413 Or 728-3414

By M Cop  
Let's  
They sa  
tion of  
protein  
dozen,  
eggs c  
pound)  
in an a  
riety  
they're  
ient li  
can eve  
tions.  
You  
more of  
About  
with egg  
lesterol  
only), bu  
restrict  
couple c  
week.  
A sim  
entree f  
strata. I  
combin  
onion a  
layered  
(Cheddar,  
mesan) ar  
mixture o  
milk that  
bread be  
custard d  
The stra  
pared in a  
gerated s  
absorb th  
ture and  
blend toge  
  
THRE  
S'  
4 ozs.  
room:  
can (  
mushr  
1/2 cup c  
1/2 tsp. rr  
3 tbsps. b  
6 slices d  
1/2 cup sh  
dar ch  
1/2 cup sh  
cheese  
1/4 cup  
mesan  
1 tsp. dry  
6 eggs, sli  
1 1/2 cups r  
1/2 tsp. sal  
1/4 tsp. pep  
  
Saute th  
onion and m  
tablespoon  
until the veg  
der. Spread  
butter over c  
bread slice.  
into 1/2-inch  
half of the  
bottom of fo  
12-ounce) cu  
ramekins. To  
mushroom m  
Thoroughly  
cheeses with  
tard and spri  
the mushroom  
each dish. T  
maining brea  
Blend tog  
maining in  
pour them c  
mixtures in e  
Refrigerate s  
overnight.  
Uncover t  
bake them i  
350-degree ov  
brown (abou  
Makes four to  
  
A custard r  
to that which  
goes into qui  
expensive but  
to use up left  
and bits of ch  
Quiche is c  
est and most  
dishes.  
It can be se  
fast, brunch,  
er, dinner or  
snack. It can  
bacon, ham, v  
shellfish, and  
And it is port  
Danish se  
combines f  
cheese and s  
tender custar  
a mild flavor  
ture. It has a  
usually sold  
Creamy Hava  
low flavor an  
ture.  
  
DAN  
SFAFOOD  
1 (9-inch) de  
crust  
1/2 pound fill  
1 cup sma  
shrimp (al  
1 1/2 cups  
Fontina c  
Havarti  
(about 4 oz  
3 eggs, light  
1 cup heavy  
1/4 cup dry w  
1 tsp. toma  
1 clove garli  
1/2 tsp. papri  
3 stuffed gre  
sliced for



# Cooking Corner

## Eggs: Cheap, Versatile Food

By MARJORIE RICE  
Copley News Service

Let's hear it for eggs. They serve up a good portion of cheap, high-quality protein (at 65 cents per dozen, large Grade AA eggs cost 43 cents per pound). They can be cooked in an almost unlimited variety of recipes. And they're packed in convenient little containers that can even serve as decorations.

You can't ask much more of a food.

About the only problem with eggs is their high cholesterol content (in the yolk only), but even people on restricted diets can eat a couple of whole eggs a week.

A simple but delicious entree featuring eggs is strata. It's an appealing combination of sauteed onion and mushrooms layered with cheeses (Cheddar, Swiss and Parmesan) and bread cubes. A mixture of beaten eggs and milk that's poured over the bread becomes a savory custard during baking.

The strata should be prepared in advance and refrigerated so the bread can absorb the egg ilk mixture and the flavors can blend together.

### THREE CHEESE STRATA

- 4 ozs. fresh mushrooms, sliced or 1 can (4 ozs.) sliced mushrooms, drained
- 1/2 cup chopped onion
- 1/2 tsp. marjoram
- 3 tbsps. butter
- 6 slices day-old bread
- 1/2 cup shredded Cheddar cheese
- 1/2 cup shredded Swiss cheese
- 1/4 cup grated Parmesan cheese
- 1 tsp. dry mustard
- 6 eggs, slightly beaten
- 1 1/2 cups milk
- 1/2 tsp. salt
- 1/4 tsp. pepper

Saute the mushrooms, onion and marjoram in one tablespoon of the butter until the vegetables are tender. Spread the remaining butter over one side of each bread slice. Cut the bread into 1/2-inch cubes. Arrange half of the cubes over the bottom of four to six (10- to 12-ounce) custard cups or ramekins. Top each with the mushroom mixture.

Thoroughly combine the cheeses with the dry mustard and sprinkle them over the mushroom mixture in each dish. Top with the remaining bread cubes.

Blend together the remaining ingredients and pour them over the bread mixtures in each dish. Cover. Refrigerate several hours or overnight.

Uncover the dishes and bake them in a preheated 350-degree oven until golden brown (about 20 minutes). Makes four to six servings.

A custard mixture similar to that which fills the strata goes into quiche, another inexpensive but delicious way to use up leftover vegetables and bits of cheese.

Quiche is one of the easiest and most versatile egg dishes.

It can be served as breakfast, brunch, lunch, appetizer, dinner or late evening snack. It can be filled with bacon, ham, vegetables, fish, shellfish, and always cheese. And it is portable.

Danish seafood quiche combines fish, shrimp, cheese and seasonings in a tender custard. Fontina has a mild flavor and firm texture. It has a red rind and is usually sold in wedges. Creamy Havarti has a mellow flavor and buttery texture.

### DANISH SFAFOOD QUICHE

- 1 (9-inch) deep-dish pie crust
- 1/2 pound fillet of sole
- 1 cup small cooked shrimp (about 4 ozs.)
- 1 1/2 cups shredded Fontina or creamy Havarti cheese (about 4 ozs.)
- 3 eggs, lightly beaten
- 1 cup heavy cream
- 1/4 cup dry white wine
- 1 tbsps. tomato paste
- 1 clove garlic, mashed
- 1/2 tsp. paprika
- 3 stuffed green olives, sliced for garnish

If the pie shell is frozen, place it on a cookie sheet and let it thaw for 20 minutes. Using a fork, prick the bottom and sides and bake the shell, empty, in a preheated 375-degree oven for five minutes. Set it aside.

Wash and dry the sole and cut it into one-inch squares. Place them in the pie shell with the shrimp. In a mixing bowl, blend the remaining ingredients, except the olives, and pour them over the seafood. Garnish with the olive slices.

Bake the quiche in a preheated 375-degree oven for 35 to 40 minutes or until it is set in the middle. Let it stand for 10 minutes before serving. Cut into wedges. Serves eight.

### TOMATO SOUFFLE

- 3 tbsps. butter
- 3 tbsps. flour

- 1 cup milk
- 1/2 cup grated Parmesan
- 3 egg yolks
- 1 cup tomato pieces
- Salt, pepper
- 4 egg whites

Melt the butter, add the flour and blend them in a saucepan over low heat. Stir in the milk and cook the sauce, stirring it constantly, until it thickens. Stir in

cheese until it melts. Set it aside to cool slightly.

Beat the yolks and add them to the cheese mixture, stirring it over low heat until the mixture is very thick. Let it cool.

Use canned or fresh tomato pieces, very well drained, and fold them into the egg yolk mixture.

Season to taste with salt

and pepper. Beat the egg whites until they form stiff peaks. Stir a spoonful of the egg whites into the yolk mixture to lighten, then into the egg whites.

Bake the souffle in a buttered and floured 1 1/2-quart dish at 350 degrees for about 40 minutes, or until it is firm. Remove immediately and serve. Makes two generous servings.



**SIMPLY DELICIOUS**—Layer bread and cheese in ramekins, pour on a simple custard mixture, bake it and voila—you've made strata, an economical main-dish bread pudding sure to please in nippy weather. It's a great way to use up leftover bread.



**SAVE 50¢**

**Anacin Tablets**

*Safeway Special!*

ARTHRITIS PAIN FORMULA  
40-ct. Btl. \$1.39  
(Save 54¢)

**\$1.39**

50-ct. Bottle



**SAVE \$1.00**

**Pert Shampoo**

• Normal • Dry or • Oily Formulas (40¢ Off Label) *Safeway Special!*

**\$1.25**

11-oz. Bottle

Savings is off regular label




**SAVE 82¢**

**Finesse Conditioner**

• Regular or • Extra Body *Safeway Special!*

**\$1.17**

7-oz. Bottle



**SAVE 40¢**

**Close-up Toothpaste**

(15¢ Off Label) *Safeway Special!*

**89¢**

4.6-oz. Tube

Savings is off regular label



**MAXIMUM STRENGTH ANACIN-3**

**Anacin-3**

Aspirin Free Formula • 60-ct. tablets or • 40-ct. capsules. (Save up to 50¢) *Safeway Special!*

**\$2.59**

Your Choice

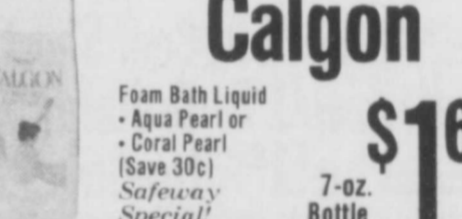


**Mink Difference**

Hair Spray, Assorted • Aerosol or • Non-Aerosol (Save 60¢) *Safeway Special!*

**\$1.99**

7-oz. Size



**Calgon**

Foam Bath Liquid • Aqua Pearl or • Coral Pearl (Save 30¢) *Safeway Special!*

**\$1.69**

7-oz. Bottle



**playtex Playtex playtex**

Disposable Baby Bottles *Safeway Special!*

(Save 30¢) **99¢** 40-ct. Pkg.

(Save 46¢) **\$1.89** 80-ct. Pkg.

# SAFEGWAY HUNDREDS OF SPECIALS!



**SAVE 36¢**

**Style Hair Spray**

Aerosol, Assorted *Safeway Special!*

**\$1.09**

8-oz. Can



**SAVE 91¢**

**Vaseline Intensive Care**

Lotion • Regular or • Herbal (35¢ Off Label) *Safeway Special!*

**\$1.88**

15-oz. Plastic

Savings is off regular label



**SAVE 54¢**

**Disposable Bic Shavers**

Economical and handy *Safeway Special!*

**89¢**

8-ct. Pkg.



**SAVE 70¢**

**Johnson's Baby Oil**

*Safeway Special!*

**\$1.99**

10-oz. Bottle



**SAVE \$1.49**

**General Electric Light Bulbs**

Standard • 60 • 70 or • 100-Watt *Safeway Special!*

**\$1.49**

4-ct. Pkg.

Safeway Gives You Your Choice of Name Brands

**Aapri Facial Scrub** Apricot Facial Scrub (Save 40¢) *Safeway Special!* 2-oz. Tube **\$2.39**

**Sine-off Capsules** • Extra Strength, No Drowsiness Formula, or • No Aspirin Tablets. (Save 60¢) *Safeway Special!* 20-ct. Bottle **\$2.49**

**Murine Clear Eyes** Bonus Pack — get 17-oz. Free. (Save 30¢) *Safeway Special!* 67-oz. Bottle **\$1.69**

**Wet Ones** Baby Towellets. A Quick Clean-up When Soap & Water Are Not Available. Everyday Low Price! 40-ct. Pkg. **\$1.29**

**Sparklers AIR FRESHENERS** Assorted Shapes *Safeway Special!* Each **\$1.49**

All On Special From Bristol-Myers

**Bufferin Tablets** *Safeway Special!* 100-ct. Bottle **\$2.59**

**Excedrin** *Safeway Special!* Tablets. 100-ct. Bottle **\$2.69**

**Bufferin** *Safeway Special!* EXTRA STRENGTH Tablets. 60-ct. Bottle **\$3.09**

**Comtrex** *Safeway Special!* Capsules. 36-ct. Bottle **\$3.49**

**Ban Roll On** *Safeway Special!* Deodorant Assorted. 1.5-oz. Pkg. **\$1.69**

**Excedrin** *Safeway Special!* Capsules. 50-ct. Bottle **\$3.49**

**Comtrex** *Safeway Special!* Tablets. 50-ct. Bottle **\$3.29**

**Comtrex** *Safeway Special!* Liquid Cold Medicine. 6-oz. Bottle **\$2.39**

**Ultra Ban Roll On** *Safeway Special!* Deodorant. • Regular or • Unscented. 1.5-oz. Pkg. **\$1.59**

More than just a fine food store...  
**The special joy of flowers...**


Cut flowers. Green plants. Bright colors. Sweet smells. Nothing makes a day seem as fresh as flowers. At Safeway, we have a floral department, filled with brimming with the gay colors and riotous smell of sweet blossoms, of spring, of late summer. We have cut flowers and fresh bouquets, at Safeway low prices. It's a little bit more for you. *The special joy of flowers, at Safeway's low prices.*

**a little bit more .... from Safeway!**



<b>Sinex</b> Long-Lasting Nasal Spray .5-oz. Bottle <b>\$2.45</b>	<b>Listermint Mouthwash</b> • Regular or • Cinnamon 18-oz. Bottle <b>\$1.79</b>	<b>Protein 21</b> • Extra Hold Hair Spray 9-oz. Aerosol <b>\$1.79</b>	<b>Protein 21</b> • Normal Shampoo 14-oz. Aerosol <b>\$1.99</b>
---	---	---	---

Prices Effective Wednesday, March 17 thru Saturday, March 20, 1982 in Colorado City Sales in Retail Quantities Only!



**SAFEGWAY**

## C. C. Garden Club Plants Flowers For Jay Boy Concert

The Colorado City Garden Club met last Wednesday in the C. C. Thompson Room of City National Bank.

President Frances Myers presided. Secretary Alice Coles read the minutes of the last meeting. Bernice Hilliard gave the treasurer's report and notified everyone that March 11th was the deadline for paying dues.

It was voted to send a memorial contribution to the Environmental Fund in memory of Zelma Owens.

A committee was formed to plant flowers in the auditorium area of Ruddick Park for the Jay Boy Adams concert. Guest speakers J. R. Bell of Big Spring and Clarence McDaniel of Mitchell County, gave a

program on "Poisonous Plants in Texas."

Members present were Mmes. Elora Brown, Dovie Brownfield, Catherine Bell, Bernice Hilliard, Linda Stewart, Jeannie Bodine, Nadine

Gordon, Clara Shoemaker, Nellie Palmer, Anne Halbert, Birdie Martin, Dorothy Johnson, Frances Myers and Alice Coles.

## Historical Foundation Receives Grant

The Texas Historical Foundation has recently been awarded a \$25,000 administrative development grant from the Moody Foundation.

The Texas Historical Foundation is the statewide non-profit organization for historical preservation. Organized in 1954, the Foundation is one of the oldest such groups in the country. Its involvement in her-

itage conservation includes historical preservation loans and grants, history awareness programs, visiting museum-architectural specialists grants, archeological surveys and excavations, and research and publications grants.

The Foundation is supported primarily by individual memberships with additional support from other non-profit

foundations and affiliated organizations.

Part of the Moody Foundation grant will be used in the development and publication of a comprehensive informational brochure outlining the Texas Historical Foundation's programs and how it can be of assistance to Texans.

Copies of this brochure can be obtained

from The Texas Historical Foundation, P.O. Box 12243, Austin, TX 78711.

### Landau's Quality Clothing

**SUNDAY SPECIALS**  
Noon Till 6:00 P.M. On Sunday  
**CLOSED SATURDAY**

## LANDAU'S

116 E. 2nd 728-2251

## Tax Tip

Beginning in 1982, new provisions in the federal tax law will bring some tax relief to many two-earner families. Working couples generally pay higher taxes on their joint income than they would pay if they were single. This is called the "marriage tax penalty."

Under the new law, working couples filing jointly may be able to deduct up to \$1,500 in 1982 and \$3,000 in 1983. They will not have to itemize deductions on Schedule A of Form 1040 to claim this deduction.

The next tax law will allow working couples filing a joint return to deduct from gross income either five percent of the earned income of the spouse with the lower qualified earned income, or \$1,500, whichever is less, in 1982. In 1983 and thereafter, the deduction increases to 10 percent, but cannot exceed \$3,000.

Also increased in 1982 is the Child and Dependent Care Credit. A taxpayer with an income of \$10,000 or less and one qualifying child or dependent will get a maximum credit of \$720.

Those who make more than \$28,000 get a \$480 maximum credit. For two or more qualifying individuals, the maximum credit will range from \$1,440 to \$960. Under prior law the maximum credit was \$400 for one qualifying dependent and \$800 for two or more.

Also, for the first time in 1982 the new legislation will allow workers who are already covered by an employers' qualified pension plan to make deductible contributions to an Individual Retirement Arrangement (IRA) or to the company plan itself provide that the plan provides for voluntary employee contributions and the employer agrees to treat such contributions as deductible. The maximum amount workers will be able to contribute is 100 percent of their earned income, up to a maximum of \$2,000.

The old requirement limited the amount deductible to 15 percent of earned income up to a maximum of \$1,500 and restricted its application to those individuals who were not active participants in employer retirement plans.

Another change increases the tax-free amount allowed for an IRA and spousal IRA from \$1,750 to \$2,250. A spousal IRA allows married taxpayers to set up an IRA for themselves and a separate one for their non-working spouses.

Taxpayers filing 1981 returns due by April 15, 1982 will not be affected by the new changes.

Information on the new tax changes may be found in IRS Publication 553, "Highlights of 1981 Tax Changes." It is available free by using the handy order form that comes with the tax package.

**MANOR HOUSE**  
**Hen Turkeys**  
USDA Inspected Graded 'A'  
Over 9-Lbs. Safeway Special!  
**SAVE 10¢ LB.**  
**59¢**  
-Lb.

**USDA CHOICE**  
**Boneless Brisket**  
Safeway Trim. From USDA Choice Heavy Beef  
Safeway Special!  
**SAVE 37¢ LB.**  
**\$1.98**  
WHOLE -Lb.

**USDA CHOICE**  
**BONELESS Top Sirloin Steak**  
USDA Choice Heavy Beef Loin  
Safeway Special!  
**SAVE 11¢ LB.**  
**\$2.38**  
-Lb.

**SMOK-A-ROMA**  
**Boneless Ham**  
Water Added  
Safeway Special!  
**SAVE 37¢ LB.**  
**\$1.88**  
(Half Hams -Lb. \$2.08) WHOLE -Lb.

**Lunch Meat** Safeway Brand - Spiced Beef Bologna - Garlic Bologna - Cooked Salami - Olive - Pickle 6-oz. Pkg. **75¢**  
**Sliced Ham** Safeway Brand Cooked 6-oz. Pkg. **\$1.69**  
**Beef Bologna** Safeway Brand or Cooked Salami 1-Lb. Pkg. **\$1.65**

**Beef Short Ribs** From USDA Choice Heavy Beef Plate -Lb. **\$1.19**  
**Ground Chuck** Made Exclusively from Beef Chuck -Lb. **\$1.88**  
**Loin Strip Steak** Boneless, USDA Choice Grade Heavy Beef -Lb. **\$3.98**

**Meat Franks** or Beef Smok-A-Roma 12-oz. Pkg. **98¢**  
**Eckrich Franks** Any Variety 1-Lb. Pkg. **\$1.85**  
**Fish Cakes** Pre-Cooked Frozen -Lb. **79¢**

**Swift's Sizzlean** Pork Breakfast 12-oz. Strips Pkg. **\$1.49**  
**Eckrich Sausage** Smoked - Regular or -Potato Kasha Long Pkg. -Lb. **\$2.09**  
**Chicken Hens** Frozen, USDA Inspected Grade 'A' Under 7-Lbs. -Lb. **59¢**

# SAFEGWAY HUNDREDS

**SAVE 35¢**  
**PARKAY**  
**KRAFT Parkay**  
Margarine, Regular Quarters.  
**48¢**  
16-oz. Pkg.

**SAVE 20¢**  
**SCOTCH BUY**  
**Salad Dressing**  
**69¢**  
32-oz. Jar

**SAVE 64¢**  
**Super Suds**  
**HEAVY DUTY Super Suds**  
Laundry Detergent  
**99¢**  
40-oz. Box

**SAVE 34¢**  
**JIF**  
**JIF Peanut Butter**  
**\$1.49**  
18-oz. Jar

**SAVE 30¢**  
**MINUTE MAID**  
**Orange Juice**  
Chilled.  
**69¢**  
32-oz. Carton

**Baked Goods Specials!**  
**Grain Belt Bread** \$1.13  
Mrs. Wright's Safeway Special! 24-oz. Loaf  
**French Bread** Mrs. Wright's New Orleans Style 16-oz. Loaf **85¢**  
**Pocket Bread** Mrs. Wright's White or Wheat 12-oz. Safeway Special! Pkg. **99¢**  
**Crumb Cakes** Mrs. Wright's Streusel 12-count 14-oz. Pkg. **\$1.39**

**In the Dairy Case!**  
**Buttermilk** 99¢  
Lucerne. Safeway Special! 1/2 Gal. Carton  
**Whipping Cream** \$1.27  
Lucerne. Pint Special! Carton  
**French Onion Dip** 87¢  
Lucerne. 16-oz. Special! Carton  
**Choc Milk** \$2.29  
Lucerne Low Fat Chocolate Milk Safeway Special! 1/2 Gal. Ctn.

**Longhorn Cheese** Safeway Brand Halfmoon Cheddar (Save 30¢) 10-oz. Pkg. **\$1.39**  
**Hunt's Ketchup** (Save 30¢) Safeway Special! 32-oz. Bottle **99¢**  
**Hefty Bags** Lawn/Leaf 39-Gallon Safeway Special! 10-cl. Box **\$2.39**  
**Sandwich Cookies** Scotch Buy Assorted (Save 50¢) Special! 24-oz. Pkg. **99¢**

**New On Our Shelves!**  
**grape-nuts** \$1.55  
Post Raisin 16-oz. Box  
**Taco Shells** Tio Sancho 10-cl. Pkg. **93¢**  
**Corn Meal Mix** Aunt Jimmie Buttermilk Self-Rising White 5-Lb. Bag **\$1.65**  
**Fisher's Peanuts** Dry Roast 16-oz. Jar **\$2.29**

**Vanilla Wafers** Busy Baker Safeway Special! 12-oz. Box **89¢**  
**Instant Potatoes** Hungry Jack Safeway Special! 16-oz. Box **\$1.25**  
**Prima Salsa** Hunt's Assorted Spaghetti Sauces Safeway Special! 32-oz. Jar **\$1.59**  
**Jalapeno Pintos** Trappery's With Bacon Safeway Special! 15.25-oz. Can **49¢**

**Do You Have Enough?**  
**M & M's Candies** \$2.19  
Chocolate, Plain or Peanut 16-oz. Bag  
**Sandwich Bags** 150-cl. Special! Box **\$1.04**  
**Golden Corn** Green Giant! 17-oz. Can **49¢**  
**Cracker Jack** Popcorn Snack Special! 3-Pack **69¢**

**Today's Safeway.**  
**SAFEGWAY**  
Where you get a little bit more.

**10¢ Off** on 12-oz. Package Golden Image Colby or Mild Cheddar Coupon good Wed., March 17 thru Sat., March 20, 1982

**20¢ Off** on 2-Liter Shasta Beverages Assorted Flavors Coupon good Wed., March 17 thru Sat., March 20, 1982

**10¢ Off** on 12-oz. Package Kraft Aged Natural Chunk Swiss Cheese Coupon good Wed., March 17 thru Sat., March 20, 1982

**20¢ Off** on 1-Lb. Can Chock Full-O-Nuts Coffee Coupon good Wed., March 17 thru Sat., March 20, 1982

**Fresh Start Laundry Detergent** Get a Fresh Start Every Day! 34.5-oz. Plastic **\$3.99**

## Representative To Be In Colorado City

A representative of the Big Spring Social Security Office will visit Colorado City to help

you apply for benefits, get social security numbers or answer your questions.

The representative will be in Colorado City at the Wallace Community Center April 14 and 28 from 10 a.m.-Noon and 1 p.m.-2 p.m.

You may phone, write or visit your Social Security Office, Room 229, Federal Building, 501 Main Street, Big Spring, Texas 79720.

If you are already receiving benefits, faster service can be given by telephone. The toll free number is 1-800-392-1603.

If you wish to apply to receive benefits, phone 915-267-5226 between 9 a.m., and 4 p.m.

For program chairmen, you may write or phone your Big Spring Social Security Office for a program concerning social security.



Janna Holmann & Mike Ratliff

## Holmann & Ratliff To Marry In May

Mr. and Mrs. Walman Holmann of San Angelo are proud to announce the engagement of their daughter, Janna to Mike Ratliff, son of Mr. and Mrs. Bob Ratliff of Colorado City.

Janna graduated from Wall High School in 1976 and is a junior at Angelo State University. She is also employ-

ed at Angelo State.

Mike graduated from Colorado High School in 1973 and from West Texas University in 1977. He was a member of Sigma Phi Epsilon fraternity while attending West Texas University. He also was voted "Most Outstanding Member" of his senior class. At the present time, Mike is co-owner of the Heritage Haus in San Angelo. He is the grandson of Mrs. Harry Ratliff of Colorado City.

The couple will exchange vows May 29, at the Trinity Evangelical Lutheran Church in San Angelo.

## Fairview T.E.H.A. Meets

The Fairview T.E.H.A. Club met March 11th in the home of Mrs. Versie McMillan.

The club prayer was read and Mrs. Muriel Thurman brought the recreation. The minutes were read and approved.

The program was brought by agent Marion Morris on "Making A Blazer." She gave tips on interfacing, lining and other instructions.

Mrs. Billie Smith gave some tips on gardening and gave each member some seeds.

Refreshments were served to Misses Clara Shoemaker and Agent Marion Morris and Mmes. Bonnie Hunter, Bertie Strain, Muriel Thurman, Wilma Womack, Versie McMillan, Mary Womack and Edna Pace.

## TJC

## Attends Festival

The Texas Junior College Speech and Theatre Association Play Festival was held at North Harris County College in Houston last week. All Junior Colleges in Texas were invited to participate.

Out of the fifteen colleges participating, Western Texas College in Snyder, won an excellent rating and received a trophy with their play, "The Real Inspector Hound." James Meadows played the part of the Hound.

Western Texas had presented the play at a dinner theatre in Snyder Thursday-Sunday before going to Houston. James' parents, Mr. and Mrs. Hubert Meadows and others from Loraine had seen the play there.

## Golf Tourney Slated

The Ballinger Ladies' Golf Association is having their annual Invitational Golf Tournament June 5, at the Ballinger Country Club.

Please reserve this date on your calendars. Flyers will be mailed within the next few weeks.

## Auxiliary Out For Safety

The Ladies' Auxiliary of VFW Post No. 9178 recently sponsored a bicycle safety project at Hutchinson School.

Fifty packets of Lite-A-Bike reflectorized tape were handed out. This tape is applied to outline bicycles to supplement proper lighting of equipment, making each bike more visible after dark.

**Perkin's**  
Apothecary & Mercantile  
Will Be  
**OPEN SUNDAY**  
12:30 - 1:30 P.M.

**TEXAS Ruby Red Grapefruit**  
Safeway Special!  
SAVE \$1.00  
**\$1.98**  
-Lb. Bag

**SCOTCH BUY Russet Potatoes**  
US #1. Safeway Special!  
SAVE 50¢  
**\$1.59**  
-Lb. Bag

**WHITE OR Yellow Onions**  
New Crop. Safeway Special!  
SAVE 47¢ ON 3-LBS.  
**\$3.11**  
Lbs. For

**BOSTON FERN Hanging Basket**  
6-Inch Pot. Safeway Special!  
SAVE \$1.00  
**\$3.98**  
-Each

**D'Anjou Pears** Extra Fancy Washington State (Save 10¢ Lb.) Special! -Lb. **69¢**  
**Seedless Raisins** Town House 15-oz. Pkg. **\$1.69**  
**Macadamia Nuts** Frieda's (Save 50¢) 8-oz. Special! Pkg. **\$1.49**

**Yellow Squash** Crookneck -Lb. **69¢**  
**Turnip Greens** Fresh Bunch **59¢**  
**Fresh Broccoli** Fresh & Crisp -Lb. **99¢**

**Pine Bark Mulch** 3 Cu. Ft. Bag **\$2.29**  
**Marble Chips** White. 1/2 Cu. Ft. Bag **\$2.69**  
**Vertagreen** Lawn Fertilizer 15-5-10 40-Lb. Bag **\$6.98**

**Scotch Heather** 4-Inch Pot -Each **\$2.29**  
**Soil Conditioner** Peat 40-Lb. Bag **\$1.99**  
**Pothos Ivy** 6-Inch Pot -Each **\$5.29**

# OF SPECIALS!

**LOOK FOR THE RED TAGS!**  
Look for the Red Tags and Arrows. They point the way to greater savings! Everyday you'll find Hundreds of Reduced Price Specials throughout all departments of your Safeway. There are new Specials every week... many are not advertised... Another Way To Save!

**BLOSSOM TIME Homo Milk**  
SAVE 54¢  
**\$1.99**  
Gallon Jug

**SNOW STAR Ice Cream**  
Assorted Flavors  
SAVE 40¢  
**\$1.49**  
1/2 Gal. Carton

**Dr Pepper**  
REGULAR or SUGAR FREE  
SAVE 50¢  
**\$1.09**  
2-Liter Plastic

**FROZEN SEAFOOD VALUES!**  
**Fish Sticks** Captain's Choice (Save 30¢) Special!  
14-oz. Pkg. **59¢**  
8-oz. Pkg. **\$1.03**  
**Fish Fillets** Mrs. Paul's Party Pack (Save \$1.30) Special!  
25-oz. Pkg. **\$2.39**

**Flounder Fillets** Captain's Choice (Save 50¢) Special!  
16-oz. Pkg. **\$2.39**  
**Ocean Perch** Fillets Captain's Choice (Save 33¢) Safeway Special!  
16-oz. Pkg. **\$1.79**  
**Haddock Fillets** Captain's Choice (Save 50¢) Special!  
16-oz. Pkg. **\$1.99**  
**Breaded Oysters** 10-oz. Pkg. **\$2.19**  
**Fish Crisps** 8-oz. Pkg. **\$1.09**  
**Scallops** Captain's Choice. Pre-cooked. Pkg. **\$3.09**  
**Fried Clams** Mrs. Paul's 5-oz. Pkg. **\$1.39**  
**Cocktail Sauce** Del Monte Seafood 12-oz. Jar **99¢**  
**Lemon Juice** Minute Maid Pure Frozen 7.5-oz. Bottle **77¢**  
**Tartar Sauce** Hellmann's 8-oz. Jar **85¢**  
**Crab Boil** Zatarain's 3-oz. Pkg. **53¢**

**Pot Pies 19¢**  
Frozen Foods are Fast and Easy  
Scotch Buy • Beef • Chicken • Turkey  
Safeway Special!  
SAVE 10¢  
6-oz. Pkg. **\$1.37**

**Niblets Corn** Green Giant With Butter Sauce Safeway Special!  
10-oz. Pkg. **93¢**

**Party Pizza** Chef Saluto Deep Dish Safeway Special!  
26-oz. Pkg. **\$3.13**

**Broccoli** Stouffer. In Cheddar Cheese Sauce. Safeway Special!  
9-oz. Pkg. **\$1.37**

**Whipped Topping 79¢**  
Dover Farms. By Birds Eye. With Real Cream. Safeway Special!  
8-oz. Tub **79¢**  
SAVE 30¢

**Fantail Shrimp** Booth. Breaded. Safeway Special!  
SAVE \$1.36  
16-oz. Pkg. **\$3.99**  
**Peeled Shrimp** Captain's Choice Peeled and Deveined. 12-oz. Pkg. (Save \$1.00) Safeway Special!  
**\$6.39**

Honey Grahams 16-oz. \$1.19  
Vanilla Wafers 11-oz. \$1.19  
Chips Ahoy 16-oz. \$1.99  
**10¢ Off** on 12-oz. Tin  
Philadelphia Brand Cream Cheese  
Coupon good Wed., March 17 thru Sat., March 20, 1982

Mrs. Paul's Fried Onion Rings French Fried 16-oz. Pkg. **\$1.67**  
**10¢ Off** on 10-oz. Package  
Kraft Cracker Barrel Cheese  
\*Sharp or \*Extra Sharp  
Coupon good Wed., March 17 thru Sat., March 20, 1982

Clorox Pre-Wash with Pump 16-oz. Bottle **\$1.49**  
Tilex Mildew Remover 16-oz. Bottle **\$1.99**  
Formula 409 Trigger Spray 22-oz. Bottle **\$1.23**  
Liquid-plumr Heavy Duty for Drains 32-oz. Bottle **\$1.36**

Prices Effective Wed., March 17 through Sat., March 20, 1982 in Colorado City Sales in Retail Quantities Only!  
**SAFEWAY**  
STORE HOURS: 7a.m. 'til 11p.m. DAILY

# Classified Advertising

## Index of Classifications

### Business Hours:

8:30 a.m. to 5 p.m.

Monday thru Friday

Closed Saturday and Sunday

Phone: 728-3413

Deadlines: Tuesday Noon Friday Noon

#### ANNOUNCEMENTS

- A-1 Public Notices
- A-2 Business Notices
- A-3 Card of Thanks
- A-5 In Memoriam
- A-7 Lost & Found
- A-9 Personals
- A-11 Fraternal Notices
- A-13 Business Opportunities
- A-15 Instructions
- A-17 Services & Repairs

#### RENTALS

- C-1 Homes for Rent
- C-3 Apartments
- C-5 Rooms for Rent
- C-7 Wanted to Rent
- C-9 Business Property
- C-11 Warehouse Space

#### REAL ESTATE

- E-1 Homes for Sale
- E-3 Real Estate Wanted
- E-5 Farms & Ranches
- E-7 Lots & Acreage
- E-9 Business Property
- E-11 Out of Town Property

#### F-11 Feed & Seed

- F-13 Farm Equipment
- F-15 Building
- F-17 Tools & Machinery
- F-19 Boats & Motors
- F-21 Wanted to Buy
- F-23 Equipment Rentals

#### TRANSPORTATION

- G-1 Motorcycles
- G-3 Auto Repair
- G-5 Campers
- G-7 Trucks - Trailers
- G-9 Autos for Sale
- G-11 Auto Financing

#### MERCHANDISE

- F-1 Miscellaneous for Sale
- F-3 Garage Sales
- F-5 Antiques
- F-7 Pets & Supplies
- F-9 Livestock

#### MOBILE HOMES

- D-1 Mobile Homes for Rent
- D-3 Mobile Homes Sites for rent
- D-5 Mobile Homes for Sale

#### EMPLOYMENT

- B-1 Male-Females Help Wanted
- B-3 Jobs Wanted

### Classified Rates

NO. OF LINES	ONE TIME	TWO TIMES	THREE TIMES	FOURTH TIME	FIVE TIMES
3	2.70	3.56	4.54	FREE	7.02
4	3.60	4.75	6.05	FREE	9.36
5	4.50	5.94	7.56	FREE	11.70
6	5.40	7.13	9.07	FREE	14.04
7	6.30	8.32	10.58	FREE	16.38
8	7.20	9.50	12.10	FREE	18.72
9	8.10	10.69	13.61	FREE	21.06

#### A-1 Public Notices

##### Notice of City Officers Election City of Loraine

Notice is hereby given that a city officers election will be held on the 3rd day of April, 1982 in the above named city for the purpose of electing two councilmen for said city. Ballot position one will be Eddie C. Galvan, position two will be Raymond John Hackfeld, and Allen Bennett Mosher.

##### Election Judge will be Mrs. Christine Britton and alternate judge will be Mrs. Debbie Finley.

The polls at the above named place shall, on said election day, be open from 7 a.m. to 7 p.m.

Absentee voting for the election shall be held at City Hall in said city, and said place of absentee voting shall remain open for 8 hours on each day of absentee voting which is not a Saturday, Sunday or an official state holiday, beginning on the 20th day and continuing through the 4th day preceding the date of said election. Said place of voting shall remain open between the hours of 8:00 a.m. and 8:00 p.m. Dated this 9th day of March, 1982.

Signed: Royce Beights, Mayor  
Attest: Kaye Nell Cornutt, City Secretary

#### Aviso de Eleccion de Funcionarios para la Ciudad de Loraine

Este aviso servira para publicar la eleccion de funcionarios para la ciudad el dia 3 de abril de 1982 en la ciudad mencionada arriba para el proposito de elegir dos funcionarios para dicha ciudad. Primer posicion en balota sera Eddie C. Galvan. Segunda posicion sera Raymond John Hackfeld y tercer posicion sera Allen Bennett Mosher.

##### Sirviendo sera Mrs. Christine Britton como Juez y Mrs. Debbie Finley como Juez auxiliar.

El sitio de votacion en el lugar mencionado arriba estara abierto el dia de eleccion desde las 7 a.m. hasta las 7 p.m.

La votacion ausente para la eleccion citada arriba se llevara a cabo en el edificio casa Municipal en la dicha ciudad y dicho lugar de votacion ausente se mantendra abierto por ocho horas en cada dia de votacion ausente no siendo sabado, domingo o dia festivo.

#### Oficial del Estado, principiando 20 dias y continuando hasta el cuarto dia antecedendo la fecha de dicha eleccion. Dicho lugar de votacion se mantendra abierto dentro las horas de las 8 a.m. hasta las 5 p.m. Fechado el dia 9 de marzo de 1982.

Firmado: Royce Beights, Alcalde  
Atestiguar: Kaye Nell Cornutt, secretaria de la ciudad

#### NOTICE OF PUBLIC HEARING

There will be a public hearing held before the City Council of the City of Colorado City, Texas at a Called Meeting on the 23rd of March, 1982, at 7:00 P.M., in the City Council Chambers, City Hall, 180 West 3rd Street, Colorado City, Texas. The public hearing will be to consider requests for use of Motel/Hotel Occupancy Tax Funds.

Signed: Elmer Martin, Mayor  
Attest: Rita Espinoza, City Secretary

#### Give away to the right family in the country...a beautiful black and amber German Shepherd, approximately 4 years old. A wonderful watch dog. Phone 728-5641 after 5:30 p.m.

WANTED: Used travel trailer, about 8x15, preferably self-contained. Phone 728-2371 after 7 p.m.

#### A-17 Services & Repairs

Color and black and white TV repair. All brands. Used TVs.

John Sanders  
620 Chestnut 728-3863  
Service call-\$12.50

#### Will do furniture upholstery. Free estimates, free pickup and delivery. Phone 728-2158.

Will do water well drilling, casings, windmill work and pump. Phone 728-3083.

#### Roofers needs work. 25 years experience, shingles or hot, also do carpenter work. Phone anytime, 728-5341.

#### PAINTING and minor repairs. 25 years experience, reasonable prices, references. Free estimates. Phone 728-3105.

Tree trimming. Shrubs pruned, yard work. Phone 728-8618 for estimate.

Expert watch and jewelry repair now available at Kirschbaum's.

#### Western Mattress Co. Bi-weekly sales and service. Phone 737-2333 and leave name.

I will do concrete work, sidewalks, patios, floors and cellars. Phone 728-5120, Joe's Concrete.

Odd jobs, light trash hauling, attic, garages cleaned, etc. Mike's Handy Man Service, 728-8618.

#### FRANCO CONCRETE WORK

Patios, Floors, Sidewalks, Driveways, Exposed Aggregate. 728-5880 443 W. 17th Colorado City, Texas 79512

#### BOOT & SHOE REPAIR AT Longhorn Leather Works

E. Interstate 20 West of Wood's Boots Monday Thru Friday 8:30-12 & 1:30-5:30 Saturday 8:30-Noon 728-5067

#### Lane Palmer Painting Service. Free estimates, phone 728-8618.

#### ATTENTION

For custom made draperies by Wanda Sikes, please phone 728-3911 for appointment.

#### Complete fireplace and chimney repair. Chimney sweep service. Brick and stone work. Free inspection and estimates. Phone Lane Palmer, 728-8618.

See Classified Ads Page 9

#### CONTRACTORS NOTICE OF TEXAS HIGHWAY MAINTENANCE WORK

Sealed proposals for a Picnic Areas and Litter Barrels Maintenance Contract for various locations in Mitchell County, Texas, will be received at the State Department of Highways and Public Transportation, P.O. Box 150, Abilene, Texas, 79604 (U.S. 83-84 By-Pass), until 11:00 a.m., Tuesday, March 23, 1982, and then publicly opened and read. The specifications and proposals are available at the District Maintenance Office, Abilene, Texas, and the Mitchell County Maintenance Supervisor's Office, Colorado City, Texas. Usual rights reserved.

#### Real Estate Putman JERRY & WINNIE PUTMAN PHONE 728-3338

#### FARMS

240 acres, 1/4 minerals, good farm, \$525 per acre. Farm Approx. 80 Acres. 15 Miles SW Of Westbrook. \$545 Per Acre.

#### LAKE PROPERTY

LAKE PROPERTY: 3 B/R, 2 Bath Double Wide Mobile Home. \$27,500.

Lake Colorado City Property.

#### RESIDENTIAL

3 bedroom, 1 bath, with about 1 1/2 acres on southside. \$25,000. Possibly owner finance.

Lovely 3 bedroom, 2 bath brick on about 2 acres. Built-in double oven and range, dishwasher, has a large wood burning fireplace, garden, orchard, small green house plus a 3 room guest house all for \$75,000.

Large older home in Loraine. 3 bedroom, 1 bath, almost 2 full lots, \$12,000.

Grocery, station & garage with trailer hookups plus a 2 bedroom, 1 bath house. All for \$20,000.

14 x 73 mobile home, 2 bedroom, 2 bath, located in Ira. \$12,234.00.

2 bedroom, 1 bath, 1 car attached garage, fenced backyard, good neighborhood, 926 Marshall, \$17,500.

3 bedroom 1 1/2 bath, nice size rooms on large lot. \$26,000.

Lovely 3 bedroom, 2 bath, with formal living room and deck on 9 acres, large metal shop with 14x20. \$66,000.

#### BUSINESSES

Large building on large lot. 250 ft. highway frontage with small storage house. Excellent location, \$25,000.

Building equipment and inventory for sale. This is a going business and has a very good net income. All of this goes for only \$60,000.

We now have two businesses in Colorado City for sale. For more information give us a call. We also have a commercial building for sale. Jerry & Winnie Putman Phone 728-3338 640 E. 11th

## IF YOU CAN FIND A BETTER REBATE, TAKE IT.

## IF YOU CAN FIND A BETTER CAR, BUY IT.

Chrysler rebates are all 100% factory paid, up to \$2,000\*.

All GM rebates require dealer money that could be added to the price you pay.

<h3>\$750</h3> <p>All factory cash on Plymouth Reliant K S.E. 4-dr. and wagon models.</p> <p><b>Chevrolet Citation offers only \$562 factory cash.</b></p>	<h3>\$750</h3> <p>All factory cash on new Chrysler LeBaron Medallion 4-dr. models.</p> <p><b>Buick Century and Olds Ciera offer only \$375 factory cash.</b></p>	<h3>\$500</h3> <p>All factory cash on Plymouth Horizon Custom models.</p> <p><b>Pontiac T1000 offers only \$375 factory cash.</b></p>																		
<p><b>Here's how a \$750 rebate works.</b></p> <p><b>Here's how a \$500 rebate works.</b></p>	<table border="1"> <thead> <tr> <th></th> <th>From Dealer</th> <th>From Factory</th> </tr> </thead> <tbody> <tr> <td>Chrysler GM</td> <td>\$-0-</td> <td>\$750</td> </tr> <tr> <td>Chrysler GM</td> <td>\$188*</td> <td>\$562</td> </tr> </tbody> </table>		From Dealer	From Factory	Chrysler GM	\$-0-	\$750	Chrysler GM	\$188*	\$562	<table border="1"> <thead> <tr> <th></th> <th>From Dealer</th> <th>From Factory</th> </tr> </thead> <tbody> <tr> <td>Chrysler GM</td> <td>\$-0-</td> <td>\$500</td> </tr> <tr> <td>Chrysler GM</td> <td>\$125*</td> <td>\$375</td> </tr> </tbody> </table> <p><b>It's the factory cash that counts.</b></p>		From Dealer	From Factory	Chrysler GM	\$-0-	\$500	Chrysler GM	\$125*	\$375
	From Dealer	From Factory																		
Chrysler GM	\$-0-	\$750																		
Chrysler GM	\$188*	\$562																		
	From Dealer	From Factory																		
Chrysler GM	\$-0-	\$500																		
Chrysler GM	\$125*	\$375																		

### FREE SCHEDULED MAINTENANCE

for 2 years or 24,000 miles, whichever comes first, on every new front-wheel-drive car and truck.

Get up to \$2,000\* factory paid rebates on all these new cars and trucks.

\$300	all factory cash on 1982 Chrysler New Yorker; Plymouth Champ, TC3 and Sapporo.
\$500	all factory cash on 1982 Chrysler Cordoba; Plymouth Voyager, Arrow pickup, and Horizon (except Miser).
\$600	all factory cash on 1982 Plymouth Reliant K Base 4-door, Custom 2-door, 4-door and wagon, and S.E. 2-door models; on 1982 Chrysler LeBaron, Medallion 2-door models (except convertibles) and Chrysler Town & Country wagons.
\$750	all factory cash on 1982 Chrysler LeBaron Medallion 4-door models; Plymouth Reliant K S.E. 4-door and wagon models.
*\$2,000	all factory cash on 1982 Imperial and '81 Trailduster.

MUST ORDER BY MARCH 19th OR TAKE DELIVERY BY MARCH 31st.

SEE YOUR PARTICIPATING DEALER FOR DETAILS.

## ANDERSON MOTOR CO.

245 Chestnut 728-3452

Continued From Page 8



**Storm Windows & Doors,** vinyl siding, insulation, fencing (chain link and wood). 100 percent financing. Ideal Exteriors 1719 Vine 728-2686

**Building & Remodeling** 18 years Experience Electrical & Plumbing No job too small or too large Add ons, conversions, prompt courteous service. Phone 728-8402

**RENT IT!** Rent Until You Own Televisions, Furniture And Appliances Pete Myers Rentals 257 E. 2nd 728-5286

**Carpet Dull & Dirty?** Phone Speedy Carpet Cleaning Also acoustical ceilings, blown taping and bedding texturing. Reasonable rates. Phone 728-3078.

**Cut 'n' Hut Barber Shop** Men's Hairstyling 1546 Westpoint, E. Hwy. 80 Tues. Sat. 8 a.m.-6 p.m. 728-3351 Doyle Mitchell Barber & Stylist

**PLUMBING SPECIALISTS** Johnny Tammen 1218 Hickory Colorado City Plumbing & Refrigeration We do plumbing, refrigeration, heating and air conditioning work. We also have electric sewer service, water heaters, repairs & installations. Free Estimates. Phone 728-5511

**Complete Welding Supplies Medical Oxygen Tools Safety Equipment** Gayle McDonald Welding Supply 1110 College Ave. 573-5329

I do all types of carpenter work, carpors, storm windows, painting, storm doors. References. Phone 728-8278 or 728-3074 after 6 p.m.

**B-1 Male-Females Help Wanted**

**AVON CALLING** Never had a job? Develop skills while earning good \$\$\$, sell Avon, phone Doris Hale, collect, 915-573-8625.

Needed immediately 3-11 LVN. Apply in person at Kristi Lee Manor, 1941 Chestnut, 728-5247. Starting salary \$45 per shift, \$1,000,000 hospitalization policy, life insurance, vacation pay, holidays, savings bond plan and a meal. Travel expense if qualified.

**HELP WANTED:** Need a hairdresser. Pay commission or booth rental. Come by and talk to Liz Alvarez at Liz's Casita of Beauty, 1703 Walnut, 728-3981, resident phone 728-3966.

\$30 per hundred paid for processing mail from home. Experience unnecessary. Information, send self-addressed, stamped envelope. TYLER, Box 707, Livingston, NJ 07039.

**HELP WANTED:** Needed additional designers. Some experience required. Apply in person only at Colorado Floral, 341 E. 3rd.

**NURSING** or similar Medical background required to qualify as our examiner. Complete exams for many insurance companies. Start part time. Training provided. We are a national organization, and need an examiner for this area immediately. For information and application write: Lifedata Medical Services, Inc., 7933 Clayton, Rd., St. Louis, Mo. 63117.

**B-3 Jobs Wanted**

**WELDING:** Will do portable welding. Many years of experience. Phone 728-3680, Lee Crabtree.

**RENTALS**

**C-1 Homes for Rent**

Small furnished lake cabin for rent year round. Retired couple to fix up and repair for part of rent. Phone 915-798-4187.

Wanted to rent, lease or purchase home and five plus acres within ten miles of Colorado City. Phone 728-5347.

**C-3 Apartments**

One bedroom efficiency apartment for rent. Phone 728-3323.

**D-3 Mobile Homes Sites For Rent**

Trailer space at Hilltop Trailer Park. Phone 728-3577 or 728-3247.

Mobile Home lots for rent for total electric or other. Phone 728-2169.

Trailer space for lease for \$55 only. For more information, phone 728-3625.

**RELEASER**

**E-1 Homes for Sale**

**FOR SALE:** 2 bedroom brick, 1 bath, den, large laundry room, fruit trees in back. Phone 728-3308.

**FOR SALE:** 3 bedroom, 1 bath house on 2 corner lots. Phone 728-3791 to see house.

Large 3 bedroom, 2 bath house on wooded lot, basement, comfortable open floor plan, 1105 Chestnut, 728-2559 after 6 and Sundays.

We have two new three bedroom home. All contain bath and 3/4 total electric, refrigerated air, carpeted, deeded lot at Lake Colorado City. Owner financing available. Phone 728-5661 or 915-694-1902.

There are many ways to finance a home today. Phone or come by and let us try to help you arrange financing to best meet your needs.

**Must Sell:** 3 bedroom, 1 bath brick home, fireplace, storm windows. Price reduction possible.

Corner lot-large three bedroom, 2 bath home, separate dining, fenced yard, fruit trees, separate rental in back, low 60's.

Home and business-large three bedroom, den, fireplace, greenhouse, currently beauty shop, equipment available, mid 50's.

Boyd Real Estate & Building 270 Walnut Office 728-5338 Home 728-2223

**FOR SALE:** Attractive 1,350 sq. ft., two bedroom, one bath, Spanish-style house, central air and heat, fenced back yard, good location, \$32,000. 1435 Chestnut. Phone 728-8422 or come by after 6 p.m., or phone 728-3430 before 6.

New listing. For sale by owner. 2 1/2 year old brick home on 3 acres, 2 miles out. 4 bedrooms, 2 bathrooms, sunken den with fireplace, formal dining room, utility room, 2 car garage, fenced in back yard. Pecan, peach and pine trees. Interested people only! For appointment, phone 728-3451 or 728-8242.

**E-5 Farms & Ranches**

**FOR SALE:** Farms and ranches, houses and residential lots. Phone R. B. Baker Real Estate 728-5052, Henry Bilberry, 728-3227 or Rita Latimer.

**E-9 Business Property**

For Rent for commercial use. Small office, gift shop, craft shop or similar. Phone 728-8618.

**MEEMARIS**

Jersey milk cows, \$675; V-B Moline tractor with planter and cultivator, \$700; a good number of fullblood game chickens; 4x4x8 chicken pens; quite a few beehives, \$20 each. Glynn Morris, 306 School Ave., Lorraine, Tex.

**FOR SALE:** Game hens, two pit bulldog puppies, also one male and one female pit bulldog. Phone 737-2614.

We sell New Home sewing machines. Repair all makes. Phone Stevens, at Free's Friendly Shop.

Thoroughbred Triple A Quarter Horse for sale. Phone 728-5410.

**FOR SALE:** 6 piece Ludwig drum set with Zildjian cymbals and cases, complete. Phone 728-5197.

**FOR SALE:** 8' sofa, one recliner, one swivel rocker in good condition. Phone 728-8235 after 5 p.m.

Firewood, oak or mesquite. Delivered and stacked. Sky Akers, 893-5865.

**FOR SALE:** Electronic cash register, \$150. Can be seen at Gas & Grub.

**FOR SALE:** 2 aquariums, 10 gallon and a 20 gallon with stand. Phone 728-2362.

**F-3 Garage Sales**

**GARAGE SALE** 544 E. 13th Friday & Saturday 8 A.M. - 5 P.M. Chairs, art supplies, air condition and other miscellaneous items. You Name It - We Have It It's The 2nd Moeser Garage Sale

**CARPOT SALE** 721 Chestnut Friday & Saturday dishes, baby clothes, children's clothes, playpen, strollers, infant carriers, toys, much more

**GARAGE SALE** At American Legion Hall Across from Anderson Motors Saturday 8 a.m.-3 p.m. Variety of Things

**GARAGE SALE** 413 Pine All Day Friday, March 19 Mainly girls' clothes

**Don't hold a fire sale in your home! Have your chimney cleaned by Lane, 728-8618.**

**F-21 Wanted to Buy**

Let us clean out your attic or garage. We buy all kinds of junk. Duke Used Furniture, 504 W. 3rd, Big Spring, 267-5021.

**TRANSPORTATION**

**G-7 Trucks-Trailers**

**FOR SALE:** 1980 Dodge pickup. 3/4 ton-4 wheel drive, low mileage, power and air conditioner, cruise-tilt steering wheel, loaded. Phone 728-3302 or 644-2551.

**G-9 Autos for Sale**

**FOR SALE:** 1981 Buick Riviera, diesel, loaded, beige with beige interior. 20,000 miles, \$13,000. Phone 728-2197 or 728-3709 after 5 p.m.

**FREE**  
**Washer & Dryer Set or Microwave Oven**  
 with any new mobile home delivered by April 30th, 1982

As a housewarming gift, Oasis Mobile Homes will give away a washer & dryer set or a microwave oven (your choice) with the purchase of any new mobile home delivered by April the 30th!

Come out and see the large selection of homes waiting for you.

**OASIS MOBILE HOMES**  
 Hwy. 84 Bypass Snyder (At Royal Trailer Park)  
 573-4924 or 573-5510

**NOW ACCOUNTS**

With No Strings Attached  
 No Charge Checking  
**PAYS YOU 5 1/4 %**  
 No Minimum Balance  
*First 150 Checks Free!*

**COLORADO CITY SAVINGS & LOAN**  
 Member FSLIC  
 105 W. 2nd 728-2671  
 401 East Broadway Colorado City 235-1748  
 Sweetwater

**grow your own RETIREMENT FUND**

with tax-deductible dollars With A Farm Bureau IRA We'll show you how. No obligation. Call us or stop by your Farm Bureau Insurance office.

Phone Today!  
 Dennis Weaver  
 Dan Morgan  
 Your Farm Bureau Insurance Agents

Mitchell Co. Farm Bureau  
 130 Walnut 728-3408

**Colorado City Kiwanis Club FARM EQUIPMENT AUCTION**  
**Saturday, March 20 At 10 A.M.**  
 Located At The Mitchell County Fairgrounds  
 1 Mile West Of Colorado City On Business Highway 80

**TRACTORS**

- 1980 John Deere 4840 Diesel Tractor, Cab, A/C, AM/FM Radio With Tape, Full Weights, 3 Hydraulic Outlets, Axle Duals, 1100 Hrs. Excellent.
- 1980 Ford TW-20, Cab, A/C, 3 Remote Outlets, Full Weights, Duals, 1400 Hrs. Excellent.
- 1981 Ford 6700, Cab, A/C, Dual Remote Outlets, 550 Hrs. Like New.
- 1974 Ford 9600 Diesel, Cab, A/C, Full Weights, 3 Remote Outlets, Good Condition.
- 1970 David Brown 990 Diesel Tractor, Very Clean.
- 1969 Ford 4000 Row Crop Diesel Tractor, 8-Speed, One Remote Outlet, Extra Good Condition.
- 1961 Ford 901 Selectospeed Diesel Tractor, Wide Front, Power Steering. Clean.
- 1957 Ford 640 LP Tractor, Overhauled Front To Back, Painted, Very Nice.
- 1942 Farmall M-LP Tractor - Needs Some Work But Solid Foundation.
- 165 Ford Lawn & Garden Tractor, Rear Mounted Rotary Tiller, Front Dozer. Extra Clean.
- 1950 International Harvester TD-14A Crawler With 12 Ft. Dozer Blade & 4 Ft. Grubber, Electric Start. Needs A Little Repair.

**EQUIPMENT**

- 1980 Hamby Folding 8-Row Cultivator-1x3 Shanks, All Gauge Wheels And Hydraulic Cylinders & Hoses.
- 1976 Hamby 8-Row Folding Cultivator-1x3 Shanks, All Gauge Wheels, And Hydraulic Cylinders & Hoses.
- Long 680 Wire Baler
- Hesston PT-12 Windrower
- Gehl CB-600 Ensilage Cutter W/Broadcast & 2 Row Head
- Cherokee Pop Up Baler Loader
- Gehl BU-86 Ensilage Trailer-Side Discharge
- Gehl 120 Grinder-Mixer With Electric Scales.
- John Deere 14 Ft. Model 310 Double Offset Disc
- Long 10 Ft. Pull Type Tandem Disc
- Ford 503 - 3 Pt. Side Delivery Rake
- Tye 14 Ft. 24 Drop - 3 Point Seeder
- Ford 4 Btm. 14" Shear Bolt Moldboard Plow
- Nobles 14 Ft. 3 Point Field Cultivator
- Clay 1500 Gallon Liquid Manure Spreader
- Ford 2-Row 11 Shank Rear Cultivator
- Kelly 2-Row Planter On Tool Bar
- Kelly 2-Row Planter On 4 Row Tool Bar
- 12-Row 3 Pt. Sandfighter
- 16 Row Drag Type Sandfighter
- Rear Mount Rake For Garden Tractor

**PICKUPS - TRUCKS**

- 1973 International 1/2 Ton On LP
- 1968 Chevrolet 1/2 Ton

**MISCELLANEOUS EQUIPMENT**

- 1 - New 3 Ft. Double Sided Stainless Steel Nursery Hog Feeder.
- 20 - Stainless Steel Lixit Hog Waterer's
- 30 Ft. Century 8" Grain Auger On Wheels
- 60 Sheets Of 36"x24" - 12" Crimp Sheet Metal - New
- 75 - 1 1/2"x20' Square Tubing - New
- 35 - 1"x20' Square Tubing - New
- 20 - New 20"x32" Hog Panels
- 14 - 8"x32" Used Hog Panels
- 13 - 6"x32" Used Hog Panel Gates
- 8 - Portable A Frame Hog Houses

**Many Items Too Small To List. Used Tires, Tools, Shanks, Etc.**

Food & Drinks Available At Sale Site Loader Available To Load & Unload

Terms Of Sale:  
**Cash, Cashier's Check Or Bank Letter Of Credit**  
 For More Information:  
**Phone: Area Code 915 728-2031 Or 728-3742 Mac Or Steve Morris**  
**AUCTIONEER: GRADY W. MORRIS**  
**TXS-013-0341**

