



FIFTH GRADE ROYALTY—Bill McGuire and Jane Noland, seated, were crowned king and queen of Hutchinson School's fifth grade in ceremonies Thursday at the school. Other members of the coronation's "royal family" are, left to right standing, Connie Dearen, pianist; Judy McNeil, assistant to mistress of ceremonies; Lana Kay Shurtieff, duchess; Barbara Echols, duchess; Dale Walker, duke; and Arla Jo Payne, mistress of ceremonies. The king and queen were selected by the fifth grade pep squad and football team.

100 ENTRIES ARE EXPECTED

Texas Tech's Anderson to Judge 20th Annual Youth Stock Show

Ranchers and farmers of tomorrow will parade more than 100 animals before judges here Saturday in the 20th annual Mitchell County 4-H and FFA Livestock Show.

Judging in the show, which is financed by Mitchell County United Fund, will be fat steer, fat lamb, and fat swine divisions.

Phone Staffer In Oklahoma For Schooling

Bradley Redman, Southwest Bell Telephone installer-repairman, is in Oklahoma City, Okla., for an 80-hour electronics school.

He is the second Colorado City phone company employee to attend the special school covering equipment used on long distance inter-city cables.

In the school during the fall was Kenneth Ezell. Bradley will attend the special electronics schooling Saturday. His course will include the study of maintenance and troubleshooting on inter-city cables and equipment, classes on theory of operation, plus actual experience while working on the equipment.

Thompson To Direct Credit Work For President's Parley

TO ARRIVE HERE FEB. 1

Brown Accepts Post as City's Director of Parks, Recreation

William Brown, who has organized community recreation programs in three southwestern cities, has accepted the position of Colorado City's director of parks and recreation.

The notified City Manager Rollin K. Snethen late Thursday that he would assume the directorship here Feb. 1.

Brown, now a resident of Oklahoma, has served as head of parks and recreation programs in Brownwood and Port Arthur and one Oklahoma city, Norman.

City Council in its December meeting voted to offer the director's post to Brown at an annual salary of \$4,600, including auto expenses.

At the same time the council transferred \$1,000 from a contingency fund to parks and recreation supervision so that a municipal recreation can be planned and initiated without having to wait for budget appropriations in the next fiscal year.

Brown, who is 31 and married, attended public schools in Wichita Falls and Austin before studying at Oklahoma City University and Baylor University, where he received his bachelor of arts degree.

superintendent of parks and recreation. Since leaving the municipal staff at Oklahoma City, he has been personnel interviewer at Tinker Air Force Base, Oklahoma City.

Brown was here in Colorado City late in 1956 to confer with the municipal parks and recreation board, which recommended to City Council that he be hired as Colorado City's first director.

He initiated year-around recreation programs in Port Arthur, Brownwood and Norman—a type of project that will face Brown here.

His experience has been in directing and supervising diversified, year-around activities for all age groups.

Included in these activities have been summer programs in sports and games, arts and crafts, dramatics, special events, nature

trips and picnics, story telling, swimming, hobbies and other recreation.

Brown also has planned and directed afternoon recreation programs on playgrounds, Saturday games in gymnasiums, teen parties and informal get-togethers, sports leagues and tournaments, square dancing for youths and adults, adult activities and other events.

In addition he also has served as parks planner and maintenance supervisor.

Move to institute a year-around recreation program began here early in 1956 under guidance of Chamber of Commerce civic improvement committee.

In less than a year the movement has included citizens meetings, studies of other cities, adoption of a city ordinance to act.

See DIRECTOR, page 3.

Charles C. Thompson, president and board chairman of City National Bank, will serve as chairman of the credit work group at President Eisenhower's drought conference Tuesday in Wichita, Kan.

The prominent banker, who also is chairman of the board for Federal Land Bank of Houston and Texas Technological College, left Saturday with Mrs. Thompson for the conference site.

Thompson Friday afternoon accepted the invitation of True D. Morse, under Secretary of Agriculture, to head the credit group—which farm, bank and business experts point to as the key to the entire drought conference.

Request for Thompson to lead the credit work had been made in telegrams from Morse.

Mr. and Mrs. Thompson left by automobile Saturday at noon for the conference site.

The banker, who also is a farmer-rancher and attorney, will arrive in Wichita in time for preliminary meetings Sunday night.

Preliminary discussions will be continued Tuesday, followed by the President's conference Tuesday. Thompson and other leaders have been asked to remain in Wichita Wednesday to wind up the conference details.

In the Wichita conference the President will discuss drought relief measures with representatives of farming, ranching, industry, banking, government and agricultural schools from over the entire Great Plains.

A tour of Southwest drought areas, including the West Texas area at San Angelo, will be made by President Eisenhower and Secretary of Agriculture Benson and other Washington officials as a preliminary study for the Wichita conference.

The President's tour in the San Angelo area will begin at 8 a. m. Monday and continue through the morning. In addition to Texas, the tour will include points in Oklahoma, New Mexico, Arizona, Colorado and Kansas.

Under Secretary Morse is directing the planning of the Wichita conference. His telegram to Thompson here in Colorado City stated:

"Would you serve as chairman of credit work group for Wichita meeting?"

"I will be in Wichita Broadview Hotel Sunday P. M. and suggest preliminary discussion Sunday evening.

"Visualize that principles to guide actions in regard to drought and other disasters to come out of these work sessions."

Thompson, before leaving for Wichita, said he has "several ideas" in regard to credit programs in face of the drought problem.

But declined to discuss proposals before talking with other principals in the meeting.

See THOMPSON, page 7

JUNIOR SUPERINTENDENTS

Boys Help Direct Show's Operation

Youngsters will join with seasoned stockmen in staging the 1957 edition of Mitchell County 4-H & FFA Livestock Show.

For not only will 4-Hers and Future Farmers exhibit their animals, before keen judging eyes, but they also will serve as junior committeemen for the show.

Bruce Byrne, Landers community rancher, is general superintendent of the 1957 show that is sponsored by Mitchell County 4-H and FFA Livestock Show committee financed by Mitchell County United Fund.

Assisting Byrne with his duties are Alfred Hackfeld of Loraine, assistant general superintendent, and Richard Keathley, Colorado City High student.

There are five other superintendents directing divisions and other phases of the annual event. And youths have a big hand in those duties, too, as junior superintendents.

Raymond Warrington of Burford is superintendent of dry lot calf show and Leslie Hamilton, junior superintendent is Ronald Haley of Loraine High.

Superintendent of the milk fed calf show is Jimmy Henderson of Colorado City. Roy Henderson is assistant superintendent and Doyce Lankford of Westbrook High is junior superintendent.

The hog division is directed by Jim Hestand of Colorado City, superintendent; Lester Webb of Loraine, assistant superintendent, and Gary Mathis of Loraine High, junior superintendent.

L. S. (Bunky) Givrin Jr. of Colorado City is again serving as superintendent of the lamb division and the assistant superintendent Pat Maynard of Loraine, junior official of the division is Mickey Cooper of Loraine High.

In charge of weights and tags for the entire show are Tommy Mathis of Loraine, superintendent; Jimmy Sorrells of Colorado City, assistant; and Billy Preston

of Loraine, junior superintendent. Officers of the show committee, who are elected for 12-month terms to direct the permanent organization for the entire county, are headed by James Trammell.

Trammell, vocational agriculture instructor at Colorado City High and former associate county agent, is the 1957 president. Other officers are Francis Winn of Colorado City, vice president; Raymond Holt, Loraine Vocational ag teacher, secretary, and Gus Chesney, vice president of City National Bank, treasurer.

Trammell, vocational agriculture instructor at Colorado City High and former associate county agent, is the 1957 president.

Other officers are Francis Winn of Colorado City, vice president; Raymond Holt, Loraine Vocational ag teacher, secretary, and Gus Chesney, vice president of City National Bank, treasurer.

Trammell, vocational agriculture instructor at Colorado City High and former associate county agent, is the 1957 president.

Other officers are Francis Winn of Colorado City, vice president; Raymond Holt, Loraine Vocational ag teacher, secretary, and Gus Chesney, vice president of City National Bank, treasurer.

Trammell, vocational agriculture instructor at Colorado City High and former associate county agent, is the 1957 president.

Other officers are Francis Winn of Colorado City, vice president; Raymond Holt, Loraine Vocational ag teacher, secretary, and Gus Chesney, vice president of City National Bank, treasurer.

Trammell, vocational agriculture instructor at Colorado City High and former associate county agent, is the 1957 president.

Other officers are Francis Winn of Colorado City, vice president; Raymond Holt, Loraine Vocational ag teacher, secretary, and Gus Chesney, vice president of City National Bank, treasurer.

Trammell, vocational agriculture instructor at Colorado City High and former associate county agent, is the 1957 president.

Other officers are Francis Winn of Colorado City, vice president; Raymond Holt, Loraine Vocational ag teacher, secretary, and Gus Chesney, vice president of City National Bank, treasurer.

Trammell, vocational agriculture instructor at Colorado City High and former associate county agent, is the 1957 president.

Other officers are Francis Winn of Colorado City, vice president; Raymond Holt, Loraine Vocational ag teacher, secretary, and Gus Chesney, vice president of City National Bank, treasurer.

Judging the entries will be Stanley Anderson, professor of animal husbandry at Texas Tech, Lubbock, and one of the most respected livestock experts in the southwest.

Anderson will begin judging fat swine at 9 a. m. Saturday, according to James Trammell, 1957 president of the show.

Fat lamb judging will begin at 1 p. m. Saturday and will be followed immediately by fat steer judging.

Approximately 10 calves, 60 lambs and 40 pigs are expected to be entered in the show by the youngsters.

Heavyweight, lightweight and champion classes will be judged for both milked and drylot steers.

Most cash for any first place awards are in the steer division with a top of \$65 for each winner, \$50 for second, \$40 for third and \$30 for fourth.

Champions steers will earn banners and rosettes will go to reserve champions.

Lambs will be judged in four classes—fine wool, mutton or cross, on fine wool, Southdown or Shropshire, and first Southdown cross, on fine wool.

There will be no grand champion selected in the lamb division but prizes in each class will slant downward from \$25 for first, \$22.50 for second, \$20 for third.

See SHOW, page 7

Some of the new equipment already is in operation in this area with the new long distance inter-city phone cable installed during the last year between Midland, Colorado City and Sweetwater, according to John Robbins, phone crew chief here.

Some of the new equipment already is in operation in this area with the new long distance inter-city phone cable installed during the last year between Midland, Colorado City and Sweetwater, according to John Robbins, phone crew chief here.

Some of the new equipment already is in operation in this area with the new long distance inter-city phone cable installed during the last year between Midland, Colorado City and Sweetwater, according to John Robbins, phone crew chief here.

Some of the new equipment already is in operation in this area with the new long distance inter-city phone cable installed during the last year between Midland, Colorado City and Sweetwater, according to John Robbins, phone crew chief here.

AROUND TOWN

Traffic Toll Dips; Cancer Meeting Set

Police Chief Leon Yeager Saturday reported a decline in traffic accidents within the city limits during 1956.

However, traffic accident injuries were on the increase. Yeager, who compiled the traffic toll record from police investigations of mishaps during the entire 12-month period of 1956, said that the number of accidents were 90 last year.

The '56 number of accidents is 10 below the mark in 1955. There were no traffic deaths recorded within the city in 1956, compared to two in 1955.

Property damage from traffic mishaps was down, too, in 1956 with total damage estimated at \$7,600. The year before, in 1955, the total was up to \$9,155.

However, 14 persons were injured on city streets in 1956—five more than in 1955.

A public information meeting is scheduled Tuesday night at 7 o'clock in the Chamber of Commerce conference room by Mitchell County Cancer Society.

Progress by science in the fight against cancer and fields of work by the cancer society will be discussed at the meeting.

The meeting has nothing to do with fund-raising, Mrs. Gerald Gordon emphasized.

Mrs. Gordon announced also Saturday that a district cancer meeting is scheduled in Big Spring Jan. 21 with members of the society and the general public invited.

Mrs. John Womack, who attended the State Cancer Society meeting recently in Dallas, will be on the program here Tuesday night.

AT COUNCIL MEETING

Girl Scout Award Presented County

Colorado City sent the largest delegation to the West Texas Girl Scout Council's annual conference Tuesday in Lamesa.

A total of 93 adults from the district's 13-county area participated in the parley. Also the seven women from Colorado City constituted the largest delegation of any city.

Evaluation awards were presented to Mitchell County for achievement in Girl Scout programs in Colorado City and Loraine during the last year.

Accepting the wards for the county was Mrs. Joe Terry, Brownie Scout leader from Loraine.

Evaluation awards were presented to the county for camping, adult leadership and membership program that attained or surpassed the goals set for 1956 by the National Girl Scout organization.

Annual report of the district for evaluation awards revealed there are 170 registered Girl Scouts in Mitchell County. Those Girl Scouts represent 22 per cent of 775 girls enrolled in second through 12th grades of the county's schools.

Camping experience was furnished 118 Mitchell County girls during the last year with 102 attending day camp, 16 attending established camp, according to evaluation reports made at the Lamesa meeting.

In fact, 70 per cent of Girl Scouts registered in the Mitchell County program had camping opportunities during 1956.

All 11 troops in the county had 100 per cent record in leadership with all leaders trained.

And with 170 registered Girl Scouts in the final month of 1956 the county showed an increase of 10 girls in scouting over the 1955 total of 160.

In the Mitchell County delegation at the conference were Mrs. John Russell, Mrs. Bob Brannon, Mrs. D. G. Robertson, Mrs. D. M. Costlow, Mrs. Vern King, Mrs. N. P. Windham, Mrs. Frank Ginselm, all from Colorado City, and Mrs. Terry.

Jay Adams Chevrolet provided

DESPITE DRY SEASON

Farmers' Requests Keeping SCS Busy

Soil conservation work is continuing in Mitchell County on significant scale despite poor crop conditions.

In fact, Soil Conservation Service here Saturday reported that SCS personnel have a full schedule of projects requested by farmers and ranchers in Mitchell County Soil Conservation District.

Among the requests for conservation projects are terrace systems, diversion terraces,

sprinkler irrigation systems and irrigation reservoirs.

Terracing still remains the No. 1 leader among conservation work being planned and carried out by "interviewers" within the Colorado City area, according to Charles W. Walker, SCS office staff member here.

A check of the conservation district records Saturday by Walker revealed that terrace systems currently have been designed and are in the process of construction on at least eight farms here in the county.

Those farms, where terrace systems are now being completed, include the acreage of A. R. Moore, James C. Kelley, Richard Howell, Roy Howell, Don Burris, H. Cranfill, Mrs. C. O. Powell and Mrs. Essie E. Kirby.

Additional requests for terrace systems have been received by the SCS staff from Warren Anderson, Tom P. Killian, Thomas F. Mathis, James C. Hall Jr., D. W. Wallace Estate, Mrs. Jewel McFarland, Don Blasingame and Charles F. Franklin Jr.

The SCS staff in recent weeks also has designed sprinkler irrigation systems for the farms of John Turner, James Barkley and Earl Hallmark.

Diversion terraces were designed, too, to check erosion and detrimental conditions caused by water runoff. Those diversion facilities were designed for Romaine Hammond, David S. Bodwin, Roy Howell, John Latty and Jack Walker.

gasoline free to the Girl Scout group for the trip.

During the business meeting plans were presented for two new buildings that will be erected at Camp Boothe-Oaks near Sweetwater. Construction will be completed before Girl Scout summer camping sessions begin at the camp.

The buildings will serve as a caretaker's home and as a counselor's retreat and infirmary, which will be used during winter months as a troop camp house.

It is estimated that construction of the buildings will increase assets of the campsite and facilities to \$100,000.

gasoline free to the Girl Scout group for the trip.

gasoline free to the Girl Scout group for the trip.

sprinkler irrigation systems and irrigation reservoirs.

Terracing still remains the No. 1 leader among conservation work being planned and carried out by "interviewers" within the Colorado City area, according to Charles W. Walker, SCS office staff member here.

A check of the conservation district records Saturday by Walker revealed that terrace systems currently have been designed and are in the process of construction on at least eight farms here in the county.

Those farms, where terrace systems are now being completed, include the acreage of A. R. Moore, James C. Kelley, Richard Howell, Roy Howell, Don Burris, H. Cranfill, Mrs. C. O. Powell and Mrs. Essie E. Kirby.

Additional requests for terrace systems have been received by the SCS staff from Warren Anderson, Tom P. Killian, Thomas F. Mathis, James C. Hall Jr., D. W. Wallace Estate, Mrs. Jewel McFarland, Don Blasingame and Charles F. Franklin Jr.

The SCS staff in recent weeks also has designed sprinkler irrigation systems for the farms of John Turner, James Barkley and Earl Hallmark.

Diversion terraces were designed, too, to check erosion and detrimental conditions caused by water runoff. Those diversion facilities were designed for Romaine Hammond, David S. Bodwin, Roy Howell, John Latty and Jack Walker.

gasoline free to the Girl Scout group for the trip.

During the business meeting plans were presented for two new buildings that will be erected at Camp Boothe-Oaks near Sweetwater. Construction will be completed before Girl Scout summer camping sessions begin at the camp.

The buildings will serve as a caretaker's home and as a counselor's retreat and infirmary, which will be used during winter months as a troop camp house.

It is estimated that construction of the buildings will increase assets of the campsite and facilities to \$100,000.

gasoline free to the Girl Scout group for the trip.

gasoline free to the Girl Scout group for the trip.

gasoline free to the Girl Scout group for the trip.

gasoline free to the Girl Scout group for the trip.

gasoline free to the Girl Scout group for the trip.

Under Secretary Morse is directing the planning of the Wichita conference. His telegram to Thompson here in Colorado City stated:

"Would you serve as chairman of credit work group for Wichita meeting?"

"I will be in Wichita Broadview Hotel Sunday P. M. and suggest preliminary discussion Sunday evening.

"Visualize that principles to guide actions in regard to drought and other disasters to come out of these work sessions."

Thompson, before leaving for Wichita, said he has "several ideas" in regard to credit programs in face of the drought problem.

But declined to discuss proposals before talking with other principals in the meeting.

See THOMPSON, page 7



BANQUET TICKET SALE—J. C. Costin, far left, and Luke Thomas, far right, both incoming Chamber of Commerce directors, register a double sale for tickets to annual Chamber of Commerce banquet, Jan. 24 in Civic House. Purchasing tickets are Glover Hader, middle left, new J. C. Penney manager here, and J. B. Gienn, newcomer to the city's list of insurance agents. (Record Staff Photo)

WITH LAST TWO YEARS

Fertilizer Sales Remain on Level

Total fertilizer tonnage sold during the spring of 1956 was about the same as during that period in 1954 and 1955. Tonnage of mixed goods sold in the first six months of 1956 was 5% less than a year ago, according to J. F. Fudge, state chemist, but sales of materials were about 5% higher.

Highly significant decreases occurred in sales of all grades with out nitrogen. Fudge said, indicating increased availability of nitrogen materials. Grades of high-analysis 12-1 ratio accounted for two-thirds of the mixed goods tonnage and 1-1-1 grades composed one-eighth of the total.

Fudge said the trend toward higher analysis fertilizers is still on the upgrade. Sales of the 5-10-5 grade were over 20,000 tons lower than those of 1953 while high analysis sales have climbed 24,000 tons in a five year period. Amount of nitrogen sold was up 6,000 tons from the same period last year and is over twice as high as in 1952. Sale of normal and concentrated super phosphates was about the same as in 1955, but showed a slump of two thirds from 1952 sales. Significant increases were noted in tonnage of anhydrous ammonia, urea, and ammonium phosphates. East Texas used slightly over one-half of the nitrogen available phosphoric acid, and potash in mixed goods. East Texas also accounted for 50% of the 1-2-1 goods and 55% of the 1-1-1 goods so far. West Texas used two-thirds of the total tonnage of anhydrous ammonium sulfate and 16-20-0, and two-thirds of the rock phosphates.

Average composition of all mixed goods sold in the state was approximately a 7-14-7 grade and the average percentage of nitrogen in all fertilizers increased from 8.52 in 1951 to 16.74 this year. The complete report is available from the Agricultural Information Office, College Station, Ask for Progress, Report 1890.

Country Club Meeting

Stockholders of Colorado Country Club will conduct their annual meeting Tuesday at 8 p. m. in the clubhouse. New directors will be elected.

Loan Association Date

Annual meeting for members of Colorado Federal Savings & Loan Association is set for Wednesday at 2 p. m. in the association's office here.

Colorado City Record

PUBLISHED SUNDAY AND THURSDAY

JOE BELL Editor & Publisher. JOE ED BOATRIGT Advertising Mgr.

Entered as second class matter at the post office of Colorado City, Texas, under the Act of March 3, 1879.

Any erroneous reflection upon the character, standing or reputation of any person, firm or corporation will be corrected gladly when such occurs in the columns of this newspaper and is brought to the attention of the management.

The publishers are not responsible for any copy omissions, typographical errors, or any unintentional errors that may occur other than to make proper corrections after being brought to their attention. Advertising is accepted on this basis only.

RATES—Subscription rate \$5.00 per year in Mitchell and surrounding counties, \$6.00 elsewhere in the United States. Advertising rates on request.

Every year more people buy RCA VICTOR than any other television

buy yours at Kirschbaum APPLIANCE STORE

Who Says All Dry Cleaning is the SAME?

Sanitone DRY CLEANING is 6 ways better for your clothes

- 1 Stubborn spots banished
- 2 Deep-down dirt removed
- 3 Like-new texture restored
- 4 Perspiration out
- 5 No tell-tale cleaning odor
- 6 Drapes better...press lasts longer

Not only does Sanitone Dry Cleaning cost no more but...you'll find it a very real economizer. Clothes stay fresh and new looking so much longer that you can wear them "for best" many more times. But see for yourself.

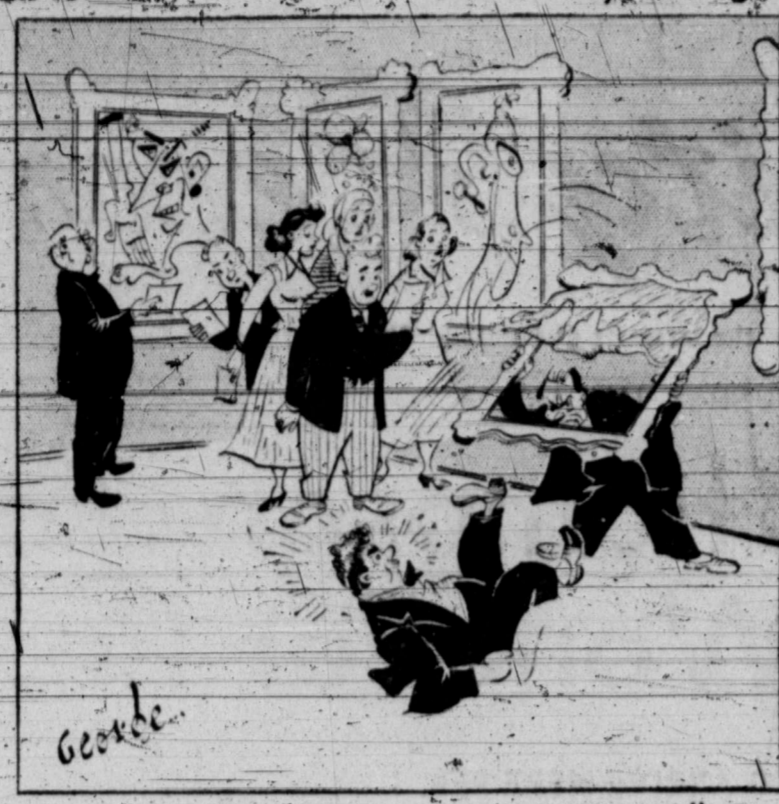


Better Cleaners

521 WALNUT • DIAL RA 8-4191

Ticklers

By George



"Some folks just can't agree on modern art."

FOR FARM PLANTING

Seven Hybrids Are Available for '57

Seven grain sorghum hybrids, developed cooperatively by the Texas Agricultural Experiment Station and the U. S. Department of Agriculture, will be available to farmers for planting in 1957. These hybrids are the result of research work which began in 1921 and are the first practical hybrids to be released from these studies.

The seven hybrids, RS 590, Texas 601, Texas 611, RS 610, Texas 620, RS 650 and Texas 660, are the best of several hundred produced and tested during the past 20 years at the Lubbock and Chillicothe stations.

Tests were conducted last year throughout Texas and all have thus been grown under limited field demonstrations. The plant breeders for the Texas Station say still better hybrids with improved adaptation to various growing conditions can be expected in the near future.

Farmers are advised to plant one or more of the hybrids adapted to their areas and to make comparisons with standard varieties. Further, it is suggested, that only certified hybrid seed be planted as insurance that seed planted are correctly labeled.

Planting seed of these seven hybrids are simple, but the grain produced will be red. In general, the higher the hybrid number, the later is its maturity, but none is as late as Plainsman. Yields 20 to 40 per cent greater than varieties of the same maturity under most conditions can be expected. The plants show superior seedling vigor, rapid growth and uniform height and maturity.

Pie Supper to Benefit Polio Fund Campaign

A March of Dimes pie supper is scheduled Friday night at Seven Wells school building. Sponsoring the event, an annual project in the county's March of Dimes campaign, will be the Payne Seven Wells Club.

Proceeds from the pie supper will go into the March of Dimes fund for the fight against polio. The supper will begin at 7 p. m. Friday with cold drinks free. Weldon Wiggins will be auctioneer for the sale of pies. Games of 42 will precede the auction.

FOR PLAINS WATER PROBLEM

'Re-Charging' of Water Wells Proposed by Tech Prof; Hunting Fatalities Cut in Half

The South Plains water table may possibly be raised by taking water from lakes formed in shallow hollows after hard rains and draining it to underground storage.

This observation was made by Dr. George A. Whetstone, Texas Tech professor of civil engineering, in the Journal of the American Water Works Assn.

According to Dr. Whetstone, these "ephemeral lakes" could be drained to underground storage with the double benefit of easing the rate at which the water table is dropping and of releasing for planting, land otherwise covered by the shallow ponds.

"Speed would be of utmost importance," Dr. Whetstone says, "to minimize evaporation losses and to drain the land promptly, as the rainy season and the planting season often coincide."

Dr. Whetstone cites examples from Parnagusta, Cyprus, where lake water was discharged into six wells over a period of 52 days. The result was not too satisfactory because of the high salt content of the silt beds.

By using some 900 feet of tunnel connecting the wells about 60 feet underground, the water absorption was increased 45 times, he pointed out.

"Recharge tunneling probably merits most serious consideration in city areas where cooling water is returned to the ground, as on Long Island, N. Y., or where treated river water at low temperature is pumped into the aquifer, as at Louisville, Ky., in winter," Dr. Whetstone points out.

"It might also find practical application in areas like the High Plains of Texas with drainage of the ephemeral lakes. Because of the cost, again application would be most practical in city areas where land costs are high. Economically, open-pit spreading is still more practical in rural areas than the tunneling method."

Texas hunters closed the old year with a gunning safety record sharply in contrast with last year's national fatality leadership.

Four new deaths have been reported since the last tabulation but this ran the total to a mere 18 in contrast with 35 reported unofficially the previous year.

The executive secretary for the Game and Fish Commission said the improved safety showing reflected "the traditionally good



gun handling reputation of Texans," but added that there "still is room for improvement."

Of the four new hunting fatalities listed, one was self-inflicted, two involved hunters being shot by others and the other concerned a hunter mistaken for a deer.

A 14-year-old Sweetwater boy was fatally shot by a young companion when a .22 rifle was discharged as it was being placed in a car.

A 28-year-old Llano man was shot in the back with a rifle held by a ten-year-old boy as they walked down a trail.

A 44-year-old Lufkin man was killed when a 21-year-old companion fired a shotgun loaded with buck shot at a brush movement which he thought was made by a deer. The victim's 11-year-old son also was struck with pellets but recovered.

A San Antonio deer hunter, hurrying to take his gun from his car to shoot a buck, died instantly when the gun discharged, the bullet striking his heart.

A 16-year-old Port Arthur youth was wounded with a shot gun blast when he was crawling through the brush and was mistaken for a wolf. His companions reported they had seen several wolves earlier and that at the time of the shooting visibility was poor because of fog.

Of the 18 total deaths for the year, fatal wounds of six were self-inflicted. Teenagers were involved in 11 of the tragedies.

In 1956 the ratio of hospital births to home births has more than doubled over the past 15 years, according to Texas State Department of Health statistics. Live birth hospital deliveries increased from 42.4 per cent to 50.1 per cent during the period of Texas' greatest growth.

Also the ratio of 1956 live births to deaths in Texas as well over three to one, while statistics 15 years ago indicate the ratio was only slightly in excess of two births per death.

Baby's chance of surviving the first year of life has more than doubled since 1940. Mother, too, has reaped even greater medical benefits. Fifteen years ago, the risk of death at childbirth was nine times great-

er than it is today. Dr. Henry A. Holle, commissioner of health, announced that the reporting of births and deaths and the percentage completeness of registration to the Vital Statistics Division of the health department, was greater than ever before in Texas history.

In addition, Dr. Holle pointed out that the actual records received were more complete and correct than ever before.

By contrast, in years gone by, birth records received in the department would often omit the name of the infant. Death records were often incomplete, especially in the early days of state record keeping.

Don Carroll, director of the Division of Vital Statistics, gave much credit for the increased accuracy to local registration officials. "Without a doubt, 1956 records show that births are on the increase, death rates on the decrease, and Texans healthier than ever," Carroll said.

But just in case the trend should ever reverse itself, the Vital Statistics Division's improved techniques and vigilance will serve early warning.

The proposed salary increase for Texas public school teachers is an emergency measure to provide teachers for Texas children until more lasting provisions can be worked out. Dana Williams of Gladewater, president of the Texas State Teachers Association reports.

A complete citizens study of teacher salaries and school building needs will be made between now and the convening of the 56th Legislature in 1959, he explained.

Although the immediate request calls for an increase in the State minimum pay of \$399, the increased annual increments will provide most Texas teachers with a \$579 pay raise, Williams pointed out.

The plan calls for salary raises of \$90 per year for the first five years of service, compared to \$51 at present. This represents an additional \$180 increase for those teachers with five or more years service.

The program also corrects certain inequities in salaries of principals. From the conferences of citizens studying salary and building needs will come "realistic recommendations which should provide solutions to these current pressing problems," Williams said.

Honey bees are sold by the pound.

You are invited to open a SAVINGS ACCOUNT

3 1/2% CURRENT DIVIDEND RATE—Dividends are payable semi-annually on June 30th and December 31st.

SAVINGS ARE INSURED—Each account is insured to \$10,000 by the Federal Savings and Loan Insurance Corporation.

YOUR ACCOUNT—May be opened personally or by mail, in any amount, large or small.

Your money works for you at

COLORADO FEDERAL SAVINGS AND LOAN ASSOCIATION

P.O. Box 442

137 West Second St. Colorado City, Texas.

STRIKE!

AT COLORADO CITY'S BIGGEST POTENTIAL MARKET THROUGH THE RECORD!



Mr. Businessman—you'll score high in sales volume when you aim your advertising toward your hometown newspaper. No other media can compare with it! Women prefer and welcome newspaper advertising—and women control 80% of the nation's retail purchasing power!

Through the pages of this newspaper your message is reaching out to blanket your entire potential market area.

Our trained staff is ready to assist you, if necessary, and our files provide you with merchandising services and ad tools to put real sales pull into your space.

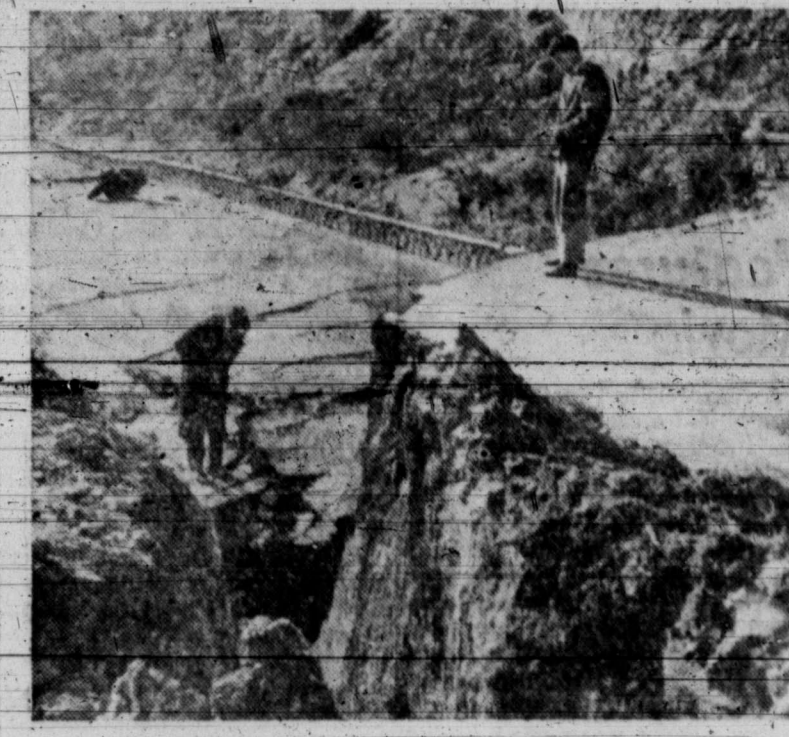
NEWSPAPER ADVERTISING COSTS YOU LESS PER READER THAN AND OTHER ADVERTISING MEDIA AND REWARDS YOU WITH SURER, FASTER RESULTS! LET US SCORE IN SALES FOR YOU!

Colorado City Record

PROGRAMS FOR KPAR, Channel 12

SUNDAY	MONDAY	TUESDAY	WEDNESDAY	THURSDAY	FRIDAY	SATURDAY
11:55 Sign On	6:55 Sign On	6:55 Sign On	6:55 Sign On	6:55 Sign On	6:55 Sign On	6:55 Sign On
12:00 The Christophers	7:00 Good Morning (CBS)	7:00 Good Morning (CBS)	7:00 Good Morning (CBS)	7:00 Good Morning (CBS)	7:00 Good Morning (CBS)	7:00 Good Morning (CBS)
12:30 Man to Man	8:00 Captain Kangaroo (CBS)	8:00 Captain Kangaroo (CBS)	8:00 Captain Kangaroo (CBS)	8:00 Captain Kangaroo (CBS)	8:00 Captain Kangaroo (CBS)	8:00 Captain Kangaroo (CBS)
12:35 Christian Science	8:25 Playtime (CBS)	8:25 Playtime (CBS)	8:25 Playtime (CBS)	8:25 Playtime (CBS)	8:25 Playtime (CBS)	8:25 Playtime (CBS)
1:00 This Is the Life	8:30 Captain Kangaroo (CBS)	8:30 Captain Kangaroo (CBS)	8:30 Captain Kangaroo (CBS)	8:30 Captain Kangaroo (CBS)	8:30 Captain Kangaroo (CBS)	8:30 Captain Kangaroo (CBS)
1:30 The Last Word	8:55 Sing Song (CBS)	8:55 Sing Song (CBS)	8:55 Sing Song (CBS)	8:55 Sing Song (CBS)	8:55 Sing Song (CBS)	8:55 Sing Song (CBS)
2:30 CBS Sunday News	9:00 Garry Moore (CBS)	9:00 Garry Moore (CBS)	9:00 Garry Moore (CBS)	9:00 Garry Moore (CBS)	9:00 Garry Moore (CBS)	9:00 Garry Moore (CBS)
3:00 Odyssey (CBS)	9:30 Morning Movie	9:30 Morning Movie	9:30 Morning Movie	9:30 Morning Movie	9:30 Morning Movie	9:30 Morning Movie
4:00 Mama (CBS)	11:00 Valiant Lady (CBS)	11:00 Valiant Lady (CBS)	11:00 Valiant Lady (CBS)	11:00 Valiant Lady (CBS)	11:00 Valiant Lady (CBS)	11:00 Valiant Lady (CBS)
4:30 The Pendulum	11:15 Love of Life (CBS)	11:15 Love of Life (CBS)	11:15 Love of Life (CBS)	11:15 Love of Life (CBS)	11:15 Love of Life (CBS)	11:15 Love of Life (CBS)
5:00 Telephone Time	11:30 Search for Tomorrow	11:30 Search for Tomorrow	11:30 Search for Tomorrow	11:30 Search for Tomorrow	11:30 Search for Tomorrow	11:30 Search for Tomorrow
5:30 Air Power (CBS)	11:45 Noon News	11:45 Noon News	11:45 Noon News	11:45 Noon News	11:45 Noon News	11:45 Noon News
6:00 Lassie (CBS)	12:00 Network News (CBS)	12:00 Network News (CBS)	12:00 Network News (CBS)	12:00 Network News (CBS)	12:00 Network News (CBS)	12:00 Network News (CBS)
6:30 Jack Benny (CBS)	12:10 Stand Up and Be Counted (CBS)	12:10 Stand Up and Be Counted (CBS)	12:10 Stand Up and Be Counted (CBS)	12:10 Stand Up and Be Counted (CBS)	12:10 Stand Up and Be Counted (CBS)	12:10 Stand Up and Be Counted (CBS)
7:00 Ed Sullivan (CBS)	12:30 As the World Turns (CBS)	12:30 As the World Turns (CBS)	12:30 As the World Turns (CBS)	12:30 As the World Turns (CBS)	12:30 As the World Turns (CBS)	12:30 As the World Turns (CBS)
8:00 G.E. Theatre (CBS)	1:00 Our Miss Brooks (CBS)	1:00 Our Miss Brooks (CBS)	1:00 Our Miss Brooks (CBS)	1:00 Our Miss Brooks (CBS)	1:00 Our Miss Brooks (CBS)	1:00 Our Miss Brooks (CBS)
8:30 Alfred Hitchcock (CBS)	1:30 Pathways of Life	1:30 Pathways of Life	1:30 Pathways of Life	1:30 Pathways of Life	1:30 Pathways of Life	1:30 Pathways of Life
9:00 Ford Theatre	1:45 House Party (CBS)	1:45 House Party (CBS)	1:45 House Party (CBS)	1:45 House Party (CBS)	1:45 House Party (CBS)	1:45 House Party (CBS)
9:30 Reader's Digest	2:00 The Big Payoff (CBS)	2:00 The Big Payoff (CBS)	2:00 The Big Payoff (CBS)	2:00 The Big Payoff (CBS)	2:00 The Big Payoff (CBS)	2:00 The Big Payoff (CBS)
10:00 The Playhouse	2:30 Brighter Day (CBS)	2:30 Brighter Day (CBS)	2:30 Brighter Day (CBS)	2:30 Brighter Day (CBS)	2:30 Brighter Day (CBS)	2:30 Brighter Day (CBS)
10:30 Sunday Night Final Edition	3:15 Secret Storm (CBS)	3:15 Secret Storm (CBS)	3:15 Secret Storm (CBS)	3:15 Secret Storm (CBS)	3:15 Secret Storm (CBS)	3:15 Secret Storm (CBS)
10:45 Channel 12 Theatre	3:30 Edge of Night (CBS)	3:30 Edge of Night (CBS)	3:30 Edge of Night (CBS)	3:30 Edge of Night (CBS)	3:30 Edge of Night (CBS)	3:30 Edge of Night (CBS)
11:45 Sign Off	4:00 Home Fair	4:00 Home Fair	4:00 Home Fair	4:00 Home Fair	4:00 Home Fair	4:00 Home Fair
	4:15 A to Z	4:15 A to Z	4:15 A to Z	4:15 A to Z	4:15 A to Z	4:15 A to Z
	4:30 Western Theater	4:30 Western Theater	4:30 Western Theater	4:30 Western Theater	4:30 Western Theater	4:30 Western Theater
	5:30 Community Crossroads	5:30 Community Crossroads	5:30 Community Crossroads	5:30 Community Crossroads	5:30 Community Crossroads	5:30 Community Crossroads
	6:00 News, Weather, Sports	6:00 News, Weather, Sports	6:00 News, Weather, Sports	6:00 News, Weather, Sports	6:00 News, Weather, Sports	6:00 News, Weather, Sports
	6:15 Doug Edwards (CBS)	6:15 Doug Edwards (CBS)	6:15 Doug Edwards (CBS)	6:15 Doug Edwards (CBS)	6:15 Doug Edwards (CBS)	6:15 Doug Edwards (CBS)
	6:30 Name That Tune (CBS)	6:30 Name That Tune (CBS)	6:30 Name That Tune (CBS)	6:30 Name That Tune (CBS)	6:30 Name That Tune (CBS)	6:30 Name That Tune (CBS)
	7:00 Phil Silvers (CBS)	7:00 Phil Silvers (CBS)	7:00 Phil Silvers (CBS)	7:00 Phil Silvers (CBS)	7:00 Phil Silvers (CBS)	7:00 Phil Silvers (CBS)
	7:30 Mickey Rooney Show	7:30 Mickey Rooney Show	7:30 Mickey Rooney Show	7:30 Mickey Rooney Show	7:30 Mickey Rooney Show	7:30 Mickey Rooney Show
	8:00 To Tell the Truth (CBS)	8:00 To Tell the Truth (CBS)	8:00 To Tell the Truth (CBS)	8:00 To Tell the Truth (CBS)	8:00 To Tell the Truth (CBS)	8:00 To Tell the Truth (CBS)
	8:30 Dr. Hudson's Journal	8:30 Dr. Hudson's Journal	8:30 Dr. Hudson's Journal	8:30 Dr. Hudson's Journal	8:30 Dr. Hudson's Journal	8:30 Dr. Hudson's Journal
	9:00 \$64,000 Question (CBS)	9:00 \$64,000 Question (CBS)	9:00 \$64,000 Question (CBS)	9:00 \$64,000 Question (CBS)	9:00 \$64,000 Question (CBS)	9:00 \$64,000 Question (CBS)
	9:30 Great Gildersleeve	9:30 Great Gildersleeve	9:30 Great Gildersleeve	9:30 Great Gildersleeve	9:30 Great Gildersleeve	9:30 Great Gildersleeve
	10:00 Red Skelton	10:00 Red Skelton	10:00 Red Skelton	10:00 Red Skelton	10:00 Red Skelton	10:00 Red Skelton
	10:30 News, Weather, Sports	10:30 News, Weather, Sports	10:30 News, Weather, Sports	10:30 News, Weather, Sports	10:30 News, Weather, Sports	10:30 News, Weather, Sports
	11:00 Channel 12 Theatre	11:00 Channel 12 Theatre	11:00 Channel 12 Theatre	11:00 Channel 12 Theatre	11:00 Channel 12 Theatre	11:00 Channel 12 Theatre
	12:00 Sign Off	12:00 Sign Off	12:00 Sign Off	12:00 Sign Off	12:00 Sign Off	12:00 Sign Off

SUNDAY	MONDAY	TUESDAY	WEDNESDAY	THURSDAY	FRIDAY	SATURDAY
6:00 News, Weather, Sports	6:00 Sports	6:00 Sports	6:00 Sports	6:00 Sports	6:00 Sports	6:00 Sports
6:25 Doug Edwards (CBS)	6:15 News	6:15 News	6:15 News	6:15 News	6:15 News	6:15 News
6:30 MA Floyd Ficka (CBS)	6:25 Weather	6:25 Weather	6:25 Weather	6:25 Weather	6:25 Weather	6:25 Weather
7:00 Disneyland	6:30 Three Musketeers	6:30 Three Musketeers	6:30 Three Musketeers	6:30 Three Musketeers	6:30 Three Musketeers	6:30 Three Musketeers
8:00 Dangerous Assignment	7:00 Sir Lancelot (NBC)	7:00 Sir Lancelot (NBC)	7:00 Sir Lancelot (NBC)	7:00 Sir Lancelot (NBC)	7:00 Sir Lancelot (NBC)	7:00 Sir Lancelot (NBC)
8:30 The Pendulum	7:30 Stasley (NBC)	7:30 Stasley (NBC)	7:30 Stasley (NBC)	7:30 Stasley (NBC)	7:30 Stasley (NBC)	7:30 Stasley (NBC)
9:00 The Lineup (CBS)	8:00 Disneyland	8:00 Disneyland	8:00 Disneyland	8:00 Disneyland	8:00 Disneyland	8:00 Disneyland
9:30 Person to Person (CBS)	9:00 Texas in Review	9:00 Texas in Review	9:00 Texas in Review	9:00 Texas in Review	9:00 Texas in Review	9:00 Texas in Review
10:00 Talent Scouts (CBS)	9:30 All Star Theater	9:30 All Star Theater	9:30 All Star Theater	9:30 All Star Theater	9:30 All Star Theater	9:30 All Star Theater
10:30 News, Weather, Sports	10:00 News	10:00 News	10:00 News	10:00 News	10:00 News	10:00 News
11:00 Chicago Wrestling	10:10 Weather	10:10 Weather	10:10 Weather	10:10 Weather	10:10 Weather	10:10 Weather
12:00 Sign Off	10:15 Bible Forum	10:15 Bible Forum	10:15 Bible Forum	10:15 Bible Forum	10:15 Bible Forum	10:15 Bible Forum



"YOU TAKE THE HIGH ROAD..."—This divided highway, in Rome, Italy, involves a unique form of division. The ground under the Viale Angelico suddenly caved in, above, splitting the road in two, and dropping one section several feet below the level of the other. Heavy rainfall was blamed for the landslide.

PROGRAMS FOR KMID, Channel 2

SUNDAY	MONDAY	TUESDAY	WEDNESDAY	THURSDAY	FRIDAY	SATURDAY
12:00 Oral Roberts	7:00 Today (NBC)	7:00 Today (NBC)	7:00 Today (NBC)	7:00 Today (NBC)	7:00 Today (NBC)	7:00 Today (NBC)
12:30 This is the Life	9:00 Home (NBC)	9:00 Home (NBC)	9:00 Home (NBC)	9:00 Home (NBC)	9:00 Home (NBC)	9:00 Home (NBC)
1:00 Million Dollar Movie	10:00 Romper Room	10:00 Romper Room	10:00 Romper Room	10:00 Romper Room	10:00 Romper Room	10:00 Romper Room
2:30 Zoo Parade (NBC)	10:30 Truth or Consequences (NBC)	10:30 Truth or Consequences (NBC)	10:30 Truth or Consequences (NBC)	10:30 Truth or Consequences (NBC)	10:30 Truth or Consequences (NBC)	10:30 Truth or Consequences (NBC)
3:00 Washington Square (NBC)	11:00 Tic Tac Dough (NBC)	11:00 Tic Tac Dough (NBC)	11:00 Tic Tac Dough (NBC)	11:00 Tic Tac Dough (NBC)	11:00 Tic Tac Dough (NBC)	11:00 Tic Tac Dough (NBC)
4:00 Topper (NBC)	11:30 It Could Be You (NBC)	11:30 It Could Be You (NBC)	11:30 It Could Be You (NBC)	11:30 It Could Be You (NBC)	11:30 It Could Be You (NBC)	11:30 It Could Be You (NBC)
4:30 Suspense	12:00 Movie Matinee	12:00 Movie Matinee	12:00 Movie Matinee	12:00 Movie Matinee	12:00 Movie Matinee	12:00 Movie Matinee
5:00 Meet the Press (NBC)	1:30 Something For the Girls	1:30 Something For the Girls	1:30 Something For the Girls	1:30 Something For the Girls	1:30 Something For the Girls	1:30 Something For the Girls
5:30 Roy Rogers (NBC)	2:00 NBC Matinee (NBC)	2:00 NBC Matinee (NBC)	2:00 NBC Matinee (NBC)	2:00 NBC Matinee (NBC)	2:00 NBC Matinee (NBC)	2:00 NBC Matinee (NBC)
6:00 Kennel Club Show	3:00 Queen For a Day (NBC)	3:00 Queen For a Day (NBC)	3:00 Queen For a Day (NBC)	3:00 Queen For a Day (NBC)	3:00 Queen For a Day (NBC)	3:00 Queen For a Day (NBC)
6:15 News	3:45 Modern Romances (NBC)	3:45 Modern Romances (NBC)	3:45 Modern Romances (NBC)	3:45 Modern Romances (NBC)	3:45 Modern Romances (NBC)	3:45 Modern Romances (NBC)
6:25 Weather	4:00 Comedy Time (NBC)	4:00 Comedy Time (NBC)	4:00 Comedy Time (NBC)	4:00 Comedy Time (NBC)	4:00 Comedy Time (NBC)	4:00 Comedy Time (NBC)
6:30 Circus Boy (NBC)	4:30 Two Gun Playhouse	4:30 Two Gun Playhouse	4:30 Two Gun Playhouse	4:30 Two Gun Playhouse	4:30 Two Gun Playhouse	4:30 Two Gun Playhouse
7:00 Steve Allen (NBC)	5:30 Lil' Rascals	5:30 Lil' Rascals	5:30 Lil' Rascals	5:30 Lil' Rascals	5:30 Lil' Rascals	5:30 Lil' Rascals
8:00 Man Called X	6:15 House Party	6:15 House Party	6:15 House Party	6:15 House Party	6:15 House Party	6:15 House Party
8:30 Highway Patrol	6:25 Weather	6:25 Weather	6:25 Weather	6:25 Weather	6:25 Weather	6:25 Weather
9:00 Loretta Young (NBC)	6:30 Racket Squad	6:30 Racket Squad	6:30 Racket Squad	6:30 Racket Squad	6:30 Racket Squad	6:30 Racket Squad
9:30 Stories of Century	7:00 Big Surprise (NBC)	7:00 Big Surprise (NBC)	7:00 Big Surprise (NBC)	7:00 Big Surprise (NBC)	7:00 Big Surprise (NBC)	7:00 Big Surprise (NBC)
10:00 News	7:30 Sports Time	7:30 Sports Time	7:30 Sports Time	7:30 Sports Time	7:30 Sports Time	7:30 Sports Time
10:10 Weather	8:00 Jane Wyman Show (NBC)	8:00 Jane Wyman Show (NBC)	8:00 Jane Wyman Show (NBC)	8:00 Jane Wyman Show (NBC)	8:00 Jane Wyman Show (NBC)	8:00 Jane Wyman Show (NBC)
10:15 Bible Forum	8:30 Favorite Story	8:30 Favorite Story	8:30 Favorite Story	8:30 Favorite Story	8:30 Favorite Story	8:30 Favorite Story
10:45 Late Show	9:00 This is Your Life	9:00 This is Your Life	9:00 This is Your Life	9:00 This is Your Life	9:00 This is Your Life	9:00 This is Your Life
	9:30 Dr. Christian	9:30 Dr. Christian	9:30 Dr. Christian	9:30 Dr. Christian	9:30 Dr. Christian	9:30 Dr. Christian
	10:00 News	10:00 News	10:00 News	10:00 News	10:00 News	10:00 News
	10:10 Weather	10:10 Weather	10:10 Weather	10:10 Weather	10:10 Weather	10:10 Weather
	10:15 Sports	10:15 Sports	10:15 Sports	10:15 Sports	10:15 Sports	10:15 Sports

SUNDAY	MONDAY	TUESDAY	WEDNESDAY	THURSDAY	FRIDAY	SATURDAY
6:00 News, Weather, Sports	6:00 Sports	6:00 Sports	6:00 Sports	6:00 Sports	6:00 Sports	6:00 Sports
6:25 Doug Edwards (CBS)	6:15 News	6:15 News	6:15 News	6:15 News	6:15 News	6:15 News
6:30 MA Floyd Ficka (CBS)	6:25 Weather	6:25 Weather	6:25 Weather	6:25 Weather	6:25 Weather	6:25 Weather
7:00 Disneyland	6:30 Three Musketeers	6:30 Three Musketeers	6:30 Three Musketeers	6:30 Three Musketeers	6:30 Three Musketeers	6:30 Three Musketeers
8:00 Dangerous Assignment	7:00 Sir Lancelot (NBC)	7:00 Sir Lancelot (NBC)	7:00 Sir Lancelot (NBC)	7:00 Sir Lancelot (NBC)	7:00 Sir Lancelot (NBC)	7:00 Sir Lancelot (NBC)
8:30 The Pendulum	7:30 Stasley (NBC)	7:30 Stasley (NBC)	7:30 Stasley (NBC)	7:30 Stasley (NBC)	7:30 Stasley (NBC)	7:30 Stasley (NBC)
9:00 The Lineup (CBS)	8:00 Disneyland	8:00 Disneyland	8:00 Disneyland	8:00 Disneyland	8:00 Disneyland	8:00 Disneyland
9:30 Person to Person (CBS)	9:00 Texas in Review	9:00 Texas in Review	9:00 Texas in Review	9:00 Texas in Review	9:00 Texas in Review	9:00 Texas in Review
10:00 Talent Scouts (CBS)	9:30 All Star Theater	9:30 All Star Theater	9:30 All Star Theater	9:30 All Star Theater	9:30 All Star Theater	9:30 All Star Theater
10:30 News, Weather, Sports	10:00 News	10:00 News	10:00 News	10:00 News	10:00 News	10:00 News
11:00 Chicago Wrestling	10:10 Weather	10:10 Weather	10:10 Weather	10:10 Weather	10:10 Weather	10:10 Weather
12:00 Sign Off	10:15 Bible Forum	10:15 Bible Forum	10:15 Bible Forum	10:15 Bible Forum	10:15 Bible Forum	10:15 Bible Forum

SUNDAY	MONDAY	TUESDAY	WEDNESDAY	THURSDAY	FRIDAY	SATURDAY
6:00 News, Weather, Sports	6:00 Sports	6:00 Sports	6:00 Sports	6:00 Sports	6:00 Sports	6:00 Sports
6:25 Doug Edwards (CBS)	6:15 News	6:15 News	6:15 News	6:15 News	6:15 News	6:15 News
6:30 MA Floyd Ficka (CBS)	6:25 Weather	6:25 Weather	6:25 Weather	6:25 Weather	6:25 Weather	6:25 Weather
7:00 Disneyland	6:30 Three Musketeers	6:30 Three Musketeers	6:30 Three Musketeers	6:30 Three Musketeers	6:30 Three Musketeers	6:30 Three Musketeers
8:00 Dangerous Assignment	7:00 Sir Lancelot (NBC)	7:00 Sir Lancelot (NBC)	7:00 Sir Lancelot (NBC)	7:00 Sir Lancelot (NBC)	7:00 Sir Lancelot (NBC)	7:00 Sir Lancelot (NBC)
8:30 The Pendulum	7:30 Stasley (NBC)	7:30 Stasley (NBC)	7:30 Stasley (NBC)	7:30 Stasley (NBC)	7:30 Stasley (NBC)	7:30 Stasley (NBC)
9:00 The Lineup (CBS)	8:00 Disneyland	8:00 Disneyland	8:00 Disneyland	8:00 Disneyland	8:00 Disneyland	8:00 Disneyland
9:30 Person to Person (CBS)	9:00 Texas in Review	9:00 Texas in Review	9:00 Texas in Review	9:00 Texas in Review	9:00 Texas in Review	9:00 Texas in Review
10:00 Talent Scouts (CBS)	9:30 All Star Theater	9:30 All Star Theater	9:30 All Star Theater	9:30 All Star Theater	9:30 All Star Theater	9:30 All Star Theater
10:30 News, Weather, Sports	10:00 News	10:00 News	10:00 News	10:00 News	10:00 News	10:00 News
11:00 Chicago Wrestling	10:10 Weather	10:10 Weather	10:10 Weather	10:10 Weather	10:10 Weather	10:10 Weather
12:00 Sign Off	10:15 Bible Forum	10:15 Bible Forum	10:15 Bible Forum	10:15 Bible Forum	10:15 Bible Forum	10:15 Bible Forum

DIRECTOR
Continued from page 1
The program, appointment of a parks and recreation board, will be a full-time director for the program, and support by the Council, with immediate short-term financing, plus continuing official recognition for additional financing in 1957-58 municipal budget.
In addition the city has acquired, as a gift from Shell Pipe Line Corporation, an air-conditioned 7,000 square foot building for recreational purposes.

Chiropractic Clinics
3208 25th St. • Ph. 35363
Snyder
Dr. V.E. Sanderson, "director"
510 N. Marlenfeld
Ph. MU 44215 • Midland
Dr. M.S. Knisely, "director"

ON TOP OF THE WORLD
You'll feel like you're...
IN OUR EXPERTLY DRY CLEANED CLOTHES!
You'll not only look better, but feel better in clothes that are spotlessly clean and properly pressed! Let us give your wardrobe a fresh new look with our modern equipment and methods that clean your clothes a times cleaner than ever before! Amazing, but true... try us this week and find out how really clean we get your clothes.
PHONE 8-4351
FOR FREE DELIVERY
POND & MERRITT
"Fine cleaning since 1924"

R.J. "Jack" Wood
UNDERWRITER
South Coast Life Insurance Co.
Houston
Old Line Legal Reserve
Ph. 8-2577 505 Oak

I PAY ALL MY BILLS PROMPTLY AND ENJOY THE PRIVILEGE OF... GOOD CREDIT RATING

What Does Your Credit Record Say About You?

People who buy on credit, and pay promptly, have the best credit rating—there's no doubt about it. You can buy almost anything you want on credit, anywhere, anytime, if your paying record is good. **THE WAY YOU PAY YOUR BILLS** is the basis on which the merchants, doctors, and bankers extend credit to you.

A GOOD CREDIT RATING IS A VALUABLE ASSET. GUARD IT AS A SACRED TRUST.

THE ANNUAL AUDIT IS TO BE MADE
Enjoy the vast privileges of a good credit rating.

The Annual Audit For New Credit Ratings Is To Be Made

About this time of year the Merchants Association Credit Bureau checks each member's ledger as to the manner of payment of customer's charge accounts. This information is assembled and posted to the credit record of every individual and is used to make up his new Credit Rating.

These Credit Ratings are available to over 3,000 Retail Merchants Associations and Credit Bureaus in the United States, Canada and Europe through our affiliation with the Associated Credit Bureaus of America.

Your Credit Record is of your own making
The Credit Bureau only keeps the Record.

BE WISE—PAY PROMPTLY

Retail Merchants Association and Credit Bureau of Colorado City, Texas

so many Hotpoint features at a price so low

Full-width 49-lb. freezer. Pull-out snack shelf. Four deep door shelves. Full-width chiller tray. Room here for tall bottles. Porcelain enameled interior. Full-width crisp drawer strong and sturdy. Tall bottle rack, even 3/4 gallons fit.

Hotpoint REFRIGERATOR
THE FAMILY-SIZE HOTPOINT AT A FAMILY BUDGET PRICE
\$199⁹⁵
(and your old operative refrigerator)
CRABTREE ELECTRIC

CLEARANCE! JANUARY! CLEARANCE!

ONLY \$3.00 PER WEEK



TO LEAD CLUB ACTIVITIES—1957-58 officers for the 1921 Study Club include, left to right, Mrs. O. E. Rhode, treasurer; Mrs. W. L. Doss, recording secretary; Mrs. Lee Lavender, vice president; Mrs. M. J. Dawson, president, and Mrs. R. H. Ratliff Sr., corresponding secretary. Not shown is Mrs. A. O. Hickman, parliamentarian, and Mrs. Ed Jones, historian. (Record Staff Photo)

FOR NEW YEAR

Merry Wives Club Elects Officers

New officers for the Merry Wives '42' Club were elected Wednesday during a meeting in the home of Mrs. J. C. Craddock. Mrs. Sam Thompson was named president of the group, succeeding Mrs. Ed E. Williams who led 1956 activities.

Other officers elected were Mrs. V. R. Trulock, secretary; treasurer and Mrs. J. A. Sudler Sr., reporter.

Club members voted to donate \$10 to the March of Dimes. It was reported that a memorial book was placed in the Federation Library in memory of the late Mrs. A. L. Whipkey.

Reports also revealed that a bouquet of flowers was sent to an Albany Church in memory of the late Mr. Pittman, father of Mrs. Charles C. Thompson. Mrs. E. H. Winn read the club diary.

Making up the four tables of "42" were Mrs. R. S. Brennan, Mrs. S. O. Wulfjen, Mrs. O. V. Jones, Mrs. W. W. Rhode, Mrs. Sadler, Mrs. Winn, Mrs. O. B. Price, Mrs. O. B. Trulock Sr., Mrs. V. R. Trulock, Mrs. J. L. Pidgeon.

Mrs. Sam Thompson, Mrs. Charles Thompson, Mrs. Charles Williams, Mrs. M. J. Dawson, Mrs. A. L. Maddin and the hostess, Mrs. Craddock. Mrs. Jones will be hostess for the next club meeting Jan. 23 in her home at Renkerbrook Ranch.

PTA Meeting Features Movie

A film "School in Centerville" highlighted a monthly meeting of the Primary Parent-Teacher Association Tuesday afternoon in the school auditorium.

The film depicted various ways of improvement for students studying different occupations.

Mrs. Bill Carter, president, presided during the meeting which was opened with prayer by Rev. Earl Clary, pastor of First Presbyterian Church.

Mrs. Carter announced that a first aid course will be begun in February if enough women are interested.

Tying for room prize were students of Mrs. Lynn Halbert, Mrs. Weldon Moore and Mrs. A. G. Furlow Jr.

Refreshments were served by Mrs. Ed Bodine and Mrs. Truman Bodine. Guests were registered by Mrs. Charles Nuckolls.

Next meeting of the group will be conducted jointly with the Hutchinson Parent-Teacher Association in the Primary School. The meeting, Feb. 12 at 7:30 p. m., will feature a film, "A Desk for Billy".

Visit Here Sunday

Visiting here Sunday with friends and relatives will be Rev. and Mrs. Fred Smith of Littlefield.

Rev. Smith will conduct the morning and evening worship services at Plainview Baptist Church.

RUTH CLASS MEETING

A book review by Mrs. Lee Lavender Thursday evening, highlighted a meeting of the Ruth Sunday School Class of First Baptist Church in the home of Mrs. Richard Lange.

Mrs. Lavender, a guest of the class, reviewed the life of Sarah, from the book, "Stories of Women in the Bible".

Devotion, "The Opportunity Is Yours" was presented by Mrs. R. C. Johnson. Opening prayer was spoken by Mrs. Dennis Walding.

After the review fruit cake, topped with whipped cream, and coffee were served to Mrs. Johnson, Mrs. A. C. Benson, Mrs. Rollin K. Sneathen, Mrs. Weldon Moore, Mrs. Walding.

Also, Mrs. A. C. Dillard, Mrs. Jack Burgess, Mrs. J. B. Magill, Mrs. Paul Beeman, Mrs. Lavender and Mrs. Lange.

Flaming Cherry Cake Thrill to See and Eat

BY DOROTHY MADDOX

WHEN a cake is both red with maraschino and flaming as it comes to the table, then it certainly is a gay touch to any table. Well, here's a recipe for such a cake. To make it flame, lemon extract is poured over cubes of sugar and ignited. That's all there is to the trick.

Flaming Cherry Pineapple Upside-down Cake
(Makes 1 8x8x2-inch cake)

Three tablespoons melted butter or margarine, 1/4 cup firmly packed brown sugar, 4 slices canned pineapple, 1/2 cup coarsely chopped walnuts, 1 1/4 cups sifted cake flour, 3/4 cup granulated sugar, 2 teaspoons baking powder, 1/2 teaspoon salt, 1/2 cup shortening, 1/2 cup milk, 1 teaspoon vanilla, 1 egg, 1/2 cup maraschino cherries, drained (about 10 cherries), 1/4 maraschino cherries, cut in half.

Pour butter or margarine into 8x8x2-inch baking pan. Sprinkle with brown sugar. Top with pineapple slices and sprinkle with walnuts. Sift flour, granulated sugar, baking powder and salt together. Add shortening, milk and vanilla. Beat until ingredients are blended. Add egg and beat well. Fold in chopped cherries. Pour over pineapple mixture. Bake in slow oven



Bright red cherries, yellow pineapple and a delicious flavor will make this a family favorite in no time.

(325 degrees F.) about one hour or until cake tests done. Cool 10 minutes. Turn out on pan. Arrange cherry halves in center of pineapple slices.

To Serve Flaming: Pour lemon extract over four small sugar cubes. Arrange cubes in pineapple slices. Ignite.

Spiced Apple Wedges (Yield: 8 servings)
Two cups sugar, 1 1/2 cups water, 1/2 teaspoon salt, 2 sticks cinnamon, 1 inches long, 2 teaspoons whole cloves, 1 blade mace, 1 inch long, 4 medium baking apples.

Combine sugar, water and salt in a deep 10-inch skillet. Tie spices in a cheesecloth bag and add. Boil two minutes. Peel, core and quarter apples. (If apples are extra large, cut into eighths.) Add to boiling syrup. Cook, uncovered, until tender about 10 minutes, turning apples to cook uniformly. Remove apples and cool. Reserve syrup for cooking more apples, adding 1/2 cup more sugar the second time.

Book Review to Mark Study Club Meeting

A book review by Mrs. Curtis L. Baker Friday afternoon will highlight a meeting of the Hesperia Daughters Study Club in the home of Mrs. A. L. (Buck) Geer.

Mrs. Baker is to review the book, "Gifts from the Sea" by Ann Morrow Lindberg. Mrs. Glen Johnson will review the life of the author.

It would take 53 years for an airplane, traveling 200 miles per hour, to go from the earth to the sun.

Kelley's Shoe Store
Shoes for All the Family

JANUARY SHOE CLEARANCE

Continues with exceptional bargains
WE MUST REDUCE OUR STOCK STILL MORE!

SHOES—for men, women, boys, girls', children, at reductions ranging up to **60%**

All sale shoes out on table in groups priced at **1 • 3 • 4**
(still bigger reductions when 2 prs. purchased at a time)

GOOD STYLES—NOTHING OLD OR OUT-OF-DATE!

BIG SPECIALS in ladies' hose, men's socks and children's anklets, too!

Ratliff Home Is Scene for Circle Meet

Home of Mrs. R. H. Ratliff Sr. Monday morning was scene for a monthly meeting of the Belle Bennett Circle of First Methodist Church.

Mrs. J. W. Randle, circle chairman, was in charge of the meeting which was opened with prayer by Mrs. W. W. Rhode.

Mrs. Leslie Keith read the 64th Psalm. Mrs. R. J. Wallace discussed the topic, "Islands of My Community".

Circle members voted to furnish soft drinks for this month's Woman's Society of Christian Service meeting.

Eleven visits to shut-in friends were reported.

Those present were Mrs. Dewey Davis, Mrs. Tom Grant, Mrs. Wallace, Mrs. J. S. (Jess) Craddock, Mrs. Jesse Bradley, Mrs. Keith, Mrs. Rhode, Mrs. J. T. Pritchett, Mrs. W. C. Hooks, Mrs. Randle, Mrs. I. W. Terry and Mrs. Ratliff.

Mrs. Wallace will host next month's meeting of the circle.

Nolen and McGuire Are Fifth Grade Favorites

Jane Nolen and Bill McGuire are queen and king of the fifth grade at Hutchinson School.

The pair was crowned Thursday morning during a coronation ceremony in the school auditorium.

They were presented again Friday afternoon during half-time activities of a school football game in Wolf Stadium.

The queen was selected by the fifth grade football boys. The king was favorite of the fifth grade pep squad.

Laura Kay Shurtleff and Barbara Echols, runners-up to the queen, were presented as duchesses in the school coronation. Dale Walker was presented duke, a runner-up to the king.

Arla Jo Payne was mistress of ceremonies. She was assisted by Judy McNeil, Connie Dearen and Shakespeare, according to estimates, never made a continuous journey as far as a round-trip from Boston to New York.

sented piano selections during the coronation.

The girls' pastel-colored formal accents the stage, decorated with various types of potted plants. Throne for the royal couple was covered in white.

★ INSURANCE
★ LOANS
★ AUTO FIRE
★ AUTOMOBILE FINANCE

CAPITAL STOCK
Standard protection
CORPORATE INSURANCE

G. D. Foster
—PROMPT SERVICE—
247 Walnut
Dial RA 8-3401
Res.—Dial RA 8-4185

DOES MONEY SLIP THROUGH YOUR FINGERS?

Remember... THE FUTURE STARTS NOW!

The time to start preparing for a happy and secure future is now... TODAY! Instead of letting your money slip away unaccounted for, open a savings account with us today and add to it regularly. As the total grows, earning our new rate of interest, you'll be on your way to a well planned future.

OUR NEW RATE OF INTEREST ON SAVINGS IS NOW **3%**

TAKE ADVANTAGE OF ALL OUR BANKING SERVICES

The Friendly
CITY NATIONAL BANK

MEMBER F.D.I.C. "Over Half a Century of Service"

Stars within your reach!

Diamond wedding rings of imaginative beauty and brilliance, priced well within your reach.

Above, wedding ring with 3 diamonds... \$85
Below, wedding ring with 5 diamonds... \$110
Prices include federal tax

Sam L. Majors
"JEWELERS FOR GENERATIONS"

Anthony's
Spring Fabric Festival

Just Unpacked... Tremendous Money Saving Selection

Better Cottons

Fresh, crisp new Spring and Summer Cottons! A gorgeous array of the most beautiful colors and patterns you have seen, usually much higher priced... now at this new thrifty price... all first quality, full pieces, all washable.

In this tremendous selection you will find 36 and 38 inch, famous GILBRAE—Fine Combed Woven Gingham, Wafile Plaque Prints, All Combed Manana Prints, All Combed Ship and Sail Prints, All Combed Polished Cotton Prints, and Fine Combed Woven Gingham with Overprints.

Values Up To **50¢** 1.19 Yard

★ Petite Sanitized Blouse Prints
★ Solid Drip'n'Dri Drizzle-Broadcloth
★ Solid Fine-Combed Everglaze Satcon
★ Solid Satin-Glow Everglaze Embossed Satcon
★ Printed Satin-Sheen Everglaze Cotton
★ "Mallib" Everglaze Cotton Prints
★ Drip'n'Dri Combed Printed Drizzle, Broadcloth
★ "Gold-Rush" Gold-Printed Cottons
★ Drip'n'Dri Printed Sailcloth
★ Combed Everglaze Sheers - Prints and Solids
36-39-42 inch widths

44/45" "Thurston" Printed Bark Cloth
DRAPERY FABRICS

Values To **77¢** 1.19 Yd.

One of the most sensational drapery fabric buys we have ever presented. Hurry on down for best selections. All first quality "Thurston" Printed Bark Cloth, Sunfast and Washfast in Printed Scenes, Florals, Moderns, Traditionals, Gold Prints, Spiced Provincials... each pattern skillfully selected and specially purchased for this event.

TRAI
sadors
were i
left to
Owen
Danny
Bible
Kenny
a gro

Mrs
Is C

Mrs.
afterno
"42" Cl
After
man ser
guests
Guest
and Mr

C

2
stratio
33
terian
33
Service
in Fell
by Mrs
7
Baptist
Street
73
of Mrs
Arlie M
93
home
2
Services
3
School
Joe Be
34
Robins
leader.
75
Auxili
Mrs. I
leader

3
Lee Sr
31
Coles
leader.
40
of Mrs
review
33
home
progra
33
home
leader.

RI



TRAINING UNION LEADERS—Officers for the Ambassadors of Christ Training Union of First Baptist Church were installed Thursday evening in Civic House. They are, left to right, Margaret Hubbard, vice president; Glenda Owens, group leader; Rose Mary Thomas, secretary; Danny Barber, social committee member; Mary Ann Goss, Bible readers' leader; Ronald Wallace, social leader; and Kenny Simmons, president. Not pictured are Helen Snyder, a group leader, and Kay Howell, Missionary leader. (Record Staff Photo)

FOR BAPTIST GROUP

New Training Union Officers Are Installed at Civic House Dinner

Officers of the Ambassador of Christ Training Union of First Baptist Church were installed Thursday evening following a dinner in Civic House. Heading the new officer slate is Kenny Simmons, president. Margaret Hubbard was installed as vice president, Mary Ann Goss is Bible readers' leader. Additional leaders installed were Kay Howell, missionary leader; Ronald Wallace, social leader; Rose Mary Thomas, secretary; and Helen Snyder, group leader. Glenda Owens, another group leader, was unable to attend. Mrs. Brooks Teague conducted the installation using "The Days of a Tree are the Days of My People" as her theme. She compared each office with a tree. The president's office was compared to an oak tree, vice president to a birch tree, secretary to a pine tree, missionary leader, a cedar tree, Bible readers' leader, a magnolia tree, social leader, a pine tree, secretary, a birch tree, and group captain, a walnut tree. Mrs. Teague said the installation prayer. Master of ceremonies for the evening was Brooks Teague, training union director for the church. Invocation was said by A. J. Dean. Mrs. M. A. Dillard is leader for the union. Mrs. A. J. Dean is director of the intermediate department. Following the installation service, programs for the coming months were planned by union members. Menu for the dinner included chicken fried steak, stuffed potatoes, green beans, fruit-cake, and whipped cream and hot coffee.

Mrs. N. Thomas Leads Circle Program

Mrs. F. N. (Nat) Thomas was program leader for a monthly meeting of the Lily-Harness Group of First Christian Church Monday in the church. The program, "Introduction to Southeast Asia," served as a prelude to a six-month study, "Our Stake in Southeast Asia." Participating in the program were Mrs. J. H. Pritchett, Mrs. Truman-Henderson, Mrs. Willis Jones, and Mrs. A. Q. Hickman. Mrs. F. H. Esce was in charge

of the worship service for the afternoon meeting. Mrs. Jones was hostess. Letters of appreciation for clothing and supplies were read by Fowler Orphan's Home in Dallas, Mt. Beulah in Edwards, Miss., and Jof'em Down Store in Hazel Green, Ky. Those attending the meeting were Mrs. Pritchett, Mrs. Thomas, Mrs. Henderson, Mrs. Hickman, Mrs. Pace, Mrs. C. L. Root, Mrs. George Davis of San Angelo and Mrs. Jones.

Harrell House Guests

Mr. and Mrs. Don Harrell of Odessa are visiting here this week end in the home of his parents, Mr. and Mrs. Roy Harrell.

Baptist WMU Begins Plans For Banquet

Women's Missionary Union of Loraige Baptist Church Monday afternoon began plans for the annual senior banquet honoring the graduating group of Loraige Schools.

Mrs. B. B. Lee was named general chairman of the affair which will be hosted during a regular WMU business meeting, directed by Mrs. Tony Snyder in the church.

Meeting of the group was opened by group singing led by Mrs. Lee and accompanied by Mrs. Dexter Taylor. Opening prayer was spoken by Mrs. H. L. Leach.

Responsive reading of the 10th chapter of Romans was directed by Mrs. Snyder. Mrs. Lee was elected program chairman following the acceptance of Mrs. E. J. Schroeder's resignation.

Mrs. Kenneth Butler was named to take the place of Mrs. Lynn Hamilton as assistant counselor for the Young Women's Auxiliary.

Mrs. Taylor, chairman of the Willie Mae Kennedy Circle, reported on the group's activities during the past month. Mrs. Boby Ring presented a report of the YWA's work during December.

Meeting was closed by the singing of "Blest Be the Tie That Binds."

Jayceettes Begin Plans For Style Show

Plans for the annual Colorado City Jayceette style show were begun Wednesday noon at the group's regular luncheon meeting in party room of Civic House.

Committee named to head the yearly program include Mrs. Carl Dean, chairman; Mrs. Bill Hudson; Mrs. Ben Sparks and Mrs. John Chinn.

Mrs. R. H. (Bob) Rathiff Jr. presided during the meeting and appointed the show committee. Plans were also discussed for showing the newly redecorated party room.

Jayceettes attending the meeting were Mrs. Doug Keith, Mrs. Bib Kirschbaum, Mrs. Virgil Brown, Mrs. Goodwin Simpson, Mrs. H. B. Slaughter, Mrs. M. L. (Joe) Melton, Mrs. Charles Oliver, Mrs. Johnny Grubbs, Mrs. Marvin Winget, Mrs. Rathiff and one guest, Mrs. Jean May.

Committees Named for Presbyterian Women

Committees for women of the First Presbyterian Church to serve in 1957 were named Monday afternoon in a regular business meeting in the church parlor.

Making the appointments was Mrs. Roy Davis Coles, new president of the group.

Committees were as follows: Program—Mrs. W. M. Elliott, Mrs. Frank Ginzel, Mrs. James O. Jarman and Mrs. Earl Clary; Telephone—Mrs. E. M. Owen, Mrs. Bernice Grable, Mrs. Oscar Sherman and Mrs. Adolph Wood; Hospitality—Mrs. Ray Noble, Mrs. Walter Gaylor, Mrs. B. T. Daugherty and Miss Mildred Coleman.

Members of the hospitality committee reported that a luncheon honoring the 1956-57 presidents will take the place of regular monthly circle meetings Jan. 28.

Mrs. Fielding Lee Sr. is outgoing president.

The covered dish luncheon will be served in the church dining hall at 12 noon, the committee said.

Mrs. Coles presented the devotion, reading the 15th Psalm. Mrs. Clary, secretary, read letters received during the past month. She announced that the school of evangelism will be conducted in Midland Feb. 23 and

Coke Party to Fete New Members of WSCS

New members of the Wares Society of Christian Service in First Methodist Church will be honored Monday afternoon at a Coke party in Fellowship Hall of the church.

All members joining since June 1956 are considered new members, according to Mrs. J. S. Craddock Sr., WSCS president.

All members are urged to attend the meeting beginning at 3:30 o'clock, Mrs. Craddock said.

In McKinney Home

Mrs. G. F. Dehoney of La Porte is a guest this week in the home of her parents, Mr. and Mrs. T. L. McKinney in the Westbrook Community.

Mrs. H. Jarman Is Club Host

Mrs. Hall Jarman Wednesday afternoon hosted the Harmony "42" Club in her home. After games of "42" Mrs. Jarman served refreshments to two guests and five members. Guests were Mrs. W. M. Elliott and Mrs. George Slaton.

Members attending were Mrs. Annie Aycock, Mrs. B. T. Daugherty, Mrs. A. H. Dolman, Mrs. Willie Whitmore and Mrs. Jerold Riordan. Next meeting of the club is to be Jan. 23, hosted by Mrs. M. E. Lindley.

On Memorial Day the flag should be displayed at half mast from sunrise to noon and at full mast from noon to sunset.

Calendar of Events

- MONDAY**
 - 2 p. m.—Installation of officers for Landers Home Demonstration Club in the home of Mrs. Willis Cornett.
 - 3:30 p. m.—Monthly Bible study for women of First Presbyterian Church in the church parlor.
 - 3:30 p. m.—New members of Woman's Society of Christian Service in First Methodist Church will be honored at a Coke party in Fellowship Hall of the church. All members are urged to attend by Mrs. J. S. Craddock Sr., WSCS president.
 - 7 p. m.—Monthly meeting for Ruby Hines Circle of First Baptist Church in the home of Mrs. Winston Gann at 1704 Hickory Street with Mrs. Joe Salter as co-hostess.
 - 7:30 p. m.—Program and social for Wesleyan Service Guild of First Methodist Church in Fellowship Hall, hosted by Mrs. Arlie Martin; Mrs. W. D. McClure and Mrs. H. H. Billberry.
- TUESDAY**
 - 9:30 a. m.—Neighborhood meeting of Girl Scout leaders in the home of Mrs. Frank Ginzel at 1505 Watson Street.
- WEDNESDAY**
 - 2 p. m.—Dessert Bridge Club in the home of Mrs. Ronald Services at 863 East 13th Street.
 - 3 p. m.—Hutchinson School Parent-Teacher Association in School auditorium. Guest speakers will be Mrs. Curtis Latimer, Joe Bell and District Attorney Eldon Mahon.
- THURSDAY**
 - 3:45 p. m.—Zetaganian Study Club in the home of Mrs. Bob Robinson at 898 East 8th Street with Mrs. W. S. Rhode as program leader.
 - 7:30 p. m.—Monthly social for Colorado City Fire Department Auxiliary in home of Mrs. H. C. Pendergrass at 820 Locust St. Mrs. Leonard Henderson and Mrs. R. A. Moore Jr. will be co-hostesses.
- FRIDAY**
 - 3 p. m.—Shakespearean Club in the home of Mrs. Fielding Lee Sr. at 1220 Vine Street.
 - 3:15 p. m.—Self Culture Club in the home of Mrs. Roy Davis Coles at 730 East 13th Street with Mrs. L. A. Strain as program leader.
 - 4:30 p. m.—Hesperian Daughters Study Club in the home of Mrs. A. L. Geer at 316 East 15th Street highlighted by a book review by Mrs. Curtis L. Baker.
 - 3:30 p. m.—Hesperian Club in the Morgan Creek Village home of Mrs. J. D. White. Mrs. J. E. Hale will be leader of the program, "Know Your Neighbors."
 - 3:30 p. m.—Members of the 1921 Study Club will meet in home of Mrs. E. L. Dorn with Mrs. W. C. Hooks as program leader.

COSCO Fashionfold CHAIRS and TABLES

They're New! They're Sweet! and they fold!

Smartest set in town—featuring the most comfortable folding chair made, and a table with no tilt!e brace! Chair has contour back and saddle-shaped seat. Table legs are flared for style and sturdiness. Bonded, chip-resistant enamel finish. Washable, stain-resistant Duron upholstery. Nine gorgeous color combinations. Can you guess how they fold? Come in and let us show you!

Set only \$895
Table \$1495
Complete set only \$5075

\$5.00 DOWN, \$5.00 MONTHLY

RIORDAN HARDWARE Self-Service Store 121 East Second

Palace Sun. & Mon. January 13-14

The fierce, fighting, flaming fury of the South's finest... **THE DIXIE DAREDEVILS** who became... **THE HELL FIGHTERS OF THE PACIFIC!**

20th Century-Fox presents **Between Heaven and Hell** COLOR BY CINEMASCOPE

STARRING: **Robert WAGNER Terry MOORE Broderick CRAWFORD**

BUDDY EBSON PRODUCED BY DAVID WEISBART, RICHARD FLEISCHER SCREENPLAY BY HARRY BROWN

JAS. KUHN family, 902 E. 16th, is winner of free pass to be picked up Sun. or Mon. at Palace box office.

Lone Wolf DRIVE IN

Sun., Mon., Tues. January 13-14-15 "BIGGER THAN LIFE" starring James Mason Barbara Rush

Wednesday & Thursday January 16-17 "ROCK, ROCK, ROCK" starring Alan-Freed Frankie Lyman

Wednesday & Thursday January 16-17 "FOREVER DARLING" starring Lucille Ball Desi Arnaz

PENNEY'S SPECTACULAR ANNUAL JANUARY CLEARANCE

ALWAYS FIRST QUALITY!

FOR WOMEN!

- SWEAT SHIRTS! FULLY COTTON FLEECE LINED! \$1.88
- SWEATERS—14 only. Broken sizes, odds and ends. Your choice \$1.33
- PAJAMAS—One group plisse pajamas. Sizes 34 to 40—Your choice \$1.00
- FULL SLIPS—One group, wash and wear slips. Sizes 34 to 38 only—Your choice \$1.77
- HALF SLIPS—One group cotton half-slips, sizes s-m-l—Your choice \$1.00
- TRICOT BRIEFS—Acetate tricot Briefs. Sorry, size med. only—Your choice \$1.00
- WINTER SLEEPING WEAR—entire stock. This selection includes "Baby Doll" styles and long flannel gowns. Broken sizes, so hurry and get yours early. Drastically reduced to clear \$1.50
- BED JACKETS—brushed rayon and plisse in this group. Your Choice \$2.00

FOR MEN!

- CORDUROY SPORTS SHIRTS—entire stock of solids and plaids. Sizes s-m-l, colors red, yellow, green, blue and turquoise. Drastically reduced to clear. Your choice \$1.88
- SWEATERS—One group coat style and slipover sweaters. Your choice \$2.00
- SHIRTS—One group men's better white dress shirts and western shirts. Slightly soiled. Broken sizes, better get here early for these. We have 50 shirts to go at this amazingly low price. \$1.50
- WINTER PAJAMAS—Entire stock of flannel and cotton knit pajamas. Sizes A-B-C. Your choice \$2.00
- WINTER CAPS—Entire stock of men's and boys' corduroy and cloth winter caps. Still plenty of cold weather ahead—Now only \$1.66
- JACKETS—5 only, men's short style reprocessed wool interlined jackets. Sizes 36-42-44. Your choice \$6.00
- COATS—Close-out on all men's style blanket lined coats. Both short and long lengths. Now only \$2.88

FOR BOYS!

- SWEATERS—Boys' long-sleeve orlon sweaters. Broken sizes Only \$2.00
- BOYS' SLEEVELESS SWEATERS \$1.50
- BOY'S SUIT—one only, size 14 suit \$10.00
- BOYS' WINTER CAPS—corduroy and cloth, now only \$1.66
- BOYS' WEAR—One big table, includes corduroy shirts, flannel shirts, little boys' sweaters, winter pajamas in both flannel and cotton knit. Sorry, broken sizes on some of these items. Drastically reduced. Your choice \$1.00
- SWEAT SHIRTS—Boys' sweat-shirts, sizes 10 and 12 only. Now only \$1.66

TODDLERS' SWEATERS Sizes 1 1/2 to 4 \$1.00

GIRLS' COTTON FLANNEL PAJAMAS Sizes 16-8-12-14-16 DRASTICALLY REDUCED \$1.50

FLANNEL SUITING DRASTICALLY REDUCED \$1.00



DOWELL WIVES' NEW OFFICERS—Elected as officers of Dowell Wives' Club Wednesday afternoon in the home of Mrs. Tommie Blalock were, left to right, Mrs. Bill Middlebrook, vice president; Mrs. Jimmie Bolin, secretary; Mrs. Blalock, treasurer; Mrs. T. V. (Tip) Tipton, social and card chairman; Mrs. Carl Rhodes, president. (Record Staff Photo)

FOR SECOND TERM.

Mrs. Sam Thompson Installed as President of Plainview Club

Mrs. Sam Thompson was installed as president of the Plainview Home Demonstration Club Thursday afternoon in the home of Mrs. R. P. Bates at Morgan Creek Village.

FOR CHURCH GROUP

Mrs. Gordon Teaches Training Session

Mrs. Gerald Gordon Tuesday evening conducted an officers training session for women of the First Presbyterian Church in the church parlor.

Mrs. Womack Installs New HD Officers

Mrs. J. C. Womack, outgoing president of the Fairview Home Demonstration Club, was installing officer for the club's 1957 officers last Thursday in the home of Mrs. W. W. Jenkins.

Mrs. Ed Bodine was installed as president of the club. Vice president installed for the new year was Mrs. James Cox.

Mrs. Womack presided during the business session prior to the installing ceremony. The group planned work at the 4H and FFA stock show. Year books were distributed and hostesses were named for the new year.

Lemon pie, coffee and tea were served to Mrs. R. E. McMullan, Mrs. J. L. Strain, Mrs. P. H. Page, Mrs. J. C. Womack, Mrs. C. C. Berry, Mrs. James Cox, Mrs. Ed Bodine, Mrs. Lon Strain and the hostess.

Next meeting of the group will be Jan. 21 in the home of Mrs. Preston Morris. A lighting demonstration will highlight the program.

Visit Mrs. Lindley

Guest last Sunday in the home of Mrs. J. A. Sadler was Mrs. Fred Boone of San Angelo, wife of a former mayor here. Mr. and Mrs. J. W. Foster of Electrica, Mrs. and Mrs. Winkle of Clairmont were guests of Mrs. M. E. Lindley.

Craddock-Witten BODY SHOP
140 W. 3rd

BODY-FENDER REPAIR

NO WASH DAY BLUES

WHEN WE DO YOUR LAUNDRY

Dial RA 8-3170

It's so easy to pick up your phone and banish those washday blues. We'll gain an extra day of leisure for you and get your clothes sparkling clean and expertly finished. And you won't believe our service could be so economical!

Colorado Steam Laundry
401 Oak St.

AT MONTHLY DINNER
Roy Sprott Is Guest For B&PW Program

Guest for the Business and Professional Women's Club program Tuesday evening in Civic House was J. Roy Sprott, a ventriloquist.

Sprott, 30-year-old son of Mr. and Mrs. J. H. Sprott, presented a short program with his dummy, Jerry.

Mrs. James E. Payne and Mrs. Travis Pritchett were in charge of the program.

Each of the women talked on "Know Your Legislation".

Invocation for the monthly dinner and social was spoken by Mrs. Billy Galtby. Miss Effie Copeland, president, conducted the business meeting. It was reported that two Christmas baskets were distributed and a monthly ticket was given to a child for school lunches.

Guests for the meeting, hosted by Mrs. Charles Minshaw and Mrs. Maule Charters, were Mrs. Leslie Crowder of Long Beach, Cal., Mrs. C. E. DeHoney of La Porte and Mrs. Sprott.

B&PW members attending were Mrs. M. L. Kirschbaum, Mrs. Ty L. McKinney, Mrs. H. I. Berman, Mrs. Jesse L. Jones, Mrs. Faye Manning, Mrs. Keith Miles, Mrs. Phillip Bernan.

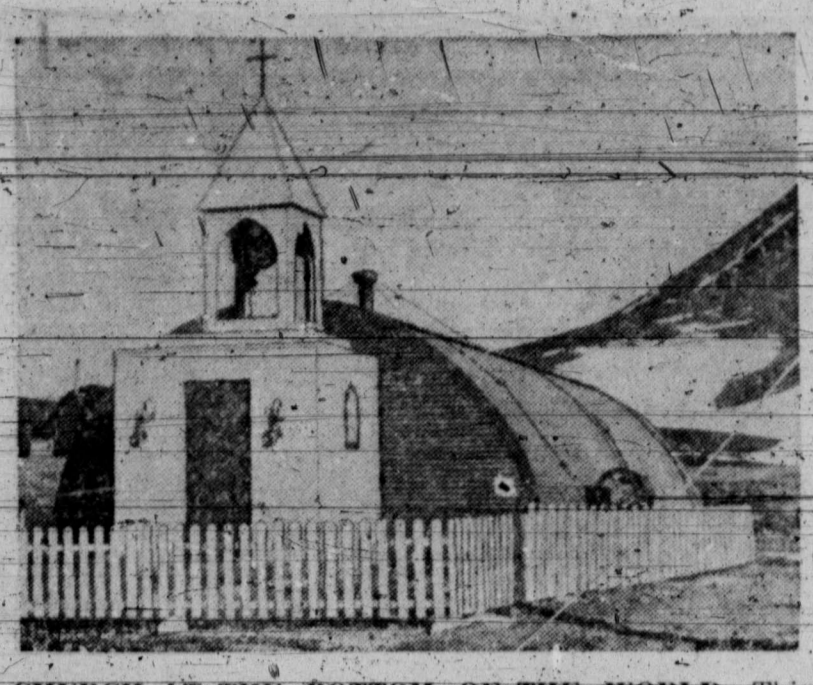
Mrs. Virgil Morgan, Mrs. Roxie Witten, Miss Louise Hardison, Miss Ruth Hightower, Mrs. Howard Rogers.

Also, Miss Nelda Garrett, Mrs. J. Ed Richardson, Mrs. Chester Hart, Mrs. Charles Wakefield, Mrs. Quilby, Miss Copeland, Mrs. Payne, Mrs. Pritchett, Mrs. Charters and Mrs. Minshaw.

Mrs. Crowder Returns To California Home

Mrs. Leslie Crowder of Long Beach, Cal., returned to her home this week after visiting here with her son-in-law and daughter, Mr. and Mrs. John H. Moore.

While here she attended a family reunion in Eastland.



CHURCH AT THE BOTTOM OF THE WORLD—This chapel is in the deep, deep, deep South—the Antarctic. The quonset structure is at McMurdo Sound, where temperatures range near 60 degrees below zero.

Ex-Lorraine Resident's Kin Dies in Roscoe

Funeral service was conducted Wednesday in Roscoe for William Alexander Sloan, 81, brother of a long-time resident of Lorraine.

He was a brother of Mrs. Alonzo Phillips, who moved from Lorraine to Sweetwater several years ago after living at Lorraine with her husband for many years.

WSG to Observe Special Month

Members, prospective members and guests are urged to attend the monthly meeting of Wesleyan-Servite Guild of First Methodist Church Monday evening, according to Mrs. J. W. Hill, president.

The meeting will be in observance of WSG month. Mrs. Roy Dozier will be program leader. Mrs. Tom Glover will present the devotion.

Hostesses for the meeting at 7:30 p. m. in Fellowship Hall are Mrs. H. H. Billberry, Mrs. Arlie Martin and Mrs. W. D. McClure.

GET BUICK'S DEAL BEFORE YOU BUY Webb Buick COMPANY
901 E. 2nd
Dial RA 8-3342

SYMBOL OF SAFETY

You never mistake the meaning of a Church spire.

Even to those who are cold to the ideals for which the Church stands, that finger of faith always points to something that is comforting, reassuring, safe.

The very presence of a Church, whether in a crowded city street or on a quiet country road, is a benediction to all, including those who are not conscious of worship.

Such an influence, with what it means to those who open their hearts to truth, is worthy of a second thought. It merits acceptance as a refuge. It commands confidence as a port in time of storm.

The Church deserves your support—your membership—because it affords real protection for the family whose welfare it is your duty to defend and whose proper upbringing is your solemn obligation.

THE CHURCH FOR ALL... ALL FOR THE CHURCH

The Church is the greatest factor on earth for the building of character and good citizenship. It is a storehouse of spiritual values. Without a strong Church, neither democracy nor civilization can survive. There are four sound reasons why every person should attend services regularly and support the Church. They are: (1) For his own sake. (2) For his children's sake. (3) For the sake of his community and nation. (4) For the sake of the Church itself, which needs his moral and material support. Plan to go to church regularly and read your Bible daily.

Book	Chapter	Verses
Sunday	Psalms	1-11
Monday	Psalms	1-12
Tuesday	Psalms	1-13
Wednesday	Psalms	1-14
Thursday	Psalms	1-15
Friday	John	1-4
Saturday	I Corinthians	1-7
	Philippians	1-11

This advertisement is made possible through the cooperation of the following:

COLORADO CITY RECORD
"Home Town Newspaper"

JAMES M. BOYD HUMBLE
Wholesale Representative

LEONARD HENDERSON STA.
200 Chestnut Phone 600

Re

1 day
2 day
3 day
Cl
C
Thur
T
adv
a c
own
on r
ces. a
N
given
will n
T
omiss
that n
being
basit

CL
DIR

• ATT
PE
A
Dozier
(
9 a.m. 5 p.
9 a.m.
Office

• BURI
- Bu
1 M
M
410 E. 3rd

• DENT
DR. R.
Residen
DR. H.
Residen
Phone

• HOSP
ROO
I
VI
2 to 4 p.m.
Efficiency
of these v
persons of
the Immed

• LAUN
Maytags
Wet Was
MORF
844 W. 4th

• TV SI
T
8:30
H-M
BON
Day Phone
RA 8-4171

ANNOUN
Lodges & M
Call
Tue
m. Work in
members of
welcome.
Way
Cha

Special Noti
All lands be
Maddin Ests
east part of
posted accor
treasurers

All hunting
eges are he
lands owned
W. R. (Jink

All lands kn
(Spade) Rap
Ing and Cok
according to
ed trespass
perpetrators
O. E. Jones

All lands be
Buchanan, E
Buchanan, E
County are
law and tres
scuted

Income Tax
reasonable C

Record Classified Ads—Market Place of Mitchell County—Randolph 8-3413

Colorado City (Tex.) Record, Sunday, Jan. 13, 1957 Page 7

Classified Information

COMPUTE AD COST BY TABLE BELOW

1 day	4c per word	4 days	11c per word
2 days	7c per word	5 days	13c per word
3 days	9c per word	6 days	15c per word

(15-word minimum charge 60c. Monthly rate 75c line.)

CLASSIFIED ADVERTISING CLOSING TIMES
Thursday 10:00 a.m. **Saturday 10:00 a.m.**

The publishers reserve the right to classify correctly all advertising, to edit any copy deemed objectionable only on a cash-in-advance basis. Some ads are charged to phone owners purely as an accommodation and payment is due upon request. Some ads are not charged under any circumstances and accepted only on cash-in-advance basis.

Notice of typographical errors or other errors must be given before the second insertion or claims for extension will not be recognized.

The Colorado City Record is not responsible for copy omissions, typographical errors or any unintentional errors that may occur other than to make proper corrections after being brought to attention. Advertising is accepted on this basis only.

MERCHANDISE

Building Material	12
Pay CASH AND SAVE	
2x4 precision cut studs	\$5.75
1x6 Sheathing (dry pine)	5.65
Corrugated Iron (Strombarn)	9.75
2x4 & 2x6 8 ft. through 20 ft.	7.25
15 lb. asphalt felt (432 gt.)	2.45
4x8 1/2" sheetrock (per hundred)	4.95
20 x 6 8 mahogany slab door	5.30
24x24 2 light window unit	9.95

VEAZEY CASH LUMBER CO.
 If you Have the Cash We Have the Price
 Phone 3-6612, Snyder, Texas
 Mile West on Lamesa Hwy.

REAL ESTATE

For sale: Oh boy, we have a nice 3 bedroom brick also 2 bedroom house all on same lot. Well located in north part of city. Easy walking distance of school. You will buy it if you look it over and have just a small cash payment and the price is right. We also have a nice little approximately 6 acres of good land and a nice small house in east Colorado out of city limits. No city tax for sale and it is worth the money also. Nice 4 sections of short shinary land located near Jayton in Kent County! A real buy. Approximately 1/2 or more minerals and only \$27.50 per acre. 5 wells of water, good fences, no house. Will run, they claim 115 cows year round. Minerals should be worth the price and we give you the land. No trade. We also have many other good buys in land and city property. Come see us for good buys.
 A. R. Wood and Son,
 Phone RA 8-3722

Houses for Sale

For sale low equity in two bedroom home. See at 980 E. 13th St. or dial RA 8-3088.

Two bedroom house, small down payment to GL. Will sell to non GI. Inquire 955 E. 14th. Dial RA 8-3109.

Alexander the Great wept because he had no more worlds to conquer.

2 1/2 bedroom house, low equity, 956 E., 16th St. Call RA 8-2555.

Nice two-bedroom home, 70 ft. lot, with carport, 826 E. 7th or dial RA 8-3363.

Youth Program Scheduled at Baptist Church

A youth program will be presented Sunday at the Mt. Zion Baptist Church, according to Rev. C. C. Beck, pastor.

Special speaker for the morning service, beginning at 11 o'clock, will be Daniel Johnson, principal of the Snyder Negro Schools.

Mrs. Hawkins of Snyder will be in charge of music for the service. Mrs. Willie Ruth McCarver will respond to the address, by Johnson.

Speaker for the evening worship service, which is to begin at 7 o'clock, will be Mrs. Lucy Wadley, a teacher at D. W. Wallace School. Music will be directed by Miss Frances Booker.

Mrs. W. D. Harris will respond to Mrs. Wadley's address. Ushers for both services will be Mr. and Mrs. B. H. Smith. W. D. Harris will be in charge of the offering. Mrs. Martha Louis is youth director of the church. Mrs. Susie Johnson is in charge of the day's activities.

THOMPSON—

Continued from page 1

However, the banker-farmer-lawyer has made it plain in agriculture meetings during the last two years that more pronounced steps in relation to farm credit should be taken as a long range recovery program.

Thompson, whose position as board chairman for Federal Land Bank of Houston also results in his chairmanship of the Intermediate Farm Credit Board, for three years has served as chairman of the National Farm Credit Directors conference.

Two other area West Texans have been named to participate in the President's conference. They are Fred Husbands and John Womble of Abilene.

Both were named by Governor Allan Shivers to represent the governor along with William L. McGill of Austin, state civilian and disaster relief director.

Husbands' executive vice president and general manager, of West Texas Chamber of Commerce, the organization that joined with Mitchell County and other area farmers in seeking more equitable cotton allotments in face of the drought.

Womble is director of public relations for Western Cotton Oil Mill Company, a division of Anderson-Clayton & Company, and also chairman of the State Welfare Board which administers much of the drought relief program in Texas.

Attend FOYT Banquet

Bob Kirschbaum, president of the Colorado City Jaycees, and Goodwin Simpson, club member, were in Abilene Saturday night for the Five Outstanding Young Texans banquet.

The two Colorado City Jaycees joined approximately 1,000 other persons at the banquet in Hardin-Simmons' Rose Field House.

Thomas Jefferson, Patrick Henry and George Washington were known as "the pen, the tongue and the sword of the American Revolution."



"Hey, Mac! Since taking those vitamins I got in the Want Ads—listen to me putr!"

GA's Begin Plans for Chinese Supper

Plans for a Chinese supper were begun Monday afternoon by the Girls Auxiliary of Oak Street Baptist Church in home of Mrs. Winfield Talley.

Plans for additional socials during the following months were also discussed during the business session conducted by Peggy Hazard.

Opening prayer was said by Vonita Cawthron. Beth Harris called the roll. Shirley Bell presented the program, "Girls Auxiliary Stockholders' Report Form."

Pat Greaves, chairman of the stewardship committee, announced that preparation for a play will be begun during next Monday's meeting.

Mrs. Talley served ice cream and date cookies after the meeting to Twilight Guthrie, Sylvia Fowler, Carolyn Sprott, Beth Harris, Pat Greaves, Monette Lewallen, Betty Buckner, Sue Philipp, Vonita Cawthron, Peggy Hazard.

Linda Sprott, Mary Ann Kidd, Johnnie Cannon, Shirley Bell, Joyce Neal and Jo-Neil Thigpen.

SHOW—

Continued from page 1
 \$17.50 for fourth and \$15 for fifth.

Weight grouping for the swine will be lightweight, 160 to 185 pounds; middleweight, 186 to 215 pounds; and heavyweight, 216 to 280 pounds. Judging will be conducted in three classes—Durocs, Hampshires and all other breeds.

Grand champion of the swine division will receive a banner and the reserve champion will carry a rosette. Class awards will be the same as lambs, with \$25 for first, \$22.50 for second, \$20 for third, \$17.50 for fourth, \$15 for fifth and other awards.

Plaques will be presented to the show's best showman each the calf, lamb and hog divisions.

There are a score of other awards, too. Best group of three dry-lot calves will receive \$15 and the best calf bred in Mitchell County will get \$10.

Best group of three in each of the lamb classes will win \$5 and the best lamb bred in Mitchell County will earn \$10.

A \$10 prize will go also to the youth exhibiting the best hog bred in the county. Best group of hogs shown by an individual will win \$8, the second group will get \$6 and the third group will get \$4.

Awards will be presented after judging in each class by a special committee chairmaned by John Russell of Colorado City.

Members of the committee will be Supt. E. Williams of Colorado City, calves; Supt. S. A. (Soc) Walker of Westbrook, lambs; and Supt. Dan Robbins of Lorraine, hogs.

Dr. Cowan to Discuss Heart for Kiwanians

Dr. Kenneth Cowan will speak Tuesday at the Kiwanis luncheon in Civic House.

His topic will be "A Look at the Heart."

Representing the local Kiwanis is recently at the Sweetwater Kiwanians installation dinner were Mr. and Mrs. L. P. Berman, Mr. and Mrs. Keith Miles, Mr. and Mrs. Sie Hamm, Mr. and Mrs. John T. Merritt, Mr. and Mrs. Perry Boles, Sims Palmer and Bobby Reed.

The Sweetwater dinner was in the Sky Room of Blue Bonnet Hotel.

Hat's worn by the King's guard in England are called Busbies.

PROGRAMS FOR

KBST, Channel 4		
SUNDAY		
1:55 Channel 4 Previews	3:20 Movie Matinee	
2:00 Movie Matinee	4:30 Afternoon Devotional	
4:00 This Is The Life	6:00 Bruce Frazier	
4:30 The Gospel Hour	6:15 News	
5:00 Telephone Time (CBS)	6:25 Sports	
5:30 Air Power (CBS)	6:30 Beat The Clock (CBS)	
6:30 Jack Benny (CBS)	7:00 Arthur Godfrey (CBS)	
6:45 News	8:00 Editors Notebook	
6:55 Weather	8:30 Eye Got A Secret	
7:00 Private Secretary (CBS)	9:00 I'll See You Tomorrow (CBS)	
7:00 Ed Sullivan (CBS)	10:10 Weather	
8:00 GE Theatre (CBS)	10:15 Sports	
8:30 C & H All Star Theatre	10:20 TV Theater	
9:00 Counterpoint	10:50 The Pendulum	
9:30 My Little Margie		
THURSDAY		
10:00 News	3:15 Channel 4 Previews	
10:10 Weather	3:20 Movie Matinee	
10:15 Sports	3:30 Afternoon Devotional	
10:20 Hollywood Star Theatre	4:35 News & Reviews	
	5:00 Longhorn Theatre	
MONDAY		
3:10 Channel 4 Previews	6:00 Bruce Frazier	
3:15 Secret Storm (CBS)	6:15 News	
3:30 Movie Matinee	6:25 Sports	
4:55 Afternoon Devotional	6:30 Industry on Parade	
5:00 Longhorn Theatre	6:45 H.C.E. College Program	
6:00 Bruce Frazier	7:00 Bob Cummings Show (CBS)	
6:15 News	7:30 Chinax (CBS)	
6:30 Robin Hood (CBS)	8:30 Mark Saber	
7:00 Liberate	9:00 Circle Four Ramblers	
7:30 TBA	9:30 Judge Roy Bean	
8:00 Texas in Review	10:00 News	
8:30 December Bride (CBS)	10:10 Weather	
9:00 Top Tunes & New Talent (CBS)	10:15 Sports	
10:00 News	10:20 Hollywood Theater	
10:10 Weather		
10:15 Sports	FRIDAY	
10:20 The Pendulum	3:10 Channel 4 Previews	
	3:15 Secret Storm (CBS)	
	3:30 Movie Matinee	
	4:55 Afternoon Devotional	
	5:00 Longhorn Theatre	
	6:00 Bruce Frazier	
	6:15 News	
	6:25 Sports	
	6:30 Chinax Calling (CBS)	
	7:00 Westpoint (CBS)	
	7:30 Zane Grey	
	8:00 Pelstar 90 (CBS)	
	9:00 Pelstar to Person (CBS)	
	10:00 News	
	10:10 Weather	
	10:15 Sports	
	10:20 Your TV Theater	
	10:50 The Pendulum	
SATURDAY		
10:00 News	12:55 Channel 4 Previews	
10:10 Weather	1:00 Lee Hockley (CBS)	
10:15 Sports	3:00 Longhorn Theatre	
10:20 Hollywood Star Theatre	3:00 Lone Ranger (CBS)	
WEDNESDAY		
3:15 Channel 4 Previews	4:30 Yesterday's Newsreel	

CLASSIFIED DIRECTORY

ATTORNEY-AT-LAW

PERRY BARBER
 Attorney-at-Law
 Dozier Bldg.—116 W. 2nd
 Office Hours:
 9 a.m.-5 p.m. Mon.-through Fri.
 9 a.m.-12n on Saturdays
 Office Phone RA 8-3292

BURIAL SERVICE

KIKER
 Burial Insurance
 1 Month to 80 Years
 Minimum Rate
 410 E. 3rd Phone RA 8-2622

DENTISTS

DR. R. D. BRIDGFORD
 Residence Phone RA 8-2059

DR. H. JENE STEAKLEY
 Residence Phone RA 8-3120
 X-RAY
 Phone RA 8-3151—Office
 446 Walnut

HOSPITALS

ROOT MEMORIAL HOSPITAL
 Visiting Hours
 2 to 4 p.m. 6:30 to 8 p.m.
 Efficiency requires observance of these visiting hours by all persons other than members of the immediate family.

LAUNDRIES

"Maytags & Steam Get Them Clean"
 Wet Wash—Drying Service

MORRIS LAUNDRY
 844 W. 4th Phone RA 8-3632

TV SERVICE

TV Service
 on all make sets
 8:30 a.m. to 10 p.m.

H-M Furniture Co.
 Bonded TV Dealer
 Day Phone Night Phone
 RA 8-4171 RA 8-4030

ANNOUNCEMENTS

Lodges & Meetings
 A-1
 Called meeting of Mitchell Lodge 563 AF&AM Tuesday, Jan. 15, 7:30 p.m. Work in Master Degree. All members urged to attend; visitors welcome.

Wayland Webb, W. M.
 Charles Godwin, Sec'y.

Special Notices

All lands belonging to the A. E. Maddin Estate situated in southeast part of Mitchell County are posted according to law, and all trespassers will be prosecuted.

All hunting permits and privileges are hereby revoked on all lands owned and controlled by W. R. (Jinks) Powell.

All lands known as Renderbrook (Spade) Ranch in Mitchell, Sterling and Coke counties are posted according to law. All unauthorized trespassing must stop or perpetrators will be prosecuted. O. F. Jones manager.

All lands belonging to the J. A. Buchanan Estate and to Roy D. Buchanan, situated in Mitchell County are posted according to law and trespassers will be prosecuted.

Income Tax let me help you. Reasonable. Call RA 8-2630.

ANNOUNCEMENTS

Special Notices A-2
 Income tax returns prepared 1912 Chestnut Street, E. A. Smith, former deputy collector.

AUTOMOTIVE

Autos For Sale B-1
 1950 Oldsmobile, 2 door sedan. Clean and good condition. Wendell Thomas, 1212 Eastover, RA 8-4096.

1954 Ford 4 door for sale. Inquire at 1421 Chestnut St.

Motors & Bikes

Girls' used bicycle, like new. Bargain. See after 5 p. m. at 532 E. 9th.

BUSINESS SERVICES

DUB ARNOLD SEPTIC TANK AND CESS POOL SERVICE. Reasonable Rates. Dial 3-4095, Snyder, Texas.

FINANCIAL

Farm & Ranch Loans G-2
 Farm and Ranch loans, 5% rate, with the privilege of paying all or any part at any time without penalty. Colorado National Farm Loan Association, 135 W. 2nd St.

FARM & RANCH

Feed, Seed & Grain H-3
 For sale: Round bale, second cutting, good leafy Alfalfa Hay, \$42.00 per ton, in carloads. Also good press hay at \$37.00 per ton. Contact Beemar Dockrey, RA 8-4309 or box 408 Colorado City, Texas.

MERCHANDISE

Appliances I-1
 Kirby vacuum cleaners sold and repaired. Shampoo and de-moth carpets. Dial RA 8-2345, 1145 Walnut, Richard Lange, Agent.

Are you thinking of buying an automatic washer? Don't buy any brand until you have tried the Frigidaire washer for seven full days with no obligation. Operates on casters. No plumbing necessary. For free trial, dial your Frigidaire dealer today. RA 8-2252.

Household Goods

Two 16,500 BTU Panel Ray Heaters. Thermostat control. Dial RA 8-4356.

Miscellaneous I-5
 For sale: good used portable typewriter. Maniss Printing Co., 435 E. 11th.

5 overhauled and reconditioned Southwind car heaters, also spare parts. Inquire at Craftman Shop, 227 Oak St.

Pets, Dogs, etc.

Guaranteed Parakeets and Canaries. Feed and cages. Erwin Bird Farm, 408 E. 15th, Phone RA 8-4196 or RA 8-4148.

For sale: English Pit Bulldog. Dial RA 8-4051.

Sporting Goods

1956 Lope Star Commander Boat and trailer for sale. \$275.00 1331 Austin St.

MERCHANDISE

Wanted To Buy I-11
 More money for plumbers brass, copper wire, oil field salvage, pipe protectors, scrap iron, batteries & rags. If dollars mean anything to you, sell us your scrap materials.—San Angelo Iron & Metal Co., 710 Block W. 14th, Ph. 21421, San Angelo.

RENTALS

Garage apartment at 520 Hickory B. L. Wren, 901 East 16th.

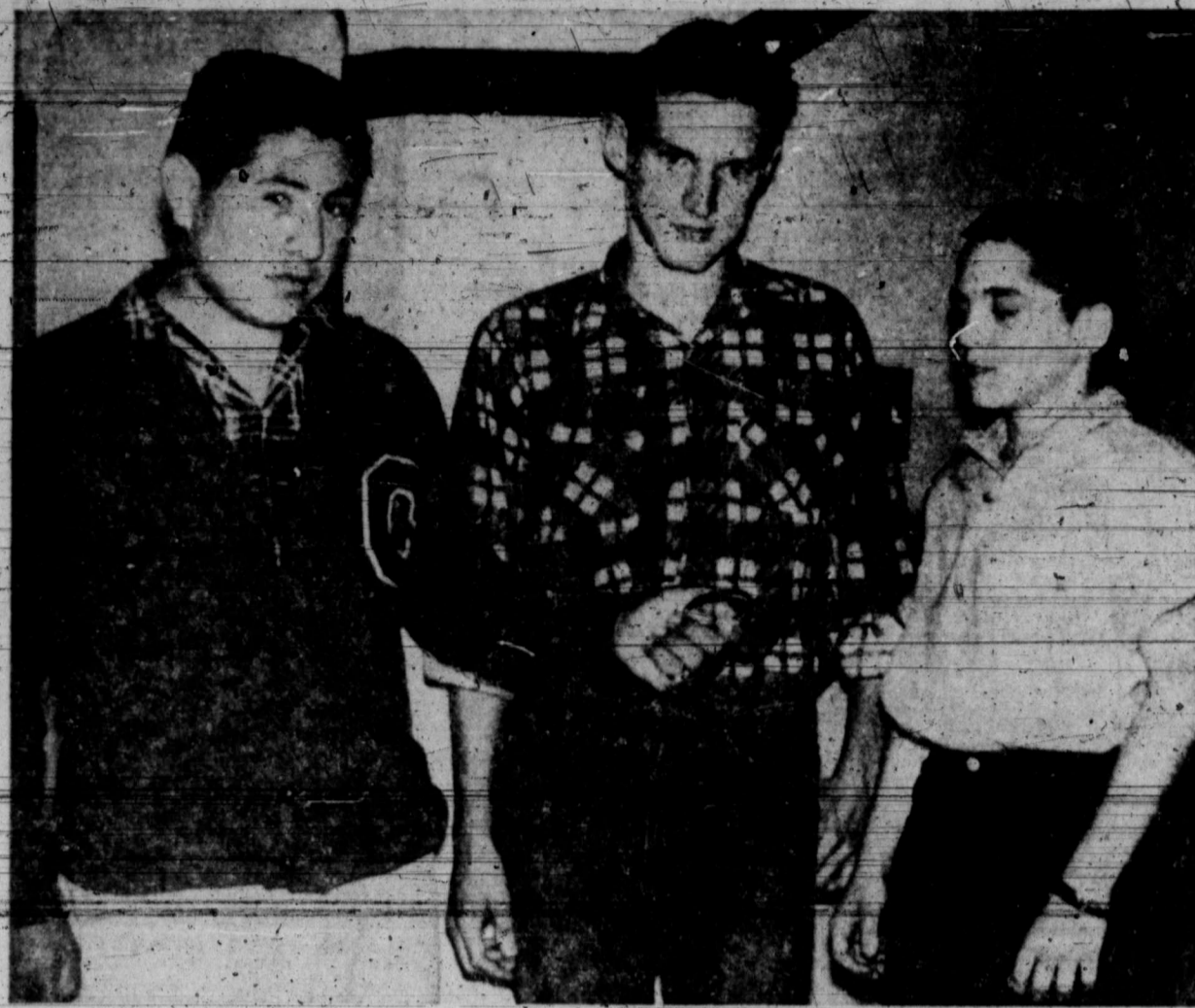
BUYING! SELLING! RENTING! SWAPPING!

YOU'LL FIND IT IN THE

WANT ADS

READ AND USE WANT ADS FOR QUICK RESULTS!
 IT'S THE TOWN'S BIGGEST MARKET PLACE—

Colorado City Record



PEP SQUAD SWEETHEARTS—Nick Martinez, left, 1956-57 sweetheart of the ninth grade pep squad of Colorado Junior High, shows his gift to sweethearts of the seventh and eighth grades' cheering sections. They are Joe Tarter, center, eighth grade, and Roger Richards, seventh. All three boys received identification bracelets inscribed with "Sweetheart, 1956-57". (Record Staff Photo)

Mustangs Drop Wolves 68-49; Go to Lamesa

Colorado High Wolves will seek their first District 3AAA win Tuesday night when they travel to Lamesa to battle the strong Golden Tornado cagers. Wolves lost their opener Friday to Sweetwater 68-49 as Dowling Ware and Sammy Harvey each dumped in 18 points for Sweetwater.

Wolves host Anson Thursday and San Angelo Friday in non-conference games.

In the Sweetwater game Friday night, the Mustangs leaped to the front early for a 17-8 lead at the first quarter mark.

Sweetwater added 12 more points in the second quarter while the Wolves were pitching in 10 points for a 29-18 score at halftime.

With Ware and Harvey still ripping the meshes, Sweetwater continued to set a rugged pace with a 47-30 lead at the third quarter mark.

The Wolves warmed up in the last quarter to match points with the Mustangs, each team scoring 19 points.

Jimmy Richardson was the leading Wolf scorer with 16 points, followed by Don Black with 10.

The loss gave the Wolves a season mark of seven wins and nine losses.

BOX SCORE

	FG	FT	TP
Richardson	5	6	16
Smith	1	0	2
Caffey	1	2	4
Black	2	6	10
Flippin	3	3	9
Compton	3	2	8
Totals	15	19	49

Clothes Sought Here For Hungarian Relief

Clothes for Hungarian relief will be collected here.

R. C. Blocker said clothes donated by Colorado City citizens will be shipped to Fort Worth for inclusion in shipments through Hungarian relief channels.

Contributions can be taken to Craftsman's shop, 227 Oak, or pickups will be made Saturday if persons phone RA-83610, Blocker said.

School Lunch Menus

Following are school lunch menus for Colorado City, Lorraine and Westbrook public schools beginning Monday, Jan. 14.

Colorado City

MONDAY—Hot dogs, Spanish hominy, mixed mustard and turnip greens, gingerbread squares, milk or feed fruit juice.

TUESDAY—Meat balls with spaghetti, lime fruit salad, banana pudding, hot sliced bread and butter, milk.

WEDNESDAY—Turkey a la king with biscuit topping, buttered carrots and peas, fluffed rice, sliced bread and butter, cookies, choice of milk.

THURSDAY—Stew meat with potatoes, tomatoes and onions, combination vegetable salad, hot rolls and butter, stewed apricots and milk.

FRIDAY—Luncheon meat and pimento-cheese sandwiches, potato chips, sliced pickles and carrot strips, sliced "devil" food cake squares and milk.

Lorraine

MONDAY—Roast pork with brown gravy, creamed potatoes, green beans, carrot sticks, peanut butter, cookies, bread and butter, choice of milk.

TUESDAY—Pot roast with potatoes, carrots, green onions, cabbage, tomato salad, dough nuts, bread and butter, choice of milk.

WEDNESDAY—Pinto beans, spinach, deviled eggs, onions, plums, cornbread and butter, choice of milk.

THURSDAY—Ham sandwiches, sliced cheese, corn, lettuce and tomatoes, baked custard, bread and butter, choice of milk.

FRIDAY—Turkey and dressing with giblet gravy, cranberry sauce, English peas, slice of pineapple, bread and butter, choice of milk.

Westbrook

MONDAY—Chili burgers.

Practical protection and lasting beauty for your home



Habitant FENCE

Habitant rustic wood fences with character and charm provide a picturesque frame for your home, and sturdy protection for your lawn and garden. Habitant fences are factory fabricated to fit your particular ground plan and are made from beautiful, durable Northern Michigan White Cedar. Single or double gate with hardware attached.

Seven distinctive styles available, each in a choice of heights. You can easily purchase Habitant fence yourself or we will give you an estimate for complete installation.

HAMMOND LUMBER & SUPPLY CO.
283 W. 2nd • Ph. 8-1191

Open House on Saturday at Packing Co.

Two native Mitchell Countyans, Bill Hartsfield and Frank Morgan, are owners of the new Premium Packing Co.

The packing company is now open for business in its new modernistic concrete tile structure two miles north of the city limits on the Snyder Highway.

The owners announced today that open house will be held Saturday with free coffee and donuts for everyone.

The new wholesale meat company is featuring home freezer service. With the purchase of one-half beef or more, the meat is cut and wrapped to the customer's specifications.

A quick freeze vault prepares

the meat for the customer's freezer.

Hartsfield, who has seven years' experience in the meat business, said the new building is equipped with all new electrical operated fixtures. Pens at the rear of the building are fixed so the cow or hog can be slipped into a chute in the building, killed and slaughtered quickly and efficiently.

Majority of the meat at the packing company are feed lot calves, dressing out 240 to 300 pounds. The calves were raised by Morgan who has been in the cattle business for a number of years, and by Hartsfield.

It is warmer to wear two thin garments than one thick one because the air between them serves as insulation.

don't make a mistake when you shop for plastic surfacing!

see **CONOLITE** by Continental Can Company **FIRST!**

It's the original do-it-yourself decorative plastic with all the advantages.

Hammond Lumber & Supply
283 W. Second • Phone 8-4101

Open house Saturday...
★ FREE COFFEE & DONUTS!

You are invited to visit the modernistic, new plant of the Premium Packing Co., north of the city on the Snyder Highway. Owners Bill Hartsfield and Frank Morgan are proud of their new business and anxious to show it to the public.

HOME FREEZER SERVICE—We specialize in home freezer service! Select 1/2 beef or more and we will cut it and wrap it to your specifications. Our good quality beef is feed lot calves, just the right size for wonderful eating. Our quick-freeze locker stores in all the wonderful meat flavor.

Our clean, modern packing plant features the latest equipment, all electrically operated. We have years of experience in the meat business and feel we can fill your needs.

PREMIUM PACKING CO.
BILL HARTSFIELD • FRANK MORGAN
North on Snyder Hwy • Phone RA 8-4310

ONLY 2 MORE DAYS!

(MONDAY & TUESDAY)

IN OUR GIGANTIC

Stock Close-Out Sale!

Remaining Stock Marked at Wholesale Cost

WE SAID WE MEANT BUSINESS AND WE DID!

This is your last chance to buy first quality merchandise at wholesale prices! We want to clear the remaining stock to the bare walls by Tuesday! We would like to thank the many customers who have taken advantage of this stock close-out sale... but there's still more to be bought... so hurry on down today!

HURRY! HURRY! HURRY!

WE HAVE REDUCED OUR STOCK TO:

4 BEDROOM SUITES

6 LIVING ROOM SUITES

4 DINETTE SUITES

1 GAS RANGE

H-M FURNITURE CO.
Next door to Post Office