



# THE WHEELER TIMES

(USPS-681-960)  
VOLUME 78, NUMBER 33

THURSDAY JULY 26, 2012

SINGLE COPY **50c**

“Wheeler; town of friendship and pride.”

## Mobeetie Schedules

# Summer Celebration Tour, July 26

The Old Mobeetie Jail will be the site for Mobeetie's Summer Celebration Tour on Thursday, July 26, 2012. Sponsoring this event are Old Mobeetie Texas Association, Mobeetie Volunteer Fire Department and Wheeler Chamber of Commerce.

Live news and weather will be broadcast from Mobeetie. Channel 10's news broadcasts at 6 and 10 P.M. will be live from Mobeetie with cut-ins from 6:30-7 p.m. The weather at 5 p.m. and 9 p.m. will be live from Mobeetie. Throughout the evening various competitions are scheduled for the enjoyment and entertainment

of those in attendance. Games and events include:  
• Tug-O-War broadcasters and MVFD  
• Frozen T-shirt contest  
• \$10,000 dice roll  
• Big Texan 72oz. Steak eating challenge 2 people chosen to eat  
• Cow chip throwing

• Corn cob toss  
• Oreo cookie eating contest  
• Frisbee Fling  
• Horseshoe pitching  
• Pie eating contest  
• Ice cream contest  
• Pancake eating contest  
• Stick horse races  
• Food Bank of Amarillo will be

selling chances to win a car  
• Live Music on site  
• Fajita plate dinners (Mobeetie Volunteer Fire Dept.)  
• Vendors (not food) Anyone interested in having a booth may contact Gena Seitz at 806-669-5615  
You are invited to attend this

Summer Happening for an evening of activities and entertainment, whether you join in or just watch.  
Summer Happenings will continue at Mobeetie Friday, July 27, when the Old Mobeetie Music Festival begins at 6 p.m.  
See you there!

# Old Mobeetie Music Festival July 27-29

**CWE CHAT WITH EDITOR**  
By Louis C. Stas

Do you have your lawn chairs all loaded up to go to Mobeetie this evening, Thursday, July 26? The Summer Celebration Tour promises to be an entertaining evening with all types of activities and entertainment.

— cwe —  
And, you can just leave your lawn chairs in place for the Old Mobeetie Bluegrass Festival which will start Friday evening. Then you will be assured of a good seat and don't have to wonder what time you need to get there to have a good seat.

— cwe —  
We were a little late in giving Rocky Mendiola the recognition he deserves, but we were waiting for the picture. We are proud of you, Rocky.

— cwe —  
The beginning of another school year is just around the corner.  
(Continued Page 8)

## STORM REPORT

As Reported by...  
**Stormie Meriwether,**  
Third Grade Student

Dear Friends, Seth and Jaeden were gone a long time for vacation. Now they are home. I am so happy. Even Baba and Jennifer are home. While Baba was gone we had to see Pop all by himself. He went to eat with us and we went to my mom's class reunion. At the reunion we talked and ate and relaxed. Then we went to the listen to the music at the U-Drop. That was fun. John and Emily (Walker, cousins from Houston) came to my house for breakfast. They loved my dad's pancakes. They are very fun people and I'm sorry their big fat cat died. I used to play with their cat when I was a little kid. I am so happy they came for the reunion. One day we went to my city house. We went in the night to see the movie called Brave. It was a funny movie. My mom and dad and I had so much fun. We ate popcorn and candy and laughed. It was a wonderful night.

No one came into the movie and shot us! I am so sad and mad that a crazy, very mean man killed the people at the Batman movie. Why would somebody do that? The people just wanted to have a fun  
(Continued Page 8)

Hello Friends!  
It's Music Festival time in Old Mobeetie!! We hope you are as excited about this as we are! This dates for the

festival are July 27th, 28th, and 29th, and will once again be held at the beautiful grounds of the Mobeetie Jail Museum. We are looking forward to seeing you there.

We have put together a great program again this year. Scheduled to appear are our good friends, The Batten Family and Star Canyon Band. Returning to our stagewill be The Larry Ford Band and Max Zimmert and The Riders from Austin, TX. New to us this year are Blocker-Stephens Band and Hanks and Co.. The incomparable Frank Cleveland will

## Resignations, Hiring By W.I.S.D. Board

Regular Board Meeting  
May 17, 2012

The Wheeler ISD Board of Trustees met for a scheduled meeting May 17, 2012. Dr Mike Smith called the meeting to order at 6:30PM. Board members present were Dr. Mike Smith, Dr. LeeAnn Hillhouse, Todd Moore, Billy Richardson, Kent Ware and James Masters. School personnel attending were Clay Mahler, Bryan Markham, David Dale and Stacey Horton. The pledge to the flag was led by Billy Richardson and the invocation was offered by James Masters.

There were no public comments or public participation.

Motion by Dr. Hillhouse, second by James Mastersto approve minutes from April 17<sup>th</sup> meeting. Six members voted to accept the motion, no votes against

Motion by Billy Richardson, second by Kent Wareto pay all bills except Wares and Buck and Beyond. Six members voted to accept the motion, no votes against.

Mark Marshall entered the meeting at 6:42pm.

Motion by Dr. Hillhouse, second by Mark Marshallto pay Wares and Buck and Beyond. Five members voted to accept the motion, no votes against, Kent Ware and Billy Richardson abstained.

Motion by Dr. Hillhouse, second by Todd Moore to accept the High Stakes Testing Resolution. Seven members voted to accept the motion, no votes against.

Motion by Mark Marshall, second by Kent Ware to accept the resignation from Carrie Huddleston with regrets. Seven members voted to accept the motion,

be providing the sound and Gina Seitz will be returning as emcee. We know you will be very entertained if you make to the trip to Mobeetie.

Who could even think about coming to the Mobeetie festival without having homemade ice cream? The Mobeetie Volunteer Fire Dept. will again be providing their exceptional concession stand. This is a fund raising effort for the Fire dept. and we hope you will support them.

We are very excited to announce that Mobeetie has been chosen as a stop on the KFDA News Channel 10 Summer Celebration Tour. They will be broadcasting the news from the Museum grounds on Thursday, July 26th, the day before the festival

starts. There will be all kinds of games and contests for people of all ages, so make plans to join us so that we can show everyone what a great place Mobeetie really is!

Mark the dates on your calendar so that you won't miss out on any of the excitement. Remember to bring your comfy lawn chairs and pick one of the many great spots to listen to your favorite music. The show will begin on Friday night at 6 p.m. and run thru the evening, and then start again at 10 a.m. on Saturday morning. The last band is scheduled to start around 9:30 p.m. Saturday evening, then make plans to be at the all Gospel show Sunday morning, beginning at 9 a.m. and ending around noon.

We are really looking forward to seeing you July 27th, 28th, and 29th, in Old Mobeetie!

ADMISSION  
Friday only \$10.00 per person  
Saturday only \$12.00 per person  
Weekend pass \$18.00 per person  
Sunday is FREE  
Children 12 and under FREE  
CAMPING  
139 hookups available at \$15.00 per day  
Dry camping available at \$6.00 per day

No reservations please — first come, first serve  
HANDICAP SPOTS ARE AVAILABLE

## CRP - Planning It Out

### Acreage Signup Exceeds 700,000 Acres In Texas

A few years ago no one knew for certain if the Conservation Reserve Program (CRP) would continue as it had in past years. Landowners were not sure if the opportunity to re-enroll their land or to make new bids would be available for this popular USDA program.

Born out of the Dust Bowl as a way to combat erosion, particularly on Highly Erodible Land (HEL), the demand for CRP has remained strong as the USDA-Natural Resources Conservation Service (NRCS) develops over 4,000 conservation plans for CRP contracts in Texas.

This historic conservation program has continued into the 43rd general signup. Farm Service Agency's Acting Executive Director James B. Douglass in Texas announced recently that 767,242 acres were accepted in the new signup, while the total number of active CRP acres in the state now exceeds 3.3 million.

NRCS in the Panhandle and South Plains region assume the majority of the total enrolled acres in the state with 3,800 conservation plans to be developed by August 24, 2012.

Conservation plans are not contracts, but rather a record of objectives planned out by the producer working with the NRCS. As in any conservation plan written by NRCS, the information is a road map designed to help producers protect and improve their land.

As the primary technical agency, NRCS' role in CRP is to work with participants to establish permanent grass cover based on the participant's decisions during the sign-up period. These decisions are recorded in a conservation plan developed by NRCS. The conservation plan supports the CRP contract for the establishment of permanent grass cover.

Mickey Black, NRCS assistant state conservationist in Lubbock said, "The process begins with technical assistance to landowners enrolled in the program to plan approved grass plantings and species, weed control options, dead litter cover and additional supporting practices depending on a producer's enrollment."

Mr. Markham discussed enrollment, all state testing is complete, and Baccalaureate is on Sunday, May 20<sup>th</sup> @ 7:00pm. Junior High Graduation is Monday, May 24<sup>th</sup> @ 7:00pm, Semester Exams are May 22<sup>nd</sup> & 23<sup>rd</sup>. Early Dismissal on Tuesday, Wednesday and Thursday. JH/HS Awards program is Thursday, May 24<sup>th</sup> @ 11:00am followed by NHS Inductions and PRIDE program. Teacher Workday on Friday, May 25<sup>th</sup> @ 9:00am. High School Graduation on Friday, May 25<sup>th</sup> @ 7:30pm.

Mr. Mahler gave the financial report.

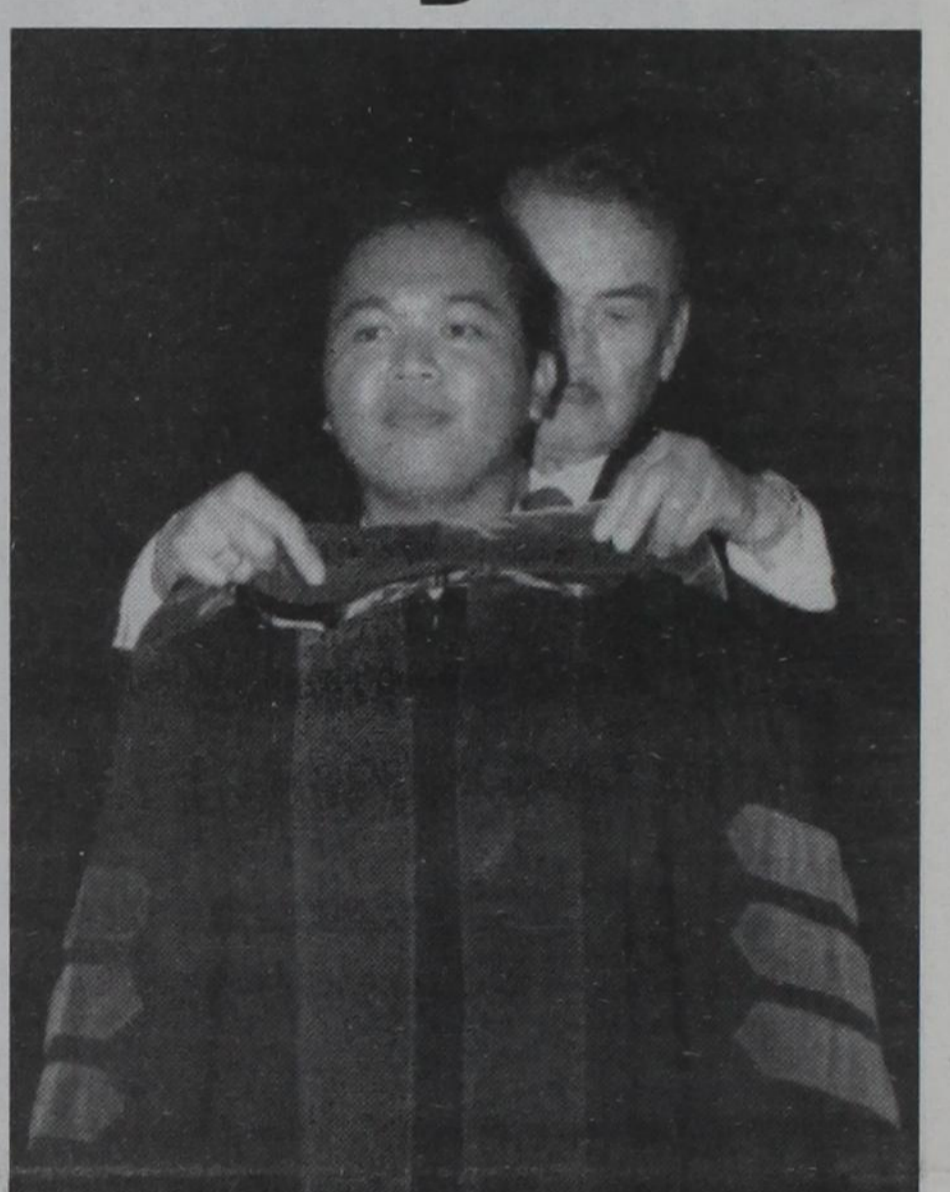
Motion by James Masters, second by Todd Mooreto adjourn at 7:02PM. Seven members voted to accept the motion, no votes against.

Mr. Dale discussed enrollment and STAAR testing. Awards assembly on May 23<sup>rd</sup> @ 9:00am and PRIDE program on May 23<sup>rd</sup> @ 12:00pm. Interviews with teacher prospects and staff arrangements.

Mr. Markham discussed enrollment, all state testing is complete, and Baccalaureate is on Sunday, May 20<sup>th</sup> @ 7:00pm. Junior High Graduation is Monday, May 24<sup>th</sup> @ 7:00pm, Semester Exams are May 22<sup>nd</sup> & 23<sup>rd</sup>. Early Dismissal on Tuesday, Wednesday and Thursday. JH/HS Awards program is Thursday, May 24<sup>th</sup> @ 11:00am followed by NHS Inductions and PRIDE program. Teacher Workday on Friday, May 25<sup>th</sup> @ 9:00am. High School Graduation on Friday, May 25<sup>th</sup> @ 7:30pm.

Mr. Mahler gave the financial report.

Motion by James Masters, second by Todd Mooreto adjourn at 7:02PM. Seven members voted to accept the motion, no votes against.



**GRADUATE:** Dr. Lawrence (Rocky) Mendiola, son of Dr. Louie L. and Gina Mendiola, graduated from the University of North Texas Health Science Center May 19, 2012. He was welcomed into the profession by his father in a formal Hooding Ceremony. He and his family moved to St. Petersburg, Florida, where he began his 3 year residency in Emergency Medicine at Tampa General Hospital/University of South Florida, a trauma facility.



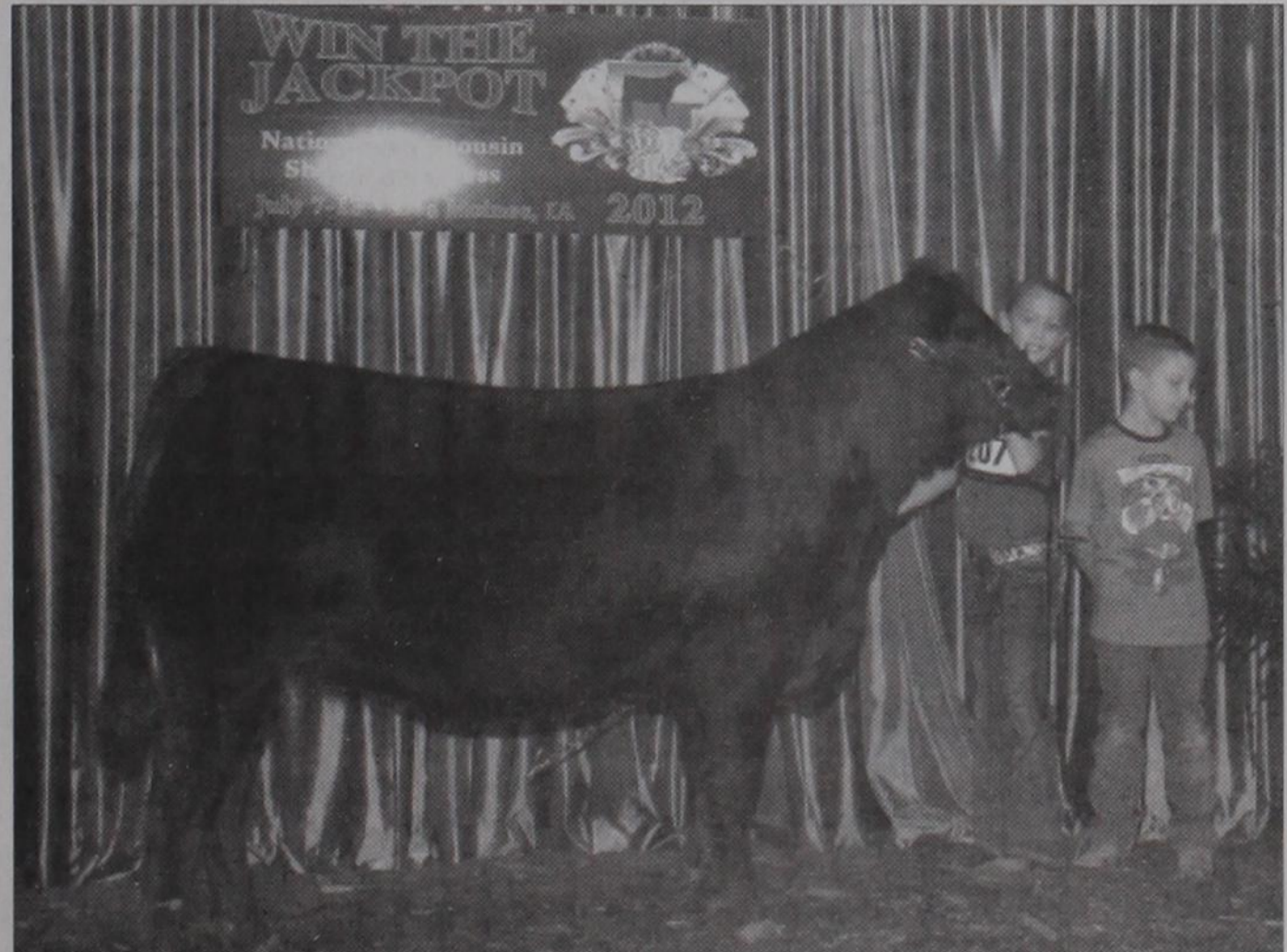
## Pastor Rex Porter Newkirk Rites July 25 In Colorado

Pastor Rex Porter Newkirk, 89, passed away Sunday July 23, 2012. Services were held at 10:00 AM, Wednesday, July 25, 2012, at the Orchard Mesa Baptist Church, 2748 B Road, Grand Junction, Colorado. A visitation time was held at 9:00 AM prior to service time. Graveside services were held at 1:15 PM, Wednesday, at the Delta City Cemetery, Delta, Colorado. Arrangements were under the direction of Martin Mortuary, 550 North Avenue, Grand Junction, CO 81501.

Rev. Newkirk was the eighth of thirteen children born to Lennie Ware Newkirk and Eva Bess Ford on December 20, 1922, in Jacksboro, Texas. He was a veteran of World War II, serving 17 months in the Philippine Islands with the 1<sup>st</sup> Cavalry Division. He was awarded four Bronze Stars, Purple Heart with one Oak Leaf Cluster and one Silver Star.

Rex answered the call to preach in 1952, pastoring churches in Texas and Colorado for over 30 years. He began going overseas in 1982, preaching in 32 different countries. He was forced to discontinue ministering due to Severe Spinal Stenosis and Parkinson's disease.

Rex married Wanda Lou Clemens on December 18, 1945, in Shamrock, Texas. She survives with their five children: Diane Moore (Willie, deceased); Donna Lane (Jack); Jim Newkirk (Charlotte); Rex A. Newkirk; Jana Bauman (Mike deceased); 12  
(Continued Page 8)



**McKINLEY BEGERT CONTENTS AT NATIONAL JUNIOR LIMOUSIN SHOW:** McKinley Begert of Allison, Texas joined exhibitors from 22 states with 400 head of Limousin cattle to participate in this year's North American Limousin Junior Association's (NALJA) National Junior Limousin Show and Congress. The event took place in Des Moines, Iowa July 7 - July 13, 2012. Dr. Clint Rusk of Stillwater, Oklahoma judged the National Junior Owned Bull and Female Show. Begert won Class 52 in Division III with BGF Carol 134Y, a 4/18/2011 black, polled daughter of LLKT Tremor 704T out of BGRT 308N. McKinley was selected as a Junior Showmanship finalist. Also pictured is little brother, Boone. Her parents are Bret and Hayley Begert of Begert Limousin Ranch, Allison, Texas.

# SORRY TO HOUND YOU

But Trent McKnight needs YOUR VOTE in the Republican Primary RUNOFF!



Runoff Election: Tuesday, July 31st  
Early Voting: July 23rd - 27th

## Endorsed by Texas Commissioner of Agriculture Todd Staples

"Trent is a dynamic and energetic leader that understands rural Texas, the importance of protecting private property owners' rights and keeping government limited. He will fight for taxpayers and against government growth."



REPUBLICAN  
**Trent McKnight**  
FOR STATE REPRESENTATIVE

District 58

Former National FFA President  
& NRA "A" Rated

[www.TrentMcKnight.com](http://www.TrentMcKnight.com)

## TRADE AREA REVIEW

Copyright 2011 by Publishers Advertising Agency, Dibble, OK  
Advertising Agency is solely responsible for sales, contents and collections of this review

### Greenbelt Electric Cooperative, Inc.

Greenbelt Electric Co-op is located at 706 Tenth St. in Wellington, phone 447-2536, operates one of the finest equipped Electric Utility Companies anywhere! This utility is managed by people with years of knowledge and experience in the electric distribution field. This fine co-op is owned by its members which enables them to purchase this utility service at a low and reasonable rate thereby saving them money. It will pay you to support and patronize this fine co-op in more ways than just saving you money, because it is a well known fact that there is no institutions in this community that has done more toward the development and progress of this section than has this reputable electric co-op. No business review would be complete without prominent mention of this well known co-op.

### MOBEETIE NEWS

By Melba Corcoran

Those working at the museum this week were Dutch Elliott, Suzanne Lohberger, Maurita Stribling, Ada Lester, Louise Walker, Louis Hogan, Bobbie Walker, Gina Seitz, Joe VanZandt, Matt Smiley, George Kilcrease and great nephew, Hunter Scribner of Hazlet, Bill Finsterwald and Dale Corcoran.

Dale and Melba Corcoran visited Wednesday in Wheeler with Pauline Barnes and Joey Stone.

Maurita Stribling went to the doctor on Monday in Amarillo.

Dutch Elliott moved down in her camper Wednesday evening.

Bobbie Walker went to Amarillo Thursday and picked up the music festival books.

What a day! Friday started out as the dogs chased me on the golf cart barking and biting at me.

When I got out of the cart and started up the walk I saw a big snake about 5 feet long drinking out of the water on the bushes.

I called Dutch to get Dale who was working at the Jail House and he didn't answer his phone.

He sent Dutch to tell me it was only a bull snake...he had already seen it the day before entering Trout's yard.

It finally moved where I could see its tail and then I knew it was only a bull snake. So, it is on the grounds somewhere now; it went around the west side of the visitors' center. Not a good start to the day.

Louise Hogan, tended to business in Pampa Wednesday.

The campers are beginning to come in. The guys are getting the stage ready. They are putting the front on the stage Friday. Still has



### THE WHEELER TIMES

PAGE 2 - Thursday, July 26, 2012

"Wheeler: town of friendship and pride."

to be painted and got ready

George Kilcrease of Pampa brought his camper down Friday. Then he rode back to Pampa with Dale and Melba Corcoran. Melba bought supplies for the museum.

Lee and Melba Brown and Nathan and Nelda Lancaster moved their campers down Friday.

Aaron and Arica Lancaster spent the week in Amarillo. Aaron had a cancer removed from his eyelid. He is doing fine.

Bro. Don McElroy is doing better after his kidney stones. He is home. Mayme was visiting their daughter and helping her get moved into their new home.

The First Baptist Church met Sunday afternoon and decorated the building for Bible School. It will be held the first of next week.

Toney and Francis Dickey went to Abernathy for Nathan's nose surgery.

Tim Lancaster has been having a toothache.

Was good to see Tracy Winter and Lamari Lancaster in church Sunday. They were visiting. Miss Tracy as she used to come all the time when she lived here. She was visiting her grandparents, Billy and Shelia Umsted.

Dutch Elliott and Melba and Dale Corcoran enjoyed going to Wheeler Saturday night for dinner.

ner; first time in over a year they had a chance to do this!

### Parkview Artery Immunizations & Vaccines

Immunizations, or vaccines as they're also known, safely and effectively use a small amount of a weakened virus or bacteria to prevent infection by that very virus or bacteria.

When you get an immunization, you're injected with a weakened form of (or a fragment of) a disease. This triggers your body's immune response, causing it to produce antibodies to that particular ailment.

Then, if you're ever again exposed to the actual disease-causing organism, your immune system is prepared to fight the infection with the antibodies it's formed. A vaccine may not completely prevent the onset of a disease, but it will reduce its severity.

Why Should You Get Immunized?

The goal of public health is to prevent disease. It's much easier and more cost-effective to prevent a disease rather than treat it. That's exactly what immunizations aim to do.

Immunizations protect us from serious diseases and also prevent the spread of those diseases to others. Over the years immunizations have thwarted epidemics of once common infectious diseases such as measles, mumps, and tetanus. And because of immunizations we've seen the near eradication of others, such as polio and smallpox.

Some vaccines need to be given only once; others require updates or "boosters" to maintain successful immunization and continued protection against disease.

Which Immunizations Do My Children Need?

Because proof of immunization is often a prerequisite for enrollment in school or day care, it's important to keep your children up to date on their vaccines. The recommended immunizations for children 0-6 years of age include:

- Hepatitis B
- Rotavirus
- Diphtheria, tetanus, pertussis
- Haemophilus influenzae type B
- Pneumococcal
- Inactivated poliovirus
- Influenza
- Measles, mumps, rubella
- Varicella
- Hepatitis A
- Meningococcal (for certain high-risk groups)

Each of these diseases at one time or another posed a serious health threat to children, taking their lives by the thousands; today most of these diseases are at their lowest levels in decades, thanks to immunizations.

What About Immunization Side Effects?

Today, vaccines are considered quite safe. As with any medication, they can have side effects, in most cases these are usually quite mild. Most common minor reactions to an immunization are:

- Soreness or redness around the injection site
- Low-grade fever

Side effects like these usually disappear in a few days. In extremely rare instances a high fever, in excess of 104 degrees, can occur with a vaccine. If your child is having a serious reaction, please contact your physician or your nearest ER. Medcat

Sunday Nite Live  
**KPDR-FM, 90.3**  
... Live from Canadian  
9:00 p.m. to 11:00 p.m.

### Lawnmower & Small Engine REPAIR

M. J. ENTERPRISES  
Allison, Texas  
806-375-1119

Mon. - Fri. 8:00 - 5:00 7/26-8/16P

### RiverCrest Homes

Building distinctive custom homes designed for your one of a kind lot.

Quail Run Estates Coming Soon

1.5 to 5 acre lots across from Maxey's

Chip Hill 972-989-8019

chip@rivercrestproperty.com

### DOUG BOYD MOTOR CO.

Buy Here / Pay Here

No Credit Check • Areas Largest Selection

Pampa • Corner of Hwy 60 @ Hwy 70

806-669-6062 • www.dougboydmotors.com

### GR W MOORE

- >Liquid Fertilizer
- >Dry Fertilizer
- >Compost
- >Chemicals
- >Application available

Grow Moore, LLC  
Matt & Michelle Moore  
Kelton, Tx  
(806-334-1277)



### AMMONS CONSTRUCTION

AmmonsConstruction.com

Remodels & Additions | Custom Homes | Roofing  
Steel & Vinyl Siding | New Windows

Local Sales Representative Don Rives

806-669-7777

**WHEELER PLUMBING**  
511 S. Cheyenne  
New Construction  
Remodel  
Repair  
Sewer Service  
Septic Systems  
Site Evaluations  
**Phone: 826-5907**  
MAX McQUEEN  
P.O. Box 754 Wheeler, TX

The family of Donald Finsterwald celebrated Donald's 80<sup>th</sup> birthday on Saturday, July 21 at the Wheeler church of Christ Multipurpose Room. A good crowd was in attendance.  
Happy 80th birthday Donald! God bless and keep you all!  
Nice to have some sweet new residents at Wheeler Care Center. Very helpful! Sorry I don't have names just right. God bless you Everyone!

**OLD TIMES NOT FORGOTTEN**  
By Roland Miles

**THE RED ANT BOMBER**

I'm sure you've noticed by now, these weekly articles have kind of changed from "growing up stories," to "later in life," stories. Then, finally, there's a limit to what all you're willing to tell on yourself. The truth is, just becoming an adult, doesn't suddenly exempt you from "flubbing up." Some of my "favorite blunders were made by guys that I worked with. I figure it's all right to tell about them, as long as I don't mention their name.

As you know, I was a welder, by trade, for forty five years. During that time, I've seen a lot of little tricks and experiments, that turned out to be either dumb, dangerous, or both. One that I recall was when another welder decided to get a "ground squirrel" out of a joint of pipe. He lit his cutting torch, adjusted the flame just right, then snuffed it out with an old glove and stuck the torch in the pipe for about fifteen seconds. When he made a spark with his "lighter," it blew the ground squirrel about fifty yards. Needless to say, it didn't survive the blast. I think he didn't really expect it to be that powerful. Another welder I worked with,

had an old welding truck and did "side jobs," after his regular job. He was out in his driveway one day, cutting on a piece of steel. Near by, there was a big, red ant bed that he'd been intending to get rid of, but hadn't got around to it. For some reason, a couple of the ants crawled up his leg and stung him. Well, not to let them go un-



punished, he just snuffed his torch out, reached down and stuck the torch tip in their hole... then let it run for about twenty or thirty seconds. He said, since he had his "striker" on his belt loop, he just got down on his knees and gave the striker one stroke with his hand. He said it blew him and the ants, about four feet into the air

and left a hole in the ground about two feet deep. When he hit the ground, he landed on his knees with his legs folded back. At first glance, it looked like he's blown his legs off! To make it worse, he got stung about a half-dozen more times. He said the good news was, the ants packed up and moved.

**Wheeler Co. Commissioners Conduct Business**

The Commissioners' Court of Wheeler County met in regular session on Monday, July 23, 2012, at 9:00 a.m. in the Commissioners' Courtroom of the Wheeler County Courthouse, 401 Main Street, Wheeler, Texas, to consider prior bill and discuss matters of mutual concern.

At 10:00 a.m. the court reconvened to consider twelve items on the agenda.

There were no minutes of previous meetings to approve.

The hourly payroll time sheets were approved for payment as presented.

The court voted to pay the bills as approved.

Commissioner John Walker moved Precinct 4 monies within his budget; this was the only action taken by the court on the budget.

The treasurer's monthly report was accepted by the court.

Bob Hink, Commissioner Pct. 2, received bids for surplus equipment of which his precinct needed

to dispose. The bids were opened. Johnny Rhodes submitted the highest bids for the Chevrolet pickup, \$555.30; and Ford pickup, \$327.50. The court rejected the four bids submitted for the 1997 8 1/2 ft. x 30 ft. Gooseneck trailer. They will again advertise for bids.

Mark Brown, Justice of the Peace, Pct. 1 ask the court to consider a raise in the pay scale for the J. P. Clerk. There are three levels for J.P. Clerks, each achieved through training and testing. The court voted to leave the county's present pay structure the same.

Lynn Switzer, District Attorney informed the court of her need to use forfeiture expenditures for office personnel training. The court approved the expenditure.

The court accepted the shut-in royalty payment for a well in section 44.

Enbridge Pipeline (Texas Gathering) L.P., was given permission for three underground Utility and Pipeline Crossings of County

Roads. The crossings will be County Roads D, 18, and 20. The installations are oil and gas pipelines. The crossings will be bores.

Fairway Links Energy was given permission to bore under County road 24 for the installation of an oil and gas pipeline.

The next meeting of the Wheeler County Commissioners Court will be Monday, August 13, 2012.

**Wheeler County COURT RECORDS**

List of instruments filed in the Wheeler County Clerks office from July 11, 2012 - July 20, 2012.

JULY 11, 2012  
DEED-William A. Umsted (Custodian) to Sarah Pool, et al, 7-9-12, Lots 7-14, Blk. A, Briscoe.

RDT-Panhandle-Plains Land Bank FLCA to Catherine Ann Brosier Testamentary Trust No. 1, 1-12-10, See Instrument.

MODIFICATION DT-R & LB Farms LLC to Amarillo National Bank, 7-1-12, 515 790 acs. Sec. 38, Blk. 24, H&GN Ry. Company Survey.

ASSIGN. BS DEED-Katherine McClintic Howard to VMH Trust, 6-28-12, See Instrument.

CERTIFICATE TRUST AFF.-Katherine McClintic Howard (Trustee) to Katherine McClintic Howard, et al, 6-28-12, No Land Listed.

ROW-Stiles Land Assets Ltd. to Enogex Gas Gathering LLC, 6-15-12, Pt. SE/4 Sec. 68, Blk. A-7, H&GN Ry. Company Survey.

ROW-Stiles Land Assets Ltd. to Enogex Gas Gathering LLC, 6-15-12, Pt. SE/4 Sec. 68, Blk. A-7, H&GN Ry. Company Survey.

CORR. DEED-Jimmy Taylor, et ux to Jesus Martin Gonzalez, 6-29-12, Lot 3 & N 40' Lot 4, Blk. 40, Wheeler.

JULY 12, 2012  
DEED-Jason Robert Hink to Marcus Rose, 7-9-12, Lot 5, Moore Sub-Division of Stanley Sub-Division, Wheeler.

DT-Marcus Rose, et ux to Great Plains National Bank, 7-9-12, Lot 5, Moore Sub-Division of Stanley Sub-Division (Continued Page 4)

**Chat** (from Page 1)  
ner. Hard to believe, isn't it.  
— cwe —  
We have Wheeler's enrollment information on page one, with other information listed on the August calendar, elsewhere in the paper.

— cwe —  
Not only will the football team be reporting for two-a-days, but the band is scheduled to begin practice sessions on August 6, two weeks from last Monday.

— cwe —  
Faye Sparlin ran Sparlin's Restaurant for a number of years, starting in the 70's. Her daughter, Yvonne Bradley was going through her mother's things and found pictures Faye had taken of their customers. We will be running these pictures; we think you will enjoy them.

— cwe —  
We continue to have 100° plus weather with clouds forming and moving off or leaving us with a sprinkle.

— cwe —  
I went with the Meriwethers to the Shamrock School Reunion Banquet Saturday evening; Rhonda is a 1966 graduate. It was a light turnout, partially due to the inability to find places to stay in the area.

— cwe —  
Motels in the area are pretty much rented to capacity by the oilfield.

— cwe —  
After the program Saturday evening, those in attendance were invited to U-Dropin for musical entertainment. Shamrock has been having "Evening Under the Neon" on Thursday evenings; with live entertainment. Very enjoyable.

— cwe —  
Barbara, Cathi, Jennifer, Dornie, and Seth returned to Florida. I went with the Meriwethers to OKC and we brought Barbara home Sunday evening. They had a few rainy days, but managed to get sunburned.

— cwe —  
Cards were played Monday evening. The men against the women and the men won both games. Leroy and I played Rhonda and Barbara. Better luck next time, girls.

— cwe —

— cwe —

Hear the...  
"Abundant Living Broadcast"  
**KPDR-FM, 90.3**  
WHEELER, TEXAS  
Saturdays: 9:00 a.m. to Noon

**Continuing Service offered by Locklear Brothers**  
... for over 50 years

Residential Commercial For Workmanship You Can Be Proud Of

**ORVILLE LOCKLEAR ROOFING**

800-466-3120  
580-323-3100

ORVILLE LOCKLEAR 40 Years Experience P.O. Box 904 Clinton, OK 73601

ALL TYPES OF AERIAL SPRAYING CHEMICAL & SEED SALES

**GRAY AG AIR**

Serving Hollis and Wellington

P.O. Box 306  
Hollis, OK 73550  
(580) 688-2548 OR  
(580) 688-2558

LYNN GRAY  
Mobile: (580) 381-0306  
REID ROBINSON  
Mobile: (580) 318-2604

**HOST AN EXCHANGE STUDENT TODAY!**  
(for 3, 5 or 10 months)

Make this year the most exciting, enriching year ever for you and your family. Welcome a high school student, 15-18 years old, from Italy, France, Norway, Denmark, Spain, Germany, Brazil, Thailand or China as part of your family for a school year (or less) and make an overseas friend for life.

For more information or to select your own exchange student please call:

Marcy at 1-800-888-9040 (Toll Free) or e-mail us at [info@world-heritage.org](mailto:info@world-heritage.org)

[www.whhosts.com](http://www.whhosts.com)

World Heritage is a public benefit, non-profit organization based in Laguna Beach, CA.

**Texas Sales Tax Weekend In Aug.**

Texas Comptroller Susan Combs reminds shoppers they can save money on everything from pens, jeans and shoes to backpacks and other items priced under \$100 during the state's annual sales tax holiday.

This year, the sales tax holiday is scheduled for Friday, Saturday and Sunday, Aug. 17-19.

"Shoppers across Texas can take advantage of the three-day sales tax holiday and save extra money for their budgets," Texas Comptroller Susan Combs said. "Families gearing up for the new school year would not pay any sales tax for many back-to-school items from clothing and footwear to school supplies during that weekend."

Lists of apparel and school supplies that may be purchased tax free can be found on the Comptroller's website at: [www.TexasTaxHoliday.org](http://www.TexasTaxHoliday.org).

This year, shoppers will save an estimated \$64.8 million in state and local sales taxes during the Sales Tax Holiday.

The tax holiday weekend has been an annual event since 1999.

A podcast about the tax holiday is also available at: <http://www.window.state.tx.us/newsinfo/podcast/transcripts/SalesTaxHoliday2012.html>.

**RiverCrest Concrete, LLC**  
Foundations, Driveways, Piers, & Walls

Chip Hill  
972-989-8019

Residential Commercial

**MARSHALL'S HEATING & AIR CONDITIONING**

WHEELER, TX — PHONE: 664-5395 — CELL: 662-7876

**TRANE** NOW DOING... AIR DUCT CLEANING

It's Hard To Stop A Trane —24 Hour Emergency Service—

LICENSED & INSURED  
License No. TACL022710E  
Mark Marshall, Owner

**PRESTIGE AUTOBODY & ACCESSORIES**

101 S. Hobart \* P.O. Box 1140  
Pampa, TX 79065  
806-665-3500 \* Fax: 806-665-2626  
[www.prestigeofpampa.com](http://www.prestigeofpampa.com)

**HANDCRAFTED ALUMINUM TOOLBOXES**

**UWS TOUGH \* MADE IN THE USA**

**AUGUST 2012**

This Calendar runs the last Thursday of Each Month and is available for Organizations & School Activities. Call: 806/826-3123 for listings.

SUNDAY	MONDAY	TUESDAY	WEDNESDAY	THURSDAY	FRIDAY	SATURDAY
<b>CROSS COUNTRY BARN</b> Hunt Bros. Pizza Pumps Open 24/7/365 301 E. Okla. St.—Wheeler Phone: 806/826-2276 Dale, Monica & Rachel Kidd		Wellington State Bank <b>WSSB</b> Wheeler • Memphis • Childress • Canadian Wheeler Banking Center 405 Alan L. Bean Blvd. P.O. Box 1040 Wheeler, Texas 79096 Member: F.D.I.C.	<b>1</b>	<b>2</b> Wheeler Fire Dept. . 7:00 P.M.  Issuance of Mustang Band Uniforms ... thru Aug. 3	<b>3</b>	<b>4</b>
<b>5</b> Church... Wheeler Nursing & Rehab W. First Baptist ..... 3:00 P.M.	<b>6</b> Band Practice Begins for Wheeler Mustang Band 5:00 - 8:00 P.M. Wheeler 2-A -Days begins Cheerleading tryouts at 2pm	<b>7</b> Wheeler Lions Club Mel's ..... 6:00 A.M. Our Country Band Care Center ..... 6:30 P.M.	<b>8</b> Wheeler I.S.D. Board Meets ..... 6:30 A.M.	<b>9</b> Old Mobeetie, Texas, Assoc. Visitors' Center ..... 7:00 P.M.	<b>10</b>	<b>11</b>
<b>12</b> Church... Wheeler Nursing & Rehab Allison ..... 3:00 P.M.	<b>13</b> Kelton I.S.D. Bd. .... 7:00 P.M. Comm. Court ..... 10:00 A.M. Mobeetie City Coun. 7:00 P.M. Ft. Elliott C.I.S.D. Bd. .... 7:00 Parkview Hospital Board Meeting ..... 6:00P.M.	<b>14</b> Mobeetie Fire Dept. .... 7:00 P.M. Wheeler Lions Club Mel's Diner ..... 6:30 A.M. Birthday Party ..... 2:30 P.M. Care Ctr. (Meth. Women) Wheeler Registration for 11 <sup>th</sup> and 12 <sup>th</sup> grade—9am-11:30am	<b>15</b> WHEELER CHAMBER OF COMMERCE 12:00 Noon Chamber of Commerce Location TBA 212 W. Oklahoma St. Wheeler Registration for 9 <sup>th</sup> and 10 <sup>th</sup> —grade 9-11:30a.m.	<b>16</b> Wheeler Fire Dept. . 7:00 P.M. Wheeler Registration for 7 <sup>th</sup> and 8 <sup>th</sup> grade—9-11:30 a.m.	<b>17</b> W.H.S. Teacher's Work Day	<b>18</b> Scrimmage Wheeler vs Boys Ranch At Pampa 12 Noon
<b>19</b> Church... Wheeler Nursing & Rehab Mobeetie Baptist ..... 3:00 P.M.	<b>20</b> Wheeler City Council City Hall ..... 7:00 P.M. Wheeler Teachers' Inservice ... thru Aug. 24	<b>21</b> Wheeler Lions Club Mel's Diner ..... 6:30 A.M. Our Country Band Wheeler Nursing & Rehab	<b>22</b> Wheeler Registration for Elementary 9 - 11a.m.	<b>23</b> Scrimmage Wheeler vs River Road At Wheeler 5:00 P.M.	<b>24</b>	<b>25</b>
<b>26</b> Church... Wheeler Nursing & Rehab Johnnie & Patty Crawford ..... 3:00 P.M.	<b>27</b> Wheeler I.S.D. Classes Begin First Day of School for Ft. Elliott Students	<b>28</b> Wheeler Lions Club Mel's Diner ..... 6:30 A.M. Meet The Mustangs At 6:00	<b>29</b>	<b>30</b> Wheeler Fire Dept. . 7:00 P.M.	<b>31</b> Wheeler Mustang Season Opener Mustangs vs Quanah At Quanah at 7:30	<b>FIRST STATE BANK OF MOBEETIE</b> Mobeetie & Wheeler Member: F.D.I.C.

# Want Ads

Wheeler School is accepting bids for milk and bread for the 2012-2013 School Year. Contact the School at 806/826-5241 7/19c

Dr. Robert Galutia is taking applications for office help. Hours are Monday through Wednesday 8 am to 5 pm and Thursday and Friday 8 am to 12 pm. Contact us at 806-826-3581 or bring applications to Parkview Clinic, 309 E. 9th, Wheeler, TX. 7/19-26c

Local Saltwater Disposal needs Part-Time Help. Must be from Briscoe/Wheeler area. Transportation a requirement. 806-683-4560 7/19rtn

News, Views & Commentary  
**KPDR-FM, 90.3**  
WHEELER, TEXAS  
Weekdays: 6:00 a.m. to 7a.m.

**Child Caregiver Position**  
Available. Apply at Ora Belinda Schoolhouse at 1320 S. Alan Bean Blvd or call Ann Porter, Director at 826-1111 7/12-19c

Parkview hospital, in Wheeler Texas, is presently seeking a Physical Therapy Asst. for full time position. Please contact Mrs. Ann Fagan-Cook @ 806 826 5581 ext. 222 or feel free to visit our website to complete your application. [www.parkviewhosp.org](http://www.parkviewhosp.org)  
Come join our team and see the difference you can make at Parkview.

**Clift Land Auctions**  
Next Land Auction Set for Tues. August 21st  
Leading Land Auction Company in Texas

## Absolute Land & Mineral Auction

960 ± Acres in Three Surface Tracts plus Three Mineral Tracts  
Carson & Gray Counties TX

**Tues. August 21st 2:00 pm**  
Registration begins at 1:00 pm

[www.CliftLandAuctions.com](http://www.CliftLandAuctions.com)

**Information Meeting**  
Tues. August 7th 5:30 pm—7:30 pm  
Auction and Info Meeting Location:  
White Deer Community Center  
E. 5th St. & Paul St. ~ White Deer, TX 79097

5% Buyer Premium  
3430 I-40 West Amarillo, TX **800-299-LAND (5263)**  
Clift Land Brokers TX Broker Lic # 458389

## Crossword PUZZLE

1	2	3	4	5	6	7	8	9	10	11	12	13
14						15					16	
17						18					19	
20						21					22	
23						24					25	
26						27					28	
29						30					31	
32						33					34	
35						36					37	
38						39					40	
41						42					43	
44						45					46	
47						48					49	
50						51					52	
53						54					55	
56						57					58	
59						60					61	
62						63					64	
65						66					67	
68						69					70	

Across  
1. Annoy  
7. Speech problem  
11. Camp sight  
14. Current amount  
15. Acreage  
16. "\_\_\_ you sure?"  
17. Kaput  
18. 1995 triple Grammy winner  
19. Make lace  
20. Break  
22. Whiten  
24. In love  
26. Skewer  
27. Frisk, with "down"  
28. Bonkers  
30. 50 Cent, e.g.

Down  
1. Average  
2. Easily tamed bird  
3. Full of energy  
4. Basic belief

**Wheeler Banking Center**  
P.O. Box 1040 Wheeler, Texas (806) 826-5566  
CANNADAN • CHILDRESS • MEMPHIS • WELLSINGTON • WHEELER

31. Got gray  
33. Hawk  
35. Dangerous time  
37. Roswell sighting  
38. Plaster base  
41. Seasnail  
43. Lascivious look  
45. Sham  
48. W.W. II fliers  
50. \_\_\_ Day  
51. Shade tree  
52. Wrestle  
55. First-born  
56. Thistlelike plant  
57. Hail, to Caesar  
58. Biblical pronoun

5. Build  
6. Turn in  
7. Laddie's love  
8. Temper  
9. Tern or erne, e.g.  
10. Famous London street  
11. Doze  
12. Soothsayer  
13. Tie up  
21. Buy in a hurry  
23. Attraction  
24. Backyard bubbler  
25. Wise men  
29. Postpone  
32. Deceive

Surface Rights Only

Buy all or Part!

# Absolute AUCTION

Tuesday, August 16, 10 a.m.

40 +/- acres with a  
**2 bedroom, 1 bath home**

SAYRE, BECKHAM COUNTY, OKLAHOMA

• Wildlife habitat & hay field •

OPEN HOUSE: Sunday, **July 29, 1-4 p.m.**  
or by appointment. Morgan Hopson, (903) 271-9933

**EDDIE HAYNES**  
real estate & auction

Buford Resources, Inc. BROKER  
[www.eddiehaynesauction.com](http://www.eddiehaynesauction.com)

**Yard to lease in Briscoe, TX—2**  
1/2 acres, utilities available. Call 806-255-9982 or 255-0166

**2-Room Office Space For Rent:**  
On the square. Phone 826-3123.

**RV Park, Wheeler, TX, Now open.**  
New Spaces ready to go. 806-669-4110. 5/10rtn

**Taking Applications for Tray Aide or Cook**  
at Parkview Dietary. 826-1355 10/27rtn

**NOTICE**  
The Wheeler County Commissioners' Court is currently accepting sealed bids on the following equipment: one (1) 1997 Goose neck trailer 8 1/2 ft. by 30 ft. Interested parties should submit bids in care of the County Judge's Office, P. O. Box 486, Wheeler, Texas 79096. Bids will be opened at the regularly scheduled Commissioners' Court meeting on

**Court** (from Page 3)  
Sub-Division, Wheeler.

DVL-Jay R. Sullivan, et ux to Chayse Rives, et ux, 7-9-12, Lot 1 & 2, Blk. 38, Wheeler.  
DT-Chayse Rives, et ux to Happy State Bank, 7-9-12, Lot 1 & 2, Blk. 38, Wheeler.  
RDT-NDEGE Ltd. to Jay R. Sullivan, et ux, 7-11-12, Lot 1 & 2, Blk. 38, Wheeler.  
DT-Barry Sanders to FirstCapital Bank of Texas NA, 7-10-12, Lot 14, Blk. G, Potts Addition, Shamrock & Lots 3-6, Blk. 11, Shamrock.  
ROY. DEED-Connie E. Moore Baker to PAC Production Company, 7-9-12, W/2 W/2 Sec. 8, Blk. A-3, H&GN Ry. Company Survey.  
ROY. DEED-Shirley Moore Jolly to PAC Production Company, 7-9-12, W/2 W/2 Sec. 8, Blk. A-3, H&GN Ry. Company Survey.  
AFF-Bonnie Moore Wuerlein, et vir to The Public, 6-6-12, W/2 W/2 Sec. 8, Blk. A-3, H&GN Ry. Company Survey.  
AFF-Margaret Moore Pendleton, et vir to The Public, 6-7-12, W/2 W/2 Sec. 8, Blk. A-3, H&GN Ry. Company Survey.  
AFF-Nancy Schilling, et vir to The Public, 6-28-12, W/2 W/2 Sec. 8, Blk. A-3, H&GN Ry. Company Survey.  
PAYOUT AFF-Sanguine Gas Exploration LLC to The Public, 7-9-12, NE/4 Sec. 25, Blk. A-7, H&GN Ry. Company Survey.  
PAYOUT AFF-Sanguine Gas Exploration LLC to The Public, 7-9-12, Sec. 66, Blk. A-7, H&GN Ry. Company Survey.  
PAYOUT AFF-Sanguine Gas Exploration LLC to The Public, 7-9-12, NW/4 & S/2 Sec. 59, Blk. A-7, H&GN Ry. Company Survey; and E 120 acs. SE/4 Sec. 5, Blk. L, J. M. Lindsey Survey.  
ASSIGN-Sanguine Gas Exploration LLC to Jill Burke, et al, 7-9-12, NE/4 Sec. 59, Blk. A-7, H&GN Ry. Company Survey.  
WELL-BORE ASSIGN-Sanguine Gas Exploration LLC to Jill Burke, et al, 7-9-12, NE/4 Sec. 59 & All Sec. 66, Blk. A-7, H&GN Ry. Company Survey.  
ASSIGN-Sanguine Gas Exploration LLC to Jill Burke, et al, 7-9-12, SE/4 Sec. 24, Blk. A-7, H&GN Ry. Company Survey.  
OVERRIDE. ROYALTY ASSIGN-Sanguine Gas Exploration LLC to Donohue Properties LLC, 7-9-12, Sec. 24, Blk. A-7, H&GN Ry. Company Survey.  
WELL-BORE ASSIGN-Sanguine Gas Exploration LLC to Donohue Properties LLC, 7-9-12, Sec. 24, Blk. A-7, H&GN Ry. Company Survey.  
TRUSTEES MD-B Raymond Evans Credit Shelter Trust to Deanne M. Rogers, 6-29-12, Sec. 34, Blk. M-1, H&GN Ry. Company Survey.  
TRUSTEES MD-B Raymond Evans QTIP Marital Trust to Deanne M. Rogers, 6-29-12, Sec. 34, Blk. M-1, H&GN Ry. Company Survey.  
STIPULATION CROSS CONVEY-Alice Zoe Eden Devoe (Es-

tate), et al to Patsy Eden Carey, et al, 4-18-12, See Instrument.  
ASSIGN-J & J Royalties LP to Linn Energy Holdings LLC, 6-4-12, S/2 Sec. 39, Blk. A-3, H&GN Ry. Company Survey.  
UNIT DESIGN-Linn Energy Holdings LLC to J. R. Black, et al, 6-28-12, Sec. 49, Blk. A-3, H&GN Ry. Company Survey.  
UNIT DESIGN-Linn Energy Holdings LLC to Donna Velasquez, et al, 6-28-12, Sec. 9, Blk. A-3, H&GN Ry. Company Survey.  
AMEND. OL-Rhonda Lynn Gallagher, et al to Linn Energy Holdings LLC, et al, 5-28-12, Sec. 31, Blk. A-3, H&GN Ry. Company Survey.  
DEED-Viva B. Sewell to Randy B. Sewell, 7-11-12, All Sec. 42 & 26 acs. SE/4 SE/4 Sec. 59, Blk. 13, H&GN Ry. Company Survey.  
ROW-Elmore Contribution Trust, et al to Chesapeake Midstream Gas Services LLC, 3-29-12, Pt. S/2 Sec. 21, Blk. R.E., Roberts & Eddleman Survey.  
REL. ROW-Chesapeake Midstream Gas Services LLC to Elmore Contribution Trust, et al, 3-29-12, Pt. S/2 Sec. 32, Blk. R.E., Roberts & Eddleman Survey.  
ROW-Black Willow Energy LLC to Chesapeake Midstream Gas Services LLC, 5-4-12, Pt. NE/4 Sec. 39 & Pt. SE/4 Sec. 42, Blk. A-4, H&GN Ry. Company Survey.  
ROW-Florence Gorin Lee LLC to Chesapeake Midstream Gas Services LLC, 5-4-12, Pt. NE/4 Sec. 39 & Pt. SE/4 Sec. 42, Blk. A-4, H&GN Ry. Company Survey.  
ROW-John A. Lee Ranch LLC to Chesapeake Midstream Gas Services LLC, 5-4-12, Pt. NE/4 Sec. 39 & Pt. SE/4 Sec. 42, Blk. A-4, H&GN Ry. Company Survey.  
DEED-Eliberardo Venzor, et al to Rafaela Garcia, 6-15-12, Pt. Blk. 43, Stanley's Addition, Wheeler.  
DEED-Eliberardo Venzor, et al to Miriam L. Garcia, 5-11-12, Pt. Blk. 43, Stanley's Addition, Wheeler.  
DEED-Eliberardo Venzor, et al to Rafaela Garcia, 4-20-12, Pt. Blk. 43, Stanley's Addition, Wheeler.  
DEED-Eliberardo Venzor, et al to Rafaela Garcia, 6-15-12, Pt. Blk. 43, Stanley's Addition, Wheeler.  
JULY 16, 2012  
POA-Cynthia Ann Stenholm, et al to Chris W. Stenholm, 6-12-12, S 60 acs. NE/4 N/2 N/2 SE/4 Sec. 19, Blk. L, J. M. Lindsey Survey & N/2 N/2 Sec. 1, D. Tindale Survey.  
DEED-James Steven Watson, et al to Matthew D. Moore, et ux, 7-13-12, N/2 NE/4 Sec. 1, D. Tindale Survey & S 98.5 acs. N 200 acs. E/2 Sec. 19, Blk. L, J. M. Lindsey Survey.  
DEED-Laverna Fillingim to Sue Ann Stiles, 7-10-12, Sec. 10, Blk. 1, Parklane Estates, Wheeler.  
RDT-National Bank of Commerce to Barry Sanders, 7-12-12, Lots 3-6, Blk. 11, Shamrock.  
RDT-National Bank of Commerce to Dean Lax, et ux, 7-12-12, Pt. NW/4 Sec. 63, Blk. A-7, H&GN Ry. Company Survey.  
ROW-James Hobbs to Greenbelt Electric Cooperative Inc., 7-5-12,

**ENERCEPT INC.**  
**ROYALTY OWNER SERVICES**

Are You Receiving Your Proper Share of Oil and Gas Sales?

We provide:

- Accounting and Accuracy of Payment Verification
- Accuracy of High Cost Severance Tax Charges
- Identification, Resolution and Collection of Royalty Payment Errors. Provided on either an Ongoing or Project Basis

Local References Available Upon Request.  
**Call Toll Free 1-800-658-7168**  
John McNab — Enercept, Inc.

**PETROLEUM CARRIERS**

**IMMEDIATE OPENINGS!**  
Crude Oil Drivers  
Safety & Performance Bonus quarterly,  
Paid Every Friday, Paid Vacation/Holidays/Jury Duty  
Company benefit package: Medical/Dental/Vision/Life,  
401K with Company match, Paid Orientation/Training Referral Bonus  
Class A-CDL-X Required  
2 yrs Tractor/Trailer Exp. In the last 5 yrs.  
12 months Tanker exp. In the last 24 months or  
1 yr Exp. W/ accredited semi-truck driving school diploma  
Minimum Age: 23  
Contact: John Townley  
940/549-4578  
To Apply In Person Please Stop By  
161 US Hwy 380 East  
Graham, TX 76450  
Mon-Fri 9am-4pm  
Or visit us online at:  
[WWW.MIPE.COM](http://WWW.MIPE.COM)  
EOE

80 acres 6 miles East of Wheeler 1/4 mile highway frontage on 152-1/2 mile frontage on CR 21—64 acres CRP—Seep pond—Big trees—Deer, dove, hogs, quail, turkey. Coldwell Banker First Equity, Realtors Agricultural Division, Richard Hefley ALC, Associate Broker, Licensed in Texas and Oklahoma. 806-468-4892 7/5-8/2c

**THE WHEELER TIMES**  
PAGE 4 — Thursday, July 26, 2012  
"Wheeler: town of friendship and pride."

**MEMBER 2012**  
**TEXAS PRESS ASSOCIATION**

**City of Wheeler Turns 100**  
Aug. 6, '05 Celebration Planned

**P.O. Box 1080**  
Wheeler, Texas 79096  
Phone: 806/826-3123

Entered as second-class matter December 18, 1933, at the Post Office at Wheeler, Texas 79096, under the act March 3, 1879.  
Postmaster: Send address changes to *The Wheeler Times*, P.O. Box 1080, Wheeler, TX 79096-1080 — [wtimes@windstream.net](mailto:wtimes@windstream.net)

**Louis C. Stas, Owner & Publisher**  
SUBSCRIPTION RATES:  
Within Wheeler Co.: \$22.00 Elsewhere: \$25.00

**THE BUSINESS DIRECTORY**

**CROSS COUNTRY BARN** ★ 24 Hr. Gas & Diesel ★ Convenience Store  
★ Hunt Bros. Pizza  
301 E. Oklahoma St. Wheeler, TX  
Phone: 806-826-2276 Dale & Monica Kidd

It pays to Advertise in **The Wheeler Times**  
Phone & Fax: 806/826-3123 [wtimes@windstream.net](mailto:wtimes@windstream.net)

Classified Rates:  
Cash—\$6.00 for 1st 20 wds.  
Chg.—\$6.50 for 1st 20 wds.  
25c for each additional word  
Display Classified: \$6.50 pci  
Card of Thanks: \$7.00

Pt. 80 acs. E/2 NE/4 Sec. 46, Blk. A-7, H&GN Ry. Company Survey.  
ROW-Oleta Ellis to Greenbelt Electric Cooperative Inc., ---,  
Pt. NW 184.6 acs. Sec. 17, Blk. L, J. M. Lindsey Survey.  
RATIF. OL-Murray E. G. Zinck to Electric Cooperative Inc., ---,  
(Continued Page 5)

Visit... **FAMILY POOL FUN.COM**

• Our pools create Generations of Memories everyday, vacations never end!

• Aboveground & Inground pools at WHOLESALE PRICING

• SIMPLE DIY Pool Kit Assembly

• SAVE MONEY on All Pool Supplies & Accessories. Ships Fast

Call Today! **800-950-2210**

**real estate auctions**

15+ TX Properties  
July 24 - Aug 6  
Nominal Opening Bids from \$1,000  
For details, visit [williamsauction.com](http://williamsauction.com)

4511 W Hwy 380, Decatur, TX  
WILLIAMS & WILLIAMS  
worldwide real estate auction

**HOUSE HUNTERS-REALTOR**  
In Wheeler—15 Acres on County Road 15-A, Good Farmland, utilities available

**Linda Laycock**  
Broker, ABR,  
GREEN, SRES, e-Pro  
806.662.1312  
Pampa MLS www.househunterspampa.com Amarillo MLS

**Larry Hadley**  
Assoc.  
806.662.2779

**Jordan Oneal**  
Assoc.  
806.670.6623



**THE MASON JARS (1987):** This local group entertained and won the talent show Friday evening and entertained at the Ex-Student Reunion business meeting Saturday afternoon. Their music of the '50's and '60's was thoroughly enjoyed at both performances. Group members are (l. to r.) Brenda Sparlin, Debbie Finsterwald, Linda Mc Coy, Judy Woolliard, Kim Goad and Melanie Reed. (Thanks to the Old Mobeetie Jail Museum for finding this original picture for us.)



**THE MASON JARS:** The modern version of The Mason Jars made an appearance at Wheeler's Block Party recently and they were as entertaining as they were in 1987. Pictured are (l. to r.) Kim Goad, Judy Woolliard, Debbie Finsterwald and Brenda Sparlin.

**Court** (from Page 4)  
Forest Oil Corporation, 6-28-12, SW/4 NW/4 Sec. 41, Blk. A-1, H&GN Ry. Company Survey.  
MD-Harold T. Henslee to Mountain Front Resources LLC, 7-6-12, W/2 Sec. 14, Blk. A-4, H&GN Ry. Company Survey.  
ROW-John Richard Hefley to Southwestern Electric Power Company, 3-13-12, Pt. S/2 Sec. 3, Blk. A-8, H&GN Ry. Company Survey.  
MD/ASSIGN.-Mary Martin Minchew to Mary Martin Minchew Revocable Management Trust, 6-29-12, All Mineral Interest in Wheeler County.  
FTL-United States of America to Brian W. Coate, 7-6-12.  
ASSIGN.-John A. Briscoe to CWB Energy LLC, 7-11-12, NW/4 Sec. 3, AB&M Survey.  
ASSIGN. OVERRID. ROY.-

Samson Lone Star LLC to Robert D. McKenna, 7-9-12, See Instrument.  
UNIT DESIGN.-Samson Lone Star LLC, et al to Sue Taylor Russell, et al, 3-30-12, See Instrument.  
ASSIGN.-Richard J. Dobson Revocable Trust to Devon Energy Production Company LP, 6-20-12, Sec. 11, Blk. R.E., Roberts & Eddleman Survey.  
HEIRSHIP AFF.-Eileen Murphy, et al to Josephine Elaine Doores, 7-3-12, No Land Listed.  
MEMO. OPERATING AGREE.-Petro-Hunt LLC to Chesapeake Exploration, et al, 7-3-12, See Instrument.  
WELL-BORE ASSIGN.-ConocoPhillips Company to Forest Oil Corporation, 6-26-12, Sec. 9, Camp County School Land.  
WELL-BORE ASSIGN.-ConocoPhillips Company to Forest Oil Corporation, 6-26-12, Sec. 15, Camp County School Land.  
WELL-BORE ASSIGN.-ConocoPhillips Company to Forest Oil Corporation, 6-26-12, W/2 & NE/4 Sec. 11, Camp County School Land.  
WELL-BORE ASSIGN.-ConocoPhillips Company to Forest Oil Corporation, 6-26-12, W/2 & NE/4 Sec. 11, Camp County School Land.  
DT-Shamrock Hotel Group LLC to North Texas MESBIC Inc., 7-14-12, 20.7 acs. SE/4 Sec. 57, Blk. 17, H&GN Ry. Company Survey.  
RDT-Panhandle-Plains Land Bank FLCA to Johnnie Pat Huff, et al, 7-12-12, See Instrument.  
JULY 17, 2012  
RDT-First State Bank of Mobeetie to Wheeler County Soil and Water Conservation District, 7-16-12, 1.03 acs. S/2 SE/4 Sec. 60, Blk. A-8, H&GN Ry. Company Survey.  
ROW-Florence Gorin Lee LLC to Chesapeake Midstream Gas Services LLC, 5-16-12, Pt. S/2 Sec. 42 & Pt. N/2 Sec. 39, Blk. A-4, H&GN Ry. Company Survey.  
ROW-John A. Lee Ranch LLC to Chesapeake Midstream Gas Services LLC, 6-13-12, Pt. S/2 Sec. 42 & Pt. N/2 Sec. 39, Blk. A-4, H&GN Ry. Company Survey.  
ROW-Virginia Lee Orr to Chesapeake Midstream Gas Services

Listen to . . .  
**KPDR-FM, 90.3**  
WHEELER, TEXAS



**Seth Bryant**, age 4, recently returned from Disney World, where he met all the Disney characters. He is the son of Jennifer and Greg Bryant. Grandparents are Mike and Beverly Bryant and Louis and Barbara Stas

For all your . . .  
**Insurance Needs, See Eastern Panhandle Insur. Agency, Inc.**  
117 W. Texas St.—Wheeler  
806/826-3573  
•Auto •Home •Life •Health  
•Commercial •Bonds

P. O. Box 582  
1308 Alan Bean Blvd.  
Wheeler, TEXAS 79096

**Paul Topper**  
Owner,  
ptopper87@me.com

**Topper Heat, Air & Plumbing**  
Licensed OSSF Installer - Gibson Distributor -LPG  
TACL840893E / OS0029695

806-334-1522

**Wheeler United Methodist Church**  
Eighth at Main St.—P.O.Box 89  
Wheeler, TX 79096  
806-826-3114 — Fax 806-826-3780  
wheelerumc@windstream.net

**Sunday Schedule**  
Coffee & Donut Fellowship—9:30 a.m.  
Sunday School—9:45 a.m.  
Worship—11:00 a.m.

**Wednesday Schedule**  
Youth Fellowship—6:00 p.m.  
Choir Rehearsal—7:00 p.m.

LLC, 5-16-12, Pt. S/2 Sec. 42 & Pt. N/2 Sec. 39, Blk. A-4, H&GN Ry. Company Survey.  
ROW-Black Willow Energy LLC to Chesapeake Midstream Gas Services LLC, 5-4-12, Pt. S/2 Sec. 42 & Pt. N/2 Sec. 39, Blk. A-4, H&GN Ry. Company Survey.  
ROY. DEED-Lena Forbau (Estate) to Janice JoAnn Townsend, 7-10-12, Sec. 21 & E/2 Sec. 22 & Pt. E/2 Sec. 40, Blk. 17, H&GN Ry. Company Survey.  
ROY. DEED-Lena Forbau (Estate) to Terry Forbau, 7-10-12, Sec. 21 & E/2 Sec. 22 & Pt. E/2 Sec. 40, Blk. 17, H&GN Ry. Company Survey.  
ROY. DEED-Lena Forbau (Estate) to LaDonna Morow, 7-10-12, Sec. 21 & E/2 Sec. 22 & Pt. E/2 Sec. 40, Blk. 17, H&GN Ry. Company Survey.  
ROY. DEED-Lena Forbau (Estate) to Darrell Dean Forbau, 7-10-12, Sec. 21 & E/2 Sec. 22 & Pt. E/2 Sec. 40, Blk. 17, H&GN Ry. Company Survey.  
ROY. DEED-Lena Forbau (Estate) to Edwaine Kay Forbau, 7-10-12, Sec. 21 & E/2 Sec. 22 & Pt. E/2 Sec. 40, Blk. 17, H&GN Ry. Company Survey.  
ROY. DEED-Lena Forbau (Estate) to Janelle Sue Sutton, 7-10-12, Sec. 21 & E/2 Sec. 22 & Pt. E/2 Sec. 40, Blk. 17, H&GN Ry. Company Survey.  
ROY. DEED-Lena Forbau (Estate) to Gordon Forbau Special Needs Trust, 7-10-12, Sec. 21 & E/2 Sec. 22 & Pt. E/2 Sec. 40, Blk. 17, H&GN Ry. Company Survey.  
MD-Delbert McWhorter to Jason Manning, 7-17-12, Pt. SE/4 Sec. 38, Blk. A-4, H&GN Ry. Company Survey.  
ROY./MD-Edward L. Hill to Southwest Petroleum Company LP, 6-13-12, All Mineral Interest in Wheeler County including Sec. 53, Blk. 23, H&GN Ry. Company Survey.

**THE WHEELER TIMES**  
PAGE 5 — Thursday, July 26, 2012  
"Wheeler: town of friendship and pride."

**Robby Schaffer**  
**FIREARMS & AMMUNITION**  
602 Cheyenne • Wheeler, TX  
806.826.0129 • 806.216.1322  
E-mail: robschaf@windstream.net  
Store Hours: Mon. to Fri. 6 P.M. to 9 P.M.  
Sat. 12 to 8 P.M.

vocable Trust to Devon Energy Production Company LP, 6-25-12, Sec. 11, Blk. R.E., Roberts & Eddleman Survey.  
ASSIGN.-Newfield Exploration (Continued Page 7)

**Rock-N Okie**  
Complete Tree Service  
Fully Insured

Mitch or Barbee  
Horstkoetter  
580-243-7494

P.O. Box 327  
Erick, Ok 73645  
www.rocknokie.com

**RAMOS ROOFING**

1401 J.N.W. CHILDRESS, TX 79201  
LICENSED/BONDED/INSURED

**RICHARD RAMOS**  
940-585-8674

**JIMMY RAMOS**  
940-585-7430

Residential & Commercial  
Metal  
Cedar Shingles  
Composition  
Flat Building  
Roofs  
Class 4 Shingles

Free Estimates — Licensed, Bonded & Insured  
— We do Painting, Siding and Windows —  
We do speak Spanish — Decimos realmente español

TEXAS STATEWIDE CLASSIFIED ADVERTISING NETWORK

**TexSCAN**

**TexSCAN Week of July 22, 2012**

**ADOPTION**  
ADOPT: Happily married couple will provide love, hugs, happiness & religion to newborn. Stay home mom education background. Large extended family. Suburban neighborhood, excellent schools. Expenses paid. Lon/John, 1-888-818-6992.

**CABLE/INTERNET**  
BUNDLE AND SAVE on your cable, internet, phone and more. High speed internet starting at less than \$20/month. Call now! 1-800-315-8254

**DRIVERS**  
ATTENTION CDL-A DRIVERS! Averi is hiring in your area. Great Benefits & Home Time. 4 Months T/T Experience Required - Apply Now! 1-888-362-8608; www.AVERTICareers.com EOE

**CDL-A DRIVERS!** Texas regional drivers needed. Take home more. Be home more. Dedicated freight and modern equipment. Dallas terminal coming soon. 1-800-392-6109, www.goroch.com

**DRIVERS-OWNER OPERATORS** and fleet drivers TX or OK/CDL. New pay package, sign on bonus, return to Texas every 6-8 days. Call 1-800-765-3952.

**DRIVERS -HIRING** Experience/Inexperience Tanker drivers! Great Benefits and Pay! New Fleet Volvo Tractors! 1 Year OTR Experience required. Tanker Training Available. Call today: 1-877-882-6537 www.OakleyTransport.com

**DRIVERS-REFRIGERATED & Dry Van** freight with plenty of miles. Annual salary \$45K-\$60K. Flexible home time. CDL-A, 3 months current OTR experience. 1-800-414-9569. www.drivemknight.com

**DRIVERS- SOUTHERN REGIONAL** and National runs earn 32¢-45¢ per mile. \$1200 sign-on bonus. Assigned equipment, pet policy. deBoer Transportation 1-800-825-8511; O/O's welcome! www.deboertrans.com

**DRIVERS- STUDENTS** 18 days from start to finish. Earn your CDL-A. No out-of-pocket tuition cost. Step up to a new career with FFE. www.drivette.com, 1-855-356-7122

**DRIVERS- TEAMS AND SOLOS** Dedicated runs, recession proof freight. Class CDL-A and one year experience. Lease purchase program with down payment assistance. Call 1-866-904-9230, DriveForGreatwide.com

**EXPERIENCED FLATBED DRIVERS**  
Regional opportunities now open with plenty of freight and great pay. 1-800-277-0212 or primeinc.com

**OWNER OPERATORS** Dedicated runs, Class CDE-A and 1 year experience. Great price fuel, discount program. Greatcare plan options for major medical, retirement, wellness and business services. 1-866-904-9230, driveforgreatwide.com

**YOU GOT THE DRIVE**, we have the direction. OTR drivers, APU Equipped, Pre-Pass, EZ-pass, pets/passenger policy. Newer equipment. 100% NO touch. 1-800-528-7825

**EDUCATION**  
**AIRLINE CAREERS** begin here. Become an aviation maintenance tech. FAA approved training. Financial aid if qualified, housing available, job placement assistance. Call Aviation Institute of Maintenance, 1-877-523-4531

**ATTEND COLLEGE ONLINE** from home. Medical, Business, Criminal Justice, Hospitality. Job placement assistance. Computer available. Financial aid if qualified. SCHEV certified. Call 1-888-205-8920, www.CenturaOnline.com

**HIGH SCHOOL PROFICIENCY** Diploma 4 week program, free brochure and full information. Call now! 1-866-562-3650, ext. 55. www.southeasternHS.com

**HELP WANTED**  
**LOOMIX FEED** supplements is seeking dealers. Motivated individuals with cattle knowledge and community ties. Contact Bethany at 1-800-870-0356 or becomeadealer@adm.com to find out if there is a dealership opportunity in your area.

**MANAGER NEEDED** for 20-room Riata Inn Motel in Rankin, Texas. (1 hour from Midland) Must live on site, apartment provided. Computer skills required. Contact: Chirag 1-254-498-2985.

**GO SHOPPING, GET PAID** Join today and become a service evaluator in your area! To learn more visit www.second-to-none.com/join

**MISCELLANEOUS**  
**SAWMILLS FROM ONLY \$3997.00.** Make and save money with your own bandmill. Cut lumber any dimension. In stock ready to ship. Free information/DVD, www.NorwoodSawmills.com 1-800-578-1363 Ext. 300N

**REAL ESTATE**  
**\$106 MONTH BUYS** land for RV, MH or cabin. Gated entry, \$690 down, (\$6900/10.91%/7yr) 90 days same as cash. Guaranteed financing. 1-936-377-3235

**10.24 ACRES**, Duval County. Heavy brush cover, deer, hogs, turkey. Private road, locked gate. (\$1817 down, \$357/month, 11%, 20 years.) Toll-free, 1-866-286-0199. www.westernTEXASland.com

**\$1.56 ACRES**, south of Sonora. End of road, large valley, whitetail, aoudad, axis, hogs, turkey. \$995/acre, low down, 9.9%, 20 years or TX vet financing. 1-830-257-5564. www.hillcountryranches.com

**ABSOLUTELY THE BEST VIEW** Lake Medina/Bandera, 1/4 acre tract, central W/S/E, RV, MH or house OK only \$830 down. \$235 month (12.9%/10yr). Guaranteed financing, more information call 1-830-460-8354

**AFFORDABLE RESORT LIVING** on Lake Fork. RV and manufactured housing OK! Guaranteed financing with 10% down. Lots starting as low as \$6900. Call Josh, 1-903-878-7265

**STEEL BUILDINGS**  
**STEEL BUILDINGS** perfect for homes & garages. Lowest prices, make offer and low monthly payment on remaining cancelled orders. 20x24, 25x30, 30x44, 35x60 Call 1-800-991-9251 ask for Nicole

**VACATION PROPERTY**  
**WEEKEND GETAWAY** available on Lake Fork, Lake Livingston or Lake Medina. Rooms fully furnished! Gated community with clubhouse, swimming pool and boat ramps. Call for more information: 1-903-878-7265, 1-936-377-3235 or 1-830-460-8354

**Run Your Ad In TexSCAN!**  
Statewide Ad .....\$500  
301 Newspapers, 942,418 Circulation  
North Region Only .....\$230  
98 Newspapers, 263,811 Circulation  
South Region Only .....\$230  
101 Newspapers, 366,726 Circulation  
West Region Only .....\$230  
102 Newspapers, 311,881 Circulation  
To Order Call this Newspaper direct, or call Texas Press Service at 1-800-749-4793 Today!

NOTE: While most advertisers are reputable, we cannot guarantee products or services advertised. We urge readers to use caution and when in doubt, contact the Texas Attorney General at 1-800-621-0508 or the Federal Trade Commission at 1-877-FTC-HELP. The FTC web site is www.ftc.gov/ftzop

**Extend your advertising reach with TexSCAN, your Statewide Classified Ad Network.**

**NO Trenching** **NO Mess**

**Rick's**  
**Lawn Sprinklers**

- Sales - Service - Installation
- Complete Dirt Work & Turf
- Residential & Commercial
- Over 30 years experience
- We trade for almost anything
- In-House Financing

**FREE ESTIMATES... Toll Free 1-800-466-0915**

(580) 477-0915  
Altus, OK 73521

**RAIN BIRD**

*Don't be misled by the opponent's false attacks!*

# Texas Governor and First Lady Rick & Anita Perry Endorse Their Friend Trent McKnight In Republican Primary Runoff

Texas House District 68 — Texas Governor and First Lady, Rick and Anita Perry, have announced their endorsement of Throckmorton rancher Trent McKnight in the Republican Primary runoff for Texas House District 68. Perry, a former rancher and native of Haskell County, also represented some of the counties in House 68 when he served in the Texas House (1985- 1990).

"Anita and I are proud to endorse our family friend Trent McKnight in the July 31st Republican Primary runoff for State Representative," said Governor Perry. "Our home, Haskell County, is part of Texas House District 68 and we know Trent McKnight's values, his proven leadership as former national FFA President, and his energetic passion for rural Texas."

Governor Perry also noted that McKnight's deep roots in ranching, his past public service experiences including participation as an overseas citizen agricultural advisory to the U.S. military in Iraq and service on the Brazos River Authority prepare him for addressing the economic development and future water needs of rural Texas.

Anita Perry, a former nurse and daughter of a small town doctor, also complimented McKnight and his family for their dedication to public education and with expanding healthcare access to families and small towns in rural Texas. McKnight raises funds for local youth scholarships and his family is active with Scott & White Hospital and their local county hospital.

"I am humbled and honored to have the Governor and First Lady's endorsement. They have both been role models for me and many others in rural Texas," said McKnight. "I strongly support the Governor's leadership for conservative values, his conservative budget compact and his belief that Texas is better with less government and lower taxes."

McKnight has also earned the endorsement of retiring State Representative Rick Hardcastle, Texas Commissioner of Agriculture Todd Staples, the Texas & Southwestern Cattle Raisers, the Texas Farm Bureau and received the NRA's "A" rating.

***"Anita and I are proud to endorse our family friend Trent McKnight in the July 31st Republican Primary runoff for State Representative," said Governor Perry. "Our home, Haskell County, is part of Texas House District 68 and we know Trent McKnight's values, his proven leadership as former national FFA President, and his energetic passion for rural Texas."***

REPUBLICAN  
**Trent  
McKnight**  
FOR STATE REPRESENTATIVE

District 68

Former National FFA President  
[www.TrentMcKnight.com](http://www.TrentMcKnight.com)

**Runoff Election: Tuesday, July 31st ★ Early Voting: Now through 27th**

# Old Mobeetie Music Festival Featured Bands



**BLOCKER STEPHENS BAND**

Blocker-Stephens Band is made up of Garland Blocker, Melvin Stephens, Billy Stephens, Kevin Foster and Jennifer Blocker. Garland Blocker plays banjo and sings lead and harmony. Garland is a great banjo player, playing any style of banjo, including claw hammer. His influences are Ralph Stanley, Earl Scruggs and Don Reno. He also plays guitar, mandolin, dobro, bass and occasionally gets hold of a fiddle.

Melvin Stephens plays mandolin and sings lead and harmony. He also plays guitar, fiddle and bass. Melvin has a unique mandolin style with influences of the Louvin Brothers, Delmore Brothers, Blue Sky Boys, Bill Monroe and many more.

Billy plays bass and sings lead and harmony. He also plays the autoharp. Billy's hard-driving bass keeps the band in line and in time. When Billy and Melvin start singing, you can hear that beautiful brotherly harmony.

Kevin plays fiddle and sings lead and harmony. He also plays guitar, mandolin, banjo, dobro and bass. Kevin's influences are Vassar Clements, Tony Rice and Doc Watson.

Jennifer Blocker plays guitar for the band and also plays bass. She also does the booking for the band and tries to keep the boys out of trouble.

Melvin and Billy were in their own band, The Stephens Boys, along with their dad. They first met Garland when he played with Illrd Generation and Jennifer helped The Stephens Boys out on the bass a few times. Garland, Melvin and Billy were all in a band together with Glen Bonham and Southern Tradition. With all the miles on the bus together, they really enjoyed singing and playing together and found that their voices really blended well together. Then, they met Kevin, started jamming with him and found that his singing, playing and personality all fit perfectly with the band. When you put us all together, we make up Blocker-Stephens Band with a hard-driving traditional bluegrass and bluegrass gospel sound. With a wide variety of songs and instrumentals, we think you will enjoy this band.



**LARRY FORD BLUEGRASS BAND**

The Larry Ford Bluegrass Band, now in its 19th year, prides itself in presenting a solid state of bluegrass and old-time country sounds by keeping the original type songs with newer selection which continue in the same tradition. Bandleader Larry Ford, Leedey OK, has been playing music for more than 45 years with different groups and has appeared on the Grand Ole Opry seven times as a guest of banjoist and funny man, Mike Snider. He has been on various radio shows and TV programs, and for a number of years prior to forming his own band in 1993, he played dobro and sang with the Texas-based band, "Flat Mountain". He has been a part of seven albums, including four with Nashville musicians and three with his own band. The latest album was a duet singing with his brother, Jimmy, and also had their cousin, Robert Klein, on the steel guitar.

The band has not only played in various venues in Oklahoma and Texas, but in Arkansas, Missouri, Kansas and New Mexico as well. Among favorite highlights was entertaining the Oklahoma State Legislators three times and opening for Roy Clark and Rhonda Vincent.

Larry Nance has been playing bass for Larry Ford for 18 years. He lives in Elk City, OK, and has played guitar or bass at church and with one other bluegrass group for about 10 years prior to playing with Larry. He is also a songwriter, having four gospel songs recorded.

Mike Bostic, Claremore, OK is a 12-year veteran in the band. He is one of the premier mandolin players in Oklahoma and has more than 40 years experience. He also plays fiddle and guitar, and sings lead and harmony. He also plays with his twin brother, Eddie, in their band, "Heartland Express".

Banjo player, Garland Blocker of Seminole, OK, has re-joined the band and perfectly fits the traditional bluegrass sound as expected. He plays his own style, but inserts licks from nearly all the famous banjo players whenever the song dictates it. In addition to the banjo, Garland is an accomplished guitar and mandolin player. He plays in the Blocker-Stephens Band with his wife, Jennifer.

The youngest member of the band is Daniel Collier, who also claims Claremore as his home. A versatile musician, he also plays the mandolin, guitar, banjo, and bass. He has been playing the fiddle for only five years, but his abilities extend beyond his experience. Daniel also plays with the Collier Family Band.

The newest voice in the group is Larry Ford's brother, Jimmy. He is an instrument builder, and also crafts knives in his spare time. Jimmy, Larry and Larry Nance have also performed as a trio at various times. For booking, call Larry Ford at 1-580-488-2984 or 1-580-488-3822.



**HANKS & COMPANY**

Hanks and Company, a traditional bluegrass/bluegrass gospel band, is comprised of members, Eddie Hanks, Debbie Hanks and Danny Milner. This group loves the Lord and enjoys playing for churches, festivals, fundraisers or any event in need of a traditional bluegrass sound with a positive, uplifting message.

Eddie and his wife, Debbie, helped form the band, Cedar Creek, in 2007 before it was renamed Music Mountain in 2008. In 2008, Eddie

and Debbie left Music Mountain and asked Danny Milner to join them in July. That's when they became Hanks and Company. Hanks and Company has a CD project which was released in February 2010 and is titled, "Songs to Sing, Tales to Tell."

Eddie has been playing guitar and mandolin since he was about 7 years old. He began playing in his father's band called Texas Grass, then moved on to play in Southern Union in 1992. Since 2004, Eddie has concentrated mainly on his banjo pickin'.

Debbie is his wife and before she met Eddie she had not had any experience with bluegrass. She enjoyed singing in church and school choirs and also sang with an acapella group while attending Texas Tech University in 1987. Eddie began teaching her how to play the bass in 2004 and states that he has "created a monster" now! This couple live in Seymour, Texas.

Danny began playing guitar as a young boy. His family was extremely musical and he tells of many songs his mama would sing to him as a child. His daddy was an Evangelical pastor so they traveled quite a bit singing and playing throughout the South. He also has performed on live radio programs as a part of his family's ministry. He makes his home with his wife in Iowa Park, Texas.



**NEW STAR CANYON:** Band members shown here are (l. to r.) Gary Wilson, Carl Josefy, Danny Lambert and Eddie Stroud.

**THE STAR CANYON BAND**

The Star Canyon Band is a favorite wherever they go! This group is very versatile and puts on a great show. They do something for everyone.

Jeff Simmons, leader and founder of the band, is still recovering from a stroke he had a while back, but is improving daily. We look forward to having Jeff back as soon as possible.

Eddie Stroud is an excellent bass player and sings lead and harmony as well. You may even see him playing guitar on a song or two! Eddie is a native Texan having been born and raised in Glen Rose, Texas, where he still lives and works. He has been playing music for over twenty years, starting out as a guitar player but switched to bass because "they always were looking for a bass player". When you hear Eddie play and sing, you will figure out what is so special about him!

Carl Josefy, from Altus, OK, has been playing and singing bluegrass music for over 27 years. Carl started out singing tenor harmony and lead vocals while jamming with his dad and friends at various festivals they attended. He plays mandolin, guitar and bass and sings tenor, lead, alto and (sometimes) bass vocals. Carl says, "I just like to pick and sing, so I try to play different instruments or sing parts other than what someone else is already doing." Carl played in a country band for several years in the mid-1990s frequenting dance halls and rodeos in southwest Oklahoma and northern Texas. Later, he was a founding member of "Truevine", a contemporary Christian music group playing churches and other events. But through it all, Carl still says bluegrass is his favorite type of music because of its honest and pure sound.



**MAX ZIMMET AND THE RIDERS**

Max Zimmet and the Riders are returning to the Mobeetie Music Festival stage for the second time. Last year's performance proved to be very entertaining.

Max, now 25, started playing classical guitar at age 8. By age 10, he knew he wanted to flatpick after seeing a tape of Bill Monroe on Austin City Limits. Max was the first person to graduate from Berklee College of Music with a dual degree in guitar and mandolin principal.

Shawn Spiars began playing banjo while living in Oceanside, California. From 1980-1982, Shawn attended South Plains College in Levelland, TX., where he earned an Associate's degree in Bluegrass Music. His banjo playing style is heavily influenced by Earl Scruggs, Don Reno and Alan. Munde. Shawn has been part of several bluegrass bands from the Austin area where he lives with his wife and two sons.

Jon Kempainen is the fiddle player in the group. He began playing violin around age 7 and guitar around age 12. He started out playing classical, then changed his focus to swing, honky-tonk and bluegrass. Jon has played with several bands including Alvin Crow, the Marshall Ford Swing Band and Tony Harrison's Hot Texas.

Ray Cargo is the bass player. He says of himself, "I'm just a old West Texas hippie who loves to play and sing." Ray didn't hesitate when asked to play in Mobeetie as he and his parents were founding members of the Panhandle Bluegrass & Old Tyme Music Association. They spent many hours volunteering, participating and performing for (and at) the Old Mobeetie Bluegrass festivals from 1979-1984.



**THE BATTEN FAMILY:** Band members are (back, l. to r.) Kevin Batten, Darrell Batten, Paul Batten, Byron Batten, (front) Teresa Batten, Tempie Batten, and Lisa Hilton.

**THE BATTEN FAMILY**

The Batten Family is a bluegrass/gospel band that includes three, sometimes four, generations (when they can get those great-grandkids there). They love to go to festivals and share their music with everyone they meet. Their latest CD, "Unfiltered", is now available and has favorite tunes such as "In God We Still Trust", "The Bible and the Bell", "Great Speckled Bird" and "Elizabeth", along with many others. They look forward to seeing you at the festivals.

**Court**

(from Page 4)

Mid-Continent Inc. to Devon Energy Production Company LP, 7-3-12, Sec. 11, Blk. R.E., Roberts & Eddleman Survey.

ASSIGN.-Richard J. Dobson Revocable Trust to Devon Energy Production Company LP, 6-25-12, Sec. 19, Blk. R.E., Roberts & Eddleman Survey.

ASSIGN.-Newfield Exploration Mid-Continent Inc. to Devon Energy Production Company LP, 6-25-12, Sec. 19, Blk. R.E., Roberts & Eddleman Survey.

ASSIGN.-Weiss Trust to Devon Energy Production Company LP, 6-23-12, Sec. 19, Blk. R.E., Roberts & Eddleman Survey.

ASSIGN.-Newfield Exploration Mid-Continent Inc. to Devon Energy Production Company LP, 6-13-12, Sec. 11, Blk. R.E., Roberts & Eddleman Survey.

ASSIGN.-R. T. McLain to Devon Energy Production Company LP, 5-31-12, See Instrument.

ASSIGN.-James L. Rheem to Devon Energy Production Company LP, 5-31-12, See Instrument.

UNIT DESIGN.-Newfield Exploration Mid-Continent Inc., et al to Larry Dean Hunter, et al, 5-21-12, Sec. 30, Blk. A-3, H&GN Ry. Com-

pany Survey. UNIT DESIGN.-Newfield Exploration Mid-Continent Inc., et al to Larry Dean Hunter, et al, 4-13-12, Sec. 30, Blk. A-3, H&GN Ry. Company Survey.

UNIT DESIGN.-Charles Len Wright, et al to Boyd Huff, et al, 5-3-07, Sec. 32, Blk. A-3, H&GN Ry. Company Survey.

UNIT DESIGN.-Samson Lone Star LLC to J. R. Black, et al, 3-15-12, 216.94 acs. Sec. 50, Blk. A-3, H&GN Ry. Company Survey.

UNIT DESIGN.-Newfield Exploration Mid-Continent Inc., et al to Boyd Huff, et al, 6-16-12, Sec. 32, Blk. A-3, H&GN Ry. Company Survey.

UNIT DESIGN.-Newfield Exploration Mid-Continent Inc., et al to Boyd Huff, et al, 4-10-12, Sec. 33, Blk. A-3, H&GN Ry. Company Survey.

AMEND. UNIT DESIGN.-Newfield Exploration Mid-Continent Inc., et al to Rebecca Foreman, et al, 2-2-12, Sec. 31, Blk. A-3, H&GN Ry. Company Survey.

AMEND. UNIT DESIGN.-Newfield Exploration Mid-Continent Inc., et al to Boyd Huff, et al, 4-4-12, Sec. 32, Blk. A-3, H&GN Ry. Company Survey.



**HOUSE FIRE:** The Cathy Burrell home at 200 West Eighth in Wheeler burned Saturday afternoon. As the picture shows, it was a total loss. The building in the foreground was also a loss. Also the Wheeler Volunteer Fire Department was called to a grass fire just inside the state line Monday afternoon. The number of acres of lovegrass burned was not known at press time.

**2012 Wheeler Cross-Country**

August 25	Canyon 6 mile Relay	HS Only
September 8	Perryton/Wolf Creek Park	HS&Jr.H
September 22	Rebel Run Thompson Park	HS&Jr.H
October 6	Canadian/Rodeo Grounds	HS&Jr.H
October 13	Spearman	HS&Jr. H
TBA	District Plainview	HS&Jr.H
November 3	Regional's @ Lubbock	HS
November 10	State	HS
	Tentatively 6/25/12	

**2012 Wheeler Varsity Football Schedule**

Date	Opponent	Site	Time
8-18	Boys Ranch- scrimmage	White Deer	12:00
8-23	Amarillo River Road-scrim.	Wheeler	5:00
8-31	Quanah	Quanah	7:30
9-7	Spearman	Spearman	7:30
9-14	Clarendon	Wheeler	7:30
9-21	Amarillo Highland Park	Wheeler	7:30
9-28	Memphis	Memphis	7:30
10-5	Claude	Claude	7:30
10-12	Gruver	Wheeler	7:30
10-19	Open	Open	Open
10-26	*Booker	Booker	7:00
11-2	*Shamrock	Wheeler	7:00
11-9	*Wellington	Wellington	7:00

**2012 7<sup>th</sup>, 8<sup>th</sup>, and JV**

Date	Opponent	Site	Time
8-30	Quanah JV only	Wheeler	6:00
9-6	Spearman JV only	Wheeler	6:00
9-13	Clarendon 7 <sup>th</sup> , 8 <sup>th</sup> , JV	Clarendon	5:00
9-21	Highland Park 7 <sup>th</sup> , 8 <sup>th</sup> , JV	Highland Park	5:00
9-27	Memphis 7 <sup>th</sup> , 8 <sup>th</sup> , JV	Wheeler	5:00
10-4	Canadian 7 <sup>th</sup> , 8 <sup>th</sup> , JV	Wheeler	5:00
10-11	Gruver 7 <sup>th</sup> , 8 <sup>th</sup> , JV	Gruver	5:00
10-18	Wellington 7 <sup>th</sup> , 8 <sup>th</sup> , JV	Wheeler	5:00
10-25	Booker 7 <sup>th</sup> , 8 <sup>th</sup>	Wheeler	5:00
11-1	Shamrock 7 <sup>th</sup> , 8 <sup>th</sup> , JV	Shamrock	5:00
11-8	Wellington 7 <sup>th</sup> , 8 <sup>th</sup> , JV	Wheeler	5:00

\*District

**50 YEARS AGO**  
... from our files

**Seventh Annual Rodeo To Begin Next Thursday Parade Will Open Affair; Barbecue Set**

Wheeler takes on its annual festive appearance next Thursday afternoon when the local riding club kicks off the seventh rodeo celebration with a parade through town.

Following this traditional event at 4 p.m., featuring riders from here as well as other Panhandle cities and towns—all roads will lead east to the rodeo grounds, where serving of the big free barbecue begins at 6 p.m.

**School Enrollment Will Be On Aug. 31**

Fall school-opening activities will begin with a workshop for teachers tentatively set for the last week in August, Supt. Arling Cordell announced this week.

All students will be enrolled on August 31, and the following Monday no school is to be held because of the Labor Day holiday. Classes begin the day after.

Cordell said most vacancies on the school faculty have been filled and all needed teachers should be employed within the next few days.

The summer is being spent at the school in beautifying the grounds and buildings.



**Engagement (July 12, 1962):** Mr. and Mrs. J. T. Wallace of Mobeetie announce the engagement and approaching marriage of their daughter, June, of Amarillo to Glen Vanlandingham of Amarillo, son of Mrs. Obeta Vanlandingham of Mobeetie. Vows will be exchanged on August 3, at 8 p.m. in the First Baptist Church of Mobeetie.

**4-H Texans Capture Highest Honors At Amarillo Parade**

The Wheeler County 4-H Texans, parading colorfully as "Texas Under Six Flags," took top honors over 12 competing riding clubs at the Will Rogers Range Riders' Parade in Amarillo last Saturday.

The local club's queen, Judy Finsterwald, was riding side-

**CRP** (from Page 1)  
accomplish the known benefits. Underwood described CRP as one of the most effective conservation programs for protecting highly erodible acres from wind

**Newkirk** (from Page 1)  
grandchildren, ten great-grandchildren, one great-great-grandchild, a sister, Lennie Raymond (Neal) of Shamrock, Texas, and numerous nieces and nephews.

Memorial contributions may be made to Hospice & Palliative Care of Western Colorado, 3090 B N 12th Street, Grand Junction, Colorado 81506.

Friends and family may leave their condolences online at [www.martinmortuary.com](http://www.martinmortuary.com).

211, 214, 217, 220, 1393, 1522, 1540, 1555

and water erosion. "CRP has established grass cover on acreage that is very sensitive and highly susceptible to wind and water erosion," Underwood said. "This grass cover has reduced the erosion rates on H-E-L lands to sustainable losses and is protecting our natural resource base for future generations."

Nationally, NRCS will be assisting landowners developing conservation plans for 3.9 million acres.

**Old Time Gospel Music**  
**KPDR-FM, 90.3**  
... In Wheeler  
Sundays: 6:00 a.m. to 8:00 a.m.

**Storm** (from Page 1)  
time at the movie just like my mom and dad and I. Now they are dead! He is a horrible man, hope he is in the jail forever and he isn't out somewhere killing people. One little girl was six years old. That is just a kid! What was that man thinking? She didn't do anything to him. That is not fair! so hope the people in the hospital will be ok and all the families can be together again. The very brave people that saved the other people are heroes. One lady got shot in the neck and her friend held her blood in and called 911. She is really brave. The killer is not brave. He is just crazy! I don't ever want that man to get out of jail! That's it!

**50 Yrs.** (from Page 7)  
saddle and dressed as a pioneer lassie in the parade. Many compliments were received by the club from the crowd and parade officials. The trophy won by the group is on display in Wheeler. Members of the 4-H Texans parading in Amarillo were: Phyllis Pakan, Mike Goad, Vicki Davidson, David Zybach, Jetta George, Fred Goad, Linda Hall,



**THE WHEELER TIMES**  
PAGE 8 — Thursday, July 26, 2012  
"Wheeler: town of friendship and pride."

Jarrell Russell, Teresa Archer, Joe Kelly, Diane Dodd, Dean Newberry, Robert Hogan, Joe Archer, Sammy Pakan, Tommy Rhodes, Billy James, Johnny Rhodes, Mark Trostle, Jackie Wardlow and the adult leader, Mrs. Buss Freeman.

Saturday marked the riding club's first time to win first place in competition.



**Hyland's Pharmacy** Phone: 806-826-5561  
Wheeler, Texas  
Canadian Shower TBA  
Wedding Shower: Ryon Moudy & Kristen Marion  
Wedding Date: August 18, 2012  
Shower Date: \_\_\_\_\_  
The store for all your needs: Prescriptions, Gifts for your loved ones, and More!

**OKLAHOMA**  
CHEYENNE • EUFAULA  
HINTON • STILWELL  
**TEXAS**  
SHAMROCK • SUNRAY  
WELLINGTON • WHEELER



**Market Square**

**THRIFTWAY**



PRICES GOOD  
WEDNESDAY, JULY 25,  
THRU TUESDAY, JULY 31, 2012

NOT LIABLE FOR TYPOGRAPHICAL OR PICTORIAL ERRORS.  
WE RESERVE THE RIGHT TO LIMIT QUANTITIES.  
SOME ITEMS NOT AVAILABLE IN ALL STORES.



**TenderCrust Split Top White Bread**  
24 oz.  
**99¢**



**Meaty Pork Shoulder Country Style**  
Ribs family pack  
**\$1.29** lb.  
Small Pack \$1.49 lb.



**Blue Bunny Premium Ice Cream or Frozen Yogurt**  
select varieties, 56 oz.  
**2 \$7** for 7



**Red Diamond Tea**  
select varieties gallon  
**2 \$4** for 4



**Pilgrim's Breast or Breast Tenderloins**  
boneless skinless  
**\$1.99** lb.



**T-Bone Steak**  
preferred trim  
**\$6.99** lb.



**Thriftway Drinking Water**  
24 pk.  
**2 \$4** for 4



**Sweet Baby Ray's Barbecue Sauce**  
select varieties 18 oz.  
**2 \$3** for 3



**Olathe Corn**  
**4 \$1** for 4



**Kleenex Viva Paper Towels**  
6 big rolls  
**2 \$10** for 10



**Betty Crocker Helpers**  
select varieties 4.7-7.9 oz.  
**4 \$5** for 5



**Watermelons seedless**  
**\$3.99** ea.



**Yellow Peaches or Nectarines**  
**99¢** lb.



**Charmin Basic Bath Tissue**  
12 double rolls  
**\$5.99**