

CENTRAL TIRE SERVICE 13 YEARS IN SNYDER

Birthday Sale

TO SHOW OUR APPRECIATION FOR YOUR CONTINUED PATRONAGE FOR THE PAST 13 YEARS WE OFFER YOU TREMENDOUS SAVINGS DURING THIS SALE!



FARMERS Get A Spare For Your COTTON TRAILER

- New 14" Wheel
 - New Tube (Any Size)
 - Used 14" Tire (Any Size)
- YOU PICK 'UM

All 3
Only

\$11⁹⁵

BOWLING FANS

\$5.00 Worth Of Free Bowling At Snyder Lanes Given During This Sale With Total Purchase Of \$100.00.

RULES

Save Your Or Your Friends Cash Or Charge Tickets — Starting Aug. 22 Through Sept. 7th, — For Every \$100.00, Get \$5.00 In Bowling Good For League Or Open Bowling Any Day . . . Dealers Not Eligible.

WORN OUT SHOCKS

"Will Wear Out Both You
And Your Car"

FOR THIS SALE ONLY

SHOCKS

Reg. \$9.80
Each

\$7.95

Installed Free On Most Size Cars
1 Or 4



SALE ENDS SEPTEMBER 7th.

SAVE ON

MOHAWK TIRES NEW GOLDEN JET

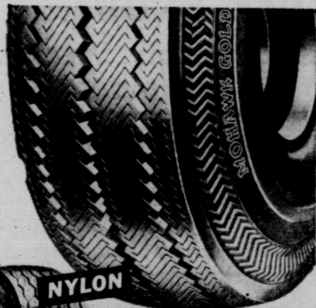
MOHAWK'S NEW GOLDEN JET

All the newest industry improvements at popular prices

- Wider shoulders to prevent edge wear
- "Buta-Syn" Tread—rides softer, stops quicker, wears longer
- New tread design, improved traction, whisper quiet

\$21⁹⁵

Size	Tubeless* Black	Tubeless* White
7.10 x 15	8.00 x 14	\$23.58
7.60 x 15	8.50 x 14	\$25.88
		\$27.20
		\$29.24



MOHAWK Silver Arrow

Economy Price
Includes Mohawk
Lifetime
Guarantee

\$10⁹⁵

Prices include
FREE INSTALLATION

* plus tax and tire off your car.

Big Trade-in Values!

on ALL-NYLON MOHAWK TIRES



EXTRA MILEAGE RE-TREADS TERMS ARRANGED

SET OF 4

\$44⁵⁰

Any Size

Exchange For Retreadable Tire

WHEELS BALANCED WHEELS ALIGNED

- Correct Wheel Alignment
- Balance Front Wheels
- Brakes Adjusted
- 5 Wheels Rotated

ALL 4 FOR
ONLY

\$11.95

Add \$2 For Air
Conditioned Car

EXPERT BRAKE SERVICE

BRAKES

Professionally Adjusted

Here's What We Do:

1. Remove front wheels, inspect lining.
2. Clean brake assembly.
3. Clean, inspect, repack front wheel bearings.
4. Adjust brake shoes for full contact—all wheels.
5. Check and add heavy duty brake fluid, if necessary.
7. Safety test brakes.

\$2 19 Any
Car

ALL-NYLON MOHAWK

Strato Chief

YOU SAVE

50%

OFF LIST PRICE



Long Wear at Low Cost...
Famous MOHAWK Jet Chief

- Low Contour Design
- Non-slip Tread
- Lifetime Guarantee
- All sizes in Stock

\$15⁹⁵

Size	Tubeless*
7.10 x 15	\$18.09
7.60 x 15	\$20.04

Featuring
4 Full Plys Of Nylon



MOHAWK STORM TRAC WINTER TIRES

\$18⁹⁵

- Super-Traction • Quiet Running
- All-Nylon • Guaranteed in Writing

All 14" and 15" sizes
available at Tubed Blackwall

YOU CAN SAVE UP TO 50% DURING SALE!

SALE ENDS SEPT. 7th.

MOHAWK Massacres
TIRE
NOW!
Save Up To
50%
First Line! First Quality! Fully Guaranteed!
Famous MOHAWK Quality

MOHAWK CENTRAL TIRE & AUTOMOTIVE

1931 25th.

HI 3-3567

SALE ENDS SEPT. 7th.

Now Truly A One-Stop Service
"No Job Too Small Or Too Large"

- Tire Service
- Brake Service
- Muffler Service
- Motor Tune-Up Service
- Battery Service
- Alignment Service
- Front End Service
- Accessories Of All Kinds

BUMPER TO BUMPER

OUR VIEW

Ex-Dictator Suddenly Has Some Criticism For America

Surely many hearts must be heavy with sympathy for Marcos Perez Jimenez, the former dictator of Venezuela. Only a few weeks ago, Perez Jimenez was waging an all-out fight to remain in the United States. Now that he has lost the fight and has been extradited to face charges of embezzlement in his own country, Perez Jimenez finds plenty of fault with the country he was so anxious to adopt as his own.

He says the U. S. Government treated him "like a pig" and he did not get enough food while confined to a Dade County (Miami, Fla.) jail.

But fortune has smiled on Senator Perez Jimenez, although it may be only temporary.

It is reported that his "jail cell" in Caracas is a three-room suite, equipped with radio, television, refrigerator and air-conditioning. He also gets all of the daily papers delivered to his cell—or suite.

Everything but the government and the Florida jail was magnificent in America, Perez Jimenez has advised his lawyer.

The jail situation undoubtedly has improved with his deportation to Venezuela. It remains to be seen whether the current regime in that country will ultimately prove more humane to Perez Jimenez than did the American government. A few weeks ago he was not anxious to make the switch.

Control Or Hatchet: It All Appears To Reach Same End

Rep. Omar Burleson, who represents this (17th) Texas District in the Congress of the United States, frequently expresses misgivings about various types of federal aid, and he reports that numerous letters he receives from constituents express opposition to aid programs.

In a recent communication back to his district, Rep. Burleson said a lot of people write him opposing federal aid to education. But he noted that most of them have in mind direct federal funds for public schools in the form of grants for buildings and facilities and teachers' salaries.

As a matter of fact, Rep. Burleson reminded, there has been federal aid to education in the country since 1917. He cited the Smith-Hughes Act and the George-Barden Act which have been in effect all these years. They provide federal funds for vocational training in public schools, such as the vocational agriculture program, etc.

Rep. Burleson fears that some of the new demands for federal aid to education would weaken these long-time programs by setting up outside training schools. The Higher Education Facilities Aid Bill, passed recently by the House of Representatives, calls for expenditures of two billion dollars over a three-year period. Although it disclaims federal control, it provides that the Commissioner of Education would have the authority to decide who gets the money.

If that isn't control, it is at least a "hatchet" that should prove effective in carrying out the will of the federal government wherever such funds are allocated.

Looking Back

50 Years Ago
From The Snyder Signal
Aug. 23, 1913

Oscar Graham will open the season at the Opera House, Friday, Sept. 5th presenting "The High Life," 35 cents, 50 cents and 75 cents. Seats on sale at Snyder Drug Co.

To the men and boys of Scurry County:

I do hereby designate and set aside Thursday and Friday, Oct. 2nd and 3rd, 1913, as good roads days for Scurry County, and do hereby request every able bodied man and boy, 15 years old and older, to plan ahead for these days, and when they come to put in these two days working on the road or roads that you want worked and that are the most important to you.

C. R. BUCHANAN,
County Judge

10 Years Ago
From The Scurry County Times
Aug. 31, 1953

Political prophets said it was impossible for Bascom Giles to become land commissioner, after he trounced Bill McDonald, present commissioner, by more than 200,000 votes in the first primary. So the former land office employe did the impossible, ousting the one-term West Texan.

A large thermometer has been placed on the front of the Times building, showing the progress of the trench silos, in tonnage of silage stored in trench silos each week, with the names of the winning precinct and individual

Believe Gas Caused Moab Mine Blast

By WILLIAM C. MUGGETT
MOAB, Utah (AP)—A federal official indicated today a collection of gas could have been the cause of the explosion deep within Texas Gulf Sulphur Co.'s potash mine that killed 18 men.

There were seven survivors from the blast Tuesday afternoon. Five of the seven were trapped 3,000 feet underground for 49 hours until their rescue Thursday night. The other two were rescued Wednesday.

The official, James Westfield, assistant director of the U.S. Bureau of Mines in charge of health and safety, said he would join in a federal-state probe with "no preconceived ideas."

"From what we see now, there was gas in the mine," Westfield said. "There was evidence during the recovery of the miners that it was methane. It certainly could collect and explode."

Westfield added that location of the bodies indicated the blast was not at the face of lateral tunnels which extended outward and downward from the 2,712-foot-deep main mine shaft. Officials believe it was near the base of the shaft.

The body of the last victim has not been removed from the mine. Officials said it was lodged in a pool of water at the base of the shaft and there was no way to pump out the water at this time.

A team of FBI experts arrived today to assist in identifying the dead—the bodies disfigured beyond recognition by the explosion.

State Industrial Commissioner Casper Nelson said the probe would start Monday. Meanwhile, federal officials ordered the mine closed until the end of the investigation—temporarily throwing out of work some 50 men.

Meanwhile, the seven survivors spent their first day out of the mine, telling and retelling their stories to friends and relatives.

Thomas Trueman, 37, Toronto, Ont., spent the day drinking beer and trying to decide whether to go back into the mine again.

"It was my first time underground," said Trueman, "although I have been working around mines for five years."

"I have a lot of time to think about whether I will go back down. What happened was a freak."

Nyasaland Slates New Youth Plan

SALISBURY, Southern Rhodesia (AP)—Prime Minister Hastings Banda of Nyasaland is calling on all youngsters to join the Pioneer Movement.

Banda, a fervent nationalist, said "foreign" organizations like the Boy Scouts and Girl Guides do not teach the young the essence of manual and physical labor or old African customs."

The move is expected to hurt the 5,000-strong Nyasaland Boy Scout Association. Nyasaland's government previously withdrew an annual grant of \$7,000 made for many years to the Boy Scouts.

The pioneer movement is similar to an organization in Ghana which President Nkrumah of that country modeled after Russia's Communist youth organization.

The Young Pioneers are instructed to enlighten youth about the motherland and to center attention on the African personality as seen in Banda.

Emancipation from colonial, imperialist and slave mentalities is described as one of its objects.

Arable areas of the world supply food for three billion people.



FOR SAFETY'S SAKE—B. C. McKinzie and Shorty Bevers, employes of C. H. C. Company, are shown unloading supports for the barricades on the new section of the Highway 180 by-pass. C. H. C. is the contractor on the job, and will start laying the base material for the paving in a few days. In addition to "Road Closed" signs, other good advice signs such as "Drive Carefully—Construction" and "Observe Warning Signs" are being erected. A guard rail will also be erected at the northwest end of the project to keep traffic safely on the detour portion.

Redistricting Problem Is A Natural For Controversy

By JERRY PILLARD
AUSTIN (AP)—The controversy over redistricting has many causes, and a big one is that city folk don't like the oversized vote their country cousins have in government.

What's behind the problem other than political maneuvering? The Texas Constitution says one county can have no more than one senator.

After the big city counties take their seats—Houston 12, Dallas 9, San Antonio and Fort Worth 7 each—the population is added up and then divided by the number of seats left to see what population the average legislator should serve.

The legislature is also charged with reshaping Texas congressional districts when a change is made by census takers.

Congressional redistricting has been more difficult than legislative redistricting.

The legislature failed after the 1950 census to enact congressional redistricting, so Texas has a congressman-at-large. The same thing happened after the 1960 census.

The last legislature talked about congressional redistricting, with federal courts watching.

The problem became so difficult one representative remarked: "A person couldn't get a call put through to his congressman now if he wanted to. They are all busy on the phone telling legislators how to reshape their districts."

A suit has been filed by a number of city Democrats in Houston, asking a federal court to do the legislative redistricting for the state—a chore accomplished in 1961 by the legislature.

The city boys say the 14th Amendment of the U.S. Constitution guaranteeing equal representation is being violated.

A rural legislator, who asked not to have his name used, said the federal courts ought to work on the U.S. Constitution before starting to change Texas'.

As an example, he says, Alaska has one congressman, the least a state can have—with 228,000 population. If Texas were to have one congressman for each 228,000 population, it would have 42 seats, instead of 23.

Houston Republicans and some Dallas residents have filed suit in federal court seeking congressional redistricting.

Gov. John Connally has hinted a special session of the legislature may have to be called to take up redistricting. He cited a decision July 17 by a three-judge federal court in Oklahoma. The court said the Oklahoma Legislature should be apportioned on the basis of population and nothing else.

The Buffalo River in Arkansas alternates serene pools with fast-moving currents that have cut limestone banks into towering bluffs.

May We HELP YOU HEAR BETTER?

Are you really interested in hearing better? If you are, then clip this ad and mail to the address below. We will send you a trained consultant to discuss and analyze your hearing problem at absolutely no obligation.

PROFESSIONAL HEARING AID SERVICE
2216 34th Lubbock SH 7-3379

False Alarm Sets Up Traffic Mishap

BINGHAMTON, N.Y. (AP)—Eight persons, including an expectant mother and her son, remained hospitalized today in the aftermath of a freak accident triggered by a 9-year-old boy.

Police said a fire engine answering a false alarm turned in by the boy caused a tractor-trailer at an intersection. The truck burst into flames, careened into Priscilla Podoluk, 26, who is expecting a baby next month and her son, Lawrence, 2, and then smashed into a restaurant.

Four firemen and two men riding in the truck were hurt. The Podoluk woman, and William Horn, 27, of Brooklyn, the truck driver, were listed in serious condition.

The name of the boy who turned in the alarm was not disclosed.

- BUY -

Hytone
Typing Paper
300 Count Polywrap 49c

Snyder Drugs

Dollar Day Specials

At Roe's Starting Tuesday And Prices To Remain All Week!

Walnut Finish School Desks From 31.95 to 39.95
Maple And Walnut BOOKCASES From 22.95 Up
Automatic Zenith Record Changers 31.95 - 149.95
\$50.00 To \$150.00 Trade In Allowance On Zenith Console Stereos

Last Call On Summer Close Out Bargains Before They Go To The Warehouse!

1 Gallon Water Jugs At 1.95
Garden Hose At 1/3 Off
Ice Chests, Group Of Garden Tools And Many Other Items To Go At 1/3 Off List.

Folding Lawn Chairs Only 4.95
Schwinn Bikes (not the cheapest but the finest you can buy) now offering long trade-in allowance on all size, types and colors of new Schwinn Bikes.

Set Of Eight (Thumb Print) With Ice Chest Container Reg. List 8.95, Now 3.95
Ice Tea Glasses

Just Received—New Items In West Bend Products At Attractive Prices.

Highland Shopping Center
Phone HI 3-3402

Roe's
FURNITURE & APPLIANCES

SNYDER DRUGS

\$ Days School Supply Specials
PRICES GOOD MONDAY & TUESDAY

Sheaffer Fountain Pen Specials

1.49 Value 3.95 Value
Pen & 7 Cartridges 59c Sheaffer Pen 3.19

2.95 Value 5.00 Value
Sheaffer Pen 2.39 Sheaffer Pen 3.98

98c Hytone Filler Paper, 300 Count 29c
98c Masterpiece Filler Paper, 300 Count 39c
98c Hytone Typing Paper, 300 Count 49c
35c Loose Leaf Dictionary 27c
25c Scissors, 5 Inch Metal 17c

29c Elmers Glue 19c
25c Crayolas - 16's 15c
25c Big Chief Pencil Tablets 15c
89c Canvas Binders 57c
69c Canvas Binders 39c
2.89 Book Satchels 2.39
89c Plastic Binders, Heavy Duty 69c
1.59 Black & Gold Plastic Binders 1.19

FREE SCHOOL BOX WITH \$2.00 PURCHASE SCHOOL SUPPLIES

\$2.00 Aquanet Hair Spray 64c

OPEN ALL DAY LABOR DAY

SNYDER DRUGS
SEE OUR VITAMIN AD IN THIS PAPER

DOLLAR DAY SPECIALS

GARZA SHEETS

63 x 99 \$1.49
81 x 99 \$1.69
81 x 108 \$1.98
Fitted \$1.98

Percale Stripe
SHEETS

72 x 108 \$2.79
81 x 108 \$2.95
Fitted \$2.95

FLORAL SHEETS

81 x 108 \$2.69
Fitted \$2.69

Insulaire
Blankets \$6.95

Superior Quality
Blankets \$2.79

Bates, Piping Rock
Bedspreads \$9.95 Spreads \$5.45

Floral Chenille

DINNAM BROS. MATTRESS FACTORY

2302 Ave. S HI 3-4142

FOR SALE

Wheat—Oats—Barley

Certified Early Triumph Wheat — State Tested, Early Triumph Wheat — First Year From Certified.

Ask Us About This Wheat Seed.

Rogers Barley — New Nortex Oats
Cimmaron Winter Oats — Elbon Rye —
Austin Winter Peas

United Industries Co.
FEED & SEED DIVISION
Ray Brown, Mgr., Hermleigh

Crops Are Ruined By Dry Weather

COLLEGE STATION (AP)—Dry weather has ruined many crops across Texas and now threatens to delay planting and growth of fall and winter crops as well.

Moisture levels are critically low in most areas. Plowing is difficult if not impossible, said John Hutchinson, director of the Texas Agricultural Extension Service. The dry conditions have aided the harvest of some crops but others have been seriously harmed by drought, he said.

The moisture shortage in South Texas is becoming critical and pastures are burning. More cotton harvest is being delayed. The cotton harvest is ending in the Valley and Coastal Bend.

The upper Gulf Coast area is critically dry. Soil is too dry and hard to plow and all vegetable plantings are being delayed. The hay harvest is at a standstill. The corn harvest is almost complete and yields are good considering the weather. The pecan crop is heavy and some limbs are break-

ing. The rice crop is good but the cattle outlook is poor.

In South Central Texas, livestock conditions are critical due to the shortage of grass, hay and water. Ranchers are culling and shaping-up herds for the drought conditions.

Moisture is very short in East Texas and ranges are below normal.

Moisture is very short in Central Texas. The few local showers were of little help. Cotton and corn harvests are in full swing and yields fair to good. Peanuts are holding on but need rain. Grasses are very dry. Feeding and livestock marketing are increasing. Lack of rain and the heat are causing cotton to open prematurely in West Central Texas and prospects are poor. Scattered showers helped some ranges but in general pastures are dry. Goat shearing is past its peak. Lamb shearing is on.

Ranges in the Davis Mountains area look good but other areas of far West Texas have poor range conditions. Livestock conditions vary from good to poor. Cotton is generally in good condition but insects are active.

Moisture is needed in all the rolling Plains and stock water is low.

Cotton and grain sorghum harvesting and plowing are active in North Central Texas. Rangelands are very dry and stock water is low in some areas. The dry weather has helped the harvest of extra good grades of cotton.

The southern part of the South Plains is dry and ranges need rain badly. Dryland cotton needs rain but irrigated cotton is good. The grain sorghum harvest and planting of wheat have begun.

The same story prevails in the Panhandle where moisture ranges from adequate to very short. Cotton conditions are normal and average to below normal. Silage grain sorghum conditions are being harvested. Livestock conditions are still good.

Three Named In Slaying

PHOENIX, Ariz. (AP)—Police say an informer has named three men, two in the Arizona Prison, as slayers of socialite Jane Langdon of Fort Worth.

The third man named is now dead.

The co-ed, 21, was found shot to death March 23 in a cave north of Phoenix.

Police said the three men had been questioned previously but that no evidence linked them with the slaying. The man in prison were sent there for robbery. The third died recently of an overdose of drugs.

Police Sgt. Wesley Mauldin said the informant pinpointed where the murder weapon. He said it had been sent to the FBI laboratory.

Now, said Mauldin, the weapon will be tested further to see if it were the gun used to kill Miss Langdon, daughter of appeals Judge Jack Langdon at Fort Worth.



AWARDED SCHOLARSHIP—Kathleen Mott, Baylor University junior, has been awarded the Mary Etta Mason Memorial Scholarship for 1963-64. A voice major from Snyder, she is the daughter of Mr. and Mrs. R. Virgil Mott, 2302 Sunset. The scholarship was established by Mr. and Mrs. Burgess Mason of Denham Springs, La., in memory of their daughter, Mary Etta, a graduate of the Baylor School of Music. The scholarship is awarded annually by Miss Tina Piazza, Baylor voice teacher, to junior, senior and graduate voice students in finance further voice study. Miss Mott is currently in New York City on a music observation tour. She is scheduled to return to Snyder next week.

Krush, Tito Near End Of Sessions

By GEORGE SVERTSEN
Associated Press Staff Writer
Brdo, Yugoslavia (AP)—Soviet Premier Khrushchev and Yugoslav President Tito, acting like long-lost brothers, paused today at Tito's secluded castle in the Julian Alps before plunging into the final three days of the Soviet Premier's working vacation in Yugoslavia.

The two Communist chiefs, their underlying friendship and mutual contempt of Red China in televised speeches Friday at the mining center of Velenje.

The remarks were a political highlight of Khrushchev's two-week visit.

But Tito displayed the same independence that caused his expulsion from the Soviet bloc in 1948. He asserted anew his determination to continue his close contacts with the West.

He indicated that Yugoslavia was willing to join the Soviet bloc in limited economic cooperation but that this would be only part of Yugoslavia's framework of ties with both East and West.

A triumphant Tito told his people Khrushchev now recognized that Yugoslavia had been correct in following an independent Communist course.

With obvious relish, Tito reasserted that his experiment with workers self-management councils, once branded a revisionist heresy by Moscow, was actually based on Marxist and Leninist teachings.

He implied that the once-outlawed institution should be put into practice throughout the Socialist world and praised Khrushchev's resolve to try it out in the Soviet Union.

Khrushchev put the Kremlin stamp of approval on this proposal in his speech by saying he agreed with everything Tito had said.

The Soviet press, however, suppressed all indications of Khrushchev's implied approval. Soviet newspapers mentioned Tito's

speech without giving the contents. A text of Khrushchev's speech omitted his statement about agreeing with Tito.



City Attorney Is Moving To Dallas

Arthur Blanchard, city attorney for the city of Snyder since April, 1961, and a member of the law firm of Blanchard, Carroll and McLaughlin, has informed Mayor John Hamblen and City Manager George Patterson that he will submit his letter of resignation at the next regular city council meeting.

Blanchard is resigning to accept a position with a Dallas law firm. He will join the Dallas firm Oct. 1.

The attorney came to Snyder first in 1952 and for a brief time was engaged in the gravel business. That year he entered the University of Texas law school, and upon graduation returned to Snyder in 1955. He has been a practicing attorney here since.

Blanchard also served the city as city judge from 1958 until 1960.

Mrs. Blanchard was a member of the Scurry County Library Board when it was first appointed in 1957. She served as chairman of the group.

The Blanchards, their three daughters and son live at 2334 Sunset Avenue.

Red Writers Visit

KARACHI, Pakistan (AP)—A two-man writers' delegation from Communist China, consisting of poets Wen Chieh and Yuan Ying arrived today for a three-week tour of Pakistan. They had been invited by the Pakistan Writers' Guild.

Communist Fairy Tales Are Designed To Rap Religion

By ANTHONY WHITE
MOSCOW (AP)—"Once upon a time," the little boy began "there was a black cat and a little mouse."

Then he told a story of how the cat had deceived the mouse. This was no ordinary cat. Actually it was a priest in disguise. Which, of course, would explain why it had tricked and cheated the poor mouse.

It was a Communist fairy story—a Communist fable with a Communist moral.

Praxis and religion deceive ordinary people.

The hall was crowded with children in the crisp red and white uniforms of the Soviet Young Pioneers movement. This was their summer camp and they were having a concert.

It was a remote spot about 20 miles out of Moscow in the heart of woods of pine and silver birch.

Here, 400 children of workers at a Moscow dairy combine were taking a month in the sun learning things and being taught the rudimentary acts of being Communists. Their ages ranged from around 8 to 14.

Boys and girls learned how to do such things as to wield a wood plane, take care of animals, make dresses and dolls and cook.

Political indoctrination, said a camp official—a matronly figure with brown hair drawn tightly back in a bun—played only a

small part in the work of the camps. What the children learned there about the party was merely a continuation of what they were learning at school.

But even in the remoteness of the woods, there is no chance for the children to forget that they are Communist youth, that their country is a Communist state.

Busts of Lenin frowned down at them from the walls of rooms. Photographs and paintings of him adorn almost every room in the encampment. A white stone statue of the hero of Soviet Communism stands high above the center of the camp.

As the girls busily sew dresses, a banner above them proclaims: "Long live the Leninist youth movement!"

In the hall the concert ends. The choir sings. They are dark little girls with pigtails and children with the wide, flat faces and strong inner eyes that mark them unmistakably as the children of peasant folk.

Their voices rise high. They sing: "We are young pioneers, children of workers. Be always ready to fight for communism."

The Leninists in kneepants and pigtails cheer. They sing again. The tune has a lively, gay rhythm. Feet begin to tap. Then the birds come through and bring a visitor down to earth: "Cuba, you are my love," the children sing. "Cuba, you are a legend."

Broiler Markets Mostly Steady

AUSTIN (AP)—Broiler markets opened fully steady in South Texas and slightly weaker in East Texas Monday. South Texas was steady through the week. East Texas showed weakness. Both areas closed about steady Friday with the undertone unsettled to weak. Supplies were adequate and demand greatly improved late in the week as producers replenished stocks for the holiday. Movement ranged from light to brisk.

Closing prices: South 14.00-15.00, East 13.25-14.00. Week before: South 15.00; East 14.25-15.00. Year ago: South 16.50-17.00; East 15.90-16.10.

- BUY -

Hyton

Notebook Paper

300 Count **29c**

Snyder Drugs

SPECIAL

Stocker Cow Sale - All Breeds

Saturday, Sept. 7, Llano, Texas

1500-2000 Cows And Heifers

Good And Choice Quality

An Opportunity To Buy Replacements In Any Number
Brucellosis Free Area Consignments Welcome
For Information Call

LLANO LIVESTOCK AUCTION

Phillip Smith 247-4748 Wayne May 247-5288
247-5294 247-5288

From TJ's Country Store

Bermuda School Dress \$12.98 (One Piece) Country Parka \$12.98 Buggy-Whip Parka \$22.98 (Pants \$8.98) Country Cousin \$12.98 (One Piece)

BUGGY-WHIP CORDS BY THERMO-JAC

TJ's very own Country Store styles for rugged elegance... in finest quality, high-luster corduroy... rich, shimmering colors of Chino, Madder Blue, Moss Green, or Twig Brown. Accented by TJ's exclusive muted plaids... 65% Dacron/35% Cotton, with wash and wear finish. The fit is fabulous in TJ's True Junior sizes 5 through 15. Parka sizes Small, Medium, Large.

Not shown: Plaid Pullover Parka \$12.98 Buggy-Whip Wrap Skirt 7.98 Plaid Shirt (long sleeves) 6.98

As seen in SEVENTEEN

Rogers

West Side Of Square

ATTENTION SPORTSMEN!

Let Us Save You Money On Your

OUTBOARD & INBOARD BOAT and MOTOR INSURANCE

Call Us Today!

LAMB INSURANCE AGENCY

In The Same Building With Lamb Chevrolet
Bill Byers - Manager
Off. HI 3-5455 Res. HI 3-3598

COMMENTARY ON MODERN LIFE

TOURISTS PAID FIVE DOLLARS PER CAR TO SEE RILLIE SOL ESTES' HOUSE—



BUT YOU CAN VISIT MT. VERNON FOR 75¢.



Sedate Texas Capitol Source Of Pride, Witness To History

EDITORS: The Texas Capitol vies with the Alamo as the state's top tourist attraction. Visitors most often ask whether they can get to the dome ("no") and what caused the crack in the ornate terrazzo floor ("no one is sure). Few ever leave the Capitol realizing that the building is the site of a political assassination, the impeachment of a governor and unseating of a house speaker. This year is the building's 75th birthday.

AUSTIN (AP)—The state government moved into the new Capitol about this time 75 years ago, but it wasn't much of a job. It was almost an anti-climax when only 25 state officials occupied what was the seventh largest public building in the world and still the tallest domed Capitol in the nation. Only sky-scraping capitols, such as Louisiana's, are higher. The Texas Capitol still is the largest on a space basis.

The little band of officials was confined mostly to the first floor. The House and Senate were not in session on the second floor, and the third floor was to be used infrequently by the higher courts. No one knew what the fourth floor was for.

Offices had no drapes against the summer sun. The Capitol commissioners were bickering over whether to accept the building until the leaky roof was fixed.

At least one newspaper, in Galveston, was reluctant to praise the state for giving up three million acres of Panhandle land

for the oversized Capitol. But most Texans felt the building was more than a statehouse. It was a monument to the state's aspirations.

And, after 75 years of watching the government overflow into other buildings, the Capitol more than ever is largely a monument instead of a mere building.

The building appears so stolid and sedate, like a fat comfortable old lady, that a visitor feels nothing very exciting could ever happen here.

But the building has been a noisy place, with the sounds of happiness and tears, gunfire, rioting, mob demonstrations and birth and burial of political careers amid the shouted votes of lawmakers.

From the first, Texans were never bashful about using the Capitol as a sort of statewide auditorium.

Legislatures before 1900 cleared out of the house to permit meetings of such groups as the farmers congress, volunteer firemen, Daughters of the Confederacy, dairymen and the Republican State Executive Committee.

Texans honored early governors with lavish inaugural balls and dinners in the Capitol. The Capitol balls were discontinued in 1919 when an influenza epidemic delayed Gov. W. P. Hobby's celebration.

The pink granite building was dedicated May 16, 1888 before a crowd which became so rowdy it drowned out efforts of Gilmore's hand.

The first legislators to use the

Capitol were awed by the size of the statehouse.

The year 1909 produced perhaps the most sensational legislature in state history.

It expelled a state senator and unseated House Speaker A. M. Kennedy. Kennedy came close to keeping his job, but the House voted 67-50 against a resolution to save him. The resolution was authored by a representative who was to succeed him as speaker and go on to become speaker of the U. S. House of Representatives, Sam Rayburn.

The most hectic days of the Capitol were in 1917, when Gov. Jim Ferguson vetoed the University of Texas appropriations.

About 2,000 students led by a band marched to the capitol, and waved banners.

When the house heard testimony on impeachment charges against Ferguson, the speaker complained that "Rangers and gunmen insist on entering the gallery armed."

The adjutant general said at least two rangers were needed in the gallery because "some crank might break loose at any time."

In a two-hour speech before a hushed audience in the Senate chamber, Ferguson compared himself to "Daniel in the lion's den, fighting for his life."

The senators, sitting as a court of impeachment, found him guilty. The capitol has seen unhappiness.

A painter's safety belt broke while he was working in the dome in 1922. He died in the four-floor fall.

State comptroller R. M. Love was chatting easily with a former comptroller's department employe one June morning in 1903 when his visitor pulled out a pistol and shot him. Love's assistant grappled with the assassin and the pistol discharged in the gunman's stomach. He died several minutes

World Crude Reserves Look Better

By MAX B. SKELTON
HOUSTON (AP)—World crude oil reserves seemed overwhelming a decade ago but now look more manageable and desirable.

This was the report last week by an industry publication in its survey of oil trends.

World Oil magazine said mushrooming consumption in 10 years will continue.

World demand for oil is expected to increase from 27 million barrels a day this year to 56 million in 1975.

The trade publication estimates United States demand will increase about 2 1/2 per cent a year with areas outside the U.S. increasing about 7 per cent a year.

"Sharp gains abroad will reflect both growing use of energy and oil's increasing share as the source of energy," the magazine said.

"By 1975, Western Europe, for example, will be using much more energy than now and oil will then be supplying 60 per cent of its energy needs, or double the present proportion."

Oil's share of total energy consumption in the United States, however, is expected to remain relatively constant.

The postwar growth in demand for oil in foreign areas continues to chip away at the dominant role the United States long has held as the world's leading oil consuming area.

U.S. demand averaged 4.9 million barrels a day in 1946, compared to only 2.8 million for all other areas. Domestic demand had jumped to 8.7 million barrels by 1957 but the total for other areas had zoomed to 9.4 million daily.

World oil estimates the U.S. requirement for 1953 million barrels a day in 1963 will amount to only 33.7 per cent of world consumption.

Florida Insects Must Beware New Cupid

ST. PETERSBURG, Fla. (AP)—Florida bug experts want to play cupid, but they have malice instead of love in mind.

About 350 University of Florida scientists, government researchers and industrial entomologists will discuss various methods of ridding the state in insects during the 46th annual meeting of the Florida Entomology Society Sept. 11-13.

Among the proposals to be considered is one involving the germinating house fly, the pesky eye maggot and the blue-sucking mosquito. The object is to introduce a fatal love triangle that would spell their doom.

later in a first floor corridor. Love died later that day.

Thousands jammed the Capitol July 13, 1940 to file past the bier of Gov. Beaufordester. He died of a heart ailment while enroute from Austin to Houston to see a heart specialist.

The capitol also has been happiness.

In 1901, lawmakers broke their routine to watch the wedding in the House of Sen. McNeill Turner and Mrs. S. M. Franklin, the first woman employed by a legislator.

Jesse Smith, a Breckenridge judge and former state senator, was married in the Senate in 1943.

An Austin architect, Ward Harris Sr., says of the Capitol: "The capitol is a repository of the living of the people of the state. It is the sort of building we accept as a bequest of our forefathers—their hopes, aspirations and feeling of pride for their state. It is a massively beautiful building. It would grace any state any place."

JOE PALOOKA



GRANDMA

KERRY DRAKE



DIXIE DUGAN



REX MORGAN



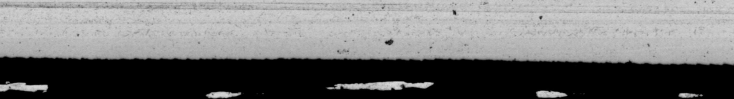
MARY WORTH



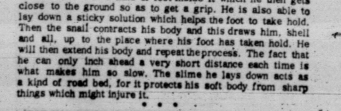
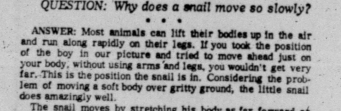
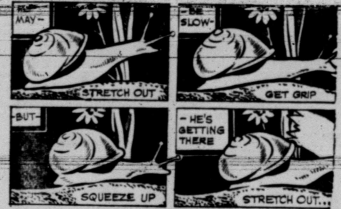
FERDINAND



YOGI BEAR



Junior Editors Quiz on SNAILS



QUESTION: Why does a snail move so slowly?

ANSWER: Most animals can lift their bodies up in the air and run along rapidly on their legs. If you took the position of the boy in our picture and tried to move ahead just on your body, without using arms and legs, you wouldn't get very far. This is the position the snail is in. Considering the problem of moving a soft body over gritty ground, the little snail does amazingly well.

The snail moves by stretching his body as far forward as he can. There is a kind of foot inside it which he then gets close to the ground so as to get a grip. He is also able to lay down a sticky solution which helps the foot to take hold. Then the snail contracts his body and this draws him, shell and all, up to the place where his foot was taken hold. He will then extend his body and repeat the process. The fact that he can only inch ahead a very short distance each time is what makes him so slow. The slime he lays down acts as a kind of road bed, for it protects his soft body from sharp things which might injure it.

FOR YOU TO DO: See if, when laying down on your stomach, you can lift your feet and hands off the ground. It's a good exercise.

(Phyllis Casan of Kansas City, Mo., wins the daily grand prize of a 20-volume set of World Book Encyclopedia for this question. Mail yours on a postcard to Junior Editors in care of this newspaper, and you may win a set, too.)

CROSSWORD PUZZLE

- ACROSS
- Cherry
 - Race home
 - Not ethical
 - Ancient
 - Affirmative
 - Love feast
 - Wanderer
 - Gherkin
 - Wall painting
 - A place of refuge
 - Ostrichlike bird
 - Celtic god
 - Stage whipper
 - Malt drink
 - Certain material
 - Wild ass
 - Original
 - Reducing meals
 32. Affirmative
 33. Wanderer
 35. Dress stone
 37. Haggard
 38. Blot
 41. Syllabus
 43. Light
 45. Volume of maps
 46. Came
 47. Unwanted plants
 48. Gr. patroness of the arts

1	2	3	4	5	6	7	8	9	10	11
12	13	14	15	16	17	18	19	20	21	22
23	24	25	26	27	28	29	30	31	32	33
34	35	36	37	38	39	40	41	42	43	44
45	46	47	48	49	50	51	52	53	54	55

Far time 25 min. AP Newsletters 8-31

SOLUTION OF YESTERDAY'S

- DOWN
- Cuban tobacco
 - Arabian noble
 - Sway
 - Wearry
 - Drummer
 - Gum resin
 - Knave of clubs
 - Water: Sp. noble
 - Massacre
 - Shoulder
 - Unit of electricity
 - Jap. salad herb
 - Goal
 - Jeopardize
 - Vicia orobus
 - Counter agent
 - Scalloped
 - Exciting
 - Succor
 - U. S. baseball
 - Happy star
 - Sun disk
 - Interpret
 - Eng. letter
 - Tease

TRAPPED... Fellin and... 14 days... while on... right Pic... mine and...

'Ho... Off... By E... WASHINGTON... 'hot li... ton and... ness— busi... will never... Now a th... White Hou... either end... munications... the next w... But it m... fingers from... that woul... Completion... possible by... ment to cre... stalling was... concally Fr...

Rec... Par... AUSTIN... nally name... committee... velopment... facilities on... voirs. Named w... Daininger... tin, Cecil... Babcock of... Wichita Pa... Corpus Chr... gen of Pol... of Houston... The study... said, is an... mendations... ties panel of... servation A... Federal a... related un... serve as a... and to pro... advice. Connally... year as a... year's partic... water reser... "All of th... ated the n... of providin... public need... capped in t... the develop... the recreati... Texas' re... Connally... study com... Determin...

Pentec... Revival... A revival... United Pent... at Thirty... nue C. The visit... Rev. E. Fr... ridge, Wed... ing cond... the Sunday... be at 7 p... The Rev... tor, said t... attend all...

B... Mr. and... General De... of a lb... 6 to 10... 12 a.m... 15 a.m...

Railroad Serial Thundered To Cliff-Hanging Climax

By JACK LEFLER
AP Business News Writer
NEW YORK (AP) — The great railroad serial thundered toward a cliff-hanging climax during the week before Congress threw the switch and sent it into another chapter.

It was less than six hours before a national strike deadline when President Kennedy signed legislation, shunting the two key issues in the work rules dispute into binding arbitration.

With the railroads canceling some train schedules and industries shifting cargoes to other carriers in anticipation of a crippling strike, Congress highballed the bills aimed at heading off a work stoppage. Little opposition developed, although reservations about limiting the process of collective bargaining were voiced.

With the President's signing of the bill, the railroads withdrew the controversial work rules changes which would eliminate the jobs of nearly 40,000 firemen. The five rail unions involved canceled their notice of a strike.

The bill set up a panel of seven arbitrators to rule within 150 days on disputes over firemen's jobs and the makeup of freight and yards crews. Kennedy originally proposed that the Interstate Commerce Commission be given the arbitration assignment.

The board's findings would be binding for two years. It was doubtful that after that time the controversy would be revived. Congress left to railroad and union negotiators the settlement of six other work rules disputes. It forbade work rules changes or a strike on these issues for at least 30 days after the arbitration panel makes its ruling on the two major issues.

Kennedy said the legislation "reaffirmed the essential priority of the public interest over any narrower interest."

Some labor leaders, including James R. Hoffa, head of the Teamsters Union, called it a serious setback for collective bargaining.

The stock market drooped when it seemed that Congress would not be able to act in time to head off a strike but came back strongly when favorable action appeared imminent.

Shares traded on the New York Stock Exchange totaled 25,535,150 compared with 20,530,001 the previous week.

Bond sales were down, however. The volume totaled \$1,603,260,000 compared with \$2,415,680,000 the previous week.

New statistics indicated that the economy was moving ahead, slowly but surely.

The National Industrial Conference Board reported a survey indicated that major industries will sharply increase capital spending in the third and fourth quarters. This was partly due to the fact that they spent less in the second quarter than they anticipated.

Total value of construction contracts in July climbed 10 per cent above a year earlier. This was largely due to a 7 per cent increase in residential building.

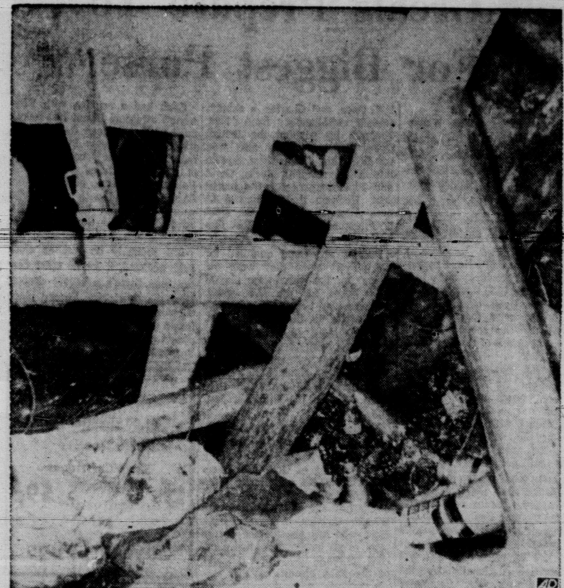
Machine tool orders — a key business barometer — in July showed a 4 per cent gain over June and a 21 per cent advance over July 1962.

On the darker side of the picture, as far as individuals were concerned, was the rise in the

cost of living for the second straight month to a record high. The Labor Department reported a 1 1/2 per cent increase in the consumer price index in July to 107.1 per cent of the 1957-59 base period. This meant that it now takes 71 cents more to buy what \$10 would have purchased in consumer items in the 1957-59 period. The rise was attributed to higher prices for food, gasoline and most goods and services.

Automobile production continued to build up slowly as more 1964 models came into production. Output during the week was estimated at 36,000 passenger cars against 22,732 the previous week and 35,115 a year ago. Only General Motors is yet to start turning out 1964s.

Steel output inched up during the week for the first time since early June and the second since late May. While the gain was only 1 per cent over the previous week, it was encouraging to steelmakers who saw in it an indication that the downswing had bottomed out.



TRAPPED MINERS BEDROOM—The above photo, released by the Pennsylvania Department of Mines, shows the Shepperton, Pa., coal mine shaft where miners David Fellin and Henry Thorne used as their "bedroom" when trapped in the shaft for nearly 14 days by a mine cave-in before they were rescued. A miners belt hangs on a timber while on bottom at left is a sleeping bag, coversalls in center and thermos bottles at right. Picture taken with 35 mm camera with speedlight lowered by rope 300 feet into mine and fire electronically. (AP Wirephoto)

'Hot Line' Set For Business Officials Hope Never Comes

By ELTON C. FAY
WASHINGTON (AP) — The historic "hot line" between Washington and Moscow is open for business — business that officials hope will never come.

Now a tinkle of a bell in the White House or Kremlin — at either end of the emergency communications system — may signal the next world crisis.

But it may also keep nervous fingers from pressing the buttons that would launch nuclear war. Completion of the circuits, made possible by a U.S.-Soviet agreement to create machinery for forestalling war, was announced last Friday night by the Pen-

Recreation Study Panel Appointed

AUSTIN (AP)—Gov. John Connally named an eight-man study committee Saturday to study development of public recreational facilities on major water reservoirs.

Named were Marvin Watson of Daingerfield, Ed St. John of Austin, Cecil Reid of Austin, John Babcock of Austin, Jack Davis of Wichita Falls, Victor Jaeggli of Corpus Christi, Carroll Wearinger of Point and Bill Ferguson of Houston.

The study committee, Connally said, is an outgrowth of recommendations by the river authorities panel of the Texas Water Conservation Association. Federal and state agencies with related functions have agreed to serve as a collaborating group and to provide information and advice.

Pentecostal Church Revival Underway

A revival is underway at the United Pentecostal Church, located at Thirty-first Street and Avenue C.

BIRTHS

Mr. and Mrs. Agapito Chappa, General Delivery, are the parents of a 6 lb. 10 oz. baby girl born at 10:25 a.m. Aug. 30 at Cogdell Hospital.

Gen. Sutton Is Recalled

WASHINGTON (AP) — Maj. Gen. William J. Sutton, a Texas insurance executive, puts his uniform on again next week and takes over the running of the Army Reserve.

Sutton, 55, of San Antonio, was recalled to active duty by Secretary of the Army Cyrus R. Vance for a four-year tour of duty as chief of the Army Reserve.

In that post, he has Army staff responsibility for all matters pertaining to the development and maintenance of the Army Reserve, which now has about 251,000 in drill pay status.

JFK Urges Restoration Of Aid Fund

HYANNIS PORT, Mass. (AP) — President Kennedy appealed today for restoration of foreign aid funds slashed by the House, saying "freedom does not come easily or cheaply" and the full program is needed at a time of "very intense" peaceful coexistence.

Standing with Kennedy at an impromptu press conference, Gen. Lucius Clay said that in slicing \$600 million from the aid authorization bill, the House has "gone too far and seriously endangered the program."

Clay, chairman of a committee that recommended gradual reduction of aid programs earlier this year, said he was particularly disturbed about reductions in funds for military assistance and the Alliance For Progress.

DOLLAR DAY SPECIALS

Display Merchandise Only!

4000 C.F.M. Evaporated COOLER Reg. 99.95	\$79.95
• Volume Controller • Built-in Water Pump	
4300 C.F.M. Evaporated COOLER Reg. 114.95	\$99.95
• 2 Speed • Built-in Water Pump	
Shop & Home Vacuum CLEANER Reg. 39.95	\$23.95
Craftsman Industrial Rated SABRE SAW Reg. 38.44	\$24.95
Kenmore 1 1/2 H.P. 7 Attachments Vacuum CLEANER Reg. 46.66	\$39.95
Kenmore Power SWEEPER Reg. 28.95	\$19.95
• Twin Fans With 18,000 R.P.M.	
Silverstone Color TELEVISION Reg. 529.95	\$449.95
• Mahogany Console • 23 Inch	
Silverstone Combination Radio & Stereo Reg. 219.95	\$149.95
• Standard A.M. & P.M. Broadcast • Honey Maple Console	

SEARS 608 E. Hwy. HI 3-4676

Welcome Back Teachers

Once again our community is honored by your presence. You have one of the most responsible, exacting and exhausting jobs in the world and we admire your dedication. Our best wishes go with you.

During the coming term there are many bank services you will find useful, such as a checking account, savings account... perhaps a loan for an emergency. We look forward to making your acquaintance and hope you will stop in soon and say "hello."

Your Home Owned Bank...

WEST TEXAS STATE BANK

WEST TEXAS STATE BANK

"Member Federal Deposit Insurance Corporation"

See Bud's Office Supply

For All Your

School Supply Needs

20% Discount

On All School Supplies

Dollar Day And All This Week

- FREE Tiger Football Schedule Windshield Stickers
- Tiger, Texan & Blue Devil Emblems FREE With Purchase Of Binder Or \$1.00 Worth Of School Supplies
- Name Imprinted FREE On Zipper Notebooks Or Ring Binder

Portable And Standard Typewriters

SALES — SERVICE — RENTALS
Also Electric Portables

Bud's Office Supply

1822 26th. Phone HI 3-4252

NOW AVAILABLE!

G-E'S MINI-WASH SYSTEM AT A NEW LOW PRICE

This New General Electric Filter-Flo® Washer also washes big 12-pound loads truly clean.

FOR GENTLE WASHING

Delicate, lacy items you'd normally do by hand can be carefully washed in the amazing MINI-BASKET... MINI-WASH SYSTEM automatically saves on water, too... perfect for small or leftover loads, up to one pound.

FAMILY-SIZE LOADS UP TO 12 LBS.

Lift out the MINI-BASKET and your G-E Washer is ready for up to big 12-pound loads requiring more vigorous washing action. Clothes get truly clean with the famous Filter-Flo Washing System.

PLUS:

- Three Wash Cycles • Three Wash and Two Rinse Temperatures • Two Wash and Two Spin Speeds • Filter-Flo Washing System • Water Saver Load Selector • Activated Sock Cycle • Unbalanced Load Control • Safety Lid Switch • Porcelain Tub and Basket

Model WA-852X

\$239⁹⁵

Roer's

FURNITURE & APPLIANCES

Highland Shopping Center
Phone HI 3-3042

Twins Win Behind Killebrew's Homer

By BOB GREEN
Associated Press Sports Writer
Dick Stuart could do worse than listen to the words of wisdom from old Satch Paige.
"Don't look back," the Ageless wonder once warned, "Something may be gaining on you."
It is his name is Harmon Killebrew—and he's fast chasing on Stuart in the race for the American League home-run championship.
Killebrew cracked a 33 tie with his 33rd homer in the seventh inning of Friday night's game with Chicago. It propelled Minnesota to a 5-3 victory over the White Sox, vaulted the Twins past Chicago into second place and pulled Killebrew within two of Stuart's league-leading total of 35.

The Twins' Bob Allison followed Killebrew's shot immediately with his 30th homer as the Twins tied two American League marks.
In other games, the leading New York Yankees beat Baltimore 4-1 behind the 28th-pitching of Al Downing, Cleveland edged Detroit 5-4 and broke the Tigers' eight-game winning string. Los Angeles whipped Kansas City 6-2 and Don Zimmer's grand-slam homer led Washington to a 7-0 rout of Boston.

In the National League, the Los Angeles Dodgers built their lead to seven games with a 3-1 victory over San Francisco. St. Louis bombed Philadelphia 11-6 and took over second place. Cincinnati edged Pittsburgh 2-1, Milwaukee

Aqueduct Stakes Will Run Monday

By The Associated Press
Mighty Kelo, who has worn out three crops of colts as America's top thoroughbred, gets his first crack at one of the leaders of the current crew of 3-year-olds Monday.

day in the \$100,000-added Aqueduct Stakes.
Rex C. Ellsworth's Candy Spot, winner of the Preakness, will challenge the powerful, 6-year-old colt and the 4-year-old Crisman Satan. However, Kentucky Derby and Belmont Stakes winner Chateaugay will pass up the 1 1/2-mile test.

70 Players Out At Rice

HOUSTON (AP) — Jess Neely starts his 24th season Monday at Rice.
The 70 players who report for training include 15 lettermen.
A back ailment eliminated senior guard Will Hubbard of Kennedy this week.

Hubbard's brother, Charles, a tackle, is among two squadmen who have decided to forego football. The other is Ronnie Cox, a sophomore fullback from Sweetwater.
Neely's roster carries only 49 players but he expects about 20 other candidates to bid for squad status.

McMurray-Herring In Heavyweight Bout

HOUSTON (AP)—Bill McMurray of Sacramento, Calif., and Tod Herring of Houston, heavyweights, fight a 10-round main event Tuesday.
Both are class A fighters.
McMurray, at 212, has won 17 pro fights. He has lost seven.
Herring, Texas state heavyweight champion, weighs 216. He will be going after his 23rd win against two losses.
Preliminary matches have Benny Bowser of Austin, Texas light-heavyweight champion, facing Sheway Goodman of Houston in one six round bout, and light-weight Henry Dominguez of Houston meeting Leo Amie of Dallas in another six rounder.
In a four round preliminary matching heavyweights, Clarence Beene of Fort-Worth meets Irish Jimmy Manahan of Houston.

Non-Pro Baseball Tournament Underway

WICHITA Kan. (AP)—A battle of unbentens tops tonight's schedule in the National Non-Pro Baseball Tournament.
It will pit Ponchatoula, La., which knocked out the defending champion Wichita Dreamliners 4-1 Friday night, against Grand Rapids, Mich.
Hollandale, Miss., got to former New York Yankee pitcher John Gabler for six hits and five runs in the eighth inning on the way to eliminating the Wichita Glassmen 7-3.
A perfectly executed suicide squeeze bunt by Doug Lakens in the ninth inning set up for a score and drove in the two runs Everett, Wash., needed to defeat Emerson Westwood, N.J., 2-1.
Tonight's schedule, EST:
3:30 p.m.—North Platte, Neb., vs. Wichita Transit.
6:00 p.m.—Fairbanks, Alaska, vs. Greensboro, N.C.
8:30 p.m.—Grand Rapids, Mich., vs. Ponchatoula, La.
11:00 p.m.—Phoenix, Ariz., vs. Everett, Wash.

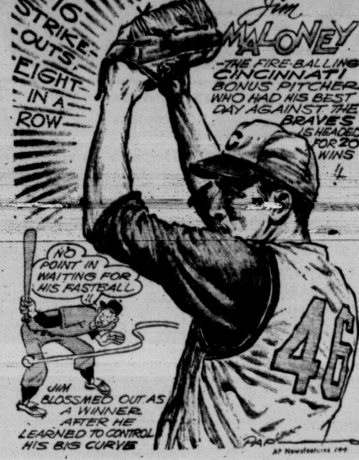
McMurray-Herring In Heavyweight Bout

HOUSTON (AP)—Bill McMurray of Sacramento, Calif., and Tod Herring of Houston, heavyweights, fight a 10-round main event Tuesday.
Both are class A fighters.
McMurray, at 212, has won 17 pro fights. He has lost seven.
Herring, Texas state heavyweight champion, weighs 216. He will be going after his 23rd win against two losses.
Preliminary matches have Benny Bowser of Austin, Texas light-heavyweight champion, facing Sheway Goodman of Houston in one six round bout, and light-weight Henry Dominguez of Houston meeting Leo Amie of Dallas in another six rounder.
In a four round preliminary matching heavyweights, Clarence Beene of Fort-Worth meets Irish Jimmy Manahan of Houston.

Non-Pro Baseball Tournament Underway

WICHITA Kan. (AP)—A battle of unbentens tops tonight's schedule in the National Non-Pro Baseball Tournament.
It will pit Ponchatoula, La., which knocked out the defending champion Wichita Dreamliners 4-1 Friday night, against Grand Rapids, Mich.
Hollandale, Miss., got to former New York Yankee pitcher John Gabler for six hits and five runs in the eighth inning on the way to eliminating the Wichita Glassmen 7-3.
A perfectly executed suicide squeeze bunt by Doug Lakens in the ninth inning set up for a score and drove in the two runs Everett, Wash., needed to defeat Emerson Westwood, N.J., 2-1.
Tonight's schedule, EST:
3:30 p.m.—North Platte, Neb., vs. Wichita Transit.
6:00 p.m.—Fairbanks, Alaska, vs. Greensboro, N.C.
8:30 p.m.—Grand Rapids, Mich., vs. Ponchatoula, La.
11:00 p.m.—Phoenix, Ariz., vs. Everett, Wash.

SPORT SLANTS . . . by Pap'



SPORTS

The Snyder (Texas) Daily News, Sun., Sept. 1, 1963

Stengel Evasive About His Plans

By JOE REICHLER
Associated Press Sports Writer
NEW YORK (AP) — If Casey Stengel is leaving the Mets, he isn't saying.

Asked point blank if the reports are true that he does not plan to return next year as manager because of a disagreement with club president George Weiss concerning use of players, the septuagenarian skipper became evasive.
"I told everybody when I came here, and it's the same now, I'll stay as long as I feel I can improve the ball club," the old manager growled.
Does he feel the club is improved?
"Well, the pitching is better. I'd have to say that. And the catching is better, too."
"But that's about it. We still need plenty. We got to have more hitting, better fielding and more good young ball players. The trouble is I don't know where we'll get 'em."
Well, will he be back next year?
"I'm not ready to tell anybody that," he said. "People ask me that every day we go to. I tell them a lot of things but not what they want to know. They ask me to go on television. They say they would like to shake my hand and wish me good luck if I'm not coming back."
"But I know what they're after and I tell everybody something else."
Well, will he be back next year?
"Weiss is the boss," snapped Casey. "It's up to him."
The same question was put to Weiss. Will Casey be back next year?
"If he wants to, he will be back," said Weiss.
Stengel's contract runs out at the end of this season. His 1962 team won only 40 of 160 games. This year's club has won 42, lost 91 and has 29 games left to play. The Mets lost to the Braves Friday night, 3-1.
Ted Williams of the Boston Red Sox was the first batter to hit a ball over the right field pavilion at Tiger Stadium in Detroit. He did it in 1939 as a rookie.

49 Golfers Play In Local Tourney

The annual Snyder Country Club Golf Tournament got underway Saturday morning with 49 players participating in four flights. The tourney will run three days, with championships in all flights due to be decided Monday.
Qualifying was completed Friday, with Dr. Robert Kidd having a low score of 71. The defending champion, Sterling Parker, was

Austin Keeps On Winning In TL Play

The Associated Press
The fastest finish in the waning Texas League race is being put on by Austin, which not long ago had dropped to fourth place.
The Senators have taken seven straight and are just one game out of first place as the race rolls into its final nine days.
Friday night Austin edged Amarillo 2-0 and when leading San Antonio split a double-header with Albuquerque, the Senators gained a half-game.
Tulsa, which was making passes at second place, took a 2-3 trouncing from El Paso and fell back two games behind Austin.
Friday night also was marked by a home run record. El Paso clubbed three homers to better the league record of 192 set in 1930 by Wichita Falls. Larry Stubing, Dick Dietz and Randy Hundley parked the ball to make El Paso's total 193 with 10 games by play.
El Paso halted a losing streak that had extended over seven games.
San Antonio beat Albuquerque 4-3 in the first game of an unearned run in the seventh inning but Albuquerque took the nightcap 2-0 behind the sixth-clutch pitching of Bill Singer. Ron Davis' sacrifice fly drove in the winning San Antonio run in the opening.
Bruce Brubaker hurled an eight-inning and clouted a two-run homer in leading Austin to its victory over Amarillo.
Amarillo is the only club that has been eliminated from the playoffs since the Gold Sox are 10 1/2 games out of fourth place with nine games left to play. But Albuquerque is virtually out of it. The Dukes are five games away with 10 to go.
Tonight, Amarillo moved to San Antonio, Austin to El Paso and Tulsa to Albuquerque.

80: Paul Sizemore, 86; Holmes Odum, 103; W. H. Henderson, 109; T. W. Holder, 96; Leland Herod, 84.

KOOL KING
Auto Air Conditioners
SPECIAL
One Year Or 12,000 Mile Warranty
\$245.00
INSTALLED
NOBLE
Brake Center
1603 Ave. R
Phone HI 3-6792

ATTENTION!
FALL LEAGUES NOW FORMING AT **SNYDER LANES**
You Can Now Use Your Borden Milk Tops To Apply On League Bowling!
Come By And Sign Up For Your Favorite Bowling Time At
SNYDER LANES
2403 25th. St. Phone HI 3-4811

Snyder Drugs \$ Day Specials
Prices Good Monday & Tuesday
School Days Are Vitamin Days

9.00 Bexel - M - 92's	3.98
9.59 Bexel-Special Formula-180's	4.80
1.98 Bexel Chewables (Candy Like)	1.32
2.59 Bexel Vitamin A 25000 U - 100's	1.73
4.25 Vitamin B1, 100 mg. - 100's	2.13
4.59 Mulvidrin Vitamins Chewable	2.89
7.69 H. P. V. - With Or Without Iron	4.98
5.19 Upjohn Unicaps M - 180's	3.88
3.11 Upjohn Unicaps 100's	2.39
4.35 Unicap Senior Vitamins 100's	2.99
7.79 Myadec (Parke-Davis) 100's	5.19
2.29 Abdol With C - 100	1.79
2.29 Abdol With Minerals (For Children) 100's	1.79
12.75 Squibbs Theragran - 180's	9.88
7.89 Squibb Theragran M - 100's	5.19
2.98 Vigran - 100's	2.19
3.29 Vigram Chewables - 90's	2.69

OVER 100 DIFFERENT VITAMINS ALL AT SPECIAL SALE PRICES

See Snyder Drugs School Supply Ad Too! Lowest Prices In Town, 1st. Quality.

Snyder Drugs
LOOK \$2.00 Aquanet Hair Spray 64c
Open All Day Labor Day

get your own school colors in
REVERSIBLE JACKETS... \$14.95

These handsome jackets with the genuine steerhide trim are top scores with everyone. One look tells you they are made of real championship materials! The warm 100% wool melton reverses to a smooth, heavy satin in either matching colors or contrasting, depending on your school colors. Knit cuffs and waistband insure a trim, action-free fit.

Black & Gold — Red & Gray — Blue & White
Boys' Department

Rogers Inc.
West Side Of Square

OPEN MON
FOR YOUR SHOPPING CONVENIENCE!
STORE FULL OF
BACK-TO-SCHOOL SPECIALS!
BEN FRANKLIN STORE
West Side Of Square

WANTED

10 The Snyder (Texas) Daily News, Sun., Sept. 1, 1963

CLASSIFIED ADVERTISING RATES & SCHEDULE

Deadline: 4:30 p.m. Monday
 High Friday, prior to day of publication.
 Deadline Sunday: 4:30 p.m. Friday
 15 WORD MINIMUM

1 day per word 6c
 2 days per word 11c
 3 days per word 15c
 4 days per word 18c
 5 days per word 22c

6th day 25c
 Legal, per word 6c
 Each additional day 2c per word
 These rates for consecutive insertions only. All ads are cash, unless customer has an established credit account with The Snyder Daily News. No refund will be made on an ad after appearing in paper. The Publisher is not responsible for copy omissions, typographical errors or any unintentional error that may occur further than to correct it in the next issue after it is brought to his attention.

BUSINESS SERVICE

BUTANE
 CALL SCURRY BUTANE COMPANY, HI-3-7721 for prompt gas delivery. 4000 and 5000 cubic and commercial quantities.

ANNOUNCEMENTS

PERSONAL

GIRLS
 We're open Monday. Look at these Summer Specials. Buy 100¢, 15¢, 20¢, 25¢, 30¢, 35¢, 40¢, 45¢, 50¢, 55¢, 60¢, 65¢, 70¢, 75¢, 80¢, 85¢, 90¢, 95¢, 1.00, 1.05, 1.10, 1.15, 1.20, 1.25, 1.30, 1.35, 1.40, 1.45, 1.50, 1.55, 1.60, 1.65, 1.70, 1.75, 1.80, 1.85, 1.90, 1.95, 2.00, 2.05, 2.10, 2.15, 2.20, 2.25, 2.30, 2.35, 2.40, 2.45, 2.50, 2.55, 2.60, 2.65, 2.70, 2.75, 2.80, 2.85, 2.90, 2.95, 3.00, 3.05, 3.10, 3.15, 3.20, 3.25, 3.30, 3.35, 3.40, 3.45, 3.50, 3.55, 3.60, 3.65, 3.70, 3.75, 3.80, 3.85, 3.90, 3.95, 4.00, 4.05, 4.10, 4.15, 4.20, 4.25, 4.30, 4.35, 4.40, 4.45, 4.50, 4.55, 4.60, 4.65, 4.70, 4.75, 4.80, 4.85, 4.90, 4.95, 5.00, 5.05, 5.10, 5.15, 5.20, 5.25, 5.30, 5.35, 5.40, 5.45, 5.50, 5.55, 5.60, 5.65, 5.70, 5.75, 5.80, 5.85, 5.90, 5.95, 6.00, 6.05, 6.10, 6.15, 6.20, 6.25, 6.30, 6.35, 6.40, 6.45, 6.50, 6.55, 6.60, 6.65, 6.70, 6.75, 6.80, 6.85, 6.90, 6.95, 7.00, 7.05, 7.10, 7.15, 7.20, 7.25, 7.30, 7.35, 7.40, 7.45, 7.50, 7.55, 7.60, 7.65, 7.70, 7.75, 7.80, 7.85, 7.90, 7.95, 8.00, 8.05, 8.10, 8.15, 8.20, 8.25, 8.30, 8.35, 8.40, 8.45, 8.50, 8.55, 8.60, 8.65, 8.70, 8.75, 8.80, 8.85, 8.90, 8.95, 9.00, 9.05, 9.10, 9.15, 9.20, 9.25, 9.30, 9.35, 9.40, 9.45, 9.50, 9.55, 9.60, 9.65, 9.70, 9.75, 9.80, 9.85, 9.90, 9.95, 10.00, 10.05, 10.10, 10.15, 10.20, 10.25, 10.30, 10.35, 10.40, 10.45, 10.50, 10.55, 10.60, 10.65, 10.70, 10.75, 10.80, 10.85, 10.90, 10.95, 11.00, 11.05, 11.10, 11.15, 11.20, 11.25, 11.30, 11.35, 11.40, 11.45, 11.50, 11.55, 11.60, 11.65, 11.70, 11.75, 11.80, 11.85, 11.90, 11.95, 12.00, 12.05, 12.10, 12.15, 12.20, 12.25, 12.30, 12.35, 12.40, 12.45, 12.50, 12.55, 12.60, 12.65, 12.70, 12.75, 12.80, 12.85, 12.90, 12.95, 13.00, 13.05, 13.10, 13.15, 13.20, 13.25, 13.30, 13.35, 13.40, 13.45, 13.50, 13.55, 13.60, 13.65, 13.70, 13.75, 13.80, 13.85, 13.90, 13.95, 14.00, 14.05, 14.10, 14.15, 14.20, 14.25, 14.30, 14.35, 14.40, 14.45, 14.50, 14.55, 14.60, 14.65, 14.70, 14.75, 14.80, 14.85, 14.90, 14.95, 15.00, 15.05, 15.10, 15.15, 15.20, 15.25, 15.30, 15.35, 15.40, 15.45, 15.50, 15.55, 15.60, 15.65, 15.70, 15.75, 15.80, 15.85, 15.90, 15.95, 16.00, 16.05, 16.10, 16.15, 16.20, 16.25, 16.30, 16.35, 16.40, 16.45, 16.50, 16.55, 16.60, 16.65, 16.70, 16.75, 16.80, 16.85, 16.90, 16.95, 17.00, 17.05, 17.10, 17.15, 17.20, 17.25, 17.30, 17.35, 17.40, 17.45, 17.50, 17.55, 17.60, 17.65, 17.70, 17.75, 17.80, 17.85, 17.90, 17.95, 18.00, 18.05, 18.10, 18.15, 18.20, 18.25, 18.30, 18.35, 18.40, 18.45, 18.50, 18.55, 18.60, 18.65, 18.70, 18.75, 18.80, 18.85, 18.90, 18.95, 19.00, 19.05, 19.10, 19.15, 19.20, 19.25, 19.30, 19.35, 19.40, 19.45, 19.50, 19.55, 19.60, 19.65, 19.70, 19.75, 19.80, 19.85, 19.90, 19.95, 20.00, 20.05, 20.10, 20.15, 20.20, 20.25, 20.30, 20.35, 20.40, 20.45, 20.50, 20.55, 20.60, 20.65, 20.70, 20.75, 20.80, 20.85, 20.90, 20.95, 21.00, 21.05, 21.10, 21.15, 21.20, 21.25, 21.30, 21.35, 21.40, 21.45, 21.50, 21.55, 21.60, 21.65, 21.70, 21.75, 21.80, 21.85, 21.90, 21.95, 22.00, 22.05, 22.10, 22.15, 22.20, 22.25, 22.30, 22.35, 22.40, 22.45, 22.50, 22.55, 22.60, 22.65, 22.70, 22.75, 22.80, 22.85, 22.90, 22.95, 23.00, 23.05, 23.10, 23.15, 23.20, 23.25, 23.30, 23.35, 23.40, 23.45, 23.50, 23.55, 23.60, 23.65, 23.70, 23.75, 23.80, 23.85, 23.90, 23.95, 24.00, 24.05, 24.10, 24.15, 24.20, 24.25, 24.30, 24.35, 24.40, 24.45, 24.50, 24.55, 24.60, 24.65, 24.70, 24.75, 24.80, 24.85, 24.90, 24.95, 25.00, 25.05, 25.10, 25.15, 25.20, 25.25, 25.30, 25.35, 25.40, 25.45, 25.50, 25.55, 25.60, 25.65, 25.70, 25.75, 25.80, 25.85, 25.90, 25.95, 26.00, 26.05, 26.10, 26.15, 26.20, 26.25, 26.30, 26.35, 26.40, 26.45, 26.50, 26.55, 26.60, 26.65, 26.70, 26.75, 26.80, 26.85, 26.90, 26.95, 27.00, 27.05, 27.10, 27.15, 27.20, 27.25, 27.30, 27.35, 27.40, 27.45, 27.50, 27.55, 27.60, 27.65, 27.70, 27.75, 27.80, 27.85, 27.90, 27.95, 28.00, 28.05, 28.10, 28.15, 28.20, 28.25, 28.30, 28.35, 28.40, 28.45, 28.50, 28.55, 28.60, 28.65, 28.70, 28.75, 28.80, 28.85, 28.90, 28.95, 29.00, 29.05, 29.10, 29.15, 29.20, 29.25, 29.30, 29.35, 29.40, 29.45, 29.50, 29.55, 29.60, 29.65, 29.70, 29.75, 29.80, 29.85, 29.90, 29.95, 30.00, 30.05, 30.10, 30.15, 30.20, 30.25, 30.30, 30.35, 30.40, 30.45, 30.50, 30.55, 30.60, 30.65, 30.70, 30.75, 30.80, 30.85, 30.90, 30.95, 31.00, 31.05, 31.10, 31.15, 31.20, 31.25, 31.30, 31.35, 31.40, 31.45, 31.50, 31.55, 31.60, 31.65, 31.70, 31.75, 31.80, 31.85, 31.90, 31.95, 32.00, 32.05, 32.10, 32.15, 32.20, 32.25, 32.30, 32.35, 32.40, 32.45, 32.50, 32.55, 32.60, 32.65, 32.70, 32.75, 32.80, 32.85, 32.90, 32.95, 33.00, 33.05, 33.10, 33.15, 33.20, 33.25, 33.30, 33.35, 33.40, 33.45, 33.50, 33.55, 33.60, 33.65, 33.70, 33.75, 33.80, 33.85, 33.90, 33.95, 34.00, 34.05, 34.10, 34.15, 34.20, 34.25, 34.30, 34.35, 34.40, 34.45, 34.50, 34.55, 34.60, 34.65, 34.70, 34.75, 34.80, 34.85, 34.90, 34.95, 35.00, 35.05, 35.10, 35.15, 35.20, 35.25, 35.30, 35.35, 35.40, 35.45, 35.50, 35.55, 35.60, 35.65, 35.70, 35.75, 35.80, 35.85, 35.90, 35.95, 36.00, 36.05, 36.10, 36.15, 36.20, 36.25, 36.30, 36.35, 36.40, 36.45, 36.50, 36.55, 36.60, 36.65, 36.70, 36.75, 36.80, 36.85, 36.90, 36.95, 37.00, 37.05, 37.10, 37.15, 37.20, 37.25, 37.30, 37.35, 37.40, 37.45, 37.50, 37.55, 37.60, 37.65, 37.70, 37.75, 37.80, 37.85, 37.90, 37.95, 38.00, 38.05, 38.10, 38.15, 38.20, 38.25, 38.30, 38.35, 38.40, 38.45, 38.50, 38.55, 38.60, 38.65, 38.70, 38.75, 38.80, 38.85, 38.90, 38.95, 39.00, 39.05, 39.10, 39.15, 39.20, 39.25, 39.30, 39.35, 39.40, 39.45, 39.50, 39.55, 39.60, 39.65, 39.70, 39.75, 39.80, 39.85, 39.90, 39.95, 40.00, 40.05, 40.10, 40.15, 40.20, 40.25, 40.30, 40.35, 40.40, 40.45, 40.50, 40.55, 40.60, 40.65, 40.70, 40.75, 40.80, 40.85, 40.90, 40.95, 41.00, 41.05, 41.10, 41.15, 41.20, 41.25, 41.30, 41.35, 41.40, 41.45, 41.50, 41.55, 41.60, 41.65, 41.70, 41.75, 41.80, 41.85, 41.90, 41.95, 42.00, 42.05, 42.10, 42.15, 42.20, 42.25, 42.30, 42.35, 42.40, 42.45, 42.50, 42.55, 42.60, 42.65, 42.70, 42.75, 42.80, 42.85, 42.90, 42.95, 43.00, 43.05, 43.10, 43.15, 43.20, 43.25, 43.30, 43.35, 43.40, 43.45, 43.50, 43.55, 43.60, 43.65, 43.70, 43.75, 43.80, 43.85, 43.90, 43.95, 44.00, 44.05, 44.10, 44.15, 44.20, 44.25, 44.30, 44.35, 44.40, 44.45, 44.50, 44.55, 44.60, 44.65, 44.70, 44.75, 44.80, 44.85, 44.90, 44.95, 45.00, 45.05, 45.10, 45.15, 45.20, 45.25, 45.30, 45.35, 45.40, 45.45, 45.50, 45.55, 45.60, 45.65, 45.70, 45.75, 45.80, 45.85, 45.90, 45.95, 46.00, 46.05, 46.10, 46.15, 46.20, 46.25, 46.30, 46.35, 46.40, 46.45, 46.50, 46.55, 46.60, 46.65, 46.70, 46.75, 46.80, 46.85, 46.90, 46.95, 47.00, 47.05, 47.10, 47.15, 47.20, 47.25, 47.30, 47.35, 47.40, 47.45, 47.50, 47.55, 47.60, 47.65, 47.70, 47.75, 47.80, 47.85, 47.90, 47.95, 48.00, 48.05, 48.10, 48.15, 48.20, 48.25, 48.30, 48.35, 48.40, 48.45, 48.50, 48.55, 48.60, 48.65, 48.70, 48.75, 48.80, 48.85, 48.90, 48.95, 49.00, 49.05, 49.10, 49.15, 49.20, 49.25, 49.30, 49.35, 49.40, 49.45, 49.50, 49.55, 49.60, 49.65, 49.70, 49.75, 49.80, 49.85, 49.90, 49.95, 50.00, 50.05, 50.10, 50.15, 50.20, 50.25, 50.30, 50.35, 50.40, 50.45, 50.50, 50.55, 50.60, 50.65, 50.70, 50.75, 50.80, 50.85, 50.90, 50.95, 51.00, 51.05, 51.10, 51.15, 51.20, 51.25, 51.30, 51.35, 51.40, 51.45, 51.50, 51.55, 51.60, 51.65, 51.70, 51.75, 51.80, 51.85, 51.90, 51.95, 52.00, 52.05, 52.10, 52.15, 52.20, 52.25, 52.30, 52.35, 52.40, 52.45, 52.50, 52.55, 52.60, 52.65, 52.70, 52.75, 52.80, 52.85, 52.90, 52.95, 53.00, 53.05, 53.10, 53.15, 53.20, 53.25, 53.30, 53.35, 53.40, 53.45, 53.50, 53.55, 53.60, 53.65, 53.70, 53.75, 53.80, 53.85, 53.90, 53.95, 54.00, 54.05, 54.10, 54.15, 54.20, 54.25, 54.30, 54.35, 54.40, 54.45, 54.50, 54.55, 54.60, 54.65, 54.70, 54.75, 54.80, 54.85, 54.90, 54.95, 55.00, 55.05, 55.10, 55.15, 55.20, 55.25, 55.30, 55.35, 55.40, 55.45, 55.50, 55.55, 55.60, 55.65, 55.70, 55.75, 55.80, 55.85, 55.90, 55.95, 56.00, 56.05, 56.10, 56.15, 56.20, 56.25, 56.30, 56.35, 56.40, 56.45, 56.50, 56.55, 56.60, 56.65, 56.70, 56.75, 56.80, 56.85, 56.90, 56.95, 57.00, 57.05, 57.10, 57.15, 57.20, 57.25, 57.30, 57.35, 57.40, 57.45, 57.50, 57.55, 57.60, 57.65, 57.70, 57.75, 57.80, 57.85, 57.90, 57.95, 58.00, 58.05, 58.10, 58.15, 58.20, 58.25, 58.30, 58.35, 58.40, 58.45, 58.50, 58.55, 58.60, 58.65, 58.70, 58.75, 58.80, 58.85, 58.90, 58.95, 59.00, 59.05, 59.10, 59.15, 59.20, 59.25, 59.30, 59.35, 59.40, 59.45, 59.50, 59.55, 59.60, 59.65, 59.70, 59.75, 59.80, 59.85, 59.90, 59.95, 60.00, 60.05, 60.10, 60.15, 60.20, 60.25, 60.30, 60.35, 60.40, 60.45, 60.50, 60.55, 60.60, 60.65, 60.70, 60.75, 60.80, 60.85, 60.90, 60.95, 61.00, 61.05, 61.10, 61.15, 61.20, 61.25, 61.30, 61.35, 61.40, 61.45, 61.50, 61.55, 61.60, 61.65, 61.70, 61.75, 61.80, 61.85, 61.90, 61.95, 62.00, 62.05, 62.10, 62.15, 62.20, 62.25, 62.30, 62.35, 62.40, 62.45, 62.50, 62.55, 62.60, 62.65, 62.70, 62.75, 62.80, 62.85, 62.90, 62.95, 63.00, 63.05, 63.10, 63.15, 63.20, 63.25, 63.30, 63.35, 63.40, 63.45, 63.50, 63.55, 63.60, 63.65, 63.70, 63.75, 63.80, 63.85, 63.90, 63.95, 64.00, 64.05, 64.10, 64.15, 64.20, 64.25, 64.30, 64.35, 64.40, 64.45, 64.50, 64.55, 64.60, 64.65, 64.70, 64.75, 64.80, 64.85, 64.90, 64.95, 65.00, 65.05, 65.10, 65.15, 65.20, 65.25, 65.30, 65.35, 65.40, 65.45, 65.50, 65.55, 65.60, 65.65, 65.70, 65.75, 65.80, 65.85, 65.90, 65.95, 66.00, 66.05, 66.10, 66.15, 66.20, 66.25, 66.30, 66.35, 66.40, 66.45, 66.50, 66.55, 66.60, 66.65, 66.70, 66.75, 66.80, 66.85, 66.90, 66.95, 67.00, 67.05, 67.10, 67.15, 67.20, 67.25, 67.30, 67.35, 67.40, 67.45, 67.50, 67.55, 67.60, 67.65, 67.70, 67.75, 67.80, 67.85, 67.90, 67.95, 68.00, 68.05, 68.10, 68.15, 68.20, 68.25, 68.30, 68.35, 68.40, 68.45, 68.50, 68.55, 68.60, 68.65, 68.70, 68.75, 68.80, 68.85, 68.90, 68.95, 69.00, 69.05, 69.10, 69.15, 69.20, 69.25, 69.30, 69.35, 69.40, 69.45, 69.50, 69.55, 69.60, 69.65, 69.70, 69.75, 69.80, 69.85, 69.90, 69.95, 70.00, 70.05, 70.10, 70.15, 70.20, 70.25, 70.30, 70.35, 70.40, 70.45, 70.50, 70.55, 70.60, 70.65, 70.70, 70.75, 70.80, 70.85, 70.90, 70.95, 71.00, 71.05, 71.10, 71.15, 71.20, 71.25, 71.30, 71.35, 71.40, 71.45, 71.50, 71.55, 71.60, 71.65, 71.70, 71.75, 71.80, 71.85, 71.90, 71.95, 72.00, 72.05, 72.10, 72.15, 72.20, 72.25, 72.30, 72.35, 72.40, 72.45, 72.50, 72.55, 72.60, 72.65, 72.70, 72.75, 72.80, 72.85, 72.90, 72.95, 73.00, 73.05, 73.10, 73.15, 73.20, 73.25, 73.30, 73.35, 73.40, 73.45, 73.50, 73.55, 73.60, 73.65, 73.70, 73.75, 73.80, 73.85, 73.90, 73.95, 74.00, 74.05, 74.10, 74.15, 74.20, 74.25, 74.30, 74.35, 74.40, 74.45, 74.50, 74.55, 74.60, 74.65, 74.70, 74.75, 74.80, 74.85, 74.90, 74.95, 75.00, 75.05, 75.10, 75.15, 75.20, 75.25, 75.30, 75.35, 75.40, 75.45, 75.50, 75.55, 75.60, 75.65, 75.70, 75.75, 75.80, 75.85, 75.90, 75.95, 76.00, 76.05, 76.10, 76.15, 76.20, 76.25, 76.30, 76.35, 76.40, 76.45, 76.50, 76.55, 76.60, 76.65, 76.70, 76.75, 76.80, 76.85, 76.90, 76.95, 77.00, 77.05, 77.10, 77.15, 77.20, 77.25, 77.30, 77.35, 77.40, 77.45, 77.50, 77.55, 77.60, 77.65, 77.70, 77.75, 77.80, 77.85, 77.90, 77.95, 78.00, 78.05, 78.10, 78.15, 78.20, 78.25, 78.30, 78.35, 78.40, 78.45, 78.50, 78.55, 78.60, 78.65, 78.70, 78.75, 78.80, 78.85, 78.90, 78.95, 79.00, 79.05, 79.10, 79.15, 79.20, 79.25, 79.30, 79.35, 79.40, 79.45, 79.50, 79.55, 79.60, 79.65, 79.70, 79.75, 79.80, 79.85, 79.90, 79.95, 80.00, 80.05, 80.10, 80.15, 80.20, 80.25, 80.30, 80.35, 80.40, 80.45, 80.50, 80.55, 80.60, 80.65, 80.70, 80.75, 80.80, 80.85, 80.90, 80.95, 81.00, 81.05, 81.10, 81.15, 81.20, 81.25, 81.30, 81.35, 81.40, 81.45, 81.50, 81.55, 81.60, 81.65, 81.70, 81.75, 81.80, 81.85, 81.90, 81.95, 82.00, 82.05, 82.10, 82.15, 82.20, 82.25, 82.30, 82.35, 82.40, 82.45, 82.50, 82.55, 82.60, 82.65, 82.70, 82.75, 82.80, 82.85, 82.90, 82.95, 83.00, 83.05, 83.10, 83.15, 83.20, 83.25, 83.30, 83.35, 83.40, 83.45, 83.50, 83.55, 83.60, 83.65, 83.70, 83.75, 83.80, 83.85, 83.90, 83.95, 84.00, 84.05, 84.10, 84.15, 84.20, 84.25, 84.30, 84.35, 84.40, 84.45, 84.50, 84.55, 84.60, 84.65, 84

AMUSEMENT

The Snyder (Texas) Daily News, Sun., Sept. 1, 1963 11



THIS IS A SCENE from the new musical hit, "Bye Bye Birdie," which starts Thursday, Sept. 5, at the Palace Theater here.

TOP TV TONIGHT

By BUD EVANS

8:30 CBS "True." An American diplomatic officer, attached to the American Embassy in Warsaw, falls in love with a Polish girl and becomes tangled in a web of blackmail and espionage. Charles Aidman, Erika Peters and Karl Swenson are featured in "Security Risk." Jack Webb narrates.

OTHER HIGHLIGHTS

11:55 CBS "Game of the Week." The New York Yankees meet the Baltimore Orioles at Memorial Stadium.

12:00 NBC "Major League Baseball." Returns to Forbes Field in Pittsburgh for the game between the Pirates and the Cincinnati Reds.

decides to tie in this group with one of his other business "enterprises."

8:00 NBC "Show of the Week." A young film actress becomes possessed by the spirit of the legendary Hollywood movie goddess whose life she is portraying. Tuesday. Alfred Drake, Michael Toland and Sorrell Books are starred in the broadcast of "The Legend of Lilah Clare." COLOR.

LIGHTEST MEXICO

By JOHN ABNEY

MEXICO CITY — Just came across this treatise by a gentleman who has devoted considerable study to the subject of time in Mexico. And lying there in the hammock, I read some pretty fascinating ideas that should be presented to Congress.

For instance, the writer said that the prevailing notion about the natives here being lazy is erroneous. And he points out that they work from sunrise until after sunset and even though they take off considerable time for fiestas they are never completely free from work.

The difference between their system and ours, the writer says, is that the natives here work according to an accustomed rhythm whereas the natives up home are hustled to a time clock that has a second hand on it.

And he goes on to state that time for the Mexican natives is an endless fluid because they never divide it into hours or minutes (much less seconds) and they don't waste money on things like watches and clocks.

This brings up a rather interesting point because I have seen just a few of people all over Mexico with watches. What the writer of the treatise must be trying to say is that once you own a time piece you lose your status as a native. Maybe people tell time by clocks and natives look at the sun

Hope Is Happiest When He's Busy

By CYNTHIA LOWRY

AP Television-Radio Writer HOLLYWOOD (AP)—Bob Hope in the past year has made three motion pictures, his usual quota of television specials, traveled thousands of air miles to give shows, and written a best-selling book weekly.

That was the year when he insisted he was faithfully following his doctor's order to slow down to "recovery" from a circulatory disorder that affected his eye.

"I haven't been doing half as much as usual," protested Hope.

He sat down to talk between scenes in his latest comedy film, "A Global Affair," in production for almost two months and almost finished. He was planning to swing into production of his first television variety show of the season, which will kick off his new weekly, hour-long anthology series on NBC.

"Hope will serve as host on most of Friday night shows, mixing in six of his own variety hours and two 'book comedies' in which he will star."

Bob obviously is hooked on work. The other day he was standing in the center of the largest set at Metro-Goldwyn-Mayer, a reproduction of the United Nations General Assembly chamber, holding a life-sized baby doll as lights, cameras and microphones were adjusted for a scene. It was a slow, and fussy business. Hope, contentedly chewing gum, exchanged wisecracks with everyone within earshot.

It came time to shoot the scene. Hope strolled out of camera range and called "Bring on the star."

A cute, live blonde baby was substituted for the doll in his arms.

and he promptly concentrated on making faces and strange noises designed to keep the baby smiling and gurgling. The scene completed, he wandered over for some talk.

"I wouldn't do any of this if you weren't happy and enjoying it," remarked Hope. "Besides, I think the discipline of working is very healthy. You eat three meals a day, you make yourself get to bed every night at 10:30. And it's relaxing to work with a crew you know and you're accustomed to."

Hope will play host on each of the 34 hour shows which will make up the series this season. NBC will fill the year's 52 Friday night spots with 14 pre-empted and will pre-empt the time on other remaining occasions with unrelated specials.

Hope, who recently passed his 60th birthday, has been an NBC star for 26 years, starting with his radio shows. Obviously there can be no driving financial need behind his dedication to work.

A couple of months back, when his fifth book, "I Owe Russia \$1,000," was published, the comedian was available for any and all appearances in which he could plug it.

Around holiday time he'll take it as usual to present Christmas messages for servicemen abroad, pieced together later as one of his television hours.

"The Defense Department will not know where we're going within the next few weeks," he said. "I'd like to go to the Middle East this year, but the department makes the decisions."

He also plans to knock out another book which he has already planned down to the title, "You Belong to the Public."



JERRY LEWIS will be seen in "The Nutty Professor," at the Canyon Drive-In Theater here on Sept. 8.

Projects In Texas Okayed Three

WASHINGTON (AP)—The Community Facilities Administration has approved these grants for Texas public works program (total project costs in parentheses):

Texas — Poteet \$25,500 (\$251,000) street improvements; \$30,000 (\$60,000) water and sewer facilities; and \$30,000 (\$60,000) civic center; Rockport \$20,000 (\$400,000) water system improvements; Mount Pleasant, \$348,000 (\$698,000) water and sewer facilities.

The CFA also announced Friday approval of these interest-free planning loans for projects whose total costs are shown in parentheses:

Rio Grande City \$39,375 (\$825,000) courthouse annex for Star County; Winterville \$6,912 (\$485,000) sewer facilities.

Crash Kills Three Texans

ROSTON, Okla. (AP) — Three Texans were among four persons killed yesterday in a collision near this Northwest Oklahoma town.

They were Mrs. Ora Lee LaFlamme of Gainesville, Tex., her son, Emil David LaFlamme, 9, and Emil Michaud, also of Gainesville. The other victim was Mrs. Alice Marie Burnside, 39, of Miami, Okla.

Mrs. Burnside's husband, Harry, and their two children, Neal and Peggy, were critically injured, as was Mrs. LaFlamme's husband, Emil. Another son, Richard LaFlamme, was seriously hurt.

The two cars collided head-on as the LaFlamme vehicle was turning off U.S. 263 to go west on U.S. 84 just west of here, the Oklahoma Highway Patrol said.

Typhoons rip across Oklahoma from May through October.

Quadruplets Are Living In Poverty

CHICAGO (AP) — The first known set of identical quadruplets in the United States is living in poverty in a broken home, a court action disclosed Friday.

The girls, Sherrill, Shannon, Sherry and Shannon Harris, were born June 30 to a \$90-a-week assembler and his 19-year-old wife.

In a Superior Court hearing Friday, Judge James Crosson ordered the father, Bernard C. Harris, to contribute support of \$30 a week for the quads and for their brother, Shawn, 1.

Harris already had begun weekly payments pending the outcome of a pauper's suit by Deborah Harris for separate maintenance, it was disclosed. Harris left the family, the suit said.

Beatrice Lewis, employed by a charitable organization assigned to assist in caring for the infants.

in the Harris' flat, expanded the story of the Negro family's plight.

Mrs. Lewis said the four girls lack food and clothing.

"They can't live on baby formula forever," she said.

Mrs. Harris' father, Lawrence (Doc) Smith, a car hiker at a garage, apparently provides principal support for the Harris' children.

He also supports a wife and three other school-age children.

CANYON

DRIVE-IN

Ph. HI 3-7212 Big Spring Hwy.

Open 7:00 — Starts 7:45

Sun., Mon., Tues. & Wed.

NO. 1

PAUL NEWMAN

IS "HUB!"

A BURNING RELEASE

NO. 2

LET MEAL — ITS WAY OUT!

GO, Johnny GO!

starring ALAN FREED • JIMMY CLANTON SANDY STEWART • CHUCK BERRY

SEPTEMBER ONLY! FAMOUS McKESSON BEXEL VITAMIN SALE!

HALL DRUG CO. Phone HI 3-4571

606 East Highway

BEXEL 1/2 PRICE

2 FOR PRICE OF 1

McKESSON VITAMIN C (ASCORBIC ACID) TABLETS

REG. \$1.29 NOW 2 BOTTLES FOR \$1.29

McKESSON VITAMIN B-1 (THIAMINE HYDRO) TABLETS

REG. \$4.25 NOW 2 BOTTLES FOR \$4.25

McKESSON VITAMIN B-12 (CYANOCOBALAMIN) TABLETS

REG. \$1.50 NOW 2 BOTTLES FOR \$1.50

McKESSON VITAMIN C

REG. \$2.50 NOW 2 BOTTLES FOR \$2.50

OTHER McKESSON VITAMINS 1/2 OFF

Vitamins A — B₁ — B₆

Cod Liver Oil, N. F. and Mint Flavored

Niacin — Wheat Germ Oil — Test Tablets (Brewer's)

McKesson Plus-Cal Capsules — with or without Iron (Dicalcium Phosphate with Vitamin D)

FREE! MULTI-COLOR RETRACTABLE PEN

WRITES RED AND BLUE

With this coupon stamped by your druggist 50 sheets heavy quality envelope and 25 matching envelopes in solid tone line design with Your Name Imprinted! Also a 2-year warranty, dual-type blotter and ball point pen, matching color... in leather-grained case! Wonderful gift!

PERSONALIZED WRITING KIT

ONLY \$1.00

Comparable \$3.00 Value

Please send me Personalized Writing Kit. Enclosed find \$1.00 for each kit. BEXEL • P.O. Box 127 • Jericho, N. Y.

Send to:

PERSONALIZED WRITING KIT

Imprint as above. If different imprint is desired — and for each additional set ordered — please print clearly on separate sheet of paper and attach to this coupon.

DRUGGIST'S AUTHORIZATION

This offer valid in any state where prohibited or otherwise restricted. Add sales tax where applicable. Allow up to 3 weeks for delivery. Cash value of this coupon will expire December 31, 1963.

BEXEL SPECIAL FORMULA IMPROVED

100 Capsules (6 mos. supply)

REG. \$8.99 NOW \$4.80 SAVE \$4.79

BEXEL CANDY-LIKE CHEWABLE TABLETS FOR CHILDREN

250 Tablets (8 1/2 mos. supply)

REG. \$7.49 NOW \$3.75 SAVE \$3.74

BEXEL VHP

(Very High Potency)

180 Capsules (6 mos. supply)

REG. \$12.98 NOW \$6.49 SAVE \$6.49

BEXEL LARGE SIZE SPECIALS

BEXEL SPECIAL FORMULA IMPROVED

100 Capsules (100 days supply)

REG. \$5.99 NOW \$3.98 SAVE \$1.97

BEXEL MULTIPLE VITAMIN LIQUID FOR CHILDREN

4 oz. size

REG. \$3.98 NOW \$1.20 SAVE \$2.78

BEXEL VHP (Very High Potency) 100's

REG. \$7.99 NOW \$5.25 SAVE \$2.74

BEXEL VHP (Very High Potency) 250's

REG. \$15.99 NOW \$10.50 SAVE \$5.49

BEXEL VHP (Very High Potency) 500's

REG. \$31.99 NOW \$21.00 SAVE \$10.99

BEXEL VHP (Very High Potency) 1000's

REG. \$63.99 NOW \$42.00 SAVE \$21.99

BEXEL VHP (Very High Potency) 2000's

REG. \$127.99 NOW \$84.00 SAVE \$43.99

BEXEL VHP (Very High Potency) 4000's

REG. \$255.99 NOW \$168.00 SAVE \$87.99

BEXEL VHP (Very High Potency) 8000's

REG. \$511.99 NOW \$336.00 SAVE \$175.99

Clip & Save—Your Movie Program For Sept. 1-7

Palace Theatre 3-3442

SUNDAY AND MONDAY

STARLITE DRIVE-IN THEATRE

SUNDAY & MONDAY

1st. Run In Snyder

"KISS OF THE VAMPIRE"

With Clifford Evans

SECOND FEATURE

"MAN OF 1,000 FACES"

With James Cagney

STARLITE—TUES. & WED.

"IMITATION OF LIFE"

In Color

Starring Lana Turner

SECOND FEATURE

"ALL IN A NIGHT'S WORK"

With Dean Martin

STARLITE—THURS., FRI., SAT.

"HATARI!" In Color

Starring John Wayne

SECOND FEATURE

"VERA CRUZ"

In Color

Starring Gary Cooper

And Burl Lancaster

Palace Theatre

WOODWARD

BEYMER

TREVOR

LYNLEY

The Stripper

FOLLOW THE BOYS

Palace—TUES. & WED.

go! go! see! see!

BYE BYE BIRDIE

JANET DICK ANN-MARGRET BOBBY JESSE ED LAGAN VERA CRUZ MARGARET STARBUCK RUDOLPH PEARSON SULLIVAN

Palace—STARTS THURS.

ALS Wire 9.00 VIRE 6.45 VIRE 9.95 OST 70c RON 8.95 S 9.50 10c 14c CO. nder, Tex. T \$1595 \$595 \$695 \$595 \$275 \$395 \$1195 ncy CE HI 3-3594

PENNEY'S
ALWAYS FIRST QUALITY

Fall Fabric Spectacular!

Here, just one highlight from our spectacular fall collection. Come see them all!

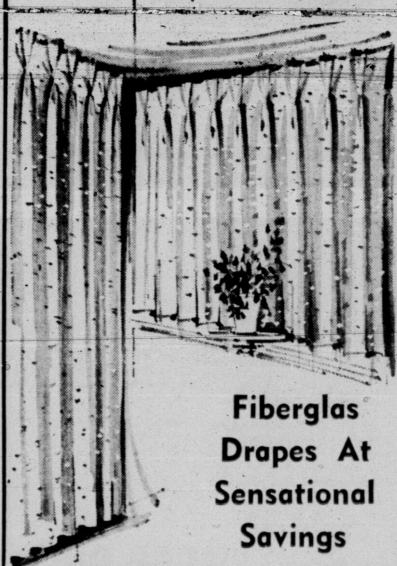
COLORFUL COTTON CORDUROY

68¢ 36" wide yd.

- machine washable
- pinwale weave

Save now on this fall favorite—all top-quality, full bolts, in rich autumn colors! Velvety pinwale weave, perfect for dresses, jumpers, sportswear, home decorating—and it's machine washable! Shop early!

back-to-school



Fiberglas Drapes At Sensational Savings

\$3⁶⁶

48 x 36

\$4⁶⁶

48 x 84

Imagine famous Fiberglas 100% glass drapes at these prices! No-iron, hand wash 'n hang in minutes. Firesafe! white • champagne • nutmeg



BOYS' JEAN SPECTACULAR
Penney's Proportion Fit Jeans In Slim And Regular!

Hefty 13³/₄ oz blue cotton denims for tight, right fit with true western styling. Fabric's been built to take it... through all his rough stuff. Sanforized, too!

3 FOR \$5⁰⁰¢



FABULOUS LAM-FUR SWEATERS DYED-TO-MATCH FLANNEL SKIRTS

2 FOR \$10

Celebrate with Penney's—play the elegant match game with just one \$10 bill! Look as if you spent a mint! Pick our wool, angora rabbit's hair n' nylon blend of sweaters in classic shirt, cardigan and collar styles. Sheath seamed skirt matches or contrast in red, blue, 34 to 40, 8 to 16.

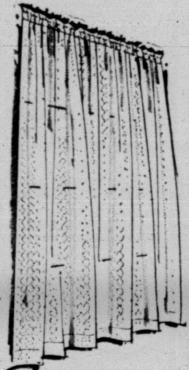
dollar-days



MENS GENTRY PRINTS IN FALL SPORT SHIRTS!

188

Buttdown, long sleeve models in washable cottons that require little or no ironing! Savings plus! Sizes S-M-L.



SPECIAL BUY! EASY-CARE TRULON PANEL

88c

40" x 81" Misty white sheers of Trulon rayon hand wash (no stretching needed, little or no ironing either! Terrific!



PETTI-PANTS WITH HALF SLIP EASE!

166

Nylon, in all white, black, beige, red! So comfortable—such a buy! Sizes S, M, L.

MONDAY And TUESDAY 9 A.M. TIL 5:30 P.M.

AND REMEMBER... YOU CAN CHARGE IT AT PENNEYS.

All-Purpose Cotton Crew Sock

For active sports or just spectating, white's right. Sizes 7-12 **3 for 1²⁵**

Combed Cotton Crew Top Sock!

Stays so neat 'n firm, because there's a stretch top that never sags or wrinkles. In white, 6-10 **3 for 1¹⁷**



BOYS' COTTON BRIEFS ARE VALUE PLUS!

3 for \$1

Smart sets of cotton with heat resistant elastic waist. Penney cut for correct size 'n comfort.



BOYS' SPORT SHIRTS IN PLAIDS! PRINTS!

122

Back-to-school naturals in a colorful selection! Neatly tailored, smartly styled! Get an armful at this price!



100% ACRILAN® KNITTED SHIRTS EASY CARE!

3 for \$5

Luxury Acrilan® acrylic means finer hand, longer wear! All new short sleeve models in the season's newest colors!



OXFORD WITH BUILT-IN COMFORT!

3⁹⁹

Black, White Cotton enameling duck upper has molded suction cup design rubber outsole! Correct balance arch too!

Boys Sizes 2 1/2 To 6, Mens Sizes 6 1/2 To 11



PENNEY'S OWN JCP'S IN CORDUROY!

2⁹⁹

Cotton corduroy with correct balance arch, cushion insole, buff-color crepe design outsole. AA 6 to 9, B 5 to 8.



IT'S SCHOOL-TIME FOR OUR PATCH SADDLES.

5⁹⁹

Sturdy nylon velvet with smooth leather patches! Comfy cushion crepe outsole 'n heel! Black with black and grey.



LEATHER OXFORD RESISTS SCUFFS!

5⁹⁹

Retains its shape! PEN-TRED® polyvinyl outsole 'n heel too! Smooth black.

* Pentred soles are guaranteed to outwear the uppers. They'll outgrow them before they outwear them, free.



BOBBY TAYLOR, first vice president of Classroom Teachers Association and Latin teacher at High School, Mrs. Jimmie Taylor, first grade at Northeast Elementary, Mrs. Patsy Elliott, music at Central Ele-

mentary, Mrs. Louise London, third grade at Central Elementary, and Mrs. Mary Ann Kincaid, English at High School.



GERALD LEE GAFFORD, speech at High School, Miss Lady Falls, Spanish at High School, Mrs. Carolyn Bowden, first grade at Northeast Elementary, Miss Gwen Beckham, fifth grade at North Elementary, Tom

Adams, choral at High School, and Mrs. Dorothy Kayser, president of the Classroom Teachers Association and music teacher at West Elementary.



MR. EDDIE LOGAN, coach and math at Lamar, Mrs. Roxie Logan, sixth grade at Northeast Elementary, Mrs. Barbara Novikoff, third-grade at Northeast

Gerald Cardwell, chemistry at High School, and Paul Hayes Jr., coach and math at Lamar.

THE SNYDER DAILY NEWS

VOL. 14, NO. 106

SNYDER, TEXAS, SUNDAY, SEPTEMBER 1, 1963

SECTION B

New Teachers Honored With Luncheon At Martha Ann Woman's Club

The Executive Council of the Classroom Teachers Association honored 28 new teachers with a luncheon Wednesday at the Martha Ann Woman's Club. Pictured on this page are the new teachers along with some of the association members. Names are from left to right.

Not pictured but newcomers to the Snyder School system are Roy Bank, math teacher and coach at Travis Junior High School, Mrs. Bertie Machel, physical education at Travis Junior High, Mrs. Martha Floyd, second grade at Central Elementary, and Mrs. Bobbie Taylor, fifth grade at Stanfield.



MISS VIVIAN REESE, classroom teacher representative from East Elementary, Miss Jean Smith, home economics at Lamar, Miss Sherre McClung, third grade at Stanfield, Miss Polly Satterwhite, second grade at North Elementary, Mrs. Maurice Robinson, special

education at North Elementary, Mrs. Jeannie Liner, classroom teacher representative from Stanfield, and Mrs. Dorothy Gladson, fifth grade at Northeast Elementary.



MRS. MARILYN PRINCE, fourth grade at Stanfield, Mrs. Viola Gracey, home economics at Travis Junior High, Mrs. Sittie Cromwell, physical education at West

Elementary, Miss Clarice Leverette, fourth grade at Northeast Elementary, and Miss Joyce Heathcott, physical education at the High School.

Hermleigh News

BY MRS. RAYMOND COLLIER
 Mrs. Rachel Lassiter and Mrs. Adala Drennan recently attended a coffee honoring Miss Jane Gold- of Andrews, bride-elect of their grandson and nephew, Coker Lassiter of Kermitt. The coffee was held in the green room of the First National Bank. Andrews. The couple will be students at AAM College this fall.

Mr. and Mrs. R. G. Groves and daughters spent the weekend visiting her aunt, Mrs. O. R. Paulsen in Fort Worth.

Sunday visitors in the home of Mrs. Eva Mae Brackeen were her sons and families, Mr. and Mrs. Kenneth Brackeen of Lamesa and Mr. and Mrs. Harold Brackeen of Snyder.

Mrs. Raymond Collier, Fred and Kathy spent last week visiting Alma Collier, Mr. and Mrs. Robert Collier, Mr. and Mrs. Lee Walton, Mr. and Mrs. Stanley Heath, Mr. and Mrs. W. H. Gage and Mr. and Mrs. Deen Gorman in Odessa. Mr. and Mrs. Ben Henderson spent the weekend in Lubbock where they visited their son, Mr. and Mrs. Charles Henderson. They attended the Hazelwood reunion in Slaps Park House, Sunday. They visited Sunday afternoon in the home of her father, Mr. G. E. Paterson in Slaton.

Sunday visitors in the home of Mr. and Mrs. J. E. Paul were Mr. and Mrs. Lee Prescott and children of Tahoka, and Mrs. Oleta Graham and daughters of Lorraine. Mrs. Alther Chandler of Midland is spending this week visiting her

daughter, Mr. and Mrs. R. G. Groves.

Mrs. Duke Groseman spent the weekend visiting her daughter, and family, Mr. and Mrs. Wayne Morrison in Seminole.

Mrs. Nathan Campbell and Byron spent last weekend at Six Flags.

Larry Hill of Snyder spent Sunday visiting Fred Collier.

Mr. and Mrs. Jimmy Fritz visited Monday night in the home of Mr. and Mrs. Lloyd Reeves. Mr. and Mrs. Fritz will move to Seminole Wednesday.

Mrs. R. G. Groves and Mrs. Alther Chandler spent Tuesday in Abilene.

Hermleigh High School cheerleaders, Cecile Hall, Nancy Campbell, Kelly Mayes and Jewel Richter returned Friday night after spending a week at SMU cheerleaders school. They won first place in final competition.

Raymond Collier visited recently in the home of Mr. and Mrs. Bill Sullenger in Snyder.

Dieters May Have Ace In The Hole

In a tug of war, the fellow with an ace in the hole is apt to win. Dieters may have another kind of reserve ace in their tug of war against hunger. The ace? Eating foods with a generous starch-carbohydrate content — such as bread, cereal, and potatoes — rather than sugar. Research in progress at the State University of Iowa has cast starch-carbohydrate foods in the envied role of appetite appeasers.

This role was indicated, Dr. Margaret Ohlson told a recent nutrition conference, in a series of experiments designed to learn the relation of nutrition to heart disease. Bread, cereal, and potatoes, she and her fellow researchers found, satisfied hunger almost too well. Subjects on a test diet — in which the form of carbohydrate was switched from sugar to starch on a calorie-for-calorie basis — complained bitterly of feeling "stuffed" even after four weeks. All subjects would have lost weight, Dr. Ohlson said, if they were allowed to stop eating when their hunger was appeased. Sugar had no such satisfying effect.

This ace in the hole for dieters is assuming added meaning in light of other heart disease research. Of all the food groups, Dr. Ohlson pointed out, only those with a generous store of starch-carbohydrates apparently can be eaten freely without increasing the troublesome fatty substances in the blood which are implicated in coronary heart disease.

Make use of this reserve ace, advise many nutrition scientists to dieter and non-dieter alike. In daily eating, emphasize foods with a generous starch-carbohydrate content to help make you a winner.

Really refreshing crushed mint leaves added to limeade with plenty of crushed ice, top with a maraschino cherry garnish.

Novel Clocks, Ashtrays Offered

A new process that makes it possible to use virtually all of a walnut tree except leaves and twigs has resulted in handsome new one-of-a-kind clocks.

The clock housing is made from trunks of large tree branches, cut through at a 45 degree angle, two inches thick. The freshly cut walnut is dipped in polyethylene glycol, a solution that resembles paraffin, to stabilize the wood so effectively that the bark remains intact permanently.

Later the disks are coated with clear acrylic lacquer and hands and numerals of native holly are applied, with the electrical mechanism concealed in the back.

These clocks are eye-catchers, with their outer ring of natural bark, an inner ring of sapwood, and a center of heartwood with every growing ring visible. The clocks range in size from 14 to 17 inches high, from 8 to 16 inches wide, with no two alike.

Ashtrays, pen sets and other home accessory items are being made by the same process by two manufacturers.

There is already widespread interest in these unique accessories.

The clocks in particular are versatile enough to be used in living rooms, kitchens, family rooms, or in offices, winter lodges or summer homes. The wood, which is skillfully cut in cross-section to display all its natural beauty, is compatible with any city or country setting.

BE WISE — MODERNIZE YOUR HOME

SEE US FOR A HOME IMPROVEMENT LOAN

First, make a list of all the home improvements you want. Next, get estimates. Then come to us for a low cost home improvement loan. We will gladly arrange terms to suit your needs. Get the workmen started before winter arrives. Pay a visit to our loan department today!

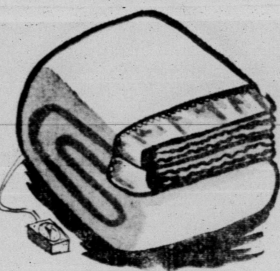
Snyder National Bank
 "Member Federal Deposit Insurance Corporation"

Anthony's RECORD DAYS OPEN LABOR DAY

Dollar Days Mon. & Tues.

Shop In Cool Comfort All Day Labor Day, At Anthony's!
 Record Low Prices On School Clothing Will Help You Stretch The Family Dollar!

AUTOMATIC ELECTRIC BLANKET



SIZE 72" x 84" **9.88**
 2 YEAR GUARANTEE

80% Rayon, 20% Cotton with 5 inch nylon binding at top. Single control. Snap fasteners, mothproof, non-allergic. Choose eggs pink, beige, light blue, or light green. Thirty, thirty Anthony priced.

PIMA BROADCLOTH

Mens White Short Sleeve White
DRESS SHIRTS
 2 for \$5.

New Fall Patterns Famous Dan River GINGHAMS

Now is the time to buy your Dan River gingham cottons for dresses, blouses, sportswear, curtains, select from new fall patterns. 10 to 20 yard pieces, doubled and rolled. At this thrifty Anthony price you can really see and save!

58c yd.

Record 2 Day Price

Boys 11 1/4 Oz. White Back Denim **BLUE JEANS**
 Slims And Regulars
 Double Knee Thru Size 12
 "BUCKHIDE" BRAND
3 FOR \$5.00

Ladies' White-Needle Toe **CANVAS OXFORDS**
2.66



Birdseye Tea Towel
 Hemmed — Stripe Borders
 Big Size 30 x 26 Inch
4 for 88c

Round-Oblong-Oval-Square SCATTER RUGS



TWIN SIZE SHEET SALE
 •• 72 x 108 MUSLIN
 •• FITTED TWIN BOTTOM
 Choice Of Either One
\$1.64

Mens Regular 2.98 **PAJAMAS**
 Exquisitely tailored and detailed men's pajamas. Nice assortment of solid colors and patterns. Outstanding quality and value. Big savings!
 SAVE 65c PAIR **2.33**

Entire Stock — Value To 3.98.

Mens Short Sleeve **SPORT SHIRTS**
 Sizes Medium - And Large **2 FOR \$3**

Layaway Now For Winter

SINGLE BLANKETS
 Size 72 x 90
 Nylon And Rayon Content
\$2.99

Floral Printed Towels & Wash Cloths

Floral pattern printed, thick, absorbent, long lasting towels and wash cloths. Lots of value and long enjoyment at the Anthony price! Green, yellow, blue combinations.
 22"x44" Towel 66c
 15"x25" Towel 2 for 77c
 Wash Cloths 4 for 88c

Mens And Young Mens SCHOOL OXFORDS

Blk. Leather — Tie Side
\$5.44
 Size 3 To 6
 Size 6 1/2 To 10 1/2

Mens And Boys Size 100% Cotton **WHITE CREW SOCKS**
 Our Regular 49c Stock **3 PAIR FOR \$1.00**

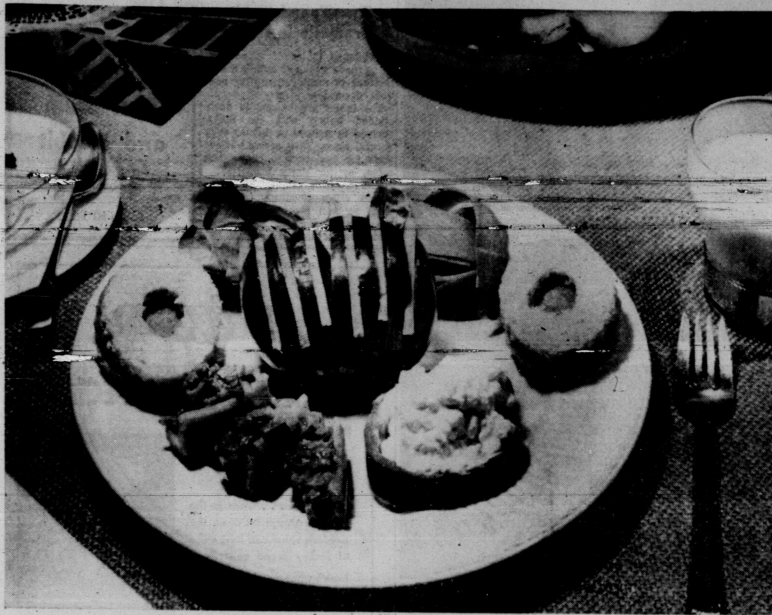
Mens And Young Men **Fall - Winter Weight Wash And Wear Dress Pants**
 Plain Or Pleats Size 28 To 40 **\$5**

FREE ALTERATIONS AT ANTHONY'S!
FREE GIFT WRAPPING AT ANTHONY'S!
 We Serve You Better — We Save You More —

• Cafeteria Workers
 • Nurses
 • Waitresses
 • Receptionists
First In Snyder SHIFT UNIFORMS
 By Brooks Dacron And Cotton **\$8.95**

Record Two Day Price **9' x 12' VISCOSE RUGS**
 With Thick Foam Rubber Back
 •• Solid Colors
 •• Tweeds **\$15.44**





Barbara June Taylor, Thomas Don Minton Exchange Vows In Belton Church Rites

The Belton Church of Christ was the scene of the marriage of Miss Barbara June Taylor of Belton and Mr. Thomas Don Minton of Snyder on Tuesday evening, August 27th, at 7:30 o'clock.

The double ring service was read by Mr. Whit Herrington, assistant minister, before a single arch, candlelight, and flowers.

The bride and groom were accompanied by white bridesmaids, Miss Charlotte Burkett of Dora, N. M., was maid of honor, and Jeannie Minton of Snyder, sister of the groom was bridesmaid. Brenda Taylor of Belton, served her sister as junior bridesmaid.

The bride wore a mauve, long-sleeved, fitted bodice with a scooped neckline and a matching pink box-hat and shoes. They each carried long stemmed pink roses.

Kelvie Crenshaw, of Snyder, cousin of the groom was flower girl. She wore a mauve cotton satin dress with tucked bodice and full skirt. A silk organza sash accented the waistline. She carried a miniature white basket of pink rose petals.

Edward Denton of Big Spring was best man and Terry Taylor of Belton, brother of the bride was ring bearer. Bobby Taylor of Belton and Drew Jackson of Salado were groomsmen. Lighting candles and ushering were Jerry D. O. Evans of Cleveland and Ronnie Heuss.

A reception was held in the church hall. The refreshment table

and attended Lubbock Christian College.

The couple will make their home in Abilene where both attend Abilene Christian College.

Handle With Care

Use common sense when you use insecticides. U. S. Department of Agriculture experts advise you to promptly wash off—with soap and water—any insecticide that may get on your skin or your person.

If your clothes become even slightly contaminated, change to clean ones and wash the others as soon as possible. And never spray or put insecticides on food, dishes, silverware, or cooking utensils.

TO-ME AT-OES

- | | |
|------------------------------|---------------------------------|
| 2 slices pressed ham | 2 slices bologna |
| 2 slices olive-pimiento loaf | Butter |
| 1 tomato | Mayonnaise |
| Mayonnaise | Celery |
| 4 slices firm-type bread | Pepper ring with cottage cheese |

Lettuce and carrot curls
 1. Cut pressed ham and olive loaf meat kitty-corner. Wash tomato and remove stem end and stand on plate. Cut down just to the bottom of the tomato in 6 slices, but not through.
 2. Spread meat with mayonnaise and stand alternate triangles into sliced tomato. Mash remaining 2 triangles and put into mixing bowl.
 3. Cut circles from bread and two rounds from bologna. Butter bread and with a doughnut cutter remove a small circle from one round of bread so the bologna can show through. Place in a round on circle of bread and top with the doughnut slice of buttered bread. Place on plate.
 4. Mash bologna trimmings with meat triangles. Mix with bit of mayonnaise and stuff into celery pieces. Garnish plate. Add pepper ring and cottage cheese to plate along with carrot curls and lettuce.

Rx: 'Soap-And-Water Public Health'

After returning to North Carolina from the jungles of Brazil, Dr. Alanson Hinnman reported a crying need for "Good, old-fashioned, basic, soap - and - water public health."

The doctor explained that many of the diseases and physical ills of those primitive people could be alleviated—perhaps even eradicated—by just a rudimentary knowledge of basic health rules, and simple reliance on the effectiveness of soapsuds.

Many Items Go In Archives Of Art

BY PHIL THOMAS
 DETROIT, 30 — The day after Fort Sumter was bombarded, signaling the start of the Civil War, artist Ithubens Peale laconically noted in his diary:

"Saturday, 13 April 1861: N. H. Charleston, S. C. the bombardment commenced on Fort Sumpter (sic), 29 minutes past 4 o'clock a. m. of yesterday."

Peale's diary is one of more than a million items preserved in the Archives of American Art, a unique institution devoted to collecting basic source materials of American painters, sculptors and craftsmen.

The definition of purpose is interpreted loosely. For the Archives, with headquarters in the Detroit Institute of the Arts, contain diaries, letters, catalogs, photographs, thousands of frames of microfilm notebooks and many reels of tape on which are recorded the voices of living American artists.

Everything pertaining to American artists, in fact, is pertinent to this storehouse of information, except the actual works of art and there are photographs of them.

Samuel F. B. Morse, well known American inventor who died in 1872, was a painter as well as an originator of the telegraph. He is best remembered as an old, heavily bearded man. But scholars who are interested in what Morse looked like as a young, clean-shaven man can go to the Archives to find an early picture of him. In the same file there is a photograph of the living room in his home.

The Archives were born in 1954 because of the difficulty which Edgar P. Richardson, then director of the Detroit Institute of Arts, encountered in his search for the materials needed to complete his book, "Painting in America: The Story of 400 Years." Richardson now is director of the Henry F. du Pont Museum at Winterthur, Del.

Richardson and Lawrence Fleischman, businessman and art collector, got together and conceived of the Archives. The first

papers for the collection a letter written by colonial artist Benjamin West, were donated in July 1954. The first money contributions came in September of that year.

No tax monies support the Archives, which survive solely on private contributions and fund-raising projects. Among the latter was a heavy machinery auction last October—proceeds from machinery donated by local manufacturers.

Richardson, whose staff consists of seven persons in Detroit, three in New York City and one each in Washington and Baltimore, says the staff's problems are complicated by the fact that "most artists are unworldly. Very few artists keep records of their lives. Thus, every little scrap is important to us, as we think of the Archives as a sort of time capsule."

William E. Woolfenden, current head of the Archives, says "the time scope of coverage in the Archives is from the landing of the first Europeans to the present. The term 'American' is intended to cover North America through the colonial period; after the American Revolution the scope is confined to the United States."

Garnett McCoy, the organization's archivist, says the biggest project now under way is the acquisition of all American art auction catalogs. He estimated that from the 18th Century to the present, between 15,000 and 30,000 such catalogs were issued.

"There is no single collection of these catalogs," McCoy said. "Very few persons save this sort of thing; you know, however, we hope to get them all recorded on microfilm."

Add strips of bologna and cheddar cheese to that tussler special salad and your family will eat it all up.

Gray's left over? You can add it to a meat loaf mixture instead of the usual liquid. It has no lead soe with 4 col pix to meat-joyce



SOURCE MATERIAL ABOUT ARTISTS—Garnett McCoy, archivist at the Archives of American Art, Detroit, looks at the tattered file received from a New York gallery. This collection will be checked, put on microfilm and indexed.



MRS. THOMAS DON MINTON

Dollar Day Specials!

Summer Sportswear

1/2 Price

- Skirts
- Blouses
- Shorts
- T-Shirts
- Pants

DRESSES

Cottons, Silks, Jerseys

1/3 & 1/2 Off

Special Rack

DRESSES 8.88

One Lot

Blouses & Bras 1.88

Gray's
Style Shop

West Side
Of Square

Early American FURNITURE VALUES

Buy & Save Now At The Colonial Shop!

A Nice Assortment

ROCKERS

Prices Start At \$32.50

Everybody's Favorite Chair For Comfort

Beautiful Table

LAMPS

Now Priced As Low As \$4.50 ea.



5 PIECE CUSHIONED MAPLE GROUP

- 1 Cushioned Wing Sofa
- 2 Solid Maple Lamp Tables
- 1 Solid Maple Coffee Table
- 1 Wing Back Club Chair

\$250.00 With Trade

Fine Quality — A Luxury Look — At A Very, Very Low Price! Foam Fitted Cushions On The Sofa. The Colonial Wing Chair Matches

CLOSE-OUT SALE

Pre-Teen
BLOUSES \$3.98 Value **\$1.49**

- Pre Teen
- DRESSES
 - SPORTSWEAR
 - SKIRTS

Values To 16.98 **\$5.98**

These Prices Will Be Good Through Sat., Sept. 7th.

LAD & LASSIE

1810 27th. HI 3-6952

Wing Back Club
CHAIRS & ROCKERS



While They Last!
 EXTRA SPECIAL

Values To \$69.95 **\$35.00** Cash

Round Maple
TABLE & 6 CHAIRS
\$179.95 With Trade



Table Is 48" In Diameter, Extends To 68" Oval
 Chairs Have Contour Moulded Seats ...

Everything And Anything Early American

Colonial Shop

East Side Of The Square

Snyder, Texas

Phone HI 3-6116

VOGUE

Panama

8 1/2" Stacked Heel, Glove Leather Upper With Light Cushion Ripple Sole.

Available In Truffle Or Black.

Dryden's Shoes

East Side Of Square
 Phone HI 3-5933





MISS GWEN LANDRUM

Miss Landrum Named Scurry County Gold Star Girl

With 2 col pix gwen landrum miss landrum 2 col 24 joyce Gwen Landrum of Fluvanna 4-H Club is the 1963 Gold Star Girl for Scurry County. She is the daughter of Mr. and Mrs. Joe Landrum of the Fluvanna community.

A group of judges consisting of Mrs. E. M. Ashley, a member of the County Home Demonstration Council, Margie Davis, Pylo 4-H Club member and Connie Sterling, Ira 4-H Club member, accompanied by Miss Ruby Butts, County Home Demonstration Agent, visited the Gold Star nominees to judge the work done by the girls.

Gwen Landrum has been a member of 4-H Club for nine years. During this time she has carried projects in clothing, food preparation, freezing, canning, bedroom improvement, gardening, yard improvement, craft and electric.

Her clothing project has been a favorite with Gwen and she has made 70 garments for herself and others. Gwen likes to do the unusual and has made some very interesting garments. Some of the latest have been made of heavy drapery fabric. Gwen feels that her sewing has been of real benefit to her because she is tall and slender and it is hard to find ready-to-wear garments that fit her. She has entered County Dress Revue six years and has won in her age division four years, and has been to the District Contest two years and was selected to go one other year.

Gwen has prepared more than 800 meals for her family, many of which she has planned. Her mother goes on trips occasionally leaving the care of the household including meal planning and preparation for her to do. Gwen has also frozen and canned almost 1000 containers of food for her family.

Her gardening project has presented problems. Since there is not enough water available to water a garden, Gwen tried helping with the family garden which is in the field. She has also had a very small plot of her own which she could water.

When the family built a new home she helped plant buffalo grass and some hardy shrubs and trees around it to help improve the appearance.

Leadership has been one of Gwen's strongest projects. Beginning when she was about 12, Gwen has served as a junior leader ever since. She has served as food leader in her club, attending training schools for 4-H junior leaders in the County Extension Office and then giving the demonstration in her club. Later Gwen took a group of 5 small girls who were starting out in 4-H club, helped them start their record-books, held a clothing workshop for them where they learned to make gathered skirts, helped them prepare entries for team demonstration contest and gave them other leadership. She has helped organize a Rifle Team in her 4-H Club two years and has held most offices in her own club and in the County 4-H organizations. Gwen has lead a group at County Camp for the past six years. She has been acting alternate to district 4-H council in 1962, and the delegate to the district council in 1963, and served in '62 on the committee to plan the District Leadership Workshop. She is on the committee that will plan the District Gold Star Banquet this year.

Recreation leadership is one of Gwen's real talents and she has directed recreation at camp for five years. She has also helped with recreation in other areas. In



INSTALLATION HELD — The Auxiliary of American Legion Layne Kite Post 181 installed officers Thursday evening at the clubhouse. Pictured above from left are: Audrey Martin, installing officer, and out-going president who received her past president pin, Faye Rogers, president; Fannie Guthrie, first vice president; Neoma Kennedy, second vice president; Frances Tibbets, historian; Maxine Prince, secretary-treasurer; and Lillie Clements, chaplain. Bess Nichols, not pictured is sergeant at arms. The Snyder unit now has a 136 per cent membership and any prospective eligible member is invited to join.



WRAP-A-ROUNDS

- 2 slices rye bread
- Butter softened
- 4 slices summer sausage
- 1 large tomato slice
- 4 green onions
- 1 Kosher dill pickle, sliced

dressing on the side for a salad. Canned pears and cream cheese balls rolled in nuts for dessert.

Light Note On Decorating

A new walnut shelf-light for use above desks is gaining favor. Slim bands of walnut frame shop screening in this horizontal installation that can go on any wall. The long, flat top of the lamp serves as a shelf for knick-knacks. Light comes softly through the translucent white screen with no glare.

Accent On Walnut Can Vary Widely

Fine walnut furniture this year has accents of many kinds. You'll find it inlaid with elm buris, or combined with ebony or rosewood, or paneled with cane. Some buffets have reversible doors that are walnut on one side and cane on the other. Many fine furnishings, including coffee tables, combine walnut's beauty with cream-colored marble. Walnut and site are another popular combination. Walnut is a "go-with" wood, combining well with other materials of character.

Two-Toned Table Dramatic In Home

Two-toned tables of walnut are being made available by one manufacturer to meet demand for unusual decorative effects. The tables are handied in dark-stained walnut with the major surface in natural or lighter than natural tones. They are of various sizes for use next to chairs and sofas, or for party use. Two-toned woods recently shown in an office furniture collection were so well received that their use has extended to the home. Light walnut banded by dark can

unify a room in which both dark and bleached woods are used.

Member Texas Optometric Association

Dr. Blum and Nesbit

OPTOMETRISTS

1825 25th St.

Phone HI 3-3399



A LADIES DAY SPECIAL

IN THE **Jockey UNDERWEAR DEPARTMENT**

FOR MEN... wives in the "know" always insist on the comfort, value and long wear of Jockey brand underwear. Here's what they buy for their men:

JOCKEY T-SHIRT—Power Knit fabric, no shrinkage, long-lasting all combed cotton, Seamfree collar lays flat. S, M, L, XL

3 for \$4.39

JOCKEY BRIEF—Fits best, feels best; gives a man the right support, properly tailored of 13 pieces, special long-lasting waistband. 28-50

3 for \$3.69

JOCKEY T.K.O. BOXER—Seat size proportioned to waist size, extra-wide cushion waistband. 30-44

\$1.50

SPECIAL APPRECIATION OFFER



... for the ladies, a \$7.95 hand painted ladies electric shaver for \$2.95, plus bags from 3 Jockey T-shirts, briefs or boxers. Details in our men's furnishings department.

School Menu

- TUESDAY**
- Veal Cutlets and gravy
 - Creamed Potatoes
 - Blackeyed Peas
 - Hot Rolls & Butter
 - Pickled Beets
 - Cantaloup & Watermelon Cup Milk
- WEDNESDAY**
- Meat Loaf
 - Pinto Beans
 - Cornbread & Butter
 - Garden Salad
 - Orange Half Milk
- THURSDAY**
- Stuffed Franks
 - Green Beans
 - Buttered Rice
 - Hot Rolls & Butter
 - Cabbage & Apple Salad
 - Jello
 - Milk
- FRIDAY**
- Fish Sticks & Catsup
 - English Peas
 - Macaroni & Tomatoes
 - Cornbread & Butter
 - Pickle Slices
 - Fruit Cobbler
 - Milk

Thin wafer-type cookies often are easiest to remove from cookie sheets if the pans are rubbed lightly with shortening and given an even coating of flour before baking.

AUTO INSURANCE

From Old Line Companies!

We Can Fill All Your Insurance Needs

Hugh Boren & Son

INSURANCE AGENCY

N. W. Cor. Sq. Phone HI 3-3555

SHOP DOLLAR DAY AT . . .

O'REAR FURNITURE CO.

One 2 Piece Early American **LIVING ROOM SUITE** Reduced With Trade **1/3**

One Long **SOFA** Reduced **1/2**

See Us For Your **Lane Cedar Chest** **25% OFF** With Trade

All **LIVING ROOM SUITES, LAMPS, DINING ROOM & DINETTES . . .** **25% OFF** With Trade

All Pictures, **Mirrors And Lamps . . .** **25% OFF** Just Received A New Shipment Of Mirrors

Good Selection **Baby Furniture** • CRIBS • CHAIRS • HI-CHAIRS • STROLLERS • PLAY PENS

We Have A Good Selection Of **Tell City Hard Rock Maple**

SEE O'REAR BEFORE YOU BUY!

904 25th. PRICES GOOD ALL WEEK HI 3-4141

FALL FLOWER SHOW

10c ea.

Mums — African Daisy — Cattail Oak And Maple Foliage

Fuji Mums Quince — Zinnia Cactus Dahlia Vines & Sprays . . . **19c ea.**

Aster Mums — Wheat Stalk Candle Flowers

Large Fuji Mums **39c ea.**

Italian Aster Camellia Vinyl Nuts

LIVE IVY PLANTS 4 Plants Per Pot Reg. 59c **37c**

CORDUROY 88c yd. Colors: White - Red - Black Lt. Blue - Bright Blue - Rose Golden - Orange - Emerald

CREW SOX \$1.00 Value White Stretch Sox Size 8-10 1/2 **3 Pr. 67c**

TOWELS Reg. 59c Towels **2 for 88c**

L. L. FILLER **500 Count 66c**

WE WILL BE **CLOSED LABOR DAY**

PRICES GOOD **DOLLAR DAY TUES., SEPT. 3**

WHITFIELD'S 5-10-25c STORE

"Smart Buys For The Value Wise"

pt. 1, 1963
ch both dark
are used.

exas
ociation
lum
esbit
ISTS
st.
99

AL

o 37.5
e electric
us bags
n, briefs
er men's
nt.

c ea.
37c

37c

uys

se"

YOUR TV LOG FOR THIS WEEK (September 1 Through September 7) (TAKE OUT AND SAVE)

Dial HI 3-5486

The Snyder Daily News

Delivered To Your Home

35¢ Per Week \$1.50 Per Month

SUNDAY TELEVISION

Time	KRBC Abilene Ch. 9, SCAT 4	KMID Midland Ch. 2, SCAT 2	KCBD Lubbock Ch. 11, SCAT 6	KPAR Sweetwater Ch. 12, SCAT 3	KWAB Big Spring Ch. 4	KLBK Lubbock Ch. 13, SCAT 8
9:00-9:45					This Is The Life	Oral Roberts This Is The Life
10:00-10:45		Faith For Today Church In The Home			Children's Gospel Hour Faith For Today	Ministerial Association Timely Topics First Methodist
11:00-11:45	First Baptist Church Industry Parade			Living Word Frontiers of Faith	The Bible Answers Church In Home	Church "
12:00-12:45	Major League Baseball	Major League Baseball	Major League Baseball	Dizzy Dean Baseball Game Of The Week	Dizzy Dean Baseball Game Of The Week	Dizzy Dean Baseball Game Of The Week
1:00-1:45						
2:00-2:45	Command Presentation			Movie	Championship	Championship
3:00-3:45		Sunday Matinee			Bowling	Bowling
4:00-4:45	Devotions Bullwinkle	Bullwinkle		Lone Star Sportsman	Championship Industry Parade Amateur Hour	Championship United Fund Amateur Hour
5:00-5:45	Meet The Press News, Weather National News	Death Valley Days Status of The Tax Reduction	Meet The Press News, Weather Austin Report	20th Century Mr. Ed	20th Century Mr. Ed	20th Century Mr. Ed
6:00-6:45	Ensign O'Toole Walt Disney	Ensign O'Toole	Ensign O'Toole	Lassie	Lassie	Lassie
7:00-7:45	Car 54	Car 54	Car 54			
8:00-8:45	Bonanza	Bonanza	Bonanza	Real McCoys	Real McCoys	Real McCoys
9:00-9:45	Show Of Week	Show Of Week	Show Of Week	Candid Camera The Hillbillies	Candid Camera The Hillbillies	Candid Camera The Hillbillies
10:00-10:45	News, Weather Art Linkletter Command	News & Wthr Untouchables	News, Weather Channel 11 Theater	What's My Line Alfred Hitchcock	News - Weather Alfred Hitchcock	News and Weather Alfred Hitchcock
11:00-11:45	Presentation			M-Squad	M-Squad	M-Squad
		Sign Off				

MONDAY TELEVISION

Time	KRBC Ch. 9, SCAT 4 Abilene	KMID Midland Ch. 2, SCAT 2	KCBD Lubbock Ch. 11, SCAT 6	KPAR Sweetwater Ch. 12, SCAT 3	KWAB Big Spring Ch. 4	KLBK Lubbock Ch. 13, SCAT 8
6:00-6:45		6:59 Morn. Devot.		Farm Fare	Farm Fare	Farm Fare
7:00-7:45	Today	Today Show	News Farm Rpt & Wthr Today			Cartoons
8:00-8:45			8:25 News Today	Captain Kangaroo	Captain Kangaroo	Captain Kangaroo
9:00-9:45	Say When Play Your Hunch	Say When Play Your Hunch	Say When Play Your Hunch	Calendar I Love Lucy	Calendar I Love Lucy	Calendar I Love Lucy
10:00-10:45	Price Is Right Concen- tration	The Price Is Right Concentration	Price Is Right Concentration	Real McCoys Pete & Gladys	Real McCoys Pete & Gladys	Real McCoys Pete & Gladys
11:00-11:45	Your First Impressions Truth of Consequen- TV News Report	Your First Impressions Consequence 11:55 News	First Impressions Consequence 11:55 News	Love Of Life Tennessee Ernie Show	Love of Life Tennessee Ernie Show	Love of Life Tennessee Ernie Show
12:00-12:45	News & Wthr Devotions Cartoons	Sea Hunt Noon Show	News, Mkt, Wthr Commu. Discus- Corliss Archer	News & Wthr Cartoons As The World Turns	News & Wthr Cartoons As The World Turns	News & Wthr Cartoons As The World Turns
1:00-1:45	People Will Talk The Doctors	People Will Talk The Doctors	People Will Talk The Doctors	Houseparty	Houseparty	Houseparty
2:00-2:45	Loretta Young You Don't Say	Loretta Young You Don't Say	Loretta Young You Don't Say	To Tell The Truth 2:25 CBS News Edge of Night	To Tell The Truth 2:25 CBS News Edge of Night	To Tell The Truth 2:25 CBS News Edge of Night
3:00-3:45	The Match Game Make Room For Daddy	The Match Game Make Room For Daddy	Match Game Make Room For Daddy	The Secret Storm Trailmaster	The Secret Storm Trailmaster	The Secret Storm Trailmaster
4:00-4:45	Command Presentation	Jet Jackson Comic Karnival Comedy Carousel	Child's World Comedy Carousel	Cartoons	Cartoons	Popeye And Gus
5:00-5:45	Quick Draw McGraw	Quick Draw McGraw	Quick Draw McGraw	TBA	TBA	TBA
6:00-6:45	News & Wthr Huntley-Brkly American Revolution	News & Mkt WT Rpt & Wthr American Revolution '63	News, Wthr Huntley-Brkly American Civil Rights	WTN News, Wthr Cronkite News The Dakotas	Texas News Cronkite News The Dakotas	WTN News, Wthr Cronkite News The Dakotas
7:00-7:45				Funny Funny Film	Funny Funny Film	Funny Funny Film
8:00-8:45				Comedy Hour	Comedy Hour	Comedy Hour
9:00-9:45	Ripcord	The Deputy	Vacation Playhouse	Ben Casey	Ben Casey	Ben Casey
10:00-10:45	Local News & Wthr National News Tonight	Reporter W T Rpts & Wthr Tonight	News, Wthr. Tonight	News And Weather The Untouchables	News And Weather The Untouchables	News And Weather The Untouchables
11:00-11:45				Trails West	Trails West	Trails West

TUESDAY TELEVISION

Time	KRBC Ch. 9, SCAT 4	KMID Midland Ch. 2, SCAT 2	KCBD Lubbock Ch. 11, SCAT 6	KPAR Sweetwater Ch. 12, SCAT 3	KWAB Big Spring Ch. 4	KLBK Lubbock Ch. 13, SCAT 8
6:00-6:45		6:50 Morn. Devot.		Farm Fare	Farm Fare	Farm Fare
7:00-7:45	Today	Today Show	Today News Rpt & Wthr Today	Cartoons	Cartoons	Cartoons
8:00-8:45			8:25 News Today	Captain Kangaroo	Captain Kangaroo	Captain Kangaroo
9:00-9:45	Say When Play Your Hunch	Say When Play Your Hunch	Say When Play Your Hunch	Calendar I Love Lucy	Calendar I Love Lucy	Calendar I Love Lucy
10:00-10:45	Price Is Right Concentration	Price Is Right Concentration	Price Is Right Concentration	Real McCoys Pete & Gladys	Real McCoys Pete & Gladys	Real McCoys Pete & Gladys
11:00-11:45	Your First Impression Truth-Consequence TV News Report	Your First Impression Truth-Consequence 11:55 News	First Impression Truth-Consequence 11:55 News	Love of Life Tennessee Ernie Show	Love of Life Tennessee Ernie Show	Love of Life Tennessee Ernie Show
12:00-12:45	Burns & Allen The Noon Show People Will Talk	Sea Hunt The Noon Show	News, Report Comm. Discus- Corliss Archer	News & Wthr Names In News As The World Turns	News & Wthr Names In News As The World Turns	News & Wthr Names In News As The World Turns
1:00-1:45	The Doctors	The Doctors	The Doctors	Houseparty	Houseparty	Houseparty
2:00-2:45	Loretta Young You Don't Say	Loretta Young You Don't Say	Loretta Young You Don't Say	To Tell The Truth Edge of Night	To Tell The Truth Edge of Night	To Tell The Truth Edge of Night
3:00-3:45	The Match Game Make Room For Daddy	The Match Game Make Room For Daddy	Match Game Make Room For Daddy	The Secret Storm Trailmaster	The Secret Storm Trailmaster	The Secret Storm Trailmaster
4:00-4:45	Command Presentation	Bengal Lancers Comic Karnival Three Stooges	Child's World Comedy Carousel	Cartoons	Cartoons	Popeye And Gus
5:00-5:45	Yogi Bear	Yogi Bear	Yogi Bear	Science In Action World Tonight	Science In Action World Tonight	Science In Action World Tonight
6:00-6:45	News & Wthr Huntley-Brkly Laramie	News & Mkt WT Reports, Wthr Laramie	News, Weather Huntley-Brkly, Laramie	WTN News, Wthr Cronkite News Combat	Texas News Cronkite News Combat	WTN News, Wthr Cronkite News Combat
7:00-7:45				Empire	Empire	Empire
8:00-8:45	Dick Powell	Dick Powell	Dick Powell	Picture This	Picture This	Picture This
9:00-9:45	Report From	One Step Beyond	Report From:	Hollywood - The Great Stars	Hollywood - The Great Stars	Hollywood - The Great Stars
10:00-10:45	News & Wthr Comment Tonight	Reporter W T Rpts, Wthr The Tonight Show	News, Weather, Sports Tonight Show	News & Weather Premiers With Fred Astaire	News & Weather Premiers With Fred Astaire	News & Weather Premiers With Fred Astaire
11:00-11:45				M-Squad	M-Squad	M-Squad

WEDNESDAY TELEVISION

	KRBC Abilene Ch. 9, SCAT 4	KMID Midland Ch. 2, SCAT 2	KCBD Lubbock Ch. 11, SCAT 6	KPAR Sweetwater Ch. 12, SCAT 3	KWAB Big Spring Ch. 4	KLBK Lubbock Ch. 13, SCAT 8
6:00				6:55 Sign On	Farm Fare	Farm Fare Rpt.
6:15		6:59 Morn. Devot.				
6:30						
6:45						
7:00	Today	Today Show	Today's News Rpt & Wthr	Cartoons	Cartoons	Cartoons
7:15	"	"	"	"	"	"
7:30	"	"	"	"	"	"
7:45	"	"	"	"	"	"
8:00	"	"	8:25 News Today	Captain Kangaroo	Captain Kangaroo	Captain Kangaroo
8:15	"	"	"	Debbie Drake	Debbie Drake	Debbie Drake
8:30	"	"	"	"	"	"
8:45	"	"	"	"	"	"
9:00	Say When	Say When	Say When	Calendar	Calendar	Calendar
9:15	"	"	"	"	"	"
9:30	Play Your Hunch	Play Your Hunch	Play Your Hunch	I Love Lucy	I Love Lucy	I Love Lucy
9:45	"	"	"	"	"	"
10:00	Price Is Right Concentration	Price Is Right Concentration	Price Is Right Concentration	Real McCoys	Real McCoys	Real McCoys
10:15	"	"	"	Pete & Gladys	Pete & Gladys	Pete & Gladys
10:30	"	"	"	"	"	"
10:45	"	"	"	"	"	"
11:00	Your First Impression	Your First Impression	Your First Impression	Love Of Life	Love Of Life	Love Of Life
11:15	Truth-Consequences	Truth or Consequ	Truth or Consequ	Tennessee Ernie Show	Tennessee Ernie Show	Tennessee Ernie Show
11:30	TV News Report	11:55 News	11:55 News	"	"	"
11:45	"	"	"	"	"	"
12:00	News & Wthr.	Sea Hunt	News, Mkt, Wthr	News & Wthr	News & Wthr	News & Wthr
12:15	Devotions	The Noon Show	Com. Closeup	Cartoon Circus	Cartoon Circus	Cartoon Circus
12:30	Cartoons	"	Corliss Archer	As The World Turns	As The World Turns	As The World Turns
12:45	"	"	"	"	"	"
1:00	Ben Jerrod	People Will Talk	People Will Talk	Password	Password	Password
1:15	"	"	"	"	"	"
1:30	The Doctors	The Doctors	The Doctors	Houseparty	Houseparty	Houseparty
1:45	"	"	"	"	"	"
2:00	Loretta Young	Loretta Young	Loretta Young	To Tell The Truth	To Tell The Truth	To Tell The Truth
2:15	"	"	"	25 CBS News	25 CBS News	25 CBS News
2:30	You Don't Say	You Don't Say	You Don't Say	Edge Of Night	Edge Of Night	Edge Of Night
2:45	"	"	"	"	"	"
3:00	The Match Game	The Match Game	Match Game	Secret Storm	Secret Storm	Secret Storm
3:15	"	"	25 NBC News	"	"	"
3:30	Make Room For Daddy	Make Room For Daddy	Make Room For Daddy	Trailmaster	Trailmaster	Trailmaster
3:45	"	"	"	"	"	"
4:00	Command Presentation	Ivanhoe	Child's World	Cartoons	Cartoons	Popeye And Gus
4:15	"	"	Comedy Carrousel	"	"	"
4:30	"	"	Komic Karnival	"	"	"
4:45	"	"	Three Stooges	"	"	"
5:00	Bullwinkle	Bid 'N Buy	"	TBA	TBA	TBA
5:15	Cartoons	Harveytoons	Three Stooges	World Tonight	World Tonight	World Tonight
5:30	"	"	Huntley-Brkly	"	"	"
5:45	"	"	"	"	"	"
6:00	Weather	News & Mkt	News, Wthr	WTTN News, Wthr	Texas News	WTTN News, Wthr
6:15	Huntley-Brkly	Weather	Huntley-Brkly	Cronkite News	Cronkite News	Cronkite News
6:30	The Virginian	The Virginian	The Virginian	Wagon Train	Wagon Train	Wide Country
6:45	"	"	"	"	"	"
7:00	"	"	"	"	"	"
7:15	"	"	"	"	"	"
7:30	"	"	"	Going My Way	Going My Way	Going My Way
7:45	"	"	"	"	"	"
8:00	Kraft Mystery Theatre	Kraft Mystery Theatre	Kraft Mystery Theatre	My Three Sons	My Three Sons	My Three Sons
8:15	"	"	"	"	"	"
8:30	"	"	"	"	"	"
8:45	"	"	"	"	"	"
9:00	The 11th Hour	Eleventh Hour	Eleventh Hour	Naked City	Naked City	Naked City
9:15	"	"	"	"	"	"
9:30	"	"	"	"	"	"
9:45	"	"	"	"	"	"
10:00	News & Wthr.	Reporter	News, Weather,	News & Weather	News & Weather	News & Weather
10:15	National News	West Tex Report	Sports	Hawaiian Eye	Hawaiian Eye	Hawaiian Eye
10:30	Tonight Show	The Tonight Show	Tonight Show	"	"	"
10:45	"	"	"	"	"	"
11:00	"	"	"	"	"	"
11:15	"	"	"	"	"	"
11:30	"	"	"	Trails West	Trails West	Trails West
11:45	"	"	"	"	"	"

THURSDAY TELEVISION

	KRBC Abilene Ch. 9, SCAT 4	KMID Midland Ch. 2, SCAT 2	KCBD Lubbock Ch. 11, SCAT 6	KPAR Sweetwater Ch. 12, SCAT 3	KWAB Big Spring Ch. 4	KLBK Lubbock Ch. 13, SCAT 8
6:00				6:59 Morn. Devot.	Farm Fare	Farm Fare
6:15						
6:30						
6:45						
7:00	Today	Today Show	Today's News Rpt & Wthr	Cartoons	Cartoons	Cartoons
7:15	"	"	"	"	"	"
7:30	"	"	"	"	"	"
7:45	"	"	"	"	"	"
8:00	"	"	8:25 News & Wthr.	Captain Kangaroo	Captain Kangaroo	Captain Kangaroo
8:15	"	"	"	Debbie Drake	Debbie Drake	Debbie Drake
8:30	"	"	"	"	"	"
8:45	"	"	"	"	"	"
9:00	Say When	Say When	Say When	Calendar	Calendar	Calendar
9:15	"	"	"	"	"	"
9:30	Play Your Hunch	Play Your Hunch	Play Your Hunch	I Love Lucy	I Love Lucy	I Love Lucy
9:45	"	"	"	"	"	"
10:00	Price Is Right Concentration	The Price Is Right Concentration	Price Is Right Concentration	McCoys	The McCoys	The McCoys
10:15	"	"	"	Pete & Gladys	Pete & Gladys	Pete & Gladys
10:30	"	"	"	"	"	"
10:45	"	"	"	"	"	"
11:00	Your First Impression	Your First Impression	Your First Impression	Love Of Life	Love Of Life	Love Of Life
11:15	Truth-Consequences	Truth or Consequ	Truth or Consequ	Tennessee Ernie Show	Tennessee Ernie Show	Tennessee Ernie Show
11:30	TV News Report	11:55 News	11:55 News	"	"	"
11:45	"	"	"	"	"	"
12:00	News & Wthr.	Sea Hunt	News, Mkt, Wthr	News & Wthr	News & Wthr	News & Wthr
12:15	Devotions	Noon Show	Com. Closeup	Cartoon Circus	Cartoon Circus	Cartoon Circus
12:30	Cartoons	"	Corliss Archer	As The World Turns	As The World Turns	As The World Turns
12:45	"	"	"	"	"	"
1:00	Ben Jerrod	People Will Talk	People Will Talk	Password	Password	Password
1:15	"	"	"	"	"	"
1:30	The Doctors	The Doctors	The Doctors	Houseparty	Houseparty	Houseparty
1:45	"	"	"	"	"	"
2:00	The Problem Child	Loretta Young	Loretta Young	To Tell The Truth	To Tell The Truth	To Tell The Truth
2:15	"	"	"	25 CBS News	25 CBS News	25 CBS News
2:30	"	You Don't Say	You Don't Say	Edge Of Night	Edge Of Night	Edge Of Night
2:45	"	"	"	"	"	"
3:00	The Match Game	The Match Game	Match Game	Secret Storm	Secret Storm	Secret Storm
3:15	"	"	25 NBC News	"	"	"
3:30	Make Room For Daddy	Make Room For Daddy	Make Room For Daddy	Trailmaster	Trailmaster	Trailmaster
3:45	"	"	"	"	"	"
4:00	Command Presentation	Bengal Lancers	Child's World	Cartoons	Cartoons	Popeye And Gus
4:15	"	"	Comedy Carrousel	"	"	"
4:30	"	"	Komic Karnival	"	"	"
4:45	"	"	Three Stooges	"	"	"
5:00	Downbeat	Huck Hound	TBA	World Tonight	World Tonight	World Tonight
5:15	"	"	"	"	"	"
5:30	"	"	"	"	"	"
5:45	"	"	"	"	"	"
6:00	News & Wthr	News & Mkt	News, Wthr	WTTN News, Wthr	Texas News	WTTN News, Wthr
6:15	Huntley-Brkly	WT Rpt & Wthr	Huntley-Brkly	Cronkite News	Cronkite News	Cronkite News
6:30	The Wide Country	Wide Country	Seahunt	Wagon Train	Wagon Train	Wide Country
6:45	"	"	"	"	"	"
7:00	"	"	"	"	"	"
7:15	"	"	"	"	"	"
7:30	Dr. Kildare	Dr. Kildare	Dr. Kildare	Going My Way	Going My Way	Going My Way
7:45	"	"	"	"	"	"
8:00	The Lively Ones	"Lively Ones"	Lively Ones	My Three Sons	My Three Sons	My Three Sons
8:15	"	"	"	"	"	"
8:30	"	"	"	"	"	"
8:45	"	"	"	"	"	"
9:00	The Circus	The Circus	The Circus	Naked City	Naked City	Naked City
9:15	"	"	"	"	"	"
9:30	"	"	"	"	"	"
9:45	"	"	"	"	"	"
10:00	News & Wthr	Reporter	News, Weather,	News & Weather	News & Weather	News & Weather
10:15	National News	WT Rpt & Wthr	Sports	Hawaiian Eye	Hawaiian Eye	Hawaiian Eye
10:30	Tonight Show	The Tonight Show	Tonight Show	"	"	"
10:45	"	"	"	"	"	"
11:00	"	"	"	"	"	"
11:15	"	"	"	"	"	"
11:30	"	"	"	Trails West	Trails West	Trails West
11:45	"	"	"	"	"	"

DIAL HI 3-5486 FOR HOME DELIVERY OF THE SNYDER DAILY NEWS—ONLY 35c PER WEEK

FRIDAY TELEVISION

	KRBC Abilene Ch. 9, SCAT 4	KMID Midland Ch. 2, SCAT 2	KCBD Lubbock Ch. 11, SCAT 6	KPAR Sweetwater Ch. 12, SCAT 3	KWAB Big Spring Ch. 4	KLBK Lubbock Ch. 13, SCAT 8
6:00				6:55 Sign On	Farm Fare	Farm Fare
6:15		6:59 Morn. Devot.				
6:30						
6:45						
7:00	Today	Today Show	Today's News Rpt & Wthr	Cartoons	Cartoons	Cartoons
7:15	"	"	"	"	"	"
7:30	"	"	"	"	"	"
7:45	"	"	"	"	"	"
8:00	"	"	8:25 News Today	Captain Kangaroo	Captain Kangaroo	Captain Kangaroo
8:15	"	"	"	Debbie Drake	Debbie Drake	Debbie Drake
8:30	"	"	"	"	"	"
8:45	"	"	"	"	"	"
9:00	Say When	Say When	Say When	Calendar	Calendar	Calendar
9:15	"	"	"	"	"	"
9:30	Play Your Hunch	Play Your Hunch	Play Your Hunch	I Love Lucy	I Love Lucy	I Love Lucy
9:45	"	"	"	"	"	"
10:00	Price Is Right Concentration	Price Is Right Concentration	Price Is Right Concentration	Real McCoys	Real McCoys	Real McCoys
10:15	"	"	"	Pete & Gladys	Pete & Gladys	Pete & Gladys
10:30	"	"	"	"	"	"
10:45	"	"	"	"	"	"
11:00	Your First Impression	Your First Impression	Your First Impression	Love Of Life	Love Of Life	Love Of Life
11:15	Truth-Consequences	Truth or Consequ	Truth or Consequ	Tennessee Ernie Show	Tennessee Ernie Show	Tennessee Ernie Show
11:30	TV News Report	11:55 News	11:55 News	"	"	"
11:45	"	"	"	"	"	"
12:00	News & Wthr.	Sea Hunt	News, Mkt, Wthr	News & Wthr	News & Wthr	News & Wthr
12:15	Garden Tips	Noon Show	Com. Closeup	Cartoon Circus	Cartoon Circus	Cartoon Circus
12:30	Cartoons	"	Corliss Archer	As The World Turns	As The World Turns	As The World Turns
12:45	"	"	"	"	"	"
1:00	Ben Jerrod	People Will Talk	People Will Talk	Password	Password	Password
1:15	"	"	"	"	"	"
1:30	The Doctors	The Doctors	The Doctors	Houseparty	Houseparty	Houseparty
1:45	"	"	"	"	"	"
2:00	Loretta Young	Loretta Young	Loretta Young	To Tell The Truth	To Tell The Truth	To Tell The Truth
2:15	"	"	"	25 CBS News	25 CBS News	25 CBS News
2:30	You Don't Say	You Don't Say	You Don't Say	Edge Of Night	Edge Of Night	Edge Of Night
2:45	"	"	"	"	"	"
3:00	The Match Game	The Match Game	Match Game	Secret Storm	Secret Storm	Secret Storm
3:15	"	"	25 NBC News	"	"	"
3:30	Make Room For Daddy	Make Room For Daddy	Make Room For Daddy	Trailmaster	Trailmaster	Trailmaster
3:45	"	"	"	"	"	"
4:00	Command Presentation	Jej Jackson	Child's World	Cartoons	Cartoons	Popeye And Gus
4:15	"	"	Comedy Carrousel	"	"	"
4:30	"	"	Komic Karnival	"	"	"
4:45	"	"	Three Stooges	"	"	"
5:00	Cartoons	Rescue 8-F	Comedy Carrousel	TBA	T	



KITTY-KORNERS

- 1 hamburger bun
- Butter, softened
- 4 slices summer sausage
- 2 hard-cooked eggs
- 1 tablespoon chopped green peppers
- 2 tablespoons mayonnaise
- Salt
- Dash pepper
- Lettuce
- Radish roses
- Cucumber curls

- two slices summer sausage on bottom half. Peel eggs then chop into bowl. Add peppers, mayonnaise, salt and pepper.
- 2. Cut remaining 2 slices of sausage into 4 wedges. Chop two of these wedges into egg salad. Mix well and pile evenly on top of sausage covered bun. Arrange 4 wedges of meat on egg filling. Add top of bun and wrap in foil and pack.
- 3. Place lettuce in transparent wrap to be added to sandwich at lunch time. Also radishes and cucumber curls go into same bundle.

Note: Salad is shredded carrot and raisins. Mayonnaise dressing in bottom of container waiting to be mixed into salad. Eggnois drink along with chocolate chip cookies.



COOL PINK CRANBERRY-TEA PUNCH—A refreshing beverage for a festive summer party.

Making Tea For More Than Two

BY CECILY BROWNSTONE
Associated Press Food Editor

VICTORIAN CHEFS used tea in two surprising and interesting ways - to flavor ice cream and to give punch to the sugar syrup of poached fruit.

A friend of ours, spurred on by this example, recently made an interesting experiment. She added instant tea to a pound-cake mix. We followed suit. The tea, plus grated lemon rind, makes a real cake-mix change that you might like to try.

Tea punches have long been in vogue. The earliest recipes for these punches included spirits and the beverage was served hot. An 1862 rule calls for green tea infused with boiling water, served flaming over brandy, rum, lump sugar, and the juice of a lemon.

The Gardeners Corner

More than two centuries ago rent was paid on a few properties in this country with "one red rose yearly if the same be demanded."

One such bit of land is now occupied, appropriately, by a rose grower who raises blooms of many hues.

This land was part of a grant from the King of England to William Penn at what is now West Grove, Pa. In 1731, according to a deed, this parcel was assigned to Penn's grandson, also named William Penn, with the provision for payment of a red rose yearly.

Subsequently deeds to the same property in 1742 and 1748 carried the same proviso.

Seeking more land on which to grow its roses, the adjacent Star Roses bought part of the original Penn tract, including the old Red Rose Inn, which was built in 1740. This was done without knowledge of the red rose rent requirement.



ON THE HOUSE

AP Newsfeatures

It wasn't too many years ago that aluminum was a material that could be worked only by professionals using special tools. Today, most hardware and building supply stores are stocked with do-it-yourself aluminum that can be bent, cut and drilled with regular hand or power tools.

One of the simplest projects that can be undertaken with this type of aluminum is a portable sun shield, suitable for the beach or backyard. The support can be a simple spike that sticks in the ground or a wooden base that can be placed anywhere. The following materials are needed:

- 4 3/4" x 8" aluminum tubes
- 4 3/4" x 90-degree aluminum elbow fittings
- 1 3/4" aluminum adjustable elbow
- 1 20" plastic clothes line
- 20 eye grommets
- 1 3/4" x 2 1/2" canvas

Hem the canvas, sewing the grommets at equal intervals around the edge, and lace the canvas onto the shield with the plastic clothesline.

For a spike, cut a sharp triangle from the bottom of the stand tube and hammer the tube to fill this gap, making a point.

For a wooden base, screw the splicer assembly into the board, using the aluminum wood screws. Fill the tube bottom to the assembly. Now fit the lower end of the adjustable elbow to the stand tube - and your sun shield is ready.

Actually, it's not as complicated as it sounds. This is one case where it's easier done than said.

QUESTION: I would like to buy a table saw of the kind that uses circular blades. The range of prices seems to be very wide. Is there some way I can tell whether I am getting my money's worth?

ANSWER: You buy a table saw the same way you buy almost anything else: by comparing what you are getting in one product with what you are getting in another - and then deciding whether the price difference makes the first or second product a better purchase. You have to look over the machine personally, see if you can detect which is built better and which has more useful features.

But probably the most important of all is to find out exactly what you are getting for your money. The prices of some table saws include blade guards and other equipment necessary to the proper functioning of the tool.

Use One Routine For Cleanliness

Instead of complaining about your child's dirty hair, face, hands, muddy shoes and clothes, all in one breath, select one cleanliness routine to be rigidly enforced.

Since hand-washing especially before meals and snacks is most important from a health standpoint, start with that campaign and don't limit your efforts to words alone. Accompany him or her - to the wash basin, time after time.

Washing your own hands at the same time sets a good example by proving that the soap-and-water routine is important for grownups as well as for children.

Bookstand Gets Around

Revolving bookstands in walnut, newly popular, can be used as night tables or living room ornaments. The stands come in square, circular and octagonal shapes and are approximately the size of end tables. Each holds a dozen or more books and turns fully around on a swivel base.

The Deffebach Agency
2606 Ave. R Phone HI 3-5611

INSURE WHAT YOU HAVE

BEST DOLLAR DAY BUYS

Ladies	DUSTERS	\$1
Childrens	DRESSES	\$1
Assorted Sizes	SKIRTS	Values To \$7.00 \$2 & \$3
One Group	DRESSES	\$2

You Save Dollar Day & Every Day At...
Jean's Ready-To-Wear BARGAIN OUTLET
1010 25th.

Snyder High School ..

Seat Cushions
Washable Plastic Cover
A Cushion For A Thousand Uses

49¢ Plus Tax

Carry Them To Football Games With You!
A 1.98 Value For Only . . .

And
A Phil Up At Your Favorite Phillips "66" Station

Field Service Station
2000 25th. St.

Smallwoods
Downtown Phillips
66 Service
1619 25th.

McCormick Phillips
Super Service
East Highway
Phillips Quick Service
1701 Avenue S

Southside 66 Service Station
3800 Avenue S

KLBK Lubbock 13, SCAT 8

in Fare

oons

ain garoo

ie Drake

dar.

ve Lucy

McCoy's & Gladys

o of

esse

of Snow

s & With

os In News

he World

is

word

epartry

ell The Truth

BBS News

Of

et Storm

master

ye And Gus

id Tonight

N News, With

ikita News

ry

Mason

ght Zone

ny Burke

y Burke

er & the

id Bridges

boat

KLBK Lubbock 13, SCAT 8

Sign On Farm Fare

oons

in Kangaroo

Show by Mouse House

In Tin

Rogers

ing

try Parade

all Game

Week

me

ing

ine

In Glass

Adams, master

ones

and Harriet

Men

efenders

Gun, travel

merica

at

Artists Dollar

Library Notes

All of us want to know more about everything. Each of us needs to know more about something. As members of the curious human race, we want to explore the mysteries of our world and universe; as individuals, we need certain facts and knowledge about our specific interests and pursuits. Pre-schoolers want to know how the little pictures on their alphabet books are formed. Youngsters become curious about various new fields of knowledge. Businessmen need to find out about sources of supply, markets, advertising, financial data, and so forth. Em-ployees who want to get ahead find that knowledge leads to better jobs. Families want to know more about health, child care, remodeling, family relationships, civic issues, travel and recreation. Yes, all of us want and need to know more.

Your headquarters for all kinds of knowledge is your Scurry County Library, and the increased rate of use indicates that citizens know this. Last month's circulation was 11,267 books and periodicals to set a new record.

1,000 more items than during the corresponding period in 1962. Books checked out indicate a marked increase of adult interest in religion and the arts and show that younger readers are becoming more and more interested in biography.

Whatever your interest, use the library often to find out what you want and need to know for a richer, fuller life.

Scurry County Library will be closed Monday, Sept. 2, for Labor Day, and the library fall schedule will begin on Sept. 3. Hours at the main library will remain the same with the exception of changing the opening hour to 9:00 a.m. Bookmobile service to rural schools will begin as follows and continue weekly:

Fluvanna on Sept. 4th, at 9:45 a.m.

Ira, Sept. 10th, at 1:30 p.m.

The Branch Library, located in the Lincoln School will be open each Monday, Tuesday, and Thursday evening between the hours of 6:00 p.m. and 9:00 p.m.

Wilson Family Has Reunion

The S. C. Wilson family reunion was held at the Knapp community center Sunday, Sunday evening was spent at the Addison's cabin at Lake Thomas.

There were 58 attending relatives; Mrs. A. N. Addison, Mr. and Mrs. Leon Cheatham, Donna Joe, Laurie, and Mike, Mr. and Mrs. Claude Addison, Debbie, and Mr. DeWitt, Melvin and Marvin; Tokio, Mr. and Mrs. Kenneth Engle, Amavillo, Mr. and Mrs. Tom Wilson, Mr. and Mrs. Loyd Wilson, Mark, and Mike, Mrs. Lois Whitley, Kay, Carolyn, and Linda, Brownfield, Mr. and Mrs. Darwin Cargill, Lubbock; Mr. and Mrs. Ira Wilson, Ville Platte, Louisiana; Mr. and Mrs. C. W. Addison, Dorothy and Peggy, Mr. and Mrs. G. O. Wilson, Mr. and Mrs. J. W. Wilson, Mr. Aubrey Wilson, Ja-nelda and Otfield, Mr. L. M. Wilson, Mr. and Mrs. C. R. Fleming, Sherie, and David, Mr. and Mrs. Glen House and Dannie, Mr. and Mrs. Charlie Eckert, Nelson, Gary, and Sheila, Joe Hancock, Mrs. Mae Krop, Keith and Kathy of Snyder.

SCAT - Cable TV Service
 Programming From
 NBC, CBS, ABC
 Snyder Community
 Antenna Television
 "If You Like TV,
 You'll Love SCAT"



B IS FOR BRUNCH

- 3 slices ham sausage
- 3 slices salami
- Lettuce
- 3 slices whole wheat bread
- Butter
- Cream cheese
- 4 slices olive-pimiento loaf

1. Cut ham sausage and salami into millimeter strips. Line a plastic salad dish with pieces of lettuce and arrange meat strips over top. Pack with small container of French dressing. Use small packing cartons for this or small kitchen jars, the kind herbs come in with a screw-on cap.

2. Spread bread slices on all sides that touch meat, with butter and then cheese. Put sandwich together with olive-pimiento meat slices to make a three-decker. Trim crusts and cut kitty-corner. Wrap in transparent wrap and pack.

Note: The cookies are bought chocolate chip with a home-made butter-cream frosting and decorated with cookie decorations. Milk to drink. Brunch for one.

All-cotton wash-wears, with durable creases and pleats, are practically around the corner. A new finishing process is expected to do the trick.

L-Shape Storage May Be For You

Need storage? Want it decorative? The free-standing L-shaped storage rack in a fine hardwood such as walnut may be your answer.

Basically it is a vertical unit with narrow, all-the-way flat-form base. Adjustable brackets are inset vertically. You can hang shelves, cupboards, desks, vanities and other storage pieces on it without marring your walls.

A show-stopper at recent furniture markets was a tall, slender L-shaped rack completely backed in walnut. Storage pieces can be affixed to the front. The back is also of beautifully grained walnut, so that the unit can serve as a handsome room divider. Such units also can dress up an unattractive wall, where they give the effect of walnut paneling — plus storage. Another L-rack, recently shown is a see-through model, and could also be used as a room divider. In

this case, poles rise from the platform base. To the pole can be attached bookshelves, magazine racks and a variety of storage pieces, all in walnut.

The free-standing designs are useful to any home owner or apartment dweller who finds his walls too flimsy to support brackets. The tall storage units resemble built-ins, but can go in the van on moving day, without dismantling.

Washable Gloves

A crisp fashion accent for now-through-Indian-summer wardrobe is a striped seersucker glove and bag set, styled with color combinations of white and black, white with red, or yellow with blue.

Made of easy-care cotton and Dacron, the gloves can — and should — be washed in soap or detergent suds after each wearing. The bag can be sponged clean with thick "dry" suds, then rinsed with a damp cloth.

Haiti's last tie with France is its official language, French. The masses speak a patois — French, Spanish, English, African, and Caribbean Indian dialects.



GOSSARD ARTEMIS "FIT-TOGETHERS"

... the beginning of a beautiful relationship!

Wonderful new way of dressing... Gossard-Artemis Lace-Mates, made for each other, color-cued and fashion coordinated. It's the fit-together feeling... so much prettier than wearing underpinnings that were never meant to go with each other. Come see the complete collection. Choose from a wardrobe of rich fall colors: Pearl, fiesta red, debutante blue, royal iris, apricot, snow white, black, prettied with lace to indulge your femininity.

A. Fully lined princess-shaped bra in lace-trimmed Antron® nylon tricot with Lycra® spandex for a youthful separation, proper support and comfortable fit. 32 to 36, A cup; 32 to 38, B and C cups in all colors. \$00.

B. Excellent control plus good looks in the long-leg Lycra® pantie girdle with reinforced nylon front panel prettied with lace. Smoother-than-ever fit with contour back seaming; so flat, you'll not feel it's there. P.S.M.L. in all colors. \$00. Average length pantie girdle. \$00. Matching girdle. \$00.

C. Slim petal-hip in Antron® nylon tricot with Bourdon lace applique. P.S.M. Short, P.S.M.L. Average, in all colors. S.M.L. Tall, in white, black and pearl only. \$00.

D. Antron® nylon slip appliqué and scalloped-edged with Bourdon lace, shaped to the bra and your figure. 32 to 40 Average in all colors; 30 to 38 Short in white, black, pearl, fiesta red, debutante blue; 34 to 40 Tall in white, black and pearl only. \$00.

ART DRESS SHOP

3421 Ave. T

HI 3-9421

DOLLAR DAY SAVINGS!

Summer Merchandise
SEE OUR

**Bargain Table
For Dollar Day**
Fantastic Prices

Final Clearance
Just A Few Left!

Summer
Dresses Each \$3
• Values To \$12.98
• Assorted Sizes

BE SURE

To Check Our
New Arrivals
Of Beautiful

FALL FASHIONS

We Feature:
Name Brand
Clothing
To Meet The
Needs Of Any
Youngster!



Phone

HI 2-6770

2617 Ave. S

TOT-2-TEEN

"Children's Fashion Center Of West Texas"