



GRAIN GIRL--Almost everybody seems to be getting into the grain harvesting act these days around Olton. With the first load of area milt reported late last week, producers say the rest is not far behind. This particular pint-sized girl is two-year-old Kim Coon, daughter of Mr. and Mrs. Bob Coen of Olton.

DATE	HIGH	LOW	PREC.
SEPT. 14	77	54	.01
SEPT. 15	78	55	T
SEPT. 16	76	51	T
SEPT. 17	80	54	T
SEPT. 18	83	58	.06
SEPT. 19	88	56	--
SEPT. 20	83	56	.16

Would-Be Burglar Hits Bank At Hart

A would-be burglar left with less than he came with early Monday morning when his attempt to crack the Farmers State Bank vault in Hart was interrupted by a surprise visit by an armored car messenger.

Local and state police, Castro and Hale County Sheriff's Deputies, Texas Rangers, and a two-man team from the Federal Bureau of Investigation were thrown into the search for what some officers believe may have been as many as three men involved.

Roadblocks were set up until about 11 a. m. at six points around Hart, and passing motorists were warned not to stop for hitchhikers.

An intensive hunt began about 3:30 a. m. Monday when the bank's plate glass window was smashed by an 18-inch long crowbar hurled from inside the building.

Hart Marshall Emmett Burrows, who was parked about a block away when he heard the glass break, said he sped to the bank in time to see the armored car messenger leaving the back door of the bank after making what would have otherwise been a routine check pickup.

Willie Morgan, an employee of the Lubbock-Amarillo Armored Car Service, told Burrows when the messenger arrived that he had heard the glass break but had seen no one.

Morgan and Burrows then re-entered the bank and discovered a deep semi-circle gash cut into the metal vault on the right side of the combination lock. An acetylene torch was still burning in front of the safe when they entered, Burrows said.

The floor immediately in front of the safe was also cluttered with a large variety of tools, including a crowbar, axe, and other prying devices.

Investigating officers later theorized the burglar (or burglars) heard Morgan coming and fled through a five-foot wide hole made by throwing a crowbar through the front window.

Officers later recovered an 18-inch long crowbar lying in

Area Roads Plagued By Traffic Mishaps

Polls Open This Tuesday

Polls will be open from 8 a. m. to 7 p. m. at City Hall Tuesday for balloting in the city-wide alderman election.

Percy Parsons, director of Parsons Funeral Home of Olton, is the only announced candidate in the contest which was called last month to replace councilman Lester Thompson who resigned last month to move to another city.

Parson's name will appear on the ballot, in addition to space for write-in choices for the post.

Election judge will be Eldon Franks with Ray Schultz, alternate. Clerks will be Era Mas Walthall and Louise Leggett.

One Killed, 8 Others Hurt In Four Different Crashes

Four separate traffic accidents over the past seven days resulted in the death of one man and injuries to eight other persons.

C. E. Bley, 72, of Olton was slightly injured in the most recent mishap when the car he was driving was struck from the rear by another auto on U. S. 70 about five and a half miles west of Plainview Tuesday afternoon.

Investigating Highway Patrolman Alton Carmicle said the accident occurred about 3:45 p. m. when Bley's auto, traveling slowly west on the highway, was struck from the rear by a second west-bound car driven by Mrs. Patricia Langley, 32, of Lubbock.

Bley's vehicle rolled over once and came to rest on its top off the north side of the road, Carmicle said. The driver was left suspended up-side down, held in place by his seat belt, when the car came to a stop. He was treated for a minor head laceration at Plainview Hospital and released.

Mrs. Langley was admitted to Plainview Hospital suffering from a fractured knee cap, and two of her children riding in the car were treated for minor injuries and released.

A third Langley youngster in the car with her mother was not hospitalized.

The Bley car was demolished, according to the officer, and the Langley car sustained light damage.

NEAR CIRCLE
A Captain stationed with the Women's Air Force at Cannon AFB was only slightly injured on the same highway about 24 hours before the Tuesday crash when she apparently lost control of her small sports car at a curve, causing the vehicle to flip.

Investigators said the car, driven east by the WAF Capt. Patricia Williams, in her 20s, left the south side of the highway and flipped over once. She told officers she was bound for Wichita Falls at the time of the accident.

She was treated for minor cuts and bruises at Community Hospital & Clinic here and then driven to Lubbock by Highway Patrolman Bill Angel where she boarded a bus for her original destination.

Her car was reported a total loss after the 2 p. m. turnover.

IN OLTON
An emergency trip to Olton Community Hospital & Clinic by an expectant mother early Sunday morning resulted in a minor emergency visit for the husband, as well, when the car in which they were riding crashed through two barricades

and slammed into the corner of Turner Shamrock Service Station near the intersection of FM 168 and U. S. 70.

Mac Jiminez, 23, of General Delivery, Dimmitt, was treated for minor cuts and bruises suffered in the crash and released.

His wife was treated for minor injuries and gave birth to a seven pound, four ounce girl named Joann, about 11:35 a. m.

Driver of the car, Eusebio Robledo Acosta, 28, of Box 119, Hart, was not injured.

Investigating Police Chief Jerry Smith said the 5:30 a. m. mishap occurred in heavy fog when the auto, traveling south on FM 168, ran through a wooden barricade which was blocking one lane of the road near the work site of curb and gutter installations at the intersection.

The car continued across U. S. 70, struck a second barricade on the opposite side of the highway, and plowed into the left corner of the service station, according to Smith.

Both barricades were lighted by flashing amber signals at the time of the wreck, he said.

The late model car involved was heavily damaged, but no damage was reported to the station.

IN SPRINGLAKE
A Waco man was mortally injured and his wife seriously hurt about 11:15 a. m. last Thursday when their car collided with a fertilizer truck at the intersection of U. S. 385 and U. S. 70 in Springlake.

Foster died about 3:40 p. m. en route to the Amarillo Veteran's Hospital from a Littlefield hospital where he received emergency treatment following the wreck. He was pronounced dead on arrival in Amarillo.

Mrs. Gene Foster, 34, was reported in good condition late this week by attendants at Littlefield Hospital & Clinic where she underwent surgery

Continued on Page 2

Electric Company Wants 7.62 Percent Rate Hike

The first general increase in electric rates in 16 years is part of a rate simplification and adjustment program submitted to municipal governments for approval in the Texas communities served by Southwestern Public Service Company.

An average increase of 7.62 percent for residential and commercial customers in the Texas portion of the company's service area will take effect upon approval of the proposal. Actual average increase in Olton will be 6.25 percent.

The new rates have already been approved for communities the company serves in New Mexico by the rate-making authority in that state, the New Mexico Public Service Commission, following thorough

study of company's books and records by the Commission and the Commission Staff.

The 1951 rate increase, which added 10 percent across the board to electric rates, is the only general rate increase the company has ever requested. There have been some 25 reductions in rates by Southwestern Public Service Company, or predecessor electric companies in the area, 14 of them having gone into effect since the company took its present form in 1942.

The company proposes, under the rate simplification phase of the program, to reduce the number of rates applicable to residential service from 4 to 2. At the same time it will switch to single meter billing for all residential cus-

tomers. Presently, those customers who heat their homes electrically or heat water with electricity are billed on two meters.

Single meter billing offers a number of advantages to the residential customer. There is a single minimum bill charge in the event of a long vacation or extended absence from the home.

For residential service in homes which are not electrically heated or do not heat water electrically, the new rate schedule is as follows: 6.50¢ per kwh for the first 50 kwh used each month, 4.30¢ per kwh for the next 50 kwh used each month, 2.15¢ per kwh for the next 900 kwh used each

Continued on Page 2

In Away Game Friday

Stubborn Mules New Foe

A pack of victorious Ponies will be hitting the trail again Friday night to take on the Muleshoe Mules in an 8 p. m. game that Head Coach Don Beck says his boys can win--only if they put out the obvious effort supplied in the first two season wins.

The stubborn Mules, on the other hand, will be giving all they've got to make up for the 28-12 defeat dealt them by Littlefield on a foreign field last week.

"What they've got" is plenty, and more than enough to

win a ball game, Beck warns.

He sized the squad up as a squad with the power to protect a ball carrier through the line and the speed to outrun any man Olton has if the power works.

Right halfback Bobby Julian is the man with the speed, He

clears the hundred-yard dash in a lightning 9.8 seconds--much faster than the fastest local opposition--and has cleared the goal line with runs of 65, 78, and 70 yards in previous season play.

His powerful guides through the Mustang line is expected to be headed by fullback Roger Swint, a boy Beck termed "a fine blocker who runs with a lot of authority."

Left halfback Charles Beamon (190) may prove to be the most stubborn Mule of them all Friday.

"He's the strongest legged running back we've seen this year," Beck observed. "He's extremely difficult to get off his feet."

The Mule line may be as big an obstacle as the backfield. "It is well reinforced with 200-pound boys," Beck said. Largest of these is 215-pound tackle Jerry Lumpkin and 230-pound tackle Randy Lucky.

Average weight of the team is also greater than Olton's. Beck counted 14 boys his squad would face Friday who weigh in at from 180 - to 230-pounds.

Olton, by contrast, sports only four boys who tip the scales at more than 180-pounds. "We won't be able to move the ball against them," Beck predicted flatly. "You just can't

Lions Carnival Due To Arrive Monday

A day for which Olton's young--and young at heart--have been waiting for more than three months will finally arrive Monday when the Lion-sponsored Rhodes Carnival comes to town next week.

Equipment is expected to begin arriving Sunday when workmen will quickly transform the town square into a playground of tents full of games and rides for all ages.

The show's scheduled six-night run means twice the fun originally slated in its first three-day engagement which was postponed in June due to rainy weather. Last night of the carnival is Sept. 30.

Local Lions Club members will man ticket booths and receive a portion of the profits

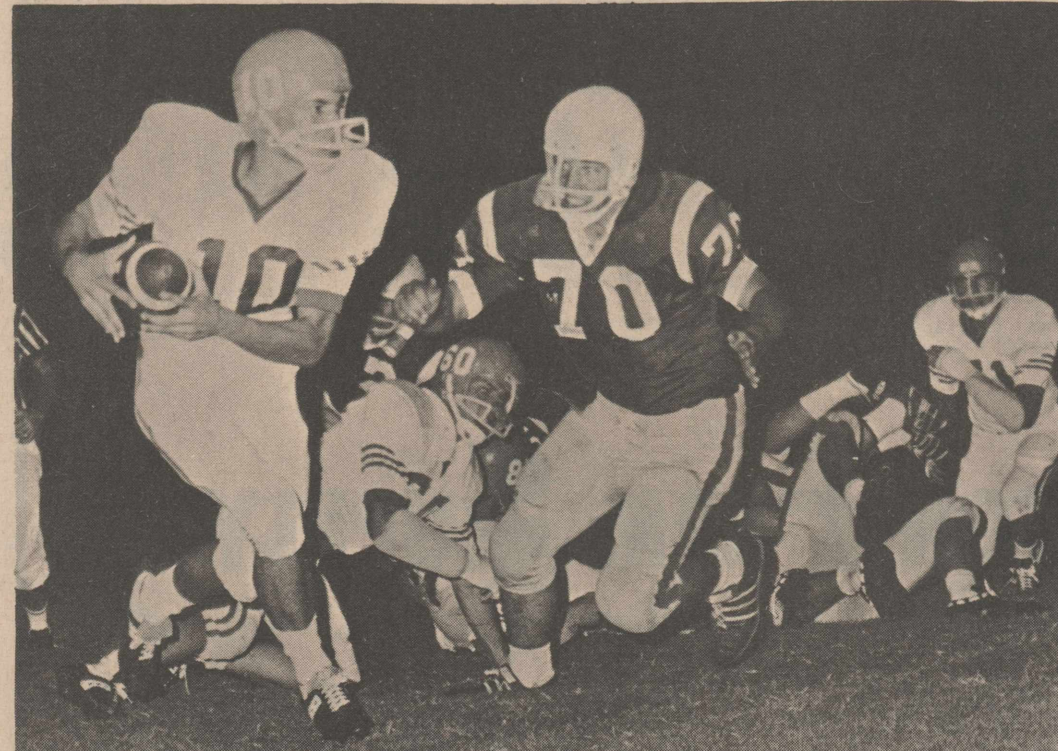
Ex-Cheerleader Wins Grid Game

A former Olton cheerleader walked away with top honors in the football contest this week. Judy (Miller) Parsons, Amarillo, guessed 12 games correct to win the first prize of \$5 and there was a three-way tie for second and third place. Each will receive a check for \$1.66.

Cecil Oursbourn of Route 2, Hart, and Doris Cagle and Bobby Turner of Olton all missed only three games of the 14 and were tied on the tie-breaker score, missing it by two points.

Mrs. Cagle picked Olton to win over Hereford 15 to 13, while Oursbourn and Turner both

Continued on Page 8



FOOTBALL FOOTWORK--Quarterback Johnny Lewis tried to evade a Whiteface lineman during last Friday nights game with Hereford. Olton went on to win the contest 21-20. For complete details, see story page 8.



UNEXPECTED STOP--This was the results when a car carrying an expectant mother to the hospital detoured into the corner of Turner Shamrock Service Station near the corner of FM168 and U. S. 70 about 5:30 a. m. Sunday.

THE OLTON ENTERPRISE

Published each Thursday at Olton, Texas, 79064.

Entered as second class matter at the post office at Olton, Texas under the act of Congress, March 3, 1879.

Any erroneous reflection upon the character, firm or corporation which may appear in the columns of The Olton Enterprise, will be gladly corrected upon being brought to the attention of the publisher.

Subscription rates: \$4.00 per year in Lamb and neighboring counties; \$5.00 per year elsewhere.

Member 1967
TEXAS PRESS ASSOCIATION

Member
WEST TEXAS PRESS ASSOCIATION

RATES

Continued from Page 1
month, 1.70¢ per kwh for all additional kwh used each month
The 1.70¢ bottom step on the rate schedule for regular residential service is the lowest rate for this type of service the company has ever offered.
The less than one-cent per kilowatt-hour rate for electric heating, the addition of supplemental heating at the lower rate, and the extension of the heating season, when the lower rates apply, to seven months, are offered because, due to air conditioning and irrigation, the peak demands for electric service in this area fall into a three to four month period covering the hot wather season. As a result, it is necessary for Southwestern Public Service Company to have a heavy investment, particularly in generating equipment, which is fully utilized for a relatively short period of time. Because other electric companies in the surrounding area also have heavy summer loads, no practical means of interconnection to share generating equipment has proven feasible.
As more customers heat their homes, or additions to their homes, electrically, the additional utilization of the generating equipment through the winter months will make possible economies beneficial to all customers.
The potential for this heating market is high. A nationwide survey recently indicated that electric home heating is the only method of heating showing a gain when people are asked for a preference on the way they would like to heat their home.

When a customer heats water electrically, after 200-kilowatt hours have been used for regular service, a 500 kilowatt - hour block at the 0.97¢ (97/100ths of a cent) rate will be offered.

"Although we are asking for a rate increase, there are pluses for our customers in this new rate structure if they will utilize them by living better electrically. No other source of energy available has held the price line for as long as the electric industry. Total electric living is practical now, as the growing preference for it indicates. Ours is a service which costs less for each unit, the more units that you use, and this type of economy is still available in these new rates," Roy Tok, president of Southwestern Public Service Company, said.

The average residential consumption is 350 kilowatt-hours a month. For a customer using this number of kilowatt-hours, the increase in his monthly bill will range from 77¢ to \$1.16, depending on which rate of the four residential rates now in effect he is being billed. The largest increase will be in Amarillo, which will still be served under the lowest of the two proposed residential rates, although the gap is being closed between the rates charged in Amarillo and those in other cities. The lowest increase will be on the North Plains, where the rates have been slightly higher. A fuel cost adjustment is included in the residential rates and accounts for 3¢ of the monthly increase for the average customer.

The new commercial rates call for the following schedule:

6.50¢ per kwh for the first 100 kwh used each month, 4.20¢ per kwh for the next 900 kwh used per month, 2.15¢ per kwh for the next 6000 kwh used each month, 1.30¢ per kwh for the next 6000 kwh used each month, .80¢ (eight-tenths of one cent) per kwh for all additional kwh used each month

When the commercial customer's demand (the number of kilowatts the company must have available to serve his load) exceeds 10 kw, then the 4.20¢ block of the rate will be extended 38 kwh for each kw of demand above 10 kw. The demand feature of the rate affects only a small percentage of the commercial customers.

The company projects that the rate increase will produce additional annual revenues in Texas, where it serves the great majority of its customers, of \$1,874,000, with the company-wide increase being just over \$2,400,000. Of this amount, \$1,179,229.49 will go for additional taxes.

The new rates do not take into account an increase in Federal Income Taxes, a subject now being considered by the Congress. Should the proposed tax increases become law they would have a detrimental impact on the company's earnings which would not be compensated for by the additional revenues the new rates are expected to provide.

The new rates will raise the company's rate of return on its investment from 5.65 percent to 5.98 percent, 6.5 to 7 percent is generally regarded as a fair rate of return and Texas law allows as much as 8 percent.

Through the years, the com-

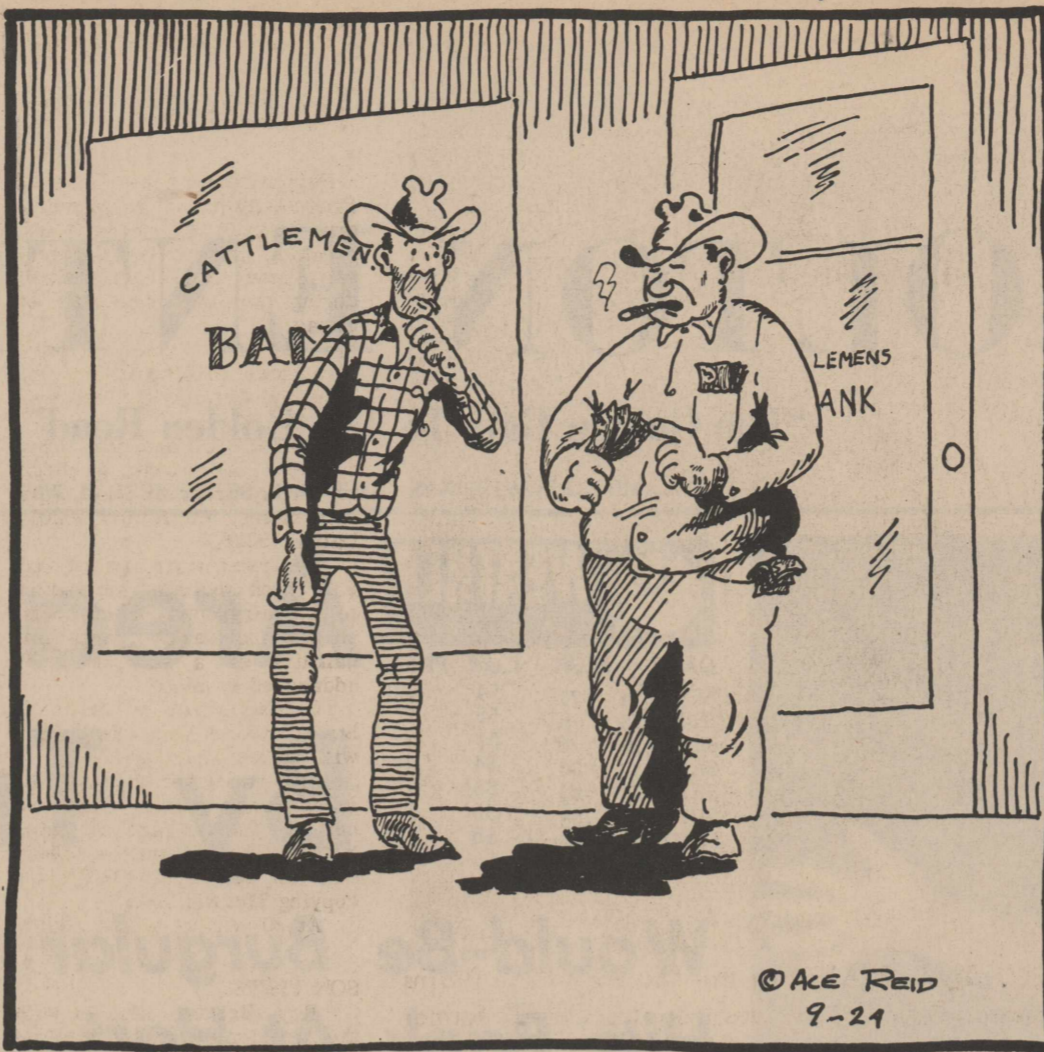
COW POKES

By Ace Reid

Sue's Views

Shutter Bug

BY SUE CANNON



"Now, my cattle lost money . . . but, I sold my feed sacks!"

© Ace Reid
9-21

Boy, what a game to start out taking pictures!

Did I ever have a time remembering I was down on that football field to get pictures for the paper during the Hereford-Olton game last Friday.

I never had so much fun! My son who is in high school and plays football on the freshman team was out there to give me a few pointers on what was going on and to learn to take pictures.

Well, I got so enthused with the game, I forgot to let him get any pictures in the first half so I told him he could take some during the last half, since I had quite a few anyway.

Who could have known that the game was going to be such a thriller during the last half?

Man, I wouldn't have let go of that camera for a minute -- except to yell for those Mustangs.

Right before the last run by Steve Spain for that touchdown, I overheard one of the boys say, "Coach, if we just had five more minutes, I KNOW we could beat them!"

Before I thought, I piped up, "You're going to beat them anyway!"

And about that time, it all happened!

Being new at the job and forgetting what I was supposed

to be doing, I just went to yelling 'like the rest of the Olton fans for him to GO!

By the time I realized, I had a camera in my hands and should have been down there at the goal post waiting on a picture of that final touchdown. -- It was too late, Spain was already there ahead of me.

But Olton fans will have a permanent picture of that run in their memories for a long time to come, if they were as thrilled as I was.

Maybe a photographer I'll never make, but a Mustang fan I'll always be . . . whether they are winning or losing, it's just more exciting to win.

The next day, I felt like I'd been run over by all those Mustangs!

I got more exercise Friday night (trying to stay up with that bunch and to stay down so I could get some good shots) than I'd had in the past five years!

My legs just wouldn't do what they were supposed to Saturday and Sunday, they were so sore!

But I just got one more thing to say . . .

I'm ready for next Friday night. In fact, I'm looking forward to it. Down there on the field is a whole lot better than a seat on the 50 yard line!

WRECK

Continued from Page 1

on the afternoon of the mishap. Driver of the truck, Clifford Morris Waldon, 33, of Hereford, escaped injury.

Investigating Highway Patrolman Bill Angel said the car, driven south on U. S. 385 by Mrs. Foster, was crossing a marked intersection when it was struck by the west-bound truck.

Mrs. Foster was thrown 28 feet from her vehicle by the impact, according to Angel.

Angel said the Foster car was demolished in the crash and that extensive damage was done to the truck.

FASHION PARTY

Mrs. Virgle Gray conducted a Fashion Party Saturday afternoon in the home of Mrs. Don Lawson. Guests were Mrs. Walter Gardner and Jeannie, Mrs. Jerry Smith, Mrs. Sammie Thomas, Mrs. Ollie Ross, Mrs. Nita Criswell, Mrs. O. L. Scheller, Mrs. Bill Lunsford, Mrs. Leroyce Kersh, and Mrs. June Reeves. Cakes, coffee and cookies were served.

CORRECTION

A correction has been made in the announced time of the PTA coffees for junior high and high school.

Junior High coffee will be at 9:30 a. m. Monday. High School will be 9:30 Tuesday morning.

SUNDAY GUESTS

Mr. and Mrs. E. S. Huckabee were luncheon guests Sunday of their son and family, Mr. and Mrs. Bud Huckabee, Stan, Steve and Jimmie. The three young men will attend Texas Tech the fall semester.

BROTHER VISITS

Mr. and Mrs. Oscar Martin of Elk City, Okla. are visiting this week with her brother, Raymond Lyons and sister, Mrs. John Campbell.

BITTEN BY SNAKE

Miss Ann Warren was bitten by a snake about noon Sunday as she was opening the cellar door. Dr. O. H. Jones examined the snake and said it was of a non-poisonous variety. He treated the injured hand and gave Miss Warren a tetanus shot.

RETURN HOME

Mr. and Mrs. Z. D. Miller and Ann returned last week from a trip where they visited their son and daughter-in-law, Mr. and Mrs. Gerald Warren, their daughter and son-in-law, Mr. and Mrs. Bill Culver, and their son and daughter-in-law, Mr. and Mrs. Elbert Warren. The Millers also fished at Buffalo Lake.

VISITING RELATIVES

Mr. and Mrs. H. M. Langford left last week for Plano where they will visit Mr. and Mrs. Arno Hall. They will also visit Mrs. Langford's sister and husband, Mr. and Mrs. Henry Franbrough of Clifton. The Langfords will be guests of other relatives at Breckenridge.

Here in the Southwest all 5000 of us are at YOUR service — personally!

Time for an extension telephone

DESK PHONE
in the family room

WALL COMPACT
wherever you want the newest

SPACESAVER® PHONE
wherever space is important

WALL PHONE
in your kitchen

STARLITE®
in teen-ager's bedroom

COLOR
in your guest rooms

This modern essential now costs so little

Live modern. You've wanted additional phones a long time. Don't deny yourself. Cost so little, just a few cents a day. Choose from many, including the new, beautifully designed WALL COMPACT, half the area of a standard size wall telephone. Decorator colors, too, to harmonize with every room. Ask any telephone company employee, or call the telephone company Business Office, because we work with you and for you. Do it today . . . now's the time!

GENERAL TELEPHONE
A Member of the GT&E Family of Companies

Happiness Is . . .



You'll find your pigs like Purina Chows, too!

Baby Pig Chow, Pig Startena, Hog Chow

For Your Show Rations ---

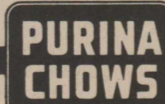
- *Omolene And Show Chow For Calves And Lambs
- *Dried Molasses And Other High Quality Ingredients For Your Mixes
- *Check-R-Mix Service

OLTON FARM SUPPLY

Phone 285-2404

Don Spain, Owner

Olton, Texas



Youngsters Perform Play For Parents

Culminating into an evening's entertainment in the form of a play was the summer work of three young people, Bryan, Brynea and Bradley, Allcorn, named "The Group".

They met each Monday afternoon to study drawing, painting and modeling with Ann Tinkle, local artist. The month of August was spent in writing and producing two short one-act plays and three pantomimes.

The evening's entertainment, in the home of Mr. and Mrs. Archie Tinkle, was a surprise to the parents of "The Group", Mr. and Mrs. R. V. Allcorn and Mrs. C. S. Silcott. Lisa Duncan was a guest.

"Strictly a Family Affair" and "I Remember Mama" with one pantomime by each member of "The Group" turned out to be a real fun performance.

Bryan played the part of Bob, Brynea as Sarah and a very lively ghost was played by Bradley.

Other activities for the youngsters this summer included active participation in Little League baseball for eleven year old Bryan; Girl Scout camp and music for nine year old Brynea and summer art classes with Mrs. Laura Bryan, local art teacher, for seven year old Bradley.

TO PENNSYLVANIA
Mrs. Wauline Little of Plainview and Mrs. LeRoy Powers of Dimmitt are now on a trip to Donavon, Pa. to visit relatives. They will return via Cincinnati, Ohio to visit Mrs. Little's brother, Rev. Randall Ball and family of that city.

Membership Drive Set To Begin Monday Night

Approximately 70 workers are busy making preparations this week for the annual Plainview Community Concerts membership campaign which is scheduled to begin Monday.

The week-long drive will open Monday night with a dinner honoring all Plainview and area campaign workers and the New York representative of Community Concerts who will assist in conducting the drive.

Campaign headquarters will be in the Reddy Room of Southwestern Public Service Building in Plainview.

Highlight attraction for the 1967-68 season will be Fred Waring and the Pennsylvanians, making a return appearance following the sell-out campaign last year.

Other artists already booked include The Chicago Little Symphony and the Vienna Academy Chorus. At least one other attraction will be booked following the campaign which ends Saturday, Sept. 30.

Mrs. J. B. Wheeler of Plainview is membership chairman. She urges area members to obtain their renewed membership or new memberships, as the case may be, as soon as possible during the campaign week since a sell-out of Plainview High School Auditorium is again expected and memberships may only be obtained during the campaign.

A number of Olton residents are members. Those interested should contact Mrs. Owen Norfleet, 285-2472, who is heading the campaign here.

High School Principal To Appear In Periodical

High School Principal Joe Turner has been selected to appear in the 1967 edition of the soft-cover annual periodical "Outstanding Personalities of the South."

Publisher's announcement this week said the honor was extended to leading figures in politics, religion, sports, education, business, and farming who "because of past achievements and service to their community, state, and/or nation, are recognized as outstanding personalities of the South."

Turner was a basketball, baseball, football and track coach here for eight years before becoming principal in 1960.

He received a BS degree in business administration from Texas Wesleyan College in Fort Worth where he was a star football player for four years. He was named team captain during his senior year.

He went on to earn his mas-

ters degree from Texas Christian University.

His almost continuous association with education was interrupted only briefly as he served in the U. S. Navy from 1942 to 1945.

Turner began his long and successful coaching career as assistant football coach and head basketball coach at Olney in 1946.

He went from there to Nacoma as head football and basketball coach from 1947-49.

Tahoka was the next stop where he served as sports director the next school year.

The Weatherford native finally came to head Olton's sports program in 1952 after a year in Austin in the insurance business.

During his term as head coach here, he saw the school grow from an A to a AA classification, his football team win four district championships, and his baseball team take two regional honors.



FIELD DAY SPEAKER at the Thursday High Plains Research Foundation was Douglas Owen, former Oltonite, son of Mr. and Mrs. C. M. Owen.

Happy Birthday

SEPTEMBER 21
Barbara Algaki
James Brown
Preston Sampler

SEPTEMBER 22
Timothy Franks
Karen McGill
Betty Stovall
Pamela Sue Galloway
Mrs. H. E. Graham

SEPTEMBER 23
Melvin Berry
Leona Cooper
H. M. Langford
J. G. Estes

SEPTEMBER 24
Michael Craig Brown
Norma McClain
Dale Parsons
Joe Roberts

SEPTEMBER 25
Beverly Jan Spain

SEPTEMBER 26
Evangelyn Coleman
Gwen McClain
J. L. Snider
Gene Trotter

SEPTEMBER 27
Bradley Allcorn
Neil Smith

LUBBOCK VISITORS
Mary Clifford and Nora Talkington of Anton were visitors in the Clint Beadle home at Lubbock last Saturday.

SISTER VISITS
Visiting in the home of Mr. and Mrs. W. R. Bean last week was his sister, Mrs. Max Wilson of Tahoka.

NEPHEW VISITS
Bill Roberson, nephew of Mrs. W. R. Bean, who is attending West Texas State in Canyon, visited in the Bean home last weekend.

SUNDAY GUESTS
Mr. and Mrs. Jerry Bean and family of Portales, N. M. visited in the home of his parents, Mr. and Mrs. W. R. Bean Sunday.

VISIT PARENTS
Mr. and Mrs. James Carson and daughters, Christie and Angela, of Hugoton, Kans. visited Saturday and Sunday with their parents and grandparents, Mr. and Mrs. Raymon Carson and Mr. and Mrs. Tom Stansell.

SUPPER GUESTS
Mr. and Mrs. D. B. Adair were supper guests Sunday evening of their son and family, Mr. and Mrs. James Adair, Cynthia and Steve of Littlefield.

ATTEND PARTY
Mr. and Mrs. R. W. Schaefer attended a birthday party Tuesday evening, Sept. 12, honoring their granddaughter, Wanda Stephan on her 11th birthday. The party was given in the home of Wanda's parents, Mr. and Mrs. Martin Stephan of Lockney.

VISIT DAUGHTER
Mr. and Mrs. Virgle Gray were in Earth Sunday visiting their daughter and family, Mr. and Mrs. Thomas Lively, Terry Lynn, Teresa and Todd.

VISIT SISTER
Mr. and Mrs. Bill Lunsford, Johnny, Teresa and Rocky visited recently in Hereford with Mrs. Lunsford's sister and brother-in-law, Mr. and Mrs. Chester West, formerly of Cheyenne, Okla.

Herb Albert, Tijuana Brass To Be At State Fair

Herb Albert and the Tijuana Brass—the hot and happy sound that is making records and breaking records—will present two shows in the Cotton Bowl during the 1967 State Fair of Texas.

The two identical performances will be at 8 p. m. Tuesday, Oct. 10, and Wednesday, Oct. 11.

Mail orders are now being accepted by sending a check or money order to State Fair Attractions, P. O. Box 26268, Dallas 75226.

Reserved seats are \$4 and \$3, which includes admission to the fairgrounds. Each order should include 25 cents for handling or a stamped self-addressed envelope.

Overall dates of the 1967 State Fair of Texas in Dallas will be Oct. 7 through 22.

The superstar and his Tijuana Brass currently are the hottest musical acts in show business and the most imitated, with an estimated 400 groups copying The Big Sound.

At 30, Albert has a wealth

of musical experience behind him. He studied horn with several teachers, including the first trumpeter of the San Francisco Orchestra. He spent two years in the Army as a trumpeter-bugler, mixing concert work with the blowing of "Taps" at as many as 18 funerals a day.

He does not pretend to play Mariachi music, but rather he incorporates the feeling of the bull ring in his arrangements. The Tijuana Brass music transcends age barriers, counting fans among the teeny boppers, the Hashbury group and the Lawrence Welk crowd.

DINNER GUESTS

Randy Ball of Olton and Mr. and Mrs. J. Paul Waggoner of Sunnyside were Sunday dinner guests in the home of Mr. and Mrs. Bob Ball of Olton. Mr. and Mrs. Garner Ball and daughter Deborah also visited in the afternoon.

ON LINKLETTER SHOW

Mrs. Orrian Hackler received word that her daughter-in-law, Mrs. Max (Monda) Wozencraft, will be a guest interviewer on the Art Linkletter Houseparty Monday, Sept. 25. Mrs. Wozencraft will interview guest star, Carol Burnett.

VISIT SISTER

Roland and Howard Livesay spent Saturday in Hereford visiting their sister and family, Mr. and Mrs. Tommy Sparkman, Kevin and Kirk.

Wayland Releases Enrollment Totals

Wayland College enrollment totals 759, said Mrs. Audrey Boles, registrar.

The enrollment figure is substantially above that of the corresponding time in the 1966 fall semester and is second only to the record 780 enrollment in the fall of 1965.

The registrar said her office had not completed a breakdown of registration figures, but she expressed the opinion that retention of upperclassmen in this semester's enrollment accounted for most of the increase.

Upperclassmen retention last year hit a new high and Wayland administrators say they are gratified that the trend continued.

Wayland classes began Sept.

RETURNS TO COLLEGE

Maxine Schaefer left last week for Seward, Neb. where she is attending Concordia Teacher's College.

ATTEND FUNERAL

Mr. and Mrs. Gene Wilson left Tuesday for Athens to attend the funeral of Mrs. Wilson's brother-in-law, Pat Malcolm, who passed away Monday night following the second heart attack he had suffered within a few days. Mr. and Mrs. Wilson were accompanied by Mrs. Wilson's sister and family, Mr. and Mrs. Garland Peek and daughter, Melodie, of New Home.

7, earlier than other colleges in the region will start classroom work and earliest Wayland has ever opened. Wayland will complete the fall semester before the Christmas and New Year's holidays.

A microterm Jan. 8 - Jan. 26 next year will offer a maximum of four hours credit in an intensive daily class schedule before the spring semester starts.

RETURN HOME

Mr. and Mrs. G. V. Estes returned last week from Marlin where they had been receiving medical treatment.

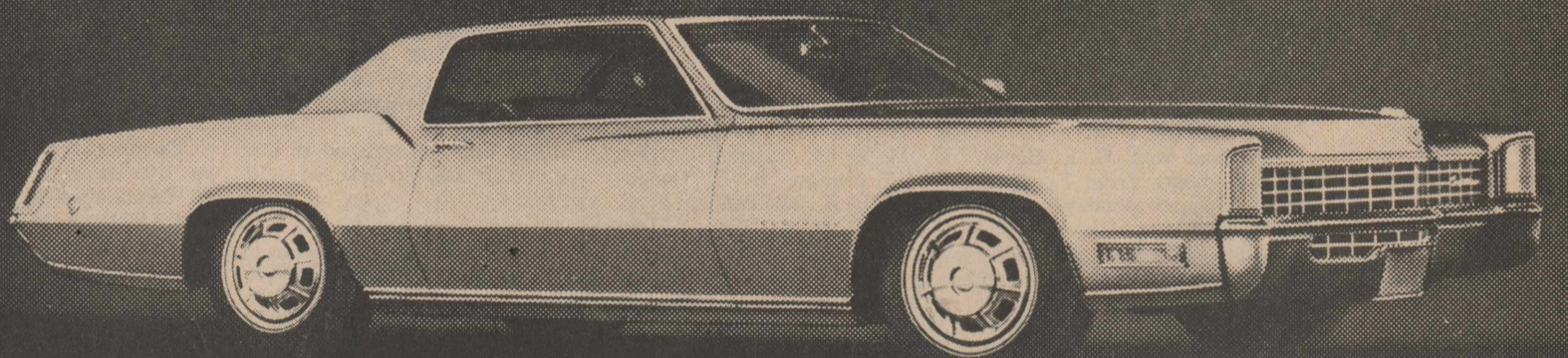
HOME FROM HOSPITAL

Mrs. Pearl Hair has returned to her home at Davidson, Okla. after having been dismissed from a hospital in Wichita Falls where she received treatment following a heart attack.

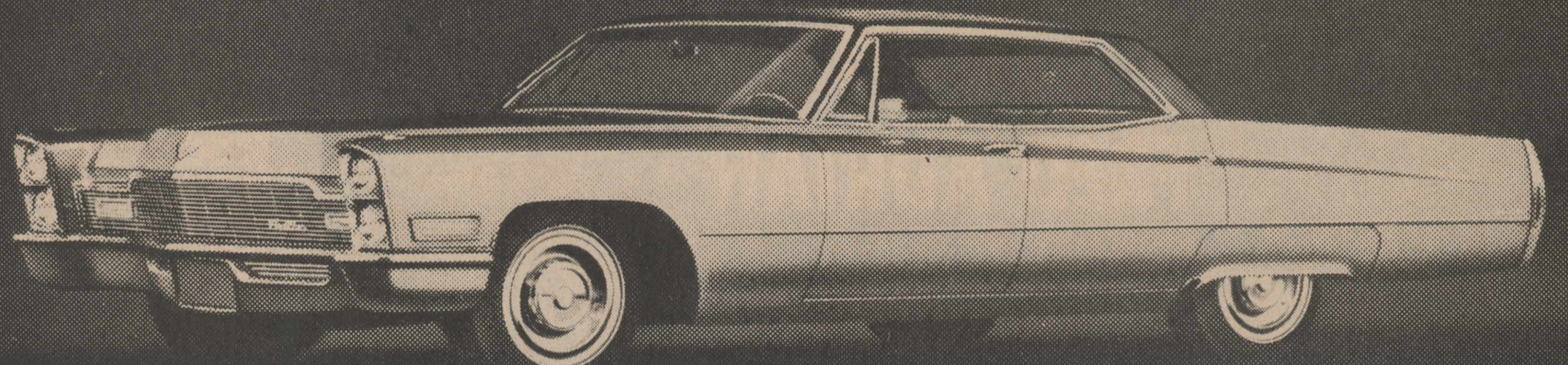
SUNDAY GUESTS

Visiting Sunday in the home of Mr. and Mrs. L. L. LaDuke were Mrs. LaDuke's father, R. I. Walsworth of O'Brien, Mrs. LaDuke's nephew and family, Mr. and Mrs. D. R. Banner and family of Littlefield. The LaDuke's daughters and families, Mr. and Mrs. Elmo Hall and children of Petersburg and Mrs. Billy Gene Wilkinson, Lynn, Judy and Patti of Lubbock and Mrs. Feral Pickrell.

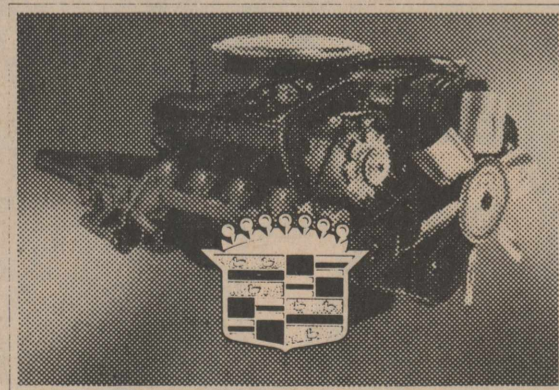
Cadillac presents elegance in action!



Shown above is the Eldorado. Below, the popular Hardtop Sedan. Cadillac Motor Car Division.



And the "inside story" for 1968 starts with the biggest, smoothest V-8 engine ever put into a production motor car.



Brilliant new styling • Dramatic new interiors • Totally new instrument panel • Concealed windshield wipers • Improved variable ratio power steering • New disc brakes available • Wide choice of eleven exciting new body styles.

Now, enter a new era of luxury car performance. Cadillac's new 472 V-8 has the greatest torque, or usable power, of any passenger car engine and the newest combination of engine components since Cadillac pioneered the V-8 fifty-three years

ago. You will notice a brilliant improvement in passing performance that in no way compromises the reserve of strength for Cadillac's usual power conveniences.

You will also be impressed with its amazing quiet—so remarkable that only its responsiveness reminds you that a great new engine lies under the hood.

Cadillac for 1968 provides, in addition, its well-proved triple braking system with finned drums to deliver smooth, straight stopping power. Front disc brakes are

available for those who prefer the further refinement of an advanced disc-and-drum combination, and this year they're standard on Eldorado. You may also choose a greatly improved air conditioning system that moves more air more quietly.

Whether your preference is for one of the more traditional models—or the classic beauty of the Eldorado—come in soon and discover new elegance and excitement in luxury motoring!



THE NEW 1968 CADILLACS ARE NOW ON DISPLAY AT YOUR AUTHORIZED CADILLAC DEALERS.

JONES MOTOR COMPANY

HALL AVENUE LITTLEFIELD, TEXAS

LEGAL NOTICE

STATEMENT OF OWNERSHIP, MANAGEMENT AND CIRCULATION
(Act of October 23, 1962: Section 4369, Title 39, United States Code)

1. Date of Filing -- 9-21-67.
2. Title of Publication--The Olton Enterprise.
3. Frequency of Issue--Each Thursday.
4. Location of Known office of publication--Main Street Olton, Texas 79064.
5. Location of the Headquarters or General Business Offices of the Publishers--Main Street Olton, Texas 79064.
6. Names and Addresses of Publisher, Editor, and Managing Editor--Sue Cannon, Drawer E, Olton, Texas.
7. Owner (If owned by a corporation, its name and address must be stated and also immediately thereunder the names and addresses of stockholders owning or holding 1 percent or more of total amount of stock. If not owned by a corporation, the names and addresses of the individual owners must be given. If owned by a partnership or other unincorporated firm, its name and address, as well as that of each individual must be given.) --T & T Enterprises, W.B. Turner, partner, Box 72, Littlefield, Texas and O.L. Taylor, partner, 5901 Jacqueline Road, Fort Worth, Texas.
8. Known Bondholders, Mortgagees, and Other Security Holders Owning or Holding 1 Percent Or More Of Total Amount Of Bonds, Mortgages Or Other Securities--None.
9. Paragraphs 7 and 8 include, in cases where the stockholder or security holder appears upon the books of the company as trustee or in any other fiduciary relation, the name of the person or corporation for whom such trustee is acting, also the statements in the two paragraphs show the affiant's full knowledge and belief as to the circumstances and conditions under which stockholders and security holders who do not appear upon the books of the company as trustees, hold stock and securities in a capacity other than that of a bonafide owner. Names and addresses of individuals who are stockholders of a corporation which itself is a stockholder or holder of bonds, mortgages or other securities of the publishing corporation have been included in paragraphs 7 and 8 when the interests of such individuals are equivalent to 1 percent or more of the total amount of the stock or securities of the publishing corporation.

Average No. Copies Each Issue During Preceding 12 Months	Copies Single Issue Nearest To Filing Date
1800	1800

10. A. Total No. Copies Printed
B. Paid Circulation
1. To term subscribers by mail, carrier delivery or by other means--
2. Sales through agents, news dealers, or otherwise--
C. Free Distribution (including samples) by mail, carrier delivery, or by other means--
D. Total No. of copies distributed--

Signed Sue Cannon

Womans Page

Birthday Honors C.M. Owen And Grandson

Sunday, Sept. 17, Mr. C. M. Owen, 87, and his grandson Stephen, 10, were honored with a party given in the C. M. Owen home. The date of their birth is September 20. The party was planned by the children and grandchildren of Mr. and Mrs. C. M. Owen.

Refreshments were coffee, spiced tea, and the traditional birthday cake. Mrs. Deryl Machen poured the tea and Mrs. Douglas Owen served the cake. Attending were Mr. and Mrs. C. M. Owen, their son Douglas, his wife, Wanda and their children, Stephen, Timothy and Amy of Plainview; the oldest daughter, Mrs. Margaret Burrus, her

children, Edd Lynn Burrus and his wife Kathleen, Olton, Deryl Machen and his wife, the former Naomi Ann Burrus, their children, Wade, Vandi and Ky Paul, Brownfield; and Charley T. Burrus and his wife Tommy, Lubbock; also of Lubbock Mrs. L. L. Holyfield, the former Naomi Owen whose husband was unable to attend because of poor health; and D. M. Granbery and his wife, the former Charley Fay Owen, Kress, their two children live in Denver, Colorado.

The Owens' granddaughter and great grandson, Mrs. Ellen Gregory and son Keith of Dimmitt, were also present. Mrs.

Gregory is the daughter of the Owens' youngest daughter, Ruth, Mrs. E. C. Jones of Las Animas, Colo. Friends who called were Mr. and Mrs. Johnnie Schenk of Hale Center; Roy Burrus of Plainview; Mrs. Annie Young, Mrs. C. S. Silcott and Mr. and Mrs. Charlie Jones, all of Olton.

Flubbers Host Golf Luncheon

Olton Women's Golf Association met Tuesday noon, Flubbers entertained the Dubbers with a luncheon.

Mrs. J. L. Snider supplied arrangements of dahlias for the table decorations.

Mrs. Russell Strain was Surprise Day winner. Low putt odd holes was won by Helen Locke with 15 putts. Mabel Mathis was second in this category. Mrs. Bill Weaver won on blind hole.

Guests at the luncheon were Mrs. Leo Ross Bryant, Red Simmons and Sue Cannon.

Garden Club Sets Fall Show

Olton Garden Club met Thursday afternoon in the Women's Clubhouse in regular meeting.

Mrs. George Bohner presented a program on horticulture.

Plans were made for the fall flower show to be held Oct. 3 at the Clubhouse.

Hostesses were Mrs. C. W. Phillips and Mrs. G. E. Brown. Members attending were Mrs. B. C. Cooner, Jack Snider, C. M. Owen, Raymon Carson, A. D. Melton, B. C. Daugherty, O. E. LaFrance, R. H. Campbell, H. G. Walker, John Lambright, Walter Schreier, George Bohner, Athol Light, Preston Sampler, Lola Lee Mills, Stella Cowart, and Jack Allcorn.

Bykotas Plan Style Show

Bykota Study Club met Sept. 12 in the home of Mrs. Jim Brown. The meeting was a president's tea.

Mrs. Gene Reynolds was elected historian to fill the vacancy left by the moving of Mrs. Bob Harber.

The spring style show sponsored by the Club was discussed. Olton merchants will be featured in the show. Mrs. Fred Pendergrass and Mrs. Landon Smith were elected chairmen of the project.

Members attending were Mrs. Mmes. Andy Stroebel, Bobby Copeland, Fred Pendergrass, Max Malone, Joe Hall, J. P. Nafziger, Dan Quigley, Billy Smith and Landon Smith.

Next meeting will be Sept. 26 with Mrs. Landon Smith as hostess. Claude Burnett, chairman of KOKE (Keep Olton Klean Everywhere), will be the speaker.

Crops of Tops Meets Tuesday

Farmer's Crops of TOPS met Sept. 12 at 8 p. m. in the Women's Clubhouse.

There was no gain - no loss reported since the last meeting so "the little fat lady" and "the little red pig" found no homes.

Kathy Hyman and Karen Thomas were guests.

TOPS met Tuesday night in the Women's Clubhouse with Mrs. Alfred Allen presiding. Mrs. Joe Chester was recognized for the most weight loss for the week.

Mrs. Earl Douglas was given the "little red pig" for a weight gain.

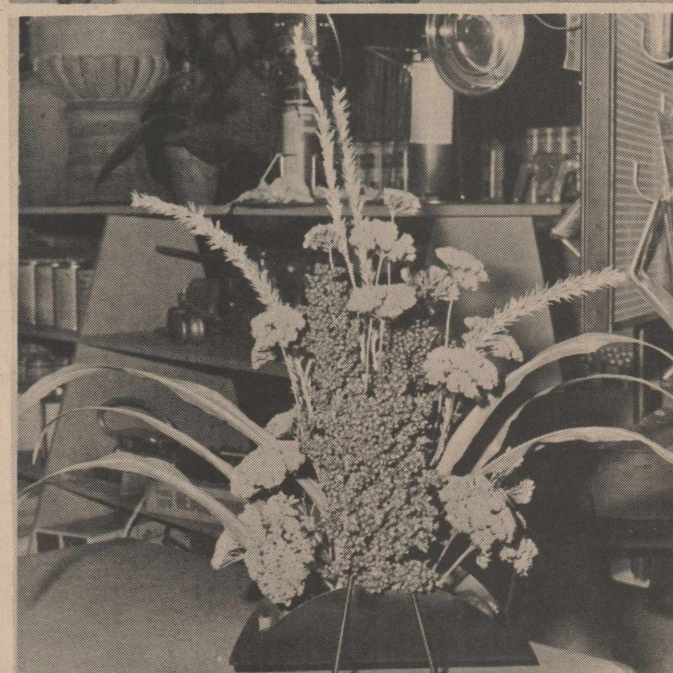
Golden Agers Meet Thursday

The Louisa Dennis Circle of W. S. C. S. of the First Methodist Church will sponsor the Golden Agers next Thursday, Sept. 28.

The meeting will be in the American Legion Hut at 2:30 p. m.

WEEKEND GUESTS

Mr. and Mrs. Woodrow Campbell of Lone Wolf, Okla. spent last weekend in the John Campbell home.



TRI-STATE FAIR WINNERS--Local garden club members, Mrs. A. D. Melton and Mrs. John Lambright entered the tri-state fair in the ninth annual sorghum bouquet contest in the two divisions, natural color and tinted. Mrs. Lam-



bright's entries, on the left, won first place in the tinted division and third in natural. Mrs. Melton's, on the right, won second in tinted and fifth in natural.

Recipe Of The Week

Ray Murphy, local high school teacher, shares a favorite recipe with us this week. Murphy, a native of Dimmitt, has lived in Olton since the fall of 1962. He teaches Spanish and English IV.

Murphy claims no special hobbies but is an avid reader. He enjoys music and is an accomplished singer.

He loves to travel and, while in the service, saw much of Europe. He studied in Mexico during the summer of 1966 and spent part of this summer traveling in Mexico.

Murphy attends the Main Street Church of Christ.

When sufficiently cooled the chicken should be skinned and the meat removed from the bones. Also remove all gristle. Tear the flesh into small pieces. Mix the white and dark meats. Divide into 18 equal portions.

Fry 18 tortillas only until the sides separate. The tortillas must be soft-fried.

Wrap the 18 servings of chicken in the tortillas. Take care to turn the loose ends of the tortillas the same direction. (Place the loose flap next to the sauce pan.)

Cover the enchiladas first with the sauce. Then spread 12 ounces grated Cheddar.

Bake 25 minutes in a moderate oven (325 deg.).

For even better flavor, top each serving with sour cream. Jalapenos stuffed with Cheddar and pimiento make an excellent relish.

NIECE VISITS

Mr. and Mrs. G. E. Brown had as guests from Freeport Sunday and Monday Mrs. Brown's niece and family, Mr. and Mrs. Billy Mills and daughter Barbara who is attending Texas Tech as a freshman. The Mills rushed back to Freeport because of the hurricane.

ENCHILADAS CON POLLO A LA SUIZA

(Swiss style Chicken Enchiladas)

Preboil a good size hen or tender fryer seasoned with salt and pepper.

SAUCE:

mix
1 lb. velveta
1 small can Tomato Sauce
1 small can condensed milk
Steam in double boiler; stir until creamy or until cheese is melted.

Mrs. Gray Honored On Eighty-Fourth Birthday

Monday evening, Sept. 18, Mr. and Mrs. Virgle Gray gave a birthday dinner honoring their mother, Mrs. H. V. Gray, 84, and their grandson Todd Lively, 2. The dinner was followed by cake and ice cream.

The celebration was attended by Mr. and Mrs. Floyd Gray, Olton, Mr. and Mrs. Doyle Eubanks, Shauna and Stephen, Muleshoe; Mrs. Doris Watt, Mark and Timothy of Olton; Mrs. Thomas Lively, Terry,

Teresa, and Todd of Earth, Mrs. T. J. Smith, Gregg and Jackie and Mr. and Mrs. A. D. Adams, Mrs. H. V. Gray and the host and hostess, Mr. and Mrs. Virgle Gray.

SUNDAY GUESTS

Mr. and Mrs. Don Lawson, Ricky, Brenda, Pamela and Gubber visited Sunday afternoon with Mr. and Mrs. Jerry Smith.

Everything But The Kitchen Sink

BY MOZELLE TROTTER

Goodness, aren't you glad we live in a part of wonderful Texas that doesn't have to worry about Hurricane Beulah? We get a little fretful when the sand blows but I'll take a sandstorm anyway! You might call me prejudiced but I don't know of many faults this little part of the country has and, in my opinion, Olton's the nicest town in the whole United States. (Despite the plugs you see scattered through the paper for the Chamber of Commerce, they did NOT put me up to this).

Came across something you might like to know - a piece of paper found in Japan a few years ago was translated with the date identifying it as being 80 years old. The paper said, "Coffee is amedicaldrink, and when one drinks it, the heat of the stomach increases. It is good for tuberculosis, rheumatism, beri-beri, toothache - in fact, coffee will heal ten thousand diseases. It must not, however, be drunk when it is raining heavily, or in time of thunder or lightning." Knew I liked coffee for a good reason!

Found this suggestion in an exchange newspaper - From a 1919 magazine, "A pinch of salt on the tongue, followed 10 minutes later by a drink of cold water will often cure a headache."

In case you caught a cold from jumping up and down so hard at last week's ball game and still have it despite all today's modern medicines here's

a 1912 cure for a cold: "Put 2 heaping tablespoon of oatmeal in a basin; cover well with cold water and allow to stand 15 minutes. Pour over this 2 1/2 cups of boiling water, stir, and pour the liquid into a saucepan, keeping back the oatmeal sediment. Boil slowly for 10 minutes, stirring all the time. Add a pinch of salt, a tiny pinch of ground ginger and a tablespoon of cream. Drink very hot." Ugh! as for me, I'll just keep the cold!

We get lots of releases from the Extension service, from different companies, from Mrs. Phillips, the county home demonstration agent, and other places. Many of the hints and recipes are very good. The boss lady and I drooled over this recipe from Betty Crocker:

APPLE CHIP BRUNCH CAKE
1/4 c. sugar
1 egg
3/4 c. milk
2 T. salad oil or shortening
2 c. Bisquick
1 c. finely chopped pared apples
Heat oven to 400 degrees. Grease layer pan (9"). Mix all ingredients except apples and Topping. Beat vigorously 30 seconds. Fold in apples. Spread in prepared pan. Sprinkle with Topping. Bake 20 to 25 minutes.
TOPPING
Mix with fork 1/4 cup sugar, 2 tablespoons Bisquick, 2 teaspoons cinnamon and 2 tablespoons soft butter until crumbly.

New Century Club Hears Israeli-Arab Symposium

New Century Study Club met Wednesday afternoon in the Women's Clubhouse in regular meeting. Mrs. R. A. Burgess was hostess for the meeting.

Mmes. Fred Thompson, W. B. Dickenson, Jr., Wilton Bodkin and M. C. Church presented an Israeli-Arab symposium. Refreshments were served to one guest, Mrs. Kenneth Ray, and members Mmes. Dickenson, Bodkin, Thompson,

Churn, C. W. Leathers, Don Spain, Owen Jones, Elmer McGill, J. L. Snider, Jess Parker, Grady Sharp, Dewayne Wilks, A. J. Spain, Ed Thompson, O. H. Jones and the hostess R. A. Burgess.

Allcorn Baby Honored Friday

Troy Don Allcorn, infant son of Mr. and Mrs. Gerald Allcorn, was honored with a lullaby coffee in the home of Mrs. Royce Collins, Friday morning.

The serving table was laid with a white cloth with a "baby tree" centerpiece.

Refreshments of coffee cake and quick breads, spiced tea and coffee were served.

Hostess gifts were a play pen car seat and silver diaper pins.

Olton H.D. Club Honors Members

Members of the Olton Home Demonstration Club gave a surprise birthday coffee in honor of four members last Tuesday. The coffee was held in the home of Mrs. Leon May.

Members honored were Mmes. Ira Bridges, Z. D. Miller, Jack Kirby and Alfred Allen.

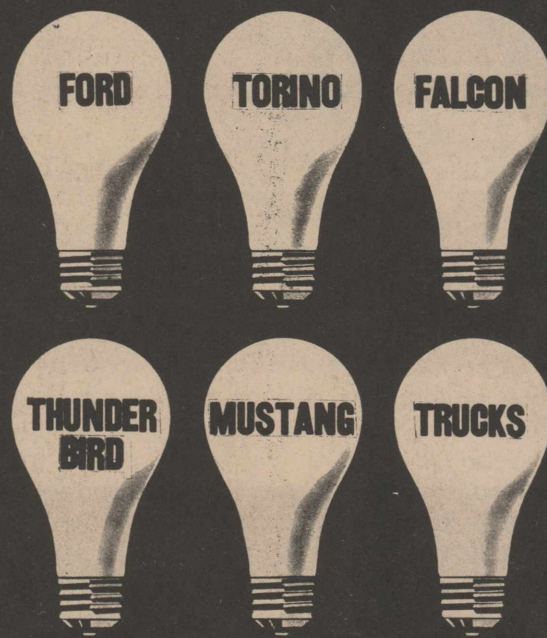
HAPPY NEW YEAR FROM FRED ADRIAN

YES, FRIDAY, SEPT. 22 BEGINS 1968. ANOTHER YEAR OF BETTER IDEAS FROM FORD. COME IN FRIDAY AND SEE A SAMPLE OF WHAT FORD HAS IN STORE FOR YOU FOR 1968. DUE TO THE UNJUSTIFIED STRIKE AGAINST FORD MOTOR CO., WE REGRET THAT WE WILL BE UNABLE TO HAVE THE SHOWING THAT WE HAD PLANNED. AT A LATER DATE TO BE ANNOUNCED, WE PLAN A SECOND AND MUCH BETTER AND BIGGER SHOWING OF OUR BETTER IDEAS 68 LINE OF CARS AND TRUCKS.

SINCERELY,

Fred Adrian

P.S. GIFTS AND REFRESHMENTS FOR EVERYONE FRIDAY, SEPT. 22, 1967



ADRIAN FORD

OLTON, TEXAS

AT THE CREST OF FASHION . . . Ban-Lon® colorful coordinates of Du Pont nylon, by Donovan-Galvani, for carefree, vibrant living! Double knit two-way s-t-r-e-t-c-h pants designed for flattering fit . . . not skintight but ladylike! In a wheel of great colors . . . shades of brick, brass and moss plus mosaic blue, grape, cranberry, black. Top it with a handscreened Ban-Lon® overblouse (4 exclusive patterns). Du Pont nylon makes upkeep cares simplicity itself.

Donovan-Galvani OF DALLAS

Pants and tops each \$14.98

KELLEY'S

Olton Garden Club Show Slated Oct. 3 In Clubhouse

Olton Garden Club will present the 1967 Flower Show "A SALUTE TO OLTON" at the Olton Women's Club House Oct. 3 according to Mrs. Pearl Schreier, chairman of the show.

RULES AND REGULATIONS concerning the show are as follows:

(1) Entries are open to all amateurs. Only one entry in a class per person. (2) Entries will be received Tuesday from 8:30 until 11:30 on Oct. 3. They must remain in place until 5:00 p. m. and must be removed by 6 p. m. (3) Fresh foliage and flowers in arrangement classes must be garden or field grown.

(4) No conservation material, nor painted or dyed plant material may be used. (5) Accessories may be used. (6) All entries in Horticulture classes except potted plants, and cacti and succulents must be grown outdoors by exhibitors, and should be labeled as to variety, if possible. (7) Judging will begin at 12:15 p. m. till 6 Oct. 3. Standard system of judging will be used, with blue, red, and white ribbons presented. The decision of judges will be final. (8) No one except the judges, clerks, and show officials will be allowed in the building while judging is going on. (9) Late entries will be displayed, but not judged.

AWARDS will be given in classes as listed below:

A Tri-Color in Arrangement classes 1,2,4,6,9,10,11,12 (all fresh materials) An Award of Distinction in classes 3,5,7,8 - A special Creativity Award in class 13 - An Award of Merit to the highest Blue Ribbon winner in Horticulture - A Sweepstakes ribbon will be presented in each Division.

DIVISION I HORTICULTURE

Horticulture entries will be judged according to variety and color. Example: Peace Rose (a), one specimen bloom, (b), 3 specimen blooms. -Extra consideration will be given to all specimens, as well as individual varieties in collections that are correctly, legibly and attractively labeled. Classes will be established for all worthy entries - Be sure to classify all Horticulture specimens on your entry card before bringing to show. (If you need assistance in classifying, call Garden Club Members before show date). - Containers for specimens to be furnished by exhibitor.

Section A - Roses
Section B - Dahlias
Section C - Chrysanthemums
Section D - Any Annual
Section E - Any Perennial
Section F - Any new plant from your garden
Section G - Shrubs (a) Berried (specimens not to exceed 30") (b) Flowering (not to exceed 30")
Section H - Potted Plants (a)

Salad Supper Launches Year

The Woman's Society of Christian Service and the Wesleyan Service Guild met Tuesday evening in Fellowship Hall of the First Methodist Church for a salad supper.

Mmes. Aubrey Smyth, Leo Ross Bryant and Ruth Holladay were hostesses for the meeting.

Mrs. Owen Norfleet gave a preview of "Encounter of the Faiths" - one of the studies that the groups will be taking this year.

A skit - "The Case of the Absentee Member" - was presented by Mmes. Bill Collins, Gene Trotter, J. C. Brown, Percy Parsons, A. J. Spain, Earl Robertson, J. L. Snider, Aubrey Smyth and Ruth Holladay.

Mrs. Tomny Nelson gave the devotion. She said that "each of us has been given a talent, it's up to us how we'll use it."

Mrs. Glen Singletary was presented with a life membership pin by the Guild. This is a pin given in acknowledgement that twenty-five dollars was given to missions in recognition of Mrs. Singletary's devotion and service to the women's work of the church.

SEE SIX FLAGS

Mr. and Mrs. Homer Curry, Mr. and Mrs. Jimmie Curry, Cimarron and Cheyenne of Plainview, Mrs. J. A. Hudgens, and Mr. and Mrs. Ervin Shugart of Canyon went sight seeing last week to Six Flags. On their return Mr. and Mrs. Homer Curry visited Curry's sister and husband, Mr. and Mrs. Harvey Testerman of Lewisville, Tex. Mr. Testerman is ill.

ATTEND FUNERAL

Mr. and Mrs. Ira Limbocker and their son Clinton of Plainview attended the funeral last week of Limbocker's uncle, Berry Limbocker at Blue Ball, Ark.

flowering (b) Foliage (c) Vines Section I (a) succulents (b) cacti

Section J - Vines (a) Flowering (b) Berried (c) Foliage DIVISION II ARTISTIC ARRANGEMENTS "A SALUTE TO OLTON"

PAST:
(1) HOMESTEADERS - an arrangement using nature's wood as a container
(2) PRAIRIE FIRES - an arrangement using analogous colors.

(3) OLD SOD HOME - an arrangement of dried or treated material in a frontier container.

(4) MAVERICK - A vertical arrangement using a single bloom and fresh foliage materials.

PRESENT:
(5) A SALUTE TO COTTON - a corsage using open cotton boles.

(6) A SALUTE TO OLTON SCHOOL - a Triangle arrangement to be used on the teacher's desk.

(7) WAVES OF AMBER GRAIN - an arrangement featuring the Plains grain with filler, no flowers in a basket-type container not to exceed 18" in any direction.

(8) NEW HORIZONS - a plaque featuring dried plant material. Plaque to be hung.
(9) GREEN ACRES - all foliage arrangement, using all fresh plant material.

FUTURE:
(10) GOLDEN GATE TO THE GOLDEN ROAD - a crescent arrangement

(11) SALUTE TO OLTON MUSTANGS - an arrangement using blue and white flowers
(12) ALWAYS A TOWER OF STRENGTH - a church arrangement (all white flowers)

(13) THE SHAPE OF THINGS TO COME - an arrangement, abstract in feeling, arrangers choice of material, but must contain some fresh plant material. Eligible for the Special Creativity Award.

(14) A MIDGET SPACE MAN - a miniature arrangement, not to exceed 5" overall.

Mrs. Allen Leads Program

Olton Home Demonstration Club met Tuesday afternoon with Ann Warren.

Mrs. Alfred Allen presented the program on low calorie meals. Roll Call was "Am I a good shopper or bad?"

Refreshments of ice cream, cookies, coffee and tea were served to Mmes. Lee Simmons, Les Kennedy, Leon May, Dora Carby, Homer Curry, O. T. Crosby, Alfred Allen, Z. D. Miller, Ira Bridges and the hostess, Mrs. Warren and two guests, Mrs. Melvin Souter and Mrs. Bessie Cowart.

Next meeting will be Oct. 3 at 2 p. m. with Mrs. Les Kennedy as hostess.

FISHING TRIP

Mr. and Mrs. Walter Struve are fishing at Lake Stamford this week.



NEW SHRUB FOR CLUBHOUSE LAWN--Mr. and Mrs. Raymond Carson and Mrs. A.D. Melton are admiring a Blue Spruce the Olton Garden Club donated to the Olton Women's Clubhouse lawn.

Northwest H.D. Club Meets At Edmonson

The Northwest Home Demonstration Club met Tuesday at the Edmonson Community Center. Mrs. Sarah Crader presided.

The program on flower arrangement was presented by Mrs. Roy Formway of Plainview, a qualified national flower show judge. In her demonstration, Mrs. Formway talked about and showed six arrangements with the same flowers. She also made dried flower arrangements using gladioli and greenery preserved in glycerin. Other arrangements were made from flowers gathered from Mrs. Formway's yard and garden; one arrangement having been leaves as greenery.

The club voted to sponsor Kathy Bohner as candidate for the Cotton Carnival Queen. The ladies were reminded that the Hale County Home Demonstration Exhibit Fair is to be held at the Hale County Agriculture Center, Sept. 28.

Mrs. Andy Wieber led the group in recreation.

Present were visitors, Mrs. D. L. Jones and Mrs. Larry Witten, and members Mmes. Sarah Crader, Clyde Witten, T. M. Fortenberry, Ivan Snipes, E. C. Freeman, Terry Hardy, Ernest Jones, D. L. Lewis, Ben Kennedy, Dan Kimball, Eldon McEachern, Bill Pinkerton, J. C. Galloway, Tom Witten, Jack Witten, John Stephenson, and Andy Wieber.

SISTER TO PERFORM

Mrs. Carol Zeiss of Burk Burnett, sister of Mrs. J. D. Lively, will play the dulcimer Sunday afternoon, Sept. 24 on the Ted Mack Amateur Hour in the Nationwide contest. Mrs. Zeiss won in the Wichita Falls area and then in the statewide contest.

DINNER GUESTS

Mr. and Mrs. T. J. Smith, Greg and Jacquie were dinner guests Sunday of Mr. and Mrs. Lester O. Kennedy, Mark and Lesley Jeanne.

Sunday School Has Pizza Supper

Mrs. Clyde Vaughn entertained the members of her Sunday School Class with a Pizza Supper in her home Saturday evening.

The table was laid with a red and white checked cloth. Mrs. Vaughn served salad and Brownies as well as Pizza.

Members of the class present were Jan Carson, daughter of Mr. and Mrs. J. L. Carson Jr.; Francine Offield, daughter of Mr. and Mrs. Denver Offield; Betty Long, daughter of Mr. and Mrs. Fred Long; Lucy Gunter, daughter of Mr. and Mrs. W. C. Gunter Jr.; Brenda Ellis, daughter of Mr. and Mrs. James Ellis; Jeanie Gardner, daughter of Mr. and Mrs. W. L. Gardner and Letha Estes, daughter of Mr. and Mrs. Jack Estes.

Tommy Hall, son of Mr. and Mrs. James Hall of Abilene, was a guest. Tommy is attending West Texas State University at Canyon.

Birthday, Anniversary Observed By Bryant Family

Mr. and Mrs. Elmo Bryant and Mark gave a dinner in their home Tuesday evening, Sept. 19, honoring Mrs. Don Bryant on her 75th birthday and Mr. and Mrs. Leo Ross Bryant on their 25th Wedding Anniversary.

The cake was in two tiers with the top smaller layer being

decorated with the word "Mother". The numbers "75" surrounded by pink roses and silver leaves. The second tier had the words "Leo Ross and Lucille 25th Wedding Anniversary" surrounded by identical decorations to the top tier.

Attending the dinner were Mr. and Mrs. Don Bryant, Mr. and Mrs. Leo Ross Bryant, Mr. and Mrs. Leamon Bryant, Mr. and Mrs. Tom McGill, Mr. and Mrs. Dale Chitwood, Joe Dale and Monte, Mr. and Mrs. Mack McGill and Sherilyn, Tanya Bryant of Plainview, and Mr. and Mrs. Elmo Bryant and Mark.

W.M.U. Meet Held At Halfway

A general meeting of the W. M. U. of the Halfway Baptist Church was held at the Church Tuesday to observe a week of prayer and the "Mary Hill Dale State Mission Program."

Mrs. W. D. Hollar of Plainview showed slides on Mission work among the Mexicans along the Rio Grande. The slides were from Mr. and Mrs. Glen Godsey showing their work. They are area missionaries in this region.

After a covered dish luncheon, Mrs. Jones of the Parkdale Baptist Church, Lubbock, told about the Day Clinic in Lubbock and its work.

W. M. U. members present were Mmes. James McCoy, Jim Odum, Eddie Pruitt, Wayne Sistrunk, Prentiss McGee, J. T. Mallow, Foster James, Rollo Harrell, Claude Fargason, Lester Cox, Emmett Palmer, Robert Graham, Winford Smith, Neilan Smith, Henry Allen, Hubert Sistrunk and David Walker.

Several members of the Halfway Baptist Church W. M. U. attended District W. M. U. Clinic in Amarillo Monday. Those making the trip were Mmes. Prentiss McGee, Emmett Palmer, Winford Smith, Neilan Smith, Rollo Harrell, Clyde Harrell and Lester Cox.

SCOUT NEWS

Girl Scout Troop 107 will meet Wednesday, Sept. 27, at 4 p. m. in the American Legion Hut.

Leaders are Dorothy Culwell, Helen Locke and Vicki Cantu.

KITCHEN KORNER

By Lela Gallion

It seems that everyone you talk to has a cold or is getting one and of course I am no exception.

When I was much younger I remember an uncle who was a firm believer in grapefruit juice to keep you from catching cold and he seldom had a cold. It seemed to me at the time that he consumed gallons of it and if you were around him you also got your quota.

Although I have never been very fond of it I do believe I will start drinking it and see if it still works so well.

This getting to be a pie and cookie baking time again.

Sewing Club Meets Friday

The Sewing Club met Friday afternoon, Sept. 15 with Mrs. G. T. Galloway. Members attending were Mmes. Ruby Crosby, Bessie Cowart, Anna Gallagher, L. O. Langley, A. S. Nafzger, Anna Marten, Irene Souter and D. B. Adair.

Visitors were Mrs. Thelma Suba and Mrs. D. D. Thomas.

The Ladies worked on various types of handwork.

Refreshments were coffee, punch and cookies.

The next meeting of the club will be Sept. 29 in the home of Mrs. L. O. Langley.

New Arrivals

Mr. and Mrs. Wayne Moore are the proud parents of a son, Timothy Wayne, born Thursday, Sept. 14 at 1:58 a. m. in the Littlefield Hospital-Clinic. He weighed 5 pounds, 8 1/2 ounces and is 19 1/2 inches long.

Grandparents are Mr. and Mrs. E. L. Moore, Olton, and Mr. and Mrs. F. Williamson, Shallowater, formerly of Olton. Great-grandparents are Mrs. Eula Watson, Fort Worth, and Mrs. Alice Williamson, Dinuba, Calif.

in sugar, butter and eggs. Add other ingredients and roll out on floured board 1/2 inch thick. Cut and fry in hot fat. Makes 4 dozen doughnuts.

OATMEAL AND COCOANUT COOKIES

1 c. brown sugar
1 c. white sugar
1 c. shortening
2 eggs
1 1/2 c. oats
2 c. flour
1 c. coconut (chopped)
1 tsp. soda
1 tsp. salt
1 tsp. baking powder
1 tsp. vanilla

UPSIDE-DOWN PECAN APPLE PIE

Cream sugar, eggs and shortening. Add remaining ingredients; mix well. Form in small round balls. Do not flatten out. Bake about 12 minutes at 350 degrees F.

CALICO COLESLAW

1 1/2 c. finely shredded red cabbage
1 1/2 c. finely shredded green cabbage
1/4 c. minced onion
2/3 c. mayonnaise or salad dressing
1 T. sugar
3 T. vinegar
1 tsp. salt
1 tsp. celery seed

Combine chilled vegetables. Blend remaining ingredients, stirring to dissolve sugar. Pour over vegetables and toss. Makes 4 to 6 servings.

HOT RED CABBAGE

2 T. salad oil
1/2 medium head red cabbage (4 cups shredded)
2 medium apples, chopped
2 c. hot water
2/3 c. vinegar
3 T. sugar
1/2 tsp. salt

Heat oil; add rest of ingredients. Cook till apples are tender. Makes 6 servings.

WEEKEND TRIP

Mr. and Mrs. Archie Sorley were in Elkhart, Kans. over the weekend.

WE GIVE FRONTIER STAMPS DOUBLE ON WED & THURS.

LEON'S GRO.

Your Satisfaction Guaranteed Or Your Money Cheerfully Refunded

PORK CHOPS

CENTER CUT **69c** LB.
END CUT **49c** LB.

25 LB FLOUR

 PILLSBURY **\$1.79**

10 LB FLOUR

 PILLSBURY **89c**

CHUCK WAGON
CHARCOAL 10 LB. BAG **69c**

CAMPBELL'S CHICKEN NOODLE SOUP

 6 CANS **\$1**

GIANT **AJAX**
GIANT **COLD POWER** **55c**

NEW ARRIVALS FROM LIPTON'S COMPLETE **DINNERS** **69c**
 BEEF STROGANOFF CHICKEN LA SCALA
 TURKEY PRIMAVERA CHICKEN BARONET

SLAB BACON

SLICED FREE **49c** LB.

1 LB. DECKER'S **OLEO** **7** LBS. **\$1**

MILLER'S GRADE A LARGE **EGGS** **3** DOZ. **\$1**
 WITH EACH \$5.00 PURCHASE

12 OZ. WHOLESUN **ORANGE JUICE** FROZEN **4** CANS **\$1**

3 LB. DIAMOND **SHORTENING** **47c**
K O K E

TULOMA CROP-MATE

CROP-MATE LIQUID MIXED FERTILIZERS

for increased yields--increased income

Have you ever stopped to consider the advantages you in using a liquid mixed fertilizer? No more stacking... or loading... or hauling. No more dumping... or dust.

Labor-saving? Convenient? You bet. And there are many other advantages when you choose TULOMA CROP-MATE liquid mixed fertilizers.

CROP-MATE is a combination of readily available nutrients scientifically formulated into a uniform mixture... balanced feeding in every drop. All CROP-MATE ingredients are weather-safe... attached to the clay particles in your soil until needed by your plants.

Based on sound research and formulated in modern, local plants, CROP-MATE liquid mixed fertilizers from TULOMA are built to help you get increased yields and increased income.

Let us show you how CROP-MATE liquid mixed fertilizer fits the plant food needs of this area... and specifically, your needs. Call us today.

TULOMA GAS PRODUCTS COMPANY
 OLTON, TEXAS
 PHONE 285-2028

New Chevrolet For '68

A new peak in individuality among Chevrolet's six car lines is reached for 1968, according to E. M. Estes, general manager.

"Each member of our automotive 'family' has a distinct pace-setting personality with features that fully span its market," Estes said. "This matches the growing customer desire for one-of-a-kind cars built in mass production."

A total of 41 new Chevrolet, Chevelle, Camaro, Chevy II, Corvair and Corvette models go on sale on Thursday, Sept. 21. Highlights include all new advance design bodies for Chevelle, Chevy II and Corvette, with introduction of two wheelbases within the Chevelle line; a longer, more luxurious regular Chevrolet, new sportiness for Camaro and continued stress on the special features offered only by Corvair, and important safety improvements, exhaust emission controls, and anti-theft provisions are standard equipment on all models. Also improvements in ride, handling and performance including a larger base V-8 engine for the regular Chevrolet, Chevelle and Chevy II and introduction on several lines of full door windows without vent-panes, hidden windshield wipers and dual level "Astro" ventilation.

Heading a list of more than 400 options and accessories is

a power vacuum door lock system, a lamp monitoring system to tell the driver if his front and rear lights are working, front disc brakes and added availability of stereo tape players.

Safety improvements range from energy-absorbing front seat backs and safety armrests positioned to shield door handles to seat belts for all passenger positions and exterior side marker lights.

REGULAR CHEVROLET—Increased length and new front, side and rear styling reinforce the "big car" image of the industry's top selling car, offered in 18 models in four series on a 119-inch wheelbase.

A new front bumper has a central bar that splits the grille horizontally. Concealed headlights are introduced as an option for Caprice models. Windshield wipers hidden beneath the cowl when not in use are standard on all models. Left hand blades are articulated for increased wiping area on the driver's side.

The rear deck extends fully down to the flush-mounted bumper giving easy access to the trunk. Traditional Chevrolet taillight clusters are mounted for the first time in the new rear bumper.

Added prestige is styled into the exclusive square roofline of the Caprice Coupe. A new model—Impala Custom Coupe

—offers this roofline to Impala hardtop buyers in addition to the "fastback" Impala Sport Coupe.

Door vent windows are eliminated on the Caprice Coupe. New dual level "Astro" ventilation providing continuous flow of outside air through the upper levels of the passenger compartment is standard on the Caprice Coupe, optional on other Caprice and Impala models. There is a different wood-like trim on Caprice Estate Wagons.

A full length body side molding on all Impala models features a black vinyl insert which in addition to adding distinctiveness also gives side body protection.

New luxury interiors offer both pattern cloth with vinyl and all-vinyl.

Refined body mounting and other chassis improvements give a smoother, quieter ride. The base V-8 engine is increased to 307 cubic inches, developing 200 horsepower. A 327 cubic-inch V-8 which also uses regular gasoline is introduced.

A 250 cubic-inch base six and three other V-8's up to 427 cubic inches give a horsepower range from 155 to 385. Five transmissions include Turbo Hydra-Matic which is offered in 1968 with all V-8's on top-of-the-line models.

CORVETTE—An all new

aerodynamic body incorporating the design of the experimental Mako Shark II is offered by America's only mass produced sports car in its 16th year on the market.

More than seven inches longer and two inches lower while retaining the 98-inch wheelbase, Corvette comes in both a convertible and unique "semi-convertible" sport coupe which has removable roof panel sections and rear window.

High-rise front fenders with functional louvers frame the long sloping hood. The grille, including front parking lights, is beneath the flush-mounted bumper. Vacuum operated retractable headlamps are concealed in the upper body surface.

New concealed windshield wipers are hidden beneath the power-operated cowl panel. Full door glass styling eliminates ventpanes and "Astro" ventilation is standard. So is Chevrolet's lamp monitoring system.

The slim-waisted fiberglass body sweeps back to a short deck with a flared rear spoiler. Large circular tail lamps retain Corvette's identity.

The all-new interior has aircraft-type instrumentation. Circular housings for speedometer and tachometer are recessed into the instrument panel. Improved, contour bucket seats have higher backrests for

increased comfort. A higher capacity electrical system, wider tread and wider wheels and tires are among engineering improvements. Four-wheel disc brakes again are standard.

Five V-8 engines offer a horsepower range from 300 to 435. Turbo Hydra-Matic is the automatic transmission option on 1968 Corvettes. Three- and four-speed fully synchronized transmissions are offered.

CHEVELLE—The industry's intermediate sales leader gets its first all-new body since introduction in 1964, plus two distinct package sizes.

Sedans and station wagons are longer with wheelbases increased one inch to 116 inches. Coupe and convertible models are slightly shorter and have a 112-inch wheelbase that gives additional emphasis to Chevelle's new long hood, short deck design.

Fourteen models in four series include two new value leaders — a 300 Deluxe two-door hardtop and a two-seat station wagon named "Nomad" which replaces the Chevy II station wagon.

A luxury Concours option is offered for the Malibu sport sedan. The Concours station wagon has wood-grain trim. Popular SS 396 models again have a distinctive hood and other ornamentation.

The redesigned front end has a lower, fine grid grille with bold horizontal bars. The long hood flares over concealed windshield wipers, standard on Concours, SS 396, and Malibu models.

Back window, curved side glass and greater slope windshield have increased total area. The roofline flows into new rear quarters and rear deck. There are wraparound tail lamps and a wider, deep section bumper.

Chevilles have all new interiors. Instruments are in recessed square panels on either side of the steering column and are mounted at an angle toward the driver for improved visibility.

The perimeter frame and front and rear suspension are redesigned for an improved ride. On a number of models, brakes are improved through adoption of finned drums.

Chevrolet's new 307 cubic-inch engine is the base V-8 for all but SS models. Two sixes and six V-8's give horsepower from 140 to 350. Five transmissions are offered.

CAMARO—After scoring a strong success in its first year on the market and climbing to second place in sales among all domestic small cars, Camaro has added appeal in 1968.

Again offered in a sport coupe and convertible on 108-inch wheelbase, Camaro has full door glass styling without vent windows and Chevrolet's new dual level "Astro" ventilation.

A new V-shape grille with strong horizontal lines adds depth to the front view. Special moldings accent the venturi-shape of the sides. Wheel trim covers and tail lamps are restyled. Camaro continues its exclusive feature in its class — concealed headlights available as part of the Rally Sport option.

More luxury has been added to all interiors. Expanded vinyl — softer and richer feeling — is used on all seat trim. The instrument panel has new dial faces, chrome accents and larger padding.

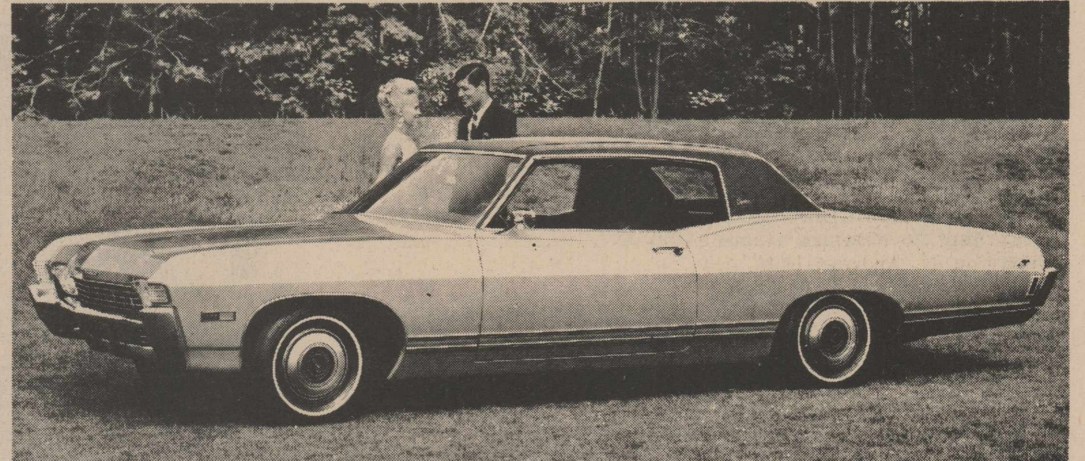
Relocation of shock absorbers and provision for greater ride travel are among chassis improvements. Two sixes and four V-8 engines with horsepower from 140 to 325 are available, plus four transmissions.

Camaro again offers a wide variety of options, accessories and "packages" including Super Sport options with 350 and 396 cubic-inch engines to allow the buyer to custom build his car.

CHEVY II — Chevrolet's popular small family car gets its first all-new body since introduction in 1962. It is longer, wider and lower and comes in two- and four-door Nova models. Wheelbase is one-inch longer at 111 inches.

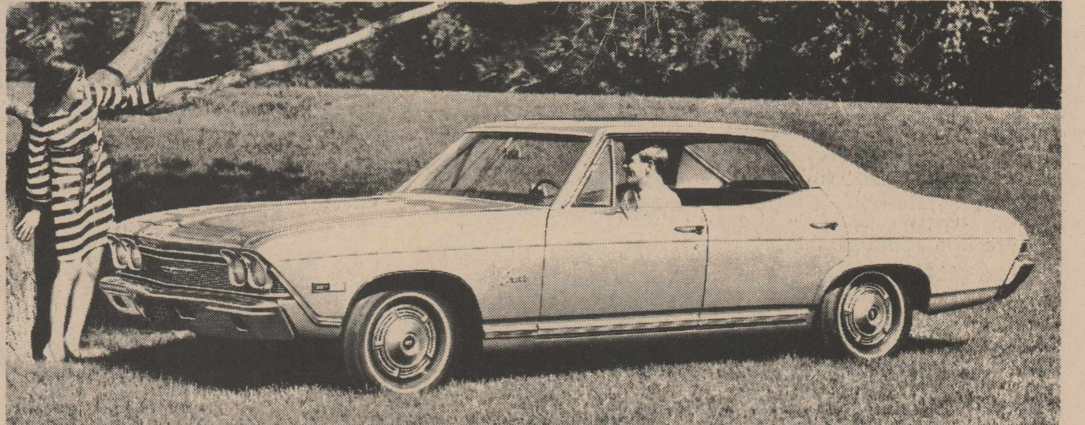
Curved side glass and round-

Swanky lines distinguish the Smart '68 Chevrolet Caprice Coupe



Chevrolet's new look for 1968 begins up front with a smart new grille and hood that conceals the windshield wipers. Recessed taillights in the rear bumpers and new body side lines are smart styling features as shown above on the Caprice Coupe. An impressive list of comfort and convenience options make it possible to custom-tailor a new Chevrolet to almost any personal taste. The new Chevilles will be on display September 21.

New splendor in Chevrolet-built '68 Chevelle Concours Sport Sedan



In addition to 14 models in the 1968 Chevelle line is this optional Concours Sport Sedan. This ultra-luxurious car like others in the Chevelle family features a new instrument panel, new lattice radiator grille, special interiors and exterior ornamental trim. The Concours Sedan is built on a 116-inch wheelbase, has special sound insulation throughout and concealed windshield wipers with articulated left blade. The new Chevrolet-built passenger cars will be on display September 21.

**Dramatic!
Distinctive!
Daringly new!**



'68s Top Secrets are here 1968 Chevrolets

The 1968 Chevrolets are the very essence of modern design. Every line, every curve is in close harmony. It's a smooth, uncluttered look with roof lines compatible with body lines, grilles and bumpers that blend gracefully into long, rounded fenders. Clean, flowing, beautiful in their simplicity, these '68 Chevrolets are rich and advanced in styling beyond any you've ever seen.

A MORE SILENT RIDE

And for 1968, we've gone to every length to give you more peace and quiet inside. The most sophisticated computers have been used to strategically place body mounts and successfully isolate noise and vibration. Shock absorbers have been improved. The wheel stance on many models is wider for greater smoothness. Exhaust systems have been redesigned to make them whisper-quiet. Even the clocks tick more softly. A sound car is a silent car. The '68 Chevrolets are the most silent, highest quality cars we've ever built.

BETTER PERFORMANCE

There are new engines, a bigger standard Six and V8. There's a new

250-hp V8 you can order that runs on regular fuel. Many new engine components increase dependability and keep your new Chevrolet running stronger. There's a new rear axle ratio you can add for greater economy. On most engines equipped with automatic transmissions, there's a special heater for the carburetor which gives you more efficient performance in cold weather. And with every engine, you get the new GM exhaust emission control.

UNIQUE ASTRO VENTILATION

There's a whole new idea in ventilation, called Astro Ventilation, for Camaro, Corvette and the elegant Caprice Coupe. It's also available on many other models. By opening two new vent-ports on the instrument panel, you bring in outside air that can be directed where you want it. This way, you can leave your windows rolled up and add still more to your peace and quiet.

PROVED SAFETY FEATURES

You get the proved GM-developed energy absorbing steering column, folding front seat back latches, dual

master cylinder brake system with warning light, plus many more new features. Among them: energy absorbing front seat backs, and safety armrests that shield the door handles.

MUCH MORE THAT'S NEW

There are new roof lines, some formal and graceful, others sporty and quick. There are new instrument panels, richly designed and all controls within easy reach. There are new interiors, new vinyls, new fabrics, new colors. There are models with Hide-A-Way windshield wipers and headlights that disappear behind grilles. There are new side marker lamps, new recessed taillights. There's even a new ignition alarm buzzer that reminds you not to walk away and leave your keys in the car.

These are the newest, the most different, the most dramatically changed Chevrolets ever. And they're at your Chevrolet dealer's now. You'll thoroughly enjoy slipping behind the wheel, experiencing the smooth new handling and library-quiet ride and, more than anything, seeing and feeling the even greater quality built into every new Chevrolet for 1968.

Be smart! Be sure! Buy now at your Chevrolet dealer's.



There's more quality and value built into Chevrolets than ever before, making every new 1968 model an even better buy!

42-6333

THOMPSON CHEVROLET COMPANY

PHONE 285-2646

OLTON, TEXAS

REAL ESTATE

GOLD MEDALLION HOME—3 bedroom, 3 bath, woodburning fire place, double garage attached, large basement, beautiful patio, large fenced back yard, exceptional well tailored drapes and modern appointments, all electric kitchen, garbage disposal & refrigeration. Well maintained, landscaped and well located to school, church and shopping. Good terms available. Shown by appointment only. This one has everything for modern living.

F.H.A. APPROVED—2 bedroom, large living room, den & study, single garage attached and large concrete cellar well located. Small down payment. Convenient monthly payments.

MODERATELY PRICED—2 bedroom home, living room and kitchen, hardwood floors, lots of closet space, must be seen to be appreciated, on pavement and large corner lot.

OTHER SMALL HOMES AVAILABLE—Terms May Be Arranged.

SEVERAL—Well located city lots with paving and good titles, also small acreages are available.

FARM—40 acres—well improved—irrigation well with underground tile, 2 bedroom modern home newly decorated—domestic well, large barn & cage laying hen house. Terms may be arranged to right party.

SHERMAN AGENCY

Phone 285-2275

Olton, Texas

SPORT MODELS NEARLY HALF OF TOTAL

Nineteen of Chevrolet's 41 models for 1968 are "sport models" . . . two- and four-door hardtops and convertibles. This high percentage of sport models underscores their growth in customer popularity in recent years.

REAR STOWAGE FOR CHEVELLE WAGONS

Concealed rear storage compartments — popular on regular Chevrolet two-seat station wagons, are added in 1968 to all wagons in the Chevelle line except the base Nomad. Chevrolet offers a total of 11 station wagons for 1968 — seven in the regular Chevrolet line and four Chevelle wagons.

NEW CHEVY II OPTIONS

A stereo tape sound system and Four-Season air conditioning are available for the first time on 1968 Chevy II models.

ACCESSORIES & OPTIONS

Light monitoring and power door lock systems plus added availability of popular stereo tape players highlight a list of more than 400 options and accessories offered on 1968 Chevrolet cars.

The light monitoring system tells the driver at a glance if important front and rear lights and signals are working. The fiber optic principle is used to "pipe" the actual lamp light to jeweled indicators mounted on front fenders and just below the rear window. The system is offered on Chevrolets, Chevilles and Camaros and one with indicators mounted on a console is standard on Corvettes.

The power door lock system, for all regular Chevrolets, allows the driver or front seat passenger to lock all doors simultaneously by a master control lever. Vacuum power is furnished from the manifold.

Stereo tape players, rapidly growing in popularity since introduction by Chevrolet a year ago, are offered in 1968 on all lines except Corvettes. The lineup includes a new "mini-stereo" to complement the redesigned interior styling of the Chevelle and the Chevy II. Chevrolet has also extended the availability of the Cruise-master — a push-button highway speed control device — to some light-duty pickup trucks.

The option and accessory list also features a wide variety of air conditioning units; numerous exterior and interior trim and convenience items; specially packaged accessory groups for operating convenience, appearance and auxiliary lighting; special equipment for traveling and trailering; and a number of highway safety aids.

VISIT DAUGHTER
Mr. and Mrs. Sonny Miller spent the weekend in Amarillo with their daughter and son-in-law. Mr. and Mrs. Ronnie Parsons. The Millers also visited Mr. and Mrs. Herman Meyer of Amarillo, formerly of Olton. Meyer is recovering from surgery which he underwent the first of last week.

News Of Our Service Men

(N0004) SAN DIEGO (FHT-NC) Sept. 6--Seaman Recruit Raymon N. Andrew, USN, son of Mr. and Mrs. Raymon Andrew, of Olton, is undergoing nine weeks of basic training at the Naval Training Center here. He is receiving instructions in Naval customs, courtesies and organization, ordnance and gunnery, seamanship, damage control, first aid, swimming and survival, shipboard drills and sentry duty.

A program of physical fitness, military drill and inspections keeps the recruits mentally and physically alert during their training.

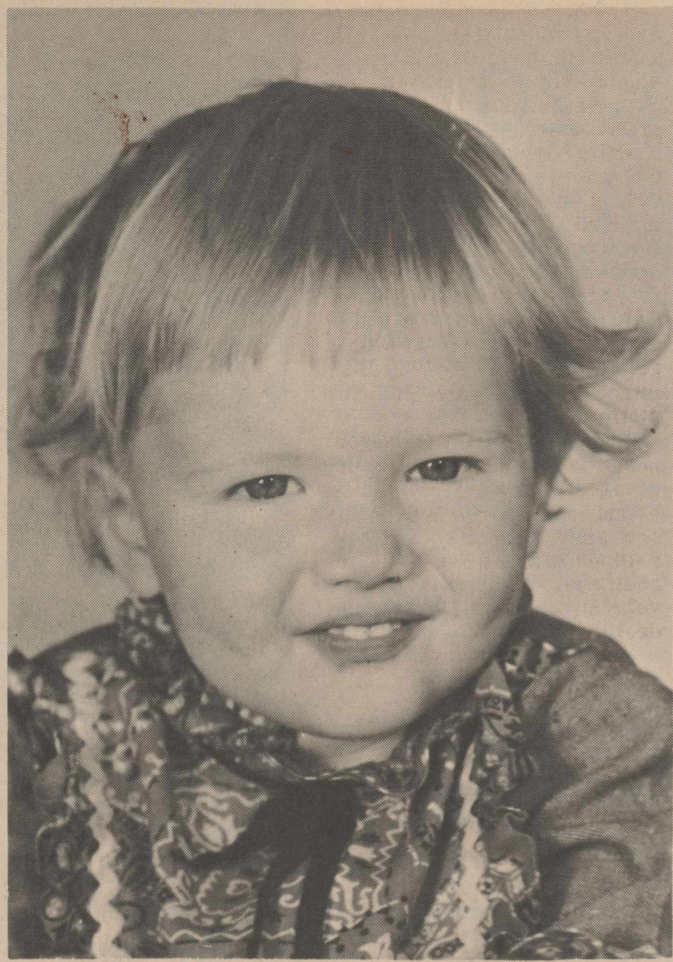
His Navy Classification tests will determine whether he will be assigned to a school, shore station or ship after his graduation.

Donny Roden left Sept. 4 for San Diego, Calif. where he is in basic training in the marine corps. Pvt. Donald L. Roden 2403561 I Co. Plt. 3065 RT. Bn. Marine Recruit Depot San Diego, Calif. 92140

PFC Elza L. Miller US 54403933 124th Trans. Comd. (TML A) APO San Francisco, Calif. 96312

Bill Hall, son of Mr. and Mrs. R. S. Hall, a medic stationed at Ft. Hood, has been ordered, with five other men, to Brownsville to help with hurricane Beulah victims. These men were flown to Brownsville and truck loads of equipment were also sent.

Visiting in his parents home for the weekend was Spec. 4 John Meyer of Ft. Sam Houston.



OLTON PRESENTS - Alexia Andrew, 1 1/2, daughter of Mr. and Mrs. Andy Andrew. Maternal grandparents are Mr. and Mrs. T. E. Clark of Hereford. Paternal grandparents are Mr. and Mrs. B. R. Andrew.

Retail Promotion Committee Meet Tuesday At Chamber

A newly organized committee on retail promotion met Tuesday at the Chamber of Commerce and Agriculture office to discuss ideas for bringing trade into Olton.

Members of the committee include Bob Duncan, chairman; Claude Burnette, Leon Noack, K. Y. Givens, Anita Sullivan, Sue Cannon, and chamber manager, Charles Polk. The group discussed the possibility of a weekly Saturday drawing to be staged approximately three or four weeks prior to Christmas as well

as plans for bringing Santa Claus to Olton.

Other discussion was on the gift fund for the first bale of cotton and the first load of grain to be brought into Olton. The group made plans to meet Tuesday at the Chamber office at 8 p. m. for further plans and discussion.

Samuel Nafzger Named Pastor

The Rev. Samuel H. Nafzger, son of Mr. and Mrs. Ralph Nafzger of Plainview, was recently installed as pastor of the Tulla-Canyon Lutheran Parish. Installation services were in St. Paul's Lutheran Church in Canyon.

The Rev. Nafzger started to school at Olton and graduated from Plainview. He received his B. A. degree from Concordia Senior College, Fort Wayne, Ind. and vicaried at St. John's Lutheran Church in Topeka, Kans. He graduated from Concordia Seminary in St. Louis Missouri and studied for a year at the University of Heidelberg, Germany on a DAAD Scholarship.

VISIT MOTHER

Mr. and Mrs. T. W. Hacker left Monday for Sayre, Okla. where they will visit Mrs. Hacker's mother, Mrs. Richardson who is in poor health.

IN WYOMING

Mr. and Mrs. J. B. Williams left last week for Wyoming.

NEPHEW VISITS

Ott Denisil Martin of Elk City, Okla. visited in the home of his uncle, Mr. and Mrs. John Campbell.

Allcorn Named Baseball Prexy

Olton Baseball Association met Tuesday night to elect officers for 1968.

R. V. Allcorn will head the slate as president. Vice president, Tommy Ballard; Secretary, Gayle Allcorn; Treasurer, Lynn Fite; Little League player agent, Andy Stroebel and Babe Ruth player agent, William De Bercy.

FORMER RESIDENT

Herman Meyer is reported "doing well" at his home in Amarillo following recent surgery at Northwest Texas Hospital.

SUNDAY GUESTS

Guests Sunday of Mr. and Mrs. E. S. Huckabee were their daughter and family, Mr. and Mrs. Harold Autry and Kathy of Clarendon. Other guests Sunday afternoon of the E. S. Huckabees were their granddaughter, Sheri Ferrell and her paternal grandparents, Mr. and Mrs. T. C. Ferrell all of Plainview.

VISIT IN CLEBURNE

Mr. and Mrs. Norman Smith recently returned from Cleburne where they visited Mrs. Smith's mother, Mrs. W. T. Richards and Mrs. Smith's sister and brother-in-law, Mr. and Mrs. C. F. Pierce, Mrs. C. W. Underwood of Cleburne returned to Olton with the Norman Smiths for a visit of several days.

MURPHY FAMILY

Mr. and Mrs. Jack Edwards and Ray Murphy recently attended the Murphy family reunion at Fort Belnap near Graham.

Among others attending were Mr. and Mrs. L. L. Chandler and Mrs. Vivilene Dirke of Big Spring; Mr. and Mrs. Frank Murphy of Graham; Mr. and Mrs. Verdie Murphy of Elgin; Mr. and Mrs. John Murphy of San Antonio; Mr. and Mrs. Fawayne Murphy of New York and Dr. and Mrs. Bill Murphy and Mrs. Ola Murphy of Dimmitt.

BROTHER VISITS

Walter Huckabee of Cleburne visited recently with his brothers, J. E. Huckabee and E. S. Huckabee enroute to Washington where he will visit his brother Charlie. In California, he will visit his sister, Mrs. Jim Farris and his brother Harvey.

RETURNS HOME

Mrs. C. H. Smith returned Sunday from Ft. Worth where she was guest of her son and family, Mr. and Mrs. Wayne Smith, Michael and Mark. Mrs. Smith also visited her brother and sister-in-law, Mr. and Mrs. W. Y. Barton and several other relatives in Fort Worth. She made the trip by air in a jet plane.

IN LUBBOCK

Mrs. L. A. George and Mrs. Berniece Smith were in Lubbock shopping Saturday. They also visited Mrs. George's grandson Gerry, son of Mr. and Mrs. Fred George.

ASCS Officials Adopt Specifications For Wrapping

Agricultural Stabilization and Soil Conservation officials have adopted specifications for jute bagging and bale ties used to wrap 1967 and subsequent cotton crops as conditions of eligibility for Commodity Credit Corp. price support loans.

L. D. Aten, manager of the Lamb County office in Littlefield, said action was taken at the request of the cotton industry for the following reasons: (1) To improve the appearance of the unsightly U. S. bales of cotton (2) to afford greater protection for the cotton and (3) to provide more uniform care weight for bagging and ties.

He pointed out that upland cotton is marketed in the United States on a gross weight basis and the use of lightweight jute bagging in recent years has

Wreck Victim Funeral Held

Funeral service for Merit Foster, a 50-year-old Waco man who died last Thursday following a truck-car crash at Springlake, were conducted at 2 p. m. Sunday in Parsons Funeral Home Chapel.

Rev. G. K. Burton, pastor of the Olton Assembly of God Church, officiated. Burial was in a Waco cemetery under direction of Parsons Funeral Home. (For complete details of the wreck, see story, page 1.)

Class of '55 Will Meet

The class of 1955 of Olton High School will meet following the Homecoming game, Oct. 6, in the American Legion Hut. All members of this class and their husbands and wives are invited to attend.

RETURNS HOME

Mr. and Mrs. C. C. Gray returned recently from a trip to Bisbee, Ariz., Silver City and Roswell, N. M.

SON-IN-LAW VISITS

Jon C. Little of Monte Vista, Colo. visited recently with his parents-in-law, Mr. and Mrs. Drexel Lawson.



NEW PTA OFFICERS FOR 1967-68 SCHOOL YEAR.

SHURFINE VALUE - READ CAREFULLY

Take this valuable SHURFINE money saving coupon to your favorite Affiliated Food store-over 240 in the Golden Spread area.

15¢ OFF 15¢

ON SHURFINE PRESERVES
18 OZ. APRICOT/PEACH/PLUM OR 18 OZ. GRAPE JAM

Mr. Grocer: Panhandle Associated Grocers, Inc. will redeem this coupon for 15¢ plus 2¢ handling if you receive and handle it strictly in accordance with the terms of this offer and if, upon request, you submit evidence thereof satisfactory to Panhandle Associated Grocers, Inc. Coupon may not be assigned or transferred. Customer must pay any sales tax. Void where prohibited, taxed or restricted by law. Good only in U.S.A. Cash value 1/20¢. This coupon void after October 17, 1967. Limit one coupon per family.

Good Only At Affiliated Food Stores.

STORE COUPON

Stock-Up-Sale!

Come See Our Everyday Low Price On Meat. We Will Save You Money On Every Item.

TASTE
QUALITY
FRESHNESS

SHURFRESH MILK

HAM PINKNEY WHOLE OR HALF LB. **47¢**

PORK CHOPS END CUT LB. **49¢** LEAN & FRESH CENTER CUT LB. **59¢**

ROAST PORK VALUE TRIMMED LB. **37¢** **STEAK** PORK LB. **43¢**

BACON FOOD KING 1 LB. PKG. **39¢** PINKNEY'S 2 LB. PKG. **\$1.09**

NECK BONE LB. **19¢** **SPARE RIBS** SMALL & LEAN LB. **57¢**

LINK SAUSAGE PIG LB. **49¢** **CURED PICNICS** LB. **37¢**

SAUSAGE LEE'S 2 LB. BAG **99¢**

BISCUITS SHURFRESH CAN **5¢**

TIDE GIANT BOX **65¢** **COFFEE** FOLGER'S 1 LB. CAN **69¢**

EGGS SHURFRESH 3 FOR **\$1** **CHILI** WILSON 20 OZ. CAN REG. 89¢ **69¢**

PINTO BEANS 5 LB. BAG **49¢**

TUNA CARNATION 3 FOR **\$1** **TISSUE** 4 ROLL PACK **29¢**

ROLLS SHURFRESH CINN. NEW REG. 29¢ **19¢**

MARGARINE SHURFRESH REG. 39¢ 100% PURE CORN OIL 3 FOR **\$1**

VIENNA SAUSAGE WILSON'S 5 FOR **\$1**

MELLORINE 1/2 GAL. BELL OR CLOVERLAKE **29¢**

PRODUCE

POTATOES RED 10 LB. BAG **29¢**

PLUMS LB. **15¢**

Get Your Coupon Out Of The Olton Enterprise On Shurfresh Corn Oil Margarine.



DOUBLE BUCCANEER STAMPS ON WEDNESDAY WITH PURCHASE OF \$2.50 OR MORE

RAINES FOOD

MELVIN RAINES, OWNER

Phone 285-2414 Free Delivery

Open 7 Days A Week 7 A.M. To 9 P.M.

With Time Running Out

Mustangs Corral Whitefaces, 21-20

Olton Mustangs won their second ball game of the season here Friday night by overcoming not only a tough team but by outlasting an equally tough opponent--time.

Mustangs parlayed key Whiteface errors with their own never-say-die spirit to close a 13-point gap with a little more than half a minute to spare.

Olton fans stood in annoyed excitement when a Mustang fumble in the opening minutes of the game fell into the talented hands of Hereford quarterback Jim Childers on the Olton 48.

Local supporters rested back uneasily in their seats as Hereford halfback Gary Goodin pushed the ball another 15 yards closer home in the next three plays.

Childers found the ball again on the very next play to sprint the remaining 32 yards to the goal--and most Olton fans gave up the idea of ever sitting down for the rest of the game.

Whitefaces converted for the extra point, and before the underdog, outclassed Ponies knew it, they were also outscored 7-0 with 5:16 seconds gone from the game.

And, also, that proved to be plenty of time for Goodin to carry the ball within range of another six point. Fullback Tony Malouf broke loose for a hard-

fought 43 yard run which, with the conversion brought the score to 14-0 with 5:1 left in the quarter.

Mustangs apparently got tired of being run down and decided to do a little running down themselves in the second quarter, starting with the kickoff.

Halfback Kenneth Johnson swung around right tackle and the Olton fans started to shout. With a few key blocks thrown by guard Eddie Hooper, tackle Steve Burleson, and halfback Benny Akin, Johnson was gone for 59 yards and on into cattle country for the first time all night.

Johnson kept the one-man drive alive two plays later as he raced for 30 yards to the Hereford 38.

Akin finally charged around end on the fourth down to bring the score to 14-6 --and every Oltonite to his feet. Spain, on his way to a three-for-three conversion performance, capped the score at 14-7 with 10:14 seconds left in the half.

The "half-score" became even more one-sided before the half actually came, however, when Hereford got off a pass play that was good for 43 yards and a third TD. The extra point sent Hereford to the dressing room with a 20-7 margin.

Akin opened the attack for Olton in the start of the second half with a dash around left

end through a hole drilled by Johnson and tackle Mike Crowder to his own 38.

A penalty on the third play brought the ball back to the Olton 40 and threatened to kill the drive, but a fighting squad held the Whitefaces to a gain of only three yards after they took the punt on the 12.

Steve Spain showed fans how a punt should be handled--and provided a glimpse of more key handling to come--as he took the return on the 50 and ran it back to the Hereford 30. The drive was still alive --and within seven yards of the goal, when Olton grudgingly gave up the pigskin on downs.

An ardent Olton defense again held the big Hereford line to a handful of yards and finally forced them to punt out to the 50.

Quarterback Charles McClain snatched the ball at the neutral strip, and, taking the cue from Spain, returned it to the Hereford 31.

A pass from Lewis to Charles McClain was good for 15 yards around the right side, followed by a quarterback option that netted another 11 yards.

Johnson finally bounded over right guard being the bulldozer action of Hooper and Akin. Hooper led the line with 16 tackles before the game was over.

The second consecutive con-

version by Spain made the scoreboard show 20-14 while the clock showed 1:18 seconds to go in the third quarter.

Errors began to plague both squads as each side sensed the closing of play.

Sel Sanchez fell on a Hereford fumble early in the closing quarter which allowed Olton to begin play on their own 29.

A pass by Childers was picked off by Joe Luera on the Olton 20 to kill the only serious Hereford drive of the quarter, but an Olton fumble two plays later lost the advantage for the local squad.

The Mustangs held the Whitefaces, but a penalty set the ball on the Mustang eight as soon as the Ponies regained control.

All that was left, it seemed, was to punt out from the eight and wait for Hereford to run out the clock.

A last-ditch effort by the

defense held the Whitefaces to a few feet and forced them to punt from the Olton 46.

Spain, who had made a 20 yard punt return once that night, obviously knew the score and managed to wind his way for 75 yards to the goal. Score with 1:23 remaining was even up.

The hero of the hour came back a moment later to literally make himself the hero of the minute as he kicked his third straight conversion of the night.

As the ball went through the uprights, the Olton crowd went wild, and the option went to the Olton "underdogs" to run out the clock and take the victory 21-20.

TOP MUSTANG LIST POSTED

A lineup of spirited Ponies were picked from the winning Mustang squad after film grades were posted for the Olton-Hereford tilt Friday night.

Mustangs with the top film scores were center Jason Latimer (offense) selected from the game included halfback Kenneth Johnson, halfback Steve Spain, quarterback Johnny Lewis, guard Eddie Hooper, center Jason Latimer, and fullback Sel Sanchez.

Head Hunters (defense) included Hooper, Spain, Burleson, Johnson and Charles McClain.

RETURN HOME

Mr. and Mrs. H. H. Cain Jr. and Kathy returned Friday from Birmingham, Ala. where they visited Cain's parents, Mr. and Mrs. H. H. Cain Sr.

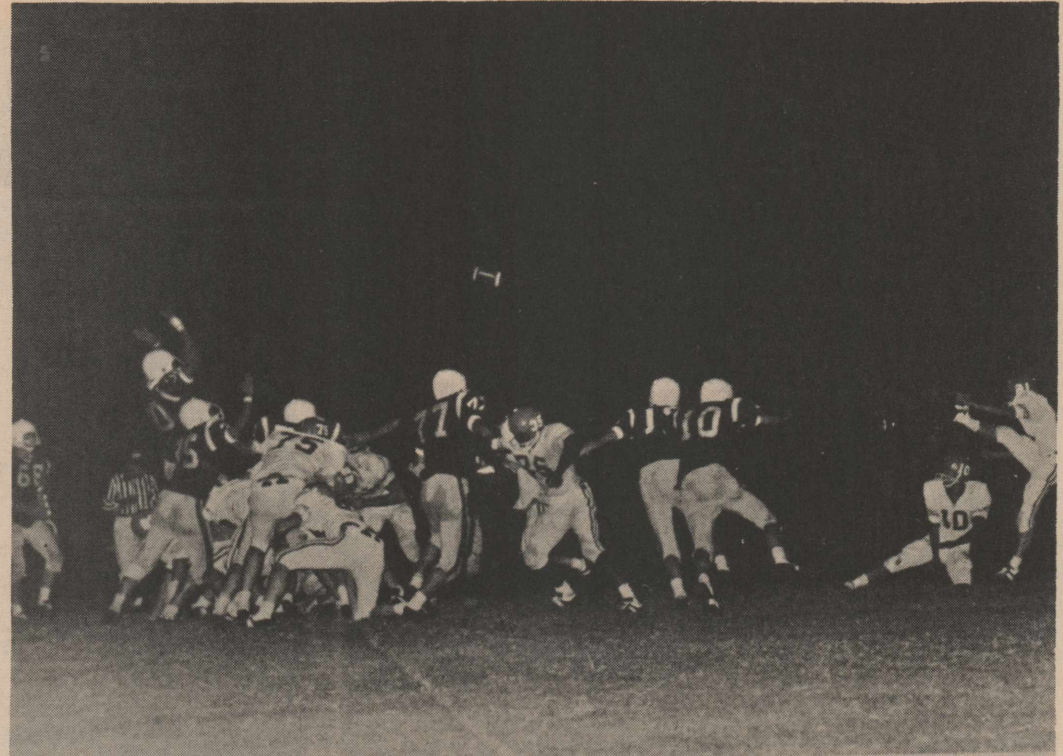
SATURDAY GUESTS

Mrs. John Haston and niece Sunnie Mack of Burkburnett were guests Saturday of Mrs. Haston's sister and family, Mr. and Mrs. J. D. Lively and sons.

Boosters To See Muleshoe Film

Booster Club will meet Monday night at 8 p. m. in the high school study hall.

A film will be shown of the Muleshoe - Mustang game. All interested persons are urged to attend.



OVER THE GOAL POST -- And Olton wins! Steve Spain is shown here as he kicked the deciding point in the Hereford-Olton game Friday night. The score following this kick was Olton 21, Hereford, 20.

Tickets On Sale

General admission tickets for the Olton-Muleshoe football game will be on sale in the high school business office until 4:30 p. m. Friday.

Adult tickets are priced \$1.50 each and student tickets are 50 cents. Gate price for students will be 75 cents.

All prices are in accordance with a District I AAA rule, according to school business manager Elmer Moore who made the announcement.

Olton fans will be assigned seating on the west side of the stadium with parking to the west and north. Entrances will be on the north and west sides.

STRIKES 'N SPARES

Standings in the Majorette Bowling League as of Monday, Sept. 18 are as follows:

Olton State Bank won 6, lost 2; A. C. Light won 6, lost 2; Earth Gin won 5, lost 3; Bleeker won 4, lost 4; Olton Cleaners, won 4, lost 4; Howard Hall won 4, lost 4; Lesters Cleaners won 2, lost 6; Anita Styleart won 1, lost 7.

High team game -- Lesters Cleaners, 714.

High team series -- Earth Gin, 1990.

High individual game -- Beverly Hasha, 193.

High game series -- Beedie Welch, 552.

Entries are still being accepted in open tournament competition scheduled Sept. 16-17 and Sept. 23-24 for area women at the Olton Bowling Lanes here according to Manager Vera Young.

Bowlers may enter as many as four of the multiple team events with the shifting of at least two of five members for each event.

Competition in the meet, sanctioned by the Women's International Bowling Club, may be in either team or singles and doubles form. Squad times are noon, 2:30, 5, and 7:30 p. m. during the tourney.

Entry fee is \$3.50 per person, in addition to \$1 optional payment for handicaps in all events. Most of the proceeds will be returned in prizes.

ACROSS THE COUNTY LINE

Mr. and Mrs. J. H. Palmer accompanied their daughter and her husband, Mr. and Mrs. Edward Mitchell to Mabel, Minn. to see their new great granddaughter, Carol Nan Brandenberger, daughter of Mr. and Mrs. Kenneth Brandenberger.

Shawn and Stacy Critchfield of Plainview spent the weekend with their grandparents, Mr. and Mrs. Tom Critchfield.

Mrs. Jerrill Young returned home Tuesday after having surgery at the Plainview Hospital and Clinic the preceding Wednesday.

Friday Miss Agnes Young and Mrs. J. Hollis Young visited an aunt, Mrs. Edd Roberts of Lorenzo.

Mr. and Mrs. Richard Rodgers and Vanessa of Lubbock were supper guests in the J. Hollis Young home Friday evening.

Guests in the home of Mrs. Tom Bostic this week were Friday, Mr. and Mrs. Hubert Newman of Hart; Sunday, Mrs. Sherwood Holley and Sherry, Mrs. Don Holley, and Mrs. Norman Huggins of Plainview and Miss Myrtle Holley of Halfway.

Sherrill Alexander of Lubbock was a weekend guest of his parents. Mr. and Mrs. Luther Alexander.

Sunday Mrs. R. O. Dickson and Mrs. Joe Pierson, Gay, Jeanne, and Ann of Earth visited Mr. and Mrs. Benny T. Dickson, Jr., Debra, Jack and John and Mrs. A. C. Gettys. The group enjoyed an ice cream supper.

Tuesday night Benny Dickson, Jr. received a call from his brother, Danny, announcing the arrival of Danelle Rae Dickson daughter of Mr. and Mrs. Danny Dickson of Riverside, Calif.

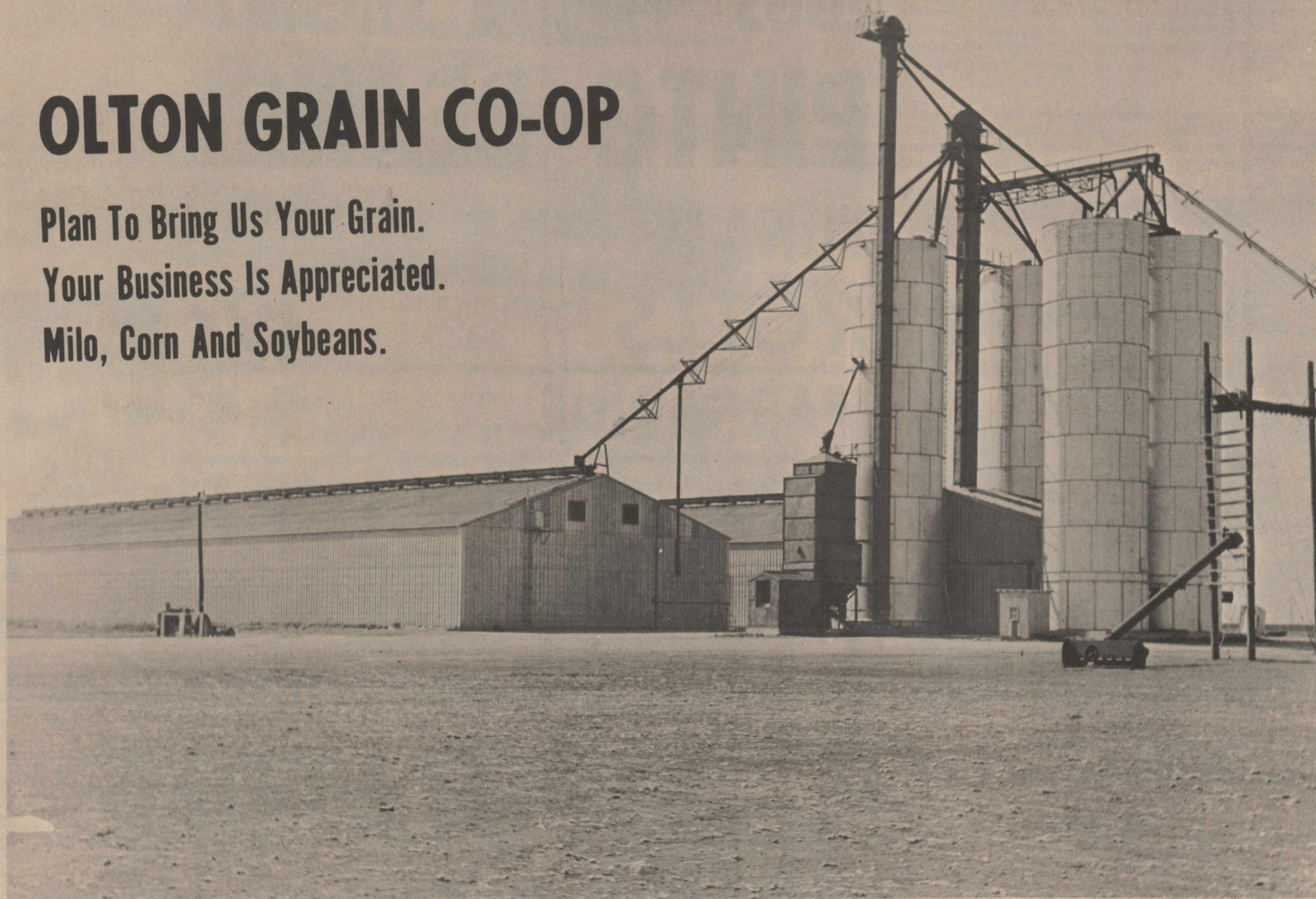
Guests of Mr. and Mrs. W. H. Hall Sunday were Mr. and Mrs. Austin Pinkerton of Sudan. The Pinkertons are former residents of the Valley View community.



CHARLES A. MCCLAIN manages to hold onto the pigskin even though he is practically standing on his head during play in the Hereford-Olton thriller Friday night. One unidentified Whiteface is caught in an awkward position after being brought down by the Mighty Mustangs.

OLTON GRAIN CO-OP

Plan To Bring Us Your Grain.
Your Business Is Appreciated.
Milo, Corn And Soybeans.



Plenty of storage space is available so you may hold your grain to sell at a future date, at your option.

Free Storage Through Balance of 1967

Additional unloading facilities are being built to handle the large volume of grain at the rush of harvest.

SHORT SNORTS-- State Regulatory Loan Commissioner Frank Miskell is pushing a probe of home improvement loan firms accused of charging too much interest and other violations.

FOOTBALL CONTEST

The teams that are playing in this week's contest games are listed in each of the ads on this page. Each team is numbered, 1 through 26.

Use the handy entry form at the lower right hand corner of the page and circle the numbers of the teams you predict to win. Print the scores you predict in the tiebreaker game in the spaces provided.

Each week's entry must be turned in to one of the merchants sponsoring the contest. Contestants are given a week to prepare and turn in their entries.

Sponsoring merchants may accept mailed entries. All late entries will be discarded.

In case of ties, a coin will be flipped to determine the winners.

Each week the number of games predicted correctly will count toward each contestant's season total. The person picking the most games correctly for the entire season will receive the grand prize. The person with the second highest total will receive the second grand prize. In the event of a tie on the season total, a coin will be flipped to determine the winner.

The weekly prizes will be given to the persons picking the most number of games for that week. The tie-breaker will count as one of the games picked, and the predicted scores will be used to determine the top three places in that week's contest, if necessary.

Only one entry per person is allowed.

BEAT FRIONA, MUSTANGS

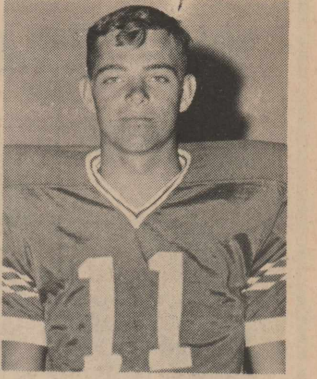
GRAND PRIZES

1. Trip For Two To Cotton Bowl (Two Tickets And \$40 Cash For Expenses.)
2. Trip For Two To Sun Bowl (Two Tickets And \$20 Cash For Expenses.)

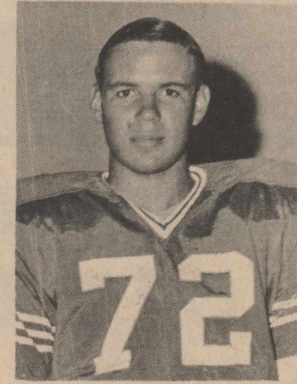
WEEKLY PRIZES: 1st **\$5** 2nd **\$3** 3rd **\$2**

ENTER EVERY WEEK- TOP TWO CONTESTANTS FOR THE ENTIRE SEASON WILL WIN BOWL GAME TRIPS!

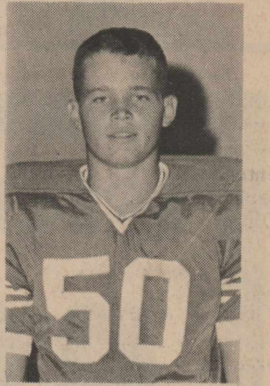
We're Proud To Back The Mustangs!



DEFENSIVE CHARLES A. McCLAIN



DEFENSIVE STEVE BURLESON



OFFENSIVE JASON LATIMER

Week's Winners

Each Week The Top Three Winners Will Be Listed Here.

1. JUDY PARSONS 2. DORIS CAGLE 3. BOBBY TURNER
 (TIE) CECIL OURSBOURNE

Complete Banking Service

- COMMERCIAL LOANS
- INSURED CHECKING ACCOUNTS
- INSTALLMENT LOANS
- SAFE DEPOSIT BOXES
- FARM & CATTLE LOANS
- MODERN EQUIPMENT AND METHODS WITH RECORDAK FOR YOUR PROTECTION
- BANK DRAFTS
- OTHER FINANCIAL SERVICES
- TRAVELERS CHECKS

MEMBER F.D.I.C.

OLTON STATE BANK

1. West Texas State VS. 2. University of Pacific

We Are Proud To Back A Fine Football Team

OLTON CO-OP GIN

IT IS PROFITABLE TO PATRONIZE YOUR CO-OP GIN

11. Floydada VS. 12. Abernathy

CONSUMERS

BUTANE HARDWARE MOTOR OILS
IGNITION SUPPLIES
HOUSEWARE GIFT ITEMS

BOX 489 SERVICE TELEPHONE 285-2240

21. Sudan VS. 22. Seagraves

OLTON TRADE LOT

See Us About Portable Disc Rolling

3. University of Kansas VS. 4. Indiana

SHERMAN INS. AGENCY

Insurance—Real Estate—Loans

13. Memphis VS. 14. Lockney

THE OLTON ENTERPRISE

"The Golden Gate To The Golden Road"

Going With The Mustangs All The Way

23. Springlake VS. 24. Hart

VERNON NIXON

Auto Parts & Farm Supplies

PHONE 285-2888 NORTH OLTON

5. Navy VS. 6. Rice

THOMPSON CHEVROLET

"A Good Place To Buy A Car"

PHONE 285-2646

15. Plains VS. 16. Bovina

GIVENS TEXACO

Box 613 Phone 285-2969

FILTERS OIL TIRE REPAIRS GAS

25. Kress VS. 26. Happy

WOZY'S TEXACO

285-2326

And

WOZENCRAFT INSURANCE

7. Texas University VS. 8. Texas Tech

PLAINVIEW PRODUCTION CREDIT

Dependable Credit For Agriculture

MARTELL LEVEQUE, OLTON OFFICE MGR.

17. Littlefield VS. 18. Tulia

OFFICIAL ENTRY FORM

NAME _____

ADDRESS _____

CITY _____

STATE _____

CIRCLE THE NUMBER OF THE TEAMS YOU PICK TO WIN

1 2 3 4 5 6 7 8 9 10 11 12 13 14
15 16 17 18 19 20 21 22 23 24 25 26

GUESS THE SCORE ON THIS GAME

TIE-BREAKER--

FRIONA _____ OLTON _____

G.H. BLEY PHILLIPS 66

PHONE 285-2515

Tires Batteries Accessories

9. Texas A&M VS. 10. Louisiana State University

Your John Deere Dealer

ED THOMPSON IMPLEMENT

19. Hale Center VS. 20. Dimmitt

WAKE-UP TO A **BETTER BREAKFAST!**



WE HAVE BETTER FOOD AND BETTER VALUES!

SPECIAL OF THE WEEK

BISCUITS



CAN

5^c

FREE

1 Lb. OLEO
With Purchase 3 Cans
HI-C ORANGE DRINK

50
EXTRA

BUCCANEER STAMPS

With Purchase

4 LB. PINTO BEANS

100
EXTRA

BUCCANEER STAMPS

With Purchase

2 FRYERS

100
EXTRA

BUCCANEER STAMPS

With Purchase

GIANT BOX TIDE

½ Gal. Cloverlake
MELLORINE
With Purchase
½ Gal. ICE CREAM

FREE

FREE

1½ Lb. Loaf BREAD
With Purchase 1 Lb.
Sammy's Pride BACON

50
EXTRA

BUCCANEER STAMPS

With Purchase

1 DOZ. MEDIUM EGGS

100
EXTRA

BUCCANEER STAMPS

With Purchase

1 LB. FOLGER'S COFFEE

50
EXTRA

BUCCANEER STAMPS

With Purchase

1 GAL. W.P. BLEACH

FREE

50 Buccaneer Stamps
With Purchase
5 Lb. SUGAR

FREE

200 Cnt. Filler PAPER
With Purchase
3 Lb. Can Swift Jewel
SHORTENING

100
EXTRA

BUCCANEER STAMPS

With Purchase **20 LB. POTATOES**

FREE FREE

YOUR GROCERY BILL

ALL YOU HAVE TO DO IS SIGN YOUR CASH REGISTER TAPE.
THERE WILL BE 3 WINNERS DRAWN EACH WEEK.

**NOT-SINGLE-STAMPS
NOT-DOUBLE-STAMPS
NOT-TRIPLE-STAMPS**

BUT

DOUBLE-DOUBLE STAMPS

**WED., SEPT. 27TH WITH
\$2.50 PUR. OR MORE**

**Spotlight
On
Senior Citizens**



MRS. ANNA MARTENS

**Former Farmer Tells Why
'Good Ol' Days' Were Good**

Mrs. Anna Martens, 79, says she can remember when the "good ol' days" really were good, and she offers several reasons why.

"Neighbors used to help each other out," she recalled, thinking back to her childhood on a farm in Grant, Iowa. She remembered neighbor's willingness to join together in times of sickness or merry-making as one of the most dependable, but now disappearing, facets of community life.

She spoke of a time when almost any little gathering had a way of turning into a full-sized community affair... of a time when people were too busy inviting folks into their homes to worry much about locking doors to keep people out.

"On Sundays," she said, "I'd plan my dinner, go to meeting, and come home to a houseful of company. We always had company," she stressed. "And it wasn't just us. It was that way everywhere."

"Life wasn't so fast," Mrs. Martens reasoned after a moment. "Life was slow... but we got our work done, and we were happy."

Getting the work done, as Mrs. Martens termed it, was at least as slow a process in her younger days as life, itself. She well remembers, for example, when a pitch fork was the only so-called "mechanized" way to move hay in the days before the automatic baler came in--and half this century went out.

The ultimate in automatic corn cultivation at the far end of Mrs. Marten's memory was a gadget that could handle two rows at a time. Now, she says, farmers in the region take on six times that and still never seem to get their work done.

"It use to take half a day to pick a wagon load of corn by hand," she said with the authority that comes with in-the-field training.

Prices of goods, no less than the process for making them, have changed with the years.

"I've sold eggs for 50 cents a dozen and I've sold 'em for five," Mrs. Martens recalled, thinking of the years (including the Depression) when she and her husband owned 1,000 laying hens.

Mrs. Martens left her 80-acre Iowa farm in 1949, shortly after the death of her husband, and moved to the Olton area with a daughter, Mrs. Paul McFadden and her family.

Mrs. Martens first settled in town where she busied herself with babysitting a community full of youngsters.

Two years later, she moved to the McFadden farm about two miles east and three and a half miles south of Olton.

She continues to babysit, although her distance from town has considerably cut her opportunity to work with children.

Now Mrs. Martens primarily occupies herself with reading the Bible and making scatter rugs of odd bits of material. She estimated turning out at least 400 such rugs--most of which have become "scattered" in all directions as gifts. She also tends a small flower garden in her spare time.

"There was always lots to do if you wanted to work," she observed about the good old days. At 79 years young, she still finds at least that much remains true today.

**Life In Vietnam Display
To Be At South Plains Fair**

A glimpse of native life in Vietnam, plus an array of crude Viet Cong weapons, will be featured in a Vietnam village scene scheduled as a highlight of the 50th annual Panhandle South Plains Fair here Sept. 25-30.

The display is being furnished by Fort Sam Houston, according to R. E. (Bob) Gee, president of the fair association.

Supervising the display will be staff sergeants Thomas Day, Wallace M. Gilbert, Jack Bailey, and C. W. Mays, all members of the U. S. Army Medical Training Center at Fort Sam Houston.

Each of the non-commissioned officers are Vietnam war veterans and by means of the exhibit will demonstrate a realistic picture of the conditions in Vietnam.

The display includes three bamboo huts furnished with hand-made furniture and utensils normally used by natives in their households. Other features include crude weapons utilized by the Viet Cong against American forces, along with an exhibit of mines and booby traps.

The village was originally constructed in Sept., 1965, to demonstrate the military and civilian personnel the conditions and hazards existing in Vietnam. The village is normally maintained at Camp Bullis.

It is one of the most unusual attractions planned for the golden anniversary edition of the fair. Another is being furnished by the Manned Spacecraft Center at Houston, featuring a simulated trip to the moon and back.

FROM DE LEON

Mr. and Mrs. Tom Whitaker and Joe of De Leon have been visiting friends and relatives at Olton.

VISIT SISTER

Mr. and Mrs. Jim Fuller are visiting Fuller's sister and brother-in-law, Mr. and Mrs. Esdel Bartlett at Wellington.

TUESDAY GUESTS

Mr. and Mrs. George Biggs Sr., of Wayside, Kans. spent Tuesday night of last week in the home of Mr. and Mrs. V. O. Harrod. The Biggs were enroute to Yuma, Ariz. where they will spend the winter.

Owned & Operated By Red Simmons & Raiford Daniel

OLTON SUPER MKT.

We Appreciate Your Business!



Chit Chat

BY SANDEE GREGORY AND JANE ANN DUNCAN

Two victories down and at least eight more teams to go is the way the Olton Mustangs rate at the present time.

The victory over Hereford was quite a thriller right down to the last seconds of the game.

Offensive leaders were Jason Latimer, Kenneth Johnson, Steve Spain, Johnny Lewis, Eddie Hooper and Sel Sanchez. Defensive standouts were Eddie Hooper, Charles A. McClain, Kenneth Johnson, Steve Burlerson and Steve Spain.

The offensive leaders received Stallions and the defensive standouts received Head Hunter awards.

Jason Latimer was chosen outstanding offensive player and it was a tie for the top honor defensively between Charles A. McClain and Steve Burlerson. Our Fighting Mustangs put

forth tremendous defensive pressure against those Hereford Whitefaces and they will do it again when they meet helmet to helmet in Muleshoe this Friday!

GO BLUE AND WHITE DEFEAT THOSE MULESHOE MULES!

Pep Squad President, Jackie Harrod, was quite surprised when she received the OHS SPIRIT JUG for her school spirit and support. She is active in choir, piano, annual and other various clubs in OHS and Jackie shows spirit in everything she does.

Congratulations and keep up the good work!

The Science Club met Monday night to elect officers and discussed plans for the coming

year. According to Mr. Walden, the lab will be available to every science student from 7-9 o'clock every other Monday night.

Those elected were Pat Bodkin, president; Phil Cox, vice-president; secretary-treasurer, Jane Ann Duncan; Steve Collins, reporter.

"Spirit '67 of OHS" will be the theme carried out this year in our homecoming parade.

With the class and town organizations participating, everyone will have to work hard for the trophy.

Five dollars has been set as the entry fee and don't forget-- homecoming is only a few weeks off and this is one thing that can't be put off until the last minutell

ATTENTION FTA'ERS: District Convention has been set for Nov. 4 so please plan to attend.

ALL FOR FUN

"Too bad about the disappearance of Professor Smith. He was a profound thinker." "Yes, he was always think-

ing, no matter where he was. The last time I saw him he was in swimming and he suddenly called out: "I'm thinking, I'm thinking!"

"You idiot! Professor Smith spoke with a lisp."

"What am I to do with this?" grumbled Garland Huguley as the police clerk handed him a receipt for his traffic-fine payment.

"Keep it," the clerk advised. "When you get four of them, you will get a bicycle."

For three nights Mr. Wilks had struggled dutifully to help his daughter unravel the puzzling arithmetic problems she had been given for homework. They weren't making much progress.

"Daddy, it's going to be even worse next week," D'Lyle warned him.

"What's going to happen next week?" he demanded, his drooping spirits sinking even lower.

"Next week," she said, "we start using the dismal system."

With the new short-skirted fashions, a gal really has to learn to take it nice and kneesy.



National Barrow Show Austin, Minn. 1967

This prize-winning Berkshire barrow, owned by Curtis Schaefer, Olton, Texas, was named the breed champion in a field of 80 barrows at the 1967 National Barrow Show in Austin, Minnesota, September 11-13, 1967. The hog (in the 190-210 weight range) is pictured here with the owner.

VISIT NEW MEXICO

Mr. and Mrs. Elbert Hooper spent last weekend in the New Mexico cities of Albuquerque and Las Vegas.

FROM OKLAHOMA

Fred Garrett of Oklahoma City has been a recent visitor of his cousin and husband, Mr. and Mrs. Homer Worley.

WEEKEND VISIT

Greg Sweat, son of Mr. and Mrs. Lloyd Sweat, was home for the weekend from West Texas State University.

SUNDAY GUESTS

Visiting Sunday in the home of Mr. and Mrs. W. K. Britton were their children and grandchildren, Mr. and Mrs. Charlie Ellis and family of Plainview, Roy Britton, Janice, Phillip and Francis of Mexico City, Mr. and Mrs. Harold Britton, Susan, Beverly, Jan and Brian of Earth and Mr. and Mrs. Vernon Britton, David, Kevin, Pat and Nancy.

CHILDREN VISIT

Mr. and Mrs. James Kennedy, Kathy and Jimmie of Hart and Mr. and Mrs. Leslie Kennedy, Steve, Vickie and Sheri were guests Sunday of Mrs. L. B. Kennedy on Mrs. Kennedy's birthday. Mr. and Mrs. T. C. Kennedy, Karin, Chuck and Connie called Sunday evening in the L. B. Kennedy home.

IN ARIZONA

Ray Culwell and his sister, Mrs. Ira Foster, went Friday to Willcox, Ariz., where they will visit their brother and sister-in-law, Mr. and Mrs. E. M. Culwell, and their sister and brother-in-law, Mr. and Mrs. J. R. Lawrence. E. M. Culwell is recovering from open heart surgery which he underwent about two months ago.

FAST USE THE WANT ADS FAST RESULTS

COUSINS VISIT

Mr. and Mrs. F. B. Dyer of Stephenville were guests Tuesday of Dyer's cousin and husband, Mr. and Mrs. L. G. Elkins.

TEXHOMA OUTING

Mr. and Mrs. Cloys Fancher and family of Friona, and Mr. and Mrs. Larry Fancher of Lubbock enjoyed an outing at Lake Texhoma last week.

SATURDAY VISIT

Mr. and Mrs. Dale Chitwood Joe Dale and Monte visited Saturday with Mr. and Mrs. Rex Chitwood and children of Canyon and Mr. and Mrs. Dale Eichhorn and family of Amarillo.

ATTEND S. P. J. C.

Rocky Farrar, son of Mr. and Mrs. Frank Farrar is beginning his Sophomore year at South Plains Junior College in Levelland.

VISIT DAUGHTER

Mr. and Mrs. J. M. Crawford were in Guymon, Okla. last week visiting their daughter and family, Mr. and Mrs. Harley Bryant, Stephanie and Latayne.

WEEKEND GUEST

Mrs. Ruth Price of Earth spent Saturday night and Sunday with her brother and sister-in-law, Mr. and Mrs. J. M. Crawford.

VISITS MOTHER

Mrs. Virgle Gray was in Levelland Tuesday visiting her mother, Mrs. H. J. Flake.

FOR SALE

I WILL SELL my house or TRADE for farm land. Mrs. H. E. Graham, 1312 Garland Plainview, Texas 79072. CA3-5793. 32-tfc.

FOR SALE-Bedroom suit AND two twin beds call 285-2314 33-2tc.

FOR SALE- 184 1/2 acres, two eight-inch irrigation wells, five room modern home. A good well at house. Two car garage, barn, other buildings. Mail route, telephone. 29% down priced to sell. Hobson Grant, 700 E. 11th St. Littlefield. 33-3tp.

FOR SALE-International corn picker. J. F. Cole, 285-2876. 33-tfc.

FOR SALE- 169 acre farm, located 7 miles north of Circle. \$650 per acre. 8" well. Call P03-0346. 34-ltp.

FOR SALE OR RENT - 3-bedroom house in Hillcrest, J. F. Vance. 34-tfc.

FOR SALE- 150 acres land, good water, 4 miles south of Springlake. L. L. LaDuke, 285-2493. 34-3tp.

FOR SALE

FOR SALE- 1954 Motorola T. V. Call 285-2241. 34-tfc.

FOR SALE- 4-row John Deere corn header Call 285-2207. 30-tfc.

FOR SALE on easy terms, irrigated farms on North Plains. Eight 10" wells, natural gas. Water formation will last a generation. If interested call collect or write J. G. Evans, Hereford, Texas. 34-tfc.

FOR SALE - Trash barrels delivered. \$3.00 Price Wrecking 285-2235. 48-tfc.

FOR SALE-1 set of left-handed golf clubs, bag and handcart. Also 15-ft. house trailer, some used wire, posts and lumber. J. F. Vance. 34-tfc.

FOR SALE-1958 "Massey Harris 92" combine with pickup reel. 1952 GMC truck with Naphide bed. Call 285-2065. 33-3tc.

FOR RENT

FOR RENT: 2 bedroom home on west 8th. See or call S. E. Whittington. 285-2727. 27-tfc.

FOR RENT--Clean three-bedroom houses. Contact Gretta Keating. 285-2421. 25-tfc.

FOR RENT--Clean three-bedroom houses. Contact Gretta Keating. 285-2421. 25-tfc.

FOR RENT--Clean three-bedroom houses. Contact Gretta Keating. 285-2421. 25-tfc.

Garage Sale. 105 E. 11th. 34-ltc.

NOTICE: G E Appliances, big store, low overhead. TAYLOR FURNITURE. EARTH. 27-tfc.

KEEP your carpets beautiful despite constant footsteps of a busy family. Get Blue Lustre. Rent electric shampooer \$1. Walters Department Store. 34-ltc.

WANTED

Would anyone who has borrowed our trailers please return them. Leo & Stephen Smith. 34-4tc.

WANTED - Custom combining. E. W. Johnson 889-3471 Half-way. 33-2tc.

NOTICE TO CREDITORS

OF THE ESTATE OF L. E. SILCOTT, DECEASED
Notice is hereby given that original Letters Testamentary upon the Estate of L. E. Silcott, deceased, were granted to the undersigned on the 12th day of September, 1967, by the County Court of Lamb County, Texas. All persons having claims against the said estate are hereby required to present the same to me within the time prescribed by law. My residence and post office address is Box 531, Olton, Texas. My attorneys are Morehead, Sharp, Boyd & Tisdale, P. O. Box 1600, Plainview, Texas.
May Silcott, Independent Executrix of the Estate of L. E. Silcott, Deceased

TAKE OVER PAYMENTS

"Repossessed 1966 model Singer sewing machine in walnut console, Will zig-zag, blind hem, fancy patterns, assume 4 payments at \$7.46. Must have good credit. Write Credit Manager, 1114 19th Street, Lubbock, Texas."

New & Used KMP LAKE PUMPS
SEE Wayne Cole 913-9th. St.

NOTICE
We Have On Hand:
1 1/2" O.D. tubing
1 1/4" O.D. tubing
1" I.D. standard pipe
4" I.D. standard pipe
6" O.D. standard pipe
8" I.D. standard pipe
REMEMBER: we always are in the market for junk and scrap metals
PRICE WRECKING

SWAYZE Bros Builders Supply, Inc. ROOFING
BEST QUALITY
235-lb. 3-TAB
Composition Shingles
\$6.39 per square
3009 W 7th CA 4-5553 Plainview, Texas

PICTURE FRAMES
can build all sizes
Contact Russell Strain after 5. Call 285-2667



"Hey Joe... CUT down on the DUZ."
We DUZ the BEST wash job in TOWN.

ROBERSON'S MOBIL SERVICE
Where Your Business Is Appreciated
Olton, Tex. Ph. 285-2131

WE BUILD - New Homes YOUR PLANS OR OURS
Remodeling LARGE OR SMALL JOBS
CALL US FOR COMPETENT BUILDERS
Mound City Paints
Ed Harris LUMBER CO.
Hart, Texas

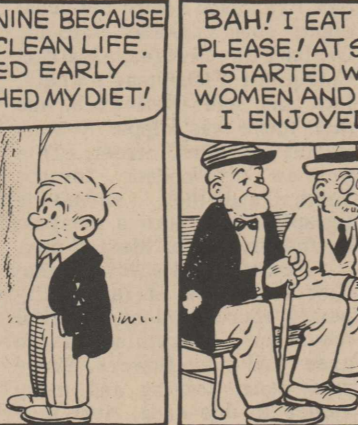
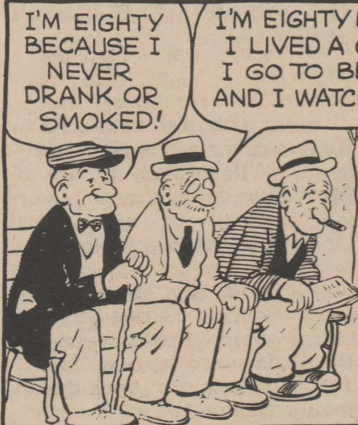
We Repair Pumps & Gearheads
All Makes And Models
COLE PUMP & MACHINE
Day Phone 285-2171 Night Phone 285-2876
J. F. (SPECK) COLE
DRILL NEW WELLS AND DEEPEN EXISTING WELLS
DOMESTIC PUMP SERVICE
ALL TYPES OF MACHINE WORK
We Service Gearheads

IT PAYS TO ADVERTISE IN THE ENTERPRISE
WAYNE'S
OFFICE SUPPLIES
PRINTING And LITHOGRAPHING
PHONE 285-2225 Olton, Texas

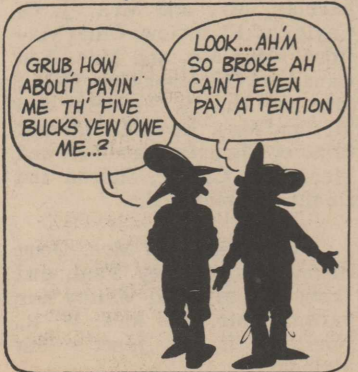
NAFZGER BROS.
GRAIN FED BEEF
1/2 or Whole 50c lb.
Ready For The Freezer
See J.P., Don or P.A.

MONUMENTS
Winsboro Blue Granite
White Georgia Marble and others
See Percy Parsons
Phone 285-2621

Rural Delivery



Grubby



THOSE WERE THE DAYS
By Art Beeman
OH, NO--THEY CAN'T COME NOW--MY ROOM ISN'T PAINTED
BUT THEY WILL BE HERE - TWO WEEKS FROM NOW!
GOODNESS, I MUST GET A HAIRCUT!
YEARS AGO GUESTS WARNED YOU BEFORE THEY CALLED
But NOW - WOW!
THEY DROP IN AT THE MOST UNEXPECTED TIMES!
By ART BEEMAN
JUST THOUGHT WE'D PAY A VISIT
HI-FOLKS
NUTS!

FOR SALE
Beef, half or whole, processed and delivered to your freezer. 50¢ lb. Also choice lamb.
Bill Warren
Phone 285-2530
A. S. Nafzger
Phone 285-2337

Glyn Carroll
Pump Sales & Service
Complete Pump And Well Service
"East Of PLAINVIEW On The Lockney Hi-Way"
- PLAINVIEW -
Office Phone CA 3-2155
Residence Phone CA 4-6834

WANTED
YOUR TIRE, BATTERY & FILTER BUSINESS
Olton Tire & Supply
C. C. CURRY, MGR.
Phone 285-2136

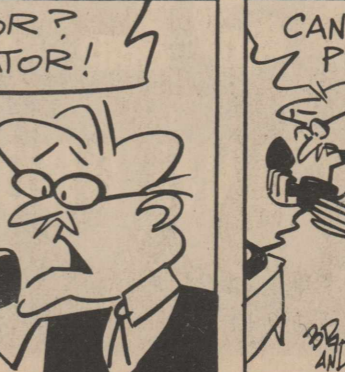
Grandpa's Boy



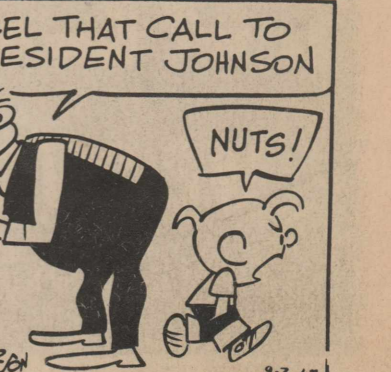
Operator?



Cancel that call



By Brad Anderson



Everyday **LOW FOOD PRICES!**

...for the Greatest in Savings



**NO
LIMIT
ON
AD
ITEMS**

SHORTENING

MRS. TUCKER'S 3 LB. CAN

59¢

COOKIES

REGULAR 39¢

4 FOR \$1 | BISCUITS

WHITE SWAN

13 FOR \$1

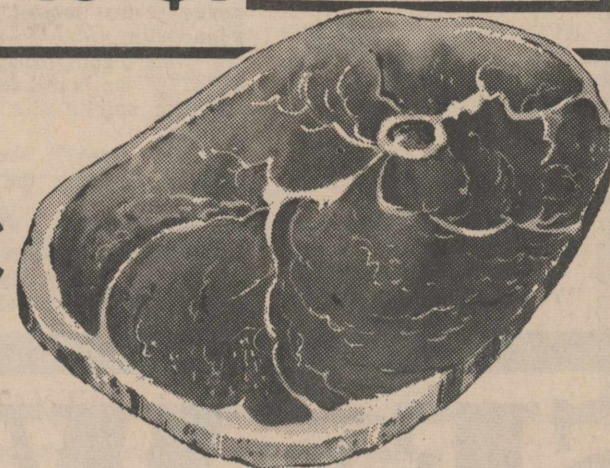
MEATS

HAM

CENTER SLICE

89¢

LB.



BACON

BAR-S 1 LB. PKG.

69¢

CHEESE

CHEF DELIGHT
2 LB. BOX

59¢

SAUSAGE

HOMEMADE 3 LB. PKG.

3 FOR \$1

HAMBURGER MEAT

3 FOR \$1

HAM SANDWICHES

SATURDAY
ONLY

10¢

BEAT MULESHOE.

TRIPLE GUNN BROS. STAMPS

WEDNESDAY, SEPTEMBER 27TH

WITH EACH \$2.50 PURCHASE

TISSUE

DELSEY
4 ROLL PKG.

49¢

EGGS

XIT GRADE A

3 DOZ \$1

DISH SOAP

DOVE

59¢

BREAD

1 1/2 LB. LOAF

10¢

POTATOES

RED 10 LB.

39¢



CABBAGE

LB. **5¢**

ONIONS

YELLOW

LB. **7¢**

CANDY

10c BARS

5 FOR 39¢

CAMEL SUGAR TIME

39c BAGS

3 FOR \$1

LUNCHEON LOAF

BILT-MORE
MADE WITH CHICKEN

39¢

TUNA

DEL MONTE

3 FOR \$1

GREEN GODDESS DRESSING

KRAFT'S

29¢

SWEETHEART FLOUR

25 LB. BAG

\$1.89

CAT FOOD

PUSS & BOOTS

6 FOR \$1

COFFEE

FOLGER'S 1 LB. CAN

65¢

AUNT JEMIMA SYRUP-FREE

When You Buy Aunt Jemima Pancake Mix

CLOROX

1/2 GALLON

39¢

SALT

LILY

BOX **10¢**

HOSE

3 prs. **\$1**

FRUIT DRINKS

DEL MONTE
46 OZ. CAN

3 FOR \$1

BEAT MULESHOE

Owned And Managed By Jesse Stovall

JESSE'S \$UPER \$AVE

WE GIVE GUNN BROS. STAMPS-DOUBLE ON WEDNESDAY

FREE DELIVERY

WE SELL MONEY ORDERS

PHONE 285 2250

**ACROSS THE
COUNTY LINE**

MRS. C. D. TANNER
Ph. 889-3620 Halfway

Mr. and Mrs. Arthur Morris and Mr. and Mrs. J. S. Bell returned Thursday from a nine day tour in eleven states. They visited Bell's sister and husband, Mr. and Mrs. Elton Corley of Longview. Then they stayed one night in Marianna, Ark. where they had planned to meet a brother of Morris but they failed to make connection.

In Nashville, Tenn. they attended "The Grand Ole Opry", the highlight of the trip for Mrs. Bell; and also visited "The Hermitage", Andrew Jackson's home.

Mrs. Morris especially enjoyed the "Smokies" in eastern Tennessee, along the boundary of North Carolina. They took some of the trails in this region and saw lovely oldhomes, some of the fattest cows, and beautiful meadows.

In Illinois they visited a nephew and his family, Mr. and Mrs. Mack Morris and children of Alton, Ill. Cornfields in this state were remarkable as were the tobacco fields of Kentucky and Indiana.

On the 3300 mile journey they were in Louisiana, Mississippi, Arkansas, Tennessee, North Carolina, Kentucky, Indiana, Illinois, Missouri, Oklahoma and Texas.

Guests in the home of Mr. and Mrs. Ralph Beasley Sunday night were Mr. and Mrs. Gary Beasley and family and Mr. and Mrs. C. M. Logan of Plainview.

Tuesday night supper guests of Mr. and Mrs. Derwood Copeland were Mr. and Mrs. Elbert Hooper, Kenneth and Terri and Miss Mary Bubliss of Plainview. Friday night supper guests were Mr. and Mrs. L. G. Hooper and baby.

Mr. and Mrs. Derwood Copeland spent Saturday night and Sunday with her bother and wife, Mr. and Mrs. Melvin Chandler of Tulsa.

Mr. and Mrs. E. G. Clark visited Tuesday and Tuesday night with their daughter and family, Mr. and Mrs. Jack Roy Straw, Rod, Roy and Scott of Gruver.

The Westside Community Club had their first meeting of the school year Sept. 7 in the home of Mrs. Evangelynn Coleman.

Games of "42", Skippo, and Yahtze were enjoyed by a visitor, Mrs. Jack Kirby, and members Mmes. Lucille Copeland, Nellie Ruth Roberts, Tommie Clark, Gladys Copeland, Vina Burgess, Cassie Copeland, Ava Copeland, Erma Lee Cox, Dorothy LaFrance, Murdell Shipley, Frances Leathers and the hostess, Evangelynn Coleman.

The Sept. 28 meeting will be in the home of Mrs. Tommie Clark.

Mr. and Mrs. Winford Smith returned home Thursday from a two weeks trip. They flew to Los Angeles Aug. 30 to join their son, Kenneth Smith, who flies for Western Airlines and was on vacation at this time.

With Kenneth they flew to Mexico City. Mrs. Smith said one of the most noticeable things on the streets of Mexico City was the absence of shorts, slacks and mini skirts. Women wore proper dress here. The University of Mexico is fabulous, the campus beautiful and the weather perfect according to Mrs. Smith.

They went further south in Mexico to Culruavaca and to Taxco where they visited the largest and richest silver mine in the world.

The Smiths also flew to San Francisco seeing the usual sights such as Golden Gate and Oakland Bay Bridges, Alcatraz, Chinatown, Fisherman's Wharf, lots and lots of flowers, and then there was Hippie Row on Haight Ashburn Street. This was an eye-opener for the Smiths and they termed it unexplainable. Such a contrast to the streets of Mexico city.

From San Francisco they flew to Seattle, a lovely city partly surrounded by beautiful mountains. Everything was so green and more flowers. There was much logging and many apples in this area. Here they found apple machines where you put in 15¢ and out came a big red apple as you would in a coke machine.

In all they flew some 9000 miles and on arriving at various destinations rented a car and drove hundreds of miles.

The Rev. and Mrs. Bob Sena, pastor of the Halfway Baptist mission, are attending Wayland Baptist College, Plainview. The Rev. Sena conducted a revival at the Baptist Mission in Muleshoe from Aug. 27 through Sept. 3.

Mr. and Mrs. Clyde Emberton carried Yvonne Emberton to enroll in Baylor University,

Waco. While gone Emberton went through the clinic at Scott and White, Temple.

Mr. and Mrs. Eddie Smith of Canyon were in Olton Friday night to attend the Hereford and Olton football game.

Mr. and Mrs. Joe A. Johnson spent Sunday with Mr. and Mrs. Gary Johnson and Gary Jr. of Lubbock. They also visited their son-in-law, Melvin Schwab of Plainview, who was a patient in the Methodist Hospital, Lubbock. He had received surgery on Tuesday and was dismissed from the hospital Monday.

Sunday Mr. and Mrs. Earnest LaFrance and Jerry were dinner guests of Mr. and Mrs. H. G. Edwards and Janice of Lockney.

Mr. and Mrs. Earnest LaFrance and Jerry and Mr. and Mrs. O. E. McKee of Plainview fished several days last week at Possum Kingdom Lake.

Saturday Mr. and Mrs. Earnest LaFrance visited his sister, Mrs. Fred Jones of Floydada. Mrs. Jones had just returned home from the Methodist Hospital, Lubbock.

The Perry family reunion was held at the Orlando Park Club house in Lubbock Sunday. Those attending were Mr. and Mrs. Ernest Jones, Mr. and Mrs. Royce McFadden, Melissa, Monte and Mark of Olton; Mr. and Mrs. Grady Sorley, Phillip, Kenneth, and Debra of Bovina; Mr. and Mrs. Joe Edwards and Mr. and Mrs. Herman Edwards and family of Amarillo; and Mr. and Mrs. Tom Perry and family and Mr. and Mrs. Mike Prabasco and family of Lubbock.

Mr. and Mrs. Ernest Jones attended the Bovina vs. Happy football game Friday night. Their grandson, Phillip Sorley played for Bovina.

Tommy Neal Bennett, son of Mr. and Mrs. V. M. Bennett, is home on leave for a month from Hawaii where he is stationed in submarine service.

Guests of Mr. and Mrs. E. C. Freeman over the weekend were Mr. and Mrs. Michael Freeman of the Law School of the University of Tulsa, Tulsa, Okla.

The W. M. U. of the Edmonson Baptist Church observed the Week of Prayer Tuesday. Bible study was led by Mrs. Carl Bands. Mrs. James Belk presided at the business meeting.

Members present were Mmes. J. C. Grisham, Carl Bonds, Bill Mason, Franklin Bala, Rex Solomon, Guy Cook, T. M. Fortenberry, Celia Slayton, Albert Painter, Robert Winter, Bob Parker, James Belk, J. A. Bush, Jack Anderson and V. N. Bennett.

A shower was given in the home of Mrs. John Stephenson honoring Miss Patricia Holmes, bride elect of Virgil Ralph Butler of Long Beach, Calif. Miss Holmes is the daughter of Mr. and Mrs. Clinton Holmes.

Hostesses were Mmes. John Stephenson, Troy McCollum; Everett Heller, V. N. Bennett, D. R. Hodges, Fina Edward, J. C. Gallimore, James Gardner and Albert Painter.

Mrs. J. H. Harrell of Haskell is visiting her sons and families, Mr. and Mrs. Rollo Harrell and Mr. and Mrs. Clyde Harrell and children of Halfway, and daughter and family, Mr. and Mrs. J. B. Carroll of Hale Center.

Mrs. Andy Weiber and Mrs. Clark Crader carried Pam Weiber and Rose Mary Bubliss of Plainview to Austin to enter the University of Texas. They also visited friends in Houston.

Mr. and Mrs. Hugh Alexander returned Wednesday from taking their grandson, Johnny Baugh, home to San Jose, Calif. They visited two weeks with their daughter and her husband, Mr. and Mrs. L. J. Baugh.

Mr. and Mrs. John Norfleet and children spent Sunday in the home of Mrs. Norfleet's parents, Mr. and Mrs. J. G. Caylor of Plainview. Other visitors were Mr. and Mrs. Edd Canada of Oklahoma City, Okla.; Mr. and Mrs. S. G. Carter and Mr. and Mrs. Jerry Caylor and Mike of Plainview; and Mr. and Mrs. Dan Caylor, Sharon and Danita of Levelland.

Sunday Mr. and Mrs. Doug Herrington, Stanley Paul, and Janet of Levelland visited her parents, Mr. and Mrs. W. R. Norfleet. It was Janet's 13th birthday.