

4665 6R2-031 EXP 1/91
MIKE PORTER
RT 2
ROTAN TX 79546

Third Annual Fisher County Quail Cookoff Is Saturday

Chili cookoffs are a favorite pastime for Texans in all parts of the Lone Star State. But leave it to the "Quail Capital of Texas"—Fisher County—to hold a quail cookoff for fun and good taste.

The third annual Fisher County Quail Cookoff will be held at 9 a.m. Nov. 10 at the Cottonwood Recreational Vehicle Park, one mile south of Roby on Hwy. 70. Teams will compete for cash prizes and trophies.

This year's event is on Veteran's Day weekend and a week after the opening of quail hunting season, said Fisher County Extension Agents Beth

Dannheim and Richard Spencer, cookoff coordinators.

"It's a day of fun for the contestants and the spectators, to celebrate the traditions of quail cookery," Dannheim said. It begins with a breakfast for the contestants, prepared by the Roby Lions Club. Spectators can dine for \$3. High School bands, singers and other performers will entertain during the day. There will be a quail calling contest and door prizes.

"We get down to the serious business at 9 a.m., when the teams begin preparing their delicacies," Spencer said.

Judging of the dishes by area celebrities and media personalities is at 11:30 a.m.

Dishes will be judged on taste, appearance and originality. The top three entries will receive trophies and cash awards of \$200, \$100 and \$50, respectively.

spectively.

Plaques also will be presented for showmanship, based on which group puts on the best show during preparation of the dish, and for the "People's Choice," in which each spectator casts

one vote.

There are two classes of competition. Open class is for contestants from outside Fisher County and has an entry fee of \$20 per team. County teams compete in a separate class, with an entry fee of \$10.

Entry blanks and additional infor-

Rotan Marching Yellowhammer Band Gets Two

The Rotan Yellowhammer Band received a Division II rating from judges at the UIL Marching Contest held in Abilene, Texas, Saturday, October 20.

Other bands and their ratings from Class A were as follows: Trent- 4, Roscoe-I, Roby- III, Rochester- III, Baird- I and Bronte- I.

The two bands that advanced from District to Region Marching contest were both from the North Zone, Paducah and Petrolia.

The band is under the direction of David Sims. Drum major is Jerry Gauna, son of Jerry and Felicitia Gauna. Twirlers this year are Karen Dickson, daughter of Joe and Linda Dickson; Missy McKinney, daughter of Monte and Dianna McKinney; and Czrena West, daughter of Catherine Weatherman and Bobby West.

Karen and Czrena both received a Division I on twirling solos and have been certified to advance to State Competition in June.

County Is Blitzed With Postal Letter On New Addressing

Fisher County residents were among over 100 million postal customers that received a guide on how to get the best possible service from the postal service, according to Rotan Postmaster Don Webb.

The four Fisher County post offices - at Rotan, Roby, McCaulley and Sylvester sent county residents a letter which explained the proper method of addressing mail. Any local resident not getting the letter can inquire for an additional copy at their local post office.

The nationwide mailing was designed to make the public aware of proper addressing to allow the postal service to use automated equipment to handle the mail more efficiently, according to Barbara Buck, Dallas Division Communications Manager.

"We plan to have 40 percent of the mail pre-bar coded by major mailers and another 20 percent bar coded by our optical character readers. The remaining 20 percent, which will include handwritten or poorly addressed mail, will be processed through a remote video encoding system that will also allow a bar code to be placed on the mail," Buck said.

NOVEMBER
FISHER COUNTY
Home To
Dicky Tandy
Ronald Henry
Edward Martinez
Tanya Upshaw
County Craft Co-Op

Roby Star-Record



ROTAN ADVANCE

VOL. 81 NO. 39

THURSDAY, NOVEMBER 1, 1990

50¢ PER COPY
24¢ BY MAIL
BY THE YEAR

Two Hundred Cast Absentee Votes, General Election Voting Boxes Told

Fisher County Clerk Bettie Rivers indicated last Tuesday morning that slightly over 200 Fisher County residents had voted by absentee ballot in the upcoming November 6th general election.

"The turnout is high for absentee voting and the numbers compare to the first primary turnout, but overall the pre-election day voting designation,

enabling voters to vote without excuse is probably the cause of the increased numbers", commented Bettie Rivers, Fisher County Clerk.

Polls open from 7:00 a.m. until 7:00 p.m. Tuesday and voting will be conducted in the following location.

The Fisher County voting boxes, locations and judges will be as follows: Box 1, Coffee Room of the Fisher

County Courthouse, Roby, Inez Neves as judge; Box 2, Rotan Fire Station, judge Betty Carter; Box 4, District Courtroom at Fisher County Courthouse, Rose Moore as judge; Box 5, Public Library, Rotan, J.A. McClain as judge; Box 6 Fire Station in McCaulley, judge will be Gloria Ferguson; Box 10, Rotan Community Center, Melvin Clements as judge; Box 12, Rotan High School Library (old one in high school building) with Anna Mae Fleming as judge; Box 13, School House in Hobbs, judge Louise Martinez; Box 17, Community Center at Capitola, Glen Webb

Sheriff Increases Rotan Burglary Reward To \$1,000

Fisher County Sheriff Mickey Counts has increased the reward to \$1,000 for information leading to the arrest and indictment of the individual or individuals responsible for burglarizing the five Rotan businesses last week.

A person or persons unknown broke into Nowlin Farm Services; Farm Tractor & Services, Inc.; The Newspaper Office, Smith & Cyphers Chevron and Gray Fuel and Chemical sometime Monday night, October 22nd.

Persons with information on the burglary can communicate with Sheriff Counts in confidence by contacting him at 776-2273.

Rotan Methodist Gumbo Supper, Bazaar Nov. 9th

The members of the First United Methodist Church at Rotan will hold their annual Seafood Gumbo & Stew Dinner and Church Bazaar on Friday night, November 9th from 5:30 p.m. until 8:00 p.m., according to Nina Tandy and Becky Burk, co-chairmen.

The church members traditionally hand craft items to be sold, offer baked goods, homemade jelly, crochet items, potholders, quilts and Christmas items.

Rotan And Roby Cities Get State Sales Tax Rebate Checks

State Comptroller Bob Bullock said Friday that his office sent checks totaling \$93 million in monthly local sales tax rebates to cities and counties in Texas.

"Sales are staying strong throughout Texas and that means sales tax collections keep increasing at a steady pace," Bullock said.

Checks to cities totaled almost \$84 million, an increase of 16 percent over last October's rebates. So far this year, rebates to cities are running almost 9 percent ahead of last year, Bullock said.

The City of Rotan received a rebate check for \$3,624.99 for a total of \$52,114.41 for the year; Roby's check was for \$1,311.70 and a total of \$13,938.87.

Other area cities and their rebates

included: Roscoe \$1,310.13 for a total of \$22,697.29; Sweetwater \$62,533.15 for a total of \$5,997,590.60; Snyder \$66,486.17 for a total of \$651,301.16; Anson \$4,294.85 for a total of \$52,720.14; Hamlin \$5,043.65 for a total of \$68,545.49; Stamford \$16,526.65 for a total of \$177,219.58; Aspermont \$4,899.75 for a total of \$40,171.93; Baird \$2,103.23 for a total of \$28,415.38; Clyde \$5,047.21 for a total of \$665,029.15 and Cross Plains \$3,736.96 for a total of \$40,429.35.

Houston received \$13.9 million, the state's largest payment, while Dallas received the second largest payment at \$9.3 million.

This month's checks reflect taxes collected on August sales and reported in late September by businesses filing monthly tax returns.

Merchants collect the state and local sales taxes and send them to the Comptroller's office with their tax returns. The state keeps its 6 1/4 percent share and each month sends cities and counties their portion of the sales tax.

All local sales taxes must be approved by local voters and may be used for any legal city or county expenses. Many areas put the regular 1 percent city sales tax in their General Fund and use it for operations like fire fighting, maintaining roads and law enforcement. Cities use additional 1/2 percent city sales taxes to help fund local economic development and to reduce property taxes.

Western Trade Day Set For Rotan, Nov. 13th

On Tuesday, November 13th the Rotan Chamber of Commerce will sponsor Western Trades-Day centered around a horse trader from Rochelle, Texas according to Tommy Harbin, Rotan Chamber President.

Miers and Christine Johnson, horse buyers of Rochelle, Texas will be setting up to buy, sell, trade horses in the grassy area West of the new Rotan City Hall.

The Johnsons will be selling saddles and tack as well as buying, selling and trading horses.

Arrangements have also been finalized to have someone available to do horse shoeing and horse trimming. Anyone is invited to set up a table and sell handmade items, canned goods, homemade crafts. Farm items can be sold.

"We invite the residents of the area to bring their horses to trade, chickens, ducks, etc. and made it a functional as well as fun event. We will be starting about mid-morning on Tuesday, November 13th and will go until late afternoon", said Harbin.

Grand Jury Indicts Hohon On 28 Count Felony Charge

The Fisher County grand jury returned a 28 count felony indictment last week against former Fisher County Hospital Administrator Pete Hohon. Fisher County Sheriff Mickey Counts indicated that the charge was "theft over \$750 and less than \$20,000".

Hohon's bond was set by the district court at \$10,000. Counts indicated that he has not been arrested. "Hohon has been in telephone contact with the Fisher

County Sheriff, he has not been arrested and I feel sure he will post bond and will come to trial at a later date", commented Counts.

Sheriff Counts indicated that the next step will "probably be a pre trial hearing, arraignment and a trial if some type satisfactory arrangement is not worked out by the court and Hohon or his attorney".

County Hospital Auxiliary Will Hold Blood Drive

The Fisher County Hospital Auxiliary has set a goal of 55 units of blood for its semi-annual blood drive set for the Fisher County Senior Citizen's Center on Monday afternoon, November 5th between the hours of 3:00 p.m. and 6:00 p.m., according to an organization spokesman.

The blood drive is held in conjunction with the Red River Region of the

Continued To Page 4

32nd Judicial District County Budget Expenses \$58,463.05

The 32nd Judicial District section of the Fisher County budget for 1989 had annual expenses of \$58,463.05. For 1991, Fisher County Commissioners recently approved a \$68,921.83 budget.

Total expenses for the 32nd Judicial District for 1989 were \$58,463.05 or approximately 5% of the total 1989 budget of \$1,250,000 for Fisher County.

In prior weeks, a total of six other Fisher County Departments have been reviewed. The series has included the Fisher County Sheriff's department, Non-departmental, Maintenance of Buildings, Fisher County Clerk's office, Fisher County Extension Agent's office and the Fisher County Senior Citizen's Center.

In the area of the 32nd Judicial District, the largest single expenditure was \$15,734.21 to the juvenile office. Salaries and benefits comprised a total of \$38,625.57. Salaries and benefits amounted to 66% of the total budget of \$58,463.05 with 93% of the budget devoted to salaries and benefits and the juvenile office. The remaining 7% consisted of law books \$1,723.82; funds set aside for autopsies of \$599.45 and a lunacy expense. Judge Marshal Bennett indicated that the lunacy item was funds paid to the state hospital in Big Spring for housing mentally disturbed Fisher County residents who have needed to be confined.

A full listing of all categories for the 32nd judicial district is listed below. Next week will spotlight the Fisher County Judge's office with expenditures of \$53,537 for 1989.

FISHER COUNTY, TEXAS STATEMENT OF REVENUES, EXPENDITURES AND CHANGES IN FUND BALANCE -- BUDGET AND ACTUAL -- GENERAL FUND For The Year Ended December 31, 1989			
	ACTUAL	BUDGET	VARIANCE FAVORABLE (UNFAVORABLE)
32nd Judicial District:			
Salary-Court Administrator	5,239	4,593	(646)
Salary-Assistant District Attorney	5,565	5,787	222
Salary-Special Investigator	4,756	4,756	-0-
Salary-Assistant District Attorney			
Secretary	3,227	3,227	(83)
Salary-District Attorney Secretary	3,687	3,604	(83)
Interpreter	20	-0-	(20)
Social Security	1,294	1,305	11
Health Insurance	2,177	2,000	(177)
Retirement	1,206	1,216	10
Outside District Judge	318	-0-	(318)
-Salary-District Judge	3,289	3,840	551
Law Books	1,581	1,500	(81)
Juvenile Office	15,734	15,734	-0-
Autopsy	-0-	3,500	3,500
Travel-Special Investigator	1,132	400	(732)
Travel-District Attorney	-0-	100	100
Travel-Assistant District Attorney	189	400	211
Travel-Outside District Judge	225	300	75
Court Appointed Attorney	7,111	15,000	7,889
7th Adm.-Region of Texas	-0-	260	260
Lunacy	1,780	-0-	(1,780)
Total 32nd Judicial District	58,530	68,522	9,992

mation may be obtained by writing to: Quail Cookoff, P.O. Box 187, Roby, Texas 79543.

Proceeds are used to promote quail hunting in the county; which annually boasts the state's largest population of the bird.

Last year's cookoff drew 23 teams and more than 400 spectators.



GOOD MOVE: I don't always agree with everything the Rotan City Council does - but I did think they made a semi-smart move by considering Attorney Gary Harger for the Rotan City Attorney position. He is attempting to get a local practice started and is bound to need the work. Good move in giving Harger consideration, in my opinion. I also happen to believe that the City of Rotan as well as every other Fisher County tax collecting entity should spend as many dollars in Fisher County as possible. You can't always measure the local lumber yard, local auto repair shop, local parts house, local hardware store against Sam's in Abilene. Sam's doesn't pay any local taxes, doesn't support any local clubs or organizations, doesn't employ any local workers and doesn't generally give a flip about Fisher County. Sam's may be less expensive on a pound of nails but the local lumber yard buys ads in yearbooks, buys chili supper tickets, supports Theatre on the Brazos with donations, helps support boy scouts, cub scouts, buys girl scout cookies and annually pays a heck of a tax bill to support the hospital, school, city and Fisher County. We need to all give the local folks a break.

THANKS SENATOR: U.S. Republican Senator Phil Gramm, the Gramm in the Gramm - Rudman all of Washington generally cusses, took great pleasure in announcing a \$6,068,000.00 award, gift - call it what you want, to the Great State Of Texas, recently. The \$6 million plus was to help support the innocent Texas victims of violent crimes. Money came from fines and penalties assessed on convicted federal defendants. Thanks Senator, that's a pretty tidy sum. Wonder where the confiscated drug money, boats, automobiles finally wind up?

FRONT PAGE STORY: In last week's paper about the Social Security Representative cutting out trips to Rotan on a monthly basis. Cora Mann at the Rotan City office indicated that the Abilene social security office used to come every other week, then cut it down to monthly, now cut visits out completely. I just wonder if we hollered loudly if it would do any good - toward getting the local representative to start up the service again? The squeaking wheel and all that jazz. We need to take the attitude that we're going to fight to retain these services. We should have, in my opinion, raised a stink when the Texas Department of Public Safety moved the driver's license renewal office from Rotan. That is water under the bridge though. If we don't dig our heels in, we'll lose the ASCS office and soil conservation office next. Lets call 1-698-1360, the Abilene Social Security Office, Glyn Hammonds, and register our objection to them pulling out of Fisher County. He will tell you it is a nationwide move, but if local folks don't ever say anything, nothing will ever get changed. If you have a pen write Charlie Stenholm, Senator Gramm, Senator Bentsen and rattle a few cages - we just may make enough noise to get the representative back. Wouldn't that be a victory?

ICE CREAM PLUG: I don't own any stock in the company, but if you get the chance try Blue Bell Extra Light ice cream. It is fat free, cholesterol free, low in salt and has only 90 calories per half cup serving. If I sound like a commercial, I guess I am. Glad the Blue Bell people have entered the Borden and Gandy's West Texas market. The Blue Bell ice cream is delicious - but you pay dearly for it. My daughter Kellie Kiker, a North Texas resident of Muenster, thinks no day is complete without a dish of Blue Bell Ice Cream - she even plugs the Brenham Creamery by wearing a Blue Bell T-shirt. Due to deliver her first child in March, the baby will probably enter this world hollering 'double chocolate and strawberry'.

FINALLY: Oi! Whistle Britches endorsed a few candidates this week. He likes Bob Bullock for Lt. Governor; John Sharp for Comptroller, Garry

Continued To Page 4



State Capital Highlights

By Lyndell Williams
Texas Press Association

Items of note that cropped up last week while Congress wrestled with the budget and Texas hurdled toward an election:

* Congressmen drawing the line on spending have written themselves a \$19,000 pay raise into the budget;

* Former San Antonio Mayor Henry Cisneros said Democratic nominee Ann Richards did not snort cocaine at a fund-raiser for Atty. Gen. Jim Mattox and ripped his sheriff for investigating her.

* Republican nominee Clayton Williams said he favors reducing the no pass-no play suspension from six to three weeks, a stance which former Gov. Mark White called "a retreat" from his reforms.

White, a Democrat who was defeated in the primary after a bloody attack by Richards, still has yet to endorse a candidate for governor.

Candidate for Mayor

White was white-hot at Richards for smearing him in TV ads which accused him of enriching himself financially at taxpayer expense, and vowed publicly he would never support her.

Williams courted White's endorsement over the summer, with unpublished results, and many have been surprised to see White stay out of it.

Now a Houston attorney, his name is being circulated there as a possible candidate for mayor next year.

White's name will be included in an exploratory poll in January by forces seeking to unseat Kathy Whitmire, according to reports.

School Finance Case

Moving with surprising speed, the state Supreme Court last week agreed to hear oral arguments on whether Texas' new school finance system is unconstitutional and should be thrown out immediately.

"We are pleased by the strong leadership shown by the court in agreeing to hear the Edgewood versus Kirby case at a very early date," said Al Kauffman, lead attorney for the property-poor school districts that launched the legal challenge against the funding system in 1984.

The high court will hear arguments on Nov. 28 - seven weeks after Kauffman's clients filed the appeal.

L-Word, Good Ol' Boys

Some days a good ol' boy just can't do anything right, according to Richards.

She protested because Williams calls her "a liberal" in new TV ads, and her campaign spokesman said she actually is more of a fiscal conservative than he.

That brought quite a few inside laughs in Austin, where nothing is so hilarious as a liberal Democrat "admitting" he or she is actually a fiscal conservative just before Election Day.

Unless it's a Republican vowing to veto taxes or make government live within its means.

Scott Controversy

The governor's chief of staff, Rider Scott, found himself embroiled in

controversy when a new prison consulting firm used his name to solicit business.

Scott was legal counsel and executive director for the Criminal Justice Division this summer, but planned to resign and join the corporation.

Instead, he was promoted to chief of staff and timing prevented his name from being pulled from some of the printed solicitations.

Record Registration

Secretary of State George Bayoud said a record 7.7 million Texans have registered to vote in the Nov. 6 gubernatorial election.

According to Bayoud, 7,701,499 - or 62 percent - of Texas' 12.5 million eligible voters have registered. That eclipses a record set in 1986 when 7,287,173 Texans registered to vote in a gubernatorial election.

Capitol Highlights

* Kay Bailey Hutchinson, GOP state treasurer candidate, said about \$100,000 million of the state cigarette tax goes uncollected because incumbent Richards does not have an effective enforcement division.

Hutchinson, a former state representative, said tens of thousands of cigarette packs enter the state with no tax stamps or counterfeit ones and blamed Louisiana as the biggest culprit.

* Enrollment at Texas colleges and universities increased by over 26,000 students, or three percent, and is expected to pace the nation.

The University of Texas at San Antonio had the greatest number of new students, 1458, while Texas A&M

University at Galveston had the state's largest percentage gain of 14.9 percent, leading the state for the third straight year.

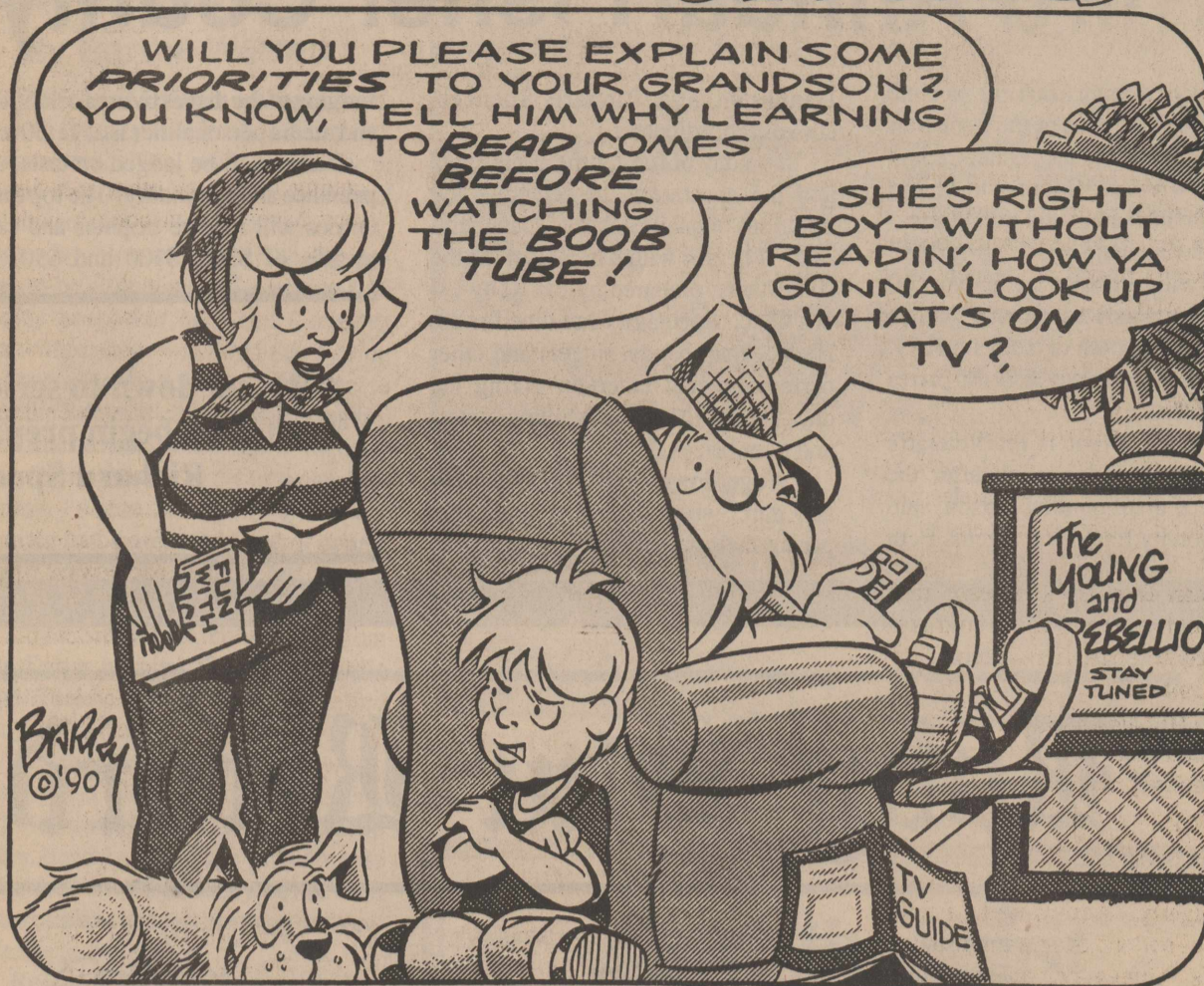
* Attorney General Jim Mattox warned that gang membership is rising dramatically in Texas, some 7,000 members in large cities, some armed with fully automatic weapons.

Police report 179 gangs in Dallas and 256 gangs in Fort Worth, each city with 2,700 gang members.

* David Marwitz, Gov. Bill Clements' legislative liaison, will leave that job to begin work Nov. 8 as a lobbyist for the Texas Hospital Association.

We Make Copies
At The
Newspaper Office
114 Snyder
Rotan

J.P. Doodles



Fisher County Church Directory

First National Bank
Of Rotan
Member FDIC
Rotan, Texas

City Grocery & Deli.
S. Hwy 180 - Roby, Texas
776-2225
Keifer & Aubrey Nell

Bart Strayhorn
735-2231
Rotan, Texas

City Auto
Supply
735-2242 - Rotan, Texas

United Artists
Cable Television
735-2526
Rotan, Texas

Rotan
Insurance Agency
735-2571

Circle C Grocery
735-2574
Rotan, Texas

Theatre
On The
Brazos

H.L. Davis & Co.
"The Friendly Store"
Bill & Elaine Day

Sunday
Isaiah
65:17-25
Monday
Zechariah
3:1-10
Tuesday
Zechariah
10:1-12
Wednesday
Numbers
6:22-27
Thursday
Ezekiel
34:11-31
Friday
Romans
15:1-6
Saturday
1 Corinthians
13:1-13

PLANTED IN THE HOUSE OF THE LORD...

Winter is just around the corner. Reminders are all around. The grass has turned from green to brown, tinted by early morning frosts. Bare, black tree limbs are silhouetted against the November sky, as winter looms on the horizon.

Yet, potted plants, carefully rescued before the first frost, shine like emeralds in the sunny bay window, oblivious to the season. They thrive in the house, warm and tended, lovingly watered and nourished.

As in nature, our lives are, from time to time, assailed by the cold winds of doubt, and our hearts gripped by the icy fingers of fear. We do not have to feel desolate. We, too, can be rescued.

Come into God's house. Warm your heart and nourish your spirit. Psalms 93:12-13 promises "... the righteous man will flourish... planted in the house of the Lord."

Scriptures Selected by The American Bible Society

Copyright 1990, Keister-Williams Newspaper Services, P. O. Box 8005, Charlottesville, VA 22906

Mid-West Electric Sponsoring D.C. Youth Tour In '91'

Fisher County teenage students can 'take a shot' at winning a free trip to Washington D.C. compliments of Mid-West Electric Cooperative, according to Edwin Jackson, member service director.

The trip, awarded to two youths in the area served by Mid-West Electric Cooperative, will be a 13-day all expense paid trip to the nation's heart and will take place between June 6th and June 18th, 1991.

The local entrants will participate in an oratorical contest to determine the winners. Local winners will then join the Government-in-Action Youth Tour, a group of 70 Texas winners, who will travel by bus to Washington.

The contest is open to any person age 14 through 19 who lives in Mid-West Electric's service area.

Additional information can be secured by contacting Edwin Jackson at Mid-West Electric in Roby 776-2244. The contest deadline for entering is January 1, 1991.

It Takes Two Things To Hold Home Trade At Home...

Two important things will help hold customers at home;

*First...a well selected stock of quality merchandise that is fairly priced.

*Second...letting the potential customers know about the goods by means of consistent advertising.

After 200 years, the best medium discovered for advertising is still your local newspaper, serving the local area.

Call 735-2562

The Newspaper Office

PEOPLE CAN'T BUY WHAT YOU HAVE IF THEY DON'T KNOW YOU HAVE IT!

St. Joseph's Catholic Church Rotan, Texas Father Austin Kitteredge Sunday Morning 9:00 a.m. Mass Sunday Night 7:30 p.m. Mass	Little Zion Baptist Church Rotan, Texas Rev. John L. Martin Sunday School 9:45 a.m. Worship Service 11:00 a.m.	Foursquare Church Rotan, Texas Rev. Robert Kennedy Sunday School 10:00 a.m. - Worship 11:00 a.m. Sunday Evening Service 6:00 p.m. Wednesday Night Service 7:00 p.m.	Cross Roads Baptist Church Rotan, Texas Rev. Keith Berryman S.S. 10:00 a.m. - Worship 11:00 a.m. Worship Service 7:00 p.m. Wednesday Night Service 7:00 p.m.
Church Of The Nazarene Rotan, Texas Rev. Jack Jones S.S. 9:45 a.m. - Worship 11:00 a.m. Sunday Evening Worship 6:00 p.m. Wed. Night Bible Study 6:00 p.m.	First Baptist Church Roby, Texas Rev. Alvin Petty S.S. 10:00 a.m. - Worship 11:00 a.m. Sunday Choir Practice 5:00 - Worship 6:00 Wednesday Prayer Meeting 7:30	Hobbs Baptist Church Hobbs Community Rev. C.J. Smith Sunday School 9:45 a.m. Sunday Morning Worship 11:00 a.m. Sunday Evening Worship 6:00 p.m.	First United Methodist Sylvester, Texas Sue Rowlett, Minister Sunday School 10:00 a.m. - Worship 9:30 a.m. Community Dinner 6:00 p.m. Each Third Wednesday Night
McCaulley Baptist Church McCaulley, Texas Rev. Dutch Parks Sunday School 10:00 a.m. Worship Service 11:00 a.m. Sunday Evening Worship 6:00 p.m.	First United Methodist Rotan, Texas Rev. Ron W. Dunaway Sunday School 9:30 a.m. Worship Service 10:30 a.m. Sunday Evening Worship Service 6:00 p.m.	Church Of Christ Roby, Texas Darrell Hart S.S. 10:00 a.m. - Worship 10:45 Sunday Evening Service 6:00 p.m. Wednesday Night 8:00 p.m.	First United Methodist Roby, Texas Rev. Larry Crumpton S.S. 9:45 a.m. - Worship 10:50 a.m. Sunday Night Worship Service 6:00 p.m. Wednesday Night Choir Practice 7:00 p.m.
Church Of Christ Rotan, Texas Douglas Reeves S.S. 9:45 - Worship Service 10:45 Sunday Ladies Bible Class 5:00 p.m. Sunday Night Worship 6:00 - Wed. - 7:30	Baha'i World Faith Rotan, Texas Dr. and Mrs. David Morris Information Meeting Every Thursday night at 7:30 Blue Haven Motel, Roby	First Baptist Church Rotan, Texas S.S. 9:45 a.m. - Worship Service 10:45 a.m. Sunday Evening Worship 6:00 p.m. Wednesday Prayer Meeting 7:00 p.m.	Emmanuel Baptist Church Rotan, Texas Rev. Felix Silva Sunday School 10:00 a.m. - Worship 11:00 a.m. Sunday Evening Service 5:30 p.m. Wednesday Night Worship 7:00 p.m.
Calvary Baptist Church Rotan, Texas Rev. Gene Prevo S.S. 10:00 a.m. - Worship 11:00 a.m. Sunday Evening Worship 6:00 p.m. Wednesday Night Service 7:00 p.m.	Mission Bautista Celvario Roby, Texas Rev. Eli Sepeda S.S. 9:45 a.m. - Worship 11:00 a.m. Sunday Eve 5:30 p.m. - Worship 6:00 p.m. Wednesday Night Service 7:30 p.m.	First United Methodist McCaulley, Texas Sue Rowlett, Minister Sunday School 10:00 a.m. Worship Service 11:00 a.m. 2nd Wednesday Fellowship 6:30 p.m.	Sylvester Baptist Church Sylvester, Texas Rev. Don Kitchens S.S. 10:00 a.m. - Worship 11:00 a.m. Sunday Evening 6:00 p.m. Wednesday Night Service 7:00 p.m.



608-100USPS

ROTAN ADVANCE
ROBY STAR RECORD
PHONE (915) 735-2562
(915) 735-2278
POST OFFICE DRAWER A
ROTAN, TEXAS 79546

Kim Pease - Editor/Publisher
Janece Pease - Co-Publisher
Rosemary Donham - Advertising
Annette Martinez - Office Mgr.
Irma Guerra - Typesetter

Second Class Postage paid at Rotan, Texas - Published Every Thursday at 114 Snyder Avenue, Rotan, Texas 79546

SUBSCRIPTION PRICES

FISHER COUNTY - \$12.00
WITHIN TEXAS - \$16.00
OUTSIDE TEXAS - \$18.00

POSTMASTER

Send Address Correction Changes to:
P.O. Drawer A
Rotan, Texas 79546

Any erroneous reflections upon the character standing or reputation of any individual, firm or corporation will be gladly corrected when notification is given in writing to the editor within 10 days after publication.



Linking Research to Life Experience

Extension Home Economics

BY: Beth Dannheim
Extension Home Economist

Every time you prepare a meal at home there's a safety risk involved. It does not pertain to dangerous cooking appliances or sharp kitchen utensils. It has to do with the way you handle your food.

Because of all the news about pesticides and chemicals in our food supply, one of the biggest food safety risks often goes unnoticed. Food-borne illness is not just a result of carelessness at fast food chains, it happens in our homes.

Human food-borne disease ranks second only to the common cold as the most frequent cause of short-term illness in the United States.

It is estimated that between 24 and 81 million cases of food-borne illness occur each year in the United States. At least 30 percent of these cases result from food eaten at home.

Food-borne illness should not be taken lightly. According to a report from the Food and Drug Administration, arthritis, kidney damage and heart problems can result from food contamination, and in rare cases death.

Although food-borne illness can be caused by viruses, fungi, parasites, heavy metals and chemical, 90 percent of cases reported are caused by bacteria, which are commonly found on raw foods.

Even harmful bacteria cannot do their work without proper conditions. All that's needed for bacterial growth is the right combination of time, temperature, moisture and nutrients.

Several factors cause contamination of raw and cooked foods: poor personal hygiene, improper cleaning of storage and preparation areas and unclean utensils.

Mishandling of raw and cooked foods may increase bacterial growth. Most bacterial growth occurs between 40 degrees Fahrenheit and 140 F.

It's important to remember to keep hot foods hot, above 140 degrees F, and cold foods cold, below 40 degrees F.

Undercooking or improper processing of home canned foods can cause

a serious type of food poisoning called botulinum, which results from the ingestion of toxin produced by Clostridium botulinum. The toxin can be destroyed by boiling foods for 10 minutes.

Extension food safety experts say that good food safety procedures involve care in selection, storage, handling and cooking of food.

When grocery shopping, select fresh produce and items that are packaged properly. Make groceries the final stop before going home and pick up refrigerated and frozen foods last.

When you get home, store food properly. Refrigerate meat and dairy products. Store canned foods in a dark, cool place for no longer than a year. Use perishable foods within a short time and keep frozen foods stored at 0 degrees F.

When preparing food, follow these simple steps: Wash your hands thoroughly with warm water and soap before preparing a meal; make sure all food equipment is clean and stays clean; wash raw fruits and vegetables; reheat leftovers thoroughly; cook pork and poultry until well done; never taste home-canned foods before cooking them; do not allow prepared food to stand at room temperature for more than 2 hours; and avoid contamination of cooked foods through the use of

cutting boards or other utensils that may have been in contact with raw foods.

An investment in a few low-cost kitchen items can also help prevent bacterial growth that causes food borne illness:

* Buy an acrylic cutting board instead of a wooden one. Knives can leave gashes in a wooden cutting board and juices from raw meat or poultry can get into those gashes. If you don't clean the board thoroughly, bacteria can spread to other foods.

* Make sure that meat and poultry cook thoroughly by using a meat thermometer.

Beef and pork are generally considered done when the internal temperature reaches 170 degrees F. Poultry is done at 180 degrees F.

* Use the appliance thermometer to make sure the temperature of your refrigerator is 40 degrees F. or below and that the freezer is zero or below.

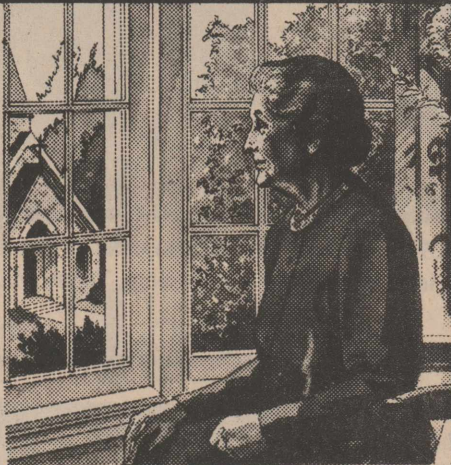
* If your stove does not have a time, get one. Set the time for two hours, beginning when perishable food is taken from the stove or refrigerator and ending

when the leftovers are stored in the refrigerator and ending when the leftovers are stored in the refrigerator or freezer.

Food-borne illness is a sickness waiting for the right opportunity to develop. It poses an even greater risk for infants, older persons, pregnant women and people who have an immune deficiency disorder. These should never eat raw fish, raw seafood or raw meat products.

United Parcel Service
PICK-UP STATION
Complete Package Shipping Service
U.P.S. Runs The Tightest Ship In The Shipping Industry.
NEWSPAPER OFFICE
Rotan, Texas
Not A UPS Agent

Come to Fisher County Nursing Home For Loving Care...



Fisher County Nursing Home
735-3291
Rotan, Texas

COME AND LEARN TO MAKE A "BUBBLE JACKET"
In One Easy Lesson (2 1/2 Hrs.)
November 14, 9:00 a.m. or 1:00 p.m.
COST \$10.00 includes FREE PATTERN
SIGN UP NOW. CLASS SIZE LIMITED

FASHION FABRICS
111 Oak Street Sweetwater, Texas
For more information call 235-4565

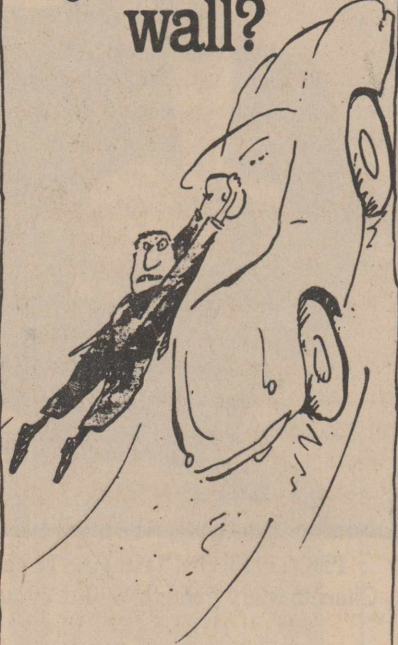
THANK YOU

I want to take this opportunity to thank all the friends who sent cards, offered prayers and performed any other acts of love during my recent illness.

Thank you and God bless you.

Morrow Hunsaker and Family

Are your car insurance rates driving you up the wall?



Calm down.

Leave it to The Good Hands People.

Compare Allstate rates.

Joe D. Burk
Rotan Insurance Agency
(915) 735-2571

Allstate
Allstate Insurance Company, Northbrook, IL



H. L. Davis & Company
"The Friendly Store"
735-2591
Rotan, Texas





OUR BANK

Who's Watching Your Valuables?



Home is no place for your valuables. We have safe deposit boxes for the things you treasure most. For peace of mind, let us safeguard your valuable in our vault. We have safe deposit boxes in all sizes . . . at prices that start at pennies a day . . . a small price to pay for the protection you need.

SAFE - SOUND - DEPENDABLE

PERFECT WAY TO INSURE YOUR VALUABLES!

The 1st National Bank of ROTAN



"Your Dependable Bank Of Service"

FDIC

Area Code 915-735-2224
ROTAN * TEXAS 79546



PHOTO FROM THE PAST: The 1924-25 Center Basketball Champions - Pictured (L to r) Coach Dale Roark, Oattie Chance, Mary Pentell, Willie White, June Headstream, May Headstream, Tenny May Kiker.

Kim's Korner From Page 1

Mauro for Texas Land Commissioner, Rick Perry for Agriculture Commissioner and calls the race for Texas Governor "a lesser of two evils" and refused to speculate. He said he favored David Counts over John Pennington of Sweetwater. I told him we didn't make it a practice of running endorsement for candidates, he called this paper spineless and left in a huff. On the local level he supports a straight Democratic ticket.

much patience with their wives as they did sitting and waiting for the fish to bite?

***MONEY:** A balanced family budget is when the money and month run out at the same time.

***POLITICS:** Ever notice that the goofy guy down the street who never votes is always the first to tell you what's wrong at the Courthouse and in Austin?

***DOGS:** Funny how the average dog is smarter than most average people - It wags it's tail and not it's tongue.

***COLLEGE STUDENTS:** College kid from Sylvester was irked when

he shook out the envelope from home and found nothing inside but news and love.

***FINALLY, FINALLY:** Britches said his sister's husband's first wife's girl said, "A single flower for the living is much better than an expensive casket arrangement for the dead."

Blood Drive From Page 1

American Red Cross Blood Services in Wichita Falls. Two bloodmobiles travel throughout the region each working day, collecting blood from communities in a 150-165 mile radius.

"To meet the needs of patients in the region, Red Cross must collect a combined total of at least 100 units of blood each weekday, or a weekly total of 500 units, including holidays," said Mrs. Glenn Copeland, local auxiliary representative.

Fisher County needs to do its share by meeting the local established goal of 55 units on Monday during the Fisher County drive."

Blood collected at the mobile sites each day is taken back to Wichita Falls where it is tested, processed and made ready to be transported the following day to the hospitals which need it. Each unit of blood undergoes a series of eight tests, including possible exposure to the AIDS virus, hepatitis and syphilis.

"It is safe to donate blood. Sterile, disposable needles are used only once and immediately discarded. You cannot get AIDS by donating blood," said Polly Brumfield, communications director for the Red Cross.

Blood donors must be 17 or older, weigh at least 110 pounds and be in good general health.

The Newspaper Office
Sells
Silk Flower
Arrangements

REMEMBER TO VOTE
Tuesday, November 6th
GENE TERRY

Winner Of Democratic Primary

Candidate For
Fisher County Commissioner
Precinct #4

Pd. Pol. Adv. By Gene Terry, Rt. 1, Box 199, Roby, Tx. 79543

Delicious
**SEAFOOD GUMBO
AND STEW DINNER**

**FIRST UNITED
METHODIST CHURCH**

ROTAN, TEXAS

**FRIDAY NIGHT
NOVEMBER 9TH
5:30 P.M. - 8:00 P.M.**

CHURCH BAZAAR
WILL BE HELD AT THE SAME TIME
IN THE FELLOWSHIP HALL

EVERYONE IS INVITED

Handmade Items, Baked Goods, Crochet Items,
Pottery, Homemade Jelly, Quilts, Pot Holders and
Christmas Items.

Elect
**FRANK MALONEY
JUDGE**

Texas Court of Criminal Appeals
(Highest Court of Texas in Criminal Matters)

- Won the 1990 State Bar of Texas Judicial Poll where the judges and lawyers of Texas endorsed him as the most qualified candidate over his Republican opponent by a 6 to 1 margin (by over 6,000 votes).
- More than 25 years experience as a law professor at the University of Texas Law School, and as a prosecutor and defense lawyer.
- Captain, U.S. Infantry, Silver Star, two Bronze Stars, Purple Heart.
- Listed as one of the best lawyers in America - Harvard Law School Series (1988-1990).
- Dallas Morning News endorsed him as a "top lawyer ... highly qualified to serve on this court" who "may have trained more current judges in the state judicial system than any other law school instructor."
- Endorsed by all the major newspapers in Texas, including those in: Abilene, Amarillo, Austin, Beaumont, Bryan, Dallas, Edinburg, El Paso, Fort Worth, Houston, Killeen, Longview, Lubbock, Palestine, Port Arthur, San Angelo, San Antonio, Temple, Tyler, Wichita Falls.
- Endorsed by the judges and lawyers of the Texas Association of Board Certified Specialists in Criminal Law.
- Endorsed by CLEAT-Combined Law Enforcement Associations of Texas.

(Pol. Adv. Paid for by Frank Maloney Campaign, 505 W. 12th, Austin, Texas 78701)

**Nichols
Insulation**

Home & Commercial
Box 1311 Snyder, Texas 79549
(915) 573-0571

ALL WORK GUARANTEED
FREE ESTIMATES

INSULATION SPECIAL
6 1/2" - R=19 - Rockwool .24 per sq. ft.
4" - R=11 - Rockwool .20 per sq. ft.

WE SPECIALIZE IN
OLDER HOMES
Offer Expires December 1st

**DEFOLIATING
CALL
776-2626
OR
776-2837**

MONUMENTS

Weathersbee Funeral Home
111 N. McKinley
Rotan, Texas 79546
(915) 735-2255

ADMINISTRATION *Roby Consolidated Independent School District* BOARD

George Price Superintendent
Guy Nelson H. S. Principal
Joe Joplin Elem Principal

BOX 519
ROBY, TEXAS 79543
(915) 776-2222

David Boyd President
Jeff McClure Vice President
Lance McWilliams Secretary

**ROBY CONSOLIDATED INDEPENDENT SCHOOL DISTRICT
STATEMENT OF REVENUES AND EXPENDITURES
FOR THE YEAR ENDED AUGUST 31, 1990**

REVENUES:

Local, Intermediate, and Out-of-State	\$ 342,569
State Program Revenues	843,466
Federal Program Revenues	108,093
TOTAL REVENUES	\$1,294,128

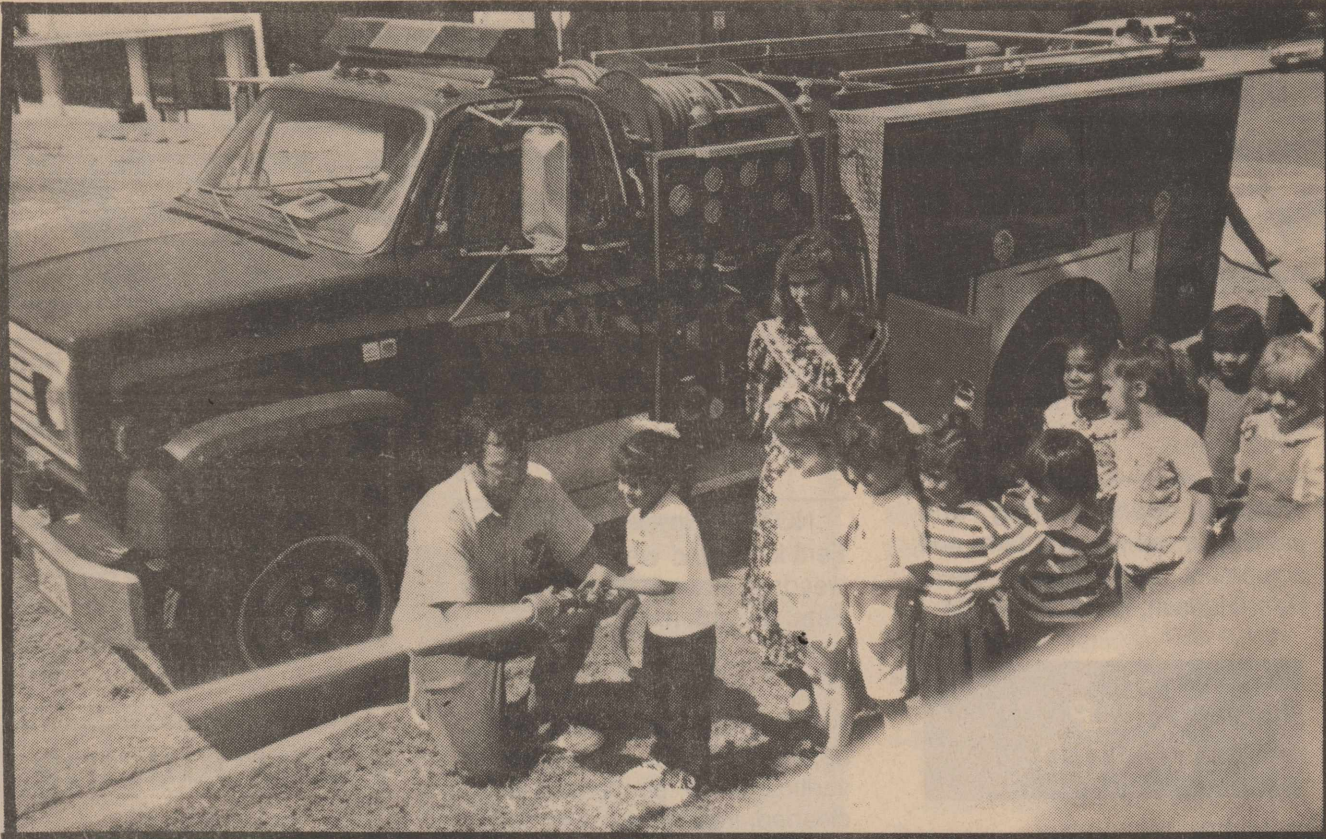
EXPENDITURES:

Instruction	\$ 719,712
Instructional Computing	17,354
Instructional Administration	493
Instructional Resources and Media Services	8,702
School Administration	76,184
Curriculum & Personal Development	7,150
Guidance and Counseling Services	2,555
Health Services	200
Pupil Transportation - Regular	54,002
Co-curricular Activities	62,666
Food Services	71,196
General Administration	122,197
Debt Services (NOTE: (BONDS PAID OFF MARCH, 1990)	509,988
Plant Maintenance and Operations	141,240
TOTAL EXPENDITURES	\$1,793,639

FUND BALANCES - AUGUST 31, 1990:

General Fund	\$ 517,140
Debt Service Fund (PAID BONDS OFF & CLOSED BALANCE TO GENERAL FUND ACCOUNT)	\$ -0-
General Fixed Assets	\$3,317,346
TOTAL FUND BALANCES - AUGUST 31, 1990	\$3,834,486

"WE GET EXCITED ABOUT CHILDREN"



LOOK AT THE WATER FLOW: The Kindergarten class taught by Mrs. Nelson enjoyed demonstrations given by Jerry Dycus, Rotan Fireman. The nozzle seems to be a little more than what one tiny one can handle as Mr. Dycus assisted with the heavy load.



RIDING ON THE FIRE TRUCK: The Kindergarten class also rode on the fire truck and enjoyed every minute of the demonstrations and ride.

Hustling Around Hobbs

By Joy Walker

Well the first freeze of the season chilled Abilene and surrounding areas as low temperatures last Monday tied a record set on October 22nd, 1911. The day's lows dipped to a nippy 32 degrees and the day's high only reached a cool 65 degrees. Guess my hay fever was no indication of the freeze, as am still sneezing and so are a number of other folks. Sunday was the most beautiful day, almost perfect, and as we put the clocks back that morning, we all got an extra hour of sleep. The weatherman reports that we are going to have beautiful, maybe a little cooler weather, all this coming week. Don't forget the Blood Drive next Monday, the 5th of November, from 3:00 to 6:00 at the Senior Citizens Building in Rotan. Please make your plans accordingly and try to come and give 1 pint of blood; you never know when you yourself or a loved one may be in need of this precious life source.

Jerry Shields from H.S.U. preached at Hobbs on Sunday in the absence of our pastor Bro. C.J. Smith who has gone to visit his son in Walla Walla, Washington, for the next two weeks. We had no services Sunday night as some of our members went to Anson to attend the Annual Association meeting at the First Baptist Church there.

Mr. and Mrs. James Ratliff went to Snyder on Sunday and attended the Church of the Nazarene with Kim Knipe and her two children. The Lighthouse Singers from Plainview were there and it was a wonderful program. They all

ate dinner together at Kim and Tracy's and really enjoyed the day.

Mrs. Steve Warren (Tachi) from Snyder visited all Sunday evening with the Rudolph Martinezs. The Martinezs also went to the Chili and Stew supper for the American Cancer Society on Friday evening. Jeffrey Martinez is home from the service, but is now visiting in Arizona with his girlfriend. She is still in the service.

Mrs. Opal Phillips visited with Glenn and Ginger Phillips in Post all last week. Larry Phillips from Lubbock was here visiting Sunday, along with Brandi and Sherry Payne. I attended a bridal shower on Monday evening for Mrs. Chuck Smith (Mary Wyrick) which was held in the home of Mrs. Harold Roberts. It was sure nice and Mary received lots of nice gifts. Evette's little dog, which is a Shihtzu, and adorable, stayed with me Monday night and Tuesday while Carol and Wilber went to Perryton early Tuesday morning to attend the funeral of Terry Jones, son of Bro. Edgar and Melva Dean (Gruben) Jones. Our heartfelt sympathy goes out to Melva Dean and Edgar and to the remainder of the family. Rode, the little dog was here because Evette and a girlfriend left for Cancun, Mexico Wednesday morning. Evette won this tip for being top marketing agent for her region. She returned home Sunday and they really had a wonderful trip.

Friday I went to supper with Carol and Wilber and then went to the Rotan-Garden City football game. Greg

Gruben from Midland was here for the weekend so I got to visit with him at the ball game and again on Saturday. Saturday I ate dinner with Sheila and Donnie and Carye who was here from Texas Tech. Carol and I went to Snyder that afternoon.

Everyone out here has had no water over the weekend; luckily I had some, not much pressure, and it was sure muddy and dirty, but it was water and I was glad to have it. I hope they will be able to fix the break on Monday.

Don't forget to watch out for all the little ghosts and goblins Tuesday and Wednesday nights. Also, please don't forget the blood drive and to come out and vote on Tuesday, the 6th of November.

See you all next week.

Legal Notice

NOTICE OF SALE

On November 6, 1990, at 11:30 A.M., the Citizens State Bank of Roby, Texas will offer for sale to the highest bidder a used 1985 Es Americana Mobile Home. That said mobile home is approximately 67 feet long and 14 feet wide and contains about 938 square feet. The sale will be conducted on location of said mobile home at North First Street in Roby, Texas, situated West of and in the same block as Central Lumber & Supply Company, in Roby, Texas. 39:1tc

4-H'ers Planning For District Show

County 4-H members are making final preparations for the Rolling Plains District 4-H Food Show. It will be held Saturday, November 3, at the Wilbarger Memorial Auditorium in Vernon, Texas.

In the Foods Project, 4-H'ers learn the importance of including foods from each of the basic food groups in the daily diet. They learn the principles of nutrition as they relate to health, physical fitness, and appearance as well as acquiring and demonstrating skills in planning, purchasing, preparing, and serving tasty, attractive, and nutritious meals and snacks. Four-H is the youth development and leadership program of the Texas Agricultural Extension Service, a part of the Texas A&M University System.

A total of 124-H'ers from the county will compete in the District Show. They are Kyle McWilliams, Jaycee Carey, Scott Price, Katrina Rains, Amanda Moore, Christy Willett, Cassidy Early, Shelly Burk, Chad Dannheim, Coby Moore, Anita Floyd, Jennifer Kincaid.

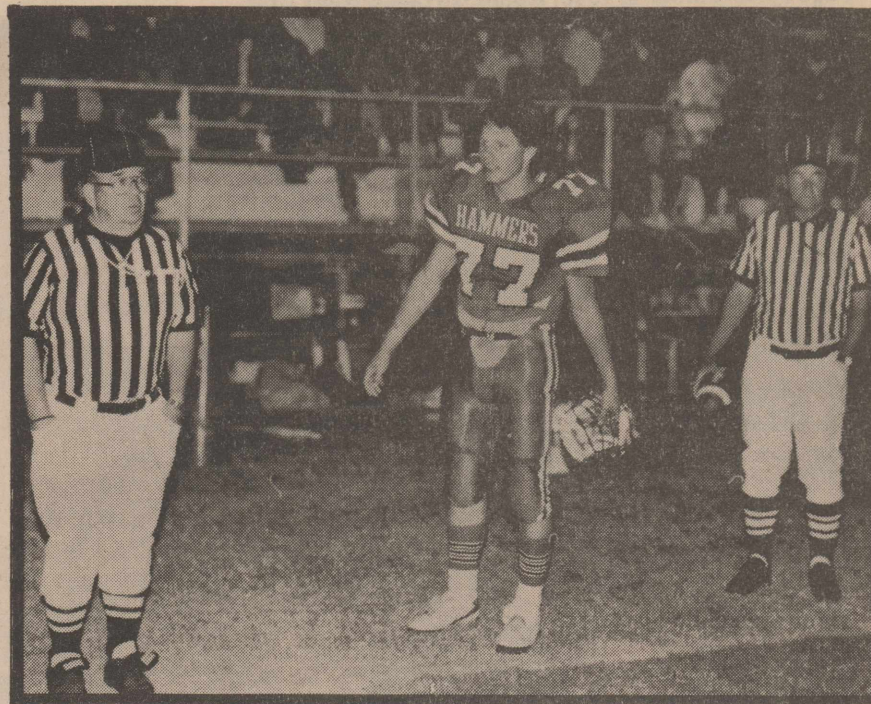
Entrants from 21 counties will compete in Senior, Intermediate, and Junior Divisions. Each division has four food classes: Main Dish, Fruits and Vegetables, Breads and Cereals, and Snacks and Desserts. Contestants in the District event are all winners of their County Food Shows. Senior Division winners in each category will advance to the State 4-H Food Show next June in College Station.

Special Beef Awards will be given by the Wichita Area Cattlewomen.

County Extension Agent Beth Dannheim said the contestants will report to the Auditorium in Vernon at 9:30 a.m., November 3. Judging will begin at 10:00 a.m.

The dishes will be on display from 1:00 to 1:30 p.m., and the public is encouraged to view them. Ribbons and awards will be presented during an Awards Ceremony at 2:00 p.m.

Cookbooks containing all the recipes prepared in the District Show will be on sale at the competition for \$4, said Betsy Harkey, Wilbarger County Extension Agent-Home Economics and Chairman of the District Food Show Committee.



CALLING COIN TOSS: Danny Warren calls the coin toss during a recent Yellowhammer game. The Yellowhammer squad will take on the Bronte Longhorns this Friday, November 2nd at Bronte.

Funeral Services Held For Lawrence Pete Lott

Lawrence Pete Lott, 66, died Saturday at his residence.

Services will be at 2 p.m. Saturday at Wilkerson Memorial Chapel with the Rev. A.L. Palmer officiating. Burial was in Rest Haven Cemetery.

Mr. Lott was born in Osage. He was a U.S. Navy veteran, a member of the United Methodist Church and had lived in Brady for 47 years.

Survivors include his wife, Amie

Lott of Brady; two sons, Willie Lott of Houston and Lawrence M. Lott of San Antonio; a daughter, Genlevia Lott of San Antonio; four sisters, Alma Smith from Slayton, Loma Smith of San Angelo, Clara Bell Toliver of Rotan, and Rhonda Lee Jefferson of Ruidoso, N.M.; a brother, Cecile Smith of Denison; 15 grandchildren; three great-grandchildren; and numerous nephews and nieces.

Circle C Grocery

Rotan, Texas
735-2574

Sylvestre, Texas
993-4533

Prices Effective November 1-7, 1990

Parade Flour

25 LB. Bag

\$3.99



Gooch Bologna

Rotan Store Only

\$1.59 LB.

Dr Pepper

6 Pack 16 Oz. Bottles

\$2.49

Singles

Cold

.49 Each



Russett Potatoes

\$1.49

10 LB. Bag



Mrs Bairds

Chocolate Cups

3 For .99

New Rotan Store Hours 6:00 a.m.-9:00 p.m.
IN STOCK A FULL SELECTION OF GOOCH LUNCH MEATS

Big Country Chevrolet-Geo

1st Anniversary

Sale

The all new '91 models just arrived. Now's the time to save with special introductory prices during this sale!!

1991 CAVALIER
Dramatic New Style For '91

St. #872 **\$195⁹²**
mo.¹



1991 CAPRICE CLASSIC
Affordable Luxury - Updated Styling



1991 CHEVY FULL SIZE

America's Favorite
Half-Ton Pickup!
Highest Gas
Mileage Rating Of
Any Standard
Equipped
Full Size Pickup!
18 City/24 Hwy.



1991 S-10 PICKUP
4.3 Liter V-6 Delivers More Power
Than Any Other Compact Pickup!



New Modern Design Is Ten Years Ahead Of Ford!

More People are Winning with the Heartbeat of America Every Day! That's Why CHEVY is Number 1 in Car and Truck Sales in West Texas.



East Hwy. Traffic Circle 915-573-5456

SILVER STAR CAFE

Hwy. 180 Roby, Texas
776-2744

WELCOME HUNTERS!

During hunting season we will be open evenings on Fridays and Saturdays.

SPECIAL

Buy large chicken fried steak at regular price, get second for 1/2 price.

FORECLOSURE SALE BY FDIC

This property will be sold at foreclosure on Tuesday, November 6, 1990 at 10:00 a.m. on the steps of the Fisher County Courthouse, Roby, TX. When inspecting a property, please drive by only, as it may be occupied.

RESIDENTIAL

1-1/2 story, 3 bedroom, 2 bath, approx. 3,107 sq. ft. residence with above ground pool. Located on County Rd. 352, Fisher County, TX.
Opening bid **\$80,800**

For more information, contact
Margie Forrest 1-800-346-9755 ext. 6573

FDIC, P.O. Box 3148, Midland, TX 79702

TELCOT[®] Report

A WEEKLY SUMMARY OF COTTON MARKETING NEWS

For The Week Ending October 26

Technical considerations and weather conditions were primary factors in a surge in New York December cotton futures prices on Monday, October 22 when the nearby contract closed up 139 points at 74.62 after reaching near limit up.

The previous trading day, Friday, October 19, the December contract had closed at 73.23, up 2 points. Monday's surge was followed by a closing price of 74.68 on Tuesday, up 6 points, but, liquidation by nervous traders with long positions contributed to a drop of 60 points for December as the contract closed at 74.08 on October 24.

Rain in portions of Mississippi, Arkansas and Tennessee elevated fears that the Delta crop harvest may be delayed and quality may suffer. Sources report as much as 20 percent of the Delta crop may be affected by the unwanted moisture. Freezing temperatures reached the Texas High Plains on Monday, October 22 and may have

contributed to the strength of the December contract. However, the High Plains crop was more advanced than normal and probably was ready for the freeze. Nevertheless, it may have been a factor on the futures market.

A surprising cotton consumption report released on October 24 may have provided temporary support for prices before the December contract closed down 60 points. According to the National Cotton Council, U.S. textile mills in September used cotton at a seasonally adjusted annual rate of 8.782 million bales, up .17 percent from August's rate of 8.767 million. However, the rise is tempered by comparison to September, 1989's adjusted annual rate of 9.130 million bales.

U.S. mills' daily consumption of cotton was 33,438 running bales in September, down from 33,985 in August and down from 34,411 a year ago. Cotton's share of total fiber use at 31.3 percent increased from 30.5 percent in August but was down from 32.2 percent a year ago, according to the National Cotton Council.

Harvest in the top 14 cotton producing states was 48 percent complete as of October 21, according to USDA. That compares to 32 percent a year ago and the average of 41 percent. Early-planted cotton yields in Texas were reported to be good with harvest activity increasing in defoliated fields, USDA said. USDA had classed slightly more than one million bales in the week ended October 18. It brings the total volume of cotton classed for the current crop to 4,542,302 bales.

Rumors early last week that China had purchased U.S. cotton remained unconfirmed, however, Egypt issued a tender for about 100,000 bales of U.S. upland cotton on October 24 calling for shipment in late December and late January.

Crop contracting in West Texas slowed following the surge in futures prices on October 22 with most acreage

being booked in the neighborhood of 1,800 points over loan. Spot trading of cotton over TELCOT jumped dramatically on October 22 and 23 with 4,154 and 4,559 bales changing hands respectively. On Friday, October 19, TELCOT traded 2,301 bales. Spot market activity was tempered by Wednesday's drop of 60 points on the December contract as 3,536 bales traded over TELCOT at an average of 64.06 cents per pound, or 1,964 over the loan.

TELCOT trading for Friday, October 19, through Thursday, October 25, totaled 17,678 bales. The adjusted world price effective through November 1 is 66.46 cents per pound, adjusted to U.S. location and base quality, according to USDA.

In its Agricultural Outlook Report issued October 19, USDA estimated U.S. net cash farm income probably will reach a record \$59 billion to \$63 billion this year. However, higher fuel prices along with other factors offer concerns for 1991, according to the report.

John Johnson

TSTA Gives Endorsement To Counts

Members of the Texas State Teachers Association in the 78th Representative District gathered in Rotan Saturday evening to give their endorsement to Representative David Counts in his campaign for re-election. Nancy Abernathy of Aspermont, who serves as a legislative contact for the association, presented Counts with a campaign contribution from TEPAC, which is the Texas State Teachers Association's political action committee. All support for this committee is made possible by contributions of TSTA members across the state.

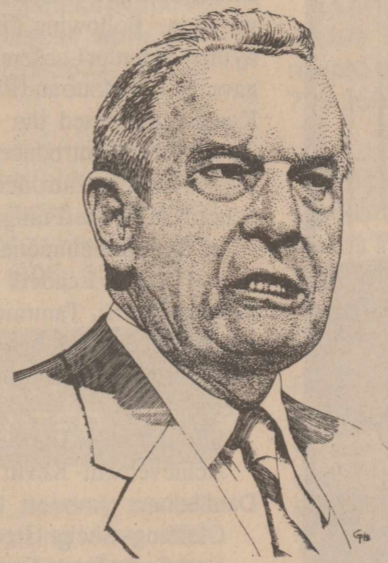
Representative Counts has been a friend to education, teachers, and children in this District. Recent legislation passed in the sixth called session provides educators with an opportunity to help shape the future of education. Site based decision making is the term used by TSTA to describe this ideal process in which teachers and the school district act as equal partners in working for educational improvements. Legislators formalized and legalized a process to involve teachers in reviewing and establishing educational goals, objectives, and programs.

The Newspaper Office Sells Office Supplies

Advertising And News DEADLINE Is NOON On Tuesday The Newspaper Office 735-2562 Rotan, Texas

"We're cut from the same cloth."

- Clayton Williams



Bill Clements



Clayton Williams

Four More Years? It's Time For A Change!

Bill Clements snarls . . . Clayton Williams grins . . . But they BOTH:

- Have tried to buy the Governor's Mansion with millions from their own pockets.
- Promise to "veto any tax" - but they lie. Clements signed the biggest tax bills in Texas history.
- Oppose public school funding reform and back plans that favor rich kids.
- Shoot callously from the lip.
- Have ethics problems. Clements' "Ponygate" scandal (which killed S.M.U.'s football program) pales when compared to more than 300 lawsuits filed against Williams for his business practices - with judgments kept SECRET when Claytie insisted that court records be permanently sealed.

In 1990, let's vote for our families and our pocketbooks. Vote Democratic November 6

Pol. Adv. Pd. by Fisher County Democrats

PUBLICATION COPY - COMMERCIAL AND SAVINGS BANKS		STATE BANK NO. 1699-06	
CONSOLIDATED REPORT OF CONDITION (Including Domestic and Foreign Subsidiaries)		FEDERAL RESERVE DISTRICT NO. 11 13 21898	
LEGAL TITLE OF BANK: Citizens State Bank, Roby, Texas		CITY OF BUSINESS DATE: September 30, 1990	
ADDRESS: PO Box 488, Roby, Texas 79543		COUNTY: FISHER STATE: Texas ZIP CODE: 79543	
ASSETS			
1. Cash and balances due from depository institutions:	a. Noninterest-bearing balances and currency and coin	330	1.a.
	b. Interest-bearing balances	592	1.b.
		9 919	2.
2. Securities:			3.
3. Federal funds sold & securities purchased under agreements to resell in domestic offices of the bank & of its Edge & Agreement subsidiaries, & in IFB's:	a. Federal funds sold	300	3.a.
	b. Securities purchased under agreements to resell	None	3.b.
4. Loans and lease financing receivables:			4.
a. Loans and leases, net of unearned income		9 014	4.a.
b. LESS: Allowance for loan and lease losses		92	4.b.
c. LESS: Allocated transfer risk reserve		None	4.c.
d. Loans and leases, net of unearned income, allowance, and reserve (Item 4.a. minus 4.b. and 4.c.)		8 922	4.d.
5. Assets held in trading accounts		None	5.
6. Premises and fixed assets (including capitalized leases)		13 880	6.
7. Other real estate owned		015	7.
8. Investments in unconsolidated subsidiaries and associated companies		None	8.
9. Customers' liability to the bank on acceptances outstanding		None	9.
10. Intangible assets		None	10.
11. Other assets		427	11.
12. a. Total assets (sum of items 1 through 11)		16 544	12.a.
b. Loans deferred pursuant to 12 U.S.C. 1823 (i)		N/A	12.b.
c. Total assets and losses deferred pursuant to 12 U.S.C. 1823 (i) (sum of items 12.a. and 12.b.)		16 544	12.c.
LIABILITIES			
13. Deposits: a. In domestic offices:		14 907	13.a.
(1) Noninterest-bearing		1 027	13.a.(1)
(2) Interest-bearing		13 880	13.a.(2)
b. In foreign offices, Edge and Agreement subsidiaries, and IFB's:		None	13.b.
(1) Noninterest-bearing		None	13.b.(1)
(2) Interest-bearing		None	13.b.(2)
14. Federal funds purchased and securities sold under agreements to repurchase in domestic offices of the bank & of its Edge & Agreement subsidiaries, & in IFB's: a. Federal funds purchased		None	14.a.
	b. Securities sold under agreements to repurchase	None	14.b.
15. Demand notes issued to the U.S. Treasury		None	15.
16. Other borrowed money		None	16.
17. Mortgage indebtedness and obligations under capitalized leases		None	17.
18. Bank's liability on acceptances executed and outstanding		None	18.
19. Subordinated notes and debentures		174	19.
20. Other liabilities		15 081	20.
21. Total liabilities (sum of items 13 through 20)		15 081	21.
22. Limited - life preferred stock and related surplus		None	22.
EQUITY CAPITAL			
23. Perpetual preferred stock and related surplus (No. of shares outstanding)		None	23.
24. Common stock (No. of shares: a. Authorized 500 b. Outstanding 500)		150	24.
25. Surplus (exclude all surplus related to preferred stock):		550	25.
a. Undivided profits and capital reserves		763	25.a.
b. LESS: Net unrealized loss on marketable equity securities		None	25.b.
27. Cumulative foreign currency translation adjustments		None	27.
28. a. Total equity capital (sum of items 23 through 27)		1 463	28.a.
b. Losses deferred pursuant to 12 U.S.C. 1823 (j)		None	28.b.
c. Total equity capital (sum of items 28.a. and 28.b.)		1 463	28.c.
29. Total assets (including deferred stock, equity capital, and losses deferred pursuant to 12 U.S.C. 1823 (j) (sum of items 21, 22, and 28.c.))		16 544	29.
MEMORANDUM: Amounts outstanding at Report Date:			
1. Assets held in trust for others		None	1.
2. Assets held in trust for others - in IFB's		None	2.
3. Assets held in trust for others - in domestic offices of the bank		None	3.
4. Assets held in trust for others - in foreign offices, Edge and Agreement subsidiaries, and IFB's		None	4.
NOTE: This report must be signed by an authorized officer(s) and attested by not less than three directors other than the officer(s) signing the report. We, the undersigned officer(s), do hereby declare that this Report of Condition has been prepared in conformity with official instructions and is true and correct to the best of our knowledge and belief.			
SIGNATURE OF OFFICER(S) AUTHORIZED TO SIGN REPORT		DATE SIGNED: 10-23-90	
NAME AND TITLE OF OFFICER(S) AUTHORIZED TO SIGN REPORT: KANNA ANDERSON, V.P. & CASHIER		AREA CODE/PHONE NO.: 915-776-2761	
We, the undersigned directors, attest the correctness of the Report of Condition and declare that it has been examined by us and to the best of our knowledge and belief it has been prepared in conformity with official instructions and is true and correct.			
SIGNATURE OF DIRECTOR: [Signature]		SIGNATURE OF DIRECTOR: [Signature]	
NAME: [Name]		NAME: [Name]	
COUNTY: Fisher		COUNTY: Fisher	
STATE: Texas		STATE: Texas	
DATE: October 23, 1990		DATE: October 23, 1990	
NOTARY PUBLIC: Beth Faught		NOTARY PUBLIC: Beth Faught	

CITY GROCERY & DELI

776-2225 Roby, Texas

Double Coupons Everyday
Reserve The Right To Limit Quantities
Open Till 9:30 Monday Thru Saturday
Prices Effective November 1-7, 1990

Sirloin Steak
\$2.29 LB.

Coca Cola 7 Up Mr Pibb
2 Ltr. .99

Fritos Corn Chips
Reg. \$2.29
\$1.69

Gooch Golden Award Hams
\$3.49 LB.

Tide Ultra 42 Oz. Tide
\$2.99

Boston Butt Roast
\$1.29 LB.

Zesta 1 LB Saltine Crackers
\$1.09

Del Monte 16 Oz. Yellow Cling Peaches
.79

Jif 18 Oz. Peanut Butter
\$1.99

Keebler (Assorted Kinds) 11 Oz. Mini Middles Cookies
\$1.89

Gandy's 12 Oz. Cottage Cheese
\$.89

Folgers Bag 13 Oz. Coffee
\$1.89

Spillmate Paper Towels
.69

Green Cabbage
.13 LB.

Cello 1 LB. Bag Carrots
2/.49

Purina 20 LB. Kibbles & Chunks
\$7.99

Kleenex Premium 45 Cnt. Dinner Napkins
.79

Comet 14 Oz. Cleanser
2/.75



VISITS FISHER COUNTY: Catheryn Mosbacher, wife of Republican Rob Mosbacher, who is seeking the office of Lieutenant Governor visited in Rotan recently.

Annual 4-H Awards Banquet Is Held With Tina McClure And Kevin Smith Receiving Gold Star Awards

The Annual 4-H Fisher County Awards banquet was held October 27 in Rotan. Teresa McClure and Chuck Dannheim served as Master of Ceremonies. Mark Marshall gave the invocation. Following dinner prepared by the 4-H Junior Leaders, Jason Gruben gave the 4-H Motto and Pledge, Jennifer Kincaid presented the welcome and Audra Lewis introduced the guests. Jessica Moore introduced the High School Share-the-Fun group that provided the entertainment.

4-H Adult Leaders Becky Burk, Belynda Rains, Tammie Kelley, Kay Moore, Shelia Gruben, and Tempie West presented awards to the following 4-H'ers:

- SENIOR AWARDS**
 Achievement- Kevin Smith, Chuck Dannheim.
 Clothing- Shelia Green.
 Dog Care- Jason Gruben.
 Entomology- Christie Anderson, Jerry Carreon.
 Leadership- Jennifer Kincaid, Teresa McClure.
 Poultry- Audra Lewis.
 Recreation- Jonathan Petty, Tina McClure, Jake Carriker, Michelle Beauchamp.
 Swine- Jessica Moore.
- JUNIOR & INTERMEDIATE AWARDS**
 Agriculture- Timothy Moore, Matt Counts, Mike Counts.
 Beef- Cassie Terry, Katrina Rains, Kelly McWilliams, Kyle McWilliams.
 Clothing- Cassidy Early, Amanda

Moore.
 Consumer Education- Christy Willett.

- Electric Energy- Kasey Green.
 Field Crops- Billy Floyd.
 Home Environment- Jaycee Carey, Anita Floyd.
 Horse- Ty West, Chad Dannheim.
 Poultry- R.J. Lewis.
 Rabbit- Guy Kelley.
 Recreation- Melissa Burk.
 Safety- Mark Marshall.
 Sheep- Shelly Burk, Lane Greene, Sarah Greenlee, Justin Smith.
 Shooting Sports- Casey Terry, Les Brenham, Rhonda Henry.
 Swine- Monroe Moore.
 Vet Science- Bryce Moore, Coby Moore.

Mac Rains presented certificates to Tina McClure, Chuck Dannheim, and Jennifer Kincaid for their accomplishments on the state level with record books.

Gary Floyd presented the All-Around 4-H Awards to juniors Anita Floyd and Chad Dannheim and to seniors Jessica Moore and Chuck Dannheim. Judge Marshal Bennett announced the 1990 Gold Star Winners as Tina McClure and Kevin Smith.

They were presented certificates from Senator Steve Carriker, Gold Star pins and plaques. Tina McClure and Kevin Smith presented certificates of recognition for leadership to the following 4-H leaders.

Kathy Spencer- 15 years; Olen Dennis- 10 years; Cindy Greene- 5

years; Karen Counts- 5 years; Becky Burk- 5 years; Vick Burk- 5 years.

The banquet is sponsored by Mid-

west Electric Coop and Citizens State Bank of Roby. The printed program was compliments of Terry's Gin, Inc.

THANKS PRECINCT 4 VOTERS

*For Your Encouragement.

*For Your Supportive Comments.

For Taking The Time To Listen To Me And For Being Concerned.

I NEED YOUR VOTE NOVEMBER 6TH

"I have enjoyed this campaign, I have worked hard, tried to see everyone,....if I missed you it wasn't on purpose. I want your vote next Tuesday."...Gene Terry

Gene Terry

Democratic Candidate
Fisher County Commissioner
Precinct #4.

Pd Pol. Adv. By Gene Terry, Rt. 1, Roby, Texas 79543

News Briefs

Theatre On The Brazos Meeting

Theatre on the Brazos will hold their monthly business meeting on Thursday, November 8th at the Lance Theatre building beginning at 7 p.m.

The meeting is mainly for input and feedback concerning the remodeling plans for the Lance Theatre. Bring a folding chair for your convenience.

Turkey Dinner

A turkey dinner with all the trimmings, served with home-made desserts will be served from 11:30 - 1:00 p.m., on November 4th at the Senior Citizens building. Adults plate will cost \$3.50; children under 12 will cost \$2.00 a plate.

Game Night and Pot Luck Supper

The Fisher County Senior Citizens will sponsor "Game" night on Thursday, Nov. 15th with a potluck supper. All senior Citizens and their guests are encouraged to come and join in the fun.

Senior Citizens Dance

The Fisher County Senior Citizens will be having a dance on Friday, October 16th at the Fisher County Senior Citizens building, with the Texas High Band playing.



ALL AROUND 4-H AWARDS: Left to right: Chad Dannheim, Anita Floyd (Juniors) and Jessica Moore and Chuck Dannheim (Seniors) were awarded the All-Around 4-H Awards for 1990 at the 4-H Awards Banquet.

HOBBS CO-OP LUNCH MENU

November 5 -9, 1990
 MONDAY: Fried Fish, Tater Tots, Hot Puff W/Honey, Coleslaw, Brownie.

TUESDAY: Green Beef Enchiladas, Green Salad, Red Beans, Chips W/Hot Sauce, Milk.

WEDNESDAY: Chicken Strips, Mashed Potatoes, Green Beans, Hot Roll, Fruited Jello, Milk.

THURSDAY: Ham or Tuna Sandwich, Potato Chips, Lettuce & Tomato, Pear Half, Banana Pudding.

FRIDAY: Hamburger, Fries, Relish Plate, Chocolate Chip Cookies, Milk.

ROBY LUNCH MENU

November 5 -9, 1990
 MONDAY: Steak Fingers/Gravy, Cream Potatoes, Corn, Fruit, Hot Rolls, Milk.

TUESDAY: Stew, Cheese Roll, Peach Cobbler, Crackers, Milk.

WEDNESDAY: Beef & Bean Casserole, French Fries, Salad, Chocolate Pudding, Bread, Milk.

THURSDAY: Burrito, Pinto Beans, Corn, Fruit, Cornbread, Milk.

FRIDAY: Hamburger W/Cheese, French Fries, Lettuce, Tomato, Onion, and Pickles, Brownie, Bun, Milk.

S&L SHAMROCK

And Parts
All Types Of Mechanic Work

By Danny Clawson
*Custom Exhaust
*Auto Glass

Visa - Mastercard - Discover & Shamrock
302 N. Cleveland
Rotan, Texas
735-3200

Jaye Neice Clements
Call 735-2010

Cakes/Photography

*Table Drapes *Birthdays
*Anniversaries *Parties

*Complete Wedding Packages
*Complete Packages Or Partial Services Suited According To Your Needs.

COLORADO CITY LIVESTOCK AUCTION

EAST HIGHWAY 80 - COLORADO CITY, TEXAS

SPECIAL SALE

Stocker - Feeder - Replacement

Saturday, November 10, 1990
12:00 Noon

In conjunction with regular sale



Accepting all sizes and types of consignments up until 12:00 noon sale day.

GIVE US A CALL
SO WE MAY ADVERTISE YOUR CATTLE
Bill or Nancy Ellis
915-728-2603 or 915-236-6922

We appreciate your business!

Large enough to serve you...
Small enough to know you.

GOODYEAR All Season Tire SALE

ENDS NOV. 3

NEW FROM GOODYEAR!

GOODYEAR ARRIVA
Dependable All-Weather Traction All Year 'Round

\$38.95

WHITEWALL SIZE	SALE PRICE	No Trade Needed
P175R13	\$41.91	
P185R13	\$45.91	
P185R14	\$47.91	
P195R14	\$49.91	
P205R14	\$51.91	
P215R14	\$53.91	
P225R14	\$55.91	
P235R14	\$57.91	

GOODYEAR EAGLE GT+4
Combines High Performance, High Mileage, Year 'Round Traction

\$76.95

WHITEWALL SIZE	SALE PRICE	No Trade Needed
P175R13	\$81.95	
P185R13	\$85.95	
P185R14	\$87.95	
P195R14	\$89.95	
P205R14	\$91.95	
P215R14	\$93.95	
P225R14	\$95.95	
P235R14	\$97.95	

GOODYEAR INVICTA 65
Long Term Mileage Capability Plus All Season Performance

\$55.95

WHITEWALL SIZE	PRICE	No Trade Needed
P185R13	\$57.95	
P185R14	\$59.95	
P195R14	\$61.95	
P205R14	\$63.95	
P215R14	\$65.95	
P225R14	\$67.95	
P235R14	\$69.95	

CONCORDE METRIC
All-Weather Traction for Imports & Small Cars

\$24.95

BLACKWALL SIZE	PRICE	No Trade Needed
165SR13	\$25.25	
165SR13	\$30.30	
175/70SR13	\$34.45	
185/70SR14	\$36.50	

CONCORDE CALIBRE
Economical All-Weather Traction

\$30.95

WHITEWALL SIZE	PRICE	No Trade Needed
P175R13	\$38.95	
P185R13	\$42.80	
P185R14	\$43.85	
P195/75R14	\$45.95	
P205/75R14	\$49.10	
P205/75R15	\$51.15	
P215/75R15	\$53.25	
P225/75R15	\$55.35	
P235/75R15	\$57.45	

GOODYEAR TIEMPO
All Season Traction, Steel Belted Strength

\$33.95

WHITEWALL SIZE	PRICE	No Trade Needed
P175R13	\$45.00	
P175R13	\$47.01	
P185R13	\$49.01	
P185R14	\$51.01	
P205/75R14	\$53.01	
P215/75R15	\$55.01	
P225/75R15	\$57.01	
P235/75R15	\$59.01	

JOE HUDSPETH'S INC.
 Hamlin 111 S. E. Ave. A 576-3656
 Stamford 202 North Swenson 773-2734

Letter To The Editor



Dear Editor:

I'd like to make a few comments on the race for Texas Agriculture Commissioner. Serving on the Board of Directors of the Texas Ag. Aviation Association, I've come to realize that Jim Hightower is much more of a threat than meets the eye. We can't afford another term under Jim Hightower. We have been bombarded with new and useless laws regulating our businesses. We have paid unrealistic fines for trivial violations. Texas agriculture has suffered under this tyrant. These are only a prelude to what Mr. Hightower has in store for us. And believe it or not the farmer and rancher have more to lose than I, the applicator. Mr. Hightower is out to put a stop to all pesticide use. He doesn't give one hoot in a hailstorm about the producer. This was clear during his brief, (but closely) hormone-free beef scam. Do you realize that after all his hoopla, he only shipped 40,000 pounds (38 head) of beef to the EC before they told him they didn't want any more. (Thanks a lot Jim, you only cost the Texas ranchers a \$100 million export market!)

His true agenda is to promote himself to a real place of power (U.S. Secretary of AG under President Jesse Jackson?), while stepping on anything and anyone in his path to do it. You may recall that he was Jesse Jackson's campaign chairman. I wish I had a picture of this clown and Jesse in their cowboy hats. I'm not sure which one of the two knows (or cares) the most about agriculture.

His allegiance is firmly planted with the environmental groups and all the earthy liberal types (Jane Fonda, Willie Nelson) that promote everything that we country people know is wrong. This is not only an agricultural issue. It's a battle to keep what we and our forebears have worked for and hold dear. It's a fight against the socialists in our government that take from the haves and give to the have-nots. It is about where we are going as a State. Do you want a bunch of liberals in Austin, Houston, and Dallas making agricultural policy. These misinformed treehuggers don't know that endive and mushrooms won't feed a growing nation much less allow us to compete in the world market. Mr. Hightower would have the masses believe that we can produce with zero tolerance of pesticides. That is his stated goal. We know that's a bunch of bunk!

Rick Perry has served in the Texas House of Representatives since 1985. He has been a consistent conservative leader that has taken the view of the agricultural producer right down the line from day one. He authored the Perry Amendment that allows us to use crop protection chemicals carefully and safely. He knows what's good for farmers and ranchers because he's both. He and his family are actively engaged in the farming and ranching in Haskell County. This man is mainstream America not radical left. He proudly

served in the U.S. Air Force while Hightower was protesting against the War in Vietnam. Rick has run a well planned, vigorous race for Ag. Commissioner. He's running on the Republican ticket. If you're a Democrat or Independent don't let that bother you. It's not the party, but the issues, that count.

Rick Perry can win! He has the support of some of the strongest farm groups in the state. He's now being endorsed by some of the strongest newspapers in the state (The San Antonio Light, San Antonio Express, Dallas Morning News, Houston Chronicle). He is leading a very strong campaign, but he needs you and me to help him. He needs not only our vote but our vocal support.

That means we've got to let Aunt Sallie and Cousin Vern in Dallas and Houston know that this is important to us. They think this Hightower fellow is OK because he's for a clean environment and that sounds real noble. They may not realize that he and his counterparts believe animals have more rights than little unborn children. They may not recall that farmers and ranchers were the first environmentalists and that there are no better stewards of the land than those who have sweat blood for generations trying to hack a living from it. They may not understand that more government is not the solution, but instead the problem. Your city cousins have a vote. Make sure they know where you stand when they go to the polls.

Rick Perry will help us to get agriculture back on the right road in Texas. He can win this most important race if we'll only help him. How can we help? Every Perry supporter must get to the polls on November 6 and vote! Even if you're not for Perry, vote anyway, this is America! But remember, if you're in agriculture (if you don't eat or wear clothes, you're not included), you have the most to lose!

Sincerely,
Randy Murphree

Boone Selected Cheerleader At LCC For 90-91

Jerri Lynn Boone of Rotan has been selected as a Lubbock Christian University cheerleader for the 90-91 school year.

Jerri Lynn is the daughter of Jerry and Patricia Boone.

She is a sophomore Elementary Education major.

Lubbock Christian University is a four-year liberal arts university providing academic excellence in a Christian atmosphere.

THE NEWSPAPER OFFICE
Sells
Texas Ranch Caviar

Congressman Stenholm Announces Deadline For Applications For U.S. Service Academies

Congressman Charles W. Stenholm has announced that the deadline for applications to the United States Service Academies is just one month away.

The deadline to apply to any military academy through Congressman Stenholm's office is December 1, 1990. Interested individuals are encouraged to contact the Stamford office as soon as possible.

Eligible applicants must be at least 17, but not past their 22nd birthday, and need to have graduated from high school by June 30, 1991. They must also be single with no dependents and be a legal resident of the 17th District.

Competitive applicants should be in the top 20 percent of their class. They need to have SAT scores above 500 Verbal and 550 Math or ACT scores of 24 English and 26 Math. Involvement in extra-curricular activities, including school and community organizations and sports as well as full or part-time employment, is also in the applicant's favor.

The Congressman will be making nominations for appointments to the

Air Force Academy at Colorado Springs, Co., the Military Academy at West Point, N.Y., the Naval Academy at Annapolis, Md. and the Merchant Marine Academy at Kings Point, N.Y.

The U.S. academies offer young people an excellent education, while also developing skills in leadership and self-discipline. It is a one-of-a-kind opportunity to earn a bachelor's degree and earn a salary for doing so. An education at an academy also guarantees a career upon graduation as an officer in the U.S. Armed Forces.

Applicants who wish to serve as commissioned officers are strongly encouraged to contact Jayne Schoonmaker in Congressman Stenholm's Stamford office. For more information call (915) 773-3623 or

(915) 672-1322 or write to P.O. Box 1237, Stamford, Texas 79553.

Nominees will be announced in late December.

Price's Picture Perfect

Is ready to help you with all your Christmas framing needs.

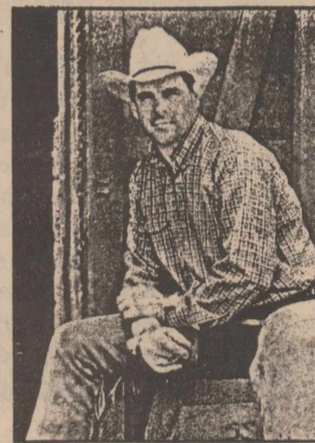
For your convenience please choose from our moulding and mat samples at **Main Street Flower Shop**. We will be doing the work at home and will deliver back to **Main Street** when completed. We will continue to strive to give you the **quality service** you deserve.

Jack & Carol Price

A New Leader For Texas

Rick Perry ★

FOR AGRICULTURE COMMISSIONER



From Agriculture, For Texas.

Rick Perry's got hands-on experience as a farmer and rancher. The office hasn't had that for over 40 years!

A Proven Conservative Leader.

As a three-term State Representative, Rick Perry has demonstrated his conservative leadership. The *Dallas Morning News* honored Rick as one of Texas' 10 most effective Legislators.

Texas Values.

Rick is a graduate of Texas A&M University and served as a Captain in the Air Force, where he flew C-130's. He and his wife, Anita, have two children: a son, Griffin, 7, and a daughter, Sydney, 4.



With a Plan for Jobs and More Prosperity for Texas.

His 6-Point "Action Plan for Texas Agriculture," to process more raw goods in-state, attract more federal research dollars, expand markets for Texas products, work with mainstream agriculture, have an outside audit of TDA and end the political scandals, will strengthen Texas agriculture and create jobs across the state.

Pd. Pol. Adv. By Randy Murphree, 808 Johnson, Rotan, Texas 79546

Fishing For A Good Deal?

Catch The Great Bargains In The Classified Section.

You'll Be Hooked

The Newspaper Office
735-2562

Christmas Special!

In November
(Expires Nov. 16th)

.44¢ Each
100 Or More

.48¢ Each
50 Or More

.48¢ Each
25 Or More



Create your own Holiday Greeting Cards

With your favorite color photo and one of these special sentiments, you can send your best this holiday season. Ask for ordering information.

EACH GREETING IS FULL COLOR - ENVELOPES INCLUDED

604 Cheers! 601 MERRY CHRISTMAS 603 Ho! Ho! Ho! 751 Happy Holidays! 752 From Our House To Yours

Come in early before the rush!

Christmas cards will be made from prints, slides or negatives. Orders will be returned to you in twelve days.

More Than A Christmas Card, A Photo Greeting To Be Treasured All Year Long.

The Newspaper Office
Available At
735-2562
Rotan, Texas

ROTAN CHAMBER OF COMMERCE PRESENTS A WESTERN TRADE DAY NOVEMBER 13TH

Buy - Sell - Or Trade
(Not An Auction)

Hoof Trimming & Shoeing



*Horses
*Tack

Bring your items to be sold or traded..
The family duck?
Your pickup or trailer?
Hand made crafts?

TAX PLANNING

Written By
James E. Rodgers, CPA



CUSTOMER SERVICE AND EMPLOYEE ATTITUDES

The quality of customer service your company provides will have an effect on the net profit of your business.

Even with the best of intentions, many companies only give lip service to this very critical area. It is necessary that every employee be tuned in to how he or she can contribute to outstanding customer service - the kind of customer service that keeps customers coming back again and again.

"Customer service" includes every element of the sales transactions between your business and a customer. Though you may consider customer service just a matter of being polite to customers, it actually involves many areas, including the following:

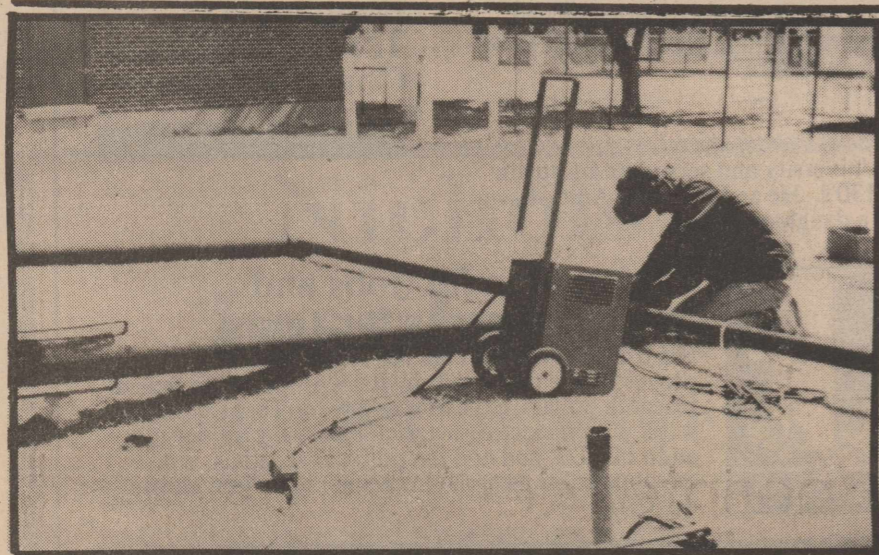
- * Being truthful in advertising your product or service.
- * Providing a product or service that meets or exceeds customer expectations.
- * Being prompt in delivering your product or service.
- * Letting customers know you appreciate their business.
- * Handling customer complaints or other concerns promptly and politely.

* Being polite and cheerful in dealing with customers - even when they're "just looking" instead of buying.

Every employee in your business should be able to compile a list of the behaviors that contribute to good customer service in your specific line of business. Have your employees bring their lists to a staff meeting and compare notes. Discuss the areas where your company could improve customer service. Then decide on specific actions to take and decide who will take them and when. It's important to follow through to be sure that the changes you decide to make are actually made.

Get your employees involved. Be persistent and consistent in improving customer service. Your net profit will show the positive results of your efforts.

Sponsored by
JAMES E. RODGERS & COMPANY
Certified Public Accountants
20 Southwest Third Street
Hamlin, Texas



MAKING NEW SWINGS: Pictured above is Larry Callan installing new swings for the students to enjoy at Rotan Primary. Also helping Larry was Frank Miranda, an employee of the school. Larry is owner and operator of Larry's Automotive in Rotan.



Office: 915-776-2228
Home: 915-776-2149

Deaton Insurance Agency

Life - Home - Auto - Bonds - Commercial

Ellen Deaton
Agent

Post Office Building
Roby, Texas 79543

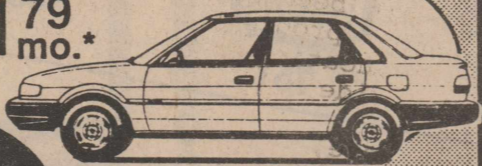
Big Country Chevrolet-Geo 1st Anniversary SALE

\$500 Down Cash or Trade

Tax, Title & License Included

89 Tempo
233³⁴ mo.**

90 Prizm
201⁷⁹ mo.*



Used
Cars

90 Lumina
242⁸¹ mo.*

90 Corsica
220⁸⁹ mo.*



Excellent Selection Available!

87 Merc. Cougar	\$7,495
83 Chev. Silverado	\$3,995
88 GMC S10 Blazer	\$9,495
84 Chev. 1/2 Ton PU	\$4,995
85 Mercury Lynx	\$2,995
88 Caprice Classic	\$9,850
83 Malibu Wagon	\$3,995
84 Chev. Suburban	\$5,995



East Hwy. Traffic Circle 915-573-5456

*Payments based on 60 mos. at 15.75% financing, W.A.C.
**Payments based on 48 mos. at 17.5% financing, W.A.C.



HARD HITTING, FIGHTING CUBS: The Yellowhammers were unable to hold the Cubs down as Roby defeated them 50-28. The Cubs will take on Roscoe this Thursday, November 1st at Roby.

Roby Lions Club To Host Pancake Breakfast Nov. 10

The Roby Lions Club is preparing to cook pancakes, sausage, bacon, eggs and toast for about 200 people Saturday, November 10, at the Cottonwood Creek R.V. Park on Highway 70, south of Roby. The breakfast will be served from 7:00 to 9:00 a.m. The cost is \$3.00 for all a person can eat.

The breakfast begins the day of activities for the National Quail Cook-off which is sponsored by the Fisher County Quail Hunting Cooperative and the County Extension Department. A large crowd is expected to be on hand all morning long for the cook-off.

Proceeds made from the Lions Club breakfast will go to help the many community and charitable projects that the Roby International Lions Club supports. Lions Club members are selling advance tickets but anyone may pay at the door for this whopper bargain breakfast.

The breakfast will be served buffet style. Chief cook, Lion Zanna Anderson, says that the breakfast will be better organized than in the past. He also says the melt in your mouth pan-

Hospital Board Holds Emergency Hiring Meeting

The members of the board of directors of the Fisher County Hospital District conducted an emergency meeting on Thursday, October 25th for the purpose of interviewing four potential candidates for the position of Fisher County Hospital Administrator.

The other item on the emergency meeting agenda was the "discuss rural health care with possible action."

With respect to the interviewing of candidates, Fisher County Hospital Board President Frank Mitchell indicated that the board interviewed four candidates. "We pretty well wrote off two candidates as not being the caliber we desired to lead this facility. The other two are being given strong consideration", said Mitchell.

It is anticipated that the search for a new administrator will continue to be discussed in future meetings.

cakes will be even more delicious than usual.

179 hungry people were served at last year's breakfast.



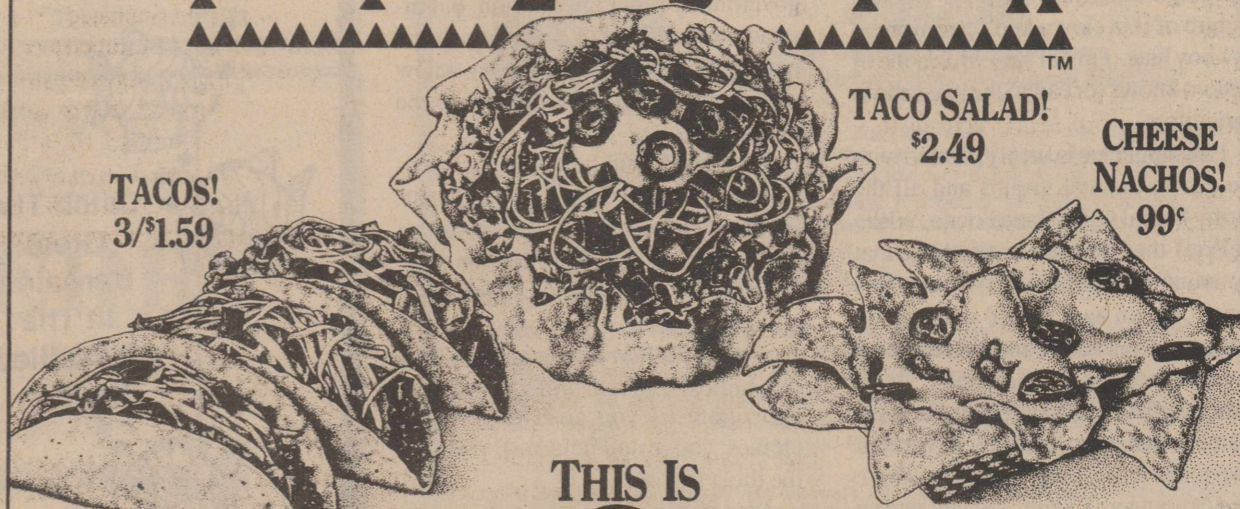
BLOODMOBILE

Monday, November 5th
Fisher County Senior Citizens Center
3:00 to 6:00 p.m.

Sponsored By The
Fisher County Hospital Auxiliary
Please Give

DQ COUNTRY

F I E S T A



Not all products available in all stores.
Good only at participating Dairy Queen stores.



Prices Good
OCTOBER 29 thru NOVEMBER 18, 1990

© Reg. U.S. Pat. & Tm. Off. Am. D.Q. Corp. TM Reg. U.S. Pat. & Tm. Tx. D.Q. Op. Coun. © Tx. D.Q. Op. Coun.

SOUTHERN STYLING 735-3130

CALL FOR APPOINTMENT
WALK-INS WELCOME

LISA
TUES.-SAT.

PERMS - \$10 OFF

KAREN
TUES., WED., & SAT.

ADULT HAIRCUTS - \$2 OFF

SHERRY
THURS. & FRI.

HI-LITES - \$5 OFF

SCULPTURED NAILS - \$10 OFF

LUMÉ - "THE ULTIMATE
NATURAL NAIL SYSTEM"
\$5 OFF

HOLIDAY SPECIALS

NOV. 1 - DEC. 29

National Gypsum Company Files For Protection Under Chapter 11, United States Bankruptcy Court Sunday

Privately-held Aancor Holdings, Inc. and its wholly-owned subsidiary, National Gypsum Company, filed on October 28, 1990, voluntary petitions for protection under Chapter 11 in the United States Bankruptcy Court for the Northern District of Texas, Dallas Division, it was announced by Peter C. Browning, newly-elected president and chief executive officer. The Austin

Company, a wholly-owned subsidiary of National Gypsum and headquartered in Cleveland, Ohio, will be excluded from the filing.

Browning also announced that the boards of directors of Aancor Holdings, Inc., National Gypsum Company and General Electric Capital Corporation have approved a Debtor-in-Possession revolving credit agreement that would provide National Gypsum Company with necessary post-filing financing. The company will petition the court to approve the transaction.

"This financial agreement, if approved by the Court, will further ensure our ability during this reorganization process to continue providing our customers with the same quality products and services they have come to expect throughout the Company's 65-year history," said Browning.

"The decision to file under Chapter 11 was made only after it became apparent that no other recourse was available which would effectively preserve the Company's assets and ensure its ongoing operation, while also providing equitable treatment of all creditors," he stated.

Browning said that even though reduction of debt remains ahead of schedule, the company's aggressive efforts to further reduce debt to appropriate levels and ensure necessary liquidity have not been sufficient. He cites as primary contributing factors deteriorating industry conditions, including declines in housing starts and gypsum wallboard prices to their lowest levels in a decade; lack of adequate new financing due to severely reduced credit availability, the increasingly difficult and uncertain economic environment and resulting decline in consumer spending; and the perception among some lending institutions as to the Company's potential asbestos-related liability.

National Gypsum Company was acquired by Aancor Holdings, Inc., as a result of a leveraged buyout completed in April 1986. Subsequently, the Company has reduced the face value of its outstanding debt from approximately

"The decision to file under Chapter 11 was made only after it became apparent that no other recourse was available which would effectively preserve the Company's assets and ensure its ongoing operation, while also providing equitable treatment of all creditors,"Peter C. Browning.

\$2 billion to some \$1 billion.

"This significant reduction has resulted from continuing strategic downsizing and reorganization of assets and personnel that began immediately following the LBO and most recently included reductions in layers of management and a streamlining of the Gold Bond sales force and distribution centers; earnings from operations before the current industry and general economic downturn and a series of actions taken during the last 18 months, including the purchase of \$136 million of outstanding debt made possible in part by the generation of \$100 million through the sales of certain non-strategic and marginally profitable assets, such as a limestone facility in York, Pennsylvania, and a Company aircraft," said Browning.

The Company's long-term debt consists primarily of three publicly-traded issues, including approximately \$294 million face value of 11 3/8% Priority Senior Subordinated Notes due March 31, 1997; \$176 million face value of 14 1/2% Senior Subordinated Debentures due April 29, 2001; and \$554 million face value of 15 1/2% Subordinated Redeemable Discount Debentures due June 30, 2004, with interest

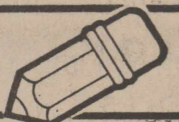
payable beginning December 31, 1991. The current total market value of these issues is estimated at less than \$300 million.

Browning stated that the Company will complete a proposed reorganization plan and present it to the court as soon as possible. "We are committed to ensuring that the Company achieves a successful workout for the benefit of our creditors, customers, suppliers and employees and to emerge from Chapter 11 as quickly as possible," Browning said. "We recognize our responsibility to be responsive to the needs of our constituencies; therefore, we are committed to establishing and maintaining accurate and candid communications," Browning concluded.

In a separate announcement today, the Company released its financial result for the period ending September 30, 1990 and 1989. For the three months, the Company incurred net losses of \$22.7 million and \$2.5 million in 1990 and 1989, respectively, while for the nine months, losses were recorded of \$53.2 million and \$27.6 million in 1990 and 1989, respectively. Browning noted that in contrast to the company's gypsum wallboard business segment, The Austin Company continued to enjoy near record revenues

and earnings. National Gypsum Company is an integrated, diversified, manufacturer and supplier of products and services used worldwide in building and construction. The Company engages in the manufacture, sale and distribution of products serving the residential, commercial, industrial and repair and remodeling markets and, through its subsidiary, The Austin Company, performs engineering and construction services for domestic and international clients.

Letter To The Editor



Dear Editor:

It was good to read of Dr. Callan's concern about our dangerous decline in population ----the worst in the entire 19 county Big County area. His comments about the run-down looks and the "brain-drain" of our graduates may suffer only from being an understatement.

However, I would like to correct one impression he has about the good report on starting a spinning factory. The feasibility study done by Texas A&M on a cotton/wool spinning mill in Fisher County was not favorable. It said in effect, yes, Fisher County can build a factory but there is no known place or company to sell the thread to.

In response to Dr. Callan's question, "Are we just going to lie down and die without so much as an effort to save our county? Many of us are not yet ready to toss in the towel, even with this newest set-back. Richard Spencer, Zana Beth Anderson, James Springer, Joe Dale Burk, Larry Landes, J.T. Palmer, Dr. Jerry Marshall and I have actively been working on a new project that may bring one or more cotton-related factories to the county.

The first one will use our gyp water in a special way that requires gyp water to bleach cotton. Our cotton is now shipped from here and bleached in New England. To get this factory under way may take some special revenue bonds. When the time comes for that, we'll know if we're ready to lie down or struggle to renew our county as did the early settlers and our forebearers.

Sincerely,

Dr. David Morris,
Former Chairman
F.C. Economic Development
Commission
Roby School Board Member



Dr. Bryan Cave
OPTOMETRIST
Eye Examinations
Contact Lenses
(All Types)
CHILDREN WELCOME
COGDELL CENTER
SNYDER, TEXAS
(915) 573-5571
Office Hours:
Mon., Wed., Fri., 9-5
Tues., Thurs., 9-6



Clinic Pharmacy
735-2500
(In Callan Clinic)
CALL ON US FOR ALL YOUR PRESCRIPTION NEEDS!
*Computer Printouts For Insurance Or IRS
*We Fill Any Doctor's Prescriptions
*We Serve Fisher & Surrounding Counties With Competent-Competitive & Caring Prescription Service
*We Deliver In Roby & Rotan

The Newspaper Office Sells
New Canaan Farms
Jellies & Jams
In 14 Varieties
735-2278

The children of
Dr. & Mrs. Maurice Callan
request the honor of your presence at a Reception honoring their
25th Wedding Anniversary
on Sunday, November 4th from 2:00 to 4:00 p.m.
At The Callan Residence
North of Rotan
No gifts please

Open Letter To The Rotan Consolidated Independent School District Residents From Dr. Nolan Kinsey, Superintendent

Rotan Public Schools
Dr. Nolan L. Kinsey
102 North McKinley Street
Rotan, Texas 79546
(915) 735-2332

October 26, 1990

Dear Friends,

It is my pleasure to have the opportunity to serve as your superintendent of schools in Rotan. We have a very fine school system that is academically and financially sound. You have a dedicated Board of Trustees that serves you well. The enrollment for Rotan schools at the end of the first six-weeks stands at 522. There are many academic and extracurricular programs available for the benefit of these students. In addition to the regular academic classes, we offer courses in compensatory, and special education for our children with special needs. A course of study is also offered for the gifted and talented student. The HOBBS Cooperative was established for our "At Risk Young People."

The curriculum has been expanded to offer courses like art. An enrichment and tutorial program has been added to the high school to enhance the overall educational opportunities. Staff positions have been increased to provide a full-time counselor.

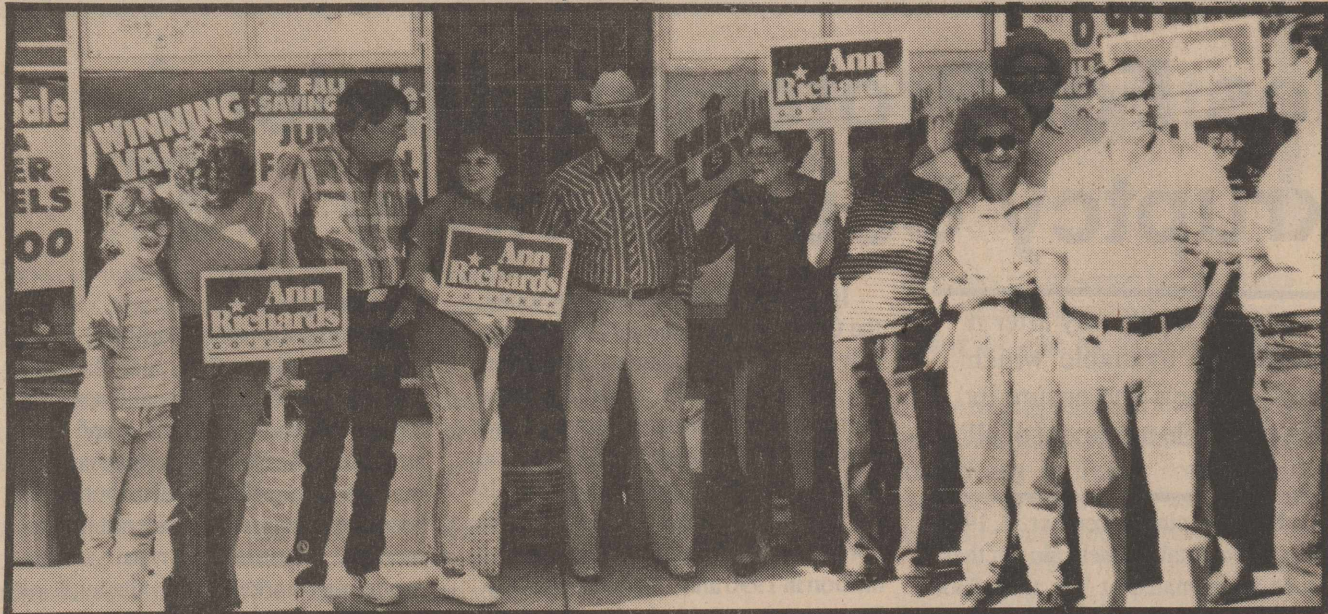
On a different note, I'm sure you are interested in knowing that the Rotan Independent School District is in excellent financial condition. These are difficult times especially with the uncertainty that has loomed over the state public school finance system. As you are aware, that system has again been abolished. In an effort to be prudent and financially sound, the tax rate was left at \$1.03. We have a balanced budget for the 1990-91 fiscal year at the referenced tax rate when many districts across Texas raised their tax rates to make ends meet.

You can rest assured we have the best interest of our children, staff, and community at heart. "Everybody is Somebody in Rotan Schools." As superintendent, if I can be of assistance in anyway, please contact me. "My door is always open."

Your friend and superintendent,

Dr. Nolan L. Kinsey
NLK:pjp





SUPPORTERS OF ANN RICHARDS: The Ann Richards Caravan came through Fisher County lately and drew several supporters as they lined up to show their support for their candidate.

Carter Edmondson Wins Title At Texas Tech Intercollegiate Rodeo Held In Lubbock

Carter Edmondson won the all around title at the Texas Tech Intercollegiate Rodeo last weekend at Lubbock. He was awarded a belt buckle. He placed third in the short go and third in the average of the calf roping. He also won second in the short go of the

steer wrestling.

Carter is a sophomore at Tarleton State University. He represents Tarleton in all the Southwest Region College Rodeos.

Carter will be competing this weekend at the San Angelo Fiesta

Roping. This prestigious event is an invitational roping that has been held for 39 years and features the top ropers in the country. He will then travel to El Paso to compete in the N.A.R.C. Finals.

Philip Matthies Stationed In Oklahoma

Air Force Airman Philip C. Matthies has arrived for duty at Altus Air Force Base, Okla.

Matthies is an apprentice structural specialist.

He is the son of Norman L. and Sandra S. Matthies of Rotan.

The airman is a 1989 graduate of Rotan High School.

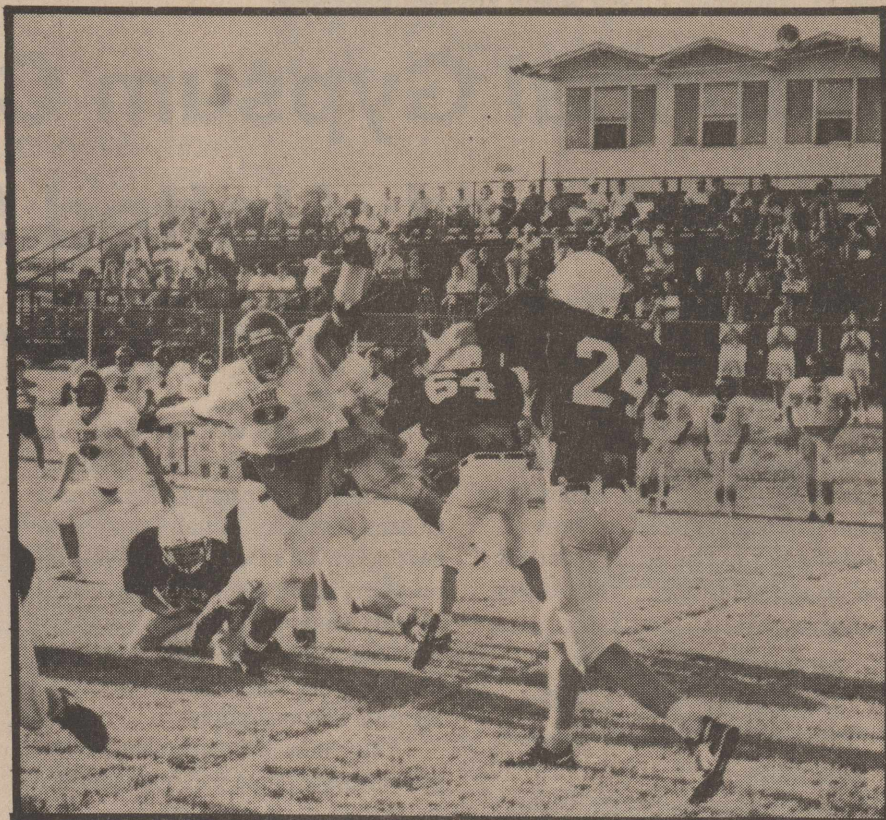
Hospital News

Patients admitted to the Fisher County Hospital were:

Golda Springer-Rotan; Daniel Silva-Rotan; Forrest Acker-Rotan; Brooks Clements-Rotan; Raymond Rains-Rotan; Ottilie Polk-Rotan; Ruby Branch-Rotan; Melody Gordon-Roby.

Roby ISD To Hold Training Session

Roby ISD, in conjunction with Tri-County Education Co-op is presenting a training session at 7:00 p.m. on Tuesday, Nov. 6 at the Roby Cafeteria. For the parents of children enrolled in the Early Childhood program, Mona Jones, early childhood consultant and former administrator of Abilene Headstart, will speak on "How To Enhance Your Child's Language Using Routine Activities, Play, Toys, and Books". A question and answer session will follow. Free child care will be provided. If you have any questions, please contact Joe Joplin, elementary principal, at 915-776-2224.



LION ATTACK: The Roby Lions in a recent game were quick on the offense and defense. The Lions will take on Roscoe this Friday night at Roscoe. The game is scheduled to begin at 7:30 p.m.

Legal

REQUEST FOR BIDS ON TEXAS HIGHWAY CONSTRUCTION

Sealed proposals for constructing 244.113 miles of seal coat on various limits of FM 18, SH 6, US 180, US 380, Loop 128, FM 126, FM 668, FM 604, FM 605, FM 617, FM 614, FM

REQUEST FOR BIDS ON TEXAS HIGHWAY CONSTRUCTION

Sealed proposals for constructing 286.919 miles of seal coat on various limits of Spur 237, Loop 544, SH 70, SH 208, SH 163, FM 610, FM 670, FM 612, FM 1785, FM 820, FM 1083, FM 2320, FM 1230, FM 1606, FM 1613, FM 1609, FM 419, FM 1646, FM 846, FM 1269, FM 1982, FM 1142 & FM 1054, covered by CPM 6-14-2, CPM 53-20-1, CPM 263-4-22, CPM 263-5-17, CPM 264-1-30, CPM 264-2-22, CPM 264-3-15, CPM 332-1-20, CPM 333-1-22, CPM 360-6-8, CPM 360-7-17, CPM 518-2-9, CPM 682-1-12, CPM 1155-5-8, CPM 1156-1-11, CPM 1248-1-8, CPM 1248-3-11, CPM 1363-1-12, CPM 1526-3-9, CPM 1526-4-5, CPM 1528-1-6, CPM 1530-1-6, CPM 1652-1-10, CPM 1732-1-9, CPM 1872-1-3, CPM 1872-2-11, CPM 1873-2-16, CPM 1900-1-8, CPM 1900-2-3, CPM 2260-1-3, CPM 2260-2-5 & CPM 3276-1-13 in Nolan, Fisher, Scurry, Mitchell, Stonewall, Howard, Borden & Kent Counties will be received at the State Department of Highways and Public Transportation, Austin, until 1:00 P.M., November 13, 1990, and then publicly opened and read.

Plans and specifications including minimum wage rates as provided by Law are available for inspection at the office of Michael Chetty Resident Engineer, Big Spring, Texas, and at the State Department of Highways and Public Transportation, Austin, Texas. Bidding proposals are to be requested from the Construction Division, D.C. Greer State Highway Building, 11th and Brazos Streets, Austin, Texas 78701. Plans are available through commercial printers in Austin, Texas, at the expense of the bidder.

Usual rights reserved.
38:2tc

382, FM 1835, FM 2163, FM 1812, FM 1636, FM 1597, FM 2407, FM 540, FM 1178, FM 2482, FM 2700, FM 2746, FM 89 and FM 3339, covered by CPM 6-11-13, CPM 107-1-29, CPM 107-2-33, CPM 107-2-34, CPM 296-6-12, CPM 360-3-17, CPM 360-8-1, CPM 733-3-25, CPM 746-1-7, CPM 746-2-3, CPM 746-3-3, CPM 974-6-7, CPM 974-7-3, CPM 975-1-13, CPM 982-1-12, CPM 984-1-11, CPM 1070-1-4, CPM 1070-2-6, CPM 1747-1-7, CPM 2031-3-9, CPM 2109-2-8, CPM 2187-1-4, CPM 2187-2-7, CPM 2188-2-4, CPM 2327-2-6, CPM 2368-1-3, CPM 2368-2-4, CPM 2378-1-4, CPM 2380-1-6, CPM 2758-1-4, CPM 2771-1-4, CPM 2935-1-6 and CPM 3399-1-3 in Callahan, Jones, Shackelford, Haskell, Stonewall, Taylor and Fisher Counties will be received at the State Department of Highways and Public Transportation, Austin, until 1:00 p.m., November 14, 1990, and then publicly opened and read.

Plans and specifications including minimum wage rates as provided by Law are available for inspection at the office of Joe Higgins, Resident Engineer, Hamlin, Texas, and at the State Department of Highways and Public Transportation, Austin, Texas. Bidding proposals are to be requested from the Construction Division, D.C. Greer State Highway Building, 11th and Brazos Streets, Austin, Texas 78701. Plans are available through commercial printers in Austin, Texas, at the expense of the bidder.

Usual rights reserved.
38:2tc

Harley Bynum
Photography

Photographic Craftsman
Snyder, Texas 79549

3403 Snyder Shopping Center (915) 573-4190

We Photograph: children, Seniors, weddings, anniversaries, restore old photos and we do instant passports.

PUBLIC AUCTION

10:00 A.M., SATURDAY, NOVEMBER 3, 1990
821 EAST 16TH STREET - Sweetwater, Texas
OVER 50 YEARS ACCUMULATION
SELLING OUT DUE TO HEALTH REASONS

French Provincial Bedroom Suite
Police Scanner
Mirrors
Upright Freezer
Ice Box
Dishwasher
Ceiling Fans
Dinette Suite
Microwave
China Cabinet
Roll Top Desk
Metal Building
Bird Bath
Swing Set
Wurlitzer Organ
Old Dolls
Old Radio
Compactor
(2) 110 Refrigerated Air Conditioners

Radial Arm Saw
Air Compressor
Air Tank
230 Welder
Tool Boxes
Drill Press
Skill Saws
Planer
Ban Saw
Riding Lawn Mower
Lots Of Old Glass
Set Of 6 Flatware (Gold Plated)
Bench Grinder
Kerosene Heater
Chain Hoist
Set Of Car Ramps
Paint Gun
Wheel Barrow
Brass Eagle & Crane

Merchandise To Be Moved Day Of Sale

Lots Of Other Items
Willie Romine

Sweetwater, Texas (915) 235-5566
Licnese No. TXS. 6504

News From Down South

By Bertha Warren

The end of October so remember to keep a sharp eye out for those little trick or treaters. Now with November at hand that means the Hobbs School Homecoming is just ten days away. Saturday, November the 10th. It's going to be a fun time and everyone will enjoy the speaker, Mr. Frank Cacrell as he will explain everything that's going on at our Hobbs School. It's so great to see the halls and class rooms full again.

Charlie and Thelma Smith attended the Cavitt reunion at Sweetwater Saturday. About 20 registered and everyone had a great time and of course there was so much food and lots of picture taking.

Joyce Smith got to come home from the Dallas hospital Tuesday. Charlie and Thelma visited with Joyce and Royce Sunday.

Mable Warren has guests this week. Becky and Nick Warren are visiting with her and Charlene Starnes of Rotan. Max Hendrix called his grandmother (Mable) from Italy Sunday, he had been out to sea and had just returned to shore. Max is in the Navy.

Rex and Carolyn Homer of Sweetwater visited with Carrol and Lena Hodges over the weekend. Rex has not been well and he really did enjoy the drive out in the country. Jim and Evelyn Edwards of Sweetwater visited the Hodges Saturday. Also visiting the Hodges, the Davies and Lorene Henderson from Roswell, N.M. were Lee and Velma Rucker. Lorene visited her sister Texas Lambert at the Holiday Nursing Center Thursday.

Mary Etta O'Donald is visiting Don and family at Brad and Ronny and family at Wylie each for a few days.

Haven't the days been pretty? I have seen some Halloween's that have been very cold.

Ben and Edna Benson's daughter-in-law and grandson Barbara Benson of Plano spent the weekend with them.

Catch the Spirit
First United Methodist Church
Rotan, Texas
Rev. Ron Dunaway
Minister

Sunday School - 9:30 a.m.
Worship Service - 10:30 a.m.
Sunday Evening - 6:00 p.m.

209 North McKinley
Rotan, Texas 79546

735-2334

"Team Roper" Pullovers
"Roomy and Comfortable"

PENNY Jo's
735-2132
Rotan, Texas

MEXICAN PILE ON ALL YOU CAN EAT \$4.99
Fajitas, enchiladas, tacos and tamales.
Make Your Own Mexican Dinner.
We Supply The Plate - You Pile It On

Western Wear
College Heights Shopping Center
SNYDER, TEXAS

Solids: Black-Turquoise-Teal
Stripes: Burgundy and Hunter Green, Turquoise and Black

ADVERTISE WHERE YOU'RE WELCOME

Call The Rotan Advance-Roby Star Record
735-2562

VOTE FOR JIMMY WRIGHT

*Experience
*Dedication
*For the concern of all of us.

WRITE - IN JIMMY WRIGHT
Candidate For Fisher County Commissioner
Precinct #4
Tuesday, November 6th

Pd. Pol. Adv. By Jimmy Wright, Roby, Texas 79543

Price Daniel Unit Exceeds All Expectations Of Community

Snyder's hopes and expectations regarding a prison in the community have all been exceeded with the Price Daniel Unit which opened there last year, the leader of Snyder's prison recruitment team said recently.

"The myths, misconceptions and what-ifs have absolutely not materialized," said Roy Baze, a Snyder native and retired Exxon executive who spoke at the regular meeting of the Lamesa Rotary Club.

Prisons are ideal industries, Baze said, noting they are non-polluting, provide a steady payroll, have high-class administration and are a symbol of law and order. "Unfortunately, it's a growth industry," he commented, adding that the prison industry is not affected by the price of oil or agricultural products.

Baze discussed a number of benefits which Snyder is reaping from the prison, rebuked several myths about having a prison in the community, and also reviewed Snyder's success in convincing state officials to begin locating prisons around the state.

One of the chief benefits of the Snyder prison is the effect of the monthly payroll of about \$500,000, said Baze. "When you hit a community like Snyder or Lamesa with \$500,000 a month, people are going to feel it," he said.

Prison employees who moved to Snyder have been easily and readily incorporated into community life. Baze said the prison employees are top rate, with many of them already taking leadership positions in churches, the Chamber of Commerce and other community activities.

Western Texas College at Snyder has expanded its enrollment by 10 percent, Baze said, through the classes it offers inside the prison to prison inmates. The college also has had some 200 people go through its correctional officer training program. Because of the extreme competition for prison positions, only about 25 out of every 100 applicants are accepted.

The Wyndham School District, which provides classes in the prison for individuals who have not yet obtained a high school diploma, has 26 employees. "You couldn't get these teachers to come back to the Snyder district," Baze said, noting that teachers at the prison do not have to worry about such things as PTA meetings, discipline problems or homework.

Twenty-nine new jobs have been created at Snyder Cogdell Memorial Hospital, which dedicated a wing for treatment of prisoners and which also provides pharmaceutical services. The hospital is now doing about \$1 million a year in business with the state, and

Baze stated, "I think that's going to save that local, rural hospital."

Church services have been held at the prison since the first trustees arrived, with attendance at those services on the rise.

Discussing a few of the myths about having a prison in a community, Baze said any claims that prisons hurt area property values are not true. Real estate values normally go up, as prison employees seek to rent or buy homes.

Snyder's real estate values have gone down in recent years, Baze admitted, but he said that is due not to the prison but the state of Snyder's economy which has been impacted by the depletion of oil reserves in Scurry County. With those oil reserves being depleted at about 10 percent per year, Baze said the tax base in the county has dropped from about \$2.7 billion in the early 80s to about \$900 million by the end of the decade.

Baze also noted that prisoners are not classified by crime as to whether they will be placed in a medium security unit of a maximum security facility. Instead, they are classified by such things as their performance and attitude.

Case history has also shown that prisons do not attract any significant number of prisoners' family members who move to a prison community to be near an inmate, Baze reported.

Contrary to claims that the local

crime rate will go up, Baze noted that a prison is a symbol of law and order. Having a prison in a community puts 75-100 or more extra uniforms in that community.

Fears of violent escapees are unreasonable, he added, noting that anyone escaping from a prison is not going to want to stay in the area but instead will seek to head to the big cities of Houston, Dallas or Ft. Worth where they will not be noticeable.

Baze said he would be less fearful of an escapee than he is of the parolees and probationers that are in every community. "I'm a lot more concerned about the people on the street than those behind the fence."

He pointed out that the prison at Snyder had had two escapees--one was captured immediately and the other slipped out of prison in a furniture van (the prison makes furniture) and has not been re-captured at this time.

GENERAL ELECTION (ELECCION GENERAL)

(Condado de) FISHER COUNTY, TEXAS
NOVEMBER 6, 1990 (6 de noviembre de 1990)

SAMPLE BALLOT

No.

INSTRUCTION NOTE: Vote for the candidate of your choice in each race by placing an "X" in the square beside the candidate's name. You may cast a straight-party vote (that is, cast a vote for all the nominees of one party) by placing an "X" in the square beside the name of the party of your choice. If you cast a straight-party vote for all nominees of one party and also cast a vote for an opponent of one of that party's nominees, your vote for the opponent will be counted as well as your vote for all the other nominees of the party for which the straight-party vote was cast.
(NOTA DE INSTRUCCION: Vote por el candidato de su preferencia para cada candidatura marcando una "X" en el espacio cuadrado a la izquierda del nombre del candidato. Usted podrá votar por todos los candidatos de un solo partido político ("straight ticket") marcando una "X" en el espacio cuadrado a la izquierda del nombre de ese partido político. Si usted vota por uno de los partidos políticos y también vota por el contrincante de uno de los candidatos de dicho partido político, se contará su voto por el contrincante tanto como su voto por todos los demás candidatos del partido político de su preferencia.)

Candidates for: (Candidatos para:)	<input type="checkbox"/> REPUBLICAN PARTY (Partido Republicano)	<input type="checkbox"/> DEMOCRATIC PARTY (Partido Democrático)	<input type="checkbox"/> LIBERTARIAN PARTY (Partido Libertariano)	WRITE-IN (Vota Escrito)
United States Senator (Senador de los Estados Unidos)	<input type="checkbox"/> Phil Gramm	<input type="checkbox"/> Hugh Parmer	<input type="checkbox"/> Gary Johnson	<input type="checkbox"/>
United States Representative, District 17 (Representante de los Estados Unidos, Distrito Num. 17)		<input type="checkbox"/> Charles W. Stenholm		<input type="checkbox"/>
Governor (Gobernador)	<input type="checkbox"/> Clayton Williams	<input type="checkbox"/> Ann W. Richards	<input type="checkbox"/> Jeff Daiell	<input type="checkbox"/>
Lieutenant Governor (Gobernador Teniente)	<input type="checkbox"/> Rob Mosbacher	<input type="checkbox"/> Bob Bullock	<input type="checkbox"/> Tom Owens	<input type="checkbox"/>
Attorney General (Procurador General)	<input type="checkbox"/> J. E. "Buster" Brown	<input type="checkbox"/> Dan Morales	<input type="checkbox"/> Ray E. Dittmar	<input type="checkbox"/>
Comptroller of Public Accounts (Contralor de Cuentas Públicas)	<input type="checkbox"/> Warren G. Harding, Jr.	<input type="checkbox"/> John Sharp	<input type="checkbox"/> William E. "Bill" Grisham	<input type="checkbox"/>
State Treasurer (Tesoroero Estatal)	<input type="checkbox"/> Kay Bailey Hutchison	<input type="checkbox"/> Nikki Van Hightower	<input type="checkbox"/> Suzanna Love	<input type="checkbox"/>
Commissioner of the General Land Office (Comisionado de la Oficina General de Terrenos)	<input type="checkbox"/> Wes Gilbreath	<input type="checkbox"/> Garry Mauro	<input type="checkbox"/> Richard C. Donaldson	<input type="checkbox"/>
Commissioner of Agriculture (Comisionado de Agricultura)	<input type="checkbox"/> Rick Perry	<input type="checkbox"/> Jim Hightower	<input type="checkbox"/> Karen A. Tegtmeyer	<input type="checkbox"/>
Railroad Commissioner (Comisionado de Ferrocarriles)	<input type="checkbox"/> Beau Boulter	<input type="checkbox"/> Robert (Bob) Krueger	<input type="checkbox"/> C. W. Steinbrecher	<input type="checkbox"/>
Chief Justice, Supreme Court (Juez Presidente, Corte Suprema)	<input type="checkbox"/> Tom Phillips	<input type="checkbox"/> Oscar H. Mauzy		
Justice, Supreme Court, Place 1 (Juez, Corte Suprema, Lugar Núm. 1)	<input type="checkbox"/> John Comyn	<input type="checkbox"/> Gene Kelly		
Justice, Supreme Court, Place 2 (Juez, Corte Suprema, Lugar Núm. 2)	<input type="checkbox"/> Charles Ben Howell	<input type="checkbox"/> Bob Gammage		
Judge, Court of Criminal Appeals, Place 1 (Juez, Corte de Apelaciones Criminales, Lugar Núm. 1)	<input type="checkbox"/> Joseph A. (Joe) Devany	<input type="checkbox"/> Frank Maloney		
Judge, Court of Criminal Appeals, Place 2 (Juez, Corte de Apelaciones Criminales, Lugar Núm. 2)	<input type="checkbox"/> Oliver S. Kitzman	<input type="checkbox"/> Sam Houston Clinton		
Judge, Court of Criminal Appeals, Place 3 (Juez, Corte de Apelaciones Criminales, Lugar Núm. 3)		<input type="checkbox"/> Bill White	<input type="checkbox"/> Carol Caul	
Judge, Court of Criminal Appeals, Place 4, Unexpired Term (Juez, Corte de Apelaciones Criminales, Lugar Núm. 4, Término no Completado)	<input type="checkbox"/> David Berchelmann	<input type="checkbox"/> Charles F. (Charlie) Baird		
Judge, Court of Criminal Appeals, Place 5, Unexpired Term (Juez, Corte de Apelaciones Criminales, Lugar Núm. 5, Término no Completado)	<input type="checkbox"/> Louis E. Stums	<input type="checkbox"/> Morris L. Overstreet		
State Representative, District 78 (Representante Estatal, Distrito Num. 78)	<input type="checkbox"/> John Pennington	<input type="checkbox"/> David Counts		
Chief Justice, 11 Court of Appeals District (Juez Presidente, Corte de Apelaciones, Distrito Num. 11)		<input type="checkbox"/> Bud Arnot		
County Judge (Juez del condado)		<input type="checkbox"/> Marshal Bennett		
District Clerk (Secretario del Distrito)		<input type="checkbox"/> Bettie Hargrove		
County Clerk (Secretario del condado)		<input type="checkbox"/> Bettie Rivers		
County Treasurer (Tesorero del condado)		<input type="checkbox"/> Ilene Hale		
Justice of the Peace, Prec. No. 3 (Juez de Paz, Prec. Num. 3)		<input type="checkbox"/> Marie Van Loon		
Commissioner, Prec. No. 2 (Comisionado del condado, Prec. Num. 2)		<input type="checkbox"/> Billy Henderson		

No.

PROPOSED CONSTITUTIONAL AMENDMENT (ENMIENDA PROPUESTA A LA CONSTITUCION)

INSTRUCTION NOTE: (NOTA DE INSTRUCCION:) Place an "X" in the square beside the statement indicating the way you wish to vote. (Marque con una "X" el cuadro al lado de la frase que indica la manera en que quiere usted votar.)

FOR (A FAVOR DE)

AGAINST (EN CONTRA DE)

"The constitutional amendment to clarify the authority of the senate to consider certain nominees to state and district offices and to provide for filling vacancies in those offices."
(Enmienda constitucional que aclare la autoridad del Senado para considerar el nombramiento de personas designadas para ocupar cargos estatales y distritales, así como el procedimiento para designar a personas que ocupen tales cargos cuando éstos se encuentren vacantes.)

One Day Service
OVERNIGHT
On Quality

Keaton
Kolor
Film Developing

Leave At Newspaper
THE NEWSPAPER
OFFICE
735-2562

Gotcha!



1. The first rule of Advertising is to get their attention.
2. The second rule is sustained, repeated Advertising.

Advertising doesn't cost...
It Pays!!

CONTACT
The
Newspaper
Office
735-2562

House And Senate Pass Bills To Expand Health Service Corps

State Offices of Rural Health took another step in the direction of federal assistance when both the House and Senate passed bills that will expand the National Health Service Corps and set up matching grants in rural areas.

In the House, H.R. 4487 was passed by a voice vote. It is designed to attract several hundred health professionals to doctor-poor rural areas. Included in the bill was also a provision authored by Congressman Charles Stenholm, (D-TX), that will authorize a federal matching grant program encouraging

states to establish and operate Offices of Rural Health in an effort to raise awareness around the country of the need to address rural health issues and to help integrate state, federal and private sector activities.

"Last year Texas lost 13 rural hospitals out of the 65 that closed across the country," said Stenholm. "These figures are alarming when you discover that not only communities, but entire counties and often clusters of counties are without medical help. Under these Offices of Rural Health we will have a

way to encourage development and sharing of innovative solutions for improving access to quality care in rural communities while also helping states fulfill a need for medical information clearinghouses within their areas."

If fully appropriated, the State Offices of Rural Health Program would cost \$10 million over three years. The federal "seed money" requires a match by recipient states who would ultimately be expected to assume full responsibility.

State Offices of Rural Health would

Provide leadership for rural residents with regard to rural health, coordinate and cooperate with the efforts of the agriculture extension services now dealing with rural development, research cost effectiveness of quality rural health care delivery, report regularly to the federal office of Rural Health Policy and meet annually with other Rural Health Offices to share information and coordinate strategies.

While the House and Senate approved similar versions of the State Offices program, major differences in

the remainder of the two National Health Service Corps bills must be considered by a conference committee composed of House and Senate Members.

Wholesale Retail

Shelled Pecans
Custom Cracking

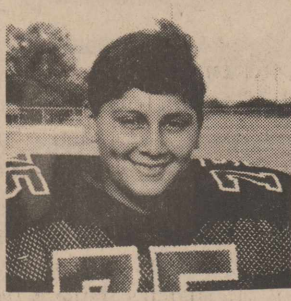
Buy & Sell
Papershell and Natives

RULE PECAN CO.
406 ADAMS AVENUE
RULE, TEXAS 79547
817-997-2812

MOLLY CANNON
817-997-2782

**OPENING
NOVEMBER 5TH**

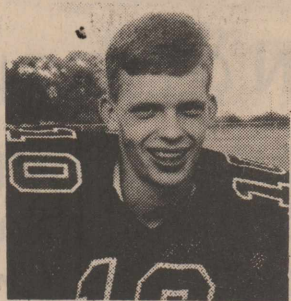
RUTH WILCOX
817-997-2194



Alfred Rivas



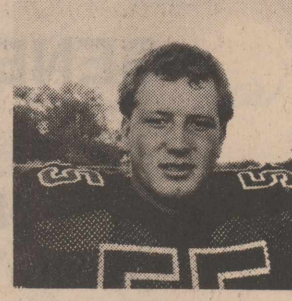
Albert Barrera



Jeremy Terry



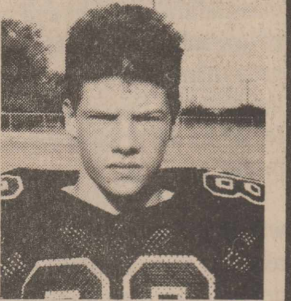
J.T. Elmore



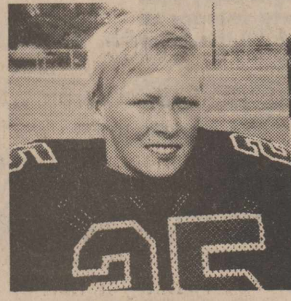
Joe Don Helm



Nick Dickson



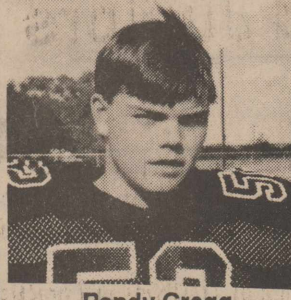
Ruple Weems



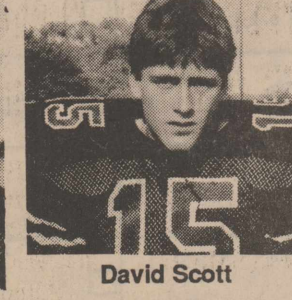
Jason Gruben



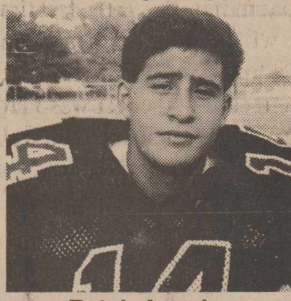
Joe Rivas



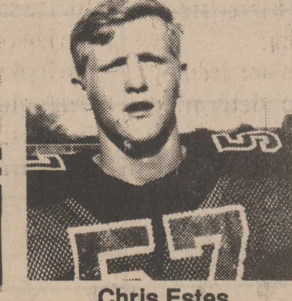
Randy Gregg



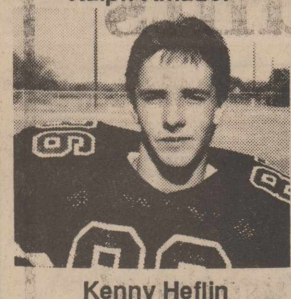
David Scott



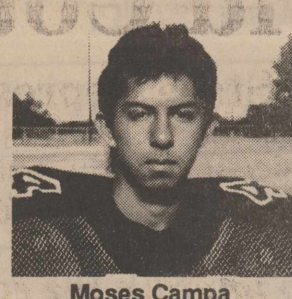
Ralph Amador



Chris Estes



Kenny Heflin



Moses Campa

Date	Opponent	Time	H/T	Us	Them
Sept. 7	A.C.H.S.	7:30	H	27	0
Sept. 14	Cross Plains	7:30	T	33	6
Sept. 20	Snyder Sophomores (Thurs)	7:30	H	6	0
Sept. 28	Miles	7:30	T	16	19
Oct. 5	Rotan *	7:30	H	13	28
Oct. 12	Robert Lee *	7:30	T	7	8
Oct. 26	Sterling City *	7:30	H	18	13
Nov. 2	Roscoe *	7:30	T		
Nov. 9	Garden City *	7:30	H		
Nov. 16	Bronte *	7:30	T		

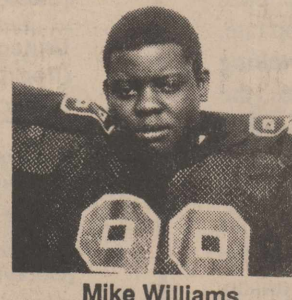
**Roby Lions
VS
Roscoe Plowboys
November 2-7:30-There
Roby Cubs VS
Roscoe
November 1-6:00-Here**



Joey Valdez



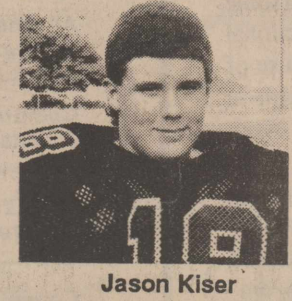
Thomas Cortez



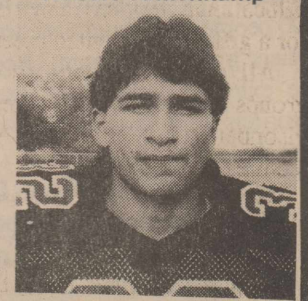
Mike Williams



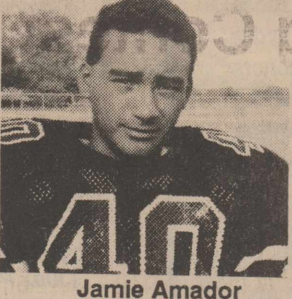
Robert Vahlenkamp



Jason Kiser



Hector Castillo



Jamie Amador



Mickey Kelly



1990 ROBY LIONS



ROBY LION TWIRLERS: Jessica Moore and Anita Floyd.

Roby Lion Friday Night Quarterback Club

*Billy and Annie Laurie Henderson
Charlie and Norma Meek
Ronald, Marie, and Ronda Henry
Rickey, Melody, and Ricia Gordon
The Kim Pease Family
Kirk, Kristi, Joshua, and Kasey Williamson
Andy, Ann, Amanda, Monroe Moore*

*David, Rhonda, Sarah, Daniel Boyd
Bettie Hargrove
Leon, Dorothy, Jay Linn and Joe Don Helm
Rudy and Patsy Hamric
Scott, Dianne, Cherie, Shana, Shea Feagan
Lance, Terry, Kelly, Kyle, Klay McWilliams
Allan, Peggy, James, Chad Arnwine
Guy, Lynda & Andrew Nelson*

*Marshall, Elizabeth, Martha, Margaret Billingsley
Archie, Bettie and Tiffany Rivers
Thomas, Peggy, and Heath Dickson
David, Judy, Blake, Leslie Stephens
Bobby, Frances, Robert, Melody and Brittany Morgan
Larry and Terrye Gruben*

TCI AG AGENCY

WEST HIGHWAY 180 & BARB ST.
P. O. BOX 458
ROBY, TEXAS 79543
Auto - Home - Farm - Health
SPECIALIZING IN MULTI-PERIL AND CROP-HAIL
1-800-752-9522

MIKE TERRY
HM. 8776-2510

OFFICE PHONE
915/776-2286

PENNY Jo's

Owners-Gilbert & Penny Brown
735-2132 Rotan, Texas

City Auto Supply
Rodney Tankersley-Owner
735-2242
Rotan, Texas

Rotan Veterinary Hospital
Dr. Vick Burk
735-2491
Rotan, Texas

City Grocery & Deli
Kiefer & Aubry Nell Cauble
776-2225
Roby, Texas

Roby Flower, Fabric & Gift Shop
Maxine, Ervin & Michelle Bark
776-2292 Roby, Texas

Fisher County Abstract
*Oscar Dickenson
Kim Redden*
776-2471 Roby, Texas

White's True Value Hardware
735-2501
Rotan, Texas

Silver Star Cafe
"Fast, Friendly, Courteous Service"
776-2744 Roby, Texas

Citizens State Bank

Member FDIC
Cecil King-President
776-2261
Roby, Texas

H.L. Davis & Comapny
"The Friendly Store"
735-2519
Rotan, Texas

Wynelle's Beauty Shop
Wynelle Terry-Owner, Operator
776-2233
Roby, Texas

Clinic Pharmacy
735-2500

Country Pharmacy
735-2121 Rotan, Texas

Midwest Electric Cooperative & Employees
Vesta Orr-Manager
776-2244 Roby, Texas

Landes Furniture
Larry & Beverly Landes
735-3171
Rotan, Texas

Rotan Insurance Agency
Joe Burk-Agent
735-2571
Rotan, Texas

Armstrong Implement
776-2110
E. Hwy. 80
Roby, Texas

Deaton Insurance Agency
Ellen Deaton-Agent
776-2228 Roby, Texas

Buddy's Specialty Auto
776-2827 Hwy. 180 West-Roby
*Complete Engine Service
Custom Exhaust*
Owners-Buddy & Bonnie Waldon

Dr. Bennie LeBleu
101 South Florence
735-2211
Rotan, Texas

Casa Morales Restaurant

MEXICAN FOOD

735-2658
122 Snyder Ave.
Rotan, Texas

Scott Fuel

776-2240-Roby, Texas Box 1186-Sweetwater, Texas

& Nubbins Convenience Store

776-2375 Roby, Texas

BRYAN JUSTISS
106 N 5th
ROBY, TX 79543

BUS: (915) 776-2276
RES: (915) 776-2720

FISHER COUNTY FARM SUPPLY

TIRES CHEMICALS FERTILIZER

SWEEPS, ETC. VET. SUPPLIES LAWN & GARDEN

FEED SEED FUEL

Bryan, Rhonda, Brandon & Kim

Roby Insurance Agency
*Honore Curlee-Agent
Debbie Griffith-Office Manager*
776-2361
Roby, Texas

Weatherbee Funeral Home
735-2255
Rotan, Texas

Dr. C.M. Callan
101 S. Florence
735-2211
Rotan, Texas

Farmers Union Co-op Gin
Bud Guelker-Mgr.
776-2237 Roby, Texas

AAA FLYING SERVICE
Herbert Lakey (915) 736-6806
Vance Lakey (915) 776-2828
Rt. 1 Box 26 1-800-642-0016 Sylvester, Texas

The 1st National Bank of ROTAN

"Your Dependable Bank Of Service"
Member FDIC
735-2224
Rotan, Texas



THE FLICKER

Rotan High School

Red Ribbon Week

By: Vanessa Peek
The emphasis was on drug-free schools at the Rotan campuses last week as all three buildings joined other schools in Texas for the Red Ribbon Week campaign, October 21-28. Assemblies were held on Monday by each building to pass out red ribbons to be worn all week and to hear speakers encouraging students to be drug free. Wednesday was designated as a day for all students to wear red in support of drug prevention week. Dr. Jerry Marshall and Luther

Summers spoke to the primary students concerning the abuse of prescription drugs. On Wednesday the primary students also released 200 balloons to emphasize the importance of drug prevention. Teachers in that building also taught some type of drug prevention lesson during the week. In Junior High, the 5th graders worked hard tying red ribbons on the trees around their building, and they also released red balloons on Wednesday. Each student had his/her own balloon to release with a drug preven-

tion slogan tied to it that included the school's telephone number in case someone found the balloon and wanted to call Junior High. Teachers in that building also taught drug prevention lessons during the week. High School had a special speaker during the Monday assembly. Mickey Counts, Fisher County Sheriff, discussed the consequences of being caught with and/or using illegal drugs. He also displayed various drug paraphernalia that has been confiscated in Fisher County. High School students

spent the week writing reports and essays and watching videos concerning drug prevention.

Much support was shown by all students on the campus during Red Ribbon Week, and hopefully this has encouraged the younger students, as well as the older ones, that being drug free is definitely the way to be.

Cans For Congress

By: Tim Gregg

The area around Rotan may be a little cleaner because of a new program by the Rotan High School Student Congress. They will be initiating a recycling project designed to emphasize the importance of a clean environment.

Student Congress members will be placing posters in the hallways of the buildings on campus and special trash cans for aluminum cans only. The drive is intended to strengthen the awareness of our environment's current state and set an example to young and old alike about the need to recycle.

Members will take the cans to recycling centers and collect money. When enough money is made, the organization will use it to purchase and plant a tree to complete the recycling process.

A committee made up of Trey Carrillo, Richard Almanza, and Tim Gregg has been selected to create informative and sensitive ideas to support this project.

Student Congress urges everyone to take part by bringing their aluminum cans to school.

High School had a special speaker during the Monday assembly. Mickey Counts, Fisher County Sheriff, discussed the consequences of being caught with and/or using illegal drugs. He also displayed various drug paraphernalia that has been confiscated in Fisher County. High School students

The students participating in the G/T program are Katie Cade, Stoney Carrillo, Lane Green, Jonathan Sims, Katie Kennedy, Jake Baker, Shelley Burk, Ryan Branch, Guy Duke, Brandy Murphree, Daniel Markham, Stacy Morrow, Sarah Greenlee, and Brooke McCall.

On October 30, the 7th and 8th graders in the G/T program went on a similar trip to Region 14 ESC and heard lectures on such subjects as "Accepting Yourself", "Dreams to Reality", and "Fufuristics (Creative Competition)". They also went to an Invention Convention and saw a film.

Baby Boomer Hit Rotan

By: A. Baker

There are several new "mothers" at Rotan High School. The girls that make up Mrs. Park's Parent and Child Development class are involved in a project in which each student is assigned to care for a doll or egg as if it were a real child.

The goal of the project is to teach the girls the many responsibilities of parenthood. They learn to make adult decisions concerning their children. Each day the girls keep a journal of their activities and how their usual daily routine is limited by their new responsibilities. They also learn about the physical and emotional needs of the children and how these needs are fulfilled. The girls thoroughly enjoy the project but some students find parenthood troublesome. "I can't go anywhere without dragging them along", said Lisa Reyes, referring to her twin eggs Brittany and Taylor.

Next the girls will travel to the Hobbs School to help work at the nursery there. This will give them the opportunity to be around real children.

Jr. High G/T Students Take Trip

By: Heather Randolph

Could a lecture actually be a fun experience? To a few special students listening to a lecture was enjoyable.

A few weeks ago fourth grade teamed up with fifth and sixth grades to travel to Abilene. They went to the Region 14 ESC (Education Service Center). They listened to many lectures by speakers such as Jack Grimm. They learned how he is searching for the original Noah's Ark and he even had a piece of wood which he claimed to

have gotten from the Ark. Jack Grimm is the same man who is said to have found treasure from the Titanic.

They also learned many new things. For example, the students were separated into groups of three. Each group was given 10 sheets of paper, 32 inches of masking tape and a set of written instructions. Each group was asked to build a landing pad for an egg dropped from a table's height.

All of these activities were part of a Gifted/Talented program.

High School G/T Students Take Trip To Abilene

By: Jason Moffett

What do nineteen Big Country high schools including Rotan have in common? They all went to the Region 14 Educational Service Center in Abilene for a gifted and talented meeting.

All of the students divided into groups of fifteen with one teacher advisor per group. The groups listened to lectures and seminars.

When lunchtime rolled around, the

students had a "working lunch" and discussed ideas for land transportation in the year 2050.

The students from Rotan High School that participated in this event were Vanessa Peek, Sr.; J.P. Martinez, Jr.; Heather Randolph and Jason Moffett, sophomores; and Mark Marshall, Matt Mercer, Jenni Burnes, and Karen Dickson, freshmen.

Band Improves Rating At Marching Contest

By: Matt Mercer

Tradition here has been that if the band performs horribly the night before contest, they usually perform well at contest. Saturday morning the tradition carried on. After a horrifying performance by the band Friday night at the Roscoe game, they went into marching contest at Abilene and received a division 2 rating.

After Friday night's performance, the band appeared to be headed for disaster. To everyone's surprise, they marched skillfully enroute to the only division 2 rating given in the Class A

competition. There were three division ones.

The Baird band found it quite humorous when it was announced that they had received a Division 1 rating and they remained silent. Yet, when Rotan was announced with a Division 2, the band screamed their heads off. However, the Baird band had no idea how much this year's Rotan band had improved.

The band would like to thank those who traveled to Abilene to support them. They would also like to thank Mr. Sims for his hard work in preparing them for this contest.

Don't Shop Till You Drop

By: Sherri Conner

Do you know what it takes to be a wise clothes shopper? The eighth graders of Mrs. Park's Life Management Skills class do.

They learned that the way one dresses contributes to making that person who her or she is. Each member of the class did a wardrobe inventory pertaining to budgeting, cost, and making plans for shopping.

The students also had a contest for who could come up with the ten best shopping tips. There were three winners; Dawn Tandy, Melissa Burk, and Brandy Long. These three combined their tips and wrote an essay on buying clothes titled "Don't Shop till You Drop", giving such hints as to pick clothes that can be machine washed rather than dry-cleaned, and that fads go out of style quickly.

These girls also suggested that although sale clothes are good to watch for, all purchases should be checked for flaws in material or seams.


Congratulations are in order for these winners.

HOMELITE®

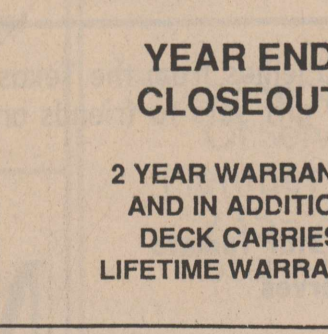
OUTDOOR POWER EQUIPMENT

Everything You Need To Get The Job Done Right!

HSB21PY
\$489.00



HSD20
\$289.00

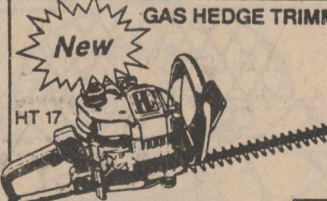


YEAR END CLOSEOUT

2 YEAR WARRANTY AND IN ADDITION DECK CARRIES LIFETIME WARRANTY


Quick Starting • Easy Operation • Dependable Performance

New GAS HEDGE TRIMMERS



HT-17

New GAS BLOWERS FROM \$99.00

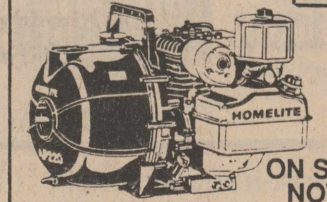


HB-100 BLOWER

BLOWER/VACUUMS, TOO!

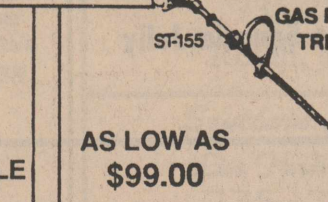
ALSO HT-18 HT-23

AS SEEN ON TV



ST-155

GAS POWERED TRIMMERS



ST-155

ON SALE NOW

AS LOW AS \$99.00

HOMELITE®

MADE IN U.S.A.

MARTIN'S FEED & GARDEN

735-3261 301 West Snyder Rotan, Texas

District Cross Country Race Held, Alls First

By: Mark Marshall

Stride for stride the runners entered the final lap of the race. Leading the pack was Landon Alls who finished first at the District 13-A Cross-Country Meet.

Victor Amezcua finished third followed by Michael Montez who finished fourth. Mitchell Montez and Mark Marshall tied for fifth place. The Hammers won the boys' team title and

will be running at the Regional Cross-Country Meet.

Heather Randolph, the only Lady Hammer entered, placed fifth in the girls' division. With this strong race, Heather will be going to the regional meet, also.

The girls run a two-mile race and the boys run a three-mile race. The Hammer team is coached by Tanya Upshaw and Ted Posey.

ACT Test

By: Monte McKinney

The juniors and seniors at Rotan High School participated in the ACT Saturday, October 27, at the Rotan Learning Resource Center.

ACT stands for American College Test, and is one of the tests used by colleges and universities to help determine admission.

The ACT tests English, math, science and social studies skills. It is a timed

test.

The scores on the ACT range from 0-36, with 19 and up being scores accepted by most colleges for admissions.

The Rotan students were not alone at the test. Students from surrounding towns were also here for the test as Rotan is one of the nearest testing sites.

Most of the students thought that they did well on the test in spite of the difficulty of it.

Annual FFA Friut Sale

By: Monte McKinney

The Rotan FFA will be holding their annual fruit sale this month. The students will begin taking orders November 1, and the last day to order will be November 15.

The Seitz Fruit Company will be providing the fruit to the FFA members.

All of the money made will be put in the chapter's bank savings to be used for such activities as ping-pong tournaments and hamburger feeds.

Orders will be taken by any FFA member you can find. (But the members will probably find you first.)

Sophomores And Juniors Take PSAT Tests

By: Monte McKinney

The sophomore and juniors of Rotan High took the Pre-Scholastic Aptitude Test (PSAT) or National Merit Scholarship Qualifying Test (NMQST) on Tuesday, October 23.

The PSAT is used to test three areas: Math, English, and Writing.

The scores on this test are used by many organizations to determine scholarship and grant winners. It is

also used to decide upon NMQST's National Merit Scholar, an award given to those who score extremely high on this test.

Although this test was just practice for the sophomores, this is the last time the juniors will be able to take it, as they are looking toward the SAT. The students all agreed that the test was hard, but most of them thought they did well.



Re-Elect

David Counts

State Representative

A voice for all the people.
A voice that *Counts* for you.

"Working to improve the educational opportunity in the 78th District."

How Would You Have Voted?

Referring to the School Finance Reform... my opponent says I voted wrong. You be the judge.

On May 9, 1990, the following choices were given with no new local taxes:

--- Figures Furnished by The Texas Education Agency ---

Five-Year Total New Money With No Tax Increase	House Bill 1	School Craft
Paducah 1.00	\$ 2,348,135	\$ 982,229
Roby .81	738,412	501,577
Rotan .93	1,667,088	1,441,185
Post 1.03	1,228,167	(37,468)
Southland 1.55	739,332	357,078
Anson 1.01	4,015,517	2,389,616
Hamlin 1.08	3,689,962	1,755,265
Lueders - Avoca 1.52	1,128,784	599,460
Hawley 1.06	3,060,453	2,246,291
Stamford 1.14	4,733,570	2,846,116
Jayton .27	(2,234)	-
Guthrie .46	1,610	-
Benjamin .85	(135,444)	(159,040)
Goree 1.59	974,070	197,135
Knox City-O'Brien .96	1,972,713	1,153,506
Munday 1.32	2,504,611	1,648,416
New Home 1.45	1,159,724	642,340
O'Donnell 1.02	2,391,368	1,319,936
Tahoka .83	1,969,489	922,609
Wilson 1.22	1,261,769	617,515
Blackwell 1.12	(247,585)	(255,324)
Highland 1.47	324,410	(4,875)
Roscoe 1.10	2,614,088	1,669,007
Sweetwater .90	6,173,138	5,726,171
Hemleigh 1.24	759,613	427,343
Ira 1.07	(25,145)	(87,739)
Snyder 1.12	7,424,538	6,732,185
Aspermont .82	32,782	(217,745)
Jim Ned 1.27	3,659,989	2,494,229
Merkel .97	4,531,809	4,266,077
Trent 1.30	872,782	542,757
Wylie 1.05	2,755,516	4,130,706
TOTAL	\$64,323,031	\$44,846,558
Difference for 78th District	House Bill 1 gave \$19,476,473 MORE	
ABILENE 1.02	\$62,050,561	\$42,237,811
Difference	House Bill 1 gave \$19,812,750 MORE	

I voted for HB 1. . . . How would you have voted?

Make your vote **COUNTS** for responsible representation.

Printed and Published by David Counts Campaign, P.O. Box 338, Knox City, TX 79529

Complete Vehicle Window Tinting

Beuley's

Paint & Body Shop

Now back in our old location
901 PECAN, SWEETWATER
235-1202 OR 235-8920

Glass Installation-Body Repair
Wrecker Service-Automotive Accessories

Roby Lions Go Hunting, Bag Eagles

Last Friday evening, the Roby Lions, hungry for a win after a near-win two weeks ago, went hunting and bagged the Sterling City Eagles. The Eagles, picked to win this game, showed several instances of tremendous speed and were physically tough, but could not do much with their passing game. The Lions, on the other hand, displayed their usual stingy defense, and much of the credit for the win must go to the linemen and linebackers who had to slow the Eagle running backs.

After winning the coin toss, the Lion's Albert Barrera took the kickoff and made a short runback to the Roby 30. A series of running plays failed to establish a drive, and Thomas Cortez punted the ball away to the Eagle 43. As luck would have it, a facemask call on the Eagles during the punt allowed Roby to resume the offense at the Lion 44. At this point, the Eagle offense hit a number of snags: J. T. Elmore dropped the Eagle quarterback for a loss, Nick Dickson hit an Eagle running back at the line of scrimmage, and Joe Rivas helped to ruin an attempted lateral pass. On the punt, Joe Don Helm almost blocked it, but unfortunately brushed the kicker a bit too hard, which caused a penalty and a second punt. Kenny Heflin took the punt and sprinted up the sideline to the Lion 34, and a personal foul call on the Eagles added another 15 yards. Roby seemed about to begin a drive from their own 48.

However, a number of short gains by David Scott and some incomplete passes were not enough. With 6:07 left in the first quarter, Roby punted the ball away, and the Lions aggressively converged on the ball carrier. Near the 30 of the Eagles, Joe Don Helm stripped the runner of the ball and J. T. Elmore recovered it. But once again, combinations of pitchbacks and passes did not prove successful. After a 4th and 13 pass attempt, the ball went over again.

The Lion defense again rose to the occasion with Jeremy Terry, Kenny Heflin and Joe Rivas all helping to crimp the Eagle's running attack. When the Lions regained possession at their own 43, the offense began to show some fire. A ten yard pass to Jamie Amador, coupled with a well-executed reverse run (also by Amador) added up to a 30 yard gain in just two plays. At the Eagle 25, Albert Barrera went up the middle for 7 yards, and Heflin gained a critical first down at the 13. When the first quarter ended, Scott and Barrera had moved the attack to inside the 5 yard line. The situation was 3rd and goal.

To announce the beginning of the second quarter, Kenny Heflin kept the ball and dove in over the left side for the TD. The extra point attempt was not good, but the Lions had broken out on top, 6-0. The Eagles, however, were not ready to quit. Taking the kickoff back to their own 30, it initially seemed that the Eagle rushing game would not be able to get past Big Mike Williams, Joe Rivas, and David Scot. Then Scotty Johnson found an unguarded hole and from about the Eagle 20, raced 80 yards for a TD. The extra point attempt was good, and in a matter of moments, the disbelieving Lions trailed Sterling City by one point.

With ten minutes left in the second quarter, the Lion's Heflin started to runback the kick, but handed off to Scott, who managed to push the return out to the 41. On this series, the Roby ground game fared well, but an Eagle

defender picked off a Heflin pass which was intended for Jeremy Terry. Terry dropped the unintended receiver on the spot, but the Eagles had the ball again. And once again, the Lion defensive effort made things happen. Eagle ball carriers repeatedly found themselves dogged by Nick Dickson, Joe Rivas, and Mike Williams. Finally, on a 3rd and 1 situation, the Eagles, thanks to the strong arm of Williams, fumbled the ball in their own backfield. Joe Rivas pounced on it, giving the offense another opportunity.

Heflin executed another keeper play, which set up a nice ten yard run by David Scott down to the 10. A couple of plays later, a pitchback to Scott ended up in the end zone, but a holding call on the Lions called it back. The Lions then attempted, on 2nd and 18, a long pass, but had it picked off again near the Eagle 20; only a roughing the passer call on the Eagles allowed the Lions to keep possession, and Roby's offense found itself on the Eagle 9 yard line. After a number of grinding plays, Albert Barrera charged over on 3rd and 3 for the TD and went in standing up and dragging tacklers. While the extra point attempt was no good, the Lions regained the lead and with 3:53 left in the first half, the score stood, Roby 12, Sterling City 7.

After Mike Williams' kick bounced down to the Eagle 32, Sterling City tried to counterattack, but could not get out to the 40. After punting the ball away again, the Lions found themselves backed up to their own 32 with 2:24 left in the half. The Lion offense started to gain ground with a mix of passes and runs. The momentum carried them down to a 3rd and 1 situation where Heflin completed a roll-out pass to Jeremy Terry who stepped out of bounds at the Eagle 35. Another pass over the middle to Terry gave the offense another shot in the arm. But Sterling City's defense began to key on the pass, and the next few passing attempts went nowhere. The ball went over to the Eagles at their own 35.

The Eagles shortly after managed to complete a pass over the middle which went as far as midfield, but on the ensuing run, the Eagle running back had the ball stripped again. The Lions recovered at their own 38 with 57 seconds left in the half. Roby held the ball only for a couple of plays and then had another pass attempt was broken up by Thomas Cortez, and on 3rd and 15, a trap play worked and sprung the Eagles down to the Roby 46. With 15 seconds left, the Eagles tried the obvious, a pass, which was snared by Joe Rivas at the Lion 40. The first half ended with the Lions in possession of the ball and the lead.

The second half opened with the Eagles taking the kick at the 30 and returning it to their own 35 where the runback was killed by Joe Rivas. Their offensive effort stalled out after repeated collisions with Nick Dickson, Joe Don Helm, David Scott, and Kenny Heflin. Forced to punt on 4th and 3, the Eagles were nearly burned by Heflin who took the ball at the Lion's 30 and cut, dodged, and darted behind some key blocks down to the Eagle 42. This play might have fired up the offense for another drive, but on the next play, the Lions fumbled the ball away. In the next series of play, the Eagles almost lost the ball themselves, but managed to keep it long enough to spring Johnson loose a few times. After getting a first down on

a 4th and inches situation, the Eagles were able to make more yardage, driving down to the Lion 35. They continued to move down to the 19, then the 11. On 2nd and 1, the Eagles were threatening to score, but their running back was met head-on by a determined defense and lost the ball. Cortez recovered for the Lions. Roby was making only short yardage when the quarter ended.

The Sterling City Eagles dominated the 3rd quarter, with Roby making only three offensive plays.

As the last quarter opened, the Eagles almost capitalized on a Lion turnover, but an offside call nullified it. Heflin then dropped back to pass to Amador and moved the ball out to the Lion 23. However, the balance of the attack, fell on David Scott who picked up another nice 12 yard gain. Penalties and a couple of attempted but unsuccessful screen passes brought the Lions to a 4th and 22. The Cortez punt went out of bounds at the Lion 44, and it looked like Sterling City would have yet another chance to score, but the Eagle quarterback, on a 2nd and 10, kept the ball on an option play. The next instant, David Scott, on a stunt, crashed directly into the quarterback as he was releasing the ball, popping it out and into the waiting arms of J.T. Elmore, who, without breaking stride, galloped downfield and into the end zone. Again, the extra point conversion failed, but the heads-up play of Scott and Elmore put the game away. With about 7 minutes left in the game, Roby led, 18 to 7.

The Eagles, to their credit, came right back and came close to completing a couple of long passes. The Lion secondary, however, was watching for the long "bomb" and the Eagles were forced into punting. The Lion offense began to try and control the ball and run out the clock. Hard running by Albert Barrera, roll-out passes by Heflin, and key receptions by Jeremy Terry pushed the Lion effort out to their own 46. A holding call against the Lions created a 4th and 14, and Cortez punted the ball down to the Eagle 38.

The clock showed 1:48 left, and Sterling City pulled out all of the stops. Despite a fumble on their first play, the Eagles were able to break Johnson out into the open twice for two receptions. The Lion secondary, however, was unable to prevent Johnson from snagging a long pass and converting it into a 52 yard scoring run. The attempted extra point was a fake, but the Lions stopped it short of the goal. With 43 seconds left, the Eagles had closed the gap, and the obvious objective now was to get the ball back.

The on-side kick was beautifully executed, but unfortunately for the Eagles, it went straight to Joe Rivas who fell on it exactly at the Lion 49 and gave no opportunity for a turnover. From this point, Heflin and the Lions simply ran out the clock. The final score was Lions 18, Eagles 13.

The key to this game, in my estimate, was the ability of the Lion defense to create turnovers. They repeatedly stripped the ball from Eagle runners and denied Sterling City several scoring opportunities. The hard hitting of the linemen and linebackers produced the key turnovers for the Lions. What hurt the Lion offense was inconsistent passing, but the overall offensive and defensive effort combined to put the game into Roby's win column.

Head Coach Brad Theissen remarked that "this was a very important

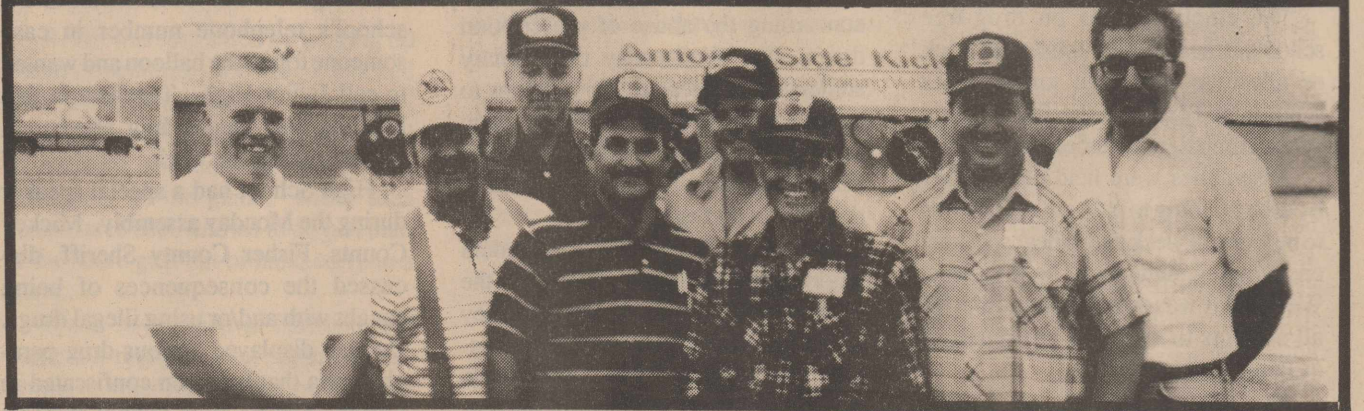
game for us in turning things around. I was real proud of their effort and the way they made the big plays. The whole game was a big step in the right direction."

The Lions amassed 100 yards rush-

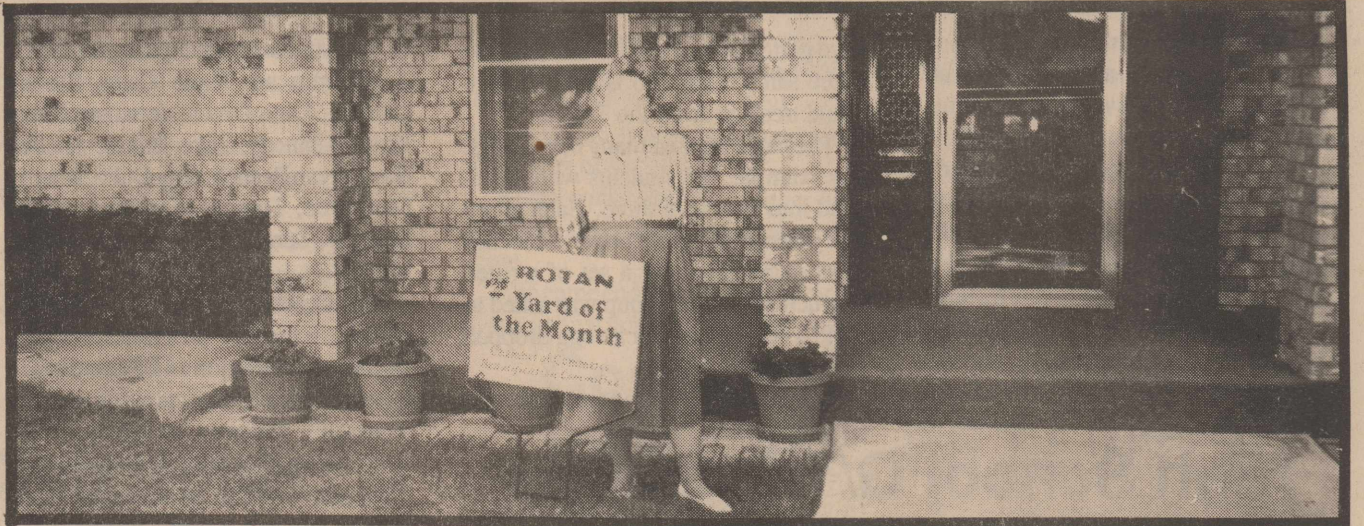
ing and 67 passing. They recovered 5 fumbles from the Eagles and lost 1 fumble to Sterling City. The Eagles, in comparison, had 187 rushing yards (with 84 of those coming on one play) and 61 passing yards (with 52 of those

also coming out of one play).

Roby's next game will be with the Roscoe Plowboys at Roscoe. Game time is at 7:30 p.m., and it promises to be an excellent one. Make a point of seeing it!



ROBY FIREMEN: A group of eight Roby firemen attended a recent Amoco Corporation sponsored training session at Western Texas College in Snyder. (Pictured l to r) Shawn Donham, J. Donham, Don Pullig, Ruben Rodriguez, Kevin Rivers, Melvin Thomson, Larry Gruben and Jimmy Ramirez.



ROTAN YARD OF THE MONTH: Mrs. Frank Kingsfield, Beauregard Street, was the recipient of the October - Yard Of The Month recognition from the Rotan Chamber of Commerce.



ROTAN YELLOWHAMMER MARCHING BAND MEMBERS: Part of the Rotan Yellowhammer Marching Band, recently receiving a two rating at competition - (L to r) Jenni Burnes, Lisa Reyes and Christy Martinez.



HAPPY HALLOWEEN: Ivin Martin, owner of Martin's Feed & Garden Supply of Rotan, dressed up a round-bale of hay that caught the attention of many and fielded numerous 'second glances' just before Halloween.

A Taste O' Texas!

Just Arrived ...

Jams and jellies from the Texas Hill Country. Try some for the family or send one of our three-jar gift sets to friends and relatives. Available in ten popular varieties:

- ★ Lone Star Tomato Preserves
- ★ Jalapeno Shrimp Sauce
- ★ Fredricksburg Peach Jam
- ★ Cactus Sangria Jelly



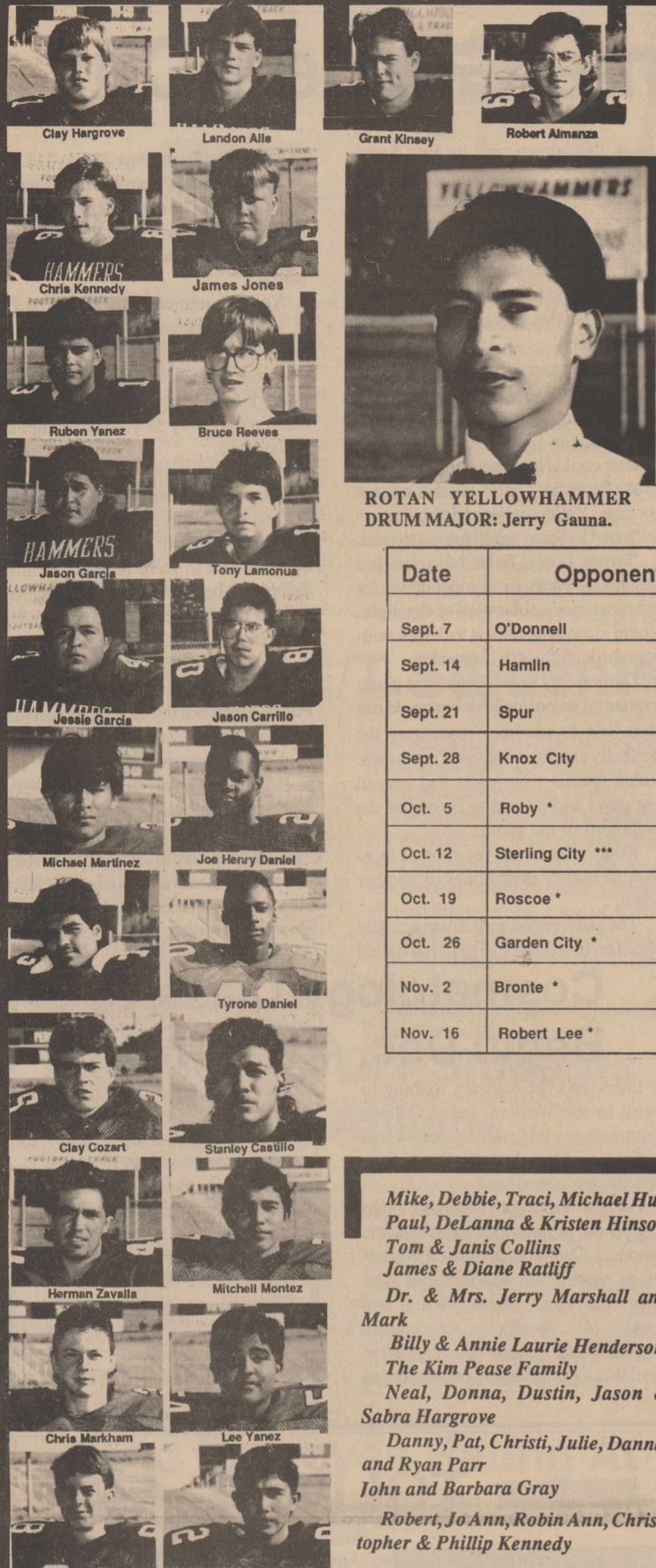
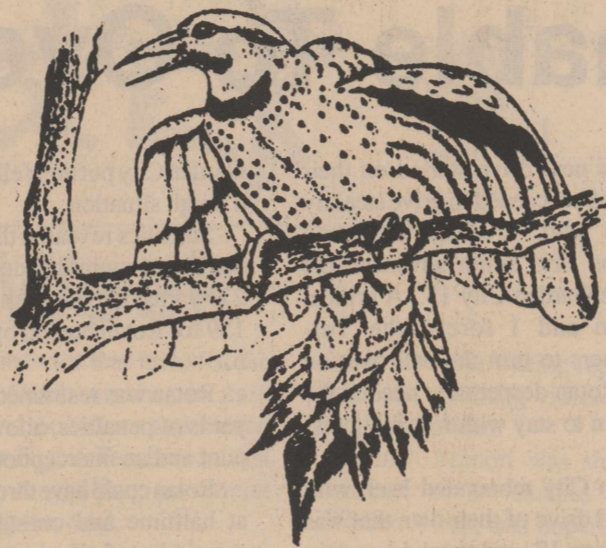
- ★ Peach Amaretto N' Pecan Jam
- ★ East Texas Blueberry Jam
- ★ Blushin' Peach Jam
- ★ Jalapeno Jelly
- ★ Jalapeno Mustard

Awfully Good Gifts
The Newspaper Office

114 East Snyder Ave. * (915) 735-2278 * Post Office Drawer A * Rotan, Texas 79546



HALLOWEEN WINNERS: Several Rotan students dressed up for Halloween were named winners in the pumpkin contest staged by the cafeteria staff.



ROTAN YELLOWHAMMER
DRUM MAJOR: Jerry Gauna.



YELLOWHAMMER
MANAGER: Christy Parr

Date	Opponent	Time	H/T	Us	Them
Sept. 7	O'Donnell	8:00	T	6	21
Sept. 14	Hamlin	8:00	H	15	12
Sept. 21	Spur	8:00	H	7	42
Sept. 28	Knox City	8:00	T	20	22
Oct. 5	Roby *	7:30	T	28	13
Oct. 12	Sterling City ***	7:30	H	21	0
Oct. 19	Roscoe *	7:30	T	34	0
Oct. 26	Garden City *	7:30	H	18	35
Nov. 2	Bronte *	7:30	T		
Nov. 16	Robert Lee *	7:30	H		

Rotan Yellowhammers
VS
Bronte Longhorns
November 2-7:30-There
Rotan JV & Jr. High VS
Munday
November 1-Here-Beginning At 6:00



1990 ROTAN YELLOWHAMMERS

*Mike, Debbie, Traci, Michael Hull
Paul, DeLanna & Kristen Hinson
Tom & Janis Collins
James & Diane Ratliff
Dr. & Mrs. Jerry Marshall and
Mark
Billy & Annie Laurie Henderson
The Kim Pease Family
Neal, Donna, Dustin, Jason &
Sabra Hargrove
Danny, Pat, Christi, Julie, Danna,
and Ryan Parr
John and Barbara Gray
Robert, Jo Ann, Robin Ann, Chris-
topher & Phillip Kennedy*

Rotan Yellowhammer Friday Night Quarterback Club

*Mary Garcia, Delores & Jason
Carrillo
Mickey, Connie, Cassidy and Cryst-
tal Early
Reece, Leatece, Shana, Shelly
Schooley
Jerry, Pat, Jerri Lynn, Shannon,
Chris Boone
Mike, Pat, Aaron, Trisha Porter
James, Brenda, Rusty, Kaleb
Goodwin
Danny, Cynthia, Kelli, Brandon
Weaver
Monte, Patti, Stacy, Rode, Morgan
Morrow
Jim, Aurora, Scott, David Nowlin*

*The Edward Martinez Family
Mayrene and Wendell Morrow
Bettie Hargrove
Joe, Linda, Steven, Jennifer, Karen
Dickson
Clay, Gwen, Haley, Sunny and
Hunter Helms
Paul, Rosemary, Stoney, Trey
Carrillo
Glenn and Janice Copeland
Kevin, Sherry and Ali Copeland
Harold and Becky Sanders,
Michael, Mitchell and Dee Ann
Montez
Rodney, Laura, & Andrea
Tankersley*

*Jim, Brenda, and Brian Sheehan
Norvelle, Donna, Katie, Byron,
Lauren Kennedy
Rudy and Patsy Hamric
Ray, Reina, Lori, Jason, Chrystal,
Selina Garcia
Archie, Bettie and Tiffany Rivers
Vick, Becky, Melissa, Shelley Burk
Roy and Clay Cozart
David, Connie and Clay Hargrove
Earnest, Rhenda, Brandon,
Landon, Jay Ben, Jeremy Ragan
Jerry, Donna, Patrick, Jason,
Kathleen & Justin Moffett
Carol and Jan Posey
Robert and Jana Morales*

Bennett

B-W

Walls

City Auto Supply 735-2242 Rodney Tankersley-Owner Rotan, Texas	Higginbotham-Bartlett Lumber Co. 735-2215 Rotan, Texas
Rotan Flower Shop 735-2261 Rotan, Texas	Rotan Veterinary Hospital Dr. Vick Burk 735-2491 Rotan, Texas
Larry's Automotive 735-2425 Larry Callan-Owner Rotan, Texas	H. L. Davis & Company "The Friendly Store" 735-2591 Rotan, Texas
First Baptist Church Brent Payton-Youth Minister 735-3471 Rotan, Texas	
Rotan Motor & Radiator Works Owners: Dexter & Inez Elrod 735-2201 Rotan, Texas	FARM BUREAU INSURANCE Life • Home Health • Auto Annuities • IRA's Crop Insurance FISHER COUNTY Rickey Gruben-Agent 735-3491 Rotan, Texas
Smith & Cyphers Gulf Service Station 735-3461 Rotan, Texas	Supporting The Rotan Yellowhammers From All Of Us At Upshaw Trucking Co.

CIRCLE C GROCERY

711 Cleveland Avenue 735-2574 Rotan, Texas

Price's Picture Perfect 109 N. Garfield Ave. 735-2469 Rotan, Texas	S&L Shamrock 735-3200 302 N. Cleveland Rotan, Texas
--	---

Clinic Pharmacy 735-2500
Country Pharmacy 735-2121 - Rotan, Texas

The National Bank of ROTAN

"Your Friendly Bank Of Service"
Member FDIC
735-2224
Rotan, Texas

Casa Morales Restaurant

MEXICAN FOOD

735-2658
122 Snyder Ave.
Rotan, Texas

Dr. C.M. Callan 735-2211
101 S. Florence
Rotan, Texas

Weathersbee Funeral Home
735-2255
Rotan, Texas

Whites True Value Hardware 735-2501 Rotan, Texas	Landes Furniture Larry & Beverly Landes 735-3171 Rotan, Texas
<i>Southern Styling</i> Lisa Nowlin-Owner 735-3130 Rotan, Texas	Dr. Bennie LeBleu 735-2211 101 S. Florence Rotan, Texas
NuTone Cleaners 115 W. Snyder 735-2552 Rotan, Texas	Rotan Nursing Center Juanita Land-Adm. 735-2233 Rotan, Texas

We ♥ Our Residents

FISHER COUNTY NURSING HOME
110 W. Johnson
Rotan, TX
735-3291

<i>Linda's Flowers & Gifts</i> 735-2210 Owners-Eddie & Linda Martin Rotan, Texas	Video Village 735-2155 Jean & Lyndle Stanford-Owners Rotan, Texas
Rotan Insurance Agency Joe Burk-Agent 735-2571 Rotan, Texas	
AAA FLYING SERVICE Herbert Lakey (915) 736-6806 Vance Lakey (915) 776-2828 Rt. 1 Box 26 1-800-642-0016 Sylvester, Tx.	
<p>1101A Lamar Street Sweetwater, Texas 79556 GLENN IMKEN, LUTCF (915) 235-4172 (915) 735-3184 Rotan Office</p>	
United Artist Cable 735-2526 Rotan, Texas	Midwest Electric Cooperative & Employees Vesta Orr Manager 776-2244 Roby, Texas
<p>735-2132 Owners-Gilbert & PennyBrown Rotan, Texas</p>	
Murphree Flying Service Randy, Shelia, Brandi, Brady & Cody Murphree 735-2266 Rotan, Texas	Builders Transport Ray Land-Manager 735-3677 Rotan, Texas

Yellowhammers Unable To Overcome Garden City

By: Jim Gruben....

Rotan Yellowhammers played two different halves Friday night against a talented Garden City team but a 35-6 halftime deficit was too large a margin to overcome.

Rotan got off to a shaky start, as Garden City blocked an opening possession punt and recovered it in the end-zone for a touchdown.

Yellowhammers rebounded with a 70 yard drive of their own, with valuable yardage gained by Herman Zavala and Maurice Ray. QB Eric Smith

covered the 34 yards on a QB option play for a touchdown with 7:58 remaining in the 1st quarter. The extra point attempt failed but closed to margin to 7-6.

Garden City answered back with a 71 yard drive for a touchdown, to take a 14 to 6 lead.

Rotan was unable to sustain a drive and forced to punt. The Bearkats high powered offense took only one play to score from the Rotan 35 yard line with 3:09 remaining in opening period. The extra point try failed but posted a 20-6 advantage.

Rotan's next drive started on their own 20 and proceeded to drive steadily down the field. Yardage by David Daniel and Eric Smith advanced the ball to the Garden City 15. A critical 4th down and 1 forced the Yellowhammers to turn the ball over on downs. Rotan desperately needed the touchdown to stay within striking distance.

Garden City rebounded back with an 83 yard drive of their own that was capped by an 18 yard touchdown pass early in the second quarter. The 2 point conversion was good for a 28-6 lead.

Rotan began to mix the passing game with their rushing game but a stray pass was intercepted by Garden City.

The Bearkats wasted no time putting the ball into the end zone on the first play from the Rotan 43 yard line. Garden City took a commanding 35-6 advantage with 5:54 remaining in the first half. Garden City could appear to do no wrong, aided by a couple of Rotan turnovers.

Rotan defense began to stiffen before halftime as Trey Carrillo managed a pass interception to stop a Garden City drive. This appeared to be a turning point in the game as the Bearkats were held scoreless the remainder of the game.

Neither team managed another scoring drive as the first half expired. Unfortunately, the damage done by

Garden City put the Yellowhammers in a tough situation.

Statistics revealed that Garden City had only 1 more first down than Rotan, 239 yards of total offense compared to 159 for Rotan but led by a score of 35-6.

Rotan was restrained by logging 60 yards of penalties, allowing a blocked punt and an interception.

Rotan could have thrown in the towel at halftime and coasted through the remainder of the game. Many area teams have been known to do just that, if the score gets out of hand early in a game.

Rotan re-grouped at halftime and came out ready to play. Quite an example of what being a Yellowhammer represents and exemplifying Hammer Pride.

Rotan defense came out the second half and began to block and tackle with an intense aggressiveness.

Garden City was forced to punt on their first two possessions and proceeded to commit a turnover on their third possession. Steven Warren recovered the Garden City fumble to stop the drive dead in its tracks.

Yellowhammers gang tackling and hard hitting seemed to surprise a Bearkat team that expected Rotan to roll over and play dead.

Rotan's fumble recovery on the Garden City 14 set up a 2 yard QB

sneak touchdown play by Eric Smith with 0:26 seconds remaining in the 3rd quarter. The scoreboard posted a 35-12 score as the Yellowhammers prepared a comeback attempt.

Eric Smith not only scored his second touchdown of the night but intercepted a Garden City pass on their next possession.

Rotan powered from their own 39 to the Garden City 33 before committing another costly turnover.

The Rotan fumble early in the 4th quarter could have been "the straw that broke the camel's back" but that was not the case. Yellowhammer defense again stiffened to force the Bearkats to punt.

Tyrone Daniel fielded the punt and dashed 89 yards for a touchdown for the most spectacular play of the night. Rotan closed the deficit to 35-18 midway through the 4th quarter.

Garden City knew Rotan was going to attempt an inside kick but could not stop Eric Smith from recovering the perfectly executed Steven Warren kick. Rotan special team units had several big plays and proved to be one of the highlights of the game.

Rotan committed yet another turnover to nullify their hopes of another score.

The game ended with Rotan actually ahead on first downs 16 to 15 but trailed

in total offense yardage 233 to 313.

David Daniel (9 carries for 58 yards), Maurice Ray (16 carries for 47 yards), Eric Smith (8 carries for 37 yards - 2 TD's), Herman Zavala (6 carries for 15 yards).

Yellowhammers only managed (3 of 11 pass completions for 19 yards - and 1 interception).

Rotan defense managed 2 interceptions, 1 fumble recovery and allowed Garden City only 51 yards rushing the second half.

An apology goes to Landon Alls nicknamed "Poose" for mistakenly calling him brother Brandon. Poose Alls is the type of utility player that coaches like to have around. Junior defensive back Alls calls defensive signals, the signal caller on punts, holder for extra point kicks, possesses the ability to play receiver, running back and even quarterback if called upon. Poose Alls is not the biggest guy on the field but he will - as the saying goes - "put the hat on you."

Rotan will travel to Bronte Friday night to determine a possible trip to the playoffs. Kickoff is set for 7:30 p.m.

Bronte has six offensive and defensive regulars from a 7-4 squad. Bronte's only loss has been to Garden City. However depth is considered a team weakness.

Local DAR Chapter Meets

The Local Chapter of Daughters of the American Revolution met in the home of Regent, Mrs. Rudy Hamric recently. Earlier Mrs. Hamric had held a program planning meeting to outline, with that committee's help, a program of work for the coming year. Mrs. Wayne Harris, First Vice Regent, is chairman of the committee.

Following the patriotic rituals, Miss Bessie Cleveland gave a devotional message; Mrs. Hamric explained the Program Committee's outline of programs, meeting places, etc. for the membership's approval. She then introduced the speaker for the day, Mrs. Marilyn Threlkeld of Sweetwater.

Mrs. Threlkeld reviewed the book, *Constitutional Journal, A Correspondent's Report from the Convention of 1787* by Jeffrey St. John.

Mrs. Threlkeld began by explaining the author's choice in writing as the eye witness reporter; thus making the reader feel that he was there. In the long hot summer of 1787, representatives from all thirteen colonies were invited. These were men who had been active in government during and following colonial days. Thus the representatives were well aware of the needs of the various regions of the country as well as the serious lacks in the Articles of Confederation. They came expecting to revise the latter; but, as we all know, came up with an entirely new document. The facts presented by Mr. St. John are taken from the notes of James Madison, a member of the conference.

Considering that the representatives included among others, George Washington, Ben Franklin, Alexander Hamilton, and John Adams, and that each man represented the people's interests in his own state or region, it is a miracle that they agreed on anything. In fact these men had only two main tenets that all knew; 1. A stronger Federal Government was a must if the nation was to survive; 2. A way for the first had to be found without destroying strong state governments. This document had to be fair to all interests of all states, regions, and especially to the people of the country.

Although the Convention lasted through a long hot summer the representatives sat it out, argued over each controversial point until some agreement could be reached. And occasionally the "Old Sage", Benjamin

Franklin spoke up with his dry humor as when he once stopped the discussion on who should vote. He said, "In a free government the rulers are the servants, the people are their superiors and sovereigns."

There was dissension on most points, however a document was devised and the members unanimously voted that the document be sent to all the thirteen states for ratification. Their hard work paid off and the Constitution has stood the tests of the years. It is not perfect, but it has proven to be flexible enough to provide guide lines for the three branches of the government to direct the many faceted needs of the people they serve. And regardless of complaints of citizens in all walks of life, most will agree that no where else in the world does a government serve its people as well as does that of the United States of America.

Following the program, Mrs. Hamric served refreshments to those present.

Shamrock Club Holds October Meeting

The Shamrocks Club met on October 4, 1990 at the Rotan Community Center at 3:00 p.m. Meeting was called to order by Stacy Morrow. 4-H motto and pledge was led by Crystal Early.

Mikya Dickson and Belynda Rains shared about upcoming food project, demonstrated measuring techniques for cooking and smart snacking. The group made popcorn balls and Tang drink, answering to "My Favorite Snack".

Members present were: Annaka Aguirre, Ryan Branch, Shelly Burk, Lacy Callan, Mikya Dickson, Crystal Early, Jennifer Fowler, David Garcia, Sarah Greenlee, Michelle Herndon, Lindy Kelly, Monica Martin, Crissi Martin, Brooke McCall, Andrea Miranda, Stacy Morrow, Dayme Mullins, Rocky Munoz, Janet Porter, Scott Price, Katrina Rains, Carolyn Rocha, Rosemary Rocha, Jason Stamm.

Each member was encouraged to make a poster for National 4-H week, October 7-13 to display around school and town.

The next meeting will be November 1st.

Budget Bill To Protect Rural Hospitals

The Budget Reconciliation Bill that was passed in the House of Representatives on Tuesday night will help protect rural hospitals, according to Congressman Charles Stenholm (D-TX).

H.R. 5835, the Omnibus Budget Reconciliation Act, was passed with a 227 to 203 vote. The bill contains revenue increases and savings in entitlements and other direct spending programs from 12 House committees. This is required by the reconciliation instructions contained in the congressional budget resolution recently adopted by the House and Senate. The legislation is expected to reduce the deficit by \$30.3 billion in FY 1991 and \$250.8 billion over the next five years.

"This Democratically-backed provision of the Ways and Means Committee's budget proposal is very fair to rural hospitals," said Stenholm. "It certainly won't take care of all the rural health problems, but it's one of many solutions we have supported."

The bill provides that an additional \$1.2 billion will be spent in the next five years in order to eliminate part of

the difference in the levels of Medicare reimbursements between urban rural hospitals by 1995. In addition, the bill continues to assure that community hospitals, essential access community hospitals and rural primary care hospitals will get 100 percent of Medicare capital payments.

Stenholm added that the Ways and Means Committee is also moving separate legislation to extend Medicare payments to rural health clinics that provide primary care services in rural areas as a way to encourage more clinics to operate in medically under-served rural areas. Ways and Means is also advancing legislation to improve payments for collection of lab tests in rural areas which is an important improvement for nursing home and home-bound patients in isolated areas.

After the Senate has passed its own budget reconciliation proposal, a conference committee composed of members from both sides will develop a compromise. That compromise bill must be signed by the President for this language to take effect as law.

NEED PRINTING?...

We offer...

- FAST SERVICE
- REASONABLE PRICES
- HIGH QUALITY
- LETTERHEADS
- XEROX COPIES
- MAILERS
- BUSINESS FORMS
- POST CARDS
- PADDING
- TELEPHONE ORDERS
- QUOTES BY PHONE
- FREE DELIVERY
- CIRCULARS
- ENVELOPES
- TYPESETTING
- NEWSLETTERS
- CARBONLESS FORMS
- STAPLING

FULL SPECTRUM OF COMMERCIAL MULTI-COLOR PRINTING

The Newspaper Office
735-2562
Rotan, Texas

Cosmetology Class To Begin Dec. 4th At WTC

Interviews for students wishing to enroll in the Western Texas College cosmetology class starting Dec. 4 will be held on Nov. 1, Judy Border, instructor, has announced.

Persons wishing to enroll are to go first to the Admissions Office in the Resource Center to pick up a cosmetology packet. When those forms have been completed, the applicant will contact Mrs. Border to schedule an interview time. Some financial aid is available for cosmetology students and

Mrs. Border can give them information about applying for that help.

Cosmetology students receive 1,500 hours of instruction in a 12-month period. Upon completion of their training, students are eligible to take state Board of Cosmetology examinations for licensing.

The Newspaper Office
Sells
FRANKOMA POTTERY

OLDSMOBILE TOLIVER CHEVROLET

Sales And Service

CHEVROLET
OLDSMOBILE
 Sweetwater, Texas

235-4384

A TASTE OF TEXAS

..... IN ROTAN

BRAZOS BEEF EMPORIUM



• Texas Ranch Caviar • Chili Con Queso • Blackeyed Pea Dip
Sold individually - \$6.00 per jar or Gift Boxed for \$17.95

Brazos Beef Emporium
Fajitas Sop \$3.95

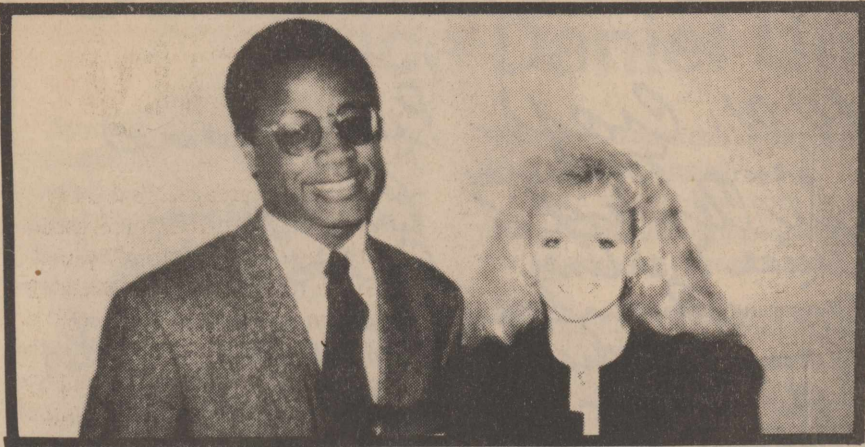
Bar-B-Que Sauce
Fajitas Sop
Chicken Sop \$17.95
Gift Boxed
with Sop Mop

Send Them A Taste Of Texas!

Free UPS Shipping

on all \$17.95 gift boxes only

The Newspaper Office
Gift Department
114 Snyder Avenue
Rotan, Texas
735-2278



GOLD STAR AWARD WINNERS: Kevin Smith from Rotan and Tina McClure from Roby were the winners of the 4-H Gold Star Awards. They were presented with the awards at the Annual 4-H Awards Banquet held last Saturday, October 27th in Roby.

Congressional Conferees Secure Agreement On Farm Bill

Early this morning Congressional conferees secured agreement on a comprehensive farm bill. Agreement was accomplished through the fine work and persistence of Congressman Kika de la Garza, Chairman of the House Agriculture Committee, Senator Patrick Leahy, Chairman of the Senate Agriculture Committee, and their two Republican counterparts, Congressman Ed Madigan and Senator Richard Lugar, along with the excellent input from Senate Minority Leader Bob Dole and other conferees.

No farm bill in memory has been written under circumstances as complex as this one. Not only did the conferees have to visualize the needs of American agriculture over the next five years, but they had to do so in the context of demanding budget realities, increasing global competition, heightened trade disputes, and the necessity for American farmers to expand their role as stewards of our environment.

The new farm bill is about the future, and the future means change. The new farm bill will help American farmers to adjust to a rapidly changing world, and hopefully make those changes work to their advantage. Faced with difficult choices brought about by budgetary constraints, the conferees took the preferred course in selecting a "triple base" program over cuts in target prices, thus increasing production flexibility which provides an additional opportunity to earn income.

Roby Cubs Defeat Rotan 50-28

The Roby Jr. High Cubs finally put together a complete football game demolishing the Rotan Jr. High 50-28.

Rotan was held on their 1st possession and had to punt the ball away to the Roby Cubs. The Cubs put together a 2 play 90 yard drive capped off by an 82 yard scamper by Jeremy Curlee. The extra points were also good. Score 8-0. On the Hammers next possession, a Yellowhammer back evened up the score on a 72 yard run, the extra points were good making the score 8-8. From this point the Cubs reeled off 36 unanswered points. A 31 yard run by Chris Cortez, 1 yard run by Jeremy Curlee, another 1 yard run by Cortez, a 37 yard pass from Coby Moore to Chad Dannheim, and a 13 yard run by Cortez making the score at the beginning of the 4th period 44-8. Getting a chance to play the "B" team in the 4th quarter the Hammers took advantage and scored 3 touchdowns on long runs by the Yellowhammer backs. The Cubs, however, tallied 1 score in the 4th on a 46 yard run by Jeremy Curlee. Some of the stats include:

Jeremy Curlee- 20 rushes for 245 yards; Chris Cortez- 15 rushes for 107 yards. Coby Moore completed 4 passes on 8 attempts for 71 yards.

United Parcel Service PICK-UP STATION

Complete Package Shipping Service Packages Brought To The Newspaper Office Before 2:00 P.M. Monday Through Friday Will Be Picked Up By UPS Personnel That Day.

*Package Wrapping Service Is Also Available For A Modest Fee.

U.P.S. Runs The Tightest Ship In The Shipping Industry.

NEWSPAPER OFFICE
Rotan, Texas
Not A UPS Agent

County Agents Column

By Richard Spencer

By: Richard Spencer

Performance horse owners all basically share a common goal. Whether it be a cutting horse, reiner, rope horse, barrel horse or a team penning pony, owners want these athletes to look and feel good while having adequate fuel to handle the task.

This fuel, which is called energy, is the most important nutrient to consider in meeting a performance horse's daily requirements. While mature, idle horses

can be maintained fairly easily on ample access to good quality hay or grazing, performance horses need more energy in a concentrated form to maintain body weight at various levels of work. At a light work load, the equine athlete's energy requirement is 25% above maintenance. Horses that work at a moderate level need 50% more energy than that required for maintenance, and heavily worked horses such as race-

horses often require 2 times as much energy as a mature, idle horse.

Horsemen can select from a variety of concentrate feeds to meet these increased energy requirements. However, making a decision can sometimes be difficult, because tags on commercial feeds do not specifically identify energy density. Thus, it is important to look at the crude fiber level shown on the tag, as this is a good indicator of the energy provided per dollar spent. Grain mixes that are high in crude fiber are low in digestible energy, and vice versa. For example, a feed containing 18% crude fiber contains only about .8 megacalories of digestible energy per pound of feed. So, this feed contains about the same amount of energy found in grass hay. Conversely, a feed with 2% crude fiber contains about 1.6 megacalories per pound of feed, which is comparable to feeding cracked corn to a horse. In very practical terms, the more energy dense grain mixes will supply energy for the performance horse in lesser amounts of total daily feed.

Horseowners should select a concentrate feed based on the expected level of work and on feeding management capabilities. For example, an extremely low fiber, high energy grain mix would not be suitable where horses are fed once daily in some group feeding situations. But, where horses are fed twice daily and on an individual basis, an energy dense feed will often be the

most economical and effective. Regardless of the level of work, performance horses should receive roughage in amounts equal to at least .75% of body weight daily (minimum of 71/2 lbs. for 1000 lb. horse). Then, depending on level of activity and energy density of the feed, the horse's remaining nutrient needs can be supplied by the concentrate. Total daily intake of hay and grain will normally range from 1 1/2 to 2 1/2 % of body weight daily.

In most cases, horseowners can enjoy a luxury in that performance horses are usually fairly easy to feed and manage. Careful selection of top quality feedstuffs and knowledge of energy provided by different concentrates will go far in helping the horseowner make sure horses have adequate fuel for the performance desired.

Social Security Number May Be Different Than Internal Revenue

Starting in October, some people in the Big Country area may receive a notice from their financial institution indicating that the Social Security number and/or the name in the institution's records are different than the ones in the records of the Internal Revenue Service, Glyn Hammons, Social Security manager in Abilene, said recently.

In some cases, Hammons said, it may be necessary for the person to contact Social Security to change his or her name in Social Security records or to verify the information already in those records.

If the person needs to change the information in Social Security records, he or she should have documentary evidence showing both his or her old and new names, as well as evidence of

identity, Hammons said.

It is a good idea to call Social Security first to make sure what action is needed. That way, an unnecessary visit to the office may be avoided. It is easy to call Social Security's toll-free telephone number, 1-800-234-5772.

Toll-free telephone service is available from 7 a.m. to 7 p.m. on weekdays. The best times to call are early in the morning and late afternoon. And if you can, it is best to call later in the week and later in the month.

The "800" number allows you to conduct your social security business without waiting for a scheduled trip.

Due to our reduced staffing, we are experimenting with different ways to continue bringing you the highest quality service that we can. We will advise you of any additional changes. Your cooperation is appreciated.

Texas Agricultural Extension Service Offering Tax Practitioner Workshops

The Texas Agricultural Extension Service, in cooperation with the Internal Revenue Service, is once again offering the Tax Practitioner Workshops across the state of Texas, in the fall of 1990. These workshops are led by CPS's and attorneys who are experienced in the field of income tax reporting and planning. They provide valuable continuing education opportunities for tax professionals seeking CPE and MCLE credit.

This year twenty-six General Tax Workshops, designed for practitioners who work mostly with individuals and small businesses, are offered in major Texas cities. The nearest one will be in Abilene, on De. 3-4. Fifteen Advanced Tax Workshops are also offered. They are directed at the practitioner with

substantial experience with individual returns, who does some business work, and feels the need to develop more skills in business related work. One will be offered in Abilene, on Nov. 26-27.

In addition to the General and Advanced Workshops, there will be four each of the Partnership Taxation and Estate Planning Workshops, and three each of the Income Taxation of Trusts & Estates and Problem Resolution Workshops. The Agricultural Tax Problems Workshop, which was introduced in 1989, will be offered this year in two locations - San Antonio and Amarillo.

We are also proud to announce a new S Corporation Workshop that is being introduced this year in response

to numerous requests for a workshop on this topic. It will be offered in Austin, Dallas, and Houston.

For a brochure with a complete listing of the sixty Tax Practitioner Workshops offered in 1990, please contact your County Extension Agent, Beth Dannheim, at 776-2171. Or you may contact the Tax Practitioner Workshop Office, Department of Agricultural Economics, Texas A&M University, College Station, Texas 77843 - 2124, or call (409) 845-5446.

October

1

is

800

National

4

Breast

C

Cancer

A

Awareness

N

Month.

C

IT'S YOUR CALL.

E

IT'S YOUR LIFE.

R

The Cancer Information Service would like to give you free information about mammograms and breast self-exams.

Call today.

A program of the National Cancer Institute

This advertisement offered as a public service of this newspaper

COMPLETE PACKAGE SHIPPING SERVICE

AND

U.P.S. Pickup Center

—FEATURING—

- *Regular Ground Service
- *Next Day & Second Day Air From Rotan
- *C.O.D. Shipping

—GIFT WRAPPING—

BRING ALL YOUR GIFTS TO US FOR COMPLETE WRAPPING. WE'LL USE YOUR PAPER OR OURS. PRICES ON REQUEST.

Pack it yourself or we'll do it for you!

Packing Service Includes:

- *Packing material *Boxes
- *Padded envelopes *Tape
- *Gift Wrapping

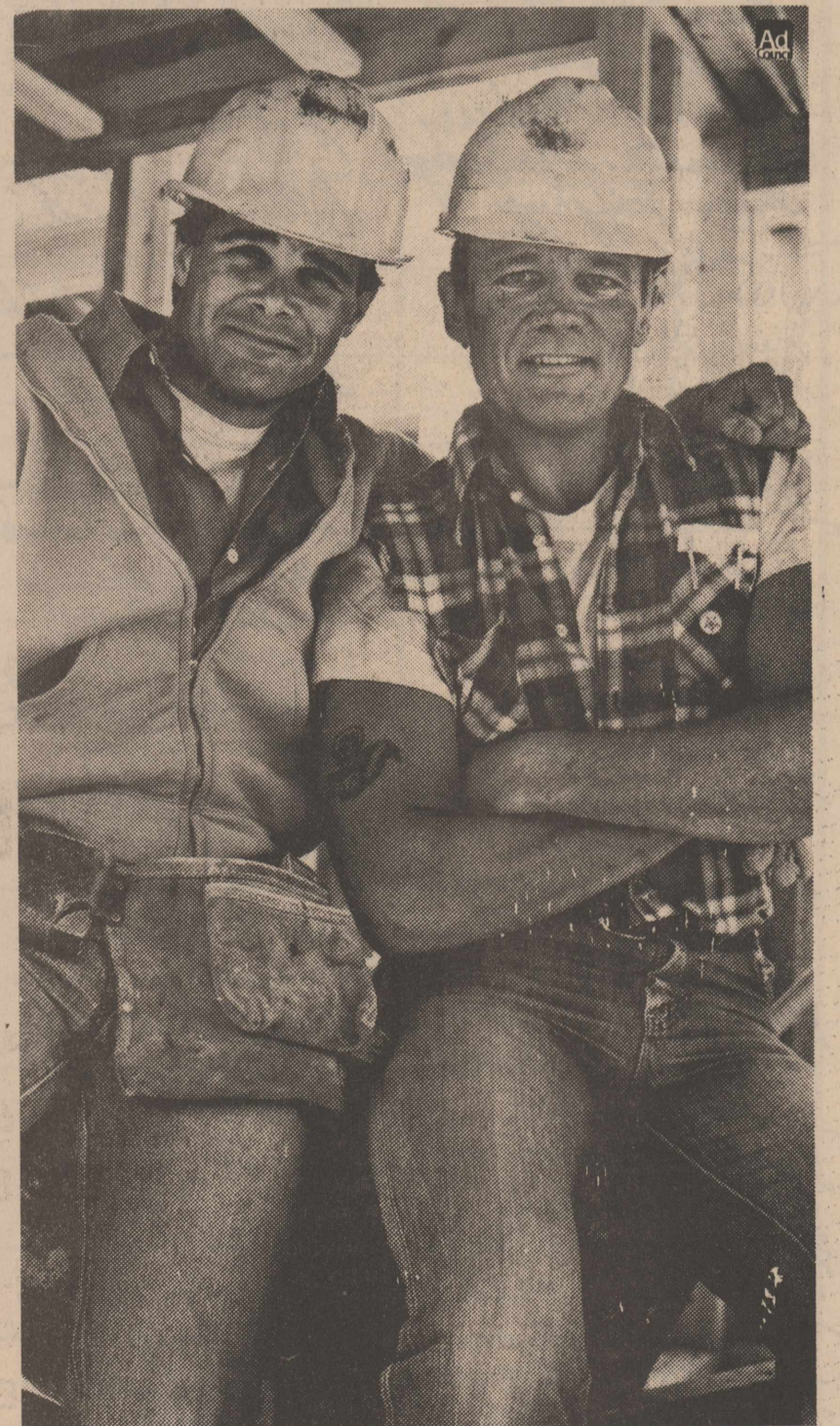
DEPENDABLE LOW-COST DELIVERIES TO ALL POINTS THROUGHOUT TEXAS & THE U.S. & MOST FOREIGN COUNTRIES

Complete gift wrapping & packaging service

Packages brought to The Newspaper Office before 2:00 p.m., Monday thru Friday will be picked up that day by U.P.S. personnel.

The Newspaper Office

NOT A U.P.S. AGENT



WHAT KIND OF A GUY WOULD JUST STAND THERE WHILE HIS FRIEND HAD A HEART ATTACK?

A guy who doesn't know CPR. The sad fact is, more people know how to jump-start a car than know how to save a life.

LEARN HOW TO JUMP-START A LIFE. LEARN RED CROSS CPR.



American Red Cross

