

Legalizing Bingo Petition Given

Joan Beach, Mitchell County Clerk, announced that her office is in the process of certifying a petition presented to her office to legalize bingo.

Mrs. Beach stated that the law requires the certification before it is submitted to the Commissioner's Court and their next meeting will be April 12.

The Commissioner's Court will then order an election on the second Saturday in August. The law requires an election to be held on one of the uniform election dates prescribed by the Texas Election Code.

Mrs. Beach stated that she has 30 days from the time the petition was submitted to her to certify it. It was too late for the March Commissioner's Court meeting.

Mrs. Beach stated that she estimates there to be 207 names on the legalizing bingo petition.



JAMIE SHIPP, music teacher at Kelley Elementary School, is pictured in center as she directs her students off after giving a delightful musical Wednesday, March 3.

Funds Started

Two funds for Eddie Jones has been started at the City National Bank in Colorado City and First State Bank in Loraine.

An employee of Texas Electric Service Plant since it opened, Jones is presently undergoing treatment for liver cancer.

He has been travelling back and forth from Lubbock for approximately a year. Recently, he was taken to M.D. Anderson Hospital in Houston where they are hoping to arrest this type of cancer with a new form of treatment, but the treatments cost \$5,000 each.

The Loraine Lions' Club has opened the funds and say they would appreciate all donations.

Colorado City Record

12 Pages - 1 Section Vol. 77 No. 20 Pub. No. 122800

P.O. Box 92, Colorado City, Texas 79512 Thursday, March 11, 1982



25¢

Commissioners Will Accept Lease Bids

Mitchell County Commissioner's Court held a regular session Monday afternoon in the Mitchell County Courthouse with the Commissioners discuss-

ing several items that was facing them on the afternoon's agenda.

They discussed a possible location for a Justice of the Peace Office in Loraine. At the present time, Loraine is in the process of the agreement of the selling of Charlie Duke's service station, located across from the Cree-Mee Drive-In in Loraine. After all the necessary papers are drawn up by Attorney Frank Ginzel, the Court will take action on the matter in their April meeting.

The Commissioners were approached with the possibility of leasing the county ag building in the Spade Community. The Commissioners agreed to hold a public auction for interested persons to make bids on the property for three to five years leasing. The auction will be held at 10 a.m., April 12 in the Mitchell County Courthouse; this will give the Commissioners time to make a decision on the highest bidder in their afternoon meeting on April 12.

Legislature requires that a county do a mileage inventory of the county roads in order for the county to receive lateral road funds. It was reported that in Mitchell County, there were 494.7 miles and each Precinct was broken down as follows: Precinct One, 112.9 miles; Precinct Two, 138.6 miles; Precinct Three, 104.2 miles and Precinct Four, 139 miles.

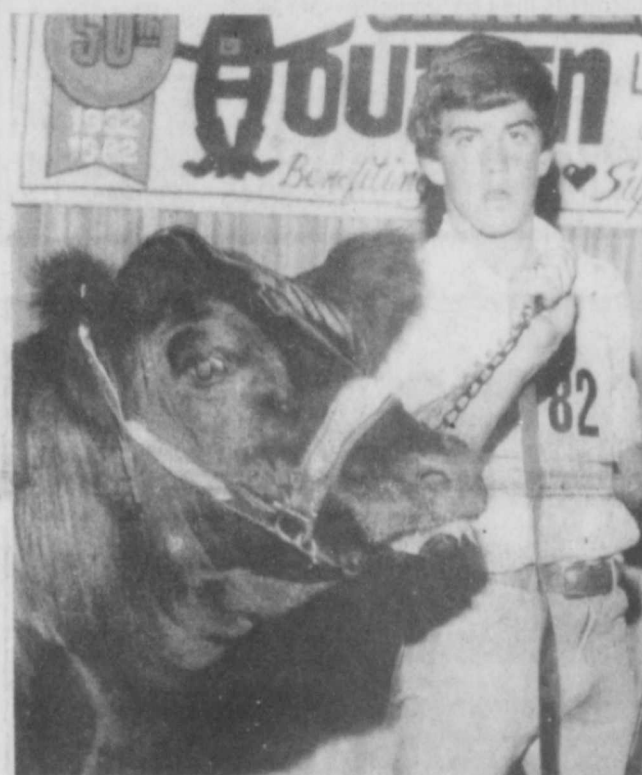
This road mileage inventory must be done yearly and submitted to the state for the funding.

Following a request by the head librarian, Gladys Oden of the Mitchell County Public Library, the Court approved her request to advance Nancy Mayo from her present position of third deputy assistant librarian to a second deputy status. Mrs. Mayo has been with the library eight months and has done an excellent job, stated Mrs. Oden.

The Court also made a decision to close a one mile road east of Westbrook following a petition that was submitted to the Commissioners.

Additional improvements to the Community Care building were discussed which include the building of the shelves and cleaning of carpet.

The Commissioners discussed a new office location for a juvenile probation officer, with the possibility of making a space in the Courthouse.



QUENTIN MERKET, a Mitchell County 4-H'er from Loraine, had the first place steer in the lightweight Chinanina class in the Houston Livestock Show and Rodeo. Due to an illness, the 1,080 pound steer, "Magic," was shown by the exhibitor's older brother, Adam. The exhibitor's father, Kenneth Merket said they had shown the steer earlier in Fort Worth where he placed sixth. "We thought he should have won his class there, so we decided not to sell and brought him here." There were 127 entries in the Chinanina classes.

Clerk Has Applications For Absentee Voting

Joan Beach, Mitchell County Clerk announced that applications for absentee voting were available in the clerk's office of the Mitchell County Courthouse.

She said that if someone thought they would be out-of-town on May 1, they could file an application for absentee voting.

To obtain an absentee voting application, persons may come by the county clerk's office or by writing P.O. Box 1166, Colorado City, concluded Mrs. Beach.

Alvarez Is Seeking LISD Board Seat

David Alvarez of Loraine announced recently that he intends to seek a seat on the Loraine School Board in the upcoming election.

A resident of Mitchell County all of his life, Alvarez is a graduate of Loraine High School. He attended Western Texas College and Angelo State University. Presently, Alvarez is a lease operator for Exxon in Snyder.

He gave the following comment, "I feel like there is room for improvement in the school. Even though it is small, I feel we can make it better and something we can really be proud of."

"If elected, I will strive to meet the needs of the people and I intend to work with the people, because I feel their input is essential to success. Today's youth are our tomorrow's leaders."

"I would appreciate support in the upcoming election."



Jerry Webb

Incumbent Webb Seeks Re-Election

Incumbent Jerry Webb of the Westbrook School Board announced he plans to seek re-election in the upcoming election on April 3.

He has been a member of the Board of Trustees at Westbrook ISD since 1969. He and his wife, Helen have three children; Tracy is a sixth grader at Westbrook, Debbie lives in Arlington and Terry Jeff is a graduate of Westbrook High School and now lives south of Colorado City.

Webb is engaged in farming where he has lived for 17 years. He is a member of the Plainview Baptist Church and is a member of the Lions' Club in Westbrook.

Webb commented, "I would appreciate your support and vote in the upcoming election in April. If re-elected, I will strive to give it my all, as I have done in the past. Thanks again for your support."



David Alvarez

Shelia Benson Is First Place Winner Of Soil Conservation Essay Contest

D. M. Smith, vice-chairman of the Mitchell Soil and Water Conservation District board of directors recently announced the winners of the conservation essay and poster contests sponsored by the district.

Essay winners will receive trophies and cash awards. The top three poster winners in the district will receive trophy awards. The top four contestants in each room will receive ribbon awards.

Smith stated the board of directors are now making plans to present the awards to the following contestants:

Essays: 1st place, Shelia Benson and 2nd place, Joe McCormick.

Posters, (Top three in county): 1st place, Corey Flanagan; 2nd place, Mark Walker and 3rd place, Becky Gonzales.

Poster winners by rooms: 1st grade Kelly Elementary, Room 10, Mrs. Scott: 1st, Mark Martinez; 2nd, Elizabeth Upton; 3rd, Cindy Fuller and 4th, Brant Jones.

First grade Westbrook School, Betty Robinette: 1st, Tamy Guill; 2nd, Cody Casey; 3rd, Scott Schlee and 4th, Jeffrey Conaway.

Second grade Westbrook School, Mrs. Ratliff: 1st, Randel Veach; 2nd, Gary Ginkinger; 3rd, Mary Alice Cantu and 4th, Robin Higgins.

Third grade Westbrook School, Mrs. Alton Raschke: 1st, Becky Gonzales; 2nd, Felix Vigil; 3rd, Glenda Faye Wallace and 4th, Chad Casey.

Fourth grade Westbrook School, Julie Moore: Tie for first, Scooter Hines and Custodio Raincones; 2nd, Pam Mantooth; 3rd, Linda Carter and 4th, Jeran Ware.

Fourth grade Hutchinson School, Room 6, Mrs. Roenfeldt: 1st, Scott Walker.

Fifth grade Westbrook School, Margaret Conaway: 1st, David Hines; 2nd, Scott Guill; 3rd, Angie Griffin and 4th, Evelyn Smith.

Sixth grade Westbrook, Mrs. Truelove: 1st, James Woods; 2nd, Amy Harrison; 3rd, Jimmie Kelly and 4th, Katie Walls.

Sixth grade, Middle School, Colorado City: 1st, Corey Flanagan.

Seventh grade, Colorado Middle School, Mrs. Patillo: 1st, Mark Walker.

Ninety-two posters were entered in the Mitchell Soil and Water Conservation District poster contest.

LISD Board Will Have Full Agenda

The Loraine Independent School District Board will meet in regular session Tuesday, March 16 at 7 p.m., in the Loraine School Board Room.

Items on the agenda include a report on the taxes due from Valero Energy Corporation, the approval of the 1982-83 school calendar, the discussion of estimates to re-roof the Vocational Building and the approval of local textbook committee's textbook selections.

Board members also plan to discuss increasing house payments to Colorado City Savings and Loan to save interest.

The School Board will adjourn the open meeting and go into executive session to consider certified personnel contracts. They will reconvene into regular session to act upon the contracts.

POLICE REPORT

Gloria Erwin, secretary and recording clerk of the Colorado City Police Department gave the following reports answered by the CCPD.

February 24 at 4:10 p.m., Sharon Davenport, of Root Memorial Hospital emergency room, reported a subject with a gunshot wound. Sergeant Jesse Dominguez investigated and found Loyd Watkins of 305 Hickory with an accidental self inflicted gunshot wound.

February 26 at 12:13 a.m., Jimmy Ellett of 713 E. 21, reported an attempted burglary of his trailer house. No entry was made and Officer Ben Villalabos investigated.

February 27, Minnie Lara advised the CCPD that some keys to Skinny's Convenience Store were possibly stolen. Officer Frank Gil investigated.

February 27 at 9:16 p.m., Jose Larez of 403 Cypress, reported an attempted burglary of his residence. An estimated damage of two windows from the attempted break-in was \$40 and Villalabos investigated.

Historical Society To Meet Wednesday

Blanche Nolan will be the keynote speaker at the Mitchell County Historical Society meeting Wednesday at 2 p.m.

Mrs. Nolan will give a presentation on her father who was a carpenter in Mitchell County for many years.

The meeting will be held in the Hesperian Room of the Mitchell County Public Library and everyone is invited to attend.

February 27 at 6:03 p.m., Tom Davenport reported a subject in a yellow vehicle had stolen a basketball valued at \$20. Villalabos investigated.

February 28 at 12:30 p.m., in the Safeway parking lot, a parked 1975 Cadillac four-door belonging to Tom Ramsey was struck by a 1979 Spirit two-door driven by Susana Pierce. There were no injuries and See POLICE Page 2

Young Men Invited To Big Spring Fest

The Spring Fest, sponsored by the Colorado City Jaycees, was originally scheduled for this past Saturday and has been rescheduled, according to President Tony Turner, for this Saturday, March 13, because of bad weather.

The Spring Fest will be held at 2 p.m., at Barber's salt lake, located northwest of Cattleman's Restaurant (Take FM 1229 off Interstate 20 for one mile north and east one mile and follow flags.)

The Jaycees will furnish the bar-b-q and all the trimmings and drinks. There will be a variety of entertainment, including horseshoes, volleyball and other games.

The get-together is open to any young man between the ages of 18 and 37. If the weather is bad, the fest will be held at the Colorado City Boys' Club, located across from Anderson Motor Company.

For more information, contact Blake Hammond at 728-8489.

Soil Erosion Is Very Natural

"Soil erosion by wind and water is a natural geologic process that has shaped our mountains, valleys, and other features of our landscape," according to Clarence McDaniel, soil conservationist for the Soil Conservation Service in Colorado City. "But modern man's activities have greatly speeded up this process to the point where it is recognized as a serious threat to our economic well-being through loss of our productive agri-

cultural capacity," he said. "The rate at which soils erode depends upon soil type, steepness of slope, amount of runoff, and other things. But ironically, the solution to much cropland erosion may be relatively simple," McDaniel said. "By leaving residues on the soil surface, evaporation, runoff, and erosion are reduced. We call this conservation tillage."

Conservation tillage is a crop planting system

where residues from previous crops or field conditions are left on the soil surface and current crops are planted in this seedbed. In its purest form, "no-till," agronomists describe it as a practice that allows farmers to plant crops without plowing or cultivating their land.

"Even though special equipment and modified

planting techniques are used, the practice has been around for nearly 30 years and can be fitted to most management styles and resource conditions," McDaniel said.

McDaniel said conservation tillage is not the total solution to erosion problems, but researchers agree that using one of the various forms of

conservation tillage reduces erosion from 30 to 90 percent, compared with conventional tillage.

Soil Conservation Service studies show that each year soil erosion moves from two to three billion tons of soil. About five tons per acre per year is considered to be a tolerable soil loss on deep soils. Many farms in Texas have annual soil losses greater than this, which will take centuries to replace. In fact, the SCS has estimated that wind and water have damaged 50 million acres of America's best cropland so badly that it is no longer useful for crop production. Another 100 million acres has been severely damaged.

Some conservationists feel a psychological stigma is attached to the acceptance of conservation tillage, according to McDaniel.

"Plowing and cultivating has been accepted for so long it's hard for some farmers to overcome the urge to plow several times each year," McDaniel said. "But no-till and other forms of conservation tillage are gaining ground yearly. Many predict acreage planted under the no-till systems will exceed conventionally planted crops in the near future."

USDA studies estimate that in less than 35 years, 93 percent of all cropland will be planted by conservation tillage.

POLICE, From Page 1

Chief of Police Jimmy Roundtree investigated.

March 2 at 3:57 p.m., at the intersection of 10th and Oak Streets, a 1974 Ford pickup driven by Homer H. Bodine of Rt. 1, Colorado City, was in collision with a 1973 Buick four-door driven by a female juvenile. There were no injuries and Villalabos investigated.

March 5 at 10:55 p.m., a 1970 Pontiac two-door driven by Sam Steven Williams of Rt. 3, Colorado City, was in collision with a cow at the intersection of Highway 80 and FM 1983. There were no injuries and Villalabos investigated.

March 6 at 5:47 p.m., Troy Scarrow of 609 Concho, reported a burglary of \$75 in ham and sausage. Officer Gil investigated.

March 7 at 8:29 p.m., Roundtree was advised of a wreckless driver. The driver was located and following a breath test was arrested for DWI. He was arrested and arraigned before Judge Henry Doss and bond was set at \$1,500.

March 8 at 10:18 a.m., in the City National Bank parking lot, a 1976 Chevrolet four-door driven by Peggy L. Stone of 521 E. 22nd struck a parked 1978 Cadillac two-door belonging to L. C. Devorce of 218 S. Austin. There were no injuries and Roundtree investigated.

March 8 at 9:07 a.m., Jimmy Lee Harrison of 1732 Locust reported criminal mischief at 805 Locust Street. A compress mounted on a small trailer was vandalized and estimated damage was \$150. Roundtree investigated.

March 8 at 12:20 p.m., V. R. Cawthron of 104 E. 13th reported the theft of four hub caps from his Ford pickup valued at \$200. Roundtree investigated.

March 8 at 1:55 p.m., in the 200 block of E. 2nd, a 1975 Ford two-door driven by Susie Davila Vidal of 1113 E. 7th struck a parked 1981 Buick four-door owned by Samuel L. Parker of Rt. 1, Roscoe. Roundtree investigated.

Several Westbrook Students Take Winning UIL Honors

Friday, February 26, students from Westbrook Elementary, Junior High and High School participated in a practice UIL Number Sense and Calculator Contests at Grady Schools.

In the Junior High Division Number Sense Contest Kellye Smith an eighth grade student placed second. James Woods a sixth grader placed 6th, Tommy Tucker a fifth grader placed 7th. These students competed with 62 contestants.

Westbrook took the first place team trophy with a total of 480 points. The high school took third place in number

sense with the freshman-sophomore division seeing Don Geiger take second place, Don Zant with fourth place, and Charles Rice taking the eighth place honor. In the Jr-Sr Division, Max Zant placed sixth of seventeen students participating.

The calculator contest had Westbrook ranked second. Clay Browne competed with 14 to place fourth, Donald Burnett scored seventh and Elizabeth Burnett scored ninth.

In the Jr-Sr Calculator Division Wade Browne placed third scoring 59.

Other schools competing in the contests were

Grady, Greenwood, Ira, Plains, Reagan County, Stanton and Sands.

Coaching the elementary students is Sharon Truelove and coaching the jr. high and high school is Dan Truelove.



HOMEOWNERS POLICY

PHONE: JERRY PUTMAN
137 W. 2nd
728-3062
State Farm Fire and Casualty Company

MEMBER 1982
TEXAS PRESS ASSOCIATION
Colorado City Record
156 E. 2nd 728-3413 728-3414
Phil Riddle Publisher
Lulu Turner Editor
Connie Thompson Editorial Assistant
Martha Martinez Advertising Layout Director
Patricia Denson Classified & Typesetter
Viola Aycock Secretary

Published every Monday and Thursday morning by Colorado City Record, Colorado City, Texas. Second class postage paid at Colorado City, Texas. Mailing address, Colorado City Record, P.O. Box 92, Colorado City, Texas 79512.

Subscription rates in Mitchell County are \$10.00 per year and outside Mitchell County \$15.00 per year.

Any erroneous reflection upon the character, standing or reputation of any person, firm or corporation will be corrected when such occurs in the columns of this newspaper and is brought to the attention of the management.

The Colorado City Record is not responsible for copy omission, typographical errors or any unintentional errors that may occur other than to make proper correction after being brought to attention. Advertising is accepted on this basis only.

DEADLINES
Deadlines are necessary in order to publish accurate facts with as few typographical errors as possible. Your cooperation will be appreciated.

Deadline for Monday's paper for news and advertising (including Classified Ads) is noon Friday. Deadline for Thursday's paper for news and advertising (including Classified Ads) is noon Tuesday.

Large Selection

Rock of Ages offers you a choice of 6 different colored granites. Whatever your requirements may be, complete satisfaction is assured with Rock of Ages.

Bernice Hilliard
529 E. 14th 728-3946

the Savings Are Yours

WITH OUR ANTI-INFLATION PRICES
At E-Z Way Superette

Specials Good Thursday, Friday & Saturday We Redeem Food Stamps

| | | |
|--|---|---|
| It's Better GROUND BEEF Lb. 98¢ | Gooch's FRANKS 12 Oz. Pkg. 89¢ | Slim & Trim Assorted Flavors ICE MILK 1/2 Gal. Crtn. \$1.69 |
| Lean PORK ROAST Lb. \$1.19 | Lean PORK RIBS Lb. \$1.39 | Morton's Coconut, Banana Or Chocolate CREAM PIES 14 Oz. Box 98¢ |
| Slab BACON Lb. \$1.29 | Lean PORK STEAK Lb. \$1.29 | Mr. P. Sausage, Hamburger Or Cheese FROZEN PIZZA 11 Oz. Box 79¢ |
| Hunt's KETCHUP 32 Oz. Btl. \$1.49 | Toast Em BREAKFAST TREATS 10 1/2 Oz. Box 69¢ | Bodine's Grade A Large EGGS Doz. 79¢ |
| Best Maid DILL PICKLES 32 Oz. Jar 89¢ | Velveeta CHEESE SPREAD 2 Lb. Box \$2.98 | Pillsbury Buttermilk Or Sweetmilk BISCUITS 5 8 Oz. Cans \$1 |
| Kraft GRAPE JELLY 18 Oz. Jar 69¢ | Veg-All MIXED VEGETABLES 2 303 Cans 79¢ | Kraft Halfmoon LONGHORN CHEESE 10 Oz. Pkg. \$1.39 |
| 1000 Island SALAD DRESSING 8 Oz. Btl. 69¢ | COCA-COLA 2 Liter Btl. 98¢ | Comstock Cherry PIE FILLING 21 Oz. Can \$1.39 |
| FRESH PRODUCE DAILY | Hawaiian Punch FRUIT DRINK 48 Oz. Can 69¢ | Kobey Shoestring POTATOES 2 1 1/2 Oz. Cans 39¢ |
| Green CABBAGE Lb. 19¢ | E-Z WAY Superette At 17th & Hickory 7 A.M. To 8 P.M. Daily | Ranch Style BEANS 2 300 Cans 79¢ |
| Sunkist LEMONS FOR \$1 | | Wolf BEEF STEW 24 Oz. Can \$1.29 |
| Russet POTATOES 10 Lb. Bag \$1.29 | | Hunt's Sliced Or Halves PEACHES 29 Oz. Can 79¢ |
| Medium Yellow ONIONS Lb. 19¢ | | Del Monte Whole TOMATOES 2 303 Cans 98¢ |
| | | Morrison CORN KITS 3 8 Oz. Pkgs. 59¢ |

Guests of Mrs. Tommie last Wednesday were her aunt, Mr. and Mrs. Burk from N.M.

Visiting weekend were sons and daughters and Mrs. J. Scott and Junction at Mrs. Gary's sons, Dusty, Cody from S.

T.I.

The VIG city met Loraine.

Two little stars of this club met pictures take Rowell last in a basket on T. porch were club meeting enterprising their eggs

Cer

At a recent the Loraine when the Loraine was discussed by Royce Ed Helen Will in charge of working the date Saturday was set. T. and Homer

Ath Uni

Mrs. Dog was hostess. neum Study home Tuesday. All members club were present during the session, the mittee, Mrs. Pratt and Johnson, re Sycamores purchased in the city following presented at thus electing officers

President, H. Johnson; President, Hester; Secretary, M. Bond; Recorder, Mrs. F. Correspondent, Mrs. Treasurer, Taylor; Hist. C. R. Green

Now a fine or lo If you cord arrange when med

F

Loraine

Loraine Personals By Ida Baird

Guests of Mr. and Mrs. Tommy Mathis last Wednesday night were her uncle and aunt, Mr. and Mrs. R. C. Burk from Portales, N.M.

Visiting over the weekend were their two sons and families, Mr. and Mrs. Don Mathis, Scott and Melissa from Junction and Mr. and Mrs. Gary Mathis and sons, Dusty, Casey and Cody from Stamford.

Mrs. Ken Albus and children, Kendra and J. D. from Midland spent several days last week with her parents, Mr. and Mrs. Herbert Mearse.

xxx

Mrs. Trixie West was released from Root Memorial Hospital and returned home last Thursday after being a patient there 22 days. Visiting

with her and with Mr. and Mrs. Don Riley Thursday and Friday was a grandson and family, Mr. and Mrs. Keith Jarrett, Dusty, Lance and Annette of Fort Davis. They also visited with his aunts, Mr. and Mrs. Frank Crowover, Mrs. Marion Mahon and Mrs. J. D. Norman.

xxx

Mrs. Al Walker brought her mother, Mrs.

Harvey Leach home Friday after she had been a patient in an Odessa hospital and had visited with Mrs. Walker in Crane.

xxx

Mrs. Cullen Payne accompanied her brother and wife, Mr. and Mrs. Otho Scarborough of Colorado City and visited their sister and husband, Mr. and Mrs. Donnie Miller in Knox City Sunday.

First Baptist "Ready" Class Meets

Margaret Brame, Frances Young and Estelle Lee were co-hostesses for the March business and social meeting of the "Ready" Class of First Baptist Church of Loraine.

The party was held in the Brame home Monday evening, March 8.

Mrs. Bobby Graham led the opening prayer and Mrs. Lee read Corinthians 13 in giving the devotional on "Love." She read a poem,

"Love." Mrs. Tony Snyder read the poem "I Met God in the Morning" and Mrs. Ed Small read a humorous article "Are You Tired."

The St. Patrick's theme was used in decor and refreshments of lime punch, cake, chips and dips were served.

During the business, the class voted to give a love offering for the Bailey grandchild and for Eddie 'Honky' Jones, both of whom are ill.

Present were Mmes. Leroy Lucas, Kenneth Butler, E. J. Schroeder, Virgil Parnell, Alta Miles, Loyd Wiggins, Ed Small, Tony Snyder, Bo-

bby Graham, Lupe Galvan, Estelle Merritt, Tharon Henderson, Gus Armstrong and guests, Mrs. David McNary and Krista.

Time To Be Holy Is Topic Of Meet

The United Methodist Women of Loraine met at the church on Wednesday at 9:30 a.m., March 3 for their monthly business and devotional time.

The meeting opened with the group singing "Take Time to Be Holy" and Mrs. J. D. Norman gave the prayer. Mrs. Syble Walker brought the devotional with "Time" as her topic. She used scriptures from Ecclesiastes as a basis for her talk. In highlighting her theme

the main point indicated Christians should glorify God with their time where ever they might be.

A business session followed. One facet of the business was a decision to make a gift to missions in memory of the late Mrs. Beatrice Bruce.

Those present were Mmes. Frank Crowover, J. D. Norman, C. H. Martin, Bennett Blair, Elva Smith, Wiley Walker, J. M. Templeton and Raymond Wheeler.

Rosie Hamrick Is T.E.H.A. Hostess

Mrs. Rosie Hamrick was hostess for the North Loraine TEHA Club when they met in regular meeting Wednesday, March 3. Mrs. C. A. Matejowsky presided over the meeting.

The meeting opened with the club prayer being read in unison. Reading of the minutes followed and the roll call was answered with a "Tall Texas Tale."

The treasurer's and council reports were given. The club was reminded that Mrs. Bobbie Steakley would bring the Council's Annual Book Review at the C. C. Thompson Room on May 4.

Other matters of business were taken care of before the Extension Agent, Marian Morris brought a blazer she had

made and gave a detailed instruction how the garment could be assembled in order to save time. Using fuseable inner facing was one point she brought out in saving time. Other stitching hints were helpful in the demonstration.

Refreshments were served to eight members and two visitors. The members were Mmes. C. A. Matejowsky, J. M. Templeton, T. L. Holman, Roy Wells, Jack Linam, Rosie Hamrick, Lora Taylor and Raymond Wheeler. The visitors were Mrs. Ollie Hardin and the agent, Marian Morris.

The next meeting will be with Mrs. Hubert Meadows on March 17th. Generic drugs will be the topic of the program.



T.K. Rowell & Friend

T.K. Rowell Is Guest Speaker

The VIG Garden Society met recently in Loraine.

Two little birds were the stars of the show at this club meeting. Some pictures taken by T. K. Rowell last spring when the two birds built a nest in a basket of ivy hanging on T. K.'s front porch were shown at the club meeting. The two enterprising birds laid their eggs and sat on

them, hatching out the eggs and guarding the baby birds from the family cats. The picture showed the nesting birds, the eggs and the hanging basket home. The club sent out a special "Thanks" to T. K. for the pictures.

The group welcomed a new member, E. M. Burleson. Some of the members have corresponded with Omar Bur-

leson through the years and know that they'll enjoy E. M.

Marsha McAdams presented A. K. Gregory with a hanging basket of Boston Fern, a most popular and beautiful fern.

Ricki Harmon commented on "wind chimes in the garden."

Berta Fuller gave the thought for the day.

Tobi Rowell gave her piano interpretation of "The Rose," one of Bette Midler's favorite piano numbers.

Officers and associate members of the club are E. M. Burleson, B. D. Miles, T. K. Rowell, Ann Rowell Gregory, B. N. Gross, R. Preston, Joy Culwell, E. D. Bond, Ricki Harmon, Marsha McAdams and Berta Fuller.

Cemetery Cleaning Day Is Set

At a recent meeting of the Loraine City Council when the condition of the Loraine Cemetery was discussed, the Mayor, Royce Beights asked Helen Williams to be in charge of an all day working there and the date Saturday, March 13 was set. Ted Lefevre and Homer Hart are

also on this committee to see to the up-keep of the cemetery. Gus Armstrong has recently resigned to assume another job.

This is a very worthwhile project that all citizens should be concerned about. You are asked to bring hoes, rakes, lawn mowers, or

any cleaning tools, bring your sack lunch and plan to help with the work there. Drinks will be provided. Kiker-Seale Funeral Home will have a tent set up so there will be shade if the temperature is high.

It is hoped to get over the entire cemetery so that the one worker em-

ployed there can keep up with the cleaning.

Donations for the upkeep of the cemetery are being accepted at the City Hall or mail your donations to the City, Box 7, Loraine, Texas.

Should the weather not cooperate for the working on March 13th, the next Saturday, March 20th has been set.

County candidates are invited to be on hand and along with helping in the cleaning will be giving out their cards and making their bids for office.

Most of all, keep this date open and help with this work is an invitation to all.

Atheneum Study Club Unites In Hester Home

Mrs. Doyle Hester was hostess to the Atheneum Study Club in her home Tuesday, March 2. All members of the club were present.

During the business session, the civic committee, Mrs. Woodrow Pratt and Mrs. B. H. Johnson, reported two Sycamores had been purchased to be planted in the city park. The following report was presented and accepted, thus electing the following officers for 1982-84.

President, Mrs. Bruce H. Johnson; First Vice-President, Mrs. Doyle Hester; Second Vice-President, Mrs. Percy Bond; Recording Secretary, Mrs. Floyd Coffee; Corresponding Secretary, Mrs. Glen Coon; Treasurer, Mrs. Willie Taylor; Historian, Mrs. C. R. Green; Parlia-

mentarian, Mrs. Lily Bennett and Reporter, Mrs. Woodrow Pratt.

Mrs. Percy Bond was program leader. She led the group in pledge of allegiance to the flag. Each member answered roll call with "Did You Know?"

First of a two-part program, Mrs. Glen Coon discussed the "Horseless Carriage," giving early history of auto-making in U.S.A. The Model T first made in 1908, was the greatest milestone in auto history. Ten million cars made in 15 years. They were made as a work car to sell for \$800. They had no starter (used a crank), no lights, no horn, a task to start on a cold morning. Roads were poor so autos had difficulty on muddy roads. All cars were black, closed car built

with good wheels, but no radios or signal lights. The Model "A" made its appearance in 1927.

Mrs. Doyle Hester discussed "Autos-Re-invented." She was concerned with the large buxorious autos of the 1960's, giving way to small, lightweight, economical cars similar to those of the 20's and 30's.

Steam and electric auto may replace the large "gas gussellers."

The hostess served cake and coffee to the following: Mrs. C. R. Green, Glen Coon, W. A. Taylor, Bruce Johnson, Lily Bennett, Harold Martin, Percy Bond, C. A. Matejowsky, Woodrow Pratt and Floyd Coffee.

The next meeting will be at the home of Mrs. C. R. Green in Sweetwater.

Your electricity is costing more in 1982 mainly because the fuel to make it is costing more.

This year, we're paying more for fuels we use to make your electricity. This is partly because another low-cost natural gas contract has expired. But mainly it's because the price of all fuels keeps rising.

We don't make a profit on fuel; we charge our customers exactly what we have to pay for fuel. And we show the amount for "fuel" on your bill each month. The chart below shows an approximate increase in your bill this year compared to last year as a result of increasing fuel costs.

| If you use (Kilowatt Hours Per Month) | Then your bill will increase about |
|---------------------------------------|------------------------------------|
| 800 KWH | \$ 5.00 |
| 750 KWH | \$ 7.50 |
| 1000 KWH | \$10.00 |
| 1250 KWH | \$12.50 |

At Texas Electric, we're trying to hold down fuel costs by using lignite coal — a cheaper fuel. And we're building a plant to use uranium, the lowest priced fuel available to us.

You can help hold down your bill by conserving at home. To learn how, please call us.



B. B. HARDEE, Manager, Phone 728-2331



Now have their Social Security check sent directly to a financial institution to avoid theft, misplacement or loss of any kind.

If you are receiving Social Security payments, we cordially invite you to let us make the necessary arrangements to have your check sent directly to us where it will be credited to your account immediately.

First State Bank

Member FDIC

Loraine

737-2211

ents
ors
nwood, Ira,
gan County,
Sands.
the elemen-
s is Sharon
d coaching
and high
Truelove.
Caution
Traffic Safety
RS POLICY
Casualty Company
ROCK OF AGES
\$169
98¢
79¢
79¢
sweetmilk
UNITS
\$1
\$139
\$139
39¢
79¢
\$129
79¢
98¢
59¢

Couple United In Marriage

In a double ring ceremony, Sareesa Mitchell and Ronald Proctor were united in marriage on Saturday, March 6 at 6 p.m., in the First Baptist Church of Colorado City.

Reverend Glenn Roenfeldt performed the ceremony. The bride is the daughter of Mr. and Mrs. Perry Mitchell of Colorado City. The groom is the son of Mr. and Mrs. Brian Proctor, also of Colorado City.

The church was decorated with a brass archway entwined with greenery, fresh flowers of pink carnations and burgundy roses, accented with pink and burgundy bows were placed on each side of the candleabras and at the bottom of the archway. Greenery and eighteen candles accented the choir rail, and bows of pink and burgundy ribbon accented the pews of the church.

The bride was given in marriage by her father,

who was attired in a long tail silver tuxedo, over a white shirt accented with a gray, white and black striped ascot tie.

The bride wore a white formal gown. The gown was of sheer and white organza with Chantilly lace. It was decorated with a Queen Anne neckline defined with a pearl and encrusted with a silk Venice lace appliqued medallion. The waistline was outlined with silk Venice lace to match the medallion. The fitted bodice was of sheer organza with pearls and lace. The gown featured long sheer bishop sleeves.

The full skirt was an overlay of Chantilly lace with a pleated flounce which extended into a five-tiered bouffant chapel train. Her two-tiered fingertip veil edged in Chantilly lace, cascaded from a Juliet cap headpiece covered in matching Chantilly lace and adorned with seed pearls. The bride carried a bouquet decorated in a cascade fashion of white roses and pink sweetheart roses, tied with love knots of pink and

burgundy streamers accented with baby's breath.

Traditional wedding music was played by Cecile Hubbard. "Oh Perfect Love," was played when the grandparents entered. "Endless Love," was played when the mothers were seated. "You Decorated My Life," was played when the candles were lit. "Theme From Ice Castles," was sung when bridesmaids and groomsmen entered. At the end of the ceremony followed by the closing prayer, "We've Only Just Begun," was sung by Cecile Hubbard.

The maid of honor, Darlene Mitchell, sister of the bride, wore a formal gown of burgundy chiffon with thin straps and a gathered waist. The dress was complimented with a burgundy lace jacket with puffed sleeves and edged in ruffled burgundy lace. She carried pink and burgundy carnations accented with baby's breath and pink and burgundy streamers.

The bridesmaids, Kim Hardegree of San Angelo; Sidney Stewart of Lubbock; Melinda Boyd of Colorado City; Toni Hutto of Austin and Marjori Maddox of Oklahoma, were attired in dresses the same as the maid of honor. They carried single pink carnations accented with baby's breath and burgundy streamers.

The flower girls, Kristi Dawn Flannagan and Maranda Mitchell, cousin of the bride, were attired in formal dresses of burgundy chiffon with round solitaire necklines, puffed sleeves and accented with sheer overlay of burgundy lace. They wore hairpieces with pink carnations, burgundy roses and baby's breath accented with pink and burgundy ribbon. They carried pink baskets with pink rose petals.

The candlelighters, Deana Browne Snyder and Christy Mitchell, sister of the bride, wore dresses identical to the bridesmaids. They also wore wrist corsages of pink carnations and baby's breath

accented with burgundy ribbon.

The best man, David Proctor, brother of the groom, was attired in a silver tuxedo over a white shirt accented with a silver bow tie.

The groomsmen, Alan Boyd of Colorado City; Jimmy Shoemaker of Fort Worth; Ricky Sanchez of Abilene; Ricky McPhaul and Dwayne Staats, both of Colorado City, were attired in silver tuxedos identical to the best man.

The groom was attired in an Avalon long tail white tuxedo with matching shirt and bow tie.

The ring bearer, Cade Proctor, cousin of the groom wore a silver tuxedo over a white shirt accented with a silver bow tie.

Boutonniers of burgundy roses and baby's breath were worn by the father of the bride, groom, groomsmen, ushers and the ring bearer.

The ushers for the occasion were Gary Hulme of Fort Worth, Matt More, cousin of the bride, of Lubbock, Rodney Taylor of Odessa and Paul Iglehart, cousin to the groom of Fort Worth.

For the traditional something old, the bride wore a set of pearls belonging to her aunt. Her dress was something new and for something borrowed she wore a pair of pearl earrings belonging to Kim Hardegree. For something blue, she wore a blue garter made by Mrs. Wayne Shawn.

Immediately following the ceremony, the couple were honored with a reception in the fellowship hall of the church, where Mrs. Hubbard entertained the guests with piano selections.

The bride's table was laid with a white cloth with an overlay of white lace. It was centered with two sterling silver candleabras with six rose candles. Complimenting the table were pink and burgundy bows. The centerpiece was a flower arrangement of pink and burgundy roses accented with greenery and pink and burgundy ribbon.

The four-tiered cake was surrounded with pink and burgundy flowers topped with white satin wedding bells trimmed with white tulle, seed pearls and dainty silk flowers. Raspberry punch was served from a sterling silver punch bowl. Completing the table were mixed nuts and pink rosette mints. Serving at the table were Stacy Garner of San Angelo and Sherry Fite of Colorado City.

The groom's table was laid with burgundy tablecloths. Accenting the table were two silver candlesticks with rose candles. Coffee and tea were served in a silver serving set.

A chocolate cake with the words "and this is our beginning," was served. Also being served were sausage balls and assorted cheeses. Tracy McPhaul and Ju-

lie McPhaul, both of Colorado City served at the groom's table. For a honeymoon trip,

the couple went to Ruidoso, New Mexico. Following the honeymoon, the couple will make

their home in Colorado City, where the groom is employed at Clendenen Incorporated.



Mrs. Ronald Proctor

...Formerly Sareesa Mitchell

From the ground up...



Farm Bureau Insurance provides protection that's built around your way of life...for you, your family, your farm or ranch, home and your future. Call your Farm Bureau Insurance agent and ask about plans that cover your operation from the ground up, including life, disability, auto, fire and liability coverages...and enjoy that good feeling of security.

Check With Us On Your Crop Hail Insurance. 20% OFF Of Texas Crop Hail Rates. PHONE Dennis Weaver Or Dan Morgan At Farm Bureau - 728-3408



HINSHAW'S
NURSERY GARDEN CENTER
TOMMY JOHNSON, MANAGER
*TREES *SHRUBS
*BEDDING PLANTS *HERBS
*GRASS & GARDEN SEEDS
*FERTILIZER *INSECTICIDES
*LAWN & GARDEN SUPPLIES
Commerical - Residential Landscaping
573-8561
2804 College Ave. Snyder, Texas

Class Reunion Slated

The Senior Class of Colorado High School, 1957 will be celebrating their 25th year class reunion, August 14, 1982. If you would care to attend please reply to: Judie Golden Anderson, 3109 Filmore, Omaha, Nebraska 68112.

All replies must be received no later than June 1, 1982.

It's BIG NEWS...

MONEY MARKET CERTIFICATE SIX MONTH CERTIFICATES

13.266%

Effective March 9 Through March 16

2 1/2 YEAR MONEY MARKET CERTIFICATES

14.05%

Effective March 2 Through March 15

ALL SAVERS TAX EXEMPT Effective February 23 **10.79%**

We Now Have 2 Drive-Thru Windows Open Mon. - Fri. 8:30 A.M. - 6 P.M.

The City National Bank
Member FDIC

228 Elm

728-5221

Hoover's Spring Value Sale



Ultimate In Cleaning
CONCEPT ONE
With Quadra Flex Agitation

OUR FAMOUS CONVERTIBLE UPRIGHTS

| | | |
|---|---|--|
| <ul style="list-style-type: none"> *Self Adjusting Carpet Adjustment *2 Speed Motor *Big 160T Disposable Top-Fill Bag *Twin Beam Head Lamp *All Around Furniture Guard *3 Speed Position Handle *Brushed Edge Cleaning <p>U3101 With Tools \$329⁹⁵</p> | <ul style="list-style-type: none"> *Eye Level Carpet Adjustment *All Steel Agitator *Wrap Around Head Lamp *Quick Cord Release *Big 160T Top Fill Bag <p>U3103 \$199⁹⁵</p> | <ul style="list-style-type: none"> *4 On The Floor Carpet Adjustment *All Steel Agitator *Big 90T Bag *3 Position Handle <p>U4127 \$99⁹⁵</p> |
| <p>U4161 With Tools \$179⁹⁵</p> | <p>WE HAVE GENUINE HOOVER BAGS & BELTS FOR ALL MODELS</p> | |

THE CARPET SHOP AND DECORATOR CENTER

1032 Hickory

Fred Butts - Owner

728-3139

"You c patient un in the face what's bef toms," sai Griffin of Malone-Ho the comm he hears ters and p A stan cardiogr short du many time indication ed cardiac years the gram wa cian's mai nosing he: It still is. However the porta monitoring been adde cian's ars nostic equi Malone-l recently p of these Holter System, Dr. Buerk esident of Hogan Cli directors. The 22-p nic has use toring syst ral years, perior tec came avail i-specialty ed to purch ter moni The devi follow hea hospitalize tients, but ue comes physician sons on a basis, expl who is on Malone-Ho ternists wh ter unit. TI permits n two patien "We are the Holte phy Syster Griffin. "It with a 24-h cording an uable aid abnormalit rhythmic lik ventricular ycardias (i rates), ar ocks." Griffin c many uses monitor. "We use acute myo ction," he Myocard ions are l in which l dies. After physicians cular for h rities lik ventricula monitor ce Determi a patient's chest pain origin is a the monit to Griffin. "In pat aining of f fast heart use the n tect the e the abnor sults help course of the interni Dizzines seizures (tions of ca ctions, ac iff. The important lating ti complaint malfunction be causin Griffin : tor's othe detection cardiac r tients with prolapse i tion of co spasm, a ich is now the new d "The E is an imp cardiac r gram lik cated Gri nician ho tent and in use of She also pleted 24-

New Discoveries Mobilize The EKG

"You can talk to a patient until you're blue in the face and not know what's behind his symptoms," said Dr. Robert Griffin of Big Spring's Malone-Hogan Clinic of the common complaints he hears of heart flutters and palpitations.

A standard electrocardiogram (EKG) is of short duration and many times will show no indication of a suspected cardiac problem. For years the electrocardiogram was the physician's mainstay in diagnosing heart problems. It still is.

However, a new tool—the portable cardiac monitoring system—has been added to the physician's arsenal of diagnostic equipment.

Malone-Hogan Clinic recently purchased one of these devices, the Holter Cardiology System, according to Dr. Buerk Williams, president of the Malone-Hogan Clinic board of directors.

The 22-physician clinic has used heart monitoring systems for several years, but when superior technology became available the multi-specialty group decided to purchase the Holter monitor.

The device is used to follow heart function in hospitalized cardiac patients, but its prime value comes in letting a physician monitor persons on an outpatient basis, explained Griffin who is one of the six Malone-Hogan Clinic internists who use the Holter unit. The equipment permits monitoring of two patients daily.

"We are proud to have the Holter Cardiology System," said Dr. Griffin. "It provides us with a 24-hour EKG recording and is an invaluable aid in detecting abnormalities in heart rhythm like premature ventricular beats, tachycardias (i.e., fast heart rates), and heart blocks."

Griffin catalogued the many uses of the heart monitor.

"We use it following acute myocardial infarction," he said.

Myocardial infarctions are heart attacks in which heart muscle dies. After such attacks physicians look in particular for heart irregularities like premature ventricular beats. The monitor can find them.

Determining whether a patient's undiagnosed chest pain is cardiac in origin is a basic use of the monitor, according to Griffin.

"In patients complaining of palpitations or fast heart beat, we can use the monitor to detect the exact nature of the abnormality. The results help determine a course of treatment," the internist said.

Dizziness, fainting or seizures can be symptoms of cardiac malfunctions, according to Griffin. The monitor is an important aid in correlating these patient complaints to the heart malfunction that may be causing them.

Griffin said the monitor's other uses include detection of abnormal cardiac rhythms in patients with mitral valve prolapse and identification of coronary artery spasm, a condition which is now treatable with the new drug Procardia.

"The EKG technician is an important part of a cardiac monitoring program like this," indicated Griffin. The technician hooks up the patient and instructs him in use of the recorder. She also scans the completed 24-hour tape, making EKG printouts of abnormalities for the physician to evaluate.

Veteran EKG technicians Caroline Smith and Frances Pate of Malone-Hogan Clinic's internal medicine department prepare patients for cardiac monitoring and scan the resulting tapes. Cardiac monitoring was Mrs. Smith's exclusive duty at the Fort Worth hospital where she was employed before joining Malone-Hogan Clinic in November.

Does it take 24 hours to read a patient's tape? "No," replied Mrs. Smith. She reported that the Holter unit can be set to scan continuous 30-second to two-minute segments of heart activity. A cassette containing fairly normal heart activity will take Mrs.

Smith about one hour to scan, while one with many abnormalities may take up to two hours.

A Big Spring patient whose heart was monitored recently explained that she was able to carry the heart monitor as easily as a shoulder bag. If she noticed any symptoms of cardiac problems, she was instructed to press a button

that marks the tape. Then she was to record in a pocket diary the time shown on the recorder's digital clock, noting her symptom and her activity at the time the symptom occurred.

"I hardly noticed the monitor," the woman commented, "but I did faithfully record what I was doing throughout the day, so my doctor would have a good idea

how various activities affected my heart."

"Persons wearing the monitor may feel somewhat 'bionic' at first," chuckled this patient. "When wearing the monitor, you have five small electrodes taped to your chest. It doesn't take long to forget they're there."

These five electrodes are attached to the recorder which holds a 24-hour cassette that documents heart activity over the course of an entire day. The Holter unit can be carried by a shoulder strap or attached to a belt.

"An important diagnostic tool for our area," is how Griffin summed up Malone-Hogan Clinic's new cardiac monitoring system.

Physicians are careful to point out that the Holter cardiography unit and systems like it do not replace standard electrocardiography. Electrocardiograms still provide a more complete short-term picture of heart activity because they can look at heart action from 12 angles instead of the two that a portable monitor uses.

SAVE 78¢



HAIR SPRAY
White Rain

Non-Aerosol Assorted
Safeway Special!

\$1.19

8-oz. BOTTLE

SAVE 50¢



FOR COLDS
Contac Capsules

Give your cold to Contac!
Safeway Special!

\$1.49

10-ct. PKG.

SAVE 60¢



EXTRA STRENGTH
Tylenol Capsules

Fast, aspirin-free relief
Safeway Special!

\$2.69

50-ct. BOTTLE

SAVE 22¢



FOR CAR CARE
Valvoline Motor Oil

H.D. 30 wt.
Safeway Special!

77¢

QUART CAN

ARRID SPRAY

Extra Dry Anti-Perspirant Assorted.
(Save 30¢)
Safeway Special!

\$2.99

6-oz. Aerosol

Chloraseptic

Anesthetic - Antiseptic Mouthwash & Gargle
(Save 28¢)
Safeway Special!

\$2.27

6-oz. Bottle

Tylenol

Children's Chewable Tablets.
(Save 22¢)
Safeway Special!

\$1.77

30-ct. Bottle

Johnson's


Baby Wash Cloths.
(Save 20¢)
Safeway Special!

\$1.19

30-ct. Pkg.

FAMOUS BRANDS SALE

SAVE 80¢



THREE-WAY
G.E. Bulbs

• 30-70-100 Watt or
• 50-100-150 Watt
Safeway Special!

\$1.19

Each

SAVE 40¢



BUTANE
Slick Bic

Lighter
Safeway Special!

59¢

Each

HIGH POTENCY
Vitamins


Safeway Special!

Theragra (Save 40¢) 130-ct. Bottle **\$5.99**

Theragra-M (Save 80¢) 130-ct. Bottle **\$6.19**

Each

SAVE 64¢



SHAVE CREAM
Noxzema

Assorted
Safeway Special!

\$1.29

11-oz. Aerosol

SAVE UP TO 55¢



TOOTHBRUSHES
Reach

• Youth and Assorted Adult
Safeway Special!

88¢

Each

Safeway's 'One Stop Shopping' Saves You Time

Pepto Bismol Liquid (Save 20¢) 8-oz. Bottle **\$1.69**

Baby Magic Bath Mennen (Save 30¢) 9-oz. Special! Bottle **\$1.89**

Baby Magic Lotion Mennen (Save 30¢) 9-oz. Special! Bottle **\$1.99**

Safeway's 'Special' Prices Save You Money

Dental Floss Johnson & Johnson Assorted 50-yd. Pkg. **\$1.09**

Noxzema Skin Cream (Save 24¢) 10-oz. Jar **\$2.19**

Wetting Solution Barbasol Head For Hard Contact Lens. (Save 30¢) 2-oz. Bottle **\$2.69**

Triaminic Decongestant Tablets (Save 30¢) **Safeway Special!** **\$1.89**

24-ct. Pkg.

Sine-Off Extra Strength Capsules (Save 40¢) **Safeway Special!** **\$2.69**

20-ct. Pkg.

Bic Roller Medium Point Pen • Black or • Blue (Save 21¢) **Safeway Special!** **77¢**

Each

Juice Pitcher 3-Way Lid. Plastic (Save 30¢) **Safeway Special!** **69¢**

Each

Turn special moments into treasures... at Safeway's low prices!

Have you noticed our Safeway Film Center? Convenient! Just pick a pack of film and put it in your shopping cart, so you'll have your camera loaded and ready next time you need it. We carry Safeway and name brand film, roll, cartridges, and instant for most makes of cameras. Flash bulbs and batteries, too. Then, when your film is ready to be developed, bring it back with you to the store. Convenient! Film, developing and convenience, all at Safeway prices.

a little bit more from Safeway!



Playtex Deodorant Tampons • Regular or • Super 28-ct. Box **\$2.49**

Playtex Plus Deodorant Tampons 28-ct. Box **\$2.59**

Hall's Cough Drops. Ice Blue 30-ct. Bag **\$1.05**

Gee • Shampoo or • Conditioner. Assorted 12-oz. Bottle **\$2.65**

Prices Effective Wednesday through Saturday, March 10, 11, 12, 13, 1982 in Colorado City Sales in Retail Quantities Only!



© 1982 SAFEWAY STORES, INCORPORATED

Mrs. Earl Brown Recognized In Golden Book

The Self Culture Club met March 5th in the home of Mrs. Wilfred Fox. The meeting was called to order by Mrs. Earl Brown, president. The pledge to the U.S. Flag and the Club Col-

lect was repeated in unison led by Mrs. Fox. The secretary read the minutes of the previous meeting and the treasurer gave the financial report stating that \$10 had been sent to the Texas Federation of Women's Club House in Austin honoring Mrs. Earl Brown by having her name put in the Golden Book. Other miscellaneous items were accounted for and

the balance brought forward was \$232.45. Mrs. Tiller moved that they send \$2 to apply on a gift for outgoing State President of T.F.W.C. The motion carried.

Mrs. Watson moved that Section 10 of the By-Laws be changed to read that a memorial to the family of a deceased member was to be given to the churches,

public library or any project that the T.F.W.C. may have at the moment. Everyone was in favor of this.

The program was about Texas. Each member was to tell something about Texas. Many different things were told, however, this seemed to be the favorite story. "What's In A Name?" Burkburnett, Wichita County, may be

the only town in Texas personally named by a President of the United States. The community originally was called Gilbert after the first settler, a lady named Mabel Gilbert. That all changed in 1905, however, when a rancher in the area by the name of Burk Burnett decided to invite President Teddy Roosevelt down from Washington to hunt wolves. Roosevelt had such

fun hunting with the Texan and his friends that he decided to do something special for his host. When he got back to the Capital, he directed the postal people to change the name of Gilbert Post Office to Burkburnett.

After the meeting, refreshments were served to Mrs. Earl Brown, Mrs. Wilfred Fox, Mrs. R. M. Reed, Mrs. E. L.

Tiller, Mrs. Leslie Keith, Mrs. Eddie Barclay,

Mrs. L. B. Elliott and Mrs. Watson.

Eddie's

of Colorado City

Will Be
Open Sunday
12:30 - 1:30 P.M.

Body Class To Begin

A new session of Body Control will begin March 15 at 10 a.m., at the Wallace Center in Colorado City. Joanne Sanderson will be the instructor.

To enroll for the class, come by the Wallace Center before the first class starts and register. These classes are for high school through adult age persons. We must have eight persons registered to start the class. For more information, phone the Community Education Office 728-2392.

Local Hospital Report

February 24
Opal Williams, City, medical; Charlotte Knowlton, City, surgical; Diane Ramirez, Oklahoma, medical; Lloyd Watkins, City, medical; Selestino Silva, City, medical.

February 26
Myrie Jameson, City, medical; Lloyd Watkins, City, medical.

February 27
Joe Villarrial, Snyder, accident; Mary Watkins, City, medical; June Wall, Snyder, medical.

February 28
Michael Molina, City, medical.

March 1
Charlene Reily, City, medical; Hubert McKinney, City, medical; Benito Arocha, City, medical; Cynthia Tuggle, Snyder, surgical; Minnie Pritchett, City, medical; Louise Ezell, City, surgical.

March 2
Jesse Shorten, City, medical; Margie Neal, City, medical; Elizabeth Safford, City, medical; Lavern Moore, Westbrook, medical.

March 3
Dorothy Richey, Lorraine, medical; Judy Ritchey, City, medical; Deanna Myers, City, medical; Ruthie Scarrow, City, medical.

February 24
Elizabeth Moore, Sweetwater, medical; Betty Oglesby, Westbrook, medical; Maria Zermeno, City, medical; Donna Boyd, City, surgical.


February 25
Ruby Claxton, Westbrook, medical; Gwindolin Smith, Sweetwater, medical; Louie Ashley, Ira, medical; Henry Goodwin, City, medical; Loyd Smith, City, medical; Charlotte Knowlton, City, medical.

February 26
Susie Smith, City, medical; Artie Lee Griffin, Lorraine, medical; Myrie Jameson, City, medical.

February 27
Amanda Marricle, Snyder, medical; Jessica Jackson, City, medical; Diane Ramirez, Oklahoma, medical; Eunice Hamilton, City, medical; Rebecca Crucey, City, medical.

March 2
Mary Brown, City, medical; Selestino Silva, City, medical; Vanda Martin, Lorraine, medical; Cynthia Tuggle, Snyder, surgical.

March 3
N. S. Griffith, City, medical; Jose Villarrial, Snyder, medical.



CRISP

Iceberg Lettuce

Safeway Special!

SAVE
77¢
ON 3

3 \$1

Heads



SALAD FAVORITE

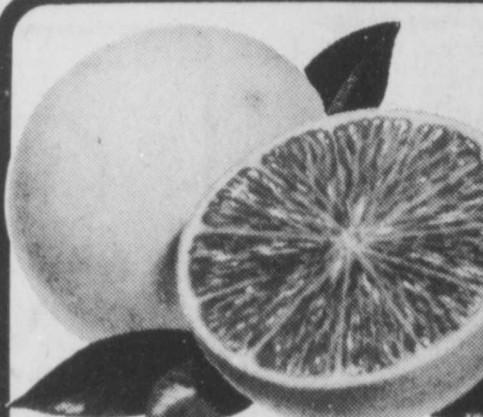
Red-Ripe Tomatoes

Great for Sandwiches
Safeway Special!

SAVE
20¢
LB.

59¢

-Lb.



TEXAS

Ruby Red Grapefruit

Safeway Special!

SAVE
33¢
ON 4

4 \$1

Each For



DECORATIVE

Marble Queen Ivy

4-Inch Pot
Safeway Special!

SAVE
\$1.00

\$1.49

Each

BLUE CHEESE Dressing Marie's 12-oz. Jar **\$1.67**
Crunchy Carrots 2-Lb. Bag **69¢**
Yellow Onions (Save 10¢) -Lb. **49¢**

Navel Oranges California (Save 10¢) Special! -Lb. **39¢**
Seedless Raisins Sun-Maid (Save 10¢) 1 1/2-Lb. Can **\$2.59**
Green Cabbage Great for Slaw -Lb. **35¢**

Shallots Frieda's (Save 20¢) Safeway Special! 3-oz. Pkg. **99¢**
Soil Conditioner 40-Lb. Bag **\$1.98**
Rose Bushes Potted, #1 "Plantable" Assorted Varieties Gal. Pots **\$3.98**

Weeping Fig Ficus Benjamin 10-Inch Pot Each **\$9.98**
Caladiums Assorted Colors 8-Inch Pot Each **\$7.95**
Dumb Cane Dieffenbachia Compacta 8-Inch Pot Each **\$4.98**



SAFEGWAY'S GUARANTEE
If, for any reason, you are not completely satisfied with any purchase made at Safeway, we will make an adjustment that is satisfactory to you or refund the purchase price in full. Proof and return of purchase may be required.

FAMOUS



SAVE 36¢

KRAFT

Miracle Whip

Salad Dressing
Safeway Special!

SPECIAL

99¢

32-oz. Jar

Limit 1 with \$10.00 or more additional purchase excluding cigarettes.



SAVE 40¢

BUMBLE BEE

Chunk Tuna

Light Meat
Safeway Special!

SPECIAL

79¢

6.5-oz. Can



SAVE 64¢

KRAFT

Velveeta

Cheese Spread
Safeway Special!

SPECIAL

\$2.89

2-Lb. Box



SAVE 22¢

LUCERNE

Large 'A' Eggs

Large Size, Grade 'A' Quality
Safeway Special!

SPECIAL

75¢

Dozen Carton



SAVE 40¢

KRAFT

Longhorn

Cheddar Halfmoon Cheese.
Special!

SPECIAL

\$1.49

10-oz. Pkg.

Mrs. Wright's Famous Breads

Granola Bran Mrs. Wright's Bread 24-oz. Loaf **\$1.09**
Wheat Bread Mrs. Wright's Butter Top Homestyle Special! 24-oz. Loaf **79¢**
Flaky Gems Mrs. Wright's Brown & Serve 11.5-oz. Pkg. **73¢**
Creamies Mrs. Wright's 10-count. 16-oz. Box **\$1.19**

Lucerne Brand Means Quality

Buttermilk Lucerne 1/2-Gal. Carton **99¢**
FRENCH ONION Dip Lucerne 16-oz. Ctn. **87¢**
Whipping Cream Lucerne Pin. Ctn. **\$1.27**
Choc Milk Lucerne Low Fat Chocolate Milk 8-oz. Gallon **\$2.29**

Special Savings

Pillsbury Plus Cake Mixes, Assorted (Save 30¢) 18.75-oz. Box **79¢**
Spam Lunch Meat Hormel, Assorted (Save up to 30%) 12-oz. Can **\$1.23**
B'n B Mushrooms Whole or Sliced 3-oz. Jar **83¢**

Check out our savings

Gebhardt TACO SHELLS Safeway Special! 12-ct. Pkg. **55¢**

Special Savings

Kraft BBQ Sauce Assorted (Save 24¢) 18-oz. Btl. **79¢**
Crisco Oil Fries crisp (Save 30%) 32-oz. Btl. **\$1.59**
Underwood Ham Deviled Special! 2.25-oz. Can **47¢**
Seven Seas Salad Dressing - Red Wine with Vinegar Safeway Special! 8-oz. Btl. **83¢**


Baby Formulas

Similac Ready to Feed - Plain or With Iron. 32-oz. Can **\$1.59**
Pedialyte Ready to Feed 32-oz. Can **\$1.73**
Isomil Ready to Feed 32-oz. Can **\$1.49**
Prosobee Ready to Feed 32-oz. Can **\$1.49**

Check out our savings

Super Sugar Crisp Post Cereal Safeway Special! 18-oz. Box **\$1.79**
Gravy Train Dog Food, Beef, Liver & Bacon Flavor 10-Lb. Bag **\$4.49**
Scotties Tissue Facial Tissues 200-ct. Box **79¢**
Clam Chowder Snow's New England Style 15-oz. Can **\$1.13**

Today's Safeway.



SAFEGWAY

Where you get a little bit more.

| | | | |
|---|--|---|---|
| Del Monte Pineapple Juice 46-oz. Can \$1.19 | Del Monte Whole Tomatoes 16-oz. Can 67¢ | Del Monte Green Beans French Sliced 8-oz. Can 37¢ | Brer Rabbit Light Cane Syrup Brown Label 24-oz. Bottle \$1.95 |
| Del Monte Fruit Cocktail 30-oz. Can \$1.05 | Del Monte Sliced Yellow Freestone Peaches 16-oz. Can 73¢ | Del Monte Lima Beans 8.5-oz. Can 53¢ | Hawaiian Punch Fruit Juicy Red. 8-oz. Cans 6 Pack \$2.23 |
| Del Monte Yellow Cling Peaches 29-oz. Can 89¢ | Del Monte Pineapple In Juice 15.25-oz. Can 73¢ | Del Monte Spinach 7.75-oz. Can 39¢ | Vermont Maid Syrup 24-oz. Bottle \$1.89 |

NO

FREE & F

W

14 MIL
Phone

Pro

GI

SAVE 16¢ LI

Premium G
Beef Patt
-Lb. \$1.

Beef Short

Sliced Bolo

Eckrich

DEL

Wolf

15-oz. Ca

SAVE UP TO 48¢

Fantasi

With Sprayer
Safeway Special!

Bath Cle

Comet

Nestle

Chocolate

2-Lb. Tin

NORDIC STOVE

SALE ON ALL STOVES \$100 OFF

FREE STANDING STOVES & FIREPLACE INSERTS

Wood Stoves

Of Roscoe
14 Miles East Of Colorado City - Exit 230 North Side
Phone 766-3948 For Appointment Day Or Night

Colorado High VICA Students Receive Kudos

Seventeen members of the Colorado High School Auto Mechanics class competed at the Vocational Industrial Clubs of America District 1 Convention in Abilene Friday and Saturday, March 5th and 6th.

Each member entered a reconditioned assembly from an automobile in the competition. Each assembly had to be a unit that needed repair or rebuilding and upon completion of the repairs the unit had to meet manufacturer's specifications in order to earn first place and qualify to enter the State Competition in San Antonio April 1-3.

Eight members qualified for the State Competition with Blue 1st place ribbons. The eight were Dennis Heredia, G.M. hydromatic 350 automatic transmission; Ronn Potts, G.M. rochester quadrajet carburetor; Tim Beights, G.M. delcoremy starter; Eusebio Garcia, G.M. rochester 2 barrel carburetor; Gerry Hamilton, G.M. rochester quadrajet carburetor; Galen Lowrance, G.M. delcoremy starter; Lucas Campos, Ford Motorcraft 2 barrel carburetor and John Sanders, G.M. delcotron alternator.

Five earned superior rating with a red ribbon. They were Scott Free, G.M. rochester quadrajet carburetor; Van Beck, Chrysler starter; Marty Martin, Ford 352 Ford cylinder head; Ray Espinoza, Chevrolet 327 cylinder head and Rosendo Rodriguez, G.M. rochester 2 barrel carburetor.

Four earned good ratings with a white ribbon. They were Joey Free-

len, G.M. delcoremy starter; Michelle Franco, G.M. rochester monojet carburetor; Bobby Arispe, Chevrolet 327 Cylinder Head and Frank Torrez, G.M. carter 2 barrel carburetor.

The eight first place winners will be going to San Antonio accompanied by their instructor Glenn Dunn on April 1-3.

This will be the seventh consecutive year that members of the Auto

Mechanics class has had members that have qualified to enter projects at the State level and each year they have won at the state meeting.

Hunter Hosts Meeting

The Fairview TEHA Club met recently in the home of Mrs. Bonnie Hunter.

President Mrs. Versie McMillan, presided. Mrs. Edna Pace read the minutes and gave the treasurer's report. Mrs. McMillan gave the council report.

Mrs. Etta Kelley and Mrs. Patsy Odom from Stanton brought a program and demonstration on loop embroidery which everyone enjoyed very much.

Refreshments were served to two visitors, Mrs. Bea Harlow and Mrs. Cassie Dorn and members, Mmes. Muriel Thurman, Velma Hester, Billie Smith, Edna Pace, Wilma Womack, Bertie Strain, Versie McMillan, Mary Womack, Miss Clara Shoemaker and hostess Bonnie Hunter.

Students Honored

Area students attending Angelo State University in San Angelo are listed on the Dean's Honor Roll for the fall semester at the university.

Those listed on the 3.00 to 3.49 honor roll include Kimberly Kay Hardegree, a business major, Freddie Kenton Harrison, a health and physical ed major, Elizabeth Gail Howell, a sociology major, Lydia Godina Mendoza, a Spanish major, Laurie Anne Mercer, an elementary education major and Yancy Dwayne Spivey, a finance major.

Those listed on the 3.50 to 4.00 honor roll include Jose Luis Rios, a journalism major and Lewis Oneal Williams, a business major.

Texas Tech has an enrollment of almost 23,000 students in six colleges: Agricultural Sciences, Arts and Sciences, Business Administration, Education, Engineering and Home Economics.

Former Resident Dies

Mrs. Ida Glen Mitchell, 51, of Orlando, Florida, native of Loraine and niece of Mrs. Pearl Johnson of Loraine, died at 10 a.m., Thursday, February 25, in an Orlando hospital.

Born Dec. 8, 1930 in Loraine, she was the daughter of Mrs. Gladys Walker of Sweetwater and the late George Walker.

She graduated from Sweetwater High School in 1949 and attended Texas Tech. She was secretary of Sweetwater Commerce before her marriage to Jack Mitchell on May 16, 1952.

Survivors include her husband, three sons, Dan and Clay of their home and Mark of Houston; her mother, Mrs. Gladys Walker of Sweetwater; two aunts, Mrs. N. O. Graham of Sweetwater and Mrs. Pearl Johnson of Loraine and a cousin, Harold Johnson of Loraine.

Funeral was in Orlando, Saturday, February 27.




Premium Ground Beef

Any Size Package Safeway Special!

SAVE 16¢ LB.

\$1.49

(Premium Ground Beef Patties) -Lb. \$1.59



Boneless Chuck Roast

Shoulder Pot Roast. USDA Choice Heavy Beef

SAVE 10¢ LB.

\$1.68

(Boneless Chuck Top Blade Steak) -Lb. \$1.88




SMOK-A-ROMA Sliced Bacon

Safeway Special!

SAVE 36¢ LB.

\$1.49

(Thick-Sliced 2-Lb. Pkg. \$2.95) 1-Lb. Pkg.



COUNTRY SKILLET Fresh Catfish

Whole Protein-Fed Cultured Safeway Special!

SAVE 31¢ LB.

\$1.88

(Fresh Fillets) 1-Lb. Pkg. \$3.29

Beef Short Ribs -Lb. \$1.19

Sliced Bologna -Lb. \$1.55

Eckrich Ham -6-oz. Pkg. \$1.79

Chuck Arm Roast -Lb. \$1.89

Rib-Eye Steak -Lb. \$4.25

Tenderloin -Lb. \$4.75

THIN SLICED Meats 2.5-oz. Pkg. 95¢

OSCAR MAYER Franks 1-Lb. Pkg. \$1.89

Hormel Franks 1-Lb. Pkg. \$2.09

Fresh Oysters 10-oz. Jar \$1.78

Smoked Turkey 1-Lb. \$1.18

Boneless Ham 1-Lb. \$3.99

BRANDS SALE



WOLF BRAND Chili

Without Beans Safeway Special!

SAVE 24¢

88¢

15-oz. Can



NABISCO Saltines

Premium Crackers Safeway Special!

SAVE 24¢

69¢

16-oz. Box



Soft 'n' Pretty Toilet Tissue

Fluffy soft but strong Safeway Special!

SAVE 40¢

99¢

4-Roll Pkg.



Purex Bleach

For brighter clothes. Safeway Special!

SAVE 24¢

49¢

1/2-Gal. Plastic



Coca-Cola and TAB

Safeway Special!

SAVE 50¢

99¢

2-Liter Plastic

DEL MONTE Vegetables 4 Mini Cans \$1

Mix or Match

- Sliced Carrots
- Golden Corn
- Cut Green Beans
- Green Peas

Safeway Special!

Fantastic Spray \$1.17

With Sprayer Safeway Special! 22-oz. Btl.

Bath Cleaner Comet \$1.39

White Magic 17-oz. Plastic 21-oz. Can \$1.59

Hefty Trash Bags \$1.99

30-Gallon Size (Save 40¢) 10-c. Box

Parson's Ammonia \$1.49

Sudsy or Lemon Scented 28-oz. Btl.

Lipton Cup-a-Soup \$1.85

Assorted Flavors Safeway Special! 4-c. Pkg.

Windex Spray \$1.49

Trigger Sprayer Safeway Special! 22-oz. Btl.

Spray 'N Wash \$1.61

Terize with Pump 22-oz. Btl.

MILDEW REMOVER \$1.99

Safeway Special! 16-oz. Bottle

Safeway Frozen Foods Feature Your Favorites

Green Giant 99¢

Niblet Ears Corn-on-the-Cob Safeway Special!

SAVE 50¢

4-Ear Pkg.

Tater Treats \$1.73

Bel-air Safeway Special! 16-oz. Pkg.

Honey Wheat Bread \$1.97

Bridgford Dough Safeway Special! 2 1-Lb. Loaves

Cinnamon Buns \$1.88

Ever Fresh Safeway Special! 10-oz. Pkg.

Ice Cream \$1.89

Lucerne. Assorted Flavors Featuring our Flavor of the Month: Peanut Butter Nut Sundae! Safeway Special!

1/2 Gal. Carton **SAVE 44¢**

Ore Ida Crispy Crowns \$1.49

30-oz. Pkg.

Nestle Quik Chocolate Flavor Mix \$2.65

2-Lb. Tin

Mrs. Smith's Crepes \$1.29

Apple Strawberry Chicken Normandy Royale Continental \$1.29

10¢ Off on 60-oz. Box Bisquick Mix

Coupon good Wed., March 10 thru Sat., March 13, 1982

Granola Clusters Light & Crunchy \$1.59

Nature Valley Assorted \$1.59

Rich 'n Chips \$1.39

Keebler Cookies \$1.39

Cheez Its \$1.97

Sunshine Crackers \$1.97

Laundry Detergent \$1.39

Arm & Hammer \$1.39

Light Spread \$1.75

Flitzmann's Corn Oil \$1.75

Coffee Rich \$1.52

Max's \$1.52

Chocolate Eclairs \$1.34

Rich's \$1.34

Prices Effective Wednesday, March 10 thru Saturday, March 13, 1982 in Colorado City Sales in Retail Quantities Only!

SAFEGWAY

we welcome FOOD STAMP SHOPPERS

STORE HOURS: 7a.m. 'til 11p.m. DAILY

Elliott and n.

M.

leen

h Pot Special! 49

Each \$9.98

Each \$7.95

Each \$4.98

S

SAVE 40¢

Wolf Chili

DELICIOUS

Without Beans Safeway Special!

88¢

15-oz. Can

NABISCO

Saltines

Premium Crackers Safeway Special!

69¢

16-oz. Box

Soft 'n' Pretty

Toilet Tissue

Fluffy soft but strong Safeway Special!

99¢

4-Roll Pkg.

Purex Bleach

Liquid

For brighter clothes. Safeway Special!

49¢

1/2-Gal. Plastic

Coca-Cola

TAB

Safeway Special!

99¢

2-Liter Plastic

79¢

5-oz. Box

1.23

2-oz. can

83¢

3-oz. Jar

55¢

2-ct. Pkg.

ings

\$1.79

Box

10-Lb. Bag \$4.49

200-ct. Box \$7.99

New Style 15-oz. Can \$1.13

abbit Syrup \$1.95

n Punch \$2.23

8-oz. Cans

Maid \$1.89

Community Calendar

THURSDAY

Noon-4 p.m. - Transportation will be provided by the Wallace Center for Senior Citizens to do shopping in town.
 1:30 p.m. - Open Duplicate Bridge Club will meet at the Country Club.
 2:30 p.m. - Fairview Extension Club will meet in a member's home.
 7 p.m. - Optimist Club will meet at the Villa Restaurant.
 7:30 p.m. - Civil Air Patrol meets at Dockrey Motors.
 7:30 p.m. - VFW Post No. 9178 and Ladies' Auxiliary will meet.
 7:30 p.m. - Mitchell County Unit of the Association of Retarded Citizens will meet in the Hutchinson Music Room.

FRIDAY

Noon - Women of the All Saints Episcopal Church will have a salad luncheon.

Noon - Noon Lions' Club will meet in the Civic Center.

7:30 p.m. - Loraine Nursing Home Singing.

SATURDAY

7 a.m. - Prayer meeting in the Lone Wolf Medallion Room.
 7 p.m.-9 p.m. - Skating at the Wallace Center, \$1.
 7 p.m. - Full Gospel Business & Professional Men's fellowship in the C. C. Thompson Room.
 8 p.m. - Dance at VFW Post No. 9178.
 8 p.m. - Do-Si-Do Club square dancing at 3rd & Chestnut Streets.

MONDAY

11:45 a.m. - The American Association of Retired Persons will meet in the C. C. Thompson Room.
 1:30 p.m. - Colorado City Lake Club will meet in a member's home.
 5:30 p.m. - TOPS TX No. 691 will meet at the Housing Authority.
 6:30 p.m. - Boy Scouts will meet at the Scout Hut.
 7 p.m. - Open Duplicate Bridge will meet in the Homestead Savings Building.
 7 p.m. - Evening Lions' Club will meet at the Villa Restaurant.
 7 p.m. - Loraine B&PW will meet in the Lions' Club Building.
 7:30 p.m. - 4-H Club will meet in the Lone Wolf Medallion Room.

TUESDAY

9:30 a.m. - BYW will meet at the First Baptist Church.
 9:30 a.m. - Hospital Auxiliary Workshop will meet.
 Noon - Kiwanis Club will meet in the Civic Center.
 2:30 p.m. - Baumann Extension Homemakers Club will meet in a member's home.
 7 p.m. - Adult volleyball at the Wallace Center, 50 cents.
 7 p.m. - Oak Street singing at Root Valley Fair Lodge.
 8 p.m. - Al Anon will meet in the All Saints Episcopal Church fellowship hall.

WEDNESDAY

9 a.m.-4 p.m. - Transportation will be provided by the Wallace Center for senior citizens to make necessary Medicaid trips.
 Noon - Jaycees and Boys' Club will meet in the Villa Restaurant.
 Noon - Circuit Riders have their trip to Big Spring and will meet in the Mental Health Clinic.
 10 a.m.-Noon - Dr. Joe Rountree will be at the Mental Health Clinic.

Art Show Is Planned

The Big Spring Art Association is sponsoring an area art show to be held April 16-18 at the new Big Spring Mall on F.M. 700. Judge for the annual event will be Mike Thornton, head of the Fine Arts Department at Western Texas College in Snyder.

Categories are graphics, pastels, mixed media, watercolor, acrylic, oil, crafts, sculpture, photography, youth and class or copy work, with no limit to number of entries or size. Cash prizes and purchase awards will be made. BSAA will take 20 percent commission on sales.

Entry fee is \$4 for non-members and \$3 for BSAA members per work. Entries are to be hand-delivered to the Big Spring Mall Friday, April 16 from 12-6 p.m.

Williams Joins Air Force

Tommy Williams, son of Mr. and Mrs. Thomas Williams of 1535 Watson, entered the United States Air Force Delayed Enlistment Program on March 4, according to Sergeant Lipford, the Air Force Recruiter in Abilene.

Airman Williams selected the Mechanical area for job training and will attend a six week Basic Training Course at Lackland AFB, San Antonio, beginning on November 15. Sergeant Lipford said the Air Force still has openings for qualified young men and women. His office is located at 165 Pine, Abilene.

Poisonous Range Plants Is Costing Texas Livestock Industry 100 Million

Poisonous range plants inflict losses of up to \$100 million each year to the Texas livestock industry. These losses stem from animal deaths as well as reduced animal performance and increased management costs.

Livestock industry losses from poisonous range plants have tended to increase over the past 50 years, according to one official.

Dr. Allan McGinty of Fort Stockton, a range specialist with the Texas Agricultural Extension Service, Texas A&M University System, believes that the trend over the past 100 years toward higher stocking rates and the change from open ranges to fenced pastures has had a lot to do with present poisonous range plant problems.

"High stocking rates generally have reduced range conditions and the carrying capacity of most Texas rangelands," he points out. "Use of fenced pastures has restricted animal movement and choice of forage. These two things combined have altered the diet selection of livestock so that grazing animals are more likely to consume significant quantities of poisonous plants."

McGinty says that good soil moisture conditions in late winter and early spring can bring an increase in poisonous range plants. If such conditions exist, he cautions ranchers to be on the

watch for poisonous plants and to take control measures and follow certain management practices to keep livestock losses to a minimum.

"Control measures include mechanical, biotic and chemical methods," says McGinty. Mechanical methods include cultivation in restricted areas, mowing, hand pulling, cutting, grubbing or burning.

Biotic methods include heavy grazing of limited areas by large numbers of livestock so that none are allowed to get a lethal dose, grazing of different classes of livestock, or deferring infested areas.

Various chemicals are available to control poisonous plants. This type of control is expensive but is effective in controlling large acreages of poisonous plants in a short time, notes the specialist.

Management practices that can influence the severity of livestock losses from grazing poisonous plants, according to McGinty, include the following:

1. Do not overgraze rangeland. Many poisonous plants will increase under low range conditions.
2. Be cautious when bringing in livestock from another county or state. Such stock are more likely to eat toxic plants.
3. Do not put hungry stock on ranges infested with poisonous plants since they will not be as selected in their grazing.
4. Make sure livestock have free access to salt, phosphorus and other needed elements. Deficiencies of any of these will reduce the selective

grazing behavior of livestock.

5. Provide adequate water.

6. Do not feed hay cut from areas infested with poisonous plants.

7. Minimize grazing when poisonous plants are the most dangerous. Use flexible grazing systems to avoid high risk areas.

8. Use the proper kind and class of livestock. One class of livestock is often more resistant to toxic plants than another.

9. Move stock carefully through infested areas, avoid crowding them, and make sure

they have full stomachs when trailed or penned.
 10. Be aware that special environmental conditions, such as periods of drought, extreme cold or wetness, may restrict animal movement or change diet selection.

11. Be cautious with livestock grazing areas recently burned or sprayed with a herbicide. Both practices can increase the palatability of toxic plants.

12. Be able to recognize toxic plants and watch for grazing use of such plants. Early detection can often keep losses to a minimum.

PUBLIC NOTICE

In accordance with rule 052.01.00.043(a) of the Public Utility Commission of Texas' Rules of Practice and Procedure, Continental Telephone Company of Texas announces it has petitioned the Commission for increased rates to offset costs associated with a change in accounting for inside station connection costs.

The increase is the result of an order by the Federal Communications Commission, directing telephone companies to expense certain station connection costs in their accounting procedures. The increase in rates to result from the accounting change will produce an increase of less than one half of one percent in gross intrastate revenues of the Company. The increase will not affect monthly recurring charges but will be reflected as an additional element to nonrecurring service connection charges when a premise visit is required.

In a separate action, Continental Telephone Company has petitioned the Public Utility Commission to amend its tariff by adding a \$7.50 service charge for each check returned to the Company unpaid due to insufficient funds. The new service charge is intended to offset costs of administering unpaid checks and will affect gross revenues by approximately \$35,000 annually.

The effective date of these rate changes will be based upon approval by the Public Utility Commission.

Continental Telephone of Texas

Delta Commodities wants to open a new BRANCH OFFICE in your town

In keeping with our planned program of growth, we are looking to open a new branch office in your area.

The individuals we seek need not have a background in commodity futures trading, although any such experience would be a definite plus. What we are seeking, are those individuals with a keen business sense to organize and help manage a branch office for Delta. Your agricultural background may qualify you for this position.

In return, we offer a complete training program, unlimited potential with higher than average compensation, full WATS lines, fully computerized bookkeeping service and a respected research facility.

If you fit the above description, let's talk. Call Melinda Holzhauser Schramm, (312) 620-5688, or send your resume to the below address.



330 Eisenhower Lane North
 Lombard, Illinois 60148

LONE WOLF ELECTRIC CO-OP

Salutes



Lita Jackson

Material - Work Order Clerk

Lita Jackson, one of Lone Wolf Electric Cooperative's newest employees, began her career with the system in February, 1981. Since that time she's learned quite a bit about the system, working as its material-work order clerk.

"There's an awful lot to the job," says Lita, who points out that some of her responsibilities include purchasing materials and supplies necessary for system operation, keeping tabs on warehouse materials, and processing work orders.

When asked what she likes best about working for Lone Wolf EC, Lita quickly points out that "the folks I work with here are the best folks anywhere."

Lita and her husband, Jacky, have one child, Cori, who is 11 years old. The family lives in Colorado City.

During her free time, Lita most enjoys doll collecting and dancing.



LONE WOLF ELECTRIC CO-OP

Robert Lee Hwy.
 728-5232

NOTICE TO HOMESTEAD OWNERS OVER 65

House Bill 885 was amended by Section 165 of HB 30, effective August 14, 1981. It states that a taxpayer who qualified for, but did not receive, the school district over-65 homestead exemption in 1979 has until April 1, 1982, to file a late application with the chief appraiser of the appraisal district. The taxpayer would have his tax ceiling for 1982 limited to what it would have been in 1979 had he received the homestead exemption at that time. No refunds are to be given for 1980 or 1981.

Donald Owens Enlists

Donald Owens, son of Mary Lou Owens of 827 E. H. St., recently enlisted in the Air Force in Dallas. He departed December 14, 1981, enroute to Lackland AFB, San Antonio, where he will attend a six week Basic Military Training Course.

After successful completion of basic training, Airman Owens will automatically be enrolled in the Community College of the Air Force, in which he will receive transferrable college credit.

Airman Owens, a 1981 graduate of Colorado High School, selected the Aircraft Maint., area for job training according to Sergeant Lipford, the Air Force recruiter in Abilene. Sergeant Lipford said the Air Force still has openings for qualified men and women. His office is located at 165 Pine in Abilene.

ALLIS-CHALMERS ANNOUNCES

9.9% 5YR. FINANCING.

THE "SAFE HARBOR" LEASE/OWNERSHIP PLAN



The company that gave you incredibly low cost financing in 1981 has gone a good deal one better. Our better deal gives you all the advantages of leasing, plus ownership. And a lower total cost. It's called the "Safe Harbor" lease/ownership plan, and it makes Allis-Chalmers equipment more affordable than ever.

At the end of the 5 year term, simply pay \$1.00 (One Dollar) more and the machine is yours. This deal is good for all new Allis-Chalmers farm equipment - tractors, combines and implements. The savings are tremendous, even compared to our special "low rate" retail financing plan. Just look at the figures.

| THE "SAFE HARBOR" PLAN | | 13.9% "LOW-RATE" RETAIL PLAN | |
|-------------------------------------|-------------|------------------------------|-------------|
| Equipment Value | \$50,000.00 | Equipment Value | \$50,000.00 |
| Down Payment | 10,000.00 | Down Payment | 10,000.00 |
| Amount Financed | 40,000.00 | Amount Financed | 40,000.00 |
| Annual Payments | 11,971.00 | Annual Payments | 11,623.00 |
| Total of Payments (5 yr.) | 59,855.00 | Total of Payments (5 yr.) | 58,115.00 |
| Purchase Option | Add 1.00 | Purchase Option | |
| Total Cost to Own | 59,856.00 | Total Cost to Own | 68,115.00 |
| Savings over "Low Rate" Retail Plan | 8,259.00 | (Plus Down Payment) | |

- OR, CHOOSE FROM THESE OTHER OPTIONS.
- (1) WAIVER OF FINANCE CHARGE ON NEW TRACTORS (40+ PTO HP*), NEW GLEANER COMBINES, CORN HEADS, COTTON HARVESTERS, AND IMPLEMENTS PURCHASED WITH A TRACTOR.
 - (2) 11.9% 3-YEAR A.P.R. FINANCING.
 - (3) 13.9% 5-YEAR A.P.R. FINANCING.
 - (4) CASH-BACK WORTH HUNDREDS OR THOUSANDS OF DOLLARS DEPENDING ON THE PRODUCT.

Better by Design
 ALLIS-CHALMERS
 See your Participating Allis-Chalmers Dealer for full Details.

KIN EQUIPMENT, INC.

1200 West I-20 In Roscoe

915-766-3138

The "Safe Harbor" plan is not currently available in the states of Louisiana and Wisconsin. Allis-Chalmers reserves the right to alter or withdraw programs at its option. *Manufacturer's estimated PTO Horsepower at rated engine speed. Gleaner is an Allis-Chalmers trademark.

Dear Editor,
 For years, v
 in local con
 have provided
 help so often
 determine a ch

Another gr
 Cook
 Cook
 Cook
 new
 Q
 Microv
 3 ways of c
 in one cov
 counter top
 Multiple Use Te
 Automatic Multi-
 System
 Automatic Temp
 Come in fr

APP
 1801 Hicco

Wit
 No

No
 F

105 W.
 401 East

Letter To The Editor

Dear Editor,

For years, volunteers in local communities have provided the extra help so often needed to determine a child's suc-

cess or failure, or, a senior citizen's involvement or isolation. Those volunteers may have not thought of themselves as special, but they were.

We believe those Americans who still volunteer deserve our on-going support and public recognition. I would like to share this with you.

This is a story about a boy named Andy who had everything going for him. At least, that was the way it seemed. His parents were loving, his two sisters and a brother were nice, and there were no economic problems in his home life. The problems were inside himself.

Andy was a fine basketball player, but he didn't think he was much good at anything else or that he could measure up to the rest of the family. He began looking for an escape from an illusion which to him was a hard reality.

He thought he'd found it in marijuana. He was in the eighth grade and someone told him smoking pot was harmless, and it made you feel

groovey. Those first few times, he recalled, he felt "very free and easy. I thought it was just great, just sitting around and feeling strange."

By the time Andy reached ninth grade, he was getting high on marijuana every morning, and some days he never made it to school. His parents, even though his father was a doctor, had no idea what he was engaged in, and he bragged to his fellow pot smokers how easy it was to fool the family. Lying was a part of his "Mr. Cool" act.

Soon thereafter, Andy's life began to go downhill fast. In school his marks were D's and F's. Lying, cheating and stealing became routine with him. He sat on the bench during the basketball games, too stoned to play.

He got in trouble with the law. The police began picking him up, fr-

eaked out. His parents were no longer unaware, but all attempts to reason with him, to point out what he was doing to himself made no impression. He was polluting himself with so many different kinds of drugs, he had lost touch with who or what he was.

It was his parents who acted to save him. One morning they literally dragged him out of bed and took him to the St. Petersburg, Fla., office of Straight, Inc., a drug treatment center.

There, they calmly but firmly made him sign a contract to take the treatment program. Andy refused, and his father told him either he would sign voluntarily or they'd get a court order and force him to take the program. Andy signed, figuring he'd get out of it later. He didn't. Instead, for the next 13 months, Straight direct-

ed his life.

Except for a small adult staff, Straight is run by teenagers like Andy. There are five phases of training, and Andy started at the bottom under guidance around the clock. There was no moving up to phase two until his fellow teenagers, on a higher phase, voted agreement. For Andy, it was a long, difficult climb back to reality, but every hard step of the way he was supported by his family and constantly aided by those who were going through the program too.

Andy had always promised himself that once he was released he would return to drugs. Instead, he discovered

the meaning of love and trust. He found real friendship, particularly with a girl who was five months ahead of him in the program, and when he walked out of Straight, there was no longer any need to return to the old ways. "I feel lucky, very lucky," Andy reflected. "I had parents who cared enough to save me. I'm back on the basketball team and my grades are good again. I have a great girlfriend who understands what I've been through...I have a lot more faith in myself now. I don't need my 'tough guy' act. I know the real me can make it."

And thanks to things

that really count in life, we're sure Andy will make it.

Thomas W. Pauken
Director of Action
Washington, D.C. 20525

WANT AN
OIL & GAS LEASE
ON YOUR ACREAGE?
CALL TODAY ON
OUR NICKLE.

CALL TOLL FREE
1-800-592-1446
9 a.m. to 5 p.m. weekdays

OIL & GAS ASSOCIATES
P. O. DRAWER 952
MIDLAND, TEXAS 79702

Quasar
MICROWAVE OVENS
backed by a...

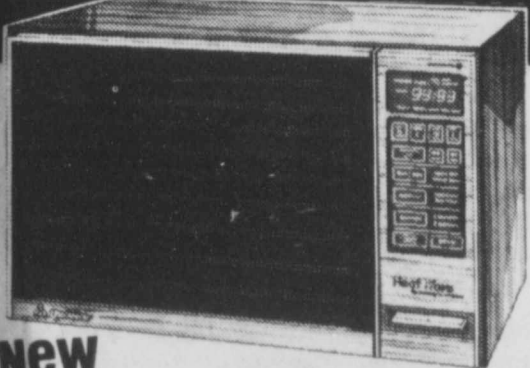
5 year
limited
warranty
on all parts and
carry-in labor

For full details of this limited warranty, see Quasar Form No. 47956
"Terms of Limited Warranty."

Another great idea from Quasar

**Cook by Microwave
Cook by Convection
Cook by Combination of both**

That's fantastic! That's Quasar!



New Quasar Heat Wave
Microwave/Convection Oven

Now you can enjoy the speed of microwave cooking and the benefits of convection cooking that evenly bakes and browns cakes, pies, breads etc. Plus a combination of both that cooks your meats, poultry, fish and even pizza quickly and deliciously.

3 ways of cooking in one convenient counter top oven

• Multiple Use Temperature Probe • Two Cookbooks included
• Automatic Multi-Stage Defrost System • Delay Start • Digital Clock/Timer
• Automatic Temperature Hold • 3-Stage Memory • 6 Variable Powers

Come in for a demonstration

Every
Quasar
Microwave Oven
carries this seal...



RAMAGE APPLIANCE & TV
Sales & Service

1801 Hickory 728-3373

Big Spring Art Association Sponsors HC Scholarships

The Big Spring Art Association is sponsoring an art scholarship to Howard College of Big

CCMP Club Meet

The Colorado City Mounted Patrol met Friday night.

A short business meeting was combined with supper.

Those attending were Mr. and Mrs. Leroy Hitchcock, Bobby and Beth of Coahoma; Mr. and Mrs. M. C. Burnett; Mr. and Mrs. Tommy Joe Smith and daughter Amanda of Snyder; Mr. and Mrs. Charles Hollaway and daughter of Snyder; Mr. and Mrs. Jessie Bunch; Mae Barr and sons, Cil and Billy and visiting were Mrs. Mae Watkins and Michael Kelly of Crawley.

The next meeting is scheduled for March 20th.

Spring. The scholarship will be available for the fall semester, 1982, and provides \$200 per the academic year.

You must be an incoming Howard College freshman who is majoring in art. The art scholarship will be awarded to the incoming freshman who shows the most promise in the field of art.

Along with a completed application form, you must submit a minimum of five pieces of your art work, in any media, to the scholarship review committee by April 16. Good pre-

sentation of art work is encouraged. Several art department scholarships at Howard College will also be given at this time. Individuals should deliver their work to Howard College Art Building, Big Spring, TX.

Notification of the Scholarship winner and first alternate will be made no later than April 30. The scholarship recipient will be expected to sign an art scholarship contract outlining the requirements and duties necessary in maintaining the scholarship. For further information, contact Mrs. Becky Smiley at (915) 267-6311, ext. 243.

c'mon home to Country Basket



Sizzling chicken-fried meat strips, golden fries, Texas toast and creamy country gravy. Come 'n get it at a special sale price!

Dairy Queen

This Monday March 15 thru Sunday March 21 only.

SALE \$1.69
Only at participating stores.

Patricia Denson



GUARANTEES RESULTS

In Record Want Ads!

3 Lines 3 Times \$3

If You Don't Sell Your Offering, Phone Patricia & She Will Run Your Ad Three More Times At No Cost To You!

This Offer Limited To Items Of A Personal Nature Only (Excludes Businesses, Real Estate & Rent Ads).

NO REFUNDS AT THIS LOW PRICE

Colorado City Record

156 E. 2nd -- P.O. Box 92

728-3413 Or 728-3414

NOW ACCOUNTS

With No Strings Attached
No Charge Checking

PAYS YOU 5 1/4 %

No Minimum Balance

First 150 Checks Free!

COLORADO CITY SAVINGS & LOAN

Member FSLIC
Colorado City
Sweetwater

105 W. 2nd
401 East Broadway

728-2671
235-1748

00.0043(a)
of Texas'
ontinental
ouces it
increased
a change
onnection

der by the
on, direct-
se certain
counting
to result
duce an
percent in
pany. The
recurring
additional
onnection
ed.
Telephone
ility
adding a
returned
sufficient
ended to
id checks
approx-

changes
he Public

R.
L.
PLAN

rm, simply
re and the
al is good for
m equipment
plements.
us, even
low rate"
look at

RETAIL PLAN
\$50,000.00
10,000.00
40,000.00
11,623.00
58,115.00
68,115.00

HP'),
AND
FINANCING.
REDS OR

NC.
766-3138

discussin.
tion.

Classified Advertising

Index of Classifications

Classified Rates

| NO. OF LINES | ONE TIME | TWO TIMES | THREE TIMES | FOURTH TIME | FIVE TIMES |
|--------------|----------|-----------|-------------|-------------|------------|
| 3 | 2.70 | 3.56 | 4.54 | FREE | 7.02 |
| 4 | 3.60 | 4.75 | 6.05 | FREE | 9.36 |
| 5 | 4.50 | 5.94 | 7.56 | FREE | 11.70 |
| 6 | 5.40 | 7.13 | 9.07 | FREE | 14.04 |
| 7 | 6.30 | 8.32 | 10.58 | FREE | 16.38 |
| 8 | 7.20 | 9.50 | 12.10 | FREE | 18.72 |
| 9 | 8.10 | 10.69 | 13.61 | FREE | 21.06 |

Business Hours:

8:30 a.m. to 5 p.m.

Monday thru Friday
Closed Saturday and Sunday

Phone: 728-3413

Deadlines: Tuesday Noon Friday Noon

ANNOUNCEMENTS

- A-1 Public Notices
- A-2 Business Notices
- A-3 Card of Thanks
- A-3 In Memoriam
- A-7 Lost & Found
- A-9 Personals
- A-11 Fraternal Notices
- A-13 Business Opportunities
- A-15 Instructions
- A-17 Services & Repairs

RENTALS

- C-1 Homes for Rent
- C-3 Apartments
- C-5 Rooms for Rent
- C-7 Wanted to Rent
- C-9 Business Property
- C-11 Warehouse Space

REAL ESTATE

- E-1 Homes for Sale
- E-3 Real Estate Wanted
- E-5 Farms & Ranches
- E-7 Lots & Acreage
- E-9 Business Property
- E-11 Out of Town Property

F-11 Feed & Seed

- F-13 Farm Equipment
- F-15 Building
- F-17 Tools & Machinery
- F-19 Boats & Motors
- F-21 Wanted to Buy
- F-23 Equipment Rentals

TRANSPORTATION

- G-1 Motorcycles
- G-3 Auto Repair
- G-5 Campers
- G-7 Trucks - Trailers
- G-9 Autos for Sale
- G-11 Auto Financing

MERCHANDISE

- F-1 Miscellaneous for Sale
- F-3 Garage Sales
- F-5 Antiques
- F-7 Pets & Supplies
- F-9 Livestock

MOBILE HOMES

- D-1 Mobile Homes for Rent
- D-3 Mobile Homes Sites for rent
- D-5 Mobile Homes for Sale

EMPLOYMENT

- B-1 Male-Females Help Wanted
- B-3 Jobs Wanted

A-1 Public Notices

NOTICE OF TRUSTEE ELECTION (AVISO DE ELECCION DE REGENTES)

The LORRAINE Independent School District Board of Trustees hereby gives notice of an election to be held on APRIL 3, 1982, for the purpose of electing 2 trustees for a full 3 year term.

(Por la presente la junta de regentes del distrito escolar independiente da aviso que se celebrara a cabo una eleccion el dia 3 de Abril de 1982 con el proposito de elegir dos (2) regentes por el termino de tres (3) años.

ABSENTEE VOTING by personal appearance will begin on 15, March, 1982, and continue through 30, March, 1982, from 7:30 a.m., to 3:30 p.m., on each day which is not a Saturday, Sunday or an official state holiday. (VOTACION POR AUSENCIA en persona comencara el 15 de Marzo, de 1982 y continuara hasta el 30 de Marzo de 1982 desde las 7:30 a.m., hasta las 3:30 p.m., en todos los dias que no sean sabado, domingo, o dia oficial de vacaciones estatales.)

Absentee voting in person shall be conducted at Principal's office Loraine School. Applications for absentee ballots by mail should be mailed to Mike Hartman, Box 457, Loraine, Texas 79532. (Votando por ausencia personal va ser conducido acerca de la oficina de el Principal de la escuela de Loraine. Solicitudes para una boleta de ausencia por correo deben dar vuelta por correo al Principal Mike Hartman, Box 457, Loraine, Texas 79532.)

The POLLING PLACE designated below will be open from 7:00 a.m., to 7:00 p.m. on the day of the election. (Los sitios de votacion indicados abajo se abriran desde las 7:00 a.m. to 7:00 p.m. el dia de la eleccion.)

Pet. No. (Num. de precincto) Lions Club Bldg., Location (Colocacion) Loraine, Texas.

A-9 Personals

WANTED: Deer and turkey season lease, large enough to accommodate 10 to 20 hunters. Contact Don, 806-747-4417.

Give away to the right family in the country...a beautiful black and amber German Shepherd, approximately 4 years old. A wonderful watch dog. Phone 728-5641 after 5:30 p.m.

Will pay to value - cash want to buy good used piano (no copyrights please). Also would like to buy good used typewriter. Phone 728-2371.

American Breeders Service A.I. training school in Sweetwater March 15-18. Phone 728-2855.

A-17 Services & Repairs

HBO

CONTRACTORS NOTICE OF TEXAS HIGHWAY MAINTENANCE WORK
Sealed proposals for a Picnic Areas and Litter Barrels Maintenance Contract for various locations in Mitchell County, Texas, will be received at the State Department of Highways and Public Transportation, P.O. Box 150, Abilene, Texas, 79604 (U.S. 83-84 By-Pass), until 11:00 a.m., Tuesday, March 23, 1982, and then publicly opened and read.
The specifications and proposals are available at the District Maintenance Office, Abilene, Texas, and the Mitchell County Maintenance Supervisor's Office, Colorado City, Texas. Usual rights reserved.

Mike's Tree Trimming Service
Trees Cut & Removed
Yard Work
Phone Lane Palmer's Shop & Ask For A Free Estimate, 728-8618

Carpet Dull & Dirty?
Phone
Speedy Carpet Cleaning
Also acoustical ceilings, blown taping and bedding textoning. Reasonable rates. Phone 728-3078.

RENT IT!
Rent Until You Own
Televisions, Furniture
And Appliances
Pete Myers Rentals
257 E. 2nd 728-5286

Color and black and white TV repair. All brands. Used TV's.
John Sanders
620 Chestnut 728-3863
Service call-\$12.50

Will do furniture upholstery. Free estimates, free pickup and delivery. Phone 728-2158.

Will do water well drilling, casings, windmill work and pump. Phone 728-3083.

Storm Windows & Doors, vinyl siding, insulation, fencing (chain link and wood). 100 percent financing.
Ideal Exteriors
1719 Vine 728-2866

Cut 'n' Hut
Barber Shop
Men's Hairstyling
1546 Westpoint, E. Hwy. 80
Tues.-Sat. 8 a.m.-6 p.m.
728-3351
Doyle Mitchell
Barber & Stylist

FRANCO CONCRETE WORK
Patios, Floors,
Sidewalks, Driveways,
Exposed Aggregate.
728-5880 443 W. 17th
Colorado City, Texas
79512

BOOT & SHOE REPAIR AT
Lonehorn Leather
Works
E. Interstate 20
West of Wood's Boots
Monday Thru Friday
8:30-12 & 1:30-5:30
Saturday 8:30-Noon
728-5067

West Texas Vacuum Cleaner Shop
We have a good supply of vacuum cleaners -- Kirby's, Hoover's & Eureka's.
New, used & rebuilt
Repair on all makes
Come by 105 E. 2nd, Big Spring, or phone 267-6530.

Mitchell County Hospital District, D.B.A. Root Memorial and Root Valley Fair Lodge is an equal opportunity employment health care facility. Employment offered to qualified persons without regard to race, color, sex, national origin, or handicapped.

Complete Welding Supplies Medical Oxygen Tools Safety Equipment
Gayle McDonald
Welding Supply
1110 College Ave.
573-5329

Western Mattress Co. Bi-weekly sales and service. Phone 737-2333 and leave name.

I will do concrete work, sidewalks, patios, floors and cellars. Phone 728-5120, Joe's Concrete.

Expert watch and jewelry repair now available at Kirschbaum's.
Odd jobs, light trash hauling, attic, garages cleaned, etc., Mike's Handy Man Service. 728-8618.

Lane Palmer Painting Service. Free estimates, phone 728-8618.

ATTENTION
For custom made draperies by Wanda Sikes, please phone 728-3911 for appointment.

Complete fireplace and chimney repair. Chimney sweep service. Brick and stone work. Free inspection and estimates. Phone Lane Palmer, 728-8618.

Roofer needs work. 25 years experience, shingles or hot, also do carpenter work. Phone anytime, 728-5341.

PAINTING and minor repairs. 25 years experience, reasonable prices, references. Free estimates. Phone 728-3105.

Tree trimming. Shrubs pruned, yard work, Phone 728-8618 for estimate.

Building & Remodeling
18 years Experience
Electrical & Plumbing
No job too small or too large
Add ons, conversions, prompt courteous service.
Phone 728-8402

PLUMBING SPECIALISTS
Johnny Tammen
1218 Hickory
Colorado City
Plumbing & Refrigeration
We do plumbing, refrigeration, heating and air conditioning work. We also have electric sewer service, water heaters, repairs & installations. Free Estimates.
Phone 728-5511

B-1 Male-Females Help Wanted
AVON CALLING
Never had a job? Develop skills while earning good \$\$\$, sell Avon, phone Doris Hale, collect, 915-573-8625.

NURSING or similar Medical background required to qualify as our examiner. Complete exams for many insurance companies. Start part time. Training provided. We are a national organization, and need an examiner for this area immediately. For information and application write: Lifedata Medical Services, Inc., 7933 Clayton, Rd., St. Louis, Mo. 63117.

\$30 per hundred paid for processing mail from home. Experience unnecessary. Information, send self-addressed, stamped envelope. TYLER, Box 707, Livingston, NJ 07039.

WANTED: Part-time clerical help. Mornings only. Typing, filing and bookkeeping experience required. Phone 728-3408.

Needed immediately 3-11 LVN. Apply in person at Kristi Lee Manor, 1941 Chestnut, 728-5247. Starting salary \$45 per shift, \$1,000,000 hospitalization policy, life insurance, vacation pay, holidays, savings bond plan and a meal. Travel expense if qualified.

Help Wanted. Apply in person at Bojo's.

Farm hand wanted shredding stalks, etc., temporary. Phone 728-5632.

Truck Stop Manager - Experience necessary. Send resume to visa Energy Incorporated 32413 I-45 North, Conroe, Texas or phone 713-273-1815.

Experienced mechanic to assist in rebuilding and installation of Toyota engine, reasonable. Phone 728-2888.

Taking applications for a qualified water and sewer man. Phone 737-2222, 8-5 Monday. Friday for more information.

B-3 Jobs Wanted

Card Of Thanks
Words cannot express the deep gratitude we feel toward all of our friends who helped in our time of need. To all who called or sent cards and flowers, and to the ladies of the First Baptist Church of Loraine for all the food. To the wonderful staff of Root Memorial Hospital who gave us a feeling of loving care and understanding. And to Rev. David McNary who said beautifully all the things we all felt about our beloved Mother and Grandmother. May God bless all of you.
The Family of Fannie Mitchell
Geneva & Ira Mitchell & Family
Genetta & Andrew Mitchell & Family
Ruby Cannon & Family
Elnora & Grady Mitchell & Family

Card Of Thanks
I would like to thank everyone who came and visited me during my stay in the hospital. Thanks also to the Church of Christ for the lovely flowers.
Manuel Chavez

Antique Auction

Sale Time 6 p.m. Saturday, March 13, 1982
C-City Auction House
1160 West Point (Old Hwy 80) Colorado City, Tx
C-City Auction proudly presents for your pleasure another super load of antiques, collectibles and lots of decorator type items. Read the partial listing carefully and make plans to attend this big auction. Inspection time 2 p.m., sale day. In the event of bad weather, auction MAY be rescheduled.
Partial Listing: Super Oak inlay stacking bookcase (6 sections, each with leaded glass & individual locking doors); Brass & iron bed; striped Pine blanket box; Round Pine kitchen table; Carved Oak monk's bench; Walnut linen press; Acid etched glass front gypsy chest; Highly carved Oak halltree; Oak tall boy chest; Mahogany Queen Anne display cabinet; Carved Oak hanging hutch; Kitchen cabinet; Mahogany leather top draw-leaf table; Oak bow front chest; Old pump organ; Queen Anne writing desk; Oak drop front side by side; Oak morris chair; Carver chairs; Highly carved set of Edwardian chairs; Mahogany dressing table; Jacobean sideboard; Carved Walnut wardrobe; Oak knee hole desk; Brass bound trunk; Dome top trunk; Queen Anne mirror back side board; Oak piano stool; Small Queen Anne occasional table; Oak police baton; plus many draw leaf tables, sets of chairs, sideboards, marble top washstands, wardrobes, dressers, gate leg tables, chests, occasional tables, book cases, old crocks, enamel bread bins, copper coal bucket, bronze companion stand, blue, green & pink depression glass, lots of super framed mirrors in Mahogany, Oak, etc., old scales, many clocks, plus much much more. Over 250 items. Lots of decorator items will be sold. Very unusual load of antiques. Come early. Refreshments available.
Grady W. Morris, Auctioneer - TXS-012-0341
For more info, phone 915-728-8292 or 728-3170
Consigned from Bris'ol Antiques Ltd.

WELDING: Will do portable welding. Many years of experience. Phone 728-3680, Lee Crabtree.

I will babysit in my home and clean house. Phone 728-5793.

WANTED: Single man or middle age couple to stay in home at night with elderly man. Phone 728-2367 after 6 p.m.

C-1 Homes for Rent
Small furnished lake cabin for rent year round. Retired couple to fix up and repair for part of rent. Phone 915-798-4187.

FOR LEASE: 2 bedroom home, unfurnished. Deposit required. Available around March 15. Boyd Real Estate & Building, 728-5338.

C-3 Apartments
One bedroom apartment for rent. Phone 728-3323.

Furnished apartments for rent. For more information, phone 728-3625.

D-3 Mobile Homes Sites For Rent

Trailer space at Hilltop Trailer Park. Phone 728-3577 or 728-3247.

Mobile Home lots for rent for total electric or other. Phone 728-2169.

Trailer space for lease for \$55 only. For more information, phone 728-3625.

FOR SALE: Attractive 1,350 sq. ft., two bedroom, one bath, Spanish-style home, central air and heat, fenced back yard, good location, \$32,000. 1435 Chestnut. Phone 728-8422 or come by after 6 p.m., or phone 728-3430 before 6.

FOR SALE: Newly remodeled 2 bedroom house on 5 acres. Carport, cellar, 2 out buildings, orchard, two wells with good water. Phone 728-3408, 728-8442 or 728-8268.

We have two new three bedroom home. All contain bath and 3/4, total electric, refrigerated air, carpeted, deeded lot at Lake Colorado City. Owner financing available. Phone 728-5661 or 915-694-1902.

There are many ways to finance a home today. Phone or come by and let us try to help you arrange financing to best meet your needs.

Must Sell-3 bedroom, 1 bath brick home, fireplace, storm windows. Price reduction possible.

Corner lot-large three bedroom, 2 bath home, separate dining, fenced yard, fruit trees, separate rental in back, low 60's.

Starter home-two bedroom, 1 bath, recently remodeled, storm windows. One or two lots available, mid 20's.

Quality comfort-two bedroom, 1 bath home, den, built-ins, central heat, air, fenced yard, low 30's.

Home and business-large three bedroom, den, fireplace, greenhouse, currently beauty shop, equipment available, mid 50's.
Boyd Real Estate & Building
270 Walnut
Office.....728-5338
Home.....728-2223

See Classified Ads Page 12

Real Estate Putman
JERRY & WINNIE PUTMAN
PHONE 728-3338
FARMS
240 acres, 1/4 minerals, good farm, \$525 per acre.
Farm Approx. 80 Acres. 15 Miles SW Of Westbrook. \$545 Per Acre.

LAKE PROPERTY
LAKE PROPERTY: 3 B/R, 2 Bath Double Wide Mobile Home. \$27,500.
Lake Colorado City Property.

RESIDENTIAL
3 bedroom, 1 bath, with about 1 1/2 acres on southside. \$25,000. Possibly owner finance.
Lovely 3 bedroom, 2 bath brick on about 2 acres. Built-in double oven and range, dishwasher, has a large wood burning fireplace garden, orchard, small great house plus a 3 room guest house all for \$75,000.

Large older home in Loraine. 3 bedroom, 1 bath, almost 2 full lots, \$12,000.
Grocery, station & garage with trailer hookups plus a 2 bedroom, 1 bath house. All for \$20,000.
14 x 73 mobile home, 2 bedroom, 2 bath, located in Ira. \$12,234.00.

2 bedroom, 1 bath, 1 car attached garage, fenced backyard, good neighborhood, 926 Marshall, \$17,500.
3 bedroom 1 1/2 bath, nice size rooms on large lot. \$26,000.

Lovely 3 bedroom, 2 bath, with formal living room and den on 9 acres, large metal shop with lots \$60,000.
BUSINESSES
Large building on large lot. 250 ft. highway frontage with small storage house. Excellent location, \$25,000.
Building equipment and inventory for sale. This is a going business and has a very good net income. All of this goes for only \$60,000.

We now have two businesses in Colorado City for sale. For more information give us a call. We also have a commercial building for sale.
Jerry & Winnie Putman
Phone 728-3338 640 E. 11th

Just fill in your Classified Ad and mail to:
Colorado City Record,
Box 92, Colorado City,
Texas 79512
Ad To Read

Name _____
Address _____
City _____
Zip _____

Continued From 1

FOR SALE: Older 3 1/2 bath house. Approx 1685 sq ft with 2 ex Loraine. Phone 728-8-5 or 728-5291 after 5

FOR SALE: 3 bedroom house on 2 corner lot 728-3791 to see house

Large 3 bedroom, 2 on wooded lot, basement, portable open floor plan, Chestnut, 728-2559 a Sundays.

House For Sale: 1936 bedroom, 1 bath, needed, fenced yard, 8784 or 728-2042.

FOR SALE: 3 bedroom 1 bath on 1 acre 3 mi city. Phone 728-5442.

New listing. For sale 2 1/2 year old brick 4 acres, 2 miles out, 4 bedrooms, sunken fireplace, formal dining utility room, 2 car garage in back yard. Pe and pine trees. Interest only! For appointment 728-3451 or 728-8242

E-5 Farms & R

FOR SALE: and ranches, and residential Phone R. B. Real Estate 728 Henry Bilberry 3227 or Rita Lat

Qua Fant

NEW! SoundStak Audio System

At last. Great sound high-performance and no complicated + 30-watt amplifier - watts RMS per channel standing sound reproduction 0.00% total harmonic distortion (20-20,000 Hz @ 8 Ohms) Metal-capsule condenser microphone with clear recorded sound with new wide-range

**Dolby Labs

APP

1801 Hic

F 5 C W II

NO MIN Retiree also op balance have to **IF YOU** 70 1/2 ca program **GET TA** the info individ workin couple, **HOMES** retiree Saving certifi retiree certifi

WE'RE H SW BIG RO RO

Continued From Page 11

FOR SALE: Older 3 bedroom, 2 bath house. Approximately 1685 sq ft with 2 extra lots in Loraine. Phone 728-5246 from 8-5 or 728-5291 after 5 p.m.

FOR SALE: 3 bedroom, 1 bath house on 2 corner lots. Phone 728-3791 to see house.

Large 3 bedroom, 2 bath house on wooded lot, basement, comfortable open floor plan, 1105 Chestnut, 728-2559 after 6 and Sundays.

House For Sale: 1936 Locust, 2 bedroom, 1 bath, no repairs needed, fenced yard. Phone 728-8784 or 728-2042.

FOR SALE: 3 bedroom house, 1 bath on 1 acre 3 miles west of city. Phone 728-5442.

New listing. For sale by owner. 2 1/2 year old brick home on 3 acres, 2 miles out. 4 bedrooms, 2 bathrooms, sunken den with fireplace, formal dining room, utility room, 2 car garage, fenced in back yard. Pecan, peach and pine trees. Interested people only! For appointment, phone 728-3451 or 728-8242.

E-5 Farms & Ranches

FOR SALE: Farms and ranches, houses and residential lots. Phone R. B. Baker Real Estate 728-5052, Henry Bilberry, 728-3227 or Rita Latimer.

E-9 Business Property

For Rent for commercial use. Small office, gift shop, craft shop or similar. Phone 728-8618.



We sell New Home sewing machines. Repair all makes. Phone Stevens, at Free's Friendly Shop.

FOR SALE: 250 gal. propane tank, two years old. \$400. Phone 728-8677 after 6 p.m.

SSSDEALERSHIP AVAILABLE! \$3,000 net or more per sale. New concept in steel homes. Half the cost of conventional construction. Phone 512-349-4084.

FOR SALE: Complete household of furniture, 3 pc. bedroom set, hide-a-bed, 2 Barkalounger chairs; Quasar TV, 80 model console TV, 30 inch almond gas cookstove, 6 pc. dinette set, Westinghouse refrigerator. Friday and Saturday, March 12 and 13th. Come by and see at 129 E. Fairmont, Colorado City.

FOR SALE: \$700 love seat less than 1 year old, excellent condition for \$250. Phone 728-3054 after 5 p.m.

FOR SALE: Gold carpet with foam pad. Approximately 14'x18'. Good condition. Phone 728-5632.

Jersey milk cows, \$675; V-B Moline tractor with planter and cultivator, \$700; a good number of fullblood game chickens; 4x4x8 chicken pens; quite a few beehives, \$20 each. Glyn Morris, 306 School Ave., Loraine, Tex.

Firewood, oak or mesquite. Delivered and stacked. Sky Akers, 893-5865.

FOR SALE: Electronic cash register, \$150. Can be seen at Gas & Grub.

FOR SALE: 2 aquariums, 10 gallon and a 20 gallon with stand. Phone 728-2362.

F-3 Garage Sales

FIVE FAMILY CARPORT SALE
612 Chestnut
Fri-Sat. March 12-13 9-7
maternity clothes, children's, men's and women's clothes

GARAGE SALE
865 Marshall
Saturday, March 13
10-4

GARAGE SALE
643 Walnut
Friday 9-1 p.m.
Weather Permitting
clothing & misc. items

YARD SALE
628 Locust
Sat. March 13 9-5
clothes, dish washer, etc.

YARD SALE
742 Locust
Thurs. & Fri. 9-5
clothes, dishes, other items

Don't hold a fire sale in your home! Have your chimney cleaned by Lane, 728-8618.

F-19 Boats & Motors

FOR SALE: 16 ft. boat and trailer. 45 h.p. motor. Phone 728-5398.

F-21 Wanted to Buy

Let us clean out your attic or garage. We buy all kinds of junk. Duke Used Furniture, 504 W. 3rd, Big Spring, 267-5021.

TRANSPORTATION

G-7 Trucks-Trailers

FOR SALE: 1980 Dodge pickup. 3/4 ton-4 wheel drive, low mileage, power and air conditioner, cruise-tilt steering wheel, loaded. Phone 728-3302 or 644-2551.

FOR SALE: 1968 Ford Ranger Pickup with camper cover and CB radio. Excellent condition, \$1,800. Phone 728-3643.

G-9 Autos for Sale

FOR SALE: 1981 Buick Riviera, diesel, loaded, beige with beige interior. 20,000 miles, \$13,000. Phone 728-2197 or 728-3709 after 5 p.m.



Chitsey, Church & Wallace Win Big

Amy Chitsey, daughter of Mr. and Mrs. Doug Chitsey; Crystal Church, daughter of Mr. and Mrs. Jerry Church and Glenda Wallace, daughter of Mrs. Linda Wallace, competed Saturday in the Seventh Annual NBTA Twirling Festival in Seminole and came away winners. Placing first in Beginner T-Strut, third in Beginner Solo and fourth in Modeling was Amy Chitsey. Crystal Church placed fourth in Beginner Solo. Glenda Wallace placed second in Beginner Solo, second in Beginner Pageant and fourth in Beginner T-Strut. Amy, Crystal and Glenda also received first place awards in divisionals. All three girls are twirling students of Miss Cheryl Hines of Colorado City. Their next competition will be the NBTA sanctioned Southwest Regional Championships in Lubbock on March 20th.

Mitchell County Oil Patch Report

Ellpen, Inc., will drill 2 Burchard, Preston C., et al, in Coleman Ranch, 2900 rt, 1650 fsl, 3630 fcl sec 4, blk 26, H&TC; 14 mi NW-Colorado City, opr's elev., 2235 gl.; abandoned location.

McCann Corp., will drill 1 Black Ranch 9000 rt, 1980 fml, 660 fcl sec 41, blk 29, TIS, T&P, 10 mi SW-Westbrook, opr's elev., 2153 gl.; contro-Partee No. 2; spud, 13-3-8-120-125 sx; 8 5-8-1923-200 sx; 4 1/2-6176-225 sx 2 3-8-6030, perf (Wolfcamp) 5640-5996 (OA); natural, Wolfcamp discovery; no suggested field name; td 8300 (ELBG); pbd 6176, cmp ip (Wolfcamp) perfs 5640-5996 p 34 bopd plus 6 bw. Pot based on 12 hr. test, gor 255 gty 36. wolfcamp 5632, Mississippian 8075, Woodford 8199, Sylvan 8250, Ellenburger 8266 grnl.

T&M Oil Co., will drill 3 Cornwell in Sharon Ridge, 1700, 1700 rt, 330 fml, 330 fcl, sec 22, blk 27, T&P, 8 mi NW-Colorado City; abandoned location.

Barbee, Bill Jr., will drill 1-6 Ellwood, 7400 rt, 660 fml, 1980 fswl sec 6, blk 15, spr, 23 mi S-Colorado City, 665-ac lse; (Formerly Crossland Petroleum Corp., abandoned location under api 42-335-32156); contr-Wes Tex; spud, 8 5-8-502-300 sx; td 3389, pbd 2950, p-Sidetrack hole.

Barbee, Bill J., will drill 1-30 Ellwood 7400 rt, 660 fsl, 467 fcl sec 30, J. P. Smith, 20 mi S-Colorado City, 665-ac lse. Bonanza Pet., Inc., will drill 1 Brennan "1" 8300 rt, 660 fml, 1310 fcl sec 1 blk 29, T1-N, blk 12, H&TC, 20 mi SE-Colorado City, 560-ac lse; opr's elev., 2265 gl. spud, td 7290, "Tight."

Cibola Oil & Gas Corp. will drill 1 Wood, J. M. 3700 rt, 467 fsl, 2173 fcl sec 17, blk 26, T&P, 3 mi N-Colorado City, 160-ac lse; opr's elev., 2130 gl. contr-Lawrence No. 1; spud, csg (NR); td, 3728 D&A.

Carlton Drig. Co., will drill 20-1 Bomar 7500 rt, 1980 fsl, 660 fml, sec 20, T&P, 9 mi NW-Westbrook, 320-ac lse., contr-D&B; spud, 8 5-8-512-450 sx; td 7888, st td 7765, pbd 3270; wocu.

Cantrell Corp., will drill 1 Winn 750 rt, 1980 fml, 1980 fcl sec 9, blk 13, H&TC, 13 mi S-Colorado City, 640-ac lse; opr's elev., 2135 gl.

New Tax Laws Set For Mobile Homes

State Comptroller Bob Bullock has good news for mobile home dwellers—their homes are no longer considered motor vehicles under Texas tax law. "Mobile homes have been considered motor vehicles and subject to registration and the four percent motor vehicle sales tax since 1941, Bullock said. "The last legislature changed that law and beginning March 1, we will no longer collect motor vehicle taxes on these homes." Bullock said people who buy a mobile home will obtain a "document of title" from the Texas Department of Labor and Standards instead of registering it as a motor vehicle and obtaining a "certificate of title" from the Department of Highways and Public Transportation. The new law basically defines a mobile home as a structure providing at least 320 square feet of living area. "This means travel trailers will still be taxed as motor vehicles and portable buildings will still be taxed under the sales tax law," Bullock said. "There will still be a tax on mobile homes which will be collected by the manufacturer," Bullock explained. "During the first year the new law is in effect, the rate will be 4.225 percent of the manufacturer's selling price. After September 1, 1983, the rate drops to 3.25 percent." "And, there's a use tax provision in the new law," he continued. "This means that anyone who buys a mobile home from an out-of-state dealer is responsible for paying the tax—which will be administered by the Comptroller's Office." Under the new law, mobile homes will no longer need to have current motor vehicle registration papers when they are sold, but they will need the "document of title" from the Department of Labor and Standards.

Quasar Fantastic Sale

NEW! Quasar SoundStak™ 7855 Audio System—just \$000

At last. Great sound made simple. The full, rich sound you expect from a high-performance system—but no need to match separate components, and no complicated connections. Just plug in and play!

- 30-watt amplifier—delivers 30 watts RMS per channel for outstanding sound reproduction. Ultra-low 0.05% total harmonic distortion (20-20,000 Hz @ 8 ohms)
- Metal-capable cassette deck with Dolby® Noise Reduction for clear, clear recorded sound, especially with new wide-range metal tapes.
- Digital FM tuner—LED digital display makes accurate tuning faster and easier than with conventional dial and pointer.
- 10" bass, 5" midrange, 1 1/2" treble drivers, reflex "tuned port" for enhanced bass response.
- "High-rise" stack rack with glass door front—protects records and tapes. Walnut-grain finish.

RAMAGE APPLIANCE & TV Sales & Service
1801 Hickory 728-3373

FREE 5 1/4% CHECKING WITH IRA

NO MINIMUM BALANCE 5 1/4% CHECKING with your Individual Retirement Account. If you have, or open, an IRA account you can also open a checking account that earns you 5 1/4% on your daily balance. You pay only for your personalized checks and you do not have to maintain a minimum balance.

IF YOU'RE WORKING, YOU'RE ELIGIBLE FOR IRA. Now, anyone under 70 1/2 can start an IRA program even if enrolled in another retirement program... and that's in addition to social security.

GET TAX RELIEF TODAY. Income tax on the money put into IRA, and the interest it earns, is tax deferred until withdrawn at retirement. Individually, you can put as much as \$2000, annually into IRA. A married working couple can set aside up to \$4000, annually, and a married couple, with one spouse working, can put \$2250, into IRA annually.

HOMESTATE SAVINGS IRA SPECIALISTS will tailor an IRA retirement program to fit your needs. With the help of a Homestate Savings counselor, you may choose one of our many high yield certificates for your IRA. Or you may prefer our new 18 month retirement certificate which will allow you to add to your retirement certificate WITHOUT extending the term.

HOMESTATE SAVINGS

WE'RE HERE TO HELP WITH OFFICES IN:
SWEETWATER: 208 Elm/726-6364 ABILENE: 1209 East South 11th/673-8339
BIG SPRING: Coronado Plaza/763-0251 COLORADO CITY: 2205 Hickory/728-2667
ROTAN: 302 West Snyder/735-2273 HAMLIN: 443 So. Central Avenue/576-2631
ROSCOE: Broadway and Main/766-3996 SNYDER: 3405 College Ave./573-4943

STEEL BUILDING REDUCTION SALE:

Star Mfg. Is Reducing Inventory! Almost Any Size & Load Available At Significant Reductions.

Building Erected On 4" Concrete Slab With One Over-Head Door & One 3' Swing Door.

30x50x14 \$19,882.
40x72x14 \$30,440.
50x100x16 \$49,203

Prices Good Through March 12.
For More Information Phone: 915-573-6381

WADLEIGH CONSTRUCTION, INC.
84 Bypass At College Snyder, Texas 79549

Buy a new Case 1190, 1290, 1390, 1490, 1690 (43" to 90" pto hp - 32 to 67 kW) ... get a check from Case for **\$2000**

Buy a new Case 2090 or 2290 (108 129 pto hp - 80 96 kW) ... get a check from Case for **\$5000**

Buy a new Case 2390 or 2590 (160 180 pto hp - 119 134 kW) ... get a check from Case for **\$6000**

Buy a new Case 4490, 4690, 4890 (210 261 300 eng. hp - 156 194 223 kW) ... get a check from Case for **\$7000**

...or choose this optional combination

Split rate financing ... **10%/15%** A.P.R. finance charges for the first 11 months

... plus a check from Case

| | | | |
|-------------------------------|-------------------------|-------------------------|---------------------------------|
| \$1000 for 1190, 1290 or 1690 | \$2500 for 2090 or 2290 | \$3000 for 2390 or 2590 | \$3500 for 4490 or 4690 or 4890 |
|-------------------------------|-------------------------|-------------------------|---------------------------------|

Important: If you buy any new Case farm tractor listed in this ad between March 1 and April 30, 1982... Case will send you a check for the dollar amount indicated in the offer you choose. The amount of your check may be applied toward your down payment. NOTE: Government Agencies Departments do not qualify for rebates.

Official test **Mrs. est

Offers valid March 1 thru April 30, 1982.

plus...special factory selling allowances to make your trade worth more than ever before

KIN EQUIPMENT, INC.
1200 West I-20 In Roscoe 915-766-3138

MITCHELL COUNTY TELEVISION SCHEDULE

Christian Broadcasting Network Is On Ch. 11 & Has A Varied Schedule Format.

Cable Reception Numbers Are Listed At Top: For Days Of March 11, 12, 13 & 14

THURSDAY

| PM | KMID CH.2 Midland | KTAB CH.3 Abilene | KERA CH.4 Dallas | KTVT CH.5 Fort Worth | KWAB CH.7 Big Spring | WFAA CH.8 Dallas | KRBC CH.9 Abilene | KTXS CH.12 Abilene | WTBS CH.13 Atlanta |
|-------|---------------------------------|------------------------|--------------------------------|--------------------------------------|-----------------------------|-----------------------------|---------------------------------|-----------------------------|--|
| 6:00 | News | News | MacNeil-Lehrer Report News Day | Happy Days Again Laverne and Shirley | News | News | News | Andy Griffith M*A*S*H | Carol Burnett and Friends NBA Basketball |
| 6:30 | NBC News | You Asked For It | | | You Asked For It | P.M. Magazine | Tic Tac Dough | | |
| 7:00 | Fame | Magnum, P.I. | Neuron Suite | Hawaii Five-O | Police Squad! Bosom Buddies | Police Squad! Bosom Buddies | Fame | Police Squad! Bosom Buddies | Utah at Atlanta |
| 7:30 | | | | | | | | | |
| 8:00 | Diff'rent Strokes Gimme A Break | Knots Landing | Movie: 'Becket' | Movie: 'Gossip Columnist' | Barney Miller Taxi | Barney Miller Taxi | Diff'rent Strokes Gimme A Break | Barney Miller Taxi | |
| 8:30 | | | | | | | | | TBS Evening |
| 9:00 | Hill Street Blues | Nurse | | | 20/20 | 20/20 | Hill Street Blues | 20/20 | News |
| 9:30 | | | | | | | | | |
| 10:00 | News | News | | Benny Hill Show Odd Couple | News | News | News | News | All in the Family Movie: 'That Man in' |
| 10:30 | Tonight Show | NCAA Basketball | | | Nightline | Nightline | Tonight Show | M*A*S*H | |
| 11:00 | | First Round Tournament | | Bob Newhart | Vega\$ | Movie: 'Road to Utopia' | | Vega\$ | Istanbul' |
| 11:30 | Entertainment Tonight | | Doctor in the House | Movie: 'The Horsemen' | | | Late Night with David | | |
| 12:00 | News | | Human Development | | | | Letterman | Sign Off | |
| 12:30 | | | | | | | | | |

FRIDAY

| PM | KMID CH.2 Midland | KTAB CH.3 Abilene | KERA CH.4 Dallas | KTVT CH.5 Fort Worth | KWAB CH.7 Big Spring | WFAA CH.8 Dallas | KRBC CH.9 Abilene | KTXS CH.12 Abilene | WTBS CH.13 Atlanta |
|-------|---|------------------------|--|--------------------------------------|----------------------|---------------------------------------|---|-----------------------|--|
| 6:00 | News | News | MacNeil-Lehrer Report News Day | Happy Days Again Laverne and Shirley | News | News | News | Andy Griffith M*A*S*H | Winners Sanford and Son |
| 6:30 | NBC News | You Asked For It | | | You Asked For It | P.M. Magazine | Tic Tac Dough | | |
| 7:00 | NBC Magazine | Dukes of Hazzard | Business Edition Wall Street Week | Hawaii Five-O | Benson | Benson | NBC Magazine | Benson | Movie: 'Big Bob Johnson and His Fantastic' |
| 7:30 | | | | Movie: 'Hot Stuff' | Movie: 'Hot Stuff' | Movie: 'Hot Stuff' | | Movie: 'Hot Stuff' | |
| 8:00 | Movie: 'The Great American Traffic Jam' | Dallas | Washington Week/Review Norman Rockwell | Movie: 'Groundstar Conspiracy' | | | Movie: 'The Great American Traffic Jam' | | Speed Circus' |
| 8:30 | | | | | | | | | |
| 9:00 | | Falcon Crest | Movie: 'Gig' | | Strike Force | Strike Force | | Strike Force | TBS Evening News |
| 9:30 | | | | | | | | | |
| 10:00 | News | News | | Benny Hill Show Movie: 'The Last' | News | News | News | News | All in the Family Movie: 'My Sister' |
| 10:30 | Tonight Show | NCAA Basketball | | | Nightline | Nightline | Tonight Show | M*A*S*H | |
| 11:00 | | First Round Tournament | | Valley | Solid Gold | Movie: 'Murder on the Orient Express' | | Fridays | Eileen' |
| 11:30 | Entertainment Tonight | | | | | SCTV Comedy Network | | | |
| 12:00 | News | | PBS Late Night | | America's Top Ten | | | Sign Off | Movie: 'The Frozen Dead' |
| 12:30 | | | | | | | | | |

SATURDAY

| AM | KMID CH.2 Midland | KTAB CH.3 Abilene | KERA CH.4 Dallas | KTVT CH.5 Fort Worth | KWAB CH.7 Big Spring | WFAA CH.8 Dallas | KRBC CH.9 Abilene | KTXS CH.12 Abilene | WTBS CH.13 Atlanta |
|-------|-------------------------------------|---|---|---------------------------------------|---|---|--|---|----------------------------------|
| 7:00 | Flintstones Comedy Show Smurfs | Popeye/Olive Comedy Show Tarzan/Lone Ranger/Zorro | American Government American Government | News | Super Friends Thundarr/Goldie Gold/ | Super Friends Thundarr/Goldie Gold/ | Flintstones Comedy Show Smurfs | Super Friends Thundarr/Goldie Gold/ | Commanders |
| 7:30 | | | | | | | | | |
| 8:00 | | Adventure Hour Bugs Bunny Road Runner | Literature | Los Tiempos Ernie Scott Extension '81 | Action Jack Comedy Hour Laverne & Shirley | Action Jack Comedy Hour Laverne & Shirley | | Action Jack Comedy Hour Laverne & Shirley | Against the Wind |
| 8:30 | Kid Super Power Hour | | | | | | Kid Super Power Hour | | |
| 9:00 | with Shazam Spiderman & His Friends | Show | Sesame Street | Hobab Signs of the Times | Richie Rich/Scooby & Scrappy Doo Show | Richie Rich/Scooby & Scrappy Doo Show | with Shazam Spiderman & His Friends | Richie Rich/Scooby & Scrappy Doo Show | Movie: 'Rebecca' |
| 9:30 | | | | | | | | | |
| 10:00 | Val de la O Mexican Tejano | Blackstar | Electric Company Mr. Rogers' Neighborhood | Point of View What about People | Fonz/Happy Days Heathcliff/Marmaduke | Fonz/Happy Days Heathcliff/Marmaduke | Space Stars | Fonz/Happy Days Heathcliff/Marmaduke | |
| 10:30 | | | | | | | | | |
| 11:00 | | Trollkins Tom & Jerry | Sociology | Voter's Digest Parents in Action | ABC Weekend Specials American Bandstand | Bionic Woman | Duffy/Speedy Show Bullwinkle | ABC Weekend Specials American Bandstand | |
| 11:30 | Championship Wrestling | | | | | | | | |
| 12:00 | | NCAA Basketball: Second Round Tournament | American History American History | Quarterhorse Show Sports Affid | Campus Report | America's Top Ten Shopping Smart | Wanted: Dead or Alive Zane Grey Theatre | To Be Announced | Movie: 'Man with the Golden Arm' |
| 12:30 | NBC Sports: Ringside | | American Government American Government | Fiesta Mexicanas Variedades Musicales | Espectacular National Match Fishing | Reporters Roundup Sugar Ray Leonard | NBC Sports: Ringside | | |
| 1:00 | | | | | | | | | |
| 2:00 | | NCAA Basketball: Second Round Tournament | Business | Cowboy Weaver /Dewey Show | Jim Houston Outdoors Pro Bowler's Tour | Special Pro Bowler's Tour | | Pro Bowler's Tour | Movie: 'Games' |
| 2:30 | | | | | | | | | |
| 3:00 | | | Humanities | Movie: 'Five Masters of Death' | | | Honda Inverrary | | |
| 3:30 | Honda Inverrary | | | | | | | | |
| 4:00 | Classic Wild Kingdom | NCAA Basketball: Second Round Tournament | Psychology | | Wide World of Sports | Wide World of Sports | Classic Pop! Goes the Country | Wide World of Sports | Motorweek |
| 4:30 | | | | | | | | | |
| 5:00 | Conversation NBC News | | American History American History | Kung Fu | | | Nashville on the Road West Texas This Week | Sports Affid | Championship Wrestling |
| 5:30 | | | | | | | | | |

LOCAL PROGRAMS CHANNEL 6

| MONDAY | TUESDAY | WEDNESDAY |
|-------------------------------|-------------------------------|----------------------------|
| 7:00 A.M. - Mitchell Co. RFD | 7:00 A.M. - Jr. Banner Panel | 7:00 A.M. - The Wed. Show |
| 7:30 A.M. - Local News | 7:30 A.M. - Local News | 7:30 A.M. - Local News |
| 10:30 A.M. - Sandy's Haircare | 10:30 A.M. - W. Roach Show | 10:30 A.M. - The Wed. Show |
| 6:00 P.M. - Local News | 11:00 A.M. - Jr. Banner Panel | 6:00 P.M. - Local News |
| 9:30 P.M. - Mitchell Co. RFD | 6:00 P.M. - Local News | 9:30 P.M. - The Wed. Show |
| 10:00 A.M. - Local News | 8:00 P.M. - Jr. Banner Panel | 10:00 P.M. - Local News |
| | 9:30 P.M. - W. Roach Show | |
| | 10:00 P.M. - Local News | |
| THURSDAY | FRIDAY | SATURDAY |
| 7:00 A.M. - Johnny's Kitchen | 7:00 A.M. - A Call To House | 7:30 A.M. - Local News |
| 7:30 A.M. - Local News | 7:30 A.M. - Local News | 6:00 P.M. - Local News |
| 10:30 A.M. - Johnny's Kitchen | 5:00 P.M. - Banner Panel | 10:00 P.M. - Local News |
| 6:00 P.M. - Local News | 6:00 P.M. - Local News | |
| 9:30 P.M. - Johnny's Kitchen | 10:00 P.M. - Banner Panel | |
| 10:00 P.M. - Local News | | |

SATURDAY

| PM | KMID CH.2 Midland | KTAB CH.3 Abilene | KERA CH.4 Dallas | KTVT CH.5 Fort Worth | KWAB CH.7 Big Spring | WFAA CH.8 Dallas | KRBC CH.9 Abilene | KTXS CH.12 Abilene | WTBS CH.13 Atlanta |
|-------|-------------------------------|--------------------|-----------------------------|--|-------------------------|-------------------------|-------------------------------|----------------------------------|--------------------------------------|
| 6:00 | Muppet Show | Solid Gold | Together with Leo Buscaglia | Solid Gold | Hee Haw | News | Lawrence Welk | Hee Haw | Prog Cont'd |
| 6:30 | Eyes of Texas | | | | | Omni | | | |
| 7:00 | One Of The Boys Chicago Story | Walt Disney | Kennedy Center Tonight | Gunsmoke | T. J. Hooker (PREMIERE) | T. J. Hooker (PREMIERE) | One Of The Boys Chicago Story | T. J. Hooker (PREMIERE) | Nashville Alive |
| 7:30 | | | | | | | | | |
| 8:00 | | Movie: 'The Champ' | | Pop! Goes the Country That Nashville Music | | | | | Undersea World of Jacques Cousteau |
| 8:30 | | | | | The Love Boat | The Love Boat | | | |
| 9:00 | McClain's Law | | | Nashville on the Road Backstage/Grand Old Opry | | | McClain's Law | | TBS Evening News |
| 9:30 | | | | | | | | | |
| 10:00 | News | News | | Benny Hill Show Wrestling | News | News | News Comment Saturday Night | ABC News Worldvision | World at War |
| 10:30 | Saturday Night | Movie: 'Pacific' | Marx Brothers In | | ABC News Dance Fever | Movie: 'The Searchers' | | | |
| 11:00 | Live | Destiny | a Nutshell | | | | Live | Movie: 'The Son of Monte Cristo' | Movie: 'The Apprenticeship of Duddy' |
| 11:30 | | | | | Movie: 'Three Steers' | | | | |
| 12:00 | Wrestling | | | Outer Limits | | | Sign Off | | Kravitz' |
| 12:30 | | | | | Evening at the Improv | Movie: | | | |
| | | | | | | | | | |

SUNDAY

| AM | KMID CH.2 Midland | KTAB CH.3 Abilene | KERA CH.4 Dallas | KTVT CH.5 Fort Worth | KWAB CH.7 Big Spring | WFAA CH.8 Dallas | KRBC CH.9 Abilene | KTXS CH.12 Abilene | WTBS CH.13 Atlanta |
|-------|----------------------------------|-------------------------------|-------------------------------------|---------------------------------------|------------------------------------|--------------------------------------|---|---|---|
| 7:00 | Faith Temple Church | Kenneth Copeland | Composition | Composition | Jim Bakker | Prog Cont'd Your Life Jimmy Swaggart | Day of Discovery | Prog Cont'd Herald of Truth Bible | Three Stooges Cartoon Festival |
| 7:30 | | | | | | | | | |
| 8:00 | Larry Jones Ministry Rex Humbard | Jimmy Swaggart | Human Development Human Development | Town Meeting Day of Discovery | Jimmy Swaggart | Dr. Robert Schuler That's Life | Just Passing Thru Amazing Grace Bible Class | Jerry Falwell | Lost in Space |
| 8:30 | | | | | | | | | |
| 9:00 | Oral Roberts Day of Discovery | Baptist Church Sunday Morning | Sesame Street | First Baptist Church | Bible | James Robison Kids Are People Too | Faith for Today | Oral Roberts Baptist Church Hour of Power | Lighter Side of the News Movie: 'Spartacus' |
| 9:30 | | | | | | | | | |
| 10:00 | Good Life Hour of Power | | Electric Company | Herald of Truth | Kenneth Copeland | We're Movin' | Baptist Church Bible Hour | This Week with David | |
| 10:30 | | | | | | | | | |
| 11:00 | First Baptist Church | Baptist Church | Sociology | First Methodist Church of Ft. Worth | First Presbyterian Church | Presbyterian Church | Sunday Devotions Meet the Press | Brinkley Rex Humbard | |
| 11:30 | | | | | | | | | |
| 12:00 | SportsWorld | NBA Basketball: Teams TBA JIP | Humanities | Outdoors Fun of Fishing | This Week with David Brinkley | This Week with David Brinkley | SportsWorld | Worldvision | |
| 12:30 | | | | | | | | | |
| 1:00 | | NCAA Basketball Championship | Soccer Made in Germany | Wallace Wildlife Jim Houston Outdoors | SportsBeat Superstars | SportsBeat Superstars | SportsBeat Superstars | SportsBeat Superstars | Movie: 'Indiscreet' |
| 1:30 | | | | | | | | | |
| 2:00 | Honda Inverrary Classic | Game | Neuron Suite | Movie: 'Day of the Triffids' | Olympic Sports: USA | Olympic Sports: USA | Honda Inverrary Classic | Olympic Sports: USA | |
| 2:30 | | | | | | | | | |
| 3:00 | | NCAA Basketball Championship | National Geographic | | vs. the World Wide World of Sports | vs. the World Wide World of Sports | | vs. the World Wide World of Sports | Mission Impossible |
| 3:30 | | | | | | | | | |
| 4:00 | SportsWorld | Game | Special | Grizzly Adams | | | SportsWorld | | Championship Wrestling |
| 4:30 | | | | | | | | | |
| 5:00 | Adult Choir Festival NBC News | CBS News | Argonauts' | Tarzan | Lawrence Welk | Nuestro Dia News | It's Your Business NBC News | Look at Us ABC News | Nice People |
| 5:30 | | | | | | | | | |

SUNDAY

| PM | KMID CH.2 Midland | KTAB CH.3 Abilene | KERA CH.4 Dallas | KTVT CH.5 Fort Worth | KWAB CH.7 Big Spring | WFAA CH.8 Dallas | KRBC CH.9 Abilene | KTXS CH.12 Abilene | WTBS CH.13 Atlanta |
|-------|-------------------------|----------------------------------|------------------------------------|------------------------|--|--------------------------|---------------------------|-------------------------------|----------------------------|
| 6:00 | Father Murphy | 60 Minutes | Prog Cont'd | Movie: 'Sweet Charity' | Code Red | Code Red | Father Murphy | America's Battle With Crime | Movie: 'World Without Sun' |
| 6:30 | | | | | | | | | |
| 7:00 | CHiPs | Archie's Place One Day at a Time | National Geographic Special | | Today's F.B.I. | Today's F.B.I. | CHiPs | Today's F.B.I. | |
| 7:30 | | | | | | | | | |
| 8:00 | Movie: 'Wild Geese' | Alice Jeffersons | Masterpiece Theatre | | Movie: 'Coma' | Movie: 'Coma' | Movie: 'Wild Geese' | Movie: 'Coma' | Week in Review |
| 8:30 | | | | | | | | | |
| 9:00 | | Trapper John, M.D. | | High Chaparral | | | | | TBS Evening News |
| 9:30 | | | | | | | | | |
| 10:00 | | News | | Solid Gold | | | | | |
| 10:30 | News | CBS News Movie: 'Never to Love' | Not the 9 | | ABC News | News | News | ABC News C. Stenholm Big City | Caribbean Nights Open Up |
| 11:00 | Entertainment This Week | | 0'Clock News Morecambe & Wise | Combat | Backstage/Grand Old Opry Pop! Goes the Country | Movie: 'Firin's Rainbow' | Movie: 'The Power' Part 1 | Comedy Dance Fever | |
| 11:30 | | | | | | | | | Movie: 'Carry on' |
| 12:00 | Jerry Falwell | | Dave Allen at Large Fawcett Towers | Sign Off | Jim Bakker | | | | Admiral' |
| 12:30 | | | | | | | | | |

Off Sla
The ann
Management
Tuesday is
This is a
producer,
entomolog
are a vital
managem
County. Th
and who
Cotton Inf
They als
give supp
scouting a
all they re
Texas Agr
ould know
mental in
A family
injuries w
8th
Is S
The 8th
sponsored
Pers
On
Three pe
er, 25 of R
Box 86 an
86, along w
McDowell
a.m., Tue
Mitchell C
search wa
They we
Henry Dos
and bond
At the pr
out on bor
Assistin
Attorney
men, Jam
Deputies,
City Offic
Inc
See
Incumb
intention
Trustees.
He has
months,
Member
He an
Kinderga
year-old
Butler,
years, g
with a b
He and h
Baptist
Loraine
Butler
support
along wi
curriculu
us, the te