



RODEO QUEEN CONTESTANTS got a preview of the rodeo arena Saturday when they inspected the new bucking chutes recently purchased by the Colorado City Area Chamber of Commerce. The Rodeo Queen's Contest is being held in conjunction with the American Junior Rodeo Association Rodeo July 23 through July 26. Queen candidates pictured left to right (standing) are Sareesa Mitchell, Tracey Gassiot, (seated) Melanie Oliver, Jody Smith, Sherry Stinson and Fonda Long. Not pictured is Kyla Wilson.

## Seven Young Beauties Vie For Coveted Crown

Seven lovely young girls will vie for the title of Queen on July 26, the last evening of the American Junior Rodeo Association Rodeo in Colorado City.

Each girl will be judged on personality, appearance and showmanship. They will receive 50 per cent of their winning points in these categories. The remaining points will be obtained through the number of rodeo tickets each candidate sells.

Candidates will be selling tickets until 5 p.m., July 25.

The queen contestants will ride in the Grand Entry of the Rodeo each evening. They will also make a special appearance in the Rodeo Parade July 26 at 2 p.m.

The contestant chosen queen will be awarded a \$100 cash prize. The runner-up will receive a \$50 cash prize. The second runner-up will be given a \$25 cash prize.

Each candidate is sponsored by a local group or organization and the contest is sponsored by the Colorado City Business and Professional Women's Club.

The B&PW will sponsor a bar-b-que luncheon following the rodeo parade from 5 p.m.-7 p.m. This will be open to the public.

After the luncheon, three judges from out-

town will interview each candidate.

Competing in the queen's contest are as follows:

...Fonda Long, 15, a sophomore, resides in Westbrook. She is the daughter of Narl Long and sponsored by Westbrook Lions Club.

Fonda has four sisters and one brother, Karen, Narlene, Belinda, Rhonda and Stanley.

Fonda was born in Hamlin but has lived in Mitchell County most of her life.

Her favorite school subject is Agriculture. Her least favorite subject is English.

After completing high school, Fonda plans to work in an agricultural related field.

She has two favorite hobbies, painting and barrel racing.

...Melanie Oliver, 15, a junior, resides in Loraine. She is the daughter of Lowell Dean Oliver and is sponsored by Loraine B&PW.

Melanie has one sister and three brothers, Tanna, Jeff, Greg and Malcolm.

Melanie has lived in Loraine for eight years. Her favorite subject is English and her least favorite subject is math.

She plans to become a physical therapist after graduating from high school.

Her favorite hobby is

showing her calf.

...Sherry Stinson, 16, a junior, resides in Colorado City. She is the daughter of Mr. and Mrs. Billy Stinson and is sponsored by Root Memorial Hospital Auxiliary.

Sherry has one brother, Joe.

Sherry is a native of Colorado City.

Her favorite school subject is journalism. Her least favorite subject is math.

Sherry plans to attend college after graduation from high school but has no definite career plans at this time.

Her favorite hobby is sports, including water skiing, tennis and basketball.

...Jody Smith, 13 in the Eighth Grade, resides in Colorado City. She is the daughter of Mr. and Mrs. T.A. Whitesides and is sponsored by the Golden Age Club.

Jody has one sister and one brother, Becca and Todd.

A native of Colorado City, Jody's favorite subject is athletics. Her least favorite subject is science.

Jody plans to attend college after graduation although the only career goal she has currently is to rodeo professionally at some point in her life.

Her favorite hobby is riding the barrels.

...Kyla Wilson, 16, a junior, lives on the Spade Ranch.

She is the daughter of Mr. and Mrs. Roy Wilson and is sponsored by the Kiwanis Club.

Kyla has one sister and one brother, Kathi and Mike.

A native of Loraine, Kyla's favorite subject is English. Her least favorite subject is math.

Tracey plans to attend college upon completion of high school and is considering a career as a legal secretary.

Tracey's favorite hobby is

sponsored by the Golden Age Club.

Jody has one sister and one brother, Becca and Todd.

A native of Colorado City, Jody's favorite subject is athletics. Her least favorite subject is science.

Jody plans to attend college after graduation although the only career goal she has currently is to rodeo professionally at some point in her life.

Her favorite hobby is riding the barrels.

...Kyla Wilson, 16, a junior, lives on the Spade Ranch.

She is the daughter of Mr. and Mrs. Roy Wilson and is sponsored by the Kiwanis Club.

Kyla has one sister and one brother, Kathi and Mike.

A native of Loraine, Kyla's favorite subject is English. Her least favorite subject is math.

Tracey plans to attend college upon completion of high school and is considering a career as a legal secretary.

Tracey's favorite hobby is

Kyla plans to go to college and is considering a career in court reporting.

She is a member of the high school twirlers and that is her favorite hobby.

...Tracey Gassiot, 17, a senior, lives in Colorado City. She is the daughter of Mr. and Mrs. Don Fite and is sponsored by Noon Lions Club.

Tracey has one sister and one brother, Sherry and Scott. She has lived in Colorado City since she was in the Sixth Grade.

Her favorite subject is business machines and her least favorite subject is math.

Tracey plans to attend college upon completion of high school and is considering a career as a legal secretary.

Tracey's favorite hobby is

## School Board Appoints White To Finish Term

Representatives from the architectural firm of Huckabee and Donham took Colorado Independent School District Board of Trustees on a guided tour of the completed air conditioning project at Hutchinson Elementary School cafeteria Monday evening during the regular monthly session.

Only a few minor details of repair around the installed air conditioning units and ducts remain unaccomplished and will be completed in the near future.

The air conditioning project at Kelley Elementary School cafeteria has run into a number of delays. A Drummond Appliance Company representative reported difficulty in subcontracting with an electrician to do the necessary wiring.

Architects reported

additional construction problems have become evident as the installation progresses.

The joists are loaded to capacity and will require additional beams to support the weight of the units.

The project may not be completed by the time school begins due to the problems which have arisen.

Board President Tom Rees presented a plaque for four years of loyal service to Gene Blassingame, who resigned from the board last month due to conflict of interest after beginning work for a company which does business with the school.

Dickie White, Rt. 1, Hermleigh, was appointed and sworn-in by Rees to fill the vacant seat for the remainder of the term.

White resides in Scur-

ry County, but lives in the CISD Tax District.

Bids were opened for a portable double classroom building to be constructed at Hutchinson Elementary School under a federal grant of \$32,000.

Two bids were received. See TERM Page 2

## Rodeo Enthusiast To See Brute Force

Time is drawing near for the Annual American Junior Rodeo Association Rodeo to be held July 23 through July 26.

Four great nights of entertainment will be offered as boys and girls, between the ages of 12 and 19, pit their skills against the brute

force of some of the finest stock in the nation, furnished by C Bar T Rodeo Company of Lubbock.

Events will begin at 7:30 p.m. nightly with a Grand Entry Parade in which posers from three counties will ride.

The candidates, Sherry Stinson, sponsored by

Root Memorial Hospital; Fonda Long, sponsored by Westbrook Lions Club; Jody Smith, sponsored by Golden Age Club; Kyla Wilson, sponsored by Kiwanis; Melanie Oliver, sponsored by Loraine B&PW; Tracey Gassiot, sponsored by Colorado City Noon Lions Club and Sareesa Mitchell, sponsored by Colorado City B&PW, will appear nightly in the rodeo and the queen will be crowned during the final evening's performance (one candidate, Stacy Engel, sponsored by Optimist

See BRUTE Page 2

See BRUTE Page 2

See BRUTE Page 2

See BRUTE Page 2

See BRUTE Page 2

See BRUTE Page 2

See BRUTE Page 2

See BRUTE Page 2

See BRUTE Page 2

See BRUTE Page 2

See BRUTE Page 2

See BRUTE Page 2

See BRUTE Page 2

See BRUTE Page 2

See BRUTE Page 2

See BRUTE Page 2

See BRUTE Page 2

See BRUTE Page 2

See BRUTE Page 2

See BRUTE Page 2

See BRUTE Page 2

See BRUTE Page 2

See BRUTE Page 2

See BRUTE Page 2

See BRUTE Page 2

See BRUTE Page 2

See BRUTE Page 2

See BRUTE Page 2

See BRUTE Page 2

See BRUTE Page 2

See BRUTE Page 2

See BRUTE Page 2

See BRUTE Page 2

See BRUTE Page 2

See BRUTE Page 2

See BRUTE Page 2

See BRUTE Page 2

See BRUTE Page 2

See BRUTE Page 2

See BRUTE Page 2

See BRUTE Page 2

See BRUTE Page 2

See BRUTE Page 2

See BRUTE Page 2

See BRUTE Page 2

See BRUTE Page 2

See BRUTE Page 2

## Commissioners Hear Request From RSVP

The possibility of a low water crossing being constructed where Interstate 20 crosses over the Colorado River took up most of the discussion time during the

regular monthly meeting of the Commissioners' Court Monday.

Commissioner Johnny Shackelford and Commissioner-elect Paul Logsdon reported they

had traveled to the District Office of the State Highway Department and conferred with Roger Welsh, district engineer, on the subject. Shackelford explained,

"We have never been able to get federal funding for the project because they just aren't interested."

He noted documented, death related accidents must have occurred because of an existing hazardous situation in order for the federal government to be interested. (In this case, tractors must leave the access road and drive upon I-20 to cross the river or take an alternate route through downtown).

Because there has only been one bad accident reported at the crossing, federal personnel do not believe the \$400,000 to \$500,000 cost of construction is justified, Shackelford said.

Logsdon said Welsh seemed very interested in the problem. He noted the traffic hazard created when tractors and

See RSVP Page 4

## Day Care Auction Planned

The Grady Morris Antique Auction Barn on East Highway 80 will be the site of a gigantic benefit auction Sunday, July 27, at 3 p.m.

Ann Gregory, director of Mitchell County Day Care Center, announced plans for the auction Wednesday.

She noted all proceeds from the auction will go toward the matching funds necessary to meet governmental provisions under which the center operates.

Any person having items no longer used, needed or wanted is requested to contact the center and donate the items for auction.

"We hope to have

See AUCTION Page 2

See AUCTION Page 2

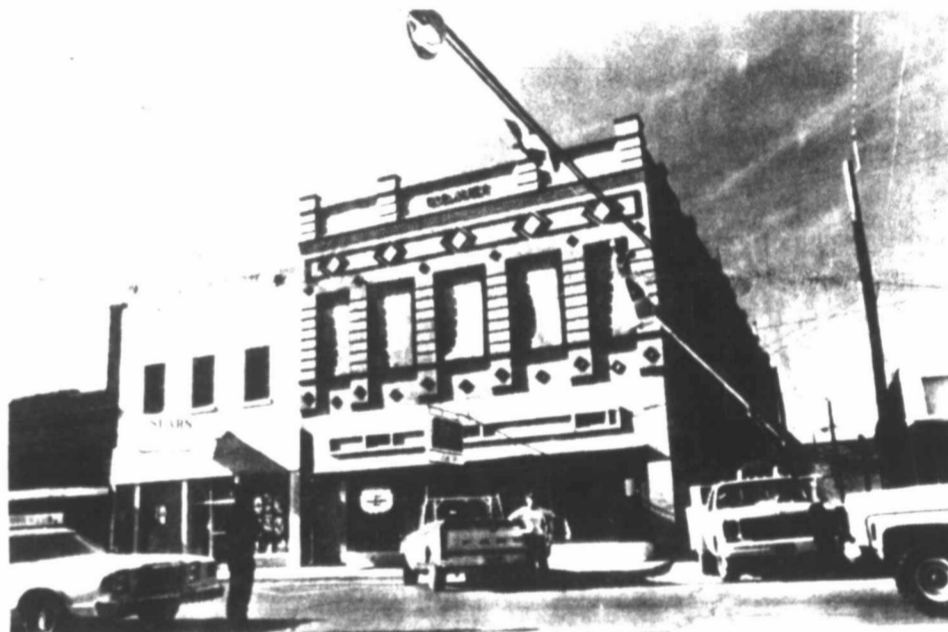
See AUCTION Page 2

See AUCTION Page 2

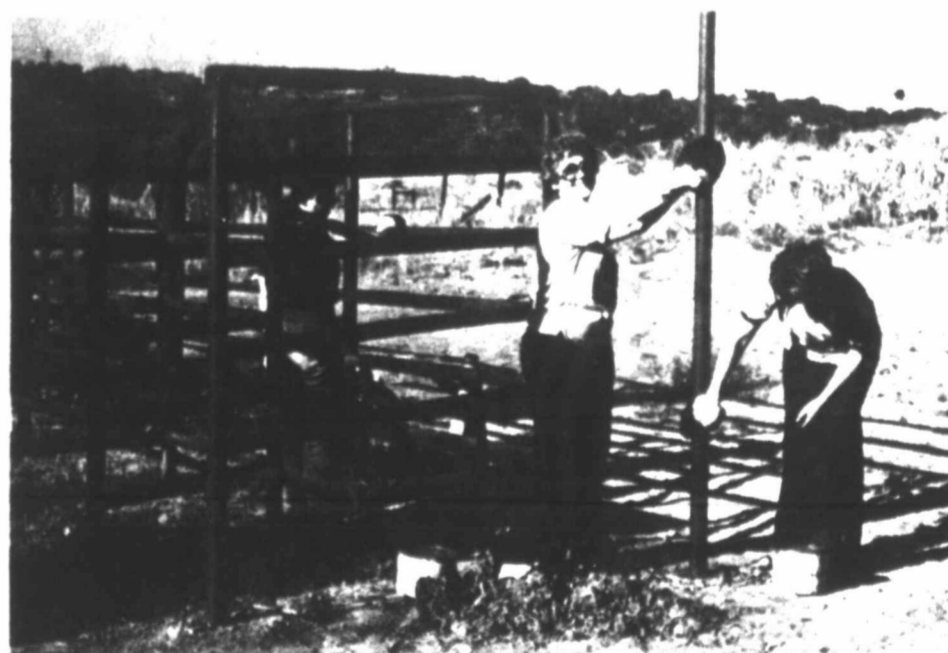
See AUCTION Page 2



STUDENTS, FACULTY AND COOKS will be able to enjoy meals at Hutchinson Elementary School from now on thanks to the new air conditioning system installed this summer. School Board members (left to right) Mac Morris and Tom Rees, join Superintendent of Schools Charlie Uselton in inspecting a vent hood also installed under the same program.



COLORADO CITY AREA CHAMBER OF COMMERCE is busily preparing for the American Junior Rodeo Association Rodeo to be held July 23-26. Decorations were strung across major intersections Tuesday (top picture) and a few hardy souls turned out for "Paint Day" at the rodeo arena Saturday at 7 a.m. Painting mitts and brushes were welded by (left to right) Chamber Secretary Patricia Denson, Wallace Center Director Barbara Gray and Chamber Manager Starr Greenblatt.



## Hospital Board Set To Appoint Administrator

Mitchell County Hospital District Board of Directors will meet Thursday evening at 8 p.m. to appoint a new Hospital Administrator.

Hospital Administrator Charles Root announced his intentions to retire and applications were solicited by the board.

Numerous applications have been received and a screening committee consisting of Bobby Lemons, Bob Reilly and Herbert

Mearse was appointed to review the applications.

They will offer their opinion on the best qualified person for the position at the meeting Thursday evening.

Mrs. Charles Root is administrator at Root Valley Fair Lodge. She submitted her resignation at the same time her husband announced his plans to retire.

James Sikes of Robert Lee has been hired to assume her duties.

Sikes currently holds the position of administrator at the nursing home in Robert Lee.

Like the Root Valley Fair Lodge, the lodge in Robert Lee has a superior rating and this was a deciding factor in his employment by the board.

Sikes will assume his duties as soon as a replacement is obtained for his position in Robert Lee, possibly by the end of July.

JULY 17 1980

**TERM.** From Page 1  
ed on the building. One bid was from Morgan Building, Inc., of Dallas. It was for \$30,084 and included carpet, restrooms and a steel roof. The building was of aluminum material.

**QUEEN.** From Page 1  
by is sports and she is on the school basketball team.

...Sareesa Mitchell, 17, a senior, lives in Colorado City. She is the daughter of Mr. and Mrs. Perry Mitchell and is sponsored by the Colorado City B&PW.

Sareesa has three sisters, Darlene, Christy and Jodi.

She is a native of Loraine and her favorite subject in school is athletics.

Sareesa's least favorite subject is English.

After graduating from high school, Sareesa plans to attend college and is considering a career in nursing.

Sareesa's favorite hobby is basketball and she is on the school basketball team.

The other bid was from Industrial Laminants of Austin. It was for \$23,889 with a tile floor or \$30,140 with carpet, restrooms and access ramps. The building is made of wood.

The school district will furnish the foundation.

Board members voted to award the bid to Industrial Laminants.

Construction on the building will be completed by August 20.

Construction on a concession stand and restroom facilities at Wolf Stadium will begin soon. Board members voted to hire several different persons to complete each phase of the construction prior to the beginning of football season.

Useton said doing the work this way will save both time and money.

Board members voted to increase the percentage of tax rate above the three per cent allowed under the law.

Under the new law, total tax revenues must remain at the same level as last year unless public notice is given notifying taxpayers of an increase and the amount of that increase.

Board members voted to increase the percentage of tax rate above the three per cent allowed under the law.

Under the new law, total tax revenues must remain at the same level as last year unless public notice is given notifying taxpayers of an increase and the amount of that increase.

Clowns for the competition will be furnished by C Bar T Rodeo Company of Lubbock.

Useton noted that even with the increase, most persons' taxes would be the same unless the value of their property increased substantially.

Resignations from five teachers were accepted by the board.

They were: David Clapp, varsity coach; Rebecca Clapp, Fourth Grade teacher; Betty Robinette, Kindergarten teacher; Adron Welch, Seventh and Eighth Grade Science teacher and Faye Welch, Science teacher.

**Electronic Course To Be Taught**

A Basic Electronics course for youth, ages 10-16, will be offered August 11-13 at Wallace Community Education Center through Western Texas College with Randy Mosely as the instructor.

The course is offered to cultivate an interest in science at an early age. Students will assemble an AM crystal radio receiver; learn basics of sound systems and will build 100 other projects through the purchase of the experimental kit.

The cost for the 10 hour course is \$20 plus \$20 for the Science Kit.

You may enroll by registering at the Wallace Center by August 7

6:30 a.m. Building on Noon-Tra Wallace Ce town. 1 p.m.-2 Psychiatris 1:30 p.m. the Country 2:30 p.m. Council wil 7 p.m.-B Walker Stu 7 p.m.-10 7:30 p.m. meet in the Noon-No Center. 3:15 p.m. member's

RECTAR hard-wor Texas Fo workers

OPEN 7:30 Phon T

# SUMMER-LOVIN' FOOD BUYS

## At E-Z Way Superette

Specials Good Thursday, Friday & Saturday We Redeem Food Stamps

 <p><b>Del Monte Chunk, Sliced Or Crushed PINEAPPLE</b> 2 #1 1/2 Cans <b>98¢</b></p>	 <p><b>Del Monte Early Garden SWEET PEAS</b> 3 303 Cans <b>98¢</b></p>	 <p><b>Del Monte TOMATO SAUCE</b> 3 8 Oz. Cans <b>59¢</b></p>	 <p><b>Gooch's Cured Half Or Whole HAMS</b>....Lb. <b>98¢</b> <b>HAM SLICES</b>.....Lb. <b>\$1.59</b> <b>HAM ROAST</b>.....Lb. <b>\$1.49</b></p>	
 <p><b>Del Monte Whole TOMATOES</b> 2 303 Cans <b>98¢</b></p>	 <p><b>Del Monte TOMATO JUICE</b> 46 Oz. Can <b>69¢</b></p>	 <p><b>Gooch's German SAUSAGE</b> 12 Oz. Pkg. <b>\$1.09</b></p>	 <p><b>Gooch's BACON</b> 1 Lb. Pkg. <b>\$1.09</b></p>	
 <p><b>Del Monte SPINACH</b> 3 303 Cans <b>98¢</b></p>	<div style="border: 2px solid black; border-radius: 50%; padding: 20px; text-align: center;"> <p>Keith's <b>FRENCH FRIES</b> 2 Lb. Bag <b>59¢</b></p> </div>	 <p><b>Del Monte MIXED VEGETABLES</b> 3 303 Cans <b>98¢</b></p>	 <p><b>Del Monte Sliced CARROTS</b>..3 303 Cans <b>98¢</b></p>	
 <p><b>Del Monte Whole NEW POTATOES</b> 3 303 Cans <b>98¢</b></p>	<div style="border: 2px solid black; border-radius: 50%; padding: 20px; text-align: center;"> <p>Patio Frozen <b>MEXICAN DINNERS</b> 12 1/4 Oz. Box <b>69¢</b></p> <p>Jeno's Cheese Or Sausage <b>FROZEN PIZZA</b> 13 1/2 Oz. Box <b>98¢</b></p> </div>	 <p><b>Wolf HOT DOG SAUCE</b>.....2 10 Oz. Cans <b>49¢</b></p>	 <p><b>Heinz BAR-B-Q SAUCE</b>.....18 Oz. Btl. <b>89¢</b></p>	
 <p><b>Del Monte Cream Style CORN</b>.....3 303 Cans <b>98¢</b></p>	<div style="border: 1px solid black; padding: 5px; text-align: center;"> <p>Fresh <b>PRODUCE</b> Daily</p> </div>	 <p><b>Del Monte CATSUP</b>.....24 Oz. Btl. <b>69¢</b></p>	 <p><b>Best Maid DILL PICKLES</b>.....32 Oz. Jar <b>89¢</b></p>	
 <p><b>Ruby Red GRAPEFRUIT</b>.....Lb. <b>29¢</b></p>	 <p><b>D'Anjou PEARS</b>.....Lb. <b>39¢</b></p>	 <p><b>Keebler Butter PRETZELS</b>.....8 1/2 Oz. Pkg. <b>69¢</b></p>	 <p><b>Del Monte SAURKRAUT</b> 3 303 Cans <b>98¢</b></p>	
 <p><b>CARROTS</b> 1 Lb. Bag <b>19¢</b></p>	<div style="border: 2px solid black; padding: 10px; text-align: center;"> <h1 style="margin: 0;">E-Z WAY</h1> <p style="margin: 0;">Superette</p> <p style="margin: 0; font-size: small;">At 17th &amp; Hickory 7 A.M. To 8 P.M. Daily</p> </div>	 <p><b>Nestle INSTANT TEA</b>.....2 Oz. <b>\$1.49</b></p>	 <p><b>Shasta Cola, Grape Or Orange DRINKS</b>.....2 Litre Non-Return Btl. <b>89¢</b></p>	
 <p><b>Nice &amp; Soft FACIAL TISSUE</b>.....150 Ct. <b>49¢</b></p>				 <p><b>Del Monte INSTANT TEA</b>.....2 Oz. <b>\$1.49</b></p>

6:30 a.m. Building on Noon-Tra Wallace Ce town. 1 p.m.-2 Psychiatris 1:30 p.m. the Country 2:30 p.m. Council wil 7 p.m.-B Walker Stu 7 p.m.-10 7:30 p.m. meet in the Noon-No Center. 3:15 p.m. member's

OPEN 7:30 Phon T

RECTAR hard-wor Texas Fo workers

6:30 a.m. Building on Noon-Tra Wallace Ce town. 1 p.m.-2 Psychiatris 1:30 p.m. the Country 2:30 p.m. Council wil 7 p.m.-B Walker Stu 7 p.m.-10 7:30 p.m. meet in the Noon-No Center. 3:15 p.m. member's

OPEN 7:30 Phon T

RECTAR hard-wor Texas Fo workers

6:30 a.m. Building on Noon-Tra Wallace Ce town. 1 p.m.-2 Psychiatris 1:30 p.m. the Country 2:30 p.m. Council wil 7 p.m.-B Walker Stu 7 p.m.-10 7:30 p.m. meet in the Noon-No Center. 3:15 p.m. member's

OPEN 7:30 Phon T

RECTAR hard-wor Texas Fo workers

6:30 a.m. Building on Noon-Tra Wallace Ce town. 1 p.m.-2 Psychiatris 1:30 p.m. the Country 2:30 p.m. Council wil 7 p.m.-B Walker Stu 7 p.m.-10 7:30 p.m. meet in the Noon-No Center. 3:15 p.m. member's

OPEN 7:30 Phon T

RECTAR hard-wor Texas Fo workers

6:30 a.m. Building on Noon-Tra Wallace Ce town. 1 p.m.-2 Psychiatris 1:30 p.m. the Country 2:30 p.m. Council wil 7 p.m.-B Walker Stu 7 p.m.-10 7:30 p.m. meet in the Noon-No Center. 3:15 p.m. member's

OPEN 7:30 Phon T

RECTAR hard-wor Texas Fo workers

6:30 a.m. Building on Noon-Tra Wallace Ce town. 1 p.m.-2 Psychiatris 1:30 p.m. the Country 2:30 p.m. Council wil 7 p.m.-B Walker Stu 7 p.m.-10 7:30 p.m. meet in the Noon-No Center. 3:15 p.m. member's

OPEN 7:30 Phon T

RECTAR hard-wor Texas Fo workers

6:30 a.m. Building on Noon-Tra Wallace Ce town. 1 p.m.-2 Psychiatris 1:30 p.m. the Country 2:30 p.m. Council wil 7 p.m.-B Walker Stu 7 p.m.-10 7:30 p.m. meet in the Noon-No Center. 3:15 p.m. member's

OPEN 7:30 Phon T

RECTAR hard-wor Texas Fo workers

6:30 a.m. Building on Noon-Tra Wallace Ce town. 1 p.m.-2 Psychiatris 1:30 p.m. the Country 2:30 p.m. Council wil 7 p.m.-B Walker Stu 7 p.m.-10 7:30 p.m. meet in the Noon-No Center. 3:15 p.m. member's

OPEN 7:30 Phon T

RECTAR hard-wor Texas Fo workers

6:30 a.m. Building on Noon-Tra Wallace Ce town. 1 p.m.-2 Psychiatris 1:30 p.m. the Country 2:30 p.m. Council wil 7 p.m.-B Walker Stu 7 p.m.-10 7:30 p.m. meet in the Noon-No Center. 3:15 p.m. member's

OPEN 7:30 Phon T

RECTAR hard-wor Texas Fo workers

6:30 a.m. Building on Noon-Tra Wallace Ce town. 1 p.m.-2 Psychiatris 1:30 p.m. the Country 2:30 p.m. Council wil 7 p.m.-B Walker Stu 7 p.m.-10 7:30 p.m. meet in the Noon-No Center. 3:15 p.m. member's

OPEN 7:30 Phon T

RECTAR hard-wor Texas Fo workers

6:30 a.m. Building on Noon-Tra Wallace Ce town. 1 p.m.-2 Psychiatris 1:30 p.m. the Country 2:30 p.m. Council wil 7 p.m.-B Walker Stu 7 p.m.-10 7:30 p.m. meet in the Noon-No Center. 3:15 p.m. member's

OPEN 7:30 Phon T

RECTAR hard-wor Texas Fo workers

6:30 a.m. Building on Noon-Tra Wallace Ce town. 1 p.m.-2 Psychiatris 1:30 p.m. the Country 2:30 p.m. Council wil 7 p.m.-B Walker Stu 7 p.m.-10 7:30 p.m. meet in the Noon-No Center. 3:15 p.m. member's

OPEN 7:30 Phon T

RECTAR hard-wor Texas Fo workers

6:30 a.m. Building on Noon-Tra Wallace Ce town. 1 p.m.-2 Psychiatris 1:30 p.m. the Country 2:30 p.m. Council wil 7 p.m.-B Walker Stu 7 p.m.-10 7:30 p.m. meet in the Noon-No Center. 3:15 p.m. member's

OPEN 7:30 Phon T

RECTAR hard-wor Texas Fo workers

6:30 a.m. Building on Noon-Tra Wallace Ce town. 1 p.m.-2 Psychiatris 1:30 p.m. the Country 2:30 p.m. Council wil 7 p.m.-B Walker Stu 7 p.m.-10 7:30 p.m. meet in the Noon-No Center. 3:15 p.m. member's

OPEN 7:30 Phon T

RECTAR hard-wor Texas Fo workers

6:30 a.m. Building on Noon-Tra Wallace Ce town. 1 p.m.-2 Psychiatris 1:30 p.m. the Country 2:30 p.m. Council wil 7 p.m.-B Walker Stu 7 p.m.-10 7:30 p.m. meet in the Noon-No Center. 3:15 p.m. member's

OPEN 7:30 Phon T

RECTAR hard-wor Texas Fo workers

6:30 a.m. Building on Noon-Tra Wallace Ce town. 1 p.m.-2 Psychiatris 1:30 p.m. the Country 2:30 p.m. Council wil 7 p.m.-B Walker Stu 7 p.m.-10 7:30 p.m. meet in the Noon-No Center. 3:15 p.m. member's

OPEN 7:30 Phon T

RECTAR hard-wor Texas Fo workers

6:30 a.m. Building on Noon-Tra Wallace Ce town. 1 p.m.-2 Psychiatris 1:30 p.m. the Country 2:30 p.m. Council wil 7 p.m.-B Walker Stu 7 p.m.-10 7:30 p.m. meet in the Noon-No Center. 3:15 p.m. member's

OPEN 7:30 Phon T

RECTAR hard-wor Texas Fo workers

6:30 a.m. Building on Noon-Tra Wallace Ce town. 1 p.m.-2 Psychiatris 1:30 p.m. the Country 2:30 p.m. Council wil 7 p.m.-B Walker Stu 7 p.m.-10 7:30 p.m. meet in the Noon-No Center. 3:15 p.m. member's

OPEN 7:30 Phon T

RECTAR hard-wor Texas Fo workers

6:30 a.m. Building on Noon-Tra Wallace Ce town. 1 p.m.-2 Psychiatris 1:30 p.m. the Country 2:30 p.m. Council wil 7 p.m.-B Walker Stu 7 p.m.-10 7:30 p.m. meet in the Noon-No Center. 3:15 p.m. member's

OPEN 7:30 Phon T

RECTAR hard-wor Texas Fo workers

6:30 a.m. Building on Noon-Tra Wallace Ce town. 1 p.m.-2 Psychiatris 1:30 p.m. the Country 2:30 p.m. Council wil 7 p.m.-B Walker Stu 7 p.m.-10 7:30 p.m. meet in the Noon-No Center. 3:15 p.m. member's

OPEN 7:30 Phon T

RECTAR hard-wor Texas Fo workers

6:30 a.m. Building on Noon-Tra Wallace Ce town. 1 p.m.-2 Psychiatris 1:30 p.m. the Country 2:30 p.m. Council wil 7 p.m.-B Walker Stu 7 p.m.-10 7:30 p.m. meet in the Noon-No Center. 3:15 p.m. member's

OPEN 7:30 Phon T

RECTAR hard-wor Texas Fo workers

6:30 a.m. Building on Noon-Tra Wallace Ce town. 1 p.m.-2 Psychiatris 1:30 p.m. the Country 2:30 p.m. Council wil 7 p.m.-B Walker Stu 7 p.m.-10 7:30 p.m. meet in the Noon-No Center. 3:15 p.m. member's

OPEN 7:30 Phon T

RECTAR hard-wor Texas Fo workers

6:30 a.m. Building on Noon-Tra Wallace Ce town. 1 p.m.-2 Psychiatris 1:30 p.m. the Country 2:30 p.m. Council wil 7 p.m.-B Walker Stu 7 p.m.-10 7:30 p.m. meet in the Noon-No Center. 3:15 p.m. member's

OPEN 7:30 Phon T

RECTAR hard-wor Texas Fo workers

6:30 a.m. Building on Noon-Tra Wallace Ce town. 1 p.m.-2 Psychiatris 1:30 p.m. the Country 2:30 p.m. Council wil 7 p.m.-B Walker Stu 7 p.m.-10 7:30 p.m. meet in the Noon-No Center. 3:15 p.m. member's

OPEN 7:30 Phon T

RECTAR hard-wor Texas Fo workers

6:30 a.m. Building on Noon-Tra Wallace Ce town. 1 p.m.-2 Psychiatris 1:30 p.m. the Country 2:30 p.m. Council wil 7 p.m.-B Walker Stu 7 p.m.-10 7:30 p.m. meet in the Noon-No Center. 3:15 p.m. member's

OPEN 7:30 Phon T

RECTAR hard-wor Texas Fo workers

6:30 a.m. Building on Noon-Tra Wallace Ce town. 1 p.m.-2 Psychiatris 1:30 p.m. the Country 2:30 p.m. Council wil 7 p.m.-B Walker Stu 7 p.m.-10 7:30 p.m. meet in the Noon-No Center. 3:15 p.m. member's

OPEN 7:30 Phon T

RECTAR hard-wor Texas Fo workers

6:30 a.m. Building on Noon-Tra Wallace Ce town. 1 p.m.-2 Psychiatris 1:30 p.m. the Country 2:30 p.m. Council wil 7 p.m.-B Walker Stu 7 p.m.-10 7:30 p.m. meet in the Noon-No Center. 3:15 p.m. member's

OPEN 7:30 Phon T

RECTAR hard-wor Texas Fo workers

6:30 a.m. Building on Noon-Tra Wallace Ce town. 1 p.m.-2 Psychiatris 1:30 p.m. the Country 2:30 p.m. Council wil 7 p.m.-B Walker Stu 7 p.m.-10 7:30 p.m. meet in the Noon-No Center. 3:15 p.m. member's

OPEN 7:30 Phon T

RECTAR hard-wor Texas Fo workers

6:30 a.m. Building on Noon-Tra Wallace Ce town. 1 p.m.-2 Psychiatris 1:30 p.m. the Country 2:30 p.m. Council wil 7 p.m.-B Walker Stu 7 p.m.-10 7:30 p.m. meet in the Noon-No Center. 3:15 p.m. member's

OPEN 7:30 Phon T

RECTAR hard-wor Texas Fo workers

6:30 a.m. Building on Noon-Tra Wallace Ce town. 1 p.m.-2 Psychiatris 1:30 p.m. the Country 2:30 p.m. Council wil 7 p.m.-B Walker Stu 7 p.m.-10 7:30 p.m. meet in the Noon-No Center. 3:15 p.m. member's

OPEN 7:30 Phon T

RECTAR hard-wor Texas Fo workers

6:30 a.m. Building on Noon-Tra Wallace Ce town. 1 p.m.-2 Psychiatris 1:30 p.m. the Country 2:30 p.m. Council wil 7 p.m.-B Walker Stu 7 p.m.-10 7:30 p.m. meet in the Noon-No Center. 3:15 p.m. member's

OPEN 7:30 Phon T

RECTAR hard-wor Texas Fo workers

6:30 a.m. Building on Noon-Tra Wallace Ce town. 1 p.m.-2 Psychiatris 1:30 p.m. the Country 2:30 p.m. Council wil 7 p.m.-B Walker Stu 7 p.m.-10 7:30 p.m. meet in the Noon-No Center. 3:15 p.m. member's

OPEN 7:30 Phon T

RECTAR hard-wor Texas Fo workers

6:30 a.m. Building on Noon-Tra Wallace Ce town. 1 p.m.-2 Psychiatris 1:30 p.m. the Country 2:30 p.m. Council wil 7 p.m.-B Walker Stu 7 p.m.-10 7:30 p.m. meet in the Noon-No Center. 3:15 p.m. member's

OPEN 7:30 Phon T

RECTAR hard-wor Texas Fo workers

6:30 a.m. Building on Noon-Tra Wallace Ce town. 1 p.m.-2 Psychiatris 1:30 p.m. the Country 2:30 p.m. Council wil 7 p.m.-B Walker Stu 7 p.m.-10 7:30 p.m. meet in the Noon-No Center. 3:15 p.m. member's

OPEN 7:30 Phon T

RECTAR hard-wor Texas Fo workers

6:30 a.m. Building on Noon-Tra Wallace Ce town. 1 p.m.-2 Psychiatris 1:30 p.m. the Country 2:30 p.m. Council wil 7 p.m.-B Walker Stu 7 p.m.-10 7:30 p.m. meet in the Noon-No Center. 3:15 p.m. member's

OPEN 7:30 Phon T

RECTAR hard-wor Texas Fo workers

6:30 a.m. Building on Noon-Tra Wallace Ce town. 1 p.m.-2 Psychiatris 1:30 p.m. the Country 2:30 p.m. Council wil 7 p.m.-B Walker Stu 7 p.m.-10 7:30 p.m. meet in the Noon-No Center. 3:15 p.m. member's

OPEN 7:30 Phon T

RECTAR hard-wor Texas Fo workers

6:30 a.m. Building on Noon-Tra Wallace Ce town. 1 p.m.-2 Psychiatris 1:30 p.m. the Country 2:30 p.m. Council wil 7 p.m.-B Walker Stu 7 p.m.-10 7:30 p.m. meet in the Noon-No Center. 3:15 p.m. member's

OPEN 7:30 Phon T

RECTAR hard-wor Texas Fo workers

6:30 a.m. Building on Noon-Tra Wallace Ce town. 1 p.m.-2 Psychiatris 1:30 p.m. the Country 2:30 p.m. Council wil 7 p.m.-B Walker Stu 7 p.m.-10 7:30 p.m. meet in the Noon-No Center. 3:15 p.m. member's

OPEN 7:30 Phon T

RECTAR hard-wor Texas Fo workers

6:30 a.m. Building on Noon-Tra Wallace Ce town. 1 p.m.-2 Psychiatris 1:30 p.m. the Country 2:30 p.m. Council wil 7 p.m.-B Walker Stu 7 p.m.-10 7:30 p.m. meet in the Noon-No Center. 3:15 p.m. member's

OPEN 7:30 Phon T

RECTAR hard-wor Texas Fo workers

6:30 a.m. Building on Noon-Tra Wallace Ce town. 1 p.m.-2 Psychiatris 1:30 p.m. the Country 2:30 p.m. Council wil 7 p.m.-B Walker Stu 7 p.m.-10 7:30 p.m. meet in the Noon-No Center. 3:15 p.m. member's

OPEN 7:30 Phon T

RECTAR hard-wor Texas Fo workers

6:30 a.m. Building on Noon-Tra Wallace Ce town. 1 p.m.-2 Psychiatris 1:30 p.m. the Country 2:30 p.m. Council wil 7 p.m.-B Walker Stu 7 p.m.-10 7:30 p.m. meet in the Noon-No Center. 3:15 p.m. member's

OPEN 7:30 Phon T

RECTAR hard-wor Texas Fo workers

6:30 a.m. Building on Noon-Tra Wallace Ce town. 1 p.m.-2 Psychiatris 1:30 p.m. the Country 2:30 p.m. Council wil 7 p.m.-B Walker Stu 7 p.m.-10 7:30 p.m. meet in the Noon-No Center. 3:15 p.m. member's

OPEN 7:30 Phon T

RECTAR hard-wor Texas Fo workers

6:30 a.m. Building on Noon-Tra Wallace Ce town. 1 p.m.-2 Psychiatris 1:30 p.m. the Country 2:30 p.m. Council wil 7 p.m.-B Walker Stu 7 p.m.-10 7:30 p.m. meet in the Noon-No Center. 3:15 p.m. member's

OPEN 7:30 Phon T

RECTAR hard-wor Texas Fo workers

6:30 a.m. Building on Noon-Tra Wallace Ce town. 1 p.m.-2 Psychiatris 1:30 p.m. the Country 2:30 p.m. Council wil 7 p.m.-B Walker Stu 7 p.m.-10 7:30 p.m. meet in the Noon-No Center. 3:15 p.m. member's

OPEN 7:30 Phon T

RECTAR hard-wor Texas Fo workers

6:30 a.m. Building on Noon-Tra Wallace Ce town. 1 p.m.-2 Psychiatris 1:30 p.m. the Country 2:30 p.m. Council wil 7 p.m.-B Walker Stu 7 p.m.-10 7:30 p.m. meet in the Noon-No Center. 3:15 p.m. member's

OPEN 7:30 Phon T

RECTAR hard-wor Texas Fo workers

6:30 a.m. Building on Noon-Tra Wallace Ce town. 1 p.m.-2 Psychiatris 1:30 p.m. the Country 2:30 p.m. Council wil 7 p.m.-B Walker Stu 7 p.m.-10 7:30 p.m. meet in the Noon-No Center. 3:15 p.m. member's

OPEN 7:30 Phon T

RECTAR hard-wor Texas Fo workers

6:30 a.m. Building on Noon-Tra Wallace Ce town. 1 p.m.-2 Psychiatris 1:30 p.m. the Country 2:30 p.m. Council wil 7 p.m.-B Walker Stu 7 p.m.-10 7:30 p.m. meet in the Noon-No Center. 3:15 p.m. member's

OPEN 7:30 Phon T

RECTAR hard-wor Texas Fo workers

6:30 a.m. Building on Noon-Tra Wallace Ce town. 1 p.m.-2 Psychiatris 1:30 p.m. the Country 2:30 p.m. Council wil 7 p.m.-B Walker Stu 7 p.m.-10 7:30 p.m. meet in the Noon-No Center. 3:15 p.m. member's

OPEN 7:30 Phon T

RECTAR hard-wor Texas Fo workers

6:30 a.m. Building on Noon-Tra Wallace Ce town. 1 p.m.-2 Psychiatris 1:30 p.m. the Country 2:30 p.m. Council wil 7 p.m.-B Walker Stu 7 p.m.-10 7:30 p.m. meet in the Noon-No Center. 3:15 p.m. member's

OPEN 7:30 Phon T

RECTAR hard-wor Texas Fo workers

6:30 a.m. Building on Noon-Tra Wallace Ce town. 1 p.m.-2 Psychiatris 1:30 p.m. the Country 2:30 p.m. Council wil 7 p.m.-B Walker Stu 7 p.m.-10 7:30 p.m. meet in the Noon-No Center. 3:15 p.m. member's

OPEN 7:30 Phon T

RECTAR hard-wor Texas Fo workers

6:30 a.m. Building on Noon-Tra Wallace Ce town. 1 p.m.-2 Psychiatris 1:30 p.m. the Country 2:30 p.m. Council wil 7 p.m.-B Walker Stu 7 p.m.-10 7:30 p.m. meet in the Noon-No Center. 3:15 p.m. member's

OPEN 7:30 Phon T

RECTAR hard-wor Texas Fo workers

6:30 a.m. Building on Noon-Tra Wallace Ce town. 1 p.m.-2 Psychiatris 1:30 p.m. the Country 2:30 p.m. Council wil 7 p.m.-B Walker Stu 7 p.m.-10 7:30 p.m. meet in the Noon-No Center. 3:15 p.m. member's

OPEN 7:30 Phon T

RECTAR hard-wor Texas Fo workers

6:30 a.m. Building on Noon-Tra Wallace Ce town. 1 p.m.-2 Psychiatris 1:30 p.m. the Country 2:30 p.m. Council wil 7 p.m.-B Walker Stu 7 p.m.-10 7:30 p.m. meet in the Noon-No Center. 3:15 p.m. member's

OPEN 7:30 Phon T

RECTAR hard-wor Texas Fo workers

6:30 a.m. Building on Noon-Tra Wallace Ce town. 1 p.m.-2 Psychiatris 1:30 p.m. the Country 2:30 p.m. Council wil 7 p.m.-B Walker Stu 7 p.m.-10 7:30 p.m. meet in the Noon-No Center. 3:15 p.m. member's

OPEN 7:30 Phon T

RECTAR hard-wor Texas Fo workers

6:30 a.m. Building on Noon-Tra Wallace Ce town. 1 p.m.-2 Psychiatris 1:30 p.m. the Country 2:30 p.m. Council wil 7 p.m.-B Walker Stu 7 p.m.-10 7:30 p.m. meet in the Noon-No Center. 3:15 p.m. member's

OPEN 7:30 Phon T

RECTAR hard-wor Texas Fo workers

6:30 a.m. Building on Noon-Tra Wallace Ce town. 1 p.m.-2 Psychiatris 1:30 p.m. the Country 2:30 p.m. Council wil 7 p.m.-B Walker Stu 7 p.m.-10 7:30 p.m. meet in the Noon-No Center. 3:15 p.m. member's

OPEN 7:30 Phon T

RECTAR hard-wor Texas Fo workers

6:30 a.m. Building on Noon-Tra Wallace Ce town. 1 p.m.-2 Psychiatris 1:30 p.m. the Country 2:30 p.m. Council wil 7 p.m.-B Walker Stu 7 p.m.-10 7:30 p.m. meet in the Noon-No Center. 3:15 p.m. member's

OPEN 7:30 Phon T

RECTAR hard-wor Texas Fo workers

6:30 a.m. Building on Noon-Tra Wallace Ce town. 1 p.m.-2 Psychiatris 1:30 p.m. the Country 2:30 p.m. Council wil 7 p.m.-B Walker Stu 7 p.m.-10 7:30 p.m. meet in the Noon-No Center. 3:15 p.m. member's

OPEN 7:30 Phon T

RECTAR hard-wor Texas Fo workers

6:30 a.m. Building on Noon-Tra Wallace Ce town. 1 p.m.-2 Psychiatris 1:30 p.m. the Country 2:30 p.m. Council wil 7 p.m.-B Walker Stu 7 p.m.-10 7:30 p.m. meet in the Noon-No Center. 3:15 p.m. member's

OPEN 7:30 Phon T

RECTAR hard-wor Texas Fo workers

6:30 a.m. Building on Noon-Tra Wallace Ce town. 1 p.m.-2 Psychiatris 1:30 p.m. the Country 2:30 p.m. Council wil 7 p.m.-B Walker Stu 7 p.m.-10 7:30 p.m. meet in the Noon-No Center. 3:15 p.m. member's

OPEN 7:30 Phon T

RECTAR hard-wor Texas Fo workers

6:30 a.m. Building on Noon-Tra Wallace Ce town. 1 p.m.-2 Psychiatris 1:30 p.m. the Country 2:30 p.m. Council wil 7 p.m.-B Walker Stu 7 p.m.-10 7:30 p.m. meet in the Noon-No Center. 3:15 p.m. member's

OPEN 7:30 Phon T

RECTAR hard-wor Texas Fo workers

6:30 a.m. Building on Noon-Tra Wallace Ce town. 1 p.m.-2 Psychiatris 1:30 p.m. the Country 2:30 p.m. Council wil 7 p.m.-B Walker Stu 7 p.m.-10 7:30 p.m. meet in the Noon-No Center. 3:15 p.m. member's

OPEN 7:30 Phon T

RECTAR hard-wor Texas Fo workers

6:30 a.m. Building on Noon-Tra Wallace Ce town. 1 p.m.-2 Psychiatris 1:30 p.m. the Country 2:30 p.m. Council wil 7 p.m.-B Walker Stu 7 p.m.-10 7:30 p.m. meet in the Noon-No Center. 3:15 p.m. member's

OPEN 7:30 Phon T

RECTAR hard-wor Texas Fo workers

6:30 a.m. Building on Noon-Tra Wallace Ce town. 1 p.m.-2 Psychiatris 1:30 p.m. the Country 2:30 p.m. Council wil 7 p.m.-B Walker Stu 7 p.m.-10 7:30 p.m. meet in the Noon-No Center. 3:15 p.m. member's

OPEN 7:30 Phon T

RECTAR hard-wor Texas Fo workers

6:30 a.m. Building on Noon-Tra Wallace Ce town. 1 p.m.-2 Psychiatris 1:30 p.m. the Country 2:30 p.m. Council wil 7 p.m.-B Walker Stu 7 p.m.-10 7:30 p.m. meet in the Noon-No Center. 3:15 p.m. member's

OPEN 7:30 Phon T

RECTAR hard-wor Texas Fo workers

6:30 a.m. Building on Noon-Tra Wallace Ce town. 1 p.m.-2 Psychiatris 1:30 p.m. the Country 2:30 p.m. Council wil 7 p.m.-B Walker Stu 7 p.m.-10 7:30 p.m. meet in the Noon-No Center. 3:15 p.m. member's

OPEN 7:30 Phon T

RECTAR hard-wor Texas Fo workers

6:30 a.m. Building on Noon-Tra Wallace Ce town. 1 p.m.-2 Psychiatris 1:30 p.m. the Country 2:30 p.m. Council wil 7 p.m.-B Walker Stu 7 p.m.-10 7:30 p.m. meet in the Noon-No Center. 3:15 p.m. member's

OPEN 7:30 Phon T

RECTAR hard-wor Texas Fo workers

6:30 a.m. Building on Noon-Tra Wallace Ce town. 1 p.m.-2 Psychiatris 1:30 p.m. the Country 2:30 p.m. Council wil 7 p.m.-B Walker Stu 7 p.m.-10 7:30 p.m. meet in the Noon-No Center. 3:15 p.m. member's

OPEN 7:30 Phon T

RECTAR hard-wor Texas Fo workers

6:30 a.m. Building on Noon-Tra Wallace Ce town. 1 p.m.-2 Psychiatris 1:30 p.m. the Country 2:30 p.m. Council wil 7 p.m.-B Walker Stu 7 p.m.-10 7:30 p.m. meet in the Noon-No Center. 3:15 p.m. member's

OPEN 7:30 Phon T

RECTAR hard-wor Texas Fo workers

6:30 a.m. Building on Noon-Tra Wallace Ce town. 1 p.m.-2 Psychiatris 1:30 p.m. the Country 2:30 p.m. Council wil 7 p.m.-B Walker Stu 7 p.m.-10 7:30 p.m. meet in the Noon-No Center. 3:15 p.m. member's

OPEN 7:30 Phon T

RECTAR hard-wor Texas Fo workers

6:30 a.m. Building on Noon-Tra Wallace Ce town. 1 p.m.-2 Psychiatris 1:30 p.m. the Country 2:30 p.m. Council wil 7 p.m.-B Walker Stu 7 p.m.-10 7:30 p.m. meet in the Noon-No Center. 3:15 p.m. member's

OPEN 7:30 Phon T

RECTAR hard-wor Texas Fo workers

6:30 a.m. Building on Noon-Tra Wallace Ce town. 1 p.m.-2 Psychiatris 1:30 p



RECTOR MONTE JONES of All Saints Episcopal Church oversees many hard-working people as they prepare battered steak fingers to take to the Texas Folklife Festival in San Antonio July 31 to August 3. Some of the team workers will be accompanying him to San Antonio for the festivities.

Hello World



Mr. and Mrs. Sam Lee Majors of Midland are the proud parents of a baby boy, Michael Lee, weighing 9 lbs.

He was born July 13 in Midland Memorial Hospital.

Mr. and Mrs. Sam Majors, Jr., of Odessa are the paternal grandparents.

Maternal grandparents are Mr. and Mrs. T.A. Sinclair of Houston.

Community Calendar

THURSDAY

6:30 a.m.-Optimist Club breakfast at the Optimist Building on I-20 and Highway 208.

Noon-Transportation will be provided by the Wallace Center for senior citizens to do shopping in town.

1 p.m.-2 p.m.-Dr. Joe Rountree, Big Spring Psychiatrist, will be at 136 E. 3rd.

1:30 p.m.-Open Duplicate Bridge Club will meet at the Country Club.

2:30 p.m.-Mitchell County Home Demonstration Council will meet in the Lone Wolf Medallion Room.

7 p.m.-Brush & Palette Club will meet in the Walker Studio on Walnut Street.

7 p.m.-10 p.m.-Skating at the Wallace Center, \$1.

7:30 p.m.-Order of the Eastern Star No. 58 will meet in the Masonic Hall.

FRIDAY

Noon-Noon Lions Club will meet in the Civic Center.

3:15 p.m.-Self Culture Study Club will meet in a member's home.

7 p.m.-Domino and 42 Club will meet in the Lone Wolf Medallion Room.

SATURDAY

7:30 p.m.-CCMP Coffee Break will be held in the Lone Wolf Medallion Room.

8 p.m.-Dance at the VFW Post No. 9178.

MONDAY

11:45 a.m.-The American Association of Retired Persons will meet in the C.C. Thompson Room.

1:30 p.m.-C-City Lake Club will meet in a member's home.

6 p.m.-Tops will meet in the Texas Electric Reddy Room.

6:30 p.m.-Boy Scouts will meet in the Scout Hut.

7 p.m.-Lorraine B&PW Club will meet in the Lions Club Building.

7 p.m.-Evening Lions Club will meet in the Civic Center.

7 p.m.-Open Duplicate Bridge will meet in the Homestate Savings Building.

7:30 p.m.-4-H Club will meet in the Lone Wolf Medallion Room.

7:45 p.m.-The Overeaters Anonymous will meet in the Texas Electric Reddy Room.

TUESDAY

Noon-Kiwanis Club will meet in the Civic Center.

7 p.m.-Oak St. Baptist Church has singing in Root Valley Fair Lodge.

7 p.m.-Extension Home Economics Study Group will meet at the Community Building on 5th and Oak St.

7:30 p.m.-Zeta Delta Study Club will meet.

8 p.m.-Al Anon will meet in the Episcopal Church fellowship hall.

WEDNESDAY

9 a.m.-4 p.m.-Transportation will be provided by the Wallace Center for senior citizens to make necessary Medicaid trips.

10 a.m.-2 p.m.-A representative of the Big Spring Social Security office will be in the Wallace Center to assist in any applications or questions.

Noon-Jaycees and Boys' Club will meet in the Villa Restaurant.

Noon-Circuit Riders have their trip to Big Spring and will meet in the Mental Health Clinic.

2:30 p.m.-T.E.H.A. of North Lorraine will meet in a member's home.

2:30 p.m.-Looney Home Demonstration Club will meet in the Lone Wolf Medallion Room.

**Palace Theatre**

OPEN 7:30 START 7:45

Phone 728-2605 For Complete Information

**Thurs., Fri. & Sat.**

More Entertaining Than Humanly Possible!

**The MUPPET MOVIE**

G MPAA

**ANOTHER GREAT VALUE**

SOFT AND COMFORTABLE **LADIES' FLOATS** *Anthony's*

Elegance and comfort combine in these lovely, soft floats! They have beautiful styling for a feminine look and feel. Great for lounging, they come in print gowns with long sleeves or solid gowns with long and short sleeves. Buy one to fit your every mood — one size fits all!

Colorado City's Friendliest Store

**ONE LOW PRICE \$6.88**

**2 FOR \$12**

Values to \$12 ea. Choose prints or solid colors.

**ONE SIZE FITS ALL**

Open 9 A.M. - 6 P.M.  
Monday Through Saturday  
728-5517 203 E. 2nd  
Colorado City, Texas

**Sterling Hardware**

**SUPER SALE DAYS**

**SALE STARTS TODAY (THURSDAY)**

**1099** **24" Barbecue Grill**  
Large 360 sq. in. chrome plated grid locks into 4 different height positions. Wheels provide easy mobility. Stores compactly. 4150 2A

**139** **B-B-Q Grill Cleaning Brush**  
Sturdy brush has stiff brass wire with a steel scraper for tough cleaning jobs. 04-0641 2B

**888** **2-Litre Jet Jug**  
Provides cold drinks with the touch of its top. Just pull out the leak proof spout and press the top. 7771P 2C

**444** **Oscillating Sprinkler**  
4 watering positions cover up to 2200 sq. ft. 18 precision punched water openings. High impact housing. 1010 1C

**99¢** **"Futura" Hose Nozzle**  
Non-corrosive nylon body. Positive clip lock holds desired spray pattern. Finger tip on/off control. 474C 3B

**788** **Beta Rain Sprinkler**  
Full or part 86 foot diameter circle with water saver arm. Includes snap coupling for fast and easy hose attachment. 1170SP 3D

**777** **1-Gal. Beverage Cooler**  
Foam insulation keeps six 12-oz. cans or 1 gallon of liquid cold. Drip proof, recessed push-button spigot. 1711 2F

**488** **Your Personal Home "Watchman"**  
WATERMATIC™

**Time As Automatic Timer**  
Simulates a lived-in appearance by turning lights and appliances on and off at different times. 0111 1E

**REMINGTON** **Limb N' Trim # 8 8" Electric Chain Saw**  
Double insulated chain saw. Cuts trees up to 18" thick. 1 1/4 hp. motor delivers no load sprayer speed of 5400 rpm. Lightweight perfectly balanced for easy use. 75481 1F

**2788** **Lawn Cart**  
Full 4 cu. ft. capacity. 35 x 20 1/2 x 13 tray. Great for hauling your average size loads. 75 1J

**36 Inch Emerson White Or Brown CEILING FAN** ~~\$149.95~~ ~~\$129.95~~ Now **\$100**

**11 Horse Power 38 Inch Cut Electric Start GREENBRIER LAWN TRACTOR** Reg. \$1,229.95 Sale Price **\$1,075**

**GREENBRIER LAWN MOWERS**

No. 50512 - 3 1/2 H.P. 22 Inch Cut Reg. \$159.95 - Sale Price <b>\$145</b>	No. 50536 - 3 1/2 H.P. 22 Inch Cut Self Propelled Reg. \$219.95 - Sale Price <b>\$189.95</b>	No. 5578 Master Cut 3 1/2 H.P. 22 Inch Cut 7 Speed Reg. \$329.95 - Sale Price <b>\$299.95</b>	No. 50525 - 4 H.P. 22 Inch Cut Now <b>\$249.88</b>
---	---	--	---

**AIR CONDITIONERS**

Dearborn 4500 Down Draft Reg. \$359.95 - Now <b>\$325</b>	Essick 4500 Side Draft Reg. \$349.95 - Now <b>\$309.95</b>	Essick 5500 Side Draft Reg. \$409.95 - Now <b>\$369.95</b>	Dearborn 3200 Window Unit Reg. \$329.95 - Now <b>\$299.95</b>
--	---	---	--

**3988** **12-Qt. Pressure Cooker/Canner**  
Control regulates pressure at 5, 10, or 15 pounds. Removable pressure control and self sealing gasket. Made of sturdy aluminum alloy. Capacity: 10 pints, 7 quarts. M-0512 8A

**999** **Rival Power Pierce Can Opener**  
Click 'N' Clean cutting unit removes for easy cleaning. Also features magnetic lid holder. 785 9C

**2188** **Double Burner Stove**  
Two infinite control switches dial heat desired. Both tubular elements in up for easy cleaning. Bright chrome top. UL 365 N

**277¢** **Canning Jar Funnel**  
Natural finished aluminum funnel features wide opening to allow fast pouring and easy filling. 9-2026 8M

**199** **Jar Lifter**  
Specially designed to lift jars from the top or side. Cushion coating gives good grip, reduces breakage. 280 8J

**888** **Granite Ware Canner**  
Large capacity 21 qt. 16 oz. canner is lightweight, easy to clean and store. Strong durable porcelain on steel construction. Won't impart undesirable flavors. 0707 8F

**488** **10 1/2" Cast Iron Skillet**  
Early American style quality cast iron for even heat distribution. Food sticks less for easy clean-up. 1058 9J

**Hurry! Limited Quantities -- First Come, First Serve.**

**Sterling Hardware**

121 E. 2nd 728-3021

JULY 17 80



PICTURED ABOVE ARE WOMEN who participated in the Volley of the Dolls Tournament "B" Division this past weekend. Pictured on the front row (left to right) are Vicki Weaver, Margaret Sparks, Liz Anderson and Betty Gale, second place winner. Back row (left to right) are Hortense Neff, Debbie Nowell, Teresa Gorham, first place winner and Andrea Redwine, consolation winner. Not pictured are Gretchin Ramsey and Terri Nowell.

## Teresa Gorham Takes First In Volley Of Dolls Tourney

Teresa Gorham took the first place title in the Volley of the Dolls "B" singles division Saturday. Betty Gale sewed up the second place title and Andrea Redwine took third place in the consolation bracket.

Terri Nowell took the first round with Hortense Neff and was beaten out by Gale in the next round. Vicki Weaver won over Gretchin Ramsey and Margaret Sparks and was later defeated by Teresa Gorham.

Debbie Nowell won over Redwine in the first round and lost to Gorham in the second. In the final round, Gorham defeated Gale 6-4 and 7-5 to take the first place title.



# Sports Action

## Church League Tourney Gets Underway Monday

The Men's Church League Tournament got underway Monday night as Church of Christ A defeated First Baptist B in a tough struggle with the final score of 18-11. Westbrook Baptist was wiped out by Church of Christ B 23-6 and First Baptist B put it on Calvary Baptist B 22-1. The final game of the night was between St. Luke Methodist and Calvary Baptist A with Calvary A taking it 14-12. During Tuesday night play, Loraine Baptist beat Mt. Zion Baptist 17-14 and Loraine Catholic was beat by Methodist B 16-10. St. Ann's A won over St. Ann's B 12-4 and Oak Street Baptist lost to Baptist Mission due to 10 run rule. The final game of the night was a close game between Methodist B and Loraine Baptist, Methodist won it 14-13.



BECKY WRIGHT, BRIDE-ELECT of Frank Frizzell was honored with a bridal shower on July 1 in the home of Mrs. Allen Miles. Pictured (left to right) are Mrs. Gerald Frizzell, mother of the groom; honoree and Mrs. Sam Wright, mother of the bride. Co-hosting the occasion with Mrs. Miles were Mmes. Billie Roenfeldt, Jolene Blankenship, Pat McPhaul and Don Fite.

**You'll Always Score With The Want Ads 728-3413**

**NOTICE**

I, Clarence C. Burt, Tax Assessor-Collector for Mitchell County, in accordance with the provisions of Article 7244c, V.T.C.S., have calculated the tax rate which may not be exceeded by more than three (3) percent by the governing body of Mitchell County without holding a public hearing as required by Article 7244c, V.T.C.S. That rate is as follows:

\$0.62 county per \$100 of assessed value  
\$0.19 road per \$100 of assessed value

Clarence C. Burt  
Tax Assessor-Collector

July 15, 1980

**FISH FRY**

**Fresh Water Catfish ALL YOU CAN EAT**

Served With  
Hush Puppies  
French Fried Or Baked Potatoes  
Homemade Hot Rolls  
Plus You Can Serve Yourself From OUR NEW SALAD BAR

Adults ..... \$3.95  
Childs Plate ..... \$2.50

**5-10 P.M. Friday**

**Jim's Trucktown Restaurant**  
Interstate 20 728-5325

**MEMBER 1980**

**TEXAS PRESS ASSOCIATION**

**Colorado City Record**

156 E. 2nd 728-3411 728-3414

MAC MCKINNON Publisher

Published every Sunday and Thursday morning by Colorado City Record, Colorado City, Texas. Second class postage paid at Colorado City, Texas. Mailing address, Colorado City Record, P.O. Box 92, Colorado City, Texas 79512.

Subscription rates in Mitchell County are \$12.50 per year and outside Mitchell County \$15.00 per year.

Any erroneous reflection upon the character, standing or reputation of any person, firm or corporation will be corrected when such occurs in the columns of this newspaper and is brought to the attention of the management.

The Colorado City Record is not responsible for copy omission, typographical errors or any unintentional errors that may occur other than to make proper corrections after being brought to attention. Advertising is accepted on this basis only.

**DEADLINES:**

Deadlines are necessary in order to publish accurate facts with as few typographical errors as possible. Your cooperation will be appreciated.

Deadline for Thursday's paper for news & advertising (including Classified Ads) is 5 p.m. Tuesday. Deadline for Sunday's paper for news & advertising (including Classified Ads) is 5 p.m. Friday.

**Donations Needed**

The Texas Junior Teenage League is in need of donations to help send the All-Star team to the tournament in Cisco.

The Lions team, sponsored by the Noon Day Lions, will be the team participating. Donations may be made by phoning Doris Pharis at 728-5554.

**Bar-b-que To Be Sold**

Payne Chapel Methodist Church at the old Wallace Center on Front Street will have a bar-b-que sale of beef and chicken dinners this Saturday.

They will begin selling dinners at 11 a.m. at a cost of \$2.50 for chicken plates and \$3 for beef plates.

Phone 728-3121 for orders to be delivered.

1st Notice - Public Hearing

**NOTICE OF TAX INCREASE**

The Colorado Independent School District proposes to increase your property taxes by twenty-one (21) percent.

A public hearing on the increase will be held on July 28, 1980, at 7:00 P.M. in the Administrative Curriculum Center Building Board Room located at 534 East 11th Street, Colorado City, Texas.

The Colorado Independent School District Board of Trustees has considered the proposal and voted in a meeting of the School Board as follows:

**FOR** the proposal to increase taxes:  
T.L. Rees, Board President  
S.L. Morris, Board Member  
Edward B. Roach, Board Member  
Eddie Piland, Board Member  
Billy B. Bridgford, Board Member  
Dickie White, Board Member

**AGAINST** the proposal to increase taxes:  
None

**ABSENT** and not voting:  
Pat A. Thomas, Board Member

**WHY GAS IS PLENTIFUL, EFFICIENT AND RIGHT FOR THE TIMES.**

It's time to kiss rumors goodbye and settle down with reassuring facts, one of which is that gas is plentiful for the residential and commercial customers of Lone Star Gas Company.

Rumors are usually more exciting than fact, but the fact is that approximately 2,500 drilling rigs were at work in the United States in December 1979. This was the highest active rig count since 1956.

Despite persistent rumors that America is running out of natural gas, industry statistics reveal an increase in the ratio of successes to failures in gas-well completions in 1979.

As a result, the United States has about 14,700\* new gas wells it didn't have a year ago. And exploration is expected to increase — not decrease — as higher gas prices offset the increasing cost of drilling.

Another reassuring fact is this: 50% of this nation's estimated remaining onshore gas reserves are in nine major basins in Texas and Oklahoma. Lone Star's pipelines connect with eight of these basins, so we'll have plenty of opportunities to buy new gas.

The new gas appliances can help you hold down your utility bills.

Gas is the naturally efficient energy that works in its original form, free of energy conversion costs. Direct use of it in your appliances actually conserves energy and saves you money.

Now, with the new energy-efficient appliances that use up to 30% less gas to do the same jobs your old appliances do so reliably, economical natural gas becomes even more economical.

The new gas appliances can help you hold down your utility bills without cutting back on the comforts and conveniences energy can provide. It's why natural gas and the new gas appliances are so right for the times!

\*Source: American Gas Association and The American Petroleum Institute.

**Lone Star Gas Company**

**GAS. IT'S PLENTIFUL, EFFICIENT AND RIGHT FOR THE TIMES.**

## Earnest Family Gathers

Making it an October-birthday-in-June, the sister of Joe Earnest of Colorado City Fannie Bess Earnest Sivalls and nine nephews and nieces, and some grand-nephews and grandnieces gathered to surprise him with a birth-

day celebration June 28. Family members came from Utah and South Carolina to help in the celebration.

## Muncrief, Merket Announce Plans

Mr. and Mrs. Billy R. Muncrief of Colorado City has announced the engagement and approaching marriage of their daughter, Sherri Carol, to Rodney Merket, son of Mr. and Mrs. Bo Merket, also of Colorado City.

The couple will exchange vows on August 23 at 7:30 p.m. in Calvary Baptist Church in Colorado City.

The bride-elect is a 1977

graduate of Colorado High School and has attended Western Texas College and Texas Tech University. She plans to attend the University of Texas School of Pharmacy in the Fall.

The prospective groom is a 1971 graduate of Colorado High School and a 1976 graduate of Texas Tech University and is presently employed with J.D. Hufstetter's Truck Company of Lubbock.



## Couple To Wed

Rodney Merket & Sherri Muncrief

### HBO PEOPLE GET A WORLD OF ENTERTAINMENT AT HOME.



#### Lido de Paris Starring Shirley MacLaine

Join Shirley and Tom Jones for a dazzling evening in Paris featuring the Lido's world famous chorus line, the Bluebell performance.

HBO People Don't Miss a Beat.



#### From Russia with Love

Sean Connery is 007, risking death aboard the Orient Express in another of HBO's Best of James Bond Series.

HBO Movies Don't Get Edited.



#### Heart Beat

Sissy Spacek, Nick Nolte and John Heard live together and love together in this intimate story of Jack Kerouac and Generation.

HBO People Get New Movies First.



#### NEXT WEEK ON HBO Death on the Nile

Guess whodunnit in this Agatha Christie thriller starring Peter the all-star cast — including Mia Farrow, Bette Davis, Maggie Smith, Angela Lansbury and David Niven.

HBO People Don't Miss Out.

**FRONTIER TV CABLE CO.**  
1325 West Point 728-3600

Also hosting were Stewart Cooper, Jr., and his wife, Margaret Ann, of Smithfield, UT; Dorothy Cooper Killough and her husband, Clive Killough, of Breckenridge; John Michael Cooper, of Atlanta, GA, and Katherine Cooper Bice, her husband, Bill Bice, and their son, William Stewart, of San Angelo. The only absent niece was Ruth Cooper Simeone, of Huntsville, AL.

After viewing old photographs of the family, there was a presentation of gifts and a picnic at Ruddick Park with Mr. and Mrs. M.C. Bynum, neighbors, and Katherine Buchanan, a long-time friend, as special guests. The hosts presented skits about the family's early years. The night before, some of the visitors went to the Fandangle, in Albany.

Also, notice came from Utah that Joseph Cooper, named for his great uncle, had married.

In mid-May, Earnest and Mrs. Sivalls went to San Marcos, where their father was born in 1859, to tour the town's old homes displayed by Heritage Association. Among the land-mark homes was that of their uncle, Joseph W. Earnest, which was built in 1892. They also attended the Commencement of the Episcopal Seminary of the Southwest, in Austin, of which Mrs. Sivalls' employer, Mrs. Joe Crump, of Midland, and the Rio Grande Valley, has been a financial benefactor.

Judge Charles Houston Earnest, the father of Joe and Fannie Bess, came to Colorado City in 1884, after graduation at Vanderbilt. He married Fannie Craig, of Pennsylvania, in the first wedding at the then-uncompleted All Saints' Episcopal Church in 1886. He had eight brothers and Joe Earnest is the last member of the Earnest family bearing the family name of Earnest.

To add to the sparkle of the day, Joe Earnest, who has contesting as a hobby, received in the morning's mail notice that he had won \$5,000 in a Colgate contest, having won \$2,500 for a niece two months ago.

"For car insurance rates that are 15% less than those set by the State, see me."

Like a good neighbor, State Farm is there.

Gary Harkins  
728-3062



State Farm Mutual Automobile Insurance Company  
Home Office: Bloomington, Illinois

# SAFEWAY



## Toothpaste

COLGATE WITH FLUORIDE.

15¢ Off Label (Save 50¢

Off Regular Retail)

Safeway Special!

7-OZ. TUBE



# 99¢

## FINAL NET HAIR SPRAY

CLAIROL NON-AEROSOL

(Save 66¢)

Safeway Special!

8-OZ. PLASTIC

# \$1.69



## BAYER ASPIRIN

FAST PAIN RELIEF!

(Save 30¢)

Safeway Special!

100-CT. BOTTLE

# \$1.27



## CUTEX POLISH REMOVER

★REGULAR ★LEMON OR ★HERBAL

(Save 26¢)

Safeway Special!

4-OZ. BOTTLE

# 49¢



FILM DEVELOPING



## SAFEWAY

# FILM PROCESSING

Recording the good times is a 'snap' when you stock up on the things you need at Safeway's Photo Supplies Department. Plenty of fresh film in all popular sizes... film for color slides, color prints, flash cubes and Polaroid film packs... Fast, expert film processing, too.

a little bit more... from Safeway!

## EVEREADY BATTERIES



★C OR ★D SIZE

(Save 36¢)

Safeway Special!

2-CT. PKG.

# 39¢

## INDOOR FOGGER

RAID SPRAY, KILLS INSECTS!

(Save 96¢)

Safeway Special!

8-OZ. AEROSOL

# \$1.99



# Good News Razor



DISPOSABLE

(Save 36¢) Special!

# 49¢

3-CT. PKG.

## FLUORIGARD

DENTAL RINSE

20¢ Off Label. (Save 70¢

Off Regular Retail)

Safeway Special!

16-OZ. BOTTLE

# \$1.29



## GLAMORENE

RUG FRESH

(Save 30¢)

Safeway Special!

15.5-OZ. CAN

# \$1.29



## COOKBOOK

FAMILY CIRCLE

★Dessert or

★Hamburger

EACH

# \$1.79



Everything you want from a store...and

a little bit more

Prices Effective Thurs. thru Sun., July 17, 18, 19 & 20, 1980 in Colorado City. Sales in Retail Quantities Only.



# SAFEWAY

TURN PAGE FOR SAFEWAY FOOD VALUES

JULY 17 80

**RSVP. From Page 1**

cotton trailers traveled through the main streets of town was also of interest to state personnel.

Shackelford explained the suggested procedure is to obtain as many names of county residents as possible on a petition. This petition and a delegation, along with a letter from the Colorado City Council and Commissioners' Court, should be presented to the highway commission in Austin.

"Everyone in the county needs to sign this petition. The more names on the petition, the more attention the state will be apt to pay to the request," Shackelford said.

Commissioners decided to take no further action in the matter until a full court could consider the problem.

County Judge Bill Carter and Commissioner Paul Hunter were not present for the meeting. Both persons were out of town on vacation.

Another item, not listed on the agenda, which took a major portion of the discussion time during the meeting was a presentation by Director Marsha Krench of the Retired Senior Volunteer Program (RSVP) in Snyder.

Ms. Krench stated she had received extension funding from the federal government and wished to establish a branch of

**RSVP in Mitchell County.**

She explained in Snyder there are more than 350 volunteer senior citizens involved in the program.

This represents about 65,000 hours of voluntary manpower, she said.

In order to establish a branch of RSVP here, the county would have to furnish \$1,039 in matching funds. This would open an office, with space donated by the Colorado Independent School District, at Wallace Center and pay a part-time worker. CETA workers would be used to answer telephones and keep the office open on a full time basis.

The total cost of the program annually is anticipated to be \$7,000, the bulk of which would

be furnished by the federal government under an ongoing program.

"The main purpose of our program is to encourage senior citizens to stay active after retirement," Ms. Krench said.

Commissioners tabled any decision on the subject until the next session when a full court is expected to be present.

In other business, Texas Highway Patrolmen requested two cameras, one for each car, to be used in gathering evidence.

Commissioners voted to grant the request.

Sheriff Bill McGuire appeared before the court to request \$650 to purchase new closet and shower doors in the living quarters at the jail.

Commissioners granted the request.

Bonds were approved for Anita Calaway, \$5,000, and Mike Burt, \$25,000, during the meeting.

Commissioners decided to table the appointment of election judges until the next session when a full court will be in attendance.

They then found that Judge Carter had contacted the persons to be appointed prior to the meeting and decided to go ahead and appoint the same judges for each precinct and voting box who served during the last election.

They are: Precinct One, Billie Marie Long and Marcelene Cox; Precinct Two, Doug Barber and Keith Williamson; Precinct Three, Olson Sweet and J.M. Munoz, Jr.; Precinct Four, Ted Lefevre

and Mrs. Royce Beights; Precinct Seven, Billie Ruffin and Juanita Vest and Absentee, Bob Ratliff and Bob Rely.

A letter of appreciation was read to the court from the Colorado City Volunteer Fire Department. The letter expressed the department's gratitude for the new truck furnished by the county and for continued interest of the court in the welfare of the department.

Commissioners gave approval for a right-of-way easement, about three and one-half miles from the Cuthbert Cemetery, for a pipeline crossing for Bruce A. Wilbanks.

Only one bid was received by the county for a new motor grader for Precinct Four.

Treanor Equipment Company bid \$113,683 on a 140-G, 1980 Caterpillar, less a trade-in of \$35,347 on the 17-year-old Caterpillar now owned by the county. The total cost to the county is \$78,336. Commissioners accepted the bid with the anticipated delivery date in about 30 days.

The next regular meeting is scheduled for August 11 at 1 p.m. in the County Courthouse.

Commissioners gave approval to a revised contract with the Colorado Independent School District in regard to the lease of property on which multipurpose tennis courts are planned for construction under a matching funds grant from the Texas Parks and Wildlife Department.

**Couple Exchange Vows In Australia In January**

Lynette Sandridge and George Cummings of Australia were married on January 5 in the St. Andrew's Church of England in Cronulla, Australia. The bride is the daughter

of Mr. and Mrs. Colin Sandridge of Australia and the groom is the son of Mr. and Mrs. E.E. Cummings of Lake Colorado City. The couple reside in Australia.



Mr. and Mrs. George Cummings

**Eastern Star Chapter To Meet Tonight**

Colorado Chapter No. 58 Order of the Eastern Star will meet this evening (Thursday) at 7:30 p.m. for a regular meeting in the Masonic Hall. A program honoring 50 year members will be presented and all members are urged to attend. Guests are welcomed to attend also.

Refreshments will be served.

**Wesley Allen Dies**

Wesley Allen Edwards, 66, of Colorado City died at 10:25 a.m. Monday. Services were at 10 a.m. Tuesday at Kiker-Seale Chapel.

Rev. Bob Manning, minister of the First Baptist Church of Westbrook, officiated. Burial was at 2 p.m. Tuesday at the Fairview Cemetery in Midland, with Rev. Ross Payne officiating.

Born March 19, 1914 in Merkel, he married Arlie Ware in 1946 in Midland. He was a veteran of World War II and worked for the Midland Fire Department for 21 years. He was a school bus driver for nine years. He had lived in Colorado City for four years. He was a Methodist.

His wife died in 1970. He married Irene Reed June 26, 1976 in Westbrook.

Survivors include his wife; six daughters, Laura Brady and Lou Jones, both of Midland, Sue Dilbeck of Odessa; Jeannette Duffer of Big Spring, Claudine Riffe of Forsan and Christine Ware of Westbrook; a sister, Lucille Moore of Midland; a brother, Jay Edwards of Midland and 13 grandchildren.

Pallbearers were E.J. Light, Marvin Beauchamp, Mazy Ware, Joe Montgomery, Coy Adams and D.H. Soles.

Carpet Shop & Decorator Center

**SAFEWAY Everything you want from a**



**Safeway Special!**  
**Tide Detergent**  
For All Your Wash!  
(Save 56¢)  
49-oz. Box  
**\$1.39**  
(Limit 1 with \$10.00 or more additional purchase excluding cigarettes.)

**Safeway Special!**  
**LONGHORN CHEDDAR Cheese**  
Safeway Halfmoon  
(Save 38¢)  
10-oz. Pkg.  
**\$1.19**

**Safeway Special!**  
**Drink Mix**  
Cragmont Sweetened Assorted Flavors!  
(Save 60¢)  
26.5-oz. Can  
**99¢**

**Safeway Special!**  
**Chunk Tuna**  
Star-Kist Light Meat  
(Save 29¢)  
6.5-oz. Can  
**79¢**

**Garden Fresh Fruits And Vegetables!**  
**Grapes**  
Thompson Seedless.  
Safeway Special!  
—Lb. **89¢**  
**Peaches**  
California Large. Safeway Special!  
—Lb. **49¢**

**Head Lettuce** For Cool Salads! Safeway Special! Each **39¢**  
**Red Tomatoes** Red-Ripe Slicers! Safeway Special! —Lb. **59¢**

**Cantaloupe** Large Size. Safeway Special! Each **3 \$1**  
**Yellow Onions** Full of Flavor! Safeway Special! —Lb. **4 \$1**

**Russet Potatoes** Premium Safeway Special! 3 Lbs. **\$1**  
**Valencia Oranges** July! Calif. 4-Lb. Cello **\$1.49**  
**Red Onions** California Sweet —Lb. **49¢**  
**Large Celery** California Each **59¢**  
**Large Broccoli** California —Lb. **69¢**  
**Green Beans** California Pole Beans —Lb. **59¢**  
**Chinelle** 4 1/2 Inch Pot Each **\$2.19**  
**Dracaena** Assorted 4 Inch Pot Each **\$1.89**  
**Dracaena** Assorted 6 Inch Pot Each **\$3.98**  
**Vertagreen** Fertilizer With 50-Lb. Sevin. (10-5-5) Bag **\$7.49**  
**Turf Builder** Scott's Fertilizer 23 1/2-Lb. Bag **\$9.99**  
**Fertilizer** Soil Life (8-8-8) 50-Lb. Bag **\$4.49**

**Plum-A-Rama**  
★Wickson ★Simka  
★Laroda ★Frontier  
★El Dorado  
Your Choice! Safeway Special!  
**59¢** —Lb.

**Look For The Arrows For Extra Savings!**  
**Hawaiian Punch** Assorted Flavors 46-oz. Can Safeway Special! **71¢**  
**Bounty Towels** (Save 16¢) 100-ct. Roll Safeway Special! **79¢**  
**Lysol Cleaner** Toilet Bowl 16-oz. Plastic Safeway Special! **75¢**  
**Tuna Twist** Mixes, Nabisco Assorted Safeway Special! 1.9-oz. Pkg. **66¢**  
**Worchestershire** Sauce, Lea & Perrin Safeway Special! 5-oz. Bottle **69¢**

**Safeway Quality Frozen Foods!**  
**Strawberries** Bel-air Whole. Luscious Desserts! 20-oz. Bag (Save 44¢) Safeway Special! **99¢**

**Fruit Pies** Bel-air Individual (Save 16¢) Safeway Special! 8-oz. Pkg. **29¢**  
**Large Shrimp** Brilliant, Cooked. Safeway Special! 10-oz. Pkg. **\$4.99**  
**Vegetable Gumbo** McKenzie Safeway Special! 16-oz. Pkg. **85¢**  
**Apple Juice** Seneca Safeway Special! 12-oz. Can **89¢**  
**Egg Noodles** Reames Safeway Special! 12-oz. Pkg. **85¢**  
**Jeno's Pizza** Assorted Safeway Special! 11.75-oz. Pkg. **\$1.29**  
**Hush Puppies** Gold King. Safeway Special! 16-oz. Pkg. **67¢**  
**French Toast** Downyflake Safeway Special! 9-oz. Pkg. **73¢**  
**Bread Dough** Bridgford Honey Wheat. Special! 2-Lb. Pkg. **81¢**  
**Breaded Cut Okra** Millwell HQF Safeway Special! 12-oz. Pkg. **64¢**  
**Creamed Chicken** Blouffer Safeway Special! 6.5-oz. Pkg. **\$1.59**

**Ice Novelties** Wide Variety Of Your Favorite Novelty Treats!  
**Ice Milk Bars** Snow Star (Save 51¢) Safeway Special! 20-ct. Pkg. **\$1.88**  
**Fudge Bars** Snow Star (Save 42¢) Safeway Special! 20-ct. Pkg. **\$1.65**  
**Frozen Pops** Snow Star (Save 46¢) Safeway Special! 20-ct. Pkg. **\$1.19**

**Swanson's Take-Out Chicken** For Picnics! Time Savings! 28-oz. Pkg. **\$3.59**  
**Snow Crop Orange Juice** Frozen Concentrate 12-oz. Can **\$1.02**  
**Soothing! Foot Powder** Dr. Scholl's For Hot, Tired Feet! 7-oz. Can **\$1.94**  
**Blue Bonnet** Light Tasty Spread 25% Less Fat and Calories! 2-Lb. Bowl **\$1.34**

## Looney Club Members Attend Pageant

The Looney Club sponsored an educational trip June 27 to the Kendrick Amphitheater, located between Eastland and Cisco on Highway 80.

This was the Kendrick Religious Pageant, the Life of Christ, from birth to resurrection.

Members of the group arrived at 5 p.m. and toured the museum. After the tour, the group

ate a sack lunch and home-made ice cream was served.

The program began at 9 p.m. Members of the group noted that the J.W. Hicklin family from Colorado City performed well in the recreation of Christ's life.

Rev. Jim Hill, pastor of First Christian Church of Colorado City acted as the chauffeur for the group as he was the bus driver.

Attending were Don Banta, Mrs. Dorothy Johnson, Mr. and Mrs. T.L. Holman, Mrs. Clara Butler, Lynn Compton, Mrs. Mabel Givens, Mrs. Hawey Leach, Mrs. Effie Wheeler and Mrs. Iva Prescott.

Also, attending were Mrs. A. Claxton, Mr. and Mrs. W.E. Harris,

Mmes. J.D. Gibson, Henry McGuire, Sidney Compton, Charles Wil-

iams, Judy Caine, Maxine Morris, Guin Claxton, Corey Flanagan,

Donnie Hearn, Minnie Howell and Thelma Howell.



MITCHELL COUNTY EXTENSION HOMEMAKERS and Martin County Homemakers met in the C.C. Thompson Room Thursday for the Annual Recreation Day. Pictured (left to right) are Minnie Lee Wells, Candace Griffin, Frankie Cummings and Doris Penny.

## Annual Recreation Day Is Slated Success By TEHA Club Members

The Annual Recreation Day for Mitchell County Extension Homemakers was held in the C.C. Thompson Room Thursday.

The all day meeting began with registration and welcoming the Martin County E.H. Clubs as guests. Arts and crafts were displayed by both clubs on tables.

The morning meeting consisted of individual clubs giving demonstrations on many useful items. Ladies had crafts

both in sewing and novelties and arts in various mediums on display.

Instructions were available on items demonstrated and helpful hints were given to those inquiring on particular crafts.

A salad luncheon, furnished by some 64 members, was served.

The afternoon session was made up of club skits and reading with Mrs. Bill Griffin, recreation of Mitchell County, as mistress of ceremonies.

The skits carried both a message of the meaning of being a member of the E.H. Club along with some humorous trials of a 1917 World War I soldier.

Mrs. Griffin closed the program by thanking everyone for their time and effort in making the "Recreation Day" a success and a special thanks to the invited guests of which there were 12, for their attendance and sharing of their talents and ideas.

The T.E.H.A. Council of Mitchell County, under the leadership of Mrs. R.D. Penny, has strived to fulfill the recommendations of the Extension Homemakers in bringing goodwill, close fellowship and sharing our works with those in our community and surrounding counties, stated Mrs. E.E. Cummings, club member.

She added that programs of this kind proves that we as people can and will continue to make our homes, communities and country a proud place to live.

# store ..... and a little bit more .....

<p><b>Safeway Special!</b></p> <p><b>Mac &amp; Cheese</b></p> <p>Kraft Dinner Easy to Prepare!</p> <p>7.25-oz. Box <b>29¢</b></p>	<p><b>Safeway Special!</b></p> <p><b>Fresh Eggs</b></p> <p>Lucerne Medium "A" Breakfast Favorite!</p> <p>Dozen <b>48¢</b></p>
<p><b>Safeway Special!</b></p> <p><b>Sherbet</b></p> <p>Lucerne Assorted Flavors (Save 50%)</p> <p>1/2-Gallon Ctn. <b>\$1.09</b></p>	<p><b>Safeway Special!</b></p> <p><b>Pringles</b></p> <p>Potato Chips. Twin Pack Crisp! (Save 37%)</p> <p>8-oz. Pkg. <b>88¢</b></p>

Look For The Arrows For Extra Savings!

<b>Fleischmann's Margarine</b>	Quarters 1-Lb Carton	<b>79¢</b>
<b>Glass Plus Refill</b>	Tealze 32-oz Bottle	<b>98¢</b>
<b>Taco Shells</b>	Old El Paso 12 Count	<b>66¢</b>
<b>Marshmallows</b>	Kraft Miniature	<b>69¢</b>
<b>Wheat Wafers</b>	Sunshine 11-oz Box	<b>85¢</b>
<b>Sliced Mushrooms</b>	Bin B 3-oz Can	<b>79¢</b>
<b>Heinz Dill Slices</b>	16-oz Jar	<b>89¢</b>
<b>Ziploc Bags</b>	Quart Size 25-ct Pkg	<b>98¢</b>
<b>Liquid Detergent</b>	White Magic 32-oz Plastic	<b>\$1.09</b>

**Everyday Low Prices!**

<b>Cut Green Beans</b>	16-oz Can	<b>33¢</b>
<b>Salad Olives</b>	10-oz Jar	<b>\$1.09</b>
<b>Corn Flakes</b>	12-oz Box	<b>65¢</b>
<b>Canned Milk</b>	13-oz Can	<b>45¢</b>
<b>Chicken Viennas</b>	5-oz Can	<b>35¢</b>
<b>Tomato Soup</b>	10.75-oz Can	<b>27¢</b>
<b>Long Grain Rice</b>	2-Lb Pkg	<b>59¢</b>

**COMPARE Everyday LOW, LOW PRICES**

**Compare These Everyday Low Prices!**

<b>Enriched Flour</b>	5-Lb Bag	<b>89¢</b>
<b>Toilet Tissue</b>	4-Roll Pkg	<b>89¢</b>
<b>Salad Dressing</b>	32-oz Jar	<b>89¢</b>
<b>Golden Corn</b>	16-oz Can	<b>32¢</b>
<b>Soda Crackers</b>	16-oz Box	<b>59¢</b>

**Compare These Values!**

<b>Liquid Bleach</b>	Gallon Plastic	<b>63¢</b>
<b>Aluminum Foil</b>	25 Sq Ft Roll	<b>41¢</b>
<b>Charcoal Briquets</b>	10-Lb Bag	<b>\$1.49</b>
<b>Paper Plates</b>	100-ct	<b>\$1.19</b>
<b>Cleanser Powder</b>	14-oz Can	<b>38¢</b>
<b>Paper Napkins</b>	140-ct Pkg	<b>69¢</b>
<b>Bonus Dog Food</b>	15.5-oz Can	<b>20¢</b>

**Safeway Meats Are Guaranteed To Please!**

**Boneless Roast \$1.69** —Lb.

Chuck Shoulder Pot Roast. USDA Choice Grade Heavy Beef. Safeway Special!

**Premium Ground Beef \$1.69** —Lb.

Any Size Package. Safeway Special!

**Top Sirloin Steak \$2.69** —Lb.

Boneless, USDA Choice Heavy Beef. Safeway Special!

**SAFEWAY FRANKS**

12-oz Pkg

KEEP REFRIGERATED

NEI WL 1287 (1980)

**Quality and Variety!**

<b>Sliced Beef Liver</b>	98¢
<b>Beef Short Ribs</b>	\$1.09
<b>Beef Patties</b>	\$1.79
<b>Ground Chuck</b>	\$1.89
<b>Boneless Steak</b>	\$1.89
<b>Chuck Arm Roasts</b>	\$2.29

<b>Smoked Ham</b>	79¢
<b>Smoked Hams</b>	98¢
<b>Boneless Hams</b>	\$1.69
<b>Curemaster Ham</b>	\$2.79
<b>Turkey Mini-Ham</b>	\$1.69
<b>Sliced Bacon</b>	\$1.08
<b>Safeway Bacon</b>	\$1.25
<b>Armour Bacon</b>	\$1.49
<b>Corn Dogs</b>	\$2.25

<b>Chicken Hens</b>	49¢
<b>Fryer-Roaster</b>	69¢
<b>Fish Cakes</b>	69¢
<b>Fish Sticks</b>	\$1.19
<b>Red Snapper</b>	\$1.69
<b>Beef Patties</b>	\$1.49
<b>Whole Lobster</b>	\$2.49
<b>Loin Strip Steak</b>	\$4.49
<b>Tenderloin Roast</b>	\$4.75

**Safeway Franks 89¢**

<b>Lunch Meat</b>	69¢
<b>Sliced Ham</b>	\$1.05
<b>Sliced Bologna</b>	\$1.35
<b>Cotto Salami</b>	\$1.29
<b>Chopped Ham</b>	\$1.39
<b>Variety Pack</b>	\$1.85
<b>Smorgas Pack</b>	\$2.09
<b>Eckrich Sausage</b>	\$1.89
<b>Eckrich Sausage</b>	\$2.29

<b>Dixie Country Flour</b>	2 49¢
<b>Baby Shampoo</b>	\$1.65
<b>Pillsbury Biscuits</b>	2 49¢
<b>Massengill</b>	\$1.33

<b>Flaked Coffee</b>	\$5.61
<b>Beanee Weenees</b>	\$5.49
<b>Cranberry Juice</b>	\$1.51
<b>Diet Snacks</b>	\$3.59
<b>Jumbo Tomatoes</b>	\$1.08
<b>Baby Food</b>	\$2.29
<b>Vaseline Petroleum Jelly</b>	\$1.15
<b>Fantail Shrimp</b>	\$4.95
<b>Fish Portions</b>	\$2.15

**WE WELCOME FOOD STAMP SHOPPERS**

Prices Effective Thurs., Fri., Sat. & Sun., July 17, 18, 19 & 20, 1980 in Colorado City. Sales in Retail Quantities Only!

**SAFEWAY**

© COPYRIGHT 1980, SAFEWAY STORES, INCORPORATED

## Lester Webb Dies

Lester L. Webb, 71, of Loraine died after an apparent heart attack about 4:25 p.m. Monday while working on his farm southeast of Loraine.

Funeral services were Wednesday at the Light-foot Street Church of Christ in Loraine. Joe Marshall officiated, assisted by Clarence Minton of Snyder.

Born April 10, 1909 in Eastland County, he lived in Mitchell County most of his life. He married Inez Thompson Aug. 23, 1927 in Colorado City. He was a member of the Church of Christ.

Survivors include his wife; a daughter, Mavis Nix of Waco; a son, Linton Ray Webb of Loraine; a sister, Wanda Ellett of Fort Worth; two brothers, Trudo Webb of Fort Worth and M.A. Webb of Muskogee, Okla.; seven grandchildren and two great-grandchildren.

Pallbearers were James Donald Clifton, Dennis Moore, Billy Cornutt, George Martin, Billy Don Green, Hubert Mearse, Larry Blair and Donnie Phillips.

## Former Resident Dies

Bessie E. Fredenburg, 76, of Henderson and a former resident of Colorado City died at 9:40 p.m. Sunday in Henderson Memorial Hospital. Services were at 10:30 a.m. Wednesday in the Kiker-Seale Chapel.

Burial was in the Colorado City Cemetery. Born April 18, 1904 in Collin County, she married Jack J. Fredenburg March 20, 1923 in Clarksville. He died June 18, 1979. She left Colorado City in 1972. She was a member of the Assembly of God Church.

Mrs. Verna Robertson and Bobbie Bell officiated.

Survivors include a daughter, Ann McCracken of Bowie; two sons, Leroy Fredenburg of Seneca, Mo., and Bill Fredenburg of Henderson; a brother, O.L. McCullough of Madera, Calif.; 10 grandchildren and a great-grandchild.

Pallbearers were Ray Ayers, Jack Ayers, Ronnie Ayers, Herman Jones, James McCullough and James Farmer.

JULY 17 1980

# SPORTS



## First Baptist Women Claim First Place Title Saturday

Church League Softball concluded Saturday as women battled in temperatures of 108 degrees for the first place title in Mitchell County Church

League Softball for women.

First Baptist took the tournament with no losses and Loraine Baptist came in second. Calvary defeated Mt. Zion

in the opening round 13-12 and Loraine beat St. Ann's 17-14.

Calvary was then defeated by the First Baptist women 13-10 and St. Ann's Catholic team was knocked out of play as they lost their second game to Mt. Zion 15-6.

First Baptist eased past Loraine Baptist 16-8 and Calvary women were knocked out by Mt. Zion Baptist 11-1.

The championship games saw Loraine beat Mt. Zion 6-1, putting Mt. Zion in third position. The final game of the day was between First Baptist and Loraine Baptist with First Baptist taking it 19-1, giving Loraine second place and First Baptist the number one slot.

Don't Strike Out! Check The Want Ads!!!!

## Tennis Tournament Is Set To Begin July 24 For Both Men And Women

July 24, 25 and 26 are the dates the Mitchell County men will determine who the best tennis players are, stated Coach Dave Redwine, tournament coordinator.

Any ladies who missed the Volley of the Dolls Tournament can also sign up to play women's doubles and both novice (beginners) and advanced divisions. Divisions for the men

will include both singles and doubles in novice and advanced divisions.

Boys 15 and under will play singles if eight players sign up. Entry fee is \$5 per player and a

can of new unopened tennis balls which are returned to the players.

Trophies will be awarded to first, second and third places in each division.

Eight players or teams must enter to have a division. Phone Dave Redwine at 728-3080 by Thursday (July 24) to enter. Play will begin at 7:30 p.m. at the Middle School courts on July 24.

## Smith Honored

Brenda Smith, 1980 graduate of Colorado High School, was selected by the Texas High School Girls' Coaches

Association out of hundreds to be honored for her athletic abilities at the Honor Award Banquet today (Thursday)

at 8:15 p.m. in San Antonio.

She was selected to the 200 meter All-Star track team. The 1,500 member association chose 12 senior girls from the B, A and 2-AA Class and 12 girls from the 3-AAA and 4-AAAA Class for their abilities.

She has qualified for regionals and state several years and brought home honors each time. She will be accompanied by a chaperone.

The association will cover expenses for her room and meal Thursday night and breakfast Friday morning, at which time she will return home.

Coach Martin and Coach Laura Wiley, the new girls coach at CHS, will attend the coaching school in San Antonio Wednesday through Saturday. All-Star games are scheduled for each day of their training.



Brenda Smith

## Flatland Run Set Saturday

There is a flatland run scheduled in Big Spring July 19th beginning at 9 a.m. at the Big Spring Airport.

There will be runs of three miles, 6.8 miles and 13.1 miles. Trophies and medallions will be awarded to male and females in all divisions.

There is four age divisions: 19 and under; 20-29; 30-39 and Masters. Entry fee is \$3 and the deadline to enter is July 19th.

For further information phone Big Spring YMCA at 267-8234.

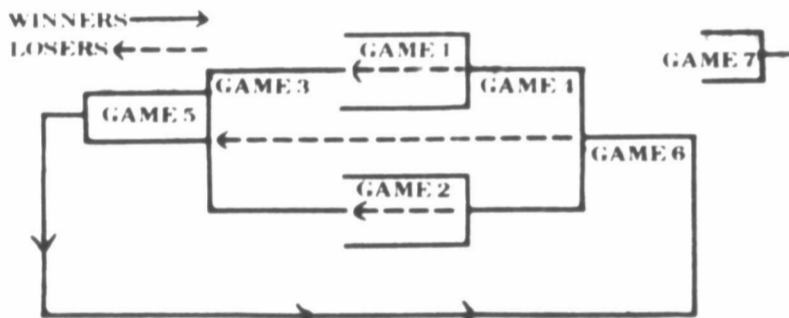
## U.G.S.A. West Texas State Tournament Schedule

THURSDAY	Division	Game No.	Field No.
7:00 P.M.	Division I	G-1	F-2
7:00 P.M.	Division II	G-1	F-1
7:30 P.M.	Division III	G-1	F-3
8:30 P.M.	Division I	G-2	F-2
8:30 P.M.	Division II	G-2	F-1
9:00 P.M.	Division III	G-2	F-3
FRIDAY			
8:30 A.M.	Division I	G-3	F-2
8:30 A.M.	Division II	G-3	F-1
9:00 A.M.	Division III	G-3	F-3
10:00 A.M.	Division I	G-4	F-2
10:00 A.M.	Division II	G-4	F-1
10:30 A.M.	Division III	G-4	F-3
7:00 P.M.	Division I	G-5	F-2
7:00 P.M.	Division III	G-5	F-3
8:00 P.M.	Division II	G-5	F-1
SATURDAY			
8:30 A.M.	Division I	G-6	F-2
8:30 A.M.	Division II	G-6	F-1
8:30 A.M.	Division III	G-6	F-3

"If Necessary" Games Will Start At 11:00 A.M.

All Division I Games Will Be Played On Field 2  
All Division II Games Will Be Played On Field 1  
All Division III Games Will Be Played On Field 3

Field Number 1..... Girls' Softball League Field  
Field Number 2..... Little League Field  
Field Number 3..... Hertenberger Field



## UGSA All-Star Tourney Is Set To Kick Off Today

Colorado City will be the site this weekend for the West Texas United Girls' Softball Association All-Star Tournament with teams from Colorado City, Andrews, Merkel-Trent and Sweetwater participating.

Each town will send one team to compete in each of the three divisions. Division I is for girls ages 8-10; Division II is for girls ages 11-13 and Division III is for girls ages 14-16.

The tournament will be conducted in accordance with UGSA rules and will be supervised by officials from the UGSA state headquarters in Midland.

Everything gets started with a meeting of league officials, coaches and managers at 2 p.m. Thursday in the Civic Center. At that time, rules will be explained, questions answered and teams will draw for positions on the bracket.

When the drawing is held, the teams will find out who they will play and when.

Then at 4 p.m. Thursday, all members of the teams participating will gather for opening ceremonies at the Civic Center and a hot dog supper will be served, compliments of the Colorado City Area Chamber of Commerce.

After opening ceremonies, all teams will be dismissed until it is time for them to play.

All teams will play Thursday night and again Friday morning. After that, teams will begin to lose out and be out of the tournament as it is double elimination.

One game will be played in the loser's bracket Friday night in each division and then Saturday morning, the championship game will be played beginning at 8:30 a.m. Should the team from the loser's bracket win the first championship game in each division, a second game will be necessary and that will begin at 11 a.m. Saturday.

The awards ceremony will be held at noon Saturday or at 1 p.m., depending on whether or not any of the "if necessary" games are played. The awards ceremony will be held at the girls' softball field in Ruddick Park. Games for the tournament will be played at three different fields with the Division I playing at the Little League field, referred to as Field 2; Division II will play at the girls' softball field, referred to as Field 1 and Division III will play at Hertenberger Field, referred to as Field 3.

The games times and bracket are contained in the accompanying chart and bracket.

## REPORT OF CONDITION

The City National Bank of Colorado City

In the state of Texas, at the close of business on June 30, 1980 published in response to call made by Comptroller of the Currency, under title 12, United States Code, Section 161.

Charter number 5276 National Bank Region Number 11

Statement of Resources and Liabilities		Thousands of dollars
<b>ASSETS</b>		
Cash and due from depository institutions		4,812
U.S. Treasury securities		2,286
Obligations of other U.S. Government agencies and corporations		2,335
Obligations of States and political subdivisions in the United States		5,202
All other securities		22
Federal funds sold and securities purchased under agreements to resell		6,000
Loans, Total (excluding unearned income)	12,351	
Less: Allowance for possible loan losses	102	
Loans, Net		12,249
Lease financing receivables		None
Bank premises, furniture and fixtures, and other assets representing bank premises		548
Real estate owned other than bank premises		None
All other assets		673
<b>TOTAL ASSETS</b>		<b>34,126</b>
<b>LIABILITIES</b>		
Demand deposits of individuals, partnerships, and corporations		14,447
Time and savings deposits of individuals, partnerships, and corporations		13,472
Deposits of United States Government		23
Deposits of States and political subdivisions in the United States		1,349
All other deposits		69
Certified and officers' checks		308
<b>Total Deposits</b>		<b>29,668</b>
Total demand deposits	15,348	
Total time and savings deposits	14,320	
Federal funds purchased and securities sold under agreements to repurchase		None
Interest-bearing demand notes (note balances) issued to the U.S. Treasury and other liabilities for borrowed money		None
Mortgage indebtedness and liability for capitalized leases		None
All other liabilities		523
<b>TOTAL LIABILITIES (excluding subordinated notes and debentures)</b>		<b>30,191</b>
Subordinated notes and debentures		None
<b>MEMORANDA EQUITY CAPITAL</b>		
Preferred stock	No. shares outstanding	None (par value) None
Common stock	No. shares authorized	5000
	No. shares outstanding	5000 (par value) 250
Surplus		500
Undivided profits and reserve for contingencies and other capital reserves		3,185
<b>TOTAL EQUITY CAPITAL</b>		<b>3,935</b>
<b>TOTAL LIABILITIES AND EQUITY CAPITAL</b>		<b>34,126</b>
<b>MEMORANDA</b>		
Amounts outstanding as of report date:		
Standby letters of credit, total		None
Time certificates of deposit in denominations of \$100,000 or more		1,687
Other time deposits in amounts of \$100,000 or more		None
Average for 30 calendar days (or calendar month) ending with report date:		
Total deposits		29,010

We, the undersigned directors attest the correctness of this statement of resources and liabilities. We declare that it has been examined by us, and to the best of our knowledge and belief is true and correct.

Charles C. Thompson  
J.R. Fuller  
George Witten

*[Signatures]*  
Directors

I, George Womack

Vice President & Cashier

of the above-named bank do hereby declare that this Report of Condition is true and correct to the best of my knowledge and belief.

*[Signature]* George Womack

July 14, 1980

## Herm Reu

Descendant late Alfred a Herm held the reunion at the son Room in City July 11 a

Seven of the of the couple sent. They Mrs. Edgar Akerly; Mr. James Hermdo City; Mr. Edgar Martz troit, Mich.; Mrs. Parnell; Mrs. Little of Mr. and Mr. Herm of M and Mr. and rold Herm a ter, Brenda, Mr. and Mrs. zel) Logan of ces, N.M., w to attend.

Others pre Mr. and Mr. Herm, Mach na and Eric Mr. and M Herm and L ery; Karla Herm, of Col Laurie, Sha Mathi Herm

## July

SPECIAL DEL MONTE BANANA Ben E. Keitt POTATO California PLUMS California CANTALOUPE White ONIONS Gandy's Old COTTAGE ICE CREAM Shasta Diet DRINK Del Monte PEACH VIP PINTO Our Darling CORN Alpo Assort DOG FOOD Gooch's All FRANKS Homestead PORK Fresh Lean PORK CHUCK Lb. \$1.19 Loraine

It's financial So easy to Get solid We you the ex Ho them We wait We'll F Lora

## Herm Family Has Reunion In July

Descendants of the late Alfred and Mattie Herm held their annual reunion at the Thompson Room in Colorado City July 11 and 12.

Seven of the children of the couple were present. They were Mr. and Mrs. Edgar Herm of Ackerly; Mr. and Mrs. James Herm of Colorado City; Mr. and Mrs. Edgar Martzoleff of Detroit, Mich.; Mr. and Mrs. Parnell; Mrs. Mildred Little of Loraine; Mr. and Mrs. W.C. Herm of Miami, Fla. and Mr. and Mrs. Harold Herm and daughter, Brenda, of Austin, Mr. and Mrs. C.A. (Hazel) Logan of Las Cruces, N.M., were unable to attend.

Others present were Mr. and Mrs. Eddie Herm, Mabelle, Deanna and Eric, Ackerly; Mr. and Mrs. Steve Herm and Laura, Ackerly; Karla and Kerry Herm, of Colorado City; Laurie, Shannon and Mathi Herm of Miami,

Fla.; Mr. and Mrs. Gary Parnell, Karby, Jeremy and Karidy of Fort Worth; Clyde Parnell of Amarillo; Mr. and Mrs. Al Fulcher and Debbie of Big Spring; Mrs. Kelleigh Phillips of Big Spring; Sharon and Nancy Martzoleff of Detroit, Mich.; Kenneth Martzoleff and Henry Ramirez, Fort Sill, Okla.; Mr. and Mrs. Roy Little, Jr., Bonnie and Douglas of Norfolk, Va.; David and Pam Little of Houston; Mr. and Mrs. Phil Wallace, Melinda, Ronnie and Kenneth and Tommy Gatlin of Andrews; Mrs. Louise Liles of Bronte; Mr. and Mrs. Dave Jackson of Colorado City; Mr. and Mrs. Audie Herm of Texas City; Olen Mayes of Roscoe; Mrs. Jimmie Law; Mr. and Mrs. David Redwind, Andrea and Chad of Colorado City and Mr. and Mrs. Kevin Herm of Roscoe.

There were 70 persons present.

## Loraine Area Personals

By Ida Baird

Mr. and Mrs. Sharon Henderson visited friends, Mr. and Mrs. D'Vane Smiley in Phoenix, Ariz., the first of last week and traveled from there to Cameron,

N.M., where they were joined by Mr. and Mrs. Lynn Hamilton for several days vacation. They returned home Saturday.

## Henderson Presides During Meeting

Loraine Baptist Women met at the church July 7 at 2:30 p.m. for their regular monthly business and mission program.

Mrs. Clifton Henderson presided over the meeting and gave the introduction of the study, "Getting started on a new mission field."

This topic discussed by several members told of the challenges and needs on a newly opened mission field. Living and working conditions in foreign lands are usually not the best, dealing with the language differences, the narrow roads, water shortage, miles away from medical areas for their families, etc., but the other side of the picture is that there is someone to call on for power and strength and

missionaries find that God meets the needs.

In the business session Mrs. Clara Butler read the minutes and Mrs. Charlie Harris gave the treasurer's report. Mrs. Harvey Leach gave the mission in action report. The group voted to give \$50 for expenses for the group who are going to Glorietta the first of August. Also, the meeting for the Bible and Mission study was changed from July 18 to July 23.

Mrs. Luke Smith showed a new book entitled "The Life of Lotie Moon" she had purchased while attending the Baptist Convention and said it would be placed in the church library.

Mrs. Lynne Compton led the closing prayer. Twelve persons were present.

Mrs. Mike Hurst and children of Stillwater, Okla., spent last week with Mr. and Mrs. Hershel Williams.

Mrs. Mildred Little accompanied her son, David Little, to his home in Houston Sunday after he had been here to attend the reunion of the Herm family. She flew from Houston Tuesday to Atlanta, Ga., where she will spend a month with her daughter and her family, Mr. and Mrs. Chip Cochran and Cindi.

Mr. and Mrs. Gary Parnell and children, Karby, Jeremy and Karidy of Fort Worth spent the weekend with his parents after attending the Herm family

reunion July 11-12. Jeremy and Karidy remained for a two week visit with their grandparents.

Kenneth Butler, accompanied by Price Hall, carried his daughter Mrs. Max Irwin, and children, Tami and Scott, to their home in Houston Tuesday after she had been here with Mr. Butler and with her mother who is a patient in Hendrick Memorial Hospital in Abilene where she underwent surgery on July 9. They returned home Wednesday.

Mr. and Mrs. T.L. Holman returned home last week after visiting their daughter, Donna Holman in Austin and

with her sister, Mrs. Eza Clemons in Victoria.

Mrs. Lily Bennett left by plane Monday for Bozeman, Mont., where she will visit the next three weeks with her son and his wife, Dr. and Mrs. Byron Bennett.

Mrs. Steve Hurst and children of Perkins Okla., returned home Saturday after spending last week with her parents, Mr. and Mrs. Jack Brewer. Also, visiting Friday were Mr. and Mrs. Danny Kenenur and children of Aledo and visiting during the week was another

daughter and her husband, Mr. and Mrs. Scott McKnight of Big Spring.

Clarence Epperson was brought home last week after being a patient in Hendrick Memorial Hospital in Abilene where he underwent major surgery two weeks ago. He became ill Sunday and was admitted to Root Memorial Hospital in Colorado City.

Rev. and Mrs. Fred Witta have as their house guests Debbie and Pete Noel of Chicago, Ill. They arrived July 8 for a three week visit.

## Summer Revival Held In Loraine

The summer revival is continuing at the Loraine First Baptist Church and will continue through Sunday night services.

Rev. Miller Robinson, pastor of Colonial Hill Baptist Church in Snyder, is the guest speaker. Steve Roath, director of music at Loraine First Baptist Church, is

the coordinator for the music.

Morning services are at 10:30 a.m. today and tomorrow (Thursday and Friday) and evening services begin at 7 p.m.

Sunday services are as follows: Sunday School, 9:45 a.m.; morning worship, 10:45 a.m. and evening worship, 7 p.m.

## Revival Continues In Loraine

A revival is continuing at Crockett and Smiley Church of Christ in Loraine through Sunday services.

Virgil Farr of Odessa is the guest speaker. Services begin each night at 8 p.m. and Sunday morning service will begin at 6 p.m.

Everyone is invited to attend.



Mr. and Mrs. Raul Martinez, Loraine, are the proud parents of a 9 lb., 8 oz., baby boy, Louis Daniel, born July 9 in Root Memorial Hospital. He was 21 inches long.

### NOTICE

I, Clarence C. Burt, Tax Assessor-Collector for Mitchell County Hospital District, in accordance with the provisions of Article 7244c, V.T.C.S., have calculated the tax rate which may not be exceeded by more than three (3) percent by the governing body of Mitchell County Hospital District without holding a public hearing as required by Article 7244c, V.T.C.S. That rate is as follows:

\$0.49 county per \$100 of assessed value.

Clarence C. Burt  
Tax Assessor-Collector

July 15, 1980

COOK UP A STORM WITH THESE...

## July Food Values

SPECIALS GOOD FRIDAY & SATURDAY

Del Monte BANANAS	10 Lb. Bag	29¢
Ben E. Keith's Idaho POTATOES	10 Lb. Bag	1.19
California Santa Rosa PLUMS	5 Lb. Carton	59¢
California CANTALOUPE	5 Lb. Carton	39¢
White ONIONS	5 Lb. Carton	29¢
Gandy's COTTAGE CHEESE	12 Oz. Carton	73¢
Gandy's Old Fashioned ICE CREAM	5 Qt. Bucket	3.79
Shasta Diet & Assorted Flavors DRINKS	5 12 Oz. Cans	99¢
Del Monte Sliced Or Halves PEACHES	29 Oz. Can	69¢
VIP PINTO BEANS	3 15 Oz. Cans	98¢
Our Darling CORN	3 17 Oz. Cans	98¢
Alpo Assorted DOG FOOD	6 15 Oz. Cans	2.19
Gooch's All Meat FRANKS	12 Oz. Pkg.	99¢
Homemade PORK SAUSAGE	1 Lb.	1.29
Fresh Lean PORK STEAK	1 Lb.	1.09

GOOD BEEF ROAST

CHUCK	ARM	7-BONE	RUMP
Lb. \$1.19	Lb. \$1.29	Lb. \$1.49	Lb. \$1.89

Green's Lil Souper  
Loraine 737-2612

## Loraine Lodge News

Everybody's glad to have as new residents at the Leisure Lodge; Mrs. Trudy Gentry, Nannie Swafford and Anne Landry. Residents said that these ladies have added so much to the home. Also, new is Marie Garrett and Mattie Savedra of Roscoe who are LVN's and the lodge is happy to have them.

Visiting with Alfredo Garcia was his brother and his wife, Mr. and Mrs. Eugene Garcia of Houston. Attending the Maule reunion in Snyder was Vera Mae Robinson. It was held June 21 at the Community Center. Many relatives were not present due to farming operations but those there had a grand time visiting, eating and catching up on news.

Those attending were George and Josie Maule of Hobbs, N.M.; Lena and Carroll Hodges of Sweetwater; Faye Scott of Mineral Wells; Mr. and Mrs. W.D. Everett, Jr., of Snyder and Vera Mae Robinson of Loraine.

The lodge is looking forward to having a

booth on "Fiesta Day," July 22 with many crafts on display and for sale. They ask that everyone to look them up and see many of their creative items.

Mrs. Beulah Stanley and Janet brought a chocolate cake to the last birthday party and everyone wishes to say thanks and it was truly delicious. Celebrating birthdays in June were Maria Rocha, Lena Parks, Pansy Waita, Julia Williams, Fairy Bond, Manuela Lopez and Jo Nell Lilly. Cake and punch were served Wednesday amid the singing of the "Happy Birthday" song.

Celebrating the Fourth of July, they had cup cakes with striped red, white and blue icing, coffee and good old fashioned vanilla ice cream on a cone.

A story was read concerning the fourth and Independence Day which received a round of applause. Many thanks to Melvina Brewer and Jean Bagwell for furnishing the ice cream.

Mrs. Ethyl Kinder had the opportunity to see and visit with her niece and her husband, Mr. and Mrs. Tommy Abreck of Abilene; her son and his wife, Mr. and Mrs. Leonard Kinder of Coahoma; her sister and her husband, Mr. and Mrs. Aubrey Cranville and daughter, Lou Ann, of Coahoma. Visiting from local people were Ruth Blair and Nola Bennett who dropped in to see Nanny Swafford.

Everyone is looking in style and very lovely due to the efforts of our beautician, Jody Derryberry.

If anyone has extra buttons, the lodge could use them and would appreciate them. They ask that you phone or come by.

Helping with Bingo donations were Shelene Sanders, Jean Bagwell, Melvina Brewer and Lois Phillips.

The singing may not be improving but it's getting stronger thanks to Glen Coon and his help, stated a lodge employee. He added that given a little more time under his skill we'll have to get better.

## Missions School Dates Discussed

Women of the First United Methodist Church of Loraine met in the home of Mrs.

Harold Martin Wednesday morning.

The meeting opened by singing "Rescue the Perishing." Mrs. Raymond Wheeler, president, gave the devotional and led in the opening prayer. She used Proverbs 14:34 and commented on an article entitled "Keep America In Your Care."

Mrs. Percy Bond talked on the Mennonites, a strict religious group, and told of some of their modes of living and religious beliefs. They were the first to grow wheat, starting in Kansas. Mrs. James Bennett gave a prayer.

Mrs. Wheeler presided over the business session. A thank you note was read from Jill Linnam for a Bible given to her for graduation from the group.

An announcement was made that a School of Missions would be held in Lubbock July 23-25 and July 27-27 and the District Conference will be held in Colorado City in September.

The treasurer's report was given by Mrs. Bennett Blair and Mrs. K.L. Taylor.

Present were Mmes. Wheeler, Bond, Bennett, Taylor, Wells, J.D. Norman, Blair, Frank Crownover, S.E. Meadows and Mattie Neely.

## T.Green Family Reunites

The family of Mrs. T.J. Green of Loraine and the late Mr. Green gathered at the home of Mr. and Mrs. Joe Scrivner at Buchanan Lake July 3 where they visited until Sunday. Mrs. Green had all of her family present except one daughter, Mrs. Bert Affleck from El Paso.

Those from Loraine were Mrs. Green, Mr. and Mrs. T.J. Green, Jr., and Tommy.

Also attending were three daughters, Mrs. Blossom Lee Burtstrom of El Campo, Mrs. Joy Cheek of Abilene and Mr. and Mrs. Joe Scrivner, hosts.

Also present were Lisa Wilkerson of Colorado City, Mr. and Mrs. Joe Scrivner, Jr., of Albuquerque, N.M., Mrs. Gerald Dunger of Houston and Mr. and Mrs. Jimmy Scrivner of College Station.

Activities for the family reunion were shared in picnics, swimming, making pictures and visiting.

## Pick the fuels electricity can be made from:

- coal
- natural gas
- oil
- uranium
- all of the above

"All of the above" is right. But these days two of those fuels — coal and uranium — cost less and are more plentiful than the others.

For many years we built plants to use natural gas and some oil to generate all your electricity. And we still have to use a lot of those fuels. But for over 10 years, we've been building plants that use lignite coal. Today, almost half of your electricity is made at lignite plants. And now, we're building a plant to make electricity with uranium.

That's good. Because at the end of this year our biggest contract for low-cost natural gas expires. The new gas and oil we'll have to buy will

be much more expensive. This means the cost of electricity will go up. But it won't be as high as it would have been if Texas Electric hadn't planned ahead. Our use of lignite coal and our planned use of uranium are ways we're helping minimize the increases in your electric bills.

By conserving, you can help save on your bills. To learn effective conservation measures, attend one of our free Operation Tighten-Up workshops. Call us for information on a workshop in your neighborhood.



S. B. HARDEE, Manager, Phone 726-2331

## Get Some Get-Away Money And Get Away.

It's vacation time! You're ready to go, but the financial fuel is low.

So go! We've got the traveling money for you. An easy-to-get, convenient-to-pay-back vacation loan. Get some of our cash and skip town for the good, solid vacation you and your family deserve.

We can probably help in other ways, too. Perhaps you need a safe deposit box for important papers and the expensive trinkets you'd rather not leave at home.

How about Travelers Checks? You're going to need them.

We've got the cash waiting for you. What are you waiting for? Start your vacation with a visit to us. We'll do all we can to get you out of town.

## First State Bank

Loraine

Member FDIC

737-2211

JULY 17 1980

## The Case Of The Diving Wasp

By Bill Jany

Gardens in Colorado City are becoming bombed out "No Man's Land." No, it's not due to angry home gardeners blowing their gardens up due to the price of water, nor is it because of the giant cracks appearing in the

soil because of severe moisture stress. It's because of a little bug—who am I kidding—a HUGE WASP burying locust in the garden. Now I know you're thinking that this Arizona Aggie has been in the sun too long, but it's true.

Each wasp are placed in each cell in the nest, an egg is laid in the cell and the cell sealed. When the eggs of these large wasps hatch, they feed on the paralyzed cicada.

By killing cicadas, these wasp are beneficial, but, if they are bothered while flying around your garden, they can sting you real good if they catch you. Most people can usually out run them; it's amazing how fast people can move when chased by a wasp that size.

If you're not into running marathons against these beasts, or you're interested in sharing your garden with them but they aren't...use a little Sevin or Diazinon, apply it directly to their mounds or tunnels. Treat these at night and close the openings to their tunnels.

These wasp are known as cicada killer wasp. This wasp is a large and striking insect about 1 1/2 inches in length. It is black or rusty brown with yellow bands on the abdomen. Adults appear in the summer when cicadas (locust, as they are called back home) are present and begin to build nests in the ground. Ci-



Kirk Wayne, son of Mr. and Mrs. Ron Loken, City, was born July 11 in Root Memorial Hospital weighing 9 lbs., 15 ozs.

## Charlott Clemmer Has Accepted Chairmanship

The Lone Star Chapter of the Cystic Fibrosis Foundation announces the appointment of Mrs. Charlotte Clemmer as chairman of its 1980 Breath of Life Campaign in Colorado City. Mrs. Clemmer will be

recruiting volunteers within the community to help plan and carry out a CF Breath of Life Campaign this Fall.

The purpose of this campaign is to provide the community with information about Cystic Fibrosis and to raise funds to support research, education and care programs for CF patients.

The number one genetic killer of children, Cystic Fibrosis is inherited and incurable. An estimated one in 20 Americans is a symptomless carrier of the recessive CF gene. One in every 1,500 babies born in this country is a victim of CF. Currently, half of all children born with CF will die before they leave their teens.

To volunteer for the Breath of Life Campaign, contact Mrs. Clemmer at 728-2255.

### Bar-b-que To Be Sold

The VFW Post will sponsor a bar-b-que dinner sale on July 26 at the VFW Post here in Colorado City.

Everyone is invited to attend. Bar-b-que plates are free to all 1981 members; and \$2.50 to non-members.

They will also sponsor a hot dog, Coke and bake sale in conjunction with the "Fiesta Day" celebration in downtown Colorado City July 24 through July 26.

## Albert Moore Family Has Reunion In Westbrook July 6

The descendants of the late Mr. and Mrs. Albert Moore had their annual family reunion July 6th in the Westbrook High School cafeteria with 55 members attending.

Attending were Messrs. and Mmes. C.H. Stephenson of Abilene; A.L. Curtis of Mead; Arlie Moore of Westbrook; Oren Moore of Colorado City; Leonard Moore, Kenny Larna and Kristie of Westbrook; Loyd Hart, Jr., Robert and Jennifer of Denver City and Dale Moore of Morton, Ill.

Also, attending were Messrs. Clarence Moore of Morton, Ill.; Charlie Moore of Dallas; Grady Moore of Mesquite and Mmes. Linnie Johnson of Dallas; Buddy Tuney and Melinda of Zelch Springs; Lillie Golden,

Bob Golden and Merle Golden, all of Colorado City.

Also, present were Messrs. and Mmes. Jewell Penden, Jeffery, Terrell, Bill Johnson of Chandler; Sam Tuney and three children of Mesquite; Pete Curtis of Mead; Ray Woodard and Sarah of Haskell;

V.W. Stokes, Anson Henderson, all of Westbrook and Jim Harris.

Also, attending were Mmes. Gay Moore of Westbrook; Mae Sheak and Sara of Mead; Velma Davis; Flonelle Conkling of Westbrook and Miss Delza Kaye Moore of Colorado City.

## Library Presents Films Saturday

The Mitchell County Public Library will be showing films, free of charge, to anyone who wishes to attend. The film showing will be a 2 p.m. Saturday.

Films to be shown Saturday are "Naughty Owllet," an animated story about a family of baby owls who live in a

hollow tree; "The Merry-Go-Round Horse," a small French ragamuffin falls in love with a merry-go-round horse; "Noises In The Night," a story of a child's fear and imagination at night and "Magic Rolling Board," a celebration of the joys and skills of skate-boarding.

**WE'RE NOT A BANK!**  
That's why  
**WE PAY YOU MORE ON INSURED SAVINGS!**  
SAVINGS INSURED UP TO \$100,000 BY THE FSLIC

6 MONTH MONEY MARKET CERTIFICATE	ANNUAL RATE	ANNUAL YIELD*
	<b>8.610%</b>	<b>8.921%</b>
Effective Through July 23		
*Yield assumes interest compounded daily, credited quarterly and left on deposit for one year. Substantial penalty for early withdrawal.		

30 MONTH MONEY MARKET CERTIFICATE	ANNUAL RATE	ANNUAL YIELD**
	<b>9.50%</b>	<b>10.11%</b>

**HOMESTATE SAVINGS**  
SWEETWATER ROSCOE ROTAN HAMLIN COLORADO CITY ABILENE

## "Project 100" Clean-up Continues



Cleaned By Kiwanis Club



Cleaned By Colorado City B&PW



Cleaned By Noon Lions Club

Clean Up Your Act  
In The Want Ads



Cleaned By The Beavers Family



Cleaned By Wallace Senior Citizens

Due To Hot Weather "Project 100" Is Set To Continue For One More Month.

**SALE**  
Colorado City Livestock Auction  
Weekly  
**CATTLE SALE**  
Each Saturday Starting At Noon  
Good Consignments Of Cattle  
Colorado City Livestock Auction  
Sweetwater Hwy.  
728-2603

**JULY MEAT SALE**  
Prices Good July 17th - July 23rd

**ARM ROAST** \$1.25/Lb.  
200 To 250 Lbs. Average Cut & Wrapped  
**1/2 BEEF**.....\$1.29/Lb.

**HAMBURGER MEAT**  
In 2 Lb. Rolls \$13.90  
10 Lbs.

**CHUCK ROAST** Lb. \$1.09  
**MINUTE STEAKS**  
(60 Pieces Per Box) 12 Lb. Box \$17.88

**Hamburger All Meat PATTIES**  
10 Lb. Box \$14.50

**STEAK FINGERS**  
(144 Pieces) 8 Lb. Box \$13.41  
In 2 Lb. Bags Pork  
**SAUSAGE**.....10 Lbs. \$8.50

**Pork SAUSAGE PATTIES**  
10 Lb. Box \$8.90

**Cox's Quality Meats Inc.**  
102 Oak 728-2501

**TENNIS SHOES Sale Priced! MEN'S ADIDAS**

**CONDOR** Reg. '16 \$9.95  
**MATCH** Reg. '11" \$5.95

**VIENNA & ROM**.....Reg. '36 \$22.95  
**COUNTRY** Reg. '36 \$18.95  
**HOGAN** Reg. '14" \$9.95

**FORMULA**.....\$29.95  
**DRAGON**.....Reg. '28 \$14.95

**LADIES' ADIDAS**

**BILLIE JEAN KING** Reg. '35 \$18.95  
**LADY RUNNER**.....Reg. '40 \$19.95  
**LADY COUNTRY**.....Reg. '36 \$18.95  
**LADIES' TENNIS SHOES**

**TRACK KING**  
Blue With White Stripes Joggers  
Yellow With Blue Stripes Joggers  
Reg. '15" \$10.95

Nike Ladies' Yellow With Blue Swoosh  
**WAFFLE TRAINERS**.....Reg. '38 \$19.95

**Wood's Family Shoe Store**  
East I-20 728-3722

Blue...  
RA...  
APPE...  
W...  
Was...  
Dry...  
Refrig...  
Air Con...  
& Als...  
T...  
For TV...  
Also...  
Ran...  
App...  
728-...  
FUR...  
REFI...  
72...  
72...  
The Be...  
is Open...  
Stylists...  
shell &...  
roughs...  
for appoi...  
Will do wa...  
ing run...  
pumps and...  
Phone Eric...  
728 1654 or...  
728 2161 Lic...  
PAU...  
SPEC...  
We're...  
Went...  
tributor...  
plumbing...  
tion an...  
work. I...  
5511...  
Colora...  
Plumb...  
Refrig...  
John...  
Lamm...  
1218 Hic...  
NELL'S...  
1826...  
Colo...  
72...  
1 Block N...  
SELF...  
C-CITY...  
MINI W...  
7...  
B...  
For All You...  
Judy's Bre...  
We A...  
For Appoi...  
Chan...  
In...  
Colora...  
Reside...  
Fre...  
91...  
CA...  
INSTA...  
Piano...  
The...  
Carp...  
Pioneer...  
72...  
BO...  
RE...  
Lop...  
E...  
West...  
Mead...  
8:30...  
Satur...  
Will do wa...  
ing, cast...  
work and...  
728-3083...  
TE...  
CO...  
Zenith...  
Stor...  
crow...  
servi...  
vision...  
A Line...  
157 E...

# H-E-A-T got you down?

Then check the Want Ads for cool buys

## Phone 728-3413 or 728-3414

**Business Services**   **Business Services**   **Business Services**   **Bug & Sell**   **Bug & Sell**   **Help Wanted**   **Miscellaneous**   **Garage Sale**

**RAMAGE APPLIANCE & TV**  
We Rent Washers, Dryers & Refrigerated Air Conditioners & Also Color TV's For TV Service Also Call Ramage Appliance 728-3373

**You Can Carpet 4-Rooms**  
Based On 44 Sq. Yds. **\$263.56**  
35 Colors To Choose From  
**CARPET MARKET**  
55 E. Washington San Angelo, Texas 655-0730

**HBO**  
Will do furniture upholstery. Free estimates. free pickup and delivery. Phone 728-2158.

**FOR SALE:** 1972 Oldsmobile Delta 88 Royale. Good condition. Phone 728-2546.

**FOR SALE:** 350 Honda motorcycle. Phone 644-2911.

**HELP WANTED!!**  
Experienced transport drivers. HOFSCO. Phone 573-5473.

Do all kinds of yard work, mowing, edging and light hauling. 788 E. 6th. Phone 728-5004.

**FAMILY BACKYARD SALE**  
Friday & Saturday, 7 a.m. till 5 p.m. Lower for TV antenna, twin bed, 37 sq. ft. washable white ceiling tile, 12 x 12 x 1/2 inch thick, clothes, all kinds of junk. 1208 Vine.

**FURNITURE REFINISHING**  
728-3604 OR 728-3170

"Downtown Bookstore" Good used books at half price. Westerns, novels, fiction, romances and Harlequins. Come visit. 236 W. 2nd.

**THE HAIR AFFAIR**  
4 Expert Beauticians To Serve You Tuesday - Saturday 271 Elm 728-2343

**FOR SALE:** Fifth wheel travel trailer, 1975 Trail Ryder, air and fully self conditioned, rear bath, sleeps five. Excellent condition. Phone 728-3639.

**Real Estate**  
House on Lake Colorado City near Col-Tex Club. Sell or trade for oil field equipment. Two bedroom, den, bath, large living room, fireplace, built-in kitchen, washer-dryer hookups. Newly remodeled, new carpet. Commercial water, gas, Cable TV on two lots with water well. George Powell, Bennett-Baucum Real Estate, 915-728-5036.

**X-Ray Technician** needed immediately in a 100-bed General Hospital. Salary commensurate with experience and training. Excellent Fringe Benefits. Apply: Administrator-D.M. Cogdell Memorial Hospital-Snyder, Tx. AC 915-573-6374, Ext. 201. Equal Opportunity Employer.

**Garage Sale**  
**BACKYARD SALE**  
Thursday, July 17 9 a.m.-5 p.m. 1545 Locust

**Class Reunion Is Set**  
The 15 year class reunion of the graduate class of 1965 at Colorado High School is set for August 16 at the Country Club. The reunion will begin at 1 p.m. with a schedule of events through 6 p.m.

The Beauty Boutique Is Open Mon. thru Fri. Stylists are Jane Mitchell & Jean Burroughs. Phone 728-5404 for appointment.

Mitchell County Hospital District 118 E. Root Memorial and Root Valley Fair Lodge is an equal opportunity employment health care facility. Employment offered to qualified persons without regard to race, color, sex, national origin or handicapped.

**ALOE VERA FOR SALE**  
FREE FACIALS FOR INFORMATION PHONE 728-3068

**FOR SALE:** 1978 Ford Courier pickup. Extra clean, five-speed, AM-FM, radio, long bed. Phone 728-3367 or 728-5846.

**FOR SALE:** Farms and ranches, houses and residential lots. Phone R.B. Baker Real Estate, 728-5052, Henry Bilberry, 728-3227 or Rita Latimer, 728-2126.

**Houses For Sale-Rent**  
FOR RENT: Furnished trailer. All bills paid. Phone Bojo's, 728-8230.

**CARPOR SALE**  
Sat., July 19, 8 a.m.-5 p.m. 935 Rusk. Kitchen & household items, good clothes and misc.

Anyone wishing to help should contact Dixie Watlington at 728-2249 or Jerry Hammond at 728-3727. Also, if you are planning to attend notify one of the above classmates as soon as possible.

Will do water well drilling, run casings and pumps and clean out. Phone Ernest Robinson 728-1654 or Jack Miller 728-2161 License No. 748

We do septic tanks, small leveling jobs, welding and repairs. Lake Area Only. Phone 728-5949 or 728-2804

**RAWLINS MONUMENTS, INC.**  
Phone 728-2576 If No Answer PHONE COLLECT 817-594-2726

**FOR SALE:** One 22,000 BTU, 220 volt refrigerated air conditioner. Phone 728-5747.

**FOR SALE:** Farms and ranches, houses and residential lots. Phone R.B. Baker Real Estate, 728-5052, Henry Bilberry, 728-3227 or Rita Latimer, 728-2126.

**HOUSE FOR SALE:** 829 E. 8th. Appraised at \$24,000. Make an offer. Phone 728-3100.

**GARAGE SALE**  
Sixte Park Road to Sportsman Club Road. Turn east and follow signs. Friday, Saturday and Sunday afternoon.

**Mrs. Latham Celebration Is Set Saturday**  
Mrs. I.J. Latham will be honored with a birthday celebration in the C.C. Thompson Room Saturday from 3 p.m. until 6 p.m.

**PLUMBING SPECIALISTS**  
We're the local Westinghouse distributor. We do plumbing, refrigeration and heating work. Phone 728-5511. Colorado City Plumbing and Refrigeration. Johnny Tammen 1218 Hickory

Wilson Auto Electric Co. Repair on starters, generators, alternators, magnets, 408 E. 3rd St., Big Spring. Phone James Norwood, owner, 267-8721

**HICKORY CARPET SHOP**  
THE CARPET SHOP  
Benjamin Moore Paints

**FOR SALE:** 1976 Dodge long, wide bed. Standard shift, factory air. 58,000 miles. \$1,600. Phone 728-5317.

**Howard S. Wright Realty**  
422 E. 9th Phone Fleta Lewis-728-2001 or Flo McKinney-728-5879 for your Real Estate needs.

**Office building for rent.** Newly remodeled. Phone 728-5511.

**GARAGE SALE**  
Thursday, All Day 243 W. Fairmont Corner of Jefferson And Fairmont

The occasion will be hosted by her seven children from Oregon, California, Colorado, New Mexico and all over Texas. The family would like to extend a personal invitation to anyone knowing Mrs. Latham to attend the celebration and help her celebrate her 80th birthday. She is the former owner of Latham Electric in Colorado City.

**NELL'S FLOWERS**  
1826 Chestnut Colorado City 728-3821 1 Block North of Hospital

Color and black and white TV repair. All brands. Used TV's. John Sanders 620 Chestnut 728-3863 Service call-\$12.50

**Public Notice**

**FOR SALE:** Complete weekender. Ski rig with 100 hp Johnson, Ford pickup with full camper. Phone 728-8218

**HELP WANTED**  
NEEDED: Club Manager for VFW Post 9178. Applications must be mailed to P.O. Box 375, Colorado City, Texas 79512 prior to July 24.

**FOR SALE:** 3 bedroom house with refrigerated air, vinyl steel siding and new carpet. Phone 728-2915.

**GARAGE SALE**  
1104 E. 6th. 7:30-11:00. Tires, lots of clothing, shoes, jeans and misc. Thursday, July 17

Everyone call Bill Erwin on his double nickel birthday!  
Bill & Amelia, Julia, Melanie, Cindy, Renee and Mark and Holly

**SELF STORAGE C-CITY JEWEL BOX MINI WAREHOUSE**  
728-5511

**At The Style Shack TERESA LAIN**  
Specializing in all types of braiding, hair cutting & all aspects of hair designs. 728-3171 321 E. 12th

**Contractors Notice Of Texas Highway Maintenance Work**  
Sealed proposals for a Rest Area and Litter Barrel Maintenance Contract for various locations in Mitchell County, Texas, will be received at the State Department of Highways and Public Transportation, P.O. Box 150, Abilene, Texas, 79604 until 10 a.m., Monday, July 28, 1980, and then publicly opened and read. The proposals and specifications are available at the office of Mr. Nelson Shave, District Maintenance Engineer, Abilene, Texas, or Mr. Gaylord Price, Mitchell County Maintenance Supervisor, in Colorado City, Texas. Usual rights reserved.

**FOR SALE:** Cab over camper, refrigerated air, propane stove with oven, ice box, porta-potty, excellent condition. See at 1208 Pine or phone 728-2028.

**HELP WANTED:** Need relief man for newspaper route, one day a week. Phone 728-5242.

**FOR SALE:** 2 year old deluxe duplex. 2 bedroom, 1 1/2 bath, fireplace, carpet, total electric and walk-in closets. Live in one unit and rent the other unit. For appointment phone 728-2613 or 728-8260.

**MOVING SALE**  
Saturday. Vehicle, formal, portable air tank and etc. 1st house north of 1-20 on old Buford Road (Road north of Trucktown)

**HAPPY BIRTHDAY**  
Everyone call Bill Erwin on his double nickel birthday!  
Bill & Amelia, Julia, Melanie, Cindy, Renee and Mark and Holly

**Judy's Beauty Shop**  
For All Your Beauty Needs See Betty Corwin At Judy's Beauty Shop, 1721 Vine We Also Pierce Ears. For Appointment Phone: 728-6171

**ELECTROLUX**  
Vacuum Cleaners Shampooers Sales & Service R.S. & Eva Wallis 1098 Pine 728-3765

**FOR SALE:** 1977 Pontiac TransAm. 56,000 miles. For more information phone 728-3515 or 728-2571.

**FOR SALE:** 70cc Honda mini bike. 800 actual miles. \$200. Phone 728-5844.

**HELP WANTED:** Spread the word. Immediate openings for LVN's. 7-3 shift, \$40, 3-11 shift, \$42. \$1,000,000 hospitalization policy, life insurance, vacation, holidays, savings bond plan and meals. Travel expense if qualified. Apply at Kristi Lee Manor, Colorado City, 728-5247.

**Nice 2 bedroom house for rent.** 625 Vine. Available August 1. \$185 per month. Phone 644-2221 or 728-2446.

**FOR RENT:** FHA Approved mobile home lots. \$45 per month, water furnished. Hilltop Trailer Park. Phone 728-2092 or 728-5854.

The family of Mrs. I.J. Latham would like to have all her friends and former customers to come and help her celebrate her 80th birthday between 3 p.m. and 6 p.m. in the Charles C. Thompson Room Saturday.

**Chaney Brothers Insulation**  
Box 1215 Colorado City, Texas 79512 Residential 'Commercia' Free Estimates 915-728-5983

I will do sewing in my home. Phone Becky Manning at 728-3009 after 5:30 p.m. No alterations please.

**Bodine Dairy**  
Buford Highway Or Local Grocery Store (Only Eggs)

**FOR SALE:** 730 John Deere tractor. Can be seen at Claxton Repair Shop behind Hutchins Ford or phone 728-8425 or 728-3574.

**HELP WANTED**  
Spread the word. Immediate openings for LVN's. 7-3 shift, \$40, 3-11 shift, \$42. \$1,000,000 hospitalization policy, life insurance, vacation, holidays, savings bond plan and meals. Travel expense if qualified. Apply at Kristi Lee Manor, Colorado City, 728-5247.

**FOR SALE:** 1969 Ford pickup short, wide bed. 390, automatic, \$1,250. Phone 728-2754.

**FOR SALE:** 1979 Harley Davidson super glide, \$3,700. Phone 728-2754.

**Real Estate**  
Jerry & Winnie Putman  
Home Ph. 644-2221, Office 728-2646  
Lake Colorado City Property.  
200 Acre Farm S/W of C-City. 3 B/R House With Fruit Trees, Storm Cellar, Commercial Water & TV Cable. 1/4 Mineral Rights. Owner Will Carry With 1/2 Down With 10% For 20 Years. \$625 Per Acre.  
FHA Appraised, 3 B/R, 1 Bath, Evaporative Air, Built In Dishwasher and Garbage Disposal. 133 W. 8th, \$16,800.  
3 B/R, 2 Bath. 941 Elm.  
2 B/R, 1 Bath. 430 Elm. \$10,000.  
4 B/R, 2 Bath Brick With One Car Garage Attached. 833 E. 14th. \$32,000.  
2 B/R, 1 Bath, Chain Link Fenced Orchard, Several Storage Buildings On 3 Lots. 629 Pine, \$20,000.  
Farm For Sale In Rogers Community.  
If you want to sell your farm, home or lake property, we need listings. Jerry & Winnie Putman Home Ph. 644-2221, Office 728-2646

**CARPET INSTALLATION**  
From Hook, Jute, Vinyl, Tile, Deep Steam Carpet Cleaning, etc. Phone Pioneer Maintenance 728-5636

**NEED A PLUMBER?**  
Phone Bob Tammen  
**BOJO'S**  
Now Has All Your Plumbing Supplies.

**Bug & Sell**  
Eggs Can Be Bought From 3-6 P.M. At Bodine Dairy

**FOR SALE:** 1960 Chevrolet truck. Big 6 motor. Tru-Fab burr spreader box. Good mechanical condition. Phone 728-2671.

**AUCTION MOVING SALE** Friday, July 18 10 a.m.  
305 Hickory Colorado City, Texas  
Living room suite, dining room suite, 3 bedroom suites, electric range, refrigerator, freezer, washer and dryer, bunk beds, 2 color TV's, 1 black and white TV, 2 commode tables, 2 sewing machines, end and coffee tables, china, crystal, electric appliances, tools, lawn chairs, Avon bottle collection, pictures, almost new vacuum cleaner, dishes, boat and motor and many other miscellaneous items.  
Gerald Lawrence Auction Co. Abilene AC 915-678-2332 Res. 673-8527 License No. TX8-011-0108

**FOR SALE:** 1969 Ford pickup short, wide bed. 390, automatic, \$1,250. Phone 728-2754.

**FOR SALE:** 1979 Harley Davidson super glide, \$3,700. Phone 728-2754.

**Bud's Roofing**  
10 Years Experience Specializing In Composition Shingles  
Phone 728-2151 For Free Estimates

**BOOT & SHOE REPAIR AT**  
Langhorn Leather Works  
E. Interstate 20 West Of Wood's Boots Monday Thru Friday 8:30-12 & 1:30-5:30 Saturday 8:30-Noon 728-5067

**AUTHORIZED KIRBY DEALER.** New and rebuilt Kirby's. Sales and Service. For free demonstration phone collect 235-1303. 115 W. Broadway, Sweetwater, TX.

**Vinyl siding, storm windows, storm doors, Soffit & Fascia, chain link and Breplacs, Aluminum screens, sun screens, turbon vents and replacement aluminum windows 100% financing available. IDEAL EXTERIORS**  
1719 Vine 728-2686

**FOR SALE:** 1977 Pontiac TransAm. 56,000 miles. For more information phone 728-3515 or 728-2571.

**EXXON**  
Interstate Station in Colorado City For Lease. Immediate Possession Available. For information concerning this station, Phone Blaine Bushman Collect at 643-2842 between 8 a.m. & 5 p.m. Monday through Friday. After 5 p.m. or Saturday or Sunday 697-3066.

**FOR SALE:** 1969 Ford pickup short, wide bed. 390, automatic, \$1,250. Phone 728-2754.

**FOR SALE:** 1979 Harley Davidson super glide, \$3,700. Phone 728-2754.

**FOR SALE:** 1978 Deck boat with tape deck. Economical 4 cylinder, Chevrolet engine, inboard and outboard, \$6,250. 48 hours total time. Phone 728-3422.

**TELEVISION CENTER OF COLORADO**  
Zenith Televisions, Stereo and Sharp Microwave Ovens. We Service Zenith Televisions. We Now Have A Line Of Gift Items. 157 E. 2nd 728-2329

**Cut 'n' Hair Barber Shop**  
Men's hair styling 1546 Westpointe, E. Hwy 90 Turn-Right. 8 a.m.-6 p.m. 728-3351 Doyle Mitchell and Lynn Hixson Barbers & Stylists

**FOR SALE:** 1978 Deck boat with tape deck. Economical 4 cylinder, Chevrolet engine, inboard and outboard, \$6,250. 48 hours total time. Phone 728-3422.

**FOR SALE:** 1979 Ford pickup short, wide bed. 390, automatic, \$1,250. Phone 728-2754.

**EXXON**  
Interstate Station in Colorado City For Lease. Immediate Possession Available. For information concerning this station, Phone Blaine Bushman Collect at 643-2842 between 8 a.m. & 5 p.m. Monday through Friday. After 5 p.m. or Saturday or Sunday 697-3066.

**FOR SALE:** 1969 Ford pickup short, wide bed. 390, automatic, \$1,250. Phone 728-2754.

**FOR SALE:** 1979 Harley Davidson super glide, \$3,700. Phone 728-2754.

**FOR SALE:** 1978 Deck boat with tape deck. Economical 4 cylinder, Chevrolet engine, inboard and outboard, \$6,250. 48 hours total time. Phone 728-3422.

# Be a Super-Saver

SHOP THESE SUPER FOOD VALUES



## AT FULLER FOODS

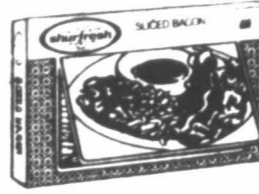
Plus The Extra Bonus Of S&H Green Stamps With Every Purchase.



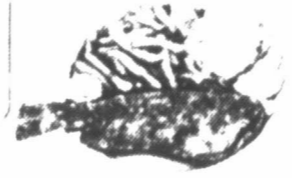
on all purchases



Shurfresh Pure  
**PORK SAUSAGE**  
1 Lb. Pkg. **79¢**



Shurfresh  
**BACON** 1 Lb. Pkg. **99¢**  
Shurfresh All Meat  
**BOLOGNA** 8 Oz. Pkg. **69¢**



Farm Fresh Whole  
**CATFISH**  
Lb. **\$1.99**



Stilwell Breaded  
**CUT OKRA**  
12 Oz. Pkg. **59¢**

Thrift King  
**PORK & BEANS**  
4 16 Oz. Cans **\$1**

Shurfresh All Meat  
**FRANKS** 12 Oz. Pkg. **83¢**  
Gary's  
**CORN DOGS** 10 Ct. Pkg. **\$1.98**



Decker's Ranch Brand  
Boneless Half  
**HAM** Lb. **\$1.79**



Shurfine  
**SUGAR**  
5 Lb. Bag **\$1.99**



Rave Soft  
Or Extra Hold  
**HAIR SPRAY**  
7 Oz. Can **\$1.19**

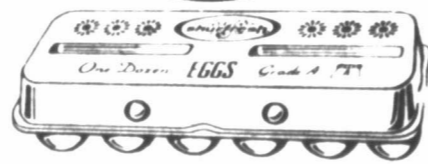
Palmolive Gold  
Shower Size  
**BATH SOAP**  
2 Bars **89¢**



French's Pure  
**MUSTARD** 9 Oz. Jar **39¢**  
Del Monte Kosher Halves  
**DILL PICKLES** 22 Oz. Jar **89¢**  
Alabama Girl Sliced  
**DILL PICKLES** 22 Oz. Jar **69¢**  
Del Monte  
**TOMATO WEDGES** 2 18 Oz. Cans **\$1**



Shurfresh Assorted Flavors  
**MELLORINE**  
1/2 Gal. Crtn. **89¢**



Shurfresh  
Extra Large  
**EGGS** Doz. **79¢**



California  
**PEACHES** Lb. **59¢**  
Sunkist  
**ORANGES** 4 1/2 Doz. **\$1**  
California Long  
**CUCUMBERS** Lb. **39¢**  
Mini  
**CARROTS** 12 Oz. Bag **45¢**

A&W  
Sugar Free Or Reg.  
**ROOT BEER**  
6 Pak **\$1.39**



Velvet Soft Spread  
**OLEO** 2 Lb. Tub **99¢**



Shurfresh  
Sweetmilk Or Buttermilk  
**BISCUITS** 6 10 Ct. Cans **\$1**

Vel Liquid  
**DETERGENT**  
32 Oz. Btl. **99¢**

Morton's Frozen Cherry,  
Apple Or Peach  
**FRUIT PIES** 24 Oz. Box **\$1.19**

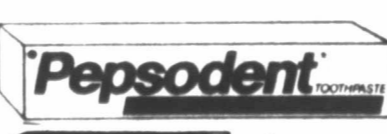
Lilt Special  
Or Body Wave Home  
**PERMANENT** EACH **\$1.89**

Morton's  
Frozen Glazed  
**DOUGHNUTS** 14 Oz. Box **89¢**

Pepsodent Soft,  
Medium Or Hard  
**TOOTHBRUSHES** EACH **59¢**



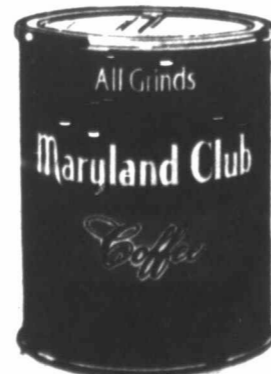
Shurfine Frozen  
**LEMONADE** 12 Oz. Can **49¢**



Pepsodent  
**TOOTHPASTE** 8 Oz. Tube **99¢**



Shurfine Assorted Flavors  
**CAN DRINKS**  
6 12 Oz. Cans **\$1**



Maryland Club Reg.,  
Drip Or Electric Perk  
**COFFEE**  
1 Lb. Can **\$2.99**



Kleenex White  
**FACIAL TISSUE** 10' Off 200 Ct. Box **69¢**



ScotTissue  
**BATH TISSUE** Single Roll **39¢**



Shasta Cola, Orange, Root Beer,  
Grape Or Strawberry  
**DRINKS** 2 Litre Btl. **99¢**

Shurfine  
**DRINKING WATER** 1 Gal. Jug **59¢**

Thrift King  
**FLOUR** 25 Lb. Bag **\$3.69**



Member Of  
**AFFILIATED**  
Food Stores  
**FULLER FOODS** FULLER VALUES

