



Clowning It Up at the Festival

Two state officials from Austin join with clowns from the Suez Shrine Temple in San Angelo during the Tumbleweed Festival luncheon in Civic House. From left to right, they are Dr. Bruce Johnson of Loraine, Shrine clown, Secretary of State Zollie Steakley, Shrine Clown Gene Williams of Snyder and Land Commissioner Bill Allcorn.

## Local Races 'Warm' Saturday Election

### Conventions to Open at 2 P. M.

A Democratic Primary ballot—mixing state politics with a few, but warmly contested local races—will draw probably more than 2,500 Mitchell County voters to the polls Saturday.

Polls will open at 8 a. m. at nine locations throughout the county and close Saturday evening at 7 o'clock.

Right in the middle of the election day will be Democratic Party conventions for the county's main precincts, meetings which at 2 p. m. will name delegates to the county convention and indicate the trend for Texas' policy for presidential nominees.

And Saturday night in front of The Record, 100 block of Walnut, Jaycoes again will operate the public election board with returns from county boxes as soon as vote totals are tabulated.

County Democratic Chairman R. H. (Harry) Ratliff urged all election judges to phone his office, RA 8-1371, just as soon as they finish their ballot counts.

Persons participating in the precinct conventions Saturday at 2 p. m. must have voted already in the primary. Poll tax receipts or certificates (for those who are exempted by age) stamped "Democratic" at the election will be the "ticket of admission" for the precinct conventions.

Conventions will be at the following places with these chairmen: Precinct 1—Court-house, Max Caddell; Precinct 2—Westbrook School, W. H. Gregory; Precinct 3—Spade, home of Robert Bolin, Wright Hoek; Precinct 4—Loraine office of Mitchell County News, Luther Anders.

Voting places will be at these 9 city and county locations:

Precinct 1, Colorado City—Court-house; Precinct 2, Westbrook—School; Precinct 3, Spade—Robert Bolin home; Precinct 4, Landers—Forrest Porter home. Precinct 5, Cuthbert—at the store; Precinct 6, Carr—at the school; Precinct 7, Loraine—Lions-Building; Precinct 10, Buford—Methodist Church annex; Precinct 12, Colorado City—American Legion Hut.

Getting the attention of local voters will be the races for state representative, county tax assessor-collector, sheriff and Precinct 1 commissioner.

Rep. Max Carriker is opposed by Jack McCain; Tax Collector Tom Glover is opposed by Montie Hardegree; 5 candidates—incumbent R. E. Gregory Jr., W. L. Claxton, W. R. McGuire, Howard Bynum and Sam Hulme—vie for sheriff.



Representative Candidates

One of the ballot warm spots Saturday in Mitchell County's Democratic Primary election will be shared by Jack McCain, left, and State Representative Max Carriker, right, candidates for the legislative post.

### BAND INSTRUMENT LOST AT PARADE

Lost: One clarinet among all the tumbleweeds.

Jackie Grace, member of the Bronte High School band which marched in the Tumbleweed Festival parade last Friday, lost the band instrument while in Colorado City.

She is offering a \$5 reward for return of the clarinet.

The instrument is black ebonyite in brown and white case. And the case is marked by the initials "J.D.G." and the owner's name.

Finder should contact the Record or Jackie Grace, P. O. Box 333, Bronte.

### ARRESTED IN MIDLAND

## Youth Admits Shop Burglary

An 18-year-old former Colorado City youth, now living in Midland, has admitted the burglary here last June of The Sport Shop.

The boy, placed on probation 2 years ago for burglary in Sweetwater, was arrested in Midland by Texas Ranger Gene Graves.

He signed a written statement here this week in the presence of Policeman Jim Latham, Deputy Sheriff Marshall Sheppard and Police Dispatcher Juanita Schafer.

Police Chief Leon Yeager said another suspect is being sought by police in connection with the burglary. However, he had not been apprehended Thursday.

Nine pistols and a quantity of knives were taken in the burglary last June 19 at the Sport Shop, located in 100 block of E. Second.

One of the stolen pistols turned up in Lubbock and information was obtained through the Midland police department—2 actions which put local officers close on the trail of suspects during the last week.

The youth who confessed burglarizing the shop said he came to Colorado City from Midland on the day of the burglary with his mother and sister to visit in the home of another sister.

That night he drove his car downtown, parked on the T&P parking lot and then walked to the rear of the Sport Shop. At about midnight the youth climbed a tree at the rear of Mode O' Day, next door to the Sport Shop, to gain the roof.

On top of the Sports Shop, the youth entered the housing from the air-conditioner, and made his way into the inside of the building.

He climbed down a step ladder the youth stated, then put pistols and knives into a box.

Police say the boy claimed he hid the pistols and knives in Midland and that "all the good" pistols were taken by someone from the hiding place. However, police believe the loot was sold for money.

### Teacher Recovering From Serious Injury

Miss Inez Butler, formerly a Colorado City public school teacher for many years, is recovering in Abilene from a broken hip and back injuries.

Miss Butler is now in Rosewood Rest Home, Treadway Blvd., Abilene, and friends report said she would enjoy hearing from friends and former students.

### FFA MEATS JUDGING

## Loraine Team 10th in State

Loraine Future Farmers' meats judging team won 10th place Saturday in state FFA contests at Texas A&M College.

The honor was earned in competition with judging teams representing the top 3 per cent of the entire state.

Loraine earned the right to go to the state contest by placing second among 41 teams the week before in regional contests in Lubbock.

At Texas A&M Saturday, the Loraine FFA team also produced the No. 4 high in individual meats judging student in the state. He is Ben Clouston, who scored 381 points out of a possible 400.

Other members of the 10th place team are Walter Clouston, Ben's brother, and Kenneth Johnson.

Taking home as their coach instructor and advisor is Ben Clouston, vocational agriculture teacher at Loraine High.

Loraine's meats judging team scored 1,050 points for 10th place—just 65 points behind the first place state winner, Fredericksburg, with 1,115.

Other top teams ahead of Loraine were Wylie, second with 1,102; Abilene, third with 1,098; Llano, fourth with 1,087; Monterey of Lubbock, fifth with 1,073; Brownfield, sixth with 1,064; Stephenville, seventh with 1,063; Mercedes, eighth with 1,061; and Ferris, ninth with 1,052.

### TO TOTAL OF 11,167

## County Population Drops 3,190 In Census Report

Mitchell County population has nose-dived more than 3,000.

The heavy drop in county population—all towns and rural residents—was evidenced Thursday with a preliminary report from the 1960 Census.

Preliminary count for Mitchell County is 11,167 persons, according to Earl Kerr, supervisor for the Lubbock District census.

The 11,167 count is down 3,190 from the county's population of 14,357 reported in the 1950 Census.

In the 1940 Census Mitchell had 12,477 population and in the 1930 Census had 14,183 persons.

Kerr reported the preliminary total in a letter to County Judge Elmer Martin.

The district supervisor stated that the total was preliminary and subject to change in cases of persons being missed in the county enumeration or in other instances of miscalculation.

However, if there is to be a revision, the change is not expected to be minor, he said.

The big slip in county population—compared to the 1950 Census—is expected to show mostly in the rural communities of the county when later figures are released.

But it also indicates that Colorado City's official population will be near its 1950

Census total and down from the population estimates made here in 1957-58-59. At a peak more than a year ago, Colorado City's population was estimated above 8,500.

Between then and the census count, though, Texas Electric Power Plant, Cham-

pioon Creek dam, Interstate 20 Freeway construction crews have moved out of the community. And oil activity has slowed.

In the 1950 Census Colorado City had a population of 6,774 and the rest of the county's population was counted at 7,583.

Therefore, even if the city shows a drop in population from the 1950 mark, the major dip still will be in population of rural areas.

Mayor Glenn R. (Bob) Robinson has requested a preliminary report for Colorado City from the district census office.

For 6 years he has been in Colorado High and Junior High bands, has been active in speech and Jetmasks, stage group at high school.

Last year he was one of 35 high school juniors across Texas selected on the basis of scholastic achievement for a special advanced physics study course at Texas Tech.

But his bout with rheumatic fever kept him at home.

In addition to his studies and activities, the West Point appointee has been employed at spare-time jobs—4 years at local theaters and the last 3 years at C.C. Printing Company.

The tests in March were the final barriers to be passed. And passing the physical exams was an extra special achievement for Chip, who only last year fought a battle with rheumatic fever.

In fact, he was stricken with the illness May 16, 1959, and was confined to bed all summer. But his recovery was remarkable and no ill effects remained to dash his hopes in the final physical tests.

Chip made his first formal application for the West Point appointment in the 10th grade upon the advice of Congressman Mahon. However, he had been seriously pointing to the appointment since he was in the fifth grade.

"Ever since he was 4 years old, really," said Mrs. J. E. Payne, his mother. "Every time he's seen a picture of a book about West Point that's all he has talked about."

Through the years, Chip has made an outstanding record in school, church and extra-curricular activities.

He's an 'A' student; Eagle Scout; president of Colorado High Math Club; charter member of the school's National Honor Society; the school's honor club; and a member of Methodist Youth Fellowship.

Mr. and Mrs. Kinard have been active in civic and church programs in Eastland. He has been president of Eastland's Lions, United Fund and an elementary school PTA. Also, he was sponsor of the YMCA's Hi-Y Club for high school boys, worker with Boy Scouts, secretary-treasurer of Little League and Teen-age baseball leagues.

Mrs. Kinard is serving this year as president of the Presbyterian Women in Eastland. She also is a member of the Thursday Afternoon Club, the Civic League and Garden Club.

The Kinards have a third child in the summer when the

### WEST POINT APPOINTMENT

## 'Chip' Payne Named to U.S. Military Academy

James E. (Chip) Payne, son of Mr. and Mrs. James E. (Tiny) Payne, 1111 Walnut, has been approved for appointment to the U. S. Military Academy at West Point.

It's a dream come true for the outstanding Colorado City High senior whose hopes to be a West Point cadet began when he was only 4 years old.

Notification of the appointment came Wednesday in a telegram from Congressman George Mahon in Washington. The wire stated:

"Officials have advised that you are fully qualified and entitled to admission to West Point on July 3, 1960.

"You will receive further details from Army officials soon. Congratulations and good luck."

### FROM EASTLAND

## New TESCO Plant Assistant On Job

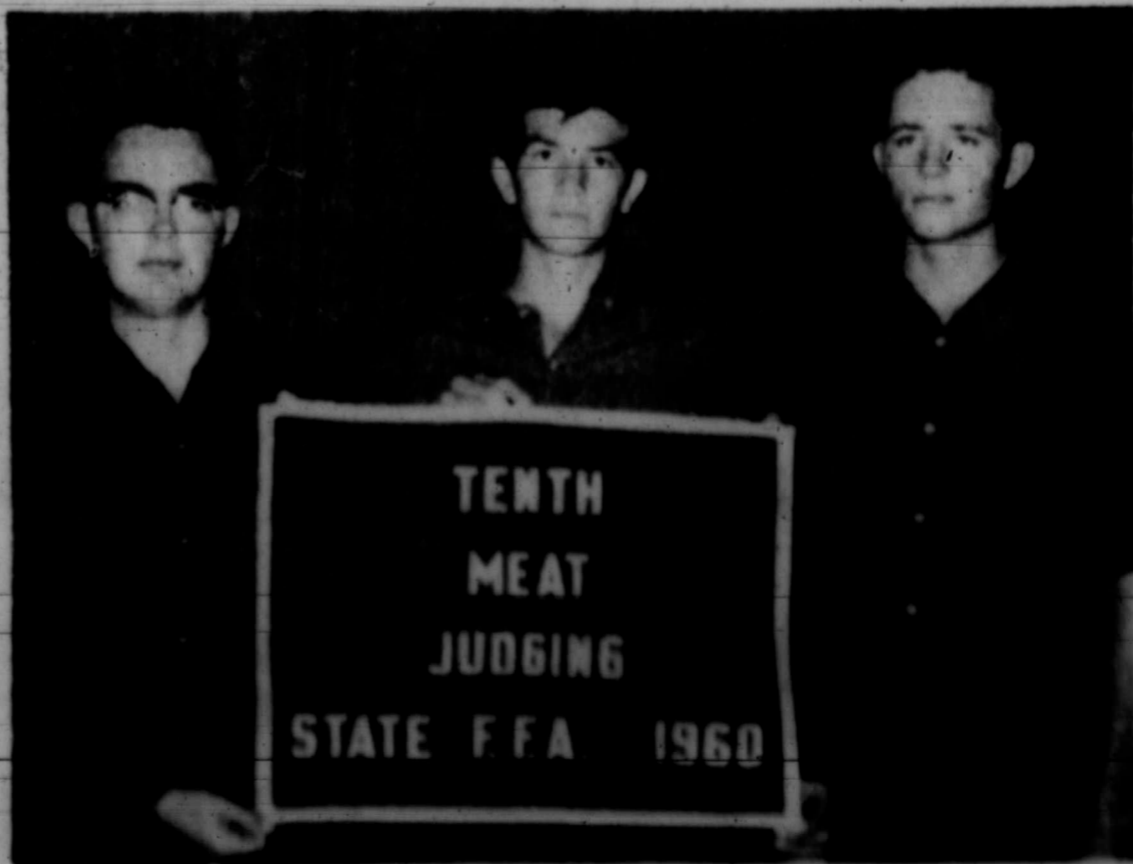
Larry Kinard is the new assistant superintendent here for Texas Electric Service Company's Morgan Creek Power Plant.

He succeeds J. C. Kuykendall, who has been transferred to TESCO's new power plant at Graham.

Kuykendall, who has been active in civic and club affairs here for the last 3 years, will be assistant superintendent of the new Graham plant.

Kinard, plant superintendent at TESCO's Leon Plant at Eastland since 1957, is ready to go to the job here. However his family will not move to Colorado City until after the school term ends this month.

And the Kuykendall family will not move to Graham until in the summer when the



Proud of State Banner

These 3 Loraine Future Farmers display the banner they won Saturday while carrying 10th place in state meats judging contests at Texas A&M College. Members of the team, left to right, are Kenneth Johnson, Walter Clouston and Ben Clouston. Ben was third high individual expert in the contest—limited to the top 3 per cent of the judging teams in the state.

**Attend Show Saturday**  
 Mr. and Mrs. Crin-Feger will leave for San Angelo Saturday afternoon to attend a musical show at San Angelo College. They will also visit their son, Royce, who is a member of the musical group.

**mother's day gifts**

GIFT WRAPPED



Summer's loveliest styles in dresses that Mother will live in and love! See them!

**MODE O'DAY**

132 East Second

**Beauticians Meet in Civic House**

The Colorado City Cosmologists Association, unit 64, met in the Civic House Monday evening for their regular monthly business meeting and dinner.

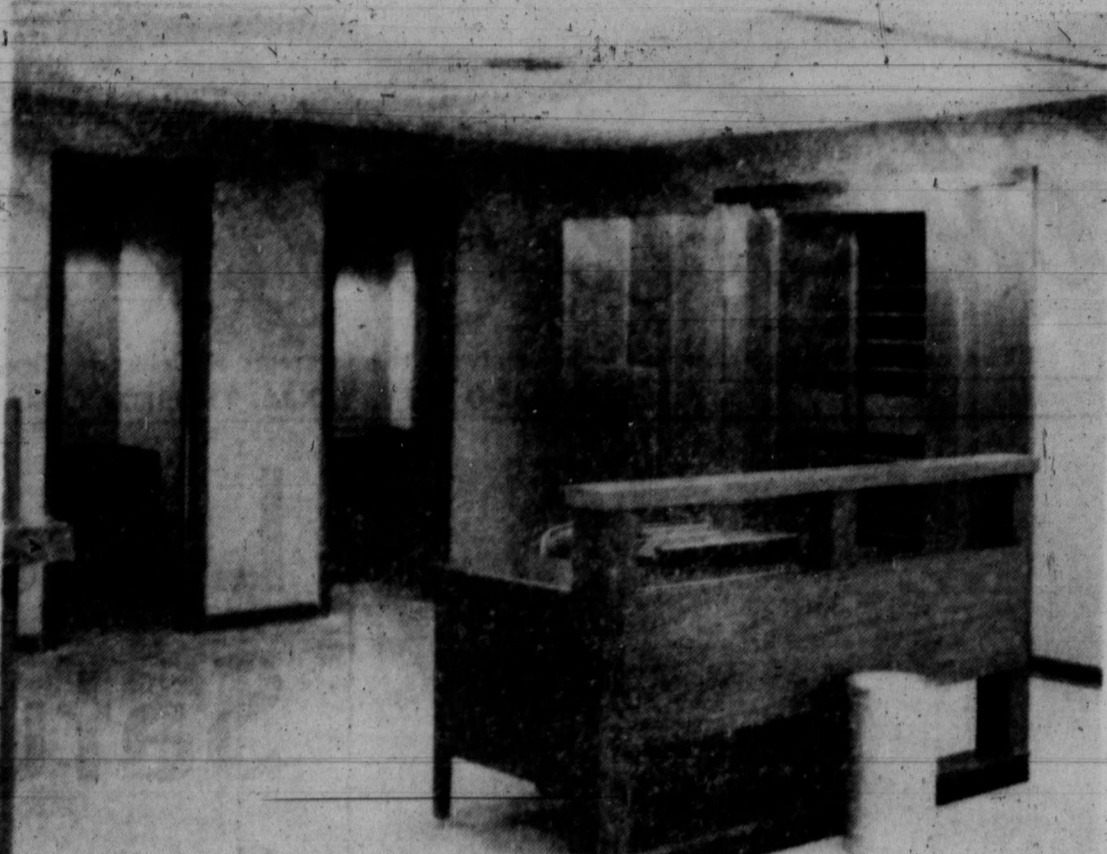
Mrs. Wann Sparks, president, presided during the business session.

Mrs. Clyde Parnell presented the unit report and read the minutes of the last meeting.

Discussion of the Southwest Texas Beauty show that is to be conducted in the Windsor Hotel in Abilene May 29-30 was conducted by the group.

Evan Campbell was appointed National Beauty Salon Week chairman by the president.

Attending were Mrs. Perry Bowles, Mrs. John Turner, Mrs. Mack Key, Mrs. Dennis Patterson, Mrs. J. L. Galey, Mrs. Lillie Sparks, Mrs. Wann Sparks, Mrs. Parnell, Mr. and Mrs. Campbell, Mrs. Luther Coffman, Mrs. Otho Rice, Mrs. Earline Sellier and Mrs. Ellen Vaughn.



Safety Deposit Facilities

Here is a view of the safety deposit vault (right) and the coupon booths for customer convenience in new City National Bank. The vault area adds more than 230 new safety deposit boxes for the bank's customers. The coupon rooms allow customers to open their boxes in privacy.

Cacti have numerous economic uses for making medicines and intoxicants and as cattle feed.

**IN TUESDAY MEETING**

**Dr Chinn Speaks to Federation**

Dr. John Chinn presented the program to members of the Mitchell County Federation of Women's Clubs when they met in the conference room of the Civic House Tuesday.

Dr. Chinn spoke to the group on "Medical Aspects of Tuberculosis Control." Mrs. John Brown led in the opening prayer and Mrs. J. T. Holley led in the pledge to the flag.

Federation treasurer's report was presented by Mrs. Lee Lavender.

Mrs. J. S. Craddock presented the library treasurer's and the librarian report during the meeting.

A note of appreciation was read from Mrs. Richard Moseley, 6th District president, for work done by Federation members in recent convention which had been received since final report on the March 17-18 convention.

A report written by Mrs. J. W. Watson concerning "Progress Day" in Stamford April 12 was read to the group.

Mrs. Watson reported that the Colorado City Club placed in a new district called the "Mesquite" district. She also told the group that Mrs. H. Jene Steakley was elected second vice-president of the new district and that 5 Colorado City women attended this re-districting meeting.

Mrs. E. A. Winn was named as an alternate delegate to the Texas Federation of Women's Clubs convention in Austin that was conducted Monday through Wednesday. In the event that Mrs. Steakley could not attend as a delegate.

Mrs. Lavender read the program for the May 24 meeting to the group.

**Musical Festival in Hutchinson School**

First annual Hutchinson Elementary School musical festival will be conducted next Thursday in the Colorado City High School auditorium at 7:30 p. m.

**Student Visits**

Jerry Lady, son of Mr. and Mrs. Carl Lady, visited in the home of his parents last weekend.

He is a student in Hardin Simmons University in Abilene.

**GIVE MOTHER Flowers**

WHY DON'T YOU SAY ...

"I LOVE YOU, MOTHER",

WITH FLOWERS THIS SUNDAY!



Only three more days and may we suggest corsages of either roses, carnations, mums, orchids, gardenias ... or seasonal pot plants ... all fresh and beautiful.

FOR FLOWERS BY WIRE, ORDER NOW! AVOID THE RUSH

THE HRBACKS

**Mary's FLOWERS**

709 E. 6th RA 8-3091

**PENNEY'S**

**BIG NEWS! MOTHER'S DAY GIFTS**  
 for the world's most wonderful Mother, yours

SHOP PENNEY'S. YOU'LL LIVE BETTER. YOU'LL SAVE!



DACRON POLYESTER NYLON-COTTON SLIPS

Shadow paneled Schiffler embroidered slip; self embroidered petti in specially finished soft and light batiste in proportioned sizes, white and pastels. **\$2.98 each** sizes 32 to 44

FREE GIFT WRAPPING!



EASY CARE SUMMER ROBES

PENNEY PLUS VALUE **4.98**

Big news! All are Dan River machine-washable, cottons, iron, if fussy. Choose from fashion solids, checks, plaids. Sizes 10 to 18, 38 to 44.

TWIN-THREADED SEAMLESS SHEERS

PENNEY PLUS VALUE **98c**

They're twice as good! If one thread snags, the other remains intact to check runs. 400-needle Gaymode sheers. Neutrals, fashion tints. Size 8 1/2-11.



**PENNEY'S SUMMER DRESS CARNIVAL**

a gift sure to please Mother!

LIVE COMFORTABLY IN PRINTED BATISTE!

It's dacron polyester batiste! sheer! printed! fresh forever! We have them with bows, V-necks, button-fronts, shirt styles in geometric, splash and polka dot prints. Hand wash, light-ironing. Sizes 12 to 20 and 14 1/2 to 24 1/2. **6.95**

**Mr. and Mrs. Voter of Mitchell, Nolan and Fisher Counties:**

BE SURE AND GO TO THE POLLS SATURDAY

VOTE FOR

**JACK McCAIN**

★ A MAN

WHO'S CHARACTER, REPUTATION, HONESTY OR INTEGRITY NEEDS NO REFERENCE

★ A MAN

WHO WILL EXPRESS HIS CONVICTIONS WITH FORESIGHT, SINCERITY AND TRUTHFULNESS

★ A MAN

WHO'S BURNING ADVOCACY TO SERVE YOU IS TEMPERED ONLY BY THE RULES AND HIS DEEP FEELING FOR HIS FELLOW MAN.

★ A MAN

WHO HAS THE INSTANTIAL FORTITUDE TO OPENLY OPPOSE THE STRONGEST OPPOSITION, REGARDLESS OF THE ODDS AGAINST HIM, OF ANYTHING THAT SHOWS THE SLIGHTEST TAIN OF EITHER SOCIALISM OR COMMUNISM.

★ A MAN

WHO AT TIMES MIGHT BE OUTSPOKEN BUT WHO WILL NEVER BECOME ALIGNED WITH ANY MOVEMENT THAT TENDS TO OVERSHADOW OR CONCEAL THE AMERICAN WAY.

★ A MAN

WHO WILL REPRESENT YOU

PLEASE VOTE SATURDAY FOR

**JACK McCAIN**

Candidate for State Representative

OUR DISTRICT, WEST TEXAS AND EVEN ALL OF TEXAS NEEDS MEN WHO POSSESS THE QUALITIES OF OUR OWN JACK McCAIN

(Written and put for by Nolan County Friends of Jack McCain)

## Women's Society Elects Officers for New Year

Members of the Women's Society of Christian Service of the First Methodist Church of Loraine elected new officers for the coming year during a meeting Wednesday in the home of Mrs. Lily Bennett.

### PRE-NUPTIAL FETE

## Shower Compliments Miss Peggy Tiller

Miss Peggy Jo Tiller, Abilene, bride-elect of Bill Mitchell of Abilene, was honored at a bridal shower Saturday evening in the Payne Community home of Mrs. Grady Beach.

The honoree's chosen colors of blue and white were carried out in the decor. Blue corn flowers and white roses complimented party rooms. Refreshment table was laid with a lace cloth over blue. Corn flowers and roses arranged in a silver bowl complimented the serving table. White streamers extending from the flower arrangement were inscribed with "Peggy" and "Bill."

## MAX CARRIKER

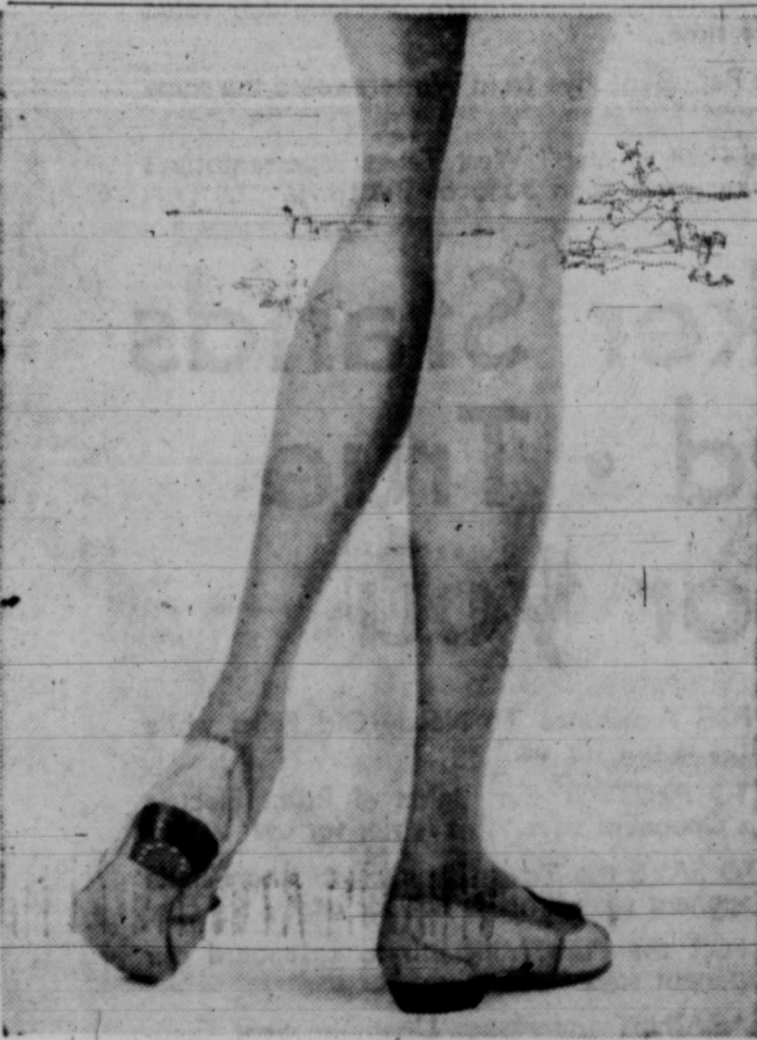
Your State Representative

VOTED FOR:

★Assistance to needy old folks

This is a vote for the old folks of Mitchell County

(Paid for by Mitchell County Friends)



you can walk miles and miles in

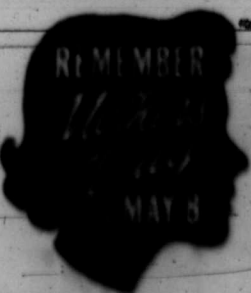
**Stanes**

seamless stockings

extra-wear service sheer.

short, medium, long

\$1.50 \$1.65 \$1.95



**LANDAU'S**  
Quality Clothes

**HARDCASTLE**  
REFRIGERATION

163 E. 3rd SA 9 2252



Play Cast Members

These students are members of Mrs. Arnel Smith's 8th grade speech that presented a one-act play Tuesday in assembly in Colorado City Junior High School for the student body and parents. Standing, left to right, are David Taylor, Ronnie Rothwell, Connie Dearen and Gail Marshall.

### IN TUESDAY ASSEMBLY

## Play Presented by 8th Grade Class

Mrs. Arnel Smith's eighth grade speech class presented a one-act play, "Sally Takes a Bow" by Rilla Carlisle, to members of the Colorado City Junior High School student body and guests Tuesday afternoon in the auditorium.

It is the story of Sally Minton, who is an ordinary teenage girl until the summer theatre opens in their town then, the theatre gets in her blood. In order to see all the plays, Sally gets in debt to her father, who doesn't even know it. Then, one day the bill comes for the tickets she had charged all summer — and Sally's day of reckoning is at hand.

Mrs. Minton, chairman of the benefit at the summer theatre is played by Martha Collins; Mrs. Minton, a normal father who hates to work alone, Ronnie Lightfoot; Bill, Sally's pesky brother played by Ronnie Rothwell; Carol, Sally's best friend, Gail Marshall; Dave, Sally's boy friend who is tired of her play acting is played by David Taylor.

### BY 8TH GRADE SPEECH CLASS

## Play Presented to Wesley Bible Class

Mrs. Arnel Smith's 8th grade speech class presented a one-act play to members of the Wesley Bible Class when it met in Fellowship Hall of the First Methodist Church Tuesday night.

"Sunday's Child" was composed of 7 members of the class. Play cast includes Martha Collins as the announcer, Vicki Neff, Mary Anne Lipps, Anne Rhode, Norman Holman, Wayland Moore and Pete Garrett.

Mrs. J. S. Craddock presented the invitation with Mrs. J. L. Strain, president, presiding at the business meeting.

Hostesses for this meeting were Mrs. E. M. Fisher, Mrs. O. D. Carter, Mrs. S. A. Wood,

### Royce Feaster Visits

Royce Feaster, son of Mr. and Mrs. Orin Feaster visited in the home of his parents during the past weekend. He is a student in San Angelo Junior College in San Angelo.



## How to have an air conditioned baby

He'll eat better, sleep better, enjoy better health in an air conditioned home. Now you can air condition your entire house for only a few dollars down. And you have a choice of easy monthly terms. The job will be done quickly, economically — by the people who know air conditioning best.



163 E. 3rd SA 9 2252

RE-ELECT FOR 2ND TERM

JUDGE

**DAVIDSON**

AS JUDGE

COURT OF CRIMINAL APPEALS

First choice of Lawyers and Judges In a State Wide Bar Poll!



SUNDAY IS MOTHER'S DAY  
... GIVE HER THE BEST!

**DANIEL GREEN'S**

**Dormie**

the scuff of the season!

Smartest, Best fitting scuff you've ever tried. Plant leather on a brand new scuff last so that you walk with the least flippety-flop. Wonderful felt cushion sole makes you feel as if you're walking on air.



Pink, Powder Blue, White, Black in N & M widths. **\$5.50**

FREE GIFT WRAPPING!

Many other patterns to choose from... priced from... **\$5 to \$6.50**



A GIFT FROM...

**LANDAU'S**

Quality Clothes

*To say "I Love You Mother's Day"*



**Henson Kickernick**



Delight her on Mother's Day with a gift of fine Henson Kickernick lingerie from Landau's. Come in and select her gift from the many, many nylon styles so attractively designed, intricately trimmed and tailored to fit. **GIFT WRAPPED!**

**LEFT** — Delicately lace-trimmed nylon slip in lovely pastels and white. **\$5.95**

**CENTER** — Deep frothy lace trim. The height of this nylon tricot petticoat, also in tall sizes. **\$3.98**

**RIGHT** — Delightfully lace-trimmed nylon petticoat in white and colors. **\$3.95**



Shows Wardrobe

Miss Maranell Terry, administrator in a school for diplomats in Japan shows some of her wardrobe that she has collected while spending 3 years in Japan.

### Calendar of Events

**FRIDAY**  
3 p. m. 1921 Study Club meets with Mrs. P. K. Mackey as hostess.

**MONDAY**  
9:30 a. m. Myrtle Barber Ware Circle of the First Baptist Church meets in the home of Mrs. J. O. Dockrey at 504 Chestnut St.  
3 p. m. Mary Robinson Circle number one of the First Baptist Church meets in the home of Mrs. Joe Smart Sr. at 445 Chestnut St.  
4 p. m. Intermediate Girls Auxiliary of the First Baptist Church meets with Mrs. R. M. Reed.  
4 p. m. Young Woman's Auxiliary of the First Baptist Church meets.  
7:30 p. m. Roberta Edwards Circle of the First Baptist Church meets.  
7:30 p. m. Colorado City High School Band Boosters Club will meet in the CHS band hall.

**TUESDAY**  
9 a. m. Colorado City Garden Club will meet in the City Recreation Building for all day workshop.  
7:30 p. m. Brush and Palette Club will meet in the City Recreation Building.

**WEDNESDAY**  
12 Noon Jaycees will meet in the Civic House for weekly luncheon.

**THURSDAY**  
2 p. m. Plainview Home Demonstration Club will meet.  
2 p. m. Fairview Home Demonstration Club will meet.  
3 p. m. Hostess Club will meet in the home of Mrs. Buck May.  
3:45 p. m. Zetaganian Study Club meets in the home of Mrs. Brady (Pete) Warren.  
8 p. m. Martha Class of the First Baptist Church meets with hostess Mrs. John Turner and co-hostess, Mrs. A. K. McCarley.

**Hostess Club Meets in Col-Tex Club**  
Col-Tex Club was the scene for the meeting of the Hostess Club last Thursday. Games of progressive were played by those attending. The next meeting will be May 12 in the home of Mrs. Buck May at 3 in the afternoon.

### To the Citizens Of Mitchell County

On behalf of my candidacy for Commissioner Precinct 1, I wish to say that I have tried to see everyone personally during this campaign. Some were not home when I called and I missed them. If anyone was not contacted personally by me during my campaign, it was not intentional.

I earnestly and sincerely ask for your support in the coming election and offer myself as a candidate for Commissioner Precinct 1.

Respectfully yours,

Ivan J. Barber

## Ex-Westbrook Girl Now Heads Diplomatic School in Japan

"Life in Japan is different from that in the United States in every way."

The comparison was made Monday by Miss Maranell Terry, administrator of a school for diplomats in Tokyo, Japan.

The purpose of the school is to teach United States diplomats how to adjust themselves to the people and customs of a new country.

Miss Terry and her parents, former residents of Westbrook, were visiting with Miss Terry's uncle, I. W. Ramsey. Mrs. Terry's parents, Mr. and Mrs. R. L. Terry, are now residents of Hickory, Miss.

She explained to Colorado City Record reporters some of the strange customs that Japanese people have today. She pointed out that the Japanese still take their shoes off to enter the house. In fact, she said they only wear shoes from house to house.

Miss Terry said that Japanese parents are very careful in choosing the schools that their children attend.

A Japanese child is taught to be particular in selecting his friends because, though they are few in number, he will keep their companionship all of his life.

She described a Shinto wedding ceremony she had attended the wedding of one of her friends, where she was a "proxy member" of the family.

The old traditional wedding vows included the bride and groom sipping rice wine from marriage cups.

Miss Terry who finished

Westbrook High in 1943 and later was graduated from Mississippi Women's College, has taken up some of the customs of the country to have a better understanding of its people. She has learned traditional Japanese dances, flower arranging. And, right now, she is learning to play the "Samisen," a native musical instrument.

"I wish all Japanese students had the opportunity to come to the United States," she continued. "Most of those who have come are awed with the freedom the United States has and the spaciousness of our country."

Every person belonging to the foreign diplomatic service must come back to the United States for a period of 6 weeks after being abroad

2 years — to keep abreast of the changing United States way of life.

In connection to her foreign work, Miss Terry has taken a tour around the world. She has visited many points of interest in the European countries, the Far East and the West where she collected souvenirs of jewelry and a native dress.

One of the highlights of her world tour was a visit to Calcutta, India, on Republic Day when she was invited to attend an official dinner, which in America would be in comparison to an invitation to the White House.

Miss Terry is scheduled to return to the West Coast Thursday. There, she will tour the western and north western part of the United States before sailing back to Tokyo.

## MAX CARRIKER

Your State Representative

### VOTED AGAINST

★ A General Sales Tax . . . and all discriminatory selective sales taxes.

This is a vote for the pocketbooks, the people, the free retail business men of Mitchell County.

(Paid for by Mitchell County Friends)

### Senior Class To Take Annual Trip

A tour of New Orleans, La., will be the highlight of the Loraine High School Senior class when they take their annual trip May 13-21.

The group will leave the high school at 12 midnight May 13 aboard school buses for the week long trip to points of interest.

After arriving in New Orleans, the group will tour the French quarters, the burial grounds and take the Mississippi River boat trip.

During one of the days of activity the group will spend the day sun bathing and swimming on the beaches of Lake Pontchartrain.

Taking the trip will be Peggy Belvin, Treva Hays, Sharon Redwine, Kaye Nell Lankford, Pauline Cornett, Peggy Sue Williams, Billy J. Long, Gary Parnell, Joe Bob Vest, Marvin Wallingsford, Clovis Hale, Jean Kidd, Maylon Bealy, Dian Bealy, Robert Galvan and Bob Rankin.

Serving as sponsors on the trip will be Mrs. R. J. Hale, Mrs. Wilson Kidd, and Mrs. Ralph Lankford.

### TO THE PEOPLE OF MITCHELL COUNTY . . .

There is some of you I have missed talking to during my campaign for sheriff. I hope you will consider this as a personal call.

I am 33 years old, married and the father of two children. I have lived in this county all my life.

I am a veteran of World War II, a graduate of Colorado High School and a member of First Christian Church.

I had four years experience in police work as Lake Patrolman on Lake Colorado City.

I promise that if I am elected your sheriff, I will be available at all times and will cooperate with all law enforcement departments and the people of this county.

I sincerely and humbly seek your vote and influence.

## HOWARD BYNUM

CANDIDATE FOR SHERIFF

### TO THE CITIZENS AND VOTERS OF MITCHELL COUNTY

★ I have made a determined effort to visit each home in all the Rural areas of Mitchell County, and also every home in Colorado City, Loraine and Westbrook.

★ You elected me as your Tax-Assessor-Collector in 1955 to a two year term of office, and later all offices were changed to a four year term, so I have served you for one short term and one long term, really for one and a half terms. I did have some experience some years ago as a tax clerk in this office which has been of great help with the duties of this office.

★ If you think it wise to return me to the Tax Office of this County, then I ask you again to go to the Polls next Saturday, May 7, and vote for me.

YOUR FRIEND & TAX ASSESSOR-COLLECTOR

## TOM GLOVER

# MAX CARRIKER

## Represents No District But His Own

His opponent hurls smears and verbal smoke-screens while trying to hide the fact that Max Carriker Votes Like He Talks and Talks Like He Votes.

His opponent yells "wolf" and cries that Carriker is "out of step," when the fact is Max Carriker walks the extra mile for West Texas folks at home.

## Carriker Votes For His Own People

Like a West Texan Should!

Actual voting records of 56th Legislature—the real facts—plainly show for all to see.

Max Carriker and the Representative from San Angelo voted the same 84% of the time.

Max Carriker and the Representative from Midland voted the same 91% of the time.

Max Carriker and the Representative from Haskell voted the same 76% of the time.

Max Carriker and the Representative from Breckenridge voted the same 93% of the time.

Max Carriker and the Representative from Winters voted the same 75% of the time.

And 5 other so-called "out of step" West Texas representatives voted with Max Carriker more than 50% of the time.

## Carriker Stands Solid • True For you

Max Carriker voted FOR Assistance To Needy Old Folks while His Opponent says "this is not for us."

Max Carriker voted TO PROTECT the Rights of Rural Electric Cooperatives while His Opponent says "this is not for us."

Max Carriker voted TO SAVE the Texas Beaches for the People of Texas while His Opponent says "this is not for us."

Max Carriker voted FOR the Pure Milk Bill to safeguard our children while His Opponent says "this is not for us."

Max Carriker voted AGAINST increasing Unemployment Compensation while His Opponent says "this is not for us."

Max Carriker voted FOR the Gas Pipe Line Tax (interstate gas tax) while His Opponent says "this is not for us."

Max Carriker voted FOR a Ceiling on Number of Big City Representatives (Dallas, Houston) to assure fair representation for Mitchell County while His Opponent says "this is not for us."

Max Carriker voted FOR Political Party Registration for party integrity while His Opponent says "this is not for us."

"This is not for us"—these are the actual words of Max Carriker's OPPONENT printed and published and circulated by the same OPPONENT.

## MAX CARRIKER ASKS NO BIG CITY SENATOR . . . NO LOBBYIST HOW TO VOTE!

# Re-elect Max Carriker

A REPRESENTATIVE WHO

VOTES FOR THE FOLKS AT HOME

(Paid for by Mitchell County Friends)



**DO YOU WANT . . .  
A GENERAL SALES TAX.  
SADDLED TO YOUR FAMILY BUDGET**

TO ADD MORE PENNIES TO EVERY PURCHASE YOU MAKE AND INCREASE YOUR COST OF LIVING AGAIN?

This has been proposed by the opponent who is fighting against Price Daniel in the Governor's race.

PRICE DANIEL HAS BEEN FIGHTING A GENERAL SALES TAX AND STATE INCOME TAX. LET'S BACK HIM UP IN THIS FIGHT FOR TEXAS.

Hear and see Price Daniel Friday at 6 p. m. KEDY-TV (Big Spring) and KPAR-TV (S'water)

**Re-Elect Governor  
PRICE DANIEL**

DEMOCRATIC PRIMARY,  
SATURDAY



**Yearbook Committee**

These women are working on the yearbook for the Maranatha Study Club for the coming year. Standing, left to right are Mrs. Bill Everett, Mrs. Newt Miller, Mrs. Brooks, Teague and Mrs. Wayne Shawn.

**IN 2 MONTH PERIOD**

**26 New Customers  
Added to Library**

During a two month period Mrs. Boyd Dozier reported that 26 new customers had been added to the list of the Mitchell County Federation Library.

She also reported that from the rental shelf \$16.60 had been collected and that from fines during the 2 month period \$44.20 had been collected.

In gifts to the library she stated that a total of \$55 had been presented by clubs but she also said that \$10 had been presented by individuals.

A total of 290 books have been added during the 2 month period. Four hundred thirty-six magazines have also been presented to the library with this bringing the circulation to 3832 for a period of 2 months.

Eight memorial books have been presented to the library. These books were presented in memory of Mrs. S. E. Carpenter, Mrs. Ola B. Leth, V. R. Trulock, Calvin M. Jones, Mitzie Pond, D. I. Durham, Mrs. Lillian Hudson and Mrs. George Plaster.

Persons presenting books to the library were Mrs. F. E. Childers of Grove; Mr. and Mrs. Ray Noble, Mr. and Mrs. J. S. (Jay) Craddock Jr., Mr. and Mrs. Joe M. Gunning, Mr.

and Mrs. George Witten, Mrs. Lon Strain, Mr. and Mrs. Ace McShan, Mr. and Mrs. Bunky Girvin, The Earnest Family, Mr. and Mrs. A. O. Hickman, Mrs. Roy Dozier, Mrs. Rufa Grantland, Mr. and Mrs. O. L. Simpson.

Mrs. Dee Bassham, Mrs. Bill Powell and Alexis Cowan presented books individually to the library.

The 1921 Study Club filled the display case with vases brought from Greece by George Mahon.

**Art Club  
Studies  
Water Colors**

Brush and Palette Club members were shown the art of water color painting and how to work with glazed oil painting when they met in the City Recreation Building Tuesday evening.

Attending the meeting were Iva Uitz, Mrs. Tom Barry, Mrs. Joe Bell, Mrs. Mayberry Wilbanks, Mrs. Brice Webb, Mrs. Tex Keel, Mrs. Hattie Ramsdell, Mrs. Jimmy Kelley, Bill Worrell, Miss Betty Jean Worrell, Melton Bodzin, George Womack, Mrs. Earl Brown, Mrs. Chester Hart and Rene Alvarez.

The next meeting will be Tuesday night at the City Recreation Building.

**Planning  
Committee  
Meets Monday**

The Mitchell County Housing and Home Furnishings Committee met in the Lone Wolf Electric Building Monday afternoon to discuss and consider all phases of housing and home furnishing needs of the county.

This meeting was done in an effort to determine the type of program that might best serve the people.

The meeting was called to order by Mrs. Cricket Taylor, county home demonstration and Mrs. Bruce Byrne, chairman of the committee presided over the meeting.

Mrs. Laura Russell, housing and home furnishing specialist from R&M extension service, outlined housing trends in Texas and emphasized the committee members role and responsibility in carrying out a county wide program that would benefit all groups of people.

Members of the committee attending were Mrs. Byrne, Mrs. Eldon Smith, John Russell, Judge Elmer Martin, Mrs. Roy Davis Cole, Mr. Herbert Gunn, Mrs. Virgil Moser, Jack Burkhalter, Mrs. Taylor.

Guests attending were Miss Mary Cotham of College Station and Mongi Guizani of Tunisia, Africa.

Potash, ammonia and iodine are obtained from kelp, a Pacific underwater plant known as the "alfalfa of the sea."

Fireman Ronald Wallace, son of Mr. and Mrs. Rip Wallace, returned to Norfolk, Va. Monday after spending 2 weeks leave here.

He is assigned to the USS Vulcan at Norfolk.

**Returns to Ship**

Members of the committee attending were Mrs. Byrne, Mrs. Eldon Smith, John Russell, Judge Elmer Martin, Mrs. Roy Davis Cole, Mr. Herbert Gunn, Mrs. Virgil Moser, Jack Burkhalter, Mrs. Taylor.

**MAX CARRIKER**

Your State Representative

**VOTED FOR:**

★ Better help and better pay for the care of our afflicted in our state hospitals and mental institutions.

This is a vote for decent care for our unfortunates.

(Paid for by Mitchell County Friends)



Publius Syrus (50 B. C.) said:  
**"BETTER USE MEDICINES AT THE OUTSET THAN AT THE LAST MOMENT"**

Some people never take any medicine until they are very sick. They give a simple ailment the time to develop into a serious problem. Treatment then is more difficult, sickness is prolonged, expensive loss of working time is costly.

Besides protecting your health, you actually save money when you consult a physician quickly. He makes fewer visits, you need less medicines and most important, you prevent sickness from ravaging your body.

YOUR DOCTOR CAN PHONE US when you need a medicine. Pick up your prescription if shopping nearby or we will deliver it promptly without extra charge. A great many people entrust us with their prescriptions. May we compound yours?

**CORNER DRUG**

PRESCRIPTION DRUGGISTS  
5th & Walnut RA 8-3484

**VOTE FOR ADAMS**

- I earnestly solicit your vote Saturday in the Democratic Primary.
- My candidacy is offered on the basis that I am trustworthy and qualified for the position.
- And it is my pledge that I will carry out the duties of the office in an efficient and courteous manner, if I am elected.

**John Adams**

CANDIDATE FOR  
Commissioner, Precinct 1

**WESTINGHOUSE**

... HAS THE  
**PERFECT GIFT  
FOR MOM!**

BUY AT OUR SPECIAL  
MOTHER'S DAY PRICE



**AUTOMATIC LAUNDRY**

Model L-124 Washer—

Automatic Lint Ejector sweeps lint and soil from wash and rinse water. Suds 'n' Water Saver saves up to 10 gallons of water per load.

Model D-124 Dryer—

Separate dial settings for wash 'n' wear, regular fabrics, silks and synthetics — air fluffing. Buy now and save at Kirschbaum's!

AS LOW AS  
\$2.40 WEEKLY  
WITH TRADE **218<sup>88</sup>**

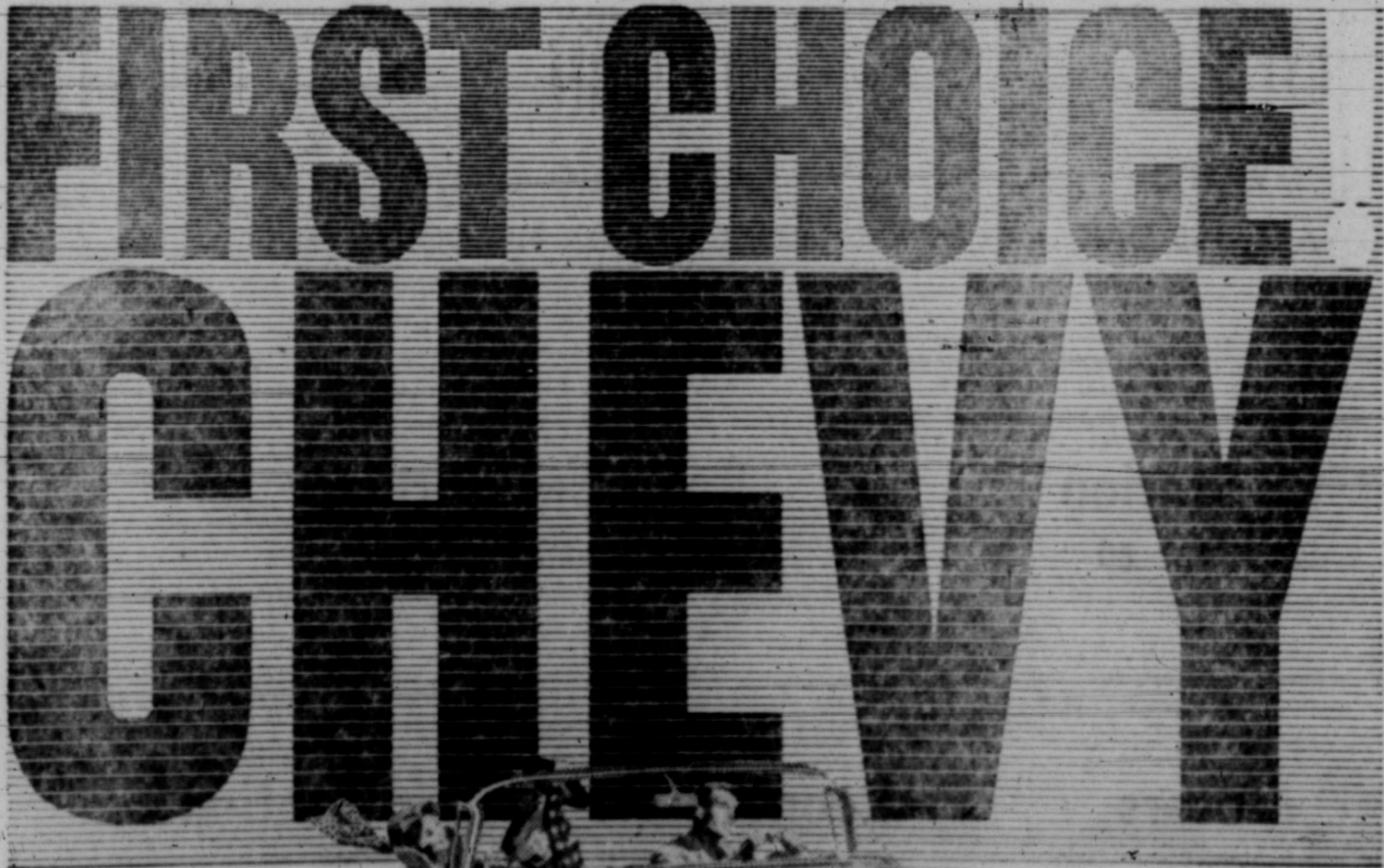
AS LOW AS  
\$1.99 WEEKLY  
WITH TRADE **179<sup>95</sup>**

TERMS!  
... of course



VISIT OUR GIFT  
DEPARTMENT  
IT'S EXCITING

Air Conditioning—temperatures made to order—for all-weather comfort. See The Dash Shore Chevy Show in color Sundays, NBC-TV—the Pat Boone Chevy Showroom weekly, ABC-TV.



The Impala Convertible with Body by Fisher!

Why shouldn't you be driving America's first-choice car right now? You couldn't do better by your family—or your family budget—than to pick out one of Chevy's 18 FRESH-MINTED MODELS, load up its VACATION-SIZED TRUNK and take off on one of those springtime trips Chevy so dearly loves. Once you're

whisking along the highway, cushioned by FULL COIL SPRINGS at all four wheels, you'll have your own smooth-running account of why Chevy's '60's best seller. And right now when beautiful buys are in full bloom at your dealer's!



...right now—during the Spring Peter Selling Spree at your local authorized Chevrolet dealer's

**JAY ADAMS CHEVROLET CO.**

877 E. 2ND STREET

COLORADO CITY

RA 8-3422

# People are handy to have around



## Because

They

- ... teach our children.
- ... pay taxes
- ... treat our ailments
- ... fix our flats
- ... listen to our troubles
- ... loan us money
- ... serve on committees
- ... guide our footsteps
- ... etc., etc., etc.

## Neighbors help us to live longer and enjoy it more

Most of the comforts and conveniences that we enjoy today are accessible to us more or less in proportion to the number of people who live near us.

Schools, churches, doctors, electric power, stocks of foods, medicines, and clothing, trained technicians to service our needs, customers for the

products of our own labor . . . all of these are ours to enjoy . . . as long as there are enough PEOPLE in the community to support them.

Every dollar that leaves this community helps to move somebody out. Every dollar that is spent here, helps to bring more people in.

★ These Merchants Welcome Your Patronage . . . Assure You the Finest Merchandise and Service ★

**Jay Adams Chevrolet**  
CHEVROLET & OLDSMOBILE DEALER

**Berry-Fee Hardware**  
EVERYTHING IN HARDWARE, 195 OAK

**Colorado Drug Co.**  
PRESCRIPTION HEADQUARTERS

**Roberts Butane Gas**  
GAS APPLIANCES, 193 E. 2ND

**Henry Vaught's Gulf Station**  
ONE-STOP SERVICE, EAST HWY. 80

**Root Enterprises**  
CHARLES L. ROOT

**G. D. Foster Agency**  
INSURANCE AND LOANS

**Hunter-Merket Motors**  
BUICK-PONTIAC AGENCY

**Leonard Henderson Station**  
FINE TEXACO PRODUCTS



Make your dollars build Colorado City . . . not somebody else's community!

**COLO**  
**ROY FOX**  
Adv. Mgr.  
**Bonnie J. Sumr**  
Classified & Bp  
Colorado City  
Thursdays and Su  
at the postoffice o  
of March 3, 1879.  
Any erroneous l  
or reputation of  
corrected when su  
paper and is bro  
ment.  
The Colorado C  
ommissions, typo  
errors that may  
rections after bei  
accepted on this

**CLASSIFI**  
**Closing Times**  
COMPUTE  
15 word minimur  
1 day 4c p  
2 days 7c p  
3 days 9c p

**CLASSIFI**  
**DIRECTC**

**ACCOUNTING**  
**HENRY L. LE**  
Tax Service  
258 Walnut  
Ph. RA 8-42  
complete bookkeepin  
service.

**BURIAL SERVI**  
**KIKER**  
Burial Insura  
1 Month to 80  
Minimum Fu  
10 E. 3rd Phone

**BEAUTY SHOP**  
facials  
manicures  
permanents  
\$7.50 & up

**FLO's Beauty**  
★  
27 Vine

**DENTISTS**  
**DR. R. D. BRID**  
Residence Phone 1  
**DR. H. JENE ST**  
Residence Phone 1  
X-RAY  
Phone RA 8-3151  
446 Walnut

**FURNITURE**  
**HOT POI**  
Appliances and ser  
refrigerator  
cabinet Set  
**Western Furr**  
Big Sprin  
206 S. Gregg Ph.

**HOSPITALS**  
**ROOT HOSP**  
Visiting Ho  
to 4 p. m. 6:30  
Efficiency requires  
these visiting br  
persons other than  
the immediate 1

**LEATHER GO**  
Men and Boys'  
Cowboy Boots  
Men and Boys'  
Bandera Felt & S  
Men and Childre  
Wellingtons  
Mocs—Squaw Mc  
Wolverine Genuir  
Buckskin Gloves  
Hand tooled belt  
truckers safety v

**CITY BOOT**  
East Hiway  
Sign Black &  
Boot.

**MUSICAL**  
Wurlitzer Organ  
A Large Stock  
ditioned pianos  
Magnavox Hi  
Record Players  
**McCREIGHT M**  
on East 11th Ph  
Kendall Ph

**RENTAL**  
Rent a Buick  
White Auto Sto  
call our man  
★  
**WHITE AUTO**  
PHONE RA

Bonnie J. Summers Classified & Bookkeeping

Kay Gresham Women's Editor

Colorado City Record, published twice weekly on Thursdays and Sundays, entered as second class matter at the postoffice of Colorado City, Texas, under the Act of March 3, 1879.

Any erroneous reflection upon the character, standing or reputation of any person, firm or corporation will be corrected when such occurs in the columns of this newspaper and is brought to the attention of the management.

The Colorado City Record is not responsible for copy omissions, typographical errors or any unintentional errors that may occur other than to make proper corrections after being brought to attention. Advertising is accepted on this basis only.

CLASSIFIED AD INFORMATION

Closing Times 10 a. m. Thursdays & Saturdays COMPUTE COST FROM TABLE BELOW:

Table with columns for ad length (1-5 words) and duration (1-6 days) with corresponding rates.

CLASSIFIED DIRECTORY

ACCOUNTING

HENRY L. LEWIS

Tax Service 258 Walnut Ph. RA 8-4256 complete bookkeeping and tax service.

BURIAL SERVICE

KIKER Burial Insurance 1 Month to 80 years Minimum Rate 10 E. 3rd Phone RA 8-2622

BEAUTY SHOP

FLO's Beauty Shop 27 Vine RA 8-2343

DENTISTS

DR. R. D. BRIDGFORD residence Phone RA 8-2059 DR. H. JENE STEAKLEY residence Phone RA 8-3120 X-RAY Phone RA 8-3151 Office 446 Walnut

FURNITURE

HOT POINT Appliances and services Refrigerator \$59.95 Stovetop Set \$39.95 Western Furniture Big Spring 706 S. Gregg Ph. AM 3-3423

HOSPITALS

ROOT HOSPITAL Visiting Hours to 4 p. m. 6:30 to 8 p. m. Efficiency requires observance of these visiting hours by all persons other than members of the immediate family.

LEATHER GOODS

Men and Boys' Cowboy Boots Men and Boys' Western Banded Felt & Straw Hats Men and Childrens Wellingtons Mocs - Squaw Mocs Wolverine Genuine Buckskin Gloves Hand tooled belts, billfolds, truckers safety wallets.

CITY BOOT SHOP East Hiway 80 Sign Black & White Boot.

MUSICAL

See Our Complete Line of PIANOS Wurlitzer Organs A Large Stock of Reconditioned pianos Magnavox Hi Fidelity Record Players

McCREIGHT MUSIC CO. 101 E. 3rd St. RA 8-4111

RENTAL

White Auto Store 101 E. 3rd St. RA 8-4111

WOMAN'S COLUMN

Beauty Aids E-2 SHORT OF CASH? Who isn't! How about earning \$40 per week? Housewives preferred for AVON TERRITORIES. Write Box 1629, San Angelo, Tex.

BUSINESS SERVICE

Furniture & Upholstery D-3 Shaw Mattress and Upholstery Company will be closed from April 30 until May 16. On vacation. L. K. Shaw.

Sewing Service E-6

Singer Sewing Machine sales and service. Call Jerry Lane RA 8-2213 or 941 Hickory St.

EMPLOYMENT

Help Wanted (Male) F-1 25 SALESMEN WANTED Who are accustomed to earning \$1000 per month or more. Must have late model car, or pick up. Furnish references, be able to finance himself and able to make bond. If you are familiar with the trucking industry it will help. Sales of truck air conditioners and other products. Apply Les Fuller Mfg. Company, East Highway 80, Colorado City.

RENTALS

Apartment J-1 Modern furnished apartment, 3 rooms and bath, in duplex. To family of not more than three, \$45 per month. Dial Warren Costin, 8-2037 or 8-2031.

FINANCIAL

Home Loans G-3 Farm and Ranch loans 6% rate, with the privilege of paying all or any part at any time without penalty. Federal Land Bank Association, 135 W. 2nd St.

FARM & RANCH

Farm Machinery H-1 Attention Farmers! 6 and 12 volt tractor batteries recharged at no cost. White Auto Store.

FEED, SEED & GRAIN

For sale - 1958 Ford Tractor 641. On gasolene. Complete with cultivator and tool bar planter. Almost new condition. Small number of hours. \$1750. Call Dan Pritchett, RA 8-2088.

LIVESTOCK & POULTRY

Pigs for sale, all sizes and prices. A. L. White, Rt. 3, phone 8-3554.

MERCHANDISE

Appliances I-1 Used 8/4 refrigerated air conditioner for sale. 220 volts. \$85. Phone 8-4468.

BUILDING MATERIAL

PAY CASH AND SAVE Corrugated Iron (strongbarn) \$10.25 2x4 precision cut studs \$5.95 215 lb. Economy Composition shingles \$2.25 1x10 sheathing (dry pine) \$1.95

VEAZEY CASH LUMBER CO.

Lamesa Hwy-Snyder, Texas Household Goods I-3 Good used electric range and used television. Your choice \$50. Crabtree Electric, dial 8-4468.

MISCELLANEOUS

M. M. Mapes, Electroflux representative for Snyder, is in Colorado City each Tuesday 8:30 a. m. to 6 p. m. Anyone needing repair parts or supplies can write M. M. Mapes, 2912 Ave. S. Snyder or phone Mrs. L. O. Robertson, RA stock for sale. Dial 8-3413 between 9 and 5 Monday through Friday.

TRUCKS & TRAILERS

1961 Buick Super, family car, good shape every way with air conditioning. John T. Smith, 1041 Elm.

U.S. OPPORTUNITIES

Businesses Wanted C-2 General contracting wanted. Rock, brick, tile, sheetrock, plumbing and painting. Phone 8-2944 or see Howard Cain or Jerry Cain, 814 and 816 E. 3rd St. Five estimates.

MERCHANDISE

Miscellaneous I-5 Barney Wren is your local representative for Sweetwater Marble and Granite Works. Phone 8-4193.

POST NURSERY

San Augustine grass, bedding plants of all kinds, grass, trees, shrubs and roses; 915 Chestnut, dial 8-4316

Business Property K-3

Drug store in Coahoma, Texas. One of the most modern stores in West Texas. Only store in the town with population of 1500 people. A good buy. Dial LY 4-3221 or LY 4-3004 after 7 p. m.

Nursery Stock I-7

FOR SALE - Tomato plants and flower plants, several kinds 721 E. 4th.

RENTALS

Apartment J-1 Modern furnished apartment, 3 rooms and bath, in duplex. To family of not more than three, \$45 per month. Dial Warren Costin, 8-2037 or 8-2031.

FINANCIAL

Home Loans G-3 Farm and Ranch loans 6% rate, with the privilege of paying all or any part at any time without penalty. Federal Land Bank Association, 135 W. 2nd St.

FARM & RANCH

Farm Machinery H-1 Attention Farmers! 6 and 12 volt tractor batteries recharged at no cost. White Auto Store.

FEED, SEED & GRAIN

For sale - 1958 Ford Tractor 641. On gasolene. Complete with cultivator and tool bar planter. Almost new condition. Small number of hours. \$1750. Call Dan Pritchett, RA 8-2088.

LIVESTOCK & POULTRY

Pigs for sale, all sizes and prices. A. L. White, Rt. 3, phone 8-3554.

MERCHANDISE

Appliances I-1 Used 8/4 refrigerated air conditioner for sale. 220 volts. \$85. Phone 8-4468.

BUILDING MATERIAL

PAY CASH AND SAVE Corrugated Iron (strongbarn) \$10.25 2x4 precision cut studs \$5.95 215 lb. Economy Composition shingles \$2.25 1x10 sheathing (dry pine) \$1.95

VEAZEY CASH LUMBER CO.

Lamesa Hwy-Snyder, Texas Household Goods I-3 Good used electric range and used television. Your choice \$50. Crabtree Electric, dial 8-4468.

MISCELLANEOUS

M. M. Mapes, Electroflux representative for Snyder, is in Colorado City each Tuesday 8:30 a. m. to 6 p. m. Anyone needing repair parts or supplies can write M. M. Mapes, 2912 Ave. S. Snyder or phone Mrs. L. O. Robertson, RA stock for sale. Dial 8-3413 between 9 and 5 Monday through Friday.

TRUCKS & TRAILERS

1961 Buick Super, family car, good shape every way with air conditioning. John T. Smith, 1041 Elm.

U.S. OPPORTUNITIES

Businesses Wanted C-2 General contracting wanted. Rock, brick, tile, sheetrock, plumbing and painting. Phone 8-2944 or see Howard Cain or Jerry Cain, 814 and 816 E. 3rd St. Five estimates.

RENTALS

3 room unfurnished house. Inquire at 1045 Chestnut. 2 bedroom unfurnished house, garage and fenced back yard. Dial 8-4226.

REAL ESTATE

House in Loraine to be moved, 5 rooms & 2 baths. Mrs. T. F. Finley, 112 Lightfoot, Loraine. For sale by owner - equity in nice 3 bedroom home with 2 baths. Dial 8-4313 after 4 p. m.

REAL ESTATE

\$350 will move you into a new 3-bedroom, 1 bath house or \$400 for new 3-bedroom, 1 1/2-bath house. Will take house, car or anything of value in trade. Both have 97 percent FHA loan approval. Contact Charles Root at Allied Lumber & Supply, RA 8-2640.

REAL ESTATE

Two bedroom house at 851 E. 14th Street. Dial 8-4126 after 5 p. m.

REAL ESTATE

Two bedroom home, 828 Locust. \$750 down, owner will carry papers on \$5,000 balance. Contact R. J. Knoke, AM 4-7178 or 1902 Nolan, Big Spring.

REAL ESTATE

For sale - Beautiful home at 936 Rust St., three bedrooms with large closets, living room, kitchen and dining room area, large den, split bath, three car garage, chain link fence, well located. Can be seen any day by appointment only.

REAL ESTATE

Two well located brick and hollow tile business houses, good location now rented. 640 acres of land at reasonable price. Will sell all or any part. Thomas and Boney Insurance Agency 270 Elm St., Phone RA 8-2591

REAL ESTATE

Equity in 2 bedroom home. See at 1431 Pine or dial 8-2388. Nice 2 bedroom house, like new, well located. Can be handled for \$1000 and reasonable monthly payments. Barry Real Estate, 144 E. 8th or dial 8-2010.

REAL ESTATE

Have several nice houses reasonable equity. Immediate possession. Barry Real Estate 144 E. 8th. Phone 8-2010.

REAL ESTATE

3 bedroom house, central heat and air condition, 220 wiring in kitchen, plumbed for washer, ample closets, less than 2 years old. FHA approved. Dial 8-3361 after 4 p. m. week days or all day Saturday and Sunday.

REAL ESTATE

Houses and farms for sale. See me if you want to buy or sell real estate. S. A. Palmer, 741 Vine, RA 8-3289.

REAL ESTATE

Lovely home, well located on paved street, 3 bedroom, large living room and dining room, kitchen and bath. Lot 70 x 140 with beautiful yard. Central heating and air conditioning with antenna, attached garage with lots of storage space.

REAL ESTATE

2 bedroom house on large lot. Nice size rooms. Being transferred at sacrifice price. \$4,200.

REAL ESTATE

2 farms, 80 acres each. \$80 per acre to sell to GI. Most in cultivation. 480 acres. \$37.50 per acre. Dial L. E. Jordan 8-3235 133 W. 8th

REAL ESTATE

3 two room furnished houses, air conditioned, bills paid. \$10 week. 1 apartment, new, tub bath. \$12.50 week. See L. E. Jordan, 133 W. 8th or dial 8-3235.

REAL ESTATE

House in Loraine to be moved, 5 rooms & 2 baths. Mrs. T. F. Finley, 112 Lightfoot, Loraine. For sale by owner - equity in nice 3 bedroom home with 2 baths. Dial 8-4313 after 4 p. m.

REAL ESTATE

\$350 will move you into a new 3-bedroom, 1 bath house or \$400 for new 3-bedroom, 1 1/2-bath house. Will take house, car or anything of value in trade. Both have 97 percent FHA loan approval. Contact Charles Root at Allied Lumber & Supply, RA 8-2640.

REAL ESTATE

Two bedroom house at 851 E. 14th Street. Dial 8-4126 after 5 p. m.

REAL ESTATE

Two bedroom home, 828 Locust. \$750 down, owner will carry papers on \$5,000 balance. Contact R. J. Knoke, AM 4-7178 or 1902 Nolan, Big Spring.

REAL ESTATE

For sale - Beautiful home at 936 Rust St., three bedrooms with large closets, living room, kitchen and dining room area, large den, split bath, three car garage, chain link fence, well located. Can be seen any day by appointment only.

REAL ESTATE

Two well located brick and hollow tile business houses, good location now rented. 640 acres of land at reasonable price. Will sell all or any part. Thomas and Boney Insurance Agency 270 Elm St., Phone RA 8-2591

REAL ESTATE

Equity in 2 bedroom home. See at 1431 Pine or dial 8-2388. Nice 2 bedroom house, like new, well located. Can be handled for \$1000 and reasonable monthly payments. Barry Real Estate, 144 E. 8th or dial 8-2010.

REAL ESTATE

Have several nice houses reasonable equity. Immediate possession. Barry Real Estate 144 E. 8th. Phone 8-2010.

REAL ESTATE

3 bedroom house, central heat and air condition, 220 wiring in kitchen, plumbed for washer, ample closets, less than 2 years old. FHA approved. Dial 8-3361 after 4 p. m. week days or all day Saturday and Sunday.

REAL ESTATE

Houses and farms for sale. See me if you want to buy or sell real estate. S. A. Palmer, 741 Vine, RA 8-3289.

REAL ESTATE

Lovely home, well located on paved street, 3 bedroom, large living room and dining room, kitchen and bath. Lot 70 x 140 with beautiful yard. Central heating and air conditioning with antenna, attached garage with lots of storage space.

REAL ESTATE

2 bedroom house on large lot. Nice size rooms. Being transferred at sacrifice price. \$4,200.

REAL ESTATE

2 farms, 80 acres each. \$80 per acre to sell to GI. Most in cultivation. 480 acres. \$37.50 per acre. Dial L. E. Jordan 8-3235 133 W. 8th

REAL ESTATE

3 two room furnished houses, air conditioned, bills paid. \$10 week. 1 apartment, new, tub bath. \$12.50 week. See L. E. Jordan, 133 W. 8th or dial 8-3235.

LEGAL

Colorado City, Texas, at 7:30 p. m. at the City Hall in the City of Colorado City, Texas on the application of Lone Star Gas Company's request for increase in residential and commercial rate schedule for Natural Gas Service.

LEGAL

J. F. Merritt, City Clerk.

LEGAL

The Housing Authority of the City of Colorado City, Texas will receive bids for construction of Low Rent Housing Project No. TEX 561 until 1:00 P. M. C. S. T. on the 3rd day of June 1960, at the City Hall in the City of Colorado City, Texas; at which time and place all bids will be publicly opened and read aloud.

LEGAL

Proposed forms of contract documents, including plans and specifications are on file at the office of the Housing Authority of the City of Colorado City, Texas.

LEGAL

Copies of the documents may be obtained by depositing \$50.00 with the Architects and Engineers, Elwyn Fitch & Associates, 4101 San Jacinto, Houston, Texas, for each set of documents so obtained. Such deposit will be refunded to each person who returns plans, specifications and other documents, in good condition, within 10 days after.

LEGAL

A certified check or bank draft, payable to the Housing Authority of the City of Colorado City, Texas, U. S. Government Bonds, or a satisfactory bid bond executed by the bidder and acceptable sureties in an amount equal to five percent of the bid shall be submitted with each bid.

LEGAL

The successful bidder will be required to furnish and pay for satisfactory performance and payment bond.

LEGAL

Attention is called to the fact that not less than the minimum salaries and wages as set forth in the specifications must be paid on this project. The Housing Authority of the City of Colorado City, Texas

LEGAL

Notice is hereby given that the City Council of the City of Colorado City, Texas, will receive bids until 12 noon May 9, 1960, on a 1 1/2 ton truck chassis to be used in the Sanitary Department.

LEGAL

Specifications are available at City Hall in Colorado City, Texas.

LEGAL

The city reserves the right to waive formalities and to reject any or all bids.

LEGAL

J. F. Merritt City Secretary

LEGAL

Notice is hereby given that a public hearing will be given and held by and before the City Council of the City of Colorado City, Texas, at 7:30 p. m. on the 3rd day of June 1960, at the City Hall in the City of Colorado City, Texas; at which time and place all bids will be publicly opened and read aloud.

LEGAL

Proposed forms of contract documents, including plans and specifications are on file at the office of the Housing Authority of the City of Colorado City, Texas.

LEGAL

Copies of the documents may be obtained by depositing \$50.00 with the Architects and Engineers, Elwyn Fitch & Associates, 4101 San Jacinto, Houston, Texas, for each set of documents so obtained. Such deposit will be refunded to each person who returns plans, specifications and other documents, in good condition, within 10 days after.

LEGAL

Colorado City, Texas, at 7:30 p. m. at the City Hall in the City of Colorado City, Texas on the application of Lone Star Gas Company's request for increase in residential and commercial rate schedule for Natural Gas Service.

LEGAL

J. F. Merritt, City Clerk.

LEGAL

The Housing Authority of the City of Colorado City, Texas will receive bids for construction of Low Rent Housing Project No. TEX 561 until 1:00 P. M. C. S. T. on the 3rd day of June 1960, at the City Hall in the City of Colorado City, Texas; at which time and place all bids will be publicly opened and read aloud.

LEGAL

Proposed forms of contract documents, including plans and specifications are on file at the office of the Housing Authority of the City of Colorado City, Texas.

LEGAL

Copies of the documents may be obtained by depositing \$50.00 with the Architects and Engineers, Elwyn Fitch & Associates, 4101 San Jacinto, Houston, Texas, for each set of documents so obtained. Such deposit will be refunded to each person who returns plans, specifications and other documents, in good condition, within 10 days after.

LEGAL

A certified check or bank draft, payable to the Housing Authority of the City of Colorado City, Texas, U. S. Government Bonds, or a satisfactory bid bond executed by the bidder and acceptable sureties in an amount equal to five percent of the bid shall be submitted with each bid.

LEGAL

The successful bidder will be required to furnish and pay for satisfactory performance and payment bond.

LEGAL

Attention is called to the fact that not less than the minimum salaries and wages as set forth in the specifications must be paid on this project. The Housing Authority of the City of Colorado City, Texas

LEGAL

Notice is hereby given that the City Council of the City of Colorado City, Texas, will receive bids until 12 noon May 9, 1960, on a 1 1/2 ton truck chassis to be used in the Sanitary Department.

LEGAL

Specifications are available at City Hall in Colorado City, Texas.

LEGAL

The city reserves the right to waive formalities and to reject any or all bids.

LEGAL

J. F. Merritt City Secretary

LEGAL

Notice is hereby given that a public hearing will be given and held by and before the City Council of the City of Colorado City, Texas, at 7:30 p. m. on the 3rd day of June 1960, at the City Hall in the City of Colorado City, Texas; at which time and place all bids will be publicly opened and read aloud.

LEGAL

Proposed forms of contract documents, including plans and specifications are on file at the office of the Housing Authority of the City of Colorado City, Texas.

LEGAL

Copies of the documents may be obtained by depositing \$50.00 with the Architects and Engineers, Elwyn Fitch & Associates, 4101 San Jacinto, Houston, Texas, for each set of documents so obtained. Such deposit will be refunded to each person who

# News from the Hospital

Following items of local interest were compiled from files of Roof Memorial Hospital.

**BIRTHS**  
 Karen Renee Herm, daughter of Mr. and Mrs. James Herm, 960 E. 12th St., born Monday weighing 7 pounds and 14 1/2 ounces.  
 Joe Valdez Jr., son of Mr. and Mrs. Joe Valdez, 541 Pine St., born Monday weighing 6 pounds and 13 ounces.  
 Truman Loyd Alberts, son of Mr. and Mrs. Eddie Alberts, 1844 Hemphill St., born Monday weighing 8 pounds and 8 1/2 ounces.

**PATIENTS ADMITTED**  
 Mrs. A. E. Orr, 1129 Walnut St., medical, admitted Wednesday.  
 Pamela Orr, 1129 Walnut St., medical, admitted Wednesday.

**PATIENTS DISMISSED**  
 Mrs. Correlia Espinoza and baby, medical, dismissed Wednesday.  
 Mrs. Joe Valdez and baby, medical, dismissed Wednesday.  
 Mrs. Murray Leach, medical, dismissed Wednesday.

**BIRTHS**  
 Floyd Barr, 1347 Elm St., medical, admitted Wednesday.  
 Mrs. Winnie Quinney, 229 E. 8th St., surgical, admitted Wednesday.  
 Mrs. Philip Berman, 643 Chestnut St., medical, admitted Tuesday.  
 Cecelia Lujan, medical, admitted Monday.  
 Mrs. Everett Hammans, 644 Pine St., medical, admitted Sunday.  
 Billy Cleve Moore, 2146 Chestnut St., accident, admitted Saturday.

**PATIENTS DISMISSED**  
 Mrs. Correlia Espinoza and baby, medical, dismissed Wednesday.  
 Mrs. Joe Valdez and baby, medical, dismissed Wednesday.  
 Mrs. Murray Leach, medical, dismissed Wednesday.

## Ticklers

## By George Eldon Mahon To Speak at Class Banquet



"So you have a poor memory? Great Scott, that reminds me... I forgot to pay the gas bill!"

The evening will begin at 7:30 with the welcome being extended by Barbara Chambers. Linda McMahan, will in turn, present the response. The invocation will be presented by Rev. Kenneth Anderson and the benediction will be presented by Rev. Max Browning. Bullion is coined gold or silver in bars, plates or other masses.

### Elect ASSOCIATE JUSTICE



**ROBERT W. CALVERT**  
 Chief Justice  
 TEXAS SUPREME COURT

- ★ Member of the Texas Supreme Court since 1950
- ★ Only candidate with Supreme Court experience
- ★ Preference of lawyers of Texas in Bar poll by nearly 2 to 1 (Pa. Pol. Ad.)

## Westbrook Seniors Plan Annual Trip

Westbrook Senior class members are making final plans for their annual class trip. The group has set the trip to attend a dude ranch and to see high points in San Antonio. Taking the trip will be Dink Rees, Gary Parrish, Grady Davis, Roy Buchanan, Joe Contreras, Linda McMahan, Linda Hart, Brenda Putman and Lynell Phillips. They will leave the high school May 22.

## Homemaking Class to Present Style Show

Mrs. Curtis Latimer's Homemaking Classes will have their annual spring style show Friday afternoon in the Colorado City Junior High School auditorium. Following the style show, a mother and daughter tea will be conducted. Time for the style show has been set at 1:20. Mrs. Latimer stated that the public is invited.

## 4-H Group Conduct Workshop

A clothing workshop was conducted by the 2L 4H Girls when they met in the Payne Baptist Church Monday afternoon for their regular meeting. The meeting was called to order by Christy Stubbiefield, with the minutes being read by Jean Compton. Mary Beach presented the prayer and Karen Holman presented the club pledge. Hostess for the meet were Mary Beach, nn Palmer, Honey Steck, Linda and Johnnie Womack. They served refreshments to those attending. Guests attending were Mrs. Charles Womack, Mrs. Bruce Byrne and Mrs. T. L. Holman. Members attending were Sally Smith, Debbie Golden, Mary Beach, Sharon Byrne, Linda Womack, Honey Steck, Reggie Long, Johnnie Womack, Christy Stubbiefield, Jean Compton and Linda Owen.

## VOTERS OF MITCHELL COUNTY

- I am seeking the office of sheriff of Mitchell County on my own merit, not on the demerits of my opponents.
- If elected your sheriff, I will maintain constant service to you, the people of Mitchell County, and I will also maintain close cooperation with all law enforcement agencies.
- I sincerely solicit your vote and support in the coming election, Saturday, May 7.

## W. R. (BOB) MCGUIRE

CANDIDATE FOR  
**SHERIFF**

## RCA VICTOR

than any other television!

BUY YOURS AT **Kirschbaum's**  
 APPLIANCE STORE

RE-ELECT FOR 2ND TERM

JUDGE **DAVIDSON**  
 AS JUDGE  
 COURT OF CRIMINAL APPEALS



First choice of Lawyers and Judges  
 In a State Wide Bar Poll!

## MAX CARRIKER

Your State Representative

VOTED TO:

- ★ Tax excess production of the importers of foreign oil

This is a vote for the oil producers, royalty owners, workers and people of Mitchell County.

(Paid for by Mitchell County Friends)

# YOU CAN BANK ON OUR LOW PRICES!

<b>PEARS</b>	NO. 2 1/2 CANS COCK O' THE WALK	<b>3 CANS \$1</b>
<b>Fruit Cocktail</b>	NO. 2 1/2 CANS COCK O' THE WALK	<b>3 CANS \$1</b>
<b>Tomato Juice</b>	HUNT'S QT. CAN	<b>2 CANS 49c</b>
<b>Facial Tissue</b>	HUDSON 400 COUNT BOXES	<b>2 FOR 49c</b>

<b>POTATOES</b>	white	10-lb. bag	<b>65c</b>
<b>CARROTS</b>	cello bag	fresh	<b>5c</b>
<b>AVOCADOS</b>	nico size	2 for	<b>15c</b>

<b>Bananas</b>	GOLDEN RIPE	<b>10c lb</b>
----------------	-------------	---------------

<b>BLACK EYE PEAS</b>	2 300 cans	<b>25c</b>
<b>MUSTARD</b>	KIMBELL'S, 9-oz. jars	<b>2 FOR 25c</b>
<b>SWEET PEAS</b>	DIAMOND 2 303 Cans	<b>29c</b>
<b>PEACH HALVES</b>	COCK O' THE WALK No. 2 1/2 Can	<b>29c</b>
<b>LUNCHEON MEAT</b>	KIMBELL'S 12-oz. can	<b>39c</b>
<b>BATH TISSUE</b>	KIM, in 2 colors, 4-roll pkg.	<b>29c</b>
<b>COCA COLA</b>	CARTON OF 12, (plus deposit)	<b>53c</b>
<b>CHICKEN POT PIE</b>	FROZEN BIRDSEYE each	<b>23c</b>
<b>WELCHADE</b>	quart can	<b>29c</b>
<b>DOG FOOD</b>	KIM	<b>6 cans 39c</b>
<b>TEA</b>	KIMBELL'S 1/4-lb. save!	<b>27c</b>

# Chuck Roast 45c BEEF RIBS 27c

<b>BACON</b>	ARMOUR'S STAR	lb.	<b>59c</b>	<b>ROAST</b>	SHOULDER ARM	lb.	<b>55c</b>
<b>CHEESE</b>	LONGHORN	lb.	<b>49c</b>	<b>LIVER</b>	CALF	lb.	<b>39c</b>

FRIDAY & SATURDAY

**Shop PIGGLY WIGGLY**

745 E. 2nd

We reserve rights to refuse sales to dealers and limit quantities!

STORE HOURS: Weekdays 7 to 8:30; Saturday 7 to 8:30

## LITTLE, FARM, MINOR TEAMS

# Little League Officials Map 37-Day Schedule

A 37-day schedule was announced Thursday for Colorado City's Little League baseball teams.

The schedule, which opens next Tuesday, includes the entire Little League organization — Little League, Minor League and Farm League.

Six teams again are in the Little League — Yankees, managed by Gene Parham; Pirates, managed by H. W. Ainsworth; Indians, managed by Don Clark; Dodgers, managed by Bob Ramage; Tigers, managed by Jimmy Harrison; and Giants, managed by Carlton Davis.

In the Minor League will be 4 teams — Texans, Missions, Cats and Eagles.

Quartet of clubs in the Farm League will be Blue 14.

Sox, Steers, Cubs and Lions. The 37-day schedule will span May and June — extending into July. However, regular play is ticketed to end June 30 — leaving July 1 for make-up contests.

And all-star games for Minor League and Farm League teams will be played July 2.

District playoff games, of course, will follow the regular schedule for Little League all-stars.

While Little League teams start the kid baseball program next Tuesday evening, the Minor League teams will not go into action until the following Friday, May 13.

And the Farm League action will start Saturday, May 14.

Here is the complete schedule for first half of the season.

May 10 — 6 p. m. Pirates vs. Indians, 8 p. m. Giants vs. Dodgers.

May 12 — 6 p. m. Indians vs. Giants, 8 p. m. Yankees vs. Pirates.

May 13 — 6 p. m. Eagles vs. Texans, 8 p. m. Tigers vs. Dodgers.

May 14 — 4 p. m. Blue Sox vs. Steers, 6 p. m. Cubs vs. Lions, 8 p. m. Cats vs. Missions.

May 16 — 6 p. m. Yankees vs. Tigers, 8 p. m. Dodgers vs. Indians.

May 17 — 6 p. m. Texans vs. Eagles, 8 p. m. Pirates vs. Giants.

May 19 — 6 p. m. Tigers vs. Pirates, 8 p. m. Giants vs. Dodgers.

May 20 — 6 p. m. Missions vs. Cats, 8 p. m. Indians vs. Yankees.

May 21 — 4 p. m. Cubs vs. Lions, 6 p. m. Blue Sox vs. Steers, 8 p. m. Eagles vs. Cats.

May 23 — 6 p. m. Giants vs. Yankees, 8 p. m. Dodgers vs. Pirates.

May 24 — 6 p. m. Missions vs. Texans, 8 p. m. Tigers vs. Indians.

May 26 — 6 p. m. Yankees vs. Dodgers, 8 p. m. Tigers vs. Giants.

May 27 — 6 p. m. Missions vs. Eagles, 8 p. m. Indians vs. Pirates.

May 28 — 4 p. m. Blue Sox vs. Lions, 6 p. m. Cubs vs. Steers, 8 p. m. Texans vs. Cats.

May 30 — 6 p. m. Pirates vs. Yankees, 8 p. m. Dodgers vs. Tigers.

May 31 — 6 p. m. Eagles vs. Texans, 8 p. m. Giants vs. Indians.

June 2 — 6 p. m. Indians vs. Dodgers, 8 p. m. Giants vs. Pirates.

June 3 — 6 p. m. Cats vs. Missions, 8 p. m. Tigers vs. Yankees.

June 4 4 p. m. Steers vs. Lions, 6 p. m. Blue Sox vs. Cubs, 8 p. m. Cats vs. Eagles.

## Party Honors Winning Team Of Juniors

A "what's my name party" last Friday evening honored a winning team of a recent contest sponsored by the Junior Training Union of First Baptist Church in Loraine.

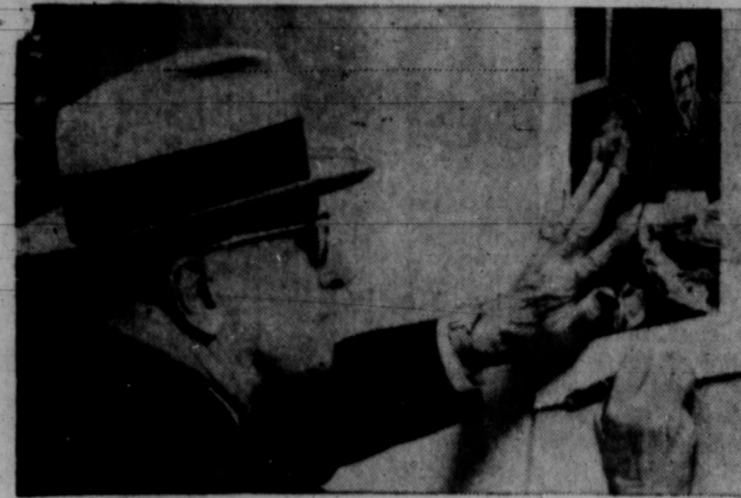
Scene for the fete, hosted by the losing team, was the home of Mr. and Mrs. Ray Preston.

Guests came costumed as a comic or theatrical person.

Characters portrayed at the party were Kitty Russell, Nelly Fo, Nick in TV's Tightrope series, Maynard in TV's Dobbie Gillis series, Josh Randle, Matt Dillon, Brenda Lee, Hedda Hopper and Goldie Applebee.

Costume prize was awarded to Carolyn Sue Schroder for the hat she wore as Hedda Hopper. Carol Little was runner up for her hair style as Kitty Russell in TV's Gunsmoke series.

Cookies and punch were served following games.



"Autograph, Mr. President?"

Former chief executive Harry Truman pauses during a morning stroll in New York to sign his photograph on the request of a resident.

## IF FARMER DESIRES

# Farm Labor Crew Commitments Due

The farmers of this area are dependent on both local and outside help in the harvesting of their cotton crops each fall.

It has come to the attention of the Texas Employment Commission in Sweetwater (serving this and surrounding counties), however, that outside crews that have helped gather the crop in past seasons, do not always fulfill their promise or commitment to return the following season. D. E. Harlow, TEC Office manager, announced.

"If you have the name and address of a crew leader that has helped you in the past, and would like to secure a written commitment, or determine whether or not the crew leader's plans have changed since talking with you last fall, the TEC will be happy to obtain this information for you," Harlow said.

If agricultural employers would like to take advantage of this service, Harlow advised that they should "come to the Texas Employment Commission in Sweetwater and give us the name and home address of the crew leader."

"As soon as we are able to contact the individual, we will let the employer know if a commitment can be secured," Harlow said.

A cordial invitation awaits you at . . .

## NORTHSIDE

### Church of Christ

SUNDAY:

8:15 a. m. — Radio Broadcast over KVMC  
10:00 a. m. — Bible Classes  
10:50 a. m., 6:00 p. m. — Worship & Preaching  
7:30 p. m. — Mid-week Service

THURSDAY:

9:30 a. m. — Ladies' Bible Class

1 mile north of city on Snyder Highway  
WEDNESDAY:

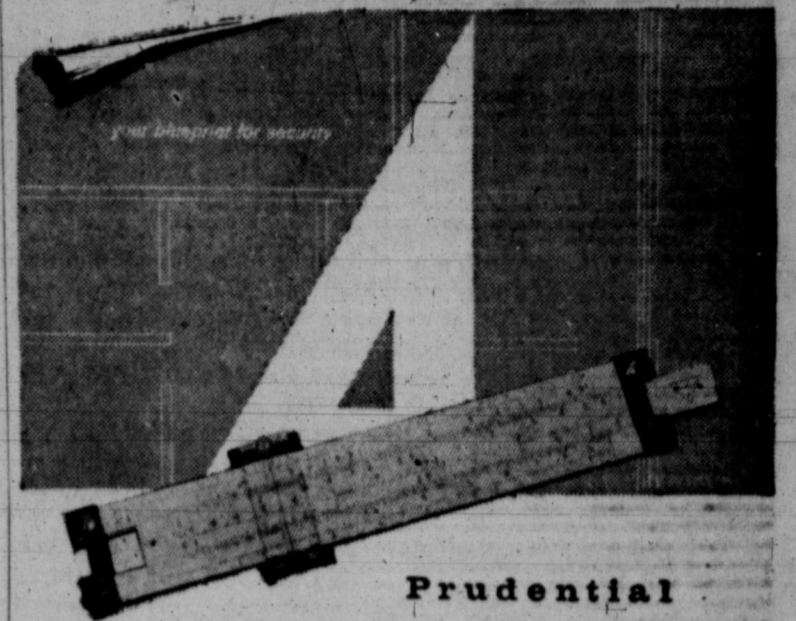
## Weekend In Oklahoma

Mr. and Mrs. Vance Dickenson and daughter, Ann of Loraine spent the weekend at Olusta, Okla., with Mrs. Dickenson's parents, Mr. and Mrs. W. A. Montreau, and in Quan-

ah with Mr. Dickenson's brother and sister-in-law, Mr. and Mrs. Curtis Dickenson.

## Guest from Snyder

Miss Nancy Hardin of Snyder visited Sunday at Loraine with Miss Fran Griffin.



Prudential Triangle Coverage

LIFE INSURANCE IN THE EVENT OF DEATH—SICKNESS, ACCIDENT AND INCOME PROTECTION—RETIREMENT INCOME FOR LATER YEARS

There are three basic financial hazards that can cut off the income of any family: Death of the Breadwinner . . . Sickness or injury that prevents him from earning a living . . . Retirement without enough money to live on.

Prudential's Triangle Coverage can protect you and your family against all three—and your Prudential Agent is the man to help you build that Triangle of Security. He will show you how you can be sure of funds to help protect your family during the growing years and how to combine life insurance with your Social Security for a comfortable retirement.

In building Prudential's Triangle Coverage into your Family Security Blueprint, you'll find the booklet "Plain Talk On The New Social Security Law" helpful and informative. To obtain a copy send the coupon today.

TO OVER 25 MILLION PEOPLE—  
INSURANCE MEANS PRUDENTIAL  
SOUTHWESTERN HOME OFFICE  
HOUSTON, TEXAS

BOB REILY  
Special Agent

Rm. 204, Berman Hotel, RA 8-3726  
COLORADO CITY, TEX.

THE PRUDENTIAL  
P. O. Box 2075, Dept. A — Houston 1, Texas  
Please send us our copy of your booklet, "Plain Talk on the New Social Security Law"  
Mr. & Mrs.  
Street \_\_\_\_\_  
City \_\_\_\_\_ Zone \_\_\_\_\_ State \_\_\_\_\_

## PLAYERS SATURDAY WILL SELL DECALS

Little League baseball players will be visiting the downtown area Saturday in uniform.

It will be a prelude to Little League Day next Tuesday when the league opens its 1960 schedule of play for more than 300 kids.

The Little Leaguers will be visiting firms and individuals Saturday for the purpose of inviting local citizens to purchase Little League decals.

Money from sale of decals assists the league in its operations — buying equipment, uniforms and paying the cost of field upkeep lighting and officiating.

"We invite all our citizens to welcome these youngsters Saturday," said K. C. McAdams, Little League president, "and provide an assist for this fine recreation program."

## Mr. and Mrs. Citizen:

# What Does Our 91st Legislative District Need Most?

## Jack McCain Says:

**JOBS — JOBS — JOBS** — are what Colorado City, Loraine, Roscoe, Sweetwater, Roby and Rotan need. I have never seen times bad when everybody had jobs, nor have I ever seen times good when people were unemployed.

Farming can not afford more employment. In fact, farms employ fewer people than they ever have before. The Oil business has passed its peak and is using fewer people than it has employed in the past decade.

### WHERE ARE WE GOING TO LOOK FOR JOBS IN THE FUTURE?

My opinion is, we will have to look to new industry to meet the need for employment.

If you believe this is true, then ask yourself how Fisher, Nolan and Mitchell County can vote for the present Representative, whose record is eighty-six percent (86%) negative votes for industry according to the latest tabulation published by a widely read, progressive, organization whose sole aim is to create a friendly atmosphere for new industry in Texas.

If you vote for Jack McCain, you are voting for a man who believes that we need laws that will ENCOURAGE INDUSTRY and DECENT LAWS THAT WILL PROTECT THE LABORING MAN. The present Representative has a record of voting that surely proves the above theory is NOT his belief.

Why did my opponent vote for AFL-CIO sponsored legislation over 95% of the time? Why did he vote 21 good votes and one bad vote in the eyes of Labor Bosses?

Representatives from Abilene, Big Spring, Lubbock and Odessa did not vote like our Representative. No, they voted the traditional West Texas way.

Folks, I think the people of Nolan, Fisher and Mitchell Counties want and deserve a different kind of representation than we have had the past two years. Isn't it obvious to you that our present representative is not representing us and that he is doing a far more effective job representing the Houston, Beaumont and Port Arthur area than his own 91st District? To me, the above voting record proves it is time for a change. — What do you think?

## VOTE FOR

# JACK McCAIN

HE WILL REPRESENT YOU



PRESCRIPTIONS  
WEST BEND AUTOMATIC

# Save! DRUG NEEDS

SPECIALS FRIDAY & SATURDAY

# Coffee Maker 16<sup>95</sup>

REG. \$24.95



CADDY SET  
REG. \$2 98<sup>c</sup>

SLIMETTE CAPSULES Reg. \$6.95 \$4.95  
BABY SHAMPOO Reg. 49c 29<sup>c</sup>  
BABY HAMPER For Home or Auto, Reg. \$2 \$1.39  
COLOGNE FAMOUS BRAND Reg. \$1 69<sup>c</sup>  
DANDRUFF TREATMENT, New Lotion Reg. \$1.50 \$1  
HAIR DRYER STYLE QUEEN Reg. \$5.95 \$4.39  
PERMANENT NUTRI-TONIC Reg. \$2 \$1.39  
CHILDREN LOVE THE DIFFERENT FLAVORS OF STUART  
VITA DRINK VITAMINS Reg. \$1.80 \$1.09

# Toothpaste 69<sup>c</sup>

COLGATE (with pkg. Reynolds Wrap free)

# Baby Pants 39<sup>c</sup>

PARTY TIME REG. \$1.49

# Glassware \$1<sup>50</sup>

PLAYTEX REG. \$2.50 SET OF 8 GLASSES

# Colorado Drug

Bring your prescriptions to . . .  
PLUS TAX ON TAXABLE ITEMS  
—Your friendly Walgreen Agency

METHODIST AND BAPTIST

# 2 Church Groups Meet For Loraine Socials

LORAINÉ — "Christ's sense of the president, Mrs. Elba Mae Beatty. Twelve Disciples" was the theme for the devotional study when Willing Workers Class met in the home of Mrs. Lily Bennett.

Presenting the devotion from a book by Edgar Goodspeed was Mrs. Troy Jones. The monthly worship and business session of the First Methodist Church class was at 7:30 p. m. with Mrs. Bennett and Mrs. Maggie Hamrick as co-hostesses.

Mrs. Alva Bennett, race relations chairman, reported on the Easter egg hunts for first grade Latin-American students and Negro children — 2 projects sponsored annually by the class.

Presiding at the business session was Mrs. Willie Taylor, vice president, in the ab-

Invocation was by Mrs. George Mahoney. Mrs. Furlow read a toast to the winning group and Mrs. Elwood Graham, class vice president, directed the business session in the absence of the president, Mrs. Garland Cary.

Attending were Mmes. Loyd Brame, B. B. Lee, Jim Allmendinger, Kenneth Butler, Furlow, Tom Graham, Leroy Lucas, Mahoney, Herbert Mearse, Tony Snyder, J. C. Wells, Price Hall, Arthur Pieper, Ray Preston, E. J. Schroeder, Willmon Tartt, Loyd Wiggins and Virgil Parnell.

Mrs. A. G. Furlow Jr., captain of the losing side in a recent class contest, was chairman for the supper.

The serving table was laid with white cloth, centered with an umbrella entwined with roses, honeysuckle and ribbon. Foursome tables were marked with miniature umbrellas and other decor.



Bumpy

Making like a bump on a log, Dixie Graves graces the seaside at Sarasota, Fla.

# CONFUSION - CONFUSION - CONFUSION

ISN'T IT CONFUSING  
WHEN THEY START ABUSING,  
WHEN THEY START A-LOSING?

Yes, Ladies and Gentlemen, confusion seems to be the present strategy of my opponents. (There seems to be quite a bunch of them, with only one FRONT MAN). They now are resorting to an age-old trick. That is, if they can't convince you they will try to confuse you.

Voters—Don't let them do it! I, Jack McCain, am going to stand right by my guns. I still contend and say I can PROVE everything that I have told you.

Have they offered to prove ANYTHING that they have told you? Folks, I say again, confusion is the strategy they are now using. They know that if they can mix-up misquote, candy-coat, and change the names of the real issues that some of you voters will not know what to believe.

Again, let me assure you, Jack McCain WILL NOT confuse you. I will use the SAME measuring stick for all the Representatives' records that I have used in showing you the MEASUREMENT of my opponent.

Now, let's look back about ninety days. After being urged by several hundred of my friends to announce as a candidate for State Representative I agreed and filed for the office January 31st. Immediately after filing for this important State position, I made a trip to Austin. I did this primarily to see for myself if Mr. Carriker's voting record was as mis-fit for our 91st District as my friends had told me. I found them one hundred per cent right.

I have quoted to you before, and I have not misconstrued one single issue, the voting record of my opponent as shown by the official Texas State AFL-CIO Austin publication. This is the Union's paper and is sent to union members and asks the members to JUDGE THEIR REPRESENTATIVES FOR THEMSELVES.

Now, if this were not a copyrighted paper, it would be very simple for me to just re-print it in our newspapers and then you could read the record for yourself. If each and every voter could read this record for himself, I assure you that he would say, "Jack McCain is not so confused and ill-advised as Mr. Carriker would have us believe."

To further enlighten you voters as to how bad our present representation is mis-fit for West Texas, I am quoting to you, below, the voting records of sixteen Representatives and our three State Senators whose districts completely encircle our own 91st District of Nolan, Mitchell and Fisher Counties. Bear in mind that this is the Texas State AFL-CIO paper I am quoting from. It is THEIR record in THEIR paper and for THEIR people's consumption. Therefore, they quote the votes as "good" or "bad" for the Labor Unions.

NOW, WON'T YOU JUDGE YOUR REPRESENTATIVE FOR YOURSELF?

Representatives:	Good Votes	Bad Votes
Max D. Carriker, Roby	21	1
H. J. Blanchard, Lubbock	1	23
R. L. Bowers Jr., Brownfield	3	22
Paul Brashear, Cisco	5	19
J. Godon Bristow, Big Spring	3	12
Joe Burkett, Kerrville	2	21
George Cook, Odessa	2	21
Will Ehrle, Childress	5	19
W. S. Heatly, Paducah	4	20
Truett Latimer, Abilene	9	16
Jesse M. Osborne, Muleshoe	4	18
Wesley Roberts, Lamesa	2	20
Renal B. Rosson, Snyder	8	16
Richard Slack, Pecos	2	19
Ben Sudderth, Comanche	1	21
Leon Thurman, Anson	7	17
<b>State Senators:</b>		
David Ratliff, Stamford	3	13
Preston Smith, Lubbock	2	17
Dorsey B. Hardeeman, San Angelo	4	15

Now, I have shown you voters the record above in figures only. Don't you see that Mr. Carriker is pretty near EXACTLY OPPOSITE the other eighteen Representatives and Senators surrounding Nolan, Fisher and Mitchell Counties? I think that this alone should prove to you my contention that our past representation is as mis-fit for West Texas as it is for our own 91st District.

Since Mr. Carriker tries to change up the issues, rename them to suit his answers, and insinuate to you intelligent people that Jack McCain would kick our old folks out in the street, feed our babies poisoned milk, and cut off our farmers' lights, let's just overlook the issues—let's just look at numbers. We can all understand figures—I don't think there is any way he can confuse any of us when we use this method.

Now, Who? Who is out of step? Who is mis-fit? Can it be possible that the eighteen men listed above, who represent the entire area that completely encircles Nolan, Mitchell and Fisher Counties; are all out of step? Since all eighteen of the Representatives and Senators listed above represent districts that join us and are comparable to us, it is very plain to see why, the Representatives and Senators around us think the 91st District, with its present representation, really shows up DARK when you look at a map of West Texas.

Let me represent you. I have employed many people. I have actively farmed all my adult life, as a side-line. I still own and operate a fair-sized farm. I know your problems!

PLEASE VOTE FOR ME

# JACK MCCAIN

I WILL REPRESENT YOU

(Paid Political Advertisement)

LORAINÉ OBSERVANCE

## Thornhill Dinner Marks Birthday

LORAINÉ — R. K. Thornhill, retired Loraine merchant, observed his 79th birthday Sunday.

A dinner hosted by Mrs. Thornhill in their home marked the observance.

Here for the dinner were a son-in-law and daughter, Mr. and Mrs. Kelley Treadaway of Colorado City.

Thornhill, a native of Missouri, moved to Texas with his parents at the age of 3. He and Mrs. Thornhill, the former Frederica Romberg, were married Sept. 9, 1904, in Holland, Tex.

Before moving to Loraine Thornhill operated dry goods stores in Lamesa, Seagraves and Sweetwater. He moved to Loraine in 1932 as owner and operator of his own dry goods store here.

However, he later sold half interest in the store to Mr. and Mrs. Ray Preston. However, in 1957 his remaining interest in the store was sold to the Prestons.

The Thornhills purchased a farm northeast of Loraine in the 1940's and moved there. But they returned to Loraine

in 1954, moving into a new residence in their golden wedding anniversary year.

Mr. and Mrs. Thornhill are active workers in Loraine's First Baptist Church.

Another daughter, Mrs. E. O. Krause, lives in New Braunfels and a son, O. O. Thornhill, resides in Gainesville, Ga.

## Minta Jane Dobbs Visits in Loraine

Miss Minta Jane Dobbs is visiting in the home of her parents, Mr. and Mrs. Martin Dobbs of Loraine, after being dismissed from McKnight Sanatorium Saturday.

Miss Dobbs, a Loraine High School graduate, was attending Mid-Western University in Wichita Falls when she entered the sanatorium for rest and treatment.

She plans to enter Howard County Junior College in Big Spring for the summer session. She is majoring in journalism.

Calumet was the name of the ceremonial peace pipe used by North American Indians.



Lewis Claxton

Sincerely asks you for your

## Vote For SHERIFF

Lewis Claxton is a trained, experienced officer of the law who pledges:

- Fair and impartial enforcement of the law for all citizens at all times.
- Diligent and constant service with his office and actions open to public inspection at all times.

**NOW! CELEBRATING FORD SALES LEADERSHIP**

**STARTING NOW!**  
**Ford Dealers Trading Fair**

**FORD RANCH WAGON**  
with more cargo space than any wagon in its class!

**FORD THUNDERBIRD**  
America's most wanted automobile!

**GALAXIE TOWN VICTORIA**  
Thunderbird of the low price class!

**WORLD'S BIGGEST SELECTION**

See "FORD STARTING" TV's hour in living color Tuesdays on NBC-TV

**FORD DEALERS TRADING FAIR**

**BEST SELLERS!** ★ **BEST TRADES!**  
**BEST VALUES!**

**CRADDOCK - WITTEN**

116 WALNUT

SA 9-3491

IN REMO

Tar By

LORAINÉ persons Sunday tended an open menting M ward Tartt and Danny. The open h by friends to pletion of a expansion of dence. Hostesses v Little, Edgar Stewart, Delbert Meadows, Joe Terry, G. Beatty and H. The dining with green clo an arrange rose arrange other rooms Hostesses a punch and co



- ★ Law gr
- ★ Four ye
- ★ Taught
- ★ Former
- ★ Membe
- code
- ★ Past pr
- ★ Board o
- ★ Ranche
- "Ap
- Vote Court**

To

**IN REMODELED HOME**

# Tartt Family Honored By Open House Event

LORAIN — More than 65 persons Sunday afternoon attended an open house complementing Mr. and Mrs. Howard Tartt and son, Jimmy and Danny.

The open house was hosted by friends to mark the completion of a remodeling and expansion of the Tartt residence.

Hostesses were Meses. Roy Little, Edgar Baumann, James Stewart, Delmas Bowlin, Herbert Meadows, Shep Compton, Joe Terry, Gene Britton, Plez Beaty and Herbert Mearse.

The dining table was laid with green cloth centered with an arrangement of roses. And rose arrangements, decorated other rooms of the house.

Hostesses alternating at the punch and coffee service. Car-

lla Britton presided at the register.

Mr. and Mrs. Tartt, who have lived in Loraine all their married life, recently remodeled their home and added a new bedroom.

Miss Sarah Pratt and Miss Jackie Coffee, students at Abilene Christian College and Hardin - Simmons University, spent the weekend here with their parents, Mr. and Mrs. Woodrow Pratt and Mr. and Mrs. Jack Coffee.

Woodrow Pratt attended the Consistory at Scottish Rite of Masons in Dallas the first of last week.

Mr. and Mrs. Floyd Coffee visited Sunday in Lubbock

with their daughter, Paula Coffee.

Mrs. Vanda Martin accompanied them to Lubbock and visited with her daughter and family, Mr. and Mrs. L.J. Burdine and son, James.

Mr. and Mrs. Floyd Dudley and son, Bryan of Hobbs, N. M., former residents of Loraine, spent the weekend and first of week here with Mr. and Mrs. Herman Miles, Mr. and Mrs. Ralph Lankford and other friends.

Mr. and Mrs. Bryan Mahon and children of San Angelo spent the weekend here with his parents, Mr. and Mrs. John Mahon.



**Tiring Work**  
Worker lays down hundreds of rubber tires on a Rochester, N. Y., rooftop. The old tires and plywood sheeting are used as protection against falling debris from the adjacent building being torn down.

**ASSORTED CHOCOLATES**  
1 lb. box \$1.40 2 lb. box \$2.70

*the sweetest way to say*  
**Happy Mother's Day**

**Russell Stover CANDIES**

**Mother's Day Sunday May 8th**

**THE GIFT BOX**  
Chocolates and butter bones  
1½ lbs. \$2.15 2½ lbs. \$3.15

*exclusively ours...*

**W. L. DOSS**  
REXALL DRUG

## Local Group Back from Convention

Delegates from the Colorado City congregation of Jehovah's Witnesses have returned home from attending the semi-annual three-day training program of Jehovah's Witnesses in Monahans, Friday through Sunday, at the Ward County Coliseum.

"Finding Peace in This Troubled World" was the title of the Bible discourse delivered by district supervisor, R. L. Anderson, as the high point of the meet. Swepton J. Landrum, presiding minister of the local congregation, said that 787 persons heard Anderson state, "Since Adam broke the peace with God, sinful man has tried to regain that lost treasure of peace by every human means."

Anderson added: "Peace can only come to those who do God's will and not to the wicked. By dedication of their lives to the sacred service of Jehovah God, Jehovah's Witnesses have found such peace as testified by the absence of any hostility in their worldwide society made up of people of many nations."

## FUTURE HOMEMAKERS

### Loraine Students At State Meeting

LORAIN — Katrina Wells, Glenda Richards, Golda Cary and their sponsor, Mrs. Evelyn Mauchon, were in Austin last weekend to attend the State Future Homemakers of America meeting.

The group arrived in Austin in the afternoon in time for a tea in the University of Texas Home Economics Building and a tour of the building.

First general session was at 9 a. m. Friday in Austin's Municipal Auditorium with Margaret King, state president from Denton, presiding.

Invocation, greeting and response were given and Margaret Boomer introduced the speaker, Miss Helen Poe, lecturer and world traveler from Dallas, who spoke on "Your World Today and Tomorrow." Group singing and entertainment concluded the morning program.

The noon luncheon was in the basement of Municipal Auditorium.

The second general session was at 2 p. m. Friday with

## Club Hosted In Snyder's Women Club

LORAIN — Bridge Club members were entertained in the Women's Club in Snyder.

Hostess for the fete were Dr. and Mrs. John Hamblen, members of the club.

Attending were Dr. and Mrs. Bruce Johnson; Mr. and Mrs. H. E. Thomas, Mr. and Mrs. Glen Coon, Mr. and Mrs. Jack Coffee, Mr. and Mrs. Wilmon Tartt, all of Loraine; Mr. and Mrs. Henry Doss of Colorado.

Mrs. Blanche Parker of Tucson, Ariz., is here visiting in the home of Mrs. C. T. Beights.

Mrs. Kenneth Day and son and daughter, Wayne and Marsha, of Abilene visited Sunday here with Mrs. Day's mother and grandmother, Mrs. Josephine Marshall and Mrs. Ruby Robertson.



Lewis Williams & Austin McCloud urge you to

## VOTE FOR JIM D. BOWMER of Bell County for COURT OF CRIMINAL APPEALS

- ★ Law graduate — Baylor University
  - ★ Four years army service — two overseas
  - ★ Taught criminal law — Baylor
  - ★ Former county attorney
  - ★ Member State Bar Committee on revision criminal code
  - ★ Past president local bar association
  - ★ Board chairman, Pythian Children's Home
  - ★ Rancher — Church & civic leader
- "Apply the law with common sense"*
- Vote for JIM D. BOWMER Court of Criminal Appeals**

## To the Citizens of Mitchell County:

I take this means to again ask for your support in the May Democratic Primary and express my convictions concerning the Sheriff's Office.

This office has the responsibility of keeping the peace in a lawful manner, as well as guarding the civil liberties of people who are accused of violations. Through experience I have learned to appreciate this trust and obligation.

As sheriff of your county, it has been my duty to assist in cases involving juvenile problems that arise in this county, as a result of this association I believe in helping raise our young people to become good adult citizens. Young people become adults at different ages and we must help and continue to give our help to them until they are of a responsible mind, and not base out actions on age alone.

I ask again for your support and pledge myself and deputies to a responsible administration of the sheriff's office.

The services of this office are extended to you at all times and trust we may be of service in the future.

Respectfully,  
**R. E. GREGORY JR.**  
Candidate for Re-election  
Office of Sheriff, Mitchell Co.

# Thank You!

- ★ Those of us at City National Bank are deeply appreciative of the success of our formal opening Saturday and Sunday. On behalf of the officers, directors and bank employees, we pledge our fullest efforts that our new building and location will give you a banking service that will meet your every expectation.
- ★ We wish to thank the 1,684 persons who made our opening an event we will always treasure and to invite those unable to attend the formal opening to drop by anytime... we will be glad to show you around our new home.
- ★ To those merchants whose cooperation made possible the Special Bank Opening Edition of the Colorado City Record... and to those friends whose flowers beautified our open house, we are particularly grateful.



**Grandsons Visit**  
 Mike and Gregg Walker of Coahoma, spent the weekend in Loraine here with their grandmother, Mrs. Elba Mae Beaty, and Mrs. Walker arrived Sunday to visit with her mother.

**Palace Theatre**  
 ADVANCED PRICE 75c  
 WED., THURS., FRI. & SAT.

**IF YOU NEVER SEE ANOTHER MOTION PICTURE IN YOUR LIFE YOU MUST SEE**  
 FRED ASTAIRE ANTHONY PERKINS  
 DONNA ANDERSON  
**ON THE BEACH**

SATURDAY MORNING 11 O'CLOCK  
**KID SHOW**  
**"The Black Dakotas"**  
 starring GARY MERRILL, WANDA HENDRIX and JOHN BROMFIELD  
 STARTING SUNDAY

VAST SPECTACLE! SWEEPING SPLENDOR! UNFORGETTABLE DRAMA!  
 THE BIG FISHERMAN  
 THE STORY OF SIMON PETER OF GALILEE!  
 TECHNICOLOUR - PANAVISION

FRIDAY SATURDAY  
**Lone Wolf DRIVE-IN**  
 DOUBLE FEATURE  
 AUDIE MURPHY & TERRY MOORE  
 in  
**"Cast a Long Shadow"**  
 —PLUS—  
**"Timbuktu"**  
 Starring VICTOR MATURE & YVONNE DECARLO  
 SUNDAY, MONDAY & TUESDAY

FRANK SINATRA  
 GINA LOLLOBRIGIDA  
**NEVER SO FEW**

**To the Citizens of Precinct 1**

I have made every effort to contact each of you personally.  
 If I have failed to see you, I take this method in asking for your support and influence Saturday, May 7.  
 If you re-elect me as your commissioner, I pledge to serve you and our community to the best of my ability.

**Sam C. Thompson**  
 Candidate for  
**Commissioner Precinct 1**  
 Mitchell County

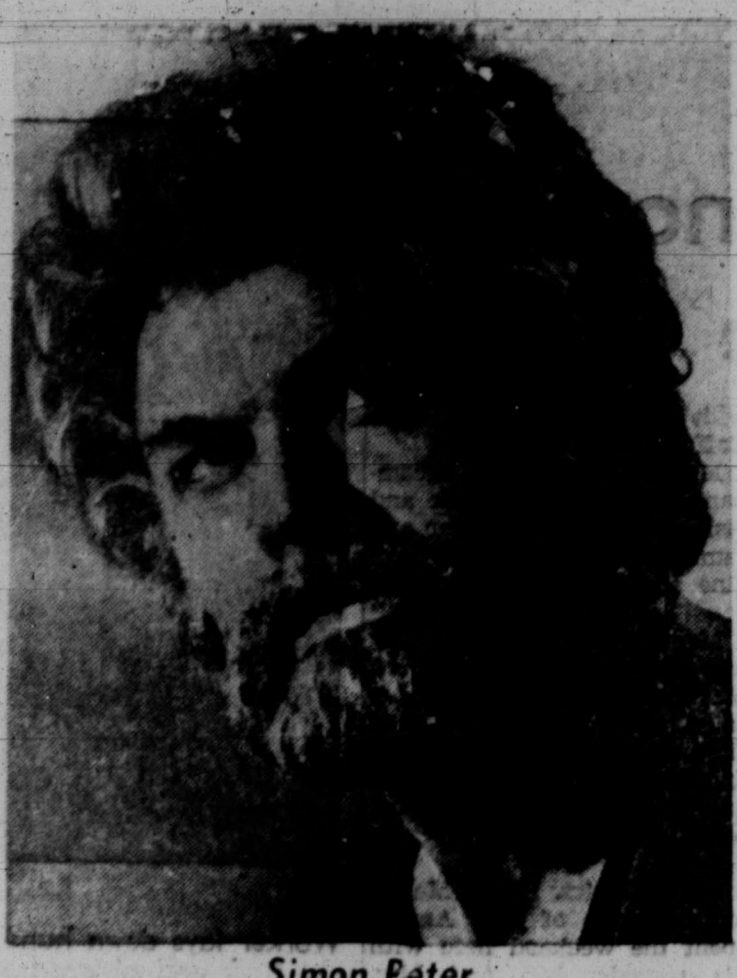
**MAGNOLIA COMMUNICATIONS**  
**Microwave To Cross County**

Magnolia Pipe Line Company, the nation's second largest pipe line system, Wednesday announced plans for a 350-mile microwave communication system to link points in central and western Texas.  
 The company is the common carrier affiliate of 'Socony Mobil Oil Company, Inc. And its microwave system will stretch across Mitchell County.  
 L. H. True, president of Magnolia Pipe Line, said in Dallas that the network will provide static-free voice communication between the Company's major storage terminal at Corsicana and its West Texas gathering terminal at Midland.  
 Both of the Texas cities are joined by major crude oil pipelines operated by Magnolia.  
 The installation will require erection of 12 relay towers, varying in height between 210 and 380 feet, and will include provision for remote control of six pipe line pump stations.  
 Midland will eventually be the control point for the pump stations on the 235,000 barrel-a-day pipe line. Three of the

**Clubs Stage Rally for Candidates**

LORLAINE — Members of North Loraine and Baumann Home Demonstration Club parlayed a political candidates rally into more than \$150 Saturday night.  
 The cash was the money paid for homemade pies and coffee sold by the HD Clubs and for homemade ice cream sold by 4-H Club girls.  
 Scene for the rally was Loraine Lions Building. Mrs. Garland Cary, Baumann HD president, greeted the candidates and audience. Loreta Tartt presented a reading.  
 Introducing candidates, who spoke to the audience, and conducting the cake and pie auction was Eddie Kissinger of Colorado City.  
 Mr. and Mrs. Bill Stribling took her brother and sister-in-law, Mr. and Mrs. R. E. Elam, to their home in Dallas Saturday after the couple had visited here the past two weeks.  
 The Striblings visited until Sunday in the Elams home and with other relatives.  
 Mrs. Pearl Bruce and son Ralston accompanied by Mrs. Myrtle McAfee of Colorado City, spent the weekend at Goodman, Mo., in the home of Mr. and Mrs. Leonard Hallman.  
 Mrs. Bruce's sister, Mrs. A. L. Hallman of Midland, who had visited there for several weeks, returned home with them.  
 Visiting in the home of Mrs. J. G. Bruce during last week were her sister, Mrs. N. M. Chapman and her son and family, Mr. and Mrs. Ewell Ferguson and daughter, Nealu, of Stanton and another sister and family, Mr. and Mrs. L. G. Stewart and nephew, Carl Stewart, and Ben Harrell of Brownwood.

Howard Keel plays the coveted role of Simon Peter in the film "The Big Fisherman", showing Sunday, Monday, Tuesday and Wednesday, at the Palace Theatre. Other stars in the movie are Susan Kohner, John Saxon, Martha Hyer, Herbert Lam, Ray Stricklyn, Alexander Scourby and Beulah Bondi.



Simon Peter

Howard Keel plays the coveted role of Simon Peter in the film "The Big Fisherman", showing Sunday, Monday, Tuesday and Wednesday, at the Palace Theatre. Other stars in the movie are Susan Kohner, John Saxon, Martha Hyer, Herbert Lam, Ray Stricklyn, Alexander Scourby and Beulah Bondi.

**County Second in Bond Sales Pace**

Mitchell County is second only to Andrews in District 5 in the percentage of Savings Bonds sales during the first 3 months of this year.  
 The local sales are 32.2 per cent of the county's entire quota of \$270,000 for 1960, according to J. C. Pritchett, executive vice president of City National Bank and chairman of Savings Bonds sales here.  
 This 32.2 per cent represents a total of \$86,947 over the 3-month period of January, February and March. Sales during March were \$11,066, Pritchett reported.  
 Andrews, the county leading in percentage for District 5, reported \$3,615 sales in March for a first quarter total of \$24,614 toward its quota of \$60,000 for 1960.  
 Savings Bonds records for other counties in District 5 are:  
 Borden, no sales toward \$20,000 quota; Dawson — \$4,552 in March for total of \$20,219 or 18.4 per cent toward quota of \$110,000; Gaines — \$17,103 in March for total of \$26,704 or 22.3 per cent toward quota of \$120,000; Howard — \$18,587 in March for total of \$109,717 or 24.4 per cent toward quota of \$740,000; Martin — \$3,736 in March for total of \$10,212 or 25.5 per cent toward quota of \$10,000; Scurry — \$15,695 in March for total of \$100,846 or 27.3 per cent toward quota of \$370,000.  
 Average percentage for the district is 26 per cent of its overall 1960 quota.

**FOR FIRST QUARTER**

**County Second in Bond Sales Pace**

Mitchell County is second only to Andrews in District 5 in the percentage of Savings Bonds sales during the first 3 months of this year.  
 The local sales are 32.2 per cent of the county's entire quota of \$270,000 for 1960, according to J. C. Pritchett, executive vice president of City National Bank and chairman of Savings Bonds sales here.  
 This 32.2 per cent represents a total of \$86,947 over the 3-month period of January, February and March. Sales during March were \$11,066, Pritchett reported.  
 Andrews, the county leading in percentage for District 5, reported \$3,615 sales in March for a first quarter total of \$24,614 toward its quota of \$60,000 for 1960.  
 Savings Bonds records for other counties in District 5 are:  
 Borden, no sales toward \$20,000 quota; Dawson — \$4,552 in March for total of \$20,219 or 18.4 per cent toward quota of \$110,000; Gaines — \$17,103 in March for total of \$26,704 or 22.3 per cent toward quota of \$120,000; Howard — \$18,587 in March for total of \$109,717 or 24.4 per cent toward quota of \$740,000; Martin — \$3,736 in March for total of \$10,212 or 25.5 per cent toward quota of \$10,000; Scurry — \$15,695 in March for total of \$100,846 or 27.3 per cent toward quota of \$370,000.  
 Average percentage for the district is 26 per cent of its overall 1960 quota.

**County Second in Bond Sales Pace**

Mitchell County is second only to Andrews in District 5 in the percentage of Savings Bonds sales during the first 3 months of this year.  
 The local sales are 32.2 per cent of the county's entire quota of \$270,000 for 1960, according to J. C. Pritchett, executive vice president of City National Bank and chairman of Savings Bonds sales here.  
 This 32.2 per cent represents a total of \$86,947 over the 3-month period of January, February and March. Sales during March were \$11,066, Pritchett reported.  
 Andrews, the county leading in percentage for District 5, reported \$3,615 sales in March for a first quarter total of \$24,614 toward its quota of \$60,000 for 1960.  
 Savings Bonds records for other counties in District 5 are:  
 Borden, no sales toward \$20,000 quota; Dawson — \$4,552 in March for total of \$20,219 or 18.4 per cent toward quota of \$110,000; Gaines — \$17,103 in March for total of \$26,704 or 22.3 per cent toward quota of \$120,000; Howard — \$18,587 in March for total of \$109,717 or 24.4 per cent toward quota of \$740,000; Martin — \$3,736 in March for total of \$10,212 or 25.5 per cent toward quota of \$10,000; Scurry — \$15,695 in March for total of \$100,846 or 27.3 per cent toward quota of \$370,000.  
 Average percentage for the district is 26 per cent of its overall 1960 quota.

**County Second in Bond Sales Pace**

Mitchell County is second only to Andrews in District 5 in the percentage of Savings Bonds sales during the first 3 months of this year.  
 The local sales are 32.2 per cent of the county's entire quota of \$270,000 for 1960, according to J. C. Pritchett, executive vice president of City National Bank and chairman of Savings Bonds sales here.  
 This 32.2 per cent represents a total of \$86,947 over the 3-month period of January, February and March. Sales during March were \$11,066, Pritchett reported.  
 Andrews, the county leading in percentage for District 5, reported \$3,615 sales in March for a first quarter total of \$24,614 toward its quota of \$60,000 for 1960.  
 Savings Bonds records for other counties in District 5 are:  
 Borden, no sales toward \$20,000 quota; Dawson — \$4,552 in March for total of \$20,219 or 18.4 per cent toward quota of \$110,000; Gaines — \$17,103 in March for total of \$26,704 or 22.3 per cent toward quota of \$120,000; Howard — \$18,587 in March for total of \$109,717 or 24.4 per cent toward quota of \$740,000; Martin — \$3,736 in March for total of \$10,212 or 25.5 per cent toward quota of \$10,000; Scurry — \$15,695 in March for total of \$100,846 or 27.3 per cent toward quota of \$370,000.  
 Average percentage for the district is 26 per cent of its overall 1960 quota.

**County Second in Bond Sales Pace**

Mitchell County is second only to Andrews in District 5 in the percentage of Savings Bonds sales during the first 3 months of this year.  
 The local sales are 32.2 per cent of the county's entire quota of \$270,000 for 1960, according to J. C. Pritchett, executive vice president of City National Bank and chairman of Savings Bonds sales here.  
 This 32.2 per cent represents a total of \$86,947 over the 3-month period of January, February and March. Sales during March were \$11,066, Pritchett reported.  
 Andrews, the county leading in percentage for District 5, reported \$3,615 sales in March for a first quarter total of \$24,614 toward its quota of \$60,000 for 1960.  
 Savings Bonds records for other counties in District 5 are:  
 Borden, no sales toward \$20,000 quota; Dawson — \$4,552 in March for total of \$20,219 or 18.4 per cent toward quota of \$110,000; Gaines — \$17,103 in March for total of \$26,704 or 22.3 per cent toward quota of \$120,000; Howard — \$18,587 in March for total of \$109,717 or 24.4 per cent toward quota of \$740,000; Martin — \$3,736 in March for total of \$10,212 or 25.5 per cent toward quota of \$10,000; Scurry — \$15,695 in March for total of \$100,846 or 27.3 per cent toward quota of \$370,000.  
 Average percentage for the district is 26 per cent of its overall 1960 quota.

**Mrs. J. M. Meadows Visits in Roscoe**  
 Mrs. J. M. Meadows visited in Roscoe Sunday with her sister, Mrs. E. J. Worthy. Returning home recently from a three week visit in Arlington was Mrs. J. C. Hall Sr., who had visited there with a daughter and family. Mr. and Mrs. Joe Millsap and children.

**THE OF TEXANS**  
  
**Re-Elect**  
**WILL WILSON**  
**Attorney General**  
 Hon. Pol. Adv.

To the citizens of Mitchell County and especially Precinct No. 3, I take this opportunity again in thanking you for your support and cooperation that you have given me.  
 I have made an effort to contact each of you in behalf of my candidacy, and if you re-elect me as your commissioner, I will continue to do my utmost to serve you to the best of my ability.  
 Thanking you again, I earnestly solicit your support in the May 7 primary.

**Jesse C. Northcutt**  
 COMMISSIONER  
 Precinct No. 3

**ELECTRICITY**

Adds confidence to cooking  
 ...because it's ACCURATE

You can measure cooking temperatures as accurately as you measure recipe ingredients when you cook electrically. Whether you're cooking on surface units or in the oven, you just set the controls for the heat you want and you get the same even heat every time. There's no guesswork... no variation of heats to confuse you. You can expect recipe-right results every time. See your electric range dealer soon. Accurate electric cooking is another of the many ways in which your dependable, low-cost electric service helps you live better... electrically.



Accurate electric cooking is a feature of all "Live Better Electrically" Medallion Homes

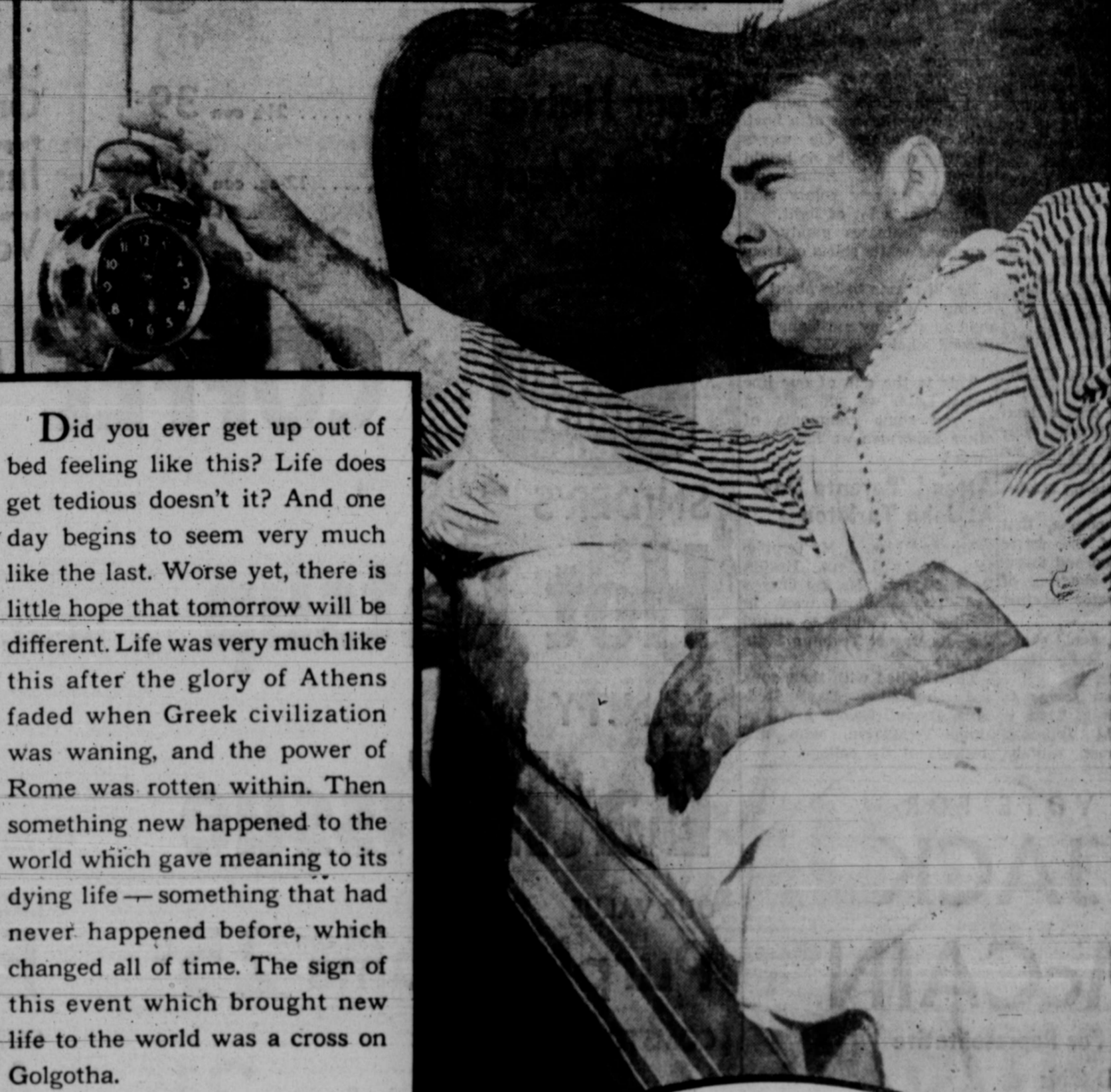
**TEXAS ELECTRIC SERVICE COMPANY**  
 A. L. N. SPADEN, Manager Phone RANDOLPH 4-2331



Colorado City  
 Your friend  
 PRESENT  
 2nd & WALNUT  
 Burton  
 BUILDING  
 118 ELM  
 De  
 "A good  
 V.  
 236 W. 2nd  
 Elliott-G  
 "All for  
 137 W. 2nd  
 Les Fuller  
 "Comple  
 WEST  
 Merket  
 Stanley M  
 JOHN DEE  
 Myer  
 "Parts for  
 366 E. 2nd  
 Pat Neff  
 "Truck  
 Owen's Fu  
 BILL  
 231 OAK  
 Lone Wo  
 "Owned  
 Bob Ratliff  
 152 WALNUT  
 Reckwe  
 "LU  
 Paul Schl  
 444 HICKORY

# Go to Church Sunday ... an investment in your Future

another day  
another dollar



Did you ever get up out of bed feeling like this? Life does get tedious doesn't it? And one day begins to seem very much like the last. Worse yet, there is little hope that tomorrow will be different. Life was very much like this after the glory of Athens faded when Greek civilization was waning, and the power of Rome was rotten within. Then something new happened to the world which gave meaning to its dying life — something that had never happened before, which changed all of time. The sign of this event which brought new life to the world was a cross on Golgotha.

The God whose love is seen at that cross stands ready to give you His love and transform the whole of your days by infusing them with the meaning of eternity. If you will have this gift, trust in Him and live in love with your neighbor.

Is something wrong with your life — an inner restless dissatisfaction? The answer to every human problem comes only from God our Maker. He alone can forgive and reassure.

Through the church God has committed the provision and proclamation of His forgiveness and redeeming love. Without a church relation no one is securely related to God. *Everyone should be in the Church and the Church in everyone!*

EVERYONE IN THE CHURCH  
THE CHURCH IN EVERYONE

© 1958, Coleman Adv. Serv., P. O. Box 4887, Dallas, Texas

**Colorado Drug Company**  
Your friendly Walgreen Agency  
PRESCRIPTIONS FILLED  
2nd & WALNUT ★ RA 8-2665

**Burton-Lingo Company**  
BUILDING MATERIALS  
118 ELM ★ RA 8-2181

**Del Paso Grill**  
"A good place to eat"  
V. C. SUMMERS  
236 W. 2nd ★ RA 8-8153

**Elliott-Godwin Insurance**  
"All forms of Insurance"  
137 W. 2nd ★ RA 8-2671

**Les Fuller's Truck Terminal**  
"Complete One-Stop Service"  
WEST HIGHWAY 80

**Merket Implement Co.**  
Stanley Merket, Owner & Manager  
JOHN DEERE SALES & SERVICE

**Myers Auto Parts**  
"Parts for all Makes & Models"  
366 E. 2nd ★ RA 8-2662

**Pat Neff Truck Service**  
"Trucking of All Kinds"  
RA 8-2071

**Owen's Furniture Company**  
Bill Owens, Owner  
231 OAK ★ RA 8-2039

**Lone Wolf Electric Coop**  
"Owned by those it serves"  
RA 8-4232

**Bob Ratliff Insurance Agency**  
152 WALNUT ★ RA 8-4371

**Reckwell Bros. & Co.**  
"LUMBERMEN"

**Paul Schkade Drilling Co.**  
444 HICKORY ★ RA 8-3600

**All Saints Episcopal Church**  
Locust & 3rd  
REV. ALAN CONLEY, Vicar  
Sunday morning worship — 9:00  
Sunday school — 10:00

**Assembly of God Church**  
Oak & 7th  
REV. F. ROBERTSON, Pastor  
Sunday school — 9:45 a. m.  
Worship — 11:00 a. m.  
Evening worship — 7:30 p. m.  
Wednesday service — 7:30 p. m.

**Calvary Assembly of God**  
Corner Dallas & College  
REV. KIRKENDALL, Pastor  
Sunday school — 10:00 a. m.  
Worship — 11:00 a. m.  
Evening service — 7:30 p. m.  
Wed. prayer meeting — 7:00 p. m.

**Calvary Baptist Church**  
1025 East 15th  
REV. J. CARRAWAY, Pastor  
Sunday school — 9:45 a. m.  
Worship — 11:00 a. m.  
Training union — 7:00 p. m.  
Evening service — 8:00 p. m.  
Wed. prayer meeting — 7:30 p. m.

**Church of Christ**  
Elm & 5th  
W. E. BURKHAM, Minister  
Bible study — 9:45 a. m.  
Worship — 10:45 a. m.  
Sunday afternoon classes — 5:00  
Preaching — 8:00 p. m.  
Ladies' Bible study — 1:30 a. m.  
Bible study — 7:30 p. m.

**Church of God**  
Hemphill & 18th  
REV. J. F. HOLMAN, Pastor  
Sunday school — 9:45 a. m.  
Worship — 11:00 a. m.  
Evening service — 7:00 p. m.  
Tues. prayer meeting — 7:15 p. m.  
Young people's endeavor (Friday) — 7:15 p. m.

**Emanuel Baptist Mission**  
240 W. 4th  
CRESCENCIO RODRIGUEZ, interim pastor  
Sunday school — 10:00 a. m.  
Worship — 11:00 a. m.  
Training union — 6:30 p. m.  
Preaching — 7:30 p. m.  
Wed. prayer meeting — 7:00 p. m.

**First Baptist Church**  
Chestnut & 3rd  
REV. J. F. SELCRAIG, Pastor  
Sunday school — 9:45 a. m.  
Worship — 11:00 a. m.  
Training union — 6:45 p. m.  
Worship — 8:00 p. m.  
Wed. prayer meeting — 8:00 p. m.

**First Christian Church**  
Elm & 4th  
REV. DON MECOY, Pastor  
Church School — 9:45 a. m.  
Worship — 10:50 a. m.  
Sun. youth groups — 6:30 p. m.  
Worship — 7:30 p. m.  
Wed. choir practice — 7:30 p. m.

**First Methodist Church**  
331 Chestnut  
REV. C. COLLINS, Pastor  
Church School — 9:45 a. m.  
Worship — 10:50 a. m.  
Methodist Youth Fellowship (Sunday) — 7:30 p. m.  
Evening worship — 7:30 p. m.

**First Presbyterian Church**  
Chestnut & 5th  
REV. JOHN BRAND, Pastor  
Sunday School — 9:45 a. m.  
Worship — 11:00  
Sun. eve. study groups 5:30 p. m.  
Wed. choir practice — 7:30 p. m.

**Mt. Zion Baptist Church**  
245 Erie Street  
REV. C. C. BECK, Pastor  
Sunday school — 9:40 a. m.  
Worship — 11:00 a. m.  
Training union (Sun.) 6:00 p. m.  
Evening worship — 7:00 p. m.  
Wed. prayer meeting and Bible study — 7:00 p. m.

**Northside Church of Christ**  
Snyder Highway  
G. FOREHAND, Minister  
Sun. Bible classes — 10:00 a. m.  
Morning worship — 10:50 a. m.  
Evening worship — 6:00 p. m.  
Wednesday service — 7:30 p. m.

**Oak Street Baptist Church**  
Oak & 5th  
REV. E. V. BROOKS, Pastor  
Sunday school — 9:45 a. m.  
Worship — 11:00 a. m.  
Sun. training union — 6:30 p. m.  
Worship — 7:30 p. m.  
Wed. prayer meeting 7:00 p. m.

**St. Ann's Catholic Church**  
Peach & West 17th  
REV. T. QUINLIVAN, Father  
Sun. mass in English 8:00 a. m.  
Sun. mass in Spanish 10:00 a. m.  
Sun. evening devotion 1:00 p. m.  
During Lent, evening devotion Wed. at 7:30 p. m. in English and Friday at 7:30 p. m. in Spanish.

**St. Luke Methodist Church**  
1635 Walnut  
REV. L. HARRISON, Pastor  
Church school — 9:45 a. m.  
Worship — 11:00 a. m.  
Methodist Youth Fellowship — 6:00 p. m.  
Worship — 7:00 p. m.

**Southside Baptist Church**  
Concho & Riverside  
REV. GEORGE SHOFF, Pastor  
Sunday school — 10:00 a. m.  
Worship — 11:00 a. m.  
Evening service — 7:30 p. m.  
Wed. prayer service 7:30 p. m.

**Payne Chapel C. M. E.**  
REV. ROBERT TIEUDEL, Pastor  
Church school — 9:45 a. m.  
Worship — 11:00 a. m.  
Evening worship — 7:00 p. m.  
Mid week service, Wednesday — 7:00 p. m.

**11th Street Baptist Church**  
REV. C. L. CARROLL, Pastor  
Sunday school — 9:45 a. m.  
Preaching — 11:00 a. m.  
Sun. evening Baptist training service — 7:00 p. m.  
Preaching — 8:00 p. m.  
Wed. worship — 7:30 p. m.  
Women's Missionary Association Tuesday — 1:30 p. m.

**St. Paul Methodist Church**  
West 16th & Cherry  
REV. J. GUERRERO, Pastor  
Sunday school — 9:45 a. m.  
Worship — 10:45 a. m.  
Sun. evening service 7:30 p. m.  
Midweek service, Wed. 7:30 p. m.

**Kiker & Son**  
FUNERAL DIRECTORS

**Roberts Butane Gas**  
AND GAS APPLIANCES  
RA 8-3711

**City National Bank**  
"Building to serve you better"  
OVER 50 YEARS OF SERVICE

Compliments of  
**Greyhound Bus Station**  
MRS. TOBIE SMITH

**Dairy Dream Drive-In**  
Ice Cream Sandwiches Malts Shakes  
545 E. 2nd ★ RA 8-2482

**Ruffin Food Service**  
Wholesale Meats, Frozen Foods, Poultry,  
Kraft Products, Food Processing,  
Locker Rental  
1st & OAK ★ RA 8-2507

**Jake Reid Tire Service**  
"CC's only complete tire market"  
RA 8-2661

**Rhodes Refrigeration**  
Day or Night Service  
1030 HICKORY ★ RA 8-2180

**Woody's 9 'till 9 Grocery**  
Closed Sundays  
8:30 A. M. TO 8 P. M.

**Yarbrough Service Station**  
Cosden Products  
388 W. 2nd ★ RA 8-3651

**Fva's Ladies Shop**  
"Ladies' ready to wear"  
122 E. 2nd ★ RA 8-4203

**Numble Oil & Refining Co.**  
Serving Farms, Homes & Industry  
JAMES M. DODD, AGENT



By VERN SANFORD

A little conversation with a lot of fishermen always brings out a raft of ideas. Nearly every fisherman has his own special opinion on "how to do it" when it comes to catching fish, especially big bass, whether you agree with what he says or not, you must admit that if he is a successful bass fisherman, there must be something to what he says.

This, even though his own thoughts may sometimes be in conflict with each other. Yet, when you stop to think about it, fish themselves don't always follow the same pattern, strike the same bait, or act the same way, day in and day out.

Some anglers say you must think like a fish to catch fish. Others say you've got to out-think them.

One old-time fisherman contends that the big trouble with most fishermen is that they use the same bait that every other fisherman uses. Net result is that the bass become so familiar with that they just won't strike any longer.

In other words, every bass fisherman, by using the same method of bass fishing that the bass have seen for years, finally educates the finny creatures to the dangers of attacking such a lure. Result is spotty fishing.

On the other hand, there is the other type of fisherman who says that as soon as your partner lands one, switch to his identical lure. He figures his chance of success is greater when he offers the same attraction.

Another fisherman says that if you want to land the big ones, do your fishing from a boat. Fishing from a bank or wading in a lake, river or stream is okay in his opinion, but the far better method is from a boat.

Yet the largest fish we ever hooked was while spin casting from a rocky bank in a narrow cove.

All of which might lead one to think that the fish doesn't care where his meal comes from, as long as it looks appetizing.

Now let's see what another fisherman has to say. Speaking of boats, this avid angler says that he prefers a 14-foot, flatbottomed, wooden fishing boat, painted a dark gray or green. Better, yet, a black-bottomed boat.

His preference for the wooden boat is that it makes less noise than any other type manufactured. He absolutely will not use a metal boat. But he says fiberglass might be a close second choice to the wooden boat.

He contends that the drumming sound of the metal boat scares the fish away. He even argues that the splash of waves on the metal boat will echo so loudly that it scares them to other sections of the lake. He also contends that waves lapping up against the side of a metal boat make a drumming noise under water.

A fishing buddy chimed in

From Plainview

Mr. and Mrs. Sol Kassing and children of Plainview visited Sunday here in the Jack Owens home at Lott.

to stress the importance of being quiet when fishing. Noisy use of the oars in paddling is just as bad as dropping a pair of pliers to the bottom of a metal boat, in his opinion.

He advocates extreme caution while rowing, and says to move along slowly.

His contention is that when rowing, you never should take the oar out of the water. He says further — return it to forward position by bringing it forward parallel to the boat, then row with a figure-S motion, so as to get the greatest amount of power with the least disturbance of the water.

Also, if you must raise the oar out of the water, don't raise it more than a few inches above the surface. Then dip it straight down into the water and break the surface as lightly as possible.

A fishing guide at Falcon Lake tells us that one of the better ways to oar a boat quietly is to finish your stroke fully before lifting the oar out of the water. This, whether it is a pulling stroke, or a back stroke.

Reason is, of course, that you are clear of the water you have generated and thereby eliminate the slushing of the stirred-up water against your own paddle.

In other words, avoid short, choppy strokes. Make them long and complete.

Every fisherman seems to agree that you should reach your fishing spot, quietly,

with the least disturbance of water, and with the slightest possible noise.

One ardent angler even recommends that you make no attempt to cast your line into the water for about five minutes. Just sit there and relax until the bass have become accustomed to the boat being around.

Needless to say, loose or broken seats that creak or squeak should be repaired before you take to the water.

Tackle boxes were the object of another angler's concern. He favors the wooden boxes over the fiberglass ones, and absolutely abhors the metal boxes.

Here again, metal is the most distracting thing in a boat.

What about clothing? That provokes a lot of conversation.

A man sticks up quite a way above the seat of a boat, says one angler. He warns that there should be no bright colors in the fisherman's clothing, or any colors that will reflect a lot of light. This eliminates gaudy apparel and white shirts or trousers.

Khaki seems to be about as fitting a garb for the fisherman as any, say most anglers. Second choice is GI fatigue clothing.

This is the end of our line today. Later we will pass on to you some comments of other fishermen we have contacted.

Attend 'Parents Day' At John Tarleton

Mr. and Mrs. J. M. Templeton, Mr. and Mrs. Heston Redwine, Mrs. Harlow Owens and Trona White were in Stephenville Sunday to attend Parents Day at Tarleton State College.

They visited with their sons and daughter — Davis Redwine, Darrell Owens and Virginia Templeton, who are students at the college.

VOTE FOR JACK McCAIN

For Representative

MY STAND ON: RURAL ELECTRIC COOPS

AM I FOR OR AGAINST THE REA?

How ridiculous a question! But since my good friends have been led to believe different I feel that I must again assure you of my stand.

I am definitely and strongly for the REA electric coops.

I am especially a supporter of the electric coops in their program of carrying electric service to those who had no other way to secure it, which, I understand, is the purpose and function of the REA.

I am for the REA electric coops and will support them in their efforts to provide for all of their members good and dependable service at reasonable rates—reasonable rates meaning their rates compare favorably with those paid by customers of commercial power companies.

I am for the coops in their efforts to maintain their facilities in a good state of repair and to have adequate financing to extend lines to others who are adjacent and who have no other source of dependable electric power.

I am for the REA coops in their efforts to maintain a strong financial position which will insure their ability to pay the interest and principal on all the money they have borrowed from the Federal Government.

I will support any legislation which is designed to carry out the rightful purposes and objectives of the REA coops.

I will oppose any legislation which is punitive in its nature and which would not be in the best interests of the members of the electric cooperatives in Texas.

JACK McCAIN

I WILL REPRESENT YOU

(Paid Pol. Adv.)

ELECT

W. M. (MARCUS) VEST

Candidate For

Commissioner Precinct 1

As a Candidate for Commissioner of Precinct One, I would like to thank the people of this precinct for a very kind and friendly attitude through this campaign. I realize this is a place of public service and if elected to this position, I will endeavor to serve you and represent you in a manner that will justify your confidence in me.

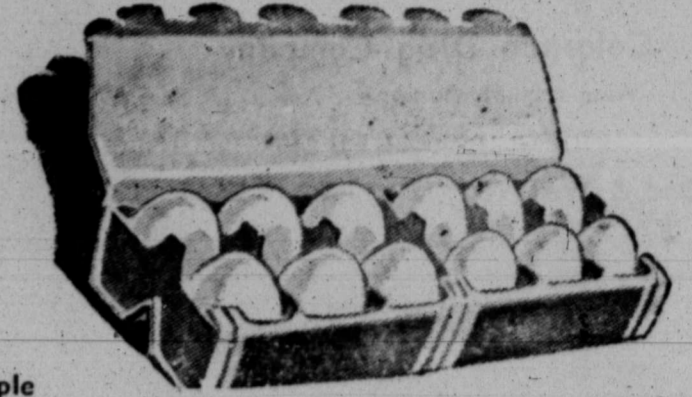
FOOD VALUES GALORE ... ALL OVER THE STORE!

PLUS B & B STAMPS — DOUBLE STAMPS WEDNESDAY!

MITCHELL COUNTY

EGGS

3 DOZ 79c



- Hunt's Pear Halves 2 1/2 can 39c
- Decker's Lunch Meat 12-oz. can 39c
- Our Value Tomatoes 2 303 cans 27c



COFFEE

Maxwell House 1-lb. can

59c lb

SNIDER'S

Hot Catsup

14-oz. bottle

2 FOR 25c

VANITY

Bath Tissue

4-roll package

19c

OUR VALUE

Purple Plums 2 1/2 can 25c

LIGHT CRUST

Flour with 9c coupon inside 5-lb. box 39c

COMSTOCK SLICED

Apples No. 2 can 21c

OUR VALUE

MILK 3 tall cans 39c

Bama Strawberry Preserves 18-oz. jar 39c

Mrs. Tucker Salad Oil 24-oz. bottle 39c

KleeneX Table Napkins 50 count 24c

Happy Vale Pink Salmon tall can 59c

Sweet Pickles

QUART JAR SILVER SAVOR

39c

FRESH GROUND

1-LB. 39c



Hamburger 3 LBS \$1

PICNICS 6 to 10 lb. lb. 27c

FRANKS Gooch's 3 lbs. 98c

STEAK USDA club, choice lb. 75c

ROAST USDA chuck, choice lb. 59c

Biscuits

BETTY CROCKER

3 CANS 17c

MORTON'S FAMILY SIZE APPLE PIES

each 35c

LETTUCE

large heads ea. 10c

Birdseye or Libby's Lemonade

large 12-oz. can 23c

ORANGES

Texas, sweet & juicy lb. 10c

Birdseye 10-oz. pkg. Broccoli Spears

23c

Squash fresh, yellow lb. 10c

Radishes cello bag 2 for 15c

SPECIAL INTRODUCTORY OFFER!

on NEW! ipana with MIRACLE HEXACHLOROPHENE

NEW 15 OFF 69c SIZE 15c

NEW 12 OFF 53c SIZE 12c

NEW 7 OFF 31c SIZE 7c



# Sample Ballot

I am a Democrat and pledge myself to support the nominee of this primary

No. xxx

Date: May 7, 1960  
**DEMOCRATIC PRIMARY ELECTION**  
Note: Voter's Signature To Be Affixed on the Reverse Side.

Instruction Note—Vote for the candidates of your choice in each race by scratching or marking out all other names in that race.

**GOVERNOR**

Jack Cox, Stephens County  
Price Daniel, Liberty County

**LIEUTENANT GOVERNOR**

Ben Ramsey, San Augustine County  
Don Yarborough, Harris County

**ATTORNEY GENERAL**

Will Wilson, Dallas County  
Robert Everett L. (Bob) Looney, Travis County  
Waggoner Carr, Lubbock, County

**UNITED STATES SENATOR**

Lyndon B. Johnson, Blanco County

**REPRESENTATIVE U.S. CONGRESS 19th District**

George Mahon, Lubbock County

**CHIEF JUSTICE OF SUPREME COURT**

Robert W. Calvert, Hill County  
Robert G. Hughes, Tom Green County

**ASSOCIATE JUSTICE OF SUPREME COURT, PLACE NO. 1**

Clyde E. Smith, Tyler County

**ASSOCIATE JUSTICE OF SUPREME COURT, PLACE NO. 2**

Joe Greenhill, Travis County

**JUDGE, COURT OF CRIMINAL APPEALS**

W. T. McDonald, Brazos County  
Jim D. Bowmer, Bell County  
Lloyd W. Davidson, Travis County

**RAILROAD COMMISSIONER**

Ernest O. Thompson, Potter County

**COMPTROLLER OF PUBLIC ACCOUNTS**

V. L. "Bo" Ramsey, Panola County  
Robert S. Calvert, Travis County

**STATE TREASURER**

Jesse James, Travis County

**COMMISSIONER OF GENERAL LAND OFFICE**

Bill Allcorn, Brown County  
Jerry Sadler, Anderson County

**COMMISSIONER OF AGRICULTURE**

John C. White, Wichita County

**ASSOCIATE JUSTICE, COURT OF CIVIL APPEALS 11th SUPREME JUDICIAL DISTRICT**

Cecil C. Collings, Eastland County

**STATE REPRESENTATIVE, 91st DISTRICT**

Max D. Carriker, Fisher County  
Jack McCain, Fisher County

**DISTRICT JUDGE, 32nd JUDICIAL DISTRICT**

Eldon B. Mahon, Mitchell County

**DISTRICT ATTORNEY, 32nd JUDICIAL DISTRICT**

Weldon Kirk, Nolan County

**COUNTY ATTORNEY**

Frank Ginzle

**TAX ASSESSOR-COLLECTOR**

M. O. (Montie) Hardegree  
Tom Glover

**SHERIFF**

Sam Hulme  
W. L. Claxton  
R. E. Gregory, Jr.  
Howard Bynum  
W. R. McGuire

**COMMISSIONER, PRECINCT No. 1**

John Adams  
Ivan J. Barber  
Sam C. Thompson  
W. M. Vest

**CONSTABLE, PRECINCT No. 1**

Billy B. Owens  
D. L. Lowe  
Mose Allen

**PRECINCT CHAIRMAN, PRECINCT No. 1**

Max N. Caddell

## Joint Effort Aids Rural Communities

More than 900 rural communities in Texas are finding community improvement projects easier to accomplish when everyone joins hands in helping each other. Reagan Brown, extension rural sociologist, says 213 of these communities are now participating in the Texas Community Improvement Program sponsored by electric utility companies in the State

and the Texas Agricultural Extension Service.

All over Texas neighbors are working to help make their community a better place in which to live. Brown continues. It is hard to tell the difference in Texas communities because they all have the same aim — improvement. The goal of each is to help their neighbors and

themselves to brighten their community life.

"When I attend a community improvement meeting, the faces look the same whether in East Texas, the Panhandle or along the Rio Grande," Brown says. "They all look happy and you find yourself thinking, 'This is a good neighborhood in which to live and raise a family.' These words mean a lot. In fact, no

greater compliment can be paid a community than to say it's a good place to live."

Improving a neighborhood is hard work, Brown points out. It's a job that's never completed. Improvement requires vision, study, ingenuity, initiative, a cooperative spirit, and plenty of elbow grease. The reward in neighborhood development, the sociologist concludes, is seeing your community go forward and become a better place in which to live.

## Buick "Easy-Ownership Plan" Puts a Buick in Your Life



Tell the Easy Ownership Man how much you'd like to pay each month! He'll show you how to finance a Buick package that fits. And what a Buick! Its looks are timeless and so is its value. Its without a doubt "the sure" whenever you say "Buick." Add the

bestest finance in any car, the smooth go of Buick's Turbine Drive! And then watch the Easy Ownership Man figure an Easy Ownership Plan for you. You will be glad you got in Buick now.

HUNTER-MERKET MOTORS 401 E. 2ND, COLORADO CITY, TEXAS

## GUIDE FOR SATURDAY VOTERS

# Check Sample Primary Ballot Before Voting

A sample of the Democratic Primary ballot is at the left of this page.

It provides you a preview of the way candidates will be listed for you Saturday when you ballot at Mitchell County polling places.

However, the sample is like the ballot which will be used by Precinct 1 voters.

In other precincts, candidates for commissioner, constable, public weigher and similar offices will be different.

Seven contested state races are listed on the primary ballot along with one district, 2 county and 2 precinct contests. A dozen other offices which will be decided by the voting do not have competition.

As in all state party pri-

maries of Texas, the ballot is lead off by the governor's race. And top spot was drawn by Jack Cox, who is seeking to defeat Price Daniel, running for his third term as governor.

Incumbent Lt. Governor Ben Ramsey has the lead-off position on the ballot in his 2-candidate race with Don Yarborough for lieutenant governor.

First name in the ballot list of attorney general candidates is Will Wilson, who seeks reelection, followed by Robert Everett L. (Bob) Looney and Waggoner Carr.

Robert W. Calvert, candidate for reelection as chief justice of Texas Supreme Court, has the lead-off position over Robert G. Hughes, his opponent.

In the 3-candidate race for judge of Court of Criminal Appeals, W. T. McDonald has the lead-off position, followed by Jim D. Bowmer and incumbent Lloyd W. Davidson.

V. L. (Bo) Ramsey is first on the ballot in the listing of state comptroller candidates. Robert S. Calvert, seeking reelection, is No. 2.

Also with a lead-off spot in a 2-man race is Land Commissioner Bill Allcorn seeking reelection in a race with Jerry Sadler.

### Firebird Suite

"Cause of fire: Bird smoking in bed." This is the way of officials in Snaresstone Station, England, explained a fire in the local railway station. A bird carried a lighted cigarette to its nest in the roof.

## Funeral Rites Here for Ed Marshall

Funeral services for Ed Marshall, 56, were conducted Wednesday afternoon in Mt. Zion Baptist Church.

Marshall, who had worked as shoe shine man and janitor for a local barber shop many years, died Monday morning following a heart attack.

Rev. C. C. Beck, church pastor, officiated in final rites. Burial was in Mitchell County Cemetery under the direction of Kiker and Son Funeral Home.

Marshall was born in Colorado City Aug. 7, 1903, and had lived here all his life. His wife is the former Annie Giles.

He is survived by his wife; his mother, Mrs. Mary Marshall; two brothers, Arthur Marshall of Los Angeles, Cal., and Charlie Marshall; and one sister, Dora Bess Marshall.

# MONEY SAVERS

Plus S&H Green Stamps  
Double stamps on Wednesdays with purchase of \$3 or more

**PEACHES** PACIFIC GOLD NO. 2 1/2 CANS **49c**

**GRAPE ADE** WELCH QUART CAN **269c**

**PICKLES** BEST MAID QUART SOUR, DILL or KOSHER **27c**

RED COACH FROZEN 10-OZ. **Strawberries** **239c**

**DOTTIES BISCUITS**  
3 cans **25c**

<b>PEAS</b> Diamond	7 300 cans	<b>\$1</b>
<b>TEA</b> White Swan, with tumbler, 1/4-lb.		<b>37c</b>
<b>OLEO</b> Elgin	2 lbs.	<b>29c</b>
<b>GREEN BEANS</b> KUNER'S, CUT	2 300 cans	<b>39c</b>
<b>PEAR HALVES</b> COCK O' THE WALK in light syrup No. 2 1/2 can		<b>31c</b>

**HAMS** HALF OR WHOLE **49c lb**

**CHEESE** Longhorn . . . . lb. **49c**

**WEINERS** Decker, all meat lb. . . . . **49c**

**BACON** Tall Korn . . . . . lb. **49c**

**BEEF RIBS** **35c**

\* BUY IT FRESH AT MORGAN'S \*

**BANANAS** golden ripe, lb. **10c**

**CARROTS** cello bag **5c**

**POTATOES** 10 lb. **4c**

**MORGAN'S**  
Drive-In Grocery & Mkt.  
SNYDER HIGHWAY

# Editorially Speaking

## One Vote Can Carry Around The World

As early as 1840, when a political party promised the voter "Two Dollars a Day and Roast Beef," the slogan has often been a part of election campaigns. However, slogans haven't yet developed this year. That's mostly because the turning of a phrase develops usually in the presidential campaign or governor's runoff and the local races candidates, actual see-at-home records and the ever important handshakes.

But the lack of catchy slogans doesn't detract the least bit from the importance — locally, state nationally — of the Democratic Primary balloting Saturday.

County and precinct races will decide important administrative and law enforcement positions for Mitchell County for the next 4 years. In district and state races — where Democratic party nomination still is practically tanta-

mount to election in Texas — voters' decisions will set the pattern for state government economy, taxation and other fields for 2 years.

And Democratic Party precinct conventions Saturday afternoon will develop policy foundation for Texas' delegation at the National Democratic Convention and our state's voice in nominating a presidential candidate.

So you see, it is a stairstep series of events leading up to every level of government. Call it grassroots, local "voice" or what have you — but it all adds up to American democracy, the finest type government ever devised and employed by man.

This government is big, important. And in the face of national and international problems, one vote cast here Saturday will be heard around the world.

Don't miss the opportunity, Saturday. Don't shirk the responsibility. Vote!

## "And This Was Supposed to Be Such a Friendly Neighborhood"



## SHINNERY PHILOSOPHER

### Can't Get Excited Over Energy Drug

Editor's note: The Shinnery Flats Philosopher on his Johnson grass farm on Bone Hollow Creek seems disturbed this week over a new drug he has read about.

Dear editor:

Of all the things scientists could be doing for man in a beneficial sort of way, I am constantly amazed at the number of sideroads they're always running down.

For example, last night I read in a newspaper that science is working on a new drug to get more physical

energy out of a man. As I understand it, some scientists believe man is capable of a lot more work than he's putting out now, and this new drug aims at "helping him tap this great inner reserve of physical power."

Why, one scientist said, "the new drug now being perfected should allow a man to run the mile in three minutes." Around four is the record now.

This is the sort of thing I'm talking about. Of all the goals science could point toward, I believe working on something to allow a man to run a mile in three minutes is about the worst, at least as far as I'm concerned.

Furthermore, even if they gave this new drug away free — and a free drug or even a low-priced one would be a miracle drug these days — I wouldn't be interested in taking any. If I've got a great reservoir of untapped energy inside me, the last thing I want to do is stir it up and unleash it.

One of the big advantages of the new drug, this scientist said, would be its use in war. Give it to a soldier and double his combat energy. The only trouble with this is that the other side would be the same, only quicker.

It's all right for science to spend its time working on greater speeds for airplanes, rockets, missiles, submarines, etc., but when it starts working on something to make me run faster or work harder, it's wasting its time. I wouldn't touch the new drug with a 10-foot pole. I'm already working as hard as I intended to.

Yours faithfully,  
J. A.

## Festival Certainly Didn't Tumble

After the parade, one woman told another, "They are still just tumbleweeds to me."

She's right, too. No matter how you treat 'em, pretty 'em up, they are still tumbleweeds.

But nobody has given them the glamour and publicity like Colorado City. That's for sure, too.

And the person who doesn't admit our Tumbleweed Festival was a gust of

success, no doubt, is blinded by dust. Out of towners — and there were thousands of them in the parade and show crowds — were surprisingly impressed by both the quality and quantity of festival attractions. News and television reporters from the metropolitan areas were spontaneous with their praise.

Naturally, those of us at home know the time, work and financing which are required for a production of this type. We know the flaws which were certain to show with this first event scheduled upon short notice.

This doesn't keep us from recognizing the fact, though, that Colorado City's Tumbleweed Festival is unique and colorful. That it tempts the imagination. That Colorado City is the only community claiming it.

So, while we sincerely applaud the men and women who led in planning and staging Colorado City's first festival, let's carefully consider the prospects of making the event an annual celebration — with a goal for betterment each succeeding year.

## Welcome

While attention was focused on the Tumbleweed Festival, a young public administrator arrived in town to quietly begin his duties.

He is Earl Keaton, Colorado City's new city manager.

Keaton is a "career" public administrator — schooled and trained for his City Hall post in the modern manner of specialized efficiency.

His welcome should be our community's cooperation for progress.

Washington Report

### New Look Toward Family Type Farm

By CLINTON DAVIDSON, Special Correspondent

Congressional farm experts this week are re-writing a long-range farm program which observers rate as the favorite to replace present programs within the next two or three years.

The program was first offered in February by a group of 20 Democratic congressmen representing every section of the country. They called it "The Farm Family Income Act of 1960."

Public hearings before the House Agriculture Committee in March brought out a majority of farm experts generally favorable to the bills, although there was enough criticism to cause the Committee to order them re-written.

The bills, all identical, place the emphasis just where the title implies, on improving the net income of family-owned and operated farms. These make up four out of every five of the three and a half million farms producing for markets.

The big departure from present programs is that the new program would be developed by farmers themselves and then submitted to Washington for approval. If approved by Congress it would be submitted to growers for approval or rejection in a referendum.

The first step would be selection of program drafting committees by growers of each commodity, such as wheat, corn and cotton growers, dairymen, hog producers, etc. Each such committee would work out a program for its particular commodity, then submit it to the Senate and House agriculture committees.

It would then go through the usual congressional pro-

## BIBLE COMMENT

### Stocktaking Need In All Our Lives

The old type of general store has largely given way to modern retail outlets, but stocktaking is still necessary to conduct business.

And in the art of living there is a form of stocktaking that is, and always will be, imperative.

That is spiritual stocktaking. It has something to do with looking within, evaluating one's own life and measuring whether the year has meant growth or deterioration.

But spiritual stocktaking is not all, or even mainly, a matter of looking within. There are many prominent

writers and publicists today telling people how to succeed, gain friends, influence others and improve themselves. Some are secular, some religious, but all have in common the placing of emphasis on man himself.

It has not been so on the part of the great religious teachers. To the Apostle Paul the chief purpose of life was to discover and conform to the will of God; and the cry of the Hebrew saint who in a human sense was the glory of the Old Testament, was:

"Search me, O God, and know my heart; try me and know my thoughts; and see if there is any wicked way in me, and lead me to the way everlasting." (Psalm 139:23-24)

"Search the scriptures" is still good advice for spiritual stocktaking, and the guidance of the scriptures attains its height in St. Peter's suggestion that is the privilege of the Christian to "grow in grace, and in the knowledge of Our Lord and Savior Jesus Christ."

## Strictly Fresh

It's one thing to itch for something. It's another to scratch for it.

Inflation is the one thing that people are down on that's on the up and up.

A head for figures has landed many a man behind the eightball.

## LOCAL BUSINESS

### Important Extras For Advertisers

By ROY V. FOX, Record Co-Publisher

When, for one reason or another, the newspaper of a community has been suspended, business has always suffered.

In various cities when studies have been made on the effect of newspaper suspensions, retail trade in all lines has dropped, approximately 25 per cent.

This was an immediate result. There is no way of estimating the net loss to a community which would result from an indefinite suspension of local newspapers.

Of course merchants have tried all kinds of substitutes when newspaper advertising was not available. But handbills, circulars, and other media could not do the job which newspapers were doing.

There are good reasons why other advertising outlets could not replace the local newspaper. Newspaper advertising is far more than printed space.

No advertiser can buy a substitute for the public confidence in the local newspaper which a demonstrated record of service has earned.

The merchant who buys newspaper advertising sees important extras which may be worth more than the immediate results of his advertising message.

The newspaper advertiser is associated with an institution which has been built on public confidence. The retailer has assurance that his advertising message will be welcomed into nearly every local home when it appears in the newspaper.

Prestige and public confidence are the most important assets a newspaper possesses. The qualities are slowly cultivated and carefully nourished by the newspaper. They are among the benefits which are transferred to newspaper advertisers.

### Ten Word INTELLIGRAM

Are you up on your baseball history? Identify the present-day teams from the clues below.

- 1—Once called the Naps in honor of their manager.
- 2—Original name, "Gordon's Highlanders" wouldn't fit on uniforms.
- 3—First the Browns, then the Maroons.
- 4—Fans disregarded owner's choice of Bluejays.
- 5—Also called the Nats.
- 6—President Harrison named them for their size.
- 7—Named for their alacrity around the trolleys.
- 8—Originally the Puritans; what else?
- 9—Success in attracting other teams' players gave them their name.
- 10—Named for Princeton University.

Count 10 for each correct choice. A score of 8-10 is poor, 10-10, fair, 10-10, good, 10-10, excellent.

Decoded Intelligram

### WEEKLY CROSSWORD PUZZLE

Here's the Answer

1 Marsupial	2 It is used in the	3 Hitch	4 Hypothetical force	5 Gull-like bird	6 Eager	7 Left	8 White	9 Sign of zodiac	10 Crudged	11 Begins	12 Mixed type	13 Comparative suffix	14 Ends	15 It is a instrument	16 Outer garments	17 Pass on	18 Mexican scarf	19 Astronomy	20 Outer garments	21 Husband	22 Grant	23 Boy's nickname	24 Consent	25 American poet	26 Direction (ab.)	27 Thoroughfare (ab.)	28 Plunder
-------------	---------------------	---------	----------------------	------------------	---------	--------	---------	------------------	------------	-----------	---------------	-----------------------	---------	-----------------------	-------------------	------------	------------------	--------------	-------------------	------------	----------	-------------------	------------	------------------	--------------------	-----------------------	------------

Horizontal Instrument

1 Dignified musical instrument

2 Label

3 M.B.B.

4 Beverages

5 Toward the mouth

6 Personality

7 Dispatched

8 Lure

9 Malaria

10 Sign

11 French article

12 It is played with the

13 Opposed

14 Waste

15 Allowance

16 Date

17 Radicals

18 Nickel (symbol)

19 Pronoun

20 Exists

21 Natrium (symbol)

22 Similar

23 River in New Mexico

24 Gaelic

25 Dash

26 Egyptian sun god

27 Comforted

28 Depart

29 Some

30 Observed

31 Hawaiian food

32 Dessert

33 Agony

34 Anno

35 Struggle

36 Band

37 Canvas shelter

### PAW!

FOR GOSH SAKES, MAN! A NERVE-SHATTERING SCREAM LIKE THAT IS ENOUGH TO FRIGHTEN A MAN TO—

### PEGGY

IT'S A WHOLE NEW WORLD OPENING BEFORE OUR EYES! FEEL JUST LIKE PART OF IT, DON'T YOU?

YOU GUESS! YOU'LL NEVER KNOW 'UNLESS YOU JUST A BIT FASTER!

SHE'S RIGHT! SURELY, I DO FEEL JUST LIKE PART OF IT!

THAT NERVE-SHATTERING SILENCE IS EVEN MORE FRIGHTENING!

YOU GUESS! YOU'LL NEVER KNOW 'UNLESS YOU JUST A BIT FASTER!

SHE'S RIGHT! SURELY, I DO FEEL JUST LIKE PART OF IT!

Gold I  
F  
Pot  
Gre  
Fol  
De  
De  
Jel  
CHER  
Evaporated for baby or  
GRAP  
Tea Garden  
Fruit of the  
CRAG  
★ Cream So  
★ Root Beer  
★ Strawber  
BROC  
or Succotash  
Bel-air, Penn  
ICE C  
Lucerne Pa  
Try our Fre  
choose for  
SUPU  
Here's a fir  
blue deter  
mate wash  
Comet  
Person  
Lava S  
Mr. Cl  
Liquid  
Liquid  
Spic &  
CN

Gold Bond Stamps!

Where-e what savings!  
Big deals all over the store!

Bargains galore!



Gold Bond Stamps!

Shopping fun!

# FIRST OF THE MONTH SALE

## Pork & Beans

Highway or Large Dry Lima Beans or Dry Blackeye Peas. Mix'em or Match'em

12 No. 306 Cans \$1.00

## Green Beans

Gardenside cut. Easy to serve for your dinner vegetable.

8 No. 303 Cans \$1.00

## Folgers Coffee

Take advantage of fine quality coffee.

1-Lb. Can 69¢

## Del Monte Corn

Del Monte cream style golden bantam corn.

6 No. 303 Cans \$1.00

## Del Monte Peas

Del Monte Early Garden, wonderful flavor.

2 No. 303 Cans 35¢

## Jell Well Gelatins

Assorted flavors.

4 3-Oz. Pkgs. 25¢

### CHERUB MILK

Evaporated for baby or baking.

3 1 1/2-Oz. Cans 39¢

### GRAPE JUICE

Tea Garden (5¢ Off Label). Fruit of the vine flavor.

24-Oz. Bottle 29¢

### CRAGMONT BEVERAGES

\* Cream Soda \* Fruit Punch \* Grape \* Root Beer \* Lemon-Lime \* Orange \* Strawberry. Plus Deposit.

Qt. Bottle 10¢

### BROCCOLI SPEARS

or Succotash. Bel-air. Premium quality frozen.

3 10-Oz. Pkgs. 59¢

### ICE CREAM

Lucerne Party Pride. Try our Fresh Peach Flavor or choose from our large selection.

1/2 Gal. Ctn. 69¢

### SUPURB DETERGENT

Here's a fine quality blue detergent that will make washing easier.

Giant Box 59¢



## Safeway Heavy Beef Sale! Sirloin Steak

Safeway "Waste-Free" Trim!  
U.S.D.A. Choice Grade Heavy Beef. Wonderful combination of flavor and tenderness. Perfect for broiling.

Lb. 89¢

## Pot Roast

Chuck Blade. U.S.D.A. Choice Grade Heavy Beef.

Lb. 47¢

### Round Steak

U.S.D.A. Choice Grade Heavy Beef.

Lb. 85¢

### T-Bone Steak

or Club. U.S.D.A. Choice Grade Heavy Beef.

Lb. 99¢

### Rib-Roast

Standing, 6 Full Ribs. U.S.D.A. Choice Grade Heavy Beef.

Lb. 79¢

### Arm Roast

U.S.D.A. Choice Grade Heavy Beef.

Lb. 55¢

### Rump Roast

U.S.D.A. Choice Grade Heavy Beef.

Lb. 79¢

### Short Ribs

or Brisket. U.S.D.A. Choice Grade Heavy Beef.

Lb. 33¢



### 2¢ OFF PASTRY SPECIAL!

#### JELLY SNAILS

Curry, "2¢ OFF" Regular 25¢ Value

7-Oz. Pkg. 23¢

#### Hamburger Buns

Skylark, 8-count pkg.

13-Oz. Pkg. 19¢

#### Mrs. Wright's Cream Pie

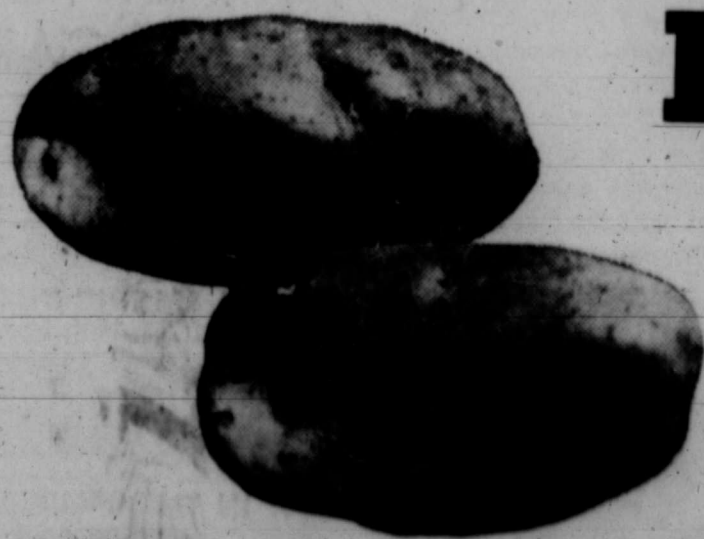
White 1 1/2-Lb. Loaf.

25¢

Chocolate, Maroon Frozen

1-Lb. Pie. 69¢

Steaks Call for Safeway Potatoes . . .



## POTATOES

White Rose U.S. No. 1 New crop, California's finest. All-purpose. Bake 'em, fry 'em or mash 'em.

Lb. 10 69¢

For Mom on Her Day!

Suave Helene Curtis 1.6 Oz.	69¢
Chocolate Peanuts Embassy for Mother's sitting. Pkg.	7 1/2-Oz. 39¢
Adorn Hair Spray Includes tax included in price.	7-Oz. \$1.85
Jergens Lotion Includes tax included in price.	4 1/2-Oz. 55¢
Deep Magic Lotion Cleansing Lotion. Tax included in price.	2 1/2-Oz. 55¢
Seamless Hosiery Truly fine hosiery. Pair 5/6 at	2 Pkgs. \$1.00

Comet Cleanser Cleans stubborn stains.	2 14-Oz. Cans 31¢
Personal Ivory Toilet soap.	4 Bars 25¢
Lava Soap Excellent for really dirty hands.	2 Med. Bars 23¢
Mr. Clean All purpose liquid cleaner.	18-Oz. Bottle 39¢
Liquid Ivory Detergent (4¢ off label).	22-Oz. Can 57¢
Liquid Joy Detergent. Kind to hands.	12-Oz. Can 37¢
Spic & Span Cleanser. Brighter of face.	16-Oz. Box 29¢
Crisco Shortening Gives you confidence in baking.	1-Lb. Can 31¢
Fluffo Shortening Golden in color. (10¢ off label.)	3 Lb. Can 61¢
Potato Chips Mortons, salted just right!	3-Oz. Pkg. 39¢
Shelf Paper Best Guard. Big Proof.	25-Sq. Roll 45¢
Pecan Sandies Supreme cooking.	1-Lb. Pkg. 49¢
Cheez-It Crackers Baking.	14-Oz. Box 19¢
Ritz Crackers Nothing special with cheese.	1-Lb. Box 35¢

## Lettuce Onions Celery

Crisp and crackling fresh. Each 15¢  
Texas' new crop. Lb. 5¢  
Pascal. Crisp and crunchy. Cello bag. Each 25¢

Prices and Coupons Effective Thurs., Fri. and Sat., May 6, 8 and 9 in California. 11¢ We Reserve the Right to Limit Quantities. No Sales to Dealers.



# SAFeway

Conveniently Located to Serve you at 324 Oak St.

CHEER 32¢	DREFT 33¢	IVORY SNOW 32¢	TIDE 32¢	DASH DETERGENT 39¢	OXYDOL 33¢
-----------	-----------	----------------	----------	--------------------	------------

**AS PRICES RISE**

**Farmer Alone Can Meet Cost Puzzle**

Can your production costs be cut? This is a vital question which every farmer or rancher must answer for himself, said C. H. Bates, extension farm management specialist. Prices of production items continue to rise, while prices received for most farm products keep dropping.

The tough problem is to find ways to hold the margin between receipts and expenses. One method is to watch closely for ways of cutting expenses that affect potential profits.

Items of fixed cost may not be reduced greatly, the specialist pointed out. These are such things as rent, taxes, interest and depreciation on buildings and equipment. Variable costs such as feed, seed,

labor, fertilizer and pesticides may offer some savings if managed carefully. These inputs must be varied under different circumstances so that the total cost per unit will be reduced.

A safe guide is to aim at the maximum production from a given "package" of resources—the land, labor, facilities and equipment controlled by the operator. For example, investment in a 4-row tractor would be uneconomical for a 100-acre cotton-grain farm, and the operator's labor would never be fully employed on this size unit. Thus some investment costs may be lowered by proper equipment selection.

Farm operators should usually increase the expense on variable inputs (feed, fertilizer, etc.) so long as the added production returns more than the added cost. For example, with corn selling a \$1.00 per bushel, and 50-pound units of nitrogen fertilizer costing \$5.00, the producer should add nitrogen only to the point where at least 5 extra bushels of corn are likely from the added unit of fertilizer.

One common procedure for cutting variable costs, said Bates, is to substitute machine work for hand work, or pull two or more implements in tandem.

Many livestock producers tend to keep their breeding dams in top high finish during gestation. Such practice may result in feed waste and poor development of the unborn animals because of lack of exercise of the mother, he emphasized. The livestock pro-

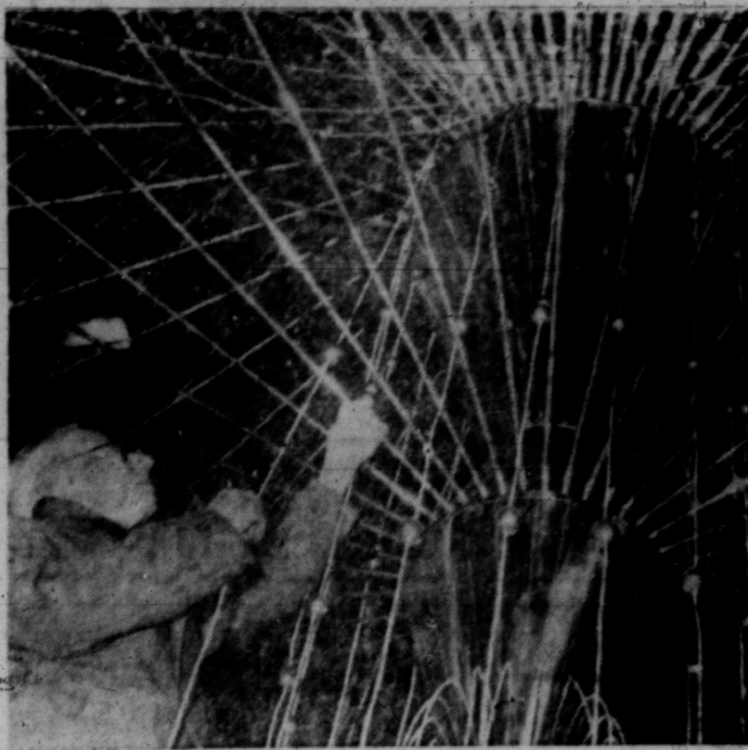
ducer should also use feeders properly designed to prevent waste; purchase feed in quantity and reduce hand labor in dispensing all feeds; and avoid feeding animals with parasite infestation.

Other common ways in which crop costs can be reduced include: plating seed of known germination; regulating planters, sprayers, etc. to deliver proper quantity; and limiting cultivation of crops to weed control or soil crops only to weed control or soil aeration.

For a complete check list of items on which production costs may be reduced, ask your county agent for a copy of MP-191, "Cutting Costs in Your Farm Business." It could save you many dollars in the weeks ahead.

**Mailman's Holiday**

Oakland, Calif., postman Bernard J. Connolly is on a 16-week European "tour of understanding." During the trip Connolly plans to deliver 13,000 letters written by people along his mail route to relatives and friends abroad.



**Light Housekeeping**

Not intimidated by the maze of wires around him, Arthur Rolloson makes adjustments on an Electrolux. Resembling a household chandelier, it bears thousands of bulbs, is 52 feet high and 22 across. It will illuminate a London arena for an electrical engineers' convention.

**Party Fetes Loraine Pair**

LORAINE — A surprise house warming Monday evening honored Mr. and Mrs. H. L. Leach in their new home in Loraine.

Mrs. Ida Baird told a story depicting the Leaches move to town from the farm. Mrs. Dexter Taylor and Mrs. R. K. Thornhill presented poems about the couple's new home. Mrs. Baird, Mrs. Pauline Smiley and Mrs. Taylor served cookies, punch and coffee before gifts were presented.

Attending were Mr. and Mrs. Edwin Hallmark, Mr. and Mrs. J. W. King, Mr. and Mrs. Dexter Taylor and Mmes. Harold Hallmark, R. K. Thornhill, Virgil Wimberly, Olen Mayes, W. H. Narrell, Woodrow Pratt, Pauline Smiley, M. D. Cheek, Moody Richardson, Ed Preston, Otelia Wilson and Ida Baird, all of Loraine.

Mr. and Mrs. Leach moved into their new home last month from their farm south of Loraine.

**FOLLOW**

THE MAN WITH A PLAN!

**JACK COX**

FOR GOVERNOR

**VOTE SATURDAY MAY 7**

**Re-elect**

**Robert S. Calvert**



of Travis County

**State Comptroller**

Keep an experienced man in this important State office. Now serving his 12th year as State Comptroller. Has worked in the Comptroller's office since 1930. Native Texan.

(P. J. Pol. Ad.)

**Legal Scheme?**

A London, England, motorist was fined \$14 for failing to paste an auto stamp on his car window. "My car is yellow and the sticker is blue. I didn't like the clash of colors," he told the judge.



here is **Max Carriker** the man... the Representative

**WHOSE FINE RECORD DESERVES A SECOND TERM!**

**MAX CARRIKER IS:**

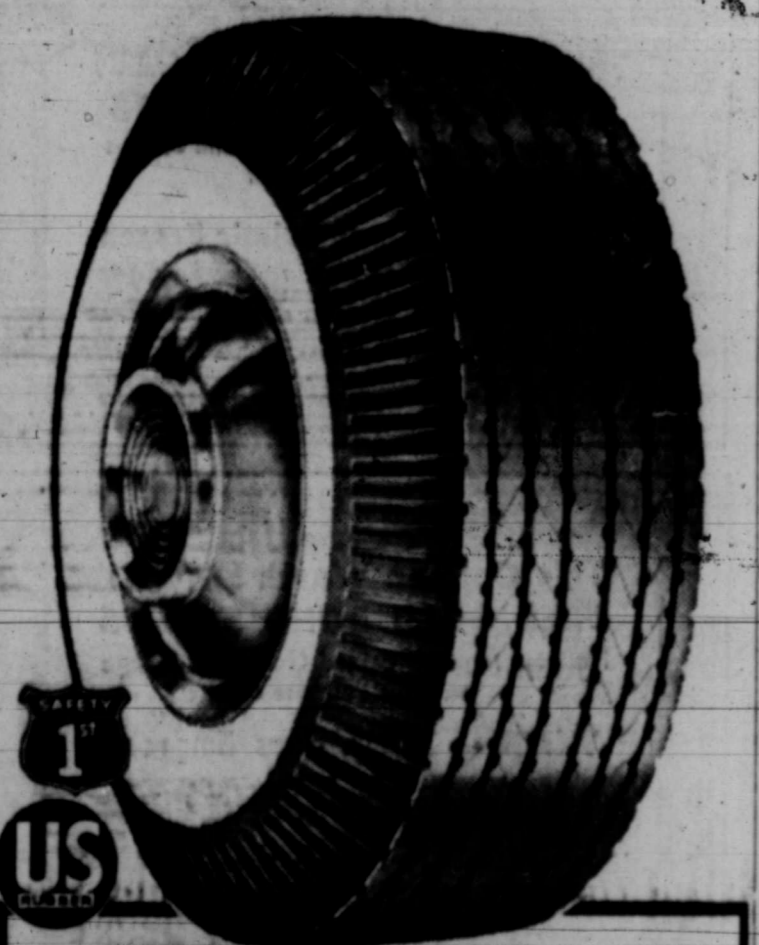
- ★ **A CHRISTIAN MAN**—a performing, believing, church-going Christian (reference, Minister, First Methodist Church of Roby).
- ★ **A FAMILY MAN**—married, he and Mrs. Carriker have three school-age children.
- ★ **AN EDUCATED MAN**—attended public schools of Fisher County, graduate of Hardin-Simmons University, Class of 1941.
- ★ **A DEMOCRAT**—a true Democrat with no prefixes (reference—Fisher County Democratic chairman, or any Democratic precinct chairman in Fisher County).
- ★ **A SELF EMPLOYED MAN**—a Farmer, Rancher and Seed business operator all his adult years. (reference—any long-time resident of Fisher County.)
- ★ **AN EXPERIENCED MAN**—3 1/2 year veteran of World War II, serving on the battlefronts of the Pacific. For 15 years a working, effective Civic leader in his community (reference—any businessman in Roby or Rotan).

**MAX CARRIKER BELIEVES:**

- ★ **IN REPRESENTING ALL THE PEOPLE OF HIS DISTRICT**—(reference—his whole record in the 56th State Legislature, including service on these 5 important and ranking Committees—Agriculture, Education, Highways & Roads, Judicial Districts, Examination for Comptroller & Treasury Accounts).
- ★ **IN SEEKING THE THINKING, GUIDANCE AND COUNSEL OF THE PEOPLE OF HIS DISTRICT** — Max Carriker drove hundreds of miles back and forth across his district before the 56th Legislature convened, talking to community leaders and the man on the street about the issues facing the coming session. During the sessions of the Legislature Max Carriker polled a broad cross-section of his people, seeking their opinions on all the major issues.
- ★ **IN THE DEMOCRATIC PROCESS OF MAJORITY RULE**—Secure in the knowledge that he had the peoples' opinion on the issues, Max Carriker voted their views as his own, as they would have wanted him to do.
- ★ **IN REPRESENTING HIS FOLKS AT HOME**. (reference—his whole record in the 56th Legislature).

• Re-elect A Man Who Votes For His Folks at Home

**RE-ELECT MAX CARRIKER STATE REPRESENTATIVE FOR A SECOND TERM**



**NOW!**

**U.S. ROYAL NYLON**

**670-15**

**FITS ALL THESE CARS \$13.95**

Chevrolet: '49 thru '55; Dodge: '53 thru '56; Ford: '52 thru '56; Kaiser, Frazer, Henry J.: '51 thru '55; Nash: '52 thru '56; Plymouth: '49 thru '56; Studebaker: '55 thru '57; Willys (wagon): '49 thru '56.

**OTHER SIZES (including 14" Tubeless)**

SIZE	BLACKWALL TUBED TYPE	WHITEWALL TUBED TYPE
670-15	\$12.95	\$13.95
710-15	15.95	16.95
750-15	17.95	18.95
800-15	19.95	20.95

Mean Pressure Temp. 110° an exclusive U.S. design process that gives U.S. ROYAL NYLON tires untold strength. This makes a U.S. ROYAL NYLON tire a smoother-riding tire, a quiet tire, a stronger tire.

**Leonard Henderson**

300 Chestnut STATION SA 8-2022

MITCHEL Me Fo

Ways to pr... ical care for... vancing man... ailments and... ing our growi... elderly peopl... jects of medi... on many fro... versity of T... Branch in G... The researc... ed with inter

Vote S... RE-I... GOVI... Price

Best f... For Unity... and Good

SEE A I... STATE... FRIDAY, WBA

2... Ri... THAN... iCI... AT NO...

BOI... GO... VAI... ICE

Fashion in food, taste, I has been taste in the criti fashions

VERY

# Medical Needs Studied For Survey of Aging

Mitchell County is participating in the statewide survey to evaluate current resources and unmet needs of our older citizens — a prelude to the Governor's Conference on Aging. Here is a report on another phase of the study conducted on the state level.

Ways to provide better medical care for the aged by advancing man's knowledge of ailments and conditions plaguing our growing population of elderly people are the subjects of medical investigation on many fronts at the University of Texas Medical Branch in Galveston.

The research is being watched with interest by members

of the Governor's Committee of the White House Conference on Aging which is now studying, on a State-wide level and at the grass roots, the multiple of problems of aging of which ailments of the elderly citizens is one.

The work, mostly conducted by individuals or teams of scientists and doctors, is woven throughout almost every laboratory and department of the many institutions comprising the Medical Branch.

Like other fundamental research, it is time-consuming and laboriously detailed, but the signposts guiding it are best described by listing the kinds of questions to which new answers are being sought. Some of the questions, for example, are:

Following heart failure, can machines be developed to replace the heart function for long enough to allow the damaged organ to repair? To what extent can we depend on new materials and techniques in seeking permanent substitutes for replacing damaged blood vessels?

Are mental changes in the aged due chiefly to mild blood clotting in the brain? In elderly people is there a dangerous blood clotting potential, and if so, how could it be reduced? The "why" of complications in wound healing in the aged. And can an enzyme be prepared for use in breaking down blood clots, which, along with internal hemorrhages, is one of the most prevalent causes of death among the aged?

What are the effects of chronic exposure to radiation upon the life span? What are the causes of early aging in women whose ovaries have been removed during early life?

Nearly a score of projects on aging are in the investigative process in the key departments of the Medical Branch — biochemistry, radiology, surgery, physiology, pathology, preventive medicine, public health, internal medicine, and dermatology. Problems with which the researchers are concerned in-

clude studies in diabetes, thyroid disorders, infection, leukemia, inflammation, changes in the blood, cancer, effects of age and the disease associated with the aging process upon the enzyme systems, effects of hardening of the arteries in relation to digestion, patterns of hardening of the arteries, resistance to disease, and mental disorders and their relationship to such socio-economic variables as occupation, marital status, education, ethnic membership, church affiliation, and other factors.

A Medical Branch researcher-physician has successfully constructed a stomach pouch from a piece of bowel. This advance has been a significant contribution for treatment of a person whose stomach must be removed because of cancer or ulcer.

The researcher has successfully used the stomach pouch in some 45 surgical operations during the past four and one-half years. He and his collaborators now are searching for a substance which can be used to permanently replace diseased blood vessels.

Another of their projects involves work on a heart-lung apparatus which would shunt a significant portion of the blood circulation around the heart for a period long enough for the heart to recover sufficiently to resume normal circulation.

At the Medical Branch most research in gerontology has been keyed to fundamental research, aiming at specific findings which advance medical knowledge about the aging processes.

The Panel on Interdisciplin-

For . . .  
**HOME DELIVERY**

of  
**Borden Products**  
Dial RA 8-2051

**B. D. Mason**

Research in Aging was established at the Branch to coordinate work among researchers and improve combined department investigations.

Faculty members have submitted to the panel 57 individual projects involving research in the field of aging. These came from 70 faculty members, and in most cases the projects are collaborative between two or more departments. Each department of the Medical Branch presented in one or more of the projects.

Among laboratories used for special clinical studies of the aged are the special Hematological Laboratory, the Heart Station, the Pulmonary Function Laboratory, the Surgical Research Laboratories, the Metabolism Unit, the Electroencephalographic Unit and the Isotope Unit.

Application to the National Institutes of Health recently was made for a \$276,400 research grant to establish a project titled "Interdisciplinary Group Research in Gerontology."

The proposal focuses upon a Family Health Research Center, with four major areas of inquiry: cardiopulmonary, hematologic, dental and the central nervous system. The key feature of the program is the study of subjects both

as individuals and as members of families.

The Family Health Research Center is envisioned as a long range project of the Medical Branch, benefiting the center's teaching and research programs in addition to its prime objective of advancing the state of general medical knowledge.

A State-wide survey is now underway in virtually every county of Texas to evaluate current resources and unmet needs of our older people. The study is a prelude to the Governor's Conference on Aging this fall and to the White House Conference on Aging in January, 1961. The help of interested citizens is needed to conduct these local studies. Details are available from County Judge Elmer Martin, back.

**DR. O. H. MAJORS**

**DR. M. L. MAJORS**

**Drs. Majors & Majors**

**OPTOMETRISTS**

"Vision Specialists"

Call RA 8-4255 For Appointment  
Offices at 157 Elm St.  
Colorado City, Texas

## Lieutenant Finishes Course of 11 Weeks

Army Second Lt. Forrest W. Appleton, 23, son of Mr. and Mrs. Forrest C. Appleton, Vincent Route, Coahoma, completed the 11-week communications officer course at The Infantry School, Fort Benning, Ga., April 20.

Lieutenant Appleton received training in the installation operation and maintenance of infantry communications systems.

He entered the Army in April 1959.

Lieutenant Appleton is a 1954 graduate of Coahoma High School and a 1959 graduate of the A & M College. Before entering the Army, he was employed by the Soil Conservation Service, Lubbock County Judge Elmer Martin, back.

## M. O. (MONTIE) HARDEGREE



Will Appreciate Your Vote For Tax Assessor Collector Sat. May 7

And assures you if elected I will discharge the duties of this office in a courteous, business manner.

## Vote Saturday RE-ELECT GOVERNOR Price Daniel



### Best for Texas

For Unity, Progress, and Good Government

SEE AND HEAR STATEWIDE TV FRIDAY, 6:15 P.M. WBAP-TV

Pa'd Pol. Adv.

# All New from Phillips 66



## NEW TROP-ARTIC offers you what no motor oil ever could before

New Trop-Artic® brings to the aid of your motor a new lubricating formula that cleans, protects, and preserves smooth performance under the most severe engine tests for automobile oil.

The secret of Trop-Artic's exceptional performance is a revolutionary super-cleaning element called PDA, made only by Phillips Petroleum Company. In hundreds of thousands of miles of testing, typical car owners re-

ported these important benefits from new Trop-Artic with PDA:

- Less oil consumption
- Less engine knocking
- Less mis-firing
- More miles per gallon of gasoline
- Cleaner oil filters

Change to new Trop-Artic Motor Oil and see if you don't notice these improvements in the performance of your car!



## NEW FLITE-FUEL

the new gasoline that gives you the "Sweetest Rhythm on the Road!"

Today, discover a new concept of motor fuel performance. Test drive a tankful of new Flite-Fuel, the gasoline with "the sweetest rhythm on the road."

New Flite-Fuel is a blend of super-high performance components perfectly matched to the natural rhythm of today's high compression motors. It vaporizes quickly . . . fires with split-second accuracy . . . delivers a mighty thrust of power without roughness or ping. It ran quiet your motor as it increases your car's power and responsiveness.

You'll really like driving with new Flite-Fuel. Fill up at any station where you see the Phillips 66 Shield.



Enjoy 'the Sweetest Rhythm on the Road!'

# 24% RICHER

THAN STANDARD ICE CREAM AT NO EXTRA COST TO YOU

## BORDEN'S GOLDEN VANILLA ICE CREAM

Fashion in dress, as with fashion in food, is very much a matter of taste. Borden's Golden Vanilla has become the criterion of good taste in ice cream just as Paris is the criterion of design in today's fashions.

VERY big on TASTE



BORDEN'S - best tasting milk in town!

## Letters to the Editor

To The Editor:  
I am supporting Governor Price-Daniel for re-election because of his good record in office. He performed his

sworn duties, as required by the state constitution, by submitting in his budget message to the Texas Legislature all his financial reports on all the



Down We Go

This nightmare of every handy man finally becomes a reality to this firefighter in Plainfield, N. J. He escaped unhurt from his tumble.

## VOTE FOR JACK McCAIN

For Representative

### MY STAND ON LABOR:

I am absolutely for the laboring man. I am for any DECENT LABOR LAWS that are FOR the laboring man himself.

I am absolutely against abolishing our Right To Work Law.

I am bitterly against any LOOP Hole labor legislation that the Union Bosses continually try to get enacted for THEIR benefit at the expense of the Working Man Himself.

Did any of you Union members ever sit down and figure how many hours, week or months, it takes you to MAKE UP lost pay for a one month's strike? Why not FIGURE it out RIGHT NOW based on a 5 or 10 cent raise at 40 hours a week.

Now ask yourself this question: Did the union Bosses who called the strike lose one dime of his 25, 50 or more thousand dollars a year salary? Where does these fabulous salaries come from? Who is paying their bills? You are. Wake up fellows. Think! This is why I don't like LABOR BOSSES. The fact that I know their game, and am MIS-INFORMED, CONFUSED AND ILL-ADVISED enough to TAKE THEM to task for it is the ONLY REASON THEY don't like ME!

Does the fact that I believe in an honest days work for an honest days pay make Jack McCain Anti-Labor? If it does then I'll just have to wear the tag. Because that's the way I feel. That's the way I will vote.

I am FOR YOU  
Why Not Get FOR me  
(Paid Pol. Adv.)

different departments and institutions of the State of Texas. These reports gave the amount of money needed to maintain essential state services. He also made recommendations for tax measures to obtain funds for these services.

I do not understand how any more could be expected from the Governor of the State of Texas. The leaders in our Texas Legislature adopted measures designed specifically to defeat the proposals of our governor. The governors proposals were sent to the Revenue and Taxation Committee. This committee was hand-picked by the Speaker of the House, Mr. Waggoner Carr.

The evidence all points to the conclusion that the committee was deliberately stacked so that it would be against the recommendations of the governor. The committee failed to act on Governor Daniels recommendation and these recommendations were pigeon-holed for over three months before a report of any kind was made.

The report that was finally made contained substitute provisions that were inadequate and obviously would not raise enough money to balance the budget.

I think we should return the governor and send someone to Austin as a replacement for Lieutenant-Governor Ben Ramsey who will help and not hinder the governors program. Lets send Don. Yarbrough to Austin as Lieutenant-Governor to help Price Daniel do something constructive for all the people of Texas.

Your truly  
Cecil Lotief  
Rotan

### TO THE EDITOR:

The Texas Rehabilitation Center, Gonzalez Warm Springs Foundation recently received a payment from the Mitchell County United Fund.

We take this means of expressing our appreciation to the people of Mitchell County for their support of the TRC rehabilitation program through the United Fund.

I shall be glad to answer any questions your readers may have concerning the operation, history, or treatment program of The Texas Rehabilitation Center.

TRC is open to visitors and tour groups each day of the week, and we would be happy to have Mitchell County residents visit the Center to see first-hand the humanitarian work being done here for Texans of all ages — regardless of their ability to pay for treatment.

Sincerely,  
J. M. Haynes, Jr.  
Director of Educational Services  
The Texas Rehabilitation Center

### Deficit in Fine

Keith Fuller planned to appeal the decision of a Denver, Colo. jury which found him guilty of a two-dollar parking violation. The trial thus far has cost the city \$250.

# OUR ORCHID FOR MOTHER

## Fine Foods and Low Prices!

MITCHELL COUNTY UNGRADED GUARANTEED

**EGGS** 4 DOZ **98c**

BIG BOY TALL CANS  
**DOG FOOD** 3 FOR **19c**

MARYLAND CLUB

**COFFEE** 1-LB. CAN **65c** 2-LB. CAN **\$1.29**



**FLOUR**

GLADIOLA 5-LB. BAG

**39c**

SWIFT'S OZ, 12-oz. jar

**Peanut Butter** 29c

50c SIZE

**Notebook Paper** 3 FOR 89c

### ★ FROZEN FOODS ★

Save More at Pick & Pay!

DONALD DUCK FROZEN

**ORANGE JUICE** 2 6-oz. cans **33c**

Morton TV Beef, Chicken, Turkey, Ham Frozen

**Dinners** each **51c**

Keith Frozen **Cut Corn** 10-oz. pkg. **15c**

Keith's or Meads **Frozen Rolls** pkg. of 24 **24c**

### ★ MARKET VALUES ★

Save More at Pick & Pay!

LEAN & MEATY PORK

**Chops** 49c

BEST GRADE HEART O' TEXAS

**Fryers** fresh dressed **29c** lb

**HAMBURGER** fresh ground, lb. 39c **3 lbs. \$1**

**CHUCK STEAK** good, tender lb. **55c**

**CHUCK ROAST** baby beef, tender lb. **49c**

**BACON** Decker's Tall Korn lb. **47c**

Kasco **Dog Food** 5-lb. bag **59c**

Lint **Starch** 2 boxes **29c**

Ballard or Pillsbury **Biscuits** 3 cans **29c**

Regular Size **Modess** box **35c**

Lot Liquid **Detergent** 12-oz. size **29c**

By the Makers of Baby Ruth **Fros-T-Pops** 18 in pkg. **39c**

Sesame **Chips** 39c pkg. 2 for **69c**

Borden's **Instant Coffee** large jar **69c**

Kodak film, 127 or 620, 39c package—8mm Kodak film, roll, \$2.49. Bring your film to Pick & Pay for quick developing.

with a \$7.00 or more purchase!  
**Extra Bonus Value**

Regular size, 12-bottle carton (plus deposit)

**Coca Cola** 19c



### ★ HEALTH & BEAUTY AIDS ★

Plus tax on taxable items!

IT ROLLS ON

**BAN DEODORANT** 98c size **79c**

Cashmere Bouquet **Talcum Powder** 49c size **39c**

Dristan **Tablets** 98c size **79c**

For your hair **Vitalis** 59c size **49c**

Candy

**Hershey Bars** 10 5c bars **39c**

Milky Way, Snicker & 3 Musketeers

**Candy Bars** pkg. of 6 **23c**

Nabisco **Vanilla Wafers** large 37c box **29c**

Hi Ho **Crackers** large 39c box **33c**

Sunshine Krispy **Crackers** 1-lb. box **27c**

Swift's Sherbet or **Ice Cream** pint, all flavors **17c**

Gandy's, all flavors **Sherbet** pint **17c**

Lux **Liquid** large 99c size **79c**

Ivory (with 69c refrigerator dish)

**Soap** 8 bars **69c**

Regular Size (with 7c coupon in it)

**Rinso Blue** box **31c**

Large 6-lb. Pail

**Crisco** **\$1.39**

Red Label **Karo** 1 1/2-lb. bottle **25c**

Mazola **Oil** quart bottle **59c**

### ★ FRUITS & VEGETABLES ★

Save More at Pick & Pay!

**BANANAS** golden ripe lb. **10c**

**POTATOES** red, 10-lb. bag **49c**

**RADISHES** crisp bag **5c**

**CARROTS** fresh, tender bag **5c**

**Western Auto**

**A World of Fun and Healthful Exercise in Your Own Backyard**

**Western Flyer 10-Game Gym Set**

Happiest youngsters play on Western Flyer Gym Sets. Top safety and stability, more play features. Built for years of fun ahead. All-steel construction, rustproofed and all expanded edges capped for safety. Over 8' long, nearly 7' tall. Easy to assemble. Buy now on easy terms for your youngsters!

Only \$5.00 Down, \$1.25 Weekly

**\$25.95**

**Western Auto** 222 WALNUT SA 9-4361  
WALTER H. ROGERS

**PICK and PAY**  
Super Market