

"The only newspaper published that's devoted completely to the interests of Colorado City and Mitchell County!"

51ST YEAR—No. 98

8 PAGES

COLORADO CITY, TEXAS, SUNDAY, SEPTEMBER 16, 1956

\$5 Per Year in Mitchell County—10c PER SINGLE COP.

## C-C MOTORCADE

### Lorraine Prepares For Jubilee Time

Lorraine paraded Gay Nineties styled women and bewiskered gents in area towns Saturday in the final build-up for Lorraine's Golden Jubilee program.

The two-day jubilee opens Friday afternoon and continues through Saturday night.

And Colorado City's Chamber of Commerce is planning a motorcade to the Golden Jubilee barbecue at noon Saturday.

Local citizens planning to attend the barbecue are urged to meet at Civic House at 11 a.m. Saturday to receive streamers and to form the motorcade.

The Lorraine boosters—dressed in styles of yesteryear—traveled by buses Saturday to Hemphill, Snyder, Rotan, Roby, Sweetwater and Roscoe publicizing their jubilee program.

Tuesday afternoon they appeared on the Crossroads program of KPARTV in Sweetwater.

Horse racing, old fiddlers contest, square dancing and variety show are among the features of Lorraine's 50th anniversary program.

The celebration will open Friday at 3 p.m. with a parade featuring Air Force band, McMurry College callopie, covered wagons, floats and other attractions.

Horse racing on a quarter-mile track west of Lorraine is scheduled for 4:30 p.m. Friday.

Variety entertainment, style

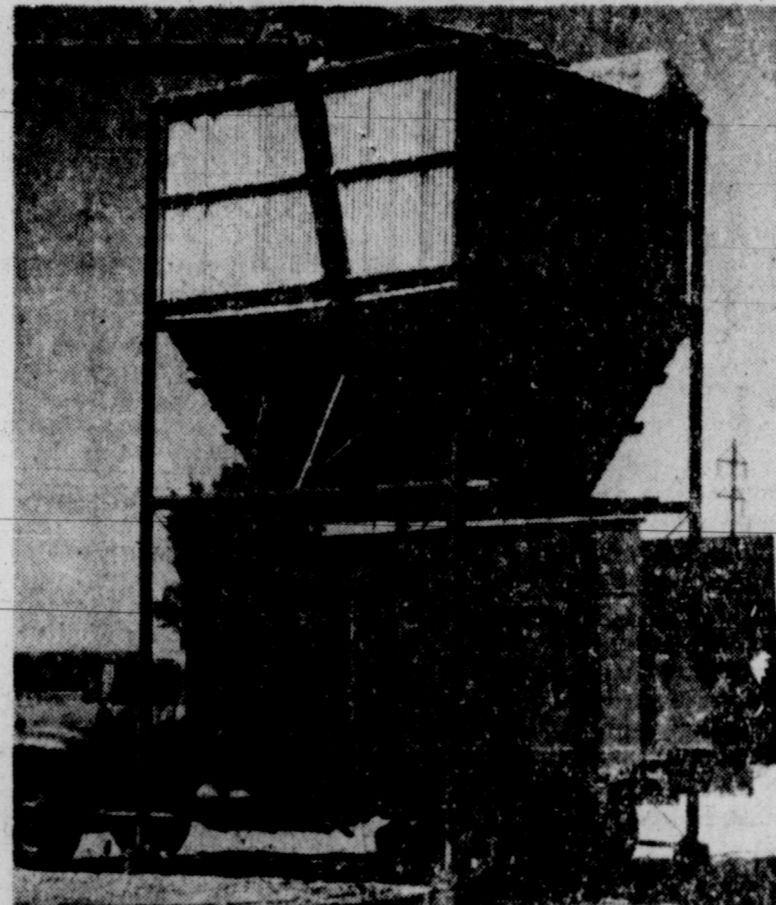
show and coronation of the jubilee queen is scheduled for Friday at 8 p.m. in Lorraine High School Gymnasium.

An old-timers reunion will open the festivities Saturday morning. The reunion will begin at 10 a.m. and will feature an address by Congressman George Mahon.

Barbecue will be served at noon beginning immediately after the old-timers reunion at about 11 a.m.—at the school. Pioneers who have lived in the Lorraine area in 1910 or earlier will be honored guests and will be served free.

Beard judging will be Saturday at 3 p.m., followed by horse racing at 3:30 p.m.

A wind-up to the jubilee will come with the old fiddlers contest Saturday at 6:30 p.m. and square dance.



**SOIL-BUILDING OPERATION**—Truck of Buford Co-op Gin loads up at the gin with cotton burs (top photo) and then spreads the three-ton load over the crop land of Louis Small, east of Buford. The burs serve as fertilizer, soil conditioner and wind erosion preventative. (Record Staff Photos)

## STARTED BY BUFORD GIN

### Burr-Spreading Service Gives Producer Cheap Soil Booster

A boxy, three-ton capacity truck pulled into the sand east of Buford and began traveling skip rows in the Louis Small cotton field.

An auger-like spreader across the rear of the truck bed deposited almost a solid layer of cotton burs on the bare ground.

The burr spreading was typical of an operation started this season by Buford Co-op Gin. Cotton burs are being delivered and spread on fields of the gin's customer at a price of \$2 per acre.

Cotton producers are showing keen interest in the service and a waiting list has formed for the burs, according to Thurston Smith, gin manager.

County Agent Jack Burkhalter has been watching the operation

and believes the burr spreading will be valuable to farmers in more ways than one.

"Fertilizer value of the burs," Burkhalter said, "is higher than the value of barnyard manure. It has the nitrogen, phosphorus and potassium and other agents our soils need."

Organic matter is another value of the burs.

The county agent said the spreading of burs on crop land will cut down on wind erosion. "It won't pack down with a hard rain," Burkhalter added, "so it will help water to penetrate better into the ground."

Burs have been recommended as an economical soil builder only in the last couple of years. New research into pink bollworm control has lessened the treatment required for burs.

"In this area," Burkhalter said, "burs are now one of the most effective and economical ways to build up the soil and to prevent wind erosion."

Smith said his gin decided to provide the burr delivery and spreading service to its customers this fall after cotton producers showed an increased interest for burs as a soil builder.

The truck bed and spreader were built and placed on the truck in Lubbock. Bed of the truck carries a top load of three tons.

"Chain conveyors on the floor of the truck bed push the burs to the spreader, which places the burs uniformly on the ground.

The apparatus will spread two to eight tons of burs per acre. Right now the plan is to put about three tons per acre on dry land fields.

"On irrigated land," Smith

said, "we can adjust the spreader to put the hulls on heavier."

The gin manager said the \$2 charge per ton for spreading the hulls was being charged to cover the cost of the service.

"We are planning to haul about two loads to the customer," Smith said, "until we go through our list, then we will start over."

"I believe every producer asking for the service will get back all the burs he hauled to the gin."

Only trouble this year is the fact there isn't enough cotton to furnish enough burs for the land.

## Tennessee Trio Joins Relatives in C-City

Mr. and Mrs. J. A. Tingay and Mrs. Joe Munday Sr., of Memphis, Tennessee arrived here Saturday to visit relatives.

Mr. and Mrs. Joe Mundy Jr., Miss Delores Smith, and Mr. and Mrs. O. H. Smith plan to accompany Tennessee trio to Arizona and Nevada. They plan to leave Sunday.

## California Rites for Ex-Resident of City

George M. Mann, former Colorado City resident, died Thursday in Ventura, Cal.

He was a brother-in-law of Mrs. Lena Mann of Colorado City.

Survivors include a sister, Mrs. B. A. Trammell of Sweetwater, and several nieces and nephews.

Mann was born Dec. 6, 1877, in Coleman County. Burial was in Santa Paula, Cal.

## Cosden Expands Operations In County's Albaugh Field

### AT DINNER FOR TEACHERS

### Citizens, Teacher Share Twin Responsibility, Minister Says

A Presbyterian minister here Thursday night cited good teaching as the responsibility of both the teacher and the community.

Rev. R. Gage Lloyd, pastor of Big Spring's First Presbyterian Church, spoke to approximately 200 persons at a dinner in Civic House.

The dinner, a community welcome and tribute to the city's public school teachers and administrators, was sponsored by Chamber of Commerce education committee.

Lloyd listed three major factors a teacher has the right to expect from a community.

"And the first is respect," the minister emphasized.

"Teachers have the right," he said, "to expect that you treat them a little better than average because they mold the character of your children."

"It is regrettable that we sometimes go out and see how cheaply we can hire a teacher."

Yet, a living wage is definitely to be expected by the teacher from the community in which he teaches, the minister said.

"You know we have a minimum," stated Lloyd, referring to the state program that sets a minimum salary base for all schools, "but we don't have a maximum."

He reviewed past and present salaries from \$75 per month wages paid teachers back in the early depression days. Too, he quoted statistics that a person must make \$6,500 yearly today to have the same purchasing power of a \$3,000 annual salary in 1939.

"So when you talk about what a teacher is getting in salary," the preacher said, "it is really not much more than the \$75 per month back in the depression."

Cooperation in the problems that arise within the schools is another essential that teachers should expect from the community, according to the speaker.

"I've never seen a teacher that was right," he said, "for they are all wrong in the eyes of parents."

"But if you don't cooperate, then you are the loser."

From the teachers, Lloyd said the community should expect scholarship; interest in current events, a philosophy for life, right morals and community interest.

"If we hire you as a teacher molding your young people," he said, "then we have a right to expect you to keep on digging—to keep abreast."

"We expect you to know what is going in the world, that you don't go to sleep and that you know what is going on financially, morally and spiritually."

It is not enough to teach just mathematics, English and other subjects.

"You have to teach more than that," Lloyd emphasized. "We expect you to have a philosophy—

and teach that philosophy to this community."

"We as parents and Chamber of Commerce people—supporters of this system by taxation—expect you to interpret life for these little ones that come along."

Lloyd said, also, that if a teacher has a philosophy, he must have right morals.

"One of the most mistaken ideas we have today," the minister said, "is that teaching is for five days a week until 4 p. m."

"We forget that those we call delinquents look up to school teachers and too often their morals are not so good."

"They see 'em out honky-tonking and in beer joints on Saturday nights."

"We and our school children

put you on a pedestal. Don't let us down by falling off that pedestal."

Lloyd, concluding his talk, emphasized that a community should expect a teacher to show interest in the community and to identify himself with that community's progress.

Rev. Bill Austin, chairman of the education committee, was toastmaster for the banquet and introduced Lloyd. The toastmaster introduced all teachers and other staff members of the school system.

No. 1 Chalk will be 330 feet from south and 990 feet from east lines of Section 92, Block 29, W&NW Survey. No. 2 Chalk will be 990 feet from south and 330 feet from east lines, Section 92.

Early in the week Cosden spudded its No. 1 Bowen, an outpost test in the same field.

Cosden Petroleum Corporation of Big Spring spotted two drilling locations in Albaugh (Yates) Field, spotlighting increased oil development in Mitchell County's southwest area.

Two additional drilling locations were staked in the county's Sharon-Ridge-1700 Field. And new producers were completed in the Westbrook and Sharon Ridge Fields.

In addition, oil development in the southwest corner of Nolan County—where between 25 and 30 drilling rigs are now operating—added four new flowing producers.

Staked by Cosden in the Albaugh Field was the Big Spring corporation's No. 1 and No. 2 Chalk. Both are scheduled for depth of 1,500 feet.

No. 1 Chalk will be 330 feet from south and 990 feet from east lines of Section 92, Block 29, W&NW Survey. No. 2 Chalk will be 990 feet from south and 330 feet from east lines, Section 92.

Early in the week Cosden spudded its No. 1 Bowen, an outpost test in the same field.

Spotted as new drilling sites in the Sharon Ridge Field were Hamilton No. 1 Hamilton-Rae and Melton & Krug No. 2-B Krug.

No. 2-B Krug, 7.5 miles southeast of Ira, will drill to 1,625 feet at a site 990 feet from north and 330 feet from west lines, 196-3, H&GN Survey.

No. 1 Hamilton, 5.5 miles northwest of Colorado City, will drill to 1,700 feet at a site 330 feet from south and 1,650 feet from west lines, Section 9, Block 27, T&P Survey.

Fred Shield No. 4 Nettie Hale was finalized as a 91.69-barrel producer in the Westbrook Field after fracturing with 20,000 gallons of fluid.

The No. 4 Hall, three miles south of Cuthbert, has its production of 24 gravity oil from a pay area topped at 3,000 feet. Location is 330 feet from south and 5,021 feet from west lines, Section 2, Block 28, T-1-N, T&P Survey.

Lone oiler finalized in the Sharon Ridge was Blackwell-Lankford No. 1 Bell-Berman, seven miles northwest of Colorado City.

The No. 1 Bell-Berman has daily potential of 71 barrels of 28 gravity oil, plus 10 per cent water, from a pay zone topped at 1,496 feet over total depth of 1,524 feet. Site is 330 feet from north and east lines, Section 15, Block 27, T&P Survey.

More rigs were moving into the southwestern Nolan County area near Mitchell County's eastern boundary.

Latest check revealed between 25 and 30 drilling rigs in the area. One of the busiest operations in that area is being carried out by Sun Oil Company with crews from Silver and Colorado City.

## Shopper Event List Climbs To 75 Firms

More merchants Saturday joined the list for Colorado City's big pre-Christmas giveaway program for shoppers.

The shoppers event—featuring weekly cash drawings—will be climaxed Christmas Eve with a final drawing for a free 1957 model auto.

A check Saturday revealed that 75 firms had provided entry fees for the program. The list of participating merchants is expected to increase, too.

The 75 firms have signed for \$3,363 in entry fees. That total is expected to climb above the \$3,500 mark with additional merchants joining the program over the week end and early next week.

Latest firms to join the program are Drummond Appliance, Crawford Hotel, Del-Paso Grill, Buck's Barbecue, Wilson Studio, Colorado Amusement Company, Fuller Foods, Hen Shoppe, Jay Adams Chevrolet, Riordan Hardware, Palace Barber Shop.

Contributing to the program, but not regular participants, are Texas Electric Service Company and William Cameron Lumber.

Firms desiring to join the program, but who have not been contacted, are asked to phone the Chamber of Commerce.

## LOTS OF MANPOWER

### 12 Committees to Direct Kids Day

Staging of Kids Day, the annual Kiwanis attraction offering entertainment and prizes free to youngsters, requires plenty of manpower.

Infact, Sie Hamm, Kiwanis chairman for 1956 Kids Day, has a dozen committees who will assist him with the all-day event here Saturday.

The free movie Saturday morning will require five committees at one time with Kiwanis groups keeping an eye on the youngsters in four different areas of Palace Theater.

Here are the committees named by Hamm:

Selection of Judges — Alton Myers, Otto Thrower and James Trammell. Bands — Winston Gann, Porter Richardson and Jimmy Payne.

Police—Chester Van Meter, Gene Williams, Ed Rothwell, Sam Thompson and Sims Palmer.

Fire Truck Rides—Winston Gann, Osear Sherman and Harold Boney.

National Guard Rides — Dan Pritchett, W. K. Miles and Dell Barber. Theater Show Planning — Elliott Dixon and Jimmy Kelley.

Show Committees—(Front Entrance) Dewey Davis, Otho Rice and Wallace Pendergrass; (Second Lobby) Ed Majors, James Trammell and Virgil Morgan; (Aisles) Frank Kelley, W. M. Vest, J. L. Gailey and Trevor Crawford; (Balcony) Ed Kessinger, L. L. Comer and A. O. Hickman.

Refreshments—B. D. Mason, Elliott Dixon, Porter Richardson and Joe Bell.

Parade—Harold Stephens, Porter Richardson, R. B. Baker, Chester Thomas, Frank Kelley, Floyd Sheppard, Sims Palmer, Rev. Earl Clary, Noble Walker, Ed Richardson, W. M. Vest, H. H. Bilberry, Doyle Kiker, Ed Boase, Jack Burkhalter, Frank Ginzel, Dewey Davis, Louis Bodzin and Dan Pritchett.

The Kids Day program will open Saturday at 9 a. m. in front of Palace Theater with rides on fire trucks and National Guard vehicles. Free movie will be at 10 a. m., followed by free ice cream at 11:30 a. m.

Parade will be at 2 p. m. with pet show immediately following. Prizes will be offered for both parade and pet show entries.

## SPRINKLER SYSTEM, TOO

### New Improvements Studied for Park

Colorado City Garden Club has requested a sprinkler system to aid beautification of Ruddick Park in vicinity of the park's main entrance and swimming pool.

The request was channeled to City Council Monday night through the municipal park and recreation board.

And City Manager Rollin K. Snethen told councilmen he believed the system could be installed, piece-meal fashion and one area at a time.

However, Snethen reported that watering for park beautification would be limited for the present time because of water supply.

The park is served by one six-inch water main. Length of the

main and number of water customers on the main decreases pressure at the park, the manager said.

Councilman Jeff Taylor suggested that the city manager check with the Garden Club to determine what the club's new planned as new beautification of the park, then see if the city can aid them with limited sprinkler system.

Snethen said approximately \$1,000 was in the budget now for park work and that the city may be able to meet at least a portion of the request.

Council then voted unanimously for the manager to check with the club.

The city manager, in the discussion, revealed that he was studying the water main system now in the eastern area in the Ruddick Park area. Recommendations concerning water improvements will be made in the future, he said.

It was revealed also that the manager is studying the possibility of installing recirculating filter system in the Ruddick Park pool.

However, there was no indication when the filter plan would be proposed—next year or later.

The manager reported that the city had purchased a \$397 mower that is being put to use now for cutting weeds and grass on city property.

The mower, pulled behind tractor, will provide a cleaned-up appearance for parkways and other properties.

## Association to Meet Monday In Lorraine

Meeting of the Mitchell-Scurry Baptist association will begin Monday evening at 7:30 o'clock in the First Baptist Church in Lorraine.

Opening address will be presented by R. A. Springer at 10 a. m. Tuesday. He is the treasurer of the Baptist General Convention of Texas.

Rev. Jimmy Nelson, pastor of Colonial Hill Baptist Church of Snyder, will deliver the annual sermon. The missionary message will be by Rev. Bobby Rine of Lorraine's First Baptist Church Tuesday morning.

Closing address will be Tuesday afternoon by the Rev. Vernon Shaw, from Buckner Orphans Home, Dallas.

## IN JUNIOR HIGH AREA

### Police Watch for Speeding Drivers

Complaints were beginning to pile up Saturday against speeding and reckless driving in vicinity of Junior High.

Councilmen mentioned the traffic problem at their meeting Monday night in City Hall.

And residents in the area have talked with City Manager Rollin K. Snethen and Police Chief Leon Yeager.

"We hate to be horsey," said Mrs. Ronald Services, 863 E. 13th St., "but we can't wait until one of our children is injured before we do something about it."

The city manager and the police chief have checked the area and looked at intersections on 13th St. that do not have stop signs.

Police patrol cars are watching the entire area closer, the manager said, in an effort to track down on traffic violators.

Councilmen Monday night said a lot of the speeding and reckless driving centered around the area of eating establishments near the Junior High campus where youths get together.

Residents in the area say the worst period is mostly from about 4 p. m. until 8 p. m.

"There are 20 children in one block—the 800 block of E. 13th St.," reported Mrs. Services, "and the speeding is dangerous to them."

The mother said there was not a stop sign at any entrance to the intersection at 13th St. and Waco. Neither is there a stop sign on 13th St. east from Austin to the end of the street, she said.

Snethen told councilmen Monday night that police had been trying to curb traffic violators in the Junior High area for some time. But he said the job was difficult because of limited police personnel and because police cars are recognized at a distance.

The city manager told councilmen that police cars bought in the future may not be black, but other colors not usually identified with police. Regular license plates may also be placed on the patrol cars, too, in place of the silver and black tags now used.



**TEACHERS AND SPEAKER**—Three new teachers in Colorado City public schools chat with Rev. R. Gage Lloyd, principal speaker, at the Chamber of Commerce banquet Thursday night honoring all public school teachers in the city. Left to right are Winfred A. Talley, B team coach; Mrs. Janice Roberts, Junior High; Rev. Lloyd, and M. B. Hair, High School. (Record Staff Photo)



**AT PRESIDENT'S COFFEE**—Mrs. A. A. Herrington pours coffee for, left to right, Mrs. J. W. Watson, Mrs. Rolin K. Sneathen and Mrs. Charles C. Thompson at a coffee here Thursday honoring Mrs. A. R. House, president of Texas State Federation of Women's Clubs.

**PROGRAMS FOR**

**KPAR, Channel 12**

<b>Sunday</b>	12:55—Sign Off	1:00—Washington vs. Baltimore (CBS)	2:45—CBS Sunday News (CBS)	3:30—Face the Nation (CBS)	4:00—Telephone Time (CBS)	4:30—You Are There (CBS)	5:00—The Christophers	5:30—Hunting 'n' Fishing Club	6:00—Lassie (CBS)	6:30—Private Secretary (CBS)	7:00—G. E. Theatre (CBS)	7:30—Stories of the Century	8:00—Beulah	8:30—Annie Oakley	9:00—Ed Sullivan (CBS)	10:00—Judge Roy Bean	10:30—News	10:45—Movie Time	11:45—Sign Off																					
<b>Monday</b>	6:55—Sign On	7:00—Capt. Kangaroo (CBS)	7:25—Cartoons (CBS)	7:30—Capt. Kangaroo (CBS)	7:55—Sing Song (CBS)	8:00—Gary Moore (CBS)	8:30—Morning Movie	10:00—Valiant Lady (CBS) EPS	10:15—Love of Life (CBS)	10:30—Search for Tomorrow (CBS)	10:45—TV Sermonette	11:00—Network News (CBS)	11:10—Stand Up and Be Counted (CBS)	11:30—Timely Topics	12:00—Johnny Carson Show (CBS)	12:30—Noon News	12:45—House Party (CBS)	1:00—Big Payoff (CBS)	1:30—Bob Crosby (CBS)	2:00—Brighter Day (CBS)	2:15—Secret Storm (CBS)	2:30—Edge of Night (CBS)	3:00—Recipe Roundup	3:30—Movie Marquee	4:30—Western Theatre	5:30—Community Crossroads	5:50—Behind the News	6:00—News, Weather, Sports	6:15—Doug Edwards (CBS)	6:30—Robin Hood (CBS)	7:00—Charlie Farrell Show (CBS)	7:30—Vic Damone Show (CBS)	8:00—Stars of Grand Ole Opry	8:30—Racket Squad	9:00—Ray Milland	9:30—Doug Fairbanks Presents (CBS)	10:00—Talent Scouts (CBS)	10:30—News	11:00—Channel 12 Theatre	12:00—Sign Off
<b>Tuesday</b>	6:55—Sign On	7:00—Capt. Kangaroo (CBS)	7:25—Cartoons (CBS)	7:30—Capt. Kangaroo (CBS)	7:55—Sing Song (CBS)	8:00—Gary Moore (CBS)	8:30—Morning Movie	10:00—Valiant Lady (CBS) EPS	10:15—Love of Life (CBS)	10:30—Search for Tomorrow (CBS)	10:45—TV Sermonette	11:00—Network News (CBS)	11:10—Stand Up and Be Counted (CBS)	11:30—Timely Topics	12:00—Johnny Carson Show (CBS)	12:30—Noon News	12:45—House Party (CBS)	1:00—Big Payoff (CBS)	1:30—Bob Crosby (CBS)	2:00—Brighter Day (CBS)	2:15—Secret Storm (CBS)	2:30—Edge of Night (CBS)	3:00—Recipe Roundup	3:30—Movie Marquee	4:30—Western Theatre	5:30—Community Crossroads	5:50—Behind the News	6:00—News, Weather, Sports	6:15—Doug Edwards (CBS)	6:30—Robin Hood (CBS)	7:00—Charlie Farrell Show (CBS)	7:30—Vic Damone Show (CBS)	8:00—Stars of Grand Ole Opry	8:30—Racket Squad	9:00—Ray Milland	9:30—Doug Fairbanks Presents (CBS)	10:00—Talent Scouts (CBS)	10:30—News	11:00—Channel 12 Theatre	12:00—Sign Off

**PROGRAMS FOR**

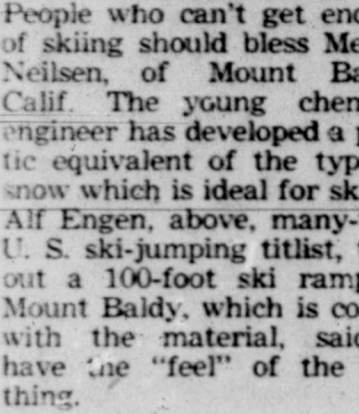
**KMID, Channel 2**

<b>Sunday</b>	12:00—Oral Roberts (F)	12:30—This Is The Life	1:00—Million Dollar Movie	2:00—Wide World (NBC)	3:00—Outlook	4:00—Meet The Press (NBC)	4:30—Roy Rogers (NBC)	5:00—Favorite Story	5:30—Kidnapped (NBC)	6:00—Stew Allen (NBC)	7:00—Sports	7:15—News and Weather	7:30—Highway Patrol	8:00—Man Called X (?)	8:30—Famous Playhouse	9:00—Loretta Young	9:30—Badge 714	10:00—News and Sports	10:10—Weather	10:15—INS News	10:30—Late Show (F)	11:30—Sig. Off (Studio)							
<b>Monday</b>	7:00—T-day (NBC)	7:25—Weather (Studio)	7:30—Today (NBC)	7:55—News (Studio)	8:00—Ding Dong School (NBC)	8:30—Bandstand (NBC)	9:00—Home (Arlene Francis) (NBC)	10:00—The Tac Dough (NBC)	10:30—It Could Be You (NBC)	11:00—Morning Matinee	12:15—News and Weather	12:30—Music Room	1:00—NBC Matinee (NBC)	2:00—Queen For A Day (NBC)	2:15—Modern Romances	3:00—Comedy Time (NBC)	3:30—Something For The Girls	4:00—Two-Gun Playhouse	5:00—House Party	5:30—Industry on Parade	6:00—Sports (Studio)	6:15—News (Studio)	6:25—Weather (Studio)	6:30—Disneyland	7:30—Science Fiction Theatre	8:00—This Is Your Life	8:30—Texas in Review	9:00—Movie	10:00—News Final
<b>Tuesday</b>	7:00—Today (NBC)	7:25—Weather (Studio)	7:30—Today (NBC)	7:55—News (Studio)	8:00—Ding Dong School (NBC)	8:30—Bandstand (NBC)	9:00—Home (Arlene Francis) (NBC)	10:00—The Tac Dough (NBC)	10:30—It Could Be You (NBC)	11:00—Morning Matinee	12:15—News and Weather	12:30—Music Room	1:00—NBC Matinee (NBC)	2:00—Queen For A Day (NBC)	2:15—Modern Romances	3:00—Comedy Time (NBC)	3:30—Something For The Girls	4:00—Two-Gun Playhouse	5:00—House Party	5:30—Industry on Parade	6:00—Sports (Studio)	6:15—News (Studio)	6:25—Weather (Studio)	6:30—Disneyland	7:30—Science Fiction Theatre	8:00—This Is Your Life	8:30—Texas in Review	9:00—Movie	10:00—News Final
<b>Wednesday</b>	7:00—Today (NBC)	7:25—Weather (Studio)	7:30—Today (NBC)	7:55—News (Studio)	8:00—Ding Dong School (NBC)	8:30—Bandstand (NBC)	9:00—Home (Arlene Francis) (NBC)	10:00—The Tac Dough (NBC)	10:30—It Could Be You (NBC)	11:00—Morning Matinee	12:15—News and Weather	12:30—Music Room	1:00—NBC Matinee (NBC)	2:00—Queen For A Day (NBC)	2:15—Modern Romances	3:00—Comedy Time (NBC)	3:30—Something For The Girls	4:00—Two-Gun Playhouse	5:00—House Party	5:30—Industry on Parade	6:00—Sports (Studio)	6:15—News (Studio)	6:25—Weather (Studio)	6:30—Disneyland	7:30—Science Fiction Theatre	8:00—This Is Your Life	8:30—Texas in Review	9:00—Movie	10:00—News Final

2:45—Modern Romances (NBC)	3:00—Comedy Time (NBC)	3:30—Something For The Girls	4:00—Two-Gun Playhouse	5:00—House Party	5:30—Coke Time	5:45—News Caravan	6:00—Sports (Studio)	6:15—News (Studio)	6:25—Weather (Studio)	6:30—INS Sports	6:45—Baseball Hall of Fame	7:00—Kraft Theatre	8:00—Krugger Theatre	9:00—Texas Raising	10:00—News (Studio)	10:10—Weather (Studio)	10:15—Sports (Studio)	10:30—Late Show	12:00—Sign Off											
<b>Thursday</b>	7:00—Today (NBC)	7:25—Weather (Studio)	7:30—Today (NBC)	7:55—News (Studio)	8:00—Ding Dong School (NBC)	8:30—Bandstand (NBC)	9:00—Home (Arlene Francis) (NBC)	10:00—The Tac Dough (NBC)	10:30—It Could Be You (NBC)	11:00—Morning Matinee	12:15—News and Weather	12:30—Music Room	1:00—NBC Matinee (NBC)	2:30—Queen For A Day (NBC)	2:45—Modern Romances (NBC)	3:00—Comedy Time (NBC)	3:30—Something For The Girls	4:00—Two-Gun Playhouse	5:00—House Party	5:30—Snooky Lison	5:45—News Caravan	6:00—Sports	6:15—News (Studio)	6:25—Weather (Studio)	6:30—Top Plays	7:00—Peoples Choice	7:30—Ford Theatre	8:00—Lux Video Theater (NBC)	9:00—Best of Groucho	9:30—Dragnet (NBC)
<b>Friday</b>	7:00—Today (NBC)	7:25—Weather (Studio)	7:30—Today (NBC)	7:55—News (Studio)	8:00—Ding Dong School (NBC)	8:30—Bandstand (NBC)	9:00—Home (Arlene Francis) (NBC)	10:00—The Tac Dough (NBC)	10:30—It Could Be You (NBC)	11:00—Morning Matinee	12:15—News and Weather	12:30—Music Room	1:00—NBC Matinee (NBC)	2:30—Queen For A Day (NBC)	2:45—Modern Romances (NBC)	3:00—Comedy Time (NBC)	3:30—Something For The Girls	4:00—Two-Gun Playhouse	5:00—House Party	5:30—Snooky Lison	5:45—News Caravan	6:00—Sports	6:15—News (Studio)	6:25—Weather (Studio)	6:30—Top Plays	7:00—Peoples Choice	7:30—Ford Theatre	8:00—Lux Video Theater (NBC)	9:00—Best of Groucho	9:30—Dragnet (NBC)

**SNOWLESS SKI JUMP**

People who can't get enough of skiing should bless Merrill Nilsen, of Mount Baldy, Calif. The young chemical engineer has developed a plastic equivalent of the type of snow which is ideal for skiing. Alf Engen, above, many-time U. S. ski-jumping titlist, tries out a 100-foot ski ramp at Mount Baldy, which is coated with the material, said to have the "feel" of the real thing.



**PROGRAMS FOR KBST, Channel 4**

<b>Sunday</b>	2:55—Channel 4 Previews (L)	3:00—Face the Nation (CBS)	3:30—CBS Sunday News (CBS)	4:00—Telephone Time (CBS)	4:30—Gospel Hour	5:00—This Is The Life	5:30—Florian Zaback (L)	6:00—Industry On Parade (F)	6:15—News (L)	6:25—Weather (L)	6:30—Private Secretary (CBS)	7:00—G. E. Theatre (CBS)	7:30—My Little Margie	8:00—\$64,000 Challenge (L)	8:30—All Star Theater	9:00—Ed Sullivan Show (CBS)	10:00—News (L)	10:10—Weather (L)	10:15—Sports (F)	10:20—Hollywood Star Theatre
<b>Monday</b>	4:30—Devotional (L)	4:35—News and Previews	4:45—Longhorn Theatre (F)	5:45—Gandy's Party Time (L)	6:00—Bruce Frazier (L)	6:15—News (L)	6:25—Sports (L)	6:30—Robin Hood (CBS)	7:00—My Hero	7:30—Life With Father	8:00—Studio One (CBS)	9:00—Texas in Review	9:30—Story Theater	10:00—News (L)	10:10—Weather (L)	10:15—Sports (L)	10:20—Hollywood Star Theatre			
<b>Tuesday</b>	4:30—Devotional (L)	4:35—News and Previews (L)	4:45—Longhorn Theatre	5:45—Gandy's Party Time (L)	6:00—Bruce Frazier (L)	6:15—News (L)	6:25—Sports (L)	6:30—Robin Hood (CBS)	7:00—My Hero	7:30—Life With Father	8:00—Studio One (CBS)	9:00—Texas in Review	9:30—Story Theater	10:00—News (L)	10:10—Weather (L)	10:15—Sports (L)	10:20—Hollywood Star Theatre			

10:15—Sports	10:20—Hollywood Star Theatre
<b>Thursday</b>	4:30—Devotional
4:35—News & Previews	4:45—Longhorn Theatre
5:45—Gandy's Party Time (L)	6:00—Bruce Frazier (L)
6:15—News (L)	6:25—Sports (L)
6:30—Cartoon Theatre	7:00—Counterpoint
7:30—Climax	8:30—Quiz Kids
9:00—Bob Cummings Show	9:30—Mark Saber
10:00—News (L)	10:10—Weather (L)
10:15—Sports (L)	10:20—Hollywood Star Theatre

**EARN WITH INSURED SAFETY**  
3%  
on Savings & Investments  
*Colorado Federal*  
SAVINGS & LOAN ASS'N.

Every year more people buy  
**RCA VICTOR**  
than any other television  
buy yours at *Kirschbaum* APPLIANCE STORE

**SHELL BETTER DRIVING QUIZ NO. 5**

**Check your driving attitudes**

Take a pencil and fill in how many times out of a possible ten you...

1... glide through a full-stop sign without halting completely

TIMES OUT OF TEN

2... slip through an intersection when the light is yellow, or jump just before it turns green?

TIMES OUT OF TEN

3... go into a marked curve without reducing speed?

TIMES OUT OF TEN

4... neglect to dim your "brights" because "he'll be past in a second"?

TIMES OUT OF TEN

5... find yourself matching the speed of a car trying to pass you?

TIMES OUT OF TEN

6... drive on the tail of the car ahead so he'll know he's going too slow for you?

TIMES OUT OF TEN

7... park close to a hydrant because there's no other space handy?

TIMES OUT OF TEN

8... try to honk your way through a traffic tie-up with your horn?

TIMES OUT OF TEN

**HOW TO SCORE YOURSELF**

Simply add up the numbers you've written under each item. A group of expert drivers scored between 0 and 18. Whatever your score, remember this fact: a basic cause of most accidents is not the car or the road, but the driver's attitude.

**HOW DOES YOUR SCORE compare with the experts?** This scale shows how a group of expert drivers scored on each question. Does your rating show there's room for improvement in your driving attitudes?

QUESTION	SCORE
1	
2	
3	
4	
5	
6	
7	
8	

**Drive right—enjoy your right to drive**

We believe that being a good neighbor calls for more than just providing you with good products. Part of our job is to help keep you safe on the road. It's not enough that today's cars are the finest, safest ever made. We need safe drivers in

the safe cars. Thus this message, America's highways form a great personal transportation system. When all motorists use these highways safely all the time, that's the sign of a better future...for you...for all of us.

**GROEBL OIL Co. — Shell Jobber**  
and Shell Service Stations Serving the Permian Basin

This advertisement prepared in cooperation with the Automotive Safety Foundation.



MISS GERALDINE CONAWAY, wedding date set.

### Miss Conaway Betrothed to R. K. Johnson

Mr. and Mrs. Thomas Edgar Conaway Saturday announced the engagement and approaching marriage of their daughter, Geraldine, to Robert Keith Johnson.

Johnson is the son of Mr. and Mrs. R. C. Johnson of Mart, Texas.

The couple plan to be married Nov. 10 at 7:30 p. m. in the First Baptist Church in Colorado City.

Miss Conaway is a graduate of Colorado High School, and attended Baylor University. She is now employed by the Miami Operating Company in Abilene.

### Oak Street's WMU Hears Mrs. Cain

Mrs. Bertina Cain was guest speaker Monday evening at a meeting of the Oak-Street Baptist Women's Missionary Union. Topic of her talk was "Obtaining a Vision."

Mrs. Bill Austin served as master of ceremonies. Mrs. W.C. Greaves led the group in a Bible quiz.

Also participating in the program was a vocal trio consisting of Mrs. Charles Coppinger, Mrs. Alfred Chambers, and Miss Beth Harris.

Mrs. Earl McMullen, president of the organization, presided at the register.

Supper was served to 38 women, including the guest speaker, and seven guests from the Austin Street Women's Missionary Union.

### Club Meets Sept. 21

The next meeting of the Slitch and Chatter Club will be Sept. 21 in the home of Mrs. Mae Werner, 1017 Vine St., instead of the previously announced date, Oct. 5.

### Parents of Daughter

A baby girl, weighing seven pounds and eight ounces was born Wednesday to Mr. and Mrs. Max Amada of Route 3, Colorado City.

### TO CHOSEN CAMPUSES

## Loraine College Students Scatter

LORAINE — College students have begun their annual trek to campuses.

They are scattering from Loraine to more than half a dozen colleges in at least two states.

Hardin-Simmons University in Abilene is claiming a big share of the Loraine college students.

Hal Haralson will be a senior ministerial student at HSU while Dale Haralson will be a sopho-

more pre-med student there. Also attending HSU will be Erma Hayes, sophomore; Jimmy Hall, sophomore; Charlene Ross, freshman; Doyle Combs, senior; and Dale Baird, graduate student.

Going to McMurry College in Abilene for her first year in college is Gaylene Taylor.

Junior students at Texas Tech in Lubbock will be Merlin Bennett and Homer Lucas. Adding

more Loraine emphasis to the Tech campus will be Eddie Templeton, senior; Richey Cary, sophomore; Wayne Reddin, sophomore; and Mr. and Mrs. Clinton Cartwright.

Bill Narell has been in Lawton, Okla., working out with the Cameron Agricultural State College football squad.

Enrolling in Rutherford Metropolitan Business College in Midland was Connie Liles. She was employed in Midland during the summer.

Victor Hackfeld is returning to Texas A&M campus in College Station, where he is a senior student.

Mr. and Mrs. Dexter Taylor visited last week end in Matamoros with Mr. and Mrs. Nolan Bar-

more. Church in Abilene to the Highland Heights Methodist Church in Sweetwater.

Rev. Fielder has recently moved from the Aldersgate

Visiting at Loraine recently was Mrs. Linwood Egger of San Antonio. Mrs. Egger, who was on route home from California, was the guest of her sister, Mrs. G. W. Hendricks.

Minister to Address Local Methodist Men

Rev. Jack Fielder will speak to the Methodist men at their regular meeting next Monday night at 7 p. m.

His subject will be "What Our Church Is Doing For College

Shop SAFEWAY

# We're Not Satisfied Unless You Are

Safeway Values

Del Monte Crushed Pineapple	No. 2 Can	30¢
Gebhardt's Plain Chili	No. 300 Can	38¢
Eagle Sandwich Spread	2 No. 1/4 Can	33¢
Ten-Der-Rist Wortz Crackers	7 1/2 Oz. Box	19¢
Ten-Der-Rist Wortz Crackers	1-Lb. Box	33¢
Hi-C Grape Drink	So Good 46 Oz. Can	33¢
Hi-C Party Punch	Try It 46 Oz. Can	38¢
Woodbury Facial Soap	3 Bars	25¢
Woodbury Facial Soap	2 Bars	25¢

Brocade Toilet Soap	10 Bar Pkg.	49¢
Parade Detergent	Giant Box	57¢
Peanut Butter	20-Oz. Jar	53¢
Pinto Beans	2-Lb. Pkg.	19¢

## Safeway's Guaranteed Meats

Jumbo Sliced Bologna	8 Oz. Pkg.	25¢
Somerset Franks	1-Lb. Cello	45¢
Veal Cutlets	1-Lb.	89¢
Canned Picnics	Ready to Eat 4 1/2-Lb. Can	\$2.79

## NATIONAL TUNA WEEK

Light Meat—Chunk	No. 1/2 Can	27¢
Sea Trader Tuna	No. 1/2 Can	27¢
Chunk Style Starkist Tuna	No. 1/2 Can	29¢
Green Label—Chunk	No. 1/2 Can	29¢
Chicken of Sea Tuna	No. 1/2 Can	29¢

Perfect Together	When you do your baking, try Lac Mix Instant Powdered Milk with your favorite Pillsbury Cake Mix
Pillsbury Cake Mix	Assorted 17-Oz. Box 31¢
Lac Mix Instant Milk	Powdered Males 8 Oz. 25 1/2 Oz. Pkg. 63¢

## Safeway's Fresh from the Farm Products

Tokay Grapes	Old Delicious 2 Lbs.	25¢
Fresh Turnip Greens	Bunch	10¢
Bell Peppers	Good in Salads 1-Lb.	19¢
Yellow Squash	Fresh—Good Tasting 2 Lbs.	25¢

Kraft Velveeta Cheese	2-Lb. Box	89¢
Kraft Cheez Whiz	8 Oz. Jar	31¢
Kraft Sliced Cheese	Swiss, Pimiento or American 1/2-Lb. Pkg.	36¢
Kraft Mayonnaise	16-Oz. Jar	45¢
Kraft Salad Oil	1-Lb. Bottle	35¢
Kraft Parkay Margarine	1-Lb. Pkg.	28¢

Cracker Barrel Cheese	13 1/4 Oz. Pkg.	71¢
Cream Cheese	Plain, Pimiento or Chive 3-Oz. Pkg.	15¢
Premium Hamburgers	Swift 11-Oz. Can	51¢
Miracle Sandwich Spread	Kraft 16-Oz. Jar	40¢
Kraft Mustard	Horseshoe or Sliced 6-Oz. Jar	11¢
Blue-White Bluing Flakes	3/4-Oz. Box	10¢
All Detergent	24-Oz. Box	39¢
All Detergent	10-Lb. Box	\$2.29
All Detergent	19-Oz. Box	33¢
All Detergent	7-Lb. Box	79¢
All Dishwasher	20-Oz. Box	43¢
Niagara Starch	12-Oz. Box	22¢
Dash Dog Food	1-Lb. Can	15¢
Red Heart Dog Food	Assorted 1-Lb. Can	15¢
Ideal Dog Food	1-Lb. Can	15¢
Dial Toilet Soap	2 Bars	33¢
Du Pont Cellulose Sponge	Four Colors No. 60	23¢
Johnny Mop	Deluxe No. 535 Pkg.	98¢
Gladiola Flour	5-Lb. Bag	49¢
Gladiola Flour	10-Lb. Bag	95¢
Gladiola Cake Mix	White or Pound 18-Oz. Box	35¢



## OLD DUTCH CLEANER

2 Can Dast	2 1/4-Oz. Can	19¢
------------	---------------	-----

Prices effective Monday, Tuesday, and Wednesday, September 17-18-19.

**WIN A 1957 CHEVROLET SEDAN**

HERE'S ALL YOU HAVE TO DO... Fill out and mail this card to Pillsbury's BEST Flour, National Entry Blank, you win 1st or 2nd Grand Prize... Get Official Entry Blanks Here Today!

**Pillsbury's BEST YOUR PRIZE-WINNING FLOUR**

5-Lb. Bag	49¢
10-Lb. Bag	95¢

## Lucky Leaf Pie Filling

Apricot Pie Filling	No. 2 Can	49¢
Blueberry Pie Filling	No. 2 Can	49¢
Peach Pie Filling	No. 2 Can	39¢
Strawberry Pie Filling	No. 2 Can	55¢

## FALL WARDROBES look better, feel better

with our sensational new **Nova-Tex** TEXTURIZING PROCESS

- Restores...
  - ★ TEXTURE
  - ★ FEEL
  - ★ DRAPE

Try our NOVA-TEX finishing on one garment — you'll send your entire fall wardrobe for this wonderful new "re-vitalizing" service!

DIAL RA 8-4351

**POND & MERRITT**

"Fine cleaning since 1924"



BY CHURCH WOMEN

United Council Is Organized in City

Church women here Tuesday morning organized United Council of Christian Women. Organization of the UCCW was approved at a meeting conducted in First Christian Church by Mrs. J. D. White, who has acted as temporary chairman during an educational and organizational period.

Hosts Dessert Bridge

Mrs. Frank Derogibus was hostess Wednesday to the Dessert Bridge Club in her home. Mrs. Bob Ratliff won high score and Mrs. Bill Craig won second high. Pie and coffee were served.

Jaycee-ettes to Meet

The Jaycee-ettes will meet Wednesday in Civic House for their regular business meeting and luncheon.

Prayer Week Observed by Baptist WMU

The Women's Missionary Union of the Oak Street Baptist Church met from Tuesday, Wednesday and Thursday mornings for the Mary Hill Davis Week of Prayer. The prayer week was planned for state missions.

Mrs. O. R. House and Mrs. Howard Cain planned the program for Tuesday, their topic being "Building Altars for State Mission." and "Building Altars Through City Missions and Rural Work."

Parish House Coffee Honors President of State Federation

Mrs. A. J. House, president of Texas State Federation of Women's Clubs, was honored Thursday morning with a seated coffee in the Parish House of the Episcopal Church. Hosting the fete were the county federated clubs.

Sorority Sets Chili Supper

A chili supper tentatively scheduled to be in the Elementary School cafeteria Oct. 23 was announced Saturday by the Mu Pi Chapter of Beta Sigma Phi. The supper is to raise money for the Texas Beta Sigma Phi state project for 1956-57.



GREETING STATE PRESIDENT—Three local club women greet Mrs. A. R. House, president of Texas State Federation of Women's Clubs, during her visit here Thursday. Left to right are Mrs. H. Jene Steakley, Mrs. L. B. Elliott and Mrs. Jack Selcraig. (Record Staff Photo)

COUNTY CLUBS ARE HOSTS

Parish House Coffee Honors President of State Federation

Mrs. A. J. House, president of Texas State Federation of Women's Clubs, was honored Thursday morning with a seated coffee in the Parish House of the Episcopal Church. Hosting the fete were the county federated clubs.

Calendar of Events

- MONDAY 11:30 a. m.—Regular business meeting, luncheon, and program of the Christian Women's Fellowship, in Fellowship Hall of the First Christian Church. Business meeting will be in the auditorium at 11:30. 7:30 p. m.—Duplicate bridge at Country Club. 7:00 p. m.—Methodist men's meeting at First Methodist Church.

Martha Class, Game Club Entertained

LORAINE — A steak supper Tuesday night feted members of the Game Club. Hosting the event on the lawn of their home were Mr. and Mrs. Clyde Smith.



SPEAKER — Girls and women of First Baptist Church Thursday night will hear Miss Eula Mae Henderson, executive secretary of Texas Women's Missionary Union with headquarters in Dallas.

State Official For WMU to Speak Here

Miss Eula Mae Henderson of Dallas, executive secretary of the Texas Women's Missionary Union, will speak here Thursday. She will be guest speaker for the first "Missions Enlistment Night" in the auditorium of the First Baptist Church at 7:30 p. m.

Women's Bible Class Feted in Ketter Home

Daughters of the Kings Sunday School class of the First Methodist Church met Thursday in the home of Mrs. J. E. Ketter. Mrs. H. P. Allmond presented the devotional, taking her scripture from 100th Psalm.

Stevens Family Here

Mr. and Mrs. Buster Stevens and children of Seagraves are visiting this week in the home of his mother, Mrs. G. B. Slaton.

State Official For WMU to Speak Here

Miss Eula Mae Henderson of Dallas, executive secretary of the Texas Women's Missionary Union, will speak here Thursday. She will be guest speaker for the first "Missions Enlistment Night" in the auditorium of the First Baptist Church at 7:30 p. m.

Women's Bible Class Feted in Ketter Home

Daughters of the Kings Sunday School class of the First Methodist Church met Thursday in the home of Mrs. J. E. Ketter. Mrs. H. P. Allmond presented the devotional, taking her scripture from 100th Psalm.

Stevens Family Here

Mr. and Mrs. Buster Stevens and children of Seagraves are visiting this week in the home of his mother, Mrs. G. B. Slaton.

Advertisement for G. D. Foster Insurance and Loans, featuring a logo for Standard Protection and contact information: 247 Walnut, Dial RA 8-3401, Res.—Dial RA 8-4185.

Large advertisement for Southwest Republic Life Insurance Company, titled "Texan Protective Plan". It lists various benefits such as immediate coverage, no increase in rates, and optional benefits like \$50,000 Paid Benefit and \$150.00 Maternity Benefit. It also includes contact information for Mrs. Kathryn Miller and Martin Dobbs.

Advertisement for Colorado Steam Laundry, featuring a woman's face and the text "Worried about Washday? Use our... LAUNDRY SERVICE". It promises efficient and reasonable service.

Advertisement for City National Bank, titled "What's the hurry?". It promotes banking by mail as an easier way than banking in person, with no need to rush to the bank. It includes the bank's logo and the slogan "Over Half a Century of Service".

Advertisement for eye care, titled "50% of all cases of reading failure are contributed to uncorrected vision problems!". It features an illustration of a child reading and text explaining how uncorrected vision affects school work. It offers a free eye examination and lists several optometrists in the area.



**STUDY CLUB DINNER**—Seated at the 1949 Study Club installation dinner in Civic House Wednesday night are, left to right, Mrs. Max Caddell, Mrs. Fred McKay, Mrs. Bynum.



**INSTALLING OFFICERS**—Mrs. Charles Nuckolls, club president, installs three officers of 1949 Study Club at a dinner Wednesday night in Civic House. Left to right are Mrs. Jimmy Harrison, Mrs. Nuckolls, Mrs. Jack Jordan and Mrs. Joe Salter. (Record Staff Photo)

**INSTALLATION CEREMONY, TOO**

**1949 Club Opens Study Series At Civic House Dinner Program**

A dinner and program in the Civic House Tuesday night opened a new series of study for the 1956-57 club year.

Mrs. Charles Nuckolls was installed as president, and in turn installed the following officers:

Mrs. Joe Salter, vice president; Mrs. Jack Jordan, recording secretary; Mrs. Jimmy Harrison, corresponding secretary; Mrs. H. Jene Steakley, treasurer; Mrs. Dwayne Feaster, parliamentarian; Mrs. Gwan Strange, historian.

Mrs. Strange opened the program with the invocation. Mrs. Walter Grubbs, retiring president, reviewed the high points of accomplishments during the past club year.

Mrs. Max Caddell reviewed the club history.

Mrs. Nuckolls presented the president's message.

Mrs. Steakley spoke on "Epic of America," as she reviewed the study for the new club year, entitled "America Awakes."

In spotlighting the high points in the make-up of America, Mrs. Steakley said Manhattan was seen as an incredible city where languages of a dozen nations are heard on the streets; where there are more Italians than in any Italian city except Rome, where there are more Jews than there are in Jerusalem, or any other town on earth, and where there are more Irish than in Dublin.

Mrs. Steakley, pointing to symbols of U. S. Freedom and enterprise, said we have the greatest roads built since the Romans, and they were built without Fascism or forced labor.

The typical American she described as a fellow whose grandfather was possibly German. Who settled in Wisconsin and married an English woman. Whose son met a girl at college. Her mother was an Austrian and her father a Hungarian Jew. And their son, the typical 20th-century fellow six-foot tall, plays football and can't speak a word of any known language except English, and is doubtful whether he ever had a grandfather.

"The American," said Mrs. Steakley, "doesn't like to take orders, doesn't like to commit himself to stay forever in one place and is a great traveler. He is ingenious, and inventive. He was born free and shows it in the way he moves. He is the best nourished human being on the face of the earth."

"He is skeptical and yet he has faith."

"And the American dream," she concluded, "is the same today as it was for our forefathers. It is a better, richer, fuller life for everyone."

Mrs. Harrison led the group in the closing prayer.

Attending were Mrs. Joe Blackard, Mrs. Joe Bell, Mrs. Howard Bynum, Mrs. Max Caddell, Mrs. Bill Carter, Mrs. Feaster, Mrs. Grubbs, Mrs. Jordan, Mrs. Willie Landau, Mrs. Nuckolls, Mrs. Salter, Mrs. Strange, Mrs. Garlan Green, Mrs. Yielding Lee Jr., and Mrs. Fred McKay.

**GARDEN CLUB PROJECT**

**Flower Show Set**

The Garden Club made plans Wednesday for a flower show to be staged Oct. 20.

Committees were appointed to complete arrangements for the show during the meeting at the Lone Wolf Electric Cooperative Building.

Mrs. Royce Mahon presented the program entitled "Moving Your Garden into the House". Mrs. L. W. Patterson, president, presided at the meeting.

Flower arrangement for the day was made by Mrs. Leon Jenkins and judged by Mrs. Ben Elliott.

**MRS. TRUAN AT B&PW DINNER**

**Speaker Points Citizen's Role For Just, Intelligent Opinion**

Public affairs committee of the Business and Professional Women's Club presented the program Tuesday evening for the club's dinner, program and business meeting.

Hostesses for the meeting were Mrs. Jesse L. Jones, Miss Ruth Hightower, and Mrs. T. L. McKinney. Mrs. H. I. Berman led in the club collect. Mrs. Jewel Richter led the pledge to the flag.

Mrs. Mildred Truan spoke on "Good Citizenship," emphasizing that citizen owes allegiance to a government and is entitled to protection by it.

"He must be loyal to his country and government," she said "to be desirable, favorable, sound, and reliable, virtuous, ethical, righteous, and noble."

Mrs. Truan said the duty of a citizen is obedience to the laws of the government.

"Just as a football game cannot be played effectively unless all players abide by rules," the speaker stated, "so a modern democracy cannot help to accomplish its purpose unless citizens obey the laws of the government."

Mrs. Truan said the second duty for a good citizen is to willingly cooperate with the government.

Music will be presented by Mrs. O. B. Trulock Jr., and Mrs. O. B. Trulock Sr.

Time of the business meeting is set for 11:30. A luncheon will begin at 12 noon, followed by the program.

BY MRS. BENTON CAIN

**Officers Installed At Circle Meeting**

Officers for the Roberta Edwards Circle of the First Baptist Church were installed Tuesday at a meeting in the home of Mrs. James McNeil.

Mrs. Benton Cain installed the following officers:

Mrs. M. A. Dillard, chairman; Mrs. Sam Thompson, vice president; Mrs. James McNeil, stewardship; Mrs. R. B. Cain, literature, social and secretary; Mrs. Earline Sellier, publicity.

Also, Mrs. R. M. Reed, community and missions; Mrs. Dennis Walding, young people's representative; Mrs. M. J. Dawson, program chairman; Miss Erdine Morgan, Bible study and treasurer.

Next meeting of the circle is scheduled to be Oct. 9 in the home of Mrs. Sellier.

Attending were Mrs. Sellier, Mrs. Walding, Mrs. Dillard, Mrs. Frank Jones, Mrs. M. J. Dawson.

**Bob Prices Visit**

Mr. and Mrs. Bob Price and family of Lubbock are visiting this week in the home of their parents, Mr. and Mrs. Roy Davis Coles and Mr. and Mrs. Oscar Price.

**Luncheon Will Open CWF Study Season**

The Christian Women's Fellowship of the First Christian Church will open its study season with a covered dish luncheon and program Monday at 11:30 a. m.

Mrs. Sam Cobb will present the first program, entitled "United We Move."

Women of the various churches participating in the program will be Mrs. Ray Noble, Mrs. Kenneth Cowan, Mrs. J. S. Craddock Sr., Mrs. Sam L. (Buzz) Majors Jr., and Mrs. Lee Lavender.

Music will be presented by Mrs. O. B. Trulock Jr., and Mrs. O. B. Trulock Sr.

Time of the business meeting is set for 11:30. A luncheon will begin at 12 noon, followed by the program.

**Mrs. B. Wren Is Speaker For Circle**

Mary Robinson Circle of the First Baptist Church met in the home of Mrs. Swenson Boyd Monday afternoon.

Mrs. Byron Wren discussed portions of the program outlined for state missions work.

Subject of her talk was "Building Altars in Texas," she stressed the building of altars with state missions and altars through city missions and rural work.

Mrs. Richard Lange conducted the business meeting.

Coffee and cakes were served to the following members: Mrs. Lange, Mrs. D. M. Logan, Mrs. Lee Lavender, Mrs. L. S. Coles, Mrs. Juanita Johnson, Mrs. Wren and the hostess, Mrs. Boyd.

**Trulocks to Host**

The Merry Wives Club will meet in the home of Mrs. O. B. Trulock Tuesday evening. Co-hostess will be Mrs. V. R. Trulock.

**To Abilene Hospital**

Mrs. Susie Johnson will enter Hendricks Memorial Hospital in Abilene Monday for surgery.

Specializing in . . .

**MASSAGES and COLONICS**

504 E. 7th  
9 a.m. to 5 p.m.  
Office phone 8-2431  
or 8-2203

MRS. FLOYE JOHNSON  
(formerly of Kinley Clinic)

**Palace Theatre** Sun. & Mon. Sept. 16-17

COLUMBIA PICTURES presents

**TYRONE POWER**  
**KIM NOVAK**

THE LOVE STORY OF THE MAN MILLIONS KNEW ONLY BY HIS MUSIC!

**THE EDDY DUCHIN STORY**

CINEMASCOPE color by TECHNICOLOR

© REX THOMPSON-JAMES WHITMORE  
© SHEPPERD STRUDWICK and HERMAN VICTORIA SHAW

**ROBT. AYCOCK** family 405 E. 15th is winner of free pass to be picked up Sun. or Mon. at Palace box office.

**Tuesday, Sept. 13**

**BUCK BALL NITE**

"OVER-EXPOSED"

—starring—  
Cleo Moore  
Richard Crenna

**Wednesday & Thursday**  
Sept. 19-20

**"BHOWANI JUNCTION"**

—starring—  
Ava Gardner  
Stewart Granger

**We Guarantee our SANITONE Dry Cleaning!**

**SPOTS VANISH**  
**ALL DIRT OUT**  
**NEW LOOK RESTORED**  
**IT'S GUARANTEED**  
**TAKES OUT PERSPIRATION**  
**ODORLESS EVERYTIME**  
**NEATER PRESS LASTS**  
**ECONOMICAL TOO**

You'll be amazed at how much cleaner, brighter and fresher your clothes will be when dry cleaned our miracle Sanitone way. Patterns, colors and texture, look like-new again! Garments hold shape longer, too. Just try us once and you'll see why we are sure you will like our guaranteed Sanitone Service.

**Better Cleaners**  
521 WALNUT • DIAL RA 8-4191

**Lowest Priced Lowboy**

**in RCA VICTOR HISTORY!**

only \$349.95

The Reeburn, illuminated VHF channel indicator, Phonojack, Tone control, Mahogany grained walnut grained with blond tropical hardwood or lined oak grained finishes. Model 211741.

**You get rich**  
**Balanced Fidelity Sound and new "LIVING IMAGE" picture!**

**HERE'S PROOF** that there is something new in TV! It's RCA Victor's magnificent new Reeburn... a dashing lowboy with a full 261 square inches of viewable picture. And that picture is bright, sharp, steady—it's RCA Victor's "Living Image" picture! You get twin-speaker Balanced Fidelity Sound, too, for added richness and realism. Even tuning is easier. "High-Sharp-and-Easy" tuning lets you dial with needle-sharp accuracy—standing up! Come in—see this TV Original with the "look of tomorrow"—today!

The Dixon, 261 sq. in. viewable "Living Image" picture. Ebony finish. Model 211713. \$229.95

The Allen, Huge 329 sq. in. viewable "Living Image" picture. Ebony finish. Model 241727. \$269.95

The Edgemont Deluxe, 261 sq. in. viewable area, 2 speakers! Mahogany grained finish. Model 210723. \$279.95

The Somerton Deluxe, 261 sq. in. viewable "Living Image" picture, 3 speakers! Maple finish. Model 210747. \$379.50

"Living Image" picture—bright, sharp, steady pictures.

Balanced Fidelity Sound—adds richness and realism.

**COMPLETE RADIO & TV SERVICE**

TERMS, of Course!

**Kirschbaum APPLIANCE STORE**

GIFTS FOR ANY OCCASION IN OUR COMPLETE GIFT DEPARTMENT

"The place to go for the brands you know"

**W-I-D-E**

Throughout the years wide wedding rings have held a special place in the favor of brides. The choices shown here are sure to win a place of highest endearment as exquisitely expressive of the beauty and personal sentiment so tenderly close to your heart.

A. 5 selected, matched diamonds \$125.  
B. 7 selected, matched diamonds \$150.  
C. 10 selected, matched diamonds \$175.  
Including Federal tax

**Sam L. Majors**  
"Jewelers For Generations"

EVERYTHING GOES!

cleaning them all out  
with one big price-smashing  
**SWEEP!**



**THANKS...**

for the fine response  
to our big sale!

SO - BY POPULAR DEMAND - WE  
ARE EXTENDING THE SALE FOR

**One More Week!**

**UPHOLSTERED SUITES!**

- MODERN SOFA—**  
Here's another unusual buy! Modern sofa with 100% nylon upholstery and foam rubber. Beautiful pink to add to your living room decor. Regular \$249.50. Save \$100 **\$149<sup>50</sup>**
- SLEEPER LOUNGE—**  
2-piece Sleeper Lounge upholstered in a beautiful coral shade of nylon. Quality construction throughout. See this value for sure. Regular \$229.50. Save \$70.00 **\$159<sup>50</sup>**
- 2 PC. KROEHLER—**  
Beautiful wintergreen color upholstery in combination of nylon and mohair. Quality Kroehler construction. Excellent living room suite value! Regular \$240.00. Save \$60.50 **\$179<sup>50</sup>**
- 2-PC. SLEEPERETTE**  
Beige color in modern viscose upholstery. Takes care of extra overnight guests. Look it over, it's a honey. Regular \$249.50. Save \$49.55 **\$199<sup>95</sup>**
- 3-PC. SECTIONAL—**  
Famous Kroehler line. Charcoal nylon upholstered 3-piece sectional with comfortable, lasting foam rubber cushions. Regular \$309.50. Save \$60.00. **\$249<sup>50</sup>**
- 2-PC. SECTIONAL—**  
Beige color nylon upholstered sectional that's modern styled and foam rubber filled. A terrific value for your living room. Regular \$329.50. Save \$80.00 **\$249<sup>50</sup>**
- 2-PC. MODERN—**  
Long lasting Ft. Smith construction in red mohair frieze. Brighten up your living room for fall with this wonderful suite. Regular \$325.00. Save \$55.50 **\$269<sup>50</sup>**
- 5-PC. EARLY AMERICAN—**  
Solid maple living room suite in Early American styling. Includes sofa, lounge chair, coffee table, lamp table and step table. Regular \$388.50. Save \$99.00 **\$289<sup>50</sup>**
- 7-PC. LIVING ROOM GROUP—**  
Rattan cane living room suite with covering that zips off for easy laundering. Distinctive styling you'll adore. Regular \$359.50. Save \$59.55 **\$299<sup>95</sup>**
- LARGE MODERN SUITE—**  
Extra large 2-piece modern living room suite, the finest money can buy. Nylon upholstered in white with black and gold metallic. Foam rubber seats, backs and arms. Upholstered platform reversible cushions. Regular \$495.00. Save \$115.50 **\$379<sup>50</sup>**

**CHAIRS REDUCED!**

- Five Occasional Chairs,  
regular \$39.50 **\$25<sup>00</sup>**
- Regular \$59.50  
Platform Rocker **\$39<sup>50</sup>**
- Regular \$129.50  
Lounge Chair for **\$49<sup>50</sup>**
- Regular \$79.50  
Platform Rocker **\$49<sup>50</sup>**
- Five revolving TV platform rockers,  
reg. \$99.95 **\$69<sup>95</sup>**
- Two Lounge Chairs,  
reg. \$189.50 for only **\$89<sup>00</sup>**

**BEDROOM SUITES!**

- SILVER MIST MAHOGANY—**  
2-piece bedroom suite with double dresser and bar bed. Regular \$225.00. Save \$45.50 **\$179<sup>50</sup>**
- ITALIAN PROVINCIAL—**  
Styled from solid pecan. 3-piece suite includes triple dresser, bar bed and night stand. Regular \$239.50. Save \$54.50 **\$185<sup>00</sup>**
- LIMED OAK—**  
3-piece bedroom suite with triple dresser, bar bed and chest. Regular \$239.50. Save \$50.00 **\$189<sup>50</sup>**
- SOLID PECAN—**  
2-piece bedroom suite with classic finished solid pecan. Double dresser and bar bed. Regular \$219.50. Save \$30.00 **\$189<sup>50</sup>**
- EARLY AMERICAN—**  
2-piece solid maple bedroom suite with double dresser and bar bed. Regular \$299.95. Save \$70.45 **\$229<sup>50</sup>**
- SEAFOAM MAHOGANY—**  
3-piece bedroom suite that's an angel's dream. Triple dresser, bar bed and night stand. Regular \$319.50. Save \$90.00 **\$229<sup>50</sup>**
- ENCHANTED WALNUT—**  
3-piece bedroom suite with 64-inch triple dresser, bar bed and 5-drawer chest. Combines quality and beauty. Regular \$475.00. Save \$95.50 **\$379<sup>50</sup>**

TERMS - if desired

EXTRA DISCOUNTS FOR CASH!

- No exchanges or approvals
- All sales final at these prices

**H-M**

**FURNITURE COMPANY**

Next door to Postoffice

**Classified Information**

COMPUTE AD COST BY TABLE BELOW

1 day	4c per word	4 days	11c per word
2 days	7c per word	5 days	13c per word
3 days	9c per word	6 days	15c per word

(15-word minimum charge 60c. Monthly rate 75c line.)

**CLASSIFIED ADVERTISING CLOSING TIMES**  
 Thursday 10:00 a.m. Saturday 10:00 a.m.

The publishers reserve the right to classify correctly all advertising, to edit any copy deemed objectionable only on a cash-in-advance basis. Some ads are charged to phone owners purely as an accommodation and payment is due upon request. Some ads are not charged under any circumstances and accepted only on cash-in-advance basis.

Notice of typographical errors or other errors must be given before the second insertion or claims for extension will not be recognized.

The Colorado City Record is not responsible for copy omissions, typographical errors or any unintentional errors that may occur other than to make proper corrections after being brought to attention. Advertising is accepted on this basis only.

**CLASSIFIED DIRECTORY**

**ATTORNEY-AT-LAW**

**PERRY BARBER**

Attorney-at-Law  
 Dozier Bldg.—116 W. 2nd  
 Office Hours:  
 9 a.m.-5 p.m. Mon. through Fri.  
 9 a.m.-12n on Saturdays  
 Office Phone RA 8-3292

**BURIAL SERVICE**

**KIKER**

Burial Insurance  
 1 Month to 80 Years  
 Minimum Rate  
 410 E. 3rd Phone RA 8-2622

**DENTISTS**

**DR. R. D. BRIDGFORD**

Residence Phone RA 8-2059

**DR. H. JENE STEAKLEY**

Residence Phone RA 8-3120

X-RAY

Phone RA 8-3151—Office—  
 446 Walnut

**HOSPITALS**

**ROOT MEMORIAL HOSPITAL**

Visiting Hours  
 2 to 4 p.m. 6:30 to 8 p.m.  
 Efficiency requires observance of these visiting hours by all persons other than members of the immediate family.

**LAUNDRIES**

"Maytags & Steam Get Them Clean"

Wet Wash—Drying Service

**MORRIS LAUNDRY**

344 W. 4th Phone RA 8-3632

**TV SERVICE**

**TV Service**

on all make sets  
 8:30 a.m. to 10 p.m.

**H-M Furniture Co.**

Sounded TV Dealer  
 Day Phone Night Phone  
 RA 8-4171 RA 8-4030

**ANNOUNCEMENTS**

**Lodges & Meetings**

Called meeting Mitchell Lodge 563 AF & AM Tuesday 7:30 p.m. Work in MM degree. All members urged to attend. Visitors welcome. Refreshments.

Wayland Webb W M Charles Godwin, Sec'y.

**Special Notices**

All lands belonging to the A. E. Maddin Estate situated in southeast part of Mitchell County are posted according to law, and all trespassers will be prosecuted.

All lands belonging to the J. A. Buchanan Estate and to Roy D. Buchanan, situated in Mitchell County are posted according to law and trespassers will be prosecuted.

All lands known as Randerbrook (Spade) Ranch in Mitchell, Sterling and Coke counties are posted according to law. All unauthorized trespassing must stop or perpetrators will be prosecuted. O. F. Jones, manager.

All lands owned and controlled by Dr. Harry Logsdon are posted according to law. All trespassers will be prosecuted.

**MERCHANDISE**

**Building Material** I-2

Pay CASH AND SAVE

2x4 & 2x6 8 ft. thru 20 ft. \$7.25

1x6 Sheathing (dry pine) 5.95

Corrugated Iron, (29 gauge Strongbarn) 9.75

Oak flooring (premium brand) 9.95

Composition shingles (215 lb.) 6.95

24x24 2 light window units 9.95

28x68 Mahogany slab door 6.40

20x68 Mahogany slab door 5.30

**VEAZEY CASH LUMBER CO.**

If You Have the Cash We Have the Price

Phone 3-8612, Snyder, Texas Mile West on Lamesa Hwy.

**Miscellaneous** I-5

For sale: Bathinet, car-bed, car-seat and baby bed. All in good condition. Dial RA 8-2450.

**Pets, Dogs, etc.** I-9

Guaranteed Parakeets and Canaries, feed and cages. Erwin Bird Farm, 408 E. 15th, Phone RA 8-4196 or RA 8-4148.

**Wanted To Buy** I-11

More money for plumbers brass, copper wire, oil field salvage, pipe protectors, scrap iron, batteries & rags. If dollars mean anything to you, sell us your scrap materials.—San Angelo Iron & Metal Co., 740 Block W. 14th, Ph. 21421, San Angelo.

**RENTALS** J

**Apartments** J-1

Two furnished apartments, air-conditioned, two bathrooms, near schools, reasonable rent. 843 Walnut, dial RA 8-3343.

Extra nice three-room and bath garage apartment furnished. 533 E. 11th St. Dial RA 8-2818.

Three room and bath, also two room and bath apartments. Real nicely furnished. Bills paid, take children. Mrs. Taylor 102 W. 4th. Dial RA 8-4382.

Clean three room furnished apartment with garage. Bills paid. Inquire at 441 Vine or dial RA 8-3155.

**Child Care** E-3

Will do baby sitting in my home. 830 E. 9th. or dial RA 8-2534.

**EMPLOYMENT** F

**Help Wanted** F-1

Earn \$40.00 weekly comm. sewing babywear. No house selling. Rush stamped addressed envelope. Baby Gay, Warsaw, Indiana.

Wanted: woman to press shirts. Woman with experience desired but will teach a willing worker. Apply at office of Colorado Steam Laundry.

Wanted: person to keep house for elderly man. Must be able to drive a car. Dial RA 8-2847 or RA 8-2701.

Help wanted: Ages from 21 to 44 with high school education or equivalent. Starting salary \$65.00 plus commission. Contact C. W. Thompson, 601 Permain Building or write Box 831 Big Spring, Texas.

**FINANCIAL** G

**Farm & Ranch Loans.** G-2

Farm and Ranch loans, 4% rate, with the privilege of paying at any part at any time without penalty. Colorado National Farm Loan Association, 135 W. 2nd St.

**FARM & RANCH** H

**Farm Machinery** H-1

Cotton trailer for rent. Dial RA 8-2240.

**MERCHANDISE** I

**Appliances** I-1

Are you thinking of buying an automatic washer? Don't buy any brand until you have tried the Frigidaire washer for seven full days with no obligation. Operates on casters. No plumbing necessary. For free trial, dial your Frigidaire dealer today. RA 8-2252.

Kirby vacuum cleaners sold and repaired. Shampoo and de-moth carpets. Dial RA 8-2345. 1145 Walnut. Richard Lange, Agent.

**Household Goods** I-3

One Oriental rug 9 X 12 also electric saw and cutter. Mrs. H. L. Lockhart, 1105 Chestnut or dial RA 8-2198.

**Building Material** I-2

For sale, Bargain—One inside door 2' x 6' with hardware, enameled, white; one glass shower stall door with polished aluminum frame. Excellent condition. See N. H. White, 716 Vine or call RA 8-2316 after 5 p.m.



"... Are you sure that veterinarian in the Want Ads fixes cuckoo clocks?"

**REAL ESTATE** K

**Houses for Sale** K-4

For sale low equity in two bed room home. See at 980 E. 13th St. or dial RA 8-3088.

Five room house. Two bedrooms, bath, living-room, dining room and kitchen. Fenced yard with grass and shrub. Also paved street. Call Frank King RA 8-2959 or see at 949 E. 16th.

Two-bedroom house with carport, good yard. Six-years-old, good condition. \$130.00 plus closing cost to veteran. 433 E. 20th or dial RA 8-2343.

Equity in three-bedroom house, panel heat, Youngstown kitchen, paved street, near three schools. 1215 Walnut Street. Dial RA 8-3116.

Five room stucco house with five acres of land. One mile North on Snyder Hi-way. Dial RA 8-2278.

Six room duplex furnished or unfurnished. Terms if desired. Call AM 4-2786 or AM 4-5585 Big Spring, Tex.

New three bedroom house for sale. \$500.00 down. 133 W. 8th. or dial RA 8-3235. Mrs. L. E. Jordan.

Six room house, big shade trees. Small down payment, balance like rent. Dial RA 8-3235 or see Mrs. L. E. Jordan at 133 W. 8th St.

**LEGALS** L

The county budget as prepared by auditor H. P. Wine was reviewed by the commissioners court while in regular session Sept. 10, 1956 and Sept. 24 from 1:30 p.m. to 3:30 p.m. was set as budget hearing date. This hearing is open to the public. Sam Bullock County Judge.

**B. DeGarmo Succumbs In El Paso**

Bruce DeGarmo, 84, former Colorado City resident, died Friday night in El Paso.

Graveside rites will be conducted Sunday at 3 p. m. in Colorado City Cemetery by Rev. Jack Ellzey, pastor of First Methodist Church.

DeGarmo formerly owned and operated a garage and service station in Colorado City. His wife died in El Paso since 1950.

Survivors include a son, Hal DeGarmo, former Colorado City resident now living in El Paso; a brother, Arthur DeGarmo of Seattle, Wash., and two grandchildren.

Kiker & Son Funeral Home will be in charge of burial here.

**Farmers Union Meets Thursday Night Here**

Mitchell County Farmers Union will meet Thursday at 7:30 p. m. in Lone Wolf Electric Cooperative Building.

A movie will be shown for members and their families, according to A. K. McCarley Jr., president. Plans will be made for a new membership drive.

**Duplicate Winners**

Mrs. Pete Ainsworth and Mrs. John Harvey won high score Friday morning in duplicate bridge at Colorado Country Club.

Second high was won by Mrs. Frank Derigibus and Mrs. Goodwin Simpson. Hostess was Mrs. B. R. Wilkinson.

**BETA SIGMA PHI PROGRAM**

**Key Points for Happiness Are Related for Sorority Members**

A recipe for happiness was outlined Tuesday evening by three members of the Mu Pi Chapter of Beta Sigma Phi.

Mrs. M. L. Melton, Mrs. Jimmy Kelley and Miss Jane Merrill presented the program—"Definition of Happiness."

Mrs. Melton described eight factors which contribute to a happy home life. They were sleep, exercise, relaxation, jobs, hobbies, sports and avocations.

"Home means household duties," said Mrs. Melton, "and you must cultivate the right attitude toward it to expect a cooperative family."

"Actually a child has a feeling of being feeble if you work around him. He wants to feel needed and worthwhile."

Mrs. Kelley talked on "Happiness Through Emotion."

"In contrasting the effect of positive and negative emotions in relation to happiness," said Mrs. Kelley, "it is only reasonable to assume that positive emotions are conducive to happiness, whereas negative emotions create unrest and unhappiness."

After elaborating on the many positive emotions, Mrs. Kelley explained that negative emotions were barriers to happiness.

In the second portion of her talk, Mrs. Kelley pointed out the happiness we receive through our associates and friends.

"Whether one will admit it or not, friends are important," said Mrs. Kelley.

The third speaker, Jane Merrill discussed "Happiness Through a General Attitude Toward Life."

"Happiness consists of being consciously in harmony with the true, the good, and the beautiful," said Miss Merrill, "and the secret of happiness is not to do what you like to do, but to learn to like what you have to do."

"Happiness is not found by seeking," she continued, "it is not an end in itself."

"We forget that what happens within us is more important than what happens to us."

It is not for us to be embittered when things don't turn out the way we planned. Happiness

is not the life of ease." Quoting Dr. Norman Vincent Peale, Miss Merrill said "successful living hinges on the capacity to believe and on the art of mastering faith."

And in quoting the words of the evangelist, Billy Graham, she said:

"God does not discipline us to subdue us, but to condition us for a life of usefulness and blessedness. In His wisdom, God knows that an uncontrolled life is an unhappy life, so He punishes upon our wayward souls that they may be directed into the paths of righteousness."

Miss Merrill said "the sacred obligation imposed by man's moral nature is to follow without swerving the dictates of duty."

"On this basis," she emphasized, "men may safely and hopefully work backward into a philosophy and forward into a faith."

The first fall meeting was in the home of Miss Mary D. Hickman.

Club president, Hazel Burdine, presided at the business meeting. She read correspondence from the International Office which advised that Mu Pi chapter had achieved a three-star rating for its accomplishments during the past year. This is the third year the chapter has received this rating.

Jane Merrill and Floy Sparks were appointed to fill the vacancies of the offices of recording secretary and treasurer.

Attending the meeting and receiving yearbooks for 1956-57 were Mrs. J. T. DeVore, Mrs. Melton, Mrs. Wann Sparks, Miss Merrill, Mrs. Eula McClure, Mrs. Hazel Burdine, Mrs. Kelley, Mrs. R. H. Ratliff, Jr., Sallie Tharp and the hostess.

Without faith life is futile. "Each person has a mission in life. That he may even deny God's existence is beside the point. Whether he finds his mission is also beside the point."

"To find happiness we must clothe ourselves with Christian virtues of love, joy, courage, and faith which come through religious training, moral practice, wisdom, and appreciation of the beautiful," Miss Merrill concluded.

The first fall meeting was in the home of Miss Mary D. Hickman.

Club president, Hazel Burdine, presided at the business meeting. She read correspondence from the International Office which advised that Mu Pi chapter had achieved a three-star rating for its accomplishments during the past year. This is the third year the chapter has received this rating.

Jane Merrill and Floy Sparks were appointed to fill the vacancies of the offices of recording secretary and treasurer.

Attending the meeting and receiving yearbooks for 1956-57 were Mrs. J. T. DeVore, Mrs. Melton, Mrs. Wann Sparks, Miss Merrill, Mrs. Eula McClure, Mrs. Hazel Burdine, Mrs. Kelley, Mrs. R. H. Ratliff, Jr., Sallie Tharp and the hostess.

Without faith life is futile. "Each person has a mission in life. That he may even deny God's existence is beside the point. Whether he finds his mission is also beside the point."

"To find happiness we must clothe ourselves with Christian virtues of love, joy, courage, and faith which come through religious training, moral practice, wisdom, and appreciation of the beautiful," Miss Merrill concluded.

The first fall meeting was in the home of Miss Mary D. Hickman.

Club president, Hazel Burdine, presided at the business meeting. She read correspondence from the International Office which advised that Mu Pi chapter had achieved a three-star rating for its accomplishments during the past year. This is the third year the chapter has received this rating.

Jane Merrill and Floy Sparks were appointed to fill the vacancies of the offices of recording secretary and treasurer.

Attending the meeting and receiving yearbooks for 1956-57 were Mrs. J. T. DeVore, Mrs. Melton, Mrs. Wann Sparks, Miss Merrill, Mrs. Eula McClure, Mrs. Hazel Burdine, Mrs. Kelley, Mrs. R. H. Ratliff, Jr., Sallie Tharp and the hostess.

**NOW COMPLETED**  
**3-bedroom home**  
 • Central heating  
 • Plenty of storage  
 • Air-conditioned  
 • 956 Marshall St.  
 Purchase G.I., F.H.A. or conventional loan.  
 Inquire: RA 8-3684  
**Jno. C. Harvey**  
 "Builder of Better Homes"

Get the **LONG DEAL NOW** during our Great **SEPTEMBER SALE!**

Right now you can buy a new **1956 FORD** EASIER THAN EVER BEFORE!

- Easy Terms • Top Trade • Low Down Payment

**BEST DEAL ANYWHERE DURING OUR SEPTEMBER SALE!**

**CRADDOCK-WITTEN**  
 FRIENDLY Ford DEALERS

**Craddock-Witten BODY SHOP**  
 140 W. 3rd  
**Expert Painting**

pt. 16, 1955  
 k!  
 79<sup>50</sup>  
 85<sup>00</sup>  
 89<sup>50</sup>  
 89<sup>50</sup>  
 29<sup>50</sup>  
 29<sup>50</sup>  
 79<sup>50</sup>  
 NY  
 ffice

CADE SCORES FOR WOLVES

# Seminole Drubs Wolves, 37-6, For Worst Defeat In 5 Years

A pair of twisting halfbacks and a tricky quarterback combined their football talents for Seminole High Friday night to hand Colorado High Wolves their worst grid defeat in five years, 37-6.

Wolves—favored in most quarters by at least one touchdown—lacked the punch to dent the aggressive Indian team.

Seminole, outweighted perhaps 12 pounds per man, capitalized on every break to take a 12-0 halftime lead and stretch that to 31-0 before the Wolves broke into the scoring column.

Seminole was camped on the Wolves' one-yard line as the game ended.

Only bright spot in the Wolves' entire offensive maneuvers was a 15-yard scoring jaunt by Bancker Cade.

Cade was the Wolves' offensive leader with 85 yards in 17 carries for a five-yard average.

James Shoemaker, Wolf fullback, juggled the ball 24 times for a net yardage of 59 yards to compile a 2.5-yard average carry.

Wolves netted only 152 yards rushing as a team.

Seminole's pair of halfback running threats—Bill Wallace and Gerald Stewart—each averaged over 7.5 yards per tot.

Wallace—who scored two touchdowns—carried for 136 yards in 18 tries through the line for his 7.5 average.

Stewart rambled for 61 yards on eight carries.

Leland Caffey, Indian quarterback, kept the Wolf defense mixed-up all night long with his ball-handling and passing. He used the belly play better than an Arabian dancer, for consistent gains around the Wolves' ends.

And he connected twice on identical 39-yard scoring passes to end Archie English as English rambled unguarded past the Wolf secondary.

Seminole connected on six of 10 passes for 83 yards net.

Wolves took to the air on 15 plays, connected four times for 63 yards, Jimmy Richardson was on the receiving end of three of the aeriels for 51 yards.

The longest Wolf aerial came from the passing arm of senior Roy Maples to Richardson for 24 yards, carrying to Seminole's 15.

It set up the lone Wolf score as Cade raced around right end given assist along nose on the next play into the end zone.

Sophomore Bobby Caffey started at the quarterback position for the Wolves, but it was Roy Maples that shined the brightest of the three Wolf ball-handlers.

Seminole wasted no time in crossing the double stripe. Following a short punt by Wolves' Jim Windham and a return by Indian's Don Holt, Seminole went to work on the Wolves' 28.

With Wallace carrying four consecutive times, the Indians bucked into the end zone.

Midway of the first quarter, both teams began fumbling—and before the game was over, C-City had lost the ball five times to Seminole via the fumble route while Seminole committed four fumbles to the Wolves.

Early in the second quarter, behind only 6-0, the Wolves started a drive goakward. But a fumble on the Indian 29 cut it short.



**OFFENSE & DEFENSE**—Roy Maples, left, used his passing arm effectively to set up the lone Wolf score against Seminole Friday. Bobby Carpenter, right, was outstanding on defense for the Wolves. (Record Staff Photos)

And the Indians took over and drove 80 yards for a score—probably the score that broke the Wolves' back.

A 28-yard ramble by Wallace was the big play that carried to the Wolves' 27.

Moving the ball to the 15, Seminole sent freshman fullback Carol Norton into action with the 173-pounder knocking at the line three times before he crossed into the end zone for the second Indian TD with 6½ minutes left in the half.

Interception of a Wolf pass and a 55-yard runback by Seminole's Leland Caffey set up the third TD.

Caffey gathered in the Wolf aerial on his 20, moved behind a wave of downfield blockers and scampered 55 yards to the Wolves' 25 where the last defender—Bobby Carpenter—showed him out of bounds.

Wallace took a lateral from Caffey for 18 yards to the Wolves' eight and then plunged off tackle for the remaining yardage.

Lutterell made good on the conversion for a 19-0 lead. After the ensuing kickoff, Wolves couldn't move and Windham kicked to the Indian 44.

Caffey gathered in the Wolf aerial on his 20, moved behind a wave of downfield blockers and scampered 55 yards to the Wolves' 25 where the last defender—Bobby Carpenter—showed him out of bounds.

Wallace took a lateral from Caffey for 18 yards to the Wolves' eight and then plunged off tackle for the remaining yardage.

Lutterell made good on the conversion for a 19-0 lead. After the ensuing kickoff, Wolves couldn't move and Windham kicked to the Indian 44.

Robertson's scores came on a 30-yard runback of an intercepted pass and later, a 15-yard pass from Templeton.

Parnell's scores came on short plunges of five and four yards. Templeton used a two-yard lunge for his score, in addition to running over two extra points.

Clyde Parnell, 180-pound senior tackle—one of three seniors on the Loraine team—was outstanding on defense.

Three plays set the ball on the Wolves' 39 where Caffey faded back and hit English on the first of two identical pass scoring plays.

Again the Wolves failed to gain after the kickoff and Seminole took over on the 43.

Moving the ball to the Wolves' 19, Seminole sent in their second string.

On the second play, sub halfback Kenneth Cook circled right end on a reverse for 19 yards and a 31-0 lead.

Midway of the fourth quarter, Wolves recovered an Indian fumble on their 13-yard line and marched 87 yards for their lone score.

Cade ripped off 13 yards, on the first play and Shoemaker followed with a 10-yard jaunt.

Maples hit end Don Black with a 14-yard pass and followed with the 24-yarder to Richardson to Seminole's 15.

Then Cade followed with his scoring run.

Lucky Merket's conversion try was low.

Seminole took the kickoff and in five plays had their final TD. Another 39-yard pass from Caffey to English did the trick.

Windham and Carpenter were outstanding in the Wolves' weaky line.

Lack of offensive blocking in the line hurt C-City, and on defense Seminole circled the Wolf ends for good gain. The Indians' yardage through the center of the line was tougher to get.

Robertson's scores came on a 30-yard runback of an intercepted pass and later, a 15-yard pass from Templeton.

Parnell's scores came on short plunges of five and four yards. Templeton used a two-yard lunge for his score, in addition to running over two extra points.

Clyde Parnell, 180-pound senior tackle—one of three seniors on the Loraine team—was outstanding on defense.

Robertson's scores came on a 30-yard runback of an intercepted pass and later, a 15-yard pass from Templeton.

Parnell's scores came on short plunges of five and four yards. Templeton used a two-yard lunge for his score, in addition to running over two extra points.

Clyde Parnell, 180-pound senior tackle—one of three seniors on the Loraine team—was outstanding on defense.

Robertson's scores came on a 30-yard runback of an intercepted pass and later, a 15-yard pass from Templeton.

Parnell's scores came on short plunges of five and four yards. Templeton used a two-yard lunge for his score, in addition to running over two extra points.

Clyde Parnell, 180-pound senior tackle—one of three seniors on the Loraine team—was outstanding on defense.

## Rabbits, Ragnots Win Season Grid Openers

Jackrabbits and Ragnots got off to successful starts for the 1936 football season, whipping Ballinger teams by lopsided scores Thursday night in Ballinger.

The ninth grade Rabbits walloped the Ballinger ninth graders 26-13 while the Ragnots blanked the Ballinger eighth graders 28-0.

Coach Bill Everett's Rabbits used the running talents of fullback Dickie Richardson for their win.

Richardson rambled for touchdowns on runs of 15, 45 and 68 yards while Bill Davis contributed the fourth touchdown with a 11-yard scamper.

Rabbits held a 6-0 halftime lead and increased it to 20-6 at the end of the third quarter.

Ballinger scored their touchdowns on the Colorado City ninth grade subs.

Rabbits had one touchdown called back on the penalty.

Everett said he was well-pleased with the team as a whole but expects the opposition to be tougher as the season progresses.

Rabbits play Hermleigh's strong B-team here Thursday in the next contest.

Coach Ocie Lambeth's Ragnots used the battering runs of Red Lemons to pave their way to victory.

Lemons tallied on two runs of 20 to 25 yards and scored one extra point on a run.

Don Vest marked up one touchdown and raced across three extra points.

Douglas Hodges, tiny wing back, accounted for the other touchdown on a 25-yard pass.

Ragnots play Snyder's eighth grade Thursday, 8 p. m. in Snyder with the Junior High seventh grade Pee-Wees playing the first game at 6:30 p. m.

Coach Ocie Lambeth's Ragnots used the battering runs of Red Lemons to pave their way to victory.

Lemons tallied on two runs of 20 to 25 yards and scored one extra point on a run.

Don Vest marked up one touchdown and raced across three extra points.

Douglas Hodges, tiny wing back, accounted for the other touchdown on a 25-yard pass.

Ragnots play Snyder's eighth grade Thursday, 8 p. m. in Snyder with the Junior High seventh grade Pee-Wees playing the first game at 6:30 p. m.

Coach Ocie Lambeth's Ragnots used the battering runs of Red Lemons to pave their way to victory.

Lemons tallied on two runs of 20 to 25 yards and scored one extra point on a run.

Don Vest marked up one touchdown and raced across three extra points.

Douglas Hodges, tiny wing back, accounted for the other touchdown on a 25-yard pass.

Ragnots play Snyder's eighth grade Thursday, 8 p. m. in Snyder with the Junior High seventh grade Pee-Wees playing the first game at 6:30 p. m.

Coach Ocie Lambeth's Ragnots used the battering runs of Red Lemons to pave their way to victory.

Lemons tallied on two runs of 20 to 25 yards and scored one extra point on a run.

Don Vest marked up one touchdown and raced across three extra points.

Douglas Hodges, tiny wing back, accounted for the other touchdown on a 25-yard pass.

### Valliz Son Born here

Rugello Valliz, son of Mr. and Mrs. Jose Valliz, of Star Route, Vincent, was born in the local hospital Saturday.

### Son for Snyder Couple

Jesse Dirk Kerley, son of Mr. and Mrs. Edwin Kerley, of Snyder, was born in the local hospital.

## SPECIALS \$ \$ \$

for the week of Sept. 16th!

- GUM DOOR—2'8x6'8, 1-1/2" hollow core flush gum door. Reg. \$9.85 sale \$6.90
- STEEL SINK—14"x20" steel utility sink in white with center drain. Reg. \$5.95 sale \$5.10
- WATER HEATER—20-gallon 'Day and Night' water heater. Reg. \$72.50 sale \$65.35
- COTTON MOP—32-ounce heavy duty. Reg. \$2.55 sale \$2.10

### Hammond Lumber & Supply

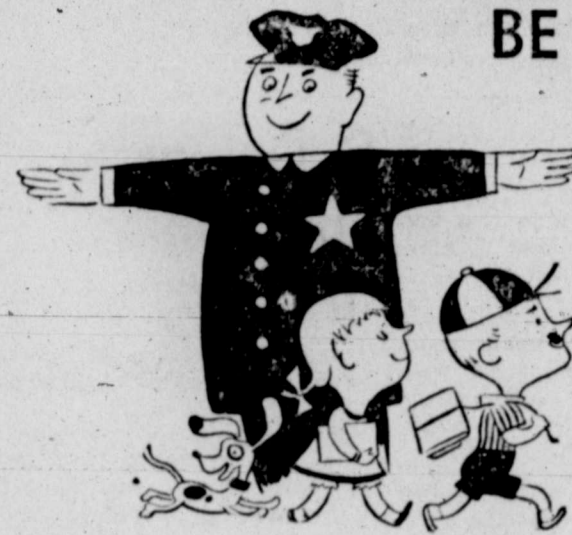
233 W. Second • Dial 8-4101

tal Sept. 6, weighing seven pounds and three ounces.

Uncle Luke's las' wish is to be insured with

**Dan Patchell**  
INSURANCE AGENCY  
Real Estate Loans and Automobiles Financed.

BE ALERT! YOUR CHILDREN ARE GOING ...



# Back to School

DRIVE CAREFULLY!



School-time is Safe driving time — The Child you save may be your own!

More and more children are on the streets again—some of them going to school for the first time. Children will be crossing the streets, walking along country roads, waiting for school buses.

Children are sometimes unpredictable, and it is up to drivers to stay alert and in full command of their vehicles in case an emergency arises.

- Be doubly careful near schools or where children play. Children don't realize the danger and may take chances. That's why you, the driver, must take extra care.
- Slow down. Speed is dangerous at any time — doubly dangerous when visibility is cut by rain, fog, or darkness.
- Keep lights and windshield wipers in good condition during rainy or snowy weather. You have to see danger to avoid it.
- Keep your car in top mechanical condition. Use chains when roads are slippery.
- Obey traffic laws. Know the traffic laws whenever you travel and don't break them.
- If you drive, don't drink—if you drink, don't drive. Remember, death takes no holiday.
- Be a courteous driver. Yield right-of-way, even when it should be yours. It's better to stay alive than to be dead right.

FOR YOUR CHILDREN'S SAKE, THIS AD IS SPONSORED BY THE FOLLOWING:

JAY ADAMS CHEVROLET

Chevrolet-Oldsmobile

HUNTER-MERKET PONTIAC

Pontiac Sales & Service

WEBB BUICK CO.

Buick Sales & Service

FRANK MOTOR CO.

Chrysler-Plymouth

HUMBLE WHOLESALE

James Boyd's

Dennis Welding's

SHELL SERVICE STATION

LONE WOLF ELECTRIC

Co-operative

DON WALLACE MOTOR CO.

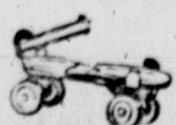
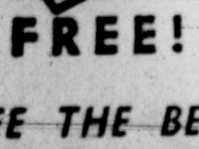
Mercury Sales & Service

IT'S FUN! IT'S THRIFTY!  
to save **EVEREDY COUPONS**

MAKE SAVING "EVEREDY" COUPONS A GAME.  
It's lots of fun and thrifty too.

**DOUBLE COUPONS ON TUESDAY**

With \$2.50 or more purchase



SEE THE BEAUTIFUL PREMIUMS ON DISPLAY AT OUR STORE-NOW!

**GARY'S FOOD MARKET**