

# Root Hospital Closing Set Oct. 15

## Our Town

By JOE BELL

COLORADO CITY, as a community, faces a crisis in its health and welfare.

That is the fact, plain but serious. Announcement that Root Memorial Hospital will cease operation and close its doors Oct. 15 propels this crisis upon the community immediately.

TO MANY no doubt, the announcement is a shock.

For the few who have been close to the situation, however, the prospect of the hospital's closing has been recognized ever since the U. S. Department of Health Education & Welfare began administering the Medicare program.

The job is there, however, for everyone and the problem is a crisis.

REGULATIONS of the Medicare program — which critically handicap the operation of privately owned hospitals — is the direct cause for the decision by Charles Root, owner, to close Root Memorial.

This hospital, different from a public owned or endowed facility, cannot financially survive with present regulations of Medicare.

And others like it across the nation — there are 255 in Texas — face a similar death unless Medicare rules are revised to recognize the financial difference in a tax supported hospital and a hospital which must pay its own way with a profit just like any other business.

IN OTHER WORDS, Root Memorial Hospital and other privately owned hospitals must make a living or die. These hospitals cannot go to a City Council or Commissioners Court or City-County Hospital Board and obtain additional appropriations from tax funds to make up deficits.

These hospitals — in contrast, to tax supported governmental hospitals or endowed hospitals — must pay their own way.

And, under the terms of Medicare's regulations, Root Memorial has found that it cannot survive.

MEDICARE administrative regulations — by its failure to recognize the difference between a privately owned hospital and a tax supported hospital — has required a cutback in revenue for the hospital, while at the same time requiring an increase in operational expense.

Roughly, this has added a 20 per cent additional cost burden upon Root Memorial Hospital.

This is an insurmountable obstacle for our hospital and, for that matter, any other business in town.

This additional financial burden for Root Memorial comes from a variety of regulations by Medicare.

Payment from the federal government for Medicare patients is on a cost basis only — not recognizing that a privately owned institution cannot survive only by meeting its operation costs. And more than half of Root Memorial's patients are Medicare.

Filing of enormous paper reports with Medicare has required the hiring of additional personnel.

The hospital must maintain a staff to meet the year's average patient load, regardless of the fact if there is only one patient in the hospital. Thus, there is no allowance for the hospital to cut out staff during low periods, to trim costs, and to increase its staff during peak use.

Even worse, Medicare regulations allow only a vaguely defined 2 per cent reimbursement for capital costs of the business, which the Federation of American Hospitals, Inc. have claimed for months is definitely unrealistic and inadequate in meeting the capital investment costs of a business.

See Our Town Page 5

# Colorado City Record

"The Only newspaper devoted completely to the interest of Colorado City and Mitchell County"

16 pages COLORADO CITY RECORD, THURSDAY, SEPT. 29, 1966 \$5 Per Year in Mitchell County — 10c Per Single Copy

## Mrs. Tower Draws 100 For Luncheon

Colorado City got on the campaign trail for the U.S. Senate Monday with a luncheon appearance by Mrs. John Tower, wife of the junior Republican lawmaker.

A crowd just over 100 was on hand to meet Mrs. Tower and welcome her to the city. Her local visit was part of a 1,300 mile, 17-city tour in behalf of her husband.

Mrs. Tower was greeted at the airport by Republican and other local dignitaries before her Civic House appearance.

Despite the campaigning nature of her visit, Mrs. Tower declined comment on any issues involved with the battle between her husband and Texas Attorney General Waggoner Carr for the Senate seat.

She did say she felt the key issues of the day were Vietnam and inflation, but she did not elaborate.

Asked about the climate of the campaign at this time, Mrs. Tower said, "I know it will take a great deal of work, but have great reason to be encouraged."

Regarding the hectic pace of the campaign, Mrs. Tower said, "It's been easy for me. I've just had a good

See Mrs. Tower Page 5



Flag Presentation

MRS. JOHN TOWER presented an American flag that had flown over the Capitol to Mayor John Chinn as part of a welcoming ceremony for her campaign visit to Colorado City Monday.

## 140 MEMBERS HERE

## County Youth Mark National 4-H Week

That extra flag, the four-leaf clover, being flown under Old Glory at the courthouse here this week is the signal that 140 Mitchell County boys and girls are celebrating National 4-H Week, Sept. 24 through Oct. 1.

Celebrating are members of the Countywide 4-H Club headed by co-chairmen Jim Dekroy and Sharon Hyatt. The club meets each first Monday night, sponsored by the County Agent and Home Demonstration Agent, Extension Service in Mitchell County.

Members added a big banner, strung across Second Street, Wednesday, heralding National 4-H Week. All civic clubs in town will sport 4-H placemats for their weekly luncheons.

Across the United States, a total of 22 million boys and girls and 23 million alumni are also celebrating the week.

Four-leaf clover on the flag with the H on each leaf is the well-known symbol for 4-H, with the 4H's standing for head, heart, hands and health.

The 4-H leafy four-leaf clover, already found by 140 young Mitchell Countians, "is a way of life to them," said Bobby Lemons, county agent in calling attention to the celebration of National 4-H Week here.

Currently, Lemons is supervising a total of 39 feeding projects — 21 lambs, 12 calves, and 16 pigs.

During the summer, 28 girls took part in the 4-H wardrobe workshop supervised by Miss Janice Miller in Colorado City.

Complimenting activities are family living, personal development, home management, conservation, engineering, community beautification, character and leadership.

The organization is cooperatively sponsored by the Extension Service on three levels: in the county through Extension Agents and a corps of volunteer workers; in the state through Texas A&M University; and nationally, through the United States Department of Agriculture, which administers the program as youth phase of the Extension Service.

## Wolves Seek Fourth Win At Brady

Colorado City's undefeated Wolves, riding the crest of a three game winning streak, traveled to Brady Friday for an 8 p.m. clash with the once-beaten Bulldogs.

A tough game is the expectation of the local coaching staff and the Wolves should have their hands full.

Wolf hopes were dimmed somewhat this week when starting halfback Larry Paul suffered a dislocated hip in an auto accident.

Paul, who is a top flight defensive halfback in the Wolf secondary, may be lost for the season.

Two other Wolves in the accident, Maeca Findley and Sammy Parham, suffered only minor injury and will be ready for action against Brady.

Coach Truman Nix plans to replace Paul with Rusty Steakley in the defensive lineup while an assortment of Wolf runners will fill in on offense.

The Wolves' cause may be aided by the injury to Puddin' Jones, the Bulldogs' 180-pound back who is the stand-out of the squad.

Jones played only shortly against Winters and it is possible that he will be held out Friday night to let his ankle heal for district play. This would be a boost to the Wolves since Jones has definitely been the "man to stop" for Brady opponents.

Except for Paul, the Wolves will be in excellent condition for the Brady tilt.

Game time is 8 p.m. Friday night in Brady.

## Leaders Shocked At Announcement

Announcement of Root Hospital's planned closing was met with shock and amazement by local officials

contacted Wednesday. County Judge Elmer Martin expressed regret at the news.

Martin said, "Personally speaking, I will do all within the power of my office to see that each Mitchell County citizen has access to necessary hospital facilities and care within the county."

Dr. Kenneth Cowan, a partner in Rhode-Cowan Clinic and City Health Officer, said he was "sort of flabbergasted" at the planned closing of the hospital.

"I certainly hate to see it close and hope we can find some way of keeping it going," Dr. Cowan said.

"This is one of those situations where Medicare hurts us," he continued.

Dr. Cowan said the hospital's closing would deeply affect the entire medical community in the city.

Cowan feared the loss of hospital staff members noting that one technician had already accepted another job. "The sad thing is that the personnel scatters and then they are hard to get back together," he said.

Ex-Mayor's Heart Attack Is Serious

Trevor Crawford, former Colorado City mayor, was reported in improved, but still serious condition Wednesday in Big Spring's Malone and Hogan Foundation Hospital.

Crawford, an engineer at Cosden Refinery in Big Spring, was stricken with a critical heart attack Friday.

He became ill in San Antonio while on a business trip for Cosden, but returned to Big Spring before entering a hospital.

Crawford, who was mayor here while being Cosden's supervisory engineer at Col. Tex Refinery, moved to Cosden a year ago after being transferred to Cosden's Big Spring refinery.

## DISTRICT 8 VFW PARLEY

## Local Post Expects 200 For District Convention

Nearly 200 VFW and Auxiliary members are expected in Colorado City Saturday and Sunday for the District 8 meeting of the organization.

District Commander Harold Spivey of Snyder will head business sessions for representatives of 12 posts expected to attend.

Cleo G. Clayton Jr., junior vice commander of the state, will represent the Department of Texas at the two-day session.

Registration gets underway Saturday at 10 a.m. and continues until 7 p.m. In addition a short period will be set from 8-9 a.m. Sunday for late registration.

Saturday's activities include a joint hospitality and tea hour from 4:30 p.m. at

the Wilson Wyatt Post Home located at 1264 College Avenue. A dance is scheduled at 9 p.m.

Schedule for Sunday starts with the 8 a.m. registration with coffee and doughnuts served from 8:30-9 a.m.

At 9 a.m. a joint memorial service will be conducted to honor deceased veterans.

A 10 a.m. business session is scheduled for 10 a.m. for VFW members at the Post while auxiliary members hold a similar meeting at the Lone Wolf Co-ordinator.

At noon a joint session and luncheon is on tap at the Post.

Starting at 2 p.m. Sunday, a school of instruction for all district and post officers will be taught by Bill Cole, Past Department Commander from Abilene.

Entertainment activities are also planned Sunday afternoon.

Clayton, who represents the Department of Texas, was named Junior Vice Commander in July.

A veteran of World War II, he is the senior member of an Amarillo law firm and has been a practicing attorney for 27 years.

He served as post commander for Amarillo Post for two terms and as Department Judge Advocate for three terms. In addition he worked three different terms as a member of the national legal committee for the VFW.

As Department Junior Vice Commander, he is the community service chairman for the Department of Texas during 1966-67.



Boosters of the Week

BILL HOLBERT, left, and H. H. Reynolds are among Quarterback Club members chosen "Booster of the Week" for their extra effort in boosting the Colorado City Wolves.

## OF CABBAGES AND KINGS

## A Problem Of Seats

By JAMES ANDERSON  
A growing list of fans have voiced complaints over finding their reserved seats already occupied upon arriving for the game.

Some folks moved when advised that they were in the wrong seat either by accident or on purpose while others talked even after being shown the real seatholders.

The purpose of buying reserved seats is just what the title indicates — the privilege of having a certain seat without having to worry where you'll be in the stands.

A reserved seat ticket entitles the buyer to a certain spot in the grandstand and the buyer should receive what he pays for.

And to refuse to move or show ire at being asked to leave someone else's rightful place is just being outright rude and boorish.

SEEMS THAT we need some sort of method whereby fans could be aided in finding their seats. Some were confused as to what row and even what side they were supposed to be sitting on.

That might be a real good project for the Boy Scouts or some other organization to undertake. A group of ushers would be helpful to fans in finding their seats, especially out-of-town visitors unfamiliar with our stadium, and also might prevent any more of the unfortunate incidents that happened at the first game.

TICKETS for the Colorado City-Brady clash Friday night are on sale at Landau's for \$1.50 each. The duets will be available until noon Friday for the contest.

Local fans were well on their way to filling a Quarterback Club sponsored charter bus to Brady.

A few seats are still left on the first one and if needed, a second bus will be char-

tered for the trip. Price of the round-trip fare is \$5.75 per seat. Sure will save a long drive home after the game. Seats can be reserved by calling Jeff Taylor at 8-4231.

Kind of makes a body feel good inside when an out-of-towner passes on a good compliment about one of our fellow townsmen.

OVERHEARD while standing on the sideline at the Roscoe tilt when Truman Nix came walking across the field just prior to kickoff — "Now there comes a good football coach and a real fine man."

# New Pontiacs In Loraine Display

Pontiac's 1967 models go on display Thursday at Walker Motor Company in Loraine with a new approach to styling, plus engineering features designed to increase safety and comfort.

New roof lines on all 2-door and 4-door models, major design advancements in both front and rear ends, a Pontiac exclusive of recessed windshield wipers and safety details will keep Pontiac a pacesetter for the auto industry, according to Wiley Walker, owner of Walker Motor Company.

An energy-absorbing steering column, a dual braking system and an inside rear view non-glare tilting mirror are standard equipment on all 1967 Pontiacs and are just three of the many safety developments available as standard equipment on every model.

Pontiac has increased the number of models from 33 last year to 35 in 1967. The Tempest series includes a sports coupe, four-door sedan and station wagon. A sports coupe, four-door sedan and hardtop convertible and station wagon complete the Tempest Custom series.

Introduced as a separate series this year is the Tempest Safari four-door station wagon.

The Pontiac LeMans is available in a sports and hardtop coupe, four-door hardtop and convertible.

The popular Pontiac GTO is offered in a sports coupe, hardtop, coupe and convertible.

The Catalina series has seven models, two and four-door sedans, a hardtop coupe, four-door hardtop, convertible and two-seat and three seat station wagons.

Two new station wagons, a two-seat and a three-seat model increase the Executive line-up to five. A four-door sedan, four-door hardtop and hardtop coupe are also offered.

The Bonneville series includes a hardtop coupe, four-door hardtop convertible and a custom three-seat station wagon.

The Grand Prix is now available in a convertible and a hardtop coupe.

The Sprint option is offered on all Tempest, Tempest Custom and Pontiac LeMans models.

Available as an option in the Catalina series is the 2 Plus 2 in the hardtop coupe and convertible and the Ventura Custom option on the four-door sedan and hardtop, hardtop coupe and convertible. The Brougham

series is available in a four-door sedan, four-door hardtop and hardtop coupe.

Pontiac styling gives individuality to each 1967 series while maintaining the distinctive and traditional Pontiac appearance.

The Tempest, Tempest Custom and Pontiac LeMans grilles are identified by vertical ribs alternately spaced to form a distinctive pattern. The Pontiac GTO grille has a unique aluminum wire mesh texture to provide a new overall effect.

Pontiac's massive front bumpers completely surround the traditional split grille. The front nose shape flows back into the hood and lower grille opening creating a wide, powerful impression.

On all except the Grand Prix, the lower headlights are set in the extreme ends of the grilles and the upper two headlights are placed directly above these in the fender.

Pontiac's massive front bumpers completely surround the traditional split grille. The front nose shape flows back into the hood and lower grille opening creating a wide, powerful impression.

On all except the Grand Prix, the lower headlights are set in the extreme ends of the grilles and the upper two headlights are placed directly above these in the fender.

Pontiac's massive front bumpers completely surround the traditional split grille. The front nose shape flows back into the hood and lower grille opening creating a wide, powerful impression.

On all except the Grand Prix, the lower headlights are set in the extreme ends of the grilles and the upper two headlights are placed directly above these in the fender.

Pontiac's massive front bumpers completely surround the traditional split grille. The front nose shape flows back into the hood and lower grille opening creating a wide, powerful impression.

On all except the Grand Prix, the lower headlights are set in the extreme ends of the grilles and the upper two headlights are placed directly above these in the fender.

Pontiac's massive front bumpers completely surround the traditional split grille. The front nose shape flows back into the hood and lower grille opening creating a wide, powerful impression.

On all except the Grand Prix, the lower headlights are set in the extreme ends of the grilles and the upper two headlights are placed directly above these in the fender.

Pontiac's massive front bumpers completely surround the traditional split grille. The front nose shape flows back into the hood and lower grille opening creating a wide, powerful impression.

On all except the Grand Prix, the lower headlights are set in the extreme ends of the grilles and the upper two headlights are placed directly above these in the fender.

Pontiac's massive front bumpers completely surround the traditional split grille. The front nose shape flows back into the hood and lower grille opening creating a wide, powerful impression.

On all except the Grand Prix, the lower headlights are set in the extreme ends of the grilles and the upper two headlights are placed directly above these in the fender.

Pontiac's massive front bumpers completely surround the traditional split grille. The front nose shape flows back into the hood and lower grille opening creating a wide, powerful impression.

On all except the Grand Prix, the lower headlights are set in the extreme ends of the grilles and the upper two headlights are placed directly above these in the fender.

Pontiac's massive front bumpers completely surround the traditional split grille. The front nose shape flows back into the hood and lower grille opening creating a wide, powerful impression.

On all except the Grand Prix, the lower headlights are set in the extreme ends of the grilles and the upper two headlights are placed directly above these in the fender.

Pontiac's massive front bumpers completely surround the traditional split grille. The front nose shape flows back into the hood and lower grille opening creating a wide, powerful impression.

On all except the Grand Prix, the lower headlights are set in the extreme ends of the grilles and the upper two headlights are placed directly above these in the fender.

Pontiac's massive front bumpers completely surround the traditional split grille. The front nose shape flows back into the hood and lower grille opening creating a wide, powerful impression.

On all except the Grand Prix, the lower headlights are set in the extreme ends of the grilles and the upper two headlights are placed directly above these in the fender.

Pontiac's massive front bumpers completely surround the traditional split grille. The front nose shape flows back into the hood and lower grille opening creating a wide, powerful impression.

On all except the Grand Prix, the lower headlights are set in the extreme ends of the grilles and the upper two headlights are placed directly above these in the fender.

Pontiac's massive front bumpers completely surround the traditional split grille. The front nose shape flows back into the hood and lower grille opening creating a wide, powerful impression.

On all except the Grand Prix, the lower headlights are set in the extreme ends of the grilles and the upper two headlights are placed directly above these in the fender.

Pontiac's massive front bumpers completely surround the traditional split grille. The front nose shape flows back into the hood and lower grille opening creating a wide, powerful impression.

On all except the Grand Prix, the lower headlights are set in the extreme ends of the grilles and the upper two headlights are placed directly above these in the fender.

Pontiac's massive front bumpers completely surround the traditional split grille. The front nose shape flows back into the hood and lower grille opening creating a wide, powerful impression.

On all except the Grand Prix, the lower headlights are set in the extreme ends of the grilles and the upper two headlights are placed directly above these in the fender.

Pontiac's massive front bumpers completely surround the traditional split grille. The front nose shape flows back into the hood and lower grille opening creating a wide, powerful impression.

On all except the Grand Prix, the lower headlights are set in the extreme ends of the grilles and the upper two headlights are placed directly above these in the fender.

Pontiac's massive front bumpers completely surround the traditional split grille. The front nose shape flows back into the hood and lower grille opening creating a wide, powerful impression.

On all except the Grand Prix, the lower headlights are set in the extreme ends of the grilles and the upper two headlights are placed directly above these in the fender.

Pontiac's massive front bumpers completely surround the traditional split grille. The front nose shape flows back into the hood and lower grille opening creating a wide, powerful impression.

On all except the Grand Prix, the lower headlights are set in the extreme ends of the grilles and the upper two headlights are placed directly above these in the fender.

Pontiac's massive front bumpers completely surround the traditional split grille. The front nose shape flows back into the hood and lower grille opening creating a wide, powerful impression.

On all except the Grand Prix, the lower headlights are set in the extreme ends of the grilles and the upper two headlights are placed directly above these in the fender.

Pontiac's massive front bumpers completely surround the traditional split grille. The front nose shape flows back into the hood and lower grille opening creating a wide, powerful impression.

On all except the Grand Prix, the lower headlights are set in the extreme ends of the grilles and the upper two headlights are placed directly above these in the fender.

Pontiac's massive front bumpers completely surround the traditional split grille. The front nose shape flows back into the hood and lower grille opening creating a wide, powerful impression.

On all except the Grand Prix, the lower headlights are set in the extreme ends of the grilles and the upper two headlights are placed directly above these in the fender.

Pontiac's massive front bumpers completely surround the traditional split grille. The front nose shape flows back into the hood and lower grille opening creating a wide, powerful impression.

On all except the Grand Prix, the lower headlights are set in the extreme ends of the grilles and the upper two headlights are placed directly above these in the fender.

Pontiac's massive front bumpers completely surround the traditional split grille. The front nose shape flows back into the hood and lower grille opening creating a wide, powerful impression.

On all except the Grand Prix, the lower headlights are set in the extreme ends of the grilles and the upper two headlights are placed directly above these in the fender.

Pontiac's massive front bumpers completely surround the traditional split grille. The front nose shape flows back into the hood and lower grille opening creating a wide, powerful impression.

On all except the Grand Prix, the lower headlights are set in the extreme ends of the grilles and the upper two headlights are placed directly above these in the fender.

Pontiac's massive front bumpers completely surround the traditional split grille. The front nose shape flows back into the hood and lower grille opening creating a wide, powerful impression.

On all except the Grand Prix, the lower headlights are set in the extreme ends of the grilles and the upper two headlights are placed directly above these in the fender.

Pontiac's massive front bumpers completely surround the traditional split grille. The front nose shape flows back into the hood and lower grille opening creating a wide, powerful impression.

On all except the Grand Prix, the lower headlights are set in the extreme ends of the grilles and the upper two headlights are placed directly above these in the fender.

Pontiac's massive front bumpers completely surround the traditional split grille. The front nose shape flows back into the hood and lower grille opening creating a wide, powerful impression.

On all except the Grand Prix, the lower headlights are set in the extreme ends of the grilles and the upper two headlights are placed directly above these in the fender.

Pontiac's massive front bumpers completely surround the traditional split grille. The front nose shape flows back into the hood and lower grille opening creating a wide, powerful impression.

On all except the Grand Prix, the lower headlights are set in the extreme ends of the grilles and the upper two headlights are placed directly above these in the fender.

Pontiac's massive front bumpers completely surround the traditional split grille. The front nose shape flows back into the hood and lower grille opening creating a wide, powerful impression.

On all except the Grand Prix, the lower headlights are set in the extreme ends of the grilles and the upper two headlights are placed directly above these in the fender.



'67 Pontiacs Coming

WALKER MOTOR CO. in Loraine will unveil the 1967 edition of the wide-track Pontiacs Thursday at their showroom. The public is invited to attend the formal showing of the new Pontiac models.

**We Are Never Closed to the Sick Corner Drug**

<p><b>STOCK UP and SAVE!</b></p>	<p>Ellis, 8-oz. Package</p> <p><b>SHELLED PEGANS</b> <b>49¢</b></p>	<p>My-T-Fine, Regular or Instant</p> <p><b>Puddings</b> <b>3 FOR 25¢</b></p>
	<p>Diamond, 303 Can</p> <p><b>TOMATOES</b> 2 for 29¢</p>	<p>Mission 303 Can</p> <p><b>PEAS</b> 2 for 29¢</p>

<p>Bodine's Grade "A" Medium</p> <p><b>EGGS</b> <b>2 DOZ 98¢</b></p>	<p>Del Monte, PINEAPPLE JUICE</p> <p><b>46-oz. Can 29¢</b></p>	<p>Kimbell's New Crop</p> <p><b>PINTO BEANS</b> <b>4 lb. cello bag 49¢</b></p>
--	--	--

<p>Hershey 6-oz. Package</p> <p><b>DAINTIES</b> 23¢</p>	<p>Our Darling Golden Cream Style</p> <p><b>CORN</b> 303 Can 2 for 33¢</p>	<p>Regular Size, Carton of 6</p> <p><b>COCA COLA</b> 33¢ plus dep.</p>	<p>Cracker Barrel Saltines</p> <p><b>CRACKERS</b> Lb. Box 25¢</p>
---	--	--	---

<p>Del Monte, 303 Can</p> <p><b>FRUIT COCKTAIL</b> <b>2 for 39¢</b></p>	<p>Kimbell's Best</p> <p><b>FLOUR</b> 25-Lb. Bag <b>\$1.89</b></p>
---	--

<p>Kimbell's</p> <p><b>CHILI</b> No. 2 Can 53¢</p>	<p>Kimbell's 303 Can</p> <p><b>PIE CHERRIES</b> 2 for 49¢</p>	<p>Maxwell House</p> <p><b>COFFEE</b> Lb. Can 69¢ 2-Lb. Can \$1.37</p>
--	---	--

<p>Betty Crocker's (All Except Angel Food)</p> <p><b>CAKE MIXES</b> <b>3 FOR \$1</b></p>	<p>Hershey's</p> <p><b>INSTANT COCOA</b> Lb. Can <b>39¢</b></p>	<p>Kimbell's Sweetmilk or Buttermilk</p> <p><b>BISCUITS</b> 3 cans 23¢</p>
--	---	--

<p><b>FRESH PRODUCE</b></p> <p>White <b>SPUDS</b> 8 Lb. Bag 33¢</p> <p>Large Fresh <b>TOMATOES</b> 2 lbs. 25¢</p> <p>New Crop, Washington Delicious <b>APPLES</b> Lb. 19¢</p> <p>Fresh, Crisp, Large Head <b>LETTUCE</b> Ea. 19¢</p>	<p><b>FROZEN FOODS</b></p> <p>Banquet Dinner</p> <p><b>MEXICAN DINNERS</b> 39¢</p> <p>Banquet Chicken, Beef, Turkey</p> <p><b>POT PIES</b> 3 for 59¢</p> <p>NEAPOLITAN GANDY'S Fro-Zan</p> <p>All Flavor <b>FRO ZAN</b> 1/2 gal. 3 for 79¢</p>	<p>Van Camp No. 300 Can</p> <p><b>PORK &amp; BEANS</b> 2 for 29¢</p> <p><b>Steak Sale</b></p> <p><b>ROUND STEAK</b> Lb. 79¢</p> <p><b>LOIN STEAK</b> Lb. 75¢</p> <p><b>T-BONE STEAK</b> Lb. 75¢</p> <p><b>RUMP ROAST</b> Lb. 69¢</p> <p><b>LOIN TIP ROAST</b> Lb. 89¢</p> <p>Fresh It's Better <b>GROUND BEEF</b> Lb. 2 for 89¢</p> <p>Decker's Toll Korn <b>BACON</b> Lb. 75¢</p>
--	--	--

**E Z W A Y**

7 A.M. - 9 P.M. **SUPERETTE** SUNDAY THRU FRIDAY SATURDAYS 7 A.M. - 8 P.M.

**HICKORY & E. 17TH**

# Chevy's Camaro Debuts Today

Jay Adams Chevrolet Thursday introduces the new Chevy's Camaro, the industry's newest, 108-inch wheelbase car.

The Camaro is in response to the American public's growing preference for individualized transportation, according to Jay Adams, owner of the Colorado City Chevrolet agency.

With addition of Camaro, Chevrolet now offers 45 new models for 1967 in its six lines.

Premier showing of the Camaro is in conjunction with the Thursday introduction of all 67 Chevrolets at Jay Adams Chevrolet, East Highway 80.

Two models of the personal-size Camaro — a coupe and convertible — are built on 108-inch wheelbase. Options in engines, trim and equipment allows a buyer to practically "tailor" his own car.

The Camaro, according to Adams, blends four-passenger roominess with sports car proportions and wide-track handling.

The front-engine Camaro takes a "fresh look" at the "long hood, short deck" concept introduced in American cars by Corvair. It stresses curved contour styling in an aerodynamic body tested in a jet age wind tunnel.

The smooth grille has a two-headlight system. Concealed headlights in a black-void grille plus special exterior moldings are included in a distinctive Rally Sport (RS) option. Wide, rectangular taillights set in a shallow concave highlight the clean, oval shaped rear of Camaro.

A distinctive SS 350 package is available to spotlight use of the new 350 cubic-inch engine introduced exclusively in the Camaro. Included is a special hood with twin simulated louvers, a four-inch raised stripe around the nose and wide oval red-line tires. The Rally Sport and SS 350 options can be ordered individually or together.

Strato-bucket seats and all-vinyl interior are standard. Among many interior options are a fold-down rear seat back for added luggage room and a Strato-back bench front seat with folding center armrest.

A new combination of separate frame and unitized body construction gives Camaro maximum roadability and passenger comfort. Front suspension is independent

## Workshop Set Oct. 3 In Dunn

Scurry Lodge 706, which is located in Snyder, will be honored during a workshop to be held at 7:30 p.m., Monday, October 3, in the Masonic Hall in Dunn.

Scurry Lodge will receive an Honor Roll Award, which is given by The Grand Lodge of Texas in recognition of outstanding attendance during the Spring series of Masonic workshop programs.

The award will be presented by James H. Fair of Hermeigh, who is chairman of the eight-county Masonic Workshop Area F-2. He will also conduct the meeting.

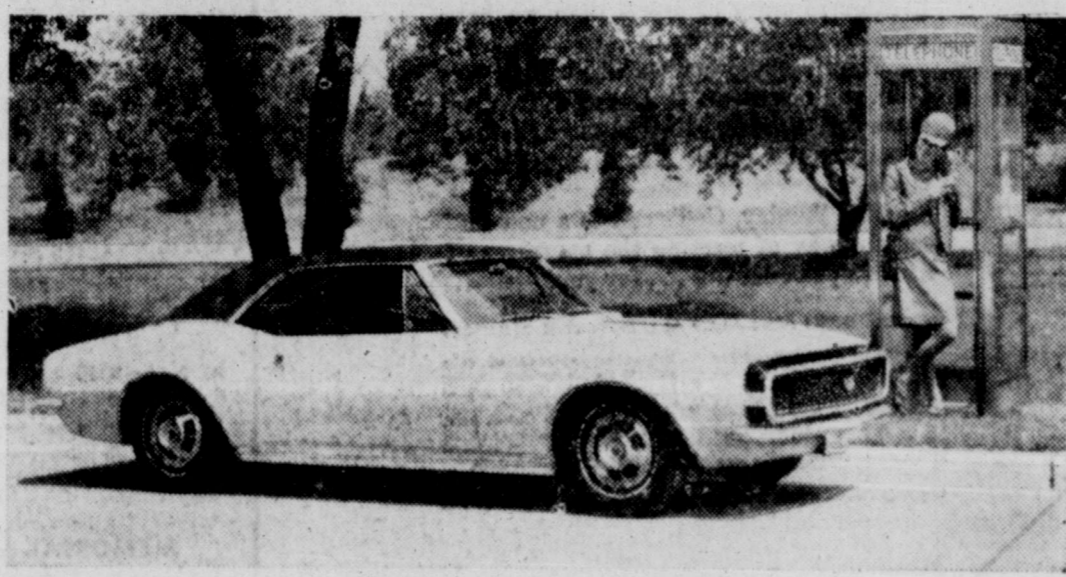
Fair said Colorado City, Ira, Hermeigh, Loraine and Dunn Lodges are also especially invited to attend the workshop.

Nearly 250 such meetings

are held twice a year for officers and members of over 970 Masonic Lodges in Texas. The Masonic Fraternity is the state's largest fraternal group with nearly 250,000 members.

## Colorado City Record Grid Pick

Grid Picks	Earl Beck	Bob Kelly	James Anderson	Teff Taylor	Raymond Webb
Season Record	11-11-2	10-11-2	16-12-2	18-10-2	17-11-2
Last Week's Results	6-1	6-1	7-3	4-6	6-4
Colorado City vs Brady	Colorado City	Colorado City	Colorado City	Colorado City	Brady
Loraine vs Hamlin B	Loraine	Loraine	Loraine	Loraine	Hamlin B
Billinger vs Winters	Billinger	Billinger	Billinger	Billinger	Winters
Stamford vs Denver City	Stamford	Denver City	Stamford	Denver City	Denver City
Texas Tech vs Texas A&M	Texas Tech	Texas A&M	Texas Tech	Texas A&M	Texas Tech
TCM vs Arkansas	Arkansas	Arkansas	Arkansas	Arkansas	Arkansas
SMU vs Purdue	Purdue	SMU	Purdue	SMU	Purdue
Rice vs Tennessee	Rice	Tennessee	Rice	Rice	Rice
Ole Miss vs Alabama	Alabama	Alabama	Ole Miss	Alabama	Alabama
Dallas vs Atlanta	Dallas	Dallas	Dallas	Dallas	Dallas



Chevy's New Line of Cars

Here's the Camaro which debuts Thursday at Jay Adams Chevrolet. Built in sport coupe (shown above) and convertible models, the Camaro is Chevy's new car 1967 with options that include concealed headlamps behind a lattice grille which opens and closes when lights are turned on and off, plus a hood with simulated louvers and wile paint band on the nose.

## Hospital News

- BIRTHS**
- Born to Mr. and Mrs. Steve Rivera, a son named Juan on Sept. 24 weighing seven pounds, 13 1/2 ounces.
  - Born to Mr. and Mrs. J. R. Edwin, a daughter named Rebecca Jill on Sept. 27 at 12:20 a.m. weighing six pounds, 13 1/2 ounces.
- ADMITTED**
- September 21: Miss Ruby Fleming, medical.
  - September 22: Delbert Ball, accident, Abilene.
  - September 23: Walter Thompson, medical.
  - September 23: Mrs. Ollie Reed, medical.
  - A. C. Putman, medical, Westbrook.
  - September 24: Mrs. W. T. Henderson, medical.
  - Mrs. Steve Rivera, OB.
  - B. C. Evers, medical.
  - Mrs. Mary E. Line, medical.
  - Mrs. Talva Mae Jones medical, Snyder.
  - Larry Paul, accident.
  - September 25: Reuben Westfall, medical.
  - Doyle Lawson, medical.
  - Frank Davila, accident.
  - September 26: Mrs. Cary Swann, surgical.
  - J. E. Hollis, surgical, Robert Lee.
  - Mrs. E. A. Schroeder, accident.
  - Jack Nance, medical.
  - Mrs. Kenneth Beasley, medical, Snyder.
  - Mrs. J. R. Erwin, OB.
- DISMISSED**
- September 22: Delbert Ball, accident, Abilene.
  - September 23: Kenny Lightfoot, medical.
  - September 25: Miss Ruby Fleming, medical.
  - September 26: Mrs. Steve Rivera and baby.
  - Frank Davila, accident.

## WORLD AFFAIRS

### Mrs. A. L. Geer Speaker At Hesperian Daughters

International Affairs program was featured Thursday by members of the Hesperian Daughters Study Club at the Villa party room with Mrs. C. N. Mayo as hostess in the Villa party room.

Lecture for the afternoon was presented by Mrs. A. L. Geer, with World Affairs as the subject. Our Affairs are the subject of the program.

"Life in any part of the universe" has become so intertwined with and so dependent upon other parts and people

of the entire world, that it is impossible to ask with intelligence, "Why Are World Affairs Mine?" Mrs. Geer told club members.

She then stressed modern communications as one reason the world is closer than any former period of his time. Our Affairs are the subject of the program.

If, she continued, "Education seems to be the only way out of the world dilemma, who is to educate the masses of humanity?"

Mrs. Geer pointed out that "Our military forces are trained to kill and we do not grow too alarmed, but we do fret about the violence in our own society! It seems evident, sometimes that violence and indifference to human dignity cannot cease. Somewhere, then, the education system, as it concerns the affairs of the world needs to be altered."

"Man is the only creature that makes bargains. May we hope to see the day when bargains of a peaceful nature may be made by men," she concluded.

Attending the program were Mrs. Warren Costin Mrs. Curtis Erwin, Sr., Mrs. R. F. Fee, Mrs. Carl Gary, Mrs. L. B. Gibson, Mrs. E. V. Grantland, Mrs. Willis Jones, Mrs. John M. Worrell, Mrs. Geer, and Mayo.

When you need us, we deliver. Select your Pharmacist as carefully as you select your Doctor. Corner Drug. (Adv.)

# Command Performance Camaro By Chevrolet



Camaro Sport Coupe with style trim group you can add.

You've been waiting for a Chevrolet like this. Now it's here.

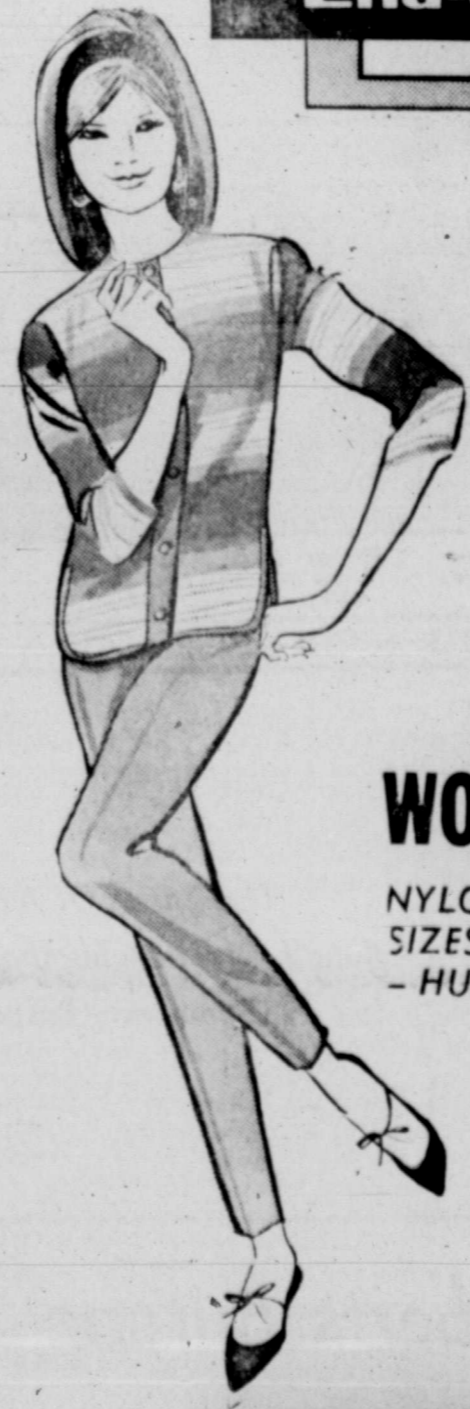
Camaro! Long, low hood. Short rear deck. Big-car stance for stability. Strato-bucket seats. A 140-hp Six or 210-hp V8, depending on model. Camaro gives you a car full of comforts from carpeting on the floor to vinyl upholstery all around. There's a lot of security, too, with new safety features like the GM-developed energy-absorbing steering column. Camaro! Sport coupe or convertible. You can order a Rally Sport with hideaway headlights or an SS 350 with Camaro's biggest V8. See your Chevrolet dealer now.



Everything New That Could Happen . . . Happened! Now, at Your Chevrolet Dealer's!

## JAY ADAMS CHEVROLET CO.

E. Hwy. 80 Colorado City Phone RA 8-3422



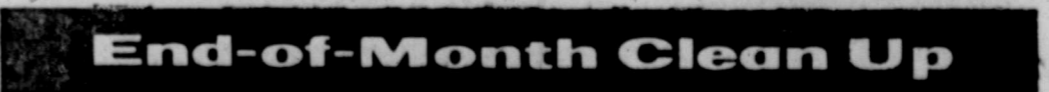
## REPEAT OF A SELL OUT

PENNEY'S DOES IT AGAIN! Brings You A Great Fashion Bargain That's Too Big To Miss!

### WOMENS VERTICAL STRETCH

NYLON AND RAYON ANKLE PANTS IN PROPORTIONED SIZES - LOTS OF COLORS SIZES 8 TO 18 - AVG & TALL - HURRY TO PENNEY'S

REMEMBER . . . You Can Charge It At PENNEY'S **3<sup>99</sup>** Pair



FOR CHILDREN	FOR WOMEN
TODDLER SLEEPERS REDUCED FOR PRE-SEASON SAVING REG. 2.19 NOW <b>\$1.77</b>	FASHION STRAW HANDBAGS FINAL CLEAN UP . . . REG. 4.99 NOW <b>\$1.00</b>
GIRL'S STRETCH SLACKS ACTION PACKED ANKLE PANTS NYLON LYCRA <b>\$1.99</b>	WOMENS BETTER DRESSES BETTER HURRY . . . THESE WON'T LAST REG. 5.98 AND 8.98 NOW <b>\$5.00</b>
FOR THE HOME	FOR MEN
SHEER PANELS BIG 41 X 81 WHITE ONLY - PERFECT UNDER DRAPERY <b>\$1.00</b>	MENS BETTER STRAW HATS WESTERN STYLE - BROKEN SIZES REG. 2.98 TO 4.98 NOW <b>\$1.00</b>

JUST SAY CHARGE IT!





Sharon Byrne, President of NHS

### Senior Girl Heads NHS At Loraine

Sharon Byrne, a senior and the daughter of Mr. and Mrs. Bruce Byrne of Loraine, was installed Tuesday as president of the Loraine High School Chapter of the National Honor Society Chapter.

Chairman for the candle-lighting ceremony was John McRae, math and science teacher of Loraine High School. He installed the officers and inducted the new members for the ensuing year, 1966-1967.

Other officers installed were Bonnie Finley, vice-president; Robin Lou Schroeder, secretary; Susan Trev, treasurer; Jean Graham and Gail Richards, historians; Mike Mease and Judy Tarr, reporters; and Danny Butler, parliamentarian.

Twelve new members were inducted. They include Patricia Baumann, Terry Brewer, Diana Chavez, Gay Green, Stanley Heckfeld, Joey Lucas, Steve McCollum, Debbie Oliver, Marsha Padgett, David Terry, Ricky Walker, and Jesse Watkins, all sophomores.

Cochair Don Bryan gave the invocation and Peter Galvan led the address in the presence of all members. Keith Hackfeld, a senior NHS member, presented the purpose and aims of the NHS. Vance H. D'Arden, H.S. principal, explained the method of selection of candidates and presented each new member with a membership card.

Members are elected on the basis of scholarship, character, service, and leadership by the teachers. Marilyn Hale served as Scholarship speaker; Marilyn Forbus, as Character speaker; Donnie Phillips, as Service speaker; and Kay Givens, Leadership speaker.

The Top Ten NHS members is one of the local chapter projects. A framed display of pictures and scholarship ranks of the NHS members is determined each six weeks with ranks based on grades from the beginning of the ninth grade.

A short business meeting of the NHS Chapter was held after the ceremony.



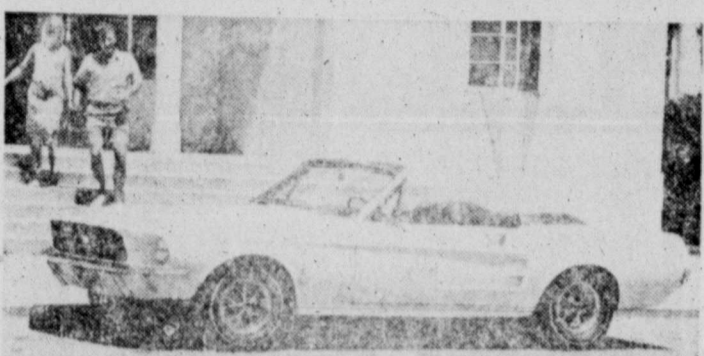
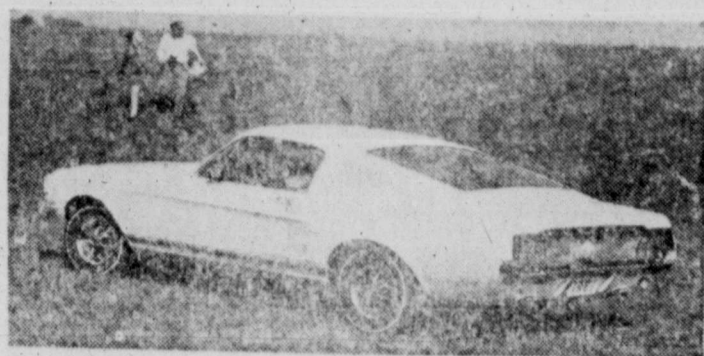
Rev. Roy Shahan, Evangelist

### Westbrook Baptists to Have Revival

WESTBROOK — Fall revival at First Baptist Church, Westbrook, begins October 2 and will continue through October 9.

Rev. Roy Shahan of San Angelo will be evangelist with Sid Williams of China Grove conducting the music. Morning services, Monday through Friday will be at 7:30 a.m. Pray's service is set for 7:00 p.m. and revival hour, 7:30 p.m. each evening.

A cordial invitation is extended to everyone to attend these services, according to an announcement made by the Rev. L. B. Edwards, pastor.



Mustang's Look For '67

Featuring new sheet metal for the first time since its introduction, the Mustang for '67 is two-inches wider at the front. The new Mustang, shown here in the 2-plus 2 Fastback and convertible models, will be on display Friday at Craddock-Witten.

AT CRADDOCK-WITTEN FRIDAY

## New Size, New Style Mustang

Newly styled for the first time since its introduction two years ago, the 1967 Mustang goes on display Friday here in Colorado City at Craddock-Witten, 1118 Walnut.

Other automobile manufacturers are moving into competition against the highly successful Mustang this year, but Ford has restyled the Mustang, increased its width and length and added other features to meet the challenge.

"We believe the Mustang with a wider selection of engines, optional equipment and new riding qualities will continue to retain its popularity appeal," said J. S. May, Craddock partner in Craddock-Witten.

Mustangs for 1967 include such new options as the Select Shift, Cruise-O-Matic transmission which allows manual or automatic gear shifting and a lineup of engines that culminate with a 52-horsepower 281 CID V-8.

Such optional features as a custom interior trim group, GT performance equipment, a fingertip speed control system and a Thi-Away steering wheel present the buyer with more opportunity to tailor Mustang to individual taste.

Completely new interior styling adds to Mustang's long list of standard equipment luxury features. Sculptured bucket seats, color-keyed, all vinyl upholstery, molded nylon carpeting, padded instrument panel, glove box and courtesy lights and sporty floor-mounted shift levers are standard.

In addition to interior and exterior styling changes, ride and handling characteristics have been improved. Total width, both front and rear, is two inches greater, giving a significantly wider stance for improved ride and cornering ability. Front suspension and steering components have been completely redesigned, producing a smoother better-controlled ride.

Mustang's all-new body sheet metal, 2 1/2 inches wider and 2 inches longer than previous models, creates a new

### Our Town

Continued from page 1

Naturally, the supported institutions do not have to be concerned with meeting this capital cost and maintaining adequate credit to attract capital.

THE FINANCIAL problem of Root Memorial under Medicare is not against the intentions of Medicare in meeting the health needs of our nation, but in recognizing the need for a more financially fair regulation under which privately owned hospitals operate.

Unless this problem is recognized by the Social Security Administration and the Congress, then most hospitals will follow in the path of Root Memorial.

This, if it happens, will be catastrophic for some out of every 10 hospitals in the nation and proprietary (privately owned).

BUT CRISIS is now for Colorado City and Mitchell County. Not in the future.

It must have adequate hospital facilities for the health and welfare of its citizens.

The path to maintain those facilities, whether it be privately owned operation, city owned and operated, or district owned and operated, must be decided and mapped successfully.

This is the business of every citizen and every organization within our community.

It is regretful, definitely so, that this newspaper, the Chamber of Commerce, our City Council and other leaders did not recognize earlier the nearness of the crisis.

To delay or stumble now in studying all avenues to successfully solve the problem will be a terrible blight upon our community.

### Mrs. Tower

Continued from page 1

time and love campaigning.

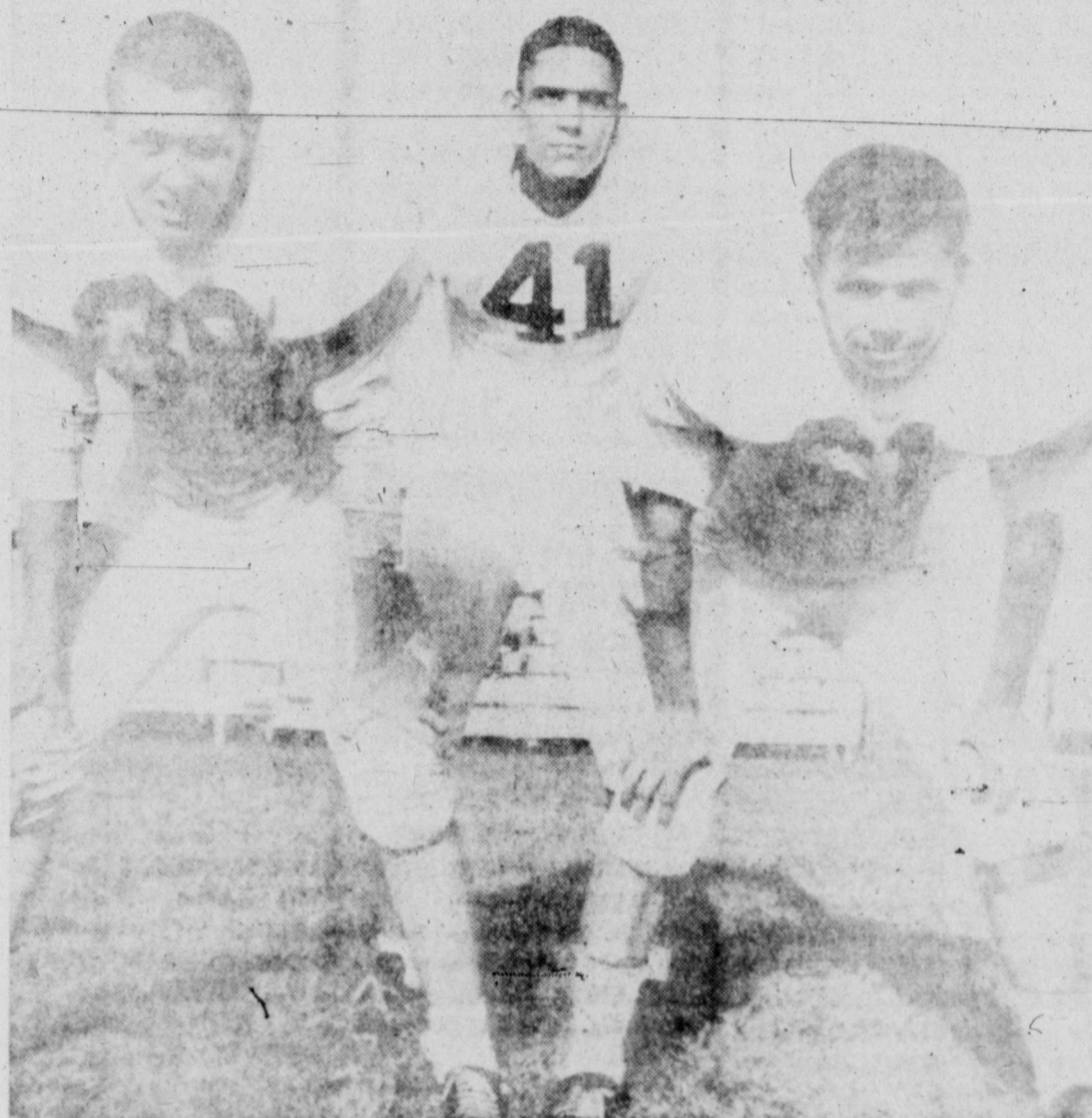
Commenting on life in the nation's Capital, she told the audience that it was "fascinating, exciting and hectic." She added it was a great opportunity for her children to be living "in the middle of history."

By the end of next week, Mrs. Tower's appearances will have totaled 88 cities, about half of those with the Senator.

# Bulldogs Seek Win

## Hamlin "B" To Provide Opposition

BY JAMES ANDERSON, Record News Editor



Loraine Linebackers

IT'S HOMECOMING time again in Loraine and this trio of Bulldogs will be going all out to stop a tough Hamlin B offense from their linebacking positions. From left to right, the gridlers are Ronnie Finley, Keith Hackfeld and Bob Furlow.

The Bulldogs seek their first victory of the season against a group of hefty Hamlin B players at 8 p.m. in the annual Homecoming football tilt.

The Bulldogs took advantage of an open date last week to polish up on all phases of their attack that has suffered earlier losses to Sterling City and Sterling City.

Coach Don Bryan's squad has spent this week working on offensive movements and are expected to be in top condition for the Saturday night clash with Hamlin.

Only dark spot on the Bulldogs' bright picture is the possible absence from the lineup of two-way starting tackle Mike Mease. The 180-pound senior has developed an allergy that may keep him out of action.

On the brighter side the Bulldog lineup was strengthened by the return of 170-pound senior Keith Hackfeld who has been out of action since suffering an injury during an early season scrimmage with Colorado City.

Coach Bryan said the Hamlin team had a large defensive line that would make going through the middle. "It's going to take a lot of determination and desire from the Bulldogs to come up dogs on offense goes like Chris Hubert at halfback.

Starting lineup for the Bulldogs on offense goes like this: right end, Donnie Phillips, 155; right tackle, Mease or Lupe Galvan, 160; right guard, Louis Rose, 171; center, Jesse Watkins, 145; left guard, Bob Furlow, 150; left tackle, John Munoz, 170; left end, Anastacio Alvarez, 110; quarterback, Stanley Hackfeld, 155; wingback, Terry Brewer, 160; fullback, Ronnie Finley, 170, or Keith Hackfeld; tailback, Randy Britton, 173.

Only newcomer to the staff is defense employed by Chris Hubert at halfback.

## First Prize In Contest To Womack

Kent Womack, a frequent football player, captured the third Colorado City Record Football contest and the \$10 top award.

Womack, 295 E. 13th St., had nine incorrect choices and a near perfect key score of 83.75. Sweetwater's 8. Coming up next week's contest was Tom Carlock, son of Mr. and Mrs. E. B. Carlock, 1313 Walnut.

The former Pony League correspondent for The Record had the right knock as he also missed nine games, but was a point further off on the key game outcome at 14.

Womack, 295 E. 13th St., had nine incorrect choices and a near perfect key score of 83.75. Sweetwater's 8. Coming up next week's contest was Tom Carlock, son of Mr. and Mrs. E. B. Carlock, 1313 Walnut.

Mike Hill, a youthful eight-year-old predictor, took third place honors also with nine misses, but being further off on the key tally.

The third grader, son of Mr. and Mrs. James Hill, 956 Marshall, wins \$5. Fourth contest of the season is found in today's issue of The Record.

FROM THIS MOMENT ON... IT'S OLDS FOR '67!

# the Rocket Action Cars are out front again!

Totally-new Delmont 88... lowest-priced 88 series! Looks expensive, but it's not. Delmont 88 prices actually start below many models with "low price names." Four to choose from. All with proved 88 chassis, brakes and suspension. 336- or 425-cubic-inch Rocket V-8 Engine.

New Custom models highlight Delta 88 lineup! New new Delta 88 Custom models are the last word in luxury. Both are highlighted by the distinctive Toronado look. Both with a 425-cubic-inch Super Rocket V-8 Engine. And all yours at an easy-going Olds 88 price.

All-new five-car Cutlass Supreme series! Olds brings a new level of luxury to the low-price field: Five sumptuous Cutlass Supreme models! Lush Strato-Scat interiors. Velvety coil-spring ride. Smooth Jetfire Rocket V-8 performance. Famous Olds quality!

Again in 1967! Look for Olds for the New! Look for a new, exclusive engineering first like Climatic Combustion Control. Look for a new UHV Transistorized Ignition System. New Stereo Tape Player. New front disc brakes. Plus other features, available for '67!



Delta 88 Custom, Holiday Sedan

Oldsmobile stands of your safety, too, with the GM-developed energy absorbing steering column that can compress on severe impact up to 8 1/2 inches, with four-way hazard warning beeper, outside rearview mirror, dual master cylinder brake system, plus many other safety features—all standard for '67.

Engineered for excitement... Toronado-style!

'67 OLDSMOBILE



JAY ADAMS CHEVROLET CO., E. HWY. 80 • COLORADO CITY

SEE YOUR NEARBY OLDSMOBILE DEALER—THE MAN WHO HAS EVERYTHING: TORONADO • NINETY EIGHT • DELTA 88 • DELMONT 88 • CUTLASS SUPREME • F-88 • VESTA SWOOSH • 442

**Palace** Weekdays Open 6:30  
RA 8-2605 Saturday - Sunday 1:30

Thursday Friday Saturday Double Feature (GA)

ALL NEW HIGH ADVENTURE!  
HENRY KOVACK AND OPATASHU  
AMERICAN INTERNATIONAL  
**TARZAN AND THE VALLEY OF GOLD**  
PANAVISION and EASTMAN COLOR

**NICK ADAMS FRANKENSTEIN CONQUERS THE WORLD**  
AMERICAN INTERNATIONAL - COLOR

**Lone Wolf** OPEN 7:30  
Friday Saturday — Double Feature

DORIS DAY ROD ARTHUR  
DAY TAYLOR GODFREY  
The Great Escape  
M-G-M  
"Your Cheatin' Heart"  
PANAVISION

**FORD PP&K COMPETITION**

**Boys 8 through 13!**  
BE A BIG WINNER!

**enter our PUNT, PASS & KICK competition today!**

WIN! Medal of Achievement awards... all-expense-paid trips to NFL games with dad... PLUS the "Tour of Champions" trip to Washington, D.C., and to the annual NFL Play-Off game in Miami, Florida, with both mom and dad.

GET FREE! A booklet of punting, passing, place-kicking tips written by NFL experts... also, an attractive PP&K pin. You must be with your mom or dad or legal guardian to register. Registration closes October 7!

**BRING YOUR MOM OR DAD TODAY! GET FULL DETAILS AT... CRADDOCK-WITTEN**

118 Walnut Phone RA 8-3491



# PRICE-BUSTING SALE

Ladies  
FLATS  
& HEELS  
Values to \$6.99  
**\$1.00** ea.

**THROW RUGS**  
**2<sup>88</sup>**  
Big Viscose rayon rugs... 27x48"  
Choose stripes or solids with fringe  
trim. Solids or multi stripes to go  
with any decor.

**Bath Towels**  
**66<sup>c</sup>**  
Screen printed cotton terry on fronts  
or white grounds. From famous  
Cannon mills. Big 22x44" size! Save  
plenty of Anthony's.

Mens  
**Handkerchief**  
**10 for 88<sup>c</sup>**

Asst. Colors  
**WASH CLOTHS**  
**10 for 88<sup>c</sup>**

Asst. Colors  
**TOWELS**  
20 x 40 **2 for \$1.00**

**WOVEN SPREADS**  
**5<sup>88</sup>**  
Fine quality textured jacquards,  
trickets, woven geometric patterns.  
92x102" All 100% cotton, all first  
quality. Values to 7.99.

Bound, in Beautiful Colors  
**KNIT**  
54" To 60" Wide  
**2 Yards \$5.00**

3 Piece, Pullman Overnight & Beautiful Case  
**LUGGAGE SET**  
**\$8.88**

Famous Name Quality - Anthony Low Prices  
**"PACIFIC" Printed Floral SHEETS and CASES**  
Full or Twin Sizes, One Low Price

**REMNANTS**  
While They Last  
Limit 20 per Person **10<sup>c</sup>** yard

**TEXTURED HOSIERY**  
Sizes 8 1/2 to 11 Colors:  
Cinnamon Black, Night-  
Light, Bermuda  
**5<sup>c</sup>** Pair

Men's Youth's Boys Black Canvas  
Men Sizes 6 1/2 - 12 Youths 11-2 Boys 2 1/2-6  
**TRACK SHOES**  
**\$3.00**  
\$4.99 Value For

81"x108" Flat or Bottom Full Fitted  
72"x108" Flat or Bottom Twin Fitted  
**\$2.29** Ea.  
42"x36" Matching Cases 2 for 1.39

Large Group Men & Boys  
SHORT SLEEVE  
**SHIRTS**  
Values To 2.99 **\$1.00** ea.

New Fashion & Colors  
Ladies Seamless  
**NYLON HOSE**  
Sizes 8 1/2 To 11  
**2 pairs 77<sup>c</sup>**

**BEAUTIFUL 72x84" COMFORTER**  
Printed French Crepe Top and  
Matching Solid Color Back  
**4<sup>88</sup>**  
Lightweight... warmth without  
weight, 100% rayon French crepe  
in lovely corsage pattern... filled  
with 100% viscose fiber. Choose  
blue, pink, maize.

and Here are More Outstanding Buys  
**Tier or Cafe Curtains**  
Special Purchase Big Savings  
**1<sup>66</sup>** set  
Complete Set  
With Valance  
Tier and Valance sets... cafe and valance sets.  
A wide variety of styles and colors... outstanding  
values.

Large Group Men's  
SHORT SLEEVE  
**SHIRTS**  
Values To 4.98 **\$2.00** ea.

Ladies Rayon  
**PANTIES**  
Colors: White, Pink, Blue  
Sizes 5 to 10  
**3 pairs 88<sup>c</sup>**

Super Special Purchase Value  
**72 x 90 BLANKETS**  
Solids, Plaids, Screen  
Prints 72" x 90" Size  
Fits Full or Twin Beds  
Wide Binding Winter  
Weights.  
**2<sup>99</sup>**

**2 and 3 Piece Sets FOR YOUR BATH**  
Every One an Extra Value  
**1<sup>99</sup>** set  
One of the prettiest assortments of best  
quality merchandise you'll find at An-  
thony's low, budget price.

Men's Work  
**SOCKS**  
Gray & White, Sizes 10 to 12  
Slightly Irr  
**6 pairs 88<sup>c</sup>**

Girls Rayon  
**PANTIES**  
Sizes 2 to 14  
**4 Pairs 88<sup>c</sup>**

Boy's Press Free  
**SLACKS**  
Sizes 6 to 16. Green or Black  
**\$2.88**

Large Group Boy's  
**SHOES**  
Sizes 8 1/2 to 12 1/2 to 3  
Reg. 3.99 **\$2.99**

Children's Terry Cloth  
**TRAINING PANTS**  
Sizes 0 to 6  
**4 for 88<sup>c</sup>**

Child, Heavy Vinyl Cover  
**HIGH CHAIR**  
Reg. 9.98 **\$8.88**

Men's Henley  
Poor Boy, Short Sleeve  
**SWEAT SHIRTS**  
Slightly Irr. Sizes S-M-L  
Reg. 2.49 **77<sup>c</sup>** ea.

**LADIES BRAS**  
Sizes 32 to 40 A-B-C Cups  
**44<sup>c</sup>** Each

Men's Black  
**WELLINGTON BOOTS**  
Sizes 6 1/2 to 10 1/2  
Now Only **\$9.88**

Men's & Boy's  
**DINGO BOOTS**  
Men's Sizes 7 1/2 to 10  
Reg. 9.99 For **\$7.88**  
Boy's Sizes 12 to 3, 3 1/2 to 6  
Reg. 6.98 For **\$4.88**

Young Men  
**Oxford & Loafers**  
Black, All Sizes  
Sizes 3 1/2 to 6  
**\$5.00**  
Sizes 6 1/2 to 10 1/2  
**\$6.00**

Ladies & Childrens  
**Canvas Oxfords**  
All Sizes  
**\$1.00**

Boy's Henley  
Poor Boy, Short Sleeve  
**SWEAT SHIRTS**  
Reg. 1.98 **2 For \$1.00**

Ladies Cotton Batiste  
**Gown & Shorty PAJAMAS**  
Size S-M-L  
Reg. \$1.99 For **99<sup>c</sup>**

Men's Wool & Mohair  
**SUITS**  
Regular & Longs, Sizes 34 to 42  
Reg. 32.50 **\$29.88**

Mens Dress & Western  
**Straw Hats**  
Values To 4.99  
Reg. 32.50 **\$1.00**

Boy Ivy League  
& Modern Style  
Press Free  
Long Sleeve  
**Shirts**  
Reg. 2.98 **\$2.00**

Cotton & Dacron Waltz Length  
**GOWN-BABY DOLL PAJAMAS**  
Reg. 6.00 **\$3.88**

Men's White Only  
S-M-L-XL  
**SWEAT SHIRTS**  
**\$1.00** each

Ladies 100% Nylon Stretch  
**PANTIES**  
One Size Fits All, Seam Free  
Colors: White-Blue-Red-Pink  
**44<sup>c</sup>** Pair

Girl's School  
**DRESSES**  
Sizes 4 to 6x-7 to 14  
Reg. 2.99 2 for 5.00  
Reg. 3.98 2 for 7.00

Men's Wool & Wool  
Blend  
**Sport Coats**  
Reg. 22.50  
For **\$18.88**

Men's Famous  
Brand  
**WESTERN SHIRTS**  
reg 5.98 **2.88**

Fine  
54" to 60" Wide  
**Woolens**  
Reg. 3.98  
**\$1.99** yd.

Printed Outing  
**Flannel**  
36" to 45" Wide  
**33<sup>c</sup>** yard

Boy's Long Sleeve  
**SPORT SHIRTS**  
Sizes 6 to 18  
Reg. 1.99 ea. **2 for \$3.00**

Boy's & Girls Stretch  
**CREW SOCKS**  
Reg. 59c pr. **3 pairs \$1.00**

Men's Wool & Wool  
Blend  
**Sport Coats**  
Reg. 22.50  
For **\$18.88**

Men's Famous  
Brand  
**WESTERN SHIRTS**  
reg 5.98 **2.88**

Fine  
54" to 60" Wide  
**Woolens**  
Reg. 3.98  
**\$1.99** yd.

Printed Outing  
**Flannel**  
36" to 45" Wide  
**33<sup>c</sup>** yard

Boys WESTERN  
**SHIRTS**  
**\$1.88** Ea.

Photo  
CLASS  
DIREC  
ANNOUNCE  
Ladies & Meeli  
Special Notices  
Cards of Thanks  
Lost & Found  
AUTOMOTIVE  
Autos For Sale  
Trucks & Trail  
Motors & Buses  
Autos  
BUS. OPPORT  
Business Change  
Business For Sa  
Business Wanted  
BUSINESS SE  
Building Service  
Furniture & Lin  
Instruction  
Aviation  
WOMAN'S CO  
Antique & Art  
Beauty Aids  
Child Care  
Home Cleaning  
Laundry Service  
Sewing Service  
EMPLOYMEN  
Help Wanted  
Positions Want  
FINANCIAL  
Insurance & An  
Farm & Ranch  
FARM & RA  
Farm, Machine  
Farm & Ranch  
Food, Seed & G  
Livestock & Po  
MERCHANDISE  
Assortment  
Bullfinch, Mock  
Barnyard, Coo  
Old Toys, Toys  
Miscellaneous  
Mission  
Nursery Stock  
Office Supplies  
Pets, Dogs, etc  
Sporting Goods  
Wanted To Buy  
RENTALS  
Apartments  
Bedrooms  
Room & Board  
Business Franch  
Farms & Ranch  
Wanted To Be  
Home Trailer  
REAL ESTA  
Average For S  
Farms - Ren  
Business Prop  
Business For Sa  
Look For Sale  
OR Land & Es  
Real Estate  
LEGALS  
L.C.  
& Radi  
Auth  
ADM  
DEA  
Mc  
Ben D.  
C  
136 Wain  
Any erro  
or reputatio  
corrected w  
paper and is  
The Cole  
omissions,  
errors that  
tions after  
5-1870  
Colorado  
day and Su  
postoffice at  
cepted on 11

# USE THE CLASSIFIED FOR YOUR

Phone RA 8-3413

Phone RA 8-3413

Colorado City Record, Thursday, Sept. 20, 1966, Page 7

## CLASSIFIED DIRECTORY

- ANNOUNCEMENTS A-1
- Ladies & Meetings A-1
- Special Notices A-2
- Cards of Thanks A-3
- Lost & Found A-4
- AUTOMOTIVE B
- Cars For Sale B-1
- Trucks & Trailers B-2
- Motorcycles & Bikes B-3
- Automotive Wanted B-4
- BUS. OPPORTUNITIES C
- Business Chances C-1
- Business For Sale C-2
- Business Wanted C-3
- BUSINESS SERVICES D
- Building Services D-1
- Printing & Upholstery D-2
- Instruction D-3
- Aviation D-4
- WOMAN'S COLUMN E
- Antique & Art Goods E-1
- Beauty Aids E-2
- Child Care E-3
- Home Cleaning E-4
- Laundry Service E-5
- Sewing Service E-6
- EMPLOYMENT F
- Jobs Wanted F-1
- Positions Wanted F-2
- FINANCIAL G
- Insurance & Auto Loans G-1
- Farm & Ranch Loans G-2
- FARM & RANCH H
- Farm Machinery H-1
- Farm & Ranch Supplies H-2
- Fertilizer & Grain H-3
- Livestock & Poultry H-4
- MERCHANDISE I
- Antiques I-1
- Books I-2
- Household Goods I-3
- Gifts I-4
- Miscellaneous I-5
- Musical I-6
- Nursery Stock I-7
- Office Supplies I-8
- Pets, Dogs, etc. I-9
- Spinning Goods I-10
- Wanted To Buy I-11
- RENTALS J
- Apartments J-1
- Bedrooms J-2
- Room & Board J-3
- Business Property J-4
- Business For Sale J-5
- Look For Sale J-6
- OR Land & Homes J-7
- Real Estate Wanted J-8
- REAL ESTATE K
- Acreage For Sale K-1
- Farms - Estates K-2
- Business Property K-3
- Business For Sale K-4
- Look For Sale K-5
- OR Land & Homes K-6
- Real Estate Wanted K-7
- LEGAL L

**DOCTOR'S EXCHANGE**  
Staffed 24 hours  
RA 8-3435

**HOSPITAL**  
**ROOT MEMORIAL HOSPITAL**  
Martin Weaver  
Administrator  
One of the few Hospitals operated on Credit Card basis. Applications for Credit Card may be obtained from the Hospital Office.

**BURIAL SERVICE**  
**KIKER**  
Burial Insurance  
1 month to 80 years  
Minimum Rate  
110 E. 3rd Phone RA 8-2622

**Special Notices A-2**  
**Perry Barber, Sr.**  
Attorney at Law  
Perry Barber Building  
1 Mile East of Hickory on East 19th - Office Phone RA 8-2275

**Business Wanted C-3**  
Wanted - 1000 More Customers  
**Maniss Office Supply**  
132 East Second Street, Colorado City, Texas.

**Card of Thanks A-3**  
Words can never express our thanks to the many friends and neighbors and all those who assisted in any way during the passing of our beloved husband and father. We wish to thank Dr. Cowan and nurses of Root-Memorial Hospital and for the beautiful flowers and food. We pray that Gods blessing may rest upon each of you.  
Mrs. A. J. Scarborough and Children

**Business Chances C-1**  
**MAKE MORE MONEY**  
Use your spare time. Show our complete Fall Line of Specialty Advertising, Calendars and Executive Gifts to Business Firms in your area. Big Fall selling season now underway. We are a low pressure, small town firm, in our 57th year, rated AAA-1. No investment, collections, or reports. Weekly commissions. Bonus arrangement. Samples furnished to qualified man. Can be developed into full time business. Write today: Harold Lufkin, Dept. 356, Newton Mfg. Co., Newton, Iowa 50208.

**Business Wanted C-3**

**Oyler Extermination Service**  
Home owned & Operated  
Roaches - Silverfish - Moths  
\$1.50 per room, 1 year guarantee.  
Free termite Appraisal  
Commercial rates for Businesses.  
Phone RA 8-2240

Photo Tinting or Coloring  
Call RA 8-2925  
544 E. 15th St.  
Mrs. Herman Gist

"We will Heat Them" or  
You can beat them  
Mexican Dinners  
Order of 3 Facilities - 99c  
Jim Truck Town Cafe  
(packed specially to take out)

**Furniture D-2**  
Are Your Typewriters and Adding Machines Sick?  
See or Call us for FIRST CLASS Cleaning and Repairs.  
Prompt Service  
Reasonable Prices!  
**MANISS OFFICE SUPPLY**  
132 E. 2nd St. RA 8-4276  
Colorado City

**Home Cleaning E-4**  
**Electrolux**  
FREE HOME SERVICE AND SALES  
**R. S. (Dick) Wallis**  
1098 Pine RA 8-3765

**W. M. BROOKS**  
Carpet Cleaning /  
907 E. 16th St. AM 3-2926  
Big Spring, Texas  
Best to call noon or evening

**Sewing Service E-6**  
**SINGER REPRESENTATIVE**  
Now working Colorado City  
Sewing Machines  
Stereos & Vacuum Cleaners  
Expert Repair Services  
Clean, Oil and Adjust - \$3.75  
**KNOX PORTER**  
Box 1262, City

**Help Wanted F-1**  
**LADIES** earn good pay in spare time servicing friends and neighbors with Fuller Brush Products. Easily \$3. hour.  
Mrs. Lloyd Devenport  
P. O. Box 663  
Snyder, Texas

**MOTHERS**  
Do you have big dreams for Christmas? Make these come true with earnings from selling Avon's beautiful products and gift sets. We train you. Write P. O. Box 1174, San Angelo, Texas.

Wanted: Part time maintenance man. If you can replace washer on facets, change locks on doors, do spot painting and etc., and want to work a few hours each month principally on weekends, go by and see Mr. Neely Villa Inn, Snyder Hwy. at IS 20.

**Farm Machinery H-1**

For Sale: Hosston cotton stripper. Contact G. B. Bulard, 1001 Dallas St., Phone RA 8-3275.

**Appliances I-1**  
**Kirby Vacuum Cleaners**  
Sales & Service  
Warren Goode - RA 8-3537

Whirlpool  
Sales and Service  
All home appliances  
Bob Ramage  
1211 Walnut RA 8-3373

90,000 BTU per hr. gas furnace for sale or trade by home owner. coming total electric. Call RA 8-4187 after 5:00 p.m.

**Building Material I-2**

**PAY CASH, SAVE**  
4 x 8 % Sheet \$1.19  
● Sheetrock  
● W. C. FIR \$7.45  
2x4, 2x6  
● Corrugated Iron American \$8.99  
Made - - - - Sq.  
● FIR STUDS 39c  
2 x 4's - - - - ea.  
**VEAZEY**  
Cash Lumber  
SNYDER, TEXAS  
Lamesa Hwy. HI 3-6612

**It Pays To Trade with us**  
30 Gal. Water Heater Glass Lined \$44.95  
Fission Lagune  
235 Comp. \$6.85  
Roofing \$2.88  
4 x 8 x 1/4 \$2.88  
Ad Plywood \$2.75  
4 x 8 x % Particle Board  
**W. W. McCullough**  
Bldg. & Supply  
Sand Spring, Texas  
Phone 391-5524

**Household Goods I-3**  
**MATTRESSES**  
New and renovated - Box springs - Complete bedding. They are guaranteed - Save 50% - Manufactured by Western Mattress Co. Call RA 8-3373 Colorado City or GR 8-2131 Westbrook.

**Household Goods I-3**  
For Sale: Refrigerator Washer - \$30. Good Clarinet - \$30. Couch - \$10. Saddle and bridle for children \$30. Call RA 8-4525 after 4 p.m.

**Miscellaneous I-5**

**EXCITING THINGS HAPPEN**  
When you place a Classified ad in Colorado City Record. Action starts at once and results are Quick.  
Phone RA 8-3413

**IT'S A SNAP**  
to solve everyday problems through a Record classified ad. And they are so economical. Too. Phone RA 8-3413.  
Dozing Work Wanted  
Stock Tanks, Tree-doing and Water ways. Call Roy Nobles RA 8-4537.

**Musical I-6**

For Sale: New Reynolds Trumpet. Phone RA 8-3394.

For Sale: Cornet and case been used 2 1/2 yr. in good condition. Z. D. Veal, RA 8-2675 Silver, Texas.

**Sporting Goods I-10**  
Guns Wanted  
Shotguns - Rifles - Pistols  
Taylor Hardware  
License Pawn Broker  
121 E. Secona

**Wanted To Buy I-11**  
**TO GET BARGAINS**  
Run Wanted to Buy Ads in Classified. Folks eager To Sell will call YOU. Dial RA 8-3413.

**Apartments J-1**  
For Rent: 3 room furnished apartment, bills paid. Call RA 8-3820.

**Western Motel**  
Now Under New Management  
Efficiency Apartments, TV Refrigerated Air, Low Weekly Rates.  
E. Hwy. 80 RA 8-8131

For Rent: Furnished 3 room garage apartment with garage and antenna near 3 schools 415 E. 14th.

**House For Sale J-4**  
For Rent: Furnished 2 bedroom house 537 Cedar, also small Crosley refrigerator cheap. Call RA 8-4192.

**Houses For Rent J-4**

For Rent: Two 3 room furnished houses, 1 furnished 3 bedroom and 1 unfurnished 3 bedroom house. Lewis-Vowell RA 8-2269.

**FOR RENT:** Nice 2 bedroom house, paved streets, corner lot, located 992 East 14th. Contact G. D. Foster office, RA 8-3401.

For Rent: Two bedroom house, washer-dryer connections, fenced backyard, newly decorated. Inquire at 728 E. 8th St.

**Acreage for Sale K-1**  
For Sale: Ranches, farms, houses, lake, cabins, lake, business and residential lots - leases and royalties. S. A. Palmer 741-Yale, dial RA 8-3289.

For Sale: 60 acres land at Buford made offer. Call Big Spring, AM 3-4171, 2402 Carleton St.

**FAT OVERWEIGHT**  
Available to you without a doctor's prescription, our product called Galaxon. You must lose weight fast or your money back. Galaxon is a tablet and easily swallowed. Get rid of excess fat and live longer. Galaxon costs \$3.00 and is sold on this guarantee: if not satisfied for any reason, just return the package to your druggist and get your full money back. No questions asked. Galaxon is sold with this guarantee by:

**COLORADO DRUG STORE**  
Colorado City - Mail Orders Filled.  
RA 8-2341

**AUCTION**  
Saturday, October 1st 6:00 P.M.  
**OPEN HOUSE**  
345 Hickory Street  
Sunday - Monday - Wednesday, Sept. 25-26 & 28  
EVERYTHING SELLS... ANTIQUES  
DEALERS WELCOME... TERMS CASH  
**EXAMPLES OF ITEMS**  
Treadle Sewing Machine - Rocking Chairs - Several Chest of Drawers - Several Bed Room Suits - Solid Cedar Chests - Hide-a-bed - Wicker Chairs - Refrigerator & Stove - Living Room Suites - High Boy.  
**Every Body Welcome**  
Tommy Marricle Auctioneer

**DEMONSTRATOR SALE**  
**'66 PLYMOUTH SPORT FURY**  
2-door hardtop, loaded, real low milage, a beautiful car, a beautiful buy.  
**'66 BARRACUDA**  
Std. shift, radio, heater, been on demonstration only one week.  
**FRANK MOTOR CO.**  
245 Chestnut St. RA 8-2341

**You're Invited To The Premier Showing**



**1967 PONTIAC WIDETRACKS**

Be Sure You See the All-New '67 Models With Pontiac's Famous Pacemaker Styling... Now With Many New Engineering Features For Increased Safety, Comfort And Convenience.

**Thursday, Sept. 29**  
**... In Loraine**

**Walker Motor Co.**  
LORAIN, TEX. PHONE RA 8-2264

**RECORD SALE!**

**L.C.'S TV & Radio Service**  
Authorized ADMIRAL DEALER

**MONUMENTS**  
SINCE 1884  
WEATHERFORD, PHONE LY 4-2724

Ben D. Elliot Colorado City, Representative  
BA 8-8102 - RA 8-2535

**COLORADO CITY RECORD**  
136 Walnut, Colorado City, Texas - Zip Code 78512  
**JOE BELL**  
Publisher & Editor  
Any erroneous reflection upon the character, standing or reputation of any person, firm or corporation will be corrected when such occurs in the columns of this newspaper and is brought to the attention of the management.  
The Colorado City Record is not responsible for copy omissions, typographical errors or any unintentional errors that may occur other than to make proper corrections after being brought to attention. Advertising is as follows:  
Colorado City Record, published twice weekly on Thursday and Sundays, entered as second class matter at the postoffice of Colorado City, Texas, under the Act of March 3, 1879.

### Three Tables At No Trump Club Friday

Salad luncheon followed the morning series of contract bridge for members of the No. Trump club, Friday.

Members and several guests for the day met with Mrs. Charlie Hunt as hostess in the home of Mrs. Leroy Medford.

High score honor was won by Mrs. Baker Hallford. Consolation prize went to Mrs. Medford.

Guests were Mrs. Mike Mikle, Mrs. Wayne Carroll

### Acreage For Sale K-1

**For Sale**  
290 acres cultivated & 30 acres pasture land, 4 miles N.W. from Loraine @ \$225.00 1/4 minerals.  
640 acres pasture 13 mi. South of Loraine @ \$55.00 1/2 minerals.

**E. B. BAKER**  
Box 441  
Colorado City, Texas

### Farms & Ranches K-2

335 Acres 12 miles NW Stanton Tex. Small irrigation wells 2 sets of improvements. Contact Mrs. Eugene Smith, Loraine, Texas. Ph. 734-2350.

### Business Property K-3

**SUN OIL CO.**  
**For Sale:** Recreation hall No. 974 Tubb Camp, Silver, Texas. Frame, asbestos siding, composition roof, to be moved. Bids accepted thru Oct. 23, 1966. Call Sun Oil Co. RA 8-2651 Colorado City for bid instructions.

### House For Sale K-4

**For Trade**  
Nice 2-bedroom home in Snyder for home in Colorado City. See Harold Freeman, Costin Implement

**House For Sale:** 3 bedroom, bath & 1/2, den with fireplace, 1002 E. 16th. RA 8-3004.

**For Sale:** 3-bedroom house, bath & 1/2, in good condition, good location, \$100, down, monthly payments \$60.00  
W. H. Cox Agency  
RA 8-3141 or RA 8-2169

### By out-of-state owner HOUSE AT SACRIFICE

\$1,000 down, assume established loan.

Completely remodeled older house; central heating, refrigerated air conditioning, built-in electric kitchen range, dishwasher, etc. 2-bedroom with extra room and bath off carport. Near 3 schools, at 532 E. 9th St. Contact Mrs. Pete Warren

Would trade modern 2 bed room house in town for lake property or small acreage. Ph. RA 8-2240.

**SUN OIL CO.**  
**For Sale:** Company houses No. 1292 Jameson camp, No. 1169 Tubb camp, Silver, Texas. Modern 2 bedroom, frame, asbestos siding, composition roof, to be moved. Bids accepted thru Oct. 17, 1966. Call Sun Oil Co. RA 8-2651, Colorado City for bid instructions.

and Mrs. William Ezell. Members attending were Mrs. Jimmie Bolin, Mrs. J. R. Erwin, Mrs. Bobby Joines, Mrs. J. Wells Slater, Mrs. Bill Sorenson, Mrs. John Martin; Mmes. Hunt, Medford and Hallford.  
Next meeting will be at 9:30 a.m. Friday, October 7, in the home of Mrs. Joines, 920 East 16th St.

### Houses For Sale K-4

**For Sale or Trade**  
Two bedroom house at 305 E. 11th. \$4750.00  
Three bedroom house at 1309 Hi-kory, \$7500.00.

**For Sale to be moved:**  
Four room and bath house \$2500.00

**For Sale:**  
403 Acres land 8 mi. South of city \$51,382.50. Down payment \$12,250.00 balance in 11 yrs. at 5% interest.

**R. B. Baker**  
Box 441  
Colorado City, Texas

**For Sale:** 2 bedroom & den, 1016 Pine St., concrete storm cellar, fenced yard, fruit trees, tall T.V. tower, ducted air-conditioning, paved street, good neighbors, priced reasonable. Will be vacant soon.  
**B. J. WOOD**  
RA 8-3722

### House for Sale K-4

**For Sale:** Small one bedroom residence at 628 E. 9th St. \$2500.00 Charles Root RA 8-2640.

**For Sale:** 2 bedroom house with extra room and bath off carport. Completely remodeled older home with refrigerated air-conditioning, built-in oven and range, dishwasher, etc. Near 3 schools at 532 E. 9th St. Sacrifice by out-of-state owner. \$1000. down, assume established loan. Contact Mrs. Pete Warren.

**For Sale:** 2 Bedroom brick, large den, wired for electric range, washer, dryer connection, garage and workshop, 220 wiring, 221 E. 10th.

**FAMILY STYLE**  
Living in this spacious New Brick Gold Medalion Home. Totally electric - Located in Colorado City's Newest All Brick addition, 2100 sq. ft. with 1700 sq. ft. living space. Located 101 E. 22nd. Contact Bobby Kimmel.

**SUN OIL CO.**  
**For Sale:** Company house No. 1297 Jameson Camp, Silver, Texas. Modern 2 bedroom, frame, asbestos siding, composition roof, to be moved. Bids accepted thru Oct. 2 1965. Call Sun Co. RA 8-2651, Colorado City for bid instructions.

### Lots For Sale K-5

**Residential Building Sites**  
Choice Lots  
Westridge Addition  
Paving, utilities, reasonable restrictions  
Charles Root

**INSURANCE**  
• Auto • Casualty  
• Life • Fire  
• Crop Hail  
**Tommy Marricle**  
Farm Bureau Insurance  
RA 8-3408 RA 8-3161

### COWS

1500 to 2000  
Country Fresh,  
Top Quality Hereford  
Angus & Crossbred  
Cows & Heifers

Lots of Pairs  
The Rest Springers

1:00 o'clock Saturday, October 1

### Brownwood Cattle Auction

Brownwood, Texas  
WAYNE MAY  
642-8619 - Brownwood

# PENNANT WINNING FOOD VALUES

You Win Everytime You Shop At Fuller's... Where You Splurge On Quality, Save On Price!... Extra Bonus, Too, In S&H Green Stamps!



Gladiola Enriched

**Flour 5-Lb. Bag 49¢**

Shurfine Enriched

**Flour 25 Lb. Bag \$1.99**

Food King 3-Lb. Can

**Shortening 79¢**

Wright Brand 3-Lb. Carton

**PURE LARD 59¢**

Fuller Foods

**EGGS dozen 57¢**

Honey Suckle BONELESS  
**TURKEY ROAST**  
Ready To Eat  
2-lb. \$3.49  
8-oz.

Food King Brand Yellow Cling

**PEACHES 2 1/2 Size Cars 3 FOR 69¢**

SHURFINE FROZEN FRESH

**FROZEN STRAWBERRIES 1-LB. PKG. 39¢**

**FARM-FRESH Produce**

200 SOFLIN

**NAPKINS 1/2 pg. 29¢**



Best of Quality Fresh

Extra Fancy Golden

**BANANAS Per Lb. 10¢**

Fresh Flavored

**Tomatoes Per Lb. 17¢**

**Carrots 2 cello bags 25¢**

**LIBBY'S Fruit Cocktail 2 1/2 con 39¢**  
**DEL MONTE Pears Halves 303 Can 29¢**  
**HUNT'S BIG 46-OZ. CAN Tomato Juice 3 for 89¢**

**VAN CAMP 303 CANS Pork & Beans 7 for \$1**  
**DEL MONTE Pink Salmon tall can 79¢**  
**GIANT BOTTLE DETERGENT Ivory Liquid 22-oz. 59¢**

Ready to BROIL, GRILL, FRY!



Ground Lean **BEEF PATTIES 10 For \$1**

Shoulder Cut **SLICED PICNICS Lb. 49¢**

First Cut Lean **PORK CHOPS Lb. 59¢**

Select Your Favorite Chicken Pieces - Cut & Packaged For Your Convenience!  
**CHICKEN PARTS**

**BREAST per lb. 79¢**  
**Pulley Bones lb. 79¢**  
**THIGHS per lb. 49¢**  
**Drumsticks per lb. 49¢**  
**WINGS per lb. 29¢**  
**BACKS per lb. 19¢**

**SHURFINE 18-OUNCE JAR S'berry Preserves 49¢**  
**BAMA 18-OZ. JAR Red Plum Jam 39¢ 3 for \$1**

**18-OZ. JAR BAMA APRICOT OR PEACH Preserves 39¢ 3 for \$1**  
**BAMA 18-OZ. JAR Peanut Butter 49¢**

**SHURFRESH SALTINE CRACKERS 1-Lb. Box 25¢**



**HEINZ KOSHER DILL PICKLES 25-oz. Jar 39¢**

**PILLSBURY-FOOD-SWEETNER SWEET-10 6-oz. bottle 69¢**

**Fuller Foods**  
fuller values

### Section Two



MUCH is being...  
Addiction, m...  
It's usually u...  
drugs, glue-sniff...  
which destroys th...  
or unintelligent e...

HUMAN bein...  
easy prey for ha...  
And just as s...  
ing addictions to...  
they like a lot...  
Have you a l...  
weekend reading...  
Sleeping late? W...  
Addiction, no...  
sense, can also r...  
tually to... or l...

PERSONS a...  
er people don't l...  
that the house i...  
Other people...  
out qualification...  
Everybody a...  
tual inclination...  
not greatly inter...  
shment.

One of my f...  
reading out loud...  
paper or book s...

AMONG oth...  
going barefoot a...  
wherever and w...  
Used to hav...  
time she felt ha...  
on hats and bou...  
The world i...  
way to cope wit...  
when you really...  
time to be late...

HABITUAL...  
include the ice-c...  
jokers... knu...  
thumpers... f...  
Equally fas...  
night readers...  
the always...  
breakers... br...  
arguifiers...  
To each hi...  
dependence...  
than reading th...  
you're fair...  
diction.

The world...  
All kinds...  
Minor add...  
Just so yo...

PICTURE...  
(Air Force Ph...  
song-fest with...  
playing the gu...  
One of the...  
pilot whose ho...  
husband of ou...  
in Viet Nam...  
Linda, in fo...  
er, and Kennel

THAT pic...  
tiful 16-year-ol...  
of the Mary L...  
Layne...  
Gwen Wh...  
shot made of



Ruth Coffey's

## CONVERSATION CORNER

MUCH is being printed, these days, in papers, journals, and family magazines about that thing called "Addiction."

Addiction, meaning habitually attracted to, attached to or dependent upon, has fallen from grace as a word. It's usually used in a "bad" sense — meaning alcohol, drugs, glue-sniffing, reefer, tobacco, LSD or something which destroys the better person within any person unlucky or unintelligent enough to get addicted in the first place.

HUMAN beings, because they are human beings, are easy prey for habit-forming evils.

And just as surely, human beings have a way of forming additions to other harmless things — good things — they like a lot.

Have you a little "nice" addiction? Like, say, going on weekend reading binges? Staying up until all hours? Sleeping late? Watching television all day, every day?

Addiction, nearly always used in the harmful-habit sense, can also mean, you know, to give oneself up habitually to . . . or habitual inclination.

PERSONS addicted to telling lies finally find that other people don't believe a word they say even if they yell that the house is on fire.

Other people, equally addicted to telling the truth without qualification, wind up without a friend to their name.

Everybody alive is entitled to at least one ill'ole habitual inclination — so long as it's fairly innocent and does not greatly interfere with necessary activity and accomplishment.

One of my favorite people has always been addicted to reading out loud everything amusing or interesting in the paper or book she happens to be reading at the moment.

AMONG other favorite addicts are people addicted to going barefoot around the house and slipping off the shoes wherever and when ever they sit down for two minutes.

Used to have a neighbor so addicted to hats that any time she felt bad, she did not go see the doctor. She tried on hats and bought one or two. It worked fine for her.

The world is full of people addicted to being late. Only way to cope with them is to set the appointment for noon when you really mean one o'clock to give 'em plenty of time to be late and on time at the same time.

HABITUAL inclinations, commonly encountered, can include the ice-chompers . . . the lint-pickers . . . practical jokers . . . knuckle-poppers . . . spoon-stirrers . . . table-thumpers . . . foot swingers.

Equally fascinating are the rain-walkers . . . book-a-night readers . . . compulsive talkers . . . off-key whistlers . . . the always-singers . . . bargain hunters . . . coffee-breakers . . . braggers . . . polyanthas . . . telephone tryants . . . argufiers . . . and trouble-tellers.

To each his own pet addiction . . . habitual inclination dependence upon. So long as it involves nothing worse than reading the papers before breakfast, no matter what you're fairly safe. Go ahead and enjoy your little addiction.

The world is so full of all kinds of folks  
All kinds of habits, all kinds of jokes  
Minor addictions you shouldn't be mindin' —  
Just so you're not hooked on constant fault-finding.

PICTURE in Monday morning's Abilene Reporter-News (Air Force Photo) showed four air crew members in a song-fest with Lt. Col. George W. Capp of Lucas, Kansas, playing the guitar in Viet Nam.

One of the singers pictured is our Capt. Keith Baker, pilot whose home address is Colorado City. The captain is husband of our Betty (Tooter) Fortune Baker and has been in Viet Nam since Easter. The Bakers have three children — Linda, in fourth grade at Hutchinson, Keven, third grader, and Kenneth of the high-chair brigade.

THAT picture, mentioned here recently, of the beautiful 16-year-old Mary Layne in Look Magazine is, in truth, of the Mary Layne born here in C-City to Pat and Harold Layne.

Gwen Wistrand (Mrs. Dick) verified it from a snapshot made of Mary with Sally and Hunter Wistrand years ago.

The Laynes lived here several years. He is a Shell Pipeline man and Pat will be remembered as a former nurse. The family lives now in Houston.

SEEN LATELYS were Wiley Walker of Loraine, an office drop-in . . . and Mary Louise Jones (Mrs. Willis) with study club news.

Saw Ida (Mrs. Jim) Watson on the downtown scene . . . Mary Anne McCloud (Mrs. Austin) her daughters Melinda and Sharon . . . with Margaret Sparks (Mrs. Ben) and her daughters Mary Margaret and Sally enjoying informal lunch after dance class.

Same time, same place (The Villa) saw the Chesneys, Gus and Frances and their daughter Linda (Mrs. Tim) Bennett . . . Max Berman and his daughter from Dallas, Phyllis Rudnick (Mrs. Albert) saying that Mrs. Berman is much better.

FAMILIAR FACES, other places, were those of Mrs. Bennett Scott . . . Mozelle Callendar (Mrs. George) . . . Leslie Hamilton . . . Mayne and Eli May . . . Ed Owen, happy over a three-week trout fishing visit in Colorado.

Talked via Alexander Graham Bell to Mrs. Ed Jones Sr. who was saying that the new Miss America is a distant relative of C-City's Mrs. H. B. Broadus!

Glimpsed Max Caswell on the shopping scene . . . Maurice Kirschbaum . . . Nice Bill Holbert, too . . . and good-looking Selma Landau, wife of Willie.

SEE CONVERSATION PAGE 5

### Ruth Class Has Social

Mrs. Rex McKenney was hostess in her home to members of Ruth Sunday School Class of Baptist Church, Tuesday night, September 20.

Mrs. W. A. Bell said the opening prayer, followed by members singing the class song, I Love to Tell the Story, and repeating class aim and scripture, I Corinthians 13:13. Mrs. McKenney gave the devotional taken from Renewing Your Faith Day by Day.

Mrs. Sam Scroggins, president, presided during a business meeting. Mrs. Ralph Bryant gave the report of the nominating committee and the following officers were elected: Mrs. Scroggins, president; Mrs. N. J. McMahan, vice-president; Mrs. Jerry Webb, secretary; Mrs. Johnny Shackelford, assistant secretary; Mrs. Gerald Rollins, treasurer; Mrs. Charles Ranne, reporter; Mrs. Curtis Clemmer and Mrs. Bryant, recreation; Mrs. Homer Rice, teacher and Mrs. Shackelford, associate teacher.

President appointed to a year book committee, Mmes. Ranne, Bryant, Shackelford and Mrs. W.A. Bell.

Refreshments were served to Mmes. Scroggins, Bryant, Webb, Shackelford, Ranne, Bell, L. B. Edwards, Floyd Rice, H. J. Geron, Linda Ranne, the hostess and her daughter, Joyce.

Mrs. McMahan will host the October meeting.

### GOOD DEVELOPMENT -

Maybe somebody called your attention to the fact that this is National 4-H Club week.

If you have not noticed, this a reminder to pause a moment and reflect upon the good things of 4-H right here at home.

There are few organizations on the level of 4-H. And here in Mitchell County this program for development and education of our youth has 140 young men and women participating in its activities — approximately 60 with special livestock feeding projects.

So you see, 4-H not only builds better citizens, but dovetails right into the natural agri-business potential of our community.

Henry Bilberry,  
CORNER DRUG

FRIDAY AT CRADDOCK WITTEN

## '67 Fords Add Length For New Body Styling

The 1967 Fords, with their new body styling changes for the third consecutive year, move into the public eye Friday in Craddock-Witten showrooms Friday here in Colorado City.

And the cars will be the largest and most luxurious for Ford.

"Our new '67 models not only have dramatic new styling," said J. S. (Jay) Craddock Jr., partner in Craddock-Witten, "but they also ride and handle better, are even quieter than last year's cars and have the greatest number of standard safety items in Ford's history."

Viewers of the new Fords Friday at Craddock-Witten, 118 Walnut, will find the car 1966 models and will notice sculptured side panels which give the car a lower, longer silhouette.

Roof lines on all models, but convertibles, station wagons and 4-door hardtops are new with softer, more sweeping lines that create a fastback look. New grilles, taillights, side trim and rear-end treatment add the finishing touches to the big Ford.

Interiors also are newly designed with instrument panels that feature recessed, bezel "round stoppers" at all controls and new, more luxuriant upholstery materials. Ford reflects further advances by sound engineers in its wheel-type inertia dampers to reduce noise even more for its 1967 models.



Ford's New Styling For '67

Here is the new styling for the 1967 Ford which has received a major change for the third time in three years. Pictured (top) X-L Convertible and X-L 2-Door Hardtop. The new Ford models will be on display in Colorado City at Craddock-Witten.

\* \* \* \* \*

1967 Front and rear suspension have bigger, softer rubber springs and shock absorbers. A new Comfort Ventilation System, standard on LTD models, provides quiet, "whispering" airflow with controlled fresh air movement throughout the car. State air is exhausted through a rear window duct in the trunk.

through a rear window duct in the trunk.

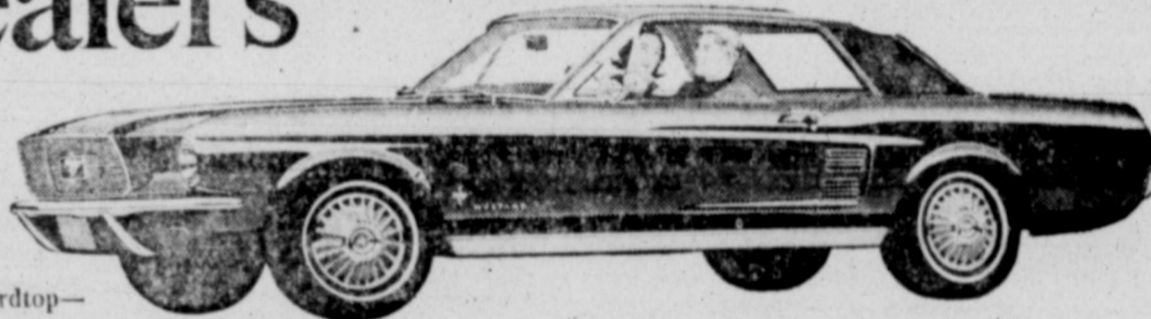
1967 models will result in smoother performance, greater economy and dependability. Also new is the Shift-O-Matic transmission, which permits manual or automatic gear shifting. The 1967 models, top-of-line Ford's, which will carry the name of Ford's premium line, will include a 4-door sedan as well as 2 and 4-door hardtops. A new vinyl-covered rear with special tussling treatment on the roof panels set the 2-door LTD hardtop apart.

Among other features are an instrumented steering wheel with deep-padded hubcaps, absorbing safety arm rest, a dual hydraulic brake system, padded windshield pillars, remote control outside view mirror, two-speed electric windshield wipers and a new lane-change indicator incorporated in the turn signal.

Engines for '67 include the 150-horsepower, 7-main-bearing, 230-CID Six which continues as standard equipment on all models except the XL's and LTD's. Standard engine for these models

See Ford Page 4

# Ride Ford's New Wave for '67! At your dealer's Friday!



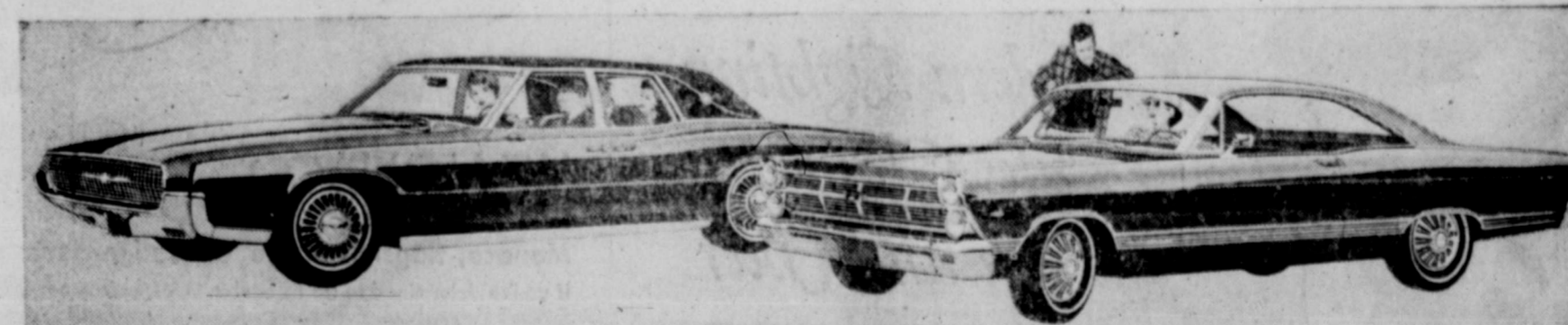
1967 Mustang Hardtop—bred first to be first



1967 FORD XL 2-Door Hardtop—the ultimate in sports/luxury cars



1967 FORD LTD 2-Door Hardtop—one of the world's quietest luxury cars



1967 Thunderbird Four-Door Landau—one of three all-new Thunderbirds

1967 Fairlane 500 Hardtop—the car that gets sportier and more popular every year

18 Fords: The strongest, quietest, best built Fords in history. Choose from luxurious new LTD's, sporty XL's, stylish Galaxies, Customs and wagons.

3 Mustangs: Bred first . . . to be first. All-new hardtop, convertible and fastback 2+2. Mustang is longer, wider, sportier than ever. And more than ever designed to be designed by you.

3 Thunderbirds: Unique, exciting, the ultimate in luxury. There are two new

two-door models, and for the first time in history . . . an elegant new four-door.

13 Fairlanses: Big-car roominess and performance in a lean middleweight. You can pick from exciting XL's and GT's, convertibles, smart sedans and wagons.

10 Falcons: Low price and big economy combined with new luxury. Some people even call them short limousines. Choose from classy Sports and Club Coupe, sedans and wagons.

Better Ideas from Ford for '67 . . . SelectShift Cruise-O-Matic transmission that shifts automatically and manually . . . automatic door locking . . . Comfort-Stream Ventilation that lets you close windows, yet be refreshed by a silent flow of air . . . adjustable Tilt-Away Steering Wheel . . . automatic speed control for foot-free turnpike cruising . . . a Magic Doorgate on wagons that swings out for people and down for cargo. And for '67, Ford Motor Company Lifeguard-Design safety features are standard on all models. Ride Ford's new wave for '67!

You're ahead in a

# FORD

MUSTANG • FALCON • FAIRLANE

FORD • THUNDERBIRD



## CRADDOCK-WITTEN

118 Walnut

Colorado City

Phone RA 8-3491



## District Teachers Hold Meet

Workshop program for local and district 4, Texas State Teachers Association, will be the country club at Big Spring Wednesday afternoon and evening, Sept. 21.

Mrs. Gerald Gordon, public relations chairman for the district, conducted one of the eight workshops. Mrs. Gordon, Colorado High School journalism teacher, is also publicity chairman for the local unit.

Brooks Tegus, president of Mitchell County Teachers Association and Bob Payne, president of Classroom Teachers organization here were among the Colorado City teachers attending.

Dinner was served from 6:30 until 7 p.m. at the country club with Sam Anderson, vice-president of the TSTA, making the keynote address. Anderson is superintendent of Big Spring public schools.

## Teacher One Nominated For Award

WESTBROOK Dick Kennedy, nephew of Mrs. Fred Roberts of Westbrook, is one of 12 teachers nominated for the \$1,000 Faculty Excellence Award sponsored by West Texas State University Ex-Students Inc. Announcement of the winner will be made at the 4th Annual Phoenix Club Dinner to be held Thursday evening, October 2 at Canyon.

All nominees will be guests of West Texas Ex-Students Inc. at the annual Phoenix Club Dinner at which time the winners will be announced and presented with the \$1,000 check. Members of the Board of Directors of West Texas Ex-Students Inc. determine the winner.

Kennedy, who was instructor at WTSU in economics and government, holds a B.S. and M.A. degree from West Texas State University.

He is the only one of the 12 nominees who does not hold the doctorate degree, and teaches government and economics in Odessa Junior College this year.

## Band Boosters Plan Meeting

Band Boosters will hold their second meeting of the year Monday evening, October 3, in Colorado High School Band Hall, at 7:30 p.m.

All parents of Wolf Band members and other backers of the band are invited to attend.

Dick Wetland is president of the organization this year. Mrs. Charles Ezell is publicity chairman.

### AFFORDABLE FUN!

Two of the Southwest's standout attractions—Fort Worth's enchanting new Green Oaks Inn and Arlington's Six Flags Over Texas—are just 20 minutes apart.

And you can get both for the price of one!

Green Oaks Inn offers a special summer Family Plan, bargain priced, with free tickets (good for all rides) to Six Flags.

There are other fringe benefits: Free breakfasts, free golf, free miniature golf, free bowling, free admission to every part of Fort Worth's nationally famous zoo.

Texas Parade, in its June issue, comments: "(The) stunning new Green Oaks Inn must rank among the top hostels of the world!"

Call or write the Green Oaks innkeeper for details and/or reservations.

There IS one drawback: Once you get to the charming Inn, you may not want to leave—even to visit Six Flags.

**Green Oaks**  
6901 W. Freeway  
817/PE 8-7311  
Fort Worth, Texas

Continued From Page 1

CID V-8 with two-barrel carburetor. Five additional V-8 engines are optional, giving the buyer a choice of power all the way up to the 425-horsepower 427-CID V-8 with eight-barrel carburetion. Valves trains on V-8 models have

four-venturi "air-vaive" carburetor is now offered on 300-CID and 428-CID V-8 engines for improved efficiency and driveability through the entire speed range.

The list of safety features on all 1967 Fords is headed

by a new automatic conventional single-point, the new system uses twin master cylinders, each with its own pumping section and fluid reservoir. One cylinder actuates the front wheel brakes and the other rear.

In the unusual case of a failure in either half of the

system, the remaining half will still operate. The system is supported by means of a built-in hydraulic pressure accumulator, which absorbs pressure when the brakes are released.

Also, new emergency steering wheels are of the Ford type with a built-in shock absorber and a door-added hub designed with a collapsible progressive

steering knuckle support in the event of a failure. The knuckle is supported by a built-in hydraulic pressure accumulator, which absorbs pressure when the brakes are released.

Also, new emergency steering wheels are of the Ford type with a built-in shock absorber and a door-added hub designed with a collapsible progressive

steering knuckle support in the event of a failure. The knuckle is supported by a built-in hydraulic pressure accumulator, which absorbs pressure when the brakes are released.

Also, new emergency steering wheels are of the Ford type with a built-in shock absorber and a door-added hub designed with a collapsible progressive

steering knuckle support in the event of a failure. The knuckle is supported by a built-in hydraulic pressure accumulator, which absorbs pressure when the brakes are released.

Also, new emergency steering wheels are of the Ford type with a built-in shock absorber and a door-added hub designed with a collapsible progressive



Over \$125,000 Cash Prizes...Over 46,000 Winners

# 'PLAY 21' at SAFEWAY!

\* \$125,000 In Cash Prizes!  
\* 2,000,000 Gold Bond Stamps!

At the end of "Play 21" all non-winning "Play 21" cards will be deposited for a drawing of 2,000,000 Gold Bond Stamps. Save all of your Non-Winning "Play 21" cards!

### WINNERS:

- |  |   |
|--|---|
| <b>\$1,000.00 WINNER</b><br>MARY ARMSTRONG<br>520 Santa Fe Ave., North<br>\$500—LIZZIE CURRY<br>1924 Second St., Dallas<br>\$500—MRS. WALTER H. SCHULZE<br>814 St. Louis, Austin<br>\$100—MRS. C. V. DELLINGER, JR.<br>418 Fair Meadows, Duncanville | <b>\$500.00 WINNER</b><br>Howard Hardcastle CITY<br>\$100—MARTHA BARTLETT<br>202 Charles St., Dallas<br>\$100—HARRY HANSEN<br>1144 Francisco, Austin<br>\$100—ANNIE PORTER<br>1055 E. Lewis |
|--|---|

Rules: One Free "Play 21" card per store visit. No purchase required. No need to pass through check-out. Secure your FREE card at either end of check-out or from any store employee other than in Meat Department. Safeway employees and their immediate families are not eligible. You must be 16 or over to receive "Play 21" cards. Only bona-fide "Play 21" cards marked "Program # 138" will be honored.

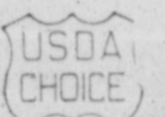


### Check These Values!

- |                         |
|-------------------------|
| Cling Peaches 4 for \$1 |
| Spam 49¢                |
| All Meat Chili 59¢      |
| Pork & Beans 6 for 89¢  |
| Corn Meal 5 Lb. 39¢     |
| Lipton Instant Tea 79¢  |
| Comet 2 for 29¢         |

## Morton Dinners Canned Biscuits Applesauce Scot Tissue Campbell's Soup

- |   |
|---|
| Frozen. * Chicken * Beef<br>* Turkey * Salisbury Steak<br>11-oz. Pkg. 3 for \$1   |
| Mrs. Wright's, Sweetmilk<br>or Buttermilk—8-oz. Can 7¢  |
| Highway, Smooth and tangy.<br>Serve with Pork—16-oz. Can 8 for \$1  |
| Toilet Tissue, Assorted Colors,<br>* Old Fashion Vegetable<br>* Vegetarian * Tomato & Egg<br>* Beans & Bacon * Cream of Celery<br>* Vegetable * Fatso-Reg. Can 4 Roll Pak 29¢ |
| 8 for \$1   |



- Safeway Guaranteed Meats!
- |                     |                       |
|---------------------|-----------------------|
| Round Steak 69¢     | Rump Roast 69¢        |
| Bottom Round 79¢    | Loin Tip Roast \$1.09 |
| Top Round Steak 89¢ |                       |

## Sliced Picnics Leg Quarters

- |                      |
|----------------------|
| Smoked, Whole, 43¢   |
| or Fryer Halves, 39¢ |

## BACON

- |                                      |                               |
|--------------------------------------|-------------------------------|
| Roth Blackhawk Sliced 1-lb. Pkg. 79¢ | Capitol Sliced 1-lb. Pkg. 75¢ |
|--------------------------------------|-------------------------------|

- |                    |                     |                     |                      |                      |                             |
|--------------------|---------------------|---------------------|----------------------|----------------------|-----------------------------|
| Birds Eye Corn 33¢ | Libby Pineapple 29¢ | Libby Beef Stew 59¢ | Corned Beef Hash 49¢ | Libby Sloppy Joe 63¢ | Light Crust Flour 5 for 69¢ |
|--------------------|---------------------|---------------------|----------------------|----------------------|-----------------------------|

- |                   |                      |                       |                         |                           |           |
|-------------------|----------------------|-----------------------|-------------------------|---------------------------|-----------|
| Cookies 2 for 97¢ | Libby Corn 2 for 47¢ | Libby Green Beans 29¢ | Burleson's Honey \$1.19 | Kleenex Napkins 2 for 35¢ | Kotex 43¢ |
|-------------------|----------------------|-----------------------|-------------------------|---------------------------|-----------|

**Bakery Fresh!**

Cheese Bread 25¢	Coffee Cake 33¢	Club Rolls 21¢	Biscuits 27¢
------------------	-----------------	----------------	--------------

**Frozen Food Savings!**

FRUIT PIES 3 for \$1	Mellorine 3 for 89¢	Casseroles 49¢	Breaded Steaks 89¢
----------------------	---------------------	----------------	--------------------

**Morton PICKLES**

★ Whole Dill ★ Whole Sour  
★ Whole Kosher Dill

16-oz. Jar 3 for \$1

**Discount Prices!**

Seamless Hose 3 for \$1	Hair Spray 63¢	Shaving Lather 53¢	Tooth Paste 56¢	Dippy Do 99¢	Polident 63¢
-------------------------	----------------	--------------------	-----------------	--------------	--------------

**From the Dairy Case...**

Chocolate Milk 49¢	Fruit Drinks 4 for \$1	Sour Cream 59¢	Fresh Milk 59¢
--------------------	------------------------	----------------	----------------

Libby Peas 5 for \$1	Libby Green Beans 5 for \$1	Libby Tomato Juice 6 for \$1	Hawaiian Punch 3 for \$1	Yellow Popcorn 29¢	Heinz Baby Food 6 for 59¢	Jell-Well Gelatin 4 for 29¢
----------------------	-----------------------------	------------------------------	--------------------------	--------------------	---------------------------	-----------------------------

**Quality and Freshness at Safeway**

## APPLES

Red Delicious, Extra Fancy, Full of flavor, 10 Lb. Bag 99¢

Pineapple 39¢

Tomatoes 29¢

Bartlett Pears 19¢

Grapes 19¢

Onions 2 for 25¢

Corn 3 for 25¢

Bell Peppers 3 for 25¢

Romaine 29¢

Lemons 6 for 35¢

Dates 69¢

Pothos Ivy 19¢

**Chase & Sanborn**

Ivory Liquid 37¢	Joy Liquid 37¢	Cascade Detergent 45¢	Thrill Liquid 37¢	Ivory Soap 2 for 25¢	Salvo Tablets 79¢	Downy Softener 40¢	Comet Cleanser 2 for 53¢	Bold Detergent 37¢
------------------	----------------	-----------------------	-------------------	----------------------	-------------------	--------------------	--------------------------	--------------------

50 FREE GOLD BOND STAMPS With the Purchase of FOUR—8-oz. Cans LUCERNE DIET FOOD Coupon Expires October 1, 1964	50 FREE GOLD BOND STAMPS With the Purchase of 8-oz. Cans LUCERNE DRESSING Coupon Expires October 1, 1964	25 FREE GOLD BOND STAMPS With the Purchase of 18-Ct. Pkg. ANTACID CHOOZ Coupon Expires October 1, 1964
50 FREE GOLD BOND STAMPS With the Purchase of 8-oz. Bottle PEPTO-BISMOL Coupon Expires October 1, 1964	75 FREE GOLD BOND STAMPS With the Purchase of Any 3-Lb. or Larger BONELESS ROAST Coupon Expires October 1, 1964	25 FREE GOLD BOND STAMPS With the Purchase of 10-Lb. Bgg Russet POTATOES Coupon Expires October 1, 1964

**SAFEMAY BONUS COUPONS**

50 GOLD BOND STAMPS With the Purchase of 3-Lb. Safeway Chub-Pak GROUND BEEF Coupon Expires October 1, 1964	100 GOLD BOND STAMPS With the Purchase of FOUR—4-oz. Cans Bel-air ORANGE JUICE Coupon Expires October 1, 1964	20¢ Off the Regular Purchase Price 14-oz. Bottle JERGEN'S LOTION Coupon Expires October 1, 1964
--	---	--

**Safeway Fresh Eggs!**

Large 'A' Eggs 62¢	Large 'AA' Eggs 64¢	Extra Large 'A' 66¢
--------------------	---------------------	---------------------

**SAFEMAY**

# FOOTBALL CONTEST

# SUPPORT THE WOLVES

(This Page Is Sponsored by Colorado City Merchants)

Have Fun! Enter The Colorado City Record's Football Guessing Contest! Prizes Every Week To The Winners . . . And Novices Can Be Just As Lucky As The Football "Experts"

**FIRST PRIZE**  
**\$10.00 in Cash**

**SECOND PRIZE**  
**\$8.00 in Cash**

**THIRD PRIZE**  
**\$5.00 in Cash**



## CONTEST RULES

1. One Of The Games To Be Played This Weekend Is Listed Under The Name Of The Advertisers On This Page. Read The Advertisement Carefully So That You Will Have A Complete List Of The Games.

In Each Ad There Will Be A Number And Game. Find The Number In The Entry Blank And Write In Your Choice.

2. This Contests Is Open To Everyone except employees Of This Newspaper and Their Families.

3. In Case of A Tie The Prize Will Be Divided Equally.

4. Bring Your Entry Blank To Colorado City Record Before 5 p.m. Friday Or Mail With Postmark To The Record P. O. Box 92, Colorado City, Before 7 p.m. Friday:

## BEAT BRADY

**JEFF TAYLOR**  
ENCO SERVICE  
111 20 & Snyder Hwy. RA 8-4231  
Rice vs Tennessee (23)

**ROGERS DELINTED**  
COTTONSEED CO.  
W. 11th 20 RA 8-2069  
Texas vs Indiana (24)

**WESTERN AUTO**  
ASSOCIATE STORE  
249 Walnut RA 8-2201  
A&M vs Texas Tech (25)

**J. L. GALEY'S**  
FINA STATION  
18th. W-Hickory RA 8-2337  
S.M.U. vs Purdue (26)

**ROGERS**  
VILLA RESTAURANT  
Snyder Hwy. RA 8-3367  
Baylor v Washington St. (22)

**CURLEE LUMBER CO.**  
Plumbing Service & Supplies  
118 Elm RA 8-2181  
Arkansas vs T.C.U. (21)

**BETTER CLEANERS**  
For Better Dry Cleaning  
521 Walnut RA 8-4191  
Seymour vs Haskell (20)

**BOB RATLIFF INS.**  
Fire, Auto And Casualty  
152 Walnut Ph. RA 8-4371  
Winters vs Ballinger (1)

**Don Henderson**  
**TEXACO**  
"US ROYAL T-RES"  
200 Chestnut Ph. RA 8-2022  
Coleman vs Lake View (2)

**Colorado**  
**SAND & GRAVEL CO.**  
S. of City Phone RA 8-4011  
Mason vs Goldthwaite (3)

**CORKEY'S MOBIL**  
"We Give S&H Green Stamps"  
395 E. 2nd Ph. RA 8-8158  
McMurry vs A.C.C. (4)

**VILLAGE FOOD MKT.**  
Mr. & Mrs. Earl Brock  
400 East 2nd Ph. RA 8-3421  
Cooper vs Brownwood (5)

**BODINE BROS.**  
Drive-In Dairy  
Snyder Hwy. Ph RA 8-3524  
Fresh Eggs & Milk  
Sweetwater vs Monahans (6)

**COL-TEX STATION**  
and Wholesale Office  
2nd & Hickory RA 8-3601  
Lamesa vs Lubbock Coronado (7)

**C C Printing**  
Commercial Printing  
154 Walnut RA 8-3701  
Littlefield vs Tulia (8)

**COLORADO DRUG**  
"Your Prescription Headquarters"  
102 E. 2nd RA 8-2665  
Snyder vs Kermit (9)

**THOMAS BROS.**  
Service Station  
"Goodyear Tires"  
Brownfield vs Seminole (10)

**CRADDOCK-WITTEN**  
"Your Hometown Ford Dealer"  
118 Walnut RA 8-3191  
Hermleigh vs O'Donnell (11)

**Sam L. Majors Jewelers**  
Diamond Merchants  
For Over 50 Years  
160 E. 2nd Ph RA 8-2502  
Bronte vs Roscoe (12)

## OFFICIAL FOOTBALL CONTEST ENTRY BLANK

Clip And Bring Or Mail To The  
Colorado City Record . . .

Write your choice beside these number. Your  
choice must be in place. In each adthere will be  
a number and game.

1	2	3
4	5	6
7	8	9
10	11	12
13	14	15
16	17	18
19	20	21
22	23	24
25	26	

### PICK THE SCORE

Colorado City . . . . . Brady  
Name . . . . .  
Address . . . . .

**G. D. FOSTER**  
Insurance & Loans  
G. D. Foster Dick Wistrand  
Loraine vs Hamlin B (13)

**ROBERTS BUTANE**  
Gas & Appliance Co.  
193 E. 2nd RA 8-3711  
Robert Lee vs Bangs (14)

**Colorado City Electric Co.**  
Robert Lee Hwy. RA 8-3478  
Anson vs Cisco (15)

**MARSHALL'S VARIETY**  
"Neighborhood Self-Service  
Store"  
1044 Hickory St. RA 8-3644  
Breckenridge vs Weatherford (16)

**HUDSON & SPARKS**  
Dirt Contractors  
Robert Lee Hwy. RA 8-2342  
Quannah vs Childress (17)

**CORNER DRUG**  
"Free Delivery on Prescriptions"  
501 Walnut RA 8-3484  
Iowa Park vs Burkburnett (18)

**COLORADO CITY RECORD**  
PUBLISHERS  
136 Walnut RA 8-3413  
Canyon vs Vernon (19)

### Con

BRIEF E  
Smith, wife of  
and another  
Hear t-ll  
Mrs. P. C. Ca  
gals who took  
day

Gillem Me  
Fowler of Sny  
tal staff . . . an

FOOTBAL  
addition dis  
ch last week

What wa  
and the Dalla  
the man o  
his beloved Ba  
Almost  
is a lifelong h  
win Southwest  
declared a nati  
exes and back

### Se

### PO

### HOS

### Ag

This is the  
statewide o  
Sickness, A

Hospital  
Room  
Up to . . . . .

Surgical  
Fees  
Up to . . . . .

Pays for X  
other Misc  
in the Polic

No Me  
Pays F  
Pays R  
No Red

SENIOR  
P.O. Box

Abilene  
Please see  
plete FR  
about th  
without a

NAME . . . . .  
ADDRESS . . . . .  
CITY . . . . .  
An

CLE

DE

MOVE UP  
ING IS FA

The  
tion  
flood  
aut  
qua

SEEYO

### Conversation Corner

CONTINUED FROM PAGE 1

**BRIEF ENCOUNTERS** brought cheer with Rochelle Smith, wife of Arnel R. and Junior High speech teacher, and another with Frances and Clem Myers.

Hear tell that Ida Kirsbaum, Effie Conland, and Mrs. P. C. Carpenter joined the eight other C.C.R.W. girls who took in District Conference in San Angelo, Sunday.

Gillian McEntire was a brief office visitor. Cecil Fowler of Snyder, 4111... J. W. Howell of the Post Hospital staff... and Eddie Braswell of the A.C.S.

**FOOTBALL** Fever that masculinized and non-harmful addition discussed last issue was at higher than usual pitch last weekend at the house on East 9th St.

What with the Wolves taking the Sweetwater Mustangs and the Dallas Cowboys walloping the Minnesota Vikings... the man of the house was almost too elated to mourn his beloved Baylor Bears.

Almost... but not quite. "That Good Ole Baylor Line" is a lifelong habitual incantation. And if the Bears should win Southwest Conference title again... there should be declared a national holiday... at least for all the Baylor eyes and backers of the Baptists.

## New Design For '67 Chryslers

Chrysler cars for 1967, new in body design and with new rear styling for 2-door hardtops, go on display in Colorado City Thursday in the showrooms of Frank Motor Company, 245 Chestnut.

There is a new series in the Chrysler line — the Newport Custom — to broaden Chrysler's coverage in the medium price market, according to Frank Derigibus, owner of Frank Motor Company.

The other four series — Newport, 300, New Yorker and Town & Country wagons — are retained, with even stronger separate styling identity than in the 1966 line.

A 90-50 divided front seat is one of the appealing new interior options. With optional fingertip power controls, it can be made to serve as a traditional luxury bench seat, or each side may be adjusted for the individual needs of driver and front seat passenger.

New standard features for 1967 include an impact absorbing steering column, a dual locking system with a warning light, new windshield wipers with non-reflection metal parts, glass rear windows for convertibles and a flow-through ventilation system for hardtop models.

Power front wheel disc brakes with 15-inch wheels become standard in Town & Country wagons. They are optional in other models.

All 1967 Chrysler cars have significant engine improvements. The standard 383-cubic inch V-8 has carburetor and camshaft modifications to provide better fuel economy. The standard 440-cubic inch engine which becomes standard in New Yorkers, has a new induction system which improves its efficiency.

There is also a new high performance 440 TNT engine package available in all models.

### BRIDAL SHOWER

## Miss June Ritchey Feted At Reception

**WESTBROOK** The former Miss Elna June Ritchey, bride-elect of Wayne Turnage, was honored at a gift reception held Monday night, September 19, in Fellowship Hall of Methodist Church.

The bride's colors of pink and white were carried out in solo decorations.

Wedding of the honoree and Mr. Turnage took place, Sept. 24.

Mrs. Choppy Rees, presided



Chrysler Hardtop Styling

Chrysler cars for '67 — on display Thursday at Frank Motor Company in Colorado City — have a new appearance with new metal sculpture, new front and rear designs and semi-fastback roof styling for 2-door hardtops. Here's the Newport Custom, a new series available in 2-door and 4-door hardtop and 4-door sedan models.

### Yearbook Requested From Organizations

Study clubs and other organizations planning to report meetings to the Colorado City Record this fall are requested, please, to provide a new 1966-67 yearbook for use of the women's news department.

Better coverage and handling of advance notice for special programs and events is possible with yearbooks in hand.

Calendar of Events calls are also always welcomed by the women's editor.

Try Record Want Ads

## Senior Policy



**HOSPITAL-CARE POLICY**  
Ages 50 to 94

This is the Senior Policy you have seen advertised statewide on TV, Radio and Newspaper that covers Sickness, Accidents and Operations.

Hospital Room Up to.....	\$700	During Present Enrollment Ages 50 to 94	\$54 <sup>00</sup>
Surgical Fees Up to.....	\$250	Individually	Per Year

Pays for X-Ray, Hypodermics, Oxygen and many other Miscellaneous Hospital Expenses as provided in the Policy.

- IMPORTANT FEATURES**
- No Medical Exam Required
  - Pays From First Day of Confinement
  - Pays Regardless of Other Insurance or MEDICARE
  - No Reduction in Benefits at Any Age

COMPLETE THIS COUPON AND MAIL

SENIOR POLICY  
P.O. Box 178  
Abilene, Texas

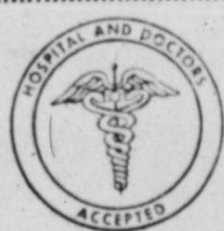
Please see that I receive complete FREE INFORMATION about the SENIOR POLICY without any obligation.

NAME .....

ADDRESS .....

CITY..... PHONE .....

American Life & Accident Ins. Co. C. 9



# YOU ARE INVITED TO HEAR CHRIST PREACHED

By



Stanley Lockhart  
Jackson St. Church of Christ  
San Angelo, Texas

Warm Friendly Welcome

To All

Congregational

Singing

Inspirational

Preaching

7 & 10 a.m. - 7:00 p.m.

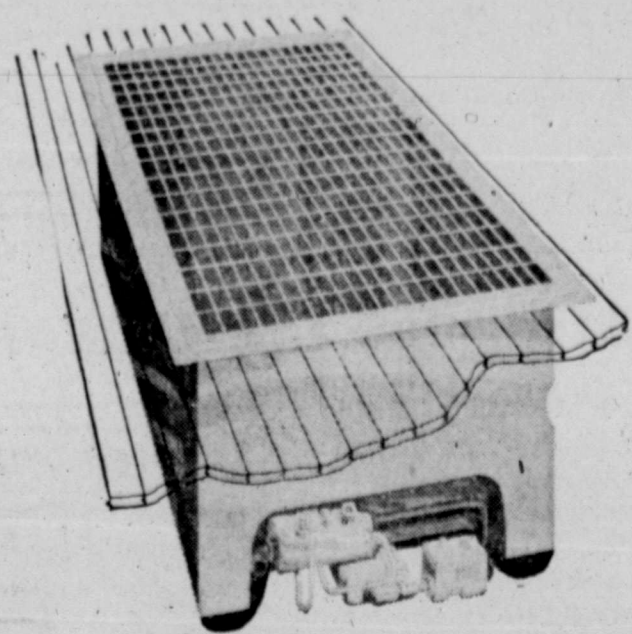
10:45 a.m. & 6:30 p.m. Sun.)

Oct 3 thru 9

**CHURCH OF CHRIST 22ND & AUSTIN ST.**

## CLEAR THE DECKS! GAS HEAT SALE

MOVE UP TO MODERN GAS HEATING BEFORE YOU NEED IT... AND SAVE! GAS HEATING IS FAST, SAFE, AUTOMATIC, CLEAN, EFFICIENT, DEPENDABLE AND ECONOMICAL.



### MODERN GAS FLOOR FURNACE

These furnaces install easily in any room — any home. Quiet operation that's economical because it's gas. Warmth flows up from the floor... beginning where you need warm comfort. Available with automatic thermostat controls. Long trouble-free service with simple, quality equipment. Buy now and save!

SEE YOUR GAS HEATING DEALER OR LONE STAR GAS

## Take Charge... Move up to Chrysler '67

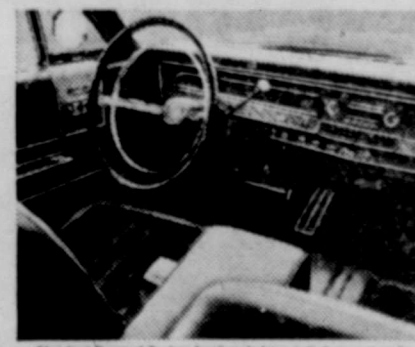
Any time. Anywhere. The '67 Chrysler takes charge.

In the way it looks.

In the way it goes.

Its optional 440 TNT V-8 is the biggest in the price class, as are the brakes. A perfect balance.

A new energy-absorbing steering column is standard equipment. So are many other safety features.



Standard Newport Custom front seats have pull-down armrests.

Something else about Chrysler. Four Chrysler Newport models are now priced just a few dollars a month more than the most popular smaller cars, comparably equipped.

If you've been looking for a winner, Take Charge in Chrysler '67. It's it.

**on display now CHRYSLER '67**



CHRYSLER DIVISION CHRYSLER MOTORS CORPORATION

Illustrated above, the Newport Custom 2-Door Hardtop. Tune in Bob Hope Wednesday and AFL Football weekly.

FRANK MOTOR CO. • 245 CHESTNUT ST.

# 67 Chevy Line Has Wide Variety, Sizes

Viewers of Chevrolet's 1967 automobile line Thursday at Jay Adams Chevrolet, East Highway 80, will discover an unparalleled variety of sizes, body styles, options and safety features.

The new models will go on display in Colorado City simultaneously with premier showings across the nation. Chevy's 1967 line offers 48 new models of Chevrolet, Chevrolet II, Corvair, Corvair and the new Camaro.

Jay Adams, owner of the Colorado City's Chevy agency, said many new safety-related improvements are standard equipment on all 67 Chevrolets. These range from energy-absorbing steering column and dual master cylinder brake systems with warning light to special door locks and four-way hazard warning flasher.

Heading a list of more than 300 options and accessories is a new stereo tape system, an improved cruise control and a new air conditioning unit which can be dealer installed on all new Chevrolets except Corvair and on all 1967 through 1966 models of Chevrolet, Chevrolet II and Chevy II.

Front-leaf brakes are available as options on regular Chevrolet, Chevrolet II and Camaro models. Four-wheel disc brakes are standard on Corvettes.

Here are the highlights of the Chevrolet lines for 1967:

**Regular Chevrolet** — Has a longer, lower "big car" look in its 16 models in five series on a 119-inch wheelbase. A wraparound grille includes front fender identification lamps standard on luxury Caprice models, optional on all other series.

Long body lines carry to the top of the rear fender. Rear fender skirts are available for added body smoothness. Twin horizontal tail lamps above the bumper are recessed into the rear panel.

Caprice and Impala sport sedans have a new roofline that ends in a larger, more sloping back window. An exclusive new roofline on Impala sport coupes stresses fastback styling with the rear window blending into the deck.

Extensive refinements in steering, rear suspension and body mounting give improved ride, handling and roadability. Base tires are large for most models and a larger 24 gallon fuel tank is standard on all models.

**CHEVILLE** Chevy's immediate size car line has six models in five series with the addition of the luxury Concours station wagon. Wheelbase runs from 115 inches.

Chevy's base six-cylinder engine is increased to 238 cubic inches. Two sizes and five V-8s are offered with a horsepower range from 140 to 325. Turbo Hydra-Matic transmission is offered for

the first time with the two Chevrolet 296 cubic-inch engines. Four other transmissions are available.

**CHEVY II** — Seven models are offered in three series on a 110-inch wheelbase.

Larger headlamp bezels, together with a redesigned extruded aluminum grille, give a broader, "big car" look to the front end. All models have 14-inch wheels and tires.

**CORVAIR** — Chevrolet's distinctive rear-engine car offered in five models in two series for 1967 on a 108-inch wheelbase.

Principal Corvair design and mechanical features are continued with styling refinements. New Strato-bucled seats are standard on Monza models.

**COUETTE** — Chevy's sports car carries into its 35th year on the market all the features which made 1966 its most successful model year in history. A sport coupe and convertible are again offered on a 98-inch wheelbase.

Styling refinements include reduction of fender side louvers and a new rear end panel incorporating a wide, centrally located backup lamp.

Five V-8 engines are available including two new triple-carburetor versions of the 327 cubic-inch engine.



Chevrolet's Impala Sport Coupe

This Impala Sport Coupe emphasizes the distinctive styling Chevrolet offers in its 1967 models. Premier showing of the new Chevys starts Thursday in Colorado City at Jay Adams Chevrolet. New sports coupe roof line (above) keynotes fastback styling with rear window blending into the deck in unbroken line.

## OFFICERS 66-67

# Maranatha Club Dinner Honors New President

Maranatha Study Club opened the current club season with a dinner party honoring their club president, Thursday evening, Sept. 28, at the home of Mrs. R. M. Reed, 723 Locust St., at 6:30 p.m.

Mrs. B. D. Bassham was installed new president, succeeding Mrs. Helen Bagwell, who will serve as parliamentarian this year. Mrs. Charles Stevens is vice-president; Mrs. W. A. Pattillo, secretary; Mrs. Wayne Shavin, treasurer; and Mrs. Red, historian reporter.

Invocation was said by Mrs. Bagwell. Mrs. Elmer Martin gave the club history, and Mrs. W. N. Miller was installation officer.

Organized in July of 1957, Maranatha Club joined Mitchell County Federation of Women's Clubs in February, 1959. The club, a Bible study organization, meets the third Thursday in each month.

Theme for the new club year will be "The Window Still of Heaven" and will be studied through programs according to the theme.

After a resume of programs planned by the yearbook committee, read by Mrs. Hines, members present were served punch and cookies.

Active members in the Hesperian Club, oldest study club active in town and county, are Mrs. Perry Barber, Mrs. Sam Thompson; Mmes. Foster, Graham, Halbert, Hale, Hines, Majors, Miller, Sotter, Scott, Simpson, Thomas, Charles C. Thompson, Watson, Winn, Wulfjen and Miss Smith.

Visiting members are Miss Schell Merrill and Mrs. Wallace with Mrs. Jones, associate members, Mrs. S. H. Miller of Amarillo, Ill. member.

as Federation, the Bible study in Elgin, Atascadero, T. G. Day, and live together.

Mrs. B. D. Bassham will be in charge of the Christmas party which will be in the home of Mrs. Sam Bagwell, Thursday, Oct. 20, at 6:30 p.m.

Christmas party will be in the home of Mrs. Sam Bagwell, Thursday, Oct. 20, at 6:30 p.m.

Installation ceremony will be followed by the president's address, made by Mrs. Bassham.

Installation ceremony will be followed by the president's address, made by Mrs. Bassham.

Installation ceremony will be followed by the president's address, made by Mrs. Bassham.

Installation ceremony will be followed by the president's address, made by Mrs. Bassham.

Installation ceremony will be followed by the president's address, made by Mrs. Bassham.

Installation ceremony will be followed by the president's address, made by Mrs. Bassham.

Installation ceremony will be followed by the president's address, made by Mrs. Bassham.

Installation ceremony will be followed by the president's address, made by Mrs. Bassham.

Installation ceremony will be followed by the president's address, made by Mrs. Bassham.

Installation ceremony will be followed by the president's address, made by Mrs. Bassham.

Installation ceremony will be followed by the president's address, made by Mrs. Bassham.

Installation ceremony will be followed by the president's address, made by Mrs. Bassham.

Installation ceremony will be followed by the president's address, made by Mrs. Bassham.

Installation ceremony will be followed by the president's address, made by Mrs. Bassham.

Installation ceremony will be followed by the president's address, made by Mrs. Bassham.

Installation ceremony will be followed by the president's address, made by Mrs. Bassham.

Installation ceremony will be followed by the president's address, made by Mrs. Bassham.

Installation ceremony will be followed by the president's address, made by Mrs. Bassham.

Installation ceremony will be followed by the president's address, made by Mrs. Bassham.

Installation ceremony will be followed by the president's address, made by Mrs. Bassham.

Installation ceremony will be followed by the president's address, made by Mrs. Bassham.

Installation ceremony will be followed by the president's address, made by Mrs. Bassham.

Installation ceremony will be followed by the president's address, made by Mrs. Bassham.

Installation ceremony will be followed by the president's address, made by Mrs. Bassham.

Installation ceremony will be followed by the president's address, made by Mrs. Bassham.

Installation ceremony will be followed by the president's address, made by Mrs. Bassham.

# CHS Class Elections Results Announced

Elections at Colorado High School for class officers of 1967 have been announced by the office of the principal, Joe Barnhart.

Stetson Cowan heads the senior class as president with Wayne Russell as vice-president. Jennifer Rowser as secretary, Dwight Cutler as treasurer and Larry Paul as student council representative.

Junior class elected Mace Findley as president with Ralph Landry as vice-president, Mike Garrett as secretary and Jean Keith as student council representative.

Don Steadley was chosen president of the sophomore class with Keaton Galles, vice president, Bonnie Witten with the office of secretary, Stan Shaw, student council representative.

Mr. Miller charged each class in turn with their duties and his congratulations she closed by telling the new president, "Yours is the duty to wear your crown with humility and justice."

The installation officer thanked her charge to the president with a rousing wish, "The kind of term we wish for you. Is one that's made of dreams come true. One that will warm, inspire and bless. One that will bring you happiness. One that is colorful and glad. Oh, the best sort of year we've ever had."

Installation ceremony was followed by the president's address, made by Mrs. Bassham.

Pro-femin proxy is Dean Turner. Other class officers are Linda Raul's, vice-president, and Helms, secretary, David Stubbfield, treasurer, and Dennis James, Student Council representative.

Dale Freeman heads the CHS Student Council as president, Russ Stubby is vice president, Pauline Mae, secretary, treasurer, and Jerald Graver, chairman.

Alvis Home Hosts Oklahoma Relative

WESTBROOK — Guests in the C. M. Alvis home the past weekend were Mr. and Mrs. Wilfred Cunningham and son, J. D. Cunningham, Oklahoma. Mrs. Cunningham is a daughter of Mrs. Alvis.

## CIVIC HOUSE, SATURDAY

# Hesperians To Celebrate At President's Luncheon

Hesperian Study Club will celebrate their annual President's Day here Saturday with a luncheon in Civic House at 1:30 p.m.

Mrs. J. W. Watson, new club president, and Mrs. Bennett Scott, outgoing president, will make addresses. Business for the President's Luncheon will be Mrs. Nat Thomas, Sr., Mrs. O. L. Simpson, and Mrs. Edgar Majors.

Mrs. Charles C. Thompson is to preside as master of ceremonies with Mrs. J. A. Sotter, Sr. to say the invocation. Mrs. Lynn Halbert will lead the Pledge to the Flag.

Mrs. Phillip Anderson, soprano, will be guest soloist for the program.

New officers for the current club year, in addition to the president Mrs. Watson, are Miss Mabel Smith, first vice-president; Mrs. Simpson, second vice-president; Mrs. Halbert, secretary; Mrs. Scott, corresponding secretary.

Treasurer is Mrs. J. F. Hale; Mrs. E. H. Winn, professional counselor; Mrs. Ralph Graham, historian and press book chairman; Mrs. Hines, publicity chairman. Membership committee members are Mrs. Charles C. Thompson, Mrs. Thomas with Mrs. O. Wulfjen and Mrs. M. E. Miller as telephone committee.

Our American Problems course of study for the year, will begin Friday, October 13, with a program, Our American Heritage, to be followed by programs highlighting problems by the American home, fine arts day, Bible day with Miss Gladys Miller, as speaker, to show slides of

## Westbrook FHA Plans Car-Wash

WESTBROOK — The FHA of Westbrook High School is having a car-wash, Saturday, October 1, from 9:00 a.m. to 3 p.m., behind the school. Charges will be \$1.00 per car with proceeds to be used to finance trip to State Fair, at Dallas.

**Deeya COSMETICS**  
1032 Hickory St.

her visit in the Holy Land. Christmas party will be in the home of Mrs. R. J. Wallace, December 16, with Mrs. Halbert as leader for the program, Mrs. Thomas to present a Christmas story.

Americanism Day will be featured January 6. Problems of education, science, health Texas Day, two programs an internationalism, will be climaxed with an April 14 program "Problems of Our Usage in the Americas. Last meeting of the year, April 28, will be the annual installation session.

First meeting of the year was held Friday, September 18, in the home of Mrs. Otto F. Jones, Rendrick, Ranch.

Members were greeted in opening remarks of the new

president, Mrs. Watson, who also extended welcome to a new member, Mrs. G. D. Foster.

After a resume of programs planned by the yearbook committee, read by Mrs. Hines, members present were served punch and cookies.

Active members in the Hesperian Club, oldest study club active in town and county, are Mrs. Perry Barber, Mrs. Sam Thompson; Mmes. Foster, Graham, Halbert, Hale, Hines, Majors, Miller, Sotter, Scott, Simpson, Thomas, Charles C. Thompson, Watson, Winn, Wulfjen and Miss Smith.

Visiting members are Miss Schell Merrill and Mrs. Wallace with Mrs. Jones, associate members, Mrs. S. H. Miller of Amarillo, Ill. member.

# ONLY KIRSCHBAUM AND WESTINGHOUSE CAN GIVE YOU THIS LOW PRICE

**Westinghouse HEAVY DUTY 15 TOP LOADING AGITATOR WASHER**  
3 CYCLE-2 SPEED

- 2 Wash and Spin Speeds
- 4 Wash and Rinse Temperatures
- Soak Cycle and Pre-Wash Cycle
- Big 15 Lb. Capacity
- 5 position Automatic Water Saver

NOW ONLY **\$199<sup>95</sup>** with trade

**Kirschbaum APPLIANCE STORE**  
123 West 2nd St. RA 8-2412

**HAMILTON OPTOMETRIC CLINIC**  
AND  
PRESCRIPTION LENS LABORATORY  
(Across Street-North Of Court House)  
106 - 108 West Third Dial AM 3-2501  
BIG SPRING, TEXAS

**now '67 CHEVROLET**

With an Impala Sport Coupe you can get all the comforts of home, maybe even more.

**Everything new that could happen... happened!**

New styling that speaks beautifully for itself. More things to add than ever before: A new stereo tape system. Comforton automatic heating and air conditioning. Front disc brakes. A better Cruise-Master control system. Plus all the power you could want in a car: up to 427 cu. in. available in Chevrolet's exclusive Turbo-Jet V8. And, standard with every new Chevrolet, a new road feel thanks to improved Full Coil suspension. You really should see the new Chevrolets. Very soon.

And all this for your added safety: GM-developed energy-absorbing steering column, dual master cylinder brake system with warning light, energy-absorbing instrument panel, four-way hazard warning flasher, plus many others.

**Everything new's happening now... at your Chevrolet dealer's**

**JAY ADAMS CHEVROLET CO.**  
42-1809  
E. Hwy. 80 Colorado City Phone RA 8-3422



**PLAY! GIANT BINGO!** WIN 1,000<sup>s</sup>  
 \$ CASH-BONUS PRIZES \$  
 WINNERS EVERY DAY IN Village Food Store

**PET MILK** 5 Tall Cans 89<sup>c</sup>  
 Pet Evaporated

Ellis Jumbo  
**TAMALES**  
 No. 2 1/2 Can **35<sup>c</sup>**

**Folgers Coffee** Mountain Grown  
**COFFEE** lb can **69<sup>c</sup>**

White Swan, (with Bacon) Blackeyed Peas 2 303 Can 27<sup>c</sup> Starkist (Green Label) TUNA 3 flat cans \$1.00 Dow Bathroom CLEANER 13-oz. Can 59<sup>c</sup>

Gandy's All Flavor  
**Ice Cream**  
 1/2 Gallon **69<sup>c</sup>**

King Size  
 6 Bottle Carton  
**35<sup>c</sup>** plus dep.

Aqua Net  
**HAIR SPRAY**  
 Large Can **53<sup>c</sup>**

Friskies Chicken Flavored **DOG FOOD** 8 303 Cans \$1  
 Ellis Vienna Sausage 3 reg. cans 59<sup>c</sup>

**Kimbell Creamy Whites Shortening**  
 3 lb Can **69<sup>c</sup>**

**DUZ DETERGENT**  
 Giant Box **73<sup>c</sup>**

Libby's sliced or halves  
**PEACHES**  
 2 No. 1 1/2 Cans **49<sup>c</sup>**

**VILLAGE MEATS**

Heavy Calf Pinbone Cut  
**SIRLOIN STEAK** Lb. 69<sup>c</sup>  
 Heavy Calf First Cut  
**SIRLOIN STEAK** Lb. 79<sup>c</sup>  
 Heavy Calf  
**T-BONE STEAK** Lb. 79<sup>c</sup>  
 Fresh  
**GROUND BEEF** Lb. 43<sup>c</sup>

Heavy Calf  
**RUMP ROAST** lb. **65**  
 Pennant Brand **BACON** Lb. Pkg. 75<sup>c</sup>



Double Scottie Stamps Wed. With \$2.50 Purchase Or More

**VILLAGE FOOD STORES**

SECOND HICKORY PHONE Randolph 8-3421

Savings a-plenty on fine quality **PRODUCE**

U.S. No. 1  
**POTATOES** 10 Lb. Cello Bag 49<sup>c</sup>  
 New Crop Red  
**DELICIOUS APPLES** LB. 15<sup>c</sup>  
 Washington  
**BARTLETT PEARS** Lb. 19<sup>c</sup>  
 California Large Head  
**ICEBURG LETTUCE** Ea. 19<sup>c</sup>

These Prices Are Good For Thurs.-Fri.-Sat.  
 WE RESERVE THE RIGHT TO LIMIT QUANTITIES

CONVER Small

RANDY P saying to a ker had su WOLVES

Ai

by James Record N BRADY dogs took a lanky Colorado fense in kneel off the unbr in a hard fdy night. Bulldogs near Moore h of 12 aerials, and repeated the Wolves v overcome a margin. The home yards on sev sard period with Moore yaid to payc Johns adding up. Big plays by a 28-yard that out the ess on the a 17-yard ga that missed a valiant sav defensive bac at the one. The Wolfe mediatly an field like juggernaut th yards in the Hugenlothan yard with 3: ead period. ten-a for ex Higginboth ley ground the drive arials of 12 Steakly and stellar end J. What may back-breaking Wolves came rps as Brad in seven play

CHUCK pounce Glen N