



This week is Future Homemakers Week across our nation and up at Stratford High School where Mrs. Dorothy Haile is our Home Ec Instructor.

The Star is happy to feature most members of the FHA classes in various photos both in advertisements and in feature articles this week.

We believe the FHA program is a vital one among our young people and that the Stratford FHA is one of the leaders in this part of the country.

We know Mrs. Haile has done a bangup good job this year, her first year back in the teaching profession. She has that quality of reaching young folks and we know her interest in our youngsters is vital and a self-less interest.

The Stratford FHA Chapter is one of 2,050 chapters across our state with over 72,000 members. All these youngsters work all year long in projects designed to expand their knowledge and skills in all aspects of home and family living.

The Star is happy to be able to recognize the fine effort put forth by Mrs. Haile and all the youngsters in our FHA this year. Best wishes to them all for continued success in the future!

xxxxx

Wind, rain, hail and who knows what all came our way this week and we really got a wee bit of moisture. It had been so long since we got any rain we almost forgot what it was like.

We got a call with other members of the CB Club to run out and cloud watch Monday and we might take this opportunity to remind folks that we all give the CB'ers a hard time, but they do a fine job of trying to keep on top of developing weather.

Their service is really appreciated when the tornado season gets upon us.

Speaking of tornadoes, we've been asked to pass along the work that the Jesse Bakers, former residents here, were alright after the tornado which hit their hometown of Lefors last week.

The Bakers were all alright and we hope they are getting along nicely now. Mr. Baker was a teacher here in high school and Mrs. Baker is secretary up at the Mary Allen Elementary School prior to moving over to Lefors several years ago.

xxxxx

We have not had any word at all concerning our former exchange student, Lieu Hoang.

Lieu lived with our family last year and his home fell to the Communist forces over a week ago. Since that time we've been in contact with Congressman Jack Hightower's office and the New York office of the American Field Service trying to learn of his whereabouts and if he and his family are safe.

We also have tried to contact a Baptist Missionary who Lieu worked with after his return to Danang and Hue and did learn that the missionary, Rev. John Parsons, is safe and is now working in Singapore. We've written to Rev. Parsons hoping he will have some word that the State Department and the AFS haven't been able to get concerning Lieu and his family.

We appreciate the many words of inquiry about Lieu and will let everyone know if, and when, we do receive any word of what has happened to the Hoang family.

We guess all we can do now is to ask your prayers for Lieu and his family and their safekeeping in a world of chaos and war there in Vietnam

xxxxx

Al Baker dropped by this week and informed us that the Rock Island Railroad question has boiled down to one of two propositions.....either the bankrupt railroad would go under the Santa Fe or the Southern Pacific.

Baker informed us that if the Southern Pacific RR gets possession of the defunct line

continued on page 2

James Roach Bring Lions Club Program

James Roach, head of the Speech Department at Panhandle State University at Goodwell, presented a program on debating to the Lions Club at their Ladies Night meeting Monday night.

Roach brought two students from PSU with him, Carol Lee Gribble and David Hoffard, who gave a demonstration debate on the question of the CIA's activities.

The date for the Lions Club Broom Sale was set for Friday, April 25, with John Richter in charge.

Plans were also made for the District 2P-1 Convention to be held in Pampa.

TOWN TALK

Mrs. J.L. Ragsdale of Odessa, spent several days visiting with her son Steve Ragsdale recently.

xxxxx



UIL AWARD WINNERS--The Stratford Elk Annual and The Elk Scene, high school newspaper, won four statewide awards in competition at this year's UIL competition. Winners include, seated left to right, Diane Romero, first place in individual art for the annual; Karen Pleyer, third place in editorial writing in UIL competition at Canadian; Jeree Gilley, third place, news writing at Canadian; Gloria Pleyer, second place for end sheets and third place for advertising page layouts and third place in editorial writing at Canadian. On the back row is Johnny Slover who was awarded second place in individual art for the annual and sponsor, Mr. Delvin Howard.

STRATFORD, SHERMAN COUNTY, TEXAS 79084

THURSDAY, APRIL 10, 1975

THE STRATFORD STAR

Tip Top Town in Texas

VOLUME 75

FIFTEEN CENTS

NUMBER 15



CANCER DRIVE PLANNED--Plans for this Thursday's house-to-house canvass in Stratford were finalized as this group met recently. Shown above, left to right, Mrs. Shirley Plunk, city drive chairman; Dr. Claude Harlow, county health officer; and Mrs. Elaine Gurley, rural drive chairman. The house to house effort will begin Thursday night in Stratford for benefit of the Sherman County Cancer Crusade.

TWO BUSES SOLD Trustees Set Date For Equalization Board

Two used busses were sold to the highest bidder, dates set for the Board of Equalization meeting and election results were canvassed at Monday night's meeting of the board of trustees of the Stratford Independent School District.

Two used busses, a 1969 Chevrolet and a 1970 Chevrolet, were sold to the North Line Bus Center of Houston on their bids of \$2,967 and \$3,267, respectively, as the highest bidder on the two units.

The board set the date of June 5 for the annual Board of Equalization meeting for the school district. Local taxpayers may meet with the board at 10 a.m. that morning and industrial taxpayers will meet at 1 p.m.

The board canvassed election returns of last Saturday's trustee election and found that both E.R. Bell and V.O. Lasley were returned to serve another three years each.

The board then elected officers for the new year. E.R. Bell was reelected president of the board with Rex Christian as vice-president and V.O. Lasley,

secretary. Other members of the board include Joe Wells, Johnny Summerour, Don Riffe and Don Dietrich.

Members of the board and administrators and their wives were guests of Mrs. Haile's Home Ec III class at a dinner in the Home Ed Department served at 7 p.m.

FARM BUREAU SALE SET FOR APRIL 19

Sherman County Farm Bureau will hold their 1975 Farm Sale on Saturday, April 19 at the lot just south of the Farm Bureau Building on Highway 287 in Stratford, announced V.O. Lasley, sales chairman.

Lee Johnson of Eva, Okla. will act as auctioneer for the sale again this year.

The annual event is used as a benefit for the Sherman County Farm Bureau's building fund. A commission of five percent is charged on items sold and a PO charge of two and one-half percent with a minimum charge of \$1 per item sold.

All residents of the area are encouraged to bring items to the sale.

80 MPH Winds Lash Panhandle Monday

Winds in excess of 80 mph at times lashed Sherman County all during the day Monday as high winds, pea-sized hail and some moisture fell over the area.

The moisture came on the heels of a large system which moved across the Panhandle from west to east putting the central Panhandle area under a severe weather watch from 1 p.m. until 6 p.m. Monday.

The Sherman County area was on the extreme northern edge of the system and received very little moisture but did get

full benefit of the high winds.

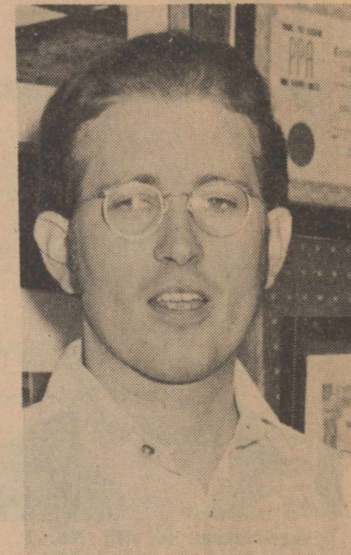
Winds blew about 60 mph for hours upon end Monday afternoon and filled the sky with dust from already drought-stricken fields.

Luckily, there was very little damage around the city due to the severe winds as radio and television antennas whipped like fishing poles in the lashing winds.

The weather was more severe in intensity down south nearer Amarillo where there was one tornado reported south of Canyon Monday afternoon.

East of Stratford, tornadoic like winds destroyed property near Guymon, Okla., but luckily, there were no injuries reported in the daylong storm.

New Associate Pastor Named By Baptists



RUSSELL MADDOXassociate pastor

Russell Maddox, a native of Miami, Texas, has been named as associate pastor of the First Baptist Church in Stratford.

Maddox is a graduate of Southwestern Seminary in Fort Worth and a graduate of Texas A&M University.

The son of Mr. and Mrs. Wayne Maddox, Russell took over the position at the First Baptist Church here effective April 1.

His prime responsibilities will be in the youth and educational field at the local church. Russell worked in Fort Worth after graduation from Texas A&M as an architect then entered the seminary to pursue his calling in that field in 1971. His job here is his first as an associate pastor.

He will make his home in the North Chestnut Apartments.

"I am looking forward to the challenges of my new job," said Maddox. "From what I have already seen I know I will enjoy the people and the position here in Stratford," he added.

P.D. Fletcher Resigns As Girl's Coach

P.D. Fletcher, head girl's basketball coach at Stratford for the past 11 years, resigned his position Tuesday to accept a similar job at Dumas High School.

Fletcher piled up a 300-52 won loss record while guiding the basketball fortunes of the Stratford Elkettes.

The 300 wins include one Class A State Championship, nine district championships, seven bi-district crowns and one regional championship. Since Fletcher has been at the helm of the Elkettes they have lost only seven games on their home court.

"I've been fortunate here at Stratford," said Fletcher. "All the teams here have been blessed with talent," he added.

This year the Elkettes were nosed out 36-35 by Vega who ended up as runner-up in the State Playoffs at Austin.

Fletcher is a 1953 graduate of Dumas High where he was named to the All State squad. He established a shooting record in 1953 in the finals which still stands today. He hit eight of eight field goals and seven of seven charity shots for an individual 100 percent shooting average.

Fletcher and his wife, Janet, have one child, Misty, age four. Supt. E. L. Bass said Tuesday the school is now accepting applications to fill Fletcher's position at SHS.

TOWN TALK

Charles Watson returned home Thursday after undergoing surgery in an Amarillo hospital.

xxxxx

INCUMBENTS ALL RETURNED

Sales Tax Question Gets Large Majority

A One Percent Sales Tax got overwhelming endorsement from voters on Saturday as city residents returned three incumbents for two more years on the city council in balloting in those two elections held at the City Hall.

SHS Annual, Newspaper Win Awards

The Stratford Elk Annual and The Elk Scene, high school newspaper, won four statewide awards in competition in this year's University Interscholastic League competition, announced Delvin Howard, sponsor of the two publications.

Diane Romero won first place in individual art for the annual while Johnny Slover won a second place in individual art. Gloria Pleyer won a second place for end sheets and a third place for advertising page layouts.

The Elk annual received an Award of Merit for this past year.

The Elk Scene, high school newspaper, was awarded an Award of Honor in the competition. Gloria Pleyer was awarded a third place in news writing in the newspaper category on the statewide competition.

"We are really pleased with the overall showing of both our annual and the newspaper this year," said Howard. "The state competition is among about 100 similar publications and to be honored with any kind of an award is a boost for our staff members," he pointed out.

Recently members of the Journalism Staff at Stratford High School competed in UIL Competition at Canadian. The various winners in that event are as follows: Jeree Gilley, third place, news writing; Karen Pleyer, third place, editorial writing; Dwayne Miller, sixth place editorial writing; Gloria Pleyer, fourth place, feature writing; Karen Pleyer, sixth place, feature writing; and Jeree Gilley, fifth place, headline writing.

This weekend the Journalism Staff will compete at Borger for the District UIL Contest.

New Tornado Season Rolls Into Texas

Texas had the dubious honor of leading the nation in the number of tornadoes last year with 116 and another tornado season is at hand.

"Most tornadoes occur during April, May and June during the late afternoon although they can occur at any time of the year or any time during the day," points out Wayne Keese, agricultural engineer with the

continued on page 2

Calendar of Events

- FRIDAY, APRIL 11 Preliminaries at Amarillo Relays in Amarillo
- 2 p.m. Prospectus Study Club meets with Lore Dietrich
- SATURDAY, APRIL 12 Amarillo Relays at Amarillo
- 7:45 p.m. Scout Circus in Dalhart
- SUNDAY, APRIL 13 ATTEND THE CHURCH OF YOUR CHOICE
- MONDAY, APRIL 14 7 p.m. Lions Club
- TUESDAY, APRIL 15 7:30 p.m. Eastern Star Elections
- 8 p.m. Fire Dept. Ladies Auxiliary at Fire Hall
- THURSDAY, APRIL 17 11:30 a.m. Happy Hour Home Demo luncheon with Alice Weatherly
- 2:30 p.m. Friendship Club at Ellen Tillery's

Two incumbents, running unopposed, were also returned to their positions on both the board of trustees of the Stratford Independent School District and on the Stratford Hospital District's board of directors at elections held Saturday at the school.

The One Percent Sales Tax Referendum got a lopsided majority of Saturday's votes in the citywide election as it passed with 254 voting FOR the proposition and only 24 voting AGAINST.

A total of 279 residents voted in the city elections.

Three incumbent councilmen were returned to new terms on the City Council by voters.

Ron Hager led the field with a total of 212 votes followed by Bill Riffe with 208 and Dwayne Plunk with 189 votes.

Leland Lewis got 173 votes and Edd Vaughn received 23 votes in the Council race.

Only 100 residents of the school and hospital district cast ballots in the elections held at the school Saturday. School Trustee Board President E.R. Bell was returned to office with a total of 99 votes, and Board Secretary V.O. Lasley received 94 votes.

Stratford Hospital Board President Walter Lasley received 95 votes as did Board Member Carroll Wisdom in the election for the Hospital District Board.

AMARILLO COMING UP

Elks Earn Second At Dumas Relays

Stratford's Elks finished second in Division II competition in last Saturday's Dumas Relays with a team total of 72 1/3 points.

Division II was won by Sunray with 91 points. Stratford was second with 72 1/3 followed by Dalhart, 58; Sanford-Fritch, 56; Panhandle, 42 1/3; Boys Ranch, 41; Vega, 34; Hartley 25 1/3; Phillips 23; Spearman, 20; Stinnett, 16; Alamo Catholic, 10; White Deer, 4; Adrian, 0.

The Elks were paced by Mark Beatty who won first place in the 220 Yard Dash, second in the 100 Yard Dash, anchored the winning Sprint Relay Team, and placed fifth in long jump.

Doug Everett and Phillip Walden placed one and two in the Discus Throw and Everett also placed fourth in the Shot Put to pace the Elk Field Events competition.

The Elks who placed in the various events are as follows: 440 Relay Team won first with

Both the SISD Trustee and Hospital Board elections were held at the school business office with George Jeffcoat serving as election judge.

E.R. Bell and John M. Wilson served as elections judges in the city elections.

Mayor Annell Wall said Monday that she "was real proud of the overwhelming majority of the vote in the sales tax referendum."

"The city has needed a new source of revenue and the entire council agreed that a sales tax would be a more equitable source than having to raise ad valorem taxes," she added.

The sales tax will not go into effect until Oct. 1 and the city will begin receiving revenue from the tax later in the year.

SCOUT CIRCUS ON SLATE FOR SATURDAY

The Scout Circus will be held this Saturday at 7:45 p.m. in the Rita Blanca Coliseum in Dalhart.

There will be 30-40 Stratford Cub and Boy Scouts participating in the circus and Bill Martin will act as ringmaster.

Scout-O-Rama tickets are being sold for \$1 and will entitle it's holder admission to the circus.

The public is cordially invited to attend.

a time of 44.8 seconds. Team members are Ricky Howard, Jeff Witcher, Gary Ferguson and Mark Beatty.

120 Yard High Hurdles. Gary Ferguson won third with a time of 15.2 seconds.

100 Yard Dash. Mark Beatty placed second with a time of 10.1 and Ricky Howard ran fifth with a time of 10.4 seconds.

220 Yard Dash was won by Mark Beatty with a time of 22.9 seconds and Ricky Howard finished fifth with a time of 24 flat.

Shot Put. Doug Everett with a throw of 141 ft 2 1/2 inches with Phillip Walden finishing second with 127, 5 1/2 inches.

Long Jump. Beatty finished fifth with a leap of 19 ft 6 1/2 inches.

This weekend the Elks will travel to Amarillo Relays where the preliminaries will be held on Friday with the finals beginning at 1 p.m. on Saturday afternoon.



RECEIVES CRISCO AWARD--Sherry Timpson, daughter of Mrs. James Holcomb of Longview, Tx., is shown receiving the Crisco Award for her outstanding work in Home and Family Living Class at Stratford High School from Mrs. Dorothy Haile, home economics instructor. Mis Timpson, a senior at Stratford High, is also active in various projects of the Art Class.

TRACKS
.....from page 1
they would keep all the men and employees on like they are at the present and incorporate the line in with their other operations.

The Santa Fe proposition would like to get the Rock Island but, and if they do, according to Baker, they would shut down the lines from Tucumcari east, take up the tracks and lay off all employees along that sections of the line.

Naturally Baker is interested in seeing that the Southern Pacific gets possession so he

and all the present employees of the Rock Island would still have a job.

He asks that everyone write to Senator John Tower, Senator Loyd Bentsen, Congressman Jack Hightower stating that they would like to see the Southern Pacific get possession of the lines. He also points out that letters may also be sent to Geroge M. Stafford, chairman of the ICC, 12th & Constitution Ave, Washington, D.C. 20423 and to Robert J. Brooks, Office of Proceedings, 12th & Constitution Ave, Washington, D.C. and to William T. Coleman

Jr., Secretary of Trans., Department of Transportation, 400 7th St SW, Washington, D.C. 20590.

We would urge your support of Baker in this question for not all towns enjoy rail service by another carrier like we do.

xxxxx

The weather has been, you name it, all but wet! Dryland wheat is going every day and the weather has been so dry the irrigated water is only 10 percent humid!

Commodity prices Tuesday showed wheat bringing from \$3.51 to \$3.52 per bushel, grain sorghum bringing \$4.15 to \$4.30 per cwt and corn selling for from \$2.62 to \$2.67 per bushel.

PSU Alumni Banquet Set For Saturday

Friday afternoon is the deadline for purchasing advance tickets for the Panhandle State Alumni & Friends Reunion Banquet to be held at Saturday evening at 7 p.m., announced R.J. Hill, area ticket chairman.

All graduates, former students and friends of PSU are invited to attend the event, Hill emphasized.

Tickets will be \$3.25 per plate with advance tickets only being available.

This year's Reunion will recognize members of Classes of 1915, 1925, 1935, 1945, 1955, 1965 and 1975.

Alumni Ambassador Hall of Fame Inductees include Dr. Freeman McKee and Nora D. Key.

Hill may be contacted at his home in Stratford by telephon-

ing 396-2087 to secure tickets for the event. Bill Gillenwaters also has tickets and he may be contacted at Cimarron Feeders Ltd at AC 405-543-2411.

Local Teams Compete In UIL Events

Stratford High School's tennis and golf teams and the one-act play team competed in various activities last week. The District FFA contest was on slate for April 3, but has now been postponed until April 10.

The girls golf team comprised of D'Lynn Brown, Shirley Christian, Kay Cotney, Patty Dietrich, Blynn Donelson, Tracy Hamilton, Beth Moore and Laura Riffe placed first in competition on April 4. Laura Riffe was named Second Medalist in the meet.

Neither the boys or girls tennis teams placed in the meet on April 2 at Gruver. Leon Payne advanced to the semi-finals for the boys while Cindy Stokes and Dana Kendrick both made semi-finals. The boys tennis team is comprised of Steve Coats, Doug Everett, Kurt Harris, Ralph Keener, Rod Kendrick, Wyatt Oakley, Leon Payne and Mike Trotter. The girls team is comprised of Vicki Bell, Kim Cotney, Debbie Crawford, Honey Hart, Dalene Prescott, Cindy Stokes and Dana Kendrick.

Stratford's one-act play team comprised of Gina Bass, Vicki Bell, Dana Kendrick and Dalene Prescott with Cindy Stokes acting as school director competed with 7 other teams in Stinnett on April 3. The team is sponsored by Mr. John Apel. Gina Bass was named to the All Star Cast in the competition.

The boys golf team competed in Guymon on April 4 to bring home eleventh place. The team is comprised of Will Allen, Leonard, Duncan, Taylor Johnson, Denny Martin, Dwayne Miller and Max Plunk.

Among certain Arabs, a childless woman often borrows the robe of a woman who has many children, hoping with the robe to acquire the fruitfulness of its owner.

Cancer Effort Set Thursday In Stratford

Plans are currently being finalized for the Sherman County Cancer Crusade with the house-to-house efforts to be made on April 10, announced Mrs. Bill Riffe, county chairman.

Rural canvass chairman this year will be Mrs. Don Gurley who has lined up several ladies to help in that end of the effort. There is no set time for the rural canvass which will be made all during the remainder of April.

Mrs. C.C. Plunk, chairman of the house-to-house canvass this year, says that all workers in the canvass this year are urged to meet at 5:30 p.m. Thursday at the Fellowship Hall of the Methodist Church to get their route assignments.

Businesses will be canvassed by Joe Wells, chairman of that portion of this year's drive.

Mrs. Gurley has several volunteers to help with the rural canvass this year. These workers include Bernice Christian, Dorothy Haile, Jan Harris, Polly Heil, Vera Pronger, Bonnie Mitchell and Mrs. Billy McClelland.

"We hope everyone will be as cooperative this year as they have in the past and we shall have another successful effort," said Mrs. Riffe.

TORNADO SEASON

.....from page 1

Texas Agricultural Extension Service.

Most tornadoes occur in the South between the Rockies and the Appalachians.

"With a total of 944 reported tornadoes in the United States last year and 361 resulting deaths, 1974 was the worst year for tornadoes since 1925", points out the Texas A&M University System specialists.

Although the average annual number of tornadoes reported has quadrupled in the past three decades, the number of tornado fatalities has been decreasing. This is probably due to better methods of sighting tornadoes, warning systems and advance preparation for tornadoes, notes Keese.

Tornadoes usually travel southwest to northeast and stay on the ground about 10 minutes. Their forward speed is about 30 miles per hour but wind speeds in the funnel of a tornado get up to 300 miles per hour.

"Because tornadoes are so erratic, it's hard to tell just where or when they will occur," points out the engineer.

He stresses the importance of having a well rehearsed plan for quick action if a tornado is sighted.

The National Weather Service issues a "tornado watch" when atmospheric conditions are

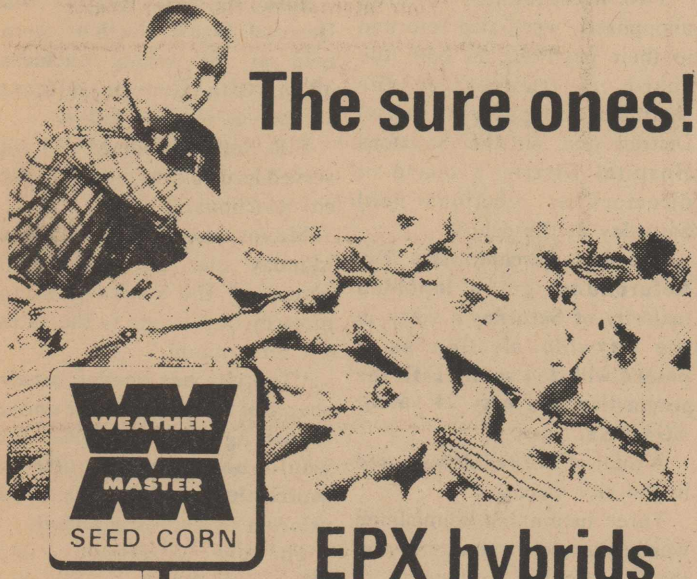
favorable for tornadoes. A "tornado warning" is issued when a tornado has actually been sighted or detected by radar.

"If a tornado watch is announced, stay tuned to a radio or television for weather advisories. A tornado warning demands action, so you should quickly move to a basement, cellar or civil defense shelter," advises Keese. "Keep a battery-powered radio handy in case power is lost."

If your home doesn't have a basement or cellar, go to the

lowest level in the center of the home or get in a closet or small room or under heavy furniture suggests the engineer. Open a few windows to allow for sudden air pressure changes.

"Stay away from windows and buildings such as gymnasiums and auditoriums with wide free-span roofs. If you live in a mobile home, move to a shelter area. If you are caught in open country, move away from the tornado at a right angle to its path or lie flat in a ditch or ravine," he adds.



The sure ones!



EPX hybrids

Tightly packed, well filled ears are a Weather Master trademark. Superior weather tolerance helps assure full pollination in hot weather and good nutrient uptake during ear filling.

You can't count on perfect growing seasons, so plant the sure ones. Weather Master hybrids. Bred to beat the weather, disease and insects.

Beaver's Fertilizer & Seed
Ph 396-2422 Stratford

GREETINGS TO ALL CATTLE PRODUCERS

FRIDAY, April 4, was the regular day for the cattle auction in Texhoma. The "Action" began at 9 AM. Various consignors sold 8534 cattle and calves through the arena.

xxxxx

For next FRIDAY, April 11, we are expecting 7000 cattle of various classes. This cattle market is "Dollars" better, so don't fool them away in the country. You will find 15 to 20 buyers at our auction instead of one at your ranch.

xxxxx

Advise us in advance of your consignments--Large or small.

Cattle Dept.

Clif. Augustine - Raymond Choate-Wayne Roberts
TEXHOMA LIVESTOCK COMMISSION COMPANY, INC.
TEXHOMA, OKLA. 73949 P.O. Box 70

Phone 405-423-3251

THE STRATFORD STAR

Second Class postage paid at Stratford, Texas, 79064. Subscription rates are \$5 per year in Sherman and adjoining counties, all others, \$6 per year. Classified & Legal Advertising rates will be charged at a rate of 10 cents per word for first insertion, 5 cents per word on subsequent insertions. If billed an additional charge of 25 cents will be added, minimum charge is \$1 per insertion. Display Advertising Rates upon request. This newspaper is a member of National Press Association, Texas Press Association, West Texas Press Association and Panhandle Press Association.

Dave McReynolds
Karen Stovall
Sue Hudson
Beth Whorton
Shirley McReynolds

Editor
Society Editor
Computer Operator
Headline Operator
Office Secretary

★ TEXAS PRESS ASSOCIATION MEMBER 1975

GUYMON'S BEAUTIFUL - SUBURBAN THEATRE

MATINEE ON SUNDAY at 2:00 PM — Show starts Each Night at 7:30 PM
2 SHOWS FRIDAY & SATURDAY NIGHT at 7:30 & 9:30 PM

As an all NEW film inspired by the great SUPPORT by Arthur Hailey

THE TOWERING INFERNO
MARCH 20th THRU APRIL 13th
2ND SHOW FRI & SAT. AT 10:30 P.M.

As an all NEW film inspired by the great SUPPORT by Arthur Hailey

AIRPORT 1975
MARCH 20th THRU APRIL 13th
2ND SHOW FRI & SAT. AT 10:30 P.M.

APRIL 1975 CORRAL THEATRE

BURT REYNOLDS
ARK GARNETT
W.W. AND THE DEER
BARBERINGS

DOUBLE FEATURE
Let The Good Times Roll
The Good Times

You're Invited

SCOUT CIRCUS

Saturday-7:45 p.m.

Rita Blanca Lake Coliseum in Dalhart

Bill Martin, Ringmaster

Tickets \$1 Each, Purchase Yours

From Any Stratford Cub or Boy Scout

Ad Compliments of Sherman Implement Co.

Congratulations during FHA Week



FHA OFFICERS--Officers for Future Homemakers of America for this year include seated, left to right, Vicki Bell, third vice-president; Brenda Wheeler, first vice-president; Dana Kendrick, president; Cindy Summerou, secretary. Back row, left to right, is Jeannie Engelbrecht, reporter, and Debbie Stacy, second vice-president.

Recognizing our students of today who are leaders of tomorrow

The FIRST State Bank of Stratford
STRATFORD, TEXAS 79064

TOWN TALK
Steven Montgomery of Boise City visited with his grandmother, Mrs. Hootie Green and his uncle, Wayland Green, over the weekend.

TEXAS TALK

by Leonard Duncan



Agriculture is still No. 1. Although only about 4.5% of the population works on farms, another 25% of working Americans are employed in directly related industries. Food transportation, marketing, financing, manufacturing, chemical development and textiles are a few of the businesses which push the agricultural industry to the nation's number one position, accounting for nearly 25% of the Gross National Product.

As bad as things are economically, Americans still spend only about 16 percent of their income after taxes for food. In a majority of the world's countries the amount of income paid for food exceeds 45%. In 25 years the percentage of disposable income spent for food in the United States has decreased more than 28%. As dramatic as this decrease, is the increase in selection and quality of foods available to the American consumer, evidenced by the more than 11-thousand food selections at many supermarkets.

DUNCAN CHEVROLET
Hwy 287 South

We want to wish every success to our STRATFORD FHA



HOME ECONOMICS I--This group of girls make up the first year class in Homemaking. Pictured, front, left to right, are Debbie Burgess, Terri Walker, Ginger Borth, Pam McReynolds, Brenda Gross, Belinda Sladek, Maria Garza and Kay Lewis. Second row, left to right are Norma Olivas, Donna Ray, Pat Emerson, Karen Frische, Jill Gilley, Deena Dodson, Sherry Beavers, Toni Vincent and Kim Everson. Back row, left to right, are Brenda Hawkins, Teresa Ewers, Renee Stipe, Patricia Locker, Gracie Martinez, Cynthia Williams and Sally Tims.

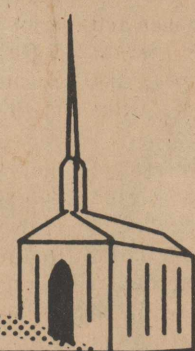
Best wishes to all members of the FHA Chapter

NORTH PLAINS SAVINGS AND LOAN ASSOCIATION
Elm at First Street P. O. Box 635 Dial 935-4184 Dumas, Texas 79029
Main at Fourth Street P. O. Box 1163 Dial 396-2376 Stratford, Texas 79064

"Thou wilt shew me the path of life:
in thy presence is fulness of Joy..."

PSALM 16-11

HERE IS THE PATH

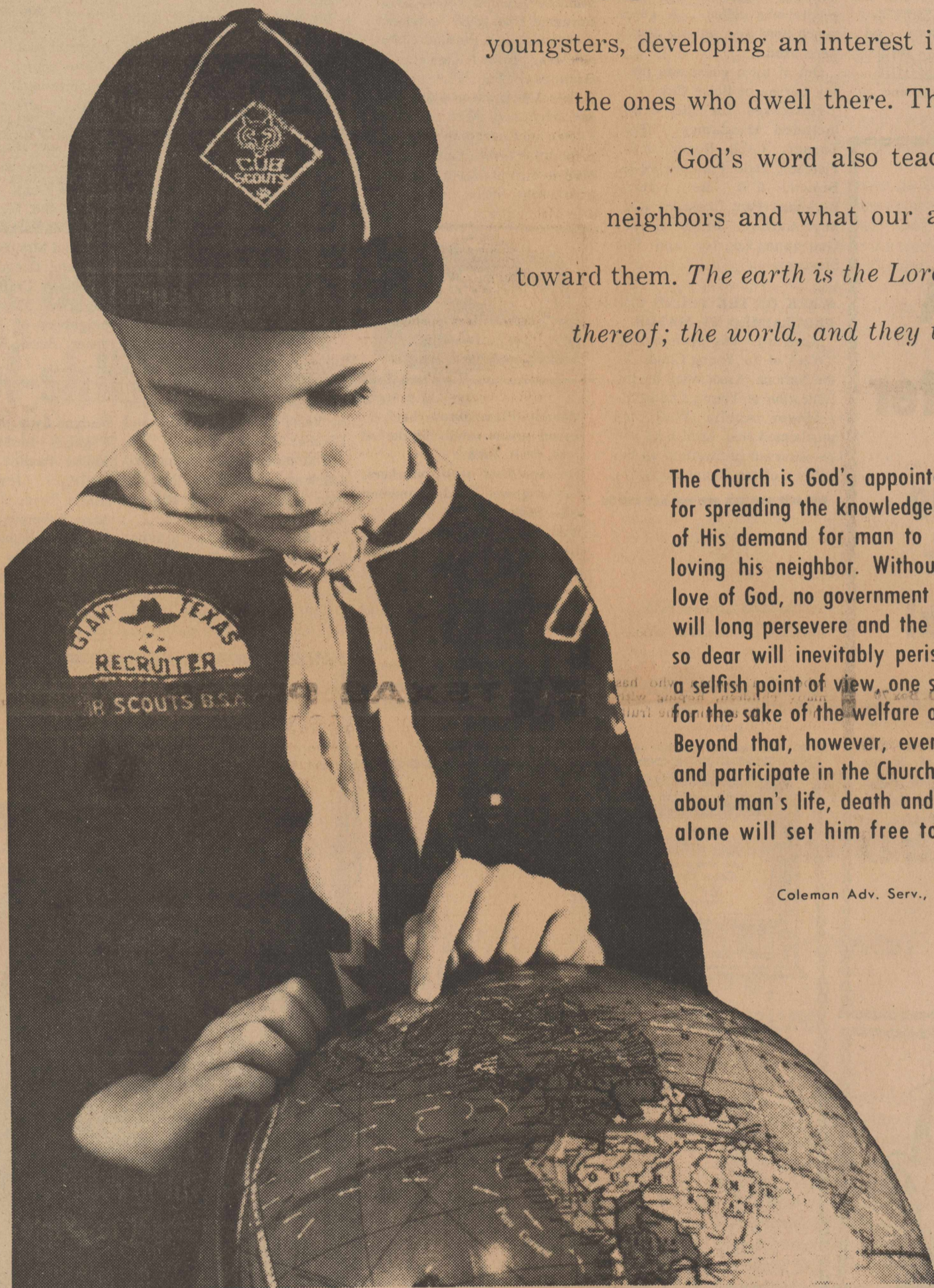


WORLD WIDE INTEREST

Many good organizations are working with our youngsters, developing an interest in other lands and the ones who dwell there. The church through God's word also teaches us about our neighbors and what our attitude should be toward them. *The earth is the Lord's and the fulness thereof; the world, and they that dwell therein.*

The Church is God's appointed agency in this world for spreading the knowledge of His love for man and of His demand for man to respond to that love by loving his neighbor. Without this grounding in the love of God, no government or society or way of life will long persevere and the freedoms which we hold so dear will inevitably perish. Therefore, even from a selfish point of view, one should support the Church for the sake of the welfare of himself and his family. Beyond that, however, every person should uphold and participate in the Church because it tells the truth about man's life, death and destiny; the truth which alone will set him free to live as a child of God.

Coleman Adv. Serv.,



Sewell's Foodway

Hwy 287 North

B&W Feed & Mineral

Box 1037, 820 Texas 396-2368
Mormans Purina Chow

COMPLIMENTS OF

Builders Supply

W.D. Brannan & Sons

Complete Flight Services
396-2157

Brown's Meat Locker

Baskin & Betty

Brown's Pharmacy

396-2281-Day or Nite

C&C Texaco Products

Box 125 Stratford

Cimarron Feeders Ltd.

Gateway to Better Feeding

Griggs, Okla. 543-2411

Consumers Company

COMPLIMENTS OF

Corral Ford Inc.

396-5511

Cut Rate Grocery of Stratford

Hwy. 54 East 396-5586

Elk Pharmacy

Phones 396-5631-396-5975 Nite
Bill & Kay Hammons

Stratford, Texas

COMPLIMENTS OF

The First State Bank of Stratford

Foxworth-Galbraith Lbr. Co.

Harold Roberts, Mgr.

Hubbard & Poole Electric

Ernest Hubbard & Mike Mathews
396-2231

J Cattle Co.

Box 888-Stratford-396-5576

Stratford Implement Co.

Minneapolis-Moline Dealer
396-2271

Kerrick Farm Supply

Conoco Gasoline
Kerrick, Texas 367-9221

King Equipment Co.

Your International Harvester Dealer

Walter Lasley & Sons, Inc.

Custom TLC* Cattle Feeding
*Tender Loving Care
Box 147 396-5961 or 367-2411.

McDonald Concrete & Insulating, Inc.

396-5659

McGavock Pump & Machine

Sales-Service-Water Well Drilling
Machine Shop Welding
396-5601 or Nights 396-5976

Monsanto Farm Store

For All Your Needs
Kerrick

367-2347

Nortex Feedlot Co.

384-2311

Dalhart

North Plains Savings & Loan

396-5534

Oakley's Floral & Nursery

AFS FTD
George & Gaynelle Oakley
Florafax Wire Service 396-2521
Hwy. 54 East 396-2092

Riverside Chemical Co.

Bill Blount, manager
Stratford

396-5517

Stratford Cablevision

Jerry Ford, Mgr.
305 N. Main 396-2020

Sherman Implement Co.

Your JOHN DEERE Dealer
396-5561 - Hwy. 54-E

Stratford Auto Electric

119 Wall

396-5941

Stratford Bi-Products

Your Local Used Cow Dealer

396-5350

Gene Romero, Mgr.

COMPLIMENTS OF

Stratford Butane Co.

COMPLIMENTS OF

Stratford Grain Co.

Stratford Welding Shop

COMPLIMENTS OF

TOC Motor Co.

396-2038

Western Auto Associate Store

219 N. Main

396-5510

ASSEMBLY OF GOD

North Wall at Third Street
Sunday School 9:45 a.m.
Morning Worship 11:00 a.m.
Evening Worship 8:00 p.m.
Wednesday Services 8:00 p.m.
Rev. J.M. Ashley

CHURCH OF CHRIST

Third at Chestnut Street
Sunday Bible School 10:00 a.m.
Morning Worship 10:55 a.m.
Ladies Bible Class (Tuesday) 9:30 a.m.
Wednesday Bible Classes 8:00 p.m.
Minister Bob Beaty

FIRST BAPTIST

Third at Fulton Streets
Sunday School 10:00 a.m.
Morning Worship 11:00 a.m.
Church Training 6:00 p.m.
Evening Worship 7:00 p.m.
Wednesday Services 7:30 p.m.
Rev. Bruce Mitchell

**The Churches
Of
Stratford**

Welcome Your Family

FIRST UNITED METHODIST

Main at Sixth Street
Church School 9:40 a.m.
Morning Worship 10:50 a.m.
Youth Activities 5:30 p.m.
Evening Worship 6:30 p.m.
Rev. J. Frank Peery

FIRST CHRISTIAN

North Main at Fifth Streets
Church School 9:50 a.m.
Morning Worship 10:50 a.m.
Evening Worship 6:00 p.m.
Wednesday Bible Study 7:00 p.m.
Choir Practice 8:00 p.m.
Rev. David Harker

INDEPENDENT BAPTIST

Sunday School 10 a.m.
Church Services 11 a.m.
Wednesday Nites 7:30 p.m.
Sunday Nite 7:00 p.m.
Training Union 6:00 p.m.
Elder Earnest Vanover

ST JOSEPH CATHOLIC

519 South Pearl Street
Schedule of Masses:
Sunday 9:00 and 11:00 a.m.
Saturdays 7:30 p.m.
Holy Days 7 a.m. and 7:30 p.m.
Wednesdays 7:30 p.m.
Confessions Before Saturday
and Sunday Masses
Father Lynch

This Series of Church Ads Is Being Published Through the Cooperation of the Local Ministerial Alliance and Is Sponsored By The Undersigned Individuals and Business Institutions

Social Scene

Mrs. Laxson Feted With Bridal Shower

Mrs. Jim Laxson of Borger, nee Betty Jean Hacker, was honored with a post-nuptial bridal shower on Saturday afternoon in the home of Mrs. Billy Turner.

The serving table hosted a mint green, dotted swiss cloth that was ruffled at the lower edge and was centered with an arrangement of majestic daisies and baby's breath in a green basket. Misses Ginger Borth and Bitsey Chesmer served white individual cakes decorated with tiny sugar bells and gold wedding rings and punch to guests who called. A green punch bowl and serving dishes were used.

Out of town guest was Mrs. Jay Carson of Boise City. Hostesses for the event included Mesdames: Billy Turner, Cecil Borth, P.D. Fletcher, Dale Prescott, M.H. Brown, E.R. Bell, Jerry Burkham, Paul Chesmer, Rodney Cathey, Mark Gates, Georgana Cearley and Pat Stevens.

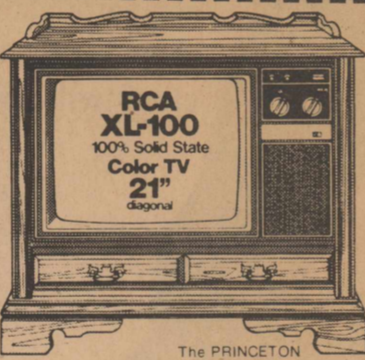
WEEK OF THE YOUNG CHILD PROCLAIMED BY MAYOR

April 6-12 has been named "Week of the Young Child" by the National Association for the Education of Young Children.

Mayor Anelle Wall has proclaimed that April 6-12 will be observed in Stratford as the "Week of the Young Child."



Stratford Lodge 874
BILLY J. COX WM
W. S. Frizzell, Sec'y
Stated Communication
3rd Thursday monthly
7 p.m.



The PRINCETON Model GT5-4 21" diagonal

color console in Colonial style

- A charming Colonial with cabinet of selected hardwood solids, hardboard panels, in rich maple-grain finish.
- Super AccuColor black matrix picture tube—RCA's best big screen tube—for rich, brilliant color!

\$ 619⁹⁵

Western Auto Store

Ph 396-5510

Stratford

Clip This Coupon For April Special

Air Conditioners checked out, new filter, motors cleaned and oiled

April Only \$11

Bring This Ad With You!

See us for Farm Equipment
Air Conditioning Needs

Glen Gilmore's Refrigeration

103 Dumas Ave 935-6682



Gamma Xi Feted At Dalhart Event

The Gamma Xi Chapter of Delta Kappa Gamma met Saturday at Dalhart Elementary School. The members were served a continental breakfast of rolls and coffee.

The Collect was led by Mozell Bell and Alleen Ledbetter led the group in singing the Official Song.

The business meeting was conducted by President, Lugenia Carter. Kathryn Vineyard read the minutes and Lucile Hughes gave the treasurer's report.

Norma Stickland reported on the information fathered from the members concerning possible changes in meeting time. The members voted to continue with nine meetings a year and to leave the time of day to the discretion of the Planning Committee.

It was reported that two of our members had recently been honored in their communities. Mary Jo Ondracek was named as Outstanding Citizen of Dallam-Hartley Counties and Sandra Carter was named Woman of the Year by Beta Sigma Phi in Sunray.

Becky King gave a very interesting report on the legislative bills concerning education which are being proposed at this time. The members were advised to contact the legislative members about these bills.

A very interesting program entitled "Expanding Our Personal Involvement" was led by Letha Lucas. She was assisted by Vesta Tubbs, Eula Vick and Frances Holden.

The meeting was adjourned following a reminder that the next meeting will be held in Channing.

Other members present included Willie Belaska, Glenda Brown, Hazel Cameron, Dora Davis, Billy Denman, Anna Elliott, Pauleen Green, Peggy Haynes, Donna Kendrick.

Nu Beta To Sponsor Charm Course

Mrs. Mickey McDonald, national director of the American Beauty Charm School, will be available at the Farm Bureau Building on April 14 at 7 p.m. to acquaint interested persons with her short charm course.

The course covers figure control, make-up, visual pose and fashion co-ordination. The course will be offered in four two-hour sessions at a fee of \$15.

Mrs. McDonald is most qualified for this instruction as one of her Amarillo students, LaVanda R. Burks, was selected as "Fashion Model of the Year" at the World Modeling Association Convention and WMA Model Awards Showcase '74 in New York City. Mrs. McDonald had been helping Miss Stratford contestants for the past two years.

Nu Beta Sorority would like to invite anyone interested in the charm course to come to the organizational meeting. For further information, please contact Chris McAdams at 753-4481.

TOWN TALK

Mr. and Mrs. Bryan (Slim) Lynch of Parkdale, Oregon and Mr. and Mrs. Earl Jeffries from Portland, Oregon were guests of the Newt Crabtrees on Friday night. The Lynches are neighbors of Mrs. Crabtree's sister, Bessie Walters.

Nadyne Lynn, Mary McDonald, Frances McMahon, Sophie Moore, Pauline Moser, Mildred Ottinger, Jewell Peterson, Marie Reynolds, Wanda Riffe, Mary Roberson, Ruth Shewbert, Laurel Thomas, Lanell Waldrop, Lorene Waller, Frances Wardlaw, Betty Canada, Patricia Garrison, Elsie Hadley, Sarah Morrison, Daina Starnes, and Linda Watson.

Home Demo Club News

The Happy Hour Home Demonstration Club met April 3 for a luncheon in the home of Mrs. Margaret Schmidt with nine members present.

Alice Ellison was elected to go to Dumas on April 12 as the THDA representative.

After the luncheon, members went out to visit the Donnie Ellisons and toured their greenhouse.

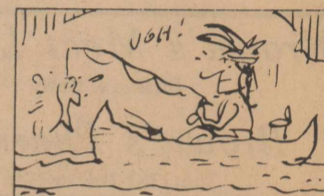
Club meets on April 17 at 11:30 a.m. with Mrs. Alice Weatherly for a luncheon.



The beginners 4-H group met last Saturday at the County Barn. They decided to name their group, The Eager Beavers.

There were eight members present to hear the program given by Mrs. Jack Harris on solids, prints, plaids and stripes in materials.

Refreshments were served by Zenith Burton.



The Huron Indians had men who preached to fish and persuaded them to come and be caught.

Merle Norman Cosmetics

Ears Pierced FREE
W purchase of stud

Ann Turner

Ph 935-3804
207 F 7th Dumas

Congratulations to our

FHA Chapter

during their week!



DISCUSSING FASHION--Mrs. Dorothy Halle, Home Economics instructor, is shown with three members of Home Economics II, left to right, Jeannie Engelbrecht, Debbie Miller and Toni Oakley, as they discuss one of the many aspects of homemaking class. xxxxx

Moore Implement Co.

The J.E. Moores

Weekend Special Hamburger & Malt

Reg 1.45

\$ 1³⁰

Chicken Fried Steak \$2

Pan Fried Chicken 1.85

Dinner Steak \$2.50

Yes - We Are Open Sundays

Dairy Queen

Phone 396-2433

Phone 396-2433

Hwy 54 at Main in Stratford



FORMER RESIDENT HIRED AT CARLSBAD CENTER

Rosemary Brewster, daughter of Mr. and Mrs. Burl Brewster of Lemon Grove, Calif., all former residents of Stratford, has been named counselor for the Drug Education for Youth Center at Carlsbad, N.M.

Mrs. Brewster holds a Masters degree in Psychology and her parents formerly operated a jewelry store in Stratford prior to moving to California.

Rosemary started school in Stratford and finished high school in Lemon Grove, Calif.

COUNTY BOND SALES ANNOUNCED FOR FEBRUARY

In releasing Treasury figures, County Savings Bonds Chairman W.S. Frizzell Jr., announced sales of Series E and H United States Savings Bonds in Sherman county during February totaled \$2,394. Sales for the first two months of 1975 were \$10,161 for 15 percent of the 1975 sales goal of \$70,000.

Texas purchased \$20,183,108 in Savings Bonds during the month. Year-to-date sales totaled \$43,473,714 for 18 percent of the yearly sales goal of \$234.3 million.

An Austin Aggie

Belle Rundle is the sister of Mrs. Corinne Eller of Stratford who was a visitor here recently.

While visiting with Corinne, we got the opportunity to meet Belle and took the time to get information about her and her cooking so she could be our Cook of the Week.

Belle lives in Austin where she is a psychiatric nurse at the Austin State Hospital. She is a graduate of Ballenger High School and then attended San Angelo Junior College and took her nursing work at the Shannon West Texas Memorial Hospital School of Nursing at San Angelo.

She is currently an active member of the Allendale Baptist Church in Austin, member of American Nurses Association and Texas Public Employees Association.

She and her husband, Hughie, have two married children, Rodney, who lives in Borger and Michael who is a junior at University of Texas at Austin. They also have one grandson, David Paul, of Borger.

Belle met her husband under

out-of-the-ordinary conditions. Seems she was recommended by her father-in-law while he was a patient in a hospital. The father-in-law told his son that if he didn't marry Belle he was just plumb off his rocker. At any rate the couple did meet and later married.

Belle has many hobbies including taking care of about six aquariums and still finds time to garden, cook and make birthday cakes for all the employees in her ward which comes to about 25 cakes per year.

She is also an "avid Aggie" as her husband is a graduate of Texas A&M. This isn't easy in a town like Austin.

(ED NOTE: we first learned about Belle when she painted the fire plug in front of her home maroon and white several years ago.)

We did prevail upon Belle to give us a couple of her favorite "out of the ordinary" recipes and we came up with Fried Banana Pie and Skillet Green Tomatoes.

We hope you will enjoy them.

Cook of Week



COOK OF THE WEEK--Our cook for this week lives in Austin where she is employed in the Austin State Hospital. She is the sister of Corinne Eller of Stratford and a very busy woman. She loves to cook; holds down a steady job; take care of six aquariums and has many other interests.

FRIED BANANA PIE

Using one canned biscuit, roll out thin on piece of wax paper, slice 1/4 banana and place in center, add 2 tsp of sugar and sprinkle with cinnamon, moisten around edge with milk and bring up sides of dough and pinch to seal. Turn and flatten like a fried pie and fry until brown in deep fat. Serve piping hot.

SKILLET GREEN TOMATOES

1 3/4 lbs. green tomatoes, cored
2 tsp flour

2 tsp sugar

1/4 tsp salt

1/8 tsp ground black pepper

4 tsp vegetable oil

Cut tomatoes crosswise into thirds, coat both sides with flour and sprinkle with sugar, salt and pepper. Heat oil til moderately hot and saute' tomato slices until lightly browned on both sides and just fork tender. Watch that they don't cook too long and get mushy. Serve immediately, serves 6.

Randy Messer Plans Revival Crusade

Randy Messer, son of Mr. and Mrs. T.J. Messer of Stratford, will be a member of one of the East Texas Baptist College Youth-Led Revival Teams. The teams will be leading revivals in Arkansas, Louisiana, and Texas area churches Friday through Sunday, April 11-13.

Each team consists of an evangelist, a musician, an accompanist, and two fellowship leaders. Messer is the Evangelist with his team.

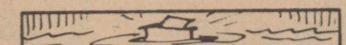
Messer's team will be at the Grand Bluff Baptist Church in Beckville, Texas.

Messer is a 1973 graduate of Gruver High School and a sophomore Religion major at ETBC.

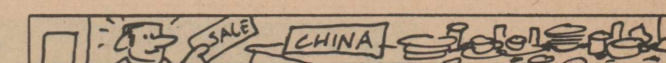
TOWN TALK

Mrs. Calvin Weiss was hospitalized in the Dumas Memorial Hospital last week.

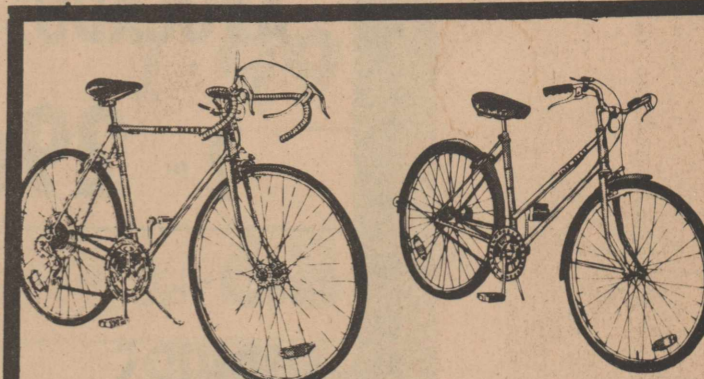
xxxxx



Some people recommend putting a letter from your love in a can and throwing it into running water to make sure she loves you.



In 16th century Europe, a Chinaman was not likely to be of Oriental ancestry. The word was used then to describe merchants who sold china.



PICK-A-PAIR... AND SAVE

When you buy any John Deere Bicycle at the regular price, get 50% off on any second bicycle of equal value or less.

Offer Ends May 31, 1975

Sherman Implement Co
Your John Deere Dealer

Congratulations to the Stratford FHA Chapter



HOME AND FAMILY LIVING--Reupholstering was one of the many projects of the Home and Family Living Class. Pictured, left to right, are Steve Coats, Keith Lewis, Mark Beaty, Philip Walden and Gary Ferguson.

Bill's men & boy's wear

STRATFORD TEXAS



The proven profit maker! The golden bronze yield leader! Reports from many fields in this area bear out that Pioneer brand 8311 sorghum turns in consistently higher test weights and higher yields.

This outstanding yellow endosperm is highly adaptable to both irrigated and dry land. It has good standability, sturdy stalks, good roots and head exertion and uniform head height.

The supply of Pioneer brand 8311 is limited this year. See your dealer and get your order in right away... it won't last long.



PIONEER BRAND SEEDS

Performance of seeds or the crop produced therefrom may be adversely affected by factors beyond our control including environmental conditions, insects and diseases. The limitation of warranty and remedy attached to each bag of Pioneer brand seed is a part of the terms and conditions of the sale thereof.

Reg. trademark of Pioneer Hi-Bred International, Inc. Pioneer is a brand name. Numbers identify varieties.

NEW INTERNATIONAL

295



QUICK CHANGE ARTIST THAT PLANTS ALMOST ANY CROP, WORKS IN ANY ROW SPACING 14" UP

The new 295 changes quick from cotton to peanuts to corn to beans or milo because it accepts International interchangeable planting equipment. And if you're a small grain man, you simply change pawl caps to change from beets to corn, beans and milo. Big savings in time and money!

The new 295 also has:

- A bigger, stronger frame... a quick, easy way to change speeds.
- Big 13 1/2-inch double disk openers that are built narrower for better penetration, have self-centering shoes that eliminate balk.
- New straddle mounted press wheel frames for mounting chemical equipment... new optional 75 lb. slimline hoppers.

Use on 1 3/4, 2, 2 1/4 or 2 1/2-inch tool bars or...

TEAM YOUR 295's with the NEW 326 PLANTER CARRIER FOR FLAT LAND, BED OR SKIP-ROW

7 different ways to use 326 Planter Carriers

- 238-inch frame for six 36-38-40-inch rows
- 238-inch frame for eight 28 or 30-inch rows
- 260-inch frame for twelve 20-inch rows
- 260-inch frame for 12 rows for use on 12 double rows spaced on six 36-38 or 40-inch beds
- 288-inch frame for eight 36-inch rows
- 288-inch frame for twelve 22-24-inch rows
- 307-inch frame for eight 38-40-inch rows

We have a few of these 295 Planters in Stock Supply is Limited

King Equipment Co

- Stratford -

Best Wishes Stratford FHA Chapter during National FHA Week



HOME ECONOMICS II--These girls make up the homemaking class in their second year. Seated are, left to right, Jeannie Engelgrecht and Toni Oakley. Back row, left to right, are Elvira Barraza, Debbie Miller, Darrie Owens, Charlotte Robinson, Rhonda Sutterfield and Kristi Summerour.



HOME AND FAMILY LIVING CLASS--These Stratford High School students make up the Home and Family Living Class in the Home Economics Department. Seated, left to right, are Stephanie Summerour, Gloria Pleyer, Maria Jurado and Patsy Romero. Back row, are Mark Beaty, Keith Lewis, Gary Ferguson, Philip Walden, Steve Coats and Rick Howard.

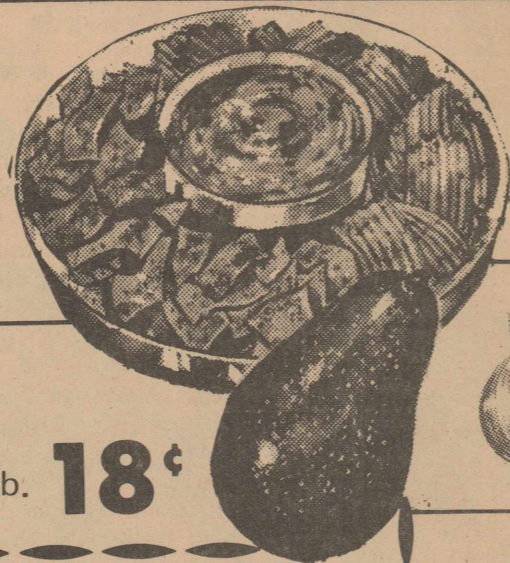
xxxxx

Stratford Grain Co.

Stratford - Lautz

Calif. **AVOCADOS**

2 for **29¢**



Washington D'anjou

PEARS

4 LBS. **99¢**

Sweet Yellow **ONIONS**

2 Lbs. **25¢**



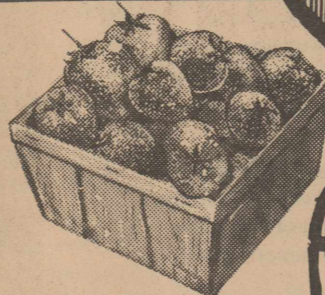
Purple Tops

TURNIPS

Lb. **18¢**

Calif. Fresh **STRAWBERRIES**

2 Pts. **99¢**



Easy Me
IT'S
WITH OUR
THROUGHOUT THE
GREATER AND S

AT YOUR

ALL T
No Give

SAVE 21¢ WITH THIS COUPON

KEEBLER Zesta 48¢

16 oz. saltine crackers

LIMIT ONE PER CUSTOMER

GOOD THRU 4-16-75

Cut Rate Gro. Stratford or Sunray, TX

Coupon subject to sales tax as required by state law



Pillsbury Country Style or Buttermilk

BISCUITS 8 Oz Can **6 for \$1**



CASCADE

For Automatic Dish Washers

35 Oz Box **87¢**

BRITANNICA JUNIOR THIS WEEK VOLUME NO. **11** EA. **\$2** WITH 5.00 PM

A & W

ROOT BEER

28 Oz. Btl.

39¢



Shurfine **ICE CREAM**

1/2 Gal. **99¢**

Gladiola **FLOUR**

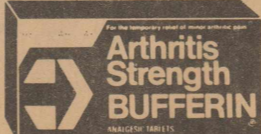
5 Lb Bag **79¢**



Head & Shoulders **SHAMPOO**

Reg. 1.19

2.5 OZ Jar. **99¢**



Arthritis **BUFFERIN**

Reg. 1.19

40's **95¢**

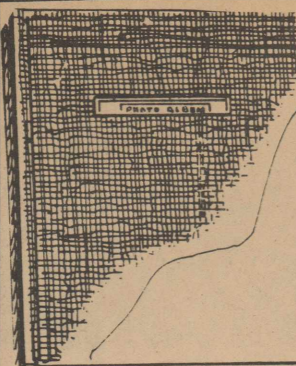
OVEN LINERS Each **59¢**



Gillette **TECHMATIC**

Reg. 1.19

5 Bands **95¢**



Magnetic Clip **PHOTO ALBUMS**

Reg. 2.44

Each **\$1.99**



Saive Strawberry **SHAMPOO**

Reg. 1.19

16 Oz. **89¢**

CONGESPIRIN

Reg. .87

36's **69¢**

congespirin
Chewable Cold Tablets for Children
Analgesic Nasal Decongestant



Shurfine **SHORTENING**

48 Oz. Can

\$1.69



Vitalis

with V7
GROOMS HAIR WITHOUT GREASE

4 Oz. **97¢**

Reg. 1.19

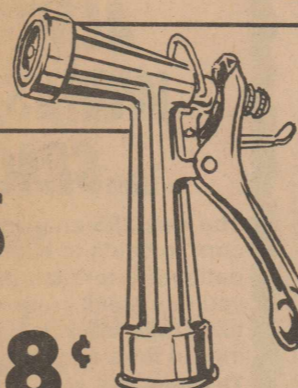
SIZE



Sine-Off **TABLETS**

Reg 1.19

24's **88¢**



HOSE NOZZLE

Clip lock holds spray. Brass stem and adjusting nut. Die cast zinc.

Our Low Price

Aqua Gun Reg. 2.00 **\$1.79** EA



Ultra Ban Super Dry **DEODORANT**

Reg. 1.39

5 Oz. **89¢**



Flintstone

MULTI VITAMINS

Reg. 2.55

60's **\$1.98**

Nylon Cooking **UTENSILS**

Decorator Colors

EA

59¢



INDOOR-OUTDOOR RUG RUNNER

Use anywhere! 100% loop pile polypropylene olefin yarn with latex backing. Choice of 2-tone tweed colors.

Darby Reg. 4.69

Sale Price **\$3.98**



Shurfine **TOMATO SAUCE**

8 Oz. Can

6 for \$1



Shurfine **ASPARAGUS SPEARS**

14 1/2 Oz Can

2 for 99¢



Shurfine **SPINACH**

15 Oz. Can

4 for \$1



ban ROLL-ON DEODORANT

REGULAR/UNSCENTED

Reg. .98 **Only**

1 Oz. SIZE **79¢**



Everynight **SHAMPOO**

Reg. 1.69

8 Oz. **\$1.25**

Excedrin 60's TABLET SIZE



Reg. 1.45

\$1.19



WE WELCOME FOOD STAMP CUSTOMERS

Cut

GROCERY AND FA
OPEN SEVEN DA

HIGHWAY 54 EAST
STRATFORD, TEXAS

Prices effective Thursday, April 10 thur Wedne

Menu Planning
 IS TRUE...
 GREAT, LOWER PRICES
 IN STORE, SELECTIONS ARE
 SO ARE MENU IDEAS!

A GREAT PLACE TO SHOP... THE PLACE TO SAVE!

Aunt Jemima 10 Oz. Pkg.
 Frozen WAFFLES 2 for 99¢

Stillwell
 Strawberries-Cherries 16 Oz. Pkg 68¢
 Blackberries-Peaches

Minute Maid
 ORANGE JUICE 16 Oz. Can 88¢

CUT RATE SUPERMARKET

THIS PLUS S & H GREEN STAMPS

Always Or Gimmicks To Run Prices Up

Ellis Tamales 28 Oz. Can 69¢

Ellis Tamales No. 300 can 2/89¢

Chicken of the Sea CHUNK LIGHT TUNA 6 1/2 Oz. Can

2 for 99¢

Welchade GRAPE DRINK Vitamin Enriched 1 Qt. Can

2 for 99¢

Cattleman's BARBECUE SAUCE Reg. Smokey, Mild 18 Oz. Btl. 79¢

BOLD 25¢ OFF King Size Box \$1.99

99¢ SHURFINE Instant COFFEE 6 Oz Jar

Shurfine Instant COFFEE 6 Oz Jar

\$1.29

Shurfine Creamed COTTAGE CHEESE 24 Oz. Ctn. 99¢

Shurfine COTTAGE CHEESE 24 Oz. Ctn. 99¢

Sport Mix Ration Chunk DOG FOOD 25 Lb. Bag \$3.99

RANCH STYLE PINTO BEANS SPAGHETTI

Ranch Style PINTO BEANS SPAGHETTI

RANCH STYLE BLACK EYE PEAS

Mix or Match No. 300 4 for \$1

99¢

Del Monte PEACH HALVES 1/2 Can

Folgers COFFEE All Grinds

\$2.99

Imperial SUGAR 5 Lb. Bag \$1.77

Duncan Hines BROWNIE MIX 23 Oz. Box 99¢

BONUS SPECIAL Reynolds Wrap HEAVY DUTY 37 1/2" x 25 FT. ALUMINUM FOIL 10¢

BONUS SPECIAL Hershey CHOCOLATE SYRUP 16 Oz. Can 1¢

Heinz Strained BABY FOOD Jar 12¢

Shurfine SALAD DRESSING 32 Oz. Jar. 99¢

Shurfine SALAD DRESSING 32 Oz. Jar. 99¢

Kraft Deluxe AMERICAN CHEESE 12 Oz Pkg. 98¢

Shurfine FRANKS 12 Oz Pkg. 59¢

Soft PARKAY MARGARINE 16 Oz Pkg. 69¢

Owens Country Style SAUSAGE 1 Lb. \$1.09 2 Lb. \$2.15

Shurfine FISH STICKS 8 Oz Pkg. 59¢

Grain Fed Farm Fresh CATFISH Lb. \$1.19

Rate
 FAMILY CENTER
 604 MAIN STREET
 SUNRAY, TEXAS

WHOLE SOME. GOODNESS.

Fresh Daily GROUND CHUCK Lb. 98¢

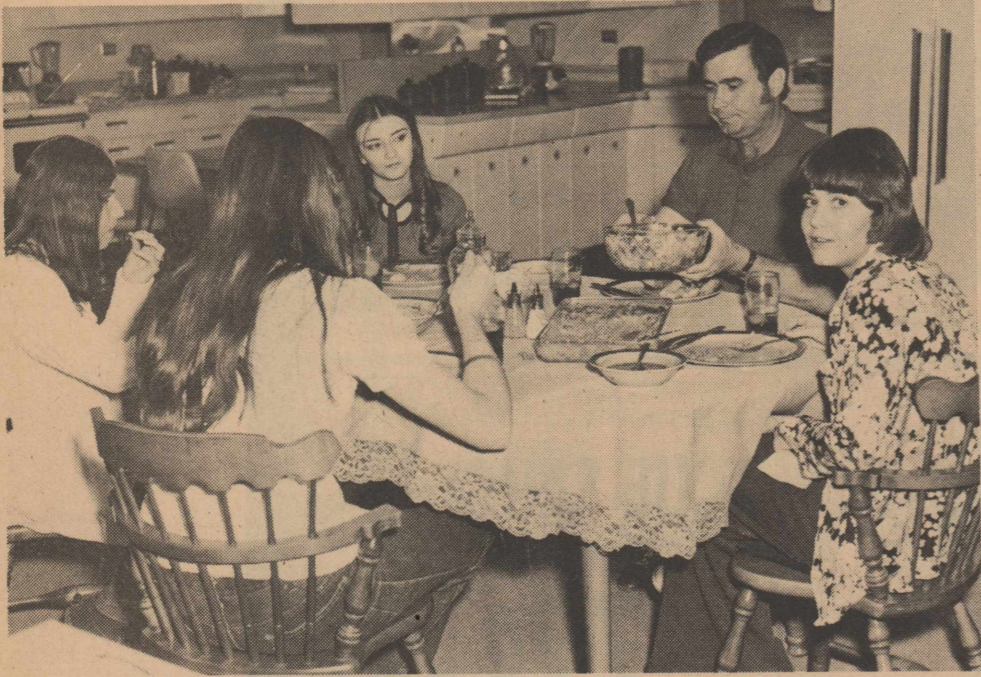
COUNTRY STYLE RIBS Lb. 98¢

CUBE STEAK Lb. \$1.39

PORK CHOPS Center Cuts Lb. \$1.29

First Cuts Lb. 89¢

We extend continued success to the FHA



GUEST AT LUNCHEON--Students in the Homemaking III class prepared a complete meal and invited Coached P.D. Fletcher to share their meal. Seated at the table, left to right, are Blanca Guzman, D'Lynn Brown, Debbie Stacy, P.D. Fletcher and Melanie Hamilton.

JA's & LuAnn's North Main in Stratford

We point with pride to the FHA Chapter during their week



HOME ECONOMICS III--Members of the Homemaking III class at Stratford High School include, seated, left to right, Melanie Hamilton, Blanca Guzman, Delores Radford and Debbie Arnold. Back row, left to right, are Evelyn Williams, Janet Vaughn and Debbie Stacy. D'Lynn Brown was absent when the photo was made.



PLAYSCHOOL RECEIVES ARTICLES--Donna Hamel, left, representing the Playschool, Inc. is shown receiving some articles made by one of Stratford High's Homemaking classes. Those helping to make the pillows and stuffed animals included Maria Jurado, Gail Ireland, Christie Hussman, Patsy Romero, Sherry Timpson and Ava Griffin.

Brown Meat Locker Betty & Baskin Brown



PHILLIP WALDROP TO APPEAR IN WAYLAND CONCERT

Phillip Waldrop, son of Mr. and Mrs. Hubert Waldrop of Stratford and a sophomore religion major at Wayland Baptist College, will appear with the Wayland Concert Choir in "Kaleidoscope '75", a fully costumed, choreographed and lighted musical production at 7:30 p.m. April 17 in Harrah Auditorium.

Proceeds from the show will help finance the choir's European tour next spring.

Local 4-H Rifle Team Wins Match

The Junior 4-H Rifle Team competed with another rifle team from Alpine, Texas at the Annual Junior National Sectional Championship in Amarillo on March 27 winning first place in the match.

The team members are Andy Riffe, son of Mr. and Mrs. Don Riffe; Keith Hill, son of Mr. and Mrs. R.J. Hill; Leon Payne, son of Mr. and Mrs. Jack Payne; Randy Williams, son of Mr. and Mrs. Rex Williams and Bobby Kirkham, son of Mr. and Mrs. Jim Kirkham.

James Kirkham, son of Mr. and Mrs. Jim Kirkham, won the sub-Jr. Division at the meet.

Members of the Jr. Rifle Team were awarded individual medals while young Kirkham was awarded a trophy for his marksmanship.

The team is coached by Jim Kirkham.

Prayer gongs of jade have been found in Asia, Africa, and among the American Indians!

World Wheat Buyers To Visit Texas

A series of foreign government-industry-trade teams of individuals responsible for wheat buying in world markets will be studying types, quality and facilities for handling Texas wheat prior to the expected bigger than usual Texas harvest beginning in May, according to Ken Kendrick, Stratford, Chairman of the Texas Wheat Producers Board. The Producers Board will be the Texas host for the groups which will be making other visits to gain a better picture of the U.S. wheat production and marketing system under auspices of Great Plains Wheat, Inc. (from Europe) and Western Wheat Associates (Asia). Texas wheat producers support such work in an effort to establish bigger and more stable markets and return, strengthened income, through a 1/2 cent per bushel voluntary assessment on their production administered through the Texas Wheat Producers Board, which in turn holds supporting memberships in both the above producer supported regional market development organizations.

The itinerary and program while in Texas is being developed in response to the specialized interest of each of the forthcoming groups, according to Bill Nelson, Amarillo, Executive Vice President and Administrator of the Producers Board. Generally, he points out, that the schedule will include farm visits with producers to discuss changing production technology and costs, local elevator stops to study receiving, storage, transportation and quality maintenance, terminal elevator and grain merchandiser conferences to discuss marketing patterns, pricing and other trading matters and tours of Texas ports to evaluate export volume potential, grading and shipping.

After leaving Texas the teams will visit wheat market centers such as Kansas City, Minneapolis, Chicago, New York and hold foreign trade discussions with U.S. Administrative and Legislative officials in Washington.

Swiss Team in Texas April 6-9

A four-man team from Switzerland will include: Mr. R.J. Hediger, Managing Director of the French-language mills

of the largest milling group in Switzerland and is a director of the eighth largest Bank in Switzerland. Mr. C. Bagnion, Managing Director of the third largest milling group in Switzerland and Director of the Swiss Millers Association. Mr. M. Steiner is the owner of the largest durum mill in Switzerland and President of the Swiss Durum Millers Association.

(Continued on Page 10)

☆☆☆☆☆ STARS and STRIPES

Coast Guard Seaman Recruit Rickey D. Baker, son of Mr. and Mrs. A.L. Baker of Stratford, is undergoing recruit training at the Coast Guard Training Center, Alameda, Calif.

Navy Fireman Apprentice William C. Moore, son of Mr. and Mrs. John E. Moore of Stratford, was graduated from Hull Maintenance Technician School at the Naval Training Center, San Diego.

During the seven-week course he received instruction in welding, metal working and pipefitting.

Indian lamas say that the earth is placed on the back of a gigantic frog whose movements cause earthquakes.

Y'all Come Eat With Us!

Tuesdays 6-9 pm

FRIED CHICKEN with all the trimmings, salad, French Fries or Baked Potato, cream gravy, hot rolls and honey

\$2.50

Thursdays 6-9 pm

FISH BUFFET, with choice of salads, hush-puppies, French Fries or Baked Potato

\$2.50

Fridays 6-10 pm

12 Oz RIB EYE STEAK with salad, Baked Potato or French Fries

\$5.25

HEADQUARTERS

Hwy 54 & 287

Best wishes to Stratford FHA Chapter



GOODIES AT OPEN HOUSE--Mrs. Mary Lou Walden is shown as she samples one of the many goodies prepared by students in the homemaking classes for visitors on the night of Open House.

Boston's Hwy 54 in Stratford

Our Best Wishes to the FHA this week



SEWING IN HOME AND FAMILY LIVING--The boys in Home and Family Living Class even learned to sew, making hunting jackets that were top-stitched and fully lined. Keith Lewis receives some instruction from Mrs. Dorothy Halle as he works on his jacket. One of the jackets can be seen in the foreground.

Woolsey Appliances

Try Our

Livestock Minerals and Salt

We now off a full line of San Tex Products including Mineral Salt plus all types Livestock Feed and Dog Food

Free Delivery Over Local Area

We also have a full line

ANIMAL HEALTH PRODUCTS

- *Antibiotics *Wormers *Insecticides *Full Line of Syringes & Guns

*Vaccines

Nites - Call 396-2592

Delta Veterinary Products Division

Phone 769-4411

2 Miles South On Hwy 287

See Them **TODAY.....**

at **STRATFORD IMPLEMENT CO.**



**105 pto hp and
hydraul-shift transmission**

Because the 2-105 engine was designed to be turbocharged, all components have the strength to take the stress associated with turbocharging. So you get the added working ability of turbocharging plus long engine life.

The Over/Under Hydraul-Shift transmission lets you take advantage of the great lugging ability of the 2-105 engine with ease. You can shift on-the-go in any of three speed ranges. The result is more efficient operation and better use of power.

For example, under tough going simply shift from direct drive to underdrive. The result is 20 per cent

more pulling power. With easier going, shift into overdrive and increase your speed by 20 per cent. All with the flick of a lever. And with no clutching. Combining the Hydraul-Shift with the standard 6-speed transmission also gives you 18 well-spaced speeds from 1.6 to 18.1 mph

With its turbocharged diesel and Hydraul-Shift, the 2-105 Field Boss outworks most other tractors in its class.

**new 2-105
field boss**

Here it is. The first two-wheel drive Field Boss tractor from White—the 2-105. Beneath that classic silver and charcoal exterior is a 105 PTO horsepower* tractor that performs.

Start with the turbocharged, 6-cylinder engine. It works at a low 2200 rpm. So you use less fuel... put less stress on the engine. The 2-105's diesel delivers 105 hp to the PTO. And it develops high torque rise for good pull-through power.

A 6-speed, constant-mesh, helical-gear transmission is standard on the 2-105.

Three range on-the-go shifting is available with the optional Over/Under Hydraul-Shift* transmission. And the addition of the Hydraul-Shift gives you 18 forward speeds.

Very few tractors in the 100-hp class offer closed-center hydraulics. With the 2-105 Field Boss, the closed-center hydraulics come standard, and so do two remote outlets.

Other standard features include a Category II, 3-point hitch and a dual-speed, 540/1000-rpm PTO.

Leading the list of comfort options available for the 2-105 is a rubber-mounted, sound-deadened Field Boss cab. The cab keeps noise and vibration out and offers good visibility with its 3-sided front. There's no right-hand corner post to obstruct vision. A heavy-duty cab pressurizer, heater and built-in, rollover protective frame come standard.

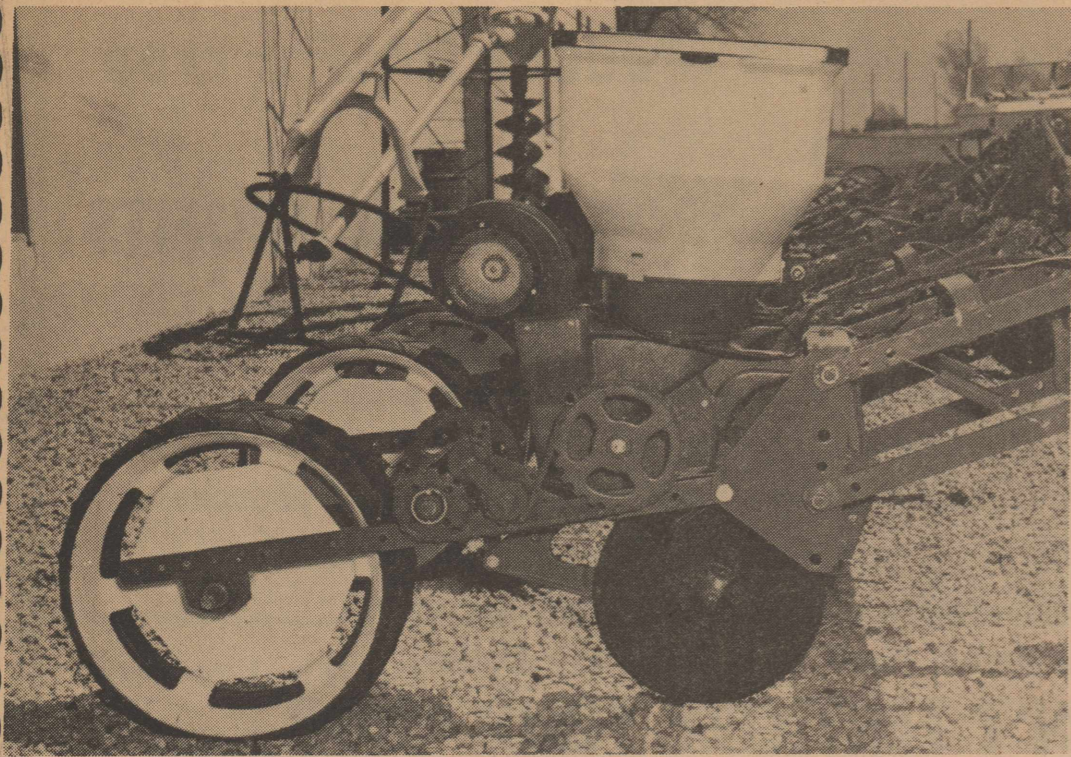
For rugged, all-around performance plus comfort, it's the 2-105 Field Boss from White.

*Manufacturer's estimate, maximum observed horsepower at 2200 rpm.

**closed-center
hydraulics**

Closed-center hydraulics offer several advantages to you. Hydraulic oil is constantly under pressure so when you need it you get it—fast! There's no lag in response. With closed-center systems, oil is pumped only when a hydraulic function is needed. As a result, no horsepower is wasted. Oil isn't heated just by passing through the system, so it holds up longer.

But there are more advantages to the 2-105's hydraulic system, too. A high-capacity filter located between the hydraulic pump and oil reservoir filters all oil before it reaches any moving parts. That means longer system life.



**The White Plant/Aire has proven
to be everything it was
expected to be...and more**

With thousands of acres to its credit, farmer-owners all across North America have been favorably impressed with the White Plant/Aire.™

The reasons for their favorable comments number as many as the thousands of acres Plant/Aire planters covered this past growing season.

Simplicity... accuracy... high-speed planting... and reliability all scored high with White owners.

The Plant/Aire was designed with all of these things in mind. Because of the simplicity of only two moving parts per row, the Plant/Aire performs with amazing dependability.

The Plant/Aire system is designed for simplicity. Pressurized air and a rotating Lexan® seed disk carry out planting chores with a minimum amount of trouble. Putting air and gravity to work has opened many doors to future benefits and has closed the door on many former planting woes.

Growers who expressed a desire to plant at previously unheard of planting speeds were given that capability. The White Plant/Aire, the first truly high-speed planter, plants with extreme accuracy at speeds up to 8-mph.

Changeover costs from corn to soybeans... or to other crops... is amazingly low compared to competitive plateless-type planters... less than \$4.00 per row.

The Plant/Aire, when equipped with minimum tillage attachments did a most commendable job planting soybeans after wheat. And in other unprepared ground... reducing time and labor requirements. Here again... gaining that all important planting element... timeliness.

The fact that the Plant/Aire is equipped with a standard integral seed monitoring system allowed farmers who were pressed for time to plant on into the night with assurance that all rows were planting. The end result being a job completed on time and a job done well... thanks to the assurance of a built-in seed monitor.

**operator
comfort and
convenience**

Climb inside the 2-105 Field Boss cab and you'll see why it's a leader in both comfort and convenience.

The cab comes standard with a heavy-duty pressurizer and heater. Air conditioning is optional. So whether it's hot and dusty or chilly outside, you ride in comfort. You won't stumble over the pressurizer or heater getting in and out of this tractor. Both are placed well out of the way in the upper right-hand corner of the Field Boss cab.

The all-weather cab mounts on rubber to keep noise as well as tractor vibration out... to reduce fatigue at day's end.

An optional AM radio is available to keep you up on the news, weather, and market reports. It provides even more enjoyment.

For your safety, a durable, 4-post rollover protective frame is built in.

Seed Hoppers 1 bushel fiberglass, standard; ¼ bushel steel, optional.

Press Wheels Double V, standard; Zero Pressure, single rib, flat traction, and flat smooth, optional.

Monitor SM1 planter malfunction indicator is standard, SM2 monitor with population counter is optional.

Seed Openers Runner opener, standard; double disk opener, optional.



STRATFORD IMPLEMENT CO.

Ph 396-2271

Stratford, Texas



County Agent's Report

Sherman County 4-H'ers competed in the Senior Livestock Judging, Junior and Senior Quarter Judging at West Texas State University Saturday, April 5.

Charlotte Sutterfield was high individual in swine judging. Team members were Charlotte Sutterfield, Blake Sladek, and Duane Gillenwaters.

The junior Quarter Horse Judging Team placed 4th. in the Contest and Darryl White was 2nd high individual. The team members were Leslie Flores, Steve and Wayne Dyess, and Darryl White. The Senior Quarter Horse Team was in a 3 way tie for 4th place and Mike

Flores was 2nd high individual. Team members were Mike Flores, Kurt Harris, and Woody Jesse.

The Grass Judging Team and Soils Judging Team will compete this Saturday.

STRATFORD JUNIOR HIGH GOLF TEAM PLACES SECOND

Stratford's Junior High Golf Team accompanied by Sam Brite competed with 14 other teams in the Guymon Junior High Golf Tournament on Monday.

The team placed second in the tournament with Pampa winning over them by only 3 strokes.

Members of the team include Toby Wisdom, Matt Vincent, Max Christian, John Bass and Noel Chesmer.

Toby Wisdom was named medalist for the tourney, having the lowest score in the meet.

What's New At School



XXXXX WHAT'S NEW AT SCHOOL--During Earth Week, April 7-12, Mrs. Patti Vincent's second grade class in the Mary Allen Elementary School constructed a Litter Man. They collected trash around the school and attached it to the cut-out figure of a man.

XXXXX

TEXAS WHEAT

.....from page 8

Mr. O. Baumele is Alternate Chief of the Import-Export Division of the Swiss Federal Cereals Administration, which is responsible for procurement and storage of government stocks.

A representative of Great Plains Wheat will be accompanying the team. One of the interest of the

Matt Vincent was named third medalist.

While the teams were competing, the storm that blew through Stratford hit at Guymon and a large whirlwind and strong wind forces hit, knocking the players to the ground on the course.

Swiss group will be confer with Texas Wheat Producers Boards' consulting animal nutritionist, Dr. R.H. Diven regarding feed wheat. Often times the Swiss millers must utilize certain quantities of home-grown wheats of varying qualities before being permitted to import the types and quantities needed for breads, pastries and spaghetties. They will attend the regular monthly Agri-Business meeting of the Amarillo Chamber of Commerce where farm commodity production and marketing discussions will be the program.

European Economic Community Wheat Trade Mission in Texas April 17-20.

European Economic Com-

munity (EEC) officials responsible for annually purchasing nearly 400,000,000 bushels of wheat from world markets, or about 18 percent of the world grain trade, will be in Texas as guests of the Texas Wheat Producers Board, April 17-20. Conferences are being arranged with exporters, producers, Texas Dept. of Agriculture and Port facility officials to exchange information and technical discussions. Dr. Ty Timm, Texas A&M University Agricultural Economist and noted EEC authority from research and trips to there will participate with the Board in discussions at the World Trade Center in Houston. Members of the EEC Team are: Mr. Walter Rode,

Just A Reminder . . .

Get that air conditioning system installed NOW before hot weather!



Call Or Go By

James Cox

Heating and Air Conditioning

935-6327

124 E. 18th

AUCTION of SALE

TUESDAY APR. 15 1975

2:30 P.M.

REAL ESTATE

670 ACRES OF FARMLAND

We will offer for sale on the above date at the Texas County Court House in Guymon, Oklahoma, the following described real estate.

Tract No. 1, The West Half (W $\frac{1}{2}$) Section Four (4) Township One (1) Range Ten (10).

Tract No. 2, The East Half (E $\frac{1}{2}$) Section Twenty-two (22) Blk. One (1) Public Free School Land.

Tract No. 3, Lots 2 & 3, Section Two (2) Township One (1) South Range Twelve (12).

Unit No. 4, The Minerals only, One Half (1/2) interest in those lying under the West Half (W $\frac{1}{2}$) of Section Thirty-five (35) Township Two (2) Range Eleven (11).

Unit No. 5 consists of 500 Shares of Common Capital Stock of TEXHOMA HOMES INC. Certificate No. 17, issued April 1, 1974.

Tract No. 1 lays just 17 miles northwest of Texhoma, mostly west. We will offer this unit with all the minerals and 1/3 of the growing wheat. It is all sown to wheat and looks real good with an excellent stand. Texas County farmland.

Tract No. 2 is located just two miles east of the southeast corner of Texhoma, Oklahoma. The blacktop road, known as the State Line runs adjacent to the north side of the land. It is also all sown to wheat with 1/3 of the growing crop going to the buyer. Minerals are all intact and will be sold with the unit. This tract is in Sherman County, Texas, Public Free School Land.

Tract No. 3, Lot 2, 15.69 acres and Lot 3, 17.20 acres. This unit lays on the north side of Tract No. 2, with 9.2 acres of grass, balance in wheat. Surface rights only will be offered. 32.89 acres more or less of Texas County, Oklahoma land.

* If you own land close to either of these units and would like to add to your present holdings or if you would like to make an initial investment in either Texas County or Sherman County, Texas, farmland, circle the above date on your calendar and plan to attend. For further information or if you would like to inspect any of this property prior to date of sale please call Lee R. Johnson, Ph. 405-545-3486, Eva, Oklahoma.

*

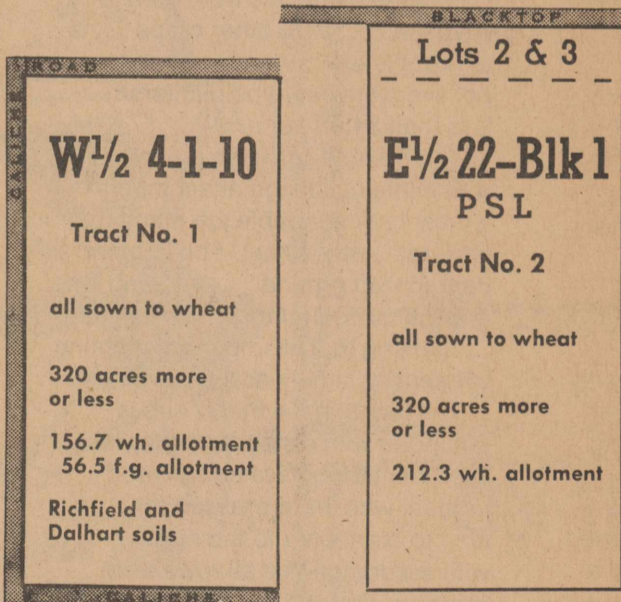
TAXES 1974 paid by the sellers and buyers to assume the 1975 taxes.

POSSESSION to be granted after the 1975 wheat harvest with one third of the growing wheat going to the purchasers.

MINERALS all are intact with Tracts Nos. 1 and 2, Tract No. 3 surface rights only. Tract No. 4, minerals only, one half interest of the W $\frac{1}{2}$; 35-2-11.

ABSTRACTS Merchantable abstracts will be furnished with Tracts Nos. 1, 2 and 3. Unit No. 4 will receive a Mineral Deed.

TERMS Ten Per Cent (10%) down date of sale, balance to become due upon approval of abstract and acceptance of title. Down payment to be placed in Escrow with the 1st National Bank of Texhoma, Oklahoma.



BESSIE W. BENSON ESTATE

OWNER

LEER JOHNSON

EVA, OKLAHOMA — 545-3486

LaMAR, TRYON, SWEET, FIELD & PETTY
Attorneys at Law — Guymon, Oklahoma

Sale of Oklahoma property subject to confirmation by The District Court of Texas County, Oklahoma.

Mr. Farmer —
HAVE You Ordered Your FERTILIZER

MAN!!! TIMES ARE TOUGH!!!

It Costs the Same to produce **HALF** a crop as a **FULL** crop.
DEMAND MAXIMUM PRODUCTION PROFITS
Select FERTILIZER Grades That Supply —

- Ammonium Sulfate assures maximum protein development.
- Polyphosphates. The most efficient form of phosphorus.
- Zinc — Assures correct chlorophyll formation.
- Iron — Assures maximum plant maturity.
- Maximum Plant Food Units Per Dollar.

DON'T FERTILIZE YOUR CROP

ZIPP IT!!!

Select A Dealer That Supplies —

OXY ZIPP fertilizers — OXY recommended pesticides
OXY field services — OXY management services

DON'T BLOW YOUR LOAN
CPP IT!!!

Contact These Dealers Today —

FARMERS FERTILIZER
Jack Young
Dalhart, Texas
249-5134

THOMPSON FERTILIZER
Bruce Thompson
Hartley, Texas
365-4433

STRATFORD BUTANE
Charles Lamb
Stratford, Texas
396-5526

BARTLETT & CO.
John Mills
Boise City, Okla.
544-2956

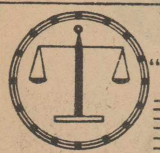


OCCIDENTAL CHEMICAL COMPANY
Texline, Texas 362-4232
Developers Of The **ZIPP** Fertilizer Concept



Plainview, Texas 293-2501

CLASSIFIED ADS *get action*



PUBLIC NOTICES "BECAUSE THE PEOPLE MUST KNOW"

XIT Rural Telephone Cooperative, Inc. has filed with the Federal Government a Compliance Assurance in which it assures the Rural Electrification Administration that it will comply fully with all requirements of Title VI of the Civil Rights Act of 1964 and the Rules and Regulations of the Department of Agriculture, issued thereunder, to the end that no person in the United States shall, on the ground of race, color, or national origin, be excluded from participation in, be denied the benefits of, or be otherwise subjected to discrimination against any person on the ground of race, color or national origin in its policies and practices relating to applications for service or any other policies and practices relating to treatment of beneficiaries and participants including rates, conditions and extension of service, use of any of its facilities, attendance at and participation in any meetings of beneficiaries and participants in the conduct of the operations of this organization.

Any person who believes himself, or any specific class of individuals, to be subjected by this organization to discrimination prohibited by Title VI of the Act and the Rules and Regulations issued thereunder may, by himself or a representative, file with the Secretary of Agriculture, Washington, D.C. 20250, or the Rural Electrification Administration, Washington, D.C. 20250, or this

organization, or all, a written complaint. Such complaint must be filed not later than 180 days after the alleged discrimination, or by such later date to which the Secretary of Agriculture or the Rural Electrification Administration extends the time for filing. Identity of complainants will be kept confidential except to the extent necessary to carry out the purposes of the Rules and Regulations. (Published in The Stratford Star April 10, 1975)

CONTRACTORS' NOTICE OF TEXAS HIGHWAY CONSTRUCTION
Sealed proposals for constructing 112.087 miles of Seal Coat (North Portion)

REMODELING SALE
Friday & Saturday
505 N. Grace

13' Kitchen cabinet [complete w/sink, top & bottom];
2 corner cabinets, [shelves on top, doors on bottom];
Selection of wooden doors and windows;
2 storm doors w/aluminum screens;
1 garage door complete w/hardware;
1 double wall furnace [ready to go]
1 used carpet;
1 portable copper tone dishwasher; plus selection of odds & ends.
15-1tc 396-2036

From 8.3 Mi. SE New Mexico State Line To New Mexico State Line
From 0.7 Mi. NW of FM 1879 to 8.3 Mi. SE of New Mexico State Line
From Dalhart City Limits to Sherman County Line
From Dallam Co. Line to Junction US 287
From Hartley County Line to Junction US 287
From Junction SH 15 to Oklahoma State Line
From Spearman to Gruver
From 0.5 Mi. N. of Canadian River Bridge to 0.8 Mi. S. of FM 2277
From Booker to 14.6 Mi. S. of Booker
From 14.6 Mi. S. of Booker to US 83

One Highway Nos. US 87, FM 297, FM 281, FM 1262, SH 15, SH 136, FM 1265, covered by C 40-1-22, C 40-2-14, C 794-2-12, C 794-3-3, C 1727-2-7, C 1336-1-7, C 308-2-19, C 356-1-68, C 1337-1-12, C 1337-2-5, in Dallam, Sherman, Moore, Hansford, Hutchinson, Lipscomb Counties, will be received at the Highway Department, Austin, until 9:00 A.M., April 23, 1975, and then will be publicly opened and read. Plans and specifications including minimum wage rates as provided by Law are available at the office of Sherman G. Gray, Resident Engineer, Amarillo Texas, and Texas Highway Department, Austin. Usual rights reserved. (Published in The Stratford Star April 10-17, 1975.)

AUTO REGISTRATIONS
4/1/75--J.H. Crawford-71 Lincoln-V.O. Lasley
4-1/75--Larry Lewallen-66 Chev.-Blake's Used Cars
4/1/75--J.H. and Debbie

Crawford-65 Ford-J.L. Whitlock
4/1/75--Johnny Gregory-68 Ford-O.D. Shelton
4/1/75--A.W. Wren-75 Chev.-Duncan Chev.
4/1/75--W.L. Burnett-66 Ford-Capps Fertilizer, Inc.
4/1/75--David Wayne Rogers-67 Plymouth-Five States Chev. Inc.
4/1/75--Billy G. Sladek-63 Ford-Stratford Butane
4/1/75--Bob and Karen Fleming 75 Chev.-Panhandle Chev.
4/1/75--Roy O. Hickman-75 Chev.-Panhandle Chev.
4/1/75--C&C Farm Stores-71 Chev.-Clarence Oiler
4/1/75--Max Brown-75Yamaha-Spinnin Wheels, Inc.
4/1/75--J.C. Stiles-71 Buick-C. G. Hardesty

MISCELLANEOUS
WATCH FOR annual Farm Bureau Auction Sale--April 19. 12-tfc
WILL THE PERSON who borrowed my portable stereo please bring it home. Faye White. 12-tfc
\$100 REWARD FOR INFORMATION leading to arrest and conviction of those who broke glasses out of motor grader south of Kerrick on FM 807. 14-3tc

REAL ESTATE
FOR SALE--One lot at 210 S. Wall Street, ready for trailer-home, contact Bill Surface at Earth, Tex., Phone Collect 257-3707 after 5 p.m. 5-tfc
FOR SALE--3 bedroom home, 2 full baths, living room, dining area, nice kitchen, large utility room. Corner lot, contact Carole Smith, 396-5314, agent for Johnson Land Co. 15-4tc

FOR SALE--1975 Westchester Trailer Home, 14'x60', Take up payments. John Higdon, Stratford, Feedyard. 15-2tp

FOR RENT
PRIME OFFICE SPACE available. Contact James Spurlock or Bill Riffe at 396-5542. 51-tfc
FOR RENT--Three room furnished apt. Couple or small family. Call 396-2105. 13-tfc

MIS. FOR SALE
FOR SALE--1972 FORD Gran Torino, contact B.A. Donelson at First State Bank of Stratford. 14-tfc

FOR SALE--Pinto Beans, \$20 for 50 lb. bag. Otto Schuster 727-4412. 2-tfc

FOR SALE--Drive line guards for irrigation wells. McGavock Pump & Machine. Call 396-5601 6-tfc

FOR SALE--270 Ft. Radio Tower. McGavock Pump and Machine. Call 396-5601 6-tfc

FOR SALE--1974 Yamaha 500 full dress, 1,400 miles. Call 396-5510 between 8 a.m. and 6 p.m. 14-tfc

FOR SALE--Old Golf Cart and Golf Shed. Cart has new batteries and connections. Call 396-2215. 14-2tp

FOR SALE--42x28 five room house to be moved. Contact Alton Gross or Ph. 396-2256. 14-4tc

FOR SALE--1974 Vega Estate Wagon, clean, low mileage, loaded, one owner. Call 396-5374 after 5 p.m. 14-4tc

SERVICES
ATTENTION: Montgomery Ward Sub-Agency has been added. Place or call orders. We solicit your business. Delivery made at: Wonder Shop, Ph. 546-4101, Keyes, Okla. 12-4tc

WILL DO BABYSITTING in your home or mine. Call Kristi Doshier at 396-2165. 14-2tc

Kirby Co. of Dumas
Authorized Sales and Service
New & Rebuilt
D.A. FLEMING
800 Dumas Ave
Box 953, Dumas
Ph 935-2524

IF YOU WANT TO DRINK... THAT'S YOUR PROBLEM!!
IF YOU WANT TO QUIT... THAT'S OURS!!
A.A. & AL-ANON meets each Thursday evening at 8 p.m. in Methodist Fellowship Hall

FARMER-RANCHER SALES POSITION
Local farmer or rancher needed to represent quality American Barbed wire and farm wire manufacturer. Long time, well-known local resident able to devote time for selling.
RETIRED OR SEMI-RETIRED FARMER OR RANCHER WELCOME
No Inventory investment by you but must have shed or store our inventory of wire for customer pick-up.
PROTECTED TERRITORY WITH HIGH INCOME POTENTIAL
Write: H. HOPE MFG. CO. 2470 S. Broadway Denver, Colorado 80210 giving name, address, phone number, years in community, bank ref., descript. of storage fac.

THE PLAYSCHOOL--quality child care, Monday-Fridays, 6:30 a.m.--8 p.m. Call 396-5996, Second and South Fulton. 43-tfc

FOR THE ULTIMATE in storm doors, custom built, designed in colors to fit your home. Call for Howard Moyer at **ONLY ALUMINUM INDUSTRIES**, 114 W 1st, Guymon, Okla. Phone 405-338-6966 or 338-6170. 13-4tc

PRETTY PLEATS DRAPERY SHOP--Custom made drapes. Free estimate. Call day or night, 727-4855 or 396-2439. 10-tfc

WOULD LIKE to keep child in my home, days, call 396-2464. 14-2tc

LAMPS, LAMP PARTS, ALL LIGHT BULBS--House of shades & Lamp Repair, 2613 Wolfen Ave., Wolfen Village, Amarillo, Texas 79109 8-52p

HELP WANTED
WAITRESSES and dish washers **WANTED**. Apply at the Headquarters. 13-tfc

HELP WANTED--part time work, water meter reader, experience preferred, apply at City Hall. 12-tfc

HELP WANTED--part time work, dog catcher, apply at City Hall. 12-tfc

Does Your Tall Water Pit Look Like A Mud Hole? Let Us Clean It Out Or Build A New One. Leo Roy Mitchell, Dirt Contractor, Ph. 806-733-2384 Gruver, Tex. 46-tfc

Help wanted: Adults-part time or fulltime help. Apply at Dairy Queen. 11-tfc

ALL CABINET WORK--Custom built. Any ceramic work. Leo L. Scott, across alley from Stratford of Texas. Ph. 396-2219. 11-tfc

GARDEN CLUB RUMMAGE SALE--April 11, 12, Friday and Saturday, King Equipment. 15-1tc

FOR SALE OR TRADE--1973 410 CC AJS. Call 753-4494. 15-tfc

FOR SALE--Electric Bar-B-Que. Phone 396-5997 after 6 p.m. 15-3tc

FOR SALE--40 bags McNair 190 Corn Seed, reasonably priced. Ph. 396-2309 or 396-2036. 15-2tc

Shoe Repair
Boots - Saddles
Leather Goods
Buster's Boot Shop
103 W. 3rd Stratford

NATIONAL CORPORATION expanding in Dumas, Stratford, Dalhart and surrounding areas. Need Sales Associates to \$18,000. For personal interview call Mr. Blackmore, Dumas, 935-2026. 9 a.m. to 4 p.m. 15-2tc

Some people suggest you stamp a letter upside down to insure a speedy answer.

CARD of THANKS
Our thanks to the voters of Stratford for approving the One Percent City Sales Tax. We will use this money for the betterment of the community.
Stratford City Council & the Old Grey Mayor
15-1tc

WANTED
All our friends to attend our Gospel meeting at the Church of Christ beginning at 8 p.m. evenings through Sunday.
Horace and Orlina Sneed
15-1tc

Real Estate... Machinery... Livestock
SALES
LARGE OR SMALL
LEE R. JOHNSON
EVA, OKLAHOMA 545-3486

CARD of THANKS
I would like to take this opportunity to thank all those who gave so generously to the Easter Seal Drive. The drive was again a big success with a total of \$525.00 collected.
Jack Gilley, chairman, Easter Seal Drive
15-1tc

CARD of THANKS
I would like to take this opportunity to thank the citizens of Stratford for their continued support in the recent election. Your vote was greatly appreciated and I will continue to serve Stratford and it's needs to the best of my ability.
Dwayne Plunk
15-1tc

CARD of THANKS
I would like to express my deep appreciation to all those who gave me their vote and support in the recent elections. I shall do my best to serve everyone to the best of my abilities.
Ron Hager
15-1tc

CARD of THANKS
I would like to thank all those who voted for me and gave me their moral support during the recent city election. Your many votes and your kind words are most appreciated.
Leland Lewis
15-1tc

Stratford April Schedule
Thurs. & Fri. April 3-4
Thurs. & Fri. April 10-11
Thurs. & Fri. April 17-18
DR. V.G. MARTIN, OPTOMETRIST
3rd & Main in Stratford
For appointment call 396-5516 or Dumas 935-6491

WOW
See **The Tire Folks** for **Firestone-Michelin Cooper** tires for your auto pickup or farm equipment
BAIN EXXON SERVICE
Ph 396-5341

Two New Homes For Sale
Both have 3 Bedrooms, 1 3/4 baths-
1306 N. Putnam
1308 N. Putnam
Come by our office for information

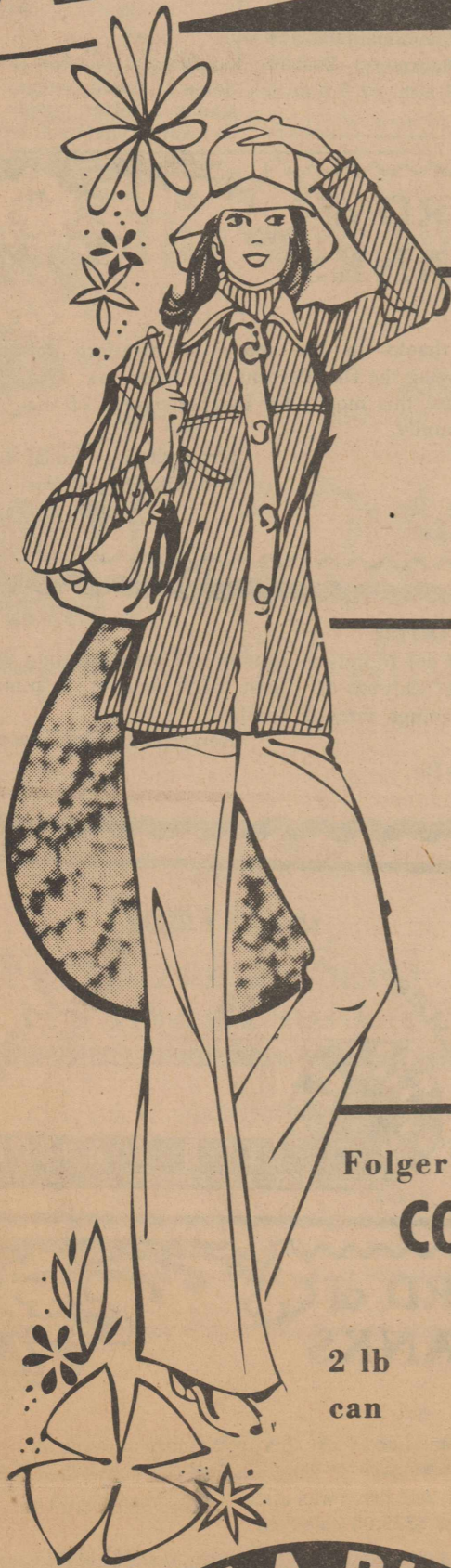
NORTH PLAINS SAVINGS AND LOAN ASSOCIATION
Eln at First Street P. O. Box 635 Dial 935-4184 Dumas, Texas 79029
Main at Fourth Street P. O. Box 1163 Dial 396-2376 Stratford, Texas 79084

Your local Used Cow Dealer is Stratford Bi - Products

farmers ranchers Gentlemen:
Seven days a week deed stock removal please call as soon as possible
Thank you 396-5350

YOU CAN'T HELP SAVING

AT THESE LOW PRICES



BEEF LIVER lb **69¢**

HOT LINKS Pound **79¢**

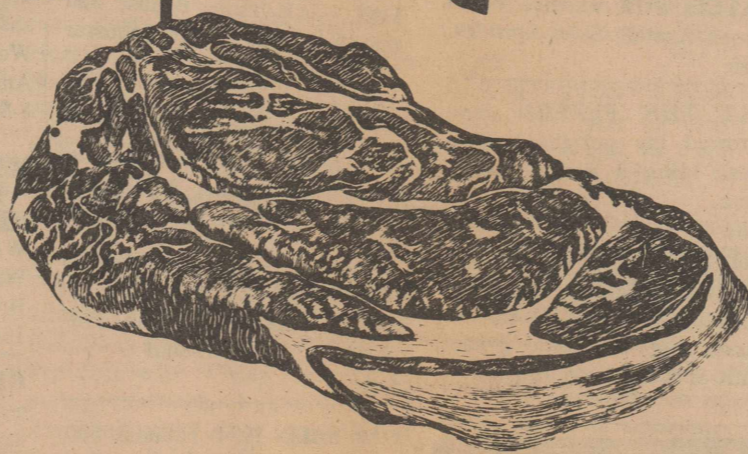
Top Hand Pure Pork **SAUSAGE**

2 lb bag **1.59**

Old Tascosa **FRANKS**

2 lb bag **\$1.65**

ARM ROAST
Pound **98¢**



Imperial Pure Cane Gold Spot Special **SUGAR** 5 lb bag **79¢**
With \$25 Purchase



Blade Cut **CHUCK ROAST** lb **79¢**

Center Cut **CHUCK STEAK** lb **89¢**

RIB STEAK lb **1.19**

Folger's All Grinds **COFFEE**
2 lb can **1.99**



American Beauty **Cut Macaroni**
Shell Macaroni
Cut Spaghetti
10 Oz Box

33¢

Plains Half Gallon **Buttermilk**
69¢



Gala All Color **PAPER TOWELS**
2 Jumbo Rolls **\$1**

Lucky Leaf Cherry No 2 Can **Pie Filling** **59¢**

Heins All Flavor 16 oz **Barbeque Sauce** **59¢**

WHAT A BUY!
32 Ounce **COKE**
3 FOR 89
plus deposit



Kountry Fresh 10 Count **Biscuits** 8 for **\$1**

Swift All Meat 24 Oz **Chili** **79¢**

Nabisco Pound Box **Crackers** **49¢**

Jergen's Lotion 5 Bars **Soap** **89¢**

Kimbell No 1 Can **Tomato Soup** 7 for **\$1**

Kimbell Quart Jar **Sandwich Spread** **79¢**

Texize 16 Oz Bottle **Spray & Wash** **99¢**

Kountry Fresh Midget Longhorn 16 Oz **Cheese** **89¢**



Folger's 6 oz Jar Instant **Coffee Crystals** **1.39**

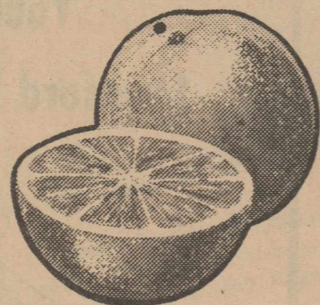
California **CELERY HEARTS** Pkg **49¢**

California **LEAF LETTUCE** Bunch **29¢**

Crystal Wax White **Onions** Pound **19¢**

Washington Red Delicious **Apples** 3 Lb Pkg **79¢**

Sunkist - Navel **ORANGES**
pound **19¢**



Pepperidge Farm 11 oz **Turnovers** **69¢**

NESTEA 3 Oz JAR **Instant Tea** **1.49**

CARNATION OR PET TALL CANS **MILK** 2 for **59¢**

Plains All Flavors Round Carton **ICE CREAM**
Half Gallon **1.19**



SEWELL'S Foodway Discount Grocery

You Have A Friend At Foodway

Ph 396-2330 Hwy 287 North

Specials Good April 10-11-12-14



WE WELCOME FOOD STAMP CUSTOMERS