

WINNER
of the Distinguished
Service Award of the
Vocational Agriculture Teachers
Association of Texas

The Bovina Blade

"In The Agricultural Center Of Parmer County"

10¢
Per
Single
Copy

THE NEWSPAPER
THAT WORKS FOR
A BIGGER, BETTER
BOVINA

WEDNESDAY, AUGUST 26, 1964

BOVINA, TEXAS

VOL. IX NO. 9

WHITTLIN'

BY DOLPH MOTEN

With the coolness and fall-like temperatures of the past week, football season can't be far away.

Bovina Mustangs are now in their second week of practice in preparation for their September 11 opener with arch-rival Farwell.

This business of kicking off the season on the second Friday night after school begins is a new one on us. Ordinarily, the first football game is played on the first Friday night of the school year.

Coach Roy Stone explains, though, that Class B schools are waiting a week longer this year than the higher classification teams. It all has something to do with the fact that Class B teams play only a regional championship while other schools go on to the state level. This means that the B schools don't have to get started so quickly since they play only two post-season games.

Frankly, it makes little sense to us. As a matter of fact, there are a lot of things about state interscholastic league rules which don't make sense. And if they do, they are sometimes so wrapped up with red tape that they're still hard to understand.

Fall-like nights in August make some people think pleasant thoughts like football. But it's a different story for others—cotton farmers, for instance, already they're handicapped with a late crop, in many cases, and cool nights now bring to mind that an early freeze could be forthcoming. That wouldn't be any fun, all farmers will be quick to tell you.

One farmer was overheard the other day wondering what kind of turnout a gin could get from cotton squares. He said he thought that was all his plants would have on them when frost came.

However, we doubt that football-weather nights indicate an early freeze. Why, it probably won't freeze until Christmas this year!

No matter what you do, it seems there's always a sport. For the past several months, we've been improving our hobby of biscuit baking.

And a worthy hobby it is, too. Biscuit making will soon be a lost art as more and more cooks take the easy way out and buy, and serve, canned biscuits.

And that's just what happened to us last week.

Just about the time we were set to improve on our hobby still more, a Bovina super market runs the canned biscuits on special for the drastically low price of five cents per can. It's all but unfair.

That is, we're sure, cheaper than we can turn out golden light biscuits. And not only that, but it enables every so-called cook in this trade territory to bake biscuits almost (we said almost) as good as the ones we turn out by starting with only the ingredients.

Those people who use canned biscuits miss out, though, on the thrilling satisfaction that can come only from taking a pan of completely homemade and delicious biscuits from a 400 degree oven.

That's half the fun . . . and they miss it all!

Here are some suggestions mentioned at Monday night's meeting of Bovina Roping Club for next year's Bull Town Days celebration:

--have "welcome" banners across streets and on businesses;

--have bales of hay and/or benches downtown to be used for people to sit on during the barbecue;

--have more fiddle music;

--increase the price of shave permits to \$5 and sell more of them;

--have a starting time for all beard contestants;

--advertise the amounts of cash prizes to be awarded.

Most of these suggestions came from the notebook of Hugh Moseley, Roping Club secretary, who heard them made dur-

(Continued on page 2)

'64-'65 School Year Starts Monday

FOR TEACHERS, SCHOOL PATRONS--

Melon Feed Set Monday

Cantaloupe and watermelon will be on the menu at a community-wide gathering Monday evening.

Members of faculty of Bovina Schools will be special guests at a get-acquainted gathering at the football field beginning at 6:30. Everyone in the community is welcome to attend.

The informal party is sponsored by members of the school board and the main purpose is to allow teachers, especially new ones, to become acquainted with patrons of the school district.

Lazbuddie Baptist Plan Bond Burning

Lazbuddie Baptist Church plans a homecoming and bond burning September 6 beginning at 10 a. m. and continuing through 8 p. m.

Noon and evening meal will be served.

Jimmy Ivy, treasurer of Baptist Church extends a cordial invitation to all former pastors and members to attend the activities.

This will be the second year for the get-acquainted feed.

There will be no speeches, school board members promise, and people are invited to come to eat cantaloupe and watermelon, get acquainted and visit only.

Serving will continue as long as people come, Johnie Horn, board president says.

A large crowd was on hand for last year's feed and another one is expected this year.

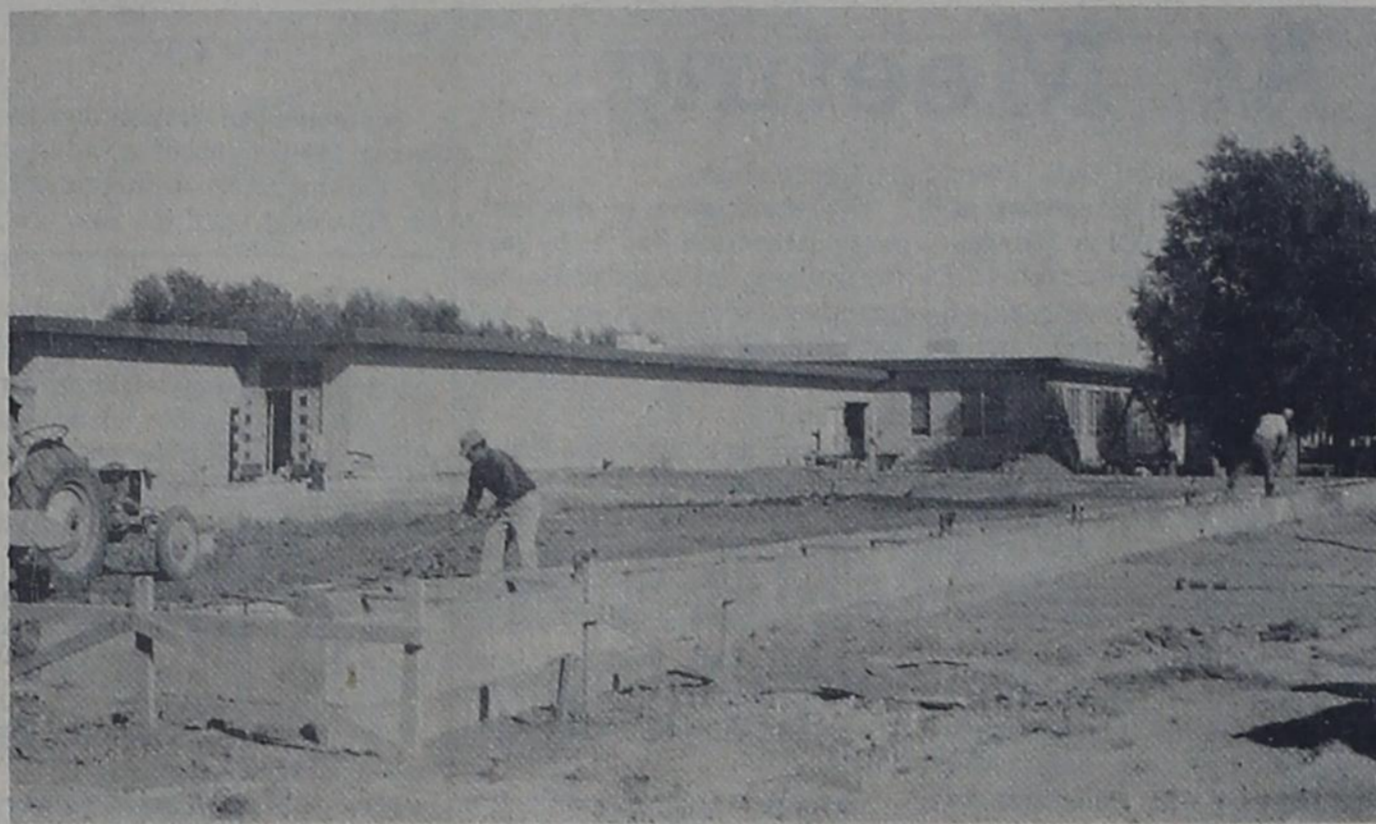
Mary Marr Schedules Style Show

A show of back-to-school styles will be presented Thursday at 8 p. m. in school auditorium by the Mary Marr Shop.

Announcement of the style show, which will feature local models, was made by Mrs. Furne Harris, owner of the dress shop.

The public is invited to attend the show, Mrs. Harris says.

Styles for teenagers and youngsters will be featured. Musical entertainment will be presented by high school stage band.



STARTING UP--Concrete foundations of part of Bovina Schools classroom construction are now visible above ground and the walls are expected to go up soon. School board members heard a report on the progress of the construction at a special meeting Monday night. Architect for the project, Atmar Atkinson of Lubbock, reported that the project is three weeks behind schedule. Original completion date was set for December 15. School officials hope to use the new facilities by the beginning of the second term of the approaching school year.

Weather by Willie

A hard freeze about October 25th. At least a shower this week.

---Willie

SUNDAY AFTERNOON--

Perry Looney Funeral Here

Perry Looney, 73, a Bovina resident for 48 years, died unexpectedly Friday about 8:30 p.m.

He was in Parmer County Community Hospital in Friona at the time of his death.

Funeral services were conducted in First Baptist Church of Bovina Sunday afternoon.

Officiating was Rev. John Ferguson, pastor of the church. He was assisted by Don Stone, minister of Bovina Church of Christ.

Will Perry Looney was born February 3, 1891 in Enns. He moved to Bovina from Lubbock County in 1916. He was a retired farmer.

Burial was in Bovina Cemetery with Claborn Funeral Home of Friona in charge of arrangements.

Survivors include a sister, Mrs. J. P. Macon of Bovina; two brothers, Hall Looney of Lubbock and Reagan Looney of Bovina; and a half-sister, Mrs. Sharp of Houston.

He was preceded in death by two sisters and one brother.

Pallbearers were Bill Bradshaw, R. L. Hopingardner, Vernon Ward, Paul Jones, Amos Steelman and Leslie McCain. Honorary pallbearers were Fred Langer, Jack Baker, F. O. Turner, Bob Sisk, Aubrey Brock and W. E. Williams.

Donald Lloyd Named New ASC Manager

Donald Lloyd, 27, son of Mr. and Mrs. Travis Lloyd of Bovina, has been named office manager of the Randall County ASC office.

Lloyd was named to the post recently by the ASCS county committee.

Lloyd, who presently is serving in a similar position in Presidio County-Jeff Davis County will move to Canyon September 14.

(Continued on page 2)



PERRY LOONEY



MUSTANG MENTORS--Preparing the Bovina Mustang football hopefuls for the 1964 campaign are Roy Stone, head coach, center, and his assistants, Milt Fitts, left, and Roger McFarren. The coaches are beginning their first year here. Stone coached at Borger last year, Fitts at Tahoka and McFarren at Hartley.

SCRIMMAGE KRESS THURSDAY--

Football Practice In Second Week

Bovina Mustangs continued their pre-school practice sessions by donning pads this week. The squad worked out in shorts last week.

Coaches Roy Stone, Milt Fitts and Roger McFarren are working with a squad of 25 boys as they prepare for their first game September 11 with Farwell.

"Our enthusiasm is high," Coach Stone said this week. The coaches will be able to tell more about the potential of their squad following a scrimmage Thursday night with Kress. The practice session will be there and will begin at 7.

Coach Stone said he expects possibly two more boys to join the squad when school begins. Members of the squad at present include:

Gene Pruitt, senior back, 172, letterman and starter last season; Gary Beauchamp, senior tackle, 154, letterman and starter last season; Roman Ramirez, junior

tackle, 193, letterman and starter last season;

David Anderson, senior back, 156, letterman and starter last season;

Al Shamblyn, senior end, 161, letterman and starter last season;

Scotty Rundell, junior back, 138, letterman;

Eddie Corn, sophomore tackle, 161;

Radford Venable, junior center, 155; letterman;

Dean Stanberry, sophomore back, 124;

Gaylen Hromas, freshman end, 124;

Kregg Wilson, sophomore guard, 140;

Don McKinney, junior, 161; Richard Carson, junior back, 121, letterman;

Jimmy Redden, senior guard, 127;

Billy Marshall, junior center, 139;

Larry Dandy, sophomore end, 116;

Randy Jones, Sophomore end, 113;

Rex Cumpston, freshman guard, 160;

Carl Harris, freshman back, 152;

Alfred Stanberry, sophomore tackle, 146;

Kent Stanberry, freshman guard, 135;

Jerry Cooper, senior tackle, 140;

Alan Carson, freshman back, 88;

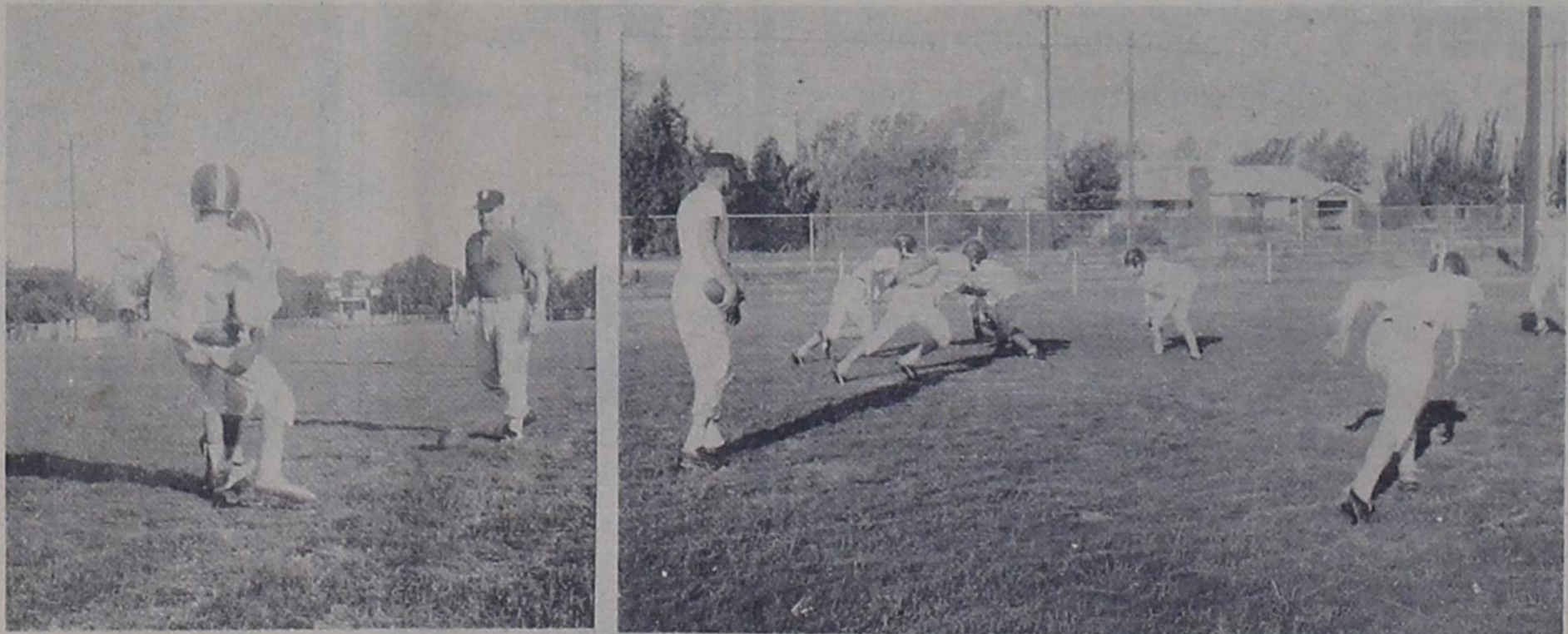
Lynn Murphy, freshman back, 121;

Darrell Kirkpatrick, freshman back, 94;

Billy Minter, senior center, 150.

Stone says that possibly another scrimmage session will be scheduled next week.

Practice sessions will continue on a twice daily basis until school begins Monday.



FOOTBALL PRACTICE--Bovina Mustang football team candidates put on pads this week in preparation for the '64 10-game season. At left, Coach Roy Stone watches as a tackler

knocks a ballcarrier backward. At right, Line Coach Milt Fitts is shown running members of the team's forward wall through their paces.

All Students Register Friday

The bell rings on Bovina Schools 1964-'65 school year Monday morning at 8:30. Registration of students is scheduled for Friday.

Registration schedule for students in grades one through six is from 9 to 12 Friday morning, announces Gary Cox, grade school principal. All students in grade school are asked to register at that time so a full day of school may be conducted on Monday, the principal says. Friday is also registration day for high school and junior high students.

Seniors will sign up for courses from 9 to 10, juniors from 10 to 11 and sophomores from 11 to 12. Seventh, eighth and ninth grade students will be registered beginning at 1 p. m., announces Alan Staley, high school principal.

Enrollment is expected to be near the 575 mark during the first week of school, announces Otis Spears superintendent.

Staley expects 125 students in the top four grades. This is an increase over last year. A class of 20 was graduated and a class of 50 is entering high school is the way Staley explains the increased enrollment.

Buses will run on their regular schedule Monday. They will not run for Friday's registration.

The first school holiday will be Monday, September 7, Labor Day.

Teachers will begin their school year with a faculty breakfast at 7:30 Friday morning in homemaker building. The breakfast will be followed

by a general faculty meeting and then by high school and grade school faculty conferences.

Bookmobile Schedule Released

The High Plains Library Bookmobile will be in Bovina on Thursday at two locations. Dates are September 10, October 1 and 22, November 12 and December 3.

The bookmobile will stop from 12:00 to 1:00 p.m. at Bovina School and be in the downtown area from 1 p.m. to 3:30 p.m. on these dates.

FU Sets Breakfast Meeting

Parmer County farmers are invited to attend a Farmers Union meeting Wednesday morning at 7:30 in Bovina Restaurant.

Jay Naman, of Waco, state president of the organization, will be present to introduce a new fieldman for the West Texas area.

"We cordially invite all farmers in the county to attend the breakfast," says Travis Dyer of Bovina, vice president of the county organization.

TWO VACANCIES--

Faculty Has 12 New Members

Bovina Schools faculty will have 12, and possibly more, "new" teachers for the opening of school next week.

Two vacancies remained at mid-week. Yet to be signed are a teacher for a first grade section and one for a third grade section.

Faculty members beginning their first year are Otis Spears, superintendent; Gary Cox, grade school principal; Bruce Rhodes, librarian; Mrs. Lillian Owens, third grade; Mrs. Bonny Ward, fourth grade;

Miss Diane Covington, junior high English and Spanish; Mrs. Margaret Douglas, high school science; Roy Stone, football coach; Milt Fitz, basketball coach and assistant football coach; Roger McFarren, junior high coach; Gene Douglas, elementary physical education; and Mrs. Alice Spears, remedial teacher.

Returning members of the faculty are Alan Staley, high school principal; Mrs. Lockhart, school nurse; Mrs. Frances Clarke, counselor; Mrs. Billie Jean Gibbs, first grade; Mrs. Leola Williams, first grade; Mrs. Betty Hall, second grade; Mrs. Ina Boothe, second grade; Mrs. Iola Hise, second grade; Mrs. Opal Perry, third grade; Mrs. Dorothy Donaldson, fourth grade; Mrs. Juanita Kidd, fifth grade; Jay Boothe, fifth grade; Mrs. Oleta Ford, sixth grade; Robert Kidd, sixth grade; Miss Grace Paul, junior high; Mrs. Anne Corn, high school math and German; Richard Roberts, high school math; Mrs. Janie Sudderth, commercial subjects; Mrs. Mary Morris, English; Mrs. Olive Staley, homemaking; John Paul Jones, vocational agriculture and Joe Wayne Harper, music.

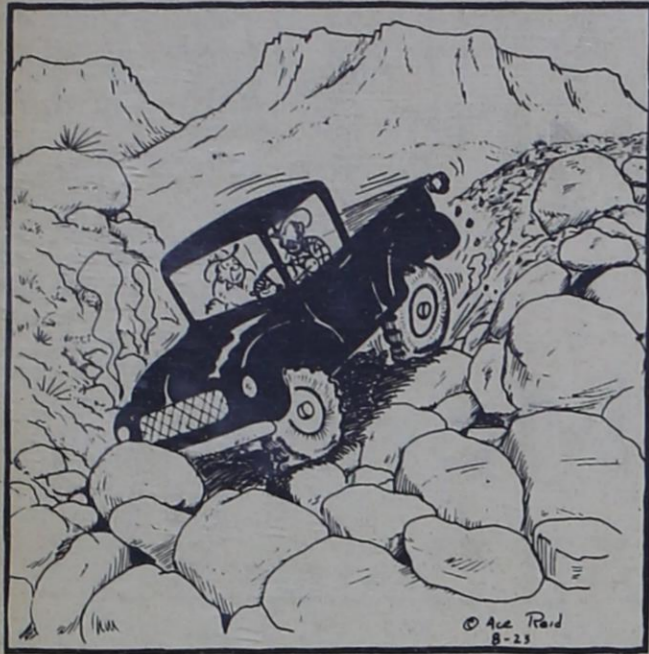
New Station Open Here

Marshall Independent Service Station is Bovina's newest business. The firm began operation Tuesday of this week in its new location on Highway 86.

Owners of the business are L. H. Marshall and his son, L. A. Marshall, of Olton. They own a service station, grocery store and cafe there. L. A. Marshall will operate the business here.

They invite the patronage of the people of the community in an advertisement in this issue of The Blade.

First National Bank Presents COW POKES By Ace Reid



"That dang lyin car salesman said this pickup could go anywhere!"

Safeguard Your Valuables



First National Bank of Bovina

-- Member FDIC --

"Helping Make A Good Community Better"



The Bovina Blade Second-Class Privileges Authorized at Bovina, Texas, 79009 Published At Bovina, Texas, Every Wednesday Dolph Moten Publisher & Editor Sue Moten Women's News

ROPING CLUB--

Discuss BTD At Meeting

A discussion of Bull Town Days highlighted a meeting of Bovina Roping Club Monday night in Bovina Restaurant.

Plans for next year's celebration were considered and a financial statement for the first annual event this year was given.

The largest expense, meat for the free barbeque, totaled \$833.32. This cost was paid by donations from bovina businesses.

Roping Club members voted memberships in the organization to Mutt Graham, who prepared the barbeque, and to Alan Staley, who was announcer for

the horse show.

The discussion of the just-past celebration was led by Jack McCracken, manager of Bovina Chamber of Commerce and Agriculture, and Hugh Moseley, secretary-treasurer of the roping club.

The roping club and the chamber co-sponsored the celebration.

McCracken estimated that 665 man hours were used in putting on the three-day event. Roping club members and their wives will have a dinner meeting at the restaurant Monday night.

Bake Sale Saturday

Ladies Auxiliary of Pentecostal Holiness Church will sponsor a bake sale Saturday, August 29, at Wilson's Super Market.

The group will sell cakes, pies and other baked goods.

Teens Attend Youth Forum

Church of Christ teenagers from Bovina attended the Youth Forum at Hereford last weekend.

Singing in the choir and attending the three-day activities were Janice Boothe, Carolyn Johnston and Beverly Pinner. Taking part in the Saturday sessions were Cecile and Becky Boothe.

Saturday sessions featured panel discussions and Friday evening David Gatewood, singer from Abilene Christian College spoke to the group.

Sunday afternoon, an area singing included members of the Bovina group who were in the choir.

Lloyds To Tyler Celebration

Mr. and Mrs. Sam J. Hartsfield of Tyler, parents of Mrs. Paul L. Lloyd, celebrated their golden wedding anniversary Sunday at Tyler.

They are the parents of 12 living children all of whom were present except one boy who is stationed overseas. They have 41 grandchildren and 20 great-grandchildren.

The group celebrated the occasion with a picnic luncheon at the Tyler Rose Garden Pavilion.

Among those attending were (Continued on page 6)

ASC Manager-- (Continued from page 1)

He is a 1955 graduate of Bovina High School and attended Texas Tech in Lubbock four years and served in the Army for six months.

He began working in the ASC office of Parmer County as a counter clerk. He then served in Reeves County and began working as an office manager trainee for Reeves County and El Paso County.

He and his wife, Myrna, have one son, Mike, 15 months old.

Whittlin'-- (Continued from page 1)

ing and after the mid-August celebration.

Possibly there will be others between now and next year's festival.

Someone has written that the worst feature about a vacation is the realization that it will be 50 weeks until the next one.

CARD OF THANKS

We wish to express our gratitude and appreciation for the thoughtfulness shown us during our recent bereavement and time of sorrow. Your acts of kindness and condolences will always be remembered. We wish to say a special thank you for the flowers, food and cards.

Mr. & Mrs. Hall Looney and family Mr. & Mrs. Reagan Looney and family Mr. & Mrs. J. P. Macon 9-1tc

Patton's Mare First At Roy

Bovina entries brought back prizes from a Quarterhorse show at Roy, N. M., Saturday.

Owen Patton's Easter's Holly earned a trophy for her first place in the class of 1962 mares. Sonny Roach's Rose Helen was fourth in the class of 1960 mares.

Advertisement for SUPER RAINBOW fertilizer, including a guarantee card and product image.

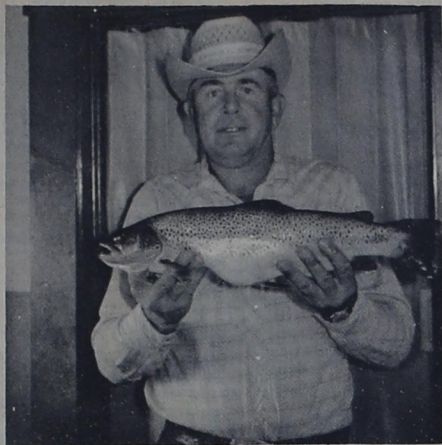
Advertisement for GULF WARRENGAS LP Gas, highlighting savings on tractor power costs.

Advertisement for MF410 COMBINE, featuring an image of the combine and text describing its features.

Advertisement for Bovina Implement Co., listing features of the MF 410 combine and contact information.

Advertisement for BEE GEE PHILGAS and CHARLES OIL CO., featuring a cartoon character and product details.

Large advertisement for Bovina Mustangs 1964 Football Schedule, including a list of games and contact info for Bovina Gin Co.



FISHERMAN JACK—Mr. and Mrs. Jack Patterson and Sandra of Rhea returned last week from a fishing trip to conejos River in Colorado. Patterson is shown here with a German Brown which weighed four and one-half pounds and was caught while spin fishing. The catch was enough to win first in a contest in the community he was fishing near. Patterson was awarded \$27 worth of fishing equipment as a prize for the trophy fish. Patterson also landed a 15" Brook trout which other fishermen there told him could have also been a prize winner. It was not entered in competition, however.

Reflections

From
The Blade

SIX YEARS AGO
August 13, 1958

Higher and better is the word for prices for the cantaloupe rolling out of the Gateway Produce Company's Bovina packing shed.

Sixteen teachers of the Bovina Schools will get pay raises this year.

The school board Monday night affirmed the raise after discussing a possible increase for the past several sessions of the board. The amount of the raise is \$200 per year.

The well for the City of Bovina was completed Thursday of last week at a depth of 360 feet and a pump was placed in position.

However, a liberal portion of sand was being pumped by the well and sand pumping continued through Tuesday of this week.

Members of Bovina First Baptist Church are participating this week in a "Back Yard Study Course," Opening Monday evening and continuing Tuesday and Thursday evenings.

THREE YEARS AGO
August 16, 1961

One of four bracero labor housing units in Bovina has been condemned and closed.

Action was taken to close the unit Friday by U. S. Department of Labor, Pete Davies, manager of Panhandle Growers Association, says. The association provides housing for the Mexican National labor.

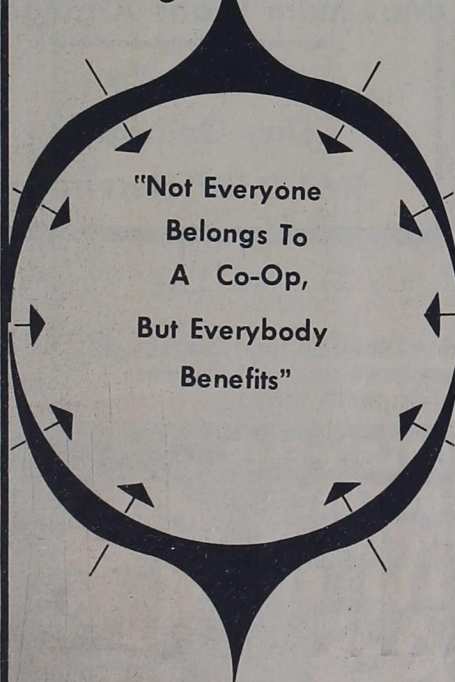
Bovina Mustang football workouts began Monday morning for 1961 football season.

Thirty candidates for the team reported to Coaches Hallie Gee and Malcolm Kennedy.

All but two positions on faculty of Bovina Schools for 1961-'62 school year have been filled Superintendent Warren Morton announces.

The Blade received the Distinguished Service Award from Vocational Agriculture Teachers Association of Texas. Presentation was made to Publisher Dolph Moten Wednesday morning of last week during a four-day conference held in Austin.

BOVINA Wheat Growers, Inc.
Is Your Business. Use It To The Advantage Of Your Farming Operation.



Convenient Locations In Bovina And Rhea

JIM RUSSELL, MANAGER

- Pho. 238-2691

WORLD OF VALUES



FEASTING FARE

On a Budget

Shurfine 1 Lb. Can **75¢**
COFFEE

AT WILSON'S
Thur., Fri., Sat.,
Aug. 27-28-29.
Many Continue
Thru
Wednesday,
Sept. 2

Swift Park Lane
Ice Cream 1/2 Gal. **59¢**
Assorted Flavors

Hunt's Yellow Cling
Slices or Halves **4**
Peaches No. 2 1/2 Cans **\$1.00**

Shurfresh
CHEESE SPREAD
2 Lb. Loaf **69¢**

Kraft Miracle Whip
SALAD DRESSING Qt. Jar **49¢**

HOLLY SUGAR 10 Lb. Bag **98¢**



3 Lb. Can **59¢**

PRODUCE SALE
California
Vine Ripe **Tomatoes**
Lb. **19¢**

Colorado
Cucumbers
Lb. **10¢**

Shurfine Sliced **PINEAPPLE**
No. 2 Can **33¢**

Purex
BLEACH 1/2 Gal. Plastic Jug **39¢**

Shurfine **TUNA** No. 1/2 Can **25¢**

California **NECTARINES** Lb. **19¢**

Texas Cello **CARROTS** Lb. **9¢**

Gerber's-Strained Fruits and Vegetables
BABY FOOD 9 1/2 Oz. Jars **98¢**

Frozen Food **Specials**
Shurfine **Lemonade** 12 Oz. Can **19¢**

Shurfine **APPLE JELLY** 18 Oz. Tumbler **29¢**

Shurfresh **CRACKERS** 1 Lb. Box **19¢**

18 Oz. Tumbler **29¢**

1 Lb. Box **19¢**

Patio Combination
Mexican Dinner 12 Oz. Size **39¢**

Shurfine **BRUSSEL SPROUTS** 10 Oz. Pkg. **25¢**



Ask About The **FREE CHINA OFFER**
Now Available At Our Store

Quality Meat **Specials**
USDA Grade A
Fresh Dressed
FRYERS Lb. **29¢**

Swift Premium Sweet Smoked Sliced
BACON Lb. **59¢**

Wilson Certified All-Meat
BOLOGNA Lb. **39¢**

Youngblood's **DRUM STICKS** 1 Lb. Pkg. **49¢**

White King **POWDERED DETERGENT** Giant Box **69¢**

Del Monte **CATSUP** 2 14 Oz. Bottles **35¢**

Libby's **Corned Beef HASH** No. 300 Can **39¢**

Double Gunn Bros. Stamps Each Wednesday With Purchase Of \$2.50 Or More



WILSON'S

Phone 238-4781

PARMER COUNTY'S FINEST



SUPER MARKET

BOVINA

Judy Koelzer, Christi Ivy Win County Bake Show

First place winner in the senior division of the Parmer County 4-H Club Better Bake Show held Wednesday at the Hub Community Center according to Cricket B. Taylor, Parmer County HD Agent, was Judy Koelzer, 16 year old daughter of Mr. and Mrs. B. N. Koelzer of Lazbuddie, Miss Koelzer was recently first place winner in the County dress revue and participated in the district revue in Amarillo, where she was given a second place rating. Second highest score in the

bake show was made by Janis Billingsley, daughter of Mr. and Mrs. Leon Billingsley of the Oklahoma Lane Club. Janis was not eligible to participate in the district competition this year due to the fact that she was winner of the \$100 (one hundred dollar) bond two years ago. Next highest score in the senior division went to Katie Blackstone also of the Lazbuddie Club. She will be alternate for Judy, to the district bake show, to be held at the Tri-State Fair in Amarillo in September.

In the 11 and 12 year old group, Christi Ivy, Lazbuddie was high score winner followed by Ann Blackstone, sister of Katie.

Each of the girls was judged on two products, "Quick Loaf Bread," and "Bar Cookies" plus their record books. Judy made nut bread and brownies and Katie entered peanut butter bread and brownies. In the junior division, Christi entered banana nut bread, and Ann showed nut bread, with each of the girls making brownies for her bar cookies.

THE HIGH PLAINS FARM AND HOME

THURSDAY, AUGUST 27, 1964

FARM AND HOME



Judy Koelzer, first place winner in the Parmer County Bake Show and Katie Blackstone, second place winner, seated, display their prize winning "Quick Breads" and "Brownies" along with Christi Ivy, junior division winner, while Ann Blackstone second place winner in the junior division looks on. Judy will be entered in district competition at the Tri-State Fair in Amarillo. Junior winners are not eligible to participate in district competition.

Caddo Wheat Makes Strong Showing

Twenty Texas producers of certified seed wheat like the new variety Caddo. The 20 received foundation seed of the new variety in the fall of 1963 and have just reported on their 1964 harvests to Dr. L. M. Atkins, small grain section leader of the Texas Agricultural Experiment Station.

The reports came from every section of Texas. Dr. Atkins said, and practically all reported Caddo yields were equal to or better than those of other varieties grown on their farms. Yields ranged from less than 15 bushels per acre to a high of 84.3 bushels. The high yield was produced under irrigation near Spearman in the upper Panhandle and compared with a yield of 76.1 bushels per acre for Improved Triumph on the same farm.

On a Castro County farm near Dimmitt, Caddo produced 57 bushels per acre as against 42 bushels for Kaw. The 20 growers reported an overall average of 33 bushels for Caddo against a 29 bushel average for other varieties grown on the same farms.

The growers also told Dr. Atkins they liked the agronomic characteristics of the new wheat. Seven said it produced more forage for winter grazing, the same number said it had stronger straw than the other variety grown and six said it was more hail resistant. On

one farm, Caddo was damaged only 8 per cent by hail compared with 17 per cent for Crockett.

Several of the growers told Dr. Atkins their Caddo had higher test weight per bushel and that it trusted less than other varieties -- two very important considerations when selecting a desirable variety of wheat for planting.

Caddo was developed by Dr. Atkins and Dr. Kenneth B. Porter, Texas Station agronomists in cooperation with the U. S. Department of Agriculture. The agronomists pointed out that before the seed of the new variety was released to growers, tests in Texas and over the Southern Great Plains area gave Caddo a rating of excellent on yield, test weight, quality and resistance to leaf rust. It is also widely adapted, including areas in Central Texas, they said.

Sherilyn Bailey of Jefferson, newly named rural civil defense specialist with the Agricultural Extension Service of Texas A&M University, assumed duties this week. She works with

Tommy Hollmig, who holds a similar position, and will be giving leadership to educational programs dealing with rural civil defense being conducted by state and county Extension personnel.

COURTHOUSE NOTES

Instrument Report August 17 thru 22

ML Affidavit, Killingsworth Builders Supply, J & N Construction Company, Lots 7 & South 15 Ft. Lot 8 Blk 1 Ridgelea Sub, Bovina

WD, D & R Builders, James Hamilton, S 45 ft. Lot 4 & N 25 ft. Lot 5 Blk 1 M & F Friona

DT, James Hamilton, First Fed. Sav. & Loan, N. 70 ft Lot 11 Blk 1 Drake Sub.

WD, John B. Taylor, Roy P. Daniel, Lot 4 Blk 9 Staley Add Friona

WD, D. L. Carter, M. O. Spears, Lots 16 & 17 Blk 12 O. T. Bovina

MML, S. Q. Jones, Heathington Lumber Co., Lots 11 & 12 Blk 6 Drake Rev. Sub.

DT, Hub Grain Co., First Nat'l Bank, Tulla, NW/4 Sect 19 T5S R4E Cap. Synd.

Abst. Judg., Heathington Lumber Co., John H. Crim, See Records

DT, Tom M. Bonds, Amarillo Savings Association, Lot 1 & N, 10 ft Lot 2 Blk 5 Ridgelea, Bovina

DT, Friona United Pentecostal Church, Hi-Plains Sav. & Loan, Lots 4, 5 & 6 Blk 89 O. T. Friona

DT, Robert W. Booth, First Federal Sav. & Loan, E 48 ft. Lot 2 & W, 26 ft. Lot 3 Blk 4 Mimo Farwell

MML, Fred Thomas, Monte Fowler, Lot 10 Blk 15 O. T.

Salt Analysis Of Irrigation Water Advised

It's poor business to guess at the quality of your irrigation water. Rather than be in doubt as to possible harmful effects of the water on future soil productivity, Jim Valentine, area Extension soil chemist, suggests you have the water evaluated by a chemical analysis. The ideal time to collect samples is during the highest period of water use.

This need is particularly acute with new wells and in instances where wells are deeper

than average for the area. Valentine says it is known that common salt is high concentrations may exist below the red bed formation. If wells extend into this strata, there is a greater possibility of dangerous salt levels in the water.

Soils vary widely in their ability to tolerate salt without being harmed -- and some crops are more tolerant than others. Clays, where the water intake rate is already slow, can be

made even less porous by a water high in sodium. Obtaining stands can become a problem on lighter soils due to sodium accumulation that "seals" or crusts the surface.

Water samples may be submitted to the Soil Testing Laboratory at Texas A&M University. Samples must be accompanied by the completed information sheet D-617, available at the local county agricultural agent's office. The present fee is \$5.00 per sample.

At Home In Parmer County

By CRICKET B. TAYLOR
County HD Agent

4-H BAKE SHOW
The County 4-H Better Bake Show is over and Judy Koelzer did it again. She was 1st. place county winner in the bake show and will enter the District Contest to be held at the Tri-State Fair in September at Amarillo.

This makes three times this year that Judy has represented Parmer County 4-H Clubs and competed in Award events. She entered the District Contest in Favorite Food Show, the District Dress Revue and now the Better Bake Show. We are hoping she will be the District winner and come home with that \$100. bond that is given to the District winner.

NEW FARM HOME IN YOUR FUTURE?
Planning a new farm home can mean many happy hours for the whole family. Because a home will probably constitute one of the largest investments you will ever make, plan it carefully for your special requirements.

Farm home plans of various sizes and designs have been developed by architects, engineers, and home economists of the U. S. Department of Agriculture and the States. Working drawings of these plans are available through your county agent or from the Extension agricultural engineer at your State Agricultural College.

Small families or elderly couples will be interested in the compact, reasonably priced 2-bedroom houses described in Plans Nos. 7160, 7158, 7157, 7156, and 7149. Plan No. 7163 is for a house with a basement that could be used for extra bedrooms, a farm office, or sewing or recreation space. Plan No. 7156 is designed as an expandable house -- the main part could be completed and lived in, and the bedrooms, porch, and carport could be added as time and money permit.

For established farms where the family has outgrown a smaller dwelling, Plan No. 7165 for 3-bedroom homes, and 7162 for a 4-bedroom home are especially suitable.

Ask for the working drawings by number from your county Extension agents. There is usually a small charge. If they are not available in your State, USDA can direct you to another source. The plans are developed by Agricultural Engineering Research Division.

For the handicapped or older people who are planning compact smaller homes, a new plan which has been received in our office, has considered every detail to make the home convenient, to save time and energy and fit the needs of this group.

FOR GOOD BUYS
See Your Exclusive Evinrude Boat And Motor Dealer Also Glasstrom, Soonercraft And Travelers Will Service All Makes

CLOVIS BOAT & MOTOR
3106 N. Prince
V. "Dink" Lovett, Owner

"Sure Sign of Flavor" QUALITY CHEK DAIRY PRODUCTS

Butter Milk Cottage Cheese Sour Cream

In No-Wax - No-Leak Plastic-Coated Cartons

CLARDY CAMPBELL Quality Chek DAIRY PRODUCTS

DO YOU KNOW THE VALUE OF YOUR WATER

Water salvaged from lakes and from irrigation tailwater saves pumping water out of storage. This water saved in storage has a potential value which will probably be greater in the future than it is today.

How much tailwater and lake water can you salvage?
Estimated Gross Value Per Acre Foot of Water Salvaged When Applied on These Crops.

Acres Feet	Cotton	Grain Sorghum	Wheat
1	\$ 60.00	\$ 40.00	\$ 33.33
10	600.00	400.00	333.33
25	1500.00	1000.00	833.33
50	3000.00	2000.00	1666.66
100	6000.00	4000.00	3333.33
250	15,000.00	10,000.00	13,333.33
500	30,000.00	20,000.00	16,666.66
1000	60,000.00	40,000.00	33,333.33

Big Displays Planned At HPRF Field Day

One of the attractions of interest to farmers is the farm equipment display at the Eighth Annual Field Day of the High Plains Research Foundation Thursday afternoon, September 10. The tour of the Foundation will end at this equipment display. Farm machinery, irrigation equipment, underground pipe, fertilizer materials and equipment will be on display.

Many firms participate in this display with the latest in equipment now or soon to be available to the agricultural industry. Representatives of these companies will be available to explore the use and value of their equipment in economic farm operation.

Carl Hill, Jr., Connally Implement Company, is Chairman of the group of Board of Trustee Members who will be hosts here for the afternoon. Those who have been invited to assist in greeting and guiding visitors to the equipment they are interested in each hour in order are: Orville Nash, Guyton, Oklahoma; J. Frank Gray, Lubbock; Grady Shepard, Hale Center; Harmon White, Cotton Center;

Allan Webb, Dimmitt; Joe Foster, Lockney; Asa Willis, Texline; Elmer McGill, Olton; Willis Hawkins, Sr., Hart; E. R. Steen, Idalou; Jarvis Angeley, Earth; and Bob Francy, Happy.

Grant Hanna, Board Member and District Commander of the 18th District of the American Legion will be Chairman of the patriotic demonstration put on by Post 260, Plainview American Legion, assisted by other Legionaires, Fred Mercer, Board Member from Silverton, will direct the activities of the Boy Scouts in assisting in messenger service and the patriotic programs.

Luther F. Mann will direct the barbershop musical organization of some 40 members in a program of favorite barbershop tunes at the conclusion of the tour just before the barbecue at 5:00 p.m.

Following the barbecue, the program will feature an address by Mr. G. W. McCullough, Vice-President of Phillips Petroleum Company, introduction of the Board of Trustees and Foundation staff and a drawing for a combine cab and a rare \$10.00 gold piece for the ladies.

Root Rot Can Be Reduced In Next Year's Crop

If you had Cotton Root Rot problems this year, you were among the many Texas farmers who lost thousands of dollars income because of the disease. However, now is the time to do something about reducing it in next year's crop, says Charles M. Heald, Jr., Extension area plant pathologist.

The specialist says that complete control of root rot on a field scale is impossible, but a number of steps can be taken to reduce the incidence of the disease. Immediately after the crop is harvested, stalks should be shredded and plowed under to a depth of 12-18 inches.

Also, since root rot lives only on top root plant systems, infested fields can be put in a rotation program with plants having a fibrous root system. Most popular crops are those in the grass family; sorghum, for instance.

If this work is done during dry summer months, chances for success are much higher, says the specialist.

About 90 per cent of the disease organism is found in the upper 9-10 inches of the soil. Deep plowing and turning under large amounts of residue, produced by grasses, supplies organic matter which helps reduce the disease organism through bacterial action in its decaying process.

Butter grades are determined by taste, smell, touch and sight. There are some 129 federal and 26 federal-state butter graders stationed in various plants and markets around the county who must resort to these four senses while labeling butter according to official USDA quality grades AA, A, B or C.



Our savers have green thumbs

When it comes to making dollars grow, our savers are real gardeners. Dollars saved with us thrive nicely on generous earnings. Put part of your pay regularly into "seed money" and watch it bloom into an impressive reserve. Why not start your bumper crop of "growth dollars" with us this week?

First Federal Savings And Loan Ass'n

Member of the Savings and Loan Foundation, Inc., sponsor of this advertisement in Reader's Digest, National Geographic and McCall's

Home Office 4th & Pile, Clovis
Branch Office 2nd & Abilene, Portales

FALL SUITS ARE IN Cotton Knit

By Bobbie Brooks • Cyrano by Sebastian Kabro of Houston

NEW SHIPMENT JUST ARRIVED

- THREE-PIECE SUITS
- TWO-PIECE SUITS
- ONE-PIECE DRESSES

COLORS: RED-BLACK-JADE GREEN-MOSS
GREEN-BIEGE-BROWN-GOLD-BLUE

JUNIORS 5s To 15s MISSES 8s To 16s

Ann-Lee's

Phone 763-6411
No. 8 In The Village
"Where There Is Always Plenty Of Free Parking"

Of Interest To THE WOMEN

To Celebrate Golden Anniversary

Mr. and Mrs. E. A. Hromas will celebrate their Golden Wedding Anniversary Sunday, September 6, at the home of their son and wife, Mr. and Mrs. Arnold Hromas of Bovina.

The come and go reception will be between the hours 2 and 5 p.m. Formal invitations will not be mailed to area residents.

Hosting the courtesies are their children and families, Mr. and Mrs. W. E. Lovell of Fort Worth, Mr. and Mrs. Clinton Skaggs of Fort Worth and Mr. and Mrs. Arnold Hromas of Bovina. Also assisting with the arrangements are Mr. and Mrs. Lewis Pesch, brother of Mrs. Hromas, of Floydada and Mr. and Mrs. C. G. Hromas of Farwell, nephew of Mr. Hromas.

Friends of the couple are cordially invited to the reception.



Mr. and Mrs. E. A. Hromas will celebrate Golden Wedding Anniversary, Sunday, September 6.

Blade Sawdust

By Sue Moten

It seems that the Bookmobile that is in use in Parmer County is used less in Bovina than any other place. Don't know exactly what this is indicative of but perhaps we aren't a very well read community. Let's try to use the bookmobile and its services to its and our best advantage.

With the fall mornings in late August it puts everyone into the notion of getting back to school. Don't know whether it is because we grew up in a school family or not but the year always seems to start in September and things just normally get into more routine ways for us at this time of year.

Those mothers who have youngsters entering first grade this year are viewing this day with anticipation and anxiety. One youngster wanted to know if he could just stay out of school and his parents pointed out that if he did he would have to pick cotton. It seems that said boy was quite ready to go to school.

Things we have noticed: People who drive station wagons have their children in the front seat as much as those who drive sports cars; Tennis shoes have taken the place of going barefooted; Insomnia occurs when one is dead tired; a new dress is never noticed, an old one is proclaimed new; people never miss the newspaperman until the camera fails to snap.

A good rural definition of togetherness could be that the husband drives a pickup, the wife a car and occasionally they meet at various places or in passing.

It seems that one of the new fall and winter fashions will be the thick knitted hose. These resemble the knee length socks and come in bold colors and seem to be worn with reasonably dressy clothes. We'll have to admit they would be warm but with a suit!

Square Dance Club To Be Organized

Mr. and Mrs. Jimmy Charles will host a meeting Friday night at 8 p. m. at their home for those interested in joining a Square Dance Club.

The organizational meeting will concern lessons, affiliating with a national organization, meeting date and other business.

Everyone who wishes to join is urged to attend.

Mrs. Lady Armstrong and granddaughters, Sheila and Rhonda Barbee, visited relatives, Mr. and Mrs. Lennie Wayne Bryant in Greeley, Colo. last week.

Connie Foster Celebrates Birthday

Connie Foster, daughter of Mr. and Mrs. Nicky Foster, celebrated her fourth birthday Saturday afternoon with a party at her home.

Traditional birthday cake featured a train and was decorated with pink and white theme. Refreshments of punch and cake were served to youngsters.

Favors of piggy banks and bubble gum were given to guests.

Attending were Sandi and Lary Sides, Rene Charles, Tamra Rogers, Jerri Ware, Ginger Gober, Sheryl Moore, Steven Stevenson, Vickie and Arty Kunselman, Jack, Jill and Jadie Bell, Stephanie and Dannie Carter and Carol and Tony Coster.

See All The New Styles For Teenagers And Youngsters

You're Cordially Invited To

The Mary Marr's STYLE SHOW

Of Back-To-School Fashions

Thursday, Aug. 27, School Auditorium - 8 p.m. -

* The Latest Fall Fashions
* Local Models

HIGH SCHOOL STAGE BAND

Will Provide Musical Entertainment

THE MARY MARR SHOP

Furne Harris

Third Street

Bovina

Party Honors Susan Lance

Susan Lance, daughter of Mr. and Mrs. Leroy Lance, celebrated her sixth birthday with a party at her home Friday afternoon.

The table was laid with a "Flintstone" cloth and set with

paper plates, cups and napkins carrying out the same theme. Refreshments of chocolate cake and soft drinks were served to guests.

Favors of whistles were given to youngsters.

Attending were Jimmy, Steven, Bradley and Michael Lance, Joni and Jana Rogers and Debbie Lance.

Shower Honors Mrs. Johnston

Mrs. Dennis Johnston was honored with a bridal shower Tuesday afternoon at Church of Christ fellowship hall.

The honoree, her mother, Mrs. B. G. Billingsley, and her mother-in-law, Mrs. E. O. Johnston, were presented with corsages by the hostesses.

The refreshment table was laid with a white lace cloth over pink and centered with an arrangement of cut flowers in a crystal container. Cake and punch were served from crystal appointments by Mrs. Howard Ellison and Mrs. Marlin Ferguson.

Mrs. Robert Calaway presided at the guest registry. Hosting the come and go courtesies were Mrs. Joe Pinner, Mrs. Billy Johnson, Mrs. Marlin Ferguson, Mrs. Buck Ellison, Mrs. Billy Marshall, Mrs. James Boardman, Mrs. Kathryn Hancock, Mrs. Robert Calaway, Mrs. Jimmy Cockerham, Mrs. Lee Capps and Mrs. Howard Ellison.

Approximately 50 guests called during the afternoon and several unable to attend sent gifts.

Shower To Fete Recent Bride

Mrs. Leon Richards will be honored with a bridal shower Thursday, August 27, in Fellowship Hall of First Baptist Church.

The come and go courtesies will be between the hours three and five p.m.

Friends of the honoree are cordially invited.

Club Meets In Charles Home

Miss Ellen Reminsider entertained members of Widow's Club at the home of Mrs. Wilbur Charles Friday.

The group also celebrated the birthday of Mrs. C. O. Edens who was 80 years old.

Her daughter, Mrs. Harold Morris, sent a birthday cake to the celebration and Mrs. Lady Armstrong sent homemade ice cream.

During the afternoon, the ladies recalled events in the past.

Attending the luncheon meeting were Mrs. J. Sam Gaines, Mrs. C. O. Edens, Mrs. Ola Free, Mrs. Julia Lloyd, Mrs. Margaret Caldwell, Miss Rita Caldwell, Mrs. Pearl Hastings, Miss Reminsider and Mr. and Mrs. Wilbur Charles.

Congratulations

Congratulations to Mr. and Mrs. W. H. Allen of Bunell, Florida on the birth of a baby boy born Sunday, August 16.

The new arrival weighed seven pounds seven ounces and is named William Allen. Grandparents are Mr. and Mrs. E. H. Young of Bovina.

Mrs. Edith Fleming and Billy Brookfield of Los Angeles, Calif. are visiting in the home of Mr. and Mrs. Earl Richards and other relatives in Friona.

Mrs. Hawkins Hosts Party

Approximately 20 women attended a Dresden Painting party Saturday at the home of Mrs. Charles Hawkins.

The group had a sack lunch at noon and Mrs. Hawkins served soft drinks and dessert.

Women spent the day painting plaques and other Dresden items.



Mr. and Mrs. E. A. Hromas on their wedding date September 9, 1914.

Rainbows Host Friendship Night

Six Rainbow assemblies were represented at Bovina Rainbow Assembly Friendship night Friday at Masonic Lodge Hall.

Approximately 80 girls and three grand visitors attended the novelty style show and salad supper.

Bovina girls were dressed in various novelty costumes. Models were Ginger Glasscock, Melissa Pruitt, Myrna Ritchie, Martha Coffey, Sheryl Lane,

Doris Corn, Karen Bell, Nancy Mitchell, Brenda Dilger, Pat Taylor, Teresa Page, Cindy Crump, Pat Reeves, Linda Riley and Donna Dunn.

Mary Coffey narrated the show and Carol Mast played background piano selections.

The lodge hall was decorated with a Japanese tea garden theme.

Assemblies represented were Plainview, Dumas, Happy, Friona, Canyon and Muleshoe.

Girl Born To Larry Pierces

Mr. and Mrs. Larry Pierces of Earth are the parents of a baby daughter born August 19.

The infant weighed six pounds 12 ounces at birth and is named Sherri Renee.

Mr. and Mrs. Pierces are former residents of Bovina.

Courtesy Fetes Recent Bride

Mrs. James Clayton was honored with a post nuptial shower Thursday afternoon in fellowship hall of First Baptist Church.

The honoree, her mother, Mrs. E. W. May of Levelland and her mother-in-law, Mrs. Jack Clayton were presented with carnation corsages.

The serving table was laid with a white linen cloth and featured an artificial floral arrangement in a milk glass bowl. Cake decorated with floral designs and wedding rings, and punch were served to guests.

Approximately 40 people called during the afternoon.

Hosting the come and go courtesies were Mrs. F. O. Turner, Mrs. F. M. Crook, Mrs. A. E. Steelman, Mrs. E. G. Steelman, Mrs. Buck Ellison, Mrs. Grady Sorley, Mrs. Boye Taylor, Mrs. Jack Woltman, Mrs. J. E. Sherrill, Mrs. O. H. Jones, Mrs. Roy Dodson, Mrs. Jon Lin Riddle and Mrs. Kent Glasscock.

Mrs. Baxter Hosts Circle

Mrs. Richards Baxter presented the program titled, "What Jesus Said About Happiness," to members of Charity Circle Tuesday morning at Methodist Church.

Following the program the group had a short business session after which Mrs. Baxter served refreshments.

Those attending were Mrs. Milt Fitts, Mrs. Bobby Filpott, Mrs. Jimmy Clements, Mrs. Vernon Willard, Mrs. Harold Snell and Mrs. Baxter.

REPAIR! REMODEL!
Nothing Down - 60 Months To Pay
Complete Line Building Supplies

Phone 238-2671 - Bovina -
CICERO SMITH LUMBER COMPANY

BACK TO SCHOOL

SHOPPER'S HEADQUARTERS

Shop Williams Mercantile For All Your School Clothes And Shoes

All Nationally Advertised And Popularly Priced --

WILLIAMS Mercantile Co.
"Pioneers In Bovina"

IMPROVE YOUR HOME NOW!

10% Discount

On **Glidden** And Jones-Blair **PAINTS**

PAINT NOW! **SAVE NOW!**

Before You Buy **CARPET** Get Our Deal On Monarch Carpet

BOVINA GLASS AND PAINT CO.
Highway 60----Phone 238-4421

THE MARY MARR SHOP

Furne Harris

Third Street Bovina

KEEPING 30 MILLION FAIR-GOERS COMFORTABLE REQUIRES MORE THAN JUST COOLING! THAT'S WHY:

AT THE WORLD'S FAIR 80% OF THE AIR CONDITIONING IS PROVIDED BY GAS

GAS does the complete air conditioning job. It cools, heats, circulates, filters, ventilates and controls moisture. And, it does it for less. GAS air conditioning units are sold and serviced by

Pioneer Natural Gas Company

COTTON TALKS

FROM PLAINS COTTON GROWERS, INC.

Floydada, Ralls, Crosbyton and Dickens. Two of the five points will be located in Dickens, with one operating north and one south of Dickens.

"The prospectus and invitations to bid have been mailed to aerial applicators," Russell said, "with instructions that they must be completed and in the New Orleans business office of PPC by 1:00 p.m. August 28. He said the bids would be opened that same afternoon and the successful bidder probably notified by teletype no later than Monday or Tuesday of the following week.

With the decision to use the new technical malathion in the High Plains program, Russell said the need for only about 10 planes is being anticipated, and the entire job is being let under a single contract although there is the possibility of some subcontracting. Technical malathion is to be applied at the rate of 12 fluid ounces per acre (less than one pint), which compares with the three or four gallons per acre applied when conventional materials diluted in water are used. This advantage allows a plane to continue spraying until its fuel supply is exhausted without the necessity of reloading. Also, the new material can be flown on from 15 to 25 feet above the cotton, taking a swath of 100 feet instead of the usual 35 to 40 feet covered when diluted chemicals are used. Obviously this development will effect considerable savings in the overall cost of the program.

Final decisions on total acreage to be sprayed and the amount of chemical needed are being held up pending late developments in weevil activity, but already 500 drums of technical malathion, 55 gallon capacity, have been ordered for delivery no later than September 5. The 500 drums will carry 275,000 pounds of the material and will arrive on five 100 foot rail-road cars, Russell said. Storage for up to 1600 drums of the

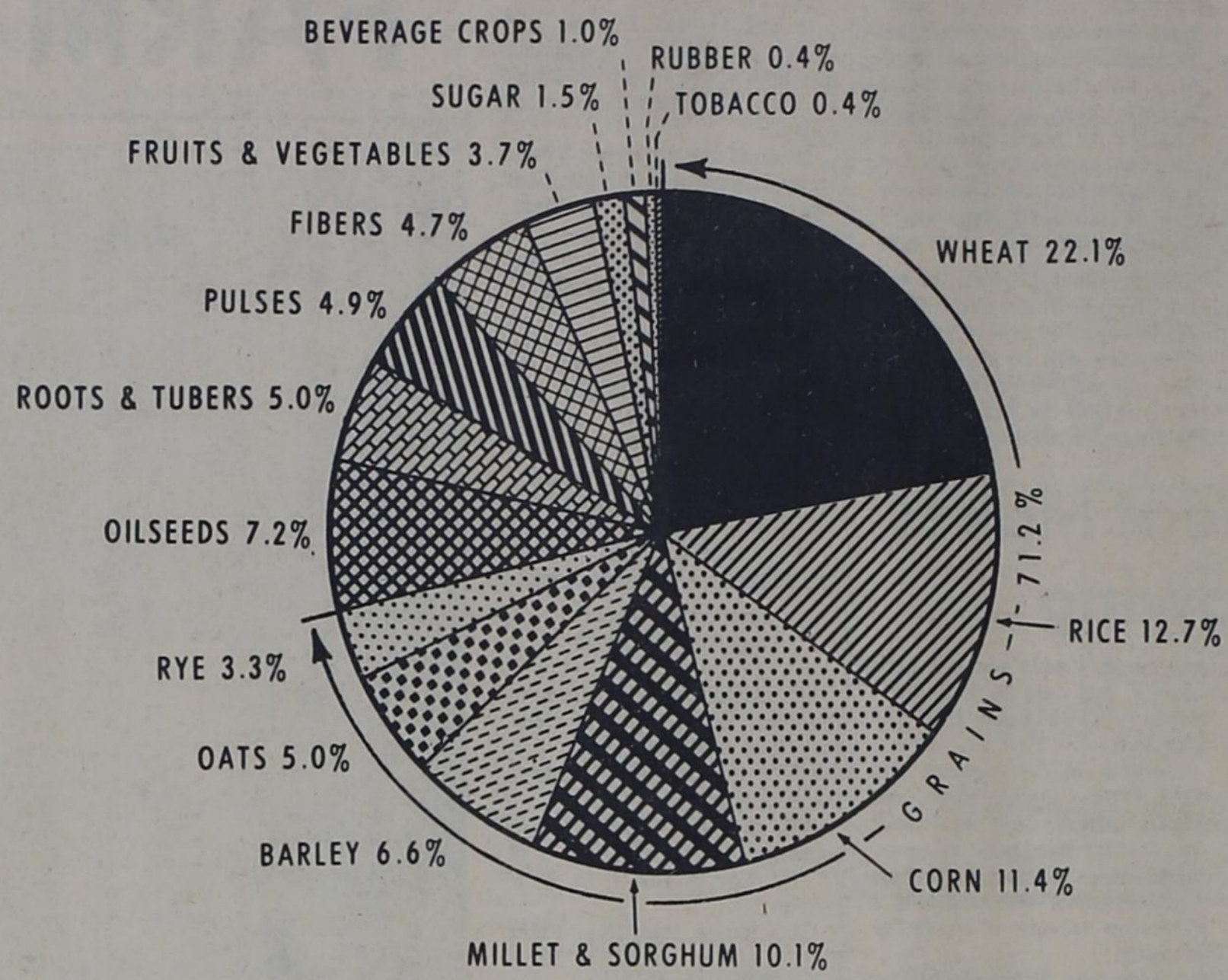
chemical at any one time has been secured in Lubbock. The contract with the aerial applicator will make him responsible for transporting the chemical from Lubbock to the airstrip and for draining the barrels and returning them to the storage location.

The best estimate available now, according to Russell, is that an area of about 225,000 acres of weevil infested cotton will be sprayed an average of four times for an aggregate total of 900,000 acres, requiring approximately 720,000 pounds of chemical.

Fed cattle prices in July were up about \$3 per hundred from low levels of last May.

WORLD HARVESTED AREA OF PRINCIPAL CROPS

Excluding Forage and Fodder Crops



U. S. DEPARTMENT OF AGRICULTURE

NEG. ERS 2235-63 (8) ECONOMIC RESEARCH SERVICE

Early Soil Testing Advised For Fall

Soil testing should be now in preparation for fall planting, reports Dr. Charles D. Welch, soil chemist with the Texas Agricultural Extension Service.

Early soil sampling is encouraged to avoid the fall rush that crowds the state's three testing laboratories. Samples now being received are mostly from pastures, small grain plots, lawns and flower beds, says Welch.

A total of 19,047 samples were received at the laboratories from January 1 through June 30 this year, compared with 13,171 samples for the same period last year. The soil testing laboratory at Texas A&M University received 9,349 of these samples compared with 7,248 last year, Welch points out.

As expected, a significant increase in tons of fertilizer applied has accompanied this increase in the number of samples tested, explains the chemist.

Established legume pastures are among the crops that will need fertilization this fall, the chemist points out. An increasing number of acres are being seeded to vetch, crimson and white clover, and since fertility and lime needs of

Total eggs produced in Texas during July at 214 million decreased four per cent from June but were two per cent above the same period last year. The 12.4 million layers on hand during July are one per cent above last month and slightly above last year. The number of eggs per layer for July at 17.2 is five per cent below last month but two per cent above last year.

Food Prices Edge Up Slightly

The average homemaker will spend a bit more money than usual for the family's food this weekend, as some prices edge up seasonally.

Best beef buys this week and next are expected on ground beef, arm and blade pot roasts and steaks, short ribs and round steaks. Pork values include smoked hams and picnics. Fryers remain an excellent bargain in most retail meat departments, and frozen turkeys are available at economical prices.

Grade A medium and large eggs are up and tuck for the egg bargain of the week, reports Mrs. Gwen Clyatt, Extension Service consumer information specialist.

Fresh fruit and vegetable items moderate to economical in price include bananas, lemons, cantaloupes, plums, peaches, nectarines, grapes, lettuce, celery, cabbage, tomatoes, green peppers, squash, dry yellow onions, sweet corn, okra and carrots.

The continuing hot weather is causing a reduction in vegetable supplies of top quality, the specialist says.

Local dairies are supplying a variety of cottage cheese combinations by request. Among the more popular are garden salad, fruit salad, and pineapple. Regular cottage cheese, creamed cottage cheese and non-fat cottage cheese are other choices.

Final approval of a \$1 million federal appropriation to match another million dollars of High Plains money has made the launching of a massive boll weevil control program an absolute certainty and planning activities are rapidly approaching a feverish pitch.

Beginning about August 24 more personnel from both the Texas Department of Agriculture and the Plant Pest Control Division of USDA will begin arriving in the area to clean up last minute preparations and get the program underway. Most of these people will likely remain in the area until about the middle of November. At least 20 additional men from the Texas Department of Agriculture will meet in Lubbock on September 1 to kick off an intensified drive to complete the signing of spraying permits by all farmers in the seven-county control zone. Permits to spray infested cotton are needed from approximately 3500 farmers in Garza, Dickens, Crosby, Floyd, Motley, Eriscoe and Kent counties and full cooperation is being urged from all farmers in these counties. To date, probably less than 1500 of the farmers have signed permits, but blank permits have been

mailed to all others along with stamped, self addressed envelopes.

The responsibility for getting these permits signed has been accepted by the Texas Department of Agriculture, and Fred Roy of that agency says that all permits need to be signed by September 5 or 6 in order to allow for plotting the spray area by September 10, the target date set for getting spray planes in the air. In addition to those permits mailed to farmers, others are available at banks, from county agents, ASC offices and from Plains Cotton Growers' committeemen in each county.

Either PCG boll weevil committeemen, county agents, or Texas Department of Agriculture personnel will have to personally contact those farmers who have not signed a permit by September 1. "It is necessary to the success of the program that every acre of weevil infested cotton be sprayed," Roy said, "and a lot of time and money can be saved if farmers in the seven control zone counties will make the necessary effort to secure and sign spray agreements before September 1."

Beginning the week of August 24 from 18 to 25 Federal Plant Pest Control personnel from all over the United States will start arriving to help put on the program. D. H. Russell, Supervisor of the Lubbock PPC office, said these men will be distributed between five points of operation tentatively set up in

MANAGEMENT PERSONNEL NEEDED to keep pace with booming motel industry and our own growing chain of King's Inn Motor Hotels. See our ad under EDUCATION or INSTRUCTION, KING'S INN MANAGEMENT CO.

JUST ARRIVED Aspen Skirts, Slacks & Sweaters
Thermo Jac Skirts, Slacks & Jumpers

Lucille's Smart Shop

HILLTOP PLAZA CENTER Phone 762-2441
CLOVIS, NEW MEXICO
ACRES OF FREE PARKING

I Get 5% Dividends On My Money At..... FIDELITY SAVINGS & LOAN
416 Mitchell St. PO 2-2917
Clovis, N. Mex.

We Invite Comparison

NATIONALLY ADVERTISED MERCHANDISE. WE HANDLE COMPLETE LINE OF ADMIRAL, NORGE AND AMANA APPLIANCES. WE ALSO HAVE VIRTUE BROTHERS DINETTES, BASSETT AND BROYHILL FURNITURE, STANLEY, COLEMAN, CLEVELAND, VAUGHAN AND MANY OTHER NATIONALLY ADVERTISED LINES. WITH OUR LOW OVERHEAD, WE GUARANTEE TO SAVE YOU MONEY.

LIVING ROOM SUITES	
2 Pc. Danish Modern (nice for apartments) . . .	119.95 59.95
2 Pc. Foam (Danish Modern)	179.95 99.95
(Materials on Plastics, color choice)	
3 Pc. Curved Nylon Sectional (Foam)	299.95 179.95
4 Pc. Curved Nylon Sectional (Foam)	349.95 219.95
80" Modern Divan (Foam-Dacron)	259.95 129.95
2 Pc. Early American Living Room Suite -- Foam, makes bed or Non-bed	299.95 169.95
Hide-A-Way Bed	269.95 149.95
2 Pc. Hide-A-Way Bed	329.95 179.95
2 Pc. Modern Foam -- Suite, Nylon	299.95 169.95
2 Pc. Foam Suite	269.95 129.95
2 Pc. Plastic Studio Suite	189.95 109.95

BEDROOM SUITES	
2 Pc. Double Dresser & Bookcase Bed	119.95 79.95
3 Pc. Double Dresser & Bookcase Bed	159.95 109.95
2 Pc. Broyhill Early American Bedroom Suite	279.95 179.95
2 Pc. Bassett French Provincial Bedroom Suite (72" Triple)	399.95 269.95

BUNK BEDS	
Bunk Beds, with Innerspring Matts	\$69.95
Maple Bund Beds, Complete	\$79.95
Oak Bunk Beds, Complete	\$89.95
Maple Bookcase Bunk Beds	\$99.95

DINETTES & LIVING ROOM	
5 Pc. Round Table & Mates Chairs	129.95 89.95
5 Pc. Large Round Early American	169.95 109.95
38" Early American Hutch	89.95 59.95
26" Early American Hutch	79.95 49.95
7 Pc. Dinette	99.95 59.95
Broyhill Corner Hutch	139.95 89.95

UPHOLSTERING-FURNITURE OR AUTO
Call us for free estimates on upholstering of any kind.
• Come by our shop and see finished suites on our floor.

TAKE UP PAYMENTS-REPOSSESSED GROUP
Complete Houseful Consisting Of Straight Across Freezer Refrigerator, Range, Double Dresser, Bed, Mattress, springs, 5 pc. dinette, 3 tables, 2 table lamps, 2 pc. living room suite, Payments 19.69 per month.

CHAIRS, ROCKERS & RECLINERS	
Large Swivel Platform Rockers	99.95 49.95
Occasional Chairs	19.95 12.95
Swivel Chairs	49.95 24.95
Recliner	99.95 59.95
Early American Swivel Platform Rocker	109.95 59.95

APPLIANCES	
12 Cu. Ft. Admiral Refr.	249.95 169.95 WT
14 Cu. Ft. Admiral Refr.	299.95 199.95 WT
15 Cu. Ft. Norge Refr. (Double Door)	349.95 229.95 WT
16 Cu. Ft. Admiral Refr.	499.95 299.95 WT
12 Cu. Ft. Double Door Admiral Refr.	329.95 239.95 WT
13.2 Cu. Ft. Upright Admiral Freezer	269.95 199.95 WT

RECORD PLAYERS & TELEVISION	
11" Admiral Lightweight Portable TV	139.95 109.95
Admiral Stereo Record Player-Radio	299.95 219.95
16" Admiral Portable TV (Thin-Line)	159.95 129.95 WT
19" Admiral Portable TV	189.95 139.95 WT
23" Admiral Console TV	259.95 199.95 WT

MATTRESS TRADE-IN SALE	
Mattress & Box Spring, Reg. 99.00	\$59.95 set
Mattress & Box Spring, Reg. 139.00	\$69.95 set
Posture Mattress & Box Springs, Reg. 159.00	\$79.95
6" Foam Mattress & Box Springs, Reg. 149.95	\$79.95

LARGEST SELECTION OF USED FURNITURE IN THE SOUTHWEST!	
Hide-A-Beds	\$40.00 to \$99.95
2 Pc. Living Room Suites	\$20.00 to \$99.95
Bedroom Suites	\$45.00 to \$79.95
16 Cu. Ft. Chest Freezer (13.55 down, \$5.69 per mo.)	\$119.95
Chest of Drawers	\$10.00 to \$14.95
7 Pc. Dining Room Suite	\$30.00 to \$59.95
Posture Rest reducing machine	\$40.00
Large Oak Table (office type) 2 Drawer	\$20.00
Electric Ranges	\$20.00 to \$49.95
Trundle Beds, complete	\$49.95
Automatic Washers (\$7.75 down, \$6.05 per mo.)	\$69.95
Refrigerators	\$35.00 to \$99.95
Bed Springs	\$2.50 to \$15.00
Beds	\$5.00 to \$15.00
2 Pc. Recovered Living Room Suites	49.95, 69.95, 99.95
Zenith Television	45.00
Ranges	\$25.00 to \$79.95
Wringer Washer, guaranteed	\$39.95 to \$49.95
Mattresses (full or half sizes)	\$7.50 to \$15.00
Blond Console Television	\$89.95
Night Stand	\$3 to \$10.00
Motorola Hi-Fi Record Player 4 speeds	\$45.00
2 Pc. Sectional	\$20.00
Desks	\$10.00 to \$30.00
Baby Bed and Mattress	\$12.50 to \$15.00
4 Pc. Sectional	\$99.95
7 Pc. Dinette	\$49.95
Maple Bed, Vanity, & Bench	\$49.95
8 Pc. Dining Room Suite	\$49.95

Free Delivery-Easy Terms-Use Your Old Furniture For Down Payment
S & S FURNITURE
"The Tradingest, Swappingest Store In The Southwest"
Ben O. Smart - Mgr. Phone 482-3325 Texico, New Mexico

NEW! 350 Model Farmhand Beet Diggers
Last Year's Model But Brand New
\$4,000
See Big Nick At Machinery Supply
Bovina Ph. 238-4861

Irrigation Systems Designed & Installed
● Roll-Flex Concrete Pipe
● Motor Joint Concrete Pipe
● Asbestos Cement Pipe
ALCOA ALUMINUM IRRIGATION SYSTEMS
● Flowline
● Gated Pipe
● Sprinkler Systems

Farm And Ranch Loans
Long Term
Low Interest
ETHRIDGE-SPRING Agency, Friona
Phone 247-2766

ADAMS DRILLING CO.
WATER WELL DRILLING
LAYNE PUMPS, INC.
PUMP & GEAR HEAD REPAIRS ALL MAKES
Sales & Service DIAL 247-3101
Friona NIGHTS 2-7-2513 Texas

PUBLIC AUCTION

640 ACRES OF DEAF SMITH COUNTY TEXAS REAL ESTATE

September 1 at 2:00 P.M. C.S.T.

Farm located 2 miles East of Hereford on Highway 60 then 1 1/2 miles North. Legal Description: Section 25, Block K 3.
Farm has 512 acres under irrigation with 6 irrigation wells that has plenty of water, 128 acres in improved midland and native grass pasture, has 105.5 acres wheat allotment that produces under normal conditions 60 bu, and more per acre, 17 acre cotton allotment that produces under normal conditions 2 bales or more per acre, and 318 acres grain sorghum allotment that produces under normal conditions 6000 to 7000 lbs. per acre.
This farm is in the heart of the sugar beet country. Hereford is the only town in Texas that has a sugar beet plant under construction.
Farm will also grow alfalfa, castor beans, lettuce, potatoes, carrots, onions and sugar beets. There are good market facilities for all crops grown in this area.
Improvements consists of a 4 bedroom - 4 bath home that has 3700 sq. ft. of floor space, has modern 2 bedroom tenant house, good barn, corrals and other buildings.
1/2 undivided mineral rights goes with purchase of farm on a non-participating basis by present owner.
This farm has dark loam soil.
Farm is located adjacent to north side of municipal airport.
Possession will be given of all land Jan. 1, 1965. Wheat allotment will be sown by present owner and will go with purchase of farm.
TERMS: 15% down on day of sale. 30 days time will be given purchaser to have abstract examined. Merchantable Title and Warranty Deed will be furnished. Additional 14% at close of escrow. Owner will carry 71% of purchase price for 10 years at 5 1/2% interest. Interest and principal to be paid annually. Or owner will accept cash at close of escrow.
OWNER: Mr. and Mrs. Earl Plank
Phone (AC 806) 258-7214
Hereford, Texas

QUINTON JENKINS
The Real Estate Auctioneer
820 North 15th Street
Phone (AC 405) FA 3-3623, Clinton, Oklahoma
Licensed and Bonded in Texas, Oklahoma and Kansas and licensed by the U. S. Government.
Write auctioneer for complete brochure.
Any announcement on day of sale supercedes all other announcements.

Zinnias Drench Gardens With Color And Sparkle

By A. F. DeWerth
Professor of Floriculture
Texas A&M University

One of the most popular flowers for a colorful garden is the zinnia. To get your gardening program into full swing next spring, start planning now and consider this annual as a "must" for color.

Zinnias are easily grown from seed and bloom in only six to eight weeks. They continue to produce showy blooms during the entire summer.

Since zinnias can be sown outdoors with great success, they can be planted in the ground where they are to grow as soon as the soil becomes warm in the spring. A warm sunny location is best.

Seeds should be planted about one-fourth inch deep and about four inches apart. Keep the soil moist but not wet, but do not let it dry out until the seedlings emerge. Then keep the soil rather dry and thin out the seedlings, leaving them eight to 18 inches apart depending upon the type plant being grown.

As soon as the first flower bud is produced, pinch it off so that the plant will develop lateral shoots and produce a bushy plant with numerous flowers.

Since zinnias require large quantities of water, soak the soil well, watering below the foliage to keep the leaves dry and to avoid mildew.

There are many kinds and types of zinnias in a wide range of colors and varieties. While the horticultural forms are myriad, the average gardener will have a general knowledge of what is available from the following groups.

Cupid zinnias are the dwarfest and most compact type, seldom growing more than 12 inches tall.

However, Mexican zinnias grow slightly taller, reaching from 12 to 15 inches. Flowers range from double to semi-double to single and are small, usually never more than 1 1/2 inches in diameter. "Old Mexico" and "Persian Carpet" are All American winners in this class.

Liliput zinnias are compact, freely branching plants that grow 15 to 18 inches high and are very useful for bedding and low flower borders. They have small double flowers about two inches across.

Pumila types are sometimes called Cut- and Come-Again zinnias. They produced long stems on plants that grow about

two feet tall, the flowers being two and one-half to three inches in diameter. Some widely grown varieties are Peppermint Stick which has striped petals and Salmon Rose which has deep salmon pink flowers.

Another type is the Cactus-flowered zinnia which grows three to four feet high in Texas gardens. It produces shaggy flowers reaching four to five inches in diameter with the quilled tubular petals curled upward.

Tetra Giant Double zinnias produce very large flowers six to seven inches in diameter. They reach a height of about two feet and are excellent bedding plants.

The most common and widely grown zinnias are perhaps the Giant Double type. They produce

giant double flowers on plants about three feet tall. Some of the most favored varieties are Scarlet Flame, Golden Dawn, Canary Bird (yellow), Enchantress (pink) and Purity (white).

Taller types provide a good background in the garden. Those of medium height provide good color in sunny spots in flower borders while shorter kinds are effective as large-scale ground covers or for edgings.

All the various types of zinnias, small, medium or large, are excellent for use as cut-flowers and will last for at least five or six days with proper care. However, the flowers should be well opened before they are cut.

Zinnias are dependable and will produce quantities of flowers all season long.

Texas 4-H's Eligible For Scholarship Grants

Twenty-five college bound 4-H Club members in nine states including four from Texas, will find their educational fund increased by \$100 in 1964.

The Santa Fe Railway, System, donor of these grants and other 4-H educational awards, has increased their college scholarships to \$500 according to Floyd Lynch, state club leader.

The railroad has actively supported 4-H Club work for more than 40 years, and has provided scholarships since 1951. Presentation of the 1964 scholarships by Ernest S. Marsh, president of Santa Fe, will take place in Chicago this fall. These newest grants will bring to 308 the number of scholarships awarded since the program started. Total grants through 1964 \$100,000 in the program conducted by the Co-operative Extension Service.

In announcing the increased value of the scholarships, State Leader Lynch also called Texas 4-H members' attention to the 12 other educational awards annually provided by the company. He pointed out that winners will be selected by a judging committee of Extension Service workers during the summer and early fall.

Scholarships and other awards in the program are given in recognition of 4-H achievement in projects and activities, demonstrated leadership abilities and personal

growth and development. Recipients must be currently 4-H members and may be high school or college students.

Two of Texas' most recent (1963) scholarship winners in this program currently are in college. Joyce Rodgers, Rt. 3, Brownwood, has completed her freshman year at Texas Woman's University. Joe David Drabek, Rt. 2, Crowell, is enrolled at the University of Dallas. The other two 1963 scholarship winners completed high school this year. They are: Carolyn Vasbinder, San Antonio and Stanley Froehner, Rt. 1, Cost.

For additional information on qualifications, supporting evidence needed, and deadlines for submitting records of accomplishments, State Leader Lynch encourages 4-H members to contact their county extension agent.

September Plentiful Foods Meat, Fruit, Vegetables

Three choices of meat, a selection of vegetables and a fruit are your plentiful foods selection for September, according to the Texas Extension Service.

The list, prepared by the Agricultural Marketing Service, features beef, fresh prunes, broilers, turkey and late-summer vegetables.

Although beef production in recent weeks has been somewhat below record levels set earlier this year, beef is still in big supply. And consumer prices continue attractive. Since September is "Better Breakfast Month," try serving steak for breakfast.

Another good breakfast item is fresh Italian prunes. Almost half again as many prunes will be available as were produced

DRILLING STATISTICS FOR JUNE

During the month of June permits were closed on 357 new wells within the High Plains Underground Water District; 16 replacement wells were drilled and 12 wells were drilled that were either dry or nonproductive for some other reason. The County Committees issued 193 drilling permits.

Listed below by counties are permits issued and wells completed for June.

County	Permits Issued	New Wells Drilled	Replacement Wells Drilled	Dry Holes Drilled
Armstrong	6	6	0	0
Bailey	23	34	4	4
Castro	24	40	1	1
Cochran	8	14	0	1
Deaf Smith	47	43	1	0
Floyd	8	38	1	1
Hockley	9	35	0	1
Lamb	17	36	1	0
Lubbock	15	47	1	3
Lynn	4	7	0	0
Parmer	16	48	7	1
Potter	0	1	0	0
Randall	16	8	0	0
Totals	193	357	16	12

More Jobs For Women Is Trend

More and more women are engaging in part-time work as the number of women in the labor market increases.

One out of every three women who had paid jobs at any time last year worked on a part-time or part-year basis, says Mrs. Wanda Meyer, Extension Service home management specialist at Texas A&M University.

For many women, part-time work has one big drawback: Most part-time jobs tend to be on the routine side. However, a new study by the Alumnae Advisory Center, Inc., a non-profit educational organization that assists college women in

Ruelene 8R, a new "pour-on" formulation, will control hornflies, lice and grubs on cattle. It employs an oil base that facilitates close adherence of the toxicant to the skin and lessens run-off.

A slightly-snug shirt collar can be eased a bit if the collar band is stretched while being damp ironed. Extension clothing specialists at Texas A&M University remind.

looking for jobs, suggests that interesting and responsible jobs can be found with some careful digging.

Mrs. Meyer suggests that a good place to start is with companies where a good part of responsible fulltime jobs are held by women.

Many retail stores, for example, hire women with merchandising experience as section supervisors on a part-time basis. If one has office skills, or just intelligence and personal stability, it might be rewarding to check with local banks, insurance companies, public utilities, and other major employers of clerical workers.

A person with good basic education and poise -- but no special job skills -- might want to investigate the wide range of sales jobs open to part-time workers. Women who like to

keep their work schedules flexible often find good opportunities in outside sales work -- for example, with "party plans" or as representatives of magazine subscription and cosmetics companies.

Most part-time jobs can help build up Social Security credits. In addition, most employers make available group life and health insurance coverage to part-time workers.

Cotton standardization activities of the U. S. Department of Agriculture have been moved from Washington, D. C. to Memphis, Tennessee. The transfer will enable the USDA to give more prompt and effective service to the cotton industry by placing the service function nearer to the people being served.



AMMO NOTES

By Bill Bennett, Agronomist

Fertilization of wheat ground is in full swing in most areas. A few are still waiting for rain.

Last week I discussed the economics of fertilizing wheat and concluded by saying that if you plan to grow wheat, it should be fertilized properly for lowest cost per bushel. This week let's look at different methods of application.

Ammonia is usually applied on 20 inch centers. This can conveniently be done either while the ground is still flat or placed in the sides of the bed after it has been bedded up. Either method is satisfactory.

Phosphorus application is somewhat more involved. broadcast phosphorus normally should be worked into the soil for best results. Since most of the land has been plowed or disked by now, there is little chance of doing this. There are now several alternatives for applying phosphorus.

One is to broadcast on top of flat ground and then list the land. This, however, throws all

of the phosphorus into the beds and leaves none of the wheat in the middles.

Another alternative is to broadcast dry fertilizer after the land is bedded. A small portion of the phosphorus will be worked into the soil with the grain drill.

A third alternative is to apply liquid 7-21-0 with the ammonia as a dual application either while the land is flat or after it has been bedded. This has the advantage of getting the job done with one trip over the field.

If dry phosphorus fertilizer for wheat cannot still be plowed under, the second and third alternatives now appear to be the best.

ABSTRACTS

See
JOHNSON
ABSTRACT
COMPANY
in
Farwell
Fast, Accurate
Ph. 461-3678 Box 88

CLASSIC JERSEY

This all wool sheath is your answer to what to wear! Simple lines of stitching and smart belt detail join forces to give you a young, sophisticated look. In basic and exciting new colors



THE FASHION SHOP
521 Main, Clovis

Complete Automotive Machine Shop SERVICE

Valve Work - A Speciality
Crankshaft Grinding
MOTOR LAB

311W. 7th. At Rear Elliott Auto Parts Clovis

Southwest Original Discount Center GIBSON'S

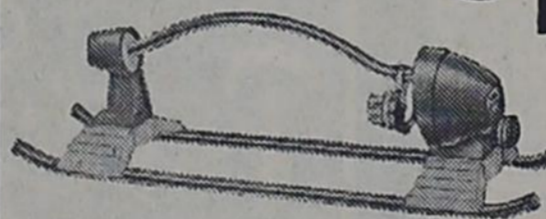
108 Sycamore - Open 9 to 9 (Except Sunday) Clovis

Specials Through Saturday Night

Everain No. 70 Oscillating Sprinkler

Gibson's Discount Price

\$3.88



Waters Area Up To 2400 Sq. Ft. Size 22 1/2 x 6 1/2 x 6 3/4"

SAVE NOW On The New 1964 Case Tractor Of Your Choice.

No Reasonable Offer Refused!



The 1965's Are Coming! And We're Moving The '64's Out At Unheard Of Low Prices.

You Can Buy A New Case Tractor Now Easier Than Ever Before

with a CASE 5-6 PLOW 830

Here's BIG row-crop power with big capacity hydraulics for heavy mounted or pull-type equipment. Economical Case Powdrone LP-

gas engine with rugged 5-bearing crankshaft. Choice of standard 8-speed transmission or famous Case-o-matic DRIVE.

Ask for a DEMONSTRATION!

FREE* RADIO FOR TRACTOR OWNERS

We're hankering to get you behind the wheel of a Case tractor. So much so, we'll swap a quality GE transistor radio (Retail list \$9.95) for just 30 minutes of your time -- with no obligation to buy. All you have to do is get a demonstration on your own farm -- test a Case for work-capacity, economy, handling ease, comfort. Then get our deal. We're ready to demonstrate. Call us today!

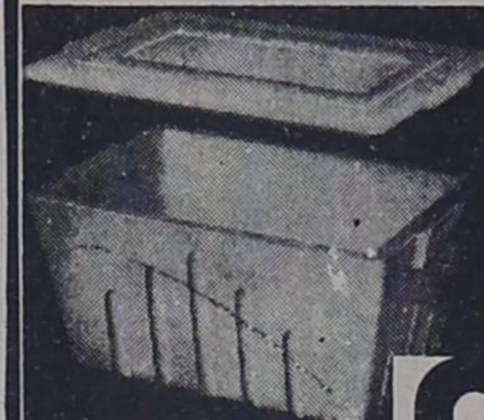
Okla. Lane FARM SUPPLY

Ph. Tharp 225-4366

A Brazilian home management specialist, Rita Gomes, who works with the Extension Service in the state of Minas Gerais, is making a study of the Texas home economics Extension Service program this week at Texas A&M University. She is studying home management programs, their evaluation, and communications work as it relates to the home management field. She will go to Robstown, in Nueces County, to work with home demonstration agents next week before returning to A&M Sept. 2, then will report to the USDA in Washington, D.C. Before coming to A&M, she completed special study at Purdue University.

BOYD'S COMPLETE BRAKE and BEAR FRONT END Service TIRE TRUING WHEEL BALANCING AND OVERLOAD SPRINGS MONRO-MATIC SHOCKS MUFFLERS AND TAIL PIPES FACTORY REBUILT POWER BRAKE UNITS-NEW UNIT GUARANTEE-EXCHANGED
BOYD'S BRAKE SHOP
21 Years in Clovis
221 W. Grand - 763-4326

#400/12 STYROFOAM ICE CHEST



GIBSON'S UNTOUCHABLE SPRING SPECIAL

★ 30 Quart Capacity
★ Hand Grips
★ For Fishing
★ For Camping
★ For Patio
88¢

CHARCOAL BRIQUETS

10 Lb. Bag

46¢



COOL CUSHIONS

INNER SPRING

87¢



Coleman Fuel Gal 81¢

Electric 29.95 Value GIBSON'S PRICE.
Lawn Edger \$16.88

IRRIGATION

Giant Of Texas Plains Economy

Irrigation continues to be increasingly big business on the Texas Plains. During the past year—June 1963 through May 1964—substantial increases have been noted in many phases of the giant industry, such as more wells and more irrigated acres through a larger number of irrigation systems, along with increased attention to more efficient methods and practices to not only help conserve the precious water, but to build soil productivity.

FACTS AND FIGURES ON PUMP IRRIGATION ON TEXAS HIGH PLAINS

County	Farms Irrigated	Total Ac. Irrigated	Irrig. by Gravity	Ug. Pipe Miles	Ac. Irrig. Us. Pipe	Sprinkler System	Ac. Irrig. Sprinkler	Wells 125 Ft. or Less	125 Ft. or More	700 gpm 700 gpm
Armstrong	107	25,160	24,460	45	9,800	10	700	182	83	99
Bailey	670	175,000	144,200	348	65,000	240	30,800	1,950	900	1,050
Borden	12	1,450	1,430	1	20	1	20	60	60	60
Briscoe	360	72,560	69,060	150	60,000	60	3,500	605	70	535
Carson	289	98,070	98,042	75	25,000	1	28	482	1	481
Castro	1100	412,000	411,600	700	125,000	6	400	3150	400	2750
Cochran	480	115,000	115,000	360	34,000	840	60,000	1,200	360	840
Collingsworth	127	12,000	12,000	6	1,000	140	9,500	130	65	65
Crosby	875	203,000	200,800	565	86,000	24	2,200	1,985	135	1,850
Dallas	155	58,000	54,800	17	3,000	25	4,000	335	250	250
Dawson	325	90,000	1,000	50	12,000	1025	89,000	1,250	75	1,175
Deaf Smith	620	325,000	325,000	600	150,000	1	10	10	7	14
Donley	173	14,500	14,500	2	150	178	14,500	185	47	138
Floyd	810	305,500	304,800	700	240,000	11	700	3,500	3,500	2,000
Gaines	800	210,640	40,640	100	30,000	1,400	170,000	1,600	600	1,000
Garza	247	13,810	13,883	97	8,680	2	127	522	358	164
Gray	185	15,670	14,570	40	6,000	15	1,100	100	12	88
Hale	160	543,000	540,000	1,440	280,000	30	3,000	4,375	1,000	3,375
Hansford	400	179,200	178,960	200	72,000	4	240	595	10	585
Hartley	67	30,000	28,350	130	16,000	10	1,650	164	2	162
Hemphill	17	900	900	1	100	15	810	17	10	7
Hockley	1210	240,000	219,000	800	175,000	225	21,000	5,550	750	4,800
Howard	38	2,000	250	2	200	36	1,750	85	66	19
Hutchinson	205	50,000	49,700	10	12,000	1	300	185	50	135
Lamb	300	360,400	336,400	12,900	290,000	240	24,000	5,485	1,685	3,800
Lipscomb	27	3,000	1,600	4	350	14	1,400	27	5	22
Lubbock	1690	330,000	327,300	1615	237,000	54	2,700	8100	800	7,300
Lynn	600	85,500	82,000	175	35,000	85	3,500	2150	1200	950
Mitchell	175	15,615	13,300	15	2,315	23	14,335	280	75	185
Moore	204	130,000	129,650	205	34,000	2	350	500	140	360
Ochiltree	125	41,660	41,660	43	10,000	160	160	160	44	116
Oldham	69	34,000	33,950	45	15,000	10	50	103	38	15
Parmer	1190	425,000	422,000	901	208,000	1	2,100	2650	15	2635
Potter	28	14,300	14,300	20	5,000	40	40	40	25	15
Randall	439	90,000	89,600	108	26,000	6	400	820	40	780
Roberts	11	5,800	5,600	18	2,800	3	200	18	4	14
Scurry	88	5,000	5,000	105	5,000	105	5,000	105	105	105
Sherman	210	135,000	134,360	90	40,000	2	640	335	535	250
Swisher	1172	357,045	356,145	711	224,000	100	900	3724	30	3694
Terry	769	130,000	130,000	90	25,000	1,500	130,000	1,530	645	885
Wheeler	36	6,760	6,760	35	12,200	25	6,760	48	34	14
Yoakum	300	68,500	10,700	35	12,200	660	57,800	855	320	535
Totals	19,956	5,437,560	4,750,968	11,743	2,645,700	7,254	665,460	55,377	9,857	45,520

Difference in acres irrigated and total of all acres of various crops irrigated and variation from previous surveys accounted for by soil bank acreage and diverted acres.

PLANTED ACRES OF MAJOR IRRIGATED CROPS INCLUDING VEGETABLES

County	Pasture	Sudan	Oats	Barley	Corn	Wheat	Legumes	Other	Vegetables	Ac. Bench Levelled	Cotton	Grain Sorghum	Alfalfa
Armstrong	200	200		500	200	7,800		100		300	1,400	14,160	600
Bailey	8,000	8,000			6,000	6,000		8,350	1,650	4	77,000	58,000	8,000
Borden													
Briscoe	1,000	600	50	200	62	15,638	1,100	360		120	16,300	37,000	250
Carson			90	180	100	50,000	200	20		100	1,800	45,000	400
Castro	3,000	3,000	2,000	5,591	1,978	74,488	4,000	17,500	5,700	100	56,518	159,823	1000
Cochran	1,500	2,000			275	2,500		100		100	66,000	35,000	1000
Collingsworth	280							100		75	9,400	300	300
Crosby	1,100	1,600		1,750	900	16,000	70	10,150	700	630	110,000	69,000	300
Dallas	400	300			400	8,000		150		750	75,000	47,000	720
Dawson	1,000	1,000	500	100		500		600			85,000	2,000	500
Deaf Smith	2,500	6,000	3,000	15,000	1,200	75,000	16,300	12,300	14,100	1,000	11,400	80,000	5,000
Donley		600				400		200			11,000	3,500	1,000
Floyd	2,000		1,000	2,710	1,174	58,000	5,000	8,890	1,450	355	89,637	11,980	2,500
Gaines	10,000	4,000	1,000	1,500	400	1,400	300	7,000	1,300		78,240	100,000	5,500
Garza	110	32				18				820	13,650		750
Gray	300	300			200	4,500		275		1,000	1,000	8,220	1,000
Hale	5,000	2,000	1,000	3,000	2,500	48,000	14,900	1,300	1,075	1,500	173,075	284,410	2,000
Hansford	800	2,000	300		500	81,338		500			1,062	91,400	1,500
Hartley	4		500	2,000	150	8,795		90			130	16,000	175
Hemphill	40	60				200	16			40	290	170	140
Hockley	3,000	700		100	150	600	2,700	700	150	6,000	165,000	50,000	2,000
Howard					5	5		30	4		1,700	15,000	500
Hutchinson	200	200			100	33,600	300	100		3,000	15,000	500	200
Lamb	6,500	4,000	1,000	1,000	8,000	4,000	4,000	240	1,850	4,000	154,000	104,000	7,000
Lipscomb	400	100			120	1,000	800				5,000	400	
Lubbock	4,000	2,000	306	350	1,000	1,000	8,700	750	540	3,000	203,000	106,385	600
Lynn	1,500					150		150			85,000	5,000	100
Mitchell	560	400	175	1,700	200	200		1,500		3,000	12,000	500	300
Moore	500	4,500	250	1,700	500	66,000	450	350			450	53,000	300
Ochiltree	60	250		100	300	20,000	200	100		300	450	20,000	200
Oldham	100					16,000		100			18,000	150	
Parmer	100	10,000	100	200	4,000	75,500	14,150	23,600	4,495	400	48,000	193,425	1,500
Potter	200					7,000		60			50	6,500	60
Randall	1,150	9,000	800	2,000	1,700	23,000	200	388		2,100	55,000	1,300	
Roberts	110		20			2,240		550		100	130	2,400	350
Scurry	40	4,000	200		3,000	6,500	200	120		4,500	65,000	100	
Sherman	4,000	5,000	1,300	9,312	595	88,650	15,885	4,800	180	250	54,112	120,801	2,500
Swisher	5,000	1,800			1,000	4,000	100		800		77,909	40,000	300
Terry						600		1,060			2,500	1,000	600
Wheeler	1,000	1,000			1,000	1,000		1,500			25,000	25,000	500
Yoakum													
Totals	69,364	70,442	13,891	48,283	36,419	869,970	89,571	103,518	34,200	25,510	1,643,971	2,042,174	48,336

Legumes include soybeans, vetch, field peas, and other legumes. Vegetables include sugar beets, castorbeans, sesame, forage sorghum, grass seed, pinto beans, etc.

Nearly Two Million Children In School Lunch Program

Approximately 1,980,268 Texas school children enjoyed a variety of good-tasting, good-quality foods served in well-balanced meals under the National School Lunch Program in 1963-64.

The entire Federal-State program is geared to making maximum use of national, regional and locally abundant foods.

Federal assistance to school lunch programs began in the early 1930's when surplus foods were first donated to schools. In 1946, the National School Lunch Act placed "school feeding" on a permanent basis.

Under this program, each participating school agrees to serve a lunch meeting the "Type A" pattern which includes a protein-rich food, a generous serving of fruits and vegetables, bread and butter or fortified margarine, and one-half pint of milk.

Four-fifths of the food used in the school lunch program is purchased by school lunch managers from their local supplies. Some of the food is purchased by the U. S. D. A. and comes from supplies of food on the market that are currently plentiful. Some of the food fulfilling the needs of the schools participating in the program are canned applesauce, canned apricots, green beans, frozen ground beef, frozen cut-up

A new herd production average for milk and butterfat has been announced for the registered Holstein herd owned by E. S. Bradley of Dublin, The Holstein - Friesian Assn. of America said the herd had a per-cow average of 14,451 pounds of milk and 516 pounds of butterfat based on 15 completed lactation records. Texas A&M University supervised the tests. This production compares with a production of 7,500 pounds of milk and 275 pounds of butterfat for the average U.S. dairy cow.

On The Farm In Parmer County

BY JOE VAN ZANDT
County Agent

INSECT SITUATION

Our insect situation has generally been favorable this year. However, we must not let our guard down at the last. Everyone is encouraged to make frequent checks on cotton and late grain sorghum fields.

In cotton we need to be on the lookout for bollworms and serious bugs as they could do serious damage if their numbers build up in a field.

Our late grain sorghum is still susceptible to midge infestation. In the Panhandle area, midge activity continues to be very light.

LEGAL NOTICE
THE STATE OF TEXAS
TO: Loodema D. Hewett, L. D.

Hewett, Joseph De Oliviera, Juan Jose De Oliviera, Joesita De Oliviera, Salome Madrid De Oliviera, Rhea M. De Oliviera,

Paul F. De Oliviera, R. E. Dunlap, and the unknown wife or wives and husband or husbands of each of the above named parties, each of whom is unknown to Plaintiff, and if any of the above named parties is deceased, then his unknown heirs, assigns and legal representatives, all of whom are unknown, and all of whose addresses are unknown, and the unknown persons owning, having or claiming any interest or lien of any nature in or to the land and property hereinafter described, and all of the unknown heirs, assigns, and legal representatives of all of said above named persons, Defendants,

GREETING:
You are hereby commanded to appear by filing a written answer to Plaintiff's Petition at or before 10 o'clock A.M. of

the first Monday after the expiration of 42 days from the date of the issuance of this Citation, same being Monday, the 5th day of October, A.D. 1964, in this cause, Numbered 2498 on the docket of said court, and styled:

SAM ALDRIDGE, Plaintiff vs LOODEMA D. HEWETT, ET AL, Defendants.

The names of the parties to the cause are as follows: Sam Aldridge is Plaintiff; and Loodema D. Hewett, L. D. Hewett, Joseph De Oliviera, Juan Jose De Oliviera, Joesita De Oliviera, Salome Madrid De Oliviera, Rhea M. De Oliviera, Paul F. De Oliviera, R. E. Dunlap, and the unknown wife or wives and husband or husbands of each of the above named parties, each of whom is unknown to Plaintiff, and if any of the above named parties is deceased, then his unknown heirs, assigns and legal representatives, all of whom are unknown, and all of whose addresses are unknown, and the unknown persons owning, having or claiming any interest or lien of any nature in or to the land and property hereinafter described, and all of the unknown heirs, assigns and legal representatives of all of said above named persons, are Defendants.

A brief statement of the nature of this suit is as follows, to-wit:

Plaintiff sues for title to and possession of the following described land, to-wit:

All of Garden Lots 4 and 5, of Section 31, Township 9 South, Range 1 East, of a Capitol Syndicate Subdivision in Parmer County, Texas,

having filed a petition alleging suit in trespass to try title in the above case, alleging ownership and title to said land and claiming title to said land by virtue of the 10-year statute of limitations, as is more fully shown by Plaintiff's Petition on file in this suit.

If this citation is not served within 90 days after the date of its issuance it shall be returned unserved.

The officer executing this process shall promptly execute the same according to law and make due return as the law directs.

ISSUED AND GIVEN under my hand and the seal of said Court at office in Farwell, Texas, this the 20 day of August, A.D. 1964.

ATTEST: Dorothy Quickel District Clerk, Parmer County, Texas.

WANT ADS

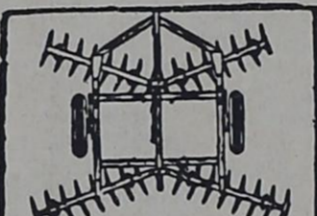
Improved Irrigated Section For Sale

If you're looking for that once-in-a-lifetime opportunity, you'll be interested in this outstanding 640-acre irrigated farm located in one of this nation's most productive irrigated areas. . . . Approximately 4500 gals. per min. from 3 wells. Exceptionally level. Rich, deep soil. All under irrigation, except approximately 55 acres pasture with feed lot and stockwell. 150 acres sugar beets. Land also ideal for vegetable crops, corn, milo, wheat, etc. Unusually good markets for grain (with feeders).

Two modern houses; also bunkhouse with electricity and running water, 40' x 100' metal storage building and other buildings. Excellent schools. For sale by owner, firmly priced at \$375.00 per acre. Liberal terms. Write % Box 127, Sharon Springs, Kan. 9-1tc

CARPETS and life too can be beautiful if you use Blue Lustre. Rent electric shampooer \$1. Super Saveway.

ATTENTION, WORKING MOTHERS - will do baby sitting in my home by the hour, day or week. Call Mrs. Bessie Webb, 238-2821. 7-3tc



BUY YOUR **KRAUSE** At Bovina IMPLEMENT CO. BOVINA IMPLEMENT CO. Hwy. 60 - 238-2541

KINDERGARTEN - Now taking enrollment for 1964-65 terms. Call Mrs. Jimmy Ware, 238-6531 for further information. 4 tnc

FOR RENT -- Two 2-bedroom houses in Bovina. Phone 238-2591. 9-2tc

LOST OR STRAYED -- Brown Pekingese puppy. If you know of his whereabouts, please call John David Ferguson, phone, 238-3861. 9-1tc

Medical Management Of The Overweight Patient
Dr. Youngblood
519 Pile Clovis

FOR SALE -- 1300x24 and 1400x24 slick and sound used maintainer tires. Charlie Jefferson, commissioner, Precinct 3, Parmer County. Phone 238-2581. 7-3tc

FOR SALE -- Building lots, small down payments, low monthly payments. See Tom Payne. 8-4tc

FOR RENT -- Small apartment, will accommodate one person. See Tom Payne. 8-2tc

FOR SALE -- Used Frigidaire automatic washing machine in good condition, \$65. Can be seen by calling 238-6451. 9-2tc

FOR ALL KINDS of insurance and farm loans, see Jim Ware at Bovina Insurance in First National Bank Building or phone 238-4382. 23 tnc

*** CBS * NBC * ABC**
Get All Three Major Networks To Perfection:
Get On Cable TV Now!
*Low Tie - On Fee
As Low As \$12. Down
*Low Monthly Rates
Clearview Company
61 Bovina
Phone Bovina 238-3592
Or Fiona 4311

FOR SALE -- Mustang Theatre, Bovina, and Border Theatre, Farwell. Buildings and all equipment in excellent repair. Will sell theatres separately or as package deal. Ideal family operation. Terms, contact Ira S. Levins, 205 Ave. C, Farwell, phone 481-3423. 7-tnc

FOR SALE -- Nice locker peaches. Phone Candy Wilson at 225-4163. 8-2tc

LOST -- Two cotton trailers branded "ABK". Red or green. Please return to Jim Owens. 8-2tc

Lightning Arrestors Installed
Protect Appliances and TV

BOVINA ELECTRIC
Odis White - Pho, 238-3871

Am interested in making loans and buying first and second lien notes secured with farm and ranch lands.

J. J. Steele
Citizen's Bank Building
Clovis, New Mexico
Dial: 763-3521 or 763-6455
7 4 tc

Want sudan, sudex, or sorghum alnum grazing for 100 to 200 weaner calves and yearlings.
J. J. Steele
Citizen's Bank Building
Clovis, N. M.
Dial: 763-3521 or 763-6455
8-2tc

Improved Irrigated Half-Section For Sale
This is probably the best irrigated half-section you have ever seen . . . strikingly level; every acre under irrigation; no idle land. Two 10-inch irrigation wells pump approximately 4000 gals. per min. Excellent soil. On pavement, 6 1/2 miles from city, 100 acres sugar beets. Land also ideal for vegetable crops, corn, milo, wheat, etc. 7-room modern house. Unusually good markets for grain . . . Excellent schools . . . For sale by owner, firmly priced at \$375.00 per acre. Liberal terms. Write % Box 127, Sharon Springs, Kan. 9-1tc

PEACHES FOR SALE
Mrs. Laura Tritsch
Phone 238-4401
9-2tc

Make More Profit From Wheat Next Year!



Let Corn's Farm Store Get Your Wheatland Ready Now For More Profit Next Year. We're Ready To List And Fertilize Your Land With Just The Right Combination Of Liquid And/Or Dry Fertilizer.

CORN'S Farm Store
Highway 86 And Third Street
Bovina
Phone 238-3181

Irrigation Motor Headquarters

For A Better Deal On A New Irrigation Motor, 413 Chrysler, Olds, Pontiac, GMC, Chevrolet or Case, and All Your Motor Repair See--

BOVINA MOTOR LAB
Highway 60 East - Bovina

Another Fine Service For Area Farmers -

Mr. Farmer:
If You Are Confronted With Possibility Of Midge Infestation In Late Grain Sorghum,

C and S CHEMICAL
Has A Reputable Entomologist Available To Serve You At A Nominal Fee.

This Service Consists Of A Regular Checking Program As Well As Making Insecticidal Recommendations If Necessary Call Us!

C and S CHEMICAL Bovina
(Formerly Bovina Farm Chemical)
Third Street Phone 238-4311

Bull Town Days Thank You!

The Sponsoring Organizations Of The First Annual Celebration Express Their Sincere Appreciation For The Fine Support And Cooperation Of All Individuals, Firms And Organizations As Well As Cotton John Smith & The KGNC Farm & Home Dept. For Their Help In Making It Such A Huge Success
It Couldn't Have Been So Highly Successful Without The Wonderful Cooperation Of All Those Who Had A Part In It.

Looking Forward To Next Year's Second Annual Event -

Thanks Again,
Bovina Roping Club
Bovina Chamber Of Commerce & Agriculture

Plan Improvements For P.E. Program

With the opening of Bovina physical education classes at Schools for the '64-'65 year, junior and senior high levels

will take on a "new look," according to Alan Staley, high school principal.

Improvements planned in the program include dressing all students alike. School officials have selected suits which include shorts and white blouses for all girls and shorts and T-shirts for boys. The materials and the design are such that students will be able to wear the garments after they finish school.

School colors of maroon and white have been chosen for the boys. Student leaders among the girls have indicated that blue shorts will be more practical for wear during the summer. The girls will decide on the color at the time of registration.

"These will be ordered following registration and it will be three weeks before the classes will be ready for public display," Staley says. Cost of the suits will include the student's name on each garment. They will be handled through a Bovina clothing store.

Dressing rooms in the gymnasium are being completely remodeled. All partitions were removed during the summer and sewer and water lines torn out. Shower and dressing rooms will provide adequate space for all participants. The curriculum, too, will be modernized. Em-

phasis will be placed on physical fitness for every individual and will include a program of conditioning and warm-up exercises each class period. Instructors in the program are Ray Stone, Milt Fitts, Roger McFarren, Gene Douglas, and Carl Cox.

MRS. CORN INSTRUCTOR--

Bovina High Offers German

For the first time in history, Bovina High School will offer a course in beginning German, announces Principal Alan Staley.

The instructor will be Mrs. Anne Corn, who has taught in Bovina high school for the past two years. She is a native of Germany and had all her basic schooling in that country before moving to the United States several years ago. Mrs. Corn is the wife of Charles Corn, local businessman and farmer. She holds a degree from Eastern New Mexico University in mathematics and a minor in the German language.

In commenting on the new course, Staley said, "Mrs. Corn is so well qualified to teach the subject and so much emphasis is being placed on the value of all foreign language instruction today that it would be unfortunate not to take advantage of this opportunity. We don't expect to make German speakers of our students but the real value comes in introducing students to other languages and in

giving them something of the culture and history of other nations. We will continue with our program of instruction in the Spanish language by offering Spanish II this year. If there is enough interest we will offer two years of instruction in each language next year."

Mrs. Corn will use audio-lingual method of teaching - the same as that used in teaching Spanish. This is the approved technique of instruction in any language today. In this way the student learns the basic vocabulary and is taught to speak and to understand basic conversation in the language. School officials hope parents and students will see the advantage of being able to study German and Spanish and that a large number will enroll. Due to scheduling difficulties freshmen students will not be able to enroll, according to Staley.

Dr. J. R. Schwartz, a New York dentist, carves ivory as a hobby, using dental tools.

Mrs. Kesner Breaks Arm

Mrs. Shirley Kesner received a broken arm last Friday when she fell from a chair. She was hospitalized at Farmer County Community Hospital in Friona and released Saturday in good condition.

Tyler Celebration--

Mr. and Mrs. Paul L. Lloyd of Bovina and their children and families; Mr. and Mrs. Paul R. Lloyd and children of Ft. Worth, Mr. and Mrs. J. B. O'Hair and family of Odessa, Mr. and Mrs. James Lawlis of Canyon and Phillip Lloyd of Bovina.

Welcome

To **The Q** Pool Snooker Dominoes

Thursday Night Is Family Night.
Fun For All The Family!

Now In Our New Location
On East Main Street

MR. AND MRS. FRED LANGER
Come On In - The Playing Fine!

Phone -- 238-8421

Notice --

To All People Near And Far !

We Have Opened A New Service Station In Bovina On Highway 86.

We Invite You To Visit Us. You Can Help Us And We Can Help You.

We Want To Get Acquainted With You All

- Marshall and Son
Marshall Independent Service Station
Highway 86 Bovina

2nd Tire 1/2-Price

Sensational Offer on Famous Firestone SAFETY CHAMPION NYLON TIRES

Buy first tire at price listed below... get the second tire for one-half that price!

Firestone
Safety Champion Nylon
A favorite replacement tire... built for Extra Safety and Extra Mileage!

Paul Jones Texaco
Highway 60 — Pho. 238-4331

SIZES	BLACKWALLS		WHITEWALLS	
	Tubeless	Tube-type	Tubeless	Tube-type
6.00-13	\$18.90	\$ 9.45	—	—
6.50-13	20.00	10.00	23.50	11.75
7.50-14	22.65	11.32	26.15	13.07
8.00-14	25.95	12.97	29.45	14.72
8.50-14	28.45	14.22	31.95	15.97
6.70-15	22.65	11.32	\$19.05	\$ 9.52
7.10-15	25.95	12.97	24.20	12.10
7.60-15	28.45	14.22	26.40	13.20
8.00-15	31.70	15.85	35.20	17.60
8.20-15	—	—	35.30	17.65

*All tires PLUS TAX... NO TRADE-IN NEEDED!

FILTERS

For Your IRRIGATION ENGINES

- Finest Quality
- Proven Performance

Get The Best And Save Dollars!

TRY SOME TODAY!

No. 41 IRRIGATION DRIVESHAFTS **\$37⁵⁰**

BOVINA AUTO PARTS, INC.
Sonny Sparlin, Owner - Manager
Highway 60 Pho. 238-3701

The Entire Bible

SURVEYED IN 30 WEEKS

Enroll In Either Class:

- ★ 5:30 To 6:30 p.m. Sunday, Or
- ★ 9:30 To 10:30 a.m. Tuesday (Classes Begin Sept. 13, Sept. 15)
- ★ Enrollment Fee: \$10.00*

*(Covers All Cost; Two Textbooks H. I. Hester's, The Heart Of Hebrew History And The Heart Of The New Testament, Plus A Bonus Book)

Enrolled To Date 30

Contact Don Stone, Phone 238-3341
Or Box 422, Bovina

● INTRODUCING ●

Western Ammonia's Program for Extra Wheat Profits brought to you by your local Western representative.

If you can afford to plant wheat, then why not go one step further and guarantee top return on your investment. How? Simply decrease your fixed costs per bushel with a properly planned fertility program from Western. When the curtain goes up at harvest time, you can always expect good results and higher profits with Western products.

WA

Western Ammonia Corporation

● STARRING ●

Presenting quality products and services designed for the wheat grower by the company organized and developed to serve your specific needs... Western Ammonia Corporation.

PRODUCT STARS

- Liquid Fertilizers 7-21-0, 8-18-0-3S
- Dry Fertilizers 0-20-0, 0-46-0 (1-43-0)
- Anhydrous Ammonia 82% nitrogen
- Prilled Sulphur 99.5% sulphur

SERVICE STARS

NEW APPLICATION EQUIPMENT
Dual applicators, dry bulk spreaders, ammonia applicators. All equipment is safety checked.

AGRONOMIC ASSISTANCE
Planned profit programs for your soil with complete fertility records maintained.

FAST SERVICE
Radio dispatched delivery for prompt, efficient service.

For a great wheat performance see WESTERN now !!!

Contact Bill Hutto Phone 238-4161