

Admits Slaying Of Houston Girl

HOUSTON (AP) — An ex-Marine, charged with murder in the slaying of a 17-year-old Houston high school girl, was to be returned here today from Louisiana.

Authorities at Thibodaux, La., said David Edward Williams, 18, arrested there Wednesday on housebreaking charges, has admitted the slaying of Donna Jean Tweed, whose body was found in a bedroom of her home Tuesday night.

Police at Thibodaux quoted Williams as saying he hit Donna Jean with a metal cleaver when she became hysterical when he went to her home to talk about his girl friend. They said he told them "I left without knowing whether she was alive or dead."

Williams was charged with

Accused Man Said Insane

GATESVILLE, Tex. (AP)—sister of Virgil Halford, accused of raping a 9-year-old Mineral Wells child, testified today that her brother has been totally insane since childhood. She said he is insane now.

Mrs. Patsy Bert, 25, of Fort Worth was the second defense witness for the former convict.

She said she and her brother, 27, were reared together near Mineral Wells. She told of her brother's setting fire to a pasture when he was six. She said he told her he wanted to "burn all of the little rabbits."

She said her brother had "terrible headaches" during which he would grab his head, jump into the air and fall on his face.

R. B. Shiflet, a non-denominational minister and a Mineral Wells public school principal, told of Halford going to a church youth camp during the summer. At the camp, Shiflet said, Halford wouldn't mingle with young people. He said he acted abnormal.

"He would just sit and stare into space, his eyes glazed over," the witness said. "He didn't appear to know right from wrong."

The girl identified Halford in court Wednesday as the man who raped her March 18.

Area Mishaps Investigated

The Snyder police department investigated a mishap at 4:43 p.m. Wednesday at Thirty-seventh Street and Avenue S. Involved were a 1963 Oldsmobile driven by Una Hart Wade, Rt. 3, a 1959 Ford driven by Gerald S. Williams, 512 Thirty-second Street, and a 1963 Chevrolet driven by James Henry Hamblen, 2608 Thirty-fourth Street.

Damage to the Wade car was estimated at \$10; to the Williams car at \$150 and to the Hamblen car at \$100.

Those involved in the mishap told police that the first car stopped to avoid a car which was turning a right and did not stop. No serious injuries were reported.

The Texas Highway Patrol also investigated two mishaps Wednesday. A minor mishap involving a school bus was reported at 7:45 a.m. at the intersection of FM 1611 and a county road 3/4 miles north of Snyder.

The bus, driven by Daniel Richard Martin was involved in a collision with a 1953 Ford driven by George Wayne Webster. There were no injuries, and both vehicles were able to proceed.

Also at about 6:30 Wednesday morning the highway patrol investigated a mishap at the dead-end of Thirtieth Street 1.8 miles west of Snyder. Involved was an auto driven by Mrs. Clyde Hall of Snyder.

Highway patrolman Royce Stowe who investigated said that there was heavy fog in the area at the time, and that the driver, heading west, apparently failed to see the dead end.

Mrs. Hall was taken to Cogdell Hospital for treatment of a head injury. Her condition was not believed to be serious.

DWI Cases Heard In County Court

Willie Collins of Abernathy was fined \$100 plus court costs \$26.35 and sentenced to three days in jail after he pleaded guilty to a DWI charge in county court.

Collins had been arrested by sheriff's deputy L. E. Hayes and Hermleigh constable Jim Farr.

A plea of not guilty was entered in county court this morning by an attorney in behalf of Gerald Johnson, charged by city police with DWI. Johnson is still in Cogdell Hospital recovering from injuries received in a mishap Friday. Bond was set at \$500.

Lamb Crop To Drop

WASHINGTON (AP) — The Agriculture Department predicts next year's lamb crop will be 4 to 5 per cent smaller, with prices little changed from 1963.

Car Rolls Five Times

SAN ANTONIO (AP)—Morris Howard, 19, died today when a car turned over five times on U.S. 90 east of here.

Dead On Hotel Stairs

FORT WORTH (AP)—Clyde Stout, 57, was found dead today on a staircase in a downtown Fort Worth walkup hotel. A man, 54, was arrested for questioning.

THE SNYDER DAILY NEWS

Published Sunday morning and each evening except Saturday by the Feather Printing and Publishing Co., Inc., at Snyder, Texas.

Entered as second-class matter at the Post Office at Snyder, Texas.

MEMBER: FEATHER PUBLISHERS ASSOCIATION

SUBSCRIPTION RATES: By carrier, \$1.00 per month; by mail, \$2.50 per month. By mail in Scurry and adjoining counties, one year \$24. Balance of Texas, one year \$12. All other States, \$15.00.

MEMBER OF THE ASSOCIATED PRESS

The Associated Press is exclusively entitled to use for republication all news dispatches in this newspaper which local news published herein. All rights reserved for republication of special dispatches.

Any erroneous reflection upon the character, standing or reputation of any person, firm or corporation which may occur in the columns of THE SNYDER DAILY NEWS will be gladly corrected upon being brought to the attention of the management.

The publishers are not responsible for circulation errors, typographical errors or omissions, or for any errors in the news items which are corrected in the next issue after it is brought to the attention of the management.

All uncorrected articles, manuscripts, letters and notices sent to THE SNYDER DAILY NEWS are sent at the owner's risk and the Snyder Daily News expressly repudiates any liability or responsibility for the custody or return.

Dear Abby...

By ABIGAIL VAN BUREN

DEAR ABBY: My husband and I were married in 1958 by a Justice of the Peace because it was all we could afford at the time. The first two years we had two babies. Neither of us was grown up enough to accept the responsibilities of marriage, so it ended in divorce shortly after the second baby came. I went home to my parents. We have been divorced nearly three years and in that time we have both matured a bit. We've been seeing each other, and have decided to try marriage again. I want a church wedding with a white gown and veil, Abby. I know this is not done for second marriages, but I think my case is the exception because there has never been another man in my life except Joe. And this, to me, is really like our first marriage. Please say it's all right.

DEAR ABBY: Joe and I were married in 1958 by a Justice of the Peace because it was all we could afford at the time. The first two years we had two babies. Neither of us was grown up enough to accept the responsibilities of marriage, so it ended in divorce shortly after the second baby came. I went home to my parents. We have been divorced nearly three years and in that time we have both matured a bit. We've been seeing each other, and have decided to try marriage again. I want a church wedding with a white gown and veil, Abby. I know this is not done for second marriages, but I think my case is the exception because there has never been another man in my life except Joe. And this, to me, is really like our first marriage. Please say it's all right.

DEAR ABBY: Joe and I were married in 1958 by a Justice of the Peace because it was all we could afford at the time. The first two years we had two babies. Neither of us was grown up enough to accept the responsibilities of marriage, so it ended in divorce shortly after the second baby came. I went home to my parents. We have been divorced nearly three years and in that time we have both matured a bit. We've been seeing each other, and have decided to try marriage again. I want a church wedding with a white gown and veil, Abby. I know this is not done for second marriages, but I think my case is the exception because there has never been another man in my life except Joe. And this, to me, is really like our first marriage. Please say it's all right.

Say Dredges Kill Oysters

GALVESTON, Tex. (AP) — Oyster fishermen claim more and more oysters are dying daily at Todd's Dump in Galveston Bay, where shell dredges are operating.

Boat captains bringing in their daily haul to Seabrook Wednesday said as much as half their hauls are freshly-killed oysters, which must be thrown overboard.

Todd's Dump is one of the largest oyster reefs in Galveston Bay. It is from a quarter of a mile wide and about two miles long.

The oyster fishermen claim that Todd's Dump is, and has always been, the most productive reef in the bay. They report that two shell dredges are taking shell at the northeast end of the reef.

In that area, the fishermen claim, half of the oysters pulled in must be thrown back. At the other end of the reef where the dredges are working, the fishermen report that as much as one-third of the haul is freshly-killed oysters.

All fishermen say the mud and silt being pumped by the dredges is responsible for the

Soviets Down Iranian Aircraft

TEHRAN, Iran (AP)—Three Soviet jet fighters shot down an unarmed Iranian plane 18 miles inside Iranian territory after it accidentally strayed into the Soviet Union, official government reports said today.

Two aerial survey officials aboard the plane were killed and the pilot was seriously injured.

The plane, on a photographic mission in connection with a land redistribution project in northeast Iran, lost its way Wednesday and flew into Soviet territory, the reports said.

The reports said the Soviet jets ordered the plane to land on a Soviet air strip. The pilot, however, found he was short of fuel and flew back into Iranian territory, the reports added.

The three jets then reportedly followed the Iranian plane and fired on it near Darغاز, in Iran. The plane was reported to have caught fire and exploded in the air.

The plane was downed while Soviet President Leonid Brezhnev was in Iran on an official visit.

News of the incident spread through the Iranian Parliament today as Brezhnev addressed a joint session on improved Iranian-Soviet relations. The president said the Soviet government and people are greatly satisfied with the removal of the "darkness" from their relations with the Soviet government.

The downed plane was a twin-engine, piston-driven civilian craft belonging to the Iranian Air Taxi Co.

Named To Board

AUSTIN (AP) — Gov. John Connally appointed Dr. Clarence Kemp of Bryan today a member of the Board of Medical Examiners. He was named to an unexpired two-year term.

FAT OVERWEIGHT

Available to you without a doctor's prescription, our product called **Chlorine**. You must lose up to 7 days or your most lose up to 14 days or your most lose up to 21 days or your most lose up to 28 days or your most lose up to 35 days or your most lose up to 42 days or your most lose up to 49 days or your most lose up to 56 days or your most lose up to 63 days or your most lose up to 70 days or your most lose up to 77 days or your most lose up to 84 days or your most lose up to 91 days or your most lose up to 98 days or your most lose up to 105 days or your most lose up to 112 days or your most lose up to 119 days or your most lose up to 126 days or your most lose up to 133 days or your most lose up to 140 days or your most lose up to 147 days or your most lose up to 154 days or your most lose up to 161 days or your most lose up to 168 days or your most lose up to 175 days or your most lose up to 182 days or your most lose up to 189 days or your most lose up to 196 days or your most lose up to 203 days or your most lose up to 210 days or your most lose up to 217 days or your most lose up to 224 days or your most lose up to 231 days or your most lose up to 238 days or your most lose up to 245 days or your most lose up to 252 days or your most lose up to 259 days or your most lose up to 266 days or your most lose up to 273 days or your most lose up to 280 days or your most lose up to 287 days or your most lose up to 294 days or your most lose up to 301 days or your most lose up to 308 days or your most lose up to 315 days or your most lose up to 322 days or your most lose up to 329 days or your most lose up to 336 days or your most lose up to 343 days or your most lose up to 350 days or your most lose up to 357 days or your most lose up to 364 days or your most lose up to 371 days or your most lose up to 378 days or your most lose up to 385 days or your most lose up to 392 days or your most lose up to 399 days or your most lose up to 406 days or your most lose up to 413 days or your most lose up to 420 days or your most lose up to 427 days or your most lose up to 434 days or your most lose up to 441 days or your most lose up to 448 days or your most lose up to 455 days or your most lose up to 462 days or your most lose up to 469 days or your most lose up to 476 days or your most lose up to 483 days or your most lose up to 490 days or your most lose up to 497 days or your most lose up to 504 days or your most lose up to 511 days or your most lose up to 518 days or your most lose up to 525 days or your most lose up to 532 days or your most lose up to 539 days or your most lose up to 546 days or your most lose up to 553 days or your most lose up to 560 days or your most lose up to 567 days or your most lose up to 574 days or your most lose up to 581 days or your most lose up to 588 days or your most lose up to 595 days or your most lose up to 602 days or your most lose up to 609 days or your most lose up to 616 days or your most lose up to 623 days or your most lose up to 630 days or your most lose up to 637 days or your most lose up to 644 days or your most lose up to 651 days or your most lose up to 658 days or your most lose up to 665 days or your most lose up to 672 days or your most lose up to 679 days or your most lose up to 686 days or your most lose up to 693 days or your most lose up to 700 days or your most lose up to 707 days or your most lose up to 714 days or your most lose up to 721 days or your most lose up to 728 days or your most lose up to 735 days or your most lose up to 742 days or your most lose up to 749 days or your most lose up to 756 days or your most lose up to 763 days or your most lose up to 770 days or your most lose up to 777 days or your most lose up to 784 days or your most lose up to 791 days or your most lose up to 798 days or your most lose up to 805 days or your most lose up to 812 days or your most lose up to 819 days or your most lose up to 826 days or your most lose up to 833 days or your most lose up to 840 days or your most lose up to 847 days or your most lose up to 854 days or your most lose up to 861 days or your most lose up to 868 days or your most lose up to 875 days or your most lose up to 882 days or your most lose up to 889 days or your most lose up to 896 days or your most lose up to 903 days or your most lose up to 910 days or your most lose up to 917 days or your most lose up to 924 days or your most lose up to 931 days or your most lose up to 938 days or your most lose up to 945 days or your most lose up to 952 days or your most lose up to 959 days or your most lose up to 966 days or your most lose up to 973 days or your most lose up to 980 days or your most lose up to 987 days or your most lose up to 994 days or your most lose up to 1001 days or your most lose up to 1008 days or your most lose up to 1015 days or your most lose up to 1022 days or your most lose up to 1029 days or your most lose up to 1036 days or your most lose up to 1043 days or your most lose up to 1050 days or your most lose up to 1057 days or your most lose up to 1064 days or your most lose up to 1071 days or your most lose up to 1078 days or your most lose up to 1085 days or your most lose up to 1092 days or your most lose up to 1099 days or your most lose up to 1106 days or your most lose up to 1113 days or your most lose up to 1120 days or your most lose up to 1127 days or your most lose up to 1134 days or your most lose up to 1141 days or your most lose up to 1148 days or your most lose up to 1155 days or your most lose up to 1162 days or your most lose up to 1169 days or your most lose up to 1176 days or your most lose up to 1183 days or your most lose up to 1190 days or your most lose up to 1197 days or your most lose up to 1204 days or your most lose up to 1211 days or your most lose up to 1218 days or your most lose up to 1225 days or your most lose up to 1232 days or your most lose up to 1239 days or your most lose up to 1246 days or your most lose up to 1253 days or your most lose up to 1260 days or your most lose up to 1267 days or your most lose up to 1274 days or your most lose up to 1281 days or your most lose up to 1288 days or your most lose up to 1295 days or your most lose up to 1302 days or your most lose up to 1309 days or your most lose up to 1316 days or your most lose up to 1323 days or your most lose up to 1330 days or your most lose up to 1337 days or your most lose up to 1344 days or your most lose up to 1351 days or your most lose up to 1358 days or your most lose up to 1365 days or your most lose up to 1372 days or your most lose up to 1379 days or your most lose up to 1386 days or your most lose up to 1393 days or your most lose up to 1400 days or your most lose up to 1407 days or your most lose up to 1414 days or your most lose up to 1421 days or your most lose up to 1428 days or your most lose up to 1435 days or your most lose up to 1442 days or your most lose up to 1449 days or your most lose up to 1456 days or your most lose up to 1463 days or your most lose up to 1470 days or your most lose up to 1477 days or your most lose up to 1484 days or your most lose up to 1491 days or your most lose up to 1498 days or your most lose up to 1505 days or your most lose up to 1512 days or your most lose up to 1519 days or your most lose up to 1526 days or your most lose up to 1533 days or your most lose up to 1540 days or your most lose up to 1547 days or your most lose up to 1554 days or your most lose up to 1561 days or your most lose up to 1568 days or your most lose up to 1575 days or your most lose up to 1582 days or your most lose up to 1589 days or your most lose up to 1596 days or your most lose up to 1603 days or your most lose up to 1610 days or your most lose up to 1617 days or your most lose up to 1624 days or your most lose up to 1631 days or your most lose up to 1638 days or your most lose up to 1645 days or your most lose up to 1652 days or your most lose up to 1659 days or your most lose up to 1666 days or your most lose up to 1673 days or your most lose up to 1680 days or your most lose up to 1687 days or your most lose up to 1694 days or your most lose up to 1701 days or your most lose up to 1708 days or your most lose up to 1715 days or your most lose up to 1722 days or your most lose up to 1729 days or your most lose up to 1736 days or your most lose up to 1743 days or your most lose up to 1750 days or your most lose up to 1757 days or your most lose up to 1764 days or your most lose up to 1771 days or your most lose up to 1778 days or your most lose up to 1785 days or your most lose up to 1792 days or your most lose up to 1799 days or your most lose up to 1806 days or your most lose up to 1813 days or your most lose up to 1820 days or your most lose up to 1827 days or your most lose up to 1834 days or your most lose up to 1841 days or your most lose up to 1848 days or your most lose up to 1855 days or your most lose up to 1862 days or your most lose up to 1869 days or your most lose up to 1876 days or your most lose up to 1883 days or your most lose up to 1890 days or your most lose up to 1897 days or your most lose up to 1904 days or your most lose up to 1911 days or your most lose up to 1918 days or your most lose up to 1925 days or your most lose up to 1932 days or your most lose up to 1939 days or your most lose up to 1946 days or your most lose up to 1953 days or your most lose up to 1960 days or your most lose up to 1967 days or your most lose up to 1974 days or your most lose up to 1981 days or your most lose up to 1988 days or your most lose up to 1995 days or your most lose up to 2002 days or your most lose up to 2009 days or your most lose up to 2016 days or your most lose up to 2023 days or your most lose up to 2030 days or your most lose up to 2037 days or your most lose up to 2044 days or your most lose up to 2051 days or your most lose up to 2058 days or your most lose up to 2065 days or your most lose up to 2072 days or your most lose up to 2079 days or your most lose up to 2086 days or your most lose up to 2093 days or your most lose up to 2100 days or your most lose up to 2107 days or your most lose up to 2114 days or your most lose up to 2121 days or your most lose up to 2128 days or your most lose up to 2135 days or your most lose up to 2142 days or your most lose up to 2149 days or your most lose up to 2156 days or your most lose up to 2163 days or your most lose up to 2170 days or your most lose up to 2177 days or your most lose up to 2184 days or your most lose up to 2191 days or your most lose up to 2198 days or your most lose up to 2205 days or your most lose up to 2212 days or your most lose up to 2219 days or your most lose up to 2226 days or your most lose up to 2233 days or your most lose up to 2240 days or your most lose up to 2247 days or your most lose up to 2254 days or your most lose up to 2261 days or your most lose up to 2268 days or your most lose up to 2275 days or your most lose up to 2282 days or your most lose up to 2289 days or your most lose up to 2296 days or your most lose up to 2303 days or your most lose up to 2310 days or your most lose up to 2317 days or your most lose up to 2324 days or your most lose up to 2331 days or your most lose up to 2338 days or your most lose up to 2345 days or your most lose up to 2352 days or your most lose up to 2359 days or your most lose up to 2366 days or your most lose up to 2373 days or your most lose up to 2380 days or your most lose up to 2387 days or your most lose up to 2394 days or your most lose up to 2401 days or your most lose up to 2408 days or your most lose up to 2415 days or your most lose up to 2422 days or your most lose up to 2429 days or your most lose up to 2436 days or your most lose up to 2443 days or your most lose up to 2450 days or your most lose up to 2457 days or your most lose up to 2464 days or your most lose up to 2471 days or your most lose up to 2478 days or your most lose up to 2485 days or your most lose up to 2492 days or your most lose up to 2499 days or your most lose up to 2506 days or your most lose up to 2513 days or your most lose up to 2520 days or your most lose up to 2527 days or your most lose up to 2534 days or your most lose up to 2541 days or your most lose up to 2548 days or your most lose up to 2555 days or your most lose up to 2562 days or your most lose up to 2569 days or your most lose up to 2576 days or your most lose up to 2583 days or your most lose up to 2590 days or your most lose up to 2597 days or your most lose up to 2604 days or your most lose up to 2611 days or your most lose up to 2618 days or your most lose up to 2625 days or your most lose up to 2632 days or your most lose up to 2639 days or your most lose up to 2646 days or your most lose up to 2653 days or your most lose up to 2660 days or your most lose up to 2667 days or your most lose up to 2674 days or your most lose up to 2681 days or your most lose up to 2688 days or your most lose up to 2695 days or your most lose up to 2702 days or your most lose up to 2709 days or your most lose up to 2716 days or your most lose up to 2723 days or your most lose up to 2730 days or your most lose up to 2737 days or your most lose up to 2744 days or your most lose up to 2751 days or your most lose up to 2758 days or your most lose up to 2765 days or your most lose up to 2772 days or your most lose up to 2779 days or your most lose up to 2786 days or your most lose up to 2793 days or your most lose up to 2800 days or your most lose up to 2807 days or your most lose up to 2814 days or your most lose up to 2821 days or your most lose up to 2828 days or your most lose up to 2835 days or your most lose up to 2842 days or your most lose up to 2849 days or your most lose up to 2856 days or your most lose up to 2863 days or your most lose up to 2870 days or your most lose up to 2877 days or your most lose up to 2884 days or your most lose up to 2891 days or your most lose up to 2898 days or your most lose up to 2905 days or your most lose up to 2912 days or your most lose up to 2919 days or your most lose up to 2926 days or your most lose up to 2933 days or your most lose up to 2940 days or your most lose up to 2947 days or your most lose up to 2954 days or your most lose up to 2961 days or your most lose up to 2968 days or your most lose up to 2975 days or your most lose up to 2982 days or your most lose up to 2989 days or your most lose up to 2996 days or your most lose up to 3003 days or your most lose up to 3010 days or your most lose up to 3017 days or your most lose up to 3024 days or your most lose up to 3031 days or your most lose up to 3038 days or your most lose up to 3045 days or your most lose up to 3052 days or your most lose up to 3059 days or your most lose up to 3066 days or your most lose up to 3073 days or your most lose up to 3080 days or your most lose up to 3087 days or your most lose up to 3094 days or your most lose up to 3101 days or your most lose up to 3108 days or your most lose up to 3115 days or your most lose up to 3122 days or your most lose up to 3129 days or your most lose up to 3136 days or your most lose up to 3143 days or your most lose up to 3150 days or your most lose up to 3157 days or your most lose up to 3164 days or your most lose up to 3171 days or your most lose up to 3178 days or your most lose up to 3185 days or your most lose up to 3192 days or your most lose up to 3199 days or your most lose up to 3206 days or your most lose up to 3213 days or your most lose up to 3220 days or your most lose up to 3227 days or your most lose up to 3234 days or your most lose up to 3241 days or your most lose up to 3248 days or your most lose up to 3255 days or your most lose up to 3262 days or your most lose up to 3269 days or your most lose up to 3276 days or your most lose up to 3283 days or your most lose up to 3290 days or your most lose up to 3297 days or your most lose up to 3304 days or your most lose up to 3311 days or your most lose up to 3318 days or your most lose up to 3325 days or your most lose up to 3332 days or your most lose up to 3339 days or your most lose up to 3346 days or your most lose up to 3353 days or your most lose up to 3360 days or your most lose up to 3367 days or your most lose up to 3374 days or your most lose up to 3381 days or your most lose up to 3388 days or your most lose up to 3395 days or your most lose up to 3402 days or your most lose up to 3409 days or your most lose up to 3416 days or your most lose up to 3423 days or your most lose up to 3430 days or your most lose up to 3437 days or your most lose up to 3444 days or your most lose up to 3451 days or your most lose up to 3458 days or your most lose up to 3465 days or your most lose up to 3472 days or your most lose up to 3479 days or your most lose up to 3486 days or your most lose up to 3493 days or your most lose up to 3500 days or your most lose up to 3507 days or your most lose up to 3514 days or your most lose up to 3521 days or your most lose up to 3528 days or your most lose up to 3535 days or your most lose up to 3542 days or your most lose up to 3549 days or your most lose up to 3556 days or your most lose up to 3563 days or your most lose up to 3570 days or your most lose up to 3577 days or your most lose up to 3584 days or your most lose up to 3591 days or your most lose up to 3598 days or your most lose up to 3605 days or your most lose up to 3612 days or your most lose up to 3619 days or your most lose up to 3626 days or your most lose up to 3633 days or your most lose up to 3640 days or your most lose up to 3647 days or your most lose up to 3654 days or your most lose up to 3661 days or your most lose up to 3668 days or your most lose up to 3675 days or your most lose up to 3682 days or your most lose up to 3689 days or your most lose up to 3696 days or your most lose up to 3703 days or your most lose up to 3710 days or your most lose up to 3717 days or your most lose up to 3724 days or your most lose up to 3731 days or your most lose up to 3738 days or your most lose up to 3745 days or your most lose up to 3752 days or your most lose up to 3759 days or your most lose up to 3766 days or your most lose up to 3773 days or your most lose up to 3780 days or your most lose up to 3787 days or your most lose up to 3794 days or your most lose up to 3801 days or your most lose up to 3808 days or your most lose up to 3815 days or your most lose up to 3822 days or your most lose up to 3829 days or your most lose up to 3836 days or your most lose up to 3843 days or your most lose up to 3850 days or your most lose up to 3857 days or your most lose up to 3864 days or your most lose up to 3871 days or your most lose up to 3878 days or your most lose up to 3885 days or your most lose up to 3892 days or your most lose up to 3899 days or your most lose up to 3906 days or your most lose up to 3913 days or your most lose up to 3920 days or your most lose up to 3927 days or your most lose up to 3934 days or your most lose up to 3941 days or your most lose up to 3948 days or your most lose up to 3955 days or your most lose up to 3962 days or your most lose up to 3969 days or your most lose up to 3976 days or your most lose up to 3983 days or your most lose up to 3990 days or your most lose up to 3997 days or your most lose up to 4004 days or your most lose up to 4011 days or your most lose up to 4018 days or your most lose up to 4025 days or your most lose up to 4032 days or your most lose up to 4039 days or your most lose up to 4046 days or your most lose up to 4053 days or your most lose up to 4060 days or your most lose up to 4067 days or your most lose up to 4074 days or your most lose up to 4081 days or your most lose up to 4088 days or your most lose up to 4095 days or your most lose up to 4102 days or your most lose up to 4109 days or your most lose up to 4116 days or your most lose up to 4123 days or your most lose up to 4130 days or your most lose up to 4137 days or your most lose up to 4144 days or your most lose up to 4151 days or your most lose up to 4158 days or your most lose up to 4165 days or your most lose up to 4172 days or your most lose up to 4179 days or your most lose up to 4186 days or your most lose up to 4193 days or your most lose up to 4200 days or your most lose up to 4207 days or your most lose up to 4214 days or your most lose up to 4221 days or your most lose up to 4228 days or your most lose up to 4235 days or your most lose up to 4242 days or your most lose up to 4249 days or your most lose up to 4256 days or your most lose up to 4263 days or your most lose up to 4270 days or your most lose up to 4277 days or your most lose up to 4284 days or your most lose up to 4291 days or your most lose up to 4298 days or your most lose up to 4305 days or your most lose up to 4312 days or your most lose up to 4319 days or your most lose up to 4326 days or your most lose up to 4333 days or your most lose up to 4340 days or your most lose up to 4347 days or your most lose up to 4354 days or your most lose up to 4361 days or your most lose up to 4368 days or your most lose up to 4375 days or your most lose up to 4382 days or your most lose up to 4389 days or your most lose up to 4396 days or your most lose up to 4403 days or your most lose up to 4410 days or your most lose up to 4417 days or your most lose up to 4424 days or your most lose up to 4431 days or your most lose up to 4438 days or your most lose up to 4445 days or your most lose up to 4452 days or your most lose up to 4459 days or your most lose up to 4466 days or your most lose up to 4473 days or your most lose up to 4480 days or your most lose up to 4487 days or your most lose up to 4494 days or your most lose up to 4501 days or your most lose up to 4508 days or your most lose up to 4515 days or your most lose up to 4522 days or your most lose up to 4529 days or your most lose up to 4536 days or your most lose up to 4543 days or your most lose up to 4550 days or your most lose up to 4557 days or your most lose up to 4564 days or your most lose up to 4571 days or your most lose up to 4578 days or your most lose up to 4585 days or your most lose up to 4592 days or your most lose up to 4599 days or your most lose up to 4606 days or your most lose up to 4613 days or your most lose up to 4620 days or your most lose up to 4627 days or your most lose up to 4634 days or your most lose up to 4641 days or your most lose up to 4648 days or your most lose up to 4655 days or your most lose up to 4662 days or your most lose up to 4669 days or your most lose up to 4676 days or your most lose up to 4683 days or your most lose up to 4690 days or your most lose up to 4697 days or your most lose up to 4704 days or your most lose up to 4711 days or your most lose up to 4718 days or your most lose up to 4725 days or your most lose up to 4732 days or your most lose up to 4739 days or your most lose up to 4746 days or your most lose up to 4753 days or your most lose up to 4760 days or your most lose up to 4767 days or your most lose up to 4774 days or your most lose up to 4781 days or your most lose up to 4788 days or your most lose up to 4795 days or your most lose up to 4802 days or your most lose up to 4809 days or your most lose up to 4816 days or your most lose up to 4823 days or your most lose up to 4830 days or your most lose up to 4837 days or your most lose up to 4844 days or your most lose up to 4851 days or your most lose up to 4858 days or your most lose up to 4865 days or your most lose up to 4872 days or your most lose up to 4879 days or your most lose up to 4886 days or your most lose up to 4893 days or your most lose up to 4900 days or your most lose up to 4907 days or your most lose up to 4914 days or your most lose up to 4921 days or your most lose up to 4928 days or your most lose up to 4935 days or your most lose up to 4942 days or your most lose up to 4949 days or your most lose up to 4956 days or your most lose up to 4963 days or your most lose up to 4970 days or your most lose up to 4977 days or your most lose up to 4984 days or your most lose up to 4991 days or your most lose up to 4998 days or your most lose up to 5005 days or your most lose up to 5012 days or your most lose up to 5019 days or your most lose up to 5026 days or your most lose up to 5033 days or your most lose up to 5040 days or your most lose up to 5047 days or your most lose up to 5054 days or your most lose up to 5061 days or your most lose up to 5068 days or your most lose up to 5075 days or your most lose up to 5082 days or your most lose up to 5089 days or your most lose up to 5096 days or your most lose up to 5103 days or your most lose up to 5110 days or your most lose up to 5117 days or your most lose up to 5124 days or your most lose up to 5131 days or your most lose up to 5138 days or your most lose up to 5145 days or your most lose up to 5152 days or your

Pre-Thanksgiving Sale

Safeway's \$5.00 Special!
With the purchase of \$5.00 or more (excluding Cigarettes) you may purchase

SUGAR

Imperial, Great Western or Domino Granulated Sugar.

5.49¢

1-Lb. Bag

With the purchase of \$5.00 or more. (Excluding Cigarettes)

The Price Is Right at Safeway!

Spiced Peaches

Old Ivory Whole. 2 No. 2 1/2 Cans 45¢

Cranberry Sauce

Cape Cod Jellied. 2 No. 300 Cans 35¢

Pumpkin

American Beauty. Perfect for your Holiday pastry. 2 No. 303 Cans 23¢



Safeway Guarantee!
Every item at Safeway is sold on a Moneyback Guarantee. This means the full purchase price will be cheerfully refunded on any item that does not give you complete satisfaction. Shop Safeway with Confidence!

Kitchen Craft ALUMINUM FOIL
25 Ft. Roll 49¢

Shop Safeway and Save!
It takes less books to get more gifts with **GOLD BOND STAMPS!**

- Colgate Florient 7-Oz. Aerosol Can 59¢
- Soaky Bubble Bath 10-Oz. Plastic 69¢
- Cashmere Bouquet 2 Bath 29¢
- Palmolive Soap 2 Reg. Bars 21¢
- Vel Beauty Bar 2 Reg. Bars 39¢
- Choice Beauty Bar 2 Reg. Bars 39¢

DON'T FORGET...
Get More FREE Gold Bond Stamps
Be Sure And Redeem Coupons.
(Those You Received In The Mail)
FREE Gold Bond Stamps When You Present The Valuable Coupons At
Safeway Store, 1507 25th. St., Snyder, Texas

- Sanka Instant Coffee 8-Oz. Jar \$1.49
- Folger's Coffee 1-Lb. Can 69¢
- Lipton's Soup Mix 2-Ct. Pkg. 37¢
- Starkist Tuna 4 1/2-Oz. Can 29¢
- Nabisco Cookies 1-Lb. Pkg. 49¢

- Cake Mixes**
Mrs. Wright's, ★ Yellow 2 19-Oz. Pkg. 49¢
★ White ★ Spice
★ Devil's Food
- Pumpkin Pie**
O-Mince Pie. Full 39¢
Bel-air Frozen. Big 8" Family Size. 1 1/2-Lb. Pie
- Ice Cream**
Snow Star. 59¢
★ Vanilla ★ Strawberry 1/2-Gal. Ctn.
★ Chocolate ★ Neapolitan
- Cragmont Mix**
★ Collins Mix ★ Ginger Ale 2 Quart 25¢
★ Sparkling Water (Plus Deposit) Bottles
- Vanilla Extract**
Westag Imitation Extract. 8-Oz. Bottle 19¢
Adds sparkle to your baking.

- Fab Detergent All-Purpose Detergent. Large Box 32¢
Cuts grease faster.
- Vel Liquid Detergent For dishes and fine fabrics. 12-Oz. Plastic 31¢
- Vigo Dog Food Blue or Yellow Label. Dogs love it - it loves dogs. 1-Lb. Can 10¢

Safeway Gift Orders!
Let Santa's Helpers solve your gift problem, with Safeway's Gift Certificate. Give everyone on your list a sure-to-please gift... give a Safeway Gift Certificate. Available at all Safeway.

- ★ Ham Certificate
- ★ Turkey Certificate
- ★ \$5.00 Denomination
- ★ \$10.00 Denomination

- More Values!**
- Margarine Piedmont Patties. So convenient, and such a low, low price too. 3 1/2-Lb. Pkg. 25¢
 - Buttermilk Lucerne. Has that just churned flavor. Quart 19¢

SAFEGWAY FRESH EGGS!
Safeway country fresh, fine quality eggs are produced on local Texas farms. The farms are owned by your Texas neighbors. Safeway eggs are gathered regularly and frequently, are cooled to just the right temperature and humidity and rushed from ranch to your Safeway Store to assure freshness. Safeway eggs are guaranteed fresh.

The Price is Always Right on Safeway Produce!

Potatoes

White U.S. No. 1. For a hearty meal serve meat and potatoes, and the vegetable powerhouse. 10-Lb. Bag 39¢

- Pascal Celery** Large Stalk 9¢
U. S. No. 1. Fresh and Crisp. Delicious in Turkey Dressing.
- Cranberries** 1-Lb. Cello Bag 25¢
Fresh Ocean Spray. Tart, tempting flavor.
- Waldorf Dates** Pitted - 10-oz. Pkg. or Unpitted - 12-Oz. Pkg. Each 37¢
- Texas Yams** U. S. No. 1. 2 Lb. 29¢

Look Who's Winning in Safeway's "THE PRICE IS RIGHT" GAME

MRS. T. L. MARTIN
MRS. CLYDE NEWTON
MRS. HERMAN HAIGWOOD
JAMES ROGERS
MRS. DAVE HAYWOOD
EUNA BEHRINGER
MRS. JAMES STEWART

Rules
One FREE "The Price is Right" card per store visit to adults only - Purchases not favored. No need to pass through checkstand. Secure your FREE card at either end of checkstand or from any store employee other than in meat department.
DISBURSED CARDS WILL BE VOID
Safeway employees, their immediate families, and children under sixteen years of age are not eligible to participate in game. All winners (except Marchandise Winners) MUST Be Verified.



The Price is Right on Safeway Superb Meats!

Chuck Roast

U.S.D.A. Choice Grade Heavy Beef. "Naturally Aged." Nutritious and economical. 39¢
(Arm Roast U.S.D.A. Choice Grade Heavy Beef, Lb. 49¢) Lb.

Pork Roast

Fresh Whole Picnic Pork Roast is rich with flavor. Lb. 29¢

- Other Meat Values!**
- Canned Picnic 3 1-Lb. Can \$1.99
Armour's Star. Boneless. Ready-to-eat.
 - Pork Sausage 1-Lb. Roll 33¢
Wingate Pure Pork. Regular or Hot.

U.S.D.A. Inspected and Graded "A"

TURKEYS

Young Toms 16 to 24-Lb. Avg. 35¢ Lb.

Young Hens 10 Lbs. and up 39¢ Lb.

For Stuffing... OYSTERS

- West Coast Fresh Oysters 12-Oz. Can 69¢
- Gulf Coast Fresh Oysters 12-Oz. Can 95¢

Exclusively at Safeway!
The LIFE Book of Christmas
This perfectly-suited-to-Christmas-giving assembly of the very best in Christmas art, music, literature and entertainment is now available in the complete set. First time anywhere and exclusively at Safeway!
Vol. 1. "The Glory of Christmas."
Vol. 2. "The Pageantry of Christmas."
Vol. 3. "The Merriment of Christmas."
MI-FI Recording "The Life Treasury of Christmas Music."
INDIVIDUAL BOOK OR RECORD... \$1.49 EACH

- Ajax Cleanser The foaming cleanser. Bleaches as it cleans. 2 14-Oz. Cans 29¢
- Ajax Liquid Cleaner With Ammonia. The All-Purpose Cleaner. Bottle 34¢

Bel Air **ORANGE JUICE**
3 6-Oz. Cans 89¢

La Lani **CRUSHED PINEAPPLE**
3 No. 2 Cans 79¢

Your Safeway Gives Valuable GOLD BOND STAMPS
Your Nearest Redemption Center is White's Auto Store

- Bakery Values!**
- Jewish Rye 1-Lb. Loaf 19¢
Slyark Jewish Rye Bread. Regular 2 1/2". Serve with Cheese or cold cuts.
 - Danish Whirls Mrs. Wright's, 12s OF) Pkg. 37¢
 - Brown & Serve Rolls Twin. Slyark 12-Count. Pkg. 25¢
 - Stuffing Bread Mrs. Wright's. Perfect for dressing. 11 1/2-Lb. Loaf 25¢

Prices Effective Thurs., Fri. and Sat., Nov. 21, 22 and 23, in Snyder. We Reserve the Right to Limit Quantities. No Sales to Dealers.

SAFEGWAY

© Copyright 1963 Safeway Stores Incorporated.

Lid Is Off For Trades In Majors

NEW YORK (AP) — The official lid was off today for inter-league trading in baseball. General managers who have been feeling each other out on the telephone now are free to get down to serious business and swap for real.

The three-week inter-league period, during which big league clubs can trade without the necessity of getting waivers, opened at midnight Wednesday. Judging by the American League deal in which the Detroit Tigers traded Rocky Colavito for Jerry Lumpe and pitchers Dave Wickersham and Ed Rakow, that's apt to be plenty of action.

The New York Mets, who need plenty of everything, declared they are ready to deal. Veteran outfielder Frank Thomas, a right-handed pull hitter, is their chief stock in trade since they swapped right-hander pitcher Roger Craig to the Cards for outfielder George Altman.

Most of the wheeling and dealing is expected to occur during the minor and major league meetings at San Diego and Los Angeles early next month.

In the National League the names of Cincinnati's Vada Pinson, Joey Jay and Gordy Coleman; San Francisco's Orlando Cepeda and Milwaukee's Eddie Mathews have been mentioned in connection with trades.

The trade winds in the AL may be blowing around Leon Wagner of the Los Angeles Angels, Jackie Brandt and Jim Gentile of the Baltimore Orioles, La Clinton and pitcher Carl Wilson of the Boston Red Sox and pitching ace Jim Bunning of the Detroit Tigers.

Banquet Speaker

HERMLEIGH — Orville Paty of Roscoe, former Hermleigh School Superintendent, will be the speaker tonight at the annual football banquet for the 1963 Hermleigh team. The event will be held in the Hermleigh High School auditorium.

Bill Bell, offensive backfield coach at Syracuse, played high school and college football under his present boss, Coach Ben Schwartzwalder.

Chief Back Eddie Wilson Is Honored

By JACK HAND Associated Press Sports Writer
NEW YORK (AP) — Eddie Wilson, a bench warmer who never started a game until Hank Stram shook up his Kansas City club, was named The Associated Press's Player of the Week in the American Football League.

Wilson took over when Stram benched Len Dawson Sunday at Boston in a desperate attempt to shake the Chiefs out of their losing spin. They didn't lose, but they didn't win either, winning up with a 24-24 tie. It was the first time they hadn't lost in their last six games.

The 22-year-old former Arizona quarterback completed 20 of 32 passes for 258 yards and two touchdowns. He was not intercepted, and he did not punt under the Benetton Blitz from the Patriots.

Trailing late in the final period, Wilson engineered a 71-yard drive in nine plays that climaxed with a 26-yard touchdown pass to Curt McClinton.

2 Big Victories Logged In Loop

Two of the District 3-AAA teams picked up big victories last week that clinched a playoff spot for one and kept the other in contention for a share of the title. Snyder won over Colorado City 21-14, and the win put Snyder into the bi-district playoffs against the winner of the Graham-Wichita Falls Rider game set for this Friday night.

Sweetwater beat Lamesa 36-20. The Spartans have permitted an average of only 71.3 yards a game on the ground. They have the best record among teams that yielded a completely major schedule.

The Spartans also have been stingy with points — permitting only 6.3 points a game. They're fourth nationally in this category.

Mississippi is the team leader in defense against scoring, with a 3-point-a-game giving up, as well as overall defense. Texas Western has the best pass defense, giving up only 49.1 yards a game through the air.

Buffalo is tops at stopping enemy passes, with 21 interceptions, but Navy and Texas are close, with 18 apiece.

Memphis State, third in total defense, is the leader in defending against scoring passes, permitting its rivals to penetrate the end zone only once through the air. Buffalo is tops at stopping enemy passes, with 21 interceptions, but Navy and Texas are close, with 18 apiece.

At Fayetteville, Arkansas Coach Frank Broyles, already saddled with his worst November (and season) since he became mentor of the Razorbacks, prepared his charges for the invasion of Texas Tech. Broyles said he would start Fred Marshall at quarterback although Marshall suffered a shoulder separation in last week's game with SMU at Dallas. The Razorbacks reported a good practice session Wednesday but said it was not as enthusiastic as Tuesday's crisp session.

Coach J. T. King sent the Texas Tech Red Raiders through drills that stressed punting and passing under pressure on the outdoor practice field scale workouts for Arkansas. King indicated that David

TROPHY PRESENTED—Avon Rushing, left, and Bob Bell, center, receive a trophy and a picture of their Colts Pee Wee Football team from Herb Barnett, director of the Scurry County Boys Club. Members of the Colts team are lined up in the background. The Colts were awarded the sportsmanship trophy for the league this year. Some 90 boys in the league voted to determine the sportsmanship winner. The awards were presented at a meeting of the Colts and their parents.

SPORTS

The Snyder (Texas) Daily News, Thurs., Nov. 21, 1963 5

SWC Teams Work Hard

By The Associated Press
While front-running Texas and last-place Texas A&M took it easy in preparation for their Thanksgiving Day game, the rest of the Southwest Conference football outfits bore down in practice sessions this week.

Texas, a top-heavy favorite over the down-trodden Aggies, drilled an hour in sweat, clothes Wednesday after taking two days off from practice. Coach Darrell Royal sent the Horns through offensive paces and signal drills at Austin and said he believed his No. 1 ranked team would be in good shape for the Aggie challenge.

Coach Hank Foldberg used the scare technique with the Aggies, telling his charges about the great Texas team they were facing next week. But Foldberg ended his discourse by saying "we're encouraged about the future," something that Royal has been thinking about.

The second-place Baylor Bears, thirsting for a bowl game or a possible tie for the championship, stressed defense in their workouts at Waco as they prepared for Hayden Fry's vastly improved SMU Mustangs and their game at Waco.

Baylor Coach John Bridgers said two days of rain had put the Bears behind in their drills, but few fans believe a couple of lost practice sessions would hurt the chances of Doc Trull and his passes to such Baylor stars as Lawrence Elkins, Trull's favorite target.

Southern Methodist, meanwhile, concentrated on defense against the Trull aerial magic and also worked on pass offense and signal drills, with little contact work. Fry said doubtful starters for Saturday's game at Waco included linebackers David Wilson and Jim Sitten and center Hardy McAlester.

Coy pre-game statements came from both Rice's Jess Neely and Texas Christian's Abe Martin as they prepared their respective charges for Saturday's game at Fort Worth. Neely said he ordered lighter-than-usual workouts for the Owls to prevent further injuries. Martin, matching Neely's psychology, said he would use sophomore Kent Nix at quarterback at least part of the game against the Rice team.

In spite of Neely's cautious drills, Rice trainer Eddie Wojcicki said he believed all the Owls would be ready for the TCU test. There was no mention of injuries in the Horned Frog camp.

At Fayetteville, Arkansas Coach Frank Broyles, already saddled with his worst November (and season) since he became mentor of the Razorbacks, prepared his charges for the invasion of Texas Tech. Broyles said he would start Fred Marshall at quarterback although Marshall suffered a shoulder separation in last week's game with SMU at Dallas. The Razorbacks reported a good practice session Wednesday but said it was not as enthusiastic as Tuesday's crisp session.

Coach J. T. King sent the Texas Tech Red Raiders through drills that stressed punting and passing under pressure on the outdoor practice field scale workouts for Arkansas. King indicated that David

Michigan St. Is Near Top In Defense

By The Associated Press
If statistics are an accurate gauge, Illinois is going to have its problems in its game against Michigan State Saturday for the Big Ten title and Rose Bowl bid.

Figures compiled by the National Collegiate Athletic Bureau disclosed today that the Spartans have one of the best defensive teams in the country, particularly against teams that move the ball on the ground. So if the big machines can be trusted, the Illini will have a tough time moving the ball through the Michigan State defense.

Although Mississippi is the national leader in total defense, having yielded only an average of 138.4 yards a game, Michigan State is fourth in the list and ranks No. 1 in rushing defense. The Spartans have permitted an average of only 71.3 yards a game on the ground. They have the best record among teams that yielded a completely major schedule.

The Spartans also have been stingy with points — permitting only 6.3 points a game. They're fourth nationally in this category.

Mississippi is the team leader in defense against scoring, with a 3-point-a-game giving up, as well as overall defense. Texas Western has the best pass defense, giving up only 49.1 yards a game through the air.

Buffalo is tops at stopping enemy passes, with 21 interceptions, but Navy and Texas are close, with 18 apiece.

Memphis State, third in total defense, is the leader in defending against scoring passes, permitting its rivals to penetrate the end zone only once through the air. Buffalo is tops at stopping enemy passes, with 21 interceptions, but Navy and Texas are close, with 18 apiece.

At Fayetteville, Arkansas Coach Frank Broyles, already saddled with his worst November (and season) since he became mentor of the Razorbacks, prepared his charges for the invasion of Texas Tech. Broyles said he would start Fred Marshall at quarterback although Marshall suffered a shoulder separation in last week's game with SMU at Dallas. The Razorbacks reported a good practice session Wednesday but said it was not as enthusiastic as Tuesday's crisp session.

Coach J. T. King sent the Texas Tech Red Raiders through drills that stressed punting and passing under pressure on the outdoor practice field scale workouts for Arkansas. King indicated that David

King indicated that David

John Barnum Is Ready To Defend His Cajun Crown

By BEN THOMAS Associated Press Sports Writer
LAFAYETTE, La. (AP) — Some of the hungry youngsters on golf's play-or-earn circuit — many may get another lesson this weekend from one of the oldest swingers on the tour. John Barnum, the 46-year-old, 52-year-old teaching pro from Grand Rapids, Mich., who plays

on the PGA circuit in the winter served notice Wednesday he's ready to win the \$20,000 Cajun Classic golf tourney for the second time. When Barnum won it last year he became the oldest winner of an official PGA tourney. His 272 total for 72 holes was 16 strokes under par and set a competitive record for four rounds on the rolling, 6,700-yard

Oakbourne Country Club layout. Barnum carded a 67 in Wednesday's pro-am warm-up for the 1963 Cajun Classic, which is the final PGA event this year. "He'll join world champion Jack Nicklaus and 138 other pros today as the four-day tournament gets under way. Nicklaus, one of the youngest

players on the tour and also one of the richest, will be seeking to become the second golfer to ever earn over \$100,000 in a single year.

Arnold Palmer, who's not playing here, has already passed the 100 grand mark this year in setting a record on the tour.

Nicklaus, winner of the Masters last spring, needs at least a fourth place finish here to jump into the six figure bracket.

Nicklaus fired a three-under par 69 in the pro-am, which was won by Luca Barbato and Gardner Dickinson Jr., with 66.

SPORTSCUTLIE

C. L. Avants, Lake View's super-charged speedster, will be trying for a record here Friday night, and unless the Tigers are more successful than most other foes of the Chiefs, he's likely to get it.

Avants needs 128 yards to set a new rushing standard for his school in a single season. He came out of last week's game against Brownfield with 119 yards. The Lake View record for ground gaining in a single season is 137 yards, set by Mike Sanders two years ago. Sanders, the lad who led the Chiefs to the district title, is well-remembered here.

Avants has averaged a little over 133 yards per game this season. However, his yardage has been more spectacular against two of the district's toughest defensive clubs. Against Brownfield last week, Avants carried the ball 25 times for a total of 165 yards. In the Chief-Lamesa ball game two weeks earlier, he carried 26 times for 231 yards, including a 99-yard touchdown run.

Everyone who has learned the name Scott Appleton by now. But, right quick on the spur of the moment can you name Texas University's other first string tackle? His name is Staley Faulkner, and reports are that the Longhorn coaching staff figure he has had a big hand in lifting the Texas team to the No. 1 spot in the nation. Until this year, he was Appleton's understudy, a perfect spot for anonymity, but got a chance to move in as a regular on the other side of the line when Ken Ferguson had a back operation.

The publicity mills at Texas A&M and Texas University sound more like automobile advertising agencies than football drum beaters these days. Each is singing the praises of a halfback named Ford as they prepare for their Thanksgiving Day engagement. Tommy Ford of Texas is the leading runner in the Southwest Conference with 825 yards on 139 carries, and Budgie Ford of A&M is his team's top ground gainer with 217 yards on 58 tries.

Somebody mentioned that Denver City had run up a 90-7 score over Spur, whereupon the talk turned to topeavy football scores. Wayne Foot-

rone, Travis 9th grade coach, and Eddie Logan, Lamar 7th pilot, said they had read about the most one-sided game in college football history. Georgia Tech defeated Columbia, 220-0. It was way back there when Georgia Tech had one of the few organized collegiate teams, while Columbia was fielding a team of fraternity boys. Georgia Tech didn't make a first down — every play they ran resulted in a score. Columbia's best play of the game lost five yards.

Two Negro seniors now performing for high schools are generally believed to have influenced the University of Texas in dropping color barriers in intercollegiate athletics, although it appeared long ago that it was only a matter of time before the move would be made. The two Negro schoolboy stars expected to attract the first contingent of Longhorn recruiters are Warren McVea of San Antonio Brackenridge and A. Z. Drones of San Angelo Central. Drones, a tackle, weighs 227. McVea, who last year led Brackenridge to the Class 4A state title, is a 170-pound wizard who specializes in touchdowns. A college scout through here recently told local coaches that McVea is regarded as the best high school football player in the country this year, and they've heard about him from coast to coast and from Canada to Mexico.

PRICES GOOD THURSDAY, FRIDAY, SATURDAY & SUNDAY WE GIVE GOLD BOND STAMPS!

Swift Butterball Turkeys 4 to 14 Lb.	43c	Ocean Spray, Jelly Cranberry SAUCE	2 Cans 29c
Hormel Cure #1, Ready To Eat Boneless Hams	Lb. 98c	Johnson, 26 Oz. Frozen Pumpkin Or Mince Pies	Lb. 59c
Regular, Ready To Eat HAMS 1/2 Or Whole	Lb. 55c	Russet POTATOES 10 Lb. Sack	29c
Choice Chuck ROAST	Lb. 49c	Delicious APPLES	Lb. 15c
Fresh Pork Tenderloin	Lb. 79c	CRISCO	3 Lbs. 69c
Fresh Market Made, Pork SAUSAGE	Lb. 39c	Folger's Coffee	Lb. 65c
U.S. Choice Sirloin STEAK	Lb. 89c	McBeth's Ungraded EGGS	Doz. 37c
Libby's PUMPKIN No. 300 Can	10c	Ellis Shelled PECANS 10 Oz.	89c

Open 7 a.m. to 9 p.m. — 7 Days a Week

Early's Grocery & Market
WE DON'T SELL ALL THE MEAT IN TOWN JUST THE BEST MEAT IN TOWN.
1900 12th Street Phone HU 3-3903

From Old Line Companies!
Hugh Boren & Son
INSURANCE AGENCY
N. W. Cor. 54 Phone FR 3-2525

KIRBY VACUUM CLEANERS SALES & SERVICE
McDOW HOME APPLIANCE
2407 Ave. R Ph. HI 3-4111

Guaranteed refunded satisfaction.
99c
Meats!
99c
99c
14-Oz. 29¢
15-Oz. 34¢
MPs
7

ALL A MATTER OF DIRECTION



End Of Aid For Cambodia Puts Reds 'Foot In Door'

By JAMES MARLOW
AP News Analyst
WASHINGTON (AP) — For this country South Viet Nam has been a cork in a bottle, preventing communism from spilling into all the Southeast Asian peninsula. The cork just got tweaked.

Cambodia, next door to Viet Nam, has canceled all American help. It will almost certainly now depend more on Red China, giving communism a foot in the door even wider than Viet Nam.

Cambodia is in the very heart of the peninsula, bordered by Viet Nam, Laos and Thailand. Prince Norodom Sihanouk, the Cambodian leader, has said he is convinced the Communists already have won the battle for Viet Nam and feels his own neutral country will eventually fall to communism.

His attitude and his refusal to accept any more American guns or money are a searing reminder the United States is living on borrowed time in Southeast Asia, and perhaps all Asia.

The Red Chinese, trying to catch up with the 20th century, and still lacking nuclear weapons, have so far avoided a showdown with this country in Southeast Asia by not intervening directly.

It can only be a matter of time before the belligerent Chinese feel strong enough to try to drive American power and influence out of Asia altogether.

Meanwhile it can use what is obvious and comes handy, like subversion, various pressures and even local Communist guerrillas to avoid a direct confrontation with this country.

For the United States, years for which he has had full time to try to achieve effective anti-Communist resistance in embattled Viet Nam, the years ahead seem sure to hold more critical, dismal, unhappy days.

Just this week President Kennedy in Florida said the American states must be ready to go to the aid of any Latin-American government requesting help against a Communist takeover.

When this country feels so strongly about preventing communist penetration of this hemisphere, it is not unnatural the Red Chinese feel the same way about Western penetration or interference in Asia.

What can the United States do? What it is doing: trying to bolster anti-Communist or neutral Asian regimes to prevent a Red takeover.

What hope of success can it have in the long run? Probably only this: that perhaps the Red Chinese Communist government will somehow collapse or that, over the intervening years, it can be induced to let its neighbors work out their destiny in their own way.

At the moment both seem like forlorn hopes.

You're No Youngster If You Recall:

By HAL BOYLE
NEW YORK (AP) — You've blown out a lot of candles on a lot of birthday cakes if you can look back and remember when—

It was a compliment to be called square. Wives tried to look their best at breakfast, so husbands would go off to work with a pleasant mental picture of them.

It was widely predicted that the end of prohibition would wipe out gangsterism in America because there would be no other major source of profits for criminal mobs.

Only bankers and big businessmen wrote checks. Ordinary folks paid their bills in cash or stood in line at the post office to get a money order. The streets of Manhattan were alive with the tinkling music of hurdy gurdies, and the monkey doffed his hat if you gave him a nickel.

It was romantic to snuggle with your best girl on the top floor of a double-deck Fifth Avenue bus. These lumbering vehicles also were the delight of sightseers, but the Irish conductors hated to climb the stairs for the fares.

Every workman's lunch pail carried a live roast, sandwich and a slab of homemade apple pie.

A juvenile delinquent was a boy who spent all his coins looking at the girly machines in the penny arcade—and then bragged to all the other neighborhood kids how much he knew about women.

If you said a bad word, your mother promptly washed your mouth out with soap instead of worrying about whether she should take you to a psychiatrist.

Saloons had separate entrances for the ladies, who always drank in a back room. It took more than your first pair of long pants to prove you were a real man. You also had to be able to light a kitchen match on the seat of them.

JOE PALOOKA



GRANDMA



KERRY DRAKE



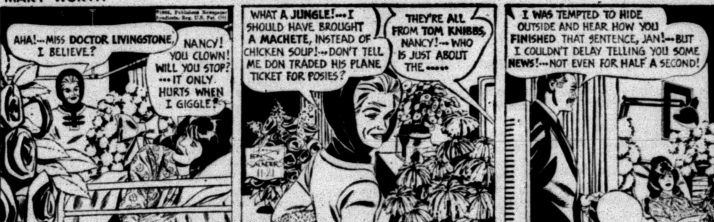
DIXIE DUGAN



REX MORGAN



MARY WORTH



OPINION-WISE



DENNIS THE MENACE

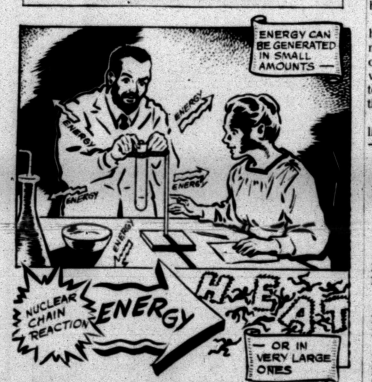


FERDINAND



"THERE'S A NEW KID IN KINDERGARTEN WITH BIG BLACK EYES... BUT HE STARTED IT!"

Junior Editors Quiz on RADIOACTIVITY



QUESTION: Why is radioactive energy so hot?

ANSWER: When, in 1896, Madame Curie and her husband produced the new element radium by refining pitchblende, they found it glowed in the dark and also gave off continual heat. This was because radium is radioactive: the tiny atoms of which it is composed slowly break down by sending out particles from the inner core or nucleus. Three kinds of particles, alpha particles, gamma and beta rays, are emitted. As this goes on, energy is released. Energy is called the ability to do work: it is something possessed by all matter in one form or another. One of the forms of energy is heat, or the movement of the molecules in material reached by energy. Radium is warm because the molecules of its own material are being stirred around by the energy being liberated. But this heat is not liberated in very large amounts.

What our questioner is probably referring to is the heat released through atomic fission and fusion. This heat results from the same thing as in radioactivity—the release of energy which sets the molecules of matter moving—but there is a huge amount of this energy and consequently of heat.

FOR YOU TO DO: Things like atomic fusion may seem frightening. But as the sun streams in your window, realize that light and warmth are coming to you because the sun is slowly burning by this same process. Scientists tell us there's so much fuel left in the sun there's no worry whatever about its burning out.

(William Saivey, of Norristown, Pa., wins today's grand prize of a 20-volume set of the World Book Encyclopedia for this question. Mail yours on a postcard to Junior Editors in care of this newspaper, and you may win a set too.)

CROSSWORD PUZZLE

- | | |
|-----------------------------------|---------------------------|
| ACROSS | 25. Detet |
| 1. Tax | 28. Roman bronze |
| 6. Woman's tide | 29. Sly look |
| 11. Father | 30. Ap- proaches |
| 12. Neither mineral nor vegetable | 34. Villainous laugh |
| 14. Poetic muse | 35. Freezer |
| 15. Jap. garment | 36. Apple seed |
| 16. Acne | 37. Soldier's overcoat |
| 17. Rain hard | 39. Amal- gamate |
| 19. Hat piece | 41. Doubletree |
| 20. Loud talker | 42. Style of architecture |
| 22. Star leet | 43. Happy places |
| 23. Whirlwinds in the Atlantic | 44. Curl |
| 24. Rest | |



SOLUTION OF YESTERDAY'S PUZZLE

DOWN
1. Small baraccudas
2. Old card game
3. Day's march
4. Seine
5. Horse of a certain gait
6. Creator
7. Bib. confused
8. Confused
9. Without ethical quality
10. Tomorrow: Sp.
11. Rubber
12. Dawn goddess
13. Niche
14. 22 Sp. dollar
15. Rookie
16. Swifly
17. Depart one's self
18. Amassed
19. High card
20. Maple
21. Thorn
22. Blue-footed booby
23. Glassen: humorous
24. Bolivian
25. Indian
26. Unstated
27. Correlative of neither

National Guard 'Weekend Warriors' May Train In Transoceanic Flights

By FRED S. HOFFMAN
AP Military Writer
WASHINGTON (AP)—Air National Guard "weekend warrior" pilots are spreading their wings in an ambitious new program pointing to eventual transoceanic training flights.
This will enhance the Air Guard's role as a combat-ready backup for the regular U.S. Air Force.

Starting Friday, Air Guard pilots from Washington, D.C., Missouri, Oklahoma, Delaware and Massachusetts will undertake missions over the Atlantic to Puerto Rico and Bermuda. The following weekend, Guard jets will fly to Puerto Rico from Colorado and Mississippi. This is made possible by the Air Guard's air-refueling capability, something it acquired after

the 1961 Berlin crisis and has retained through practice since then. The Air Guard uses KC-10 tanker planes, hand-me-downs from the Air Force, which now owns ultra modern KC-135 jet tankers.
The KC-10's lack modern radar-gauged equipment for the delicate job of rendezvousing with other planes high in the air. The

hookup of jets to the refueling is done by "eyeball" judgment in the Air Guard. When the Guard gets the latest equipment for rendezvousing, it will be possible to undertake cross-ocean flights, and the Guard hopes eventually to send units overseas on training exercises. The long-range flights this weekend and next will be re-

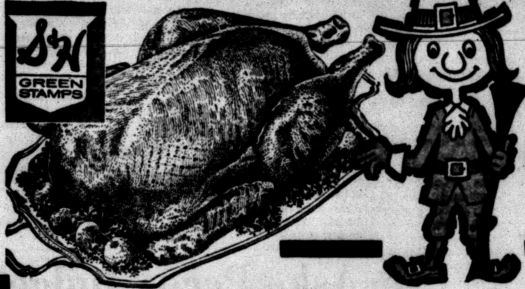
fueled by the Air Guard's lone tanker wing, the 120th. This air-refueling wing totals 24 planes and includes units based in Chicago, Milwaukee, and at the Clinton County Airport in Ohio. In a three-day drill starting Friday, 12 F100 Supersabre jet fighters from the 113th Tactical Fighter Wing, District of Columbia Air National Guard, and 6 F100s from the 131st Tactical Fighter Group, St. Louis, will fly to Ramey Air Force Base in Puerto Rico.
They will refuel twice—over Myrtle Beach, S.C., and near Miami, Fla.—during the 4-hour and 20-minute operation. At the same time, planes of

the 166th Air Transport Group, Wilmington, Del., and the 137th Air Transport Wing, Oklahoma City, Okla., will head for Ramey from their home bases. Meanwhile, 21 F86H Sabrejet fighters from the 104th Tactical Fighter Group, Westfield, Mass., and the 102nd Tactical Fighter Group, Boston, will fly to Kindley Air Base in Bermuda. They will not have to refuel on this two-hour trip.
These exercises will end Sunday when all planes will return home. On Nov. 23, 12 F100s from the 140th Tactical Fighter Wing, Denver, Colo., and 8 RF-4B Phantom II fighters from the 186th Tactical

Reconnaissance Group at Meridian, Miss., will fly to Roosevelt Roads, Puerto Rico.
Lovers Fill Parliament
KUALA LUMPUR, Malaysia (AP)—Malaysia's gleaming new Parliament Building has become a deluxe lovers' lane complete with police protection. The \$5.5-million structure and its softly lighted gardens are drawing hundreds of couples who formerly courted along lonely roads where there have been repeated cases of bandit-

The Snyder (Texas) Daily News, Thurs., Nov. 21, 1968 7
Four policemen are on duty around the clock to protect the building.
Member Texas Optometric Association
Dr. Blum and Nesbit
OPTOMETRISTS
1825 25th St.
Phone MI 3-3992

THE BEST THANKSGIVING MEATS ARE IN THE PIGGLY WIGGLY MARKETS!
LOWEST PRICES ALWAYS



WE INVITE YOU TO COMPARE

TOM TURKEYS Clary's, U.S.D.A. Grade A Fresh Frosted 18 Lbs. Up, Lb. **35¢**
HEN TURKEYS Clary's, U.S.D.A. Grade A, Fresh Frosted, 12 to 16 Lb. Avg. Lb. **39¢**
HAMS Armour Star Smoked Cure Shank Portion Lb. **39¢**

Armour Star, Aged, Heavy Beef, "Value-Trim" Rib Roast Lb. **69¢**
Armour Star, Aged, Heavy Beef, "Value-Trim" Sirloin Steak Lb. **89¢**
Hormel's Dairy Brand, Fully Cooked, Half or Whole Cooked Hams Lb. **59¢**
Armour Star, Boneless, Fully Cooked, 8 Lb. Can Canned Hams **3.98**
Armour Star, 4 1/2 to 8 Pound Ducklings **DUCKS** Lb. **49¢**
Booth's, Fresh, West Coast 12 Oz. Can **OYSTERS** **69¢**
Wilson's, Certified Genuine, Roasters, 3 To 4 Lb. Average **CHICKENS** **49¢**
Town & Country, For Your Giblet Gravy 9 Oz. Pkg. **CHICKEN LIVERS** **39¢**
Town & Country, For Your Giblet Gravy Chicken Gizzards Lb. Pkg. **39¢**
Rodeo, Lean, Northern Pork, Loin End, 3 To 5 Lb. Average **PORK ROAST** Lb. **49¢**

FRESHEST FROZEN FOODS!

Dinners Enchilada Ea. **39¢**
Banquet, Blueberry and Boysenberry, 14 Oz. Pkg. **Fruit Pies** 43¢
Ore Ida, 2 Lb. Pkg. **Tater Tots** 39¢
Parkerhouse, 24 Ct. Pkg. **HOLSUM ROLLS** **19¢**
Blossom Brand PEAS 2 10 Oz. Pkgs. **25¢**
Tressweet, 2 - 6 Oz. Cans **Orange Juice** 55¢

Samsonite FOLDING TABLE
PLASTIC SURFACE
TUBULAR STEEL LEGS
Nationally Advertised!
\$3.99
WITH \$25 WORTH OF REGISTER TAPES
Reg. \$6.95 Value

Marshall Strained **CRANBERRY SAUCE**
2 35¢
No. 300 Can

Biscuits Holsum Buttermilk Or Sweetmilk 4 Cans **29¢**
Butter Bonnelle - Sweet Cream Quarters Lb. Pkg. **69¢**
Peaches Hunt's, Spiced, in Heavy Syrup No. 2 1/2 Can **25¢**

GARDEN FRESH PRODUCE!
Celery Calif. Green 2 Large Stalks **25¢**
Clipped Tops, Purple Top Turnips Lb. **15¢**
California, Large Size **Pomegranates** .. **10¢**
APPLES Rome Beauty The All Purpose Apple, Lb. **10¢**

Stuffing Kellogg's, Grouettes Herb 7 Oz. Pkg. **29¢**
Yams Trappay's, Fancy Whole, in Heavy Syrup 3 Sct. Cans **29¢**
Eggs Ideal Grade A Medium Dozen **45¢**
Dates Betty Baker Pitted 8 Oz. Pkg. **23¢**
Food Cheese Chef Delect **2 Lb. Box** **53¢**

These Values Good in Snyder November 21, 22, 23, 24 & 25, 1968. We Reserve the Right To Limit Quantities

Carnation Evaporated **MILK**
3 39¢
1 Gall. Cans

Velecia Facial **TISSUE**
400 Count Box **12 1/2¢**

HEALTH & BEAUTY AIDS!
Hand Lotion Woodbury Reg. \$1.00, 1/2 Price Label, 4c Tax **37¢**
Tan Cream, Reg. 89c Retail Large Size Plus 6c Tax **Deodorant** **57¢**
Micrin, 11c Off Label, Reg. 87c Retail Large Size **Mouth Wash** **69¢**
Plain Or Mint, Reg. 63c Retail, 12 Oz. Bottle **Milk Of Magnesia** **55¢**
Sunshine, 16 Oz. Pkg. **Hydrox Cookies** **49¢**
Aurora, Assorted Colors 2 Roll Pkg. **Toilet Tissue** **27¢**
Sioux Bee, Extracted **HONEY** 16 Oz. Jar **39¢**
Sugarine Diet Sweetener 4 Oz. Bottle **59¢**
OLEO Elgin Colored 1 Lb. Pkg. **12 1/2¢**
Golden Cream Style Or Whole Kernel Corn Darling .. 2 Cans **33¢**
Jack & Beanstalk, Cut No. 303 Can **Green Beans** **23¢**
Liberty **Fruits & Peels** 16 Oz. Pkg. **69¢**
Liberty **Glace Cherries** 8 Oz. Pkg. **69¢**
Tuna Lucky Strike, Chunk No. 7c Can **25¢**



Underwoods DEVILED HAM 4 1/2 Oz. Can **39¢**
Woody's **Cooking Sauce** 12 Oz. Bottle **65¢**

CRISCO All Vegetable Shortening 4c Off Label 3 Lb. Can **69¢**

American Beauty Instant Potatoes 8 Oz. Pkg. **25¢**
None Such, 9 Oz. Pkg. **Mince Meat** **25¢**

Good N Rich, Devil's Food White, Yellow, Spiced and Marble **CAKE MIX** 19 Oz. Pkg. **25¢**

LAY-AWAY NOW FOR CHRISTMAS

Lowest Prices Greatest Variety always at **Piggly Wiggly**

FURR'S
Super
Markets

Let's Talk Turkey!

**PLUMP!
PAMPERED!
PEDIGREED!**

**U.S.D.A.
INSPECTED**

**CREAM
CHEESE**

Food Club
3 Oz. Pkg.

2 for 25c



**TURKEYS
TURKEYS**

Hens, Top Frost
Grade A, 12 to 14 Lb.
Average, Lb.

39c

Toms, Top Frost
Grade A, 16 To 18 Lb.
And Up, Lb.

35c

Top Frost
DUCKS 4-4 Lb. Avg.
Lb. **45c**

U.S.D.A. Inspected Farm Pac Blue Ribbon
Or Graded
Choice, Lb. **49c**

Boston Butt
PORK ROAST Lb. **39c**

Food Club Sweetmilk Or Buttermilk
BISCUITS Can **3 For 19c**

**FRUIT
COCKTAIL**

Food Club
No. 300 Can

19c

Marshmallow
CREME

Kraft
7 Oz. **19c**

Gold Medal
FLOUR

5 Lb.
Bag **49c**

**PUMPKIN
COCA COLA**

Food Club
No. 303
Can **10c**

59c

We Reserve The Right To Limit Quantities

APPLES **19c**

Washington
Red Delicious
Lb.

TANGELOS Florida, New
Crop, Lb. **19c**

BELL PEPPERS Calif., Fresh
Lb. **15c**



Sweet Potatoes East Texas
New Crop
Lb. **12 1/2c**

HAMS

Swift Premium

3 Lb.
Can **3.69**

COFFEE

1 Lb.
Can **65c**

Shortening
BAKE-RITE 3 Lb.
Can **49c**

Hershey's
DAINTIES 6 Oz.
Pkg. **23c**

Food Club
FLOUR 5 Lb. Bag **39c**

SUGAR C & H Or
Imperial
5 Lb. Bag **59c**

CORN Kounty Kist
Whole Kernel
12 Oz.
Can **25c**

EGGS Furr's, U.S.D.A.
Graded, Med.
Doz. **39c**

Spencer
OLIVES 7 1/2 Oz. Jar **39c**

Supreme Malted Milk Chip
10 1/2 Oz. **39c**

Supreme First Lady
Cookies 14 Oz. **49c**

Green Giant, Kitchen Sliced, No.
303 Can

BEANS 2 for **43c**

Betty Crocker Gingerbread
MIX 14 Oz. Pkg. **31c**

Dynashine
POLISH Paste **19c**

Food Club Instant
8 Qt. **63c**

Hi Vi
Dog Food 300
Can **10c**

**Cranberry
SAUCE**

Food Club, In Heavy Syrup

No. 303 Can

235c

SAVE

With Valuable
Frontier Stamps

KRAFT DRESSINGS

Herb, Roka Your Choice

Blue Cheese

Catalina

Cole Slaw **39c**

Enjoy Furr's Fresh Frozen Food Selections

GENERAL MERCHANDISE BUYS - BEST AT FURR'S!

Fruit Pies

Top Frost, Fresh Frozen
Baby Limas 10 Oz. Pkg. **3 for 59c**

Morton Fresh Frozen, Macaroni
CHEESE 8 Oz. Pkg. **19c**

Morton, Fresh Frozen, Danish Pecan Twist
COFFEE CAKE 10 Oz. Pkg. **59c**

Morton Fresh Frozen
DONUTS 10 Oz. Pkg. **39c**

Morton Fresh Frozen
HONEY BUNS 9 Oz. Pkg. **29c**

Rosedale, Mince &
Pumpkin Or
Morton, Peach,
Apple

MORTON FROZEN VEGETABLES

OKRA & TOMATOES, 10 Oz. **YOUR CHOICE**

GREEN PEAS & Butter Sauce, 9 Oz. Pkg. **Each**

GREEN PEAS & Celery, 10 Oz. Pkg. **29c**

CORN, With Butter Sauce 9 Oz. Pkg.

29c Hair Spray

Just Wonderful
14 Oz. Can **63c**

MOUTH WASH

Oraltone
Pint **19c**

COLD TABLETS

Clinicin
Reg. 1.50 **1.19**

Hair Dressing

Boyer's H-A
4 Oz. **59c**

VAPORUB

Vick's, 8 Oz.
Jar, 49c Value **33c**



Furr's
Price **98c**

NOTICE

THIS SATURDAY IS THE LAST DAY TO PURCHASE THE
FAMOUS RAND McNALLY HOME AND SCHOOL ATLAS AT
FURR'S - COMPLETE YOUR SET TODAY!

SPIC & SPAN

Cleaner **31c**

COMET

Cleanser
14 Oz. **2 for 33c**

BREEZE

Large
Size **33c**

Condensed All

Giant
Size **75c**

VIM

Detergent
Reg. Size **41c**

FURR'S
SUPER MARKETS

Snyder FFA Host To 11 Other Clubs

The 12 towns of the Lone Wolf District of the Future Farmers of America were represented here Wednesday as members of the various chapters competed in several phases of FFA activity.

Teams were in Snyder representing Colorado City, Sweetwater, Loraine, Divide, Westbrook, Highland, Roscoe, Ira, Fluvanna, Hermleigh, Blackwell and Snyder.

Chapter Conducting, which is a leadership training phase of FFA work, was divided into junior and senior divisions. Judges of the senior division were T. C. Blankenship of Hamilton Future Farmer work. Highest and Cecil Allen of Abilene Junior Chapter Conducting was judged by Jimmy Laurie of Roby and Albert Mayberry of Trent.



LORAIN WINNERS—Pictured following their sweep of the Farm Skills demonstrations at the Lone Wolf District FFA competitions here yesterday are these Loraine FFA chapter members. From left they are

Kenneth Brame, Ralph Smith and Danny Tartt, who competed in the senior division, and Keith Hackfeld, Randy Britton and Donnie Phillips who competed in the junior division.

Selling Course Scheduled Here

Americans currently are spending at a rate of over \$1.3 billion per business day. These are consumer dollars going for oil, gas, TV repair, lawn mowers, clothes, insurance and other goods and services. Minimum projections indicate that this figure will increase by \$120 million this year.

"Are we getting our share?" These were the words of spokesmen for sponsors of a special training program for Snyder businessmen scheduled Dec. 2-5.



MARY FRANCES BOWDEN

Mrs. Mary Frances Bowden from the University of Texas will conduct a sales training course titled "Selling Techniques," under sponsorship of the Snyder Chamber of Commerce, the Retail Merchants Association and the Distributive Education Program.

The training is made available by the Distributive Education Program of the University and the Texas Education Agency. It will help people who sell do a better job.

During the four-day program, discussions will be held on how to secure and hold the customer's attention, how to satisfy needs through the use of proper job knowledge, and how to help the customer make the proper buying decision.

Mrs. Bowden has had broad experience in personnel administration, training in retail and service fields and in retail merchandising.

Prayers To Continue

NORTH BROOKFIELD, Mass. (AP)—The chairman of the North Brookfield School Committee says he expects daily Bible reading and prayers to continue in the community's public schools pending the outcome of court action initiated by the Massachusetts attorney general.

Att. Gen. Edward W. Brooke Wednesday asked the State Supreme Court to order discontinuance of the required religious exercises. The court ordered the school committee to answer by Dec. 4.

Hermleigh Favorites

HERMLEIGH—Hermleigh High School students have selected school favorites for this year.

Voted "Best all-around" were Nancy Campbell and Paul Kinzey. "Most popular" are Kelly Mayes and Joe Vignon, while Carolyn Roemisch is "Miss HHS" and Jerry Chitsey is "Mr. HHS."

Class favorites are Joyce Collier and Donnie Kubala, freshmen; Harold Royce Mason and Charlotte Ince, sophomores; Marilyn Darden and Curtis Brown, juniors, and Betty Ethereedge and Pete Garcia, seniors.

BIRTHS

Mr. and Mrs. Donnie Potts, 131 Milburn Street, are the parents of a 7 lb. 8 oz. baby girl born at 1:19 p.m. Nov. 20 at Cogdell Hospital.

CAREFREE DRIVING FOR LESS THAN 1c

A Day With MIC's Towing And Road Service Protection Covers Emergency Service When You Need It... Call Us Today!



LAMB INSURANCE AGENCY

In The Same Building With Lamb Chevro. Bill Byers - Manager Off. HI 3-5456 Res. HI 3-3998

HOSPITAL NOTES

COGDELL HOSPITAL

ADMISSIONS: Linda Karen Potts, 131 Milburn; Harley Alfred Smith, III, 3008 Thirtieth; Luther Seymour Blythe, 2415 Avenue S; Mary Verne Parks, Rt. 3; J. O. Sheid, Jr., 3303, Avenue A; Bobbie Jean Sharp, Hobbs, N. M.; Willie D. Smith, 4504 Denison; Jan Martin, 1104 Twentieth; Joe Sentell, 2406 Thirtieth; Gertrude Velma Ball, Fluvanna; Robert Edwin Keyes, Odessa; Sandra Cantrell, 1802 Fifteenth; Billie Frances Ledbetter, Rt. 3.

DISMISSALS: Alva Lawrence; Robert Cromwell; Bonnie Lyons; Mrs. Joe Sanchez and baby boy; Henry Wayne Clark.

SHOP BARROW'S FOR TOP TRADE IN ALLOWANCE For Your Old Furniture

Over \$500 Donated To Dystrophy

The drive for contributions to the Muscular Dystrophy Association of America Tuesday night netted \$503.88. It was announced today.

The drive was conducted by the Snyder Fire Department auxiliary with the assistance of the VFW auxiliary. Fire departments in a number of counties conduct the drives during November which has been designated as Muscular Dystrophy Month.

The local organization is placing coin containers at a num-

ber of business firms in Snyder. They will be collected at the end of the month.

Anyone who wishes to donate to the cause and has not been contacted, has been asked to bring their donation to any fire station, or to call HI 3-6215, and a volunteer will come by.

Mrs. Kenneth Wood, president of the Snyder Firemen's Auxiliary, expressed thanks on behalf of the workers for the donations made during the Tuesday night drive.

SCAT... Cable TV Service 5 CHANNELS OF TV Programming From NBC, CBS, ABC Snyder Community Antenna Television "If You Like TV You'll Love SCAT"

WAYNE BOREN CLYDE HALL

Snyder Insurance Agency

COMPLETE INSURANCE SERVICE

P. O. Box 530
1820 26th. Street
Snyder, Texas
Phone HI 3-3163

Spanish moss gets its sustenance largely from the air and uses trees, telephone poles and fences as an anchor.

The average cash earnings of factory workers were \$4,282 yearly and of farmers \$2,136, according to the 1960 census.

Only 60 per cent of the nation's Negro population lives in the South. In 1860, 92 per cent lived in Southern states.

Michigan's largest industry is auto making, followed by forest and the tourist and resort industry.

PENNEY'S ALWAYS FIRST QUALITY



Special! Tough Denim Soft Lined Boxer Jeans

Sizes 4, 6 & 8 **\$1**

Save now on soft 100% cotton flannel lined, Sanforized* boxer jeans. Reinforced at points of strain for rugged, long wear. Buy now. Save now!



Special! Flannel Shirts In Bright, Bold Plaids

Sizes 6-18 **\$1**

Warm 'n soft flannel sport shirts at sensational savings... regular collar style with plastic buttons. 100% woven cotton for longer, comfortable wear. Patterns and colors galore. Stock up now and save!

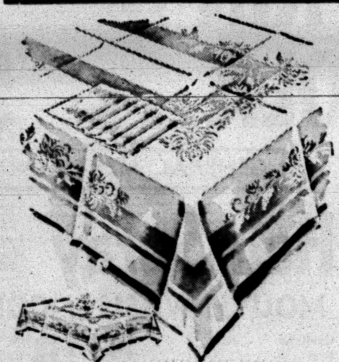


Warmth Without Weight Nylon Quilt Ski Parkas

Sizes 12-20 **\$12.95**

All-nylon taffeta ski parkas with 4 oz. Net Dacron* polyester fiber fill "88" for warmth. Bulk-free with stylish concealed roll-away hood and zipper pockets. Electric blue, black or red. Sizes 6 To 10 **9.95**

6 reasons why IT PAYS TO CHRISTMAS SHOP EARLY AT PENNEY'S



Damask Dinner Sets For Holiday Entertaining!

Special **\$2** 6 Napkins 50 x 66" Cloth

Exciting savings in rich rayon and cotton damask that machine washes* with ease!

- 50 x 50" napkins \$1 • 70" rd., 6 napkins \$4
- 50 x 76", 6 napkins \$3 • 60 x 90", 8 napkins \$5
- 60x90" oval, 8 napkins or 60x100", 12 napkins \$6

* luxewarm water



Holiday Decorating Zing! Color-Rich Accent Rugs!

27" x 48" **4.44**

Special savings on the liveliest accents a room can have! Scatter them boldly... they'll bring new color dimensions to your rooms! Thick, luxurious viscose rayon pile in lots of vibrant colors! No-slip latex back!



Easy-Care Sport Shirts Prints! Plaids! Solids!

Sizes S-M-L **2 for \$5**

University buttondown Edwardian prints are trimly tapered. Dan River cotton gingham plaids show smartly blended fall dark colors. Dacron* polyester 'n cotton solid are wash 'n wear. Touch up ironing!

AND REMEMBER... YOU CAN CHARGE IT AT PENNEY'S