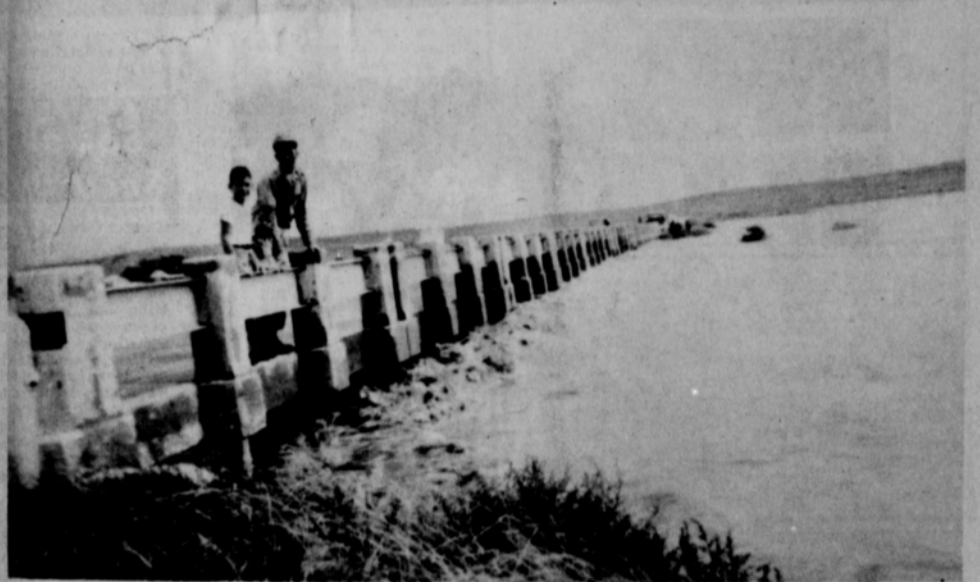




Rainfall in the Spearman-Gruver area amounted to about 1 inch, as of 9 p. m. Wednesday morning. The rain came in two separate showers, .40 earlier in the week, and more than .60 Tuesday night, and early Wednesday. The rain brought some severe weather in the Stinnett area late Tuesday evening. Pictured are some scenes of the Palo Duro Bridge between Spearman and Gruver, when the water actually had gone over the top of the bridge at one time. This



is one of the many flood pictures that engineers look at when they study the feasibility of a Palo Duro dam for Hansford County.

Also pictured, to the right, is a flood scene, just below the bridge. Much of the land has already been washed away, and members of the local dam board, are making progress in building a dam on the Palo Duro. If it continues to rain all day today (Wednesday) the creek is expected to rise by Thursday night.



'76 America's 200th - '76 Hansford County's 100th



The Spearman Reporter

VOLUME 67, NO. 28

THE SPEARMAN REPORTER, SPEARMAN, TEXAS 79081

THURSDAY, MAY 27, 1976

Commissioners court has busy meeting here Monday!

The Hansford County commissioners court was in session from 10 a. m., till late Monday afternoon, with all of the commissioners and Judge Lee present.

Commissioner Renner read the minutes of the May 10 meeting, and the minutes were approved by the commissioners.

Immediately after the minutes were read, Judge Lee and the commissioners heard from Cecil Biggers and Chalmers Porter, who presented a petition to the court. The petition called for the Hansford Hospital Board to be elected, instead of appointed by the court. The court thanked the men for presenting their petitions, and stated that they would check the petition to see that every-

thing was legal, and that as many as 250 of the signatures qualified to call the election. If the petition is approved, the first election for Hospital Board members will be held in April of next year.

The board accepted the resignation of Charles E. Reid from the Hansford Hospital Board, and Mr. Porter asked the board to name him as Reid's replacement. He explained to the board why he had taken this position. The court thanked Mr. Porter for his presence, and stated that they had several men that they might appoint in Mr. Reid's place, but this will not be determined until 10 a. m., Friday morning, when the court will convene in special session to appoint a

board member. In other action at the court, the board approved payment of claims, received treasurer's report, and approved installation of buried cable by General Telephone Company.

The court considered purchasing of Air Packs for fire trucks, especially for the Morse and Gruver areas, as Spearman already has an air-pack.

The commissioners were given oaths as members of the Board of Equalization for the county.

Editor Billy Miller was in attendance of the Monday meeting, and stated that this group of men is to be commended for their actions concerning the county business, and the hospital situation. Miller stated that the court was

extremely courteous to the two men who had petitions to present to the court, as they worked them in ahead of all of the other agenda work for the day. The court made those present feel that they were actually appreciated for their interest in our community and county government.

The court is also to be commended for the work done recently at the Spearman (Old Hansford) Cemetery. The roads have been filled in with caliche, roll packed, and in beautiful shape.

This memorial day will be a historical event for everyone who visits the cemetery at Old Hansford, and we urge all of you to thank the court for this fine road work done, just in time for Memorial Day.

Hackley Memorial Tourney Nets \$3800

The Dr. D. E. Hackley Memorial Golf Tournament held Sunday at the Hansford Golf Club added some \$3800 for the Dr. Hackley Memorial Trust Fund, which has been set up to promote the well being of handicapped children in Hansford County. Dr. Hackley, who passed away early this year, was instrumental in securing treatment for handicapped children in Spearman.

The co-sponsors of the tournament plan an annual tournament to support the Memorial Trust Fund which is a perpetual fund and will be governed by representatives of the Hansford Golf Club, Spearman and Gruver Banks, Spearman and Gruver schools, medical staff and Ministerial Alliances.

Co-sponsors were Janet and Kenneth Irvin, Dorothy and Junior Lusby, Peggy and Carl Archer, Frances and Gene Cudd, James K. Gross, Charlene and Roy Bulls, Hazel and Clay Gibner, Elizabeth and Richard Holton, Mary and J. L. Brock, Glenda and Kent Guthrie, Johanne and Ralph Blodgett, Alta and Pete Fisher, Toni and

Bobby Archer, Cathy and Pat Patterson and Effie Hackley.

Terry Kendrick of Perryton turned in a three-under par 68 to capture championship honors in the first annual Dr. D. E. Hackley Memorial Golf Tournament.

Kendrick was followed by Martin Hendrick of Perryton who had a 70 in the tourney which attracted 91 competitors.

Brothers James and Tony Salinas of Borger finished third and fourth. James had an even-par 71 and Tony fired a 72.

Borger's Bill Clemmons won the first flight with a 72. He was followed by R. L. Eads of Borger, 73, and Ronnie Wood of Perryton, 74.

In the second flight, Don Smith of Spearman and David Pletcher of Perryton tied for first at 75. They were followed by Eddy Clemmons of Spearman, 78.

H. L. Curlee's 78 won the third flight. Curlee of Gruver nipped Duane Wells of Dumas by a stroke. Spearman's Jim Morley was third at 81.

In the fourth flight, Butch Baker of Spearman and Mark Neff of Spearman tied with 87's. Jerry Denton of Perryton had an 88 for third.



Gruver's Lion Club president Horace Curlee pauses for a moment Monday A.M., to accept plaudits for his low 78 which put him at the top of the Third Flight at the First Annual Dr. D. E. Hackley Memorial Golf Tournament, Sunday. Duane Wells of Dumas was a close second with 79 and Spearman's Jim Morley, 3rd with 81. Almost \$3,800 was raised for the Hansford County Handicapped Children's Fund through the tourney sponsor. There were 91 competitors from throughout the Panhandle participating in the Tournament held at the Hansford Country Club.

City Council Meeting

Minutes of the city council meeting of May 10, 1976 and the special city council meeting of May 17, 1976 were read and approved at the meeting Monday night at city hall.

The council approved the Spearman Volunteer Fire Dept. Officer elections. Those elected are Chief, Chuck Rigdon; first assistant chief, Charles Littlejohn; 2nd Assistant chief, Ronnie Bullard; Captain Company 1, Robert Cochran; Captain Company 2, Ronnie Antalek; Captain Company 3, Steve Slater; secretary, Denise Hutton; and treasurer, Ralph Bynum. Terms of the officers are 3 years chief, 2 years for the assistant chiefs and secretary, and one year terms for the captains and treasurers.

Approval was given to the Comprehensive Planning Map presented by the planning and zoning commission.

The contract with Perdue, Brandon, Blair, Shiever & Fielder for collection of delinquent taxes was renewed.

The recent Railroad Commission hearing was discussed. All testimony in the hearing has been completed, but the city does not expect a ruling in the matter until sometime in August. The City of Spearman along with other cities in the Panhandle served by High Plains Gas Co. are protesting the rate increase High Plains Gas Co. is requesting. City officials stated that the testimony in this hearing was much more complete than in the previous one. The Railroad Commission granted the gas company

a rate increase at that time for Spearman which went into effect about 4 months ago.

In the city manager's report on systems, taxes and cash position, he stated that work was underway on some gas leaks on Oklahoma Street at the present time. The cash position of the City was discussed, revealing that last week they had paid off the note held by the First State Bank for some \$30,000.

Other discussion centered around the renovating of the dog pound, enlarging the facility and creating better sanitary conditions. The renovating was begun last year but had been stopped due to lack of funds.

Council members are making a study as to the feasibility of possibly combining the city police department with the county sheriff's department. Some cities and counties in the Panhandle have merged their law enforcement departments. They are Wellington, Quanah and Canadian. These programs are being researched by the city & county officials. It is estimated that the cost of merging the departments would be considerably less than having separate departments as is now the case.

These communities that have established this type of merger have two county commissioners, 2 city commissioners and 1 other citizen as a board to oversee the departments.

No action was taken on the matter until further study is made.

Discussion was held on the appointment of another person to the Board of Equalization. At the present time, members of that board are Jimmy Shieldknight, and Roy Bulls. There must be three people on this board, according to law.

Arena Parking Place On Sale

Parking spaces at the Oscar Archer Arena are now on sale for the Hansford Roundup Days, \$10 per space. These spaces are sold on a first come, first serve basis.

If you are interested you may contact the Chamber of Commerce office. Deadline is June 2.

Proposed Water & Gas Revenue Bond Issue Breakdown

The city has called a bond election for June 8, 1976 in the high school auditorium.

If the proposed water and gas revenue bond issue passes it will provide the City of Spearman with the required amount of monies to meet the 40% matching funds required for our E.D.A. grant in the amount of \$214,600, along with \$322,000 provided by E.D.A. It will also provide the \$50,000 that will go to cathodic protection and painting of existing water storage units, along with \$10,400 to pay for the fiscal agents fees.

This makes the total \$597,000 for both water and gas system reconditioning and upgrading. Breakdown of the proposals are divided, the

water proposal calls for \$81,000 to match E.D.A. Funds, \$50,000 cathodic protection and painting, and \$4,400 for fiscal agents' fees for a total of \$135,400. The gas proposal calls for \$133,000 for required E.D.A. matching funds and \$6,000 for the Fiscal Agent's Fees for a total of \$139,000. Combined total for the two issues is \$274,400.

If the issue passes, the citizens of Spearman would be paying for 46% of the project that would put our gas system in shape to meet the D.O.T. requirements and cut unaccountable gas losses to a minimum, and also provide for either an additional well and storage or an additional two water wells for the city. The proposals in the bond

issue call for bonds to be secured by and payable from a lien on and pledge of the Net Revenues of the City's Water, Gas and Sewer systems.

The upgrading of our gas and water system is of utmost importance to the City and these repairs are going to have to be made, in fact are long overdue, and if the voters approve these proposals in the election they will actually only be paying 46% of the cost with the E.D.A. picking up the tab for the rest of the expenditure.

SPECIAL MEETING

Thursday, May 27, 1976. Time 7:30 p. m.

This meeting called in accordance of the Constitution and By-laws of Hansford Hospital.

- Purpose:
 1. Act on Phillipino Nunes Resignation
 2. Employ Auditor
 3. Inventory drugs and supplies.
 4. Discuss employment of temporary and permanent administrator.

The commissioners court will have a special meeting at 10 a. m., Friday to appoint a board member to the Hansford Hospital board.



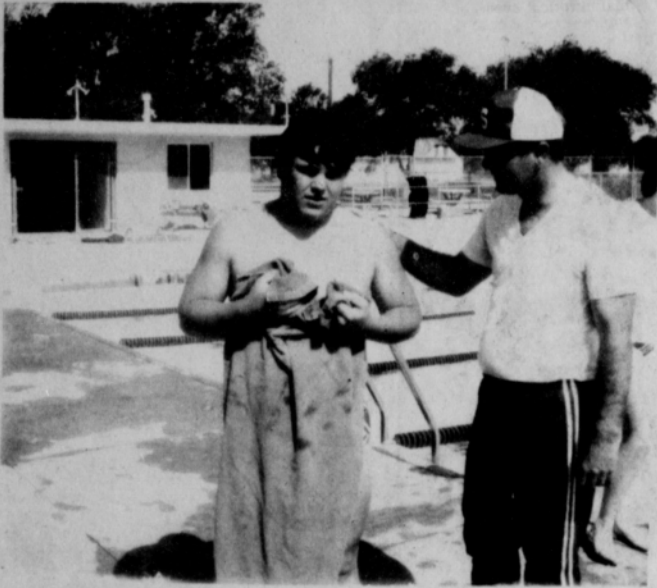
Jimmie Wells, and Oscar Donnell enjoyed the Dr. Hackley tournament, played here Sunday.

**B
a**

**SPEARMAN
659-2514
GRUVER
733-2981**

**J. L. BROCK
AGENCY**

**It's
HAIL Insurance
Time**



Jed Miesner and Coach Don Wisdorfer as he get out of the pool after finishing his 200 lengths during the swim-a-thon Saturday. Jed swam his without stopping. It took him 1:40 min.

ton Street Campus. Complete and detailed schedules of course offerings may be picked up there.

Social Security

On May 13, in Federal District Court at Texarkana, Arkansas, Dr. John H. Gordon, a podiatrist in Texarkana was convicted on 14 counts of filing fraudulent Medicare claims. Gordon was indicted when an alert beneficiary informed Medicare Investigators that he was billing Medicare for services he had not performed. No sentencing date has been set on these charges.

In discussing the case, Howard L. Weatherly, manager of the Pampa Social Security Office stated, "Medicare dollars are valuable and we who are involved in administering the Medicare program want to protect the money contributed to the program by taxpayers and beneficiaries." "When Medicare pays for services rendered to Medicare beneficiaries, it sends them an accounting of the payments made," Weatherly said. "The beneficiaries should examine the form carefully to make sure only correct payments were made." Weatherly stated, "and any person who finds an irregularity in billing, charges, or practices should contact the local social security office."

The Pampa Social Security Office is located at 1541 North Hobart Street. The phone number is 669-3381.

AC Summer Registration Set

Regular registration for the first summer term June 1 at Amarillo College will be conducted in the College Union Building on the Washington Street Campus.

Summers beginning with I through N will report from 9 to 9:30 a.m.; O through S from 9:30 to 10 a.m.; T through Z from 10 to 10:30 a.m.; A through D from 10:30 to 11 a.m.; and E through H from 11 to 11:30 a.m.

Late registrants may report between 11:30 a.m.

and noon, while evening college students may enroll between 7 and 8 p.m.

Various courses in Bible, biology, chemistry, economics, English, government, history, home economics, mathematics, men's and women's physical education, microbiology, psychology, reading, social sciences, sociology and speech will be offered by the College of Arts and Sciences.

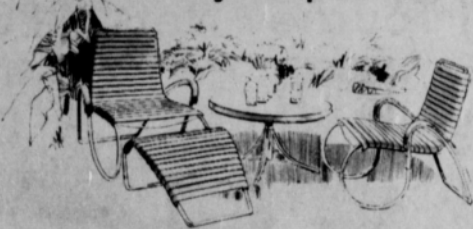
The school of Biomedical Arts and Sciences will offer programs in child care as-

stant, dental assisting and hygiene, medical laboratory, medical office assistant, medical records, mental health, nursing, radiologic technology and respiratory therapy.

The School of Technology will offer courses in accounting, business administration, data processing, electronics, law enforcement, mid-management and office and business occupations.

Late registration and schedule changes may be accomplished until June 4 at the registrar's office in the Administration Building on the Washing-

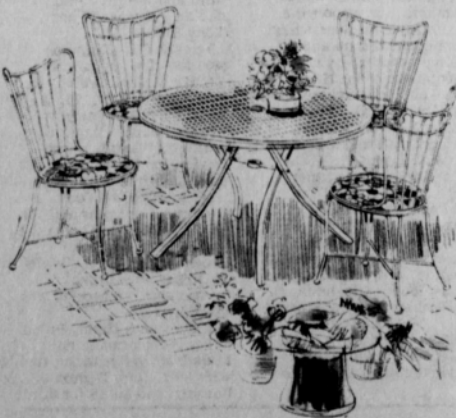
Beautiful seating on your patio



Due to late arrival of our outdoor furniture, we have reduced the price immediately by

20%

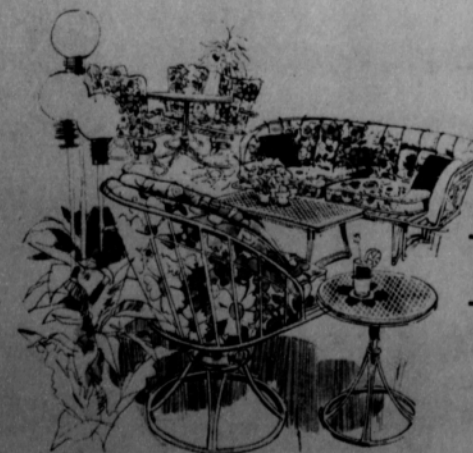
Just arrived our famous brand Homecrest Patio Furniture



Beedy Furniture

Plains Shopping Center

659-3044



THIS REPLICA of Tyler House built by Mr. W.C. Price of Borger is one of the exhibits that may be seen at the Hansford County Stationmaster's House Museum, 30 S. Townsend. The Museum will be dedicated at 2 p.m. on June 4 in conjunction with the Hansford County Roundup.

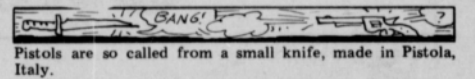
Museum To Be Dedicated June 5

Hansford County's Stationmaster's House Museum, located at 30 South Townsend in Spearman will be dedicated at 2:00 Saturday afternoon, June 5th in conjunction with the Hansford County Roundup. Everyone is invited to attend.

One of the exhibits in the museum will be a model of the Tyler House built by Mr. W. C. Price of Borger. The brick and shingles of the replica

were made from those of the original structure once located between Gruber and Morse. Mr. Price will be at the Stationmaster's House Museum on June 5th to talk to visitors.

Anyone wishing to donate materials of historical interest from Hansford County or money for the county museum can contact Linda Crawford, the museum director by phoning 659-3008 in Spearman or 733-2740 in Gruber.



Pistols are so called from a small knife, made in Pistola, Italy.



The Roman Appian Way is in better condition than some modern roads, yet it is more than 2,000 years old!

OPEN 24 HOURS

ALLSUP'S CONVENIENCE STORES

ALLSUP'S PICNIC HEADQUARTERS OPEN ALL DAY MEMORIAL DAY!

PRICES GOOD THURS. THRU SAT. MAY 27-29, 1976

FAVORITE BORDEN'S BUYS

- BORDEN'S SHERBET 1/2 GAL. \$1 19 CTR.
- BORDEN'S HI PRO MILK 1/2 GAL. 79 CTR.
- BORDEN'S ASSORTED FRUIT DRINKS 1/2 GAL. 43 JUG
- REGULAR SLICED BOLOGNA 1 LB. 59 C
- SHURFRESH BACON 1 LB. \$1 29 LB.
- SHURFRESH BOLOGNA 12 OZ. 69 C

HOT COOKED FOODS SPECIAL!

FRESH OSCAR MAYER SMOKED MILD LINKS 3 FOR \$1 00

HOT COOKED FOODS

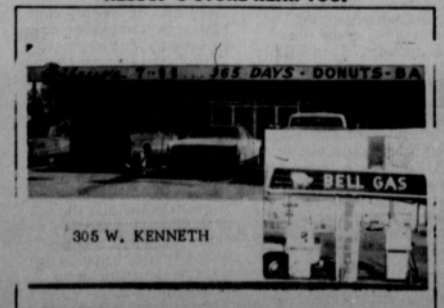
- BBQ CHICKEN
- HOT LINKS
- BURRITOS
- GERMAN SAUSAGE
- BBQ RIBS
- MILD LINKS
- CORN DOGS
- BULK BBQ BEEF
- BBQ BEEF SANDWICHES

CONVENIENT BAGGED PARTY ICE 10 LB. BAG 65 C

FRITO LAY SPECIALS

- REGULAR 8 1/2" SIZE PACKAGE PRONTOS FRITO LAY NOW ONLY 59 C
- REGULAR 7 1/2" SIZE PACKAGE CORN CHIPS FRITO LAY NOW ONLY 69 C
- REGULAR 7 1/2" SIZE PACKAGE CHEETOS FRITO LAY NOW ONLY 69 C

SHOP THE FRIENDLY, CONVENIENT ALLSUP'S STORE NEAR YOU!



305 W. KENNETH

305 W. KENNETH

WANTED

Boxwell Bros.
Funeral Home and Flower Shop
Day-Night Phone 659-2212
Spearman, Texas

O. J. ROOK
PHONE 274-4968
PAINTING - INDUSTRIAL RESIDENTIAL
FREE ESTIMATES
ACOUSTICAL CEILINGS
CARS AND TRUCKS

YOUR LOCAL USED COW DEALER: Spearman BI-Products. Seven days a week dead stock removal. Please call as soon as possible 659-3544 8-rtm

Hansford Lodge
1040
A.F.&A.M.
2 & 4 Monday
8:00 P.M.

Dan Faries, W.M.
Cecil Batton, Secy.

SERVICES

Hansford County Planned Parenthood
26 S. Hanev
659-2483
Spearman
Mon. - Fri.
8 A.M. to 12 noon
30s-rtm

GENERAL FIX-IT SHOP
Minor repair, will fix faucets, hot water heater, roto rooter, floor furnaces, wall heaters.
LAWTON GUTHRIE
659-2487

Custom fertilizing and any type of farming.
W. B. Bames
659-3493

Alcoholics Anonymous Meeting every Tuesday, 8:00 P.M. at the Girl Scout Little House, 22 S. Endicott, Call 3394 or 2762 for information.
4 S-rtm

KIRBY SALES & SERVICE of Spearman, 912 S. Bemice, 659-2797 30-rtm

GRADER, Dozier, and Drag line work. Call Lee Roy Mitchell, Gruver, 733-2384.
28-rtm

Rawleigh Products-Janie Kunselman, 659-2631 25-8tc

Custom Farming. Reasonable rates. Call Jack McWhirter, Phone 659-2249 or 659-3308.
13s-rtm

For Real Estate or Machinery Auctions, see or call Weldon Bransgrove, Representative for Triangle Auctioneers. "Go With The Pros" - Phone 806-435-2524.

HAY HAULING
Trucks or Station Wagon
Call 935-4842
935-3163

GENERAL PLUMBING
Phone 733-2912
Gruver
Steve Phillips
"Licensed"
10 yrs. Experience

Emie's Plumbing
659-3781-Spearman
733-2938-Gruver
19s-rtm
For Sand Free Domestic Wells call W. V. Block, 935-4088, Dumas 24-rtm

CUSTOM FRAMING, any size. Over 100 samples, moulding, also mats cut.
C&B STUDIO
205 Main
Spearman
23-rtm

SEWING MACHINE REPAIR. All makes & Models. 408 E. Kenneth 659-2415. Electrolux & Necchi.
21-rtm

PORTABLE DISC ROLLING call
DAVID MCINTYRE
659-3782
118 1/2 N. James
Spearman, Texas 79081
19-rtm

Trees pruned. Old or big trees removed. Rotary tilling. 806-733-2877.
26-6tc
Horseshoeing. Bailey Patterson 659-2144.
28-8tc

Miscellaneous For Sale

RUMMAGE SALE: one door north of Southwestern Public Service on Main Street in Gruver, 9:00 A.M. to 6:00 P.M., May 27, 28, 29.
27-3tc

FOR SALE: 3 registered collie puppies. 659-2105, 118 North James.
28-2tc

FOR SALE: 2 wheel trailer 659-2658
27s-2tp

FOR SALE: 71 Suzuki 500 excellent condition. \$350. 659-2463, anytime
27s-6tc

FOR SALE: Avacado electric stove, in good condition \$50. 659-2463 anytime.
27s-6tc

"Grapefruit Pill" with Diadax plan more convenient than grapefruits - Eat satisfying meals and lose weight. Spearman Drug.
27s-6tp

FOR SALE: Antique dresser, brown mahogany, brass pulls. Call Mrs. Howard Goodrich 733-2359.
28-4tp

GARAGE SALE: 312 N. Hoskins, Friday & Saturday from 9 to 5.
28-1tc

Small collection-Old Guns For Sale-806-339-6924.
28-1tc

FOR SALE: 1 nearly new small evaporative air conditioner \$50. One Ethan Allen maple twin bed, \$25. One walnut bed & four drawer chest, \$50. Call 659-2361.
28-4tc

GARAGE SALE: Saturday only. 8:30 til 5, 1001 S. Bemice.
28-1tc

Lose weight with New Shape Tablets and Hydrex Water Pills at Spearman Rexall Drug
28-6tp

FOR SALE: Womens and mens wedding ring set. Call 2237.
25-8tc

FOR SALE

Home For Sale by Owner-Comer lot, nice location, Central heat & air, lots of storage, by appointment only. Call 659-3441
25-8tp

FOR SALE: 3 bedroom, 2 bath home, den, carpets and drapes, double garage. Two rental properties and mobile home included in deal. Emmett R. Sanders, Realtor, 659-2516, nights 659-2601.
26s-rtm

708 Townsend, 3 bedroom garage, 2 full baths, central air and heat, gas built-in cooktop, dishwasher, walk-in closets.

404 Endicott, Large home on 3 lots. Will accept an offer.

Crawford addition, 250 front feet by 180 feet lots.
In Gruver, 508 Cluck St. 4 bedroom, price reduced.

In Waka, 21 acres, east edge of Waka.
Call Perryton 435-6528
Mayfield Real Estate
Ruby Lair, Salesperson
Spearman, 659-2188.

FOR SALE: Nice 3 bedroom brick home, fenced yard, tool house, patio, 2 baths, electric kitchen. Shown by appointment only, Emmett R. Sanders, Realtor, 659-2516, nights 659-2601.
27-rtm

FOR SALE: 2 bedroom house to be moved. Call 659-2635.
27s-4tp

FOR SALE: Large lot at 12th & Archer Streets, choice residential location, Emmett R. Sanders, Realtor, 659-2516; nights 659-2601
26-rtm

36 bed nursing home, Spearman, TX, with 300x300 lot, can be doubled, vacant, excellent condition, doesn't meet new code, 8600 square feet. Make rest home, offices, or apartments. Steal at \$75,000 Tim H. Osborne, REALTOR, Box 491, Gainesville, TX, 76240, (817) 665-2182.
27s-4tp

FOR SALE BY OWNER: Four bedroom brick home, Crawford Addition, Spearman, Texas. Two baths, large kitchen with new carpet, Large lot, 125 x 200 ft., chain link fenced yard, cement block workshop in back. Approx. 1/2 of lot is graveled, underground storage tanks for fuel. Call 659-3355 after 5:30 Sun. through Wed.
26s-4tp

FOR SALE: three bedroom brick home, large living room, den with fireplace, extra large fenced yard. Call 3374 for appointment.
28-rtm

FOR SALE: 3 bedroom brick house. Central heat and air. 2 baths, fenced yard with trees. Built ins. 1110 S. Barkley, 659-3775
28-rtm

WANTED TO BUY: Tall water pump, 600 gallon. 405-327-2551.
26s-4tp

FOR SALE
Used T. V.'s
Call 659-2663
or 659-3363
Color or B & W

YOU'VE GOT A DISPOSABLE LAWN MOWER...



GET A JACOBSEN
All Makes of LAWN MOWERS REPAIRED ... at PORTER BAKER 7th & Ash
"Briggs & Stratton" and Tecumseh Parts Dealer...

Wanted: Lawns to mow. Jimmy Nicholson, 659-3092 26s-1tc

MOBILE HOMES
For Sale

FOR SALE: 24 x 51 double wide mobile home, 3 bedroom, 2 baths, large lot & carport. Farnsworth. 435-2489.
27-4tc

Automobiles
For Sale

FOR SALE: 1972 Chevrolet Impala. Bill Gandy-659-2056.
27-4tc

FOR SALE: 1967 Dodge Coronet extra clean. Call Bobby Fanning 8:00 to 7:00, 659-2588; 7:00 ---659-3538.
28-rtm

FOR SALE: 1973 Mercury Cougar XR7 & 1968 Chrysler Station Wagon-Sidney Jines 435-2511 or 5596.
28-3tc

FOR SALE: 62 Ford Fairlane, good condition, call 659-2798 after 5:30.
28-1tp

For Rent
LBL Trailer Spaces & Trailers for rent. \$40 Monthly. 50' x 150' lots Call Manager, 659-2617.
22-rtm T only

Trailer space for rent. Call L. E. Ryan, 659-3349 Spearman. Have garage on this lot for car.

FOR RENT: 2 bedroom house, elec. stove. No pets. Call 3436.
27-rtm

To Give Away
TO GIVE AWAY: 1 black part bassett puppy, also to give away, one full blooded bassett female hound. Call 3614 or come by 500 W. 9th.
28-2tc

HELP WANTED

Qualified Electric Serviceman needed in Spearman, Texas. Electric distribution experience in maintenance and restoration of service, meter reading and troubleshooting necessary. Contact Mr. C.D. Riggins in Perryton, Texas at (806) 435-4077 for interview. COMMUNITY PUBLIC SERVICE COMPANY - AN EQUAL OPPORTUNITY EMPLOYER
27-2tc.

Need a qualified Electric Lineman to work in the Perryton area. Call Mr. Kenneth Parker at 806-435-4061 for an interview. COMMUNITY PUBLIC SERVICE COMPANY - AN EQUAL OPPORTUNITY EMPLOYER
27-2tc

PART TIME HELP NEEDED. Contact Mr. C. D. Riggins in Perryton, Texas at 806-435-4077 for interview. COMMUNITY PUBLIC SERVICE COMPANY - AN EQUAL OPPORTUNITY EMPLOYER.
27-2tc

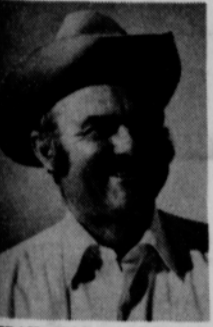
Card of Thanks
THE DALE PACKARD family would like to thank everyone for their prayers--if it wasn't for your prayers, we could in't have made it. We also want to thank everyone for all they have done for us. There just aren't words to let you know how we feel about all you have done. May God bless everyone of you throughout all of your lives.
Dale & Lena, Greg & Duane Packard

We wish to thank our friends and family, Rev. Russell Pogue, and Boxwell Brothers for the many kindnesses shown to us at the loss of our son, Troy Allan Hughes.
Bill and Jan Hughes and family.

We would like to thank everyone for the thoughtfulness shown us during our time of sorrow. We will always remember your cards, flowers, the food, and all the prayers that helped us through the difficult time during the loss of our brother, Eddie Goolsby.
Mrs. Bill Walker
Mrs. Peggy Herring

Dear Friends: I want to express my love and thanks to my good friends for the flowers, cards, and for the food that you have sent me during my illness. Thank you most of all for your prayers and thought while I was in the hospital and at home.
Sincerely,
Dora Garrett

Texas Tech Bicentennial Drive Slated



TRAIL BOSS Chas. Schreiner III is still able to smile as he plans finishing details of the Texas Tech Bicentennial Trail Drive from San Antonio to the Ranching Heritage Center, Texas Tech University, Lubbock, Texas.

SAN ANTONIO, TEXAS--It's getting mighty close to "head 'em out" time for the Texas Tech Bicentennial Trail Drive slated to depart San Antonio June 27 for the more or less 400-mile trek to Lubbock and Texas Tech's Ranching Heritage Center.

With stops scheduled at Kerrville, San Angelo, Stamford and Midland along the way, the Texas Longhorn herd of some 70 animals will arrive on the Museum grounds during late afternoon of July 2, hopefully, in time for official dedication ceremonies at 6:00 p.m.

Trail boss for this historic event is Chas. Schreiner III, owner of the YO Ranch, Mountain Home, Texas. Schreiner headed a drive to Dodge City in 1966 so this isn't his first encounter with trail drive problems. He also runs a good-sized herd of the cantankerous Texas Longhorns on his YO Ranch so is familiar with their "cussedness." The drive will be made up from the Texas Longhorn herds of the YO, Carter McGregor near Wichita Falls and Dan Harrison of Houston.

This symbolic event is slated to draw attention to the fabulous 12-acre Ranching Heritage Center of Texas Tech University. A collection of authentically restored buildings, including a Schoolhouse and a Meat and Milk House, depicting the history of ranching in the United States. The Ranching Heritage

Too Late To Classify

Give the graduate A Bicentennial Gift she will cherish forever. From the Bicentennial "U Name It Shop" - 118 N. James, 9-5, Mon. - Fri.
28-1tc

HOUSE FOR SALE: three bedroom, 1 3/4 bath, large living room, 2 car garage. Fenced Yard. Call 659-3629
28-rtm

HOUSE FOR SALE: 1005 S. Drensen. Shown by appointment only. Call 659-3377.
28-3tc

Let's let our patriotism show--Get your decorations for your bicycles & floats at the Bicentennial "U Name It Shop" - 118 N. James, 9-5, Mon. - Fri.
28-1tc

HELP WANTED: Call York Electric, in Spearman, Texas. Would prefer someone interested in electrical work. Phone 659-3625.

"I have learned that success is to be measured not so much by the position one has reached in life as by the obstacles which he has overcome while trying to succeed." Booker T. Washington.

CABINETS FURNITURE RESTORATION RENOVATION - TRIM TRAILER SPECIALIST
659-2388
CHARLEY JINES

YOUR ANTIQUE TRUNKS REFINISHED & DECORATED CALL OR SEE DOROTHYMAE 806-659-3027 14 S. HANEY SPEARMAN, TEXAS

Center opened its first building in 1970, the Ren-derbrook-Spade Blacksmith Shop, and since that time, as the center has grown to its present 20 buildings and near completed condition, more than 80,000 visitors have toured the site.

Ramrods for this Bicentennial historical event are the world-renowned cartoonist Ace Reid of "Cowpokes" fame; Jimmy De Lederhler, Special Texas Ranger and Van Poorman. Both Reid and Jimmy Dee, as he's more often called, made that long trek to Dodge City in 1966 so they too are familiar with the rigors of trail drives.

As the herd of Texas Longhorns reaches each of the cities along the route where stops are planned to drive will go through town on the main street in most cases so everyone will be able to get a good, close, look at real Texas Longhorns.

Barely 50 years ago these animals were somewhat scarce and it was feared they might become extinct. The Wichita Wildlife Refuge in Oklahoma started with 30 in 1927 and it is their herd which became the foundation for most Texas Longhorn herds in the country today.

The arrival of the Texas Tech Bicentennial Trail Drive herd at the Ranching Heritage Center signals the beginning of weekend festivities during which Mrs. Lyndon B. Johnson will be a special guest and cut the thong officially opening the Ranching Heritage Center. Dale Robertson of movie and TV fame will be master of ceremonies.

This might well be the last Texas Longhorn trail drive ever held, we know it is the only Bicentennial trail drive, so any aspiring cowboys, cowgirls or cow-pens who might want to help move the herd from San Antonio to Lubbock can still get in on the act by contacting Texas Tech Bicentennial Trail Drive, YO Ranch, Mountain Home, Texas 78058. Or since mail service today isn't so speedy as the old Pony Express you might want to call them at 512-640-3222.

TEXAS PRESS MEMBER 1975 ASSOCIATION

Spearman REPORTER
213 Main Spearman, Texas 79081 659-3434
Box 458
Published Weekly at 213 Main Street Spearman, Texas 79081

Owner-Publisher.....William M. Miller
Second Class Postage Paid at Spearman, Tex.

Any erroneous reflection upon the character of any person or firm appearing in these columns will be gladly and promptly corrected upon being brought to the attention of the management.
SUBSCRIPTION RATE -- Hansford, adjoining counties, combination with the Spearman Reporter, \$10.92 Tax included.
Other points \$15.12. Tax included.

FOR THE ULTIMATE IN STORM DOORS CUSTOM BUILT, DESIGNED, AND IN COLORS TO FIT YOUR HOME..... CONTACT HOWARD MOYER AT ONLY ALUMINUM INDUSTRIES 405 338-6966 or 338-6170 P. O. BOX 471 GUYMON, OKLA. 73942

HELP WANTED
Cooks & Waitresses
Call 659-3648
PLAINS RESTAURANT
WE WILL BE CLOSED REMODELING UNTIL JUNE 5th

What a difference a day makes.

A lot can happen in just twenty-four hours. There's the interest that we will add to your savings in any of our plans. So that when it's time to turn to your savings--and the interest--it'll be a really great big day for you.

Great Day Savings Accounts



EVERYBODY'S BANK IN A GREAT BIG WAY

FIRST STATE BANK
SPEARMAN, TEXAS 79081
© 1975 Leon Shaffer Goinich Adv. Inc.

COMMENCEMENT PROGRAM

MAY 27, 1976
8:00 P. M.

PROCESSIONAL Mrs. Carol Pack
Mrs. Verna Strawn

NATIONAL ANTHEM Mrs. Karen Countiss

INVOCATION The Rev. Edward Freeman

INTRODUCTION OF GUESTS Mr. James Cunningham

CHARGE TO THE CLASS OF 1977 Leon Hagerman

ACCEPTANCE Terry Latham

SALUTATORY Billy Jones

VALEDICTORY Roger Jones

RECOGNITION OF HONOR STUDENTS Mr. Eddy Clemmons

PATRIOTIC MEDLEY Mrs. Karen Countiss
Mr. Eddy Martin

PRESENTATION OF DIPLOMAS Mr. Chalmers Porter

SCHOOL SONG Seniors of 1976

BENEDICTION The Rev. Russell Pogue

RECESSIONAL Mrs. Carol Pack
Mrs. Verna Strawn

JUNIOR ESCORTS
Pam Rylant Philip Archer

JUNIOR USHERS
Rick Morris Kent Hargis
Terry Latham Lonnie Clemmons

JUNIOR HOSTESSES
Vicki Dortch Guenna Wilson
Rhoda Bingham Cindy Hamilton



BACCALAUREATE SERVICE

MAY 23, 1976
8:00 P. M.

PRELUDE Mrs. Carol Pack

PROCESSIONAL Mrs. Verna Strawn

"ONWARD CHRISTIAN SOLDIERS" ... Class and Audience
Led by Mr. Glen Harris

INVOCATION The Rev. David Nuckels

ANNOUNCEMENTS Mr. James Cunningham

INTRODUCTION OF SPEAKER Mr. Eddy Clemmons

SERMON The Rev. Archie Burress

BENEDICTION The Rev. Jacob C. Regier

RECESSIONAL Mrs. Carol Pack
Mrs. Verna Strawn

JUNIOR ESCORTS
Carla Harper David Witt

JUNIOR USHERS
Bo DeArmond Mark Cunningham
Jeff Hohertz Doug Steele

JUNIOR HOSTESSES
Glenda Cook Letitia Piatt
Lanita Greene Alicia Mahanay

SENIOR CLASS OF 1976

Leslei Elizabeth Alexander
Roy Sena Avila
Laura Ann Barnes
Jeffrey Lane Beedy
Belinda L. Benavidez
Melody Denise Benton
Donna Ruth Boatwright
Calvin Hershell Bodey
Teresa Jean Booth
Larry Bowen
Kathy Kingham Brown
James R. Burch

Gina Lee Hutchison
*James Grier Jackson, Jr.
Ocie Zack Jenkins
*Karl E. Johnson
*Roger Clay Jones
*William A. Jones
Keith O. Kelp
*Janyth Lee Lackey
Johnette Lee
David Wayne Lewis
Kimberley Kay McCammond
Robbie Lee McDade

*Gary Burke
Earl Campbell
Juan M. Cantu
Ramon Cantu, Jr.
Cary Powell Collier
Paul D. Comegys
Brenda Lea Davis
Ned Davis
David Edward Dear
Dennis Lee DeArmond
Denise Desimone Burnett
Stephen William Donnell
Kathy Ann Dowdy


*Debra Rajan Martin
Loretta Gail Montgomery
Patrick Ooley
Larry Michael Pack
Cindy Patterson
Milana Dee Papay
Darlita Dee Pierce
Terry Miesner Porter
Cecelia Randall
Judy Reed
Arnold Reginald Robertson, Jr.
George David Schick
Ronnie Schmehr

Terrell Lance Evans
Bobby Gene Fanning
Steve L. Fite
*James Mark Fox
*Maria Suzanne Gatlin
Kathi R. Gilley
Charles Edward Gilmore
Jayne Delores Godfrey
Aubrey Leon Hagerman
Roy Harbour
Elbre Ellis Hickerson II
Darrie Owens Howard

Mary Michele Schumann
Willetta Nadine Shelton
Robby Shields
Bobby Neal Snider
David Charles Steele
Galen Ray Thompson
Kim Lane Vera
Aaron Dean Volden
Darrell Wayne West
Donald Eugene Wilcox
Judy Lynn Wyrick
Janyth Lee Wysong

*Honor Students



<p>White House Lumber Co. of Spearman</p>	<p>Gruver State Bank</p>	<p>Daco Lease & Well Service Spearman, Texas</p>	<p>THE SPEARMAN REPORTER</p>
<p>ALLSUPS CONVENIENCE STORE OPEN 24 HOURS</p>	<p>Tucker Water Well Service</p>	<p> Hansford Implement Spearman, Texas</p>	<p>R. L. McClellan & Sons Spearman, Texas</p>
<p> J. L. BROCK AGENCY GENERAL INSURANCE Spearman-659-2514 Gruver-733-2981</p>	<p>Jr. Lusby Cats 889-6971 Canadian 889-2146 Spearman</p>	<p>Boxwell Bros. Spearman, Texas</p>	<p>HANSFORD PLAINSMAN</p>
<p>Speartex Grain Co. Spearman, Texas</p>	<p>York Electric Spearman, Texas</p>	<p>THE GRUVER STATESMAN</p>	<p>Spearman Redi-Mix Spearman, Texas</p>

Commissioners to judge bake-off at Celebration!



Editor Billy Miller is shown here with members of the Town & Country Home Demonstration Club, l to r, Judy Hergert & Tyce, Rita Holmes, Myrna Biggers and Sherlene Hays as they discuss the big BAKE-OFF that the HD Council of Hansford County is having during the Hansford Roundup on June 5. Miller claims that he will win with his secret recipe!!!

Great goodness alive! The ladies of Hansford County have done it again! They have come up with one of the biggest features of the century for the Hansford Roundup, June 5th. Not only are we going to have a big MMM Rodeo, and a visit from Miss America, but now we will have the women of the area in possibly the most important contest of the century, a BAKE-OFF.

Now if some of you are too young to have missed the old time fairs, where the canned goods and baking contests were the highlight of the fair, you will get to see a real honest to goodness old time food fair June 5th in Spearman.

The H.D. Council of Hansford County is sponsoring the Bake-Off and the county commissioners will have to decide who is the best "cook" in Hansford County. And, sure enough both men and women will be eligible to enter the contest.

The rules are as follows: it costs nothing to enter, and there will be four categories; pies, cakes, breads, and cookies. Ribbon awards will be given (a blue one for

first place) and a grand champion for each category will be named.

The Bake-Off will be held at the old Brandt Building, downtown Spearman. Baked goods must be in by 8:30a.m. the morning of June 5th (Saturday). The pies entered in the contest will be sold and the proceeds will go to the HD Council of Hansford County.

Remember, this includes only 4 categories; pies, cakes, breads; and cookies. And men, let's show the ladies up, by entering some of our favorite baking goods.

"Sink or swim, live or die, survive or perish, I give my hand and my heart to this vote." Daniel Webster.

"In education we are striving not to teach youth to make a living, but to teach youth to make a life, in the sense that a life is useful happiness and well-spent leisure." William Allen White.

MARKETS
Wheat \$3.94
Milo \$4.15
Corn \$2.72

ATTENTION

Farmers Stockmen
PANHANDLE LIVESTOCK COMMISSION CO.

Would like to announce a change in sale date. Auction will be held every Friday, starting March 5th, 11:00 A.M. C.S.T. If you have any consignments or need information on special sales, contact Bill Blackmore, 338-3378, H.W.Y. 54 NE Guymon. Home phone 349-2583.

DATE	HI	LO	PREC.
May 18	84	44	
May 19	84	52	
May 20	84	53	
May 21	86	58	.01
May 22	83	53	.34
May 23	82	51	.01
May 24	76	52	

"A day to honor America is a great idea. It's time somebody did something like this for America." Harry Truman.

Letters To The Editor

Dear Editor:

It has been pointed out to me that a reference I made in my first letter to doctor prospects who have been overseas residents could have offended the two Vietnamese doctors preparing to practice in Gruver.

It was certainly not my intention to offend these men--I'm very happy they're going to be available. I know it'll help alleviate the doctor shortage situation. The point I was making was that, even after an agreement is reached, it takes a long time to get these people on the field due to certification procedures.

My apologies to these gentlemen.

I would also like to express my appreciation for the many expressions of concern over the hospital-doctor situation that have come to me in recent days. I think it will yet be worked out for the best interests of us all.

Sincerely,
Chalmers Porter

Dear Editor:

This letter is not intended to be critical of any other person but rather a letter of self criticism with a few suggestions that will hopefully avoid future problems. I am no different than many other people, but having been on "both sides of the fence" as a citizen and as an elected official, I hope my suggestions will be of some value.

A special thanks should be given to every citizen that expressed their views recently on one of our local problems. We have the right of freedom of speech and the right to express our views. But with this right, we all know we should assume the duty of keeping ourselves informed before the last minute. How many of us have attended a public meeting in the last month? The last year? Did we attend the last County meeting? City meeting? Hospital meeting? Palo Duro Dam meeting? School Board meeting? Frankly, I can answer yes to only one of these.

Public officials and board members appreciate public interest and attendance. Too often the only people at a meeting are the officials or board members. Let us not hastily ask them to resign in mass because we have some very competent public officials and board members. Hopefully, the next public meetings will require larger rooms to accommodate the public.

Please, let us keep informed and current by attending the meetings, learning the facts, and expressing our opinions.

Sincerely,
Bob Skinner

To the Editor:

Hansford County has just been through a trying period involving the hospital. Everyone involved was and is vitally and intensely interested in not only keeping the hospital but to improve it. However, an honest, emotional, and deep difference of opinion developed concerning decisions made by the board. The time has now come when the events of the past weeks or perhaps years should be put aside and everyone who is involved in the common desire for the

health care of this community should work just as fervently to that goal. To accomplish this end, we all must learn from this experience.

First, everyone should have been made more firmly aware of the extent of peoples concern for good local institutions and the time and effort they will spend to save one which is threatened.

Second, facts alone provide the light by which truth may be seen and gossip discredited. Information was provided at the meeting of the Hospital Board on May 22, 1976. Perhaps if this information had been provided to the public at a much earlier date, the stress of the problem to all concerned would have been greatly reduced.

Finally, all citizens, boards, and other governmental entities should have, once again, been reminded of the importance of keeping an ever-vigilant watch so that problems may be identified early, thorough investigations may be made, and timely, well reasoned solutions may be properly adopted in an atmosphere of quiet cooperation rather than crisis.

Let us all work in our own areas to keep Hansford County one of the best in the State and if there be disagreements, let us settle them lawfully without hard feelings.

Sincerely yours,
Billy Britt Jarvis

Dear Editor:

Many of us have used your paper as a means of expressing our feelings about our hospital and our doctors here in Spearman. I would like to use this means once again to say that I also give my support to our new doctors in Gruver.

Dr. Thu and Dr. Vong, I am glad that you have chosen to practice medicine in Hansford County. We need you here and hope you and your families will feel welcome in our communities.

Now, where do we go from here? Dr. Thomas must make his own decision about what he will do. I hope and pray that he chooses to stay in Spearman, but whatever his decision is, the rest of us must begin pulling together for the best interest of our hospital.

I did not agree with the decision the hospital board made earlier in May, and I still believe they made a grave mistake; however, I attended the hospital board meeting on May 22 and began to realize the extent of the problems now facing this board. These men must replace key personnel in the hospital and correct the financial problems of the hospital. This will be a big job, so regardless of any personal feelings about past actions, I hope we can support this board while it works to correct a bad situation.

Yours truly,
Yema Strawn

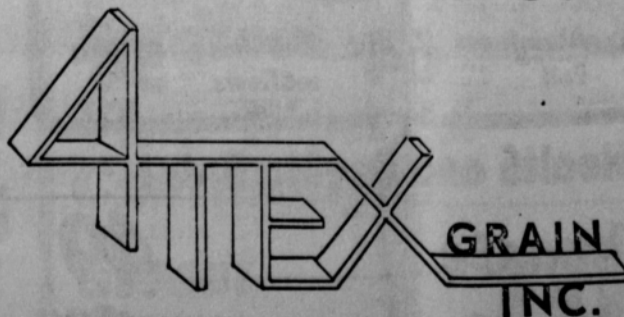
When the volcano Krakatoa exploded in the Pacific in 1883 the sound was heard for 3,000 miles!



We will
be ready
to Receive
Your Wheat
Crop

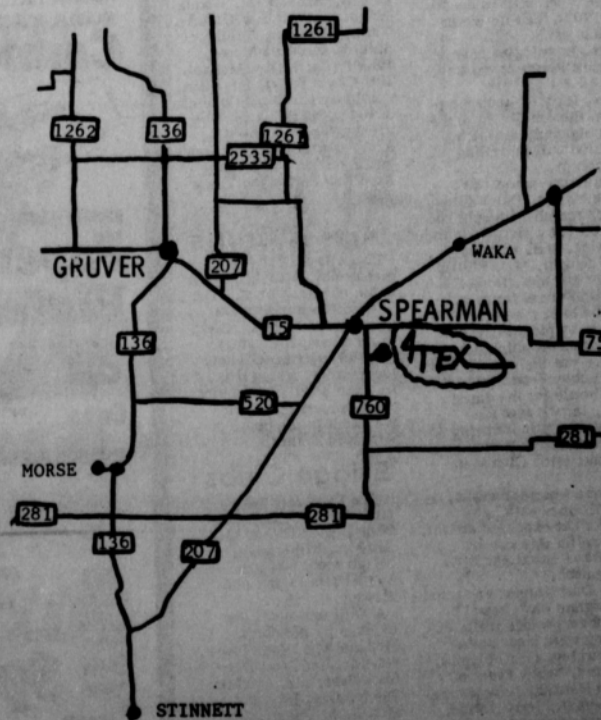
Yes!! We have completed our new elevator and will be receiving this year's wheat crop.

- Bonded
- Licensed
- Insured



5 miles south on FM760

HARRIETT SHUFELDT - MANAGER



GERALD JOHNSTON
ELEVATOR SUPERINTENDENT

Gladiola Flower Club Gives Scholarship

The Gladiola Flower Club met Thursday, May 20th in the home of Mrs. John Brown.

President, Mrs. Gordon Cummings presided over the meeting. Roll Call was answered to "What Makes Me Happy".

The club members decided that since there is no graduating senior going into nursing this year, Angela Craig will receive the Nursing Scholarship from the club again this year.

Club members will meet June 2nd at 10:00 a.m. to work on their float for the parade.

Mrs. Wallace Bemer won first place with her Peace Rose Specimen, Mrs. Ray Martin won first place with her home grown arrangement of peonies, rose and columbine, and Mrs. Tom Sutton won first place with her borrowed arrangement of peonies.

Mrs. Kenneth Evans gave the program on "Flags and Flag Etiquette". She completed the program with the Pledge to the Flag.

Delicious refreshments were served by Mrs. Brown to members, Mesdames: Clois Baker, Wallace Bemer, Lloyd Buzzard, Gordon Cummings, Kenneth Evans, Marcus Larson, Ray Martin, M. D. McLaughlin, Claude Newell, Tommy Reger and Tom Sutton.

Next meeting will be June 3rd.



The stegosaurus, a type of dinosaur famous for its queer platelike armor, had a brain no bigger than a walnut!

Rotary Club News

The Spearman Rotary Club met Monday, May 24th at Martin's Steak Garden.

Junior Lusby presided over the meeting. Mark Neff gave the program on the up-coming Water and Gas Bond Election and gave reasons to vote these bonds in. The program was followed by a Question and answer session.

Guests present at the meeting were Robert Elliot of Perryton, R. W. Lortz of Borger, and Brad Beedy, Ralph Blodgett and Alton Elsworth, all of Spearman.

Members present were Carrie Marie Berry, J. L. Brock, Archie Burreis, John R. Collard, Pete Fisher, Ed Garner, Peyton Gibner, Don Hergert, John Hutchison, Junior Lusby, Eddie Limbocker, Jack Melwhirer, Mark Neff, C. D. Riggins, Elizey Vandenberg, Don Wirsdorfer, John Lynn and Jim Brown.

Next meeting will be May 31st at Martin's Steak Garden.

Club Members Tour Yards

The Dahlia Flower Club met Monday, May 24th in the home of Mrs. Deta Blodgett at 9:30 a.m.

President, Mrs. Ceril Batton presided over the meeting. Minutes of the previous meeting were read and approved.

Mrs. J. W. Walker led the club in the Pledge of Allegiance. Roll Call was answered with an "Interesting Place in Texas I Have Visited."

The Club Collect was given in union.

Mrs. Ceril Batton and Mrs. Deta Blodgett tied for first place with their arrangements of roses, Mrs. Batton won first place with here Tiffany Rose specimen.

Refreshments of coffee and sweet rolls were served by Mrs. Blodgett to guests, Mrs. Marion LaFoe of Monroe, La., who is Mrs. Batton's daughter-in-law, and to Mrs. Terry Curtis, who is Mrs. Frank Davis's grand daughter-in-law, and to members, Mesdames: Garrett Allen, Earl Riley, John Bishop, Mable Edwards,

Hansford Lodge Meets

Hansford Lodge #1040 A.F. & A.M. met Monday, May 24th in the Hansford Lodge Hall.

George Young, Worshipful Master pro-tem presided over the meeting, with 14 members and one guest from Meade, Kansas present.

It was announced the High Plains Hill Top Planning Meeting will be held Friday, June 4th at 8:00 p.m. at Carson Lodge #1187 in Panhandle, Texas. One representative or more are requested to be present at the Planning Meeting.

The Hill Top Meeting will be held July 24th at 8:00 p.m. The place to be set at the June 4th Planning Meeting. Refreshments of hot dogs and ice cream were served to those present by Jack Whitson.

Election of officers will be held at the next meeting, June 14th in the Hansford Lodge Hall.

Some people believe that if you drop a knife, a fork, or a spoon, company's coming!

Mr. and Mrs. James Wright request the honour of your presence at the marriage of their daughter Debbie Dianne to Mr. Steve W. Thomas Saturday, the twenty-ninth of May Nineteen hundred and seventy-six at seven o'clock First United Methodist Church 407 South Haney Spearman, Texas Everyone Invited

Our Heritage of Faith...

notes from Faith Lutheran Church

June 1st at 8:00 will be the regular monthly meeting of the Church Council. As always there will be some items of interest to discuss. Please attend if possible.

At 7:30 June 2nd there will be a meeting to organize the Vacation Church School. Vacation Church School is being held the week of the 14th thru 18th of June. As usual we are working in cooperation with the Presbyterians. Our material this year is based on the word, "Shalom" which has countless meanings for us today. We hope and pray that your child can attend. It is for age 3 thru the 6th grade.

The week of the 6th thru 12th of June is Bible Camp at Ceta Canyon. If your child plans to attend be sure that their application forms are in before June 1.

Just because our church activities are slowing down for the summer we need not or should not slow down in our attendance for Sunday morning worship. We need to give thanks and praise to God just as much in the summer time as in the winter. Let us all come to worship regularly this summer.

It seems to me in a religious or theological perspective that one of the major problems facing us in the world, particularly Spearman, is that people do not listen to one another. They hear the words that are spoken but don't understand the deep emotional feelings that are buried underneath the words. The feelings of rejection, hurt, frustration and sorrow, are some of these feelings. I believe Christ demonstrates to us that we are to search out the other persons feelings and not just hear the words that are spoken, for the words do not always carry the true meaning of how the person feels or believes. This I believe is one of the problems in Spearman especially with the Hospital situation. We are dealing with people's feelings and not necessarily what is right or wrong or what is best for the community. A person must act upon their convictions, yet as Christians we are always to care about our fellowman. Please everyone remember there are very deep feelings involved in any situation, whether at home, church or community. Listen to these feelings and the problems that arise may be solved with compassion on all sides of the issue. Bruce Loewenhagen-Intern.

If you have no home of worship we invite you to attend Faith. Morning worship is 9:30, Sunday School is 10:30.

HD Club

The Town & Country Home Demonstration Club met Tuesday, May 18th in the home of Mrs. Richard Pipkin for a luncheon and their last meeting till next September.

President, Mrs. Jerry Holton presided over the meeting.

Mrs. Charles Shieldknight gave the devotional.

Mrs. Jerry Hayes was elected State T. H. D. A. Convention Delegate and Nominated County T. H. D. A. County Chairman. The club voted to donate \$25.00 to the Fire Works Fund.

Mrs. Jerry Hayes gave a Council Report on the Bake-Off.

Mrs. Jerry Holton reported on the 4th of July activities planned, at which, the club will be selling ice cream.

A treasury report was given by Mrs. Dan Ralston.

Each member brought one of their baby pictures to the meeting. Mrs. Charles Shieldknight, Mrs. Phillip Renner and Mrs. Doug Holmes won prizes for matching the most members with their baby pictures. Members voted on which baby picture was the cutest, and Mrs. Bobby Evemon won a baby bottle for the cutest.

Mrs. Jerry Hayes was presented a gift for being the Most Active Home Demonstration Club Member.

Members presented Mrs. Doug Holmes with baby gifts for her expected arrival.

The raffle was won by Mrs. Dan Ralston and Mrs. Bob Pearson.

Mrs. Darl Hergert presented the program on "Crewel".

Members present at the meeting were Mesdames: Tim Barkley, Cecil Biggen, Joe Cloke, Bobby Evemon, Gilbert Hamish, Jerry Hayes, Darl Hergert, Jerry Holton, Carl Kusselman, Vernon Pipkin, Dan Ralston, Phillip Renner, Richard Pipkin, Charles Shieldknight, John Trimmell, Gary Taylor, Doug Holmes and Bob Pearson.

Party Honors

Sandi McLeod

Sandi McLeod, 7 year old daughter of Mr. and Mrs. Jimmy McLeod, was honored with a birthday party Wednesday, May 19th from 3:00 till 5:30 p.m. in her home.

Refreshments of cupcakes, punch and ice cream and games were enjoyed by birthday honoree, Sandi McLeod and guests, Sherry Goodknight, Pamand Rhonda Stumpf, Scott and Teresa Russell, Jill McLean, Wanda Wagner, Carrie Ann Guthrie, Tammy Nollner, Tammy Shields, Redonna Moore, Julie Latta, Kellye McFarlin, Cayla Eaton, Jan Allen, Kimberly Jenkins, Michele Savage, Stacie Swan, Gay Pipkin, Tonya Stowen, Kim Branstetter, Terri Stewart, Jennifer Yarrrough, Kara Kay Farries and Tracy Tigrett.

Arts & Crafts

The Arts & Crafts Guild met Friday, May 21st in the home of Mrs. Garrett Allen. Delicious refreshments were served by Mrs. Allen, to members, Mesdames: Guy Fuller, Clay Gibner, Joe Traylor, Nolan Holt, P. A. Lyon and F. J. Hoskins. Next meeting will be May 28th in the home of Mrs. Ned Turner.

Bridge Clubs

The Duplicate Bridge Club met Monday, May 24th in the home of Mr. and Mrs. Bill Strawn. High score was won by Bill Strawn and Ann Flowers.

A delicious meal was enjoyed by members, Mr. and Mrs. Roy Flowers, Mr. and Mrs. Dennis Nelson, Mr. and Mrs. Burch Baker, Mr. and Mrs. S. B. Sheets, Mr. and Mrs. Jack Lassater and hosts, Mr. and Mrs. Bill Strawn.

Next meeting will be June 28th in the home of Mr. and Mrs. Burch Baker.

PLAY CASH KING...

\$8000 IN CASH PRIZES... PICK UP YOUR GAME CARDS



PRICES EFFECTIVE THRU SATURDAY, MAY 29, 1976. NONE SOLD TO DEALERS. LIMIT RIGHTS RESERVED.

MON. - SAT. 8:00 - 8:00

SUNDAY 10:00 - 7:00



OUR CHECKERS DON'T HAVE TO "REMEMBER" EVERY ADVERTISED PRICE! ALL REDUCED ITEMS ARE "SPECIALLY MARKED" FOR YOUR PROTECTION...

OPEN MEMORIAL DAY MONDAY MAY 31. FOR YOUR SHOPPING CONVENIENCE

COOK'S DELITE FULLY COOKED

BONELESS HAMS

WHOLE... 14 TO 17-LB. AVERAGE

\$1.39 LB.

CENTER CUT BONELESS Ham Slices... \$1.69

FRESH PORK

Country Ribs

EXCELLENT FOR COOK-OUTS

PORK LOIN **\$1.29** LB.

SIRLOIN END SLICES **\$1.39** LB.

Pork Chops... **\$1.39** LB.

MEADOWDALE, HICKORY SMOKED

Sliced Bacon **\$2.69** 3-LB. PKG.

COOK'S DELITE, FULLY COOKED

Boneless Hams

HALVES **\$1.49** LB.

FRESH

Pork Steaks

SHOULDER SLICES **\$1.39** LB.

STOP BY IDEAL AND GET ALL THE PICNIC FOODS THAT YOU'LL NEED FOR YOUR...

Holiday Outing...

MEL-O-CRUST HAMBURGER OR **Hot Dog Buns**... **28¢** (LIMIT-3 WITH \$7.50 OR MORE PURCH. PKG. OF 5)

CAMELOT HAMBURGER **DILL PICKLES**... **64¢** (32-OZ. JAR)

HUNT'S **TOMATO KETCHUP**... **58¢** (15.00 OR MORE PURCHASE. 28-OZ. BTL.)

KRAFT, ALL FLAVORS **B-B-Q Sauce**... **48¢** (18-OZ. JAR)

SHASTA, REGULAR OR DIET **Canned Pop**... **8¢** (12-OZ. CANS)

WIZARD **Charcoal Lighter**... **89¢** (32-OZ. CAN)

FONDA 9-INCH **Paper Plates**... **78¢** (PKG. OF 100)

SWEETHEART 7-OZ. **Cold Cups**... **78¢** (PKG. OF 100)

SQUIRE HEAVY DUTY 14-INCH **Aluminum Foil**... **64¢** (25-FT. ROLL)

SCOTT Family Napkins... **29¢** (PKG. OF 20)

GLAD LARGE **Sandwich Bags**... **35¢** (CTN. OF 10)

CAREY **Ice Cream Salt**... **63¢** (16-LB. BAG)

KRAFT JET PUFFED **Marshmallows**... **54¢** (16-OZ. PKG.)

ALL GRINDS

Folgers Coffee... **\$4.48** (3-LB. CAN)

Folgers Instant Coffee... **\$3.75** (16-OZ. CAN)

KRAFT SALAD DRESSING

Miracle Whip... **74¢** (LIMIT-1 WITH \$5.00 OR MORE PURCHASE. 32-OZ. JAR)

NESTLE Instant Tea... **\$1.38** (3-OZ. JAR)

VAN CAMP'S Pork & Beans... **24¢** (LIMIT-4 WITH \$5.00 OR MORE PURCHASE. 16-OZ. CAN)

MEADOWDALE CUT

Green Beans... **5¢** (16-OZ. CANS)

NIBLET'S WHOLE KERNEL Golden Corn... **89¢** (12-OZ. CANS)

CAMELOT PINK Grapefruit Juice... **48¢** (16-OZ. CAN)

CAMELOT HALVES OR SLICED YELLOW PEACHES... **67¢** (12-OZ. CAN)

JENO'S DOUBLE Cheese Pizza... **\$1.09** (254-OZ. BOX)

ALL FLAVORS Jell-O Gelatin... **5¢** (3-OZ. BOXES)

DEL MONTE LIGHT MEAT Chunk Tuna... **48¢** (84-OZ. CAN)

WELCH'S GRAPE JAM OR Grape Jelly... **\$1.25** (32-OZ. JAR)

Health and Beauty Aids!

Aim Toothpaste... **49¢** (2.1-OZ. TUBE)

SECRET Spray Deodorant... **\$1.29** (1-OZ. CAN)

SCOPE Mouthwash... **\$1.49** (34-OZ. BTL.)

WHITE RAIN Hair Spray... **\$1.09** (11-OZ. CAN)

United Presbyterian News

Thursday, May 27 on the Church Calendar is Ascension Day. The account of that day may be read in Mark 16:19-20; Luke 24:49-53; and Acts 1:9-11. Sunday, May 30 is the seventh Sunday of Easter or Ascension Sunday. At the First Presbyterian Church of Spearman, there will be the Sunday Church School at 9:45 a.m., with a class for everyone, from the nursery through the adult class. At the service for the public worship of God at 11:00 a.m., Pastor Edward D. Freeman will speak on "The Ascension," Luke 24: 50-53.

The Fifth International Presbyterian Conference on the Holy Spirit will begin on Memorial Day, May 31, at the Pasadena Civic Center, Pasadena, California, and continue through Thursday, June 3. United Presbyterian Women will have a creative

activities workshop Tuesday, June 1 at 9:30 a.m. They are making things to sell in their booth at the Hansford Round-Up. Proceeds of the sale will go toward purchasing new cushions for the pews.

First Presbyterian Church and Faith Lutheran Church are planning a joint Vacation Church School for June 14-18. Teachers and staff will meet Wednesday, June 2, at 7:30 p.m. at Faith Lutheran Church.

H.D. Club Meets

The Spearman Home Demonstration Club met Friday, May 21st in the home of Mrs. Frank Davis. The meeting was opened with prayer in unison. Mrs. Frank Davis gave the devotional taken from I Corinthians 13. President, Altha Groves presided over the meeting. Discussion was held on various projects. Miss Groves was elected Delegate to the State T.H. D.A. Convention. Mrs. L. W. Rosenbaum

was nominated County T.H. D.A. Delegate. Roll Call was answered by showing members baby pictures. Minutes of the previous meeting were read and approved. Mrs. Tommy Reger gave the program with slides and a lecture on the bi-centennial. Delicious refreshments were served by Mrs. Frank Davis and her grand-daughter Mrs. Terry Curtis to guests, Mrs. John Schubert and Mrs. Ethel Cookston and to members, Mesdames: Tommy Reger, B. J. Garnett, Virgil Hull, Richard Shedeck, John Kenney, W. H. Tarbox and Altha Groves.

Book Review Club Meets

The Book Review Club met Tuesday, May 18th at 7:00 p.m. in the home of Mrs. R. E. Lee. Mrs. E. J. Copeland presided over the meet-

ing. Guest, Mrs. Bert Sheppard reviewed the book "Horse Trading" by Ben K. Green. A delicious dinner was enjoyed by guest, Mrs. Sheppard and members, Mesdames: O. C. Holt, Tom Etter, Clay Gibner, John Berry, E. J. Copeland and the hostess, Mrs. Lee. Next meeting will be June 2nd in the home of Mrs. Clay Gerner.

Post Office To Close For Memorial Day

The Spearman Post Office will be closed Monday, May 31, in observance of Memorial Day. There will be no deliveries on city or rural routes.



Triple M rodeo crew, headed by Pappy Martin bring in a load of hay, the old way. They are getting ready for the big Hansford Celebration, June 5th.

WIN UP TO \$1,000!!!

AND TICKETS NOW...NO PURCHASE NECESSARY!

PRIZE VALUE	NUMBER OF PRIZES	ODDS FOR ONE GAME	ODDS FOR 20 GAMES	ODDS FOR 100 GAMES
\$1,000	1	1 in 143,000	1 in 14,300	1 in 1,430
100	10	1 in 14,300	1 in 1,430	1 in 143
10	100	1 in 1,430	1 in 143	1 in 14.3
1	1,000	1 in 143	1 in 14.3	1 in 1.43
TOTAL NO. OF PRIZES	1,111	1 in 143	1 in 14.3	1 in 1.43

BONELESS BUTCHER BLOCK BEEF
Charcoal Steaks
BONELESS SHOULDER, BEEF CHUCK
\$1.29
LB.

BONELESS BUTCHER BLOCK BEEF
Chuck Steaks
BEEF CHUCK, 7-BONE CUTS
\$1.19
LB.

FRESH, EXTRA LEAN
Ground Chuck
IN 3-LB. PKG. OR MORE
\$1.09
LB.

YOU CAN WIN UP TO \$1,000 CASH!

\$1,000 WINNERS:
Lola Armentrout ... Garden City, Ks.

\$100 WINNERS:
Mrs. Jerry N. Neel ... Pampa, Texas
Junior Randall ... Perryton, Texas
Dorothy Koncaba ... Enid, Oklahoma
Martina Brown ... Liberal, Kansas
Forest Krieder ... Hooker, Oklahoma
Lucille Norman ... Liberal, Kansas
Shirley R. McCormick ... Berger, Tx.

BONELESS BUTCHER BLOCK BEEF
Cub Steaks... \$1.79
MATURE BUTCHER BLOCK BEEF
Boneless Pot Roast... \$1.09
FAST FIXIN CHICKEN FRY OR BEEF FRITTERS... \$0.99
OSCAR HAYER MEAT OR BEEF
Sliced Bologna... \$0.89
OSCAR HAYER COTTO SALAMI OR PICKLE LOAF... \$0.99
OSCAR HAYER MEAT OR BEEF
Skinless Franks... \$1.49

BONELESS BUTCHER BLOCK BEEF
Shoulder Roast... \$1.29
RODEO, MEAT OR BEEF
Skinless Franks... 79¢
RODEO, ASSORTED VARIETIES
Luncheon Meats... 65¢
RODEO
Sliced Bologna... \$1.29
RODEO GOLDEN SMOKE FULLY COOKED
Boneless Hams... \$2.29
RODEO HICKORY SMOKED
Sliced Bacon... \$1.29

Free Party Hose!
plus a 20¢ off coupon on your next purchase of backboard Bacon.
RODEO BUCKBOARD, HICKORY SMOKED
Sliced Bacon... \$1.49
SWIFT PREMIUM U.S.D.A. GRADE A
Game Hens... \$1.29

SHOP IDEAL FOR SUPERLATIVE SAVINGS, 7 DAYS A WEEK... WE WELCOME FOOD STAMP CUSTOMERS.

Union Church Missionary Meet
The Union Church Missionary Ladies met Tuesday, May 11th in the Union Church Annex. President, Mrs. Jesse Francis presided over the business meeting. The devotional was given on Prayer and Fasting. General Business was discussed at the meeting. The meeting was dismissed with prayer by Mrs. Archie Burres for lunch.

Following lunch, a Vacation Bible School meeting was held.

Members present were Mesdames: Leo Taylor, Harold Bowen, J. W. Pipkin, J. H. Martin, J. T. Pond, Archie Burres, Bernard Barnes, George Colvard, Vida Jones, Myrtle Fullbright and Barbara Miller.
Next meeting will be May 25th at the church.

Mr. and Mrs. Joseph M. Doescher and Mr. and Mrs. Paul L. Westerfield invite you to share in the joy of the marriage uniting their children Starla Gae and Paul Loring.

This celebration of love will be on Saturday, the fifth of June Nineteen hundred and seventy-six at seven o'clock in the evening Collinsville Community Church Collinsville, Oklahoma

FAIRMONT DAIRY FARM ICE MILK
1/2-GAL. CTN.
Thrift-7 Dairy Foods
CAMELOT INDIVIDUALLY WRAPPED
American Slices... 98¢
12-OZ. PKG.
CAMELOT TWIN TUB
Soft Margarine... 38¢
1-LB. CTN.
CAMELOT LARGE OR SMALL CURD
Cottage Cheese... 89¢
14-OZ. CTN.
CAMELOT MILD
Longhorn Cheese... 98¢
18-OZ. PKG.
KRAFT PHILADELPHIA
Cream Cheese... 20¢
PLAIN OR CHIVE
FAIRMONT
Whipping Cream... 39¢
1/2-PINT
FAIRMONT FRESH
Snack Dips... 62¢
8-OZ. CANS
CAMELOT GRADE A
Medium Eggs... 65¢
DOZEN
CAMELOT GRADE A
Large Eggs... 69¢
DOZ.

75¢ FAIRMONT SANDWICH BARS
PKG. \$1.09 OF 12
Thrift-7 Frozen Foods
BANQUET **FRIED CHICKEN**... \$1.99
1-LB. BOX
CAMELOT **LEMONADE**... \$1.06
6-OZ. CANS
CAMELOT **Whipped Topping**... 48¢
8-OZ. CTN.
TROPHY SLICED
Strawberries... 3 \$1
18-OZ. BOXES
BANQUET, ALL FLAVORS
Cream Pies... 2 \$1
14-OZ. CTNS.
GOLDEN DELUXE 18-INCH
Cherry Pie... \$1.59
4-0Z. PKG.
MEADOWDALE
Crinkle Cut Potatoes... 58¢
1-LB. BAG
SPARKLING
Crushed Ice... 69¢
15-LB. BAG

Fresh Fruits & Vegetables At Low Thrif-T-Prices on Green Market Street!

Watermelon... 8¢ LB.
RED-RIPE

California Potatoes... 5.79¢ LB.
LONG WHITE

Vine Ripened Cantaloupe... 59¢ EACH
DELICIOUS

Sweet Corn... 10 FULL EARS \$1.00
FLORIDA, GOLDEN

CHERRY RED
Rhubarb... 39¢
CALIFORNIA
Lemons... 39¢
NORTHERN
Peat Moss... 40 LB. \$1.00

Reception following 1502 Walnut

... TEMPERATURES WILL DROP TONIGHT AND REMAIN COOL FOR THE NEXT FEW DAYS, HOWEVER EXPECT THE UPPER 90'S AGAIN BY THE END OF THE WEEK.

The varying weather conditions in this part of the country can affect the amount of electricity required to keep your home comfortable. Predicting the exact amount of each month's electric bill can be as difficult as predicting the ever-changing weather. Community Public Service Company has a helpful plan, called the Equal Payment Plan, that can help you in your monthly budgeting. Your yearly electric usage is estimated and divided into twelve equal monthly payments so you know each month how much your electric bill will be. It's a nice and easy way to help smooth out your budgeting from month to month. Periodically, we will review your account and if we find that the original estimate was too high or too low, you will be contacted to work out an equitable adjustment. The Equal Payment Plan... another service from the folks at Community Public Service Company.

COMMUNITY PUBLIC SERVICE
Your Electric Light & Power Company
An Equal Opportunity Employer

SINCERE *Best Wishes*



SPEARMAN SENIORS 1976



James Cunningham, Superintendent; Billy Cawthon, Principal; Jim Turbinage, Counselor; Lt. Mark Lerner; Harold Berlin, Speech; Roger Jones, President



YOU HAVE THE
SPIRIT
TO '76

THE
SWEET
SMELL OF
SUCCESS
Great going,
grads. We're
proud of you!

GOOD
LUCK
TO
YOU

"We're People Like You



Serving People Like You"

THE FIRST NATIONAL BANK
PERRYTON, TEXAS



HANSFORD ROUNDUP

June 3, 4, 5 Something For Everyone

The annual Hansford Roundup will be held this year on June 3, 4, and 5. There are several additions to the activities this year. There will be a sidewalk sale by downtown merchants and dedication ceremonies will be held for the Stationmaster's House Museum. The rodeo, sponsored by the Spearman Chamber of Commerce will be held Thursday, Friday, and Saturday at 8 p.m. at the rodeo grounds. Rodeo headquarters will be at the Chamber of Commerce office, phone 659-3330. Books open on Tuesday, June 2 from 9 a.m. to 5 p.m. Entry fees must be in before 7 p.m. before each performance. Cash or money orders will be accepted, no checks. Buckles will be given in the following events, saddle bronc, bareback, bull

riding, head and heeling, calf roping, and barrel racing. Entry fees in all of these categories is \$30 plus \$2 office call except head and heeling which is \$30 plus \$5 stock charge. Stock contractor for the rodeo is Triple M Rodeo, James Martin of Spearman, owner. Announcer will be Scott Stutzman of Ulysses, Kansas. Clown will be Mike McFarland and Curges Low of Canyon. Admission is \$2.00 for adults and \$1.00 for children. 25% of the profit from the rodeo will go to Girls Town. There will be a wild cow

milking contest each night. This event is open to Hansford County residents only. Trophies will be given each night. A teen dance will be held from 9 p.m. to 1 a.m. Friday, at the Community Building. This is sponsored by Spearman Jaycees. Cost

is \$2. each. Saturday is the big day for the Roundup with a full day's activities on the agenda. A sidewalk sale by Spearman merchants will be held from 8:30 to 4 on Saturday. The Old Timers Reunion will be held at the Joe Trayler Ford Co. at 9:30 a.m. The parade will be at 11 a.m. Saturday followed by a barbecue at noon at the rodeo grounds. At 2 p.m. a dedication ceremony will be held for the Stationmaster's House Museum.

The Fiddler's Contest will be at 8:30 at the Community Building. The Miss Hansford County Beauty Pageant will be held at 7 p.m. at the Spearman High School Auditorium. Miss America 1975, Miss Shirley Cochran, will be the emcee and moderator. The pageant is sponsored by the Spearman Lions Club. The Gruver High School Swing Band and Lion Rick Kirk will provide the music. A rodeo dance will climax activities. The dance will be at the Community Building from 9 p.m. to 1 a.m. and will feature "All Most Country" from Guymon. Cost for the dance is \$4.00 stag and \$7.00 for couples.

Summer Recreation Program Begins June 2

Registration for the summer recreation program will be at 9 a.m., June 1st, for pre-schoolers through age 12. Registration will be at the High School field house. Also, those interested in AAU summer track program age 6 through 18 should register at this same time and place on June 1st. Coach Greg Sherwood is in charge of the summer recreation program in Spearman. Activities will begin on June 2nd.

Work Day Set

A work day has been set for Saturday, May 29 at Holt Cemetery. Everyone is asked to come out and work on that day if possible so the cemetery can be in readiness for Memorial Day.

Lions Club will eat at HD Club

The Spearman Lions Club will eat at the HD Club Room next Monday,

12 p.m. The club will have an early meeting Tuesday morning, also, and both meetings are important to the club, as they prepare for the Miss Hansford Contest, to be hosted by Miss America. The club will eat at the HD club room for the next two weeks, while new owners will be renovating the shopping center cafe, preparing to open it in a couple of weeks. Tuesday program was brought by Lion Woodrow Gibner. The program was on hellum, and enjoyed by all present. Lion Gibner has been named "Lion of the Week" for bringing this outstanding program!

Commencement Exercises

8th grade commencement exercises will be held Wednesday, May 26 at 6:30 p.m. in the high school auditorium. Valedictorian of the class is Sabre McCoy, and salutarian is Kyle Beedy. Other ranking students are Margie Schubert, Brent Ware, Kelly Rylant, Deanne Baker, Brenda Gene Boyd, Valerie Hagerman, Kelly Shaver, Connie Etheredge, Jamie Butler, and Kindra Ivey. Seventh grade ushers will be Edward McIntyre, Tammi Maize, Kerry Bodey and Cammye Gee. Mrs. Wilma Clark will present the music for the processional and Rev. Russell Pogue will give the invocation. G. W. Robinson, junior high principal, will recognize the honor students. This will be followed with the salutatory address by Kyle Beedy and the valedictory address by Sabre McCoy. Superintendent James Cunningham will present the certificates to the graduating students. The class will sing the school song, followed by the benediction by Rev. Russell Pogue. The ceremony will conclude with the recessional with music by Mrs. Wilma Clark. Everyone is invited to attend the graduation exercises Thursday evening. Eighty eight students will receive their diplomas at the graduation ceremony. They are: Klye Beedy, Sabre McCoy.

Jerry Apple, Albert Avila, Alfred Avila, Jose Avila, Jr., Deanne Baker, Karen Barber, Jerry Barker, Elana Kay Barnes, Mac Bingham, Chris Bodey, Shannon Bowling, Brenda Boyd, James Butler, Alvin Byers, D'Anda Close, Jay Comegys, Melinda Cook, Rhonda Cooper, Mike Dennis, Rickie Dowdy, Pamela Dry, Dayton Edwards, Debbie Eller, Beth English, Connie Etheredge, Jan Flowers, Jane Flowers, Tamala Ford, Andy Francis, Diana Galvan, Jay Gamblin, Dean Groves, Brad Guthrie, Valerie Hagerman, Billy Hand, Greg Hazelwood, Doug Hohertz, Kindra Ivey, Mike Kizzlar, Vicki Klyer, Bridgett Lincoln, Frank Lozano, Kelly Mahaney, Kermit Mahaney, Jeannie McClellan, Kerry McMullan, Lesa Merrill, Michael Messer, Pat Miller, Richard Montgomery, Clifton Morrison, Jimmy Nicholson, Ray Ortega, Mike Owens, Deborah Padilla, James Pierce, Ken Prachar, Halee Reed, Joann Reed, Melissa Robertson, Angel Rodriguez, Linda Rodriguez, Charles Ross, Kelly Rylant, Dean Schaffer, Dearta Scroggs, Delinda Scroggs, Kelly Shaver, Toni Shields, Patti Short, Karl Smith, Timmy Spoonmore, Randy Stafford, Suzy Steele, Ivonne Sullivan, Denise Torres, Kevin Townsend, Jim Trinh, Cole Umphress, Ofelinda Vela, Ruben Vera, Lynn Vernon, Kenny Wagner, Brent Ware, and David West.

Swimming Pool To Open Saturday

The swimming pool will open May 29th and will be open everyday from 2 p.m. until 6 p.m. Rates for the pool this year are children thru 12 years old, 50¢; Teens, 13 to 18 years, 75¢; and adults, 18 and over \$1.00. Season tickets may be purchased. Prices are children thru 12 years - \$30.00 and teens 13-18 \$45.00. Private parties rate will be \$20.00 for the first hour and \$15.00 each additional hour. Private parties with over 50 people in party \$25.00 first hour and \$20.00 each additional hour.

Little League News

In Little League action Dodger pitchers Steve Tindell, Felix Sandoval, and Ricky Torres are credited with 6 wins and no losses. The Dodgers are sponsored by The Spearman Reporter and coached by James Umphress and Lawrence Tindell.

League Standings
Major Division

	W	L
Dodgers	6	0
Indians	4	2
Astros	3	3
Jets	2	4
Yankees	0	6

Family night has been set for Tuesday from 7 to 9 p.m. Teen night for teenagers only will be Thursday from 10 to 12 p.m.

Teen Dance Scheduled

A Teen Dance will be held Friday, June 4th at the Community Building featuring "Taxi". The dance will be held from 9:00 till 1:00 A.M. with tickets \$2.00 each. This dance is sponsored by the Spearman Jaycees in an effort to provide activities for the youth during our annual Hansford County Celebration. No Alcoholic Beverages Allowed.

P. A. Lyon III Receives Law Degree

P. A. Lyon III, son of Mr. and Mrs. P. A. Lyon, Jr., received the degree of Juris Doctor from St. Mary's University School of Law, San Antonio, Texas, on May 9, 1976. Lyon holds the bachelor degree from Texas Tech University. He is married to the former Wanda Weathersby of Odessa.

TG & Y

Prices good through Sat., May 29, 1976
PRICES GOOD IN ALL 5c TO \$1.00 STORES
AND FAMILY CENTERS—WHILE QUANTITIES LAST!

TETERS® SPRAYS



27 INCH
FLORAL ARRANGEMENTS

In 6 beautiful styles. A cheerful and colorful selection of flowers with ferns and leaves behind to complete each type. For a loving remembrance.

\$2.27 EA. | \$3.67 EACH



MASON JARS

SET OF 8 QUART SIZE

\$1.47

Reg. \$2.47
SET WITH LIDS
BI-CENTENNIAL DESIGN

PINT SIZE SET OF 8 WITH LIDS \$1.17 Reg. \$1.97

STEAM

CLEANS CARPETS WITHOUT SCRUBBING DIRT IN...

Now Steamway cleans carpet from bottom up. No dirt or shampoo left in fabric. Call us today, we'll be happy to show you our new method... Free Estimates.

ROGERS STEAMWAY
616 N. CRUMLEY GUYMON, OKLA
405-338-7926

HERE'S YOUR Memorial Day FLOWERS

521 Hwy. 207 S. Spearman, Texas

REALISTIC WREATHS

Assorted style arrangements with several flowers and ferns in each. All combined for years of lasting beauty. Wire supports.

13 INCH	14 INCH
\$2.49 EACH	\$2.88 EACH

TG & Y LAWN MOWER

Recoil Start, 4 position wheel adjustment. 22" cut. 3 1/2 HP Briggs and Stratton® Engine. 8" wheels.

\$79.88

#W0906



spray doc sprayer

3 Gallon Size

Heavy duty galvanized steel tank. Full rotating 12" brass wand, adjustable nozzle. Quick pressure 10" pump, comfortable thumb release valve. Flexible 30' hose, shoulder-type carrying strap. A gardening must!

\$13.88 EA.

T.G.&Y.'s ADVERTISED MERCHANDISE POLICY

Our company's policy is to always have advertised merchandise in adequate supply in our stores. In the event the advertised merchandise is not available due to unforeseen reasons, T.G.&Y. will provide a Rain Check, upon request, in order that the merchandise may be purchased at the sale price when it becomes available, or you may purchase similar quality merchandise at a similar price reduction. It is the policy of T.G.&Y. to see that you are happy with your purchases.

SPECIAL FOOD SAVINGS for MEMORIAL DAY



Your Favorite Special!

SHURFINE PORK & BEANS

4 \$1
16 OZ. CANS



Your Favorite Special!

SHURFINE 3 SIEVE CUT GREEN BEANS

5 \$1
16 OZ. CANS

Ground Beef

69¢
L.B. IN 2# PKGS.

TENDERIZED STEAK

\$1.29
L.B.

DELL. B-B-Q Chickens

\$2.09

SHURFINE HAMBURGER/ SLICED DILLS 32 OZ. JAR **59¢**

SHURFRESH FRANKS 12 OZ. PKG. **69¢**

SHURFRESH BOLOGNA 12 OZ. PKG. **89¢**

SHURFRESH 6 OZ. PKG. LUNCHEON MEAT **89¢**

SHURFINE INSTANT TEA 3 OZ. JAR **\$1.09**

SHURFRESH CHICKEN OR HAM SALAD 8 OZ. BOWL **79¢**

SHURFRESH PIMENTO CHEESE SPREAD 12 OZ. BOWL **\$1.19**

SHURFRESH PIMENTO OR JALAPENO CHEESE SPREAD 7 1/2 OZ. BOWL **79¢**

SHURFINE SLICED BACON ONE POUND PKG. **\$1.39**

SHURFRESH ASSORTED FLAVORS Ice Cream 1/2-GALLON ROUND CARTON **\$1.19**

BONELESS SHURFRESH - FULLY COOKED Canned Ham 3 LB. CAN **\$4.99**

VACUUM PAK-ALL GRINDS Shurfine Coffee 1 LB. CAN **\$1.19**

CANNED-ASSORTED FLAVORS Shurfine Pop 9 13 OZ. CANS **\$1.00**

SHURFINE-CREAMY RICH Salad Dressing 33 OZ. JAR **69¢**

SUPER SAVING BUYS

COLBY CHEESE SHURFRESH HALFMOON LONGHORN 10 OZ. PKG. **89¢**

WHIPPED TOPPING SHURFINE NON-DAIRY 2 10 OZ. BOWLS **89¢**

SHURFINE FROZEN Orange Juice **4 \$1.00**
6 OZ. CANS

SHURFINE FROZEN Potatoes CRINKLE CUT 32 OZ. BAG **69¢**

SHURFINE PURE VEGETABLE SHORTENING 48 OZ. CAN **\$1.09**

ROXEY RATION DOG FOOD 7 15 OZ. CANS **\$1.00**

SHURFINE EVAPORATED CANNED MILK 3 14 1/2 OZ. CANS **89¢**

SHURFINE COFFEE CREAMER 11 OZ. JAR **69¢**

SHURFINE TRASH CAN LINERS 30 GAL. SIZE 10 CT. PKG. **89¢**

SHURFINE FRUIT COCKTAIL 2 16 OZ. CANS **79¢**

SHURFINE SALAD MUSTARD 2 16 OZ. JARS **59¢**

SHURFINE CATSUP 2 14 OZ. BTLs. **79¢**

MORE GROCERY VALUES

SHURFINE APPLESAUCE 3 16 OZ. CANS **\$1.00**

SHURFINE - HALVES UNPEELED APRICOTS 2 16 OZ. CANS **79¢**

SHURFINE MANDARIN ORANGES 3 11 OZ. CANS **\$1.00**

SHURFINE YELLOW CLING PEACHES HALVES OR SLICES 3 16 OZ. CANS **\$1.00**

SHURFINE - ASSORTED FRUIT DRINKS 2 46 OZ. CANS **89¢**

SHURFINE FANCY TOMATO JUICE 2 46 OZ. CANS **\$1.00**

SHURFINE CUT GREEN SPEARS ASPARAGUS 2 14 1/2 OZ. CANS **89¢**

SHURFINE WK OR CS GOLDEN CORN 4 17 OZ. CANS **\$1.00**

SHURFINE FRESH SHELLED BLACKEYES 4 15 OZ. CANS **\$1.00**

SHURFINE EARLY HARVEST SWEET PEAS 3 17 OZ. CANS **\$1.00**

SHURFINE WHOLE IRISH POTATOES 4 16 OZ. CANS **\$1.00**

SHURFINE SAUERKRAUT 4 16 OZ. CANS **\$1.00**

SHURFINE WHOLE PEELED TOMATOES 3 16 OZ. CANS **89¢**

SHURFINE TOMATO SAUCE 6 8 OZ. CANS **\$1.00**

SHURFINE CHUNK STYLE TUNA 2 6 1/2 OZ. CANS **\$1.00**

SHURFINE APPLE BUTTER 20 OZ. JAR **59¢**

SHURFINE STRAWBERRY PRESERVES 18 OZ. JAR **79¢**

SHURFINE CRUNCHY OR SMOOTH PEANUT BUTTER 12 OZ. JAR **59¢**

FAVORITE FOOD SAVINGS

Your Favorite Special! MACARONI & CHEESE SHURFINE DINNER **4 \$1**
7 1/4 OZ. BOXES

PAPER NAPKINS SOFLIN - WHITE OR ASSORTED 2 100 CT. PKGS. **\$1**

POTATO CHIPS SHURFRESH REGULAR OR FOR DIPS 8 OZ. PKG. **59¢**

CRACKERS SHURFRESH PREMIUM QUALITY SALTINES 2 16 OZ. BOXES **89¢**

Your Favorite Special! ECONOMICAL - LAUNDRY SHURFINE BLEACH 64 OZ. JUG **39¢**

Your Favorite Special! QUARTERED SHURFRESH MARGARINE 1 LB. PKGS. **389¢**

M & M Grocery
No. 1
202 N. Bernice Spearman, Texas
659-3234





UNION CHURCH AS AMERICAN AS APPLE PIE

In keeping with our Bi-Centennial Year of celebration Union Church plans an old fashioned day on Sunday June 6th. Dinner on the ground, singing in the afternoon and a hitching rail in front of the church. Everyone is asked to come and bring antiques and conversational pieces to put on display like flat irons, shor lasts, churns etc. Sunday night service, everyone is asked to bring your lantern or lamp and plan to sing the old time religion. Old fashioned clothes will be the attire and the old time religion will be preached and sung. Do ride your horses or bring your family in the wagon and team. A watering trough will be near the hitching rail. We plan to have a fall of hay for the pulpit and remind everyone of the days when the fans form the funeral home was a part of every service, through out the summer.

Buxton Receives Company Award



H.G. BUXTON

Mr. H. G. Buxton of Phillips Petroleum Company's Natural Resources Group, Perryton Area, has been awarded \$390.00 through the Company's suggestion plan. His suggestion concerned a field piping change resulting in the salvage of a compressor.

Mr. Buxton, a Field Operator in the Perryton area, has been employed of Phillips Petroleum Company for 8 years. His wife's name is Norma June and they have two children, Earl Lynn and Kevin Dale. They live at 1008 S. Haney, Spearman, Texas.

You don't have to worry about flour getting wormy if you keep it in a plastic bag in the freezer. Flour never freezes.



SOUTH AFRICA IMPLEMENT DEALERS visit here on tour. 1 to 1 J.T. Snyman, J.C. Veldman, B Van Der Westhuizen, and B.J. Bosman, visit here with Gene Cudd of Hansford Implement center. All the visitors are John Deere dealers and are touring the U.S. dealerships. They visited in Amarillo and in Spearman at Hansford Implement.

74 Seniors Graduate

Commencement exercises will be Thursday, May 27 at 8 p.m. in the High School Auditorium. The professional will be by Mmes. Carol Pack and Verna Strawn. Karen Courtis will sing the national anthem followed by the invocation by Rev. Edward Freeman.

Superintendent James Cunningham will introduce the guests. Leon Hagerman will give the charge to the class of 1977 and Terry Latham will give the acceptance speech. The salutatory address will be given by Billy Jones, followed by Roger Jones with his valedictory address.

Principal Eddy Clemmons will recognize the honor students who are: Valedictorian, Roger Jones with an average of 94.733; Salutatorian, Billy Jones, 92.258; Karl Johnson, 92.187; Jimmy Jackson, 92.133; Janyth Lackey, 91.58; Suzy Gatlin, 90.666; Mark Fox, 89.6; Gary Burke, 89.548; and Rajan Martin, 89.516.

A patriotic medley will be presented by Karen Courtis and Eddie Gail Martin.

Chalmers Porter, president of the school board, will present the diplomas.

to the graduating seniors. The senior class will sing the school song, followed by the benediction by Rev. Russell Pogue.

The recessional will be played by Mmes. Pack and Strawn. The seniors will be rehearsing Thursday (today) followed by an outing on Lake Meredith.

Students graduating are: Leslie Elizabeth Alexander, Roy Sena Avila, Laura Ann Barnes, Jeffrey Lane Beedy, Belinda L. Benavidez, Melody Denise Benton, Donna Ruth Boatwright, Calvin Hershell Bodey, Teresa Jean Booth, Larry Bowen, Kathy Kingham Brown, James R. Burch, Gary Burke, Earl Campbell, Juan M. Cantu, Ramon Cantu, Jr., Cary Powell Collier, Paul D. Comegys, Brenda Lea Davis, Ned Davis, David Edward Dear, Dennis Lee DeArmond, Denise Renee Desimone, Stephen William Donnell, Kathy Ann Dowdy, Terrell Lance Evans, Bobby Gene Fanning, Steve L. Fite, James Mark Fox, Maria Suzanne Gatlin, Kathi R. Gilley, Charles Edward Gilmore, Jayne Delores Godfrey, Aubrey Leon Hagerman, Roy Harbour, Elbre Ellis Hickerson II, Darric Owens Howard, Gina Lee Hutchison, James Crier

School Board Two Local Girls On Honor Roll

All members of the Spearman School Board were present at the regular board breakfast, in Spearman Tuesday morning. James Cunningham, Superintendent of Spearman Schools conducted the meeting which was a discussion of a new choir shell, special education program, and "touching up the budget."

The board agreed to "look into" buying or building a shell to be used by the Championship Spearman Choir which is being conducted by Ricky Myler. The special education program was discussed, and the board learned that only one child was available for special education in the Spearman area.

James Cunningham, Superintendent of Spearman Schools, released figures showing that 152 students made the Dean's Honor List for the Spring semester. "To be eligible for the Dean's Honor List," said Balderton, "A student must be carrying at least 15 hours or more on semester-hour subjects and maintain a 3.4 GPA." Making a perfect 4.0 GPA in Spearman is Kathye Brown of 1110 S. Haney. Making a 3.6 is Angela Craig of 714 E. 2nd.

Students making the honor roll compose the upper five per cent of the students. Avoid storing canned food near steam pipes, radiators, furnace and kitchen ranges. A dry, moderately cool place is best.

4-H News

COLLEGE STATION --- Texas 4-H Roundup brings together the top youth talents in the state in judging contests and various demonstrations and skill events. Their goal is to be the best in Texas. Some 1,800 4-H boys and girls will be converging on the Texas A & M University campus June 1 and 2 for the annual event which has become a highlight of the 4-H year. Competition is keen in the more than 30 events which range from public speaking and livestock judging to demonstrations on safety and use of electricity.

youth but also brings together some 600 adults including county Extension agents, 4-H leaders, friends of 4-H, mass media representatives, contest donors and members of the board of directors of the Texas 4-H Youth Development Foundation, the service organization of 4-H in the state. "Many in 4-H consider Roundup the top event of the year," says McArthur. "It provides an opportunity for youth to grow and develop and to share learning experiences across a broad spectrum of activities. And really, that's what 4-H is all about." The 4-H and youth specialist points out that Texas 4-H Roundup is one of the oldest annual statewide 4-H events in the nation. Through the years it has offered challenges and thrills to those who have competed.

horticulture and animal judging. The 4-H leader has attended 4-H workshops and forums throughout the state as well as several on a regional and national basis. She has also participated in a national study of 4-H leader organizations. Mrs. Flores was named the Outstanding 4-H leader in Sherman County in 1973 and 1975. She is president of the Sherman County Parent Leaders Association. In addition to her 4-H activities, Mrs. Flores has served as a Cub and Girl Scout leader and day camp director. She also serves on the Sherman County Bi-centennial Committee and is superintendent for educational exhibits at the Sherman County Fair.

Dooley, a feedlot foreman, has been a Moore County 4-H leader for the past four years with the Sunray Community 4-H Club and the 4-H Beef Club and is assistant leader of the Sunray 4-H Horse Club. Members of the 4-H clubs under his leadership have received top honors in livestock shows and have won many county and district awards.

Dooley initiated a project fair in Moore County in which every 4-Her was recognized with a ribbon. This fair has become an annual event.

He was instrumental in organizing and securing donations for the building of a \$45,000 rodeo arena in Sunray. Dooley serves as director of the Sunray Youth Rodeo.

The 4-H leader has also played an active part in securing funds for the Texas 4-H Center and to finance 4-H trips to camps and workshops. Dooley has served as vice-president of the Moore County 4-H Adult Leaders Association and received the 4-H Alumni Award in 1975.

4-H Leaders To Be Honored

COLLEGE STATION, May 27 (Sp1). --- Two area 4-H leaders are among 28 Texans who will be honored at the State 4-H Roundup at Texas A&M University June 2. They are Mrs. Terry Flores of Stratford and Jim Dooley of Route 2, Sunray. The two leaders will be recognized at a special luncheon as the top adult volunteer leaders in District I of the Texas Agricultural Extension Service, the parent organization of 4-H. Each will receive a special plaque provided by the Texas 4-H Youth Development Foundation, the service organization for 4-H. Under Mrs. Flores' leadership, members of the Sherman County Younger Texans 4-H Club have participated in county and district 4-H shows and one member received a \$4,000 Houston Livestock and Rodeo Scholarship. Throughout her 12 years as a 4-H leader, Flores has assisted members with projects in clothing, foods, horses, dog care, landscape



Since the outer bran coating of brown rice contains oil which can become rancid in time, some home economists say that it's best to use the contents of a package within two or three months.

STATEMENT OF FINANCIAL CONDITION OF HANSFORD COUNTY

1. RECONCILIATION WITH DEPOSITORY BANK AS OF MAY 1, 1976

Funds	Book Balance	Outstanding Checks	Bank Balance
Jury	6,750.12	513.36	7,263.48
General	46,184.71	14,761.29	60,946.00
Cemetery	939.15		939.15
Road & Bridge, General			
Precinct No. 1	26,520.72	3,164.53	29,685.25
Precinct No. 2	38,459.51	3,179.49	41,639.00
Precinct No. 3	29,888.02	2,068.50	31,956.52
Precinct No. 4	30,084.39	1,818.00	31,902.39
Road & Bridge, Sinking			
Precinct No. 1	7,920.43		7,920.43
Precinct No. 2	13,880.16		13,880.16
Precinct No. 3	5,053.38		5,053.38
Precinct No. 4	7,232.85		7,232.85
Road District 2	0		0
Social Security	21.63	9,575.08	9,596.71
Revenue Sharing	23,771.09	2,369.84	26,140.93

2. SUMMARY OF RECEIPTS AND DISBURSEMENTS

Funds	Balance Feb. 1, 1976	Receipts	Disbursements	Balance May 1, 1976
Jury	9,250.03	930.56	3,430.47	6,750.12
General	46,261.76	87,775.84	87,852.89	46,184.71
Cemetery	8.59	930.56		939.15
Road & Bridge, General				
Precinct No. 1	21,869.53	36,449.07	31,797.88	26,520.72
Precinct No. 2	27,546.02	34,773.72	23,860.23	38,459.51
Precinct No. 3	16,560.75	34,467.80	21,140.53	29,888.02
Precinct No. 4	65,131.00	35,095.09	70,141.70	30,084.39
Road & Bridge, Sinking				
Precinct No. 1	7,104.41	816.02		7,920.43
Precinct No. 2	8,291.01	5,589.15		13,880.16
Precinct No. 3	4,636.17	417.21		5,053.38
Precinct No. 4	6,688.21	544.64		7,232.85
Road District 2	16,484.77	28,258.54	44,743.31	0
Social Security	21.63	9,574.96	9,575.08	21.63
Revenue Sharing	41,564.22	22,124.00	39,917.13	23,771.09

3. OUTSTANDING INDEBTEDNESS

Hansford County Precinct 3, Fund 14 - - - - - \$5,000.00

4. INVESTMENTS

Hansford County General Fund 2	- - - - -	\$50,000.00
Hansford County Precinct 4, Fund 11	- - - - -	\$50,000.00
Hansford County Precinct 4, Fund 15	- - - - -	\$25,000.00
Hansford County Road District 2, Fund 17	- - - - -	\$30,000.00
Hansford County Revenue Sharing, Fund 25	- - - - -	\$30,000.00

ATTENTION --- CATTLE PRODUCERS

THURSDAY, MAY 20, THE AUCTION BEGAN AT 10:00 AM AND WE SOLD A TOTAL OF 2579 CATTLE THROUGH THE ARENA.

IF YOU HAVE CATTLE TO SELL, LET US KNOW OF YOUR PLANS AS SOON AS POSSIBLE AT THIS HELPS US DO A BETTER JOB WITH OUR ADVERTISING.

NOTICE -- STARTING TIME WILL BE 10:00 AM EACH WEEK UNTIL FURTHER NOTIFIED.

GEN. MGR. -- LLOYD GOODNER (RES. PHONE 405-423-6601)
CATTLE DEPARTMENT - LLOYD GOODNER & RAYMOND CHOATE

YOUR CATTLE AUCTION WITH "ACTION" EVERY THURSDAY

TEXHOMA LIVESTOCK COMMISSION CO., INC.

Phone 405-423-3251

Texhoma, Okla. 73949

P. O. Box 70

Equity Sets Earning Mark

The stockholders at the annual meeting of the Perryton Equity Exchange Thursday night were all smiles after hearing a report from general manager Kenneth Allen informing them that the cooperative has just ended its most successful year in history.

Net earnings, after state and federal income taxes, came to \$3,325,754.45 for the fiscal year ending March 31, 1976.

Later in the meeting, the stockholders approved action by the directors which will pay the stockholders 40 per cent of this earnings in cash and the remainder in new capital stock. A reserve of 10 per cent of the net earnings was first set aside in accordance with Equity bylaws.

So the distribution of these earnings will mean some additional income to the Equity stockholders who are now scattered through three states in 28 elevator and service center locations.

The record 1976 earnings figure came on the heels of two other outstanding earnings years. In 1974 the Equity net earnings were \$3,313,380.22 and in 1975 the figure was \$2,276,584.67.

The previous high mark for Equity earnings had been in 1969 when earnings totaled \$766,479.25.

Included in the net earnings for this year were \$1,642,153.63 which came from patronage refunds from other cooperatives, principally Farmland Industries where Equity secures most of its fuel and fertilizer. Union Equity Exchange of Enid is also one of the principal sources of patronage refunds for the Equity as most grain shipments are handled through Union Equity from the local cooperative.

However, the net local earnings of the Equity came to \$2,183,600.82 which was an outstanding accomplishment in the fiscal year just ended.

The record earnings were made on annual sales of \$69,081,285.98 and represented a net of 5.5 per cent profit on sales. The Equity paid income taxes of \$382,804.60 this year.

During the 57 year history of the Equity there have been only three years with net losses. These came in 1934, 1936 and 1938 when the Equity area was struggling to overcome drought and depression.

Since 1938 there has been a continuous record of net earnings with the past three years by far the best in the Equity history.

Total assets of the Equity have grown to \$20,906,720.35 and this includes approximately \$10 million in current assets and \$6.5 million in real estate, buildings and equipment.

In his annual message, President Marvin Groves told the members that a new concrete annex, an additional dump pit and grain dryer are under construction at the Holt elevator south of Spearman. Also the Equity has under construction at Stratford two new steel storage tanks and these two improvements will add another 1,000,000 bushels of storage capacity.

General manager Allen told the members that he was proud of the record made by the Equity this year and praised the Equity employees, directors and members who made it possible. He pointed out that net earnings were 5.5 per cent of sales and that net earnings were 4.41 per cent return on investment of the stockholders.

In looking to the future, Allen said that he could not hold out much promise for higher wheat prices. He said that the national wheat carryover this year is reported at 500 million bushels which has depressed the price of wheat to \$3.30 per bushel. When the carryover was 200 million bushels, wheat was \$5 per bushel and when it was 300 million, the price was \$4.50.

Next year the predictions are for 600 million bushel carryover and Allen said that this means the price of wheat is bound to drop unless something unforeseen happens.

He pointed out that the Equity volume now depends a great deal upon milo and corn and that the Equity area is no longer a one crop country.

The directors have voted to buy up the Equity stock issued in 1966 which will retire all outstanding stock 20 years old.

In the election of officers, all seven nominees to the Equity

board were returned without opposition.

These are Fred Groves of Spearman; Wendel Peckenpaugh of Farnsworth; John Trindle of McKibben; Arthur Betts of Keyes, Okla.; Dean Gregg of Beaver; Ralph Pattison of Perryton and Lonnie McGarraugh of Perryton. All seven are currently members of the board.

In the business session, the Equity stockholders voted to approve an increase in director

fees from \$25 per day to \$50 per day, to be paid for the actual time spent in board meetings.

Each Equity stockholder received a gift at the close of the meeting.

Approximately 1,000 Equity members attended the annual meeting, which began with a barbecue dinner in the Perryton High School cafeteria served by the Pampa Shrine Club, with the business meeting held in the Perryton High School auditorium.

Marvin Groves of Waka is president of the Equity.



In northern European mythology, cats are believed able to influence the weather.

Little Liberty Belle Pageant A

The Little Liberty Belle's of '76 Pageant, sponsored by the Rho Rho Chapter of Beta Sigma Phi, held Saturday night in the high school auditorium was a big success.

Fourty four little girls were contestants in the pageant.

The winner of the Tiny Belles category was Brandi Schneider, first runnerup was Rae Lynn Scribner, and second runner up was Carly Shieldknight.

Donda Pool was the winner in the Little Belles category with first runner-up Dawn York, and 2nd runnerup was Linda Evans. Kelli Sue Crawford was

the winner in the talent division with her acrobatic performance.

Judges for the event were Mmes. Robble Carlisle, Virginia Dulin and Sandy Ireland all of Lubbock.

Ms. Murphy Allen was the Mistress of Ceremonies, Mrs. Vernon Pipkin was the pianist and special entertainment was provided by Teresa Hargis.

Mary Lou DeArmond, Miss Hansford County, presented the awards to the winners, and gifts from the sorority were presented to the contestants.

The proceeds of the contest will go to pay for a "Billy Light" for Hansford

Hospital, which is used in the care of new babies. At the present time, if a baby needs this treatment it must be sent to Amarillo.

Special contributions to the pageant were by Sparks Bros, Dairy Queen of Spearman, Stratford and Gruver; J. L. Brock; The Bunkhouse; Gordon's Drug; H & H Water Well Service who bought trophies; Teresa's Dance Studio provided the crowns and stage decorations, Spearman Jewelry engraved the trophies; John Hutchison and Bob Pearson provided the flowers for the winners, and the Spearman Reporter took the contestant's pictures.

Contestants and their sponsors in the Tiny Belles program were Andi Dawn Speck, Carmon's Canine Clip Joint; Maleea Beth Shaver, Anthony Electric; Wendy Slater, C&B Studio; Elisa Hoover, Thriftway; Tina Cator, Messer's Department Store; Carole Poole, Horizon Oil & Gas; Brandi Dawn Schneider, The Bunkhouse; Jami Lydawn Maize, First State Bank; Connie Jo Red, Farmer's & Ranchers Supply; Laura Umphress, Spearman Magneto; Kyla Nelson, Joe Traylor Ford; Tasha Lin Haight, Messer's Department Store; Ginger Pearson, Hergert's Pontiac,

Bulck, & GMC; Lynette Williams, B&B Farm Ind.; Patricia Ann Bellows, White House Lumber; Carly Shieldknight, Excell Chevrolet-013; Kathy Poole, KBMF-FM Radio; Misha Leigh Lesly, Spearman Reporter; Jane Ann Windsorfer, P. A. Lyon, Jr.; Melanie Lamberson, Messer's Department Store; Mell Floyd, Spearman Rexall Drug; Margie Evans, Earl's TV; Tina Breeden, Gruver Farm Supply; Rae Lynn Scribner, Pringle Equity Elevator; Julie Latta, B&B Sales; Anissa Everson, Western Auto; Deana Renee Turner, Schnell Electric & Drapery; Christa Maelynn

Prices Good In Perryton's United Super Market!



PRICES GOOD THRU MAY 29TH



ENJOY MEMORIAL DAY . .

BACKYARD

CONTADINA WHOLE PEEL			
TOMATOES	4	300 CANS	
BEANS RANCH STYLE	4	FOR	
		300 CANS	
PEAS DEL HAVEN	4	303 CANS	
		TENDER SWEET	
BEANS FINE FARE	4	303 CANS	
		BLUELAKE	
CORN GOLDEN WHOLE KERNEL	4	303 CANS	
		OR CREME STYLE	
BEANS VAN CAMP PORK 'N	4	300 CANS	

COKES

6 BOTTLES 32 OZ. BTL. \$1.79 PLUS DEPOSIT

HAMBURGER OR CONEY BUNS

8 CT. PKGS. \$1.33

GEBHART CHILI HOT DOG SAUCE

10 OZ. CANS 4 FOR \$1

FRENCH'S PREPARED MUSTARD

8 OZ. SQUEEZE BOTTLE 33c

MRS. TUCKER'S SHORTENING

3 LB. CAN 89c

HEINZ REG. 49' RELISH • SWEET • HOT DOG • INDIA • HAMBURGER 3 9 1/2 OZ. JARS \$1

DIXIE EASY DAY PAPER PLATES 50 CT. PKG. 98c

DIXIE EASY DAY PAPER CUPS LARGE 16 OZ. 18 CT. PKG. 59c

FASELINE INTENSIVE CARE LOTION REGULAR OR HERBAL 10 OZ. \$1.09

HAIR SPRAY MISS BRECK ALL VARIETIES 93c

SHAMPOO PROTEIN "21" 25' OFF LABEL 98c

DEODORANT DIAL SOLID STICK \$1.49

BANANAS

5 LBS. \$1

CORN FLORIDA SWEET LARGE FULL EARS 8 FOR \$1

YAMS CALIF. No. 1 3 LBS. 1

ONIONS TEXAS WHITE NEW CROP LB. 19c

CARROTS CALIF. No. 1 16 OZ. CELLO BAG 19c

APPLES WINESAP LARGE EXTRA FANCY 4 LBS. \$1

Big Success

Sims, Mr. & Mrs. James Hargis; Dee Dee Shelton, Alton's Gulf; Gina Leann Bartz, Hansford Implement. Contestants in the Little Belles contest and their sponsors were: Stephanie Larue Friemel, Wardrobe Cleaners; Melissa Marie Mans, M&M Grocery #2; Donda Dee Pool, Jerry Bowling-Handyman Service; Christy Lynn Dossert, Spearman Red-Mix; Dawn Michelle York, York Electric; Tammy Donahue, Donahue Ditching Service; Jodie Zschiesche, Consumers Sales; Shelly Friemel, Gift Box; Cynthia Arnold, Blackburn's Flowers; Cynthia Hansen, Berry Cleaners;

Stacy Poole, M&M Grocery #1; Kimberly Nelson, Lusby Cats; Linda Evans, Reed's Shoes; Kelli Sue Crawford, Lady Fair.

Pictures of winners were not available for this issue but hopefully will be in Sunday's paper.

Hospital News

Patients in Hansford Hospital are Clarence Pettitt, Grace Jenkins, Patrick Flores, Colleen Jeffries, Marguerite Jenkins, Ollie Harbour and Luther Ryan.

Dismissed were Fred Groves, Dorothy Haner and Jerald Atkinson.

Past Hansford County Queens Sought

Please fill out and return immediately to: Mrs. Jock D. Lee
P. O. Box 887
Spearman, Texas 79081

Name:
Maiden Name:
Address:
Title:
Year:
Family: (Names and childrens ages)

Achievements:

Hobbies and activities:

Other pertinent info.:

I will be attending _____ I will not be attending _____
(Please check one of the places above so we will know how many to plan for.
Thank You)

Dear Past Hansford County Queens:

Hansford County will be having its annual celebration June 5th. Since this is the Bi-Centennial year we wish to honor all past Hansford County Queens.
Your name has been listed as one representing our country in the past, therefore, we take great pride in inviting you to attend our festivities. The Spearman Lions Club has made plans for all to ride on a float in the parade at 11:00 a.m. casually dressed. You and your family will be feted with a Salad Supper at the Fellowship Hall, First Baptist Church beginning at 5:00 p.m. and thereafter be presented on stage during the "Miss Hansford" Beauty Pageant. A special gift will be given to each one attending.

Please fill in the enclosed questionnaire and feel free to add any other information that you would like to share. We would appreciate immediate response from you whether you will be able to attend or not.

Looking forward to seeing you in the near future.

Sincerely,

Russell Pogue, President

Troy Sloan, Pageant Chairman

Market Report

This past Friday the receipts at the Panhandle Livestock Commission consisted of 923 cattle and calves. The market was very active of cows with five packer buyers

present to absorb the offering. Top packer cows, steers sold from \$31.00 to \$33.75 with a few cows going back to the country bringing up to 40¢ a pound. The market was quite active on choice calves sold from \$46.00 on the plain kind to \$54.50 on the choice kind. Heifer calves sold from \$36.00 on the plain kind to \$42.50 on a few choice heifers in odd lots. The market on feeder steers was very active selling from \$36.00 on the plain kind to \$42.50 on the choice kind. Feeder heifers sold from \$35.00 to \$38.00 on the better kind.

About 60 pairs were in the offering with a few bringing up to \$36.00 a pair. For next Friday, May 28 we are expecting 1100 to 1250 cattle and calves. These new packer accounts will be here every Friday, so let us know ahead of time whether you plan to sell any cows or bulls. There is a great demand for all calves of cattle here at the Panhandle Livestock Commission Co., so let us know in advance of your plans.

Starting next Friday our auction will start at 11:00 because we are having such a large amount of jackpot cattle every week.

Some Rep. Sales: 20 wf calves, 275, \$54.50; 7 black wf heifers, 301, \$42.50; 9 black wf steers, 585, \$42.50; 9 char. steers, 538, \$42.00; 11 char steers, 572, \$42.20; 13 char steers, 601, \$41.25; 17 black wf heifers, 661, \$38.00; 13 wf heifers, 692, \$37.50; 1 holstein cow, 1320, \$40.00; 1 holstein cow, 1540, \$38.00; 1 holstein cow, 1270, \$35.50; 1 holstein cow, 1510, \$36.75; 1 holstein cow, 1470, \$35.75; 1 holstein cow, 1360, \$34.50; 9 holstein cows, avg. 1420, \$33.85; 1 Rd. wf cow, 1215, \$32.50; 1 black wf cow, 1205, \$32.00; 1 wf bull, 1405, \$36.30; 1 appalosa horse, per head, \$400.00.

Bill Blackmore Panhandle Livestock Commission Co. Guyton, Okla. 335-3378

Jehovah's Witnesses Plan Meet

T. J. Murray, spokesman of the Perryton Congregation of Jehovah's Witnesses, revealed completion of plans for a four-day district convention of the religious group in Oklahoma City, June 10-13. "This is only one of the 94 conventions arranged for the summer of 1976 in the United States," he added. Murray said nearly ten thousand delegates are anticipated to attend this annual convention planned for the Myriad Convention Center.

The theme of the conference is "Sacred Service" and the local representative added that the program will address itself to improving life spiritually within the family circle.

"There will be specific information for husbands, wives and young people," Murray said. "Designed to examine the problems confronting society today and suggesting concrete solutions to overcome them."

Murray further explained that the program will feature Bible lectures, symposiums, discussion periods and four Bible dramas to be presented in full costume. A Baptismal service will be one of the highlights of the meeting on Friday, June 11.

The principal speaker of the religious seminar is J. L. Dixon of Brooklyn, New York, who will discuss the question, "Will serving God solve your problems?" It is scheduled for Sunday June 13 at 2 P.M.

Among the 48 persons who will represent Perryton at the seminar are Peter and Mary Butrus, the families of Tom Murray, Carl Stafford, Sherman Beasley, and Pat Lamascus. Also from Gruver the families of Don Frontehouse and Alex Garza will accompany the group.

Texas CowBelles To Attend 4-H Meet

Texas 4-H Round-Up at A&M University June 1 and 2, will be attended by Texas CowBelles from throughout the state.

TEXAS COWBELLES sponsor the Meat Identification Contest, which will be held during Round-Up, for Texas 4-H Club members.

An executive board meeting has been planned for Tuesday, June 1, to be followed by a work-shop on meat identification, Wednesday, June 2.

Prices Good In Perryton's United Super Market!

WEEKEND WITH UNITED'S FIXIN'S!

IMPERIAL LIGHT BLEND
OLEO
2 8-OZ. TUBS **39¢**

MJB COFFEE
ALL GRINDS 1 LB. CAN **\$1.39**

UNITED'S TruTendr BEEF
• ROUND • RIB • SIRLOIN
STEAK **\$1.09**
RUMP
ROAST **\$1.09**
BONELESS
STEW EXTRA LEAN CUBES OF BEEF **\$1.09**
WILSON'S CERTIFIED MEAT OR BEEF 12 OZ. PACK **79¢**
BONELESS WILSON'S CERTIFIED TENDA MADE **\$2.49**
HAMS 3 TO 4 LB. FULLY COOKED
SMOKED PORK WILSON'S CENTER CUTS **\$1.79**
CHOPS

WILSON CERTIFIED BOLOGNA
MEAT OR BEEF **LB. \$1.29**
WILSON CERTIFIED BACON
LB. \$1.69

UNITED'S TRU-TENDR BEEF RANCH
STEAK
CENTER CUT 7-BONE **LB. 98¢**
WILSON SMOKED SAUSAGE **1.39**

CHUCK ROAST
BLADE CUT **LB. 68¢**

UNITED ASSORTED MELLORINE HALF GALLON **59¢**
NEW FANGLED POTATO CHIPS 9 OZ. PKG. 10' OFF LABEL **79¢**
PRINGLES
BAMA PEACH PRESERVES 18 OZ. JAR **59¢**
"UNITED FROZEN FOOD BUYS!"

1000 extra S&H Green Stamps
come make history in our big
BICENTENNIAL BONUS BONANZA
pick up your card today!

BANQUET FRUIT PIES • APPLE • PEACH • CHERRY 9 OZ. SIZE **4 FOR \$1**
JENO'S REG. 98' PIZZA • HAMBURGER • PEPPERONI • SAUSAGE • CHEESE **79¢**

REG. \$2.98 BANQUET FRIED CHICKEN 2 LB. BOX **\$1.89**
HEAT & EAT

UNITED SUPER MARKETS
PERRYTON, TEXAS
WE GIVE S&H GREEN STAMPS



AVISO DE ELECCIONES

NOTICE OF ELECTION

THE STATE OF TEXAS :
COUNTY OF HANSFORD :
CITY OF SPEARMAN :

ESTADO DE TEXAS :
CONDADO DE HANSFORD :
CIUDAD DE SPEARMAN :

se prepararan de acuerdo con el Código de Elecciones de Texas para así permitir al elector el votar "A FAVOR" o "EN CONTRA" de las antesdichas PROPUESTAS, tales balotes a contener tales provisiones, marcas, e idioma como requiere la ley, y que tales PROPUESTAS serán sustancialmente expresadas como sigue:

TO THE RESIDENT, QUALIFIED ELECTORS OF SAID DISTRICT:
TAKE NOTICE that an election will be held in said City as provided in an ORDINANCE CALLING AN ELECTION duly passed by the City Council of said City, which Ordinance is substantially as follows:

A LOS RESIDENTES, CON DERECHO A VOTAR, DE DICHA CIUDAD:
SE LES HACE SABER que unas elecciones tomaran lugar en dicha Ciudad tal como se estipula en la ORDENANZA LLAMANDO A LAS ELECCIONES, cual Ordenanza fue debidamente dada por el Cuerpo de Consejeros Municipales de dicha Ciudad, y cual ORDENANZA dice sustancialmente como sigue:

A FAVOR]
EN CONTRA]
A FAVOR]
EN CONTRA]

PROPUESTA NO. 1
LA EMISION DE BONOS DE INGRESOS PARA EL SISTEMA DE GAS

PROPUESTA NO. 2
LA EMISION DE BONOS DE INGRESOS PARA EL SISTEMA DE AGUAS

THE STATE OF TEXAS :
COUNTY OF HANSFORD :
CITY OF SPEARMAN :

WHEREAS, it is deemed necessary and advisable to call the election hereinafter ordered; and

WHEREAS, it is hereby officially found and determined: that a case of emergency or urgent public necessity exists which requires the holding of the meeting at which this Ordinance is passed, such emergency or urgent public necessity being that the proceeds from the sale of the proposed bonds are required as soon as possible and without delay for necessary and urgently needed public improvements; and that said meeting was open to the public, and public notice of the time, place, and purpose of said meeting was given, all as required by Vernon's Ann. Civ. St. Article 6252-17.

THEREFORE, BE IT ORDAINED BY THE CITY COUNCIL OF THE CITY OF SPEARMAN, TEXAS:

1. That an election shall be held on June 15, 1976, in said City at the following designated polling place: EAST CENTRAL HALLWAY, SENIOR HIGH SCHOOL BUILDING, SPEARMAN, TEXAS

Said City shall constitute a single election precinct for said election, and the following election officers are hereby appointed to hold said election:

Presiding Judge: Troy Sloan
Alternate Presiding Judge: Mrs. Tom Etter

2. That the Presiding Judge shall appoint not more than five qualified election clerks to serve and assist in conducting said election; provided that if the Presiding Judge actually serves as expected, the Alternate Presiding Judge shall be one of such clerks.

3. That by approving and signing this Ordinance the Mayor of said City officially confirms his appointment of the aforesaid election officers to serve at said election; and by passing this Ordinance the governing body of said City approves and concurs in the appointment of the aforesaid election officers.

4. That all resident, qualified electors of said City shall be entitled to vote at said election.

5. That notice of said election shall be given by posting a substantial copy of this Ordinance at the City Hall and at two other places in said City, not less than 15 days prior to the date set for said election; and a substantial copy of this Ordinance also shall be published on the same day in each of two successive weeks in a newspaper of general circulation published in said City, the date of the first publication to be not less than 14 days prior to the date set for said election.

6. That at said election the following PROPOSITIONS shall be submitted in accordance with law:

PROPOSITION NO. 1

Shall the City Council of said City be authorized to issue the bonds of said City, in one or more series or issues, in the aggregate principal amount of \$139,000, with the bonds of each such series or issue, respectively, to mature serially within not to exceed 40 years from their date, and to be sold at such prices and bear interest at such rates as shall be determined within the discretion of the City Council, for the purpose of improving and extending the Gas System, with said bonds to be secured by and payable from a lien on and pledge of the Net Revenues of said City's Waterworks, Sewer and Gas System?

PROPOSITION NO. 2

Shall the City Council of said City be authorized to issue the bonds of said City, in one or more series or issues, in the aggregate principal amount of \$136,000, with the bonds of each such series or issue, respectively, to mature serially within not to exceed 40 years from their date, and to be sold at such prices and bear interest at such rates as shall be determined within the discretion of the City Council, for the purpose of improving and extending the Waterworks System, with said bonds to be secured by and payable from a lien on and pledge of the Net Revenues of said City's Waterworks, Sewer and Gas System?

7. That the official ballots for said election shall be prepared in accordance with the Texas Election Code so as to permit the electors to vote "FOR" or "AGAINST" the aforesaid PROPOSITIONS with the ballots to contain such provisions, markings and language as required by law, and with such PROPOSITIONS to be expressed substantially as follows:

PROPOSITION NO. 1

FOR) THE ISSUANCE OF GAS SYSTEM REVENUE
AGAINST) BONDS

PROPOSITION NO. 2

FOR) THE ISSUANCE OF WATERWORKS SYSTEM
AGAINST) REVENUE BONDS

ORDENANZA LLAMANDO A LAS ELECCIONES

EL ESTADO DE TEXAS :
CONDADO DE HANSFORD :
CIUDAD DE SPEARMAN :

CONSIDERANDO QUE se juzga conveniente y necesario el llamar a las elecciones de aquí en adelante ordenadas; y

CONSIDERANDO QUE, oficialmente se encuentra y determina aquí que existe un caso de emergencia de necesidad pública urgente el cual requiere el que tenga lugar una reunión en la cual esta Ordenanza se ha de pasar, tal emergencia de necesidad pública urgente siendo la necesidad de adquirir fondos a obtenerse con la venta de los bonos propuestos, sin retrasos, para el fin de utilizarse para mejoras públicas urgentes y necesarias; y que dicha reunión se hizo pública, habiéndose señalado la hora, el lugar, y el propósito de dicha reunión todo tal como se estipula por Vernon's Ann. Civ. St. Artículo 6252-17.

POR CONSIGUIENTE, ORDENA EL CUERPO DE

CONSEJEROS MUNICIPALES DE LA CIUDAD DE SPEARMAN:

1. Que se celebrarán elecciones el 15 de June de 1976 en dicha Ciudad en los lugares de votación designados: ESTE CORREDOR CENTRAL DEL ESCUELA SUPERIOR EDIFICIO, SPEARMAN, TEXAS

Dicha Ciudad se constituirá en un solo precinto de votación para tales elecciones, y los siguientes oficiales de elecciones son aquí nombrados para sostener tales elecciones:

Juez que Preside: TROY SLOAN
Juez Alterno que Preside: MRS. TOM ETTER

2. Que el Juez que Preside nombrará no menos de cinco oficinistas calificados para servir y asistir en el conducto de dichas elecciones; siempre que el Juez que Preside actualmente sirva como expresado, entonces el Juez Alterno deberá ser uno de tales oficinistas.

3. Que al aprobar y firmar esta Ordenanza el Alcalde (Mayor) de dicha Ciudad oficialmente confirma el nombramiento de los antesdichos oficiales de elecciones para servir en dichas elecciones; y al pasar esta Ordenanza el cuerpo gobernante de dicha Ciudad aprueba y concurre con el nombramiento de los antesdichos oficiales de elecciones.

4. Que todos los electores residentes y calificados de dicha Ciudad tendrán el derecho a votar en dichas elecciones.

5. Que se dará noticia de dichas elecciones por medio de poner una copia sustancial de esta Ordenanza en las Oficinas Municipales y en otros dos lugares de dicha Ciudad, con no menos de 15 días de anticipación de la fecha fijada para sostener dichas elecciones; y una copia sustancial de esta Ordenanza también se publicará en el mismo día en cada una de dos semanas sucesivas en un diario (periódico) de circulación general en dicha Ciudad y también publicada en el Condado, la fecha de la primera publicación pero con no menos de 14 días anteriores a la fecha fijada para dichas elecciones.

6. Que en dichas elecciones las siguientes PROPUESTAS serán sometidas de acuerdo a la ley:

PROPUESTA NO. 1

Si se le autoriza al Cuerpo de Consejeros Municipales de la Ciudad de Spearman, Texas el emitir los bonos de dicha Ciudad, en una o más series de emisión, en el monto principal agregado de \$139,000, con los bonos de cada tal serie o emisión, respectivamente, a vencerse por serie dentro de, pero no excediendo cuarenta años desde su fecha de emisión, y de ser vendidos a tales precios y acarrear tales promedios de intereses como se determine a discreción del Cuerpo de Consejeros Municipales, con el propósito de mejorar y extender el Sistema de gas de dicha Ciudad, tales bonos a ser asegurados y pagados por medio de un gravamen sobre, y preñar los Ingresos Netos del Sistema de Aguas costurera, y gas Sistema de Cloacas de dicha Ciudad?

PROPUESTA NO. 2

Si se le autoriza al Cuerpo de Consejeros Municipales de la Ciudad de Spearman, Texas el emitir los bonos de dicha Ciudad, en una o más series de emisión, en el monto principal agregado de \$136,000, con los bonos de cada tal serie o emisión, respectivamente, a vencerse por serie dentro de, pero no excediendo cuarenta años desde su fecha de emisión, y de ser vendidos a tales precios y acarrear tales promedios de intereses como se determine a discreción del Cuerpo de Consejeros Municipales, con el propósito de mejorar y extender el Sistema de Aguas de dicha Ciudad, tales bonos a ser asegurados y pagados por medio de un gravamen sobre, y preñar los Ingresos Netos del Sistema de Aguas costurera, y gas Sistema de Cloacas de dicha Ciudad?

7. Que los balotes oficiales para dichas elecciones

Values Of Homes Rise Locally

NEW YORK, May 22, Families in Hansford County are finding that the home they own are much more valuable than they had imagined. Many of them are worth more than twice as much as they paid for them. Their value has gone sky-high because of inflation and because the demand for homes, now that the economy is improving and mortgages are easier to obtain, has risen sharply. In many areas they are in short supply because there has been very little construction for several years. An official of the American Savings and Loan Association reports that prospective buyers are out in such force in some communities that they are out-bidding each other for whatever is available. Prices are shooting up as a result. The equity that Hansford County residents have in their homes, over and above the mortgage debt on them, is now approximately \$16,933,000 and is rising steadily. The figure applies to one-family, non-farm dwellings that are owner-occupied. The facts and figures on the housing situation, locally and elsewhere in the United States, are based upon data gathered by the Department of Commerce, the National Association of Home Builders and others. They show that the average price in the United States of a new single-family house has gone from \$37,900 to \$42,300 in the past year alone. For used properties, the jump has been from \$33,850 to \$37,200. In some areas prices are higher than these and, in others, lower. In Hansford County the average price in the United States of a new single-family house has gone from \$37,900 to \$42,300 in the past year alone. For used properties, the jump has been from \$33,850 to \$37,200. In some areas prices are higher than these and, in others, lower. In Hansford County the average price in the United States of a new single-family house has gone from \$37,900 to \$42,300 in the past year alone. For used properties, the jump has been from \$33,850 to \$37,200. In some areas prices are higher than these and, in others, lower. In Hansford County the average price in the United States of a new single-family house has gone from \$37,900 to \$42,300 in the past year alone. For used properties, the jump has been from \$33,850 to \$37,200. In some areas prices are higher than these and, in others, lower. In Hansford County the average price in the United States of a new single-family house has gone from \$37,900 to \$42,300 in the past year alone. For used properties, the jump has been from \$33,850 to \$37,200. In some areas prices are higher than these and, in others, lower. In Hansford County the average price in the United States of a new single-family house has gone from \$37,900 to \$42,300 in the past year alone. For used properties, the jump has been from \$33,850 to \$37,200. In some areas prices are higher than these and, in others, lower. In Hansford County the average price in the United States of a new single-family house has gone from \$37,900 to \$42,300 in the past year alone. For used properties, the jump has been from \$33,850 to \$37,200. In some areas prices are higher than these and, in others, lower. In Hansford County the average price in the United States of a new single-family house has gone from \$37,900 to \$42,300 in the past year alone. For used properties, the jump has been from \$33,850 to \$37,200. In some areas prices are higher than these and, in others, lower. In Hansford County the average price in the United States of a new single-family house has gone from \$37,900 to \$42,300 in the past year alone. For used properties, the jump has been from \$33,850 to \$37,200. In some areas prices are higher than these and, in others, lower. In Hansford County the average price in the United States of a new single-family house has gone from \$37,900 to \$42,300 in the past year alone. For used properties, the jump has been from \$33,850 to \$37,200. In some areas prices are higher than these and, in others, lower. In Hansford County the average price in the United States of a new single-family house has gone from \$37,900 to \$42,300 in the past year alone. For used properties, the jump has been from \$33,850 to \$37,200. In some areas prices are higher than these and, in others, lower. In Hansford County the average price in the United States of a new single-family house has gone from \$37,900 to \$42,300 in the past year alone. For used properties, the jump has been from \$33,850 to \$37,200. In some areas prices are higher than these and, in others, lower. In Hansford County the average price in the United States of a new single-family house has gone from \$37,900 to \$42,300 in the past year alone. For used properties, the jump has been from \$33,850 to \$37,200. In some areas prices are higher than these and, in others, lower. In Hansford County the average price in the United States of a new single-family house has gone from \$37,900 to \$42,300 in the past year alone. For used properties, the jump has been from \$33,850 to \$37,200. In some areas prices are higher than these and, in others, lower. In Hansford County the average price in the United States of a new single-family house has gone from \$37,900 to \$42,300 in the past year alone. For used properties, the jump has been from \$33,850 to \$37,200. In some areas prices are higher than these and, in others, lower. In Hansford County the average price in the United States of a new single-family house has gone from \$37,900 to \$42,300 in the past year alone. For used properties, the jump has been from \$33,850 to \$37,200. In some areas prices are higher than these and, in others, lower. In Hansford County the average price in the United States of a new single-family house has gone from \$37,900 to \$42,300 in the past year alone. For used properties, the jump has been from \$33,850 to \$37,200. In some areas prices are higher than these and, in others, lower. In Hansford County the average price in the United States of a new single-family house has gone from \$37,900 to \$42,300 in the past year alone. For used properties, the jump has been from \$33,850 to \$37,200. In some areas prices are higher than these and, in others, lower. In Hansford County the average price in the United States of a new single-family house has gone from \$37,900 to \$42,300 in the past year alone. For used properties, the jump has been from \$33,850 to \$37,200. In some areas prices are higher than these and, in others, lower. In Hansford County the average price in the United States of a new single-family house has gone from \$37,900 to \$42,300 in the past year alone. For used properties, the jump has been from \$33,850 to \$37,200. In some areas prices are higher than these and, in others, lower. In Hansford County the average price in the United States of a new single-family house has gone from \$37,900 to \$42,300 in the past year alone. For used properties, the jump has been from \$33,850 to \$37,200. In some areas prices are higher than these and, in others, lower. In Hansford County the average price in the United States of a new single-family house has gone from \$37,900 to \$42,300 in the past year alone. For used properties, the jump has been from \$33,850 to \$37,200. In some areas prices are higher than these and, in others, lower. In Hansford County the average price in the United States of a new single-family house has gone from \$37,900 to \$42,300 in the past year alone. For used properties, the jump has been from \$33,850 to \$37,200. In some areas prices are higher than these and, in others, lower. In Hansford County the average price in the United States of a new single-family house has gone from \$37,900 to \$42,300 in the past year alone. For used properties, the jump has been from \$33,850 to \$37,200. In some areas prices are higher than these and, in others, lower. In Hansford County the average price in the United States of a new single-family house has gone from \$37,900 to \$42,300 in the past year alone. For used properties, the jump has been from \$33,850 to \$37,200. In some areas prices are higher than these and, in others, lower. In Hansford County the average price in the United States of a new single-family house has gone from \$37,900 to \$42,300 in the past year alone. For used properties, the jump has been from \$33,850 to \$37,200. In some areas prices are higher than these and, in others, lower. In Hansford County the average price in the United States of a new single-family house has gone from \$37,900 to \$42,300 in the past year alone. For used properties, the jump has been from \$33,850 to \$37,200. In some areas prices are higher than these and, in others, lower. In Hansford County the average price in the United States of a new single-family house has gone from \$37,900 to \$42,300 in the past year alone. For used properties, the jump has been from \$33,850 to \$37,200. In some areas prices are higher than these and, in others, lower. In Hansford County the average price in the United States of a new single-family house has gone from \$37,900 to \$42,300 in the past year alone. For used properties, the jump has been from \$33,850 to \$37,200. In some areas prices are higher than these and, in others, lower. In Hansford County the average price in the United States of a new single-family house has gone from \$37,900 to \$42,300 in the past year alone. For used properties, the jump has been from \$33,850 to \$37,200. In some areas prices are higher than these and, in others, lower. In Hansford County the average price in the United States of a new single-family house has gone from \$37,900 to \$42,300 in the past year alone. For used properties, the jump has been from \$33,850 to \$37,200. In some areas prices are higher than these and, in others, lower. In Hansford County the average price in the United States of a new single-family house has gone from \$37,900 to \$42,300 in the past year alone. For used properties, the jump has been from \$33,850 to \$37,200. In some areas prices are higher than these and, in others, lower. In Hansford County the average price in the United States of a new single-family house has gone from \$37,900 to \$42,300 in the past year alone. For used properties, the jump has been from \$33,850 to \$37,200. In some areas prices are higher than these and, in others, lower. In Hansford County the average price in the United States of a new single-family house has gone from \$37,900 to \$42,300 in the past year alone. For used properties, the jump has been from \$33,850 to \$37,200. In some areas prices are higher than these and, in others, lower. In Hansford County the average price in the United States of a new single-family house has gone from \$37,900 to \$42,300 in the past year alone. For used properties, the jump has been from \$33,850 to \$37,200. In some areas prices are higher than these and, in others, lower. In Hansford County the average price in the United States of a new single-family house has gone from \$37,900 to \$42,300 in the past year alone. For used properties, the jump has been from \$33,850 to \$37,200. In some areas prices are higher than these and, in others, lower. In Hansford County the average price in the United States of a new single-family house has gone from \$37,900 to \$42,300 in the past year alone. For used properties, the jump has been from \$33,850 to \$37,200. In some areas prices are higher than these and, in others, lower. In Hansford County the average price in the United States of a new single-family house has gone from \$37,900 to \$42,300 in the past year alone. For used properties, the jump has been from \$33,850 to \$37,200. In some areas prices are higher than these and, in others, lower. In Hansford County the average price in the United States of a new single-family house has gone from \$37,900 to \$42,300 in the past year alone. For used properties, the jump has been from \$33,850 to \$37,200. In some areas prices are higher than these and, in others, lower. In Hansford County the average price in the United States of a new single-family house has gone from \$37,900 to \$42,300 in the past year alone. For used properties, the jump has been from \$33,850 to \$37,200. In some areas prices are higher than these and, in others, lower. In Hansford County the average price in the United States of a new single-family house has gone from \$37,900 to \$42,300 in the past year alone. For used properties, the jump has been from \$33,850 to \$37,200. In some areas prices are higher than these and, in others, lower. In Hansford County the average price in the United States of a new single-family house has gone from \$37,900 to \$42,300 in the past year alone. For used properties, the jump has been from \$33,850 to \$37,200. In some areas prices are higher than these and, in others, lower. In Hansford County the average price in the United States of a new single-family house has gone from \$37,900 to \$42,300 in the past year alone. For used properties, the jump has been from \$33,850 to \$37,200. In some areas prices are higher than these and, in others, lower. In Hansford County the average price in the United States of a new single-family house has gone from \$37,900 to \$42,300 in the past year alone. For used properties, the jump has been from \$33,850 to \$37,200. In some areas prices are higher than these and, in others, lower. In Hansford County the average price in the United States of a new single-family house has gone from \$37,900 to \$42,300 in the past year alone. For used properties, the jump has been from \$33,850 to \$37,200. In some areas prices are higher than these and, in others, lower. In Hansford County the average price in the United States of a new single-family house has gone from \$37,900 to \$42,300 in the past year alone. For used properties, the jump has been from \$33,850 to \$37,200. In some areas prices are higher than these and, in others, lower. In Hansford County the average price in the United States of a new single-family house has gone from \$37,900 to \$42,300 in the past year alone. For used properties, the jump has been from \$33,850 to \$37,200. In some areas prices are higher than these and, in others, lower. In Hansford County the average price in the United States of a new single-family house has gone from \$37,900 to \$42,300 in the past year alone. For used properties, the jump has been from \$33,850 to \$37,200. In some areas prices are higher than these and, in others, lower. In Hansford County the average price in the United States of a new single-family house has gone from \$37,900 to \$42,300 in the past year alone. For used properties, the jump has been from \$33,850 to \$37,200. In some areas prices are higher than these and, in others, lower. In Hansford County the average price in the United States of a new single-family house has gone from \$37,900 to \$42,300 in the past year alone. For used properties, the jump has been from \$33,850 to \$37,200. In some areas prices are higher than these and, in others, lower. In Hansford County the average price in the United States of a new single-family house has gone from \$37,900 to \$42,300 in the past year alone. For used properties, the jump has been from \$33,850 to \$37,200. In some areas prices are higher than these and, in others, lower. In Hansford County the average price in the United States of a new single-family house has gone from \$37,900 to \$42,300 in the past year alone. For used properties, the jump has been from \$33,850 to \$37,200. In some areas prices are higher than these and, in others, lower. In Hansford County the average price in the United States of a new single-family house has gone from \$37,900 to \$42,300 in the past year alone. For used properties, the jump has been from \$33,850 to \$37,200. In some areas prices are higher than these and, in others, lower. In Hansford County the average price in the United States of a new single-family house has gone from \$37,900 to \$42,300 in the past year alone. For used properties, the jump has been from \$33,850 to \$37,200. In some areas prices are higher than these and, in others, lower. In Hansford County the average price in the United States of a new single-family house has gone from \$37,900 to \$42,300 in the past year alone. For used properties, the jump has been from \$33,850 to \$37,200. In some areas prices are higher than these and, in others, lower. In Hansford County the average price in the United States of a new single-family house has gone from \$37,900 to \$42,300 in the past year alone. For used properties, the jump has been from \$33,850 to \$37,200. In some areas prices are higher than these and, in others, lower. In Hansford County the average price in the United States of a new single-family house has gone from \$37,900 to \$42,300 in the past year alone. For used properties, the jump has been from \$33,850 to \$37,200. In some areas prices are higher than these and, in others, lower. In Hansford County the average price in the United States of a new single-family house has gone from \$37,900 to \$42,300 in the past year alone. For used properties, the jump has been from \$33,850 to \$37,200. In some areas prices are higher than these and, in others, lower. In Hansford County the average price in the United States of a new single-family house has gone from \$37,900 to \$42,300 in the past year alone. For used properties, the jump has been from \$33,850 to \$37,200. In some areas prices are higher than these and, in others, lower. In Hansford County the average price in the United States of a new single-family house has gone from \$37,900 to \$42,300 in the past year alone. For used properties, the jump has been from \$33,850 to \$37,200. In some areas prices are higher than these and, in others, lower. In Hansford County the average price in the United States of a new single-family house has gone from \$37,900 to \$42,300 in the past year alone. For used properties, the jump has been from \$33,850 to \$37,200. In some areas prices are higher than these and, in others, lower. In Hansford County the average price in the United States of a new single-family house has gone from \$37,900 to \$42,300 in the past year alone. For used properties, the jump has been from \$33,850 to \$37,200. In some areas prices are higher than these and, in others, lower. In Hansford County the average price in the United States of a new single-family house has gone from \$37,900 to \$42,300 in the past year alone. For used properties, the jump has been from \$33,850 to \$37,200. In some areas prices are higher than these and, in others, lower. In Hansford County the average price in the United States of a new single-family house has gone from \$37,900 to \$42,300 in the past year alone. For used properties, the jump has been from \$33,850 to \$37,200. In some areas prices are higher than these and, in others, lower. In Hansford County the average price in the United States of a new single-family house has gone from \$37,900 to \$42,300 in the past year alone. For used properties, the jump has been from \$33,850 to \$37,200. In some areas prices are higher than these and, in others, lower. In Hansford County the average price in the United States of a new single-family house has gone from \$37,900 to \$42,300 in the past year alone. For used properties, the jump has been from \$33,850 to \$37,200. In some areas prices are higher than these and, in others, lower. In Hansford County the average price in the United States of a new single-family house has gone from \$37,900 to \$42,300 in the past year alone. For used properties, the jump has been from \$33,850 to \$37,200. In some areas prices are higher than these and, in others, lower. In Hansford County the average price in the United States of a new single-family house has gone from \$37,900 to \$42,300 in the past year alone. For used properties, the jump has been from \$33,850 to \$37,200. In some areas prices are higher than these and, in others, lower. In Hansford County the average price in the United States of a new single-family house has gone from \$37,900 to \$42,300 in the past year alone. For used properties, the jump has been from \$33,850 to \$37,200. In some areas prices are higher than these and, in others, lower. In Hansford County the average price in the United States of a new single-family house has gone from \$37,900 to \$42,300 in the past year alone. For used properties, the jump has been from \$33,850 to \$37,200. In some areas prices are higher than these and, in others, lower. In Hansford County the average price in the United States of a new single-family house has gone from \$37,900 to \$42,300 in the past year alone. For used properties, the jump has been from \$33,850 to \$37,200. In some areas prices are higher than these and, in others, lower. In Hansford County the average price in the United States of a new single-family house has gone from \$37,900 to \$42,300 in the past year alone. For used properties, the jump has been from \$33,850 to \$37,200. In some areas prices are higher than these and, in others, lower. In Hansford County the average price in the United States of a new single-family house has gone from \$37,900 to \$42,300 in the past year alone. For used properties, the jump has been from \$33,850 to \$37,200. In some areas prices are higher than these and, in others, lower. In Hansford County the average price in the United States of a new single-family house has gone from \$37,900 to \$42,300 in the past year alone. For used properties, the jump has been from \$33,850 to \$37,200. In some areas prices are higher than these and, in others, lower. In Hansford County the average price in the United States of a new single-family house has gone from \$37,900 to \$42,300 in the past year alone. For used properties, the jump has been from \$33,850 to \$37,200. In some areas prices are higher than these and, in others, lower. In Hansford County the average price in the United States of a new single-family house has gone from \$37,900 to \$42,300 in the past year alone. For used properties, the jump has been from \$33,850 to \$37,200. In some areas prices are higher than these and, in others, lower. In Hansford County the average price in the United States of a new single-family house has gone from \$37,900 to \$42,300 in the past year alone. For used properties, the jump has been from \$33,850 to \$37,200. In some areas prices are higher than these and, in others, lower. In Hansford County the average price in the United States of a new single-family house has gone from \$37,900 to \$42,300 in the past year alone. For used properties, the jump has been from \$33,850 to \$37,200. In some areas prices are higher than these and, in others, lower. In Hansford County the average price in the United States of a new single-family house has gone from \$37,900 to \$42,300 in the past year alone. For used properties, the jump has been from \$33,850 to \$37,200. In some areas prices are higher than these and, in others, lower. In Hansford County the average price in the United States of a new single-family house has gone from \$37,900 to \$42,300 in the past year alone. For used properties, the jump has been from \$33,850 to \$37,200. In some areas prices are higher than these and, in others, lower. In Hansford County the average price in the United States of a new single-family house has gone from \$37,900 to \$42,300 in the past year alone. For used properties, the jump has been from \$33,850 to \$37,200. In some areas prices are higher than these and, in others, lower. In Hansford County the average price in the United States of a new single-family house has gone from \$37,900 to \$42,300 in the past year alone. For used properties, the jump has been from \$33,850 to \$37,200. In some areas prices are higher than these and, in others, lower. In Hansford County the average price in the United States of a new single-family house has gone from \$37,900 to \$42,300 in the past year alone. For used properties, the jump has been from \$33,850 to \$37,200. In some areas prices are higher than these and, in others, lower. In Hansford County the average price in the United States of a new single-family house has gone from \$37,900 to \$42,300 in the past year alone. For used properties, the jump has been from \$33,850 to \$37,200. In some areas prices are higher than these and, in others, lower. In Hansford County the average price in the United States of a new single-family house has gone from \$37,900 to \$42,300 in the past year alone. For used properties, the jump has been from \$33,850 to \$37,200. In some areas prices are higher than these and, in others, lower. In Hansford County the average price in the United States of a new single-family house has gone from \$37,900 to \$42,300 in the past year alone. For used properties, the jump has been from \$33,850 to \$37,200. In some areas prices are higher than these and, in others, lower. In Hansford County the average price in the United States of a new single-family house has gone from \$37,900 to \$42,300 in the past year alone. For used properties, the jump has been from \$33,850 to \$37,200. In some areas prices are higher than these and, in others, lower. In Hansford County the average price in the United States of a new single-family house has gone from \$37,900 to \$42,300 in the past year alone. For used properties, the jump has been from \$33,850 to \$37,200. In some areas prices are higher than these and, in others, lower. In Hansford County the average price in the United States of a new single-family house has gone from \$37,900 to \$42,300 in the past year alone. For used properties, the jump has been from \$33,850 to \$37,200. In some areas prices are higher than these and, in others, lower. In Hansford County the average price in the United States of a new single-family house has gone from \$37,900 to \$42,300 in the past year alone. For used properties, the jump has been from \$33,850 to \$37,200. In some areas prices are higher than these and, in others, lower. In Hansford County the average price in the United States of a new single-family house has gone from \$37,900 to \$42,300 in the past year alone. For used properties, the jump has been from \$33,850 to \$37,200. In some areas prices are higher than these and, in others, lower. In Hansford County the average price in the United States of a new single-family house has gone from \$37,900 to \$42,300 in the past year alone. For used properties, the jump has been from \$33,850 to \$37,200. In some areas prices are higher than these and, in others, lower. In Hansford County the average price in the United States of a new single-family house has gone from \$37,900 to \$42,300 in the past year alone. For used properties, the jump has been from \$33,850 to \$37,200. In some areas prices are higher than these and, in others, lower. In Hansford County the average price in the United States of a new single-family house has gone from \$37,900 to \$42,300 in the past year alone. For used properties, the jump has been from \$33,850 to \$37,200. In some areas prices are higher than these and, in others, lower. In Hansford County the average price in the United States of a new single-family house has gone from \$37,900 to \$42,300 in the past year alone. For used properties, the jump has been from \$33,850 to \$37,200. In some areas prices are higher than these and, in others, lower. In Hansford County the average price in the United States of a new single-family house has gone from \$37,900 to \$42,300 in the past year alone. For used properties, the jump has been from \$33,850 to \$37,200. In some areas prices are higher than these and, in others, lower. In Hansford County the average price in the United States of a new single-family house has gone from \$37,900 to \$42,300 in the past year alone. For used properties, the jump has been from \$33,850 to \$37,200. In some areas prices are higher than these and, in others, lower. In Hansford County the average price in the United States of a new single-family house has gone from \$37,900 to \$42,300 in the past year alone. For used properties, the jump has been from \$33,850 to \$37,200. In some areas prices are higher than these and, in others, lower.