

## Side Glances

by John Carroll

THE AYATOLLAH KHOMEINI really lost his cud over the Canadian's rescuing six Americans from Tehran, according to all reports.

Now, the terrorists and the Iranian government (is there really any difference?) say that the other hostages in our embassy there may have to pay for the Canadian's actions.

We have some advice for the Iranians. If they turn loose our people, get out of our building and try to act just a little contrite, we might be persuaded to forgive an "impulsive act of religious zeal."

But even Islamic zealots cannot be forgiven if they have more than a few more days of sober reflection on the error of their ways.

These are the same people who are going to cry for American help when Russian tanks cross into their country in the not-too-distant future. If the Russians will turn our diplomats loose after

capturing the Iranian capital, maybe we should let them have Iran. It's not doing us any good, anyway.

I SAW A VERY GOOD MOVIE on HBO the other day. It was called "Days of Heaven." Using some quite innovative camera techniques, the filmmakers were able to capture what I interpreted as the essence of early Twentieth Century life on the High Plains of Texas. I won't tell you any more about it except that it's a visual treat. Be sure to see it next time it plays on television.

I HAVE TO LOOK ASKANCE at my fellow journalists covering the trial of Loy Stone in Lubbock. The fact that he is a self-professed "witch" gets more attention than the question of whether he fired the shot that killed a high school girl.

Not exactly a high-water mark in the annals of professional (and supposedly objective) journalism.

### THE VALENTINE



### County soldier completes infantry training

Pvt. David Mariscal, son of Mr. and Mrs. Santos B. Mariscal, of Lockney, recently completed advanced individual training at the U.S. Army Infantry School, Fort Benning, Ga.

The training included weapons qualifications, squad tactics, patrolling, landmine warfare, field communica-

tions and combat operations. This qualified him as a light-weapons infantryman and as an indirect fire crewman. He was taught to perform any of the duties in a rifle or mortar squad.

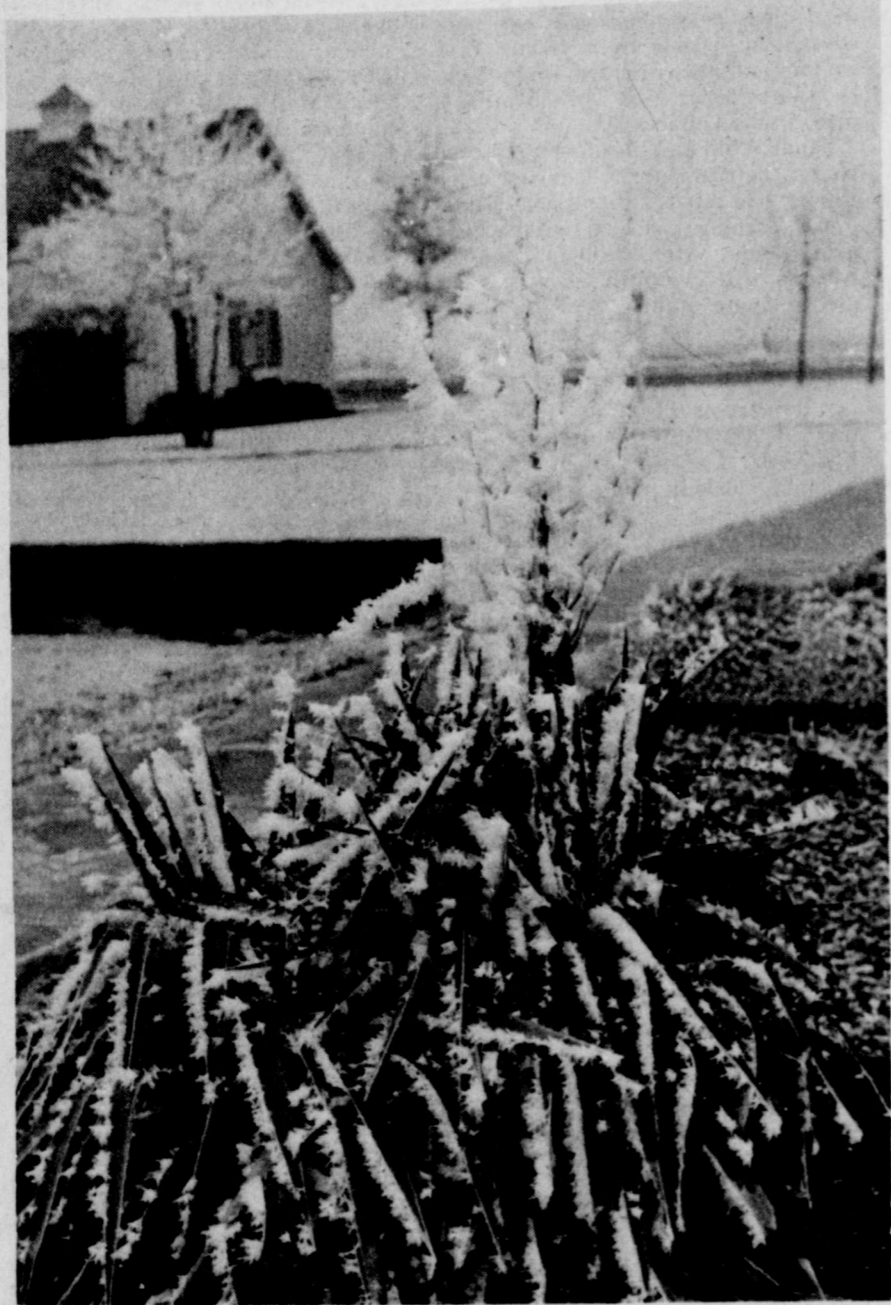
Pvt. Mariscal entered the Army in October 1979.

### FmHA changes schedule

Because of other duties it is necessary for the Floyd County office of Farmers Home Administration to alter their usual schedule.

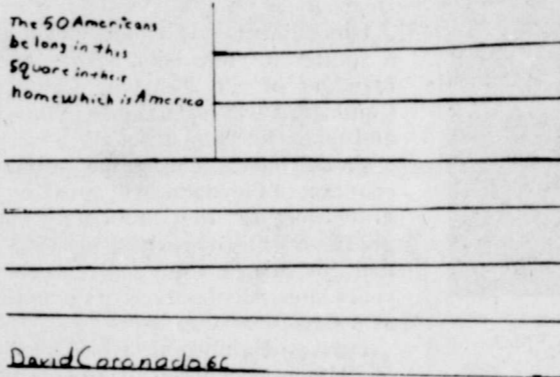
The county supervisor will be in the office on Tuesday, February 12th instead of February 11th. Because of a national holiday on February 18th, the

county supervisor will be in the office on February 19th from 9:00 AM to 12:00 Noon. The Floyd County FmHA office will be closed from February 19th at 1:00 PM until February 22nd at 9:00 AM to permit the employees to attend a multi-district FmHA meeting at Lubbock.



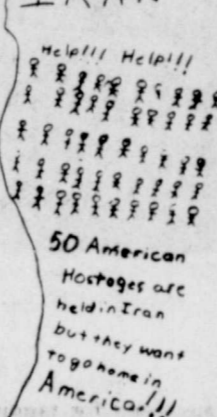
A BLOOM OF ICE — Nature imitates nature in Floydada this past week as ice crystals built up on this yucca plant to

look like the foliage is in spring bloom. The ice on the leaves, however, give away the chilly temperatures.



David Coronado

### IRAN



FOR THE HOSTAGES — David Coronado, a sixth grade student at R.C. Andrews, said he was looking at the

American flag and thinking about the hostages when the idea for this drawing came to him.

### Correction

In the final paragraph of the Hesperian story on the Southwestern Public Service rate increase, the city rate should have been listed as \$.0825 a

kilowatt hour for the first 20 kilowatt hours, rather than \$.25 for the first 20 kilowatt hours.

## Granddaughter of Floydada residents is named 1980 Rocky Mountain Paint Horse Queen

D'Lesé Redd, 18-year-old daughter of Carol and Dale Redd, former Floydada residents, now of Golden, Colorado, was recently named the 1980 queen of the Rocky Mountain Paint Horse Association. The announcement was made at the annual awards banquet.

D'Lesé is the granddaughter of Mr. and Mrs. Tom Daniel and Mr. and Mrs. Floyd Lawson, all of Floydada. She is a freshman business major at Western State College in Gunnison, Colorado. She is a graduate of Arvada West High School where she was a member of the swim team, president of the Pep Club, and president of a Junior Achievement group.

D'Lesé has been very active in Paints since 1975 when she acquired her first paint horse Hi Co Leo. She and this young gelding became a competitive pair as they acquired Register of Merits in five youth events and four in open events.

In 1977 D'Lesé obtained a new paint, Kay Motion, and has accumulated a remarkable record in the show arena with her mare. In 1978 she was the Reserve National Champion in Hunter Hack as well as the World Champion Mare in Jumping, Working Hunter and Hunter Hack and that year also received her APHA Championship on Kay Motion. She and Kay Motion were also Youth Honor Roll Leader in Working Hunter. D'Lesé has received three superiors and five register of Merits in open competition and in youth as received four superiors and eight register of Merits on Kay Motion. Since 1975 she has won numerous awards from the Rocky Mountain Paint Horse Association.

D'Lesé has been active in other horse organizations such as Westernaires for six years, where she was an officer on each team she was a member. In Westernaires she rode on specialty

teams, such as Trick Riding, Liberty, and Dressage. She also belonged to the TMR Stablemates 4-H Club where she held offices of secretary and treasurer.

D'Lesé is looking forward to representing the Rocky Mountain Association this year and hopes to meet many new friends along the way and invites anyone who has questions about Paint horse to get in touch with her, as she looks forward to continuing to promote "The Sports Model" of the horse industry.

### Cherri Redd

D'Lesé's sister, Cherri Redd and her horse, Skipardo E. Star, were high point open performance horse and high point 14-18 youth for the Colorado West Paint Horse Club.



D'LESE REDD

## CAPITOL UPDATE

John Tower



The Constitution requires the President each year to report to the Congress on the State of the Union. Unfortunately, this year all the Congress received was a self-serving dossier of alleged administration grand accomplishments -- a document more suited to a campaign stump than the State of the Union Message.

The 75-page document submitted to the Congress is nothing more than a collection of re-hashed programs and ideas, many of them already rejected or completely overtaken by events.

The most serious failing was in the area of national defense. Stepped-up Soviet aggression has made it crystal clear that the U.S. must act and act now to rebuild itself as a military power. Even the President has admitted Soviet adventurism in Afghanistan caused him to reassess his view of Russian intentions. But the State of the Union Message ignores any lessons that should have been learned.

For the Administration apparently to have concluded that its Five Year Defense Plan -- already woefully inadequate -- in any way would deter the Soviets from future aggression is patently ridiculous.

The Administration even has the audacity to claim to have reversed several years of reduced defense spending. That assertion ignores a history of cuts to defense budgets by a Democrat-controlled Congress. Carter's own campaign pledge to further reduce defense spending, and his reluctance even to meet his promise to our NATO allies for a 3 percent real growth in the budget.

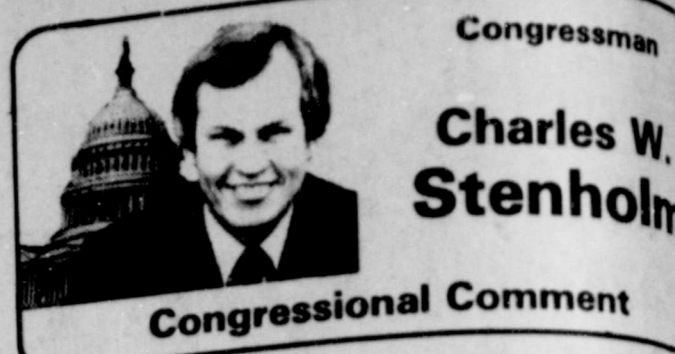
The new 1981 defense budget and Five Year Defense Plan have been grudgingly drawn up by the Administration. Close examination of these proposals clearly shows that most of what is advertised as new additions is really only catch-up spending would be paid for largely by deferring other vital programs to the years beyond 1985 -- a classic example of robbing Peter to pay Paul.

Just as disturbing are the President's words of praise for the SALT II treaty. The Administration has ignored all objective analyses which reveal serious flaws in that treaty, including the report from the Senate Armed Services Committee that concluded the treaty is not in the best interests of our national defense.

As for the domestic policy aspects of the President's message, they reflect the Administration's continued dependence on unworkable ideas, and a tendency to believe spending money with or without having effective programs will solve any problem.

There is nothing of the shift in attitudes and direction that is required if we are to effectively address the problems of inflation and energy.

The Congress faces grave responsibilities this year. It would be easier for Congress to meet its challenges with wise and effective leadership from the Administration. But even if that leadership fails to appear, Congress has the power, and I hope the will, to take decisive action to improve the American position in the world, and to start on the road to solving our domestic problems.



Congressman Charles W. Stenholm  
Congressional Comment

WASHINGTON, D.C. — Probably no government program is as misunderstood or mistrusted as the 1980 Census which will get underway in March. And yet, the information received during the census taking is far more important and far-ranging than just an official counting of American noses.

Census statistics are critical components in the distribution of federal, state and local funds—\$50 billion annually in Federal spending alone is allocated according to census population figures. Land management, highway repairs, the job training, revenue sharing, the Cooperative Extension Service and Agricultural Experiment Stations — and 100 other federal programs — use census statistics in allocating funds.

With that in mind, perhaps we should look at the census as our vote to receive our proper share of federal spending, rather than, by default, allowing our money to be distributed elsewhere.

Of the 24 Congressional Districts in the State of Texas, our district received the lowest amount of General Revenue Sharing Funds in fiscal year 1979 — \$11.9 million compared to \$13.6 million and \$13.7 million for two neighboring districts. With the district's high population of elderly and minority citizens, both groups that mistrust the intrusion of census takers, an accurate that we receive our fair share of Revenue Sharing Funds.

Allocation of federal money under the nutritional and social services program for the elderly is based solely on a state's population over age 60. Again, we gain by an accurate evaluation of the number of persons in that category.

The second issue to note is an experimental program in which residents of Abilene and four other Ameri-

can cities will be participating in this year's census. During the census, questionnaires are delivered by census takers, mailed to each household, and returned in most of the traditional "by-mail" method is more accurate than such a program, however, both a costly and cumbersome to what should be a process by extensive education of the need for the census. The original and main reason for the census is accounting of the population, each person is literally asked to determine an equitable share of the national income.

To those who oppose the basis of loss of confidentiality, I would like to see the Census Bureau have a record for keeping confidential personal information gathered by the census. Actually, the requested is often less than that demanded for credit school enrollment, medical records, and a lot more.

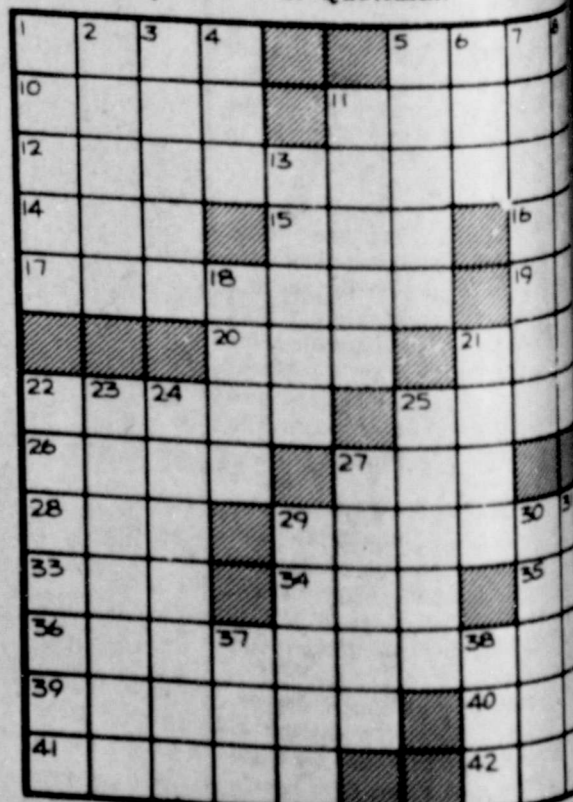
In the final analysis, a few minutes, or perhaps filling out a form if your answers were secret, your participation would bring tax dollars back to your state. Most people would, and should, look at the census.

THE FLOYD COUNTY HESPERIAN  
USPS 202-680  
Published each Sunday and Thursday at 111 E. Missouri Street, P.O. Box 700, Floydada, Texas 79235. Publication No. 202680. John Carroll, editor, publisher. Subscription rates: Local \$10.50 a year, out-of-trade area \$11.50 a year. Second class postage paid at Floydada, Texas 79235.

★ TEXAS PRESS ASSOCIATION MEMBER 1979

### WEEKEND CROSSWORD

- ACROSS  
1 Hebrew dry measure  
5 Port in Brittany  
10 Function  
11 Laborer  
12 Luck  
14 Snake  
15 "— been had!"  
16 Govt. bldg.  
17 Goaded  
19 Harem room  
20 "— the fields ..."  
21 Bluenose  
22 Perfume  
25 Cash recipient  
26 Quality of sound  
27 Half a bikini  
28 Terminate  
29 Hotel employee  
33 Commotion  
34 Prince Valiant's son  
35 Ear: prefix  
36 Early heavenly sight  
39 Store, as fodder  
40 Position of power  
41 Frail  
42 Miss Nazimova
- DOWN  
1 Church instrument  
2 Big game animal  
3 Some lovers do  
4 Fez color  
5 Overcome by ennu  
6 Decay  
7 Evasive  
8 Adjournment term  
9 In one's youth  
11 Conceal  
13 Tender meat  
18 Completed  
21 Talk show name  
22 Large clam  
23 Tolerate  
24 Guarantee  
25 Antler's end  
27 Carried  
29 Quotidian



# Sports

## Breezers win Christ the King tourney, come in second at McAdoo

Floydada eighth grade Breezers won first place in the Christ the King basketball tournament Jan. 14 and took second place in that city's tournament.

Eighth graders started out play in the Christ the King tourney by losing to Shallowater, 30 to 24. The hometown Breezers soundly trounced the McAdoo eighth grade team the next day, 43 to 11.

In the finals, Floydada lost a close one to Spur, 46 to 39, giving the Breezers second place in the tourney. Mark Hatley and Joe Faulkenberry were named to the All-Tournament team.

Joe Scott Faulkenberry received the Most Valuable Player award for the tournament. Mark Hatley made the all-tournament team.

Last week at McAdoo, the Floydada eighth grade coasted to an easy victory, 51 to 17, against the Post seventh grade team. The Breezers soundly trounced the McAdoo eighth grade team the next day, 43 to 11.

In the finals, Floydada lost a close one to Spur, 46 to 39, giving the Breezers second place in the tourney. Mark Hatley and Joe Faulkenberry were named to the All-Tournament team.



STAFF PHOTO

**SEVENTH GRADE MVP** — Derrick Jenkins holds the trophy he won as the most valuable seventh grade player in the Christ the King tournament in Lubbock.

## Seventh grade Breezers take second in Christ the King tourney

The Floydada seventh grade Breezers won second place in their division of the Christ the King basketball tournament in Lubbock, Jan. 14.

The Breezers defeated Shallowater by one point, scoring in the last second of play to win the game, 23 to 22.

In the second game of the three-day series, Floydada scamped past the

Western Hills Baptist Academy, 24 to 17.

Going into the finals, Floydada dropped the last game to Lubbock Christian, 51 to 29, coming home with the second place honors.

Derrick Jenkins was named most valuable seventh grade player in that contest.



STAFF PHOTO

**TWICE ALL-TOURNEY** — Consistently excellent performance by eighth grade Breezer Mark Hatley led to his being named All-Tournament during the Christ the King and the McAdoo tournaments.



STAFF PHOTO

**EIGHTH GRADE MVP** — Joe Scott Faulkenberry shows off the most valuable eighth grade player trophy he won at the Christ the King tournament and the All-Tournament trophy he won at the McAdoo tournament.



STAFF PHOTO

**LIKELY STORY** — Bobby Miller who sets his farm animals straight, or at least gives them a new outlook on life.



STAFF PHOTO

**POWDEE!** — Hester Moore as Minnie Earl pokes a little fun and promotes the county library at the same time.

### Deadline for tagging

### bobcats is approaching

The deadline for obtaining bobcat pelt tags and for tagging the Texas Parks and Wildlife Department.

Every bobcat pelt taken in the state during the current tagging period (Nov. 15, 1979 to Feb. 15, 1980) must be tagged prior to purchase or sale. Pelts tagged during the legal tagging period may be purchased or sold at any time of the year, the department said. Pelts from cats taken prior to or after these dates will not be eligible for tagging under the Texas Bobcat Pelt Tagging Program. Untagged pelts cannot be sold.

The bobcat pelt tagging is a part of a program by the federal Endangered Species Scientific Authority to monitor nationwide bobcat harvest rates. Tagged pelts are eligible for export, except those tagged in a 28-county area of the High Plains, including Floyd County. These pelts may be sold only on the domestic market.

### High Plains water district

### praises two retiring

### Floyd County members

The Board of Directors of the High Plains Underground Water District wishes to advise residents of Floyd County of outstanding community service performed by Connie Bearden and M.M. Smitherman who are retiring as Water District Committeemen for Floyd County.

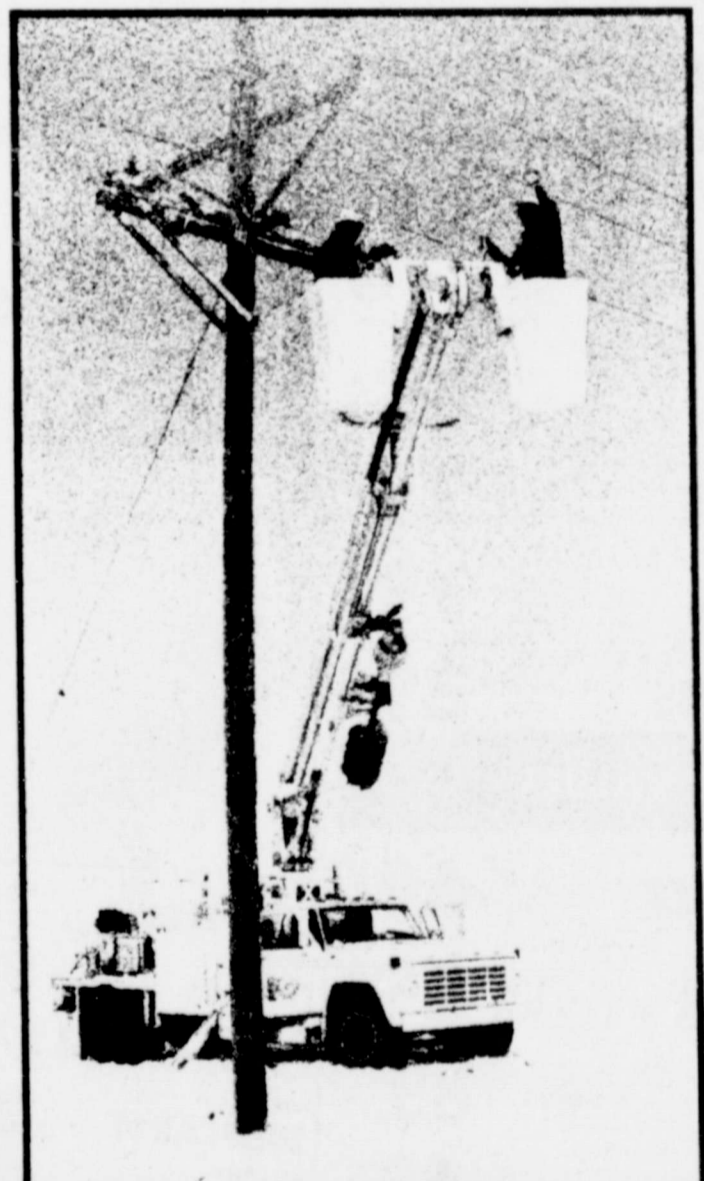
Bearden and Smitherman, residents of Floydada, are each stepping down after eight years of representing Floyd County residents to the Water Board. Both men were re-elected in 1976 to serve their second 4-year term.

During their elected tenure Bearden and Smitherman worked to actively promote water conservation among Floyd County residents. Along with three other elected County Committeemen they helped familiarize the area residents of services offered by the District as well as with its rules and regulations.

They met with other committee members each month to accept and recommend for Board approval applications for water well drilling permits and extensions. Their responsibilities called for donating many hours to District-related business and to keeping the District Board and staff informed about water issues affecting the people of Floyd County.

They were called upon as local spokesmen for water policy and practices and occasionally to volunteer their own land for piloting water conservation programs in conjunction with the District.

The Board of Directors presented Connie Bearden and M.M. Smitherman with certificates of appreciation for their contributions to the District.



**YOU  
EXPECT  
US  
THERE**

**Yes you expect us there and** You depend on Southwestern Public Service electricity to provide a lot of things to make your life better and more comfortable at home and work.

You depend on SPS to restore service quickly after a storm or accident.

When you need us we'll be there. It's good to know there's something you can depend on.



WE RESERVE THE RIGHT TO LIMIT

YOUR THRIFTWAY STORES SELL & FEATURE ONLY FINE QUALITY AMERICAN GROWN GRAIN FED BEEF, FRESH PORK & QUALITY POULTRY.



PAN READY WHOLE  
**CUT-UP FRYERS**  
LB. **65¢**

U.S.D.A. GRADE 'A' SPLIT  
**FRYER BREASTS**  
LB. **\$1.19**

U.S.D.A. GRADE 'A' QUALITY FRYERS

WHOLE  
**FRYERS**  
**55¢**  
LB.

U.S.D.A. GRADE 'A' FRYER  
**DRUMSTICKS**  
LB. **99¢**

U.S.D.A. GRADE 'A'  
**FRYER THIGHS**  
LB. **99¢**

**MEAT SPECIALS!**

- OSCAR MAYER SLICED MEAT **BOLOGNA** 12 OZ. PKG. \$1.19
- OSCAR MAYER SLICED PICKLE & PIMENTO LOAF **LIVER CHEESE** 8 OZ. PKG. 99¢
- OSCAR MAYER SLICED CHOPPED OR HAM & CHEESE **HAM** 8 OZ. PKG. \$1.19
- OSCAR MAYER FINEST QUALITY SLICED **BACON** 1 LB. PKG. \$1.19
- SWIFT'S BREAKFAST STRIPS **SIZZLEAN** 12 OZ. PKG. \$1.19

We Take Visa & Mastercharge

USDA Inspected Grain Fed Beef For Freezer Cut & Wrapped

**TOTAL SAVER**



**1/2 BEEF**

**\$1.29**  
Lb.

**TOTAL SAVER**

All Grinds  
**MARYLAND CLUB**  
1 LB. CAN  
**\$2.79**

2 PLY FACIAL  
**KLEENEX TISSUE**  
200 CT. BOX  
**59¢**

ABSORBENT PAPER  
**HI-DRI TOWELS**  
JUMBO ROLL  
**2.89¢**

ASSORTED BATHROOM  
**DELSEY TISSUE**  
4 ROLL PKG.  
**79¢**

PAPER BAG FLOUR  
**GLADIOLA**  
5 LB. BAG  
**89¢**

SENECA PIECES & STEMS OR WHOLE OR SLICED  
**MUSHROOMS**  
8 1/2 OZ. JAR  
**\$1.59**

- TOTAL GROCERY SAVERS**
- NO BEANS **WOLF CHILI** 15 OZ. CAN **89¢**
  - SUNSHINE KRISPY **CRACKERS** 32 OZ. BOX **\$1.19**
  - AMERICAN BEAUTY LONG **SPAGHETTI** 24 OZ. PKG. **85¢**
  - TRADITIONAL SPAGHETTI PLAIN/MUSHROOM/MEAT **RAGU SAUCE** 15 1/2 OZ. JAR **79¢**
  - WHITE HOUSE **APPLE JUICE** 32 OZ. BTL. **79¢**
  - DEL MONTE WHOLE **GREEN BEANS** 16 OZ. CAN **39¢**

- FROM OUR SHELVES**
- KLEENEX SUPER DRY EXTRA ABSORBENT **DIAPERS** 24 CT. BOX **\$2.79**
  - KOTEX **MAXI PADS** 30 CT. BOX **\$2.29**
  - KOTEX **MINI PADS** 30 CT. BOX **\$1.69**

- FROZEN FOODS**
- MINUTE MAID FROZEN **ORANGE JUICE** 12 OZ. CAN **89¢**
  - MORTON FRIED **CHICKEN** 32 OZ. BOX **\$2.29**
  - MRS. GOODCOOKIES ASSTD. **COOKIES** 16 OZ. BOX **\$1.19**

- HEALTH & BEAUTY AID SAVINGS**
- GILLETTE CARTRIDGES **TRAC II** 5 CT. PKG. **\$1.29**
  - GILLETTE SUPER STAINLESS **STEEL BLADES** 5 CT. PKG. **99¢**
  - BLISTEX **LIP GLOSS** EACH **59¢**
  - VICK'S COUGH SYRUP 3 OZ. BTL. **\$1.29**
  - VICK'S FORMULA 44 **COUGH SYRUP** 3 OZ. BTL. **\$1.39**
  - DECONGESTANT **VICK'S INHALERS** EACH **\$1.09**

- DAIRY VALUES**
- MINUTE MAID PURE **ORANGE JUICE** 32 OZ. CTN. **69¢**
  - BLUE BONNET QUARTERS **MARGARINE** 1 LB. BOX **59¢**
  - Bell Quality Cheked **Buttermilk** 1/2 Gallon **89¢**
  - KRAFT PHILADELPHIA **CREAM CHEESE** 8 OZ. BOX **49¢**
  - Bell Quality Cheked Slim & Trim **Ice Milk** 1/2 Gallon **\$1.09**

FLORIDA RUBY RED 104 SIZE **GRAPEFRUIT** EA **25¢**

RED DELICIOUS **APPLES** 3 LB. BAG **98¢**

TEXAS GREEN **CABBAGE** LB. **12 1/2¢**

BALEK & GLOSSY **EGGPLANTS** LB. **39¢**

VINE RIPENED **TOMATOES** LB. **39¢**

CALIFORNIA SUNKIST  
**LEMONS**  
**3 \$1.00**  
LBS.

CALIFORNIA ICEBURG  
**LETTUCE** LB. **29¢**

**S.H. GREEN STAMPS**  
DOUBLE ON WED.

10¢ OFF LABEL LAUNDRY DETERGENT  
**OXYDOL**  
**\$1.59**  
49 OZ. BOX

20¢ OFF LABEL DISHWASHING LIQUID  
**JOY**  
**\$1.29**  
32 OZ. BTL.

BY GILLETTE CRICKET  
**LIGHTERS**  
EACH **49¢**

**PAGE'S THRIFTWAY**

PRICES EFFECTIVE FEB. 3-9, 1980  
LOCKNEY

### Camera Club to meet Thursday night

Don L. Falkner, president of the Lubbock Photographic Club, will present the program Thursday night at the Lock Camera Club. The program will be a lecture, show and discussion on color-effects filters.

The camera club meeting will be at 7:30 p.m. Thursday (February 7) in the Lighthouse Electric Cooperative building in Floydada.

Anyone who is interested in photography is welcome to attend the meeting.

# Sale

**Dinnerware**  
**40% Off**

SELECTED PATTERNS IN

- Noritake Formal China
- Noritake Stoneware
- Makasi Stoneware
- Franciscan Earthenware
- Oneida Flatware

**Noritake and Viking Crystal**  
**50% Off**

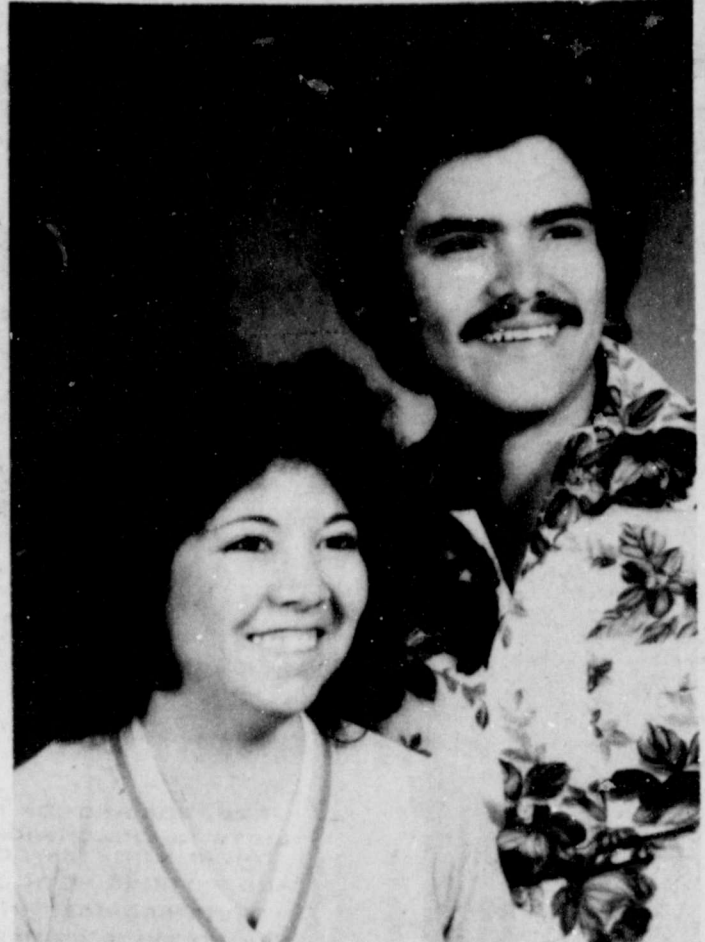
**Wyler Watches 50% Off**  
**Seiko Watches 20% Off**

SALE STARTS IMMEDIATELY

Schacht's  
Flowers, Jewelry & Gifts

652-2385 LOCKNEY

# Social Events



**MARCH VOWS PLANNED** — Sylvia Salinas, daughter of Rachel Salinas and the late Mr. A.Z. [Ted] Salinas of Lockney will be married to Glenn Smith Jr., son of Rev. and Mrs. Glenn Smith Sr. of Lockney on March 15. They will repeat vows in the First Mexican Baptist Church of Plainview with the Rev. Glen E. Godsey and the Rev. Glenn Smith officiating.

The bride-elect is a graduate of Lockney High School and is employed with the Highway 70 Texaco. Smith also attended Lockney schools and is employed with Consumers Fuel Association of Lockney.

Enter Your Grandchild's Picture In the  
Hesperian--Beacon Valentine Page ...



MAYBELL MARTINEZ AND ELI ENRIQUEZ

**Martinez, Enriquez engagement announced**

Mr. and Mrs. Benny Martinez announce the engagement and forth-coming marriage of their daughter, Maybell, to Eli Enriquez, son of Mr. and Mrs. Chris Enriquez, all of Floydada.

Maybelle will be a May graduate of Floydada High School and is presently employed at Arwine's Drug. Eli is a 1978 graduate of Floydada High School and is employed by Don Hardy Race Cars, Inc.

The couple have set their wedding date for March 15.

slightly more meat than do their poultry counterparts. Ready-to-Eat meat soups must contain five percent meat and condensed meat soups, at least 10 percent. That means a minimum of 0.80 ounces and 1.6 ounces of meat per 16-ounce can, respectively. Ready-to-Eat poultry soups contain two percent poultry meat and condensed, four percent poultry meat, or 0.32 ounces and 0.64 ounces per 16 ounce can, respectively.

The label on meat or poultry products tells you what the major ingredients are by listing them in descending order of predominance by weight. Knowing what is in a processed product and how much meat and poultry it actually contains can help you plan well-balanced satisfying meals. For example, even though chili con carne has more meat than chili con carne with beans, both items are a good source of protein.

Educational programs conducted by the Texas Agricultural Extension Service serve people of all ages regardless of socioeconomic level, race, color, sex, religion or origin.

## Silk Flowers For Valentine Day Gifts!

We have just restocked with thousands of Silk Flowers, Silk Ferns, and Silk Follages, all in new designer colors!

You will find no larger selection of Beautiful Silk Flowers in this vicinity!

Our floral designers have created over 100 arrangements in Silk Flowers, Silk Follages and Silk Ferns for this VALENTINE DAY.

"Cupids Headquarters In Floydada"

### Park Florist

312 West Georgia  
Floydada  
983-2867 983-2868

## Today's Lifestyles

By Marilyn Tate

County Extension Agent

We Have  
Bridal Selections  
For  
Allison Clark  
Bride-Elect Of  
Randy Hale

DIAMOND NECKLACES  
DIAMOND EARRINGS  
WEDDING BANDS  
14 KT. NECK CHAINS  
DIAMOND DINNER RING  
14 KT. BRACELETES  
AND MANY OTHER GIFTS

Solomon Jewelry  
102 South Main St.,  
Floydada, Texas  
PHONE 983-3240

# THOMASON

VENTURE GROCERY & MARKET  
PHONE 652-3346 LOCKNEY, TEXAS

We accept  
Food Stamps  
WIC Cards

Bestmaid 22 Ounce Jar

Dill Pickles 79¢

Sausage 99¢ Lb.

(Our Own Homemade)

Lays  
Potato Chips  
Or  
Tostitos  
Regular 99¢ 79¢

Bordens 1/2 Gallon  
Ice Cream \$1.49  
Round Carton

5 - 2 Lb. Pkgs.  
Ground Chuck \$12.90

Coke. TAB.  
Two great refreshers

YOUR CHOICE  
\$1.89  
32 OZ. RETURNABLES  
PLUS DEPOSIT

**HOW MUCH MEAT IN PROCESSED CHILI, STEWS AND SOUPS**

With the nipping blast of winter, you may be reaching for hot and hearty soups, chili and stews to feed your family.

Processed foods offer quick convenience to busy schedules, but if you want to know what's in that package check the label.

Specialists with USDA's Food Safety and Quality Service check each name against the recipe to be used — before the name ever goes on the label — to see that it tells what's really inside the package.

For example, did you know you can expect about the same amount of meat in chili con carne with beans as you could find in beef stew? USDA standards require both items to contain at least 25 percent meat.

Usually, you'll find more meat in chili than stew and more meat in stew than soup.

In a 16-ounce can of chili con carne, at least 6.4 ounces or almost a half of the can will be meat. A can of chili sauce with meat may contain at the minimum one ounce of meat, since standards require at least six percent meat.

In Brunswick stew, at least two kinds of meat and/or poultry must account for 25 percent of the product and

## Colonial Beauty Shop

319 South Second  
Floydada

Announces The Association Of  
Dixie Harris  
She Specializes In All The Latest Cuts

Mens & Womens Styles  
Early & Late Appointments

Special  
Uni-Perms Regular \$25.00 \$20.00

Phone 983-5011

Dixie Works Wednesdays, Thursdays & Fridays

### Colonial Beauty Shop

Floydada

Got Heating  
Or Plumbing  
Problems?  
Call  
HOLMES  
PLUMBING

Austin or Steve  
983-2251  
6:30 - 9:30 a.m. and  
5:30 p.m. Until?

**School Menu**

LOCKNEY SCHOOL CAFETERIA MENU

Feb. 4-8

Monday: Breakfast — scrambled egg, toast, milk, tomato juice. Lunch — chicken-fried steak, gravy, fried okra, creamed potatoes, cornbread, milk, plain cake with frosting.

Tuesday: Breakfast — toast, oats, cinnamon apple. Lunch — pig in a blanket, onion rings, veg. beans, milk, peanut butter and crackers.

Wednesday: Breakfast — sausage, biscuit, fruit juice, milk. Lunch — turkey and dressing, cranberry sauce, asparagus, hot rolls, tossed salad, milk.

Thursday: Breakfast — toast, scrambled egg, fruit cocktail. Lunch — chili, coleslaw, French-fried potatoes, crackers, milk, catsup, apricot cobbler.

Friday: Breakfast — buttered rice, pears, milk. Lunch — fried chicken, creamed corn, cheesy broccoli, applesauce, hot rolls, milk, cake.

**"You Block people really know your stuff. I shoulda come here last year."**



Each year, all Block preparers are updated on all the latest changes in the tax laws. That's another way of making sure we can complete your return accurately and correctly.

**H&R BLOCK**  
THE INCOME TAX PEOPLE

106 West Missouri

983-5233

Floydada

**Cook of the week**



MRS. EVA TACKETT

Mrs. Eva Tackett is being featured as our special cook this week. She has chosen three recipes — chicken pot pie, broccoli salad and chicken or turkey dressing — to share with our readers.

Mrs. Tackett was born in Alabama in 1902, finished high school in Crosbyton, and was married to S.H.

Tackett in 1922. They have one daughter, Cleta Ellison of Lubbock, four grandchildren — two girls and two boys; and four great-grandchildren.

In addition to cooking, Mrs. Tackett enjoys china painting. Of her cooking, she says, "I am a by-guess cook. I just guess about how much,

a pinch of this and a smidgeon of that."

**Broccoli Salad**  
1 package frozen chopped broccoli

1 package frozen English peas

Thaw enough to mix. Add 1 small onion diced fine, 3 chopped boiled eggs, 1/2 cup sour cream; 1/2 cup mayon-

naise, garlic salt, salt and pepper to taste. Mix and keep refrigerated.

**Chicken Pot Pie**

Boil one large fryer and bone. Thicken stock slightly, add four hard boiled eggs. Make crust as for any plate pie. In pan being used to make pie, put half of the chicken mixture. Cover with

a crust and brown in oven. Remove, add other half mix and another crust, and bake.

**Chicken or Turkey Dressing**

Break left over biscuits in pieces, or use stale light bread, plus an equal amount or "a little more" cornbread than white bread. Pour stock from chicken or turkey over crumbs. Add pepper and salt

to taste, plus a smidgeon of ground sage. Sauté a large cooking oil and add mixture. Add hard boiled eggs, 1 can celery soup, 1 can mushroom soup. Mix thoroughly, slightly soupy. Bake in a 350 degree oven to desiredness.

**"Family Crusade"**



A Cordial Invitation

To Hear

Rev. and Mrs. Bob Mickey

Evangelist,

Singer,

Chalk Artist,

Puppeteer

REV. BOB AND IDA MAE MICKEY ARE INTERNATIONALLY KNOWN FOR THEIR MINISTRY TO THE NAZARENE. THEIR MINISTRY CONSISTS OF PREACHING, SINGING, CHALK DRAWING AND WORKING WITH CHILDREN. THEIR SERVICES INCLUDE SOMETHING FOR ALL AGES, THEY REFER TO THEIR REVIVAL SERVICES AS "FAMILY CRUSADES." BOB MICKEY WAS CONVERTED FROM THE ENTERTAINMENT WORLD. HE HAS CALLED HIM TO PREACH FOR HIM, BOB HAS WRITTEN AND RECORDED SOME OF HIS OWN SONGS. IDA MAE IS A FINE CHALK ARTIST AND CHILDRENS WORKER. SHE WORKS WITH PUPPETS, THEY ARE A GREAT TEAM. THEY WORK IN REVIVALS, CAMP MEETINGS AND CHILDRENS CRUSADES WHEREVER GOD LEADS THEM.

**Floydada Church Of Nazarene**

February 5-10

7:30 p.m. Each Night

Sunday 10:45 a.m. 6:00 p.m.

**Independent Cattlemen's Assn.**

Of Texas

Opposes

BEEFERENDUM 1980

Reasons;

1. Creates more federal bureaucracy at cattle producers expense
2. Imported beef exempt from check-off yet receive promotion benefits
3. Funds cannot be used to influence government policy or action
4. Sec. of Agriculture has final authority over decisions of Beef Board

REGISTER TO VOTE JANUARY 28 - FEBRUARY 6

AT YOUR COUNTY ASCS OFFICE



**PIGGLY WIGGLY**

**ALL NEW GAME! ALL NEW PRIZES!**

**JOIN THE WINNER AT PIGGLY WIGGLY.**



**WIN UP TO \$1,000! PLAY**

**THOUSANDS WON IN OUR LAST GAME... YOU COULD BE NEXT!**

**OVER \$60,300 IN CASH PRIZES! HERE'S HOW YOU CAN PLAY...**

- Pick up a FREE Instant Vegas Bingo Collector Card at our checkout counter or store office. No purchase necessary. Each card contains Instant Vegas Bingo games where you could win \$5, \$10, \$100, and \$1,000! Plus you can win \$1 or \$2 instantly!
- Each time you visit our store, pick up a FREE Instant Vegas Bingo game ticket. Simply punch out the perforated sections to reveal 4 game markers. Match the markers to the squares on your Collector Card. Just follow the easy rules on the back of your Collector Card.

**NO PURCHASE NECESSARY!**

**Instant Vegas Bingo**

**ODDS TO WIN**

Odds vary depending upon the number of game tickets you collect. The more tickets you collect the better your chances of winning. Instant Vegas Bingo Series including Piggly Wiggly, Stone Garrizozo, Clavis, Estancia, Dallas, Las Vegas, Rowell Silver City, Texas and Trust or Consales, Muebles, Samuels, Station and Tulsa, Texas. The above stores are served by Shop-Rite Foods Inc., 817 Truman Rd., Abilene, Texas, New Mexico.

Scheduled termination date of the promotion is April 27, 1980. Instant Vegas Bingo tickets are distributed.

Copyright © 1979 Wallace Games, Inc.

**ODDS CHART EFFECTIVE FEBRUARY 4, 1980**

PRIZE VALUE	NUMBER OF PRIZES	ODDS FOR ONE GAME TICKET	ODDS FOR 13 GAME TICKETS	ODDS FOR 26 GAME TICKETS
\$1,000	15	1 in 119,333	1 in 9,179	1 in 2,120
100	175	1 in 10,229	1 in 787	1 in 284
10	350	1 in 5,114	1 in 393	1 in 142
5	650	1 in 2,754	1 in 212	1 in 81
2	3,000	1 in 597	1 in 46	1 in 15
1	15,081	1 in 119	1 in 9	1 in 7
TOTAL NO PRIZES	19,251	1 in 93	1 in 7	1 in 7

# CLASSIFIED ADS sure to get results

**CLASSIFIED RATES**

CLASSIFIED ADVERTISING RATE: 15 CENTS PER WORD FIRST INSERTION; 10 CENTS PER WORD EACH SUBSEQUENT INSERTION. MINIMUM CHARGE \$12.00. CLASSIFIED DISPLAY RATE: \$1.40 PER COLUMN INCH CARD OF THANKS: \$2.00.

**Autos For Sale**

4 shocks for the price of 3. Free installation. 123 W. Calif. tfc

FOR SALE: 1974 Chevy Impala. 4 door, V-8, P.B., P.S., A.C. Call 983-3024 after 6 p.m. tfc

FOR SALE: 1974 Chevrolet Malibu, four door sedan, automatic, air, see or call Ted Allen at 311 W. Hallie. 983-2597 or 983-2382. 2-3c

FOR SALE: Ford Econoline Van, 1965 model. Good Condition. George Worsham 652-2471. Ltfc

FOR SALE: 1979 Luv Pickup. Call 983-3364. 2-3c

FOR SALE: 1979 Buick Limited 4-door 6-way seats, power windows and electric door locks. Low mileage. 652-3637. Ltfc

**cash in with a classified ad...**

**BIBLE BRIEFS**

Let us not therefore judge one another any more: but judge this rather, that no man put a stumbling block or an occasion to fall in his brother's way.

The wise man learns that first impressions and quick judgements are more often wrong than right. Good judgments are carefully made, after time and consideration. The difficulty with judging one another is that we often do not give the other man his due.

If we like a particular person, we overlook small faults we consider intolerable in someone not so favored. We are prone to help friends and make things difficult for those we dislike for some reason. This, of course, is not the Christian way — is not God's way.

## Public Notices

**LEGAL NOTICE**

The Floydada Independent School District will receive bids on:

1. Athletic Field House - metal construction - complete - under one general contract until 8:00 P.M., February 12, 1980, in the school administrative office. At that time bids will be opened and read aloud. Floydada I.S.D. reserves the right to reject any or all bids or proposals and to waive any formality in connection therewith.

For information or specifications concerning this notice call or write C.E. Tyler, Principal, Floydada High School, Floydada, Texas 79235. Telephone 806-983-3256. 2-7c

IN THE MATTER OF NO. 4445 § IN THE COUNTY COURT OF § OF § MAYE CRAGER, DECEASED § FLOYD COUNTY, TEXAS

**NOTICE TO ALL PERSONS HAVING CLAIMS AGAINST THE ESTATE OF MAYE CRAGER, DECEASED**

Notice is hereby given that Original Letters Testamentary upon the estate of MAYE CRAGER, deceased, were issued to the undersigned on the 16th day of January, A.D., 1980, in the proceedings indicated below my signature hereto, which is still pending, and that I now hold such letters. All persons having claims against said estate which is being administered, in the county below named, are hereby required to present the same to me at the address below given, before such estate is closed, and within the time prescribed by law.

s/s Ted J. Crager  
DR. TED J. CRAGER, 7305 SW 141 TERRACE, MIAMI, DADE COUNTY, FLORIDA, EXECUTOR OF THE ESTATE OF MAYE CRAGER, DECEASED. CAUSE NO. 4445, IN THE COUNTY COURT, FLOYD COUNTY, TEXAS 2-3c

**For Sale**

FOR SALE: Baled Cane. 652-3619 Ltfc

FOR SALE: Garage doors, storm windows, and gas heater. Call 983-2175. 2-7p

WANTED: Childrens kitchen appliances in good condition. Call 983-3304 a.m. & 983-3774 p.m. tfc

FOR SALE: Early American round dining room table, four chair, two leaves. 983-3836. tfc

**Help Wanted**

WANTED: LVN for 2 p.m. to 10 p.m. shift. Call 983-3704 or apply at Floydada Nursing Home. tfc

WANTED: Someone to work in office one day a week. Call 983-2153. tfc

WANTED: Someone to do light housekeeping. Call 652-2634. L2-3c

WANTED: Mechanic trainee and truck driver. If interested call or come by Perry Implement Lockney. 652-3306. Ltfc

**FOR RENT**

FOR RENT: 3 bedroom 1 1/4 bath living room, den and kitchen, utility, and one unfinished room, 1 car garage 1116 SW 6th, Lockney. Call 652-2292. Ltfc

FOR RENT: Brick house at South Plains, Dorsey Baker, Lockney. Ltfc

**STOP PAINTING**

Cover all outside walls and overhang with U.S. Steel Products

FREE ESTIMATES Stan-By Steel Siding 1501 N. Columbia Plainview, Texas Phone: 293-9330 Ltfc

**Can You Use Some Extra Money Let Us Help!!!!**

WE BUY SCRAP IRON, OLD JUNKERS, AND FREE PICKUP

Call 983-5277

**STORAGE SPACE**

BOATS, FURNITURE, ANYTHING, ETC. BY THE MONTH OR SIX MONTH 10% DISCOUNT.

WEST TEXAS MINI STORAGE 983-3573 OR 983-2151

**DAN'S AUTO SERVICE**

DAN TEUTON, Owner Specializing in Automatic Transmission, Motor Tune-Ups, Auto Air Conditioning.

General Repair We Have A BRAKE LATHE to handle all passenger car brake drums. See us for complete brake service.

Phone 652-2462

**COW POKES**



"Your cook's miserable disposition just got him elected President of the bank!"

THIS FEATURE SPONSORED BY Floydada Real Estate & Insurance Agency AUTO, FIRE & FARM INSURANCE Jim Word — — — Phone 983-2360

J.A. Bobbitt - Dealer For

"See Me For Your Cotton Seed Needs"

652-3787 LOCKNEY L 2-28C

**TURNER REAL ESTATE**  
983-2635 Farms-Ranches Floydada, Texas

FARMS-RANCHES-CITY PROPERTIES- BUSINESS LEASES-LOANS

**B. B. WILKES BROKER REAL ESTATE**

100 S Main, Lockney Barry Barker, Solicitor  
Barker Insurance Agency-652-2642

IF IT IS INSURANCE -SEE-  
**BARKER INSURANCE AGENCY**  
LIFE-FIRE-CASUALTY-HOSPITAL

**Diamond Industrial Supply Co., Inc.**  
Phone Days 296-7418 Nights 296-1200 or 296-7728  
1014 Broadway Plainview, Texas

Chain Sprockets V belts Sheave: U joints Oil Seals O rings Wisconsin

SKF BCA Timken Bower Cotton Striper Brushes & Bats

"We Appreciate Your Business More" Ltfc

**BUSINESS SERVICES**

**INTERIOR PAINTING WALL PAPERING**  
Call Rena Turner or Nancy Mayo, 983-5130 or 983-2667. tfc

**INSULATION**  
Fire-Resistant. Installed and Guaranteed. MARR Insulation Co. Lockney 652-3593. Ltfc

U-D-J INSULATION can help save your dollars. For information call 983-2601.

WILL DO ALL Types of carpenter work. Call 983-5201 after 5:30. tfc

WE DO Painting, floor leveling, house blocking, roofing and remodeling. We are now working Floydada Area. Contact Childress Bro. Collect 352-9563 tfc

CUSTOM Application of Herbicides. Bill Wisdom 652-3541, John Widom 652-3544. Ltfc

**BEFORE YOU PAINT**  
Get our free estimate on U.S. Steel Siding. 100% financing budget terms, D & B Construction 2806 34th, Lubbock 793-3173. tfc

Will sit with elderly person in their home or hospital from 8 to 4 or 7 to 3, Monday through Friday. 652-3178 L2-3p

**WANT TO SAVE GAS?** Then come to Charley's Sales, Service, Sharpening and Fix-it Shop in Plainview. We have the Heald trail bikes, trykes and tryke haulers. Also the Pedal Power electric bicycle — or we can electrify your bike. We are also the distributor for Skill products. Charley's Sales, Service, Sharpening and Fix-it Shop, 2103 West Fifth, Plainview. Phone 293-8891. L-S-tfc

**Fireplaces**  
BY MAJESTIC BUILT-IN OR FREE-STANDING CALL OR COME BY AUDRY MCCORMICK 107 WILLOW LOCKNEY 652-2572 L TFC

**MR. FARMER**  
acres wanted for onions, peppers, or cucumbers under contract. If interested, call 983-3791. 2-21c

**CAKE DECORATING**  
Custom baked and decorated for birthdays, holidays, parties, club meetings, etc. Laura Wilson 652-3770 L-tfc

"Carpet Need Cleaning?" Let me do the work for you. Dry foam, 10 cents sq. foot. Call Jack Moore 983-3033 after 5 p.m. tfc



Auto Accidents DO Happen... If one happens to you, be protected. Our car insurance offers coverage to meet your special needs — repairs to personal liability.

**BAKER Insurance Agency**  
127 W. Calif. Ph. 983-3270

**Real Estate**

FOR SALE: Three bedroom, two baths, with two lots. 983-2306 tfc

FOR SALE: Brick three bedroom, new carpet and new evaporative air conditioner, storage shed, fruit trees, new paint, and fenced back yard All this plus a great location. 104 J.B. Ave. Floydada. Call 293-8137 in Plainview after 5 p.m. tfc

FOR SALE: Two bedroom house newly redecorated, fenced-in back yard, garage. 316 W. Hallie St. tfc

Three bedroom house, one bath, large kitchen and living room, double garage and fenced-in yard with fruit trees, living room, dining room and hall newly carpeted. 701 W. Ross. Call 983-5047. tfc

FOR SALE: to be moved — 5 room house. 652-3183. Ltfc

FOR SALE: Two bedroom, one bath, large living and dining room, utility room, kitchen, single car garage, 1 1/2 lots. Call 983-2425 or 983-3024 after 6 p.m. tfc

FOR SALE: Nice home, large living room with dining area, kitchen, den, 1 1/4 baths, new steel siding, insulated. Garage with large carport and storm cellar, two storage buildings, fruit trees and chain link fence, \$32,000. Hale Insurance and Real Estate, call 983-3261. tfc

**PETS**

FOR SALE: Two-year-old female blond Cocker Spaniel, full blood, no papers. \$50.00. Call 983-5565 after 6 p.m. 2-3p

**Farm Items**

FOR SALE: Model 30 Ferguson tractor and some implements. Call 652-2471. Ltfc

Check with us for

**LIQUID FERTILIZER ANHYDROUS HERBICIDES**

Rigs available for application

**LONE STAR CHEMICAL INC.**

Office: 652-2761  
Deanie Henderson: 652-3434 Ltfc

**Estate**

Several good three bedroom and Real Estate. Wilson Bond, 983-3573. tfe

and 3 bedroom sale. King Real Estate. 983-5028. tfe

Two and three homes for sale. Insurance and at 983-3261. tfc

OK TRADE: Complex with low interest. tfc

Seven room two baths. 652-2760. tfc

By owner — 3 brick 1 3/4 bath. 652-4p.m. Lockney. Ltfc

**Acres**

40x70 steel barn, bedroom two bath and in Dougherty. Kay Steen 744-345 Chateau real-estate. tfc

ED TO BUY irrigated farm in surrounding area. XRO, c/o Hesp-700. Floydada. tfe

**LOST & FOUND**

German Sheppard, brown dog. Has a medal and medals of fame is Ted. Call 2-3c

**BUSINESS OPPORTUNITIES**

Highly profitable and Jean Shop of your during the latest in denim and Sports-6,500.00 includes inventory, fixtures, etc. You may have open inas little as Call any time for 612-835-1304. 2-3p

own highly profitable jeans or fashion \$16,000. Call any fashion flair 1-704-2-3p

**NO... WE AREN'T IN THE PHOTOGRAPHY BUSINESS BUT**

WE WILL REPRINT PICTURES THAT WE HAVE SHOT AND PUBLISHED IN THIS NEWSPAPER

**5 x 7 Gloss Finish \$2.00**

**FLOYD COUNTY HESPERIAN & LOCKNEY BEACON**



Vertical text on the left edge of the page, including names like 'LOU GRANT', 'PUPPET TALK', 'SAVING THE LONG', 'SEA HUNT', 'GUNSHPHORE', 'CAMEL THREE', 'SOAP', 'NICHOLAS MOORE', 'WALKER UP', 'ROSE', 'LITTLE TIGER', 'BLACK POWDER', 'ATTORNEY', 'THE OUT'.

# Fairview News

BY MRS. CLYDE BAGWELL

January 28 — Monday morning everything was covered with ice and it was very cold. The best place this kind of weather is at home by the fire.

Mr. and Mrs. E.W. Walls returned home Saturday afternoon from Oklahoma where they had spent over a week visiting at Nicoma Park with his sister and husband, Mr. and Mrs. E.C. Johnson. They also visited at Norman with her sister and husband, Mr. and Mrs. Marvin Marsee and with the Marsee's visited at Wayne, Oklahoma with the brother and wife, Mr. and Mrs. Seth Percy. On the way home Mr. and Mrs. Walls spent a few days at Lake Texoma a visiting friends and doing a little fishing.

Friday afternoon, Mr. and Mrs. Loyd Ownbey and Mrs. Leon Rasco of Lubbock visited their cousin, Mrs. Clyde Bagwell. They were in Floydada to attend the funeral of a long-time family friend, Mrs. Della Williamson. Carolyn Burton visited Fri-

day afternoon with Mr. and Mrs. C.H. Wise.

Mrs. Ray Cook went to Wellington Thursday to visit her cousins, Mrs. Ruby Sullivan and John Sullivan.

Sunday Mrs. Ray Cook talked with her son, Lt. Col. Keith Whitfield, in Summerville, South Carolina. He said the cold weather had reached there now and it was also pouring down rain and had been for three days.

Mrs. Kate Crabtree visited Mr. and Mrs. Kay Crabtree and family Sunday and had dinner with them.

Charles Beedy of Claude spent the weekend with his parents, Mr. and Mrs. Bill Beedy. Others visiting in the Beedy home Sunday afternoon were Mr. and Mrs. Bill Tye and Mr. and Mrs. Walton Wilson.

Mr. and Mrs. Grady Reeves of Plainview visited Wednesday night with Mr. and Mrs. T.L. Perry.

Mr. and Mrs. Franklin Harris and family visited Wednesday night with Mr. and Mrs. Eugene Watts and family.

## Mrs. J. B. Allen dies in Lockney; funeral services set Saturday

Myrtle Eunice Allen, a long-time Lockney resident, died at 9:50 p.m. Wednesday in Lockney General Hospital. Services were scheduled at 10 a.m. Saturday (Feb. 2) at the First Baptist Church in Lockney with the Rev. John Jenkins, pastor, officiating. Place of burial is Lockney Cemetery, with Moore-Rose Funeral Home of Lockney in charge.

Mrs. Allen was born June 21, 1890 at Lipan, Texas. She married James Brice Allen October 5, 1914 at Lipan. They moved to Floyd County from Childress County in 1917. Mr. Allen died November 5, 1962.

Mrs. Allen was a housewife and a member of the Lockney First Baptist Church.

Surviving are three sons, Brice Allen of Crosbyton, Dr. Roach V. Allen of Tucson, Arizona, and Bill Allen of San Diego, California; a daughter, Mrs. Tress Tannahill of Friona; a sister, Mrs. Lorene Aitken of Mineral Wells; 10 grandchildren and 14 great-grandchildren.

Pallbearers are Frank Brown, Hubert Frizzell, Leslie Ferguson, R.C. Mitchell, C.L. Record and Kelton Shaw.

# Deaths

## Brother of Floydada woman dies in Canyon

Services for Elma T. Cummings, 70, were at 2 p.m. Saturday in the First Baptist Church of Canyon. Burial was in Memory Garden Cemetery in Amarillo. Cummings was born in Floyd County June 19, 1909 and died Thursday in Palo Duro Hospital in Canyon. He was a certified public accountant and had lived in Canyon for 31 years. Survivors include his wife Vivian, one son Clancy of Dalhart, one daughter Mrs. Elma Lynn Nunley of Richardson, one brother A.D. Cummings of Lubbock; 3 sisters Mrs. Ima Rae Cates of Lubbock, Mrs. Aileen Smitherman of Floydada and Mrs. Willie Mae Hale of Quinlan, and seven grandchildren.

# FACTS & FIGURES

George Washington managed his Presidency assisted by a staff of two (one of whom was a part-timer). By Grant's administration, the number of personal aides had risen to six; by Coolidge's, to 46—mostly messengers, clerks and typists. Today, there are more than 500 people on the President's staff. Television's first historical study of the most powerful and influential office in the world, the American Presidency, will be broadcast on Public Television Jan. 23, 30 and Feb. 6, 9 pm EST. The three-part series, "Every Four Years," produced by WHYYY—Philadelphia/Wilmington and underwritten by grants from the State of Pennsylvania, the Corporation for Public Broadcasting, and our President's study of public's personal institutions.

# Center News

By Mrs. J.E. Green

January 28 — We had more winter weather this week. Trees, shrubs and grass were loaded with ice. Such a good time to stay in by the fire.

Company for several days last week at the Marion Carpenters were their granddaughter, Mrs. Michael Otting and small son from Atlanta. They visited in the Lockney Rest Home with her great-grandmother, Mrs. Claud Carpenter. The Otting family were moving from Atlanta to El Paso, and the husband had gone on ahead while the wife and son visited the relatives.

Mrs. Henry Brewer was on the sick list awhile last week. Mr. and Mrs. Millard Watson visited her parents, the Brewers, Friday afternoon, and Mr. and Mrs. Fred McDougle also came Sunday afternoon.

Mrs. Leo Frizzell spent Sunday night with Mrs. Ava Jackson.

Mr. and Mrs. Julian Edmondson of Borger visited Mrs. Fred Battey Friday afternoon.

Mrs. Ola Warren's three great-granddaughters, Mabelle, Natalie and Barbie Stout, children of Mr. and Mrs. Paul Stout of Muleshoe, visited her Saturday night. They were spending the weekend with grandparents, the Thomas Warrens.

Mr. and Mrs. Hal Thomas were in Post Thursday seeing his sister and sister-in-law who are not well.

The C.W. Denisons were in Lubbock Sunday visiting their son, Gilmer Denison and family, and an aunt, Mrs. J.A. Eaves.

Mrs. Fred Battey, Mrs.

Ola Warren and Mrs. Kate Crabtree visited Mrs. Green Thursday afternoon.

Friday about midnight the Clyde Greens of Peralta, New Mexico, arrived at the Green home for the weekend. Then Saturday afternoon the Victor Greens of noon the Victor Greens (Vic and Sue) of Plainview came. They drove to see the Anthony Latta's beautiful new home. Later the Latta's drove back with the Greens and all had supper. The Clyde Greens accompanied Mrs. Green to services at Calvary Baptist Church Sunday, and soon after dinner they left for home. The weather was threatening.

Mrs. Nancy Vertrees of Dallas came early last week to visit her mother, Mrs. C.M. Meredith and other relatives.

Miss Vera Meredith's company last week were the Clay Muncys; Mrs. C.M. Meredith, Curtis and Nancy; Mrs. Leo Frizzell; Mrs. Ethel Warren; and Mrs. Hal Thomas. Mrs. Lois Durham dined Sunday with Mrs. Ethel Warren.




Mr. and Mrs. Merten Myers of Canyon visited the Gordon Mayfields Tuesday. The parents talked to Gene Mayfield Friday (a phone visit).

Roland Blocker of Midland, a cousin of Mr. Mayfield, died recently. Our sympathy is with loved ones.

Mrs. Dorothy Anderson Thompson and daughter, Mrs. Randa Collins of Petersburg, were in town for last rites of an aunt, Mrs. Williamson. Mrs. Williamson will be missed by her many relatives and friends.



Trees can be successfully planted in Texas during the early spring months if kept dormant until planting and Agriculture Commissioner Reagan V. Brown suggests choosing a fruit or nut tree to add production as well as beauty to your landscape. For more information on lawn and garden care, write to the Texas Department of Agriculture, P. O. Box 12847, Austin, Texas 78711.

Minute Maid Frozen <b>Orange Juice</b> 77¢	Kraft 7 1/2 Oz. <b>Macaroni &amp; Cheese</b> 3/87¢	Casserole <b>Pinto Beans</b> 2 Lbs. 79¢
 <b>PIGGY WIGGLY</b>	Gold Medal <b>Flour</b> 5 Lbs. 86¢	Coffee Creamer <b>Coffee Mate</b> 16 Oz. \$1.39
 FULLY COOKED - SHANK PORTION <b>Smoked Ham</b> 88¢ Lb.	FRESH CRY-O-VAC <b>Beef Briskets</b> \$1.58 Lb. FULLY COOKED - CENTER SLICE <b>Smoked Ham</b> \$1.48 Lb. ALL VARIETIES 5 OZ. PKG. <b>Jimi's Burritos</b> 39¢	 FRESH DELICIOUS <b>Ground Beef</b> \$1.18 Lb. 3 LB. OR OVER
JOHNSON DAYTIME DISPOSABLE <b>Diapers</b> \$2.69	<b>Spam</b> 12 Oz. 99¢	<b>Wesson Oil</b> 48 Oz. \$1.19
AMERICAN BEAUTY LONG <b>Spaghetti</b> 24 OZ. 91¢	U.S. NO. 1 RUSSETT <b>Baking Potatoes</b> 5 LB. BAG 59¢	Carefree Panty Shields 30'S \$1.19
RAGU 15 1/2 OZ. <b>Spaghetti Sauce</b> 69¢	CALIFORNIA SUNKIST <b>Naval Oranges</b> 10/99¢	Stayfree Super Maxi Pads 30 CT. \$1.19
FAMILY 18 OZ. <b>Scope Mouthwash</b> \$1.49	CRISPY FRESH LARGE <b>Green Peppers</b> 6/99¢	AEROSOL <b>Windex</b> 18 OZ. 79¢
<b>Dristan Tablets</b> 24'S \$1.47	SNOWWHITE, LARGE HEADS <b>Cauliflower</b> LB. 69¢	COMET <b>Long Grain Rice</b> 14 OZ. \$1.19
BOULIQUE 125 CT. <b>Kleenex Facial Tissue</b> 64¢	<b>Red Rome Apples</b> LB. 49¢	BETTY CROCKER 16 1/2 OZ. <b>Cake Frostings</b> \$1.19
KRAFT <b>Grape Jelly</b> 2 LBS. \$1.09	<b>Green Onions</b> ICY FRESH 4/99¢	INSTANT DECAF <b>Sanka Coffee</b> 2 OZ. \$1.19
CHIFFON 1 LB. TUB <b>Whipped Margarine</b> 85¢	<b>PIGGY WIGGLY</b> FLOYDADA	
CARNATION <b>Hot Cocoa Mix</b> 12 PKG. \$1.27		

AT TH  
Inte  
address  
conven  
organiz  
Brown  
among  
further

POST PETIT  
District of Colun  
denied the c  
ons for a reheat  
The Nation  
Industry of  
asking t  
mandate per  
disposition  
calling  
in the Suj  
by the app  
the stan  
industry  
arch 26.  
FLCRA PRO  
tion industry  
Council staff  
or Labor Secret  
discussed prob  
ency's admin  
for Contract  
sburg agreed  
using areas  
ifications for  
ation, an info  
established

Texan

NEW ORLEAN  
Texas cotton  
onal Cotton

erman A. Pr  
chairman  
Steering C  
years, was  
oday by the l  
rmer member  
in the Council  
olicies con  
for the  
lateral Tra  
succeeds C. H  
I.C., producer  
board chairman  
Lewis S. Mor  
cable manufac

Fir

Eq

Floy

McI  
C

Fec

Assoc

from the Sun...  
 Remember your...  
 loved ones...  
 \$1.39  
 \$1.99  
 \$1.79  
 \$2.99  
 \$1.99  
 \$1.99



# FARM & RANCH NEWS



**AT THE PREDATOR CONTROL SUMMIT**--Sec. of the Interior Cecil Andrus makes a point during his keynote address to livestock producers and environmentalists convened January 15 for the predator control conference organized by Agriculture Commissioner Reagan V. Brown. The day-long meeting produced lively debate among participants as well as some solid suggestions for further study into solving the costly predator problem.

## Top soybean growers named

Texas' top soybean growers were recognized at the annual meeting of the Texas Soybean Association in Bay City Jan. 25.

State champion was Joe Schwartz of Rt. 1, Hale Center (Hale County), with a yield of 72.9 bushels per acre. He received a state plaque and a trip for two to Acapulco.

Second place winner was Worth Matteson, III, of Rt. 4, De Kalb (Bowie County), with a yield of 65.8 bushels.

Third in the state was Harold Weiblen of Rt. 1, Dunlay (Medina County), with a 64.8 bushel average.

Both second and third place winners received a state plaque as well as an area plaque and their choice of an amount of either Trellan or Surfian herbicide for being named top producers in their respective areas of the state.

Winners were announced by R.J. Hodges, agronomist with the Texas Agricultural Extension Service, which conducts the production contest, and Jim Forrest, district sales manager with Elanco Products Co., contest sponsor.

The contest is designed to recognize top producers in each of the major soybean growing areas of the state--High Plains, Gulf Coast and South Texas, and Northeast Texas.

State champion Schwartz planted the R.A. 480 variety. Matteson reaped his award-winning yield with the Forrest variety, and Weiblen used the Bragg variety.

Joining Schwartz as top producers in the High Plains were Max Marble of Hart (Castro County) with a 64.7 bushel yield with the Mitchell R.A. variety and John Dee Walker of Olton Rt., Plainview (Hale County), with a 64.2 bushel yield with the Mitchell variety.

Along with being named state champion, Schwartz was also initiated into the Texas 70 Bushel Soybean Club. He was the only producer to break the 70-bushel mark in 1979.

A host of growers, including Matteson, Weiblen, Marble and Walker, were initiated into the Texas 60 Bushel Soybean Club. Others were Charles Noel, Rt. 1, Plainview, 63.5 bushels; Bill Williams, Plainview, 62.3 bushels; James Campbell, Hart, 61.8 bushels; Emmet Pittman, Star Rt., Kress (Swisher County), 61.62 bushels; Donald Lee Terrell, Plainview, 61.61 bushels; and Alfred Sammann, Rt. 4, Dimmitt (Castro County), 61.5 bushels. All are from the High Plains area.

According to Hodges, the soybean yield contest is sponsored annually by the TSA and Elanco Products Co. in cooperation with the Extension Service to stimulate soybean production by providing useful cultural information to farmers and to increase cooperation within the industry to improve production efficiency.

## Farm Bureau Facts

**BEEF PROMOTION**

Cattle producers are reminded that they must register at the local county Agricultural Stabilization and Conservation office during the period of January 28 through February 6 in order to be eligible to vote in the secret ballot beef promotion election during the period of February 19-22, 1980. Producers may register by mail, but a blank registration form must be secured from local ASCS office, completed and returned to local ASCS office during the period of January 28 -- February 6.

the state senate when the legislature returns to session. After the initial appointments, all subsequent appointments to the board will be for a term of six years.

The State Conservatorship Board came into existence when Governor Clements signed Senate Bill 1266 into law on June 6, 1979. The new law is found in Vernon's Annotated Civil Statutes Article 4413(203). Sections 1-12. While it nowhere directly defines the word "conservatorship" it gives the newly created board potentially great powers over any statewide executive agency, department, commission, board, or office created by statute and directed by an appointed officer, or officers.

Specifically, the statute requires the Legislative Audit Committee to notify the governor if it finds that a condition of "gross fiscal mismanagement" exists in agencies of the type described above. The Legislative Audit Committee consists of the Speaker of the House of Representatives, the Chairman of the House Appropriations Committee, the Chairman of the House Revenue and Taxation Committee, the Lieutenant Governor, the chairman of the Senate Finance Committee, and the Chairman of the Senate Committee on State Affairs.

On receipt of the notice the governor by proclamation may order the State Conservatorship Board to act as "conservator" of the agency. "Gross fiscal mismanagement" includes failure to keep adequate fiscal records, failure to maintain proper control over assets, failure to discharge fiscal obligations in a timely manner, and misuse of state funds, all as determined by the Legislative Audit Committee.

While acting as "conservator" of a state agency, the newly created board may employ personnel for the agency, fire employees which it determines were responsible for the "gross fiscal mismanagement," make other necessary organizational or structural changes in the agency to achieve the purposes of the new law, contract with public or private entities or persons for management or administrative services, and delegate any part of its powers, other than rule-making powers to public, or private, entities or persons. The board's "conservatorship" of an agency continues until the governor issues a later proclamation declaring that the condition of "gross fiscal mismanagement" in the agency no longer exists, or until the Legislative Audit Committee determines and reports to the governor a similar finding. In both cases, the "conservatorship" is then dissolved, and presumably the state agency would then be back under the laws which created it, and previously regulated it.

**CONSUMER AFFAIRS COUNCIL**

President Carter issued Executive Order 12160, September 26, 1979 establishing a Consumer Affairs Council. The Council is composed of representatives from the following: the Department of Agriculture, Commerce, Defense, Energy, Health, Education and Welfare, Housing and Urban Development, Interior, Justice, Labor, State, Transportation and Treasury. Esther Peterson, Special Assistant to the U.S. President for Consumer Affairs has been designated as chairman of the newly created Consumer Affairs Council. Esther Peterson, Chairman of the Consumer Affairs Council has announced a workshop designed to give consumers a chance to discuss the Executive Order and consumer programs proposed under the order with leaders of various federal programs. The program will be in the North Building of the Department of Health, Education and Welfare, 330 Independence Avenue, S.W., Washington, D.C. 20201, February 6, 1980.

Anyone interested in attending the meeting should call the following telephone number (202) 456-6226. The meeting is open to the public.

## Cotton Today

**PETITIONS DENIED:** The District of Columbia Court of Appeals denied the cotton industry's petitions for a rehearing of the cotton dust case. The National Cotton Council and other industry organizations have filed petitions asking the same court to stay its mandate pending the review and disposition of petitions for writs of *habeas corpus* (calling up records) which will be filed in the Supreme Court. Barring a stay by the appeals or the Supreme Court, the standard for the general cotton industry will become effective March 26.

**ILCRA PROBLEMS DISCUSSED:** Cotton industry leaders, National Cotton Council staff members, and Assistant Labor Secretary Ellisburg last week discussed problems resulting from the agency's administration of the Farm Labor Contractor Registration Act. Ellisburg agreed to review the problem-solving areas and promised specific recommendations for the cotton industry. In addition, an informal liaison committee established to assist in dealing with

problems that may arise in the future. Last year, the Labor Department began citing farmers, ginners, and others for failing to register as labor contractors.

**NCC ANNUAL MEETING SET:** Some 1,800 cotton industry leaders from across the Belt will arrive in New Orleans this week for the National Cotton Council's 42nd annual meeting. Committees will convene January 25 at the Hyatt Regency to hear a special report on cotton's economic outlook, and then will meet separately the following day to review Council programs and draft recommendations for 1980.

**EXPORTS REPORTED:** Sales of upland cotton for the week ended January 6 totaled 44,500 running bales. This brought the season's total to 7,895,200. The major buyers were Taiwan, 22,100 bales; Hungary, 7,200; and The Philippines, 5,500. The week's exports of 188,100 running bales pushed the total for the current marketing year to 2,940,300, compared with 2,114,800 a year ago.



"Try it, you'll like it." That's the message the Textile Research Center (TRC) at Texas Tech University and Plains Cotton Growers, Inc. is conveying to textile mills and cotton merchandisers about the 1979 High Plains crop of predominantly low micronaire cotton.

"And we have test results to show that this is no idle claim," emphasizes TRC Director James Parker.

funks were diverted from less urgent projects, and the test results will soon be in the hands of U.S. and foreign cotton mills and the cotton trade.

Ten bales ranging from 2.7 to 3.3 micronaire were processed at TRC on two different types of widely used open-end spinning equipment and a conventional ring-spinning frame. Three singles count yarns were spun, 8's 14's and 22's. Eights and 14's were run on the ring frame. Of the 60 different yarns spun, six from each bale, six earned a rating of "A" on the American Society for Testing and Materials yarn grading system, 39 graded "B" and 15 rated "C".

Data sheets show beyond a doubt, Parker told PCG, "that each of the bales produced acceptable yarns in every test. Strength, evenness, appearance--all were considerably better than is usually achieved from low mike cotton, and the strength of the yarn was in fact excellent."

Johnson believes there can be little doubt that the tests will open more mill doors to High Plains cotton this year. "and with the high volume of low mike cotton on the Plains it is doubly important to area producers that it move into the market as quickly and at the best prices possible," he said.

A great number of people on the Plains and elsewhere early in the 1979 harvest season were surprised at the low micronaire readings from what appeared to be a mature crop. This plus fiber strength values that failed to register a proportionate decline, led to speculation that textile performance of the crop might not be as low as the poor micronaire would indicate.

Parker and Donald Johnson, PCG Executive Vice President, discussed this possibility with others in the industry and Johnson, who is also Chairman of the Natural Fibers Advisory Committee of the Texas Natural Fibers and Food Protein Commission, (NF&FPC) proposed that NF&FPC provide TRC with the necessary funds for spinning tests.

The Commission approved, NF&FPC

## Hexan to head Cotton Council

NEW ORLEANS, Jan. 28 (Special) -- Texas cotton producer will head National Cotton Council officers for 1980.

Chairman A. Propst, of Anson, who has been chairman of the Council's Production Steering Committee for the past 12 years, was named president here by the board of directors. A former member of the board, he served the Council's industry practices committee and was a cotton negotiator for the Tokyo Round of the Bilateral Trade Negotiations. Propst succeeds C. Hoke Leggett, Hobgood, S.C., producer, who is now Council chairman.

Lewis S. Morris, Greensboro, N.C., manufacturer, and Samuel B. Hollis, Memphis warehouseman, were named new vice presidents. Re-elected were Vice President Gerald B. Brewer, Fresno, Calif., cottonseed crusher; and Treasurer Frank M. Mitchener, Sumner, Miss., producer.

Earl W. Sears, Memphis, executive vice president and secretary; and Macon Edwards, vice president of Washington operations, also were re-named.

Announcement of officers was made here today at the Council's 42nd annual meeting which is being attended by producers, ginners, merchants, cottonseed crushers, warehousemen, manufacturers, and cooperative leaders from 17 cotton-producing states.

### Sponsored by the Following Interested Firms

- |   |  |                            |
|---|--|----------------------------|
| First National Bank<br>Floydada           | Russell's Equipment & Supply<br>Floydada         | Floyd County Farm Bureau   |
| Case Power & Equipment<br>Floydada        | Plainview Savings & Loan Association<br>Floydada | Perry Implement<br>Lockney |
| Floydada Cooperative Gins                 | The Floyd County Hesperian Co.<br>Floydada       | Ansley & Son<br>Lockney    |
| McDonald Implement Co.<br>Floydada        | Consumers Fuel Association<br>Lockney            | Floydada Implement Co.     |
| Federal Land Bank Association Of Floydada |  |                            |

### AERIAL PESTICIDE APPLICATORS REGULATIONS

A "citizens interest group," Friends of the Earth, has filed a petition with the U.S. Environmental Protection Agency seeking amendment to aerial pesticide applicators' regulations.

The petition is requesting that aerial pesticide applicators be required to get written permission from persons within a thousand feet of the field under contract to be sprayed before spraying operations begin.

In summary, the request is for the administrators to propose additional regulations that are more restrictive, along with additional labeling requirements. The request is for the administrator to propose the regulations. The farmers plea would be in opposition to opening this matter for additional regulations.

Anyone interested in sending comments should address them in duplicate to Federal Aviation Administration, Office of the Chief Counsel, Attention Rules Docket (AGC-24) Docket Number 19448, 800 Independence Avenue, S.W., Washington, D.C. 20460.

For further information from the Environmental Protection Agency, contact Jean Frane, Registration Division, Office of Pesticide Programs, 401 M Street, S.W., Washington, D.C. 20460, telephone (202) 426-2510.

For information from the Federal Aviation Administration, call Raymond Makis, AVS-24, Federal Aviation Administration, 800 Independence Avenue, Washington, D.C. 20591, telephone (202) 755-8716. Copies of the entire announcement are available from this office.

### CONSERVATORSHIP BOARD

January 9, 1980, Governor Clements appointed Frank Junell, Chairman of the Board of Central National Bank of San Angelo, to the newly created State Conservatorship Board. ("Conservatorship" is a broad legal term referring to persons who are appointed by law to be temporary guardians or custodians of property.) Mr. Junell's term would expire on January 31, 1981. Two members had been previously appointed to the three-member board: William M. Noble, President of the American Bank of Commerce in Victoria, on December 13, 1979 for a term to expire on January 31, 1983; and the Board's intended chairman, Jack N. Roper, Sr., President of Bearing Chain and Supply in Dallas, on November 30, 1979, for a term to expire on January 31, 1985. However, all three of the appointments will require the advise and consent of

### METRIC GAS PRICING

The Texas Department of Agriculture's Weights and Measures Division is proposing to adopt rules that will permit gasoline distributing agencies to use any one of the following three methods of pricing gasoline: (1) price per gallon; (2) price per half gallon and (3) price per liter. Gasoline is now being dispensed on the basis of price per gallon and price per half gallon. The change in current rules proposed by the Texas Department of Agriculture is scheduled to become effective on February 11, 1980. Anyone wishing to comment by way of telephone should call Mr. Charles E. Foster at A/C 512 475-6577 or by writing Mr. Foster, P.O. Box 12847, Austin, Texas 78711.

