

The Wheeler Times

BUY IN WHEELER
HELP IT GROW

THE WHEELER TIMES, WHEELER, TEXAS, SEPTEMBER 27, 1956

5c Per Copy

THE COUNTY SEAT NEWSPAPER

ETIE NEWS

RECK, Correspondent

NEW FORDS ON DISPLAY NEXT WEDNESDAY A.M.

The Vanpool-Burton Motor Co. of Wheeler extends a cordial invitation to the public to come out and view the 1957 Ford next Wednesday morning, according to an announcement made this week by Pete and Bud.

They stated the Fords for '57 would be longer, lower and wider with no sacrifice in headroom.

"The ride is much easier than in previous years, and the performance better," Mr. Burton said.

"The Fords for '57 are distinctive and will be long appreciated by the public. Their newly designed grill and headlights combined with the distinctive tail fins and chrome trim make them a thing of beauty," Mr. Vanpool added.

The power plants available in the 1957 models are the 144 horsepower Mileage Maker six cylinder, combined with the choice of a 190, 212 or 245 horsepower V-8 economy eight. The Wheelbase of the Fairlane models have been lengthened to 118 inches with the custom line at 116 for '57.

"Come out Wednesday, October 3, and see these new models and find out for yourself just how beautiful, economical, and durable they are," Pete and Bud insist.

8 SCOUTERS GO TO ROUNDTABLE

Eight Wheeler adult leaders in scouting motored to Wellington Tuesday night, September 18 for a roundtable meeting for adults who work with the different phases of Boy Scouting. The meeting was under the general Chairmanship of Virgil Jamison of Wheeler who is the District Commissioner of the Scouting District.

The meeting was devoted to the general idea of Scout leaders and counselors getting together to discuss their problems and solutions to them. The meeting was divided up into groups for the purpose of technical instruction in the work regarding each leader's particular phase of duty.

Attending the meeting were about a hundred people from Wheeler, Collinsworth, Donley and Hall counties. Also in attendance at the meeting were the District and Council Executive Bill Eller and Yorel Harris.

Future plans of the Scout Organization call for regular meetings to acquaint the leaders more thoroughly with the Scouting Program and keep them informed of the national program.

Those attending from Wheeler were: W. E. Bowen, C. P. Adams, Bob McNeil, Frank Walker, Mrs. Dick DeArment, Mrs. Lowell Farmer and Mrs. Jick Garrison.

Edwards Family Reunion Held In Atherton Home

The Darville Atherton home at Briscoe was the scene of the Edwards Family Reunion held Sunday afternoon, September 23. Honorees were Mr. and Mrs. Linn Williams of Shafter, Calif. A bountiful dinner was served. The evening was spent visiting.

Those present were: Mr. and Mrs. Linn Williams, Shafter, Calif.; Mrs. Addie Plyant and Letch Edwards, Quanah; Mr. and Mrs. Roy Edwards, Bandera; Mr. and Mrs. Cecil Edwards and son, Memphis; Mr. and Mrs. Ted Atwood and family, Pampa; Mr. and Mrs. Hank Brown and daughter, Amarillo; Mr. and Mrs. Wayne Edwards and family, Mr. and Mrs. Floyd Atherton, Bill Atherton, Mr. and Mrs. Darrell Atherton and family, Mrs. Elva Hubble and children and Scott Helton, all of Wheeler; and the host and hostess, Mr. and Mrs. Darville Atherton.

Relatives visiting in the Floyd Atherton home over the week-end included Mrs. Atherton's sister, Mr. and Mrs. Lizzie Williams of Shafter, Calif., and two brothers, Mr. and Mrs. Roy Edwards of Bandera and Letch Edwards of Quanah.

Sgt. and Mrs. Merle Tackett of Camp LaJune, N. C., spent the week-end with her aunt, Edna Wright. They all enjoyed a trip to Amarillo and visited more relatives.

Harold Nash was in Dallas on Tuesday to preview the '57 Pontiac and attend other business.

Band Boosters Hold Rummage Sale Here

The Wheeler Band Boosters Club is having the Annual Rummage Sale in the building west of D. O. Boone's office. If anyone has any clothing or other items they would like to donate, please call Mrs. Archie Hibler, Mrs. Bill Owen or Mrs. Doris Hutchison and it will be picked up.

ASC WILL NAME COUNTY PANEL

A meeting of the recently elected 1957 ASC community committeemen was scheduled for Wednesday September 26 for the purpose of naming three members and two alternates to a county committee.

Following is a list of the community committeemen named in the September election:

A Community: Chairman & Delegate, Gordon Stiles, Vice Chairman and Alternate Delegate, Charley Whitely, Regular Member Ernest Henderson, First Alternate Marion Bryant, Second Alternate Stanley T. Richardson.

B Community: Chairman and Delegate Tom Helton, Vice Chairman and Delegate Fred Waters, Regular Member Grady Dodd, First Alternate, E. A. Zybach, Second Alternate Frank Walker.

C Community: Chairman and Delegate, R. H. Dyson, Vice Chairman and Alternate Delegate Milton Finsterwald, Regular Member, Jack Sims, First Alternate S. W. Williams, Second Alternate, Barney Burgess.

D Community: Chairman and Delegate V. W. Bentley, Vice Chairman and Alternate Delegate John McDowell, Regular Member Paul Macina, Jr., First Alternate Walter Bailey, Second Alternate Raymond Gossett.

E Community: Chairman and Delegate, J. B. Henderson, Vice Chairman and Alternate Delegate C. C. Collingsworth, Regular Member Bennie A. Schegel, First Alternate L. E. Clay, Second Alternate C. T. Palmer.

LYDIA RIVES FUNERAL TUES.

Last rites were held in the Shamrock Church of Christ Tuesday afternoon for Mrs. Lydia Rives, longtime resident of Wheeler county who died at 2 o'clock Monday morning in Shamrock General Hospital.

Mrs. Rives, 78 years old, had been in ill health for two years and had been in the hospital since Saturday.

Bro. G. B. Stanley, minister of the Shamrock Church of Christ, was in charge of the last rites, assisted by Bro. Alfred White, minister of the Canadian Church of Christ.

Pallbearers were: Ray Hardy, Thomas Daughtry, Johnie Burrell, J. M. Tindall, Ernest Lasater and Bailey Whitely.

Funeral Home was in charge of interment in Shamrock Cemetery.

Mrs. Rives was born October 26, 1878, in Georgia, and came to Wheeler County in 1918. She resided in the Kelton Community for many years, later moving to Shamrock. For the past two months, she had made her home

(Continued on last page)

HOSPITAL NOTES

PATIENTS ADMITTED

Mrs. Max Wiley, Sept. 19

Sam Wright, Mobeetie, Sept. 21

Jan Pitcock, Sept. 21

Sandra Jo Walker, Allison, Sept. 22

Susie Sides, Briscoe, Sept. 22

Mrs. Nelson Porter, Sept. 23

Newman Riley, Twitty, Sept. 23

Mrs. A. D. Burrell, Twitty, Sept. 25

Jimmie Lee Burrell, Twitty, Sept. 25

Robert Lee Burrell, Twitty, Sept. 25

PATIENTS DISMISSED

Sharon Hudson, Briscoe, Sept. 21

Mrs. Jimmie Parsley, Sept. 23

Geraldine Caudell, Briscoe, Sept. 21

Ben Helton, Sept. 20

Sam Wright, Mobeetie, Sept. 24

Jan Pitcock, Sept. 22

Sandra Jo Walker, Allison, Sept. 24

Susie Sides, Briscoe, Sept. 23

24

25

26

27

28

29

30

1

2

3

4

5

6

7

8

9

10

11

12

13

14

15

16

17

18

19

20

21

22

23

24

25

26

27

28

29

30

1

2

3

4

5

6

7

8

9

10

11

12

13

14

15

16

17

18

19

20

21

22

23

24

25

26

27

28

29

30

1

2

3

4

5

6

7

8

9

10

11

12

13

14

15

16

17

18

19

20

21

22

23

24

25

26

27

28

29

30

1

2

3

4

5

6

7

8

9

10

11

12

13

14

15

16

17

18

19

20

21

22

23

24

25

26

27

28

29

30

1

2

3

4

5

6

7

8

9

10

11

12

13

14

15

16

17

18

19

20

21

22

23

24

25

26

27

28

29

30

1

2

3

4

5

6

7

8

9

10

11

12

13

14

15

16

17

18

19

20

21

22

23

24

25

26

27

28

29

30

1

2

3

4

5

6

7

8

9

10

11

12

13

14

15

16

17

18

19

20

21

22

23

24

25

26

27

28

29

30

1

2

3

4

5

6

7

8

9

10

11

12

13

14

15

16

17

18

19

20

21

22

THE WHEELER TIMES

Published Every Thursday at Wheeler, Wheeler County, Texas, by Cooper, Siemmer & Montgomery

Entered as second-class matter December 18, 1933, at the postoffice at Wheeler, Texas under act of March 3, 1879.

Chas. Siemmer - Editor-Manager
Jimmy Goad - Printer
Clifton Courtright - Apprentice

MEMBER
Panhandle Press Association



NATIONAL EDITORIAL ASSOCIATION
REGULAR MEMBER

Subscription Rates
3 Months 75c
6 Months \$1.25
1 Year \$2.00
In Wheeler, Beckham and Hemphill Counties Everywhere Else
3 Months 85c
6 Months \$1.50
1 Year \$2.50

Jack Atwood of Lubbock visited his mother, Florence Atwood and his grandmother, Ma Atwood, who is ill, over the week end.

Sandra Richardson, Ted Crowder To Wed



Mr. and Mrs. George Richardson announce the engagement and approaching marriage of their daughter, Sandra Yvonne to Ted Crowder, son of Mr. and Mrs. Dee Crowder of Lela. The wedding will take place in October.

John Gilmer was injured Wednesday, last week when the scaffold which he was working under the bridge on Sweetwater Creek fell. He was sent to the Shamrock hospital for observation and X-rays.

Mr. W. L. Williams of Southwest of town is critically ill in the Northwest Texas Hospital in Amarillo.

FORD CHASSIS GIVES NEW KIND OF RIDES FOR '57

In the biggest change in modern Ford history, the 1957 Ford chassis has been completely redesigned for improved riding comfort and reduced car height.

Major innovations begin with wide-flaring frame design, a radical departure from previous years. Side rails extend around the passenger section, almost as wide as the body itself. In effect, the rails become side bumpers which protect the passengers. Heavier side rail stock and tubular cross members make the new frame 27 per cent more rigid, Ford engineering tests reveal.

A tapered drive shaft enters the underslung hypoid rear axle almost an inch lower than in 1956. This improvement made it possible to lower the car's height without reducing passenger space.

Swept-back ball joint suspension eliminates 33 per cent of the parts, on previous models. Upper and lower suspension arms are now single units, hinged with rubber bushings. Wheel motion on bumps is upward and rearward in a roll-with-the-blow action.

Wheels are 14 inches in diameter—one inch smaller than last year. Without sacrificing steering ease, the lower pressure tires have more tread surface on the road for better control. New wheels have rim with broader shoulders to give tubless tires a firmer grip for severe turns in emergencies.

Fuel tanks have been increased in capacity to 20 gallons, three more than last year, for greater cruising range.

A lower angle steering column and smaller diameter deep-dish safety steering wheel provide better visibility over the hood. Steering ratio is up from 15.3 to 1 to 27.0 to 1, for easier turning.

New outboard-mounted springs are two inches longer than on the 1956 model. An even keel ride, with even less tendency for front-end dive on quick stops and rear end rip on rapid starts, has been accomplished by increasing the length of the spring leaves ahead of the rear axle.

New live rubber mounts developed by Ford engineers are installed at 20 places between the body and the frame. The result is that the body rides on rubber, insulated from road vibration and noise.

Mr. and Mrs. T. E. Haddock, Jr., moved to Lubbock Saturday, last week, where he enrolled in college. They have made their home at 2304 Fifth Street with Jaunice Sims, formerly of Mobeetie. Mrs. John Sims, Jaunice's mother, recently returned from visiting there.

Mr. and Mrs. E. H. Herd and Mr. and Mrs. S. A. Maxwell visited Mr. and Mrs. Perry Yarborough in Texola, Okla., Sunday afternoon.

Mr. and Mrs. Fat Murrell of Mobeetie shopped in Wheeler Monday.



This is Ford's 1957 Country Sedan, one of five station wagons in the new line of 19 body styles which Ford dealers will unveil. The new station wagons are longer and lower than in 1956. Four engine sizes available range from 245 down to 144 horsepower. This Country Sedan comes in nine- and six-passenger models, and has new self-raising rear liftgate with 20 per cent bigger opening for easier loading.

THE FORD CAR LINE FOR 1957

(Continued from page 3)

forward slanting grille, and includes streamlined wheel opening, a windshield that wraps further around the sides for better visibility, distinctive fins at the rear, and contoured sides that give the cars a sculptured look.

"Hardtop" styling is the trademark of the conventional two door and four door sedans in the Fairlane and Fairlane 500 series. The effect is achieved with thin side pillars. Ford's true pillarless "hardtops," the four door and two door Victorias, also are offered in these series.

Station wagons have flatter roof lines, with a contoured step-down midway back from the windshield, at the back, the rear window and lifeliftgate wrap around the sides to provide 20 per cent more opening for bulky loads. A new latch opens the entire liftgate with one pull, and liftgate swings up automatically on concealed torsion bar springs.

Special side moulding and ornamentation distinguish each of Ford's five series, which are available in 19 two-tone paint combinations or 12 solid colors. Inside, upholstery is color-matched to the body's paint.

Ford's pioneering safety features introduced in 1956 have been improved. There is a new safety instrument panel with recessed control knobs clustered under the redesigned deep center steering wheel. Instrument panel and sun visor crash cushions are available, and the safety rear view mirror is continued. Safety door latches have been reinforced to withstand greater impacts. A three and one-half inch shock absorbing area is provided over the steering column by the new safety steering wheel, which is one inch smaller in diameter. It is mounted lower in the car for the best driving position.

Roofs have been strengthened with steel center bows. Hoods are hinged at the front so air will hold them down if they open accidentally. The hood release has been moved to the instrument panel, making the engine compartment tamperproof when the car is locked. The fresh air intake has been moved to the cowl in front of the windshield so exhaust fumes are

not drawn into the car. For 1957, Ford offers a broad range of optional features including poweroperated steering, brakes, seats and windows, as well as air conditioning, tinted glass, 6 and 8-tube radios, and heaters.

Mr. and Mrs. O. E. Sims and Mr. and Mrs. James Howerton and boys, all of Amarillo, spent the week end in the Lyndon Sims home.

Mr. and Mrs. Charlie Bradshaw visited his sister, Mrs. W. S. Patterson in Hollis Sunday.

Newspaper Advertising Pays!

Mr. and Mrs. Bob Amarillo visited friends in Wheeler end.
Dr. R. J. M.
Optometrist
GENE HALL
Office Hours - 9:00
For Appointment
R. P. GRIDLER
Wheeler, Tex.

AUCTION SALE

Located 22 mi. Southeast of Canadian on Gem way No. 33. Moving away and will see all to highest bidder.

SAT. OCT. 6TH 10:30

Gem City Store building 54x24 ft. 3-small built gallon propane tank, Pressure pump with pipe and rod fir 106 ft. well, Electric beverage Case, Kelvin refrigerator, Fire proof safe, Computing scales, 6 cases, adding machine, bath room fixtures, tub, commode and cabinet, grocery stock and many other items will go to highest bidder.

Terms: CASH — Lunch at Noon

MRS. L. A. SMITH OWNER

SHELBY PETTIT, Auctioneer
Wheeler, Texas

B. M. SMITH

ARE YOU SUFFERING FROM DISCOMFORT OF COLD, COUGHS, AND HAY FEVER

? ? ?

Our Complete Line of Anahist Preparations include such brands as

- Velvo
- Vicks
- Creomulsion

We also have ENTORAL COLD CAPSULES for your protection against winter colds.

We have received another shipment of that famous

AIR MAID HOSIERY

In All New Fall Colors!

CITY DRUG STORE

"Where it's a Pleasure to Please"
Wheeler, Texas

STOCK YOUR PANTRY NOW DURING OUR CANNED FOODS SALE!

ARMOUR'S

Treet



I.G.A. SMALL SIFTED

PEAS 4 NO. 300 CANS 79c



I.G.A. FANCY

SPINACH 4 No. 300 Cans 49c

I.G.A. All Green **FRUIT COCKTAIL**

3 No. 2 1/2 Cans \$1.00
4 No. 300 Cans

Nothing like **CRISP, BROWN**



GOOD VALUE

SLICED BACON LB. 49c

BARBECUE PORK

SPARE RIBS LB.

FRYERS

Each 69c

Auction Sale

As I am leaving the farm I will sell at 1 p.m. at my place located 2 1/2 miles north of Wheeler on Highway 83 on

Tuesday, October 2, 1956

HOGS

- 39 Feeder Shoats, up to 130 pounds
- 4 Duroc Jersey Sows. Bred for second litter
- 1 Sow and 10 pigs
- 1 Hampshire Boar

CATTLE

- 7 Mixed Cows and Calves
- 1 Jersey Cow, 3 yrs. old, fresh soon
- 1 Hereford Bull, 18 months old
- 1 Black Steer, Wt. about 600 pounds

IMPLEMENTS

- 1950 Allis Chalmers WD Tractor, New Rubber
- 2-Row Planting and Cultivating Equipment

- 2 Bottom 16" Breaking Plow
- Feed Grinder and Belt
- Dempster Grain Drill, on rubber, Good
- Fertilizer Distributor (John Blue)
- 2 Rolls Hog Wire, Never been used
- Hog Sheds and Panel Fencing
- Hog Feeder — Hog Troughs
- International Manure Spreader, Good Shape

FURNITURE

- 2 Kitchen Cabinets
- Singer Sewing Machine
- Coal Heater
- Four Burner Oil Stove
- Used Doors and Windows

MISCELLANEOUS

Many items too numerous to mention

LEAN CENTER CUT **PORK CHOPS** LB. 59c

DEL MONTE SLICED **PINEAPPLE** 3 NO. 2 CANS 95c
ARMOUR'S CORNED **BEEF HASH** 2 16 Oz. CANS 59c

FLEMINGS FLAVOR RICH **COFFEE** LB. 99c

PACKARD'S BEST **FLOUR** 25 LB. SACK \$1.79

CREAMY GOLDEN **FLUFFO SORTENING**

3 POUND CAN
WHITE OR COLORED NORTHERN **TISSUE** 3 Roll

ARMOUR'S **BEEF STEW** 24 Oz. Can

GIANT TIDE PACKAGE

REGULAR TIDE PACKAGE

Save Valuable IGA Red Stamps—Double

CLAY Food Store

Chris McClain, owner

Shelby Pettit, Auctioneer

FORD ENGINES WITH POWER, PERFORMANCE

Increased horsepower and improved performance have been designed into Ford's 1957 engines.

Three V-8's and a "Mileage-Maker" Six are offered, each with major engineering changes and higher compression ratios.

Engineers redesigned the Ford engines to give freer breathing, higher compression, more efficient ignition, and better exhaust.

For the first time, a high performance V-8 is available as an optional engine on any Ford car. This engine, the Thunderbird Special V-8, features a 9.7 to 1 compression ratio, and develops 245 horsepower. The high performance engine has a special four-barrel carburetor and displaces 312 cubic inches.

A 212 h.p. 282 cu. in. Thunderbird V-8 with 9.1 to 1 compression ratio is the standard engine for Fairlane, Fairlane 500 and station wagon models.

The standard V-8 for Custom and Custom 300 models is the 190 h.p. 272 cu. in. engine. Its compression ratio is 8.6 to 1.

The 144 h.p. 223 cu. in. six is available on all Ford cars.

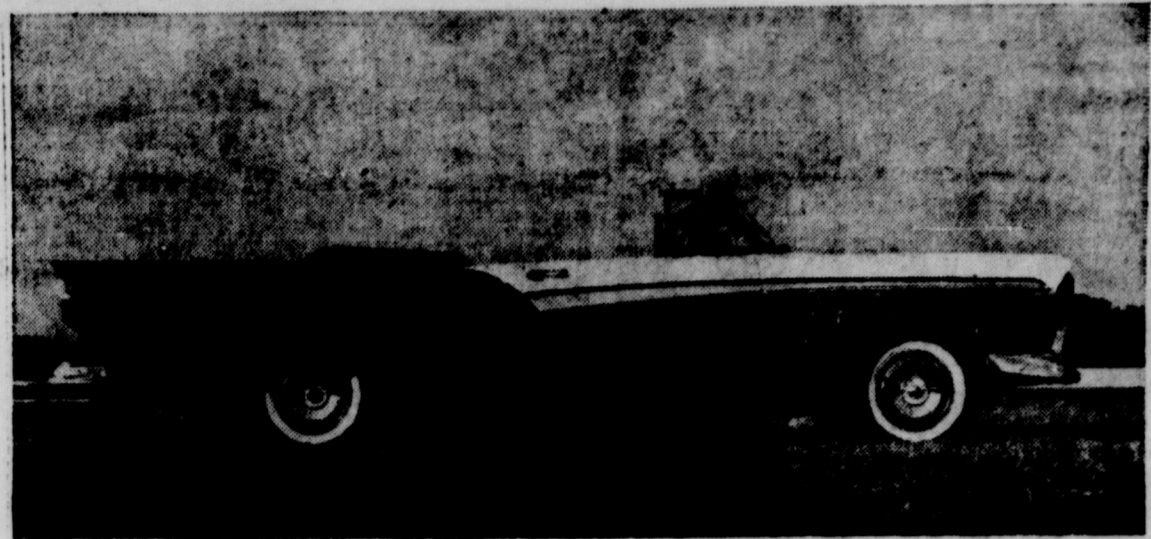
All Ford engines can be ordered with Fordomatic standard or overdrive transmission.

Major engineering changes which have brought improved performance include a new dry-type air filter which is more efficient than the former oil bath type; new low silhouette carburetors; new and larger intake manifold; bigger and higher lifting valves; recontoured compression chambers and camshafts; a new centrifugal-vacuum distributor; new rotor oil pump, and completely new exhaust system.

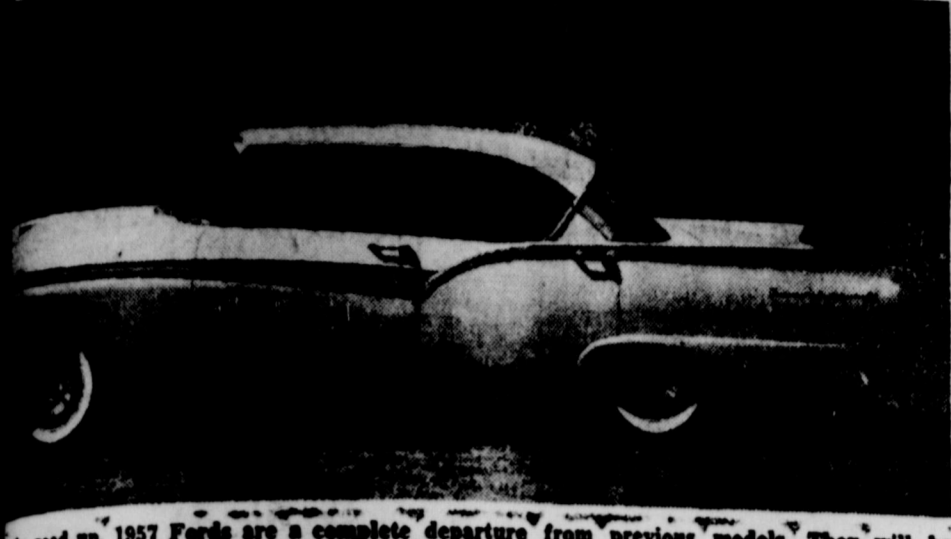
The air filter element is made of a specially treated fiber which is pleated to give maximum surface. Approved for installation on Ford engines after extensive testing in dusty roads, it will last 20,000 miles before it should be replaced.

Ford's new styling starts with the wide hooded headlights and a

(Continued on page 4)



The longest, lowest Ford convertible ever made is this 1957 Sunliner which is being introduced along with 18 other completely new Ford body styles. The new Fords will offer a broader range of improved engine performance, with the top power plant being the optional 245 horsepower Thunderbird Special V-8. The Sunliner is a member of Ford's new "Fairlane 500" series, which will offer a band of gold-colored anodized aluminum side trim with two-tone paint selections.



The road up, 1957 Fords are a complete departure from previous models. They will be the Ford dealers in 19 body styles, of which this is the four door Victoria, a member of "Fairlane 500" series. Fairlane models are nine inches longer and four inches lower than counterparts. Though the new models are lower, interior headroom is as great as last year's chassis and floor are re-designed for a lower center of gravity.

FORD CAR FOR 1957

For the first time in its 53-year history, Ford Motor Company will offer a new line of Ford cars, the 19 new models unveiled by Ford last week. The 19 new models are the highest performance ever offered in the history of Ford cars.

ly three and one-half inches lower than the 1956 models. Station wagons are three and one-half inches lower and nearly six inches longer. Fairlane and Fairlane 500's are built on a "116-inch wheelbase. Station wagons, Customs and Custom 300's have a 116-inch wheelbase.

"There has been no sacrifice of headroom inside the car, in spite of their reduced height," Mr. McNamara said. "The new frame extends to the sides of the car, and this permits the floor to be lowered inside the frame rails.

"The design and styling are new from the ground up. Every dimension is changed. Wheels, frame, rear axle, drive shaft, engines, and every inch of sheet metal in every body style are definite departures from past models," he explained.

Riding ease has been greatly improved by using a longer, wider frame with lower pressure tires on wider treads, and employing redesigned ball-joint suspension in front and outboard-mounted longer leaf springs in back. Because there is more spring length ahead of the rear axle, front end dip on quick stops is checked better than ever before.

"Durability is built into the 1957 Ford through stronger alloy met-

als, greater use of insulation and sound-deadening materials, longer-wearing fabrics and plastics, and strengthening of mechanical parts," Mr. McNamara pointed out.

For the first time, a high performance V-8 engine is available as an optional power plant on all Ford cars. The engine, called the Thunderbird Special, develops 245 horsepower, and is equipped with a four-barrel low silhouette carburetor.

Standard engine for the Fairlane and station wagon series is the 212 h.p. Thunderbird V-8. A 190 h.p. is standard for the Custom and Custom 300 series. Both have two-barrel carburetors. In addition, the 144 h.p. Mileage Maker six is available on all models. All engines can be ordered with standard, overdrive or Fordomatic transmissions.

Advanced design of the engines' carburetion, combustion chamber and exhaust system, plus stepped-up compression, provides increased operating economy in all models. The dry-type air filter, carburetors, intake manifold, intake valves, camshaft, and distributor are the new components which give Ford increased performance.

Ford's new styling starts with the wide hooded headlights and a

THIS IS WHERE TOMORROW STARTS

A new "inner car" gives you a NEW KIND of FORD for 1957!

Coming October 3rd.

Wednesday, October 3rd, Ford Dealers throughout United States will unveil a new kind of automobile!

Cars are involved in every American's life. News of a new kind of car is the biggest kind of news to millions of Americans.

The Big New Kind of Ford is that kind of news... a car totally new in design from crest to trunk lock.

This completely new automotive package will sell at the traditionally low Ford prices.

This makes possible a new high standard of such honest-to-goodness value that it actually increases the purchasing power of your automobile dollar.

When you see it, other cars will look out of date, because...

This is Where Tomorrow Starts... with a Big New Kind of Ford.

The New Kind of Ford is the fullest, most eloquent expression of Ford's special personality—the youthful grace, the whiplash action—and the reputation for durability known wherever there's a road.

To all this we have added true elegance—a kind of elegance never before seen in the low-price field. To make a car truly elegant, you must start deep-down inside.

The New Inner Ford

The Inner Ford—the car you cannot see—is a very remarkable structure. Its frame is actually a cradle. Side members extend almost the full body width; they serve not only as supporting members but as reinforced side bumpers of immense strength.

The New Ford Body

The new Ford body is a triumph of engineering in steel. The doors close with the solid finality of a bank vault. Even the door lock button has been moved up front—easier for you to reach, but out of the children's reach.

All these features were engineered to give you a solid new kind of comfort.

The New Ford Ride

The New Kind of Ford sits six people as other low-priced cars have ever sat them

—six elbows wide in each seat, with deep space around each one of six knees. And above all that space, there's hat room to spare for all six passengers.

The 1957 Ford rides low, solid, with a firm, deep road-holding feel. Yet it's a light-hearted, high-beated ride—this car is responsive, nimble, agile, with a proud easy movement.

The New Ford Choice

Ford offers not only one, but two sizes of cars... each on its own extended wheelbase... each with its own body shell... each with its own styling.

First, the two Fairlane Series on a 118-inch wheelbase. The Fairlane 500's come in 5 body types, a four-door sedan, a two-door sedan, a two- and four-door Victoria coupe, and a convertible. The same body types (except for the convertible) are available in the Fairlane Series.

Second, two Custom Series mounted on the 116-inch wheelbase chassis. In the Custom 500 Series, a four-door and a two-door sedan are distinguished from the Custom models by more luxurious inte-

riors and elaborate trim. The Custom Series also includes a Business Sedan.

Beyond all these, you also have your choice of five Station Wagons—the famous glamour cruisers that are the champions in this field!

The New Ford Look

That low, low cradle-span frame means a low, low car. The Fairlane 500 is only four feet eight inches from road to roof! The Custom is just over four feet nine inches!

The new Ford is not only low—but long. Ford gives you more than 17 feet of elegant length in the Fairlane Series, a shade less in the Custom. It's a nice kind of **long** just to look at it. It's high-priced in every way except price.

The New Ford Performance

You can have up to 245 wonderful Thunderbird horsepower in any Ford model. There's a moderate—and really moderate—extra charge for this engine of 312 cubic inches with its 4-barrel carburetor.

For "Six" lovers, we've got the 144-hp Mileage Maker Six. Whether you choose Six or V-8, the going is great!

Here is where your own tomorrow starts

It starts at your Ford Dealer's showroom!

The cars will be there on Wednesday, October 3.

These are the best Fords of our lives.

They are the first symbols out of Detroit of the new automotive age that is beginning for you.

This is where tomorrow starts—at your Ford Dealer's.

This is when your tomorrow starts—October 3rd.

Come in and see us for the Big New Kind of Ford!

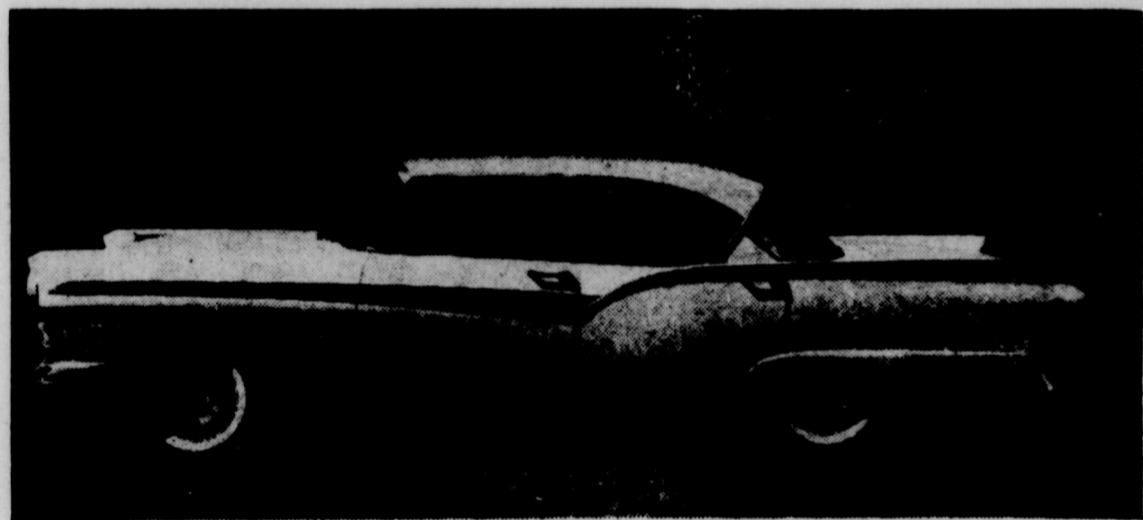
Vanpool-Burton Motor Co.

FORD SALES and SERVICE
PHONE 2311

WHEELER, TEXAS

WEST HIGHWAY 152

Announcing the showing of the ... 1957 Fords



WEDNESDAY, October 3, 1957

Five Complete Lines of New Bigger, Roomier, and more Comfortable FORDS for 1957.

New Design... New Power Plants (144 to 245 horse power), Longer... Lower... Easier Ride, More Safety Features... 19 different Color Combinations in Fairlane, Ranch Wagons and Custom Line Models.

A special invitation to attend this showing of New Cars is extended by the Entire Staff:

Pete Burton Bud Vanpool Robbie Robinson
Jack Terry Harvey Davis

Vanpool-Burton Motor Co.

Ford Sales and Service

West Highway 152 Phone 2311 Wheeler, Texas

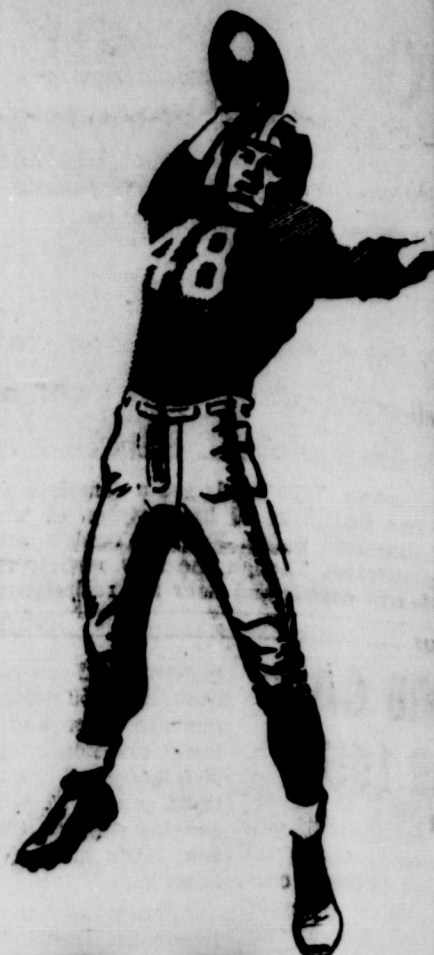


BEAT ERICK!

See the Mustangs in Action! Attend the games! Back them ALL the Way!

See you at the 

Shot the 



HOLD THAT LINE!

FRIDAY, SEPT. 28

Mustangs

Probable Starting Line-up

No.	Name	Pos.	Wt.
10	Crossland, Harold	B	145
11	Hunter, Larry	E	150
14	Porter, Jim (Capt.)	B	180
15	Cox, James	C	140
16	Topper, Bruce	G	150
17	Moore, Darrell	G	150
18	Wilsford, Dennis (Capt.)	T	175
22	Jaco, Joe (Capt.)	B	150
27	Johnson, Wallace	E	155
30	Hill, Jimmy	T	160
13	Miles, Roland	B	160
19	Satterfield, Gary	B	155

COACHES: J. D. Atwell and G. W. Daugherty



LET'S GO TEAM

Bearcats

Probable Starting Line-up

No.	White	Name	Pos.	Wt.
11	44	Dill, Don	B	140
14	14	Hardy, Alva	B	130
23	23	Martin, John D.	E	185
65	65	Gilchrist, Ralph	T	160
77	77	Elms, David	C	135
80	80	Dill, Dick	B	155
24	24	Elms, Roger	E	160
21	21	Flanagan, Dale	G	150
10	72	Gibson, Kenny	B	150
18	18	Guthrie, Gayle	T	160
20	20	Pigg, Wayne	G	145

COACH: Bill Lalicker

NICHOLSON FIELD, 8 p. m.

The following business firms and individuals are behind the Mustangs 100%. They are expecting a big season from this team!



- Vanpool-Burton Motor Co.
- W. A. Goad, Jr.
- Kirk Funeral Home
- DeLuxe Cleaners
- Wheeler Drug
- Puckett's Food Store
- Title Abstract
- Parsley's Furniture
- Wheeler County Produce
- Wheeler Lumber Co.
- Chapman Service Station
- Cicero Smith Lumber Co.
- J-Lee Department Store
- The Harold Kenadys
- Southwestern Public Service

- Ware Chevrolet Co.
- Ernest Lee Hardware and Furniture
- Daughtry's 5 and 10
- Wheeler Radio and Refrigerator
- City Drug Store
- Wheeler Co. Farm Bureau
- The George Gandy family
- Percy's Garage
- Garrison's Service Station
- Hall's Flower and Gift Shop
- Hibler Implement
- Owen's Service Station
- Thomas Garage
- Lowell's Service Station
- Wheeler Gas Company

- Wheeler, Locker and Grocery
- Dairy Cream
- Mr. and Mrs. Harry Wafford
- Nation's Barber and Beauty Shop
- Dick Pendleton
- The Wheeler Times
- Wheeler Recreation Club



has been transferred to the W. O. Traylors sold their home in Wheeler and have moved to Tulsa to live.

NOTICE!

Risner Fruit and Vegetable Market
October 1 for the winter.

Risner's Lake will also close on that date and will open again when later notified.

We take this means of saying "Thank You for Your Patronage" to those local and out of town who have kept us in business.

RISNER'S MARKET
West Highway 152

KIWANIS NOTES

Tom Puryear, of Route 1, was the only guest at the regular weekly meeting of the Wheeler Kiwanis Club Monday at Fellowship Hall. Geo. Gandy, P. E. Yarborough, Geo. Hefley and Harry Wofford made the inter-club at Berger last week. P. E. was the program.

The nominating committee nominated the following officers and directors for the coming Kiwanis year:

President, Frank Wofford; Vice president, Earl Brown; Directors, George Taylor, Carroll Killingsworth, and Gene Hall. The election will be held at the annual meeting which is next Monday, October 1.

David brought another good program, a film of last season's Southwest Conference game. Thanks David, we all enjoyed it.

From A To Blizzard

Dr. Hall says these City Slickers voted him in the City. He could not take it.

The prayer of intercession is the noblest and most Christian kind of prayer . . . by means of it, love is raised to its greatest power.

It takes a lot of living to make a house a home. Standing on the corner, let the girls go by . . .

Dr. Hall

Miss Donna Greenhouse To Be November Bride



Mr. and Mrs. Henry Greenhouse of 1036 Thrums, Berger, announce the engagement and approaching marriage of their daughter, Donna Yvonne to Charles Leland Sosebee, son of Mr. and Mrs. Leland Sosebee of Berger. The wedding will take place Sunday November 18 at 2 o'clock p.m. in the Gateway Church of Christ, Berger.

Morris-Tucker Vows Read in Pampa Recently

Miss Ruth Morris, daughter of Mr. and Mrs. Lee Morris of Mobeetie, became the bride of Teddy Tucker, son of Mr. and Mrs. Theodore Tucker of Grimes, Okla., at 4 p.m., September 2, in the home of Mr. and Mrs. Carl Henderson, 418 N. Davis in Pampa, brother-in-law and sister of the bride.

Rev. C. R. Tucker of Carter, Okla., brother of the bridegroom, officiated for the double-ring ceremony, performed before a setting of pink gladioli.

For her wedding, the bride wore a white sheath topped with a pink lace duster. Her accessories were pink, and she carried a white Bible topped with a bouquet of pink carnations.

Matron of honor was Mrs. Carol Henderson, sister of the bride. She was attired in a blue taffeta dress and carried a bouquet of pink gladioli.

Dale Thompson of Grimes, served as best man.

Immediately following the ceremony, a reception was held. Greeting and registering the guests were Miss Nora Rudolph of Plainview and Miss Barbara Henderson, niece of the bride. The wedding cake and punch were served by Misses Eloise and Elaine Henderson, twin nieces of the bride.

Following a wedding trip to Colorado Springs, Colo., the couple will be at home at 500 N. Davis.

The bride was graduated from Mobeetie High School in 1954, where she was chosen all-around girl, class favorite and where she played basketball. She is now employed by the First National Bank

of Pampa. The bridegroom, who served with the army in Germany, is employed by Motor Inn Auto Supply, Pampa.

Out of Town guests for the wedding were Rev. and Mrs. Tucker of Carter; Mr. and Mrs. T. P. Tucker and Dale Thompson, all of Grimes, Okla.; Mrs. May Turner and children of Sayre, Okla.; Mr. and Mrs. George Tucker and children, Delhi, Okla.; Dwain Cook Waukegan, Ill.; and Miss Nora Rudolph, of Plainview.

Engagement Revealed



Mr. and Mrs. Morgan Pride announce the engagement and approaching marriage of their daughter, Pat, to A. J. T. Grimes, son of Mr. and Mrs. J. B. Grimes of Paramount, Calif. The wedding will be read the latter part of November.

Bed-Wetting Can Be Stopped

*Bed-wetting in children over three can result in many serious problems of maladjustments which affect the child's future and happiness. Science has developed a safe, simple and rapid solution to this problem, which has already helped thousands of children & adults. Now you can help your child regain confidence, enjoy life once more.

*functional
NO DRUGS — NO DIETS — NO SHOTS — NO BODY ATTACHMENTS

For information fill in and mail the attached coupon. There is no obligation or embarrassment to either child or family.

THE ROCKY MOUNTAIN ENURTOLE CO.
7115 West 42nd Avenue
Wheatridge, Colorado

Name _____
Address _____
Age _____ Phone _____
City _____
State _____

Engagement Told



Mr. and Mrs. James Beesley of Wheeler announce the engagement of their daughter, June, to Archie Gene Hardin of Shamrock.

Mr. and Mrs. Olen Pendleton and Mr. and Mrs. Owen Jones visited the ladies' sister, Mrs. W. S. Patterson who is in the hospital, in Hollis, Okla., Sunday.

American Legion of Wheeler Statement of Receipts and Disbursements from 2-25-56 to 9-17-56

BANK BALANCE 2-25-56	\$648.84
RECEIPTS	
Gross Dance Receipts	\$3587.35
Dues	35.00
Rent from baseball field	50.00
Hall rental (from Masons)	5.00
TOTAL RECEIPTS	\$3677.35
TOTAL RECEIPTS PLUS BEGINNING BALANCE	\$4526.19
DISBURSEMENTS (Paid By Cash)	
Band commission	\$2337.43
Repairs to hall	11.50
Cleanup & misc'l supplies	62.42
DISBURSEMENTS PAID BY CHECK	
Gas, water, & lights	100.76
Donation to Wheeler library	60.00
Donation to Thursday Review club for community building	43.00
Boy State donation and expense	61.00
Help Given to transit American Legion Member	12.90
Boy Scout donation	15.00
Dues paid	39.00
Dance advertising	187.85
Groceries	37.96
Floor sweep and other supplies	33.52
Building repairs	327.60
Bonds redeemed	50.00
Air Conditioners	304.22
Bad checks returned by bank	5.00
License on baseball field	50.00
Insurance	66.75
Jackpot	55.00
Christmas decorations	22.38
TOTAL DISBURSEMENTS	\$3883.89
BANK BALANCE AS OF 9-17-56	\$642.30

Bill Ridgway and His Panhandle Play Boys
Saturday, September 29



WE ARE THE REDEMPTION CENTER
SAVE 'EM FOR CHRISTMAS, BIRTHDAYS, WEDDINGS, ETC.

Fortening 3 lb. can **75¢**

LOUR 25 lb. bag **1.69**

- VEGETABLES 25 Lb. Bag **69¢**
- TOES 2 Lbs. **25¢**
- ERS 1 LB. **10¢**
- ES WHOLE NO. 303 CAN **21¢**
- EN BEANS NO. 2; CAN **29¢**

- KEENE 5 LB. BAG **39¢**
- CORN MEAL **39¢**
- BUG KILLER QUART **\$1.19**
- REAL-KILL
- PET MILK 2 TALL **29¢**
- M&M 6 OUNCE PACKAGE **25¢**
- CANDY **25¢**
- SUNSHINE HYDROX 12 OZ. PKG. **35¢**
- COOKIES

- MEATS**
- FRESH GROUND BEEF **27¢**
- BANNER BACON **45¢**
- U.S. GOOD BEEF RIBS **23¢**
- PICNIC SHOULDERS **35¢**
- ALL MEAT BOLOGNA **39¢**

- 2 CANS **25¢**
- QUART CAN **98¢**
- BOX **25¢**
- BOX **35¢**
- 2 ROLLS **25¢**

These Prices Good Friday, Saturday, and Monday.
Public Stamps Every Wednesday on Purchase of \$2.50 or more.

Puckett's WHEELER, TEXAS
FOOD MARKET

HOWARD'S ROLLER RINK

Will Re-Open For This Skating Season This
SATURDAY, SEPTEMBER 29
Opening Session 5:30 p.m.

Wednesday, will be party night. Call 2078 for arrangements

Skate for Health, Skate for Exercise, Skate For FUN.

HOWARD'S ROLLER RINK

Wheeler, Texas

Hours: Dailey at 7 p.m. Sat. at 5:30
Sunday 2:00 to 5:00 p.m.

Business and Professional DIRECTORY

C. J. MEEK
AGENT
INSURANCE
Nite Ph. 3881, Day Ph. 2221

Walter L. Williams
Termite Extermination Service
Stop that costly termite damage to your home
Dial 3623 Wheeler

DR. JOEL M. GOOCH
OPTOMETRIST
207 N. Wall
Phone 500
SHAMROCK, TEXAS

WATSON HOTEL
Air Conditioned Rooms
Phone 4751 — Wheeler

Gene Hall
Bookkeeping, Tax Returns
Real Estate
Dial 4001 Wheeler, Texas

Canadian Valley
Production Credit
Association's
Representative
IS IN THEIR
Wheeler Office
EACH
Thursday

AUCTIONEER
SHELBY PETTIT
Will cry your sale any time or place
Phone 3561 — Wheeler, Texas

Protect Children's Health
GIVE THEM
BORDEN'S
Fine Dairy Products
CHAPMAN DAIRY
Phone 2001 Wheeler

Pink And Blue Shower Honors Mrs. D. Corse

Mrs. Doug Corse was honored with a pink and blue shower in the Lions Hut in Mobeetie September 19. The hostess presented her with a corsage made of baby socks. June Topper registered the guests. Mrs. Peggy Dunn poured pink punch from a serving table covered with blue linen which was decorated with a miniature cradle and baby shoes.

Present to assist the honoree in opening and presenting her gifts were her mother Mrs. Pierce Walker, and mother-in-law, Mrs. Kenneth Corse. Those present were: Mesdames Verne Corcoran, Eva Webb, Mary Farmer, Orville Greenhouse, Virginia Nixon, Charles Nixon, Mattie Williams, Alice Totty, Ester Eberting, Bernice Caldwell, Fleda Godwin, Willie R. Hathaway, Mary Nixon, La Rue Sims, Thelma Dunn, G. Cowan, Leta Mae Gatlin, Oleta Vandandingham, Mary Brewer, Dorothy Nixon and Miss Sally Cowan.

Sending gifts were: Bonnie Hogan, Eula Johnson, Alma Seitz, Ann Trimble, Lora Hill, Pat Johnson, Oleta Moore, Patricia Eads, Maggie Gill, Money Skiggs, Elsie Scribner, Hattie Lee, Leona Williams Ethel Herd, Charlotte Coward, Margaret Trout, Bill Gill, Eulene Waiser, Helen Reaves, Elta Johnson, Maurita Stribling, Elma Atkins, Ethel Burke, Oreta Baird, Mada Allen and Miss Isabel Huselby.

Hostesses for the occasion were: Peggy Dunn, June Topper, Beulah Grimes, Hallie Rontines, and Mildred Greenhouse.

Mr. and Mrs. Bill Tomlin of Dallas visited Mr. and Mrs. Grainger McIlhany over the week-end.

If you need furniture see us. We sell or trade. Parsley's Furniture, Dial 4321. 14-tfc

NEW MATERIALS

Velveteen, Corduroy fall suiting and no-iron Cottons.

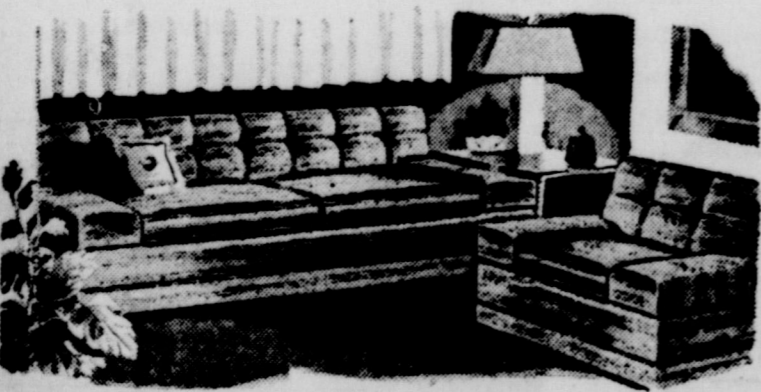
New Fall Coats, Hats,

**Gloves and Shoes
Marcy Lee and
Nelly Don Dresses**

McILHANY'S
"For Everything You Wear"
Wheeler, Texas

TWO MAGNIFICENT MODERN PIECES

It's today's adaptable modern that is equally at home with yesterday's accessories.



Pieces that represent the best in design and workmanship. Beautifully made, with interesting tufted backs. The fabrics are unusual in their texture and quality.

Come In and See Our New Shipment of living room furniture — See the luxurious fabrics — the New and Appealing Colors.

- BROWN
- ROSEBEIGE
- TURQUOISE
- GREEN

We will accept your old suit as part payment.

ERNEST LEE HARDWARE

Furniture - Rugs - Radios - Hardware
Wheeler, Texas

Wheeler GOC —

(Continued from page one)

Officers of the post are already listed with the 4768th Ground Observers Squadron of the US Air Force; R. J. Holt, Jr., Supervisor; Adrian Risner, Chief Observer; Bob Douthit, and Joe Rogers, Assistant Chief Observers; Arnel Holt, Vera Rogers, Dorothy Rogers, Charlene Douthit, Bob and Dorothy Holde-man, Harrison and Bernice Hall, Joe and Mary Weatherly, J. D. and Florene Beaty.

Dudley and Verna Callan, N. D., and Roberta Ware, Chester and Gene Lewis, Bob McNeil, W. L. and Toots Jolly, Bill and Wanda Chapman, Dick and Margaret Pendleton, Charles and Mildred Stlemmer, Buster and Mable Callan, Earl and Mary Barnes, Thurman and Jane Rives.

Harold and Sylvia Lee, Betty McNeil, Roy and Peggy Ford, Hiram and Odessa Whitener, A. O. and Novella Vanpool, observers. Summary of the last alert held in this area shows the most common failure to be: Distance of aircraft from post in fractions of miles; Direction of craft shown on overhead aircraft; Reports not rendered in proper sequence; Speed of transmission (some too fast and some too slow).

The local post is situated at the Bank and a telephone is available for the transmission of the aircraft flashes.

Lydia Rives —

(Continued from page one)

in Canadian with a sister, Mrs. Charity Riddle.

Mrs. Rives was a member of the Church of Christ.

Surviving are four sons and three daughters: W. F. Rives, Borger; I. W. Rives, Redondo Beach, Calif.; B. T. Rives, McAllen; Douglas Rives, Shamrock; Mrs. Lorene Powell, Sunray; Mrs. Odell Brittain and Mrs. Alma Shaffer, both of Kelton; and a step-daughter, Mrs. Elsie Brazel, Desdemona.

Also surviving are: a brother, Johnny Bettis, Higgins; four sisters, Mrs. Annie London, Maybank; Mrs. Charity Riddle and Mrs. Gustie Gilbert, both of Canadian; and Mrs. Sarah Newman, Cottonwood, Ariz.; 34 grandchildren and 26 great-grandchildren.

Her husband, Billington Rives, passed away in 1946. Also preceding her in death were four sons: L. T. Rives, who died in infancy; Marvin Rives, who died in 1922; Don Rives, who died in 1949; and Travis Rives, who died September 12, 1955.

Mr. and Mrs. Booker Toon of Amarillo spent Saturday night and Sunday with Mrs. J. G. Cowden.

The Buster Callan family spent Sunday afternoon with the Earl Barnes family.

Mrs. Calvin Wainright of Canadian, visited her parents, Mr. and Mrs. Clyde Johnson Monday.

Mr. and Mrs. Bill Hampton and boys visited Mr. and Mrs. Enos Morgan in Borger Sunday.

Darrell and Henry Greenhouse of Borger were Wheeler callers Saturday.

WANT ADS

FOR SALE

FOR SALE — Modern 4-room house with 24x24 garage, 100x140 ft. lot in Wheeler. See Bobby Helton. 29-tfc

Monuments, Markers, Grave Covers, Curbing, Surface Burial Vaults, Will Warren 4-tfc

Hardwick stoves are good stoves, change to a Hardwick today. Wiley's 43-tfc

FOR SALE — German Millet seed \$6.00 per 100 lbs. Fat Moore 37-tfc

FOR SALE — Practically new ESTEY Piano, Spinet Model. Priced to sell, this is a good buy for you. See Virgil Jamison. 39-tfc

FOR SALE — 16 upright Maytag Deep freeze; 3' Philco Refrigerator See at Mobeetie Cleaners. 40-3tp

FOR SALE — 4 room house 2 mi east 4 mi north of Gageby Store. See F. M. Grimes, the D. C. Allied (farm 8 mi W. of Wheeler) 41-2tp

FOR SALE — Prairie Hay, See Harrison Hall. 41-tfc

SCHOOL BUS FOR SALE
Briscoe has a 1951 36-passenger Ford School bus for sale. This bus will be sold by sealed bids. Bids from may be had from Co. Superintendent or Briscoe Superintendent. Bids will be received until October 25, at which time the bids will be opened at 8:30 p.m. School reserves the right to reject any or all bids for the good of the school. 42-4tc

MISCELLANEOUS

FOR RENT — Furnished Apartment. Inquire at Don's Courts. 17-tfc

Furnished apartment for rent Call Wheeler Gas Office, phone 2771. 1-tfc

FINISH High School or grade school at home. Spare time. Books furnished. Diplomas awarded. Start where you left school. Write Columbia School, Box 1514, Amarillo. 40-52tp

WANTED — Lady or Girl in Wheeler, Mobeetie or within driving distance, to handle light office work and write small news items. No experience necessary. Good opportunity to qualify as local correspondent for daily papers. Might consider one on partime basis. The Wheeler Times.

HOUSE WIFE Wanted — Full or part time for Linda Lee Cosmetics Co. Write Box 187, Wheeler 42-11c

I PUT AD in The Wheeler Times and sold home 2nd week. FOR SALE — One all modern well-constructed dental office. Could be used as residence. Also servent's 2 room house in rear. \$45. Also 4-room modern house telephone 2700. Dr. Hall, Dentist. 42-2tp

FOR RENT — 2 room and bath furnished apartment. 42-11c

SCHOOL CAFETERIA MENU

OCTOBER 1 - 5

MONDAY
Baked Ham, Escalloped Corn, Black eye Peas, Bread, Butter, Milk, Cookies and Fruit.

TUESDAY
Fried Potatoes, Spinach and Egg Au Gratin, Corn Bread, Butter, Milk and Banana Pudding.

WEDNESDAY
Breaded Pork Chops, Sweet Potatoes with Marshmellow Topping, Green Beans, Bread, Butter, Milk and Apple Sauce Cake.

THURSDAY
Meat Loaf, Creamed Potatoes, Spring Salad, Bread, Butter, Milk and Chocolate Chip Cookies.

FRIDAY
Tunt Fish Salad, Peas, Carrots, Potato Chips, Hot Rolls, Butter, Milk and Cherry Pie.

Approvals Of —

(Continued from page one)

culture, to immediately instruct all FHA County Office in the designated areas to withhold further approvals of roughage purchase certificates.

The County Offices are authorized to continue to accept and hold on file applications for assistance under this roughage program, but are instructed to take no action on these applications and to make reports on the tonnage requirements covered by such applications to Mr. McKay's office.

Mr. McKay has been asked to solicit the assistance of the Texas USDA Drought Committee and the Office of the Governor in making a careful reappraisal of the demand for assistance under this Emergency Roughage program including financial requirements.

Mr. Scott stated in keeping with the policies and the desires of Secretary Benson, the Department will continue to work closely with Governor Shivers and leaders in the State

Liberty Theatre

SHAMROCK, TEXAS

FRIDAY AND SATURDAY

GUN-MAD RINGO BAKER!
The Savage Horde
WILLIAM ELLIOTT
ADRIAN BOOTH
A REPUBLIC PICTURE

ALSO "King Size Canary" and Serial

PREVUE SATURDAY NITE
SUNDAY, MONDAY & TUESDAY

THE GUTS AND GLORY STORY
BOLDLY AND BRAVELY TOLD!
THE BOLD AND THE BRAVE
SUPERSCOPE
COREY · ROONEY · TAYLOR · MAUREY

Plus 'Cat That Hated People' & 'The Blue Coast'

VISTAVISION
JOHN PAYNE
MARY MURPHY
HELL'S ISLAND
TECHNICOLOR

Wheeler Mustangs —

(Continued from page one)

his outstanding work in previous games. Bruce Topper is a starting Guard under other conditions.

Dale Wefford will replace Topper in the starting lineup. His jersey is number 25 and he weighs 165 pounds. See the Football Booster page elsewhere in this issue for the other probable starters.

Erick will be playing in red jerseys Friday night so the player identification numbers listed under the red in the line-up will be the ones applicable to this game. The Bearcats have two sets of jerseys and sent the numbers for both sets.

Dick Pendleton will man the loud speaker at the game to assist in keeping you posted in what is going on and who is doing it. This speaker system makes the games vastly more enjoyable fans have stated.

Half time ceremonies will be colorful and will add much to the evenings entertainment.

Mrs. May Rogers of Shamrock and Mrs. Cecil Johnson journeyed to Wellington Sunday.

PIONEER DRIVE THEATRE IN SHAMROCK, TEXAS

FRIDAY & SATURDAY

One Of The Gayest And Funniest Pictures Of The Year!

WHAT A CREW!
WHAT A CRUISE!
WHAT A LAUGH!



at Sea
starring
DIRK BOGARDE
BRIGITTE BARDOT
BRENDA DE BANZIE
JAMES ROBERTSON JUSTICE
TECHNICOLOR
VISTAVISION
A L. ALTMAN PRODUCTION
A REPUBLIC RELEASE

PLUS TWO CARTOONS

SUNDAY, MONDAY AND TUESDAY

THE MOST COLOSSAL MOTION PICTURE OF ALL TIME!



ROBERT ROSSON
RICHARD BURTON · FREDRIC MARCH
CLAIRE BLOOM
ALEXANDER THE GREAT
FILMED IN CINEMASCOPE
IN COLOR BY TECHNICOLOR
with BARRY HINES · BARRY ANDREWS · STANLEY BAKER
and WALLACE BOWEN
WRITTEN, PRODUCED AND DIRECTED BY DANIELLE BOURGEOIS · ROBERT ROSSON
RELEASED THRU UNITED ARTISTS

Also "Fine Feathered Frenzy"

Kids Day —

(Continued from page one)

essays, Richard Hampton, first; Cecil Hamilton, second; and Gary Waters, third; saddle points, Dwight Erwin, first; Peggy Lott, second; Vickie Walker, third; bicycles, Sidney Ann Kenady, first; Rodney Weatherly, second; Tommy Wiley, third; pets, Carl Adams leading Annie Robison's dog, for best dressed; Wanda Pearce with her colt, best trained; Joan Chapman with a bird, most unusual pet;

Pet Show winners who received first, second and third place ribbons as were placed were: Dogs: Kent Sims, first; Tony Terry, second; Steve Taylor, third;

Rabbits: Chas. New Colts: Wanda Pearce Joan Chapman, first; gleton, second, East Danny Dorman, first; Terry McCasland, first; sha Lee, first; Turt Smith, first; Coon Laura Singleton, first; gim, second.

Pigs: Lajo Fling Ground Squirrel: Gary first; Judy Gaines and ers, tied for second were awarded duplicate Guinea Pigs: Ray B

Mr. and Mrs. Lem turned to their home day. Mr. and Mrs. Co accompanied them pa

Texas Theatre

SHAMROCK, TEXAS

Last Three Days For This Rib-Tickling Play
Thursday, Friday and Saturday

the birds and the bees

It's the gayest, singiest, danciest romance in years!



ALSO "Bear And The Bean" And "The That Couldn't Be Printed"

SUNDAY, MONDAY AND TUESDAY

Here's That 'Marty' Man Again!



The story of a girl who wants to lead her own life.

THE CATERED AFFAIR

STARRING
BETTE DAVIS
ERNEST BORGNINE
DEBBIE REYNOLDS
BARRY FITZGERALD

Plus 'The Talking Dog' & Late News Of The

STARTS NEXT WEDNESDAY

Paramount Presents
BOB HOPE · SAUL BELLOW · SANDOR
THAT CERTAIN FEELING
Color by TECHNICOLOR
with PEARL BAILEY NORMAN PANAMA
and MELVIN FRANK
Produced by WILLIAM ALTMAN
Directed by ROBERT ROSSON
Released by United Artists