

Moore... ABOUT EASTLAND

by Virgil E. Moore

We note, not with alarm, but with due wondering, that the County has worked out a plan with the Highway Department to construct a new Farm - Market road in the county. The paved road—which has been scheduled to reach the building stage next Spring—will run from Carbon to Highway 183, which connects the cities of Rising Star and Cisco. The highway will make it much easier for citizens of Carbon to reach both Cisco and Rising Star.

We are pleased to see that the county will get the eight miles of paving. But at the same time, we wonder when something is going to be done about the condition of Highway 6 between Carbon and Eastland, Highway 6 between Carbon and Gorman is now in wonderful shape. In fact, that part of Highway 6 makes the section running into Eastland look even worse.

By the way, another road program slated for next Spring is 3.6 miles of paving from Farm-Market Road 571 to Desdemona. Completion of that work will give Eastland a paved road all the way to Desdemona.

Any columnist that didn't mention what is now happening in Little Rock, Ark. would be shutting his eyes to history in the making. We don't know what the outcome of the Little Rock national disaster will be. We do know that our children will be reading about it in their history books in years to come. We also know that President Eisenhower, who earlier this year said he couldn't imagine anything that would force him to use armed forces in the South, has now found that "anything." We do not believe the President will solve anything with force, just as we did not think the governor of Arkansas would. It's hard for us to decide which we oppose the most, integration or mob violence.

"Our six year old son was very excited about starting to school recently," writes Mrs. David Gaines, Route 3, Cisco. "The day finally arrived to go and enroll him, but at the last minute we had to search all over the place to find his missing birth certificate. We found his sister's, but not his. He was very interested in the thumb prints and the little footprints and asked me how they put them on. I had to explain that they were done with ink and pressed down on the paper. Finally I was about to give up looking for Blake's certificate and said, 'I guess we will just have to get you another one.' He looked up with the most surprised expression on his face and said, 'With these big feet!'"

City Manager Jimmy Young mailed us a clipping from the Shonee, Okla. News-Star entitled, "Guaranteed Directions for Producing a Ghost Town." Here are the six rules to follow:

1. Tell everyone you meet that you never buy anything at home; the merchants are a bunch of crooks, robbers and cheats.
2. Belittle all efforts for community betterment—the people trying to do these things are secretly making a lot of money, want to "run things" and their way of doing things is all wrong anyway.
3. Never waste money by advertising or waste time trying to attract trade to the town—nobody reads the ads, there is never anything in the paper, it's always late, and why should anyone want to come to town—it's a dead place.
4. Turn down all appeals for contributions; and do it in a nasty way so you won't be bothered again, because the money (Continued on Page 8)

Annual Meeting Of Hospital Contributors Set

Annual meeting of the Contributors to the building and equipping of Eastland Memorial Hospital will be held at 7 p.m. Monday, Sept. 30, in the meeting room of Texas Electric Service Company. The required legal notice of this meeting was published in the Telegram on Sept. 12.

"All those who contributed money or services to the Hospital are requested to attend the meeting, the purposes of which are to elect three directors for the ensuing year, and to transact such business as may properly come before the meeting," a spokesman said.

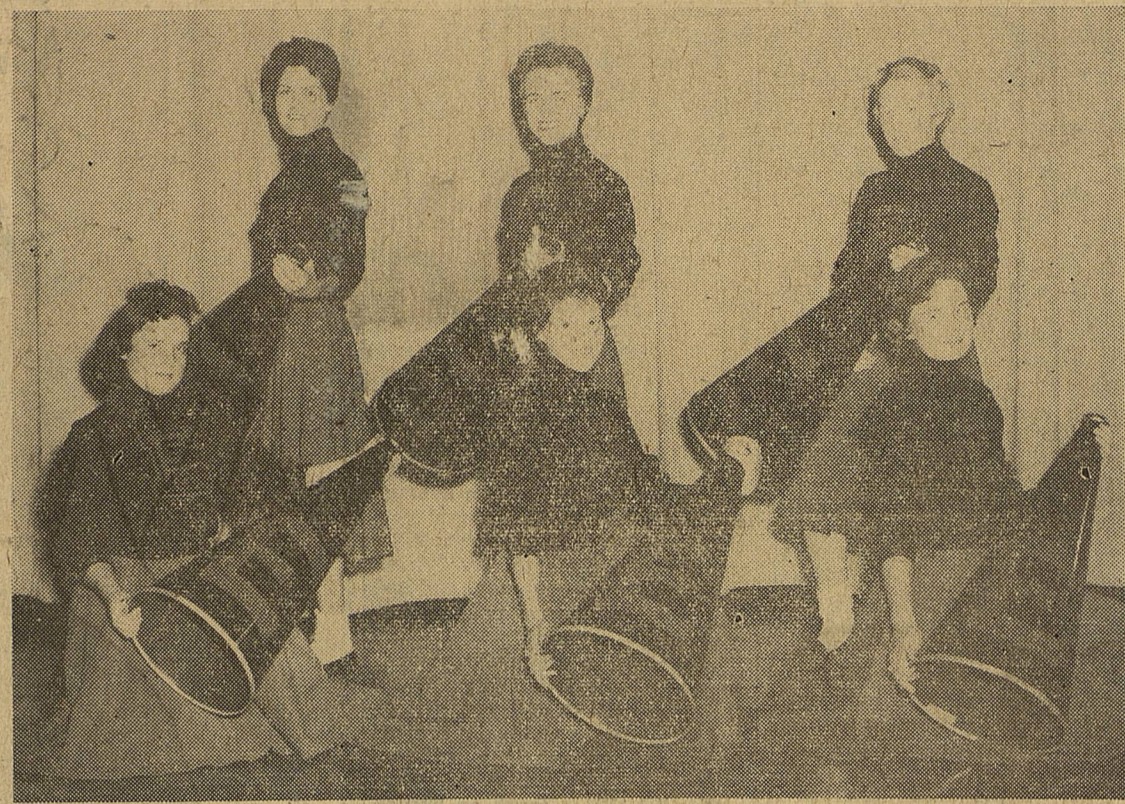
Albany B Team Invasion Slated Saturday Night

Eastland's B team will play host to Albany's Bees here Saturday night at 7:30 in Maverick Stadium.

The game will be the first home clash of the year for Coach Jon Tate's eleven. Tate said he would start James Lewis at the quarterback slot, Roger Taylor and Jimmy Jimenez as halfbacks, and Jimmy McElreath as fullback.

Bill Cate and Verle Lee will start as ends, Charles Channey and Bobby Lane will get the call as tackles and Martin Day and Red McCleskey will be starting guards.

ICE COLD
Comfort in three hours, installed in any car \$273—Automobile air conditioners.
Don Pierson Olds - Cadillac Eastland



MAV CHEER LEADERS—These six Eastland High School students are the girls who lead the cheers for the mighty Mavericks. Pictured standing, from left to right, are Marian Woods, Sidney Seale and Peggy Humphreys. On the front row are Patsy Hollis, Barbara Brock and Pat Fullen. Barbara is head cheer leader this year. The cheerleaders are elected by their classes. Patsy represents the Freshman Class, Peggy the Sophomore Class, Pat the Junior Class and the other three are all Seniors. The entire student body selects the head cheerleader. (Capps Photo.)

Commissioners Approve County Budget of \$412,841 For 1958

Eastland County commissioners this week approved a budget of \$412,841.98 for the year 1958. The new budget is \$57,337.88 higher than the 1957 budget, but the county tax rate will remain unchanged.

Commissioners adopted without change the budget prepared by County Auditor Earl O'Brien. O'Brien drew praise from the Court for "a job well done."

Estimated expenditures for the year are considerably higher than estimated revenue. Total receipts are listed at \$319,418.94. Thus there is a difference of \$93,423.04. However, O'Brien told the Court that he had conservatively estimated revenue while listing expenditures slightly higher than he actually anticipated to allow for unpredicted expenses.

Proof that more money will come into the county's bank account than estimated can be found in past history. O'Brien always estimates tax collections at 80 percent, but actually collections have totaled over 90 percent for many years. The county also will begin the year with a neat balance of \$316,646.37, giving the

county total resources of \$636,065.31. O'Brien estimates the county will end the 1958 year with a balance of \$223,223.33. In his 1957 budget he estimates the end of the year balance would be \$297,818, but it was actually higher by \$18,828.37, again due to conservative estimates of revenue. This year's tax rate will again be .80 per \$1000. The rate was the same in 1957 and 1956. In 1955, 1954, 1953 and 1952 the rate was .75 and in 1951 it was just .60. O'Brien said that Eastland County still has one of the lowest tax rates in the state. Only 19 other counties have as low, or lower, rate, and there are 254 counties in the state.

This year's breakdown of the .80 rate shows that the jury fund will get .05, the road and bridge fund .10, the road and bridge sinking fund .10, and the general fund .55. The general fund has long been the headache fund of Eastland County, but under the new budget it will be greatly strengthened. Last year the fund got only .35, but under a Constitutional amendment passed this past year, the Commissioners Court was able to transfer .15 which previously went to the courthouse sinking fund to the general fund.

That transfer will not endanger the courthouse interest and sinking fund since the fund has a balance of \$34,526.96. Last payment on the courthouse will be made March 15, 1961 and the county now has enough money to meet all payments through 1960. Only \$45,000 is still owed on the building.

The county also has healthy balances in all other funds, except one. The jury fund shows a balance of \$15,301.18, the road and bridge fund's balance is \$192,429.22, the road and bridge sinking fund's balance is \$16,303.14 and the permanent improvement fund balance is \$29,589.08. O'Brien estimates that the beginning 1958 balance for the hard-hit general fund will be only \$7,013.42, however.

Besides the courthouse bond indebtedness the county still owes \$40,000 on its 1922 road bonds. That sinking fund contains \$20,650.12, however, and the State (Continued on Page Two)

Land is our basic asset, from both a local and national aspect. Soil erosion is a big menace to our prosperity and security. For these two reasons land owners are encouraged to take advantage of local conservation programs and apply conservation to their land. Local programs are designed to fit local needs in helping to keep soil and water on the land where it belongs.

Terrace systems have been recently completed by the following land owners: Fred Burfield south of Carbon, Homer Stiffler near Olden, John W. McAfee at Flatwood, and on the Wright estate near Eastland. Terracing is a popular and much needed practice in this area. Properly built terraces with adequate channels and supporting ridges across the slope will intercept excess runoff. Soil conservation technicians working with landowners run these lines on proper grades or fall and empty terraces on terraces on stable grassed outlets. Terrace systems and contour farming do much to hold small flash rains, and during excessive or prolonged rain runoff is conducted to stable outlets with a minimum of erosion.

Diversion terraces have been recently built on the farms of J. G. Harlow, Waverly Massengale, Charles A. Clark and Fred Burfield. Diversion terraces are large terraces constructed primarily above cropland to intercept outside water and prevent damage to lower areas. They are designed to carry runoff in excess of what could be carried by standard field terraces. They are also used for such other purposes as conducting water into or away from farm ponds.

Farm ponds have recently been built for C. B. Rust, J. C. Seaborn, J. G. Harlow, L. L. Hartman, H. B. MacMoy, and W. E. Kirklin in the Eastland area. In the Cisco area the following have recently built ponds: Dean H. Perry, L. E. Booth, Leo Wells and Stewart Slotton. Land owners in the vicinity of Ranger who have con-

Mavs to Seek Upset Of Own Friday Night

Locals Test Cross Plains Buffs There

Eastland's Mavericks who caught the rebounding team last week, may have another on their hands Friday night. The Mavs journey to Cross Plains to take on the powerful Buffs in the top Class A game in the region.

This time, however, it could be that Eastland may do a little rebounding themselves. Both teams took hard defeats last week. The Mavs were upset by DeLeon, 20-6, while Cross Plains was bowing to mighty Coleman, 51-12. The setback was the first of the

season for Cross Plains. The Buffaloes previously downed Baird, 19-0, and Merkel, 19-7. Eastland, on the other hand, has lost two of three. The Mavs were downed by Cisco, 21-18, but beat Dublin, 25-7.

Eastland and Cross Plains met twice last year, with Cross Plains winning the first game, and Eastland winning the one that counted most, the bi-district tilt. Eastland lost heavily from last year's team, however, but the Buffaloes have most of their team back. Cross Plains is favored to win District 10-A.

The Mavs face one of the heaviest teams they have met in a long time in Cross Plains. The Buffs average 171 pounds a man across their starting team. That breaks down to 175 pounds a man in the line and 163 in the backfield.

Eastland, on the other hand, will field a team averaging just 159 pounds a man. The Mav line will average out at 163 pounds a man and the backfield 151.

Offensive starters for the two teams are shown in the box above. Marvin Agnew will start for Charles Martin, still out with a bad case of the flu. And Henry Van Geem is slated to start for injured Larry Aldredge, who also will not suit up. Aldredge's condition was reported improved Wednesday. Bill Norwood will be back in the starting line-up after sitting out last week's game with a back injury, and Johnny McMahan and Knicky Arther, both injured last week, are expected to be ready to start.

Coaches Carrol Shelton and Jon Tate kept their charges in out of the rain yesterday, fearing more illness if they held workouts. Blackboard drills were the call of the day.

Shelton said he would start Saul Pullman and Stanley Reed at defensive ends, Fred Tucker (Continued On Page Four)

Silver Dollars Are Given Away

At least one Eastland merchant has a bad case of "rain-gladdness."

Mode O' Day announced in an advertisement in the Telegram today that the store would give a free silver dollar to customers purchasing three \$3.99 dresses or one \$5.99 to \$10.99 dress for the balance of the month.

Mrs. J. U. Johnson, manager, said, "It's rained a lot, crops look good and we just feel like celebrating."

Probable Line-Ups

EASTLAND	Wt.	Position	Wt.	CROSS PLAINS
Johnny McMahan	160	End	150	Doyle Oliver
Marvin Agnew	160	Tackle	180	John Baum
Henry Van Geem	148	Guard	178	Johnny Pancake
Knicky Arther	157	Center	175	Don Watkins
Wayne Dodson	156	Guard	185	Joe Gary
Stanley Reed	210	Tackle	207	Perry Jennings
Clint Humphreys	152	End	152	Jim Fleming
Larry Hollis	134	QB	152	Charles Nech
Bill Norwood	142	HB	165	Darvel Hutchins
Saul Pullman	138	HB	155	Granvel Scott
	190	FB	180	Audrey Grey

Albany's Atwell On Top In Scoring Race

Jerry Atwell added 25 points to his season record Friday night as the Lions thundered past Monday to take over scoring honors in District 10-A.

Atwell now has a total of 43 points to his credit and replaces Wylie quarterback Joe Rex Schulle on the top of the list. Schulle, in fact, slipped to third in the scoring race as his team had an open date. Bob Neely of Throckmorton edged him out for second place with 30 points, compared to 29 for Schulle. Mr. Schulle, of course, has played just two games, compared to three for both Atwell and Neely. Eastland fullback Saul Pullman and Throckmorton's Charles Hibbets are tied for fourth place honors. Hibbets picked up a touchdown last week, but Pullman did-

n't manage to score. Both have 18 points to their credit.

District 10-A has an impressive record of 10 wins against four losses for the year. Here's how the standings look:

District 10-A	W	L
Albany	3	0
Throckmorton	3	0
Wylie	2	0
Eastland	1	2
Clyde	1	2

This week the strength of Albany should be shown as the Lions take on tough Winters in Albany. Clyde entertains Baird, Throckmorton goes after Munday and Eastland has the chore of meeting Cross Plains in Cross Plains.

Here's complete individual scoring in the district.

PLAYER	TEAM	POINTS
Jerry	Albany	43
Bob Neely	Throckmorton	30
Joe Rex Schulle	Wylie	29
Saul Pullman	Eastland	18
Charles Hibbets	Throckmorton	18
Harold Hicks	Clyde	14
James Baker	Throckmorton	13
Bill Norwood	Eastland	12
Larry Tally	Wylie	12
Jimmy Ellis	Albany	12
Dale Hillis	Throckmorton	7
Johnny McMahan	Eastland	6
Clint Humphrey	Eastland	6
Franklin Bales	Albany	6
Stanley Reed	Eastland	6
Larry Hibbets	Throckmorton	6
Don Huston	Wylie	6
Verner Allen	Wylie	6
Billy Cullin	Clyde	6
Glen Carter	Wylie	6
Don Gruce	Clyde	6
Jackie Jenkins	Albany	6
Jackie Eubanks	Albany	6
Jerry Grable	Throckmorton	6
Ernest Hall	Albany	6
Harrell Keeter	Throckmorton	6
Farrell Durham	Albany	6
Larry Cawley	Albany	6
Kenneth Watson	Eastland	1
Ralph Bolling	Albany	1

Sears Pig Show Winners Named By County Agent

Lynn Hagan, Cisco, son of Mr. and Mrs. J. B. Hagan, showed his Sears pig first place in the 4-H Club Sears Gilt show Saturday at the Eastland airport. Larry Morrow, son of Mr. and Mrs. J. L. Morrow, Gorman, won second place with his gilt, David Stuart, son of Mr. and Mrs. W. B. Stuart, showed his gilt to third place.

Billy Johnson, son of Mrs. Bobly Joe Johnson, Ranger, showed fourth in the show. Dick Morrow, Rising Star, son of Mr. and Mrs. J. R. Morrow, received fifth place and Terry Gey, Rising Star, son of Mr. and Mrs. H. L. Gey, received sixth place.

Each of the boys received ribbons and the first five will receive prize money. The prize money will be eight dollars for the first place winner on down to four dollars for the fifth place. The boys will buy lumber, nails, wire or other material to improve their swine program with the prize money.

Judge of the show was Tommy Tollard, vocational agriculture teacher at Cisco High School.

Bruce Pipkin Points to New Johnson Motors

"The V age finally has come to outboard boating." That's the word from Bruce Pipkin, of Pipkin's Sport Center.

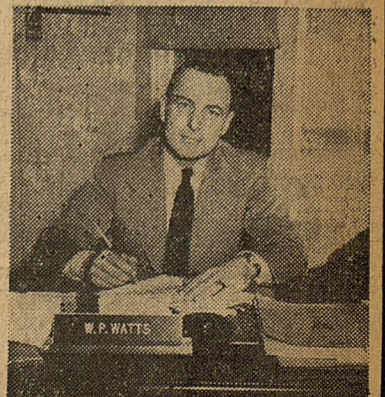
"Johnson Motors, the nation's leading manufacturer of outboard motors, will pioneer the revolutionary innovation in its 1958 line when it introduces a four-cylinder, V outboard engine rated at 50 horsepower," Pipkin announced today.

"For outboard engineers the V motor has been a long sought goal thought of as the golden apple hanging just beyond reach. It now is a commercially successful reality for the first time in history," he said.

W. H. Jonas, Johnson director of sales, reports the new V engine provides more power in a smaller package, reduces noise, increases durability and dependability, yet can be operated at greater economy than any other outboard of comparable power. It will open new

(Continued on Page 2)

... speaks to Lions
W. P. WATTS



SOIL CONSERVATION DISTRICT NEWS

OUR SOIL ★ OUR STRENGTH

Land is our basic asset, from both a local and national aspect. Soil erosion is a big menace to our prosperity and security. For these two reasons land owners are encouraged to take advantage of local conservation programs and apply conservation to their land. Local programs are designed to fit local needs in helping to keep soil and water on the land where it belongs.

Terrace systems have been recently completed by the following land owners: Fred Burfield south of Carbon, Homer Stiffler near Olden, John W. McAfee at Flatwood, and on the Wright estate near Eastland. Terracing is a popular and much needed practice in this area. Properly built terraces with adequate channels and supporting ridges across the slope will intercept excess runoff. Soil conservation technicians working with landowners run these lines on proper grades or fall and empty terraces on terraces on stable grassed outlets. Terrace systems and contour farming do much to hold small flash rains, and during excessive or prolonged rain runoff is conducted to stable outlets with a minimum of erosion.

Diversion terraces have been recently built on the farms of J. G. Harlow, Waverly Massengale, Charles A. Clark and Fred Burfield. Diversion terraces are large terraces constructed primarily above cropland to intercept outside water and prevent damage to lower areas. They are designed to carry runoff in excess of what could be carried by standard field terraces. They are also used for such other purposes as conducting water into or away from farm ponds.

Farm ponds have recently been built for C. B. Rust, J. C. Seaborn, J. G. Harlow, L. L. Hartman, H. B. MacMoy, and W. E. Kirklin in the Eastland area. In the Cisco area the following have recently built ponds: Dean H. Perry, L. E. Booth, Leo Wells and Stewart Slotton. Land owners in the vicinity of Ranger who have con-

Daugherty Described As Father Of City

(Editor's Note: This is the 23rd in a series of articles taken from the book, "History of Eastland County, Texas," written by Mrs. George Langston in 1904.)

Confederate Association
One of the leading features of the historical, social and benevolent interests of Eastland County is the organization of this unchartered body. It's purposes have been so thoroughly and uniformly adhered to, and so pleasant and commendable that interest in its annual reunions increases.

At the suggestion of our well beloved comrade, Dr. S. H. Stout, who now sleeps in the honored soldiers' grave, a preliminary meeting was held in County Clerk John T. Yeargin's office, Feb. 8, 1886. The Confederates present were Dr. S. H. Stout, Colonel George W. Shannon, John T. Yeargin, W. H. Day, Henry Kallum, J. T. Harmonds, C. R. Johnson, Captain J. I. Steele and Jane Kim.

There are 493 names on the roll. Those who have passed over the river, and those who have moved to other localities are so entered, making it a true record.

The annual reunions of this organization, which have since become an institution of the County have brought our people together for 17 years, the delightful gatherings numbering from 3000 to 5000 veterans, wives, sons, daughters, and friends.

The constitution declares the object of this Association to be

historical, social, and benevolent. The organization owns in fee simple a beautiful and convenient plot of ground, located one-half mile north of the courthouse, consisting of 5 1/2 acres, upon which it proposes to build a spacious tabernacle. When the building is completed it will pass into the hands of the sons and daughters, who will doubtless receive it as a sacred trust committed to them by their fathers.

J. S. Daugherty, the father of Eastland City, was born in Missouri, August 25, 1849, and educated at Lexington University, Kentucky.

He came to Dallas in 1873, and soon became interested in a real estate business, and in the founding of Eastland City. He was the author of the Business League in the United States.

On his motion, the Dallas Board of Trade created a committee of public interest in 1882. (Continued On Page Four)

Installation Loans Custom Made For Each Customer
EASTLAND NATIONAL BANK
Member F. D. I. C.

Eastland Telegram

Eastland County Record established in 1931, consolidated August 31, 1951. Chronicle established 1887, Telegram established 1923. Entered as second class matter at the Post Office at Eastland, Texas under the act of Congress of March 3, 1879.

TIMES PUBLISHING COMPANY
Published Tri-Weekly—Tuesdays - Thursdays - Sundays
ONOUS DICK and JOE DENNIS, Publishers
VIRGIL E. MOORE, Editor
CAROLYN COLLINS, Society Editor

One week by carrier in city	.15
One month by carrier in city	.65
One year by mail in County	2.95
One year by mail in state	4.95
One year by mail out of state	6.95

NOTICE TO PUBLIC—Any erroneous reflection upon the character, standing or reputation of any person, firm or corporation which may appear in the columns of this newspaper will be gladly corrected upon being brought to the attention of the publishers.

Commissioners—

(Continued from Page One)
is meeting obligations with the county's share of the State gasoline tax.
It's interesting to note where

AUTOS FOR SALE

1956—PONTIAC Catalina 4-door hard top, air conditioned, fully equipped, low mileage, locally owned car. Clean as a pen. \$2,275.00.
1955—BUICK Roadmaster 4-door sedan. Factory air conditioned, full powered, Royal Master tires. \$1495.00.
1954—BUICK 2-door hard top sedan. Air conditioned. This car has been re-conditioned in our shop. \$1375.00.
1953—FORD V-8 4-door sedan. New rubber, a perfect car. \$785.00.

AUTO FOR SALE: 1956 Ford Customline four door sedan. New tires, low mileage. A steal. Call 839, Eastland.

SEE MUIRHEAD MOTOR CO.

For Outstanding Automobiles BARGAIN PRICED

Yr.	Ass. Val.	Total Col.	Pct. Col.
'52	\$21,987,160	\$153,458	93
'53	\$21,740,050	\$149,895	91.1
'54	\$21,271,060	\$145,839	91.5
'55	\$20,948,280	\$153,142	91.4
'56	\$20,949,790	\$154,485	92.1

MUIRHEAD MOTOR CO.

Phone 692 Eastland

the county gets it's money. A total of \$121,836.44 will come from ad valorem taxes, O'Brien estimates (using the 80 percent collection figure). The county's share of the automobile license tax is estimated at \$110,000. Fines will bring in \$7000 and \$9,607.50 will come from lateral road surpluses. The county's share of the State gasoline tax is estimated at \$9,870 and \$1400 will come from the county farm. Fees of office will bring in an estimated \$52,150, revenue from poll tax sales will be \$1000, trial fees are estimated at \$6000, rent of county property will bring in \$420 and stenographer's fee will amount to \$75, it is estimated.

And here's where it will be spent: Juries will cost \$8,943.60, road and bridge fund expenditures will amount to \$183,711.44, general fund expenditures will be listed at \$73,137.92, \$4000 - will be spent on permanent improvements, \$92,977.02 is earmarked for the officers salary fund, \$775 will be spent on the county farm and \$9,607.50 will go for road and bridge fund refunding bonds. In addition \$13,867 will be spent to pay off courthouse bonds, bonds, and \$15,952.50 will be paid for road and bridge bonds. All of these figures, of course, are estimates.

The following chart shows assessed valuations in the county, total amount of ad valorem taxes collected and the percentage of taxes collected in the past five years. Total assessed valuation in 1957 was \$20,929,800.

Yr.	Ass. Val.	Total Col.	Pct. Col.
'52	\$21,987,160	\$153,458	93
'53	\$21,740,050	\$149,895	91.1
'54	\$21,271,060	\$145,839	91.5
'55	\$20,948,280	\$153,142	91.4
'56	\$20,949,790	\$154,485	92.1

Bruce Pipkin—

(Continued From Page One)
worlds of cruising to family outdoor owners who want to participate in all forms of outdoor water activities.
"Despite its increased power, the new V engine features an important safety factor since its lower center of gravity will make the boat less vulnerable to tipping than with other large motors," Pipkin pointed out. "Another important feature of the new V engine will be a reduction of vibration and less exhaust noise. It also will have a shorter, stronger

Lions Hear—

(Continued from Page One)
credit of the State to cities and water districts.
Watts said the people's vote would determine whether or not Texans will have an employees retirement system ranking favorably not only with those of State employees elsewhere in the nation but also with industrial employees throughout the country.
He pointed out that the Texas Research League studied the retirement system of State employees then made recommendations. Out of the study evolved House Bill 790 and Senate Bill 338. The 56th Legislature passed the House bill.

Under the present law, benefits are related to past earnings and these are limited to \$3600 per year for purposes of retirement benefits, Watts explained. The new plan will help keep retirement benefits abreast of changes in the price level, he said.

Watts said the second amendment on the ballot would give old age pensioners in the state an average increase of about \$2 each per month, raising the top aid from \$58 a month to \$60 a month. The former assistant attorney general pointed out that the average pension now is about \$4 a month.

The water development amendment would do four things, Watts said. He said it will not disturb vested property rights in surface or ground waters; is a self-supporting, self-liquidating proposal; will not increase taxes or burden the State money-wise; and has the potential of developing \$600 mil-

Conservation—

(Continued from Page One)
drainage area in balance with the storage capacity. A location with high ground on both sides of a stream and a natural basin gives more depth and storage capacity to the completed pond. Wide flat spillways designed to carry flood runoff are an essential safety feature to all ponds.
The above practices are county A.C.P. practices as selected by the County A.S.C. Committee, Soil Conservation Service technicians, Soil Conservation District supervisors, county agricultural agent, and Farm Home Administration supervisor. Land owners receive cost sharing assistance on these and other county approved practices.

Pipkin announced that he is presently closing out all 1956 models "at a greatly reduced price."

The V-50 has a 70.7 cubic inch piston displacement that helps make it possible for the motor to push heavy loads with little strain on essential engine parts.
Vibration and noise are reduced in the new V-50 design by balancing the driving force of the pistons.

To assure correct water temperature in the cooling system of the V-50, Johnson engineers have designed a new, thermostatically-controlled recirculating water system. This will give the motor a longer life and provide for more efficient operation since water in the cooling system is maintained at ideal temperature.

Pipkin announced that he is presently closing out all 1956 models "at a greatly reduced price."

KINDERGARTEN

OPENS TUESDAY, OCT. 1st
902 W. Plummer. Ages 4 to 6.
Ph. 827-W. Mrs. Ferne Green

PALACE

THEATRE - IN CISCO, TEXAS

Thursday and Friday

M-G-M'S NERVE-TINGLING DRAMA
A PLOT TO OUTWIT THE INTERNATIONAL POLICE!

ROBERT TAYLOR
DOROTHY MALONE

TIP ON A DEAD JOCKEY



16 CINEMASCOPE

ATTEND THE CHURCH OF YOUR CHOICE EACH SUNDAY

CALL 601 FOR CLASSIFIED ADVERTISEMENT

TRADE WITH YOUR HOMETOWN MERCHANTS



FREE SILVER DOLLAR

with purchase of two \$3.99 dresses or one \$5.99 to \$10.99 dress for balance of month. Starts Friday.

MODE O'DAY

East Side of Square Eastland, Texas

Classified Ads..

Telegram Couldn't Possibly Staff County C-C Meeting Before 4:30

(An Editorial)
And why not an Eastland County Chamber of Commerce?
Eastland, Cisco, Ranger, Gorman and Rising Star have tried hard and long to accomplish something by pulling five ropes in five different ways. About the only thing that we can notice as the result of such action is a much smaller county—population wise—than we had 10 years ago.
The Telegram sincerely wishes that Gorman would land a 20 billion dollar automobile manufacturing plant. We guarantee you Eastland would get bigger, not smaller, as a result.
You say a county chamber won't work. We say you're the main reason it won't. Eastland County has too many people saying it won't. We say it will.
How should it be set up? Through the local chambers of commerce. To start with let's say each C-C should name two directors to serve on the county organization. That would assure equal representation. Then let's all join the group, give it a little working capital, and help the directors make it work.
A good idea but let's wait 'til tomorrow, you say. No good. For you know, and we know, that tomorrow never comes. We couldn't possibly attend an organizational meeting ourselves before 4:30 this afternoon.

FOR RENT -

- FOR RENT: New decorated 6 room modern house, lots of closets. Call 1044-W-2.
- FOR RENT: Small furnished house newly decorated. Close in. Apply 210 East Valley after 6 p.m.
- FOR RENT: Five room furnished house. 1403 Slay. Phone 823-J.
- FOR RENT: 4 room house. Contact J. F. Holloway, Holloway Service Station. Phone 9545.
- FOR RENT: Four furnished and four unfurnished rooms in Duplex. Phone 394-J.
- FOR RENT: Furnished apartment, two rooms, private bath. Phone 811-W.
- FOR RENT: Four unfurnished rooms in Duplex. Phone 394-J.
- FOR RENT: 2 room apartment, 404 South Bassett.
- FOR RENT: Newly decorated apartments. Phone 2085-W.
- FOR RENT: Newly decorated apartment. Hillside Apartments. Phone 9520.
- FOR RENT: 5 room house, modern conveniences. Call 727-J1.
- FOR RENT: Five room unfurnished house, 103 N. Ammerman. Phone 446-J or 270.

MISC. FOR SALE -

- FOR SALE: Rye seeds for planting, nice well matured seed, clean enough. A. H. Cox, Ivan Star Route, Breckenridge, Tex.
- FOR SALE: Pickup, dirt hauler. Stop by 908 W. Commerce, Eastland.
- FOR SALE: Three school bus bodies. Also 20 by 700 and 750 tires. W. B. Norton, 705 W. 12th Cisco. Phone Hillcrest 2-1885.
- FOR SALE: 1956 Evinrude motor, used, 15 miles. Original price \$385, Sale price \$275. Phone 421, Ranger.

Insurance AND Real Estate

D. L. KINNAIRD
Life - Fire - Auto - Farm
Folio - Bonds
37 years in the Insurance Business in Eastland

INGROWN NAIL HURTING YOU?

Immediate Relief!
A few drops of OUTGRO bring blessed relief from tormenting pain of ingrown nail. OUTGRO softens the skin underneath the nail, allows the nail to be cut and thus prevents further pain and discomfort. OUTGRO is available at all drug counters.

HELP WANTED

WANTED: No. 1 operators desired for Compression Absorption Gasoline Plant in West Texas. High wages scale. Must have at least 5 years Compressor and process operating experience. Inquires confidential. Write Box 378 or phone Mutual 26351, Midland.

READ THE CLASSIFIEDS

NOTICE

FRESH DRESSED FRYERS

Every Day Special Price for Your Deep Freeze
—also—
Chicken Blood Bait . . . Guaranteed to stay on any type hook.

PHONE 110 WALKER Dressing Plant

PERMANENTS

\$ 7.50 Oil-Glo Creme . . \$ 5.00
\$10.00 Creme Wave . . . \$ 7.50
\$15.00 Creme Oil Wave \$10.00

Basham Beauty Bar

Lula Mae Smith Basham
1416 S. Lamar Phone 964

SPECIALS

25.00 Permanents . . . 20.00
20.00 Permanents . . . 15.00
15.00 Permanents . . . 10.00
10.00 Permanents . . . 7.50
Other Permanents . . . 5.00

JOSEPHINE Beauty Salon

Josephine Brister, Owner and Operator
Betty Crawley - Vivian Jones Operators

HELP WANTED Female -

LADIES wanted to do part time work in their own home. You will do telephone survey work for a nation wide insurance company. You will receive \$1.00 per hour for average 15 to 20 hours per week. Write Alan Turner, Box 676, Abilene, Texas.

HELP WANTED MALE -

FOR SALE: Homemade quilts, 2 rocking chairs. 414 South Lamar, Phone 669-J.

Back to School SPECIAL

on all famous brand COLD WAVES

from \$5.00

All Types Beauty Work
Hair Shaping & Styling
Merle Norman Cosmetics

Ruby Lee's Beauty Shop

403 South Lamar Phone 66

DIXIE Drive-In

Box Office Opens 7:15
Show Starts 7:30
Box Office Closes 9:30

WEDNESDAY - THURSDAY, SEPT. 25 - 26

Star of "Seven Year Itch"

Tom Ewell is a RIOT!

MGM Presents
THE GREAT AMERICAN PASTIME
Starring
TOM EWELL * ANNE FRANCIS * ANN MILLER

PLUS: Color Cartoon and Sports Reel

FRIDAY - SATURDAY, SEPT. 27 - 28

RANDOLPH SCOTT **THE TALL T**

TECHNICOLOR A COLUMBIA PICTURE

PLUS: Color Cartoon and Sports Reel

QUALITY MEATS

Choice Fed Beef

SEVEN ROAST	lb. 43c
SHOULDER ROAST	lb. 49c
LOIN STEAK	lb. 65c
T-BONE STEAK	lb. 69c
ROUND STEAK	lb. 73c

SAUSAGE, Country Style	lb. 33c
SAUSAGE, Country Style	2 lbs. 65c
HAMBURGER, Good Grade	lb. 33c
GROUND MEAT, Extra Lean	lb. 39c
CALF LIVER	lb. 39c
BARBECUE, Pit Cooked	lb. 69c
BRICK CHILI, Homemade	lb. 49c

EARNEST Frozen Food Center

210 South Lamar Phone 11

'Weight Control' Is Lesson Topic Of Word HD Club

"Weight Control" was the topic of the lesson brought by Miss Sandra Kirkland at the meeting of the Word Home Demonstration Club. They met in the home of Mrs. Sadie Youngblood on Sept. 19.

After Mrs. Werdner Stansell called the meeting to order the group repeated the club motto, pledge and prayer in unison. Roll call was answered with "a job I have simplified." Mrs. Youngblood brought the devotional from the scripture of James 1:26-27.

The nominating committee gave

the new officers as follows: Mrs. Ida Schaefer, president; Mrs. Lena Hanson, vice president; Miss Willie Ward, secretary and treasurer; and Mrs. Lottie Lassiter, council delegate.

Mrs. Lassiter was in charge of the recreation. Refreshments were served to Mes. Werdner Stansell, Dee Clements, Annie King, Ida Schaefer, Sadie Youngblood, Cora Plomlee, Effie Mayheu, Lena Hanson, Gay Weaver and Lottie Lassiter.

Refreshments were also served to the visitors, Mrs. Anslar, mother of Mrs. Schaefer, Mrs. Alma Enley, Miss Sandra Kirkland, county home demonstration agent, Miss Alice Bacon, Miss Willie Ward and Miss Leclair Harrison.

The next meeting will be in the home of Mrs. Nellie Campbell on Oct. 3. The lesson will be on cheese and cheese dishes.

SOCIAL CALENDAR

Tuesday, Sept. 24
3:15 p.m.—South Ward P.T.A. will meet at the school house for their first meeting. All parents are urged to attend this meeting.
7:30 p.m.—Band Boosters will meet in the Band Hall. All members are urged to be present for the election of officers.
7:30 p.m.—Zeta Pi Chapter of Beta Sigma Phi will meet in the home of Mrs. R. P. Haun at 807 West Moss.

Wednesday, Sept. 25
12 noon—Pioneer Club will meet for a covered dish luncheon in the home of Mrs. T. M. Johnson.

Each member are to bring their own table service.

Thursday, Sept. 26
2 p.m.—Morton Valley Home Demonstration Club will meet in the home of Mrs. Floyd White. Mrs. Bobby Muller will be hostess. All members are urged to attend the meeting for the election of officers.
7 p.m.—Evangel Class of the First Baptist Church will meet for a covered dish dinner. All new members are cordially invited.

Thursday, Sept. 26
7 p.m.—Evangel Class of the First Baptist Church will meet for a covered dish dinner. All new members are cordially invited.

Tuesday, Oct. 1
9:30 a.m.—Woman's Society of Christian Service will meet in the church parlor for Mission Study. The lesson will be given by Mrs.

Rachel Group Is Studying 'Women Of The Bible'

Rachel group of the First Christian Fellowship continued their study on "Women of the Bible." The lesson was brought by Mrs. A. Gallagher.

The group met in the home of Mrs. Hugh Neeld Monday at 9 a.m. Mrs. Charles Freyschlag presided over the meeting. Mrs. Gerald Ables gave the devotional. Mrs. Neeld served refreshments of coffee and cinnamon rolls to

Mmes. Gerald Ables, J. W. Edson, A. L. Gallagher, Hugh Neeld, R. A. Pooler, Charles Freyschlag, Bernard Hanna, S. G. McCullough and Kerman Bond.

NEWS FROM DESDEMONA

By Anell McMasters

Mrs. Sonja Wilcoxson has been a patient in the Glenrose hospital for the past two weeks but is doing as well as can be expected.

Mrs. John Smith who recently opened the Desdemona Cafe was rushed to the Dallas Hospital for treatment Sunday morning.

At this writing Mrs. Ollie Riggs is a patient in the Gorman Hospital.

Visiting Mrs. Ethel Keith was Mr. and Mrs. B. M. Keith and daughter of Cisco and Mr. and Mrs. Fug Guthery and family of Kermit. Also Mr. and Mrs. Fug Guthery visited his parents, Mr. and Mrs. Roy Guthery.

Mr. and Mrs. Robert Ables and son of Oil Center, N. M., are visiting his parents, Mr. and Mrs. Hugh Ables.

Mr. and Mrs. Robert Mears of Arlington visited her parents, Mr. and Mrs. Raymond Joiner. Also visiting the Joiners was their daughter and son-in-law, Mr. and Mrs. Robert Ables and son of Oil Center, N. M.

Mr. and Mrs. Harry Barnes of Dallas and Mr. and Mrs. P. D. Ash and son, Dale, visited their parents, Mr. and Mrs. John Ash and Etula this weekend.

Mrs. Ollie Fien returned home Sunday after an extended visit with her daughter in Minneapolis, Minn.

READ THE CLASSIFIEDS

Overseas Veterans Welcome
Karl and Boyd Tanner
Post No. 4136
VETERANS
OF
FOREIGN
WARS
Meets 2nd and
4th Thursday
8:00 p.m.

ED V. PRICE & CO.
TAILORED
SUITS
Sport Coats Slacks
C. L. FIELDS
Phone 571 103 W. Valley

YOUR CHOICE EACH SUNDAY
READ THE CLASSIFIEDS

Announcing...
the association of
Mr. Frank Carter
with
Ruby Crawley Beauty Shoppe
Mr. Carter specializes in hair
shaping and hair styling.
Graduate of Abilene Beauty
College. Experienced Hair Dres-
ser.



Ruby Crawley Beauty Shoppe
107 North Helen Curtis Cold
Lamar Waves at Franchised Phone
Prices 379

We Live in a Great Country—
... and one of the things that has helped to make it so is
Insurance. In one particular at least the average American is
unique in that he buys more insurance than any other na-
tionality. He doesn't like to carry risks and the attendant
worries that go along with them. He keeps himself insured—
his family, his property, everything he has—because it's good
business to do so. Yes, it's American to be insured and In-
surance is typically American!

EARL BENDER & COMPANY
Eastland, (Insurance since 1924) Texas

PHONE
42 Day and Night
EXPERT BODY WORK AND PAINTING
WRECKER SERVICE
KING MOTOR CO
Direct Factory Ford Dealer
Northeast Corner of Square

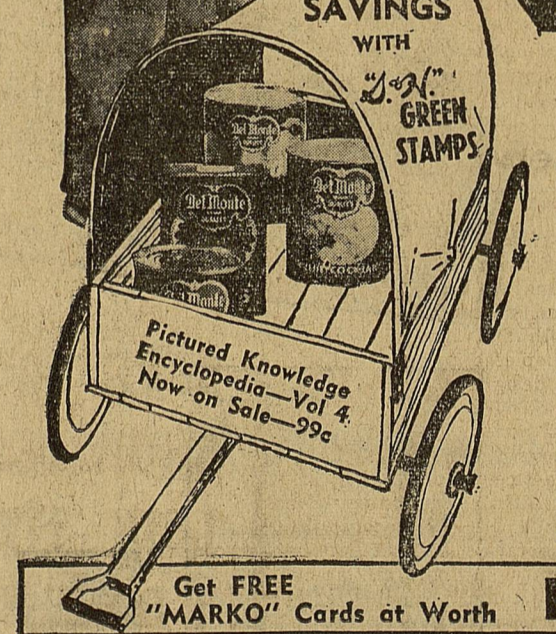
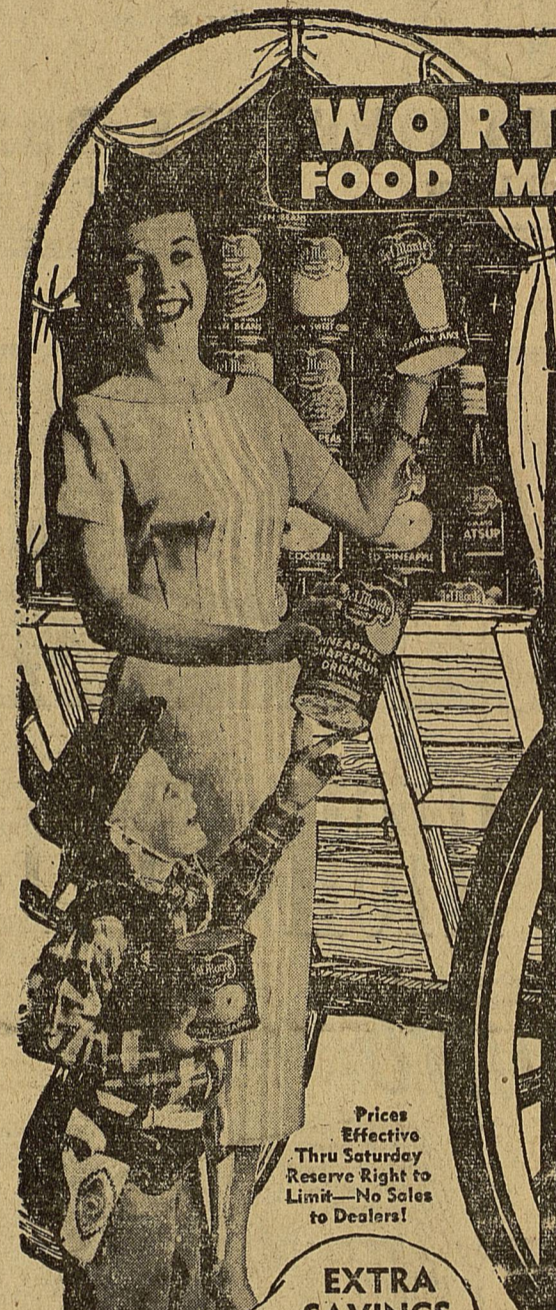
NOTICE... Come To
Kendrick Drive-In Dairy
(Serving This Territory Since 1940)
FOR
Good, Clean JERSEY Sweet Milk
Price - 70c Gal.
Phone 896-J-2 — Located Halfway between
Eastland and Cisco

Funeral Directors
HAMNER FUNERAL HOMES
Ben E. Hamner
Oxygen Equipped - Air Conditioned
Eastland Cisco
Phone 17 Phone Hillcrest 21211
AMBULANCE SERVICE ANY WHERE ANY TIME
Nominal Cost Burial Insurance
For The Entire Family

SUCH BIG NAMES AS
• Pat Boone
• Elvis Presley
• Jimmy Dorsey
• Sal Mingo
• Tommy Sands
• Perry Como
• Nat "King" Cole
• Patti Page
• The Crew Cuts
• Fats Domino and
many, many others

Complete Selection
Records
Now you can get your
favorite recordings
right here in Eastland.
We have just added a
complete stock, includ-
ing Albums and Singles
ALL REASONABLY
PRICED!

CANARIS STUDIO
102 South Seaman Eastland



Load up neighbor, during our big
DEL MONTE ROUND-UP

EARLY GARDEN PEAS DEL MONTE 6 Cans	No. 303 \$1.00
CUT GREEN BEANS DEL MONTE 5 Cans	No. 303 \$1.00
GOLDEN CORN DEL MONTE CREAM STYLE 6 Cans	No. 303 \$1.00
SPINACH DEL MONTE EARLY GARDEN 8 Cans	No. 303 \$1.00
CHUNK TUNA DEL MONTE 4 6 1/2 Oz. Cans	\$1.00
CATSUP DEL MONTE—WITH PINEAPPLE VINEGAR 6 14-Oz. Bots.	\$1.00
FRUIT COCKTAIL DEL MONTE EXTRA FANCY 5 Cans	No. 303 \$1.00
DEL MONTE PEARS FANCY HALVES HEAVY SYRUP 4 Cans	No. 303 \$1.00
PINEAPPLE DEL MONTE CRUSHED 4 No. 2 Cans	\$1.00
PINEAPPLE-GRAPEFRUIT 46-Oz. Can	29¢
PEACHES DEL MONTE CLING SLICED or HALVES 5 No. 303 Cans	\$1.00
DEL MONTE PEACHES SLICED OR HALVES YELLOW CLING	No. 2 1/2 Can 29¢

COOKED PICNICS SWIFT'S PREMIUM FULLY-COOKED Lb. Only **45¢**

CALF CHUCK ROAST WORTH QUALITY CALF Lb. Only **39¢**

ROUND BONE ROAST WORTH QUALITY CALF Lb. **45¢**

PREMIUM BACON SWIFT'S SLICED Lb. **65¢**

SLICED CALF LIVER FRESH SLICED Lb. **59¢**

PORK SAUSAGE ARMOUR'S STAR Lb. **49¢**

PLAY "MARKO"—SATURDAY 7 to 8 p.m.—KFJZ-TV Channel 11

DEL MONTE UNPEELED WHOLE APRICOTS No. 303 Can	25¢	DEL MONTE SLICED BEETS No. 303 Can	19¢	DEL MONTE SAUERKRAUT No. 303 Can	15¢	DEL MONTE TOMATO JUICE 46-Oz. Can	31¢
DEL MONTE GRAPEFRUIT SECTIONS No. 303 Can	21¢	DEL MONTE FANCY GARDEN BLENDED DEL MONTE ASPARAGUS Picnic Can	33¢	DEL MONTE STEWED TOMATOES No. 303 Can	23¢	DEL MONTE ORANGE JUICE 46-Oz. Can	29¢
DEL MONTE PRUNE JUICE Quart Botl.	35¢	DEL MONTE EARLY GARDEN GREEN LIMA BEANS No. 303 Can	27¢	DEL MONTE TOMATO SAUCE 3 8-Oz. Cans	29¢	DEL MONTE PEACH, PEAR, APRICOT DEL MONTE NECTAR 2 No. 211 Cans	29¢
DEL MONTE SEEDLESS RAISINS 15-Oz. Pkg.	25¢	DEL MONTE WHOLE POTATOES No. 303 Can	15¢	DEL MONTE MEDIUM PRUNES 1-Lb. Pkg.	25¢	DEL MONTE PINEAPPLE JUICE 2 No. 2 Cans	31¢
DEL MONTE SLICED SOUR PICKLES 24-Oz. Jar	37¢	DEL MONTE WHOLE KERNEL CORN 12-Oz. Cans	35¢	DEL MONTE DRIED PEACHES 11-Oz. Pkg.	35¢	DEL MONTE PINEAPPLE JUICE 46-Oz. Can	33¢

RUSSET POTATOES LARGE SELECT BAKERS Lb. **7¢**

JUICY GRAPEFRUIT FLORIDA RED BLUSH Lb. **12¢**

APPLES JONATHAN—CRISP, RED, WASHINGTON Lb. **15¢**

CARROTS CRISP, TENDER, IN CELLO BAGS 2 1-Lb. Pkgs. **25¢**

TOMATOES CELLO, 3's, 4's Ctn. **19¢**

LARGE JUICY SUNKIST LEMONS CALIFORNIA WONDER Lb. **15¢**

BELL PEPPERS EAST TEXAS "BAKERS" Lb. **15¢**

SWEET POTATOES Lb. **12¢**

BAYER ASPIRIN 100-Tablet Bottle **49¢**

HAND LOTION JERGENS 54c Size (Plus Tax) **49¢**

Frozen Food Specials!

CUT OKRA TRAPPEY'S 3 10-Oz. Pkgs. **49¢**

CREME PEAS HILLS-O-HOME 2 10-Oz. Pkgs. **39¢**

WORTH FOOD MART

I GIVE YOU TEXAS

By BOYCE HOUSE

Here's the story of how a lease was obtained on what proved to be one of the richest tracts in the history of oil:

One hot day, Ira G. Yates was rounding up drouth-stricken cattle to be driven to Rankin for shipment to market when Charles A. Hitt, in charge of land operations for the Transcontinental Oil Company in West Texas, accompanied by Ossie Greene, Transcontinental scout, and others with that company, paid Yates a visit to discuss an option for an oil lease on his ranch. He agreed to discuss the matter with them further at Rankin two days later—and there,

sitting on top of a corral fence, he signed the papers for a consideration of one dollar.

The 60-day option was twice extended and had only a few days to run when Hitt received instructions to obtain a lease from Mr. and Mrs. Yates. The instructions came from the Transcontinental's headquarters in Tulsa, where A. M. (Jack) Hagan and other geologist of the company had filed highly favorable reports.

So Hitt and O. H. Kilpatrick, a geologist and engineer for the company, left San Angelo for the Yates ranch, 130 miles away. At Sheffield, they were joined by J. D. Miller, Jr., a land man for the company. They found a notary public milking on his stock farm and added him to the group.

There had been heavy rains and the Pecos was swollen, so that it was night when the four reached the ranch house. And there at 11 p.m., on Dec 29, 1923, Ira and Ann Yates affixed their signatures to documents for a lease of 4,000 acres free and on an additional

4,000 acres for a dollar an acre bonus and a yearly rental of twenty-five cents an acre.

The visitors started back that night so that the check could be placed to Yates' credit when the bank opened in San Angelo the next morning. En route, they returned the notary public to his home. When they asked how much they owed him, that functionary apologetically inquired, "Would \$2.50 be too much?" He was paid \$5.

Locals Test-

(Continued from Page One)

and Wayne Dodson at tackles, Joe Martin, Arthur and Kenneth Watson as linebackers and McMahan, Norwood, Larry Hollis and Mike Lisenbeen as backs.

Cross Plains has a powerful line, scouting reports show. The Buffs didn't give mighty Coleman much up the middle, but couldn't stop Coleman's four fast backs around end.

The Buffaloes pass quite a bit and run a lot of power plays. Game time is 8 p.m. The Mavs will go into the game as two-touchdown underdogs.

CALL 601 FOR CLASSIFIED ADVERTISEMENT

County History-

(Continued from Page 1)

this committee, of which he was chairman, three railroads, the Galveston News as Morning News, and the headquarters of the T. & P. and M.K. & T. Ry. Companies were brought into Dallas; the Fair was organized and the Opera House and Merchants' Exchange Buildings were built. Other prominent cities, Denver, Kansas City, etc., organized Business Leagues.

In 1882 Mr. Daugherty was elected President of the Real Estate Men's Association of Texas; in 1889 he was elected Chairman of the State Immigration Association, in 1892 he was appointed to represent Texas in the "Good Roads" Committee of the United States, and many of its policies and principles were formed by him.

He was unanimously chosen by the Trans-Mississippi Commercial Congress at Denver to prepare an address to the people of the United States on the silver question. Richard P. Bland, then in Congress, adopted this address as part of his argument of this question, and it was printed in the Congressional Record.

Mr. Daugherty, who now resides in Houston, is still a successful dealer in real estate.

(Next: "C. U. Connellee")

TRADE WITH YOUR HOMETOWN MERCHANTS

Hospital News

Patients in the Eastland Memorial Hospital are:

Mrs. J. V. Cox, medical
H. D. Warren, medical
Mrs. Pearl Cross, medical, Gorman

Larry Alldredge, accident
Mrs. J. D. Hitt, medical, Cisco
Riley Morton, medical, Morton Valley

C. C. Pippen, medical, Abilene
Wallace Bagley, medical
Mrs. Grace Reed, surgical, Cisco
Dismissed was Mrs. Bell Bal-

linger.
Patients in the Ranger General Hospital from Eastland and Olden are:
Mrs. Roy Turner, medical
Mrs. T. C. Moxley, medical
Joe Kay, medical
J. L. Fox, medical
Mrs. J. E. Pittman, surgical, Olden

CALL 601 FOR CLASSIFIED ADVERTISEMENT

SPECIALS:



\$10 Wave NOW \$8.50
\$6.50 Wave NOW \$5.00
Hot Oil Manicure \$1.50
Electrical Reconditioning
Treatment \$3.50
(including shampoo and set)

DEMA'S BEAUTY BOX

416 North Lamar

Phone 63

READ THE CLASSIFIEDS

FLOWER SHOP

Irma Parker
Martha Brashier

CHOICE FLOWERS

WEDDINGS CORSAGES

FTD FUNERAL DESIGNS
POTTED PLANTS

200 N. Green

Tel. 140

SPECIAL

FOR THE MONTH OF SEPTEMBER ONLY

Wash and Dry
4 QUILTS, any size 1.00
4 DOUBLE BLANKETS 1.00
Single
BLANKETS... 15c each, 2 for 25c

Finish Rough Dry Fluff Dry Wet Wash

Eastland Steam Laundry

"Courteous Service"

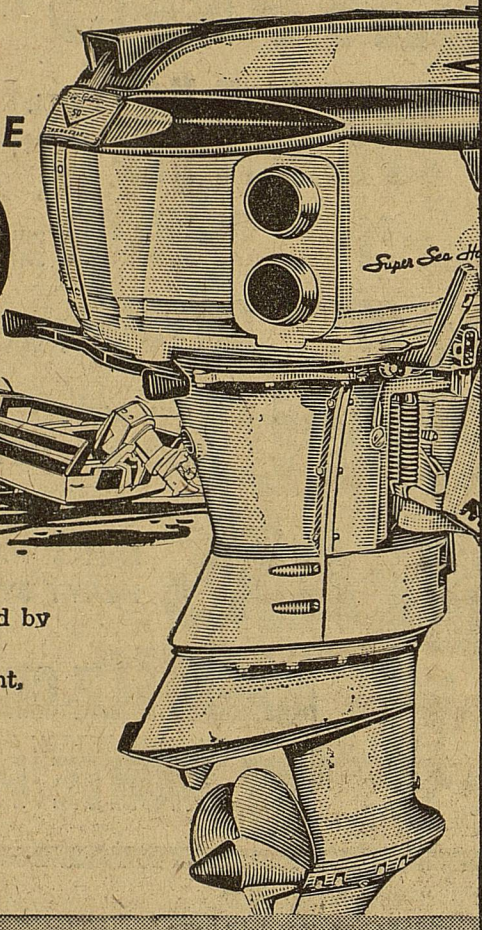
Phone 584

Free Pick-Up - Delivery

COMING SOON!

It's the most effortless big motor ever built!

THE NEW Johnson SUPER SEA-HORSE V-50



World's first outboard V-engine
A miracle of compact power—inspired by finest automotive engine design.
4-cylinders, 70.7 cubic inch displacement,
50 hp, 12-volt electric key-switch starting. Delivers full thrust instantaneously. Drives tremendous loads with ease. New super smoothness. New super silencing. Easiest terms ever.

BRUCE PIPKIN'S SPORT CENTER

Phone 525

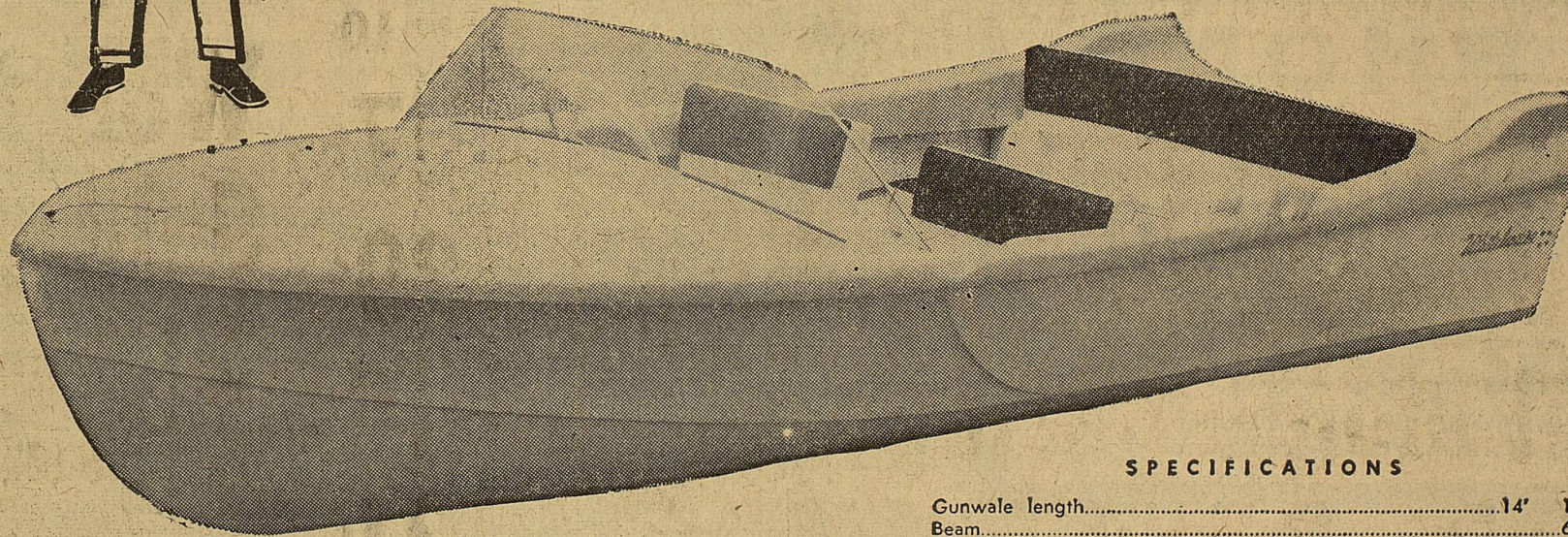
304 E. Main



FOR THOSE WHO WANT BUT THINK THEY CAN'T AFFORD

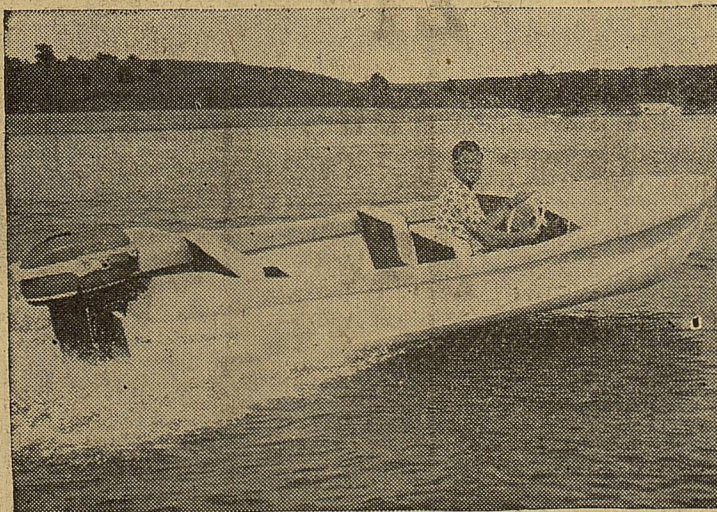
A HIGH STYLE Quality BOAT

Whitehouse BONITO



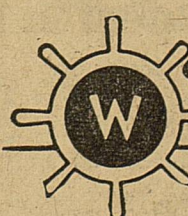
SPECIFICATIONS

Gunwale length.....14' 10"
Beam.....68"
Transom width.....58"
Freeboard forward.....30"
Freeboard aft.....22"
Length of forward deck.....59"
Seating capacity.....6
H.P. capacity.....60
Approximate weight.....300 lbs.



For the first time in boating history, Whitehouse, the leader in fiberglass boats, brings you the beautiful all new, all fiberglass Bonito at a price that up until now could be offered only in less durable boats such as wood or aluminum runabouts.

This flashing new model has all the features that have become synonymous with the name Whitehouse... strength, low maintenance, performance, style, comfort, and safety. Standard equipment includes windshield, steering, foam-cushioned upholstered seats, padded dash, and drain plug. All this is available at an unbelievable price made possible by mass production in the world's largest fiberglass boat plant. Don't delay! Compare these features and prices with any other boat! Order your Bonito today!



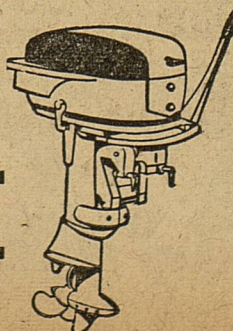
Whitehouse BOATS

Manufactured by Whitehouse Reinforced Plastic Co. • Route 3, Box 219 • Fort Worth, Texas

—JOHNSON OUTBOARD MOTORS—

BRUCE PIPKIN'S

Sport



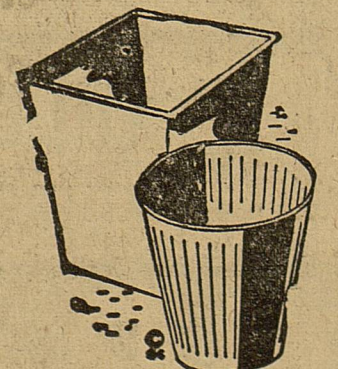
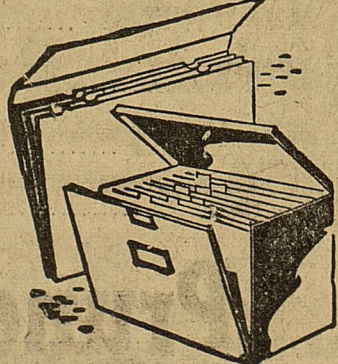
Center

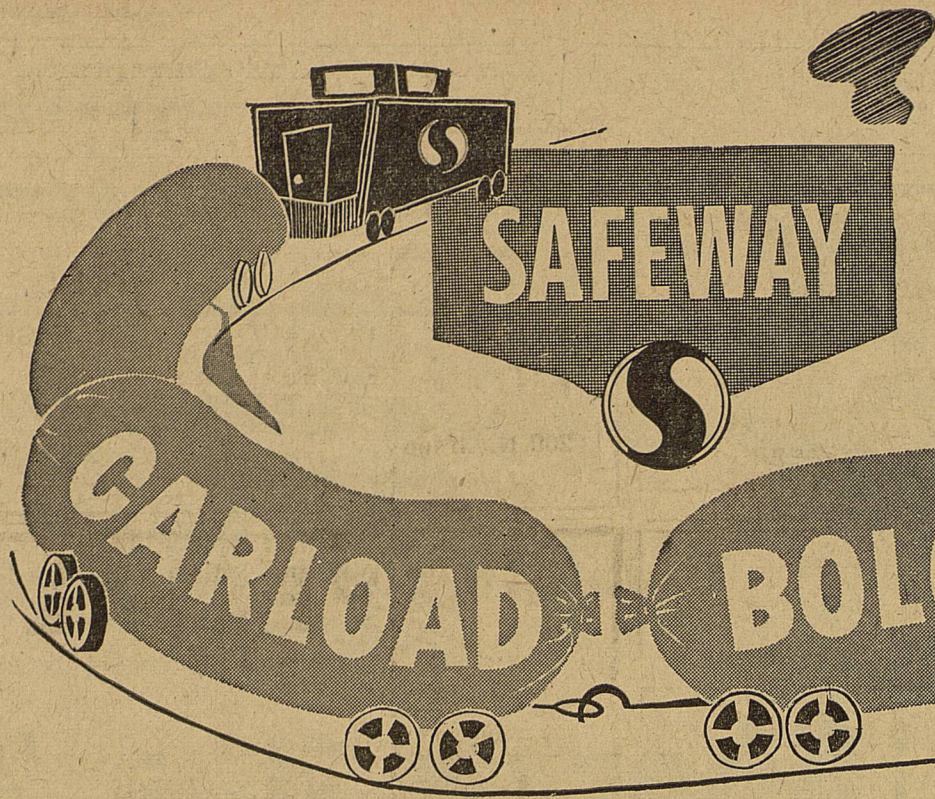
304 E. Main - Ph. 525

STATIONERY

OFFICE SUPPLIES

- LEDGERS
- PENCILS
- ALL KINDS PAPER
- CARBON PAPER
- FILE CABINETS
- PENCIL SHARPENERS
- TYPEWRITER RIBBONS



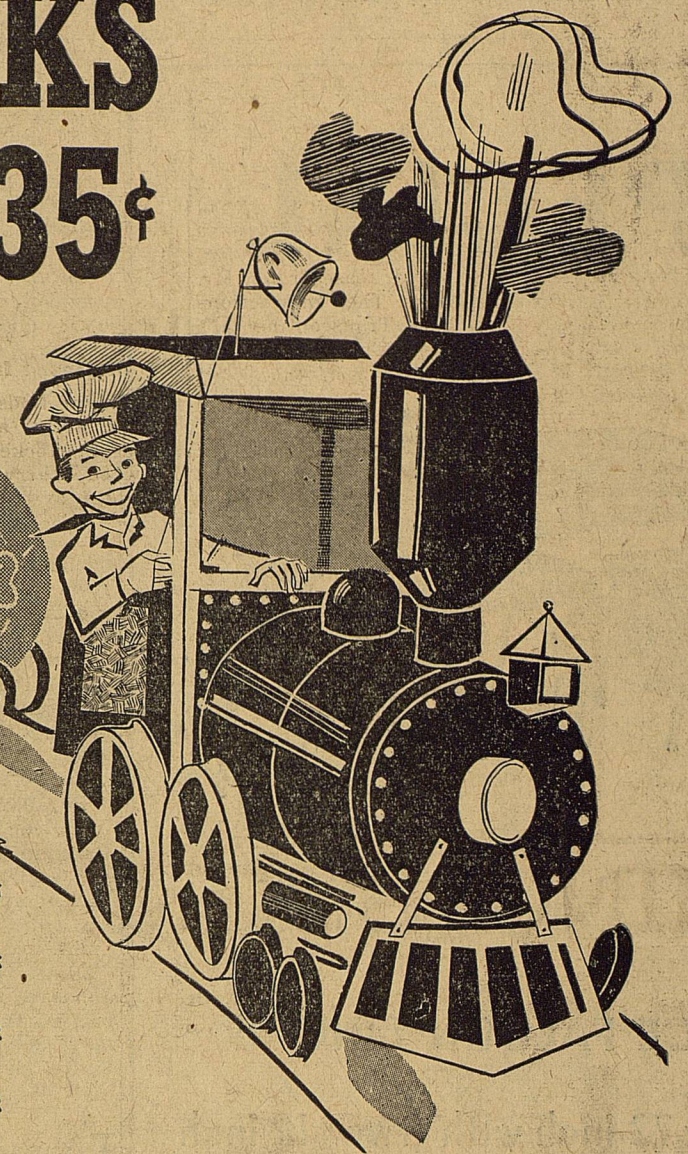


BOLOGNA CHUNKS

Large Jumbo

Cash in on this great buy during our giant Carload Bologna Sale. Bologna is always a lunch box favorite.

Lb. 35¢



- Jumbo Bologna** Sliced Just Right for Perfect Sandwiches 16-Oz. Pkg. **39¢**
- Small Stick Bologna** Chunk Lb. **45¢**
- Rath Sliced Bacon** Black-Hawk 1-Lb. Cello **69¢**
- Armours Star Franks** 1-Lb. Cello **49¢**

- Kraft Dinner** Macaroni and Cheese Casserole 2 7 1/2-Oz. Boxes **35¢**
- Bel-air Okra** Frozen Whole 2 10-Oz. Pkgs. **45¢**
- Blackeye Peas** Bel-air Frozen 2 10-Oz. Pkgs. **45¢**
- Green Peas** Bel-air-Frozen 2 10-Oz. Pkgs. **33¢**
- Peas and Carrots** Bel-air Frozen 2 10-Oz. Pkgs. **33¢**
- Edwards Coffee** 1-Lb. Can **87¢**
- Nob Hill Coffee** 1-Lb. Pkg. **79¢**
- Airway Coffee** Rich Flavored 1-Lb. Pkg. **73¢**

Lucerne Milk Homogenized 1/2 Gal. Ctn. **47¢**

Special Offer

Vanilla Wafers Busv Baker 7-Oz. Pkg. **29¢** Both For

and **Vanilla Pudding** Jell-Well 3 1/2-Oz. Pkg. **29¢**

GET VALUABLE PREMIUMS FREE WHEN YOU SAVE SAFEGWAY'S GREEN Cash Register TAPES

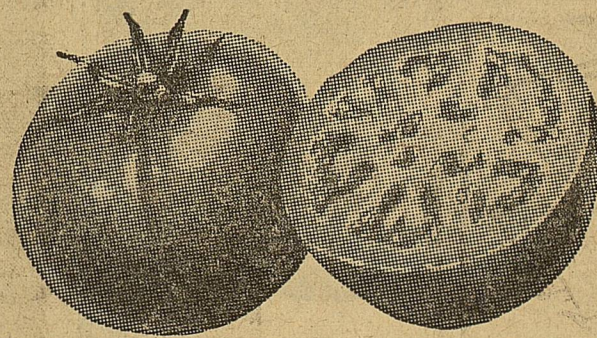
Empress Preserves Grape or Plum

or, Apple, Grape, and Plum Jelly or Orange Marmalade 5 12-Oz. Jars **\$1.00**

- Frozen Whiting** Captain's Choice 1/2-Lb. Pkg. **37¢**
- Nestle Cocoa Mix** Quik 1/2-Lb. Pkg. **27¢**
- Nestle Cocoa Mix** Quik 1-Lb. Pkg. **49¢**
- Jiffy Mix** Pancake and Waffle 9-Oz. Pkg. **10¢**

- Sandwich Spread** Lunch Box 32-Oz. Jar **57¢**
- Zippy Pickles** Sweet Whole or Mixed 16-Oz. Jar **29¢**
- Del Monte Catsup** Perky Flavor 1 14-Oz. Bottle **15¢**
- White Bread** Mrs. Wrights Reg. Sliced 1 1/2-Lb. Loaf **21¢**
- Frozen Orange Juice** Bel-air 8 6-Oz. Cans **\$1.00**
- Hair Dressing** Valcream Tax Included Giant Tube **45¢**
- Grade A Eggs** Breakfast Gems Small Doz. **39¢**

- Libby Peaches** Sliced or Halves 3 No. 2 1/2 Cans **85¢**
- Applesauce** Town House 2 No. 303 Cans **29¢**
- Pork & Beans** Taste Tells 2 No. 300 Cans **15¢**
- Wolf Plain Chili** No. 2 Can **49¢**
- Gold Cove Salmon** Chum 1-Lb. Can **45¢**
- Applesauce** Musselman's No. 303 Can **20¢**
- Mother's Oats** Cup and Saucer 42-Oz. Box **50¢**
- Pancake Mix** Aunt Jemima 1-Lb. Box **20¢**
- Corn Meal** White Aunt Jemima 5 Lb. Bag **49¢**
- Cheez-it Crackers** Sunshine 6 1/4-Oz. Box **19¢**
- O-Cel-O Sponges** Bargain Pack 4-Ct. Bag **39¢**



TOMATOES

Firm Flavor-Rich of "Just Right" Ripeness 2 13-Oz. Ctns. **25¢**

- Dole Pineapple** Crushed No. 2 Can **29¢**
- Pie Filling** Lucky Leaf Apple No. 2 Can **41¢**
- Mexicorn** Extra Tender 2 12-Oz. Cans **37¢**
- Niblets Corn** Fresh Flavored 2 12-Oz. Cans **35¢**
- Beef Chop Suey** La Choy No. 303 Can **59¢**
- Barbecue Beef** Ireland's Chopped or Sliced No. 300 Can **59¢**
- Zest Beauty Bar** Deodorant Soap 2 Rec. Bars **29¢**
- Zest Beauty Bar** Deodorant Soap 2 Bath Bars **39¢**
- Dreft Detergent** Ideal for Dishes Large Box **31¢**
- Ad Detergent** Ideal for Automatics 19-Oz. Box **31¢**
- Ajax Cleanser** Gets Dirt Fast 2 14-Oz. Cans **25¢**
- Facial Tissue** Scotties White, Pink or Yellow 400-Ct. Box **29¢**
- Toilet Tissue** Soft Weave Assorted Colors 2 Rolls **27¢**

- Red Delicious Apples** Lb. **15¢**
- Tokay Grapes** Firm, Tangy-Sweet Jumbo Cluster Just in from Vineyard Lb. **10¢**
- Fresh Italian Prunes** A Breakfast Treat Lb. **10¢**
- Scott Towels** Pink, Yellow or White 2 Rolls **39¢**
- Crisco Shortening** 3 Lb. Can **95¢**
- Shaving Cream** Gillette Foamy 6 1/4-Oz. Can **79¢**
- Gooch Noodles** Wide or Fine 2 5-Oz. Pkgs. **23¢**
- Frozen-Rite Rolls** Parker House 22-Oz. Pkg. **39¢**
- Dog Food** Champ "99" Horsemeat 15 1/4-Oz. Can **18¢**
- Sandwich Spread** Kraft Miracle 16-Oz. Jar **41¢**
- Kraft Salad Oil** For Tasty Salads Qt. Bot. **49¢**
- Kraft Cheese** Velveta 2 Lb. Box **93¢**
- Mellow Cheese** Kraft Cracker Barrell 8-Oz. Pkg. **39¢**
- Kraft Margarine** Miracle 1-Lb. Pkg. **32¢**

WEBSTER'S Dictionary

Now available in 11 Loose-Leaf Units you can easily assemble yourself. Watch it grow for ter glorious weeks.

Section Five **99¢**

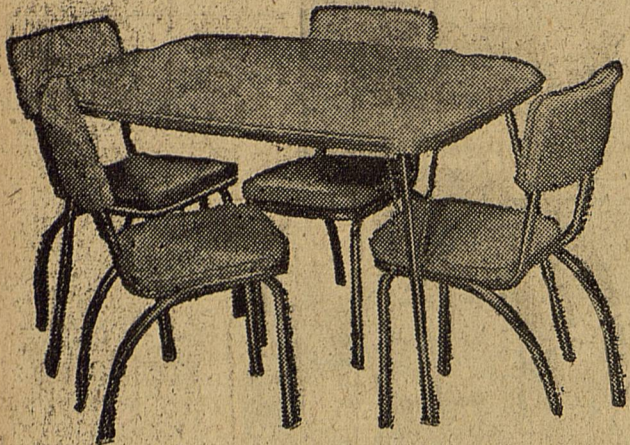
Prices effective Thursday, Friday and Saturday, September 26-27-28. IN EASTLAND

SAFEGWAY'S **your BEST place to save!**

CALL 601 FOR CLASSIFIEDS

CALL 601 FOR CLASSIFIEDS

SPECIAL



7-PIECE FALCON DINETTE

Size 36 x 72-inch with two 12 inch leaves. Bronze finish, leg-loop brass ferrules, 6 large chairs, 3/4" steel frame, plastic angle guides.

REG. 129.50 **99⁵⁰**

Coats Furniture & Carpets, Ltd.

Authorized G. E. Appliance Dealer
 Easy Terms Free Delivery Good Trade-Ins
 305 S. Seaman EASTLAND Phone 585

WSCS Enjoys Luncheon Mon.

Business, social and officer's reports meeting was held by the Woman's Society of Christian Service of the First Methodist Church on Monday, Sept. 23. The group enjoyed a covered dish luncheon prior to the business meeting.

Mrs. James Horton, president, presided over the meeting with each officer giving her report.

Mrs. Cecil Collings announced the Mission Study will begin at the first meeting in October and continue through each meeting of October. Mrs. Turner Collie will present the first Mission Study lesson at the next meeting on October 1, in the church parlor.

Mrs. Harold White urges each member to attend and benefit from these well planned programs.

Mrs. Taylor Smith gave the devotional and also led the group during the social hour.

Hostesses for this meeting were Meses. Cecil Collings, Harold White, R. E. Sikes, Taylor Smith, and R. C. Ferguson.

Members present were Meses. Ina Bean, Earl Bender, H. J. Bulgerin, Frank Castleberry, T. M. Collie, Cecil Collings, W. F. Daveport, Charles Harris, H. L. Hassell, Tom Haley, Richard Smith and Jerry Souther.

Mmes. James Horton, T. M. Johnson, W. P. Leslie, N. C. Morris, O. O. Mickle, C. M. Pogue, Guy Quinn, R. E. Sikes, Taylor Smith, O. M. White, H. E. White and Marguerite Welch.

Former Resident In Waco Clinic Due To Injuries

Steve Eugene News, grandson of Mrs. Blanche Sims, Rt. 2, Eastland, was injured while playing football for the Hillsboro Eagles.

He received broken jaws, cuts and bruises. He has been taken to a clinic in Waco to have his jaws wired. He was a halfback for the Eagles.

Steve is a former resident of Eastland.

M. H. PERRY

Representing

Southland Life

Life - Retirement Income Partnership
 Mortgage Cancellation
 Educational - Annuities
 Accident - Sickness
 Hospitalization - Group

Call 173 or 713-J
 107 W. Main • Eastland

Banquet Honors Mrs. Collings

Mrs. Bill Collings, teacher of the Yabblers Sunday School Class of the First Christian Church, was honored with a banquet. Her Sunday School Class gave the banquet in the church annex, Tuesday at 7 p.m.

The banquet table was decorated with red roses in crystal. The guests' names were written in black on place cards of red pennants. Favors were colored candies.

Mrs. Collings was presented with a Ten Commandments bracelet and handkerchief by the party chairman, Linda Eidson.

The menu was ham, potato salad, green beans, pickles, olives, hot rolls, iced tea, and cake. Mrs. Eldress Gattis, assistant teacher, assisted the group in preparing the banquet.

Those attending were Ann Freyschlag, Barbara McCullough, Linda Eidson, Carol MacMoy, Kathleen Turner, Gracie Tankersley, Tubby Freese, Bobby Cartwright, Mr. and Mrs. Eldress Gattis and Mr. and Mrs. Bill Collings.

G. A. President Is Lois Ann Sims

Lois Ann Sims was elected president of the Morgan Girls Auxiliary at their meeting Wednesday evening in the home of Mrs. Harvey Kimbler, counselor.

Others elected to serve during the next months were Sharon Sayre, vice-president; Donna Kay Ford, secretary; Mary Ann Manning, treasurer; Patricia Liles pianist; Jan Taylor, choirster.

Brenda Jenkins presided during the business meeting. Mary Ann Manning directed a program on "Foreign Mission Works."

Scripture passages were quoted by Kay Poe, Sharon Sayre and Linda Butler. A duet was sung by Janice Denny and Sharon Chick.

Stories about Paul were told by Patricia Liles and Janet Kimbler. Fields, where Baptist Missionaries now serve, were listed by Donna Ford and Mary Ann Manning, and stories about late missionaries were told by Lois Ann Sims and Jan Taylor. Brenda Jenkins gave the location of the Foreign Mission Board.

Mrs. Kimbler announced that a county wide organization of Girls Auxiliary is to be formed in the near future to meet quarterly. It is to be called "Girls' Auxiliary Council. It will meet for the first time Oct. 13 at 2:30 p.m. at the First Baptist Church of Breckenridge.

Punch and cookies were served. Morgan Girls' Auxiliary meets

each Wednesday from 7 p.m. to 8 a.m. Mrs. Gene Rhodes and Mrs. Kimbler, counselors, invites all girls between the ages of 9 and 12.

STOP! SHOP HERE! and SAVE!

BEST BUYS

KIMBELL'S BEST FLOUR

25-Lb. Bag **169**

MRS. TUCKER'S

Short'n 3 Lb. Can **79¢**

Coffee Clover Farm Drip or Reg. Lb. **79¢**

HONEY BOUY **Salmon** No. 300 Tall **49¢**

CLOVER FARM

Milk 2 Tall Cans **27¢**

NORTHERN **Napkins** 2 80 Count Boxes **25¢**

CLOVER FARM **Margarine** Lb. **23¢**

CHOICE RE-CLEANED **Pinto Beans** 2 Lb. Bag **21¢**

U.S. No. 1 IDAHO RUSSETT **POTATOES** 10 Lb. Bag **49¢**

AMERICAN OIL **SARDINES** 3 No. 1 Flat **25¢**

GLENDALE EARLY JUNE **PEAS** 2 No. 303 Cans **25¢**

FIRM GREEN **CABBAGE** Lb. **5¢**

CENTRAL AMERICAN **BANANAS** Lb. **12 1/2¢**

C. B. DANIELS SORGHUM **MOLLASES** 1/2 gal. **89¢**

FANCY JONATHON **APPLES** Lb. **15¢**

CHUCK TIME **VIENNAS** 3 No. 1/2 Cans **25¢**

LOOK

GOOCH'S FRANKS

3 Lbs. **94¢**

VEL

Beauty Bar

Each **15¢**

BEST BUYS

RIB STEAK

Good Quality Lb. **59¢**

SPECIAL!

NEUHOFF

Bacon Thick Sliced 2 Lbs. **1.29**

Loin Steak Good Quality Lb. **68¢**

LEAN TENDER

Pork Chops Lb. **59¢**

Bacon ENDS 5 Lb. Box **1.45**

SMOKED

Picnics

Lb. **39¢**



H. B. MacMoy, Owner

7:30 a.m. to 8:00 p.m. Weekdays

7:30 a.m. to 9:00 p.m. Saturdays

Good Quality

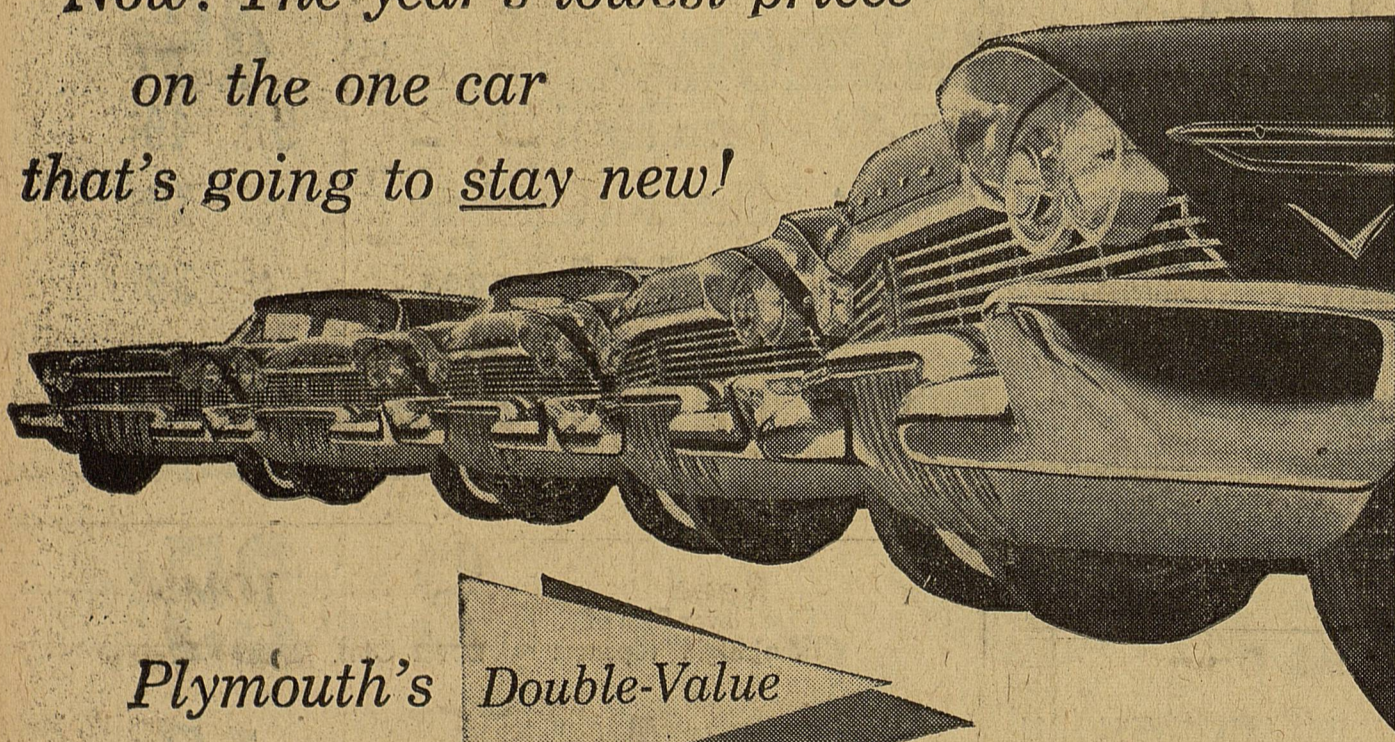
CHUCK ROAST

Lb. **45¢**

Now! The year's lowest prices

on the one car

that's going to stay new!



Plymouth's Double-Value

DEAL-AWAY!

1 YEAR'S BIGGEST SAVINGS!

Previous prices topple to brand-new end-of-season lows. A years-ahead Plymouth was never so inexpensive. And remember, too—your present car will never again be worth as much in trade as it is right at this moment, during the Plymouth Deal-Away.

2 THE CAR THAT WILL STAY NEW!

You keep right on saving . . . because Plymouth is the only new car that's going to stay new. One look at that years-ahead Flight-Sweep Styling; one test of satinsmooth Torsion-Aire Ride is convincing proof. And that means your new Plymouth is going to be worth more—far more—when trade-in time finally rolls around.

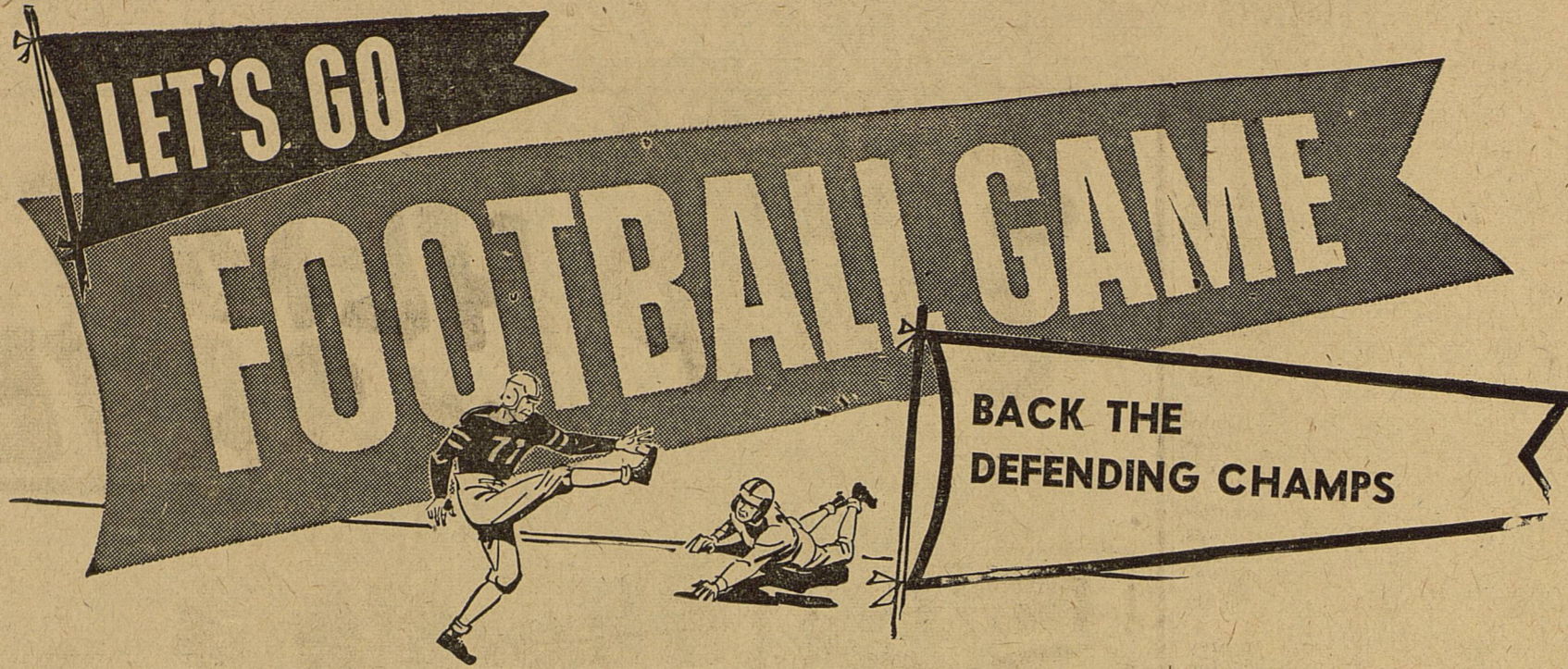
ONLY PLYMOUTH GIVES YOU ALL THESE FEATURES NOW!

- Flight-Sweep Styling . . . the new shape of motion
- Torsion-Aire Ride . . . tames the roughest road!
- Double-Header Lights . . . increased safety
- Push-Button TorqueFlite . . . optional on all models
- Directional Stabilizer Fins . . . safer travel at all speeds
- Dozens more . . . see for yourself with a test drive!

You'll be proud of the deal...prouder still of the car!

Look ahead...buy ahead...buy a *Plymouth* and own more of the future right now!

For your TV entertainment, Plymouth presents two great shows: "Date with the Angels," starring Betty White, and Lawrence Welk's "Top Tunes and New Talent." See TV section for time and station.



FRIDAY NIGHT - 8:00 O'CLOCK

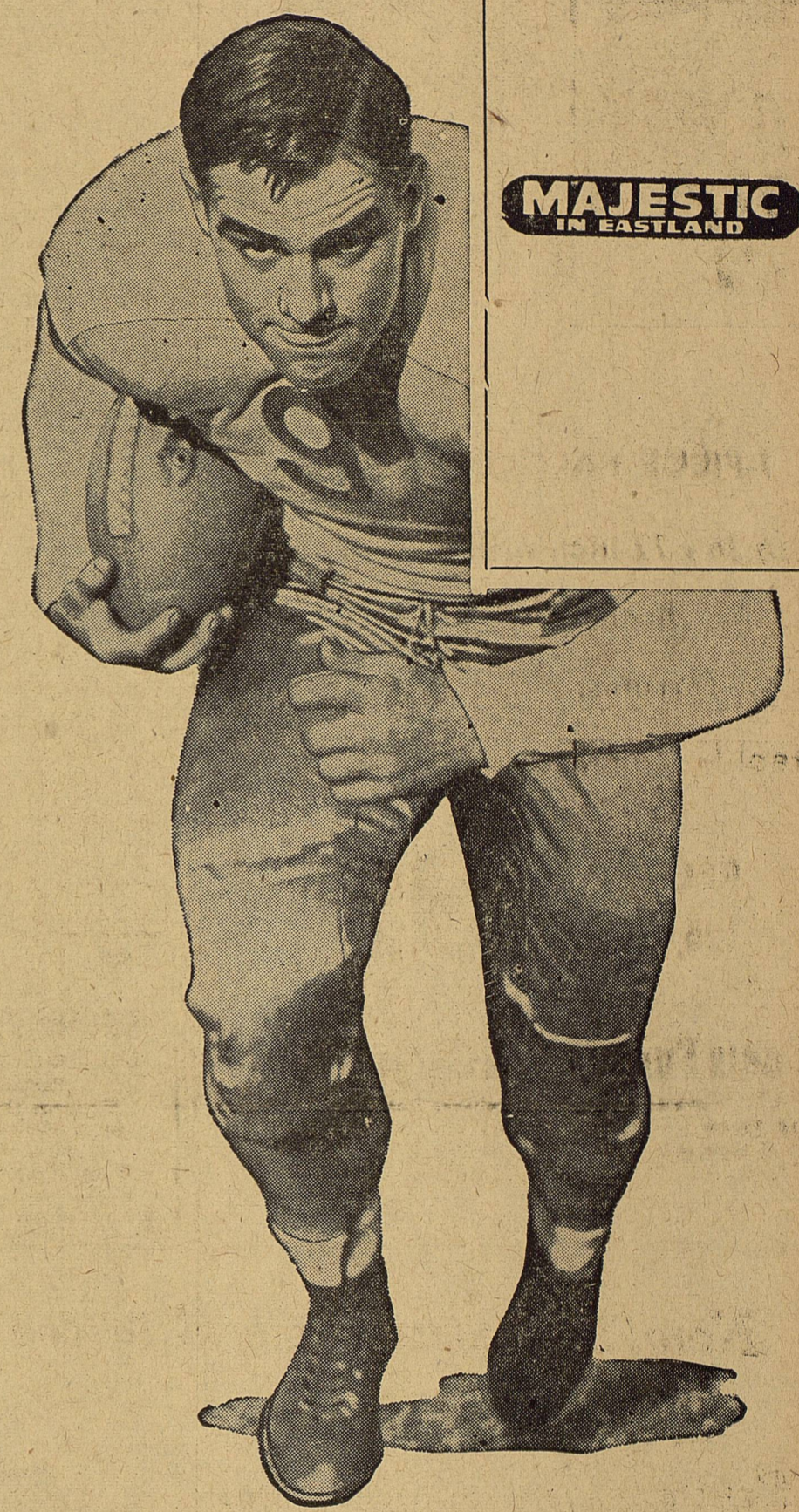
Cross Plains -VS- MAVERICKS

GAME TO BE PLAYED AT CROSS PLAINS

Mavericks 1957 Football Schedule

Date	Opponent	Place	Date	Opponent	Place
Sept. 6	Cisco 21, Eastland	18	Oct. 18	Wylie*	Wylie
Sept. 13	Dublin 7, Eastland	25	Oct. 25	Albany*	Eastland
Sept. 20	DeLeon 20, Eastland	6	Nov. 1	Open	
Sept. 27	Cross Plains	There	Nov. 8	Throckmorton*	Here
Oct. 4	Ranger	Eastland	Nov. 15	Clyde*	Clyde
Oct. 11	Gorman	Gorman			

*Denotes District Games



Anderson's
Ladies' Apparel and Children's Wear
Gifts - Millinery - Accessories
North Side Square Eastland

Carl Johnson's
Dry Goods
Band and Pep Squad Shoes
North Side Square

Texas Electric Service Co.
F. N. Sayre, Mgr. Phone 18

R. M. Sneed
General Oil Field Construction
Office Phone 684 Residence Phone 889

King Motor Company
Ford Sales and Service
On The Square Phone 42

E. K. Henderson
Texaco Consignee
"The Texaco Star's In All 48 States"

The Men's Shop
Correct Styles for Men and Boys

Gregory
Milk Distributing Company
Borden's Dairy Products
Serving: Eastland, Stephens, Brown,
Comanche Counties
P. O. Box 390 Eastland Tel. 36

Dairy Treat
"Where Everybody Meets"
814 W. Main Phone 69
Mr. and Mrs. B. W. Robertson

Higginbotham Bartlett Co.
Lumber - Paint - Hardware
Fishing Tackle
301 W. Main Jack Elliott, Mgr. Ph. 112

Sunshine Laundry
Wet Wash - Rough Dry - Finish Work
Free Delivery
Mr. and Mrs. J. B. Kendrick
106 E. Plummer Phone 155

PERRY'S
5 - 10 - 25c STORE
James Smith, Mgr.

City Garage
J. J. Finley, Proprietor
Engine, Starter and Generator Work
103 White St. Phone 995

Foremost Dairy Products
Clyde Manning, Mgr.
Eastland Phone 10

Eastland National Bank
"On the Square" Member F.D.I.C.

Eastland Iron & Metal Co.
East Main Street Phone 270

Brown Plumbing Shop
Mr. and Mrs. Truman Brown
214 E. Neblett Phone 785

Eastland Chamber of
Commerce

Nig's Cafe
"Where Everybody Eats"
North Side Square Phone 9522

Eastland Venetian
Blind Mfg. Co.
405 1/2 S. Seaman Phone 436

McGraw Motor Co.
Dodge - Plymouth
416 S. Seaman Phone 80

Koen Salvage
Your Scrap Metal Dealer
Highway 80 West Phone 680

Rushing Motor Co.
De Soto - Plymouth
Phone 313 Eastland

Geneva Petroleum Co.
Paraffin Chemicals
Phone 833 Eastland

Leon Bourland Family
OBIE & DOC
Cosden Service Station
East Main & Bassett Phone 9535

Poe Floral
When It's Flowers . . . Say It With Ours
West Main Phone 96

Muirhead Motor Co.
Buick - Pontiac
Sales and Service Phone 692

Doc Davis Drug
Prescriptions Filled Accurately
South Side of Square Phone 696

Irish Drilling Company
Highway 80 East Phone 100

R. M. Sneed Contractor
Oil Field Construction
Hwy. 80 East Phone 684

Freyschlag Insurance Agency
Phone 173

Lovlace
Transfer & Storage
Local and Long Distance Moving
Since 1929
Eastland, Texas

Reed
Oil Company
13 Major Brands
Oil - Quart 35c
Reg. Gas 24 9/10 - Ethyl 26 9/10
501 E. Main Phone 9550

Scott
Paint & Body Works
"We Make 'Em New Again"
300 W. Commerce Ph. 977

F. W. Red) Graham
Gulf Products
West Main Phone 9509

TOMS
Sport Cars
Phone 8 308 W. Main

Kincaid's Feed &
Turkey Hatchery
Full-O-Pep Feeds
Eastland, Texas

EARLEY TIRE SERVICE

302 WEST MAIN
PHONE 208

Compliments of

TRI-CITIES REAL ESTATE

Phone 1076 Phone 1076

"Selling Eastland and Eastland County"

Mavericks 1957 Player Roster

No.	Name	Pos.	Wt.	No.	Name	Pos.	Wt.
10	Hollis, Larry	HB	142	24	Stamey, Hampton	T	147
11	Turner, Bill	HB	135	25	Lane, Truman	B	136
12	McMahan, John	E	160	26	Aldredge, Larry	G	152
13	Martin, Charles	T	172	27	Robertson, Ronald	HB	138
14	Watson, Kenneth	C	157	28	Van Geem, Henry Jr.	G	148
15	Reed, Stanley	E	152	29	Humphrey, Clint	QB	134
16	Pullman, Saul	FB	190	30	Dodson, Wayne	T	210
17	Tucker, Fred	C	189	31	Martin, Joe	QB	158
18	Thompson, Charles	E	140	32	Murray, Leo	G	131
19	Arther, Knick	G	156	33	Agnew, Marvin	G	160
20	Norwood, Bill	HB	138	34	Lisenbee, Mike	E	144
21	Manning, Mike	HB	158	35	Smith, J. J.	B	130
22	Lewis, Phillip	E	164	36	Miller, Freddie	E	143
				38	Lusk, Gary	T	200

Coaches: Carrol Shelton, Baylor—Jon Tate, Sul Ross
Managers: Elmo McAlister, Perry Miller, Clarence Mayers

Moore About—

(Continued from Page One)
collected is eventually stolen by some "higher ups" anyway.
5. Refuse to serve on all com-

mittees, have nothing to do with civic organizations—the chamber of commerce never does anything and is run by a bunch of dim-wits who want only to get their names before the public. All the city officials are in-

vice to get a share of the graft. 6. Knock the town, knock its industries, knock the schools and churches, keep repeating the town is going to the dogs, things are better other places, to invest in such a dead place would be the height of a foolishness—and keep on knocking like a drunken woodpecker.
You know, we believe the plan would work here.

A letter from Cleo Seaberry contains a clipping from the Abilene Reporter-News. The article is syndicated and we cannot reprint it as requested by Mrs. Seaberry. It points out that \$500,000, 100 annually is being profited in pornography, citing obscene magazines and other sources. The writer, Inez Robb, terms the situation "America's Ugliest Racket." The article appeared on the editorial page of the evening Reporter-News, dated Sept. 17. Mrs. Seaberry asks, "How can Christian people be so complacent in the face of such flagrant disregard of decency, to say nothing of its evil consequences?"

—vcm—
All aboard for Cross Plains!

A&P Chairman Of Board Dies Monday Night

George Ludlum Hartford, 92, last survivor of a trio of Hartford's who became "Family Grocers" to more people than anyone else in history, died between 9:30 and 10 Monday night in Monclair, N. J., where he resided with his son-in-law, Sheldon M. Stewart. He would have been 93 years of age next Nov. 7.

Mr. Hartford was chairman of the Board of the Great Atlantic & Pacific Tea Company, better known to millions in this country just as "The A&P." The Company grew from one small tea store, opened back in 1859 on Vesey Street in Lower Manhattan, to one with more than 4,000 stores in 37 states bringing its daily supplies from virtually every agricultural growing region in this country and many foreign lands.

Hartford died quietly in his sleep at the Monclair residence, from which funeral services will be held on Thursday of this week. He has been actively associated with A&P for more than 80 years.

Surviving in addition to Stewart are one nephew, George Huntington Hartford II, of New York City, and three nieces, Mrs. John F. C. Bryce, New York City, Mrs. Allen J. McIntosh, Mount Kisco, N. Y., and Mrs. Charles S. Robertson of Huntington, N. Y.

Also surviving are one grand nephew, William G. Wrightson, of Orange, N. J., and five grand nieces, Mrs. Henry G. Carpenter, Shelter Island, N. Y., Mrs. Thor Henry Ramsing, Greenwich, Conn., Mrs. Robert Woodruff Besch, Short Hills, N. J., and Mrs. Carl Twitchell of Miami, Fla.

A brother, John A. Hartford, who was closely identified with George L. Hartford in the management of the Company for almost a half century, died on September 20, 1951, at the age of 79. Another brother Edward V. Hartford, who was engaged in the automotive accessory business, died in 1922. Two sisters, Mrs. A. G. Hoffman and W. B. Reilly, also are deceased.

CALL 601 FOR CLASSIFIED ADVERTISEMENT

Religious Film To Be Shown Here Thursday Night

The religious film, "The Happiness of the New World Society", produced by the Watchtower Bible and Tract Society of Brooklyn, New York, will be shown in Eastland, Thursday 7:30 p.m. at the Kingdom Hall of Jehovah's Witnesses, 204 North Dixie Street, it was announced today by Mrs. Zettye Parrack, spokesman for the local congregation.

"This 60 minute colored film, showing the activities and big conventions of Jehovah's Witnesses throughout the earth, from Yankee Stadium in New York City to the jungles of 'bush' Africa, is being shown to peak audiences throughout the earth in more than 160 countries and islands of the seas", Mrs. Parrack said.

"Everyone is welcome to come and see this educational and inspirational film", Mrs. Parrack stated. "It's all free and no collection will be taken."

Group's Lesson Is Led By Mrs. Eugene Day Mon.

Mrs. Eugene Day was hostess in her home to the Esther group of the First Christian Church Monday at 8 p.m.

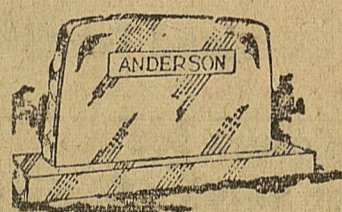
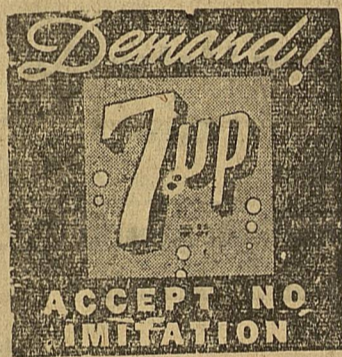
Mrs. Millie Brittain, chairman, presided over the meeting. The meeting was opened with prayer by Mrs. H. B. Meek. The devotionals on "Belief" was given by Mrs. Millie Brittain.

"Looking from God's View Point" was the topic of the lesson given by Mrs. Day.

After the benediction Mrs. Day served refreshments of frosted ice cream, homemade cookies and cake to the guests.

Those attending were Meses, W. M. Bagley, H. B. Meek, Henry Ferrell, R. I. Malone, May Gattis, J. H. Evans, N. T. Johnson, Dave Fiensy, Millie Brittain, Miss Sally Day and Mrs. Eugene Day.

ATTEND THE CHURCH OF YOUR CHOICE EACH SUNDAY



ALEX RAWLINS & SONS MONUMENTS
WEATHERFORD, TEX.
Serving This Community Since 1884

SURPRISE BIRTHDAY

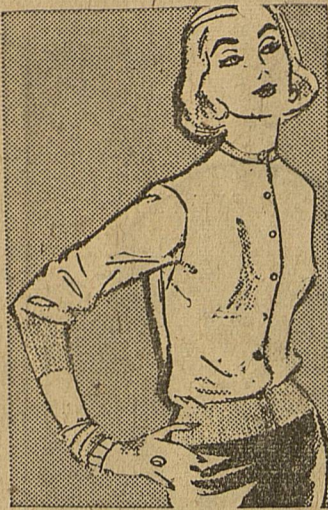
Mr. and Mrs. Pete Holt of Olden surprised their daughter-in-law, Mrs. Mel Holt, with a birthday

dinner. Those who attended the dinner were Mr. and Mrs. George Fox, parents of Mrs. Mel Holt, Mrs. Travis Springfield and baby,

daughter of Mrs. Mel Holt. There were four generations of the Holt family and also four generations of the Fox family.

Mr. and Mrs. Mel Holt are of Abilene. Mrs. George Fox also honored her daughter with a birthday party.

PENNEY'S
ALWAYS, FIRST QUALITY!



INTERLOCK KNIT PENNEY ORLONS

4.98

Sizes small, medium, large, extra large

Handsome V-neck slipovers, Towncraft styled and designed exclusively for Penney's! 100 per cent Orlon through-... shrink and stretch resistant! Hand wash.

FULL-FASHIONED—OUR ORLONS FIT!

long sleeve cardigan

5.95

short sleeve pullover 3.98

long sleeve pullover 4.98

Our beautiful orlons, looking so expensive. Gloriously colored, detailed like imports, they hand wash. Sizes 32 to 42.

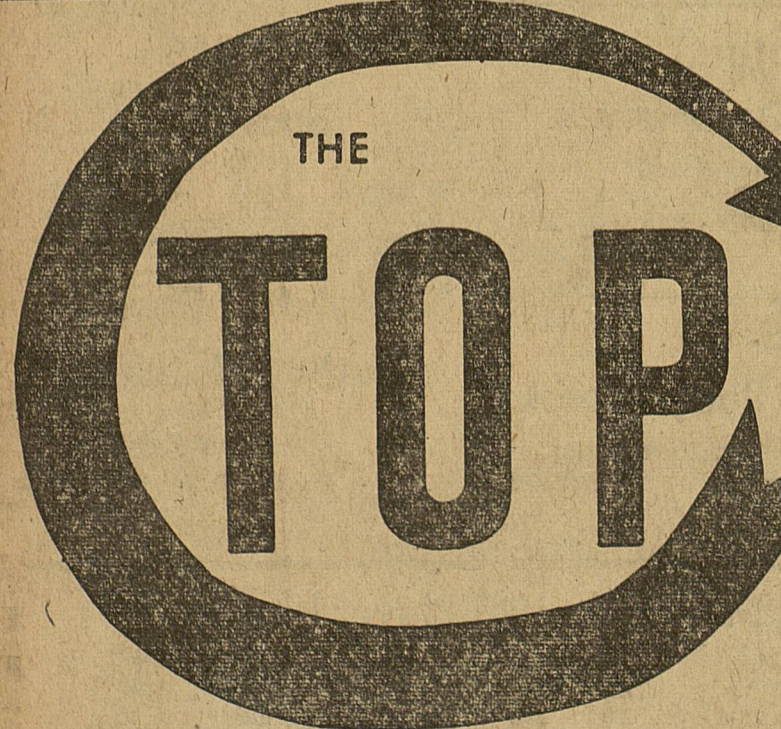


Lady Towncrafts Take A "UNIVERSITY LOOK"

What a year for madras plaids 'n tartan stripes! See how smartly Penney's styles 'em with button-down collars! Machine washable woven cottons, gay colors.

2.98

Sizes 30 to 40

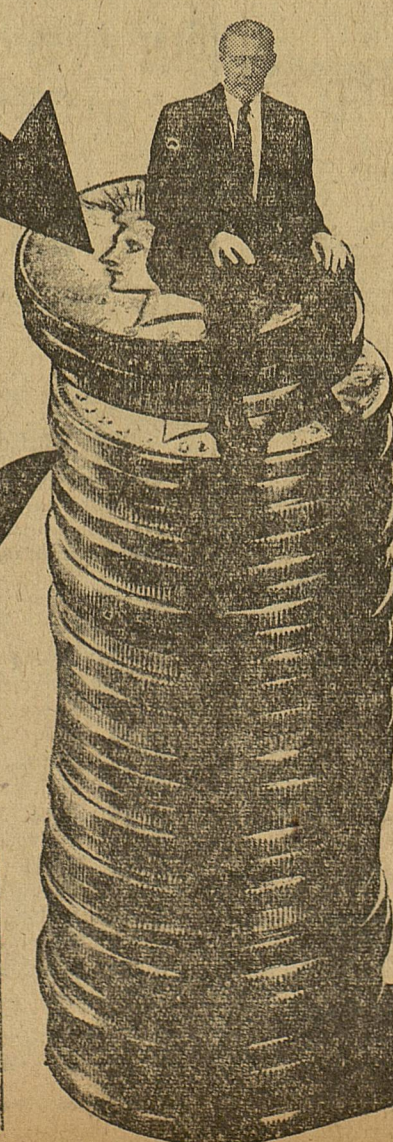


For Your Scrap Iron and Tin

As we enter the 32nd year of business... We are very proud to recognize that many of our customers and suppliers of our early years have remained most faithful... And have been joined by a greatly expanded and impressive list of those served by

EASTLAND IRON & METAL CO.

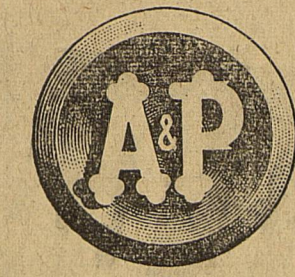
Henry Pullman, Owner



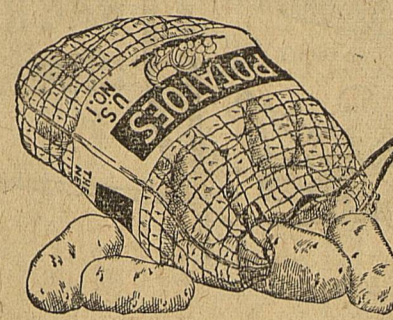
Constantly Purchasing and Selling NEW - USED Structural Steel

- Plate
- Flats
- Sheets
- Rods
- Channels
- Beams
- Pipe
- H-Beam
- Angles
- Reinforcing
- Rods

We Also Build Cattle Guards Lines and Clothes



ALL PRICES IN THIS AD EFFECTIVE THROUGH SEPTEMBER 28TH.



Fresh Produce... You'll Find The Finest At A&P!

POTATOES U.S. No. 1 SIZE "A" 10-lb. 49¢

WASHINGTON STATE RED Delicious Apples Lb. 19¢

WASHINGTON STATE Jonathan Apples 2 Lbs. 25¢

CALIFORNIA Celery Hearts Pkg. 19¢

BOURLANDS MARKET VALUES

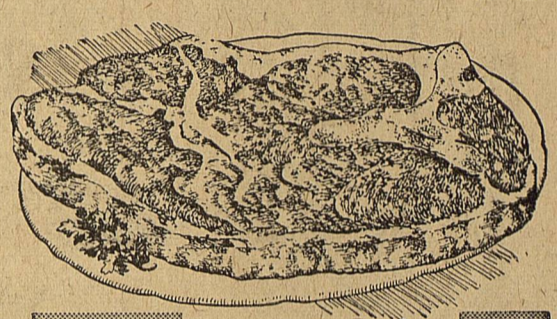
—WE HANDLE NOTHING BUT THE BEST—

CHOICE Chuck Steak -or- Roast Lb. 49¢

CHOICE Sirloin -or- Club Lb. 69¢

IT'S LEAN Ground Beef Lb. 35¢

MORRELL PRIDE Picnics Canned—Ready To Eat 4-Lbs. 2.59



PALACE SLICED BACON Tray Pack Lb. 65¢

WE WILL PROCESS YOUR BEEF FOR YOUR FREEZER—OR SELL YOU A HALF OR WHOLE CUT UP AND WRAPPED

TOILET SOAP PALMOLIVE Regular Bar..... 9¢

TOILET SOAP PALMOLIVE 2 Bath Bars..... 25¢

CASHMERE BOUQUET Reg. Bar..... 9¢

CASHMERE BOUQUET 2 Bath Bars..... 25¢

DETERGENT VEL Giant Pkg..... 73¢

DETERGENT FAB Giant Pkg..... 73¢

CLEANSER AJAX Reg. 2 for 21c Giant 17c

AUTOMATIC WASHER DETERGENT AD Giant Pkg..... 75¢

PINK LIQUID VEL 22-oz. Can..... 69¢

KRAFT MARGARINE PARKAY 1-lb. Pkg..... 28¢



PRESERVES

ANN PAGE PEACH APRICOT PINEAPPLE..... 1-lb. Jar 27¢ 2-lb. Jar 49¢

ANN PAGE TOMATO SOUP 4 10 1/2-oz. Cans 39¢

FACIAL TISSUES—WHITE OR PINK KLEENEX TISSUES 2 Boxes of 400 47¢

IONA BARTLETT PEAR HALVES 3 29-oz. Can 1.00

SULTANA PEANUT BUTTER 1-lb. Jar 39¢

ANN PAGE GELATIN DESSERTS SPARKLE Assorted Flavors..... 5 Pkgs. 27¢

A&P FROZEN DESSERT MELLORINE 1/2-gal. Can 49¢

A&P SMALL ENGLISH PEAS 16-oz. Can 25¢

JANE PARKER Peach Pie 49¢

JANE PARKER STRAWBERRY PIE..... Ea. 49¢

JANE PARKER CHIFFON ORANGE CAKE..... Ea. 43¢

JANE PARKER PINEAPPLE TOPPED SWEET ROLLS..... Pkg. 25¢

JANE PARKER OATMEAL COOKIES 11-oz. Bag 29¢

JANE PARKER ENRICHED WHITE BREAD Large Loaf 21¢

"QUICK ACTION" GULF Spray Pt. Can 35¢ Qt. Can 59¢

IONA CUT—303 Can Green Beans 10c

HY POWER—In Sauce—2 1/2 can Tamales 3 for 1.00

EIGHT O'CLOCK COFFEE Milder and Mellow..... 1-lb. Bag 73¢

RED CIRCLE COFFEE Rich and Full Bodied..... 1-lb. Bag 79¢

DRY PINTO BEANS 4-lb. Bag 39¢

Borden's Grated American CHEESE 2-oz. Shaker 15¢

KRAFT OLD ENGLISH CHEESE 8-oz. Pkg. 35¢

ALL PURPOSE 5c OFF Wesson Oil Qt. 50c

SHORTENING Snowdrift 3-lb. Can 93¢

AMERICA'S FOREMOST FOOD RETAILER... SINCE 1859

