

Weather

Aug. 8	86	60
Aug. 9	85	60
Aug. 10	88	59 .74
Aug. 11	78	60 .14
Aug. 12	68	62 1.75

MULESHOE JOURNAL



20¢

'The Community of Opportunity-Where Water Makes the Difference'

Volume 58, No. 34

10 Pages Today

Published Every Thursday at Muleshoe, Bailey County, Texas 79347

Thursday, August 13, 1981

Rains Continue - Farm Outlook Favorable

Around Muleshoe

Muleshoe High School volleyball coach, Christi Phelps has announced that volleyball practice will begin Monday, August 17 at 10:30 a.m. All girls who are interested in this sport need to make a special effort to attend these practices. Cuts will be made prior to the start of fall school classes, and those not attending practice will not be able to make the cut.

Youth skating will be held Friday, August 14 from 7 till 10 p.m. at the Bailey County Civic Center. Admission will be \$1.00.

A Youth Western dance will be held Saturday, August 15 from 9 till 12 p.m. featuring music by AAA Music from Clovis. Admission is \$3.00 per person and the dance is sponsored by the Triangle CB Club.

Freshman or 9th grade football players are reminded to report to high school at 3 p.m. Monday, August 17 for practice.

An organization meeting of the ladies division of the Muleshoe Chamber of Commerce is scheduled for Tuesday, August 25 from 12 noon to 1 p.m. at the XIT Restaurant.

Officers will be elected at this meeting. "All interested persons are urged to attend" according to Nelda Merriott.

Muleshoe residents are reminded of the Mule Rodeo scheduled for this Saturday, Aug. 15, at the Roping Arena. Events begin at 1:00 p.m. and entry deadline is 8:00 a.m. Saturday contact Jeff Smith for entries or if you have a mule to spare.

Cont. Page 6, Col. 2

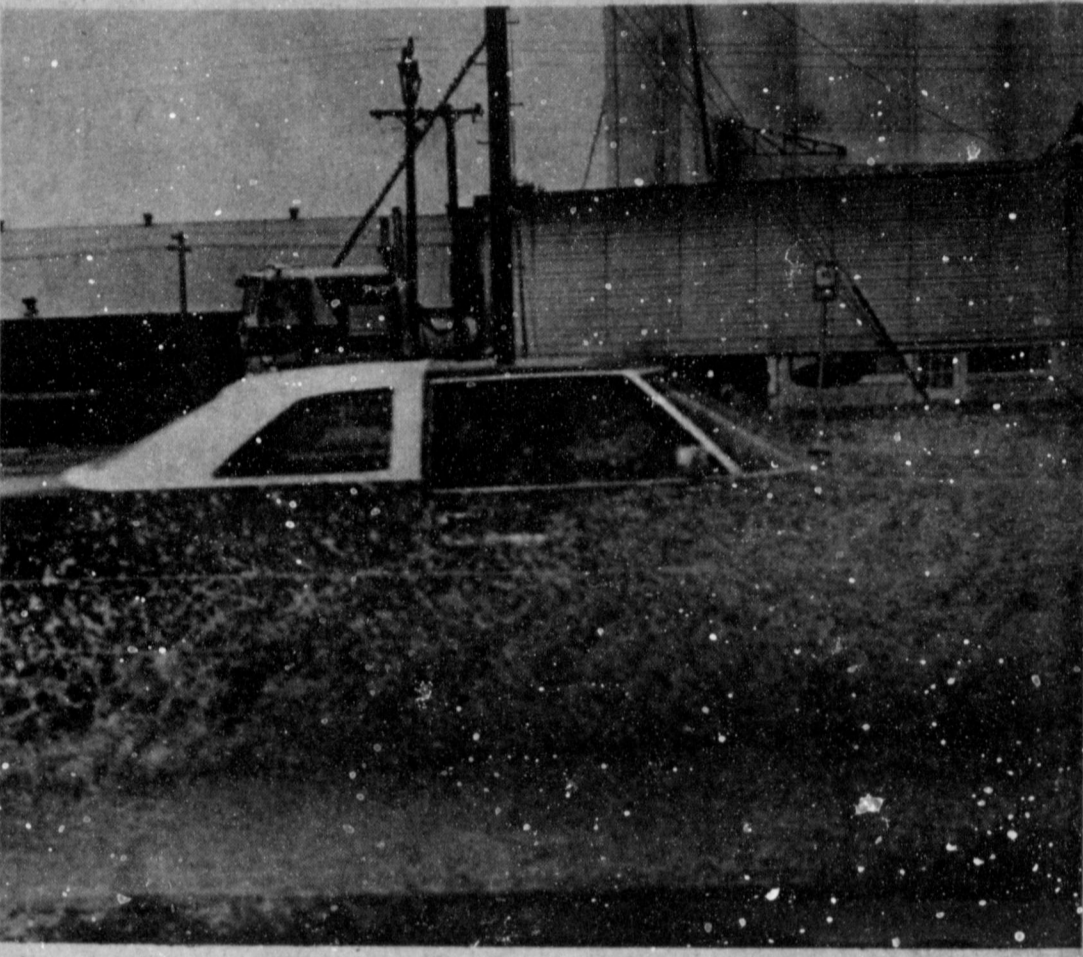
School Offers Extra Class

Muleshoe High School is offering a class of American History at 7:30 each morning during the 1981-82 school year. The class is offered for students who have problems working in elective courses in their schedules.

Anyone interested in the class who has not pre-enrolled for the class should contact Ben Gramling, Counselor at the High School office.

The class carries the same credit and is the same length of time as other classes. It is open primarily to Juniors, but others who need American History will be considered on an individual basis.

A student taking this class would be able to take a total of 7 courses during the year if necessary. Those approved for the course must have parent permission, as well as be approved by the counselor and principal.



WATER, WATER EVERYWHERE..... Two weeks of rain has left Muleshoe with approximately 3 to 4 inches of moisture. This auto seems virtually hidden on American Boulevard, as it made way through the heavy run-off.

August 30 Marks Brand Re-registration Date

Attorney General Mark White has issued two Attorney General's opinions which affect and should interest everyone involved in the cattle, ranching, farming and dairy industries. Opinion MW-289 discusses certain changes in laws on the registration of livestock brands, and MW-358 further clarifies the statutes.

Article 6899j, V.T.C.S. was passed by the Legislature and became effective on August 30, 1971. Under this law and under Article 6890, V.T.C.S., all marks and brands registered after August 30, 1971 and before August 30, 1981 must be re-registered within six months of the latter date. Marks and brands must

then be re-registered at subsequent ten-year intervals by the owner. All marks and brand will then be recorded with the county clerk, regardless of when they originally were recorded, within six months of August 30, 1981, August 30, 1991, August 30, 2001, etc.

Attorney General Mark White is reminding every citizen who has registered a brand prior to August 30, 1981 that citizens must re-register each brand with the county clerk within six months in order to protect their right to it. If everyone follows the registration schedule set out by the law, county clerks will have a correct, revised set of records every ten years, and there should be no dispute about the correct ownership of livestock.

To register or re-register marks and brands, the livestock owner may obtain forms either by mail or in person from his or her

New Students Report Friday

Friday, August 14 has been set up at the Junior High School and the High School to register all NEW students. NEW students are those who have not attended Muleshoe Schools before.

All other students have pre-registered and will not need to register for school.

New students should report to the Junior High School or the High School from 9:00 to 12:00 a.m. or from 1:00 to 4:00 p.m. on Friday, August 14 at the principals' offices.

This time is for NEW students only who are in grades 6 through 12.

Students in grades 6 through 8 may pick up schedules at the Junior High School from 1:00 to 4:00 p.m., August 20. All high school students will pick up schedules when they report to school for the first day of instruction August 26.

county clerk's office. There will be blank spaces on the form in which to describe the mark or brand and the location on the animal where the brand is recorded. The forms should then be mailed or delivered in person to the county clerk, who will keep the forms in an indexed bound volume or on microfilm for easy reference.

Opinion MW-358 answers questions concerning the recording of the marks and brands and the publication requirements to notify the public of changes in the law. Under Article 6899j, the county clerk is not required to notify individual owners of cattle brands of the ten-year expiration. Cont. Page 6, Col. 2

Bailey County 4-H Youth Treated To Camp-out

The Muleshoe Wildlife Refuge was the sight of the second annual Bailey County 4-H Camp this past weekend. The camp began Friday evening August 7 and ended Saturday evening the 8th.

Twenty 4-Hers and two leaders enjoyed an evening around a campfire and a night under the stars at the 4-H Camp.

Saturday was a full day for the 4-Hers as they participated in games, learned about the upcoming archery project, and participated in a mini-hunter education course utilizing the recent BB gun project.

All 4-Hers who participated had a great time. They enjoyed a pancake breakfast Saturday morning and were treated to hot dogs at lunch. The camp ended Saturday at 4:00. County Agent Jim Irwin stated, "If you missed 4-H camp this summer, you missed a lot of fun and fellowship."

Participants at the camp represented all 4-H Clubs in Bailey County.

4-H leaders Joe and Letha Wheeler spent the ni-

Food Stamp Fraud Basis Of True Bills

The Bailey County Grand Jury handed down 10 indictments this week concerning obtaining food stamps illegally theft and falsification of government documents.

Juanita Sandoval has been jailed on three counts of allegedly obtaining food stamps illegally and one count of making a false entry, concerning employment verification, to obtain food stamps.

Alberto Daniel has also been jailed on two counts of allegedly falsifying government records.

A \$10,000 bond has been posted for Elvira Trevino who has been charged with two counts of allegedly obtaining food stamps illegally.

Rosa Olivarez has also posted bond for \$5,000 on the same charge for the alleged crime.

Four other true bills were

handed down, but the accused have not been located.

Bailey County Sheriff Bobby Henderson stated that the investigation of these food stamp charges began about 60 days ago. State investigators were in charge.

Meeting Set On FM 3397

With regard to the FM 3397, from FM 298 at Circleback, South 8.3 miles to FM54, a pre-construction meeting for this project has been scheduled for 10 a.m. on August 17 in the Muleshoe warehouse of the State Department of Highways and Public Transportation.

The purpose of this meeting is to promote safety to the traveling Cont. Page 6, Col. 3

City Council Suspends Energas Rate Hike

In their regular meeting Tuesday, August 11, Muleshoe City Council voted the passing of a resolution suspending the effective rate increase recently made by Energas Company. They elected to meet with representatives from other cities affected by this increase on Thursday, August 13 at 7 p.m. in Lubbock.

A steering committee for the purpose of examining this request will be formed at the Lubbock meeting.

Meeting with Council, Jess Winn, manager of the

Muleshoe Energas office explained the rate increase as being a "valid one that must be met in order to meet the inflationary gas cost now facing gas companies."

Under the proposed increase, customers will receive a minimum monthly bill regardless of the amount of gas used. Winn further stated that a "IMCF cost will be used to compile the minimum billing."

In other matters, members were notified of a SPAG general assembly meeting scheduled for September 22.

City manager, Dave Marr, informed the council that the budget was ready for council work sessions. These will begin sometime within the next week.

Council members attending were: Ronnie Shaffer, Bob Finney and Mayor Charles Bratcher. Others present include Jess Winn and Shirley Farmer.

School Taxes Will Not Be Raised

The Board of Trustees of the Muleshoe Independent School District announced at their regular meeting on August 10, 1981 that the 1981-82 Muleshoe Independent School District school budget would not necessitate a raise in school taxes.

The school budget is higher than last year due mostly to higher salaries for teachers given by the state. The monies for the increased budget will come from an increase in state funds.

The Muleshoe Independent School District is fortunate to be able to hold the line in school taxes. In fact, the tax rate will be lowered due to an increase Cont. Page 6, Col. 2

Spirits High With Re-current Moisture

An early morning survey of Bailey county farmers revealed a good amount of rain received through Tuesday night and Wednesday morning. Muleshoe received 1.75 inches on Tuesday; however J.K. Adams reported 2.65 in his rain gauge. The city's overall total for the past 12 days has been 5 inches.

Lazbuddie reported approximately 3 inches within the last two days, with a total over the last two weeks over 5 to 6 inches. R.G. Bennett who lives in the YL Community reported 1.5 inches of moisture through Wednesday morning bringing the total there in the past two weeks to 7.03 inches. Bennett also reported roads to be underwater and some impassable.

Mrs. W.R. Welch who lives between Maple and Enochs reported 3.5 to 5 inches overall for that area since the first of August, and also stated "the rain is still falling."

Three Way and the area west has received 2.02 inches since early Tuesday morning and our source there, Jack Hodnett said that the probable total

would range somewhere between 5.5 to 6 inches and "sure is nice."

Toward FM 1760 and several miles out Eugene Shaw reported 3 to 3.5 inches overall total moisture. Shaw stated that he "sure wouldn't miss watering at all." The re-current rains have enabled Shaw as well as other farmers to shut off irrigation wells for the season.

J.L. Dale who farms near Needmore area reported approximately 2 to 3 inches of total moisture and also stated that "this will just about make it for us, if we can get some good hot weather and drying out now."

In the Stegall area and west to the New Mexico line amounts range from 3.5 to 5 inches and still raining. Farmers in this area, which is basically dry-land were jubilant over the moisture received. One farmer stated: "This puts us in excellent shape for moisture, and looks like we may have one of the best crop yields we've seen in some time."

"These rains will, in most cases, enable irrigation farmers to shut off wells now being used to water cotton and corn crops. It will just about put dry-land farmers in the best shape they've been for some time," said Spencer Tankley, Bailey County Extension Agent.

Most areas have received at least 1 1/2 to 2 inches of moisture, with some ranging up to 4 to 5 1/2 inches.

Cont. Page 6, Col. 1

Police Report

In police activity this past week one reported criminal mischief resulting from slashed tires on August 6. August 8 arrests included one burglary, one for no drivers license, one theft; and one for public intoxication on the 7th.

Also on August 8 a runaway was reported.

An assault was reported August 9 in the 100 block of Chicago. Two were arrested near Littlefield in connection with this offense. Another charge of reckless conduct resulted from this assault.

On August 10, two were arrested for public intoxication, with one of these carrying an additional no drivers license charge.

Law Officers Graduate Basic

On July 23, three students from the South Plains Region were honored along with 36 other classmates from the 22nd Graduating Class of SPAG's 320 hour Basic Law Enforcement School. The graduating ceremonies were held at the Gridiron Restaurant in Lubbock. Cont. Page 6, Col. 1

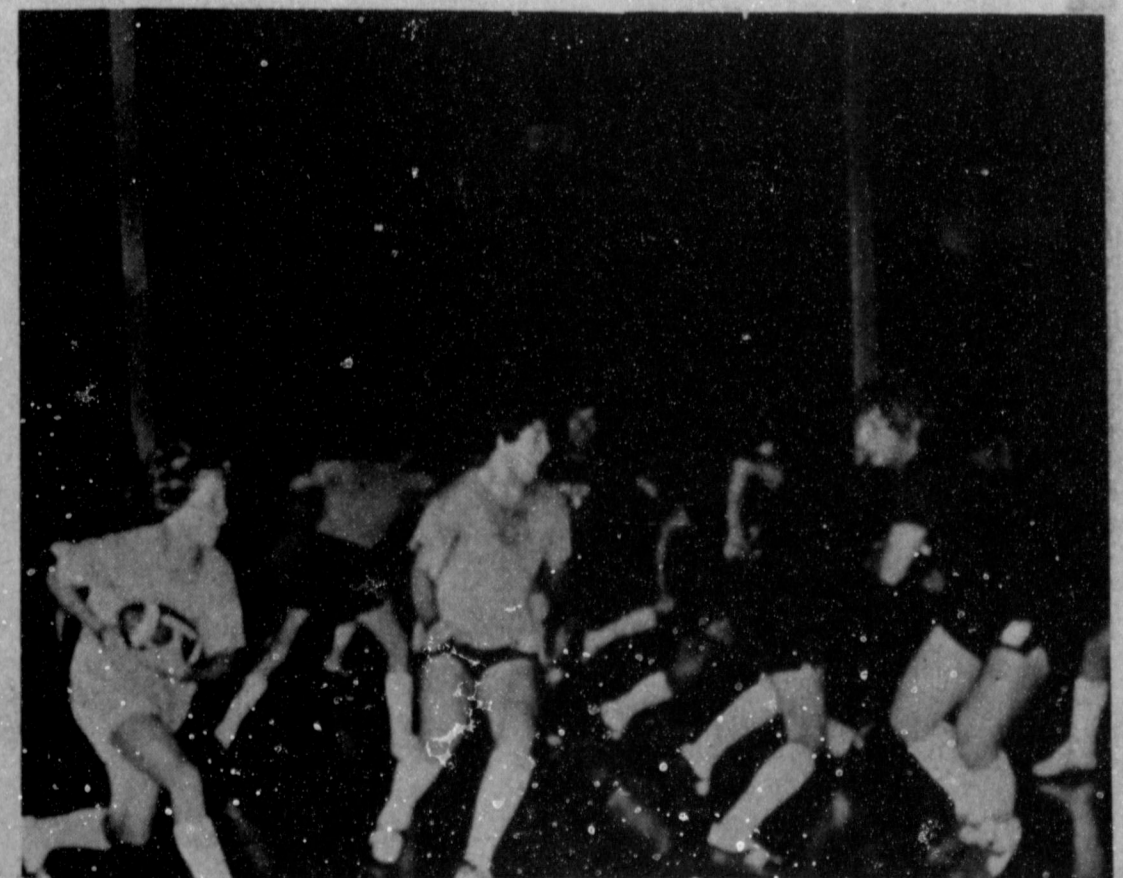


JOE REED Gospel Singer In Concert

Joe Reed, former Detroit Lions quarterback and nationally known gospel singer will be in concert at First Assembly of God, Muleshoe, Friday at 7:30 p.m.

Rev. James Golaz invites everyone "to the concert and hear Joe share his Christian testimony"

After the concert there will be a special time of fellowship for the youth of the community and church. Refreshments will be served. This will be for those from age 12 years to 20 years old.



OH MY ACHING BACK..... Football hopefuls at Muleshoe High began 2-a-day workouts on Monday. Due to wet conditions on the field, practice was shifted to the gym for Tuesday's workout.

The Tricycle As A Space-Time Machine

Consider the tricycle—a marvelous machine that teaches concepts of time and space. A child should be ready for a first tricycle—and the lessons it teaches—at about the end of the second year.

and down, *within* her own body. Once she feels those differences inside herself, she has a starting point for organizing the space outside herself.

Pushing the pedals first with the right foot and then

with the left helps a child learn that right and left, inside and outside, are different.

A tricycle also teaches about time. To make progress at all, the child must shift from side to side, from left to right, at the proper time. She cannot shift at any old time: she must be precise.

Time is very important

in school learning. To spell correctly, for example, a child must learn to get the letters in the proper time order. A child who has not learned about time might spell "girl" as "gril" or "first" as "frist". These errors are examples of general problems in organizing time. Riding a trike smoothly, efficiently, and rhythmically helps the

child organize movements in time.

An old fashioned tricycle is probably best to buy—one where the child sits straight up instead of leaning back. This gives clear and unobstructed vision.

A child will feel more comfortable if her feet reach the pedals without adding blocks of wood. A good general guide is that

if a child's inside leg measurement is between 17" and 20" her tricycle front wheel should have a diameter of 12" or 13". A shorter child may need a 10" front wheel.

Choose a tricycle with a squat look, that is, a wide wheel base in proportion to the height. A wider wheel base will make tipping over on tight turns less likely.

As for how to teach a child to ride, probably the best methods is just put her on it, put her feet on the pedals, and let her go. If the child does not get the idea immediately, just give a gentle push, making sure she can feel her feet moving with the pedals as they go around.

Truce shaky between Israel & Lebanon.

Muleshoe Journal (USPS 367-821)

Established February 22, 1924. Published by Muleshoe Publishing Co., Inc. Every Thursday at 908 N. Second. Box 405, Muleshoe, Texas 79347. Second class postage paid at Muleshoe, Texas, 79347.

TA MEMBER 1981
TEXAS PRESS ASSOCIATION

L.B. Hall - President
James Woods - Vice President
Neddy - Editor
Evelene Harris - Society
Holly Milling - Advertising
Bennie Branson - Bookkeeper

SUBSCRIPTIONS:
Muleshoe Journal and Bailey County Journal
Bailey and surrounding counties \$10.00
Muleshoe Journal and Bailey County Journal
elsewhere in Texas \$11.95
Muleshoe Journal and Bailey County Journal
Outside of Texas \$12.95
Years in Advance \$11.50
Monthly in Advance \$1.00
Advertising rate: card on application

Growing Child, a monthly child development newsletter, reports that learning to ride a tricycle helps children get their eyes matched up with what their bodies are doing. The first thing they learn to push first with one foot and then with the other—to shift from left to right. Doing this, they learn about having two different sides.

The concept of difference of sides is important in learning to read. If a child has no concept of the left/right difference, she may read "b" as "d" or "was" as "saw". Reversals like these are really reversals in space; the only difference between "b" and "d" is the difference between left and right.

In order to organize directions in space *outside* her body, the child must first feel the difference between left and right, up

MAS Plans Tournament

Racquetball players and fans are invited to participate in the MHR Racquetball Invitational Tournament, Aug. 21-22, in Tucumcari, N.M. The Z Racquet Club and Mental Health Resources, Inc. are co-sponsors for the two-day event which will take place at the Racquet Club 224 East Center.

The men's and women's divisions will each be divided into three classifications: open, "C", and novice. There will also be a mixed doubles event. Registration for tournament play is open to the public but will be limited to 50 players. There is a ten dollar entry fee for the first event and a \$5 fee for the second event.

Deadline for entries is Friday, Aug. 14. An entry form may be obtained from The Z Racquet Club or any office of Mental Health Resources, Inc. MHR offices are located in Tucumcari, Clovis and Portales. Entries should be mailed to Kirk Storrie, owner/manager, The Z Racquet Club, 224 East Center, Tucumcari, NM 88401. A check, made payable to The Z Racquet Club, should accompany all entries.

Trophies will be awarded in each division. Players will also receive a T-shirt and be provided with refreshments. For more information and times of play, please call the racquet club at 461-4121 in Tucumcari.

"This is a great way to get exercise and have lots of fun, so we hope there will be good participation in the tournament," Dario Silva says. Silva is program manager for the MHR Tucumcari Unit. "MHR advocates exercise and relaxation for improving mental health, and this tournament gives people an excellent opportunity to do just that. We want to invite everyone to be where the action is, Aug. 21-22 in Tucumcari, for the MHR Racquetball Invitational 1981 tournament," Silva says.

Mental Health Resources, Inc. is a community mental health center, a non-profit corporation, which serves seven counties in eastern New Mexico. In addition to its three treatment centers, MHR also operates outreach offices in Fort Sumner, Santa Rosa, Clayton, and Roy.

Tonight!

Have a treat!
Have a steak!
BONELESS CHUCK

Steak \$1.59 LB.
Roast \$1.69 LB.

JENIE-O TURKEY DRUMSTICKS LB. 49¢
SWIFTS FIREBRAND 12 OZ. PKG. BEEF STRIPS \$1.39

LEAN **GROUND BEEF** LB. \$1.49
BBQ BEEF **SHORT RIBS** LB. \$1.29

JENIE-O TURKEY WINGS LB. 49¢
CATFISH STEAKS LB. \$1.29

YOU CAN TREAT YOUR FAMILY TO DELICIOUS STEAK FOR LESS THAN THE COST OF EATING HAMBURGERS OUT!

CARESS BEAUTY BAR 3.5 oz. **39¢**

Health & Beauty Aids

Flex SHAMPOO CONDITIONER REVLON 16 OZ. **\$1.99**

FLUORIGARD 10 OZ. 12" OFF LABEL **\$1.67**

AQUA FRESH 6.4 OZ. 25" OFF LABEL **\$1.75**

BATH SOAP TONE 2 PACK **99¢**

APPLE JUICE WHITE HOUSE 32 OZ. **79¢**

ASPARAGUS KOUNTY KIST CUT 10 1/2 OZ. CAN **69¢**

IVORY LIQUID DISH DETERGENT 22 oz. **99¢**

Wesson Oil 38 oz. **\$1.89**

EVAPORATED MILK CARNATION 13 OZ. **3/98¢**

Van Camp's PORK & BEANS 3 16 OZ. CANS **\$1**

TREET LUNCHEON MEAT 15" Off Label **\$1.29**

SCOTT Paper Towels **69¢**

KRAFT PARKAY Margarine MAXI CUP 1 LB. **79¢**

MARINA BATHROOM Tissue WHITE ASSORTED 4 ROLL PACK **99¢**

One Big Salad-Bowl of Savings

Here's where the world's finest fresh fruits and vegetables get together to save you money

Flour LIGHT CRUST PILLOW OR PAPER 25 LB. **\$4.99**

Folgers Coffee FOLGERS FLAKED 13 OZ. CAN **\$1.69**

Rich & Ready ORANGE & FRUIT DRINK GAL **89¢**

Donuts EVERFRESH GLAZED 14 OZ. **89¢**

ORANGE JUICE WHOLESUM 6 OZ. **55¢**

ORE IDA TATER TOTS REG. OR W/ONION 2 LB. **\$1.19**

California Iceberg Lettuce **29¢** LB.

GRAPES CALIFORNIA THOMPSON SEEDLESS **69¢** LB.

CORN COLORADO GOLDEN EARS **7/\$1**

PEACHES CALIFORNIA O'HENRY'S **49¢** LB.

CUCUMBERS LONG GREEN SLICKERS **5** LBS. **\$1**

NECTARINES CALIFORNIA'S FINEST LB. **39¢**

TONY'S PIZZA Reg. 11" **\$1.39**

White's Cashway Supermarket

Open 7:30 To 9:00
Monday To Saturday 12:00 P.M. To 9:00 P.M.
Sunday

We Welcome WIC Card & USDA Food Stamps

Get Ready on the Firing Line for —
"THE BIG DOUBLE BARREL SHOOT OUT"

Double Gunn Bros. Stamps Every Wednesday & Saturday

Jury Trials Set Tuesday

District Court of Bailey County has been called for the week beginning August 17 before the Honorable Jack D. Young.

Jury settings have been set for Anna Maria Gonzalez and Ramon Gonzalez in the interest of Sergio Rolando Gonzalez and Selina Katrin Gonzalez; Margarito Castillo vs. Willis James, suit on injury; and estate of Susan Roseltha Bell Allen vs. Ken Bales, suit on unauthorized contact.

Others reporting are: Lamar Decamp Treadwell, II, Martha Cudd McCormick, Eddie Truitt Barron, Fannie Formby Hicks, Clinton Wade Smith, Gary Glenn Elliott, Donald T. May, Mrs. J.K. Adams, Marie Garner Darnell, and Sandy Brown Peterson.

Other prospective jurors are: William Eugene Meyers, Mrs. Sandra C. Betts, Clara Mounts, Josie Estrada Baca, Ralph Eddie Miller, John E. Burch, Gayla L. Toombs, Margaret Warren Stout, John Rodriguez, and Elizabeth May Black.

Also reporting will be: J.W. Maddox, Vicki Lynn Griffin, Mike Vela Perez, Mrs. Betty Burelsmith, Robert Alton Morris, Aubrey Don Heathington, Tom B. Smith, Eldise Lindley Wilson, Mrs., Bobby Don Henry, and Francisco Jose Savage.

Other jurors reporting: William Franklin Smith, Jewel Wells Green, Jim

Wiley Allison, Mrs. M Vera Haire, S.D. Clements, Richard C. Orozco, Jerrie Tims, Jarrol Alan Layton, Thomas H. Burgess, Nancy

Other cases also scheduled to be heard are: Torrie Rene Davis and McShane Davis, modification of order; and Raymond Treider Construction vs. Dick Tillema individually and Tillema Dairy and Tillema Dairy, Inc.

Jurors called to report include: Davy Darwin Cavitt, Maria Munserato Olivias, Roy Thomas Atchison, Joyce Heidman Holmes, Margaret Mabry Gleason, R.A. Irwin, Leonard Don Henderson, Norma Mills Pitcock, Ruby Griffin Lambert, and John H. Puckett.

Also called are: Domingo Estrada, Durwood M. Obenhaus, Margaret Blackburn Wills, Carey Wayne Brooker, Lorilla Farmer Jones, Tom Edwin Ladd, Marjorie Cassidy Precure, Englandina Anguiano Gonzales, Kem Eric Bales, and Curby J. Brantley.

Other potential jurors are: Elmer Franklin Smith, Bobby G. Free, Ruby Brantley, Mrs. Jane Griffiths, Mary Estela Gomez, Bettie Logan Harrison, Donn'e Micheal Dewbre, Jasper Leroy Thomas, Daniel Guerrerro Lopez, and A.G. Sisneros.

Also reporting are: Carrie Hall Hall, Jessie Norene Robinson, Carl M. Evans, Larry Dale Parker, W. Timothy Campbell, Clifford Leon Black, Johanna Schuster Wrinkle, Juanita Sandoval, Gertrude Simpson Fred, and Maria Vii-

McCrary Miller, and Mark Wayne Slayden.

Also reporting will be: Mrs. Johnnie Elizabeth Kimbrough, Rosa Davis Allison, Jarrell W. Pruitt, Elaine Estrada, Lucy Yoachum Smith, Juanita Busby, Mrs. Mildred May, Wendell E. Jones, J.E. McVicker, and Richard S. Turner.

Other jurors will be: Anne M. Camp, Judy K. Lambert, Tommie Marlene St. Clair, Jack Reginald Rennels, Eunice Douglas Bales, Clifton Wayne Tunnell, Dorothy Perry St. Clair, Debra Ann Grimes, and Larry Wayne Parker.

Archery Project Scheduled August

The Bailey County 4-H Council and Adult Leaders Association would like to announce a new project for Bailey County youth. In late August the Council will be sponsoring an archery project.

The development of this project is part of a continual effort to provide interesting activities for youngsters to enjoy. Archery is a lifetime activity which can be enjoyed by the entire family and has been gaining popularity as a recreational sport and as a hunt-

ing sport over the past several years. This is an excellent opportunity for Bailey County youngsters to learn the basics of archery and begin an activity which will enrich their lives, their family's life, and the community. This is the purpose of 4-H!

The archery project will teach youth, ages 9-19, the basics of archery, how to use and care for archery equipment, and will provide training and practice

in the area of marksmanship. The participants will have access to bows, arrows, and targets and will learn to make some accessories to enhance the sport.

Persons interested in participating in the 4-H archery project, should call or come by the Extension office located on the first floor of the Bailey County Courthouse. The phone number is 272-4583.

Final arrangements con-

cerning times and dates of the project will be announced this week and a letter will be sent to those who have contacted our office. The archery project will then become part of the standard curriculum offered through the 4-H program in the county.

4-H programs sponsored by the Texas Agricultural Extension Service serve all youth ages 9-19 regardless of race, color, sex, creed, religion, handicap or national origin.

BIBLE VERSE

"God is our refuge and strength, a very present help in trouble." Answers to Bible Verse

1. The Psalms.
2. By King David and directed to his Chief Musician to be set to music.
3. Psalm 46:1.
4. 150.
1. Of what part of the Bible is this verse a part?
2. By whom was it written?
3. Where may it be found?
4. How many Psalms are there in the Old Testament?

All-Youth Rodeo Slated October 2-3

Nine events have been scheduled for the all-youth rodeo, slated Oct. 2-3, the last two days of the eight-day run of the 64th annual Panhandle South Plains Fair.

General manager Steve L. Lewis said competition would be held at 7:30 p.m. on both dates in the Fair Park Livestock Pavilion. The competition, which is fast becoming one of the major attractions at the exposition, is sponsored jointly by the fair association and Lubbock County 4-H Clubs.

Cash prizes are to be awarded in all events and 75 percent of all entry fees will be paid back.

Mail entries will be accepted on a first come, first serve basis at Route 9, Box 92, Lubbock, Texas 79423, or by telephone

806-745-2936.

Events and associated entry fees include bareback riding, \$20; bull riding, \$25; tie-down calf roping, \$20; ribbon roping (must be boy-girl team under 14), \$25; ribbon roping (boy-girl team over 14), \$25; barrel racing, over 14 and under 14, \$12.50 each; pole bending, over 14 and under 14, \$12.50 each.

Books open on the events on Sept. 25 and will close Sept. 30. Signed entry forms must be turned in with entry fees by 7 p.m. on the night of the performance, Lewis noted.

Seven stage shows, including some old and new faces, have been booked for Fair Park Coliseum during the 1981 exposition.

Charley Pride, returning for a record 10th appearance here, will open the slate on Sept. 26. He'll be followed by Mickey Gilley, Johnny Lee and the Urban Cowboy band Sept. 28; Don Williams, Sept. 29; Marty Robbins and Little David Wilkins, Sept. 30; Slim Whitman and Boxcar Willie, Oct. 1; Mel Tillis and the Maines Brothers, Oct. 2; Jacky Ward and the Kendalls, Oct. 3.

Williams will be presented in only one show—8 p.m.—but all other shows will be at 5 p.m. and 8 p.m. daily.

All seats are reserved and tickets are \$6, \$7, and \$8 for all shows.

Mail order reservations are being accepted by the fair at P.O. Box 208, Lubbock, Texas 79408 and requests are being filled in the order in which received.

All requests must be accompanied by a stamped, self addressed

1981 Yield Soybean Contest Announced

Soybean producers once again have an opportunity to compete for top honors in the Texas Soybean Yield Contest.

The 1981 contest is being sponsored by the Texas Soybean Association and Elanco Products Co. in conjunction with the Texas Agricultural Extension Service, Texas A&M University System, announces Dr. Arlen Klosterboer of Beaumont, area Extension agronomist.

"The contest is designed as an educational tool to stimulate interest in soybean production," notes Klosterboer. "Benefits include the development of worthwhile cultural information, cooperation within the industry to increase production efficiency, and recognition of individuals who achieve superior

yields."

Interested producers should contact their county Extension agent for contest

rules and entry forms, points out the agronomist. All entries must be in by Sept. 1.

Each entrant must grow at least 50 acres of soybeans and designate at least five acres to be harvested. There may be only one entry per entire farm operation. Measuring of the land, harvesting and weighing of the soybeans will be supervised by a three-man County Soybean Contest Committee.

According to Klosterboer, awards will be pre-

sented to the top three producers in the irrigated area, Northeast Texas and Coast Prairie. Then the state champion will be selected from among the nine area winners. Winners will receive appropriate plaques along with various amounts of Treflan or Surflan, depending on their placings. The state champion will receive a trip for two to Acapulco.

The agronomist also points out that entering the contest makes producers eligible for membership in the Texas 60 Bushel Soybean Club or the Texas 70 Bushel Soybean Club, should they reach either of these yields.



Mule Rodeo

1 P.M.
Sat., Aug. 15

All Events Performed
On Mules!

Adults \$2.00

Children 12 & Under 50¢

Muleshoe Roping Arena
E. Hwy. 84

Calf Roping '15, Open Cutting '25, Head & Heel '30
Per Team, Barrell Racing '10, Pole Bending '10,
Steer Stop '15, Hide Drag '10.

Entry Deadline Aug 15 8 a.m.

For More Information Call Jeff Smith
272-5545 Or 965-2886 After 5

NOTICE
Energas Company, a division of Pioneer Corporation, hereby gives notice of its intent to implement new rates for domestic and commercial type, small industrial and large air conditioning/electric generating customer classes residing in the unincorporated areas (townships) of its West Texas System. It is anticipated that the new rates will result in a 1.6% increase in Energas' gross revenues, which increase is not a "major change" as defined in Section 4301a of Article 1446c, V.A.T.C.S. A Statement of Intent to change said rates was filed with the Railroad Commission of Texas on or about August 7, 1981, and is available for inspection at the Company's Amarillo office, 301 S. Taylor Street.

The proposed increase will not become effective until or except to the extent that the same rates are approved for service within the municipalities on the West Texas System.

UNINCORPORATED AREAS (ENVIRONS)

OF THE FOLLOWING CITIES AND TOWNS ARE AFFECTED:

Abernathy	Muleshoe
Amarillo	Nearesh
Artes	New Deal
Big Spring	New Home
Bovina	Odesa
Brownfield	O'Donell
Canyon	Olton
Cosahoma	Pampa
Crosbyton	Panhandle
Dimmitt	Parsonburg
South	Plainview
Edmonson	Post
Floydada	Quitaque
Forsan	Ralls
Friona	Respaite
Heat Center	Seagraves
Happy	Seminole
Hart	Shallowater
Hawford	Sheridan
Isabou	Sutton
Kress	Smyer
Lake Ransom	Southland
Canyon	Springdale
Lake Tanglewood	Stratton
Lamesa	Sudan
Laveford	Tahoka
Listfield	Tule
Lockney	Turkey
Lorenco	Vega
Lubbock	Wellmon
Meadow	Wilton
Mildard	Wulforn

Harvey Bass Appliance Is Now Your Sales And Service Center For The Maytag Appliances.

We Now Have A Complete Line Of Maytag Appliances On Our Floor.

Our Service Department Is Qualified To Service All Maytag Appliances.

Introductory SALE on

MAYTAG

WASHERS and DRYERS

Big Savings on Maytag Washers and Dryers, Special Savings on Maytag Jetclean™ Dishwashers, too!

SAVE on Maytag Heavy Duty Washers

Number 1: • in long life • in fewer repairs • in lower repair costs • in nationwide preference (Based on a national survey asking consumers which brand of washer they'd like to own) There's a Maytag Washer just right for your needs, your budget!

SAVE on Maytag Big Load Dryers

• Commercially proven in self service laundries • Gentle, energy efficient drying for permanent press and all of today's fabrics • Choose from Electronic, Auto-Dry and Time Controls • Big Load Drum with Easy Access Door • Up-front, easy-to-clean lint filter

SAVE on Maytag Jetclean™ Dishwashers

• Outclean 'em all on the dual wash regular cycle • Low Energy Cycle for Everyday Loads • Energy Saver Drying Cycle circulates air without heat • Exclusive self-cleaning Micro-Mesh Filter • Three-level Jetwash System



Don't Miss Out HURRY!

SAVE ON THE MAYTAG YOU'VE ALWAYS WANTED

Remember Nobody Builds 'em Like Maytag!

MAYTAG

HARVEY BASS

122 S. 1st.

Muleshoe

272-3030

ENMU Offers Telecourses Over KENW-TV This Fall

Adults who would like to continue their education, but have not had the opportunity to do so can receive college credit in a variety of courses without regular attendance in a classroom.

Beginning this fall, as part of a major new public television project, Eastern New Mexico University and KENW-TV at ENMU will participate in a television program service that will turn local homes and offices in Portales, Clovis, Ft. Sumner, Tucumcari, Santa Rosa, Ruidosa, Roswell, Farwell, Friona, Muleshoe, Artesia, and Hagerman into classrooms.

Four college level telecourses will be available to any interested television viewer through an adult learning program service

coordinated nationally by the Public Broadcasting Service.

According to Dr. Orlo Sundre, dean of Continuing Education and Summer Sessions, the telecourses will benefit adults interested in continuing their education, physically disabled persons, home-bound parents with children, and the senior citizen with a limited mobility.

"From the introductory course in psychology to the practical lessons of business, there is an intellectually stimulating telecourse for many adults in the community," Dr. Sundre said.

Telecourses offered by ENMU for credit include "Understanding Human Behavior", "Interaction", "It's Everybody's Bus-

iness", and "Humanities Through the Arts".

"Understanding Human Behavior" offers a comprehensive introduction to the field of psychology. Dramatizations clarify the elements of motivation, memory and learning, sensation and perception, personality and social psychology. The telecourse suggests answers to such questions as What makes humans human? Why do we all act differently? What causes violent behavior?

For the teacher or the teacher in training, "Interaction" is a valuable professional development course. Examining in-school communications, language, stereotyping, peer groups, self-image and conflicts, it is designed to help teachers work more effectively with students of different cultural or ethnic backgrounds. The course has been approved by the

New Mexico Department of Education for teacher certification.

"It's Everybody's Business" explores the wide and complex range of operations that make up today's business world. The course explores a variety of business operations across the country and interviews the leaders of the business world from corporate executives to union leaders. Offering an inside look at the American marketplace, the course is designed for persons in business or those who are interested in a career in business.

The extra qualities that enrich our lives and add dimension to what we see and think are explored by "Humanities Through The Arts". The telecourse examines film, drama, literature, music, painting, sculpture and architecture from four different perspectives: the historical context, the elements of the art, the art form and meaning, and criticism and evaluation.

All of the telecourses consist of 30 half-hour programs televised over KENW-TV on 15 successive Saturdays beginning August 29. Viewers seeking college credit will have to study the materials accomplished by the course and take a test administered by the ENMU instructors.

Persons desiring college credit should register at the ENMU Continuing Education office by August 28. Students will be assigned an experienced teacher who will be available to help with course problems by way of phone, mail, or personal conference.

Additional information on the telecourses may be obtained by contacting the Office of Continuing Education, ENMU, Portales, NM 88130, 562-2165.



MRS. RANDY MUNIZ

Mrs. Nuniz Feted With Wedding Shower

Mrs. Randy Muniz (nee Patricia Grogan) was feted with a wedding shower Saturday, August 8, from 2-3:30 p.m. in the parlor of the First Baptist Church.

Mrs. Muniz and Mrs. J.R. Johnston greeted the guests. Guests were registered by Darla Ramage.

Miss Ramage also served thumbprint cookies and punch from crystal and silver appointments.

The serving table was covered with a lace cloth and accented with an arrangement of burgundy and pink silk roses in a wicker basket. The honoree's corsage was made of silk flowers in shades of pink and burgundy.

Special guests were Mrs.

J.R. Johnson, mother of the honoree and Mrs. Lucille Barnes, grandmother of the honoree.

The hostesses gift was a set of Faberware cookware. Hostesses for the occasion included Mrs. Jack Young, Miss Prisca Young, Mrs. Phil Garrett, Mrs. Kenneth Precure, Mrs. Darrell Turner, Mrs. Clinton Kennedy, Mrs. Lee Dunbar, Mrs. Royce Hamilton, Mr. D.O. Burlesmith, Mrs. R.D. Precure, Mrs. Bill Taylor, Jr., Mrs. Ronnie Holt, Mrs. Raymond Scott, Mrs. Elbert Hamilton, Mrs. Melvin Griffin, Mrs. James Crane and Mrs. Herb Ramage.

Muleshoe Singing Group Meets

The Muleshoe Singing group met Saturday, August 8 at 7:30 p.m. in the fellowship hall of the Trinity Baptist Church. J.R. King gave the invocation.

There were 28 present including visitors, Mr. and Mrs. Zed Robinson, daughter Nelouise Snyder of California and her grandchildren Jermy Triggs and his two year old sister Jennefer and Mrs. Ora Smith of Clovis.

Jeremy sang a solo with his grandmother accompanying him at the piano. Several special arrangements were arranged and several request numbers were given.

Claud Coffman gave the benediction.

NOTICE
Energas Company, a division of Pioneer Corporation, hereby gives notice of its intent to implement new rates for domestic and commercial type, small industrial and large air conditioning electric generating customer classes in the 83 cities and towns on its West Texas City Plant System, effective September 4, 1981. It is anticipated that the new rates will result in a 16% increase in Energas' gross revenues on its West Texas City Plant System, which increase is a "major change" as defined in Section 43(b) of Article 1446c, V.A.T.C.S.

A Statement of Intent to change said rates was filed with each of the cities and towns (listed below) on or about July 31, 1981, and is available for inspection at the Company's Amarillo office, 301 S. Taylor Street.

CITIES AND TOWNS AFFECTED:

Abemathy	Muleshoe
Arnhart	Nazareth
Anton	New Deal
Big Spring	New Home
Bovine	Odessa
Brownfield	O'Donnell
Canyon	Olton
Coahoma	Pampa
Crosbyton	Parland
Dinmit	Parsons
Earth	Pearview
Edmonson	Post
Forsan	Quitman
Friona	Ralls
Hale Center	Roperville
Happy	Seagraves
Hart	Shallowater
Heeford	Silverton
Idalou	Slaton
Kress	Smey
Lake Ransom	Southland
Canyon	Springlake
Lake Tanglewood	Stanton
Lamesa	Sudan
Levelland	Tahoka
Littlefield	Tule
Lockney	Turkey
Lorenzo	Vegge
Lubbock	Volcan
McAdow	Wilman
Midland	Wilson
	Wolforth

Anthony's
C. R. ANTHONY CO.

Saturday Only Specials

321 MAIN STREET • MULESHOE

- Mens • Regular to \$11⁰⁰
- KNIT PULLOVER SHIRTS \$4⁸⁸ 3 FOR \$14
- Short Sleeve
- MENS DRESS SHIRTS \$3⁸⁸ & \$5⁸⁸
- Clearance • One Day Only • Reg. \$24⁹⁵
- MENS LEVI ACTION SLACKS \$12⁸⁸
- Reg. \$179⁰⁰
- MENS LEATHER BLAZERS \$99
- MENS PURR SUEDE BLAZERS \$99

ORIGINAL LEVI FLARE JEANS
and LEVI SADDLEMAN JEANS
Regular \$20⁰⁰

\$16⁸⁸

Open 9 to 7

Mens and Boys
WESTERN BOOTS
and MENS DRESS SHOES

20% OFF

Three Piece
BEAUTIFUL TOWEL SETS \$6 SET

Nylon & Canvas
SPECIAL PURCHASE HANDBAGS \$3⁸⁸

Regular \$16
JUNIOR ATB JEANS \$13⁸⁸

Ladies & Juniors • One Day Only • Reg. \$50
VELVETEEN BLAZERS \$39⁸⁸

One Day Only
LADIES LEVI BENDOVER SLACKS \$18⁸⁸

GIANT FABRIC CLEARANCE

One Day Only! "One Group" 77¢ YD. "One Group" \$1 YD.

FRESH LIME DAIQUIRI
1 jigger Appleton Gold Rum (1 1/2 oz.)
Juice of 1/2 lime
3 tablespoons Karo light corn syrup
1/2 cup crushed ice

In blender container place rum, lime juice, corn syrup and ice; cover. Blend on high speed 1 minute or until frothy and smooth. Makes 1 drink.

RUM COLLINS

2 ounces Appleton Gold Rum
2 tablespoons lemon juice
2 tablespoons Karo light corn syrup
Club soda
Ice Cubes

In 12 ounce glass stir together rum, lemon juice and corn syrup. Fill glass with ice cubes; add club soda. If desired, garnish with maraschino cherry and lemon wedge. Makes 1 drink.

If Not N.O.W. When?

If you haven't yet combined your savings and checking accounts into a Muleshoe State Bank N.O.W. Account, you're losing interest—fast!! The N.O.W. Account acts like a regular checking account—there when you need it. Open a N.O.W. Account—now and watch your interest grow!!

MULESHOE STATE BANK
Member FDIC 272-4561

GOING OUT OF BUSINESS

SALE

40-60% OFF

Trader's Furniture, Inc.

HOME OF GE - APPL. - TV
109 MAIN STORE HOURS: 9:00 TO 5:30 763-5537

Product More Than Meets The Eye

There are times when a product's name and use is so specific that you just don't realize its versatility. Take Open Pit barbecue sauce, for example. Now

most of us realize it's a wonderful basting sauce for grilled pork, chicken or beef. But, how many think of using it as a cocktail dip?

If you're planning on serving small meatballs or frankfurters at your next party, try Zesty Cocktail Dip as a change of pace. Just combine 1 1/2 cups

Open Pit barbecue sauce and one 10-oz. jar of currant jelly in a saucepan. Cook and stir until jelly is melted and prepare yourself for a sweet/sour dip that's both different and delicious. Makes about 2 cups.



Tarrah Leigh Bell

Mr. and Mrs. Stephen Bell are the proud parents of a daughter born at 12:50 p.m. August 6.

The young lady weighed seven pounds, eight and a half ounces and has been named Tarrah Leigh. She is the couple's first child.

Grandparents are Rosemary Bell of Muleshoe and Mavis Zackaski of West Virginia.

Great grandparents are Flora McGhee of Ohio and Mr. and Mrs. Ray Reed of Muleshoe.

Amy Judith James

Mr. and Mrs. William James of Bovina are the proud parents of a daughter born August 7 at 3:01 a.m. in the West Plains Medical Center.

The young lady weighed six pounds, nine ounces and has been named Amy Judith. She has a two year old brother, Joshua.

Grandparents are Mrs. Marcia Casey of San Antonio and Mr. and Mrs. Floyd Englant of Bovina.

Great grandparents are Mary Gozerty of New York, G.L. Wade of Illinois and Bessie Webb of Bovina.

Nation's Best-Known Cream Cheese Celebrates Centennial

Making cheesecake is a cherished American tradition — but few realize that cheesecake's main ingredient is a national institution as well. Philadelphia Brand cream cheese is celebrating its 100th Anniversary this year, making it one of the nation's oldest packaged dairy products.

An American original, cream cheese was invented in 1872 in upstate New York, in response to a desire for a better, richer cheese made with cream. The brand name "Philadelphia" was first used for the cheese in 1880, not because the cheese had any connection with Philadelphia, but because the city at that time enjoyed a reputation for high quality foods and superior and plentiful dairy products. In 1928, Kraft merged with the company that produced "Philly" cream cheese and the product has carried the Kraft label ever since.

Over the years, the uses for cream cheese have multiplied from its original use as a spread for bread, crackers, or bagels. It is now featured in a host of recipes, from appetizers to desserts. But mention baking with cream cheese, and "cheesecake" springs almost immediately to the mind. This rich dessert has generated a controversy between those who fancy creamy no-bake cheesecake, and those who prefer the traditional baked cheesecake with a drier texture. Even more controversy ensues when trying to decide on the "greatest" cheesecake recipe, as many cooks have their own secret recipes purported to be the famous Lindy's or Reuben's cheesecake.

To salute the 100th year of "Philly" cream cheese, here is a "classic": Hollywood Cheesecake, delicately flavored with lemon and vanilla. This traditional baked cheesecake features a tangy sour cream topping, and may be garnished with strawberry halves, if desired.



From the very beginnings of culinary history, cheesecake has been a favorite dessert.

Hollywood Cheesecake

- 1 cup graham cracker crumbs
- 3 tablespoons sugar
- 3 tablespoons margarine, melted
- 2 8-oz. pkgs. Philadelphia Brand cream cheese
- 1/2 cup sugar
- 1 tablespoon lemon juice
- 1 teaspoon grated lemon rind
- 1/2 teaspoon vanilla
- 2 eggs, separated
- 1 cup dairy sour cream
- 2 tablespoons sugar
- 1 teaspoon vanilla

Combine crumbs, sugar and margarine; press onto bottom of 9-inch springform pan. Bake at 325°, 10 minutes.

Combine softened cream cheese, sugar, lemon juice, rind and vanilla, mixing at medium speed on electric mixer until well blended. Add egg yolks, one at a time, mixing well after each addition. Fold in stiffly beaten egg whites; pour over crust. Bake at 300°, 45 minutes.

Combine sour cream, sugar and vanilla. Carefully spread over cheesecake; continue baking 10 minutes. Loosen cake from rim of pan; cool before removing rim of pan. Chill.

ABOUT YOUR HOME

When canning peaches, either drop them in hot syrup or in salt water to prevent them from turning brown. Use one teaspoon salt to one gallon of water.

By April Rhodes
August is the month to plant or reset iris. Spade the bed 18 inches deep, mix in fertilizer and wait a week or two for soil to settle before placing rhizomes.

They Worked
Ever wonder how grandmother could endure those antique chairs? Well, the answer is she was tired when she sat down.

-Tribune, Oskaloosa, Ia.

How To Replace A Jacket Lining

Tattered lining spoiling an otherwise perfect blazer jacket? Linings are relatively simple to replace, says Nancy Brown, a clothing specialist.

Brown is on the home economics staff of the Texas Agricultural Extension Service, The Texas A&M University System.

Basically, all you do is take the old lining out of the jacket, separate all the pieces, determine how much new fabric you'll need, buy it, cut it out and sew it into the jacket, the specialist explains of the process.

Here are the steps for actually replacing the lining: Carefully remove the old lining.

Take it completely apart at the seams, darts, vents or pleats. Mark the stitching lines where darts and pleats were.

Press the lining free of wrinkles. This will allow all seams to lie flat.

Determine the lining grainline and mark with chalk.

Lay the lining out on the table to determine how much new lining you'll need to buy.

Buy a new lining fabric similar in weight to the original lining, Brown says.

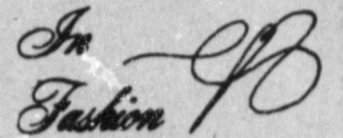
A lightweight slick is good for jackets because it makes the garment easy to put on and take off, the specialist says.

Choose an attractive matching color or a contrasting one, she suggests. Don't feel you must stay with the original color in making your selection. Also, consider printed fabrics—they're fun to look at inside a garment, Brown says.

Next, use the old lining as a pattern and lay out as a pattern and lay out and cut the new lining, being careful to keep the pieces "on grain".

Construct the new lining just like the old.

Machine or hand stitch it into the jacket.



An early preview for fall shows there will be changes in jackets, sleeves and pants. Jackets will be shorter, sleeves have a gathered puff effect at the shoulder and pants feature wider bands and side openings.

Expressions Of Love
Bridal Selections For
Mrs. Jack Foster
NEE
Ann Timms
Open 10-5:30 Mon. - Sat.
Expressions

Beltone
REGULAR HEARING AID SERVICE CENTER
Bailey Co. Civic Center
Fri., Aug. 14
10-12
272-4114
FREE CLEANING AND CHECK-UP OF ANY HEARING AID
FREE ELECTRONIC HEARING TEST
Special Battery Discounts
If you can't come in, we'll come to you. Just call us.
BELTONE HEARING AID SERVICE **Beltone**
1303 Thornton
Clovis, N.M. 505-762-7992

Trinity Baptist Church
Invites You To Revival Services
August 16-23
Sunday Services
Sunday School 9:45 a.m. Church Training 6:00 p.m.
Worship Service 11:00 a.m. Evening Worship 7:00 p.m.
Services During The Week
Daytime Services 12:00 Noon Evening Services 8:00 p.m.
Rev. Jack Pearce Preaching
Buddy L. Wells Singing
Nursery Provided

GIBSON'S WHERE YOU ALWAYS BUY THE BEST FOR LESS
GOING OUT OF BUSINESS SALE
All Sales Final
● No Phone Calls ● No Layaways ● No Exchanges

Auto Supplies 50% OFF	Clothing 50% - 70% OFF	Grab Tables 75% OFF	Sporting Goods 50% OFF
Pet Supplies 75% OFF	Bar-B-Que Grills 40% OFF	All Grocery Items 20% OFF	
Hardware Dept. 50% - 75% OFF	Lawn Carts Spreaders Wheelbarrows 50% OFF	Stationary 50% OFF	

Rain...

Cont. From Page 1
Tanksley stated that "even more benefits have been received from this rain, due to the gentleness of the fall." There are some fields of irrigated cotton that could well be determined as Bumper Crops.

The agent did express the feeling of most farmers in stating that "what is needed now is good, dry hot weather to secure this year's crops against low temperatures and insect problems." Nighttime temperatures below 70 degrees slows maturity and can severely damage quality over an extended period of time.

Tanksley further warned of increased pest problems due to the rains. Aphids have increased in heavy levels in many fields across a wide area. It is best to adopt a limited treatment program and use low rate of certain chemicals to avoid destroying all beneficial insects.

Bollworms may be a threat to cotton crops that have had all the beneficials destroyed. Bollworms have been reported in counties east of Bailey County.

Producers are urged to take precautionary measures and examine crops carefully to detect infestations.

Businessmen in the Muleshoe-Bailey County area express a good outlook and uplift of business as well as farmers spirits due to the moisture received.

SPAG...

Cont. From Page 1
Those attending from Muleshoe were: Diana L. Fox and Michael M. Fox and Johnny G. Rivas. All of these represented the Muleshoe Police Department.

Colonel Leo E. Gosett, Assistant Director of the Texas Department of Public Safety was the banquet speaker.

Presentations of awards was made by SPAG President H.L. "Bill" Young.

South Plains Fair Will Feature Barrow Show

A whopping \$6,850 in premiums will be up for grabs in the open barrow show, one of several livestock events tabbed as features of the 64th annual Panhandle South Plains Fair here Sept. 26-Oct. 3.

It will be a terminal show and there will be no Brands...

Cont. From Page 1
ation date of their registration. However, the county clerk must publish notice of the registration date in a newspaper of general circulation in the county for a period of thirty days, paying for such notice out of the general county fund. Finally, when the clerk records the brands or marks, the date of record must be noted.

Taxes...

Cont. From Page 1
in assessed values. The board plans to use the effective tax rate, which is determined by the Bailey County Appraisal District. The effective tax rate is that rate which will bring in the same amount of funds as last year plus 3 percent for new values and improvements to the tax roll.

Muleshoe...

Cont. From Page 1
Michelle Bryant, daughter of Mr. and Mrs. Jess Bryant, received her high school diploma in commencement exercises at Lubbock Christian High School on Friday, July 31. Michelle received the award for the highest grade point average in her graduating class. She will enroll at Texas Tech this fall.

D.J. Krumm, President of the Maytag Company of Newton, Iowa has announced that Harvey Bass Appliance has been designated as an authorized Maytag dealer in Muleshoe.

"take home" barrows, according to general manager Steve L. Lewis.

Sam Sparger of Southlake has been named to judge the event and two longtime fair volunteer workers, Lee Roy Colgan of Lamesa and Billy Roach of Snyder will serve as superintendent and assistant, respectively.

The 1980 grand champion was exhibited by Lisa Phillips of Hereford.

Entries for the 1981 competition will close Sept. 14 and non-returnable entry fees of \$5 are charged for each barrow entered.

Competition will be in the swime barn beginning at 9 a.m. Sept. 28.

Barrows will be divided into the following classifications at weigh-in: 200 to 220 pounds, lightweight; 221 to 235 pounds, medium; and 236 to 250 pounds, heavy. No tolerance or re-weighing is permitted.

Champion barrows of each division will compete for grand champion. The reserve champion barrow of the division named grand champion will be brought in to compete for reserve grand championship honors.

Division classifications include Duroc, Hampshire, Crossbred, and all other purebred barrows, with premiums ranging from \$5 for 10th spot to \$50 for first in class competition in all four groups.

Total premiums of \$75,000--an all-time high--are being offered during the 1981 exposition.

An all-star lineup has been booked for the stage of Fair Park Coliseum, beginning with Charley Pride **FM 3397**

Cont. From Page 1
public and construction personnel; and, to discuss the project plans, specifications, and the contractor's plan and schedule of operations.

All interested citizens are invited to attend

on Sept. 26. Other shows include Mickey Gilley, Johnny Lee and the Urban Cowboy band, Sept. 28; Don Williams, Sept. 29; Marty Robbins and Little David Wilkins, Sept. 30; Slim Whitman and Boxcar Willie, Oct. 1; Mel Tillis and the Maines Brothers, Oct. 2; Jacky Ward and the Kendalls, Oct. 3.

Show times are 5 p.m. and 8 p.m. daily, except for Williams, who will be on stage only at 8 p.m.

All seats are reserved and tickets for all shows are at \$6, \$7, and \$8.

Proposal May Limit School Food Sales

Federal officials propose to revise a rule that now limits sale in schools of foods that compete with federally-subsidized school meals, according to Deputy Assistant Secretary of Agriculture John Bode.

Under the current rule, in effect since July 1980, schools are prohibited from selling sodas, water ices, chewing gum and some candies from the beginning of the school day until after the last lunch period.

In a speech to the Arkansas Association of Educational Administrators here today, Bode said the possible change was among several being considered as part of the administration's reform program to reduce the burden of federal regulations.

Bode said USDA looks forward to hearing from local school administrators, parents and any other parties interested in the proposed revision.

"Our aim is to increase the flexibility and control of local schools," he said.

First 3-Way School Day August 21

Three Way school officials have announced August 17 through 20 as teacher's in-service days.

The first day of school for Three Way will be August 21. This will be a full day of school and

buses will run. Lunch will be served.

Three Way's first football game is scheduled for September 4 against Midland Christian.

Boot & Shoe Repair

617E. Amer. Blvd.

INTERNATIONAL HARVESTER PRESENTS

THE GREAT AMERICAN TRACTOR SALE



HERE'S YOUR CHANCE TO MAKE YOUR BEST BUY OF THE YEAR ON NEW INTERNATIONAL® 2+2 AND 2-WHEEL DRIVE TRACTORS OVER 100 PTO HP. SAVE WITH OUR SPECIAL DEALS... THEN GET A CASH REBATE OF UP TO

\$10,000

Now's the time to trade. Buy any new Series 88 tractor or 2-wheel drive Series 86 tractor over 100 PTO hp and receive a cash rebate of up to \$10,000 from International Harvester. See us for complete details. But hurry. You must buy and take delivery during August 1981.



INTERNATIONAL AGRICULTURAL EQUIPMENT

Wooley International Inc.

W. Hwy 84

272-5514

FROM OUR COUNTRY KITCHEN
LOOK WHAT TOWN & COUNTRY FOOD STORES HAVE FOR YOU!!

COUPON \$
2 PIECES FRIED CHICKEN
FRENCH FRIES & ROLL
reg. \$1.80 **\$1.19**
Valid through Aug. 31, 1981.

COUPON \$
2 BURITTOS
& FRENCH FRIES
reg. \$1.95 **\$1.19**
Valid through Aug. 31, 1981.

COUPON \$
SAUSAGE on a STICK
FRENCH FRIES & ROLL
reg. \$1.41 **\$1.19**
Valid through Aug. 31, 1981.

COUPON \$
2 CORN DOGS
& FRENCH FRIES
reg. \$1.75 **\$1.19**
Valid through Aug. 31, 1981.

COUPON \$
FISH ON A BUN
& FRENCH FRIES
reg. \$1.74 **\$1.19**
Valid through Aug. 31, 1981.

COUPON \$
9 PIECES CHICKEN, FRENCH
FRIES, ROLLS & SALAD OF
YOUR CHOICE
reg. \$7.75 **\$5.95**
Valid through Aug. 31, 1981.

Prices good ONLY WITH COUPON
Cooking Hours 10 - 10 Daily

No. 72 1900 W. American
272-5337
Muleshoe, Texas



TOWN & COUNTRY FOOD STORES COUNTRY KITCHENS

ATTENTION:
COTTON FARMERS
Recent Rainfalls Have Been Invaluable To You As A Cotton Producer. The Needed Moisture Has Given Your Cotton Crop That Needed Push Toward A More Profitable Harvest.
NOW Is The Time To Look Into A Foliar Application Of 3-18-18.
BENEFITS:
*Slows Down Excessive Stalk Growth
Hastens Crop Maturity
Matures More Top Bolls
Aids In Final Turnout Of Your Cotton Production*
For More Information: Contact Ron Kidd-Custom Application
272-3705
965-2262



Ground Beef **\$1.99**
 lb. Extra Lean (Ground Round Quality)
 Not Less Than 90% Lean

Beef Rump Roast **\$1.99**
 lb. Boneless Lean & Tender

Chopped Ham **\$1.59**
 Oscar Mayer 8 oz.

Cooked Ham **\$1.59**
 Oscar Mayer 6 oz.

Morehead Potato Salad **49¢**
 14 oz.

Pimento Cheese **79¢**
 Salad Morehead 7 1/2 oz.



Leg Quarters
 USDA Grade A Fryers

59¢
 lb.

Breast Quarters
 USDA Grade A

63¢
 lb.

Pork Sausage
 Jimmy Dean

\$1.59
 16 oz.

\$3.15
 2 lb. roll

Eye Of Round Steak
 Or Roast

\$2.99
 lb.

Round Roast
 Boneless Bottom

\$1.89
 lb.

Round Steak
 Boneless Bottom

\$1.99
 lb.



SHOPRITE
Points Everything
Back To School
 Prices Good Thru August 19, 1981

ON SALE NOW!
 Beautiful, Fine
 Porcelain China

Now you can collect a beautiful set of china through this exclusive offer. Each week a different place setting piece will be featured at this special price and purchase requirement.

Matching accessories are also available to complete your collection. Each accessory is available throughout the program with no purchase requirement!

THIS WEEK'S FEATURE ITEM:
DESSERT DISH **69¢** EACH
 with each \$5.00 Grocery Purchase



Double S&H Stamps Every Wednesday Saturday Sunday

Always Fresh

Bread

2/89¢



Shurfine

Orange Juice

Frozen 12 oz. can **79¢**



Delsey Bath

Tissue

Assorted **89¢**

4 roll



Hi Dri

Paper Towels

2/99¢

2 rolls

Nestea 3 oz. jar **\$1.99**

Shurfine **Bleach** 64 oz. **59¢**

Shurfine Vegetable **Oil** 38 oz. **\$1.49**

Shurfine **Milk** Evaporated 2 13 oz. can **89¢**

Shurfine **Rice** Medium Grain 2 lb. bag **89¢**

Shurfine **Applesauce** 2 16 oz. **89¢**

Shurfine **Fruit cocktail** 16 oz. **69¢**

Mac & Cheese Dinner Shurfine Cut 7 1/2 oz. pkg. **3/79¢**

Green Beans 16 oz. can **3/89¢**

Hominy White Golden 15 oz. **3/89¢**

Peas Early June 17 oz. can **2/89¢**

Jelly Grape 32 oz. jar **\$1.19**

Bar-B-Que Sauce 18 oz. **69¢**

Mustard 16 oz. **49¢**

Affiliated **Milk**

\$1.99
 gal.

Giant Size 49 oz.



Shurfine **Crackers**

Saltine **59¢**
 16 oz. pkg.



Shurfresh **Biscuits**

Buttermilk Sweetmilk **6/\$1**

8 oz. can



Kleenex Facial **Tissue**

Assorted White **59¢**

200 ct. pkg.

Coke Pepsi
Dr. Pepper

6 PAC CANS **\$1.19**

(Your Choice)

Bananas
 Golden Ripe **29¢**
 lb.

Soda **79¢**
 2 liter

Spinach **3/\$1**
 15 oz. can Shurfine



WHAT'S HAPPENING IN THE...

CLASSIFIED SECTION

Deadline For Classified Ads Is 11:00 Tuesdays And Fridays

CLASSIFIED RATES
 1st Insertion, Per Word--\$1.15
 Minimum Charge--\$2.00
 2nd Insertion, Per Word--\$.13
 3rd Insertion, Per Word--\$.10
 Minimum Charge--\$1.80
 1/2 Cheaper to run Classifieds 3 times or more
CARD OF THANKS
 25 Words--\$3.00
 Over 25 Words Charged at regular Classified Rates
 Classified Display--\$1.55 per column inch
 Double Rate for Blind Ads
DEADLINE FOR INSERTION
 11 a.m. Tues. for Thurs.
 11 a.m. Fri. for Sun.
WE RESERVE THE RIGHT TO CLASSIFY REVISE OR REJECT ANY AD. NOT RESPONSIBLE FOR ANY ERROR AFTER AD HAS RUN ONCE.

1. PERSONALS
WE BUY USED FURNITURE AND APPLIANCES
 CALL 272-3030
HARVEY BASS APPLIANCE
 1-28t-tfc

Let us put your wedding in beautiful pictures. Call Oecia for your date. 385-5169, 512 Phelps, Littlefield, Texas 79339.
 1-28t-tfc

Custom farming, 8 row equipment. Reasonable rates call 272-5317 before 8 a.m. or after 7 p.m.
 1-16s-tfc

SKIN CARE & BEAUTY BY MARY KAY
 Dorris Carter
 (806) 246-3483
 Box 226 Amherst, Tx.
 1-29t-tfc

R.L. Scott will open his vegetable garden to the public Friday, August 7. Blue Lake Beans & Black-eyed peas. No Sunday callers or pickers.
 15-32t-4tp

Sherry's Art Shack
 800 W. American Blvd.
 272-4902

workshops
 Eva Kimbrough
 August 15th
 Fabric Painting
 Fee \$11.50
 10 a.m. - 5 p.m.

Jean Lyles
 September 9th
 Oils
 Fee \$19.50
 9:30 a.m. - 4:30 p.m.

Jean Green
 September 12th
 Oils
 Fee \$16.50
 9:30 a.m. - 4:30 p.m.

Lawanda Calton
 September 19th
 Oils
 Fee \$16.50
 9:30 a.m. - 4:30 p.m.

Charles Lyles
 October 10th
 Oils
 Fee \$19.50
 9:30 a.m. - 4:30 p.m.

3. HELP WANTED
HELP WANTED
 Muleshoe Independent School District is now accepting applications for male and/or female qualified bus drivers for the coming school year. Applicants must be able to obtain, prior to employment, a Texas Chauffeur's License, pass a Physical Examination provided for by the School, have a safe driving record from the Texas Department of Public Safety, and complete a twenty hour driving course provided by the school.
 Salary range is \$50.00 to \$75.00 per week with driving time being two to three hours per day.
 Application forms may be picked up at the bus garage or at the School Business Office.
 3-30s-6tc

HELP WANTED
 Auto mechanic. Experienced, with tools. Excellent pay plan and benefit program.
 Thornton Chevrolet
 201 Main
 Muleshoe, Texas
 272-4521
 3-30s-tfc

WANTED: Experienced cook or willing to learn. Also 1 full time waitress. Apply at Dinner Bell.
 3-33t-2tc

TEACHERS* BOOKKEEPERS* BANK PERSONNEL.....
 Need Extra Money?
 Anthony's is in need of a bookkeeper/cashier to work Saturday ONLY this fall. Make extra cash and receive employee discount on your purchases. To start late August
 3-33t-2tc

Alaskan and Overseas employment. Great income potential. Call 602-941-8014 Dept. 511. Phone call refundable.
 3-32t-4tp

Muleshoe Country Club needs man or woman to work in lounge. Approx. 40 hours.
 Call 272-4004 or 272-4250
 3-32s-tfc

Avon Representatives Needed in Muleshoe area. Call Nettie 272-3208 or Oneida 272-3346.
 3-28t-tfc

HELP WANTED: The Muleshoe Police Dept. is seeking someone for the position of Animal Warden. For more information contact: Chief of Police, 215 E. Avenue B
 3-30T-TFC

4. HOUSES FOR RENT
FOR RENT: 3 BR brick home. Call Floyd Gafford work 806-669-7441 home 806-665-6980
 4-33t-2tc

5. APTS. FOR RENT
FOR RENT: 1, 2, & 3 bedroom apartments. (utilities paid. Unfurnished except stove and refrigerator. Starting \$215 or less. Call collect 1-806-247-3666.
 5-22t-tc Friona, Texas.

8. REAL ESTATE FOR SALE
BY OWNER: Attractive living (w/fireplace), dining, kitchen comb., 3 bedroom, 2 bath, dbl. garage. Equity buy assume 9.875 percent loan. Shown by appt. only after 6 p.m. and all day Sat. & Sun.
 8-33t-tfc

Krebs Real Estate Sales and Appraisals
 201 W. Ave. C
 Muleshoe, Texas

House for sale by owner. Need to sell immediately! 3 bedroom, 1 bath. Good condition. 1913 W. Birch. Call 272-3843.
 8-24s-tfc

FOR SALE: Brick home, 1702 Ave. C. 2 Br., 2 bath, fireplace, garage, many extras. Custom drapes, ref. air, fence and outside storage. Call 272-4450 or 272-3921
 8-31s-tfc

HOUSE FOR SALE BY OWNER: 3-2-1 Excellent location. Brick, 2,000 sq. ft. Priced to sell. 1816 W. Ave. C. phone 272-4501 days; 272-3722 evenings
 8-21t-tfc

FOR SALE: 3 bedroom, 2 bath, brick, living room, den with fireplace, office, Richland Hills. 272-4701.
 8-21t-tfc

For all your real estate needs call:
GLAZE & GOFORTH
 112 AVE. C
 272-4208
 8-11-tfc

TOWN and COUNTRY REAL ESTATE
 HIGHWAY 214 NORTH MULESHOE, TEXAS
 3 bedroom, 2 bath, 2 car garage, fireplace and storm cellar. All for \$65,000.00 1714 W. Ave. G
 3 bedroom, 2 bath, brick V home. Has it's own well and lots of extras. \$64,000.00 1816 W. Ave. C
 Nice 3 bedroom, 2 bath, 2 car garage, brick veneer house in Country Club Addition, \$45,000
 Stucco house, 3 bedroom, 2 bath, remodeled inside and out, priced at \$25,000 207 W. 12th.
FARMS RANCHES HOMES
JOHN W. SMITH, Broker
 806 272-4678
 Also 272-4307 OR 272-3725
 8-27s-tfc

3 bdrm, 2 bath, 2 car garage, stucco 310 W. 16th Tommy Gunstream 272-3006 after 5
 8-31s-tfc

Spacious and very nice, well arranged home in a nice location. Perfect for a growing family. 3 bedroom, 1 3/4 bath, kitchen and den combination. Approximately 1,642 sq. ft. living area.
 Call 272-5049 after 5 p.m.
 8-29s-8tc

We want your business. REMEMBER REID REAL ESTATE THURSDAY 272-3142 OR George Nieman 965-2488 OR Dianne Nieman 965-2488
 8-19s-tfc

SMALLWOOD REAL ESTATE
 232 Main 272-4838
 Joe and Ricky Smallwood
 3 bedroom brick home one bath, 1 car garage.
 2 bedroom stucco, one bath, Country Club Addition.
 See or Call Joe or Ricky
 8-19s-tfc

BY OWNER: Attractive living (w/fireplace), dining, kitchen combination, 3 bedroom, 2 bath, dbl garage. Equity Buy. Assume 9.875 percent loan. Shown by appointment only after 6 p.m. and all day Saturday and Sunday 272-4428
 8-32s-tfc

HOUSE FOR SALE BY OWNER: 3 bedroom 1 bath at 309 W. 7th Call after 6 p.m. 272-5091.
 8-32s-tfc

J.B. SUDDERTH REALTY INC.
 Box 627
 109 Fifth St.
 Farwell, Texas 79325
 Phone (806) 481-3288 or 481-9149
 160 acres irrigated with circle. East of Lariat, 200 ft. plus water
 181 acres irrigated, leased circle sprinkler, 2 wells, Hwy 70-84 West Muleshoe
 160 acres northwest of Muleshoe, 2 wells, lays good on FM highway.
 8-49s-tfc

9. AUTOMOBILES FOR SALE
 1978 250 motorcycle w/low mileage and good condition Call 272-3159 or go by Southside Gulf.
 9-33t-tfc

FOR SALE: 1976 Matador 4 dr. sedan, bucket reclining seats, good condition. Call 272-4707 day or 272-3166 after 6.
 9-32t-4tp

FOR SALE: Motorcycle - 1977 Kawasaki KZ 1000, cruise, vetter farrings, saddle bags and box, and custom seat. Call 385-4659 after 6 p.m. Roland Bell, Littlefield \$2,400.00
 11-11s-tfc

A new broom won't sweep clean unless someone uses it.

4. HOUSES FOR RENT
 House for rent. 3-2-2 brick. Country Club Addition. 965-2156
 4-31s-4tc

10. FARM EQUIPMENT FOR SALE
 2270 John Deere Swather w/14' header. Excellent condition. 6 1/4 mile side roll sprinklers, self-leveler on all good condition.
 925-6640
 10-33t-2tc

FOR SALE: 5 ton bulk feed tank \$500 965-2145
 10-33t-2tc

11. FOR SALE OR TRADE
FOR SALE OR TRADE to be moved. Two 2-bedroom houses. 1 good condition.
 925-6640
 8-32t-4tc

FOR SALE: Alfalfa Hay
 Ricky Bennett
 Call 806-825-3822
 11-20t-tfc

12. HOUSEHOLD GOODS
BURROWS UPHOLSTERY AND FURNITURE REPAIR
 118 W. AVE. C in the rear
 PHONE 272-4255
 12-30s-tfc

Unclaimed furniture. New covers. Antique clubchair-velvet cover. Occasional chair-black & gold. Ranch oak divan, makes bed-vinyl cover. See at Burrows Upholstry Shop, 118 W. Ave. C. in rear.
 12-32t-8tc

15. MISCELLANEOUS
WANTED TO BUY: used aluminum pipe of all sizes. Also side roll sprinklers of all sizes. No quantities too large. Top prices paid.
 Stateline Irrigation
 272-3819 or 272-3450
 15-33t-tfc

Piano Lessons Experienced
 Call 272-3229
 15-32t-tfc

FRANK'S REFRIGERATION APPLIANCE & SERVICE PARTS & REPAIR
 315 W. 3rd Ph. 272-3822
 15-7t-tfc

FOR SALE: Electric cook stove 505 Austin St.
 272-4784
 15-32s-2tc

Woodwind Buffet clarinet for sale 272-4864
 15-32s-2tc

Used air conditioner for sale.
 Williams Bros. Office
 Supply 272-3113
 15-32s-tfc

FOR SALE: 1974 Honda motorcycle. Call 272-3222 or come by Southside Gulf
 9-29t-tfc

Want a propane system? check with
SMITH LP GAS MULESHOE
 15-30s-tfc

Honey for Sale
 Nick Landers
 334 W. Ave. J.
 272-3096
 15-32t-tfc

Nursing Home News By Joy Stancell

Marie Ingram was visited by Jeff Whatley, Nan Gatlin, Maye Provence, Margie Precure, Juanita Florance, Maud Kersey, Mr. and Mrs. Holland, Maud Young, Mrs. C.W. Wilhite, Jerry Hutton, Bro. Kent. Stacey Campbell came Saturday morning and took Marie out to her house.

 Thursday afternoon Bro. Williams and members of the Nazarene Church came to have a devotional with the residents.

 Friday afternoon the J.O.Y. Choir from the First Baptist Church came to have a devotional and singing with the residents. Mrs. Lena Hawkins directed the devotional

 Sunday morning E.B. Wilson came to have Bible Study with the residents. Their lesson was titled "When God Seems Far Away."

 Sunday afternoon The Calvary Baptist Church came to have singing with the residents.

FOR SALE: Tam 105 Wheat Seed. First year from Certified. This seed has been cleaned and sacked. Can be picked up at King Grain Co. Call 925-6777
 17-32t-tfc

FOR SALE: Like new Dixie Powder table and chair. White with gold trim (2 drawers with mirror in center). 3 drawer chest to match. Twin brass headboard and numerous baby items. Call 806-933-4641.
 15-30s-tfc

FOR SALE: Tam 105 Wheat Seed. First year from Certified. This seed has been cleaned and sacked. Can be picked up at King Grain Co. Call 925-6777
 17-32t-tfc

FOR SALE: Like new Dixie Powder table and chair. White with gold trim (2 drawers with mirror in center). 3 drawer chest to match. Twin brass headboard and numerous baby items. Call 806-933-4641.
 15-30s-tfc

FOR SALE: Like new Dixie Powder table and chair. White with gold trim (2 drawers with mirror in center). 3 drawer chest to match. Twin brass headboard and numerous baby items. Call 806-933-4641.
 15-30s-tfc

FOR SALE: Like new Dixie Powder table and chair. White with gold trim (2 drawers with mirror in center). 3 drawer chest to match. Twin brass headboard and numerous baby items. Call 806-933-4641.
 15-30s-tfc

FOR SALE: Like new Dixie Powder table and chair. White with gold trim (2 drawers with mirror in center). 3 drawer chest to match. Twin brass headboard and numerous baby items. Call 806-933-4641.
 15-30s-tfc

FOR SALE: Like new Dixie Powder table and chair. White with gold trim (2 drawers with mirror in center). 3 drawer chest to match. Twin brass headboard and numerous baby items. Call 806-933-4641.
 15-30s-tfc

FOR SALE: Like new Dixie Powder table and chair. White with gold trim (2 drawers with mirror in center). 3 drawer chest to match. Twin brass headboard and numerous baby items. Call 806-933-4641.
 15-30s-tfc

FOR SALE: Like new Dixie Powder table and chair. White with gold trim (2 drawers with mirror in center). 3 drawer chest to match. Twin brass headboard and numerous baby items. Call 806-933-4641.
 15-30s-tfc

FOR SALE: Like new Dixie Powder table and chair. White with gold trim (2 drawers with mirror in center). 3 drawer chest to match. Twin brass headboard and numerous baby items. Call 806-933-4641.
 15-30s-tfc

FOR SALE: Like new Dixie Powder table and chair. White with gold trim (2 drawers with mirror in center). 3 drawer chest to match. Twin brass headboard and numerous baby items. Call 806-933-4641.
 15-30s-tfc

FOR SALE: Like new Dixie Powder table and chair. White with gold trim (2 drawers with mirror in center). 3 drawer chest to match. Twin brass headboard and numerous baby items. Call 806-933-4641.
 15-30s-tfc

FOR SALE: Like new Dixie Powder table and chair. White with gold trim (2 drawers with mirror in center). 3 drawer chest to match. Twin brass headboard and numerous baby items. Call 806-933-4641.
 15-30s-tfc

FOR SALE: Like new Dixie Powder table and chair. White with gold trim (2 drawers with mirror in center). 3 drawer chest to match. Twin brass headboard and numerous baby items. Call 806-933-4641.
 15-30s-tfc

FOR SALE: Like new Dixie Powder table and chair. White with gold trim (2 drawers with mirror in center). 3 drawer chest to match. Twin brass headboard and numerous baby items. Call 806-933-4641.
 15-30s-tfc

FOR SALE: Like new Dixie Powder table and chair. White with gold trim (2 drawers with mirror in center). 3 drawer chest to match. Twin brass headboard and numerous baby items. Call 806-933-4641.
 15-30s-tfc

Tuesday afternoon The "Pink Ladies" from the Auxillary came to work on their beauty shop. They about 20 ladies shampoos and lovely hair do's.

Wednesday afternoon Ann Hall, Sandy, Bro. Crenshaw and 4 young people from the Lazbuddie Methodist Church came to have a Sing-A-Long with the residents.

Mrs. Betta Lancaster was visited by Mr. and Mrs. Jessie McReynold, Mr. and Mrs. E.E. Wright, Joyce Ferrill and Mr. Lancaster.

Bertie Hendrix went out to Leon and Judy's for Sunday dinner. Audrey and Joyce Albertson were guests too. Jerry Hutton visited her Monday at the Nursing Home.

Annie Brown was visited by Nina Aduddle, her daughter Sybil Simpson, Jerry Hatton.

Lona Embry brought craft ideas to the residents last week.

Mrs. Wenner was visited by Nelda Merriott, her son and his wife.

Clara Weaver was visited by Pat and Bill, Jeff, Amy and Chris. They came Wednesday and left Tues. Sunday Clara went out to her house for dinner. All of her family was there except Linda.

Lula Embry was visited by her granddaughter Estelle and Brian and their little boy.

Dottie Wilterding was visited by Mr. and Mrs. D.B. Head and the Heads little great granddaughter, Wednesday.

Mrs. Lena Hawkins,

Mrs. Maude Kersy, Jerry Hutton, Mrs. Shipp were among those visiting the Nursinf Home this week.

The Spudnut Shop brought spudnuts to the residents Monday. Thank you very much.

Lena Thomas' family gave her a birthday party Thursday. Her brother and sister-in-law from California are here visiting.

Ruby McCamish went to her daughter barbara and spent two nights.

Keith Fuller was visited by Kenneth Precure and her granddaughter and two great grandsons Wed.

Betty Manasco, a nurses aide in the Nursing Home is in the hospital. Hurry and get well Betty. We miss you.

Edith Bruns returned to the Nursing Home after being hospitalized. Welcome back.

Ruby Gare was visited by Ronnie, Louise, Mrs. Mabel Neiman, Francis Stevens, Lena Hawkins, Mrs. Shipp. Mrs. Gare went out to Louise's for Sunday dinner and supper.

Alma Henley's grandson Robert and his family came and got her and took her to Celso's over the weekend, for a family reunion. Her grandson Jim brought her back to the Nursing Home.

RECIPE


By Sarah Anne Sheridan
 Slaw is a complement to a meal and often the key to a successful meal. Cabbage is relatively cheap and retains its crispness if properly prepared. Use home cooked or prepared dressings--oil is not recommended. Here are a few basic rules and hints for cabbage combinations.
 A salad should fit into meals for flavor, color, texture and food value.
 Salads should be simple, attractive, easy to eat, fresh and crisp with the right dressing.
 In-season ingredients are budget-wise. Save your exotic, expensive creations for special occasions.

- Cabbage Combinations**
1. Cabbage, onion, tomatoes, green pepper.
 2. Red cabbage, white cabbage, green pepper, onions.
 3. Cabbage, carrot, peanuts.
 4. Cabbage, cucumber, radish.
 5. Cabbage, celery, turnip.
 6. Cabbage, apple, raisins.
 7. Cabbage, pepper, cottage cheese.

People only get old; life is continually new and full of change.

SEED WHEAT TAM 105
 One of the top in yields for dry land or irrigated. First year from certification planted on summer tilled ground. \$4.75 per bu., bulk, F.O.B., Dimmitt, Texas
Dimmitt Agri Industries, Inc.
 P.O. Box 728
 Dimmitt, Texas 79027
 (806) 647-2141

TOWN & COUNTRY, is seeking individuals who are interested in a management career with a fast growing convenience food store chain in this area. If you are aggressive, hard working, goal oriented and willing to learn & contribute, call after 6:00 at 272-5537 or 385-6740



Dear Friends,
 Your kind expression of sympathy is gratefully acknowledged and deeply appreciated.
 The Daughters of Mary Stevenson
 Bernice Fritz
 Frieda McAlfee
 Judy Schmitz