

# EASTLAND TELEGRAM

NUMBER 65

EASTLAND, TEXAS 76448 - THURSDAY, AUGUST 15, 1968

TEN CENTS (10c)

## WOMEN'S SOFTBALL GAMES UNDERWAY AT LOCAL STADIUM

The two Wednesday games will play at 8 p. m. Friday and the winners will play at 8 a. m. Saturday.

Thursday night, Eastland Whitecaps will play Comanche at 8, followed by Eastland Wranglers vs. Stephenville Farmers at 10. The losing teams will play at 10 p. m. Friday, while the winning teams play at 10 a. m. Saturday.

The consolidation games will begin at noon Saturday, with the losing teams of the Saturday 8 a. m. game playing. The losers of the 10 a. m. game will play at 2 p. m. Losing teams from these two games will meet at 6 p. m.

Semi-finals will begin Saturday afternoon and finals will open at p. m. Saturday.

The public is urged to attend these games.

## Rites Pending For Mrs. White, Carbon Resident

Mrs. Wade (Hattie B.) White, 79, of Carbon, died at 12:30 a. m. Wednesday in Graham Hospital in Cisco. Funeral arrangements are pending at Arrington Hamner Funeral Home.

Born Aug. 19, 1891, in Mississippi, she married Wade White Aug. 10, 1915, in German.

Mrs. White had been a resident of Carbon for the past 39 years and was a member of the Carbon Baptist Church. She was a former resident of Lueders.

Survivors include her husband; two sons, Edgar White of Odessa and Basil White of Abilene; two daughters, Mrs. Jim Everett of Olden, and Mrs. Bill Clark of Cisco; five sisters, Mrs. Cliff Harter of Cisco, Mrs. Carra Price of Austin, and Mrs. Ernest Lindsey, Mrs. Hershell Jones and Miss Pearl Payne, all of California; one brother, Earnest Payne, Wichita Falls; 8 grandchildren and 5 great-grandchildren.

## Grid Ticket Option Holders Are Advised

Persons who purchased season tickets in Maverick Stadium for the 1967 season, have the option of purchasing the same seats for the following season, officials report.

If you desire the same seats for the 1968 season, you are requested to either mail your check in the amount of \$6.25 per seat to Box 31, Eastland, or pick up your tickets in person at the business office in the high school by Tuesday, Sept. 10. After that date, all season tickets not picked up will be open for sale to the general public.

Checks should be made payable to Eastland High School Athletic Fund, according to Supt. Wendell T. Siebert.

## Rev. Gates To Be Installed Here Friday

Installation services for the pastor of the First Church of God, the Rev. William L. Gates, will be held at 7:30 p. m. Friday. The Rev. Henry Engbrecht of Odessa will conduct the service.

The public is cordially invited to attend.

## FULLEN MOTOR Co. LAUGH-A-DAY

last job?" asked the personnel man of the job seeker. "Illness, sir," was the reply. "What illness?" "I don't rightly know, sir," the applicant answered. "They just said they were sick of me."



Listening to a review of the "Fiddler on the Roof," presented at the recent Texas County Agricultural Agents Association meeting in Abilene are, left Mrs. Roger Blackmon of Dickens, formerly of Eastland County, and Mrs. DeMarquis Gordon of Eastland. (Reporter-News Photo.)

## Detailed Statistical Data Is Given On Olden, Eastland School Districts

The Saturday, Aug. 24, consolidation election at which voters in Olden and Eastland will decide whether schools in these two towns will be combined, is already putting a lot of question marks in residents' minds — and more are sure to come as time for the election draws near.

Petitions asking the elections were presented to the County Judge recently, and he, finding the petitions to be in good order with the proper number of qualified petitioners' signatures, called the vote. The measure will have to carry in both towns to be accomplished. The petitions were presented by citizens, and the one from Olden contained 42 names, the one from Eastland, 24.

The Olden School Board has issued a statement saying that it is opposed to consolidation at this time. The Eastland board's statement said that while it did not initiate the petitions and is not taking an active part in the election, it would welcome the Olden School into its system, and urged Eastland voters to vote for the consolidation as an expression of their willingness to have the Olden system in Eastland.

Understandable, talk of the school moves prompts speculations and theories. Some accurate. Some not so accurate. In order that voters in both areas may have a record of the data, an extensive survey has been made from statistical reports issued by the Texas Education Agency. Last one available for is the year 1965-66.

Comparisons of the two school districts in data from the report:

	Olden	Eastland
Cost per student:		
1965-66	\$617.07	\$354.87
1964-65	536.78	329.43
1963-64	507.09	325.36
1962-63	513.76	325.71
1961-62	523.06	319.49
Average Daily attendance:		
1967-68*	143	703
1966-67	145	740
1965-66	137	770
1964-65	143	773
1963-64	140	748
1962-63	138	746
(*1967-68 figures are from personal reports from school officials.)		
Professional unit's employment:		
1965-66	11	36
1964-65	11	35
1963-64	16*	33
1962-63	10	36
1961-62	9	36
(*This is believed to be a typographical error and probably should be either 10 or 11.)		
Tax Rate:		
1967-68	\$1.50	\$1.75
1963-67	1.50	1.55
1962-63	1.50	1.50
Bonded indebtedness and sinking fund balances as of 8-1-68:		
	Olden	Eastland
1967-68	\$1.50	\$1.75
1963-67	1.50	1.55
1962-63	1.50	1.50

## AUG. 20 IS DEADLINE FOR ABSENTEE VOTING

Eight people had voted absentee in the Olden-Eastland consolidation issue, according to a Tuesday afternoon report from the County Clerk's office. The election is scheduled for Aug. 24 and persons who will not be in town on that date may vote absentee at the Clerk's Office between 8 a. m. and noon and 1 and 5 p. m., Monday through Friday. Deadline for absentee voting is Aug. 20.

The election was set by the County Judge after petitions were signed by voters in each district. The petitions ask that the Olden Schools be closed and the district consolidated with the Eastland Independent School District. The Aug. 24 voting will be conducted in both towns. The absentee votes included six from the Olden district and two from the Eastland district.

## 3.5 Inch Rain Over County Called Peanut Crop-Maker

A cool front, which arrived shortly after midnight Saturday, lowered temperatures and brought welcome rain by Monday throughout the county. Official county weather observer James Dabney said that Saturday's 104 degrees, high for the year, fell to 86 for Sunday's high. Low during the night was 67.

Rainfall in Eastland was 1.38 inches Monday and 2.12 Tuesday, bringing the two-day total to 3.50 by 7 a. m. Wednesday. Cisco measured 1.60 Monday and .80 Tuesday for a total of 3.40. Nimrod reported a high 4.10 for their two-day total and Mitchell and Horn communities each reported over an inch Monday followed by more Tuesday.

Lightning and high winds which accompanied the rain did little reported damage in Eastland although at least one sign was blown over. The only reported damage in Cisco was by J. D. Yardley, owner of the Spot Restaurant, who said lightning apparently struck some part of the air conditioning system at the restaurant, causing a failure in its operation.

R. G. Lyerta of Eastland, chairman of the ASC said, "This rain is the grandest thing which could have happened to the county peanut crop at this point, especially the non-irrigated peanuts. The moisture will enable the peanuts to mature more fully in September when the weather is cooler."

Eastland County Farm Bureau president, T. C. (Jack) Cozart said, "This rain should be worth an estimated million dollars to cattlemen and farmers in the county. All the grazing land had practically dried up and the peanut farmers were really beginning to need the moisture. Crops throughout the county were running bank full according to reports."

## Rites Wednesday In Eastland For Mrs. Purdom, 78

Mrs. Geneva Purdom, 78, a longtime resident of Eastland County, died Monday, Aug. 12, in Hickman Nursing Home in Cisco where she had been for the past two weeks. She had been in ill health about eight months.

Funeral services were held at Arrington Hamner Funeral Chapel in Eastland at 2 p. m. Wednesday. Burial was in Flatwood Cemetery.

She was born Feb. 25, 1891, at Rector, Ark., moving to Eastland some 41 years ago. She married Robert H. Purdom at Rector May 15, 1908. He preceded her in death on Feb. 3, 1963.

Survivors include one son, Luther Purdom of Carbon; two daughters, Lucy Patton and Margaret Ensor, both of Eastland; one sister, Mrs. Arvis Pruett of Rector; two brothers, Ervin Smith of Eastland and Oda Smith of Alvarado; 20 grandchildren, 46 great-grandchildren and one great-great-grandchild.

## 3 Local Youths Play in Breck Golf Tourney

Three Eastland boys placed in the top six in the Breckenridge Junior Boys Golf Tournament, which had 150 players.

Butch Eidson, son of Mr. and Mrs. Jim Eidson, placed third with a score of 170 for 36 holes. Craig Lund, son of Dr. and Mrs. F. H. Lund, was fifth with 174 for 36 holes; and Randy Rexroat, son of Mr. and Mrs. Orval Rexroat, was sixth with 175.

First place winner was Craig Ford of Arlington, with 156.

## Lake Permits for Leon Sale Aug. 15 At Lakekeeper's

Fishing and boating permits will go on sale Aug. 15 at Lake Leon according to announcement of patrolman James Johnson. These permits extend from Sept. 1968 to Sept. 1969.

Price of fishing permit is \$5 which includes man and wife; boating permits are \$5 each. Permits for fishing may be purchased at any place on the lake but boating permits must be obtained from patrolman Johnson or at the Information Office.

## Freyschlag Insurance

INSURANCE  
Presents the WEATHER - CONTINUED HOT. Chance for late evening thundershowers slim.

## Morton Valley Water Plan Funds Okayed

The Farmer's Home Administration has awarded a loan of \$98,500 plus a grant of \$81,000 to the Morton Valley Water Supply Corp., it was announced this week.

Word came Monday from Sen. Ralph Yarborough's Austin office reporting the approval for the development work.

Retired Col. Roy R. Plumley is president of the nonprofit corporation and the funds will go for development of a water system covering the rural section of the county serving 83 farms and other homes, it was announced.

Application was made through the local FHA office, with Mr. O. M. Boyle, Eastland County FHA supervisor.

Construction is expected to begin soon.

## Funeral Tuesday For Victims of Auto Accident

Funeral services for Gary Leon Jones, 9, and Chris Edwin Jones, 6, were held at East Cisco Baptist Church Tuesday (today) at 2 p. m., with the pastor, Rev. James Hall, officiating. Burial was in Oakwood Cemetery under direction of Rust Funeral Home.

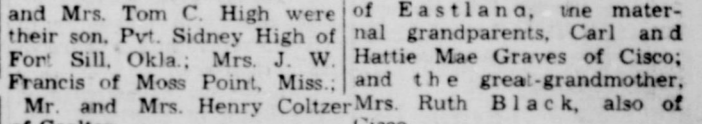
The two young boys were killed and their mother seriously injured Friday about 5:35 p. m. when the car in which they were riding failed to negotiate a curve on U. S. 183 about 2.3 miles south of Cisco.

Gary Leon Jones was born Oct. 26, 1958 in Eastland and Chris Edwin was born March 14, 1962, in Eastland.

Both boys are survived by their parents, Mr. and Mrs. Sammie L. Jones of San Antonio; the paternal grandparents, Mr. and Mrs. S. B. Jones of Eastland, the maternal grandparents, Carl and Hattie Mae Graves of Cisco; and the great-grandmother, Mrs. Ruth Black, also of Cisco.

## Vandals Strike ...

Both front and rear windshields were broken in a Sheriff's Department car Saturday night while the car, driven by Deputy Loy Williams, was parked beside the Cisco Police Department. Two Cisco youths were believed to have been involved.



## Visit Grandparents

Philip and Karen Timmons, students at Texas Tech in Lubbock, visited their grandparents, Mr. and Mrs. Carl Timmons and Dr. and Mrs. R. C. Ferguson. Philip will receive his B.S. degree in Chemical Engineering from Texas Tech Aug. 25.

## LOOK WHO'S NEW

Mr. and Mrs. Jim Roberts of Dallas announce the birth of a son, Jason Meredith, Aug. 8. He weighed eight pounds and twelve ounces.

The Roberts have another son James, two years old.

Maternal grandparents are Mr. and Mrs. I. C. Inzer of Eastland. Paternal grandparents are Judge and Mrs. Earl Roberts of Longview.

## Visit Grandparents

Philip and Karen Timmons, students at Texas Tech in Lubbock, visited their grandparents, Mr. and Mrs. Carl Timmons and Dr. and Mrs. R. C. Ferguson. Philip will receive his B.S. degree in Chemical Engineering from Texas Tech Aug. 25.

## Visit Grandparents

Philip and Karen Timmons, students at Texas Tech in Lubbock, visited their grandparents, Mr. and Mrs. Carl Timmons and Dr. and Mrs. R. C. Ferguson. Philip will receive his B.S. degree in Chemical Engineering from Texas Tech Aug. 25.

# CLASSIFIED ADS

### Announcements

**MASONIC LODGE NO. 467**  
Meets second Thursday of each month at 8 p. m. in the Masonic Hall. Call Wayne Jackson, W. M. at 629-1740 or 629-1145 or L. E. Huckabay, sec'y, 629-1391 for information.

**EASTLAND ROTARY CLUB**  
Meets each Monday noon at White Elephant Restaurant in Eastland.  
Grover Hallmark, President

### Notice

NOTICE: Motorcycle Lime run, Sunday, Aug. 18, beginning at 1:30 p.m. at the National Guard Armory in Cisco. 64

NOTICE: Planning a wedding? Eastland Telegram has napkins for both shower and reception. 11

NOTICE — "If they're WESTERN-BILT, They're Guaranteed." Call western mattress Co. for complete mattress service. Phone 629-1740 or 629-1398. 11

NOTICE: Reads at big savings now at Horton Tire Co. Eastland. 11

### For Sale

FOR SALE at Clyde: Nice two bedroom house, garage, garden, good well, near to school, one acre fenced. Earl

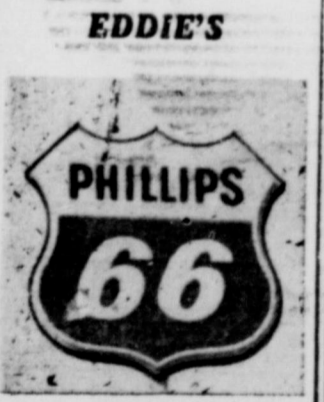
FOR SALE: Two bedroom house in Ranger. Or will trade for house in Eastland. Call Ranger, 647-1670 after 6 p.m. 65

FOR SALE: Take up payments on repossessed merchandise: console color TV, \$17 month; 20" portable TV, \$15 month; three different stereos, each \$10 month; portable black and white TV, \$9 month; Good-year Service Store, Eastland, 629-2662. 11

FOR SALE — Bon du Graph plural purpose paper, 8 1/2" x 11", 500 sheets per package. Limited quantity — \$1.00 a package. Eastland Telegram, 11

FOR SALE: Precision Swiss Photo Watch personalized for you. The message or emblem of your choice mysteriously appears on the face of the watch every 20 seconds; is viewable for 10 seconds, then disappears to reappear later. Your advertising or personal message appears 2880 times a day. Call The Eastland Telegram for a demonstration. Cost \$18.70 each. 11

FOR SALE — Mimeograph machine in like new condition Bargain at \$50. See it at the Ranger Times office in Ranger. 11



Now Offers You  
**MOHAWK TIRES & TUNE UPS**  
Complete Service  
Call 629-8838  
—Free Pickup—  
GUARANTEED SERVICE & TOP PHILLIPS PRODUCTS  
West Main St.

**GARAGE SALE** at 104 South Hillcrest. Lots of good junk. Come early for choice items. Sunday August 18th from 1:00 p.m. 'til dark. Metal detector, electric motors, electric drill one fourth inch, lawn chairs, slide projector, record albums, 8x10 tent, and many other items. 66

**FOR SALE:** Like new popcorn machine. Been used only a short time. Call RE 4-5732, Gorman; after 6:30 call 2518, Desdemona. 66

**FOR SALE:** Large, fiber, dark chair pad to protect your carpet at the office. The Telegram has one, and much more. 11

**FOR SALE:** Nice two-bedroom home. 305 S. Virginia. Phone 629-2206. 11

**FOR SALE:** Lake house, beautifully decorated, paneled walls, one and one-half baths, custom cabinets, two porches, sidewalks, patio, 100 trees. Fenced, new bath fixtures, lighting, 220 wiring, new roof. Barn red color, white trim. South side of lake across dam. Open for inspection. Price: \$7,950. Call Carl Garrett, 629-1485. 11

**FOR QUICK SALE** due to illness: Gorman Dairy King with dining room. Call RE 4-5732, Gorman; after 6:30 call 2518, Desdemona. 66

**FOR SALE —** Desk calendar Refills: one-half price for one-half year left. Make excellent memo pads and diaries. Includes small calendars for years 1963 through 1973. Valuable aids for program chairmen, etc. Eastland Telegram. 11

**FOR SALE—4 bedroom home.** 861 W. Commerce. Phone 629-2290. 11

**REAL ESTATE HOMES FOR SALE**  
Two bedroom and bath in Eastland on West Main. Make offer.  
Two bedroom and bath, furnished, \$3,700.00 S. Ammerman, Eastland.  
Nine room duplex on Bassett St., Eastland \$5,500.00.  
Three bedroom and bath, 3/4 mile out of Eastland; 2 1/2 acres \$4,500.00.  
Two bedroom and bath, Ranger \$3,700.00.  
Two bedroom and bath, S. Oak Lawn Eastland.  
Three bedroom, 2 bath, carpets, central heat and cooling \$12,900.00 S. Oak Lawn.  
Three bedroom, 1 1/2 bath, brick, Olden.  
Nice four bedroom.s 1 1/2 baths, Ranger \$15,900.00.

**LAND FOR SALE**  
20 acres in Olden with drive-in movie and 2 bedroom living quarters.  
15 acres on pavement five miles south of Eastland.  
We have three 80-acre places; will G.I. No improvements.

160 acre well improved stock farm, all Coastal and other improved grasses, plenty water.  
160 acre improved peanut farm. 46 acre allotment. Nice home.  
200 acre stock farm south of Ranger. Coastal and other improved grasses \$125.00 acre. We have irrigated peanut farms from 80 to 320 acres; also all size ranches anywhere in Texas. Ask us about them.

**KINCAID REAL ESTATE**  
100 S. Seaman — 629-1788  
J. W. Elder, Robert Kincaid  
647-1321 629-2721

**ONE - STOP SERVICE**  
FOR Total-Car Care! That's D & M SERVICE CENTER  
802 W. Main St.  
Humble Products  
General Repair  
Air - Conditioning  
Brake Work  
Road Service: 8 to 5  
Open 24 Hours  
• OBIE DUNCAN  
• ROBERT MANGUM  
Steam Cleaning  
Wash - Lubrication  
Dial 629-8866  
Complete line accessories  
Tires Batteries

**M. L. TERRELL REAL ESTATE**  
FARM BURAU BLDG.  
Highway 80 East  
Tel. 629-1725 Day or Night  
Eastland, Texas

**ROLLINS & SONS MOBIL SERVICE**  
Call for Appointments on Wash - Grease Oil Changes  
601 W. MAIN  
9188 - 629

**FOR SALE:** Take up payments on repossessed merchandise: console color TV, \$17 month; 20" portable TV, \$15 month; Three different stereos, each \$10 month; portable black and white TV, \$9 month; Good-year Service Store, Eastland, Texas. 11

**FOR SALE:** Several used portable TV sets. Goodyear Service Store, Eastland, 629-2662. 11

**FOR SALE:** Three lots—close in. 629-2168. 65

**FOR SALE:** Two bedroom, one and one-half story house, hardwood floors throughout, three rooms and upstairs carpeted, aluminum siding exterior, aluminum screens, boxed carnicies fenced back yard, 4 large oak trees, stoveroom, garage, paved street, yardlight, lot size 65 ft. x120 ft. Insulated attic, refrigerated air-conditioning. Newly remodeled kitchen with built-in cook top and oven, plenty of cabinet space, double sink, remodeled bathroom with ample cabinet space, fluorescent lighting throughout, 220 wiring, washer and dryer connections, guaranteed free from termites. Good neighbors. Ideal for retired couple. See to appreciate at 303 Sodosa. Call 629-1201 for appointment. 11

**FOR SALE:** Several used portable TV sets. Goodyear Service Stores, Eastland, Texas. 11

**CARD OF THANKS**  
We wish to express our sincere appreciation to friends for each act of kindness and each expression of sympathy during our loss of our loved one, J. F. Francis.  
May God bless each of you.  
The family of J.F. Francis.

**FOR SALE:** Eight months old, no frost, refrigerator. Royal Typewriter. Both like new. Bargains. Moving. 417 S. Lamar St., Eastland. 11

**FOR SALE:** Good used office desks with chairs. See at newspaper office. 11

**FOR SALE:** One 1961 three-quarter ton pickup. Four speed. With cab-over camper. Sleeps four. For sale cheap. See at 1208 S. Bassett or call 629-1230. 11

**FOR SALE:** Beautiful, new office credenza in grey, still in its carton. Best addition to office equipment since desk were invented. See at The Telegram. 11

**DON'T** merely brighten carpets... Blue Lustre them... no rapid re-soiling. Rent electric shampooer \$1. Coats Furniture Co. 99

**FOR SALE:** Railroad car seats, reclining, only \$15.00, F. O. B. in railroad car. Built to last. Ideal for home, office, lake, etc. 307 South Hillcrest. 11

**FOR SALE:** City Ice and Grocery, 410 West Commerce, Eastland. Stock and equipment at inventory price. Tonnage lease. Contact Jimmy Kendrick at above address, Monday through Sunday, 6 a. m. to 7:30 p.m. 69

**NOTICE:** Professional poodle grooming. Reasonable rates. 1700 North Parks, Breckenridge, Texas. Call Hickman 9-4692. 65

**HOMES & LAKE CABINS**  
2 bedroom home South Daugherty ready to move in.  
3 room and bath, 8 lots Carbon \$3,150.  
5 room home and 5 acres, Olden.  
2 lake cabins, Lake Leon.  
**FARMS AND RANCHES**  
37 a. 6 miles southwest of Eastland. \$4,200.  
80 a. near Scranton. \$82.50 per acre.  
80 a. 6 miles north Eastland, 3 bedroom, \$12,600.  
39 a. south of Ranger, 3 bedroom home, \$15,000. Terms.  
153 a. near Rising Star, 21 a. peanuts, 20 a. Coastal \$137.50 per ac.  
96 a. Carbon, 50 ac. Coastal, 191 a. 35 a. peanuts 145 ac. cultivation. \$125.00 per a. near Romney.  
Have 650 a. 880, 1000, 1240 acre tracts Eastland Co. larger tracts if desired. Bottom or on Sand.

**Wanted**  
WANTED: LVN's — top wages — apply at Lawndale Nursing Home, Gorman, Texas. 70

**HELP WANTED:** LVNs wanted. 1967-1968 nursing school graduates accepted. Starting salary, \$1.70 per hour. Apply to E. E. Frost, Hickman Nursing Home. 11

**WANTED:** Good used electric drinking fountain. Call 629-1707. 11

**WANTED:** A teaching position in primary education. Experienced. Write P. O. Box 633, Rule Texas, 79547; or call 3501, Rule. 70

**WANT-AD BARGAIN**  
Every Sunday is Want-Ad Bargain Day! 5¢ per word (20 words minimum) in Cisco, Eastland and Ranger newspapers—all for \$1.00  
**3 papers .... \$1**  
(Copy deadline: Friday Noon)

**WAYNE'S T.V. SERVICE**  
in EASTLAND, TEXAS  
Offering Day and Night Black and White and Color TV Repair Service  
Phone 629-1583 Day or 629-1154 Nights & Weekends  
Complete Television & Antenna Repair Service  
**WAYNE CALDER**  
107 E. Sodosa

**ROY LEE SMITH**  
distributor for Dayton Electric Motors offering complete motor replacement (Other brand motors available)  
Complete Line in stock at  
**Smith Plumbing Co.**  
114 N. Seaman 629-1722

**GUARANTEED ELECTRIC SERVICE • BOND ELECTRIC**  
629-1724  
407 Foch

**ROLLINS & SONS MOBIL SERVICE**  
Call for Appointments on Wash - Grease Oil Changes  
601 W. MAIN  
9188 - 629

**DON'T WAIT**  
Now is the time to tune-up and repair your boats and motors. ALL TYPES, FREE ESTIMATES.  
Boat & Motor Sales New and Used  
**TROY GALYEAN**  
442-3016 after 5:30 p.m.  
804 Ave. D — Cisco

**For Rent**  
FOR RENT: Three and a half room unfurnished cottage. On top of Park Hill, 505 High Street, Only \$30.00. Call 629-1417. 11

**CARPETS** a fright? Make them a beautiful sight with Blue Lustre. Rent electric shampooer \$1. Perry Bros., Eastland. 68

Brace yourself for a thrill the first time you use Blue Lustre to clean rugs. Rent electric shampooer \$1. Coats Furniture Co. 68

**FOR RENT:** To couple or small family, large two-bedroom house. Newly re-decorated. Inquire at 308 East Main Street. 11

**EMMET MORREN PLUMBING**  
COMPLETE REPAIR SERVICE  
—24 Hour Service—  
401 South Oak  
629-2092

**FREE ESTIMATES ON new roofs only**  
Repair of Your Old Roofs Residential and Commercial  
"ALL NEW WORK GUARANTEED"  
**TRI-CITIES ROOFING CO.**  
Call Noble Scrifers 629-2370

**LOOK**  
To Us For First Quality Laundry Service  
Free Pickup & Delivery  
**CISCO STEAM LAUNDRY**  
Cisco — 442-2151

**PERMANENTS**  
\$10 Creme Oil Waves \$7.50  
\$12 Protein Waves — 8.50  
\$12 Lanolin Waves — 10.00  
Helen Curtis Waves \$11. up  
**BASHAM BEAUTY BAR**

DO YOU NEED A LITTLE HELP?  
—Around the home, office, business?  
—Part-time, full-time?  
IF SO, Call 629-2332.

**CHAMBER OF COMMERCE** & ask about **STUDENT EMPLOYMENT**  
(presented in the public interest by this newspaper)

**PIANO TUNING FELTON CARR**  
Write Box 82 or Call 643-6401  
Rising Star

**JOE SAYS:**  
Miracles sometimes occur, but one has to work terribly hard for them.  
**JOE CULPEPPER** of Hood King Motor Co. also says: "See me for the best automobile deal."

### TIDBITS

(Continued from Page 1) if I should become a criminal, the federal government will guarantee my ultimate protection from outraged society.

"If my son should do well and make it to college he will be subject to the draft. However, if he goes off or drops out or becomes a delinquent or joins a gang, he may absolutely count on the Job Corps or OEO or HEW.

"If others are as confused as I am about whether we really should teach our children the old-fashioned moral virtues of honesty, toil, independence and responsibility, there is some hope that this system will collapse. Without taxpayers to tax, persecute and legislate against and free-load on, the gravy train would soon be as scarce as the passenger train."

### Lions Pinned, Party Plans Are Tentatively Set

Official pins were distributed and preliminary plans were made for a ladies night at the regular luncheon meeting Tuesday of the Eastland Lions Club.

President E. O. Moore presided and presented a past-president's pin to C. W. Hoffmann Jr. and a Club Sweetheart pin to Sweetheart Jan Jolly.

The club members decided in favor of an entertaining, probably musical, for an upcoming ladies night party, instead of hiring an out of town speaker.

Date, time and site for the event are to be announced. Guests included Joe Dennis of Ranger and Mike Siebert of Eastland.

Harvard University was established at Cambridge, Mass., in 1636.

**MINI-BILLBOARD** for rent \$3 per month. Call 629-1707.

**NOTICE SUMMER HOURS:**  
8 a.m. to 10 p.m. except Sunday: 8 to 9:30 a.m. 11 a.m. to 10 p.m.

**HILLCREST FOOD MARKET**  
1401 W. Main  
629-1600

**Expert REPAIR**  
Give Those Outmoded Shoes A New Look...  
**Quality Shoe Repair**  
North Side of Square



birthday shopping? Send her flowers. She'll adore them—and you! Flowers are always appreciated, always in good taste. Come in and choose today. We'll even "gift wrap" the flowers for you!

Send Birthday flowers anywhere  
**POE FLORAL**  
Phone 629-1711

## EASTLAND TELEGRAM

Phone 629-1707  
110 W. Commerce St. — Eastland

(Consolidate with Eastland Chronicle, 1887, and Eastland County Record, 1931).

Second Class Postage paid as Eastland, the act of Congress of March 1931.

Published Semi-Weekly - Thursday and By Eastland County Newspapers H. V. O'BRIEN, Editor

**SUBSCRIPTION RATES:** By carrier week or 65c month; one year by mail per year; one year by mail in city or state, \$6 per year; one year by mail

**NOTICE:** Any erroneous reflection upon, standing or reputation of any person or corporation which may appear in the newspaper will be gladly corrected brought to the attention of the editor.

If you are not eligible for additional life insurance... you can still protect your family with a Funeral Security Trust Plan. For a booklet with all the facts write or phone

Arrington Hamner Funeral Home  
Eastland, Texas 76448

**FUNERAL SECURITY TRUST PLANS**  
3238 Gillham Road - Kansas City, Mo. 64118  
Please send your free booklet  
Name \_\_\_\_\_  
Address \_\_\_\_\_  
City \_\_\_\_\_  
State \_\_\_\_\_ Zip \_\_\_\_\_

**TIME TO CHANGE?**  
Then it's time to switch to Skelly Supreme industry's low consumption motor oil. Use it if any, between changes. Insist on Skelly for maximum engine protection.  
Eastland Dealer  
**CLEM GILLES EASTLAND TRUCK K-C FUEL CO.**

**A carefully prepared family insurance plan**  
Protects your home your family and yourself  
Something good happens you see your "Heart of Home"  
**M. H. PERLEY**  
Office — 629-1707  
Residence — 629-1707  
**Southland INSURANCE**

## (506 Miles) Calls Cheaper After Aug. 1

War II, the index has risen. That means, in butter terms, it cost 20 cents in 1935 cents today. — Long Distance service — to cut half as much as it cost since coast rates began in 1915. — announced, effective a reduction in rates to save customers million annually calls covering more than 506

three minutes. Only last November, AT&T reduced interstate rates \$100,000,000 annually.

Already, the customer can call station-to-station anywhere in the U. S. between 7 p. m. and 7 a. m. weeknights and all day weekends for \$1 or less.

## Lone Star Gas Has Increased 1st Half Earnings

Lone Star Gas Company earnings for the first half of 1968 were \$18,908,586 up \$1,164,049 over the year before level. Louis G. James, president, reported. Earnings for the 12-month period ended June 30, 1968, were \$23,227,699 is equivalent to \$1.58 per share.

James said total operating revenues for the Company, and its subsidiaries were \$126.5 million for the first half of



Richard Rodgers, of the famous Rodgers and Hammerstein musicals writing team, selected Constance Towers, left, to be Maria in the New York City Center revival of "The Sound of Music" recently. She has also been selected to play the same role opposite well-known British actor, Michael Allinson, right, as Capt. Georg von Trapp, in the Dallas Summer Musicals production of the heart-warming, fun-filled, exciting Broadway hit, at the Music Hall, Aug. 13-25.

1968, up 12.7 million from last year. Operating expenses in the same period were \$102.3 million, up \$10.3 million.

Gas purchased expenses increased due to the greater volume of gas sold. Federal income taxes increased as a result of the 10 per cent surcharge tax enacted in June, 1968 retroactive to Jan. 1, 1968, and higher taxable in-

## The Readers Write . . .

We the students of Olden High School would like to express how we feel about the consolidation of "our" school.

If the people of this community would stop and think if we lose our school we have lost everything. The school is the only thing left here that creates any activity. If we lose the school gradually other things will go too. When the school is gone the young people will leave, the post office will gradually become unable to operate and the churches will dwindle to nothing. Do you think you would enjoy living in a community where the most activity is to sit on your front porch and watch the weeds and grass grow up in the places our boys use to play their hearts out in a football game? The people against our school are those whose children have already graduated or those people who do not even have children. They feel the school is no concern of theirs but this is where they are mistaken. Let us state some of the reasons why they should be concerned.

1. Some of us who are Juniors and Seniors will never graduate because of your concern. Students do their best in a school they enjoy going to. Lots of students who are leaders in our school will only be another student in a school somewhere else. We want to feel needed and wanted, not just necessary to help the schools somewhere else. We, the students, down

come in the first half than one year ago.

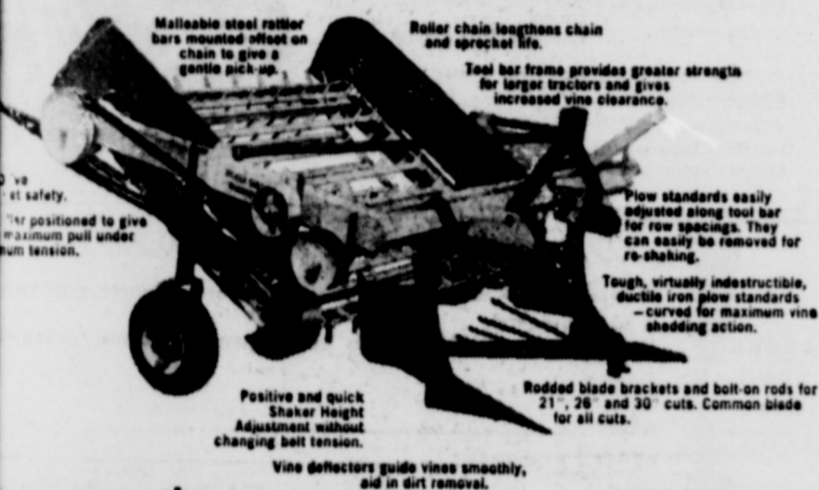
The president reported that Lone Star Producing Company, a wholly-owned subsidiary of Lone Star Gas Company, is participating in offshore Texas oil and gas exploration. Producing Company owns basically a 10 percent interest in the "Alamos" Combine which recently acquired 152,684 acres of Federal leases.

2. Have you honestly thought of the way your taxes will be affected if this petition to close the school goes through? You are required to pay \$1.50 per hundred dollar value here. How do you feel about paying \$1.75 on the same amount? Would you rather pay \$1.75 and let Olden dwindle to a dead community or pay \$1.50 here and keep our school. You do not like the idea of paying \$1.50 here, do you really like the idea of paying \$1.75 in Eastland?

3. There has been some very unfair and untrue remarks about our faculty. We have some of the best teachers there are. They are well educated. All of our teachers have their degrees. Five of our teachers have their Masters degree and six of them have their Bachelors degrees. Our teachers go to the same colleges and universities as any other teacher in this county, so why is there a fault in ours? Our teachers are devoted to us. They use their spare time to give extra attention to the student, who are having difficulties. We would not get any personal attention in other school like this. Our superintendent is a fine man. Can you think of anyone who has tried any harder to keep a school for us? He has been accused of many unfair things, but yet he is still here doing his best to keep this school for us. Don't you think he has wanted to walk out? His interest is in the future leaders of our community why aren't you?

4. It is true if we lose our

## Some special reasons why the LILLISTON 2700 Digger-Shaker-Windrower is the quietest, slickest, smoothest running digger ever built.



you seen the  
 LILLISTON 2700?  
**SQUIERS FARM STORE**  
 W. Main St. Eastland, Texas 629-2220

## ARE YOU A LEGALLY QUALIFIED VOTER TO VOTE IN THE OLDEN- EASTLAND SCHOOL CONSOLI- DATION ELECTION?

IF YOU MEET THE FOLLOWING  
 REQUIRMENTS:

- Registered Voter
- Resident of State 12 Months
- Resident of County 6 Months
- Resident of School District (No Time Limit)

BRING YOUR VOTER REGISTRATION RECEIPT  
 WITH YOU ON ELECTION DAY, SAT, AUG. 24

ad paid for by Committee for Better Schools



**FIRING**  
 Two hundred and fifty boys and girls, ages 7 to 14, from 39 States, Canada and Mexico, participated in the recent U. S. Jaycee International 8-B-Gun Championship Matches at Irving, Texas. (Upper left) girl shooters comparing scores—(upper right) NRA Official Bill Jordan counsels one of the younger contestants—(lower left) bullseye view of a contestant on the firing line—(lower right) the All-Girl team, "Ruffles and Rifles" from Minnesota. More than 500,000 boys and girls were instructed in proper gun handling in 1968, the courses being conducted by the U. S. Jaycees.

school property value will go down. What if you decide to sell and move? You can not expect a big price to come from something that is in a place with little or no activity.

We want our school. We do not intend to give it up without a fight. Those who have gone to school here since the first grade and others that have enrolled later, have grown to love our school and take pride in what it stands for. Won't you help us keep it. We need your support. On election day cast your vote TO SAVE OUR SCHOOL.

Olden High School Students  
 Glenda Notton  
 Richard Underwood  
 Hymonda Baird  
 Jackie Graham  
 Sharon Dublin

## Shifting Insurance Burdens —

... has long been an American custom, and it's a good custom. Don't try to carry the load of financial risks yourself against the hazards of these modern times, but shift it to your local agent and let Insurance do it. Your losses may be hours or years away but meanwhile Insurance will give you peace of mind and financial protection that is worth far more than it costs. Loss or no loss, you win either way — with Insurance.

## Earl Bender & Company

Eastland (Insurance since 1924) Texas

## YOU ARE INVITED TO HEAR



ROY C. DEAVER  
 OF FORT WORTH

## GOSPEL MEETING CHURCH OF CHRIST

309 S. DAUGHERTY

MEETINGS — 8 p.m. — AUGUST 14-18

## BACK TO SCHOOL NEEDS

**SPECIALS**

Sheaffer Cartridge Pen Reg. \$1—Now 69c  
 Regular 10c

Aladdin Notebook Paper Now 5c

Tot Staplers Reg. 98c Now 69c

Parker Touche II Tip Pen  
 Reg. \$1.98 — Now \$1.59

EASTLAND  
 MAVERICKS  
 NOTEBOOKS  
**\$1.75**

Masterpiece Vu-Thru  
 NOTEBOOKS 1.98

Westab Girl Talk School Ensemble  
 NOTEBOOKS 2.98

FREE:  
 15c Soda  
 or Fountain  
 Drink with  
 each \$1.50 Purchase  
 (Offer Good Thru  
 Sept. 3, 1968)

ALADDIN  
 Tablets No. 1251  
 1252, 1253  
 Filler No. 1255  
**25c ea.**

Complete Line Master-  
 piece School Supplies

## EASTLAND DRUG CO. PHARMACY & GIFTS

629-2112

Adams

Eastland... Adams... Adams... Adams...

Adams... Adams... Adams... Adams...

Adams... Adams... Adams... Adams...

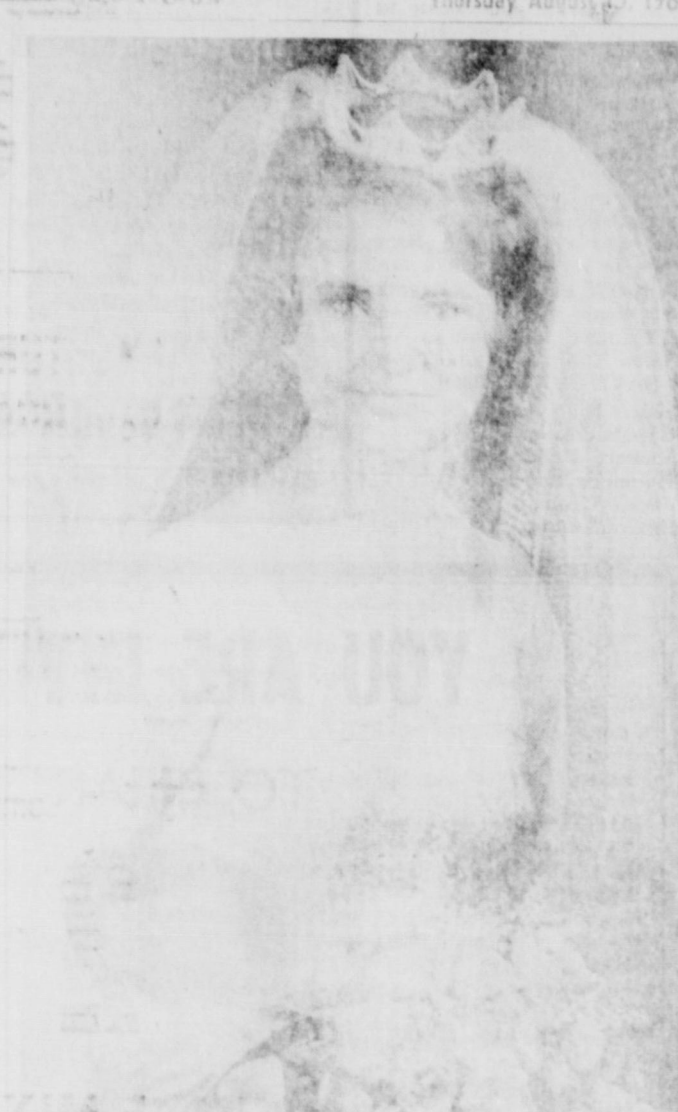
Adams... Adams... Adams... Adams...

Adams... Adams... Adams... Adams...

Adams... Adams... Adams... Adams...

Adams... Adams... Adams... Adams...

Adams... Adams... Adams... Adams...



Mrs. NORMAN V. PETERSON... Miss Deborah Sue Pettit

Peterson Rites Performed in Lawton

The wedding of Norman V. Peterson and Deborah Sue Pettit was held in Lawton, Okla. The ceremony was performed by Rev. Harold...

The bride wore a white gown with a blue sash and carried a bouquet of pink and white flowers. The groom wore a dark suit and a white shirt with a blue tie.

The wedding party included bridesmaids in white dresses and groomsmen in dark suits. The ceremony was held in a church in Lawton, Okla.

The reception was held at the home of the bride's parents. There was a buffet dinner and dancing. The bride and groom were the center of attention.

The wedding was a beautiful affair. The bride and groom were both very happy. The ceremony was well attended and the reception was a success.

white tapers in silver holders. The bride held a crystal punch bowl and a strawberry ring cake decorated with white lovebirds and pink rings.

The rice table was skirted and covered to match the bride's table and held a pink tree made of French paper, pink roses, and pink velvet and a white Colonial basket decorated with miniature bells and pink rosebuds filled with rice bags.

Miss Pat Harsh registered guests and Misses Linda Myers, Diane Kinner, and Mrs. Charles Turner served punch and cake.

Following a wedding trip to Bent's Air, San Antonio, the couple will live at a 314 Babb, Midwest City, Okla.

The bride attended Eastland Elementary School, and is a 1967 graduate of Lawton High School, where she was a member of National Honor Society, and the future Teachers of America. She was a member of the Spanish Club, Volantees, and the Student Council. She was twice Student of the Month and placed second in the state in 1967 for her essay in hiring the handicapped. She attended Cameron State College on a scholarship from NCO Wives Club. There, she was September Student of the Month, a member of Cameron Singers. She has been employed with Ralston's Book Store.

The bridegroom is a 1968 graduate of Lawton High School where he was sports editor of the Lawton News. He received the Gaultie Scottish Rite Bodies Gaultie Spanish Rite Bodies Scholarship. He attended Cameron State College where he was sports editor for the "Cameron Collegian" and a sports writer for the Lawton Constitution Morning Press. He is now attending the Central Oklahoma College at Edmond and Oklahoma Journal.

The bride's mother wore a two-piece ensemble of blue crepe with white accessories and a white glabella corsage. The mother of the groom wore a dress of imported blue tulle over pale rose tulle, with blue accessories and a corsage of white glabella.

The bride presented a white corsage to her grandmother, Mrs. George Hollins of Eastland, who attended the ceremony. The groom presented white corsages to his grandmother, Mrs. Norman E. Dail, and his grandmothers, Norman E. Dail and Norman V. Peterson, of Winterpark, Florida.

The bride's going-away costume was a navy blue dactron voile dress with white collar and cuffs, navy patent shoes and purse, navy blue straw hat with red accents, and white kid gloves with a corsage of white roses.

Parents of the bridegroom were hosts to a rehearsal dinner in the banquet room of Lew Johnson's Restaurant Tuesday night. The tables were covered with white cloths and centered with floral arrangements in the bride's chosen colors of pink and white. The bride-elect and her fiance presented gifts to members of the wedding party.

The couple will attend Central State College this fall.

Mrs. Jane Merrill of Claremont, Calif. is visiting her parents, Mr. and Mrs. C. M. Oakley.

Texas is regarded as one of the most fertile fields in America for archeological research.

Ysleta del Sur, established in 1682 near El Paso, is Texas' oldest permanent settlement.

Enclosed please find \$.....for.....copies of DRAWING TOWARD GOD @ \$3.50 per copy. (Make checks payable to this newspaper. Include tax and postage.)

NAME..... STREET ADDRESS..... CITY..... STATE..... ZIP CODE.....

DRAWING TOWARD GOD The Art and Inspiration of JACK HAMM Introduction By CHARLES SCHULZ Creator of "PEANUTS"

Jack Hamm has a way of using his brush, crayon, and words to cut through to some of the great theological truths that concern us all. This is a marvelous book for individual meditation, or for any group of dedicated people who wish to have a guide to promote inspirational discussion. Jack has a rich imagination and a fine sense of fundamentals. We have been blessed in our world with many great editorial cartoonists, but I know of no other man who has been able to turn his talents to interpreting religious truths as has Jack Hamm.

Enclosed please find \$.....for.....copies of DRAWING TOWARD GOD @ \$3.50 per copy. (Make checks payable to this newspaper. Include tax and postage.)

Plymouth's year-end clearance is on. It's time for year-end bargains, even if you only buy one. 250,000 Ford and Chevy owners couldn't wait to switch to Plymouth. You did. Now come in and clean up. RUSHING MOTOR CO. - 211 South Seaman

your local newspaper

Meet THE unbeatable

Meet THE unbeatable

Meet THE unbeatable

### Laudermilk Attends Teacher Meeting

The Terrace Motor Hotel will be the site for the meeting which kicked off Monday, Aug. 12, with registration beginning at 3 p. m., announces Jack Lacy, Lampasas Vocational Agriculture Teacher, and President of the Vocational Agriculture Teachers Association of Texas.

A full slate of events make up the agenda for the annual affair. The first general session will begin at 8:30 a. m. Tuesday and the keynote speaker will be Ben Barnes, Speaker of the Texas House of Representatives. Dr. J. W. Edgar, Commissioner of Education and John Guemple, Assistant Commissioner for Vocational Education, will also address the group on Tuesday.

On Wednesday morning the Association will sponsor its annual awards breakfast to present tenure pins to the membership and awards to Legislators, school superintendents, Texas news media and individuals who have contributed to the progress of Agriculture Education.

On Wednesday and Thursday the teachers will take part in Area Meetings and nine in-service education workshops. George H. Hurt, State Director of Agriculture, will discuss "The Importance of a Basic Curriculum for Production Agriculture."

Entertainment and activities are also planned throughout the four-day meeting for the ladies who will also be attending.

Approximately 1425 Vocational Agriculture Teachers and friends are expected to attend the conference.

### Public Notice Constitutional Amendment Number One on the Ballot (HJR50)

BY THE PEOPLE OF THE STATE OF TEXAS: The first Tuesday after the first Monday in November 1968, at which election all ballots shall have printed on them the following:

"FOR the constitutional amendment authorizing the Legislature to provide for the refund of the tax on cigars and tobacco products sold at retail within the corporate limits of Texarkana, Texas, or any incorporated city or town in Texas contiguous to Texarkana."

"AGAINST the constitutional amendment authorizing the Legislature to provide for the refund of the tax on cigars and tobacco products sold at retail within the corporate limits of Texarkana, Texas, or any incorporated city or town in Texas contiguous to Texarkana."

### Public Notice Constitutional Amendment Number Two on the Ballot (HJR61)

BY THE PEOPLE OF THE STATE OF TEXAS: The most direct route of travel, from a table of distances prepared by the Comptroller, to each county seat now or hereafter to be established; no Member to be entitled to mileage for any extra Session that may be called within one (1) day after the adjournment of the Regular or Called Session.

Section 2. The foregoing constitutional amendment shall be submitted to a vote of the qualified electors of this state at an election to be held on the first Tuesday after the first Monday in November 1968, at which election all ballots shall have printed on them the following:

"FOR the constitutional amendment providing the members of the Legislature shall receive as salary an amount not exceeding Eight Thousand, Four Hundred Dollars (\$8,400) per year."

"AGAINST the constitutional amendment providing the members of the Legislature shall receive as salary an amount not exceeding Eight Thousand, Four Hundred Dollars (\$8,400) per year."

### Public Notice Constitutional Amendment Number Two on the Ballot (SJR11)

BY THE PEOPLE OF THE STATE OF TEXAS: The residence requirements, if any, for participation in these programs.

The Legislature shall have authority to enact appropriate legislation which will enable the State of Texas to cooperate with the Government of the United States in providing assistance to and/or medical care on behalf of needy persons, and in providing rehabilitation and any other services included in the Federal legislation providing matching funds to help such families and individuals attain or retain capability for independence or self-care and to accept and expend funds from the Government of the United States for such purposes in accordance with the laws of the United States as they now are or as they may hereafter be amended, and to make appropriations out of state funds for such purposes; provided that the maximum amount paid out of state funds to or on behalf of any individual recipient shall not exceed the amount that is matchable out of Federal funds; provided that the total amount of such assistance payments and/or medical assistance payments out of state funds on behalf of such recipients shall not exceed the amount that is matchable out of Federal funds; provided that if the limitations and restrictions herein contained are found to be in conflict with the provisions of appropriate Federal Statutes as they now are or as they may be amended, to the extent that Federal matching money is not available to the state for these purposes, then and in that event the Legislature is specifically authorized and empowered to prescribe such limitations and restrictions and enact such laws as may be necessary in order that such Federal matching money will be available for assistance and/or medical care for or on behalf of needy persons; and provided further, that the total amount of money to be expended per fiscal year out of state funds for assistance payments only to recipients of Old Age Assistance, Aid to the Permanently and Totally Disabled, Aid to the Blind, and Aid to Families with Dependent Children shall never exceed Seventy-five Million Dollars (\$75,000,000).

"Nothing in this Section shall be construed to amend, modify or repeal Section 31 of Article XVI of this Constitution; provided further, however, that such medical care, services or assistance shall also include the employment of objective or subjective means, without the use of drugs, for the purpose of ascertaining and measuring the powers of vision of the human eye, and fitting lenses or prisms to correct or remedy any defect or abnormal condition of vision. Nothing herein shall be construed to permit optometrists to treat the eyes for any defect whatsoever in any manner nor to administer nor to prescribe any drug or physical treatment whatsoever, unless such optometrist is a regularly licensed physician or surgeon under the laws of this state."

Sec. 2. The foregoing Constitutional Amendment shall be submitted to a vote of the qualified electors of this state at an election to be held on the first Tuesday after the first Monday in November 1968, at which election all ballots shall have printed thereon the following:

"FOR the Constitutional Amendment raising the limit on the amount that may be expended in any one year out of state funds for Public Assistance payments only to Seventy-five Million Dollars (\$75,000,000)."

"AGAINST the Constitutional Amendment raising the limit on the amount that may be expended in any one year out of state funds for Public Assistance payments only to Seventy-five Million Dollars (\$75,000,000)."

### 4 Local Girls To Attend Annual Youth Meeting

Four Eastland girls will be among the 1,020 delegates to the sixth annual Texas Youth Conference at the University of Texas, Aug. 22-25.

The local girls will be sponsored by civic groups here. Representing Eastland will be Earin Miller, daughter of Mr. and Mrs. Ed Ehrhridge, sponsored by the Lions Club; Shannon Wilson, daughter of Mr. and Mrs. Tom Wilson, sponsored by the Rotary Club; Darlene Lovelace, daughter of Mrs. C. P. Lovelace, sponsored by the Jaycees; and Janet West, daughter of Mr. and Mrs. D. J. West, sponsored by the YMCA.

The Eastland Council advisors are Mrs. Vernon Mahan and Mrs. Aileen Raymond, both Eastland High School teachers.

Selection of delegates is based on leadership, scholastic achievement, and extra-curricular activities.

H. K. Allen, Chairman of the Board of the Temple National Bank of Temple, is current President of the Texas Law Enforcement and Youth Development Foundation. Austin attorney Robert T. (Sonny) Davis will serve as Director of the Conference.

Mike Collins is the local representative of the Youth Council and spearheaded organization of the Eastland Chapter.

### Public Notice Constitutional Amendment Number One on the Ballot (HJR61)

BY THE PEOPLE OF THE STATE OF TEXAS: The most direct route of travel, from a table of distances prepared by the Comptroller, to each county seat now or hereafter to be established; no Member to be entitled to mileage for any extra Session that may be called within one (1) day after the adjournment of the Regular or Called Session.

Section 2. The foregoing constitutional amendment shall be submitted to a vote of the qualified electors of this state at an election to be held on the first Tuesday after the first Monday in November 1968, at which election all ballots shall have printed on them the following:

"FOR the constitutional amendment providing the members of the Legislature shall receive as salary an amount not exceeding Eight Thousand, Four Hundred Dollars (\$8,400) per year."

"AGAINST the constitutional amendment providing the members of the Legislature shall receive as salary an amount not exceeding Eight Thousand, Four Hundred Dollars (\$8,400) per year."

### Public Notice Constitutional Amendment Number Two on the Ballot (SJR11)

BY THE PEOPLE OF THE STATE OF TEXAS: The residence requirements, if any, for participation in these programs.

The Legislature shall have authority to enact appropriate legislation which will enable the State of Texas to cooperate with the Government of the United States in providing assistance to and/or medical care on behalf of needy persons, and in providing rehabilitation and any other services included in the Federal legislation providing matching funds to help such families and individuals attain or retain capability for independence or self-care and to accept and expend funds from the Government of the United States for such purposes in accordance with the laws of the United States as they now are or as they may hereafter be amended, and to make appropriations out of state funds for such purposes; provided that the maximum amount paid out of state funds to or on behalf of any individual recipient shall not exceed the amount that is matchable out of Federal funds; provided that the total amount of such assistance payments and/or medical assistance payments out of state funds on behalf of such recipients shall not exceed the amount that is matchable out of Federal funds; provided that if the limitations and restrictions herein contained are found to be in conflict with the provisions of appropriate Federal Statutes as they now are or as they may be amended, to the extent that Federal matching money is not available to the state for these purposes, then and in that event the Legislature is specifically authorized and empowered to prescribe such limitations and restrictions and enact such laws as may be necessary in order that such Federal matching money will be available for assistance and/or medical care for or on behalf of needy persons; and provided further, that the total amount of money to be expended per fiscal year out of state funds for assistance payments only to recipients of Old Age Assistance, Aid to the Permanently and Totally Disabled, Aid to the Blind, and Aid to Families with Dependent Children shall never exceed Seventy-five Million Dollars (\$75,000,000).

"Nothing in this Section shall be construed to amend, modify or repeal Section 31 of Article XVI of this Constitution; provided further, however, that such medical care, services or assistance shall also include the employment of objective or subjective means, without the use of drugs, for the purpose of ascertaining and measuring the powers of vision of the human eye, and fitting lenses or prisms to correct or remedy any defect or abnormal condition of vision. Nothing herein shall be construed to permit optometrists to treat the eyes for any defect whatsoever in any manner nor to administer nor to prescribe any drug or physical treatment whatsoever, unless such optometrist is a regularly licensed physician or surgeon under the laws of this state."

Sec. 2. The foregoing Constitutional Amendment shall be submitted to a vote of the qualified electors of this state at an election to be held on the first Tuesday after the first Monday in November 1968, at which election all ballots shall have printed thereon the following:

"FOR the Constitutional Amendment raising the limit on the amount that may be expended in any one year out of state funds for Public Assistance payments only to Seventy-five Million Dollars (\$75,000,000)."

"AGAINST the Constitutional Amendment raising the limit on the amount that may be expended in any one year out of state funds for Public Assistance payments only to Seventy-five Million Dollars (\$75,000,000)."

# SHOP



The store that cares about you!

Prices Good thru Aug. 17, 1968. Quantity Rights Reserved.

**A&P FRESH CHILLED**

## ORANGE JUICE

Qt. 39¢ 1/2-Gal. 69¢  
Size 39¢ Size 69¢

**A&P DRY ROASTED VIRGINIA PEANUTS**

13-oz. 59¢  
Can

**SUNSHINE CRACKERS HI-HO'S** 1-lb. Pkg. 39¢

**CORONET JUMBO PAPER TOWELS** 3 Rolls \$1.00

**ANN PAGE VEGETABLE SOUP** 2 10 1/2-oz. Cans 29¢

*Kinfolk Brand*

**PORK & BEANS MEXICAN STYLE BEANS**

**BLACKEYES** With Bacon

**CREAM PEAS** With Bacon

**PURPLE HULLS** With Bacon

Your Choice 15-oz. Can **10¢**

**INSTANT OUR OWN TEA** 4-oz. Jar 79¢

**EVAP. MILK** 6 Can \$1.03

**TEA** 1/2-lb. 89¢ 48 Bags 69¢

Sizzling Good "Super-Right" Meats!

**"SUPER-RIGHT" BONELESS HEAVY BEEF FULL CUT ROUND**

# STEAK 89¢

.....lb.

<p>All Varieties Sultana Frozen</p> <p><b>DINNERS</b> lb. 39¢</p> <p>'Super-Right' or Neuhoff</p> <p><b>FRANKS</b> 1-lb. pkg. 59¢</p> <p>'Super-Right' Heavy Beef</p> <p><b>CUTLETS</b> lb. 99¢</p> <p>Cap'n John's Frozen Fillets</p> <p><b>PERCH</b> 1-lb. pkg. 49¢</p>	<p>Gulf Princess Frozen</p> <p>1 1/2-lb. pkg.</p> <p><b>SHRIMP</b> 2.59</p> <p>'Super-Right' Quality</p> <p><b>Ground Beef</b> lb. 49¢</p> <p>Fisher's - 12-oz. pkg.</p> <p><b>Beef Bacon</b> 79¢</p> <p>Center Cut</p> <p><b>Ham Slices</b> lb. 79¢</p>	<p>ALL WHITE MEAT B</p> <p><b>TURKEY</b> \$3.49</p> <p><b>ROAST</b> 2-lb. 6-oz.</p> <hr/> <p>ALLGOOD BRAND</p> <p><b>BACON</b></p> <p>2-lb. Pkg. \$1.09 1-lb. Pkg. 55¢</p>
---	--	--

"SUPER-RIGHT" GRAIN FED HEAVY BEEF CUT & WRAPPED FOR YOUR FREEZER

# HINDQUARTERS 69¢

.....lb.

Dependable Grocery Values!

# EGGS

SUNNYBROOK GRADE A MEDIUM 2 DOZ. 69¢

<p><b>PEAS</b> 2 17-oz. Cans 39¢</p> <p><b>CHEESE</b> 1-lb. Ctn. 29¢</p> <p><b>COFFEE MATE</b> 18-oz. Jar 99¢</p> <p><b>ICE CREAM</b> 1/2-Gal. Ctn. 59¢</p>	<p><b>BROWNIE MIX</b> 2 1 1/2-oz. Pkg. 39¢</p> <p><b>GRAPE JAM</b> 2-lb. Jar 39¢</p> <p><b>ZEE TISSUE</b> Assorted Colors 3 4-Roll Packs \$1</p> <p><b>POTATOES</b> French Fried 2-lb. Pkg. 25¢</p>
---	---

# FLOUR 49¢

5-lb. Bag

Limit 1 with a Purchase of \$5.00 or more.

Oven-Fresh Jane Parker Buys!

<p><b>STARTER SETS</b> \$1.89</p> <p><b>PAPER</b> Pkg. of 300 52¢ Pkg. of 500 78¢</p> <p><b>CARTRIDGE PEN</b> Ea. 49¢</p> <p><b>SUBJECT BOOKS</b> 3 for \$1</p> <p><b>PENCIL TABLET</b> 8 1/2 Sheets 25¢</p>	<p><b>LOAF</b> 28-oz. 79¢</p> <p><b>CAKE</b> 12-oz. 49¢</p> <p><b>GLAZED DONUTS</b> 12 of 29¢ 12 of 39¢</p> <p><b>PIES</b> Cherry 53¢ Blackberry 39¢</p>	<p><b>CREME SANDWICH</b> 1-lb. Pkg. 39¢</p> <p><b>OH! OH</b> 1-lb. Pkg. 39¢</p>
--	--	---

### Fresh Fruits and Vegetables!

# GRAPES 23¢

Calif. Thompson Seedless lb.

<p><b>NECTARINES</b> Calif. Legrand 29¢</p> <p><b>WATERMELONS</b> 27-lb. Avg. Ea. 59¢</p> <p><b>BLACK-EYED PEAS</b> lb. 19¢</p> <p><b>RUSSET POTATOES</b> U.S. No. 1 10-lb. Bag 59¢</p>	<p><b>SWEET CORN</b> 5 Ears 39¢</p> <p><b>PEACHES</b> Full Color Yellow Meas. lb. 19¢</p> <p><b>BABY OKRA</b> Fresh and Tender lb. 25¢</p>
---	--

<p>8¢ OFF TOOTH PASTE</p> <p><b>GLEEM</b> 3 1/4-oz. Size 35¢</p> <p>HEAD &amp; SHOULDERS</p> <p><b>Shampoo</b> Large Size 79¢</p>	<p><b>COOKIES</b> 12-oz. pkg. 3 for \$1</p> <p>DETERGENT</p> <p><b>BOLD</b> 85¢</p> <p>White Beauty 3-lb. Tin 49¢</p>	<p>JANE PARKER OLD FASHION</p> <p><b>Plaid Stamps bring gifts kids love.</b></p> 
---	---	--

<p>DETERGENT</p> <p><b>OXYDOL</b></p> <p>Gt. Size 85¢</p>	<p>WITH BATH TOWEL</p> <p><b>BONUS</b></p> <p>King Size \$1.39</p>	<p>DETERGENT</p> <p><b>DREFT</b></p> <p>Gt. Size 85¢</p>	<p>DETERGENT TABLETS</p> <p><b>SALVO</b></p> <p>8-lb. 10-oz. Size \$2.29</p>	<p>DETERGENT</p> <p><b>DASH</b> LOW SUDS</p> <p>20-lb. 1-oz. Size \$4.59</p>
<p>DETERGENT</p> <p><b>CHEER</b></p> <p>Gt. Size 79¢</p>	<p>DETERGENT</p> <p><b>TIDE</b></p> <p>Gt. Size 79¢</p>	<p>WITH GLASSWARE</p> <p><b>DUZ</b></p> <p>Gt. Size 85¢</p>	<p>GRANULATED</p> <p><b>Ivory Snow</b></p> <p>Gt. Size 85¢</p>	<p>SOAP FLAKES</p> <p><b>Ivory Flakes</b></p> <p>Lg. Size 37¢</p>



**LEVI'S HEADQUARTERS  
IN EASTLAND COUNTY—  
HEIDENHEIMER'S  
IN CISCO!**

**NEW!**



NEVER  
NEEDS  
IRONING

**LEVI'S**

**Double-Knee Jeans**

COMSTOCK CANVAS  
IN BLUE - OLIVE &  
HONEY BROWN  
Sizes 4 to 12 In Reg. & Slim

**\$3.98**

**HEIDENHEIMER'S**

AN INTERSTATE THEATRE  
**MAJESTIC**

EASTLAND PH. 629-1120

NOW THRU SATURDAY

Thur.-Fri. — Open 5:45 — Show 6:10-8:45 Onyl  
Saturday Open 12:45 — Show 1:15-3:50-6:25-9:00

When in Southern California visit Universal City Studios

**NOW AT POPULAR PRICES!**  
UNCUT! DIRECT FROM ITS ROADSHOW ENGAGEMENT!  
**ACADEMY AWARD WINNER**  
(BEST MUSICAL SCORE)

Julie Andrews  
as MILLIE  
Mary Tyler Moore  
Carol Channing  
James Fox



in ROSS HUNTERS  
production of  
**THOROUGHLY MODERN MILLIE**

TECHNICOLOR®  
John Gavin Beatrice Lillie  
Music Score by ELMER BERNSTEIN • Music Numbers Scored by ANDRE PREVIN  
Musical Supervised by JIM LAYTON • Written by RICHARD MORRIS • Directed by GEORGE ROY HILL  
Produced by ROSS HUNTER A UNIVERSAL PICTURE

**\* HOSPITAL NEWS \***

Patients reported in Eastland Memorial Hospital Wednesday morning were:

- James Beard.
- Florence Fagg.
- Ola Jane Robinson.
- Clyde Johnson, Desdemona.
- Nickey Gaeta.
- Roy Mayfield.
- Henry (Pete) Tyrone, Carbon.
- Judy Hoertch, Amarillo.
- Josephine Lewis, Rising Star.
- Patti Wyatt.
- Eliza Malone, Moran.
- Louise Stroebel, Cisco.
- Charles Baird, Cisco.
- Vernon Baird, Odessa.
- Ira Adams, Odessa.
- Susie Caudle.
- E. J. McKellar.
- Odell Tucker, Cisco.
- Mrs. Gertrude Parker.
- Eunice Sharpes, Cisco.
- Bennett Bradford.
- I. B. Walker, Olden.
- Harvey Black, Cisco.
- John Goldman, Rising Star.
- Maudie Hardy, Rising Star.
- Sarah Harrell.
- William A. Owen.
- Sentha Squires, Ranger.
- Eula Ayers.
- Haddon Freeman.
- Steve Serrato.
- Dessie Reed.
- Anna Harris, Cisco.
- Claude Dabbs.
- Rose Day.
- Leslie Ringo, Gordon.
- Opal Kelley.
- Winnie Anderson, Comanche.
- Lola Hudspeth.
- Calvin Hart, McCamey.
- Tom Clark.
- A. W. Dawson, Cisco.
- Raymond Thackerson, Mineral Wells.
- Mattie (Pat) McPherson, Cisco.
- Ethel Levens.
- Troy Ray.
- Violet Robertson.
- Jerusha Tucker.
- James Cunningham, Ranger.
- Pearl Hunt, Cisco.
- Janice Jones, San Antonio.
- Ima Edwards.
- Wallace Bagley, Cisco.
- Nolon Henson, Oklahoma.

Patients in Ranger General Hospital Wednesday morning were:

- Mrs. Frances Daffern.
- Mrs. Sarah Wilson.
- Mrs. Ella Mae Stewart.
- Mrs. Jesse White.
- Mrs. Edith Young.

- Mrs. Lillie Marlow.
- Mrs. Jessie Lewis.
- Mrs. Dora Fox.
- Mrs. Dollie Norris.
- Mrs. Belle Langston.
- Sheryl Harbin.
- Mrs. Pat Collins and baby boy.
- Mrs. Gladys Meredith.
- Mrs. Bertha Owens.
- Mrs. Dessie ...
- Jim Garner.
- W. C. Polk.
- W. E. Bradshaw.
- James Ratliff.
- Jack Robinson.
- J. T. Hickman.
- Dell Melette.
- John Sleight.
- S. M. Shell.
- W. W. Sanders.
- C. J. Renfro.

**Area Residents  
Invited To Take  
Corps Job Test**

Eastland County area residents interested in putting their skills to use in developing nations around the world are invited to take the Peace Corps Placement Test at 1:30 p. m. on Saturday, Aug. 17 at the Post Office Building in Abilene.

The Peace Corps uses the Placement Test to determine how an applicant can best be utilized overseas. The test measures general aptitude and the ability to learn a language, not education or achievement. The test requires no preparation and is non-competitive; an applicant can neither pass nor fail.

Persons interested in serving with the Peace Corps must fill out an Application, if they have not already done so and present it to the tester before the test. Application forms are available from post offices or from the Peace Corps in Washington, D. C. 20525.

Twelve thousand Volunteers are currently serving in Asia, Africa, Latin America and the Pacific Islands working with the people of those nations in self-help projects ranging from food production to health to education. More Volunteers are needed for programs which will begin this fall and winter.

**Scientists Tell  
Sunday Topic**

"The Lord God is a sun and shield; the Lord will give grace and glory; no good thing will he withhold from them that walk uprightly." These words from Psalms are the Golden Text of this week's Christian Science Lesson-Sermon titled "Soul". The Lesson-Sermon is the same in all Christian Science churches throughout the world. In Church of Christ, Scientist, in Eastland, the Sunday service begins at 11 a. m.

One of the related passages to be read from the denominational textbook is the following: "Knowing that Soul and its attributes were forever manifested through man, the Master healed the sick, gave sight to the blind, hearing to the deaf, feet to the lame, thus bringing to light the scientific action of the divine Mind on human minds and bodies and giving a better understanding of Soul and salvation. Jesus healed sickness and sin by one and the same metaphysical process" ("Science and Health with Key to the Scriptures" by Mary Baker Eddy).

**Entry Deadlines  
Near for Stock**

The livestock entry deadlines for the West Texas Fair and the State Fair of Texas are rapidly approaching. Boys and girls who plan to enter their livestock in these major shows need to be finalizing their plans at this time.

Entry deadline for the West Texas Fair, to be held Sept. 9-14, is Tuesday, Aug. 20. Entries are due for the State Fair of Texas, to be held Oct. 5-20, is Monday Sept. 9. You can obtain entry blanks from the County Agent's Office, according to Bob Cohen, Ass't. County Agent.

Michigan leads the U. S. in industrial output and leads the world in automobile production.

**frozen FOOD Specials**

- PERCH FILLETS.....lb.
- CATFISH FILLETS.....lb.
- FISH STICKS 8-oz. pkg. 2 for
- BREADED SHRIMP 10-oz. pkg.
- COLOMBOS PIZZA.... pkg.
- ENCHILADA DINNERS.. 2
- CHOICE LOIN STEAK.....lb.
- CHOICE PIN BONE STEAK.....lb.
- CHOICE RIB STEAKS.....lb.
- FRESH PORK STEAK.....lb.
- FRESH PORK SAUSAGE.....lb.

—PLENTY PIT COOKED BAR-B-QUE—  
Home Made Potato Salad  
Home Cooked Beans  
Home Made Salads of All Kinds

**SLEDGE RETAIL MARKET**  
At Earnest Packing Company

210 S. Lamar

**FRESH MEATS**  
cut to order

**JUMBO ROLL**  
ITS REGULAR HOLDER™

Nothing like it!  
Absorbs like magic!

**NEW!** from Procter & Gamble  
**Bounty**  
TOWELS

125 TWO PLY SHEETS • 11" x 11" SIZE

★ White  
★ Assorted Colors  
★ Decorator

Jumbo Roll **37¢**

**SAFEWAY**

Prices Effective Thurs., Fri. and Sat., August 15, 16 and 17, in..... EASTLAND

We Reserve the Right to Limit Quantities. No Sales to Dealers.

**3 Days Only**  
Offer Ends Saturday night!

**SAL**  
any size  
whitewalls or blackwalls list

**GOOD YEAR**  
NEW TREADS retreads on sound tires

**\$11**

- \*plus 27¢ to 46¢ per tire Estimated Tax recovery (depending on treadable tire of the same size)
- You get the same famous Goodyear type tread design that comes in our "Power Cushion" tires
- Free mounting
- Pick your size now and call

Buy Now and Save — Any of the One Low Price — Whitewalls or Blackwalls	
7.75x14 (7.50x14)	7.75x15 (6.70x15)
7.35x14 (7.00x14)	7.35x15 (6.50x15)
6.95x14 (6.50x14)	6.40x15

LARGER SIZES \$12.25\*

**NO MONEY DOWN** on our Easy Pay Plan

**Vinalawn Garden Hose**  
50 ft. in length—  
100% vinyl plastic  
**\$1.66**

**FOR PICK-UP AND PANEL TRUCK OWNERS**  
**ONE LOW PRICE**  
**WORKHORSE TIRE**  
3-T Nylon Cord "Traction Sure-Grip"

6.70 x 15 tube-type	\$2.80 F.E.T.
7.00 x 13 tubeless	\$2.56 F.E.T.
7.00 x 14 tubeless	\$2.81 F.E.T.

Delivers 7½ gals. per min. & exceeds most water pressure requirements. Green with rustproof brass couplings.

**GOODYEAR** SERVICE STORE

306-308 EAST MAIN ST. — EASTLAND — 629-2662

**HEADQUARTERS  
EASTLAND COUNTY—  
HEIDENHEIMER'S  
IN CISCO!**



**VI'S  
CORNFIANS**  
Number One pants style in a  
Sanforized cord. Tops with the  
for school and leisure wear. In  
ular off-white and rich desert tones.

**HEIDENHEIMER'S**

**Eastland Historical Plaque  
Wording Is Up-Dated Here**

**EASTLAND**  
County Seat, Eastland County, named for William M. Eastland—Texas war for Independence hero who was in Mier Expedition against Mexico, and was executed in the "Black Bean" lottery at Rancho Salado in 1842.

Most noted early local people were Comanches, who resisted occupation of area by white settlers. The last recorded Indian Raid in County was in 1874. Eastland was named county seat in an election on Aug. 2, 1875. With 250 people it was incorporated on June 6, 1891, and elected W. Q. Connelley as mayor.

After a discovery in 1917, one of the fabled oil booms of Texas occurred nearby, with Eastland center for legal matters. With oil priced \$2.60 a barrel, many wells flowed at 10,000 barrels a day. The city quickly grew to 25,000 people; five banks prospered. Coming here to seek "Black Gold" were celebrities, including Evangelist Billy Sunday, Circus Owner John Ringling, Sports Figures Jess Willard,

Tex Rickard. An international wonder-story happened here: The old courthouse corners one was opened (on this site) in 1928 to reveal survival of "Old Rip", a horned toad placed there with other mementoes on July 19, 1897.

**4 County 4-H'er's  
Books Place First  
In District Race**

Eastland County 4-H Club members did well in District Record Book Judging. Four of their records placed first and will compete in State Record Book Judging. Brenda Browder of the Gorman 4-H Club placed first with her record in Achievement; Patsy Moseley placed first with her record in Conservation of Natural Resources. She is a member of the Olden 4-H Club. Bobby Williams of the Gorman 4-H Club placed first with his record in Leadership. Kathy Kincaid of the Morton Valley 4-H Club placed first with her record in the Santa Fe Award Program. These records will be judged on the State Level at Texas A&M University in September.

Also entering records from Eastland County in the Senior Division were Carter Housnel of Rising Star in Agriculture, and Frank Claborn of Eastland in Field Crops. Both of these records placed second. In the Junior Division Bobby Ables of Cisco received a

**Comanche County  
Reunion Aug. 25  
In Lubbock Park**

The 19th annual Comanche County Reunion will be held in Mackenzie State Park in Lubbock, Aug. 25. A basket lunch will be served at 12:30 and then there will be singing in the afternoon. All Comanche County residents and all "Ex's" are invited to attend.

**4-H'ERS ENJOY CAMP  
AT LAKE CISCO PARK**

Eastland County 4-H boys and girls enjoyed themselves at the County 4-H Camp held at Lake Cisco, Aug. 8-9. Some 48 4-H Club members attended the camp. Club members were taught swimming, crafts and folk games.

The camp was planned and led by 4-H Jr. Leaders Patsy

Moseley, Sharon Steddum, Frank Claborn, Kathy Kincaid, and Bobby Williams. Also serving as instructors and speakers for the camp were Ben McKinnis of Eastland, Curley Hayes and J. T. Wilson of Abilene.

The 4-H Club members were especially thankful to the 4-H Adult Leaders who prepared and served the food for camp.

red classification on his record in Sheep, and Hardy Brown a white classification on her record in clothing. According to Judy Dedeck, Assistant County Home Demonstration Agent, a total of 187 records were entered for District Judging.

**RANGER  
DRIVE-IN THEATRE**

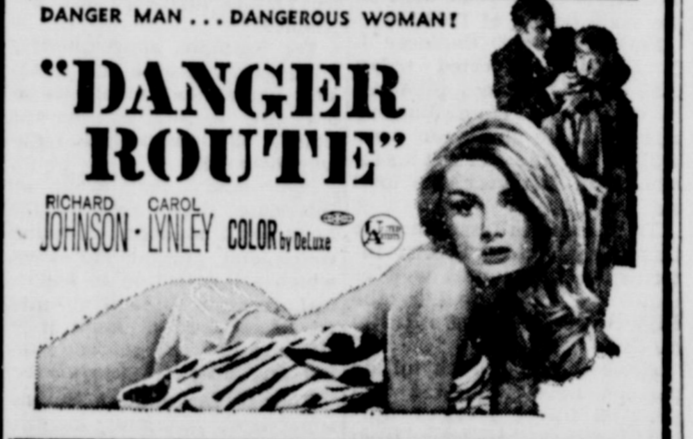
ADULTS 60c — KIDDIES UNDER 11 FREE  
Show Starts At Dusk — Box Office Closes at 9:45

THURSDAY — FRIDAY — SATURDAY  
AUGUST 15-16-17

DONBLE FEATURE PROGRAM — EACH  
FEATURE SHOWS 1 TIME NIGHTLY



—PLUS OUR SECOND FEATURE—



**RAWLINS SINCE 1884  
Monuments**  
WEATHERFORD PHONE LY 4-2726

IF WE MAY ASSIST YOU, CALL US COLLECT OR MAIL THIS AD

NAME \_\_\_\_\_ PHONE \_\_\_\_\_  
ADDRESS \_\_\_\_\_ CITY \_\_\_\_\_

**WALMART STORE**  
FIRST STOP HERE then **Back to School**  
& RANGER FAMILY STORE

**SPECIAL!**  
**BONDED ORLON FABRICS**  
60" Wide Many Colors **\$2**

**Men's Better TROUSERS**  
REDUCED  
Dacron & Pima Cotton  
Tan & Green  
Most All Sizes  
Reg. \$10 **\$6**

**Permanent Press SPORT SHIRTS**  
Men's & Boy's All Sizes  
Reg. \$2.79 to \$3.50 **\$2**

Many Styles, Colors, Sizes — Reg. \$10 to \$12  
**WOMEN'S SHOES** — Now **\$5**  
Wear Now Into Fall  
Solids, All Sizes — Reg. \$11  
**WOMEN'S SPORT COATS** — Now **\$5**  
POPCOCK WOMEN'S SUITS **\$5**  
SUMMER — Many Styles **1/2 price**  
SLIP-ONS, TIE SANDALS — Reg. \$5 **\$2**  
WOMEN'S SHOES — Now **\$2**  
POPCOCK GIRL'S SUMMER WEAR **\$1**

**Will your air conditioning turn  
your home into a steam box  
this summer?**

A breakdown on a typical summer day could accomplish just that! That's why you ought to consider gas air conditioning right now! It's built to be relied on. Gas air conditioning is built simply, ruggedly, with no compressor, fewer moving parts. That means less things to go wrong... and added years of dependable service and comfort. Call Lone Star Gas for a free estimate on reliable gas air conditioning.



Lone Star Gas

**FISH NIGHT — EVERY WEDNESDAY**  
ALL THE FISH YOU CAN EAT FOR \$1.25  
all the trimmings: french fries, slaw, onion rings, hush puppies  
**COUNTRY CHICKEN NIGHT — EVERY THURSDAY**  
ALL THE CHICKEN YOU CAN EAT FOR \$1.40  
Gravy, hot rolls, honey, salad, drinks of tea or coffee  
—BRING THE FAMILY OUT FOR AN EATING-OUT TREAT—



**RESTAURANT**  
EASTLAND, TEXAS  
Mr. and Mrs. Charles Robertson, Mr. and Mrs. Ernest Robertson Your Hosts  
DOUG CUDE — Your Chef

**DIXIE Drive-In**  
EASTLAND RANGER HIGHWAY

Box office opens 8:30, show starts 9:10  
Box Office closes 10:10

ADMISSION — 60c . . . Children under 12 Free  
Each Wednesday and Thursday Are Bargain Nights!  
Adults — 25c

WEDNESDAY — THURSDAY  
GARY COOPER in  
**FRIENDLY PERSUASION**  
Allied Artist — in COLOR  
FRIDAY — SATURDAY  
GLENN FORD — ANGIE DICKINSON  
CHAD EVERETT  
**THE LAST CHALLENGE**  
In PANAVISION and METROCOLOR

**LEVI'S HEADQUARTERS  
IN EASTLAND COUNTY—  
HEIDENHEIMER'S  
IN CISCO!**



**VERY  
BIG  
WITH  
BOYS!**



**LEVI'S STA-PREST  
TRIMCUTS**

**SPARTAN CLOTH**  
50% Fortrel Polyester  
50% Cotton  
Blue Amber — Gold — Olive  
28 to 38  
**\$7.50**

**STA-PREST TATTERSALLS**  
50% Fortrel Polyester  
50% Cotton  
Blue or Yellow  
28 to 38 Waist  
**\$9.00**

**HEIDENHEIMER'S**

# County Clerk's Office Is 'Fascinating Place'

TEXAS CONSTITUTION, Article V, Section 20: "There shall be elected for each county, by the qualified voters, a County Clerk . . . who shall be clerk of the County and Commissioner's Courts and recorder of the county . . ."

Johnson Smith, who has served as Eastland County Clerk since 1953, says, "This office is one of the most fascinating places in the world". Then he adds, truthfully, "Even if it is one of the most confusing places in the world to the general public."

The office contains records of many kinds, most of them open to the public "at the convenience of the clerk," according to law. Some records are never open to the public, notably those dealing with juveniles. The office handles records of any criminal proceedings held in County Court. Minutes of the Commissioners' meetings are also filed in the office.

Vital statistics; birth and death records, are filed there. (Note: in recent years, many cities keep these records at the city hall.) Marriage licenses and military discharges are there. The fee for obtaining the marriage license covers recording it following the wedding; there is no charge for recording a military discharge.

County Judge Scott Bailey says, "Title to land is only as good as the records which support it." All documents pertaining to land titles are filed in the clerk's office: deeds, warranty, mineral, trustee's, right of way, cemetery; deeds of trust; proof of heirship; mechanic and materialman's lien; release of liens; and others.

(Note: the documents pertaining to land or property and marriage licenses are the "Filed for Record" listings found weekly in the newspaper. They are copied from the index record, which lists them alphabetically. Most questions concern the et

ux", etc, which follows names Et UX MEANS and wife"; et vir, and husband; and et al, and the -deceased" following other names, and the other. For instance, if John Doe and three of his brothers buy a farm, the document itself contains all names; the document is filed and the key to filing—the index—is listed "John Doe, et al" meaning John Doe and others.

"Proof of heirship" means that, to settle an estate, or to clear title and clarify ownership, the heirs of the deceased person or the representatives of the state must file an affidavit, which is attached to the records of the property in question. The document is filed under the name of the deceased, which leads to the printed listing: "Jane Doe, deceased to the public, proof of heirship.")

Smith explains, "The index system is designed to help us find documents quickly, thereby giving information to the public quickly. This is a service office. People are welcome to come here to secure information. We are equipped to provide photostatic copies of documents for a fee. However, there is not usually a fee for information, as such which does not require a copy."

Marriage licenses are indexed by the last name both the male and the female; property records are indexed by both grantor and grantee.

As a matter of fact, people do go there for information. Deputy County Clerks are Mrs. Joann Johnson, three eight years; Mrs. Edith McCullough, three nine years; Mrs. Winnie Wright, one year; and Mrs. Gail Dennis, who has worked in the office at different times when she was an Eastland resident. They help people who need proof of birth date for various reasons; who must have a copy of a deed; who want to check records for genealogical information; who need to have a birth certificate, which is incorrect, corrected.

And, then, some people merely like to "look around," as in a store. Records date back to 1874 and older records are especially fascinating; one death record lists "cause of death" as "old age and general softening of the brain". The dead person was 56. Another says of a child: "This child was not rite since birth". Many times in the older books, the "undertaker" column says, "None called."

The old records give a vivid impression: man is born, man dies, and the world spins at the same rate, while we take care of our own. The philosophy comes through the pages, through the years; this philosophy which conquered against all the odds.

No wonder, the county clerk's office is "the most fascinating place."



**BOBBY WILLIAMS** (r), of the Gorman 4-H Club being presented a certificate by Asst. Co. Agent Bob Cohen on behalf of Pennzoil United, Inc. Bobby is receiving this certificate for being the 4-H State winner in the Danforth Leadership Camp award. Pennzoil United sponsors the trip to and from the camp, which he held at Stoney Lake, Michigan. Bobby left to attend the camp on Saturday, August 10, and will return from the two week camp on August 26.

## Highway Dept. Assisting More Visitors Daily

AUSTIN — More people than ever before want to know what to see and do in Texas.

Most of them ask—and get the answer from—the Texas Highway Department.

In fact, 46 per cent more visitors were helped by the Department in the first six months of this year than in the same period of 1967.

State Highway Engineer J. C. Dingwall reported today that travel services rendered to visitors from January through June this year were 502,326. In the first six months of last year, the total was 342,115.

This includes assistance to travelers given at Tourist Information Bureaus as well as inquiries answered by the Highway Department's Austin office.

Altogether, nearly a million persons have requested and received travel services during the first half-year from the Texas Highway Department.

Comparatively, services rendered by the seven State, line Tourist Information Bureaus which were in operation in 1967 are up 30.4 per cent for the first half of 1968. Included are bureaus at Anthony, Denison, Gainesville, Orange, Texarkana, Waskom and Wichita Falls.

Two new bureaus opened this year at highway gateways in Amarillo and Laredo. The Highway Department also operates the Capitol Information Center in Austin and a special HemisFair center in the Institute of Texan Cultures.

"Each of the Department's 11 centers are operating at near-capacity now during the peak of the recreational travel season," Dingwall said.

"Trained travel counselors greet and assist visitors with their travels in Texas," he said. "Our travel counselors

strive to encourage people to see more of our State."

Dingwall said the centers are an important part of the Highway Department's wide range of services and facilities for the highway traveler.

Most of the descriptive literature distributed in response to mail inquiries and by the Tourist Information Bureaus is produced by the Department. An estimated five million pieces of literature have been distributed this year.

Other services also emphasize that "highways are for people."

For example, approximately 1,100 safety rest areas, roadside parks and scenic turnouts are maintained on the State's 69-thousand-mile highway network.

New safety rest areas on Interstate Highways include comfort stations, drinking water and special Info-sites, which call attention to historical, recreational and cultural resources nearby. Each Info-site also has a dispenser offering free maps to the visitor.

Tourist Information Bureau supervisors also note increasing numbers of visitors are interested in Texas' recreational waterways.

Growing popularity of water sports underlies the Highway Department's boat ramp program with some 170 boat ramps completed, under construction or programmed for construction along Texas waterways.

"All these services are important adjuncts to the prime mission of the Texas Highway Department—providing the safest most convenient highway facilities possible," Dingwall said.

## Special USAF Recruiters Due In Abilene Soon

A special recruiting team for the United States Air Force will come to Abilene on Aug. 16 and 17. They will be interested in talking to young ladies who might be interested in a job with the Air Force. The Air Force has job openings for young ladies who are high school graduates, college graduates and registered nurses. The special team will be at Room 142, Downtowner Hotel, in Abilene, Friday and Saturday, Aug. 16 and 17, between the hours of 1 and 8 p. m. to conduct job interviews. Members of the special team are: Captain David Kries, Sergeant Dee Webb, WAF Recruiter, Sergeant R. B. Parnell, Jr. All from the Dallas-Fort Worth area. Sergeant Lee Yates and Sergeant Jack Townsley from the local office will also be there.

NOW AT THE MAJESTIC



**"THOROUGHLY MODERN MILLIE"**  
Julie Andrews' dream of turning herself into a 1923-style flapper comes true in Ross Hunter's hilarious romantic comedy with music, "Thoroughly Modern Millie," a Universal picture photographed in Technicolor.

NOW AT THE MAJESTIC



**"THOROUGHLY MODERN MILLIE"**

Where can you find better proof of the flapper era than this photo of Mary Tyler Moore, Julie Andrews and Hunter's production of "Thoroughly Modern Millie"? It's a Universal picture in Technicolor.



TEXAS HIGHWAY DEPARTMENT

**OUR DAD WANTS TO SELL YOU SOME INSURANCE HOW ABOUT SEEING HIM AT**

**D. L. KINNAIRD GENERAL INSURANCE**  
207 W. Main St. — 629-2544

**JIMMY & DWIGHT KINNAIRD**



# fuln foods 1st in price

White Swan <b>WHOLE GREEN BEANS</b> 303 can - <b>29c</b>	White Swan <b>FRUIT COCKTAIL</b> 4 303 cans <b>\$1</b>
Jewel <b>SHORTENING</b> 3 lb. can <b>49c</b>	Sweetheart <b>FLOUR</b> 5 lb bag <b>39c</b>
<b>HI-C DRINK</b> Pineapple — Grapefruit — Orange Orange-Pineapple — Grape — Apple Punch — Cherry 3 46-oz. cans <b>89c</b>	Maryland <b>COFFEE</b> Drip-Reg-Perk-o-Elect lb <b>69c</b>
White Swan <b>TEA</b> 1/2-lb. pkg. <b>49c</b>	Hunt's <b>CATSUP</b> 5 14-oz. bottles <b>\$1</b>
Borden's <b>BUTTERMILK</b> 1/2-gal. <b>45c</b>	Borden's <b>MELLORINE</b> 2 1/2-gal. carton <b>79c</b>

## CRISP • CLEAN • FRESH Produce

POTATOES California	20-lbs.	89c
PEACHES Texas Green	lb.	19c
CABBAGE Thompson Seedless	lb.	5c
GRAPES	lb.	29c

## TASTY MEATS

Decker's Tall Corn <b>SLICED BACON</b>
Decker's <b>WEINERS</b>
Barbecue <b>HOT LINKS</b>
<b>CHUCK ROAST</b>
<b>ARM ROAST</b>
<b>SHORT RIBS</b>

**DOUBLE GOLD BOND STAMPS**  
Every Wednesday with \$2.50 Purchase Or More

HOME OWNED — HOME OPERATED  
**SUPER SAV**  
G. A. WHITE — Manager  
PHONE 629-1191 400 S. S.

**PREVENTION IS BEST PROTECTION**  
**FRANKLIN Vaccines**  
**Livestock Medicinals and Supplies**  
**EASTLAND DRUG**

**NOTICE**  
We service all kinds of submersible pumps, sprinkler systems, house wells, and windmills, 15 years experience.  
**MANCILL SMITH**  
203 E. Plummer St.  
Phone 629-1212  
Eastland, Texas

# Trade for a tough truck now!

the Dodge Boys have dealin' fever

Carry a big load of people or cargo in the Dodge Sportsman. Room for eight adults with optional rear seat. Or, 252 cubic feet of cargo space, 108" wheelbase, bucket seats and an intermediate bench seat. Get a great deal on a Dodge Sportsman from the Good Guys now!

**RUSHING MOTOR COMPANY**  
215 South Seaman

**THE DODGE BOYS**

## Reunion Attracts Visitors Sunday

Approximately 200 people of the annual Fox Family Reunion held Sunday, Aug. 11, at Eastland City Park. The picnic lunch, the picnic lunch business meeting were held. Mrs. Fox of Eastland during the business meeting. New officers elected: Evelyn Fox of Olden, secretary-treasurer; Berwick, of Ranney, Oral Fox of Woods and Hur- of Olden, and of Eastland, committee; Shirley en, Almaire Fox Clara Mae Eastland, Jose inger, and Bill e, food commit- were made to and for a future for the reun- of flowers was Fox, oldest re- member who union in 1910. rs old and re- n the reunion fish fry at Un-

cle Tom Duncan's place on Colony Creek. The program was turned over to Mr. and Mrs. Abe Fox of Lubbock. Attending were: From Eastland: Bud Fox, Mr. and Mrs. Melvin Fox, A. E. Fox, Mr. and Mrs. R a ymond Fox and Derrick, Mrs. Annie Terry, Ada V. Cox and Terry, Airman First Class and Mrs. Larry Mace, Bertha Rainey, Mr. and Mrs. Walter Fox, Mr. and Mrs. Adra L. Fox and family, Mr. and Mrs. Jack Mace and Bob. Ranger: Mr. and Mrs. C. A. Strong, Mr. and Mrs. M. W. Herwick and Richard, Mr. and Mrs. Bobby Ables, Rosa Adams Hatton, Mr. and Mrs. Oral Fox an dfamily, Martha Adams Dempsey. Fort Worth: Mr. and Mrs. Wayne Richardson and family, John Fox, Mr. and Mrs. Lloyd Jones and family, I. N. Fox, Mr. and Mrs. Don Vaughn and family, Mr. and Mrs. C. A. Harrison and boys, Mr. and Mrs. Charles Cocran and daughter, Mr. and Mrs. Skeet Russell, Sue Fox, Kathy Fox, Mr. and Mrs. J. E. Barton.

**ON SALE**  
 Reduced all prices and used travel prices start We only have kind in stock, will be 3 per from the fac- also selling Camper Cover \$50.00 up. Ezylift and installed.

**Kar Co.**  
 Breckenridge

**NOTICE**  
 GAS COM- to sell its 629, located at Plant No. 108 approximately six Ranger, Tex- ages No. 309 ed at the RCF nger, Texas. made to the r on an as is e successful e required to t State Tax in e bid submit- successful bidder days after re- of sale to re- age from the ear out, clean ve all found- ls, rocks, aving the pre- ood orderly m bids or bid e of your ch- Star Gas Com- with Harwood Texas 75201, P. L. Stone. ust be receiv- an 5:00 P.M., 1968 to be ne Star Gas erves th e any and all

**Organs**  
 School Sale you to come ver our new anos and r Spinets in hes. Studios Ampico ed in maple Lowrey Or- \$545. Used Student uced in this 6 months to Authorized er.

**GLAS**  
 Organ Service block east Stephenville 4-4221 lle, Tex.

**Retread Tires**  
**Big Savings Now!**

- First-Class Carcass
- No. 1 Dixie-Cap Tread Rubber
- 670x15, 815x15, 775x14 825x14
- Guaranteed life of tread

\*\*\*  
**HORTON TIRE CO.**  
 EASTLAND

# GREAT VALUES

## DECKER'S TALL KORN Thick Sliced BACON 2 LB. PACK \$1<sup>09</sup>

DECKER'S RANCH STYLE  
**BONELESS HAM**..... lb. \$1.29  
 USDA CHOICE CHUCK  
**BONELESS ROAST**..... lb. 79c  
 WISCONSIN  
**COLBY CHEESE**..... lb. 99c

DECKER'S  
**JUMBO FRANKS**..... lb. 59c  
 LEAN & TENDER  
**PORK STEAK**..... lb. 59c  
 CORN KING — 6-oz. Pkgs. — Bologna, Olive-Pickle, Macaroni  
**LUNCHEON MEATS**... 3 for \$1

—HEALTH AND BEAUTY AIDS—  
**JERGENS LOTION** 79c  
 Colgate  
**TOOTH PASTE** 59c  
**BRYLCREAM** 89c  
 Reg. or Menthol  
**AERO SHAVE** 39c

Shamrock French Style 303  
**Green Beans** can 4 FOR \$1  
 Shamrock 3sv Alaska 303  
**Pee Wee Peas** can 5 FOR \$1  
 Shamrock WH or CS 303  
**Corn** can 6 FOR \$1  
 Peter Piper Peeled 303  
**Tomatoes** can 7 FOR \$1

Del Monte 303  
**Spinach** can 5 FOR \$1  
 Gold Tip 303  
**Tomatoes** can 6 FOR \$1  
 Franco American 15 1/4  
**Spagettos** can 7 FOR \$1  
 Ranch Style 300  
**Spaghetti** can 8 FOR \$1  
 Musselman 303  
**Apple Sauce** can 9 FOR \$1

Shamrock 303  
**Spinach** can 5 FOR \$1  
 Shamrock Fresh Shelled 300  
**Blackeyes** can 6 FOR \$1  
 Shamrock — 10 count 303  
**Potatoes** can 7 FOR \$1  
 Shamrock Jumbo 303  
**Butter Beans** can 8 FOR \$1  
 Peter Piper Short Cut 303  
**Green Beans** can 9 FOR \$1  
 Shamrock Med 303  
**Sliced Beets** can 10 FOR \$1

Alma 300  
**Whole Potatoes** can 5 FOR \$1  
 Shamrock  
**Red Kidney Beans** can 6 FOR \$1  
 Alma 303  
**Peas & Carrots** can 7 FOR \$1  
 Gold Tip Cut 303  
**Green Beans** can 8 FOR \$1  
 Alma Baby  
**Lima Beans** can 9 FOR \$1  
 Alma  
**Mexican Style Beans** can 10 FOR \$1  
 Alma  
**Spinach** No. 1

SEASONED JUST RIGHT — SHOP MADE  
**PORK SAUSAGE**..... lb. 49c

<b>Bake Rite SHORTENING</b> 3-lb. Tin — Limit One 39c	<b>Klean DETERGENT</b> Giant Box 49c TIDE 69c	<b>Foremost MELLORINE</b> Ass't. Flavors 3 1/2-gal. ctns. \$1
---	---	---

ASSORTED FLAVORS  
**FOREMOST ICE CREAM**..... 1/2-gal. ctn. 59c  
**FOREMOST COTTAGE CHEESE**..... 2 lb. ctn. 49c

Del Monte — 303 can <b>PEAS</b> ..... 4 for \$1	Shamrock — Reg. 1/2 cans <b>TUNA</b> 3 cans \$1
Del Monte Gold Tip <b>SPINACH</b> 5 for \$1	Del Monte Tomato — 46-oz. can <b>JUICE</b> ..... 3 for \$1
Del Monte — 303 can <b>CORN</b> ..... 4 for \$1	Libby's — Reg. Cans <b>Vienna Sausage</b> ... 4 for \$1
CUT — 303 Can <b>Green Beans</b> .... 4 for \$1	Value Pac <b>TISSUE</b> 70-count roll 79c
Del Monte — 303 Can <b>KRAUT</b> ..... 5 for \$1	Austex <b>BEEF STEW</b> 300 can 49c
Shamrock Sliced <b>Pineapple</b> ..... 3 for \$1	Lily <b>SALT</b> 26-oz. box 10c
Del Monte Orange — No. 2 can <b>JUICE</b> ..... 5 for \$1	Lipton <b>TEA</b> 1/4-lb. box 39c
	Hershey <b>Chocolate Syrup</b> 25c

**FLOUR** DUTCH OVEN 5lb. bag 39c

Como <b>TISSUE</b> Assorted Flavors 4 roll pkg. 25c	Mission <b>CANNED DRINKS</b> Assorted Flavors 12 12-oz. cans \$1	Bama <b>APPLE JELLY</b> 4 18-oz. jars \$1
--	---	---

## —JRB QUALITY PRODUCE FEATURES—

**CARROTS**..... lb. 10c  
 DELEON  
**FRESH CANTALOUPE**..... 5 for \$1  
**RUSSETT POTATOES**..... 20 lb. bag 89c  
 NEW MEXICO  
**PEACHES**..... 2 lbs. 29c  
**TEXAS TOMATOES**..... lb. 19c

**DOUBLE S&H GREEN STAMPS**  
 with purchase of \$2.50 or more  
**EVERY WEDNESDAY!**

# JRB

**SUPERMARKETS**  
 S & H GREEN STAMPS  
 WITH EVERY PURCHASE

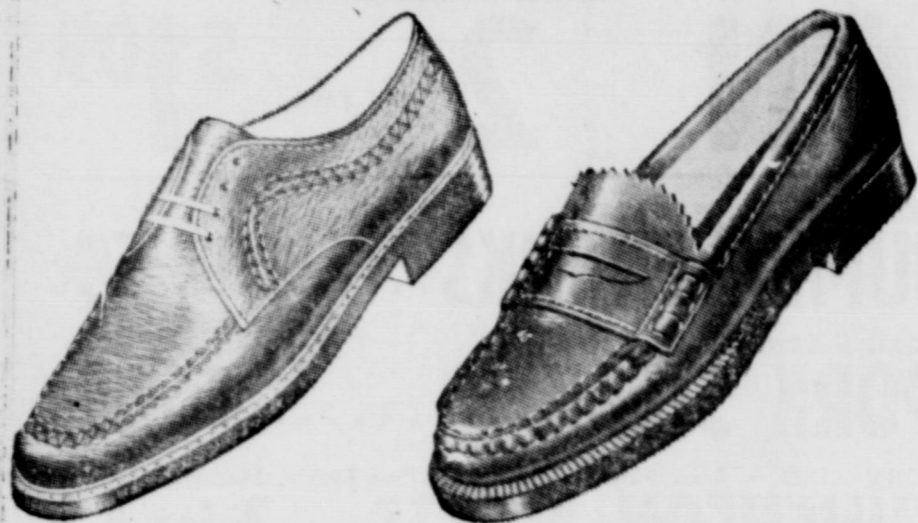
PRICES GOOD THROUGH SATURDAY, AUG. 17  
 PRICES GOOD IN EASTLAND  
 Quantity Rights Reserved — No Sales to Dealers

# Fashion Days

**Penneys**  
ALWAYS FIRST QUALITY

## PRICES REDUCED!

Famous Penney quality shoes!  
SIZES FROM KINDERGARTEN TO COLLEGE  
SAVE 1.11 TO 3.11 A PAIR THROUGH  
SATURDAY ONLY



MEN'S REG. 10.99

**NOW 8.88**

OUR BEST SELLING  
TOWNCRAFT MOCCASIN TOE

Little boys', reg. 7.99... now 5.88  
Big boys', reg. 8.99... now 6.88

MEN'S REG. 12.99

**NOW 9.88**

OUR BEST SELLING TOWNCRAFT  
BEEF ROLL SLIP-ON STYLE

Little boys', reg. 6.99... now 5.88  
Big boys', reg. 8.99... now 6.88



GIRLS' REG. 7.99

**NOW 5.88**

OUR BEST SELLING GIRLS'  
CAROL EVANS® AND  
GAYMODE® SADDLE SHOE

Little girls', reg. 6.99... now 5.88  
Ladies', reg. 7.99... now 5.88  
Ladies', reg. 8.99... now 6.88

GIRLS' REG. 6.99

**NOW 5.88**

OUR BEST SELLING GIRLS'  
CAROL EVANS® T-STRAPPER

Smooth leather T-strapper is styled to  
give the kids support and comfort.  
Bouncy ribbed rubber heel, sole.

CHARGE IT

IN CISCO, TEXAS  
9:00 A.M. to 5:30 P.M.

USE OUR  
LAY-AWAY

## FALL FASHIONS FOR BACK - TO - SCHOOL THE NEATNIK WAY

### SHOP SEARS FOR A COMPLETE PERMA-PREST WARDROBE

for every member of the family  
featured in our special  
38 pages of back to school values  
in stock for immediate delivery

SHORT SLEEVE PERMA PREST  
SHIRTS — VALUES TO 4.95  
NOW

**2.99**

SKIRT LENGTHS

YARD

**1.66**

ELECTRIC  
PENCIL SHARPENER

**11.50**

Fall Fashion Days, 1968...

The progressive merchants of Cisco  
join together to bring the public one of  
the most exciting events of the entire year.

*With the busy days of autumn,  
the wonderful days of a renewed school  
term just around the corner, it's a  
time for thinking and looking after the  
family's wardrobe. Season changes  
are definite things in this part of  
the state, and public school and college-  
bound young people think of their apparel  
for the months ahead. (Parents of  
scholars need very little excuse to  
consider a new suit, a new dress, a winter  
wrap) . . . and the fashions this year  
are so beautiful, so exciting, so  
imaginative, that, well, even the most  
comfortable old hat, or old shoe, loses its  
charm in comparison with the new!*

And you'll find it all at the  
shops and stores in Cisco —

Friendly, courteous, efficient and helpful:

these are the outstanding centers  
inviting one and all to

#### FALL FASHION DAYS IN CISCO

- Altman's
  - Ferguson's
  - Heidenheimer's
  - Lorraine's Fashions
- The Man's Store
  - J.C. Penney Co.
  - Sears, Roebuck & Co.



with fashions, featuring  
brand names you know

- Justin McCarty
- Leslie Pomer Originals
- Dana Hall
- Fred Lief
- HIS for Her Sportswear
- BOGART (Mr B.)
- Tumbleweed
- Eileen Scott
- Formfit-Roger
- Playtex
- Hanes
- Vera
- Leroy Knit
- Lorraine's Lingerie
- Fairfield Knit shells
- & many more! Come see



"SMART WEAR FOR WOMEN"  
CISCO

(TELEPHONE 442-3294)

see you in Cisco!

EASTLAND  
COUNTY  
HEADQUARTERS  
FOR  
LEVI'S  
IS

For the  
Wide Open Spaces  
Wear

**LEVI'S**  
AMERICA'S FINEST OVERALL



## HEIDENHEIMER

IN  
CISCO

fit trimmer...  
look slimmer...



**LEVI'S**

AMERICA'S FINEST JEANS • SINCE 1851

You'll look more neat and  
get more wear in LEVI'S —  
the original blue jeans —  
made of the world's heaviest  
all-cotton denim. Why take  
less than the real thing?

GUARANTEED  
To Shrink To Fit:  
Button Front  
Men's 27 to 44 Waist  
28 to 36 Length

**\$5.29 pr.**

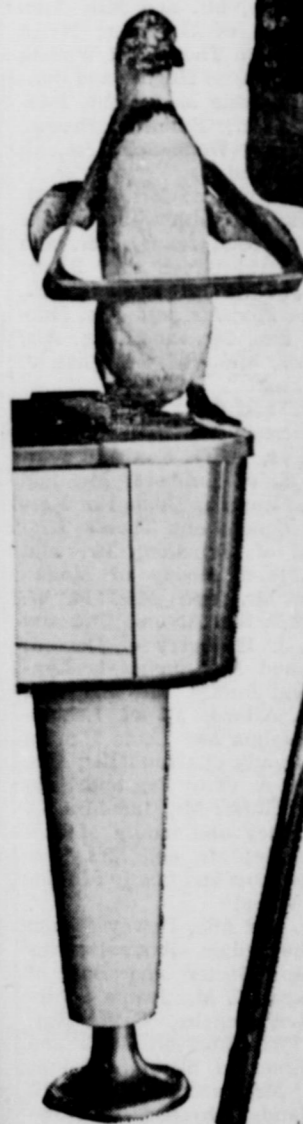
38 & 40 Lengths

**\$5.79**

Boy's Zipper Front  
Size 0 to 12  
18 to 26 Inch Waist

**\$4.29**

Get  
that  
cool,  
unruffled  
look!



Mr. LEVI'S SLA

## LEVI'S STA-PREST never need iron

STA-PREST(r) SPARTAN

50% Fortrel Polyester  
50% Cotton

Blue Amber — Gold — Olive

30 to 42 Waist **\$8.50**

STA-PREST(r) DRESS PL

70% Dacron — 30% Avril Ray

30 to 42 Waist **\$14.00**  
Brown & Gray

# starts Wed. In CISCO

to show off

*Fall*



STA-PREST  
NUVO  
Levi's

long, lean Levi's look in a rugged  
weave that never needs ironing.  
ection of groovy solid colors. Re-  
nobody makes Sta-Prest but Levi's!

THE MAN'S STORE  
Bob Elliott  
CISCO, TEXAS

FALL IS HERE

WITH THE LATEST  
IN FASHION FOR  
PARTICULAR WOMEN

★ ★ ★  
featuring these brand names  
JANTZEN — JON McCAULEY —  
CAMELON — MR. JACK —  
in wool knits, wool, leather  
and Dacron-Polyester

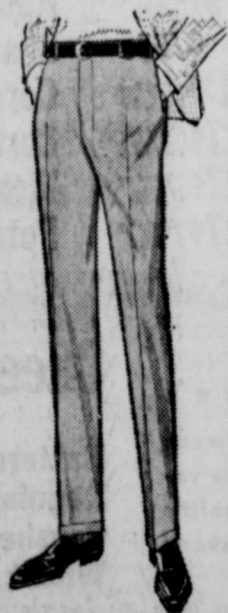
california  
**COBBLERS**  
STROLL THE AVENUE  
Hometown, U.S.A. or Far Away Places. Smart new  
"Boulevard" by California Cobblers is the perfect  
shoe for going anywhere, anytime. In frankly fake  
reptile grained leather, this go-getter rests on a  
comfy inch high heel and features the ever-popu-  
lar high vamp squared-off with antiqued metal  
studs. "Boulevard" will be a welcome newcomer  
to your busy life.



★ ★ ★  
**FERGUSON'S**  
CISCO

## FALL LOOK FOR HIM & HER

BOY'S  
Sta-Prest  
JEANS  
NEVER NEED  
PRESSING!  
own — Gold  
Deep Blue  
izes 1 to 16  
\$2.99 to \$3.50  
pair \$5



Boy's 13 1/2-oz.  
Sanforized  
DENIM  
LUE JEANS  
\$2.49 Each  
pair \$7

### THE LEATHER LOOK

FOR GIRLS  
Cabrella Vinyl  
Over Cotton  
In A Smartly  
Styled Jumper



only  
**\$3.99**

**HEIDENHEIMER'S**

The Family Store In Cisco

## FALL FASHION EXTRAVAGANZA

*fur  
crowned  
classic*

WE'RE BURSTING OUT  
ALL OVER WITH NEW  
FALL FASHIONS AND  
ACCESSORIES - -

Fashions for Back to School  
Fashions for Dress Wear  
Fashions for Sportswear

### SHOP ALTMANS

for your favorite Nationally-Advertised  
brand names

### COATS AND SUITS

Betty Rose — Dumas of California  
Tuxster — Graff of California and others

### KNIT SUITS, COSTUMES, Etc.

Butte Knit — "Puccini" Import from Hong Kong  
—Catalina — R and K — Amy Adams and others

### FALL DRESSES

R and K — Lorch — Mr. Mench — Laura of Dallas  
Vicky Vaughn — JP's Only  
Juniors 3 to 13 Misses 8 to 20 Half sizes 10 1-2 to 26 1-2

**Betty  
Rose**

Beautifully understated  
coat of endless virtuos-  
ity. Climaxed with a fine  
natural mink\* wedding  
band collar. Outstanding,  
loopy wool / nylon, tai-  
lored with the famed  
Betty Rose finesse. Just  
see how perfectly it fits  
into your busy schedule!  
Sable/natural palomino,  
Celery / natural pastel,  
Brown / natural ranch,  
Black / natural ranch.  
10-20.

**79.95**

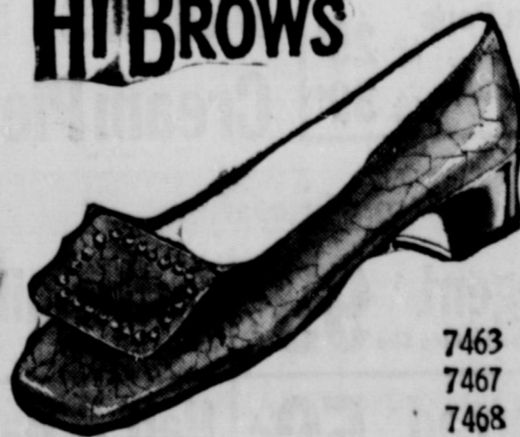
Other new fall coats  
24.95 to 99.00

### Back To School Shoes

ARE PRETTIER THAN EVER

Low Heel Pumps — Wide Straps — Ties — Loafers  
Black and New Colors — Most styles 4.95 to 11.95

**HUBROWS**



7463  
7467  
7468

---BUY NOW---

Put Your New Clothes and Shoes  
in Lay-a-Way or charge to your account!

**Altman's**

Fashion Stores of the Oil Belt  
Cisco . Eastland - Abilene

# The Gordon Spot

By DeMarquis (Dee) Gordon  
Eastland County Extension Agent

Leaf spot, a disease of peanuts, is causing a lot of damage this year. The lower leaves of peanuts were showing leaf spot infection early in the season. This causes leaves to fall and a reduction of yields. It has been proven that the control of this disease is economical. The leaf spot is worse

in irrigated peanuts and is worse in dry land peanuts in wet years.

We had a leaf spot demonstration on Edwin Schaefer's place near Pioneer last year. Peanuts that were treated made from 12 to 28 dollars more per acre above cost of treatment than the non-treated peanuts.

This year we have another leaf spot demonstration on Claude Fuller's farm near Gor-

man. We are using three different fungicides — Cal-Cop 10 Kocide, and Poly-ram. Different rates of water are also being used. Each chemical is being applied with three different rates of water. Some plots are sprayed with 15 gallons per acre, some with 25 and some with 35 gallons per acre. Other fungicides that are being recommended for leaf spot control are sulfur, Sperlox, Dithane and Maneb.

The fungicides should be applied to the peanuts every 10 to 14 days.

I attended the Texas County Agents Association convention in Abilene August 5 and 6. Our speakers included John McKee of the Ford Motor Company, John Hutchinson, Director of the Texas Agricultural Extension Service and Dr. H. O. Kunkel, Dean of Agriculture, Texas A&M.

The Southwestern Peanut Growers Association furnished roasted peanuts for the convention again this year.

Grass burs and weeds usually cause a problem in coastal bermudagrass. John Love of the Chaney Community can tell you how to solve this problem. We sprayed two swaths 20 feet wide through his coastal bermudagrass. Simazine 80W was the herbicide used

and was applied on March 6. One swath was sprayed with one pound of Simazine per acre and the other was sprayed with 1 1/2 pound per acre. John said the Simazine worked better than he expected it to. All summer you could easily see the difference in the sprayed area and the unsprayed area. There are very few weeds in the treated area.

Simazine was cleared this year for use on established

bermudagrass. It kills weeds by cutting off the root system. As weeds emerge, they appear normal, but the leaves will not hurt. Simazine costs one acre is enough for one acre, but 1 1/2 to 2 is needed on sandy

# FOODS TO ENJOY SOUTHERN STYLE

Southern Fried Chicken is Tops...



Try These Southern Style Foods!

## Biscuits 5¢

Mrs. Wright's. ★ Sweetmilk or ★ Buttermilk (Limit 6) Safeway Special!

8-oz. Can



Prove It to Yourself!

Check Safeway's Low Everyday Prices and Compare Specials... You'll see you save at Safeway. IT'S THE TOTAL FOOD BILL THAT COUNTS

Safeway Special!

### Green Peas

Green Giant. 5 17-oz. Cans \$1

Safeway Big Buy!

### Flour

Harvest Blossom. 5-Lb. Bag 39¢

Safeway Special!

### Maryland Coffee

Coffee. All Grinds. 1-Lb. Can 59¢ (With \$5.00 or more purchase, excluding Edwards 1-Lb. 57¢) (Safeway)

Safeway Big Buy!

### Shortening

Velkey. 3-Lb. Can 49¢

Safeway Special!

### Tomato Juice

Libby. 3 46-oz. Cans \$1

Safeway Big Buy!

### Soft Drink

Cragmont. Assorted. 2 Full Quart Bottles 25¢



## FRYERS 29¢

USDA Inspected Grade "A". Whole Safeway Special! (Cut-Up Fryers Fresh or Frozen. —Lb. 35¢)

Choose the Parts You Prefer!

Fryer Halves Freshly Cut. —Lb. 35¢	Whole Breasts Freshly Cut. —Lb. 75¢	Leg Quarters Freshly Cut. —Lb. 39¢
4-Legged Fryer Cut-Up Fryer. —Lb. 39¢	Breast Quarters Freshly Cut. —Lb. 45¢	Drumsticks or Thighs. —Lb. 59¢

### Round Steak 89¢

Full Cut, USDA Choice Heavy Beef. (Boneless Full Cut Round—Lb. 99¢) —Lb.

### Rump Roast 89¢

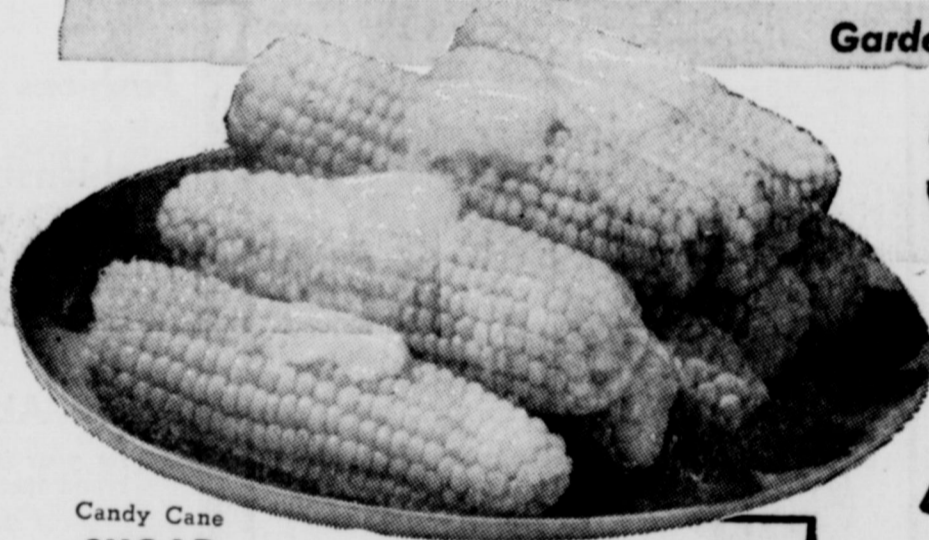
or Pikes Peak Roast. USDA Choice Grade Heavy Beef. —Lb.

Armour's Franks 12-oz. Pkg. 49¢	Boneless Roast 1-Lb. 89¢
Armour Bacon 1-Lb. 69¢	Arm Roast 1-Lb. 79¢
Canned Picnic 2-Lb. Can \$2.49	Swiss Steak 1-Lb. 85¢
Thick Sliced Bacon 2-Lb. Pkg. \$1.38	Boneless Steak Top Sirloin, USDA Choice Heavy Beef. —Lb. \$1.49
Cervelat 1-Lb. 69¢	New York Steak Boneless Strip, USDA Choice Heavy Beef. —Lb. \$1.99
Stick Salami 1-Lb. 69¢	Chuck Steak Center Cut, USDA Choice Heavy Beef. —Lb. 75¢
Sliced Bologna 1-Lb. 63¢	Ground Beef Safeway Handy Chub Pak. 2-Lb. Chub \$1.05
Smoked Sausage 1-Lb. 89¢	Hamburger Steaks Ready to grill. —Lb. 59¢

Old Southern Style Smoked!

## Slab Bacon 49¢

8 to 12-Lb. By the piece. Rind on. (Rindless Sliced Bacon 59¢) —Lb.



Garden Fresh Fruits and Vegetables

## Sweet Corn

US No. 1 Quality. Full Ears. Serve Fresh hot buttered corn for supper. (Crate \$2.95) Each

## Watermelon 5

Texas Crop. (24 to 30-Lb. Size) —Each

## Lettuce

Large Crisp Heads. —Each

## Tomatoes

California's Extra Fancy. Large, Slicing Size. —Lb.

## Fresh Okra

Locally Grown. —Lb.

Candy Cane SUGAR 5-lbs. 49¢-10-lbs. 89¢

Cucumbers 10¢ or Bell Peppers. Crisp and crunchy. —Each

Crisp Carrots 25¢ Safeway (1-Lb. 2 for 25¢) —2-Lb. Cello

Red Cabbage 15¢ Adds color to salads. —Lb.

### Honeydews 59¢

Texas Grown. Large Size. —Each

### Bananas 25¢

Golden Ripe. Safeway Special! 2 Lbs.

Compare Non-Food Values!

Compare... Frozen Food Values!

Compare These Everyday Low, Low Prices!

### Toothpaste 39¢

Safeway. ★ Fluoride or ★ Hexachlorophene. Family Size Tube



### Lemonade 10¢

Scotch Treat. Regular. Big Buy! 6-oz. Can

### 5-Day Deodorant 89¢

Aerosol. 7-oz. Can (\$1.49 Value)

Frozen Treats

Twin Pops 4-Ct. Pkg. 29¢	Dinners Banquet. Assorted. Regular. Pkg. 39¢
Sundaes 4-Ct. Pkg. 39¢	Cream Pies Bel-air. 14-oz. Assorted. Pkg. 29¢

### Shampoo 59¢

Woodbury. (39¢ Value) 8-oz. Bottle

### Johnson's Pledge 1.29

Instant Spray Wax. 14-oz. Can (\$1.39 Value)

Sno-White Salt ★ Plain or ★ Iodized 26-oz. Box 9¢ Why Pay 12¢	Kotex Sanitary Napkins ★ Regular or ★ Super 12-Ct. Box 89¢
Baby Food Heinz. Assorted Sterilized 4 1/2-oz. Fruits or Vegetables. Jar 6/55¢	Charcoal Briquets Ozark. 10-Lb. Box 89¢
Purina Dog Chow 10-Lb. Bag \$1.39 Why Pay \$1.49	Corn Meal Covered Wagon. White. 5-Lb. Bag 89¢
Canned Milk Carnation 11-oz. Can 17¢ Why Pay 2/37¢	Corn Flakes Safeway. 18-Lb. Pkg. 4.49
Fritos Corn Chips 4-oz. King Size. Pkg. 27¢ Why Pay 29¢	Vienna Sausage Libby. 4-oz. Can 89¢
Cake Mixes Mrs. Wright's. Assorted. 19-oz. Pkg. 27¢ Why Pay 35¢	Potato Chips Morton's. 4 1/2-oz. Pkg. 89¢

Shop... Compare Bakery Values!

### Skylark...

Remember this famous name for a complete variety of highest quality breads to please every taste.

### Cheese Bread 2

1-Lb. Loaf

Buttermilk Bread skylark.  
Regular Rye Bread skylark.  
Crushed Wheat Bread skylark.  
Wheat Bread skylark. Multi Grain. F.A.M.

Prices Effective Thurs., Fri. and Sat., Aug. 15, 16 and 17, in. We Reserve the Right to Limit Quantities. No Sales to Dealers.

Check These Low, Low Prices!

### Heinz Ketchup 22¢

Good Eating! Special! —14-oz. Bottle

### Fab Detergent 99¢

with Borax (25¢ Off Label)—King Size

### Buttermilk 39¢

Lucerne. Special! —1/2-Gal. Ctn.

### Salad Dressing 37¢

Piedmont. Big Buy! —Quart Jar

### Cheese Spread 59¢

Breeze. Imitation. —2-Lb. Box

### Half & Half 35¢

Lucerne. Special! —Pint Ctn.

### Paper Napkins 10¢

S&W. Assorted Colors. —40-Ct. Pkg.

### Safeway Cheese 79¢

Halfmoon. Longhorn. —Lb.

### Grade 'A' Eggs 45¢

Breakfast Gems. Medium. —Dozen



# SAFEWAY