

...OF THE MOST PROFESSIONAL...'

Maymie Clark Retires After 23 Years As Teacher

...teacher who began her career at a small school in Hale County last week...

1976" at a salad luncheon for Duncan School staff Thursday. Mrs. Ray McDonald, president of the Floydada local unit of the Texas State Teachers Association, made the presentation. Mrs. Clark logged 23 years of teaching, taking time out for several years to raise a family. For the past

three years she has taught in the Floydada Plan "A" program in grades 1-3. She taught at Harmony School in 1943, the last year that Floyd County school was open. Mrs. Clark has taught third grade in Lamesa, special education a "trainable class" at Santa Fe, New Mexico, and at several other

schools. She began her teaching career at Liberty School, the small Hale County school.

Bob Copeland, principal at Duncan Elementary, called Mrs. Clark "...one of the most professional teachers I've ever dealt with."

Copeland said of Mrs. Clark, "She loved children and met their needs, no matter how far the spread between abilities."

Her late husband, L. L. "Pete" Clark, ran Clark's Cleaners in Floydada from 1950 to 1959.

The three children Mrs. Clark took time off from teaching to raise are Dane Clark of Denver, Mrs. J. E. Waller of Floydada, and Kent Clark of Wichita, Kansas. Mrs. Waller is a kindergarten teacher in Floydada.

Mrs. Clark has five grandchildren, Brooks, 9, and Cameron, 7, of Denver; Jay, 15, and Jim, 12, of Floydada; and Renae, 7, of Wichita.

She attended West Texas State University and received her BS degree in education from Texas Tech.

Mrs. Clark said after receiving her retirement plaque Thursday, "I plan to live in Floydada at 621 West Kentucky for the rest of my days."



RETIRING TEACHER Maymie Clark

Receives plaque from local TSTA president Mrs. Ray McDonald.

Floyd County Hesperian

10 PAGES IN ONE SECTION

15¢ Per Copy

FLOYDADA, FLOYD COUNTY, TEXAS 79235 SUNDAY, MAY 30, 1976 NUMBER 44

Tennis Club Plans

Open Tournament In July

The Floydada Tennis Club met Tuesday, May 25. Several items of business were discussed. Among them was that the club had sent a telegram of encouragement to Donette Marble and Debbie Johnson in Austin during the state tennis finals.

Also among the general discussion was the present tennis situation in the school system.

Frank Barrow, club president, announced that the club has received an invitation from the Post Tennis Club to play with them on Saturday, June 26. They have four new tennis courts at high school and can accommodate several players at one time. Those interested in going should call Eleanor Hendrix, 983-5064. Players will meet at the Floydada high school courts by 12 noon, June 26. Plans have been made to eat lunch in Post, and play will begin at 2 p.m.

Several members expressed interest in the Tennis Day Camp to be held in June and conducted by Fred Scott.

The main item of business was the 1976 Floydada Open Tennis Tournament to be held July 14-18. Directors for the tournament are Eleanor Hendrix and Jean Hale. Committee chairmen named at the meeting are as follows: Housing Lon Davis; Concession Stand Vickie Rainer, Nona

teaching pro. Cantrell; Courts Jerry Neeley, Bob Copeland.

There will be 18 divisions in the tournament, which lasts five days. Entry blanks will be available in a few days, and persons wishing to enter or needing further information should contact Eleanor Hendrix at 983-5064 or Jean Hale at 983-840.

Floyd Pioneer Association Names Carthel President

Floyd County Pioneer Association officers for the next year, elected by acclamation at the reunion Saturday, are Chester Carthel of Lockney,

president; Aldine Williams, Floydada, vice president; H. E. Frizzell, Lockney, treasurer; Ann Sweptson, Floydada, secretary.

Most Businesses To Close For Memorial Day

Most Floydada firms, with the exception of some grocery stores and Perry's Variety, will be closed Monday, May 31, in observance of Memorial Day.

Managers of auto shops, garages,

furniture stores, department stores, hardware and drug stores have indicated they will close Monday as well as the bank and federal and other government establishments. The Post Office will distribute mail in post office boxes but there will be no deliveries.

Phone Bills To Be More Detailed

A newly-designed telephone bill with more detailed information will be mailed out by Southwestern Bell to customers in Lockney and Floydada starting in June.

Jim West, manager for Southwestern Bell, said the monthly statements have been revised primarily because of growing cost consciousness on the part of consumers.

West said the new monthly statements will include greater detail of long distance service.

"Our computers will now print the time of day or night each long distance call was placed and the number of minutes talked," West said.

West added the new bills also will denote the classification of each long distance call - customer dialed station-to-station, operator-assisted station-to-station, or person-to-person. Whether a call was interstate or intrastate will be indicated, as well as the rate period

that applies to each call.

"In addition to more information on long distance service," West said, "the revised statements will show any adjustments from the previous month, as well as any unpaid balance. If there is no unpaid balance, this will be indicated to let customers know their accounts have been properly credited."

The manager pointed out, too, that federal excise taxes will be listed separately.

The new bills will specify a "due by" date to let customers know when payment is expected. "We believe the new bill format will help our customers keep a sharper eye on their budgets - at least the portion that goes for telephone service," West said.



BEGINNING IN JUNE, Southwestern Bell customers will receive newly-designed telephone bills similar to the one shown. The bills go into detail on long distance service, noting the number of minutes talked, the time the call was placed and the rate period that applied.



FIVE GENERATIONS TOGETHER IN FLOYDADA - Claude L. Carpenter, born in Norcross, Georgia in 1887, moved to Floyd County in 1914. He resides with his wife, the former Sally Smith, in Floydada. His oldest son, Marion W. Carpenter, born in Wolfe City, Texas in 1910, and Mrs. Carpenter, the former Foy Bryant, have recently returned to their home in Floydada after living for several years in Dallas. Their youngest child, Norma Carpenter Wilcox, was born near the Center community in 1930, and attended Floydada schools until 1948. She has recently moved from San Francisco, California to Lubbock. Her oldest son, Barry G. Boteler, born in Floydada in 1951, resides with his wife, the former Connie Seabourne, in Oklahoma City. Their first child, Elizabeth Anne Boteler, is two years old. Boteler's father, Macyl Boteler, is a former Floydada resident. (Staff Photo)

...county last week... Angeles are: (l to r) (Photo) ... DA ... ESS ROUND ... AK ... NCH ... AK 79 ... 12 OZ. WIL ... B ... 9 ... B ... 12 COUNT KE ... 53¢ VALUE ... CE CRE ... CUPS ... 2/79 ... ALLON DETER ... ERA ... 89 VALUE ... \$4.49 ... LEANSER 27¢ ... AJAX ... /\$1.00 ... TIDINA 23¢ V ... MATO ... AUCE ... /\$1.00 ... PRESOFTEN ... WAX ... IZ. COUNT CH ... OMPARTMENT ... \$1.93 VALUE ... PLATE ... \$1.19 ... 9¢ VALUE ... HT DAYS 3 ... 49 OZ. ... AB ... UPON 99 ... PON ... AT BUDDY'S

...INTERESTING ... from another "Hesperian": ... I ate lunch at the King ... and purchased a copy of ... HESPERIAN ... ASSOCIATION in Gaines ... chartered in 1892. I am ... how long you have used ... HESPERIAN and any of the ... furnish. Every one at ... interested since we have ... BI-CENTENNIAL WEEK ... success. Enclosed is an ... for your convenience. Any ... will be greatly appreciat- ... Very truly your, ... HESPERIAN SAVINGS ... ASSOCIATION ... Marie E. Cannon ... Escrow Accounts ... GIVE UP DEPT: A couple ... there. Once there was a man ... to invent a new soft drink. ... hard in his laboratory, and ... with a soft drink he called ... It was not popular. So he ... to work and invented ... called Five Up, but it ... up. He tried a third time, ... drink called Six Up, but it ... either. Discouraged, he ... work and spent the rest of ... a delivery truck. ... know how near he came ... there was a guy who bought a ... months he tried to teach ... talk. Not a sound, except ... Finally he gave up in ... later it ... the parrot straightened out ... upright on his perch ... "You stupid jerk! Say ... AND TAKERS ... composed of takers and ... takers eat better; the ... better.

Communities With Holdouts Face Loss Of Participation In Boll Weevil Program

LUBBOCK Communities along the eastern edge of the Caprock of the Texas South Plains face possible loss of participation in the joint producer-USDA funded Diapause Boll Weevil Control Program if holdouts in their area continue to thwart efforts to stop the weevil's migration onto the Plains.

In a strongly worded statement released recently in Lubbock by the steering committee of the boll weevil control program, steps were mapped out which would lead to the exclusion of communities where producers having significant amounts and locations of acreages refuse to participate.

Such action could possibly affect several area counties where pockets of holdouts exist.

The statement was com-

plied by the Technical Advisory Committee of the control program and adopted by the steering committee. The advisory group is made up of representatives of Plains Cotton Growers, based in Lubbock, Plant Protection and Quarantine Service of the U.S. Department of Agriculture, Texas Department of Agriculture, Texas Agricultural Extension Service, the Texas Agricultural Experiment Station, Texas A&M University, Texas Tech University and several representatives of the cotton and allied communities.

The steering committee is composed of 10 persons from the South Plains area.

The Diapause Boll Weevil Control Program was begun in 1964 along a 15-county area stretching from the upper South Plains southward and southwestward to

the New Mexico line, along the Caprock. Its purpose is to use pest management concepts, including spraying and field scouting, to prevent the boll weevil from migrating westward from its overwintering areas along the Caprock.

Officials believe they have successfully prevented the establishment of overwintering infestations above the Caprock on the Texas High Plains and eastern New Mexico by treating infested cotton producers in this area voluntarily participate in the program which is administered by producers through Plains Cotton Growers and the U.S. Dept. of Agriculture, Plant Protection and Quarantine.

Producers refusing to participate give a number of reasons for holding out, the statement said. Many of them say they are fearful that treatments may open the door to bollworm infestations.

To overcome the threat of a bollworm problem, officials have adopted recommendations of the advisory committee that treatments for boll weevil control be delayed from August 25 to September 6. This has the effect of delaying the disruption of beneficial insect activity which keeps the bollworm in check.

A second step to counter the objection would be to continue the practice of providing for bollworm counts in the field along with weevil counts. During the fall, field scouts are customarily sent out to survey weevil infestations. This second measure includes survey of bollworm activity as well.

According to the statement, the steering committee aims to "make the best use of public and private funds which have been made available in good faith." The way to do this, the report concludes, is for treatment activities to be restricted to those areas in which there is "a reasonable chance that effectiveness can be maintained."

To accomplish this, the committee outlined in the statement the following procedures for dealing with the holdout problem:

Contact will be made with present holdouts in efforts to persuade them to participate on a continuing basis. If this fails, an appropriate committee will consider and evaluate their cotton acreage and its location within the community. Should this acreage and location render impractical and ineffective the spraying of other cotton in that community, that community will be dropped from the program.

-If the community should be dropped, financial and agricultural leaders as well as news media in the area will be notified of this action.

-The community (a defined geographical area to be determined by the review committee) will be excluded for the remainder of the season or until such time that the appropriate committee may review a petition from the uncooperative growers requesting readmittance.

Provisions also were outlined in the statement for dealing with potential holdouts. When USDA and PCG personnel are notified by growers that they do not want their fields to be sprayed, efforts will be made to "persuade them to stay in the program. If this fails, the growers will be told that their request will be honored, but that their names cannot be held confidential when there are inquiries about holdouts."

USDA and PCG officials say the steering committee adopted the statement with no ill feelings or harassment intended, but simply to make the best use of tax money and private funds which have been made available to the Diapause Boll Weevil Control Program for its specific goals.

The recommendations of the statement take effect with the 1976 treatment program which already is being mapped out.

Officials said information about the statement can be obtained by calling or writing Plains Cotton Growers or USDA-Plant Protection and Quarantine, in Lubbock.



WHILE MOST OTHER Panhandle farms plant corn with big capacity 4, 6 or 8-row corn planters, Darrel Reynolds, plant manager for DeKalb AgResearch, Inc., Dumas, Texas, plants more than 500 hybrids by hand at this test plot near Dumas.

Strangest Corn Farm In Panhandle?

With big capacity machinery, few farmers would ever dream of planting their crop by hand. But for researchers at one seed corn company, planting seed corn kernel-by-kernel is a seasonal task that's unlikely to ever change.

That's how researchers at DeKalb AgResearch, Inc., a company widely recognized among farmers for their research efforts with hybrid corn and sorghum, plant their corn plot at Dumas, Texas - by hand. What's more, when other farmers are planting three or four different corn varieties, DeKalb researchers are planting more than 500.

The company has been actively engaged in research in the panhandle area for the last four years. It's all part of their massive research effort to breed higher yielding hybrids for the panhandle area.

For corn growers on the High Plains, that's good news, because it means a greater chance of increasing per acre productivity. According to crop experts,

probably no other area in the U.S. has realized as rapid an expansion in corn acreage.

Texas Agricultural Extension Service agronomist, Dr. James Supak, says High Plains' corn acreage in 1973 was little more than 450,000 acres. But this year, that acreage has jumped to nearly 1.2 million.

"It's a startling switch indeed," he says, "when there's only about 1.5 million acres of corn in the state of Texas."

According to Vern Challgren, manager of DeKalb's field testing program, the Dumas plot ranks as one of the highest yielding research fields in the United States. Last year, for example, some hybrids yielded more than 180 bushels per acre - a top yield for any part of the country - with some promising new hybrids exceeding the 200 bushel mark.

Challgren says the main reason the Dumas area ranks as a high-yielding corn area, is because of irrigation. "Without it," he says, "the area would be desert."

The company's test plot at Dumas is under flood irrigation and researchers there do everything possible to help the new corns produce at maximum potential. Fertility levels are balanced and exceed 200 pounds of nitrogen per acre. Row widths are calculated for optimum air movement, but with no room for waste at a 32-inch spacing. Plant populations average 24,000 plants per acre, about maximum for irrigated Panhandle corn. And just about all field work is done by hand...an ambitious effort for even a three acre farm.

Challgren says every stalk is accounted for before the growing season is complete; every ear hand-harvested.

"It's a tremendous effort to breed higher yielding corns," Challgren explains. "We're looking for hybrids that yield well under good irrigation and high fertility levels, have the ability to withstand unusual heat and wind damage, stand well, hold ears, and resist insect damage peculiar to this area."

For best yield potential, DeKalb seed experts like to finish planting by mid-April. This year plant manager Darrel Reynolds, Dumas, Texas completed planting by April 12. Reynolds manages the company's seed production plant at Dumas, but at planting time, assists the research crew with extra hands.

While most farmers might consider hand planting and harvesting a slow, tedious task, Challgren says it's characteristic of any plant breeding program.

Floyd County

Honored In Michigan

(Editor's note: Don Hollums is the son of Mr. and Mrs. Walter Hollums of Floydada. He is a graduate of Lockney High School and attended West Texas State University. The following is from the May 13, 1976 "Observer & Eccentric":

OUTDOOR TEACHER IS A 'NATURAL' AWARD WINNER

pick up newspaper...please return copy to James

Those who know him are not surprised that Don Hollums, director of the Bloomfield Hills Schools Nature Center, has received an award as the "outstanding outdoor education person" in Michigan.

Hollums is the first recipient of the Dr. Julian W. Smith Outdoor Education Award, given in memory of a Michigan State University professor who was director of the Outdoor Education Project at MSU.

Dr. Smith, a former instructor of Hollums' at MSU, died in June 1975. The award was given to Hollums at an annual outdoor education conference in Battle Creek on Saturday.

The award is a hand-carved black walnut Canadian goose, about eight inches high, done by Dr. George Gibbens, professor of outdoor education at the University of Northern Alabama.

The sculpture had been ordered from Gibbens by Dr. Smith but was incomplete at the time of his death. It was to have been a gift to Dr. Smith. The call of the Canadian goose was a favorite nature sound of Dr. Smith's.

"Someone would almost have to know Julian Smith to know the significance of receiving the award," Hollums said. He has the sculpture displayed in his

ACROSS THE COUNTRY
4-H dairy men 9-19 learn-by-doing to apply sanitation principles and sound management practices to the care of one or more dairy animals.

In practical projects and activities supervised by the Cooperative Extension Service, 4-H'ers also discover how dairy products are marketed, processed and distributed.

Many 4-H members find satisfaction in fitting and showing dairy animals, and in serving on judging teams locally, statewide or even nationally.

The only difference between men and boys, is the price of their toys.

4-H Leaders

To Be Honored

COLLEGE STATION, ... Two area 4-H leaders are among 28 Texans who will be honored at the State 4-H Roundup at Texas A&M University June 2.

They are Mrs. June Terrell of Route 2, Plainview and Orville Finck of Route 1, Tulia.

The two leaders will be recognized at a special luncheon as the top adult volunteer leaders in District 2 of the Texas Agricultural Extension Service, the parent organization of 4-H. Each will receive a special plaque provided by the Texas 4-H Youth Development Foundation, the service organization of 4-H.

During her 14 years as a 4-H leader in Hale County, Mrs. Terrell has been active in assisting members of the Plainview 4-H Club in

method demonstrating state champion members of the state won Gold Star Award.

In addition to her project leadership, she has been active in the 4-H Spinning Club for many years.

Mrs. Terrell is president of the Elementary School for the past year and has been a regional Conservation Award winner.

Finck, a school farmer, has been leader with the Club for many years. He has been active in project leadership and has competed in rifle and beekeeping county and state level.

He organized the 4-H Beekeeping Club and has provided instruction in changing beekeeping.

Finck received Silver Star Award in addition to his activities. Finck is a supporter of the Farmers of the Future superintending the Swisher County Swisher County Show. He is active in the Swisher County Swisher County Association.

Most Farm CHEMICALS at discount prices

Milogard \$2⁶⁵

Atrex \$2⁶⁵

Simezine \$3¹⁰

Caparol \$2⁸⁵

WEX

The superior surfactant and solid nutrient release agent.

Darrell Dunn

Star Route Box 166

5 mi. S. 5 mi. W.

Ralls, Texas 79357

806-649-2578

CLIP ME OUT - TACK ME UP

FOR FAST & EFFICIENT DEAD ANIMAL REMOVAL

CALL COLLECT 293-4431

PLAINVIEW RENDERING

Your original used cow dealer

Serving you since 1951

Box 1698

Plainview, Tx.

4-H'ers Help Boost Dairy Month



Dairy Month gives 4-H'ers a chance to help focus public attention on the importance of America's dairy industry. More than 91,000 young people 9-19 participate in the national 4-H dairy program conducted by the Cooperative Extension Service and sponsored by Insurance Company of North America.

CHICAGO—More than 91,000 4-H'ers will be busy this June helping to promote Dairy Month. They're members of the national 4-H dairy program, and they're convinced of the importance of America's dairy industry.

"We need milk or other dairy products every day for good nutrition," says 4-H'er Larry Grim, 17, of Nampa, Idaho. Last year Grim won a national 4-H dairy scholarship donated by Insurance Company of North America.

"The only way to assure wholesome products for the consumer is to have clean, healthy, well-fed animals," he says. "And it's the only way to make dairying profitable."

Service and Sales Seminar DWY Industries, Inc.

INVITES YOU TO LEARN MORE ABOUT THE NUMBER ONE DRYER AND BENEFITS AMERICAN AUTOMATED GRAIN DRYERS

AMERICAN AUTOMATED GRAIN DRYERS

Totally Automated-High Resale Value Trade for a new American now or add a new American to your drying installation

This sale covers Small Line, 2400 Line and Commercial Dryers Individualized liberal lease programs available



Learn How To Dry High Moisture Grain!

THE DRYER OF EXCELLENCE SINCE 1943!

Join us for a FREE Service & Sales seminar at:

KINGS RESTAURANT

Matador Highway

Thursday, May 10 8:00 p.m.

Sponsored by:

DWY INDUSTRIES, INC.

Charlie Gasaway
General Manager
913-746-8875

820 S. Harrison, Olathe, Kansas 913-764-3444

Bud Laughtlin
General Sales Manager
913 - 659 - 4340

Thrasher & Co.

Redi-mix Concrete Sand & Gravel

Excavation call us:

983-2170

229 E. California



If you happen to h that all of them w

5



Shurline Apple Butter 28 o

Shurline Applesauce 16 o

Shurline Apricots Halves 1

Shurline Asparagus Spear

Shurline Biscuits Buttern

Shurline Blackeyes Fresh 1

Shurline Bleach 64 oz. Jug

Shurline Catsup 14 oz. Bot

Shurline Charcoal Briquets 5

Shurline Cheese Halfmax

Shurline Coffee Creamer 1

Shurline Corn Cream Styl

Shurline Corn Frozen Cut

Shurline Crackers Salting

Shurline Dills Hamburger

Shurline Egg Food Ration C

Shurline Evaporated Milk

Shurline Flour Enriched 51

Shurline Fruit Cocktail 16

Shurline Fruit Drinks Ass

Shurline Green Beans 3

Shurline Ice Cream As

Shurline Macaroni C

Shurline Mandarin O

Shurline Margarine C

Shurline Mustard Salt

Shurline Orange Juic

Shurline Paper Napkins

Shurline Peaches Y

Shurline Peanut But

Shurline Peas Sw

Shurline Pop Cann

Shurline Pork & B

Shurline Potato 1

Shurline Potatoes

Shurline Potatoes

Shurline Preserv

Shurline Salad D

Shurline Sauerk

Shurline Shorte

Shurline Tea In

Shurline Tomat

Shurline Tomat

Shurline Trash

Shurline Tuna I

Shurline Whip

AGE OWENS I

ERMILK C

AGE CHEE

S 6-32 C

HES

ODOS

RS L.B. 4

fresh

WE AC

HOME OWNE

L&J

We Give Double

THE NOB

Telephone Co-Op Loan Approved

The purpose of the loan is to finance facilities to connect 30 additional subscribers; to construct 44 miles of new line; to upgrade service in the Hollandville, Arnett, and McAdoo exchanges to all one-party lines; to construct new dial central office buildings in the Arnett and Hollandville exchanges; and to finance system improvements.



If you happen to have 13 children the odds are 8,192 to 1 that all of them will be boys!

PULL-ON PECOS COMFORT
NO LACES!
LARGE SELECTION OF SIZES AND WIDTHS



Try them on at
Hale's Department Store

YOUR FAVORITE SPECIAL

- Shurline Apple Butter 28 oz. Jar \$.59
- Shurline Applesauce 16 oz. Can 3/\$1.00
- Shurline Applesauce Halves Unpeeled 16 oz. Can 2/ \$.79
- Shurline Applesauce Spreads Cut Green 14 1/2 oz. Can 2/ \$.89
- Shurline Biscuits Buttermilk or Sweetmilk 8 oz. Can 9/\$1.00
- Shurline Blackeyes Fresh Shelled 15 oz. Can 4/\$1.00
- Shurline Blackeyes 64 oz. Jug \$.39
- Shurline Catsup 14 oz. Bottle 2/ \$.79
- Shurline Carrot Bites 10 lb. Bag \$.89
- Shurline Cheese Hallmoon Longhorn Colby 10 oz. Package \$.89
- Shurline Coffee Vac Pak All Grinds 1 lb. Can \$1.19
- Shurline Coffee Creamer 11 oz. Jar \$.69
- Shurline Corn Cream Style or Whole Kernel Golden 17 oz. Can 4/\$1.00
- Shurline Corn Frozen Cut 10 oz. Package 3/ \$.89
- Shurline Crackers Saltine 16 oz. Box 2/ \$.89
- Shurline Dills Hamburger Sliced 32 oz. Jar \$.59
- Shurline Dog Food Ration Canned 15 oz. Can 7/\$1.00
- Shurline Evaporated Milk 14 1/2 oz. Can 3/ \$.89
- Shurline Flour Enriched 5 lb. Paper Bag 2/ \$.79
- Shurline Fruit Cocktail 16 oz. Can 2/ \$.89
- Shurline Fruit Drinks Assorted Flavors 46 oz. Can 2/ \$.89
- Shurline Green Beans 3 Sieve Cut 16 oz. Can 5/\$1.00
- Shurline Ice Cream Assorted Flavors 1/2 Gallon Round Carton \$1.19
- Shurline Macaroni & Cheese Dinner 7 1/2 oz. Box 4/\$1.00
- Shurline Mandarin Oranges 11 oz. Jar 3/\$1.00
- Shurline Margarine Quarters 1 lb. Package 3/ \$.89
- Shurline Mustard Salad 16 oz. Jar 2/ \$.59
- Shurline Orange Juice Frozen 6 oz. Can 4/\$1.00
- Shurline Paper Napkins White or Assorted Colors 180 ct. Package 2/\$1.00
- Shurline Peaches Yellow Cling Halves or Slices 16 oz. Can 3/\$1.00
- Shurline Peanut Butter Crunchy or Smooth 12 oz. Jar \$.59
- Shurline Peas Sweet Early Harvest 17 oz. Can 3/\$1.00
- Shurline Peas Canned Assorted Flavors 12 oz. Can 9/\$1.00
- Shurline Pork & Beans 16 oz. Can 4/\$1.00
- Shurline Potato Chips Reg. Bag or For Dips 8 oz. Package \$.59
- Shurline Potatoes Frozen Crinkle Cut 32 oz. Bag \$.69
- Shurline Potatoes Whole Irish 16 oz. Can 4/\$1.00
- Shurline Preserves Strawberry 18 oz. Jar \$.79
- Shurline Salad Dressing 32 oz. Jar \$.69
- Shurline Sauerkraut 16 oz. Can 4/\$1.00
- Shurline Shortening Pure Vegetable 48 oz. Can \$1.09
- Shurline Tea Instant 3 oz. Jar \$1.09
- Shurline Tomato Juice Fancy 46 oz. Can 2/\$1.00
- Shurline Tomato Sauce 8 oz. Can 6/\$1.00
- Shurline Tomatoes Whole Peeled 16 oz. Can 3/ \$.89
- Shurline Trash Can Liners 30 Gallon Size 10 ct. Box \$.89
- Shurline Tuna Chunk Style 6 1/2 oz. Can 2/\$1.00
- Shurline Whipped Topping Froz. Non-Dairy 10 oz. Ctn. 2/ \$.89

OWENS HOT OR MILD 2 LB \$2.49

CLOVERLAKE 1/2 GAL 69¢

CHEESE CLOVERLAKE 24 OZ. 89¢

6-32 OZ. BT. CNT PLUS DEPOSIT \$1.39

GEORGIA RED LB 39¢

CALIF. LRG. 39¢

CALIFORNIA LONG WHITES 49¢

POTATOES 10 LB. BAG 99¢

THESE VALUES GOOD THROUGH JUNE 5

WE ACCEPT FOOD STAMPS

L&J FOOD STORE

OWNED AND HOME OPERATED GROCERY

Give Double S&H Green Stamps On Wed.

112 W. Mo. 983-3125

STATE FARM LIFE Insurance Company



KINDERGARTEN REVIEW—Kindergarten students presented an end-of-school program for parents at Duncan Elementary School last week. (Staff Photo)

R. C. ANDREWS HONOR ROLL

- SIX WEEKS HONOR ROLL 4th Grade**
- "A" Kent Mankins, Becky Fuller, Melet Nolan, Rusty Simpson, Tammie Galloway, Sam Crabtree, Patrick Lloyd, Roger Nichols, and Jana Finley.
- "B" Robert Galvan, Joey Payne, Shannon Shurbet, Irma Garcia, Susan Kimble, Christy Pruitt, Joe Faulkenberry, Anita Nichols, Diana Vallejo, Thresa Brooks, Matt Griffin, Timothy Liphham, Cliff McLain, Wayne Morren, Cindee Davis, Cheryl Goen, Christy Pate, DelYnn Ramsey, Fernando Arvizu, Mark Hatley, C. L. Robinson, Stanley Sanders, Lori Jarrett, Kristi Rainey and Belinda Rodriguez.
- 5th Grade**
- "A" David Carr, David Myrick, Debra Patterson, Lillian Polanco, Wally Davis, Michelle Byrd, Teresa Spurlock.
- "B" Grant Turner, Sheila Ehler, Eloisa Ocanoy, Rhonda Ratliff, Irene Rodriguez, Shawnda Sanders, Debra Vick, Calvin Coleman, Dwayne Green, John Leatherman, Ramon Martinez, Pam Cathey, Sophia Garza, Tracy Harrison, Sandra Robinson, Belinda Vallejo, Don Cheek, Carol Cochran, LaDonna Heflin, Christi Norrell, Bonnie Purdy, Mary Lou Quilant, Mysti Younger, Danny Crawford, Bobby Smith, Felix Soliz.

- Myra Ledbetter, Terri Marquis, Tammy Reams and Jodie Smith.
- 6th Grade**
- "A" Todd Beedy, Stacy Graham, Melanie Cox, Ricky Heflin, Van Lowrance, Mark McCormick, Brent Duke, Steve Griffin, Bryant Higginbotham, Todd Denton, Brad Fulton, Jim Waller, Debra Alfaro, Suzie Ehler, Deanne Howard, Norman Allen Kelli Ferguson, Treva Hambright, and Susan Hendrix.
- "B" Ricky Peralez, Rande Poage, Robert Nixon, Patty Gonzales, Drew Ann Johnson, Tina Bagwell, Rachael Contreras, David Galvan, Troy Neeley, Mark Nutt, Gary Rinker, Terry Westbrook, Brenda Hicks, Susan Turner, Joey Hale, Monty Williams, Janet Minnett, Eddie Kinard, Sammy Rodriguez, Francisca Bueno, Karen Davis, D'Lee Marble, Gloria Trevino.

NOTICE OF ELECTION

THE STATE OF TEXAS
COUNTY OF FLOYD
FLOYDADA INDEPENDENT SCHOOL DISTRICT

TO THE RESIDENT, QUALIFIED ELECTORS OF SAID DISTRICT:

TAKE NOTICE that an election will be held in said District as provided in an order calling an election duly passed by the Board of Trustees of said district, which order is substantially as follows:

ORDER CALLING AN ELECTION

WHEREAS, this Board of Trustees deems it advisable to call the election hereinafter ordered; and

WHEREAS, it is hereby officially found and determined: that a case of emergency or urgent public necessity exists which requires the holding of the meeting at which this order is passed, such emergency or urgent public necessity being that the proceeds from the sale of the proposed bonds are required as soon as possible and without delay for necessary and urgently needed public improvements; and that said meeting was open to the public, and public notice of the time, place, and purpose of said meeting was given, all as required by Vernon's Ann. Civ. St. Article 6252-17.

THEREFORE, BE IT ORDERED BY THE BOARD OF TRUSTEES OF FLOYDADA INDEPENDENT SCHOOL DISTRICT:

- That an election shall be held on JUNE 26, 1976 in said District at the following designated polling place:
FLOYD COUNTY COURTHOUSE, FLOYDADA, TEXAS
- Said District shall constitute a single election precinct for said election, and the following election officers are hereby appointed to hold said election:
Presiding Judge: JACK STANSELL
Alternate Presiding Judge: MARGARET SPRINGER
- That the Presiding Judge shall appoint not less than two qualified election clerks to serve and assist in conducting said election; provided that if the Presiding Judge actually serves as expected, the Alternate Presiding Judge shall be one of such clerks.
- That absentee voting shall be conducted at the SCHOOL ADMINISTRATIVE OFFICE, 208 SOUTH MAIN, FLOYDADA, TEXAS, and during the period absentee voting is required or permitted by law, the hours designated for absentee voting by personal appearance shall be from 8:30 A.M. to 4:00 P.M. on each day except Saturdays, Sundays, and official state holidays; and the absentee voting clerk shall keep said absentee voting place open during such hours for absentee voting by personal appearance. The absentee voting clerk for said election shall be Darlynn Hambright.
- That all resident, qualified electors of said District shall be entitled to vote at said election.
- That a substantial copy of this order shall serve as proper Notice of said election, and said notice shall be published one time, at least 10 days prior to the date set for the election, in a newspaper of general circulation in said District.
- That at said election the following PROPOSITION shall be submitted in accordance with law:
PROPOSITION
Shall the Board of Trustees of said District be authorized to issue bonds of the District, in one or more series, in the aggregate principal amount of \$440,000.00, for the purpose of the construction and equipment of school buildings in the District, with said bonds to mature, bear interest, and be issued and sold in accordance with law and shall the Board of Trustees be authorized to levy and pledge, and cause to be assessed and collected, annual ad valorem taxes, on all taxable property in the District, sufficient, without limit as to rate or amount, to pay the principal of and interest on said bonds?
- That the official ballots for said election shall be prepared in accordance with the Texas Election Code so as to permit the electors to vote "FOR" or "AGAINST" the aforesaid PROPOSITION, with the ballots to contain such provisions, markings and language as required by law, and with such PROPOSITION to be expressed substantially as follows:
PROPOSITION
FOR) THE ISSUANCE OF BONDS AND LEVYING
AGAINST) THE TAX IN PAYMENT THEREOF



FIVE LOCAL YOUNG MEN enlisted in the United States Marine Corps this week and will leave for Recruit Training at the Marine Corps Base in San Diego, California in August. Pictured above are L-R: Ben Hernandez, Ben Delgado, Johnny Herrera, Erbey Molinar and Rene Gonzales. According to Rudy Chapa, the Marine Corps Representative in Lubbock, all five will receive 12 weeks of Recruit Training and will then be assigned to a formal school for more technical training in a specific job field. "They chose to take advantage of our BUDDY PROGRAM which means that they will leave Floydada at the same time and go through recruit training in the same platoon...I call them the FLOYDADA FIVE." Upon completion of recruit training, they will return home on a 10-day leave of absence.

AVISO DE ELECCIONES

EL ESTADO DE TEXAS
CONDADOS DE FLOYD
ESCUELA DISTRITAL INDEPENDIENTE DE FLOYDADA

A LOS RESIDENTES DE DICHO DISTRITO, CON DERECHO A VOTAR

SE LES HACE SABER que unas elecciones tomarán lugar en dicho Distrito tal como se estipula en la ORDEN QUE LLAMA A LAS ELECCIONES cual Orden fue dada por la Junta de Patronos de dicho Distrito, y cual Orden dice sustancialmente como a continuación sigue:

ORDEN QUE LLAMA A LAS ELECCIONES

EL ESTADO DE TEXAS
CONDADOS DE FLOYD
ESCUELA DISTRITAL INDEPENDIENTE DE FLOYDADA

YA QUE, esta Junta de Patronos juzga conveniente el llamar a las elecciones que aquí se ordenan; y

YA QUE, oficialmente se encuentra y se determina aquí: que existe un caso de emergencia de necesidad pública urgente, el cual requiere el que tenga lugar una reunión en la cual esta Orden se pueda pasar, siendo tal emergencia de necesidad pública urgente la necesidad de adquirir los fondos a obtenerse de la venta de los bonos propuestos, sin retrasos, con el fin de utilizar dichos bonos para mejoras públicas urgentes y necesarias; y que dicha reunión se hizo pública, habiéndose publicado la hora, la fecha, el lugar, y el propósito de dicha reunión, todo tal como está estipulado por Vernon's Ann. Civ. St. Artículo 6252-17.

FOR LO CONSIGUIENTE, SE ORDENA POR LA JUNTA DE PATRONOS DE LA ESCUELA DISTRITAL INDEPENDIENTE DE FLOYDADA

- Que se celebrarán elecciones el JUNE 26, 1976 en dicho Distrito en el lugar de votación a continuación designado:
FLOYD COUNTY COURTHOUSE, FLOYDADA, TEXAS
- Que el Juez que Preside nombrará no menos de dos dependientes oficinistas calificados, para servir y asistir en el conducto de dichas elecciones; siempre que el Juez que Preside actualmente sirva como expuesto arriba, entonces el Juez Alterno deberá de ser uno de tales dependientes.
- Que los votos en ausencia tomaran lugar en:
SCHOOL ADMINISTRATIVE OFFICE, 208 SOUTH MAIN, FLOYDADA, TEXAS
- Que durante el periodo que el voto en ausencia que exige o permite la ley, las horas designadas para votar en ausencia en persona, serán desde las 8:30 A.M. hasta las 4:00 P.M. de cada día con excepción de los sábados, domingos y días feriados estatales oficiales; y el dependiente encargado del voto en ausencia mantendrá tal lugar para votar abierto durante tales horas para las personas que quieran votar en ausencia. El dependiente para dichas elecciones será: Darlynn Hambright
- Que una copia sustancial de esta orden servirá como Aviso apropiado para dichas elecciones, y que dicho Aviso se publicará una vez, por lo menos con 10 días de anticipación de la fecha fijada para las elecciones en un periódico (o diario) que tenga circulación general en dicho Distrito.
- Que en tales elecciones la siguiente PROPOSICION será sometida a los electores de acuerdo con la ley:
PROPOSICION
"La Junta de Patronos de dicho Distrito será autorizada para entregar los bonos del Distrito, en una o más series, la cantidad principal en conjunto de \$440,000.00 para ser destinada a la construcción y habilitación de los edificios escolares en el Distrito, con dichos bonos para madurar, producir intereses, y ser entregados y vendidos, de acuerdo a la ley; y la Junta de Patronos será autorizada para ejecutar y asegurar, e imponer y cobrar, los impuestos ad valorem, sobre todas las propiedades sujetas a impuestos en el Distrito, suficientes, sin límites en cuanto al cupo o a la cantidad, para pagar el principal de y el interés en dichos bonos."
- Que las balotas oficiales para dichas elecciones se prepararán de acuerdo con el código de Elecciones de Texas para así permitir al elector (o votador) votar "A FAVOR" o "EN CONTRA" de la antedicha PROPOSICION, con las balotas que contendrán dichas provisiones, marcas y terminología requeridas por la ley; y con dicha PROPOSICION a ser sustancialmente preparado como sigue:
PROPOSICION
A FAVOR) LA EMISION DE BONOS Y LA RECAUDACION
EN CONTRA) DE IMPUESTOS PARA PAGARLOS

Society



Mrs. Jimmy Michael Vickers (former Sharon Elaine Decker)

Sharon Elaine Decker, Michael Vickers United In Marriage

Sharon Elaine Decker and Jimmy Michael Vickers were united in marriage at 7:30 p.m. Friday, May 28th. Vows were read in the First Baptist Church with Rev. Jimmy McGuire performing the double ring ceremony. The bride is the daughter of Mrs. Edell Moore of Floydada and Lane Decker of Plainview. Mr. and Mrs. Jimmy Vickers of Floydada are parents of the groom.

Bouquets of varied shades of pink spring flowers and hurricane candelabras accented the altar where the couple and honor attendants stood on a raised satin covered platform.

Wedding music was presented by organist, Mrs. Bob Copeland, and Miss Christy Stringer who sang "Walk Hand in Hand" and "One Hand, One Heart." As Miss Stringer sang "Whither Thou Goest", the bride and groom lit a unity candle of

pink frost. Escorted down a candle-lit aisle by her father, the bride wore a gown of pearl white silk organza embellished with Venice and heirloom lace. The molder bodice featured a high wedding neckline of scalloped Venice lace edging. Long full bishop sleeves were caught in deep cuffs, and the A-line skirt fell from a crescent waistline into a chapel length train, bordered at the hemline with lace. The skirt front was enriched with lace flowers which also complemented the sleeves. The chapel length veil of imported English illusion was sprinkled with lace flowers which also bordered from a capulet of lace flowers.

The bride carried a cascade of white and pink roses, and a lace handkerchief given to her by the groom's

grandmother, Mrs. J. R. Vickers of Floydada. For something old she wore the gold wedding band which belonged to her late great grandmother, Mrs. T. F. Anderson and borrowed the bridal veil from her sister, Mrs. Charlotte Sutton of Newport News, VA. The bride wore the traditional blue garter and pennies in her shoe.

The groom was attired in a white Savile Row tuxedo and his attendants wore single-breasted plum colored tuxedos with contrasting pink shirts.

Mrs. Sutton and Rex Yeary, Floydada, were honor attendants.

Bridesmaids were Misses Karen Alldredge, Kim Harrison, Kathy Hinsley and Linda Norman all of Floydada. They were gowned in floor length sleeveless ensembles of soft pink chiffon fashioned with high rolled necklines, sheer chiffon capes, and A-line skirts which flowed from empire waists. They wore white dogwood covered capulets holding pink tulle veils which descended floor length, and each carried matching muffs.

Groomsmen were Todd Vickers, brother of the groom, Mark Probasco, Ashley Wester and Rance Young all of Floydada. Serving as ushers were David Welborn, Floydada and Troy Barker and Kevin Regan both of Holcomb, Kan., all cousins of the groom.

Janet and Rani Foster of Happy were candlelighters and Karen Gilliland of Austin was flower girl. Miss Kathy Hale was at the guest register and Lisa Welborn distributed wedding programs.

Following the wedding the bridal couple was honored with a reception in

Miss Teen Bicentennial Contestants Needed

A search is being made throughout America to find a teen girl to become Miss Teen Bicentennial of America for 1976.

All girls between the ages of 13 and 17, regardless of race, creed or color, who are American citizens and have never been married, have the opportunity to win this coveted and historic title. This distinguished honor will not only lead her to excitement and fortune, but will symbolize the contribution of the young teens to the growth and prestige of this nation.

The girl who becomes

Miss Teen Bicentennial of America will have her name written in the pages of history along with the past, present, and future greats of this renowned country.

A great program of extensive travel, entertainment, and recreation awaits the winner, in addition to many fine prizes. Miss Teen Bicentennial of America will travel abroad, where she will represent her community, her state, and her country in the furtherance of good will, supporting the upholding of the standards of the Constitution of the United States, and the advancing of the brother-

hood and understanding of all people.

Every girl in America, within the age bracket and marital status stated above, has the opportunity to become Miss Teen Bicentennial of America; a title that will lead her to popularity, fame, and fortune, besides having her name written in the pages of history! There is no theatrical talent required. For more information and a free entry blank, write: Miss Teen Bicentennial of America Committee, 435 E. Grand River, Box 802, Fowlerville, Michigan 48836.



Penny Muncy
Penny Muncy
Receives Guild
Diploma

Penny Muncy received her Piano Guild Diploma Saturday, May 22. To obtain this she auditioned for Dr. Marion Weide of Santa Barbara, California, national adjudicator at the Garden & Art Center in Lubbock. Her program consisted of fifteen memorized pieces, sight-reading, modulation, transposition and other technical work. Penny performed works by Chopin, Bach, Haydn, Khachaturian and Brahms. She placed a Critics Circle Rating Reading grade of 99.

Miss Muncy was recipient of the Paderewski Award last year, having competed at National Level for 10 years. Her recital was held last Saturday at the Garden & Art Center at Lubbock. Penny is the student of

Mrs. Glenn Pool Club Hostess

Mrs. Glenn Pool was hostess for members of the Harmony Home Demonstration Club in the club house for their regular monthly meeting.

Kathy Burk, home economist for Lighthouse Electric, gave the program on "Great Women of Texas." She named and gave a short history of several Texas women of the past and present. Miss Burk conducted two games, locating towns in Texas which are named for women, and matching women with things they are famous for.

Beverly McDonough, a member of the Petersburg 4-H club, gave her demonstration on pork sausage. She won first place in Hale County for the demonstration and will present it again at the 4-H Round-Up in June.

Mrs. Zant Scott and Mrs. Glen Curtis were elected nominees for delegates to attend the THDA State meeting to be held at College Station Sept. 21, 22, 23.

Club members made plans for the friendship luncheon and a book review scheduled for June 14th. Invitations

are extended to all women in the community.

Mrs. Pool served refreshments to Mes. Everett Miller, R. N. Hopper, Elmer Williams, Mather Carr, Glen Curtis, Jimmy Kelly, Zant Scott, Kathy Burk, Clifton McDonough and Beverly McDonough.

FLOYD DATA
Mr. and Mrs. Raymond Irby have returned home from a visit in California with relatives. The visited Mr. and Mrs. Howard Martin at Sunnyvale, Mr. and Mrs. C. D. Northcutt at Chico and Mr. and Mrs. Lee Drake at Freemont. Mrs. Northcutt and Mrs. Irby are sisters of Howard Martin.

Cheek Piano Students To Give Bicentennial Recital

A Bicentennial Recital will be presented Sunday, May 30th at 3 p.m. at the First Baptist Church by the piano students of Mrs. Carolyn Cheek.

Students performing patriotic and American folk music are Julie Faulkenberry, Esmeralda Gonzales, Kristi Julian, Mitzi Julian, Susan Kimple, Melissa Morren, Cindy Mulder, Debbie

Patterson, Kay Lyn Rainer, Mary Ann Rainer, Barbara Schwertner, Rusty Simpson and Christine Wilson.

Lockney Care Center Capers

By Linda Cumbie

Hi everyone! Hope that each of you have had a nice week. We have been busy here at the center.

We have been enjoying the beautiful flowers that have been shared with us. Those sharing flowers with us this week were Ruth Carthel, Joyce Wilson, Will McDonald and the family of May Hill.

Thanks to everyone who has visited with us this week.

Our devotionals have been great again this week. We seem to always feel better after the devotionals. Our thanks to Esther Brasher for playing the piano on Monday and to Ann Race for playing the piano for us on Tuesday.

We have worked in arts and crafts Friday and Wednesday. Had several residents working with us.

Monday we gave a going away part for Virginia Owens and Nifa Hernandez. Refreshments of cookies, strawberry cake, punch, dips and chips were enjoyed by everyone. Nifa received a pretty gown and Virginia received a "jade" potted plant. We will miss them here at the center and hope they will come back and visit with us often.

Tuesday Mable Foster came with the bus and took five of our residents on a trip to Floydada. They toured the Ceramic Shop and the pretty flowers at various houses. We stopped for ice cream on the way home. Those making the trip were

Anna Dietrich, Myrtle Burke, Juan Garcia, Mr. and Mrs. D. W. Burkie and our

aide, Debbie. We had a swell time.

Thursday we played bingo. Our top prize winner was Myrtle Burke. She won a bag of gum-drops. Several residents played with us.

We want to welcome Jeanne Sickling and Olivia Jones to our staff. They are nurses' aides. Also Joe Copeland is working with us now. He is an LVN.

Again, we would like to thank Lena for coming on Mondays and doing the ladies hair for us. We all appreciate her doing this for us.

Mrs. Mary Carwile is in the hospital. We hope she will soon be well and be back with us before long.

We extend our love and sympathy to the family of May Hill. We will all miss her here at the center. We were all saddened by her death. May God be close to her family at this time.

Lula Cottrell went to Plainview with her daughter Mae Jackson on Monday.

Eula Bryant went out with her daughter, Jean Lewis on Wednesday.

Arrie Aulick went to the doctor at Plainview Thursday with her sister.

Thanks to everyone who brought us material scraps, egg cartons, magazines. Those bringing items were M. D. Auterburn, Juanita Bresh and Rev. Crowder. Thanks to the persons who brought items, but whose name I didn't receive.

Mrs. Edith Tinsley went out for a ride with her daughter, Juanita Brose on Thursday afternoon.

Will close for now. May God Bless!
Til next time...

Cindy Day On Dean's Honor List

At SP College

Cindy Day, daughter of Mr. and Mrs. J. W. Day of Floydada, was listed on the Dean's Honor List at Texas Tech for the spring term. Miss Day had a 3.4 grade average carrying 15 hours. She is a senior with a double major, art education and secondary education specializing in English.

Miss Day is employed at West Texas Hospital in Lubbock. During her college semester she was office secretary of the Tech student chapter of Texas Art Education Association and was actively involved in the Lubbock Esthetic Education Program (LEEP).

FLOYD DATA
Houseguests of Mr. and Mrs. Ian Moore Monday through Wednesday were Dr. and Mrs. Manuel Tiggos of Lexington, Ky. Dr. Tiggos is a professor at the University of Kentucky.

On Dean's List At SP College

Lonnie Robinson and Sherry Moss, both Floydada High School graduates, were listed on the Dean's Honor List at South Plains College for the spring 1976 semester.

In order to be eligible for the Dean's Roll, students must maintain a 3.25 grade point average while taking a minimum of 12 semester hours with no failing grades.

Lonnie is the son of Mr. and Mrs. Wayne Robinson of Plainview and Sherry is the daughter of Mr. and Mrs. John C. Moss of Floydada.



Students Perform At

Four Piano students of Mrs. Ann Race performed at a recital Friday night at the Race home.

Stephanie Bybee, Shawnda Brock, Sheryl Perry and

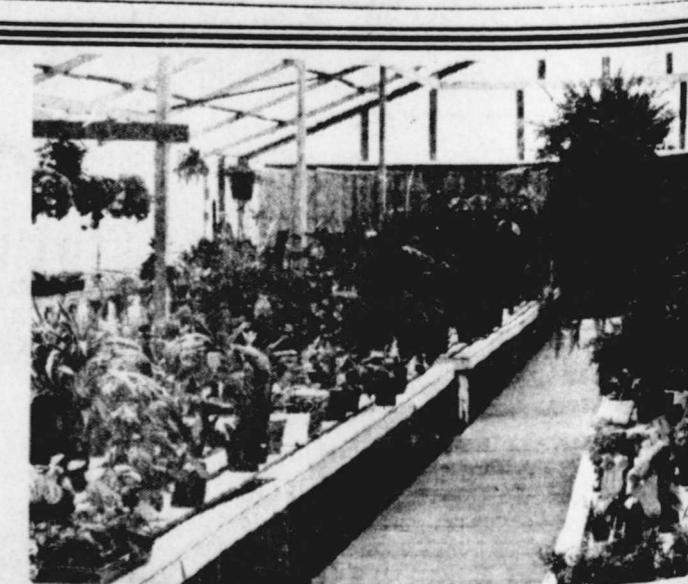
FLOYD DATA
Mrs. A. E. Guthrie is expected home today or Monday from All Saints Hospital in Fort Worth, where she underwent surgery for a

Happy 40th Birth

Willie Mae
Marricle
Monday, May 31

Welcome To
The 40's Club

PUTTING THINGS in the proper place can help keep you safe.



Ladies, do you have a bare spot in your home or patio?

The Oxygen Plant in Plainview has a large selection of decorative green plants - tropical or exotic, and many hanging baskets.

Come by and let us show you around.

USE YOUR
BANK AMERICARD
OR MASTER CHARGE

ON SPECIAL PATIO TUB GERANIUMS in 5 gal. containers, while they last. Reg. \$12.50 now \$8.99.

We will be open Memorial Day, May 31st start of sale.

THE OXYGEN PLANT
One mile south of YMCA Golf Course
209 S. Ennis 293-5011

perry's
Memorial Day
SALE

WREATHS



REG PRICE	NOW
\$2.99	\$2.69
\$3.29	\$2.99
\$4.29	\$3.99
\$5.29	\$4.99
\$6.29	\$5.99

Flowered Cementary Crosses
Reg. \$1.99 NOW 99¢

We Will Be Open
Memorial Day

Happy 30th Birthday
PATTY

Job Guar...
each with...
officers. T...
to be calle...
Corp", aft...
the "Natio...
Full Empl...
Full Empl...
The idea...
full empl...
attained s...
the entire...
supply. T...
Governme...
body a job...
and able".
to mean a...
who can cr...
or crash...
Employment...
is to be...
reason. T...
The th...
phrey-Ha...
absolute t...
ignoring t...
"unemploy...
full employ

Sho...
ooks
ere

Miss...
M.C.
Texas

W. D.C. - In...
we will be...
out legisla...
title "Full...
Balanced...
with this...
called...
and Eco...
Act," both...
as the...
have a...
now, with...
over the...
our nation...
become law...
to have one

These propo...
of l...
Planning...
of Eco...
ation, a...
omic Plann...
Committee...
Planning and a...
Balanced

ely created...
ntities will...
problem of...
mandating...
ted States...
Service be...
the United...
Employment...
proposes to...
network of...
Public Service...
"advisors", and

ed

are needed...
surrounding...
counties to...
aged, blind...
and adults who...
continue living...
but who are...
eligible for...
care, accord...
Carroll, adult...
supervisor...
department of...
The foster...
program is one...
of programs...
the department...
ive to institu...

seeking warm...
who have...
homes for one...
or disabled...
are not related...
roll said. "The...
will be willing...
ide opportuni...
recreational...
activities as...
they would not...
vide health...
ers."

lication, the...
will interview...
foster care...
check to see...
meets health...
standards. They...
are ongoing...
to approved...
any problems...
Carroll said...
ld help the...
ing foster care...
thing to give it...
ainted before...
angements are...
all stated. "This...
family-sharing...
are all concern...
congenial. We...
enrich the lives...
ned."

the foster care is...
with receiver and...
department...
pay a total of...
per month...
according to...
ations.

ked persons...
learning more...
ing this service...
the local social...
er Local resi...
write Nola...
P.O. Box H...
79235, or...
(86) 983-2280.

ilton

n's List

ilton, a Texas...
at, majoring in...
business, had a...
grade average...
semester at Tech...
and has been...
the Deans List...
da High School...
oss is the son of...
Mrs. Charles...
Floydada

DO COUNTY...
SPERIAN

ch Sunday and...
111 E. 4th St...
79235. Sec...
postage paid at...
editor, 79235. W...
Local 1450 a year...
area: 99.50.

FOOD MARKETING ALERT

USDA Agricultural Marketing Service
As of mid-May, the supply situation in June is expected to look like this . . .

RED MEATS —
Beef . . . plentiful. Production rates to average 6-8% above year earlier and about 8% above the June 1973-75 average. Gains from year earlier in fed beef output will more than offset declines in nonfed beef production.
Pork . . . light. Production rates during June will be seasonally reduced, but up about 5% from the unusually low level of last year. Output near 6% below the June 1973-75 average.

POULTRY & EGGS —
Broiler-fryers . . . plentiful. Record June marketings to be about 12% higher than both the year-ago and June 1973-75 average.

Turkey . . . adequate. New crop marketings in June to be nearly 20% higher than last year and 10% more than the June 1973-75 average. June 1 cold storage holdings, however, are expected to be 25% less than both year earlier levels and the 1973-75 June average. Hence, the total supply of turkeys for June would be about 6% lower than last year.

Eggs . . . adequate. June 1976 output only slightly over last year's level, but below the 1973-75 June average.

MILK & DAIRY PRODUCTS —
Milk and dairy products . . . plentiful. Milk production in June will be at or over its seasonal peak and 2-3% above its previous yearly and 3-year

average levels for the month. **American cheese output in March** was 15% over the previous year and 6% higher than its 1973-75 average. **Butter and nonfat dry milk production levels in March** were relatively low. Although commercial stocks of major dairy products at the end of March were below the 1973-75 average, they are expanding seasonally.

FRUITS, VEGETABLES, NUTS
Fresh citrus fruits and juices . . . plentiful. Oranges and lemons remaining for harvest May 1 represent 33% of expected total U.S. orange and lemon crops. About 17% of the grapefruit crop remained for harvest May 1—3.6 million boxes more than this time a year earlier. Florida frozen concentrated orange juice stocks May 1 were 8% higher than year earlier and 14% more than the past 3-season average.

Processed vegetables . . . plentiful. Canned vegetable inventories are high with prospects for a large aggregate carryover to complement '76 packs. April 1 canners' stocks of 5 principal items up 29% from year earlier and 52% over 1973-75 average. Snap beans exceeded 1973-75 average by 63%; Sweet corn by 44%; tomatoes, 68%; tomato juice 17%; and green beans

larger than previous record. **Almonds, walnuts, pecans . . .** plentiful with large 1975 crops up sharply from year earlier.

GRAINS & LEGUMES —
Rice . . . plentiful. Production in 1975 was 15% above previous year, and 30% higher than 1972-74 average. Exports are estimated at 15% lower this year. **Wheat . . .** plentiful. Carryover stocks are up an estimated 70% over previous year's low level. Production in 1975 was 20% above 1974 and 25% over the 1972-74 average. **Corn . . .** plentiful. Carryover stocks at 15% higher than last year. Production in 1975 was 25% from 1974 levels and up 10% from 3-year average. **Dry beans . . .** plentiful as a result of reduced export demand. About 3% fewer acres to be planted in 1976. **Dry peas . . .** plentiful because of large carryover and reduced export. Farmers to plant 20% fewer acres this year.

Fresh potatoes . . . adequate. Although April 1 storage stocks were 11% less than the large holdings last year, spring crop production up 19% from 1975 production figures and 6% above latest 3-year average. Potato supplies from the 1976 summer crop, adequate. **Dry onions . . .** plentiful. The 1976 spring crop is up 35% from last year's low.

Peanuts . . . plentiful. Commercial stocks on March 31 were 11% higher than a year ago. The 1975 crop was 5%

Keep Mower Blades Sharp

COLLEGE STATION - One of the most important maintenance procedures on rotary lawn mowers is keeping the blade sharp, says Lambert Wilkes, professor of agricultural engineering at Texas A&M University.

"It is important from the standpoint of energy conservation," Wilkes points out. "If the blade is sharp enough to slice the grass rather than beat it off, the engine is under less load, and therefore uses less gasoline to perform an equal amount of work."

Wilkes notes that a sharp blade is less hazardous than a dull one since "most accidents occur due to the constant pushing and pulling when using a dull blade."

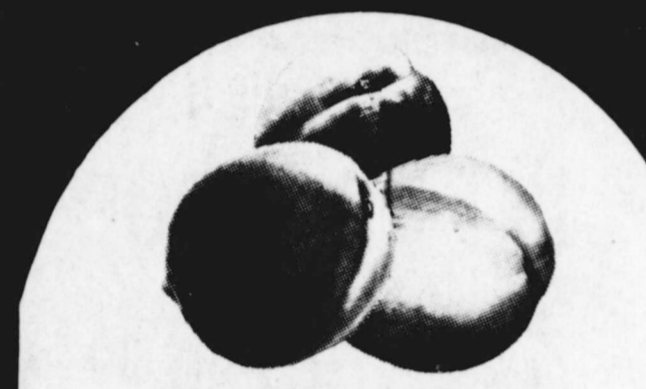
"Americans eat a lot of junk food. Does our diet have anything to do with this?"

Possibly. A direct or indirect relationship between the diet and cancer is being seriously and



SPECIAL PRICES

Prices good thru June 2, 1976.
We reserve the right to limit quantities. None sold to dealers.
Open Memorial Day
9 a.m. - 6 p.m.



New Crop California
FRESH PEACHES
69¢
Lb.

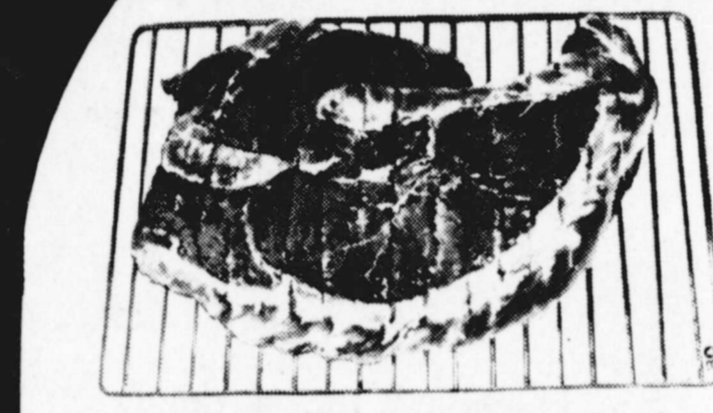
Red Ripe, Cherry
Tomatoes Pt. Bkt. **59¢**

Radishes or Long Shank
Green Onions 2 Cello Bu. **29¢**

Large Sweet
Honeydew Melons Lb. **39¢**

Fresh New Crop
Bing Cherries Lb. **99¢**

New Crop California
VALENCIA ORANGES
41¢
Lbs.

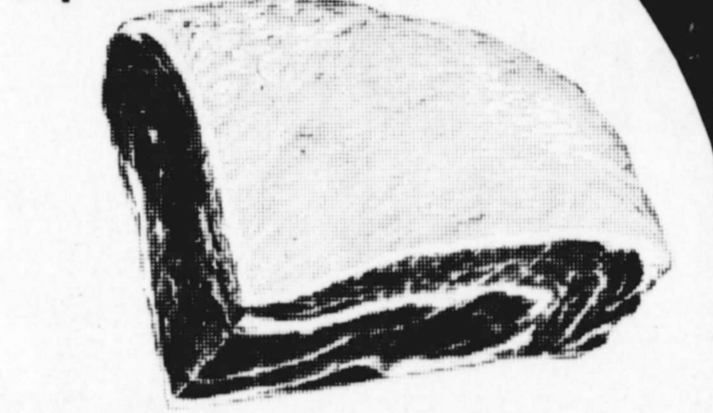


Heavy Aged Beef
SIRLOIN STEAK
\$1.19
Lb.

"Fresh Cut," Breast or Leg
Fryer Quarters Lb. **49¢**

Whole, 5 to 8 Lb. Avg.
Smoked Picnics Lb. **89¢**

Fresh
GROUND BEEF
79¢
Lb.



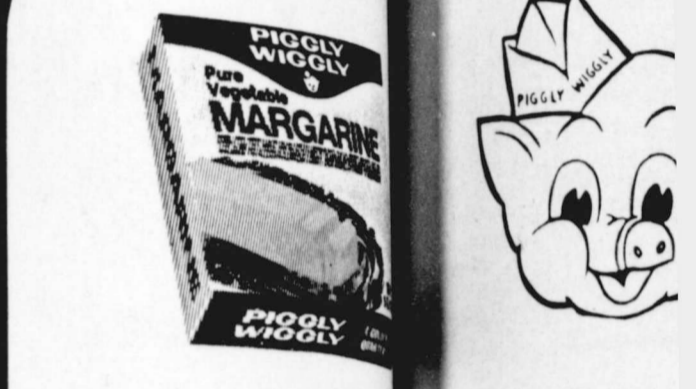
Cry-O-Vac, Packer Trim
BEEF BRISKETS
\$1.19
Lb.

Cornish
Game Hens **\$1.39**

Double Your Money Back Meat Guarantee

At Piggly Wiggly, we are so confident of the superior quality of our fresh meats that we proudly offer an unconditional guarantee that gives you double your money back on any fresh meat purchase which does not completely please you. So, if the meat you buy does not completely satisfy you, see our store manager and the purchase price will be refunded, double!

Heavy Aged Beef
T-BONE STEAKS
\$1.79
Lb.



Piggly Wiggly, Regular
FRESH GOLDEN MARGARINE
48¢
16-oz. Pkgs.

Piggly Wiggly
Texas Style Biscuits 5

All Flavors
Nabisco Toastettes 3

Hunt's
TOMATO SAUCE 8-oz. Cans **\$1.50**

Chicken No
CAMPBELL'S SOUP 10 1/2

613 Register At Old Settlers Reunion

LOCKNEY
 Francis Carthel, 1905
 Chester Carthel, 1917
 Pauline Sims Sams, 1905
 Robin Forbenberry, 1912
 Mrs. C. H. Rose, 1906
 C. H. Rose, 1911
 Mildred Martin, 1916
 Vernon Gross, 1910
 Fay Gross, 1914
 R. B. Holt, 1926
 Helene Hay Holt, 1924
 Mrs. Meda Honea, 1890
 Olga Applewhite, 1903
 Mrs. Frank Brown, 1924
 Frank Brown, 1911
 Verda Smith, 1904
 Josephine Smith, 1915
 Mrs. Louzila Nichols, 1905
 Hershel Carthel, 1910
 Mae Bennett Bryant, 1892
 Hestand Bennett, 1904
 Imogene Fortenberry, 1926
 Mrs. P. H. Phehis, 1926

Mrs. Carl McAdams, 1894
 Elva Perry, 1901
 Mrs. Birda Foster, 1927
 J. D. Copeland, 1908
 Betha Cunyus, 1905
 Della Willmon, 1905
 Ruth Carthel, 1905
 Mrs. Jim Conner, 1918
 Jim Conner, 1907
 Clara Mize, 1898
 Mrs. Albert King, 1908
 Johns Cox, 1930
 Vera Sweat Cox, 1925
 Marjorie Cox Martin, 1929
 Milton Robbs, 1901
 Mrs. Lloyd Readhimer, 1915
 Lloyd Readhimer, 1915
 Glen Cooper, 1925
 Dollie Cardinal, 1915
 John Holmes, 1908
 Grace Colson, 1910
 Audie Noland, 1920
 C. S. Keeter, 1899
 Chester Mitchell, 1919
 Opal Blount, 1912
 A. B. Blount, 1906
 Bettie Counts, 1907
 Herman King, 1910
 Joan King, 1955
 Mrs. Archie Muncy, 1920
 H. E. Frizzell, 1913
 Virginia Taylor, 1939
 Roxie Frizzell Workman, 1920
 Almeda Workman Phillips, 1919
 Lorene Workman King, 1920
 Mrs. T. U. Payne, 1917
 Sylvia Weaver Yeary, 1921
 Mrs. Olive Myers, 1916
 Reed Lawson, 1913
 Maudie Lawson, 1934
 G. C. Applewhite, 1903
 Mary Lou Hammonds Bolman, 1909
 Henry Bollman, 1919
 Mrs. T. B. Mitchell, 1919

FLOYDADA
 G. L. Fawver, 1913
 Leslie Fawver, 1917
 JoNelle Burke Fawver, 1927
 W. L. Orman, 1914
 Glenna Shurbet Orman, 1917
 Ben Galloway, 1917
 Tinnie Bradford Galloway, 1926
 Bill Stevens, 1926
 John Key West, 1911

Madge Dorsey West, 1930
 Melvin E. Holcomb, 1927
 Robbie Hatley, 1922
 Wayne Collins, 1923
 W. G. Collins, 1915
 Mrs. W. G. Collins, 1905
 W. M. Hambright, 1917
 Ethel Hambright, 1924
 Mrs. Pierce King, 1921
 Mrs. T. T. Hamilton, 1918
 Louis Anderson, 1928
 Fern Stovall Anderson, 1911
 C. O. Lyles, 1920
 Josephine Britton Lyles, 1924
 Estelle Cantrell Warren, 1930
 Elvis Warren, 1926
 Clem McDonald, 1915
 Hilda McDonald, 1937
 Doc Jones, 1900
 Bonnie Hopper Wright, 1911
 N. O. Wright, 1906
 Mrs. A. B. Clark, 1918
 Bill Hale, 1930
 Carolyn Haitcock Hale, 1924

1933
 Cliff Gilly, 1916
 Earnestine Dillard Gilly, 1921
 Ella Lewis, 1915
 Henry Lewis, 1915
 Roy Baxter, 1925
 Dorothy Smith Reeves, 1918
 Harry Reeves, 1923
 Mrs. Earl Edwards, 1918
 Earl Edwards, 1917
 Melvin Henry, 1909
 Lucille Graham Willis, 1946
 Emmitt Willis, 1911
 O. W. Denning, 1908
 R. H. Crawford, 1923
 Mrs. R. H. Crawford, 1935
 Veda Henry Dorsey, 1915
 A. W. Dorsey, 1930
 Vernon McPeak, 1906
 John McKinney, 1913
 Clara Mae Holmes, 1922
 J. R. Holmes, 1922
 Dovie Rushing, 1912
 Lee Rushing, 1896
 Winnie Hill McCormick, 1917
 Clara McNeely, 1916
 Grady Freeman, 1925
 Esther Freeman, 1926
 Wanda O'Neal, 1919
 Jewel Woolsey Reeves, 1916

Duncan Hollums, 1910
 Edwina Hollums, 1916
 Guy Garrison, 1913
 Thurmon Perry, 1916
 Ruth Cozby Perry, 1915
 Joe Peck, 1916
 John Lloyd, 1916
 Fay Hart, 1917
 Amanda Stephens Hart, 1921
 Mary Pittman Smith, 1908
 George L. Smith, 1906
 Flora Day McNeill, 1915
 M. J. McNeill, 1927
 Mary Helen Day, 1925
 J. W. Day Jr., 1927
 S. V. Adams, 1906
 Beatrice Connelley Adams, 1917
 J. I. Connelley, 1917
 Frances Probasco Badgett, 1920

Preston R. Badgett, 1919
 Warnie Hilton, 1915
 Betty McCleskey Tye, 1895
 Jura Dunn Roberts, 1917
 Mary Maxwell Stanley, 1900
 Vada Ruthedege Meredith, 1918
 Cleo Andrews Goins, 1907
 Corrie Cline, 1924
 Flora Noland Warren, 1914
 Mrs. E. B. (Hale) Gilliland, 1926
 Alma Edwards Rape, 1911
 M. D. Rape, 1923
 Mary Lou Cardwell Bullock, 1923
 R. L. Bullock, 1924
 Grace McNeill Robertson, 1926
 B. A. Robertson, 1925
 Nora Cardwell Halley, 1920
 Laverne McIntosh, 1949
 Willie D. Wilkins Hill, 1924

Otis Ray McIntosh, 1925
 Gertrude Hollums, 1917
 T. C. Hollums, 1919
 J. C. Anderson, 1917
 Sid Brown, 1897
 Goldie Brown Cypert, 1899
 A. V. Womack, 1911
 Ida Bell Womack, 1915
 Vaughan West Murff, 1905
 Paul B. Murff, 1921
 Ann Swepton, 1913
 Ann Watson, 1914
 Jake Watson, 1917
 Inez Wilkins Barton, 1923
 Geneva Knight Elliott, 1927
 W. C. Mooney, 1923
 Mrs. W. C. Mooney, 1923
 Mrs. W. A. Lovell, 1925
 W. A. Lovell, 1925
 Christine Swepton Colston, 1916
 Mrs. E. I. Durham, 1916
 Mrs. Edd Muncy, 1921
 Gracie Riggle, 1916
 Cora Brown Hartline, 1912
 W. L. Hartline, 1932
 Jennie Burgett Irwin, 1912

Ford Johnson, 1928
 Agnes Riggle Baker, 1916
 Raymond A. Baker, 1916
 Floyd Bradford, 1926
 Euna Fawver Bradford, 1925
 Geneva Smith, 1948
 Lois Beard Gilly, 1925
 C. L. Gilly, 1921
 Mrs. C. W. Denison, 1923
 Weldon Hammonds, 1951
 G. W. Smith, 1915
 Alta Lloyd Smith, 1916
 Ruth Johnston Scott, 1927
 Zant Scott, 1904
 Alma Montgomery Dunn, 1912
 Joy Grigsby Allen, 1912
 Gladys Wimberly, 1919
 Menard Field, 1924
 Jettie O. Field, 1972
 Gladys Bertrand Widener, 1934

Ernie L. Widener, 1916
 Rexie Gordon, 1917
 Clinton Fyffe, 1917
 Janie Shurbet, 1905
 Leona Allmand McCray, 1922
 Lloyd McCray 1937
 Letha Lindley Lightfoot, 1936
 Travis Lightfoot, 1917
 Foy Gooch, 1960
 Fay Gooch, 1960
 Roy Hale, 1919
 Roe Jones, 1913
 Vera Jones, 1916
 Robert A. Reeves, 1923
 Mrs. Bob Reeves, 1926
 John Green, 1926
 Mrs. John Green, 1926
 Vollie McNeill, 1926
 W. A. Johnson, 1924
 Mrs. W. A. Johnson, 1965
 Georgia Finley, 1934
 Bennie Teaff, 1918
 Mrs. Bennie Teaff, 1921
 Hershel Hammonds, 1913
 Troye Stansell, 1910
 W. A. Massie, 1909
 Lurline Joiner Bagwell, 1918

Viola Smith Brown, 1906
 Vida Culpepper, 1917
 Bill Culpepper, 1921
 Joy Denton, 1972
 Wilma Colston, 1932
 J. B. Colston, 1929
 Sam A. Spence, 1921
 Dola Maddox Lackey, 1915
 Jack Lackey, 1916
 W. H. Furrow, 1904
 Adrian West, 1922
 W. R. Daniel, 1919
 Margaret Daniel, 1948
 Lloyd Allen, 1923
 Ernest Smitherman, 1917
 Ruth Smitherman, 1912
 Sara Beard, 1906
 Horace Cage, 1919
 Mrs. Horace Cage, 1917
 Johnny Harris Jr., 1947
 Phyllis Harris, 1949
 Wayne Finley, 1919
 Mrs. Wayne Finley, 1924
 Bob Ratjen, 1907
 Mrs. Carl Lewis, 1914
 Carl Lewis, 1922
 Marion Carpenter, 1924
 Mrs. Marion Carpenter, 1924

Bill Holladay, 1924
 Clorene Holladay, 1926
 Ara Keim, 1926
 Mrs. J. A. Arwine, 1963
 J. A. Arwine, 1924
 William H. Smith, 1912
 Philip Smitherman, 1933
 Henry Bloodworth, 1916
 Beatrice Bloodworth, 1918
 Winfred Payne, 1926
 Wilma Payne, 1932
 Willie Rogers, 1916
 Bobbie Rogers, 1924
 L. D. Britton, 1908
 Cecil M. Phillips, 1920
 Hosea Phillip, 1911
 Donie Hanson, 1900
 Burnah Probasco, 1910
 Ruth King Dutton, 1913
 Emmett Dutton, 1925
 Frank Breed, 1922
 Sid Waller, 1928
 Charlie Warren, 1914
 Helen Breed, 1928
 Thelma Jones, 1911
 Mrs. B. C. Hinsley, 1925
 Mrs. Edell DuBois, 1919
 Edell DuBois, 1919
 Louis Newell, 1921
 Mrs. Earl Baker, 1920

Georgia Christian Adcock, 1916
 Vera Brown Troutman, 1931
 Thelma Crawford, 1923
 Earl Crawford, 1933
 Mildred Burke Cates, 1921
 Johnnie Cates, 1917
 Lois Parrish Waller, 1917
 Will Martin, 1908
 Fred Cardinal, 1918
 Polly Smith Cardinal, 1917
 R. H. Grubbs, 1923
 Abbie Nell Grubbs, 1923
 Carol Reeves Bell, 1928
 Robert W. Reeves, 1931
 Iris McBride Colston, 1918
 Voncel Woolsey Colston, 1922

Jim Tye, 1928
 Charley Spence, 1914
 Maylon Loller Spence, 1914
 Mrs. H. M. Thomas, 1915
 Inez Wilkins Barton, 1923
 Geneva Knight Elliott, 1927
 W. C. Mooney, 1923
 Mrs. W. C. Mooney, 1923
 Mrs. W. A. Lovell, 1925
 W. A. Lovell, 1925
 Christine Swepton Colston, 1916
 Mrs. E. I. Durham, 1916
 Mrs. Edd Muncy, 1921
 Gracie Riggle, 1916
 Cora Brown Hartline, 1912
 W. L. Hartline, 1932
 Jennie Burgett Irwin, 1912

Ford Johnson, 1928
 Agnes Riggle Baker, 1916
 Raymond A. Baker, 1916
 Floyd Bradford, 1926
 Euna Fawver Bradford, 1925
 Geneva Smith, 1948
 Lois Beard Gilly, 1925
 C. L. Gilly, 1921
 Mrs. C. W. Denison, 1923
 C. W. Denison, 1923
 Weldon Hammonds, 1951
 G. W. Smith, 1915
 Alta Lloyd Smith, 1916
 Ruth Johnston Scott, 1927
 Zant Scott, 1904
 Alma Montgomery Dunn, 1912
 Joy Grigsby Allen, 1912
 Fleeta Carthel Adams, 1942

Mrs. Georgia Foster, 1911
 Mrs. Lindsey Warren, 1911
 Mrs. W. H. Smith Sr., 1915
 Mary Corley, 1907
 Mable Epperson, 1904
 Travis Corley, 1923
 Allene Hopkins Henry, 1916
 Henry Willis, 1905
 Nina Willis, 1905
 Bill Tye, 1918
 Mrs. Bill Tye, 1918
 Mrs. Jim Owens, 1903
 Mrs. Jim Owens, 1927
 Mrs. J. C. Odum, 1920
 J. C. Odum, 1924
 Jim Owens, 1927
 Mrs. Cecil Fyffe, 1908
 Mrs. Helen Solomon, 1912
 Roy Crawford, 1923
 Calvin Steen, 1909
 Mrs. H. O. Ginn, 1932
 G. M. Armstrong, 1912
 Claude Fawver, 1900
 Mrs. Claude Fawver, 1917
 Jane Tye Pruitt, 1941
 Weldon Pruitt, 1956
 Elizabeth Armstrong, 1912
 Betty Lou Tye Simpson, 1935

Mary Pearl Coward, 1917
 Mrs. J. H. Barnard, 1945
 Kate Bullock Crabtree, 1901
 H. A. Tardy, 1925
 Marie Smith Tardy, 1908
 James Lovell, 1926
 Mrs. C. B. Lyles, 1916
 Dozier Dillard, 1915
 Clara Day Murry, 1891
 Lloyd Murry, 1914
 Imelda Murry, 1924
 Emma Lou Whitaker, 1912
 Earl Bishop, 1925
 Mrs. Earl Bishop, 1925
 Mrs. Raymond Williams, 1909
 Mrs. Sally Kreis, 1927
 Mrs. J. E. Green, 1893
 Floyd Anderson, 1916
 J. O. Elliott, 1946
 Gayle Fawver Ross, 1949
 Cora Lee Shipley, 1919
 Bill Hinkle, 1927
 Mrs. Bill Hinkle, 1936
 Ann Ferguson, 1939
 Ray Gene Ferguson, 1938
 J. W. Adams, 1926
 Cecil Pope, 1923
 Harold Wayne Bennett, 1932
 Alton Higginbotham, 1939
 Sue Higginbotham, 1941
 Randy Hollums, 1943
 Ruth Warren, 1923
 Sudie Thomas, 1898
 Hal Thomas, 1937
 Gladys Howard, 1910
 Mrs. Otis Anderson, 1924
 Otis Anderson, 1922
 Artie Ward, 1927

OUT OF TOWN
 Lee Pearson, Truth or Consequences, N.M., 1896
 Mrs. Jess Glover, Dougherty, 1917
 Winnie McLain, Dallas, 1895
 Myrtle McLain Williams, Dimmitt, 1893
 Ida King Phillips, Idalou, 1898
 Jane Clark Norman, Brownfield, 1923
 Leeman Norman, Brownfield, 1921
 Doris Sams Meriwether, Plainview, 1921
 Stella Warren Rogers, Lubbock, 1914
 Bob Roger, Lubbock, 1916
 Mrs. Jack Cummings Smitherman, South Plains, 1905
 Jack Smitherman, South Plains, 1917
 Mary Alice Montgomery Eakin, Petersburg, 1916
 Willie B. Eakin, Petersburg, 1925
 Mrs. Ralph May, Plainview, 1915
 Ralph May, Plainview, 1902
 Phillip Dunavant, Plainview, 1916
 W. L. Holmes, Amarillo, 1908

Linnie Hardesty, Crosbyton, 1917
 Alice Knight, Farmington, N.M., 1908
 Mrs. Albert Clubb, Lubbock, 1904
 Neomi Burgett Pace, Skellytown, 1926
 W. B. Parrock, Anson, 1924
 W. L. Croft, Roaring Springs, 1921
 Mrs. Bartie Bell Scott, Truth or Consequences, N.M., 1912
 C. W. Dunn, Canyon, 1920
 Jack Henry, Lorenzo, 1929
 Lois Newsom Morrison, Lubbock, 1916
 Mrs. Bonita Newsom Monk, Lubbock, 1918
 B. L. Ewing, Plainview, 1904
 Q. Carter, Littlefield, 1920
 P. T. Gentry, Slaton, 1905
 Juanita Shurbet Henry, Wellington, 1916
 Vinson Smith, Silverton, 1920
 Mrs. Vinson Smith, Silverton, 1922
 Joe Robertson, New Braunfels, 1923
 Lenton Lanham, Silverton, 1908
 Charley McDonald, Colorado Springs, Colo., 1918
 Willie Muriel McDonald, Colorado Springs, Colo., 1929

Myra Applewhite, Plainview, 1929
 Debs Moore, Ralls, 1906
 G. L. Shurbet, Lubbock, 1928
 Foster Amburn, Canyon, 1907
 Mrs. Foster Amburn, Canyon, 1914
 Mrs. Frank B. Smith, Lubbock, 1929
 Frank B. Smith, 1908
 Ruby Jewel Whitfill, Sweetwater, 1929
 Marie Harris, 1926
 Billie Pettie, Tuls, 1920
 Bessie Yeary Sauls, Quitaque, 1908
 W. F. Sauls, Quitaque, 1944
 Mrs. J. H. McClain, Amarillo, 1908
 Mrs. Roy Tyler, Amarillo, 1914
 Roy Tyler, Amarillo, 1938
 Betty Newell Shirey, Long Beach, Calif., 1920
 Don Marble, South Plains, 1932

Nancy Marble, South Plains, 1951
 Mattie McPeak, Lubbock, 1891
 Margaret Kansey McPeak, Lubbock, 1919
 Maye Parks, Lubbock, 1919
 Carolyn Marble, South Plains, 1936
 Mrs. Raymond Teeple, Silverton, 1907
 Raymond Teeple, Silverton, 1918
 Billie Jones Crawford, Dougherty, 1926
 Roy Crawford, Dougherty, 1923
 Floyd Willis, Lubbock, 1913
 Georgia Pittman Stark, Crosbyton, 1912
 Cleta McLain Brown, Lubbock, 1921
 John Lyles, Hale Center, 1922
 Mrs. John Lyles, Hale Center, 1931
 Mrs. C. K. Williams, Petersburg, 1902
 C. K. Williams, Petersburg, 1904
 Vera Wilson Armstrong, Clovis, N.M., 1907
 Carolyn Ramizani, Str-



Save 15% Of Electric Water Heating Cost



The **ELECTRIC CONSERVATIONIST**... it's fast. Install it right at the point of use for hot water instantly. It requires no space for a flue or vent. All it needs is a source of water and electricity.

The **ELECTRIC CONSERVATIONIST** features double efficiency insulation to keep heat inside the tank longer. And less heat is lost to cold floors with insulator pads.

The **ELECTRIC CONSERVATIONIST**... guaranteed for 10 years and it saves 15% of the average customer's electric water heating cost.

WE SELL, SERVICE, INSTALL, FINANCE & GUARANTEE 'EM!

WE SELL 'EM - Call Us!

Helen Dunlap, 1944
 Lorene Battay Newberry, 1918
 W. O. Newberry, 1916
 Loretta Parrish Denning, 1917
 Clinton Denning, 1924
 Mrs. Glenn Jarnagin, 1917
 Glenn Jarnagin, 1917
 Charlie Wright, 1915
 Tommy Assiter, 1930
 Joy Keeter Assiter, 1944
 Bill Daniel, 1921
 Gladys Ruth Brown Badgett, 1918
 Mrs. M. L. Probasco, 1910
 Hazel Probasco Bradley, 1913
 Woodrow Badgett, 1919
 Walton Wilson, 1909
 Wanda Lackey DuBois, 1926
 Bill DuBois, 1926
 Betty Swepton Campbell, 1926
 Ethel Cross, 1927
 Edna Patton, 1924
 Russell D. Warren, 1914
 Jack Stansell, 1918
 Imogene Stansell, 1921
 Archie Muncy Jr., 1923
 Mrs. Nell Muncy, 1953
 L. O. Adams, 1910
 R. B. Hatley, 1917
 Floyd Medley, 1923
 Maurice Campbell, 1915
 E. L. Cornelius, 1932
 Hillery Polvador, 1920
 Bessie Sherrill Wilson, 1919
 Woorow Wilson, 1912
 Minnie Bullock Barton, 1925
 S. D. Medley, 1923
 Peggy Medley, 1947
 Walter Hanna, 1910
 Mrs. Walter Johnston Hanna, 1922
 Wade Warren, 1914
 Mrs. Wade Owens Warren, 1935
 Eddie King, 1905
 Aline Dobbins, 1923
 Dollie Cantrell, 1923
 Ada Ellis, 1918
 J. D. Pope, 1924
 A. C. Carthel, 1917
 Dorothy Byars Carthel, 1920
 G. F. Weast, 1910
 Myrtle Davis Weast, 1899
 Clyde Bagwell, 1917
 Mrs. Weldon Hammonds, 1951
 Horace Carr, 1910
 Bess Smith Carr, 1931
 Greer Christian, 1916
 Ruth Troutman Christian, 1931

20% OFF SALE

at

Don's Thrifty

All Grocery & Meats
 20% Off
 All Produce
 40% Off

Don's Thrifty Supermarket

ST A...
 PIAN...
 25 y...
 425 i...
 FEED STORE...
 Grinder and...
 and three...
 sale loans...
 call Hale in...
 tfc
 MR. wire...
 NOR tract...
 and...
 FOR Case...
 fact...
 dual...
 3883...
 in Lockney...
 bath, newly...
 in, fenced...
 cellar, at 121...
 Hale Center...
 tfc
 DOR...
 office building...
 dead, James...
 3144 night...
 tfc
 house, double...
 most of town...
 3873...
 1961...
 Biltva...
 983-2...
 BAR Like...
 a \$3...
 983-2...
 size party...
 home, small...
 reasonable...
 ideal for a...
 6-6c
 3-3 bedroom...
 utility...
 for washer...
 central heat...
 patio with...
 College...
 2818... 15-30c
 3 large bed...
 -prising closet...
 FOR one...
 Buic...
 3907...
 living den...
 with pantry...
 in a met...
 1972...
 baths with...
 heaters? ...
 1973...
 workshop...
 and 199 ft...
 pow...
 New...
 428-250 would...
 call 852-2372...
 L-tfc
 FOR...
 houses, two...
 wated, See Jake...
 Missouri or call...
 tfc
 1969...
 \$11.11...
 WHAT YOU CAN...
 20 miles...
 Floydada. Call...
 tfc
 Health...
 For person...
 1976...
 AUTO...
 Owner...
 in Auto...
 -mission...
 -Ups, Auto...
 oning...
 Repair...
 ave A...
 LATH...
 all passenger...
 ums. See us...
 ole brake...
 2-2462
 use...
 CTORS...
 or LEASE...
 2836...
 POWER...
 PMENT...
 a, Texas...
 ANT...
 ULTS...
 SE...
 ANT...
 DS...
 \$

FAST ACTION use the

WANT ADS

BUSINESS SERVICES

PIANO TUNING. Edward C. Lain 25 years experience. Write Box 425 Silverton or call 823-2151. L-tfc

IF IT'S metal, we can sharpen it. scissors, saws, chain saws, knives. Carmack Feed & Seed, 983-3404. tfc

FARM SERVICES

MR. FARMER we have baling wire now - Babe's Service Center. L-tfc

FARM MACHINERY

NORRELL TRACTOR PARTS for tractor and irrigation supplies and accessories. tfc

AUTOMOBILES

FOR SALE: two tractors, 1370 Case, air conditioned, heater, factory duals. 1030 Case, cab, dual, new tires, also 21 ft tandem, new condition. 983-3883 Floydada, after 5 p.m. tfc

FOR SALE: New 4" green pump 250 ft setting, all complete gearhead etc. Several joints irrigation pipe. Two platform scales, different sizes. Dorsey Baker, 652-2363. tfc

FOR SALE

1961 Chevrolet, 409 1961 35 ft. Bitwell trailer, 5 axle. 983-2951 or 983-2737. 6-6c

BARGAIN: 1975 Honda XL 175. Like new, was \$795 now \$725 with a \$30 helmet included. Call 983-2783. 5-30p

FOR SALE: 1972 GRAND PRIX. Power steering, power brakes, air conditioner, tape deck, good tires. \$1875. Call 983-3737 days or 983-5297 nights. tpf

FOR SALE: one 1960 Ford car, one 1963 Buick Electra, one 1967 Buick Electra, 983-3561 or 983-3907. tfc

1972 Honda CB350 motorcycle in excellent condition. 2 helmets included. 983-2624. 6-6c

1973 Ford Torino station wagon, power and air, good condition, new brakes and shocks, \$2,095. Phone 983-3962. tpf

FOR SALE: 76 Pinto 3-door, run-about, 9,000 miles, mag wheels, FM radio, like new. Contact Jackie Covington or call Jack Covington 983-3184. tfc

1969 Mustang, standard, shrp. \$1,150.00. 915 Garrison, Floydada tfc

WANTED: 12 miles from Floydada. Call tfc

WANTED: 12 miles from Floydada. Call tfc

WANTED: 12 miles from Floydada. Call tfc

WANTED: 12 miles from Floydada. Call tfc

WANTED: 12 miles from Floydada. Call tfc

WANTED: 12 miles from Floydada. Call tfc

WANTED: 12 miles from Floydada. Call tfc

WANTED: 12 miles from Floydada. Call tfc

WANTED: 12 miles from Floydada. Call tfc

WANTED: 12 miles from Floydada. Call tfc

WANTED: 12 miles from Floydada. Call tfc

WANTED: 12 miles from Floydada. Call tfc

WANTED: 12 miles from Floydada. Call tfc

WANTED: 12 miles from Floydada. Call tfc

WANTED: 12 miles from Floydada. Call tfc

WANTED: 12 miles from Floydada. Call tfc

WANTED: 12 miles from Floydada. Call tfc

WANTED: 12 miles from Floydada. Call tfc

WANTED: 12 miles from Floydada. Call tfc

WANTED: 12 miles from Floydada. Call tfc

WANTED: 12 miles from Floydada. Call tfc

WANTED

WANTED TO BUY a good used refrigerator Call Terry at 983-3739. tpf

WANTED TO BUY irrigated or dryland farm in Floyd or surrounding area. Write Box XRO, c/o Hesperian, Box 700, Floydada. tfc

WATCH REPAIR. C. H. Bradford 216 W. Crockett. tfc

WANTED: carpentry work of all kinds new or remodeling, concrete work, and painting. Bill Brown, P. O. Box 136, Dickens (806) 294-2281. tfc

PART TIME housekeeper for summer. Must be able to cook. Call 652-3413 after 6 p.m. Mrs. Mavis Reecer, Lockney. L5-30c

WANTED: carpentry work of all kinds new or remodeling, concrete work, and painting. Bill Brown, P. O. Box 136, Dickens (806) 294-2281. tfc

WANTED: carpentry work of all kinds new or remodeling, concrete work, and painting. Bill Brown, P. O. Box 136, Dickens (806) 294-2281. tfc

WANTED: carpentry work of all kinds new or remodeling, concrete work, and painting. Bill Brown, P. O. Box 136, Dickens (806) 294-2281. tfc

WANTED: carpentry work of all kinds new or remodeling, concrete work, and painting. Bill Brown, P. O. Box 136, Dickens (806) 294-2281. tfc

WANTED: carpentry work of all kinds new or remodeling, concrete work, and painting. Bill Brown, P. O. Box 136, Dickens (806) 294-2281. tfc

WANTED: carpentry work of all kinds new or remodeling, concrete work, and painting. Bill Brown, P. O. Box 136, Dickens (806) 294-2281. tfc

WANTED: carpentry work of all kinds new or remodeling, concrete work, and painting. Bill Brown, P. O. Box 136, Dickens (806) 294-2281. tfc

WANTED: carpentry work of all kinds new or remodeling, concrete work, and painting. Bill Brown, P. O. Box 136, Dickens (806) 294-2281. tfc

WANTED: carpentry work of all kinds new or remodeling, concrete work, and painting. Bill Brown, P. O. Box 136, Dickens (806) 294-2281. tfc

WANTED: carpentry work of all kinds new or remodeling, concrete work, and painting. Bill Brown, P. O. Box 136, Dickens (806) 294-2281. tfc

WANTED: carpentry work of all kinds new or remodeling, concrete work, and painting. Bill Brown, P. O. Box 136, Dickens (806) 294-2281. tfc

WANTED: carpentry work of all kinds new or remodeling, concrete work, and painting. Bill Brown, P. O. Box 136, Dickens (806) 294-2281. tfc

WANTED: carpentry work of all kinds new or remodeling, concrete work, and painting. Bill Brown, P. O. Box 136, Dickens (806) 294-2281. tfc

WANTED: carpentry work of all kinds new or remodeling, concrete work, and painting. Bill Brown, P. O. Box 136, Dickens (806) 294-2281. tfc

WANTED: carpentry work of all kinds new or remodeling, concrete work, and painting. Bill Brown, P. O. Box 136, Dickens (806) 294-2281. tfc

WANTED: carpentry work of all kinds new or remodeling, concrete work, and painting. Bill Brown, P. O. Box 136, Dickens (806) 294-2281. tfc

WANTED: carpentry work of all kinds new or remodeling, concrete work, and painting. Bill Brown, P. O. Box 136, Dickens (806) 294-2281. tfc

WANTED: carpentry work of all kinds new or remodeling, concrete work, and painting. Bill Brown, P. O. Box 136, Dickens (806) 294-2281. tfc

WANTED: carpentry work of all kinds new or remodeling, concrete work, and painting. Bill Brown, P. O. Box 136, Dickens (806) 294-2281. tfc

WANTED: carpentry work of all kinds new or remodeling, concrete work, and painting. Bill Brown, P. O. Box 136, Dickens (806) 294-2281. tfc

WANTED: carpentry work of all kinds new or remodeling, concrete work, and painting. Bill Brown, P. O. Box 136, Dickens (806) 294-2281. tfc

WANTED: carpentry work of all kinds new or remodeling, concrete work, and painting. Bill Brown, P. O. Box 136, Dickens (806) 294-2281. tfc

WANTED: carpentry work of all kinds new or remodeling, concrete work, and painting. Bill Brown, P. O. Box 136, Dickens (806) 294-2281. tfc

WANTED: carpentry work of all kinds new or remodeling, concrete work, and painting. Bill Brown, P. O. Box 136, Dickens (806) 294-2281. tfc

WANTED: carpentry work of all kinds new or remodeling, concrete work, and painting. Bill Brown, P. O. Box 136, Dickens (806) 294-2281. tfc

WANTED: carpentry work of all kinds new or remodeling, concrete work, and painting. Bill Brown, P. O. Box 136, Dickens (806) 294-2281. tfc

WANTED: carpentry work of all kinds new or remodeling, concrete work, and painting. Bill Brown, P. O. Box 136, Dickens (806) 294-2281. tfc

WANTED: carpentry work of all kinds new or remodeling, concrete work, and painting. Bill Brown, P. O. Box 136, Dickens (806) 294-2281. tfc

WANTED: carpentry work of all kinds new or remodeling, concrete work, and painting. Bill Brown, P. O. Box 136, Dickens (806) 294-2281. tfc

WANTED: carpentry work of all kinds new or remodeling, concrete work, and painting. Bill Brown, P. O. Box 136, Dickens (806) 294-2281. tfc

WANTED: carpentry work of all kinds new or remodeling, concrete work, and painting. Bill Brown, P. O. Box 136, Dickens (806) 294-2281. tfc

WANTED: carpentry work of all kinds new or remodeling, concrete work, and painting. Bill Brown, P. O. Box 136, Dickens (806) 294-2281. tfc

WANTED: carpentry work of all kinds new or remodeling, concrete work, and painting. Bill Brown, P. O. Box 136, Dickens (806) 294-2281. tfc

WANTED: carpentry work of all kinds new or remodeling, concrete work, and painting. Bill Brown, P. O. Box 136, Dickens (806) 294-2281. tfc

THIS FEATURE SPONSORED BY
AUTO, FIRE & FARM INSURANCE
Floydada Real Estate & Insurance Agency
Jim Word — — — Phone 983-2360

COW POKES

By Ace Reid



"Banker Tuernal, all them live ones is yore collateral, and the dead ones is your interest!"

PETS

HALF GERMAN police and half collie puppies. Donice Casey, 652-3414 Lockney. tfc

FOR SALE: Brittney Spaniel pups. Melvin Cooper, Lockney 652-2201. tfc

FOR RENT

WELL kept carpets are a joy to own. Shampoo your rug with CAMPOO. Rent electric shampooer \$1.00 and \$2.00. PARKER HOME FURNISHINGS, LOCKNEY, Texas. L5-30c

FLOYD COUNTY ABSTRACT CO.

Abstracts Of Title Title Insurance
Verna L. Stewart, Manager
217 W. California 983-3728
Floydada, Texas

Now Open
ASHLEY'S BODY SHOP
200 W. California
Glass installation and complete body work
BILL & MARK ASHLEY
983-5073

QUALITY SHAMROCK PRODUCTS
Always Make A Good Deal On
SONIC TIRES and SOUTHLAND BATTERIES
Dial 652-3366
JACKSON TIRE COMPANY
Richard Wiley

WANT ADS

FOR SURE-FIRE MARKET MAGNETISM

IF IT IS INSURANCE — SEE —
Barker Insurance Agency
LOCKNEY
Life — Fire — Casualty — Hospital
B. B. Wilkes, Real Estate
LOCKNEY
Farms — Ranches — City Properties
Business Leases — Loans

Custom Application of Chemicals for Cotton Corn Milo
Call Bill Wisdom 652-3541
Or Darryl Dennis 652-2616



BUSINESS FOR SALE

WE WANT to sell the Hesperian Office Supply and Business Machines business in Floydada. Terms can be arranged for right person. Wendell Tooley, 983-3737. tpf

SALES

3-FAMILY Garage Sale, 614 SW 4th, Lockney, Joe Roger's home, all day Friday and Saturday and Sunday afternoon. Clothes, furniture and miscellaneous items. Becky and Cynthia and Vira jo Bybee. L5-30-p

NOTICE

A NICE way to remember your friends and loved ones is with a Memorial Gift to the American Heart Association. A card will be sent to the family acknowledging your gift. Contact June Bybee, Memorial Chairman at Lockney, 652-3355. L-tfc

A NICE way to remember your friends and loved ones is with a Memorial Gift to the American Heart Association. A card will be sent to the family acknowledging your gift. Contact Olin Watson, Memorial Chairman at 983-2191. tfc

BARGAIN ROOM open on Friday and Saturday at Betty's Place - open 10:00 close 6:00. Great saving on many items. tfc

STACK used lumber. Yours for the hauling. 983-2760. tfc

CLASSIFIED AD SALE

CLASSIFIED ADVERTISING RATE: 7 CENTS PER WORD FIRST INSERTION; 5 CENTS PER WORD EACH SUBSEQUENT INSERTION. MINIMUM CHARGE: \$1.00.

CLASSIFIED DISPLAY RATE: \$1.15 PER COLUMN INCH. CARDS OF THANKS: \$1.00.

COPY DEADLINES: 5 P.M. TUESDAYS FOR THURSDAY EDITION; 10:00 A.M. FRIDAYS FOR SUNDAY EDITION. Call 983-3737 in Floydada or 652-3318 in Lockney

FOR SALE

KENMORE sewing machine with 8 dial-to-sew stitches, 4 stretch stitches. 20 year head guarantee. Now reduced to \$79.95. Portable case, \$10.95. One only. Sears, Floydada. tfc

FOR SALE: country club membership, 983-3151. 6-28c

FOR SALE: almost new queen size box springs and mattress. 983-2851. 6-3c

BICYCLE, bedroom set, automatic washer, refrigerator, antique dresser. 311 W. Marivena 983-5273. 6-10c

1975 Kenmore Avocado dryer. One of top models with automatic cycles, wrinkle-guard, and buzzer. Was \$244.70 now \$149.95 in carton. Sears-Floydada. tfc

FOR SALE: 1965 Trailmobile grain trailer, \$2,500.00. Call 983-2170 or 229 E. Calif. Floydada. tfc

FOR SALE: I have several hundred feet of good four and five inch aluminum pipe. 40 cents per foot. Phone 983-3982. tpf

FOR SALE: 80 bags Paymaster Dwarf cottonseed. 80% germ, \$5.00 per bag. 983-3561. tfc

FOR SALE: one GE color portable TV, excellent condition, less than one year old. Also a stereo unit for the home. Stereo consists of: Panasonic, AM-FM Receiver & eight track tape player, realistic Lab 12 turn table AKAI 1710 reel to reel tape, recorder-player. After 6 call 983-3158. Tommy Wylie. tfc

In time for Father's Day: WEBER KETTLE BARBECUE grills, 363 sq. in. cooking area, dome cover holds in heat, promotes cooking. Adjustable lid and base dampens controls heat. For certain enameled steel kettles in red and black. Reduced to \$39.99 and \$49.99. Sears, Floydada. tfc

VENUS COSMETICS
The best money can buy. With Stabilized Aloe Vera. Please call after 6 or weekends. Dewanna Blenden, 652-2563. L-tfc

WE SELL new and rebuilt Kirby vacuum cleaners and parts Parker Furniture, Floydada. tfc

AIR CONDITIONER, GE, refrigerated from 6000 to 24,000 BTU, also Dearborn evaporative cooler, pads and parts. Parker Home Furnishings in Lockney. L-7-31c

FOR SALE, 40 inch Roper range, \$25.00. 312 W. Spruce Lockney, 652-2415. L5-30p

MARKDOWN ON CRAFTSMAN 5 H.P. vertical-shaft rotapader with power reverse. 13" slicer tines, 2 digging widths. Was \$269.95, now \$199.95. Two only. Sears, Floydada. tfc

LIVING ROOM chairs for sale. Call 652-2492. L6-3c

JUSTIN work boots as low as \$17.95. Boot Hill Western Wear, Lockney 652-2607. tfc

WANT to sell push button Ford radio. Excellent condition. \$35. Phone 983-3982. tpf

FOR SALE: 1976 Texas Almanac, Beacon Office Supply - Hesperian Office Supply. tfc

WE HAVE IN STOCK the new revised 1975-76 336 page U. S. Zip Code Directories \$3.95 each Hesperian Office Supply and Beacon Office Supply. tpf

WE have the Spanish Farm & Ranch book. Hesperian Office Supply. tpf

NOW we have in stock electronic printing calculators at adding machine prices. \$129.95 with year guarantee. Hesperian Office Supply, Beacon Office Supply. tpf

WE have the Spanish Farm & Ranch book. Hesperian Office Supply. tpf

NOW we have in stock electronic printing calculators at adding machine prices. \$129.95 with year guarantee. Hesperian Office Supply, Beacon Office Supply. tpf

WE have the Spanish Farm & Ranch book. Hesperian Office Supply. tpf

NOW we have in stock electronic printing calculators at adding machine prices. \$129.95 with year guarantee. Hesperian Office Supply, Beacon Office Supply. tpf

WE have the Spanish Farm & Ranch book. Hesperian Office Supply. tpf

NOW we have in stock electronic printing calculators at adding machine prices. \$129.95 with year guarantee. Hesperian Office Supply, Beacon Office Supply. tpf

WE have the Spanish Farm & Ranch book. Hesperian Office Supply. tpf

NOW we have in stock electronic printing calculators at adding machine prices. \$129.95 with year guarantee. Hesperian Office Supply, Beacon Office Supply. tpf

WE have the Spanish Farm & Ranch book. Hesperian Office Supply. tpf

NOW we have in stock electronic printing calculators at adding machine prices. \$129.95 with year guarantee. Hesperian Office Supply, Beacon Office Supply. tpf

WE have the Spanish Farm & Ranch book. Hesperian Office Supply. tpf

NOW we have in stock electronic printing calculators at adding machine prices. \$129.95 with year guarantee. Hesperian Office Supply, Beacon Office Supply. tpf

Auto Accidents DO Happen . . .

If one happens to you, be protected. Our car insurance offers coverage to meet your special needs — repairs to personal liability.

BAKER Insurance Agency

127 W. Calif. Ph. 983-3270

DIAMOND INDUSTRIAL SUPPLY CO., INC.
Phone Days 296-7418 - Nights 296-1200 or 296-7828
1014 Broadway
Plainview, Texas

Chain Sprockets V-belts Sheaves U-joints Oil Seals O-rings Wisconsin

SKF BCA Timken Bower Cotton Striper Brushes & Bats

"We Appreciate Your Business More" L-TFC

Large 2 story house,
3 bedroom, 3 baths, workshop,
underground den.
Also 5 lots for garden spot.

Shown by appointment only
652-2143 L-TFC

Custom Application of Chemicals for Cotton Corn Milo
Call Bill Wisdom 652-3541
Or Darryl Dennis 652-2616

Get ACTION with WANT ADS

Heavy feed properly aged choice 250-350 lb. average half
79' lb.
Good 150-225 lb. average half 75' lb.
ask about our \$30 to \$50 beef pack
Lockney Meat Co.
Sam Fortenberry
Manager 652-3305 TFC

Heavy feed properly aged choice 250-350 lb. average half
79' lb.
Good 150-225 lb. average half 75' lb.
ask about our \$30 to \$50 beef pack
Lockney Meat Co.
Sam Fortenberry
Manager 652-3305 TFC

Heavy feed properly aged choice 250-350 lb. average half
79' lb.
Good 150-225 lb. average half 75' lb.
ask about our \$30 to \$50 beef pack
Lockney Meat Co.
Sam Fortenberry
Manager 652-3305 TFC

Heavy feed properly aged choice 250-350 lb. average half
79' lb.
Good 150-225 lb. average half 75' lb.
ask about our \$30 to \$50 beef pack
Lockney Meat Co.
Sam Fortenberry
Manager 652-3305 TFC

Heavy feed properly aged choice 250-350 lb. average half
79' lb.
Good 150-225 lb. average half 75' lb.
ask about our \$30 to \$50 beef pack
Lockney Meat Co.
Sam Fortenberry
Manager 652-3305 TFC

Heavy feed properly aged choice 250-350 lb. average half
79' lb.
Good 150-225 lb. average half 75' lb.
ask about our \$30 to \$50 beef pack
Lockney Meat Co.
Sam Fortenberry
Manager 652-3305 TFC

Heavy feed properly aged choice 250-350 lb. average half
79' lb.
Good 150-225 lb. average half 75' lb.
ask about our \$30 to \$50 beef pack
Lockney Meat Co.
Sam Fortenberry
Manager 652-3305 TFC

<

SECOND BIG WEEK

Shur Fine

SUMMER SELECTION



VOTE FOR SAVINGS

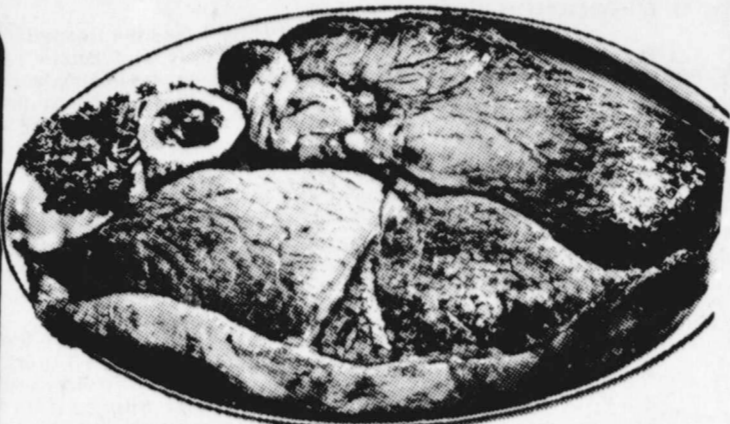
America's Greatest Store Selection



WEXFORD CRYSTAL ITEM OF THE WEEK:

Stemmed Sherbet

49¢ WITH EACH AND EVERY \$3 PURCHASE



SHURFRESH HAM FULLY COOKED BONELESS 3 LB. CAN \$4.99
SHURFRESH BOLOGNA 12 OZ. PKG. 89¢
LUNCHEON MEATS SHURFRESH BOLO. PAF OLIVE OR CRO. SALAMI 2 6 OZ. PKGS. 89¢
HAM OR CHICKEN SALAD SHURFRESH 8 OZ. TUB 79¢
PIMENTO CHEESE SPREAD SHURFRESH 12 OZ. TUB \$1.19
CHEESE SPREAD SHURFRESH JAL OR PIM 7 1/2 OZ. TUB 79¢

USDA Graded FRYERS

47¢ lb.

Fresh Extra Lean BEEF PATTIES lb. 89¢

U.S.D.A. CHOPPED SIRLION

SHURFRESH SLICED BACON THICK OR THIN 2 LB. PKG. \$2.77 1 LB. PKG. \$1.39

GROUND BEEF

TOP QUALITY Shurfresh FRANKS 12 OZ. PKG. 69¢

BONELESS CHUCK ROAST TENDERIZED CUTLETS

SUMMER GROCERY SAVINGS

HEINZ BARBECUE SAUCE 26 OZ. BTL. 79¢

REGULAR OR SUPER Kotex Tampons 40 CT. BOX \$1.59

SHURFINE Salad Dressing 32 OZ. JAR 69¢

SHURFINE Enriched Flour 5 LB. BAG 69¢

SHURFINE 3 SIEVE CUT Green Beans 5 16 OZ. CANS \$1.00

SHURFINE Instant Tea 3 OZ. JAR \$1.09

SHURFINE GRANULATED SUGAR 5 LB. BAG \$1.09

SUMMER DAIRY SAVINGS

SHURFRESH SWEETMILK OR BUTTERMILK BISCUITS 9 8 OZ. CANS \$1.00

SHURFRESH IN QUARTERS Margarine 3 1 LB. CTNS. 89¢

SHURFRESH HALFMOON LONGHORN COLBY CHEESE 10 OZ. PKG. 89¢

SHURFINE CANNED POP 9 12 OZ. CANS \$1.00

ENERGY CHARCOAL Briquets 10 LB. BAG 89¢

SHURFRESH QUALITY ICE CREAM ROUND HALF GALLON CTN. \$1.19

LIQUID DETERGENT IVORY 32 OZ. BTL. 99¢

SHURFINE HAMBURGER SLICED DILL Pickles 32 OZ. JAR 59¢

DETERGENT-10° OFF LABEL Oxydol 49 OZ. BOX \$1.19

ALL GRINDS Shurfine Coffee 1 LB. CAN \$1.19

FOR FRESHER BREATH Scope Mouthwash 18 OZ. BTL. 99¢

NEW CROP CALIFORNIA LONG WHITES POTATOES 10 LB. POLY BAG 99¢
WASHINGTON RED DEL. LG. APPLES 4 LBS. \$1.00
YELLOW SWEET ONIONS 1 LB. 15¢
CALIFORNIA CELLO CARROTS 1 LB. BAG 19¢
GEORGIA REDS PEACHES LB. 39¢
CALIFORNIA HAAS LARGE AVOCADOS EACH 39¢

SUMMER FROZEN FOOD VALUES SHURFINE FROZEN Cut Corn 3 10 OZ. CTNS. 89¢

SHURFINE FROZEN Orange Juice 4 6 OZ. CANS \$1.00

SHURFINE NON-DAIRY WHIPPED TOPPING 2 10 OZ. TUBS 89¢

SHURFINE CRINKLE Cut Potatoes 2 LB. BAG 69¢

TOOTH PASTE GLEEM 7 OZ. TUBE 79¢

HEALTH AND BEAUTY AID FIRST AID SPRAY NEW-PACK MEDI-QUIK 4 OZ. BTL. \$1.39

VICK'S SINEX Nasal Spray 1/2 OZ. BTL. \$1.39

SEA AND SKI Tanning Lotion

SHAMPOO LOTION-25° OFF LABEL Head & Shoulders

BODY WAVE OR SPECIAL Lilt Permanents

REGULAR OR UNSCENTED Sure Deodorant

- Shurfine Apple Butter 28 oz. Jar
Shurfine Applesauce 16 oz. Can
Shurfine Apricots Halves Unpeeled 16 oz. Can
Shurfine Asparagus Spears Cut Green 14 1/2 oz. Can
Shurfine Blackeyes Fresh Shelled 15 oz. Can
Shurfine Bleach 64 oz. Jug
Shurfine Catsup 14 oz. Bottle
Shurfine Coffee Creamer 11 oz. Jar
Shurfine Corn CS or WK Golden 17 oz. Can
Shurfine Crackers Saltine 16 oz. Box
Roxey Dog Food Ration Canned 15 oz. Can
Shurfine Evaporated Milk 14 1/2 oz. Can
Shurfine Fruit Cocktail 16 oz. Can
Shurfine Fruit Drinks Assorted Flavors 46 oz. Can
Shurfine Macaroni & Cheese Dinner 7 1/2 oz. Box
Shurfine Mandarin 16 oz. Jar
Shurfine Mustard 16 oz. Jar
Shurfine Peaches YC Halves or Slices 16 oz. Can
Shurfine Peanut Butter Crunchy or Smooth 12 oz. Jar
Shurfine Peas Sweet Early Harvest 17 oz. Can
Shurfine Pork & Beans 16 oz. Can
Shurfine Potato Chips Reg. Bag or For Dips 8 oz. Pkg
Shurfine Potatoe Whole Irish 16 oz. Can
Shurfine Potatoes Whole 16 oz. Jar
Shurfine Sauerkraut 16 oz. Can
Shurfine Shortening Pure Vegetable 48 oz. Can
Shurfine Tomato Juice Fancy 46 oz. Can
Shurfine Tomato Sauce 8 oz. Can
Shurfine Tomatoes Whole Peeled 16 oz. Can
Shurfine Trash Can Liners 30 Gallon Size 10 ct. Box
Shurfine Tuna Chunk Style 6 1/2 oz. Can

TOTAL SAVINGS DOWN EVERY AISLE!

THRIFTWAY

SPECIALS GOOD MAY 31-JUNE 5, 1976

5¢ Per Copy

Me

former past... moved to San... methodis minis... was born in... the son of M... graduated from... attended McM... eived a B. A... asters of Divin... Theological S... tucky and wa... United Metho... forthwest Tex... e has served... 70). Lamesa I... Hamlin (1974... ed to the form... ar, daughter of... also attended... iving a B.S. education... three children:... and will be i... o is 6 years o... grade; and Juli... rs old in Augu... rved as presid... d Hamlin M... nizations, vice... of the Lamesa... ool Advisora... e executive cor... nited Way and... an, member of... of the Hamlin... Development, n... Directors of t... the Jones Cour... rd, the Ham... mmittee, and t... Committee. mber of the 1

Rock Cl... Wendell To...

KE FLOYDAD... recreation... is running a h... st south of th... and this is going... dances. Who... sometime in July... keep your eye... job on the old c... the Lockney hig... o be a recreat... with snack

ORE REMINDI... election Saturd... Carl Dally...J... art of Criminal J... Texas Railro

ITE POSSIBL... 1976 wheat w... in the next... or people be on t... e a picture of t... load of wheat... some good irrig... "air" irrigated

GRESS NOTE... wash has increas... with another "ste... some big news... the contract for t... and the 16 apart... of Duncan... his apartment de... some seven mont

ELWELCOME THE... Floydada. Jim... pastor. Our bes... ay and Connie T... ed to San Anto... community will n... me for their work... and Jimmy as... at the hospita... games, taught... on the Floy... ment, he drove a... e teacher, just to

H COGDELL... through the year... as he worked... a big football fi... ed to the Texa

for sending tl... is the reply... had the Hesper... something I can'

Jes