

2, 1931  
tion and  
every-  
sphere.



# THE JUNCTION EAGLE

Volume 47

Junction, Kimble County, Texas, Thursday, March 19, 1931

Number 49

## MARCH 27 AND 28 ARE NEW DATES FOR INTERSCHOLASTIC LEAGUE CONTESTS AT LONDON

### Kimble Co. Egg Record Exceeds State Average

Demonstrations Show That 187 Hens Laid 2606 Eggs In February

During the month of February the 187 hens enrolled in the four egg laying demonstrations in Kimble County laid 2606 eggs. D. M. Stewart's 84 Brown Leghorns took the lead and laid 1265 eggs or an average of 15 eggs per hen for the month which exceeds the State Extension standard 6 eggs. Mr. Stewart says that what he lost in a cheaper egg market he made up in numbers sold.

Eileen Reese took second honors with her 29 Buff Minorca hens which laid 425 eggs or an average of 14.6 eggs per hen.

The gross income from the eggs sold from the 187 birds amounted to \$28.13 which was offset by \$11.12 feed cost leaving a net profit of \$17.01.

County Agent R. E. Homann reports that the egg laying contest is one that will test the value of poultry on the farm, since there are three different breeds represented, and one demonstration is a mixed farm flock. Meat type in the dark Cornish owned by the Banowsky boys, dual-purpose hens entered by Eileen Reese and egg layers entered by D. M. Stewart, Elton Stewart, son of D. M. Stewart, is the contestant entering the mixed birds. All demonstrators showed a profit on poultry enrolled. Since the contest started on November 1, Mr. Stewart's average of 89 hens have laid 4075 eggs or 45.7 eggs each during the period.

### Frank Wootan Wins Mile Race At Brady Meet

Twenty Schools and 200 Boys Compete in Track Contests

Frank Wootan of the London High School won the mile race easily last Saturday in invitation track meet held in Brady, making the mile in 5 minutes and 12 seconds, outdistancing some twenty boys by 150 yards. Buster Smith, a junior boy, won second place in the high jump and 3rd place in the 100-yard dash.

Coach E. B. Morrison entered boys in several events and feels that his team made a good showing since about 20 schools and 200 athletes from the best schools in the district were represented. Track events, tennis, singles and doubles, and girls volleyball were featured during the day.

The London team will go to Eden Saturday for a similar meet. Eden, featuring the Davis brothers, won the Brady meet, making 32 points for 1st honors. Coleman came second with 22 points.

### P.-T. A. Meets Monday Afternoon 3:30 O'clock

Mrs. George Robert Pepper, president of the local Parent-Teachers Association, announces that the regular meeting at the high school building at 3:30 o'clock Monday afternoon, will be important in many respects. Miss Austin Durst will give a reading demonstration. The committee for nominating officers for next year will be selected at this meeting and also the delegates to the district meeting at Rankin will be chosen.

### Tennis Matches Will Be Held Friday Morning

M. B. Bethel, director general of the Kimble County Interscholastic League, announces the county meet has been postponed from March 14 and 21 to March 27 and 28. The tennis matches will be held on Friday morning, March 27. All other events will take place as previously scheduled.

The schedule is reprinted for the convenience of those interested.

Friday Afternoon, 2 o'clock Senior Spelling, Junior Spelling, Sub-junior Spelling.

3 O'clock Essay Writing, Arithmetic.

4 O'clock Extemporaneous Speaking, Debating.

7 O'clock Declaration.

Saturday Morning, 9 o'clock Volley Ball, Play Ground Ball.

Saturday Afternoon, 1 O'clock Track and Field Meet.

The track and field meet will be run off according to the schedule in the constitution and rules or as they come on the entry blank.

The directors and officers of the League are:

M. B. Bethel—Director Gen.

Continued on last page

### "Ruth in a Rush" 3-Act Comedy is Coming Tonight

"Ruth in a Rush," a three-act comedy, comes to Junction tonight at the Texan Theatre under the auspices of the Efficiency Class of the First Methodist Church. This play, which is being directed by Mrs. Olney Patterson and assisted by Mrs. Roy Blackburn, has made great hits where it has been produced in many American cities. It is a rollicking, fast moving comedy.

Users for the evening are Mesdames Clay Secrest, Tom Sheppard, Ovie Buster, and Joe Ramsey.

No extra admission will be charged for the evening performance which will include the sound picture, "Renegades," with Warner Baxter, and the three act comedy. The moving picture precedes the play.

The cast of characters includes:

Ruth MacDonald Moore, Always in a rush, Mrs. Pierce Hoggett; Mrs. Brownell, Ruth's Aunt; Mrs. E. L. Smith; Juliet Raymond, Ruth's secretary and friend; Mrs. L. E. Standifer; Susie, A maid; Mrs. E. O. Lowgren; Leonard Bruce, Poor but Artistic; Walter Buck; Wayne Ashley, Rich but Uncultured, M. B. Bethel; Dwight Lambert, An eloper; Russell LaVelle; Peggy Patton, Another eloper; Audrey Blackburn; Gilbert Lansing, a writer; L. D. Borden; Philip Grant, A millionaire; Bennett Kindrick; Sadie Sodastrom, a ticket agent; Mrs. E. R. Borden; Jean Moore Foster, Ruth's sister; Mrs. Hal Holland.

Time—The Present.

Place—An Eastern City.

Mrs. Henry Murr celebrated her 84th birthday last Tuesday. She enjoyed a congratulatory card from the Junction State Bank. Uncle Henry is 86 and both of them are hale and hearty and do all their own work.

Mr. and Mrs. Brown King of San Angelo visited in Junction this week.

### LIQUOR POURED INTO SEWER!

Court Orders Intoxicants Not Needed as Evidence Destroyed

One hundred and two pints of beer, 190 pints of whiskey, and 3,760 pints of alcohol were poured into the sewer at the county jail last Saturday! This includes intoxicating liquor confiscated by Sheriff Frank Patterson in raids made since he has been sheriff.

In its investigation during the February term of court, the grand jury learned of the vast quantity of liquor in the possession of Sheriff Patterson and asked that District Judge Joe G. Montague order all destroyed except such as is necessary for evidence in criminal cases on the docket.

Sheriff Frank Patterson and deputies, George Strong and Joe St. Clair and Game Warden S. O. Durst poured all this liquor in the sewer while many were singing "How Dry I Am."

A large amount of the liquor destroyed, was taken by Sheriff Patterson in a raid nearly two years ago when H. Alexander was arrested. A Dodge truck was also confiscated when the raid was made and the liquor taken.

### Junction Gets 15 Per Cent Reduction For Good Fire Record

John M. Hankins, Fire Chief of Junction, received a telegram yesterday from J. W. Dewese, Fire Insurance Commissioner, stating that Junction has received a fifteen per cent good fire record credit, which became effective March 1st.

This reduction of 15 per cent comes as a result of the good fire record which Junction has maintained during the past 3 years. The efficiency of the local fire department and the co-operation of local citizens in regard to abolition of fire hazards, has been responsible for this reduction.

This reduction, in short, means that the property owners here will be relieved of the 15 per cent penalty brought on by the bad fire record of 1927, which will make a difference of approximately \$4.80 on an \$18 premium. In other words if a property owner had an \$18 premium on \$2,400 worth of insurance, the \$2,400 fire record penalty is not added but is subtracted from the \$18, making a difference of \$4.80 saving for the policy holder.

John Hankins, fire chief and the members of the fire department should be congratulated upon the enviable record maintained during the past three years.

## County And District Attorneys Association Of West Texas Will Meet In Junction March 27 and 28

### Seed Campaign Shows Interest In Kimble Co.

25 Farmers and Ranchmen Have Pooled Orders For Pure Seed

Twenty-five interested farmers and ranchmen of Kimble county have pooled their orders for pure line, germination tested seed, totalling 6060 pounds. Through the efforts of the county agent, the Chamber of Commerce is financing this great work and splendid results are expected when harvest time is here.

The seed pooled and handled to the farmers at cost aggregates the following amounts: Sudan—2,600. Hepar—1,800. Dwarf Yellow Milo—900. Came—369. Spur Feterita—100. Black Hull Kaffir—100. Reese, Furgeson Yellow Dent and Sure Cropper corn—10 bushels.

Chinese Red Cow Peas—100. Figuring only average production with present market prices these seed will produce approximately \$30,000 worth of feedstuff.

The planting seed secured was the best available seed money could buy in the state. R. E. Homann is elated over security.

Continued on last page

### Junction is Admitted To Baseball League

Messrs. John M. Hankins and Perry Dechert attended a meeting of the directors of the Hill Country Baseball Association in Fredericksburg last night. Junction was admitted as a member of the association and V. P. Emmons and John Hankins were elected on the board of directors.

The season will open with a game in Junction on April 6. In next week's issue of the Eagle will be found the schedule for the season. Kerrville, Fredericksburg, Pontotoc, Mason, Comfort and Junction compose the league this season.

A meeting is called at the courthouse tonight of players and fans to promote the movement.

Mrs. Guy C. Moses and Patsy left Sunday for a visit with relatives in Dallas. They were accompanied as far as Temple by Mr. Moses.

### "SIGNS OF THE TIMES"



### One Act Play Will Be Shown Here March 26

Local Talent Will Give League Play Here Before Going To San Angelo

"Martha's Mourning", the one act play that will represent Junction High School in the Interscholastic League Play Contest at San Angelo, March 27 and 28th, will be presented in Junction at the Texan Theatre Thursday evening, March 26. This excellent drama, written by Phoebe Hoffman, will be acted by Mae Delle Lowry, Juanita Cowser, and Marie Sheppard, Mrs. Conde Hardeman, directing. The play will follow the regular motion picture program, with no advance in price.

Continued on last page

### J. N. Hodges Buys 110,000 Lbs. Mohair In One Day This Season

Mr. J. N. Hodges, manager of the Schreiner-Hodges Company, reports the purchase of 110,000 pounds of mohair in one day recently, paying 22¢ for grown hair and 32¢ for kid hair. This is probably the largest purchase of mohair ever made in Junction in one day. He reports that he has bought to date approximately 175,000 pounds of mohair and that the fleece is coming in daily.

With a few more days good weather, all the spring clip of mohair will be marketed. At the present time the price is off. Some wool is coming in now but the shearing of sheep will begin in earnest in April. The wool crop will be heavy this spring as many did not shear sheep last fall.

### Kimble County Band Will Give Musical Program Here Friday

Friday evening, March 20, the Kimble County Chamber of Commerce Band, assisted by Misses Piraale Linn and Edwina Lowgren, will present a musical concert at the courthouse, according to Mr. I. W. Myers, director. The program will start at 8 o'clock promptly. According to Mr. Myers, the program will be varied and interesting to music lovers.

Aside from the musical numbers and specialties, Misses Piraale Linn and Edwina Lowgren will give readings.

The public is cordially invited to attend this program. No admission will be charged.

Mr. A. G. Farmer has been indisposed for several days.

### Distinguished Officials Will Fill Places On Program

### LAW ENFORCEMENT

Other Organizations will Co-operate With Attorneys

District Attorney Weaver H. Baker, County Attorney J. B. Stevenson and the Kimble county Bar will be hosts to the County and District Attorneys Association of West Texas here on March 27 and 28. The program is completed and in the hands of the members of the association which is composed of 101 West Texas counties.

The West Texas Sheriffs Association has been invited to meet here with the attorneys. County Judges, justices of the peace, Captain Wright's Ranger Company, members of the border patrol, immigration service and game wardens operating in the five counties of the 112th judicial district will be represented in the convention to work out a co-operative program for the better enforcement of the laws of this district.

The Junction Lions Club is sponsoring a banquet for the association at 8:00 o'clock Friday evening.

Judge O. S. Lattimore, Ex-governor Pat M. Neff and other distinguished citizens are assigned places on the program. The theme of the program is "A Co-operative Law Enforcement Program for West Texas." Representatives from the various organizations invited to meet with the attorneys will discuss the scope of their duties in the program of law enforcement.

### Henry Ethridge Dies Suddenly Monday Morning

Friends of Henry Grady Ethridge were shocked Monday to learn of his untimely death early that morning after a brief illness. He had been confined to his room only a few days and no one thought that he was seriously ill.

Henry Grady Ethridge was born at Mineola, Texas, April 4, 1906. He spent the greater part of his life in Hunt county near Lone Oak. His mother died in 1912 and a few years after her death, he went to live with his grandmother, Mrs. Media Hodge who lives near Lone Oak, Hunt County.

Deceased came to Kimble county about three years with Smith Bros., who built the pipe line through here for the Texas Pipe Line.

On June 8, 1929 he was married to Miss Ledia Mae Savage, who survives him. He is also survived by his grandmother, his father, G. B. Ethridge, and one brother, Willie Ethridge. The father and brother arrived too late for the funeral which was postponed from 10 o'clock Tuesday morning until 3 that afternoon.

During his short stay in Junction, he made many friends who regret to learn of his untimely death. Mr. G. W. Crofoot, Pastor of the Junction Presbyterian Church, conducted the funeral services and the body was buried in the Junction cemetery.

# EAGLE SCREAMS

VOLUME 2 Thursday, March 19, 1931 NUMBER 26  
EDITED BY THE STUDENTS OF SCHREINER HIGH SCHOOL

### —STAFF—

ELLA SIMON Editor-in-Chief  
 VIVIENNE LIVINGSTON Associate Editor  
 WILBUR JETER Sports Reporter (Boys)  
 EUNICE NORTHCUTT Sports Reporter (Girls)  
 OLIVER LYNN VIERLING V. A. Reporter  
 LORENA COUEY Senior Reporter  
 HARRY WITT Junior Reporter  
 LUCILLE WILLIAMS Sophomore Reporter  
 JARVIS JORDAN Freshman Reporter  
 BETTY KROPPF Club Reporter  
 HAZEL LISTER Humor Editor  
 MRS. EFFIE ROY FELPS Sponsor

### PERSONALS

Maxine Wright spent the week-end with Madeline Ragland.  
 Marie Sheppard spent the week-end with Tommy Jones at the Jones ranch.  
 Florence Roth, of San Antonio, guest of Mae Delle Lowry, visited school Thursday.  
 Helen Parker, Marie Sheppard, and Tommy Jones were absent Monday.  
 Christine Schraub was absent Monday and Tuesday on account of sickness.  
 Roberta Ragland was a week-end visitor with Joyce Wright.  
 Juanita Cowsert was absent from school Tuesday.

### PATHE CLUB MEETS

The Pathe Club had a meeting Friday to discuss matters of business pertaining to the club. The president and vice-president chose sides, and one officer is to preside at one meeting and the other officer at the next.  
 The club had another meeting Monday and several reports were given by members.

### Freshman Class News

The first year Vocational Agriculture class visited Jetton's Dairy Tuesday. While there, they had a judging contest on dairy cattle.  
 The 8th P. History Class has been studying "Christianity in the Roman Empire." A test was given Friday.  
 The eighth grade is beginning its third week without having any tardies. If they keep this up, at the end of six weeks they will get a half day holiday.  
 The Glee Club will present five programs to the public in the near future. The places where these entertainments are presented, will be given later.

### AN APPROPRIATE TEXT

A pastor in a small community ministered to a congregation that was small and very tight-fisted. Having a large family the parson saw the dire necessity of seeking a new field where he could increase his income.  
 At his last Sunday he announced from the pulpit that he had secured a position as chaplain in the county jail. "My text is, 'I go to prepare a place for you.'"  
 "You've never heard the ten commandments, my boy? What is you name?"  
 "Moses, mum."

### ENGLISH REPORT

The English IV Class has completed the sentence outlines on "Macbeth" and have written a theme contrasting Macbeth with Lady Macbeth. This class is now taking an examination over this selection from Shakespeare. Some of the scenes from the play will be presented to the Journalism club soon.

Members of the Spanish II Class will meet Monday for their regular club meeting. The feature of the program planned is a roll call in which a motto is given in response. The class hopes to begin work on plays as soon as the study of "La casa de los cuervos" is completed.  
 Shorthand students have attained the speed of approximately 55 words a minute in class dictation. The minimum requirement for this class is seventy words per minute at the close of school. The grades in this class have been above the general average. The class has been divided into two groups which will contend against each other in shorthand contests.  
 Miss Nellie Bennett's biology class is studying the parts of flowers.

### BRADY MAN SPINS QUEER FISH YARN AND HAS PROOF

After fishing for several hours at Shropshire Lake, B. Simpson of Brady, had his attention attracted to a mighty splashing just off shore, and investigation disclosed a 61-pound bass stranded in a shallow part of the lake, where it had chased a crappie. Simpson captured the stranded fish without so much as getting his shoes wet. Upon further investigation, the captured bass disgorged a legal size crappie, that it had swallowed, just prior to engaged in its fatal chase after still more food.  
 He has witnesses.

A successful trade-in-Kimble County policy requires consistent co-operation on the part of merchants and local buyers. It is impossible to build the markets here unless both buyers and sellers are awake to the civic responsibilities.

Last year for the first time in at least ten years, the farm population of the county increased instead of diminishing.  
 "Thrift Week" is just another week in Scotland.

## "Checking" On Dad's Bank Account Started By English

Three hundred years ago a bank check was an unheard-of thing. But today, ninety-five per cent of the business of the United States is transacted by check.

The history of banks, and the bank check, dates back to old England of several hundred years ago. At this date, people were in the habit of leaving their money and valuables at the goldsmiths, who kept it in their strong boxes, where it was considered safe. When there was a bill to pay, the depositor would write the goldsmith a letter, demanding him to pay a certain amount to the party in question. If the party he owed lived in a distant city, the sum was paid by writing and this was called a "bill of exchange."

Out of this bill of exchange grew the bank check, and the goldsmiths finally became the bankers of England. However it was not until the year 1780 that bank checks became popular in England, and about 1800 before they were used commercially in our large cities.

The origin of the name "check" is not exactly known, but it is supposed to have arisen from the practice of placing se-

rial numbers upon any negotiable paper. These numbers served as a check, or means of verification, and it is out of this system that the name "check" is supposed to have originated.

The check of today is somewhat like the old bill of exchange. However, instead of being drawn on a bank and payable to the bearer on demand, the present day check is issued to the order of some individual or firm. By paying a check to the bearer, it was found that graft resulted, and stolen checks could be cashed easily.

When checks first began to be used commercially, each bank tried to see how original it could be in the design of its own check. No two banks used the same form, the same paper, color or ink. Each tried to have a better looking check than its competitor. However, today this is eliminated, and checks the world over are almost the same, and instead of a dozen different sizes, there are only two or three convenient sizes available. And were it not for the bank check, business of today would be so congested as to be almost hopeless.

### February Shipment of Vegetables is Large

Fruit and vegetable shipments from Texas during February set a new high record for the month, according to the University of Texas Bureau of Business Research. A total of 7,250 cars were shipped during February, compared to 5,597 cars in January and 5,210 cars in February 1930.

Spinach and cabbage were two of the greatest items shipped out.

It isn't the house that you live in, but it's you.

BEAUTIFUL HOME GROUNDS give pleasure, and add value to property. Valuable information is found in free catalogue of RAMSEY'S AUSTIN NURSERY, AUSTIN, TEXAS. 32c.

Physicians gave an art exhibit in New York recently. Some of them will probably shine with their iodine paintings.

**HAVE YOU**  
 VISITED THE MILAM CAFETERIA IN SAN ANTONIO?  
 The excellent food, the friendly hospitality and the beautiful surroundings will be a real treat for you—prices are so reasonable too. Enjoy your meals and meet your friends at the—  
**MILAM CAFETERIA**  
 32c.

### JOURNALISM CLUB HOLDS GOOD MEETING MONDAY

The Journalism Club held an interesting meeting in the High School auditorium Monday. The meeting was called to order by Ella Simon. The following pupils contributed to the entertainment:

Marguerite King—Reading, Mae Delle Lowry—Report on the recent session of court, Vernelle Tinsley—Reading, Lorena Couey—Selection from Chaucer's "Canterbury Tales." Following the above program Harry Witt gave out a number of assignments to the members for articles to be written for the paper. Ella Simon made a short talk.

### JUNIOR CLASS MEETS

Members of the Junior Class met in their home room last Wednesday at 11:30 to hold the first of their regular class meetings.

After all formalities were observed, the class discussed plans for a party to be given soon. Each member of the class was urged to bring his part of the money to pay for the refreshments.

Plans were discussed for the Junior-Senior banquet, but nothing definite was decided, as a part of the class was not present. All the Juniors are urged to stay for the next meeting, which will be held two weeks from the first one. Visitors are welcome.

### BASEBALL NEWS

The Junction Eagle base ball team has been practicing for three weeks and are getting in fair shape. Coach Earl Bowers has been picking his men for the positions that they are best suited for.

Bowers has had a hard time getting two pitchers, Dunbar and Tomberlin are getting to where they can deliver the ball across the plate.

About 20 boys are working out at present.

A game with the town boys has been scheduled for Friday, March 21.

### EAGLE FEATHERS

A ball hit Oliver Linn on the nose.

T. M. has a glass arm. Arthur S. broke the mile record.

Harry has a rubber tongue when playing base ball.

Junction is going to play the Schreiner Institute.

Lawson knocked a home run.

Friday morning Miss Inez Kelley delivered a lecture in the study hall on "Clean and Healthful homes and Neighborhoods." She stressed the proper methods of washing clothes and dishes and keeping homes clean. Miss Nellie Bennett will give the lecture next week upon health.

The basketball girls have not been practicing the first of this week on account of mud, but they are planning to resume practice soon, in order to be in condition to play Eldorado Friday.

The Seniors expect the arrival of their invitations at an early date. The Junction Eagle is publishing the calling cards.

Miss Durst's first grade class is composed of 27 boys and one girl. Two new pupils have entered this week, Hubert Neff from Brownsville and James Everet Smith from South Llano.

Friday 13, contrary to usual belief, proved to be a fortunate day for Junction as the State School Inspector, Miss Margaret Cotham, visited the schools on that day.

### CIVICS CLUB HAS PARTY AT SCHNEIDER RANCH

On Friday evening, March 13, the Civics Club was entertained with a party at the ranch home of Sarah Schneider.

Interesting games and contests were played throughout the evening. Several of the games and the refreshments carried out the St. Patrick motif.

Refreshments consisting of candy, pop-corn balls, sandwiches, cake and punch were served to the following: Wynona Cabler, Marie Dechert, Faye Jarvis, Pauline Jobs, Vernelle Tinsley, Vivienne Livingston, Eleanor Highsmith, Palralee Lynn, Miss Knight, Raymon Furr, Harrell Ramsey, Leonard Dunbar, Blake Chenault, T. M. Tomberlin, Harry Witt, Roy Hufsteler, and Bob Bissett.

### CAMPUS CHATTER

Our idea of a beautiful girl is one who has:

A form like Mickey Sheppard.  
 Eyes like Tommie Jones.  
 Hair like Elsie Martin.  
 Teeth like Juanita Cowsert.  
 Mouth like Lucille Williams.  
 Chin like Mae Delle Lowry.  
 Complexion like Kathryn Hodges.  
 Manners like Maxine Wright.  
 Feet like Lee Ola Hodges.  
 Ways like Athalie Burt.  
 Teeth like Arthur Hensley.  
 Hands like Edith Davis.  
 Voice like Ollie Bishop.  
 Disposition like Christine Schraub.

But our idea of a handsome boy is one who has:

A chin like S. L. Jeter.  
 Shoulders like Overby Smith.  
 Legs like Roy Nelson.  
 Eyes like Jarvis Jordan.  
 Hair like Reagan.  
 Nose like John Whitworth.  
 Teeth like Arthur Hensley.  
 Walk like Leon Turner.  
 Physique like T. M. Tomberlin.  
 Feet like Harry Witt.  
 Disposition like Blake Chenault.

Walk like Raymon Schneider.  
 Voice like Doyle Parker.  
 Hands like Cotton Tomberlin.

The county meet was postponed from the 20 and 21 to the 27 and 28 of this month.

Junction streets need paving

## YOUR CLOTHES

### Should Tell Something About You



IN your business and social contacts, your clothes should establish you as an individual. They should convey some subtle message... expressing your own personality. Only merchant-tailored clothes accomplish this purpose. Our custom made Spring suit from one of our exclusive fabrics, for as little as \$25.

## Quick Service Tailors

Service You'll Like  
 Telephone 132



**VALUE**  
 only  
**GOODYEAR**  
 offers—



### GOODYEAR Pathfinder

The QUALITY tire within the Reach of ALL

4.50-20 (29 x 4.50)	\$5.60	5.00-19 (29 x 5.00)	\$6.98
4.50-21 (30 x 4.50)	\$5.69	5.50-19 (29 x 5.50)	\$8.90
4.75-19 (28 x 4.75)	\$6.65	6.00-20 (32 x 6.00)	\$11.50

All Sizes low priced      Tubes at big savings

**Loeffler Motor Co.**  
 Telephone 105

# Country Correspondence

## LONDON LOCALS

(By G. Lewis)

Brother Lewis Cooper was a pleasant caller the 16th. We are informed that he and his good wife have been employed to teach the Tea Cup School for the term of 1931-32. Both the teachers and school are to be congratulated, the school being fortunate in securing a faculty with the educational fitness and the moral attributes of Mr. and Mrs. Cooper, and it is just as fortunate for the teachers to be able to secure a position in a school and community that work together as a unit in the development and advancement of the school interest as do the people of Tea Cup community. Their present term is a model under the direction of Mrs. Cooper and Mrs. G. R. Kothmann.

We are also informed that the Board of Trustees of London School have employed the present board of teachers for the 1931-32 term. This, in the judgment of the writer was a wise choice. We do not think to take the present faculty as a whole, they could be beat, as our present school term is a success. With this selection of teachers and the re-election of the present board of trustees we would be assured of a continued onward and upward stride in our school interest.

Mr. and Mrs. Max Durst had business at Menard on the 10th. J. F. Thurber and his shearing crew are very busy men these days.

Mr. Horace Pearson and Miss Edna Woodward were quietly married Tuesday night of last week. Horace is a son of Mr. and Mrs. F. F. Pearson of London and his bride is a daughter of Mr. and Mrs. J. D. Woodward of Fredericksburg but formerly of London. Their many friends wish for them a happy married life.

Mr. and Mrs. J. A. Walker Mr. Walker's daughter. Mrs. Robert Todd of Noxville Tuesday. We acknowledge with thanks the kind and encouraging words spoken by Mrs. Doid in regard to the London Column. Hon. Weaver H. Baker, District Attorney of the 112th Judicial District, passed through London the evening of the 12th and stopped long enough to speak and shake hands with a few on the streets. Judge Baker in statements to the writer and others made it plain that he intends to do his best to see that all laws are obeyed and all violations prosecuted in his district from the common drunk on the street to the higher up criminal. We expected this of Weaver and would have been disappointed if he should have been other than four square for respect and obedience of the law. Our citizens should stand squarely behind him.

Mr. and Mrs. L. W. Puckett and daughter, Miss Juanita returned at 3 A. M. Thursday from a trip to Louisiana where they had been called to the bedside of Mr. Puckett's mother, who was not expected to live but Mr. Puckett informs us that his mother is still alive and improving satisfactorily.

Our school attended the meet at Brady Saturday. Frank Wootan won first place in the mile run, while our school won other lower places. All who attended came back declaring they were tired out but had a good time.

Brother Lewis Pearl was a pleasant caller Saturday. Lewis doesn't read much politics, doesn't even know of the last bank robbery, but if you will lead him out on the Christian religion, you will find him full of that. He actually believes the teaching of the Bible and declares he is trying to obey the Gospel every day. I believe he is too.

A demonstration of neighborly love and respect was featured at the home of Mr. and Mrs. Dan Gephart last Sunday on the 11th which was the 69th birthday of Dan. His neighbors decided to give him and his good wife a surprise dinner, which they did on Sunday. The neighbors cooked their share of the noon meal and all went in about noon time to eat the birthday dinner with him and his family. Mrs. J. T. Lange presented the birthday cake bearing 69 candles. Those present to cheer Brother Dan and

his wife were as follows: Mr. and Mrs. T. J. Lange and son, Marvin, Mr. and Mrs. T. S. Jones and children, Tommie and Jack and Miss Marie Sheppard. Mr. and Mrs. W. C. Jones, Mrs. Ernest Hardesty and daughter, Mr. G. W. Hardesty, and Mrs. Mary E. Bell, and Miss Henrietta Gephart, a sister. Mr. Bill Gephart, the older son, and Mr. and Mrs. Lee Gephart, and children, L. D. and Rita Fay were present. All other relatives and some guests were prevented from attending because of sickness and bad roads. These good people had a good time and did a good deed. Dan Gephart enjoyed it. I know it marks another bright place in his life. He is one man whose life seems to be filled with brightness notwithstanding his sad misfortune many years ago. I have never heard him murmur nor complain. As a man of patience, I believe him to be the most outstanding example I ever knew. The good deeds to cheer his unfortunate yet patient life will not only be appreciated by him and his family but blessed by our God.

## IVY ECHOES

Another fine rain fell here Sunday morning and now all of nature has begun to smile and put on the appearance of one of the beauty spots of the world. Lucille, Fred, Jr., and Cecil Maass, were absent from school Monday.

Born to Mr. and Mrs. Huston Collins Friday night, a six pound baby girl. They have named her Joyce Lee.

Mr. and Mrs. Jesse Smitherman spent Sunday with Mr. Henry Grobe and family.

Bonnie Ray Amberson spent Saturday night with Mrs. T. B. Pearl.

Mrs. Guy Cummins spent Sunday with Mrs. Orlan Stewart.

Mr. and Mrs. Alton Shearer of San Angelo are visiting Mr. and Mrs. Huston Collins.

Miss Alberta Wootan spent the week-end with her parents, Mr. and Mrs. T. J. Wootan.

Lorene and Bursley Collins were absent from school Friday.

Miss Henrietta Gephart spent Sunday with Mr. and Mrs. Dan Gephart.

Mr. and Mrs. Jake McDonald spent Saturday night with Mr. and Mrs. Albert Smitherman.

Ola, Susie and Henry Walker spent Sunday afternoon with Mr. and Mrs. Albert Smitherman.

## We Wonder Why?

Bonnie often wears girls' hats. Alberta dressed up Monday.

Bonnie Ray appeared sleepy Monday.

Ruth was tardy Monday. Marvin appears so happy.

Lester Land doesn't ever play tennis.

Motto: "Push, pull or get out of the way."—By Bonnie Ray Amberson.

## AMONG OUR SUBSCRIBERS

The response to the statements mailed to our subscribers a few weeks ago has been good. Many have renewed and checks are coming daily. A few have written that they are unable to pay just now, but want the Eagle to keep coming. In cases of this kind, the management is glad to keep the paper going. What is displeasing is for some one to read the paper for months and months and then stop it until a gentle reminder is sent and then write an ugly letter saying that they did not want the paper. Less than a half dozen letters of this kind have been received.

If any of the subscribers are interested in the paper and want it to continue, all they have to do is write a letter informing the editor that they want the Eagle and will pay for it later.

The many nice things said about the Eagle are appreciated. Readers say it is a good newsy paper. The following have renewed the past two weeks: Ovie Buster, Junction; W. L. Kothmann, London; Fred Maass, London; Marx Wiese, Junction; C. A. Stapp, Kerville; Mrs. French Murphy, Nacogdoches; Mrs. Joe A. Harris, Cincinnati, Ohio; V. L. Milsap, Junction; O. C. Wright, Junction; V. B. Hardeman, Junction; Mrs. O. Z. Jones, Junction; Ernest W. Wilson, Abilene; Edgar Swartz,

## How One Woman Lost 20 Lbs. of Fat

Segovia; Miss Nannie E. Rogers, Bayside; C. A. Adams, Greensburg, La.; George Ashwander, Hanceville, Alabama; Becker Hotel, Junction; Mrs. J. M. Livingston, Sr., San Angelo; J. F. Sullivan, Flatonia; Mrs. W. J. Bryan, Memphis; Mrs. R. J. Motley, Junction; W. S. Pearce, Junction; M. V. Kirkpatrick, Junction; C. G. Reid, Telegraph; Joe Oliver, Junction; E. I. Cummins, London; R. W. Kothmann, Mt. Home; L. E. Miller, London; J. J. McWright, Junction.

## Lost Her Double Chin Lost her prominent Hips Lost Her Sluggishness

Gained Physical Vigor Gained in Vivaciousness Gained a Shapely Figure

If you're fat—first remove the fat!

Take one half teaspoon of KRUSCHEN SALT in a glass of hot water before breakfast every morning—cut out pastry and fatty meats—go light on potatoes, butter, cream and sugar—in 3 weeks get on the scales and note how many pounds of fat have vanished. Notice also that you have gained in energy—your skin is clearer—your eyes sparkle with glorious health—you feel younger in body—livelier in mind. KRUSCHEN will give any fat person a joyous surprise.

Get an 86c bottle of KRUSCHEN SALT at Heyman Drug Store (lasts 4 weeks). If even this first bottle doesn't convince you this is the easiest, safest and surest way to lose fat—if you don't feel a superb improvement in health—so gloriously energetic—vigorously alive—your money gladly returned.

Mrs. Mame Carey of Buffalo, N. Y., writes — "Since I began taking Kruschen Salts I have lost 20 pounds and I feel as if I had lost 50 pounds — I feel so good and the best part of it all is that I eat anything I like."

## PURE MILK

Our dairy has standard equipment and we offer for sale only milk that will stand the test of close inspection.

## JETTON DAIRY

## Heyman Has It

Our business is selling DRUGS AND DRUG SUNDRIES. We have anything in the drug line. During our 43 years in Junction we have learned the needs of the people. When you cannot find what you want elsewhere come here. To save time, come here first.

## Heyman Drug Store

Service and Quality

See our line of STATIONERY SPECIALS this week. Also Johnson's Baby Toilet Articles

**GENTLE REMINDER**  
Mr. Poorpay: "I should like to have this pair of trousers resealed. I sit a lot you know."  
Tailor: "All right, and I hope you brought the bill I sent you along to be receipted, too. I've stood a lot, you know!"  
Faithfulness over little things may spell mastery over big ones.

**Riley, Holekamp & Denman**  
INSURANCE, LAND LOANS  
All Kinds

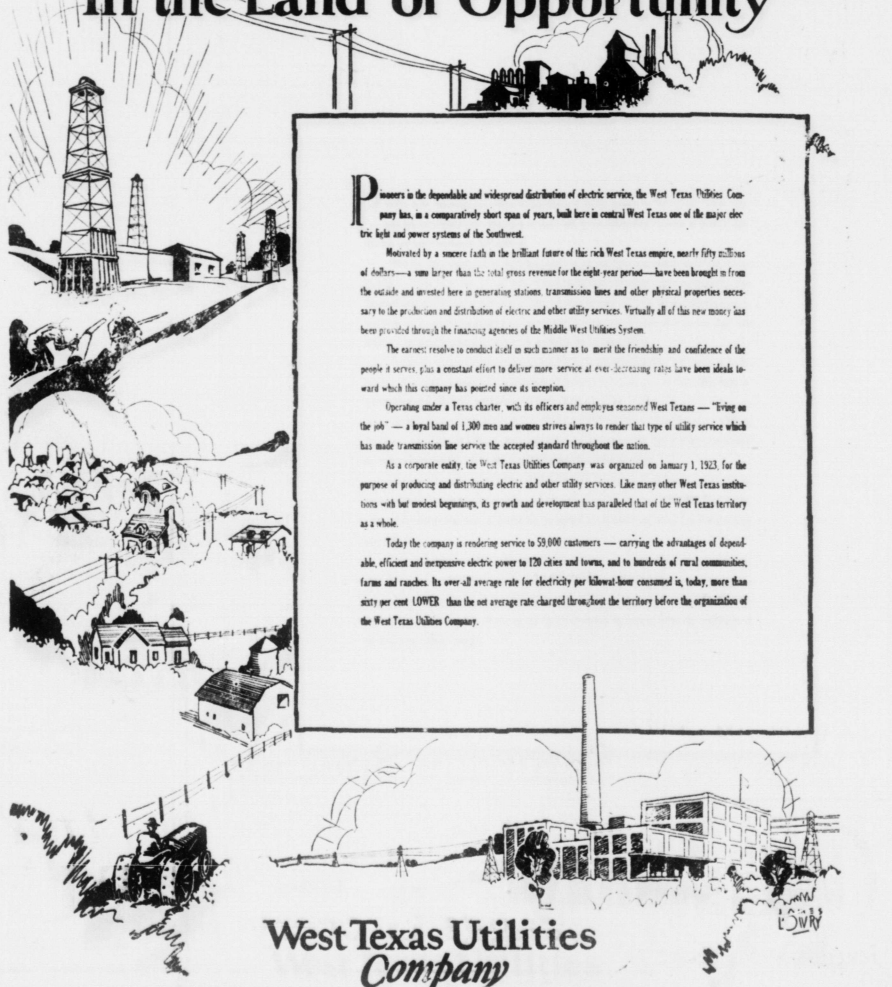
**SAVE TODAY THE**  
Where Cleanliness Is a Habit  
And Courtesy Is Unfailing  
  
**HANDY-ANDY WAY**

**Saturday Specials**

COFFEE, Maxwell House, 1 lb.....	?
COFFEE, Maxwell House 3 lbs.....	?
SOAP, Swift's White Laun. 10 bars....	.29
PRESERVES, dainty lunch asst. 1 lb....	.28
MILK, Armours baby size can.....	.04
CHILI, Alamo, No. 2 can.....	.25
TAMALES, Alamo, No. 1 1/2 can.....	.15
SWEET PICKLE, whole peaches 2 1/2....	.28
BANANAS, per dozen.....	.18
BROOMS, Special, each.....	.26
APPLES, Winesap, Large, per doz....	.28

**Junction Handy-Andy Store**  
SPICK AND SPAN ALWAYS

**In the Land of Opportunity**



Producers in the dependable and widespread distribution of electric service, the West Texas Utilities Company has, in a comparatively short span of years, built here in central West Texas one of the major electric belts and power systems of the Southwest.

Motivated by a sincere faith in the brilliant future of this rich West Texas empire, nearly fifty millions of dollars—a sum larger than the total gross revenue for the eight year period—have been brought in from the outside and invested here in generating stations, transmission lines and other physical properties necessary to the production and distribution of electric and other utility services. Virtually all of this new money has been provided through the financing agencies of the Middle West Utilities System.

The earnest resolve to conduct itself in such manner as to merit the friendship and confidence of the people it serves plus a constant effort to deliver more service at ever decreasing rates have been ideals toward which this company has pointed since its inception.

Operating under a Texas charter, with its officers and employees resident West Texas — "Tying on the job" — a loyal band of 1,300 men and women strives always to render that type of utility service which has made transmission line service the accepted standard throughout the nation.

As a corporate entity the West Texas Utilities Company was organized on January 1, 1923, for the purpose of producing and distributing electric and other utility services. Like many other West Texas institutions with but modest beginnings, its growth and development has paralleled that of the West Texas territory as a whole.

Today the company is rendering service to 59,000 customers — carrying the advantages of dependable, efficient and inexpensive electric power to 120 cities and towns, and to hundreds of rural communities, farms and ranches. Its over-all average rate for electricity per kilowatt-hour consumed in, today, more than sixty per cent LOWER than the net average rate charged throughout the territory before the organization of the West Texas Utilities Company.

**West Texas Utilities Company**

The Junction Eagle

Subscription: In Kimble and adjoining counties... \$1.50 Elsewhere in Texas... \$2.00 Outside the State... \$2.50

EDGAR McLENDON Manager

Any erroneous reflection upon the character of any person or firm appearing in these columns will be gladly and promptly corrected upon calling the attention of the management to the article in question.

Entered as second class matter, at Post Office at Junction, Texas.

All cards of thanks, resolutions of respect, obsequies or club notices, where there is a money consideration, will be run only as paid matter at regular rates.



I know not what the truth may be, I tell it as 'twas told to me.

LADIES NIGHT

The Burt Fleming Post No. 237 of the American Legion, will have Ladies Night, April 6th at 8 o'clock p. m. at the courthouse.

GONZALES-RAMIREZ

Judge R. R. King decided last week when he married a Mexican couple in "Little Mexico" that he needed a knowledge of their language.

Our cleaning and pressing department is complete. Have your clothes cleaned and pressed here and note the difference.

Junction Tailor Shop 49c Fred Mudge spent the first of the week in San Antonio.

A demonstration in one of our NEW Fords does not obligate you in any way and costs you NOTHING. We are at your service and take pleasure in showing you the quality of our cars.

Loeffler Motor Co.

Mrs. Walter Tinsley is the program leader. Mrs. C. W. Atchison will give a talk on the "Selection of Children's Books" and Mrs. Guy Wynne will direct the community singing.

A full attendance is urged for this meeting.

Mrs. Jack Molesworth and children of Sierra Blanca are visiting at the ranch of Mr. and Mrs. A. L. Mudge.

PLUMBING

and Sheet Metal Work By Skilled Workmen For Floats, Water troughs, Tanks, and all metal works call Junction Sheet Metal & Plumbing Works



Junction Tailor Shop

Society

Mrs. A. W. Loeffler, Society Editor—Phone 138

MR. AND MRS. P. JOSEPH HONOR MRS. ROTHENBERG

Mr. and Mrs. P. Joseph entertained the members of the Merry Wives Club, their husbands and a number of friends, in honor of Mrs. George Rothenberg of Chicago, Saturday evening, March 21, at Kimble Courts Club.

After a series of bridge games, the scores were added and silk hose were awarded to Mrs. Paul Crawford of San Antonio, and Roy Spiller, who made high guest and club scores, respectively. The men's prize, a tie, went to Mr. J. A. Thompson. A handsome black and rose silk kimono with matching pajamas was presented to honoree. Mrs. Joseph's sister, Mrs. Gene Roth of San Antonio was given a pair of silk hose.

Salad in green aspic, green and white sandwiches, wafers, olives, pickles, little cakes and coffee brought the evening to a pleasant close.

Those present were: Misses Lela Taylor, Eloise Hardeman, Mary Hubert, Laura Black of Houston, Flora Mae Spiller, and Mesdames Olney Patterson, Dorothy Westmoreland, Frank Patterson, Lucy Motley, John Phillips, A. W. Loeffler, Gene Roth of San Antonio, and Mr. and Mrs. Clay Secrest, Mr. and Mrs. V. P. Emmons, Mr. and Mrs. Vann Martin, Mr. and Mrs. Paul Crawford of San Antonio, Mr. and Mrs. Sayres Farmer, Mr. and Mrs. Wm. R. McKee, Mr. and Mrs. R. H. Spiller, Mr. and Mrs. R. E. Homann, Mr. and Mrs. C. T. Holekamp, Mr. and A. S. Rieck, Mr. and Mrs. A. L. Mudge, Mr. and Mrs. L. D. Borden, Mr. and Mrs. Guy Wynne, Mr. and Mrs. Roy Spiller, Mr. and Mrs. Norman K. Farmer, Dr. and Mrs. L. E. Standifer, Mr. and Mrs. J. A. Thompson, Mr. and Mrs. W. P. Riley, Mr. and Mrs. Carl Wolf, Messrs. Walter Chadwell and Carlos Taylor, Mr. and Mrs. Joseph and the honoree.

FIDELIS CLASS HONORED THURSDAY AFTERNOON

Mesdames G. W. Crabb and C. S. Amick were joint hostesses to the members of the Fidelis Sunday School Class of the Baptist Church, Thursday afternoon. The teachers of the primary and adult departments were the guests on this occasion and Mesdames Jim Carpenter and L. D. Borden were the guests of honor.

The following interesting program was rendered in the auditorium.

Reading—Betty at the Ball Game, by Miss Tommie Jones. Piano Solo—Valse Marie, by Mrs. Weaver H. Baker.

Reading—Foolish questions, by Miss Marie Sheppard. Music—Boy Scout March, by Junior Orchestra.

Vocal solo—My Heart is a Haven, by Mrs. Weaver H. Baker.

Vocal Duet—Lullabye, Mesdames C. W. McCarroll and D. L. Williams with Mrs. Lillie Hickerson at the piano.

The guests were invited into the dining room where the table was decorated with ferns and greenery in honor of St. Patrick's.

Green salad in aspic and cake brought the affair to a pleasant close.

Those present were Misses Tommie Jones, Marie Sheppard, Ceelia Merchant, Mesdames D. L. Williams, Lillie Hickerson, Bob Ragland, Frank Wilson, L. D. Borden, Hilry Henderson, Ernest Ball, Marx Wiese, L. R.

Hodges, W. T. Carpenter, W. H. Baker, Roy Reynolds, C. W. McCarroll, Grady Kindrick, Van Martin, Carl Taif, Dave Turner, Guy Munn, Posey and the hostesses.

SURPRISE PARTY

Friday afternoon, at her home Mrs. Rowland Martin was honored with a surprise party, by a group of friends.

After a social hour, ice-cream and cake were served to Mesdames L. D. Borden, H. O. Denman, C. T. Holekamp, Slator Fleming, Clifford Hamer, Pierce Hoggett, Vann Martin, Joe Ramsey, L. E. Standifer, W. R. McKee, John Martin, Jack Richardson, Carl Nelms, Louis Ellis of Menard, J. A. Thompson, and the honoree.

MISS BLIX HANKINS ENTERTAINS FRIENDS

Miss Blix Hankins entertained with a bridge, at the Hodges Hotel, Tuesday evening.

The St. Patrick's motif was cleverly carried out in the party appointments.

Miss Mary Hubert won the prize, a dainty puff box. The men's prize, an electric cigarette lighter went to Mr. Vann Martin. Mr. Dillard Motley received the cut prize, a box of fancy soap.

Fruit salad, nut bread sandwiches, olives coffee, and angel food cake were served from green glassware. Miniature Irish hats filled with candy, made amusing favors.

Those present were Misses Lillian Kindrick, Mary Hubert Eula, Lula and Lucille Motley Messrs. Mitchell McLendon, Lee Craven, Dillard Motley, Mesdames H. G. Hubert, Lucy Motley, Mr. and Mrs. J. A. Thompson, Mr. and Mrs. Vann Martin, Mr. and Mrs. Brown King of San Angelo and the hostesses.

W. M. S. MEETS

The Womens' Missionary Society of the Methodist Church met Tuesday afternoon at the residence of Mrs. Wm. McDonald.

Mrs. Ada Dockery was the leader of the program. The program theme was the Indian Cajuns of South Alabama. The origin of the group was told by Mrs. Tom Sheppard.

Mrs. A. E. Bissett discussed the characteristics and population and Mrs. Wm. Taylor discussed their social customs. The economical conditions of the group was told by Mrs. McDonald. Mrs. Jennie Stevenson talked on their hope for the future and the study of the Indian Cajuns closed with an exposition by the leader of the mission work undertaken.

A poem, "The New Age," was read by Mrs. Ovie Buster.

Cake and tea were served at the close of the afternoon to Mesdames T. E. Sheppard, E. R. Borden, A. E. Bissett, Ovie Buster, Joe Bissett, Jennie Stevenson, Wm Taylor, G. H. House, Ada Dockery and the Hostess.

Mr. F. H. Dunk suffered a badly bruised thumb this week while sawing wood. The wound is painful, but some of his friends in joking him said that he should not be interfering with his wife's business by sawing wood.

We have some bargains in USED cars. If you are interested we will be glad to give you a demonstration.

Loeffler Motor Co.

WHO Makes Good -on the Goods that Go Wrong?



No man-made product can be unfailingly perfect. The best of manufacturers, at times, have sub-standard products; the best merchants make errors of judgment in buying; unforseen defects will creep into goods. Unintentional mistakes will occur.

And it is just such things that give your local merchant the opportunity to show his fairness and eagerness to make good --- to rectify and satisfy the unguarded customer.

But what chance have you on the "come back" with the transient trader who is here today and gone tomorrow?

His goods may go wrong too. From the very nature of his "one-time transactions quality cannot be so strictly safeguarded. And when his goods go wrong, as they are more apt to do than the careful merchant, where's redress?

You can't go back and meet him "face to face" --- he's gone. You can't find him and he surely won't seek you.



Cross marks the spot where the peddler WAS-

In Your Own Interest BUY AT HOME

# Anniversary Week

## Closes March 21

### 10 Per Cent Discount On Everything Except Gas

# Powell Motor Co.

Phone 51

## Local Happenings

**Baldwin Dairy**—A Trial Sack for \$2.25. **Baldwin Feed Store.**

Mr. and Mrs. J. T. Swanson and Miss Edith Cook were Del Rio visitors last Saturday.

New Spring goods arriving daily; greatly reduced prices. **Junction Tailor Shop 49c**

Mrs. Earl Barr, who underwent an operation several days ago, is still critically ill.

Compare our tire prices with mail order prices. **Powell Motor Company 49c**

Mr. and Mrs. B. L. Smith were Kerrville visitors Tuesday.

If you are interested in a new or used car we will be glad to give you a demonstration. **Loeffler Motor Co.**

Miss Judith Hoesak of San Antonio is a guest of Mrs. J. A. Barnes.

Rough Dry, 15 lbs. for \$1.00. **Junction Steam Laundry 44c**

Mr. and Mrs. Robert Loeffler are the parents of a fine nine-pound son, born March 15.

Little Donald Bishop, son of Mr. and Mrs. Chas. Bishop, was taken to the Standifer Hospital suffering with pneumonia.

A 10-pound son was born to Mrs. William Barker of Marble Falls at the Standifer Hospital Sunday.

Mr. and Mrs. Alton Childers returned Monday from a visit to San Antonio.

Mr. Hardy Farmer has had a seige of the flu for several days.

Joe Turner residence in Junction for sale. Price reasonable and terms easy. C. A. Adams, Greensburg, La. 48-2p

Mrs. John A. Allen, who has been ill, was remembered with a visit and refreshments from the ladies of the Woodmen Circle last Wednesday.

Miss Ruth Rankin is visiting her parents, Mr. and Mrs. P. Rankin. She will return next week to Denton where she is attending school.

**Kimble King Hen Scratch** at Baldwin's Feed Store. 17fc

Mr. and Mrs. W. H. Kelley of Sutton county were Junction visitors last Friday.

Wet wash, 20 lbs for \$1.00. **Junction Steam Laundry 44c**

Mrs. M. G. Owens returned Wednesday to Llano after an extended visit here with her daughter, Mrs. Wilson Buster.

Mr. Dameron Whitaker and Miss Olga Fae Wood of Mason visited Mr. and Mrs. Alton Childers last week.

Clinton Barnes was a patient at the Standifer Hospital this week.

Mesdames Wilson Buster, Ovie Buster, and C. Baylor accompanied Mrs. M. G. Owens as far as Mason on her return home after an extended visit here. They visited Mrs. Bill May while in Mason.

**TEN PER CENT DISCOUNT** on everything except gas during anniversary week at **Powell Motor Company 49c**

Mr. and Mrs. J. M. Bishop returned recently from a business trip to Hot Springs, New Mexico.

Baby chicks and custom hatching. **Peterson Poultry Farm, Kerrville, Texas. 40fc**

If you want a good job of cleaning and pressing, call 102 and we will do the rest. **Junction Tailor Shop 49c**

Come in and see our spring and summer suits. They are good to look at and the price is right. **Junction Tailor Shop 49c**

Mrs. Wilson Stone and little son, Charles, of Austin, are here for a visit with Grandpa and Grandma Stone and Uncle and Aunt Hugh Wilson. Charles is the attraction in the Stone and Wilson home.

**WILD CAT**  
WOMEN'S MOTORS  
**Schreiner-Hodges Co.**

Mr. and Mrs. Philip Joseph had as week-end guests Mrs. E. J. Roth and children, Florence and Jack, of San Antonio.

**Wilson Bros. Haberdashery, Junction Tailor Shop 49c**

Mrs. G. Rothenberg and her daughter, Francine, of Chicago were guests of Mr. and Mrs. P. Joseph the past week-end.

Mrs. Rees, who has been here with her daughter, Mrs. Bolton Boome for three weeks, returned to her home in San Antonio today.

Have you seen our show window during our ANNIVERSARY WEEK which does not close until Saturday night? **Powell Motor Company 49c**

Mr. and Mrs. M. N. Harrison of the Del Rio country are business visitors in Kimble County this week.

Mr. and Mrs. O. W. Barnes of San Antonio were guests of Mr. and Mrs. J. A. Barnes Sunday.

We have some bargains in USED cars. If you are interested we will be glad to give you a demonstration. **Loeffler Motor Co.**

Mr. and Mrs. I. O. Weldon returned Wednesday from a week's visit in the home of their son, Forrest Weldon, of Rocksprings. Forrest drove the car to Junction for them. Mr. I. O. Weldon is getting along fine, but is getting tired of taking the rest vacation prescribed by his physician.

We have some bargains in USED cars. If you are interested we will be glad to give you a demonstration. **Loeffler Motor Co.**

Yes, you want your auto put in the best of condition at the least possible price. Bring your car or phone 27 day or night. **C. W. Walker 47fc**

Your clothes are cleaned in water white solvent at **Junction Tailor Shop 49c**

Mr. and Mrs. B. W. Draper of San Angelo were Junction visitors Wednesday. They are connected with the Boy Scout and Girl Scout movement in the Concho Valley Council. The boys camped here last summer and Mr. Draper and the scouts were so well pleased with Kimble County and the Llanos that they would be glad to see a permanent camp established here.

**ATTENTION Ladies**—Have your mattresses renovated by the Simmons Mattress Factory, Menard, Texas. Hundreds of satisfied customers. Call me or leave order at Farmer Furniture Company.

**W. B. Simmons**  
Box 817, Menard, Texas 47-4c

**KAZMEIER BABY CHICKS**  
White Leghorn, Barred Rocks and S. C. R. I. Reds, from trap-nested, blood tested and pedigree bred hens. Every nest on my farm is a trap nest. The trap nest is the only sure way of breeding for high flock average egg-production. Write F. W. Kazmeier, Bryan, Texas.

White Leghorn, Barred Rocks and S. C. R. I. Reds, from trap-nested, blood tested and pedigree bred hens. Every nest on my farm is a trap nest. The trap nest is the only sure way of breeding for high flock average egg-production. Write F. W. Kazmeier, Bryan, Texas.

White Leghorn, Barred Rocks and S. C. R. I. Reds, from trap-nested, blood tested and pedigree bred hens. Every nest on my farm is a trap nest. The trap nest is the only sure way of breeding for high flock average egg-production. Write F. W. Kazmeier, Bryan, Texas.

White Leghorn, Barred Rocks and S. C. R. I. Reds, from trap-nested, blood tested and pedigree bred hens. Every nest on my farm is a trap nest. The trap nest is the only sure way of breeding for high flock average egg-production. Write F. W. Kazmeier, Bryan, Texas.

White Leghorn, Barred Rocks and S. C. R. I. Reds, from trap-nested, blood tested and pedigree bred hens. Every nest on my farm is a trap nest. The trap nest is the only sure way of breeding for high flock average egg-production. Write F. W. Kazmeier, Bryan, Texas.

White Leghorn, Barred Rocks and S. C. R. I. Reds, from trap-nested, blood tested and pedigree bred hens. Every nest on my farm is a trap nest. The trap nest is the only sure way of breeding for high flock average egg-production. Write F. W. Kazmeier, Bryan, Texas.

White Leghorn, Barred Rocks and S. C. R. I. Reds, from trap-nested, blood tested and pedigree bred hens. Every nest on my farm is a trap nest. The trap nest is the only sure way of breeding for high flock average egg-production. Write F. W. Kazmeier, Bryan, Texas.

White Leghorn, Barred Rocks and S. C. R. I. Reds, from trap-nested, blood tested and pedigree bred hens. Every nest on my farm is a trap nest. The trap nest is the only sure way of breeding for high flock average egg-production. Write F. W. Kazmeier, Bryan, Texas.

White Leghorn, Barred Rocks and S. C. R. I. Reds, from trap-nested, blood tested and pedigree bred hens. Every nest on my farm is a trap nest. The trap nest is the only sure way of breeding for high flock average egg-production. Write F. W. Kazmeier, Bryan, Texas.

White Leghorn, Barred Rocks and S. C. R. I. Reds, from trap-nested, blood tested and pedigree bred hens. Every nest on my farm is a trap nest. The trap nest is the only sure way of breeding for high flock average egg-production. Write F. W. Kazmeier, Bryan, Texas.

White Leghorn, Barred Rocks and S. C. R. I. Reds, from trap-nested, blood tested and pedigree bred hens. Every nest on my farm is a trap nest. The trap nest is the only sure way of breeding for high flock average egg-production. Write F. W. Kazmeier, Bryan, Texas.

White Leghorn, Barred Rocks and S. C. R. I. Reds, from trap-nested, blood tested and pedigree bred hens. Every nest on my farm is a trap nest. The trap nest is the only sure way of breeding for high flock average egg-production. Write F. W. Kazmeier, Bryan, Texas.

White Leghorn, Barred Rocks and S. C. R. I. Reds, from trap-nested, blood tested and pedigree bred hens. Every nest on my farm is a trap nest. The trap nest is the only sure way of breeding for high flock average egg-production. Write F. W. Kazmeier, Bryan, Texas.

White Leghorn, Barred Rocks and S. C. R. I. Reds, from trap-nested, blood tested and pedigree bred hens. Every nest on my farm is a trap nest. The trap nest is the only sure way of breeding for high flock average egg-production. Write F. W. Kazmeier, Bryan, Texas.

White Leghorn, Barred Rocks and S. C. R. I. Reds, from trap-nested, blood tested and pedigree bred hens. Every nest on my farm is a trap nest. The trap nest is the only sure way of breeding for high flock average egg-production. Write F. W. Kazmeier, Bryan, Texas.

# TALKING PICTURES

AT THE

## Texan Theatre

Friday, Saturday-March 20-21

**HOOT GIBSON**

—AND—

**"Concentratin' Kid"**

—ALSO—

**Saturday Matinee**

**Sunday Matinee**

—AND—

Monday, Tuesday-March 23-24

**"What Men Want"**

—WITH—

**Pauline Starke**

—AND—

**Ben Lyon**

Wednesday, Thurs. Mar. 25-26

**"The Virtuoso Sin"**

—WITH—

**Walter Huston**

—AND—

**Kay Francis**

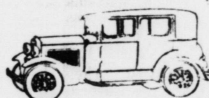
**Two one-act plays by Mrs. Conde Hardeman's pupils Thursday, March 26.**

## Texan Theatre

Mr. J. F. Horton of Eden was a week-end visitor in Junction.

Miss Mary Ellis Blackburn was a recent visitor in San Antonio, and while there attended the Little Theatre, a municipally owned institution in San Antonio. She feels that it would be fine if Junction could own a home for the Little Theatre productions.

**BEAUTIFUL LINES AND RICH UPHOLSTERY**



**NEW FORD DE LUXE SEDAN \$630**

(P. O. B. Detroit, plus freight and delivery. Bumpers and spare tire extra at low cost.)

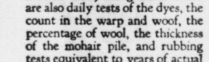
The beauty of fine upholstery gives charm and distinction to the interior of the new Ford car.

In the De Luxe Sedan, as in the Town Sedan and the De Luxe Coupe, you may choose either a rich tan Bedford cord, or brown mohair. The Bedford cord has an all-worsted face and is similar to the upholstery formerly used only in custom-built cars. The soft, luxurious mohair will not crush easily and is long wearing because it is faced with genuine Angora mohair and fine wool worsted.

Unusual care is taken to maintain the quality of the fabrics used for the Ford cars. Laboratory tests for weight, the character of the cloth and the grade of the yarns are constantly being made. There are also daily tests of the dyes, the count in the warp and weft, the percentage of wool, the thickness of the mohair pile, and rubbing tests equivalent to years of actual wear.

In every detail of trim and finish, as in mechanical performance, you will note the substantial worth that has been built into the Ford car. It has been made to endure.

Call or please for a demonstration



**Loeffler Motor Company Telephone 105**

## Sunday at Our Churches

### BAPTIST CHURCH

(Rev. G. W. Crabb, Pastor) Sunday School at 10 a. m. Preaching at 11 a. m. by pastor. Subject: "Five Men on the Road to Jerico."

Junior B. Y. P. U. at 5:30 p. m. Intermediate B. Y. P. U. at 6:00 p. m.

Preaching at 7:30 p. m. On Easter morning the pastor will speak on the Resurrection of Christ and at the evening service a song sermon will be given by the choir. If you have never heard a song sermon be there and I am sure you will enjoy the service.

Make plans now to attend the revival services starting April 19.

### CHURCH OF CHRIST

10 A. M.—Bible Study for the classes.

11 A. M.—Assembly for the worship, in songs, sermon, fellowship, communion, and prayers. Sermon subject: "The Social Side of the Church."

6:30 P. M.—Young Peoples' Meeting.

7:30 P. M.—Evening Worship. Sermon Subject: "We Act as We Think."

2:30 P. M. Thursday—Ladies Bible Study.

7:30 P. M. Wednesdays—Bible Study for all.

### METHODIST CHURCH

The Presiding Elder, Rev. S. L. Batchelor, will preach at the 11 o'clock hour on Sunday morning and the pastor will preach at Copperas. Give our presiding elder a week hearing on this occasion.

In the afternoon Brother Batchelor will preach at Copperas and hold the Second Quarterly Conference. All of the Stewards are expected to be present and the people are urged to attend these services at Copperas. See your steward this week and help us to make a good report.

The pastor will preach at the evening hour which is now at 7:45 on the subject: "The Christian Home." As a husband or as a wife, or as a son, or as a daughter—what are you doing to make your home a religious sanctuary? A man can be judged as to the life he lives by way he regards his home. Help make this service an inspiration to some one else by being present.

On Eastor Sunday night, April 5th, the Leaguers will pre-

sent a colorful and impressive pageant at the Church. Those who saw the Christmas pageant can be assured that this one will be just as beautiful and inspiring.

Christ has a right to expect you to be loyal to the Church if you expect the Church to consider you as a member.—Bolton Boone, Pastor.

### TABERNACLE NEWS

Large crowds are attending the services every night at 7:30 o'clock at the Full Gospel tabernacle which is located 3 blocks south of the Junction State Bank. The services consist of singing, testimonies, and preaching. Every body is welcome. Old time gospel messages, souls saved, and sick prayed for at every service. **Chauncey Merwin, Pastor Evangelist.**

### INTERMEDIATE B. Y. P. U.

The following is the Intermediate B. Y. P. U. program for March 22.

Topic—"Giving the Gospel to our Neighbors."

Soft Music—Jewel Riley.

Quartet—"The Old Rugged Cross"—Tommy Jones, Jewel Riley, Athalie Burt, and Marie Sheppard.

Sentence Prayers.

Songs.

Introductory Talk—Lella Bes-

sent. "The Whosoever" Conversa-

tion—Grace Johnson.

A Conversation at the Well—

J. F. Kropff.

A Conversation With the Scribes—Leslie Crabb.

A Centurians Plea—Tommy Jones.

An Invitation to Dinner—

Leora Taylor.

A Conversation with a Tree

Sitter—Martha Hensley.

The Test of our Love—Rus-

sell Oliver.

Bible Quiz.

### PRESBYTERIAN CHURCH

Sunday School will meet at 10 o'clock. Morning worship will begin at 11 o'clock. The subject of the morning sermon will be "Men With Healthy Shadows." There will be no evening worship.

Church Services at Evergreen

Every one is cordially invited

to attend church in the Ever-

green Schoolhouse next Sunday

afternoon at three o'clock. Rev.

G. W. Crofoot, pastor of the

Junction Presbyterian Church, will preach.

## Used Car Bargains

- One Chevrolet Roadster.....\$ 75
- One Chevrolet Coach.....195
- One Chevrolet Six Landau Sedan.....385
- One Chevrolet Truck.....160
- One Model A Ford Roadster.....285
- One Model A Ford Sport Roadster.....295
- One Model A Ford Sport Roadster.....350
- One Model A Ford Phaeton.....425

If you are interested in a used car come and see these. All in good condition and worth the money. We also have a few real bargains in Model T Pickups.

**Loeffler Motor Company**  
Phone 105



Meet me at **Craven's Pharmacy**

where you will find Easter toys, Easter eggs, Pangburn's candy in Easter boxes.

Real live Easter rabbits will be in our window preceding Easter Sunday.

**CRAVEN'S PHARMACY**

Phone 41

## Prices Reduced

To aid in the adjustment program the following **Reduced Prices** are effective at my shop during the spring and summer:

	Medium	Heavy
Boots Half Soled	\$2.00	\$2.25
	Light	Medium
Men's Bootees	1.50	1.75
Men's Half Soles	1.25	1.50
Men's Full Soles-Heels	2.50	2.75
Ladies-Misses H. S.	1.00	
Ladies Leather Taps		.30
Ladies New Heels	1.00	1.25
Boys Shoes Half Soled	1.00	1.25
All Rubber Heels		.50

Well Equipped Shop, Skilled Workmen, Courteous Treatment, Your business is appreciated.

**E. O. LOWGREN**  
Manufacturer Hand-Made Cowboy Boots



**Pinky Dinky Jingles**  
VICTOR LED FLOOD ON THE DECK AND KISSED THE CAPTAIN'S DAUGHTER. THE CAPTAIN GRABBED HIM BY THE NECK AND THREW HIM IN THE WATER. CHARLES WALLACE, JAPANICA, IOWA.

### Rotary International Makes Rapid Growth Throughout World

#### U. S. TO LET CONTRACTS FOR 388 AIRPLANES COSTING \$18,000,000

WASHINGTON, D. C.—Contracts for 388 airplanes to cost \$18,000,000 soon will be let by the United States government. Allotment of this large sum at one time was with a view to provide additional work at plants throughout the country and to bring the corps as close as possible to its full strength of 1,800 planes, authorized by Congress under the five-year building program.

#### MISMATED

"I married my first husband for money, and my second husband for love."  
Then I suppose you are happy?  
Not very. You see my first husband married me for love and my second husband for money."

#### DEED OF TRUST SALE

STATE OF TEXAS  
COUNTY OF KIMBLE  
Notice is hereby given that, whereas on the 7th day of February A. D. 1928, W. R. Richardson, Kern D. Richardson and H. T. Richardson executed a deed of trust to me as Trustee for the benefit of Mrs. Adam Murr and Horace E. Wilson, both of the hereinafter described real estate, which deed of trust appears of record in Vol. 12, page 106 of the Deed of Trust Records of Kimble County, Texas, to which record reference is here made to more fully show the wording and effect of such instrument and the property covered by it.  
And, whereas, the said deed of trust was made for the purpose of securing the payment of two certain promissory notes, each of which said notes was the property of W. R. Richardson, Kern D. Richardson and H. T. Richardson, and both dated at Junction, Texas, February 5, 1928, and both payable on or before three years after date one of said notes being payable to the order of Mrs. Adam Murr, and the other of said notes being for the sum of \$500.00, payable to the order of Horace E. Wilson, both of said notes bearing interest at the rate of eight per cent per annum from date until said notes payable annually and payable at the maturity thereof.  
And, whereas, the said W. R. Richardson, Kern D. Richardson, and H. T. Richardson have made default in the payment of both of the notes described in such instrument, leaving the sum of \$100.00 on the said note payable to Mrs. Adam Murr remaining unpaid thereon on the date, and leaving the sum of \$50.00 on the said note payable to Horace E. Wilson remaining unpaid thereon on the date.  
And, whereas, the said beneficiaries have requested me to enforce such trust:  
Now, therefore, I, F. L. Wilson, trustee as aforesaid, hereby give notice that I will accordingly after due publication of this notice as required by such deed of trust, sell at public vendue to the highest bidder, or bidders, for cash at the courthouse door of Kimble County, Texas, in which said property is situated, between the hours of 10 o'clock a. m. and 4 o'clock p. m. on the first Tuesday in April next, to-wit: the following real estate as described in and covered by such deed of trust as follows, to-wit: Situated in the County of Kimble and State of Texas, and to-wit:  
A subdivision of three hundred thirty-two and one-half (322 1/2) acres of land, more or less out of and being a part of the following named two surveys: Vite; Sur. No. 13 Certificate No. 283, Abstract No. 1181, Original Grantee, G. C. & S. F. Ry. Co. and patented in Wm. Gilpin, by Patent No. 138, Vol. 106, dated March 25th, 1888, the whole survey containing 328 acres of land; and Survey No. 28, in and to the County of Kimble, State of Texas, containing 160 acres of land, and one-half (32 1/2) acres subdivision herein conveyed being described by metes and bounds as follows, to-wit:  
Beginning at the Northwest corner of said Survey No. 13, to the same G. C. & S. F. Ry. Co. thence East with the North line of Survey No. 13, to W. N. G. Ry. Co. thence South with the East line of said Survey No. 13, and the West line of said Survey No. 1, passing the N. E. corner of said Survey No. 20, in name of R. H. Rawls to the N. E. corner of a 147 1/2 acre subdivision out of said two surveys no. 20 and no. 13, to Spectator, hereinafter described, by H. T. Richardson on the 18th day of October, 1923, fully set out in Vol. 27, page 312, Deed Records of Kimble County, Texas; thence West with the North line of said 147 1/2 acre subdivision to its N. W. corner, the West line of Survey No. 13; thence North with the West line of said Survey No. 13, to the place of beginning.  
Witness my hand at Junction, Texas this 5th day of March, A. D. 1931.  
F. L. WILSON, Trustee 48-3c

Approximately 160,000 men in more than 60 countries of the world, representing different trades, crafts, professions, and stations in life, and languages constitute Rotary International which will meet in annual conference in Vienna in June. This historic city is planning a cordial reception for Rotarians.

Rotary has made a wonderful growth since it was organized in Chicago February 23, 1905. Paul Harris, who started the movement, little realized what it would mean to the world. It became international when the first club was organized in Canada in 1912. The following represents the rapid growth of the organization.

- 1912—Canada, England.
- 1913—Scotland, Ireland.
- 1915—Hawaii.
- 1917—Wales.
- 1918—Porto Rico.
- 1919—Uruguay, Phillipine Islands, Panama.
- 1920—India, Argentina.
- 1921—Spain, Japan, Mexico, France, Australia, New Zealand, Union of South Africa.
- 1922—Newfoundland, Peru, Norway, Denmark.
- 1923—Netherlands, Belgium, Brazil, Italy.
- 1924—Bermuda, Chili, Switzerland
- 1925—Alaska, Austria, Guatemala, Czechoslovakia.
- 1926—Portugal, Sweden, Hungary, Venezuela.
- 1927—Colombia, Costa Rica, Finland, Salvador, Belgium Congo, Ecuador, Bolivia, Germany.
- 1928—Paraguay, Java.
- 1929—Greece, Egypt, Palestine, Yugo-Slav, Nicaragua, Rumania, Honduras, Ceylon, Burma, Luxembourg, Federated Malay States.
- 1930—Algeria, Morocco, Estonia, Southern Rhodesia, Sumatra, Straits Settlements, Kenya (Africa), Siam.

#### SNAKE FASTENS FANGS IN BOY'S TROUSER LEG

Beattie Clark, Jr., 8, of Fort Worth was playing in his backyard at 1810 Beach Street Friday morning when he felt a hard tug at his trousers leg. He thought it was his dog.  
The boy looked down. A copperhead snake, about three and a half feet long, had its fangs buried in the cloth and was wriggling to get free.  
Beattie screamed and kicked. The screams brought his mother. The kicks dislodged the reptile and it crawled away.  
The highest compliment that a business man can pay an individual is to sell on credit; if some Kimble County merchant has done this with you, make him a payment on the account? He probably needs it.

Probably Senators consider their body the "upper house" because the seats come higher.  
Pecan trees give shade and food, and live for generations. The best of all kinds of trees and plants sold by RAMSEY'S AUSTIN NURSERY, AUSTIN, TEXAS. Free catalogue.—32c.

### Crude Agricultural Implements Found Near College Station

A cache of primitive agricultural implements—a spade, hoes and probably axes—was recently uncovered by William C. Manning while plowing on a Brazos County farm near College Station. The collection was presented to A. & M. College for the museum.

These crude agricultural tools, fashioned from chert or flint, apparently by Indians, include what the college scientists consider some very fine specimens of implements used to till the soil by primitive man in this region. The largest, seven inches across and twelve inches long, was probably used as a spade. All the specimens were found neatly piled together in their hiding place underground.

LONG LIVED, HARDY, AND beautiful Chinese Arbor Vitae is the best evergreen for wind-break, hedge, screen, or background. Lowest prices ever known or offered by RAMSEY'S AUSTIN NURSERY, AUSTIN, TEXAS.

### CLOVER PASTURES

Fifteen farmers in Erath Co. pooled an order this month for 800 pounds of sweet clover seed to be planted for soil building on marginal land and incidentally for pastures. Most of these men have never grown clover before but have been convinced of its usefulness to the soil by having seen it on a neighboring farm.

**IT PAYS TO PRESENT A NEAT APPEARANCE**  
Have your hair cut regularly by experienced workmen at **Burt's Barber Shop**

### New Pumps

Modern Equipment  
Improved Service  
Free Water and Air  
Your Business Appreciated  
Safety First Service Station  
Coleman & Buster  
GAS—OIL—TIRES

### FRITZ HOTEL

JUNCTION  
37 ROOMS—24 BATHS—FIREPROOF  
Single Rates, \$2.00 and \$2.50  
Double Rates, \$3.00 and \$3.50  
Dining Room Service. Best Meals in West Texas.  
Ranch people are invited to make the Fritz Hotel their headquarters  
Comfortable lobby and rest rooms are at your disposal

**A. W. Browning**  
Real Estate, Farm Loans, Live Stock, Insurance

**Walter Buck**  
Watch-maker and Jeweler  
Office in Masonic Bldg.

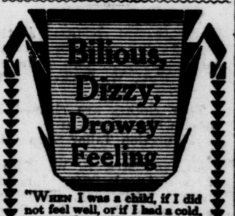
**DR. J. HOLT SMITH**  
Dentist  
Special Attention to Artificial Dentures  
Extraction of Teeth Under Local Anesthesia  
PHONES—Office and Residence  
Junction, Texas

**HORACE E. WILSON**  
Lawyer  
Will practice in all State and U. S. Courts  
Office—West side Court House square

**666 LIQUID OR TABLETS**  
Cure Colds, Headaches, Fever  
**666 SALVE**  
CURES BABY'S COLD

**TRUCKS**  
Leave for San Antonio on Monday and Thursday, returning Tuesday and Friday  
Phone 191R  
**Ponton Truck Line**

**FRANK L. WILSON**  
Abstracter—Notary Public  
Writes Contracts, Deeds, Mortgages, Releases, Etc.  
Real estate and vendor lien notes bought and sold  
Loans and Fire Insurance  
Office—west side, square



**Bilious, Drowsy, Drowsy Feeling**  
"When I was a child, if I did not feel well, or if I had a cold, my mother gave me Black-Draught," says Mrs. Ophelia Hill, of Wofford, Ky. "When I was married, it became a family medicine in my own home, as it was in my mother's."  
"I take it for headache and especially for constipation. When I get bilious, my skin gets yellow and I have a very bad taste in my mouth, and a drowsy feeling all during the day. My eyes burn and I get dizzy, or my head is 'trembling.' When I take Black-Draught, it seems to drive the impurities out of my system and I feel fine. I am seldom without this reliable remedy."  
**THEOPHILUS Black-Draught**  
For Constipation, Indigestion, Biliousness  
WOMEN who are run-down, nervous or suffer every month, should take BLACK-D. Used for over 45 years.

### STANDIFER HOSPITAL

Junction, Texas  
CATERING TO MAJOR SURGERY  
Other cases admitted, with exception of tuberculars  
Dr. Lilburn E. Standifer, Chief Surgeon

### Schreiner-Hodges Co.

GENERAL MERCHANDISE  
Junction, Texas  
We carry a complete General Line of First Quality Merchandise, and invite your inspection.  
We buy Mohair, Wool, Cotton and Pecans, paying highest Market Prices.

### Schreiner-Hodges Co.

COME SEE US!

**Is She Hitting On All Six?**  
—or does she "Spit back at you?" If the motor is not acting just right drive in and let us check it over and locate the trouble.  
We do expert service work on all makes of cars and our prices are very reasonable.  
We have the most up-to-date shop equipment in this part of the state and are prepared to do your work promptly and efficiently.  
Wrecker service if you need it.  
Junction Battery and Electric Garage

### Keep your Car young with Flashlike Gasoline & Velvet Motor Oil

Preserve the quietness and smoothness of your car by using a fuel of high anti-knock rating — and its compression, by using a motor oil that never leaves a moving part unshielded — whether the motor be cold or hot. Flashlike Gasoline and Velvet Motor Oil form the ideal combination. Flashlike Gasoline makes a motor start easily, develop full power quickly, and run smoothly for thousands of miles of added service-life. Velvet Motor Oil has the body and easy-flowing qualities to protect bearings at all driving speeds and temperatures. It holds compression — and increases power.

**Humble Service Station No. 188**  
Next to Handy Andy  
Schreiner-Hodges Company

Low Cost Beauty!

With the approach of Spring, activities are beginning to center on lawn and yard improvements. Last year, V. P. Emmons, local manager of the West Texas Utilities Co., demonstrated that lawn beautification could be done at a small cost. With an expenditure of \$7.50, the park pictured here was landscaped and completed. Much can be done with little money through the use of ingenuity, patience and a little hard work.



Title Registered U. S. Pat. Of.

Being a vaporish review of words that pop into print

He was downright love-sick—he believed Miss Sewanew could mend his ways.

equinox (ee'kwi-knocks. The e is strong as in cheese; and the o is as short as an embezzlin' banker.)

We have hard knocks, personal knocks, door knocks, engine knocks, John Knox, and on March 21 equinox.

I overheard a couple of High School kids in a parked auto last night, wrapped up in the moon and themselves, and I gathered from the boy's remarks that "the equinox is the point in the heavens where the sun crosses the celestial equator." Boy! and the girl replied that "this occurs about March 21 and September 22, and on these dates the day and night are theoretically of equal length. "Equinox" is from Latin, meaning "equal night." Some chatter for kinds.

Then, I suppose it associates with equator, "the equinoctial line." And word relatives are equidistant, "of equal distance;" equilibrium, "of equal weight;" equity, "equal justice;" and equivalent, "equal value."

The season of equinoctial storms—disturbances in weather and digestions. Catchwords are nightmares and liver pills.

It's just one thing after another: Easy Money and Hard Times.

Marie von Essen of the German Opera. They tell me the von is a preposition like of used with family names, and is pronounced "phone" only snappier.

Staten Island. Staten rhymes with fatten. I think it's an island in the entrance to New York Harbor.

Prague: (rhyme with vague) Capital of Czechoslovak Republic whatever that is.

Reichstag: By George! this is a hard one! In Europe, Reichstag is a legislative or law making body and is called an imperial diet and is pronounced like what's in a name anyway. I never went in much for diets and least of all an imperial one. In the United States a diet is a law made to govern a body's eatin', and that's bad enough. The nearest we salad-and-pie-eatin' and water drinkin' Americans can come to pronounce it is ryehs'lahg (we will put that "rye" in there) and being just as guttural as you please.

So long. See you in the "EAGLE."

In The Cattle Business

A Kansas stockman, who had mortgaged his cattle to the local bank, was called in by the banker and told that the note was due and must be paid the following day. The stockman asked the banker: "Were you ever in the cattle business?" "No," the banker answered. "Well, you are now," the cattleman said, and walked out.

The citizen of Junction who invests no thought or effort in the improvement of his home town, can't expect his home town to return him any dividends of increased prosperity.

LAW PROTECTS SKUNKS!

An exchange compiling a "hall of fame" of freak legislation, lists the following:

An act once passed by the Kansas Legislature read: "When two trains approach each other at a crossing, they shall both come to a full stop, and neither shall start until the other is gone."

Another Kansas legislative gem reads: "All carpets and equipment used in offices and sleeping rooms, including walls and ceiling, must be well plastered and kept in a clean, sanitary condition at all times."

Tennessee statutes of 1913 offered its citizens this one: "It shall be unlawful for the owner or keeper of horses, mules, cattle, sheep, goats and hogs, to run at large."

A Pennsylvania statute of 1919 begins: "An act for the better protection of the skunk or polecat."

A law passed in Ohio in 1919 reads: "Major Surgery" shall be defined to mean the performance of those surgical operations attended by mortality from the use of knife or other surgical instruments."

"There ought to be a law against that," the popular slogan of the American public, appears to work magically. There are not many things left outside the law.—Port Worth Star-Telegram.

THE "BACK YARD"

In Europe, they call the space in the rear of a house, the "garden," and they raise lovely flowers there. In America many dump their tin cans there. Many families that used to raise flowers and vegetables there are now too busy stepping on the gas. American travellers are laughed at in Europe, when they refer to such spots as "back yards."

We have too many back yards in Junction and not enough gardens. You can find physical health, as the nice spring weather comes on, in the active work of transforming a mussy spot into a scene of charm. All you help tell the world that we have a fine resident town.

ECLIPSES FOR 1931

In the year 1931 there will be five eclipses, three of the sun and two of the moon.

1. A total eclipse of the moon on April 2, visible in Asia, Australia, Europe and Africa, the ending also visible in the eastern part of South America.

2. A partial eclipse of the sun on April 17-18, visible in eastern Asia.

3. A partial eclipse of the sun on September 12, visible in extreme northeastern part of Asia and in Alaska.

4. A total eclipse of the moon on September 26, visible in Asia, Australia, Europe, part of Africa; the ending visible in the eastern part of South America.

5. A partial eclipse of the sun on October 11, visible in southern half of South America.

CARD OF THANKS

We wish to express to those who were instrumental in making the 4-H Club Show a success, our sincerest appreciation for the splendid co-operation, financial and material assistance. R. E. Homann, County Agent and Club Members. Live each day as if it were your very last day to live.

COUNTRYSIDE BROADCASTINGS

By Rev. G. W. Crofoot, Pastor Junction Presbyterian Church

A BANKER recently said, "The country people work only about one hundred days in the year." The reply is "If a farmer makes such a great over-production by working only one hundred days, what would happen if he worked three hundred days?"

There ought to be some plan devised by which our American farmers could be enabled to make the maximum production and at the same time to dispose of the inevitable surplus.

THE RICHEST mine in the world is not the one able to produce coal, gas, copper, silver, gold or radium. The richest mine in the world is found in the thin layer of soil about six inches thick which covers the continents of the earth. You may leave any of the minerals to be mined next year or 100 years hence, but not so with the rich mine of the soil. It is capable of yielding so much wealth each year. If that wealth is not mined this year it is lost forever. What we need is not to limit production to avoid surplus but to encourage production and marketing at less cost so that the farmer may get an equitable income from his labor and the consumer may live more cheaply. A scheme should be worked out by which our surplus in agricultural production may be disposed of in the markets of the world.

ON FEBRUARY 5th, Joseph Stalin, the Russian leader, said, "The Soviet Union soon will be the greatest agricultural nation on earth." This statement backed by the measure of success already attained, should furnish food for thought for every American farmer.

WE HAVE HAD a tariff to protect our corporate industries. Why not adopt a debenture plan to enable the American farmers to compete with other countries of the world. This would cost our government \$20,000,000. But if the wheat were sold at \$1.00 a bushel, America would be \$100,000,000 richer than if this wheat had not been produced. The farmers, the transportation companies, and the American merchants would receive the entire amount of \$120,000,000 which would be put into circulation in this country.

THE RISING WALLS of the new school building are a testimony to the vision, ability and efforts of Superintendent Guy C. Moses and the Board of Trustees. The growing minds and developing characters are testimonies of the interest, efficiency, and work of the children, parents, and teachers. Good homes, good schools and good churches are the true foundation of every community and entitles it to be called great.

FOR SALE:—Bright Johnson Grass hay. Write or phone J. R. Pumphrey, Ingram, Texas. 48-2p

\$200,000 PRE-DRY LAW LIQUOR STOCK SEIZED

PHILADELPHIA.—Dan Dever, 80, was held in \$800 bail for court today as a result of a recent raid on his house at which time police said they seized liquor valued at more than \$200,000.

Dever, who made a fortune in the wholesale liquor business prior to the advent of prohibition, contended the liquors and wines seized ante-dated prohibition.

KNOW TEXAS

Texas stands tenth among the states in number of radio sets in use with 364,000 on July 1, 1930.

Texas has 66 airports, representing an investment of \$3,854,000 with \$685,000 more to be spent this year.

Texas brought in 4,361 oil wells and 356 gas wells during 1930 and drilled 2,889 "dry" holes in addition.

SCHOOL ELECTION NOTICE

Notice is hereby given that an election will be held in the polling places of the various school districts in Kimble county on the first Saturday in April, 1931, the same being the 4th day, for the purpose of electing one county school trustee at large, and also for the purposes of electing a county trustee in commissioners precincts one, two and three.

R. R. King, County Judge

President Hindenburg of Germany declares he has never felt nervous. If, being married, he is truthful, he richly deserves his Iron Cross.

BUILD YOUR HOME Estimate cheerfully given Plans and Specifications MAXWELL & RAMSEY

M. E. BLACKBURN Attorney-at-Law Junction, Texas Will practice in all State and Federal Courts

Woodstock Typewriters For Sale at the Eagle Office

for you—BREAD CAKES and PIES Patronize a home institution owned and operated by home people We appreciate your business City Bakery Junction, Texas

School Census Must Be Taken In This Month

Supt. Guy C. Moses Is Enumerator In Junction School District

Many parents and guardians do not seem to realize the importance of getting a full scholastic enrollment of all the children in the school district. The enrollment of each child means \$17.50 for the school. Missing only a few children could easily cut the school term in a rural district one month!

County Superintendent R. R. King has distributed blanks to the census trustees with instructions to get a full enrollment of all children between the ages of six and eighteen on September 1, 1931. This year

the family census blank must show the name of both the father and mother of the children. The state requires this to reduce to the minimum of duplicates on the rolls.

Superintendent Guy C. Moses is taking the census in Junction and asks the co-operation of the parents and guardians in enrolling all the children in the Junction Independent School district. The census must be completed during the month of March. Children born on or before September 1, 1913, or after September 1, 1925 must not be enumerated.

Texas has 1,323,774 families living in 1,213,474 homes.

Be sure you are going, but also that you are on the right track.

BE SURE TO WRITE FOR FREE CATALOGUE OF RAMSEY'S AUSTIN NURSERY, AUSTIN, TEXAS. 32c.

Chas. Schreiner Bank (Unincorporated) KERRVILLE, TEXAS. Makes Liberal Advances on SHEEP, GOATS, WOOL AND MOHAIR Established 1869.



Spring Is Here A good season in the ground calls for garden and yard work. The proper tools for all your yard, garden and farm work is in stock at our store. See our line of garden and flower seed. Junction Hardware Co. In business since 1911 Telephone 88



Consider what you get for what you pay Today, especially, it is wise to consider what you get for every dollar you pay. Quality never cost less than it does in the new Chevrolet Six. And in the long run, quality makes a big difference in the satisfaction you get out of the money you spend for an automobile. New low prices Chevrolet's new low prices range from \$475 to \$650. All prices C. & S. Flint, Mich. Special equipment extra. Low delivered prices and easy terms. NEW CHEVROLET SIX The Great American Value Highland Chevrolet Co.

aps ment vice Air ss d vice aster RES Hotel Personal L Y reon Co. SE ing ine 188

### Junction Trade Notes

(By G. G. Co.)

Panama City, March 16: "An international highway which would link the United States with the Canal Zone, extending a distance of 3,500 miles, was planned here today at a meeting of the Inter-American Highway Commission. Much of the preparatory field work already is completed and should be ready for submission to Congress by December. . . . Highway No. 4, which is routed thru Kimble County, is a link in the international highway referred to in the foregoing dispatch.

Certified planting seeds in stock this week: Sudan, Red Top Cane, German millet, Feterita, Hegari, Kaffir, Maize, Barley, Rye, "Yellow Dent and "Sure Cropper" corn. Gann Grocery Company. Black-eyed peas for planting, sweet potatoes suitable for planting or bedding.

While Kimble County and the range country received a seasonable one-inch rain last Sunday the weather bureau reports drouth still hovering over the wheat belt of the northwest, Ohio Valley, Maryland, Virginia and the Carolinas. The weather bureau says 11 states have had the driest winter on record and that last summer's rainfall east of the Rockies was 500,000,000,000 tons short of normal.

In stock: Buttermilk; starter feed, baby chick scratchfeed, rolled oats in bulk, all kinds chicken feed. Gann Grocery Company.

Mr. and Mrs. W. W. Buck last week dressed a 1930 spring turkey that weighed 30 pounds. A. C. Bowman of the fertile Llano Valley continues to supply the local trade with choice home-grown cabbage and carrots. . . . Mrs. Jack Molesworth and children from the ranch in Culberson County, are visiting with the A. L. Mudge's. Mrs. Omer Wright returned Sunday to the ranch on Watson Divide after a week in town at the bedside of her sister, Mrs. Earl Barr. . . . Mr. and Mrs. H. H. Jackson of Coleman came to Junction for a week end with friends.

Boston dispatch March 17, states that moderate quantities 12-months Texas wools are moving at prices in the range of 63 to 65 cents, scoured basis. . . . And the general public appreciates the work of the local Lions Club in placing the names of owners on ranch gates.

New packages in stock: Stokely's honey pod peas, tested and approved by Good Housekeeping Magazine; "Kre-Mel," a new dessert in four flavors, chocolate, vanilla, caramel and coffee; "Linit" for the bath.

### Gann Grocery Company "Everybody's Store."

Let us show you some red hot pajamas.

Junction Tailor Shop 49c

Mr. Fred Maass of the London section was a business visitor in Junction Saturday. He added his name to the subscription list of the Junction Eagle while here.

Mr. and Mrs. H. H. Jackson of Coleman were week-end visitors in the Sam Woodward and H. G. Hubert homes the past week-end. Mr. Jackson is the proprietor of the Coleman Democrat-Voice, generally conceded to be the best weekly newspaper in Texas.

NOW IS A GOOD TIME TO PLANT TREES. Write for catalogue. —RAMSEY'S AUSTIN NURSERY, AUSTIN, TEXAS. 32c.

Miss Mary Ellis Blackburn, who was elected principal of the Roosevelt School soon after Christmas, reports very pleasant work. She says that there is a fine spirit of co-operation among the patrons and a fine school spirit among the pupils. She is delighted with her work.

With each \$1.50 wash job on our high pressure washer, we will grease you car free on our hydraulic lift during anniversary week.

Powell Motor Company 19c

Junction streets need paving

### LA JUNTA STUDY CLUB HAS MEET WEDNESDAY

La Junta Study Club met at the residence of Mrs. C. T. Holekamp Wednesday afternoon. The rooms were beautifully decorated with vases of wild flowers.

Mrs. W. P. Riley, the president, presided during the business meeting at which time the following committees were appointed. Committee for the open house to be held May 20, Mrs. H. G. Hubert, chairman, Mesdames Frank Wilson, A. L. Mudge, and A. W. Loeffler.

The year book committee for 1931-32 were Mrs. C. W. Atchison, chairman, Mesdames Frank Wilson, Frank Patterson and A. W. Loeffler.

Mrs. H. G. Hubert was the program leader. The topic for afternoon was folk music.

Roll call was answered with the names of songs we love.

Mrs. Clay Secrest's subject was "What is Folk Music." A discussion of Indian music was given by Mrs. C. W. McCarrroll. Her talk was illustrated with phonograph and records of Indian music and radio station WOAI in San Antonio broadcasted several Indian numbers for the benefit of the study club.

An exposition of cowboy songs and poetry was given by Mrs. G. W. Crofoot, who has been the mascot of the Old Trail Drivers Association, since its organization.

Mesdames C. W. Atchison and A. W. Loeffler talked on the subject of negro spirituals.

Mrs. Hubert discussed folk music of other lands.

The program closed with a parliamentary drill conducted by Mrs. Frank Patterson.

At the close of the afternoon Mrs. Holekamp served pepper mint ice cream, caramel cake, tea and nut date squares in honor of Mrs. Olney Patterson, the incoming president, whose birthday it was.

Those present were Mesdames C. W. Atchison, E. R. Borden, G. W. Crabb, H. O. Denman, L. R. Hodges, H. G. Hubert, A. W. Loeffler, A. L. Mudge, C. W. McCarrroll, Frank Patterson, Olney Patterson, W. P. Riley, Clay Secrest, Walter Tinsley, S. P. Woodward, G. W. Crofoot, Carl Wolf, and Frank Wilson.

### SEED CAMPAIGN---

(Continued from page 1) 700 pounds of State Certified dwarf yellow milo since there are only seven growers in the state that met with the standard set by the state seed board. This seed is produced under the supervision of this board and when the grower meets the qualification set forth by the Division Field Seed Inspectors it is licensed by the board.

Mr. Homann asks "Why plant 2 pounds of milo at 2 cents per pound and receive a yield of possibly 1,000 pounds of heads when two pounds of certified seeds at 5 1/2 cents per pound will, under the same conditions produce 1,700 to 2,000 pounds of heads. The difference on initial investment being seven cents as compared to a difference of 7 to 10 dollars at harvest time?"

If you are interested in a new or used car we will be glad to give you a demonstration. Loeffler Motor Co.

### R. E. Homann Receives Pure Planting Seed

County agent R. E. Homann has received about 6,000 pounds of pure line seed for those who have pooled their orders. The seed are at his office in the courthouse and the secretary of the Kimble County Chamber of Commerce is there to issue the seed to those who have ordered them.

Mr. Homann is expecting good results from these seed this year as a good planting season is in the ground and if favorable seasons come during the year it will show the importance of planting pure line seed. During the past dry season the results justified the extra cost for the good seed.

### MARRIAGE LICENSES

Only two marriage licenses have been issued during March. One couple from Kerrville drove over for their licenses, and a Kimble County Mexican couple secured licenses.

The licenses were issued to: Emil Rotge and Miss Annie Prince.

Lasaro Gonzales and Miss Agila Ramirez.

### ONE ACT PLAY---

(Continued from page 1) on the ring-toe of the King's great aunt; Tommie Jones playing the Mime; Mary Farmer, the Little Milkmaid; Azalee Wallace, the Blindman; Vernelle Tinsley, the Ballard-Singer; and Nancifred Dunderstadt as the Dreadful Headman.

The high school glee club, directed by Mrs. C. W. McCarrroll, will contribute a group of semi-classical and popular numbers. Mrs. McCarrroll composed the music for the songs Vernelle Tinsley uses as the Ballard-Singer, in the play.

Miss Mary Ellis Blackburn will make a short talk on Stuart Walker's work in the theatre. The proceeds of the entertainment will be used to send the high school players to the San Angelo contest.

### INTERSCHOLASTIC---

(Continued from page 1) eral.

E. E. Morrison—Athletic Director.

Mrs. L. E. Stockard—Director of Essays.

Miss Eldon Claire Gough—Declamation Director.

Mr. Guy C. Moses—Debate and Extemporaneous Speaking.

Mrs. W. L. Cooper—Spelling.

Mr. Orlan Stewart—3 R's.

Mrs. Ellouise Emery—Music Memory.

Miss Nellie Bennett—Senior Spelling.

The Kimble County Chamber of Commerce is sponsoring the county meet and will furnish the ribbons for the various contests.

A demonstration in one of our NEW Fords does not obligate you in any way and costs you NOTHING. We are at your service and take pleasure in showing you the quality of our cars. Loeffler Motor Co.

Mrs. Emil A. Loeffler visited relatives at Kerrville this week.

### BOY SCOUTS MEET

The Junction Boy Scouts held an instructive meeting at their room in the basement of the courthouse. Mr. Emil A. Loeffler was a pleasant visitor. Several games were played and drills taken. Members of the Buffalo Patrol rendered an interesting program.

The local Boy Scouts wish to thank the Junction business men for their hearty co-operation with the movement in their town.

A demonstration in one of our NEW Fords does not obligate you in any way and costs you NOTHING. We are at your service and take pleasure in showing you the quality of our cars.

Loeffler Motor Co.

Messrs. Emil A. Loeffler, Walter Tinsley and Earl Buxton returned Wednesday from Houston with three new Fords for the Loeffler Motor Company.

Mr. and Mrs. Alton Childres had as their guests last week Mrs. Ben Plunneke and Mr. and Mrs. C. D. McMillan of Mason.

Mr. and Mrs. R. A. Bishop of Cleo were trading in Junction Wednesday. Mr. Bishop handed us his renewal to the Eagle while here.

### Refrigerator Time

You can't have efficient refrigeration with an old dilapidated ice box. The new refrigerators are smart looking and provide food protection superior to any other form of refrigeration. Cold air with just the right amount of humidity and continuous purging of food odors are outstanding superiorities of ICE REFRIGERATION.

BORDEN ICE COMPANY



How

About

### GARDEN AND YARD TOOLS

THE garden and yard needs good tools--and here is the Store that is ready to provide those things for you economically.

One-piece

STEEL RAKE

Presented in 12 teeth size; 5 1-2 foot hard-wood handle.

Special

GARDEN HOE

Solid socket and shank, 6-inch blade and 4 1-2 ft. hard-wood handle.

Anything for yard, garden, farm or ranch

### Wahl Brothers & Schraub

McCormick-Deering Dealers

### Diversification----- Leads To Prosperity

Good rains continue to keep fine seasons in the ground for spring planting. Low prices for products usually produced on ranches and farms emphasize the fact that a diversified program should be followed this year. We have always advocated that enough cows, hogs and chickens should be grown on every ranch and farm to supply the needs of all families on the ranches and farms. To this program, we urge gardens this season to furnish vegetables in season and can enough to take care of the family during the winter.

The "Live at Home" program should be carried out in Kimble County. Cows, chickens, hogs and gardens will help our farmers and ranchers tide over the nation wide depression. The outlook is bright and with a diversified program Kimble County will lead in the return to normalcy.

### Junction State Bank

and

### Junction Cattle Loan Company

### = BARGAINS =

Get your share of the bargains offered ANNIVERSARY WEEK. A greasing

--F-R-E-E--

with every wash job.

Be sure to see our show window Friday and Saturday.

POWELL MOTOR CO.

Phone 51

Practically as many X-ray machines are used by Chiropractors as any other one profession. The X-ray furnishes proof of the existence of misplaced vertebrae which cause pressure on the spinal cord and spinal nerves.