

# Wellington Leader

12 Pages

Volume, LXVII

For Sixty-six Years a Builder in Collingsworth County

WELLINGTON, COLLINGSWORTH COUNTY, TEXAS 79095 THURSDAY, JANUARY 20, 1977

19c per Copy  
Plus 1¢ Tax

Number 26

## Bruce Hite, Constable, Dies Jan. 12

Bruce Hite, 76, Constable of Precinct 1 for 26 years, died unexpectedly at his home early Wednesday, January 12. Although he suffered from a heart condition, his death came as a shock to the community.

His tenure as constable was one of the longest in the Panhandle.

He served in other law enforcement capacities prior to that, having been a deputy sheriff in 1928-29 and Wellington Chief of Police in 1937-38.

Mr. Hite bought the Day dray line in 1929. At that time it operated with horses and wagons and one of the items he hauled was coal. Later he added trucks and went into cattle trucking and house moving. He also farmed many years.

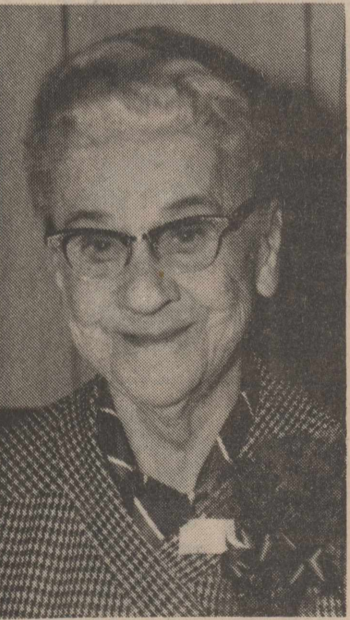
Born November 23, 1900, in Collinsville, Guthrie Bruce Hite was the son of the late Mr. and Mrs. G.N. Hite. The couple brought their five sons to Collingsworth County in 1910.

Bruce Hite attended the Wellington Schools. He was married to Miss Modell Perrin on April 4, 1926, at Mangum. He was in the candy business there for a while, then the couple moved to Wellington in 1928.

The only times he lived away from here was a year at Wheeler, 1934-35, and during World War II, when he worked for Consolidated Aircraft at Ft. Worth.

He was a member of First United Methodist Church.

Funeral services were conducted at First Baptist Church Thursday, at 2:00 p.m. with the Rev. James Boswell, pastor of First United Methodist Church, officiating. Burial was in North Fairview —See #1, Page 2



MRS. FRANK L. BOURLAND

## Mrs. Bourland Dies Thursday At Ninty-Four

Mrs. Frank L. Bourland, who came to Clarendon in 1902 and helped to shape the town's cultural and religious life, died in Collingsworth General at 8:30 p.m. Thursday, January 13. She was 94.

She came to Wellington three years ago to enter Thomas Nursing Center.

Her late husband was a member of one of Collingsworth's early ranching families which acquired land in the west part of the county in the 1890s, and which the descendants still own.

Mrs. Bourland, the former Edna Condon, was born at —See #2, Page 2



GRAND CHAMPION-David Baumgardner's Hereford took the honors at the Collingsworth County Livestock Show.

## City Election Called for April 2

Wellington voters will name a mayor and two council members in the city election Saturday, April 2. The election was called during the council meeting Monday, January 17.

In addition to Mayor Bill Hatch, council members whose terms expire are Tom Wilkins and Gus Barton.

Miss Bessie Rainer will be the election judge and Mrs. Cicero Gulley assistant judge.

## Fire Damages McKinney Home

Fire believed to have started from a bathroom wall heater heavily damaged the home of Mrs. Claude McKinney, 1505 Dalhart Street, Thursday, January 13.

Fire Chief David Peters said an apparent explosion also occurred.

Furniture in the bedrooms adjoining the bath were destroyed and the contents in the remainder of the house was smoke damaged, the fire chief said, however she was able to save some household items and personal belongings.

The blaze was discovered by two men passing the house about half an hour after the justice of the peace left for her —See #3, Page 2

## Youths Show 12 Calves at Amarillo

Twelve of the county's top calves are entered in the Amarillo Livestock Show, which opened Tuesday, January 17 and will continue through the week.

These steers were entered in the county show Saturday, January 15.

The calves will be judged Saturday, January 22, and the annual sale will be held Monday, January 24.

Taking sheep to the Amarillo show will be Gary Isaacs, Harold McKinney, Jacen Jeffrey, Leigh Myrick and John Birkey.

Hogs will be exhibited by Lon Kiker, who will have two hampshire barrows and Calvin Lockhart, who will have one.

To insure that these boys

The council heard a written report from Bill McMorries, the city's engineer, on the

## Null Joins Farm Experiment Work

Ray H. Null, Wellington farmer and cattle raiser, began work January 1 as farm demonstration assistant with the Northwest Texas Research Demonstration Program.

Announcement of his selection was made by Don Reeves, county Extension agent.

Mr. Null will be in charge of carrying out the program's experiments, working under Mr. Reeves, and along with Extension Service and A&M University Experiment Station specialists.

Plans are being made for updating and expanding the Northwest Texas Research Demonstration Program. This will include more experiment plots and a broader range of plant varieties. The program also has been expanded from three counties to five, now including Collingsworth, Childress, Hall, Wheeler and Donley.

The Northwest Texas Research Demonstration Program is a joint work of the

request by Lone Star Gas Co. for a rate increase, made to the council in October 1976.

The report recommended a gas rate lower than that which Lone Star requested.

No action was taken as the city's legal counsel, Paul Spillman was out of town. The council is opposing the inclusion of the flow-through or rate adjustment clause in the request for rate increase.

Representatives of North Texas towns in which Lone Star is seeking a rate increase will meet in Wichita Falls this week to discuss a possible course of action. Wellington will be represented.

Members next noted that the clause is included in the last rate increase granted West Texas Utilities. A resolution was passed to place on the agenda of the next meeting a proposal to rescind the WTU flow through clause. Company officials will be invited to attend.

The council next went on record to request from the county a list of persons paying fines for traffic violations, to determine what proportion of these are from out of town.

It was brought out in discussion that several members have received complaints from people living elsewhere, who do business here or travel through Wellington.

Councilmen expressed themselves as concerned that Wellington will get a name as a speed trap.

Stan Tate has his reserve champion, a Semmental, and also a Hereford.

Others exhibiting will be Lynn Tate, a Limousine and a Hereford; Paul Estes, a Hereford; Joe Baumgardner, Maine Anjou; Mark Fourmentin, a Limousine and an Angus; Barry Long, an Angus; Darvin Nix, a Charolais-Limousine-Hereford Cross, and Kirk Patterson, a Limousine.

Following the sale Tuesday, seven of these calves will go to the Fort. Worth Livestock Show, where they will be exhibited for the remainder of the week.

These will include David Baumgardner with the Hereford and Maine Anjou; Mark Fourmentin with the Lim-

## Pay Increase for Officials Approved

County officials and several deputies in their offices received a 5 percent salary increases by action of the commissioners court Monday, January 10. These raises are effective as of January 1, 1977, according to minutes of the meeting.

Members of the county historical committee were appointed, and the commissioners also covered a variety of business that ranged from payments of \$300 each to the Senior Citizens group and the county Historical Museum, to a request that all officials and the road and bridge department make an inventory of property in their offices.

In spite of the pay hike of 5%, salaries of the county officials remain below those paid in many other counties in this part of the state.

Under the new scale, listed in the minutes, the four commissioners will receive salaries of \$3,000 plus \$1,050 each. The county judge receives \$6,685 plus travel amounting to \$900.29. The county attorney's salary is \$6,366.94.

The county-district clerk and the tax assessor-collector will draw \$6,685.29 each. Four deputies, two in each office, will make \$4,804.80 each.

The sheriff's salary is \$9,600, while the county treasurer will draw \$6,320.63, the justice of the peace \$5,226.69 and the constable \$1,648.23.

The county's part of the extension service salaries includes \$2,889.16 for the county extension agent, plus

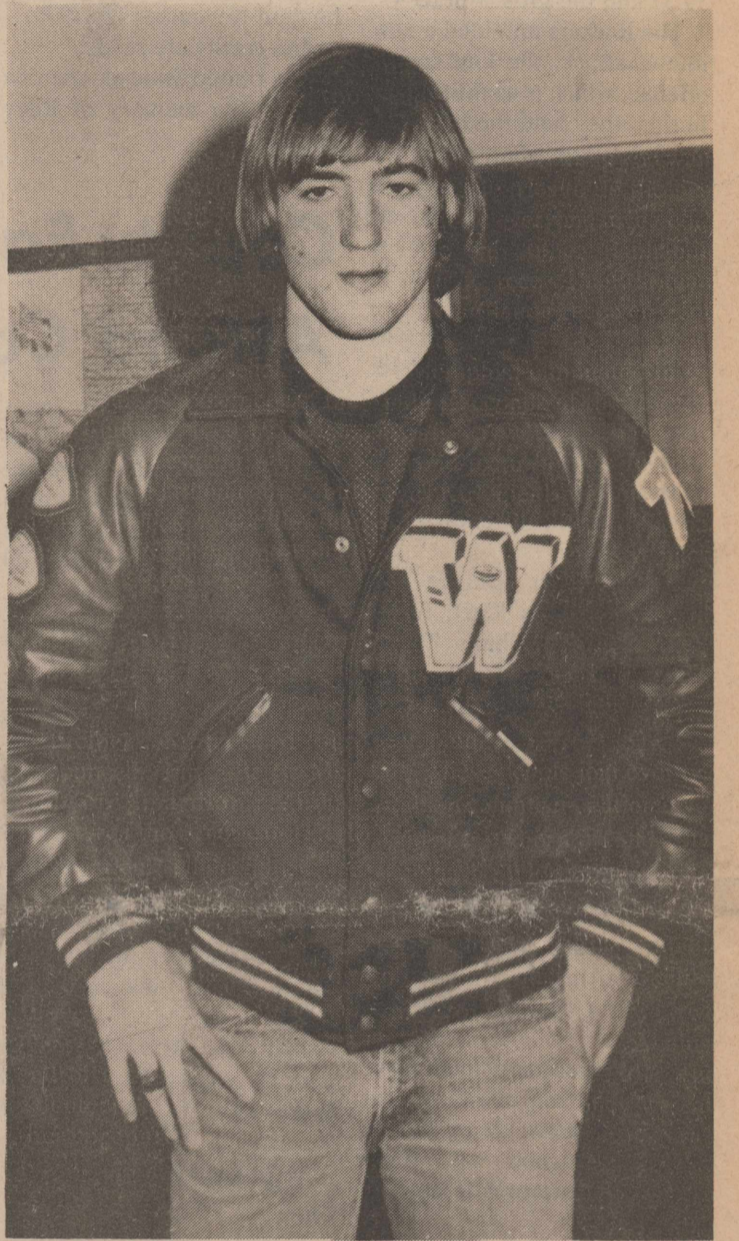
\$1,600 travel and \$2,205 plus \$1,200 travel for the extension agent for home economics (home demonstration agent). The new salary for the secretary in that office will be \$2,402.40.

Newly set salaries for the

Road administrator is \$7,591.50; for road employees \$6,300, and for the custodian \$4,804.80.

Salaries of the county school superintendent and her deputy are paid by the state and the

—See #4, page 2.



ALLEN SANDERS

## Allen Sanders Named to All-State Football Team

Skyrocket tackle Allen Sanders is a first-team selection on the 1976 Class A All-State Football Team, which was announced Sunday, January 16.

The teams are selected annually by the Texas Sports Writers Association.

"He has been a great team leader for us in the last three years," praised Head Coach James Williams. "He has done a tremendous job. Allen has been a leader on the football field and in the classroom as well."

In receiving this honor, Allen Sanders follows his older brother, Richard Sanders, who was named to the all-state team for the 1974 season. Richard is now a student in North Texas State University, Denton.

Coach Williams noted that

they are the only two all-staters Wellington has had since he came here.

Sanders, the son of Mr. and Mrs. Joe Sanders, is a 6-3, 190-pound senior, with 4.9 quickness in the 40. He started on both offense and defense for three years during which the Skyrockets compiled a 23-7-1 record.

He was named to the all-district teams in 1975 and 1976. Two weeks ago Wichita Falls sports writers named him to their Red River Top 22 football players of the year.

Last year he played basketball but a leg injury has kept him off the 1976 team.

A good student scholastically, Sanders is a member of the Beta Club. He is also Student Body vice president.

Allen will attend college but he is still looking for the one that will best fit his individual

needs, for he wants to play college football.

It is a tribute to the men who have coached him that he intends to become an athletic coach.

"It takes a lot of individual work for a player to accomplish this, also a lot of team work from his teammates. Allen is aware of this," said Coach Williams.

"He is real coachable and tries to do everything you want him to. He tries to do the best he can for everyone involved."

The only other Panhandle player to receive a first-team bid was Claude receiver Geoff Forbes.

Memphis, eliminated in the fading seconds of the regional finals by Hart, had two second-team berths. Running back Kirk Fields was picked on offense while Pedro Salinas was chosen for defensive back.

## Area Captains Named for Heart Fund Drive

Area captains were announced this week for the 1977 heart drive in Collingsworth County by Mrs. Raymond Ford, Heart Campaign chairman.

The captains include Bill Beall, business; Mrs. Guy Owens, residential; Mrs. Bob Goforth, Highway 83; G.B. Hopper, East Wellington; Mrs. B.B. Martin, Dodson; Mrs. Delbert White, Quail; Mrs. Charles Roberts, Sam-

norwood; and Ike Paschall, Lutie.

Additional captains are being recruited, and each captain will appoint his workers to assist in distributing life-saving information and collecting money in the heart campaign which is set for February.

A workers' meeting will be held at the Heritage Room in the Wellington State Bank on Thursday night, January 27 at

7 o'clock. Mrs. Ford has announced. Mrs. Betty Musick of Amarillo, regional director of the American Heart Association, will conduct the training meeting for all workers.

Members of the Wellington High School Future Homemakers of America chapter and of a girl scout troop are volunteers who will assist in the preparation for the

campaign.

"These people join over two million volunteers nationally," said Mrs. Ford, "and that sounds like a lot. But you must remember, heart and blood vessel diseases afflict one out of seven Americans, killing one out of every two Americans who die. Against that, we need all the volunteers and money we can get."

# Baumgardner, Isaacs Show Top Steer and Lamb in Show Saturday

A middle-weight Hereford steer shown by David Baumgardner was grand champion of the winter steer show Saturday, January 8.

Stan Tate of Abra Community had the reserve champion, a Simmental-Hereford cross.

First place in the lamb division went to Gary Isaacs, while Harold McKinney showed the second place winner.

Coach Don Reeves said overall, the calves "were about as even a set of calves as

ever shown here." The show judge, Dink Wilson, pointed out that within the classes, there was little difference in the calves exhibited.

Baumgardner's calf was bred by Billy Mac Sims at his ranch south of Wellington.

This is the second consecutive year that the youthful owner has exhibited the grand champion of the winter show.

David is the son of Mr. and Mrs. David Baumgardner. Stan's calf, which placed second in the middle weight

class, is a Simmental. His parents are Mr. and Mrs. Rudie Tate.

Third place in the middle weight was Lynn Tate, Stan's brother, who showed a Limousine. Kirk Patterson's Limousine was fourth and his Hereford placed fifth. Stan's Hereford was sixth.

In the heavy weight division, a Charlois-Limousine-Hereford cross shown by Darvin Nix was in first place; Mark Fourmentin's Limousine, second; Barry

Long, Angus, third; Lynn Tate, Limousine, fourth; David Baumgardner, Main Anjou, fifth; and Harold Scott, Angus-Hereford Cross, sixth.

In the light weight class, a Hereford shown by Joe Baumgardner was first; two Angus steers exhibited by Mark Fourmentin placed second and third. Lynn Tate's Hereford was fourth and another Hereford belonging to Paul Estes placed fifth.

Besides Gary Isaacs first place sheep, and the second place animal belonging to Harold McKinney, other exhibitors were Jacen Jeffrey, third; Leigh Myrick, fourth; John Birkey, fifth and Leigh Myrick, sixth.

The championship trophies and place ribbons were given by the City State Bank.

**#4-continued from page 1** county librarian is paid through a federally funded program.

Members of the county historical committee for the year are Mr. and Mrs. Clyde Drake, Mr. and Mrs. Doug Coleman, Mrs. Edd Henard, Mrs. Lynn Wright, Mrs. L.C. Hill, Mr. and Mrs. B.M. Sims and Mrs. Murray Dodson.

In still other action, the commissioners approved a motion to advertise for the school depository and to accept the grant for the 100th judicial district criminal investigator.

By another resolution, the 100th District Probation funds were transferred to the district judge. Bonds of Deputy Sheriff Julian Torrez and Mrs. Frances Williams, tax assessor-collector were approved.

December fines, which help to finance the combined law enforcement program, were noted: \$2,434 from the justice of the peace and \$253 from the county-district clerk. Also transferred to the law enforcement fund were \$2,687.80 from the officer salary fund and \$1,599.75 from revenue sharing.

Other action approved according to minutes of the meeting were:

-To allow employees to attend National Guard.

-Approved the actual use general revenue sharing report.

-Voted to advertise for supplies, materials, fuels and oils.

-To lower the cash balance to be placed in the audit budget category of the general fund to \$8,000.

## Presidents Certificate Honors Riley Dunson

Mrs. Riley Dunson has received a certificate of recognition from President Gerald R. Ford in memory of the late Mr. Dunson.

A veteran of World War I, he died November 18, 1976.

The certificate reads: The United States of America Honors the memory of Riley Dunson.

This certificate is awarded by a grateful nation in recognition of devoted and selfless consecration to the service of our country in the Armed Forces of the United States.

Gerald R. Ford  
President of the United States

## County Farmers to Attend Convention

A large group from Collingsworth County will attend the annual convention of the Texas Farmers Union to be held in Amarillo Thursday through Saturday, January 20 to 22.

The Hilton Inn will be headquarters.

Delegates from Collingsworth County Farmers Union are Carroll Nunnelley, president, Rudie Tate, W.R. Breeding, Kirby Campbell, Dan Henard, Jr., Dan Langford and Delbert White.

Alternates are Donald Langley, Garland Hightower, J.L. Alexander, Wilbur DePauw, Doug Seal and Joe Knoll.

Mr. and Mrs. Nunnelley and Mr. and Mrs. Tate are members of the planning

**#3-continued from page 1** office.

Friends report Mrs. McKinney is preparing to renovate and remodel the house and clean-up operations began late last week.

This is the second time she has lost her home to fire in Wellington. The other occurred at Christmas, 1941, while she and the late Mr. McKinney were out of town on a holiday visit.

## Rockets Lose Close Games At Clarendon

Wellington Rockets and Rockettes lost a pair of close games to Clarendon Tuesday, January 11 on the Broncho's court. Clarendon boys won 39-37 and the girls won 53-47.

The Rockets unfolded a new line of attack, the four-corner offense, which is working well. In this, they hold the ball until a good lay-up shot opens for them and altogether try to slow the game. "It will pay off for us later on. The kids have lots of confidence in it," said Coach Robert Hicks.

At halftime, Wellington was behind only one point, 19-18, and at the third, the Rockets led 31-24. Clarendon came back in the final quarter to make 15 points and hold Wellington to 6, ending the game 39-37.

High point player for Wellington was Carl Taylor with 13 while Shane Tarver had 9, Jon Sessions 6, Tony Martinez 4, Robert Powell three, and Bob Cummings two.

Billy Gardner scored 13 for Clarendon, Irven Thomas 9, Gary Thomas 6, Kevin Floyd, 5, Billy Newhouse four and Jerry Lemons two.

The second quarter defeated Wellington girls, as Clarendon outscored them 20 to 7.

Wellington outpointed their opponents from the floor, but Clarendon made 21 of 25 free throws, a good percentage and Wellington made only 13 of 28.

"We did not play as good as we are capable of playing. I watched Clarendon the week before, and they played much better than I thought they would.

Lee Ann Sessions scored 18 points, Pam Ingram 17, Suzy Chandley 11 and Kloette Camp one. Tunnell made 24 for Clarendon, Nance 15 and Myers 14.

## Memphis Victor Over Rockets Fri.

Wellington Skyrockets met the District 2-A Leader, Memphis here Friday, January 14, and stayed with them until through much of the play, losing the possibility of a win only in the last two minutes.

Memphis took the game 57-43.

Wellington girls were defeated 69-39.

"Memphis has been scoring a lot of points on other people and we were determined to hold down their points, said Coach Robert Hicks.

The first half was slow, and Memphis led 25-14 at that point.

The Rockets trailed 40-24 at the third period, but in the fourth, they scored 19 points to 17 for Memphis, and the game ended 57-43.

Wellington scored 32 percent of its shots from the floor during the first half and 63 percent the second half.

Memphis had the Rockets outsize, but they were able to come up with 43 rebounds, which is above average. However to control the boards, around 60 would have been needed.

Shane Tarver scored 12 points, Bob Cummings 11, Jon Sessions 10, Tony Martinez 6 and Carl Taylor 4.

For Memphis, Anthony Johnson had 13, Kirk Fields, 12, Ricky Guy 11, Tracy Galloway 9, Woodrow Richard son 5, Randall Shahan 4, and Steve Flemmons two.

Wellington girls were behind only 12 points at the end of the third period. They scored at the beginning of the fourth to make it 10. Then, everything fell apart for the Rockettes and Memphis outscored them 26-8 in the last

period "and embarrassed us," said Coach Bruce Dollar.

"For the first three quarters we played good ball. Then it was as if we had stepped off the court and left them out there by themselves," he added.

Wellington trailed only 14-9 at the first period and 29-23 at halftime.

For Wellington, Lee Ann Sessions scored 16 points, Suzy Chandler 10, Kloette Camp 8 and Pam Ingram 5. Memphis outstanding forward, Fay Beck, had 40 points; Jana Davis 21. Jane Richardson 6 and Hutcherson two.

## Electrical Shock Injures Myrick

Rodney Myrick, Wellington vo-ag instructor, received an electrical shock, Wednesday evening, January 12, while washing sheep for the youth livestock show.

Myrick said his clothes were wet when he picked up a blower to dry an animal. Apparently it had a short, he continued, and his body made a ground for the electric current.

He received emergency treatment at Collingsworth General Hospital, then taken by Volunteer Ambulance Service to an orthopedic surgeon at Jackson County Memorial Hospital, Altus, Okla.

The accident occurred at the Wellington School Bus Barn.

If you want good luck, some people believe that you will get it by turning your hat around and then pulling your pockets out!

## County Has Traffic Death in December

The Texas Highway Patrol investigated five accidents on rural highways in Collingsworth County during the month of December, 1976 according to Sergeant James Powell, Highway Patrol supervisor of this area.

These crashes resulted in one person killed and five persons injured.

The rural traffic accident summary for this county during the first twelve months of 1976 shows a total of 14 accidents resulting in one person killed and 17 persons injured.

The report for surrounding counties includes: Childress: three accidents, no deaths or injuries. Cottle: two accidents, no deaths, two injuries. Donley: 12 accidents, no deaths, two injuries. Gray: 10 accidents, no deaths, two injuries.

ters, Mrs. Robert G. Dillard of Austin and Mrs. James R. Ross of Quail; 7 grandchildren and 15 great grandchildren. Only other survivors are Mrs. Stuart Condron of Canyon, a sister-in-law, and Fenn Bourland of Newburg, Oregon, a brother-in-law.

The family requests that memorials be in the form of donations to the Collingsworth County Historical Museum or the building fund of First United Methodist Church in Wellington, or to the Fine Arts Department of Clarendon College.

## Wellington Leader

Published every Thursday at 913 West Ave., Wellington, Tex. 79095. Entered as second class mail Aug. 25, 1909 at the post office at Wellington, Texas. HENRY W. WELLS, Editor and Publisher. Subscription rates: \$7.00 a year inside of trade territory; \$10.00 a year outside of trade territory.

**Come By**

**Ray's Exxon**

Friendly Service

All Major Oil Brands


AND NOW...

**WHOLESALE DIESEL**

For All Your Farm Equipment


**Ray's Exxon**

102-8th Street  
447-5696



*FLOWERS, since time began, have been man's cherished symbols of regard.*

*Through the ages, they have spoken eloquently of love, respect, admiration.*




**Carroll's Flowers**  
—Fresh Cut Flowers - Plants—  
Brass Gift Items - Pottery  
Phone 447-2345 or 447-2985  
Orders Called Anywhere

Master Charge Bank Americard Diners Club

American Express

Free Delivery



**OPEN 24 HOURS**



**ALLSUP'S CONVENIENCE STORES**

**SAVINGS GALORE AT YOUR FRIENDLY ALLSUP'S STORE!**

**PRICES GOOD THURSDAY THRU SATURDAY, JANUARY 20-22, 1977**

	<b>BORDEN'S BUTTERMILK</b>	1/2 GAL. CTN.	<b>69¢</b>
	<b>GOLD MEDAL FLOUR</b>	5 LB. BAG	<b>59¢</b>
	<b>SHURFRESH BACON</b>	1 LB. PKG.	<b>99¢</b>

**ALLSUP'S TOP QUALITY BUYS**

DORITOS BRAND NACHO FLAVOR TORTILLA CHIPS	79¢ SIZE PKG.	<b>59¢</b>
12 OZ. PACKAGE SHURFRESH FRANKS	EA.	<b>59¢</b>
JOY DISH DETERGENT	22 OZ. BOTTLE	<b>89¢</b>
CELLO 1 lb. PKG. TOMATOES	3 / \$	<b>1 00</b>
FOX PIZZA		<b>79¢</b>

**HOT COOKED FOODS**

•BBQ CHICKEN	•BBQ RIBS
•HOT LINKS	•MILD LINKS
•BURRITOS	•CORN DOGS
•GERMAN SAUSAGE	•BULK BBQ BEEF
•BBQ BEEF SANDWICHES	

**COKES or 7-UP 64-oz. 79¢**

**COKES or 7-UP 6-pk. 10-oz. 68¢**  
Plus Deposit

SHOP THE FRIENDLY, CONVENIENT ALLSUP'S STORE NEAR YOU!



West Ave. & 15th St.—Phone 447-9872  
Mrs. Marie Black, Manager

# I Saw... by Virginia Robey

Hopes rose high early Monday as a daily newspaper reported Wellington was to receive a \$370,000 grant from the Commerce Department for improvements and to increase employment. No such application had been made. What a windfall! Something for nothing!

Within the first hour Mayor Billy Hatch, who was completely in the dark, too, received 7 phone calls with suggestions on how to spend the money.

Hopes went down just as fast as word came that this was really Wellington, Utah, that was to receive the money to build water lines.

The only connection we can see is that in the alphabet, U as in Utah comes just after T as in Texas.

Mary Sain called about the picture of the late Judge E.H. Small's home south of Aberdeen (also east of Lutie) used on a recent editorial page.

Her father, L.E. Tingle, his father, A.J. Tingle, and sister, and brother-in-law, Sherm and

Sarah Branch, lived there in 1925-26. By that time, the Floyd Thompsons owned the land, and it is presently on the Marvin Knoll place, just east of their house. There is now no trace of the Small Home.

Some months ago James Sullivan was wondering about pictures of the old Katy Depot and train. Does someone have a good one?

Also, are there any pictures of Pearl, this county's own ghost town?

Margaret Vines of the Chamber of Commerce says the water lines being laid near Dodson are bringing in workmen, some with wives, who are hunting places to live.

## Watts Receives Hand Injury

Danny Watts received a deep cut on the palm of his left hand Tuesday, January 11, as he was putting a disc on a tamdem disc at his farm in Loco community.

The 6-inch cut extended from the base of his fingers to his wrist. Seven stitches were

## Grandchildren Perfect for 5th Annual Valentine Issue

Pictures of children to be included in The Wellington Leader's Valentine Section are already arriving--brought by grandparents eager for everyone to see the youngsters in their families.

The fifth annual Wellington Leader Valentine pages, featuring all these grandchildren, will be published Thursday, February 10.

This is a special event for grandparents only!

Here is what you do:

Bring a picture, preferably billfold size, to The Wellington Leader not later than Saturday noon, February 5. Also the

grandparents should bring the youngster's name, the names of the parents and as many grandparents and great grandparents as the child may have.

This is for children one day through six years of age.

The child's face will appear on a special valentine on the greeting page.

The children featured may live anywhere in the world, and it is not necessary that the grandparents sending the pictures live in Collingsworth County either.

There is a charge of \$5.00 per picture and the pictures may be picked up following publication.

## Memphis Downs Wellington B

The Skyrocket boys B team bowed to Memphis B, 58-28 in a game here Friday, January 15.

At the end of the first quarter, Wellington led 8-4, then Memphis forged ahead to lead 27-15 at halftime.

"In the third and fourth quarters, they showed us how the fast break is supposed to be run," commented Coach Ronnie Glenn.

James Thomas led Wellington scoring with 10 points; Kevin Hall had 5, Marty Warrick and Lynn Hurst four each, David Baumgardner and Alvin Pennon, two each; and Jeffrey Camp one. This gives the Wellington B team a 1-4 record for the season.



**LET US "DIG" FOR YOU!**

... for an insurance policy, that is! We'll shop many of the largest insurance companies in the country for the policy that will meet your needs and probably SAVE YOU MONEY too! Call your Independent Insurance Agency today!

**1<sup>ST.</sup> WELLINGTON AGENCY**

447-2517

YOUR Independent Insurance Agency SERVES YOU FIRST

**MONTGOMERY WARD** At your service.

**We Can Fix It!!**

Save 10% On—

**Air Conditioner Service**  
**Refrigerator - Service**  
**Color TV Picture Tubes**  
**Lawn Mower Tune-Ups**  
**Tiller Tune-Ups**

**In Our Service Dept**  
**Through Feb. 28, 1977**

Ask About Our Service Contracts

---

Call or visit Wards Service Dept.  
Phone 447-2518 806 East Ave, Wellington  
In Childress Phone 937-2591 In Shamrock 256-2127



**Ladies Pantsuits**

Long Sleeves  
regular 11.97 for  
**\$10<sup>49</sup>**

"WHERE YOU ALWAYS BUY THE BEST FOR LESS"

**GIBSON'S DISCOUNT CENTER**

New Shipment of **Dacron Batting** ..... **\$3<sup>59</sup>**



**Johnson Baby Powder**

regular 1.69 for  
**\$1<sup>35</sup>**


14 oz.



**Mens PVC Jackets**

Men's 100% Poly Vinyl Chloride Shell jacket. 100% nylon lining Ass't sizes.


regular 14.97 for  
**\$10<sup>97</sup>**



**Sewing Thread**

Special buy.  
**6 for \$1**

Polyester thread.



**Johnson Baby Lotion**


16 oz. regular 1.99 for  
**\$1<sup>57</sup>**



**Bufferin**

165's

regular 2.89 for  
**\$2<sup>47</sup>**



**4-Way Nasal Spray**

1/2 oz. regular or menthol regular 1.19 for  
**98¢**



**Pro Toothbrushes**

4 / \$1<sup>00</sup>

**Charmin Toilet Tissue** 4 roll pkg. **79¢**



**Kraft Grape Jelly** 2 lb. jar for **89¢**



**One Group of Boys Long Sleeve Shirts**

regular 3.97 value  
**\$2<sup>49</sup>**

**Head & Shoulders Shampoo**

Hates your dandruff... Loves your hair

4 oz. tube or 7 oz. lotion  
**\$1<sup>47</sup>**

**Palmolive Liquid Detergent** 32 oz. **98¢**

**Meadowlake Oleo** Quarters **39¢**

**Hunts Tomato Catsup** 32 oz. **69¢**



**Johnson Wax**

regular 2.39 for  
**\$1<sup>95</sup>**

16 oz. kit



**Clairol Frost & Tip**

regular 4.97 for  
**\$3<sup>95</sup>**

**Del Monte Cut Green Beans** 303 size can **3 / 87¢**

**Del Monte Creme Style Corn** **4 / \$1<sup>00</sup>**

**Coca Cola** 6 pk. cans for **99¢**



JUDGING LAMBS - Livestock judge Dink Wilson looks over the lot of six at the county show Sat., Jan. 15.

### Five Ask Post of Constable

The Commissioners Court met Monday, January 17, to consider appointment of a constable to succeed the late Bruce Hite, then tabled the measure for further study.

There are five applicants for the post according to County Judge Zook Thomas. They are

Alvin Horton, Sam Adams, Wilson L. Porter, Delmer Doc Turner and N.E. Childers.

The Veterans Administration sends compensation and pension checks totaling \$8 billion a year to some five million recipients.

### Twisters Open For Members

The Wellington Texas Twisters square dance club is opening its membership rolls to anyone interested in learning to square dance. Mrs. Carolyn Devoss, reporter, said this week.

A regular dance will be held Friday, January 21, at 8:00 p.m. in the American Legion Hall. and anyone wanting to

become a member is invited. Those wishing additional information may call Mrs. Hubert Bowen, president, Mrs. DeVoss, or any member. Regular dances are held on the first and third Friday nights of each month at 8:00 p.m.

In England, there is still a "Knights of the Round Table Club" which claims to be the oldest social club in the world, having been founded in 1721!

### Thomas Nursing Center News

We express deepest sympathy to the family of Mrs. Edna Bourland.

Mrs. Helen Ford is in the hospital.

Mrs. Martha Reeves was last week game winner.

We are grateful for those that made our special activities possible last week.

On Monday afternoon we always look forward to our time for games. R.S.V.P. members help with our games.

Tuesday afternoon we had our sing along with Mrs. Jack Davis. During this time we honored Tommy Thomas with a surprise birthday party. Cake and punch were served. On Tuesday evening Hugh Bledsoe and the Childress Quartet sang for us. A large crowd enjoyed this.

Rev. Wayne Pulliam came for our Bible study on Wednesday afternoon and we all were blessed from the study on prayer.

Mrs. Trudie Peters and the Church of Christ children always thrill us with their singing on Wednesday evenings.

Mrs. Mellie Lacy and Tom Wilkins were here for a time of singing Friday evening.

Saturday evening we enjoyed a trio from the Nazarene church. They were Joyce Harrison, Susan Kimbro and Marcia Lindley.

Rev. Pulliam and members have been in charge of Sunday afternoon worship service this month.

Our visitors were: Visiting Doc Dean was his niece, Mrs. Louise Sandlin from Iola, Kansas.

Mrs. Clara Smith from Mangum, Okla. and Mrs. Naomi Cromar from Vinson

visited Mrs. Vinnie Talkington.

Mr. and Mrs. Cecil Back from McLean visited his mother, Mrs. Mattie Back.

Visiting Mr. and Mrs. Otis Roberson were their daughter, Mrs. Patsy Graves from Amarillo and Mr. and Mrs. Clifton Stafford from Springtown. Mrs. Roberson visited in the home of her sister, Mr. and Mrs. Leonard Karnes Saturday.

Visiting Guy Bumpas were his grandson, Mr. and Mrs. Jimmy Hewlette and baby from Dallas.

Mrs. Stella Payne from Tulia visited Mrs. Grace Johnson.

Mr. and Mrs. Jerrell Jacobs from Amarillo visited her grandmother, Mrs. Cornelia King.

Mr. and Mrs. Robert Oliver from Los Angeles, Calif., visited her father, Gabriel Smith.

Mrs. Alma Clement visited in the home of her son, E.W. Clement and her daughter, Mrs. Pearl Harwell.

Mrs. Ida Killian visited in the home of her son, Mr. and Mrs. J.B. Killian.

### Anderson, Peters Teaching ECA

Tom Anderson and Marshall Peters are assisting in teaching the Emergency Care Attendant course which is beginning in Shamrock.

There is an enrollment of 40.

Both Anderson and Peters were recently state certified as Emergency Medical Technician and Emergency Care Attendant instructors.

Mr. and Mrs. Alvin Horton were in Arlington recently to visit their son, Mr. and Mrs. John Horton and John Ed. They attended John Ed's fourth birthday party while they were there.

The work photography means drawing with light, according to World Book Encyclopedia. A camera picture is a picture drawn with rays of lights.

Sell it with a Classified Ad.

### OPEN UNDER NEW MANAGEMENT

### WATCH FOR OUR GRAND OPENING COMING SOON

Specials - Limited Supply - 1st come 1st served

Wrights - All Meat Bologna lb. .... 98¢

Ground Beef lb. .... 79¢

Longhorn Cheese lb. .... \$1.39

Reg. Jello Gelatin Dessert. .... 5/1.00

Grade A Large EGGS dozen. .... 79¢

Banquet Pot Pies. .... 4/1.00

Kountry Fresh, Sweet & Buttermilk BISCUITS 10 in can. .... 7/\$1.00

100 Watt Light Bulbs 2/pak. .... 79¢

Borden 1/2 Gal. Round Ice Cream. .... \$1.09

64 oz. No Return COKES each .... 79¢

### Pic & Save Grocery

Sidney McGill

604 Haskell 447-2668



## LANIER Insulation Wellington, Texas

Let the Insulation experts spend a day in your attic

"Heat Losses are Dollar Losses"

# THERM-CON INSULATION

is today's best investment.

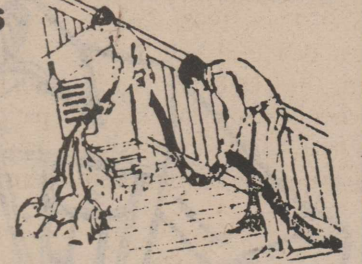
If your butane bill is too high for heating your home or if your natural gas bill is too high for heating your home or if your electricity bill is too high for heating your home, we feel we can help save you money.

THERM-CON Insulation not only adds permanent value to your home, it also pays each month in cash saving due to lower heat bills. You can conserve 40% of your heat losses if you insulate your ceiling only.

THERM-CON has an R VALUE of 4.5 per inch which is more than rock wool or fiberglass. That is, it has more resistance to heat and cold per inch insulation than the others.

Free Demonstrations Free Estimates

FINANCING AVAILABLE F. H. A. APPROVED



Contact: Shannon Lanier

Regie Souder Sales Representatives

Gary Lanier Day 447-2443 Night 447-5456

## YOU CAN BANK on It!

By BILLY MOSELEY President CITY STATE BANK

Commonly called the FDIC, the Federal Deposit Insurance Corporation was created by Congress in the Bank Act of 1933, and became effective on the first of January, 1934, during the depths of the Great Depression.

Deposits in virtually all banks in the country are insured up to \$40,000 by this agency of the federal government. Coverage extends to bank checking accounts, savings accounts and certificates of deposit.

Increases in the amount of the insurance stand as something of a yardstick to measure the affluence and savings habits of Americans. When the FDIC first began insuring accounts the limit was \$2,500. That amount has steadily increased up to the present level which went into effect on November 27, 1974.

Contrary to some misconceptions, this valuable service is not financed by the government, but rather by the banks themselves. Presently, banks are assessed one-half of one percent of their year-end deposits.

"We want to"

1976

## The Annual Financial Report, Collingsworth County

FUND	BALANCE 12-31-75	RECEIPTS	EXPENDITURES	BALANCE 12-31-76	CERTIFICATE OF DEPOSIT
JURY	\$ 5,440.22	\$ 7,127.69	\$ 6,065.49	\$ 6,502.42	\$ 4,000.00
ROAD AND BRIDGE	6,243.09	191,461.79	194,294.84	3,410.04	60,000.00
GENERAL	13,014.23	92,791.09	94,945.55	10,859.77	60,000.00
COURTHOUSE AND JAIL	5,403.27	34,078.62	31,365.71	8,116.18	10,000.00
OFFICERS SALARY	5,308.24	83,801.56	80,915.19	8,194.61	25,000.00
SOCIAL SECURITY	1,937.79	25,562.28	25,606.85	1,893.22	
CRIMINAL JUSTICE PLANNING	95.32	2,850.00	2,851.79	93.53	
REVENUE SHARING					
TRUST	14,599.32	131,868.66	138,696.09	7,771.89	
COUNTY PARK	392.05	8,219.85	8,236.56	375.34	
<b>TOTAL</b>	<b>\$52,433.53</b>	<b>\$577,761.54</b>	<b>\$582,978.07</b>	<b>\$47,217.00</b>	<b>\$159,000.00</b>
ROAD DISTRICT #1	\$ 84.43	\$ 42.42	\$ 126.85	\$ -0-	
CONSOLIDATED LAW ENFORCEMENT	3,111.48	96,941.29	99,872.26	180.51	
PROBATION FEE	2,785.25	4,107.28	4,518.11	2,374.42	
100TH JUDICIAL DISTRICT PROBATION	8,585.30	53,102.49	48,174.50	13,513.29	
100TH JUDICIAL DISTRICT CRIMINAL INVESTIGATION	-0-	22,538.46	22,478.36	60.10	
THE STATE OF TEXAS					
COUNTY OF COLLINGSWORTH					

I, HELEN GOLLIHUGH, COUNTY-DISTRICT CLERK IN AND FOR SAID COUNTY AND STATE DO HEREBY CERTIFY THAT THE FOREGOING IS A TRUE AND CORRECT FINANCIAL REPORT OF COLLINGSWORTH COUNTY, TEXAS, AS SAME AS FILED FOR RECORD IN MY OFFICE FOR THE YEAR 1976.

This report made pursuant to Art. 1609, Acts 1893, P.160: G.L., Vol. 10, P.509: Book 238, P. 674, also Article 6252-2 infra.

GIVEN UNDER MY HAND AND SEAL OF OFFICE, THIS THE 12TH DAY OF JANUARY, 1977.



HELEN GOLLIHUGH, COUNTY-DISTRICT CLERK COLLINGSWORTH COUNTY, TEXAS

# Large Group Hears School Building, Finance Plans

A larger than expected group, present for an open meeting Thursday, January 13, heard a detailed explanation of proposed Wellington School building-renovation program and the up coming \$540,000 Schoolhouse Bond election.

That election will be February 5, and all persons living within the Wellington School District and who are registered may vote.

Supt. E.W. Clement presided at the meeting. Bob Copeland, elementary school superintendent, explained the need for the new elementary school; Thomas Brown, A.I.A. Ft. Worth, explained the construction proposed, and George B. Buescher, Jr., finance consultant from Abilene, explained the financing.

To answer those who wanted to know the cost of the program in tax dollars, Mr. Buescher pointed out that the assessed value for tax purposes of most houses in Wellington is around \$5,000.

Using this as his base, Mr. Buescher said the present yearly taxes amount to \$96, and the taxes if the bonds pass will be \$109.50. This amounts to an additional \$13.90 per year in taxes, or broken down farther, the average homeowner would be paying only \$1.13 per month additional, Mr. Buescher said.

The School district presently owes \$576,000 in bonded indebtedness maturing in the next 16 years. Upon issuance of \$540,000 in schoolhouse bonds maturing over a 21 year period, the tax needed to pay both principal and interest on the old and new bonds is calculated to be .69 cents. This is a net increase of .27 cents, since .42 cents is now levied to discharge the present debt.

Additionally, Mr. Buescher brought out that the 1976 assessed valuation for school taxes is \$13,845,694. The average annual principal and interest requirements for the period 1977 to 1998, for the present debt and new bonds would be \$90,717. Mr. Buescher said that at the .69 cent tax at 95% collection

would bring in \$90,758.

The present tax rate for the district is \$1.92. It is estimated that the new tax rate upon issuance of the bonds will be \$2.19 per \$100 valuation.

The school district present ratio of debts to assessed valuation is 4%. It can, by law, issue bonds up to 10 percent of the assessed valuation.

Mr. Brown told of proposed improvements.

There will be a new elementary building consisting of 17 classrooms, combination library and media center, offices, restrooms, nurses quarters, teacher work room and related facilities. This would include 21,000 square feet at a cost of \$16.50 per square foot for a total of \$346,500.

-Remodeled east wing of existing building for four

classrooms and tax and administrative office, at \$10.95 per square foot, totaling \$80,000.

Architect and engineering fees will be \$25,600.

-Bond expense \$13,940.

-A contingency fund \$27,960

Heating and air conditioning the high school auditorium, \$12,800.

-Refurnishing the gymnasium, including refinishing the floor, repairing bleachers, new lighting, and a new paint job, totaling \$8,200.

-Renovating the athletic stadium facilities \$25,000.

Construction of the new elementary building and the covering of that part left standing will be of four-inch pre-cast concrete panels. Additional information will be given on the construction features of the new school.

## Norwood Wins Duo

Samnorwood Eagles, playing on their opponents court, defeated Estelline boys 51-43 Friday, January 14. The Eaglettes won their game 63-44.

Norwood girls trailed two points at the first quarter, 14-12 and the game was tied 28-28 at halftime. The Eaglettes had forged an 11 point lead at the third, 48-37.

"We didn't play real well the first half, and Estelline caused a great deal of this," said Coach Kenneth Martindale. "But we came back at the beginning of the third and scored 10 straight points before their forwards ever touched the ball, and that made the difference. We built on that for the remainder of the game."

DiAnna Schaub had 22 points, Tonya Kincannon 21

and Mable Bryant 20. Tammy Bates had 20 for Estelline.

The Eagles led 17-12 at the end of the first period and 31-27 at halftime. The score was still close at the third, 39-36 Norwood. Then in the final period, the Eagles scored 13 points and held Estelline to 7.

Norwood boys made 46 percent of their attempted field goals and 53 percent from the free throw line. Clifford Oldham led the rebounding with 9.

"We didn't play a real good game, but we played well enough to win," said Coach Dale Morris.

Three high point men for Norwood were Lowry Schaub 17, Clifford Oldham 10 and Clinton Oldham 8.

Joe Nivins had 13 for Estelline.

## Lunchrooms

WELLINGTON


Monday-Jan. 24: Weiners stuffed with cheese, green beans, mashed potatoes, cranberry sauce, hot rolls and butter, 1/2 pint milk.

Tuesday-Jan. 25: Spaghetti with meat sauce, buttered cauliflower, green peas, fruit, cookie, bread, 1/2 pint milk.

Wednesday-Jan. 26: Tacos-taco sauce, lettuce and tomato salad, whole kernel corn, carrot sticks, fruit cobbler, bread, 1/2 pint milk.

Thursday-Jan. 27: Hamburger on a bun, cheese slice, onion, pickles, mustard, lettuce and tomatoes, tater tots-catsup, fruit cocktail, 1/2 pint milk.

Friday-Jan. 28: Pizza (ground beef and cheese), orange juice, mashed potatoes, tossed salad, cookie, 1/2 pint milk.



# SALE

## 20% Off

Wall's Goose Down & Polyester Filled Coats, Jackets & Vests for men & Western Style Belts & Buckles

### LIVESTOCK SUPPLY COMPANY

Kent Holland, owner

#### Animal Health Supplies

Hwy. 83  
Day - 447-2708 Night - 447-2797

## Hospital Notes

Visiting Hours: 2:00 to 4:30 p.m.; 7:00 to 8:30 p.m.

Mrs. Mattie Maddox, medical, was admitted Jan. 11.

Noel Turner was a medical patient from Jan. 11 to Jan. 15.

Mrs. Ravena Graves, medical, has been a patient since Jan. 11.

Floyd Jackson, medical, was admitted Jan. 11 and dismissed Jan. 14.

Danny Watts, medical, was hospitalized Jan. 11 and released Jan. 13.

Orbie Offutt, medical, was admitted Jan. 11 and dismissed Jan. 12.

Mrs. Bud Seale, surgical, was hospitalized Jan. 12.

Mrs. Jewell Morgan, medical, was admitted Jan. 12 and dismissed Jan. 14.

Melva Massey, medical, was hospitalized Jan. 12.

Mrs. Ruby Wood was admitted as a medical patient Jan. 12 and released Jan. 16.

Mrs. Howard Crosby, medical, was admitted Jan. 12 and released Jan. 14.

Mrs. B.E. McKinney was hospitalized as a medical patient Jan. 13 and dismissed Jan. 15.

Mrs. Kate Estes, medical, was admitted Jan. 13.

George Roberts, medical, was admitted Jan. 13.

Mrs. Maude Vaughan, medical, was hospitalized Jan. 13.

Raymond Barton was a medical patient Jan. 13 and Jan. 15.

Mrs. Carolyn Westmoreland, Wheeler, surgical, was admitted Jan. 14.

Earl Hunter, medical, was hospitalized Jan. 15.

Murray Dodson, medical, was admitted Jan. 15.

Albert Bettis, medical, was admitted Jan. 16.

Mrs. T.W. Devenport, medical, was hospitalized Jan. 16.

Patients admitted earlier and dismissed since Jan. 11:

Mrs. Nora Johnson, Jan. 11. Ada Sain, Jan. 12.

Johnny Garcia, Jan. 12. Loyd Sutton, Jan. 12.

Mrs. Juanita Boyett, Jan. 12. Mrs. Georgia Bartlett, Jan. 13.

Mrs. Mabel Emmert, Jan. 14. Mrs. Clara Bettis, Jan. 15. James Wood, Jan. 16.

# STRETCH YOUR FOOD DOLLARS

## HERE!

### BONELESS CLUBS

# \$1.49

Lb.

GLAD Trash Bags 95¢  
10 count

Finish 13" Off 85¢  
33 oz.

MINUTE MAID Frozen Orange Juice 49¢  
12 oz.

CRISCO 3 lb. Tin \$1.39  
LIMIT ONE PLEASE

Duncan Hines Cake Mix 2/99¢

WHITE SWAN Biscuits 8/\$1.00

Gladiola Corn Bread Mix 2/29¢

Merico ENGLISH Muffins 47¢



### WILSON PLAZA

# Franks 49¢

12 oz.



### Van Camp's Pork & Beans

# 29¢

#300



### Wilson's Vienna Sausage

# 3/\$1.00

5 oz.



### DEL MONTE SPINACH

# 3/89¢

#303

## DOUBLE GREEN STAMPS

EVERY WEDNESDAY WITH \$2.50 OR MORE PURCHASE EXCLUDING CIGARETTES

Calif. ORANGES 23¢  
#

All Purpose White POTATOES 69¢  
10 #

3 Lb. Bag Red Delicious Apples 79¢

# HOME OWNED — HOME OPERATED

## City Grocery

James & Bernice McDanel, Owners • Phone 447-2431



## Sunday Lunch At

# Carroll's

—Appetizer—  
Soup or Salad

—Entree—  
CHICKEN & Dumplings  
Baked Ham

Chicken Fried Steak  
Roast Beef  
Golden Brown Fried Chicken

—Vegetables—  
New Potatoes & Fresh Green Beans  
Macaroni Salad  
Buttered Yellow Corn

—Dessert—  
Homemade Banana Pudding  
or  
Homemade Peach Cobbler

ORDERS TO GO WELCOME  
CALL IT IN "IT'LL BE READY"  
447-9868 or 447-2951

## B&PW Hears Discussion of Upcoming Bond Election

The Wellington Business and Professional Womens' Club met for the first meeting of the year on Tuesday, January 11, at the Community Building.

Mrs. Jack Lowry, chairman of the civic participation committee, and Mrs. Ray-

## Good Fit

## Easy to Do

COLLEGE STATION -- Simple alterations can turn a poorly fitting garment into a "good fit," making it more attractive and comfortable to wear, Mrs. Becky Culp, an area clothing specialist, points out.

"Fit is one of the most frequently listed reasons for buying (good fit) or not buying (poor fit) a garment. Influencing need for fitting alterations are weight gain, or loss, changing fashion trends such as hem lengths, individual preferences and fabric shrinkage."

Mrs. Culp is with the Texas Agricultural Extension Service, The Texas A&M University System.

The following can make fitting alterations easier and more attractive:

--Fit garments on the body right side out to get an idea of how the garment should look and because right and left sides of the body may differ.

--Before fitting, all zippers, buttons, snaps, belts and hooks and eyes should be completely fastened. Also, wear undergarments and show heel heights similar to ones planned to go with the garment.

--Analyze the garment's fit from the top down. Pin fitting adjustments and make alterations one at a time also from the top down. Adjustments made in the upper part of a garment affect the fit of the remainder of the garment and may correct other problems. Always make hem length adjustments last.

--Study the construction techniques used by the manufacturer before removing the original stitches. When restitching the same area, try to use the same or similar techniques.

--Know the limitations before you start. Garments more than one size too large or too small are difficult to alter successfully through existing seams and design lines.

--Watch for punched holes used by the manufacturer in marking and trimmed and clipped seams that cannot be let out. Also, the original stitching or fold lines on some fabrics cannot be let out without showing," she cautioned.

## Personal

Weekend guests of Mr. and Mrs. Melvin Kiker and Lon were their children, Mr. and Mrs. Dale Graves, Jamie and Cory of Littlefield and Mr. and Mrs. Cecil Burrow of Uvalde. Mr. and Mrs. Jerry Scott and Melinda joined the group Sunday.

Mr. and Mrs. Bedford Harrison of Shamrock were business visitors here Monday.

Mr. and Mrs. W.S. Ingram and John of Friona were weekend guests of his mother, Mrs. John Ingram.

Mike Gulley and Debbie Robbins of Duncan, Oklahoma were guests of Mr. and Mrs. Cicero Gulley over the weekend.

We're lowering the prices in our store 'Cause we don't 'give' stamps anymore Since we don't have to buy 'em The prices don't have to be so high and You'll save money when you come thru our door!

**BELL GROCERY**  
Hwy. 83 & 1st Street

mond Patton, co-chairman, were in charge of the program. Mrs. Lowry gave the collect, then Mrs. Patton introduced Supt. E.W. Clement of the Wellington Schools as the speaker.

He called on Mrs. Melvin Cardwell to give a report on the condition of the Wellington Elementary school and what needed to be done.

He brought the architect's drawing of the proposed new building and the remodeling of part of the present building and explained what the bond election would provide.

The bond election will be February 5 and he has been speaking to clubs and organizations about the proposed building of the elementary school. There will also be repairs to the High School auditorium.

Mrs. Lynn Wright, president, directed the business session.

The club has been asked to call donors for the Bloodmobile for February 21. Mrs. Wright gave the date for the State B&PW Convention to be held in Ft. Worth on June 10-12 and encouraged members to attend.

Mrs. D.R. McKinney was a guest of Mrs. Billy Williams and Mr. Clement a guest of the club. These members were present: Ms. Cardwell, Mrs. Truman Estes, Mrs. Lottie Handley, Mrs. J.C. Hartman, Mrs. Pearl Harwell, Mrs. Jimmie Kelso, Mrs. Mitt Lowry, Mrs. Patton, Mrs. Dudley Phipps, Mrs. L.C. Sweat, Mrs. Zook Thomas, Mrs. Billy Williams, Mrs. Wright and Miss Myra Hays.

# Society News

THE WELLINGTON (TEXAS) LEADER  
Thursday, January 20, 1977

6

## Pathfinders Hold Supper

Pathfinders of First United Methodist Church held their annual salad supper Monday evening, January 17, in the Heritage Room. Hostesses were Mrs. Gary Killian, Mrs. Dan Henard Jr., and Mrs.

Sandy Covey.

Mrs. Covey gave the program, "A New Model for Christ." The business session followed.

Those present were Mrs. Glenn Thomas, Mrs. Andy Henard, Mrs. Jerry Lewis, Mrs. Rodney Kane, Mrs. Bill Spillman, Mrs. Mark Killian, Mrs. Tommy Campbell, Mrs. John Henard III, Mrs. Gary Killian, Mrs. Dan Henard, Mrs. Covey, Miss Nancy King, members, and Mrs. Gary Patrick, Mrs. Johnny Holton and Mrs. Thomas Binford.

## Marriage Licenses

Ronnie Alvin Fullen of Ft. Story, Va., and Katherine Rene Anagnastore of Midwest City, Oklahoma, December 23. Tommy Lee Forsythe of Arapaho, Oklahoma, and Phyllis Darlene Crow McClain of Weatherford, Oklahoma, December 18.

Lonnie Leroy Green and Donna Willene Rasco, both of Wellington, January 1.

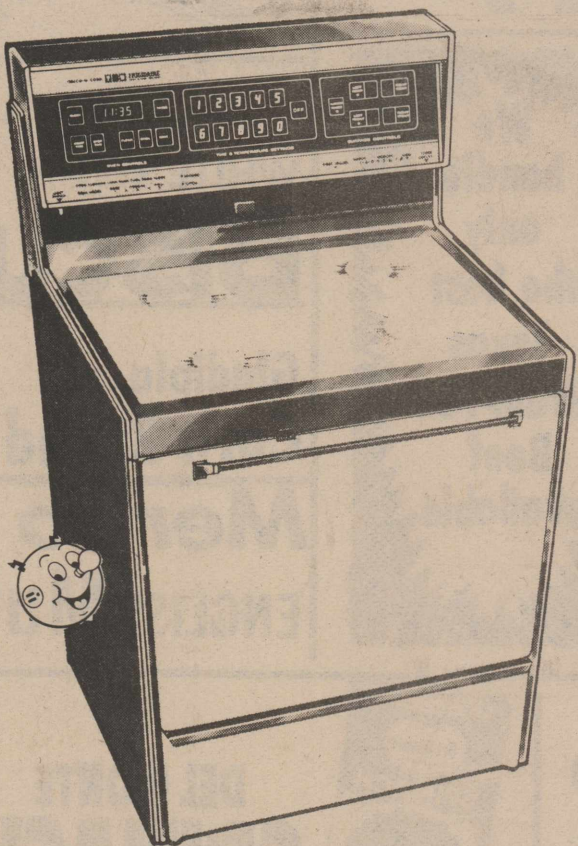
Mark Curtis Nesmith of Mangum, Oklahoma and Sandra B. Hubbell Sherwood, January 10.

Joseph Napoleon Kilgore and Linda LaRue Thomas, both of Wellington, December 30.

## Dr. M. V. Cobb

CHIROPRACTOR  
Specializing in the examination and treatment of spinal and nervous disorders  
256-2133  
310 South Main  
Shamrock, Texas

## Proper Energy Management Can Save You Money!



### ON ELECTRIC COOKING

- ☆ Don't be an oven-peeper. Every time you open the door, you lose 20% of the heat.
- ☆ Plan oven meals to accommodate more than one dish at a time, or time your baking for multiple dishes. Most recipes can stand a 25° F. temperature variation.
- ☆ Get foods for baking into the oven the moment it reaches the right temperature. Remember, you don't have to pre-heat the oven for broiling or roasting.
- ☆ Use the high setting to bring foods to steaming then switch to the lowest heat needed to complete cooking. Turn off surface units before cooking is complete and let the retained heat finish the job.

Pick up your FREE copy of "ENERGY CONSERVATION" Booklet from

**Frigidaire**  
Home Environment Division of General Motors.

WEST TEXAS UTILITIES COMPANY

**WTU**  
A Member of The Central and South West System

## DKG Meets At Memphis

Members of Gamma Kappa Chapter, Delta Kappa Gamma, heard a program on the Equal Rights Amendment Saturday, January 8, in the Bronze Room of First National Bank, Memphis.

Mrs. Betty White of Childress directed the program in the form of question and answer discussion. Panel members were Miss Helen Madden and Miss Tops Gilreath of Memphis.

The consensus favored equal rights but without a constitutional amendment.

Mrs. Jack Lowry president, directed the afternoon meeting.

Refreshments were served by the Memphis members.

Attending from Wellington were Mrs. Charley Hill, Mrs. Rufus Sweat, Mrs. Chester White, Mrs. Lowry and Miss Maudie Coffee.

## Care Corps Featured

The Volunteer Care Corps of Collingsworth County was featured in a slide and script presentation for Lillie Home Demonstration Club Thursday, January 13, when Mrs. Zook Thomas was hostess.

John Alf Thomas, who is in charge of the food stamp program, gave the program.

The slides and script by Mrs. Nova Purdy, with the State Department of Public Welfare, Lubbock, prepared the slides and script which details the unusual amount of volunteer work done in the county.

During the business session, year books were distributed and the president, Mrs. Dudley Phipps, appointed committee chairmen: Mrs. Lowell Wells, reporter; Mrs. Elmer Haralson, program; Mrs. Bill Langford, exhibit; Mrs. Wells, finance; Mrs. Jim Lowe, expansion; Mrs. Fred

Yarbrough, education; Mrs. Thomas, recreation; Mrs. Mack Horton, parliamentary. Training leaders are Mrs. Phipps, Mrs. Haskell Manuel and Mrs. Henry Langford.

Mrs. Phipps gave a quotation from the inaugural address of the late President John Kennedy.

Each member answered roll call by describing her first school. Many amusing and interesting incidents, most of them in Collingsworth County, were recalled.

Mrs. Bill Hill gave the council report.

Mrs. Wells will be hostess to the club on Thursday, January 27.

A salad buffet was served.

Members attending were Mrs. Elmer Haralson, Mrs. Bill Hill, Mrs. Charley Hill, Mrs. Mack Horton, Mrs. Earl Hunter, Mrs. Lowe, Mrs. Haskell Manuel, Mrs. Phipps,

## Mrs. Smith Hosts HDC

The Dodson Home Demonstration Club met in the home of Mrs. Carl Wayne Smith in Hollis, Oklahoma, January 11. The program was centered on "Safety". Each member answered roll call by telling what to do when tragedy strikes.

Refreshments were served to Mrs. Allene Reynolds, Mrs. Purl Tippie, Mrs. Erma Lee Lowrie, Mrs. Barbara Cochran and Hostess Mrs. Smith.

Next club date is January 25 at Nellie's Cafe in Dodson, with Allene Reynolds as hostess.

Mr. and Mrs. Ray Hamilton of Amarillo visited Mr. and Mrs. Ocie Scott last weekend.

Mrs. Wells, Mrs. Sandy Parsons, Mrs. Bill Lindsey and daughters, Mr. Thomas and the hostess, Mrs. Thomas.

# Sale Ends Sat., Jan. 22

## LAST CHANCE TO SAVE MONEY!

# FINAL DAYS BUSINESS ADJUSTMENT

Everything is reduced so much we're practically going to GIVE IT AWAY!



We're caught with too much merchandise



# MONEY SAVING SALE

## \$600 in FREE PRIZES

## Voting will end Fri., Jan. 21

## Free Votes Every Day

## Come in Each Day & Vote

## For Your Favorite Contestant

## Bonanza (Extra) Votes with

## purchase of selected merchandise

## Prizes Awarded Sat. Jan. 22

# Hatch Dry Goods

your BANKAMERICARD

Phone 447-5522

Wellington

9:30 - 5:30 Mon. - Sat.

master charge



## Miss Jelaine Beall, Keith Workman Marry in Amarillo Church Rites

Wedding vows were spoken by Miss Jelaine Beall and Keith Workman in Trinity United Methodist Church, Amarillo, Friday, January 14, at seven-thirty in the evening. Dr. Jim F. Dyer, of Wichita, Kansas, great-uncle of the bride, performed the ceremony.

Mr. and Mrs. Bill D. Beall of Wellington are the parents of the bride. The bridegroom is the son of Mr. and Mrs. Bobby D. Workman of Olton.

Church decorations were a fifteen-tiered candelabra, with ten-tier candelabras and baskets of white chrysanthemums and yellow stock on either side. The white lace unity candle was on the altar.

Wedding music was played by Mrs. Pat Kerr of Amarillo, organist, who also accompanied Miss Terrie Jan McClellan of Fritch as she sang.

The bride chose a formal wedding gown of white organza. The Queen Anne neckline and empire bodice were trimmed with Venice lace, and appliques of the lace trimmed the sheer bishop sleeves, the cuffs also were of the matching lace. The full skirt had four vertical rows of lace joined to two rows in back by appliques. The chapel train was accented with matching appliques.

To complete the ensemble, the bride wore a fingertip

length veil of white bridal illusion, edged in Venice lace and attached to a Camelot headpiece, also covered with matching lace and scattered with seed pearls.

Her bouquet of cimbidium orchids and white roses was accented with baby's breath and white ribbons. She wore an antique lavalier which belonged to her great grandmother.

Her attendants were Mrs. L.E. Larson of Amarillo, her aunt, who was matron of honor, and Miss Holly Rae Graham, of Hobbs, New Mexico, Miss Jan Jinks of Littlefield and Miss Terri Crawford of Canyon,

# Society News

THE WELLINGTON (TEXAS) LEADER  
Thursday, January 20, 1977

7

## Study Club Hears Of Proposed School

The 1954 Study Club members met in the home of Mrs. Fred Cox on Thursday, January 13th.

Mrs. Lynn Wright, club president, introduced two guests, Mr. Melvin Cardwell, Wellington High School principal, and Mrs. Bill Long, resource teacher for the Wellington schools.

These two educators presented an in-depth report on an extensive proposed school improvement program. There will be an election on February 5th, 1977, to determine if \$540,000 in schoolhouse bonds will be issued to finance these

improvements. The speakers pointed out that many might not be aware of the state of the existing elementary building, the crowded conditions there, and of improvements that must be made there and in other areas to meet present and future Texas Education Agency requirements. They hoped that the voters would become well informed concerning all the facts relating to this proposal and turn out in large numbers to approve the bond issue next month.

Attending were Mrs. A.J. Fires, Mrs. Leon Hartman, Mrs. Bill Hatch, Mrs. Cal Hurst, Mrs. Jerry Nix, Mrs. Lois Ratliff, Mrs. R.L. Templeton, Mrs. J.D. Ward, Mrs. Lynn Wright, the hostess, Mrs. Fred Cox and the guests, Mrs. Bill Long and Mr. Melvin Cardwell.

They wore formal gowns of medium blue jersey with empire bodices that rose to form high standing collar. Wide straps accented the bare backs. Contrasting blue hooded jackets, lined with royal blue were styled with long sleeves and front ties. Each attendant carried one long-stem yellow rose.

Kevin Workman of Olton, was his brother's best man, while the groomsmen and ushers were Max Moss of Olton, Lin Cope of Claude, Roger Morris of Petersburg, Jim Hand of Happy, Terry Duffy of Lemont, Illinois, and Max Beall of Wellington, brother of the bride.

Mr. Beall and Kallie Dyer of Perryton, cousin of the bride, lighted the candles.

After the ceremony, Mr. and Mrs. Beall entertained with a reception in the fellowship hall of the church.

Members of the house party were Miss Kathy McNaney of Hereford, Miss Sandra Goodin of Claude, Miss Mary Schuarz of Roswell, N.M., Miss Debbie Bullard of Lubbock and Miss Karen Walker of Duncanville.

The bride will be a candidate for the B.S. degree

## Cunninghams Host Family

Visiting in the home of Mr. and Mrs. Tom Cunningham of Sannorwood were all of their children, along with grandchildren.

These included Mr. and Mrs. James A. Cunningham and Mark of Spearman; George Cunningham and Alison of Lorenzo; and Mr. and Mrs. Jody McBrayer of Amarillo and all their children, Mr. and Mrs. Harold Wright, Shana, Rachel and Jennifer of Lubbock, Mr. and Mrs. Lonnie Moore of Amarillo, Mr. and Mrs. Ernie McBrayer and Chad, and Eddy McBrayer of Amarillo.

## Eastern Star Installs Two

With Mrs. Mary Morrow, worthy matron, presiding, two new members were installed into the Eastern Star Tuesday, January 11.

In the absence of Mrs. Cora Hurst, Mrs. Nadine Birchfield conducted the new members, Mrs. Oneta Fike and Mrs. Geney Gully to the various stations for instruction.

After the meeting, refreshments were served by the hostesses, Mrs. Nita White, and Mrs. Jennie Holcomb.

The first queen to visit the U.S. was Queen Emma of the Sandwich Islands (Hawaii) in 1866.

The bridegroom attended Panhandle State University in Goodwell, Oklahoma, where he played football, and WTSU, where his fraternity was Phi Delta Theta. He is employed by KDTW-AM Radio, Amarillo, as air personality.

After returning from the wedding trip to Ruidosa, New Mexico, the couple will live at 3005 West 27th, No. 25, Amarillo.

We've done away with the gimmicks (Except for these limericks!) If you want to save money, Then our plan is a honey No stamps-so no case of "The Lip-sticks!"

**BELL GROCERY**  
Hwy 83 & 1st Street

## Shower to Honor Beatrice McKinney

The court house personnel--county officials and employees--will host a shower for Mrs. Beatrice McKinney, justice of the peace, on Wednesday, January 26, in the Heritage Room. The hours are 2:00 to 3:30 p.m.

Mrs. McKinney's home was destroyed by fire Thursday, January 13. Most of her possessions were destroyed or damaged beyond use.

The shower is for everyone in the county who wishes to participate, said Mrs. Helen Gollighugh, county-district clerk, who is one of those planning it.



## Hearts and flowers. How sweet it is.

Flowers and romance go together. That's why flowers are the perfect surprise for your love

We have all kinds of beautiful, fragrant surprises for your sweetheart. In assorted colors and assorted prices. Just stop by or call.

Brighten her day with flowers and plants.

## Wellington Florist & Greenhouse

Alliene Shanks Phone 447-2563

Orders called Anywhere or filled from Anywhere



## Bell Grocery

447-2737

Hwy. 83 at 1st St.  
**Bob and Sharon Bell**  
Complete line of  
Over-the-counter  
Medicine  
Health &  
Beauty Aids  
Ammunition  
8-Track  
Stereo  
Tapes

### T-BONES

LB. \$1.39

Van Camp <b>Pork &amp; Beans</b> No.2 can.... <b>37¢</b>	Armour 3' Off <b>Vienna Sausage</b> ... <b>46¢</b>
Kalex <b>Bleach</b> Compare 1/2 gal. .... <b>56¢</b>	Kraft Red Midget 1 lb. <b>Longhorn Cheese</b> <b>\$1.39</b>
Campbell's <b>SOUP</b> Chicken Noodle <b>22¢</b>	Banquet Salisbury <b>Steak Dinner</b> 11 oz. .... <b>52¢</b>
Dash Laundry 100 oz. box <b>Detergent</b> ... <b>25¢ OFF</b>	Mrs. Baird's <b>3/\$1.00</b> <b>Hamburger Buns</b>
Mrs. Tuckers <b>Shortening</b> 42 oz. .... <b>\$1.03</b>	Del Monte Family Style <b>CORN</b> 303 can. .... <b>29¢</b>
Comet <b>Cleanser</b> ..... <b>2¢ OFF</b>	<b>Round Steak</b> LB. <b>\$1.19</b>
Popsrite Yellow <b>Popcorn</b> 2 lb. bag. .... <b>59¢</b>	<b>Chili Meat</b> LB. .... <b>99¢</b>
Popsrite Yellow <b>Popcorn</b> 1 lb. bag. .... <b>29¢</b>	<b>Stew Meat</b> LB. .... <b>\$1.29</b>
3 Minute 16 oz. box <b>Treasure Oats.</b> <b>53¢</b>	Kraft Catalina <b>Dressing</b> 8 oz. .... <b>52¢</b>
	Kraft French <b>Dressing</b> 8 oz. .... <b>49¢</b>

Only Store Open on Sundays  
With FRESH MEAT

The store that has just a little bit of everything!  
No Stamps, No Gimmicks---Just Low Prices!

it's Good!



## Country Basket SALE

**Dairy Queen**

A Great Country Meal and a Good Deal.

You get both, with the 99¢ Country Basket Sale. The Country Basket, with chicken-fried meat strips, golden fries, Texas toast, and country gravy. If you like country cookin', you'll love The Country Basket. On Sale!

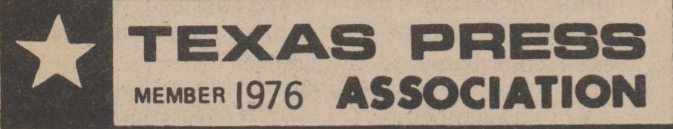
Tuesday through Sunday only-January 18-23

at participating stores.

# Wellington Leader

Published Every Thursday  
at 913 West Avenue, Wellington, Texas 79095  
H. Deskins Wells, Editor and Publisher, 1925-1976  
Henry W. Wells, Editor and Publisher

Entered as second class mail Aug. 25, 1909 at the post office at Wellington, Texas, under Act of March 3, 1879.



Member  
**NATIONAL NEWSPAPER** Press Association  
Association - Founded 1886

NOTICE: Any erroneous reflection upon the character, standing or reputation of any person, firm or corporation which may appear in the columns of THE WELLINGTON LEADER will be corrected gladly upon its being brought to the attention of the publisher.

\$7.00 a year inside of trade territory  
\$10.00 a year outside of trade territory

THE WELLINGTON (TEXAS) LEADER  
Thursday, January 20, 1977

8

## County Improvement Projects Should Be Followed by Others

The south-southeast part of the county is getting its rural water system. At the opposite end, the gap in the Abra FM road is being completed. Wellington will have block grant improvement funds for street surfacing and home improvement. All in 1977.

These are public funds. Wellington will also have a new half-million dollar elementary school plant and a new Methodist Church. We have in an application for airport improvement funding.

This county is off and running in the new year. But we must not let this fine start die for lack of energy or interest. There is much else that we need.

What are your ideas? What do you think we should work on during the next 12 months? Let yourself be heard. Most of the above projects have been several years in preliminary stages. This could well be true of new projects. What do we need that is feasible? Will you be willing to work on it?

## A Coveted Honor

One of Oklahoma's finest small communities has done it again. Weatherford has long been known for its Southwestern State University, its aggressive industrial task force that landed such prizes as the 3M Manufacturing Plant, and as the home town of astronaut Thomas Stafford.

And now to the list the fact that Weatherford is first among all the nation's small communities in Keeping America Beautiful.

Weatherford won that coveted honor at the Keep America Beautiful, Inc. national awards banquet held in New York the other day. It was the only city in the Western United States to win a 1976 award.

The city of Weatherford and the Chamber of Commerce join in sponsoring the majority of projects to keep Weatherford in spit-and-polish condition. Among the 1976 projects was one in which businessmen joined the town's fire and sanitation departments in a thorough cleaning of the main business district. The town maintains a hot-line for residents seeking help to clean vacant lots or solve other community problems. Special cleanup days are held periodically with 19 organizations involved in cleaning target areas and planting trees.

"Beautiful!" A town can well afford to swell with pride when it has earned that title.

The Duncan (Oklahoma) Banner

## Cruel and Unusual

Is execution for capital crimes "cruel and unusual punishment"? Many Americans believe that it is, and as many more are certain that those who object to capital punishment on any grounds, humanitarian, religious, or moral, are themselves guilty, per se, of "being soft on crime."

And the United States Supreme Court, which must be the final arbiter in this matter, since the question is at this point a legal one, not a moral one, can't seem to arrive at any firm decision at all. The Court must make a decision, basing it on legal and Constitutional grounds. When the Court has made its determination as to what the law and the Constitution demand, the American people may then have to decide whether or not the Constitution and the law should be changed to conform to the moral views of a majority of the populace.

That is the only way in which a final determination can be made in a democracy...or should be made.

But while we continue to debate whether or not execution for capital crimes is, indeed, "cruel and unusual punishment" as defined by our Constitution, there can be little doubt that the current temporizing, and day to day delays of execution by one court order or another, is indeed cruel and unusual.

This is like Chinese water torture...not fatal, perhaps, but mighty hard on the nervous system. The convicted criminals on death row, and their fellow-citizens on the outside alike, are surely entitled to a firm and final decision from the Supreme Court...or if the Justices are in doubt, to a permanent stay of all executions until the matter can be settled, one way or another, by Constitutional revision on which the people will be the jury.

Canadian Record



PANORAMIC VIEW

Reproduced above is about one-third of an early-day panoramic view of the Dodson area that was made with a revolving camera. Photo courtesy Collingsworth County Museum



AUSTIN — The 65th legislature reported at the capitol last week and quickly organized for business.

House Speaker Bill Clayton was re-elected to a second term without opposition, and both houses adopted procedural rules with a minimum of controversy.

What opposition there was to Clayton's House rules centered on a change which would permit representatives, by resolution, to direct closed-door sessions of committees.

Both Clayton and Lt. Gov. Bill Hobby in the Senate lost no time in naming their standing committees, clearing the decks for early hearings on bills.

And Gov. Dolph Briscoe, a week earlier than usual, spelled out his recommendations for legislation in a state-of-the-state message.

Briscoe urged top priority tags on school and highway finance programs — which will cost more than \$800 million each — for public health measures and crime control.

The governor repeated his familiar commitment to veto any spending which would require new or additional taxes and expanded the pledge:

"There will be no new or additional state taxes so long as I am governor."

If the governor seeks and wins another four-year-term next year, the anti-tax promise will extend until the 1983 legislature.

Both Briscoe and Clayton emphasized need for fiscal restraint.

Clayton urged prudent handling of \$3 billion in increased revenue as a top legislative policy goal.

### Briscoe Running

Gov. Briscoe edged closer to jumping into a race for a third term at a meeting with nearly 300 supporters at a South Texas ranch recently.

Reports indicated the governor told the gathering he expected to announce his candidacy after the legislature adjourns at the end of May. He later conceded

that he only promised to make a "formal announcement" sometime in the future, but he added his intentions are "well known."

Meanwhile, Atty. Gen. John Hill opened a campaign office and hired (effective February 1) former Texas AFL-CIO Political and Legislative Director John Rogers to help him beef up his organization. However, Hill, who acknowledges he aspires to be governor, said he has not definitely made up his mind to be a candidate and will wait until the legislature adjourns to announce

his decision.

When rumors began circulating that Agriculture Commissioner John C. White may go to Washington as deputy U.S. Secretary of Agriculture, a long line of prospective candidates for his state job began forming.

### Appointments

Gov. Dolph Briscoe named three old friends, Jess Hay of Dallas, Mrs. Roland Blumberg of Seguin and Dr. Sterling Fly Jr. of Ulvade to The University of Texas board of regents.

## Grandparents:

This Year Let's Have A Big

Valentine from YOU

Here's A Chance To Make Your Children & Grandchildren Happy!

Send Or Bring Us A Cute Photo Of Your

Grandchild

(We Promise To Return It Unharmed)

We'll Place It In A Heart

(Like The One On The Right)

Including Name,

And On

Thursday, February 10

(The Last Paper Before)

Valentine's Day,

Your Little Valentine Will Appear In Our Paper!

Ages: 1 Day To 6 Years

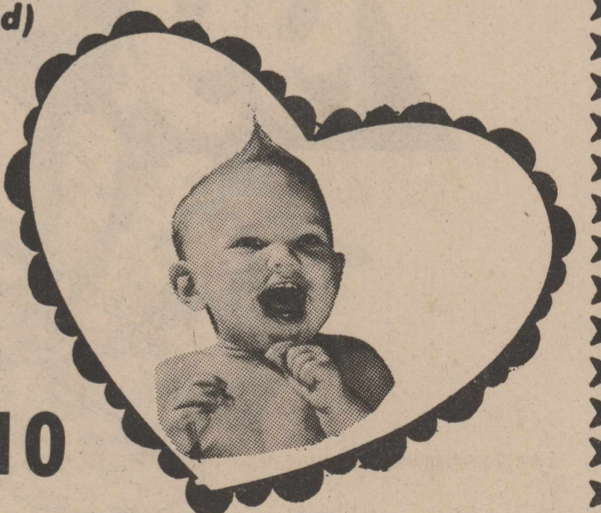
HURRY, NOW! THE

DEADLINE IS

February 3rd

The Cost Is Only \$5.00 Per Heart

Wellington Leader



### OLD CHINESE PROVERB SAY:

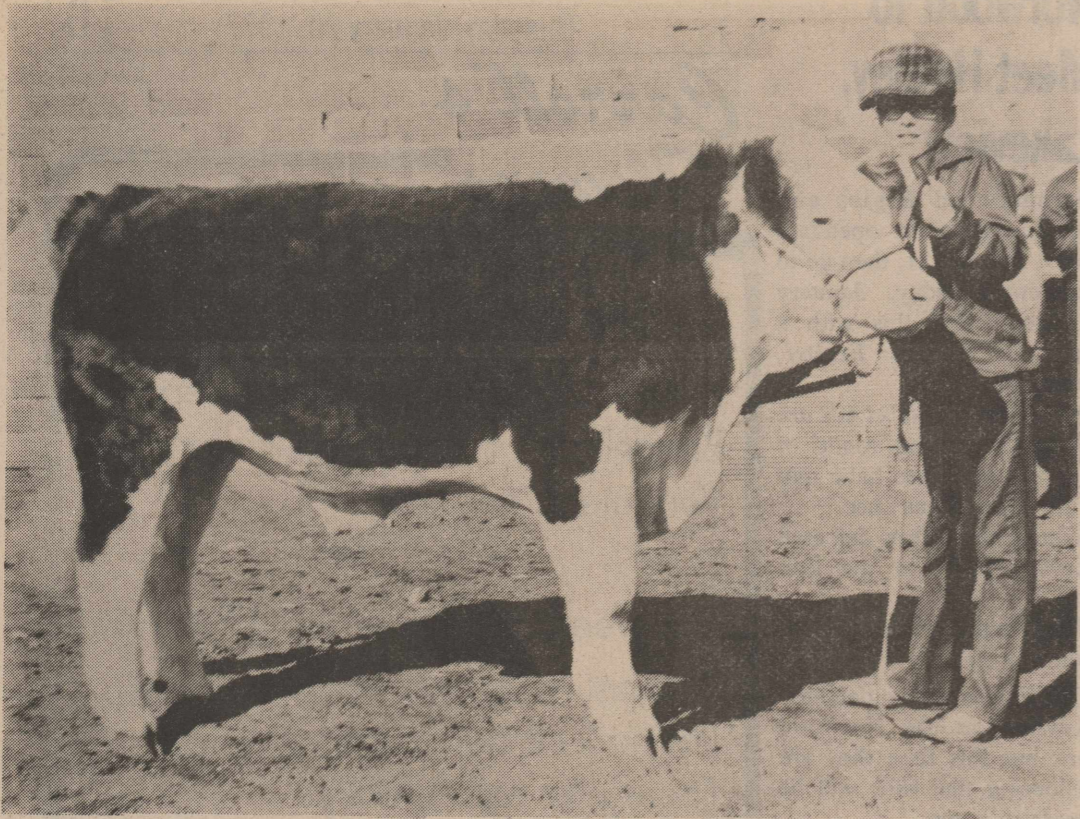
"Smart people go to FIRST FEDERAL SAVINGS & LOAN ASSOCIATION for all business and personal loans."

Interest rates are low on personal and business loans. We are happy to help you with all of your financial problems.



FIRST FEDERAL SAVINGS & LOAN ASSOCIATION OF CHILDRESS

WELLINGTON BRANCH  
815 W. Ave. 447-2730



RESERVE GRAND CHAMPION-Stan Tate exhibits Simmental-Herford calf at the livestock show Saturday.

## New Responsibilities, New Office for Cong. Hightower

(Washington, D.C.)—Congressman Jack Hightower begins his second term in the Congress with new responsibilities, new staff members and a new office.

Hightower, on Jan. 11, was nominated by the Steering Committee of the House Democratic Caucus to serve on the Government Operations Committee. His nomination was assured Tuesday when the Steering Committee selected Hightower from 20 applicants to fill one of eight positions available on the Committee.

Claiborn Crain, a native of Canyon and most recently Director of Media Services for the Texas State Senate, has joined the Congressman's Washington staff. Dr. Isabelle Hunt, former Professor in the Political Science Department at Midwestern State University, will work part-time in the Wichita Falls District Office.

On Tuesday, January 4 the Congressmen moved from smaller offices in the Longworth House Office Building

to Room 120, Cannon House Office Building. The ability to move to larger offices at the beginning of each Congress is dictated by a member's seniority.

"I am delighted by the changes that have been made," Hightower said, "and I am approaching my new responsibilities with great enthusiasm."

"The activities of the Government Operations Committee are important to the interests of the 13th District," he said, "and I believe it will complement my service on the House Agriculture Committee, which will continue to be my major committee."

Hightower said that during the last two years his constituents have made it very clear that they wanted him to do whatever he could to help mandate a more responsive, more responsible and more efficient federal government—a government that interferes less in their daily lives.

"This is my top priority," Hightower said, "and I

believe the Government Operations Committee, more than any other committee in the Congress, will provide the best opportunity for me to work toward achieving it."

One of the Committee's primary responsibilities is to oversee the over-all economy and efficiency of government operations and activities, including oversight of all budget and accounting measures other than appropriations.

The oldest branch in all the nation's military services is the army's infantry branch.

No more fooling with high prices  
To save money, our advice is  
Come see Bob Bell (And Sharon, as well)  
And your pocketbook will know what "Nice" is!  
**BELL GROCERY**  
Hwy 83 & 1st Street

## Eighth Grade Splits At Shamrock

Eighth grade girls defeated Shamrock 43-26 there Monday, January 17, while the boys lost 38-28.

"This was our second district game and the girls played real well and put up a good defense. That leaves us on top in the district with a 2-0 record," said Coach Bruce Dollar.

Sandy Morris scored 17

points, Kathleen Reeves 16 and LaVonda Thomas 8.

For Shamrock, Maxwell had 15, Galmore 6 and Campbell 5.

Eighth grade boys played the best game of their season, leading at halftime and at the third. In the final period, however, they got into foul trouble and lost two players.

"That made the difference," said Coach Bruce Dollar.

THE WELLINGTON (TEXAS) LEADER  
Thursday, January 20, 1977

9

## No New Year's Baby in County

January is almost three weeks old, and the county has not had a New Year's Baby.

A larger than usual number of babies are due to be born at Collingsworth General Hospital during March and April, but the first baby of 1977 has yet to be born.

Sell it with a Classified Ad.

Darrell Thomas had 16 points, Joe Saldana 5, Tim Anderson four and Lennie Archie three. Clarendon's Bennett made 14, Rather 11, Salinas 9, Miller, Nelson and Luna two each.

Eighth grade boys and girls meet Clarendon here Monday, January 24. The girls have not met before, but the boys

played in the Childress Junior High Tournament with Wellington winning by about 12 points.

Mr. and Mrs. Jim Hewlett and baby daughter, Stefanie, of Arlington, visited his grandparents, Mr. and Mrs. Guy Bumpas over the weekend.

# Saied's Final Clearance

Department Store

Ladies Fall Dresses, Pant Suits, Coats,  
Lady Wrangler Sportswear,  
Jane Colby Sportswear

Final Clearance

All Go At **1/2 price**

## Men's Knit Shirts

Entire Stock Final Clearance

**1/2 price**

## Men's Sport Coats

By Curlee - Campus

Entire Stock Final Clearance

**1/2 price**

## Ladies Girdles & Long Line Bras

Values to \$14.00

Closing Out  
1 Huge Group

By Olga, Formfit, Real Form, Playtex

**\$1.00 to \$7.00**

## Super Look Pantie

Playtex

Stock up and get up to \$5  
Cash Refund from Playtex

## Men's Suits

By Curlee - Campus

One Group Final Clearance

**1/2 price**

## Men's and Boys Jackets

Final Clearance **1/2 price**

## Boys Knit Shirts

By Donmoor - Campus

Entire Stock Final Clearance

**1/2 price**

Buy now and save for Back to School

## Ladies Fall Cobblers Shoes

Final Clearance **1/2 price**

## Donmoor Knit Shirts

Final Clearance Values to \$6.50

One Group **\$1.99** Extra Special

Ladies Jump Suits  
Final Clearance  
**33 1/3 % Off**

Final Clearance  
Children's (Girls) Blouses  
**1/2 price**

## Men's Hanes Briefs

Reg. 3 for \$4.99

**3 for \$3.49**

Extra Special

One Week Only

## All State and County

# TAXES

Are Now Due

Avoid a Penalty by Paying Your Taxes  
Before The Deadline

**January 31  
1977**

Penalty and Interest  
will be added  
beginning February 1

Vehicle Licenses Go on Sale February 1

**Frances Williams**

Tax Assessor-Collector of Collingsworth County

Saied's  
Department Store

Phone 447-5747

### Cates on House Appropriations Committee

AUSTIN--Rep. Phil Cates of Shamrock has been named to the House Appropriations Committee by Speaker Bill Clayton.

Cates, who is in his fourth term, was on Human Resources and Agriculture and Livestock committees last session. Members on Appropriations serve on no other committee.

He is one of 21 members on the Appropriations Committee who will consider all bills and resolutions appropriating money from the State Treasury. It is considered the most powerful committee in the House.

Clayton said Cates' tenure in the Legislature made him a good choice for the committee. "I know that he can be of great service to the committee and the people of Texas."

### G.H. Brewer In Amarillo Hospital

G.H. Brewer has been a patient in St. Anthony's Hospital, Amarillo, since Monday, January 10.

A daughter Mr. and Mrs. Herbert Bearden and Miss Mary Bearden, took him to Amarillo. A grandson, Gary Brewer has visited him, as have other members of the family here.

Mr. Brewer has two daughters in Amarillo, Mrs. Floyd McNabb and Mrs. Jessie Brown.

### PUBLIC NOTICE

The Greenbelt Electric Co-operative, Inc. announces that it is making an application for a loan from the Rural Electrification Administration which will provide for the construction of approximately two and one-half (2 1/2) miles of 69,000 volt transmission line. The facilities covered by this announcement will consist of two and one-half (2 1/2) miles of single-pole transmission line running on approximately fifty (50) foot wide right-of-way from Southwestern Public Service Co. substation [substation at southwest side of City] at Wheeler, Texas to a point two (2) miles south of Wheeler.

The substation will be a 1000 KVA, 69,000 volt to 7200/12470 volt facility. Such facility normally requires a 2.06 acre site. The transmission line as proposed will consist of wooden pole single-pole structures designed for normal spacing of approximately 400 feet between structures and having an esthetic value exceeding other types of overhead structures requiring two (2) poles, or structures, at each location and greater widths for right-of-way. The route was selected considering environmental impact, ease of construction and economical advantages, as well as avoiding crossing on or near recorded historical sites.

If there are any comments on the environmental aspects of the proposed construction, they should be submitted to the Cooperative within thirty (30) days of the publication of this notice. Additional information may be obtained at the Cooperative's office at 706 10th St., Wellington, Texas; Telephone 806/447/2536.

### PUBLIC NOTICE

Samnorwood School Board is taking sealed bids on:  
Two-year-old Craftman-Commercial Endless Blade Hacksaw; 1/2 HP; 1725 RPM. Perfect Condition. Can be seen at Samnorwood Ag Shop.  
Bids will be opened Monday, February 14. The Board reserves the right to refuse any or all bids. Mail bids to:  
Rex Peoples  
Superintendent of Schools  
Box 765  
Samnorwood, Texas 79077-26-2c

**Dr. Chester L. Harrison**  
Optometrist  
Tuesday & Friday  
Wellington, Texas



FIRST PLACE LAMB - Gary Isaacs' lamb was judged best of six entries at the county livestock show last weekend.

### Delores McCaig Dies January 6

Mrs. Delores Somerville McCaig, of Santa Fe, New Mexico, died in the hospital there on Thursday, January 6. Memorial services were held at the United Methodist Church at 10 a.m. on January 10, with the Reverend William D. McReynolds officiating. Interment was in the National Cemetery with the Order of the Eastern Star conducting graveside services.

Mrs. McCaig, the daughter of Mrs. Mayme Somerville and the late Marvin Somerville, was born in Wellington on April 8, 1933, and graduated from Wellington High School in 1950. She served as secretary of the graduating class and was a member of the Skyrocket Band. After attending Wayland Junior College in Plainview, she studied at Texas Tech, where she was a member of Zeta Tau Alpha. At Lubbock she was married to Donald W. McCaig on September 1, 1952. Later she received her degree from the University of New Mexico in Albuquerque. Mrs. McCaig taught at Young Junior High School in Santa Fe before resigning to assist her husband in his business, the Southwest Mineral and Rock Supply.

A devoted and faithful church worker, Mrs. McCaig first became a member of the church at Wellington. In Santa Fe she worked on the publication of the church newspaper and bulletin. As a member of the A.A.U.W. she was state chairman of the Scholarship Fund. She was a member of the Eastern Star and was an advisor for the Rainbow Girls.

Mrs. McCaig is survived by her husband, Donald McCaig of Santa Fe, her mother, Mrs. Mayme Somerville of Wellington, and a sister, Mrs. Nicholas Louis of Detroit, Michigan. An infant son preceded her in death in 1965.

Leader Want Ads get quick results.

### FIRST BAPTIST CHURCH TELEVISION SCHEDULE

CABLE CHANNEL 5

Jan. 23 - 29

#### SUNDAY

10:15 a.m. Sunday School FBC  
11:00 a.m. Worship Service FBC  
7:00 p.m. Worship Service FBC

#### MONDAY

10:00 a.m. Houston FBC Worship

#### TUESDAY

10:00 a.m. Sunday AM Worship FBC  
7:00 p.m. Puntito - Spanish  
7:05 p.m. Luz para un Mundo en tinieblas  
7:30 p.m. La Respueta

#### WEDNESDAY

10:00 a.m. Jacob's Brothers  
7:00 p.m. James Robison Presents  
7:30 p.m. Human Dimensions  
8:00 p.m. Amarillo FBC Worship

#### THURSDAY

10:00 a.m. Amarillo FBC Worship

#### FRIDAY

10:00 a.m. Selection

### Bloodmobile Visit Will be February 21

Collingsworth County residents will make their semi-annual donation of blood Monday, February 21, during the semi-annual visit of the bloodmobile from Red River Red Cross Regional Blood Center, Wichita Falls.

Announcement of the date was made by Charles Floyd, administrator of Collingsworth General Hospital.

Because of a conflict in the use of Bura Handley Community Center, the blood center is presently scheduled at First Baptist Church Fellowship Hall, Mr. Floyd noted.

The county's quota is 118 units of blood, a figure based on the county's population.

Mrs. Ernest Harwell and Wellington Business Professional Women's club are in charge of the blood donor campaign. Wellington Young Home-

makers will assist. Mr. Floyd reminded that the visit this year is on a Monday, a change from that of recent visits.

### CJC Sociology Class Planned

Sociology 243, Introduction to Sociology and Spanish 262, Conversational Spanish will be offered at Childress this spring. Both classes will meet each Monday night starting January 24 and end on May 11. Registration for the classes will be held on Monday, January 17 from 6-7 p.m. in the High School.

Cost of each course is \$50.00 plus books. For additional information contact the Registrar's Office at Clarendon College or Mr. Herman Vinson at Childress.

### Norwood to Meet Hedley, Lakeview

Samnorwood Eagles and Eaglettes have an opendate Friday, January 21, then go to Lakeview Tuesday, January 25. They follow this with a game at Hedley Friday, January 28.

All teams in District 4-B are now in the second round of play, and therefore have met all the other teams once.

Samnorwood girls defeated Lakeview 58-57 in the first game.

They were victors over Hedley 64-24. The Eagles easily defeated Lakeview on the Norwood court, but this time they are considering that they will be away from home.

"Lakeview always plays pretty good ball at home. We've got to be sure we're mentally ready to play," said Coach Dale Morris.

### Carroll's Flowers

All Hours Phone 447-2345 or 447-2985  
Carroll Daves, Owner

We have received a new Shipment of 3" green plants!

- |                     |                    |
|---------------------|--------------------|
| Prayer              | Strawberry Begonia |
| Bromeliad           | Tri-Color Wax Ivy  |
| Verigated Peperomia | And Others         |

This week; Special on Ivy \$1.00 per pot

Also just received; Plant Gro Lights (for dark corners of your house)

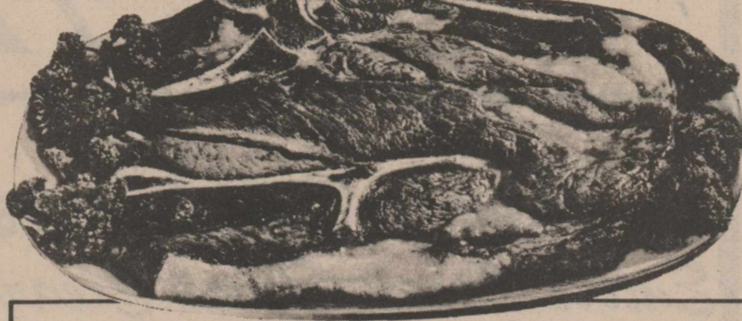
Fits regular light socket.

75 watts & 150 watts

Guaranteed for 1 year.

\$5.89 and \$5.99

## You Get A Lot More Without Paying More At Thriftway!!



U.S.D.A. CHOICE BEEF-BLADE CUT

**CHUCK ROAST**

**69¢**

U.S.D.A. CHOICE BEEF BONELESS  
**CHUCK ROAST**  
**99¢**

FRESH-GUARANTEED 73% LEAN  
**GROUND BEEF**  
**79¢**

SLICED VACUUM PACKED  
**SHURFRESH BACON**  
**\$1.19**

10 CT. PKG.  
**69¢**  
32 OZ. PKG.  
**69¢**  
U.S.D.A. CHOICE BEEF LEAN  
**CUBES FOR STEW**  
**\$1.19**

U.S.D.A. CHOICE  
**BEEF CHUCK STEAK** ..... **89¢**  
U.S.D.A. CHOICE BEEF TENDERIZED  
**BEEF CUTLETS** ..... **\$1.79**  
HOMES  
**LITTLE SIZZLERS** ..... **89¢**  
HOMES W/BRANDED  
**SMOKED FRANKS** ..... **\$1.39**

HUNT'S TOMATO  
**JUICE**  
46 OZ. CAN  
**49¢**

RANCH STYLE  
**BEANS**  
15 OZ. CANS  
**\$1.49**

12 HOUR RELIEF  
**CONTACT**  
10 CT. PKG.  
**99¢**

HUNT'S TOMATO  
**Ketchup**  
QUART BTL.  
**69¢**

SAUSAGE-HAMBURGER-CHEESE-PEPPERONI  
**TOTINO'S PIZZA**  
13 1/2 OZ. PKG.  
**79¢**

**4 \$1**

LIQUID COLD MEDICINE  
**CONTACT JR.**  
4 OZ. BTL.  
**\$1.79**

**COCA COLA**  
10 OZ., PLUS DEPOSIT.....  
**69¢**  
64 OZ., NO DEPOSIT.....  
**79¢**

BIRDSEYE LITTLE  
**CORN ON THE COB**  
8 EAR PKG.  
**79¢**

CHUNK STYLE  
**SHURFINE TUNA** ..... **59¢**  
BATHROOM TISSUE  
**FAMILY SCOTT** ..... **69¢**  
NEW IMPROVED PAPER  
**BOUNTY TOWELS** ..... **59¢**  
SKINNERS THIN  
**SPAGHETTI** ..... **59¢**  
INSTANT COFFEE  
**MAXWELL HOUSE** ..... **\$3.99**

SHURFINE GRANULATED  
**SUGAR**  
LB. BAG  
**589¢**

SUNSHINE GRAHAM  
**CRACKERS** ..... **59¢**  
NABISCO  
**OREO COOKIES** ..... **79¢**  
BRAND CHEESE FLAVORED FRIED  
**CHEE-TOS PUFFS** ..... **59¢**  
FRANCO AMERICAN  
**BEEF RAVIOLI** ..... **49¢**  
FRANCO AMERICAN  
**ROTONI** ..... **29¢**  
FRANCO AMERICAN-WITH MEAT BALLS  
**ROTONI** ..... **49¢**

SHURFRESH  
**SOFT MARGARINE** 1 LB. BOWL **49¢**  
SHURFRESH LONGHORN  
**COLBY CHEESE** ..... **89¢**

20¢ OFF LABEL DISHWASHER  
**Cascade**  
50 OZ. BOX  
**\$1.29**

HEINZ 15 1/2 OZ. WITH BEANS 15 OZ. WITHOUT YOUR CHOICE  
**CHILI FIXIN'S** ..... **69¢**  
NEW TEXTIZE IN-EZ SPRAYER  
**SPRAY & WASH** ..... **\$1.19**

BEEF, CHICKEN, OR LIVER FLAVORED DOG FOOD  
**STRONGHEART**  
15 1/2 OZ. CANS MIX-N-MATCH  
**89¢**

40¢ OFF LABEL DETERGENT  
**Tide**  
FAMILY SIZE BOX  
**\$4.29**

TEXAS RUBY RED  
**GRAPE-FRUIT**  
6 \$1

FOR BETTER BAKING  
**BAKE-RITE SHORTENING**  
3 LB. CAN  
**99¢**

BAMA RED  
**GRAPE JAM PLUM JAM APPLE JELLY**  
18 OZ. BTL. YOUR CHOICE  
**59¢**

WASHINGTON  
**ROME APPLES** ..... **4 \$1.00**  
SUPER  
**SELECT CUCUMBERS** ..... **29¢**  
CRYSTAL WAXED  
**WHITE ONIONS** ..... **25¢**  
LARGE  
**BELL PEPPERS** ..... **49¢**

WE SELL AFFILIATED MONEY ORDERS

VALID COUPON NO. 2876-7  
POST CEREAL  
**HONEY COMB** 12 OZ. PKG. **79¢**  
WITH THIS COUPON VOID JANUARY 22, 1977 LIMIT ONE COUPON PER CUSTOMER  
**THRIFTWAY**

DOUBLE  
**BUCCANEER STAMPS**  
Wednesday with \$2.50 Purchase or more



WE SELL AFFILIATED MONEY ORDERS

DOUBLE  
**BUCCANEER STAMPS**  
Wednesday with \$2.50 Purchase or more

Ranch Style  
**TENDERCRUST BREAD**

WASHINGTON  
**ROME APPLES** ..... **4 \$1.00**  
SUPER  
**SELECT CUCUMBERS** ..... **29¢**  
CRYSTAL WAXED  
**WHITE ONIONS** ..... **25¢**  
LARGE  
**BELL PEPPERS** ..... **49¢**

WE SELL AFFILIATED MONEY ORDERS

VALID COUPON NO. 2876-7  
POST CEREAL  
**HONEY COMB** 12 OZ. PKG. **79¢**  
WITH THIS COUPON VOID JANUARY 22, 1977 LIMIT ONE COUPON PER CUSTOMER  
**THRIFTWAY**

DOUBLE  
**BUCCANEER STAMPS**  
Wednesday with \$2.50 Purchase or more

WE SELL AFFILIATED MONEY ORDERS

WE SELL AFFILIATED MONEY ORDERS

VALID COUPON NO. 2876-7  
POST CEREAL  
**HONEY COMB** 12 OZ. PKG. **79¢**  
WITH THIS COUPON VOID JANUARY 22, 1977 LIMIT ONE COUPON PER CUSTOMER  
**THRIFTWAY**

DOUBLE  
**BUCCANEER STAMPS**  
Wednesday with \$2.50 Purchase or more

WE SELL AFFILIATED MONEY ORDERS

WE SELL AFFILIATED MONEY ORDERS

VALID COUPON NO. 2876-7  
POST CEREAL  
**HONEY COMB** 12 OZ. PKG. **79¢**  
WITH THIS COUPON VOID JANUARY 22, 1977 LIMIT ONE COUPON PER CUSTOMER  
**THRIFTWAY**

DOUBLE  
**BUCCANEER STAMPS**  
Wednesday with \$2.50 Purchase or more

WE SELL AFFILIATED MONEY ORDERS

WE SELL AFFILIATED MONEY ORDERS

VALID COUPON NO. 2876-7  
POST CEREAL  
**HONEY COMB** 12 OZ. PKG. **79¢**  
WITH THIS COUPON VOID JANUARY 22, 1977 LIMIT ONE COUPON PER CUSTOMER  
**THRIFTWAY**

DOUBLE  
**BUCCANEER STAMPS**  
Wednesday with \$2.50 Purchase or more

**WANT...  
TO BUY?  
TO SELL?  
RESULTS?**

# WANT ADS

**...WILL  
WORK  
FOR YOU!**

THE WELLINGTON (TEXAS) LEADER  
Thursday, January 20, 1977

11

## Want Ad Information

Reader Ads (Minimum Charge \$1)  
per word, when paid in advance ..... 10c  
Additional Insertions, when paid in  
advance, per word ..... 5c  
Display Advertising in Classified  
Section, per column inch ..... \$1.50  
Repeat Insertion Display Ads in  
classified section, per column inch ..... \$1.00  
Deadline for Want Ads — Noon Tuesday  
Phone 447-5493

### PUBLIC NOTICE

ORDER TO ACCEPT BIDS FOR  
COLLINGSWORTH COUNTY  
FUNDS AND COLLINGSWORTH  
COUNTY COMMON SCHOOL  
FUNDS

It is the order of the  
Commissioners' Court that the  
County Clerk advertise in the local  
newspaper for depository for  
Collingsworth County Funds and  
Depository for Collingsworth  
County Common School Funds.

Bids to be opened at regular  
session of Commissioners' Court  
in the regular meeting place,  
Monday, February 14, 1977, at  
10:00 A.M. Said Depository for  
1977-78.

Helen Gollighugh  
County Clerk  
Collingsworth County, Texas

### PUBLIC NOTICE

ORDER TO ADVERTISE FOR  
SUPPLIES, MATERIALS  
FUELS AND OILS

A motion was made by  
Commissioner Hartman, duly  
seconded by Commissioner Lowe  
and carried unanimously that the  
County Clerk be instructed to  
advertise for Supplies, Materials,  
Fuels and Oils. Bids to be opened  
at regular meeting place,  
February 14, 1977 at 2:00 P.M.

CGM-18'-86" Quote per foot;  
1-Beam -8"-10"-12"-14"-16"  
Quote per foot

Bridge Nails, 70 Spike  
Lumber-Bridge Timber 3"x12"  
x16" - 3"x12"x24"

Fuel and Oils:  
Gas, Regular-State Octane  
Oils-S-3, 20w and 30w  
Gas Engine 20w and 30w

**WANTED - Listings of farms and  
ranches. Have buyers — What have  
you for sale — what do you want  
to buy?**

Temple Slay Realtor  
1618 S. Western  
Amarillo, Tex. 79106  
Phone 806/352-5617

### FOR SALE

Blacksmith Shop, fully equipped.  
You can walk in and begin operation.  
Lots, building, equipment and supplies  
(Former Howard Crosby Shop)

See  
SAM ADAMS

Representing  
Littleton Real Estate  
Phones 447-2811 Nite 447-2478  
Wellington, Tex.

### Custom Draperies

One window or whole  
house. Made  
ESPECIALLY for you.  
Installation FREE  
Call 256-3652

Brannon's Custom  
Draperies  
Shamrock, Texas 79079  
35-tfc

Johnny's Texaco  
447-2916

KCTX  
Radio 1510  
Childress, Texas  
Local News on the Hour  
52B-tfc

### Butler-Gilmore Locker

Expert Butchering - 17 Years Experience  
8 a.m. - 5:30 p.m. Mon. - Fri.  
8 a.m. - 1:00 p.m. Saturday  
Call 447-5660 any time.

New Reduced Prices.  
Beef Slaughter - \$6 per head  
Beef Processing - 13¢ per lb.  
including tenderizing, wrapping,  
and cutting to your specification  
Choice Grain-Fed Freezer Beef  
½ beef - 79¢ per lb. cut & wrapped  
Also whole beef, hind & front quarters

Slaughtering on Tuesdays & Fridays

FARM—RANCH—COMMERCIAL  
Orville W. Canningham Real Estate  
(405) 683-4225 Reed, Okla. 73563  
(915) 672-2481 Abilene, Texas

NEED LISTINGS ON GOOD  
FARMS OF ANY SIZES

Now Two Phones  
CALL IN YOUR ORDER - IT'LL BE READY

# Carroll's

Phone 447-9868 or 447-2951

OPEN 7 DAYS A WEEK  
8 a.m. to 11 p.m. Monday thru Saturday  
6 a.m. to 11 p.m. Sunday  
Breakfast served til noon on Sunday

Automatic Transmission oil,  
10w and 30w

Gear Grease-Cartridge all  
purpose, Lum. 90w

Tires and Tubes-State plan;  
Flat tire repair

The Commissioners Court  
reserves the right to reject any  
and all bids submitted.

Helen Gollighugh  
County Clerk  
Collingsworth County, Texas  
25-2c

### HELP WANTED

HELP WANTED: Medication  
Aid, must have medication  
course or be willing to attend  
medication course. Relief work  
3 to 11 and 11 to 7.  
Dependability and concern for  
Geriatrics absolute necessity.  
Contact Larry or Opal White,  
Clarendon, Texas. Phone  
874-3711. 25-2c

WANTED: Man or woman to  
help care for my husband.  
Mornings 9 to 12. See Mrs.  
Guy Bumpas, 1404 Dalhart.  
26-1p

HELP WANTED: Daytime fry  
cook. Starting salary \$2.30 an  
hour. Call or come by Dairy  
Queen. 24-tfc

### Card of Thanks

I want to thank our many  
friends for their prayers,  
visits, cards, flowers and food  
during my illness. I thank you  
all so very much.  
Myrtle Lou Hall

CUSTOM PLOWING  
CHISELING  
BIG OXING

FLAT BREAKING  
(with or without pucker)

LISTING

FERTILIZING  
(Treflan Application)

DAVID CAISON  
447-2672

### FOR SALE

FOR SALE: Mesquite fire-  
wood. \$45 cord delivered.  
David Currie, phone 683-4344,  
Reed, Okla. 26-1p

FOR SALE: 1968 Chevy  
Pickup. Call Ray Null,  
447-5430. 26-2c

FOR SALE: 4-row Servis  
shredder 160. Phone 447-2397.  
26-2c

COLD FEET? We have 3 types  
of rubber boots for cold wet  
weather. LIVESTOCK SUP-  
PLY Hwy 83, day 447-2708;  
night 447-2797. 26-tfc

FOR SALE: Four room house,  
4 lots. Very reasonable.  
ALSO windmill for sale,  
reasonable. Phone 447-2988.  
26-2c

MEN'S COATS, vests, jackets  
& belts now REDUCED at  
Kent Holland's Livestock  
Supply, Hwy 83, day 447-2708;  
night 447-2797. 26-tfc

LARGE ROOMY HOUSE FOR  
SALE. Large lot, close to  
town, reasonable. Call 447-  
2988. 26-2c

LOST: One heavy, gray,  
plastic barrel on US 83, north  
of town. Oran Starkey,  
447-5630. 26-1c

FOR SALE: 1973 Ford Pickup  
F250, 390 engine, 4 speed  
power steering, brakes, air  
conditioned, auxiliary fuel  
tanks. Jerry Lewis 447-2228.  
26-tfc

FOR SALE OR LEASE:  
Texaco Station, 8th &  
Childress Sts. For information  
call Johnny's Texaco 447-2916  
26-tfc

FOR SALE: 8 track Home  
Stereo System, \$50 or best  
offer. 806-256-3879 26-2c

SETTLE ELECTRIC  
COMMERCIAL AND RESIDENTIAL WIRING  
Licensed and Bonded

JERRY SETTLE, OWNER 1002 CHILDRESS STREET  
PHONE 806-447-2876 WELLINGTON, TEXAS 79095

### SHARPENING SERVICE

Knives Scissors  
Saws Anything  
FARRIS CORNELIUS  
1100 8th St. 447-2679

Dixon-Kirchoff,  
Inc.  
Hollis, Okla.

Parts and Service  
CALL COLLECT  
405-688-3304

### G & T PAINTING

Professional Work  
Free Estimates  
806/259-2900  
or  
806/259-2308

MEMPHIS, TEXAS  
1-tfc

### COMMERCIAL AND RESIDENTIAL Wiring

Licensed and Bonded  
Will work anywhere  
All phases of wiring  
DICK PENDLETON  
519 17th St. Ph. 447-2155

### Caldwell Real Estate

3.7 acres large 3 bedroom home with basement,  
other improvements. Close in.

Three bedroom home, 2 baths, air, cellar, close to  
school.

3 bedroom brick, 2 baths, air, heat.

New 2 bedroom home, 2 baths, corner lots.

15 acres, good improvements, on pavement.

Large 3 bedroom house, 2 baths, garage, cellar.

Nice 2 bedroom home, cheap.

Two acres on Haskell Street. Large home -  
shown by appointment.

NEED LISTINGS ON FARMS & HOUSES

1511 8th St. 447-2263 or 447-2157

### FOR SALE

ASK US ABOUT "THE  
MULE" Kent Holland's  
LIVESTOCK SUPPLY, Hwy 83  
across from Dairy Queen,  
phone day 447-2708; night  
447-2797. 26-tfc

PERKINS DITCH DIGGING  
SERVICE. Phone 405-688-  
9285, Hollis. 26-1p

FOR SALE: 1971 Ford ½T.  
pickup, power steering, auto.  
trans., radio, heater, air  
conditioner, tape player, new  
engine. ALSO 901 Ford  
tractor, power steering, 12  
forward gears, new tires. 1974  
350 Honda motorcycle, very  
low mileage. One 10 ft.  
one-way plow, Harvester  
brand. ALSO 4 row set of  
markers and 4 tool boxes for  
pickups. John Thomas, Rt. 1,  
Wellington, 447-5431. 26-5c

FOR SALE: 200 acres, 2 miles  
north of Quail, has nice lake  
and creek, large trees, some  
grass, balance in cultivation.  
Good hunting. Possession  
now. Owner will finance. JESS  
MADDOX, HUGO H. LOE-  
WESTERN COMPANY, Re-  
altors, P.O. Box 9009,  
Amarillo, Texas 79105. (806)  
372-2228 24-4c

FOR SALE: 80 acres, 60 acres  
in wheat. Windmill, barn,  
plenty of fences. Only \$16,900  
buys whole thing. 447-9877  
days; 447-2163 after 6. 23-3c

FOR SALE: 80 acres, 60 acres  
in wheat. Windmill, barn,  
plenty of fences. Only \$16,900  
buys whole thing. 447-9877  
days; 447-2163 after 6. 23-3c

"GRAPEFRUIT PILL" with  
Diadax plan more convenient  
than grapefruits-Eat satisfying  
meals and lose weight.  
PARSON DRUG. 25-2p

FOR SALE Two good cotton  
innerspring mattresses, \$20  
each; one foam rubber  
mattress \$10; one platform  
rocker, \$15. Mrs. Earl Janes,  
1211 Dalhart St. 447-5656.  
25-2c

Farm Bureau seeks outstanding young  
man to assist manager in servicing  
present accounts and creating new ones.  
Company-paid training. 12,000 plus.  
Call Jack Campbell

806-447-2515

Sell it with a Classified Ad.

Blakemore  
FRESH  
PROTEIN-FED CATFISH

"Dressed While You Wait"

Phone 256-3287  
400 North Main  
Shamrock, Texas 79079  
23-tfc

KIRBY  
Sweepers and Parts  
FARRIS CORNELIUS  
1100 8th St.  
447-2679 447-2405

COMPLETE HANDLE  
SERVICE FOR  
ALL HAND TOOLS  
FARRIS CORNELIUS  
1100 8th St. 447-2679

### Hiett & Hiett Construction Co.

See Us for All Your Concrete Needs

SAND — GRAVEL — FILL DIRT

BACKHOE — HAULING

447-2224

447-2964

30-tfc

Doug's Auto Sales & Repair  
Hwy 83 & 12th Doug Mead 806/447-2931  
9 a.m. - 7 p.m. Mon. - Sat.  
Complete Service - Bill Estes, Service Manager  
Major-Minor Tune Up Brake Electrical  
Alternators Generators Carburetors  
Air Conditioners Shocks Mufflers  
Come see us General Repair Free Coffee  
New & Extra Clean Used Cars & Trucks

### FOR RENT

HOUSE FOR RENT: 1613  
Graham, unfurnished, 2 bed-  
rooms, large living room,  
large dining room and kitchen.  
\$100 per month. \$100 deposit.  
Call person to person collect  
Milner Duvall, 817-441-8717  
or 817-332-6802. 19-tfc

FOR RENT: Locked individual  
storage units. Ideal for boats,  
trailers, farm equipment or  
any type vehicle. Two sizes 20  
ft. x 20 ft. or 20 ft. x 40 ft. with  
10 ft. doors. Contact Robert  
Owens, 447-2581. 25-8c

### FOR SALE

FOR SALE  
1. 9N Ford tractor, new  
paint & tires, \$950.  
2. 6½" table saw &  
motor, \$50.  
3. Used baby bed &  
mattress, \$35.  
See Mark Fires  
or call 447-2980

BARRELS FOR SALE: \$4  
each. Will deliver. Contact  
Howard Murdock or call  
447-2863. 22-tfc

PATRICK  
STATION SHAMROCK  
447-9879

HOUSE OF SHADES AND  
LAMPS: Expert lamp repair,  
replacement parts shades,  
bulbs. New shades arriving  
every day. Tiffany shades and  
lamps. New, very latest  
Capiz Shell shades and  
lamps. Aladdin lamps and all  
their parts. 2613 Wolfliin  
Ave. Wolfliin Village, Ama-  
rillo, Texas.

SINGER Sewing Machines -  
Vacuum Cleaners - Smith  
Corona Typewriters - Adding  
Machines - Electroponic  
Stereos. Sales, Service. Store  
in Memphis, 719 Main.  
Phone 259-2716 or call  
447-5758 in Wellington.

GODFREY PEST  
CONTROL  
Licensed & Insured  
See Pat Godfrey  
721½ Montgomery  
Memphis Texas

Bulldozing  
Terracing  
Grading  
Harold Elbert

5-Minute Car Wash  
More soap, soft water  
and plenty of pressure  
Degreaser for washing  
Motors and Tractors

Home-owned  
Wilkerson Car Wash  
Highway 83 South

### NOTICE

WILL DO IRONING in my  
home. 447-2366.

SADDLE REPAIR, CUSTOM  
LEATHER WORK. Triangle-  
D Custom Leather Shop.  
Samnorwood, Texas 256-3755.  
Closed Saturdays. 24-tfc

NEED WOOD for your  
fireplace? Call 447-2127. 24-4p

### SERVICES

INCOME TAX SERVICE: Call  
447-5677 or 447-2020. Mrs.  
A. V. Mote. 24-2c

\$30.00 per hundred Stuffing  
Envelopes. Immediate earn-  
ings. Beginners kit, send  
\$1.00 and two 13 cent stamps  
(Refundable) O. Johnson,  
P.O. Drawer P, Mont Belvieu,  
Texas 77580. 23-4p

WILLIE CANADA  
ERECTION CO.  
(Agri-Steel Bldgs. only)  
Dodson, Texas  
Ph. 493-2611 26-4c

FOR SALE OR RENT: New  
and used typewriters, adding  
machines and electronic calcu-  
lators with printed tape.  
Ribbons for most machines.  
ROY M. HORN, Typewriter  
Service. 1710 15th Street.  
447-2580 29-tfc

RADIO SHACK 622 Noel,  
Memphis Texas. We stock CB  
radios, scanners, antennas  
and other accessories. 8 track  
cassette player, recorders and  
tapes. Stereos and many other  
items. Formerly Messer Elec-  
trics. 6-tfc

We SPECIALIZE in  
Remodeling, also  
Acoustical Ceilings  
WILEY CANADA  
Box 393, Dodson, Tex.  
806-493-2611

CHISELING  
John Jackson  
447-2450

Monuments  
WILLIS PELLOW GRANITE  
MONUMENT WORKS  
Call Collect 535-2184  
Granite, Okla.

EXPERT BODY WORK  
Free Estimates  
Prompt Service  
Expert Work  
Brown Paint  
& Body Shop  
Phone 447-5505

SERVICE  
Airconditioning  
Refrigeration  
Sheet Metal  
G.E. Appliance Service  
RUSSELL HILL  
and  
RICK MOTSENBOCKER  
Life time of experience  
Ph. 447-2184 and  
447-2684 39-tfc

### Volunteer Ambulance Service Report

Aulia Allen Logan, Barbara Ann Logan, Edwin Allen Logan, Myrtle M. Campbell, Andrea Marlene Campbell, Tammy Dianne Campbell, Tony Campbell: from 14 miles south of Wellington to Collingsworth General Hospital and them to Altus AFB Hospital, Jan. 5.

Mrs. Helen Ford: Thomas Nursing Center to Collingsworth General, Jan. 17.

Tom Walker from 607 Haskell St. to Collingsworth General: Jan. 10.

Rodney Myrick: Collingsworth General to Jackson County Hospital, Altus: Jan. 12.

Larry Adams: Wellington High School to Collingsworth General: Jan. 5.

Mrs. Edna Bourland: Thomas Nursing Center to Collingsworth General: Jan. 6.

Mrs. Mattie Maddox: 1200 Dalhart to Collingsworth General, Jan. 11.

### Rummel to Speak At Conference

Dr. Don Rummel is one of 13 scientists and specialists from the Texas A&M University Agricultural Research and Extension Center, Lubbock, who will present technical papers at the annual Beltwide Cotton Production Research Conference in Atlanta, Georgia, January 10 to 12.

The meeting will draw some 1,000 scientists and cotton industry representatives from 13 states.

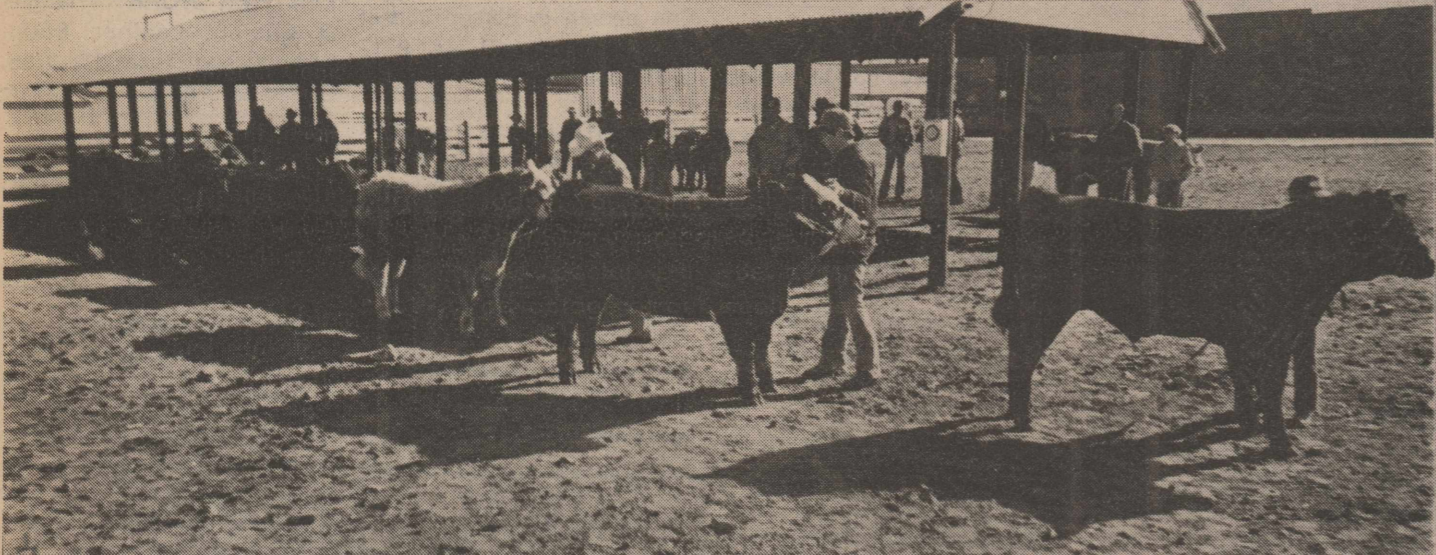
The group will also attend the Beltwide Cotton Production-Mechanization Conference January 12-13, following the production-research conferences.

The annual event is a series of technical workshops and seminars in which cotton researchers and specialists

from various disciplines exchange ideas and information on cotton production, primarily through progress reports of ongoing research. Most of the reports are results of experiments conducted the previous year, according to Dr. Bill Ott resident director of TAES.

Workshops include the Cotton Disease Council, Cotton Defoliation and Physiology Conference, Cotton Improvement Conference, Cotton Insect and Control Conference, and the Agricultural Engineers Regional Research Committee.

National Cotton Council of America, based in Memphis, Tennessee, sponsors and coordinates the various conferences.



STEER SHOW - County students exhibited steers in light, (upper), middle and heavy classes at the livestock show.

### Real Estate Transactions

Sadie Camp to Adelle Burquist Read, wife of Mark Read: 9.85 acres in section 82, block 14.

City of Wellington to Joe Powell: South 5 feet of lot 30, addition B, Fairview Cemetery.

Eddie Riley to John Robert Henard III and wife, Debbie: lots 1, 2 and 3, block 32, Wellington.

Leroy Stephen Brown and wife, Wanda Faye, to Ronald M. Blanton and wife, Sandra: lots 17, 18 and 19, block 198, Wellington.

Quitclaim Deed: William Nation to William I. Smith: lots 5 and 6, block 22, Stall Addition, Wellington.

Harrison Coughenour and wife, Kathryn L. Coughenour Charles Albert Harrell and wife, Peggy Loving Harrell: south 5/8 acres of the North 25 acres of SE/4 of SE/4 section 2, block 15.

Sam T. Hollingsworth and wife Gladys I. to Harrison Coughenour and wife, Kathryn L.: 5 acres of North 25 acres of SE/4 of SE/4 section 2, block 15.

Zook Thomas, Henry Sullivan and Jimmie Kelso, trustees of Wellington Cemetery Association, to Mrs. B.F. Howard: N/4 of lot 18H, North Fairview Cemetery.

John Deaver and wife, Emma F., to Denton Anthony and wife Ellen: section 21, block 19.

Lawson Ridgeway to Larry Don Parks and Rosemary Harrison Parks: NW/4 section 4, block 15; and 143.6 acres of the E/2 section 4, block 15.

W.E. Reynolds and wife, Mary T. to J.H. Parker: lot 11, block 43, Dodson.

Pearl M. Parker, executor of the estate of J.H. Parker, to G.M. Norman: lot 11, block 43, Dodson.

Edith Parker Abernathy to G.M. Norman and Naome Norman, lot 11, block 43.

G.M. Norman and wife, Naome, to Farmers Co-op Enterprises, Inc., lot 11, block 43, Dodson.

Lala Dunson to R.J. Dunson, Sherrie Adams and Judy Hall: lots 19 and 20, and the north 3.5 feet of lot 18, Partition deed: to Eunice Nunnelley: a tract in section

First National Bank of Amarillo and First National Bank of Pueblo, Colorado, trustees of the grandchildren's trust, under the last will and testament of R.B. Etter, to Georgia Hawks Swift, Lillie Hawks Holder, Helen Hawks Benton, Janice Hawks Grey, Sara Sue Hawks Kataoka, and Eva Metcalf, trustees of the Georgia Whittenburg Hawks Trust No. 1: SE/4 section 54, block 12, 165.85 acres; section 46, block 12, 641.5 acres; NE/4 section 44, block 12 160.05 acres; section 56, block 12, 638.08 acres; 80 acres in SE/4 section 44, block 12, 80.25 acres; North 80 acres of SW/4 section 44, block 12, 80.25 acres; 80.25 acres in

section 44, block 12; the W/2 and N/2 of NE/4 section 45, and); S/2 of NE/4 and SE/4 of section 45, block 12; E/2 and SW/4 section 55, block 12; and section 57, block 12.

Panama hats are made in Ecuador.

### HEALTH INSURANCE that really covers



With the cost of sickness or accidents today, you could easily fall into debt. Don't be unprepared to meet hospital and Doctor bills. Be covered. Take advantage of our Health insurance.



## Wells & Wells

Jack Sanford      Calvin Hurst      Harold Watkins  
Insurance      Abstracts  
DIAL 447-2520      911 West Avenue  
WELLINGTON, TEXAS  
"Dependable Insurance"

**RITZ Theatre**  
DIAL 447-2813

SHOWTIMES  
Friday 7:00 Saturday 7:00, 9:30  
Sunday 8:15 Admission \$2.00

FRIDAY-SATURDAY & SUNDAY JANUARY 21-22-23

91,000 People.  
33 Exit Gates.  
One Sniper.

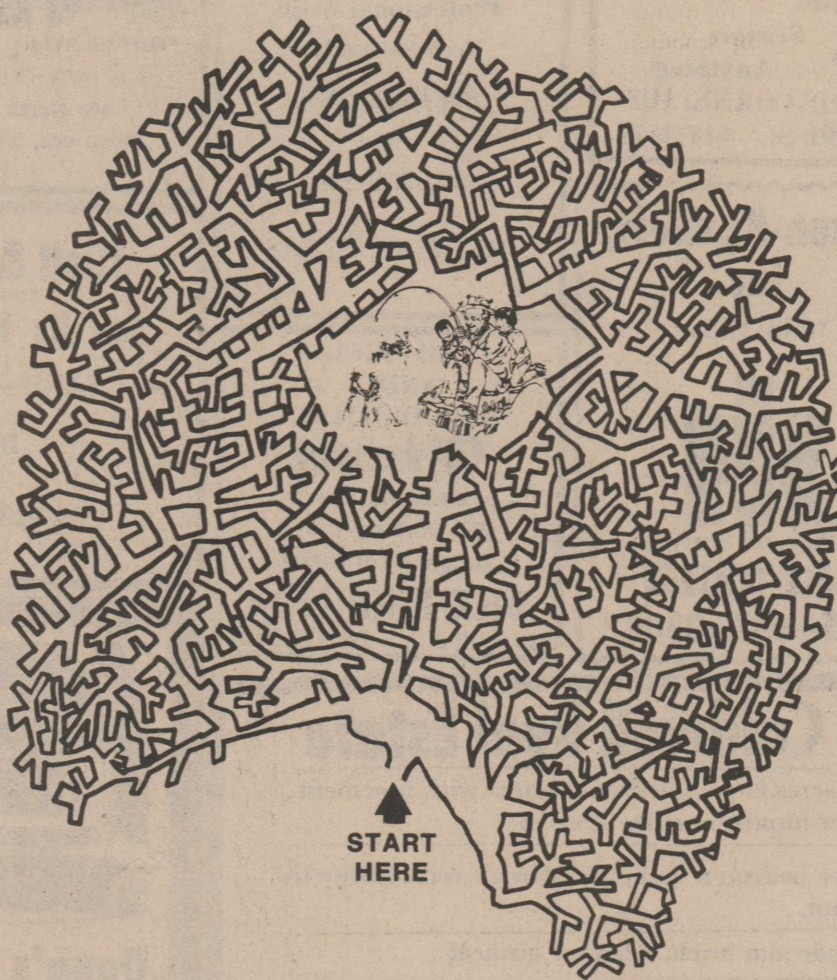
CHARLTON HESTON  
JOHN CASSAVETES  
MARTIN BALSAM - BEAU BRIDGES  
MARILYN HASSETT - DAVID JANSSEN  
JACK KLUGMAN - WALTER PIDGEON  
GENA ROWLANDS BROCK PETERS - DAVID GROH - ANTHONY DAVIS

**TWO MINUTE WARNING**

### FIND THE COLONY OF THE LOST GNOMES

Help Knobby and Jasper find the lost gnomes by printing and distributing this exciting and challenging maze. Youngsters will share the thrill of the search by finding the right trail through the Redwood Forest Maze without crossing any lines.

Use the maze in conjunction with the coloring contest, and offer them as an exciting herald to fast food chains and family restaurants.



1st 10 who find the way through the maze to the Colony of Lost Gnomes will receive a free pass to the show "The Gnome Mobile".

This must be presented at the Ritz during regular show hours.  
7:00 Friday and Saturday; Sunday 8:15

Friday & Saturday Jan. 28-29  
**RITZ Theatre** SHOWTIME  
DIAL 447-2813 Friday 7:00 Saturday 7:00, 9:00  
Sunday 8:15

University Establishes Free Enterprise Chair  
AUSTIN, Texas (Spl.)--A Chair of Free Enterprise, endowed by \$500,000 in private contributions, will be established in The University of Texas College of Engineering. The professor of free enterprise will have tenure in an engineering department.

## SPECIALS

Thursday, Friday & Saturday

FRESH GROUND HAMBURGER POUND..... **79¢**

### BEEF ROAST

Blade Cut POUND..... **75¢**  
7-Bone POUND..... **85¢**  
Arms POUND..... **98¢**

HOT BAR B Q DAILY  
1/2 or Whole Fried Chicken on Order  
CUBED ICE

GOLD MEDAL FLOUR 5 LB. BAG..... **55¢**

KLEENEX FACIAL TISSUE 280 Count. **59¢**

OXYDOL DETERGENT GIANT SIZE..... **\$1.25**

CAMPBELL TOMATO SOUP CAN..... **19¢**

CARPET SHAMPOOERS  
Rented \$1.50 per day  
—with the purchase of Blue Lustre Shampoo

CONTADINA TOMATOES 300 SIZE **4/\$1.00**

VAN CAMP PORK & BEANS 300 SIZE. **29¢**

SHURFINE FRUIT COCKTAIL 303 CAN **39¢**

KRAFT'S-ASSORTED CHEESE SPREADS 5 oz.glass **49¢**

SUNSHINE HI HO CRACKERS 16 oz. **69¢**

JIFF-REG. or CRUNCHY PEANUT BUTTER 18 oz.jar **98¢**

SCHILLING'S BLACK PEPPER 4 oz. can **69¢**

WE GIVE **Blue Stamps**  
We Give **CIRCLE W BLUE STAMPS**  
DOUBLE ON TUESDAY

ALL PURPOSE 10 LB. BAG WHITE POTATOES..... **69¢**

YELLOW SQUASH POUND..... **29¢**

SUNKIST ORANGES POUND..... **19¢**

**LEWIS GROCERY & MARKET**  
Delivery 4 p.m. Daily  
50¢ Charge on All Deliveries **Dial 5566**