

WEATHER

Table with weather data: Moisture High Low, Sunday 45 19, Monday Trace 66 17, Tuesday Trace 89 10, Wednesday 54 4. Includes monthly and yearly moisture statistics.

The Hereford Brand

16 Pages

Sixty Years Of Service

SINCE 1901

Published Every Thursday

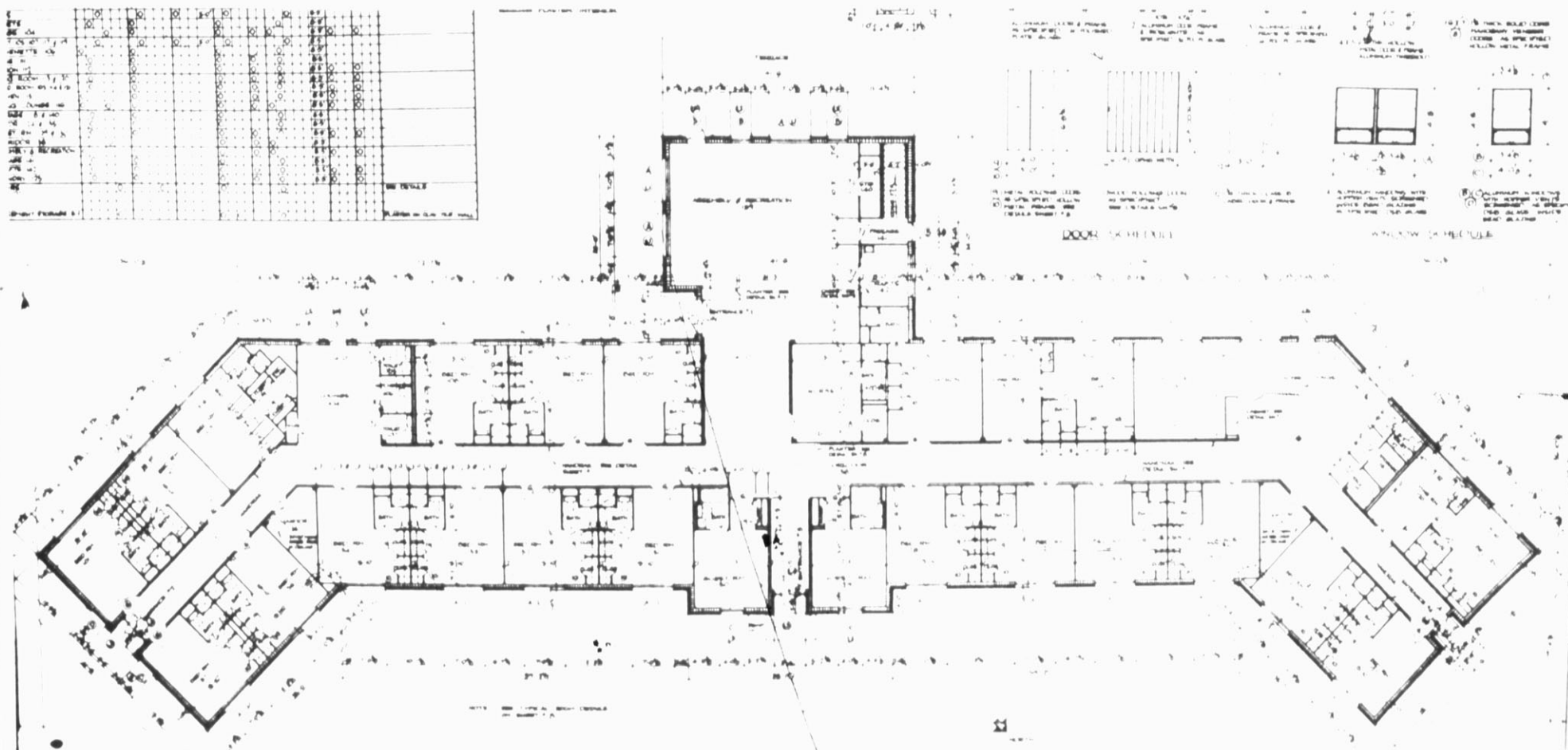
Our Slogan: "More People — More Farms"

61ST YEAR — NO. 9

Hereford, Texas, Thursday, March 1, 1962

Price 10c Per Copy

Open King's Manor Bids Today



Floor plan for the first unit of King's Manor

Two final steps before construction of a home for the aged in Hereford will be taken here Thursday and Saturday.

Board of trustees have called for construction bids on the first phase of the home to be opened in the Community Center at 3 p.m. Thursday, March 1, with the public invited to attend the occasion.

Members of the Executive committee and building committee for the home will convene here at 1 p.m. Saturday, March 3, to consider bids and award contracts.

Between 12 and 15 firms are expected to bid on the project as general contractors. Most of the bidders are expected to be from Amarillo and Lubbock.

First unit of the home is to be constructed this spring and summer on a site in Northwest Hereford. Site purchased for the home is north of Moreman Street and west of 25 Mile Avenue, with the actual building situated northeast of Northwest Elementary School. The home will be called King's Manor.

The home is to be a cooperative effort on financing. It will be built by the Methodist church. Conference of Northwest Texas aided by funds donated by the Hereford Area Foundation.

More than \$100,000 in pledges and donations were raised by the Foundation, not including the site, as evidence of interest by Hereford area residents.

Anticipated generally from southeast to northwest, the first unit will be joined later to a future central area and identical wing, which will be built toward the southwest from the first unit.

Included in the plans for the first unit are provisions for 16 one-bedroom units, three two-bedroom units, two guest rooms, a large square dining quarters, a lounge, an assembly and recreation room, kitchen, combination dining and lounge area, six rest facilities, and crafts area.

Each one-bedroom unit will include private bath and double closets. The two-bedroom units will provide a living room in addition to accommodations included in the single units. All (Continued on Page 2)

Negro Bellhop, Woman Receive Full Penalties

An Amarillo woman and a Negro bellhop drew maximum sentences in city and county courts Wednesday as charges of vagrancy by prostitution and procuring were filed.

Arraigned in Corporation Court, Henry Benson presiding, on the prostitution charge was Jimmie Marie Watson, 28. She drew the maximum fine of \$200 on the charge after entering a guilty plea.

William Cavitt Jr., 34, of Big Spring drew the maximum sentence for procuring as he was tried Wednesday morning in County Court, Judge H. C. Williams presiding.

The fine was \$200 plus costs plus six months in the county jail as he pleaded guilty to the charge. (Continued on Page 2)

Cindermen Set Track Schedule

Hereford High School cindermen will compete in their final track meet of the season Saturday at Brownfield. The meet will mark the beginning of a series of five meets by Hereford High School athletes.

Following the Brownfield meet, Hereford trackmen have scheduled three other contests before the district track meet April 7, according to track coach Ray Todd.

Entered in the Saturday meet are eight Hereford athletes. Slated to run the 880-yard race are Ronnie Welby and Austin Hodges. Jim Haney, J. Carter, and Gary McKee will compete in the 440-yard dash.

Carter will also run the 220-yard dash. Charles Kelly is slated to compete in the 180-yard low hurdles, and Manuel Pancheco is in the mile run.

Neal Lueb throws the discus for the local team, Gary McKee competes in the broad jump and Austin Hodges in the high jump.

Coach Todd stated that a team for the mile relay had not been chosen as of Tuesday.

Pitman Course Slates Tourney, Begins Classes

West Texas Chapter of the Texas Professional Golfers Association will sponsor a pro-amateur tournament at the John Pitman Municipal Golf Course here Monday.

A field of 100 golfers from the West Texas area is expected to attend the meet. It will be a low-ball, 18-hole tourney, with one-half handicap allowed to all entrants in both the men's and women's contests.

Merchandise prizes will be given to the three low teams, on a 50-30-20 basis. Golf pro Bud Posey also announced plans for golf lessons for ladies and youngsters during (Continued on Page 2)

Felony Assault Charges Filed Here Monday

An argument Sunday between a Negro couple ended in Justice of the Peace Court, as charges of assault with intent to murder were filed against Frank White Jr., 34, Route 1.

Charges following the shooting incident were filed with bond being set at \$2000 by JP C. B. Miles. White waived an examining trial in the JP court, according to Henry Aycock, chief of police.

White allegedly fired a shot at Marie Gertie Jackson, 28, of Route 1, during an argument between the couple about 2 p.m. Sunday.

It is said that the woman (Continued on Page 2)

OPERATION, PERSONNEL ARE PRAISED

County Judge And Commissioners Review Sheriff's Department

As expected, County Judge H. C. Hank Williams made some recommendations on the operation of the Sheriff's department during County Commission meeting Monday.

He emphasized that he was not criticizing any person or any part of the current operations of the department and

that the suggestions were made for the County Commission to study. Commissioners said that all the suggestions had been studied at one time or another, but that further study might be in order. They took no definite action on the suggestions. Both the judge and the Commissioners released written statements.

In other action, Commission approved the purchase of a tractor for Precinct One, hired J. R. McMorris of Amarillo to keep up valuation studies on portions of the county outside the city and Hereford school district and retained two persons to assist on the paving of a street to the cemetery.

Following is the text of the County Judge's recommendations to the Court on the operation of the Sheriff's Department: "Last week I said that I would have some recommendations to make in regard to the Sheriff's office of this county. At the outset, I would like to make it clear that these items are brought up with absolutely no thought of casting any reflections upon that office or upon its personnel.

These thoughts are presented only for your consideration and are the result of two major factors. First, the Court has, at various times, questioned the cost of operation of the Sheriff's department. Secondly, it is my feeling that a periodic review should be made of all county departments, to determine whether they are being operated

to the best interest of the taxpayers and whether there might be places where some savings might be effected. It is important that the Court look at all aspects of the county to find out where some operations might be streamlined without cutting out any necessary services.

In the past, there has been some discussion about converting the jail garage into an apartment where a couple might live with the man acting as jailer and the woman cooking meals for the prisoners. I would strongly advise against spending the \$5,000 to (Continued on Page 2)

Deadline Near On City, School Posts

Filing deadlines are nearing in the race for two posts on the Hereford City Commission, for two positions as county school trustee and one post for a district school trustee.

The deadline for filing for City Commission posts has been set for March 3. Even though the date falls on a Saturday, candidates may still file.

In the school elections, set for April 7, the deadline has been set for March 8. At least three have filed for the posts. With the deadline nearing, two candidates have filed in the City Commission election as the terms of two incumbents expire.

Dale "Pappy" Tinnin filed recently for City Commission, Place 4, the position now held by Dr. R. B. Wilks. The other candidate in the election is Bill Howard, who has filed for Place 3 on the Commission. Troy Moore is the incumbent.

Neither of the incumbents has announced for re-election to the city offices.

Leo Forrest, incumbent, announced recently for the post of county school trustee-at-large (Continued on page 3)

Around Town

Nell Cooper's old friend, Garrett Milton Ramsey, won't be coming back to Hereford for a while. Ramsey, who is free on bond after his conviction for burglary of Cooper's Market last year pending another trial, is in a California prison. He was sentenced to 1-15 years for second degree burglary and is now in the penitentiary after his application for probation was denied.

Congratulations to Henry Aycock, Hereford police chief, for being named outstanding lawman in Deaf Smith County for 1962. He received his award from the Hereford Junior Chamber of Commerce during their meeting Tuesday.

Hereford's junketing school board members returned home from New York City and Atlantic City with presents for those left behind. Of course, they wanted to know who had let us know about some of their escapades while they were gone. Apparently tired with my unkempt appearance at their board meetings, they thoughtfully presented me with a comb... about 14 inches long and more than three inches tall. B. F. Cain was the recipient of a toothbrush that was about the same size. Tom Robinson said he had saved pennies for three years to pay for the trip, but says Price Daniel almost ruined him. He figures the sales tax in Texas used up what he would have had for a comfortable margin and that he figured for a while that he might have to wire for help.

Former Herefordite Marshall Formby will have a 15-minute show on 13 state television stations Thursday, March 1. He will appear in this area on Channel 10 at 10:30 p.m. We (Continued on Page 3)

Announce Rural Route Changes

For the first major change in the Hereford Post Office staff since 1959, five reassignments will be made as the results of the retirement of A. Petersen, according to postmaster Nolan Grady.

Owen Stagner will be reassigned from rural route five to route four, in order to fill the vacancy left by Petersen's retirement. It was pointed out that Stagner was transferred from route four when Petersen moved to Hereford in 1935, some 27 years ago.

Fursel Young will be transferred from route two to route five and Leroy Price has been reassigned from his position as office mails foreman to route two.

Postmaster Grady stated that applications for the position of mails clerk are currently being processed, and an appointment will come soon.

A. Petersen Ends 33 Years With U.S. Postal Service

By Wain Miller, Brand Staff Reporter. A. (Pete) Petersen's story is the story of progress in the Hereford Post Office. Petersen came to Hereford to take over Rural Route 4 in March of 1935, after six years prior postal employment. This week, Petersen is retiring from post office work, after 33 years of service. He was assigned to route four, which was then only 65 miles long. Mail was delivered three times weekly back in '35. Petersen's route has grown to some 102 miles in the northwestern

sector of Deaf Smith County at the present time. Mail is delivered daily. There was no paving on the route when he came, but now there are 48 miles of farm-to-market road paved. After 27 years of delivering mail on route four, Pete is retiring this week. "I have come to love each of my patrons," admits A. Petersen. "They are just like part of the family. I guess all postmen feel the same way, though," he adds. Pete brags that the people that he has delivered mail to

over the past years are "the best people in the world. When one of them moves," he adds, "I miss them. I have watched many of the kids grow up, and somehow, they mean something to me. There used to be two brothers on my route that were always pulling pranks on me. When I pulled up to their mailbox, I knew something was up when I saw them peeking around some corner. Sometimes there would be a cat or dog in the mailbox when I opened (Continued on Page 2)

FRIDAY AND SATURDAY

Second Annual Lions Club Minstrel On For Two Days

"Gentlemen be seated." With this traditional phrase, the 1962 edition of the Lions Club Minstrel Show will get underway with Ernest Langley as Mr. Interlocutor and a cast of over 70 club members.

The annual show, the second to be presented by the club, will begin at 7:30 p.m. as it

plays a two-night stand in the high school auditorium Friday and Saturday.

Features in the show will be a can-can chorus, an orchestra, specialty acts and lots of laughs as the Lions put on the fast-paced, witty show.

Among the many numbers to be featured during the evening's entertainment are such songs as "Dixie," "Old Man River," "Carolina in the Morning," as well as many of the old Southern favorites and Negro spirituals.

This year's minstrel show is to be "sportin' an orchestra that is bigger an' better than ever," according to Charlie Bell, production director.

The full male chorus, in blacked face and Southern attire, and the can-can girls will be accompanied by Don Baugous tickling "the 88" guitar picked by Gerald Martin, Bill Penn on trumpet, the rhythmic drums of (Continued on Page 2)

Felony Charge Filed Following Accident Friday

Felony charges were filed here Monday against Nicodemus Lamas, 25, of Route 2, for failure to stop and render aid following an accident on Dairy Road Friday night.

Lamas was arraigned in Justice of the Peace Court, C. B. Miles presiding, and bond was set at \$1000. Lamas waived examining trial as the charges were filed.

The Latin American is alleged to have left the scene of the accident on foot after his automobile collided with a foreign (Continued on Page 2)



YOU'VE GOT TO BE ON your toes when the Lions Club minstrel end-men are around. They will be helping keep the fast-paced action when the show is presented Friday and Saturday. Mr. Interlocutor is Ernest Langley and his job will be trying to get

everyone in line. End-men include Ben Gollehon, giving a hot foot to Dub Reeves. Roy Hartman is amused, but he doesn't know he's about to be hooked by Buddie Evans. (Staff Photo)



AFTER 33 YEARS of delivering mail to rural patrons, A. (Pete) Petersen is retiring from the Hereford Post Office department. Petersen has delivered mail on rural route four here for 27 years, and had previously served for six years at Carey, Tex., near Childress. Petersen made one of his last deliveries last week. At top right is the 1927 Model T that he used when he started delivering mail in 1929. During his thousands of miles without an accident which was his fault, he has worn out 15 cars. (Staff Photo)

Petersen...

(Continued from page 1)
it, but I enjoyed them. One of them was Billy Hudson, who is now working in the post office.

During 27 years of service on route four in Hereford, and six years at Carey, Tex., Petersen has seen many changes come over the post office department, and improvements in post office service.

Almost a million miles and 33 years ago, Petersen began delivering mail on a rural route at Carey. He drove a

1927 Model T. The winters were long and cold, and there was no heater in the old car. "It was cold!" he recalled. During his 33 years as a rural mail carrier, Petersen has worn out 15 automobiles. "I came back in the days of the dusts," says Petersen. "Lots of the time I could hardly see where I was going. I had a hard time learning my route that March, because I couldn't see the roads."

Pete moved to Hereford in March of 1935. Since that time, he has served under seven postmasters. When he moved here, he replaced Owen Stagner as

mail carrier on route number four, and Stagner was then reassigned to another route. When Petersen leaves, Stagner will return to service on route four, according to postmaster Nolan Grady. When Petersen came to Hereford, the post office was a shabby building in the first block of Main Street. He watched as postal service improved, and saw the post office move to its present attractive building in 1940.

"I think postal service here has improved 50 per cent during this time," he says.

The adage "The mail must go through" applies to Petersen, as well as the others at the Hereford Post Office. It was not until 1942 that Petersen was unable to deliver the mail on at least part of his route. This came during a blizzard, when the postmaster would not let any of the carriers venture into the storm.

"I never got 'snowed in', but I have got 'mudded in' quite a few times," he laughed.

"I don't guess there's much exciting about being a mail carrier except the challenge of getting the mail through sometimes, especially when it's bad," he stated. "One thing though, anything can happen... we just put the mail in the box and go on."

Going above and beyond the call of duty, Pete admits hiding Christmas packages for parents in chicken coops. Like most rural carriers, Petersen has come to the rescue of many cars that couldn't make it in bad road conditions.

"I guess about the nicest thing that ever happened to me as a mail carrier was when Mrs. John Higgins quilted a blanket for me. She had all of the patrons on the route embroider their names on it. I treasure that more than anything else."

Petersen tells the old story about the postman who retired; for the first year he did nothing but sit in his rocking chair... the second year he began to rock.

Not so with Pete, however. "I hope to go into some type of Christian service after I retire," he says, "but I don't know exactly what yet."

Petersen is state vice president of the men's association of the Christian Church. "I think it will be something along that line," he added.

"I do hope to take some time off and travel a while, after my wife retires," stated Petersen. He and his wife, Eunice, have raised two sons. Both sons are married and have families.

Postal employees are honoring Pete with a dinner Saturday, according to postmaster Nolan Grady. "It will probably be the last time we can all get together," he said.

"I'll miss the people on route four," says Pete.

After 26 years of punctual service, the postal patrons on route four might say the same for A. (Pete) Petersen, rural carrier.

King's... County...

(Continued from page 1)
bathrooms will be completely tiled and include showers with benches. Exterior finish will be face brick with a narrow line of stone around the building. All windows will be aluminum with screened openings at the bottom.

Adjoining the recreation room will be a terrace. A small basement beneath the recreation room will house utilities and heating equipment.

Architects for the project are Haynes and Kirby of Lubbock. Among others, they designed the huge Lubbock Municipal Auditorium-Coliseum and the new Andrews High School.

More than two years ago, residents started talking about the need for a retirement home in Hereford. The Business and Professional Women's Club called together representatives of various groups.

During their considerations of the matter, they were approached by a representative of the Methodist Church Conference about the matter.

The local group voted to make a bid for such a home to be built by the Methodists. They were given the go-ahead provided they could raise the funds wanted as evidence of good-will in the community. This was done, with some to spare and Hereford was announced as the site of the first of several such homes planned. The project has been somewhat delayed because of efforts to work out finances.

(Continued from page 1)
\$10,000 it would cost to convert the garage into an apartment. From his personal observation, there is no system now in the jail which would eliminate the odor which is present. The jail itself is kept in a very clean and sanitary condition, but the continued ways make this odor a factor. This odor would be present in the apartment and would make for an unpleasant situation. The only way to eliminate this would be the installation of a very expensive suction fan device.

"From some checking which I have done on jails which maintain living quarters, this would be a continued source of trouble and difficulty for the Court and the Sheriff. Experience in other jails shows that it is extremely difficult to find someone to live in the jail permanently and that finding replacements would be increasingly difficult as time passed.

"I would also advise against investing any funds in kitchen equipment, such as a stove and refrigerator, and buying groceries for prisoners to prepare their own meals. This I believe, would not solve the problem of feeding prisoners. It might also leave the way open for

some of the prisoners to have access to weapons which might be used in attempting to escape or extra food which they might attempt to sell.

"It is my opinion that meals for jail prisoners could not be prepared by prisoners as cheaply as is being done under the present arrangement, where food is brought from a restaurant. It is my feeling that if the Sheriff feels the present feeding arrangements is not satisfactory, he should make other arrangements, since he is in charge of the department.

"It has apparently been a matter of consideration with the Court for some time that the Sheriff's Department is too costly in its operational expense.

"Upon checking into the operation, on the basis of the expense, I find that the department also has some revenues which partially cancel out the expense.

"The Sheriff's Department each month turns in several hundred dollars to the county from cash and checks received as fines for offenses committed. The Justice of the Peace office also provides some income for the county each month from the fines it collects. I clearly realize that the Sheriff's Department and the Justice of the Peace office are not in operation to make money. They don't try to show a profit from collection of fines, but the law does provide that fines may be levied against persons found guilty of certain crimes.

"These incomes, I feel should be considered as part of the over-all picture.

"As an example, I have checked into the costs of the Sheriff's Department and the Justice of the Peace office for the month of December, 1961. Actual cost of operation for that month was \$2,963.27 for the Sheriff's Department. This includes salaries, food, cleaning supplies and the other usual costs of operation of the Sheriff's Department and jail. Expense of the Justice of the Peace office was \$420 for the same month. This includes all salaries, supplies and expenses. During the same month, the Sheriff and Justice of Peace office turned over to the county a total of \$1,602.10. Taking these incomes from the total cost, the actual cost of maintaining the two offices was \$1,781.17 for the month of December, 1961.

"The average cost for the past six months for operating this Department was \$1,316.82 per month.

"I would remind the Commissioners that this includes the sheriff, two deputies, the Labor Camp deputy who draws \$100 per month, two night dispatchers, one day dispatcher, the Justice of the Peace, plus other expenses incurred by the two offices.

"In regard to operation of the law enforcement radio in the Courthouse, I would recommend that the County Commission make an effort to work out an agreement with the City of Hereford which would be more efficient for all concerned. I feel that there now exists a duplication in police radio operation. At present, the city and the county are both operating their own radio facilities both on a 24-hour operation, with an attendant duplication of effort in radio dispatchers, maintenance of equipment and an overlapping of effort.

"Any joint meeting on this problem should most certainly include the thinking and recommendations of the County Sheriff and the City Police Chief.

"It is my hope and wish that no part of this statement should cast any reflection upon the Sheriff or his personnel. I again wish to express my belief that this department is being

Symptoms of Distress Arising from STOMACH ULCERS DUE TO EXCESS ACID QUICK RELIEF OR NO COST Ask About 15-Day Trial Offer!

Over five million packages of the WILLARD TREATMENT have been sold for relief of symptoms of distress arising from Stomach and Duodenal Ulcers due to Excess Acid—Poor Digestion, Sour or Upset Stomach, Gasiness, Heartburn, Sleeplessness, etc., due to Excess Acid. Ask for "Willard's Message" which fully explains this home treatment—free at

City Drug
Edwards Pharmacy
McDowell Drug
Rogers Drug

Pitman...

(Continued from page 1)
March and April. Beginning Tuesday, March 13, golf pro Posey and assistant pro Brad Wilson will instruct a ladies class at 9:30 a.m. each Tuesday morning for seven weeks.

A junior class for all youngsters will be held each Saturday morning at 9:30 p.m., beginning March 17, and lasting seven weeks. Lessons will be given free of charge, but each person interested in joining the class is asked to bring his own golf clubs.

Anyone interested in joining the classes is invited to call EM 4-2782 or come by the pro shop before Monday night, March 12, to sign up for the class.



Dennis Hodges second team, All-State

Negro...

(Continued from page 1)
Both were arrested here Wednesday about 10:30 p.m. at a local hotel by officers from the Hereford Police Department after a warrant for their arrest had been issued.

As each was tried in the city and county courts, Henry Aycock chief of police, asked that maximum sentences be levied.

Around...

(Continued from page 1)
hear that he kinda lowers the boom on one or two of his opponents for the governor's seat.

Les Short and Gerald Wilson will be presented a sales award from Ford during a banquet Saturday in Oklahoma City.

During a big political rally in Tulia Monday evening, Mrs. Curtis Traveek of Hereford presided. She is committeewoman from the 30th Senatorial District. Frank Ford Jr. of Hereford, a candidate for state representative, also spoke.

Deaf Smith County farmers are invited to attend a special agriculture meeting at the Hub Community Center on Friday, March 2, starting at 2 p.m. There will be talks by Bill Gunter on fertilizer, Dave Sherrill on irrigation, James Murphrey on cost and returns on crop production and George Warner on grass production.

Central School PTA has moved its meeting date to Tuesday, March 6, at 7:30 p.m. The meeting originally had been slated for Thursday, March 8.

Judge W. A. Morrison was in town this week working on his campaign for re-election as Judge of the state Court of Criminal Appeals.

It is hoped there will be a large turn-out Thursday afternoon when bids for construction of King's Manor will be opened. Although it seems that the project has been in the mill for a long time, it must also be remembered that this is a large project and will be with us for many years to come.

Fort Worth's Mister Ramsey

operated in a highly satisfactory manner and that it could continue to do so if any or all of these recommendations might be adopted after consideration by the Court.

Attached to the statement, but not a part of it was a breakdown of expenses and income of the Sheriff's department and the Justice of the Peace office for August, 1961, through January, 1962.

Following discussion of the report, the Commissioners released the following statement:

"The Commissioners Court would like to take this means to endorse the statements that its personnel are operating with excellent efficiency and the best interests of the community at all times. It feels that there should be absolutely no reflection on the Sheriff's Department as the Court reviews operations of this and other departments of the county.

"Commissioners feel that the recommendations made by the Judge have been under consideration at various times in the past and are under consideration periodically."

"In other action, Mrs. Melvin Young was hired as temporary secretary for the county home demonstration and county agent office. She will be paid on an hourly rate.

B & B Oliver of Hereford was low bidder on a small tractor to be used primarily to mow weeds in Precinct One. Low bid, including trade-in of a 1956 tractor, was \$1780. Farm and Home Supply of Hereford bid \$1900 exchange on a Case tractor and Ken-Tex Farm Supply of Dimmit bid \$1812.50 exchange on a Ford.

Commissioners ordered two lights for the library. After some discussion, they retained Jack Messer to supervise paving of Bradley Street from the west city limits to the cemetery. County equipment will be used on the job, so far as possible. L. J. Clark was retained for \$200 to engineer the project.

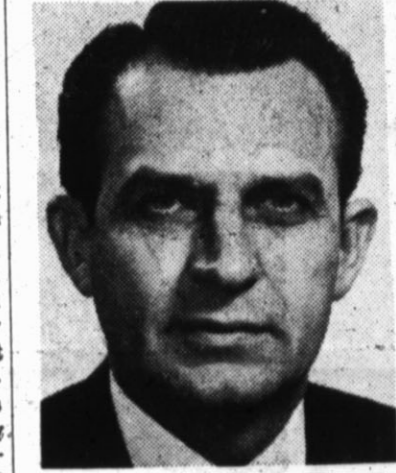
CHIROPRACTIC FOR HEALTH DR. GALE J. PAGE 1011 PARK AVE. EM 4-2643

J. R. McMorris of Amarillo, who did reappraisal for the county tax rolls last year, was retained to keep the property rolls up to date on property outside the city and Hereford school district. Estimated cost will be \$500 to \$600 a year, plus travel. His charge is \$15 per section on rural property.

Markham Waddill of the county tax office will maintain records on property within the city and school district boundaries.

For COLDS take 666

TOM REAVLEY Wants To Be Your Attorney General



Former Texas Secretary of State... Former County Attorney and Assistant DA... Ex-President of State Junior Bar... Professor in criminal law... 14 years a practicing, full-time working lawyer.

An independent progressive in the old-fashioned Democratic tradition... The best man for the job... Best for Texas...

Support Tom Reavley Democratic Primary, May 5 (Pd. Pol. Adv.)

HEAR MARSHALL FORMBY Candidate For Governor Of Texas CHANNEL 4 Amarillo 10:30 P.M. - Mar. 1 (Paid Pol. Adv.)



ONE OF THE SPECIAL presentations of the second annual Lions Club minstrel Friday and Saturday nights will be a fast-moving piano number presented by endman Buddie Evans. The show will start at 7:30 p.m. in the high school auditorium. (Staff Photo)

Annual...

(Continued from page 1)
Tommy Weemes, Woody McDermitt with his string bass, Charlie Bell wailing his saxophone and clarinet, and Glenn Nelson and Alvin Schmucker strummin' on the old banjos.

Another feature of the show will be the Hi-Brown Gals, a high-stepping and fancy strutting can-can chorus composed of Linda Edwards, Avie Justice, Suzanne Langley, Joyce West, Joy Story, Kay Lemons, Marjorie Lackey, Nancy Edwards, Maribeth Gilliland and Sharon Hill.

Club members are anticipating an even smoother, grander and faster-paced stage extravaganza than the one presented last year. The show written by Charlie Bell, will also feature quartets, solos and comedy routines plus choruses.

Proceeds from the show are earmarked by the club for its donation to the golden age home to be built here. The Lions pledged \$7500 toward the construction of the home during the fund raising campaign.

Tickets may be purchased from any member of the Hereford Lions Club or at the door.

Charge...

(Continued from page 1)
made compact driven by Charles E. Brown, 206 Ave. J.

Both Brown and his 19-year-old wife were injured in the accident. The couple was treated and released from the Deaf Smith County Hospital Friday night.

Lamas was reportedly arrested about an hour following the accident by the Hereford Police Department.

Assault...

(Continued from page 1)
ran from the house following the shooting. She had not been hit by the bullet fired from a .38/44 cal. revolver, the gun allegedly used by White.

White was arrested by Acie Austin, police patrolman, about 5:30 p.m. Sunday in the 100 block of W. First Street.

White is being held in the county jail in lieu of bond. Charges pending against him will be investigated at the regular session of the Deaf Smith Grand Jury.

Dennis...

(Continued from page 1)
than the traditional five-player positions.

Following are those selected from AAA schools across the state. Included are the players' sizes, classifications, averages and votes received:

FIRST TEAM

Outside — Bill Hughes, Waxahachie, 6-2, 175, Sr., 21.3, 52, and Gene Westmoreland, Lamesa, 5-9, 149 Sr., 13.1, 50. Inside — Carroll Hooser, Richardson, 6-7, 190, Sr., 24.0, 70; Bill Doty, Clear Creek, 6-6 200, Sr., 21.4, 68, and Albert Jones, Killen, 6-5, 190, Sr., 21.7, 63.

SECOND TEAM

Outside — Dennis Hodges, Hereford, 5-7, 140, Sr., 18.5, 47, and Eddie Shenk, Robstown, 5-11, 170 Sr., 20.0, 42. Inside — Gerald Henery, Odessa Ector, 6-3, 190, Sr., 18.2, 43; David Smith, Waxahachie, 6-6, 195, Sr., 18.7, 33; and Dick Rector, Dumas 6-2 180 Sr., 14.7, 20.

THIRD TEAM

Outside — Newton Grimes, South San Antonio, 5-9, 140, Sr., 18.0, 30, and Bill Overall, San Marcos, 5-11, 165, Jr., 20.0, 25. Inside — Glenn Hackstedt, Lamar Consolidated, 6-3, 180, Sr., 17.0 18; Tommy Dugger, South San Antonio, 6-3 1/2, 190, Sr., 14.3, 17 and Julius Farris Beeville, 6-4, 185, Jr., 21.0, 14.

Won't be with us for a while, As he is serving in durance vile. Hooray! For Ramsey's no pansy. He got money, ruined the safe and even the floor tile.

BLOOMING PLANTS Mums — Begonias — Geraniums Cut Sweet Peas Garden Plants Ready Soon Pansies — Verbenas - Etc. Bud's Garden Shop "Blossom With Bud's" 213 Higgins EM 4-3417

No "peekaboo" muffler in a Rambler! CERAMIC-ARMORED MUFFLER and TAILPIPE WE'LL PAY THE COST IF EITHER RUSTS OUT RAMBLER World Standard of Compact Car Excellence KINSEY-OSBORN MOTORS, INC. 142 Miles St.

SEE HI-PLAINS SAVINGS and LOAN ASSOCIATION 128 E. 3rd FOR HOME LOANS TO BUY OR BUILD REMODEL REFINANCE

OPEN LETTER TO OUR CUSTOMERS...

WE JOIN "NATIONAL BUYING SERVICE" ... CONTRACT CALLS FOR THE FULL AND COMPLETE ELIMINATION OF PRESENT INVENTORY ON HAND... NOTHING HELD... EVERYTHING WILL BE SOLD TO THE BARE WALLS... THE PARAMOUNT THOUGHT IN OUR MIND... "MAKE THIS COMPLETE CHANGE OF OPERATION WITHIN A TWENTY-ONE DAY PERIOD"

Preview Selling Tonight 6-9 P.M.

WHAT CAN NATIONAL BUYING SERVICE DO FOR YOU . . .

NATIONAL BUYING SERVICE IS AN ORGANIZATION MADE UP OF FURNITURE DEALERS INTERESTED IN IMPROVING THEIR BUYING AND ADVERTISING METHODS. GROUP BUYING WILL SAVE YOU OUR CUSTOMER COUNTLESS DOLLARS IN HOME FURNISHINGS... OUR FUTURE ADVERTISING WILL CARRY ONLY ACTUAL PHOTOS OF WHAT WE HAVE TO OFFER... EACH ITEM WILL CARRY A "CERTIFIED VALUE CERTIFICATE" FROM NATIONAL BUYING SERVICE.

OPEN EVERY NIGHT TILL 9 P.M.

OUR ENTIRE STOCK TO BE SOLD WITHOUT RESERVATION

EVERYTHING, REPEAT, EVERYTHING IN OUR PRESENT INVENTORY WILL BE LIQUIDATED DURING THE NEXT TWENTY ONE-DAY SELLING PERIOD... NOTHING HELD BACK... ESTABLISHED PRICE MERCHANDISE WILL BE INCLUDED... THERE IS NOTHING TO WAIT FOR NOW... MAKE YOUR MOVE IN THE RIGHT DIRECTION TODAY... SHOP OUR STORE FOR CERTIFIED VALUES AS APPROVED BY NATIONAL BUYING SERVICE... NO SALE FINAL UNTIL YOU ARE COMPLETELY SATISFIED...

OPEN EVERY NIGHT TILL 9 P.M.

\$76,874 Furniture Stock To Be Sold For \$48,562

EMERGENCY

EVERYTHING MUST GO!!! RIGHT NOW

EMERGENCY

NOTHING HELD-BACK NOTHING RESERVED

EMERGENCY

THIS IS A STORE-WIDE SALE

EMERGENCY

UNUSUAL CREDIT TERMS 36 MO. to PAY

EMERGENCY

DELIVERIES WILL BE MADE IN ROTATION

EMERGENCY

SHOP TODAY SAVE TODAY You Will Be Glad You Did

EMERGENCY

DEPARTMENT BY DEPARTMENT ELIMINATION

EMERGENCY

NO SALE FINAL UNTIL YOU ARE SATISFIED

SPECIAL STORE HOURS DURING GREAT LIQUIDATION SALE

TO PERMIT YOU and MRS. HOMEMAKER AN OPPORTUNITY TO BUY TOGETHER, SAVE TOGETHER, REFURNISH YOUR HOME TOGETHER... WE WILL BE OPEN EVERY NIGHT TIL 9 P.M. DURING THIS GREAT DEPARTMENTAL LIQUIDATION... REMEMBER... WE WILL OFFER NEW AND UNUSUAL CREDIT TERMS DURING THIS ONCE-IN-A-LIFETIME SALES EVENT... YOU HAVE NEVER IN YOUR LIFETIME SEEN SUCH A DESIRE ON THE PART OF A RETAILER TO TURN THEIR INVENTORY and COMPLETE THE INSTALLATION OF THIS NEW AND UNIQUE SYSTEM OF SELLING FURNITURE.

OPEN EVERY NIGHT TIL 9 P.M.

UNUSUAL CREDIT TERMS NOW IN EFFECT...

DURING THIS GREAT DEPARTMENT ELIMINATION SALE YOU WILL FIND A "SPECIAL CREDIT PLAN" TO MEET YOUR NEEDS... THERE IS NOTHING TO WAIT FOR NOW... WE HAVE NAME BRAND FURNITURE AT CLOSE-OUT PRICES... WE WILL BE OPEN EVERY NIGHT TO PERMIT YOU TO MAKE YOUR SELECTION TOGETHER... WE HAVE A CREDIT PLAN TO SATISFY YOUR POCKETBOOK... MOST IMPORTANT OF ALL... YOU CAN BUY "TOP QUALITY" HOME FURNISHINGS AT THE PRICE OF LOW QUALITY PROMOTIONAL FURNITURE... SHOP OUR STORE TODAY... NOW

OPEN EVERY NIGHT TILL 9:00 P.M.

THIS IS A STOREWIDE LIQUIDATION SALE

UNUSUAL CREDIT TERMS 36 MONTHS TO PAY

H & H DISCOUNT FURNITURE

WEST HIWAY 60

HEREFORD, TEXAS

OPEN DAILY 9 A.M. - 9 P.M.

EM 4-2030 WANT ADS

FOR SALE Miscellaneous

McCULLOUGH MOTOR COMPANY
345 E. Hiway 60
Phone EM 4-3150
CHRYSLER IRRIGATION ENGINES
Sales & Service
B-1-49-TFC

BIG RED BARN
We Buy - Sell - Trade for anything of value. Used Furniture, Appliances and Junk.
EM 4-3552
West Edge Of Hereford
Highway 60
B-1-1-TFC

SEE **HEREFORD GRAIN CORP.** FOR

- Lawn Grass Seed
- Bulk Garden Seed
- Ground Corn Cobs for Chicken Litter
- Place Your Order Now For Baby Chicks

Phone EM 4-3755
B-1-32-TFC

DEMPSTER PLANTERS, LISTERS AND CULTIVATORS
Sales and Repair Parts
LESLEY MOTOR CO.
West Highway 60
Phone EM 4-1600
B-1-33-TFC

BUY-RITE FURNITURE
North End of Main Street
SPECIALS
USED WESTINGHOUSE WASHER
\$60. A-1 Condition. Used Maytag Washer, ready to go.
Frigidaire Dryer, A-1 condition \$60
One Army Cot, good shape, \$5
One bargain left in Brand New 1961 GE Refrigerator. Good used TV. A-1 shape. Good Hotpoint dryer and a good Frigidaire dryer.
B-1-35-TFC

CLOTHING
For The Entire Family
At MARTIN'S
509 Park Ave.
B-1-24-TFC

AERMOTOR MILLS AND TOWERS
TURNER WELL SERVICE
Avenue H & Grand
Ph. EM 4-2568 or EM 4-2194
B-1-21-TFC

TOP QUALITY Irrigation dams as low as \$3.25. Davis Implement Co., 144 West Second.
B-1-14-35-TFC

SET OF **BARBELLS** For Sale: 125 pounds. Good for body building. Call EM 4-0454.
B-1-13-7-TFC

BOILER FOR SALE: 450 cubic feet Phone EM 4-9007, or BR 6-4433
B-1-10-6-TFC

All Your **NEEDLEWORK SUPPLIES** Free Instruction
MOLLIE'S HOBBIES
129 West Third
T-1-4-TFC

GENERATORS and starters for cars and trucks. Hereford Wrecking Co. Phone EM 4-0580.
T-1-12-18-TFC

JERRY'S APPLIANCE
EM 4-3505
Reconditioned automatic washers and dryers.
1-1958 Maytag Washer.
1-1958 GE Washer
1-1958 Kelvinator Washer
1-1958 Maytag Dryer
1-1958 Kelvinator Dryer
Several other models, all guaranteed.
JERRY'S APPLIANCE YOUR FRIGIDAIRE DEALER
513 Park Avenue
B-1-34-TFC

WE SCALD HOGS British Hopsan. 1 mile East of Bull Barn. Phone EM 4-2683.
B-1-13-35-3C

HEREFORD GLASS CO.
Expert Car Glass Installation
Table Tops and Window Frames
Picture Frames
392 Park Ave. Ph. EM 4-2652
B-1-25-TFC

TO BE MOVED WAREHOUSE
40 x 100 ft. with 18 ft. eaves. Can be seen for inspection at National Alfalfa Plant east of Hereford. Reasonable. Contact J. D. Wood, National Alfalfa, Plainview, Texas.
CH 4-5558
B-1-34-9C

NEW 1960 30 Volume edition set of Encyclopedia Americana, bookcase. 15 Volume Child Craft. These are still in original boxes. Perfect library at excellent price. EM 4-1420. 303 Roosevelt.
B-1-29-35-2C

FOR SALE Farm Equipment

DEMPSTER
Submersible Pumps. Drilling and Repairing.
D. E. TURNER
306 Avenue H
Phone EM 4-2568
B-2-21-TFC

FOR SALE
Lillian Roto Speed Cutter and Repairs
LESLEY MOTOR COMPANY
West Highway 60
Phone EM 4-1600
B-2-3-TFC

CALL EM 4-1120 FOR YOUR **FIRESTONE TRACTOR TIRES AND ON-THE-FARM SERVICE**

HEREFORD FARM SUPPLY
621 E. 1st EM 4-1120
B-2-35-TFC

FOR SALE Combine and truck. Call EM 4-1332.
B-2-10-4-TFC

WE ARE DEALERS for Peerless Grain Rollers. Davis Implement Company, 144 W. 2nd St., Phone EM 4-2811.
B-2-35-TFC

FOR SALE 1960 Model 800 series Ford Tractor. Less than 800 hours. Like new. CL 8-4459.
B-2-15-35-4C

FOR SALE
One Industrial 56-A Chrysler Irrigation motor, natural gas. 1-4 row Dempster cultivator, 3 point hitch. Both are good.
H. H. ROWLAND
Phone EM 4-1188
B-2-9-6C

FOR SALE
Old Style 4 row IHC Potato Planter, \$200.
New Style Iron Age 2 row Potato Planter, \$400.
E. C. Reinauer, 1 mile north Jewell Switch. CL 8-4595.
B-2-11-35-TFC

FOR SALE Automobiles
We Pay Cash For Used Cars
MILBURN MOTOR COMPANY
225 N. Sampson
Phone EM 4-0077
B-3-33-TFC

SPECIAL
1958 PLYMOUTH FURY Coupe, Radio, Heater, Automatic Transmission. Unbelievably Low Priced.
HI-WAY AUTO SALES
600 W. First
B-3-9-1C

1957 Mercury four door. Reasonable. Call EM 4-1126. 520 Avenue K.
B-3-10-35-2P

SPECIAL
1959 VAUXHALL, 4 Door \$495
HI-WAY AUTO SALES
600 West First
B-3-9-TFC

4. REAL ESTATE For Sale Or Trade
Austin Stone house in Abilene, Texas. 3,000 feet floor space, 3 bedrooms, 2 baths, double wood burning fireplace. Huge den. Formal living room and dining room. Refrigerated air conditioning and central heat. Servant's quarters. Under-ground sprinkling system. Swimming pool, private water well. Beautifully landscaped. Will sell or trade for house or farm in this area. Phone EM 4-2727.
B-4-7-TFC

FARMS
Good 1/4 section close to town. One 8" and one 6" well. 14 acres cotton allot. 21 acres wheat. Nice 2 bedroom house. \$16,000 cash down.
Good quarter section. One 8" and one 6" well. Good allot. 138 acres milo. 22 acres wheat. \$18,000 cash down payment.

HOMES
7.6 acres with 5 bedroom house, living room, dining room, and kitchen. One bath. 250 ton hay shed, 4 in. electric well. Close to town. \$15,000, \$7,000 down, owner will carry the balance.
\$16,750 for beautiful 3 bedroom brick home, 2 baths, living room, kitchen, utility and double garage. Assume FHA Loan.
\$9,000 for nice 2 bedroom home, living room, kitchen, one bath and single garage. Owner would take \$1500 down and carry second at 6%.

These are just some of the listings that we have on farms and homes in the Hereford area. We will be glad to show you these or any other listings we have.

INSURANCE
Farm Property... possible 20% savings on insurance. NOW IS THE TIME TO START THINKING ABOUT HAIL INSURANCE!!!!

LOANS
Prudential Farm Loans and Conventional Home Loans, Auto Loans & FHA Home Loans.

LONE STAR AGENCY
6th & Main EM 4-0555
Insurance
Lloyd B. Sharp Home Ph. EM 4-2543
Ralph E. Starr - Life Insurance Home Ph. EM 4-3743
Loans & Real Estate Harold Morton Home Ph. EM 4-1462
B-4-35-2P

LISTINGS WANTED
Have prospective buyers. Want Listings.
FARMS - RANCHES CITY PROPERTY
Call or come by office and see

CLINTON JACKSON AT FARMERS UNION INSURANCE AGENCY
807 N. Main Ph. EM 4-2624
Hereford, Texas
B-4-3-TFC

320 acre irrigated farm in Dallam County with two 8 in. wells, shallow water belt, natural gas, R.E.A., Telephone, 7 room modern house, Quonset Barn. Pressure pump and windmill. 5 1/2 miles from town. Good maize allotment. \$250 per acre with terms.
BEUFORD ZINCK, Owner
% Casa Mia Motel
Dalhart, Texas
B-4-35-3C

160 ACRES, 2 electric wells, fair improvements. Close to town. \$250 A.
SAM R. RATCLIFF REALTOR
133 W. 3rd EM 4-3771
B-4-35-TFC

\$\$\$
ONE MILLION DOLLARS
To lend on irrigated land in Deaf Smith, Castro and Parmer counties. For

PRUDENTIAL
America's Largest Farm Lender!
Harold Morton EM 4-1462
SAM NUNNALLY EM 4-0555
LONE STAR AGENCY EM 4-2814
B-4-51-104P

FOR SALE by owner, 180 acres. Well improved. 2 1/2 miles Southwest of Strigler. H.C. McCoy. Phone YO 7-2715, Stigler, Oklahoma.
B-4-20-8-3P

TWO REAL NICE
Homes on Hereford's best Streets. Priced to sell.
OTTO L. MASSIE
Phone EM 4-0837
Office Jim Hill Hotel
B-4-7-TFC

For Sale 1700 square foot house, 3 bedrooms, 2 baths, good location; Star Street. Call EM 4-3330, after 6, no agents.
B-4-20-27-TFC

FOR SALE 10 acres of land on East Highway 60 Phone EM4-1332
B-4-12-34-TFC

BUY YOUR OWN
Three Bedroom House for as little as \$350, initially. FHA Financing.
MORGAN CONSTRUCTION CO.
EM 4-0239
B-4-33-TFC

FARMS
180A, all in cultivation, 1 well. Good wheat & maize allotments. Priced to sell at \$250 A.
160 A., 1 well, fair allotments. \$260 A.
1 section dry land, \$100 A.
I NEED YOUR LISTINGS

HOMES
3 bdr. & den, 2 baths. This is a nice home. Price \$18,500. 2 bdr. stucco. Has large garden area, fruit trees, garage & storm cellar. Price \$7700. Have other houses priced from \$5,000 to \$32,500.
DON MARTIN AGENCY
809 Park EM 4-0925
B-4-34-TFC

HOMES
Lovely 4 BR Home just out side city limits. Shown by appointment only. See us for details.
3 BR Brick located 234 Star. 1 1/2 baths, carpeted, central heat. Possession.
Real nice 2 BR located 215 Star. Must see to appreciate.

3 BR Stucco, large kitchen, dining room, large living Rm. Carpet on LR and dining Rm. Central heat, 2 car garage. Price - only \$11,500 will carry \$9,400 FHA loan.

3 BR Stucco, near High School. Price lowered to \$7,000 for quick sale.

FARMS
480 A. perfect land. 4-8" wells, 3 BR Home. This is truly one of the finest farms in Deaf Smith. No Johnson grass nor bind weeds. Would sell 1/2 Sec. or 1/4 sec. See us for details.
1/2 Sec. 1/2 Mi. off pavement. 8" well on nat. gas. \$9,000 down.
1/2 Sec. improved, 1/2 in native grass, 1/2 in cult. 40 A. wheat B. 14 A. Cotton and 77 A. maize. 7 mi. Hereford on pavement.

HUGH BOOKOUT REALTY
511 Schley St.
Hereford, Texas
Ph. EM 4-3161
B-4-34-TFC

FARMS
640 A., 544 Cul., irr., 4 wells, 205 A. wheat, 256 A. Milo, 6 A. cotton and 60 A. of bermuda grass. Nice 3 bdr. home, big barn. Price \$350 per acre. \$100,000 down, or will trade for good Okla. ranch.
320 A., 210 Cul., 1-irr. well, 42 A. wheat, 75 Milo Allot. 3 bdr. Home, on paving. Check on this buy, only \$225 per acre.
300 A., 150 Cul. 1-irr. well, 50 A. Milo, 23 A. wheat, 5 A. cotton; 3 bdr. home, 32x60 barn, on paving. Price \$63,000; \$28,000 down.
161 A., 140 Cul., 2-irr. wells, 3 bdr. home, 20x80 barn. \$14,500 down.
124 A., all cul., irr., \$12,000 down, within 2 mi. of Hereford.
105 acres, 5 bedroom home, on paving. 1-8" well. One mile from Hereford. 29% down.

HOUSES
3 bdr. & den brick, 2 baths, fully carpeted, built-in oven and burners, double garage, fenced back yard. Located at 323 Star. Would sell or trade for house on S. Hwy. 385.
Nice 3 bdr. brick, dbl. garage, fenced back yard. Located in N.W. Hereford; Price \$18,900.
2 bdr. house, fully carpeted, newly redecorated. \$750 - \$1,000 down, bal. terms. Price \$7,500.
3 Bdr., newly redecorated, near schools; \$750 down, bal. on terms. Price \$7,500.
We have other houses for as low as \$500 down payment. See us on these. WHY NOT TRADE WHAT YOU HAVE FOR WHAT YOU WANT.

J. M. HAMBY REAL ESTATE
1/2 Mile S. of Underpass On Hwy 385
Office Ph. EM 4-1345
J. M. Hamby EM 4-2533
Harold Hamby EM 4-2533
Gerald Hamby EM 4-1534
B-4-32-TFC

2 sections Dallam County, 746.9 acres in Soil Bank, balance in grass. 428.9 acres in Soil Bank through 1965, 318 acres through 1966. Five room modern house, two good stock wells. Write Box 743, Dalhart, Texas.
B-4-35-3C

\$165 per A. irrigated 1/2 section. Fair allotments. 3 wells, small down payment.
1/2 section, well improved, 1-8" well, \$225A. Consider trade. 180A. 1-8" well 225A. Improved 1/4 close in. Small down payment. \$250A.
2-3 bedroom homes near schools. Will accept Trailer House or truck as down payment.
We buy equities.

CARTHEL REAL ESTATE
206 N. 25 Mile Avenue
Phone EM 4-0944
Residence EM 4-1714
B-4-35-3C

121 Avenue K, 3 BR, Carpeted, fenced, attached garage, low equity, low payments. See-by appointment only. Call EM 4-3860.
B-4-18-9-2P

5. FOR RENT
ONE bed-room furnished apartment for rent. Whites only. Call EM 4-1543.
B-5-10-21-TFC

THREE extra large rooms, completely redecorated. Furnished, bills paid. No children, 603 Jackson, EM 4-0298 after 5:00 P.M.
B-5-17-8-4C

FURNISHED apartment for one or two people. 409 East Third. Mrs. Forrest Sawyer, Clarendon, Texas.
B-5-15-4-TFC

TWO APARTMENTS for rent, 503 25 Mile Avenue. Newly furnished, tile baths, carpets, central heat. Call EM 4-3859.
B-5-17-27-TFC

FOR HEREFORD SCHOOL TRUSTEE: (two posts)
DR. L. B. BARNETT
IVAN BLOCK
LEROY WILLIAMSON

FOR COUNTY SURVEYOR:
A. J. "MAJOR" SCHROETER

FOR STATE REPRESENTATIVE:
BILL CLAYTON
J. FRANK FORD JR.
B. M. NELSON
W. T. "BILL" MILLEN

FOR DISTRICT JUDGE:
HARRY H. SCHULTE

FOR CITY COMMISSION, PLACE THREE:
BILL HOWARD

FOR CITY COMMISSION, PLACE FOUR:
DALE "PAPPY" TINNIN

FOR STATE SENATOR, 5th DISTRICT:
JOHN ZAHN

FOR COUNTY CLERK:
H. C. "HANK" WILLIAMS

FOR COUNTY CLERK:
B. F. CAIN

FOR DISTRICT CLERK:
LUCILLE POSEY

FOR COUNTY TREASURER:
VELMA HODGES
LOIS RUTTER

FOR COMMISSIONER, Precinct Four:
R. DONALD HICKS
GLENN B. ALLRED

TWO ROOM upstairs furnished apartment to whites only. Call EM 4-0694.
B-5-10-8-TFC

APARTMENT FOR RENT:
White middle aged couple. Call EM 4-0028.
B-5-10-7-TFC

CLEAN PRIVATE furnished apartment with vented heat, TV antenna. Whites only. See at 113 Avenue G. Call EM4-0372.
B-5-18-5-TFC

Attractive furnished duplex to white adults. Central heat, utilities paid. No pets. 711 East Third.
B-5-15-4-TFC

FOR RENT: nicely furnished apartment for couple or single person. Phone EM4-1286
B-5-12-6-TFC

FOR RENT Two bedroom apartment and one bedroom apartment. Furnished or unfurnished, 603 East Fourth St. Call EM 4-1100.
B-5-17-4-TFC

Carrier
Heating & Air Conditioning
LET US BID ON YOUR NEXT JOB
Large Or Small
WALKER REFRIGERATION SERVICE
305 E. 3rd EM4-0788

Hereford Rotary Club
meets every Monday at 12:05
Hotel Jim Hill

Stated Meetings
Monday
Thursday
7:30 p.m.
E.A.
Hereford A. F. & A. M. No. 849
Troy Stambaugh, Sec.
Marvin Coffey, W.M.

Lions Club
meets each Wednesday, 12 Noon
Hotel Jim Hill

OPTIMIST CLUB
Meets Monday Eve. 6:30 p.m.
American Legion Hall

Kiwanis Club
Thurs. Noon
IOOF Hall
207 E. Sixth

ALCOHOLICS ANONYMOUS
EM 4-1094
Regular meetings every Thursday night 8:00. Spanish speaking group Tues., 8 p.m. Open meeting last Thursday of month. Public invited. AA Fellowship Sunday 2:30 "Hi?"

FOR RENT, Whites only, three room furnished apartment at 126 North 25 Mile Avenue.
B-5-14-23-TFC

FURNISHED apartment, 613 South 25 Mile Ave. Adults. White. EM4-0337
B-5-10-34-TFC

(Continued on page 5)

AUTO LOANS
LLOYD SHARP LONE STAR AGENCY
601 N. Main EM 4-0555

NOTICE FARM MACHINERY AUCTION
To Be Held The 3rd Wednesday Of Each Month
FIRST SALE MARCH 21st
Consignments Needed And Welcome.
We Sell Anything
WATCH FOR SALE BILL KING SALES
F. H. KING
North Hwy. 385 - Hereford, Texas - EM 4-3886

DEMAND... JUSTICE
FARMS HOMES

327 acres northwest of Hereford, 2 eight inch wells, good allotments, \$235 per acre.

320 acres of dryland, 240 acres in soilbank, \$95 per acre.

45 acres located south of town. Improvements and irrigation well. Priced reasonable.

800 acres with five wells and improvements, \$275 per acre. 29% down. Would split into 360 acres and 440 acres.

320 acres in Terry County with three wells, 108 acres of cotton, on paving, 29% down.

320 acres irrigated land, good allotments, 18 acres grass, 29% down, easy payment.

155 acres, 2 miles from town; 181 acres of allotments, large 5% loan.

3 bedroom located nicely, large fenced backyard, brick with attached garage, low down payment.

Large 2 bedroom, double garage, in Northwest Hereford, \$14,500.

Two bedroom brick home, \$500 down, payments only \$71 per month. See us for details.

3 bedroom, 1 1/4 bath, and den. Located on Harrison Highway. \$18,500.

3 bedroom with 2116 sq. ft. Large double garage, 1 1/4 bath, large FHA loan.

RANCHES
Oklahoma ranch to trade for land in this area. We have listings in Colorado, Arkansas, Oklahoma and Missouri to suit your needs.

MOTELS
Looking for a fascinating business? Let us build you a new Motor-Hotel. You furnish the ground and we do the rest.

Justice Real Estate
345 West First Street Phone EMerson 4-1757
Mike Justice Res. EM 4-2180
Oliver Streu Res. EM 4-2857
Virgil Justice

WESSON'S SPECIALS

ANNOUNCEMENT: We are now in full swing in dealing in city and business property, as well as farm land. If you want to buy, sell or trade, we can be of good service to you.

LOANS: We are now in position to render a good service in making FHA and GI loans as well as conventional loans on city property. If you need a loan to build a home, buying a home or for making improvements we can help you.

3 BEDROOM HOME: Located on Harrison Highway on 5 acre tract of land. 1800 sq. ft. floor space, double garage, has full bath and 1/2 bath and fully carpeted. A beautiful home and location at attractive price. See us for price, terms and other details.

500 DOWN: Nice 3 bedroom home on K Street, 1200 sq. ft. living space, den and utility room. Is plumbed for washer and has central heating. Very reasonably priced at \$7,850.

SUBURBAN HOME SITE: 18 acres located just north of Hereford. 6" irrigation well. All good level land in cultivation. Beautiful location for country home. Price per tract \$17,500.

STOCK FARM: 1/2 section located in Sims Community. Old improvements, well and windmill. 100 acres wheat, 50 acres maize, 50 acres grass. All good tillable land, fenced and cross fenced. Possession. Must sell at once. See us for price and particulars.

COME TO SEE US
WESSON REAL ESTATE
201 So. 25 Mile Ave.
Hereford, Texas
Office Ph. EM 4-2528 Res. Ph. EM 4-2860

The Hereford Brand TEXAS PRESS ASSOCIATION
Member 1962

Our Slogan: "More People—More Farms"
Member National Editorial Assn.
Member Associated Press
Hereford, Deaf Smith County, Texas—Phone EM 4-2030
Published Every Thursday at 336 Main St.

Entered as second-class matter at the Post Office in Hereford, Texas under the act of March 30, 1879. Any erroneous reflection upon the character, standing or reputation of any person, firm or corporation, which may appear in the columns of this paper, will be gladly corrected upon due notice of same being given to the editor personally at the office. Subscription Rates: Zone 1, \$2.50 per year; Zone 2 and above, \$3.50 per year. With the Sunday Brand, both papers, Zone 1, \$4.95 per year; Zone 2, \$6.15 per year. Carrier delivery, 60c per month. Single copies, 10c each.
Classified advertising rates: 6c per word first insertion (60c minimum); 4c per word additional insertion.

JAMES M. GILLENTE Publisher



AFTER SLIDING SIDEWAYS for 105 feet, a 1955 model sedan driven by Nicademo Lamas hit a small 1961 model foreign car driven by Charles Brown about 8:30 p.m. Friday night. Brown and his wife were treated and released at Deaf Smith County Hospital. The foreign car was termed a total loss by investigating officers. Following the accident, Lamas left the scene on foot, but was picked up one hour later by policemen. Brown reportedly left the pavement in order to avoid the car which was sliding out of control. Felony charges were filed against Lamas Monday morning. The accident occurred near the intersection of Dairy Road and the Veterans Park road. (Staff Photo)

Deadline...

(Continued from page 1) office. Voting places in the coming county school elections have been set for the Commissioners Courtroom in the County Courthouse and the Dawn School for the trustee-at-large of the Deaf Smith County District election. Voters of the Walcott Common District 6 will cast their ballots for the county trustee-at-large, the county school trustee of commissioners precinct 3 and the district trustee at the Walcott School.

Hospital Notes

PATIENTS IN HOSPITAL
Leslie Lightfoot, 222 Avenue A; Mrs. L. J. DeRusha, Rt. 3, Friona; Mrs. Joe Salz, Box 5, Black; Mrs. C. E. Williams, Box 92; Mrs. Leroy Edwards, Star Route, Vega; Mrs. L. F. Stayton, 305 Jewell; Mrs. William E. Cumpston, Box 1002, Friona; Joseph A. Bell, 133 Avenue H; Viola Nunn, 501 East 5th; Mrs. David Farmer, Rt. 1; Georgia Pinkerton, Rt. 2, Friona; Mrs. O. J. Stagner, 132 Avenue D; Mrs. Wirt Phillips, 211 West 6th; Clemmie Randle, Box 704; R. C. McGilvary, Box 114; Mrs. Bud R. Miller, Rt. 3, Des Moines, N. M.; Carl Lee, Box 74, Summerfield; W. A. Hunter, 113 Star; Marie Angelo, 227 Avenue B; Earl H. Hare, Box 72, Vega; Mrs. Charlie Morris, 314 Star; Mrs. Alvin M. Smith, 704 East 4th; Willis Dufur, 205 West 7th; Ernest O. Neff, 305 McKinley; Mrs. Leo Kuper, Rt. 5; Mrs. Domingo Landin, Box 84; Marshall R. Kimbrough, 827 Blevins; Mary Tjerina, General Delivery; Mrs. Johnny Martinez, 330 West 2nd; Mrs. Torvivo F. Garcia, Box 778; Clara Martin, 606 Avenue K; Mrs. Earl Nipper, 606 Union; Tony Piland, Box 901, Bovina.

DISMISSALS
Mrs. J. T. Tice, 2-23.
Irene Eubank, Mrs. Homer Fox, Mrs. Florinda Moya Francisco, Tommie McKay, Mrs. R. B. Baker; 2-24.
Mrs. Leon Vogler, 2-25.
Thom Seigle, Mrs. Baldomero Guerrero, Juanita Guerra, Mrs. Sam A. Love, Minnie Williams, Mrs. V. A. Funk, Mrs. Henry Ayala, Mrs. Julio A. Valdez, 2-26.
Raul Cruz, S. P. Bass, Mrs. Jim L. Underwood, Mrs. Seferino DeLos Santos Jr., Mrs. H. N. Reeves, Mrs. Harold Bischoff, Ray R. Smith, 2-27.
William J. Litschke, 2-28.

FOR GENERAL BUILDING AND REPAIRS SEE US
We do all types of work Building & Remodeling Storm Cellars
Roofing Stucco Electrical Dashing Interior Decorating Outside Painting Ph. EM 4-3685 213 W. Park Perforating Textoning DURWARD HAMBY B-11-33-TFC
PORTABLE DISC ROLLING Scalloped or plain. Jacobsen Brothers. Phone EM 4-1543. B-11-10-23-tfc

WANTED Two experienced farm hands. Prefer married men. Houses furnished. Call EM 4-3322. B-8-12-35-2C

10. NOTICE
WE SCALD HOGS Britch, Hopson. 1 mile East of Bull Barn. Phone EM 4-2683. B-10-13-35-3C

WELL WORK J. E. TURNER
PHONE EM 4-2194 T-10-34-TFC

There's Nothing Like **SOFT WATER**
For Laundry For Bath For Kitchen **USE LESS SOAP**
The Savings are Greater than the Cost. No Equipment to Buy. No Work to Do. See Your **SOFT WATER SERVICE** Dealer TODAY at 216 N. Hiway 385 Hereford, Texas B-10-34-TFC

CLINTON Sales & Service
Complete Service and Repairs on all air cooled Engines & Lawn Mowers. **HICKS OIL AND GAS INC.**
Phone EM 4-0220 B-10-23-TFC

11. Business Services

DIRT WORK
Yard Plowing Ditching Air Hammer Back Hoe Trash Hauling
LEON J. BELL
Ph. EM 4-0685 336 Ave. 1 B-11-3-TFC

SEWING MACHINES REPAIRED
Used Machines; Bought and sold.
JEFF ROBERSON
137 Avenue D. Phone EM 4-0262 B-11-30-TFC

WASHER & DRYER REPAIR
Guaranteed Service On All Major Brand Washers and Dryers.
HEREFORD WASHER AND DRYER SERVICE
ROY DALE MANNING 303 W. 9th EM 4-0931 B-11-35-TFC

Magneto - Starter motors rewind generator & electric Sales & Service **OWENS & HOLLINSWORTH**
EM 4-3545 EM 4-3572 Commercial - Industrial Residential Wiring 307 East Third B-11-13-TFC

Classifieds...

(Continued from Page 4)
FOR RENT Furnished apartments. 608 East Third. Inquire house in rear. B-5-11-4-TFC

NICE furnished apartment for rent. 232 West Third Street. B-5-9-20-TFC

HOUSE for rent at 909 Parke Call EM 4-3859. B-5-11-35-TFC

Two bedroom unfurnished house. 311 Myrtle. Call EM 4-2048. B-5-10-35-2C

THREE room apartment. Private bath, fully carpeted. EM-4-3665 after six weekdays. B-5-11-35-TFC

FOR RENT Two room furnished house for couple. N. B. Hood. 343 West Second. B-5-14-9-TFC

FOR RENT Furnished 3 room house. Roy Manning. 325 Avenue B. B-5-11-9-TFC

FOR RENT Newly decorated three room completely furnished efficiency apartment. Private bath, entrance. Bills paid. Not pets. Inquire Hinds Upholstery 310 McKinley day time, Hinds residence evenings. Ph. EM 4-2011. B-5-29-9-2P

CLEAN, attractive three room furnished house. Newly decorated, carpeted, furnace heat. TV Antenna, Call EM 4-1343. B-5-15-9-1C

6. WANTED
WANTED Feeder Cattle. Walter Paetzold. Phone EM 4-3609. B-6-10-35-TFC

JOB WANTED Married lady desires office work. Would consider sales. Write Box 673. B-6-13-35-2P

WANT TO RENT 1/2 section or section irrigated land. Can give good references. Garland Smith, AV9-4459. B-6-16-16-TFC

7. Dressmaking-Ironing
WANTED dressmaking and alterations. Phone EM 4-1508. Mrs. Foy Huff, 221 Avenue K. B-7-12-35-2P

8. HELP WANTED
WE HAVE OPENING for men age 24 to 45. Education, High School Graduate or better. Manner, alert, enthusiastic. A career opportunity, not just a temporary position. If you are dissatisfied with your present income, Call FL-61861 collect in Amarillo for an appointment. B-8-8-3C

EXCEPTIONAL OPPORTUNITY
Refilling and collecting money from New Type high quality coin operated dispensers in this area. No selling. We establish accounts for you. Car and references desirable. \$600 to \$1900 cash required. Seven to twelve hours weekly nets excellent monthly income. More full time. For personal interview write P. O. Box 2753, Boise, Idaho. Include phone. B-8-9-1P



DECKED WITH ICICLES, this fruit tree takes on the look of a winter wonderland while many other fruit trees in town were blossoming in expectation of an early spring. The weekend. A. H. Brown of 302 Avenue K took the pre-caution of spraying his trees in order to prevent their early blossoming during the below-freezing weather that prevailed over the weekend. (Staff Photo)

Things get moving in MARCH!
at **Piggly Wiggly!**

Round Steak
USDA CHOICE GOOD lb. **79¢**

HAMS
WRIGHTS HICKORY SMOKED
HALF OR WHOLE lb. **39¢**

METRECAL
6 Pack Ctn. Chocolate, Vanilla Butterscotch **\$1.39**

PORK CHOPS
FRESH LEAN
FIRST CUT CENTER CUT
lb. **45¢** lb. **65¢**

FINAL 3 DAYS
Shurfine YOUNG MOTHER HUBBARD SALE
FEB. 19 thru MARCH 3
SHOPPING LIST

EGAD! WHAT SAVINGS!

| | |
|--|---|
| <input type="checkbox"/> Shurfine Apple Butter 28 oz. 4/\$1.00 | <input type="checkbox"/> Shurfine Milk Canned Tall Can 7/\$1.00 |
| <input type="checkbox"/> Shurfine Apple Sauce 303 7/\$1.00 | <input type="checkbox"/> Shurfine Mustard Greens Chopped 303 9/\$1.00 |
| <input type="checkbox"/> Shurfine Blackeyes Fresh Shelled 300 7/\$1.00 | <input type="checkbox"/> Softlin Napkins White 80 ct. Box 2/\$.25 |
| <input type="checkbox"/> Shurfresh Biscuits Sweet-Buttermilk-8oz. 13/\$1.00 | <input type="checkbox"/> Shurfine Orange Juice Unswt. 46 oz. 2/\$.79 |
| <input type="checkbox"/> Elmdale Brooms \$1.19 | <input type="checkbox"/> Shurfine Peaches YC Sli. or Hlv. 2 1/2 4/\$1.00 |
| <input type="checkbox"/> Shurfine Catsup 14 oz. 5/\$1.00 | <input type="checkbox"/> Shurfine Pears Bartlett Halves 303 4/\$1.00 |
| <input type="checkbox"/> Shurfresh Cheese Spread 2 lb. \$.69 | <input type="checkbox"/> Shurfine Peas Early Harvest. 303 5/\$1.00 |
| <input type="checkbox"/> Shurfine Cherries R.S.P. 303 4/\$1.00 | <input type="checkbox"/> Shurfine Peanut Butter 18 oz. 2/\$1.00 |
| <input type="checkbox"/> Shurfine Chili with Beans .300 4/\$1.00 | <input type="checkbox"/> Shurfine Pork and Beans 300 9/\$1.00 |
| <input type="checkbox"/> Shurfine Coffee 1 lb. for only 19¢ | <input type="checkbox"/> Shurfine Preserves Apri.-Peach-Red Plum -20 oz. 3/\$1.00 |
| Purchase of Any 2 PEPSODENT TOOTH BRUSHES | |
| <input type="checkbox"/> Shurfine Corn Golden WK-CS 303 6/\$1.00 | <input type="checkbox"/> Shurfine Salad Dressing Qt. \$.39 |
| <input type="checkbox"/> Shurfine Cucumber Chips Fresh 16 oz. 4/\$1.00 | <input type="checkbox"/> Shurfresh Salad Oil Qt. \$.55 |
| <input type="checkbox"/> Roxey Dog Food No. 1 13/\$1.00 | <input type="checkbox"/> Shurfine Salmon Red Alaska No. 1 \$.89 |
| <input type="checkbox"/> Energy Detergent Liquid 22 oz. \$.39 | <input type="checkbox"/> Shurfine Sauer Kraut 303 7/\$1.00 |
| <input type="checkbox"/> Shurfine Flour 10 lb. Paper Bag \$.73 | <input type="checkbox"/> Shurfine Shortening 3 lb. \$.69 |
| <input type="checkbox"/> Shurfine Flour 25 lb. Print Bag \$1.69 | <input type="checkbox"/> Shurfine Spinach 303 7/\$1.00 |
| <input type="checkbox"/> Shurfine Fruit Cocktail 303 5/\$1.00 | <input type="checkbox"/> Shurfine Sweet Potatoes Sm. Whl. 3 squat. 4/\$1.00 |
| <input type="checkbox"/> Shurfine Grapefruit Juice Natural 46 oz. .. 2/\$.59 | <input type="checkbox"/> Shurfine Tomato Sauce 8 oz. 10/\$1.00 |
| <input type="checkbox"/> Shurfine Grapefruit Sections 303 5/\$1.00 | <input type="checkbox"/> Shurfine Tuna Chunk Style 6 1/2 oz. 3/\$.89 |
| <input type="checkbox"/> Shurfine Grape Juice 24 oz. 3/\$1.00 | <input type="checkbox"/> Shurfine Turnip Greens Chopped 303 9/\$1.00 |
| <input type="checkbox"/> Shurfine Green Beans Cut B.L. 303 5/\$1.00 | <input type="checkbox"/> Shurfine Vienna Sausage 4 oz. 5/\$1.00 |
| <input type="checkbox"/> Shurfresh Margarine 1 lb. 6/\$1.00 | <input type="checkbox"/> Shurfine Waffle Syrup 32 oz. \$.39 |

GRAPEFRUIT RUBY RED 5 LB. BAG **39¢**

CELERY PASCAL GREEN CRISP STALK **19¢**

APPLES DELICIOUS LB. **19¢** **2 FOR 49¢**

| | | | |
|---|--|-----------------------------------|------------------------------------|
| REG. SIZE CAMAY 3 BARS 31¢ | GIANT SIZE Ivory Liquid 65¢ With Free Roses | GIANT SIZE CHEER 75¢ | BATH SIZE ZEST 2 Bars |
| REG. SIZE SALVO 35¢ | REG. SIZE COMET 2 CANS 25¢ | CASCADE BOX 45¢ | 39¢ |

See for yourself what bargains you get in finest foods...
Piggly Wiggly

PIGGLY WIGGLY PIGGLY WIGGLY PIGGLY

Ready Plans For Palo Duro Canyon Theatre



ARCHITECT'S CONCEPT of the theater to be built in Palo Duro State Park will be built for the presentation of the symphonic drama project being shown as it will nestle in the hills on the canyon floor. The theater developed. (J. Howard Miller Photo)



HI-BROWN GALS have become a tradition in the Hereford Lions Club minstrel shows. Appearing in the can-can chorus for the 1962 edition of the show are, from left: Joyce West, Linda Edwards, Mar-Gwen Lackey, Joy Story, Maribeth Gilliland, Sharon Hill, Nancy Edwards, Kay Lemons and Suzanne Langley. Director for the show, appearing deceptively calm about the performances Friday and Saturday night, is Charlie Bell. (Staff Photo)



A MINSTREL SHOW must have twanging banjos and the Hereford Lions Club presentation won't be any exception. In fact, it will feature a trio of banjo players, including, from left, Alvin Schmucker, Glen Banjos and Woody McDermitt. The show will be held Friday and Saturday. (Staff Photo)



BY JIMMIE GILLENTE
Sometimes it is downright hard to spend a quiet afternoon, especially if you happen to be a member of the volunteer fire department — and this is exactly how Bob Spaulding found things last Sunday. He and Mrs. Spaulding were sitting quietly at home when their department radio beeped a couple of times, and announced a fire alarm at "Second and Clements."
"My goodness," exclaimed Mrs. Spaulding, "that's where we live!" whereupon the couple dashed out and gave the house a close scrutiny, but could discover no flames. When Bob called in and was told that the alarm was on a grass fire across the street, it then dawned on him that there must be at least four locations to be described as "Second and Clements." Meanwhile, he was one of the first firemen on the scene.

At a meeting in the Fine Arts Building at West Texas State College on Tuesday, Feb. 27, 7 p.m., the architect of the theater which is to be built in the Palo Duro State Park in connection with the symphonic drama project presented the model of the theater which was approved by the Texas State Parks Board on Feb. 20 in its meeting in Marshall, Texas.
Except for minor adjustments this model represents the theater as it will actually be. It is drawn to scale and set in the contours of the land in the park where it will be built.

A gentle hill on either side of the stage hides from the audience the buildings on either side which contain dressing rooms, costume storage, workshops, scenery storage, etc. In front of the rises are large stages on each side, and one of these will be the location for the orchestra. Back of these side stages will be light towers. The theater will seat a thousand people and the seats will be set on a concrete base which fans out on the side of the hill. All of the concrete will be the color of the earth

so that the structure will seem to be a part of its surroundings.
When the plans and the pictures of the model were sent to Paul Green in North Carolina for his approval, he was most enthusiastic and replied that it would be a delight to write his play for these surroundings. He showed the plans to Harry Davis, director of the fabulously successful symphonic drama "Unto These Hills" which plays in Cherokee, N. C. Davis sent the following comment about the plans: "... this theatre seems to be planned with intelligence, imagination and sensitivity."

Mon Amis Study Club Makes Amarillo Trip

On Wednesday, Feb. 21, members of the Mon Amis Study Club of Summerfield left Hereford at 9 a.m. and toured an ice cream plant in Amarillo. The group then went to KFDD Channel 10, where Jim Pratt conducted a tour through the television studio. Dan True talked to Mrs. Bill Cotton, club president, while the other club members watched the weather report and the news.
After the tour of the TV station, the group had lunch together. The afternoon was spent in shopping. Those making the trip were Mesdames Cliff Allmon, Bill Bell, Bill Cotton, Jamie Clearman, David Hutchins, Jim Lookingbill, Bob Noland, Raymond Wiley, Ted Godfrey, Lawrence Jackson, and two guests, Mrs. Charles Jacks and Miss Kay Stafford.

The architecture firm of Hucker and Parge prepared the plans for the theater in the Park. The senior partner in this firm, Robert Hucker has been practicing in Amarillo since 1946. He holds the Bachelor's degree in architecture from Texas A & M where he was graduated in 1938. He is a past president of the Texas Panhandle chapter of the American Institute of Architecture and past chairman of the Amarillo planning commission.
Earl Parge was born in Chicago and received his B. A. in architecture from the University of Illinois. He became associated with Hucker in 1959. He is on the executive committee of the Texas Panhandle chapter of the A.I.A. and has also served as its president. He has designed mobiles which have attracted considerable attention in Amarillo.
Some of the projects which have been designed by this firm are the West Texas State stadium, Tascosa High School, Bowie Junior High School, Wolf-Link Village, Gunther Hall (West Texas campus) KGNC radio and TV building, and First Federal Savings and Loan in downtown Amarillo.

WESTWAY NEWS

Baptist Church Has Revival

By Mrs. Harold Rudd
The Westway Baptist Church is holding its revival this week. Rev. Don Larkin of Port Comfort, is the preacher and Larry Branscum of Plainview is leading the singing. They have been having good crowds attending the services. The last service will be held on Sunday evening.
Mr. and Mrs. Frank Hafner of Hereford, Mrs. Gerald McCathern, Mrs. George Zetsche, Mr. and Mrs. Edwin Morrison of Hereford, and Mr. and Mrs. Harrel Mays and children of Bippus were guests in the home of Mr. and Mrs. J. C. Morrison last Sunday afternoon.
Mr. and Mrs. Don Heddens and girls of Hereford had eaten dinner with the Morrises that day.
Mr. and Mrs. Merlin Kaul were dinner guests in the home of Mr. and Mrs. Ralph Dursline at Friona on Sunday.
Mrs. Harold Rudd and Kit visited with Mrs. Lefty Thomas last Wednesday afternoon.
Mrs. R. W. Mitchell was hostess for the meeting of the Westway Home Demonstration Club Thursday afternoon. Mrs. Kenneth Rudd presented the program on Laundry Aids. Nine members and two guests, Mrs. Lois Rutter and Mrs. R. L. Wilson, were present.
Mr. and Mrs. Buel Monroe and family visited with his parents, Mr. and Mrs. Joe Monroe, in Clovis Sunday afternoon.
Mrs. Ken Rudd and Jean and Mrs. Harold Rudd and Kit visited with Mrs. Phillip Shook in Hereford Friday morning.
Mr. and Mrs. Wagner Johnson, Jerry and Johnny of Post arrived last Saturday afternoon to spend the weekend with her brothers, Ben L. and Jim Thomas.
That evening the Johnson family and the Ben L. Thomas family visited with Mr. and Mrs. Bud Rabern east of Hereford.
On Sunday the Jim Thomas family joined the Johnsons in the Ben Thomas home for a family dinner.
Mr. and Mrs. George Turrentine, Janice, Carol, and Patti

The new building next to Gwynne's Cleaners on Highway 385 will house an appliance store with Gerald Wilson as chief cook and bottle washer. He says a formal announcement will follow soon.

Currently, the Marshall Formby for Governor campaign is about to get rolling in this area. Formby is scheduled to appear over KGNC-TV at 10:30 p.m. Thursday, March 1. Many people feel that the split in LBJ's forces between Price Daniel and Connally put Formby in a good position to hit the run-off. A former resident of this community, along with being part owner of KPAN, Formby is in a position to pretty well carry this area. Furthermore, if he survives the next governor of Texas. Consequently, most of his work needs to be done between now and the first primary. It will be a tough battle, but it is also one of the few times in history that Deaf Smith County has had an opportunity to vote for a "hometown man" for the high office of governor.

Being in the newspaper business, I sort of hate to brag on a radio man, but Formby is one of the best qualified men in the race — and he gets my vote, especially after looking over the rest of the field.
Dub Reeves is an old boy who seldom turns beet red or grovels for words, but some of his cronies say it really hap-

pened last week when a Lions Club delegation visited Pampa to attend a Negro Minstrel presentation. The Hereford group — J. W. Robinson, Ben Gollehon, J. F. Martin, Charlie Bell, and Reeves — found seats in the rear of the building and settled down to enjoy the show. After the final curtain, the lights came on and the Emcee introduced dignitaries, then said, "And we have a delegation of Lions here from Hooker to observe our presentation: will they please stand?"
Quick as a flash, Reeves jumped to his feet and yelled out in stentorian tones: "Mr. Interlocutor. We are from Hereford, not Hooker!"
Every eye in the audience turned on our hero, including those from a delegation of 15 people from Hooker, who rose from their seats to be introduced.

Properly squelched, Reeves slumped into his seat. "And," says J. W. Robinson, "he didn't have anything on me." Reports have it that Ben Gollehon actually crawled under the seat, which is almost as unbelievable as Reeves being at a loss for words.
From time to time, we hear people say that Hereford is changing; that we are not so friendly, that we do not possess the hometown pride we once knew, that we are a bunch of "fat cats" sitting around and riding on the merits of previous effort. Are these things true? Do we need a general rejuvenation? Maybe some of the newcomers might give us an idea. If true, in whole or part, what is the answer? Without a doubt, progress passes from generation to generation, but we notice several new faces on various posts and committees — and many of them are younger men and women, some of whom graduated from our own schools. Anyway, it is a serious question which merits serious consideration. A community never stands still; it either plows ahead or inches backward. And the direction depends largely upon community spirit.

Even the most severe critics of President Kennedy must admit that he has a more attractive wife than did Franklin Roosevelt. Mrs. Kennedy seems to make a hit, no matter where she goes.
When Astronaut John Glenn Jr. pointed out the likelihood of

future accidents in space orbits, he did the country a real service. These things are bound to happen — and we were extremely fortunate that this first one came off without a hitch. All in all, Mr. Glenn is getting the reputation of being a level headed, logical citizen. Most people seem to like him and the things he has to say. We were extremely fortunate to come up with a man who possesses such an unusual public relations personality. Sometimes, I imagine the appearances become almost as hectic as the orbit ride.
Things are looking up on the Palo Duro State Amphitheater near Canyon. Understand if you need a good club program you can call Bessie Patterson, and this topic will be covered. The new theatre is scheduled to be outstanding in the nation.

ATTENDS CONVENTION

Mrs. Buddie Evans of Hereford attended a two-day convention of cosmetologists, from over a five state area, at the Hotel Dale in Guyton, Okla., on Feb. 24 and 25. The convention celebrated National Beauty Salon Week. Mrs. Evans is a student of the Space and Form Hair Design School in Amarillo.

WEEKEND VISITORS

Mr. and Mrs. Carl Oldham and family of Woodward, Okla., were weekend visitors in the homes of their parents, Mr. and Mrs. Cap Oldham and Mrs. C. Ora Cockrell, all of Hereford.

ELECTED PRESIDENT

Bill Angel of Hereford was elected president of the Panhandle Professional Photographers Association at a meeting held Sunday, Feb. 25, in Amarillo.

WARNING FROM THE WALL

MERIDEN, Conn. (AP)—Flames crept up the wall and snapped the cord that held a picture. The picture fell and bumped 82-year-old Charles Parker on the head as he slept in his bed. Parker awakened, and escaped the fire in his room without apparent injury.

Too Late To Classify

NEED someone for baby sitting five days week; 8:30 a.m.; 4:30 p.m. Call EM 4-3184 after 6:00 or come by 324 Avenue B. B-8-22-9-20

NICE clean two bedroom house. Furnished. Whites only. Inquire 211 Avenue K. EM 4-3837. B-5-13-9-TTC

FOR RENT Bedroom to white man. Can do cooking. 238 Avenue E. EM 4-0798. B-5-13-2P

TRY CHIROPRACTIC DR. GALE J. PAGE 1011 PARK AVE. EM 4-2643

HEAR MARSHALL FORMBY Candidate For Governor Of Texas CHANNEL 4 Amarillo 10:30 P.M. - Mar. 1 (Paid Pol. Adv.)

WATCH FOR OPENING OF SUNSET APPLIANCE CENTER Next To Gwynne's 906 LEE





"WE HUMBL Y ASK- THEE TO BLESS this food" precedes each meal at the home of the Rev. Gilbert Davis Jr. The children take turns with their parents in asking table blessings. The family includes, (from left to right), Mrs. Hilda Davis, David, Mark and the Rev. Gilbert Davis Jr., seated at the bounteous dinner table. (Staff Photo)

LET'S COOK SOMETHING

Mrs. Davis Lists Recipes Of Out-Of-State Friends

"Bless, O Lord, this food to our use, and us to Thy Service, and make us ever mindful of the needs of others, in Jesus' Name. Amen." This typical table grace could be the one said before each meal by a member of the family of the Rev. Gilbert Davis Jr., pastor of the First Christian Church of Hereford. Mark and David ask the blessings along with their mother and father; all taking turns. There is no set family grace asked; the members speaking from their hearts.

1 egg, beaten
3 1/2 cups of unsifted flour
Beat hard, cover, let rise until double (Mrs. Davis usually puts it on top of the television set for 1 1/2 hours.)
Knead; roll out to 1/2 inch thickness, cut, let rise again (about one hour). Bake at 450 degrees. Brush tops of rolls with butter.

BLANCH'S CHICKEN TETRAZZINI
(North Carolina)
1 5-pound hen
3 cans of cream of mushroom soup

Lone Star Club Hosts Luncheon
Members of the Lone Star Study Club met recently in the home of Mrs. John Jacobsen Jr. Mrs. Jim Higgins, vice president, presided at the short business meeting. The meeting was in the form of a salad luncheon. Mrs. R. G. Blue gave the invocation. After lunch, games of bridge and forty-two were played.

Laundry Aids Study For Westway HD
The Westway Home Demonstration Club met on Thursday, Feb. 22, in the home of Mrs. Ralph Mitchell with Mrs. Bess Werner the presiding officer for the business meeting.

ZADIE'S ROLLS
2 tablespoons shortening
1 teaspoon salt
2 tablespoons sugar
Mix well.
Heat one cup milk, cool to lukewarm. Pour into the above mixture.
Add 1/4 cup of warm water with one yeast (dry) package dissolved.

State Government Studied At Meet
The Progressive Home Demonstration Club met on Tuesday, Feb. 20, in the home of Mrs. "Doris" Hallows for the regular meeting and program on "State Government."
Mrs. Lena Lee Hammett was the presiding officer for the session of business. Committee reports were heard. A special Council report and council recommendations were read by Mrs. Pete Carmichael. The recommendations were approved by the club membership.

Panel Study For Central P-TA
Central School PTA will meet on Tuesday, Mar. 6 at 7:30 p.m. instead of Mar. 8, the scheduled date in the yearbooks.
The first portion of the program will be a panel discussion on "Mental Attitudes of Children." Panel members will be Dennis Pulliam, Mrs. Earl Springer, Mrs. Helen Coffman, Dr. C. E. Hicks and the Rev. B. H. Baldwin. The meeting will be held in the school gym.

Churches in Farm Areas
NASHVILLE, Tenn. (AP)—Eighty-four per cent of the congregations of the Methodist Church, the nation's largest Protestant denomination, are in rural areas or small towns of less than 10,000 population, a study shows.

and while hot pour orange juice and sugar mixture over the cake. Bake the day before for the best flavor. Warm in a low oven (250 degrees) before serving. The recipe can be doubled and frozen for future use.

SYRIAN COFFEE CAKE
(Hilda's Mother's recipe)
2 cups of brown sugar
2 cups flour
1/2 cup shortening
1 egg
1 teaspoon nutmeg
1 cup (1/2 pint) sour cream
1 teaspoon soda
1/2 to 1 cup chopped nuts
Sprinkle of cinnamon
Blend flour, brown sugar, and shortening into crumbs. Put 1/2 of mixture in a well-greased pan.
To the remaining crumbs, stir in the egg, nutmeg, and the sour cream mixed with the soda. Pour over the crumb mixture in pan. Top with chopped nuts and cinnamon.
Bake at 350 degrees form 35 to 40 minutes.

EAST TEXAS SCALLOPED CORN
1 No. 2 can of cream style corn
2 tablespoons diced pimientos (optional)
3 tablespoons melted butter
1 teaspoon dry mustard
1/2 teaspoon salt
1 egg
Dash of pepper
1/2 cup milk
1/2 cup coarse crackers
1/2 cup grated American or sharp cheese
Beat egg and add to the milk. Add other ingredients. Mix well and pour into a buttered dish. Top with buttered cracker crumbs. Bake at 375 degrees for 30 minutes or until firm and brown.

ESSIE'S CHOCOLATE CAKE
2 cups sugar
1/2 cup shortening
3 tablespoons cocoa
2 eggs
1/2 cup buttermilk
1/2 teaspoon soda
2 cups all purpose flour
1 teaspoon vanilla
Mix all at once and then add 1 cup of hot coffee: Mix well (batter will be soupy). Pour into a 12 x 13 x 2 inch greased and floured pan. Bake from 45 to 50 minutes in a 325 to 350 degree oven.

Father Of Hereford Residents Is Buried
Funeral services for Joe Paul, 95, were held at 2 p.m. Wednesday, Feb. 28, in the Lazbuddie Methodist Church with the Rev. Beird, pastor of the Ralls Methodist Church, officiating.
Burial was in the Friona Cemetery under the direction of the Claborn Funeral Home.
Mr. Paul died on Monday, Feb. 26, in the Parmer County Hospital.
Mr. Paul was born Feb. 16, 1867, in Illinois, and moved to Friona in 1905. He was a retired farmer.
Survivors include three sons, Elmer of Roswell, N. M., Charles of Bakersfield, Cal., and Ralph of Hereford; four daughters, Mrs. Daisy Bradbury of Lordsburg, N. M., Miss Grace Paul and Miss Greta Paul, both of Lazbuddie, Mrs. Francis Shaw of Hereford; one half-sister, Mrs. Lillie Nekenson of Bull Island, Ill., and one half-brother, Julius Sinele of Canada.

NORTH CAROLINA LEMON PUDDING
2 tablespoons flour
1 tablespoon shortening
1 cup milk
2 egg whites
1 cup sugar
2 egg yolks
1 lemon (juice and grated rind)
Cream shortening with the sugar, add flour, egg yolks, juice and rind of the lemon, and milk. Fold in well-beaten egg whites.
Cook in a lightly greased baking dish set in a pan of hot water. Bake in a moderate oven (375 degrees) from 35 to 40 minutes.

WATCH FOR OPENING OF
SUNSET
APPLIANCE CENTER
Next To Gwynne's
906 LEE

Courthouse Records

VEHICLE REGISTRATIONS
James Dale Dickson, 1953 Ford; T. C. Morrison, 1955 Ford; William Lee Wilson, 1954 Cushman Motor Scooter; 2-19.
Mary Dafson, 1953 Chevrolet; Marian L. Davis 1953 Chevrolet; D. L. (Jack) Kassahn, 1962 Dodge; Bob Jackson, 1960 Chevrolet; Brown Sheet Metal, 1958 Chevrolet 1/2 Ton Pickup; Tommie Kemp, 1962 Chrysler; Roy L. Vaughn, 1957 Ford; Carl Schroeder; 1952 Plymouth; Roy D. Manning, 1956 Buick; John H. Flores, 1959 Ford; Harold E. Pettyjohn, 1958 Chevrolet; Mark A. Koenig, 1958 International 1/2 Ton Pickup; W. J. Schumacker, 1961 Chevrolet 1/2 Ton Pickup; Andre Bennett, 1957 Plymouth; Charles Stayton, 1954 Mercury; A. J. Lawler, 1951 Chevrolet; Sam Long, 1962 Chevrolet; S. F. Davis, 1962 Chevrolet; W. R. Duggan, 1959 Chevrolet; Eddie Rushin, 1950 Chevrolet Truck; B. A. West, 1955 Buick; W. N. Reiger, 1960 Chevrolet Pickup; 2-20.
Gwendolyn Buckley, 1962 Chevrolet; Duane Baize, 1950 Dodge Pickup; Jose L. Flores,

1955 Chevrolet; Richard A. Young, 1954 Plymouth; B. F. Markham, 1962 Chevrolet Pickup; Glen Neill, 1953 Chevrolet Pickup; John H. Channer, 1952 Dodge; Benny Dement, 1952 Oldsmobile; Elmer Carlson, 1961 Chevrolet Pickup; N. D. Bartlett Jr., 1957 Midway House Trailer; 2-21.
Dale R. Mudgett, 1947 Dodge; J. W. Nicholson, 1960 Ford; J. F. Messer, 1956 GMC Truck Tractor; Monte K. Vaughn, 1956 Ford; R. G. Manning, 1949 Chevrolet Pickup; 2-22.
WARRANTY DEEDS
R. T. Adams, et ux, to Ancil L. Greenway; Lot No. Thirteen (13), in Miller and Miller and Mosley's Subdivision of Block No. Twenty-six (26, of Evans Addition.
Alice Williams, a widow, to J. T. Wansley; A part of Block No. 27 of Evans Addition.
John Earl Dyer Jr. to James W. Witherspoon, et al: An undivided 1/16 interest in and to the East 1/4 of Section 56, Block K-5.
Lois P. Dyer, et al, to John Earl Dyer Jr.: An undivided 1/2 interest in and to the East 1/4 of Section 56, Block K-5.
DEEDS OF TRUST
W. M. Decker to James F. Smith, trustee for the benefit of

Amarillo Savings and Loan Association; The East 75 feet of Lots 1 and 2, Block 72, of the Town of Hereford and Additions.
Jess A. Rountree, et ux, to O. J. Mangum, trustee for the benefit of J. C. Hilburn; Tract 1: The East Half (E/2) of Section 77, Block K-7. Tract 2: All of the North Half (N/2) of Section 10, J. J. Jowell Subdivision of Capitol Leagues No. 498 and 491, Castro and Parmer County, Tex., containing 292.03 acres.
Douglas K. Nix, et ux, to R. Earl O'Keefe, trustee for the benefit of Western National Life Insurance Company of Texas: The North 20 feet of Lot 35 and all of Lot No. 36 in Block No. 1, Westhaven Addition.
Francis E. Barrett, et ux, to J. O. McMahan, trustee for John Hancock Mutual Life Insurance Company: All of the Northeast One-fourth of Section 37, in Block K-8, T.T. Ry. Co., Certificate No. 129, Abstract No. 320, in Deaf Smith County, containing 161.175 acres of land, more or less.
Fred S. Barrett Sr., et ux, to J. O. McMahan, trustee for the benefit of John Hancock Mutual Life Insurance Company: All of Section 37, Block K-8, T.T. Ry. Co., Certificate No. 129, Abstract No. 320, in Deaf Smith County, containing 161.175 acres of land, more or less.
Richard E. Barrett, et ux, to J. O. McMahan, trustee for the benefit of John Hancock Life Insurance Company, All of the Northwest One-fourth of Section 37, Block K-8, T.T. Ry. Co., Certificate No. 129, Abstract No. 320, in Deaf Smith County, Tex., save and except the South 600 feet of the West 60 feet of said tract, and the eight-inch irrigation well located thereon, containing 160.349 acres of land, more or less.
Bessie Barrett, a single woman, to J. O. McMahan, trustee for John Hancock Mutual Life Insurance Company: All of the Southwest One-fourth and the South 600 feet of the West 60 feet of the Northwest One-fourth of Section 37, Block K-8, T.T. Ry. Co., Certificate No. 129, Abstract No. 320, and the eight-inch irrigation well and all equipment situated on the described tract, containing 162 acres of land, more or less.
Elmer I. Northcutt, et ux, to Hal Weatherford, trustee for The Federal Land Bank of Houston: All of Section No. 30, Township 3 North (T3N), Range 2 East (R2E), of a Capital Syndicate Subdivision of Capitol Reservation Leagues Nos. 420 and 433, containing 640 acres of land, save and except, the East 200 acres of the North 1/4 of said Section; leaving 440 acres of land, more or less, herein.
MARRIAGE LICENSES
Leland Stanford Cole and Hazel Pauline Stallings, Feb.

21. Robert Hartford Trowbridge and Clara Ethel May, Feb. 23.
VEHICLE REGISTRATIONS
H & W Implement Co., 1962 Chevrolet Pickup; Deaf Smith County Precinct 2, 1962 Chevrolet Pickup; Howard Gault & Son, 1958 GMC Pickup; George N. Sells, 1955 Chevrolet Pickup; 2-22.
Stella Parker, 1960 Chevrolet; Eual L. Perry, 1955 Plymouth; Harille Shannon, 1959 Chevrolet Pickup; L. D. Shaw, 1960 Chevrolet; Esequiel Lucero, 1957 Ford; Antonio Ramirez, 1956 Chevrolet; Ismael Y. Vera, 1954 Chevrolet; R. E. Caddell, 1960 Chevrolet; M. W. Blankenship, 1962 Chevrolet Pickup; Tri-County Fertilizer Co., 1962 Chevrolet 1/2 Ton Pickup; Richard L. Cardinal, 1960 Matchless Motorcycle; E. D. Sawyer, 1954 Chevrolet Pickup; West Texas Drilling Co. of Hereford Inc., 1957 Oldsmobile; A. Petersen, 1960 Chevrolet; Tom A. King, 1962 Chevrolet; A. Nathan Hopson, 1959 Plymouth; 2-23.
W. B. Nunley, 1959 GMC Pickup; Bryant Brothers, 1962 GMC Pickup; C. W. Pierson, 1955 Buick; Mrs. Lena Cudgell, 1962 Chevrolet; E. Milliano Lamas, 1955 DeSoto; Tom J. Clay, 1956 Chevrolet; Johnny Martin and Kenneth Stevens, 1948 Chevrolet Pickup; Trinidad Salazar, 1959 Chevrolet; J. F. Messer, 1953 Ford Pickup; Donald H. Brown, 1948 Chrysler; H. F. Patezold, 1962 Chevrolet Grain Truck; 2-26.
WARRANTY DEEDS
C. E. Winder, et ux, to Cecille Winder Armstrong: All of the East One-Half (E 1/2) of Section Forty-seven (47), Block K-6, G.B. & C.N.G. R.R. Co., Grantee, Deaf Smith County, Tex.
B. A. West and wife, Meca West, to Albert Fischbacher Sr.: All of Section 56, Block K-8, Deaf Smith County; save and except a portion of the West One-Half of Section 56 in Block K-8, Certificate No. 357, containing 72.3 acres conveyed to J. M. Hamby by deed dated Aug. 16, 1954.
J. Schroeter to Floyd Dunavant: All of Lot No. 37 of Allison Subdivision of Block 2, the West 1/2 of Block 3 and the East part of Block 16, Welsh Addition.
MARRIAGE LICENSES
Eugene Mark Zinser and Kaun Vee Treider, Feb. 26.
Weldon Eugene Toews and Joan Jeffrey Cox, Feb. 26.
Layton Davis Sawyer and Ladena Kaye Gunn, Feb. 28.
Kelly Coplin and Rosalee Saul, Feb. 26.

Clothing Consumer Program Set Mar. 1

Clothing consumer information day will be observed in Castro County on Mar. 1 with a special program designed to give dollar-saving tips and work saving information to interested homemakers.
The program will be free, and the public is invited. Sybil G. Stringer, county home demonstration agent, has announced.
The clothing sub-committee of the county program building committee determined that the program was needed, then set about to plan the event. The sub-committee also has assumed responsibilities for registration, displays and exhibits, general arrangements, style show and publicity, according to Mrs. Stringer.
Management and consumer information in fabrics and laundering will be stressed in the daylong program. A talk on "Laundering Tips," including the selection of laundry aids, how to use the washing machine and other information helpful in home laundering, will be presented by Miss Lily Johnson, home economist with the Philco Corp., Dallas.
Miss Fannie Brown Eaton, Extension Service clothing specialist at College Station, will discuss "Buying Today's Fabrics," in which fibers, their characteristics and care will be stressed.
Discussing the management phase of the clothing program will be Mrs. Argen Draper, Deaf Smith County HD agent, whose subject will be "Your Clothing Dollar." A similar clothing consumer information day was held on Feb. 27 in Deaf Smith County.
Question and answer periods will be held at the close of the talks, with Miss Edith Lois Wilson, District Agent, Amarillo, acting as moderator.
Clothing exhibits and displays will be set up by local clothing merchants. Area members of Future Homemakers of America chapters and the clothing sub-committee are also expected to have exhibits. The finale will be a spring fashion show, featuring local models, and sponsored by local merchants.

Services Held For Mrs. Minnie Love

Mrs. Minnie Velma Love, 65, of 605 Jackson, Hereford, died at 1:05 p.m., Sunday, Feb. 25, in Deaf Smith County Hospital after an illness of about four months.
Funeral services were held at 2 p.m. Monday, Feb. 26, at Rose Chapel of Gilliland Funeral Home with the Rev. B. L. Davis, pastor of the First Baptist Church, officiating. A second service was held at 2:30 p.m. Tuesday in the First Baptist Church of Archer City. Burial followed in the Archer City Cemetery.
Mrs. Love was born on May 10, 1896, in Collin County, and was married to Sam Love on May 19, 1934, in Wichita Falls. They moved to Hereford from Lubbock in 1950. She was a member of the First Baptist Church.
Survivors include her husband, two sons, Ray Maxwell and J. D. Pitts of Archer City; a daughter, Mrs. Jaunita Burkholder of Electra; a sister, Mrs. Estelle Wallace of Wichita Falls; six grandchildren and one great-grandchild.

RECEIVE HONOR

The Feb. 15 issue of READ Magazine, a school publication used in all 50 of the United States plus foreign nations, featured a picture of the Deaf Smith County winners of the 1961 READ Magazine Creative Writing Awards Program. Steve Hodges, son of Mr. and Mrs. Joel Hodges of Hereford, was the first place winner. Second place winner was Edward Mims, son of Dr. and Mrs. A. T. Mims of Hereford. Students at Stanton Junior High School, the boys are English students of Mrs. Inez Welch and Mrs. Marie Rateliff, Sharon Seiver, daughter of Mr. and Mrs. John Seiver of Hereford, was third place winner in the contest.

VISIT MOTHER

Mr. and Mrs. Clifford Kester of Craig, Colo., are visiting his mother, Mrs. F. M. Kester, and other relatives in Hereford.

HOSPITAL PATIENT

Mrs. Robert Hickman of Hereford is a surgery patient in Scott and White Hospital in Temple.

Services Held For Mrs. Minnie Love

Mrs. Minnie Velma Love, 65, of 605 Jackson, Hereford, died at 1:05 p.m., Sunday, Feb. 25, in Deaf Smith County Hospital after an illness of about four months.
Funeral services were held at 2 p.m. Monday, Feb. 26, at Rose Chapel of Gilliland Funeral Home with the Rev. B. L. Davis, pastor of the First Baptist Church, officiating. A second service was held at 2:30 p.m. Tuesday in the First Baptist Church of Archer City. Burial followed in the Archer City Cemetery.
Mrs. Love was born on May 10, 1896, in Collin County, and was married to Sam Love on May 19, 1934, in Wichita Falls. They moved to Hereford from Lubbock in 1950. She was a member of the First Baptist Church.
Survivors include her husband, two sons, Ray Maxwell and J. D. Pitts of Archer City; a daughter, Mrs. Jaunita Burkholder of Electra; a sister, Mrs. Estelle Wallace of Wichita Falls; six grandchildren and one great-grandchild.

RECEIVE HONOR

The Feb. 15 issue of READ Magazine, a school publication used in all 50 of the United States plus foreign nations, featured a picture of the Deaf Smith County winners of the 1961 READ Magazine Creative Writing Awards Program. Steve Hodges, son of Mr. and Mrs. Joel Hodges of Hereford, was the first place winner. Second place winner was Edward Mims, son of Dr. and Mrs. A. T. Mims of Hereford. Students at Stanton Junior High School, the boys are English students of Mrs. Inez Welch and Mrs. Marie Rateliff, Sharon Seiver, daughter of Mr. and Mrs. John Seiver of Hereford, was third place winner in the contest.

VISIT MOTHER

Mr. and Mrs. Clifford Kester of Craig, Colo., are visiting his mother, Mrs. F. M. Kester, and other relatives in Hereford.

HOSPITAL PATIENT

Mrs. Robert Hickman of Hereford is a surgery patient in Scott and White Hospital in Temple.

TRY
CHIROPRACTIC
DR. GALE J. PAGE
1011 PARK AVE.
EM 4-2643

HEAR
MARSHALL FORMBY
Candidate For
Governor Of Texas
CHANNEL 4
Amarillo
10:30 P.M. - Mar. 1
(Paid Pol. Adv.)

TREES PLANTS-SHRUBS
JUST ARRIVED
Bare Root Trees & Shrubs
Wide Selection and Varieties
★ Fruit and Shade Trees
★ Pecan Trees
★ Shrubs
★ Hedge Plants
★ Fence Roses
● Hybrid 311 (red)
● County Fair (pink)
DELMO'S
Farm & Garden
SUPPLY

How to save on your insurance
... in one easy step!
Ask About The
NEW FARMOWNERS POLICY
CALL US
Plains Insurance Agency
Since 1926
W. H. Patton Robert Lemons
Jno. H. Patton

TWIST the MOST out of Your Food Dollars

Coopr. G. Doppel 1962

| | | | |
|----------------------------------|--------------------------|-----------|--|
| POWDERED OR BROWN SUGAR | Imperial 1 Lb. | 2 Boxes | 25¢ |
| POWDERED CREAM | COFFEEMATE REG. SIZE JAR | | 25¢ |
| DUNCAN HINES ANGEL FOOD CAKE MIX | BOX | 39¢ | GLADIOLA — Yellow Or White CORN MEAL 5 LB. BAG 39¢ |
| MAC. AND CHEESE DELUXE DINNER | KRAFT 14 Oz. | | 39¢ |
| Van Camps 12 Oz. | | | Franco American — 15½ Oz. Can |
| BEANEE WEENIES | 25¢ | SPAGHETTI | 2 FOR 25¢ |
| PATIO BEEF ENCHILADAS | NO. 2 CANS | | 45¢ |
| CRUSHED PINEAPPLE | SHURFINE FLAT CANS | 2 FOR | 29¢ |
| 46 Oz. Orange Drink | | | Waxahachie Chief Extracted |
| HI - C | 29¢ | HONEY | 4½ LB. BUCKET 89¢ |

| | | |
|-------------------------------------|------------|-----|
| Shurfine Sweet PICKLES | 22 OZ. JAR | 39¢ |
| WISHBONE ITALIAN DRESSING | 8 OZ. | 35¢ |
| FROZEN — Morton's Blueberry MUFFINS | 8 OZ. PKG. | 35¢ |
| FROZEN — Cape Ann Fillets PERCH | LB. PKG. | 39¢ |

FOLGER'S
COFFEE
Lb. Can **65¢**



Everybody's doing it—TWISTING more fine foods—More cash savings out of their food dollars by shopping regularly at COOPERS. You'll be doing it too, for you'll pick up SUPER VALUES at every twist and turn of your shopping tour through our market. Come in today and let our storewide low prices put a new beat in your budget—new twist to your savings.

FRESH DRESSED WHOLE

FRYERS

USDA A GRADE

LOOK FOR THIS SHIELD

lb. 29

You Can Depend On The Quality At Cooper's — We Sell Only GRADE "A" POULTRY

Shurfine
YOUNG MOTHER HUBBARD SALE

MARCH 3



WHITE OR COLORED

KLEENEX

4 BIG 400 COUNT BOXES **89¢**

YOUR CHOICE OF HAIR TYPES
TONI HOME PERMANENTS Reg. \$2.19 **1.49**
TAX INCL.

BUBBLE BATH — 12 Oz.
MATEY Powder Or Liquid **59¢**

| | | |
|-------------------------------------|-----------------------------|----------------|
| WILSON'S CORN KING | | |
| BACON | lb. | 47¢ |
| PURE — ALL MEAT | | |
| BOLOGNA | lb. | 39¢ |
| LAZY DAZY — FROZEN BEEF & VEGETABLE | | |
| TURNOVERS | 8 COUNT 16 OZ. PKG. | 89¢ |
| CELERY | CRISP STALKS CALIFORNIA EA. | 17¢ |
| CARROTS | CELLO PACK TEXAS 2 PKG. | 19¢ |
| ONIONS | FANCY YELLOW | lb. 10¢ |
| BIG 25 FOOT ROLL | | |
| FOIL | ALCOA ALUMINUM | 29¢ |

- Shurfine Apple Butter 28 oz. 4/\$1.00
- Shurfine Apple Sauce 303 7/\$1.00
- Shurfine Blackeyes Fresh Shelled 300 7/\$1.00
- Shurfresh Biscuits Sweet-Buttermilk-8 oz. 13/\$1.00
- Elmdale Brooms \$1.19
- Shurfine Catsup 14 oz. 5/\$1.00
- Shurfresh Cheese Spread 2 lb. \$.69
- Shurfine Cherries R.S.P. 303 4/\$1.00
- Shurfine Chili with Beans .300 4/\$1.00
- Shurfine Coffee 1 lb. for only 19¢ With the Purchase of Any 2 PEPSODENT TOOTH BRUSHES
- Shurfine Corn Golden WK-CS 303 6/\$1.00
- Shurfine Cucumber Chips Fresh 16 oz. 4/\$1.00
- Roxey Dog Food No. 1 13/\$1.00
- Energy Detergent Liquid 22 oz. \$.39
- Shurfine Flour 10 lb. Paper Bag \$.73
- Shurfine Flour 25 lb. Print Bag \$1.69
- Shurfine Fruit Cocktail 303 5/\$1.00
- Shurfine Grapefruit Juice Natural 46 oz. 2/\$.59
- Shurfine Grapefruit Sections 303 5/\$1.00
- Shurfine Grape Juice 24 oz. 2/\$1.00
- Shurfine Green Beans Cut B.L. 303 5/\$1.00
- Shurfresh Margarine 1 lb. 6/\$1.00
- Shurfine Milk Canned Tall Can 7/\$1.00
- Shurfine Mustard Greens Chopped 303 6/\$1.00
- Softlin Napkins White 80 ct. Box 2/\$.25
- Shurfine Orange Juice Unswt. 46 oz. 2/\$.79
- Shurfine Peaches YC Slt. or Hlv. 2½ 4/\$1.00
- Shurfine Pears Bartlett Halves 303 4/\$1.00
- Shurfine Peas Early Harvest 303 5/\$1.00
- Shurfine Peanut Butter 18 oz. 2/\$1.00
- Shurfine Pork and Beans 300 9/\$1.00
- Shurfine Preserves Apri.-Peach Plum 20 oz. 3/\$1.00
- Shurfine Salad Dressing Qt. \$.39
- Shurfresh Salad Oil Qt. \$.55
- Shurfine Salmon Red Alaska No. 1 \$.89
- Shurfine Sauer Kraut 303 7/\$1.00
- Shurfine Shortening 3 lb. \$.69
- Shurfine Spinach 303 7/\$1.00
- Shurfine Sweet Potatoes Sm. Whl. 3 squat. 4/\$1.00
- Shurfine Tomato Sauce 8 oz. 10/\$1.00
- Shurfine Tuna Chunk Style, 6½ oz. 3/\$.89
- Shurfine Turnip Greens Chopped 303 9/\$1.00
- Shurfine Vienna Sausage 4 oz. 5/\$1.00
- Shurfine Waffle Syrup 32 oz. \$.39

| | | |
|-------------------------|--------|------------|
| Johnson's Furniture Wax | | |
| PLEDGE | 7 OZ. | 69¢ |
| Staley Staffe | | |
| STARCH | QUART | 25¢ |
| Wizard Aerosol | | |
| DEODORANT | 7 OZ. | 59¢ |
| Liquid Detergent | | |
| LUX | 22 OZ. | 59¢ |
| REGULAR BARS | | |
| DOVE | 3 FOR | 45¢ |

COOPERS

LAST DAY OF SALE IS MARCH 3



TRADITIONAL FHA-FFA Sweetheart and Beau party was highlighted by selections made by the chapters. Top left are Royce Ann Gilliland and Arnold Powell, named the cutest couple; top right are Joan Marnell and Roddy Allred, Sweetheart and Beau of the Junior High chapter; bottom left are Kathryn Kuper and Edward Allison, Sweetheart and Beau of the Royal Rose Chapter; bottom right are Linda Jones and Dan Wall, Sweetheart and Beau of Chapter One. (Whiteface Photos)

FHA Presents 1962's Sweethearts And Beaus

Honoring Sweethearts and Beaus of both the high school and junior high school chapters of the Future Homemakers of America, was the annual Sweetheart and Beau Party. It was held in the Hereford Bull Barn on Friday, Feb. 23. It is at this party that the outstanding girl of each chapter is honored in Future Homemakers by being named Chapter Sweetheart. The girls receiving this title this year well deserve it. Named along with the outstanding boys from F.F.A are

"Sweetheart and Beau"; and Dan Wall and Linda Jones of Chapter I. Named "Sweetheart and Beau" for Junior High are Roddy Allred and Joan Marnell. "Cutest couple" award went to Royce Ann Gilliland and Arnold Powell. They were judged by Mrs. Jess Robinson, G. W. Newson and Frank Prowell.

A theme of George Washington was carried throughout the affair with a large picture of George Washington done in profile by Faye Evans and Mary and Phyllis Betzen, and a color theme of red, white, and blue streamers and table decorations. The table centerpiece, done by Mrs. Pulliam, was blue carnations and red candles with cut-outs of hatchets and cherry clumps decorated the white tablecloth.

As special guest, John Brazzell, of Canyon (a county agent) taught the group some new folk games and dances. He wore a colorful hand-woven Mexican jacket. Group games were also played through the evening.

Present, also, were many chapter parents including Mrs. Pulliam, Mr. and Mrs. Earnest Langley, Mr. and Mrs. J. R.

David Bearhine Gives Assembly With Puppets

On Thursday, Feb. 22, the Hereford High School Student Council presented the fourth Southern Assembly of this school year. The guest was Mr. David Bearhine, noted puppeteer and marionettist. Mr. Bearhine told of the early American circus along with illustrating certain acts with his marionettes. A few of the amusing characters were: the white-faced clown, Willie; Bimbo, the baby elephant; Col. Whitehall and his trained seal, who played Yankee Doodle Dandy on the bicycle horns; the antics of Sir Sedgewick cycling on the tight wire and Miss Lilly on the high trapeze.

The show was concluded with the humorous pranks of Punch and Judy.

Speech Class Will Give Play For Club Meet

Mr. James Hinkley's seventh period speech class is to present a play entitled "Sorry, Wrong Number" to the La Plata Study Club at the Community Center on March 6, the club's guest night.

The play is of an invalid, Mrs. Stevenson, portrayed by Kathy Boston, who overhears a telephone conversation of The Man (Roger Albracht), and George (Charles Mims). They talk of how they are to kill an invalid lady who finally is discovered to be the listener herself. (Continued on Page 2)

Ideal Boy

Barbara Pulliam finds her ideal boys are all among the senior class. Her ideal boy would walk like Joe Mack Hale and have feet similar to those of Geary Gearn. Jim Dzuik has the best nose, Dennis Hodges has the bluest eyes, and Randy Dowell's hair is the nicest. Roger Albracht has the most charming smile.

Barbara likes the neatness of Jerry Cursinger and the way Drew Kershen uses his manners. The best dressed boy is Carl McCaslin, most likable is Troy Don Moore, and the kindest is Virgil Strange. The energy that Grady Persons has is remarkable, but you can't beat Ted Wimberly for eagerness. Lynton Allred is funny to watch while Edward Allison is silly. The ideal boy would have to be happy like Dennis Rickman and rambunctious like Butch Waltershead, but be quiet like John Bob Drake and bashful like Dan McDowell.

The flirtiest is Bill Miller, and John Buck's friendliness can't be beat. The zealotness of Marcus Jacobsen and personality of Jimmy Reinauer are great.

Her ideal boy's qualities would be the intelligence of Ken Loerwald, the ambition of Walker Parris, and the remarkableness of Darrell Garrett. She thinks Joe Shultz is the cutest boy in Hereford High School, and the most handsome is Eldon Howell. She goes for boys who have a physique like Mack Cansler, mouth like Jim Marnell, and a nice voice like Jerry Moss. They must be witty like Mickey Stevens, and as talented as Eddie Gallagher, and be tall like Mickey Bonesio.

As for being the best all around, he would have to be like Mack Cansler. (Continued on Page 2)

Honor Society Offers Tutoring Aid To Students

The members of the National Honor Society are making themselves available for tutoring service to those students who are failing or having difficulty with various subjects. These students are urged to check the following list of names for those who are qualified to help them in various subjects, or get in touch with Miss Mackey or Mr. Thompson.

Those specializing in English are Terry Anderson, Ronnie Gray, Janis Higgins, Nelda Botkin, Audri Miller, Jackie Nunley, Bill Miller, Martha Ponder, and Judy Rowland. Those tutoring math are Nelda Botkin, Ronnie Gray (algebra), Martha Ponder (business math), Kathy Knox (geometry, algebra), Bill Miller, Jackie Nunley (algebra), Donald Payne (algebra), Cecelia Wilhelm, Ted Wimberly (trigonometry and physics).

Aiding in history are Janis Higgins, Audri Miller, Jackie Nunley, Donald Payne, Martha Ponder; Latin: Ronnie Gray, Kathy Knox, and Audri Miller; science: Donald Payne (chemistry), and Martha Ponder (biology).

Qualified to help with music is Kathy Knox, and shorthand assistants are Martha Ponder and Linda Stephen. Teachers are reminded to suggest that their "trouble" students get in touch with one of the foregoing students.

Key Club Has Riotous Choir During Assembly

On Friday, Feb. 23, the students of HHS were entertained by a most delightful program presented by the Key Club Choir. The musical appetites of the group cannot be truthfully stated without inciting a riot, but their remarkable unity and harmony cannot be equaled. The group was led by Charles (Mims) Mitowsky, otherwise known as Mitch Mims, and Charles Kelly.

Everyone appeared to have enjoyed the beautiful impromptu rendition of "Some Enchanted Evening" by Mickey Bonesio, famous stage and singing star of Hereford High School, in the middle of "Animals" sung by the Key Club Quartet except the members of that quartet. They promptly expressed their disfavor by shooting him with a cap pistol. Oh! But he was a tough one... it took six shots to down him. Then he ended on a true note.

Many enlightening incidents were also revealed regarding the past life of some of our faculty members and local students.

All in all, the whole program was entertaining and it was reported that many students expressed hopes of more assemblies like this one being presented throughout the year.



ANNUAL D. E. RADIO DAY was held last Tuesday, with strong competition from U. Col. John Glenn Jr. Providing musical interludes during the day was Eddie Gallagher, top left. Juniors Arnold Powell and Austin Hodges discussed prospects for the Whiteface football team next fall. Announcers were Harold Hamby, James Vines, and Judy Fowlkes. (Whiteface Photos)

Official Publication Of Hereford High School Hereford, Texas

The WHITEFACE

Hereford, Texas, Thursday, March 1, 1962

Section Two

Behind The Lockers

By Suzy Woodford

Bill Miller, what happened to your car last Saturday? If anyone would like to know who did it, just ask a certain group of junior girls plus one sophomore girl, known to have an interest in the party fore-mentioned. Also, did you really get married and if so, to whom?

Judy Means and Judy Price, what do your dietary desires consist of on Thursdays?

Dennis Rickman, are you finally ready to go with big girls and quit robbing the cradle?

I hear Stan Kroff and David Highers are undefeated in basketball and are so good that even Mr. Smith and Mr. Penner won't even take them on.

The Thespians of H.H.S. will certainly be glad when there are two auditoriums so they can have one in which to put on their plays.

Joe Don Noland, what is this about the little fire in the will?

Jim Marnell, what kind of sign do you have on the back of your car?

Boy, we surely were surprised to hear Joyce West had such an interest in baseball. We never would have guessed such a thing.

Diane Clearman and Linda, remember girls, all is fair in "Love and War."

Bob Uselton, who is your secret admirer who wrote you love letters all last year?

Darrel Garrett, what do you have against rear-view mirrors?

Drew Kershen, do you always have such trouble keeping your buttons buttoned? Last week Drew was getting ready to have his picture taken in the library when Mrs. Leggett kindly told him his shirt was unbuttoned, so we were just wondering.

Dewey Stevens, why were you crawling around on your hands and knees last Saturday?

Dennis Rickman wants to know who Gloria has been going with.

Austin Hodges, why were you letting the air out of Dan Thomas' tires last Saturday night? Haven't you got any?

(Continued on Page 2)



DEBATERS FROM HEREFORD High School (standing) debated with Jackie Nunley and Carolyn Brumley. The two teams have planned debates with area high schools and will enter Interscholastic League competition. (Whiteface Photo)

Col. John Glenn's Trip Matched By Presentations On D. E. Radio Day

Glued to the radio or television, millions of Americans gave a cheer last Tuesday as the Friendship 7, carrying the now immortal John Glenn, rose from the Cape Canaveral launching pad early Tuesday morning.

Only one hour before Glenn's blast-off, Hereford Distributive Education students took to the air... over local radio station KPAN, and the "fight" was on. It was John Glenn versus the D. E. radio day. Thousands listened intermittently, between the Colonel's live broadcasts from 100 miles up, and the annual presentation of the D. E. School Day.

While Glenn was soaring over Africa, and radio announcers

back home were heralding his accomplishments, Hereford D. E. students presented local talent and programs to a changeable audience.

Listening to the local broadcast long enough to hear Eddie Gallagher play "Asia Minor" on the piano, a change of the dial would bring the information Glenn was orbiting over Asia major.

Back on the local scene, head football coach Jack Meredith and members of the squad presented the outlook for the team. Meanwhile network commentators pointed out the remarkable teamwork that went into orbiting the Friendship 7.

A girls' quartet sang out with a rendition of "Sentimental

Journey," while John Glenn was on a historic one. Soloist Fred Henry was vocalizing about "Old Man River" along about the time Glenn stated he could see the Mississippi from his station 100 miles above Florida.

Members of the Hereford High School National Honor Society were explaining entrance requirements - John Glenn had just become the initial American member of a unique society of national honor.

Thoughts turned to God and Christianity when the Tri-Hi-Y and the Hi-Y presented the noon-time devotional. John Glenn was getting a unique glimpse of the Creator's creation, and millions were making a silent request from the Al-

mighty for Glenn's safe return. Glenn was having problems with his steering as D. E. students were having trouble staying on their course - because a few programs failed to show up. The colonel decided to give it another whirl anyway, and so did the D. E. announcers, Harold Hamby, Judy Fowlkes, and James Vines.

Speech classes presented "The Fall of the House of Usher" at about the same moment that Glenn was falling gently into the Atlantic, to be rescued.

Glenn landed on time, the D. E. students completed their broadcast on time, and all turned in for a needed night's rest.

C OF C SCOUT

'Deaf' Smith Says

TO: The Spirit Of General Sam Houston
FROM: The Spirit Of Erastus "Deaf" Smith

SUBJECT: Scouting Report On My Chamber Of Commerce

It's been a long time since the last report, Sam, but I'll try to be more regular from now on. The Chamber of Commerce that bears my name has been so busy with its annual banquet and with the end of its fiscal year that other committees have not had much of a chance.

It was interesting to me to see the results of a study the staff prepared the other day. Each year the Chamber of Commerce of the United States sends out a survey questionnaire covering the operations of local chambers of commerce.

The preparation of the answers to this survey require quite a bit of detailed analysis of the local chamber of commerce operation.

The information gained from all over the country is then tabulated and compiled for the benefit of the local chambers of commerce. From this survey it is possible for the board of directors of my chamber of commerce to compare the operation of this organization with that of Chambers of Commerce in communities of similar size across the nation.

One part of the questionnaire was of particular interest because the question is so often asked as to how many farmers, or how many retailers, belong to the Chamber of Commerce. Statistics as such are often not very interesting but these might be to those people who are interested in their Chamber of Commerce in my county.

The survey sets up 17 classifications into which all of the memberships fall. The figures given here are on dues pledged during 1961 and do not include any of the increased memberships due to the continuing budget which started in September.

Following is a break-down of the various classifications, how many members, how much they contribute to the Chamber budget, both in actual amount and percentage, and how many of the members pay the minimum Chamber dues:

1. Amusements and entertainments classification includes three members, who pay \$216, which is 1.2 per cent of the total budget. Of these, none pay the minimum.

2. There are 33 members in the automotive division, including new and used car dealers, service stations, repair shops, etc., who pay \$1722, amounting to 9.5 per cent of the total budget. Of these, 15 pay the minimum.

3. Construction division has 15 members who contribute \$901 or five per cent of the total budget. Six of these pay the minimum.

4. In the financial branch, which includes banks, savings and loan establishments, investments, and finances, there are five members who pay 3.6 per cent or \$672 of the Chamber budget. Only one of these pays the minimum membership fee.

5. There are six members in the hotels, motels, and apartments classification, who pay \$360, or two per cent of the budget. Two of these pay the minimum.

6. Insurance and real estate classification has 18 members, who pay \$1,020, or 5.5 per cent of the Chamber's total budget. Eight of these pay the minimum.

7. Manufacturers and processors, including elevators, vegetable processors, metal shops, etc., have 34 members, who contribute \$2,937, or 15.8 per cent of the budget. Six members pay the minimum.

8. Classified in the professional division which has 22 members, doctors, lawyers, accountants, etc., pay \$1,146. This is six per cent of the budget, as six members pay the minimum.

9. Public utilities classification has five members, who pay \$780, one of these pays the minimum.

10. Publishers and printers include four members, who pay \$240, or 1.3 per cent of the Chamber budget. Two of these pay the minimum.

11. There is only one member in the radio and television classification.

12. Four restaurants and cafes pay 7 per cent of the budget with \$130. Three of these pay the minimum.

13. Wholesalers and distributors include 12 members, who pay \$772, or 4.1 per cent of the budget. There are three members paying the minimum.

14. Retailers classification includes 64 members, who pay \$3,792, or 20.4 per cent of the budget. Of these, 24 pay the minimum.

15. In the services division, which includes laundries, cleaners, personal, etc., there are 31 members who pay six per cent of the budget with \$1,142. Eighteen of these pay the minimum.

16. Transportation, including rails, buses, air, and trucks, pay \$312 or 1.7 per cent of the budget. There are seven members, four of whom pay the minimum.

17. In the largest division, the diversified classification which includes farmers, ranchers, government agencies, etc., there are 72 members who pay \$2,432, or 13 per cent of the total Chamber budget. There are 53 members who pay the minimum membership fee.

Some interesting observations can be made from this. With a total of 336 members the per cent of the total membership in each category, rather than the per cent of the total financial support would make an interesting comparison. If the Chamber of Commerce in its



A PUBLIC SAFETY AWARD was presented recently to Hereford naming the city as the safest in Texas in the 5,000 to 10,000 population class for 1960. The award was presented by the Texas Safety Association through the Department of Public Safety. Accepting the award the city from Cecil McNeal, area safety patrolman, is Henry Aycock, chief of police. (Staff Photo)

TRY
CHIROPRACTIC
DR. GALE J. PAGE
1011 PARK AVE.
EM 4-2643

PLANT NOW!

- Dwarf Fruit Trees
- Fruit Trees
- Shade Trees
- Ornamental Trees
- Evergreens

Come and see our selection of quality nursery stock.

Armstrong
NURSERY AND GARDEN CENTER
305 W. Park EM 4-1988

SPECIAL NURSING CARE 24 HOURS
• Special Diet • State approved Fire Sprinkler System
• Licensed and approved by State Board of Health and Nursing.

Mrs. L. V. Childers, Owner
TWILIGHT REST HOME
1303 S. Lincoln St. Amarillo Phone DRake 3-8408



HEAR MARSHALL FORMBY

Candidate For
Governor Of Texas

CHANNEL 4
Amarillo

10:30 P.M. - Mar. 1
(Paid Pol. Adv.)

FIRESTONE'S \$500,000 PRIZE SWEEPSTAKES For READER'S DIGEST SUBSCRIBERS

CHECK YOUR LUCKY NUMBER HERE

HEREFORD FARM SUPPLY

621 E. First

EM 4-1120

Behind...

(Continued from page 1)

I hear that Butch McCaslin and Mack were the only ones who caused any trouble at the ACT test last Saturday morning. Way to go boys.

Marcus Jacobsen, what does Cynthia Seed know about you that is so top secret?

Carl Mc., Butch W., John F., David S., and Eddie G. find the library a very convenient place to keep in practice for the pool hall, or rather the B. and B. Recreation Hall.

Miss Collard, who do you take bowling lessons from while your students are bowling?

We find there is something new in English after all. For instance, a colon is nothing more than two periods going steady.

Anyone who is interested in learning how to square dance is urged to tell me or Mrs. Caves. The club would meet twice a month, probably on Friday night. If you like to square dance, it would be lots of fun.

WEEKEND VISITOR

David Wertenberger, student at West Texas State College in Canyon, was a weekend visitor in the home of his parents, Mr. and Mrs. O. Wertenberger of Hereford.

HOME FOR WEEKEND

Greg Combs, son of Mr. and Mrs. Les Combs of Hereford, was a weekend visitor in the home of his family. Greg is a student at Texas Tech in Lubbock.

The Hereford Brand, Hereford, Texas, Thurs., March 1, 1962

EICKE ELECTED TO ANGUS ASSOCIATION

F. L. Eicke, Hereford has been elected to membership in the American Angus Association at St. Joseph, Mo., announced Frank Richards, secretary. He was one of 30 breeders of purebred Aberdeen-Angus in Texas elected to membership during the past month.

VISIT IN OKLAHOMA

Mr. and Mrs. Loy T. White of Hereford were weekend visitors in Hollis, Okla., in the homes of her sister, Mrs. Odie Whorton, and niece and family, Mr. and Mrs. Otis Byrd, and other friends.

Thin-skinned heavy grapefruit with a russet hue are usually good eating.

NAMED COUNCIL OFFICER

La Nell Short has been elected secretary of the executive council of the Baptist Student Center at Texas Technological College in Lubbock. She will hold the office during the spring and fall of 1962.

Dr. Milton C. Adams
OPTOMETRIST
Office Hours
8:30 5:00
335 Miles Avenue
Phone EM 4-2255
Hereford, Texas

HEREFORD MEAT CO.

FEATURES

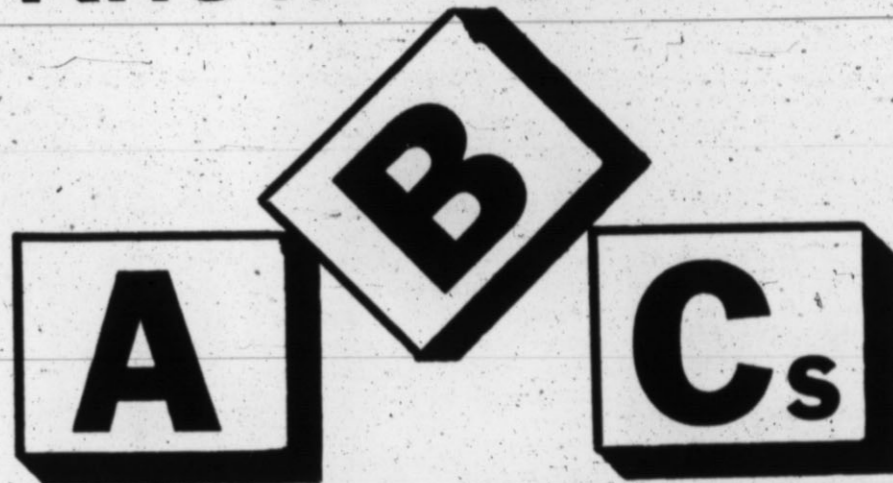
GRAIN FED BEEF

Fed in Deaf Smith County
QUARTER — HALF OR WHOLE CARCASS
Custom Slaughtering & Processing
LOCKER SERVICE

HEREFORD MEAT CO.

Glen Hopson V. C. Hopson
John D. Pitman B. E. Roberson
130 N. MAIN EM 4-3881

Know Your...



Of Banking!

FINANCE YOUR 1962 CAR AT YOUR BANK

SAVING NO. 1 —The cost of borrowing from our bank is kept low; and there are never any extra charges to pay at any time. Thus, the over-all outlay for your car purchase is kept to a minimum.

SAVING NO. 2 —We arrange monthly terms of repayment to fit your budget, not strain it—and you thereby gain a cash margin for taking advantage of other money-saving opportunities.

SAVING NO. 3 —You save precious time, as well: Prompt action on your application for a loan from us quickly gets you the money you need to pay the dealer of your choice.

SAVING NO. 4 —As you repay your loan per agreement, you build your credit standing with us—a sound basis for low-cost bank borrowing in the future.

BEFORE YOU SIGN UP FOR A 1962 CAR — COME IN; LET US SHOW HOW LITTLE IT COSTS

HEREFORD STATE BANK

"Your Friendly Bank" Member F.D.I.C.

Speech...

(Continued from page 1)

Other parts are played by Carolyn Watkins, the telephone operator; Janis Higgins, Information; Glenda Fuhrmann, Chief Operator; David Kendall, Western Union; Dewayne Gresham, Sergeant Duffy; and the nurse is portrayed by Gillian MacArthur.

Have you read the classifieds?

No Second Guessing!
We Give You a **WATCH to WEAR** AT NO EXTRA COST WHILE YOURS IS REPAIRED

- LOW PRICES
- FACTORY PARTS
- PROMPT EXPERT SERVICE
- GUARANTEED WORKMANSHIP

After this check-up... dress up your watch with a new **WATCHBAND**
COWAN JEWELRY
217 N. Main EM 4-3821

Ideal...

(Continued from page 1)

Cynthia Seed was the best-dressed girl.

Together with the flirtiness of Jan Reese, the friendliness of Kay Lemons, vivacious Tony Parker and witty Betty Mae Scott all make up the ideal personality of Sharon Hill. With all these characteristics David and Jackie decided that the best-around girl was Joyce West.

When carrots are at their best, they are not green at the top.

MICKY GOES FOR HARRY
HOUSTON, Tex. (AP) — "If I owned the Houston Colts I have hired Harry Craft to manage the club for me," so said Mickey Mantle at Houston's major league dinner.

Craft, who will pilot Houston in the National League this year, managed Mantle during his first two years in the minors at Independence, Kan., in 1949, and at Joplin, Mo., in 1950.

PGA EXEMPTS TOUR WINNERS

Dunedin Fla. AP — For the first time in the history of the PGA championship, winners of all cosponsored or approved tournaments during the 12 months preceding the big PGA test at Aronimink near Philadelphia, July, 18-22, will be exempt from qualifying.

Monday, June 18, has been set as the date for qualifying in the PGA's 34 local sections.

BUILDING FUND

NEW YORK (AP) — Among gifts received by the Episcopal Church for the construction of a new headquarters center here was \$419,781.96 from Mr. and Mrs. Eli Lilly, of Indianapolis. He is the founder of the pharmaceutical manufacturing firm that bears his name. So far, 3 of the 4 million dollars needed for the new headquarters has been raised.

Like all-meat frankfurters? Then read the label when you buy the franks to make sure of what you are getting.

WE SELL and INSTALL

- CARPET
- FELT BASE LINOLEUM
- CABINET TOPS
- INLAID LINOLEUM
- TILE OF ALL CLASSES



E. B. Black Co.
Factory Trained Mechanics
Since 1901



*Manufacturer's suggested retail price for the full-size 4-door Newport sedan, exclusive of destination charges. White wall tires extra.

CHRYSLER \$2,964*



Chrysler 300 2-door hardtop sedan.

SPORTS-DRIVE THE 300! Now in a new price range that starts just above Newport. Recent winner, Manufacturer's Award, Class 1, Pure Oil Performance Trials!

Newport continues to help Chrysler-set a record sales pace so far this '62 model year. And, Newport's a very solid success. Its all-welded body has no bolts to loosen. It's a hefty car.

Newport's broad-shouldered V-8 engine has a surprisingly dainty appetite for all of its 265 horsepower—on a diet of 10% less-expensive regular gasoline.

Newport's rich fabrics would lend color and distinction to any living room decor.

Newport's, more than ever, Chrysler's finest full-size value!

THREE GREAT CHRYSLERS: NEWPORT = 300 = LUXURIOUS NEW-YORKER... Again, no jr. editions to jeopardize your investment.

McCullough Motor Co. 345 East First St.

REP. ROGERS WRITES

Disagreement With RFK View On Texas Voiced

TO THE PEOPLE OF THE 18th DISTRICT

In view of some recent developments in a far-off land in connection with a question asked by an Indian of our Attorney General, the Honorable Robert Kennedy, it appeared to me that a little light should be thrown on the subject. It is especially appropriate at this time since March 2 is Texas Independence Day, and one of the great days in the history of mankind in his fight for freedom and independence.

I do not know the exact words used between the Attorney General and the Indonesian student, but it was the general understanding from reports of the transaction that the Mexican War was a war of aggression on the part of this country against Mexico in which the land area presently constituting the State of Texas was the grand prize. Whether or not this was the actual subject matter of the discussion between the two, I do not know but correct or incorrect, it was the impression in the minds of those who read accounts of the statements. Hence, in order to clarify the situation and to redeem my lost prestige suffered by this country, the Attorney General, Texas, or Mexico, I think it would be well to look to the true facts.

The revolution in Texas preceded the Mexican War by some 11 years. According to Stephen F. Austin, this revolution was a stand against military dictatorship. The aim in the beginning was not independence from Mexico. On November 7, 1835, it was declared by the colonists in a consultation at San Felipe de Austin that they had "Taken up arms in defense of the Federal Constitution of Mexico in 1824". It was not until the Alamo was under bombardment on March 2, 1836, that a convention of colonists held at Washington-on-Brazos declared the independence of Texas.

The Mexican War was actually precipitated by the annexation of Texas in 1845. Mexico broke off diplomatic relations with the United States immediately after the admission of Texas as the 28th State of the Union on December 29, 1845. The first encounter was at Palo Alto near Brownsville May 8, 1846. Another engagement was fought at Resaca de la Palma on the following day.

The Mexican forces then withdrew into Mexico proper and no other battles were fought north of the Rio Grande. In the first instance, General Zachary Taylor had been ordered to seize disputed Texas land settled by Mexicans, and it was after the border clash that the United States declared war on May 13, 1846. Ten days later

Mexico declared war on the United States.

Generals Winfield Scott and Zachary Taylor moved rapidly to Mexico City and it fell on September 14, 1847. The Treaty of Guadalupe Hidalgo was signed on February 2, 1848. Mexico relinquished any claim to Texas, including the area below the Nueces. It ceded to the United States that part of the present United States west of Texas and the Louisiana Purchase and south of Oregon. However, the United States paid Mexico 15 million dollars.

It must be kept in mind that all of this transaction took place 12 years subsequent to the declaration of independence by the valiant men of Texas gathered at Washington-on-Brazos on March 2, 1836. It was after the successful conclusion of the revolution as it developed after March 2 that brought complete freedom and independence to Texas and it became a Republic, which it remained until it became annexed as the 28th State of the United States.

Although independence was not declared until March 2, 1836, it seems to me that the fight for independence by Texas began on February 23 when fewer than 200 men entered the Alamo on February 23 at the approach of a Mexican army numbering 3,000. It was then that the siege began which lasted until March 6, 1836, ending when the walls were stormed by the overpowering numbers of Mexican troops and the defenders were slaughtered to the last man.

So very much could be written about the honor and glory of those stalwart patriots at the Alamo that the space within this newsletter would be wholly insufficient to even pay surface treatment to the subject. However, I would commend to those interested in the true history of our fight for freedom the reading and re-reading of the early days of Texas history.

Few events in the history of the world can approach the story of the Alamo for sheer bravery, honor, self-sacrifice, devotion to duty, and dedication to the freedom of the individual, and certainly none can surpass it. It was all summed up on February 24, 1836. The previous day Santa Anna had hoisted a blood-red flag, meaning "NO QUARTER". William Travis replied from the Alamo with a cannon shot. On the next day he sent out his famous message "to the People of Texas and all the Americans in the World."

"Fellow citizens and compatriots, I am besieged by a thousand or more of the Mexicans under Santa Anna — I have sustained a continual bombardment & cannonade for 24 hours & have not lost

a man — The enemy has demanded a Surrender at discretion, otherwise the garrison are to be put to the sword, if the fort is taken. . . . I shall never surrender or retreat. . . . Then, I call on you in the name of Liberty, of patriotism & everything dear to the American character to come to our aid, with all dispatch. The enemy is receiving reinforcements daily and will no doubt increase to three or four thousand in four or five days. . . . If this call is neglected, I am determined to sustain myself as long as possible & die like a soldier who never forgets what is due to his own honor or that of his country. . . . Victory or Death!"

He meant every word of it. WALTER ROGERS MEMBER OF CONGRESS 18TH DISTRICT OF TEXAS

Bowling Scores

| LEAGUE NO. ONE STANDINGS | Won | Lost |
|--------------------------|-----|------|
| Tri-County Fertilizer | 34½ | 9½ |
| Tom's Peanuts | 28 | 16 |
| Hereford Bakery | 23 | 21 |
| Brownlow Builders | 23 | 21 |
| Dr. Pepper | 24 | 20 |
| Hereford Flying Ser. | 22 | 22 |
| Borden's | 21½ | 22½ |
| B & S | 21½ | 22½ |
| Crowe-Guide | 20 | 24 |
| Farm and Home | 17½ | 26½ |
| Wheeler Fertilizer | 16 | 28 |
| Carl McCaslin | 14 | 30 |

| RESULTS | Score |
|---|-------|
| Borden's | 4 |
| Hereford Bakery | 0 |
| Crowe-Guide | 4 |
| Brownlow Builders | 0 |
| Tri-County Fertilizer | 4 |
| Carl McCaslin | 0 |
| Dr. Pepper | 4 |
| Hereford Flying Ser. | 0 |
| Tom's Peanuts | 4 |
| B & S | 0 |
| Wheeler Fertilizer | 3 |
| Farm and Home | 3 |
| Bowler of the Week: Jack Kirksey with 714 | |
| High Team, three games: Tom's Peanuts with 2594 | |
| High Individual, three games: Jack Kirksey with 669 | |
| High Team Game: Tom's Peanuts with 886 | |
| High Individual Game: Jack Kirksey with 247 | |

ATTEND FUNERAL
Mr. and Mrs. Howard Gore of Hereford returned to Hereford Friday, Feb. 23, after attending funeral services for Aubrey Patton in Frederick, Okla., held on Thursday afternoon, Feb. 22. Patton was a cousin of Mrs. Gore.

OFF THE Shelf

BY H. A. TUCK
A romance that is non-fiction is one of the more delightful new books at the Deaf Smith County library now.

My Home in the Zoo by Gerald Iles is an intimate portrait of his continuing love affair with animals, birds, fish and reptiles. . . . When he was 17, he went to live in a zoo, Belle Vue Zoological Gardens, Manchester, England. His uncle was managing director of a company that had taken over the Gardens from the Jennison family, which had owned it more than 90 years. His father was to be general manager.

Animals had always fascinated Gerald and now he was in a bit of paradise, and continued to feel that it was just that for years to come.

On March 25, 1933, when he was just 21, Gerald was named to succeed his late father. With a meager budget, he started instituting new ideas, buying more animals, getting competent help.

Just about the time he had the zoo on its feet after the depression that hit England, he was faced with a larger problem. World War II brought with it unimagined headaches. There were no replacements for the animals which died. Helpers were small boys, ancient men or illiterates.

When the war ended Iles really went to work. He re-established contacts with animal dealers and started replenishing his stock. He added new attractions and rebuilt facilities.

Iles took advantage of television to the fullest. After an initial guest appearance, he had regular shows. To each of them he carried something from the zoo, limited only by size. . . . It had to fit in a taxi. . . . Through the years he knew many animals, all of them distinct individuals as far as he was concerned. But he had his favorites. There was Peggy Kikum, the tame leopardess who often accompanied him on his walks and had her own ideas about animals.

Also introduced in the book are Kliou and Maude, the tigers, rare offspring of a tiger and a lioness; Tony, a completely lovable hippo; Tony's son, Nicholas did not, unfortunately, inherit his father's placid nature. You will also meet Joey, the chimpanzee who loved

Courage Is Topic Of La Plata Club

La Plata Study Club members met on Tuesday, Feb. 20, in the home of Mrs. Jay Boston for the regular meeting with Mrs. Raymond C. White, president, as the presiding officer.

Mrs. Viola Chisholm, program chairman, introduced the speaker, Mrs. Lloyd McGee, whose subject was "Courage." Mrs. McGee held the attention of the group as she described the quality of courage by saying, "Courage consists, not in blindly overlooking danger, but in seeing and conquering it. A coward flees backward, a way from things. A man of courage flees forward, in the midst of new

things. True courage is cool and calm. No man can answer for his courage who has never been in danger."

At the business meeting, plans were made for the Mar. 6 meeting which will be "guest night." Mrs. Elmer Patterson will present a program on "Friendship" at that time. Election of officers for the new

year was held. The following slate was elected: Mrs. Viola Chisholm, president; Mrs. Joel Treadwell, vice president; Mrs. Joe Smith, recording secretary; Mrs. Lloyd McGee, corresponding secretary; Mrs. George Warner, treasurer; Mrs. Elmer Kimball, parliamentarian; and Mrs. Britch Hopson, historian-reporter.

Refreshments were served to Mesdames Urlin Streu, A. J. Schroeter, Viola Chisholm, J. M. Madison, Raymond C. White, Jack Brown, Britch Hopson, George Warner, Louis Woodford, Frank Prowell, Ansel McDowell, Leroy Aven, Joe Smith, Lloyd McGee and Jay Boston.

Local Students Honored At WT

Three former Hereford students were honored in West Texas State College's annual Personality Pageant Saturday night. Two were candidates for class favorites, and one a candidate for Personality Queen.

Miss Phyllis Goettsch, a senior, one of five candidates for Personality Queen. Bobby Renfro was one of two male nominees for Freshman Favorite, while John David Bryant was one of three candidates for Senior Class Favorite.

MR. FARMER

WE ARE NOW WRITING

1962

CROP HAIL INSURANCE

YOU ARE INVITED TO STOP BY OR CALL THE FARM BUREAU OFFICE FOR PARTICULARS THAT WILL INTEREST YOU.

FARM BUREAU MEMBERS WHO HAVE NOT PICKED UP THEIR 1961 CROP HAIL DIVIDENDS PLEASE COME BY THE OFFICE AND PICK UP YOUR CHECKS.

DEAF SMITH COUNTY FARM BUREAU

Stan Sigman

EM 4-1070

THE SECOND ANNUAL LIONS CLUB BIGGER AND BETTER



Minstrel SHOW

HIGH SCHOOL AUDITORIUM

FRIDAY-SATURDAY, MARCH 2-3

CURTAIN TIME 7:30 P. M.

HOMETOWN CAST IN A BLACKFACE MUSICAL

- DARTOWN RAMBLERS BAND
- JUBILEE CHORUS
- SOFT SHOE DANCE
- HI BROWN GALS CAN CAN LINE
- THE DEAF SMITHS

INTERLOCUTOR-ERNEST LANGLEY

END MEN

J. W. ROBINSON — DUB REEVES — ROY HARTMAN
J. F. MARTIN — BUDDY EVANS — BENNY GOLLEHON



- * Rock & Roll With Toe-Tapping Rhythms
- * Laugh With New Gags & Jokes & Special Acts
- * Enjoy A Big Parade of Home Talent

GET YOUR TICKETS FROM ANY LIONS CLUB MEMBER



SPECIAL RECORD OFFER

Hi-Fi and Stereo Albums Now Only

99¢

ALSO I HAVE A NICE STOCK OF COUNTRY, WESTERN AND RELIGIOUS RECORDS — ANY KIND YOU NEED. SO COME IN AND LOOK OVER MY NEW STOCK AND SEE MY NEW DISPLAY.

All Top One Hundred Albums And 45's In Stock, Too.

COME IN AND CHOOSE YOUR FAVORITE RECORDS

All Records Sold On Money-Back Guarantee

OPEN SIX DAYS A WEEK FROM 8 A.M. TIL 8 P.M. CLOSED SATURDAYS. SO, IF IT'S RECORDS OR READING MATERIAL YOU NEED, I HAVE IT OR WILL ORDER FOR YOU.

Glen's News Stand

108 E. Third Street

Hereford, Texas

Just Across From The First National Bank

Record Headquarters for the Entire Hereford Area

FOR GOD SO LOVED THE WORLD

Grace Gospel Church

Thirteenth and Avenue K
 Rev. H. V. Fields, Pastor
 Sunday School is at 9:45 a.m. and worship services convene at 11 a.m.
 Bible Study is held each Sunday at 7 p.m. and preaching service at 8 p.m.
 Wednesday prayer meeting held at 8 p.m.

Church of God

H and 13th Street
 Rev. W. L. Sims, Pastor
 Sunday School will begin at 10 a.m. Worship service is at 11 a.m. Sunday evening worship begins at 7:30 p.m.
 Thursday Young Peoples' Endeavor, 7:30 p.m.
 Bring your burden and carry away a smile.
 "The Church that is large enough to serve you and small enough to know you."
 For transportation call EM 4-3809.

Church Of Jesus Christ of Latter Day Saints (Mormon)

EM 4-1905
 The Mormon Church meets in Gilliland Funeral Home. Sunday School, 10 a.m. Sunday. Sacrament Meeting, 11 a.m. Sunday.

First Christian

West Park Avenue
 Rev. Gilbert Davis Jr., Pastor
 Sunday School is held at 9:30 a.m. Worship service will begin at 10:50 a.m.
 Chi-Rho and CYF meets at 6 p.m. Sundays and vesper services are at 7 p.m.
 Functional Departments first Wednesday at 8 p.m.
 General Church Board, second Wednesday at 8 p.m.

Avenue Baptist Church

Rev. Clarence F. Powell, Pastor
 Sunday School is held at 9:45 a.m.; Worship Service at 11 a.m.; Training Union, 6 p.m.; Evening Worship Service, 7 p.m. Wednesday Evening Prayer Service, 7 p.m.

Assembly Of God

Union and Ave. G.
 Rev. V. W. Marcontell, Pastor
 Sunday School is held at 9:45 a.m. Morning worship service convenes at 11 a.m.
 C. A. service begins at 7 p.m. Junior C. A.'s meet at 6 p.m. and worship service begins at 8 p.m. each Sunday evening.
 Prayer meeting and Bible Study will be held Wednesday at 8 p.m.

Immanuel Lutheran

Park and Avenue B.
 Sunday School, 6 p.m.
 Worship Service, 7 p.m.
 Call to Worship over KPAN, 9:15 a.m., Sunday
 Lutheran Hour Over KPAN, 1:15 p.m., Sunday
 A most cordial welcome to all.



LIFE AHEAD

Only four years have passed, but what lies ahead? Will this be a life of service to God and country... or will it be bleak, full of dissipation and sin? Parents—the job is yours! Financial security is good, but don't stop there. Much more than a life is at stake—there is a soul to be reconciled, to be guided. Then tend him, nurture him—for "A child left to himself bringeth his mother to shame." Prov. 29:15. Remember, his life will only be a projection of yours. Let us help make it a "Good Life Ahead."

You In The Church
The Church In You
 — form a combination for good. Every man, woman and child needs the influence of the church. So, come let us go into the house of the Lord. Let us support her program of service to humanity, be a faithful worker, a daily bible reader and attend services regularly.

Grace Assembly

(Undenominational)
 Pastor Ray Jennings
 211 Blevins
 Sunday: Sunday School, 10 a.m.; Morning Worship, 11 a.m.; Evening Service, 7 p.m.
 Tuesday: Teaching Service, 7:30 p.m.
 Friday: Teaching Service, 7:30 p.m.
 "The Voice of Faith" broadcast over KPAN each Sunday 5:5-15 p.m. Everyone Welcome.

A La Iglesia San Antonio

North 25 Mile Avenue and Highway
 Vd. Es Catolico? Pues, Tiene La Obligacion De Asistir A La Santa Misa Todos Los Domingos!
 Horas De Misas En Los Domingos: 6:30 a.m.; 8 a.m.; 10 a.m. y 8 p.m.
 Durante La Semana: 6:30 a.m.

Community Mission Of A La Mision De San Jose

LABOR CAMP
 Horas De Misas Los Domingos: 8 a.m. y 10 a.m.
 El Domingo Es El Dia Del Senor, Tiene Que Adorable. No Misa: El Sacrificio De Calvario Hay Mejor Modo Que La Santa Continud.

The Church Of God In Christ

115 West Norton
 Rev. Calvin Hodge, Pastor
 Sunday School 9:45 a.m.; Morning Worship 11 a.m.; Evening Worship 8 p.m.
 Monday, Bible Band meets 7 p.m.
 Wednesday, Prayer Meeting 8 p.m.

Bippus Community

Eugene L. Naugle each first and third Sunday and R. D. Evans each second and fourth Sunday.
 Sunday School is at 10 a.m. every Sunday and Preaching is at 11 a.m. and 7 p.m. All Day Singing each Fifth Sunday.

Westway Baptist Church

Rev. Orville Atkinson, Pastor
 Sunday School is held at 10 a.m. with Church Services following at 11 a.m. Training Union is held at 6 p.m. and Evening Services on Sunday begin at 7 p.m.
 The Wednesday night Prayer Meeting in the Church is held at 6 p.m.

Jehovah's Witnesses

317 Ave. I
 Sunday: Public Bible Lecture, 3 p.m.; Weekly Watchtower Study, 4:15 p.m.
 Tuesday: Congregation Bible Study, 8 p.m.
 Friday: Service Meeting, 7:30 p.m.; Theocratic Ministry

(Continued on page 5)

These Hereford Business Firms Make This Page Possible in the Interest of a Christian Community. Go to Church Sunday.

FARM & HOME SUPPLY
 ● W. A. DeBusk

FIRST NATIONAL BANK
 ● Virgil Hennen

HUNTER'S FOOD MARKET
 ● Mr. and Mrs. Russell Hunter

PLAINS FERTILIZER CO.
 ● Glenn O. Edwards

MASTERS CLEANERS
 ● Mr. and Mrs. C. D. Fitzgerald

SUIT'S AUTO SUPPLY

HEREFORD FERTILIZER & INSECTICIDE CO.
 ● Norman Moore

ROCKWELL BROS. & CO.
 ● D. R. Vandever

Lyle Blanton of Hereford, Inc.

BUY-RITE FURNITURE
 ● J. H. Fish

HEREFORD GRAIN CORP.
 ● Curtis O. Roach, Mgr.

LOERWALD BROS.
 ● Ed, George, Gene & Harold Loerwald

ORSBORN-NORWOOD CHEV.-OLDS.
 ● Your Chevrolet-Oldsmobile Dealer

HEREFORD TEXAS FEDERAL CREDIT UNION
 ● Mrs. Dyalhia Benson

FARMER'S DRIVE IN
 ● Troy Moore

ELIZABETH WITHERSPOON INSURANCE
 ● 148 N. Main St.

GILLILLAND FUNERAL HOME
 ● Marlin Gilliland

E. B. BLACK CO.
 ● Dick Barnard - Jesse Stanford

CLOWE & COWAN INC.
 ● The Best - Pomona Pumps

PIGGLY WIGGLY
 ● Mr. and Mrs. Gaylord Newell

ROGERS DRUG
 ● Mr. and Mrs. Grady Rogers

BIG T PUMP CO., INC.
 ● Hilrey and Leroy Aven

HEREFORD STATE BANK
 ● Russell E. Corver, Pres.

DEARING WRECKING CO.
 ● Anson A. and June Dearing

McRIGHT GARAGE & SUPPLY
 ● Mr. and Mrs. A. N. McRight

CONSUMER'S FUEL ASS'N.
 ● Louie LeGrand

PITMAN GRAIN CO.

DAVIS IMPLEMENT CO.
 ● W. L. Davis, Jr.

HEREFORD LAUNDRY & DRY CLEANERS
 ● Ernest Kendall

CHURCH...

(Continued from page 4)

First Baptist Church

Rev. B. L. Davis, Pastor
 Fifth and Main Streets
 Sunday School, 9:45 a.m.;
 Morning Worship, 10:55 a.m.;
 Evening Worship, 7 p.m.; Train-
 ing Union, 6:30 p.m.
 Superintendent's Cabinet Wed-
 nesday, 7 p.m.; Teachers and
 officers meeting, Wednesday,
 7:15 p.m.; Mid-Week Prayer
 Service, Wednesday, 8 p.m.;
 Sanctuary Choir rehearsal, Wed-
 nesday, 9 p.m. (Wednesday eve-
 ning services 30 minutes ear-
 lier October through March).
 Graded Choir Rehearsals, 4
 p.m. Tuesday; WMS visitation,
 first Wednesday, 9:30 a. m.;
 Women's Missionary Society
 Monthly Luncheon and business
 meeting, second Wednesday, 12
 noon; W.M.U. Circles meeting
 fourth Wednesday, 9:30 a.m. or
 3 p. m. W. M. U. Night Circle
 meeting, every second Thursday
 7 p.m.
 Junior G A.'s meet Tuesday at
 5 p.m.; Intermediate G. A.'s
 Wednesday, 7:15 p.m.; Sun-
 beams Wednesday, 7:15 p.m.;
 Junior Royal Ambassadors, Sat-
 urday, 9:30 a.m.; Truett Bro-
 therhood, Monday, 6:30 a.m.
 Sunday morning worship
 Services broadcast over KPAN.
 Listen to the "Baptist Hour"
 at 8 a.m. over KPAN.

First Methodist

501 North Main
 Pastor
 Rev. Herschel L. Thurston,
 Thursday, March 1: Victory
 Class Fellowship, Fellowship
 Hall, 7-10 p.m.
 Sunday, March 4: Sunday
 School 9:45 a.m.; Morning Wor-
 ship, 10:55 a.m.; Junior and
 Primary Mission Study, 5:45
 p.m.; Junior High and Senior
 MYF, 6:15 p.m.; Worship Ser-
 vice, 7 p.m.
 Tuesday, March 6: Bible Stu-
 dy, Ward Hall, 7 p.m.; Boy
 Scouts, Ward Hall, 7:30 p.m.;
 Homebuilders' Prayer Group,
 8 p.m.
 Wednesday, March 7: Youth
 Prayer Group, Ward Hall, 7
 a.m.; Woman's Society of Chris-
 tian Service Executive Meet-
 ing, 11:30 a.m.; Woman's So-
 ciety of Christian Service Lun-
 cheon, 12:15 p.m.; Every Mem-
 ber Canvass Division Leaders
 Meeting, 6:30 p.m.; Commis-
 sion Chairman Meeting, 7:30
 p.m.; Commission on Missions,
 Education, Christian Social Con-
 cerns, Membership and Evange-
 lism, and Stewardship and
 Finance, 8 p.m.; Choir Rehear-
 sal, Sanctuary, 7:45 p.m.; Youth
 Bible Study, 7:30 p.m.

Church of The Nazarene

Fourth and Jackson
 Rev. Burle M. DeBord, Pastor
 EM 4-1381
 Sunday School is held at 10
 a.m.; Worship Service at 11 a.
 m.; Evening Worship Service
 at 7:00 p.m.
 Prayer meeting Wednesday
 will begin at 7:00 p.m.
 Church board meeting the
 first Friday of each month at
 7:00 p.m.

First Presbyterian

610 Lee Street
 Rev. Russell Wingert, Pastor
 Sunday School is held each
 Sunday at 9:45 a.m. followed
 by worship service at 11 a.m.
 Morning Devotional at 9 a.m.
 Tuesday.
 Choir Rehearsal, 8 p.m. Wed-
 nesday. Prayer meeting Friday
 at 7:30 p.m.

Thompson Memorial Mexican Baptist Mission

Norton and Texas
 Rev. James E. Timmons
 Orden De Cultos
 Domingo Por La Manana, 10
 a.m.; Escuela Dominical, 11
 a.m.; Culto De Adoracion.
 Domingo Por La Noche, 7
 a.m.; Union De Prearacion, 8
 a.m.; Culto Evangelistico, Mier-
 coles Por La Noche. Culto De
 Oracion Y Estudio Biblico.

San Pablo Iglecia Methodisa

233 Kibbe Street
 Rev. Vicente T. Moreno
 Pastor
 Los Servicios de nuestra nue-
 va Iglecia. Seran de la Siguien-
 te manera los Domingos y los
 dias de la semana. Escuela Do-
 minical, a las 10 a.m.; Servicio
 de Adoracion, a las 11 a.m.;
 Domingo en la noche Predica-
 cion 7 p.m.; Los fueves servi-
 cion de oracion 7 p.m.

Wesley Methodist

410 Irving
 Rev. John Ferguson, Pastor
 Sunday: Church School, 9:45
 Earloh Voyles, Superintendent.
 Morning Worship, 11 a.m. Meth-
 odist Youth Fellowship, 6:30.
 Evening Worship, 7:30 p.m.
 "See You In Church Sunday."

Templo el Calvari Asemblea de Dios

Pastor, Fidel Alcala
 Bien venidos. Cuidada en la
 Calle 128 E. 5th.
 Los servicios durante la se-
 mana y el Domingo.
 Como siguen: 8 de la noche
 Martes, Jueves, Sabado y Dom-
 ingo.
 Domingo, 10 de la manana,
 escuela dominical, a las 11:30
 predicalon.

St. Anthony's

Harrison Highway at 25 Mile
 Ave.
 Father Angelus, Pastor
 Sunday Masses at 6:30, 8 and
 10 a.m.
 Sunday evening mass at 8 p.
 m., Daily mass at 6:30 a.m. and
 11 a.m.
 Confessions are Saturday af-
 ternoon from 4 p.m. to 5 p.m.
 and Saturday evening from 8 p.
 m. to 9 p.m.
 Mass Wednesday evening at
 8 p.m.

Park Ave. Church Of Christ

On Harrison Highway
 Worship Services 10:30 a.m.
 Sunday; mid-week services 8 p.
 m. Wednesday.

Central Church Of Christ

Sunset Drive and Plains Ave.
 Earnest Highers, Minister
 Bible School is held each Sun-
 day at 9:30 a.m. with morning
 worship at 10:30 a.m.

Temple Baptist Church

Forrest St. and Ave. K
 Rev. Bill Ware, Pastor
 Sunday School begins at 9:45
 a.m. and Training Union is in
 the evening, at 6:30 p.m. Wor-
 ship services are at 10:50 a.m.
 and 7:30 p.m.
 Wednesday prayer servi ce
 will be held at 7:30 p.m.
 The teachers and officers
 meeting will be held at 7 p.m.
 Wednesday.
 Choir practice is at 8 p.m.
 Wednesday.

St. Thomas Episcopal

Harrison Highway
 Rev. Joel C. Treadwell, Vicar
 Vicarage, 113 Elm Street
 Sunday: Holy Communion, 8
 a.m.; Church School, 10 a.
 m. Morning Prayer and Ser-
 mon, 11 a.m.; Holy Commu-
 nion the first Sunday of each
 month at 11 a.m.
 Wednesday: Holy Communion,
 10 a.m.
 Women's Division is held the
 first and third Tuesday of each
 month at 3 p.m. in homes.
 The Bishop's Committee
 meets the first Sunday of each
 month at 2 p.m. in Mission Hall.
 Choir Rehearsal at 7:00 p.m.
 each Wednesday.

Seventh Day Adventist

Harrison Highway
 Elder James Mead, Pastor
 "The Gospel to All the World"
 is the subject for daily lesson
 study and class discussion Sab-
 bath, March 3.
 Memory Verse: Mark 16:15
 Lesson Aim: To teach the
 Christian responsibility to all
 peoples of the world.
 Lesson Outline: 1. The Larger
 Aspect of the Good Neighbor
 Policy, 1 Cor. 9: 19-22 2. The
 Christian's Personal Responsi-
 bility, Luke 4:18; Mark 10:45
 3. How and Where to Begin,
 Luke 24:47 4. The Ministry of
 Reconciliation, Eph. 2:12 5.
 What If We Do Not Go? Matt.
 25: 28-30; 45; 46
 Services: Meditation 9:30 a.m.
 Saturday Sabbath School 9:45
 a.m. Worship Services 11 a.m.
 Pastor: The Elder James
 Mead
 Location: Harrison Highway

Carver In Cast Of One-Act Play

Cadet Randy Carver of Here-
 ford appeared with the Missouri
 Military Academy Dramateers
 as they presented "The Seek-
 ers", a one-act allegory, here
 Saturday night.
 Carver, son of Mr. and Mrs.
 Russell E. Carver, 203 N. Texas,
 was cast as Plough, the plow-
 man, in the play, in which three
 men, to get revenge, search for
 Death, who has killed their
 friend Mortal. They search a-
 gainst warnings not to do so
 and, as is often the case, what
 they find is not what they
 wanted.
 The M.M.A. drama group,
 directed by Lt. David Alexan-
 der, each year presents several
 performances for the corps,
 parents and friends. Usually one
 each year is cadet-written.

STUDENT HOME
 Ronnie Botkin, student at
 Texas Tech in Lubbock, was a
 weekend visitor in Hereford,
 visiting with friends and in the
 home of his parents, Mr. and
 Mrs. Roy Botkin of the Frio
 Community.



Stack Up and Save on These Safeway Dollar-Bargains!

| | | | |
|------------------|---|----------|--------------------|
| BEANS | Renown Vertical Pack or Whole Green Beans | 5 | No. 303 Cans for |
| TUNA MILK | Sea Trader Chunk Style—Green Label Tuna | 4 | 6 1/2-oz. Cans for |
| | Cherub Canned Milk—Low Special Price at Safeway | 8 | Tall Cans for |

| | | | | | | | |
|-----------------------|-------------------------------|-----------------|------------|---------------------|-------------------------------|----------------|------------|
| Instant Coffee | Airway—25c Off Label | 12-oz. Jar | \$1 | Tomato Juice | Town House Fancy Quality | 4 46-oz. Cans | \$1 |
| Peanut Butter | Real Roast Low Special Price! | 3 lb. Jar | \$1 | Meat Soups | Campbell's Meat Varieties | 6 No. 1 Cans | \$1 |
| Toilet Tissue | Delsey White or Colored | 8 Rolls | \$1 | Pinto Beans | Dried Beans—Special Low Price | 4 2-lb. Pkg. | \$1 |
| Tomato Juice | Town House Fancy Quality | 10 No. 300 Cans | \$1 | Corn Flakes | Post Corn Flakes—Always Fresh | 4 12-oz. Pkgs. | \$1 |

| | | | | | | | |
|------------------|-----------------------|---------------|----------------|------------------|--------------------------|------------|----------------|
| 5 for \$1 | Whole Apricots | Sundown Whole | No. 2 1/2 Cans | 3 for \$1 | Fruit Cocktail | Town House | No. 2 1/2 Cans |
| 1 for \$1 | Del Monte Corn | Cream Golden | No. 303 Cans | 1 for \$1 | PINEAPPLE JUICE | DOLE | 46 OZ. CANS |
| | Vienna Sausage | Oscar Mayer | 4-oz. Cans | | Sliced Pineapple | Dole | No. 2 Can |
| | Del Monte Corn | Whole Kernel | 12-oz. Cans | | Crushed Pineapple | Dole | No. 2 Can |
| | | | | | Ellis Tamales | Jumbo | No. 2 1/2 Cans |



STEAK

Tender Baby Beef
SIRLOIN STEAK
 Lean, Juicy Steak—Ideal For Broiling or Frying.
 Serve a Safeway Sirloin Steak for Dinner Tonight!

89c lb.

Ground Beef Freshly Ground **3 lb. 1.00**

Lunch Meat 6 Varieties To Choose From **25c**

Shop Safeway—Where You Get Gunn Bros. Stamps!

| | | | |
|----------------|---|-------------|------------|
| FLOUR | Kitchen Craft All Purpose Flour | 10 lb. Pkg. | 79c |
| PECANS | New Crop Shelled Pecans | 12-oz. Pkg. | 59c |
| SALADS | Lucerne Vegetable, Waldorf, Fruit, Pineapple-Cottage Cheese | 15-oz. Ctn. | 29c |
| NU-MADE | Vegetable Oil for Frying | Qt. Botl. | 49c |

White Magic or Su-Purb
DETERGENT
 Don't Miss This Safeway Dollar Special!

2 1.00 Gt. Pkgs.

PIEDMONT
Salad Dressing
 CHECK THIS SAVINGS!

29c QT.

MRS. WRIGHT'S
BISCUITS
 GREAT FOR BREAKFAST!

4 29c

Dollar Specials That Will Lower Your Food Bill!

| | | | | |
|--------------------|------------------------------------|-----------|--------------|------------|
| Apple Sauce | Town House Fancy Quality | 8 | No. 303 Cans | \$1 |
| Sweet Peas | Town House Fancy Tender Green Peas | 6 | No. 303 Cans | \$1 |
| Baby Foods | Gerber's Strained Foods | 10 | JARS for | \$1 |

Buy Now and Save—Safeway Discount Prices On...

| | | | | |
|-----------------------|---------------------------|------------|---------------|------------|
| PEAT MOSS | | 100 | Pound Bag for | 59 |
| SPRING BULBS | From Holland Assorted | 2 | Pkgs. | 89c |
| NO. 1 POTATOES | Colorado Red McClure | 10 | lb. Bag | 35c |
| GRAPEFRUIT | Florida White or Ruby Red | 2 | lbs. | 25c |

Special Offer at Safeway!

Samsonite FOLDING TABLE

← PLASTIC SURFACE TUBULAR STEEL LEGS

Nationally Advertised!

\$3.99

WITH \$25 WORTH OF REGISTER TAPES

Reg. \$6.95 Value
 SPECIAL OFFER
 WILL END SAT., MARCH 10TH

All-Purpose Table / Ideal Gift

Shop Safeway And Save!

| | | | |
|----------------------|----------------------------|--------------|---------------|
| Kraft Dinner | Deluxe Macaroni and Cheese | 14-oz. Pkg. | 45c |
| Wesson Oil | All Purpose Cooking Oil | 24-oz. Botl. | 53c |
| Wesson Oil | Best for Frying | 38-oz. Botl. | 79c |
| Puddings | My-T-Fine Assorted | 2 Pkgs. | 23c |
| Maryland Club | Coffee | 1 lb. Can | 71c |
| Maryland Club | Coffee | 2-lb. Can | \$1.41 |

LIPTON'S TEA

| | | |
|-----------------------------|------------------------|---------------------------|
| 1/2-Pound Pkg. Orange Pekoe | 16-Count Pkg. Tea Bags | 1 1/2-oz. Jar Instant Tea |
| 43c | 27c | 53c |

WE RESERVE THE RIGHT TO LIMIT QUANTITIES

SAFEWAY

AUSTIN HIGHLIGHTS

Campaigning Candidates Seek Support Of Groups

BY VERN SANFORD
 After the labor unions gave Houstonian Don Yarborough their coveted COPE "Commendation," some sections of the Political Association of Spanish-Speaking Organizations started worrying about joining the state body in a PASSO pronouncement for Gov. Price Daniel.

First splinter off the block was Hidalgo County chapter—third largest PASSO unit—which voted 44-16 to make no endorsement in the governor's race.

Yarborough made no comment as he rounded the Gulf Coast area to line up more support. He's been conspicuously absent from his Austin headquarters, while all other statewide candidates touch base here frequently to counteract the almost constant presence of gubernatorial candidate Will Wilson and the incumbent who dwells in the mansion.

Daniel almost had trouble getting his campaign off the ground when a Department of Public Safety plane nipped its wing while lifting the governor off Austin ground for a Houston appearance. The party changed to a private plane, and proceeded to inspect the Carla damaged San Jacinto Monument with representatives from the State Board of Control, Building Commission and State Archives.

Former Secretary of the Navy John Connally also suffered several setbacks in his search for support. Bad weather prevented him from landing for San Marcos and San Antonio speaking engagements. When the clouds cleared he carried his campaign to Laredo.

Sen. Jarrard Secret, democratic candidate for lieutenant governor, followed Connally into Laredo to speak to PASSO supporters where champion traveler Tom Reavley joined him to get help for his attorney general's race.

Secret announced the opening of his Austin office this week with a blaring banner on the avenue leading to the Capitol. Will Wilson started crowding Daniel's position as patron of Texas teachers. Wilson stated that Texans need to take a "long, hard look at the curricula of our schools—and then pay a little more attention to the advice of professional educators—instead of well-meaning but ill-informed amateurs." He also suggested higher pay.

Another lieutenant governor contender, Sen. Crawford C. Martin, also started keeping shop in the capital city. A Friday coffee party served as "house" warming for Waggoner Carr, former Speaker of the House, who's an attorney general hopeful.

Carr's office is just a block and a half from the Capitol grounds. Les Procter, another attorney general candidate, has his headquarters in a long silver trailer, across the street from the Capitol.

GOP HOPES TO BLANKET STATE

After State Democratic Executive Committee officials sling verbal arrows at the Republicans for not holding primary elections in every county and precinct, the GOPs embarked on a campaign to finance a primary in every county.

Local Student Elected Officer Of Campus BSU

Glenna Faye Gandy daughter of Mr. and Mrs. Clifford Raymond Gandy, 121 Ave. F, was chosen publicity chairman of the Baptist Student Union in a recent campus-wide election at Wayland Baptist College, Plainview.

Miss Gandy, a 1961 graduate of Hereford High School is a freshman seeking a BA degree with a major in education and minor in Spanish. In addition to her recent appointment to the BSU office, Miss Gandy is a frequent contributor of art work to the Wayland Literary Magazine.

Miss Gandy was recognized along with 13 other new officers at the annual BSU banquet.

Hospital Notes

PATIENTS IN HOSPITAL

Mrs. L. J. DeRusia, Rt. 3, Friona; Mrs. Charlie Morris, 314 Star; Mrs. Alvin M. Smith, 704 East 4th; Mrs. O. J. Stagner, 132 Avenue D; Mrs. V. A. Funk, 506 McKinley; Mrs. Earl Nipper, 606 Union; Joseph A. Bell, 133 Avenue H; Viola Nunn, 501 East 5th; Clara Martin, 606 Avenue K; Tommie McKay, Rt. 3; Mrs. Homer Fox, 323 Lee; William J. Litschke, Rt. 1, Waukomis, Okla.; Mrs. Leon Vogler, Rt. 2; Marie Angelo, 227 Avenue B; Jaunita Guerra, Rt. 3, Box 75; Friona; W. A. Hunter, Rt. 5; R. C. McGilvary, Box 114; Irene Eubank, 501 West 4th; Mrs. R. B. Baker, Rt. 3, Friona; S. P. Bass, Rt. 1; Mrs. David Parmer, Rt. 1; Marshall R. Kimbrough, 827 Blevins; Clemmie Randle, Box 704; Willis Dufur, 205 West 7th; Mrs. Harold Bischoff, Box 488, Dimmitt; Ernest O. Neff, 305 McKinley; Tony Piland, Box 901, Bovina; Mrs. Jim L. Underwood, 819 South 25 Mile Avenue; Minnie Williams, 205 East 6th; Mrs. Bud R. Miller, Rt. 3, Des Moines; N. M.; Mrs. J. T. Tice, Rt. 5; Mrs. Wirt Phillips, 211 West 6th; Carl Lee, Box 74, Summerfield; Mrs. Domingo Landin, Box 84.

DISMISSALS

Mrs. Merl Bridges, Mrs. William Nation, 2-21.
 Mrs. Lewis Turner, L. A. Singleton, Mrs. Marvin J. Horton, Karen Bell, Mrs. A. rmon Lauderback, Kevin Young, 2-22.
 Mrs. Francisco Galan Jr., Mrs. Frank Hernandez, Marilyn Talley, Mrs. Lowry Molloy, Mrs. K. R. Hunter, Mrs. U. E. Cook, Mrs. Larry Fairchild, Mrs. N. A. Greer, 2-23.
 David Hammock, 2-24.



MORE THAN ONE THOUSAND cans of baby food were delivered to the Labor Camp Friday for use at the maternity clinic now being built. Dr. Lena Edwards, Camp physician, expresses her thanks to Larry Palmer, center, of Amarillo and Jack Nunley of Hereford. The cans were donated to the Camp after being collected throughout this area as grocery stores and supermarkets were supplied with new glass jars to replace the cans. (Staff Photo)

building these projects involves as much as a decade.

One stage of the long-range development plan includes a \$65,700,000 reservoir on the lower Navasota River. But supporters have run into the problem of excessive chloride content caused by oil field salt water disposal—a problem repeated in many Texas streams.

Water Commission Engineer John Vandertulp will submit a report on the source of this pollutant next week.

HIGHWAY SAFETY STUDIED
 Top engineers and administrators from the state highway departments of Texas, Oklahoma, Arkansas and Louisiana will gather this week to discuss uniform use of highway and street signs, signals and markings in an effort to increase driving safety.

Governor Daniel announced that traffic deaths over the past five years have averaged 230 below the 1956 toll. There

were 2,611 traffic deaths in 1956, and the yearly average since then has been 2,381. Daniel credited the joint efforts of groups interested in traffic safety with the preservation of many lives.

'ARCADE' DUE IN AUSTIN
 U. S. Chamber of Commerce President Richard Wagner will head the team of national chamber officers, committeemen and staff specialists who will land here March 8 on "Arcade for Citizenship Action."

This will be the first Texas stop in the Arcade's sixth annual cross-country series of public discussions on legislative matters. Former Gov. Allan Shivers is chairman of the Austin Arcade which will begin at the Municipal Auditorium at 9:25 a.m. and continue until 3:30 p.m. Delegations from all over the state are planning to wing in for the panel conferences and 37 luncheon.

SHORT SNORTS
 Eight hundred high school students invaded Austin Friday for the 1962 State Youth Leadership conference, where they'll compete for \$5,000 in scholarships as representatives of 5,000 distributive education students, working in retail, wholesale and service projects.

Governor Daniel called on the Texas Tourist Council, State Parks Board, Highway Department and Game and Fish Commission to work out a proposal to establish a park and game preserve in the Big Thicket area of East Texas.

Mrs. Carter Clopton took over as State Coordinator of Aging Services, which is set up to guide organizations interested in care and activities of elderly people.

Alex C. Roberts of Austin succeeded E. H. Cofield of Del Rio as a member of the State Board of Barber Examiners.

Look Who's New

Dr. and Mrs. Harold Bischoff are the parents of a boy born on Feb. 22 at 8 p.m. He weighed 6 pounds and 13 ounces.

Mr. and Mrs. Francisco Galan Jr. are the parents of a boy born on Feb. 22 at 10:50 p.m. He weighed 6 pounds and 6 ounces.

Mr. and Mrs. Vestor A. Funk are the parents of a boy born on Feb. 23 at 6:43 a.m. he weighed 7 pounds.

A. O. THOMPSON ABSTRACT CO.

Mr. & Mrs. A. J. Schroeder,
 Mgrs.
 Courthouse
 P. O. Box 73
 Phone EM 4-1504
 Free City maps showing blocks.

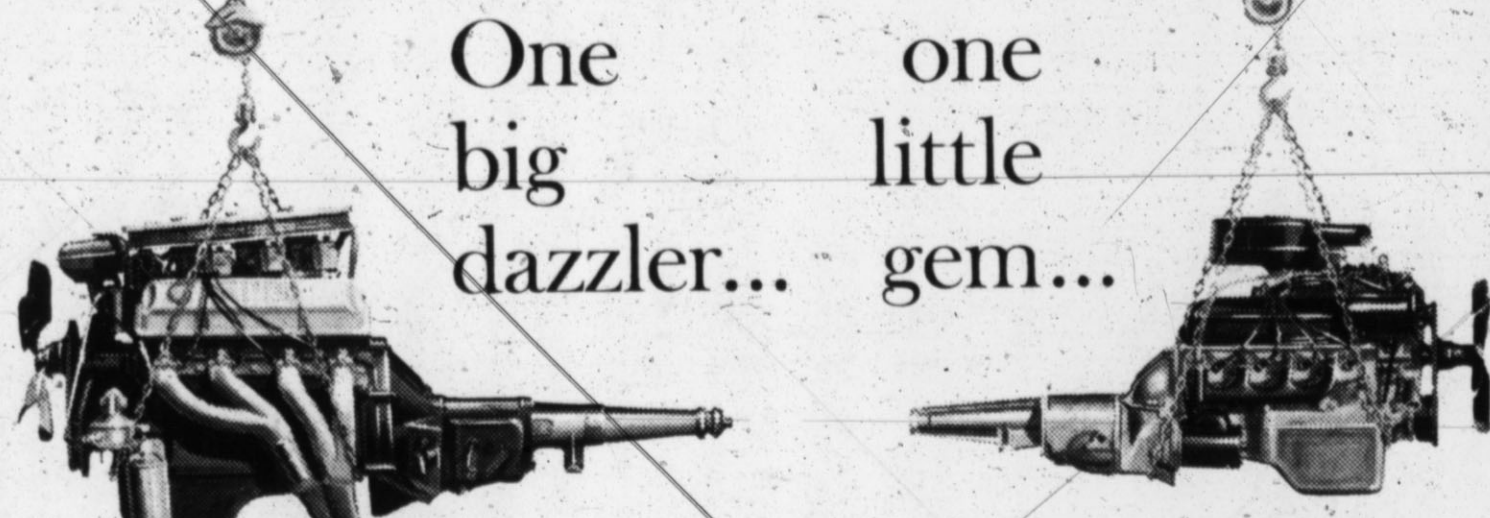
LET US KEEP YOUR CAR LOOKING AND RUNNING LIKE NEW!



There's no better way to keep your car looking like new than to have it washed and waxed regularly. And, there is nothing quite like our professional results. See the difference!

HALE'S GULF

Corner 385-Hiway and Park Ave.
 Phone EM 4-0010



now join the world's greatest V-8 collection

405-HP THUNDERBIRD V-8—Thirty years of Ford experience culminate in this startling V-8. Available in every Galaxie, it puts 405 horses under the throttle, a dazzling level of acceleration that cannot be imagined but must be felt. A super-performance option, it comes only with the four-speed gear box. But, unlike some "special" engines that require delicate tuning and modification, it puts out its potential right off the showroom floor. Even more impressive, Ford skill has made it a docile tiger; it idles smoothly, it is durable, its super capacity does not come at the expense of harshness and noise. Among expert drivers, it is praised as a true high-performance V-8 in America... the pace-setter for 9 other V-8's tailored to every driving need.

NEW FAIRLANE CHALLENGER "260" V-8—When the 221-cubic-inch Fairlane V-8 appeared last fall, automotive writers hailed it as a great basic advance, a compact jewel of design. Now, the "260" V-8 proves their prediction. With 164 hp, 19 more than the standard version, Fairlane gains a new brilliance of performance—but it still runs on "regular," still outsaves any standard-size Six. It has the durability of time-tested cast iron, slimmed and lightened by Ford's precision-casting technique. Created by the one maker who has built 30,000,000 V-8's since 1932, it brings the sparkle and smoothness of V-8 power well within the thrifty budget's reach, puts truly sophisticated engineering at the service of truly economical motoring.



WORLD'S FOREMOST BUILDER OF HIGH PERFORMANCE V-8 ENGINES

Whatever you're looking for in a V-8, look to the long Ford line



FAIRLANE 500... Right size... Right price... Right between compacts and big-cars



GALAXIE 500... Its silence whispers quality



THUNDERBIRD... Unique in all the world



CHARLIE SEEDS MOTOR COMPANY, INC.

First and Miles

Hereford, Texas

WHO OFFERS ONE STOP BUILDING SERVICE

ROOFING-SIDING

Carl McCaslin

ELECTRICAL WORK

Carl McCaslin

INSULATION

Carl McCaslin

WEATHERSTRIPPING

Carl McCaslin

PAPERHANGING

Carl McCaslin

PLUMBING

Carl McCaslin

CABINET WORK

Carl McCaslin

WATERPROOFING

Carl McCaslin

HARDWARE-TOOLS

Carl McCaslin

FENCING

Carl McCaslin

STORM DOORS & WINDOWS

Carl McCaslin

PAINING

Carl McCaslin LUMBER COMPANY

Phone The Lumber Number EM 4-3434
 1 Block East of Court House



By: Suzy Woodford

There is one very happy sophomore boy in Hereford High. Buzz Gillentine has a new '58 yellow Chevy convertible. Buzz says he and Sara, his sister, are very proud of it, and I don't blame them. It is a very sharp car. Maybe if you are real nice to him, he will take you for a ride-in it.

Saturday night Ruth Ann Allison was host to Mack Cansler, her date; Randy Dowell with his date Sharon Hill; and Joyce West, who was with Jerry Joe Curtisinger, for a steak dinner.

The get-together was in honor of Ruth Ann's 16th birthday she had celebrated the Thursday before.

Jim Bob Allison, her father, prepared the steaks for the group. After supper they listened to records and just relaxed, something most of us fail to do these busy days.

I am very sorry to report that the Thespians' production of "Midsummer Night's Dream" has been called off. James Hinkley, and the cast agreed the time allotted to do the production was much too short. Everyone is very disappointed, but maybe it can be done at a later date, when the group will have more time.

James Hinkley, besides his Thespians, also has a debating team. The girls are: Caroline Brunley and Jackie Nunley. The boys are Gary Kendrick and Donald Payne. The team is debating on Federal Aid to Education, the girls being for it and the boys against it.

The team is getting in as much practice as possible in preparation for the state debate contest being held later this year.

Saturday night James Hinkley was kind enough to take a bus load of Thespians to see the West Texas production of "J. B.", a play based on the book of Job. Those going were Shari Jo Carmichael, Judy Kreigshauser, Kakky Barnard, Lareese Askew, Audni Miller, Cynthia Seed, Mickey Boneso, Clifton Corley, Jay Boston, David Highers and Vicky Urbanczyk.

The seniors around Hereford High are finally realizing how near is the end of their education here in Hereford.

Last week the seniors ordered their invitations for graduation and other essentials for this very special occasion.

To most of the seniors it seems nearly impossible they are graduating and will be in college next year. I must admit it is a pretty frightening experience for some of us.

In preparation for college next year, Joyce Ann Johnson went to Austin to pick out her room. She went with the Holts who had gone down to see Cherry Holt. Besides picking out her room, I imagine Joyce Ann

will visit Wendall Wilson.

Also in preparation for college a group of seniors went to Canyon to take an ACT test. After they finished quite a few of them went on to Amarillo for lunch and a good movie. This made them feel much better and helped them forget the unpleasant morning task they had just completed.

Martha and Mary Russell and their mother went to Baird and Dallas on a business trip last Thursday.

While they were in Dallas they called Helen Sears who is going to school there. I am sure Helen was very glad to hear from them since she gets pretty homesick.

They had planned to stay until Sunday but they heard over the radio that we had eight inches of snow on the ground so they decided they better come home while they could. Better luck next time.

This coming Saturday a group from the mixed choir, girls choir, and the choir from junior high will participate in contest solo singing. It is an annual affair, being held either in Canyon or Amarillo.

This year it is being held in Canyon. The entrants will sing before a judge who rates them, I, II, III, or IV.

The singers are judged on a number of things. Some of the requirements they are judged on are: phrasing, pronunciation, diction, musical ability and tone production. Good luck to everyone. We hope you all make a "1".

Last Monday Beverly Boyer celebrated her 18th birthday. A group of senior girls got together and surprised Beverly with a party. Among those attending and enjoying a wonderful cake were: Linda Reed, Suzanne Langley, Avie Justice, Donna Rogers, Sara Gillentine, Brenda Beasley, Shari Prowell, Joyce West, Marjeth Gilland, Sharon Hill and myself. After the girls ate, they enjoyed their usual round of good gossip.

The students in Distributive Education wish to extend a word of thanks to Clint Formby. Last Tuesday he let the D. E. students take over the radio station and run it. They had a talent show all day with any interested student taking part.

In preparation for Radio Day, the students sold ads to business firms in Hereford and then read the advertisements all day as sponsors for the different groups.

Some of the talent included Eddie Gallagher on the piano, Donna Rogers singing, and the speech class giving plays. The different organizations of Hereford High told their background and purpose. Some of the clubs were: Future Nurses of America, Tri-Hi-Y, Key Club and the Junior Red Cross.

Judy Fowlkes, James Vines, and Harold Hamby read ads most of the day, but some of the other D. E. students also read. Lynton Allred, who isn't in D. E., read one ad. He started out very fine but when he came to the part telling about the fine hosiery his face got very red. Everyone thought it was funny, except poor Lynton.

I am sure everyone, except Clint Formby, is looking forward to next year's Radio Day. It will probably take him until next year to get the station put back together.

The F.H.A. Sweetheart and Beau party was held last Friday night in the Bull Barn.

The kids have really had a hard time finding a suitable night for the party. First, it was called off when the officials of the Bull Barn remembered they had two activities planned for the same night. Then, it was

postponed due to the basketball play-off. But, last Friday with everyone keeping their fingers crossed, the party came off as originally planned.

The Bull Barn was decorated to honor George Washington. The point of interest, displayed was a portrait of George Washington painted by Faye Evans, who is an exceptional art student. They also had streamers of red and blue. The name tags consisted of bunches of cherries cut out of crepe paper.

For refreshments the group had sandwiches, cup cakes and punch.

Only those girls who had earned 35 points by doing assigned jobs were allowed to go. The F.F.A. boys were the guests for the party.

The couples were lead in folk games by John Brazzel, who is very excellent in leading folk games.

When everyone was almost exhausted, the sweethearts of

both the Royal Rose and Chapter I, were chosen.

Kathlyn Kuper was sweetheart of Royal Rose, and Linda Jones of Chapter I.

The boys chosen to be the beaux were Dan Wall of Chapter I, and Edward Allison for Royal Rose. The junior high chapter of the F.H.A. chose Joan Marnel for their Sweetheart and Roddy Allred for their Beau.

For being chosen beau, Edward, Dan and Roddy received key chains with F.H.A. medals on it. Edward told me he is very proud of his and plans to keep it with him at all times.

Royce Ann Gilliland and Arnold Powell were chosen cutest couple. Royce Ann had on a very cute red apron and Arnold, a flashy red vest. Gilliland McArthur, our exchange student, and Earnest Langley, a sponsor, were also chosen cutest couple.

Mrs. Newsom said the only

reason they were chosen is because Gillian flirted with the judges.

All of this is a new experience for Gillian but she says she is having a "ball".

All in all, the party was a great success, and everyone had a very nice time.

Saturday, the Church of Christ was host to the Fort Worth Christian Choir. The choir members stayed in the homes of the church members.

Churches from around the Panhandle and eastern New Mexico, were invited to hear the choir sing. Following the church supper, a short program was presented by Charles Kelly, followed by musical selections sang by the choir.

Sunday afternoon in the Community Center the Future Nurses of America held a pinning service. In order to receive a pin the girls needed 300 points earned by taking part in the activities of the club.

To receive a guard, a senior girl must have 500 points.

Those receiving pins were: Beverly Boyer, Avie Justice, Jan Story, Judy Stone, Rita Albracht, Sharon Hoffman, and Christiene Skypala.

Girls receiving both were Brenda Beasley, and Sara Gillentine.

Kathryn McClain, club president, Lavonne Thompson, and Shari Prowell earned their guards. These girls got their pins last year.

The girls were all given yellow carnations with their pins, which their mothers pinned on them.

The tea table was decorated in Japanese fashion with an Angel of Mercy as the center decoration. Mrs. Millard Nobles served the refreshments.

It was a very effective and impressive ceremony, one all the girls should be very proud of.

Several groups from H.H.S.

went to conventions and contests causing quite a noticeable gap in our crowded halls last week.

L. B. Russell, high school principal, and Wylie Quattlebaum Junior High principal, attended a principal's convention held in St. Louis, Mo. They left Thursday, Feb. 22, and will be home Thursday, bringing new ideas for all the schools in Hereford.

Some of the Future Farmers of America along with their teacher Jess Robinson went to Houston Sunday afternoon to show cattle in the livestock show being held there. The boys going were: Pat Smith, Joe Shultz, Edward Allison, Steve Conaway and Jackie Andrews.

Besides showing their fine livestock, the boys plan to look over Houston and attend the rodeo being held in conjunction with the livestock show. We all hope they bring home big blue ribbons.

Pantry Stockup Sale

PRICES GOOD THROUGH SATURDAY, MARCH 1 - 2 & 3
QUANTITY RIGHTS RESERVED

CRISCO
Shortening
3 Pound Can

79¢

SAVE AT SUPER SAVE!



WHITE SWAN
PINTO BEANS 9 300 Cans

WHITE SWAN YELLOW CLING
PEACHES Halves or Sliced 3 No. 2 1/2 Cans

SHASTA Orange, Grape, Pineapple-Grapefruit, Pineapple-Orange
FRUIT DRINKS 3 46-Oz. Cans

HUNT'S
TOMATO JUICE 3 46-Oz. Cans

GREEN GIANT
MEXICORN 5 Giant 12-Oz. Cans

GREEN GIANT
PEAS 4 303 Cans

MAXWELL HOUSE
INSTANT COFFEE 6-Oz. Jar

WHITE SWAN
BISCUITS 12 10-Ct. Cans

89¢

89¢

VAN CAMP GRATED
TUNA 5 Reg. Cans **98¢**

CHOPPED TURNIP GREENS and DICED TURNIPS 2 303 Cans **29¢**

SUNSHINE
DICED RUTABAGAS 2 303 Cans **35¢**

GLADIOLA
FLOUR 10 Pound Bag **89¢**

MAXWELL HOUSE Drip or Regular
COFFEE Pound Can **65¢**

BETTY CROCKER Raisin Bran, Date, Orange
MUFFIN MIX 3 14-Oz. Pkgs.

WHITE SWAN
FRUIT COCKTAIL 3 No. 2 1/2 Cans

SILVER BRAND
MARGARINE 6 Pound Cartons

NIBLETS CORN Vacuum Packed Whole Kernel 5 12-Oz. Cans

GREEN ONIONS 2 Large Bunches **15¢**

ORANGES California Navels LB. **19¢**

KENTUCKY WONDER
GREEN BEANS LB. **25¢**

RADISHES 2 Large Bunches **19¢**

POTATOES Russets 10 Pound Bag **39¢**

DOUBLE
Western Stamps Every Wednesday With \$2.50 Purchase

HUNTER'S AT Phone EM 4-0350 219 Sampson St.



89¢

DIXIE PETAL
HOT CUPS Package of 15 9-Oz. Cups **33¢**

AJAX
CLEANSER 2 14 Oz. Cans **29¢**

KRAFT'S
BAR-B-Q SAUCE 28-Oz. Bottle **49¢**

CHUCK WAGON
CHARCOAL BRIQUETS 5 Lb. Bag **39¢**

WHITE SWAN
LUNCHEON MEAT 12-Oz. Can **39¢**

SUZANNE'S FROZEN
Peach, Apple, Cherry, Pineapple

PIES 3 24-Oz. Pkgs. **89¢**

Youngbloods - Frozen Cut-Up
FRYERS 1 Lb. 10 Oz. Ea. **79¢**

WESTERN WONDER FROZEN
STRAWBERRIES 5 10-Oz. Pkgs. **98¢**

MACARONI AMERICAN BEAUTY & CHEESE DINNERS 2 7 Oz. Pkgs. **35¢**

BONELESS - NO WASTE
ROAST Beef lb. **69¢**

LONGHORN - ALL MEAT
FRANKS 1 Lb. Pkg. **49¢**

HICKORY - SMOKED
BACON THICK SLICED 2 LB. PKG. **79¢**

PURE PORK SAUSAGE 2 LB. BAG **59¢**



See you've made some additions to your herd!

Yes-financed 'em through the bank!

They could just as well be talking about feed, fertilizer, farm equipment... For prompt action on a low-cost loan for any sound farming need, come see us - you will be welcome.

THE FIRST NATIONAL BANK OF HEREFORD



INITIATION FOR NEW MEMBERS of the V.F.W. Auxiliary was held recently in the Rock Clubhouse at Veterans Park. Eight new members were initiated into the club. New members are from left to right, back row; Mrs. LeRoy Williamson, Mrs. Frank Wilhelm, Mrs. Nola Ralston,

Mrs. Wilhelmine Vinton, and Mrs. Lesley Wagoner. New members of the Junior Auxiliary are Mary Kay Wagoner, Linda Williamson, Jo Ann Wagoner, and Nina Gilliland. (Staff Photo).

Local Draft Board Lists Reclassifications

As a public service, the Hereford Brand publishes draftboard reclassifications as released by the Deaf Smith County Selective Service Board each month.

Listed in I A are Robert Schacker, David Murillo, Richard Wilhelm, William Callar-

man, Kerry Knorpp, Clayton Watkins, John Hill, Felix Zepeda, Willie Ward, Ronald Thomas, Jesse Gutierrez, Cecil Smith, Donald Thrasher, Larry Drake, Billy Hardage, Jimmie Burgan, Orville Bradley, Lisle Patton, Frankie Wester, James Evans, Norberto Guerras and Alvin Bandy.

Those in II A are Benito Baca, Dwayne Cassels, Eloy Estrada, Gerald Parker, and Gary Brooks. Included in II S are Benjamin Dial, Charles Thomas and Joe Allen.

In IV F are Frank Cadena, Jerry Renner, Nicanor Gonzalez, George Bumpass, and Gonzales Blanco.

In IC Enl are Richard Sisco, Jimmy Killingsworth, William Seales, William Hubbard, David Dragger, Alan Tittle, Jerry Clark, Bill Ivie, Jerry Varner, Dennis Hoelting, John Winters, James Wells, Theodore Peters, and Raul Flores.

Listed as IC Ind is Ruben Escobedo. Named as IY are Jerry Hyatt, James Wheeler, Ruben Cruz, Gregario Dones, Armando Ramirez, Jesus Ramirez, Francisco Rodriguez, Tiofilo Barela, Archie Scott, Thomas McBroom, Noel Parvin, Layton Sawyer, George Heard,

Jerry Cluck, Gerald Battenhorst, Roy Bryan, Jerry McCarley, John Sanders, Ray Skelton, Earl Stone, Julius Bradshaw, Larsaro Jimenez, Donald Vinton, William Childers, Edwin Schroeter, Charles Mills, Billy Sheppard, Richard Pre-wett, Mike Cornado, James Jacks, David Aragon, Glenn Reeves, Clarence Birkenfield, Donald Hix, Arthur Peterson, Freddie Wesley, Larnice Blake, Gayland Anderson, Donald Blac-

Fields, Dudley Humphries, Carl Hollabaugh, Richard Winters, John Brorman, Paul Torrez, Don Snider, Azael Valdez, George Washington, Norman Kerr, Jerome Hanson, Roy Fowler, and Stanton Elliot.

Carroll Rea is in IV D, while the following are in V A: Hugh Mosley and Herbert McGregor. Enrique Guzman and Santiago Blanco are classed in IV C. On IV A are Carl Parker, Donald Moore, Carol Acton, Charles Kirk and Jerry Scarborough.

Colors And Bedrooms Topic Of 4-H Meet

The Sadie Lee Oliver 4-H Club met on Friday, Feb. 16, in the Westway Community House for a program presented by Miss Loretta Fowler. Her subject was "Color Combination and Bedroom Improvements."

Janice Head presided at the business meeting at which time plans were discussed for the presentation of a program for the Westway Community Night scheduled for April.

Those present were Janice Head, Judith Morrison, Lynn Rudd, Teresa Rudd, Janice Tur-rentine, Carol Turrentine, Deborah Jesko, the leaders Mrs. George Turrentine and Mrs. Harold Rudd, and the guest speaker, Miss Loretta Fowler.

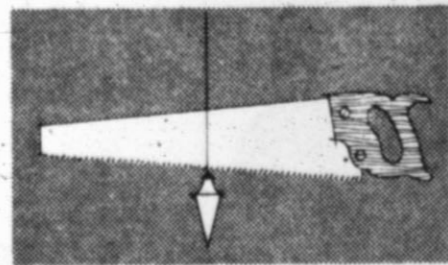
Have you read the classifieds?

BEFORE YOU BUILD OR BUY A NEW HOME . . .

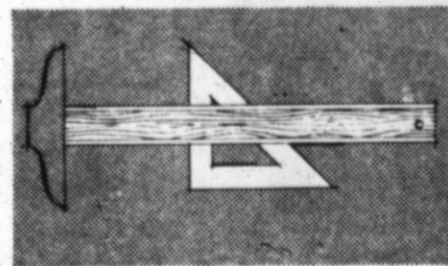
ASK YOUR REALTOR about property values.



ASK YOUR BUILDER about construction details.



ASK YOUR ARCHITECT about design, space management.



THEN ASK FIRST FEDERAL OF AMARILLO

... about financing! Working together, these specialists - realtors, builders, architects, and First Federal - have welded a smoothly geared professional relationship that has saved many a prospective homeowner both dollars and headaches. Talk to First Federal about financing - whether it's for a home loan or a Title I Home Improvement loan!

First FEDERAL
Savings & Loan Association
of Amarillo

Downtown:
406 Polk Drake 2-3247
Suburban:
Wolfin of Duniven Circle
Fleetwood 5-3375

Paying a current dividend rate of 4 1/2% on savings accounts.

In Hereford See: **Don L. Baugous**

P. O. Box 72 EM 4-0850

Thursday Friday Saturday

ALL STAR DOUBLE FEATURE
Both in TECHNICOLOR

JAMES STEWART

ROCK HUDSON

"BEND OF THE RIVER"
ARTHUR KENNEDY JULIE ADAMS - LORI NELSON

TYRONE POWER

The **MISSISSIPPI GAMBLER**

SUN. - MON. - TUES. - WED.

Just how many luscious babes is a bachelor entitled to accumulate???

Bachelor Flat

It's where all the fun takes place!

TUESDAY RICHARD TERRY-CELESTE WELD-BEYMER-THOMAS-HOLM

DIRECTED BY FRANK TASHLIN-FRANK TASHLIN...BUDD GROSSMAN

TOWER DRIVE-IN THEATRE

Showtime 7:30

REOPENING - FREE SHOW

FRIDAY SATURDAY SUNDAY

You'll see it all...this epic saga of the scorched earth in all its flame and fury!

JAMES STEWART

THE MOUNTAIN ROAD

LISA FAY GLENN CORBETT HENRY (HARRY) MORGAN

You're In The Hereford Capital of the World SO... EAT MORE BEEF

FRYERS ^{GRADE A} lb. **29¢**

USDA INSPECTED

RIB STEAK lb. **79¢**

T-BONE STEAK lb. **89¢**

ANGEL FOOD CAKE REG. 39¢

3 FOR \$1.00

COFFEE FOLGERS lb. **65¢**

COCA COLA KING SIZE PLUS DEP. **35¢**

SWIFT HONEYCUP **39¢**

MELLORINE 1/2 GAL. **39¢**

SHURFINE - FROZEN **3 FOR 89¢**

ORANGE JUICE 12 OZ. **3 FOR 89¢**

400 CT. POLY BAG **69¢**

NOTEBOOK PAPER **69¢**

ALKA SELTZER 25's **39¢**

BREMERS JUMBO PIES Box Of 12 **39¢**

ALCOA FOIL 25' X 12" ROLL **29¢**

FROZEN Thrifty Steaks 1 1/4 LB. **69¢**

AQUA NET Hair Spray \$2.00 Size Plus Tax **89¢**

MENNENS Baby Magic \$1.00 SIZE **69¢**

HAVOLINE & TEXACO OIL Cheap by the Quart Cheaper by the Case Cheaper Still by 5 Case Lots

CAMPBELLS SOUPS MEAT VARIETIES **6 FOR \$1.00**

BANANAS GOLDEN RIPE **2.25¢**

GRAPEFRUIT FLORIDA EACH **5¢**

POTATOES RUSSETS 10 LBS. **49¢**

CELERY STALK **19¢**

We Have FERRY'S Garden & Flower Seeds on Display

Shurfine YOUNG MOTHER HUBBARD SALE

EGAD! WHAT SAVINGS!

Shurfine Apple Butter 28 oz. 4/\$1.00

Shurfine Apple Sauce 303 7/\$1.00

Shurfine Blackeyes Fresh Shelled 300 7/\$1.00

Shurfresh Biscuits Sweet-Buttermilk-8oz. 13/\$1.00

Elmdale Brooms \$1.19

Shurfine Catsup 14 oz. 5/\$1.00

Shurfresh Cheese Spread 2 lb. \$.69

Shurfine Cherries R.S.P. 303 4/\$1.00

Shurfine Chili with Beans .300..... 4/\$1.00

Shurfine Coffee 1 lb. for only19¢

Shurfine Corn Golden WK-CS 303 6/\$1.00

Shurfine Cucumber Chips Fresh 16 oz. 4/\$1.00

Roxey Dog Food No. 1 13/\$1.00

Energy Detergent Liquid 22 oz. \$.39

Shurfine Flour 10 lb. Paper Bag \$.73

Shurfine Flour 25 lb. Print Bag \$1.69

Shurfine Fruit Cocktail 303 5/\$1.00

Shurfine Grapefruit Juice Natural 46 oz. 2/\$.59

Shurfine Grapefruit Sections 303 5/\$1.00

Shurfine Grape Juice 24 oz. 3/\$1.00

Shurfine Green Beans Cut B.L. 303 5/\$1.00

Shurfresh Margarine 1 lb. 6/\$1.00

Shurfine Milk Canned Tall Can 7/\$1.00

Shurfine Mustard Greens Chopped 303 9/\$1.00

Softlin Napkins White 80 ct. Box 2/\$.25

Shurfine Orange Juice Unswt. 46 oz. 2/\$.79

Shurfine Peaches YC Sli. or Hlv. 2 1/2 4/\$1.00

Shurfine Pears Bartlett Halves 303 4/\$1.00

Shurfine Peas Early Harvest 303 5/\$1.00

Shurfine Peanut Butter 18 oz. 2/\$1.00

Shurfine Pork and Beans 300 9/\$1.00

Shurfine Preserves Apri.-Peach-Plum 20 oz. 3/\$1.00

Shurfine Salad Dressing Qt. \$.39

Shurfresh Salad Oil Qt. \$.55

Shurfine Salmon Red Alaska No. 1 \$.89

Shurfine Sauer Kraut 303 7/\$1.00

Shurfine Shortening 3 lb. \$.69

Shurfine Spinach 303 7/\$1.00

Shurfine Sweet Potatoes Sm. Whl. 3 squat. 4/\$1.00

Shurfine Tomato Sauce 8 oz. 10/\$1.00

Shurfine Tuna Chunk Style 6 1/2 oz. 3/\$.89

Shurfine Turnip Greens Chopped 303 9/\$1.00

Shurfine Vienna Sausage 4 oz. 9/\$1.00

Shurfine Waffle Syrup 32 oz. \$.39

TAYLOR & SONS

FOODS

LOW, LOW EVERYDAY SHELF PRICES PLUS S & H GREEN STAMPS

