

# GROOM BOUNCES WHEELER 20-7

By Paul Sims (Pampa News)  
Junior halfback Thomas Reed broke one tackle and raced 89 yards for a third

quarter touchdown, then later intercepted a pass to spark Groom to a 20-7 non-district win over host

Wheeler Friday night. Groom, 4-0 for the season and ranked as high as fifth in Class B in the

state grid polls, was out-gained in rushing yards, passing yards and first down as Wheeler, now 1-2, unleashed a surprisingly potent attack that kept the outcome of the game in doubt until the final few minutes.

Reed's long jaunt came on the first play from scrimmage after Wheeler had driven to the Groom 11 and lost the ball on a fumble. Defensive end Richard Weller recovered.

The touchdown came with 59 seconds left in the third period and gave the Tigers a 20-7 lead. Phillip Britten was stopped on the try for two extra points.

The teams exchanged punts, and on Wheeler's next series, a Don Brown pass was picked off by Reed on the Tiger 23 and returned to the 50. Two plays later, Groom fumbled and Dell Ford recovered his second loose ball of the contest.

Wheeler then drove to the Tiger 22 but lost the ball on downs. The Mustangs sustained another drive in the quarter but were unable to score.

Groom's first two touchdowns, which resulted in a 14-0 halftime lead, came as a result of Wheeler errors. A fumble on a Wheeler punt attempt gave Groom the ball on the one-foot line in the first quarter. Art Brown recovered, setting up the touchdown, which came on Chris Britten's short dive over left guard with 3-13 left in the period.

Binbo Bivens booted the extra point for a 7-0 lead. Wheeler took the kickoff and drove to Groom's 36. On first and 10, Jon Mark Belue intercepted a pitch in the Wheeler backfield and rambled 62 yards for a second touchdown.

Game Statistics:	Wheeler	Groom
First Downs	22	9
Net Yards Rushing	205	174
Net Yards Passing	27	0
Total Yards Gained	232	174
Passes & Completions	10-2	5-0
Opp. Passes Intercepted	0	2
Fumbles & Fumbles Lost	5-5	2-2
Penalties & Yardage	11-114	7-47
Punts & Average	4-51	6-33
Total Plays	80	49

# THE WHEELER TIMES

VOLUME 42 NUMBER 39 THURSDAY, OCTOBER 2, 1975 SINGLE COPY 10c

## MUSTANGS ATTEMPTING COMEBACK AGAINST CLAUDE FRIDAY NIGHT

Wheeler's embattled Mustangs open their District 2-A race Friday night at Claude at 7:30 after coming out on the short end of the score in their last two non-conference games.

Both Claude and Wheeler carry identical 1-2 records into Friday's tilt and both have lost to a common foe, the Groom Tigers.

Having lost to Groom and Vega with a win over happy, the Claude Mustangs will be no easy foe for any stretch of the imagination for Wheeler as Claude has been quite proficient in their passing game and they have moved the ball well in all three of their games via the air.

Wayne Campbell, Jr., quarterback, leads the Claude attack that uses the T formation and splits people wide both on the line and in the backfield.

Complimenting Campbell, Claude has two excellent receivers in Geoff Forbes and Randy Nuttall who play the end positions and are split very wide on practically every play.

Wheeler has always been noted for their outstanding fan support and the Mustangs need this support Friday night.

## A Letter To The Editor

I would like to bring it to the attention of the Wheeler public that the Colts have won their first two football games and it has gone unnoticed in the Wheeler Times.

Nicholson Field, Thursday, Oct. 2, at 6:00 p.m. against Claude. They will have to fight hard to defeat the Claude Colts, so come and give them all your support to help them go to district.

Thank you  
Georgann Millet

## MUSTANG NEWSLETTER

Only 1 day left to get ready to beat Claude. The Wheeler Mustangs will journey to Claude to play the Claude Mustangs, Friday at 7:30 p.m. This will be the first district game for both teams.

**COLTS & MUSTANG JV**  
play  
**CLAUDE**  
Here Thurs., 6:00 p.m.

## Beat Claude

Mustangs, don't let anyone tell you that you are going to be beaten this week, don't let anyone make you doubt your own ability. Please don't let the past two losses get you down. No matter how many mistakes you make, we are still rooting for you, because fans who are not with a team when it's down, doesn't deserve to be with it when it's up!

Wheeler outplayed the Groom Tigers Friday night, but again mistakes cost the Mustangs the ball game. The coaches were well pleased with the progress the team made, but we must eliminate our mistakes to win district.

## Punt, Pass, Kick Competition Sat.

"This year, the National Finals will be held at the Super Bowl 1/4 in Miami on January 18, 1976. Naturally, we hope some of our local PP&K winners will make it all the way to the Finals," Pete Burton said.

The Ford Dealer further explained that each entrant, upon registering, receives a free PP&K Tips Book. In the 1975 edition, there are competition tips by NFL stars Ray Guy, Ken Anderson, and Chester Marcol. The Tips Book also includes complete PP&K rules and helpful conditioning exercises for contestants.

PP&K registrations will close at Pete Burton Ford on October 3.

This is the 15th anniversary year for PP&K. From its inception the youth activity has been sponsored by the Ford Dealers of America in cooperation with the National Football League. In that time more than 11.5 million youngsters have taken part in PP&K, making it one of the largest activities.

Registrations for the 1975 Punt, Pass & Kick competition sponsored locally by Pete Burton Ford continue to roll in. The contest is open to any youngster 8 through 13 years of age.

Any youngster meeting the age requirement who can punt, pass or kick a football - or who'd like to try - will want to compete. Participants compete only against others their own age, and there is no body contact.

No special equipment is needed and participation does not impair a youngster's amateur standing. Each youngster will compete in three categories - punting, passing and kicking. Judges will score one point for each foot the ball travels on the fly, minus one point for each foot the ball lands to the right or left of the center tape.

Youngsters, accompanied by a parent or guardian, may register for PP&K at any participating Ford Dealer. There is no entrance fee.

Competition will be Saturday, Oct. 4, 10:00 a.m. Wheeler Football Field. Coach Jim Robinson and his staff will conduct the competition.

## HERE AND THERE

By Laura Guthrie

Just in case you missed the Davis-Lee wedding on Saturday night, I'll tell you that you missed a beautiful affair, - "a family affair" at that. Five brothers and sisters worked into places as attendants, father giving the bride away, with mothers approval, aunt at the organ, uncle singing, another uncle ushering and grandfather performing the ceremony. It was beautiful.

Mrs. T. A. Treadwell has been visiting with her son, Capt. Bobby Treadwell and his family at Copperas Cove, Texas. She also spent some time with her brother and wife, Mr. and Mrs. C. B. McAllister in Weatherford. The McAllisters drove her to Wheeler on the return trip, spent a couple of days and then went to Okla. City to visit a son.

Zinnie Bailey had the good fortune of going with her daughter and husband, the Paul Lutterells on a trip to Colorado. She spent some time in Denver and got to hear her son, C. R. preach in his church there.

It is very obvious when Adrian and Dorothy are

## Continued page 2

## HOSPITAL NOTES

Old Admissions  
6-18 Violet Hampton  
8-29 Lillian Holland  
8-31 Claud Franklin  
9-9 Hammie Herd  
9-22 Greta Gegan  
Stela Fields

New Admissions  
9-24 Bert Kysar  
Lawrence Crowder  
Fredricka Adams  
9-25 Martin Callan  
Jackie Jones  
9-26 Berniece Short  
Ricky Markham  
Loretta Grayson  
Madge Wright  
Geniva Farrell  
9-27 Ollie Jaco  
9-28 Pearl Braxton  
Shelila Stevens  
Topsie Gossett  
Martha C. Williams  
James Adkins  
Clinton Stribling  
Bob Markham

Dismissals  
9-24 Willie Morris  
Steve Patterson  
Harold Neal  
Virginia Holdeman  
Beatrice Harville  
Clara Baker  
9-25 Baby Girl Stevens  
Na  
Mary Nations  
Ruby Edwards  
Jean Bradstreet  
9-27 Wilma Risner  
Ricky Markham  
Frank Chandler  
Bert Kysar  
Fredricka Adams  
Ollie Jaco  
9-30 Clara Adams  
Jackie Jones.

## NEW ARRIVAL

Mr. and Mrs. Bob Hink, Jana and Janet would like to announce the arrival of Robert Jason, Sept. 29, at 11:59 p.m. at Shamrock hospital. He weighed in at 6 pounds 12 ounces and was 19 inches long.

Grandparents, Mr. and Mrs. L. W. Rogers, Dorothy and the late Irvin Hink, Mrs. Ed Henderson all of Wheeler, and A. B. Sweitzer of Pampa.

## Phil Cates To CALF, FISH FRY PLANNED OCT. 4

Wheeler County 4-H and Wheeler FFA will co-sponsor a Calf and Fish Fry Saturday, October 4th in

## Blood Pressure Clinic Thursday

There will be a free Blood Pressure Clinic for Wheeler County residents that are 55 and over, Thursday, October 2. It will take place in the South end of the old Nicholson Memorial Hospital on Canadian St. from 9:30 til 12:00 a.m.

## FHA Car Wash Saturday, Oct. 4

The Homemaking 3 unit of the Wheeler FHA Chapter held a car wash Saturday, September 20, at Albert's Service Station. The girls working were: Janice Albright, Ann Sparlin, Carla Schaffer, Marla Calcote, and Jenny Smith. The minimum charge for a car (inside and out) was four dollars and five dollars for pickups. The group worked from 9:00 a.m. until 5:00 p.m. and made an estimated fifty dollars. The money earned will go into the FHA fund to help with other projects.

## Royalty Owners To Meet Tues.

Panhandle Producers and Royalty Owners Association will hold a meeting Tuesday, October 7 for the Wheeler County royalty owners. The meeting will be at the Wheeler High School Auditorium and will begin at 7:30 p.m.

## Local Residents Attend Meeting

Clarence Zybach, Director of Zone 5 of the Wheeler County Soil and Water Conservation District (SWCD) and Lavon Williams, District Conservationist for the Soil Conservation Service (SCS) attended the annual meeting of the Texas Association of SWCD which was held in Fort Worth Sept. 23-25.

## Dillons Observe 60th Anniversary

Mr. and Mrs. Archie Dillon of Allison celebrated their 60th wedding Anniversary Sunday, Sept. 28. They were honored with a dinner in the home of their daughter and her husband, Virginia and Rex Miller. Others sharing in the celebration were, Mr. and Mrs. Shot Childress, Ronnie, Duane, and Tom from Miami; Mr. and Mrs. Kelly Miller and Shelly, Lugoton, Kansas; Mr. and Mrs. Gay Hodges, Santa Fe, New Mexico, Jim Miller and Marlene Moore, Weatherford, Okla.; Mr. and Mrs. Sandy Parsons, Mrs. Bulah McMillen, Mr. and Mrs. Claude Savage, Wellington; Mrs. Bobby Dillon and Michael, Amarillo; Mr. and Mrs. Bob Dillon, Loreta and Melissa Slaton and Mrs. Dessie Monroe, Ft. Smith, Ark.; Mrs. Bill Miller, Mr. and Mrs. Lee George, and Mr. and Mrs. Frank George called in the afternoon. The Allison community gave the Dillons a beautiful floral arrangement and Mr. and Mrs. Dillon wish to thank everyone for it.

## Fabric Sale

Briscoe FHA will sponsor a Fabric Sale at Briscoe School, Tuesday, October 7, 9:00 a.m. til 6:00 p.m. We appreciate your support.

## Senior Citizens

The Senior Citizens will meet Monday night, Oct. 6 at 6:30. Bring a covered dish and enjoy the fun.

## Cowbelles Corner

The Top O' Texas Cowbelles will meet Monday, Oct. 6, at 11:30 a.m., at the Cafeteria in Pampa, Texas. Wheeler members to be hostesses. This is a very important meeting we will be electing our officers for the coming year. We will also be voting on the proposed changes in local constitution as well as our state constitution. Frances Owen, Texas Cowbelles President, included the proposed changes to our state constitution in her newsletter of Oct. 4. You may wish to study these proposed changes because our delegates will be taking our instructions to the state convention in Fort Worth, Oct. 20-21. We hope to present at this meeting a design of our new napkin for your approval. We do urge everyone to be aware of state and national bills which affect the cattle industry and agriculture, and to make your wishes known your state and national representatives. Remember... BEEF IS BEST!

## Cowbelles Corner

The Top O' Texas Cowbelles will meet Monday, Oct. 6, at 11:30 a.m., at the Cafeteria in Pampa, Texas. Wheeler members to be hostesses. This is a very important meeting we will be electing our officers for the coming year. We will also be voting on the proposed changes in local constitution as well as our state constitution. Frances Owen, Texas Cowbelles President, included the proposed changes to our state constitution in her newsletter of Oct. 4. You may wish to study these proposed changes because our delegates will be taking our instructions to the state convention in Fort Worth, Oct. 20-21. We hope to present at this meeting a design of our new napkin for your approval. We do urge everyone to be aware of state and national bills which affect the cattle industry and agriculture, and to make your wishes known your state and national representatives. Remember... BEEF IS BEST!

## Cowbelles Corner

The Top O' Texas Cowbelles will meet Monday, Oct. 6, at 11:30 a.m., at the Cafeteria in Pampa, Texas. Wheeler members to be hostesses. This is a very important meeting we will be electing our officers for the coming year. We will also be voting on the proposed changes in local constitution as well as our state constitution. Frances Owen, Texas Cowbelles President, included the proposed changes to our state constitution in her newsletter of Oct. 4. You may wish to study these proposed changes because our delegates will be taking our instructions to the state convention in Fort Worth, Oct. 20-21. We hope to present at this meeting a design of our new napkin for your approval. We do urge everyone to be aware of state and national bills which affect the cattle industry and agriculture, and to make your wishes known your state and national representatives. Remember... BEEF IS BEST!

## Cowbelles Corner

The Top O' Texas Cowbelles will meet Monday, Oct. 6, at 11:30 a.m., at the Cafeteria in Pampa, Texas. Wheeler members to be hostesses. This is a very important meeting we will be electing our officers for the coming year. We will also be voting on the proposed changes in local constitution as well as our state constitution. Frances Owen, Texas Cowbelles President, included the proposed changes to our state constitution in her newsletter of Oct. 4. You may wish to study these proposed changes because our delegates will be taking our instructions to the state convention in Fort Worth, Oct. 20-21. We hope to present at this meeting a design of our new napkin for your approval. We do urge everyone to be aware of state and national bills which affect the cattle industry and agriculture, and to make your wishes known your state and national representatives. Remember... BEEF IS BEST!

## Cowbelles Corner

The Top O' Texas Cowbelles will meet Monday, Oct. 6, at 11:30 a.m., at the Cafeteria in Pampa, Texas. Wheeler members to be hostesses. This is a very important meeting we will be electing our officers for the coming year. We will also be voting on the proposed changes in local constitution as well as our state constitution. Frances Owen, Texas Cowbelles President, included the proposed changes to our state constitution in her newsletter of Oct. 4. You may wish to study these proposed changes because our delegates will be taking our instructions to the state convention in Fort Worth, Oct. 20-21. We hope to present at this meeting a design of our new napkin for your approval. We do urge everyone to be aware of state and national bills which affect the cattle industry and agriculture, and to make your wishes known your state and national representatives. Remember... BEEF IS BEST!

## Cowbelles Corner

The Top O' Texas Cowbelles will meet Monday, Oct. 6, at 11:30 a.m., at the Cafeteria in Pampa, Texas. Wheeler members to be hostesses. This is a very important meeting we will be electing our officers for the coming year. We will also be voting on the proposed changes in local constitution as well as our state constitution. Frances Owen, Texas Cowbelles President, included the proposed changes to our state constitution in her newsletter of Oct. 4. You may wish to study these proposed changes because our delegates will be taking our instructions to the state convention in Fort Worth, Oct. 20-21. We hope to present at this meeting a design of our new napkin for your approval. We do urge everyone to be aware of state and national bills which affect the cattle industry and agriculture, and to make your wishes known your state and national representatives. Remember... BEEF IS BEST!

## Cowbelles Corner

The Top O' Texas Cowbelles will meet Monday, Oct. 6, at 11:30 a.m., at the Cafeteria in Pampa, Texas. Wheeler members to be hostesses. This is a very important meeting we will be electing our officers for the coming year. We will also be voting on the proposed changes in local constitution as well as our state constitution. Frances Owen, Texas Cowbelles President, included the proposed changes to our state constitution in her newsletter of Oct. 4. You may wish to study these proposed changes because our delegates will be taking our instructions to the state convention in Fort Worth, Oct. 20-21. We hope to present at this meeting a design of our new napkin for your approval. We do urge everyone to be aware of state and national bills which affect the cattle industry and agriculture, and to make your wishes known your state and national representatives. Remember... BEEF IS BEST!

## Cowbelles Corner

The Top O' Texas Cowbelles will meet Monday, Oct. 6, at 11:30 a.m., at the Cafeteria in Pampa, Texas. Wheeler members to be hostesses. This is a very important meeting we will be electing our officers for the coming year. We will also be voting on the proposed changes in local constitution as well as our state constitution. Frances Owen, Texas Cowbelles President, included the proposed changes to our state constitution in her newsletter of Oct. 4. You may wish to study these proposed changes because our delegates will be taking our instructions to the state convention in Fort Worth, Oct. 20-21. We hope to present at this meeting a design of our new napkin for your approval. We do urge everyone to be aware of state and national bills which affect the cattle industry and agriculture, and to make your wishes known your state and national representatives. Remember... BEEF IS BEST!

## Cowbelles Corner

The Top O' Texas Cowbelles will meet Monday, Oct. 6, at 11:30 a.m., at the Cafeteria in Pampa, Texas. Wheeler members to be hostesses. This is a very important meeting we will be electing our officers for the coming year. We will also be voting on the proposed changes in local constitution as well as our state constitution. Frances Owen, Texas Cowbelles President, included the proposed changes to our state constitution in her newsletter of Oct. 4. You may wish to study these proposed changes because our delegates will be taking our instructions to the state convention in Fort Worth, Oct. 20-21. We hope to present at this meeting a design of our new napkin for your approval. We do urge everyone to be aware of state and national bills which affect the cattle industry and agriculture, and to make your wishes known your state and national representatives. Remember... BEEF IS BEST!

## Cowbelles Corner

The Top O' Texas Cowbelles will meet Monday, Oct. 6, at 11:30 a.m., at the Cafeteria in Pampa, Texas. Wheeler members to be hostesses. This is a very important meeting we will be electing our officers for the coming year. We will also be voting on the proposed changes in local constitution as well as our state constitution. Frances Owen, Texas Cowbelles President, included the proposed changes to our state constitution in her newsletter of Oct. 4. You may wish to study these proposed changes because our delegates will be taking our instructions to the state convention in Fort Worth, Oct. 20-21. We hope to present at this meeting a design of our new napkin for your approval. We do urge everyone to be aware of state and national bills which affect the cattle industry and agriculture, and to make your wishes known your state and national representatives. Remember... BEEF IS BEST!



David Massick



Jim Verden



Dell Ford

## Parkview Buys Hospital Beds

Charles Hix, administrator, Parkview Hospital, announced the purchase of ten new all-electric beds, complete with overbed tables and bedside tables for patient use at Parkview Hospital.

Hix stated the purchase of this new patient room furniture was made possible through contributions to the Memorial Fund.

This fund is an established procedure used by many people who wish to be of financial assistance to the local hospital through a tax deductible contribution made to the Memorial Fund of Parkview Hospital, or those who, having lost friends or loved ones, wish to make a monetary contribution in memory of the deceased that will be lasting and of benefit to those who are ill and in need of hospital care.

All contributions made to the Memorial Fund are used to purchase new and better equipment in the hospital for the care of the sick and to aid in their recovery.

Continued page 4

# Court Records

**LIST OF INSTRUMENTS FILED IN THE OFFICE OF THE COUNTY CLERK AND DISTRICT CLERK OF WHEELER COUNTY, TEXAS FROM SEPTEMBER 22 THROUGH SEPT. 26, 1975**  
**BILL OF SALE**--Sand Lake Inc to D L Jones 7-18-75 House  
**OL**--Edith F Sims to Di-

mond Shamrock Corp 5-12-75 NE 1/4 Sec 17 Blk A-5  
**19 SHUT-IN DIV ORDERS**--  
 J Kirk Duncan et al to Thelma Dunn et al Apr to July 1975 NE 1/4 & NW 1/4 SE 1/4 18; 24, NW 1/4 SW 1/4 17, 26 exc NE 1/4 NE 1/4 NE 1/4 140 ac NE 1/4 15, 16 A-5  
**AOL**--Eason Oil Company to Arkla Explor Co 4-1-75 Secs 3,4,6,7,8 Blk 1; 6 Blk 5 & 5,7,9 Blk 2 B&B Survey  
**AOL**--Freepoint Oil Co to Arkla Exploration Co 4-1-75 Secs 3 to 8 Blk 1; 7,9 Blk 2; 6 Blk 5 B&B Survey  
**AOL**--Freepoint Oil Co to Arkla Exploration Co 4-1-75 Sec 5 Blk 1 B&B Survey  
**ROL**--El Paso Natural Gas Co to J B Bass et ux 9-10-75 S 1/2 Sec 59 Blk A-7  
**QCD**--Edna M Davy to I L Cook 9-16-75 5/9600 Min Int S 1/2 Sec 48 Blk 24  
**D**--Lone Star Producing Company to J H Avert 5-13-75 S 1/2 SW 1/4 SW 1/4 27 Blk 24 Surface Only  
**QCD**--Orlean S Thumond to Flora M Thumond 1-17-68 Mins Secs 1 A-8 & 10 Blk 17  
**OL**--Samuel J Hall et ux to Minco Oil and Gas Co 8-25-75 108.11 ac S 1/2 W 2/3 S 1/2 Sec 28 Blk A-4  
**2 AOL**--Robert A Spears, Trustee to Coquina Oil Corp 9-5-75 W 1/2 NW 1/4 29 A-8, N 1/2 NW 1/4 2 & E 241.70 ac N 1/2 Sec 37 Blk A-4  
**MML**--B D Harrington et ux to Bryce Clay Plumbing Co 9-17-75 Blk XLIX Shamrock  
**TMM**--Bryce Clay to Farmers & Merchants S Blk Shamrock 9-- 1975 Blk XLIX Shamrock  
**RDT**--Farmers H Merchants S Blk Shamrock to Stanley Rankins et ux 9-19-75 Lots 11, 12 Blk III Shamrock  
**RDT**--Farmers & Merchants S Blk Shamrock to Stanley Rankins et ux 9-19-75 Lots 11, 12 Blk 3 Shamrock  
**D**--H H Hall et ux to Joe D King et ux 8-22-75 Lots 22, 23, 24 Blk F, Wheeler, Park Ad

**DT**--Joe D King et ux to Lomas & Nettleton Company 8-22-75 Lots 22, 23, 24 Blk F, Wheeler, Park Ad  
**D**--Jerry Lee Lewis et al to Leon Moore et ux 9-2-75 Lots 32 to 36 Blk 3, Wheeler, Stanley 2nd addn  
**DT**--Leon Moore et ux to Jerry Lee Lewis et al 9-2-75 Lots 32 to 36 Blk 3, Wheeler, Stanley 2nd Addn  
**SEPTMBER 23, 1975**  
**D**--Robert L Roark et ux to S W Roark et ux 9-22-75 S 1/2 Lot 7, Lots 8, 9 N 15 ft Lot 10 Blk F, Wheeler, Park Addn  
**MML**--James W Batton et ux to C W Burch 9-15-75 N 200 ac E 1/2 Sec 8 Blk A-5  
**TMM**--C W Burch to First S Blk Miami 9-22-75 N 200 ac E 1/2 Sec 8 Blk A-5  
**ROL**--Arkla Exploration Co to E R Blocker et ux -- 1975 SE 1/4 Sec 4 Blk L  
**SEPTMBER 24, 1975**  
**P OF ATTY**--Luke Ray Alexander to Donald Ray Alexander 9-24-75  
**D**--Clifton Boydston to Dave Dukes 9-24-75 Lot 11 Blk 2 Allison  
**ROL**--Gulf Oil Corporation et al to J W Buckingham et al 9-12-75 Pt Secs 12, 14 A-7  
**AFF**--Harold S Kenady to Marty Carr et al 9-24-75 Pt Sec 59 Blk A-4  
**2 ASSIGN ROW**--Tulsa Crude Oil Purchasing Co to Koch Oil Co 9-3-75 NE 1/4 26 Blk 24 Pt Sec 47 Blk 13 & Pt Secs 26, 31 to 34 Blk 24  
**RATIF OL**--Rebecca Rose Karlin to Leede and Pine 9-19-75 NE 1/4 8 Blk E  
**RENTAL DIV ORDER**--T M Conrey et ux to T M Conrey et ux 9-15-75 SE 1/4 Sec 32 Blk A-4  
**ASSIGN OVERRID ROY**--Linda Plummer to Larry

3, Wheeler, Stanley 2nd Addn  
 J Cunningham et al 7-16-75 NE 1/4 3 Blk L  
**D**--Nona Lorraine Hall to Gary Dan Hall 9-23-75 Lots 21 to 24 Blk 10 Allison  
**QCD**--Nona Lorraine Hall to Josephine Begert 9-23-75 Lots 13, 14 Blk 10 Allison  
**SEPTMBER 25, 1975**  
**D**--R Lee Robert Seitz et ux to R L Galmor et ux 9-16-75 NW 1/4 76 Blk A-5, Loss  
 Lots 12, 13 Blk 118 New Mobeetie  
**DT**--Greenbelt Electric Cooperative, Inc to United States of America et al 9-1-75 All Holdings  
**3 SHUT-IN-DIV ORDERS**--  
 James Kreiger & Doris Hebert to James Kreiger and Doris Hebert 7-14 7-15 1975 Sec 26 exc NE 1/4 NE 1/4 sec 16 & 140 ac NE 1/4 15 A-5  
**2 OL**--Victor C Taylor et ux to W P Buckthal et al 5-28-75 W 1/2 11 1/2 N 1/2 SE 1/4 12 Camp Co Sch Ld  
**2 OL**--James Smith Keene et ux to W P Buckthal et al 5-28-75 W 1/2 11 1/2 N 1/2 SE 1/4 12 Camp Co Sch Ld  
**D**--Annie Jones to Chester Jones et ux 9-23-75 E 30 ac S 1/2 10 Blk L Exc Life time Est  
**DT**--Chester Jones et ux to Annie Jones 9-24-75 E 30 ac S 1/2 10 Blk L Exc Life-time Est  
**SEPTMBER 26, 1975**  
**ROL**--Phillips Pet Co to Hugh E Bailey et al 8-28-75 N 1/2 2 & SE 1/4 100 ac SW 1/4 3 A-2  
**D**--H H Cook et ux to Clifford P Martin et ux 9-23-75 Lots 10, 9 Blk 51 Shamrock WSA  
**DT**--Clifford P Martin et ux to First Fed Savs and Loan Assn 9-23-75 Lots 10, 9 Blk 51 Shamrock, WSA  
**TMM**--First Natl Bk Wheeler to First Fed Savs and Loan Assn 9-23-75 100'x150' SW 1/4 5 A-4  
**DT**--Thomas G Edwards et ux to First Fed Savs and Loan Assn 9-23-75 100'x150' SW 1/4 5 A-4  
**RDT**--First Fed Savs and Loan Assn to Robert L Roark et ux 9-23-75 Lots 8, 9 Pt 7, 10 F Wheeler Park Ad  
**MD**--Mae Lister to Stewart Chesser 9-26-75 10/320 int E 1/2 4 J Poitevent Sur  
**MD**--Marie Lister to J B Baker 9-26-75 10/320 int E 1/2 4 J Poitevent Sur  
**ROL**--Kerr-McGee Corp to

ux to R L Galmor et ux 9-16-75 NW 1/4 76 Blk A-5, Loss  
 Lots 12, 13 Blk 118 New Mobeetie  
**DT**--Greenbelt Electric Cooperative, Inc to United States of America et al 9-1-75 All Holdings  
**3 SHUT-IN-DIV ORDERS**--  
 James Kreiger & Doris Hebert to James Kreiger and Doris Hebert 7-14 7-15 1975 Sec 26 exc NE 1/4 NE 1/4 sec 16 & 140 ac NE 1/4 15 A-5  
**2 OL**--Victor C Taylor et ux to W P Buckthal et al 5-28-75 W 1/2 11 1/2 N 1/2 SE 1/4 12 Camp Co Sch Ld  
**2 OL**--James Smith Keene et ux to W P Buckthal et al 5-28-75 W 1/2 11 1/2 N 1/2 SE 1/4 12 Camp Co Sch Ld  
**D**--Annie Jones to Chester Jones et ux 9-23-75 E 30 ac S 1/2 10 Blk L Exc Life time Est  
**DT**--Chester Jones et ux to Annie Jones 9-24-75 E 30 ac S 1/2 10 Blk L Exc Life-time Est  
**SEPTMBER 26, 1975**  
**ROL**--Phillips Pet Co to Hugh E Bailey et al 8-28-75 N 1/2 2 & SE 1/4 100 ac SW 1/4 3 A-2  
**D**--H H Cook et ux to Clifford P Martin et ux 9-23-75 Lots 10, 9 Blk 51 Shamrock WSA  
**DT**--Clifford P Martin et ux to First Fed Savs and Loan Assn 9-23-75 Lots 10, 9 Blk 51 Shamrock, WSA  
**TMM**--First Natl Bk Wheeler to First Fed Savs and Loan Assn 9-23-75 100'x150' SW 1/4 5 A-4  
**DT**--Thomas G Edwards et ux to First Fed Savs and Loan Assn 9-23-75 100'x150' SW 1/4 5 A-4  
**RDT**--First Fed Savs and Loan Assn to Robert L Roark et ux 9-23-75 Lots 8, 9 Pt 7, 10 F Wheeler Park Ad  
**MD**--Mae Lister to Stewart Chesser 9-26-75 10/320 int E 1/2 4 J Poitevent Sur  
**MD**--Marie Lister to J B Baker 9-26-75 10/320 int E 1/2 4 J Poitevent Sur  
**ROL**--Kerr-McGee Corp to

ux to R L Galmor et ux 9-16-75 NW 1/4 76 Blk A-5, Loss  
 Lots 12, 13 Blk 118 New Mobeetie  
**DT**--Greenbelt Electric Cooperative, Inc to United States of America et al 9-1-75 All Holdings  
**3 SHUT-IN-DIV ORDERS**--  
 James Kreiger & Doris Hebert to James Kreiger and Doris Hebert 7-14 7-15 1975 Sec 26 exc NE 1/4 NE 1/4 sec 16 & 140 ac NE 1/4 15 A-5  
**2 OL**--Victor C Taylor et ux to W P Buckthal et al 5-28-75 W 1/2 11 1/2 N 1/2 SE 1/4 12 Camp Co Sch Ld  
**2 OL**--James Smith Keene et ux to W P Buckthal et al 5-28-75 W 1/2 11 1/2 N 1/2 SE 1/4 12 Camp Co Sch Ld  
**D**--Annie Jones to Chester Jones et ux 9-23-75 E 30 ac S 1/2 10 Blk L Exc Life time Est  
**DT**--Chester Jones et ux to Annie Jones 9-24-75 E 30 ac S 1/2 10 Blk L Exc Life-time Est  
**SEPTMBER 26, 1975**  
**ROL**--Phillips Pet Co to Hugh E Bailey et al 8-28-75 N 1/2 2 & SE 1/4 100 ac SW 1/4 3 A-2  
**D**--H H Cook et ux to Clifford P Martin et ux 9-23-75 Lots 10, 9 Blk 51 Shamrock WSA  
**DT**--Clifford P Martin et ux to First Fed Savs and Loan Assn 9-23-75 Lots 10, 9 Blk 51 Shamrock, WSA  
**TMM**--First Natl Bk Wheeler to First Fed Savs and Loan Assn 9-23-75 100'x150' SW 1/4 5 A-4  
**DT**--Thomas G Edwards et ux to First Fed Savs and Loan Assn 9-23-75 100'x150' SW 1/4 5 A-4  
**RDT**--First Fed Savs and Loan Assn to Robert L Roark et ux 9-23-75 Lots 8, 9 Pt 7, 10 F Wheeler Park Ad  
**MD**--Mae Lister to Stewart Chesser 9-26-75 10/320 int E 1/2 4 J Poitevent Sur  
**MD**--Marie Lister to J B Baker 9-26-75 10/320 int E 1/2 4 J Poitevent Sur  
**ROL**--Kerr-McGee Corp to

William M Hefley 6-25-75 SW 1/4 Sec 60 Blk M-1  
**ASSIGN ROW**--Getty Oil Co to Pioneer Nat Gas Co 9-9-75 SW 1/4 Sec 14 Blk L exc 4952 ac  
**2 GDN OL**--Flora M Thumond to Malouf Abraham Co Inc 9-10-75 N 1/2 100 B 17 & Sec 1 A-8  
**OL**--Nora Drake et al to J Roger Allspaugh 6-19-75 W 2/3 S 1/2 28 A-4  
**AOL**--J Roger Allspaugh to Arkla Exploration Co 8-18-75 W 2/3 S 1/2 28 A-4  
**AFF**--Onie Laycock to Hyland Weaver 6-24-75 N 1/2 Sec 27 A-4  
**SUB OL**--H O Miller et ux to Arkla Exploration Co 6-25-75 SW 1/4 & W 1/2 SE 1/4 15 A-4  
**9**--RATIF OL--James P Riggs et al to Arkla Explor Co Jun to Aug 75 NW 1/4 S 1/2 28 A-4  
**SUB OL**--Canadian Prod Cre Assn to Arkla Explor Co 6-11-75 W 1/2 SE 1/4 SW 1/4 15 A-4  
**D**--W C Hallmark et al to Royce Cantrell 9-15-75 Lots 13 to 16 Blk 1 HSAD & Lot 13 to 16 Blk 1 Tarbets Addn to Shamrock  
**DT**--Royce Cantrell et ux to Edith H Morrison 9-15-75 Lots 13 to 16 Blk 1

HSAD & Lots 13 to 16 Blk 1 Tarbets Addn to Shamrock  
**MARRIAGE LICENSE ISSUED**  
 Clyde D Harrell and Sharon Harrell 9-21-75  
 Eddie Ray Davis and Lucie Nell Lee 9-22-75  
 Jerald C Kuhlman and Beverly Ann Bay 9-22-75  
 Stephen E Thompson & Gwen Delozier 9-26-75  
**DISTRICT CLERK'S OFFICE**  
 No. 7100 Peggie Ann Scott and Charles Wayne Scott 9-24-75 Divorce  
 No. 7101 B J Smith et al vs Joe Brown 9-25-75 Suit for Damages  
 No. 7102 Sharon Lunsford and Joseph Ray Lunsford 9-26-75 Divorce  
 No. 7103 Freeman Dean and Lela Mae Dean 9-26-75 Divorce

## Insurance-Tips



**RIVES INSURANCE AGENCY**  
 "We put the sure in your insurance"  
 117 W. Texas St.  
 Wheeler, Texas  
 Phone 826-5224

**SAWS SHARPENED**  
 Hand Saws - Skil Saws  
 Table Saw Blades  
 Chain Saws  
 Jointer Blades  
 Foley Equipment  
**R. St. John**  
 Mobeetie

## Furniture-Appliance TOONS

By Pierce's Trading Post  
 A Woman's Mind Is CLEARER Than A Man's... She Changes It MORE OFTEN.



**Pierce's Trading Post**  
 "Furniture, Carpet, Plumbing & Appliances"  
 401 East Oklahoma  
 Phone 826-5212

**A. & E. MOBILE HOMES**  
 Highway 83 So.  
 Canadian, Texas  
 Phone 323-6469

## PAINTING

Interior & Exterior  
 Commercial & Residential  
 Brush, Roller, and Spray  
 Painting.  
 No Job Too Large  
 (Except Skyscrapers)  
 or Too Small.  
 Reasonable Rates  
 Call:  
**DONALD FORD**  
 (806) 826-3106  
 Wheeler, Texas

**FOR WEAR ON CONCRETE**

**RED WING**

Sure cure for 5 o'clock feet

**LANCASTER DEPARTMENT STORE**

**RENT OUR RINSE VAC**  
 Get carpets professionally clean.  
 New RINSE VAC operates on the steam principle to get your carpets professionally clean. Portable and easy to operate - see it show you how. RINSE VAC is the powerhouse that cleans, rinses and vacuums out dirt and residues. RINSE VAC cleans carpets cleaner - keeps them cleaner longer.  
 Rent for only **12.00** a day  
**LOYD'S**  
 Ben Franklin  
 826-5868

## PROGRESSIVE CLUB SANDIFER HOSTS

Thursday evening, Sept. 25th the Progressive Study Club met in the home of Ruby Lee Sandifer.  
 The meeting was called to order by the president, Amelia Sims by giving the Club Collect followed by the singing of "The Star Spangled Banner". Roll call was answered with an important historical event in American History. Jewel Moore gave a Federation Report. Library dues and "The Senior Citizens" needs were discussed. The club decided to continue the donation of \$3.00 each toward the Library and to give a donation of \$25.00 toward the needs of the Senior Citizens Club.  
 This being an Americanism Program, Doreen Owen gave an interesting report about the Liberty Bell, Irma Kirk gave the poem, "The Raggedy Old Flag" and Ila Byers gave an interesting discussion on "Our Freedoms". Novella Vanpool reviewed the program for the next meeting Oct. 9 which will be on "Home Life" with Doreen Owen.  
 Refreshments were served to three guests, who were Bennie Mae Whitener, Doodie Phillips and Leola Farris, all the members except one.

**RENT OUR RINSE VAC**  
 Get carpets professionally clean.  
 New RINSE VAC operates on the steam principle to get your carpets professionally clean. Portable and easy to operate - see it show you how. RINSE VAC is the powerhouse that cleans, rinses and vacuums out dirt and residues. RINSE VAC cleans carpets cleaner - keeps them cleaner longer.  
 Rent for only **12.00** a day  
**LOYD'S**  
 Ben Franklin  
 826-5868

## HERE AND THERE

Continued from page 1  
 out of town on Sunday. Other wise they would be in their places at the church. This past Saturday night and Sunday they spent at Abilene at a family reunion Grandchildren, Wade and Keri Childress of Pampa accompanied them.  
 Cindy Manning was a visitor in Wheeler over the weekend. Of course this seems like home to Cindy. She spent Friday night with the Adrian Risners and Saturday night with Mary Wofford. At present Cindy is training with the Home Demonstration Agent at Hereford, but will soon take up a regular job as Demonstrator at Clarendon.  
 In case you haven't already noticed, be sure and observe the window display at Lancaster's Dept. Store. As far as I know that's the first business to try to arouse in us the spirit of '76, I'm sure there will soon be others showing the Bicentennial colors.  
 Mr. and Mrs. Guy Brown and Mrs. Ronnie Fox spent Saturday and Sunday with their son and brothers, Richard, Duck and Joe Brown at Lubbock. They took their daughter, Mrs. Billie Ruth Fox spent a week with the Guy Browns.

**BOWEN PLUMBING & DITCHING SERVICE**  
 Ditching, backhole work, sewer, gas and water hook-up. Plastic pipe, septic tanks sales and installation. Also septic tank cleaning. Fully insured. Call Collect.  
 Canadian 323-5471 or Mobeetie 845-3151.

**Look what we have for you during the PIONEER**

**Harvest Victory Celebration**

More farmers planted more Pioneer brand seed than ever before and it looks like their harvest will break all records. To celebrate that victory we have special incentives for Pioneer brand corn or sorghum producers.

Ask your dealer about these premiums.

**FREE Fuzzy Wuzzy Cap** - Place your order now for the Pioneer brand sorghum or corn seed you'll buy in 1976. Receive on the spot, this fuzzy wuzzy, ear-flapped, winter cap.

**FREE Gold Jacket** - Help us record the results of this year's Pioneer brand corn and sorghum crop and you'll receive one of these smart-looking gold, dacron/cotton jackets.

Seed Purchased	Discount
50.99	5%
100.99	10%
200.99	12%
300 or over	15%

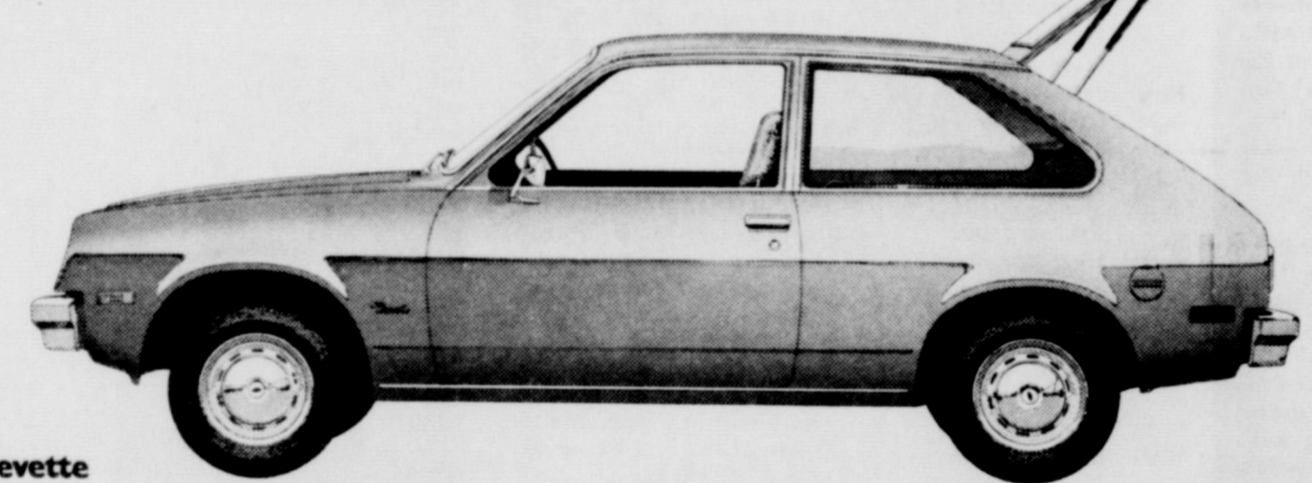
**VOLUME INCENTIVE PRICES** - the more Pioneer brand seed you buy the less each bag costs. Here are the volume discounts you'll earn.

**Allison Grain & Farm Supply**  
 ALLISON, TEXAS

**PIONEER SEEDS**

# Chevette.

## Chevrolet's new kind of American car.

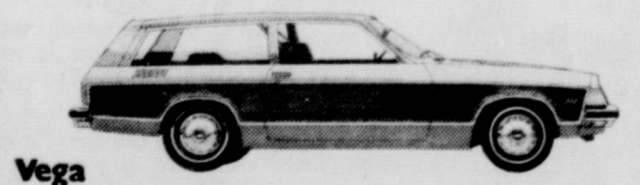


**Chevette**  
**40 MPG HIGHWAY**  
**28 MPG CITY**  
**EPA RATING**  
 That's with the standard 1.4-litre engine and 4-speed manual transmission. The mileage you get, of course, will be strongly influenced by how and where you drive.

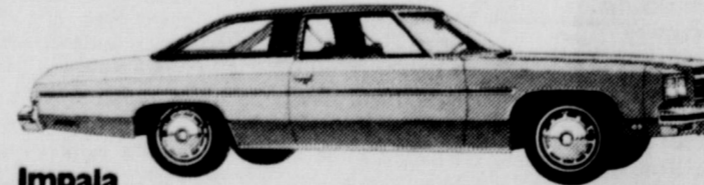
- Chevette is international in design and heritage, incorporating engineering concepts proved around the world.
- Its wheelbase is about the same as a VW Rabbit's.
- It has more front-seat head room than a Datsun B-210, more front-seat leg room than a Toyota Corolla.
- Its turning circle is one of the shortest in the world.
- It can carry cargo up to four feet wide.
- It is well insulated against noise.
- It is protected by 17 anti-corrosion methods.
- It is basically a metric car.
- It comes with a clear, simple self-service booklet.
- It has a standard 1.4-litre engine. A 1.6-litre engine is available (except Scooter).

**Prices start at \$2899**  
 2-seat Scooter (not shown) . . . \$2899  
 Chevette Coupe (shown) . . . \$3098  
 The Sport (not shown) . . . \$3175  
 The Rally (not shown) . . . \$3349  
 The Woody (not shown) . . . \$3404  
Manufacturer's Suggested Retail Prices including dealer new vehicle preparation charge. Destination charge, available equipment, state and local taxes are additional.

### Other Chevrolet values for 1976.



**Vega**  
 Built to take it. Vega for 1976: An extensive anti-corrosion program. New hydraulic valve lifters, for quieter engine performance. A new torque-arm rear suspension. And Vega offers a tough Dura-Built 140-cu.-in. 4-cyl. engine guarantee.



**Impala**  
 One of America's most popular full-size cars. That's the result of giving America good value for the dollar. This year, the Impala series includes the new value of the thrifty Impala S - Chevrolet's lowest priced full-size car.



**Nova/Concours**  
 America's favorite compact car. Our basic compact, '76 Nova, makes even more sense than the 3 million Novas that preceded it. And Concours, the brand-new model featured here, is our highly practical approach to compact luxury.



**Chevelle**  
 Enough car for practically anything. It offers room for six at a sensible price. This year, more than ever, its deft blending of mid-size economies, plus room for the average family, makes Chevelle a size whose time has come.

There's much more to see at your Chevy dealer's. Caprice, Monza, Monte Carlo, Camaro, Corvette, Chevrolet wagons—something for everyone in 1976.

**Chevrolet Come in Oct. 2.**

**RHYLAND'S PHARMACY**  
 PH 826-5561

# OCTOBER FOOD VALUES

No. 1 NEW MEXICO  
**SWEET POTATOES** lb. **25¢**



WASHINGTON FANCY RED DELICIOUS  
**APPLES** 3 lbs. **\$1.00**

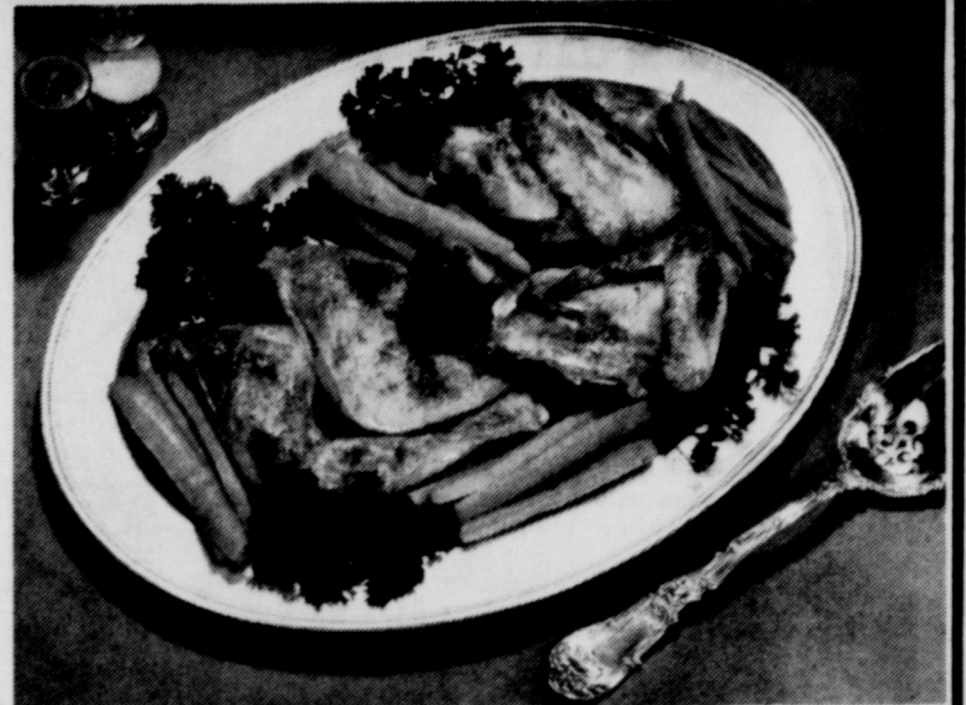


CELLO PACK  
**CARROTS** 2 1 lb. Pkg. **49¢**



MEDIUM YELLOW  
**ONIONS** lb. **17¢**

US GRADE A  
 WHOLE  
**FRYERS**  
 LB. **55¢**



USDA CHOICE  
**ROUND STEAK**  
 lb. **\$1.39**



BONE END  
**RUMP ROAST**  
 lb. **\$1.09**

USDA CHOICE  
**LEAN BEEF SHORT RIBS** lb. **69¢**

ALL GRINDS  
**FOLGERS COFFEE**  
 2 lb. Can. **\$2.39**

Pet-Ritz  
**COBBLERS**  
 APPLE, PEACH, CHERRY  
 26 oz. **\$1.09**

GOLD MEDAL  
**FLOUR**  
 10 lb. Bag **\$1.59**  
 No Coupon Required

HUNTS <b>TOMATO JUICE</b>	2	300 Cans	<b>43¢</b>
STOKLEY CUT <b>GREEN BEANS</b>	3	303 Cans	<b>89¢</b>
STOKLEY <b>CORN</b> Cream Style or Whole Kernel	2	303 Cans	<b>79¢</b>
HUNT'S <b>TOMATO CATSUP</b>		14 oz. Bottle	<b>41¢</b>
GLADIOLA <b>CORNBREAD MIX</b> YELLOW OR WHITE	2	7 1/2 oz. Pkgs.	<b>35¢</b>
ORE IDA <b>GOLDEN FRIES</b>		2 lb. Bag	<b>69¢</b>
CHARMIN <b>BATHROOM TISSUE</b>		4 Roll Pkg.	<b>79¢</b>
SKINNER CUT ELBO <b>MACARON</b>		12 oz. Pkg.	<b>35¢</b>
KOLD KOUNTRY <b>POT PIES</b>	3	8 oz. Pies	<b>89¢</b>
KIMBELL <b>SLICED APPLES</b>		No. 2 Can	<b>53¢</b>

NEW SIZE  
**COOL WHIP**  
 13 1/2 oz. Pkg. **99¢**

**JANE THOMAS** won last week's Pick The Winner Contest.

6th BIG WEEK  
**PICK THE WINNER CONTEST**  
 at ROARK'S FINE FOOD

\$25.00 will be given each week during the High School Football Season to the winner of our PICK THE WINNER CONTEST. Each week 10 area High School games will be listed. You pick the winner and guess the total yardage of the Tie Breaker Game. The entry with the most winners picked and with the closest guess to the total yards gained in the Tie Breaker Game will win \$25.00. In the event of a tie the money will be divided between the winners. Play each week and Support your High School Team.

All entries must be in the store not later than 6:00 P.M. Thursday, Oct. 9, 1975. You must be 18 or over to enter. Prize money will be divided in the event of a tie. Winner will be notified. No Purchase Necessary.

**CIRCLE THE WINNER**

Wheeler	vs	Wellington
McLean	vs	Clarendon
Shamrock	vs	Memphis
Claude	vs	Silverton
Canadian	vs	Stratford
Pampa	vs	Monterey
Groom	vs	Boys Ranch
Lefors	vs	Pampa J. V.
Stinnett	vs	Sunray
Perryton	vs	Woodward, Okla.

**TIE BREAKER . . . . .**  
 TOTAL YARDAGE GAINED BY WHEELER AND WELLINGTON WILL BE \_\_\_\_\_ YARDS.

NAME \_\_\_\_\_  
 ADDRESS \_\_\_\_\_  
 PHONE \_\_\_\_\_

ZEE  
**PAPER TOWELS**  
 2 Jumbo Rolls **98¢**

PUREX  
**BLEACH** 1/2 gal. **49¢**

KIMBELL  
**SALAD DRESSING**  
 Qt. Jar **75¢**

**BANQUET FRIED CHICKEN**  
 32 oz. Box **\$1.99**

**Roark's FINE FOODS**

- OPEN MON.-SAT. 8 a.m. till 6:30 p.m.
- USDA FOOD STAMPS ACCEPTED
- FREE DELIVERY WITH \$2.50 PURCHASE
- FEATURING GUNN BROTHERS STAMPS

YOUR FRIENDLY HOME OWNED AND OPERATED GROCERY STORE

is 13 to 16 Bld  
 addn to Shan-  
 LICENSE ISSU  
 rrell and Shan  
 1-75  
 Davis and Luc  
 22-75  
 thman and  
 Bay 9-22-75  
 Phampson &  
 9-26-75  
 CLERK'S OFF  
 eggie Ann  
 harles Wyne  
 '5 Davorce  
 J Smith et al  
 9-25-75 Sit  
 s  
 iaron Lunsford  
 Ray Lunsford  
 orce  
 eem on Dean  
 ae Dean 9-25-75  
 AND THERE  
 tinued from pag  
 on Sunday,  
 they would be  
 ces at the chur  
 iaturday night  
 they spent at  
 a family reunio  
 ren, Wade and  
 ess of Pam pa  
 id them.  
 nning was a  
 heeder over the  
 Of course this  
 home to Cindy  
 Friday night  
 rian Risners  
 y night with  
 d. At present  
 ining with the  
 nstration Agent  
 , but will soon  
 gular job as  
 or at Clarendo  
 ou haven't ab  
 ed, be sure and  
 window dis-  
 caster's Dept.  
 or as I know  
 irst business to  
 e in us the  
 , I'm sure there  
 e others show  
 nial colors.  
 rs. Guy Brown  
 nnie Fox spent  
 d Sunday with  
 id brothers, Ric  
 nd Joe Brown  
 They took their  
 rs. Billie Ruth  
 i week with  
 owns.  
 SERVICE  
 , gas and  
 ic tanks  
 c tank  
 flect.  
 5-3151.  
 for you  
 ton  
 near brand  
 cs like their  
 o celebrate  
 entives for  
 roducers.  
 niums.  
 zzy Cap - Place  
 now for the  
 d sorghum of  
 if buy in 1975  
 spot, this fuzzy  
 ped, winter cap  
 Discount  
 5%  
 10%  
 12%  
 15%  
 NEER.  
 EDS

for all your . . .

# PARTS NEEDS

see . . .

## BAKER AUTOMOTIVE

116 East Texas Phone: 826-3213

Your **GREEN LIGHT** Auto Parts Store

### Want Ads

**FOR RENT:** Trailer Space Black Gold Trailer Park Phone 826-5874. rtn

**For Rent:** Trailer Space \$20.00 a month Call 845-2721 or 845-3171

**WANTED:** Reliable full time farm and ranch man. Contact Bill Waters 806/669-6851 or 669-2494, Pampa.

**FOR SALE:** 2 bedroom 1 1/2 bath house, 1107 S. Main, Phone: 826-5518 or 826-3026. rtn

**LOST:** Silver earring with inlaid Peyote bird in coral and turquoise, Mary Moore, Phone: 826-5754. Itc

**PAUL'S TRAILER PARK**  
Across Street From School  
Trailer lots 40'x70'  
Modern Underground Utilities  
Gas and Water furnished  
Individual Electric Meters  
PAUL TOPPER-Ph. 8237 or 5931

**HOUSE FOR SALE:** 2652 sq. ft. 4 bedroom, 2 1/2 baths kitchen appliances built-in, carpeted, all-electric, full size basement. Call after 5:00 826-3154. rtn

**FOR SALE:** 1969 MG, 27 mpg, \$1250. Phone: 845-2281. Itc

**FOR SALE:** 2 bedroom houses, Paul's Real Estate, Paul Topper. rtn

**HOUSE FOR SALE:** 2 bedroom house 1 1/2 miles east of town, .66 acres, Call Gary Bray, 806-935-5989 after 6 or 806-935-3937 from 8:00 to 6:00. rtn

**Seamless Reinforced Concrete STORM SHELTERS**  
227-4357 Fairview

**Northwest Oklahoma Storm Shelter Co.**

**FOR SALE:** Nearly new 30" gas range with "continuous clean" oven, \$150. Louis C. Stas, 826-3123. rtn

**FOR SALE:** 2 bedroom, 2 bath home on Alan L. Bean Call 826-5719 or 857-3141 in Pritch. rtn

**Monuments, Grave Covers, and Curbing.** Complete finishing. Will Warren, Wheeler. rtn

**FOR SALE:** Lot 100 x 300 ft. 207 S. Stanley. Phone before five 826-3011, after five 826-5905. rtn

**WATCH FOOTBALL** on a new R.C.A. We have a full line of new t.v.'s. L & F Repair. rtn

**FOR SALE:** 1973 Melody Mobil Home 12'x64' furnished. Clint DeWolf, 405/634-2210, 15 miles E. 5 miles N. of Wheeler. Itc

**FOR RENT:** Cottage for three, Mrs. H. M. Wiley, Call 826-5273. rtn

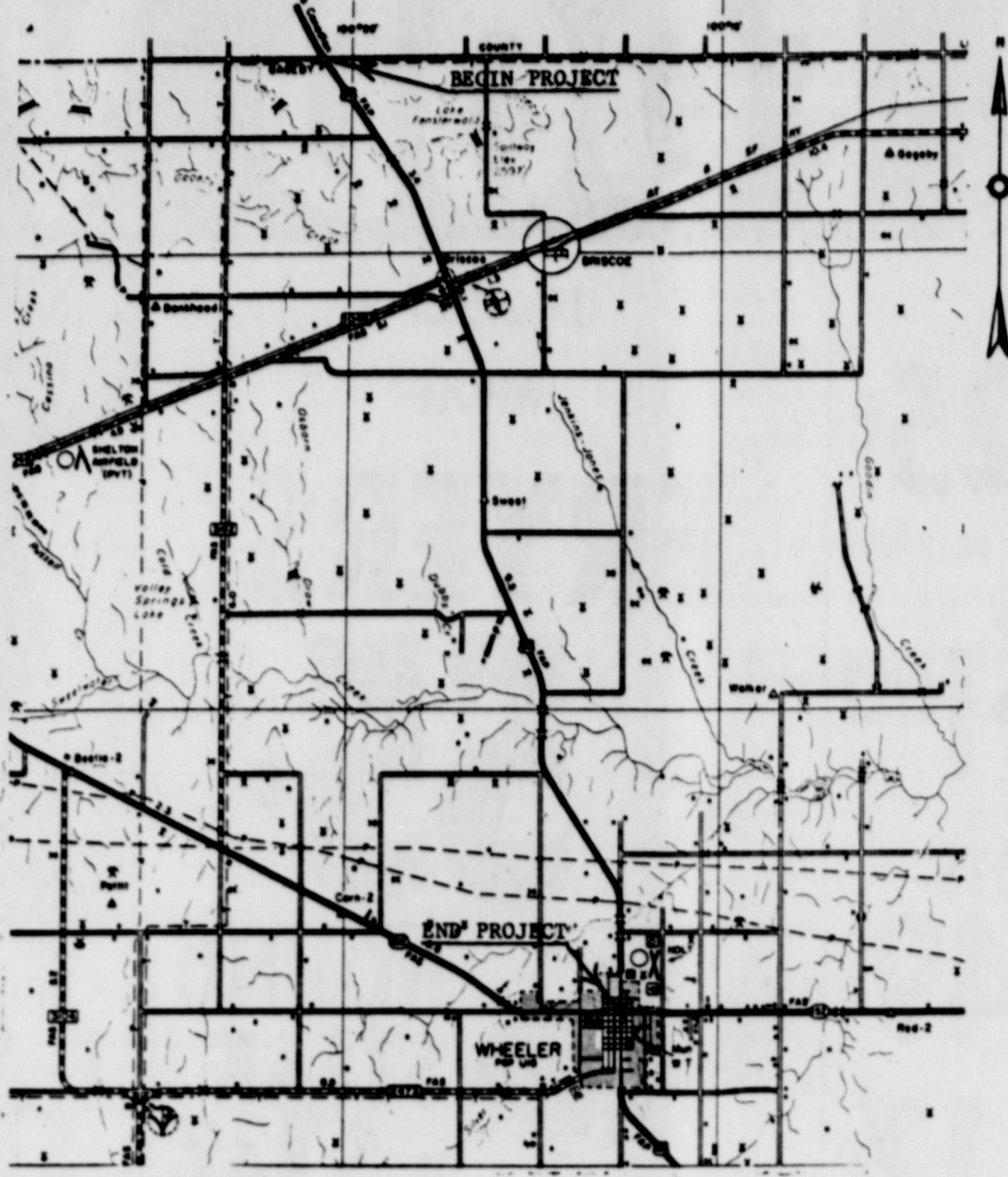
**FOR SALE:** 2 bedroom house on 8 lots, 611 E. 7th Street. Call 826-3148. 2p

**FOR SALE:** 1973 Grand Prix, tape, cruise, one-owner, \$3450. Phone: 845-2281. Itc

**TAKING BIDS:** The City of Wheeler is taking bids for the painting and of the exterior of the City Office and garage. Bids will be opened at the regular council meeting October 20. Etc

**STRAYED:** Whiteface heifer 600 lb. with R brand and right ear is notched. Call H. B. Leake, Mobeetie, 845-2574. 2p

**FOR SALE:** International wheat drill. 16x8 on rubber, new discs. \$800 at Hibler Implement. 3tc



PARTIAL MAP OF WHEELER COUNTY  
U. S. HIGHWAY 83

### FROM HEMPHILL COUNTY LINE, SOUTH TO STATE HIGHWAY 152, IN THE CITY OF WHEELER

**Legal Notice**  
NOTICE OF INFORMAL PUBLIC MEETING TO CONSIDER IMPROVEMENTS OF U.S. HIGHWAY 83 WHEELER COUNTY

The State Department of Highways and Public Transportation is planning the improvement of a 13-mile section of U.S. Highway 83, extending from the Hemphill County Line, south to State Highway 152, in the City of Wheeler.

An informal public meeting will be held in the Wheeler County Commissioners' Courtroom, in Wheeler on Tuesday, October 14th, 1975 at 1:00 p.m. The purpose of this meeting is to discuss the need and requirements for widening and reconstruction of the above described section of highway.

All interested persons are urged to attend and express their views concerning this improvement project. Social economic and environmental aspects will be considered. Right of way requirements and the State's relocation assistance programs and relocations plans, services for displacees, and information concerning the relocation assistance office will be discussed.

Any questions concerning this informal meeting may be directed to the office of Mr. O.V. Johnson, Supv. Resident Engineer, Wellington, Texas, or Mr. Lewis H. White, District Engineer of State Department of Highways and Public Transportation P.O. Box 909, Childress, Texas 79201.

### CITATION THE STATE OF TEXAS COUNTY OF WHEELER

To All Persons and Parties Interested in the Estate of GERALD LAWRENCE ADERHOLT, Deceased, and Unknown Heirs of GERALD LAWRENCE ADERHOLT, Deceased, Whose Names and Residences are unknown.

You and each of you are hereby cited, required and commanded to appear before the County Court of Wheeler County, Texas, to be held in the County Courtroom in the Court-house of said County in the City of Wheeler, Wheeler County, Texas, Texas, such appearance to be at or before ten o'clock a.m. on the first Monday next after the expiration of ten days from the date of service, exclusive of the day of such service, which day and date of service shall be the date of publication that this newspaper bears, and which appearance shall be at such time on such Monday, which will be the 13 day of October, 1975, by filing written answer to the application hereinafter mentioned, showing cause why an administration is necessary or why the determination of heirship should not be made, which application will at such hour and in such Court be acted on, said application having been filed

by Evie Lee Aderholt, Michael Wayne Aderholt, Sharon Lee Aderholt and Phyllis Jean Vaughn in said Court on the 30 day of September, 1975, and now pending there in a proceeding on the probate docket of said Court, styled ESTATE OF GERALD LAWRENCE ADERHOLT, DECEASED, the file number of which application and the docket number of which proceeding is 1910, the nature of such application being that it alleges that no administration is necessary on said estate and requests a determination of the heirs of GERALD LAWRENCE ADERHOLT, DECEASED, and alleges that there are no debts owed by GERALD LAWRENCE ADERHOLT, DECEASED, which are not secured by liens upon real estate.

If this citation is not served within 90 days after date of its issuance, it shall be returned unserved.

The officer executing this writ shall promptly serve the same according to the requirements of law and the mandates hereof and make due return as the law directs.

Issued and given under my hand and seal of said Court at Wheeler, Texas, this 30 day of September, 1975.

Mary Wofford  
Clerk of the County Court of Wheeler County, Texas  
Lavada Sehnst  
Deputy

## Free...for all youngsters 8-13 Sign up now for the 1975 Punt, Pass & Kick Competition



There are only a few days left to sign up for the 1975 Punt, Pass & Kick Competition. This is a chance to test your football skills against other youngsters your own age. It's free, and all you have to do is bring your parent/guardian in and sign up. You have time to register and get your free Tips Book. So hurry and sign up today!

### Registration Ends October

Date **Sat., Oct. 4, 1975**  
Time **10:00 A.M.**  
Location **Wheeler High School Football Field**

## PETE BURTON FORD

Wheeler, Texas

### GROOM

Continued from page 1  
opening series of the second half, marched from their own 34 to Groom's 17 but a fumble recovery by Chris Britten thwarted a possible touchdown.

One factor in the change of momentum was quarterback Brown, who gained 67 yards on 13 carries in the third quarter. Chris Britten was Groom's sparkplug in the first half, when the visitors controlled the game, as he gained 48 yards in the first period. Neither Brown nor Britten had more than one good period, rushing wise, however. Brown finished with 54 yards on 27 carries, while Britten had 74 yards on 17 rushes.

Brown, pressured throughout the contest by Weller, Brown, Mike Koetting and Mike Britten, was thrown seven times for a total of 40 yards in losses. The Mustangs dominated the game statistically, out-rushing the Tigers in first downs 21-9. Wheeler completed two of nine passes for 21 yards, while Bivens failed to connect on four attempts. Still, Groom set the tempo from the outset and repeatedly came up with the big play. The Tigers recovered four fumbles and intercepted two passes. Leading rusher in the game was Reed with 98 yards on 14 attempts. Danny Helton led the Mustangs with 74 yards on 13 carries, including 71 on nine attempts in the second half. Wheeler gained 168 yards in the final two periods.

"I was real pleased with our kids," coach Jim Robinson said. "This is the best game they've played so far this year. I was real worried about us on Friday night."

"The only thing that I appreciated was we got them two touchdowns. I thought our kids played great defensive ball game. We're just real pleased. The last two weeks, we've had some bad plays, bad breaks. If we get some breaks, we've gotta be tough."

Robinson naturally was disappointed that Reed was not tackled on the 89-yard run. "I think our tackle had his arms around him and our linebacker was coming up to make the play. He (the linebacker) knocked our kid off."

**Anthony's**

**Ladies' Pants or Blouses**  
**\$5 each or 3 for \$12**




**Children's**  
**NYLON and LEATHER ATHLETIC SHOES**  
molded crepe sole, padded collar

**4.99**  
**3 PRS. \$12.**

A lot of comfort and wear in this favorite style. Padded collar. Red or Royal. Outstanding value.

Size 5 to 11  
1 1/2 in. x 4

**dramatically styled**  
with the "Look Of Leather"  
go most everywhere Coat

**\$19.**

A style that knows no season. Glove leather feel polyurethane vinyl. Double breasted, two waist pockets, full lined. Sizes 10 to 18 in. Chamis, Butter-scotch, Navy and Red.

THURSDAY, FRIDAY & SATURDAY

314 N. MAIN  
SHAMROCK, TEXAS

**Anthony's**

### THE BUSINESS DIRECTORY

**TEXAS PRESS ASSOCIATION**  
MEMBER 1975

Published Every Thursday at Wheeler, Texas, By . . .

**THE WHEELER TIMES**  
P.O. Box 1080  
Phone: 826-3123

**Louis C. Stas, Owner and Publisher**

**Wheeler Lodge No. 1099**  
A. F. & A. M.  
MONDAY  
7:00 P. M.  
Percy Farmer, Sec'y.  
Members Urged To Attend.  
Visitors Welcome.

**WRIGHT FUNERAL HOME**  
All Types Cemetery and Memorial Work  
Phone: 806-826-5214

**WHEELER REDI-MIX**  
REDI-MIX CONCRETE SAND  
Washed Gravel-All Sizes  
Office Hours: 7:30 to 5:00  
Phone 806-826-3223

**Dr. Marion Roberts**  
OPTOMETRIST  
Phone: 669-3333  
112 W. Kingsmill  
Pampa, Texas

**TRACTORS - IMPLEMENTS PARTS and SERVICE**  
**HIBLER IMPLEMENT CO.**  
Wheeler, Texas

**Let Me Write It . . .**  
**GEO. RICHARDSON**  
All Types OF INSURANCE

**FOR ALL YOUR Farm Supply Needs**  
**WHEELER CO. PRODUCE**  
Wheeler, Texas

**GUARANTEED AUTO GLASS INSTALLATION & Body Repair**  
**GARRISON SERVICE**  
Phone: 826-5515  
Wheeler, Texas

**Aluminum Self-Storing STORM-SCREEN WINDOWS**  
Permanent year-round protection. Changeable from inside. Easy to clean, powder-proof. Eliminates drafts...Cuts fuel bills....

**WHEELER LUMBER CO.**  
Phone: 826-5543 Wheeler, Tex.  
Fine Service for Fine People

**CUSTOM DRAPERIES**  
Swags, Cornices, Shutters  
We Install Free  
Tele 256 3652  
Brannons Decorators  
Shamrock, Texas 79079

# Mobeetie News

**Wilber Beck**  
 Wilber Beck and Mrs. Ernest Beck visited Rev. and Mrs. V. Grace in Pampa, Friday. While there also attended to business visited Roy Johnson who is a patient in the Grand General Hospital.

Betty Lou Rodney and her mother Eugene Johnson of Pampa, California visited Mrs. Tommie Tyson last week. Mr. and Mrs. Melba Burch accompanied Mrs. Tyson with Mrs. Bessie Galmor and Mrs. Melba Burch to the airport. Mr. and Mrs. Aaron Lancaster, Ernest and Carline of Amarillo, visited their parents, Mr. and Mrs. Curtis Lancaster and Mr. and Mrs. Arzia Corcoran, last weekend. Weekend visitors of Mr. and Mrs. Ead Whitten were Mr. and Mrs. Billy Whitten, Teresa and Kristie of Amarillo and Mrs. Olene Bearden of Carey. Guests of Mrs. Mary Brewer were Mr. and Mrs. Len Stevenson, Melinda, Jeff and Tommy of Amarillo and Earl Alexander of White Deer. Mr. and Mrs. Doyle Grimes attended to business in Amarillo and spent the weekend with their son and family Mr. and Mrs. Gary Grimes of Kendra. Mrs. Myrtle Baker of Wheeler recently visited her aunt, Mrs. G. W. Johnson. Mr. and Mrs. W. H. Atkins are home following a tour of California with their son, Herbert Atkins of Amarillo. In Porterville they visited Mr. and Mrs. Tom Atkins, in Linsey another brother, Mr. and Mrs. M. L. Atkins was visited. From there they went to Woodville where they visited Mr. and Mrs. Artie J. Atkins and at Carson they visited Mr. and Mrs. Arch Atkins. Mr. and Mrs. Garland Lancaster, Scott and Shelly visited their parents, Mr. and Mrs. Eugene Guggel and Ronald and Mr. and Mrs. Curtis Lancaster. Weekend visitors of Mrs. Paulene Hooker and Mr. and Mrs. Gene D. Harrison and children were Mr. and Mrs. Mac Shelton and Willetta of Spearman and Mr. and Mrs. Kirby Brillhart of Pampa. Mr. and Mrs. Tince Williams visited their grand-daughter and family Mr. and Mrs. Ronnie Stuart and baby son, Chad Wayne in Elk City, Tuesday last week. Mr. and Mrs. Frank Risner and their child and families recently

of Perryton and Bobby Risner. Mr. and Mrs. Nathan Lancaster, Michael and Alicia visited the lady's parents, Mr. and Mrs. Doug Baird. Mr. Columbus McCraw formerly of Mobeetie, now living in Wheeler is a patient at the present time in the Highland General Hospital in Pampa. Mrs. Clara Adams, Mrs. Bert Ktsar and Mrs. Dale Holland are all patients in the Parkview Hospital in Wheeler at this writing.

**Dr. Jack L. Rose**  
**OPTOMETRIST**  
 121 Main St. - Shamrock  
 Phone 256-3203  
 Tues. 9-5 Fri. 2-5

**Blakemore**  
 FRESH  
**PROTEIN FED CATFISH**  
 "Dressed While You Wait"  
**BLAKEMORE MOTOR CO. BUILDING**  
 Phone 253-3287  
 400 North Main Shamrock, Texas 79079

**BUTCHERING & PROCESSING PRICES**  
**Beef processed, double wrapped 14¢ per pound**  
**1¢ A Pound for Butchering**  
**Pork processing including curing double wrapped 16¢ per pound**  
**\$4.50 A head for butchering**  
 We butcher Monday thru Friday 8 to 12 A. M. except holidays.  
**CALL FOR QUARTER - HALF - WHOLE BEEF PROCESSED**  
**WE NOW HAVE CUTS OF PORK AND BEEF FOR SALE**  
**SHAMROCK SLAUGHTER PLANT**  
 N. of City Phone 256-3241  
 Closing at Noon on Saturday

foliage tour in the Colorado mountains. With Mr. and Mrs. Risner were Mrs. Donna Garst, Butch, Tressa and Jan of Amarillo, Mr. and Mrs. Charles Risner, William and Susan

## TEXAS TALK

By George Richardson

Although promoting the producer is customary fare for this column, seeing farmers get "good press" from one of the country's financial magazines is refreshing. In the July issue of FORTUNE, a major article compliments today's farmer as being a talented businessman. In part the article says... "a farmer must be a tolerably good chemist, mechanic, market analyst and cost accountant... must be able to judge when to sell his crops, when to hold back, and when to hedge with futures contracts, requiring not only a deep understanding of the commodities markets, but also a grasp of U. S. economic policies at home and abroad." When talking about management ability... "When it comes to managerial skill, a first-rate farmer can hold his own with businessmen in industry." In short the article states what a lot of us have realized for a long time... a successful farmer or rancher means being a true professional.

## Wheeler County Farm Bureau

Wheeler, Texas

Charlene Rainey and Avis Parker took Mrs. Eula Markham to Shamrock for medical reasons. Jim and Cindy (Dukes) Starnes have a new addition to their family. A six pound, seven ounce daughter. They named her Whitney Kye. They reside in Allen, Texas, near McKinney.

## Allison News

By Mary Cornell  
 As the news is written today, Rita Grayson is a patient in Parkview Hospital. Hope by the time this comes to you she will be home and feeling better.

Mr. and Mrs. Archie Dillon observed their 60th wedding anniversary, Sunday at the Rex Miller's home. A family gathering was attended by Kelly, Shery, and Shelly Miller of Hugerton, Kansas; Shot, Texas, Tom, DeWayne, Romy Bill Childress of Miami; Linda and Gary Hodges of Santa Fe, New Mexico; Jim Miller of Weatherford, Okla.; Lois and Sandy Parsons of Buelah; McMillan and Claude Monroe of Fort Smith, Arkansas; Bob, Fern, Melissa, and Loretta Dillon of Slaton; Gayland Michael Dillon, Amarillo; Bill Miller, Allison and Marlene Moore of Wheeler. Debbie Cornell of Okla. City and Doyle Cornell of Canadian visited Gertie and Anthony this past weekend. Debbie is planning to stay with her dad until college starts for the spring semester. Then she plans on enrolling in college.

Carl Giddens returned home Sunday after visiting, this past week with the Don Sinnetts and family of Buena Vista, Colorado. Visitors in the Shorty Crawford's Sunday were Johnny and Patty Crawford and the "Fat" Joslins. Loyd, Sandra, Michael, and Kelly Hammond visited Loyd's folks at Cheyenne, Oklahoma.

Monroe, Nadene, Debbie Reynolds, Linda, Kim, and Kevin Hall, Vickie Gary, and Greg Boydston attended the funeral of Mrs. James Reynolds of Sloan Springs, Arkansas. She is the sister-in-law of Monroe. The services were Saturday morning and they returned home Sunday.

**Dr. M. V. Cobb**  
**CHIROPRACTOR**  
 Specializing In The Examination And Treatment of Spinal And Nervous Disorders  
 256-2133  
 310 South Main Shamrock, Texas

**Farmers Hog Mkt.**  
 OPEN EVERY THURSDAY  
 8:00 a.m. to 2:00 p.m.  
 Brashears Sale Barn  
 1 mile North on Highway 83  
 Shamrock, Texas  
**Bob Richie**  
 Phone 256-2540  
 HOG BUYER Day or Night

**Save on Taxes!**  
 ... add to your retirement.  
 Individual Retirement Annuity for Modern Woodmen members.  
**Modern Woodmen of America**  
 Fraternal Life Insurance  
 Home Office • Rock Island, Illinois

**NOW WHITE STAG**

**The Dot Shop**  
 Family Fun

# GRAND OPENING

**GOLDEN FLEECE WINTER COATS**  
 Open Nights Till 8  
 Assorted Men's and Boys' Sizes  
 Dacron and Down Filled  
 Assorted Colors

**EXERCISE BIKES**  
 Reg. \$62.95 **\$54.44**

**RCBS PRECISIONEERED RELOADING EQUIPMENT**  
 FOR YOUR RELOADING SUPPLIES  
 See Our Complete Selection. Stock Up While Supplies are Largest.

**PHOTOGRAPHY SUPPLIES**  
 WE HAVE CATALOG ACCESS TO BELL & HOWELL SUPPLIES

**(P) PATHCOM INC. COMMUNICATIONS DIVISION**  
 DEPENDABLE No. 123 A \$159.95  
 Other Models in Stock

**OVER AND UNDER SHOTGUN**  
 BROWNING 12 Ga. \$395

**LEVER ACTION HIGH POWERED RIFLE 30-30**  
 WINCHESTER \$129.95

**PUMP ACTION SHOTGUN**  
 WINGTON - Ithaca Gun From \$174

**Save \$6.12 on the new Zebeo One**  
 Twenty-five years of reel making experience have gone into this One. It's the finest professional closed-face reel your money can buy.

Unique brake and feather cast system  
 Smooth, stainless ball bearings  
 Silent, selective anti-reverse  
 Sensitive star drag  
 Lifetime Lexan body  
 Polished stainless covers  
 Filled with DuPont Stren Line

Reg. \$25. **\$18.88**

**GARCIA-AMBADEUR 5000**  
 THE WORLD'S FINEST BAITCASTING REEL WITH UNIQUE FEATURES  
 The 5000 combines more accurate, pinpoint casting with less possibility of backlash than any other casting reel. Central gear brake anti-backlash mechanism, plus calibrated mechanical brake. Component free spool, silent level wind, no-tool take-down, smooth and powerful fully adjustable star drag. Two spool sizes - holds 130 yds. (5000) or 165 yds. (5000A) of 15-lb. mono.

**\$42.50**

**WATER SKIS \$40 to \$98**  
**RAM GOLF SUPPLIES**

● Head  
 ● Wilson  
 ● SLAZINGER  
 ● DUNLOP  
 ● PENN  
 ● RAWLINGS

**Warm-up Suits**  
 FOOTBALLS \$5 TO \$25  
 FOOTBALL SHOES \$9 TO \$15  
 SHORTS \$1.99 TO \$3.75  
**Etonic** Golf Shoes by Eaton  
**Fred Perry** T-Shirts by Fred Perry

**NEW AMBADEUR 5000C**  
 PRECISION BALL BEARINGS FOR A REVELATION IN SMOOTHNESS!  
 For the man who recognizes the finest. The 5000C offers all the features and precision of the famous 5000, plus Swedish ball bearings of stainless steel for even longer, smoother casts, with lighter tines, than ever before possible. If you're looking for the finest baitcasting reel that money can buy, then stop looking. It's right here.

**\$53.50**

**ARCHERY ACCESSORIES**  
**BOWS '37 to '95**  
**COMPOUND '187"**

**BRUNSWICK Since 1945**

**AIR-HOCKEY BILLARDS \$300.00 to \$1200.00**  
**FOOSBALL TABLE \$350**  
 LOADS OF ACCESSORIES

**BUCK KNIVES**  
 FAMOUS FOR HOLDING AN EDGE

● UNCLE HENRY  
 ● SCHRADER  
 ● OLD TIMERS  
 ● OTHERS

Best Selection of Knives In Town

**HAND GUNS:**  
 \$4 W  
 Colt  
 High Standard

● Browning  
 ● Charter Arms  
 ● Lama  
 ● Others

**BACK PACKS \$48 to \$88**  
 Good Stock of Camping Accessories

**As a Means of Welcoming you to our Grand Opening, we will give away the following items:**

**FREE!!**

1 BRUNSWICK AIR HOCKEY Retail Value \$190.00  
 1 BROWNING BICYCLE Retail Value \$119.00  
 1 Rawlings Metal Tennis Racket Retail Value \$60.00

Come in often and register October 1 through October 8. No obligation. Nothing to buy. You need not be present to win.  
 PRIZES WILL BE AWARDED AT 3 P.M. OCT. 11, 1975.

**BEAR ARCHERY**

**FAMOUS SLINGSHOT \$475**

**WRIST SLINGSHOT**

**LEISURE-TIME SHOPPE**

**CORONADO CENTER PAMPA, TEXAS 9:00 TO 8:00**

**YOU DON'T HAVE TO WISH ANYMORE**

... for an efficient heating system. Today, you can meet both your heating and cooling needs with one unit, one thermostat setting. The heat pump does both jobs. You don't have to find a magic lamp with a genie inside to tell you how the heat pump works... one call is all it takes and we'll give you a FREE personalized heating cost survey and tell you all about the heat pump... it's not magic, it just acts that way.

**BE SWITCHED**

... to electric heat. There's a heating system that's just right for your home... an electric heating system that will be just as modern tomorrow as it is today... and environmentally sound, because electric heating is 100% efficient at the point of use. Call us this week.

**ENERGY EFFICIENCY ALLOWANCE**  
 We, at Southwestern, are interested in your getting the most for your energy dollar. That's why we're offering an Energy Efficiency insulation allowance to our customers in existing homes who install electric comfort heating. Ask us about it.

**ELECTRICITY - IT DOES SO MUCH GOOD**  
**The Electric Company**  
 FOR SO MANY PEOPLE

EQUAL OPPORTUNITY EMPLOYER

### Wed. Study Club Begins New Year

The Wednesday Study Club opened its new year with a Bruch at the home of its president, Mrs. Harry Wofford. The Social Committee was co-hostess with Mrs. Wofford and included Mrs. R. Wm. Brown, Mrs. Cecil Denson, and Mrs. Harold Hill. The group stood in the receiving line dressed in red, white and blue, varying in pattern and design. Small flags were pinned on each guest. The decorations also carried out the Bicentennial Theme. The table centerpiece was made of red and white flowers, blue ribbon and studded with small American flags. A lovely brunch of coffee cake, nuts, fruit and coffee was served. The invocation was given by Mrs. Cecil Denson. During

the program that followed the Pledge of Allegiance was given to the flag, and the group sang "America." Mrs. Wofford commented on the theme for the year - "Let Freedom Ring" and gave excerpts on the lives of some early American Patriots. The course of study for the year is our responsibilities as

"Daughters of Freedom's Land". Mrs. Brown presented the year books and Esther Sorenson gave the Federation Report. Meeting closed with the collect. Others present at the meeting were: Mrs. Charles R. Brown, a

guest, Mrs. S. W. Roark, a new member, Mesdames W. A. Finsterwald, Lee Guthrie, Carl Laflin, M. McIlhany, Madge Porter, Shelby Pettit, C. J. Van Zandt, and George Weems. Several members were either ill or out of town.

### NOTICE OF COMPLIANCE

The following policy of nondiscrimination is made by Parkview Hospital as required by the Department of Health, Education and Welfare.

At its meeting on Sept. 8, 1975, the governing Board of Parkview Hospital passed a resolution that effective Sept. 8, 1975 Parkview Hospital will continue to operate on a nondiscriminatory basis in accordance with the

Civil Rights Act of 1964. This means that all facilities and services of view Hospital will be available to all patients, employees, on a non-discriminatory basis. Waiting rooms, public toilets, recreation facilities, recreation rooms, therapeutic room accommodations will be available without regard to race, color or national origin. This action will enable Parkview Hospital to continue receiving Federal funds necessary for operation.

The Board urges all public users and the employees of Parkview Hospital to cooperate in this program so that we can continue our mission of serving the needs of our community.

and children of Fritch. Wednesday night at J. P. Meek home for supper were Mrs. Walter Bible, Carla and Tom.

Mrs. Bible and children visited the Willis Fillingims after church Sunday night.

Mr. Robert Gatchos of Canyon visited Billie Hill Sunday and they ate dinner with the Dick Irvine family. Sunday afternoon Billie's other visitors were Carolyn Nicholson and Linda Gipson. Minister and Mrs. Sandifer Cole ate dinner Sunday with the Wayne Meek family.

## Briscoe News

By Veta Parker

September 25, a good bit of frost on top of cars. Jettie Woods of California visited the L. S. Aderholts Sunday. Her son, Tade and wife Wilma Wood of Calif. visited there one day last week. They use to live here. Word came to me that Velma D' Spair's brother passed away. Our sympathy goes out to the D'Spains and relatives.

Last Sunday Tom and Alice Bell visited Mr. and Mrs. Lawrence Aderholt. Douglas and Marsha Mitchell of Lubbock spent this weekend with the Tom Heltons.

Tom and Alice Bell Helton spent Wednesday night and Thursday in Amarillo and visited their grandson Ronny Croslin who is in the hospital there. He is improving but only the family is allowed to visit him.

Visitors of Sophia Helton last week were Willa Fillingim, Effie Renfro, and Lois Meadows.

Friday afternoon Mr. and Mrs. Lawrence Aderholt visited the Lister Hudsons. Sunday Oden Hudson ate dinner with his parents the L. J. Hudsons.

Lois Hudson is still with her daughters family the Ronny Gatlins. Lois had Surgery on her foot Sept. 17. It doesn't seem to be doing very well.

Mike and Melody Goad and children went to Holly, Colo. to a rodeo.

Sunday dinner guest at the Jack Meek home were Eddie

and Leta Meadows, Mark and Annette Meek. Hoyle Helton spent one day last week with Oma Dyer in Wheeler.

Mr. and Mrs. Edd Aldrich, Mr. and Mrs. Warren Aldrich of Gravin, Iowa, and Mrs. Lucille Tipps spent Thursday night with the Cliff Walkers.

Mr. and Mrs. Veme Lohberger, Dean and Dwight Tipps were evening visitors. Weekend visitors at the J. O. Heltons were Juanell, Gwyn and Dale Manning.

Saturday night visitors at the Colie Parkers were Dwayne Jackson of Wheeler, Leland Moore of Eldorado, Texas, Weldon Parker of Pampa.

Visitors at the Dick Irvine home Friday night were Zedell Swift Lacy, and Fye, Willis and Verna Fillingim.

Visitors at the Wayne Meek home last weekend were Tola Fay's brother, Mr. and Mrs. Kenneth Bynum

### Card of Thanks

Words cannot express how we would like to "thank" each of you for the prayers, food, flowers, memorials, and other kind deeds shown us in our loss of our loved Husband, father, son and brother. May God bless you.

Yvonne & Leesa Sivage  
Bonnie Bunch  
Mr. & Mrs. V. Ray Sivage  
Mr. & Mrs. J. R. Clark  
Mrs. Irene & Palmer Sivage  
Mr. & Mrs. Harold Sivage

### Card of Thanks

To the people of Wheeler for the thoughtfulness, love and concern shown to our wife and mother during her illness.

Ray Alexander  
Kenneth, Dale, Don, Max & families



### WEDDING ANNOUNCEMENT

Mr. and Mrs. Mike Silva request the honor of your presence at the marriage of their daughter, Andrea Silva to Rodney Darling, son of Mr. and Mrs. Henry Darling. Ceremony will be held October 25, 1975, 7:00 p.m. at the Kingdom Hall of Jehovah's Witnesses, 1701 Coffee, Pampa, Texas. All friends and relatives are invited.

### Richard's RADIATOR AND HEAD SHOP

Complete Radiator and Cylinder Head Work  
301 E. 12th  
Shamrock, Texas  
Ph. 256-3151  
Richard Blakemore - Owner

# AD SAVINGS

from your neighborhood ASSOCIATED DRUGGISTS OCTOBER 1-7, 1975

 <b>VITERRA VITAMINS</b> Multivitamin and Minerals Supplement by Rong Pharm Bottle of 100 Mfg. List \$1.19 <b>\$2.29</b>	 <b>CRICKET LIGHTER</b> by Gillette Mfg. List \$1.49 <b>73¢</b>	 <b>BUFFERIN TABLETS 100's</b> Mfg. List \$1.95 <b>\$1.24</b>
 <b>CORYBAN COLD CAPSULES</b> 24's Mfg. List \$1.59 <b>74¢</b>	 <b>AYDS REDUCING CANDY</b> 1 1/2 Pound Vanilla, Chocolate Chocolate Mint, Butterscotch Mfg. List \$4.50 each <b>\$2.67</b> each	 <b>GILLETTE TRAC II</b> Cartridge 9's Mfg. List \$2.39 <b>\$1.45</b>
 <b>DAISY TWIN BLADE RAZORS</b> Pack of 2 Mfg. List \$1.19 <b>72¢</b>	 <b>MITCHUM DAB-ON ANTI-PERSPIRANT</b> 1 oz. Scented or Unscented Mfg. List \$3.50 each <b>\$1.82</b> each	 <b>ALPHA-KERI BATH OIL</b> 8 oz. Mfg. List \$3.69 <b>\$2.11</b>
 <b>SUMMER'S EVE DISPOSABLE DOUCHE</b> 4 1/2 oz. Regular or Herbal Mfg. List \$3.00 each <b>3 for \$1.00</b>	 <b>GELUSIL</b> Liquid 12 oz. Reg Mfg. List \$1.89 <b>\$1.16</b>	 <b>FLINTSTONE VITAMINS</b> 60 + 30 FREE Regular Mfg. List \$2.59 \$1.41 With Iron Mfg. List \$2.89 <b>\$1.58</b>
 <b>Alka Seltzer</b> Blue 36's Mfg. List \$1.43 <b>96¢</b>	 <b>CHLORASEPTIC</b> 6 oz. Antiseptic with Sprayer Mfg. List \$1.71 <b>98¢</b>	 <b>WETTING SOLUTION</b> by Barnes Hind 2 oz. Mfg. List \$2.49 <b>\$1.34</b>
 <b>ALLEREST</b> Allergy Tablets 24's Mfg. List \$1.69 <b>97¢</b>	 <b>MAGLEANS TOOTHPASTE</b> 7 oz. with Fluoride Mfg. List \$1.41 <b>77¢</b>	

\*THESE ARE SUGGESTED AD PRICES OPTIONAL WITH PARTICIPATING STORES

## HYLAND'S PHARMACY

Wheeler, Texas

WE RESERVE THE RIGHT TO LIMIT QUANTITIES AT SALE PRICES

### Beta Sigma Phi Meetings Held

The Alpha Mu Alpha Chapter of Beta Sigma Phi held its first meeting of the year at Pauline Sutton's. President, Sally Ledbetter called the meeting to order with 12 members present. The program was given by President Sally Ledbetter on Woman, Her Heritage and Her Hope. After the program the husbands of the members joined the group and gave the Suttons a surprise House Warming. A money tree was presented to them. Cake and cokes were served to the following: Mr. and Mrs. Huey Williams, Mr. and Mrs. Richard Wallace, Mr. and Mrs. Ken Schwalk, Mr. and Mrs. Steve Walker, Mr. and Mrs. Ronnie Cook, Mr. and Mrs. James Hiltbrunner, Mr. and Mrs. Charles Crockett, Mr. and Mrs. Bill Healey, Mr. and Mrs. Delbert Thomas, Mrs. Sally Ledbetter, Mrs. Dixie Chick and the honorees, Mr. and Mrs. Leon Sutton.

The Alpha Mu Alpha Chapter of Beta Sigma Phi held its second meeting of the year Monday night, September 22. President Sally Ledbetter called the meeting to order. Following the business meeting Jane Thomas gave the program, What Women are Heir To. Refreshments were served to the following: Sally Ledbetter, Dixie Chick, Debra Hiltbrunner, Mary Sue Williams, Jane Thomas, Lue Crockett, Anne Cook, Lynda Wallace, Linda Hink, Nina Walker and the hostess, Linda Schwalk.

## LANCASTER DEPARTMENT STORE

as seen in  
MADEMOISELLE

**48.00**

**Pantsuit Panache**

**TONI TODD**

The shape for days (and nights) to come... Toni Todd's tweed-textured threesome. Richly-patterned jacquard cardigan covers the slim-tied, sleeveless turtleneck, matching pull-on pants. Outstanding in polyester double knit, machine wash/dry. Grey/Brown or Rust/Camel. 8-18. 00.00.

**36.00**

**vicky vaughn**

has a lot of zip

Let the good times roll. You'll be ready in Vicky Vaughn's all-in-one turnout with great, zipped patch pockets. Skinny-ribbed top, collared in white, grooves onto a skiff of color-flecked tweed. Polyester double knit, machine wash-dry. Navy/Red or Brown/Gold. 3-13. 00.00.

### LEWALLEN INSURANCE AGENCY

ALL - LINES

826-5719      114 E. Texas

## GREAT FOOD VALUES

**Market Made SAUSAGES**  
lb. **\$1.49**

**Fresh Lean HAMBURGER**  
BONELESS  
**Stew Meat** Pound **\$1.19**

BORDEN'S  
**Buttermilk** 1/2 Gal. **89¢**

WHIPPED PARKAY  
**Margarine** 16 oz. **89¢**

NABISCO OREO  
**Cookies** 15 oz. **79¢**

KIMBELL  
**Instant Tea** 2 oz. **89¢**

DOUBLE LUCK  
**Green Beans** 3 303 Cans **\$1**

**COCA COLA**  
6 10 oz. Btls. **59¢**  
(Plus Btl. Deposit)

**BANANAS** Pound **19¢**

**CARROTS** 4 1 lb. Cello Pkg. **\$1**

PRICE  
**Pimento SPREAD**  
7 1/2 oz. **79¢**

FRANCO  
**SPAGHETTI**  
3 15 oz. Cans **89¢**

FRANCO AMERICA  
**MACARONI 'n Beef**  
2 15 oz. Cans **89¢**

KIMBELL  
**SPANISH STYLE TOMATO SAUCE**  
6 8 oz. Cans **\$1**

FISHER'S Sliced  
**Spanish Peas**  
13 1/2 oz. **89¢**

MOBEETIE GROCERY

Phone 845-7711

# MUSTANG SENIORS:



Don Brown



David Massick



Tony Hefley



Mike Izard

# WHEELER MUSTANGS

VS.

# CLAUDE MUSTANGS

Friday, Oct. 3

7:30 P.M.

At Claude Stadium

Captains:  
BILL McILHANY  
DANNY HELTON  
TERRY TIDWELL

## WHEELER MUSTANGS

No.	Pos.	Wt.	Class
11	QB	155	Jr.
10	QB	140	Soph.
31	TB	155	Sr.
20	FB	185	Jr.
21	WB	135	Sr.
32	FB	150	Soph.
41	WB	120	Jr.
30	TB	137	Jr.
53	C	170	Sr.
50	C	135	Soph.
61	G	150	Sr.
71	G	150	Jr.
63	G	150	Jr.
64	G	130	Soph.
70	T	165	Soph.
72	T	170	Soph.
74	T	230	Jr.
23	E	150	Sr.
84	E	180	Sr.
80	E	130	Jr.
40	E	145	Soph.
82	E	150	Sr.
83	E	155	Sr.

## CLAUDE MUSTANGS

Name	No.	Pos.	Wt.	Class
Wayne Campbell	11	QB	147	Jr.
Ronnie Heck	15	QB	130	Soph.
Kirk Cline	20	WB	138	Jr.
George Jaramillo	21	WB	141	Sr.
Jimmy Sanders	22	WB	146	Jr.
Gene McBee	23	WB	119	Jr.
Jeff Cartwright	32	WB	166	Sr.
Chuck Brown	41	FB	187	Jr.
Randy Heckman	42	FB	170	Soph.
Troy Conrad	50	C	123	Jr.
Bobby Loyless	52	C	149	Jr.
Kevin Wilde	60	G	134	Soph.
Bradley Dye	61	G	146	Soph.
Chris Morton	63	G-T	174	Jr.
John Hawkins	65	G	130	Sr.
Gary Bagwell	70	T	190	Jr.
Paul Voyles	71	T	145	Jr.
Doug Barrett	72	T	160	Sr.
Tom Swires	81	E	132	Sr.
Randy Stephenson	82	E	122	Jr.
Randy Nuttall	84	E	166	Jr.
Geoff Forbes	12	WB	155	Jr.
Kenny Eddleman	K	K	135	Jr.

## Jr. Varsity

No.	Pos.	Wt.	Class
11	QB	120	FR.
40	TB	160	Fr.
30	FB	145	Fr.
31	WB	120	Fr.
20	WB	110	Fr.
21	WB	130	Soph.
61	C	120	Fr.
61	G	130	Fr.
62	G	125	Fr.
60	G	110	Fr.
63	G	125	Fr.
73	T	140	Soph.
74	T	145	Jr.
71	T	125	Fr.
84	E	115	Fr.
81	E	120	Fr.
83	E	130	Fr.
41	E	95	Fr.

COACHES:  
Jim Robinson, Head Coach  
Bill Wiggins  
John Copeland  
Richard Gaines

## 1975 Mustangs Football Schedule

Sept. 5	Lefors	27-0
Sept. 12	Open	
Sept. 19	Canadian	6-29
Sept. 26	Groom	7-20
*Oct. 3	Claude	7:30 T
*Oct. 10	Wellington	7:30 H
*Oct. 17	Shamrock	7:30 T
*Oct. 24	McLean	7:30 T
*Oct. 31	Clarendon	7:30 H
*Nov. 7	Memphis	7:30 T
*Nov. 14	Silverton	7:30 H

## JR. VARSITY

Sept. 4	Open	
Sept. 11	Open	
Sept. 18	Open	
Sept. 25	Silverton	6:30 T
*Oct. 2	Claude	7:30 H
*Oct. 9	Wellington	7:30 T
*Oct. 16	Shamrock	7:30 H
*Oct. 30	Clarendon	7:30 T
*Nov. 6	Memphis	7:30 H
*Nov. 13	Silverton	7:30 T

## COLTS

Sept. 4	Open	
Sept. 11	Open	
Sept. 18	Lefors	6:00 H
*Sept. 25	Silverton	6:00 T
*Oct. 2	Claude	6:00 H
*Oct. 9	Wellington	6:00 T
*Oct. 16	Shamrock	6:00 H
*Oct. 23	McLean	6:00 H
*Oct. 30	Clarendon	6:00 T
*Nov. 6	Memphis	6:00 H
Nov. 13	Open	

THIS AD IS SPONSORED BY THE FOLLOWING MERCHANTS AND INDIVIDUALS

BAKER AUTOMOTIVE  
WHEELER MILK CO.  
HANNA FAYE & ALBERT CHAPMAN  
NORA'S CAFE Odessa & Elwood Mooney  
HIBLER IMPLEMENT  
WEST MOTEL  
EDWARD'S '66' TRUCK STOP  
WHEELER FLOWER SHOP  
ROARK'S FINE FOODS  
McILHANY DRY GOODS  
WHEELER REDI-MIX  
WHEELER GAS CO.  
LEWALLEN INSURANCE AGENCY  
MARY WOFFORD

THE WHEELER TIMES  
LANCASTER DEPT. STORE  
McWHORTER'S TEXACO  
WHEELER VETERINARY CLINIC  
PRODUCTION CREDIT ASS'N.  
TRADING POST  
PETE BURTON FORD  
WHEELER LUMBER CO.  
FIRST NATIONAL BANK  
THE DOT SHOP Richard & Lynda Wallace  
JOHN C. VISE  
WHEELER COUNTY PRODUCE  
PRIME FEEDERS  
PRITCHARD'S THRIFTWAY

HYLAND'S PHARMACY  
WARE CHEVROLET CO.  
LEE HARDWARE & FURNITURE  
WHEELER FARM BUREAU  
George Richardson & Kenneth McCasland  
M & M GIN  
RIVES INSURANCE  
SPARLIN'S RESTAURANT  
WHEELER ABSTRACT  
SOUTHWESTERN PUBLIC SERVICE CO.

**Jr. Varsity  
& Colts**  
**Claude**  
**Thursday, Oct. 2**  
**at Nicholson Field**

# AUTUMN VALUES!



**BLUE HERITAGE  
IRONSTONE DINNERWARE**

THIS WEEK'S ITEM:  
**Dinner Plate**

EACH BASIC  
PLACE SETTING  
WITH EVERY  
\$5.00 PURCHASE

**49¢**

FAMILY CIRCLE DO-IT-YOURSELF  
**Encyclopedia** \$1.79

THIS WEEK'S  
VOLUME 6 EACH

MAXWELL HOUSE

**COFFEE**



LB CAN \$1.09

**FROZEN FOOD & DAIRY VALUES**

SHURFINE  
**Orange Juice** 4 6 OZ. CANS **89¢**

BANQUET ASSORTED MEATS  
**Cooking Bags** 3 5 OZ. PKGS. **\$1.00**

PHILADELPHIA  
**Cream Cheese** 8 OZ. PKG. **45¢**

PILLSBURY APPLE OR CHERRY  
**Turnovers** 12 OZ. PKG. **59¢**

HUNGRY JACK  
**BISCUITS** 3 10 OZ. CANS **\$1.00**

FLAKY OR BUTTERMILK

DETERGENT 30% OFF LABEL



**DASH**

JUMBO BOX

**\$2.99**

ALL FLAVORS



**SHASTA POP**

64 OZ. BTL. **69¢**

**HEALTH & BEAUTY AIDS**



VASELINE INTENSIVE CARE  
**LOTION**

10 OZ. BTL. **99¢**

SHAMROCK-WHEELER WE GIVE S & H GREEN STAMPS

QUANTITY RIGHTS RESERVED



GRAIN FED BEEF FULL CUT

**ROUND STEAK**

**\$1.39**

LB.

GRAIN FED BEEF BONELESS  
**RUMP ROAST** LB. **\$1.49**

BONELESS  
**Lean Stew Meat** LB. **\$1.19**

GRAIN FED TENDERIZED (FOR CHICKEN FRY)  
**Beef Cutlets** LB. **\$1.79**

GRAIN FED BEEF  
**Pikes Peak Roast** LB. **\$1.39**

GRAIN FED BEEF BONELESS  
**ROUND STEAK** LB. **\$1.49**

SHURFRESH QUALITY  
**Franks or Bologna** 12 OZ. PKG. **79¢**

LITTLE BOY BLUE  
**Corn Dogs** 12 OZ. PKG. **89¢**

TOP QUALITY LEAN  
**Slab Sliced Bacon** LB. **\$1.69**

PARKAY - IN QTRS.



**Margarine**

1-LB. PKG. **45¢**

CHEESE FOOD



**Velveeta**


2-LB. BOX **\$1.59**

NEW FANGLED POTATO CHIPS 10% OFF LABEL




**PRINGLES** 9 OZ. TWIN PACK CANS **79¢**

NICE'N SOFT BATHROOM 4% OFF LABEL




**TISSUE** 4 ROLL PKG. **69¢**

VIVA OR FIESTA VIVA PAPER

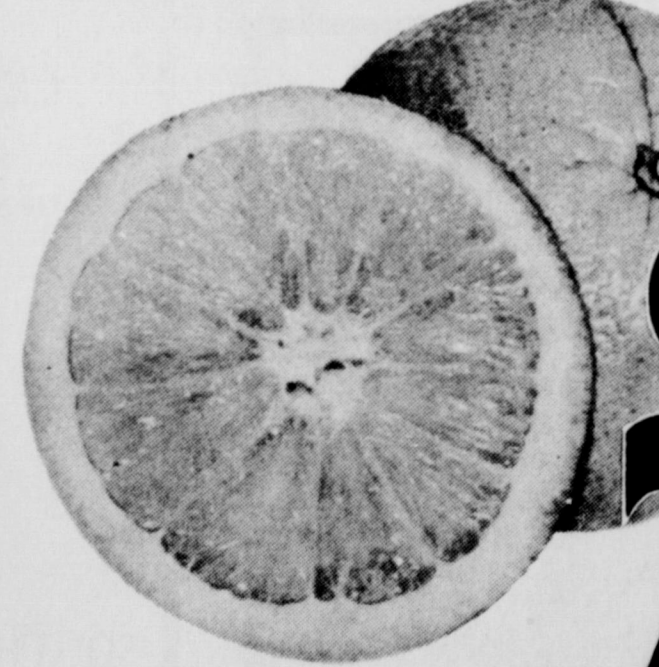


**TOWELS** JUMBO ROLL **49¢**

HUNT'S SLICED OR HALVES YELLOW CLING



**PEACHES** 29 OZ. CAN **49¢**



**SUNKIST ORANGES**

**2.39¢**

LBS.

MEDIUM SWEET  
**Yellow Onions** LB. **19¢**

MARYLAND  
**Sweet Yams** LB. **29¢**

FLORIDA RUBY RED  
**Grapefruit** LB. **19¢**

WASHINGTON FANCY GOLDEN  
**Delicious Apples** LB. **39¢**

**Hot Coca Mix** Hershey 10 Env. Pkg **79¢**

**American Cheese** Borden's 12-oz Singles **89¢**

**THRIFTY GROCERY BUYS**

- STOVE TOP - CORNBREAD OR CHICKEN  
**Stuffing Mix** 7 OZ. BOX **57¢**
- WOLF  
**Plain Chili** 19 OZ. CAN **79¢**
- NABISCO  
**Fig Newtons** 16 OZ. PKG. **69¢**
- PETER PAN SMOOTH OR CRUNCHY  
**Peanut Butter** 28 OZ. JAR **\$1.49**
- ALLEN STANDARD  
**Tomatoes** 3 300 CANS **89¢**
- ORCHARD ORANGE  
**Breakfast Drink** 64 OZ. BTL. **69¢**

CASCADE



**DISHWASHER DETERGENT**

13% OFF LABEL

35 OZ. BOX **79¢**

SUDDEN BEAUTY HTH OR REG.



**HAIR SPRAY**

12 OZ. CAN **69¢**

20% VALUABLE COUPON NO. 08884 20%

GOLD MEDAL  
**Flour** 10 LB. BAG **\$1.39**

WITH THIS COUPON VOID OCT. 4, 1975  
LIMIT ONE COUPON PER CUSTOMER

20% **THRIFTWAY** 20%

"New" Hot & Delicious



**ChiliBean Burritos** 3 For **\$1**

4-minutes Ready-To-Eat

# THRIFTWAY

SPECIALS GOOD Oct 2-3-4, 1975