

Linda Vann Named As WTC Senate Officer

Linda Vann of Rotan has been elected secretary of the Western Texas College Student Senate for the 1977-78 school year. Other new officers are Ike James of Pecos, president; Terri Ann Scott of Hawley, vice



Linda Vann

Barbara King, Wayne Harris Heading Drive

Mrs. Cecil King of Roby and Mr. Wayne Harris of Rotan will lead Bellringer workers in a house-to-house drive during May, Mental Health Month.

"Proceeds will benefit the Mental Health Association in Texas", said Shirley K. Camfield, state President of the voluntary citizens' association.

As a non-governmental agency the association can and does speak for the consumer—the person who needs professional help for an emotional disturbance.

"The association is a moving force to get services established where there are none. It also serves as a monitoring agency to see that treatment services are doing what they were set up to do," said Camfield.

The Mental Health Association strongly promotes more community-based care as well as more research into the causes of mental illness.

Seeking to prevent mental health problems through education, the association, in cooperation with the Texas Department of Community Affairs, Early Childhood Development Division, sends out the newsletter series "Pierre the Pelican" to first-time parents in the state.

The 28-part series, in English and Spanish, is mailed periodically and deals with the emotional and mental development of children while giving helpful hints to parents.

Additionally, the association offers literature to the public on a variety of topics including depression, alcoholism, and positive mental health concepts. For free information write to the Mental Health Association in Texas, 103 Lantern Lane, Austin, Tex. 78731.

County Committee To Name 77 Senior Citizen

The Fisher County Committee on Aging met recently to select the Outstanding Senior Citizens for Fisher County for 1977.

This committee is an organization sponsored by the Fisher County Extension Office. Advisors to the committee are County Extension Agents, Mrs. Alice Ballenger and Richard Spencer.

Eight of the committee

Roby Study Club Has June 7th Meeting Set

The Roby Young Women's Home Economics Study Club met Tuesday night, May 3, at the REA Building and enjoyed a fine program presented by Mrs. Lynn Randolph of the Center Home Demonstration Club. Mrs. Randolph's program was entitled "Quick Breads With the Master Mix". After the program the group enjoyed sampling the many tasty treats Mrs. Randolph had prepared using the

president and Angela McCoy of Aspermont, treasurer.

Miss Vann, daughter of Mr. and Mrs. Kenneth Vann, is completing her freshman year at WTC as a math major. She is a member of Phi Theta Kappa, the national honor fraternity for students in two-year colleges and has served as a Residence Hall Assistant.

A graduate of Rotan High School, Miss Vann was named to the Top Five and the National Honor Society there.

Hospital Board Vote Split On Overtime Pay

Fisher County Hospital Directors were split (3 for, 1 against) over an issue involving overtime pay for nursing personnel as the board met for their regular monthly meeting last Monday night.

Board member Wendell Morrow explained that nursing personnel, when called upon to pull a double shift (16 hours) are really not receiving overtime pay under the present system. Morrow was in favor of paying overtime to the personnel called upon to pull a double shift. Under the present pay system, adopted by the board in March of this year, personnel working over 80 hours in a two-week period receive time and a half for all hours over 80 hours. Morrow contended that nurses should get overtime for pulling their second 8 hour shift. He indicated that in some cases the nurse would pull her regular 8 hours shift, then at the last minute have to pull an over time 8 hours because of sickness or something, and often times she would be so exhausted she could not come back the next day and work her regular scheduled 8 hour tour. Morrow felt she should be compensated for pulling the double shift. "Its only fair, overtime is overtime", said Morrow.

Board member Kirmet Terry said he was in favor of leaving the overtime just as it was set by the board in March. "We worked this pay scale out for a year", said Terry.

After considerable discussion, C.M. Callan made a motion to leave the pay scale concerning overtime just as it is, with time and a half for all hours over 80 hours. His motion was seconded by Kirmet Terry. Board members Callan, Terry and Rudy Martinez voted for the motion while board member Morrow voted against. The

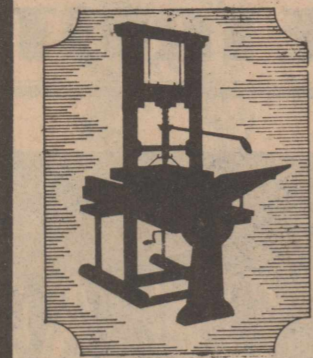
members reviewed the ten nominations sent in by churches and organizations from over the county. The individual winning the honor will be announced in local papers in the near future.

Committee members were the chairman, Mrs. Annie Bruce; Mrs. Garland Moore, W.P. Schubert, C.D. Heron, Rudolph Martinez, Rev. Allan Cartrite, Rev. David Vickers and Rev. L.D. Parks.

master mix.

The club will meet again Tuesday, June 7, at 7:30 p.m. at the REA meeting room. Mr. Tommy Harbin of Rotan will present a program on safety and crisis prevention.

The program is affiliated with the Texas Agriculture Extension Service and is open to everyone regardless of age, race, color, or socio-economic background.



Roby Star-Record

The Voice Of Fisher County Since 1907

ROTAN ADVANCE

VOL. 69 NO. 14

THURSDAY, MAY 19, 1977

FISHER COUNTY TEXAS

SINGLE COPY PRICE 20 CENTS

TEN PAGES

OIL REPS ASK COUNTY ABOUT RE-EVALUATION

Two oil company representatives met with the Fisher County Commissioners and officials from the Fisher County Hospital, Rotan and Hobbs Schools last Tuesday morning to discuss the rapid decline in oil property valuation and what the decline will mean to local taxpayers.

Jerry Krupka of Continental Oil Company and Bob Ford of General Crude Oil Company both indicated that they felt that re-valuation in Fisher County is necessary for the financial well-being of Fisher County in years to come.

According to Ford, "The local taxpayers need to look at taking on a larger share", with respect to the taxes.

Valuations are expected to drop to approximately 30.8 million for 1977. In 1976 the total valuation was 41 million for Fisher County. Projected valuations for 1978 indicate that the valuation will drop to 24.4 million.

Fisher County Commissioner Thurman Terry questioned the two oil representatives concerning the tremendous amount of farm land that was being ruined by salt seepage. "We never had any salt water until injections (by

oil companies) started", said Terry.

At one point Ford said that he felt like tax paying land owners would rather see a gradual increase in taxes

instead of a "whopping tax increase" all at one time in about 1980, in order to offset the declining tax dollars from oil companies.

Commissioners are ex-

pected to discuss the anticipated decline in tax dollars at their meeting in June.

In other action the commissioners accepted the rough lease draft prepared by County Attorney Rudy Hamric for the agriculture planes at the Fisher County Airport.

Yellowhammer Booster Club Meeting Is Set

The Yellowhammer Booster Club will meet Tuesday, May 24, at 8:00 p.m. in the school cafeteria.

The purpose of the meeting is the election of officers for the 1977-78 school year. Some projects and activities will be discussed.

Hobbs Sets Kindergarten Registration

The Hobbs Kindergarten pre-registration will be held Monday, May 23, from 9:30 to 10:30 a.m. in the kindergarten room.

In order to pre-register the child must have a birth certificate and shot record at this time.

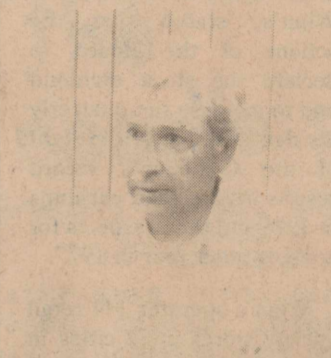
Rotan Primary To Hold Awards Day On May 20

Rotan Primary will hold their annual Awards Day May 20, at 10:00 a.m. in the High School Auditorium.

Parents, relatives and friends are cordially invited, according to John Harbison, principal.



Bob Ford



Jerry Krupka

Stuart Finishes 3rd At State Track Meet

Brad Stuart of Roby traveled to Austin last weekend and captured second place in the 330 intermediate hurdles at the class B State Boys track meet. Brad ran an impressive 39.9, a new school record and a personal record for Brad. He was the shortest man in the event, but his excellent hurdle form and strong finish proved to be the winning edge. This is truly a

great honor for Roby High School.

Brad is a junior and he is looking forward to next year. "Brad put in a lot of hard work and he deserved this honor greatly", said coach Holik.

Sharon Murdoch Wins First In Song Festival

Saturday night, May 7, Sharon Murdoch of Rotan, entered the Stars of Tomorrow Talent Contest at the International Gospel Music Festival in Stephenville; she won first place.

Mrs. Murdoch entered a similar contest and won first place last November in Hobbs, New Mexico.

She will be recording her first LP in Nashville, Tenn. on May 20.

Local Fund Opened For Sissy Callan

The Alpha Omicron Tau Chapter of Beta Sigma Phi in Rotan opened an account at First National Bank to benefit Sissy Wilkinson Callan.

Those wishing to make donations may do so by sending to Sissy Wilkinson Callan Fund, First National Bank, Rotan.

She was to undergo surgery on Wednesday, May 18, at which time her leg will

be removed above the knee, below the hip. The family asked that everyone remember her in their prayers.

The bake sale sponsored by the sorority chapter to benefit Sissy has been moved up to Saturday, May 21. The bake sale will be held at Village Flower Shop.

Local Auxiliary To Hold Officer Installation

The VFW Post 5072 Ladies Auxiliary will hold installation of officers for 1977-78 at the Post Home, May 19, at 7:30 p.m. This will be a salad social and secret pals will be revealed.

Each member is asked to bring a salad, and all members are urged to attend.

March Of Dimes Fund Drive To Be Held Soon

Fisher County workers for the March of Dimes will begin a fund raising drive in the near future, according to Mary Beauchamp, fund drive coordinator for Roby.

Wanda Murphree will be head of the drive in Rotan.

Volunteer workers in Rotan, Roby and Hobbs will begin house to house drives and workers will be contacting businesses in order to raise funds to help fight birth defects.

Baccalaureate For County Schools Sun.

The four Fisher County High Schools will all hold Baccalaureate Services this Sunday night.

Rev. Fred Thomas, pastor of First Baptist Church in Rotan, will be the Baccalaureate speaker in Rotan. Services are set to begin at 8:00 p.m. in the High School Auditorium.

Rev. Luther Baker, pastor of First United Methodist Church in Roby, will be the speaker honoring the Roby Senior Class. The Roby services are to be held in the High School Auditorium at 8:00 p.m.

Henry Dickson, pastor and former football player under the famed Sammy Baugh,

Mary Lynn Crawford Gets MC Band Award

Mary Lynn Crawford, daughter of Mr. and Mrs. G.W. Crawford, Rotan, was



Mary Lynn Crawford

presented, by the U.S. Marine Corps and National Band Association, the Distinguished Musicians Award. This award was intended as a tribute to her many fine musical accomplishments during her four years of high school.

Mary Lynn has earned many first divisions ratings in U.I.L. music events, has been named to All-District and All-Region Bands, and was recently named to Who's Who of American High School and College Musicians. She plans to attend Angelo State University this fall on a band scholarship.

Three In County Get Degrees at WTC

Catherine V. West and Koen Dee McKimney of Rotan and Barbara Denman of Hobbs were among the graduates receiving associate degrees from Western Texas College in commencement exercises on May 12.

Dr. Cecil Mackey, president of Texas Tech University, was speaker for the ceremonies. He was introduced by Dr. Robert Clinton, president of WTC. Associate in Arts degrees were presented by Dr. Ben Brock, WTC vice president, and Associate in Applied Science degrees were presented by Dr. Gene McClurg, Dean of Occupational Education and Technology.

Mrs. West and Miss Denman received the Associate in Arts degree, while

McKimney received the Associate in Applied Science degree. Miss Denman was graduated cum laude with a grade point average of 3.62, and has been a member of the duster basketball squad for two seasons.

Two In County Get Degrees At Tarleton Univ.

Governor Dolph Briscoe addressed the 1977 Tarleton State University spring graduating class Sunday afternoon, May 15, at Stephenville.

Among the 255 undergraduate and graduate students were: Rickey Von Gruben, Roby, B.S. General Agriculture and Janet Ruth Callan, Rotan, B.S. Elementary Education.

\$2.44 or less, you could take down these recipes by Long Distance.

Printing these recipes to make a point: a Long Distance call lets much, for so little. A minute phone call to San Francisco, between 5 p.m. and 11:00 p.m. could take down the recipes below. And by dialing 1+, the most \$2.44, plus tax. By a pleasant visit tonight by Long Distance. Whether you call to recipes... or just to find out what's cookin'.

STARTER

- 1 cup instant nonfat dry milk
- 2 tablespoons sugar
- 4 cups all-purpose flour

nd sugar in 2½ quart crock or non-
involved. Stir in flour gradually until a
posely covered in warm place. 3 to 5
asionally. Store loosely covered

ter used for each recipe by stirring
milk and flour back into starter. (For
with ½ cup homogenized milk and
covered until it bubbles, overnight,
ss is repeated, the starter becomes
sour flavor. Note: if stored as much
usings, just pour off the watery layer
cedure in (b).

2. SOURDOUGH BREAD STICKS

- 1 cup instant nonfat dry milk
- 1 cup warm water (105° to 115°)
- 1 cup Sourdough Starter (see Recipe No. 1)
- 2 cups all-purpose flour
- 3 tablespoons vegetable oil
- 2 teaspoons salt
- 2 teaspoons sugar
- ½ teaspoon baking soda
- ½ to 1 cup all-purpose flour
- ¼ cup butter or margarine, melted

a) Mix dry milk, water, Sourdough Starter and 2 cups flour in non-metallic bowl, cover loosely. Let stand in warm place until mixture is coarse and bubbly, at least 8 hours.

b) Mix oil, salt, sugar and baking soda into sourdough mixture. Stir in enough of the remaining flour to make dough easy to handle. Knead dough lightly on well-floured board, about 2 minutes.

c) Roll dough into rectangle, 15 x 10 inches, on well-floured board. Cut into fifteen 1-inch strips. Roll each strip into even round strand, about 14 inches long. Double strand over and twist to form bread stick. Place bread sticks on greased baking sheet, brush with melted butter. Cover with plastic wrap. Let rise in warm place until double, 1 to 1½ hours.

d) Heat oven to 375°. Bake bread sticks until golden brown, 30 to 35 minutes. (Makes 15).

Recipes courtesy SPHERE Magazine.

Long Distance. What else is so nice for the price?

Southwestern Bell

City Auto Offering Roman Holiday Trip

How would you like to spend a week in Italy, seeing the sights, staying at a famous hotel, enjoying gourmet meals and special parties? You may have the opportunity to do all this, and more, if you're the lucky winner of the free "Roman Holiday" trip-for-two being offered by City Auto Supply, A Bull Parts Ful-Line Associate.

To be eligible for the drawing, just fill out an entry form and drop it in the contest box. No purchase is necessary. The registration ends June 30, 1977 and the drawing will be held July 15, 1977.

The charter flight will leave September 24 from the Dallas or San Antonio airport and return October 2. Headquarters will be in Rome at the incomparable Excelsior Hotel, located directly on Via Veneto. The "Roman Holiday" also includes a full-day tour to Florence and another tour to Pompeii, Sorrento and Naples.

Complete details on the free trip are available at the participating Bull Parts Ful-Line Associate. In addition to the trip, other prizes will be awarded to winners of the drawing.

Winn's Stores Sets 15% Stock Dividend

Winn's Stores, Inc. (OTC) announced today that its Board of Directors has declared a 15 percent stock dividend payable in shares of the Company's common stock on May 27, 1977 to shareholders of record at the close of business on May 13, 1977.

The San Antonio based retail variety store chain further announced that its Board of Directors also acted to increase the Company's regular quarterly dividend on its common stock commencing with the dividend to be declared in June 1977. The new quarterly dividend rate of 20 cents per share amounts to a rate of 80 cents per share on an annualized

basis. Winn's quarterly dividend rate had previously been 18 1/4 cents, or 75 cents per share on an annualized basis.

Lynn H. Spears, Chairman of the Board of Directors of Winn's, stated that the actions of the Board to declare the stock dividend and to increase the quarterly dividend were taken in light of the Company's record results in sales and earnings in 1976 and the prospects for another good year in 1977.

Winn's operates 144 retail variety stores in 72 cities in Texas and its stock is traded in the over-the-counter market under the NASDAQ symbol WSTO.

National Gypsum And Japan Firm Ink Pact

Two of the world's largest manufacturers of building products—National Gypsum Co., headquartered in Dallas, and Yoshino Gypsum Co., Ltd. of Tokyo, Japan, have signed a major technical exchange agreement, it was announced recently.

John P. Hayes, President of National Gypsum and Tsuneo Sudo, President of Yoshino Gypsum, stated that the agreement, involving National's Gold Bond Building Products Division, headquartered in Buffalo, N.Y., pertains to all technologies and patent rights covering gypsum wallboard, plaster and related products of both companies.

Mr. Hayes said, "Yoshino has outstanding chemical gypsum expertise and manufacturing sophistication, while Gold Bond is a leader in product development, dried process construction flavor, cooking quality and nutritive value.

Also, drying time is reached with controlled heat of the oven. Limit the oven load to no more than four to six pounds of freshly prepared food at one time.

Use trays 1 1/2 inches smaller than the width and depth of the oven, separated 2 1/2 inches. Allow a 3-inch clearance at the top and

The Veterans Administration has ended its prepayment policy for persons enrolled in educational programs.

Japan. Yoshino designed and built wallboard plants using gypsum made by stack-gas process, thereby taking the lead in Japan's gypsum industry.

Mr. Hayes and Mrs. Sudo both feel confident that the technical exchange agreement will result in improved construction products and techniques for both countries.

National Gypsum's seven operating divisions, which accounted for \$613 million in sales last year, produce a diversified line of building products and materials, including gypsum wallboard, ceramic tile, cement, wall-coverings, glass, mirrors, glass-aluminum building products and manufactured homes.



CHURCH OF CHRIST
Rotan, Texas
Bible Study-9:45 a.m.
Worship-10:30 a.m.

FIRST UNITED METHODIST CHURCH
Rotan, Texas
Rev. Cecil M. Tune, pastor
Sunday School-9:30 a.m.
Worship-10:30 a.m.

CHURCH OF NAZARENE
Rotan, Texas
F. W. Rogers, Pastor
Bible Class-9:45 a.m.
Worship-10:50 a.m.
Evening Service-7:00 p.m.

SYLVESTER BAPTIST CHURCH
Harold Ely, Pastor
Sunday School-10:00 a.m.
Worship-11:00 a.m.
Sunday Night- 6:00 p.m.

SARDIS BAPTIST CHURCH
9 Miles SW of Rotan
Bro. Henry Dickson, Hawley
Sunday School-10:00 a.m.
Worship-11:00 a.m.

FIRST ASSEMBLY OF GOD
Rotan, Texas
Sunday School-10:00 a.m.
Church-11:00 a.m.
Night Services-7:30 p.m.

CHURCH OF CHRIST
Rotan Latin American
Bible Class-10:00 a.m.
Worship-11:00 a.m.

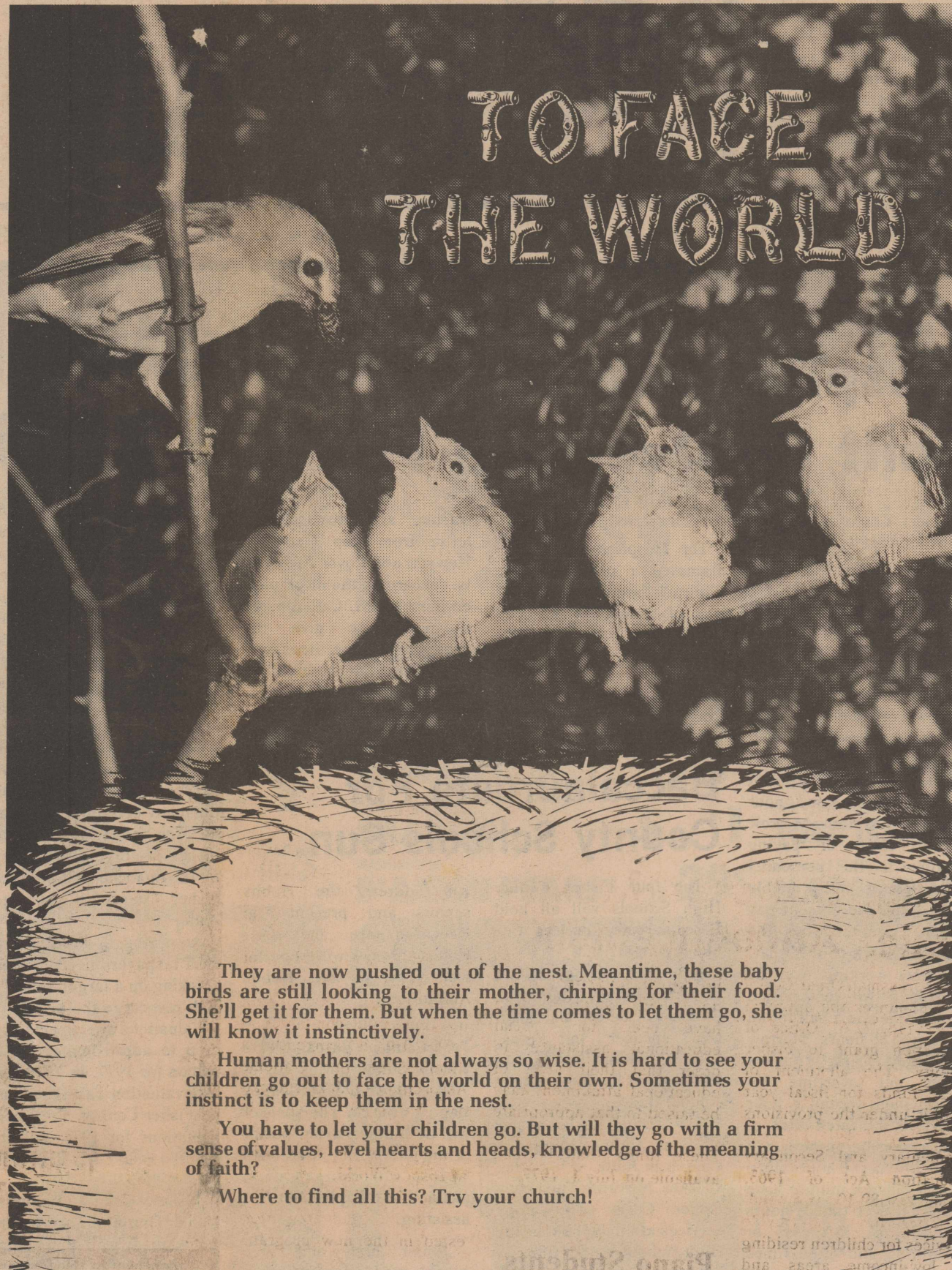
FIRST UNITED METHODIST CHURCH
Sylvester, Texas
Buddy Payne, Minister
Morning Worship-9:30 a.m.
Sunday School-10:30 a.m.
Sunday Night-7:30 p.m.

CALVARY BAPTIST CHURCH
Rotan, Texas
David N. Vickers, Pastor
Sunday School-10:00 a.m.
Worship-11:00 a.m.

ST. JOSEPH'S CATHOLIC
Rotan, Texas
John Hoorman, Pastor
Mass-Saturday Eve.-7:30 p.m.
Mass-Sunday-9:00 a.m.

LITTLE ZION BAPTIST
Rotan, Texas
James Carrington, Pastor
Sunday School-9:45 a.m.
Worship-11:00 a.m.

CHURCH OF CHRIST
Roby, Texas
Wardell Halliburton, Minister
Bible Class-10:00 a.m.
Worship-11:00 a.m.



They are now pushed out of the nest. Meantime, these baby birds are still looking to their mother, chirping for their food. She'll get it for them. But when the time comes to let them go, she will know it instinctively.

Human mothers are not always so wise. It is hard to see your children go out to face the world on their own. Sometimes your instinct is to keep them in the nest.

You have to let your children go. But will they go with a firm sense of values, level hearts and heads, knowledge of the meaning of faith?

Where to find all this? Try your church!

Copyright 1977 Keister Advertising Service, Strasburg, Virginia

Scriptures selected by The American Bible Society

Sunday Mark 12:13-27	Monday Luke 3:15-22	Tuesday John 3:1-21	Wednesday John 3:22-36	Thursday John 5:19-30	Friday John 9:1-41	Saturday Acts 2:1-13
-------------------------	------------------------	------------------------	---------------------------	--------------------------	-----------------------	-------------------------

FIRST UNITED METHODIST CHURCH
McCauley, Texas
David Binkley, Minister
Sunday School-10:00 a.m.
Worship-11:00 a.m.

FEATURE SUPPORTER
Rotan Insurance Agency

Sweetwater Prod. Credit Dwayne Parker - Vice President 776-2311 - Roby, Texas	Trail's End 735-3575 Rotan, Texas	Rotan Motor Co. Ford and Mercury	Citizens State Bank Roby, Texas Member F.D.I.C.
Rotan School NON-ASPIRIN PAIN RELIEF DATRIL 100 CT. \$1.29 8TL. LETS YOU SLEEP EXCEDRIN P.M. 30 CT. 99¢ BTL. STOPS PAIN EXCEDRIN 100 CT. \$1.49 BTL. DISPOSABLE LIGHTER CRICKET BUTANE EA. 79¢ KOTEX DEODORANT MINI PADS 24 CT. \$1.39 BOX	Fisher County Farm Bureau 215 West Snyder Rotan, Texas	Dono and Lorena Darden	Weathersbee Funeral Home 735-2255 Rotan, Texas
Rotan School	Roby Insurance Agency 776-2361 Roby, Texas	First National Bank Of Rotan Accounts Insured To 140,000 735-2224	Fisher Nursing Home County 735-3291 Rotan, Texas
CREAM PIES 49¢	Sunday Services	Roby Hydro Inc. Bettie and Archie Rivers Roby, Texas	Worship Together
WHEAT NIBBLETS 3 12 OZ. CANS \$1	airy Martinez	Clinic Pharmacy Cleburne Murdoch, R. PH. 735-2500	Hatahoe Drive Inn Mr. and Mrs. Ernest Ragan Rotan, Texas
WE ACCEPT FOOD STAMPS	Farmers Union Co-Op Gin Foy Mitchell, Manager Roby, Texas	Rotan Insurance Agency Joe Burk, Agent Rotan, Texas	Rotan Paint & Body Shop Mr. and Mrs. Carlton Burrow Rotan, Texas
Co.	H. L. Davis & Co. Bill and Elaine Day Rotan, Texas	Hinds Department Store Gold Bond Stamps Rotan, Texas	Rotan Paint & Body Shop
orn	Home Lumber Co. Mr. and Mrs. H. Thompson Rotan, Texas	Midwest Electric Roby 776-2244 Roby, Texas	Noles Drug Store Roby, Texas
iture andes	Sunday		

RAIL
DESTROYS CROPS
INSURE WITH FARMERS UNION CROP HAIL INSURANCE
Florence Wiley
Box 246 - Roby
776-2529

WHEAT NIBBLETS
3 12 OZ. CANS \$1
WE ACCEPT FOOD STAMPS

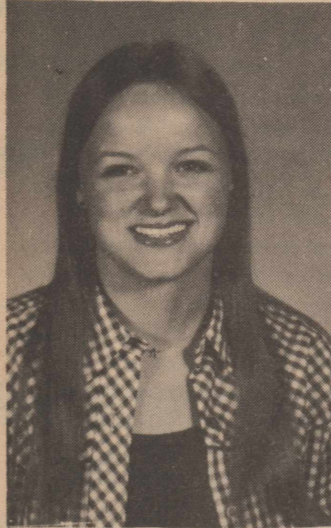


ROBY FFA PROJECT: The Roby FFA Ag-Mechanics class participated in a cement project where they poured a driveway and walk for J.T. Pope. Left to right, Mike Wilburn, Mike Terry and James Putnam.

Susie Deel, Richard Winegar Engagement

Dr. and Mrs. W.S. (Sessum) Deel, Levelland, announce the engagement and approaching marriage of

their daughter, Susie, to Richard Winegar, son of Mr. and Mrs. William T. Winegar, Levelland.



Susie Deel

The couple plans a July 16 wedding at the First United Methodist Church in Levelland.

Both are graduates of Levelland High School. Miss Deel is a student at South Plains College, Levelland, majoring in Data Processing. Winegar is employed at United Super Market in Levelland and will continue his Mid-Management studies at South Plains College in the fall.

Miss Deel is the granddaughter of Mr. and Mrs. Pete Deel of Roby.

Lunch Menu

May 23-26, 1977
Rotan

Monday: Hamburger with Cheese, Pork & Beans, Potato Chips, Orange Juice, Cookies, Milk.
Tuesday: Country Fried Steak with Gravy, Whipped Potatoes, Green Beans, Let-

tuce-Tomato Salad, Hot Rolls, Butter, Jello, Milk.
Wednesday: Pinto Beans, French Fries with Catsup, Onion Rings, Cornbread, Butter, Pears, Milk.
Thursday: Ham & Cheese Sandwiches, Pork & Beans, Corn, Lettuce & Tomato, Peaches, Milk.

Farm Leaders Call For "No" Vote On Program

A group of farm leaders, representing various counties from across the state on the Texas Farmers Union Board of Directors, have unanimously stated that they hope the Administration will exempt agriculture in any consideration of fuel taxes to discourage usage.

The farm group stated in a resolution that "the farmer is already the most efficient industrial consumer of fuels in America" and that any tax on his operating fuel "will only add to the cost of producing food and further inflation".

Texas Farmers Union also went on record as opposing two research and promotion groups, Cotton Incorporated and the proposed and soon to be voted on Beef Research and Information Act. The farm organization alleges that once the act has been voted on by producers in a referendum and passed, all producer control and democratic representation are lost.

Said one spokesman, "These boards who gain control of the producers' dollars soon become dominated by special interest groups who do not necessarily represent producers. The undemocratic system is perpetuated by a lack of clear-cut criteria for determining who is a qualified special interest group; how many, if any, producers a group must represent; and whether each should get one vote regardless of its size."

"The end result is that a few groups maneuver for control while the producer himself, and the fact that it is his money, are ignored. After the referendum vote there is not another democratic vote on anything by the producers. And there is insufficient review on a periodic basis of what the boards are doing with their money and power."

The Texas Farmers Union passed a resolution unanimously calling for a continued boycott of participation in Cotton Incorporated and

the Cotton Board. All but one member voted in favor of urging beef producers to vote "no" in the beef referendum coming up for a vote probably the first of June. The group reminded, however, that even for a "no" vote the producer must register in his local ASCS office during the registration period just prior to the vote.

"We are not opposed to producers researching and promoting their products,"

emphasized the spokesman for Texas Farmers Union. "We simply question the absence of democratic controls once these boards are established. If this problem could be remedied during the drafting of enabling legislation, many of our members could support such a program which would benefit producers. We urge the Secretary of Agriculture and Congress to take another look at these programs."

Cong. Burleson Makes Educ. Announcement

Congressman Omar Burleson announces the approval of a \$118,772.61 Office of Education grant to Fisher County. The allotment of these funds for fiscal year 1978 is under the provisions of Part A of Title I of the Elementary and Secondary Education Act of 1965, Public Law 89-10, as amended. These funds will provide services for children residing in low-income areas and State-operated or supported

institutions for neglected and delinquent children, who have need for special educational assistance in order that their level of educational attainment may be raised to that appropriate for children of their age. These funds shall become available on July 1, 1977.

Jeana Floyd Gets Degree From Howard Payne

Some 250 degrees, including two honorary doctorates, were awarded Sunday, May 8, at the Howard Payne University annual commencement exercises in the Brownwood Coliseum.

HPU President Dr. Roger L. Brooks conferred the degrees and Dr. Jose Rivas, minister and professor of Greek at HPU, delivered the main address.

Receiving honorary doctor of divinity degrees were D.D. Sumrall, pastor of First Baptist Church, Greenville; and Joshua Grijalva, dean of the Mexican Baptist Institute, San Antonio.

Graduate from Rotan is Jeana Sue Thomas Floyd, daughter of Rev. and Mrs. Fred Thomas of Rotan, BME degree in Music Education.

Piano Students Participate In 1977 Auditions

Piano students of Mrs. Nash Miers participated in the 1977 National Piano Playing Auditions held at Snyder May 12, and are members of this fraternity for one year.

Those participating were Rocky Roberts, Sheri Evatt and Lyle Hale, elementary with a rating of excellent; Meg Field, Andrea Callan, Teresa Cantu, Robin Harris and Desiree Gray, intermediate, excellent plus and superior minus.

"Our judge was considerate, yet very informative and pleasant with his remarks" said Mrs. Miers.

We Can Do All Your Job Printing at the Newspaper Office

Western Texas Plans Music Dept. Expansion

Western Texas College is planning an expanded program for instrumental music students next fall, and along with the additional instruction will be forming a jazz ensemble to showcase the talents of the students involved.

Guy Gamble, a native of Abilene, has been picked to direct the program. Gamble received the bachelor of music education degree from Abilene Christian University in 1973 and is to receive the master of music education from North Texas State University this month.

He has also studied at Tarleton State University, and served as instructor for woodwinds and jazz ensemble there. He was student jazz ensemble conductor at ACU. He is currently a member of the National Association of Jazz Educators. He spent a year in Orlando, Fla., where he was a member of the show band at Disney World.

Gamble will be contacting high school graduates interested in the new program,

and will have scholarships to be awarded for the fall semester. High school band and choir directors who would like to recommend graduating students may contact Gamble through the college.

Weather

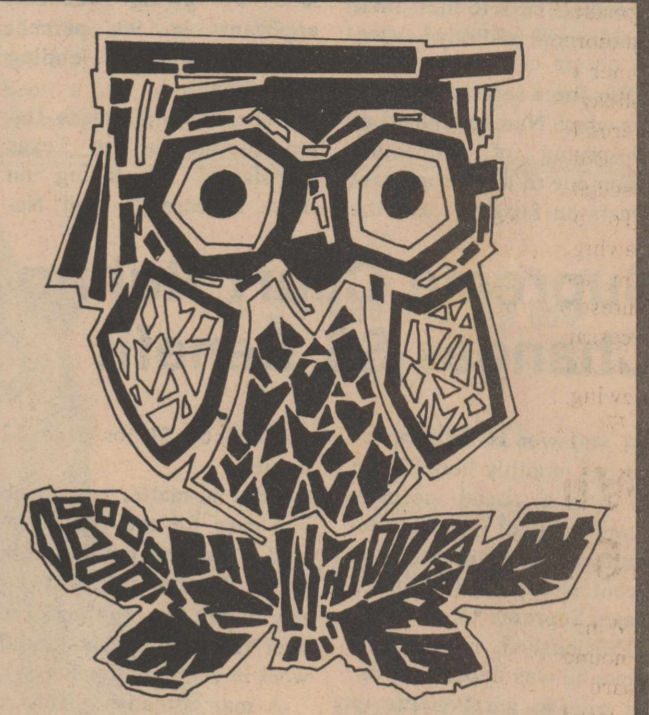
From the Record of FRED BYERLY
Rotan Weather Observer

May 77	Prec.	Hi	Lo
Tue 10		75	62
Wed 11		80	59
Thur 12		79	59
Fri 13		82	61
Sat 14		87	65
Sun 15	90	62	
Mon 16		85	68

Total precipitation to date:
1976.....6.47
1977.....8.50

We Have All Kinds Of Office Supplies at the NEWSPAPER OFFICE ROTAN

Deaton Insurance Agency
776-2228
Ed Deaton-Agent-Roby, Texas



Remember your grads

Congratulate all the graduates you know with special Ambassador graduation cards.

Come In And See Our Large Selection Of Graduation Gifts.

Newspaper Office
735-2562

Fisher County Hospital News

Patients admitted to Fisher County Hospital May 10-16, 1977.

Aletha Moyers, Harvey, La.; Annie Bettis, Elba Bates, Roby; Rena Colwell, Edna Taggart, Helen Warner, Reyna Garcia, Minnie Porter, Joy Lynn Stinson, Lupe Martinez, Bernice Loving, Wesley Counts, Sam Baugh, Mary Lou Garcia, Rotan; Lee Sanders, Annie Sanders, Sylvester; Jerry Shelley, T. Worth; Mickey Ferris, Snyder; Ira L. Levens, Clyde; W. Theo Johnson, Hamlin.

WATCH SERVICES FIRST BAPTIST CHURCH Sunday 11:00a.m.-7:00p.m. Channel 2



Remember your GRADUATING SENIORS with selections from

Roby

Flower, Fabric & Gift Shop
776-2292 776-2613 Night
P.O. Box A Roby, Texas



WHEN YOU'RE READY TO TALK TURKEY

WITH THE CAR SALESMAN ABOUT TRADING CARS.....

WE'RE READY TO TALK AUTO FINANCING

THE FIRST NATIONAL BANK OF ROTAN

Farm Bureau Calls For Passage Of Bills

Texas Farmers Union President Jay Naman called on the 65th Legislature to focus its attention on three important pieces of state legislation which are important to agriculture before lawmakers rush to their final adjournment just days away.

The three legislative matters which Naman labeled as "deserving of immediate action due to their important effects on farmers" are the

issues of school finance, property taxation of open-space land based on its agricultural productivity and the Family Farm Security Act, a bill which would assist young farmers purchasing land by giving qualified applicants a 90 percent guarantee to their lending institution.

"The Texas Farmers Union commends the Texas Legislature for taking on these concerns", said Na-

man. "We especially recognize the Senate committee which has acted on ag-use taxation and the Constitutional amendment it requires for voter approval. This has been a top priority with Texas Farmers Union during this session, and we hope the House can now arbitrate its differences, pass the bill, and get it on the Governor's desk."

Differences have arisen between House and Senate versions of the open-space tax bill over whether to include or prohibit corporate land operations from the tax break. Naman says that a bill excluding corporate entities "is the only just way to deal with the matter and the only acceptable form in which the House, and more important the voters, will pass it into law."

Concerning the other matters, school finance and its effect on property taxes are still to be resolved in the Senate. The Family Farm Security Act has passed the necessary committee along with its Constitutional amendment and is awaiting a vote before the full House floor.

Naman warns that time is running out for these three agricultural matters and the Legislature should not fail to give the issues a hearing and a vote before closing shop for two more years.

Supreme Court Ruling Changes SS Benefit

A widower or a husband can get monthly benefits on his wife's social security record without proving dependence on her under a recent decision by the United States Supreme Court.

Previously a man had to prove he was dependent on his wife to get benefits on her record if she retired, became disabled, or died after working long enough in jobs covered by social security. A woman did not have to prove she was dependent on her husband to get benefits on his record.

Starting with payments for Mary 1977, neither men or women have to prove dependency. Husbands and wives and get reduced social security payments starting at 62 or full payments starting at 65.

Widowers and widows can get payments starting at 60—or starting at 50 if they are disabled.

Men who think they may be eligible under the court ruling can get information about applying for benefits by calling or writing any social security office, according to Glyn Hammons, social security district manager in Abilene.

"Social security payments may be affected by earnings", Hammons noted. "You can earn as much as \$3,000 in 1977 and still get your full social security payments. But over \$3,000, social security payments are

reduced by \$1 for each \$2 earned.

"But no matter how much you earn for the year," he said, "you can get your full social security payment for any month you neither earn over \$250 nor do substantial work in your own business."

A man already getting a small social security benefit could be eligible for an additional payment on his wife's record under the Court ruling, according to Hammons. "But he can only be paid an amount equal to the higher benefit—not both benefits," he said.

The Abilene social security office is at 142 S. Pioneer. The phone number is 698-1360.

ROLEX FOR BOLD ELEGANCE AND CHRONOMETER PRECISION

Your timekeeping instrument is a statement of style when you wear the Rolex Datejust. This distinctive 30-jewel wrist chronometer, in 14kt. gold and stainless steel, comes with the exclusive Jubilee bracelet. It is self-winding, and guaranteed pressure-proof down to 165 feet, thanks to its seamless Oyster case, which incorporates the patented Twinlock winding crown that seals with submarine-hatch security.



Cox Jewelry

Sweetwater, Texas

SNYDER FIBERGLASS COMPANY
FIBERGLASS TANKS
200 gal for Tractor Mount
750 gal for Trailer Mount
LIQUID FEEDERS
Let us custom manufacture
All of your Fiberglass Needs
call 573-0502
Snyder, Texas

Morning Glory MATTRESS

We Have An Extra Good Selection Of Morning Glory Sleep Sets In Stock

Twin, Full, Queen & King Size.

Ask About Postur-Firm Plus & Postur-Firm • THIS WEEK.

Morning Glory Famous Sleep Sets Features Hundreds Of Coils And A Handsome Floral Tick That's Deep Quilted For Greater Comfort And Long Wear.

LANDES FURNITURE
735-3171
ROTAN, TEXAS

Farm Tractor & Service, Inc.



Sunshine Values

Save On These Quality John Deere Products Through May 31, 1977.

JOHN DEERE COUPON

Save \$75

Coupon good for \$75 off regular price of any new John Deere 66 or 68 Riding Mower

To Customer: Please be advised of following conditions: (1) The cash value of coupon is 1/20th of 1 cent. (2) Coupon is void if use is prohibited or restricted by law. (3) You will be required to pay any sales tax applicable to the transaction in which you use coupon—such tax may be payable on full value of goods; and (4) you must fill in your name and address in places provided below. This coupon is being distributed by a John Deere Dealer who owns his own store and sets his own retail prices. Price of merchandise offered on coupons subject to change without notice. Further, dealers may not have merchandise against which this coupon may be applied in stock at the time you present coupon. However, merchandise will ordinarily be available and can be ordered from John Deere by participating dealer. Other items may not be available at all if sales exceed anticipated demand or other circumstances occur beyond dealer's and John Deere's control. Use of coupon subject to availability of such merchandise. Limit: one coupon per item. Mr. Dealer: You are authorized to act as our agent for redemption of this coupon in accordance with the terms thereof. Dealer must fill in name and account number. Presentation for redemption without such compliance constitutes fraud. This coupon and all others you redeem for Spring 1977 Direct Mail Program are to be turned in to John Deere Territory Manager. Offer expires May 31, 1977.

Customer Name (Please Print) _____ Mr. Dealer _____
Address _____ Name (Please Print) _____
Town, State, Zip _____ Branch Code No. _____ C.P. Acct. No. _____ No. 1

JOHN DEERE COUPON

Save \$8

Coupon good for two (2) spools of cutting line (TY3094 or TY9313) with purchase of new John Deere Electric Weed Eater® Trimmer (TY2541)

To Customer: Please be advised of following conditions: (1) The cash value of coupon is 1/20th of 1 cent. (2) Coupon is void if use is prohibited or restricted by law. (3) You will be required to pay any sales tax applicable to the transaction in which you use coupon—such tax may be payable on full value of goods; and (4) you must fill in your name and address in places provided below. This coupon is being distributed by a John Deere Dealer who owns his own store and sets his own retail prices. Price of merchandise offered on coupons subject to change without notice. Further, dealers may not have merchandise against which this coupon may be applied in stock at the time you present coupon. However, merchandise will ordinarily be available and can be ordered from John Deere by participating dealer. Other items may not be available at all if sales exceed anticipated demand or other circumstances occur beyond dealer's and John Deere's control. Use of coupon subject to availability of such merchandise. Limit: one coupon per item. Mr. Dealer: You are authorized to act as our agent for redemption of this coupon in accordance with the terms thereof. Dealer must fill in name and account number. Presentation for redemption without such compliance constitutes fraud. This coupon and all others you redeem for Spring 1977 Direct Mail Program are to be turned in to John Deere Territory Manager. Offer expires May 31, 1977.

Customer Name (Please Print) _____ Mr. Dealer _____
Address _____ Name (Please Print) _____
Town, State, Zip _____ Branch Code No. _____ C.P. Acct. No. _____ No. 3

JOHN DEERE COUPON

Save \$2

Coupon good for \$2 off regular price of one (1) John Deere Rake, Shovel, or Hoe (TY4215, TY4216, TY4217, TY4218, TY4221, TY4225, TY4228, TY4230, or TY4242)

To Customer: Please be advised of following conditions: (1) The cash value of coupon is 1/20th of 1 cent. (2) Coupon is void if use is prohibited or restricted by law. (3) You will be required to pay any sales tax applicable to the transaction in which you use coupon—such tax may be payable on full value of goods; and (4) you must fill in your name and address in places provided below. This coupon is being distributed by a John Deere Dealer who owns his own store and sets his own retail prices. Price of merchandise offered on coupons subject to change without notice. Further, dealers may not have merchandise against which this coupon may be applied in stock at the time you present coupon. However, merchandise will ordinarily be available and can be ordered from John Deere by participating dealer. Other items may not be available at all if sales exceed anticipated demand or other circumstances occur beyond dealer's and John Deere's control. Use of coupon subject to availability of such merchandise. Limit: one coupon per item. Mr. Dealer: You are authorized to act as our agent for redemption of this coupon in accordance with the terms thereof. Dealer must fill in name and account number. Presentation for redemption without such compliance constitutes fraud. This coupon and all others you redeem for Spring 1977 Direct Mail Program are to be turned in to John Deere Territory Manager. Offer expires May 31, 1977.

Customer Name (Please Print) _____ Mr. Dealer _____
Address _____ Name (Please Print) _____
Town, State, Zip _____ Branch Code No. _____ C.P. Acct. No. _____ No. 4

JOHN DEERE COUPON

Save \$100

Coupon good for \$100 off regular price of any new John Deere Lawn and Garden Tractor

To Customer: Please be advised of following conditions: (1) The cash value of coupon is 1/20th of 1 cent. (2) Coupon is void if use is prohibited or restricted by law. (3) You will be required to pay any sales tax applicable to the transaction in which you use coupon—such tax may be payable on full value of goods; and (4) you must fill in your name and address in places provided below. This coupon is being distributed by a John Deere Dealer who owns his own store and sets his own retail prices. Price of merchandise offered on coupons subject to change without notice. Further, dealers may not have merchandise against which this coupon may be applied in stock at the time you present coupon. However, merchandise will ordinarily be available and can be ordered from John Deere by participating dealer. Other items may not be available at all if sales exceed anticipated demand or other circumstances occur beyond dealer's and John Deere's control. Use of coupon subject to availability of such merchandise. Limit: one coupon per item. Mr. Dealer: You are authorized to act as our agent for redemption of this coupon in accordance with the terms thereof. Dealer must fill in name and account number. Presentation for redemption without such compliance constitutes fraud. This coupon and all others you redeem for Spring 1977 Direct Mail Program are to be turned in to John Deere Territory Manager. Offer expires May 31, 1977.

Customer Name (Please Print) _____ Mr. Dealer _____
Address _____ Name (Please Print) _____
Town, State, Zip _____ Branch Code No. _____ C.P. Acct. No. _____ No. 2

JOHN DEERE COUPON

Save \$6

Coupon good for \$6 off regular price of a deluxe 3-inch John Deere Cordless Shears (TY2365)

To Customer: Please be advised of following conditions: (1) The cash value of coupon is 1/20th of 1 cent. (2) Coupon is void if use is prohibited or restricted by law. (3) You will be required to pay any sales tax applicable to the transaction in which you use coupon—such tax may be payable on full value of goods; and (4) you must fill in your name and address in places provided below. This coupon is being distributed by a John Deere Dealer who owns his own store and sets his own retail prices. Price of merchandise offered on coupons subject to change without notice. Further, dealers may not have merchandise against which this coupon may be applied in stock at the time you present coupon. However, merchandise will ordinarily be available and can be ordered from John Deere by participating dealer. Other items may not be available at all if sales exceed anticipated demand or other circumstances occur beyond dealer's and John Deere's control. Use of coupon subject to availability of such merchandise. Limit: one coupon per item. Mr. Dealer: You are authorized to act as our agent for redemption of this coupon in accordance with the terms thereof. Dealer must fill in name and account number. Presentation for redemption without such compliance constitutes fraud. This coupon and all others you redeem for Spring 1977 Direct Mail Program are to be turned in to John Deere Territory Manager. Offer expires May 31, 1977.

Customer Name (Please Print) _____ Mr. Dealer _____
Address _____ Name (Please Print) _____
Town, State, Zip _____ Branch Code No. _____ C.P. Acct. No. _____ No. 5



Farm Tractor & Service, Inc

411 S. Cleveland

735-2462

Rotan, Texas

Hustlin' Round Hobbs

By Mrs. Jimmy Walker
Hobbs, Texas 735-2840

Well, it keeps trying to rain and this wind we have been having every day and most of the night is really drying things out. A number of folks are planting, while others are still waiting for the rain to come. Anyway, its sure a busy time for the farmers.

Mr. and Mrs. D.H. Hornsberger from Sweetwater spent the day Thursday with Mr. and Mrs. J.D. Kincaid.

Mrs. Meloda Anderson is doing a little better each day and is now at home, but she is still very weak. We hope to hear that she will soon begin to feel lots better.

Our deepest sympathy goes out to Dutch Parks and his family on the death of his father who passed away on Sunday at the Rolling Plains Memorial Hospital in Sweetwater. He was buried at Roscoe on Tuesday morning.

Mrs. Lillie Lacey is back in the hospital at Snyder and seems to be pretty sick. We hope to hear that she will soon begin to improve. Mrs. Lacey is the mother of Mrs. P.M. Burnett of our community.

Mr. and Mrs. Lonnie McGould of Abilene have been staying with Mrs. Bea Hardin for the past few days. Mr. and Mrs. Kenneth Hardin visited with them all on Sunday, also Mr. and Mrs. Jackie Tankersley and family from Dallas.

Mr. and Mrs. Albert Phillips from Arlington visited with Mr. and Mrs. Josh Phillips Saturday night.

Mr. and Mrs. J.W. Etheredge, Randy and Todd attended the 4-H Horse Show at Rotan on Friday night. Randy and Todd both participated in the horse show.

David Etheredge, Todd White and Raymond Cantu all went to Midland to attend the FFA Convention accompanied by Gary Finley, FFA Advisor. They left Friday and came back Saturday.

Coach Tom Pierson is still in Dallas but seems to be improving and hopefully may get to return home one day this week.

Mrs. James Ratliff and Teresa also attended the 4-H Horse Show on Friday and Teresa participated in the show.

Mr. and Mrs. Ernest Etheredge from Dallas spent Saturday until Monday with Mr. and Mrs. Sam Etheredge. Sunday afternoon Sarah Etheredge visited with them all, also visiting were Mr. and Mrs. B.B. Etheredge from Roby, Mr. and Mrs. S.L. Etheredge, Mrs. Jessie Etheredge and grandson, Carl Mock, from Snyder, Mr. and Mrs. Windle Barrett, Charlotte, Corby and Tania and John Erwin, a friend of Corby's, all from Snyder. Mrs. Sarah Etheredge and her sister Mrs. Bill Craven from Midland spent Monday visiting with Mrs. Roger Robertson in Winters. Mrs. Robertson is their sister. Mrs. Bill Craven spent Sunday and Monday nights with Mrs. Sarah Etheredge.

Mr. and Mrs. Jimmy Walker and Melody attended the 4-H Horse Show on Friday night at Rotan.

Mr. and Mrs. Joe B. Martinez went to Lubbock to attend the graduation of Margie Martinez from Texas Tech on Friday, May 13, and Saturday, the 14th, at Jones Stadium. Accompanying them were Joe Bob Martinez, Cecilia and Mary Grace Martinez, all brothers and sisters of Margie. Margie Martinez earned a degree in Elementary Education from Texas Tech. Also attending the ceremonies were Sherri Long and Pam Ogden.

That's all for this week. See you next Thursday.



MAKING FRIENDSHIP QUILT: Several ladies from the Sardis community put finishing touches on A Friendship

Quilt MADE FOR Mrs. Willie Noles of Stephenville. Left to right, Norma Lou Parks, Mrs. Louie Hayes, and Mrs. Carl Martin.

Sardis Ladies Make Large Friendship Quilt

About a dozen ladies in the Sardis community got together last Thursday to put the finishing touches on a "Friendship Quilt" for one of their friends that now resides in Stephenville.

Mrs. Willis (Mae Ruth) Noles, a former Sardis resident, made mention to Mr. and Mrs. Martin Warren on a casual basis that she

would like to have a quilt. At the time she was showing Mrs. Warren a quilt that some Stephenville friends had presented her on their 45th anniversary.

"I wish I had a quilt like this from my Fisher County friends", is just what she said, according to Mrs. Warren. When the Warren's started home from their visit

with Mr. and Mrs. Noles, Mr. Warren suggested that the ladies get together and make the quilt.

Some 48 quilt squares from families throughout the county were sewn together to make up the quilt.

Mrs. Noles was a nurse in Fisher County for years, and would do anything to help anyone, according to one of the ladies.

Those who helped sew the quilt were Alva McHaney, Mrs. Anson Martin, Mrs. J.L. McKimmey, Mrs. Carl Martin, Norma Lou Parks, Mrs. Louis Hayes, Mrs. Pauline O'Brian, Mrs. Martin Warren and Mrs. Maxine Rogers.

Several other have volunteered material, thread, postage for mailing, etc. They are Joyce Noles, Pearl Masters, Kathy Hale, Lois Noles and Bonnie Lunday.



SARDIS LADY WORKS ON QUILT

Disabled veterans receiving vocational rehabilitation training should contact the Veterans Administration for new payment procedures.

Effective June 1, persons enrolled in Veterans Administration educational programs will receive allowances at completion of the month's enrolment, ending prepayment procedures.

A Tribute To Mother

At this beautiful time to be thankful for... the spring-time of the year... And with Mother's Day almost here... Dear Lord, I want to thank you for my dear little Mother. You know, and I know that there is no other... Who more loves and respects God, family, life in its self, friends... Always putting herself last to the very end. Even now as we are all grown... I could never adequately express all the love she has shown. Instead of spanking and sending us to our room... It was a "talking-to" we got--And thought it was pure doom... Many times we just prayed that she would just get that old razor strap... Just get this ordeal over... Just go ahead and give us a tap... But no, she knew, and now I know... As down life's road I go--Just nothing takes the place of a "talking-to"... Nothing could hurt worse or make me feel quite so low... As to realize I had hurt the very one who loved me so. One tear my Mother could shed... And I would just wish that I were dead... It would just break her heart when we argued or just had a misunderstanding... At us she never got mad... nor was she disgust-

ing and demanding... She just has to be the very best in the land... Surely it will be proved by the times of sand... To bring twelve children into this world... Five boys and seven girls... Simply puts my mind in a whirl... God surely knew just in whose hands to put that "bunch of kids"... And I guess that is exactly what he did... Her whole adult life has been one of "raising" kids... And now at the age of 78 years young... She can look back with sweet and also sad memories of the past... And as always, she is still putting her self last... With the youngest of the twelve being 35... And the oldest being 59... It surely must be pure faith in God that keeps her young and us in line...

Her days are never long... She can hardly wait to get up in the mornings... To see what the day brings... One highlight is for the mailman with letters from the "kids"... With that her heart just sings... Surely there is no other sweeter than my Mother... Independent, strong of will, Faith in God, and that un-dying Love... I thank the Good Lord above for the love and the guidance that my Mother has shown... And still shows me... I just know that she has got to be... The very best authority after God... As the pathway of life I trod. Just no one could be more important to me... Nothing makes my life happier than to see... My "Little 4 ft., 11 in. Mother", happy, healthy and full of life... And thinking each new day

that life has only begun... Each day is a new experience but not one without strife... But she just takes everything in her stride... Surely God is by her side. About my Mother I could write a book... It would be very easy to do... Cause I know the love and patience that it must have took... My Mother's life is a story that should be told... For surely when God made her... He must have thrown away the mold... My beautiful silver-haired Mother with a heart made of pure gold... A heart so big and so warm, never cold... The love and respect that we

12 kids have for my Mother... Is well earned by her and by us for each other. I thank the Good Lord for his guidance and love... Hoping each day that he will forgive us from the Heavens above... And just let us keep knowing how lucky we are... To have a Mother who still shines like a star. She is so beautiful... And so precious to me... If you only really knew her... I know you could see... Just how lucky can I be... For my Mother, Lillie (Mrs. T.C.) Adams Sr. By Doris Adams Metcalf, April 28, 1977.

Pd. Adv.



looking for a job? We may have just what you've been looking for: a job with guaranteed training, good pay, and enrollment in the Community College of the Air Force. If you're interested, call:

Sgt. Art Clark
111 E. 3rd St.
Big Spring, Texas 79720
Call Collect (915) 267-1721

air force

WINDMILL REPAIR
Clean Waterwell Call
Julian Montez
735-3273
Rotan, Texas

Summer SKETCHING WORKSHOP

By NED MOORE
SWEETWATER, TEX.

CLASSES for All Ages

11 yrs - 15 yrs • 9 AM - 12 Noon
ADULT CLASSES • 1 PM - 4 PM.

CLASSES BEGIN JUNE 28
AND CONTINUE TO AUG. 9

CALL TO ENROLL
CLASSES ARE LIMITED

MARIE'S ART STUDIO
735-2316
ROTAN, TEXAS

FmHA To Guarantee Rural Housing Loans

The Farmers Home Administration (FmHA) will begin a new program of guaranteed rural housing loans, the U.S. Department of Agriculture (USDA) has announced.

FmHA, the USDA's rural credit agency, will guarantee up to 90 percent of principal and interest of loans for single family rural housing made by private lenders.

Final regulations for the new program have been published in the Federal Register, and will become effective Jan. 1, 1977.

Housing is the third major area of FmHA credit services in which the agency has introduced the guaranteed loan.

FmHA also guarantees private lenders' loans, as well as making its own loans, under its business and industrial (B&I) and farm loan programs. Nearly all of the lending under the B&I program is guaranteed. All lending under a special Emergency Livestock Credit program is guaranteed. A small portion of the agency's

other types of farm credit is guaranteed.

In housing, FmHA at present will offer loan guarantees only under its single family housing loan program to applicants who cannot get housing mortgage credit without a guarantee. FmHA will continue to make single family housing loans with its own funds to low-to-moderate income borrowers who cannot qualify for guaranteed loans. The agency also will continue to make, but not guarantee, other housing loans, including those for rural rental housing, farm labor housing, and housing site development in rural areas.

FmHA makes and will guarantee housing loans in rural areas--defined as open country, towns of up to 10,000 population, and 337 places between 10,000 and 20,000 population which are not in Standard Metropolitan Statistical Areas and are seriously lacking in housing mortgage credit for low and moderate income borrowers.

MR. WHEAT PRODUCER
we will appreciate a chance
to buy your wheat this year.
SENN GRAIN CO.

WALTER
WENT "OVER THE HILL"
TWO YEARS AGO
AND VIRGINIA GETS TO THE TOP
THIS WEEK.
40

CITY GROCERY

Roby, Texas

Open 6 Days A Week (Closed Sunday)
We Reserve The Right To Limit
WE TAKE FOOD STAMPS

GANDY'S BUTTERMILK 49¢ 1/2 GALLON 69¢ WITH \$5 PURCHASE EXCLUDING CIGARETTES WITH OUT \$5 PURCHASE	MRS BAIRDS LARGE LOAF BREAD 2/99¢	MRS BAIRDS SNACK CAKES 4/\$1
TROPHY STRAWBERRIES 3/\$1	DEL HAVEN CUT GREEN BEANS 4/\$1	OUR DARLING CORN 3/\$1
BODEN ORANGE DRINK 69¢ 64 oz.	RICH-n-READY ORANGE DRINK 99¢ GALLON	GEBHARTS HOT DOG SAUCE 4/\$1
LIPTON GREEN PEASOUP 49¢ 6 oz BOX	CHINET COMPARTMENT PLATE 1.69 36 COUNT	HEINZ CHILI FIXIN 59¢ 15 1/2 oz.
ZEE TOWELS 59¢ ROLL	PINE SOL 15 oz. 79¢	MR BUBBLE 10 oz. BOX 65¢
CHUCK ROAST 79¢ LB	CHUCK STEAK 89¢ LB	BONELESS LOIN TIP ROAST \$1.59 LB
GOOCH GERMAN SAUSAGE 99¢ PKG	DELICIOUS APPLES 29¢ LB	ROUND STEAK \$1.29 LB
AVACADOS 4/\$1	CANTALOUPE 59¢ EACH	LETTUCE 25¢ HEAD

Leisure Lodge News By Ima Berry

Our community social dinner was a great success, everyone had a great time and we all ate too much. Want to thank each person that attended.

We would like to thank the Sunday School group that brought our birthday party on Friday. It was beautiful. Thank you.

We all enjoyed the Jr. Class play from Hermleigh on Wednesday. It was really great and we appreciate the students for taking time to bring it to us.

We failed to thank Carol Gruben's group of GA girls who sang for us a couple of weeks ago. We always enjoy the children.

Thanks to June Anderson for playing the piano for us.

Don't want to fail to say thanks to the people responsible for our our Sunday School each Sunday.

O.B. Cave visited his father Emmett Cave the past weekend.

Mr. and Mrs. Tom Simmons came home over the weekend. Mr. Simmons had spent last week in Ft. Worth with the Bill Simmons they brought him home and Mrs. Simmons was released from Fisher County Hospital. The Doug Simmonses from Abilene and the Bill Etheredges of Roby visited over the weekend.

Helen Warner has been in the hospital since last Thursday; is improving and hopes to come home soon. We really miss Helen, so get well, Helen.

Mr. and Mrs. Jim Albritton of Ft. Worth are visiting Nancy White. Mrs. Albritton is the former Fay White.

Jack Barker of Roby visited Mrs. Mary Lee Barker.

Miss Luna Kolb and Mrs. Isetla Deal of Sweetwater visited Miss Emily Garrett last Thursday and attended our luncheon. They also visited the B.B. Crawfords. See you next week.

Students planning fall enrollment in Veterans Administration educational program who desire advance payments must make their request in writing to the schools.

Winners Of First 4-H County Horse Show

The first 4-H Horse Show of the season was held Friday night, May 13, at the Rotan arena. The results follow:

Registered Mares 4 and under: 1. Renee Underwood, 2. Rhonda Underwood.

Grade Mares 5 and older: 1. Lynda Henderson, 2. Kirk Williamson, 3. Ricky Spencer, 4. Jerry Wayne Stuart.

Grand Champion Mare, Lynda Henderson; Reserve Champion, Renee Under-

wood. Registered Gelding 4 and under: 1. Tisa Lovett, 2. Linday Hoodenpyle.

Registered Geldings 5 and over: 1. Randy Etheredge, 2. Cheryl Terry, 3. Todd Coker, 4. Terry Coker, 5. Tammy Stuart, 6. Tab Hines.

Grade Geldings 4 and under: 1. Teresa Ratliff, 2. John Shipp.

Grade Geldings 5 and over: 1. Damon Shipp, 2.

Melody Walker, 3. Deena Williamson, 4. Alan Kiker, 5. Tina McCombs, 6. Connie Williamson.

Grand Champion Gelding, Randy Etheredge; Reserve Champion, Tisa Lovett.

Pee Wee Western Pleasure: 1. Deena Williamson, 2. John Shipp, 3. Jerry Wayne Stuart, 4. Reggie Spencer.

4-H Age Western Pleasure: 1. Lynda Hoodenpyle, 2. Damon Shipp, 3. Cheryl Terry, 4. Cheryl Terry, 5. Melody Walker, 6. Connie Williamson.

Pee Wee Reining: 1. John Shipp, 2. Reggie Spencer.

4-H Age Reining: 1. Damon Shipp, 2. Randy Etheredge, 3. Linda Hoodenpyle, 4. Cheryl Terry, 5. Melody Walker, 6. Connie Williamson.

Pee Wee Western Horsemanship: 1. John Shipp, 2. Reggie Spencer.

4-H Age Western Horsemanship: 1. Randy Etheredge, 2. Connie Williamson, 3. Alan Kiker, 4. Melody Walker, 5. Damon Shipp, 6. Teresa Ratliff.

Pee Wee Barrels: 1. Reggie Spencer, 2. Stacy Terry.

4-H Age Barrels: 1. Cheryl Terry, 2. Endgate Adkins, 3. Todd Etheredge, 4. Paula Terry, 5. Lynda Henderson, 6. Teresa Ratliff.

Pee Wee Pole Bending: 1. Reggie Spencer, 2. Stacy Terry, 3. John Shipp.

4-H Age Pole Bending: 1. Melody Walker, 2. Todd Etheredge, 3. Alan Kiker, 4. Endgate Adkins, 5. Lynda Henderson, 6. Teresa Ratliff.

Coach Barnes Comments On UIL Rule Changes

Rotan girls basketball will have a jump on other schools in the district as far as five players are concerned. They plan to make a partial switch next year.

Last week's ruling by the University Interscholastic League to permit girls basketball to go from 6 half-court players to 5 full-court players will see partial implementation in the 1977-78 school year. The U.I.L. makes it mandatory in the 1978-79 school year.

According to girls basketball coach, Sonny Barnes, "We will begin the full court five player system in the junior high and on the junior varsity next fall."

"Personally, I don't think the change from 6 on 6 to the proposed 5 on 5 will change how the girls will play, if full court is coached right", said Barnes. Barnes indicated that if you look at it from a player's standpoint, guards have always been punished by not being able to shoot.

"Five on five is going to make basketball players better, they'll all have to learn to shoot now", he said. Barnes said that the fans like pressure playing, not just standing around. "They like to see the game move fast, full court, a lot of passing and a lot of dribbling".

The only possible drawback that Barnes could see to the full court five on five

method for girls was "if coaches don't play pressure basketball, the game will be boring". He plans on playing pressure defense and opening up the game where it will be worth watching.



People can learn to swim easily because the average human body is slightly lighter than fresh water, and much lighter than salt water.

JOIN OUR SERVICES
Sunday
11:00 a.m.-7:00 p.m.
Channel 2
First Baptist Church
Rotan

CUSTOM SLAUGHTERING AND PROCESSING
WE ARE NOW ABLE TO TAKE CARE OF YOUR PROCESSING NEEDS
ALL PACKAGES DOUBLE WRAPPED
PORTER'S LOCKER PLANT
(915) 735-2541
ROTAN, TEXAS

SALUTING THE CLASS OF 77

FREE GIFT WRAPPING

GREAT GIFTS FOR GRADS

FREE GIFT WRAPPING

H.L. DAVIS & CO.
"The Friendly Store"
Rotan, Texas

HALF PRICE SUNDAE SALE



Twice as nice... at half the price!
Your choice of any scrumptious Dairy Queen Sundae, any available size or flavor, with luscious whipped topping, crunchy pecans, and crowned with half a juicy cherry!



Tuesday thru Sunday
May 17-22 only

At participating stores.



RING AROUND THE ROSES: Rotan FHA members took part in a child-care day last week and were photographed last week entertaining younger children outside the Rotan Primary Building.

Western Artist Tops List To Show AT WTC

Painting and sculpture by several well-known Western artists will be shown in the Scurry County Museum at Western Texas College in an exhibit continuing through May 29.

The exhibit has been arranged as a feature of Scurry County Museum Appreciation Month. The museum is open each week day and from 1-5 p.m. on Sundays.

Artists who have accepted the Museum's invitation to bring works for the show are Terry Gilbreath of Baird, George Kovach of Stephenville, Bill Leftwich and Paul Wylie of Lubbock, Jack Stevens of Iowa Park, Jim Thomas and Justin Wells of Amarillo, Mark Storm of Houston and Tom Warren of Plainview. All are members of the Texas Cowboy Artists Association.



HONORARY LONE STAR FARMER: Wendell Morrow of Rotan received the Honorary Lone Farmer degree, the highest award that State FFA Association can give an individual. He received the award based on his outstanding contributions to the Rotan FFA Chapter. He received his award at the Area II convention held in Midland Friday and Saturday.

WHEN YOU NEED INSURANCE SERVICE FOR YOUR . . . HOME RANCH FARM AUTO CROPS LIFE

Think of Low Net Cost with Service.

BEN READ
AGENT
FARM BUREAU INSURANCE SERVICES

215 W. SNYDER ROTAN, TEXAS 79546 BUS. (915) 735-3491 RES. (915) 735-2583

Notice

The Fisher County Commissioners will accept bids on the construction of a 60x30 ft. steel building at their next regular meeting on June 13, 1977. The building will contain two rest rooms, wiring, plumbing, a 5-inch thick concrete floor, two outside steel doors, 2 storm doors, and be insulated, 12 ft. cabinet with sink, 10 ft. walls, air conditioner.

Information on bids other than what is contained in the notice can be obtained by contacting A.J. Ford or Dwight Lovett.

The contractor will be required to comply with the provisions of the Davis-Bacon Act and should acquaint himself with these provisions before submitting a bid on this project.

All bids should be submitted prior to June 13, sent to Fisher County Judge, and be clearly marked steel building bids.

Bids will be opened on June 13, at 10:00 a.m., the Commissioners Court reserves the right to accept or reject any and all bids.

13-2tc

Foursquare Nears End Of Set Remodeling

Rotan Foursquare Church, 8th and Genevieve Streets in Rotan, has Sunday School at 10 a.m. Sunday morning with classes for all ages and special songs for boys and girls portion. Worship is at 11 a.m. and 6 p.m. The Sunday night service will be an evangelistic service, "Make Church right, attend Sunday night". On Thursday at 7 p.m. will be a

Charismatic Miracle worship service with an illustrated chart on "Gifts of the Spirit".

Foursquare Church is not a brand new faith, but it incorporates all basic teachings of the Bible that have been taught by the Church all through history. While the Holy Spirit has always been a part of the Church, He came at the birth of the

church in a fresh breath of revival, bestowing miraculous sings following ministry as the Prophet Joel speaks in Joel 2:28-29.

The remodeling of the parsonage is near completion look for date of dedication soon. A warm welcome is extended to all to attend by the pastors Rev. and Mrs. Floyd Bailey.

Yes Sir And Yes Ma'am.

That

\$40,000 Represents

The Amount Your Account

Is Insured To By The

Federal Deposit

Insurance Corporation.

\$40,000

You Can Save With Safety

At

Citizens State Bank

776-2261
ROBY, TEXAS

MEMBER F.D.I.C.
ACCOUNTS INSURED TO \$40,000

Farmers Union CO-OP Gin And Farm Store

Farm & Ranch Latex Paint

White Only

\$10.95

for a 2 gal. BUCKET

776-2237

Foy Mitchell, Manager

Roby, Texas

WANT ADS DO THE JOB FAST!

Classified Advertising cost is 10¢ per word, \$2.00 minimum. Cards of Thanks are \$5.00 minimum to be placed in 2 col., by 2 inch space. Name, not phone number, must be given on all charge classified ads and full payment is due upon receipt of publication proof.

BUY! SELL! RENT! TRADE!

B & F APPLIANCE Repair and major household appliances, refrigerators, washers, etc. 24 years experience. Also sell used appliances. Call 576-3869 Hamlin before 9 a.m. or after 5 p.m. 7-tfc

MATTRESSES: New and renovated. Choice color, firmness and size. Save on renovating. Guaranteed. Made by Western Mattress Co. Call 735-3421, J&J Sully, Rotan. In Roby call 776-9211, leave name. 41-tfc

FOR SALE: 61 model 95 John Deere combine, new motor, good tires, 14 ft. header, ready to work. Call 915-735-2025. 12-4tc

WANTED: Used refrigerator in operating condition. Call 735-2511. 14-1tc

FOR SALE: Two bedroom house at 702 E. 7th St. Call 735-3445. 12-tfc

HAND MADE GIFTS Vera's Gift Shop. Open 9 to 11 a.m. and 1 to 5 p.m. 908 E. 8th St., Rotan. 49-tfc

FOR SALE: 2 bedroom frame house with new siding. Carpet, basement, garage, one bach, corner lot, one and one-half lots, fruit trees. Call 776-2225 or 776-2432. 11-tfc

FOR SALE: Refrigerated air conditioner, 1800 BTU; four saddles-1 small and 3 large. D.E. Fancher, 311 N. Garfield, 735-3047. 14-1tc

NOTICE: We have 18 new styles of thank you notes for your selection. Newspaper Office. 13

NOTICE: Our 13-year history has proven a KWIK KAR WASH to be one of the highest investment return businesses known. We provide financing, site analysis, construction and service. Call Mike Slevin collect (214) 243-3521. 12-3tp

PLUMBING: For all your plumbing needs call Pete Lomax, 735-3066, Rotan, Texas. 4-tfc

FOR SALE: 3 bedroom, 2 bath, frame house on N. 5th St., Roby. Call 776-2367 after 6 p.m. 14-tfc

FOR SALE: 14x75 1973 Astro, 3 bedroom, 1 1/2 baths, furnished, lots of extras. Call evenings 735-2948. 13-2tc

NOTICE: TV Service for Roby area, call Roby Hardware, 776-2131. 52-tfc

NOTICE: I have Northrup King seed on hand. Call Richard Posey, 735-2065, Rotan. 7-14tc

GARAGE SALE: Home of Mrs. H.E. Butler, Sat., May 21, 9 a.m. North First St. in Roby. 14-1tf

FOR SALE: GSA-71 SR2 and Western 44 delinted cotton seed. Call 735-2098 after 7:00 p.m. 13-3tc

FOR SALE: 1969 John Deere 4020 LP, new paint, 3 new tires, recent overhaul. Alton Smith, 735-2908.13-4tp

NEW HOME SEWING machines, Electrolux cleaners, repair all makes. H.B. Stevens, 1101 James, Sweetwater, phone 235-2889, or Paul Stevens, 1713 E. 14th St., Sweetwater, phone 235-9791. 4-tfc

FOR SALE: House in Rotan, 2 bedroom, living room, kitchen-den combination. Call for appointment 823-2064, Anson. 14-2tc

WANTED: Your Butane and Propane Business. Call 735-3378. Ned's Fuel Service, Rotan. 17-tfc

MONUMENTS AND CEMETERY CURBING: J.B. Smith, 308 E. 4th St. Rotan, Texas call 735-3290. 22-tfc

FOR SALE: Lankart 57 SR-2 cotton seed. Call Bobby Smith, 735-2006. 12-3tp

NOTICE: Will do yard or garden plowing any day after 5 p.m. Call 735-2385. 14-2tc

SAFEMARK TRACTOR TIRES: 18-4-34, 6 ply, \$208.70 plus mounting. Where else at this price but Farm Tractor and Service, Inc., 735-2462. 14-4tc

NOTICE: See Buddy's Used Cars, east on Anson highway from Roby, at Aub's place. 12-2tp

NOTICE: Earn \$80.00 weekly at home stuffing envelopes. Information: rush 50 cents and stamped self-addressed envelope to Financial Miracles, P.O. Box 15129, Fort Worth, Tex. 76119. 12-4tp

SAFEMARK TIRES: Our best selling size H78-14, white wall, 4 polyester-2 fiberglass ply, \$37.90 total includes all taxes, mounting and balancing. Where else at this price but Farm Tractor and Service, Inc., 735-2462, Rotan. 14-4tc

WANTED: Nurses Aide for midnight shift. Apply at Golden Haven Nursing Home, Roby. 12-2tc

NOTICE: Lawn mower repair, 308 Johnston. Call 735-2546, David Riggs. 141tp

FOR SALE: Hegari planting seed, cleaned, treated and sacked; Arizona variety, \$20.00 per hundred. Call Harvey Dowell, 962-5441, McCaulley, Tex. 10-tfc

GARAGE SALE: 3 families, Friday only, 914 E. 5th St., Rotan. 14-1tc

NEW SERVICE: Curry Appliance Service. Can repair all large appliances for information call 735-3171 or 235-2229. Your satisfaction is guaranteed. 13-5tp

FOR SALE: Blonde bedroom suite, mattress and box spring; one large desk. 708 8th St. Mrs. J.A. Compton, Rotan. 14-1tc

TV SERVICE: For television repair call Home Lumber 735-2421. 46-tfc

BUSINESS OPPORTUNITY

FOR SALE: 3 Lots 150x83 ft. on highway 180 and College in Roby. One block from city square, commercial property, has house and several old buildings on lot. Call 915-694-0430, or write Dave R. Weeks, 4603 Leisure, Midland, Texas 79701. 9-tfc

Farm & Ranch Loans

Through The FEDERAL LAND BANK ASSOCIATION OF ROBY

E.J. Richardson, Jr. Manager 915-776-2321

Drs. Blum AND Nesbitt

OPTOMETRISTS

1825 25th Street Snyder, Texas Phone 573-3992

OFFICE CLOSES NOON WED. & SAT.

Hungry? Call Hatahoo

735-3161 776-2259
Rotan Roby

Color Photography

By Kim Pease

- Weddings
- Family Reunions and Gatherings
- Family Pictures

See Samples at NEWSPAPER OFFICE 735-2562

TEXACO

S & L TEXACO

and Auto Parts

Specializing In Engine Tune Ups 735-3200

Hallum's Dragline

PHONE AC(817)-989-2698

OLD GLORY, TEXAS

Tank Cleaning & Erecting

The Deavers Co.

SERVICE OF INTEGRITY

TEXAS Structural Pest Control License #207-G

MEMBER TEXAS PEST CONTROL ASSOCIATION NATIONAL PEST CONTROL ASSOCIATION

BILL DEAVERS

P. O. BOX 982 SNYDER, TEXAS

OH, 915-573-7230

Ronald B. Green

GENERAL CONCRETE WORK

CONCRETE AND LABOR CONSTRUCTION CEMETERY CURBING - YARD CURBS WALKS AND DRIVES - PATIOS

Box E 776-2108 Roby, Texas

Texas Farmers Union

Get Into The Fight For Parity

"FARMER POWER" With Farmers Union SUPPORT THE Farmers Union

Rep. Martin Authors Money Saving Bill

House Bill 1178, authored by Rep. Elmer Martin of Colorado City, has passed the House and has been passed favorably out of the Senate Committee on State Affairs and is now awaiting action on the Senate Floor. Sen. Ray Farabee of Wichita Falls is Senate sponsor of the legislation. This legislation relates to the mowing, bailing or shredding of certain highway rights-of-way in Texas.

"This legislation should result in a savings of more than \$767,000 during the next five-year period to the state highway fund," Rep. Martin said.

"I believe this bill will benefit agricultural property owners and tax payers, as well as the State Department of Highways and Public Transportation," Martin continued.

Under this proposed legislation, a district engineer of the State Highway Department

can grant permission to an individual to mow, bale or shred the right-of-way of any designated portion of a road or highway in the state highway system within the boundary of the district engineer. If the person requesting permission is not the owner of the land adjacent to the right-of-way, the district engineer must first provide the landowner the option of mowing or baling the land.

Rep. Martin added that no person may receive monetary compensation for any such activity, but is entitled to use or dispose of any materials produced by the mowing, bailing or shredding.

The State of Texas, the Texas Department of Highways and Public Transportation and the district engineer are not liable for any personal injuries or damages incurred during the performance of services or agreements provided in the act.

Gary Smith Opens TCJC Scholarship

Gary A. Smith, Associate Professor of Biology and Chairman of the Science/Mathematics Department at Tarrant County Junior College Northwest Campus who last week was cited as being a 1977 Piper Professor, has established a scholarship on his campus.

Smith earmarked \$500 of his \$1,500 Piper honorarium to establish the scholarship, which will be given annually to a student of sophomore standing.

Recipients must have a grade point average of at least 3.4, and must be taking at least one mathematics or science course during the semester the scholarship is awarded.

Smith, a graduate of Rotan High School, holds B.A. and M.A. Degrees from Baylor

University. Additional study has been at North Texas State University, East Texas State University and the University of Texas at Arlington.

Smith has been a TCJC faculty member since 1967.

WTC Offering Scholarships For Trainers

Western Texas College has scholarships available for a man and woman trainer for the college basketball teams.

Applicants should have high school experience as a trainer, team manager or statistician, and should be willing to attend a three and a half day workshop during the summer.

COUNTY AGENT NEWS

BY RICHARD SPENCER

The conservation of our natural resources is a vital issue today and will become even more critical to our society in the years ahead. It's an issue that everyone can and should become involved in, and 4-H adult and teen leaders will have an opportunity to do just that at an upcoming conference at the Texas 4-H Center in Brownwood.

The event is the Texas 4-H Natural Resource Conference, June 12-16. Purpose of the conference is to train 4-H leaders interested in natural resource projects. Armed with a better understanding

and appreciation for natural resources, the leaders can then provide meaningful experiences in outdoor education to interested 4-H members.

Participants at the Natural Resource Conference will explore the major natural resources areas, including forestry, wildlife, soil, water and grasslands to learn the function of each man's relationship and responsibility to use and manage. Emphasis will be on "teaching how to teach."

The conference will be conducted in an informal

atmosphere through small group studies, field trips and natural examples of resources.

Applications are available at the county Extension offices and must be submitted by June 1. A maximum of 125 applicants will be accepted on a first come basis.

Sponsors for the conference include the Sid W. Richardson Foundation, Federal Cartridge Corporation, and the Association of Soil and Water Conservation Districts.

*** Farmers and ranchers in Fisher County who have been employing aliens, for temporary work will be interested in an upcoming public hearing dealing with this particular matter.

A public hearing on the employment of aliens for temporary farm jobs will be held in San Antonio, May 27-28. The hearing will begin at 9:30 a.m. each day in the San Antonio Convention Center in Hemis-Fair Plaza.

The hearing will be conducted by U.S. Department of Labor officials. The Labor Department published on January 25 revised rules and regulations for certifying employment of aliens in agricultural and logging operations. The proposed regulations, if allowed to become effective, could greatly curtail the use of any temporary employment of aliens for seasonal agricultural work.

All agricultural producers who may be affected by changes regarding the employment of aliens for temporary work are urged to attend the upcoming hearing in San Antonio and to voice their opinions.

DEAR EDITOR

EDITOR'S NOTE: The opinions expressed here are those of the writers and do not necessarily reflect the views of this newspaper. All letters submitted for publication must be signed and are subject to be edited for libelous material. Letters are accepted on that basis. Names can be withheld upon request, however initials will be used on all letters. Signed original letters will remain in the possession of this newspaper.

Dear Editor,

Today we know that mental illness can be prevented in many cases. We can do this through education, especially of parents, and by learning to cope with stress. There is a group of citizens, like ourselves, trying to see that this happens—the Mental Health Association.

During May, Mental Health Month, your neighbor will be coming to your door to collect for mental health. I

urge you to give generously.

The Mental Health Association needs your support because

*mental illness can be cured

*the cycle of child abuse can be stopped

*education of parents can prevent some emotional problems in children.

Your support is needed to accomplish this.

Very truly yours,
Wayne Harris
Mental Health Chairperson



WINNER OF AREA II AG MECHANICS AWARD: Cle Don Coffman of Rotan was the winner of the Area II Ag-Mechanics Award. He received his plaque Saturday at Midland at the Area II Convention. Cle Don's accomplishments in surveying, small gas engines, electrification, arc welding, oxy-acetylene welding, concrete work, and ag structures earned him this coveted award. He will compete on the state level in July at Fort Worth. He is the son of Mr. and Mrs. W.J. Coffman.

Card of Thanks

I would like to thank all my friends for the cards, flowers, gifts, telephone calls and

visits that I received while in the hospital. May God bless you all.
Juanita Gaona

Farm Tractor & Service, Inc.

"Your John Deere Dealer"

4 H.P. / 22" Cut
Model No. 350-77
Power Propelled

- 11.44 Cu. In., Briggs & Stratton engine with vertical pull start, oil dipstick, super l-tone muffler and shroud.
- Cast aluminum deck with integral baffles.
- Five position fingertip wheel height adjusters.
- Equipped with easy empty polyester grass catcher.
- Two position adjustable folding chrome handle with remote drive engagement and throttle control.
- 8.00" x 1.75" ball bearing steel wheels. Twin line tread, front tires. Gear tread rear tires.
- Tangerine and Black finish color.
- 94 lbs. approximate shipping weight.

Rotary Mowers

20" CUT 3 1/2 H.P.

\$225

REAR DISCHARGE MOWER

22" CUT 4 H.P.

\$265



\$788
8 H.P.

TILLS FROM THE REAR



8 H.P. / CHAIN DRIVE REAR TINE TILLER Model No. 408-77

- 19.44 Cu. In., Briggs & Stratton engine. Recoil start.
- Three-step reduction double chain drive in stamped steel gear case.
- Four speeds forward, neutral and reverse. Tine drive has lock-out feature.
- Independent wheel drive.
- 20" tilling width. Adjustable depth bar.
- Heavy gauge steel handle adjustable vertical and horizontal. Remote drive engagement and throttle control.
- Heat-treated bolo tines. 14" diameter.
- 16.00" x 4.00" steel wheels. Semi-pneumatic tractor tread tires.
- Tangerine and Beige finish color.
- 225 lbs. approximate shipping weight.

Farm Tractor & Service, Inc.

735-2462

Rotan, Texas



WIN A FREE TRIP FOR TWO! ... PLUS OTHER PRIZES



8 EXCITING DAYS IN ITALY! ROME-FLORENCE-NAPLES/POMPEII/SORRENTO... you'll see them all if you're the LUCKY WINNER. Register at any participating Bull Parts Ful-Line Associate thru June 30, 1977. No purchase necessary.

MOTOR OIL SALE



#159 30-W HPO (High Detergent)



#141 10-W-40 (All Climate)

KRACO 8-TRACK STEREO AM/FM RADIO



Mfg. Sugg. List \$139.95

SALE \$69.95 #KID5608

AC SPARK PLUGS



AC RESISTOR PLUGS 89¢ ea. BUY 7... GET 8th FREE!

MONROE SHOCK SALE

Special prices AND if you BUY 3... get 4th Shock FREE.



GRIPPER Full one-inch bore. Buy 3... Get 4th FREE!



MONROE-MATIC HEAVY-DUTY SHOCKS \$12.95 ea. Buy 3 4th FREE!



SUPER 500 EXTRA HEAVY-DUTY \$20.95 ea. Buy 3 4th FREE!

CITY AUTO SUPPLY

216 W. Snyder Rotan, Texas

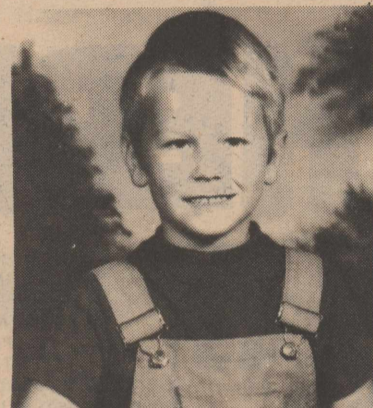


Grandparents' Corner



Angela, age 7 and Molly, age 4, are the children of Mr. and Mrs. Preson Morrow, Jr. of Summit, New Jersey. Grandparents are Mr. and Mrs. Preston Morrow, Sr. of Rotan.

Ted Boyd, age 6, is the son of Mrs. Judith Boyd of San Angelo and the late Mr. Bill Boyd. Grandparents are Mr. and Mrs. Edward Boyd and Mr. and Mrs. Preston Morrow, Sr. of Rotan.



Counselors Are A Rare Breed Of People

Counselors are a rare breed of people, and Martha Sullivan of Breckenridge proves the point. Not that she has always been a counselor, she hasn't; but she has always been particularly interested in children.

Martha Sullivan, the daughter of Mrs. Imogen Lane of Lybbeck, is a former Rotan Resident. She is a graduate of Rotan High School and was raised in the home of the late Mr. and Mrs. E. Howard of Rotan. She is the niece of Sybil and Hattie Belle Howard.

Martha was graduated from TWU with a degree in clinical pathology. Automatically she chose to do her internship in the Children's Hospital in Los Angeles. Not that she couldn't have worked with children closer to home, but she was young and California sounded glamorous. It wasn't long before home called, and Martha wound up with her rancher husband on the banks of the Clear Fork of the Brazos twelve miles from Breckenridge where she has been ever since. Martha also received her master's degree from ACU, Abilene.

Mrs. Sullivan taught chemistry and biology at Breckenridge for about fifteen years. The switch to counseling came about through insight and foresight. Martha had always been a natural born mother confessor. Students had always gravitated to her with their problems, Breckenridge had never had a counselor, but Martha knew that the time was imminent. She applied for the job, took her certification at ACU, and became the only counselor Breckenridge has ever had. She received her master degree from ACU.

When and if Martha retires she has an ace in the hole, a vocation which she has already launched. Since early childhood she has been painting, but in the last six or seven years she has put extra emphasis on it—especially when she found out that people want to buy what she paints. Up until this time she painted purely for pleasure, an outlet for her boundless energy, a source of gifts for her family and friends. Now she teaches three night classes in her home each week. Breckenridge has not art program; so one of her classes is made up of school-age children. Martha also enters her paintings in art shows and even has

shows of her own. Last spring she had a solo show of 63 of her paintings in the bank at Breckenridge and sold two-thirds of her works.

Martha even has a copyrighted trade name for her work, Wee Texas Originals. Everything she paints is small, nothing larger than 8x10 and most smaller than that. Her favorite style of painting is the use of a magnifying glass with the dry brush method. This allows her to put in intricate details which aren't obvious to the viewer but make the painting very life-like.

It is someone like Martha Sullivan who keeps life from being dull for all those around her.

The Sullivans have a son who received his Ph.D in entomology. He is a research entomologist at Clemson University in South Carolina.

Rotan UMW Reviews Year

The U.M.W. of First Methodist Church, Rotan, began this year of spiritual growth and Bible study with a meeting on January 12, for a devotional and pledge service.

Then January 26 marked the beginning of an interesting Bible study of the book of Mark by Rev. Cecil Tune, pastor. The study continued through four meetings.

March 6th was the date for U.M.W. contribution to World Wide day of Prayer. Also in March, was a business and year book meeting.

A Sub-District meeting was held March 20 in the Rotan church. After a business meeting in the sanctuary the group enjoyed tea time in the parlor.

The Hunsaker home was the setting for a lovely "Come and Go" breakfast on the morning of April 13.

The women have had two meetings on a study of Africa. The area women are invited to attend.

Students enrolled in Veterans Administration educational programs have been advised that prepayment procedures have ended. Checks now follow the month of enrollment.

Center HDC Has Meeting May 11

Mrs. Aurora Martinez was hostess May 11 to the Center Home Demonstration Club members. Mrs. Willard Burk presided and Mrs. J.T. Mahaffey led recreation.

Mrs. Howard Noles gave a report on the recent THDA meeting held in Roby. She reported that 171 ladies from the 16 counties in District 3 attended.

Mrs. Alice Ballenger, county Agent, gave the program on the metrics are coming. After a round-table discussion, questions were asked on the educational program and it is important to start becoming familiar with such terms as milliliters, grams, kilograms and others. An examination was given to members, testing their ability to convert to the metric system.

Mrs. Martinez served sandwiches, German Chocolate Cake, coffee and colas to the following ladies: Mrs. Ballenger, Mrs. Joe Ballenger, Mrs. J.T. Mahaffey, Fay Anderson, Mrs. Howard Noles, Willie Lake, Mrs. Will More, Mrs. James Cave, Mrs. Willard Burk, Mrs. Farrest Tefteller, and Mrs. Fred Waddell.

Longworth HDC Holds Meeting

Longworth Home Demonstration Club women met in the home of Mrs. J.W. Landers May 9 with 2 visitors and 5 members present.

Roll was called and answered with a favorite Bible verse or a wise saying. Recreation was directed by Mrs. H.F. Guelker with a bird game. Handy Andy was won by Mrs. Wayland Williams.

Mrs. Ray Scherwitz read the minutes and gave the treasurer's report. Mrs. Guelker gave the council report of May 2.

Program was a Mothers Day program. Mrs. Williams read "The Praise of a Virtuous Woman" from Proverbs 31:10-31. Mrs. Guelker read a poem "The Mothers of Men". Mrs. Landers read "The Meanest Mother" by Robbie Pingare.

After the program the club honored Mrs. George Peoples with a pot plant for being the only living mother of the club members.

Refreshments were served to the two visitors, Mrs. George Peoples, Mrs. Jim Williams; and members Mrs. H.F. Guelker, Wayland Williams, Ray Scherwitz, W.P. Schubert by the hostess.

The May 16 meeting was a program on the metrics are coming.

Students enrolled in Veterans Administration educational programs during June will receive their checks July 1, under new payment procedures.

Fisher County Nursing Home

Well, due to our unsettled weather conditions this past week, our picnic has been temporarily postponed. We will reschedule it later when the weather is a little warmer and more settled.

We didn't have any out-of-town guests reported this week. However, we overlooked one last week. Mrs. Owens' daughter and her husband, Mr. and Mrs. O.C. Gilbert were here on Mothers Day. They are from Cleburne.

We want to say a special thank you to the WMU ladies and Bro. Thomas from the First Baptist Church for their services here Wednesday. There were 14 of our residents in attendance.

We also want to thank the ladies who planned the party at the Community Center on Wednesday for the ladies 70 and older. We had 3 to attend and we want to thank the ones who picked these ladies up.

The Methodist Church was here Sunday and everyone really enjoyed the services.

The Nazarene Church still comes every Thursday morning for Bible study. We always have quite a few who attend this and really receive a blessing from it.

Again, our news is short this week. We want to thank all our visitors and the ones who bring the beautiful flowers in. We want to congratulate Reyna Garcia on the birth of her 6 lb. 12 oz. baby girl born Friday, May 13.

That's all for this week.

Eating Out is FUN!



GET IN ON THE FUN....

THIS WEEK EAT OUT AT THE

HATAHOE

ROTAN 735-3161

ROBY 776-2259

Beef Shortcourse Set For Hobbs June 6-9

A beef production short course for adult farmers will be held June 6-9 under the sponsorship of the Hobbs High School Vocational Agriculture Department, according to Mr. Bill Denman, Superintendent, and Mrs. Gary Finley, teacher of Vo-Ag.

Dr. Elmer V. Krehbiel, Beef Production Specialist with the Vocational Agriculture Division of the Texas Education Agency and the Department of Animal Science at Texas A&M University, will be the instructor for the course. He is headquartered at Texas A&M University.

Dr. Krehbiel is a native of Oklahoma. As a farm boy and FFA member, he had shown livestock and won many awards, including championships at the Southwestern Livestock Exposition in Ft. Worth and at the American Royal Livestock Show in Kansas City.

He has a strong background in animal production and genetics. He received a B.S. degree from Oklahoma State University in 1950, an M.S. degree from the University of Arkansas in 1959, and a Ph.D from Virginia Polytechnic Institute in 1966. His graduate studies were based on selection for type and reproduction performance of cow herds.

Between periods of formal training, Dr. Krehbiel worked with the beef cattle industry as artificial insemination technician, beef cattle herdsman and ranch manager in Oklahoma. He also served as beef cattle research assistant in Arkansas, and animal geneticist for the USDA at Miles City, Montana. For the past two years prior to joining the Agricultural Education Specialist Program he served as Area Livestock Extension Agent in Ohio.

The short course at Hobbs is scheduled to begin June 6 at 7:30 p.m. in the Vocational Agriculture Building. Other meetings in the series of four

will be held June 7-9. During the dates the short course is in progress, Dr. Krehbiel will be available to assist cattlemen with individual problems and to provide on-the-farm instruction, according to Gary Finley, Vo-Ag teacher at Hobbs.

Cattlemen interested in attending the short course should write or call the superintendent of schools, Mr. Bill Denman, or the teacher of vocational agriculture, Mr. Gary Finley. An entry fee of \$5 will be charged.

Beef Production Short Course certificates will be presented to each cattleman who attends all the training sessions.

Dr. Krehbiel states that the field of beef cattle production must take a close look at efficiency of production in the future. With land prices, feed, and taxes rising, the producer is meeting more and more competition for the consum-

buy. He also states that the course will include such important topics as cattle reproduction and pregnancy diagnosis, selecting bulls and replacement heifers, half crop percentages, and supplemental winter feeding. The course can be changed to meet the wishes and interests of the farmers and ranchers enrolled.

"Short courses in beef production, as well as in other areas, are now available to farmers throughout the state under the cooperative program between the Education Agency and Texas A&M University," states Bob Jaska, associate professor, Department of Agricultural Education at Texas A&M University, who coordinates the program for Texas A&M.

"This cooperative program," states Jaska, "is designed to make the services of specialists available to conduct short

CLEP Testing College Credit Offered WTC

Students interested in receiving college credit through CLEP tests may contact Dr. Mary Hood, Director of Testing, at Western Texas College.

Wendell Jones, Associate Professor of Foreign Language, reminds prospective WTC students that if they have had one or two years of Spanish in high school they may qualify for credit in freshman courses and be ready to enroll for sophomore level courses next fall. Persons wishing further information about foreign language credits may call Jones at the college or at his home, 573-9784. CLEP tests in Spanish, German and French are available at WTC. Spanish is included in the fall schedule at WTC and German could be added if there are a sufficient number of students.

CLEP tests will be given at WTC on June 13-17, July 11-15 and Aug. 15-19.

TO PAGE 10

The needle point

Cogdell Center, Snyder, Texas 573-3377 and Brunswick

Paternayan yarn, hand painted canvases, crewel, latch hook, Christmas stockings and small gift items.

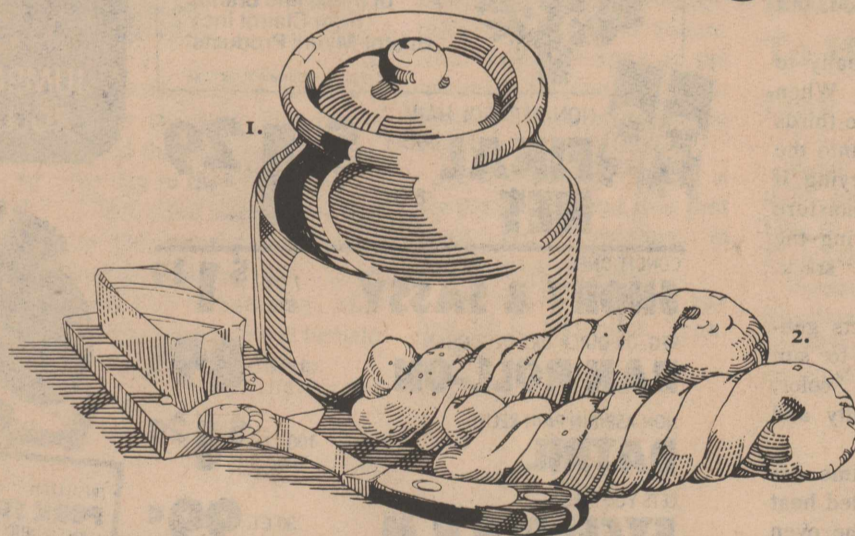
Lamps, trays, luggage racks, tennis racket covers, purses, key rings all with needle point.

Instruction books and calendars. Come get acquainted or write concerning lessons

10 to 5 Monday thru Saturday

"the most unusual in needle art"

A 10-minute call to San Francisco doesn't take a lot of dough.



For just \$2.44 or less, you could take down these recipes by Long Distance.

We're printing these recipes to make a point: a Long Distance call lets you say so much, for so little.

In a 10-minute phone call to San Francisco, between 5 p.m. and 11:00 p.m. tonight, you could take down the recipes below. And by dialing 1+, the most you pay is \$2.44, plus tax.

So enjoy a pleasant visit tonight by Long Distance. Whether you call to get a couple recipes... or just to find out what's cookin'.

1. SOURDOUGH STARTER

1 package active dry yeast
2 1/2 cups warm water (105° to 115°)

1 cup instant nonfat dry milk
2 tablespoons sugar
4 cups all-purpose flour

a) Stir yeast, water, dry milk and sugar in 2 1/2 quart crock or non-metallic bowl until yeast is dissolved. Stir in flour gradually until a smooth batter forms. Let stand loosely covered in warm place, 3 to 5 days. Stir down batter occasionally. Store loosely covered in refrigerator.

b) Replace exact amount of starter used for each recipe by stirring equal amounts of homogenized milk and flour back into starter. (For example, replace 1 cup starter with 1/2 cup homogenized milk and 1/2 cup flour.) Let stand loosely covered until it bubbles, overnight. Stir down. Each time this process is repeated, the starter becomes more active and develops a more sour flavor. Note: if stored as much as two to three weeks between usings, just pour off the watery layer on top and replace following procedure in (b).

2. SOURDOUGH BREAD STICKS

1 cup instant nonfat dry milk
1 cup warm water (105° to 115°)
1 cup Sourdough Starter (see Recipe No. 1)
2 cups all-purpose flour
3 tablespoons vegetable oil

2 teaspoons salt
2 teaspoons sugar
1/2 teaspoon baking soda
1/2 to 1 cup all-purpose flour
1/4 cup butter or margarine, melted

a) Mix dry milk, water, Sourdough Starter and 2 cups flour in non-metallic bowl, cover loosely. Let stand in warm place until mixture is coarse and bubbly, at least 8 hours.

b) Mix oil, salt, sugar and baking soda into sourdough mixture. Stir in enough of the remaining flour to make dough easy to handle. Knead dough lightly on well-floured board, about 2 minutes.

c) Roll dough into rectangle, 15 x 10 inches, on well-floured board. Cut into fifteen 1-inch strips. Roll each strip into even round strand, about 14 inches long. Double strand over and twist to form bread stick. Place bread sticks on greased baking sheet; brush with melted butter. Cover with plastic wrap. Let rise in warm place until double, 1 to 1 1/2 hours.

d) Heat oven to 375°. Bake bread sticks until golden brown, 30 to 35 minutes. (Makes 15).

Recipes courtesy SPHERE Magazine

Long Distance. What else is so nice for the price?

Southwestern Bell

Before You Purchase A New Car Or Pick Up...Give Us A Chance To Show You How Much You'll Save At

F & M Chevrolet-Buick
Complete Sales & Service
735-2244
105 S Cleveland Rotan, Texas.

County Extension Agent

Home Economics
By Alice Ballenger

776-2171 Court House Roby, Texas

Home Drying Fruits And Vegetables

Drying surplus fruits and vegetables is one answer to limited freezer space, canning equipment and high cost of fuel. Successful drying is removal of enough moisture from the food to prevent spoilage because both enzymes and micro-organisms require moisture. Drying methods include sun drying, oven drying and sun (solar) heaters.

These processes depend on enough heat to draw out the moisture, but not enough to cook the food material. Dry air is also necessary for two reasons—to absorb released moisture and then to carry off the moisture by circulation. Although drying preserves food, it also affects taste—not always for the best.

Two dried fruits that do have agreeable flavors are prunes and raisins—dried from plums and grapes.

Other dried-fruit items are apples, apricots, peaches and pears—although they do tend to darken during storage. To prevent darkening, blanch or treat fruits with ascorbic acid before drying. Then dry these fruits under controlled conditions, such as in the oven.

Vegetables that may be dried include lima beans, green and red chili peppers, corn, onions, peas, pumpkins, Hubbard squash and herbs for seasoning. One problem with drying is that it almost always causes some loss of nutritional quality—a few vitamins, particularly, tend to be destroyed by the light of sun drying.

Utensils for drying include shallow, wooden trays with slatted, perforated or woven bottoms—suitable for drying because they can be used outdoors in sun or shade, or indoors in a dryer or oven. Open bottoms allow for air circulation.

In the drying process, remember to dry foods out of doors in an area protected from dirt and grit.

As a precaution against insects, place cheesecloth or screening over the food, but not in contact with it.

Turn food occasionally to help it dry evenly. When Foods seem about two-thirds dry, move the trays into the shade and continue drying. If there is a chance of moisture during the night, bring the trays indoors and stack. Cover when cooled.

Oven-dried products generally are superior to sun dried products in color, flavor, cooking quality and nutritive value.

Also, drying time is reached with controlled heat of the oven. Limit the oven load to no more than four to six pounds of freshly prepared food at one time.

Use trays 1½ inches smaller than the width and depth of the oven, separated 2½ inches. Allow a 3-inch clearance at the top and

The Veterans Administration has ended its prepayment policy for persons enrolled in educational programs.

FROM PAGE 9

courses under the supervision of public schools. Such a program will enable teachers of vocational agriculture to provide improved educational services to farm people."

bottom of oven. Maintain a temperature of 140 Deg. F. Most vegetables take 4-12 hours to dry, fruits 6-20 hours. Time varies with the kind of fruit or vegetable, size of pieces and load on the tray.

Specialists are now available in the fields of beef production, farm electric wiring and safety, farm electric motors, arc welding, swine production, tractor maintenance, pasture, and oxy-acetylene welding.

Rackleys Make WTS Graduation Exercise For Son

Mr. and Mrs. Martin Rackley were at Canyon over the weekend to attend WTSC of Nursing Pinning Cer-

monies Friday night and the WTSU spring commencement Saturday.

Their son, Gary, graduated with a Bachelor of Science Degree in Nursing.

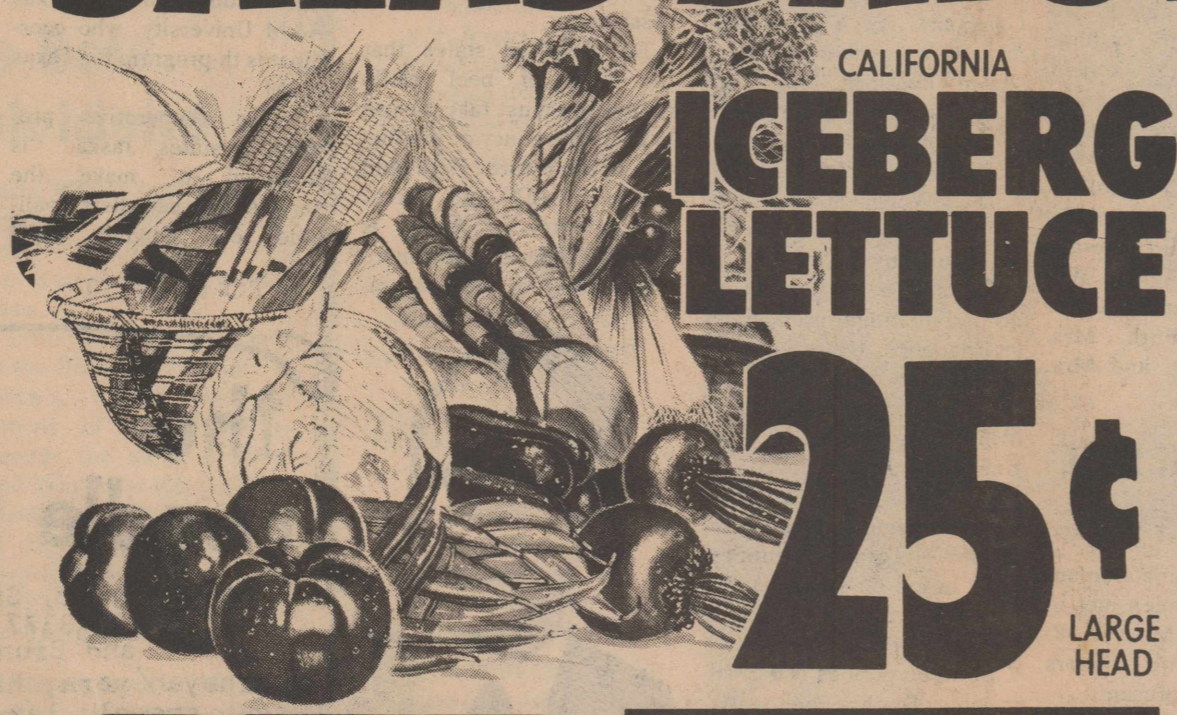
The Veterans Administration has changed payment procedures for persons enrolled in educational programs. Local VA offices have complete information.

GI Bill students desiring advance payment for fall school semesters must submit their request in writing to the school, the Veterans Administration advises.

Locally Owned & Operated
Big Country Termite-Pest Control
Member Texas Pest Control Association
Texas License # 22610PT - & Insured
FREE TERMITE INSPECTIONS
Complete Rt. #1
Household Exterminator Rotan, Texas
Phone 735-3252

ATTENTION LADIES
Jeanne Cooper Slimnastics Teacher from Hamlin will instruct a weekly one hour exercise class for four weeks. The cost for the course will be \$4.00.
Next class will be Monday May 23 at 7:00 p. m. in the old Rotan Gym.
Those interested in registering call Ruth Callan 735-2385, LaFave McDonald 735-2374, Pat Cadenhead 735-3262 or Sally Parks 776-2447 in Roby.

SALAD DAYS ARE HERE



CALIFORNIA
ICEBERG LETTUCE
25¢
LARGE HEAD

GOLDEN YELLOW
BANANAS
5 \$1
LBS.



THRIFTY. A MAN OF ALL SEASONINGS TOSSES A MEAN SALAD - AND PART OF HIS SECRET OF SUCCESS ARE THE INGREDIENTS HE USES WHICH CAN BE FOUND ON THIS PAGE!

CALIFORNIA HAAS **AVOCADOS** 4 FOR \$1
CALIFORNIA CELLOBAG **CARROTS** 1 LB. PKG. 19¢
CALIFORNIA FRESH **BROCCOLI** LB. 49¢
CALIFORNIA NAVEL **ORANGES** 5 \$1 LBS.
WASHINGTON **D'ANJOU PEARS** LB. 29¢

BARBECUE Sauce 59¢
KRAFT DRESSING **ITALIAN STYLE** 8 OZ. BTL. 59¢
KRAFT DRESSING **1000 ISLAND** 16 OZ. BTL. 89¢
KRAFT JET PUFFED **MARSHMALLOWS** 10 OZ. PKG. 33¢

SALAD DRESSING
MIRACLE WHIP
99¢
QUART JAR

TOTAL GROCERY SAVERS
HORMEL VIENNA **SAUSAGE** 3 5 OZ. CANS \$1
ASSTD. WALDORF BATHROOM **TISSUE** 4 ROLL PKG. 79¢
FOR PERFECT JAMS & JELLIES **PEN-JEL** 3 1/4 OZ. BOXES 79¢

HI DRI
PAPER TOWELS
39¢
JUMBO ROLL

A & W
REG. OR SUGAR FREE
ROOT BEER
6 \$1
12 OZ. CANS

FROZEN FOOD SAVERS
7 OFF LABEL **COOL WHIP** 9 OZ. CTN. 59¢
SUN FRESH FROZEN **STRAWBERRIES** 3 10 OZ. CTNS. \$1
SHURFINE FROZEN **LEMONADE** 3 12 OZ. CANS \$1

\$3.00 REFUND
when you buy any 4 of these fine brands from Clairol Inc./Bristol-Myers Products*

NON-AEROSOL HAIR **FINAL NET** 8 OZ. BTL. \$1 29

CONDITIONER **SHORT & SASSY** 7 OZ. BTL. \$1 19

REG. OR QUICK DRY DEODORANT **BAN ROLL-ON** 1.5 OZ. BTL. 89¢

NON-ASPIRIN PAIN RELIEF **DATRIL** 100 CT. BTL. \$1 29

LETS YOU SLEEP **EXCEDRIN P.M.** 30 CT. BTL. 99¢

STOPS PAIN **EXCEDRIN** 100 CT. BTL. \$1 49

DISPOSABLE LIGHTER **CRICKET BUTANE** EA. 79¢

KOTEX DEODORANT **MINI PADS** 24 CT. BOX \$1 39

SLICED INTO CHOPS OR FAMILY PAK 9-11 CHOPS
QUARTER LOIN
PORK CHOPS
\$1 09
LB.

LEAN CENTER CUT RIB
PORK CHOPS
\$1 39
LB.

LEAN CENTER CUT LOIN
PORK CHOPS
\$1 49
LB.

WILSON'S SMOKED CENTER CUT
PORK CHOPS
\$1 69
LB.

FRESH LEAN **PORK STEAK** LB. 99¢
LEAN COUNTRY STYLE **SPARE RIBS** LB. \$1 19
SHENSON'S FINEST QUALITY CORNED **BEEF BRISKET** LB. \$1 49
HORMEL'S PORK LINK SAUSAGE 12 OZ. PKG. 89¢
LITTLE SIZZLERS SELECT SLICED YOUNG **BEEF LIVER** LB. 59¢
FROZEN FRESH FISH **TURBOT FILLETS** LB. \$1 29
TENDA MADE CHICKEN FRIED **BEEF FRITTERS** LB. \$1 29
LITTLE BOY BLUE **CORN DOGS** 12 OZ. PKG. 99¢

PET RITZ
Cream Pies
49¢

GIANT BOX
Ajax Detergent
\$1 19

KRAFT VELVEETA **CHEESE FOOD** 2 LB. BOX \$1 99
KRAFT BRANDED EXTRA SHARP OR **SHARP CHEESE** 8 OZ. PKG. 89¢
BUTTERMILK OR COUNTRY STYLE PILLSBURY **BISCUITS** 3 8 OZ. CANS 39¢

64 oz.
Pepsi
or
Dr Pepper
69¢
HALF GALLON

WHOLE KERNEL CORN
NIBLETS
3 \$1
12 OZ. CANS

GREEN GIANT
Sweet Peas
3 \$1
17 OZ. CANS

KRAFT
Mayonnaise
\$1 19
QT. JAR

KAIL
DESTROYS CROPS
INSURE WITH FARMERS UNION CROP HAIL INSURANCE
Florence Wiley
Box 246 - Roby
776-2529