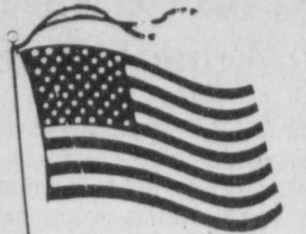


BAILEY COUNTY JOURNAL

The Community Of Opportunity-Where Water Makes The Difference



© 1990

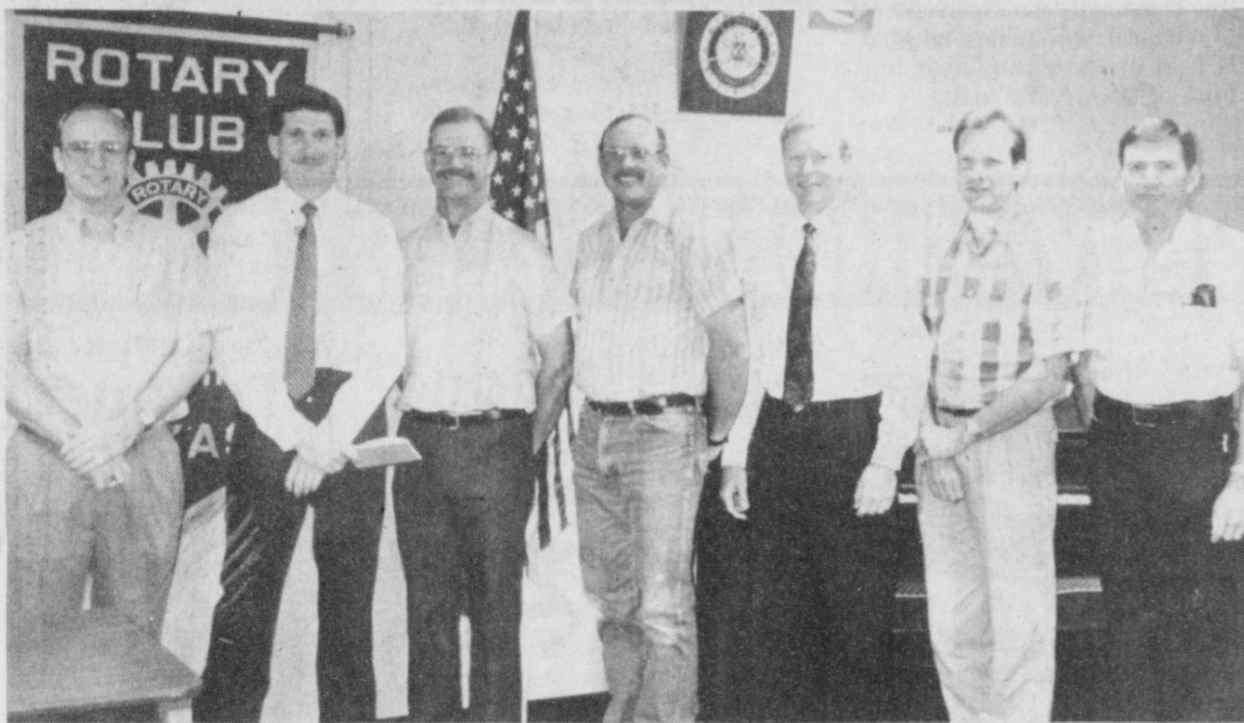
Vol. 70, No. 28

Published Every Sunday At Muleshoe, Bailey County, Texas 79347

Member
TEXAS PRESS
ASSOCIATION

20¢

Sunday, July 5, 1992



ROTARY INSTALLS OFFICERS--J.D. Cage, past District Governor of Rotary, made comments to the Muleshoe chapter of Rotary June 30. Cage gave the duties of each officer and asked for the members' support of their work. New officers are (left to right): Bret McCasland, president, David Tipps, vice president; Charles Moraw, secretary; Sam Harlan, treasurer; Mark Morton, Robert Lepard, Jerry Hicks and Don McElroy, directors. Following the installation McCasland spoke briefly about his goals for Rotary during the coming year. (Journal Photo)

- The Britannia -

The following is part two of The Britannia by Johanna Wrinkle. Day 3-Saturday

We went to sleep so quickly last night, but we were both up and down from midnight on. It will take a day or two to get into this time zone. Breakfast was served to the rooms in baskets. We had a hard roll, a croissant, orange juice, and an apple. We had a tea kettle for instant coffee or brewed tea in the room. It was good to not have to go downstairs for breakfast.

We left for our city tour at 9:00. We drove by the American Embassy, statue of Eisenhower, Ritz Hotel, Picadilly Street, Scotland Yard, Westminster Abbey, Parliament, Big Ben, statues of Churchill, Lincoln, Oliver Cromwell, and Richard the Lion-hearted. We drove across the Thames River and parked across from Lambeth Hall where the Archbishop of Canterbury lives while in London. We were able to get some excellent pictures of

Parliament and Big Ben. While here all of us purchased post cards, tea towels with London scenes, and other souvenirs. Jan wanted us to watch the practice of the Trooping of the Color (the annual birthday celebration parade of Elizabeth II). The bus dropped us off and we walked several blocks to The Mall. The guards were elegantly dressed in their red and black uniforms and lined the entire street to Buckingham Palace. I would guess the guards were every six feet on each side of the Mall. We watched the queen's carriage go by empty--she did not need to practice. Several bands went by in their splendid uniforms. The English policemen, bobbies, were everywhere and they are so well-mannered. Finally, we saw the person Jan said would be in the practice-Prince Phillip!! He came riding on a horse in front of a regiment. I was thrilled as I guess I am a "royalty watcher." The birthday parade is to be next Saturday, so I guess we had second best, but that's okay. We also saw Old Bailey and St. Paul's Cathedral during the morning. We ate lunch at Flannagens and had baked chicken. This was the first time that I have had the type of salad that we were to have several times. It was simply a boiled egg cut in half and covered in some type of mayonnaise, and on the plate, we had a few fresh vegetables.

After lunch we were on our own. Esther, Jane, Virginia, and I caught a cab to the British Museum after walking down Regent Street to shop for about an hour. I bought some Royal Doulton cereal bowls for two of my grandsons, Austin and Taylor, and for my minister's

daughter, Jordan. The rest of the Muleshoe group went to Westminster Abbey. The British Museum was an absolute thrill to me. I finally was able to see the treasures of Sutton Hoo, the burial ship that I have read about in our English literature book. We saw lots of ornate jewelry from the Celtic Period. This museum is like the Louvre in Paris; it would take days to see it all, so we saw several special things we wanted to see. Next we went into the manuscript section. Here we saw the original "Messiah" in the handwriting of Handel. We saw a book of poems in the handwriting of Emily Bronte. We saw the manuscript of Beowulf that was recorded in the year 1000 (I could only stand in awe! Just wish I had my English IV classes with me.). We next saw a copy of Canterbury Tales done in the fifteenth century. We saw the original copy of Jane Eyre in Charlotte Bronte's handwriting, a book of poems by Elizabeth Barrett Browning (also in her handwriting), and a handwritten copy of "Kulba Khan" by Coleridge. I just couldn't grasp all we saw in about two hours. We also saw one of the four original copies of The Magna Carta signed by King John June 15, 1215. Later we saw the place west of London where it was signed.

We were to meet at the theatre at 4:00 to see "Blood Brothers." It was truly good. The play is about a poor Irish woman whose husband left her whenever she was expecting her second child. She obtained a job as a housekeeper for a wealthy family. Soon the woman found she

Cont. Page 6, Col. 1

Tilt Fungicide Given Crisis Exemption

On June 1, corn farmers in Texas were granted a crisis exemption by the Texas Department of Agriculture to use the fungicide Tilt for control of Northern Corn Leaf Blight and Southern Rust.

Dr. Harold Kauffman, Disease Plant Pathologist from Lubbock, was in the Panhandle last week and found traces of the fungus in the Springlake and Earth area in Castro County. The Northern Corn Leaf Blight occurs when the corn is in early tasselling stage and has brown elliptical lesions on the leaf or leaflets, usually one to two inches in length.

In a statement issued by the Texas Department of Agriculture, it specified use of Tilt as follows:

* TDA hereby issues a crisis exemption of, as of this date and authorizes the use of propiconazole in food and feed grade corn for control of northern corn leaf blight and southern rust.

* TDA shall be immediately notified of any unexpected adverse effect resulting from the use of Tilt Fungicide under authority of this crisis exemption.

TDA also states that "Within 15

days from issuance of this crisis exemption, TDA will make application to EPA for an emergency specific exemption to authorize the use of Tilt Fungicide for the above noted purpose. This act will maintain the crisis exemption in effect until EPA renders a decision on the specific exemption application. TDA will immediately notify appropriate persons of any EPA decision affecting this crisis exemption."

King stated that when the TCPB office received the call from Dr. Gary Odvody of the Texas A&M Agricultural Experiment Station in Corpus Christi and from Dr. Richard Fredericksen of College Station alerting him of the problem, he immediately went to (EPA) registered label shall be followed.

* Tilt Fungicide may be applied at the rate of four (4) fluid ounces (0.1125 lb. a.i.) per acre in a minimum of 15 gallons of water per acre when ground application equipment is utilized or in a minimum of five (5) gallons of water per acre when aerial

Cont. Page 6, Col. 2

PUSH Expected Here July 12

A PUSH team will be in Muleshoe July 12 at the New City Park for a Puppet Show at 8:30 p.m. Everyone is asked to bring your blankets or lawn chairs, make yourself comfortable and enjoy a

fantasize presentation of what it's like to be a disabled in the community. This is good for young and older.

In early 1976, Pi Kappa Phi Fraternity began searching for a

Emergency Farm Loan Applications Being Accepted

Applications for emergency farm loans for losses caused by drought, freeze, flood and hail, from January 1, 1991 through December 31, 1991, are being accepted at the Farmers Home Administration (FmHA) office located at 115 E. Ave. D, Muleshoe. FmHA County Supervisor G. Lance Smith said today.

Bailey County is one of 23 counties in Texas recently named by Secretary of Agriculture Edward Madigan as eligible for loans to cover part of actual production losses resulting from the drought, freeze, flood and hail.

Smith said farmers may be eligible for loans of up to 80 percent of their actual losses or the operating loan needed to continue in business or \$500,000, whichever is less. For farmers unable to obtain credit from private commercial lenders, the interest is 4.5 percent.

"As a general rule, a farmer must have suffered at least a 30 percent loss of production to be eligible for an FmHA emergency loan," Smith said. Farmers participating in the PIK or Federal Crop Insurance program will have to figure in proceeds from those programs in determining their loss.

"Applications for loans under this emergency designation will be accepted until February 23, 1993 but farmers should apply as soon as possible. Delays in applying could create backlogs in processing and possibly over into the new farming season," Smith said.

FmHA is a credit agency of the U.S. Department of Agriculture. It is authorized to provide disaster emergency loans to recognized farmers who work at the relay on

farming for a substantial part of their living. Eligibility is extended to individual farmers who are U.S. citizens and to farming Cont. Page 6, Col. 4

Blood Drive Scheduled Thursday

Muleshoe Church of Christ along with United Blood Services of Lubbock will sponsor a blood drive Thursday, July 9 in the church's family room at 2201 W. American Blvd. Anyone who can is asked to take 45 minutes of their time and go by the church and donate between the hours of 10 a.m. and 7 p.m.

Two thirds of the men and women over the age of 17 are eligible to donate yet fewer than five percent of these healthy adults take time to donate blood.

Summer is often a time of blood shortages, as fewer people donate regularly during June, July and August, however blood usage does not decrease. Many people schedule elective surgery during the summer months and hospitals tend to see more accident victims.

University Medical Center in Lubbock will perform bone marrow and liver transplants for the first time ever during the month of July, increasing dramatically the need for blood. Each of the transplant surgeries can use more than 100 pints of blood.

For more information or to schedule an appointment, contact Carol Cox at 272-4396.

Local Girls Will Attend RYLA Camp

Two young women from Muleshoe, Stacie Harris and Jeanne Cox, will be attending Camp RYLA, July 12 through 17 at Camp Summer-Life in Vadito, N.M., along with 80 other young women from West Texas and the Panhandle.

Participants in Camp RYLA (Rotary Youth Leadership Award) are chosen for their leadership qualities shown in school, church and community activities, their scholarship and their excellent moral standards.

Camp RYLA is a youth program of Rotary International, sponsored by the 57 Rotary Clubs in District 5730. The camp provides an opportunity to make youth in the community aware of the great opportunities for service and accomplishment which they can achieve.

The objectives of Camp RYLA are to provide an atmosphere where future leaders will experience democratic living that will aid them in developing sound values, to promote an environment that will provide each individual with a basis of insight and understanding for intelligent leadership, to expose the youth leaders to some opportunities and challenges of life in a free democratic society, and to promote involvement that encourages the participants to think through and arbitrate conflicts of values.

Guest speakers and their topics for the camp include Margaret Keys, "Thinking on your Feet" and Getting It All Together"; Cindy Reece, "The Value of teamwork"; Phillip Walsh, "Individual

Differences", Ed Cooper, "Theory of Teen Court"; and Liz Lowery, "Controlling Your Life; Making the Choices Right".

Other guest speakers and their topics include Ralph McLaughlin, Rotary International Director, "Happiness" and Bilye McLaughlin, "Home Is Where The Heart Is."

Special seminars for the campers will be conducted by Kay Baker, a specialist in adult learning theory from Austin. Baker's seminars will include "Becoming a Pro: The Key to Professionalism," "The Art of Influencing People," and "Who Am I? A Style Inventory."



LIVE ENTERTAINMENT---Jana Stanfield was at Joe's Boot Shop Thursday providing live entertainment for shoppers inside as well as under the big tent. (Journal Photo)

around Muleshoe

Norene Pearson notified the Journal Thursday morning that the local Sears Catalogue Sales Store was only one of two stores in this area to close. The local store will close at the end of July.

At press time funeral services for Lola Clark, 83 of Sudan were pending with Ellis Funeral Home in Muleshoe.

Ms. Clark died at 9:45 a.m. Friday at Highland Medical Center in Lubbock following a lengthy illness.

Beginning today, Sunday, July 5, the Panhandle-Plains Historical Museum in Canyon will be open from 1 to 6 p.m.

"We have been considering the change for sometime, and decided that summer was a perfect time," said Diane Brake, interim director for the PPHM. "Our goal is to meet the needs of our visitors and this seems to fill a need," Brake continued.

Regular Museum hours are now 9 a.m. to 6 p.m. Monday through Saturday and 1 to 6 p.m. on Sundays. For information on special exhibits or events, the public is invited to call 656-2244.

Two students from Muleshoe were among the 390 spring graduate candidates who participated in the May 8 commencement exercises at Eastern New Mexico University, with 12 students receiving associate degrees, 328 receiving bachelor's degrees and 50 students receiving master's degrees.

Students with a cumulative grade point average of 3.8 to 4.0 graduated summa cum laude, while 3.7 to 3.79 grade point average students graduated magna cum

Cont. Page 6, Col. 6

Veterans Get Special Help From The SBA

The U.S. Small Business Administration (SBA) makes a special effort to help America's armed forces veterans get into business and stay in business, according to Walter Fronstin, district director of SBA's Lubbock office.

Although the majority of SBA loans are bank-guaranteed loans,

veterans are one of the few groups for which the SBA still has a direct loan program. SBA's direct loan program is available to Vietnam-era veterans and veterans with 30 percent or more disability. The maximum amount available to a veteran under this program is \$150,000. In FY 1991, the SBA made loans totaling \$16.1 million to Vietnam-era and disabled veterans, Fronstin said.

The SBA offers numerous business development and training courses for veterans, and most SBA offices around the nation have veterans affairs officers. The Veterans Affairs Officer in SBA's Lubbock District is William W. (Bill) Beauchamp, Fronstin said.

The SBA also sponsors special outreach training conferences for prospective and established business owners throughout the country. In FY 1991, the SBA conducted over 1,000 conferences for veterans.

Fronstin encouraged persons wanting more information about the SBA's services to veterans to contact Mr. Beauchamp at 1611 10th Street, Suite 200, Lubbock, TX 79401 telephone (806) 743-7462, or toll-free, 1-800-767-1005.

Richard Gephardt, House Democratic leader: "The president said the economy is getting better but the people don't realize it...unemployment is getting worse."

Three Way News by: Mrs. H.W. Garvin

George Tyson spent Tuesday night with his daughter, the Tommy Durhams in Lubbock.

The Bill Dolle family spent the weekend in Lakehoma attending a family reunion.

The community has received a lot of rain, hail and strong wind which is hard on the young grain crop. Most of the cotton is lost.

A wedding shower was held Saturday at the Three Way Baptist Church honoring Marcus Huff and Jodie Mapes from Lubbock. They plan on getting married July 7 in Lubbock.

Mr. and Mrs. Adolph Wittner visited her sister the Nitcher family Saturday evening.

Visiting in the Joe Sowder home are Mr. and Mrs. Norvill Stapp from Oregon, the Mike Stapp family from Arkansas and the Jack McCarty family from Logan, N.M.

The annual Sowder reunion was held at Muleshoe the past weekend.

Mrs. Nettie Quesenberry from Muleshoe spent Tuesday night with the Jack Lane family.

Saturday night the Stegall community received extensive storm damage from some tornado damage to some buildings.

Thorvald Stoltenberg, Norwegian Foreign Minister: "This is like a fairy tale coming true to see countries from NATO and the former Warsaw Pact making military strategies (together)."

Harold Morris, spokesman for Reformed Presbyterians: "The hope is that many will reaffirm their vows and renew their Christian commitment."

Patients in Muleshoe Area Medical Center

JUNE 30

Daniel Ramirez, Thelma Snodgrass, Victor Foss, Mae Wilterding, Wylie Lee, Iva Smith, Sally Toscano and baby boy Toscano, Robert Bureson

JULY 1

Mary Lopez, Thelma Snodgrass, Leticia Rivas, Robert B. Bureson, Victor Foss, Mae Wilterding, Wylie Lee, Iva Smith, Marisela Norez, baby girl Norez, W. B. Killingsworth

JULY 2

Mary Lopez, Thelma Snodgrass, Leticia Rivas, Robert B. Bureson, Victor Foss, Mae Wilterding, Wylie Lee, Iva Smith, Marisela Norez, baby girl Norez, W. B. Killingsworth

Courthouse News

MARRIAGE LICENSES

James Arvin Cunningham-Muleshoe to Shawna Gail Clark-Muleshoe

Billy Mike Thetford-Anton to Kimberley Dawn Gregory-Springlake

WARRANTY DEEDS

Bill Roberts, Walter Roberts, Elizabeth Cleveland and John Morcombe and Mary Alice Caldwell, independent executrix of the estate of June H. DePean Delvalle, deceased to Gene Caldwell-an undivided (1/2) interest of the estate of June H. DePean Delvalle in the following: beginning at a point (800') south of the NW corner of the (N 160) acres of Section (81), Block Y, W. D. and F.W. Johnson Subdivision (2) in Bailey County, Texas

J. D. Gleason and wife Margaret E. Gleason to J. D. Gleason and Barry Cowart DBA Muleshoe Animal Clinic-a 2.863 acre tract of land out of the NW/4 of Section 33, Block X, W. D. and F. W. Johnson Subdivision, Bailey County, Texas

Gleason, Inc. et. al. to Dr. Karlan Steve Kennedy and wife Sherri Lynn Kennedy-a 4.788 acre tract of land out of the NW/4 of Section 33, Block X, W. D. and F. W. Johnson subdivision, Bailey County, Texas

Velma L. Fried to Leonard Griswold and wife Bertha Griswold-a part of section 54, Block Y, W. D. and F. W. Johnson subdivision #2, in Bailey County, Texas

Doris Elaine Richardson to Bill Dupler and wife Patsy Dupler-the (S/2) of Lot (13), Block (1) of the original town of Maple, Bailey County, Texas

CIVIL MINUTES

Beverly Glee Sheton and Tommy Joe Sheton-DV

Karen Kay Barberi and Eugene Robert Barberi-DV

BCAD VS. Enrique Toscano-Judgment

Hoyt Glasscock, Dennis McCain, Emilio Ramon, Marlon Waldorf, Tom Hefner, Gary Spielman and Fry and Cox, Inc. VS Jeff Hobgood and Tommy Davis, DBA Davis Cattle Company-Judgment

BCAD VS Thomas G. Howard-Order of Dismissal

Riverside/Terra Corporation VS. Sherri Drake-Order of Dismissal

Bailey County Journal
Established March 31, 1963. Published by Muleshoe Publishing Co., Inc. Every Sunday at 304 W. Second, Box 449, Muleshoe, TX. 79347. Second Class Postage paid at Muleshoe, TX. 79347.

MEMBER 1992
TEXAS PRESS ASSOCIATION

I.B. Hall, Publisher
Sammye Hall, Vice-President/Comptroller
Evelene Harris, News
Joyce Adams, Society
Holly Mithag, Advertising
Diana Bernice, Classified
SUBSCRIPTIONS
Muleshoe Journal and Bailey County Journal
Bailey and surrounding counties
By Mail \$18.58
Muleshoe Journal and Bailey County Journal
Elsewhere
\$17.50
Muleshoe Journal and Bailey County Journal
By Carrier Yearly
\$14.00

Advertising Rate Card on Application
Advertisers should check their ad the first day of insertion. The Journal will not be liable for failure to publish an ad or for a typographical error or error in publication except to the extent of the cost of the ad for the first day of insertion. Adjustment for errors will be limited to the cost of that portion of the ad where the error occurred.

A&M FARM & RANCH OPEN EVERY SUNDAY 11 A.M. - 5 P.M.

<p>Hammerblow Trailer Couplers</p> <p>YOUR CHOICE</p> <p>2" Pipe, 2" Channel, 2" Round, 2" V-Shaped</p> <p>\$39⁹⁹</p> 	<p>SAE Class 2 Specification For Non-Passenger Carrying Trailers</p> <p>SAE CLASS 2 For gross trailer weights up to 3,500 lbs./1589kg</p> <p>2" Dutton Lainson</p> <p>Trailer Coupler \$15⁹⁹</p> 	<p>Acar Marine Jack With Wheel \$21⁹⁹</p> 	<p>Weld On Trailer Tongue Jack \$19⁹⁹ Disc Foot</p> 	
<p>Bulldog 2" Trailer Ball \$7⁹⁹</p> <p>With 1" Shank</p> 	<p>Universal Bolt On Hitch \$34⁹⁹</p> <p>#2263</p> 	<p>Tekonsha \$69⁹⁹</p> <p>ELECTRICALLY ACTUATED COMMANDER™ ELECTRONIC BRAKE CONTROL</p> 		
<p>Metal Connectors</p> <p>4-Way</p> <p>Socket \$5⁹⁹ Plug \$4⁹⁹</p> 	<p>REESE \$27⁹⁹</p> <p>#2563</p> 	<p>9010 COMMANDER \$79⁹⁹</p> <p>FOR 2 & 4 BRAKE TRAILERS</p> <p>It's simply the most advanced brake control on the market. The Tekonsha COMMANDER is the first electronic brake control engineered to work in complete unison with a low vehicle's braking system - without interfering on other vital electronic functions.</p> <ul style="list-style-type: none"> • Simple 3 wire hook-up makes installation a snap and virtually eliminates post-installation problems that may occur when interfacing with the electrical system. • Comes with three mounting options: traditional below-dash, Velcro™ for top of dash, or a handy dash-clip. • Quick release disconnect wire harness allows users to easily transfer COMMANDER to other vehicles or store out of sight for security. • LED horizontal bargraph display makes setting the gain and monitoring brake power accurate and easy. • Power Indicator LED tells you the COMMANDER is on and that there is a completed circuit. • COMMANDER eliminates false brake signals when manually trimming the trailer during a sway condition. • COMMANDER's unique Braking Sensor gives truly proportional braking power for smoother, safer stops and eliminates brake pulsing sometimes experienced with rough road conditions. • All mounting hardware and illustrated instructions included. No additional mounting parts required. 		
<p>Electrical Wire \$2⁴⁹</p> <p>16 Gauge Carded Black, Red, White, Yellow Card</p> 	<p>Tool Boxes \$79⁹⁹</p> <p>Pickup, Wide Bed or Compact</p> <p>DELTA</p> <p># 901 000, # 902 000</p> 			
<p>Fram CA 326 Air Filter \$3⁹⁹</p> 	<p>Fram PH8A Oil Filter \$2⁸⁹</p> <p>Fram PH13 Oil Filter \$3⁰⁹</p> 	<p>GRAND PRIX \$39⁹⁵</p> <p>Blue Battery</p> <p>65 Month Warranty Groups 22F, 24, 24F, 74</p> 	<p>Battery \$49⁹⁵</p> <p>Live One 75 Month Warranty Groups 24, 24F, 74</p> <p>* ALL BATTERIES PRICED WITH EXCHANGE</p> 	<p>CHROME PICKUP AND VAN MIRRORS \$19⁹⁹</p> <p>Peterson MFG. Co. #640 Each</p> <p>EURADA® SERIES</p> <p>Highly styled with a touch of the continental, Eurada® mirrors are unlike any others. Eurada® features new materials and unique innovations that put them years ahead of the competition. All arms are thin wall zinc die castings with highly polished chrome plate or matte black enamel. Precision molded mounting feet have unique features which enable Eurada® to mount on any door contour. Unique insert permits mirror head to be mounted inboard or outboard on mirror arm. Molded boot covers mounting ball for a finished look.</p> 
<p>Pennzoil 5W-30 Quart \$1²⁹</p> 	<p>Pennzoil 10W-30 Quart \$1²⁴</p> 	<p>TropArtic 30W Quart 89¢</p> 	<p>Havoline 30W Quart 99¢</p> 	<p>Havoline 10W-40 Quart \$1⁰⁵</p> 
<p>Pennzoil 10W-40 Quart \$1²⁹</p> 	<p>Pennzoil 30W Quart \$1¹⁵</p> 	<p>TropArtic 10W-30 Quart 95¢</p> 	<p>TropArtic 10W-40 Quart 95¢</p> 	<p>Havoline 10W-30 Quart \$1⁰⁵</p> 

A&M FARM & RANCH SUPPLY

3 AREA LOCATIONS

2600 Mabry Drive, Clovis, NM 1505-762-7717 | 1601 S. Ave. D, Portales, NM 1505-356-8543 | 1302 W. American Blvd., Muleshoe, TX 1806-272-5571

Monday - Saturday 7:30 am - 6:00 pm | Sundays 11:00 am - 5:00 pm

VISA MasterCard Discover

Panhandle-South Plains Fair Features Country Stars

The 75th, "Diamond Jubilee," edition of the Panhandle-South Plains Fair will feature a sparkling lineup of top country entertainers with Tanya Tucker, Sawyer Brown, McBride and The Ride and Hal Ketchum already booked for paid shows in Fair Park Coliseum.

J. D. Sumner and The Stamps and The Chuck Wagon Gang, two of the most popular groups in gospel music, will also be appearing. Fair officials are also planning to offer several free shows again this year, but details of those performances have yet to be announced.

Hal Ketchum, a Texas singer-songwriter who made a smashing debut with 1991's nationwide No. 1 single of the year "Small Town Saturday Night," will perform at 5 p.m. and 9 p.m. on Saturday, September 26-the fair's opening night. Ketchum's shows will be priced at \$10 for the early

performance and \$12 for the 9 p.m. show.

Ketchum followed up "Small Town Saturday Night" with "I Know Where Love Lives." Other hits include, "I Miss My Mary," "Long Day Coming," and "Past the Point of Rescue."

Appearing with Ketchum will be McBride and The Ride, a trio that debuted last year with the smash country singles "Can I Count on You" and "Same Old Star." Named the 1991 Top New Country Group by Cashbox magazine, McBride and The Ride is stepping into 1992 in a powerful way with the new MCA release "Sacred Ground."

Sawyer Brown will take the stage at 5 and 7 p.m. on Sunday, September 27. Both shows are priced at \$12.

This high-energy crowd pleasing group is in top form after the success of their most recent album,

"Buick" -- which many in the music business call their best yet. Sawyer Brown's stage show has been pleasing country fans for more than 10 years now with the band's unique style of funky acoustic guitar work and flamboyant fiddling.

Gospel sounds will fill Fair Park Coliseum on Tuesday, September 29, as J. D. Sumner and The Stamps and The Chuck Wagon Gang kick off their shows at 7 and 9 p.m. Both performances are priced at \$5.

J. D. Sumner is certified by the Guinness Book of World Records as the lowest bass singer in the world and is one of gospel music's most prolific songwriters. The Stamps have pioneered many great things in the music industry. They were the first gospel group to record on a major record label. In 1971, they

joined Elvis Presley's show and sang gospel music to millions. They were backup vocalists on all concerts and recordings until Elvis' death in 1977.

The Chuck Wagon Gang boasts a tradition of gospel music that began in the early 1930s. The tradition began in Lubbock with a daily live broadcast over KFYO Radio. The show was so popular the family moved to bigger audiences-being known to millions as The Chuck Wagon Gang on WBAP in Ft. Worth, one of the nation's largest radio stations. The Group has sold more than 30 million records. They have received numerous awards and honors, including being named the No. 1 Gospel Act in America by the National Disc Jockey Association and being inducted into the Smithsonian Institute as part of

its "Classic American Recordings."

They have been named the Gospel Group of the Year four times by the TNN/Music City News Country Awards Show including 1992.

Tanya Tucker will close out the fair with shows at 5 and 7 p.m. Saturday, October 3. Tuckers shows will be priced at \$10 for the early performance and \$12 for the 7 p.m. show. Tucker, now 32, has been a country chart topper since she recorded "Delta Dawn" at the young age of 13 with an \$1,100 stake her daddy won in Las Vegas.

In 1989, she became a mother, but motherhood hasn't slowed this "Texas Tornado," who still manages to make more than 200 concert dates a year. Her daughter, Presley Tanita Tucker, accompanies her on the road.

Tucker has recently hit the charts with such memorable tunes as "Strong Enough To Bend," "Love Me Like You Used To," "I Won't Take Less Than Your Love," "If It Don't Come Easy," "One Love At A Time," and "Oh What It Did To Me."

Mail orders for tickets to any of these shows will be processed daily

as received, according to Fair General Manager Steve Lewis. Tickets will not be mailed until August 10. He encouraged fans to order early for the best seats.

Show tickets, he stressed, do not include gate admission--which remains at \$3 for adults and children over 12 and \$1 for children 6 through 11. Children under 6 are admitted free.

For mail order tickets write: SHOW TICKETS, Box 208, Lubbock, TX 79408. Enclose a stamped, self-addressed envelope plus \$1 for handling charges.



Prepare your hearts unto the Lord, and serve him only.

1. To whom were these words spoken?
2. By whom were they spoken?
3. What is their meaning?

- Answers:
1. The children of Israel.
 2. By Samuel, the prophet.
 3. That while God wants the heart of love, he also wants the hand of service.

Ultraviolet Light May Cause Eye Disorders

The sun's ultraviolet (UV) light causes skin damage, but it may also be linked to age-related eye disorders, say researchers at Baylor College of Medicine in Houston.

"Understanding how ultraviolet light ages cells in the eye may help doctors treat disorders such as cataracts and macular degeneration, two major vision disorders that can be age-related," said Dr. Laurence Rapp, assistant professor of ophthalmology at Baylor.

Rapp is measuring the effect of UV-A light in the eyes of rats. Cells in the retina of the eye are examined to evaluate damage and to

determine the influence of that light on the aging process. Rapp says this research may also answer some questions about one of the mechanisms which may be involved in aging called oxidation.

When oxidation occurs, cells lose the ability to break down matter which leads to a buildup of material known as 'debris.'

"The debris buildup caused by oxidation may cause several age-related problems in the eye such as detachment of the retina, hemorrhaging and cell death," said Rapp.

"If we can learn how UV-A light enhances this process, we may be able to treat these and other disorders of the eye in earlier stages."

There are three bands of ultraviolet light called UV-A, UV-B and UV-C. Only two of them, UV-A and UV-B, penetrate the earth's protective ozone layer.

Rapp suggests sunglasses with full UV-light protection. "Your ophthalmologist can tell you if a pair of glasses properly blocks out the harmful rays. Sunglasses with 100-percent UV-light protection may help lessen the risk for age-related vision problems."

Nursing home News

by: Joy Stancell

Sunday afternoon the Progress Baptist Church came for church services and fellowship.

Tuesday afternoon Laverne James, Beverly, Wagon, Claudine Embry, Bonnie Green, Lynda Low, LaRonda and Jordan came to shampoo and set the ladies' hair and assist in the beauty shop. Mandy Edwards and Shelby Murphy gave manicures.

Wednesday morning Buster Kittrell and Melvin Griffin hosted the Men's Coffee Time.

Our thanks to the Truth Seekers Sunday School class of the First Baptist Church for their donation to the Activity Fund.

Janetta Hukill was visited by her niece Charlene Wednesday morning.

Our thanks to Joann Davenport for re-stocking our fish aquarium. We are really pleased over our new addition.

A special thank you to all the Willing and dedicated Volunteers who "carried on" while I was away on vacation and to Thursie Reid and Mandy Edwards. You all are truly selfless people. Thank You.

The Family Support Group will meet Monday, July 13 at 7 p.m. in the Conference Room. They need you to come and be a part of this "Caring and Sharing."

Happy July birthday to Arvel Robertson 7-11-93, Cordie Claunch 7-12-09, Ella Faubus 7-29-98, Blanche Awbrey 7-2-06.

The Needmore Community Club will host the monthly birthday party Thursday, July 23 at 3:30 p.m. We invite you to come and join the celebration.

Wylie Lee and Victor Foss are in the local hospital. Get well, soon. We miss you.

Have a happy and safe 4th of July holiday.

Thank You A.A.R.P. for your donation to our Activity Fund.

Mamie Askew was visited Wednesday by her grandson Kenneth Splawn and his family-also her daughter Irene Splawn. They enjoyed playing a game of Skip-Bo together.

Paul Poyner and J. P. Shelburne visited Leonard McCormick this week.

Youth Programs Underway

In an effort to serve more young Texans in search of summer work and work experience, the Texas Department of Commerce is launching the Career Exploration Opportunities program, or CEO. By allowing participants to "work" at Commerce, CEO is making available more opportunities and work experience for area youth.

CEO consists of two programs: the annual Summer Youth Program, sponsored by Service Delivery Areas; and Commerce's exclusive "Shadow Program."

During the two-week shadow program, student relative of Commerce staff members will be exposed to a professional work environment, gaining insight into their career paths. One example is a high school junior considering a law career who will be "working" in Commerce's Legal Division four hours a day. These non-paid positions benefit both the participants and the agency.

"The CEO program offers students valuable exposure to a real work situation," says Executive Director Cathy Bonner. "The lessons learned in this workplace classroom are important job skills that every student needs. It's a win-win situation for both the students and the agency," she adds.

The halls of Commerce will also be filled with the JTPA participants. These students will spend four hours a day for eight weeks in paid positions at Commerce. They are expected to

be trained and to work in actual jobs, including high skill positions such as those in Commerce's Accounting Office. The hands-on experience they gain will benefit them with future job opportunities. Businesses and companies joining Commerce in accepting JTPA students also benefit from the program.

"The CEO program is designed to provide business and industry with entry level employees who see 'real world' relevancy to their jobs," says Gina Starr Hill of Commerce's Work Force Development Division. "Our aim is to give businesses someone who has already experienced the aspects of a job that go far beyond a paycheck," she adds.

Commerce is the only state agency participating in the shadow program, and is, for the first time in two years, accepting JTPA students in the Summer Youth Program.

More than 33,500 Texas youth will be assisted through the Summer Youth Program statewide. The successful annual program is a cooperative effort between Texas schools and public employees, along with SDAs. Youth ages 14-21 deemed economically disadvantaged are eligible to participate.

The program kicks off June 15 and will continue through August. For more information, contact the Texas Department of Commerce Work Force Development Division at 512-320-9800.



TRACTOR TIRE SALE



Farm Utility Tire

- Can be used as wagon tire or front tractor tire.
- Floats across difficult, wet fields.
- Wide load area means minimum ground compaction.
- Rugged 3-T cord body.

\$57⁵⁰
9.5L-15 TL 8 ply



Dyna Torque Radial

- Revolutionary three-lug/pitch design improves traction and ride.
- Computer-designed "natural" shape casing improves tire body life.
- Radial construction provides better traction, lower fuel and overall costs.

\$595.00
18.4R-38 1 star



Dyna Torque II

- Excellent traction with long-bar, short-bar lugs.
- Designed for improved stability and roadability, plus reduced vibration.
- High-strength polyester cord body and heavy-duty rim shield help protect tire from damage.

\$490
18.4-38 6 ply



Four Rib

- Uniform pressure distribution for on-road mobility important for higher horsepower tractors.
- Positive steering.
- Bruise-resistant nylon cord.

\$97⁵⁰
10.00-16 6 ply



Mike & Terri Hahn
invite you to come by
and make your tractor
tire selections with us.



James Crane Tire Co.

GOODYEAR





Mike Hahn 272-3594 322 N. 1st. Muleshoe, Tx. 272-4594 Mobile 946-7501

Kelly Conklin and Heidel United In Marriage

Miss Kelly Kay Conklin became the bride of Richard Mark Heidel in a double ring ceremony at 7:30 p.m., June 6 in the First Baptist Church of Muleshoe. Vows were read by Rev. J.P. Manley, youth minister of First Baptist Church, Beeville.

Parents of the couple are Norris and Beckye Conklin of Muleshoe, Bert Heidel of Lubbock and John and Pauline Heidel of Lamesa. Grandparents of the bride are Mr. and Mrs. Raleigh Mason of Muleshoe and Mrs. F. N. Conklin of Melrose, N.M. Mark's grandparents are Heywood and Leona Heidel of Lovington, N.M., Beula Moore of Alpine, and Mr. and Mrs. John Fulton of Lovington.

Vows were exchanged before an altar surrounded by fresh lighted plica trees. Dual spiral candelabra were adorned with fresh florals using the bride's chosen colors of mauve and celestion green. On each side of the altar were stairstepped Grecian pillars holding baskets of rubrim lilies, gladioli, snap dragons and fresh greenery.

The bride entered the sanctuary escorted by her father. She was wearing a white gown by Bonnie. The sheath gown featured a wedding band collar trimmed with lace and pearls. The bodice and skirt were heavily applied with lace and iridescent sequins and pearls and the open back displayed rows of

draping pearls. The chapel length train was caught by a Shantung bow at the hip. It featured continuous layers of crystalline organza ruffles as did the short sleeves of the dress. To complement the dress the bride chose a simple waist length veil. The double crown was composed of silk flowers and a solid band of pearls. The bridal bouquet was a cascade of white roses, tulips, stephanotis freesia and were intertwined with shooting pearls.

Amber Green of Muleshoe served as maid of honor. Matron of honor was Sheryl Sullivan, aunt of the bride, of Waxahachie. Bridesmaid was Lisa Noble and bridesmatron was Fran Hamilton, both of Muleshoe. They wore identical two piece suits of celestion green with scalloped shawl collars of white handkerchief linen. They carried cascades of mauve roses. Hailey Ann Hamilton, a special friend of the bride and groom, served as their flower girl.

Russ Sanders of El Paso served the groom as best man. Groomsmen were Pat Brink of Houston, Royce Hamilton and Mason Conklin, both of Muleshoe.

Ushers were Wade and Jarred Watson of Lamesa. Also serving as ushers were Jason Sullivan of Waxahachie and Matthew Conklin of El Paso.

Candlelighters were Chelsey Conklin of El Paso and LeEdna

Jacobs of Clovis, N.M. The candlelighters and flower girl wore floral print dresses in mauves and celestion.

Music for the ceremony was provided by Jeremy Bruns, Alan Finney, Sheryl Sullivan and Mr. and Mrs. Bary Moynihan.

A reception followed in the fellowship hall. The bridal cake was a four tiered French vanilla cake with Bavarian cream filling. Each tier was embellished with fresh florals and on the top tier stood a porcelain music box. The groom's cake was red velvet with chocolate frosting in the shape of Texas Tech. Punch, fresh fruit and cream puffs canapes were also served.

After a European honeymoon, the couple will be at home in Lubbock.

Kelly is a 1990 graduate of Muleshoe High School. She is currently a Junior at Texas Tech, majoring in Music Education.

The groom is a graduate of Lamesa High School and a 1986 graduate of Tech. He also holds a Master's degree in Music from Texas Tech. He is the band director in Levelland.

Out of town guests came from Lamesa, Lubbock, San Angelo, El Paso, Midland; Clovis and Lovington, N.M.; San Francisco, California; Silverdale Washington; and Casino, Australia.

Rebekah Lodge

By Ina Wilemon

On June 30 Noble Grand Mary Ann Ramirez opened lodge with Patsy Chance, chaplain, giving the opening prayer. Mickey presented our flag. Ruby Green, protom secretary, read the minutes of last session, some bills were read and all approved. Roll call of sixteen members were present. We missed you that were not present.

Ruby Green, District Deputy President and staff will install Friona officers in Friona Monday evening and Muleshoe officers Tuesday evening in Muleshoe.

We will have pot luck before lodge opens July 7.

Mickey and Ina served refreshments. Patsy gave the closing prayer. To each have a most wonderful and safe holiday.



Christopher Samuel Toscano

Fabian and Sally Toscano of Muleshoe announce the birth of a son, Christopher Samuel Toscano. The child was born June 30 at 4:30 a.m. in the Muleshoe Area Medical Center. He weighed 8 lbs., 3 oz. The Toscanos have one other son, Fabian, Jr.

Grandparents are Fermin and Mary Rosas and Frank and Lupe Toscano, all of Muleshoe. Great grandmother is Rosa Toscano of Muleshoe.



One can microwave grilled cheese sandwiches easily and quickly.

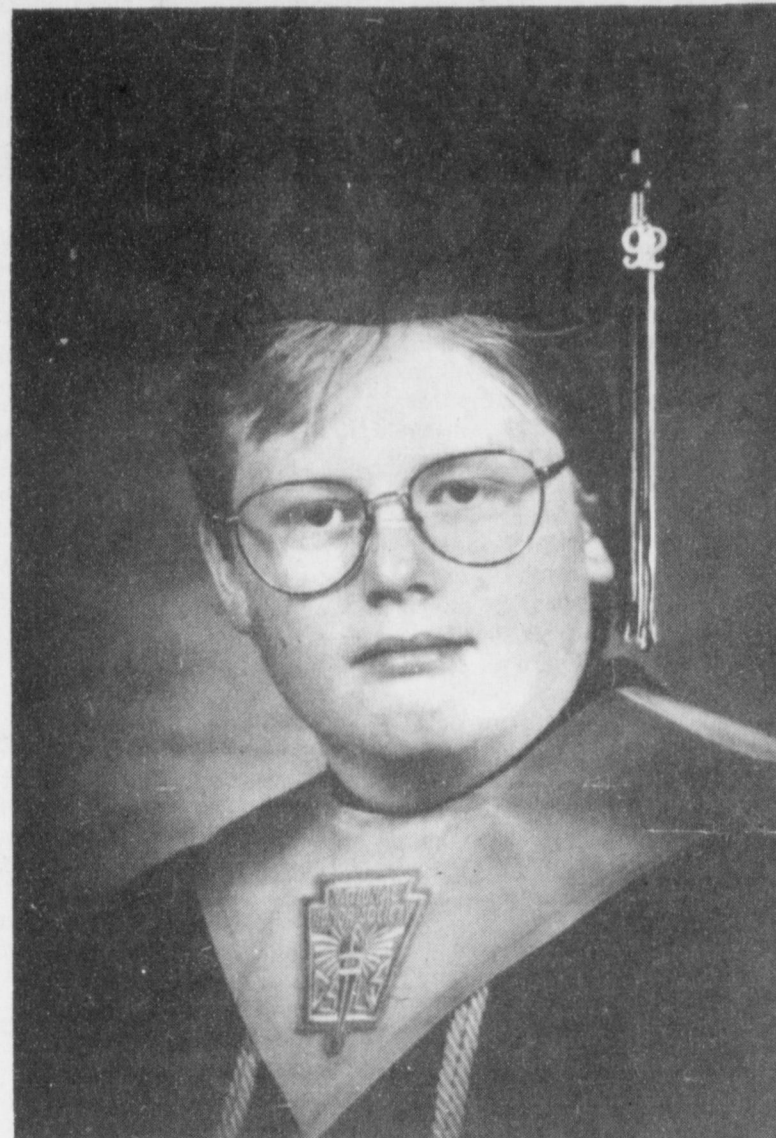
Preheat a browning dish on High and place sandwiches (battered on outside) in it for prescribed time.

Cook half time and then flatten with spatula. Turn sandwiches over and cook until cheese begins to melt. Let stand for about half a minute after microwaving.

There are a surprisingly large number of good fishing days.

Not everyone who demands tolerance is willing to practice it.

The idea that wild animals live at peace is not to be relied upon.



Virgil Snell

Snell Awarded Scholarship From Western Texas

Virgil Snell, a recent graduate of Muleshoe High School, has been awarded a \$1000 scholarship from Western Texas College in Snyder. Virgil is a 1992 graduate with a grade point average of 3.7. Virgil was an honor student graduating 14th in his class. Virgil received a \$400.00 scholarship from the Western Texas College Housing Department and another \$600 from the Drama Department of Western Texas College for his scholastic achievements.

Virgil plans to become an actor. He has participated in one act plays throughout his high school years.

He has received numerous awards for his part in the plays. He had the privilege of going to Austin for state competition each year with the one act play. While in high school Virgil was actively involved with the Future Teachers of America, Student Community Action Club, and was a member of the National Honor Society.

Virgil is the son of John and Della Snell and has a brother Terry Snell, all of whom are members of Calvary Baptist Church. Virgil will perform this year in the Mule Plex Production "The Butler Did It."

Opportunities Given For At-Risk Students

In an effort to enhance learning opportunities for At-Risk students, Sudan I.S.D. has joined other districts in Bailey, Cochran, Hockley, and Lamb Counties in forming an alternative high school. Beginning August 17, PEP (Prepare and Educate with Pride) School, located in the former Pep School facilities in western Hockley County will serve students from ages 14 to 35 who have dropped out of school or who are at risk of dropping out of school. These students, who are enrolled in grades nine through twelve at PEP, will have the opportunity to obtain a GED certificate or work for a diploma from their home district when they have completed twenty-one credits.

Classes in the core curriculum of English, math, history, and science will be taught in both a block time

schedule and self-paced schedule using computers or modules. To serve students who are parents, a day care facility will be available which will be combined with Parenting and Child Development Classes. Food Production, Building Trades, and Auto Mechanics classes will also be taught.

Future plans are to expand the vocational courses available in order to give students an introduction to several potential career choices. Through the integration of vocational and academic courses, the students will have opportunities to expand their knowledge base. Transportation will be furnished by the home district. If you or your child(ren) are interested in enrolling in PEP School, please contact Buddy Lowrance at Sudan High School, Call 227-2336.



Charlotte Campbell

Tops Club

TOPS Chapter No. 34 met at the Muleshoe Church of Christ Thursday, July 2 at 6 p.m. Leader Laverne James called the meeting to order. The TOPS pledge was recited and the fellowship song was sung. Mrs. James led the group in a prayer.

Betty Jo Davis, weight recorder, called the roll with 17 members answering with the amount they had lost or gained. Minutes of the previous meeting were read by Aurora Mata, secretary, and were approved as read. Ruth Clements, treasurer, gave the treasurer's report. Ernestine Steinbock was named best loser for the week. Runners up are Charlotte Campbell, first runner-up and Carolyn Stancell, second runner-up.

Monthly best losers were Aurora Mata, best loser; Ruth Clements, first runner-up and Tommie Fulcher and Alene Bryant, second runner-up.

Charlotte Campbell was crowned our six month best loser. The meeting was adjourned with the singing of the good night song.

If you want to live a long time, maintain the will to live—it's better than medicine.

30 Color Photos

\$11.99

- 1-10x13 (Wall Photo) 99¢ Deposit
- 1- 8x10 11.00 Due at Pick up (plus tax)
- 2- 5x7
- 2- 3x5
- 16-King Size Wallets
- 8-Regular Size Wallets



AT

Anthony's
Thursday, July 9
9 a.m. - 6 p.m.



Shugart's inc.

Group charge 99¢ per person



Tankersley's

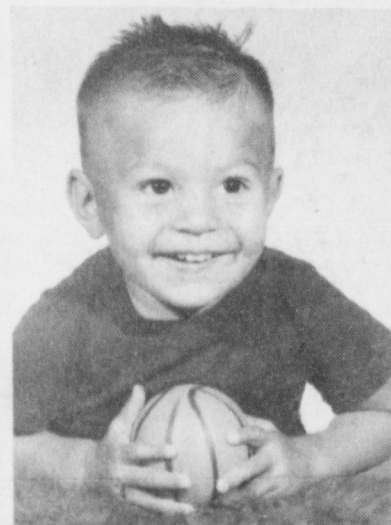
"SUMMER SPECTACULAR"

UP TO 50% OFF WOMEN'S

- Dresses
- Shoes
- Sports Wear
- Handbags
- Skirts



306 Main
Clovis
762-0362
762-0017



You Were Such A Pretty Baby... But Look At You Now!!
Happy 25th
From All Your Family

Summer Time Specials

Jewelry, Purses, Cosmetics
Ladies & Children's Clothes

Spring & Summer

25% to 50% off
Latrell's Fashions

Phone 272-3459 1519 West American Boulevard
Open Daily 10:00 a.m. - 6:00 p.m.



VOLUNTEER HONORED--Melvin Griffin, at left, volunteer at the Muleshoe Area Healthcare Center, was honored recently for his extra dedication in assisting residents of the Center. Griffin celebrated his birthday July 4. He is shown here with resident Johnny Rios. (Journal Photo)

Hobby Club

Muleshoe Hobby Club met at 2 p.m. Thursday, July 2 in the Senior Citizens Complex.

Jane Williams presided over the meeting. The meeting opened with a roll call with six members present. Those present included: Jane Williams, Hazel Reeder, Glenda Morris Frances Bruns, Mattie Benton and Laura Mae Stansell. Two visitors Tylor and Trent, grandsons of Frances Bruns, were also present.

Minutes of the previous meeting were read and approved.

Since today (Thursday) was Blanche Aubrey's birthday, Jane Williams, Hazel Reeder, Frances Bruns and Laura Mae Stansell went to visit her in Muleshoe Area Health Care Center.

Mattie Benton drew the hostess gift, which was a towel and picture frame. Hostess for the July 16 meeting will be Laura Mae Stansell.

Lemonade, punch, peanut butter and crackers and cookies were served.

Cold Shoulder

When the frost is on the pumpkin.

When the chill is in the air.

When I feel the lures of the crisp outdoors.

I stay in my rocking chair.



FAMILY MEMBERS VISIT--Ruth and Dee Clements had three of Clement's sisters visit in their home last week. (From Left) June Leach and Faye Trout, both of Graham, Dee Clements; and Beatrice Stennett of Cisco

In Fashion

Classic outfits, in simple lines and of the same color, should be a part of the well-dressed woman's wardrobe because they have a look that lasts for more than one season.

This wardrobe can also be very versatile by using the skirts and pants with trendy color combinations for casual wear.



SMILES

Straightened Out

Stranger: When does the five-fifteen leave?

Train Man: At a quarter past five.

Stranger: Thanks. I get all mixed up over this changing of time.

NOTES, COMMENT

Few astronomers are atheists.

The world is literally yours for a smile.

Sunshine friends can rarely stand the heat.

Listening is usually smarter than talking.

Memory is the product of intelligence and work.

Creative Living

by: Sheryl Borden

Information on safe toys, dietary supplements and home lighting will be the featured topics on "Creative Living" on Tuesday, July 7 at 12 noon and Saturday, July 11 at 2 p.m. (All times are Mountain.) "Creative Living" airs on public broadcasting station, KENW-TV, from Eastern New Mexico University.

Debbie Pollard, Palmer County Extension Service Home Economist, will talk about age-appropriate toys. She will also give some examples of what to look for and what to avoid when purchasing toys. Ms. Pollard is from Farwell.

Dr. Keith Wheeler, representative of Ross Laboratories, will discuss some of the dangers of food supplements and diet aids. He will also talk about the importance of vitamins, minerals and fiber. Wheeler is from Columbus, OH.

Vickie Watts, Marketing Home Economist with Southwestern Public Service Co., will demonstrate a lighting bar that shows many different types of lighting that are now available to consumers. Ms. Watts is from Roswell, N.M.

On Tuesday, July 7 at 9:30 p.m. and on Thursday, July 9 at 12 noon "Creative Living" will present information on different uses for tea and programs for recycling disposable diapers.

Marie Rama, representative of the Tea Council, will demonstrate how tea can be served in different ways for different occasions. Ms. Rama is from Mt. Vernon, NY.

Dr. Bill Sammons, pediatrician and representative of the Diapers Manufacturers Group, will discuss some pilot programs throughout the country that are designed to compost or recycle disposable diapers. Sammons is from Charlotte, VT.

"Creative Living" is produced and hosted by Sheryl Borden. The show is carried on more than 100 PBS stations in the United States, Canada, Guam and Puerto Rico and is distributed by Pacific Mountain Network, Denver, CO. Viewers can request copies of materials offered on the show by sending one 29 cent stamp for each handout requested. Send the stamps, along with your name, address and booklets requested to: "Creative Living" Requests, KENW-TV Station 52, Eastern New Mexico University, Portales, N.M. 88130.

Words of Wisdom

Wisdom is knowing what to do next, skill is knowing how to do it, virtue is not doing it.

-Tribune, Chicago.

For Your
Mary Kay Cosmetics
Josie Flowers
272-3865
8 a.m. - 12 noon
& after 6 p.m.

S' ANTHONYS SCHOOL

NO DOWN Payment Layaway Sale

Starts Today!

Save on the best selections of back-to-school fashions with no payments until August 2nd.

Lee® Denim Jeans for Juniors

\$19.99
Save \$10

Keds® Canvas Sneakers for Women & Girls

\$16.99

Levi's® 550® Jeans

\$17.99
Boys Sizes 4-7 \$19.99
Sizes 8-14 \$21.99
Men's 29-38 \$27.99

Levi's® 501® Jeans for Men

\$22.99
Blue or Black Stonewash 501s \$27.99
Limit 6 per customer.

Saturdays® Shirts for Men

\$12.99
Solids
Stripes . . . \$15.99
SAVE UP TO \$8

We Will Be Open On Sundays!

Tankersley's

"SUMMER SPECTACULAR"

UP TO **50% OFF**

MEN'S

Suits Sport Coats Slacks
Shoes Shorts Dress Shirts
Knit Shirts Robes



306 Main
Clovis
762-0362
762-0017

--The Britannia--

Cont. Page 6, Col. 1

was to have twins. The wealthy woman prevailed upon her to let her have one of the twins. She did, and then later the two boys met and become great friends, fall in love with the same woman, and ultimately died tragically. The actors and actresses were tremendous and received a lengthy standing ovation.

After the play, we went back to the hotel (about 7:00). Some of the Kentucky group had tickets for another play that night. The rest of us asked Jan if she could recommend a good place for fish and chips. She said "Sure, I'll walk you there. It's only a short distance." Well, the distance to walk for American tourists and an English tour guide has two different meanings completely. But to make a long story short, we finally got to the Seafresh Restaurant, and, yes, the fish and chips were heavenly. As we walked, we went by the Scandic Crown where we stayed in 1990. Many beautiful pubs were on all the corners as we walked to the cafe. Then, of course, we had to walk back after the fish!! But we were well fed and definitely needed to walk some more. This proved to be a long, busy, wonderful day. No one tarried long to say good night and Esther and I were back in our room by a little after 9:00.

Day 4-Sunday

We had the same breakfast as yesterday. It was really nice to have coffee in the room as soon as we were up. Today was also a free day but we all asked Jan about the Tower of London. We left the hotel at 9:30 for the Tower, going in the "tube." Jan, our tour guide, took us on a tour of the tower then we were on our own for a while. Naturally the most important place to see was the crown jewels. First we went through a room filled with swords, gold punch bowls, serving dishes of every type, and examples of clothes, the most outstanding was the royal robe worn when Elizabeth II was crowned. Then we went down the stairs to the vault. Diamond bracelets, brooches, crowns, etc. filled the glass-encased display. The main interest of each visitor was the sceptre with the 530 point Star of Africa diamond on top. The crown has 2800 small diamonds, then dozens of large rubies and emeralds. The guards keep the viewers moving along quickly, but a person can go around it again--which we did. After leaving the crown jewels, we walked along "Elizabeth's walk" where Elizabeth I was imprisoned before she became queen. We went to the apartment where Sir Walter Raleigh was imprisoned from 1603 until 1616. We also saw the Changing of the Guard at the Tower. It is not as elaborate as the one at Buckingham Palace. The

PUSH...

Cont. Page 6, Col. 1 with disabilities. The innovative program teaches our youngest citizens what it's like to be 'differently-abled.'

During the trip across America, the team also participates in many special events created to support the local efforts of allied organizations. Whether it is a benefit barbecue or "PUSH America Day" at a Major League Baseball game, these events raise awareness of the good work provided by many organizations serving the disabled.

"With your help, this summer's 'Journey of Hope' can be an even bigger success," said Nancy Kidd. "Will you join the PUSH America Team and Go the Extra Mile for some very special kids."

Yeoman Warders wear dark blue for everyday dress and red for formal.

William the Conqueror defeated King Harold in October of 1066 and he was crowned king of England on Christmas day of 1066. He had construction started on the fort, now known as Tower of London. Through the years it has served as an arsenal, a prison, and now a museum and tourist attraction. Many kings have been added to the original fort. Anne Boleyn (second wife of Henry VIII) and Catherine Howard (his fifth wife) were both put to death here. Six ravens live at the Tower and the superstition is that if the ravens leave, the kingdom will fall. So to prevent the ravens from leaving, the wings are clipped. The problem created by this is that ravens mate in the air so if they can't fly, they can't mate. In 1989 one raven was hatched, and in 1990 five were, so apparently they are managing to mate.

After leaving the Tower at noon, we rode down the Thames to Parliament on a boat. This took about thirty minutes. Jean and Sammy went with Jean's grandson, John, who had been going to college in London and the rest of our group rode the tube to Kensington Heights to tour the palace. We walked about five or six (long) blocks to the Palace. It cost about three pounds seventy-five pence, or about \$7.50 to enter. First we viewed a fabulous collection of clothes from the last 300 years, plus the wedding gown of Princess Diana. Here we saw a portrait of Queen Elizabeth wearing the robes and the crown and holding the sceptre that we saw earlier today at the Tower. We came out of this part and went up the stairs and toured the state rooms of the Palace. Queen Victoria lived here when she learned that she was to be queen. We saw her bedroom where she lived and also saw the bedroom where she was born. We then went to the Orangry (on the grounds of the palace) for tea. I had scones with "clouted cream" and strawberry jam. --Was delicious. While we were sitting there we saw Jean, Sammy, and John. They had been to St. Paul's Cathedral. After tea we walked down the side of the park and took a bus to Hyde Corner. I might add that Kensington Park is extremely beautiful. Dozens of Londoners were walking about enjoying the sunshine. We then walked down Grosvenor Street until Buckingham Palace Road. I just walked my

Fungicide...

Cont. Page 6, Col. 1

application equipment is utilized. * Application of Tilt Fungicide may be initiated when symptoms of either northern corn leaf blight or southern rust first appear. If needed, subsequent applications may be made on a 7-14 day schedule.

* Use of Tilt Fungicide under authority of this crisis exemption is subject to the following limitations:

* DO NOT enter Tilt treated corn fields within 24 hours following an application

* DO NOT apply more than 16 fluid ounces of Tilt per acre per season.

* DO NOT allow domestic livestock to graze or feed on Tilt treated forage, fodder or straw.

* The product Tilt Fungicide (EPA Reg. No. 100-617), manufactured by Ciba-Geigy Corporation, may be used. All applicable restrictions, directions, and precautions on the Environmental Protection Agency

group to death!! Our hotel was just across from the Mews--the place where the horse guards leave for the Changing of the Guard. We had about an hour before dinner.

At 6:30 we walked to the restaurant. Some took a taxi. For our appetizer, we had an English muffin topped with sour cream and a slice of smoked salmon with a "dab" of Danish caviar. Tonight we had baked chicken, potatoes, green beans, and purple cabbage. Dessert was strawberry cream crepes. It was a really delicious meal. Did not have as many complaints tonight as Friday night. Some of the group walked back but Esther and I and three more took a taxi back to the hotel. Whenever several of us took taxis, the ride was always less than

a pound per person. Our hotel here has been nice. We had a hair dryer, two telephones (one in the bathroom) a kettle for tea and coffee, and a pants press. Our bath towels were enormous. We had another long and wonderful day. We are to leave at 8:30 in the morning.

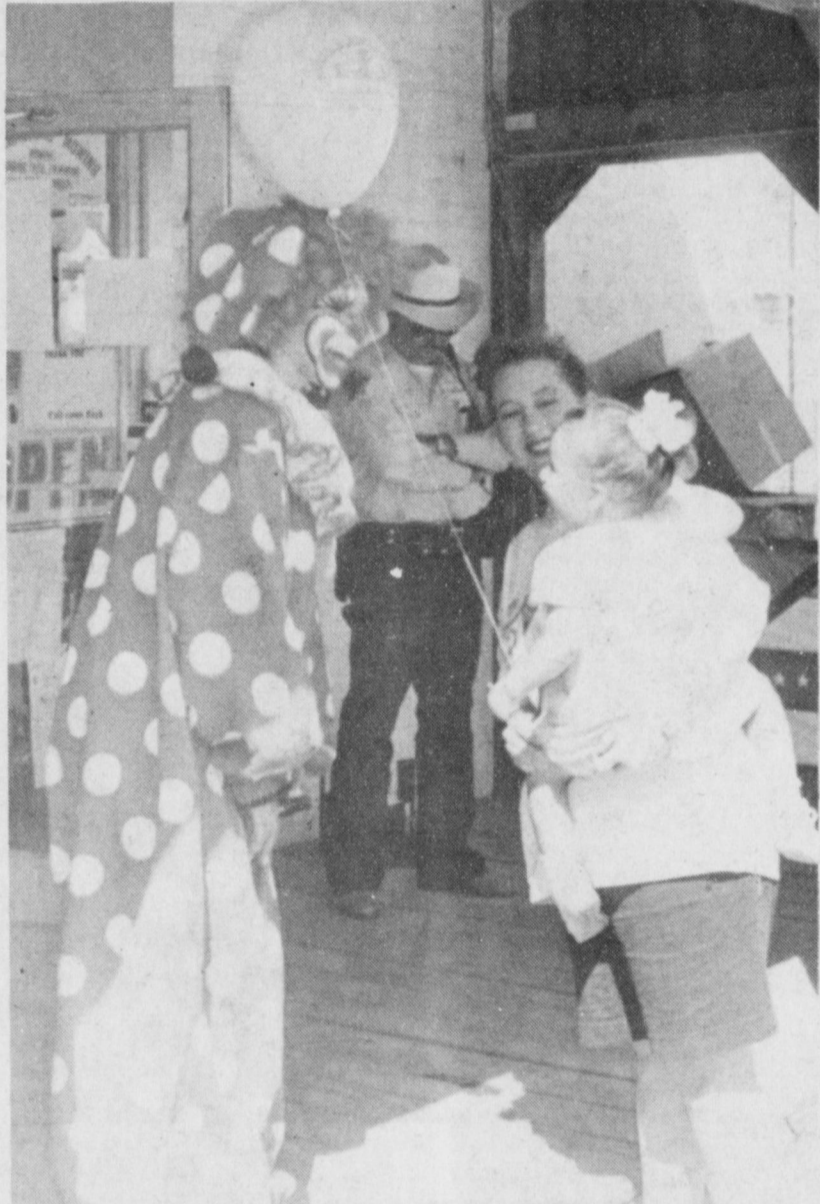
The Britannia will continue with Day-5 in Thursday's edition of the Muleshoe Journal.

Loan...

Cont. Page 6, Col. 1

partnerships, corporations or cooperatives in which U.S. citizens and a majority interest.

The FmHA office in Muleshoe is open from 9 a.m. to 5 p.m. Monday through Friday.



JUST CLOWNING AROUND---This clown visited and entertained youngsters at Joe's Boot Shop over the weekend. The clown gave this unidentified youngster a balloon. (Journal Photo)

Kiwanis News

By R.A. Bradley

Ten Kiwanians, one honorary Kiwanian and Sweetheart, Tiffany "Who" Angeley met this Friday morning at the Dairy Queen for breakfast. It was sure good having Sweetheart Tiffany back. Tiff has her car back again. We won't say what happened to her other car but she sure is happy her brother is buying this one for her. All kidding aside, Tiffany, it was good to see you this morning. We have sure missed you. Be sure and look for Tiffany in the parade. She is so pale, we think she needs to get out in the sun some.

No program this morning, just discussion over what would be going on over the 4th and where everyone needs to be. The Kiwanis Club will start the 4th off by putting out flags all over town at 6 a.m. Come by and eat breakfast

with us starting at 7 a.m. and continuing until 10 a.m. at Higginbotham's. Pancakes and sausage \$2.00 all you can eat, coffee or orange juice 50 cents. Come by and support the Kiwanis Club. Be sure and come by our Fireworks Stand just west of town. Big discount on all fireworks today. No reasonable offer refused!

We wish everyone a fun filled Fourth of July. Make it a safe one. Be careful where and how you shoot your fireworks.

Muleshoe...

Cont. From Page 1

laude. Cum laude graduates must have a 3.6 to 3.69 GPA. Students with a 3.25 to 3.59 GPA graduated with "honors."

Graduates include Linda Gail Ruthardt Burris with a bachelor of science degree in social studies, magna cum laude and William Joseph Savuto with a bachelor science degree in computer science.

Paying compliments is one sure way to insure quick popularity.

JONES
PONTIAC • GMC • MAZDA
3300 E. Mabry Drive Hwy 60-70-84
East Clovis 762-2986

Welcomes

Kim Humphreys
Sales Representative

Jones proudly welcomes Muleshoe's own Kim Humphreys to their sales staff. Kim Invites all her past customers and friends out to see her for their next vehicle.

Jones Pontiac * GMC * Mazda

Radio Shack

SINCE 1921

AMERICA'S TECHNOLOGY STORE

ALL-STAR SUMMER SALE!

<p style="text-align: center;">TANDY</p> <p style="text-align: center;">With Pre-Installed Windows and Microsoft Works for Windows! Includes Mouse and 2400-bps Fax/Modem</p> <p style="text-align: center;">25MHz 386SX with VGA Monitor</p> <p style="text-align: center;">Save \$261 \$1588 Reg. Separate Items 1849.85</p> <ul style="list-style-type: none"> ■ Tandy 2500 SX/25 HD with 85MB hard drive ■ Fast 25MHz AM386™ SX processor ■ MS-DOS 5.0 ■ 2MB RAM ■ Ideal for home or business <p style="text-align: center;">#25-1610/1070/4044</p>	<p style="text-align: center;">High-Power Car Cassette</p> <p style="text-align: center;">Save \$40 11995 Reg. 159.95 #12-1949</p> <p style="text-align: center;">■ 14 watts per channel ■ Auto-reverse</p> <p style="text-align: center;">Mini CB for fun & safety</p> <p style="text-align: center;">29% Off 4995 Reg. 69.95 #21-1509</p> <p style="text-align: center;">■ Never have to drive "alone" again</p>	<p style="text-align: center;">2-Way Truck/Van Speakers</p> <p style="text-align: center;">Save \$70 11995 Reg. 189.95 PAIR #12-1712</p> <p style="text-align: center;">■ 200 watts capacity per pair</p> <p style="text-align: center;">60-Watt, 7-Band Car EQ</p> <p style="text-align: center;">Cut 38% 4995 Reg. 79.95 #12-1959</p> <p style="text-align: center;">■ Makes your car stereo awesome</p>
<p style="text-align: center;">MEMOREX™</p> <p style="text-align: center;">Four-Head VCR with remote</p> <p style="text-align: center;">Save \$60 25995 Reg. 319.95</p> <ul style="list-style-type: none"> ■ Superior freeze, slow motion and search viewing ■ Auto power-on, playback, rewind and power-off ■ 179-channel tuner ■ On-screen programming <p style="text-align: center;">#16-525</p>	<p style="text-align: center;">Radio Shack Big-Button Phone</p> <p style="text-align: center;">22% Off 3495 Reg. 44.95</p> <ul style="list-style-type: none"> ■ Easy dialing ■ Amplified handset <p style="text-align: center;">#43-338 Tone/pulse</p>	<p style="text-align: center;">Mini Speakers</p> <p style="text-align: center;">Cut 30% 3495 Each Reg. 49.95</p> <p style="text-align: center;">■ Astounding sound, yet only 7" high</p> <p style="text-align: center;">#40-2030, Black. #40-2045, White</p>
<p style="text-align: center;">ARCHER</p> <p style="text-align: center;">3-in-1 Lantern</p> <p style="text-align: center;">Cut 27% 1088 Reg. 14.95</p> <ul style="list-style-type: none"> ■ Just the thing for emergencies ■ Batteries/DC <p style="text-align: center;">#61-2739</p>	<p style="text-align: center;">REALISTIC</p> <p style="text-align: center;">AM/FM Stereo</p> <p style="text-align: center;">30% Off 1388 Reg. 19.95</p> <p style="text-align: center;">■ With lightweight in-ear phones</p> <p style="text-align: center;">#12-182</p>	<p style="text-align: center;">Wilson Appliance</p> <p style="text-align: center;">117 Main 272-5531 A RADIO SHACK DEALER</p>

Ask the Land Bank about...

money to buy land or improve your farm.

Farmers today are looking at ways to increase their productivity...buying or improving land...building or remodeling facilities.

Whatever way you choose to grow, the Federal Land Bank can provide long-term credit to help.

So when you're looking to buy or build, stop in and talk to the long-term farm credit specialist at your Federal Land Bank Association.

Federal Land Bank Of Muleshoe

316 Main 272-3010

THE LAND BANK

MS-DOS licensed from Microsoft Corp. Most battery-powered equipment excludes batteries. SWITCHABLE TOUCH-TONE/PULSE phones work on both tone and pulse lines. Therefore, in areas having only pulse (rotary-dial) lines, you can still use services requiring tones. FCC registered. Not for party or coin lines. We service what we sell.

Most Major Credit Cards Welcome
Sale Ends 7/25/92

Billy The Kidd Come To Life In Amphitheater

Crowds have gathered at the Caprock Amphitheater 10 miles south of San Jon, N.M. for the past five summers to see the drama "Billy The Kid."

The show opened this weekend (Saturday night) and will continue at 8 p.m. MDT (9 p.m. Central Daylight Savings Time) every Friday and Saturday through Aug. 22 atop the bluffs of the Llano Estacado.

"Because of new research by many historians and writers, including Robert M. Utley of Santa Fe and John P. Wilson of Las Cruces, the playwright Don McAlavy has chosen to write a new version on the William H. Bonney story," said Bary Floersheim, New Mexico Outdoor Drama Association director from Roy, N.M.

"Billy is not the Hollywood myth we've been led to believe," said McAlavy, a Clovis, N.M. resident. "A more interesting story has emerged about the Lincoln County war, his association with Pat Garrett and the evil and greedy political force that manifested itself in the Santa Fe Ring. They controlled the Murphy-Dolan bunch and Pat Garrett."

The initial "Billy The Kid" script

was written in 1986, by McAlavy.

"A clearer picture has come into focus and more emphasis on the power play between the corrupt Santa Fe Ring that controlled the government, the courts, and even some of the lawmen," McAlavy said. "The Kid, this year, gets treated as he was, a good natured youngster, but one that as fast as lightning, could turn into a killer when provoked."

"Many new things will appear—new dances, new scenes, and a totally different, easier-to-follow plot will, I believe, delight the audiences," McAlavy said.

Playwright McAlavy also directs the production. Larry Buchanan will return after a year's absence to be musical director. Also returning after a two year absence will be Rudy Ulibari of Albuquerque.

Technicians will include Lonnie Royal of Canyon; John Pritchett of Portales, and Keevy McAlavy of Clovis.

Cattle Call of Amarillo will serve a barbecue dinner beginning at 6:30 p.m. before each performance.

For more information, write Caprock Amphitheater, Box 337, San Jon, N.M. 88434 or call (505) 576-2455.

Legislative Fly-In Brings Farmers To Washington

Joe Rankin, president of Texas Farmers Union, and six other TFU members, joined 200 family farmers from 20 National Farmers Union states on Capitol Hill for three days of contacts with members of Congress June 24-26.

Issues of primary concern to family farmers that were brought to the attention of the Congressmen were:

* **DISASTER:** There is a need for disaster assistance in areas hit by hail, excessive rain and tornadoes. Texas alone has lost three million acres of cotton due to drought and hail, and the state was already suffering losses from drought the previous year. It is essential that funds authorized for disaster assistance be made available to those in hard hit areas. Congress has authorized funding of 1.6 billion for disaster relief and they stipulated that \$755 million of that amount was subject to the President's request. It is imperative that the President act now to make those funds.

* **TRADE:** Regarding trade, NFU says the negotiations under the General Agreement on Tariffs and Trade (GATT) will be devastating for producers if they continue in their present direction. The proposed North American Free Trade Agreement (NAFTA) involving Canada, the United States and Mexico would be "every bit as bad as GATT, if not worse," according to Mike Dunn, who heads the NFU Washington office.

NFU President Lee Swenson, in a meeting with U.S. Secretary of Agriculture Edward Madigan, disagreed with Madigan on the validity of GATT Director Dunkel's proposal, saying that family farmers would be giving up their domestic farm supports and market protections, all on the big assumption that exports will increase dramatically. "That has been assumed in the past two farm bills and it hasn't happened yet."

* The support of the NFU organization for a single-payer national health plan as a way to

combat skyrocketing health care and insurance prices. Recent studies indicate that one-in-four Americans has no sustained health care coverage, and NFU members are distressed that rates they pay for insurance often run as high as \$900 per month.

* Family farmers are concerned that proposed changes in the function of USDA will mean that county offices may close, leaving them without service at a time when farm programs and regulations are more complicated than ever. They also worry that the streamlining will eliminate county committees, which are designed to provide farmers input into USDA field office decisions.

In a meeting with Madigan the NFU leader promised his group's support in reassuring family farmers that streamlining USDA's county farm service centers would be to their best interest and would not leave them without the assistance and advice they need from those offices.

* On the issue of farm credit, the NFU members say the recent notices sent to a fourth of all Farmers Home Administration (FmHA) borrowers indicate serious income and credit problem in rural America. "Beginning farmers can't obtain credit at all," Rankin said. "We are facing a net loss of farmers since young people do not have the means to enter the business."

* The fly-in participants urged that Environmental Protection Agency rules on reformulated fuel be redrafted to allow for use of ethanol blend fuels in major metropolitan areas.

Texas Farmers Union members joining in the lobby effort included Gary and Ann Moore of Tulia. Moore is president of Swisher County Farmers Union.

Less trash in our landfills can come from buying trash bags made from bottles you recycled.



ENMU Rodeo Team Finishes Second

The Eastern New Mexico University women's rodeo team finished second at the College National Finals Rodeo in Bozeman, Montana, on June 16-21. Walla Walla Community College captured the championship with 435 points to the Zias' 336 points. Eastern had won women's national titles in 1981 and 1983.

Shawnda Autrey, a sophomore from Mountainair, N.M., scored all of Eastern's points by winning the second-go of goat tying, and taking second in the first-go. After two rounds she had a total of 16:2 seconds, but managed only 11.2 in the final short go. She finished second overall in goat tying with a total of 27.4 seconds. For the season, Autrey finished third nationally in goat tying.

Other team members were Cresta Davis and Amy Cockrell. Eastern qualified for the CNFR by winning the championship of the Southwest Region of the National Intercollegiate Rodeo Association.

SIX MONTHS BEST LOSERS---During Thursday night's TOPS meeting the Six Months best loser was crowned and runners-up announced (From Left) Charlotte Campbell, best loser; Evelene Harris, first runner-up; Lucille Harp, Alma Robinson, Jewell Peeler, Laverne James, Betty Jo Davis, Ruth Clements and Alene Bryant. (Journal Photo)

BRIEFS

Bush vows to debate opponents in fall.

Study: Fires slow greenhouse effect.

U.S. food banks out of surplus food.

Bush pledges \$150 million to save trees.

Americans are more obedient to health rules.

Study predicts vast global spread of AIDS.

WIN FREE FOOD!

PLAY EASY MONEY

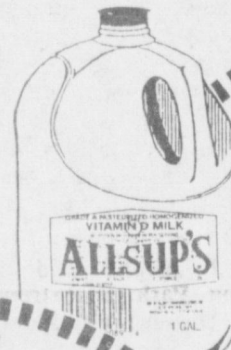
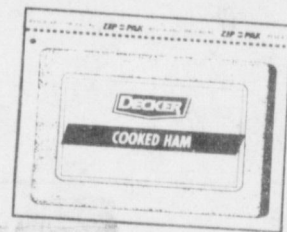
ALLSUP'S

PICK UP YOUR FREE GAME TICKET TODAY!

PRICES EFFECTIVE JULY 5-11, 1992

318 W. Amer. Blvd. 272-4862

DECKER 4x6 CHOPPED HAM 10 OZ. PKG. \$1.29

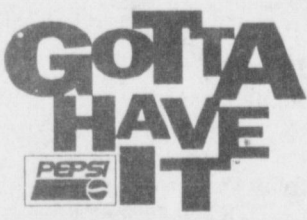


HOMOGENIZED ALLSUP'S MILK GALLON \$1.99

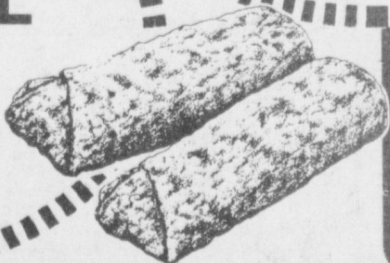
'FAMOUS' ALLSUP'S BURRITOS BUY ONE GET ONE FREE



ALL TYPES PEPSI-COLA 6 pk. 12 oz. cans \$1.79



LANA'S CHICKEN EGG ROLL 3 OZ. SIZE 2 FOR \$1



EASY MONEY

\$1,000.00 WINNERS

GERALD J. ELLIOTT-CLOVIS, N.M. MARGARET M. CHAVES-ALBUQUERQUE, N.M.

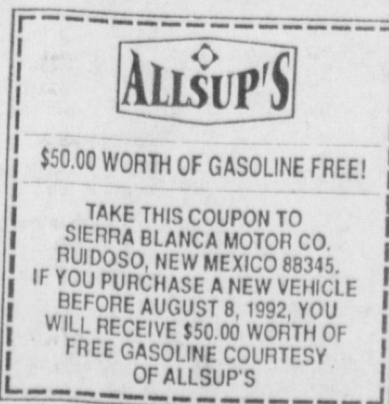
\$100.00 WINNERS

CRYSTAL KEYS-PAMPA, TX. SUZIE HICKS-LOS LUNAS, N.M. KATHY THOMAS-ALBUQUERQUE, N.M. ERMA BROUGHTON-CARLSBAD, N.M.

GAS FOR A YEAR

LUZ CHAVARRIA-ABILENE, TX.

1 PACK 9 VOLT OR 2 PACK C&D ENERGIZER BATTERIES FOR ONLY \$2.39



ALL FLAVORS TOM'S BIG SNACKS REG. 59¢

2 FOR 99¢

SAUSAGE, EGG & BISCUIT EACH 79¢

ANDES TING-A-LING OR CREME DE MENTHE 4.67 OZ. BOX \$1.29

SOLORAY SUNGLASSES ANY PAIR \$1 off

ALL FLAVORS GATORADE DRINKS 16 OZ. 69¢

OUCH! BUBBLE GUM BIG 24 STICKS 79¢

GIANT TWOOKIES 2.19 OZ. 2 FOR \$1

MEDIUM OR LARGE FITTI DIAPERS PKG. \$5.99

BAR-S BOLOGNA 12 OZ. PKG. 69¢

ATTENTION MR. FARMER

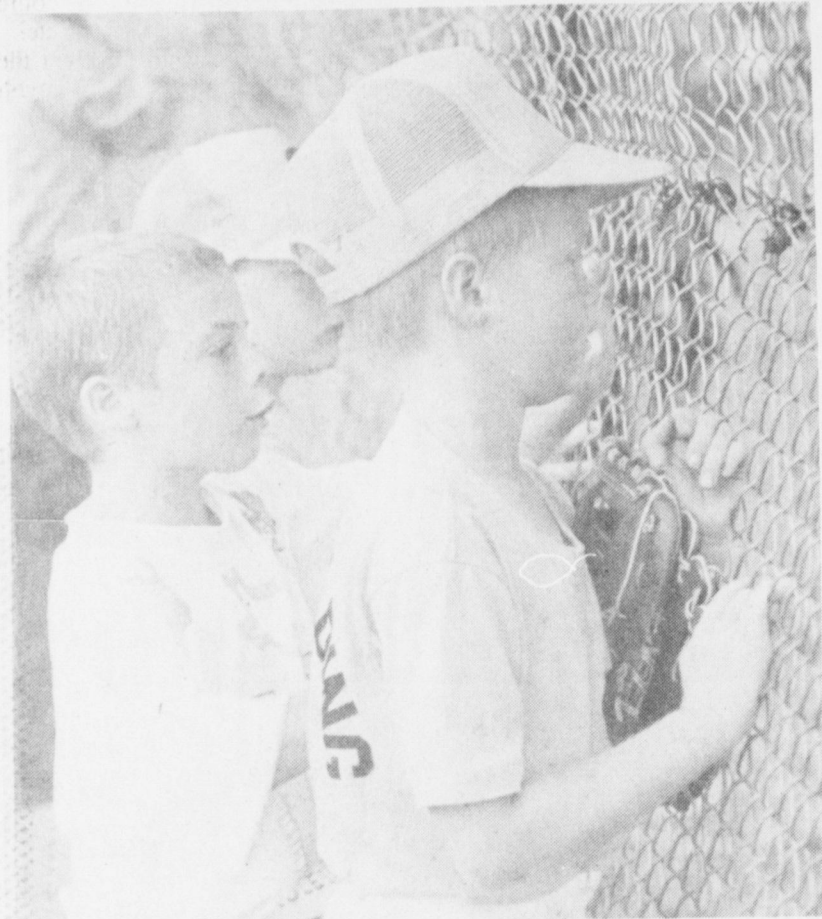
We Are Now Contracting Confectionary Sunflower!

This is a Total Acreage Contract to be delivered to a local delivery point. Sunflowers are a quick maturing crop with a good profit potential!

Western Sunflower Co.

Colby, Kansas Local Representative - Jack Little 806-272-4805

"Take Me Out To The Ballgame" Roger Miller Park In Muleshoe



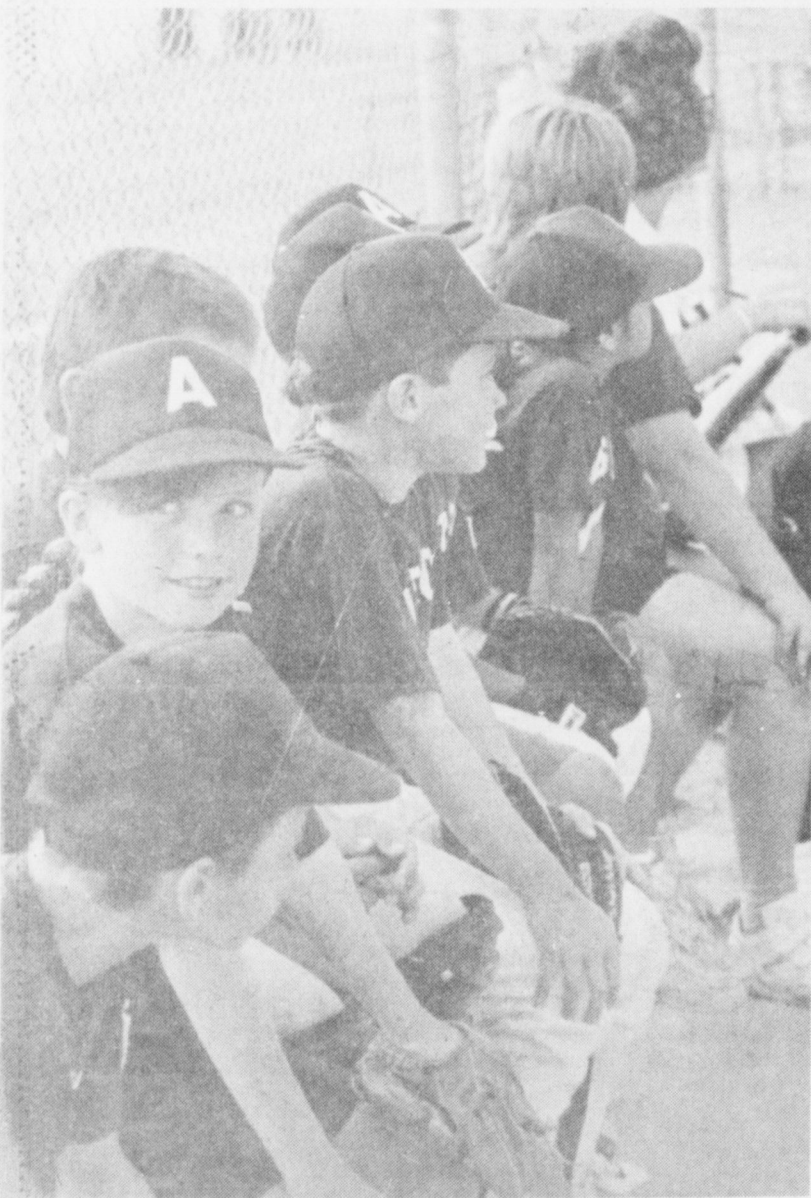
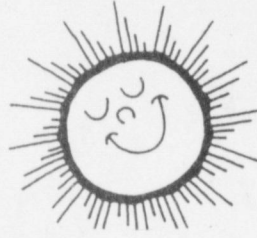
Bryan King-- and friends watch the older boys in action.
(Journal Photo)



Scoring A Run---Jed Bonds is seen giving 100 percent for his team.
(Journal Photo)



The Bullpen--is full of Bulls (Bailey County Farm Bureau) as they anticipate action with the Astros (First Bank) in Minor League play
(Journal Photo)



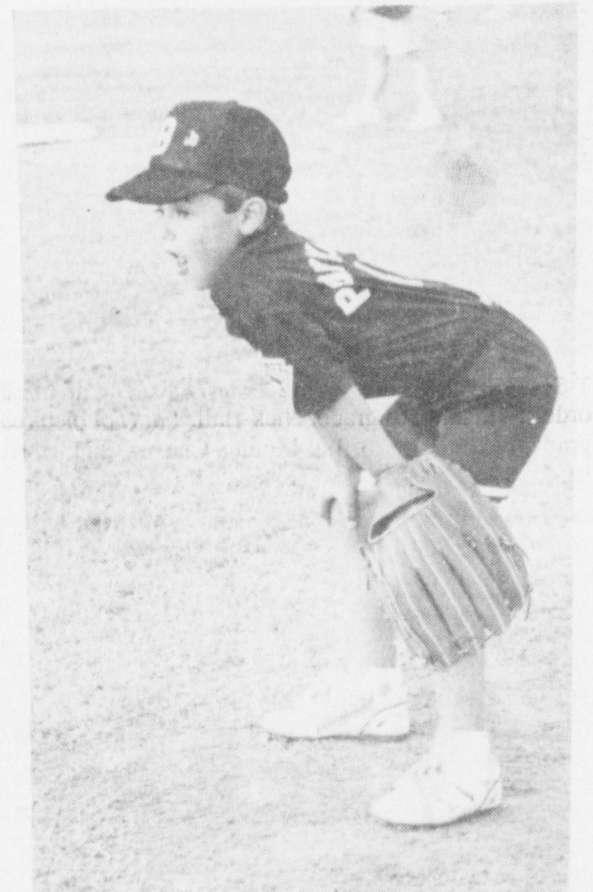
Astros in the Dugout Not The Bullpen!!!



Third Baseman---Berry Morris is captured moving into action as the ball comes his direction.
(Journal Photo)



Hard Hitting---Melissa Thompson is the first batter-up for the Monkeys in their game against the Wild Turkeys in T-Ball action
(Journal Photo)



Ready or Not---first baseman Chase Winkler plays for the Wild Turkeys (sponsored by Poynors). The Wild Turkeys won over the Monkeys 21 -20
(Journal Photo)



Pregame Excitement--seems to have captured everyone. This T-Ball team sponsored by Lowes Marketplace is coached by Bo Long and Joe Gear.
(Journal Photo)



Whoops--- a little too mu effort in crossing the plate?
(Journal Photo)



And You're Out---says Chris Vella of the Astros (First Bank) as the ball beats Art Perez (Bulls- Bailey County Farm Bureau) to first base in an exciting game. The Astros won 10-6.
(Journal Photo)



And The Game Is Over-- as the teams line up to shake hands in a show of good sportsmanship.
(Journal Photo)

Summer Reading Club Awards Program Well Attended

A good crowd was on hand Wednesday afternoon for the Awards Program for the Summer Reading Club. Everyone who participated received a certificate and gold seals and ribbons. Pins were added for 20, 30 and 40 books read and reported on. Special T-shirts were presented to the three highest readers in three age groups.

Anne Camp, librarian, assisted by Linda Lopez gave out the awards and congratulated all the boys and girls on the very fine efforts they made. Refreshments for this final program were furnished by the Friends of the Library, and a drawing was held for several nice prizes, which were donated. A lapel pin flag was given each one present as he left. Anne Camp and staff hope all who participated in the 1992 Summer Reading Club enjoyed "Discovering the new world of Reading," and will continue to read and enjoy the services of the Library.

Pre-kindergarten and 1st grade summer reading club honor roll includes Jami Wedel, 1st; Didi

Sotelo, 2nd; Brant Wedel, 3rd; Natasia Chavez, Rosie Sotelo, Dal Grumbles, Tisha Lovelady, Jennifer Heredia, Esther Heredia, Lilia Flores, Christopher Ballard, Veronica Florez, Cassie Holt, Paje DePalma, Mindy Gore, Garrett Scisson, Amber DeLeon, Rachel Rudd, Laura Vasquez, Christopher Jones, Amy Hall, Michael Sexton, Daniel Greenhouse, Corey Sexton, DiAnna Mendoza, Crystal DeLeon, Shanna Rempe, Bethenie Sanchez, Kayla Bussey, Jordan Bonds, Ryan Powell, Yuri Aguirre, Thomas Buenrostro, Eric Villa, Cami Valdez, Nathan Villa, Amanda Buenrostro, Kyle Yell, Carmen Ontiveros, Jodi Hawkins, Myles James, Chane Williams, Charissa Conner, Andrew Smith, Emily Zabolki, Robby Bomer, Joshua Shelburne, Erin Hancock, Mitci Hawkins.

Second and third grade honor roll at the Muleshoe Area Public Library includes Kristol Sotelo, 1st; Monica Chavez, 2nd; Chris Harp, 3rd; Jennifer Rempe, Michael Lopez, Adrienne Ashford, Kayla

Copp, Jaime Guerrero, Liz Torres, Nikki Felan, Thomas Black, Jennifer Pacheco, Amanda Mendoza, Wesley Holt, Carmen Flores, Brittany Gore, Wayne Terry, Ricky Rudd, A.J. Buhrman, Megan Barrett, Anthony Buenrostro, Jason Sexton, Brian Smith, Bryan Felan, Rachel Williams, Jeremy Armstrong, Nikki Bonds, Stephan Shelburne, Jeffrey Skipworth, Bobby Guerrero, Tad Lutz, Laura Wood, Jeffrey Shelburne, Lacy Clark, Shari Alanis, James Hancock, Suzanne Messenger, Michael Johnson, Levi Valdez and Candace Hutto.

Fourth and fifth grade library summer reading club honor roll includes Nick Hall, 1st; Patrick Black, 2nd; Eric Posadas, 3rd; Rosario Flores, Melissa Aguirre, Makayle Payne, Jerred Harp, Gary Jones, Joe Lopez, Lela Hancock, Audra Clarkson, Gabriel DeLeon, Brandi Lopez, Jose Florez, James Barrett, and Chris Vaughn.

Any boy or girl who was unable to come to the Awards Day program can pick up his award anytime after Wednesday, July 1 at the library. The library will be closed Friday, July 3rd and open again Monday, July 6.

Lyme Disease Still On Rise

Researchers this week announced the discovery of a vaccine effective in protecting lab animals from Lyme disease. Human clinical trials on the new vaccine however, will not begin until later this year. "Until the vaccine is available to the general public, it's still extremely important for people to be aware of, and protect themselves from, the disease," said Lowell Johnson, M.D., a family physician on Methodist Hospital's medical staff.

Second only to AIDS, Lyme disease is the fastest growing infectious disease in the country-cases of the disease have been reported in all states, with the exception of Hawaii, Alaska and New Mexico. A greater incidence of Lyme disease is found during the summer months, when people tend to be outdoors.

The disease is caused by a tiny infectious spirochete which lodges in ticks. These ticks (which usually feed on forest and marsh animals, such as deer and mice) can then bite and infect humans.

"In a majority of cases, a bulls-eyed shape rash appears anywhere from three to 32 days after the bite," Dr. Johnson said. Other symptoms of the disease include fatigue, fever, headache, chills and painful joints and muscles.

Prompt treatment with antibiotics is successful in most cases. "But, if left untreated, the disease can lead

to arthritis, irregular heartbeat, meningitis, facial paralysis and other nervous system complications," Dr. Johnson said.

Dr. Johnson suggests the following tips to protect yourself against Lyme disease:

*Stay away from mice habitats, such as tall grass, wood piles, stone fences and scrub pines.

*When hiking, wear light-colored clothing, which makes it easier to

spot ticks. Tuck long pants into socks or boots.

*Spray repellent on clothing to repel ticks on contact.

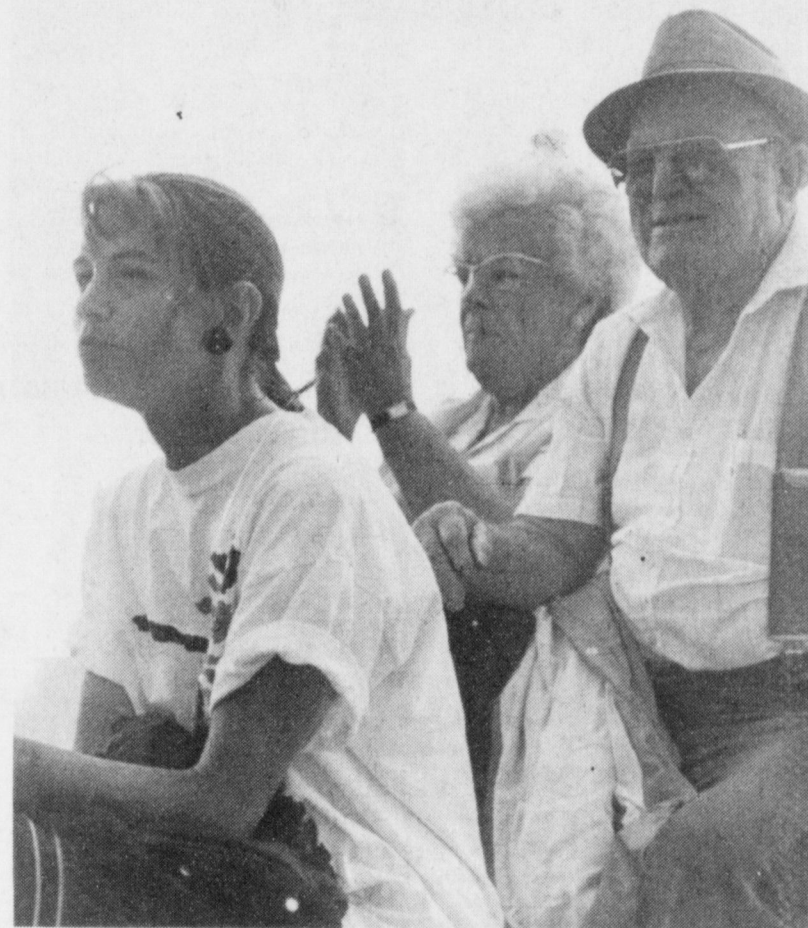
*After outings, check clothing, skin and pets for ticks.

*If you should discover a tick, grab it close to the skin's surface with tweezers. Pull it out straight back, slowly-crushing it could disperse the infectious spirochete.

*Wash hands, and disinfect the area with alcohol or hydrogen peroxide.



T-SHIRT WINNERS--at the Muleshoe Area Public Library Summer Reading Club Awards Program are (not in order): 4th and 5th grade, Nick Hall, 1st; (not pictured) Patrick Black, 2nd; and Eric Posadas, 3rd; 2nd and 3rd grade: Kristol Sotelo, 1st; Monica Chavez, 2nd; Chris Harp, 3rd; Pre-kindergarten and 1st grade, Jami Wedel, 1st; Didi Sotelo, 2nd and Brant Wedel, 3rd. (Journal Photo)



Fans--- as well as players enjoyed the action at Roger Miller Park. (Journal Photo)



Who Knows?

1. Where and when was the first drive-in movie theater opened?
2. Name the 15th U.S. president.
3. When did the nation Zimbabwe come into existence?
4. Who wrote *My Old Kentucky Home*?
5. Name the first and only president of the Confederacy.

- Answers:
1. Camden, N.J., in 1933.
 2. James Buchanan.
 3. In 1979, formerly known as Rhodesia.
 4. Stephen Foster.
 5. Jefferson Davis.

50 years ago
a baby girl was born to
Mr. & Mrs. Refugio Castorena
on July 4th
We would like to wish
this fine, young & sweet girl
a **Happy Birthday**
Love,
the whole gang

Match Three And Win.



Introducing Texas Match Up. A fun and easy-to-play game from the Texas Lottery where you have a chance to win from \$2 to \$20,000 instantly. To play, just buy an instant game ticket. Scratch off the entire play area, and if three dollar amounts match up, you win. For example, if you see three \$4 symbols, you win \$4. It's that easy. You might also make a special match: If your ticket has three "ENTRY" marks on it, you could be a contender for our weekly millionaire drawing. (See back of ticket for details.) Tickets for Texas Match Up are \$1. And they're available, along with complete information on how to play, at locations displaying the official Texas Lottery sign. For more information, call 1-800-37-LOTTO (1-800-375-6886). Play Texas Match Up. And get in the game of Texas.



Texas Match Up, The New Instant Ticket Game.

Overall odds of winning 1 in 0.81. Must be 18 years or older to play.

**Dan Wood
Funeral Services
To Be Held Today**

Funeral services for Dan Wood, 52, of Sudan will be held today at 3 p.m. in the First Baptist Church of Sudan with the Rev. Cliff Hargrove, pastor and James Withrow, officiating.

Burial will be in Sudan Cemetery under the direction of Ellis Funeral Home. He died at 11:25 a.m. Thursday, July 2 in Methodist Hospital, Lubbock, after a lengthy illness.

He was born in Wellington and lived there until moving to Sudan in 1942. He married Mary Alice Mullins January 27 in Littlefield. He was a farmer and a member of First Baptist Church, Sudan.

He was active in Little Drifters Basketball, Little League Baseball, a member of the Sudan Fire Department, of Sudan Farmers Cooperative Gin Board, and of the Sudan Jaycees. He played college basketball at Schreiner Institute of Kerrville and attended Lubbock Christian College.

Survivors include his wife, Mary Alice; two sons, Joe of Littlefield and David of Sudan; one daughter, Lisa Logan of Hale Center; one brother, Calvin of Earth; his mother, Mable Wood of Sudan, four grandchildren, Lacey Logan of Hale Center, Derek Wood of Sudan, Kyla and Michael Wood of

**Bruce Burreson
Funeral Services
To Be Held Today**

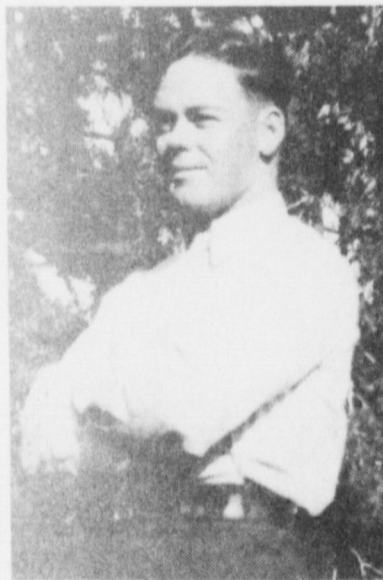
Funeral services for Bruce Burreson, 81, will be held at 2 p.m. today at the Ellis Funeral Home Chapel with Rev. Terry Taylor of Richland Hills Baptist Church and Rev. Brad Huckaby of Hospice of the Plains officiating.

Burial will be in Muleshoe Cemetery under the direction of Ellis Funeral Home. He died July 2 at the Muleshoe Area Medical Center. He was born February 7, 1911 in Cranfills. He married Mildred I. Adams on March 15, 1938 in Farwell.

He moved to Muleshoe from Cranfills Gap in November 1938. He was a farmer.

Survivors include his wife Mildred I. of Muleshoe; two sons, Mike of Hereford and Stanley of Brownfield; one daughter, Kay Taylor of Tucson, Arizona; two brothers, Milton of Sacramento, California; Daniel Burreson of Bowie, Arizona; two sisters, Lillian Harvey of and Ruth Potts, both of Clifton, eight grandchildren and two great grandchildren.

The family suggests memorials to the Muleshoe Area Medical Center.



Bruce Burreson

**B.E. Jones
Funeral Services
Held Friday**

Funeral services for B. E. Jones, 61, of Amarillo were held at 2 p.m. Friday in Ellis Funeral Home Chapel with Bret McCasland, minister of Muleshoe Church of Christ, officiating.

Burial was in Muleshoe Cemetery under direction of Ellis Funeral Home.

Jones died at 9:15 p.m. Monday at his residence after an illness.

He was born in Vinson, Oklahoma. He moved to Amarillo from Muleshoe in 1953. He was a truck driver for Southwestern Public Service Company. He started May 25, 1953 and retired November 15, 1987.

Survivors include one son, Michael E. Jones of Amarillo; two daughters, Kathy Edwards of Albuquerque, N.M. and Vickie Johnson of Hurst; one sister, Joy Naagle of Wilcox, Arizona; and his mother, Myrtle Jones of Wilcox, Arizona.

The family suggests memorials to the American Cancer Society.

Littlefield. The family suggests memorials to the Sudan Ambulance Fund of Sudan or the American Cancer Society.

In Fashion

Polished gold will be fall's newest, biggest neutral color. Wearing more than one pin gives the wearer the opportunity to create your personal flare for jewelry.

Gold jewelry will feature hearts, stars, crowns, butterflies, and leaf in oversized pins, scatter pins, pendants, and earrings. Drop earrings have become longer and longer in late fashion notes.

**Enochs News
by: Mrs. J.D. Bayless**

The late Mr. and Mrs. Monrow Hardins family had their Hardin family reunion Saturday June 27 at the Morton Activity Building. All six of the children attended. They all took lunch and enjoyed the day visiting. There were over 60 attending.

Mrs. Winnie Byars of Seminole attended the Hardin family reunion and spent Saturday night and had lunch with Mrs. Ellen Bayless Sunday. Then visited Mrs. Inez Sanders in the afternoon.

Mr. and Mrs. Harrie Pollard had their daughters as guests for Father's Day. Mr. and Mrs. Joel Sinclair and children of Muleshoe,

and Mr. and Mrs. Tommy Lewis and family of Littlefield.

Larry Vrathan of Canyon was lunch guest in the home of the Dale Nichols Monday. Other guests were their daughter Paula Grant and children Ashley and Chandler, two other grandchildren Kristen and Landon Nichols. Chandler spent a few days with his grandparents. Kristen and Landon went home with Mrs. Grant.

Mrs. Peggy Hurley and children visited her grandmother Mrs. Inez Sanders Tuesday.

Mrs. Bonnie Long of Morton spent

HEALTH INSURANCE
CALL Mark Morton 109 S. 1st Muleshoe 272-7519

Friday night with her sister and husband, Mr. and Mrs. Bill Key.

Mr. and Mrs. Eric Silhan attended the funeral service of her great grandmother, Mrs. Edna Bass, Sunday, June 21 at 2:30 p.m. at

Texline. Dorothy and Adrean Weir from Acuff visited Mr. and Mrs. Harvey Blackstone Thursday afternoon.

Happy Birthday To A Fine Young Boy Who Just Turned 6 Love, your family

- Immaculate Conception Catholic Church**
Father Patrick Maher
Northeast of City
- First Baptist Church**
220 West Ave. E.
Pastor Stacey Conner
- Trinity Baptist Church**
314 E. Ave. B
Rev. Dale Berry
- Circle Back Baptist Church**
Intersection FM 3397 & Fm 298
Rev. Jessie Shaver
946-3676
- Calvary Baptist Church**
1733 W. Ave. C.
Rev. Rick Michael
- Church of Compassion**
605 W. 8th
Jimmy Williams
272-5624
- Progress Baptist Church**
Alan Petersen
Progress, Texas
- Richland Hills Baptist Church**
17th and West Ave. D
Rev. Terry Taylor
- St. Matthews Baptist Church**
Corner of West Boston & West Birch
Pastor M.S. Brown
- Progress Second Baptist Church**
1st and 3rd Sundays
Rev. Arthur Hayes
- Primitive Baptist Church**
621 South First
Elder Cleveland Bass, Pastor
- 1st Baptist Church**
Lazbuddie, Tx.
Gary Wilcox, Pastor
965-2126
- Jehovah Witness**
Friona Hwy
Jack Tiffin, Minister
Warren Meeks, Minister

A Hollow Shell

What a profound symbol of emptiness, a hollow shell from which the life kernel has been removed.

Its purpose for existence is gone; it is fit only to be cast on the rubbish heap.

Sometimes life is like that — an empty shell from which the life force has been removed. It has no meaning and no purpose; it seems to have no conceivable end but the grave. This is a picture of life without God, a shell from which the kernel of meaning has been removed.

God has made us for Himself and we are empty until filled with His presence. Only God can make human life meaningful. God's gift to lead us to this meaning is His Church. Go to Church Sunday and open your life to the One who will fill it with significance.

EVERYONE IN THE CHURCH THE CHURCH IN EVERYONE

Is something wrong with your life — an inner restless dissatisfaction? The answer to every human problem comes from God our Maker. He alone can forgive and reassure.

Through the church God has committed His provision and redeeming love. Without a church relation no one is securely related to God. Everyone should be in the Church and the Church in everyone!

- St. John Luthern**
Sunday School and Bible Classes 9:30 a.m.
Church Services 10:30 a.m.
Rev. Richard Greenthanger
- Lazbuddie Methodist Church**
965-2121
Doug Chapman, Pastor
- New Covenant Church**
Plainview Hwy
Sunday 10:00 a.m.
Wednesday 7:00 p.m.
Jimmy Lowe, Pastor
- New Vision Church of the Nazarene**
814 W. Ave. C
272-3622
Pastor David R. McIntire

- Primera Iglesia Bautista**
223 E. Ave. B
Roy Martinez, Pastor
- Lariat Church of Christ**
Sunday School 10:00 a.m.
Worship 11:00 & 6:00 p.m.
Wednesday Services 7:00 p.m.
Sam Billingsley, Minister
- Muleshoe Church of Christ**
Clovis Hwy
Bret McCasland, Minister
- 16th & Ave. D Church of Christ**
Sunday 10:30 a.m.
Evening 6:00 p.m.
Wednesday 7:30 p.m.
Curtis Shelburne, Minister
- Lazbuddie Church of Christ**
Minister, Keith Courmier
Sunday School 9:30 a.m.
Morning Services 10:20 a.m.
Evening Services 5:00 p.m.
Wednesday Night 7:00 p.m.
- First Assembly of God**
Rev. G. Dean Reid, Pastor
Sunday School 9:45 a.m.
Morning Worship 11:00 a.m.
Evening Services 6:30 p.m.
Mid-Week Services 7:30 p.m.
272-3984
- Spanish Assembly of God**
East 6th and Ave. F.
Mike Doyle, Pastor
- First United Methodist Church**
507 W. 2nd Street
Richard Edwards, Pastor
- El Divino Salvador Methodist Church**
5th and E. Ave. D
Leonard Gonzales, Pastor
- United Pentacostal Lighthouse Church**
207 East Ave. G
Rev. N.W. Thompson
272-3258
- The Christian Center**
Morton Hwy
272-5992

Attend The Church Of Your Choice!

Dairy Queen 1204 W. Amer. Blvd. 272-3412	Throckmorton Refinishing Shop 319 E. Amer. Blvd. 272-5345	Bailey County Farm Bureau 1612 W. Amer. Blvd. 272-4567	Combination Motors & Salvage 272-4458
American Valley Inc. W. Hwy 84 272-4266	First Bank Member F.D.I.C. 202 South First 272-4515	Bratcher Motor Supply 107 E. Ave. B 272-4288	Western Drug 114 Main 272-3106
Decorator's Floral & Gifts 616 S. 1st. 272-4340	Bob Stovall Printing 221 E. Ave. 272-3373	Richland Hills Texaco 1914 W. Amer. Blvd. 272-4875	Lookin' Good 206 Main 272-5052
Irrigation Pumps & Power W. Hwy 84 272-4483	James Roy Meat Market 506 W. Amer. Blvd. 272-4361	Viola's Restaurant 2002 W. Amer. Blvd. 272-3838	5-Area Telephone Cooperative Inc. 302 Uvalde 272-5533

Lowe's Pay-n-Save MARKETPLACE

LOWE'S PRICES SAVE YOU...\$\$\$

2 Liter Coca Cola \$1.19 Asst.



Lowe's Pay-n-Save MARKETPLACE QUALITY MEAT




Sirloin Tip Roast or
Steak
\$2.57
lb.



Thin Cut Beef



Ribeye Steaks
\$3.97
lb. Single Pak \$4.67



Decker
Beef Bologna
\$1.27
12 oz.



Weight Watchers Super Lean
Stew Meat
\$2.57
lb.



Pilgrim's Pride Boneless Skinless
Chicken Breast
\$3.57
lb.

Ribeyes
\$4.87
lb.



Hormel 12 oz. Buy One For \$2.49 Get One FREE
K.C. Masterpiece B.B.Q. Sauce \$1.39 18 oz.

Peyton's
Sliced Bacon
99¢
1-lb. Pkg.

Pilgrim's Pride
Buffalo Wings
\$8.97
Fully Cooked Bag



R.G.
Beef Patties
\$3.97
5 lb. Box



Bumble Bee
Tuna
3.99¢
6 1/8 oz. For With Coupon



Blue Bunny
Ice Cream
\$1.59
Asst. Square Carton



FREE
Six Flags Tickets
With The Purchase
of a 1 lb. or 12 oz.
Decker Bacon
See Store For Details



Hillshire Farms Deli Select
Thin Meats
\$1.39
6 oz. Pak



Bumble Bee
Tuna
3.99¢
6 1/8 oz. For
With Coupon. Expires 7/15/92. Limit 3 per Coupon. Limit One Coupon Per Customer. Thereafter 49¢.

FROZEN FOOD



Weight Watchers
Desserts
\$1.59
Asst.



Tyson Chicken Pajita or
Stir Fry Kit
\$3.99
21 oz. to 24.2 oz.



Weight Watchers
Entrees
2 \$3.99
for Asst.



Weight Watchers
Breakfast
\$1.39
Asst.

DAIRY



Pillsbury
Grands Biscuits
Buttermilk Flaky Butter
79¢
10.5 oz.



Bluebonnet
Spread
\$1.49
3 lb. Tub




Kraft
Singles
American, Pimento or Swiss
\$2.09
12 oz.

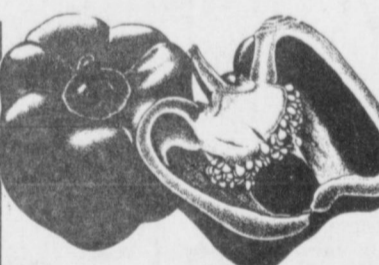


Tropicana
Orange Juice
\$1.99
64 oz.

Introducing Freshness!




Fresh
Cucumbers
Great in Salads
4 \$1
ea. For



Fresh Crisp
Bell Peppers
4 \$1
ea. For



Red Ripe
Tomatoes
68¢
4 Pk Cello ea.



Fresh
Cilantro Bunch
2 \$1
ea. For



Jalapeno Peppers
98¢
lb.



Fresh Green
Leaf Lettuce
2 \$1
ea. For



Yellow
Onions
5 \$1
lbs. For



Shurline 1/2% Lowfat
Milk
\$1.89
Gal



Lowe's Pay-n-Save MARKETPLACE
515 W. Amer. Blvd. Muleshoe 272-4406
401 W. Amer. Blvd. Muleshoe 272-4585
WE RESERVE THE RIGHT TO LIMIT QUANTITIES IN TEXAS
Our Best to You!