

Additional Stetsons tossed into political ring

A general election race for sheriff developed, a third candidate emerged for commissioner of Precinct Three and incumbent County Attorney Kenneth Bain Jr. became a candidate for

re-election before the filing deadline concluded Monday.

In addition to local races, Randy Hollums of Floydada threw his hat into the ring as a candidate for U.S. representative from the 13th Congressional District, which encompasses much of the Texas Panhandle and North Texas. Hollums presently serves as district attorney for the 110th Judicial District.

This post is being vacated by Congressman Beau Boulter, who is challenging incumbent Lloyd Bentsen for senator.

The lone local general election race developed Monday when Ray Macha filed as a Republican candidate for Floyd County sheriff. Incumbent Fred Cardinal is the Democratic standard-bearer for the same office.

Since neither Cardinal nor Macha has primary election opposition, their race will be decided in the November general election.

Macha is the lone Republican candidate for a county position.

D.R. (Richard) Sanders became the third aspirant for commissioner in Precinct Three. Incumbent Thomas

Warren and George Taylor had filed earlier.

Penny Golightly and Carolyn L. Redding are seeking to become county tax assessor-collector.

Five men are vying to become commissioner of Precinct One: Connie D. Bearden, Hulon Carthel, Bill Hopper, Delmas McCormick and Sam Spence, the present officeholder. All are Democratic candidates.

Candidates sans opposition in the Democratic primary are: Bill Hardin, county judge; Bain, county attorney; and Kay Crabtree, commissioner, Precinct Four.

Both Democratic and Republican first primary elections are scheduled for Tuesday, March 8. Second or run-off primary elections will be held on Tuesday, April 12.

County and precinct chairpersons for both parties are due to be named in the primary.

The presidential primary election will be held in conjunction with the first or general primary election. This is being termed "Super Tuesday," at which time several Southern states are to conduct primaries.



COUNTY'S FIRST—Matthew Lee Barrientos became 1988's first baby born in Floyd County with his 8 p.m. arrival on the first day of the new year. The infant weighed six pounds and was 19 inches long at birth in Lockney General Hospital. Proud parents are Janie and Joe Angel Barrientos, longtime

Floydada residents who make their home at 313 West Grover. The couple, who have been married 19 years, are parents of three other offspring: Joe Jr., 18; Peggy, 16; and Patricia, 11.

—Staff photo

a view from

The Lamplighter

By Ken Towery

I suppose every old soldier understands the internal conflict that arises when one is faced with the decision of what to do when desire is weighed against duty. I'm not sure about others, but when the bombs started raining down real close, and the artillery shells began showering shrapnel against the parapet, I always had a desire to be somewhere else. However, the reality in such circumstances, for a soldier at least, always translates into duty. Which means that often desire has to give way to reality.

We saw a case of that coming to work, or at least coming to the office, Tuesday morning as a freezing drizzle covered streets, fields, sidewalks, anything that was exposed, with a coating of ice that made movement next to impossible. An old dog lives somewhere around Main and Tennessee Streets here in Floydada. Every morning he takes up his position and chases cars as they go by. It all probably started out as a desire, but as the years have gone by he probably now sees it as a duty. At least he acts that way. So there he stood, having made it a few steps past the curb to his usual post. Occasionally a car would creep by and he would attempt a few steps forward, only to slide and nearly fall. He had been there long enough to be completely covered with ice. Still he didn't retreat. His desire was to do his duty and chase cars, but reality kept him practically motionless. An old, confused soldier.

A look back and a look forward. Now that 1987 is history and the passage of the holidays has given us a moment for reflection...what kind of year was it for Floyd County, and what kind of year is 1988 likely to be? Looking back over the news pages of the Hesperian and the Beacon, I'd say it was a very good year all in all. Certainly there were some bad spots. The terrible hail that practically wiped out crops in parts of the county would have to be rated as one of the darkest news stories we covered. But some recent developments, which we will get to later, may help alleviate some of the hurt for at least some of the folks hurt by the hail.

On the other side of the coin we would have to say that the bumper cotton crop in other parts of the county, and the generally improved agriculture picture nationwide, worldwide, and particularly locally, has got to translate into a more optimistic mood for our citizens as we go into the new year.

From a personal standpoint we'd say some of the brightest, most heartwarm-

Continued on Page Two

Work continues on wildcat well

Work continued early this week on a wildcat well being drilled about seven miles southeast of Floydada.

A spokesperson originally had stated that exploration was scheduled to have been concluded "around the first of the

year," but inclement weather has slowed progress.

The wildcat is approximately four miles west-northwest of a producing well in the southern edge of Floyd County.

Old Man Winter strikes area... again



Old Man Winter refused to remain at the North Pole with Santa Claus.

Another wintry blast, similar to the one which struck prior to Christmas, arrived Sunday night.

Freezing rain and mist beginning Monday night, transformed streets into virtual "sheets of ice" and made travel extremely hazardous.

Floydada schools dismissed at 3 p.m. Tuesday and are on an abbreviated 9:30 a.m.-3 p.m. schedule Wednesday and Thursday. Supt. Jerry Cannon says this allows time for students to travel behind earlier traffic and to return home before dark.

Scheduled Tuesday basketball games in Hale Center were cancelled.

At Lockney, classes did not meet until 9:30 Wednesday morning. Basketball games scheduled for Tuesday, against Valley in Lockney were cancelled.

COMMODITIES

Caprock Community Action will distribute commodities at Lockney Community Center January 18, from 2:30 to 5:00 p.m. Please do not arrive before 2:30 p.m. Bring white commodity cards. New applications will not be accepted after 4:30 p.m.

Seminar on truck law changes scheduled Friday

With new Federal Motor Carrier Safety (D.O.T.) regulations being enacted, an informational seminar, sponsored by Producers Cooperative Elevator in Floydada, is scheduled for 7 p.m. this Friday at Massie Activity Center. Department of Public Safety troopers from the Plains DPS office will outline new regulations.

All interested persons are welcome to attend the meeting. Refreshments will be served.

Provisions of House Bill 908, signed into law this summer, affect

commercial motor carriers in several areas, most notably in regulations on drivers.

One of the most significant changes affecting drivers is limitation on the number of hours drivers may spend driving. Other changes include qualifications for driving certification, requirements that companies keep files on their drivers and rules regarding log books kept by drivers.

Other safety regulations enacted require bumpers on some types of trucks, seat belts in all trucks built

after 1965 and fire extinguishers and triangle reflectors on most additional safety regulations enacted include requirements on truck equipment such as lights, brakes, turn signals, tire tread and rules on the transportation of hazardous materials. The regulations apply to all trucks weighing over 10,000 pounds.

The DPS points out that dates on which the new regulations become effective have been staggered with several of the provisions going into effect on Jan. 1, 1988. Require-

ments pertaining to drivers' log books are to take effect on Jan. 1, 1989.

In addition to commercial truckers, the regulations also apply to farmers and ranchers. Some exceptions are allowed for farmers and ranchers, but these individuals must comply with many of the regulations.

Additional information concerning the regulations can be secured by contacting the DPS office in Lubbock at 797-4491 or the DPS office in Plainview at 293-2508.

Ray Macha candidate for sheriff

Ray Macha, who resides at 529 W. Missouri in Floydada, announces his candidacy for sheriff of Floyd County. He is running subject to the Republican Primary.

Macha says: "I believe it is time for a change in the sheriff's office. We need a new and aggressive approach in crime prevention and apprehension. 1940s law enforcement will not defeat 1980s criminals. I intend to run a clean and responsible campaign based on my qualifications as a candidate.

"I ask all Floyd County voters to consider my qualifications and proposals I will be sharing with them during this election year. I believe I will make an effective and cooperative sheriff for Floyd County, and I will appreciate all assistance in my election."

Macha, 36, formerly served with the Floydada Police Department, where he

attained the rank of sergeant. He resigned from the police force to devote full-time to his farming operation.

A self-employed farmer for the past 10 years, Macha is presently employed with Lockney Police Department on a part-time basis. His wife of 15 years, Judy Macha, helps her husband as a partner in the farming operation.

Mrs. Macha was formerly associated with Pat Walker's and Shop Rite as a checker. Both are located in Floydada.

Judy Macha has been designated as her husband's campaign treasurer. Born Dec. 1, 1951 in Lubbock County, Macha was graduated from Plainview High School and attended Amarillo Junior College, where he earned an Associate of Arts Degree in Law Enforcement while working as campus security. He also attended Wayland Baptist College, majoring in Law Enforcement.

Macha holds Basic, Intermediate and Advanced Law Enforcement certification from the State of Texas. He has over 2,000 hours of police training and has served as a police firearms instructor.

His grandparents came to Lynn County "around the turn of the century" from Baylor County. His paternal grandfather, Henry Macha, developed the first stormproof cotton, Macha cottonseed, during the 1940s and 1950s.

The candidate's parents, E.V. and Lois Macha, reside at Finney Switch, north of Plainview. The father, a retired farmer, is a veteran of World War II.

The Macha family are active members of the Abundant Life Fellowship Church in Floydada.

His hobbies are hunting, fishing, Indian artifact collecting, coin collecting, metal detecting and antiques.

ACP signing set January 11-15

A sign-up period of Jan. 11-15 has been established for the Annual Conservation Practices (ACP) program. The practices include underground tile, pits, land leveling, terraces and waterways.

"Please remember that practices started prior to approval will be

ineligible for cost-sharing," officials point out.

"If you are interested in performing a conservation practice, come by the (ASCS or SCS) office to file an application during the Jan. 11-15 period," they add.

Sanders files for Precinct Three post

D.R. (Richard) Sanders, a 52-year-old Liberty Community resident and a longtime resident of this county, announces his candidacy for commissioner in Precinct Three. He is running subject to the Democratic Primary.

Sanders says he has been encouraged by several persons to offer himself as a commissioner candidate and gave the matter considerable consideration before filing.

"I like people and I like to work with people," says Sanders, who has been in the drilling and pump business for 32 years and who also farms. "I like to give people a fair and honest shake, and that's what the people of Precinct Three will get if they elect me as their commissioner," he adds.

Sanders has served the past six years as a county committeeman for the High Plains Underground Conservation District No. 1 which includes Floyd and most other South Plains counties.

Sanders has lived in Floyd County all but one year of his life. He has resided in the present Precinct Three since 1949.

Starting to school at Center, he also attended classes at Lone Star, Sterley

and South Plains before graduating from Floydada High School in 1953.

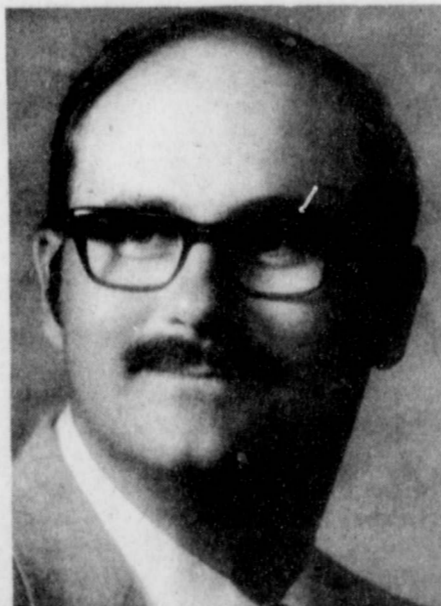
He and his wife, the former Nina Grisham, are parents of four offspring: Regina Craddock of Sundown, Renee Mills of Bryan, Stanley Sanders of Floydada and Layne Sanders of the home.



D.R. (RICHARD) SANDERS



RANDY HOLLUMS



RAY MACHA

This Week

WEATHER

Courtesy of Energas

DATE	HIGH	LOW
Dec. 30	50	32
Dec. 31	32	24
Jan. 1	34	22
Jan. 2	37	27
Jan. 3	42	26
Jan. 4	28	22
Jan. 5	26	25

GRAIN PRICES

Courtesy of Producers Coop.

Milo	\$2.90/100 wt.
Wheat	\$2.50/bushel
Soybeans	\$5.30/bushel
Corn	\$3.35/100 wt.

COMMODITIES

Caprock Community Action will distribute commodities at Massie Activity Center at Floydada January 11, 12 noon to 4:00 p.m. Please do not arrive before 12:00. Bring white commodities card. New applications will not be accepted after 3:30 p.m.

Have a good week!

D.W.I. CLASS

A D.W.I. Education Class will be held in the Floyd County Courthouse in the County Courtroom on Jan. 11 and 12, from 6:00 p.m. to 10:00 p.m. each night. The cost of the class is \$50.00 for both classes, which must be paid on the first night of the class.

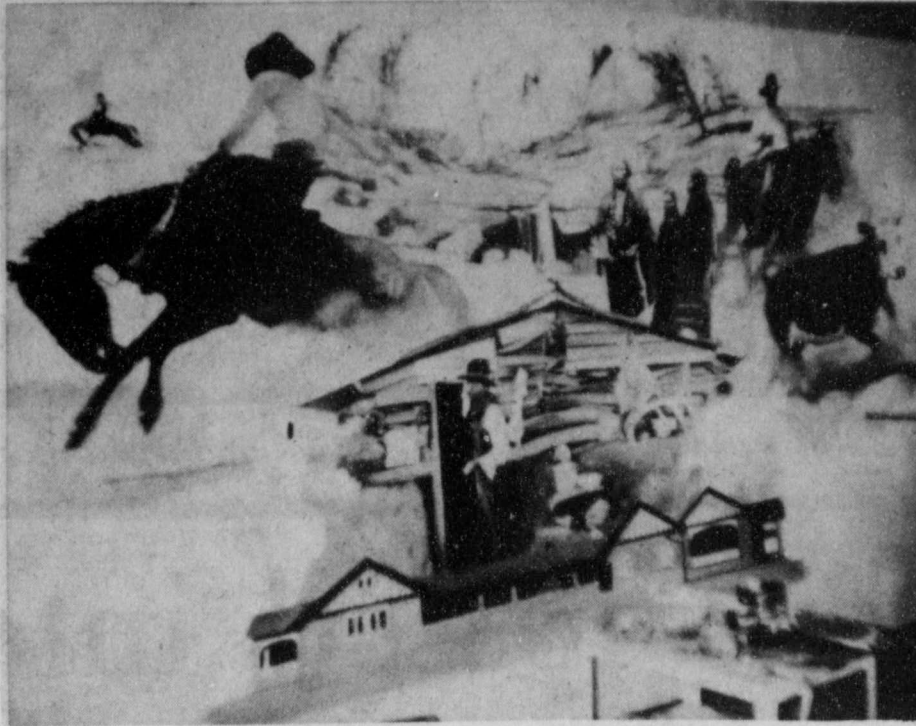
This class is a required probation condition for a first time conviction of Driving While Intoxicated. If not completed within 180 days of conviction, the person's drivers license will be automatically suspended.

MOTHER'S DAY OUT

The Mother's Day Out program at the First United Methodist Church will be held each Tuesday from 8:30 to 5:00. All children of the community are invited to attend. For more information call 983-3093 or 983-3707.

ADULT EDUCATION CLASSES

Adult education classes are held each Monday and Tuesday from 6:30-9 p.m. at R.C. Andrews Elementary School cafeteria. This is a study for GED tests, written test for driver's license, and citizenship, and to improve basic skills in math, science, social studies, reading and English. Classes are free.



MOTLEY MURAL—The 100-year history of Motley County is depicted in a mural which will be viewed Saturday during open house at Matador's newly remodeled library.

Mural depicts colorful Motley County history

Characters who blazed their trail across the 100-year history of Motley County come alive on the canvas of Joe Taylor, Crosbyton artist. Taylor, commissioned by the Motley County Library Board, is creating an historical mural, 7 x 21 feet, for the open house of Matador's newly remodeled library on Saturday, Jan. 9, at 10 a.m.

In his effort to accurately depict the colorful history of Motley County, Taylor re-lives the exploits of the people and places he paints with thorough research. Rare and precious history books, yellowed photographs, and treasured family histories litter his Crosbyton studio. Looking at a picture of the county's first married couple, the D.C. Kieths, Taylor comments, "There's a man without a job," referring to the Matador Ranch's policy of firing hands who married.

Bordered by the blue, green and purple Scottish clan tartan of the Campbells, the mural is dominated by three main features, Quannah Parker encamped at Roaring Springs; H.H. Campbell, founder of the Matador Ranch, posing by his dugout; and the sprawling headquarters of the Matador Ranch.

Branding, roundup, and bronc-busting scenes are intermingled with unique personalities such as the buggy doctor, the fire and brimstone preacher, the Hall of Fame cowgirl, the slain sheriff, the Swedish immigrant who lived in a half-dugout for 35 years, and the pony express rider who rode from Quannah to the Golden Gate.

The buffalo hunters' TeePee City, the landmark Quitaque Peaks, the classic Roaring Springs Depot, and sinful Dewdrop Saloon are some of the places Taylor captures on canvas to share with future generations.

Being engrossed in history is not a new thing for the Taylor, who spends his free time roaming local creek beds and caliche hills for ancient bones of three-toed horses, giant salamanders, bison, and camels. This particular

hobby led to another enterprise, casting reproductions of the rare specimens for museums and history buffs.

Since he returned four years ago to his native Crosbyton from working in Hollywood, this is Taylor's sixth mural commission. Other commissions have included billboards, stage props, oil paintings, portraits, book illustrations, and sculpture by the versatile artist whose latest handiwork will be on display for the library's open house which will also feature Western author Elmer Kelton, and District Representative Foster Whaley.

Elmer Kelton, author of such best selling western novels as "The Time It Never Rained," "The Day the Cowboys Quit," and "The Man Who Rode Midnight" will be one of the featured guests at the Saturday open house for the Motley County Library.

Also on the speakers' agenda is District 84 Representative Foster Whaley of Pampa. To be honored will be the many supporters who have made possible the permanent home for the library through grants, memorials, and donations.

Caprock Hospital

December 29-January 5

Lena Withers, Floydada, adm. 12-19-86, continues care, Hale

Gladys Simpson, Floydada, adm. 2-23-87, continues care, Jordan

Flora Warren, Floydada, adm. 12-11, continues care, Hale

Marilyn Buchanan, Floydada, adm. 12-26, dis. 1-4, Hale

Pearlie Moosberg, Floydada, adm. 12-26, dis. 1-1, Jordan

H.L. Porter, Petersburg, adm. 12-26, dis. 12-31, Hale

Maude Powell, Floydada, adm. 12-28, continues care, Hale

Nell Sue, Ralls, adm. 12-28, dis. 1-3, Lopez

Fabian Torrez, Floydada, adm. 12-28, dis. 12-30, Lopez

Robert Owens, Floydada, adm. 12-28, transferred 12-30, Hale

Charles Breeding, Floydada, adm. 12-29, dis. 12-30, Jordan

Carl Bailey, Floydada, adm. 12-29, deceased 1-3, Hale

Pauline Hagood, Petersburg, adm. 12-30, continues care, Hale

Veronica Gonzales, Floydada, adm. 12-30, dis. 12-31, Lopez

Elizabeth Brinsfield, Matador, adm. 12-30, dis. 1-5, Jordan

Opal Morrison, Floydada, adm. 12-31, continues care, Hale

Wayne Bennett, Floydada, adm. 12-31, continues care, Jordan

Rebecca Carisales, Floydada, adm. 12-31, dis. 1-1, Lopez

Charlie Lewis, Floydada, adm. 1-2, continues care, Hale

James Moore, Matador, adm. 1-3, continues care, Hale

Frances Casillas, adm. 1-2, continues care, Jordan

Lela Mae Burns, Floydada, adm. 1-3, continues care, Hale

Clara McNeely, Floydada, adm. 1-4, continues care, Jordan

Jan Rubio, Floydada, adm. 1-4, continues care, Hale

Annie Caruthers, Floydada, adm. 1-4, continues care, Jordan

Dina Livingston, Floydada, adm. 1-5, continues care, Hale

Barn burglary suspect apprehended in Ralls

A suspect in the Friday night or early Saturday morning burglary of a barn southeast of Floydada was apprehended in Crosby County. A warrant has been issued in this county charging Israel McBride of Lubbock, formerly of Ralls, with burglary of a barn.

Sheriff Fred Cardinal says the suspect was pulling a two-wheel trailer, stolen from J.S. Hale's barn, in Ralls when peace officers noticed that the trailer bore no lights. A routine check by the lawmen revealed that the trailer had been stolen and the suspect was taken to Crosby County Jail in Crosbyton.

Reportedly stolen from the barn were two welders, the two-wheel trailer, a cutting torch, wrenches and a "cut-off saw." The welding equipment is mounted onto the trailer.

The items, valued at an estimated \$2,600, were in possession of the Floyd County Sheriff's Department early this week.

Hale's burglarized barn is located approximately 13-14 miles southeast of Floydada.

Three individuals were apprehended "over the week-end" on DWI (driving while intoxicated) charges.

Boulter seeks Senate seat

Saying that the people of Texas deserve a responsible alternative to "Lloyd Bentsen's record of tax and spend," 13th District Congressman Beau Boulter announced Monday he will seek the Republican nomination for the right to challenge Democrat Lloyd Bentsen.

"He's tax-happy," Boulter said. "Lloyd Bentsen shows an astonishing enthusiasm for tax increase."

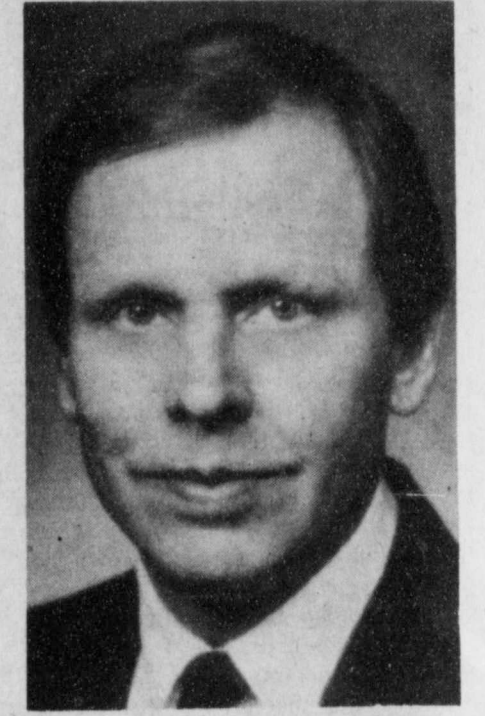
"He says he works for Texas as Chairman of the Senate Finance Committee, but it seems to me he has worked more for taxes," Boulter said. "I will not criticize Lloyd Bentsen for ineffectiveness. The problem, unfortunately, is he has been all too effective in steering through the Senate two new tax bills this year alone."

"It's great that a Texan is chairman of the Senate Finance Committee, but what good is it for Texas if he's using it to lead the charge for higher taxes," Boulter added.

Ending weeks of speculation, Boulter embarked on a three day tour of the state, beginning in Houston and concluding Wednesday in Texarkana, to announce his candidacy for the U.S. Senate seat currently occupied by 17-year incumbent Democrat Lloyd Bentsen.

Boulter said that he made his mind up to challenge Bentsen when Bentsen unveiled plans to raise taxes on the American people by \$23 billion over the next two years.

"I believe strongly in an America of less taxes and less government spending. The size of our government is becoming an unbearable burden on the backs of the American taxpayer," Boulter said. "In contrast, Lloyd Bentsen's vision of America is one of bigger government, never-ending budget in-



BEAU BOULTER

creases, and higher taxes to cover our budget deficits."

Boulter was born in El Paso. Later his family moved to Levelland. He graduated from the University of Texas and later finished in the top 5% of his class at the Baylor University School of Law. Soon after graduation he and his wife Rosemary moved to Lubbock to establish his law practice. In 1974, Boulter and his family moved to Amarillo.

In 1981, Boulter defeated a five-term incumbent for the Amarillo City Commission. In 1984, Boulter was elected to represent the 13th District of Texas, defeating a five-term incumbent. In 1984, he was re-elected by 65%.

Patton Springs ISD superintendent files for House of Representative

J.J. Barlow Jr., Superintendent of Patton Springs ISD, announces his candidacy on the Democratic ticket for the 84th District seat in the Texas House of Representatives. He seeks the position filled by Foster Whaley of Pampa, who is retiring. Billie Sue Shepler of Afton is designated as campaign treasurer.

Barlow said his decision to run was prompted by his concern for: 1. Public education as a result of the Edgewood vs. Kirby decision and a formula which must be developed by the legislature for financing all Texas Public Schools. 2. Creating an efficient coordinated plan of school operations between the Legislature, State Board of Education and the Texas Education Agency, which has demonstrated a lack of cohesion in the past. 3. The development of a plan for economic growth for Texas as an alternative to oil and petroleum dependency.

Barlow, 55, cites his rural background and farming interests to be beneficial in making decisions for the Agricultural Industry in the 71st Legislature. His 33 years of experience in public education will be an invaluable asset in the crucial financial realignment of all Texas public schools, as well as refinement of the current Texas school mandates.

His experience in operations of large, richer, city school districts, urban schools of moderate size and wealth, and the poorer rural school districts gives him sound judgement and understanding of fiscal management and tax structures across a broad spectrum on which our Texas way of life exists.

Born in Earth in 1932, he graduated from Springlake-Earth High School, Texas Tech University (B.A.), North Texas State University (Denton) (M.Ed.) He is married to the former Annette Stark of Levelland, a graduate of North Texas State University (B.S.) and is a real estate broker. They have four children: Stephen, a pilot for Delta Airlines (Atlanta, Ga.); Stuart, a builder in the Dallas area; Scott, a doctoral student in Spanish at North Texas State University; and Sabrina, a senior at North Texas State. The Barlows have three grandchildren.

Have A Safe & Happy New Year!

a view from

The Lamplighter

By Ken Towery

Continued from Page One

ing news stories we dealt with during the year involved the community "spirit" of our citizens. Taken separately they show what individuals can accomplish when they exercise leadership, and taken collectively they show what can be accomplished for the whole community by groups of people working together toward a common goal.

In that category we would note the tremendous success of the effort to memorialize the site of "Camp Resolution", of the ill-fated "Texan Santa Fe Expedition", headed by Bill Gray and the folks over at Floyd County Museum. It was an important effort, gaining much support among our own people and attracting folks and attention from across the state.

And there was the tremendous effort put forth by Bill Hale and any number of local citizens to gain a much-needed state facility for Floyd county. The effort was unsuccessful ultimately, but that in no way detracts from the importance of the effort. Citizens came together for the common good and fought the good fight, proving to themselves they could do it and paving the way for successful ventures later.

Another good story covered in the pages of these newspapers dealt with a group of neighbors up in the South Plains community. There a citizen was laid up in a hospital at a critical time of Spring plowing and planting. The word spread. Within a matter of hours tractors and drivers appeared in the fields, and within a matter of some six or eight more hours approximately 600 acres of land had been prepared for planting. Everyone then repaired to the South Plains Baptist Church for a noon meal, and a blessing. It was a good story of a good act. Maybe a small story, as stories go, of a small act of kindness. But as someone said a long time ago, "In great matters men show themselves as they wish to be seen. In small matters they show themselves as they are." I like that.

Then there was the heartwarming

story of Floyd County emerging as "The Pumpkin Capitol of the World." Not the state, mind you, but the world. Nothing backward or bashful about this community, particularly when it's not brag, just facts. We hope, and expect, the festival surrounding the event to be an annual celebration that will lighten the heart and increase the pride of our community. We're kinda proud of the role folks here at the papers played in the beginning of the event.

Looking ahead, what do we see? Obviously there is a great big "IF" in trying to predict what the overall business climate will be during 1988. We concern ourselves with "business" because agriculture is every bit as much a "business" as any other. It involves the producing and selling of commodities, and if that is not business then we don't know what business is. We have the feeling, given the generally improved picture in agriculture, this will be a good year for Floyd County, "IF", of course, the weather cooperates. Otherwise businesses and consumers will be hit by more of those phased-in taxes imposed on us by the last legislature. That will cause the struggle to be a little harder, but that seems to be the name of the game nowadays.

Now for another big "IF." Our spies tell us that petroleum geologists have determined that some very promising formations have been located in the area where Floyd, Motley and Briscoe counties join, extending quite some distance into Floyd County, and that a major test of the formation is due within the next few months. Leasing activity is going on now in that part of Floyd County and our information is that it is likely to expand. If the test is successful, we are told by principles, "a great deal of exploration and drilling" is likely to follow.

All of which will help county citizens, including a number of those whose crops were wiped out in last summer's hail storms in that part of the county. Let us hope.

Representative candidate Ivey opening headquarters in Ralls

Gary Ivey of Ralls, candidate for the Republican nomination to the Texas House of Representatives, District 84, announces that the opening of his official headquarters will be at 3 p.m. Friday in Ralls.

The location is the former Danner's Department Store building on the west side of the square.

Refreshments will be served, and the public is invited.

Office hours have not as yet been determined, but a staff of volunteers will keep the doors open as much as possible, Ivey said.

Craig McDonald of Ralls has agreed to serve as Ivey's finance chairman for Crosby County. Edwin Moore, also of Ralls, is overall campaign treasurer.

Ivey's nomination is subject to the March 8 Republican primary.

Senior Citizen's Menu

Floydada

January 11-15

Monday — Sloppy Joe on bun, potato salad, slice tomato and lettuce, pickle, fruit cobbler, milk

Tuesday — Chicken fried steak, cream gravy, mashed potatoes, oriental vegetables, roll and butter, fresh fruit cup, milk

Wednesday — Meat loaf with creole sauce, creamed corn, carrots and peas, hot biscuit and butter, applesauce, milk

Thursday — Swiss steak, black eyed peas, zucchini and tomatoes, cornbread and butter, rice pudding, milk

Friday — Lasagna with mozzarella cheese, buttered green beans, tossed salad and dressing, garlic toast, peach cobbler, milk

THE LOCKNEY BEACON
(USPS 317-220)

Published weekly each Thursday by Floyd County Newspapers, 211 North Main St., Lockney, Texas 79241. Second class postage paid at Lockney, Texas. Subscription rates: Floyd, Swisher, Hale, Motley, Briscoe, and Crosby counties \$15.00, other counties \$17.00, out-of-state \$18.00.

POSTMASTER: Send a d-dress changes to The Lockney Beacon, P.O. Box 187, Lockney, Texas 79241.

Ken Towery Publisher
Alice Gilroy Editor
Jim Reynolds Editor
Pam Armstrong Office Manager/Advertising

Final week of SALE on CHRISTMAS ITEMS.

ONEIDA SALE continues through JANUARY 16

SCHACHT
Flowers, Jewelry & Gifts

652-2385
112 W. Poplar

Open 8:30 through 5:30
Monday through Saturday

Don't Miss...
KRISTI'S Annual Sale
Unbelievable savings of
25 - 50%
in all departments.

Kristi's
DOWNTOWN PLAINVIEW
296-7254

Senior Citizens
hearing test
Caprock Hospital District
901 W. Crockett
Monday, Jan. 11 10:00 a.m. thru 3:00 p.m.

If you have trouble hearing or understanding, this test [which uses the latest electronic equipment] will determine your particular loss. Test is performed by state licensed hearing aid personnel. You will see a hearing aid so tiny it fits totally within the ear.

Miracle-Ear®
Sponsored By
West Texas
Miracle-Ear Center

Junior varsity tournament Saturday in Floydada gym

Floydada, Lockney, Crosbyton and Lorenzo squads are entered in both the boys and girls divisions of the Floydada junior varsity tournament this Saturday. The county's two girls squads open action at 8:30 a.m. in the one-day tournament, with boys squads from the Floyd schools taking the court at 10 a.m. Crosbyton and Lorenzo girls are match-

ed at 11:30 and boys from those schools will play at 1 p.m. All eight squads are to play two games Saturday. Third place in the girls division is scheduled for 2:30, boys third place will be settled in a 4 o'clock contest, the girls championship match is set for 5:30 and the boys championship game unreefs at 7 p.m.

Boys play two overtime games in Frenship Invitational meet

Slaton outscored the Whirlwind boys 10-5 during the overtime period last Wednesday to nose out the Green and White, 62-57, for third place in the Frenship Boys Invitational.

A fourth quarter surge by Coach Mike Cocanougher's crew left the score 52-all after 32 minutes. Slaton took a 14-11 first quarter edge in the nip-and-tuck contest and it was 31-29 at intermission. The Tigers were in front 43-39 entering the final stanza.

Chad Pernell singled the nets with 24 points for the Winds.

Whirlwinds fared better in another tourney overtime match. They netted 3 points while limiting Monahans to 2 in the extra period for a 63-62 first round win.

Monahans owned a 15-13 lead after eight minutes but Floydada shot into a 32-23 halftime edge with a 19-8 advantage in the second quarter. The locals still led 44-42 after a strong third period showing by Monahans. It was 60-60 at the end of the regulation game.

Three Whirlwinds scored in double

digits: Ty Stovall 17, Pernell 12 and Chad Quisenberry 11.

Powerhouse Littlefield — a district foe — outgunned the Winds by 77-66 on Tuesday. It was a game of strong quarters as Floydada outshot the Wildcats by 15-13 and 27-14 in the first and fourth stanzas while Littlefield outscored the Green and White 24-12 and 26-12 in the middle two quarters.

Pernell scored 23, Ty Stovall had 13 and Randy Enriquez netted 10.

Ninth grade Winds

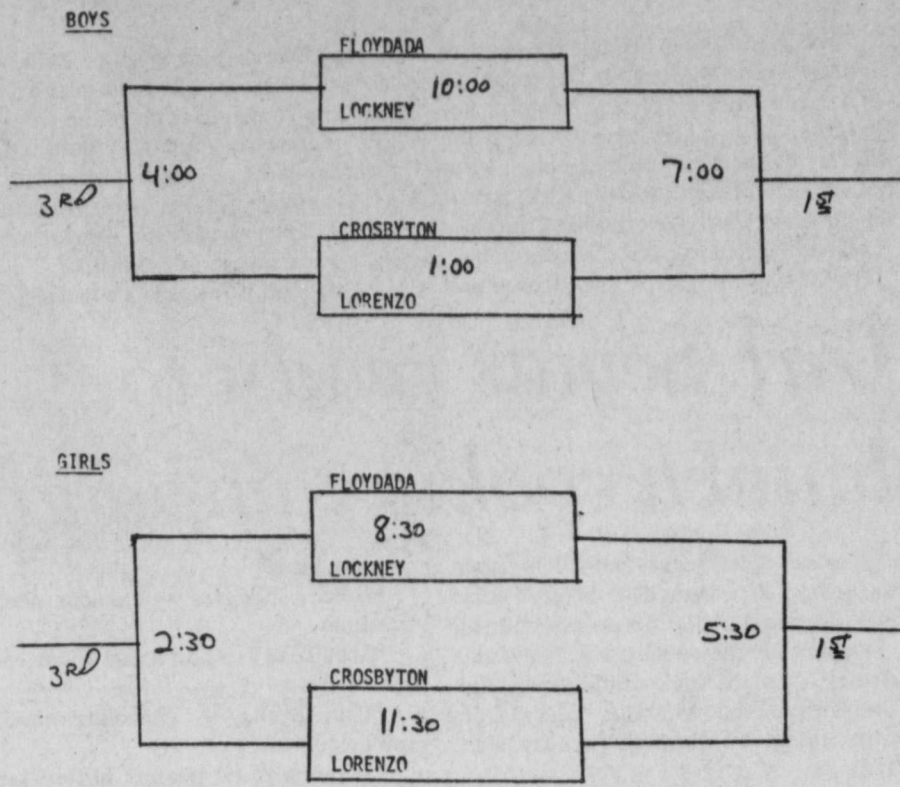
nip Muleshoe, 45-34

Floydada ninth grade boys notched a 45-34 victory over visiting Muleshoe on Monday night. This gives the Whirlwind frosh a 3-2 record.

Scoring were: Mike Aleman 21, Chad Williams 11, Ryan Burns 10, Aric Hendricks 2 and Vince Farris 1.

Next game will be Jan. 18 at Dimmitt.

FLOYDADA J. V. TOURNAMENT
JAN. 9



Top Team will wear Dark Jerseys
Bottom Team will wear White Jerseys

Ernest Smitherman posts hole-in-one

Ernest Smitherman of Floydada recently posted a hole-in-one playing the Floydada Country Club course. The ace was posted on the 136-yard, par 3, two hole using a five iron.

The hole-in-one has been registered with the Golf Digest's Hole-in-One Clearing House and Smitherman will receive a Johnnie Walker International Hole-in-One Award package which includes a personalized wallet card, certificate and golf bag tag. Established in 1952, the Gold Di-

gest's Hole-in-One Clearing House has registered nearly 700,000 holes-in-one over the years, including 42,000 in 1986.

The Johnnie Walker International Hole-in-One Award program began in 1926 in Scotland and since then it has been introduced into more than 40 other countries. Johnnie Walker's involvement in honoring American aces began in 1984 when it assumed sponsorship of the Golf Digest's Hole-in-One Clearing House.

In addition to an award package, all aces who register with the Golf Digest's Hole-in-One Clearing House are eligible to play in the Johnnie Walker National Hole-in-One Tournaments presented by The Golf Card.

Shannon Barbee on CC honor roll

Shannon Barbee of Floydada was recently named to Clarendon College's Dean's Honor Roll for the fall semester of 1987. In order to be so listed a student must carry at least twelve academic hours and earn a minimum 3.5 GPA.

Whirlwind girls open district on Tuesday

Whirlwind girls travel to Muleshoe next Tuesday to open their district basketball schedule. Area observers believe the title chase is "wide open."

Not since 1974 has a Whirlwind fem squad captured a district championship. The junior varsity contest is scheduled for 5 p.m., according to information from coaches, with the varsity match to follow.

While their female counterparts are

playing in Muleshoe, the Whirlwind boys are scheduled to travel to Valley High for a doubleheader starting with the JV contest at 6 p.m.

Four Floydada squads will travel to Hart on Friday. Both varsities, JV boys and freshmen girls are to play. The FHS frosh girls take on Hart's JV.

Floydada seventh grade basketballers are entered in an Idalou tournament on Saturday.

Whirlwind fems meet rugged foes in West Texas Girls Invitational

An 18-8 second quarter bulge allowed Perryton to pull away in a Thursday consolation semi-finals match against the Whirlwind girls in the West Texas Girls Invitational at Slaton. Final score was 44-28.

This tournament annually features some of the region's top squads.

Perryton led only 5-4 after the first stanza but forged ahead 23-13 at half and went into the fourth quarter with a 35-22 edge.

Angie Bertrand sank 8 points for Coach Gail Gregg's Whirlwinds.

Jamie Morrison scored 14 and Ber-

trand and Pam Woody each contributed 11 as the Whirlwinds outdistanced Lamesa 58-48 on Wednesday.

The locals owned quarter leads of 13-6, 28-22 and 42-38.

Floydada was pitted against host Slaton in a first-round match on Tuesday. Although they dropped a 49-36 decision, the Winds played the Lady Tigers tough. Slaton was up 6-4, 19-14 and 33-21 after each of the first three quarters.

Amanda McDaniel put in 9 points to pace the Whirlwinds.

Social Security News

By Terry J. Clements

The Medicare hospital insurance deductible, the amount a Medicare patient is responsible for when he or she first receives hospital insurance services in a benefit period, will increase to \$540 in 1988. The 1987 deductible is \$520.

Also scheduled to increase are the per-day amounts patients are responsible for after specific lengths of stay in a hospital or skilled nursing facility.

After 60 days of inpatient care in a benefit period of 1988, Medicare will pay for all covered services except \$135 a day. The 1987 figure is \$130.

For each reserve day, Medicare will pay for all covered expenses \$270 a day. The 1987 figure is \$260.

After 20 days of care in a skilled nursing facility, Medicare will pay all covered service except \$67.50 a day. The 1987 figure is \$65.

The basic premium for Medicare medical insurance will be \$24.80. The

1987 basic premium is \$17.90. Some people pay more than this rate because there were periods of time they could have had this protection but did not.

The monthly premium for hospital insurance for those people not otherwise eligible for this protection will be \$234 in 1988. The 1987 premium is \$226.

The medical insurance annual deductible will remain \$75, unchanged from 1987.

TAX FREE BONDS

8.00%

* To Maturity. Rate based on A rated tax free bond. Some local taxes may apply.

KEVIN PLATT
Edward D. Jones & Co.
415 BALTIMORE 293-9561



SEVENTH GRADE BREEZERS — Back row, left to right, Rance Gollightly, Jason Pyle, Jeremy Foster, Michael Gilliland, Michael Henderson, Scott Crader, Wayne Wells, Scott Chatman and Coach Tim James; front row from left,

Jonathan Simpson, Cabino Suarez, Joe Hernandez, Michael Brown, Josh Thayer, Jeremy Rubio, Johnny Egla and Casey Carthel. Not shown is Jason Bailey.

— Staff photo

THE FLOYD COUNTY HESPERIAN

(USPS 2026-8000)

Published weekly each Thursday at 111 East Missouri Street, Floydada, Texas 79235. Second class postage at Floydada, Texas 79235.

SUBSCRIPTION RATES: Floyd, Crosby, Hale, Motley, Swisher and Briscoe counties, \$15.00 per year; other counties, \$17.00; out-of-state, \$18.00 per year.

POSTMASTER: Send address changes to the Floyd County Hesperian, 111 East Missouri, Floydada, Texas 79235.

Ken Towery
Alice Gilroy
Jim Reynolds
Neta Marble
Rosemary Gonzales
Juanita Stepp

Owner
Publisher
Editor
Associate Editor
Production Mgr.
Reporter

★ Monday games ★

AT MULESHOE

EIGHTH GRADE GIRLS

Floydada	4	8	12	19
Muleshoe	10	14	24	28
Lesha Black 16, Branda Breed 3				
Season record: 3-4				
District record: 1-4				
Next game: Jan. 18, Dimmitt here, 5 p.m.				

SEVENTH GRADE GIRLS

Floydada	5	13	17	29
Muleshoe	2	9	11	15
Holly Henderson 12, Elisa Suarez 11, Lori Flores 2, Jayna Dunn 2, Tian Younger 1, Amanda Watson 1				
"Good defensive efforts by all," Coach James says. "Others who contributed were Zora Woody, Amber Poole, Rhonda Garcia, Spring Lipham, Vicki				

Luna, Amy Bethal, Annette Garcia, Jodee Breed."

Season record: 3-2

District record: 3-2

Next game: This Saturday in Idalou

tournament, 8 a.m. against Post

Go Winds!

We are caught up

Let us pick up your modules
and gin your cotton.

We will do you a good job.

Caprock Turner Gin Flomot

Gin -
469-5297

Donnie Turner

Home -
469-5337

I NEED YOUR HELP!

HOLLUMS FOR CONGRESS

I have announced for the 13th Congressional District and will be running in the Democratic Primary on March 8, 1988. I want to thank the voters of Briscoe, Motley, Dickens, and Floyd County for their past support and votes. I appreciate being allowed to serve you as District Attorney for the past 12 years.

I need your support and help one more time. Please volunteer to help in my campaign by filling out the form below and returning it to:

HOLLUMS FOR CONGRESS COMMITTEE

BOX 488

FLOYDADA, TEXAS, 79235

If you prefer to call, the phone in Floydada is 983-3513

NAME _____

ADDRESS _____

PHONE _____

I am enclosing \$_____ to help with the campaign.

I will work for the campaign. I prefer to:

_____ Call Voters

_____ Distribute Materials

_____ Travel & Visit Voters In Other Counties

_____ Help In The Campaign Headquarters

_____ Raise Funds

_____ However I Am Needed

Paid for by Hollums for Congress Committee

Nancy Willson, Treasurer, Box 488, Floydada, Texas, 79235, Ph. 806-983-3513



MR. AND MRS. JOHNNY BRENT WECKAR

Julie Davis-Brent Weckar wed in home ceremony

Julie Diann Davis became the bride of Johnny Brent Weckar on December 19 in a ceremony held in the home of her parents, Jerry and Dovie Davis of the Sterley community, on December 19 at 2:00 p.m. Reverend Robert Kirk, pastor of the First United Methodist Church of Lockney, officiated for the ceremony. Parents of the groom are Richard and

Francis Weckar of Wichita Falls. The ceremony was held in the den of the Davis home in front of the fireplace. The mantle was adorned with a large arrangement of pink carnations and white spider mums with eucalyptus sprigs. The mantle was also decorated with white tapers in gold candle holders and large pink bows. The room also held

the family Christmas tree, decorated for the holiday season.

The bride chose a country theme for the wedding and entered the room wearing a white blouse and denim skirt with grey ropers. She was escorted to the altar and given in marriage by her brothers, Joey and Randy Davis, who were similarly attired in shirts, jeans, and boots.

Maid of honor Dee Casey of Seymour also wore a denim skirt and pink blouse with navy ropers.

Weckar and his best man, Rance Carrington of Seymour, were also dressed in country fashion. The groom wore a white shirt, jeans, and grey ropers to match the bride and Carrington wore a pink shirt, jeans and navy ropers to match Casey's attire.

For her bouquet, the bride chose an arrangement of pink roses and white carnations. Fashioned into the bouquet were a handkerchief which belonged to the bride's grandmother, the late Mary Auld, and her mother's first wedding band. The bouquet carried by the maid of honor was a smaller replica of the bride's.

Music for the ceremony were selections prepared by Joyce Wilson of Lockney and were previously used at the bride's brother's wedding. Following the pledging of the vows, a reception honoring the couple was held in the dining area of the home.

The bride's table was laid with a hand crocheted ecru lace cloth over pink. The lace cloth was made for the bride by her great-aunt, the late Della Mae McWhorter, when Julie was six years old. A large pink bow was tied in front of the table and formed a scalloped front to the cloth.

The table held a three-tiered white cake decorated with pink roses which was made by the mother of the bride. Sitting at the base of the cake were a

Precious Moments bride and groom. A silver coffee service was also used on the table. Serving guests were Latona Davis, sister-in-law of the bride, and Susie Smith, cousin of the bride.

The bride was graduated from Lockney High School and attended Texas Women's University. She will begin classes at Midwestern University in January. The groom was graduated from Seymour High School and is a student at Midwestern. He is also employed at Gibson's in Wichita Falls where they will make their home.

Look Who's New!

NUTT
Danny and Laura Nutt of Floydada are proud to announce the birth of their first son, Jason Alan, who was born at 11:36 p.m. December 24 at Caprock Hospital.

Jason, who weighed in at 7 lbs. 8 ozs. and was 21 inches long, has one sister, Lindsey, age 2.

Grandparents are Mr. and Mrs. Edwin Nutt of Floydada and Mr. and Mrs. Leonard Pittman of Ft. Worth.

Great-grandparents are Mrs. Ellie Nutt of Plainview, Mrs. Eunice Newby, Tulia; Mrs. Ruth Pittman, Ft. Worth, and Mrs. Lois Schultz, Ft. Worth.

THOMPSON
Tracy and Lane Thompson of Allen are happy to announce the arrival of their daughter, Taylor D'Lane. Taylor was born at Baylor Hospital in Dallas on December 22 at 11:44 a.m. She weighed 7 pounds, 8 ounces and measured 20 1/4 inches.

The proud grandparents include Lewis and Ann Reddy of Floydada and Pete and Carolyn Thompson of Abernathy. Pearl Reddy, Floydada, is Taylor's great-grandmother.

Girl Scouts ready to launch cookie campaign

Caprock Girl Scout Council is again launching its annual Girl Scout Cookie Sale throughout the 18-county council. Orders for the cookies will begin this Friday, Jan. 8, and continue through Saturday, Jan. 23, and again from Monday, Feb. 1, through Tuesday, Feb. 16.

Deliveries are scheduled to be made Feb. 19-28.

According to Caprock Girl Scout Council officials, the cookie sale is "the only council-wide fund raiser. Each troop retains 10 percent for each box its members sell. Council profits are used to improve and maintain Camp Rio Blanco, east of Crosbyton."

Cookie varieties available include:
*Jubilee — chocolate, caramel and coconut cookie bars
*Classic Cremes — chocolate and vanilla sandwich cookies
*Hoedowns — chocolate covered

peanut butter
*Golden Yangles — cheddar cheese crackers
*Scot-Teas — shortbread sugar cookies

*Thin Mints — chocolate covered mint cookies
*Savannahs — peanut butter sandwich.

Cookies are priced at \$2 per box, the same as last year.

Floydada Girl Scout Leader Elizabeth Sims may be contacted at 983-3414 regarding cookie sales.

The Cadet Troop of seventh graders is hoping to raise enough money to finance a July trip to Girl Scout headquarters in Wyoming. A side trip to Yellowstone National Park is also planned. The girls need \$2500 to make the trip.

Two other local troops are also selling cookies, the first grade troop and the second and third grade troop.

Recipes present ideas for use of Girl Scout cookies

1. Company Surprise

1 qt. chocolate ice cream, softened
1 qt. vanilla ice cream, softened
1 c. whipped cream or whipped topping
1/2 pkg. Jubilee Cookies, chopped
8 maraschino cherries

Pour chocolate ice cream into bottom of 8 or 9-inch springform pan; chill until slightly firm. Pour vanilla ice cream over chocolate ice cream. Freeze until firm. Remove from freezer 15 minutes before serving. Remove from springform pan. Garnish with whipped cream around edge of ice cream; sprinkle chopped Jubilee Cookies in center of cream. Arrange maraschino cherries. (Makes 10 to 12 servings).

2. Rocky Road Parfaits

1 pkg. (4 servings) instant vanilla pudding
2 c. cold milk
1/2 c. mini marshmallows
8 Hoedowns, cut into bite size pieces.

Prepare pudding with 2 cups milk. Fold marshmallows and Hoedowns into pudding. Spoon mixture into dessert glasses or dishes. Chill or serve immediately. Garnish with whipped topping, if desired. (Makes 4 servings).

3. Black Forest Pie

14 Chocolate or Vanilla Classic Creme Cookies
1 (3-oz.) pkg. cherry gelatin
1 c. boiling water
1 pt. chocolate ice cream, softened
Whipped cream
Chocolate curls
Cherry pie filling

Arrange cookies around edge of pie plate. Dissolve gelatin in boiling water. Stir in softened ice cream. Pour mixture into arranged cookies. Refrigerate 1 hour. Garnish with whipped cream, chocolate curls and cherries. (Makes 8 servings).

4. Crazy Snack Mix

5 tbsp. butter or margarine, melted
1 tsp. Worcestershire sauce
1 tsp. brown sugar
1/2 tsp. garlic powder
2 c. Golden Yangles
2 c. popcorn
2 c. thin pretzel sticks or rings
1 c. peanuts

In 15 x 10-inch baking pan, combine butter, Worcestershire sauce, brown sugar and garlic powder. Stir in Golden Yangles, popcorn, pretzels and peanuts. Bake in 325°F. oven for 20 minutes, stirring occasionally. (Makes 6 cups).

5. Strawberry Chiffon

12 Vanilla Classic Creme Cookies, crushed
4 tbsp. butter or margarine, melted
1 c. boiling water
1 (3-oz.) pkg. strawberry gelatin
1/2 c. cold water

2 c. whipped cream
1 c. sliced strawberries

Combine cookies with butter; press into bottom of 8 or 9-inch springform pan. Chill. Dissolve gelatin in boiling water. Stir in cold water and chill until mixture is the consistency of unbeaten egg whites. Fold in cream and strawberries. Pour into springform pan. Chill 2 hours or until set. Garnish, if desired, with additional strawberries, sliced kiwi and whipped cream. (Makes 8 servings).

6. Layered Delight

1 pkg. Savannah Cookies, crushed
4 tbsp. butter or margarine, melted
1 pkg. (8-oz.) cream cheese, softened
2 (4 servings) pkgs. instant chocolate pudding
3/4 c. milk
3 c. whipped topping or whipped cream
Chocolate curls

In small bowl, combine cookies with melted butter. Press cookie mixture on bottom of 13 x 9-inch pan. Chill slightly. Combine cream cheese with 1/2 cup milk. Spread over cookie mixture. Chill for 15 to 20 minutes. Prepare pudding with 3 cups milk and pour over cream cheese mixture. Chill for 1 hour or until ready to serve. Top with whipped topping or whipped cream and chocolate curls. (Makes 10 to 12 servings).

7. Chocolate Mint Loaf

24 Thin Mint Cookies
2 (4 serving) pkgs. instant chocolate pudding
3 c. milk
2 c. whipped cream or whipped topping

Line bottom and sides of 8 x 5 x 3-inch loaf pan with plastic wrap. Arrange 20 Thin Mint Cookies on bottom and sides of loaf pan. Crush remaining cookies. Prepare chocolate pudding with 3 cups milk. Fold in whipped cream or whipped topping. Spoon into loaf pan and freeze 4 hours or until firm. Remove from freezer 15 minutes before serving. Garnish, if desired, with additional whipped cream or whipped topping and mint leaves. (Makes 10 to 12 servings).

8. Cream Sherbert Pie

36 Scot-Tea Cookies
3 tbsp. butter or margarine, melted
1 pt. vanilla ice cream, softened
1 pt. raspberry sherbert
1/2 c. toasted coconut

Finely crush 22 cookies. Combine cookies with melted butter. Press on bottom of pie plate. Stand 14 cookies around edge of plate, pressing into bottom crust. Spread vanilla ice cream

over bottom of prepared crust, pressing into cookies along edge. Scoop raspberry sherbert into balls over vanilla ice cream layer. Freeze. Sprinkle with toasted coconut. (Makes 8 servings).

9. Mini Cheesecakes

12 muffin tin paper liners
12 Scot-Tea Cookies
2 (8-oz.) pkgs. cream cheese, softened
1 tsp. vanilla
1 tsp. lemon juice
2 eggs, beaten
1/2 c. heavy cream
1/2 c. sugar

Cherry pie filling, jam or preserves
In 12-cup muffin tin, place first a muffin liner and then one Scot-Tea cookie in each cup. Combine cream cheese, vanilla, lemon juice, eggs, heavy cream and sugar. Beat well together. Divide mixture evenly over each cookie. Bake in 350°F. oven for 15 minutes or until set; cool. Top with

cherry pie filling, jam or preserves. Garnish, if desired, with mint leaves. (Makes 6 servings).

10. Apple Yangle Pie

Apple mixture*:
5 c. sliced cooking apples
3 tbsp. sugar
1 tsp. lemon juice
1 tsp. cinnamon
2 tsp. cornstarch
Crust and topping:
1 (9-inch) unbaked pastry crust
1 1/2 c. Golden Yangles, crushed
1/2 c. butter or margarine, melted

In unbaked pie crust, place apples, sugar, lemon juice, cinnamon and cornstarch. Combine Golden Yangles with butter and sprinkle over apples. Bake at 350°F. for 30 minutes for until Golden Yangles become golden brown. (Makes 8 servings). *Or substitute 2 cans (16-oz. each) prepared apple pie filling.

R.C. Pattons mark 50th anniversary

Mr. and Mrs. R.C. Patton of Snyder celebrated their 50th wedding anniversary in their home on New Years Day. The reception was hosted by their children: Sherry Lynn Kasmatka of Fort Smith, Arkansas, and John Mac Patton of San Diego, California, and grandchildren Charles and Keri Haile of Fort Smith.

R.C. Patton and the former Amy McRoberts were married in Floydada January 1, 1938, ten years after their

families moved to Floydada. The Pattons arrived from Lamesa, where R.C. graduated from high school. R.C. began working for Higginbotham-Bartlett in 1937 at the Floydada yard and is now a district manager for the company. He is a director of the West Texas State Bank, president of the board of trustees of Western Texas College and a member of Rotary Club.

The McRoberts family came from Jacksboro. Amy graduated from Floydada High School in 1931 and owned the Vogue Beauty Shoppe on the west side of the square until the early 1940's. She also taught oil painting in Floydada and has held art classes in Snyder for 21 years. The family attends First Baptist Church.

Attending the celebration from Floydada were Mrs. Bates McClung and Mrs. Duncan Hollums. Also attending the reception were sisters of Mr. Patton, Mrs. John (Bernice) Stapleton of San Angelo, and Mr. and Mrs. C.L. (Lerie) McMurray of Tucumcari, New Mexico. Mrs. Patton's sisters, Mr. and Mrs. Jack (Adele) Gleason of Amarillo, and Mrs. Norman (Mary Frances) Penhall of Snyder, were also present.



MR. AND MRS. R.C. PATTON



Begins Thursday
Jan. 7

Fall & Winter Merchandise
up to 50% off

The BEEHIVE
106 Berkshire Crosbyton

STOREWIDE SALE

Thursday, January 7 thru Saturday, January 9
(NOON)

50% off

30% off

- All Christmas Merchandise
- All Silk Flower Arrangements
- All Boxed Chocolates

- Everything else in stock - Except Precious Moments Figurines

Sue's Gifts & Accessories

No Refunds
No Layaways
No Returns

100 E. California

983-5312

Mastercard
Visa

Gifts, Etc.

803 Main St. Ralls

Fall & Winter Clearance

Begins Thursday, January 7

8:30 to 5:00

Closed Saturday

Fincher awarded top PTA recognition

Delores Fincher of Canyon was recently awarded an honorary National Life Membership, the highest honor that the National Congress of Parents and Teachers Association can bestow. It was given in recognition of her contributions made to improve the quality of life for children and youth through service as an advocate for children in such areas as education, health and safety, and legislation.

Fincher is the daughter of LeRoy and Bettye Chowning, and the granddaughter of W.B. and Mary Alice Eakin, all of Floydada.

The award was presented at the Texas State PTA's annual convention in El Paso by Ann Lynch, vice-president of the National PTA Association.

Among the 2,000 delegates there were almost 50 PTA members from the Texas Panhandle including honored guest from Canyon High School, Mary Harrison, the state president of Texas State Vocational Home Economics Teachers group.

Mrs. Fincher has served the past two years as a state vice-president of the Texas PTA, with a seat on the executive committee of the State Board of

Directors. She has recently been elected to serve as state chairman of the Child & Youth Advocacy Committee (this state chairmanship will include child abuse prevention, AIDS education, peer pressure, teen sexuality, etc.)

A PTA member for 18 years with active membership at Rex Reeves the past nine years, she also organized and is a charter member of Lakeview PTA, Valleyview Junior High PTA, Arden Road PTA and Oscar Hinger PTA.

A Texas honorary lifemember since 1980, she has served on the District, Regional, Area Council and local level as president. She also served as co-chairman for the 1979 Texas State PTA Convention held in Amarillo.

Currently involved locally with the AIDS curriculum advisory committee for Canyon Independent School District, Mrs. Fincher is in the process of coordinating a volunteer program for the Canyon School District.

She and her husband, Kenneth, have lived in Canyon almost ten years. They have three grown children and two grandchildren, Terry and Todd and Tammy Dorris and Callie and Cody Dorris.



DELORES FINCHER

Have a good week!



JANE ARCHER
652-2183 or 652-3539
By Appointment

Floydada Nursing Home Happenings

By Jo Bryant

Monday morning we had the usual coffee and juice break. It was good to be back after the three day holiday. At 10:30 Elvis Warren came and shared Numbers: 22-23. How Balak obeyed the Lord, and learned to speak what he told him to.

Tuesday, we had Bible study, and shared from Romans: 5-1-21 about having hope for the new year. We talked about how fast the year of 1987 had gone, and what we would do for the coming year of 1988. We shared that we would try to have more hope and faith. At 2:00 we had exercise and played some games.

On Wednesday, Bro. Earl Blair came and had the devotion on 1 Cor.: 12 on unity. Tho we are one body and there are many parts, and each one plays an important part in the body of Christ, also even if we don't think that we are important, God does. At 2:00 the residents played Bingo. Myra Hall had the first Bingo. They enjoyed the bananas since Bro. Neeley didn't get to come Tuesday. They missed them. On Thursday, Bro. Travis Curry came and gave the devotion on Zeph 8, the zeal of God.

Our sincere sympathy and love goes out to the family of Mrs. Una Clark, and Mrs. Alta Probasco, we will miss them both. We also wish for all those who have been struggling with colds to soon be well.

We want to wish one and all a Happy New Year, filled with happiness and good health. We also want to say thanks to Letha Mulder for the candy canes which she brought out to the residents. We welcome a new resident, Jewell

Ginn.

It was good to see the sunshine and have the snow and ice melt.

This week's visitors were: Randy Wolford, Artie Webb, Lorin and Bennie Leibfried, Winnie Neil, Mel and Marjorie Holcomb, John and Christine Lyles, Jettie Moss, Frances Badgett, Hazel Bradley, Bessie Wilson, Bab and Jack Dillard, Becky Johnston, Fred Beard, Mac and Marge McElyea and Kim Bradley.

Bridal selections
available for...

Alicia Davis & Bret Turner

THOMPSON PH. 983-5111
HEALTH MART PHARMACY
200 SO. MAIN FLOYDADA, TEXAS 79235

HALE'S DEPARTMENT STORE

Biggest Sale Ever

Starts Friday January 8th - 9:00 a.m.

Store closed all day Thursday to prepare for sale. Charge, Cash, or Layaway - IT'S BUSINESS AS USUAL AT HALE'S SALES!

This is truly the biggest sale we have ever had. From January 8th thru January 31st. Sale priced in every department.

SPECIAL - NOT USUALLY ON SALE!! 20% off on...

Every pair of SOX for women & children, including Tights.
All ladies Panties, Slips, Petticoats, & Camisoles
All Playtex Bras and Girdles

Home Furnishings

- BLANKETS reg. 8⁹⁹ sale 6⁹⁹
- BLANKETS reg. 10⁹⁹ sale 8⁹⁹
- BLANKETS reg. 14⁵⁰ sale 12⁵⁰
- Electric BLANKETS reg. 51⁹⁹ - 74⁹⁹ sale 10⁰⁰ off
- Only 3 King Size PILLOWS reg. 12⁹⁹ now 9⁹⁹
- King Size SHEETS - flat & fitted reg. 14⁰⁰ sale 12⁰⁰
- Queen Size SHEETS - flat & fitted reg. 9⁹⁹ sale 7⁹⁹
- Double Size SHEETS - flat & fitted reg. 9⁹⁹ sale 7⁹⁹
- Twin Size Sheets - flat & fitted reg. 6⁰⁰ sale 4⁰⁰
- CASES reg. 7⁹⁹ sale 6⁰⁰
- Fieldcrest BATH RUGS reg. 9⁰⁰ & 10⁰⁰ sale 7⁵⁰ - 8⁵⁰
- rug & contour
- Universal LID COVERS - reg. 5⁰⁰ now 3⁹⁹
- All Fieldcrest Popularity TOWELS reg. 6⁰⁰ now 4⁹⁹
- Hand TOWELS reg. 4⁵⁰ now 3⁵⁰
- WASH CLOTH reg. 2⁵⁰ now 2⁰⁰
- Fieldcrest Cotton-up TOWELS reg. 8⁰⁰ now 7⁰⁰
- Hand TOWEL reg. 6⁰⁰ now 5⁰⁰
- WASH CLOTH reg. 3⁰⁰ now 2⁵⁰

"Odds 'n' Ends" Linens - Much Cheaper

Kid's World

- Fleece Joy Suits in 3 - 24 months
1/3 off
- Toddler Boys & Girls Fleece Sets - Dresses & - Corduroy Sets
1/3 off
- Girls 4-6X Tops - Sweat Pants - Overalls - Dresses
1/3 off
- Girls 7-14 Tops - Sweat Pants - Overalls - Skirts
1/3 off
- Jeans by Wrangler - Jarrett - Zena
1/3 off
- Girls Coats
1/3 off
- Accessories - Belts - Bows - Jewelry - Suspenders
1/4 off
- Girls Panties - All Cotton or Polyester - Sizes 4 - 12
2⁰⁰ & 12²⁵ 3 pair for - 4⁹⁹

Mens western felt HATS by Resistol reg. 76.00 now 49.99
reg. 98.00 now 69.99

Mens & Boys

Special Group Mens & Boys JEANS
Washed, Denim Wranglers, Levis, & Sedgfield
\$1.99 WOW!

- SUITS 1/4 to 1/3 off
- SPORTCOATS 1/4 to 1/2 off
- Arrow Dress SHIRTS \$5.00 off
- T.S. SPORTSHIRTS 1/4 to 1/2 off
- S.S. SPORTSHIRTS 1/4 off
- S.S. Western SHIRTS 1/4 off
- L.S. Western SHIRTS 1/4 to 1/2 off
- FLEECE WEAR, Childrens & Mens \$8.99 - top or bottom
- Mens casual HATS (cold weather) 1/3 to 1/2 off
- Boys COATS 1/3 off
- S.S. Knit & Sport SHIRTS 1/4 to 1/2 off
- Mens SWEATERS 1/4 to 12 off
- Mens JOGGING SUITS 1/4 off
- WHIRLWIND JACKETS \$10.00 off
- Boys SHIRTS & SPORTSWEAR 1/3 off
- Levi '501' prewashed \$19.99 (1 week only) blue, black, grey
- Levi '501' bleached \$22.95 (1 week only)
- Wrangler American Hero stonewashed \$17.99 - Students
\$20.98 - Mens
- Wrangler acid washed \$23.99 - student - \$26.99 - mens
- Mens & Boys BELTS \$2.00 off
- Mens HAGGAR SLACKS \$10.00 off
- Mens Sansabelt SLACKS \$20.00 off (Charge for alteration)
- Mens S.S. JUMPSUITS \$19.99
- Mens ROBES 1/4 off
- Mens PAJAMAS reg. \$11.98 now \$9.99
- Mens & Boys SOX 20% off
- Mens Knit JEANS \$19.99
- All Boys JEANS \$3.00 off
- Student WRANGLERS \$14.99
- Mens WRANGLERS \$16.99 all styles
- Mens JACKETS 1/4 to 1/2 off
- Mens Walls work COVERALLS reg. \$26.98 now \$23.99
- Mens Walls insulated COVERALLS reg. \$49.95 now \$39.95
- Mens Walls insulated COVERALLS reg. \$64.95 now \$49.95
- HANES UNDERWEAR Mens Brief - \$5.99 (pkg. of 3)
- T-Shirts - \$8.99 Undershirt - \$7.99
Boys Brief - \$4.59 (pkg. of 3)
- Munsingwear Brief - reg. \$11.00 now \$8.99 - T-Shirt & V - neck
- reg. \$14.00 now \$10.99 Undershirt - reg. \$12.00 now \$9.99
- Jockey Brief - reg. \$12.00 now \$8.99

Ready-To-Wear

- DRESSES - 1/3 off Junior-Misses-Half-Sizes
- SPORTSWEAR - 1/3 off - Koret-Joyce-Thats Me-Donovan-Galvani
- BLOUSES - 1/3 off - Polyester & Cotton styles
- SLACKS - 1/3 off - Counterparts
- SKIRTS - Wool & Denim - 1/3 off -
Sasson-Summitt-Cherokee-Candies
- SWEATERS - 1/3 off - Small-Extra Large
- Denim JEANS - reg. & acid washed - 1/4 off -
Cherokee & Levi 900's
- Ladies COATS - 1/3 off - All weather - dressy & pants coats
- Group Fleece JOGGING SUITS - 1/4 off
- ROBES - GOWNS - PAJAMAS - SLEEPSHIRTS
(entire stock) 1/4 off

SEE OUR EXTRA SPECIAL RACKS OF
Womens - Jackets, Shirts, Pants, Blouses, Dresses
All 1/2 price or Much Less!!

ENTIRE STOCK HOSEIERY 25% off

Silk Reflections, Hanes Too, Isotoner, Thigh-Hi, Fitting Pretty, Alive

Shoes

- Mens & Womens DANIEL GREEN HOUSE SLIPPERS - 20% off
- Women's SAS Sandals - 20% to 50% off
- Women's KEDS - 20% off
- 9 West Flats & Heels - reg. \$42 to \$46 - sale \$25
- Cobbies - Red Cross - Socialites - reg. \$36 to \$49 sale \$24 to \$33
- SAS Mocs - for 7 days only - \$37.99
- SAS Mocs - one group discontinued styles & colors - \$29.99
- Large Group Womens SHOES - Super Bargains - 1/2 price & less
- Mens NUNN BUSH Loafers - reg. \$35.00 & \$59.95 sale \$29.99 & \$49.95
- Mens SAS SHOES - 7 days only - reg. \$55 & \$65 sale \$45 & \$55
- Small Group HUSH PUPPIES - DEERSKINS - Lace-up PORTO PEDS
at Super Bargains!
- Mens COWBOY BOOTS reg. \$49.95 - \$99.95 sale \$15.00 off
- Mens ROPERS reg. \$79.95 sale \$69.95
- Womens ROPERS reg. \$74.95 sale \$59.95
- Womens All-Weather BOOTS - all on sale SALE
- Hundreds of CHILDRENS SHOES - All Specially Priced
- Mens & Womens TENNIS SHOES
- all leather - by Nike & Reebok - \$10.00 off
- All other TENNIS SHOES on sale from \$4.99 up
- Childrens Cowboy BOOTS, including ROPERS
reg. \$24.95 - \$49.95 sale \$10.00 off

New Spring HANDBAGS - 10% off
All other BAGS - 25% - 50% off

Ladies BELTS & JEWELRY - 1/3 to 1/2 off

Hale's Biggest Sale Ever!

New crop technology could improve ag outlook

How cold does it feel?

Find today's temperature and read across for wind chill temperature.

Degrees Fahrenheit	MPH WIND SPEED							
	5	10	15	20	25	30	35	40
35	33	22	16	12	8	6	4	3
30	27	16	9	4	1	-2	-4	-5
25	21	10	2	-3	-7	-10	-12	-13
20	16	3	-5	-10	-15	-18	-20	-21
15	12	-3	-11	-17	-22	-25	-27	-28
10	7	-9	-18	-24	-29	-33	-35	-37
5	0	-15	-25	-31	-36	-41	-43	-45
0	-5	-22	-31	-39	-44	-49	-52	-53
-5	-10	-27	-33	-46	-51	-56	-58	-60
-10	-15	-34	-45	-53	-59	-64	-67	-69
-15	-21	-40	-51	-60	-66	-71	-74	-76
-20	-26	-46	-58	-67	-74	-79	-82	-84
-25	-31	-52	-65	-74	-81	-86	-89	-92
-30	-36	-58	-72	-81	-88	-93	-97	-100
-35	-42	-64	-78	-88	-96	-101	-105	-107
-40	-47	-71	-85	-95	-103	-109	-113	-115

The wind chill factor is the combination of cold and wind that makes a body feel colder than the actual temperature.

**By Marilyn Brown
TAES Science Writer**
An excess of farmland, decreased demand, increased competition from abroad, and the tremendous debt acquired during the 1970's have put the U.S. farm economy in serious trouble. Many allied businesses are suffering as well.

"The situation is not likely to change quickly," says Bill A. Stout, agricultural engineer with the Texas Agricultural Experiment Station.

Within 15 years, Europe will probably be a net exporter of food. Russia might get there even sooner. China is already exporting wheat and cotton. Argentina has 300 million untilled fertile acres ready to go into production.

According to a recent Merrill Lynch report, employment in agriculture has fallen by 50 percent since 1979. Many agricultural banks are failing, and the farm credit system in many areas is suffering. Farm debt has grown from \$182 billion in 1981 to \$213 billion in 1985, and land values — the collateral for that debt — have fallen 19 percent to 49 percent.

Ward Sinclair of the *Washington Post* has pointed out that the nations of the world are producing more food than

ever thought possible, and they don't need our farmers. Clearly, old remedies will not heal these new problems, the United States must look for new solutions, he says.

New uses for farm products, which could open and expand markets, offer much promise, Stout says. Farmland must be looked at as a potential source for biomass energy and for new crops that could be produced from genetically engineered plant life, he says.

"The plight of the U.S. farmer has never been more desperate nor the need for diversification greater," he says. "And new tools, such as biotechnology, are becoming available to increase biomass yields; salt tolerance; drought, pest, and disease resistance; and cold or heat tolerance; or even to manipulate the chemical composition (of plants)."

The Council for Agricultural Science and Technology (CAST) pointed out that fewer than 1 percent of seed bearing plants have been utilized commercially, and at least some of those unused species offer several advantages, including more diversified diets, reduced production of surplus crops, use of biomass for energy and industry, and reduced vulnerability to the environment and the economy.

One such crop is guayule, which produces natural rubber. While many crops are stockpiled in government surplus bins, rubber reserves are low.

Others are plants that are sources of medicines, insecticides, food, fiber, animal feed, oils, and waxes.

Plants contain many complex chemical structures, such as proteins, complex carbohydrates, oils and waxes, and steroids, which either cannot be produced synthetically or cannot be produced on the scale required as easily and economically as they can be derived from plant sources.

While vegetable oils are found in virtually every American kitchen, some also offer industrial uses. Soy, sunflower, rapeseed, and mustard all are important sources of vegetable oil. Crambe, another member of the mustard family, produces an oil high in erucic acid which has many industrial uses as a lubricant.

Jobba is a desert shrub with deep tap roots which produces an oil widely used in the cosmetics industry. It also can be used as a lubricant for automotive transmissions, for polishes, and for candle production.

New products for non-traditional markets also offer promise, Stout says. "Just as soybeans rose from a specialty crop to occupy more than 100 million acres of the world's cropland in the past few decades, other new crops and new uses will add important new demands for farm products."

ASCS slates ACP signing

The 1988 ACP Program has been announced by the Floyd County ASCS office. Sign-up has been scheduled for Jan. 11-15.

A number of conservation practices can be cost-shared, including parallel terraces, standard terraces, diversion terraces, waterway, irrigation tailwater, recovery pits systems, irrigation pipelines, irrigation lake recovery systems and land levelling.

This is a combination of ACP funds and target funds for 1988 sign-up. The target fund is a special fund for irrigation conservation programs.

Anyone who would like more information about the cost-share program should contact the Floyd County ASCS office or the Soil Conservation Service in Floydada. The phone number is 983-2352. All programs and services provided by USDA and SCS are available to everyone with regards to race, color, creed, sex or national origin.

Smiths to Farm Bureau conflag

Texas Farm Bureau, the largest state Farm Bureau in the nation with 334,162 member families, will send 23 voting delegates to the 69th annual meeting of the American Farm Bureau Federation, Jan. 10-14 in New Orleans.

They, along with voting delegates from 48 other states and Puerto Rico, will adopt national policy for the 3.6 million member families within Farm Bureau for 1988.

Major issues that will be considered by delegates include farm program amendments, international trade, government monetary policies, environmental regulations, farm labor, and immigration reform regulations.

Attending will be Robert Van Winkle, Sulphur Springs, chairman of the TFB Young Farmers and Ranchers Advisory Committee; and the recipients of the 1987 Outstanding Young Farmer/Rancher Award, Dan and Reeda Cay Smith of Lockney.

Doug Galloway county winner in grain sorghum production contest

Gary Matthews, who farms in Gaines County, and his brothers, Terry and Gary O'neal, Gray County farmers, have been named winners in the 1987 national grain sorghum production contest. The Yield and Management Contest, sponsored by National Grain Sorghum Producers Association, is conducted in two categories — irrigated and non-irrigated.

Contestants were scored against the three-year average established for their county by the Crop Reporting Service. Winners were those producers whose yields were highest in relation to the county average.

Doug Galloway was the Floyd County winner.

The contest had 233 entries from 19 states. Contestants were asked to complete a management information questionnaire on method of tillage, seed per acre, use of herbicides, insecticides, fertilizer, etc. National GSPA recorded this information in a computer program for reference and analysis. This information has also been printed in handbooks which will be distributed to contestants, the Extension Service, seed company sponsors and others who request it.

Farm News

Control financial risk

Texas farmers and ranchers take many daily risks that relate to weather, insects and disease. To better understand risk and how to handle it, elements should be separated into business risks and financial risks, say two agricultural economists with the Texas Agricultural Extension Service.

Dr. Wayne Hayenga and Dr. Danny Klinefelter, economists-management, define business risk "as all aspects of risk associated with the operation of a farm or ranch." This involves the risk associated with production and marketing of products, they explain.

Financial risk, they add, "is the risk associated with the way a farm business is financed. Financial risk results from the fixed repayment commitments that debt financing creates. If one has a relatively large amount of outstanding debt, he faces a greater financial risk than the producer who is debt free."

"Leverage ratio" is the most frequently used measure of the amount of debt financing, the economists explain. Financial leverage—or the leverage ratio—is a comparison of the amount of debt and equity capital in a producer's capital structure, they add.

There is no general, "best" leverage ratio for any farm business, says Hayenga and Klinefelter. "This depends on the type of operation, economic situation, management capabilities and many other factors. Lenders are concerned if they have more invested in a business than an owner and, therefore, more to lose. As one increases financial leverage, he also increases the financial risk for his business," explain the economists.

Impact of financial risk on a farm or ranch business can be realized in two ways.

First, explain the economists, increased debt financing can result in greater variability in net farm income. During good years, when returns are greater than interest charged, net farm income will be higher. However, during bad years, net income will be less because of fixed debt payments. Debt financing magnifies the financial results of a business operation. It makes the good years better and the poor ones worse, the economists say.

A second impact of financial risk on a business is that of creating liquidity problems. As a producer increases the amount of debt financing, he also increases fixed repayment commitments. These greater repayment commitments place heavier demands on cash flows. At some point, producer may experience difficulty in meeting debt repayment commitments from current cash flows.

"If these cash flow problems become severe and creditors move against a producer by calling demand notes which he cannot satisfy, he is bankrupt. But, as long as he can satisfy creditor demands, he is still in business, able to operate and work his way out of this short-term crisis situation," the men explain.

"To insure survival and long-run success of a farm or ranch business, one needs to sharpen financial manager skills. In today's economic climate, it is imperative to improve management and increase abilities to live with greater financial risk," say Hayenga and Klinefelter.

Search underway for rural hero

The search is under way for the rural hero for 1987, according to Ben Bullard of Waco, president of the Texas Farm & Ranch Safety Council which presents the annual rural heroism award.

The 1987 recipient will be announced March 7, at the 49th annual Texas/Southwestern Safety Conference and Exposition to be held at the Marriott Hotel in San Antonio. Deadline for submitting 1987 entries will be Feb. 15, 1988, Bullard said. Send all nominations to Texas Farm & Ranch Safety Council,

Box 2689, Waco, Texas, 76702-2689.

To qualify for the honor, a candidate must have performed a heroic act of human-lifesaving within Texas during 1987. Preferably, it should be related to farming and ranching, Bullard noted.

The 1987 winner, Arzo Burnim, junior high coach at Teague, rescued Russell Keaton, 13, also of Teague, from a rain-swollen storm drain at the edge of this small Central Texas town. Burnim received his award at Houston on March 24, 1987.

AGRICULTURE: IT'S YOUR HEARTBEAT, TEXAS!

CAPROCK-PLAINS FEDERAL LAND BANK ASSOCIATION



Floydada 983-2480

FLOYDADA IMPLEMENT CO.



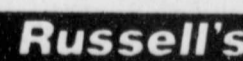
Floydada 983-3584

FIRST NATIONAL BANK OF FLOYDADA



Floydada 983-3717

RUSSELL'S EQUIPMENT & SUPPLY



Floydada 983-3751

FLOYD COUNTY IMPLEMENT



Floydada 983-3732

FLOYDADA COOPERATIVE GINS INC



Floydada 983-2884



We're ready when you are —

Custom application of -

- Dry Fertilizer
- Liquid Fertilizer
- Herbicides
- Treflan - Prowl Bulk - Package
- Milogard, etc.

PRODUCER'S COOPERATIVE ELEVATOR

983-2821
Floydada

983-3770
Dougherty

SHOP



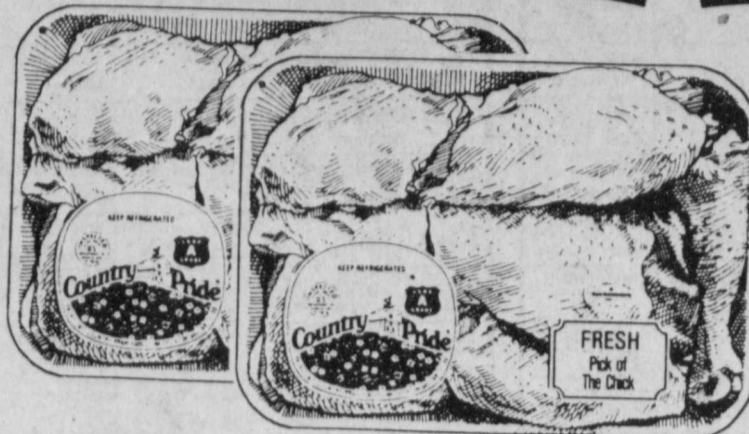
RITE

309 S. Wall
Floydada TX

Prices Effective January 6,
thru January 12, 1988.

**UNLIMITED
DOUBLE COUPONS
FOR THE NEXT 7 DAYS**

DOLLAR DAYS



**Country Pride
Pick
of the Chick**

Fresh Grade A Lb.

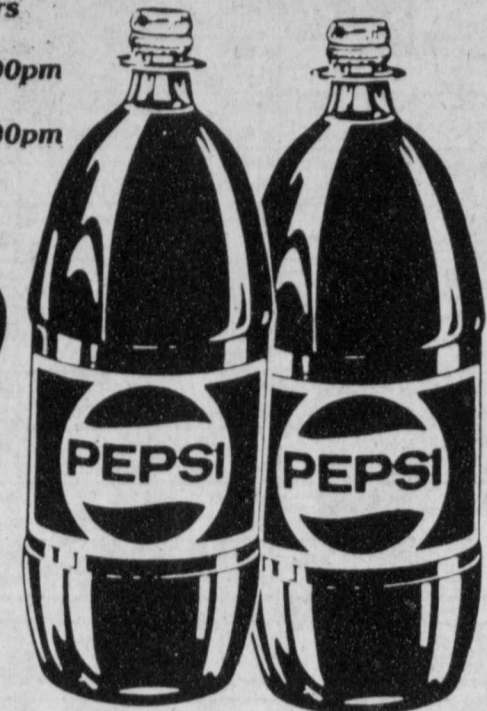
1.00

Pepsi
Diet Pepsi &
Mt. Dew

Store Hours
Mon-Sat
8:00am to 8:00pm
Sun
9:00am to 8:00pm

2 Liter
Bottle

.99



**Farm Pac Split
Top White
Bread**

1/2 Lb. Loaf

2/\$1

**Break Cake
Chocolate
Cake**

2 Ct. Pkg.

3/\$1

**Farm Pac
Homogenized
Milk**

1/2 Gal. Ctn.

1.00

**Hormel
Little
Sizzlers**

Regular
or Hot

12 Oz.
Pkg.

1.00

**Decker
Lunch Meats**

Bologna, Salami,
or Luncheon

12 Oz.

1.00



**Decker Sliced
Bacon**

12 Oz.
Pkg.

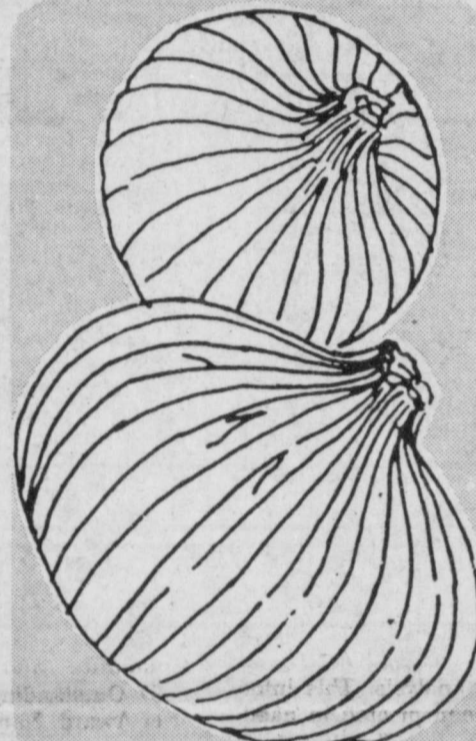
1.00



**Food Club
Macaroni &
Cheese Dinner**

7 1/4 Oz.
Pkg.

5/\$1



Yellow Onions

Medium Size

Lb.

3/.89

**Sweet
Potatoes**

Medium Size

Lb.

.43

**D'Anjou
Pears**

Washington State

Lb.

.49

**Whole
Dressed
Catfish**

5 Lb.
Bag

1.00

**Decker
All Meat
Franks**

12 Oz.

1.00

**Merico Flaky
Buttermilk
Biscuits**

10 Oz.

2/\$1

**Del Monte Golden
Corn**

17 Oz.
Can

3/\$1



**Del Monte Golden
Corn**

Whole Kernel
or Cream Style

17 Oz.
Can

3/\$1

**Del Monte
Sweet Peas**

17 Oz.
Can

3/\$1



**Del Monte
Sweet Peas**

17 Oz.
Can

3/\$1

**Del Monte
Cut Green
Beans**

16 Oz.
Can

3/\$1



**Del Monte
Cut Green
Beans**

16 Oz.
Can

3/\$1

**Zucchini
Squash**

Medium Size

Lb.

.99

**Navel
Oranges**

California Finest

Lb.

2/.89

**Red Rome
Apples**

3 Lb.
Bag

.99

**Food Club
American
Cheese Singles**

12 Oz.
Pkg.

2/\$3

**Del Monte Golden
Corn**

Whole Kernel
or Cream Style

17 Oz.
Can

3/\$1

**Del Monte
Sweet Peas**

17 Oz.
Can

3/\$1

**Del Monte
Cut Green
Beans**

16 Oz.
Can

3/\$1

**Russet
Potatoes**

Colo. Finest

5 Lb. Bag

.79

**Webber Farms
Pork Sausage**

All Varieties

16 Oz.
Pkg.

2.00

32 Oz.
Pkg.

4.00

**Food Club
Soup**

Chicken Noodle,
Chicken Noodle O,
Chicken Soup,
Chicken Star Noodle

10 1/2 Oz.
Cans

3/\$1

**Food Club
Pinto Beans**

2 Lb.
Bag

2/\$1

**Gladiola
Mixes**

Yellow Cornbread
Corn Muffins,
Biscuit,
White Cornbread

6 Oz.
Pkg.

4/\$1

Royal Gelatin

Assorted Flavors

3 Oz.
Pkg.

4/\$1

Page Towels

Large
Roll

3/\$1

**Gaylord Mega
Flour**

25 Lb.
Bag

3.00

**Ramen Pride
Oriental Pasta**

Assorted

3 Oz.
Pkg.

6/\$1

**Bolo
Dog Food**

Beef, Regular, or Liver

15 Oz.
Can

4/\$1

**Pet Evaporated
Milk**

12 Oz.
Can

2/\$1

**Kitchen Treat
Pot Pies**

Chicken, Beef or Turkey

6 Oz.
Pkg.

5/\$1

**Top Frost
Spinach**

Chopped
or Leaf

10 Oz.
Pkg.

4/\$1

Borden Dips

Assorted
Flavors

8 Oz.
Ctn.

2/\$1

WEEKLY TELEVISION SCHEDULE

Table for Thursday, Jan 7 (Weekdays) showing TV schedules for TBS, KTXT, WGN, KCB, KLB, KAMC, KJTV, HBO, SHOW, and ESPN.

Table for Thursday, Jan 7 (Evening) showing TV schedules for TBS, KTXT, WGN, KCB, KLB, KAMC, KJTV, HBO, SHOW, and ESPN.

MORNING: 9:05 (3) *** Jailhouse Rock (1957, Musical Drama) Elvis Presley, Judy Tyler. Musical Drama. Elvis Presley, Judy Tyler. Musical Drama. Elvis Presley, Judy Tyler. Musical Drama. Elvis Presley, Judy Tyler.

Table for Friday, Jan 8 showing TV schedules for TBS, KTXT, WGN, KCB, KLB, KAMC, KJTV, HBO, SHOW, and ESPN.

MORNING: 9:05 (3) *** Live a Little, Love a Little (1969, Comedy Drama) Elvis Presley, Michele Carey. Comedy Drama. Elvis Presley, Michele Carey. Comedy Drama. Elvis Presley, Michele Carey.

Table for Saturday, Jan 9 showing TV schedules for TBS, KTXT, WGN, KCB, KLB, KAMC, KJTV, HBO, SHOW, and ESPN.

MORNING: 11:00 (3) *** Green Slime (1969, Science Fiction) Robert Horton, Luciana Paluzzi. Science Fiction. Robert Horton, Luciana Paluzzi. Science Fiction. Robert Horton, Luciana Paluzzi.

Table for Saturday, Jan 9 (Evening) showing TV schedules for TBS, KTXT, WGN, KCB, KLB, KAMC, KJTV, HBO, SHOW, and ESPN.

MORNING: 11:00 (3) *** Green Slime (1969, Science Fiction) Robert Horton, Luciana Paluzzi. Science Fiction. Robert Horton, Luciana Paluzzi. Science Fiction. Robert Horton, Luciana Paluzzi.

Table for Sunday, Jan 10 showing TV schedules for TBS, KTXT, WGN, KCB, KLB, KAMC, KJTV, HBO, SHOW, and ESPN.

MORNING: 9:30 (3) *** The Hellfighters (1969, Drama) John Wayne, Katharine Ross. Successful firefighter is reunited with his wife and daughter. Drama. John Wayne, Katharine Ross. Successful firefighter is reunited with his wife and daughter.

Table for Monday, Jan 11 showing TV schedules for TBS, KTXT, WGN, KCB, KLB, KAMC, KJTV, HBO, SHOW, and ESPN.

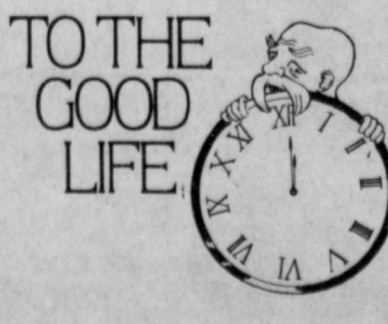
MORNING: 9:05 (3) Paper Dolls (1982, Drama) Joan Hackett, Jennifer Warren. Pressures put on teenage high fashion models. Drama. Joan Hackett, Jennifer Warren. Pressures put on teenage high fashion models.

Table for Tuesday, Jan 12 showing TV schedules for TBS, KTXT, WGN, KCB, KLB, KAMC, KJTV, HBO, SHOW, and ESPN.

MORNING: 9:05 (3) *** Elephant Walk (1954, Drama) Elizabeth Taylor, Dana Andrews. A bride has problems adjusting to her husband's way of life in Ceylon. Drama. Elizabeth Taylor, Dana Andrews.

Table for Tuesday, Jan 12 (Evening) showing TV schedules for TBS, KTXT, WGN, KCB, KLB, KAMC, KJTV, HBO, SHOW, and ESPN.

MORNING: 9:05 (3) *** Elephant Walk (1954, Drama) Elizabeth Taylor, Dana Andrews. A bride has problems adjusting to her husband's way of life in Ceylon. Drama. Elizabeth Taylor, Dana Andrews.



OBITUARIES

Local

CARL NATHAN BAILEY

Memorial services for Carl Nathan Bailey of Floydada, a Vietnam veteran, were at 2 p.m. Tuesday in the Moore-Rose Chapel in Floydada. Officiating was the Rev. Jeffrey Lee, a Baptist minister from Spur.

Interment was made in Floydada Cemetery, under direction of Moore-Rose Funeral Home.

Nephews served as pallbearers.

Mr. Bailey, 38, was claimed by death at 2 a.m. Sunday, Jan. 3, in Caprock Hospital following a lengthy illness.

Born Aug. 23, 1949 in Matador, Mr. Bailey was a lifelong Floyd County resident.

He and the former Debra Baird were married June 24, 1972, in Floydada.

Mr. Bailey was a Special Forces Green Beret during the Vietnam conflict. He was a farmer.

Survivors include his wife, Debra; two sons, Jason and Justin, both of the home; his parents, Guin and Dorothy Bailey of Lockney; two brothers, James Bailey of Lockney and Glenn Bailey of Floydada; two sisters, Guinda Emert and Linda Bailey, both of Lockney; a grandmother, Ola Gwinn of Levelland; several nephews, nieces, aunts and uncles.

HILDA JANE McDONALD

Hilda Jane McDonald, a Floydada resident for over half a century, was claimed by death at 2 a.m. Tuesday in Methodist Hospital in Lubbock. She was 85.

Friends said that she suffered a broken leg Sunday in a fall.

Mrs. McDonald resided at 820 West California Street.

Memorial services are scheduled for 3 p.m. Thursday in First Baptist Church. The Rev. Howell Farnsworth, pastor, is to officiate.

Interment will be made in Floyd County Memorial Park. Moore-Rose Funeral Home is directing arrangements.

A retired public school teacher, Mrs. McDonald was a member of First Baptist Church.

The former Hilda Jane Tatum was married to Clement B. McDonald on Sept. 15, 1928 in Enid, Okla. The couple moved to Floyd County in the summer of 1937 from Quitaque.

Mr. McDonald preceded his wife in death on July 21, 1987.

She was born Oct. 28, 1902 in Homer,

Logan County, Kentucky.

Survivors include one daughter, Carolyn Cheek of Floydada; one son, Ray McDonald of Lubbock; one brother, H.A. Tatum of Lubbock; a sister, Mary Gillispie of Lubbock; six grandsons, Derek Cheek of Orange, Calif., Jett Cheek of Denton, Don Cheek and Lane Cheek, both of Floydada, Laron Cheek of Camp Pendleton, Calif., and Bill McDonald of Lubbock; one granddaughter, Stephanie McDonald of Lubbock; one great-granddaughter, Laura Cheek of Floydada; and one great-grandson, Jonathan Cheek of Orange, Calif.

In addition to her husband, Mrs. McDonald was preceded in death by her parents, Mr. and Mrs. C. A. Tatum, and a daughter, Marilyn Katherine McDonald.

Elsewhere

VERLENE PERRY

Verlene, Perry, 68, of Amarillo was claimed by death Sunday in Baptist Hospital in Amarillo.

Memorial services were conducted at 2 p.m. Tuesday, Jan. 5, in the Schooler-Gordon Colonial Chapel in Amarillo. Burial was made in Amarillo.

A native of Rogers, Mrs. Perry was a former Floydada resident.

She was married to Sidney W. (Jock) Perry.

Survivors include her husband; a daughter, Linda Sue Brumm of Amarillo; two sons, M.T. Perry and Robert W. Perry, both of Amarillo; a sister, Lois Higgs of Amarillo; a brother, E.A. Kilpatrick of Amarillo; seven grandchildren; and seven great-grandchildren.

Mrs. Perry was a sister-in-law of Everett Perry, Mrs. J.W. Gilbreath, Mrs. C.M. Perry and Mrs. Ruth Perry, all of Floydada, and Mrs. Leo Brown of Amarillo.

MYRTLE STANDEFER

Services for Myrtle Gurtie Standefer, 92, of Plainview were at 10 a.m. Friday in Lemons Memorial Chapel with the Rev. Travis Hart, pastor of First Baptist Church in Plainview, officiating.

Burial was made in Floydada Cemetery.

Mrs. Standefer was claimed by death at 8:50 p.m. Tuesday, Dec. 29, in Plains Convalescent Home after a lengthy illness.

A Mount Pleasant native, she had resided in Floydada, Silverton and Lubbock before moving to Plainview.

She and Walter Dave Standefer were married on Nov. 26, 1916 in Floydada. He died Nov. 14.

Survivors include a daughter, Ruth Fariss of Amarillo; a son, Frank Standefer of Plainview; 17 grandchildren; and 28 great-grandchildren.

Courtroom Activities

In county court, Patsy Jonell Neitsch was charged with theft on Dec. 21, 1987. There was no disposition on this case.

On December 22, 1987, Jose Sasa Bueno, 49, of Floydada was charged with DWI. He pled guilty and was fined \$350.00 plus 120 days in jail which was probated for two years. He must also pay court costs of \$88.50.

On Dec. 28, 1987, Yolanda Garcia Salas, 37, of Petersburg pled guilty to DWI. She was fined \$500.00 plus court costs of \$88.50. She was also sentenced to 150 days in jail which was probated for two years. Salas also pled guilty to driving while her license was suspended. She was fined \$100.00 plus court costs of \$88.50 and sentenced to 10 days in jail.

David Garcia, 25, of Floydada also pled guilty to DWI on December 28, 1987. He was fined \$350.00 plus court costs of \$88.50. He was also sentenced to 140 days in jail which was probated for two years.

On January 4, Vollie Ferral Bearden, 43, of Matador was charged with DWI. There was no disposition on this case. John R. McCandless filed a speeding appeal on January 4. There was no disposition on this case.

Rebecca Camacho Hernandez, 24, of Floydada, pled guilty on January 4 to DWI. She was fined \$400.00 and sentenced to 140 days in jail, which was probated for two years. She must also pay court costs of \$88.50.

In J.P. court for the two week period of December 21, 1987 through January 5, 1988 there were 97 misdemeanor cases filed.



Register To Vote



BLOCKING TRAFFIC—Snow drifts, most of them small such as this one which appears behind a pickup and car, were created by the season's first snow and accompanying winds.

Staff Photo

We Salute

HAPPY BIRTHDAY

Thursday, Jan. 7: Juan Rodriguez, Janie Hales

Friday, Jan. 8: Holly Henderson, John Esquivel, Atha Sue, Kay Hicks

Saturday, Jan. 9: Rose Mary M. Segura, Bud Henderson, Aimee Fondy, Heather Fondy, Alejandra Reyes.

Sunday, Jan. 10: David Summers, Billy Gene Hinkle, Dianne Emert, William Smith

Monday, Jan. 11: Thomas Delgado

Sr., Dean Watson, Jan Thayer, Mindy Evans, Olga Gonzalez

Tuesday, Jan. 12: Chris Wilson

Wednesday, Jan. 13: Jennifer Gutierrez, Jackie Harvis, Anthony Rene Narbaez

HAPPY ANNIVERSARY

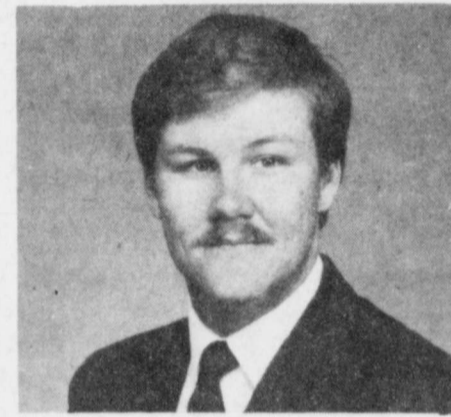
Thursday, Jan. 7: Dick and Doris Jones

Friday, Jan. 8: Noe R. and Yolanda A. Martinez

Saturday, Jan. 9: Mr. and Mrs. Armando Enriquez



A message from this newspaper and the Texas Dept. of Public Safety



TECH GRADUATE — Gary Cawley, son of Jerry and Barbara Cawley of Lockney, was a recent graduate of Texas Tech University in Lubbock. Cawley received a bachelor's degree in electrical engineering.

Your Vote Is Important

Political Calendar

Representative, 13th Congressional District

RANDY HOLLUMS

County Judge

BILL HARDIN

Sheriff

[Democratic Primary]

FRED CARDINAL

[Republican Primary]

RAY MACHA

County Tax Assessor-Collector

PENNY GOLIGHTLY

CAROLYN REDDING

Commissioner, Precinct 1

CONNIE BEARDEN

HULON CATHREL

BILL HOPPER

DELMAS McCORMICK

SAM SPENCE

Commissioner, Precinct 3

RICHARD SANDERS

GEORGE TAYLOR

THOMAS WARREN

Commissioner, Precinct 4

KAY CRABTREE

Political ad paid for by the candidate.

Subject to the Democratic Primary.

Carolyn Redding

for Tax Assessor-Collector

Ad paid for by candidate.

30% OFF DISCOUNT SALE 30% OFF

This is NOT a Going Out of Business Sale!

ALL Merchandise Except For Carpet

COUCH'S HOME & AUTO STORE

STORE WIDE SALE

SALE Starts January 7th thru January 16th

REFRIGERATORS
FREEZERS
HEATERS
CLOCKS

WASHERS
DRYERS
TV'S
TOYS

SPORTING GOODS
STOVES
SMALL APPLIANCES
TOOLS
TIRES

SEAT COVERS
BICYCLES
GUNS
WATCHES

TV STANDS
FISHING SUPPLIES
LAWN EQUIPMENT
FLOOR MATS

TELEPHONES
KNIVES
PATIO FURNITURE
CHAIN SAWS

OIL FILTERS
CAR STEREOES
MICROWAVES

Quality Service Selection Savings

703 Main Ralls, Tx

NO CHARGES — CASH OR CREDIT CARD

Phone: 253-2325

Mr. and Miss LHS to be revealed Saturday night



MR. AND MISS LHS NOMINEES

Horns compile 13-2 record

The Lockney Longhorn varsity boys upped their record to 13 and 2 when

they defeated Post on December 21. Final score of the game was 56 to 43.

JV Horns stop Post

The JV Horns posted a district win on December 21 against Post with the final score of the game being 73 to 54.

Coach Malcom Moerbe commented, "The team hustled and used good pressure defense to get several fast break scores to defeat a very fine Post team."

Scoring for the Horns were Clint Carthel and Justin Means with 18 points each, Scott Armstrong with 15, Mark Gatica and Louis Luna 10 each, and Kip Holt 2 points. Also on the roster were Steven Salas and Justin Adams. The JV boys fell on January 2 to Ralls by a score of 45 to 55. The coach said, "Fouls hurt us. We ended the game with two players but that's not an excuse. We didn't play well to begin with."

Scoring in this game were Scott Armstrong with 15 points, Mark Gatica 10, Clint Carthel, 8, Kip Holt 7, Louis Luna 3, and Justin Means 2 points.

Coach Phil Cotham commented, "The first half marked one of the poorest performances of the year. In the second half we finally came alive and played some good basketball."

Scoring for the Horns were Wesley Teeter with 19, Jimmy Ballejo with 11, Javier Bernal with 10, Ron Cates 9, Louis Perez 4, Jorge Bernal 2, and Scott Armstrong 1 point. Also on the

roster for the game was Joel Mitchell.

The Horns dropped their third game of the 1987-88 season on January 2 when they faced off with Ralls and fell to the Jackrabbits by a score of 54 to 45.

Cotham said, "We played exceptionally well in the first half, but made too many mistakes in the second half. Ralls has a good team this year."

Scoring for the Horns were Cates 18, Todd Hallmark 7, Teeter 6, Ballejo and Javier Bernal 4 each, and Perez, Jorge Bernal and Joe Luis Guerrero 2 points

Lady Horns tangle with Ralls

The Lady Horns also lost to Ralls on the same night. Final score in the game was 19 to 37.

According to Coach Eddie Fortenberry part of the problem for the Lady Horns in the game was that they made only 3 of 14 shots from the free throw

line.

Scoring for the Lady Horns in the game were Melinda Basaldua with 8, Connie Gonzales and Erin Adrian each with 4, Veronica Blanco with 2, and Rosellen Arjona 1 point. Also on the roster for the game was Tandi Gant.

Lockney Care Center

By Lanita Cantwell

Did all of you have a wonderful Christmas? We surely hope so. The residents at Lockney Care Center certainly did. They are so grateful to everyone who helped brighten their holiday. We had a great crowd at the resident Christmas party on December 22. We started off the festive evening by singing a few carols. Mrs. Larue Garvin accompanied us on the piano. Everyone was quite ready for Santa, but he had a little delay just south of the North Pole. It seems his sleigh was so overloaded that he almost didn't make it through a big snowdrift. When Santa did arrive, he had a sack of goodies for every resident and candy canes for all the kiddies. Teresa and Brandy Pitchford helped Santa by making sure that every resident got a bag. The staff passed out the gifts which family and friends had placed under the Christmas tree. Punch, cinnamon rolls, cookies and a variety of snacks were served in the dining room.

We had the drawing for the VCR that many of you had been anxiously awaiting. Juan Hernandez of Lockney was the winner. Prizes were also awarded to the top sales persons on our staff. Nona Thomas won another VCR for being the top sales person. Second prize went to Virginia Torres and third prize to Blanca Blanco. We appreciate the efforts of all our staff, and thank all of you who donated and bought chances. We collected over \$1000 for Alzheimer's research.

We had a number of people who provided special music and entertain-

ment for us during the holidays. John and Maebelle Francis, in addition to their weekly program, came and sang for us and John played his keyboard. The 5th grade classes of Lockney Elementary School came and sang lovely carols and also brought gifts for everyone. We appreciate their thoughtfulness. West College Church of Christ included our home on their caroling tour. They also brought "cheer baskets" filled with all sorts of "good eatin'" for each resident.

The Salvation Army also brought fruit and nuts for everyone, as well as a gift box which the residents received at the party. Some others we wish to thank for refreshments are Lozelle Keeter, Becky Pitchford, Shirley Stansell, May Pearl Burns and Brenda Gaskins. We also thank all who donated refreshments anonymously.

In the afternoon before our party, Susie Smith came by with her family and gave every resident a cute little gingerbread man ornament made from wood. The residents thought they were so sweet.

We want to thank Revco Drug and Cecil and Charlotte Carthel for donations to our stocking gifts. And we want to thank Bucky Adams for the service he performed.

Our living room has been made lovelier by the beautiful white poinsettia that Eleanor and Margaret Schacht brought us. We surely thank them also.

The residents all had a wonderful Christmas, but they are a bit tired and are resting up to get ready for the New Year. Hope all of you have a Happy New Year!

Lockney Elementary School will be the site of the Mr. and Miss LHS contest Saturday night, January 9 at 7:00 p.m. The public is invited and there will be a 50 cent admission charge for each person attending.

In addition to the naming of Mr. and Miss LHS, those attending will learn the names of those selected by their Candidates for the Mr. and Miss LHS titles include Rosellen Arjona, Jimmy Ballejo, Javier Bernal, Veronica Blanco, Ron Cates, Linda Cruz, Todd Hallmark, Connie Vasquez, Matt Williams and Ruth Elaine Wilson.

Accomplishments for these ten seniors are listed below in alphabetical order.

Rosellen Arjona has played basketball for all four years in high school. She has run on the varsity cross country team for the past three years and ran track her sophomore and junior years. She was a regional qualifier her sophomore year and as a junior received the desire award in basketball. This year she is a member of the journalism class. She is the daughter of Jessie and Lupe Arjona.

Jimmy Ballejo has played on the varsity football team since his sophomore year and was a member of the district winning team that year. He has been named to the all-district team two years in a row. He has also played on the varsity basketball team the past three years and ran track as a sophomore and a junior. He was a member of the district winning track team his junior year. He was a member of the sprint relay team. Ballejo has also played tennis the last four years and was in power lifting two years. He was selected as most attractive in his class as a freshman and sophomore. As a senior he serves as class secretary and he ran cross country two years. He is the son of Dora Esparza.

Javier Bernal has also participated in sports all of his high school years. He has run cross country and was a member of the state winning team in 1985 and 1986. He has played basketball and run track all four years. He has also played football for four years. He was selected to the all-district team his junior year.

He has received numerous awards from his classmates who voted him most attractive and most athletic in his freshman year, class favorite, most athletic and most attractive as a sophomore, and most athletic and most attractive as a junior. Javier is the son of Mrs. Francisco Reyes.

Veronica Blanco has played basketball for the past four years and has served as a team captain for the Lady Horns all that time. She has run cross country the past three years and was a regional qualifier as a sophomore. She has been a member of the track team the past three years and played in the band for two years. She was also a member of the UIL one act play cast as a sophomore. She has been a member of the Future Homemakers of America for four years and this year is serving as the treasurer of that organization. She is also currently a member of the Fellowship of Christian Athletes and this year serves as the secretary. She has also been a member of the Riot Squad for the past two years. She is the daughter of Rodolfo and Maria Blanco.

Ron Cates has played football the past four years and has been named to the all-district team three years. He has also played basketball for the past four years and has run track three years. He has been voted by this classmates as class clown, and has played in the band two years and played tennis one year. He is also a member of the Fellowship of Christian Athletes. He is the son of Benny and Marilyn Cates.

Linda Cruz has been an active runner on the cross country team for the past four years. During his freshman year the team won district and she placed third at the district meet. That same year the team qualified for regional and she placed fourth at the regional meet. During her sophomore year she was a regional qualifier and that year she was selected as the most outstanding cross country runner at the all-sports banquet. She has run track all four years and has run the mile relay, the 800 meter, and the mile. She also played basketball on year, was a member of the

Riot Squad this year and was first runner up as football queen. She is the daughter of Joe and Irene Cruz.

Todd Hallmark has played football and basketball all four years in high school. He was named to the all-district team in football two years and received honorable mention in basketball one year. He has also run track for four years and has qualified for regionals in the 300 meter intermediate hurdles, twice, the 110 meter high hurdles once and was on the regional qualifying mile relay team one year. He has been a member of the student council for four years and this year serves as the student body president and is also president of his class. He has been a member of FCA four years and a member of the National Honor Society for two years. He has also received numerous class favorite awards from his peers that include most attractive as a freshman, class favorite, most dependable, and most courteous his junior year. He is the son of Dub and Peggy Hallmark.

Connie Vasquez has been named the football sweetheart for the past three years and has served as a cheerleader for four years. She has played basketball for three years and run track for one year. She played in the band her first two years in high school and has been a member of FCA and FHA. She has been voted class favorite, class clown and most attractive, and most athletic for the past three years by her peers. She is the daughter of Pauline and Refugio Vasquez.

Matt Williams is an active member of the Lockney vocational agriculture program and the FFA. He has been enrolled in ag for the past four years and as a junior he served as the third vice president of the Lockney FFA chapter. As a senior he is serving as the organization's secretary. He was class president for three years and has been a student council representative for four years and this year is the vice president. He played football for two years and is a member of the National Honor Society. He has also received several honors which were voted on by his peers. These include class favorite and most attractive for the past three years. He is the son of Jerry and Kay Williams.

Ruth Elaine Wilson has used her high school years for both athletic and music pursuits as well as academic achievement. She has played basketball for three years and was named outstanding offensive player her junior year. She has also run track and played tennis. She has also served as the Longhorn mascot for two years. She has played in the band for four years and made all-region three years. She has also played in the all-district orchestra two years and the all-state orchestra one year. She participated in UIL competition in spelling for the past three years, went to regional two years and competed in typing one year. She has been a member of FCA two years and served as co-president last year. She has been in NHS two years and presently serves as secretary of that organization. She was also named to the academic all-district three years and was a candidate for football queen this year. During her junior year she was voted most dependable, most courteous, and class favorite by her peers. Her parents are Chuck and Joyce Wilson.

Lockney School Menu

January 11-14

Monday:

Breakfast — Waffles and syrup, fruit cocktail, milk

Lunch — Tuna sandwich, French fried potatoes, green beans and milk, apricot cobbler

Tuesday:

Breakfast — Cheese toast, milk, hash brown potatoes

Lunch — Roast, creamed potatoes, cole slaw, hot rolls, milk, peaches

Wednesday:

Breakfast — Oatmeal, pears, milk

Lunch — Pizza, corn and salad, fruit cocktail, peanut butter cookie, milk

Thursday:

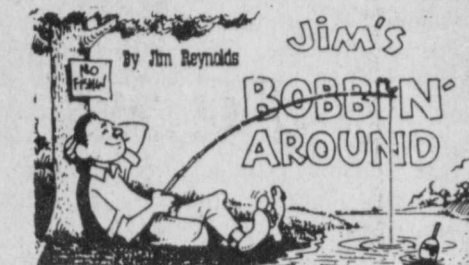
Breakfast — Chicken and gravy, French fried potatoes, biscuit, milk

Lunch — Corn dog with mustard, vegetable soup, cracker, pears, milk

Friday:

Breakfast — Cereal, peaches, milk

Lunch — Hamburger, French fried potatoes, hamburger salad, pear and pineapple salad, milk



COMPARISON

An Abilene preacher announced that he was quitting sports.

Tom Nagle, pastor of the St. James United Methodist Church in Abilene, gave 13 reasons why he was quitting the sports scene. See if the reasons sound familiar.

1. Every time I went, they asked me for money.
 2. The people with whom I had to sit didn't seem very friendly.
 3. The seats were too hard and not at all comfortable.
 4. I went to many games, but the coach never once came to call on me.
 5. The referee made a decision with which I could not agree at all.
 6. I suspected that I was sitting near hypocrites — they came to see their friends and what others were wearing rather than to see the game.
 7. Some games went into overtime and I was late getting home.
 8. The band played some numbers I had never heard before, and I didn't like them at all. I only like one kind of music.
 9. It seems that games are always scheduled when I want to do other things, and they interfere with my plans.
 10. I was taken to too many games by my parents when I was growing up.
 11. I recently read a book on sports, and now feel that I know more than the coaches do anyhow.
 12. I don't want to take my children to any games because I want them to choose for themselves what sport they like best.
 13. The temperature was never right — it was either too cold or too hot.
- Any resemblance between the reasons above and those given by people who quit church is strictly intentional.

Go Horns!

Candidate for
Tax Assessor-Collector



Penny Golightly

Paid for by Friends of the Candidate

PENNY GOLIGHTLY is seeking election as TAX ASSESSOR AND COLLECTOR of Floyd County in the March 8th primary. She has served as Tax Assessor Collector by being appointed by the Commissioners Court to fill out Jonelle Fawver's term. Penny has worked in the Tax Assessor Collector's office for nearly 5 years.

Penny is married to Dayne Golightly. They have two children, Rance, age 12 yr., and Lacy, age 9 yrs. They are members of the First Baptist Church of Floydada. Penny is also a member of the Floyd County Arts Assoc.

"I am continually furthering my education as County Tax Assessor Collector to further serve the people of Floyd Co. I have enjoyed serving you as your Tax Assessor Collector and ask the voters of Floyd County to let me serve you in this capacity. I truly thank the people of Floyd Co. for all the patience and words of encouragement."

THE FORD TRUCKS ARE COMING TO FLOYDADA FORD-MERCURY

Floydada Ford-Mercury has special ordered 18 new Ford pickups and they will be here in just a couple of weeks. We just wanted to let you know!

FLOYDADA FORD MERCURY

FLOYDADA, TEXAS

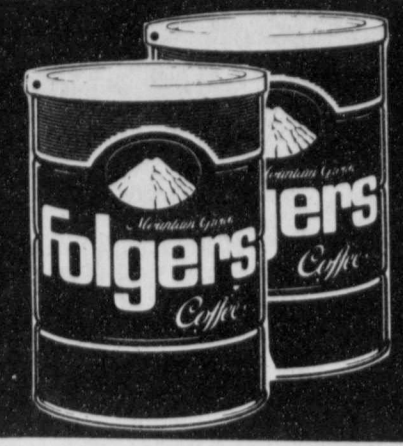
983-3761



Lay's
REG. \$1.39
99¢



Coca Cola
\$1.59
16 oz. No Return Bottles



ALL GRINDS COFFEE
Folger's
3 LB. CAN
\$5.97



PAPER TOWELS
Bounty
JUMBO ROLL
67¢

SUNNYFRESH GRADE A
Jumbo Eggs
ONE DOZEN
59¢

BATH TISSUE ASSTD.
Charmin
4 ROLL PKG.
97¢

60° OFF LABEL
FABRIC SOFTENER
Downy
96 OZ. JUG
\$3.07

20 LB. KIBBLES'N'BITS
OR 25 LB.
Gravy Train
\$5.99
YOUR CHOICE

ASSORTED
PRINGLES
CAN
\$1.17

CRMYCKY PEANUT BUTTER
JIF
28 OZ. JAR
\$2.87

35° OFF LABEL-REG/UNSC.
BOUNCE
40 CT. BOX
\$1.87

FROZEN FOOD & DAIRY
STOFFERS DELUXE/PEPPERONI
PIZZA
12 OZ. PKG.
\$2.19

CITRUS HILL REG/PLUS CALCIUM
ORANGE JUICE
12 OZ. CAN
87¢

SENECA FROZEN
APPLE JUICE
12 OZ. CAN
79¢

BORDENS BUCKET
ICE CREAM 5 QT. SIZE **\$4.19**
BORDENS BUTTERMILK 1/2 GAL. CTN. **\$1.09**
BORDENS PURE ORANGE JUICE ONE QUART **99¢**
KRAFT ASSORTED QUESISMO CHEESE 16 OZ. PKG. **\$2.17**
KRAFT DELUXE AMERICAN/PIMENTO/SWISS CHEESE SLICES 8 OZ. PKG. **\$1.09**

HEALTH & BEAUTY
TOOTH PASTE ASSORTED 6.4 OZ. TUBE **\$1.47**
CREST
MOUTH WASH REG/PEPPERMINT 24 OZ. BTL. **\$2.97**
SCOPE
SHAMPOO HEAD & SHOULDERS 11 OZ. BTL. **\$2.77**
ANTI-PERSPIRANT ASSORTED 1.25 OZ. SIZE **\$1.57**
SURE

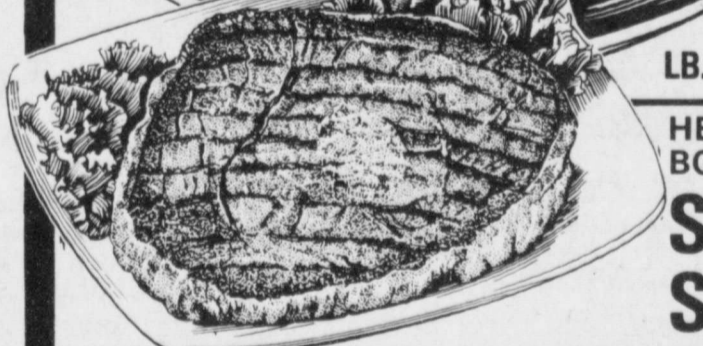


REDEEM YOUR PROCTER & GAMBLE SPECIAL OLYMPICS COUPONS NOW! THESE COUPONS CAME IN YOUR MAIL IN THE PUBLISHERS CLEARING HOUSE SWEEPSTAKES ENVELOPE. FOR EACH OF THESE COUPONS YOU REDEEM IN OUR STORE BY SUNDAY, JANUARY 17, 1988 PROCTER & GAMBLE WILL DONATE 10¢ UP TO \$750,000 TO HELP SPECIAL OLYMPICS ATHLETES

WE WILL NOT INTENTIONALLY SELL ANY GROUND BEEF UNDER 80% LEAN & WE PLEDGE TO MAKE OUR GROUND BEEF AT LEAST TWICE A DAY.



HEAVY GRAIN FED BEEF BONELESS BLADE CUT
Chuck Roast
\$1.39
LB.



HEAVY GRAIN FED BEEF BONELESS ARM
SHOULDER STEAK
LB. **\$1.99**

HEAVY GRAIN FED BEEF CHUCK STEAK LB. **\$1.79**
HEAVY GRAIN FED BEEF BONELESS CENTER CUT CHUCK ROAST LB. **\$1.69**
FRESH 80% LEAN FAMILY PAK GROUND BEEF LB. **\$1.19**

LEAN FRESH BEEF GROUND CHUCK LB. **\$1.59**
WILSON REG./POLISH/BEEF SMOKED SAUSAGE LB. **\$1.99**
DECKER QUALITY TRAY PAK CORN DOGS LB. **\$1.39**

BATH SOAP
ZEST
3 BAR PACK
\$1.47

POWDERED DETERGENT
BOLD 3
42 OZ. BOX
\$2.17

REG./MTN. SPRING DET.
DAWN
32 OZ. BTL.
\$1.57

SHELF SPECIALS
CLEANSER
COMET
14 OZ. CAN
37¢

KRAFT SPIRAL
MAC & CHEESE
5.5 OZ. PKGS.
89¢

VLASIC POLISH/KOSHER
CRUNCHY DILLS
32 OZ. JAR
\$1.29

SUNSHINE KRISPY
CRACKERS
16 OZ. BOX
67¢

HORMEL W/BEANS OR PLAIN
CHILI
15 OZ. CAN
99¢

ASSORTED LUNCHEON MEAT
SPAM
12 OZ. CAN
\$1.59

3 MUSKETEERS, SNICKERS, MARS BAR, MILKY WAY, M&M'S PLAIN/PEANUT
CANDY
6 CT. PACK
\$1.59

U.S. NO. 1 BAKING RUSSET
Potatoes
19¢ LB.
Floydada Lockney

WASHINGTON EXTRA FANCY RED DELICIOUS
APPLES
3 LB. BAG
\$1.19

PRODUCE SPECIALS
GOLDEN RIPE BANANAS 4 LBS. **\$1.00**
TEXAS ORANGES 5 LB. BAG **\$1.89**
TEXAS RUBY RED (LARGE SIZE) GRAPEFRUIT 3 LBS. **\$1.00**

Pay-n-Save
QUALITY AND SERVICE
WE RESERVE THE RIGHT TO LIMIT QUANTITIES

DOUBLE STAMPS ON WEDNESDAY!
[Excluding Cigarettes]
DOUBLE COUPONS ON SATURDAY!
[Rules Posted In Store]



REV. RALPH E. JACKSON is the pastor of Mt. Zion Baptist Church in Floydada. He was installed as the minister August 9, 1987. Before coming to Floydada, Rev. Jackson was the assistant pastor at Christian Light Church in Los Angeles, California. Rev. Jackson has served twenty years in the U.S. Navy, he retired in 1977. He has attended Chapman College in Orange County California, and the Southern Baptist Seminary in California. Rev. Jackson has two children, a daughter, Mekeba 12, and a son Rolland 24. His parents are Mr. and Mrs. Ora and Emma Jackson, of Richmond, Calif.

SLEEPING CHRISTIAN AND DRUNKARDS WHO DO NOT DRINK
Text: 1 Thessalonians 5:6
"Therefore let us not sleep as do others; but let us watch and be sober."

Sleep is used here to denote religious carelessness: The Apostle does not conclude his sentence by saying, "Let us not sleep" but he completes his statement by adding, "as do others."

Since there are three kinds of sleep spoken of in the Bible, it is to be understood here, that the writer is not speaking of a natural sleep but a spiritual sleep.

Natural sleep is a normal procedure for any human being, we all sleep at some time or another, but there is another kind of sleep that the Apostle is warning us the danger of.

He is saying, "Therefore let us not sleep as the ungodly sleep, the unbelievers, the unconcerned and the disinterested person, but let us keep spiritually awake and watch the signs of the times."

The three kinds of sleep mentioned in the scriptures are:

1. The sleep of nature.
2. The sleep that is referred to in this text, which is the sleep caused by a spiritual relaxation. Spiritual sleep causes one to become at ease in Zion, and it matters not what may be going on around us, we are totally unmoved.

Likewise the writer says, "let us be sober - let us be temperate, use self control, have a mental and emotional balance. Since drunkenness is a form of some kind of intoxication, drunkenness may be brought on by anything that will cause us to lose self-control."

3. The sleep of death.
The most dangerous of all sleep, is spiritual sleep. It is always fraught with perils, its prevailing idea being to render one insensible to the things that should concern us. If the devil can keep us from realizing what is going on around us, he can make great advancement.

When we become intoxicated with worldly pleasures and material blessings, we soon fall into a deep sleep, darkness becomes the element before us, and we are unable to see anything on the bright side of life.

The world today is drunk with hate and bloodshed. For four thousand and four years the thundering voices of the prophets could be heard over the nations, yet when Christ came, He found men sleeping.

To the intellectuals of His day, He said: "You know how to interpret the meaning of the stars, but you cannot keep watch on the changing of the times."

Jesus is calling for a wide awake church today, God can best be served by a sober congregation.

Many christians are drunk and have fallen into a deep sleep. Like the Jewish religious leaders of Jesus' day, the Scribes and Pharisees, they were deeply opposed to drunkenness by intoxication from over indulgence in strong drinks, but they were drunk with pride and self-righteousness.

They were drunk with self until they did not even know their neighbor. They were too drunk to know who Jesus was, and had gone to sleep when Jesus was born in Bethlehem of Judah.

Many Christians are drunk today, yet they do not drink.

They are drunk with hate, self-righteousness, and jealousy. They are intoxicated with pride and go about disturbing the peace of any social order.

In closing let's be reminded of the words in the text:

"Therefore let us not sleep as others; but let us watch and be sober."

—Rev. Ralph Jackson

Child-support program needs state volunteers

By Attorney General Jim Mattox
It is a sad tragedy that so many of our children live in poverty because their neglectful, non-custodial parents refuse to make child support payments.

It is an injustice and a national disgrace that only one-quarter of the children who are owed child support receive financial help from their non-custodial parents.

The cost of such irresponsibility is not only to the children who are forced to live impoverished, disadvantaged lives, but also to taxpayers who have to support many of these families through welfare payments.

We, as a society, must put pressure on those who fail to pay child support. For four years, I have talked about the dire need for a change in public attitude about the problem because I believe that community awareness is the first step toward a solution.

Public awareness must now be followed by public action.
We have begun a volunteer program for our Child Support Enforcement Offices across the state. We are seeking people who recognize the problem and who would like to contribute some of their time to the needy children of Texas.

Our volunteers help with routine office matters, which frees state investigators and attorneys to push for faster resolution of cases.

My office currently has 320,000 pending child support cases, 80 percent more than when we took over the program in late 1983, and enough staff to handle only 60,000 of those cases at any one time.

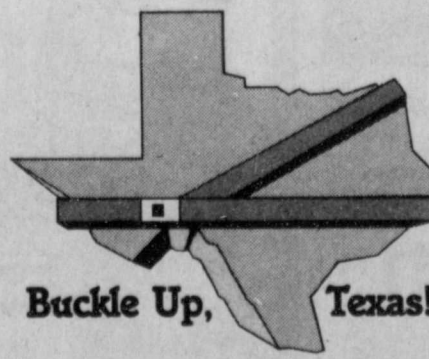
That dramatic increase in the number of single-parent families seeking child support help from the Attorney General's Office has been coupled with a

300 percent increase in collections on behalf of those families. Collections topped \$70 million in fiscal 1987, compared to only \$18 million in 1983 just before we took over the program.

Despite the fact that the Child Support Enforcement program could be fully funded to allow the program to grow and serve more single-parent families. The federal government provides approximately \$4 for every \$1 of state seed money put into the program. The feds provide additional money for the program based on the amount of collections.

The additional earned money could be used as seed money to attract even more federal dollars allowing the program to grow. The Legislature, however, removes the earned funds, which requires re-seeding each year and stunting the growth of the program.

The new volunteer program is an attempt to keep Child Support Enforcement working and making more gains for the children of Texas. Volunteers are a cornerstone of our society. I believe in them, and I value their devotion to making our state and nation a better place to live.



CARPET • CABINET TOPS • VINYL • TILE • HARDWOOD FLOORS
WOVEN WOODS • MINI BLINDS • CERAMIC TILE
CUSTOM CABINET TOPS • WALLPAPER
VERTICAL BLINDS • BRAIDED RUGS

REAGAN'S FLOOR COVERING
We Give Everything We've Got - Every Time
FREE ESTIMATES
PLAINVIEW, TEXAS

510 ASH ST. 293-4453

CHURCH DIRECTORY

<p>CEDAR HILL ASSEMBLY OF GOD Rev. H.D. Morton Jr., Pastor Sunday School 10:00 a.m. Morning Worship 11:00 a.m. Evangelistic Service 6:00 p.m. Wednesday Evening Bible Study 8:00 p.m.</p>	<p>CITY PARK CHURCH OF CHRIST Floydada J.C. Bailey, Minister Sunday Bible Study 9:30 a.m. Morning Worship 10:30 a.m. Evening Worship 6:00 p.m. Wednesday Bible Study 7:30 p.m. Spanish Assembly, Sunday 3:00 p.m.</p>	<p>FIRST UNITED METHODIST CHURCH Floydada Earl Blair, Pastor Sunday School 9:45 a.m. Morning Worship 11:00 a.m. Youth Fellowship 5:00 p.m. Sunday Evening Worship 6:00 p.m.</p>	<p>CALVARY BAPTIST Floydada Dr. Ricky Johnson Sunday School 9:45 a.m. Morning Worship 11:00 a.m. Bible Study 6:00 p.m. Evening Worship 6:00 p.m. Wednesday Evening 7:00 p.m.</p>
<p>LOCKNEY LATIN ASSEMBLY OF GOD Rev. Juan Herrera Sunday School 9:45 a.m. Morning Worship 11:00 a.m. Evening Worship 5:00 p.m. Prayer Service - Friday 7:30 p.m.</p>	<p>MAIN STREET CHURCH OF CHRIST Lockney George Schuster, Minister Bible Study 9:30 a.m. Morning Worship 10:30 a.m. Evening Worship 6:00 p.m. Wednesday Ladies Bible Class 9:30 a.m. Bible Study 7:30 p.m.</p>	<p>EVANS CHAPEL BAPTIST CHURCH Rev. Sammy Hollaway Sunday School 10:00 a.m. Morning Worship 11:00 a.m. Training Union 6:00 p.m. Evening Worship 7:00 p.m. Wednesday Prayer Meeting 7:00 p.m. Sunday Afternoon Worship 2:00 p.m.</p>	<p>MT. ZION BAPTIST CHURCH Floydada Rev. Ralph Jackson, Pastor Sunday School 10:00 a.m. Morning Worship 11:00 a.m. BTU 6:00 p.m. Evening Worship 7:00 p.m. Mid-Week Prayer Wednesday 7:00 p.m. Bible Study Thursday 7:00 p.m.</p>
<p>SPANISH ASSEMBLY OF GOD TEMPO GETSEMANI 308 Mississippi Rev. Daniel Herrera Sunday School 10:00 a.m. Morning Worship 11:00 a.m. Evening Evangelistic Service 6:00 p.m. Wednesday, Family Night 7:30 p.m.</p>	<p>WEST COLLEGE CHURCH OF CHRIST West College & Third, Lockney Frank Duckworth, Evangelist Morning Worship 10:30 a.m. Evening Worship 6:00 p.m. Wednesday Service 8:00 p.m.</p>	<p>PRIMER IGLESIA BAUTISTA Rev. Pedro Reyes Sunday School 9:45 a.m. Morning Service 11:00 a.m. Training Union 6:00 p.m. Evening Worship 6:00 p.m. Wednesday Service 7:30 p.m.</p>	<p>AIKEN BAPTIST CHURCH Rev. Ray Starnes, Pastor Sunday School 10:00 a.m. Morning Worship 11:00 a.m. Training Union 6:00 p.m. Evening Worship 6:00 p.m. Prayer Service Wed. 7:30 p.m. Brotherhood, W.M.U. and Auxiliary Wednesday 7:30 p.m.</p>
<p>CARR'S CHAPEL Service Every Sunday Morning Worship 9:30 a.m. Sunday School 10:30 a.m. No Evening Services</p>	<p>TRINITY LUTHERAN CHURCH Providence Community Rev. Bruce Adamson Sunday School & Adult Bible Class 9:45 a.m. Worship Service 11:00 a.m.</p>	<p>TEMPO BAUTISTA SALEM Lockney Tivarsio Villarreal Sunday School 9:45 a.m. Worship Service 11:00 a.m. Christian Training Time 5:00 p.m. Evening Worship 6:00 p.m. Wednesday Prayer Meeting 7:30 p.m.</p>	<p>FIRST BAPTIST CHURCH FLOYDADA Rev. Howell E. Farnsworth, Jr. Pastor Sunday School 9:45 a.m. Morning Worship 10:55 a.m. Church Training 6:00 p.m. Evening Worship 7:00 p.m. Wednesday Evening 6:45 p.m.</p>
<p>FIRST CHRISTIAN CHURCH Phil Carpenter Interim Minister Sunday School 9:45 a.m. Sunday Worship 11:00 a.m.</p>	<p>FIRST UNITED METHODIST CHURCH Lockney Rev. Robert Kirk Sunday School 9:45 a.m. Worship Service 10:55 a.m. UMY 5:00 p.m. Evening Worship 6:00 p.m. United Methodist Women. First Tuesday of Month Circles. Monday (2nd & 4th Monday nights) Tuesday & Wednesday mornings.</p>	<p>BIBLE BAPTIST CHURCH Floydada Bob Chapman Sunday School 10:00 a.m. Morning Worship 10:45 a.m. Sunday Evening Prayer Meeting 6:00 p.m. Sunday Evening Services 6:30 p.m. Wednesday Evening Services 7:30 p.m.</p>	<p>LONE STAR BAPTIST CHURCH M.B. Baldwin, Pastor Sunday School 10:00 a.m. Morning Worship 11:00 a.m. Training Union 5:00 p.m. Evening Worship 6:00 p.m. Prayer Service, Wednesday Evening 6:30 p.m. Brotherhood, First Saturday Morning of Every Month.</p>
<p>"ABUNDANT LIFE FELLOWSHIP" FIRST ASSEMBLY OF GOD CHURCH Floydada Ron Dysart, Pastor Sunday School 9:45 a.m. Morning Worship 10:50 a.m. Sunday Evening Evangelistic 6:00 p.m. Wednesday Night Service 7:30 p.m.</p>	<p>GRANT CHAPEL CHURCH OF GOD IN CHRIST John Williams, Pastor Sunday School 10:00 a.m. Monday Worship 11:00 a.m. Evening Service 7:30 p.m. Prayer Service-Tuesday 8:00 p.m. Service-Wednesday 7:30 p.m.</p>	<p>FIRST BAPTIST CHURCH Lockney Rev. Garry Don Higgs, Pastor Sunday School 9:45 a.m. Morning Worship 10:45 a.m. R.A.'s 5:00 p.m. Acteens 4:30 p.m. Church Training 6:00 p.m. Evening Worship 7:00 p.m. Wed. Choir Practice 8:00 p.m. Wednesday: Prayer Meeting 7:00 p.m. Our Time (Jr. High and High School) 7:00 p.m. GA's 6:00 p.m. Mission Friends (preschool) 7:00 p.m. Thursday: Baptist Women 1st & 3rd Mondays 3:00 p.m. Baptist Young Women 2nd Monday 7:00 p.m.</p>	<p>VICTORY BAPTIST CHURCH Floydada Travis Curry, Pastor Sunday School 10:00 a.m. Morning Worship 11:00 a.m. Evening Worship 7:00 p.m. Wednesday Services 7:00 p.m.</p>
<p>SAN JOSE CATHOLIC CHURCH Lockney Pastor: Fr. Jack Gist Mon.-Fri. Liturgy 8:00 p.m. Saturday Vigil Mass of Sunday 7:30 p.m. Sunday Mass 12:30 p.m.</p>	<p>SOUTH PLAINS BAPTIST CHURCH Tom Fisher, Pastor Sunday School 10:00 a.m. Morning Worship 11:00 a.m. Evening Service 6:30 p.m. Wednesday Service 7:00 p.m.</p>	<p>TEMPLO NUEVA VIDA Rev. Herman Martinez 308 W. Tennessee Sunday School 10:00 a.m. Evening Worship 6:00 p.m. Tuesday Ladies Prayer 2:00 p.m. Thursday Service 7:30 p.m.</p>	<p>NEW SALEM PRIMITIVE BAPTIST CHURCH Floydada Jim Jackson, Pastor Sunday Congregational Singing 10:30 a.m. Morning Worship 11:00 a.m. Evening Worship 6:00 p.m.</p>
<p>WEST SIDE CHURCH OF CHRIST Floydada Sunday Morning Worship 10:30 a.m. Sunday Evening 6:00 p.m. Wednesday 7:00 p.m.</p>	<p>LATIN AMERICAN CHURCH OF CHRIST Lockney Bible School 9:45 a.m. Morning Worship 10:45 a.m. Evening Worship 6:00 p.m. Wednesday Service 8:00 p.m.</p>	<p>TRINITY CHURCH Meets at the Y G.A. Van Hoose, Pastor Sunday School 9:45 a.m. Morning Worship 11:00 a.m. Sunday Evening 6:00 p.m. Wednesday Night Prayer 7:30 p.m.</p>	



This page is being brought to you through the courtesy of:

Brown's Department Store 106 N. Main 652-3831	Moore-Rose Funeral Home 329 W. California, Floydada 983-2525 402 S. Main, Lockney 652-2211
Byrd Pharmacy 320 N Main 652-3353	Nielson's Restaurant 304 E. Houston 983-3464
City Auto 201 E. Missouri 983-3767	Oden Chevrolet-Olds 221 S. Main 983-3787
Sponsor Needed	
Davis Lumber 102 E. Shubert 652-3385	Plains Electric Co. 106 S. Main 652-2133
E.X.C.L. Co. Rt. 2, Box 135 Lockney, TX 806-983-3022	Producers Dougherty 983-3020 Bothe Spur 983-2716 301 E. Missouri Floydada 983-2821 Cedar Hill 983-2970
Gilbreath Tex-Pack Freight 111-B E. Missouri 983-5487	Schacht Flowers & Jewelry 112 W. Poplar 652-2385
Jackson Tire Co. 101 S. Main 652-3366	Thompson Pharmacy 200 S. Main 983-5111
Lockney Coop Gin. W. of City 652-3377	Lighthouse Electric Cooperative Matador Highway 983-2814

Attend The Church Of Your Choice.

FARM

WILL PAY CASH for reasonably priced CRP land near Lockney. Mail details (location and price) to The Beacon, Box 187, Lockney.

1-28c

WANTED: Farm land to rent or cash lease. Have financing and equipment to handle large acreage. Can furnish references. Contact Larry Bramlet, 806-652-3441.

12-31p

FARM SERVICES

WE CUSTOM MAKE AND FIT hose for all types of machines.

Brown's Implement
983-2281

tfn

CUSTOM PLOWING, braking, chisel, roto-till, shred, chemical application and sow grass. Carthel Bros., 983-2363.

tfn

SERVICES

SEWING - with personalized fit. Hart Fashion Design. 983-5664 after 1 p.m.

tfn

TAPE-BED, acoustical spraying, painting-inside and out. 296-5404.

1-14p

MISCELLANEOUS

FOR SALE: Used heaters, all kinds; open, central heating unit, shop heater. LP or NG. Texas Energy Co., 652-2781.

tfn

FIRST WEEKEND flea market, Lorenzo, TX, January 1, 2 and 3, 1988. Open 9-5. 806-634-5445.

12-31p

SHAKLEE DISTRIBUTOR: Nutrition products, environment safe cleaners, cosmetics, and personal care products. Box 404, 79235, 983-5664.

1-8c

LONG DISTANCE SERVICE: Use NTS Communications and save 15%-45%. No service fee if paid promptly. Donna Fullingim, 667-3480 or 667-3661.

tfn

HAY FOR SALE: Clean, small stem, sweet cane, big bales, discount on volume. Mark Gilly, 983-3689 after 6 p.m.

1-8p

HAY FOR SALE: Clean square bales, Red Top Cane. In barn or in field. David McGowen, 983-3031.

1-22c

FOR SALE: Snap-on 295 amp arc welder, \$200. Call Bobby at 983-2624.

1-7p

FOR SALE: A pickup toolbox. Call 893-3319.

1-7p

STEEL OFFICE desk. \$80. 983-2273.

1-28c

CARD OF THANKS

To all our friends, neighbors and kin, thanks for all the thoughts, calls, cards, prayers, flowers and visits while Les was in the hospital and after returning home. All acts were very appreciated and have meant so much to us. Our heartfelt thanks to each and everyone. Bless all.

Thanks again,
Les and Jonelle Fawver and family
1-7p

We would like to take this opportunity to thank everyone who has called, brought food and visited us during these past few weeks. We also thank those who sent flowers, mailed cards, and who helped in other ways.

Our sincerest appreciation goes out to family and friends who have stood beside us these past few months.

May God bless each one of you!
Sincerely,
Watson and Jean Jones
Larry S. Jones
1-7c

AUTOMOTIVE

HARD LUCK DRIVERS
Automobile Insurance. Reasonable Rates. Small Down Payment. Monthly Pay...SR22 Filings. Call David Cates. 983-3284 116 W. California

tfn

1970 OLDS STATION WAGON, 455, running and dependable. Make offer or might trade for running older pickup. Call 652-3318 or 652-3509 after 7 p.m.

tfn

1980 MONTE CARLO. White. One time owner. Clean. \$1995. 983-2255 after 5 p.m.

1-14p

FOR SALE: 1982 Cutlass. Loaded. Call 652-3158.

1-7c

STAPP BRAKE & ALIGNMENT SHOP
Now Open
120 N. Main
652-2354
Monday-Friday, 8-6.

ALTERNATOR & STARTER REPAIRS
Norrell Tractor Parts
215 S. Main 983-3417

FOR RENT

THREE BEDROOM APARTMENT for rent. Stove and refrigerator furnished. \$125 a month plus deposit. Call Lockney, 652-2435.

tfn

HELP WANTED

EARN EXCELLENT MONEY in home assembly work. Jewelry, toys and others. Full-time and part-time available. Call today! 1-518-459-3535 (toll-refundable) Ext. B-6685. 24 hours.

1-14p

FEDERAL, STATE & CIVIL SERVICE jobs \$14,877 to \$63,148/year, now hiring! Call JOB LINE 1-518-459-3611 Ext. F6628 for information. 24 hours.

1-14p

FLOYDADA NURSING HOME is now accepting applications for qualified LVN's. The positions open now are 11 p.m.-7 a.m. full-time and 6 a.m.-2 p.m. week-end relief. Competitive salary. Please apply in person Monday-Friday, 9 a.m.-5 p.m. Only the best need apply. E.O.E.

tfn

CLASSIFIED RATE
The Hesperian - 983-3737
or
The Beacon - 652-3318

Per word	
First Insertion	20 cents
Second Insertion	15 cents
Minimum Chg. 1st Insertion	\$2.50
Second Insertion	\$1.50
Card of Thanks	\$3.00
Legal Notices	\$2.00 per column inch

Anyone who can give information about my 7 steers still missing (some steers have been returned home) will receive a \$1,000 reward. H.E. Frizzell, 806-652-3788, Lockney.

Portable disc rolling
Lawson Farm Supply Inc., 983-3940
Floydada

TRAVIS THORNTON BUILDER
Remodeling, add-ons, cabinets, minor repairs. Big or small. Give me a call.
293-8035 after 6 p.m.

Script Printing & Office Supply
*Commercial Printing
*Office supplies & Furniture
*Business Machines
108 S. Main Floydada 983-5131

HALE INSURANCE AND REAL ESTATE
SAMMY HALE-BROKER 983-3261
BEST BUY FOR THE MONEY IN FLOYDADA, two story, 3 bedroom/2 bath.
TWO LIVING AREAS, GREAT FAMILY HOME, GOOD LOCATION, 4/3. LARGE HOME WITH NOT SO LARGE A PRICE. 3 bedroom, 2 bath. WALK TO SCHOOL. CLOSE TO DUNCAN & JR-HIGH, 3/2/2.

BOND LANDS, INC. REAL ESTATE
107 S. 5th Street
806-983-2151
Dale Goen, Broker
P.O. Box 487
Floydada, Texas, 79235-0487
Frances Ashton, Office Manager
General Land Services, Sales, Leases, and Management

Diamond Industrial Supply Co., Inc.
Phone Days 296-7418
Nights 296-1200 or 296-7828
1014 Broadway Plainview, Texas
Chain Sprockets V belts Sheave SKF BCA Timken Bower
U joints Oil Seals O rings Wisconsin
"We Appreciate Your Business More"

BISHOP PEST CONTROL
Institutional and household pest control
Termites: slab or pier and beam structures.
Crickets & Roaches
Fleas & Ticks
Mike Bishop, M.S.
(806)983-2198 or 983-2870
TX. Bus. Lisc. 5021
TPCL Lisc. 26855

FURNITURE RESTORATION
Are you thinking of buying new furniture?
Will it upset your budget?
It won't if you consider having it refinished
Call for estimate
RUSH AND CANE SEATING - VENEERING
OLD TRUNKS COMPLETELY RESTORED
J.R. Steele, 823-2097 900 Braidfoot, Silverton

LOST & FOUND

FOUND: Brittany Spaniel south of Floydada. Young, female, blue collar. Call 983-5325, nights.

1-7p

CLASSIFIED ADS PAY OFF!

LAND LEVELING TERRACES PUMP PITS BENCHING
DEWIE PARSON 983-2646 FRED PARSON 293-4768

ADAMS WELL SERVICE
Complete irrigation service
5 years warranty, domestic pump
720 N. 2nd
983-5003

Volunteer.
American Heart Association

Farmers Insurance
Sam A. Spence
111 B. East Missouri
983-2881

STORAGE SPACE
West Texas Mini Storage
c/o Assiter Insurance
206 W. California
983-2511

PUBLIC NOTICES

It is the policy of LOCKNEY ISD not to discriminate on the basis of sex, handicap, race, color, and national origin in its educational and vocational programs, activities, or employment as required by Title IX, Section 504 and Title VI.

LOCKNEY ISD will take steps to assure that lack of English language skills will not be a barrier to admission and participation in all educational and vocational programs.

For information about your rights or grievance procedures, contact the Title IX Coordinator, W.H. HALLMARK at Box 428, Lockney, 806-652-2115, or the Section 504 Coordinator, James Poole at Box 1058, Lockney, 806-652-3325.

CITATION BY PUBLICATION

THE STATE OF TEXAS
TO: DANNY DAVID JOHNSON, Defendant, Greeting:
YOU (AND EACH OF YOU) ARE HEREBY COMMANDED to appear before the 110th District Court of Floyd County at the Courthouse thereof, in Floydada, Texas, by filing a written answer at or before 10 o'clock A.M. of the first Monday next after the expiration of forty-two days from the date of the issuance of this citation, same being the 25th day of January A.D. 1988, to Plaintiff's Petition filed in said court, on the 31st day of July A.D. 1986, in this cause, numbered 8027 on the docket of said court and styled IN THE MATTER OF THE MARRIAGE OF MARYLAND KAY JOHNSON AND DANNY DAVID JOHNSON AND IN THE INTEREST OF ANETRIA ALEAN JOHNSON, A CHILD.

A brief statement of the nature of this suit is as follows, to-wit: Suit for divorce and conservatorship and support of child.

If this citation is not served within ninety days after the date of its issuance, it shall be returned unserved.

The officer executing this writ shall promptly serve the same according to requirements of law, and the mandates hereof, and make due return as the law directs.

Witness, Barbara Edwards, Clerk of the 110th District Court(s) of Floyd County, Texas.

Issued and given under my hand and the seal of said court at Floydada, Texas, this the 10th day of December A.D. 1987.

Barbara Edwards Clerk,
District Court
Floyd County, Texas.
By /s/ Mary L. McPherson, Deputy.
1-7-88c

CONTRACTOR NOTICE OF TEXAS HIGHWAY CONSTRUCTION
Mowing of State Department of Highways and Public Transportation Rights-of-Way

Sealed bids for mowing highway rights-of-way will be received, publicly opened and read on January 25 and 26, 1988, at the Lubbock District Office Training Center, 601 Slaton Road, Lubbock, at 10:00 a.m.

Bids will be opened on January 25 for the following contracts: Parmer; Terry; Hockley; Lubbock S.E.; Bailey; Hale; Garza; Lynn; I.H. 27; S.H. 114; U.S. 84 N.W.; and U.S. 84 S.

Bids will be opened on January 26 for the following contracts: Castro; Floyd; Dawson; Lamb; Lubbock N.E.; Cochran; Yoakum; Crosby; Gaines; Swisher; U.S. 62 W.; and U.S. 87 S.

The State Department of Highways and Public Transportation, in accordance with the provisions of Title VI of the Civil Rights Act of 1964 (78 C.F.R., Part 8), issued pursuant to such Act, hereby notifies all bidders that it will affirmatively ensure that the contract entered into pursuant to this advertisement will be awarded to the lowest responsible bidder without discrimination on the grounds of race, color, or national origin; and further that it will affirmatively ensure that in any contract entered into pursuant to this advertisement, minority business enterprises will be afforded full opportunity to submit bids in response to this invitation and will not be discriminated against on the grounds of race, color, or national origin in consideration for an award. Plans and specifications are available at the Maintenance Office for the above mentioned counties and at the office of Woody Marcy, Maint. Const. Supt., 601 Slaton Road, P.O. Box 771, Lubbock, Texas, 79408-0771.

Usual rights reserved.

1-7, 1-14

Windshields up to 40% off and a '50 rebate on most American made cars and trucks.
Stapp Body Shop
652-2354 or 652-3429

ECONOMICAL STORAGE TRY BARKER'S
Jewel Box-Mini Storage
and save your time and money.
Phone 652-2642
Corner Main & Locust
Lockney, Texas.
BAREER BUILDING

Gibson Electric
Bonded and Insured
Properly Licensed
Commercial and Residential
'No job too small or too big'
1401 Ave. M Ralls 253-2472

Looking For The Perfect Gift?
How about a one year subscription to the
FLOYD COUNTY HESPERIAN
OR
LOCKNEY BEACON
RATES:
Floyd and Surrounding Counties - \$15⁰⁰
Other Counties - \$17⁰⁰
Out of State - \$18⁰⁰

