

'Smoke on the Mountain'

Returning to Local Stage in October

...see Page 6



2000



AWARD WINNER

SINGLE ISSUE PRICE STILL ONLY 50¢

Eagles Set For Season Opener With Christoval

...see Page 4



THE ELDORADO SUCCESS

© Copyright 2000, Masked Rider Publishing, Inc.

e-mail: eldoradosuccess@bigfoot.com

U.S.P.S. # 342-470

VOLUME 99, ISSUE 37

"The Voice of Eldorado and Schleicher County Since 1901"

AUGUST 31, 2000

Inside This Issue:

- 4-H News.....5
- Birthdays & Anniversaries.....6
- Blotter.....8
- Classified Ads.....9
- County Commissioners Meet.....10
- Crossword Puzzle.....2
- Drought Contingency Plan.....7
- Editorial & Guest Columns.....2
- Hospital Board Adopts Budget.....6
- Meals for Friends Menu.....3
- Obituaries.....3
- Public Notices.....3, 8 & 9
- School Lunch Menu.....4
- Sports.....4 & 5
- Way Off-Broadway Players.....8

DROUGHT

City enacts drought plan, begins 'Stage 1' conservation measures

by Pat Ragsdale

The City of Eldorado adopted a state-mandated 'Drought Contingency Plan' on Monday evening, August 28. The plan consisting of six triggers which require six levels of response, was mandated by the state and had to be adopted before a Sept. 1, 2000 deadline. The complete text of the plan may be seen on Page 7.

Mayor John Nikolauk noted that the plan's adoption automatically placed the city's water customers in Stage-1, which calls for voluntary water conservation.

"I don't think people realize how much water they waste," Nikolauk stated. "We're all guilty of it and we need to be reminded."

As reported in the August 17

edition of the Success, the water level in the city's wells have been steadily declining ever since a monitor was installed earlier this year on the well located behind City Hall. When that well was drilled almost 70 years ago, water was encountered at 280 feet. Over the years the water level has dropped below 300 feet. On Friday, August 25th a check of the well revealed the water level stood at 319.4 feet below the surface. The following Monday the level had dropped to 319.54 feet.

"That fits with the trend we've been seeing," said City Administrator Randy Mankin, who, along with Cindy Cawley, Manager of the Plateau Underground Water Conservation and Control District, has been monitoring the well as the Drought

Contingency Plan was prepared for the city council to adopt.

Stage 1 of the drought plan was triggered by the declining water level. Stage 1 triggers and responses are as follows:

Stage 1 Trigger...Mild Water Shortage Conditions—When water consumption has reached 75 percent of daily maximum supply of 1,250,000 gallons per day for sixty (60) consecutive days; or when the water level in the test well declines to 315 feet from surface; or if there is an extended period of time (six months) without significant rainfall (less than 2 inches); or if there is a failure of two or more of the city's pumps.

Stage 1 Response—Goal is to achieve a 10 percent reduction in total water use through voluntary water use restriction. Water customers are requested to voluntarily limit the irrigation of landscaped areas and to irrigate landscapes only between the hours of midnight to 10:00 a.m. and/or from 8:00 p.m. to midnight. Customers are requested to practice water conservation and to minimize or discontinue water use for non-essential purposes.

Stages 2 through 6 are triggered as water usage increases as a percentage of maximum daily supply; or when the water level in the city's well behind City Hall falls in 7-foot increments; or as system failure and power outages impede the city's ability to deliver water to its customers.

It should be noted that the city's water level need only drop another 2.46 feet before Drought Stage 2 is triggered.

A summary of the responses to Stage 2-6 Triggers follows:

Stage 2...MODERATE Water Shortage Conditions—The goal is a 20 percent reduction in total water use. Watering restrictions would continue as in Stage 1 with the following additional usage restrictions. Water to wash vehicle is restricted to early morning or late evening except at a commercial car wash. Filling of swimming or wading pools, spas etc., and the use of water to supply ornamental fountains pools, etc. that do not have circulating capability is restricted to early morning or late evening hours. Use of fire hydrants is limited to fighting fires or other activities necessary to maintain safety, public health or welfare. Watering of golf course fairway, tees and greens is restricted to early morning and late evening hours. Restaurants are prohibited from serving water to customers except upon request. Non-essential washing of sidewalks, walkways, driveways, parking lots, tennis courts or other hard surface areas is prohibited as is the washing of buildings or structures except for fire protection, use of water for dust control, flushing of



319 feet and falling — Cindy Cawley, Manager of the Plateau Underground Water Conservation and Control District checked a gauge on a well near City Hall on Tuesday. As water levels continue to decline in city wells, Stage 1 drought conditions have resulted in the call for voluntary conservation measures.

Water Conservation...are you wasting our water?

by Cindy Cawley, Manager Plateau UWC&SD

Water conservation starts with YOU and is everyone's responsibility. The savings in water use may seem small when simply turning the water off when you brush your teeth, but when everyone conserves the total savings add up. In times of drought, water use priorities must be established and observed. What are your priorities? The number one priority should be drinking water for people and livestock and conservative household use. Outside watering should be limited to keeping established trees alive. Yes, many of us have spent hard earned money on establishing our lawns and do not want to see them die for lack of water. However, which is more important, drinking water or a pretty lawn? Besides being conservative with water use there are other measures that can be taken to ensure that you are not wasting water. Are your faucets leaking? If so, how much water is being wasted?

A leaking faucet is obvious, but what about other leaks? Toilet "runs" after flushing wastes 4-5 gallons per minute. Another obvious waste of water, but what about "silent" leaks? An example of a silent leak is the water leakage from the tank into the bowl that is not as easily detected. A flow rate of merely a cup a minute wastes

about 2,700 gallons per month. Do you have a "silent" leak? Testing for a "silent" leak is simple. After the tank finishes filling if you can see water running into the bowl the "silent" leak is obvious. Otherwise mix a few drops of food coloring or a dye tablet (available free of charge at the Plateau Underground Water Conservation & Supply District) into the water in the toilet tank. Wait approximately 10 minutes and if coloring appears in the bowl you have a "silent" leak. The most common causes of toilet leaks are worn flush valves and/or valve seats, improperly adjusted water levels, and leaking fill valves. These along with faucet leaks, are easily remedied with replacement parts.

Compare the cost of fixing leaks to the monthly increase in your water bill or electric bill for your pump. A leak can easily account for 10% or more of total water used per month. A 10% savings doesn't seem like much, but it could account for the "extra" charges on your bill. Water loss through leaks not only wastes this precious resource, it also cost you money in increased monthly water or electric bills. Conservation saves your water and your money. For more information, other conservation measures, or dye tablets, please contact the Plateau Underground Water Conservation & Supply District at 853-2121.



Waste not want not — Water sprinklers running with water running down the street. It's an everyday sight in Eldorado. This photo was taken at the school on Tuesday, however, similar shots could have been taken in most parts of town. With water levels dropping, the Eldorado City Council has enacted a Drought Contingency Plan, placing the town under Stage 1 restrictions, calling for voluntary water conservation measures.

City council adopts drought plan, approves new budget

87.72¢ tax rate approved for 2000-2001

by Pat Ragsdale

Eldorado City Council members met Monday evening, August 28th and, among other business, voted to adopt a Drought Contingency Plan. (see related story above) As council members considered the proposed plan they looked over a list of the top water users in town.

The Eldorado Golf Course, which receives water at no charge through two separate meters, was by far the big user in town at 2,465,000 gallons during August. Consumption at the golf course was 1,871,000 gallons in June but dipped to 358,000 gallons in July. Other big users include the high school football field, the elementary school and playground and the Eldorado Housing Authority apartments.

On hand to visit with the council was Cindy Cawley, Manager of

the Plateau Underground Water Conservation and Control District. She explained that the city's wells received very little recharge from the heavy rain the area received in June. Cawley noted that the water level in the monitor well near City Hall continues to drop.

After discussing the Drought Contingency Plan the council voted unanimously to adopt it as presented.

Present for the meeting were Mayor John Nikolauk and council members Sherry Lux, Robert Bybee, Eddie Rodriguez, Tommy Minor, Toni Sudduth and Richard Mendez.

In other business the council voted unanimously to purchase a group health insurance plan for city employees from Blue Cross/Blue

CONTINUED ON PAGE 8

F.Y.I.

For Your Information

Regional Water Plan

The draft water plan for the Region F Regional Water Planning Area has been completed and hearings will be held on September 5th in San Angelo and September 6th in Odessa. The nearest public meeting is slated for Tuesday, September 5, at 6:00 p.m. at the Texas A&M Research and Extension Center, 7887 U.S. Highway 87 North in San Angelo. The hearings are one of the final steps in the development of a water plan for the future of the 32-county region.

Six-Man Football

For small town high schools in Texas with less than 94 students, Friday nights in the Fall mean one thing — six-man football. It's fast, exciting and high-scoring. Six-man football is played on a smaller field (80 yards long and 40 yards wide), the goal posts are narrower and the game may end at halftime or later after a team leads by 45 points.

There are currently 92 schools playing six-man football in Texas. Nebraska has 20 schools, Montana and Colorado each have 16 schools playing the sport. There are 12 schools playing six-man football in New Mexico.

On This Date

On this date in 1535 Pope Paul II excommunicated King Henry VIII of England. In 1887 Thomas Edison patented the Kinetoscope. In 1954 the U.S. Census Bureau was established. In 1971 Dave Scott became the first person to drive a car on the Moon (lunar rover). In 1978 Symbionese Liberation Army founders William & Emily Harris pleaded guilty to 1974 kidnapping of newspaper heiress Patricia Hearst. In 1980 Poland's Solidarity labor was union founded.

Birthdays of note include: 12 A.D. Roman emperor Caligula; 1897 actor Frederic March; 1914 actor Richard Basehart; 1924 comedian Buddy Hackett; 1928 actor James Coburn; 1931 news anchor Dan Rather; 1945 violinist Itzhak Perlman; 1949 actor Richard Gere.

Texas Drought Website

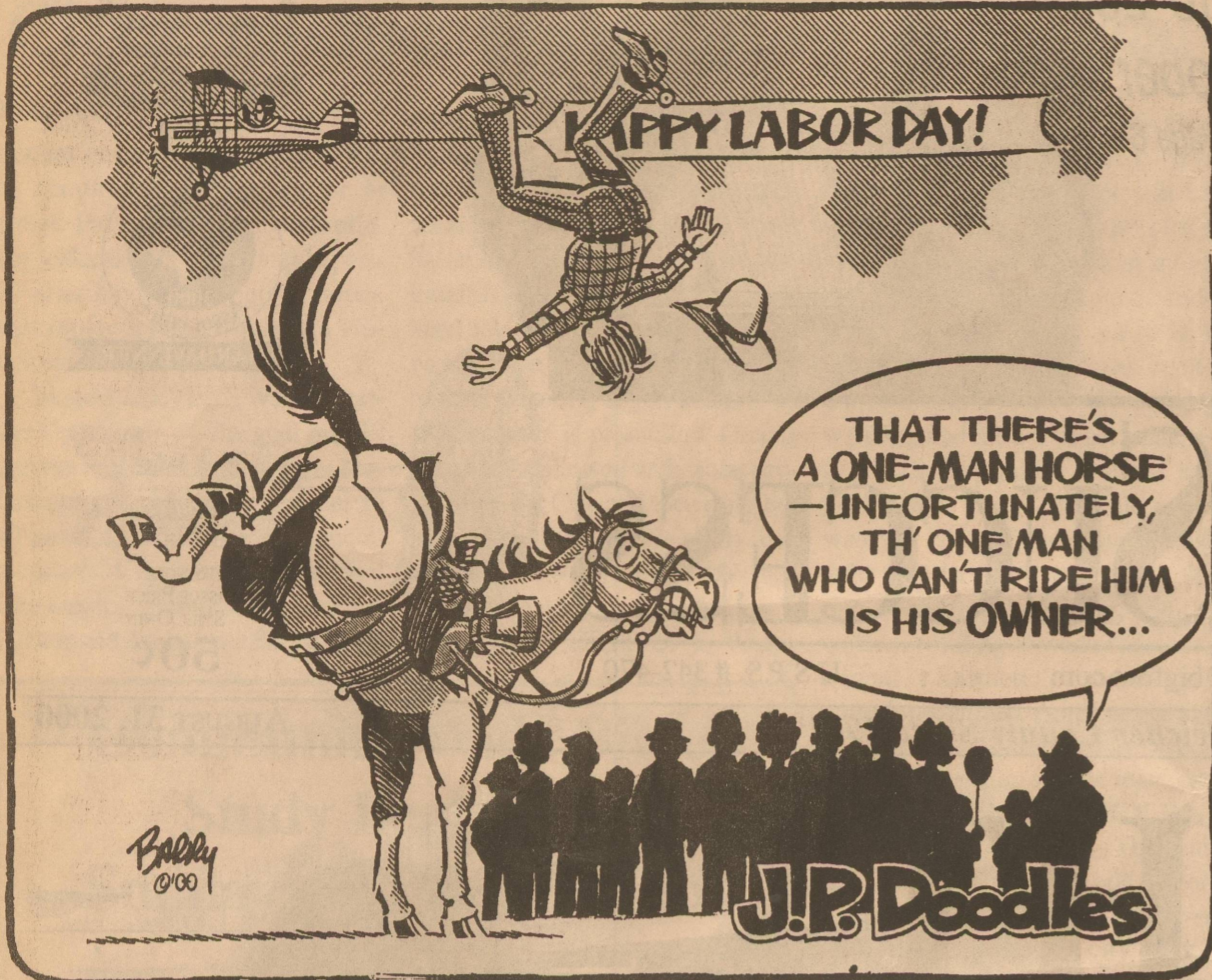
Texas A&M Extension Service maintains a drought related website titled "Texas Drought". The site features news concerning the current drought, which began in 1996 and the effects of past droughts. There are also links to other drought related sites. Access the site at <http://agnews.tamu.edu/drought/>

CONTINUED ON PAGE 10

Are you pouring money down the drain? A leaky faucet can cost you big bucks.

Amount of Leak	H ₂ O Wasted/Month
Slow - 100 drops/minute	350 gallons
Fast	600 gallons
Small Stream	2,000 - 2,700 gallons
Large Stream	4,600 gallons

Interested in other water saving ideas? Contact the Plateau Underground Water Conservation and Supply Dist.

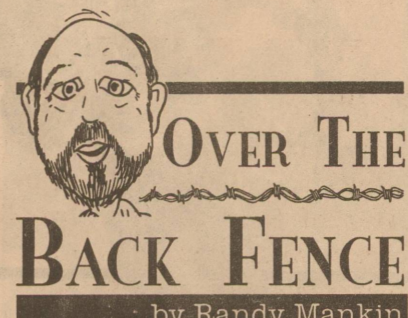


How dry were the '50s anyway?

The other day I heard a fellow say that the current drought is worse than the great drought of the 1950s. I was born in 1955, so I was too young to remember much about that drought, which officially broke in 1956. However, I've heard about it all my life and always imagined it to have been terrible.

Don't get me wrong, it's plenty dry here and now. Still, I couldn't help but wonder just how bad the '50s drought really was. So, I logged onto the internet, found a website maintained by Texas A&M called "Texas Drought" and started looking for answers.

I learned that the 1950s drought actually started in 1949 right here in West Texas and in the Lower Rio Grande Valley. From 1949-51, Texas rainfall dropped by 40 percent and West Texans experienced severe declines. By 1952, more



than half the state had received 20 to 30 inches less rainfall than normal. In 1952, Texas' monthly rainfall average fell to just 0.03 inches...the lowest level since the Weather Bureau began collecting records in 1888.

And, for the first time since 1914, Lubbock did not even record a trace of rain. Even hardy West Texas mesquite trees began to die. By 1953, 75 percent of the state recorded below normal amounts of rainfall. There were seven million parched acres in Texas and Oklahoma. That summer in the High Plains, bulldozers were used to remove drifts of blowing soil from highways.

1953 was no better. That summer Dallas recorded 52 consecutive days of 100+ temperatures. A few miles away, Corsicana topped the century mark 82 times. The City of Dallas then opened stations where people could buy cartons of water from artesian wells for 50 cents a gallon, which was more than the cost of gasoline. And, more than 1,000 towns and cities had to enforce strict water conservation measures or import supplies.

In the spring of 1955, rolling clouds of dust on the High Plains

reduced visibility and motorists drove with their headlights on at midday. By 1956, Comal Springs, which normally flowed at the rate of 200 million gallons per day, dried up for the first time in recorded history. From 1954-56, flows in the Guadalupe River dropped from an average of 241,000 acre-feet (AF) to only 10,000 AF.

By 1957, all but 10 of Texas' 254 counties were declared federal drought disaster areas. Finally, in the Spring of 1957, the drought ended. Dallas reported the second wettest May in its history, Kingsville received three inches in an hour, and there was street flooding in Bracketville. Cooke and Grayson counties had to apply for flood relief by June.

After reviewing the information about the 1950s drought, I don't think this one is as bad...yet. Some things are troubling, however. Although the population hasn't increased much in Schleicher County since the '50s, the demand for water certainly has, and our fragile aquifer, which some said was inexhaustible, is slowly being depleted.

Another concern is the fact that our neighbors in San Angelo are also suffering from water supply problems. If they run out, don't be surprised if they try to take our water.

My old granddad told me once that water would be more valuable than oil, someday. Well, oil is over \$30 per barrel. Still, when I consider the prospect of running out of water, I have to believe that someday is now.

Texas to study causes for global warming

AUSTIN — Officials with the state's environmental agency last week laid out plans to figure what role Texas industries play in the dirtying of the planet.

The three-member Texas Natural Resource Conservation Commission adopted measures to evaluate the effect of Texas' greenhouse gases on global warming.

The commission instructed TNRCC Executive Director Jeffrey A. Saitas to complete the following actions and issue a report by Dec. 1, 2001:

- Compile TNRCC and EPA information on actual greenhouse gas emissions, or use estimates if necessary.

- Survey other states and the federal government to determine

State Capital Highlights

Compiled by Ed Sterling

what specific actions are being taken to address global warming.

- Consult with other state agencies and Texas universities about the most up to date science regarding global warming, including potential effects and potential solutions.

- Estimate how much greenhouse gases have been reduced by TNRCC measures already in place, including environmental provisions of Senate Bill 7 (electric utility restructuring and deregulation) and Senate Bill 766 (reduc-

tion of grandfathered air emissions).

The agency also will:

- Estimate greenhouse-gas reduction that may be attributed to various state plans to reduce ground-level ozone, and federal plans that could have an effect;

- Create a registry for greenhouse gas reductions.

- Recommend any strategies needed to reduce greenhouse gases in Texas.

The commission's action was in response to petitions filed by a coalition of environmental organizations.

More Taking 'Advanced' Tests

Texas public school students took almost 98,000 Advanced Placement exams in 1999-2000, a 21.9 percent increase over the previous year and double the growth rate experienced nationally, Commissioner of Education Jim Nelson announced Aug. 23.

The number of Texas public school students taking the exams reached 55,176 last year, a record level for the state and a 17.9 percent increase over 1998-99 participation levels.

Nationally, 617,547 public school students took advanced placement exams, an 8.7 percent increase over the previous year, according to the College Board, which oversees the program.

Texas students also outpaced the nation in the percentage increase of students earning a score of three, four or five on the exam. Possible scores range from one to

five. Most higher education institutions will award course credit or advanced placement when a student earns a score of three or higher.

In the past five years, the number of Texas students taking AP tests has risen 95 percent while the number of exams taken has increased 112 percent, figures from the College Board show. In 1996, 28,351 students took an exam versus 55,176 in 2000. In 1996, Texas students took 46,237 exams. By 2000, the number of exams taken had risen to 97,965.

Drivers Can Apply Online

Good drivers in underserved ZIP codes can apply online for lower-priced car insurance through the state's automobile insurance Market Assistance Program (MAP).

Texans can apply via the Internet on the Texas Department of Insurance's web site at www.tdi.state.tx.us.

"The Market Assistance Program has demonstrated many, many times that it can save hundreds of dollars a year in car insurance premiums for eligible drivers who apply," Insurance Commissioner Jose Monte-mayor said.

"We want Texans to apply, and letting them do it online makes the application process even easier than it was before."

Other Highlights

- Agriculture Commissioner Susan Combs will conduct town

CONTINUED ON PAGE 6



ROLLING ALONG

WITH TUMBLEWEED SMITH

A Personal Star Wars Adventure

I put off writing this column for a couple of days. I'm glad I did. The wait changed my attitude about things.

We took our son BZ to see the Star Wars movie when it first came out 24 years ago. He flipped out over the film. Even though he was only eight years old, he started collecting Star Wars toys, books, games and movie posters. His collection grew and grew. He acquired Star Wars t-shirts, records, bubble bath, picture cards, soap, cookies, even sheets and bedspreads with pictures of Star Wars characters on them.

He displayed the items on shelving in his bedroom. Once he walked past the door to his room and glanced at his collection for a split second. He noticed a small gun missing from one of his figures. I mean the gun was maybe half an inch long. He told us he would like to keep the door to his room locked when the cleaning lady came because she messed with his stuff. We obliged him. The tiny gun was found.

He kept an accurate count of everything he had. His inventory list was in a notebook along with receipts for items he purchased and description sheets for his larger things. Every gift-giving occasion we gave him a Droid Maker Factory or Imperial Troop Transport or Millennium Falcon or an Ice Planet.

BZ left his collection in our care when he went off to college. He helped us put everything in their original boxes and stack them in a storage shed behind our house where we keep the lawnmower.

The collection stayed there for years. I went to the shed last Sunday to put up a weed eater and discovered the lock to the storage building was gone. When I opened the door, I saw only empty shelves. Everything had been stolen.

We were devastated. The collection represented our son's childhood. Every time I went to the shed for the lawnmower, I would look at all the boxes and have good thoughts about BZ. We called police, placed ads in the newspaper and local tv cable offering a reward for the return of the items. The local radio station did a heart-wrenching story on the loss. We prepared fliers and took them to neighbor's homes. We told everyone we could about the theft. We figured the items were taken sometime the previous Saturday while we were out of town for about three hours.

It was hard to call BZ and tell him what happened. About 7 o'clock Wednesday morning, in the midst of our grief, I walked up to the front yard to work on a sprinkler head. I noticed a bunch of boxes and bags in our yard. My first thought was, "Now what...somebody has dumped garbage in our yard." But that thought lasted only a second. I realized the boxes and bags contained the stolen Star Wars collection.

Someone's practical joke? A conscience attack? Some parents' concern? I don't know. I do know that when I called BZ and told him about the stuff being returned, he was ecstatic. I told him we were sending it all to him.

THE ELDORADO SUCCESS
 Publisher and Editor: Randy Mankin
 Office Manager and Classifieds: Kathy Mankin
 Advertising and Circulation: Lori Stricklan
 Local Reporter: Pat Ragsdale
 Sports Reporter: David Hill

The Eldorado Success is published weekly at 204 SW Main Street in Eldorado, Texas by Masked Rider Publishing, Inc. Subscriptions are \$20 per year in Schleicher County and \$25 per year elsewhere in the United States. Periodical class postage paid at Eldorado, Texas 76936. POSTMASTER: Send address changes to THE ELDORADO SUCCESS, P.O. Box 1115, Eldorado, Texas 76936-1115. Notices of entertainment where admission is charged, cards of thanks, resolutions of respect and all material not news, will be charged at regular advertising rates. Advertisements, Classified Ads and Cards of Thanks are payable in advance unless the customer has an established account. A finance charge of 1.5% per month will be assessed to customers with balances over 30 days old. Any erroneous reflection upon the character or reputation of any person or firm will be promptly corrected when brought to the attention of the management.

The Eldorado Success is not responsible for copy omissions, typographical errors or any other unintentional errors that may occur other than to make a correction in the next issue. The Eldorado Success reserves the right to cancel any advertisement at any time.

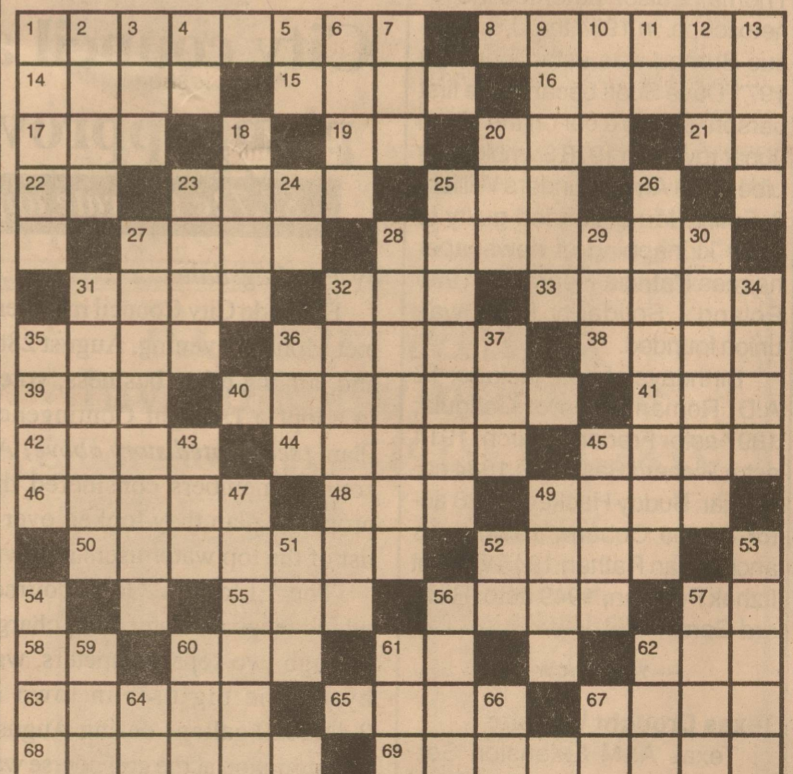
Letters to the Editor will be considered for publication only if they are signed and are accompanied with a day and night phone number for verification purposes. Anonymous letters will not be published.

THE ELDORADO SUCCESS
 © Copyright 2000 MASKED RIDER PUBLISHING, INC.
 Office: (915) 853-3125 Fax: (915) 853-3378
 E-Mail: eldoradosuccess@bigfoot.com
 USPS 342-470

MEMBER 2000
TEXAS PRESS ASSOCIATION
 AWARD WINNER

CROSSWORD PUZZLE

ACROSS	49 Sports	(slang)
1 Leeward	afficionados	18 Bridge fee
8 Abbot's jurisdiction	50 Reflexive form of "her"	20 African religious cult
14 Fertilizer component	52 Ice mass	23 Diagonal
15 Leguminous plant	55 Fodder	24 A.K.A. Great Britain (abbr.)
16 SW Indian language	56 Short-tailed wildcat	25 Puffed
17 Mutual Savings Bank (abbr.)	57 Bismuth, periodically	26 Highest in quality
19 Plural of "I"	58 Prefix, indicating to do again	27 Chose
20 Turkis unit of weight	60 Term of address for a man	28 Dried herb
21 Not out	61 Negative	29 Wildebeest
22 Adriatic Sea feeder	62 Zodiacal lion	30 Lens or scope components
23 Boxing match	63 Fervor	31 Change over
25 G-men bureau (abbr.)	65 Young girl	32 In the third place
27 Cocoon fiber	67 Honey and water	34 Titaness of mythology
28 Arouse from unconsciousness	68 Accretion	35 Buckeye State
31 Stamp of office	69 Food poisoning	36 Eat dinner
32 Siamese	DOWN	37 Hankering
33 Incompetent	1 Drops unceremoniously	43 Pronoun, of a female
35 Night birds	2 More or less	45 Das Kapital author
36 Timidly	3 Arachnid's entanglement	47 Polo-neck garment
38 Mythological goddess of fate	4 Sodium, periodically	49 Look after oneself
39 Rush along	5 Equals	51 Corn spike
40 Thigh and hip armor	6 Quantity of no importance	52 Aside
41 Prevaricate	7 Coloring agent	53 Electron tube
42 Strong restless desire	9 Bathing suit	54 Boast
44 Primp	10 Part of 9 Down	56 Misplaced
45 Isinglass	11 Gold, periodically	57 Noggin
46 Eightsome	12 Type of computer interface (abbr.)	59 Stray
48 Informal term for father	13 New Englander	60 Seed a field
		61 Forty winks
		62 Garland
		64 Coiffure
		66 And then
		67 Master of Arts (abbr.)



This crossword puzzle is sponsored each week by:

Kerbow Funeral Home

"Established in 1943"

Family owned and operated

- Monuments 853-3043
- Pre-Need Burial Insurance 387-2266

OBITUARIES

Francisco Paiz Suarez

GRAND PRAIRIE — Francisco Paiz Suarez of Grand Prairie, passed away on August 27th. He was born on September 12, 1912 in Kenedy, Texas. He was preceded in death by his wife Consuelo Suarez. Survivors include daughters Teresa Gonzales of Houston; Alda Martinez of Eldorado; Frances Pina of Arlington; Janie Guerrero of California; Grace Perez of Arlington; Lupe Gomez of Arlington; Maria S. Martinez of Grand Prairie; Mary Jones of DeSoto; Alice Smith of Florida; and

sons Roberto Suarez of Denton; Ramon Suarez of Eldorado; Jesus Suarez of Sherman; Edward Suarez of Grand Prairie; Alfred Suarez of Grand Prairie; and Roberto Zuniga of San Antonio; and sister Lupe Asevedo of San Antonio; 50 grandchildren and numerous great grandchildren. Services were held on Wednesday, August 30, 2000 in Brown's Memorial Chapel with Rev. Jonathan Hernandez officiating. Interment will be at Oak Grove Memorial Gardens in Irving.

Otis Deal

SAN ANGELO — Otis Deal, 93, of San Angelo passed from this life Friday, Aug. 25, 2000. He was born in Sherwood on Aug. 23, 1907, to Dr. E.O. and Lorah Meredith Deal. He was married to Ora Grimsley on Dec. 22, 1928, in Abilene.

Service was held Sunday, Aug. 27, at the Mertzson Church of Christ with Paul Shero and C.E. Packer officiating. Burial will follow in Mertzson Cemetery. Arrangements were by Johnson's Funeral Home.

Otis was a member of the Church of Christ, serving as an elder at the Mertzson Church of Christ for more than 50 years.

He was a pharmacist and a rancher. He was active in Texas and American Angus Associations, Federal Land Bank, Eldorado Divide Soil Conservation District, Texas Sheep and Goat Raisers

Association and ASCS committee in Schleicher County.

He is survived by his wife of almost 72 years; one daughter, Lou Ann and husband, Jack Turner, of Eldorado; four grandchildren, Theresa Truitt of Abilene, Rick Turner of Arlington, Cindy Echols of Fort Worth and Amy Clinton of Abilene; six great-grandchildren; one great-great-grandchild; and numerous nieces and nephews.

Otis Deal loved his Lord and his church first of all, then his family and after that the land and ranching.

Pallbearers were his grand nephews, Jim Freeman, Robert Freeman, Shawn Glover, Kyle Heller, Danny Macy, Bryan Offutt, Calvin Packer and Randy Packer.

Honorary pallbearers were all of his friends.

The family requests memorials be made to one's favorite charity.

Glenda Ann Cobb Joyce

SAN AUGUSTINE — Glenda Ann Cobb Joyce, of Monahans passed away Friday, Aug. 25, 2000, in a Temple hospital after a lengthy and courageous battle with cancer.

Born to Fred Eugene Cobb and Ruby Ford Cobb, Sept. 29, 1935, in Nacogdoches, Glenda was raised on the family farm in San Augustine County. With the passing of her mother during the birth of her sister, Glenda became the watchful big sister helping her father, grandmothers, Aunt Vera Ford and Aunt Ruth Ford raise her sisters and brothers. In August 1948, her father relocated her family to Midland where she graduated from Midland High School.

She married Robert B. Joyce of McCamey on Aug. 5, 1954. Bob went to work immediately for Northern Natural Gas Company. During 30 years of marriage, the couple moved multiple times residing in Fort Stockton; Hobbs, N.M.; Eldorado; Chinook, Mont.; and Grand Junction, Colo.

She was not only a lifetime homemaker, a loving mother and sister, and adoring grandmother, she was also a talented cook, decorator, and friend to many. Her heart of gold touched many during her life and will be missed dearly by all she loved and encountered.

She was preceded in death by her parents, Fred and Ruby Cobb; and her sister, Elizabeth Ruth Cobb.

She is survived by one son, Robert B. Joyce II of Taylor; two granddaughters, Charlotte Sloan Joyce and Erin Ruth Joyce, both of Katy; stepmother, Hazel Baker Cobb of Broadus; three brothers, Jessie and wife, Lola, of Colleyville, Etheridge and wife, Judith Cobb, of Fort Worth, and Michael Cobb

of Ford's Corner; three nieces, Jeniece and husband, Tim Mantel, of Choctaw, Okla., Karissa and husband, David Bledsoe, of Midland, and Heidi Cobb of Fort Worth; seven nephews, Danny and wife, Kay Cobb, of Midland, Steve and wife, Catherine Cobb, of Colleyville, Tyler Cobb of Fort Worth, Trey and Kara Cobb of Fort Worth, Tony and wife, Beth McCarthy, of Midland, Noel and wife, Jeananne McCarthy, of Summerville, Eddie and wife, Rebecca McCarthy, of Galveston, Babe McCarthy and Pat Cobb of Midland, Bob Joyce of San Angelo; and six great-nephews and six great-nieces.

The family wishes to express their gratitude for all wonderful love, friendship and support given to Glenda in the past by Rosalind Kress Haley of Midland, R.K. Haley library staff of Midland and Lubbock, Don and wife, Robbie Blackwell, of Monahans. Also appreciated was the very caring and exceptional medical care by Dr. Charles Capen and Nancy Eaton, R.N. of Scott & White Hospital of Temple, Ward Memorial Home Health and Peggy Russ, R.N. of Monahans.

All memorials should be directed to your favorite church or to Scott & White Hospital in Temple.

"Don't be afraid, because I have saved you. I have called you by name, and you are mine. When you pass through the waters, I will be with you. When you cross the rivers, you will not drown. When you walk through fire, you will not be burned, nor will the flames hurt you. This is because I, the Lord, am your God, the Holy One of Israel, your Savior."

Isaiah 43:1-3

Paul Fitts-Torrez IV

ELDORADO — Paul Fitts-Torrez IV, infant son of Paul Torrez III and Angie Fitts, died Thursday, Aug. 24, 2000, in a Fort Worth hospital.

Graveside service was Saturday, Aug. 26, in Eldorado Cemetery. Arrangements are by Kerbow Funeral Home.

He was born Aug. 20, 2000, in

Fort Worth.

Survivors include his parents; a sister, Ashton Xuma Torrez of San Angelo; his maternal grandparents, Milton and Sharon Fitts of Point; his paternal grandparents, Lucy and Paul Torrez Jr. of Brady; his maternal great-grandparents, Hal and Jeri Whitten of Eldorado and Chloe and Dale House of Dallas.

Shirley Williams

BRADY — Shirley Diane Williams, 47, of Eldorado and formerly of Brady, died Tuesday, Aug. 22, 2000, in Eldorado.

Service was Friday, Aug. 23, in Heritage Funeral Home Chapel with burial in Live Oak Cemetery.

She was born Dec. 10, 1952, in Brady. She was a nurse's aide and was a Baptist.

Survivors include two sons, James Bradley Short of Abilene and Gary Short of Port Allen, La.; a daughter, Tracy Silva of Abilene; her parents, Johnny and Ann Williams of Brady; four brothers, Johnny Dale Williams and Alvin Dean Williams, both of Brady, Calvin Gene Williams of San Saba and David Pittman of Abilene; a sister, Florence Nichols of Abilene; and five grandchildren.

Community-wide Bible Study

by Glen R. MacDonald

While I was pursuing my Masters in Bible, a very old and very wise professor gave our class what I still consider to be one of the great truths of biblical study: "When you see the word 'therefore' go back several verses and see what it is there for." Very simple, but very valuable. As people who travel along the journey of faith, we are often presented with or discover for ourselves a single verse or passage of Scripture and fail to comprehend the setting or context of the message. While the primary goal of the Community-wide Bible Study is to examine the major teachings of the Word of God, it is also my aim to investigate the larger context or the bigger picture of God's Word. The material that will be used in our study is the product of several years of detailed analysis of various major biblical themes. Some of those themes include: Central Themes; The Two Major Parts of the Bible; Christ's Death, Burial, and Resurrection; The Holy Spirit; The Word of God; Maintaining the Relationship; and End Times.

The title of the material: "Taken In Context..." characterizes the approach this study will take in investigating God's Word. This community-oriented study is an outgrowth of numerous requests from people who wish to study the Bible on a deeper level within a non-threatening environment. I look forward to the opportunity to examine the Scriptures with others who share an interest in surveying the bigger picture of God's Word. The Community-Wide Bible Study will have its first class on Sunday, September 17th at 6:30 p.m. in the Fellowship Room of the Mertzson Hwy Church of Christ. If you would like more information concerning this study, please call me at 853-2124 or 853-3237.

Meals for Friends Menu



Monday, September 4
CLOSED, LABOR DAY
Tuesday, September 5
Hot Dogs w/Chili Cheese, Candied Sweet Potatoes, Buns, Pineapple Waldorf, Brownie, Milk
Wednesday, September 6
Chicken Strips, Baked Potato, Broccoli w/Cheese Sauce, Dinner Roll, Peach Cobbler, Milk
Thursday, September 7
Soft Tacos and Cheese, Pinto Bean, Corn w/Sweet Pepper, Flour Tortilla, Chopped Lettuce & Tomato, Mixed Fresh Fruit w/Cantaloupe, Milk
Friday, September 8
Ital. Baked Fish, Lima Beans, Baked Tatar Tots, Cornbread, Sliced Strawberries, Milk

Weekly newspapers are this country's best advertising value. To guarantee that you're getting the most bang for your advertising dollar. Call the Success

853-3125

PUBLIC NOTICE

Stage-1 Drought Conditions exist in Eldorado

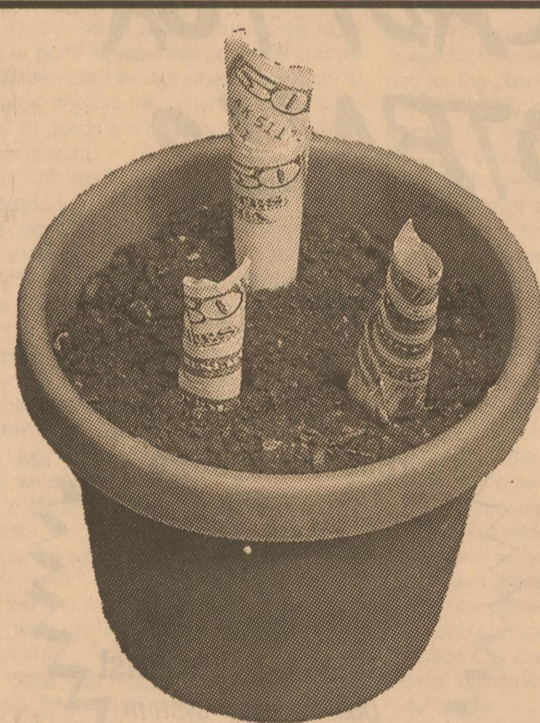
In accordance with the Drought Contingency Plan adopted by the Eldorado City Council on Monday, August 28, 2000, the following water use restrictions apply to all users of water supplied by the City of Eldorado's municipal water system:

Voluntary Water Use Restrictions

1. Water customers are requested to voluntarily limit the irrigation of landscaped areas and to irrigate landscapes only between the hours of 12:00 midnight and 10:00 a.m. and 8:00 p.m. to midnight.
2. Customers are requested to practice water conservation and to minimize or discontinue water use for non-essential purposes.

Voluntary water use restrictions are intended to bring about a 10 percent reduction in water usage. Voluntary water use restrictions will remain in place until conditions warrant or until Stage-2 drought conditions occur, at which time mandatory restrictions on irrigation of landscaped areas, and other non-essential water uses will be implemented.

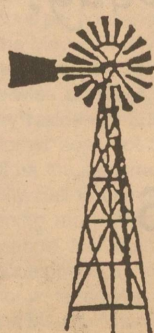
Copies of the Drought Contingency Plan are available for inspection Eldorado City Hall. The text of the plan is also being printed in its entirety in this week's edition of the Eldorado Success.



**Wet year,
or dry year,
your money
will grow
at FNB!**

Do you want to have your money in an account that pays you for having a higher balance? Do you want access to your money without penalty? At FNB Eldorado we have a Money Market Account that pays you for having more!

**Talk to one of our Personal Bankers.
Let us open an account for you today!**



**FIRST
NATIONAL
BANK
OF ELDORADO**

**FNB Will Be Closed
Monday, Sept. 4th in
Observance of Labor Day**

Main 853-2561 • TeleBank 853-2567
TeleTime 853-2569 • Member FDIC



Mighty Eagle Fan of the Week

This week the Mighty Eagle Fan of the week is Mondee Whitten. If you are chosen as Pizza Pro's Mighty Eagle Fan of the Week, cut out the ad, bring it by Pizza Pro and say, "I'm the Mighty Eagle Fan of the Week!" and receive a free pizza on us!



Redeem before Sept. 7, 2000

School Lunch Menu



Milk & Bread Offered
Menus Subject To Change
Cafeteria Line

- Monday, September 4**
No School, Labor Day
- Tuesday, September 5**
Chalupas, Spanish Rice, Lettuce and Tomato Salad, Sliced Peaches, Cowboy Cookies
- Wednesday, September 6**
Cowboy Beans, Potato Salad, Dill Pickle Spears, Pineapple Tidbits, Cornbread, Orange Cake/Icing
- Thursday, September 7**
Fish Strips/Tarter Sauce, Macaroni and Cheese, Black-eyed Peas, Applesauce, Chocolate Cake/Choc. Icing
- Friday, September 8**
Chicken Burgers, French Fries, Lettuce, Tomatoes, Pickles, Lemon Pudding

Breakfast

½ Milk & ¼ Juice Offered with each breakfast

- Monday, September 4**
No School, Labor Day
- Tuesday, September 5**
Pineapple Slices, Cream of Wheat, Toast/Jelly
- Wednesday, September 6**
Orange Juice, Breakfast Pizza
- Thursday, September 7**
Pears, Donuts, Cheese Stick
- Friday, September 8**
Grape Juice, Buttered Rice, Toast/Jelly

Fast Food Line

- Monday, September 4**
No School, Labor Day
- Tuesday, September 5**
Chili Crisitos/Cheese Sauce, French Fries, Sliced Peaches, Cowboy Cookies
- Wednesday, September 6**
Corn Chip Pie, Lettuce & Tomato Salad, Pineapple Tidbits, Orange Cake/Icing
- Thursday, September 7**
Turkey Sandwiches, French Fries, Lettuce, Tomatoes, Pickles, Chocolate Cake/Choc. Icing
- Friday, September 8**
Chicken Burgers, French Fries, Lettuce, Tomatoes, Pickles, Lemon Pudding

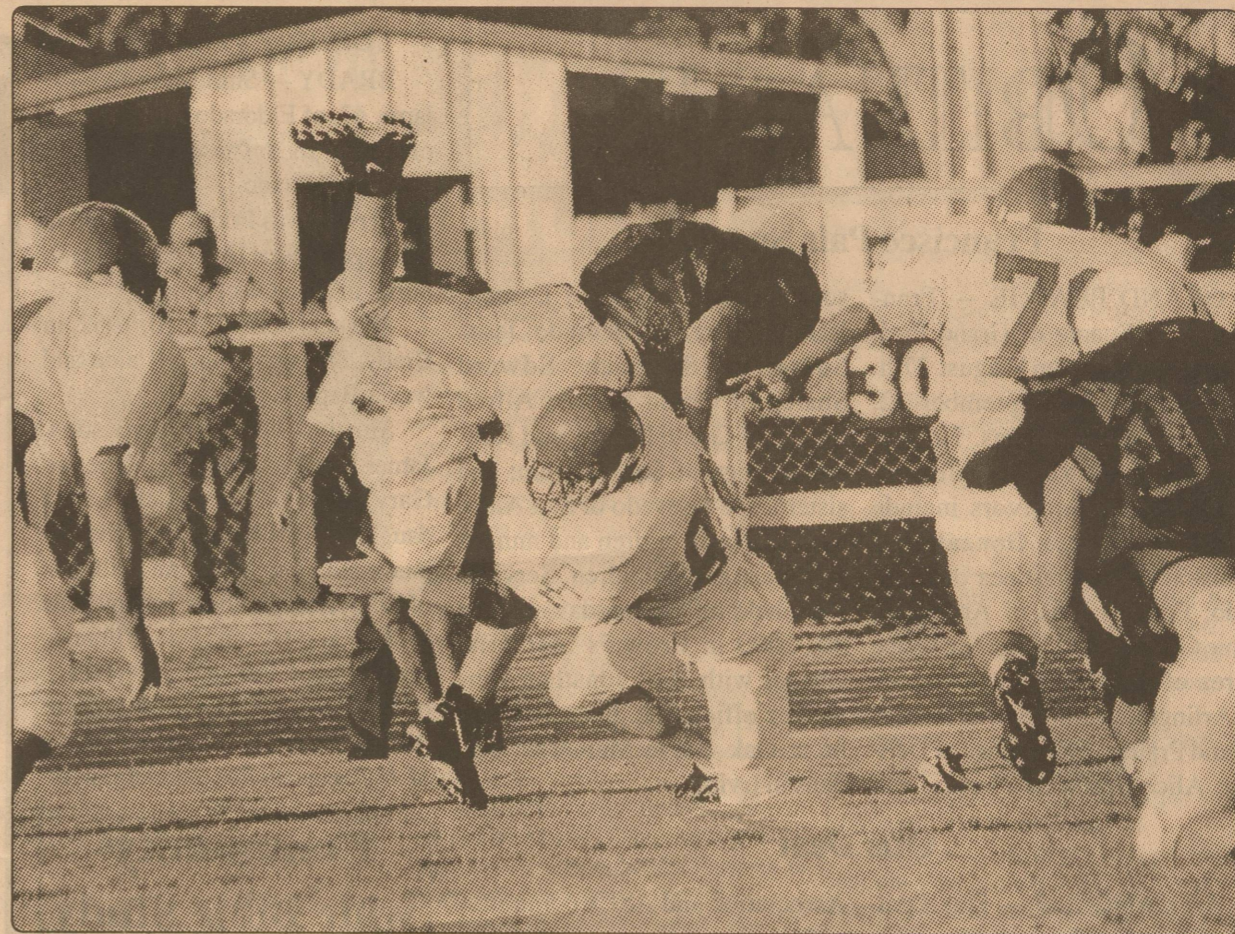


photo by Randy Mankin

Upended — A Rankin ball carrier tried the left side of the line only to meet Eagles defensive back Blake Leggett who made this beautiful tackle at the line of scrimmage.

Eagles endure tough scrimmage with Rankin, face Christoval Cougars tomorrow night

by David E. Hill

The Eldorado Eagles had a tough scrimmage against the #8 1A Rankin Red Devils last Thursday. The Eagles escaped the scrimmage with a 0-0 score. Rankin was quick, fast, and was very aggressive on the defensive side of the ball. Eldorado's offense never got untracked the entire evening. The defense did bend some during the night, however, they forced turnovers inside the red zone and did not allow a score.

All in all it was good experience for the Eagles as they prepared for the upcoming season. Coach Fryar commented on the scrimmage by saying, "We ran up against a real hard hitting ball club. Rankin is ranked 8th in the state, and I concur with that ranking, they could very well take that district this

year." Fryar continued, "It's still early, and this contest should focus us for the opening game against Christoval."

The Eagles will open play in Christoval tomorrow night at Cougar Stadium. This will be the first meeting between these two ballclubs. Christoval enjoyed many years of success in the 6 man ranks before moving up to 11 man a couple of years ago. This could become a good rivalry due to the proximity of the two communities.

The scouting report on Chris-

toval is they have good speed and an explosive offense. Their feature back gained over 1,500 yards last year. Defensively, they move to the ball well and are fairly big. All in all it should be a good match up for the Eagles in their opener.

Everyone should be sure and make the trip north some 25 miles and support the Eagles in their 2000 quest for the playoffs. This will be the first of six road games for Eldorado. Game time is 8 p.m. Be there, wear your GREEN, and BE LOUD!



photo by Randy Mankin

Cruising to the right — Eagles running back Quisto Gonzales found running room around the right end last week as the Eagles scrimmaged the Rankin Red Devils. Eldorado travels to Christoval tomorrow night to play the Cougars for the first time in history.

District 2-2A

	W	L	PF	PA
Eldorado	0	0	0	0
Grape Creek	0	0	0	0
Junction	0	0	0	0
Mason	0	0	0	0
Sonora	0	0	0	0
Wall	0	0	0	0

This Week

- Eldorado vs. Christoval
- Grape Creek - Open
- Junction - Open
- Mason - Open
- Sonora vs. Big Lake
- Wall vs. Midland Christian

AFLAC trivia question of the week will begin with district play.

DAVID HILL, D.S.C. - 853-4036 / 444-0998

For all your supplemental insurance needs, Cancer, Heart, Intensive Care, Accident, Disability, and Long Term Care

Why should you have AFLAC insurance? Without it, no insurance is complete.

ARE YOU READY FOR SOME FOOTBALL?

We thought so!



Single receiver system
\$69.00 + tax
While Supplies Last
Dual receiver system only \$218.00

Act now and receive a **SPECIAL OFFER***

*For a limited time, all new DirecTV® subscribers, who also subscribe to the 2000 NFL SUNDAY TICKET®, will receive 3 months of free TOTAL CHOICE®, STARZ® and sports programming. Also receive 3 months of FREE Showtime® and HBO®. Offer ends October 15, 2000.

Don't miss a single game...sign up today!

Jerry's TV Service

208 SW Main ~ Eldorado, Texas 76936

853-2314

Shugart's inc.

30 Color Photos \$12.99

- 1 - 10X13 99¢ Deposit \$12.00 (plus tax) due at pickup
- 1 - 8X10
- 2 - 5X7 group charge 99¢ per person
- 2 - 3X5
- 16 King Size Wallets
- 8 Regular Size Wallets



serving your photo needs at

DUCKWALL'S
301 Divide
Tues, Sept. 5
Photo Hours:
9:30AM-6:00PM



WE USE KODAK PAPER, FILM & CHEMISTRY

NOS Niblett's Oilfield Services, Inc.

PUMP TRUCKS, TRANSPORT SERVICES, VACUUM TRUCKS, ACID TANKS, FRAC TANKS, EQUIPMENT HAULING

Hwy. 277 S.
P.O. Box 910
Eldorado, Texas 76936

(915) 853-2521

Eldorado Animal Clinic

William F. Edmiston, DVM

Proudly Supporting the Eagles!

Sic 'Em!

P.O. Box 519
9550 Hwy 277 S.
Eldorado, Texas 76936

(915) 853-2572
Res. (915) 853-3383



Eldorado Division
902 East Street
(915) 853-2502

From The Wellhead Through The Pipeline...Hanover People Perform.

Annual Hext Golf Tourney

by Tom Gray

The Annual Hext Memorial Golf Tournament was held August 19th and 20th. There were 58 teams entered.

Saturday results Championship Flight - 1st place Hughes and Smith, 2nd place Causey and Harvey, 3rd place Price and Davenport; Presidents Flight - 1st place Jost and Jost, 2nd place Henderson and Nix, 3rd place Warnock and Wanoreck; First Flight - 1st Hunley and Phillips, 2nd place Torres and J. Gutierrez, 3rd place Guana and Hernandez; Second Flight - 1st C. Griffin and Medanich, 2nd place C. Gurierez and V. Gutierrez, 3rd place Hinojosa and Reeves; Third Flight - 1st place Aguilar and Parras, 2nd place Robles and Enriquez, 3rd place Crippin and Alexander; Fourth Flight - 1st place B. Whitten and K. Whitten, 2nd place Jonas and Allen, 3rd place Kosub and Pridemore.

Sunday Finishes Championship Flight - 1st place Price and Dav-

enport, 2nd place Causey and Harvey, 3rd place S. Whitten and McBride; Presidents Flight - 1st place Davis and Spain, 2nd place C. McCravery and T. Whitten, 3rd place Henderson and Nix; First Flight - 1st place Brown and Mitchell, 2nd place B. Bailey and Cravens, 3rd place C. Griffin and Medanich; Second Flight - 1st B. Whitten and K. Whitten, 2nd place Robles and Enriquez, 3rd place Payne and Phillips; Third Flight - 1st place Clark and Clark, 2nd place Crippin and Alexander, 3rd place Jones and Jones; Forth Flight - 1st place Bradley and Prater, 2nd place Kosub and Pridemore, 3rd place Joy and Beach

Closest to the pin contests were won by Randy Sparks, Mario Robles, Richie Craven and Chris Phillips. A special thanks to: Curtis Griffin, Mike Prater, Britt Poyner, Danny Halbert, Ronnie Sauer, Gus Hinojosa, Leroy Reeves and all the others who helped make the tournament a success.



Smiling faces — Over fifty youth traveled to Lake Brownwood last weekend for a Fall retreat. The annual event is sponsored by First Baptist Church of Eldorado

4-H news and views

by Nancy Lester, CEA

It's time to sign up for 4-H on Wednesday, September 6th after school.

Every family needs to come by and sign up. We are not allowed to keep you on the role if you don't

sign up. So, if you want to be in cooking, the stock shows, sewing, method demonstrations, shooting sports, going to camp or any other 4-H projects, this is the time to sign up.



In town for the tourney — Harold Skaggs and Terry Phifer, grandsons of Jack & Ernestine Hext, were on hand for the Hext Memorial Tournament held on August 19 & 20.

Why does the early bird always get the worm?
Because he reads about it in
THE ELDORADO SUCCESS
Eldorado's hometown newspaper

RYE SUPPLY COMPANY, INC.
General Oilfield Supplies • Pump Repairs
GO EAGLES!
216 South Divide Eldorado, TX 76936 Ph: (915) 853-4060 Fax: (915) 853-1411

Schleicher County Emergency Medical Service is looking for you!
EMT course will be offered this fall.
Late September through early October 2000. Please call 853-3456 for more information.
We need at least 10 students to start.

Texaco Star Stop
303 N. Divide
All 20 oz. Coca-Cola products including Daisani Water and Fruitopia Drink
Gandy's Milk \$2.69/gal 12oz. Coca-Cola 6-pks. \$2.00
853-3474
Deli Hours 5am to 10pm
Store hours 5:00 am to 12:00 midnight — EVERYDAY!
LARGE 2-TOPPING PIZZA + CHEESE STICKS only \$13.49
MEDIUM 1-TOPPING PIZZA only \$8.99
get the second for **HALF PRICE!**
Pizza Pro
Hours: 11-2 & 5-8
853-2504

Halbert LPG
"Please buy Some Propane"
Proud Eagles Supporter
456 South U.S. Hwy. 190 Eldorado, Texas 76936 **853-2815**

MANNY'S GROCERY
(915) 853-4406
Eldorado, Texas
GO EAGLES!
700 E. Murchison Ave.

John E. Meador Construction
General Oil Field Construction
Fully Insured & Radio Equipped
24-Hour Service
Phone: (915) 853-3135
Complete Roustabout Service
• Pumping Service
• Backhoe • Welding
• Sandblasting & Painting
• Polyethylene or Steel

How 'bout those Eagles!

Dollar Days
PRICES EFFECTIVE THRU SEPTEMBER 6TH

FREE CARD
Hallmark FRESH Ink
Ask For Coupon At Register No Purchase Required

\$5 Everyday Low Price
18.25 Gal. Tote. #1730 Stackable.
• 3-Drawer Rolling Tower. Reg. 18.99...\$15

\$1 Each Values Up To 1.39
• Interbake Cookies. 6.75 to 14 oz.
• Gold Crest Peanuts • Tasty Pop 4-Pk. Popcorn

\$1.99 Your Choice
Nutcracker Cashew Halves Or Mixed Nuts. 9 oz. can.

\$1 Everyday Low Price
Shasta 6-Pk. Canned Soft Drinks.
Assorted thirst satisfying flavors.
PLUS DEPOSIT IN IOWA

\$1 Everyday Low Price
Selected Household Plastics.
Improve home efficiency.
CONTAINER CONTENTS NOT INCLUDED

\$6 Folgers Classic Roast Coffee.
39 oz. can.

\$8 Reg. 9.99
Folding Sports Chair.
Carrying bag included.

\$3.99 Reg. 4.88
Selected Heavyweight Bath Towels.
Asst. styles and colors.
SLIGHTLY IMPERFECT

\$5 Everyday Low Price
Selected Kitchen Multipacks.
Dish towels, dish cloths or bar mops.
5 TO 8 PER PACKAGE

2/\$7 Everyday Low Price
American Dream Pillows.
Jumbo, firm or standard size.

\$6 Reg. 10.00
Twin Country Manor Sheet Sets.
• Full. Reg. 17.00...\$13
• Queen. Reg. 21.00...\$18

STORE #750
101 W. MILLS ST.
ELDORADO, TX
DUCKWALL'S
HOMETOWN VARIETY STORE
MON-SAT 9AM-7PM
SUNDAY 12:30-5:30

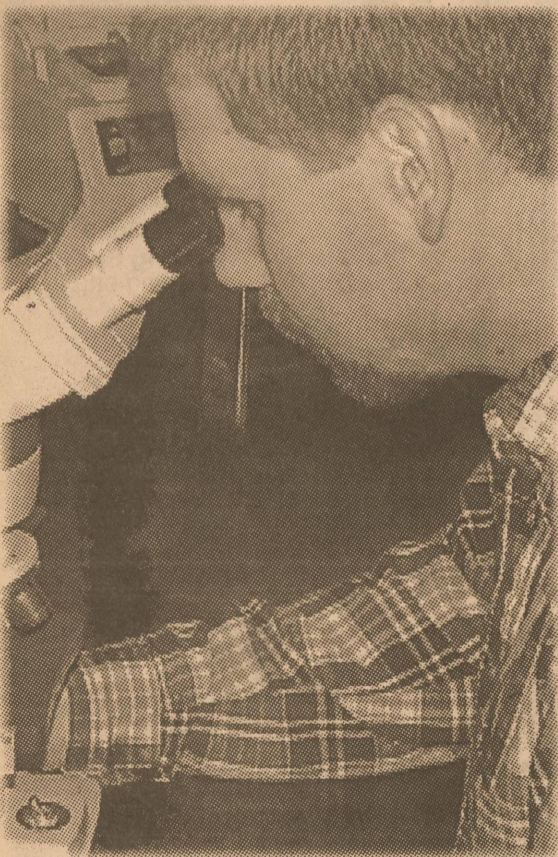
Come by
Linda's Crafts N Clutter
Summer Clearance SALE
25% to 50% OFF Selected Items
805 SW Main -Eldorado, TX
853-1668

Bad Credit? No Credit? Bankruptcy?
1-800-CAR LOAN NO PROBLEM!
A Jim Bass Ford Company

The West Texas office of the New York Life Insurance Company proudly announces the association of
NEW YORK LIFE
T. Cy Griffin
Agent
The Company You Keep®
See Cy for all your family's life insurance needs
Life Insurance • Annuities* • Long Term Care
Estate Planning • Business Insurance
109 Main Street Eldorado, Texas 76936
tlyg@airmail.net
Bus: 915-853-3826
Fax: 915-853-2922
Res: 915-853-1250
*Annuities offered through New York Life and Annuity Corporation a subsidiary of New York Life Insurance Company

HUDSON LIVESTOCK SUPPLE- INCORPORATED
All Natural Protein, No Urea
Easy to Feed/ Less Labor
No Salt or Fillers
Enhanced Condition Storage
Improved Reproduction
Heavier Weaning Weights
Matt Brown
853-2496 or 650-6235
SureFed
Now handling a full line of SureFed Feeds
Featuring N-Timidator® THE ORIGINAL and still the best!
Goat Feed and Supplement

Your doctor wants it fast.
You want it right...the first time, everytime.



State of the art laboratory equipment. Trained professional staff. Getting it right...it's what we do.

Acute Care, Emergency Room, Intensive Care, Laboratory, X-Ray, Physical Therapy...just a few of the things we do everyday so you can sleep better at night.

Caring People In the Business of Caring for You
Schleicher County Medical Center
400 West Murchison ~ Eldorado, Texas 24-Hour Phone: 853-2507

Hospital board adopts new budget, sets 43.75¢ tax rate

Schleicher County Hospital District Meeting 8/28/00

The Schleicher County Hospital District board of trustees met Monday evening, August 28, 2000, and voted to adopt a budget for 2001 totaling \$3,971,838.00. Revenues from services rendered should cover roughly 81 percent of the expenses leaving a tax subsidy of \$750,614.00 required to balance the books. That will require a tax rate of 43.75¢ per \$100 valuation, slightly lower than last year's tax rate of 44.23¢.

The numbers may be even better than the budget might indicate, however, since the new Critical

Access program is funneling new revenue into the hospital side of the facility. Andy Freeman, a partner in Preferred Management, the company which manages the facility, speculated that the district could possibly realize a surplus in excess of \$300,000.00 next year. Board members were pleased with that number, noting that it would be good to replace a portion of the district's reserves that were spent in recent years.

It was noted that a 25 percent increase in hospital charges was being implemented immediately. A second increase is planned by year's end with the goal to bring the hospital's fees into line with prevailing rates in West Texas.

The meeting officially began at 6:00 p.m. with all members present except Randy Mankin, who joined the meeting in progress. The meeting was called to order by Board President Judy Christian and the group immediately entered executive session for the purpose of discussion with the attorney concerning the renewal contract with Shannon Medical, and a review of the enabling legislation which created the hospital district some 30 years ago. The group emerged into open session at 8:15 p.m. and took no formal action on the subject.

The trustees then reviewed and approved 'Quality Assurance' reports for the hospital and nursing home. Minutes of the previous meeting were then read and approved upon a motion by Delia Pina, seconded by Lanis Mikeska.

Asst. Administrator Beverly Minor then presented the district's financial reports. It was noted that the daily loss in the facility, which is the amount paid by the previously mentioned tax subsidy, had improved dramatically. In 1999 the district was losing \$2,180 per day. Currently, the district is losing only



Number crunching — The Schleicher County Hospital District board of trustees met Monday night and adopted a \$3.97 million budget for 2001. They also set a tax rate of 43.75¢ to subsidize that budget.

\$904.00 per day with the trend improving slightly each month.

Hospital Administrator Ann Fagan-Cook reported to the board that an annual comprehensive survey of the nursing home by government regulators was underway and was continuing even as the board was meeting. The inspectors reportedly arrived just at the close of regular business. The inspections are always unannounced and may occur at any hour of the day or night, Fagan-Cook explained. She further stated she believed the survey would be completed by Wednesday and predicted nothing of significance would be found by the surveyors.

The board entered into another executive session at 9:09 p.m. for the purpose of discussing personnel matters and returned to open session at 9:40 p.m. without taking action. Discussion between the board and administrators in the open session centered around improving the channels of communication between the board and administrators.

The board then voted to approve an extension of medical staff privileges to Doctors W. Gordy Day and Jacqueline Jeffery. The two physicians help with emergency room coverage on weekends.

Next the board reviewed a rec-

ommendation from Ms. Fagan-Cook concerning laundry services. They briefly discussed the possibility of constructing a laundry building on the hospital grounds but quickly dismissed the idea due to cost. A motion to call for bids for contract laundry services was unanimously approved.

The board then voted to hire a consultant to inspect the hospital's emergency generator. It was noted the generator is old and that the control panels are obsolete. The purpose of the consultant is to bring a recommendation to the board concerning a replacement generator and the installation of new control panels.

Randy Mankin offered a motion, seconded by Delia Pina, to authorize the purchase of a Spirometer for \$3,999.00. It was explained that the machine will allow the hospital to offer more advanced pulmonary evaluations than can currently be performed locally. The board unanimously authorized the purchase.

An invoice from King Consultants, Inc. for air monitoring, during the recently completed asbestos abatement project, was also approved. The meeting was adjourned at 11:08 p.m.

State Capital Highlights
Compiled by Ed Sterling

CONTINUED FROM PAGE 2

hall meetings across Texas beginning in September. She plans to meet with farmers, ranchers and rural community leaders to discuss issues affecting agriculture and rural life. El Paso and Marfa are the first two cities on the list, with meetings set for Sept. 15.

Land Commissioner David Dewhurst's new Texas Beach Watch Program will assist Gulf Coast counties in monitoring beach water quality to protect the health of communities and beach-goers. Participating communities will sample the water periodically, have it tested, make the results public and report back to the General Land Office.

Second Hand Rose Consignment
Back to School Clothing Can't Beat Our Prices
Hwy 277 South
Open 10-6 pm
Mon-Sat. 853-3736

Schleicher County Chamber of Commerce welcomes Dana Shriver at Dana's Corner Daycare



10 W. Gillis ~ Eldorado, Texas
(915) 853-1236

DL Automotive & Diesel NOW OPEN

109 US HWY 190 WEST
(Old Cotton Gin)



DL Automotive & Diesel is a full service automotive business specializing in gas and diesel engines.

Now we are also offering most major brand tires New and Used! Oil Changes, Fix Flats, Mount and Balance Tires, Interstate Exide Batteries and State Inspections

Dana Ledbetter-Owner
Howard Ledbetter
Esequiel Robles
We would like to welcome Bobby Daniels to our service department.

Solution to puzzle on Page 2

D	O	W	N	I	N	D	A	B	B	A	C	Y
U	R	E	A	S	O	Y	A	I	R	U	L	A
M	S	B	T	W	E	O	K	A	I	N		
P	O	B	O	U	T	F	B	I	S	K		
S	S	I	L	K	B	R	I	N	G	T	O	
S	E	A	L	T	A	I	I	N	E	P	T	
O	W	L	S	S	H	Y	L	Y	U	R	T	H
H	I	E	T	U	I	L	L	E	S	L	I	E
I	T	C	H	P	R	E	E	N	M	I	C	A
O	C	T	E	T	D	A	D	F	A	N	S	
H	E	R	S	E	L	F	B	E	R	G	D	
B	D	H	A	Y	L	Y	N	X	B	I		
R	E	S	I	R	N	O	D	L	E	O		
A	R	D	O	R	L	A	S	S	M	E	A	D
G	R	O	W	T	H	P	T	O	M	A	I	N

BIRTHDAY LIST

- AUGUST**
31st Pat Ragsdale, Dora Bosmans, Melvin Conner Sr., Mary Hoffman, Mark Bybee, Cindy Bybee, Robert O'Keefe
September
1st Ronnie Sauer, Rene Dominguez
2nd Jeff Sellers, Carolyn Mayo, Franky Estrada, Oscar Rios Sr., Jesus Guadarrama
3rd Charlene Sudduth, Byron Guterrez, Mack Holley, Jeff Sellers, Shawn Hamilton, Tommy Phippen, Steve Whitten
4th Yadira Iglesias, Sandra Clark, Magdalena Martinez
6th Matthew Hill, Melissa Marie Mejia, Ram Jr. Buitron, Jaime Jenkins, Staci Key Jenkins

ANNIVERSARY LIST

- AUGUST**
31st Caroline & Kenneth Hight, Billy & Leanne Higgins
September
1st Ronnie & Sharon Mittel
2nd Mark & Elizabeth Lloyd
3rd Donnie & Donna Newton
4th Damien & GERALYN Beach, Fidel & Delia Herrera
5th Lannis & Lynna Mikeska
6th Clarence & Freda Rayvon

FLORAL DESIGNS
by Liz Anderson
201 S. Oak
Corner of S. Oak and Gillis
Phone 915/853-2659

Section I: Declaration of Policy, Purpose, and Intent

In order to conserve the available water supply and protect the integrity of water supply facilities, with particular regard for domestic water use, sanitation, and fire protection, and to protect and preserve public health, welfare, and safety and minimize the adverse impacts of water supply shortage or other water supply emergency conditions, the City of Eldorado (the City) hereby adopts the following regulations and restrictions on the delivery and consumption of water.

Water uses regulated or prohibited under this Drought Contingency Plan (the Plan) are considered to be non-essential and continuation of such uses during times of water shortage or other emergency water supply condition are deemed to constitute a waste of water which subjects the offender(s) to penalties as defined in Section XI of this Plan.

Section II: Public Involvement

Opportunity for the public to provide input into the preparation of the Plan was provided by the City by means of scheduling and providing public notice of a public meeting to accept input on the Plan.

Section III: Public Education

The City will periodically provide the public with information about the Plan, including information about the conditions under which each stage of the Plan is to be initiated or terminated and the drought response measures to be implemented in each stage. This information will be provided by means of public events, press releases or utility bill inserts.

Section IV: Coordination with Regional Water Planning Groups

The service area of the City is located within the Plateau Underground Water Conservation and Supply District and Regional Water Planning Group Region F and the City has provided a copy of this Plan both entities.

Section V: Authorization

The Mayor or his/her designee is hereby authorized and directed to implement the applicable provisions of this Plan upon determination that such implementation is necessary to protect public health, safety, and welfare. The Mayor, or his/her designee, shall have the authority to initiate or terminate drought or other water supply emergency response measures as described in this Plan.

Section VI: Application

The provisions of this Plan shall apply to all persons, customers, and governmental entities and other property, utilizing water provided by the City. The terms "person" and "customer" as used in the Plan include individuals, corporations, partnerships, associations, and all other legal entities.

Section VII: Definitions

For the purposes of this Plan, the following definitions shall apply:

Aesthetic water use: water use for ornamental or decorative purposes such as fountains, reflecting pools, and water gardens.

Commercial and institutional water use: water use, which is integral to the operations of commercial and non-profit establishments and governmental entities such as retail establishments, hotels and motels, restaurants, and office buildings.

Conservation: those practices, techniques, and technologies that reduce the consumption of water, reduce the loss or waste of water, improve the efficiency in the use of water or increase the recycling and reuse of water so that a supply is conserved and made available for future or alternative uses.

Customer: any person, company, or organization using water supplied by the City.

Domestic water use: water use for personal needs or for household or sanitary purposes such as drinking, bathing, heating, cooking, sanitation, or for cleaning a residence, business, industry, or institution.

Industrial water use: the use of water in processes designed to convert materials of lower value into forms having greater usability and value.

Landscape irrigation use: water used for the irrigation and maintenance of landscaped areas, whether publicly or privately owned, including residential and commercial lawns, gardens, golf courses, parks, and rights-of-way and medians.

Monitor well: a well located on a lot owned by First Presbyterian Church that is adjacent to the City's well behind City Hall. Personnel of the City and the Plateau Underground Water Conservation and Supply District regularly monitor the well to verify water levels in the nearby City well.

Non-essential water use: water uses that are not essential nor required for the protection of public, health, safety, and welfare, including:

A. Irrigation of landscape areas, including parks, athletic fields, and golf courses, except otherwise provided under this Plan;

B. Use of water to wash any motor vehicle, motorbike, boat, trailer, airplane or other vehicle;

C. Use of water to wash down any sidewalks, walkways, driveways, parking lots, tennis courts, or other hard-surfaced areas;

D. Use of water to wash down buildings or structures for purposes other than immediate fire protection;

E. Flushing gutters or permitting water to run or accumulate in any gutter or street;

F. Use of water to fill, refill, or add to any indoor or outdoor swimming pools or Jacuzzi-type pools.

G. Use of water in a fountain or pond for aesthetic or scenic purposes except where necessary to support aquatic life.

H. Failure to repair a controllable leak(s) within a reasonable period after having been given notice directing the repair of such leak(s); and

I. Use of water from hydrants for construction purposes or any other purposes other than fire fighting.

Section VIII: Criteria for Initiation and Termination of Drought Response Stages

The Mayor or his/her designee shall monitor water supply and/or demand conditions on a regular basis and shall determine when conditions warrant initiation or termination of each stage of the Plan, that is, when the specified "triggers" are reached.

The triggering criteria described below are based on water supply, customer demand, climatic conditions, pumping capacity, storage capacity and the City's ability to otherwise deliver water to its customers.

STAGE 1 Triggers — MILD Water Shortage Conditions

Requirements for initiation

STAGE 1 may be implemented when one

or more of the following conditions exist:

A. Water consumption has reached **75 percent** of daily maximum supply **1,250,000 GALLONS** for **60** consecutive days.

B. The water level in the Monitor Well reaches **315 FEET** while the City's pump is running.

C. An extended period (6 months) of time without significant rainfall (less than 2 inches).

D. Failure of two or more of the City's pumps.

STAGE 2 Triggers — MODERATE Water Shortage Conditions

Requirements for initiation

STAGE 2 may be implemented when one or more of the following conditions exist:

A. Water consumption has reached **80 percent** of daily maximum supply **1,250,000 gallons** per day for **30** consecutive days.

B. The water level in any of the City's water storage tanks cannot be replenished quickly enough to maintain the average residual pressure on the system at **38 PSI** during working hours of the City.

C. The water level in the Monitor Well reaches **322 FEET** while the City's pump is running.

D. Failure of one or more pumps or storage tanks that decreases the City's ability to maintain adequate storage for domestic and emergency service.

STAGE 3 Triggers — SEVERE Water Shortage Conditions

Requirements for initiation

A. Failure of a major component of the City's water system or an event which reduces the average residual pressure on the system below **36 PSI** for a period of 12 hours.

B. Water consumption has reached **90 percent** of daily maximum supply **1,250,000 gallons** per day for 30 consecutive days.

C. The water level in any of the City's water storage tanks cannot be replenished quickly enough to maintain the average residual pressure on the system at **36 PSI** during working hours of the City.

D. Other unforeseen events, which could cause imminent health or safety risks to the public.

E. The water level in the Monitor Well reaches **329 FEET** while the City's pump is running.

F. Failure of a common pipeline connecting two (2) or more of the City's wells to the water distribution system.

G. Failure of one of the City's three storage tanks.

H. Loss of electricity for more than **8 hours**, if during the outage the storage tank levels drop sufficiently to cause the average residual pressure on the system to fall below **36 PSI**.

STAGE 4 Triggers — CRITICAL Water Shortage Conditions

Requirements for initiation

A. Failure of a major component of the City's water system or an event which reduces the average residual pressure on the system below **32 PSI** for a period of 24 hours.

B. Water consumption of has reached **95 percent** of daily maximum supply **1,250,000 gallons** per day for **30** consecutive days.

C. The water level in any of the City's water storage tanks cannot be replenished quickly enough to maintain the average residual pressure on the system at **32 PSI** during working hours of the City.

D. Other unforeseen events, which could cause imminent health or safety risks to the public.

E. The water level in the Monitor Well reaches **336 FEET** while the City's pump is running.

F. Failure of a common pipeline connecting three (3) or more of the City's wells to the water distribution system.

G. Failure of two of the City's three storage tanks.

H. Loss of electricity for more than **12 hours**, if during the outage the storage tank levels drop sufficiently to cause the average residual pressure on the system to fall below **32 PSI**.

STAGE 5 Triggers — EMERGENCY Water Shortage Conditions

Requirements for initiation

A. Failure of a major component of the City's water system or an event which reduces the average residual pressure on the system below **30 PSI** for a period of 36 hours.

B. Water consumption of **97 percent** or more of the maximum available **(1,250,000 gallons per day)** for **30** consecutive days.

C. The water level in any of the City's water storage tanks cannot be replenished quickly enough to maintain the average residual pressure on the system at **30 PSI** during working hours of the City.

D. Other unforeseen events, which could cause imminent health or safety risks to the public.

E. The water level in the Monitor Well reaches **343 FEET** while the City's pump is running.

F. Failure of a common pipeline connecting four (4) or more of the City's wells to the water distribution system.

G. Failure of one of the City's two elevated storage tanks.

H. Loss of electricity for more than **24 hours**, if during the outage the storage tank levels drop sufficiently to cause the system pressure to fall below **30 PSI**.

STAGE 6 Triggers — WATER ALLOCATION

Requirements for initiation

Customers shall be required to comply with the water allocation Plan prescribed in Section IX of this Plan and comply with the requirements and restrictions for STAGE 5 of this Plan when

Requirements for initiation

A. Failure of a major component of the City's water system or an event which reduces the average residual pressure on the system below **28 PSI** for a period of 48 hours.

B. Water consumption of **98 percent** or more of the maximum available **(1,250,000 gallons per day)** for **30** consecutive days.

C. The water level in any of the City's water storage tanks cannot be replenished quickly enough to maintain **28 PSI** during working hours of the City.

D. Other unforeseen events, which could cause imminent health or safety risks to the public.

E. The water level in the Monitor Well reaches **350 FEET** while the City's pump is running.

F. Failure of one of the City's two elevated storage tanks.

G. Loss of electricity for more than **48 hours**, if during the outage the storage tank levels drop sufficiently to cause the system pressure to fall below **28 PSI**.

Section IX: Drought Response Stages

CITY OF ELDORADO Drought Contingency Plan adopted Aug. 28, 2000

The Mayor, or his/her designee, shall monitor water supply and/or demand conditions on a regular basis and, in accordance with the triggering criteria set forth in Section VIII of this Plan, shall determine that a mild, moderate, severe, critical, emergency or water shortage condition exists and shall implement the following notification procedures:

Notification

Notification of the Public:

The Mayor, or his/her designee, shall notify the public by means of:

Publication in a newspaper of general circulation,

Public service announcements,

Signs posted in public places

Additional Notification:

The Mayor, or his/her designee, shall notify directly, or cause to be notified directly, the following individuals and entities:

All members of the Eldorado City Council

Fire Chief of the Eldorado Volunteer Fire Dept.

Schleicher County Emergency Management Coordinator

Schleicher County Judge & Commissioners

State Disaster District / Department of Public Safety

TNRCC (when mandatory restrictions are imposed)

Major water users

Critical water users, such as schools, hospitals, nursing homes

Parks / street superintendents & public facilities managers

Stage 1 Response — MILD Water Shortage Conditions

Goal: Achieve a voluntary **10 percent** reduction in total water use.

Supply Management Measures: None.

Voluntary Water Use Restrictions:

A. Water customers are requested to voluntarily limit the irrigation of landscaped areas and to irrigate landscapes only between the hours of midnight and 10:00 a.m. and 8:00 p.m. to midnight.

B. All operations of the City shall adhere to water use restrictions prescribed for Stage 2 of the Plan.

C. Water customers are requested to practice water conservation and to minimize or discontinue water use for non-essential purposes.

Stage 2 Response — MODERATE Water Shortage Conditions

Goal: Achieve a **20 Percent** reduction in total water use.

Supply Management Measures: Reduce flushing of water mains.

Water Use Restrictions: Under threat of penalty for violation, the following water use restrictions shall apply to all persons:

A. Irrigation of landscaped areas with hose-end sprinklers or automatic irrigation systems shall be limited to the hours of 12:00 midnight until 10:00 a.m. and between 8:00 p.m. and 12:00 midnight. However, irrigation of landscaped areas is permitted at anytime if it is by means of a hand-held hose, a faucet filled bucket or watering can of five (5) gallons or less, or drip irrigation system.

B. Use of water to wash any motor vehicle, motorbike, boat, trailer, airplane or other vehicle is prohibited except between the hours of 12:00 midnight and 10:00 a.m. and between 8:00 p.m. and 12:00 midnight. Such washing, when allowed, shall be done with a hand-held bucket or a hand-held hose equipped with a positive shutoff nozzle for quick rinses. Vehicle washing may be done at any time on the immediate premises of a commercial car wash or commercial service station. Further, such washing may be exempted from these regulations if the health, safety, and welfare of the public is contingent upon frequent vehicle cleansing, such as garbage trucks and vehicles used to transport food and perishables.

C. Use of water to fill, refill, or add to any indoor or outdoor swimming pools, wading pools, or Jacuzzi-type pools is prohibited except between the hours of 12:00 midnight and 10:00 a.m. and between 8 p.m. and 12:00 midnight.

D. Operation of any ornamental fountain or pond for aesthetic or scenic purposes is prohibited except where necessary to support aquatic life or where such fountains or ponds are equipped with a recirculation system.

E. No application for new, additional, expanded, or increased-in-size water service connections, meters, service lines, pipe-line extensions, mains, or water service facilities of any kind shall be approved, and time limits for approval of such applications are hereby suspended for such time as this drought response stage or a higher-numbered stage shall be in effect.

Stage 5 Response — EMERGENCY Water Shortage Conditions

Goal: Achieve a **50 Percent** reduction in total water use.

Additional Supply Management Measures:

Adopt water rates that are 2 times the City's normal water rate including minimum and per gallon charges; Drill additional supply well(s); seek alternative supply source(s).

Water Use Restrictions: Under threat of penalty for violation, the following water use restrictions shall apply to all persons. All requirements of Stage 2, 3, and 4 shall remain in effect during Stage 5 except:

A. Irrigation of landscaped areas is absolutely prohibited.

B. Use of water to wash any motor vehicle, motorbike, boat, trailer, airplane or other vehicle is absolutely prohibited.

Stage 6 Response — WATER ALLOCATION

In the event that water shortage conditions threaten public health, safety, and welfare, the Mayor is hereby authorized to allocate water according to the following water allocation Plan:

Single-Family Residential Customers

The allocation to residential water customers residing in a single-family dwelling shall be as follows:

Persons per Household - Gallons per Month

1 or 2 - 6,000; 3 or 4 - 7,000; 5 or 6 - 8,000; 7 or 8 - 9,000; 9 or 10 - 10,000; 11 or more - 12,000

"Household" means the residential premises served by the customer's meter. "Persons per household" includes only those persons currently physically residing at the premises and expected to reside there for the entire billing period. It shall be assumed that a particular customer's household is comprised of two (2) persons unless the customer notifies the City of a greater number of persons per household on a form prescribed by the Mayor. The Mayor shall give his/her best effort to see that such forms are mailed, otherwise provided, or made available to every residential customer. If, however, a customer does not receive such a form, it shall be the customer's responsibility to go to City Hall to complete and sign the form claiming more than two (2) persons per household. New customers may claim more persons per household at the time of applying for water service on the form prescribed by the Mayor. When the number of persons per household increases so as to place the customer in a different allocation category,

the customer may notify the City on such form and the change will be implemented in the next practicable billing period. If the number of persons in a household is reduced, the customer shall notify the City in writing within two (2) days. In prescribing the method for claiming more than two (2) persons per household, the Mayor shall adopt methods to insure the accuracy of the claim. Any person who knowingly, recklessly, or with criminal negligence falsely reports the number of persons in a household or fails to timely notify the City of a reduction in the number of person in a household shall be fined not less than **Fifty Dollars (\$50.00)**.

Residential water customers shall pay the following surcharges:

\$2.00 for the first 1,000 gallons over allocation.

\$4.00 for the second 1,000 gallons over allocation.

\$6.00 for each additional 1,000 gallons over allocation.

Surcharges shall be cumulative.

Master-Metered Multi-Family Residential Customers

The allocation to a customer, billed from a master meter, which jointly measures water to multiple permanent residential dwelling units (e.g., apartments, mobile homes) shall be allocated 6,000 gallons per month for each dwelling unit. It shall be assumed that such a customer's meter serves two dwelling units unless the customer notifies the City of a greater number on a form prescribed by the Mayor. The Mayor shall give his/her best effort to see that such forms are mailed, otherwise provided, or made available to every such customer. If, however, a customer does not receive such a form, it shall be the customer's responsibility to go to City Hall to complete and sign the form claiming more than two (2) dwellings. A dwelling unit may be claimed under this provision whether it is occupied or not. New customers may claim more dwelling units at the time of applying for water service on the form prescribed by the Mayor. If the number of dwelling units served by a master meter is reduced, the customer shall notify the City in writing within two (2) days. In prescribing the method for claiming more than two (2) dwelling units, the Mayor shall adopt methods to insure the accuracy of the claim. Any person who knowingly, recklessly, or with criminal negligence falsely reports the number of dwelling units served by a master meter or fails to timely notify the City of a reduction in the number of person in a household shall be fined not less than **Fifty Dollars (\$50.00)**. Customers billed from a master meter under this provision shall pay the following monthly surcharges:

\$2.00 for 1,000 gallons over allocation up through 1,000 gallons for each dwelling unit.

\$4.00, thereafter, for each additional 1,000 gallons over allocation up through a second 1,000 gallons for each dwelling unit.

\$6.00, thereafter, for each additional 1,000 gallons over allocation up through a third 1,000 gallons for each dwelling unit.

Surcharges shall be cumulative.

Commercial Customers

A monthly water allocation shall be established by the Mayor, or his/her designee, for each nonresidential commercial customer, other than an industrial customer, who uses water for processing purposes. The non-residential customer's allocation shall be approximately **75 Percent** of the customer's usage for corresponding month's billing period for the previous **12 months**. If the customer's billing history is shorter than **12 months**, the monthly average for the period for which there is a record shall be used for any monthly period for which no history exists. The Mayor shall give his/her best effort to see that notice of each nonresidential customer's allocation is mailed to such customer. If, however, a customer does not receive such notice, it shall be the customer's responsibility to contact the City to determine the allocation. Upon request of the customer or at the initiative of the Mayor, the allocation may be reduced or increased if, (1) the designated period does not accurately reflect the customer's normal water usage, (2) one nonresidential customer agrees to transfer part of its allocation to another nonresidential customer, or (3) other objective evidence demonstrates that the designated allocation is inaccurate under present conditions. A customer may appeal an allocation established hereunder to the Eldorado City Council. Nonresidential commercial customers shall pay the following surcharges:

\$2.00 per thousand gallons for the first 10,000 gallons over allocation.

\$4.00 per thousand gallons for the second 10,000 gallons over allocation.

\$6.00 per thousand gallons for each additional 1,000 gallons over allocation.

The surcharges shall be cumulative.

Industrial Customers

The Mayor, or his/her designee, shall establish a monthly water allocation for each industrial customer using water for processing purposes. The industrial customer's allocation shall be approximately **90 Percent** of the customer's water usage baseline. Ninety (90) days after the initial imposition of the allocation for industrial customers, the industrial customer's allocation shall be further reduced to **80 Percent** of the customer's water usage baseline. The industrial customer's water use baseline will be computed on the average water use for the 24-Month period ending prior to the date of implementation of Stage 2 of the Plan. If the industrial water customer's billing history is shorter than 24 Months, the monthly average for the period for which there is a record shall be used for any monthly period for which no billing history exists. The Mayor shall give his/her best effort to see that notice of each industrial customer's allocation is mailed to such customer. If, however, a customer does not receive such notice, it shall be the customer's responsibility to contact the City to determine the allocation, and the allocation shall be fully effective notwithstanding the lack of receipt of written notice. Upon request of the customer or at the initiative of the Mayor, the allocation may be reduced or increased, (1) if the designated period does not accurately reflect the customer's normal water use because the customer had shutdown a major processing unit for repair or overhaul during the period, (2) the customer has added or is in the process of adding significant additional processing capacity, (3) the customer has shutdown or significantly reduced the production of a major processing unit, (4) the customer has

previously implemented significant permanent water conservation measures such that the ability to further reduce water use is limited, (5) the customer agrees to transfer part of its allocation to another industrial customer, or (6) if other objective evidence demonstrates that the designated allocation is inaccurate under present conditions. A customer may appeal an allocation established hereunder to the Eldorado City Council. Industrial customers shall pay the following surcharges:

\$2.00 per thousand gallons for the first 100,000 gallons over allocation.

\$4.00 per thousand gallons for the second 100,000 gallons over allocation.

\$6.00 per thousand gallons for each additional 1,000 gallons over allocation.

The surcharges shall be cumulative.

Section X: Enforcement

A. No person shall knowingly or intentionally allow the use of water from the City for residential, commercial, industrial, agricultural, governmental, or any other purpose in a manner contrary to any provision of this Plan, or in an amount in excess of that permitted by the drought response stage in effect at the time pursuant to action taken by Mayor, or his/her designee, in accordance with provisions of this Plan.

B. Any person who violates this Plan is guilty of a misdemeanor and, upon conviction shall be punished by a fine of not less than **Fifty Dollars (\$50.00)** and not more than **Five Hundred Dollars (\$500.00)**. Each day that one or more of the provisions in this Plan is violated shall constitute a separate offense. If a person is convicted of three or more distinct violations of this Plan, the Mayor or shall, upon due notice to the customer, be authorized to discontinue water service to the premises where such violations occur. Services discontinued under such circumstances shall be restored only upon payment of a re-connection charge, hereby established at **Twenty-Five Dollars (\$25.00)**, and any other costs incurred by the City in discontinuing service. In addition, suitable assurance must be given to the Mayor that the same action shall not be repeated while the Plan is in effect. Compliance with this Plan may also be sought through injunctive relief in the district court.

C. Any person, including a person classified as a water customer of the City, in apparent control of the property where a violation occurs or originates shall be presumed to be the violator, and proof that the violation occurred on the person's property shall constitute a rebuttable presumption that the person in apparent control of the property committed the violation, but any such person shall have the right to show that he/she did not commit the violation. Parents shall be presumed to be responsible for violations of their minor children and proof that a violation, committed by a child, occurred on property within the parents' control shall constitute a rebuttable presumption that the parent committed the violation, but any such parent may be excused if he/she proves that he/she had previously directed the child not to use the water as it was used in violation of this Plan and that the parent could not have reasonably known of the violation.

'Smoke on the Mountain' slated for return engagement

The wildly popular musical "Smoke on the Mountain", written by Connie Ray and directed by Jo Ann Sproul will return to center stage at the Ratliff Civic Theater this October.

In the Way Off-Broadway Players' production, a young baptist minister named Mervin Oglethorp (played by new cast member Leonard Wideman) invites

the family of musicians to perform for his congregation at the Mount Pleasant Baptist Church. What follows is a musical comedy packed with gospel singing, slap-stick humor and heart warming testimonies

Returning as the Sanders Family Sanctified Singers are father Burl Sanders (Jim Martin), his wife Vera Sanders (Sherry Belk) and their children Dennis, Denise and June (Charlie Brad-



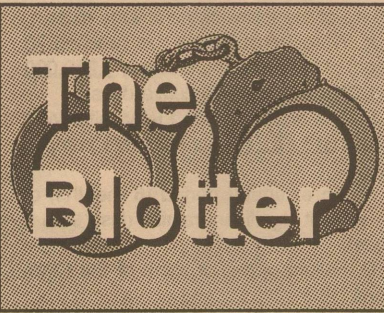
Return performance — Sherry Belk, Charlie Bradley and Leonard Wideman are three of the cast members of *Smoke on the Mountain* which returns to the stage at the Ratliff Civic Theater in October.

ley, Eva Jo Sessom and Deb Joy), Burl's brother Stanley and Ralph (Dale Lipsett and Lynn Meador), Ralph's wife Ethel (Terry Green) and Ethel's cousin Maybelle (Jo Parker).

Offsetting the boisterous singing troupe are two somber spinsters, Miss Maude and Miss Myrtle (Mabel Blaylock and Kathy Mankin who

are the church's main benefactors.

"Smoke" will run through out the month of October. The first performance on Saturday, October 7 will include a dinner sponsored by the Eldorado Pride Committee. There will be a total of 8 performances. For ticket information call 853-2062 weekdays, or 853-3411 weekends.



The Blotter is a summary of the previous week's activity by the Schleicher County Sheriff's Dept. For practical reasons of time and space, The Blotter does not include every call made to the Sheriff's office, nor does it include routine security checks, minor traffic stops or routine patrols. Incidents of major impact will be reported separately. Subjects reported to have been arrested are presumed innocent until proven guilty in a court of law.

ARRESTS

August 16 • Rico, Luis Arturo, male age 28, hold for Irion County, charge Driving While Intoxicated. Released on \$500 Surety Bond.

August 17 • Blye, Richard, male age 29, arrested by SC Officer, charge Driving License Suspended/Possession of Marijuana (less than 2 ounces).

Jones, Paula Ann, female age 36, arrested by SC Officer, charge Possession of Marijuana (less than 2 ounces). Released on a \$1,000 Surety Bond.

Laurence, Joseph Randy, male age 24, hold for Irion County, charge Public Intoxication. Released on Citation.

Cowley, Steven Shane, male age 29, hold for Irion County, charge Driving

While Intoxication, 2nd Driving While License Suspended. Released on \$1,500 Surety Bond and a \$750 Surety Bond.

August 20 • Castilleja, Milton Jr., male age 33, arrested by SC Officer, charge Out of County Warrant and Local Warrant.

Martinez, Carlos, male age 39, arrested by SC Officer, charge Driving While Intoxicated (2nd Offense). Released on \$5,000 Surety Bond.

REPORTS

August 16 • 1:00 p.m. Landowner reported a controlled burn will be held on 8/17/00 with fire trucks on site.

• 1:29 p.m. Complainant requested an ambulance at a residence on Depot Street. Officer and EMS 2 responded.

• 2:20 p.m. Complainant on Calendar and Mulberry Street reported a small grass fire. Fire truck responded.

• 10:43 p.m. Complainant reported a 15 year old female subject missing. Officer responded.

August 18 • 4:00 p.m. Complainant reported phone harassment.

• 7:44 p.m. Report of fight in progress on El Paso Street.

• 10:00 p.m. Report of a tool box that has fallen out of a white pickup. Officer responded and tool box was brought into the Sheriff's Office. Owner came by Sheriff's Office and described tool box and box was returned.

• 2:30 p.m. Complainant reported a opossum in their yard on the corner of Oaks and Lewis. Officer responded to call.

• 3:58 p.m. Complainant on S Cottonwood requested an ambulance. Subject complaining of shortness of breath. EMS2 and officer responded.

• 11:06 p.m. Complainant reported a couple of horses out 1/4 mile out on FM 2696. Officer and DPS Officer responded.

• 6:51 p.m. Complainant requested an ambulance for an Advance Cardiac Life Support transfer. Officer and EMS 2 responded.

August 19 • 9:48 a.m. Complainant on S. Cottonwood requested a ambulance because subject was complaining of shortness of breath. Two officers and EMS 1 responded.

• 11:02 a.m. Complainant on County Road 206 requested a ambulance because subject was complaining of stomach cramps and vomiting. Two officers responded and EMS 2.

• 8:57 p.m. Complainant reported someone had hit a sign at a local business on N. Divide. Officer responded.

• 10:59 p.m. Complainant reported a possible drunk driver on Hwy. 277 South. Officer responded.

August 20 • 11:40 a.m. Complainant requested assistance in locating their son driving a Tan Ford 150. Two males age 21 were coming from Del Rio to Rising Star. May have gone through Sonora-Menard-Brady cutting across 864 or coming through Eldorado. Subjects are broke down since 4:00 a.m. this date. Officer responded.

• Time unknown - Hospital reported a dog bite.

August 21 • 6:23 p.m. Complainant reported while traveling to Menard a vehicle in front of them had fence wire fell out. Complainant reported they had run over the fence.

• 8:11 p.m. Hospital reported they will be conducting a fire drill.

August 22 • 12:30 p.m. School requested a Criminal Trespass warrant be served on a male subject. Officer responded.

KENT'S AUTOMOTIVE

WILL BE
CLOSED
FOR VACATION
SEPTEMBER 11-15

Home Owned EST. 1910 Home Operated
10 E. Gillis • Eldorado Texas
(915) 853-2730

**Dove Season
Opens Sept. 1**

Stock up on
ammo now!

**12 guage shotgun shells
25 rounds.....only \$3.99**

The members of the Mertzson Hwy church of Christ wish to invite all students to a **FREE BREAKFAST** the morning of this great event on **September 20th.**

For more information call 853-2124 or 853-3237.

SEE YOU AT THE POLE!

Eagles Checks

Now Available at

1st Community Federal Credit Union

Get Yours Today and Be One of the First to Show Support for the Eldorado Eagles!! plus...

1st Community will donate \$1 to your school for each box of checks purchased

1st Community Federal Credit Union
202 SW Main - Eldorado 853-2538
3505 Wildewood * Goodfellow AFB * 620 W 29th 653-1465 or 800/749-1465

1st Year Drivers Expect To Earn \$35,000 To \$40,000
1st Day Benefits
NOW!!
1 Year Plus Experience Starts You At 33¢ Per Mile - Up to 40¢ Per Mile

MARTEN
MARTEN TRANSPORT, LTD

Independent Contractors 83¢ Per Mile/93¢ Per Mile W/Your Refrigerated Trailer.
We Pay Expenses That Equate To Additional 10.5¢ Per Mile.

1-800-786-4135 www.marten.com

City council meets, adopts 2000-2001 budget

CONTINUED FROM PAGE 1

Shield of Texas. The insurance covers employees only and has a \$250 deductible.

The council then took up discussion of the 2000-2001 city budget. City Administrator Randy Mankin

recommended that transfers of un-expended funds from the 1999-2000 budget in excess of \$237,000.00 be made. City Secretary Carolyn Mayo explained that the action would allow the funds to be spent in the next budget year. Mankin further explained that the money would be used to pay for a paving project which began this week and repairs to a landfill compactor tractor. The machine, which the city recently purchased for \$35,000.00 from the General Services Commission in Ft. Worth, is being readied for service in a Caterpillar repair shop. After briefly discussing the transfers, the council voted unanimously to authorize the expenditure of the money in next year's budget.

Next, the council reviewed and unanimously approved the 2000-2001 budget, totaling \$1,706,205.00. Of that amount, \$1,186,215.00 was in the utility fund while the remainder was in the general fund.

The council then discussed setting a tax rate for the upcoming budget year. Carolyn Mayo explained three possible courses of action for the council. The first would be to set a rate above the rollback rate and chance a rollback election. The second would allow the city to raise taxes 3 percent without having to publish notices and hold additional public hearings. The third option was to adopt the slightly lower effective rate, which would give the city the same amount of tax revenue it received last year.

Randy Mankin informed the council that the city's tax base had declined approximately \$750,000.00 from last year. He recommended adopting the effective tax rate of 87.72¢ per \$100 valuation since it which would give the city the same amount of tax revenue as it received last year. After discussing the matter, the council voted unanimously to adopt the effective rate and set the tax at 87.72¢.

Mankin then reported that a paving project is underway on East Warner Avenue. He noted that several and other shorter street projects will be carried out at the same time and said he would push the contractor to finish before cool weather sets in. Next, the council reviewed and authorized \$994.96 in bad debts to be written off. That amount is owed to the city by various utility customers who moved away while owing bills greater than the amount of their deposits. It was explained that although the debts are written off the active books, the names will be maintained in a file so that if and when the delinquent customers move back to Eldorado the money can be collected before new utility accounts are established. The meeting adjourned at 7:10 p.m.

Statewide Classifieds

— A Texas-size Bargain —
Place your Classified Advertisement *Statewide* or in *Regions of the Lone Star State* to better target your potential sales!

Get Statewide Results!

Request For Seal Coat Bids

(To be Completed by October 15, 2000)

The Schleicher County Commissioners Court is requesting bids for approximately 9.5 miles of seal coat, located in said county. The County Roads will be identified as:

County Road No. 302, North End	=1.4 miles
County Road No. 302, South End	=3.7 miles
County Road No. 302-312 Intersection, West to US 277	=0.2 miles
County Road No. 220, North End	=4.2 miles
	9.5 miles

Please submit a bid on cost per mile basis.
The Material Requirements will be Texas Department of Transportation Specifications:
Basis of Estimate 5280' x 20' = 11,733 Square Yards/Per Mile

11,733sy x 9.5 miles = 111,464 sy

111,464 sy = 1238 cy PB Grade 3 Aggregate

111,464sy X 0.40 gal/sy = 44,586 Gal Asphalt AC-15P

Seal Coat Aggregate: PB Grade 3
Rate of Application: 1 cy/90sy

Asphalt: AC-15P
Rate of Application: 0.35 Gal./sy on flushed areas.*
Rate of Application: 0.40 Gal./sy on dry cracked areas.

• Excessive Asphalt

Bids will be opened and read in the Commissioners Court on September 11, 2000, in Eldorado, Texas.

The Schleicher County Commissioners Court hereby notifies all bidders that it will insure the bidders will not be discriminated against on the grounds of race, color, sex or national origin, in having full opportunity to submit bids in response to this invitation, and in consideration for an award.
Usual Rights Reserved.
Please submit bid to: Peggy Williams,
Schleicher County Clerk
Drawer 580
Eldorado, Texas 76936

7 Leader in Miles Years in a Row
COVENANT TRANSPORT

\$1,000 Sign-on Bonus for Exp. Company Drivers

Teams Start up to **46¢**
Benefits, we've got ALL the bells & whistles

Owner Operators
Solos 83¢ Teams 88¢

Lease Purchase Program Available

Experienced Drivers
1-800-441-4394

Owner Operators
1-877-848-6615

Graduate Students
1-800-338-6428

best dressed kids.com

the very coolest, most comfortable clothing and shoes on the planet!

(gifts, toys and matching mommy, too!)

WEST TEXAS CLASSIFIED AD NETWORK™



CLASSIFIED ADS

- ✦ ELDORADO
- ✦ SONORA
- ✦ OZONA
- ✦ BIG LAKE

Place your non-commercial classified ad in the Eldorado Success, Devil's River News, Ozona Stockman and the Big Lake Wildcat for one low, low price. Call today for details!

853-3125

Miscellaneous

VIDEOS FOR SALE-Over 150 Titles \$5.00 or Less. Inventory changes weekly. Sam's Flea Market. S. Main. 34-37b

For Sale: Twin Captain Bed (three drawer). New never been used. \$200. Call 853-3181. 37b

FOR SALE: Love seat newly covered in flowers in warm colors. Also a hide-a-bed sofa in same pattern. 1984 Pontiac 6000, Microwave and lots of odds and ends. Come by 307 Ave. H or call 392-2846.p

FOR SALE: (like new) Yamaha PSR-220, (like new) Casio Karaoke System, 4-16 inch gold wired wheels for Grand Prix or GM car. For more info call 392-2488 or leave message.p

FOR SALE: 1992 Ford F-250 truck - two beds, 140K. Runs great-\$3,800. 915-277-3445. p

\$475-\$575 gets you a beautiful registered colt. Call and come look. Bob-915-392-2382.

Notice to Bidders

Sealed bids, addressed to the Schleicher County Commissioners Court will be received by the County Clerk, until **10:00 a.m. September 11, 2000**, when such bids will be opened in the Commissioners Courtroom for:

One Transport Load of #2 Diesel Fuel
Prices shall include all taxes applicable

The Commissioners Court has the right to accept or reject any and all bids submitted.

Peggy Williams
County & District Clerk
P.O. Drawer 580
Eldorado, Texas 76936
(915) 853-2833

Services

FOR PLUMBING REPAIRS call Tommy Hunley. 853-3705 or 853-2820.37b

Cowboy Horseshoeing Bud Arendt

401 Sallee Rd, San Angelo 76904
915-835-7692 or 450-3856
33-36b

BEGINNING CLOGGING LESSONS

Date: September 12, 2000
Place: Memorial Building
Time: 6:30 to 8:00
FIRST LESSON FREE
12 Additional Lessons @ \$2.50 Per Lesson
Clogging is a form of tap dancing, great exercise, fun for all ages.
FMI Call Cindy Bybee 853-2278

Bookkeeping Services Available. FMI contact M.J. Sims. 387-5433 after 5:30 p.m.p

Mobile Homes

Only One Left! Huge 3 Bdrm/ 2Bath-CH/CA, Appliances Stay; less than 2 years old. 915-653-7800. Immediate move in!
41b

OPEN TO THE PUBLIC \$500,000 DEALER INVENTORY LIQUIDATION
Now Accepting Bids. ALL Homes Must Go! Hurry In. 1-800-698-8003.41b

Sonora-For Rent: 3/BR, 2BA Mobile Home. Very nice. Located in Sonora. \$425 month-\$150 Deposit. 387-3371 or 277-1267.

REAL ESTATE

Eldorado-HOUSE FOR SALE 12 Year Old Jim Walters Home with 10 Acres. 3 Bedroom, 2 Bath, New Central Heat/Air, Fenced, Water Well, Pond, Carport, 853-2974 or 853-2561 ask for Nancy. 1 1/2 Miles on McIntosh Hwy. Rd 203.
36b

Eldorado-For Sale: Country Living: 35 acre Farm/Ranch combination, very private, secluded within 1.5 miles of Eldorado, Texas. Very nice Lancer 2B/2BA with large rooms, fireplace, metal roof, pens, barns, 2 car carport plus large R.V. port. Nice yard w/pecan and fruit trees. Wildlife: deer, dove, excellent water well, good deep soil. 641' frontage on Hwy 2596, \$88,000. **Reduced \$79,000.**
Stevens Ranch Real Estate
Harold Stevens, Broker
Brady, Texas
Office: 915-597-0749 or 1-800-880-0749
Alfred Sykes Agt. 915-853-2386
Mobile 915-226-2796 33-36b

Eldorado-4/Bedroom, 3 1/2 Bath House for sale. Large living room, den, yard and trees. 214 Bluebonnet; ~~\$88,000~~ **REDUCED 79,000**; 853-2762.28tfn

Sonora-For Lease: Old Bank Building 216 N.E. Main. \$500 per month. Contact Michael Hale @ First National Bank. 387-3861.p

Sonora-For Sale or Lease: 3400 sq.ft. building at 303 Crockett. For more information call 1-800-219-8306. (after 7p.m. call 915-396-2647.

Sonora-For Sale By Owner- 105 Hillside; 3/BR, 3/BA, Pool \$130,000. Call 387-5126.p

Budget Hearing

Notice is hereby given of a public hearing on the proposed budget for Schleicher County for the Fiscal Year 2001. Hearing is set for **Monday, September 11, 2000 at 10:00 a.m.** at the Commissioners Court Schleicher County Courthouse. 37b

Employment

Applications are now being accepted for evening and weekend hours. Also, temporary maintenance help. Applications are available at cash register. Duckwall's.37p

EXPERIENCE DRIVERS NEEDED!

- Must have current Class A CDL and a good driving record.
- Experience driving transports, vacuum trucks, operating pump trucks & winch truck
- Monthly performance & safety bonuses
- Health Insurance
- Annual Profit Sharing
- Drivers days off schedule

Please apply in person Niblett's Oilfield Service, Inc. Hwy 277 South, Eldorado. No phone call please. 33-37b

GARAGE SALES, YARD SALES & ESTATE SALES

ELDORADO-GARAGE SALE; Saturday and Sunday; Sept. 2 & 3; 510 W Divide (McCravey Resident). 8:00 AM.b

ELDORADO-CARPORT SALE: Large Sale-Two Families; A variety of things. Saturday, September 2nd; 8AM-til? 1 Mile North on Hwy. 277. Redwine Residence.

ELDORADO-HUGE 8 FAMILY YARD SALE- Saturday, September 2nd; 9 AM-6 PM; Next to Linda's Crafts N Clutter.

ELDORADO- Walnut (Dining Table, 6 Chairs & 3 Leaves), Maple Bookcase, Day Bed, Antique Oak Dresser and Round Mirror, Blue Cordroy Hideabed, Maple Coffee and End Tables, Wicker Twin Headboard, Double Dresser and Mirror. Second Hand Rose Furniture Annex, Hwy. 277 South. 853-3736.24b

CARD OF THANKS

Words cannot express our heartfelt appreciation for all the kindness shown to our family and our dear loved one through the long years of his illness. We wish to thank everyone who touched his life.

In fear of leaving someone out, we won't list names here, but he knew each of you and we greatly appreciate your efforts.

Wenona Isaacs
Sharon & Family
Shirley & Family

"Thank you" seems so little to say for all the wonderful acts of kindness shown during my surgery.

Eldorado has to have the most loving and caring people. Your prayers, visits, calls, cards, food and beautiful flowers sent are so very special.

May God Bless each of you.
Sarah Yates & Family

TEXAS STATEWIDE CLASSIFIED ADVERTISING NETWORK



TexSCAN Week of August 27, 2000
ACREAGE

LAND BARGAIN! 3+ ACRES - \$24,900 with boat slip! Beautifully wooded, spectacular views, deeded access to crystal clear 35,000 acre recreational lake in Tennessee - next to 18 hole golf course. Paved roads, utilities, soils tested. Excellent financing. Call now, 1-800-704-3154, ext. 30.

ADOPTION

NOTE: It is illegal to be paid for anything beyond medical of legal expenses in Texas adoption.

A FAIRYTALE LIFE: Mom and dad with boundless love, energy and wonderful home to share, would love to adopt your baby. Call Jennifer & Henry anytime, 1-800-645-0118.

ADOPTION: A CHOSEN heart. Unconditional love, laughter and lifetime opportunity. Happily married, financially secure couple desires very much to welcome a new born baby into our hearts and home. Please call Allan, our friend and attorney at, 1-800-492-2011 about Chris and Tammy.

OUR PROMISE TO you. We promise a life of unconditional love, strong family bonds and a world of opportunities for your baby in our wonderful home. Stay at home mom and devoted dad can give your baby all the things you dream of. Call Ginny & Jimmy anytime, 1-800-464-6540.

AUCTION

ABSOLUTE AUCTION, BUCKSKIN Joe Frontier Town and Railway, Canon City, CO. Sept. 16. Highly profitable old west amusement park. JP King Auction Company Inc. 1-800-558-5464. LTG Brokerage CO License # 100321011.

ABSOLUTE AUCTION, MOUNTAIN Spoons Ranch, Pagosa Springs, Colorado. Sept. 14 at 1:00pm. Log home on 81+/- acres, 4 bedrooms, 3 bath, recreational ranch. JP King Auction Company Inc. 1-800-558-5464. LTG Brokerage CO License # 100321011.

AUTOMOBILES

CHARITY CARS - DONATE your vehicle, tax deductible, free towing. We provide vehicles to needy families. As seen on Oprah and People Magazine. 1-800-442-4451, www.charitycars.org.

BUSINESS OPPORTUNITY

AAA GREETING CARD route - 25 local and established locations. Hi-traffic, great income. Free info (\$6.5k investment). Card Songs of America. 1-800-277-9424, 24 hrs.

LET THE GOVERNMENT start your business. Free cash and grants, free corporation, free business and check software. Send SASE to Gov't Publications, 1025 Connecticut Ave., Washington, DC 20036. 1-800-306-0873, www.capitalpublications.com.

OWN YOUR OWN \$1.00 store or choose apparel, shoe, lingerie, bridal, or gift. Includes inventory, fixtures, buying trip, training. Minimum investment \$19,900. 1-501-327-8031. www.libertyopportunities.com.

DRIVERS WANTED

ATTN. DRIVERS: FLEETWOOD Transportation hiring long-haul flatbed drivers. Peterbilt equipment. Guaranteed home time and complete package of benefits. Also need long-haul owner operators. 1-800-458-4279.

COMPANY PAID CDL training & first year income \$35K - Stevens Transport - OTR drivers wanted! Non-experienced or experienced. 1-800-333-8595. EOE.

DRIVER: COVENANT TRANSPORT * Coast to coast runs * Teams start 42cpm - 46cpm * \$1,000 sign-on bonus for experienced company drivers. For experienced drivers, 1-800-441-4394; owner/operators 1-877-848-6615. For graduate students 1-800-338-6428.

DRIVERS: ALLIED VAN Lines has openings in their special products fleet. Average 125cpm. 2 yrs. OTR experience required. Tractor purchase program available. 1-800-634-2200, Dept. ATXS.

DRIVER - OWNER OPERATORS Average 113 cpm in five-state area running AR, TX, OK, LA, and NM. We need 63 trucks to cover current obligation. \$1,000 sign-on bonus. Base plates provided. Generous fuel surcharge and a low-cost lease program. FFE has plenty of freight. Call 1-800-569-9298.

DRIVERS - CFI HIRING OTR company/student-driver operators. Company with one year experience start at 32 cpm. Students earn \$50 per day. Owner/Operator start at \$80 all miles. For more information call 1-800-CFI-DRIVE.

DRIVERS: INDUSTRY LEADING pay, top out a 43cpm. CDL Training & tuition reimbursement available for inexperienced drivers. O/O's welcome. USA Truck. 1-800-237-4642.

DRIVERS - NEW PAY package. Applications processed in 2 hours or less. Long haul and regional drivers. Class - A CDL required. Students welcome. Continental Express. 1-800-745-9670.

DRIVERS - SWIFT TRANSPORTATION - Drivers and Owner/Operators wanted for various runs. CDL training available. \$1,000 sign-on bonus. (eoe-m/f, min. 23 yrs.) 1-800-966-0983

DRIVERS: WE OFFER you a career, not a job. *Up to .37cpm to start *Per diem pay *Great benefits package. Tri-State Delivery. 1-800-558-2065.

DRIVERS - WHEN IT comes to benefits, we've got all the bells and whistles. *Paid weekly. *Great pay. *\$1,000 sign-on bonus. *Student graduates welcome. SRT toll free: 1-877-BIG-PAYDAY (1-877-244-7293).

DRIVERS-OWNER/OPS: Run regional. Home weekly! Paid: Base plate, permits, fuel taxes. 81 cpm. Loaded and empty plus fuel surcharge. 1-800-454-2887. Arnold Transportation.

IF YOU ARE the spouse of an over the road truck driver, we will teach you to drive a "Big Rig" w/ automatic transmission in just 2 weeks! Interested, please call 1-800-234-3748.

LANDSTAR RANGER NEEDS Owner/Operators. Plenty of freight and miles. One year verifiable over the road experience. good safety record. 1-800-669-6778.

TRUCK DRIVERS - COMPANY solo (.30+ or .28+cpm). Teams (.36 +cpm) and O/O'S (.82 +cpm). Good miles, excellent equipment and benefits. OTR experience required. Gulf Coast Transport. 1-888-988-8666.

DRIVER - SOLOS START at .31cpm, teams .34cpm. Guaranteed home time, top equipment. Owner/Operators, .83cpm, 3,000+ miles per week, paid fuel surcharges, \$1,000 sign-on. 1-877-9-HELWIG. James Helwig & Son.

DRIVER TRAINING

GET ON THE road! Tri-State semi-driver training program offers: 3 week training, job placement assistance. Financial aid available to qualified students. Call today. 1-888-854-7364. www.learn2drive.com.

A \$35,000 PER YEAR career! C.R. England needs driver trainees. 15 day CDL training. Housing/meals included. No upfront \$55. Tractor Trailer Training. 1-888-781-8556.

DRIVER - INEXPERIENCED? LEARN to be an OTR professional from a top carrier. Great pay, executive-style benefits and conventional equipment. Minimum investment required. Call today! US Xpress, 1-800-879-7743.

FINANCIAL SERVICES

BE DEBT FREE - years sooner! Low payments. Reduce interest. Stop late fees. Stop collectors. Family credit counseling. Non-profit Christian agency. Free quote. www.familycredit.org. Recorded message: 1-800-729-7964.

CREDIT CARD DEBT? Avoid bankruptcy. *Stop collection calls. *Cut finance charges. *Cut payments up to 50%. Debt consolidation. Fast approval. No credit check. Call 1-800-270-9894.

NEED CASH? \$500.00 cash by phone. Same day service. Checking account required. No credit checks. No upfront fees. Call toll free now, 1-888-891-6669.

NOTICE: While most advertisers are reputable, we cannot guarantee products or services advertised. We urge readers to use caution and when in doubt, contact the Texas Attorney General at 1-800-621-0508 or the Federal Trade Commission at 1-877-FTC-HELP. The FTC website is www.ftc.gov/bizop. Call this Newspaper to Advertise Statewide and Regionally or Call 512-477-6755.

105 Maple Street

Sunset Acres Addition

3 Bedroom, 2 Bath, Brick Home with 2 car garage, central heat and air. Approximately 1,600 square feet. Asking \$74,900.00. Owner Moving.

Call 915-853-2808

Lynn Meador Real Estate

5 N. Divide

Jo Ward, Agent 915-853-2339

LABOR DAY SALE

OLD MILL Arts & Crafts

TRADE DAYS

Collectibles Antiques
Fri., Sat. & Sun, Sept. 1, 2, 3, 2000
www.omtd.com (806) 495-3529

FREE PROFESSIONAL INSTALLATION!

Satellite TV

Save \$200⁰⁰ by Subscribing Today!

Programming starting at \$21⁹⁹/mo. Over 210 digital-quality channels available. Avoid rising cable rates. No monthly contract.

877-DISH-111

Local Toll-free for Texas



Mittel Insurance Agency
Eldorado Spotlight



This week the Eldorado Spotlight shines on Berta Nicholson. When the Spotlight camera caught up with Berta she was delivering the Hospital's Quality Assurance Report at the meeting of the Schleicher County Hospital District's board of trustees. Berta is the Director of Nursing in the hospital.

"Your independent hometown agent"

Call Connie Andrews

853-2576

or come by our office at 119 SW Main Street ~ Eldorado

Classified Deadline

5:00 PM

MONDAY

City implements voluntary water usage restrictions

CONTINUED FROM PAGE 1

gutters or permitting water to run or accumulate in any gutter or street. Failure to repair controllable leaks within a reasonable period after having been given notice that repair is needed is also a violation under the plan.

Stage 3...SEVERE Water Shortage Conditions — The goal is a 30 percent reduction in total water use. Discontinue reduced rate water to all persons, including City Council members, City employees, retired City employees and Volunteer Firefighters and Ambulance Service Vol-

unteers. Discontinue providing free or reduced rate water to all other locations. Limit irrigation of landscaped areas to the above mentioned hours but limit such irrigation to permanently installed automatic sprinkler systems, hand held hoses, buckets, or drip irrigation. Hose end sprinkler use is prohibited. Watering of golf course tees and fairways is prohibited. Greens only will be allowed with water provided by the City and then only between the hours previously described. The study of possible sites for additional supply wells begins.

Stage 4...CRITICAL Water

Shortage Conditions — The goal is a 40 percent reduction in total water usage. Water rates will be increased to 1.5 times the city's normal water rate including minimum and per gallon charges. Landscape irrigation is limited to that provided by hand held hoses, buckets and drip systems. Hose end watering and the use of permanently installed sprinkler systems are prohibited. Hours for landscape watering allowed under Stage 4 are 6:00 a.m. to 10:00 a.m. and 8:00 p.m. to midnight. Filling, adding water or refilling of water for recreational or aesthetic or scenic purposes is prohibited. Applications for new service, extended service, pipeline extension will be rejected.

Stage 5...EMERGENCY Water Shortage Conditions — The goal is a 50% reduction in total water usage. Water rates are to be increased to 2 times the city's normal rate. All landscape irrigation is absolutely prohibited. Washing of vehicles, hard surfaces, buildings is prohibited.

Stage 6...WATER ALLOCATION — Single family dwelling with 1 or 2 persons will be allocated 6000 gallons of water per month. The

allocation increases incrementally with a household of 9-10 people receiving 10,000 gallons per month. Any usage beyond the allocation will be billed at \$2 for the first 1,000 gallons, \$4 for the next 1,000 gallons and \$6 for each 1,000 gallons thereafter. Fines of \$50 to \$200 will be levied for misreporting the number of persons living at a residence.

Long-standing attitudes in the community that our water source is inexhaustible are proving to be false. Increased usage over the years, coupled with years of below average rainfall have placed Eldorado residents in the unfamiliar position of having to conserve water. City Administrator Randy Mankin says his hope is that voluntary conservation will be enough to reverse the trend. We as citizens can avoid the necessity of moving beyond the voluntary measures in Stage 1 by exercising good judgement and cooperating to conserve our most valuable natural resource.

The city's Drought Contingency Plan is printed in its entirety on Page 7. It may also be read at City Hall or at the office of the Plateau Underground Water Conservation and Supply District.



photo by Kathy Mankin
New boss at Duckwall's — Dawn Fay was recently named to replace Jeanne Evans as manager at Duckwall's Hometown Variety Store. Evans left to manage the Duckwall's store in Crane. Fay has worked for the company since October of last year and will soon travel to Kansas for management training.

Commissioners Court meets

by Pat Ragsdale

Schleicher County Commissioners met in regular session on Monday, August 28 when County Judge Johnny Griffin called the court to order at 9:10 a.m. Present were Judge Griffin, Commissioners Steve Minor, Johnny Mayo and Ross Whitten. Commissioner Bill Clark was absent. Minutes of the meeting of August 14 were read by County Clerk Peggy Williams and approved as presented.

Mrs. Shannon Gillespie met with the court to request that the rental fee for the use of the Memorial Building be waived or reduced so that her business could sponsor after game victory dances following three home football games. She expressed a desire to provide a safe place for teens to gather following local football games. She stated that a small entry fee would be charged at the door to assist her in paying costs associated with obtaining a disc jockey to provide music. The court stated its policy regarding the use of the Memorial Building for commercial purposes but assured Ms. Gillespie that they would have no objection to waiving the fee if a school club could be found to serve as sponsor of the event. Ms. Gillespie thanked the court and expressed that she felt sure that she would be able to find such a sponsor.

Buff Whitten, representing the American Legion, asked the court for permission to place a 105-mm howitzer artillery piece on the Courthouse Square as a memorial to Schleicher County Veterans. After some discussion as to just where the gun would be located, the court approved the request by consensus.

The commissioners then approved an inter-local agreement with Kerrville State Hospital for the purpose of allowing Kerr County

officials to act in behalf of Schleicher County regarding mental competency hearings related to admissions to the Kerrville State Hospital. This agreement prevents the necessity for the County Judge and County Attorney to make a minimum of two round trips per individual case to the hospital regarding competency hearings as required by law.

By order of the court a call for bids related to nine and one half miles of paving on county roads 302, 312 and 220 was issued. The commissioners also ordered a call for bids for one load of diesel fuel.

The men also approved renewal of its contract with Texas Department of Human Services. This action relates to the Community Resource Center and requires an annual funding of \$4,500.00, payable at \$1,125.00 per quarter.

The court next approved a new application for the county's involvement in the National Flood Insurance Plan. The former plan had been returned with a request for more information, it was explained.

In other business the court met with Carrol Green regarding his request that a softball field be constructed adjacent to the County owned baseball field currently being used by the School. The commissioners expressed their willingness to supply the land and provide necessary equipment for dirt work but felt that construction of backstop, fences and bleachers should be the responsibility of the school. The men asked Judge Griffin to contact the school about the issue.

In other business, the court approved replacement of the air conditioning unit serving the Lion's Club room in the Memorial Building. Cost of replacement of the unit is \$2,100.00. The current air conditioning unit has served well having been in service for sixteen years. Current accounts were ordered paid and correspondence was reviewed. The court recessed for lunch and reconvened at 1:00 p.m. for the purpose of discussing the budget for 2001.

The court recessed at 6:45 p.m. and returned on Tuesday evening for a lengthy budget workshop. A hearing for the formal adoption of the budget and the setting of a tax rate has been set for September 11, 2000.

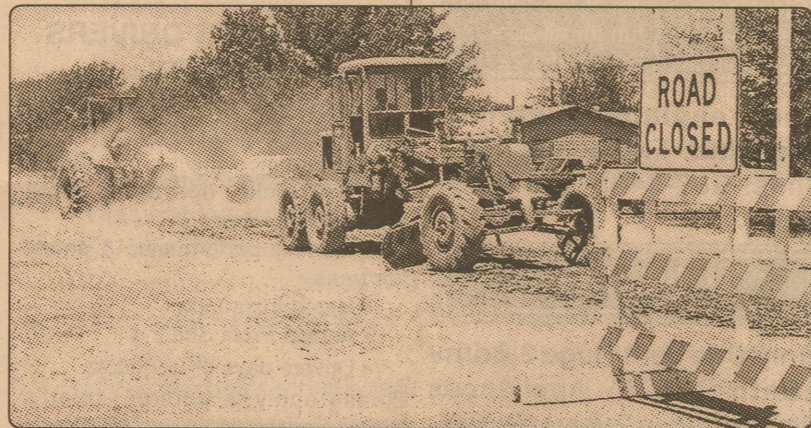
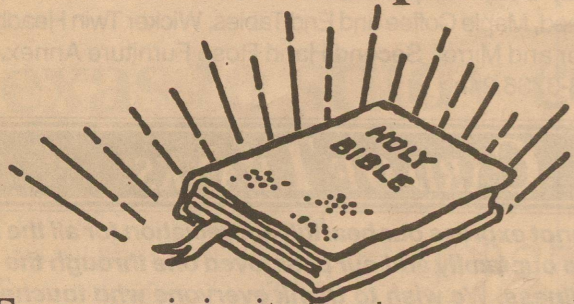


photo by Kathy Mankin
Road work — Seidel Construction began work on Warner Ave. this week. The portion from Cottonwood St. to Mulberry Street will be seal coated, while the remainder from Mulberry to East St. will be completely rebuilt.

Community-Wide Bible Study Beginning Sunday, September 17th @ 6:30 p.m.



Everyone is invited and encouraged to participate in a Community-Wide Bible Study to be facilitated by Glen R. MacDonald. This interdenominational study will cover a wide range of topics from God's Word and promises to be both practical and challenging. This study course will be held in the Fellowship Room of the Mertzon Hwy. church of Christ with refreshments provided. For more information please call 853-2124 or 853-3237.

Effective September 30

OUR CHANGES MEAN MORE CHOICES FOR YOU.

How Will Our Changes Affect You?

We will no longer take bill payments or offer merchandise at our local offices, effective September 30. However, we will be using most of our offices for operational purposes so that we can continue to provide exceptional customer service and outage response. We have made many changes during the past year that will provide more choices for our customers in how they pay their bills and conduct business with WTU.

Will This Change Affect Your Service?

Absolutely not. During this past year, we have added to the services available — like 24-hour-a-day, seven-day-a-week, toll-free access to our customer service center, 1-888-216-3523. We've added payment options, including the Internet. And, even though we're shifting around some of our resources, critical areas, such as responding to outages and other emergencies will continue to receive the same high priority they get today.

Payment Options:

- **BY MAIL**, using the convenient return envelope enclosed with your bill.
- **THROUGH AUTOMATIC BANK DRAFTING.** Under DirectAdvantage, your payment is

automatically drafted on the bill's due date through your bank or other financial institution. To sign up for the program, call WTU Customer Service at 1-888-216-3523 and ask for an application form. Automatic drafting will begin 30 to 60 days after you've filed your application. You still get your billing statement — before the funds are withdrawn from your account. So you have plenty of time to check your bill before it's paid. But you don't pay the bill, your bank does. And that saves you time, checks and stamps.

- **WITH A CREDIT CARD OR CREDIT/DEBIT CARD.** ChoicePay, a third-party vendor, offers an automated bill payment system that provides a convenient, easy way for customers to pay their bills using most major credit/debit cards 24 hours a day, seven days a week. Call 1-877-414-2060 to use this service.

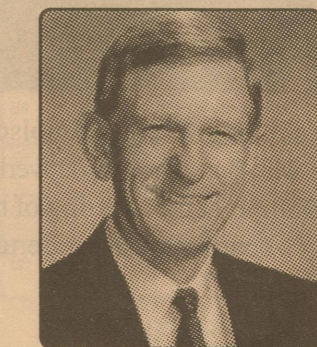
- **AT A WTU-AUTHORIZED PAY STATION.** Call WTU at 1-888-216-3523 for the location of the pay station nearest your home.

- **OVER THE INTERNET THROUGH TRANSPPOINT™.** Customers with Internet access can sign up at the TransPoint™ Web site of www.transpoint.com to receive and pay their WTU bill electronically. Electronic bill payment is convenient, secure and there is no charge to the customer for this service.

You Looked! So Will Your Customers!



It pays to advertise in THE SUCCESS



Ronnie Mittel

Ronnie Mittel Investments/Insurance
Eldorado, Texas (915) 853-3833

INSURANCE

- Life Insurance
- Health Insurance
- Medicare Supplement
- Long Term Care
- Home Health Care
- Final Expense

INVESTMENTS

- IRA'S
- Annuities
- Mutual Funds
- Pension Rollovers

Retirement and Estate Planning

Securities offered through Registered Representatives of Walnut Street Securities (WSS). Ronnie Mittel Investments/Insurance is not affiliated with WSS, Inc.

WTU

West Texas Utilities Company