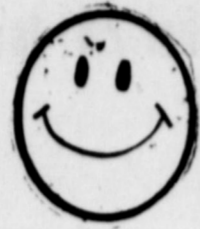


The NEWSpaper Dedicated to the Development of the World's Richest Irrigation Area.



The Earth News-Sun



"A CONSOLIDATION OF THE EARTH NEWS & EARTH SUN, OCTOBER 12, 1956"

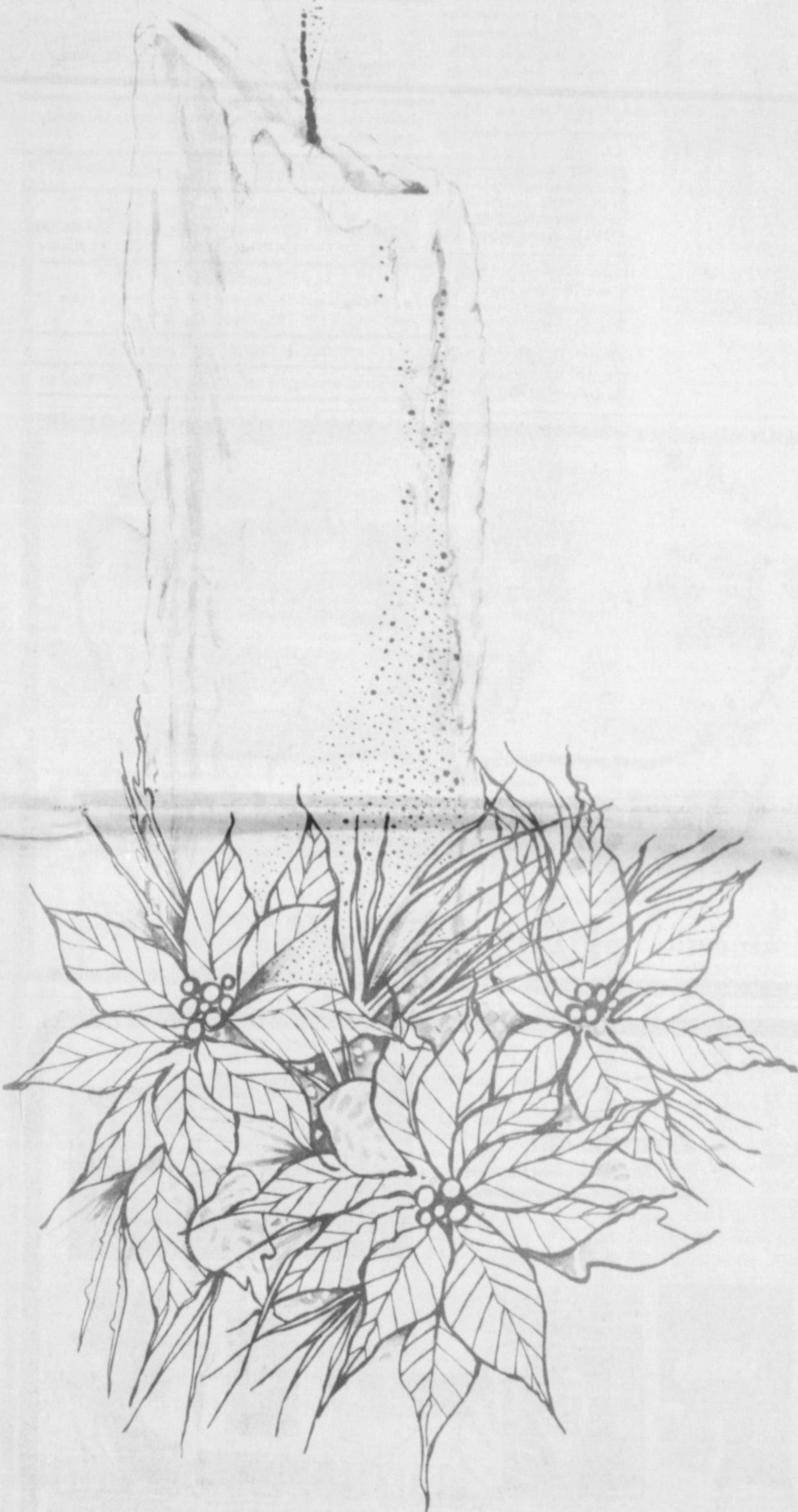
VOLUME 22

15¢ Including Tax

EARTH, LAMB COUNTY, TEXAS, DECEMBER 25, 1975

28 PAGES IN TWO SECTIONS

NUMBER 19



Merry Christmas



Alleluia! Alleluia! Throughout the world all are filled with gladness. It is the birthday of Our Savior... the Lord. Hearts and souls are rich in love resounding. Choirs sing hymns of peace and joy. As the glorious season wraps us in peaceful thoughts and true reflections of the first Holy Night, let us pray that this is the way it always will be. That everyone, here and the world over, will find time for understanding. Our Christmas wish is that you and your loved ones will share this season's blessings, now and in the days to come.

Merry Christmas and Happy New Year

From The Staff Of

Earth News-Sun



May The True Meaning Of Christmas
Lift The Hearts Of All Men!

EARTH, SPRINGLAKE & SUNNYSIDE BAPTIST CHURCHES ASSISTING

Community Watch Night Services December 31 In Methodist Church For Youths

A community-wide Watch Night for all youth from age 10 through teenage is set to begin at 10 p.m. December 31, in the United Methodist Church. The meeting will continue until the New Year comes in at midnight.

The Baptist Church of Springlake, Sunnyside and Earth will join with the Methodist Church in the community Watch Night Services.

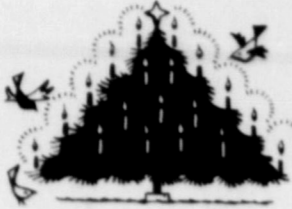
A film will be shown entitled "A Man and his Men." It is about Tom Landry, Coach of the Dallas Cowboys.

A guest speaker will speak to the group. The speaker will be Jerry Cain, student recruiter at Wayland Baptist College.

A "Fun time" will be led by Mrs. A. J. Jones and Mrs. Raymond Jones, both of Sunnyside. Rev. Raymond Jones of Sunnyside will conclude the Watch Night services.

Delicious refreshments will be served to all.

Don't forget, be present at the Methodist Church, December 31 for the Watch Night Services.



CHILDREN'S CANTATA AT SPRINGLAKE BAPTIST CHURCH... Was well attended and enjoyed by all. Karen Jones portrayed the part of Mary and Byron Smith the part of Joseph. Fred Hoover, was soloist, in a song. Jerry Hoover, music director for the church, directed and narrated.

News-Sun Office To Close December 24-January 5

The News-Sun office will be closed Wednesday, Christmas Eve and will remain closed until January 5.

The January 1 issue will be omitted. The next issue will be published January 8.

The purpose of omitting the one issue is to allow personnel to have a long vacation with their families and to rest up after the mad rush of getting the Christmas paper out early.

Surprisingly enough, the British Victorians were the folks who introduced the custom of kissing under the

castles, scenes of the German way of living, their crops, and many interesting facts about the country.

A fellowship followed, with coffee and doughnuts served in the fellowship hall.

mistletoe at Christmastime. Who says they were strait-laced?

The EARTH NEWS-SUN



Published at Earth, Texas 79031 every Thursday except the first Thursday following Christmas.

Second Class Postage paid at Earth, Texas 79031

SUBSCRIPTION RATE
Earth and Trade Territory, per year, \$6.00 plus tax
Elsewhere in United States, per year, \$7.00 plus tax

CLASSIFIED RATES
10¢ per word, first insertion, 8¢ per word thereafter
\$1.50 minimum.

ADVERTISING RATES GIVEN ON REQUEST

ROSS and POLLY MIDDLETON, Publishers

OIL PRICES HAVE BEEN REDUCED BUT ...



BUT ... CHAMPLIN OIL QUALITY REMAINS HIGH

Let Us Supply You With the Oil to Suit Your Particular Needs.

Book Your Oil at Today's Prices to be Delivered When Needed.

Included in our oil inventory are: Deluxe, LPG, S3, HI-V-I Motor Oil; 303 Hydraulic Fluid, Automatic Transmission Fluid and Drip Oil.

Gas, Oil and Diesel - Wholesale and Retail

HI-PLAINS OIL CO.

Corky Longford, Owner - Manager
PHONE 647-2307---DIMMITT

Stores To Close For Christmas

The stores in Earth will close for the Christmas holidays.

Pioneer Natural Gas Company will be closed December 25 and 26, also New Years Day.

The Bee Hive Mall will close at 1 p.m. December 24 and remain closed until December 29. They will remain open until

New Years Day when they will close for the day.

All stores in Earth will close for Christmas Day. Some are undecided as to how long they will remain closed during the holidays.

The News-Sun will close Christmas Eve Day until January 5.

Rev. David Hartman Show Films Taken In Germany

Rev. David Hartman and Mrs. Hartman showed films of their one year stay in Germany, at First Baptist Church in Earth,

Sunday, December 21 at 7 p.m.

Rev. Hartman, former pastor of the local church, resigned here to pastor the Rhein Valley Baptist Church in Waldorf, Germany. He served as pastor of the local church for five years. The films included many interesting sights, such as

Christmas Greetings

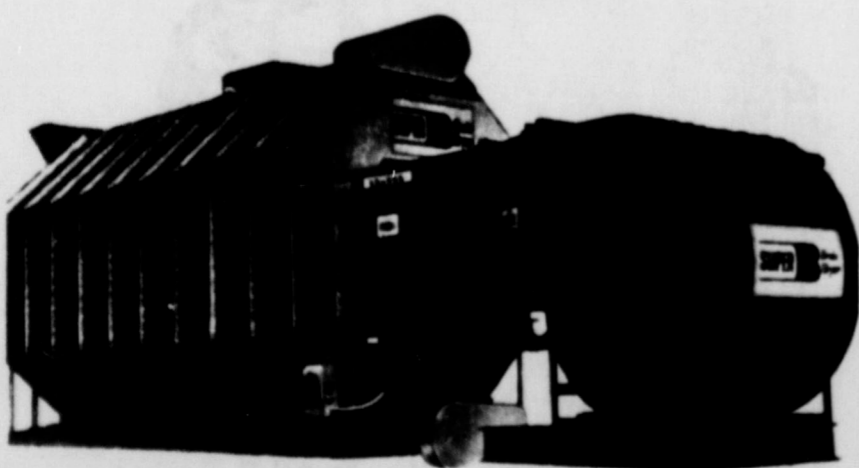
It's all around — that Christmas feeling! May it fill your holiday with warmth, joy and loving thoughts. We hope you enjoy this time to the fullest. Thanks, friends.

LITTLEFIELD **RODEN ~~TEXAS~~ DRUG** PHONE 385-4250

Buy Your Wife A Dryer for Christmas

A Corn Dryer!

Only **Super B** has the "Stage Controlled" "Sweat Drying" Process. Set the dial, flip the switch, forget it. Up until now women have had the only truly automatic dryer. **Super B** won't take the drudgery out of washday, but it sure will make corn drying a snap. There are seven **Super B** Grain dryer models to choose from. **Super B** offers the "Super Quiet" centrifugal fan models and much more. Tagco Industries is proud to offer the **Super B** at substantial savings through a factory authorized pre-season price reduction. This fact coupled with service as well as sales makes it the best choice in dryers today.



TAGCO SPONSORED GRAIN DRYING SEMINARS- ALL CORN FARMERS INVITED

HEREFORD-JANUARY 7-7 P.M., CAISON HOUSE
MULESHOE-JANUARY 8-7 P.M., XII RESTAURANT
FRIONA-JANUARY 5-7 P.M., PARMER HOUSE

DIMMITT-JANUARY 6-7 P.M., COLONIAL INN RESTAURANT

CALL COLLECT 357-2222



Hereford, Texas

All these exclusive features are standard on Zimmatic systems

Zimmatic 410

Full 10-tower system handles steep slopes, ditches, terraces



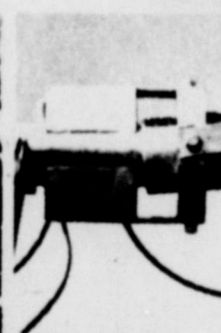
Monitoring System: Selector switches and read-out meters quickly pinpoint possible electrical malfunctions, save walking field to find problems



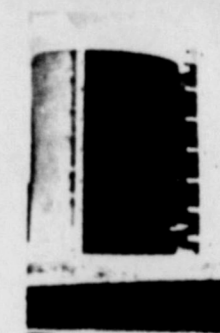
Pressure Shut Down: Pressure shut down automatically stops Zimmatic during any loss in pipe line pressure. Eliminates backtracking.



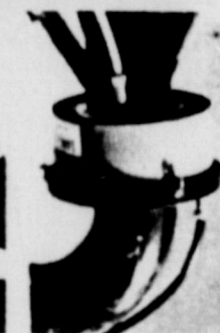
Sealed Drive: Drive mechanism is enclosed in sealed oil bath. Gears are up to 75% heavier with 3 times the strength of some competitive models.



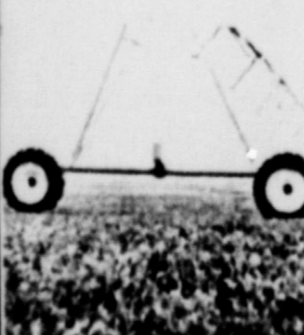
Uni-Knuckle: Painted joint allows stress-free flexing on rough terrain. Unit is completely external — nothing made pipe to obstruct flow.



Split Metal Coupler: Combination metal sleeve with rubber inner liners offers more flexibility and is easily replaced without using a boom truck.



External Collector Ring: Transfers power to towers through double brushes. No wires inside pipe.



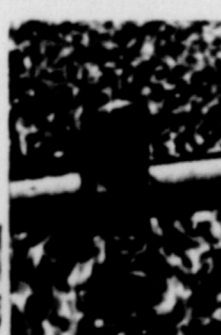
Extra Long Wheelbase: A full 14 ft. — one of the longest in the industry. Works with Uni-Knuckle and Lindsay rotating feature to provide exceptional stability on rough terrain and over terraces.



Thermal Plastic Control Boxes: Zimmatic towers feature molded double-wall insulated plastic boxes for freedom from condensation and corrosion.



Wheel Retract: Designed for quick change from watering to towing position. Removal of one pin allows wheel to serve.



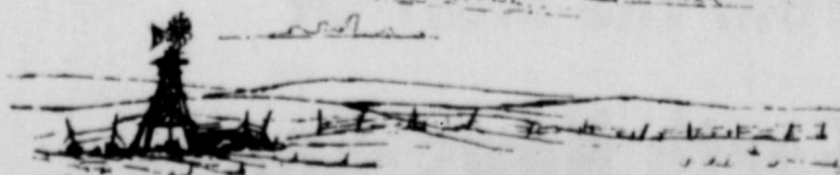
High Torque Motors: Lindsay's 200 in.-lb. (staked) motors, specially designed for irrigation, deliver up to 50,000 in.-lb. torque. Large shafts, heavier gears to withstand stress.



Maximum Flexion Tires: Wide tread puts more surface on ground for high flotation, added traction — without cutting deep ruts.



Lindsay Rotating Feature: New rotating device allows towers to be mounted solid to pipe for maximum strength, yet each span is free to rotate.



SANDHILLS IRRIGATION

Phone 806/772-5533
522 West American Blvd.
MULESHOE, TEXAS 79047

ZIMMATIC CENTER PIVOT SYSTEMS

WOLVERINE DEN

SPADE UPENDS WOLVERINES

BY: BILL WELDON

Using a quick start in the second half Spade rode the fast break and the hot hand of Lynn Cowan to a 61-54 victory over the cold shooting Wolverines.

For the Wolverines it was a frustrating evening as time and time again they would control the offensive backboard to gain a second and third shot only to have ball roll off the rim. While the Wolverines could not buy a bucket, the Longhorns hit a sizzling percentage the second half (62%) and for the game were equally as potent from the field canning 27 of 54 for 50%.

The Wolverines held close, down only 31-27 at half, but fell behind in the third stanza

when Spade got four breakaway baskets after missed shots by the Wolverines. The Longhorns broke on top 50-36 and then withstood a furious rally by the Wolverines in the final quarter that fell short.

The Wolverines began their stretch run with a little over four minutes remaining when Mark Barton hit three straight shots from the top of the circle to pull the Wolverines within 8, 52-44. But Spade went into a delay game that ate up both the clock and valuable points at the freethrow line. The Wolverines missed several opportunities to catch up when normally easy shots would not fall. Cowan and Elizondo hit important freethrows down the stretch and even though the Wolverines got within 5 they just could not

hit enough shots to pull off the comeback.

The Wolverines hit a terrible 20% from the field on 21 of 79, but even worse could only hit 9 of 45 the second half. From the charity line the Wolverines were 12 of 21 for 57% while Spade was 7 of 14. The Wolverines did eliminate turnovers that had been plaguing them as they committed only 10 all night.

Wolverines 10 27 36 54
Spade 13 31 50 61

The Wolverines will be in the Amarillo City Tournament December 29-30, after the Christmas break, playing Quannah in the first round.

Party Line

Mr. and Mrs. Chester Lee from Platville, Colorado are visiting Mr. and Mrs. Billy Garner and daughter Misty.

WOLVERETTE WEB

SPADE WINS OVERTIME

BY: BILL WELDON

The Wolverettes fell in a heartbreaking loss Thursday night as Spade was able to capitalize on freethrows for a 37-36 overtime victory. Once again the inability to hit crucial freethrows or fieldgoals proved fatal to the Wolverettes who now will take a vacation until after Christmas.

The second quarter proved to be disastrous to the Wolverettes as they were unable to hit any of the eight fieldgoals they attempted in that quarter and fell behind at half 17-10. A good rally in the third quarter brought them back as L'Anna Sulser and Kim Dent combined for 10 points and the defense held Spade to just four points as the Wolverettes jumped into a 24-21 lead.

But Vivian Thompson who had a game high 30 points was able to hit crucial freethrows in the

final quarter and the Wolverettes were unable to capitalize on their own attempts and the game was forced into overtime. Once again, freethrows played an important role as Spade hit 3 and the Wolverettes could not hit the bucket on their last four tries to win the ball game.

The Wolverettes outshot the Spade team from the field as they hit 15 of 42 for 34% to Spade's 12 of 43, 28%, but the freethrow line spelled the difference as the Wolverettes could only manage 6 of 14, 42% and Spade hit 13 of 30.

Sulser led the Wolverettes with 18 and K. Dent added 10.

The Wolverettes play in the small school division of the Amarillo City Tournament after Christmas and will face Alamo Catholic in the first round. The tournament opens play on December 29.



SANTA LOVES THEM ALL... Pictured with Santa are two lovely sisters, Page and Lacy Layman, also Ty Lively and Delvin Bulls. Santa took notice of all their wishes, and will arrive at their homes in Earth Christmas Eve night.

DON'T WAIT!

NOW IS THE TIME TO SEE US ABOUT YOUR PENSION PLAN AND SAVE ON THIS YEAR'S INCOME TAX...

TO QUALIFY FOR THE 1975 TAX YEAR, YOUR PENSION PLAN MUST BE OPENED THIS CALENDAR YEAR.

INCOME TAX DEDUCTIBLE SAVINGS DEPOSITS

NO INSURANCE TO BUY, NO STOCK TO BUY, NO SET-UP OR SERVICE FEE TO PAY.

Join Now!
Federal provisions let you set aside 15% of income, tax deductible, up to \$7,500 annually.

If you're in business for yourself, you can put 15% of your income (up to \$7,500 a year) into our Pension Plan, and it's 100% tax deductible. You can set aside up to \$750 a year even if this exceeds the 15% limit.

Individual wage earners not presently covered by a pension plan or self-employed persons who prefer not to include all full-time employees who have 3 years or more of service can put 15% of their income (up to \$1,500 a year) into our 100% tax deductible Pension Plan. A working wife may set aside up to 15% of her income (up to \$1,500) if she is not presently a participant in any other retirement plan.

No federal income tax is paid on either savings or interest until you retire—when you'll probably be in a lower tax bracket, perhaps with more exemptions available.

Find out about our Pension Plans. They'll answer a lot of questions about your future.

INTEREST RATES AT FIRST FEDERAL ARE ABSOLUTELY THE HIGHEST RATES AVAILABLE FROM A FEDERALLY INSURED FINANCIAL INSTITUTION

YOUR CONTRIBUTION WILL EARN UP TO 7.75% PER ANNUM COMPOUNDED DAILY

FIRST FEDERAL OF LITTLEFIELD

ESLIC

301 XIT Drive in Littlefield • 385-5197
707 8th Street in Levelland • 894-4926

CALL COLLECT FOR INFORMATION OR APPOINTMENT

Swine Expert Takes Dim View Of "Ban The Bacon" Scare

LUBBOCK--A swine specialist with the Texas Agricultural Extension Service says that all the excitement about an alleged cancer causing chemical agent in bacon is blown totally out of proportion and is based on misleading information.

Dr. Gilbert Hollis, an area Extension Service specialist based in Lubbock, says the uproar started when a news wire story carried on Sunday, October 19, 1975 quoted Dr. Donald Houston, assistant deputy administrator of USDA's Animal and Plant Health Inspection Service.

"We will probably require certain actions by the industry," the quote said "within a specified period to remove nitrosamines from bacon or take some action so that the product as we now know it will not be available."

Houston had replied to a reporter's questions referring to a television show which linked a chemical agent in bacon with cancer.

Hollis says that consumers need to understand the clear facts about bacon rather than believe innuendos and unfounded implications.

The American Meat Institute, he says, has worked closely with the U.S. Department of Agriculture and the Food and Drug Administration ever since any hints of cancer related problems were presented. Because nitrosamines were found in fish meal treated with nitrite about five years ago, investigation was begun of meats cured with nitrites and nitrates.

The problem, Hollis says, is that nitrite is used in curing bacon to inhibit the growth of organisms that cause botulism. Nitrites also play an essential role, he says, in fixing color, providing a distinct cured flavor and preventing rancidity.

USDA-approved levels of nitrite in bacon can result in formation of very minute amounts of nitrosopyrolic acid after cooking, considered to be a carcinogen to experimental animals. Hollis says that lowering amounts of nitrite in bacon could reduce the probability of formation of these nitrosamines but would also increase the probability of botulism, a type of food poisoning that can result in rapid paralysis and even death.

Commercial average levels of nitrosamines in bacon are about 10 parts per billion, equal to one penny out of 10 million dollars.

Hollis says this amount is so small that danger is virtually non-existent.

"Through eating, drinking and breathing we take in thousands of microorganisms every day that could cause us harm. You can't live in a totally sterile environment," he adds.

Additional research has been underway to determine a safe process which will consistently produce non-detectable levels of nitrosamines. Hollis says. Studies in Germany, for instance, show that after 600 days a normal life span of rats) of feeding 3,0 milligrams per kilogram of body weight per day to rats, liver tumors developed while no tumors were found in rats fed 1.0 milligrams.

According to the American Meat Institute, for an average 150-pound person to run any risk of nitrosamine having the same effect as in rats, he would have to consume 46,000 pounds of bacon a day every day of his life or consume as much bacon daily as 100 people eat in a lifetime.

"That is a pretty small risk," Hollis says.

The West Texas Chapter of the Arthritis Foundation extends best holiday wishes to all West Texas residents, especially to our 123,000 neighbors who are victims of arthritis.

GREETINGS

We're wishing all our neighbors and friends the best that Christmas has to offer, and much more. Many thanks for your loyal, continued patronage.

FARMERS CO-OP ELEVATOR

Muleshoe Enochs Clays Corner

SPEAKING OF SPORTS

BY: BILL WELDON

Thoughts of 1975 as the year closer out and awards are given... Coach's of the year, in this area, to Dimmitt's Ken Cleveland and Vega's Eddie Clipson in basketball and to Vega's Jimmy Duncan in football... Most schools are now involved in serious off-season weight and agility programs in class A, since they cannot have spring training. Coaches say it makes or breaks their seasons, lessens chances of injuries, teaches younger players techniques... Wonder if UCLA's dynasty in college basketball

will ever be equaled... Vote for best world series ever played, but wonder if Astros will make it in our lifetime.

Oklahoma wins share of National Championship, while on probation, with players who helped put them in trouble, guess it pays to cheat... All says he gets better with age and proves it against an "older" Frazier... Wonder if folks are tiring of Monday night football or just Howard Cosell and "Spanky"... Biggest disappointment was failure of '75' Wolverines to win district trophy... Vega got more from less material in football, with Bovina

second in that category this season... Scott makes last season at Farnell sweet as he wins district.

Tech blows chance for conference in basketball after beating A&M... Baltimore and Dallas surprises in NFL... Glad to see George Allen lose for a change, wonder if he'll leave for more money at San Diego? Golden State surprise of the year in NBA will sweep of bullets, maybe upset of decade for bookies at Las Vegas... Three Wolverines make it to Austin for State Track Meet, Mark Barton, Larry Dear and Jake Miller... Lamesa, Dimmitt, Spade, Canyon and Vega all reached the finals in basketball at the state meet with Lamesa and Dimmitt's lining... Biggest flop, Bill Walton in pros, with biggest surprise Fred Lynn of Red Sox... Why don't they just make the Helmsman Trophy just for backs and ends, since no lineman has ever won... Biggest upset Arkansas vs A&M.

Tech and Steve Sloan need good recruiting gear, especially big, quick linemen... Dallas upset Minnesota, but lose to Los Angeles in NFC final, who will then lose to Pittsburgh in Super Flop X... Hope bear Bryant loses to Penn State, serves him right... Texas domination

may be on way out after recent scandal, its hating recruiting. Most gracious losers, A&M after Arkansas loss, worst loser, Washington after St. Louis and Buffalo after Miami losses... Hear officials are going to film coaches errors in decisions on certain play selections, re-play for national TV and refuse to call them for incompetency.

U.I. needs to conduct investigation into officials' chapters in certain cities for competency on rules and reasons for calling fourth school games... Football will have to keep drawing to pay for increased cost of girls athletic programs at larger schools... Bowl game winners will be A&M, Texas, Arkansas, Ohio State, Oklahoma, Nebraska, Florida, and for the upset Penn State... Crystal ball in the future sees... Coaching changes in district schools at Hart and Vega... In colleges at West Texas state, SMU, Rice, and TCU... Wolverines place fourth in basketball, with Wolverettes third... Wolverines win district in track... Dodgers overtake Reds and Yankees catch Red Sox... Astros hire Billy Martin and Yankee Yogi Berra.

Merry Christmas and Happy New Year to all of you, Wolverine and Wolverette fans...

---SPONSORED BY---

DENT FARM SUPPLY

"YOUR JOHN DEERE DEALER IN EARTH"

NOSIN... With Polly

A CHRISTMAS WISH

I wish
for you and
yours a joyous, happy
holiday season. May your
tree of life be filled to the
fullest length of its every
branch with goodly things of
Earth and glorious things of Heaven.
May you exercise your faith each day
until your cup runneth over with joy
and love. May
your trunk too,
be packed with
with success
during the new
year. May you
not have doubts instead be rooted and grounded
on faith in God and love for man.

**Rainbow Girls Initiate
Clayton And Daniel**

A beautiful initiation service was held at 4 o'clock Friday, December 19 in the Lodge Hall. Approximately 25 were present for the service.

Sheryl Clayton and Jodie Daniel were initiated into the local Rainbow Chapter.

The Lodge Hall was enhanced by gala Christmas decorations throughout.

A brief Christmas program followed the initiation.

Karen Hulcy, soloist, sang, "Angels We Have Heard On

High." She was accompanied on the piano by Mrs. Jimmy Craft.

Donice Taylor presented a Christmas poem.

Mrs. Donald Kelley, Mother Advisor, presented each girl with a Christmas gift.

Refreshments of Christmas cookies and punch was served by Mrs. Doug Lewis and Mrs. C. C. Goodwin. During refreshment time, members of the chapter presented their Mother Advisor with a gift.



MR. and MRS. ELROY WISIAN

**Mr. And Mrs. Wisian Feted
On 25th Anniversary**

Mr. and Mrs. Elroy Wisian of Springlake were honored with a surprise reception in celebration of their 25th wedding anniversary, Sunday in the church parlor of the United Methodist Church. Their four children and their mates hosted the event.

The serving table was laid with a lovely cloth and centered with a beautiful two-tiered cake, made by Mrs. Hilbert Lee Wisian of Mulshoe.

The beautiful cake was iced in white and decorated with green roses and wedding bells. Between the two tiers was an up-turned wine glass enhanced with green ribbons. The cake was topped with the numerals 25 made in silver, surrounded

with green net with silver glittered. The napkins were white printed in silver were the words, Elroy and Mable, December 16, 1950-1975. Lime sherbert punch, green and white mints and cake were served from crystal appointments, by the couples two daughters, Mrs. Marty Crossland of Midland and Gena Wisian.

The couple were married December 16 in the old Methodist Church, that has long since been replaced by the present beautiful and spacious church building.

Those attending the event were Rev. and Mrs. Bill Watson, pastor of the church, Mr. and Mrs. Hilbert Wisian of Spring-

lake, Mr. and Mrs. Ross Middleton, Billy Braden, Beryl Hamilton, Mr. and Mrs. Melvin Bock, Ralph Wisian of Amarillo. Mr. and Mrs. Hilbert Lee Wisian and children, Jimmy, Mike and Lee Ann of Mulshoe, and the host and hostess, Mr. and Mrs. Elroy Wisian, Jr., of Wilmore, Kentucky, Mr. and Mrs. David Wisian of Hereford, Mr. and Mrs. Marty Crossland, Midland and Gena Wisian of Springlake.

**Junior High Honor
Society Has Christmas Party**

Members of the Junior Honor Society had their annual Christ-

mas party Thursday afternoon following school.

The nineteen Honor Society members had drawn names and at the party they exchanged gifts.

Refreshments of punch, cookies, peanut brittle and popcorn balls were served.

Kim Haydon is president of the group. In order to become a member of the Honor Society, a student is required to make

85 or up in an overall grade average.

Members include Kim Haydon, Paula Verden, Jeanne Haydon, Tamara Jones, Carla Taylor, Glen Craft, Chester Robinson, Lonnie Neinast, Michael Graham, Gaylon Conners, Stan Runyon, Beverly King, Kevin Riley, Lesa Templeton, Cindy Clayton, Donna Fulewider, Stephanie Parish, Loretta James and Sue Jones.



The greatest people in the world are truly found in the Earth-Springlake communities.

Our hearts have been filled to overflowing with your expressions of concern, your prayers, your love, and your financial support. Wonderful loving, caring friends always make the world more beautiful.

We pray that God's richest blessings will be yours during the holiday season and that a joyous new year is awaiting each of you.

With all our appreciation and love, we thank you.

GREG & DARLA SLOVER

In times of sorrow, ones heart is lifted by the thoughtfulness of dear friends. I find words are inadequate to express the gratitude we feel for the many kindnesses and expression of sympathy we received from you, during the illness and death of our father.

We want to thank each of you for your cards, flowers, food and encouragement.

May God richly bless you in a very special way.

Mrs. L. B. Huckabey
Mr. & Mrs. Don Huckabey
Mr. & Mrs. Jimmy Huckabey



...to the wonderful folks

we've had the pleasure

of serving this past year!

AND HAPPY NEW YEAR FROM ALL

THE BOYS AT YOUR ALLIS

CHALMERS DEALER AT

Dimmitt Equipment Co.

411 SE 2nd DIMMITT 647-2573

**Faculty Members Have Covered
Dish Dinner Tuesday Night**

Faculty members of the Junior High classes and their mates, enjoyed a delightful covered dish dinner. The event began at 6:30 p.m. Tuesday night and was held in the Homemaking Cottage.

Each one attending brought a meat dish or salad dish for the

event. Approximately 25 attended the fellowship dinner.

Following the dinner the group had a brief session of visitation.

MAY YOUR
CHRISTMAS
INCLUDE CHRIST

25 made in silver, surrounded

**FHA Has
Annual
Christmas Party**

30 members of the local FHA Chapter met Wednesday in the Homemaking Cottage for their annual Christmas party.

The group sang Christmas carols. They exchanged names by numbers. The person receiving number 1 went up and selected a package and opened it. Number 2 looked the gift over. If she wanted to take that gift, rather than select one from under the tree, she could do so. The game of exchanging gifts went on in that order until the 30 members had selected a gift.

The cottage was decorated with a silver tree enhanced by red ornaments. Red and white arrangements decorated the tables.

Cherry punch and an assortment of homemade cookies were served in the dining room of the cottage.

Mrs. Marie Slover and Mrs. Sue Haberer are instructors for the local chapter.

**JUNIOR HIGH
HONOR SOCIETY
HONORS TEACHERS**

The Junior High Honor Society honored teachers and adult employees, Thursday with a Christmas tea, which continued throughout the day.

Guests were served punch, cookies, peanut brittle, popcorn balls and coffee.

Sponsors for the Junior High Society are Mrs. Bill Verden and Cary Hamilton.

**Mrs. Higgins
Host Coffee
Wednesday**

Mrs. Bruce Higgins was hostess at a coffee Wednesday at 4 p. m. to lady employees of the bank and other friends in the area.

The entertaining rooms were decorated with Christmas arrangements and ornaments, highlighted by a beautifully decorated Christmas tree.

Refreshments of peanut rolls, magic coconut bars, hot spiced tea and coffee were served.

Those present for the event were Mrs. Wayne Rutherford, Mrs. Gene Tunnell, Mrs. Bill Scott, Mrs. Delbert Spraberry, Mrs. J. D. Phipps, Mrs. Lynn Glascock, Mrs. Sam Barden, Mrs. Glenda Glass, Mrs. Melton Welch, Mrs. W. E. McDonald, Mrs. Rene Littleton, Mrs. Arnold Shelby, Mrs. Larry McMillan, Mrs. Alene Griffin and Mrs. W. B. McMillan.

Colossal
Store Wide
Clearance Sale
Monday, Dec. 29, 1975
\$30,000⁰⁰ Overstock
20% 30% 40% 50% off
Women's - Children's - Men's Shoes
Our Loss - Your Gain
Closed Dec. 25, 26, 27
Bates Shoe Store
Tulia

**FOR YOUR LAST MINUTE
CHRISTMAS GIFTS SEE US FOR**

*C.B. RADIOS

*SPORT WATCHES

*MAJOR APPLIANCES

*SPORTING GOODS

Merry Christmas
and
Happy New Year

FROM ALL THE GANG AT

TEXAS ENERGY

DIMMITT

**January Clearance
SALE**

Starts January 4

IN PREPARATION FOR THIS SALE OUR STORE WILL BE CLOSED JAN. 1-2-3

Lerice's

FARWELL

PHONE 481-3891

Mr. & Mrs. Holland To Be Honored With Reception December 28

Mr. and Mrs. Prentice Holland will be honored at a reception Sunday, December 28th in their home. The event is in celebration of their fiftieth wedding anniversary.

Friends and relatives are invited to call between the hours of 2:30 and 5:00 p. m., and the couple requests that no gifts be brought.

Hosting the reception will be the children of the couple, Mr.

and Mrs. William P. Holland, Jr., Mr. and Mrs. Jeff Brantley, and their families. Also assisting, Mrs. L. L. Swindle and Mr. and Mrs. James Holland, sister and brother of the honored couple.

Holland, who is a native Texan, and the former Alma Dean Grissom, who was born in Tillman County, Oklahoma, were married December 23, 1925 in Manitou, Oklahoma in

the home of a Methodist minister. Engaged in farming, they have lived in the Amherst community since their wedding date.

A WIDESPREAD popular fallacy is that "nothing much can be done" about arthritis. Here's the good news. Medical science now knows how to prevent most arthritis disability if victims seek prompt and proper medical care.



MR. and MRS. PRENTICE HOLLAND

TOPS Hear Article On Losing Weight

Mrs. M. H. Been presided over the TOPS Club Thursday when they met for a weekly meeting in the Earth Medical Building. She led the Pledge and called the roll, with seven members answering to the call.

Mrs. Been read an inspirational article concerning weight. The article explained how a lady lost 142 pounds in 13 months.

Mrs. Been also gave a brief run down on her two week trip to Hawaii in early December.

The meeting concluded with the Serenity Prayer.

Those present were Mrs. Gerald Ingalls, Mrs. Carl Perkins, Mrs. Bill Robinson, Mrs. Robert McCurry, Mrs. J. E. Shirey and Mrs. Larry Hausmann.

The club will hold their meeting for the next two weeks

on Tuesdays instead of Thursdays on Thursdays on January 8.



MAY THIS HOLIDAY BE TRULY HAPPY FOR YOU AND YOUR LOVED ONES, AND MAY PROSPERITY BE YOURS THROUGHOUT THE YEAR TO COME.

GALA HALLMARK

610 Broadway Plainview

A Joyous Christmas



May the bright Christmas star lead you to peace . . . brotherhood. Our thanks.



Best Wishes

Sit back and enjoy the New Year. We know it's going to be a good one!

Mrs. Jennifer Horn "Best Pledge" In Delta Xi

Two faculty members and ten students at West Texas State University were recently initiated into the Delta Xi Chapter of Beta Beta Beta, the National Biology Honor Society, at their



JENNIFER HORN



The elevator isn't a smoking car, so observe the no-smoking rule (No butts about it).

semi-annual initiation and awards banquet. Dr. Vaughn Nelson, head of the WTSU Physics Department, presented an illustrated talk on Alternative Forms of Energy.

Marvin C. Cornette of White Deer received the 1975 fall scholarship of \$100, while Jennifer Horn of Springlake was named "Best Pledge."

Initiate from Springlake was Mrs. Jennifer B. Horn of Route 2, wife of Wendell Horn, In-

dustrial Arts Instructor at Springlake-Earth School.

Mrs. Horn leads a busy life going to school at WTSU two days each week and substitute teacher for school when needed.



a basketful of Good Wishes

Please accept our sincere good wishes for a happy, joyful Yuletide . . . rich in love and warm friendship!

Pratt's Jewelry & Trophies
5th AND XIT DRIVE
LITTLEFIELD, TEXAS 79339

DODD FERTILIZER and ELEVATOR

FORREST COLLINS-Mgr. ---DODD COMMUNITY

WHAT'S COOKING AT SCHOOL

January 5 thru 9-1976

MONDAY
Lasagna
Green beans
Toasted Salad
Stewed Apricots
Hot Rolls and Butter
Milk

TUESDAY
Fried Chicken and Gravy
Au Gratin Potatoes
Cabbage Slaw
Mixed Fruit
Cookies
Hot Rolls and Butter
Milk

WEDNESDAY
Tacos
Beans
Spoon Tomato Salad
Lettuce & Cheese
Peach Cobbler
Cornbread and Butter
Milk

THURSDAY
Barbeque on Bun
Potato Salad
Buttered Spinach
Pineapple Upside Down Cake
Milk

FRIDAY
Pizza
Toasted Salad
Creamed Corn
Peanut Butter Cups
Milk

MERRY CHRISTMAS

...to the wonderful folks we've had the pleasure of serving this past year!

Cobb's in MULESHOE

Holiday Greetings

May the seasons keep bringing happy holidays to you. Our wish is that they be merry and bright . . . filled with love and peace. Accept our thanks for your loyalty.

AVI INC. IRRIGATION SELF PROPELLED

BOX #11 MULESHOE, TEXAS 79847



Christmas Greetings

May sleighbells, laughter and the splendor of a snowy countryside bring you happy joys and a memorable Christmas.

AND HAPPY NEW YEAR . . . WE ARE LOOKING FORWARD TO SERVING YOU IN 1976

PRODUCTION CREDIT ASSOC.

ROBERT WHITE - DIMMITT - 647-3169 CURTIS WALKER - MULESHOE 272-3162

Band And Choir Presents "The Sounds Of Christmas"

A capacity crowd filled the auditorium at the Springlake-Earth School on Wednesday night, December 17, to hear the combined choir and band program entitled "The Sounds of Christmas."

The tone of the program was set by Kathy Wright's rendition of "The Christmas Dolly." A cheerful group of third grade choirsters then sang the traditional Christmas songs "Deck the Halls" and "Up on the Housetop."

The fourth grade class then entertained by playing their new recorders, "Hot Cross Buns," "Mary Had a Little Lamb," "The Peasant and the Bear," and "Jingle Bells," were performed by the fourth grade. Glen Wester, the choir director combined the fifth and sixth grade choirs to sing "Angels We Have Heard on High" and "Carol of the Drum." They were assisted by Ben Johnson on the snare drum.

Following the elementary portion of the choral program the junior high choir sang "Silver Bells" and "Calypso Christmas Song."

The high school choir then sang "Do You Hear What I Hear" arranged by Harry Simone and a popular song entitled "I Won't Last a Day Without You," featuring a solo by Kathy Wright. Combining their efforts with the junior high, they then performed the famous "Hallelujah Chorus" from Handel's "Messiah."

The fifth grade band followed with "Go Tell Aunt Rhodie," "Crusader's Hymn," "Mary Had a Little Lamb," and "Jingle Bells." The sixth grade band played "Good Night Ladies," featuring a flute trio and a saxophone trio. The flute trios were Wendy West, Stacy Tunnell, and Merri Hausmann. The saxophone trio was Ricky Dutton, Sheryl Clayton and Lance Phelps. The band then played "Slipping Cider thru a Straw," "Crawdaddy," and "All through the Night."

The junior high band was next with "Activity March" by Bennett, "Das Pensionat" by Von Suppe, and "Christmas Sketches" arranged by Schaeffer.

The high school band opened their portion of the program

with the stirring "Block 'M' March" by Bilik. They then featured their cornet trio in Leroy Anderson's famous "Bugler's Holiday." The trio consisted of Bobby DeLaGarza, Tim Craft and Jaime Soto. The band then followed with three movements from Clifton Williams' "Symphonic Suite."

The finale to the program was a combined band and choral piece from the Walt Disney library called "The Wonderful World of Christmas," by Christensen. At the end of that large piece the band and choirs combined the voices of over four hundred band and choir students to sing "We Wish You a Merry Christmas."

Everyone was very proud of the students for their participation in such a long program involving so many people and especially for the quick and cooperative way they moved on and off the stage in transition from one part of the program to the next. All in all, everyone felt that they had heard the "Sounds of Christmas."



THE CHORAL GROUP... at Springlake-Earth school, along with the band presented a delightful Christmas Concert

Wednesday. The audience enjoyed the concert thoroughly. (Sorry the band picture did not turn out.)

Local Couples Take Hawaiian Vacation

Mr. and Mrs. J.L. Coker and their guests, Mr. and Mrs. M. H. Beem arrived home Sunday evening, December 14th from a two weeks vacation in beautiful Hawaii. The trip was planned at this time so that they could join a tour group composed of survivors of Wake Island, who were holding their annual convention in Honolulu. J.L. Coker was among those taken prisoner on Wake Island on December 23, 1941, after a fifteen day siege by the Japanese. They were interned as prisoners of war by the Japanese for forty-four months, being released at the end of World War II. Approximately 30 men who shared this fate, their wives and guests made the tour.

On December 7th, the group toured Pearl Harbor, visited the Arizona Memorial, and the National Memorial Cemetery of the Pacific. The cemetery dominates the heart of Honolulu from its location in Punchbowl Crater, the remnant of a long extinct volcano. Here within the well-kept and carefully landscaped area is located the granite Group Burial Marker which bears the names of the Marine and Civilians who lost their lives in a heroic effort to defend Wake Island from the Japanese and also the names of those who did not survive the lengthy ordeal as Prisoners of War. Around this granite marker the group reverently placed flower leis, as they gathered for a simple but impressive Memorial Service. With flooding memories and tearful eyes, the group quietly dispersed after a fitting paraphrase of "My Buddy" and prayer offered by the survivors as a tri-

bute to those who were symbolically buried there. Somewhat lower down the gently sloping hillside is the grave of Ernie Pyle, famous correspondent of World War II.

Other high lights of the trip were the banquet for the survivors of Wake Island and their guests in the Polynesian Room of the Reef Hotel, Convention Headquarters, on Waikiki Beach; a visit to the Polynesian Cultural Center and their fabulous evening show "An Invitation to Paradise," staged by students of Brigham Young University of Hawaii; dining at a Luau on the Beach at Waikiki; watching "The Happy 200th," a delightful musical variety show of Hawaiian and American selections celebrating the American Bicentennial; a sunset dinner cruise around the Waikiki Beach area, and a shopping trip through

the International Market Place. After seven days of sightseeing and marveling at the beauty of the island of Oahu, the group flew to the island of Kauai, which is known as the garden isle. It is indeed a land of legend and incredible beauty. Everything seems to be covered with brightly colored flowers from the smallest plant to the largest tree. Being from an agricultural area the visitors were also very interested in seeing the sugar cane and pineapple fields and various fruit trees and coconut and date palms as they flourish in these tropical islands.

After ten days of renewing old friendships and making new ones, the group bid good-bye and boarded 747 Jet flights at Honolulu International Airport to their various homes scattered across the United States.

Lamb County Over Annual Goal In Savings Bond Sales

United States Savings Bond sales in Lamb County totaled \$13,238, 00 during the month of October. Sales for the ten-month period were \$133,322, 00 which represents 103% of the

1975 sales goal for the county, according to County Bond Chairman James T. Lee. October sales in Texas totaled \$20,266, 476 compared to sales of \$21,154, 479 during the same

USDA Designed Solar Energy-Heated House Nears Completion

Construction of a medium-priced, three-bedroom family dwelling heated with solar energy, designed by the U.S. Department of Agriculture's Agricultural Research Service (ARS), is nearing completion.

The completely insulated attic of the house serves as the solar collector and a 12-inch thick layer of crushed rock beneath the floor of the house serves as a heat storage tank. The house is conventional in other respects.

The heating system is simple in design. Two layers of translucent fiberglass replace conventional roofing on the south roof slope and transmit sunshine or solar energy into the attic where it is absorbed by a black plywood floor. This heats the air in the attic and the heated

air is circulated to heat the house and the rocks beneath the house. The heated rocks can store a four-day supply of heat to warm the house at night and during cloudy or rainy weather. The solar heated house was

designed at the ARS Rural Housing Research Unit, Clemson, S. C., by architect Harold F. Zornig. It is part of the ARS effort to lower the operating costs of rural housing with a low-cost, low-maintenance heating system using solar radiation as the energy source. Such a heating system could be modified to match the demands of other geographic and climatic areas.

Mr. Zornig predicts that at least 75 percent of the house heating load during the coldest month in Greenville can be supplied by solar energy. To meet the small need for extra heat during the heating season a slightly larger than normal hot water heater is used as an auxiliary heat source. Hot water is automatically pumped from the hot water supply to a heat exchanger in the air distribution system when and if the house has no solar heat in the attic or in storage.

The rocks that are used as a heat storage tank in winter can keep the house at a pleasant daytime temperature during the warm months. This is achieved by bypassing the heat from the solar collector and allowing the rocks to cool at night.

Hello-Thermics, Inc., builders of the house is cooperating with ARS in the project. The Greenville firm developed the solid-state electronic controller which operates the house's energy conserving system.

The ARS Rural Housing Research Unit will monitor the performance of the prototype house through four seasons starting this winter, according to Mr. Zornig.

Performance during the year will be measured while the

house is occupied. Although designed by ARS and built to ARS specifications, construction is being done by the Greenville firm for a local resident who contracted for the house. The owner has agreed to allow installation of the instrumentation necessary to properly monitor the heating and cooling system.

The prototype house has a calculated average heat loss of 216,000 BTU per day in the Greenville area in January. In this same month there should be available a calculated 457 BTU per day of solar energy per square foot of transparent roof, assuming the prototype house will have the same 43 percent attic collector efficiency as a small test house previously built by the Rural Housing Research Unit.

With a collection area of 442 square feet, the solar system should provide an estimated 201,994 BTU per day, or 94 percent of the heat needed, Mr. Zornig says, however, that because of loss of heat through the storage system, the predicted 75 percent supply of solar heat to meet heating loads in January is probably more realistic.

My Neighbors



"Well, how was your day, dear?"

NOEL

Christmas! That special time of the year. A time when families and friends gather together to share and enjoy the season. And a time when we give special thanks. WE ARE LOOKING FORWARD TO SERVING YOU IN 1976

LAZBUDDIE GRAIN, INC.

965-2926

Baptist Brotherhood Views Missionary Film

Nine were present for the brotherhood breakfast, Saturday morning in the Baptist Church Fellowship Hall.

A film entitled "Thailand, good-bye to a small and magic dragon" was shown to the group. A delicious breakfast was enjoyed by the fellows.

Those present were Rev. David Burum, Hershel and Greg Hulcy, Donald and Stan Runyon, Paul Wood, Billy Pittman, John Bridges and W. M. Detwiler.

VFW

NEW YEARS DANCE

Saturday, December 31

FEATURING

EUGENE BUHRMAN

AND

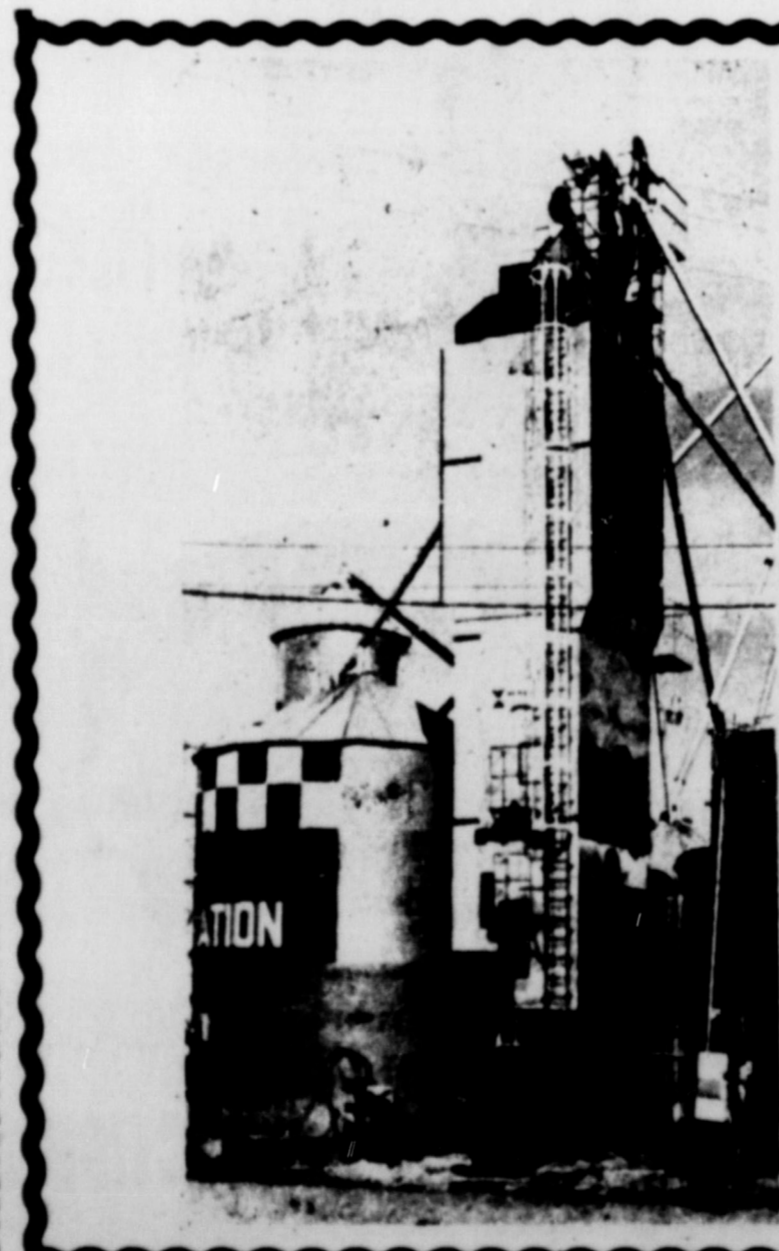
THE WESTERN ACES

EVERYONE INVITED

ADMISSION ... \$5.00 per couple

9:00 P.M. TO 1:00 A.M.

2 Miles east, 1 mile north, and 1 mile west of Muleshoe



For Your Drying and Storage Needs

Call:

MERLE L. LISTER & SONS Inc.

144 West Third

Hereford, Texas

★ CRANE RENTAL SERVICE

364-5352

PRE-SEASON DISCOUNT ON DRYERS AND GRAIN TANKS

Distributors For:

CONRAD CORRUGATED STEEL BINS

REDEX PORTABLE AND STATIONARY DRYERS

KELLEY DUPLEX GRAIN HANDLING EQUIPMENT

All Types Grain Cleaners

Fire Destroys Bed And Bedding At Wimberley Home

Damages were estimated at approximately \$200 from a smoldering fire discovered about 3:30 a. m. Friday in the Doyl Wimberley home.

The fire was caused, according to Mrs. Wimberley, from an electric blanket that shorted out on the bed where her daughter Carmen was sleeping.

The blanket shorted out at the foot of the bed, where the blanket was tucked between the mattress and box springs to hold it in place. The bed never broke out into flames but smoldered for several hours and destroyed the mattress, box springs, electric blanket, two sheets and caused considerable smoke damage to the girl's clothes hanging in the closet and the several pot plants in the room.

Carmen half awake, though partially asleep, at various times through the night, thought she smelled the smoke. She dismissed it as she thought she was dreaming she smelled smoke, and went back to sleep. Finally the room which held a mixture of smoke from wires burning combined with other materials became so intense, she awakened as she began coughing and gasping for breath. She rushed to awaken her par-

ents, who poured water over the ruined mattress, box springs and bedding, finally dragging it out to the alley, to be carried away.

They felt fortunate indeed that their daughter awakened when she did as it could have become a disaster to the family and home.

Beulah Newton New JP For Precinct 2

Beulah Newton, a resident of Earth since 1929, was appointed Justice of Peace for precinct 2 on Monday, December 15. She was sworn in by Judge Bill Angel in his office in Littlefield.

Her office will be in the Farmers Union Insurance Office Building.

Mrs. Newton was employed for Beavers Flowerland in Muleshoe for five years. She accepted part time work at Howell's 216 Floral in Earth early this fall. She will continue working part time there.

Mrs. Newton commented, "I can be found when needed, at the J. P. Office, Howell's 216 Floral or at my residence."

Mrs. Newton has two daughters, Mrs. Ysleta Ball and Mrs. Yvonne Davis of Pecos. Mr. Newton passed away in 1967.



MRS. HEIZERS KINDERGARTEN CLASS... Excitement soars as each day brings this group closer to Christmas day. The thoughts of Santa, gifts and all kinds of goodies crowd out thoughts of all else. Why not, it comes only once a year and to Kindergarten students a year is also f-o-r-e-v-e-r.

Community Development Grant Application Date Extended

WASHINGTON, Dec. 17-Rural communities now have until February 13, 1976, to file pre-applications for community development discretionary grants under Title I of the Housing and Community Development Act of 1974 (P. L. 93-383.)

Preapplications were to be filed with the Department of Housing and Urban Development (HUD) by January 13, 1975. But the date was extended after

the U. S. Department of Agriculture (USDA) reported that nonmetro communities need more time to comply with interim revised regulations announced earlier.

Communities needing information on the regulations or on preapplication procedures should contact HUD offices or offices of USDA's Extension Service and Farmers Home Administration.

Never a Christmas Morning . . .
 Never the Old Year ends,
 But Someone thinks of Someone
 Old Days, Old Times, Old Friends

Merry Christmas

In the spirit of the season — we hope everybody has the happiest of holidays wherever you spend it! Your kind patronage is appreciated.

WAYNE RUTHERFORD
66 STATION
 EARTH

CHRISTMAS GREETINGS

I am now in California for the Christmas Holidays - However I Couldn't get through the Holidays without remembering all of you, that I love so dearly in the Earth-Springlake communities, and wishing each of you a Happy and Prosperous Holiday Season. May the Spirit of God bring Contentment to You and Yours...

TED BORUM

In Taiwan, the island republic's 600,000 Christians observe a more subdued Christmas than their western brothers, saving festivities for the Chinese Lunar New Year.

December is bonus time in Japan. The year-end bonus is enjoyed by all employees of Japanese firms and the government, including the Prime Minister.

Merry Christmas

May hearts be filled with gladness on His birthday. Thanks.

Get into the spirit of the New Year. Set out to make it the greatest. You can do it if you try!

1976

A HAPPY PLACE TO SHOP
 NEXT TO BASKIN-ROBBINS

PLACE AROUND THE CORNER in PLAINVIEW
 THE BUSY CORNER



Mr. and Mrs. Norman Hinchliffe, Don Taylor, Buster Watson and Steve Madrigal.

WISHING EVERYONE A Very Merry Christmas



Demitrio Hinjoso, Mrs. Darrell Sawyer and Ronnie Haberer.

& A Wonderful New Year

And Many, Many Thanks To Our FRIENDS AND CUSTOMERS



EARTH AG SUPPLY

SPRINGLAKE GRAIN

Phon: 257-3762---EARTH

Phone 986-2311---SPRING LAKE

Malawi Persecutes Jehovah's Witnesses

"Thousands of Christians are now under brutal persecution in Malawi," declared Boyd Lowery, presiding overseer of the Mledoch Congregation of Jehovah's Witnesses. "Starting August 19, 1975, more than 34,000 Jehovah's Witnesses from Malawi who fled as refugees to Mozambique in 1972 because of severe

persecution were forced to return to Malawi and now experience brutal persecution again. All of this is because of their refusal to join a political party."

Lowery said he had received a report from N. H. Knorr at the Brooklyn Headquarters of Jehovah's Witnesses. Knorr said that

when a group of Jehovah's Witnesses arrived at the Malawi border, the Minister for the Central Region, Mr. Kumbweza Banda, greeted them; "We welcome you with both hands. You left Malawi of your own accord and now you have returned of your own accord. The Malawi Congress Party is still in power in this country. Go back to your home villages and cooperate with the party officials." Then, referring to the members of the League of Malawi Youth, he said: "My boys are here to see that you do cooperate with the Party. Soon roads in the north and central regions of Malawi were filled with Jehovah's Witnesses on their way back to their home villages.

In some instances the Witnesses were allowed to enter their villages and take up occupancy of houses they abandoned in 1972. However, in most cases Youth Leagues soon called to ask if they were prepared to buy political party cards. Referring to Jesus' example of political neutrality, the Witnesses refused. Immediately beatings, rapings and other atrocities began again and many were driven from their homes. In Kanchenche six Witness women were all raped by several men. In Sosola village a group of men and women, including the local Member of Parliament, Mr. Ebon Mluzi, seized the possessions of the Witnesses and drove them from the village.

Early in September youths under the direction of the Kasanjola branch of the Malawi Congress Party visited homes of Jehovah's Witnesses in six villages, demanding they buy party cards. When they refused, the youths stole all their belongings, subjected them to terrible beatings and mutilated the supply of flour that these refugees had brought with them, making it unfit for food. In other locations the Witnesses

The computer is now going to play an even bigger role in the overall design and evaluation of insect pest management programs conducted by the Texas Agricultural Extension Service as the agency has appointed a data manager in pest management.

He is Jerry L. Henson, who is assigned to the Department of Entomology at Texas A&M University.

"With the coordinated educational programs in pest man-

were stripped naked, their hair burned off their bodies with torches and beaten until blood came out of their mouths and noses. This happened at Chimasongwe village in Lilongwe under the direction of the local chairman of the Youth League, Mr. Chipukupuku, while the attackers were urged on by local women members of the League of Malawi Women.

Because no one will accept them, many Witnesses have been forced to wander in the cities by day, sleeping in nearby forests at night. Upward of 4,000 fled to neighboring Zambia, but reports just received say they were repatriated to Malawi by force.

Dr. H. Kamuzu Banda, Life President of Malawi, recently instructed the Malawi police to round up adult Jehovah's Witnesses and put them in detention camps. The children are being left behind either to stay with relatives or fend for themselves. The government order applies this even to nursing infants. The police have ruthlessly executed this order. Whole congregations of Witnesses, men and women, have been rounded up and put in detention to further pressure them into buying political party membership cards and to prevent flight from Malawi. According to the latest reports,

Post Management To Become Computerized

agement currently under way in numerous crops in various areas of the state, the need for more detailed analysis of these programs is real," said Dr. John E. Hutchison, state Extension Service director, in announcing the appointment of Henson. "We feel fortunate to have the services of Mr. Henson in this vital area, and we know that his contributions will lead to a more effective statewide program of insect pest management."

Henson will be particularly working to develop a computer network for collecting and summarizing pest management program data and will give close attention to the economic evaluation of the pest management program. He will also develop computer simulation models for forecasting insect populations, added Hutchison. The new data manager is the son of Mr. and Mrs. G. H. Henson of Monahans. He is a graduate of the local high school and attended Sul Ross State University where he was on the Dean's Honor Roll for three years. Henson received a B.S. degree in mathematics from Texas A&M in 1974 and recently completed his Master of Computer Science degree.

Henson was a teaching assistant in the Mathematics Department at Texas A&M last fall and for the past 10 months has been a graduate assistant in the Data Processing Center.

Party Line

Mr. and Mrs. Freddy Kelley of Weatherford, Oklahoma are in Earth visiting their parents, Mr. and Mrs. Clarence Kelley and other relatives and friends.

Merry Christmas



Christmas at our place, so that you may enjoy Christmas at your place. . . A very merry one from all of us!



The Future IS Electric!



O, come all ye faithful

Our warmest wishes for the holiday. It's a time to be joyful and to say, "thank you".

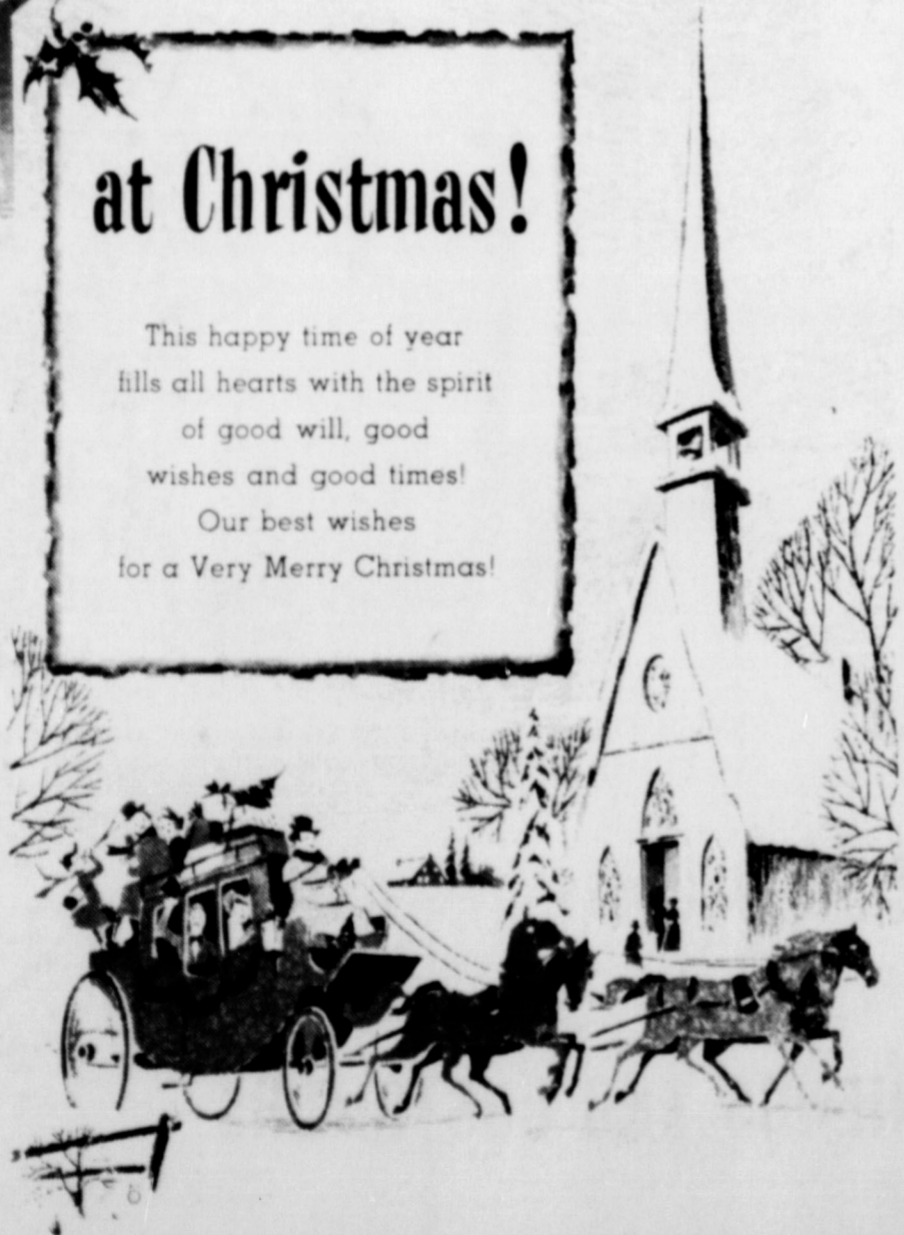
HERBERT DUNN

Lamb county Tax assessor-collector



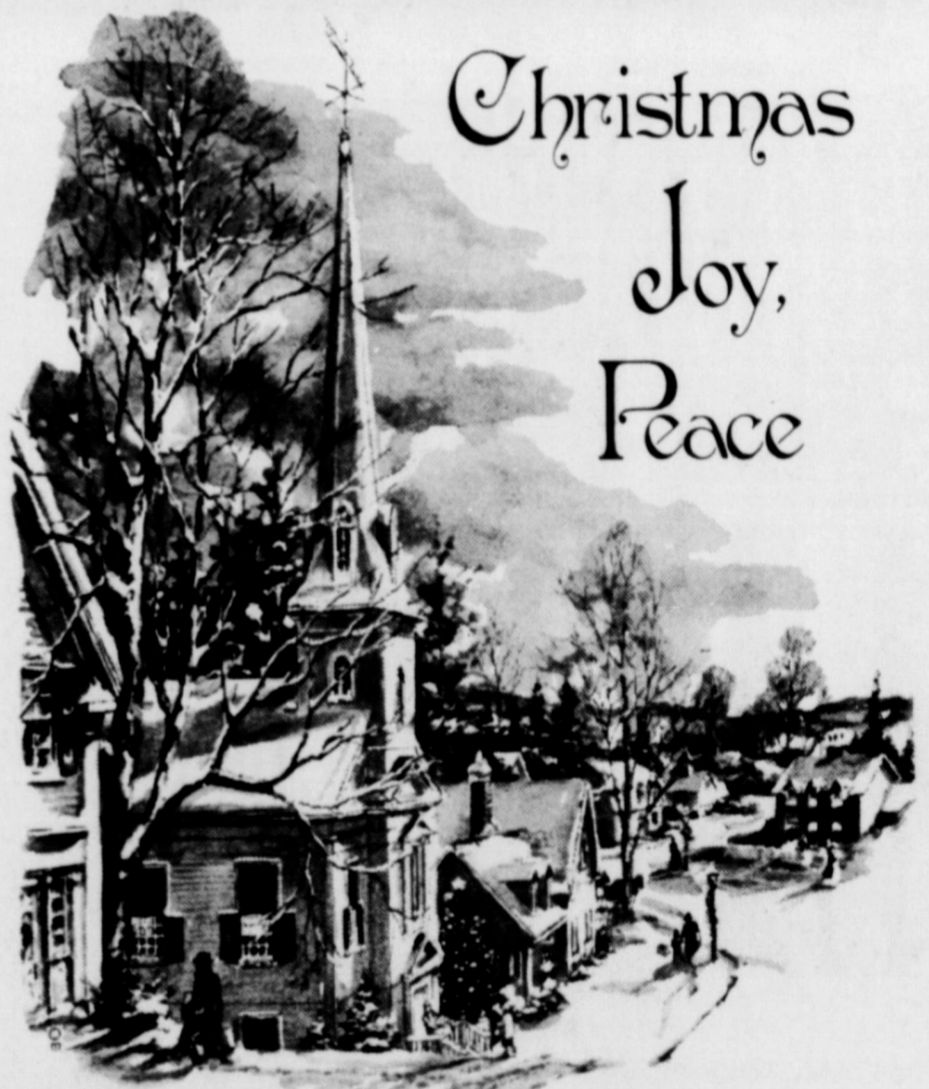
at Christmas!

This happy time of year fills all hearts with the spirit of good will, good wishes and good times! Our best wishes for a Very Merry Christmas!



EARTH CO-OP GIN, INC.

JAMES SHEPARD—Manager



Christmas
Joy,
Peace

Christmas! The very word awakens a host of happy expectations, with its promise of gifts and gladness, greetings and treatings. Enjoy it to the full, good friends. We thank you, warmly.



Wood-Jordan Inc.

CALVIN WOOD---EARTH---EARL JORDAN

CONSUMERS WHO ARE charging their purchases during early Christmas shopping need to re-

member to keep track of what is being spent, over runs can be avoided this way.



CHRISTMAS

A time of joy, a time of peace... we hope you and yours are blessed with the warmth and happiness that are so abundant throughout this holy season. Thanks.

Taylor Market Basket
EARTH

Aurelio Rivas Initiated Into Psi Chi

WTSU--West Texas State University Senior Aurelio Rivas has been initiated into Psi Chi, the National Honor Society in Psychology, with active membership in the WTSU chapter. Rivas is the son of Mr. and Mrs. Jose Rivas of Route 2, Earth. He is majoring in psychology and minoring in sociology. Psi Chi was organized in 1928 under the sponsorship of the American Psychological Association, Washington, D. C., to recognize scholarship in the field of psychology. The West Texas State University chapter was formally established in October, 1971, at Canyon, Texas.

JOE RIVAS INITIATED IN ALPHA CHI

WTSU--Joe A. Rivas, a junior at West Texas State University from Earth, has been initiated into Alpha Chi, national honor society. Rivas is of the upper 10 percent of the junior class at WTSU. Rivas, a mathematics major, is the son of Mr. and Mrs. Joe A. Rivas, Route 2, Earth.

NOTES AND CARDS during the holiday season give one a chance to remember and renew friendships with old friends and relatives in a meaningful way.

Grant Approved For South Plains Community Action Assoc., Inc.

Congressman George Mahon announced Friday that a Community Services Administration grant for \$17,826 was granted the South Plains Community Action Association, Inc. in Levelland. The grant will enable the

agency to continue to provide services to low income residents.

Effective January 1, 1976, the grant will serve Anton and the Counties of Cochran, Lamb, Terry and Yoakum.

DPS Director Urges Drivers To Drive With Care

AUSTIN--Colonel Wilson E. Speir, director of the Texas Department of Public Safety, today warned that traffic accidents during the Christmas and New Year periods may claim almost 100 lives in Texas. The state's top lawman said 48 of the deaths are likely during the Christmas period which runs from 6 p.m. Wednesday, December 24, through midnight Sunday, December 28.

An estimated 46 deaths will occur in the New Year period which runs from 6 p.m. Wednesday, December 31, through midnight Sunday, January 4, 1976. Speir said the DPS will be working with local law enforcement agencies to mount as strong an enforcement effort as possible. "We will be utilizing all the manpower and resources that

we have in the department, and will be concentrating on such hazardous violations as drinking while driving and speeding," he noted.

He said public cooperation is also needed if accidents are to be prevented during the holiday, and pointed out that DPS will be working with local police and the news media in a public education effort called "Operation Motorcade."

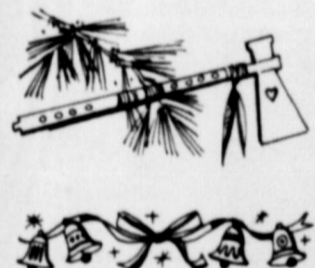
"Through this program we attempt to emphasize the problem of hazardous driving and create a driver consciousness that will make our highways and streets safer to use," he said.

During the holiday, the news media will be provided with periodically updated information on holiday accident locations and dangers.

AMERICA'S SETTLERS CELEBRATED IN OWN WAY

During the early 17th century any formal observance of Christmas was ruled out by the rigid code of Puritanism. Yule festivity was forbidden as emanating from the Devil. And the Devil was very much a personage in those days. This rule persisted until 1681 when it was repealed. Probably the influence of the Dutch and German settlers had prevailed, and their customs of Christmas feasting and gaiety softened the hearts of the strict Puritans.

The plenty of the new land provided abundant foodstuffs for the holiday table. And the woods' greens, boughs and assorted cones were used for decorative trim.



Party Line

Mrs. Bennie Prather had as her guest over the week-end Mr. and Mrs. Sandy Sanders and children of Hico and Mrs. Steve Larkin and Chad of Hereford.

Mr. and Mrs. Sandy Sanders of Hico are here for the holiday, visiting their parents Mr. and Mrs. Marvin Sanders and Mrs. Bennie Prather.

Mr. and Mrs. Cecil Slover and children left Friday for Dangerfield where they spent several days with his parents. Mr. and

Mrs. Ira Slover. They returned home Christmas to spend the day with their son and daughter-in-law. Mr. and Mrs. Greg Slover.

MERRY CHRISTMAS & HAPPY NEW YEAR



Christmas joy

Let us take a moment to wish you and yours all the happiness and good cheer that this Yuletide season brings. We appreciate your friendship and generous support.

WOLVERINE DRIVE IN and MINI MART

MERRY CHRISTMAS



PEACE

Unto you is born this day in the city of David a Saviour, which is Christ the Lord

It has been a pleasure serving the folks in this area and we look forward to serving you during the next year.

BUSBY AUTO PARTS
Springlake

A Very Merry Christmas

In the spirit of this joyous season our very best wishes one and all. To the friends we have had the pleasure of serving, thanks.



LOWE SPRAYING SERVICE
PHONE 965-2338---RESIDENCE 257-2073

Merry Christmas



It's Yuletide Season... here's a hearty wish for the best holiday ever! Fill it with good times, high spirits, and lots of friends. It's been our pleasure to serve you. Have a happy!

PARSON-ELLIS-SINGLETON FUNERAL HOME

Ag Producers Advised To Check Tax Changes

Americans will save \$23.1 billion in tax money this year as a result of the Tax Reductions Act of 1975. And some changes are of particular interest to farmers and ranchers.

Dr. Wayne Hayenga, economist for the Texas Agricultural Extension Service, advises agricultural producers to give close attention to such tax changes as 1975 draws to a close.

"One change involves an increase in the level of investment credit," points out Hayenga. "A 10 per cent increase in investment credit is in the law through 1976. This credit applies to property bought or

under construction after last January 21 and before January 1, 1977."

A permanent change associated with investment credit has also been made. Instead of having to wait to claim the credit when the construction is completely done, individuals can claim credit on progress payments during the construction period, notes Hayenga.

Also, the amount of used property that qualifies for investment credit has been increased from \$50,000 to \$100,000.

A tax break designed to help small farmers and other self-employed workers will make

individuals with an annual income between \$4,000 and \$8,000 eligible for a refundable tax credit on all earned income, says the Texas A&M University System specialist.

"Earned income is defined as any compensation for personal services and includes wages, salaries and tips, but not pensions and annuities."

People with an income of \$4,000 will get the maximum tax credit of \$400. As income goes up to \$8,000, the amount of credit decreases, Hayenga explains.

"This tax cut operates like a negative income tax when the



JUNIOR HONOR SOCIETY... Has Christmas party Thursday at school. The party was fun, and remembering school would be out next day for the holiday, added to the gaiety of the group.

REMEMBER CHRIST ON HIS BIRTHDAY



Santa's delivering our cheery wish to all, plus many thanks for your kindness.



Christmas Greetings

May your Christmas star lead you to a richer, happier life: warm with love, bright with joy, secure in peace. We take this opportunity to thank you for being such good friends. We're grateful for your goodwill and loyal patronage.

EARTH FEED & SEED, INC.

EARTH

amount of credit is greater than a person's tax liability. If that happens, the excess credit is refunded."

For the general populace, a significant tax break for 1975 is an increase in the standard deduction for singles to \$2,300 and for joint returns, \$2,600.

"An increase in personal exemptions is also in store for 1975 taxpayers," notes Hayenga. "Taxpayers will be able to deduct \$750 plus an additional \$30 tax credit for themselves, their spouse and each dependent. However, this extra \$30 credit does not apply to the blind or aged."

The maximum income allowable to claim a child care expense deduction has been increased from \$18,000 to \$33,000. For income above this, the amount deductible for child care expense decreases, says Hayenga. If income is \$44,600 a year or more, there can be no deduction for child care expense.

The amount of income needed before a tax return must be filed has been increased from \$2,050 to \$2,350 for 1975. This will be of some help to farmers and ranchers who hire their children, deduct the wages as expenses, and still claim the children as dependents, points out Hayenga.

Christmas belongs to other sects too, Asians say

According to the manager of a large department store in Hong Kong, Christmas no longer belongs to Christians only. "The Chinese population," says he, "has made it a fete of their own."

Buddhists, Confucians, Moslems, Shintoists, Taoists and all other men of good will express in some way the spirit of the season.

In South Korea Christmas Eve is a night for revelry. The midnight to 4 a.m. curfew, imposed because of any North Korean threat, is lifted. Koreans in the thousands flock to tea houses, night clubs and hotels.

In Burma, where the people are predominantly Buddhist, one may be able to turn on the radio on Christmas Day and hear a live broadcast of Handel's "Messiah" presented by an interdenominational, multiracial choir.

"Peace on earth" is what all the "little" people think about and families pray for. In military camps there is mail from home, the best food the army can muster and the odd improvised Christmas tree perched on top of a bunker.



AT

Christmas

May your Christmas bloom with good feeling to last through the holidays and always. We're grateful for your business. Thank you!

T-BAR WESTERN

EARTH



Joy AT Christmas

During this joyous holiday we would like to express sincere thoughts that this should be a blessed season for all. To our wonderful patrons, thanks.



Joyous CHRISTMAS

May your holiday be filled with peace and serenity: the quiet contentment which comes from within. Our special thanks to the patrons we serve for putting their trust in us.



Q-P Parts, Inc.

QUALITY-PROVEN AUTOMOTIVE PARTS & SERVICE

WHOLESALE & RETAIL

EARTH, TEXAS 79031

PHONE 257-2140

P. O. BOX 567

JAMES

and MABEL WAGES



At Phillips 66 it's performance that counts

EARTH OIL & GAS CO., INC.



PRAISE GOD FOR ALL HIS LOVE AND MERCY.....

Holy Journey Made By Decree

Wise Men Follow Guiding Star to Jesus



JOURNEY OF THE MAGI — This symbolic tempera on wood by 15th century artist Sassetta of Siena, Italy, in part, depicts the rugged roads and methods of transportation during Biblical times. Here the Wise Men (on horseback) apparently are following the guiding star, lower right, to the Infant Jesus. From the Metropolitan Museum of Art, bequest of Maitland F. Griggs, 1943.

"And it came to pass in those days that there went out a decree from Caesar Augustus that all the world should be taxed . . ." So begins the Bible story of the birth of Christ in Saint Luke's Gospel.

"All the world," of course, meant the Roman Empire of the time, and the "taxation" referred to was basically an "enrollment," according to biblical scholars, a census, leading ultimately to a land tax; so it was decreed that "All went to be taxed, every one into his own city."

And so, Saint Luke goes on to tell us, "Joseph also went up from Galilee, out of the city of Nazareth, into Judaea, unto the city of David, which is called Bethlehem, to be taxed with Mary his espoused wife, being great with child."

The Bible gives us little more than those bare facts about the journey which ended at a manger outside Bethlehem. It has remained for biblical scholars and archaeologists to try to fill in the details as best they can from facts known or guessed about the Palestine of that time and from other indirect evidence in the Bible itself.

Although Joseph was a Judaeen by ancestry, he lived and plied his trade as carpenter some 70 miles to the north in Nazareth in Galilee, where Jesus spent his early years, thus becoming identified as Jesus of Nazareth.

There was a good road leading southward from Nazareth to Jerusalem and Bethlehem, for this was no "backwoods" area but one traversed by merchants and their caravans as well as functionaries of the Roman Empire, all following in the footsteps of invaders and travellers of many years.

A journey of some 70 miles over mostly hilly country without a car might give many of us pause today, particularly in view of Mary's condition. According to tradition, Mary rode a good part of the way on an ass, a common beast of burden and one certainly more appropriate to the task than either camel or horse, even had these been available to Joseph.

A journey of that distance, with Joseph walking and leading the ass, would be bound to consume several days, so it is likely that the travellers made provision for spending some nights along the way and, also, carried sufficient food and water in case supplies were not always available.

Although Nazareth was a fair-sized town, it was reported to have had only one good source of water, known today as Mary's Well, from which it would have been prudent to obtain a "canteen" before setting out on a journey. Wells and springs were to be found infrequently in the hills, particularly toward the end of the dry season, which historians believe was the most likely period for the trip of Mary and Joseph. As to food, there would have been no problem in procuring rations of bread, olives, and other provisions for the journey from an area as rich in agriculture as Galilee.

Arrival at their destination in Bethlehem did not bring an end to "roughing it" for the travellers, for there were so many who had preceded them that "there was no room for them at the inn." Therefore, this predicament led Mary and Joseph to the manger, a cattle shelter outside Bethlehem which symbolizes the birth of Jesus.

Peace

It's the greatest gift of all. On this special holiday, may you all enjoy the warmth and love that Christmas brings.

WE THANK YOU FOR YOUR PATRONAGE AND LOOK FORWARD TO SERVING YOU IN 1976

ROLL-A-COM MANUFACTURING & DISTRIBUTING CO.
Phone 806 668 2410
Rt. 2, Box 25 Tulia, Texas 79088

Letters To Santa

Dear Santa,
I am 2 1/2 yrs. old so my mama is writing this letter for me. I've tried to be good and will try to keep being good all next year.

I'd like a big ole football helmet, a horn like the band plays and a flag of the United States. Remember my little sister Brooke with a soft, cuddly animal. I'll leave you some cookies & milk.

Love,
Brannon Byers

DEAR SANTA,
I have been a good girl this year and I would be very happy if you would bring me a girl on a motorcycle for Christmas.

Thank you
Patsy Marquez

Dear Santa,
My name is Ronnie Parish. I am six years old and in kindergarten at school. I would like a basketball for Christmas.

Thank you
Ronnie Parish

Season's Greetings

We wish you peace and joy at this time and for always!

Littlefield Frozen Food Center
R. & KIRBY
We Specialize in Meats
for your Lunch & Home Freezer
PHONE 385-3818 LITTLEFIELD, TEXAS

Merry Christmas

Gather 'round the tree for song . . . laughter.
Rekindle friendships . . . extend good tidings to all.
To our loyal patrons greetings and thanks.

Route 1
Dimmitt, Texas 79027

JONES

Springlake Phone 986-2786
Sunnyside Phone 846-2671

SPRAYING SERVICE

Star of wonder

May the light of the Christmas star enter your heart and home this season—filling them with lasting joy and peace. To our patrons we would like to express our thanks for the loyalty shown to us.

GILBREATH FEED & GRAIN CO.

MULESHOE



CHRISTMAS GREETINGS

"For unto us a child is born, unto us a son is given . . . and his name shall be called Wonderful, Counsellor...The everlasting Father, The Prince of Peace."

We wish you and all you hold dear a very joyful holiday. May it be graced with health, happiness and peace. Our thanks for the kindness shown to us.

CITIZENS STATE BANK

EARTH, TEXAS - MEMBER F. D. I. C.

Dear Santa,
When you come by me house on Christmas night. Will you bring a watch and a game and a baseball. My sister wants a ring and a game to. And I want a coat. And I want a doll and a ring too.

Love
Jerrri Paige

nice and you give toys. And you are pretty and good. I hope you come to school. Everybody likes to see you and your elfs work good. Everybody likes you. Have you seen Rudolf the red nose reindeer? He has a red nose that is bright, I love you Santa Claus. My name is Rosalinda and my teachers name is Mrs. McDonald. And the class room is nice. Do you live in the north pole?

Dear Santa Claus
I like to get a doll it's name is baby Christy. Santa Claus I like you very much, you are

Good by,
Rosalinda

A Lasting Christmas by Garnett Ann Schultz

*I keep a part of Christmas
For it helps to add a glow,
To the January darkness
And the February snow.
If March is cold and blustery
And though April brings us rain,
The peace and warmth of Christmas
With its happiness remain...*

*There's a beauty when it's Christmas
All the world is different then,
There's no place for petty hatred
In the hearts and minds of men.
That is why my heart is happy
And my mind can hold a dream,
For I keep a part of Christmas
With its peace and joy supreme.*

Reprinted by permission from GUIDEPOSTS MAGAZINE,
Copyright 1974 by Guideposts Associates, Inc., Carmel, N. Y.

Dear Santa,
I am writing you this letter so you will know what I want. This is what I want: Baby Alive doll, carriage & a typewriter. I really do hope you have a Merry Merry Christmas. I hope I really do get my presents. I hope I'll see them presents under the Christmas tree on Christmas Eve. I'm really thinking about how much fun it's going to be and of course I can't wait to open my presents you know it really is a lot of fun to open presents.

Love,
Patricia Ann Garza
Merry Christmas!

Dear Santa,
I wish it was Christmas right now. So that I could see you, I hope I get to see you. And you get to give me candy. And we got seven presents under the Christmas tree. And my mother and daddy have some presents on layaway. And are you going to bring me a present if you get this. Are Christmas tree has lots of pretty things. And are Christmas has lots of lights. And it looks pretty. And this is what I want you to give me. I want a little santa claus lamp. And that is what I want from you. And I hope you get this letter. And the man whos going to them to you you'll see what I want. And be sure if your going to give it to me at school try to bring it December 24, 1975 happy new year Santa Claus. And if you don't get it. That's just going to be to bad.

Good by Santa Claus
Ruben Puentes

Dear Santa,
I hope you think I've been good. And here is what I want: A B-B gun, a G. I. Joe man, a G. I. Joe sea wolf submarine, and last of all some walkie-talkies. Have a Merry Christmas Santa.

Love
Jason Scott Hinchliffe

Dear Santa,
Please bring me a race car and a toy.

Craig Fasband
Grade 2
Room 5

Dear Santa,
Please bring me a football and a basketball and a baseball.

Lynn Slover
Room 5-Grade 2

Dear Santa,
Please bring me a doll and I want a Babby That Away.

Stacey Porter
Room 5-Grade 2

Dear Santa Clause
I want a Jewel Magic and a Weebles tree house. And a Baby that away.

Love
Connie Cain
Grade 2-Room 5

Dear Santa,
I want some guns and bicycle and a cowboy hat and play tractor.

Gregory Miller
Grade 2-Room 5

Dear Santa,
Please bring me a microscope and a star trek enterprise and a surprise.

Marty Watson
Grade 2-Room five

Dear Santa,
I have been a good girl this year and am in kindergarten. For Christmas, I would like a Baby Alive and a Baby Bundles.

Thank you,
Melanie Ward

Dear Santa,
I have been a good girl this year. I am 5 years old. For Christmas I would like to have a Baby Alive.

Thank you,
Delma Soto

Dear Santa,
I am a student in kindergarten and have been a good boy this year. For Christmas I would like to have a walkie-talkie and a bike.

Thank you,
Marvin Hood

Dear Santa,
I am 6 years old and in kindergarten. I have been a good boy this year. For Christmas I would like to have a walkie-talkie.

Thank you,
Kyle Jones

Dear Santa,
I have been a very good girl this year. I am 6 years old and am a kindergarten student. For Christmas I would like to have a Play-doh Pumper #9.

Thank you,
Raina West

Dear Santa,
I have been a good girl this past year. I am a kindergarten student too! For Christmas I would like to have a Baby Alive doll.

Thank you,
Sawnya Branscum

Dear Santa,
I have been a very good boy this year. I am in kindergarten and am 6 years old. For Christmas I would like to have a car.

Thank you,
Jeffery DeLaGarza

Dear Santa,
I have been a very good girl this year. I am a kindergarten student and for Christmas I would like to have a Baby Bundles doll.

Thank you,
Tammy Cook

Dear Santa,
My name is Monica Coleman and I want a Baby Alive Doll for Christmas.

Thank you,
Monica




GREETINGS

MERRY CHRISTMAS

Add to your holiday greetings our wishes for a happy Christmas. Thanks for your patronage. We appreciate it.

ORIGINAL TASTY TACO

5th & MIT DRIVE-LITTLEFIELD



Warm Christmas Wishes

From all of us to all of you, in gratitude and deep appreciation for your continued friendship.

PROTEIN PROCESSORS

LAZBUDDIE- PHO. 965-2811



E. D. McNEESE and FAMILY

LITTLEFIELD

Coming to you this Yuletide are our warmest holiday greetings and good wishes for a joyous season.



O, Holy Night

We wish you a Christmas rich in love and peace. Thanks, friends for allowing us to serve you.

Muleshoe Implement & Supply Co.

602 American Boulevard-Muleshoe (Formerly Ladd Pontiac)

Christmas JOY



Merry Christmas

May the serenity of Christmas find and keep you content. May every day of this joyful season be filled with joy . . . abundant in peace . . . rich in brotherhood. To all the cherished patrons we serve . . . our warmest gratitude.



DIMMITT, TEXAS

Dear Santa Claus
Would you bring me a kitten,
and some skates; and a puppy,
and a horse, and some candy,
thank you. Hope you will bring
it. I won't peek when you come,
O, K., and when I wrote this I
was in class, I am in Mrs. Mc-
Donald's class. But bring them
to my house. Please, please,
please.

Thank you
Good Bye
Angela Kay Parish

Dear Santa
I like your reindeer. I like
Rudolf best of all.
And I want a Tiffany Teller,
and a Magel Hat for Christmas.
I am eight and a half years old.
My sister is five and a half
years old.
This is just for you.
There was an old man with a
beard
Who said, "It is just as I

feared!
Two Owls and a Hen
Four Larks and a Wren,
Have all built their nests in
my beard!"

Love
Page

Dear Santa,
I want a train and village and
a Holly Hobbie doll to lay on
my bed. I don't know what els
so you can bring me any thing
els. If you even want to. Well
I better go.

Your friend always,
Kelli Huckabey
I'll leave you cookies and
milk.

Dear Santa,
I have been a very good girl
this year. I am a kindergarten
student. For Christmas I would
like to have a play stove and a
Raggady Ann doll.
Thank you,
Sandra Kay Spencer

Dear Santa,
I wish I could have a Baby
That away and a bick and some
othee toys to. I am so thankful
that Christmas is here. I just
love Christmas time. And I
wish I could have a Baby Allfie
to. And a little play house.
And a new coat to. And a big
candy-cane to. I like your little
red nose and rood off to. And a
play wach and a ball to play
with. And a hat of you to if you
have some. I want a slaking to.
This letter is for Santa.
I love you Santa?

Love
Page

Dear Santa,
I want a train and village and
a Holly Hobbie doll to lay on
my bed. I don't know what els
so you can bring me any thing
els. If you even want to. Well
I better go.

Your friend always,
Kelli Huckabey
I'll leave you cookies and
milk.

Dear Santa,
I want frow gane for Christ-
mas. And a football. I want to
see you. But I want a bikcy. I
go to Singlake shcool. My
teacher name is Mrs. McDom-
ald. I like to play ball. And a
Dump Sinta A six thous. dollar

man for Christmas. And a truck
for Christmas and a car.
by Richard

Dear Santa,
I would like a baby doll dressed
in pink for Christmas. I am five
years old and in kindergarten.
Thank you,
Mecca Sauseda

Dear Santa,
My name is Michael Pittman.
I am five years old, I would like
an Electric Train for Christmas.
Thank You,
Michael

Dear Santa,
The toy I want most for Christ-
mas is a Six-Million-Dollar
Man. I have been very good
this year. I am five years old
and in kindergarten.
Thank you,
Chad Metcalf

Dear Santa,
My name is Johnny Shepard
and I am five years old. I would
like a big yellow Tonka dump
truck for Christmas.
Thank you,
Johnny

Dear Santa,
My name is Jimmy Fulenwider
and I live in Springlake. I am
five years old and I would be
very happy if there were a red
race car under the Christmas
tree for me Christmas morning.
Thank you,
Jimmy

Dear Santa,
I am five years old and a very
good boy. Would you please
bring me a race car that is red
with a man in it.
Thank you,
Larry Price

Dear Santa,
My name is Elda Lopez. I
would like a baby doll dressed
in red for Christmas.
Thank you,
Elda

Dear Santa Claus,
I have been a good girl this
year. I want a Weebles Tree
House, dishes, and a baby that
cats and drinks.
I love you,
Michele Holmans

Dear Santa,
I have been a good boy this
year. Also I am a kindergarten
student. For Christmas I would
like to have a big wheel to
ride.
Thank you,
Charles Brantley

Dear Santa,
I am a student in kindergarten
this year and have been a good
boy. I would like to have a G. I.
Joe doll for Christmas.
Thank you,
Ronnie Morris

Dear Santa,
I have been a good girl this
year and am a kindergaretn

student. For Christmas I would
like to have a bike.
Thank you,
Ermalinda Espinoza

Dear Santa,
I have been a good boy this
past year. I am in kindergarten
too! For Christmas I would like
to have a model cattle truck.
Thank you,
Skeeter Mayhan

Dear Santa,
I have been a good boy this
year and am in kindergarten.
For Christmas I would like to
have a R. B. gun.
Thank you,
Paul Salazar

Dear Santa,
I am in kindergarten this year.
I have been a good boy this
year. For Christmas, I would
like a police pickup and a road
grader. I'll come see you!
Thank you,
Brett Fryar

Dear Santa,
I have been a very good girl
this year. I am a kindergarten
student and 5 years old. For
Christmas I would like to have
a Baby Alive doll.
Thank you,
Elisa Vega

Dear Santa,
I have been a very good girl
this year. I am in the kinder-
garten class at school. For
Christmas I would like to have
a little purse.
Thank you,
Elena DePerez

Dear Santa,
I have been a good boy this
year. I am 5 years old and a
kindergarten student. For Christ-
mas. I would like an electric
motorcycle that I can ride.
Thank you,
Jack Shepard

HAVE A MERRY CHRISTMAS AND A HAPPY NEW YEAR...

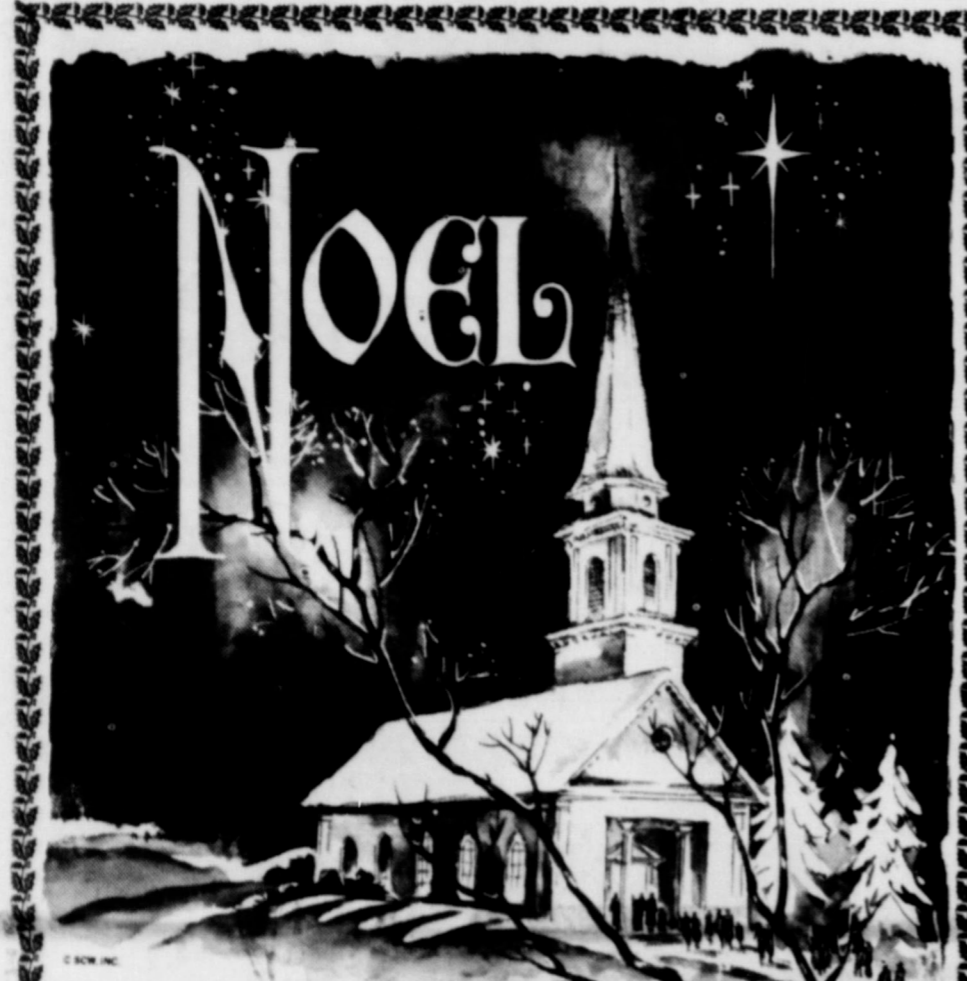


Merry Christmas

*Yuletide greetings to one
& all! May your holidays be gay!*

McNAIR SEED CO.

DALE MEIXNER-DISTRICT SALES MANAGER
LUBBOCK-PHONE 744-0210



**WE PRAY THAT
PEACE BE WITH YOU**

May that peace that passes understanding... the peace
of Jesus Christ, our Lord... come into every heart
this Christmas. We wish you and yours the very best!

WE WISH TO THANK YOU FOR YOUR BUSINESS IN 1975
AND WILL BE HAPPY TO SERVE YOU IN 1976

LAZBUDDIE FARMERS SUPPLY, INC.

LAZBUDDIE



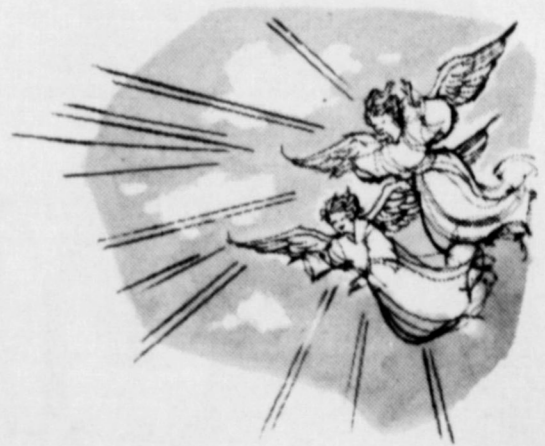
Greetings

Let's celebrate this Christmas season with
sincere wishes for a simply wonderful holiday. To
all our friends and neighbors go many thanks
for your continued patronage and goodwill.

WE ARE LOOKING FORWARD TO SERVING YOU IN 1976

SHERLEY-ANDERSON LAZBUDDIE ELEVATOR

*A
Joyous
Christmas*



Rejoice in the glorious birth
of our Savior. Find inner peace and
warmth in the true spirit of
Christmas. Our gratitude
for your kind patronage.



Davis & Pyle Pump and Drilling Co.

GEARHEAD REPAIR-WE PICKUP AND DELIVER
WE HAVE THE PEERLESS DEALERSHIP FOR THIS AREA
WE ALSO HAVE RETCO- WORTHING TON-FAIRBANKS MORRIS
AND ALL MAJOR BRANDS OF PUMPS
LOCATED IN THE FORMER B&W PUMP CO. BUILDING ON NORTH
HIGHWAY 385 IN SPRING LAKE
L. T. DAVIS---OWNERS---FLOYD PYLE

Dear Santa-- I Would Like to have a Tractor and a Horse and a Plane and ...



Dear Santa,
My name is Jill Hamilton. I would like a fuzzy teddy bear if you have one. Would you please bring me a Big Wheel and a sit up stroller.
I have been pretty good this year. Thank you for the things you brought last year.
Your friend,
Jill

Dear Santa Claus,
I want a bicycle for Christmas. I have been a pretty good girl. I want some Indian Jewelry also.
Carman Taylor
P. S. I also want some skates, baby you take a bath with.

Dear Santa,
I am writing this letter to tell you what I want for Christmas. I want a G.I. Joe Seawolf Submarine; or a B.B. repeating gun. I hope you and your wife have a very Merry Christmas.
Your friend,
Joe Robert Garcia

Dear Santa,
I wish to get an evil kenevill stunt cycle. December is the jolliest month of the year, but it would not be if it weren't for you. December 25th is the happiest holiday of all, so is new year eav.
Love
Albert Daniel

Dear Santa Claus,
I want to now how you are doing. I am doing fine. I wonder how you are doing in the north pole. We are wondering when you will be hear on Christmas. I am wondering when you are going to by hear on Xmas day I want a doll a motor bike, a bike, a watch, rack trak, Barbie doll, sleeping bag, radio, record player, taps, a doll too sit up on my dresser, clothes, shoes, ring, top player, neoteir, cweir bag, Debbie de stunt cycle, Derdie Birtle games, blackboard, umbella, organ, new coat, and candy.
Beth

Dear Santa Claus,
I wish I could have a doll that crales and walkes and a bear that walkes to. And a Santa Clas doll to and I wish I could have a watch and ring to. And I wish I could have a dog that barkers to. And I wish I could have some dreses and some pansis to. And I wish I could have some shoes to. And Santa this is the last thing it will be the esy bake oven. O heres a other thing what I want a coloring book of you. Dear Santa I think this is all for now. good-by Santa. I like you.
Linda Rosalez
P. O. Bcx 184
Spring-lak, Texas

Dear Santa,
I want a train for Christmas, and I want a truck for Christmas too. I am saving some money to by Kandi a baby cralde. I have saved up ten dollars to by mother a coffee pot for Christmas. And I saved up five dollars to by father a drill and I want a pair of walkie talkies and a c-b too. My father has been wishing for a new pickup and mother has been wishing for a new house. I have been wishing for another dog for my dog and I want a TV.
Love
Johnny Robbins

Santa Claus
Come to my house from North Pole and limey a car Evil Knevl.
from Max

Dear Santa Claus
How are you I hope you are fine how is your wife I am nice and I hope you will bring me a present for Christmas and put it under the Christmas tree. I want a doll that can walk and a Barbie that has a house and some pants and ear rings. That all I want and I hope you will bring it.
Love
Joelda

Dear Santa
I want some sheets and a Barbie town house and stilts. And Ray Day Clue Life the game. Clay wants stuff that goes on a farm cars and trucks and some horses.
We wish you a Merry Christmas, We've beingood and bring us a surprise.
And I want a Bless you Baby Tender Love.
Clayton wants a putt putt rain-road and spldually.
Love
Wendy Lynn and
Clayton Patrick Bulls

Dear Santa:
I wish for walke talkes, And I want some racing cars and a

pellet gun. Now I wish for a little chopper that runs on batteries. And I wish for the game named Sorry. And I want some bebes for my bebe gun. And I wish for a miney bike.
Good by Santa Claus
By Jamie

Dear Santa
I have been good most of the year. But some times I have been mean and didn't want to go to bed or play the piano. but I am usualy very nice so if you think, I am good well you will give me some toys. but if I am mean you won't give me any toys. but if I am nice will you please give me these. The Beast, and Big Jim and Dr.

Steel and the game Pay Day. And that's all Santa.
From
Ken Craft

Dear Santa,
Please bring me a train and a race car.
Michael Ray Ruiz
Room 5-Grade 2

Dear Santa,
Please bring me a train and a TTP motorbike.
Danny Dee Taylor
Grade 2-Room 5

Dear Santa,
I want a electric train and some cars and a Magic hat.
Michael Marquez
Grade 2-Room 5

Dear Santa,
I what a doll that cries and sleeps.
Artie Posada
Grade 2-Room 5

December 12, 1975
Dear Santa,
I want a doll that crawls and walks, and a snowman that does ice cream cones and a doll.
Mary Gonzales
Room 5

Dear Santa,
My name is Leann Oustad and I have been a good girl this year. Please bring me a Bath-tub Baby, a Jewel Magic and a View Master. Bring my little

brother Kevin a Digger Dog and a chatter phone. He has been a good boy.
Thank you,
Leann Kevin

December 12th, 1975
Dear Santa Claus,
How are you doing Santa. I want three things for Christmas I want a little car, I want a big truck, I want a little play bus.
Martin Gallegos
Grade two-Room 5

Dear Santa,
You are a nice man. So will you bring these toys. A tape recorder, tapes for the recorder, mighty-mo dump truck, skates

camer, Bee-Bee gun, bee-bees Fire truck, police car, western suit, basketball shoes, boots and a new rope.
Jerry Dunlap

Dear Santa Claus,
I want a B-B gun and a bike. And a motor skooter. Please bring my little brother some car. And boxing gloves, and a fire engine and a tricycle. We have been good boys.
Love
Patrick Zamora

Dear Santa,
Please bring me a gun and cowboy hat.
Dickie Hood
Grade 2-Room 5



Merry Christmas

These carolers' glad refrain helps express our season's sentiments. May the holidays be merry and bright in the happiest of Yuletide traditions. To the many friends that have given us the pleasure of their patronage... our sincere gratitude.



Christmas Greetings

Good tidings to all our dear friends and patrons. Our pleasure is serving you and we're grateful for all your kindness. Thanks.

PIERCE'S SPECIALTY SHOP
LITTLEFIELD

"WHERE YOU ALWAYS BUY THE BEST FOR LESS"

GIBSON'S

DISCOUNT CENTER

1723 W. AMERICAN AVE. --- MULESHOE

"Dear Santa: I've Tried to Be Good, and I Want ..."



Dear Santa Claus,
I want baby that a-way, brush set, doll bed and a baton.
Thank you
Santa Claus

P.S. have a Merry Christmas
Kimberlee Radford

Dear Santa Claus
I written you this letter it tell you bren good. Want you on i want for Christmas i want a bike for Christmas and a 4 dolls and a merry Merry Christmas and tell red nosie i love him, and you Sant Clas and Mr. Sant Clas and all the riandera and mother riandera,
Lucy Sabehac

Dear Santa,
I want you to bring me a doll and a record player.
Audra D'Ann Neinst
Grade 2-Room 5

Dear Santa Claus,
I want a guns and a cowboy suit and a bike and I want a truck.

Julian Sabedra
Grade 2

Dear Santa
I want a Baby Thataway that can crawl and some
Stacey
Room 5

Dear Santa,
I want a teddy bear and a dump truck and a Santa Claus puppet.

Love
Steven Haberer
Grade 2-Room 5

Dear Santa,
My name is Norma Garza and my po box is 127. Santa I would like a doll for me and some candy from you Santa.
Santa I would like to see you with my own eyes.
Norma Garza

Dear Santa Claus,
I want a pair of boots and a belt to, please if you can get around to it. And don't forget Bobby he wants a guitar Billy wants a watch Liz wants to be a nurse. Mama allready opened her presents so has Daddy he got a suit belt. Well Santa, thats all I can think of.

Good by
Kathy Pyle

Dear Santa Claus,
I want a toy elephant and a ball and I want a shirt and pants and a coat and socks and a doll and a dog and I want a belt and a ring and a radio and rug and I want a map and I want a jacket and some jeans and a horn and I want a vest and I want a fireplace and a book and I want shos.

from
Angilla Morris

Dear Santa,
I want a doll that walks and crawls.

Christy Longoria
Grade 2-Room 5
Love Santa

Dear Santa,
I want a doll that eats and drinks and a snowman that makes snowcones.

Love Santa
Sandra Lynn Nail
Grade 2-Room 5

Dear Santa,
Would you please bring me a toy. And would you bring me a doll that talks. And shirt and pants and a coat. And would you bring me a puppy. And Santa please bring Christi and Shawndia a doll to.

Love
Sharman

Dear Santa Claus,
I want a doll that walks and cralls and five pants and a dress and a toy puppy and socks and shoes and a toy reindeer.

Esmeralda Rodriguez

Dear Santa,
How is Mrs. Santa. How are you doing. I want a game and doll a hastbal TV tennis dog cat and boots dress coat shirt.

Love
Vickie Ann King

GOOD LUCK! THAT'S ODD!
According to an ancient fancy, there's luck in odd numbers.

I'M THE BOSS OF THIS MOVIE!
It is said of a well in England that if a bride drinks of it first, she will rule the house, if her husband does, he will.

A TRUE STORY THE CHRISTMAS STORY

The king told the people they must go to there home town so the people sat out for there home town. A lot of people went to bethlehem. Mary was esperting a baby his name was to be Jesus. Jesus was born in a manger and the manger was in a stable. Why it was in stable was because they could not find a place to stay. Thats why we have presents and Santa Claus. I like Christmas. Do you?

M. R. Watson
Grade 2

Italian Foods at Christmas Vary According to Regions

Feasting is an integral part of the Christmas celebration, symbolizing not only rejoicing at the coming of Christ but, also, the spirit of sharing and brotherly love which is characteristic of the season. Like so many other aspects of Christmas, it is a blend of Christian and pre-Christian traditions, strongly influenced by local customs.

In Italy the dishes of the Christmas feast vary widely depending on the region. In the north, for example, the meal may begin with cappelletti ("little hats") stuffed with meat or tortellini, a sort of ravioli, followed by a main dish of meat, which may be anything from roast turkey with chestnut stuffing to zampone, a pork sausage packed in a pig's leg smothered with lentils.

In the area around Rome, the traditional dish of Christmas Eve is "capitone," a large female eel, roasted, baked, or fried, following a religious tradition which prescribes a meatless dinner on Christmas Eve, the Vigilia, or Christmas vigil. In accordance with this tradition, the Roman fish market, held the night of December 23rd, is a peculiar feature of the Christmas observance.

In the south of Italy, the feasting usually begins with macaroni with meat and tomato sauce, followed by chicken or meat in jelly.

Particularly characteristic of Christmas feasting in all regions are sweets: fruitcakes of various types (panetton) and other sweets in which nuts and honey figure prominently.

The Christmas season coincides with the lengthening day and the beginning of the New Year, and from ancient times nuts have been a symbol of fertility and a promise of the next year's harvest, also representing hope for increase in herds and flocks, and the family, as well. The use of honey, the most common sweetener in ancient Rome, was a traditional way of conveying the wish that the new year might be as sweet as the gift.



The saying, "Happy as a clam at high tide," stems from the fact that clams are gathered only when the tide is out.

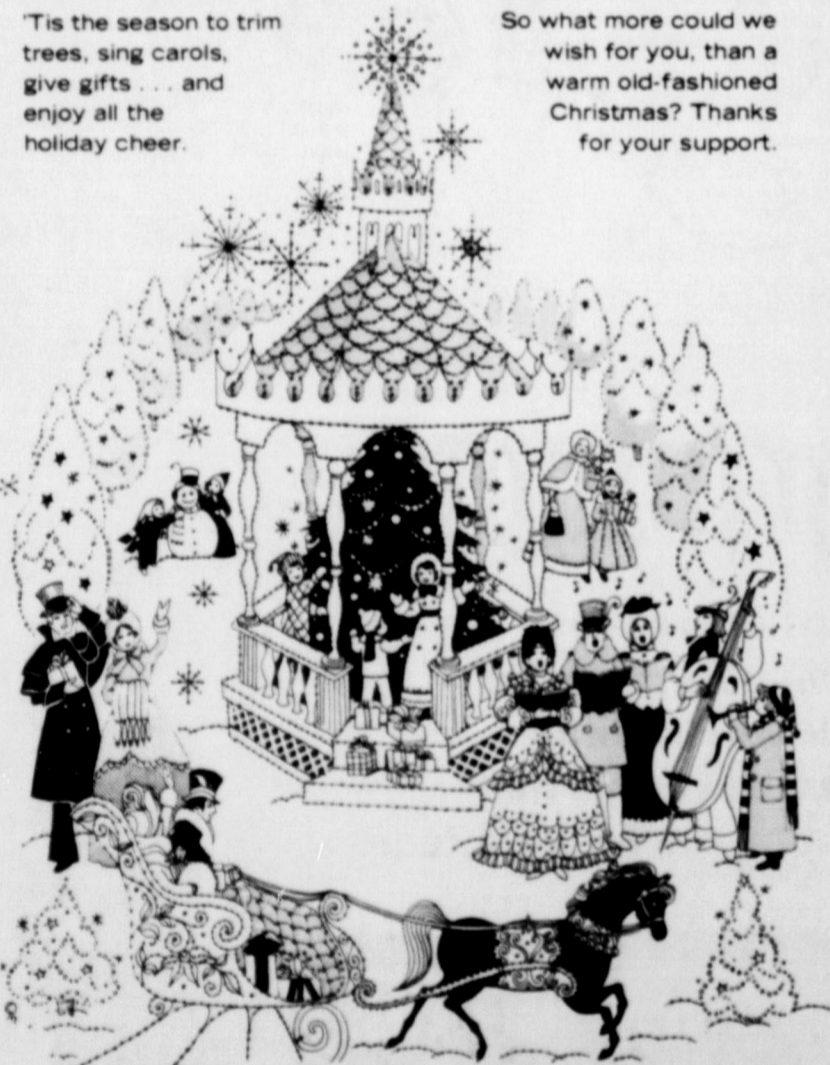
OUR FONDEST WISHES
FOR A VERY
MERRY
CHRISTMAS
TO ALL... AND
SINCEREST
THANKS
FOR
YOUR
PATRONAGE

Plains AUTO PARTS
P.O. Box 200
MULLEN, TEXAS
79047

MERRY CHRISTMAS

'Tis the season to trim trees, sing carols, give gifts ... and enjoy all the holiday cheer.

So what more could we wish for you, than a warm old-fashioned Christmas? Thanks for your support.



MERRY CHRISTMAS
FROM ALL THE GANG

-AT-

Cry & Cox INC.
401 S. FIRST
MULESHOE
TEXAS 79047
PH. 272-4511



During this happy holiday season we hope for one and all the best things that Santa's knapsack has to offer . . . peace and faith, brotherhood and good will. These are gifts to be treasured and enjoyed not only at Christmas time but all the year 'round. With these go wishes to brighten up everyone's Yuletide . . . good times, good friends and warm feelings. We wish you all these and thank you for your valued friendship and support. Have a happy!

BAILEY COUNTY ELECTRIC COOPERATIVE
MULESHOE



The Rush Is On To Get Voters Registered

"It's a run for your money" so to speak, at the tax assessor-collector's office as personnel swiftly attempt to get approximately 9,000 pre-printed voter registration cards mailed before postal rates go up on December 28.

Secretary of State Mark White notified county tax assessor-collectors last week that they could begin mailing the new registration cards at any time. As originally scheduled to go out on November 5, the new voter registration applications would have helped tremendously to straighten out goofed up voter registration lists that have resulted from permanent registration.

Legislators were aware of the mess voter registration lists were in, across the state and passed a senate bill calling for a new voter registration procedure which would allow tax assessor-collectors to take the names of all voters off the list who did not return the new

forms. Shortly thereafter, one black and one Latin American filed a suit, alleging that taking off, or purging, voters from the rolls who did not return registration cards was discriminating against minority groups.

A planned mailing on November 5 was held up by a group that included the American Civil Liberties Union and the Mexican-American Legal Defense Fund. The result is that these notices can now be mailed out with the addition of a notice in both English and Spanish which says in effect that you are not required to complete and return the form in order to continue to vote.

The notice does go on to say that if you live at a new address, you must complete and return the form showing your current address. But who is going to see to it that all these changes of address over the past four years are forwarded.

Whether or not tax assessor-collectors will be allowed to remove the names of these notices that aren't deliverable hasn't been ruled on yet.

The county will have to spend approximately \$900 for postage to mail out the notices which will do very little to correct the registration list. Many voters who have moved won't receive notices. If voters haven't changed addresses, they can ignore the registration if they wish. And since the registration forms will have to be returned at the voters' expense, it is a toss-up how many will bother to complete and return the forms and affix the 10 or 13 cents postage stamps.

Herbert Dunn wouldn't hazard a guess on the percentage of applications which will be returned. He said he expects the older voters to bring theirs in when they come in to pay taxes.

One area tax assessor said he didn't expect more than 50



SEATED ON SANTA'S KNEE... and relating all the things he wanted for Christmas is Kelley Goobby, grandson of Larue Glenn, mail carrier who brings mail into Garth.

percent to be returned.

Dunn said all he can do is hope and encourage voters to return the applications to help update the registration lists.

Since the permanent registration began in 1972, it's anyone's guess as to how many have moved or died. It is estimated that at least a million persons across Texas are on the registration lists who should be in different voting districts, etc.

On the new forms there is a place to write in the voter's name, place of birth and add the voter's social security number (also optional) which will help prevent duplications. No longer will a woman be listed by Mrs. preceding her husband's name, she will be registered by her first, maiden, and last name.

Looks like only those who complete and return the voter registrations to the tax office will be re-registered. However, those who don't respond will remain eligible voters. Tax assessors can send renewal notices, but may not purge registration rolls of the names of persons

Religious Cards Take Lead In Popularity

"Sorry, we don't have any more Christmas cards, only some religious ones."

These words, supposedly spoken by a saleswoman to a last-minute shopper for greeting cards a good many years ago, wouldn't be meaningful now.

During recent Yule seasons, who do not renew.

The court order by U.S. District Judge William Wayne Justice hampers the effort to clean up voting lists. This will only skim over the top instead of vacuuming it clean.

This seems to be another example of what just two people claiming discrimination against a minority can block what would have been for the good of the majority. Its causing the question, "What the heck is wrong in favoring the majority."

As Dunn understands it, the current status of the law and court action regarding present registrations are in effect until 1978.

greetings with a religious message have led the way in popularity. The wryly-humorous idea that anyone looking for cards wants some that show only the convivial side of Christmas was never very funny, and now it definitely isn't true.

Early cards pictured dancers and skaters, holly and mistletoe, robins and other birds, beautiful women and charming children and flowers by the score.

Such themes still appear, but they take second place to religious messages—especially, "Peace on earth, good will toward men."



The American Physical Therapy Association reveals that more than 150,000 Americans undergo physical therapy daily for such conditions as arthritis, spinal cord injuries, fractures and neuromuscular diseases. Devote your time and money to the therapeutic activities of the association.

REGIONAL OCCUPATIONAL CENTER - PLAINVIEW

708 YONKERS (Muncy Building Phone (806) 293-3605)

Division Of South Plains College

PLAINVIEW, TEXAS 79072

REGISTRATION: Registration for classes will be from January 5 through January 23, from 9 a.m. to 4:30 p.m. NIGHT REGISTRATION will be January 5, 6, and 7, from 7 to 9 p.m. All registration will be in the MUNCY BUILDING, 708 YONKERS. Late registration will be through January 23.

EVENING SCHEDULE

COURSE & NO.	DESCRIPTION	NIGHT	COURSE & NO.	DESCRIPTION	NIGHT	COURSE & NO.	DESCRIPTION	NIGHT			
AGRICULTURE			AGRICULTURE TECHNOLOGY			BUSINESS VOCATIONS					
A G 135-96	Principles of Horticulture	Monday	A T 135-96	Agriculture Economics	Tuesday	B V 131-96	Lab-Intermediate Typewriting	TBA			
A G 232-96	Welding	Monday	A T 231-96	Farm Power & Machinery	Tuesday	B V 132-96	Elementary Shorthand	Mon & Tues 8:00-10:00 p.m.			
AUTOMOTIVE MECHANICS			A T 231-96	Lab-Farm Power & Machinery	Wednesday	B V 132-96	Lab-Elementary Shorthand	Mon & Tues 6:00-8:00 p.m.			
A M 0701-96	Auto Mechanics	M-T-W-Th 7:00-10:45 p.m.	A T 233-96	Agriculture Chemicals	Wednesday	B V 133-96	Intermediate Shorthand	TBA			
A M 0702-96	Auto Mechanics	M-T-W-Th 7:00-10:45 p.m.	ART 237-96	Advertising Art	Tuesday	B V 133-96	Lab-Intermediate Shorthand	TBA			
A M 0703-96	Auto Mechanics	M-T-W-Th 7:00-10:45 p.m.	B V 130-96	Business Vocations	Mon & Tues 6:00-8:00 p.m.	B V 134-96	Transcription Procedures	Wednesday			
			B V 130-96	Elementary Typewriting	TBA	B V 135-96	Business Math	Thursday			
			B V 131-96	Intermediate Typewriting	8:00-10:00 p.m.	B V 136-96	Business Machines	Thursday			
						B V 136-96	Lab-Business Machines	TBA			
						B V 137-96	Personal Finance	Monday			
						B V 233-96	Secretarial Procedures	Thursday			
						B V 235-96	Business Communications	Wednesday			
						CHEMISTRY					
						CHM 130-96			Preparatory Chemistry	Thursday	
						ENGLISH					
						ENG 030-96			Basic English	Monday	
						ENG 031-96			Reading Skills	Tuesday	
						ENG 032-96			Technical Writing	Wednesday	
						ENG 130-96			English Usage	Thursday	

DAY CLASS SCHEDULE

Course & No.	Description	Time	Day	Course & No.	Description	Time	Day
ENG 030-95	Basic English	8:00	MWF	ENG 031-95	(Lab)		TBA
B V 135-95	Business Math	8:00	MWF	M M 135-95	Credits & Collections	11:00	MWF
B V 136-95	Business Machines	8:00	MWF	B V 137-95	Personal Finance	8:00	TT
B V 136-95	(Lab)			EDU 130-95	Intro to Education	8:00	TT
M M 134-95	Salesmanship	8:00	MWF	H S 235-95	Recreational Activities	8:00	TT
NHA 232-95	Intro to Social Psychology	8:00	MWF	M H 232-95	Pharmacology	8:00	TT
MTH 0312-95	Basic Arithmetic	9:00	MWF	ENG 033-95	Technical Writing	9:30	TT
B V 238-95	Basic Accounting I	9:00	MWF	M M 131-95	Human Relations	9:30	TT
ENG 130-95	English Usage	9:00	MWF	MSE 231-95	Medical Office Procedures	9:30	TT
M M 232-95	Principles of Management	9:00	MWF	H E 231-95	Interior Design	9:30	TT
SCI 131-95	General Science	9:00	MWF	CHM 130-95	Preparatory Chemistry	9:30	TT
HST 037-95	American Studies	10:00	MWF	B V 132-95	Elementary Shorthand	11:00-1:00	TT
B V 130-95	Elementary Typewriting	10:00-12:00	MWF	B V 132-95	(Lab)		TBA
B V 131-95	Intermediate Typewriting	10:00-12:00	MWF	B V 133-95	Intermediate Shorthand	11:00-1:00	TT
M M 238-95	Principles of Retailing	10:00	MWF	B V 133-95	(Lab)		TBA
SPA 141-95	Beginning Spanish	10:00-12:00	MWF	B V 134-95	Transcription Procedures	1:00-2:30	TT
ENG 031-95	College Reading Skills	11:00	MWF	(Concurrent enrollment in BV 133-95 is required)			
				SOC 237-95	Mexican American Studies	11:00	TT

CLASSES BEGIN JANUARY 12, 1976

PLACE: Classroom assignment will be made during registration.

COST: Credit Courses

3 hours - \$58.00	9 hours - \$105.00	15 hours - \$170.00
6 hours - \$76.00	12 hours - \$140.00	18 hours - \$178.00

MINIMUM ENROLLMENT: A minimum enrollment of twelve persons is required for a course.

ADMISSION REQUIREMENTS: Person must be a high school graduate or possess the GED Certificate. Persons without the GED may apply for probationary enrollment to the Dean, ROC.

STEPS FOR ADMISSION:

1. Complete application for admission (social security number required).
2. Official transcript from last school attended (high school or college).
3. Must file an immunization certificate as required by state law.

All of the above three steps can be accomplished during registration. Forms will be furnished.

FOR FURTHER INFORMATION CONTACT LEON HARRIS, DEAN.

OCCUPATIONAL PROGRAMS

All classes meet from 8:00 a.m. to 2:30 p.m., Monday thru Friday

AUTOMOTIVE MECHANICS

- A M 1401-95 Automotive Mechanics, Full-Time
- A M 1402-95 Automotive Mechanics, Full-Time
- A M 1403-95 Automotive Mechanics, Full-Time
- MTH 0312-95 Fundamentals of Arithmetic

Radio & Television Servicing

- RTS 1401-95 Radio & Television Servicing, Full-Time
- RTS 1402-95 Radio & Television Servicing, Full-Time
- RTS 1403-95 Radio & Television Servicing, Full-Time
- MTH 0312-95 Fundamentals of Arithmetic

EDUCATION

EDU 130-96 Intro to Education Wednesday

FT 232-96 Fire Administration II Thursday
 FT 233-96 Building Construction & Codes Wednesday
 FT 235-96 Fire Safety Education Monday
 FT 238-96 Hazardous Materials II Tuesday

H E 131-96 Principles of Nutrition Wednesday
 H E 132-96 Home Management Monday
 H E 231-96 Interior Design Tuesday
 H E 232-96 Preschool Child and His Environment Wednesday

H S 133-96 Human Growth & Development Monday
 H S 135-96 Basic Health Care Monday
 H S 231-96 Developing Leadership Behavior Thursday
 H S 234-96 Intro to Foster Care Tuesday
 H S 235-96 Recreational Activities Wednesday

HST 037-96 American Studies II Monday
 HST 037-96 American Studies I Thursday

M H 234-96 Rehab. of Institutionalized Client Tuesday
 M H 238-96 Aging & Its Related Problems Wednesday
 M H 237-96 Psychology of Mental Health Tuesday

M M 114-96 Management Seminar TBA
 M M 115-96 Management Seminar TBA
 M M 131-96 Human Relations Wednesday
 M M 131-97 Human Relations Wednesday
 M M 134-96 Salesmanship Wednesday
 M M 135-96 Credit & Collections Monday
 M M 214-96 Management Seminar TBA
 M M 215-96 Management Seminar TBA
 M M 231-96 Communications in Mgt. Tuesday
 M M 232-96 Principles of Management Thursday
 M M 236-96 Small Business Management Tuesday
 M M 237-96 Personnel Management Thursday
 M M 238-96 Retailing Thursday
 M M 239-96 Production Problems Monday
 M M 2312-96 Mgmt. Decision Making Tuesday
 M M 2313-96 Financial Management Wednesday

MSE 131-96 Medical Terminology Monday
 MSE 231-96 Medical Office Procedures Tuesday

MTH 0312-96 Fundamentals of Arithmetic Tuesday
 MTH 0312-97 Fundamentals of Arithmetic Wednesday

PNO 233-96 Photography I Monday

PSY 235-96 Applied Psychology Thursday

RTS 0701-96 Radio & T.V. Servicing M-T-W-Th 7:00-10:45 p.m.
 RTS 0702-96 Radio & T.V. Servicing M-T-W-Th 7:00-10:45 p.m.
 RTS 0703-96 Radio & T.V. Servicing M-T-W-Th 7:00-10:45 p.m.

WLD 0701-96 Welding M-T-W-Th 7:00-10:45 p.m.
 WLD 0702-96 Welding M-T-W-Th 7:00-10:45 p.m.
 WLD 0703-96 Welding M-T-W-Th 7:00-10:45 p.m.
 WLD 0704-96 Welding M-T-W-Th 7:00-10:45 p.m.

Regional Occupational Center

DIVISION OF SOUTH PLAINS COLLEGE

708 YONKERS - MUNCY BUILDING

PLAINVIEW

PHONE (806) 293-3605



JUNIOR HONOR STUDENT... attempts to break the pinata hanging high above his head.

Give A "Safety" Gift For Christmas

AUSTIN-December 19--If you haven't completed your Christmas shopping, The Texas Safety Association suggests a couple of gifts for safety this holiday season. One requires the giver to exercise his will-power, the second gift to demonstrate his love.

The first gift would help insure that holiday travelers reach their destinations safely and still a good financial risk for their Christmas creditors. That is to "give" yourself one hour for every drink you take at a holiday party before you start to drive anywhere, including home.

The reason behind this, the Texas Safety Association explains, is that the body requires about one hour for the alcohol in the average drink to be eliminated from the drinker's body.

Because half of all traffic fatalities involve alcohol, the one-for-one rule is vital to reduce holiday traffic crashes when partying and driving often are commonplace.

The second gift is a present to the child of your choice of an appropriate child restraint system for the car he/she rides in, instead of permitting him to ride unrestrained in a dynamic environment. Nationwide the National Safety Council reports that almost 1,500 children under the age of five lose their lives in traffic crashes annually. Many could be saved if they wore proper safety harnesses.

Ordinary seat belts are unsuitable for very young children, because in a crash the heavy-duty belts can do heavy damage to a child's fragile body. Child restraint systems are designed to more effectively distribute the forces of collision around the body, lessening the chances of injury.

Child restraints are available at moderate cost from many automobile dealers and juvenile stores. They would make an excellent gift for a youngster and might be the most important gift a parent or grandparent could ever give, TSA says.



Max Crim
Clays Corner, Texas

Max says, "I planted WEATHER MASTER corn this year. My WEATHER MASTER EPX-888 made over 10,000 lb. dry wt. I was really pleased with that."

"It is the best corn I have ever planted, and I will plant it again next year."

Early book now while supply is good on all varieties at:

Interstate

800 Am. A Fertilizer, Inc. Farwell
Bill Roberts -
Owner 481-3838
Max Crim -
Area Rep. 965-2742



Oh My Gosh!

... through the hustle & bustle of helping Santa with all his needs, we may have failed to extend our best wishes to all our friends & customers.

May We Take
This Opportunity To
Wish Everyone

A
MERRY
CHRISTMAS

And A

Happy New Year

FIRST STATE BANK

DIMMITT---MEMBER F.D.I.C.

Christmas Season Can Bring Dangers

'Tis the season to be careful. Extra fire hazards in the home, excited youngsters and busy adults can trigger increased accidents during the Christmas season.

Falls when handling boxes and using ladders are common. Gift-buyers need to be wary of toys with rough, sharp edges or small parts that can be swallowed. Some dangerous toys are made of lead or are coated with poisonous lead-based paint.

But Christmas trees, candles and heating devices present special problems, according to



KIDDO'S ENJOY GAMES... They are picking up the candy that was scattered after a lucky student broke the pinata and scattered the goodies. They are Stephanie Parish, Kim Haydon, Loretta James, Jeannie Haydon, Cindy Clayton and Steve Robinson.

Danger symptoms include drowsiness, headache, tightness across the forehead, confusion, nausea and muscular weakness.

Some major causes of CO poisoning are running a car in a confined place like a garage, closing a fireplace damper before the fire is entirely out and

faulty home heating systems (which should be checked annually.)

A little care can keep Christmas cheer from turning into tragedy.

TRUST ME!
Self-Trust - The essence of heroism.

HOSIERY DEPARTMENTS are featuring large selections of hard sole slippers and casual shoes such as espadrilles, wedges and sandals. Popular casual styles look similar to selections in regular shoe departments, but are generally about half the price.

Merry Christmas

Thank You Friends

I CANNOT LET THE OPPORTUNITY PASS WITHOUT SAYING "THANKS A MILLION" FOR THE MANY YEARS OF FAITHFUL PATRONAGE I HAVE RECEIVED FROM YOU, I SINCERELY WISH YOU A HAPPY HOLIDAY SEASON AND A PROSPEROUS

NEW YEAR

H. L. DENNIS

OLTON

the Texas Medical Association.

A Christmas tree can be a torch ready to ignite in the home. Faulty wiring on lights, a carelessly flicked cigarette ash or curious youngsters can easily ignite dry branches.

One way to cut down on danger is to keep the tree bottom anchored in wet sand or set in water to help keep the branches from drying out so quickly. Some lighting repairs can be made safely using a roll of electricians' tape, but of course

a new string of lights is much cheaper than hospital bills or furniture replacement from fire damage. Buying Underwriters (UL) approved equipment adds extra safety.

Curious kids can often burn themselves on hot lights or even overturn some Christmas tree. A well-placed, firmly anchored tree with ornaments placed out of children's grasp adds increased safety but even the biggest, safest Christmas tree cannot withstand a persistent child for long.

Our forefathers were used to candles and took appropriate precautions but modern Americans often forget that that soft glow can be dangerous. A runaway flow of hot wax can ignite some materials and the tiny candle flames cause their share of blazes when they are placed too near to flammable objects like curtains, walls, some plastic flowers, etc. Sometimes a candle in a glass holder can crack the glass and unleash trouble.

Screens in front of open-flame heaters and fireplaces can prevent many accidents. But all family members should know what to do when clothing catches fire. Above all, don't run; don't panic. Roll on the ground; smother the flames with a blanket or a coat. Get severely burned persons to a doctor immediately. For severe burns, apply a clean cloth to keep out air. Keep the victim's head and chest a little lower than the rest of the body. Raise

the legs if possible. If the victim is conscious and can swallow, give him plenty of non-alcoholic liquids to drink. Do not apply ointments, greases, baking soda or other substances to extensive burns. For minor burns, wash in cold water and/or apply clean ice to relieve pain. Place a pad over the burn and bandage loosely.

But prevention can save pain. Eliminate fire hazards, practice smothering clothing fires and pre-plan escape routes from burning rooms. The children probably will enjoy a couple of drills, valuable practice that helps prevent panic for everyone.

Some heaters can produce deadly carbon monoxide, CO, gas. This killer is odorless, colorless and tasteless. Hazardous quantities usually accumulate when a relatively cool, slow fire burns in limited air. Autos are also a prime source.



BEST WISHES

Happy New Year from us with an extra measure of health... happiness!

SWAP SHOP

MULESHOE

Merry Christmas

Here comes Santa Claus and friend laden with season's wishes to our many fine customers. A happy holiday to all. Thanks.



As we close the book on a good year, we look forward to one even better, shared with our friends.

Greetings

Ring the bells with Christmas cheer, as we take a moment to send all of you our warmest wishes for a happy holiday and much gratitude for your loyal support. It's been a pleasure to serve you.



NELSON'S TRUE VALUE HARDWARE

620 E. 3 RD.

LITTLEFIELD

PHONE 385-4331



Greetings

We're planting wishes for you and hope they'll flower into the happiest New Year ever! Our thanks to you all!

A Joyous Christmas

May the spiritual peace of this

Christmas enter into your lives. It's a

time of joy... a time to wish

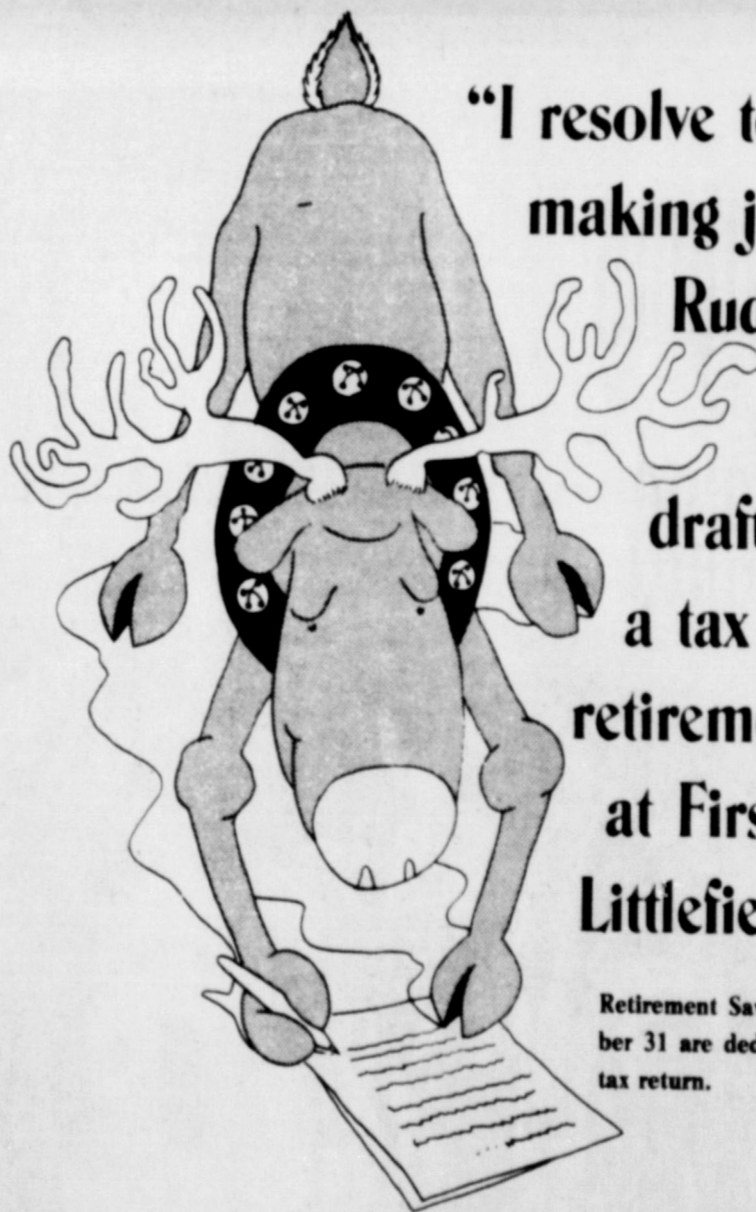
everyone the happiness and contentment

of that Holy night long ago. Thanks.



CARLISLE-OLDHAM FORD

LITTLEFIELD-Phone 385-5164



"I resolve to stop making jokes about Rudolph's nose, stay out of drafts, and open a tax sheltered retirement account at First Federal Littlefield."

Retirement Savings Deposits in by December 31 are deductible on your 1975 income tax return.

FIRST FEDERAL

of Littlefield

"the best one for your money"



Lamb - A Christmas Tradition

To vary this year's holiday menu, try juicy, flavorful lamb for a special treat. Mrs. Mary Sweeten, a foods and nutrition specialist, suggests.

"The quality of lamb today has improved due to the better breeding, feeding and marketing practices. Lamb is rich in protein, iron, and in B vitamins.

"Today's lamb contains less fat and fewer calories when purchased well trimmed. All cuts of lamb are tender because the lamb is less than one year

when marketed." Mrs. Sweeten is with the Texas Agricultural Extension Service, The Texas A&M University System.

"One holiday favorite is leg of lamb, roasted fat side up resting on a bed of onions. Pierce holes in the meat and stuff a small piece of fresh garlic in them. Season with the family's favorite spices.

"If using a meat thermometer, insert it into the roast so the tip is in the center of the roast

but does not touch the bone. Roast the leg of lamb in 325 degree F, oven until medium to well done."

A five to eight pound leg of lamb requires three to four hours of cooking. Boneless lamb roast weighing three to five pounds requires two to three hours, she said.

Remove the roast from the oven when done. Place onions cooked in the bottom of the pan through a sieve and use to flavor a gravy or sour cream sauce.

"The secret in making a smooth gravy is to blend the flour thoroughly with fat or with cold liquid before combining it with hot liquid."

Serve the festive roast leg of lamb decorated with a paper frill at the end for Christmas dinner this year and delight the family with a gourmet's treat, the specialist suggested.

Immunization: A Priceless Health Asset

It has long been observed that a person who has had an infectious disease is not likely to have it again. This observation led to the development of a priceless health asset, the procedure we now know as immunization.

Unfortunately, children still die each year from disease for which safe, effective vaccines exist. The immunity level is such that epidemics of polio, measles, German measles and other communicable disease could occur.

To increase immunity levels among preschool children, the Texas Medical Association has joined with the Texas Department of Health Resources, the Governor's Office, and several other organizations in promoting Immunization Action Month in October 1975.

Though the percentage of un-

protected preschoolers has been declining since the Immunization Action Month (IAM) program started in 1973, the U. S. Center of Disease Control reports that some five million 1-4 year-olds are still immunized inadequately or not at all.

The main goal of this year's IAM effort in Texas is to immunize the 300,000 preschool children who need additional immunizations in order to be completely protected.

Among the immunizations that preschoolers should have are:

DPT: Dpt is medical lingo for a mixture which builds protection against three serious diseases--diphtheria, tetanus and pertussis (whooping cough.) Doses are usually given at about two months, four months, and six months, with booster shots given at the age of three to six. Tetanus and diphtheria boosters are then given every 10 years.

POLIO: The Sabin polio vaccine, the one most commonly used, is given by mouth. It is given as individual doses for three separate strains of polio virus, or as combined vaccine containing all three. Children should receive the first dose at the age of two months, with two additional doses at six to eight week intervals, and boosters at 12 to 15 months and on starting school.

MEASLES: Measles (Rubella) vaccine should be given to all children one year old or older who have not had the disease. It is a serious disease, often complicated by pneumonia, hearing loss, visual damage and encephalitis or brain fever. Boosters are not routinely needed.

RUBELLA: Rubella, sometimes called German measles, is a mild illness and is often overlooked but it is a serious hazard

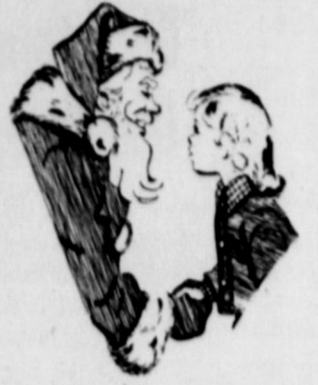
to unborn children during the early months of the mother's pregnancy. Rubella vaccine is recommended for children between the age of one year and puberty. It should not be given to pregnant women.

MUMPS: Mumps vaccine may be given at any age from 12 months. It is of particular value in children approaching puberty, adolescents and adults (especially males) who have not had

the disease. These schedules of immunizations are merely guidelines, and may vary depending on the needs of the individual and the recommendations of individual physicians.

BWONG!!

A real cockney is one born in the East End of London within the sound of the bells of St. Mary-le-Bow.



Lord

make me an instrument of Your peace.
Where there is hatred, let me sow love.
Where there is injury, pardon:
Where there is doubt, faith:
Where there is despair, hope:
Where there is darkness, light, and
Where there is sadness, joy.

O, divine master,

grant that I may not so much
Seek to be consoled as to console:
To be understood as to understand,
to be loved as to love.
For it is in giving that we receive:
It is in pardoning that we are pardoned:
and it is in dying that we are born
to eternal life.

FRANCIS OF ASSISI
1182-1226 A.D.

From All Of Us

They say "the more the merrier"
And so we all take part
In wishing you a Christmas
That's just perfect from the start
And all of us would like to say
We hope the whole year, too
Will bring you those
important things
That mean the most to you

The Bee Hive Mall
Lillian Hamilton, Leona Prial,
Shirley Sigman, Beth Kelley,
Linda S. James, Evelyn Bridges
Kathy Hinders
Merry Christmas and Happy New Year

Merry Christmas

The spirit of the season is all around. May you, and those close to you, enjoy all the warmth and good feelings that go with this holiday. We're grateful for your loyalty.

HIGGINBOTHAM-BARTLETT COMPANY
EARTH

A Joyous Christmas

CHRISTMAS

During this happy holiday season we hope for one and all the best things that Santa's knapsack has to offer . . . peace and faith, brotherhood and good will. These are gifts to be treasured and enjoyed not only at Christmas time but all the year 'round. With these go wishes to brighten up everyone's Yuletide . . . good times, good friends and warm feelings. We wish you all these and thank you for your valued friendship and support.

HAPPY NEW YEAR

CITY INSURANCE AGENCY
PHONE 257-3365---EARTH

HIGH SCHOOL

Honor Roll

The High School honor roll for the first semester was released Tuesday by High School principal Bob May.

"A" HONOR ROLL

The following students have an average of 90 or better.

SENIORS

Jimmy Furr, Gale Jones, Neshia Lewis, Bill O'Hair, Lupe Rivas, Cindy Robinson, Grace Saucedo, Karen Smith, Margaret Street and Kathy Wright.

JUNIORS

Dickie Brown, Susan Burk, Augustina Castillo, Craig Holland, Toni Inglis, Kim Jones, Kirk O'Hair, Isabel Saucedo, Debbie Verdenand Sherri Winders.

SOPHOMORES

Jill Barden, Alan Seen, Brene Belew, Susan Clayton, Clint Dawson, Connie Dear, Kim Dent, Tommy Graham, James Hanson, Pam Ott, Flora Rivas, Baldomero Saucedo, Alayne

Slover, Daneen Wilson and Ranae Winder.

FRESHMEN

Laurinda Bulls, Timmy Craft, Angelita DeLeon, Karen Robinson, Arjelia Saucedo and Donice Taylor.

"B" HONOR ROLL

The following students do not have a grade below B.

SENIORS

John Cleavinger, Larry Dear, Fonda Goodwin, Kelly Haydon, Randy Latham, Kathy Winders, Gina Wisian and Cliff Wood.

JUNIORS

Mark Barton, Debbie Daniels, Juanita DeLeon, Cindy Dent, Royce Jordan, Max Price, Lydia Smith and Bryan Taylor.

SOPHOMORES

Andy Ellis, Carrie Everett, Vickie Freeman, Santos Garcia, Kevin Kelly, Rosa Rivas and Lloyd Smith.

FRESHMEN

Belinda Hampton



CHILDREN ANTICIPATE the arrival of "Kris Kringle," also known as Santa Claus, in this large electrotype reproduced from an 1891 specimen sheet of Christmas cuts offered by the A. Zeese & Co. of Chicago. As Kris Kringle prepares to descend the chimney of their home, the children, in box at bottom left, appear to be awake, perhaps in the hope of catching a glimpse of Santa.

How Healthy Is Your Personality?

Much more is known about how to recognize and to maintain physical health than is known about mental or emotional health, Roberta Dix, a family life education specialist, says.

"Physical health is body contained. Mental health is reflected in the individual's feelings, responses and reactions toward others," she noted.

Miss Dix is with the Texas Agricultural Extension Service, The Texas A&M University System.

In order to assess a healthy personality seven qualities can be used. Ask them of yourself in this manner:

--What is the movement of the personality? Is it toward or away from others? Is there more like than dislike for others? Is there warmth or coldness?

"Each of us has an opportunity to create a climate of warmth when we are near others, in such an atmosphere each individual becomes his best self."

--Is there a balance between the give-and-take in relation to others?

"The healthy personality is able to accept or take as well as give. Most of us get a great deal of satisfaction out of giving but find it hard to accept as easily as we give. Talking and

listening, our daily practice of give and take, are very effective ways of checking to see levels of individual give and take," she noted.

--Is there some skill developed? Skill or competence in handling materials is essential to building self-confidence and gaining the confidence of others. Confidence is reflected in the responsibilities we take on voluntarily or accept when assigned.

--Is there pleasure in creative privacy?

"You are interesting if you are interested. The individual who enjoys his own resources, his own self, has real texture in the quality of his living. If you

like yourself, you will be liked. Do you plan time for creative privacy?"

--Is there capacity to suffer disappointment?

Our maturity shows in the ways we react to unwanted, disappointing experiences: resentment, a child's reaction, realization that disappointments happen to everyone; learning to translate personal loss into an understanding of how other people feel.

--Is there a sense of possibility?

"The top-level personality is hopeful, optimistic. If there is hope, there is a feeling that things can be done."

--Is there a sense of something greater than oneself?"

"Recognition of the existence of something greater than oneself helps to avoid self-centeredness, uneasiness, unhappiness and an unhealthy personality," the specialist said.

MERRY CHRISTMAS AND A HAPPY NEW YEAR

Christmas GREETINGS

To our friends and loyal patrons, here's hearty wishes for the best Christmas ever. Thanks.

GARY'S TV LAB
EARTH

Peace... Joy

During this holy holiday, we'd like to wish all our friends a simple, lovely Christmas, filled with warmth and happiness. Our sincere thanks to all.

H. S. SANDERS LUMBER
EARTH

"Hark! the herald angels sing..."

Glad voices sing out...and glad thoughts ring out, with every good wish for a happy, hearty holiday season.

We extend our sincerest appreciation to all the wonderful people who have made the past year a most successful one for us.

EARTH PUMP and MACHINE INC
WENDELL CLAYTON-Phone 257-3434
DISTRIBUTORS FOR
SIMMONS PUMPS
OF LUBBOCK

O, Holy Night

All is calm. Peace reigns. Hearts are light with the joys of Christmas. And thoughts turn to the wonder of that Holy time when the shepherds and Magi gathered to adore the Newborn King.

MR. & MRS. TOM LIVELY & FAMILY
EARTH

MR. & MRS. VIRGLE GRAY
EARTH

THE HOME OF WHITE Auto Store GREATER VALUES

Six Wrecks On Rural Highways In Lamb During November

The Texas Highway Patrol investigated six accidents on rural highways in Lamb County during the month of November, 1975, according to Sergeant Thurman Keffer, Highway Patrol supervisor of this area.

These crashes resulted in no persons killed and two persons injured.

The rural traffic accident summary for this county during the first 11 months of 1975 shows a total of 104 accidents resulting in five persons killed and 70 persons injured.

The rural traffic accident summary for the 60 counties of the Lubbock Department of Public Safety Region for November, 1975, shows a total of 530 accidents resulting in 14 persons killed and 258 persons injured, as compared to November, 1974, with 497 accidents resulting in 10 persons killed and 229 persons injured. This was 33 more accidents, four more killed, and 29 more injured in 1975 at the same period of time.

The traffic deaths for the month of November, 1975, occurred in the following counties: Two each in Swisher and Wilbarger; and one each in Clay, Crosby, Lubbock, Montague, Palo Pinto, Parker, Wichita, Hutchinson, Oldham and Wheeler.

Effective Use Of Feed Additives

LUBBOCK--While antibiotics used in swine feeding rations are being closely scrutinized for their safety and efficiency by the Food and Drug Administration, they are playing an increasingly important role in swine production.

Dr. Gilbert R. Hollis, area specialist with the Texas Agricultural Extension Service in Lubbock, says that it is doubtful that swine producers could continue to produce pigs in today's densely populated, multiple-farrowing, and confinement rearing units without effective antibiotics and chemotherapeutics.

Research data available to date, Hollis says, demonstrate that when antibiotics are fed at the approved levels for the approved stages of hog production, there are no identifiable problems of health safety associated with the feed additive usage.

But, he warns, producers should see to it that antibiotics are used strictly according to Food and Drug Administration regulations in order to avoid incurring problems which would lead to their removal from the market.

"Loss of some of these antibiotics would certainly increase costs of production either by a reduction in pig performance or from the cost of developing effective substitutes," Hollis says. "Under the present systems of production, feed additives are a valuable part of our total feeding and management program."

From an application point of view, he adds, the most effective feed additives are the ones that give the most consistent response. Like insurance, they provide the broadest protection over a wide range of growth-reducing circumstances and are the most useful as growth promotants.

Hollis says antibiotics are most effective in swine rations during the breeding period, just prior to and immediately after farrowing, and in baby pig creep and starter diets.

"It is very important that all drugs be used as they have been tested and approved. We should not jeopardize their future by using incorrect levels, by using combinations that have not been approved or by not following withdrawal requirements," he says.

Manufacturers of drugs, premixes and complete feeds containing drugs are required by law to include special instructions for their usage on container labels.

GOD LOVES YOU

Agronomist To Work With Peanuts, Oil Seed Crops

With continued expansion in the state's production of peanuts and various oilseed crops, the Texas Agricultural Extension Service is directing more resources to meet the educational needs of producers and processors of these crops.

To handle these educational efforts, the Extension Service has announced the appointment of Dr. Leland D. Tripp, who for the past 14 years has been a crops specialist with the Oklahoma Cooperative Extension Service.

"Dr. Tripp has some 21 years of Extension Service experience in Oklahoma, and we feel that his wealth of experience and knowledge will be a tremendous asset to our educational programs," said State Extension Director Dr. John E. Hutchison. "Peanuts continue to be a major cash crop in Texas, and other oilseed crops are also coming to the forefront. So we

believe that more educational efforts must be directed to these commodities."

Tripp will be planning and conducting educational programs by working with county Extension agents and county program building committees in those areas where peanuts and other oilseed crops are now being produced or have the potential for becoming important cash crops.

In addition to serving as a crops specialist, Tripp also spent two years as a radio and television specialist and three years as an assistant county agent with the Extension Ser-

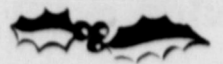
vice in Oklahoma.

A native of Grady, Oklahoma, Tripp holds three degrees from Oklahoma State University. He was a student instructor in the agronomy department at OSU for a year prior to joining the Extension Service.

Tripp spent two years in the U. S. Army as a combat engineer.

He is a member of the American Peanut Research and Education Association, American Society of Agronomy and Crop Science Society of America.

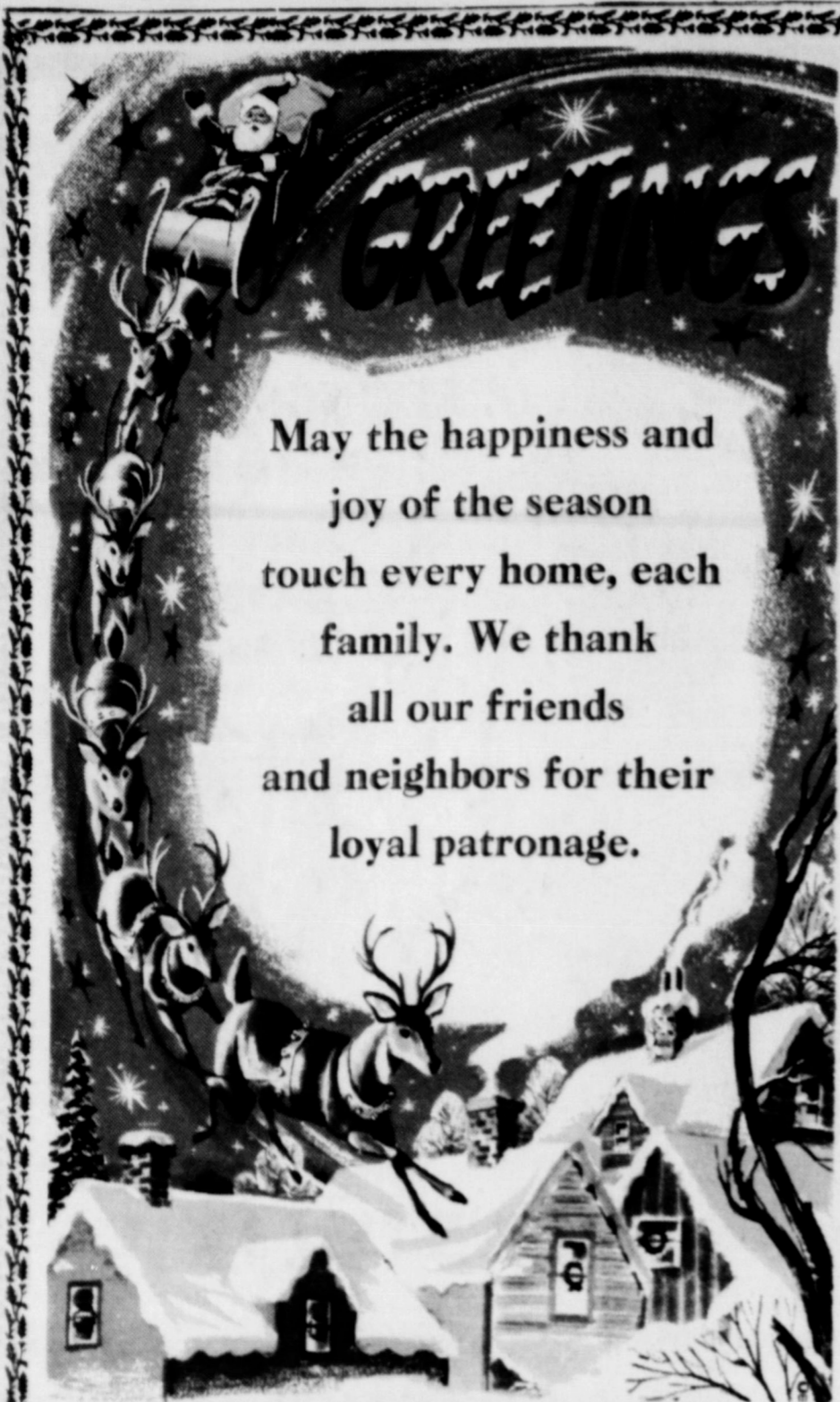
He and his wife, the former Bernadine A. Gehringer, have five children.



Remember the Needy

Now that the time has come wherein Our Saviour Christ was born, The larder's full of beef and pork, The granary's full of corn, As God hath plenty to thee sent, Take comfort of thy labors, And let it never thee repent To feed thy needy neighbors. — Poor Robin's Almanack (1700)

GOD IS LOVE



LAYMAN BROS. BUTANE

AND

AUTO PARTS

EARTH

EARTH

GREETINGS

Christmas is a warm holiday when families share in festive preparations... here's hoping yours is happiest ever.



DIMMITT SUPER MARKET

DIMMITT



Greetings

The season's warm glow is filling the air with happiness and cheer, laughter and joy. And as we celebrate this special time, we want to take a moment to thank you for your valued patronage and good friendship.

DIMMITT AGRI INDUSTRIES, INC.

DIMMITT

Cattle Outlook Should Improve By 1977

Although 1977 may seem like a long way off, that's the target year when things should start looking up for cattlemen. A livestock marketing specialist for the Texas Agricultural Extension Service believes that if cow slaughter continues heavy through next year and if replacement heifers are at a low level, then the market outlook for cattle should brighten once again.

"We've had too many cows on hand for the past two years, and we must continue to cull our herds to get them back in line with the demand for calves and beef," says Dr. Ed Uvacek. "If cow slaughter continues heavy in 1976, we should have a much smaller calf crop in 1977. By this time, there should also be an expanded demand for feeder



EXCITEMENT IS IN THE AIR... And children with a twinkle in their eyes wait anxiously for the day to arrive. The gala decorations in the First grade room, taught by Mrs. Charles Parish, adds much to encourage thoughts of Christmas.

calves by feedlots, so the overall cattle outlook should improve."

What can cattlemen do to stay in business for another year or so until prices hopefully improve?

"Mainly, producers have got to figure every possible way to cut costs," contends the Texas A&M University System specialist. "They've got to do a lot of belt-tightening. The annual cost of keeping a cow in Texas averages between \$205 and \$210. Of this, about \$75 to \$115 is variable or out-of-pocket costs. If cattlemen can cover these variable costs during the coming year, they may remain in business. However, this means no return to land, labor or capital. Cattlemen who can stand such a limited income picture will still be in business when 1977 rolls around."

Medical Association says, patients often are encouraged to rest, drink adequate amounts of fluids and eat a light diet. Aspirin and cough syrup may ease discomfort. If fever is high or persists, a physician should be consulted since other diseases may have symptoms similar to flu.

Flu symptoms include headache, cough, sore throat, nasal discharge, fever, muscle pain and a general feeling of sickness. The most uncomfortable symptoms usually subside after a few days but the patient is likely to feel very tired and below par for a week or more.

Flu seems to strike most in winter months and often spreads rapidly through classes, homes

Population Faces Flu

At the height of the winter wheezing season, people begin to look around at their ailing neighbors and wonder what they can do to avoid catching influenza.

Physicians usually recommend flu vaccinations mainly for the elderly and persons with serious chronic illnesses such as heart disease, lung disease or diabetes. The best advice is to stay away from infected people. A number of people seem to get flu-like respiratory infections even after being immunized. Often vaccines taken in the middle of a flu epidemic are not effective, especially if a person has already been exposed to the virus.

Once the flu strikes, the Texas

THE EARTH NEWS-SUN, THURSDAY, DECEMBER 25, 1975-PAGE 23

and offices. Health officials urge flu victims to stay home until they are recovered, for their own well-being and to cut down on the disease's spread.

Complications of the flu can be varied and include everything from pneumonia to ear infections. If any problems arise along with the flu, be sure and see a physician. Many complications are easily treated in their early stages by administering the proper treatments.

Merry Christmas



We hope your good friendship will continue throughout the years.

Thanks to All
LAZBUDDIE CHEMICALS, INC.
PHONE 965-2355

Warm Christmas Wishes



A sleigh full of cheery wishes is coming your way! Have a very merry Christmas Day! Our gratitude for your support.

SOUTH PLAINS HOSPITAL & CLINIC
AMHERST



Merry Christmas

We're ringing out our very warmest Yuletide greetings to you and yours... with a sincere "thank you." Looking forward to serving you in 1976

STOVALL-BOOHER RADIATOR SALES & SERVICE
1019 BROADWAY PLAINVIEW PHONE 296-2865 or 293-1445



We wish you all the happiness this holy season has to give... peace and joy. Kind thanks.

THANKS FOR 1975 - LOOKING FORWARD TO 1976
PLAINVIEW MATTRESS & UPHOLSTERY
PLAINVIEW - PHONE 293-5673



Merry Christmas

May the serenity of Christmas find and keep you content. May every day of this joyful season be filled with joy... abundant in peace... rich in brotherhood. To all the cherished patrons we serve... our warmest gratitude.

FEEDERS GRAIN, INC.
MARVIN TOLLETT-MANAGER-SUDAN

Boy Scouts Have Weiner Roast Friday

Members of the Boy Scouts 114 Troop enjoyed a weiner roast in the Running Water Draw, North of Earth, Mike Tibbits, Scoutmaster, was in charge of the outing.

The boys ate, played games and in general enjoyed the outing. Shawn Branscum, though not a scout, went along and assisted with keeping the fire aglow.

Scouts present were Greg Hulcy, Billy and Bobby Pyle, Dusty Stovall, Claud Barlow, Scott Branscum, Sammy Ott and Mike Wimberly.

Adults attending were Mike Tibbits, Sawnie Branscum, Hershel Hulcy, Beryl Branscum and Kenny Kendrick.



TAKING IT EASY... Adults may go in circles getting everything in readiness for Christmas. Children find time to do their thing, even if it's nothing more than chewing on a handy toe. Dan Templeton is the toe chewing lad and Stephanie Byers is the lovely little lass watching him. (The lad in the foreground is unknown.)

Sore Throat, Symptom Of Trouble

Sore throat can be a symptom of many diseases, not just a common cold or flu, says the Texas Medical Association.

If sore throat persists for a few days, especially if cold or flu symptoms do not materialize, you should consult a doctor. Sore throat can be one symptom of diseases as varied as scarlet fever or sinus trouble. Of course not every sore throat indicates the diseases mentioned. But it does indicate a problem of some kind.

Allergies, tonsil trouble, dry air, excessive smoking, and

breathing mainly through the mouth can trigger sore throat.

Severe sore throat is sometimes caused by streptococci bacteria (strep throat.) As with many diseases, the doctor may want to take a culture (swab test) and have it analyzed in the laboratory.

Another bacteria which causes serious sore throat is most common in children ages 3 to 5. Epiglottitis, as this relatively rare disease is called, produces severe sore throat and croup. You should consult a doctor at once because the epiglottitis, the structure which guards the entrance to the windpipe (larynx), becomes infected and swollen. The swelling can take place rapidly and obstruct air passages.

The "kissing disease", infectious mononucleosis, can have sore throat as a symptom. The disease can be spread just like the common cold. Often only a laboratory test can confirm that "that tired feeling" is due to mononucleosis.

These are just a few of the diseases associated with sore throat.

Some sore throat diseases are

TSTI Offering New New Night Classes

Texas State Technical Institute of Amarillo is offering a new night class in welding and fabrication. This course is designed for the student who works during the day and wishes to learn welding and fabrication skills during the evening hours.

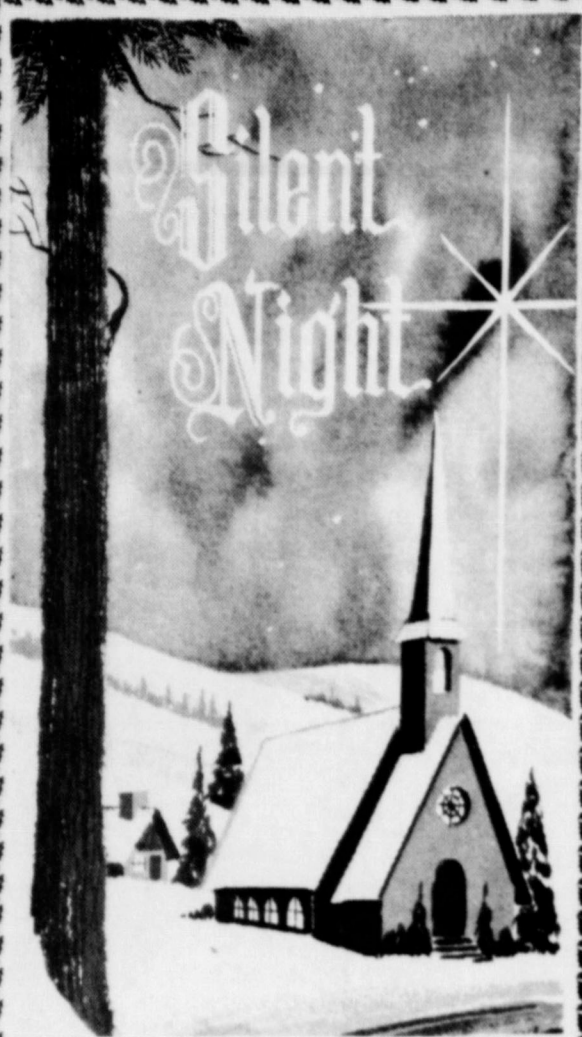
A unique aspect of this class is that a person may enter the program at anytime due to the

individualized instruction that the student receives. Classes are held each Monday, Tuesday and Thursday evening between the hours of 6 and 11 p.m. The course of instruction includes basic, intermediate and advanced welding and fabrication techniques.

Students who attend only the night class program will complete the course in 24 months.

Welding and fabrication students who find work in this vocation following graduation usually begin at salaries ranging from three-fifty to six dollars and fifty cents per hour.

Cost of the six-quarter course is fifty-five dollars per quarter. Persons interested should contact the business office of Texas State Technical Institute in Amarillo.



MAY THE TRUE MEANING OF CHRISTMAS LIFT THE HEARTS OF ALL MEN. WE THANK OUR LOYAL CUSTOMERS AND FRIENDS... HAPPY HOLIDAYS TO ALL!

Lamb County
Frozen Food Locker

MARCELINO DURAN-LITTLEFIELD



A
PRAYER
FOR
Christmas

Let us, at Christmas, pray that the spirit of the Nativity may be with us always.

Let us, with faith reaffirmed and resolve renewed, pray that we may live as He would have us live, ever seeking to attain "Peace on earth, good will to all."

We want to take this opportunity to thank you, our good friends, for thinking of us through the year, and to wish you and your families every joy of the Christmas Season.

Ware's in
LITTLEFIELD

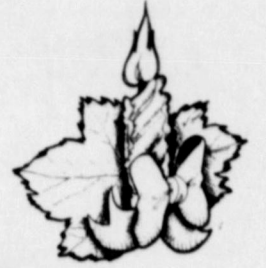


Welcome

Hope this brand new year holds joy, peace, health and prosperity for you.

CHEERY GREETINGS

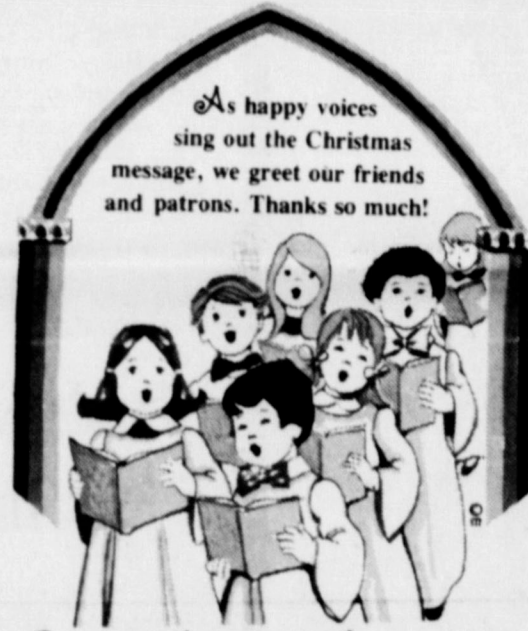
Joy and laughter — that's what we prescribe for friends and neighbors. It's a sure way to a happy holiday. Warm thanks.



CARVER PHARMACY

DIMMITT

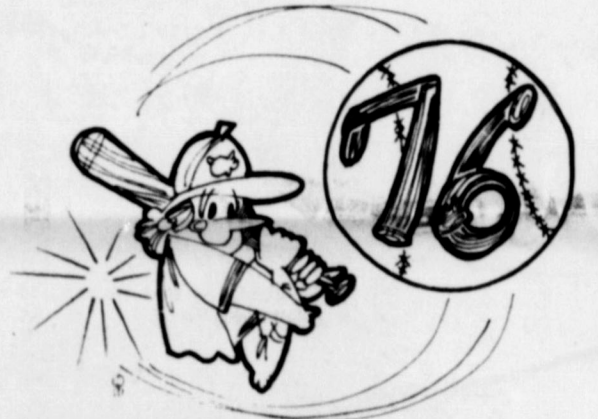
PHONE 647-3151



As happy voices sing out the Christmas message, we greet our friends and patrons. Thanks so much!

Silent Night, Holy night

DIMMITT VETERINARY CLINIC



Happy New Year

Let's make it a grand slam New Year. Keep the bases loaded with new goals... fresh hope and success. And drive them all home!



Greetings

Let's celebrate this Christmas season with sincere wishes for a simply wonderful holiday. To all our friends and neighbors go many thanks for your continued patronage and goodwill.



Happy New Year

Farum-pum-pum. The New Year has come. Hope it's wonderful!

First National Bank

MEMBER F. D. I. C. - AMHERST



Give Blood, Give Life, Need For Blood Is Growing

A fluid no one can manufacture can save someone's life. Blood is this precious fluid, says the Texas Medical Association. Nearly 13,000 pints of blood are needed daily. And the need is growing.

It is natural to be nervous about giving blood. Blood often is strongly identified with vital life force. But often persons also identify blood with personal injury because that is the only time we see it.

Giving blood can mean the difference between life and death for someone. And blood collection agencies have made donation painless and safe.

Blood is taken under medical supervision by a medical technician or nurse. The blood is withdrawn from a vein in the donor's arm and placed in a bottle or bag. Only about 10 minutes are required to actually take the blood. The entire procedure takes about 30 minutes, including getting a brief medical history from the donor.

Serious blood loss can occur from injury or some diseases such as hemophilia. Transfusions sometimes are used to combat shock and increasingly in surgery. Some infants are victims of hemolytic disease, where the newborn's and mother's blood are incompatible. The baby's blood is replaced, a little at a time, with compatible donor blood.

The average person has between 10 and 13 pints of blood,

depending mainly on body size. Donations of one pint per visit are recommended a maximum of every two to six months.

An eligible donor is generally someone between 18 and 59 years old, weighing at least 110 pounds and in good health. Persons with high blood pressure, even on normal medication, generally can donate blood. Check with your local Red Cross, hospital or blood bank for specific requirements. Persons with a history of tuberculosis, hepatitis, active allergies and some other diseases are ineligible to donate blood. Anyone who has had major surgery, received a blood transfusion or been pregnant in the last six months generally will be asked to donate later. Check with your local blood collection agency if you have any questions.

Millions of persons are living today because of donors who overcame their fears and realized the importance of giving blood, the gift of life. Be a life saver. Don't wait—donate.



And the angel said unto them: fear not for behold I bring you good tidings of great joy, which shall be to all people. For unto you is born this day in the city of David, a Savior which is Christ the Lord.

— Luke II, 10 and 11



PEOPLE OF ALL AGES...shopped in the Bee Hive Mall during their sale Monday. Seen doing their last minute shopping are Jeff and John Chisum, sons of Mr. and Mrs. Melvin Chisum.

Cutback Slated For Nitrogen Production

Nitrogen fertilizer production in the United States will be reduced about 4 per cent this winter, but Texas farmers should not be affected too much by the cutback.

That's the contention of Dr. Russell McDonald, an economist in marketing for the Texas Agricultural Extension Service.

He points out that the delivery of natural gas (the feedstock for ammonia used for nitrogen fertilizer) to ammonia plants will be curtailed as the winter season approaches. Current estimates are that the curtailment will total about 670,000 tons for the 12-month period ending March 1, 1976. Of course, severe winter conditions might further reduce the volume of natural gas going to ammonia plants.

"The expected curtailment of natural gas for ammonia production is almost double the curtailment during the year ending March 1, 1975," notes the Texas A&M University System specialist.

The 670,000 tons of natural gas that are expected to be curtailed means a reduction of 550,000 tons of ammonia for nitrogen fertilizer. Half of this reduction is scheduled for the period of January-March next year, a time when the need for fertilizer production increases sharply to meet demands for the spring planting season.

"The greatest cutback in ammonia production will be in the Corn Belt where nearly 180,000 tons of nitrogen may be lost due to the curtailment of natural gas deliveries," says

McDonald. "The northeastern part of the United States and the Appalachian region will also suffer, as ammonia production is expected to be down about 25 per cent from that of

a year ago." The remainder of the country should not be faced with a shortage of nitrogen fertilizer unless severe winter conditions bring even more than the expected

natural gas curtailments adds the economist.

Merry Christmas

PRaise THE LORD FOR THE LOVES HE SHOWS EACH DAY..

Peace

Christmas is the time for togetherness. Tenderness. Loving. And the greatest gift of them all — peace. Live it fully this season. Sincere gratitude to our patrons.

LOOKING FORWARD TO SERVING YOU IN '76

MULESHOE **WESTERN DRUG** MULESHOE

MERRY CHRISTMAS

Santa's coming down the slopes with holiday greetings... direct from us to all of you. Have a merry, cheery Christmas! Jolly thanks loyal patrons!

EVALENES IMPORTS
1500 S. COLUMBIA PLAINVIEW

Peace on Earth

On the eve of our Savior's birthday we wish you inner peace... true joy. To our many patrons, "thanks."

FLAGG GRAIN CO., INC.
J. W. BROWN-Manager-Phone 647-2133

DODD ELEVATOR
FORREST COLLINS-Manager-Phone 965-2315 or 965-2327

Greetings
With a tip of our hat we wish you a New Year that's extra special.

During this happy holiday season we hope for one and all the best things that Santa's knapsack has to offer... peace and faith, brotherhood and good will. These are gifts to be treasured and enjoyed not only at Christmas time but all the year 'round. With these go wishes to brighten up everyone's Yuletide... good times, good friends and warm feelings. We wish you all these and thank you for your valued friendship and support. Have a happy!

LOOKING FORWARD TO SERVING YOU IN 1976

OLTON STATE BANK

MEMBER F. D. I. C. - OLTON

Letters To Santa

Dear Santa
My name is Freddie Duran and I would like a horse for Christmas. I am five years old and a good little boy.

Thank you
Freddie

Dear Santa,
My name is Holly Moree and I want a doll for Christmas. I would like it to be a Baby Alive Doll.

Thank you,
Holly Moree

Dear Santa,
My name is Lupe Galvan. I am five years old and very small but I would like a big baby doll that cries.

Thank You,
Lupe

Dear Santa,
My name is Anthony Price and all I want for Christmas is a bicycle. I am six years old and a fairly good boy.

Thank you,
Anthony



CHILDREN LOVE SANTA... Kiddo's in the area have had a grand time visiting with Santa in Earth lately. They have told him all the things they want for Christmas, and of course they told him they had been good. Pictured with Santa is Ty Lively and Wendy Bulls.

Dear Santa,
My name is James Shepard. I am a real good boy. I want a car for Christmas that has a battery and foot pedal and you mash it and it goes. It is down a Peggy's Store.

Thank you,
James

Dear Santa,
My name is Angie Porter and I am six years old. I live with my Granny in Earth and I would like a Baby Alive for Christmas.

Thank you,
Angie Porter

Dear Santa,
My name is Mandy DeLeon

We're joining these carolers in their heartfelt refrain: Peace on earth... good will toward men. Season's best to all. To all, our special thanks.

JJ's MOBILE HOMES
TEXICO, N. M.

at Christmas!

This happy time of year fills all hearts with the spirit of good will, good wishes and good times!

Our best wishes for a Very Merry Christmas!

LOOKING FORWARD TO SERVING YOU IN 1976

PLAINS CO-OP OIL MILL
LUBBOCK- PHONE 747-3434

and I would like a Baby Doll for Christmas. I think I have been a good girl this past year.

Thank You,
Mandy

Dear Santa,
My name is Jose Vasquez. I am five years old. I think I have been a very good boy this year. Would you please bring me a red truck for Christmas.

Thank you,
Jose Vasquez

Dear Santa,
My name is Isreal Samaniego and I am five years old. I would like a red race car for Christmas.

Thank you,
Isreal

Yule Log

An important ceremony of Christmas in many countries of Northern Europe was that of burning the Yule log. Logs large enough to burn for twelve days were used, and the fire was tended constantly to prevent its burning out before the end of the twelve days. In Lithuania, now a part of Russia, the word for Christmas meant literally "log evening."

It is quite likely that the early Christians — persecuted, driven underground — chose to celebrate Jesus' birthday during the Saturnalia so that the public fes-

followers underwent a ceremony of baptism to attain eternal life. This highly ethical and intellectual religion was especially favored by the influential upper classes — and was therefore deeply rooted in the life and customs of Rome.

By the middle of the fourth century A.D., it was evident that the populace was determined to have a festival at the time. In 353 Pope Liberius, to honor Saturnus or Mithras, or just for the sake of having a rollicking good time, decided to absorb observances by declaring Dec. 25 the official birthday.

Christians Celebrate Holy Day With Prayer and Thanksgiving

For those who celebrate Christmas as a holy day, the holiday is greeted with rejoicing, with prayer and thanksgiving, in church and private devotions.

The word "greeting" has a special significance here, for herald angels singing to shepherds in the fields and a star shining in the heavens truly brought greetings—according to the Revised Standard Version of the Bible, "good news of great joy which will come to all people."

Long before the December 25 birthdate of Christ was celebrated in devotions, it had marked a season set aside for another kind of greeting. In Northern Europe, Teutonic tribes of pagan times greeted the rebirth of the sun, of the winter solstice.

Earliest celebrations of Christmas combined some of the ancient pagan traditions. By association with Christian beliefs, old customs of greeting the sun became symbolic of a recognition—a greeting of faith, hope and life eternal.

CHRISTMAS GREETINGS!

These young carolers are bubbling with happy Yuletide wishes for you... from us. Our merry thanks to all!

WE WILL BE CLOSED DECEMBER 25-26-27

B.W. ARMISTEAD Optometrist
LITTLEFIELD

Merrie Christmastide

Hear ye! Hear ye! 'Tis our wish that this holiday be a bell ringer in the spirit of Christmases past. Glad tidings, and thanks!

LOOKING FORWARD TO SERVING YOU IN 1976

CENTRAL COMPRESS & NICHOLS GIN
SUDAN - PLEASANT VALLEY

We wish you the peace, joy and blessings of Christmas, and we join our heartfelt prayers with yours, that peace and good will may soon endure for all men.

LOOKING FORWARD TO SERVING YOU IN 1976

PEACE

BIG T PUMP CO., Inc.
DIMMIT T

Increased Imports On Work Gloves Effects Nation's Economy

DETRIMENTAL EFFECTS ON COTTON

WASHINGTON, D. C. --(Special)--Increased imports of work gloves are not only posing a problem for the U. S. glove industry but also are having detrimental effects on cotton and other parts of the nation's economy, the U. S. Trade Commission was told here today.

C. Hoke Leggett, chairman of the National Cotton Council's Producers Steering Committee and a Hobgood, N. C., grower, urged Commission action to keep work glove imports within "reasonable bounds."

He noted that in the last two years the raw cotton content of work glove imports has risen about nine or ten times the 7 per cent annual increase pro-

vided for textile imports under the 1973 Multilateral Textile Trade Agreement. Leggett said 66 per cent of the cotton in these imports was grown in foreign countries, in contrast to domestic manufacturers' output which consists almost entirely of U. S. cotton.

"Thus, two of every three bales of cotton imported in the form of gloves displaces U. S. markets primarily because the foreign labor used to process the

raw fiber into a usable product is paid only a fraction of the wages earned by U. S. workers with comparable skills," he testified.

The producer pointed out that some 123,000 bales of cotton were used by U. S. work glove manufacturers last year, and that cotton holds 91 per cent of the market.

"Gloves alone require a third as much cotton as all girls', children's and infant's apparel combined," Leggett stated.

Noting that only towels, wiping and polishing cloths, and abrasive backing contain a greater percentage of cotton, he said the industry needs and values markets which are resistant to moving toward other fibers.

When the U. S. cotton industry loses markets as a result of imports, the Council spokesman said it has a ripple effect on much of the nation's economy. He said losses mean a reduction in cotton operations, with a reduced ability to compete for remaining markets.

Employment in farm machinery, farm chemical, and other supply manufacturing is also adversely affected as cotton farmers turn to alternate crops.

"The materials and machinery purchased by farmers to grow the average acre of cotton cost over \$200 or 2 1/2 to 3 times as much as those required for an acre of soybeans, cotton's most common alternative crop," Leggett added.

Low Carbohydrates Holiday Treats Ideas

Holiday snacks have to be "made with care" for diabetics and people on calorie-restricted diets, Mrs. Mary Sweeten, a foods and nutrition specialist and registered dietitian, says.

"This is because food plays a major part in controlling metabolic disorders such as diabetes, commonly called 'sugar diabetes'." Too many carbohydrates, starches and sugars are bad for diabetics because their bodies don't produce enough insulin to counteract the effects of these types of food.

Mrs. Sweeten is with the Texas Agricultural Extension Service, The Texas A&M University System.

She suggested that diabetics can eat fresh fruits or unsweetened canned fruits, a baked apple sweetened with artificial sweetener, cinnamon and dietic lemon-lime soft drink makes a festive dessert.

"Another holiday treat, pumpkin custard, can be made of unsweetened cooked pumpkin combined with artificial sweetener, cinnamon, ginger and saccharin. This baked custard would be counted as a B vegetable or half slice of bread."

Plain or dietetic gelatin can be prepared with or without fruits for many desserts. Try combining plain gelatin with low-calorie cranberry juice, artificial sweetener and orange rind. Pour into orange shells and refrigerate. If fruit is added to the gelatin, count the fruit as the fruit exchange for that meal, she said.

"Many diabetics are unaware that they can eat regular ice cream, in limited amounts, in

place of a slice of bread and two fat exchanges.

"Avoid diabetic candy and ice cream because they may be high in fat and extremely expensive. Also, the label may be confusing.

"If diabetic ice creams are used, they must be calculated into the diet. Dietetic soft drinks are allowed and can be used to flavor desserts or even in baking a candied holiday ham," she said.

Plan For Next Year's Sunflower Crop

Sunflowers literally "blossomed" up throughout Texas in 1975 and chances are good that the crop will continue to become more important to the state's agricultural industry in the years ahead.

Good prices caused the sunflower crop to mushroom to more than 375,000 acres in 1975 compared to only 5,000 acres a year ago. However, yields ranged widely over the state due to adverse weather conditions and a lack of knowledge about the crop.

So, an agronomist with the Texas Agricultural Extension Service advises producers who intend to plant sunflowers next year to plan ahead carefully.

"Producers planning to grow sunflowers in 1976 need to take a close look at their farming operation in preparation for next season's crop," points out Dr. John Bremer.

He lists a number of items for farmers to consider.

"First of all, choose your planting area carefully. Stay away from home sites and cotton fields since problems arise when

attempting to desiccate the crop.

"Do not plant the crop on the same land year after year as this leads to increased disease problems.

"Plant only high quality seed.

"Inexperienced growers should plant only small acreages of the crop. There are a lot of questions still unanswered about proper management practices for sunflowers.

"Look closely at the market situation before planting sunflowers. Due to the expected increase in production, the market may be less attractive than this past season. It's important to get a price commitment from a buyer.

"Control volunteer sunflowers in next year's crops where sunflowers were planted in 1975. Volunteer plants can cause moisture and harvesting problems in other crops if they are not controlled."

Bremer notes that the Extension Service is attempting to gather as much information as is available to assist producers in making plans for the 1976 sunflower crop. However, knowledge proper fertility and insect, disease and weed control practices is still fairly limited due to the newness of the crop in Texas.

"The potential for sunflowers remains great, however," believes Bremer, "as oilseed crops continue to gain in prominence throughout this country. Sunflowers also loom as an alternate crop for cotton growers."

LUBBOCK--With expected increased acreages of corn production next season, farmers can look forward to more cases

of Southwestern corn borer infestations.

One of the major insect pests of corn on the High Plains, the corn borer larva, girdles the stalks, causing them to lodge, or fall.

Cultural practices, such as fall plowing and disking, are the best management tools to prevent yield losses next year due to this pest, says Buddy C. Logsdon, County Extension Agent.

Logsdon says mature borer larvae spend the winter four to six inches below the soil surface in the top roots of corn.

"If left undisturbed, they have an excellent chance of surviving the winter," Logsdon says.

"However, cultural practices which expose the top roots to freezing weather will greatly reduce the number of corn borers surviving the winter. In the High Plains, sufficiently cold weather to kill exposed larvae can be expected up through February."

Logsdon says if a producer is planning to graze his stalks, some type of cultivation is still necessary and the earlier this is done in the winter, the more effect it will have on hibernating borer larvae.

"If no cultivation is applied until after the severe part of the winter is over, deep breaking may reduce populations some," Logsdon adds. "Deep breaking often buries the borers too deep for the adult moth to emerge in the spring."

Logsdon encourages area-wide or community-wide stalk destruction programs to help control the pest. "With the prediction that corn production will increase next year, practices which decrease borer populations should be undertaken now."

WHAT CHRISTMAS MEANS TO ME

Mrs. G. L. Adrian--Christmas is happiness, having our loved ones back home, and I'm especially thankful to be living in this community.

Mrs. Polly Middleton--Christmas is a time to re-evaluate our lives and see if Christ is really LORD of our lives. It is also a time to praise the Lord for everything he has given us, love, family, friends, food, rament and shelter.

Mrs. Jean Wimberley: Love and the Christmas spirit walking side by side.

Cultural Practices In Corn Borer Control

LUBBOCK--With expected increased acreages of corn production next season, farmers can look forward to more cases

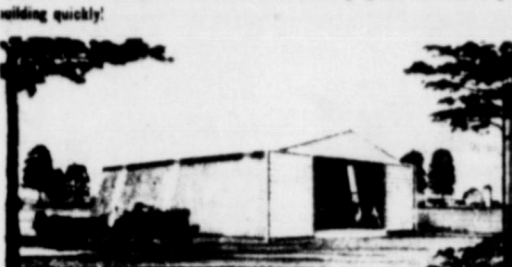
of Southwestern corn borer infestations.

THEY'RE ALL IN CLASSIFIED

FARMLINE
A product of Atlas Building Systems (Overseas, Inc.)

A Great Place to Store Things!

Be prepared for winter weather! Work inside this year, or store that equipment to protect your investment. Atlas Building Systems will deliver your building quickly!



WINTER SPECIALS!

Wide variety of sizes available from 9'x9' to 50'x150'

Call or write today.

BROWNLOW BROS. GENERAL CONTRACTORS

364-0053 HEREFORD 242 E. Third

MONUMENTS

Windsboro Blue Granite White George Marble and others, including Bronze for Memorial Park Specifications.

See or Call Collect Percy Parson, Olton Phone 285-2621 or Frank Ellis Muleshoe, Phone 272-4574.

FOR SALE Two bedroom house to be moved. See Ed Cox at Fry and Cox, Phone 272-4511, 11/13 t/c.

KINBY SALES AND SERVICE Repair while you wait, Harvey Bass Appliance-Muleshoe, 3/27/t/c

To Rest Assured use SAFETY DEPOSIT BOX Protection

FIRST STATE BANK Dimmitt, Texas



OWENS ELECTRIC

WE SPECIALIZE IN: Complete sales and service of electric motors (new and used), magnitos, starters and generator repairs.

LOAN MOTORS AVAILABLE 809 E. 2nd, 364-3572 HEREFORD, TX.

Floating Tailwater Pump Conserve that water

Vertical Hollow Shaft

Electric Belt Driven Gear Head

"Guaranteed Satisfactory Service" Warren Owen.....Harvey Milton

FOR SALE

(2) 6" Smithway Pump 1 1/4" Shafts Woodlined 280' 250' with 40' Suction Suction on the 250'

(1) 6" Green Pump 1 7/16" Shaft 200' All 3 in good shape and pumping

(3) 6" Cooling Jackets Call 385-5816 or 385-3620

QUICKBALL PLYON CO. High Pressure Automobile Pump Supplies & Equip. P.O. Box 567 Earth Texas

WE ARE STILL HERE and STILL WANT TO HELP YOU WITH YOU'RE IRRIGATION PROBLEM

STATE LINE IRRIGATION CO., INC. Littlefield-Muleshoe

Political Announcements

HERBERT DUNN Candidate For: Lamb County Tax Assessor Collector

TREFLAN \$118.75

FOR EXPERT CARPET CLEANING and INSTALLATION CALL LITTLEFIELD CARPET SERVICE 611 E. 9th St. --Phone 385-4089

OUR CARPET SALE Now In Progress PRICES RANGING FROM \$5.95 UP INSTALLED SHAGS-SCULPTURES-KITCHEN CARPETS

SON CARPET CENTER Serving The Plains For 17 Years Phone 296-2761

PUBLIC NOTICES "BECAUSE THE PEOPLE MUST KNOW"

NOTICE TO BIDDERS Sealed Bids addressed to the Honorable Mayor and City Council of Earth, Texas for the purchase of a Crawler Dozer. Bids to be received on both new and used Dozer. Crawler-Dozer to be a 70 H. P. or larger with a dozer blade and ripper. Bids will be received at the office of the City Secretary, City Hall, Earth, Texas until 8:00 p. m., January 5, 1976.

when publicly opened and read. The City of Earth reserves the right to reject any or all bids.

Signed Larry Tunnell Mayor City of Earth, Texas

Published in the Earth News-Sun December 18 and December 25, 1975.

FOR SALE NEW 1976 MODEL **1066 TRACTOR** AIR COND. DUAL CONTROLS RADIO HEATER DUAL WHEELS THIS TRACTOR HAS NO HOURS ON IT, AND HAS THE NEW BLACK STRIPE WITH COM LIMETER HITCH CALL 257-3482

DEAD STOCK REMOVAL 7-DAYS A WEEK SERVICE

Please Call As Soon As Possible **MULESHOE BI-PRODUCTS** Phone 364-2423 LASSUDON

GROW TRITICALE Under Contract! \$700 CWT. BASE PRICE

For Information Call **806-296-5969**

LARRABEE'S LITTLEFIELD HOME IMPROVEMENT CO. 203 XIT DRIVE ACROSS FROM THE WINDMILL CALL COLLECT 385-4566 SPECIALIST IN UNITED STATES STEEL SIDING ALUMINUM DOORS and WINDOWS LITTLEFIELD

LISTING WANTED SEE Ted Haberer OR Alfred Washington 257-2113

FOR SALE 16" Well Casing New Steel 18 1/2 c per pound. 6" and 8" Column Pipe. Highest Prices for Junk Iron

FARWELL Pipe & Iron Phone 481-3287 601 Ave A Farwell, Texas

TELEX Hearing Aids We Have Moved From 416 Mitchell To 403 E. 14th **CLOVIS HEARING AID CENTER** Phone 763-6900 Clovis, N.M.

VA Stresses Importance Of Safeguarding Personal Documents

The importance of safekeeping for personal documents such as military discharge papers, marriage licenses, divorce decrees or child custody evidence is emphasized by the Veterans Administration in daily counseling sessions with former military members.

Other information that should be filed with family documents are government and commercial life insurance policies, VA correspondence with identifying claim number, social security numbers and, where applicable, naturalization papers.

A few minutes in simple organization can do much in avoiding undue anguish during

times of great emotional stress," Jack Coker, VA Regional Director, said. "These vital papers should be kept safe from fire and theft, yet readily accessible, and their location known to family members," he added.

The veteran's family should be aware of possible survivor benefits such as VA pensions or

dependency and indemnity compensation for service-connected death.

Complete information on all benefits available to veterans and their families is available at VA regional offices, through representatives of veterans' service organizations, or veterans county service offices.

Winter Brings Unexpected Problems

Many persons think they can easily cope with winter, but unexpected problems from car wrecks to frostbite abound, says the Texas Medical Association.

Highway accidents always

unexpected problems from car wrecks to frostbite abound, says the Texas Medical Association.



CHRISTMAS TREES ARE VERY, VERY PRETTY... Hope Templeton turns on an angelic smile as she inspects the tree and its colorful decorations. She is the charming little daughter of Mr. and Mrs. David Templeton.

jump dramatically when snow or ice settles in. One of the most dangerous road conditions is glaze ice, a glass-slick ice layer almost undetectable until you start sliding. Pumping the brake pedal often can cut down on slides. Some persons put extra weight in their trunks to aid traction. But, if you absolutely have to travel, probably the best way to avoid wrecks is to think slow in the snow. A slow trip is a lot speedier than standing around waiting for the authorities to investigate an accident.

Pushing a vehicle out of snow also can be very dangerous. The exertion can cause muscle strains and even heart attack, especially in middle age men who are overweight and don't get much exercise. Sometimes a stuck car's exhaust pipe will become clogged with snow. Then carbon monoxide can get into the passenger compartment and cause illness or death.

Snow shoveling, although necessary to cut down on falls, can be another unexpected exertion, especially if it is done hurriedly. Again, overweight, middle aged are prime targets for trouble. But at the right pace, snow shoveling can be good exercise for many persons.

One of the most serious dangers of winter is frostbite. Wind plays an important part in causing frostbite. Air moving at 45 miles per hour in 20 degree

weather has the same chill as 40-below zero air on a still day.

One of the dangers of frostbite is that you often don't feel it. First thing you know is that someone else notices that your nose or ear is turning white. The frozen part becomes hard to the touch and loses feeling. Many sports leaders advocate a buddy system for outdoor winter sports; two persons are paired off, each watching the other for signs of frostbite.

To prevent frostbite, first be

certain that you are properly dressed for the temperature. Avoid overexertion and excessive perspiration. Avoid contact of bare flesh with cold metal. Don't smoke or drink alcohol.

In first aid for frostbite, forget the old "remedy" about rubbing the affected part with snow, and also forget the completely invalid caution against rapid thawing. Also, don't massage or rub the frozen part. Don't touch it at all.

Begin rewarming as soon as possible. A hot bath is excellent but avoid scalding. Hot wet towels will help, changed frequently and applied gently.

If no fire or hot water is at hand, place the patient in a sleeping bag, or cover with coats and blankets. Hot liquids help raise body temperatures. For any frostbite, even a mild case, prompt medical attention is important. The depth and degree of the frozen tissue cannot be readily ascertained.



Christmas

... and we wish you the best of gifts: peace on earth, good will toward men! Thanks for your kindness and loyalty.

GIBSON'S DISCOUNT CENTER

DIMMITT



Follow this prescription for a happy holiday—good cheer . . . share laughter and joy . . . fill your heart and home with love. Our best to all . . . to all, thanks.

THANKS FOR YOUR PATRONAGE IN 1975
WE LOOK FORWARD TO SERVING YOU IN 1976

FLOYCE PIERCE

LOCATED IN THE PRESCRIPTION DEPARTMENT OF
Littlefield Hospital

401 W. 6th St. -- Littlefield -- Free Mailing -- 385-4491



To you and yours, the peace and joy of Christmas with sincere best wishes from us.



Curtis R. Wilkinson

County Attorney
Littlefield



CHRISTMAS GREETINGS

Quiet thoughts turn to this time of peace, happiness and togetherness. It's a season when families and friends harvest many joys and blessings. Christmas is also a nice time to thank friends like you.

LOOKING FORWARD TO SERVING YOU IN 1976

HIGH PLAINS SEED & DELINTING

GARLAND De PRANG-MANAGER

OLTON - PHONE 285-2657



Christmas Greetings

It's all around — that Christmas feeling! May it fill your holiday with warmth, joy and loving thoughts. We hope you enjoy this time to the fullest. Thanks, friends.

FARMERS GRAIN

SUNNYSIDE-HART