

## Funeral Services Conducted Saturday For Walter Stout

Funeral services for Walter C. Stout, 80, were conducted Saturday, October 24, at 2:30 p. m. in the First Baptist Church in Earth.

Rev. M. B. Baldwin, of Grand Prairie and Rev. David Hartman, pastor, officiated. Interment was in the Earth Cemetery under the direction of Parson-Ellis Singleton Funeral Home.

Mr. Stout was dead on arrival at 6:45 a. m. Thursday at West Plains Memorial Hospital in Muleshoe, after suffering a heart attack at his home three miles northwest of Earth.

Stout was born December 16, 1889 in Montague County, Texas. He married Maude O'Hair, December 20, 1914 in her home northeast of Quanah. He has been a resident of Earth for 40 years, moving here from Lockney.

Stout has through the years served as a "helping hand" in many worthwhile projects for betterment of the Earth area. He gave generously to help build the City Swimming Pool, Baseball Park and many other civic projects he felt were worthwhile. He also was a contributor to the Baptist Church, Red Cross, Boy Scouts, Girl Scouts and various other churches and organizations.

He served for 12 years on the Springlake-Earth School Board. He also served as director of



WALTER STOUT

the Earth Co-op Gins, Inc. and on the South Plains Hospital Board for many years. Stout's love for watching things grow kept him interested in farming throughout his entire lifetime.

He is survived by his wife, Maude; three daughters, Mrs. Jack Hadaway, Mrs. L. J. Welch, and Mrs. Fred Welch, all of Earth; two sisters, Mrs. Chloe Filppin, of Hart and Mrs. Agness Filppin, of Quanah; also eight grandchildren and six great-grandchildren.

The NEWS Paper Dedicated to the Development of the World's Richest Irrigation Area

# The Earth News-Sun

"A CONSOLIDATION OF THE EARTH NEWS AND EARTH SUN, OCTOBER 12, 1956"

NUMBER 16

12 PAGES

EARTH, LAMB COUNTY, TEXAS, THURSDAY, OCTOBER 29, 1970

10 CENTS

NUMBER 11



V FOR VICTORY... S-E Seniors are shown with Miss Flame, Susie Adrian, showing the Victory Sign at the Bonfire last Thursday night.

## Susie Adrian Is "Miss Flame"

Petite, brown-eyed Susie Adrian, daughter of Mr. and Mrs. G. L. Adrian, began her reign as Miss Flame at the annual bonfire pep rally Thursday night.

Susie, a senior student at S-E, was elected by her classmates to represent the senior class in their competitive race with the three other high school classes. The representatives were Marlan Dawson, Junior, Leah Galaway, Sophomore, Brenda Cavitt, Freshman.

The title of Miss Flame was bestowed on Susie when it was determined that the senior class gathered the largest amount of wood per student than any other class.

Susie, who is a refreshing young lady, has been in Band for four years and is currently serving as assistant drum major. She has been selected by the Band Council as outstanding Bandsman for October. She is also interested in basketball and FHA, having been active in both for the past four years. She has been a member of FTA for two years. She was a member of the Junior Class Play cast last year and is cast in the Senior Play this year. She is also active in the Earth Chapter of Rainbows and in church work.

## Lazbuddie Boys Show Champion Swine At State Show

Mike Windham and Loy Dale Clark, both members of the Lazbuddie FFA, exhibited champion swine at the State Fair of Texas Junior Livestock Show in Dallas.

Mike exhibited a 6 month old 215 pound Champion Berkshire Barrow. Clark exhibited a six month old 202 pound Champion Chester White. He also won Reserve Champion in the Class 8 Division of Chester White.

Rickie Seaton, also a member of the Lazbuddie FFA, showed the Reserve Champion Crossbred Barrow. Seaton also won 9th place in Class 13 Duroc competition.

A Duroc belonging to Mike Windham took 26th place in Class 13 competition. He also took 5th place with a Hampshire in Class 17 Competition.

Larry Dear, a member of Lamb County 4-H Club, took 10th place in Class 17 Hampshire Competition, David Hinchliffe of the Springlake-Earth FFA Chapter took 25th place and Bruce Bridges took 30th place in the Class 17 Hampshire Competition.

Welda Barton, a member of Lamb County 4-H Club, took 16th place in Class 37 Division of Crossbred Barrows. She also won 6th place in Class 23 Poland China Competition.

Hinchliffe took 21st place in Class 18 Competition of Hampshire Barrows with Bruce Bridges placing 23rd in the same division.

"Freedom of the press is the staff of life for any vital democracy." - Wendell Willkie.

## PTA Has Program On Drug Usage

The Springlake-Earth PTA met Monday night at 7:00 in the S-E school cafeteria and were entertained by the High School Choir under the direction of Miss Donna Blienke and accompanied by Marlan Dawson. The Choir entered the cafeteria singing "Consider Yourself" from the musical Oliver. The choir continued with several selections from the musical Camelot. A choral speech ended the performance with a Halloween treat for little spooks and goblins entitled "Hist Wist".

The Golden Tones, composed by Regina Cole, Karen Dear, and Kim Welch, delighted the audience with two folk selections, "They Call The Wind Mirrah" and "Donna Donna". Mrs. Ray Joe Riley, president of the local PTA, introduced the speaker, Mrs. Inez Moore, Lubbock, Coordinating Consultant for Drug Education at the

Education Service Center, Region XVII. She aids schools in developing and implementing a program for Drug Education.

Mrs. Moore showed a film strip on drug usage and brought out the idea that drugs are not as new on the scene as some would think. The first known drug abuse was in 1674 with the drug Opium. The French used marijuana in 1849. The syringe was invented in 1850 and there were many drug addicts during the Civil War. The drug LSD was discovered by Albert Hoffman in 1930.

The supply and growing of drugs comes from many places. Heroin, a favorite drug of addicts, is grown plentiful in Turkey. An abundance of marijuana comes from Mexico. San Antonio is the drug capital of Texas with Houston and Dallas running a close second. Small towns are not without their drug pushers and users. The speaker said that Earth is not excluded from the use of drugs as some would like to believe.

It was stated that over 75% of the college students in California are participating in some kind of drug use and at least 25% are using drugs on all campuses.

It doesn't stop on college campuses, unfortunately. In the small town of Denton, it has been reported in the grade schools. Denton has a listed telephone number that troubled depressed people can call and receive help. Recently, a 5th grade student called asking for help because his parents never came home until late and he was lonely and frightened and he threatened to end his life with drugs.

The speakers told her audience "The real cause for drug usage is more than just one reason."

But the problem can be coped with. Audience participation was not lacking on ideas. Members of the audience had some of the following ideas. The teenagers claim lack of communication. If they lack it now, they never had it. It needs to start when they are young. They need to know they can always talk with Mom and Dad about anything. They need love and they need to know what responsibility is. No one can pin it down to these; but if they have this closeness, it sure won't harm them.

Mrs. Moore brought a kit full of artificial pills that addicts or even innocent home users have in their medicine cabinet. So many home users use drugs that they don't realize are habit forming.

Following the address, refreshments of Cookies and Coffee were served to those attending. The next meeting will be November 16. Gil Lamb of Muleshoe will be guest speaker for the event.

## Goodwill Centre Needs Blankets, Coats, Baby Clothing

Mrs. Sam Cearley operated the Goodwill Centre Saturday for members of the Town and Country Study Club.

Sales for the day totaled \$9.50. Mrs. Cearley reported that blankets, baby clothing and children's coats were the items most desired by the public, and the Centre could use more of these items.

### BULLETIN

City Hall will be closed November 3 due to general election.

## Bozeman Is Manager At Earth Swine Breeders

Shelby Bozeman has been secured as manager of the Earth Swine Breeders, Inc. He took over the position on September 1.

Prior to accepting the position here, he was working for a master's degree in Swine Management at Texas A&M. He received his masters degree in August of this year.

Bozeman, who is a 1962 graduate of Springlake-Earth High School, also has a Bachelors Degree from Abilene Christian College. His major was in Animal Science.

Bozeman taught courses in Animal Science two years at Lubbock Christian College. Mr. and Mrs. Bozeman are the parents of a son, Shannon Dale, 16 months old. They reside at 608 E. 3rd in Earth.



SHELBY BOZEMAN

## Only 3 Days Left To Get A Free Photo

There is only three days left to take advantage of the free offer of an 8x10 color photo with each subscription to the Earth News-Sun. The photograph can be of yourself, your family or of any individual you select.

There is no way you can lose on this offer. The photo itself would, in all possibility, cost more if you were to buy it than the \$3.50 you would spend for a one year subscription to the News-Sun.

This offer cannot be continued longer as photos must be taken on November 5 in order to have them ready for Christmas.

A representative from Allstate will be at the Community Build-

ing in Earth from 2:00 until 7:30 p. m. on November 5 to take the photographs.

Band students are now selling subscriptions to the News-Sun and too many popular magazines in order to raise funds for Band events during the year. If a Band student calls on you, they are in a position to make this free photo offer to you. Be sure to fill out the free photo coupon.

If your subscription is still in effect and you still want to take advantage of the free photo offer, you may do so. Your subscription will automatically be extended for the proper amount of time.

Act now! The offer will end October 31.

## Carnival Promises Night Of Fun For All

A warning has been issued to all area residents to beware of a possible traffic jam of Spooks, Goblins, and perhaps a Witch or two flying around on their brooms, as the sunlight fades away and twilight ushers in the witching on Halloween night.

The cause has been attributed to the fact that a big "Halloween Carnival" will begin in Earth. Witches and Warlocks will be greeting attendance at the door and a black cat may be watching you every move.

The site of the possible traffic jam will be at the Show Barn on highway 70. The hours will be between 6:30 and 10:30 P. M.

Area Witches and Warlocks have brewed up a night full of fun and surprises for all the area Spooks and Goblins.

There will be booths for Dart Throwing, a Fishing Pond, Fish Toss, A Car Bash, sponsored by Cub Scout parents.

Girl Scouts will have an Ole Fashioned Country Store and a Cake Walk.

The Young Homemakers will be giving away the handsome deer rifle that has been seen displayed in several business places in Earth.

The need for something to calm the nerves has also been taken care of as the Cadette Troop will have a concession stand open, serving, who knows, maybe a little Witches Brew? . . .

Parents bring your spooks and goblins to the Halloween Carnival, keep them off the streets and give them a family night full of fun, games, prizes and lots of surprises.

## Investiture Services Set Today For Brownies - Scouts

Investiture Services for the Springlake-Earth Brownies and Girl Scouts is set for 4:30 p. m. in the Springlake-Earth School Cafeteria, Thursday (today) October 29.

The theme of the Investiture will be "Juliet Lowe's Birthday". Juliet Lowe was the founder of Girl Scouts.

Each Brownie Troop and Girl Scout Troop will take part in

the program as new members are invested and former members are re-dedicated. Mrs. Donnie Clayton, Service Chairman, will be in charge of the Investiture Services. All parents are invited to attend this impressive service.

Following the Investiture, a birthday party in honor of Juliet Lowe will be staged. Cake and punch will be served.

## Neil B. Scott Speaker At Y.F.

The S-E Young Farmers met Thursday, October 22, at 8 p. m. in the Vocational Agriculture Building at the S E High School.

Neil B. Scott of Neil B. Scott Commodities of Amarillo, spoke on the "Futures Market". The theme of his talk was the speculation on bidding in the future's market.

Refreshments of coffee and cookies were served to members and visitors.

Those attending were Larry Hausmann, Jerry Jones, Dean Jones, Charles Axtell, Jerry

Goheen, Don Curtis, J. Allen Gover, Gerald Graham, Vic Coker, Cliff Brown, Tom Lively and Shelby Bozeman.

Visitors were W. O. Jones, Dave County, Dave Haberer, and Neil B. Scott.

The next meeting will be November 19 at 7:00 p. m. with the proposed program to be on farm income tax and will be given by a CPA.

VOTE TUESDAY

## Pat Goforth Leading In Football Contest

Only three contestants had as many as nine games correct in this the seventh week of the football contest. All three of the top contestants were women.

Pat Goforth of Herford was first. She rated first place by a slight margin in guessing the tie-breaker score more nearly correct.

Placing second was Mrs. Ray Joe Riley and Janey Townsend placed third.

Leading in the over-all standings for the seven weeks is Pat Goforth with 590 points.

Doug Freeman is in second place with 565 points. Tied for third place, 35 points behind the leader, is Danny O'Hair, J. W. Dear, and Janey Townsend with 555 points.

In fourth place with 550 points are Sunnye Randolph and Jerry Jones.

Other contestants with 500 points or more are: Karen Layman 540; Tom Sanders and Troy Layman 530; Jimmy Randolph, Dale and Mike Parsons, 520; Cindy Barton, 515; James L. Littleton, 505 and Mark Barton, Lavelle Dear, C. W. Conway, Mrs. Ray Joe Riley, and Doug Jones, 500.

Twenty-one other contestants have scores in the 400 to 490 points group.

With three remaining weeks left in the contest and with scores so near the same, everyone still has a chance to end up at the top.

So keep your entries coming.

## Preacher Is Comedian At Local Banquet

Seventy people were present for the Workers Appreciation Banquet on Wednesday, October 21, in the Fellowship Hall of the First Baptist Church in Earth.

Guest speaker for the event was Vernon Norris of Plainview. Norris is a member of the faculty of Plainview Public Schools and serves as Music Director at Lone Star Baptist Church.

Norris gave an interesting and informative talk on church leadership. The tables were decorated with fall floral arrangements.

During the lighter side of the program, Rev. Hartman presented a brief skit, portraying a preacher delivering a sermon gathered from the Sears and Roebuck Catalogue, using Little Jack Horner as the subject.

Rev. Hartman accompanied Norris on the piano as he sang "While The Organ Peeled Potatoes".

The delicious food was prepared by the school lunchroom personnel and the comics were supplied by the pastor with the assistance of the guest speaker.

## Annual Sandhill Crane Hunt To Begin October 31

The Muleshoe, Texas Jaycees have scheduled their Eighth Annual Sandhill Crane Hunt to be held October 31, 1970 through November 8, 1970.

The Muleshoe Jaycees have arranged again for land adjacent to the Muleshoe National Wildlife Refuge. This refuge is the oldest in the State of Texas, and during the winter months, there are as many as 100,000 sandhill cranes wintering away from their arctic breeding grounds.

The Muleshoe population represents the largest concentration of this species in the United States.

The Jaycees will also provide transportation to and from the hunting area. Shells and licenses will be available and the guides will leave the Dinner Bell Restaurant, 1700 W. American Blvd., which is hunt headquarters, one and one-half hours before sunrise each day.

The costs for the hunt are as follows:

\$7.50 Week-end  
\$15.00 October 31 through November 8

The hunter who kills the largest bird during the hunt will receive a Browning twelve-gauge Automatic Shotgun.

For more information, contact Jerry Hutton, Manager, Muleshoe Chamber of Commerce, Box 525, Muleshoe, Texas 79347. Phone Area Code 806/272-4248.

**BAND TO HOLD MARCHING CLINIC**

The S-E Band will have a Marching Clinic on November 3 with Clinician, Dean Kilhon, of Texas Tech University conducting the clinic.

The clinic will be held before school and during regular band period so as not to interfere with other class time. The clinic will be in preparation for the UIL Marching Contest to be held in Lubbock November 17.

## Fire Destroys 38 Bales Of Cotton Tuesday

A fire at Barton Brothers Gin in Earth during the early morning hours Tuesday, resulted in an approximate \$3000.00 in damage. The cause was undetermined.

Although firemen fought the blaze for four long hours, they were unable to save 38 bales of cotton that was destroyed. Most of the cotton destroyed belonged to Sandy Sanderson, owner of Farm Chemical Company of Earth and Springlake.

The fire was discovered about 12:15 a. m. Tuesday by Harold Miller, who sounded the alarm

**'NO' ON PROPOSITION 3**

**Tax Amendment Dangerous One**

VOTERS SHOULD be wary—and vote "no"—whenever any proposition sounds so innocent as proposed Amendment No. 3 on Tuesday's ballot.

The wording on the ballot is such as to appeal to anyone's sense of fair play: "... to provide by law for the establishment of a uniform method of assessment of ranch, farm and forest lands..."

What goes before and after those words, however, has more catches than the old line of "let me show you my etchings."

First, the amendment would "authorize the Legislature" to provide for the "uniform method of assessment." No one knows what the Legislature might provide. There are grounds for fear that a tax ceiling on so-called "farm lands" would be set ridiculously low.

Equal cause for caution is presented the farmer: What the Legislature can do by law can be undone at the next session. A city-dominated Legislature two years or four years from now might set rural tax valuations inordinately high.

The real "clinker" in the proposed amendment, however, is in the wording that the assessments "shall be based upon the capability of such lands to support the raising of livestock and/or to produce farm and forest crops."

This doesn't really affect the true farm-

er. A man who derives his principal income from the land already is protected from having his farm over-taxed merely because a city happens to grow out to his land. What the new amendment would do is extend this tax shelter to big companies and land speculators who gobble up land around big cities and hold on to it for long-term gains.

For example, Company X might buy farm land for \$300 per acre and hold it for 10 years while a city grows out to it and the acreage becomes worth \$1,300 for development. The company realizes a profit of \$100 per acre per year but the taxes are not increased.

Enjoying this tax shelter, the company would have no incentive to develop the land. Conceivably, it could hold the property for years while other taxpayers—home owners, for instance—are forced to take up the tax lag. The latter, after all, must pay taxes on the "market value" of their homes, not on the "capability" of their lots to produce crops.

In other words, one class of property owner—the speculator—would get special tax consideration at the expense of everyone else.

That should jar anyone's sense of fair play enough for him to vote "no" on Amendment 3.

-LUBBOCK AVALANCHE-JOURNAL



WOLVERINE DEFENSE gave an outstanding performance Friday night, holding the hardhitting Farwell Steers scoreless in the last half. The final score was Farwell 14, Springlake-Earth 8.

**Care Advised In Handling Chemical**

Misuse, mishandling and improper storage of herbicides and other agricultural chemicals is resulting in the death of many farm animals.

Dr. John C. Reagor, toxicologist for the Texas Veterinary Medical Diagnostic Laboratory, reports that a arsenic based chemical has become the leading cause of death in cases he has investigated.

In one case, a can of arsenic had fallen from a shelf onto the dirt floor of a hay barn, "Dr. Reagor said. "Moisture had rusted a hole in the can and had spread the arsenic over most of the floor of the barn, and whenever bales from the bottom row were used, animals would die."

In the case, there was extreme difficulty in locating the source of poisoning, since only a few bales of the hay 'hot' with arsenic were fed."

Dr. Reagor also warned against using barrels for feed troughs or storage that had previously been used as containers for arsenic base agricultural chemicals.

"You can burn them, wash them, and everything else, but the arsenic may still remain in the metal of the barrels in sufficient quantities to kill almost any animal," he said. "You are just asking for trouble when using these barrels."

Dr. Reagor urged the policing of all areas in which animals are housed or pastured or where feed is stored.

"All agricultural chemicals, potentially dangerous to all

**The EARTH NEWS - SUN**



Published at Earth, Texas 79031 every Thursday except the first Thursday following Christmas.

Entered as Second Class Matter at the Post Office at Earth, Texas 79031, October 1, 1954--Under Act of Congress March 3, 1879.

**SUBSCRIPTION RATE**

Earth and Trade Territory, per year.....\$9.50  
Elsewhere in United States, per year.....\$5.00

**CLASSIFIED RATES**

6¢ per word, first insertion, 5¢ per word thereafter-----60¢ Minimum.

**ADVERTISING RATES GIVEN ON REQUEST**

ROSS AND POLLY MIDDLETON-----Publishers

farm animals and small children, should be gathered up and buried in an area where leeching into farm and community water supplies will not occur, he said.

Over 400 million persons suffer from trachoma. For 5¢ the United Nations Children's Fund can provide antibiotic ointment to save one of them from blindness.

**Texas Launches New 4-H Club Plan**

4-H in Texas is taking on a new look! Plans are underway to develop 4-H Club work in the state into an "in-depth" program.

The new plan has been outlined by Dr. Ed Schlutt, associate state 4-H Club leader, to county Extension Service personnel and adult 4-H leaders at recent gatherings throughout the state. The new plan has a two-fold objective: (1) To reach a larger number of youth, and (2) to develop meaningful programs, grants.

The 4-H leader outlined these basic ingredients of the plan:

1. A dynamic action program at the local club level.
2. Adult leaders working more closely with youth, and county Extension agents working closely with adult leaders.
3. More involvement of junior or teen leaders.

"The new 4-H program must especially be aimed at the interests of youth--creation, action, learning and fun," said Schlutt.

"New programs must be developed that are meaningful and that meet the present-day needs

of our youth. They should feel self-satisfaction of self-attainment in 4-H Club work," he added.

Schlutt cited the major needs of 4-H today as the development of adult leaders, special programs for teenagers, a broader scope for 4-H, more recognition at the local club level and a more appealing image of 4-H.

"In 4-H our major concern is the development of boys and girls," contended the 4-H leader. "Our youth are Texas' most valuable resource, and we must dedicate ourselves to their development and well-being."

"There are some 92,000 boys and girls throughout the state now enrolled in 4-H Club work," pointed out Schlutt. "This is only a small portion of the total potential of 2.5 million youth."

All youth between the ages of 9 and 19 are eligible for enrollment in 4-H.

With the continuing decline of the rural population in Texas, the number of rural youth has also decreased and now totals about 130,000. However the urban youth potential has increased tremendously over the past 10 years and now totals

well over 2 million, explained the 4-H leader.

About 27,000 or 40 per cent, of the present 4-H youth in the state live on farms. Small towns of less than 10,000 population provide about 33,000 members. One of the main goals of the new 4-H plan is to attract more urban youth, added Schlutt. This sector offers unlimited potential in the state's expansion efforts.

"Although 4-H enrollment across Texas has not changed drastically over the past few years, there are encouraging signs," contended Schlutt. "For instance, adults and teenagers are becoming more interested and involved in 4-H. Since 1960, the number of adult 4-H leaders has increased from 11,000 to 14,000 while the number of junior or teen leaders has almost doubled, from 4,000 to 7,500."

"We need to involve more people at all levels in 4-H Club work," said Schlutt. "This includes Extension personnel, lay leaders and the 4-H'ers themselves."

**EVERY MODERN FARMER  
NEEDS A PERMANENT  
AND DEPENDABLE  
SOURCE OF CREDIT!**



This Is The Key To Many Efficient Farm Operations. Here's How Production Credit Association Meets This Challenge For You.

Production Credit Association Is A True Farm Credit Cooperative, Organized To Serve You With Personalized Farm Loan Service.

Production Credit Association Loans Are Available For Any Farm Production Need! Production Credit Loans Help You To Be More Efficient, Giving You The Money You Need---When You Need It---Payable According To A Plan You Can Meet, And At The Lowest Possible Cost.

Stop By And Visit Your Production Credit Association Soon.

**—MOVE AHEAD WITH PCA—**

**AMERICAN EDUCATION WEEK OCTOBER 25-31**

Visit Your Schools! Support Them!

WATCH FOR CHILDREN ON HALLOWEEN NIGHT  
AND DRIVE WITH CAUTION.



**Production Credit Association**

Martell LeVeque-Olton-285-2651

W. B. LeVeque-Muleshoe-272-3162

**WORLD'S BEST BUY  
BIG SCREEN COLOR**



**FACTORY DIRECT  
SHIPMENT JUST  
ARRIVED**

There Is No Finer  
Color TV Than A  
Curtis Mathes At  
Any Price.

CURTIS **CM** MATHES



**SAVE  
\$100**

25" COLOR PICTURE TUBE

**8 YEAR  
PRORATED  
PICTURE  
TUBE  
WARRANTY**

The **SAN BENITO**  
• MEDITERRANEAN IN OAK **\$499<sup>95</sup>**

**MANY MODELS TO SELECT FROM  
STEREOS- COLOR PORTABLES- 23" COLOR CONSOLETS**

**TABLE MODEL**



CART EXTRA  
28" WIDE, 18" HIGH  
282 SQ. IN. PICTURE TUBE

**\$149<sup>95</sup>**

BLACK AND WHITE

**295 SQ. IN. COLOR TV**



GENUINE WALNUT CABINET  
INSTANT ENTERTAINMENT

**\$399<sup>95</sup>**

IF NO TRADE ADD \$20

**FACTORY DIRECT TO DEALER**

When we cut out the distributor, we cut the cost of living. Why strain your budget when you can have a higher quality Curtis Mathes for less.

Higher quality doesn't have to cost you higher prices. At Curtis Mathes we give you higher quality for lower prices by selling direct from factory to dealer.

EASY TERMS Up To - 36 Months To Pay AUTHORIZED SERVICE

We have a few of the 1970 models left and you can buy them practically at cost.

**Sale - Prices - Last - Thru November 7**

SHOP IN OLTON FOR BIGGEST VALUES AND SERVICE

**Register - For - Free - Prizes - Drawing - On - November 7**

Ages 15 years and up are eligible.

You Can Buy A Color Set For \$249. and up. Buy Now - Lay-Away for Christmas

EXCLUSIVE CURTIS **CM** MATHES DEALER FOR LAMB COUNTY

RADIO

**LUSTER'S**

TELEVISION

508 E. 8th St. Olton Phone 285-2755

## HD Club Has Demonstration On Making Lingerie

The Home Demonstration Club met Thursday in the home of Mrs. Orlan Bibby, president. Mrs. James Smith, called the meeting to order and asked members to sing the Home Demonstration Creed. The roll call was answered by naming "A Talent I Would Like To Have". Mrs. Orlan Bibby gave a very interesting demonstration on making lingerie. Refreshments of Coconut Pound Cake, Coffee, and Cold Drinks

were served. Those attending were Mrs. James Smith, Mrs. Bob Boone, Mrs. Ed Biles, Mrs. A. Hollingsworth, Mrs. Keith Boone, Mrs. Ruel Fanning, Mrs. Herman Cooper, Mrs. T. V. Morrell, Mrs. L. C. Blalack and Mrs. Orlan Bibby. Also visitors Mrs. Alfa A. Whitford, Mrs. C. L. Houchin, Mrs. Alan Goforth and Mrs. Burt Wall. The next meeting will be in the home of Mrs. James Smith.

## Cadettes Discuss Fashions and Dating

The Cadette Troop 178 met Monday afternoon at the Fire Hall and practiced the Investiture Service. Mrs. Don Taylor read the contents of the "Gripe Box". The troop discussed sisterly relations and then chose scout sisters as follows: Ruth Street-Neisha Lewis, Donna Daniel-Margaret Street, Quincey Lewis-Debra Daniel, Lisa Clayton-Camille Hincheff.

A debate was held using such familiar subjects as the Mini, Midi, going steady and kissing more on first date. Following the debate, the group walked to the cafe for a Coke. Those attending were Ruth and Margaret Street, Neisha and Quincey Lewis, Debra and Donna Daniel, Lisa Clayton and Camille Hincheff. Also, their leader, Mrs. Don Taylor.



ANNOUNCEMENT OF MISS FLAME was given at the Bonfire at Barton Brothers Gin Thursday night. Candidates and Miss Flame are shown left to right: Miss Flame, Susie Adrian, Leah Galloway, Brenda Cavitt, and Marian Dawson.

## George Bush, Jr. Visits In Littlefield

George Bush, Jr., of Houston, son of the candidate for the U. S. Senate, campaigned for his father in Littlefield, Wednesday, October 21. He attended a reception at the Crescent House (2204 Hall Avenue), at 5:30 p. m. and at 6 p. m., he attended an informal coffee at the Pioneer Natural Gas Company. The visit to Littlefield was the last stop in a three-day, 11-city tour of

West Texas for young Bush. George Jr., 24, is the oldest of five children. A graduate of Yale University and a former Air Force pilot, he is presently active in the Air National Guard. His father was elected to Congress in 1966, and set a precedent for Republicans in Texas when he was re-elected to the Congress without opposition in 1968.

Congressman Bush is chairman of the Republican Task Force on Earth Resources and Population, and a member of the powerful House Ways and Means Committee. He has actively sponsored legislation concerning urban affairs, rural job development, bilingual education, setting priorities in federal spending, Congressional ethics, and conservation.

## Corpus Christi To Get "Freon" Plant

The "Freon" Products Division of the Du Pont Company today announced the decision to purchase the 1,560 acres on which it holds options on the north side of Corpus Christi Bay in San Patricio County, Texas. Worldwide leader in fluorocarbon production, Du Pont has under active consideration for this site the building of a large integrated facility for the production of fluorocarbons. Fluoro-

carbon products are used as aerosol propellants, refrigerants, solvents, food freezants, fire extinguishing agents and blowing agents for plastic foams. Design and construction cost estimates for the proposed plant are under way and a definitive decision is expected before the end of 1971.

Americans will spend nearly \$5 1/2 billion this year to put new rubber between the nation's wheels and its highways—\$25 for every man, woman and child.



Go To The Polls  
VOTE

## Thanksgiving Feast For Senior Citizens November 4

A Thanksgiving Dinner for the Senior Citizens is set for 7 p. m. on Wednesday, November 4 in the Community Building in Earth. Each Senior Citizen attending is asked to bring a covered dish.

Clarence Bennett, of Muleshoe, will be the guest speaker. If members are interested in playing dominoes or other games following the luncheon, they are asked to provide these games.

## Oddfellows Attend Meeting

Earth IOOF Lodge was among eleven area Oddfellow Lodges represented at an area meeting held Monday, October 26, in Hereford. Attending from the local lodge were Jim Robbins and Clyde Parish. Kenneth Deatridge, Grand Master of the Grand LOOF Lodge of Texas and guest speaker for the event, addressed approxi-

mately 60 Oddfellows representing Earth, Hereford, Levelland, Muleshoe, Dimmitt, Friona, Pampa, three Amarillo Lodges and the Grand Lodge of Texas. Prior to the meeting, those attending enjoyed a delicious chicken dinner served by members of the Rebekah Lodge of Hereford.

## Seaman Kent Kelley Home On Leave

S/A Kent Kelley is home on a 14 day leave visiting his parents, Mr. and Mrs. Clarence Kelley and other friends and relatives here. Seaman Kelley has just completed 11 weeks of boot training at Orlando, Florida. At the end of his leave, he will report to Norfolk, Virginia where he will be assigned to the Eugene A. Greene, a destroyer. Kelley, a 1970 graduate of Springlake-Earth High School, joined the Navy on August 4 of this year. Seaman Kelley's brother Freddy is also serving in the Navy. He is currently in Alameda, California but is expected to be transferred to San Diego. Freddy has been in service almost three years.



S/A KENT KELLEY

## Cub Scouts Make Halloween Costumes

Cub Scout Den 1 met Tuesday, October 27, at 4:15 p. m. at the Scout Hut. The meeting was called to order by Den Mother, Mrs. Larry Hausmann and assistant Den Mothers, Mrs. Bob Belew and Mrs. Nathaniel

Ingram. Seven boys were present. The Scouts made Halloween posters for the Halloween Carnival. The group also made masks out of sacks to use as their Halloween costumes. Refreshments of gum and candy were served by Rex Fennell to Biff Belew, Allen Clayton, Rex Fennell, Dave Allen Ingram, Nathan Ingram, Loren Taylor and Tye Harber. What do you know about salt? Common salt is a mineral that is vital to life itself. Salt is made up of sodium and chlorine, which play very important roles in our health. Without salt the fluids in the body could not be kept in their proper balance. Salt is also very important as an industrial chemical.

## Grand Opening Sale

COVERING THE ENTIRE STOCK

THE

## MULEBARN

\* FURNITURE

\* CARPET

\* FINANCING ON APPROVED CREDIT

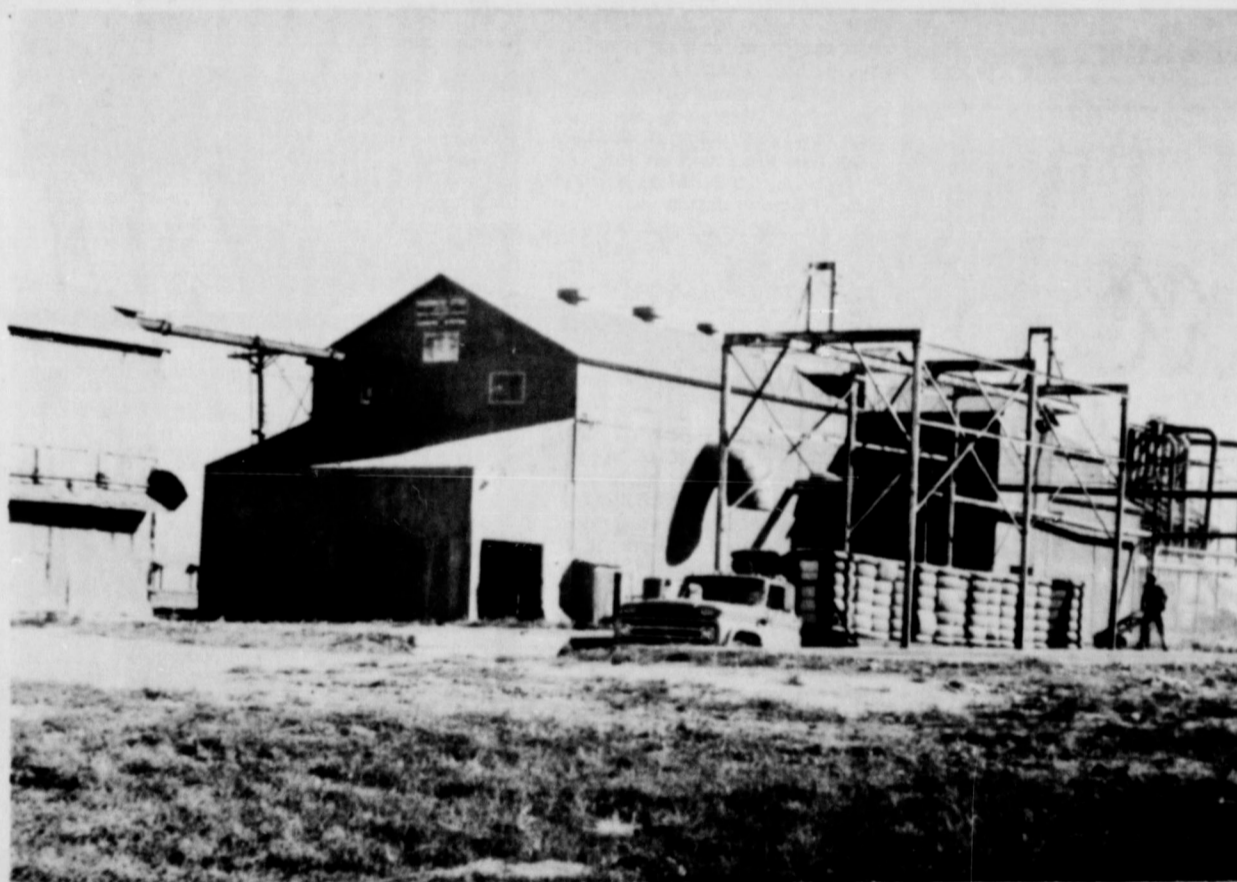
WE TRADE FOR ANYTHING OF VALUE

322 Main

Muleshoe

272-3426

## FOLLOW THIS SIGN FOR BIGGER PROFITS



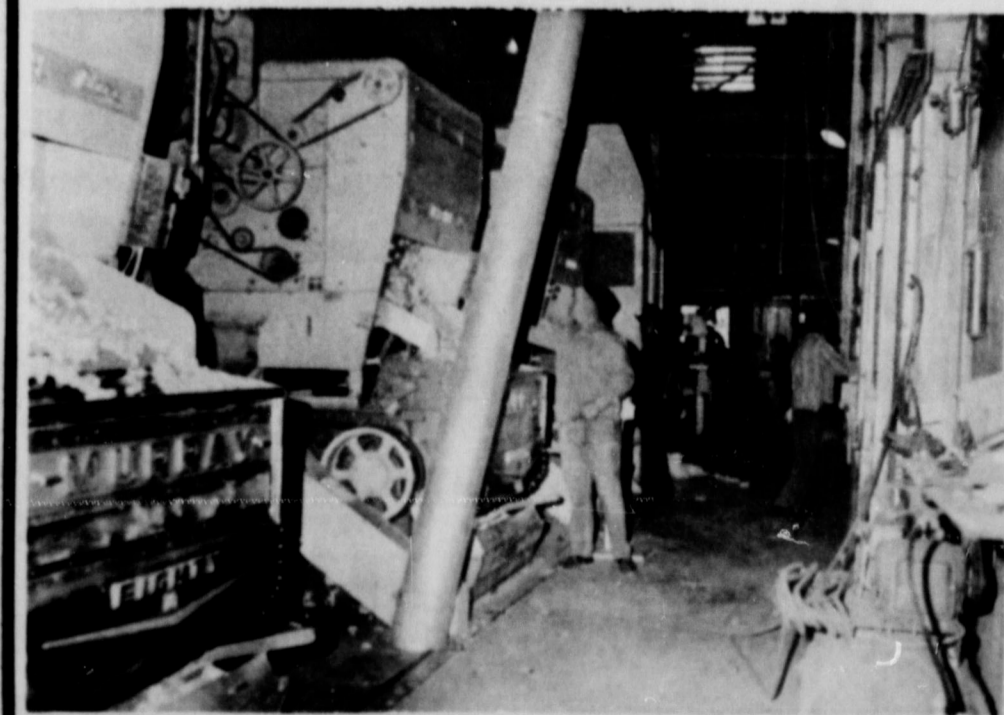
FROM YOUR COTTON CROP

### 5 WAY SAVINGS

1. Earnings from the Co-op Gin.
2. Profits from the Marketing Association
3. Savings from the Co-op Oil Mill.
4. Dividends from Co-op Compress.
5. Margins from Growers Seed Association.

PLUS GINNING KNOW HOW & TIP-TOP MACHINERY

WE ARE PROUD OF OUR CUSTOMERS THEY ARE THE BEST PEOPLE ON EARTH ...



We Don't Want All The Ginning  
JUST YOURS

You To Can Share In The  
Profits By Ginning With  
Your Farmers Owned

**EARTH CO-OP  
GINS, INC.**

L. K. Anderson, Manager - Earth



## Troop 373 Work For Magic Carpet Badges

Girl Scouts of Troop #373 met in the Fire Hall Thursday afternoon to continue working on their Badges.

Favorite short poems were read by each girl present. This is a requirement of the Magic Carpet Badge.

The group participated in a practice session of the Brownie and Girl Scout Investiture to be held Thursday (today) in the school cafeteria.

A requirement of the Hospitality Badge is to make invitations for the parents to attend the Investiture. The girls fulfilled this requirement before

the outdoor game and song session led by Teresa Lively and Pam Ott.

Refreshments of punch and cookies were served by Oletha Thomas and Lydia Smith.

Those attending were Joyce Ingram, Pam Ott, Brene Belew, Pam Hood, Hattie Thomas, Oletha Thomas, Doniece Taylor and Teresa Lively.

Also Linda Hood, Jackie Lewis, Sherry Higgins, Elaine Bills, Kim Clayton, De Ann Clayton, Elizabeth Huggins, Lydia Smith, and leaders Mrs. Ralford Daniel, Mrs. Nathaniel Ingram, and Mrs. Alan Smith.

## Mission Friends Have Program Entitled "How I Grow"

The Beginner Department of the Springlake Mission Friends met Wednesday afternoon at the church for a program entitled "How I Grow".

Something new was added to the program this week as the children were shown a film strip about growing up.

Following the film strip, the children made handprints using the tempera paint and manilla paper.

Attired in grown-up clothes,

the group enjoyed a play period in the home living area.

Mrs. Bill Lunsford read the story entitled "God Made Jesus".

To conclude the program the group sang "I'm Growing" led by Mrs. Lunsford.

Refreshments of Ice Cream Bars were served by Mrs. Kenneth Hinson to Kathy and Kelley Head, Kelley Walden, and Michael and Jerry Field.

## What's Cooking At School

November 2-6

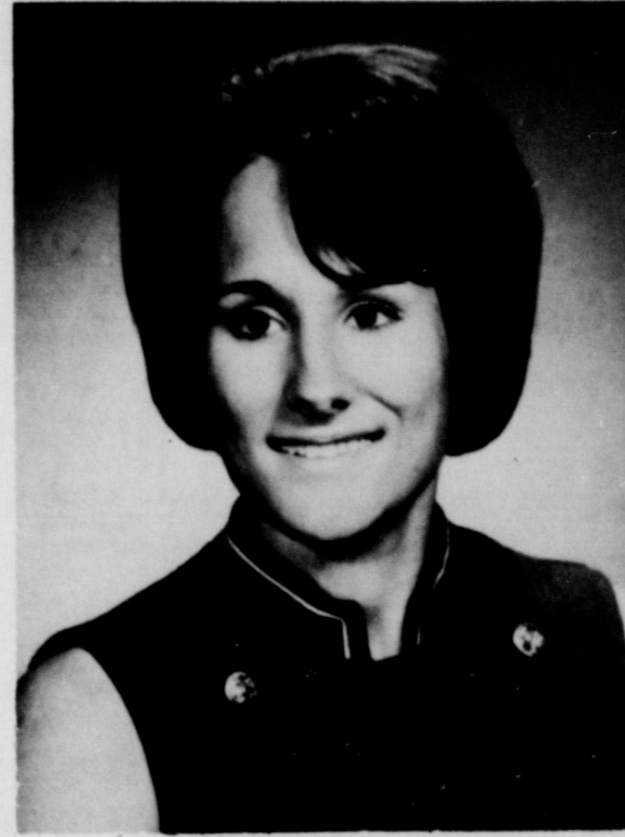
**MONDAY**  
Chicken Fried Steak-gravy  
Baked Potatoes  
Tossed Salad  
Lemon Chiffon Pie  
Hot Rolls, Butter, Milk

**TUESDAY**  
Pizza  
Creamed English Peas  
Cabbage Slaw  
Cherry Cobbler  
Milk

**WEDNESDAY**  
Barbeque Beef Tips  
Potato Salad  
Navy Beans  
Brownies  
Cornbread, Butter, Milk

**THURSDAY**  
Spaghetti and Meat Balls  
Buttered Carrots  
Pineapple-Cottage Cheese Salad  
Storybook Cake  
Hot Rolls, Butter, Milk

**FRIDAY**  
Baked Ham  
Candied Yams  
Tomato Wedges  
Raisin Pie  
Hot Rolls, Butter, Milk



BEVERLY CHICK

## Wedding Plans Told

Mr. and Mrs. A. F. Chick, of Dennison, Texas, announce the engagement of their daughter, Miss Beverly Chick, to Steve Jackson, son of Mr. and Mrs. F. J. Jackson of Springlake.

The couple will be married January 2 at 7 p. m. in the First Presbyterian Church of Dennison.

The bride-elect is a 1967 graduate of Permian High School in Odessa. She was graduated from Grayson County College and is presently a senior student at Texas Tech.

Mr. Jackson, a graduate of Springlake-Earth High School,

is presently attending Texas Tech. He is employed at Frank McGlaun Office Supply in Lubbock.

## Primary Group Hears Story Of Jesus

"God Made Jesus" was the title of the story told by Mrs. Doyle Head that intrigued the Primary Mission Friends at their regular meeting Wednesday.

The Mission Friends sang "Jesus Loves Me" before going into their handwork period.

The handwork of the day consisted of making Halloween pictures of cats and pumpkins. These will be pasted on their trick or treat bags at the next meeting.

Ice Cream Bars were served by Mrs. Kenneth Hinson to Lewis Moseley, Rocky Lunsford and Mike Ramirez.

Mr. and Mrs. Tom Sanders and daughters Toni and Vicki spent Saturday night and Sunday in Midland as guest of Mr. and Mrs. Phil Middleton, Mrs. Middleton is a daughter of the Sanders.



Words can not adequately express our feelings, but we would like to thank our many friends and neighbors for their prayers, sympathy, assistance, floral offerings, memorials, and food during the illness and death of our loved one, Oscar Anderson. May God bless each of you.

Mrs. Oscar Anderson  
Mr. and Mrs. Zeph Robnett  
Mr. and Mrs. Ervin Anderson,  
Jerry and Jay  
Mr. and Mrs. Clinton Green and Family  
Mr. and Mrs. Billie Robnett and Girls  
Mr. and Mrs. Buddie Robnett  
Mr. and Mrs. Johnny Anderson

Words are inadequate to express the appreciation in our hearts for every expression of love and kindness shown during the loss of our loved one. For the prayers, the food, the flowers, memorials and cards, we are truly grateful. God has blessed us in many ways. May he richly bless each of you.

The Family of W. C. Stout

## Jr. High UMY Study "Self"

Junior High members of the UMY met Sunday evening at the United Methodist Church for a regular meeting.

Camille Hinchliffe presented the program entitled "Count Down, Me", bringing out questions and answers concerning make-up and personalities.

Two scriptures were read, the first taken from John 1, 4-16 and Genesis 31:49.

Those attending were Fonda Goodwin, Dyke Gaston, Randy Bills, L'Anna Sulser, Camille Hinchliffe and leader Mrs. Bud Matlock.

## Hello World



Mr. and Mrs. Larry Weaver of Earth are the proud parents of a daughter, born at 9:40 a. m. Thursday, October 22, in Lee General Hospital in Lovington, New Mexico.

The lass tipped the scale at 6 pounds 13 ounces and is 20 inches in length. She has been named Tawyna Lee.

Tawyna has a sister Rhonda and a brother Ricky.

Mr. Weaver is employed at Pioneer Natural Gas Company at Earth.

Grandparents are Mr. and Mrs. Jack Weaver of Littlefield, Mrs. Dolly Carr of Elk City, Oklahoma and Earl Fish of Hobbs, New Mexico.

Mr. and Mrs. Ray Tom Packard of Amarillo are the parents of a baby girl born at 9:17 a. m. Tuesday, October 27 in the Central Plains General Hospital at Plainview.

Jana Lin weighed 6 1/2 pounds and is 18 inches tall. She has a brother Tim, who is 3 1/2 years old.

Paternal grandparents are Mr. and Mrs. James Packard, Springlake. Maternal grandparents are Mr. and Mrs. Carl Cody of Earth.

Every time your pulse beats, three new babies are born into the world. Only one of these is delivered by a trained attendant. UNICEF helps by training and equipping more midwives in the developing countries.

## 'How To Be Angry' Studied By Sr. Hi. UMY

Members of the Senior High UMY met Sunday evening for a regular meeting at the United Methodist Church.

Pat Cleavinger and Jo Ann Coker presented the program entitled "How To Be Angry". Highlights of the program were pointers on how to use construc-

tive anger.

In a short business meeting, members voted to send \$100.00 to the Youth Service Fund to be used in Associational UMY projects.

Mrs. Ross Brock, leader, met with the fifteen members present.



## FINANCIAL FACTS

By: Norlan Dudley.

Do you know where the dollar sign originated? There are two theories concerning its conception.

In the early United States gold was rare and silver pesos were in most common use. Later they were called "dollars" because they were roughly equivalent in value to the "thaler" coin.

These dollars had the Pillars of Hercules imprinted on one side. When first minted, the motto read "non plus ultra" meaning "no more beyond". This was because at the time the Pillars were thought to be the end of the world.

After North and South America were discovered the motto was changed to "plus ultra".

One theory states that the upright lines of the dollar sign represent the Pillars of Hercules

that appeared on the early pesos.

The second believes we derived the dollar sign from the Spanish contraction for "peso".

WATCH NEXT WEEK FOR THE JOACHIMSTHALER

SUPPORT THE WOLVERINES, ATTEND THE GAME AT HART FRIDAY NIGHT, GAME TIME 7:30

Come in and visit with us, our coffee pot is always full. CITIZENS STATE BANK, phone 257-3451. Open daily, except Saturday, 9 till 3. We'll be happy to serve you!

**Warm, Fresh Air**

... direct from the manufacturer

Natural gas is the healthiest, most economical way to heat your house this winter. Gas is economical because it's the direct way to produce heat - you don't pay to convert heat to another energy source and then back to heat. And with gas you can afford to bring clean outside air into your home this winter instead of having to re-heat the same old stale air time after time.

So, if you're building or remodeling, be sure to specify gas heating. Gas is the "natural" fuel. It's like buying direct from the manufacturer. Call your heating contractor, plumber, or Pioneer Natural Gas.

**PIONEER NATURAL GAS COMPANY**

EVERYONE NEEDS A "SLIM GYM"

Contact FAYE STARKEY Phone 257-2095 Earth

**SALES EXPLOSION**

TERRIFIC SAVINGS FOR YOU!

**FINAL PRICE SLASHES**

TIME FOR ACTION LAST 3 DAYS!

**ALL-OUT DISPOSAL SALE**

TREMENDOUS SELECTIONS MANY MORE ITEMS UP TO

**1/2 PRICE**

FOR FINAL CLEARANCE WHILE QUANTITIES LAST

DON'T MISS THESE FANTASTIC SAVINGS!

Good Only Until Sale Ends

Special Gift Check

Only One to Each Customer

GOOD FOR \$5.00 ON PURCHASE OF \$50.00 OR OVER  
GOOD FOR \$2.50 ON PURCHASE OF \$25.00 OR OVER  
GOOD FOR \$1.00 ON PURCHASE OF \$10.00 OR OVER

Gift Check Must Be Presented to Cashier at Time of Purchase

Discount not available on fair traded items, tobacco, prescriptions, etc. Cash value 1/20 of 1c

**POUNDS(Rexall) PHARMACY**

EARTH EARTH



LISA DUNCAN

## Lisa Duncan Is Brownie Of Week

Lisa Duncan, 8 years old, daughter of Mr. and Mrs. Fred Duncan was named Brownie Scout of the Week.

Lisa, a third grade student, is a member of the Brownie troop 101. She joined the troop four weeks ago and shows much interest and enthusiasm for Brownie work. She practices being a good Brownie in her home by taking care of her baby brother.

## GA's Plan Halloween Party For Wednesday

Girls in Action of the First Baptist Church met Wednesday afternoon at the church with their leader, Mrs. Delvin Walden.

A crossword puzzle entitled "What GA's Learn" was worked with all the girls participating. The GA's divided into two groups for the game of Tic-Tac-Toe with Gail Miller and Robbie Mosley being the leaders. Each group was asked a question about previous programs on Missions. The game ended in a tie.

Plans were made for a Halloween party for the Mission Friends at the next meeting.

Each girl will bring a piece of fruit to the next meeting to go into the Trick or Treat Bag that is being made up for a senior citizen in the community. Mrs. Walden read the prayer calendar and led in the closing prayer.

Ice Cream Sandwiches were served by Mrs. Kenneth Hinson to Ranae Winder, Tammy Davis, Bobbie and Robbie Mosley, Gail Miller, and visitors Teresa Lunsford, Sheila Moseley, and Nancy Rameriz.

### Notice

Earth Rainbow Girls will present a Talent Show for the Masons and Eastern Stars Monday November 2 at 8:00.

You are invited to a grandmother's coffee shower honoring Mrs. Pat McCord, Saturday morning, November 14, at 10 o'clock, in the home of Mrs. C. P. Parish.

## Study Club Has Program On Troop 309 Rehearse Investiture Service 'Our Peruvian Neighbors'

The Town and Country Study Club met October 22 in the home of Mrs. John Welch.

Mrs. Sam Cearley presided over a short business meeting. A letter of appreciation was read from Marshall W. Cooper, Executive Director of Girltown U. S. A., for the gas light donated by the Town and Country Study Club for their campus.

Mrs. L. Z. Anglin was accepted in the Study Club as an associate member.

A devotional, "Living The Faith As We Labor" was given by Mrs. Wayne Rutherford.

Slides on "Our Peruvian Neighbors" were shown and narrated by Mr. and Mrs. Pat McCord.

Delicious refreshments consisting of sandwiches, nuts, pickles, olives, angel food cake and coffee were served to

nine members and three guests. Those attending were Mrs. B. Campbell, Mrs. Sam Cearley, Mrs. M. E. Kelley, Mrs. N. Ray Kelley, Mrs. Carra Morgan, Mrs. Gladys Parish, Mrs. Wayne Rutherford, Mrs. Marie Ross and hostess Mrs. John Welch. Guests were Mrs. Lucy Lewis, Mr. and Mrs. Pat McCord and John Welch.

### Party Line

Mr. and Mrs. Tom Sanders attended the Tech game Saturday in Lubbock.

Bill Freeman and Larry Price attended the WTSU game Saturday in Canyon.

The Springlake Girl Scout Troop #309 met Friday afternoon at the Community Building with leaders, Mrs. Wayne Davis and Mrs. Sam Barden. The meeting began with the Pledge of Allegiance, singing

of America and reciting of the Girl Scout Promise, with all the girls taking part in the opening ceremonies.

The group rehearsed their part of the Investiture Service, to be held October 29 at the school

### WSG Continue Study Of 'The Americans'

The Wesleyan Service Guild met at 7:30 p. m. Monday at the United Methodist Church to continue study of the book "The Americans" under the leadership of Mrs. Beula Newton.

Mrs. Johnnie Williams showed slides on work being done in Methodist schools in Laredo, Texas and Monterey, Old Mexico. Mrs. Sulser closed the study

with a poem. Ruby Jones served cake and coffee to Mrs. Johnnie Williams, Mrs. Burl Hamilton, Mrs. Beula Newton, Mrs. Norman Sulser.

One hospital bed out of four in the world is occupied by a patient disabled by polluted water. Providing safe water is one of UNICEF's programs.

## UMY Collects Funds For UNICEF

Junior High UMY members met at the United Methodist Church Saturday evening at 6:30 p. m. to trick or treat for UNICEF.

The group worked one and half hours and reported a total of \$54.51 collected.

Following canvassing the town, they returned to the church for a game session.

Refreshments of hot chocolate and sandwiches were served. Those attending were L'Anna Sulser, Gina Wislan, Dyke Gaston, Randy Bills, Ricky Cearley and guests Kathy Winder, Patty Enloe and leader Mrs. Bud Matlock.

### Party Line

Wayne Davis, of Springlake, and Jim A. Williams, of Clovis, New Mexico, attended the Texas-Oklahoma Wolf Hunter Bench Show and field trials October 21-24. It was held at Eldorado, Oklahoma. Wayne's dogs were awarded four ribbons in the field trials. Del Davis's dog "Billy" won 2nd in natural carriage in the Bench Show.

Mr. and Mrs. R. S. Cole spent the week-end with their daughter and family, the Clifford Bills, in Denver City.

## GENERAL ELECTION LAMB COUNTY, TEXAS NOVEMBER 3, 1970 OFFICIAL BALLOT

### INSTRUCTION NOTE:

Vote for the candidate of your choice in each race by placing an X in the square beside the candidate's name.

You may vote a straight ticket (that is, vote for all the candidates of a certain party, and for no candidates outside that party's column) by placing an X in the square beside the name of the party of your choice at the head of the party column. (If you use this straight-ticket method of marking, do not mark squares beside the names of individual candidates.)

Sample  
GENERAL ELECTION  
Lamb County, Texas  
November 3, 1970  
NOTE: Voter's signature to be affixed on the reverse side.

CANDIDATES FOR:	<input type="checkbox"/> DEMOCRATIC PARTY	<input type="checkbox"/> REPUBLICAN PARTY	WRITE-IN
U. S. SENATOR	<input type="checkbox"/> LLOYD BENTSEN	<input type="checkbox"/> GEORGE BUSH	
U. S. REPRESENTATIVE 18th CONGRESSIONAL DIST.		<input type="checkbox"/> BOB PRICE	
GOVERNOR	<input type="checkbox"/> PRESTON SMITH	<input type="checkbox"/> PAUL EGGERS	
LIEUTENANT GOVERNOR	<input type="checkbox"/> BEN BARNES	<input type="checkbox"/> BYRON FULLERTON	
ATTORNEY GENERAL	<input type="checkbox"/> CRAWFORD C. MARTIN	<input type="checkbox"/> EDWARD M. YTURRI	
COMPTROLLER OF PUBLIC ACCOUNTS	<input type="checkbox"/> ROBERT S. CALVERT	<input type="checkbox"/> S. L. ABBOTT	
STATE TREASURER	<input type="checkbox"/> JESSE JAMES	<input type="checkbox"/> ROBERT F. KOENNECKE	
COMMISSIONER OF GENERAL LAND OFFICE	<input type="checkbox"/> BOB ARMSTRONG	<input type="checkbox"/> HARRY TRIPPET	
COMMISSIONER OF AGRICULTURE	<input type="checkbox"/> JOHN C. WHITE	<input type="checkbox"/> DANIEL C. HEATH	
RAILROAD COMMISSIONER	<input type="checkbox"/> BEN RAMSEY		
ASSOCIATE JUSTICE, SUPREME COURT, PLACE 1	<input type="checkbox"/> JACK POPE		
ASSOCIATE JUSTICE, SUPREME COURT, PLACE 2	<input type="checkbox"/> RUEL C. WALKER		
ASSOCIATE JUSTICE, SUPREME COURT, PLACE 3	<input type="checkbox"/> JAMES DENTON		
PRESIDING JUDGE, COURT OF CRIMINAL APPEALS	<input type="checkbox"/> JOHN F. (Jack) ONION, JR.		
JUDGE, COURT OF CRIMINAL APPEALS	<input type="checkbox"/> TRUMAN ROBERTS		
STATE SENATOR, DISTRICT 30	<input type="checkbox"/> JACK HIGHTOWER		
STATE REPRESENTATIVE, DISTRICT 72	<input type="checkbox"/> BILL CLAYTON		
MEMBER, STATE BOARD OF EDUCATION, DIST. 19 (Unexpired term)	<input type="checkbox"/> JAMES H. WHITESIDE		
ASSOCIATE JUSTICE, COURT OF CIVIL APPEALS, DISTRICT 7	<input type="checkbox"/> CHARLES L. REYNOLDS		
DISTRICT JUDGE, 15th JUDICIAL DISTRICT	<input type="checkbox"/> PAT BOONE, JR.		
COUNTY JUDGE	<input type="checkbox"/> G. T. SIDES		
DISTRICT CLERK	<input type="checkbox"/> RAY LYNN BRITT		
COUNTY CLERK	<input type="checkbox"/> MARY BETH WILLEY		
COUNTY TREASURER	<input type="checkbox"/> LUCY M. MORELAND		
COUNTY SCHOOL SUPERINTENDENT	<input type="checkbox"/> C. ROY STEVENS		
COUNTY COMMISSIONER, PRECINCT NO. 3	<input type="checkbox"/> T. L. BUDDY FREE		
JUSTICE OF THE PEACE, PRECINCT NO. 2			

### PROPOSED CONSTITUTIONAL AMENDMENTS

Instruction Note: Place an X in the square beside the statement indicating the way you wish to vote.

No. <input type="checkbox"/> FOR 1 <input type="checkbox"/> AGAINST	The constitutional amendment relating to the removal, retirement, or censure of Justices, Judges, and Justices of Peace under prescribed circumstances.	No. <input type="checkbox"/> FOR 4 <input type="checkbox"/> AGAINST	The constitutional amendment reconstituting the State Building Commission as a three-member appointive commission.
No. <input type="checkbox"/> FOR 2 <input type="checkbox"/> AGAINST	Repeal of the prohibition against open saloons found in Section 20, Article XVI of the Constitution of the State of Texas.	No. <input type="checkbox"/> FOR 5 <input type="checkbox"/> AGAINST	The constitutional amendment authorizing any county, on the vote of a majority of its qualified property taxpaying electors, to issue road bonds in an amount not to exceed one-fourth of the assessed valuation of the real property in the county.
No. <input type="checkbox"/> FOR 3 <input type="checkbox"/> AGAINST	The constitutional amendment to authorize the Legislature to provide by law for the establishment of a uniform method of assessment of ranch, farm and forest lands, which shall be based upon the capability of such lands to support the raising of livestock and/or to produce farm and forest crops.	No. <input type="checkbox"/> FOR 6 <input type="checkbox"/> AGAINST	The constitutional amendment increasing the value of the homestead which is exempt from forced sale.
		No. <input type="checkbox"/> FOR 7 <input type="checkbox"/> AGAINST	The constitutional amendment authorizing the Legislature to provide for consolidating governmental offices and functions and allowing political subdivisions to contract for performance of governmental functions in any county.

Announcing...

## HOUSE of FABRICS

In Dimmitt

### Will Be Open For Business

Saturday, October 24-9 AM

THE NEW ADDRESS IS  
116 E Jones St.

SPECIALIZING IN DACRON KNIT  
SIMPLICITY PATTERNS AND  
ALL NOTIONS TO SEW KNITS

.....

### Dollar Day Specials

ZIPPERS	BUTTONS
Each 25¢	Card 10¢

\$1 A Yard Off C\* Dacron  
DOLLAR DAY ONLY

## HOUSE of FABRICS

647-4496 Dimmitt

Presented In The Public Interest By:

## CITIZEN STATE BANK

Member Of F. D. I. D. - Earth

## Mrs. Been Is TOPS Queen

Mrs. M. H. Been was named Queen of the Week with a 24 pound weight loss at the regular meeting of the Happy Lovers TOPS Club. The group met Thursday night in the Goodwill Centre.

Mrs. Pauline Hucks was runner-up with a recorded loss of 24 pounds. Mrs. Fred Clayton led the group in repeating the TOPS pledge. Mrs. Florence Gover, weight recorder, weighed in thirteen members and recorded a 15 1/2 pound loss.

Mrs. Lois Radd's name was drawn for the \$1.00 prize. She also received a grab bag gift for perfect attendance for the past eight weeks.

The Queen of the Month will be announced at the Thursday (tonight), October 29 meeting. Each member will bring a piece of fruit to present to the Queen of the Month. She will also receive a fruit bowl from the club. The meeting was concluded with the Serenity Prayer and the TOPS Inspirational Song.

## WSCS Study Psalms

The WSCS of the First United Methodist Church met on Tuesday morning at 10:00 a. m. in the church.

Mrs. Ray Axtell directed the study of the Psalms based on the textbook "Out of the Depths". Psalms studied in this session were "Creation Psalms" and Psalms to God as Lord of History. This was the fifth session of a series of six lessons.

Attending were Mrs. Bessie Cearley, Mrs. Kenneth Cowley, Mrs. Ida Allen, Mrs. Naomi Burgess, Mrs. J. L. Hinson, Mrs. Beula Coler, Mrs. Gladys Goodwin, Mrs. Ross Brock and Mrs. J. A. Littleton Jr.

## Eastern Star Meet Monday

Members of the Earth Eastern Star met Monday night in the Earth Masonic Lodge Hall. A report on the Friendship Night in Harford on Saturday, October 3, was given by Mrs. Johnny Murrell and Mrs. Melvin Bock.

A regular business meeting was conducted with Mrs. Forrest Simmons, Worthy Matron, and O. B. Whitford, Worthy Patron, presiding. Mrs. Melvin Bock was introduced in the East as a committee member of fraternal visitation for District 2 Section 3. Mrs. Bock was installed in the Grand Chapter of Texas in Houston on September 27. The altar was draped for William G. Vollis who passed away September 25. He was Past Grand Patron in 1930-1931.

Refreshments of Cookies and Coffee were served by Mrs. Donald Runyon to Mrs. Forrest Simmons, O. B. Whitford, Mrs. B. Campbell, Mrs. Doug Lewis, Mrs. Melvin Bock, Leonard Green, Mrs. Johnny Murrell, Mrs. O. B. Whitford, Ruel Fanning, Mrs. Jimmy Craft, Mrs. Donald Clayton, and Mrs. Ruel Fanning.

## Girls In Action Organized In Sunnyside

By Teeny Bowden

A charter meeting of "Girls In Action" Organization was conducted Tuesday afternoon, October 20, at the Sunnyside Baptist Church.

There were 14 girls who signed the two charters, and the W. M. U. Director, Mrs. E. R. Sadler, administered the signing of the charter.

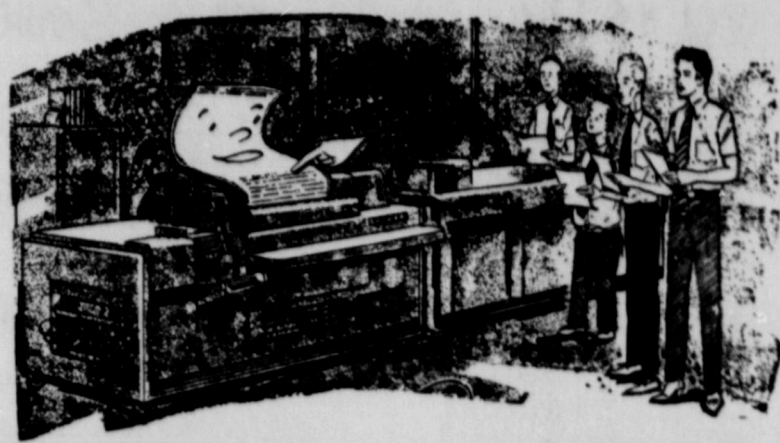
Following the ceremony, refreshments were served to the girls and their mothers, and other guests.

The Director, Mrs. Gale Sadler, and leaders, Mrs. Cliff Brown, Mrs. Barbara Epperson, and Mrs. Bill Morgan had charge of the meeting.

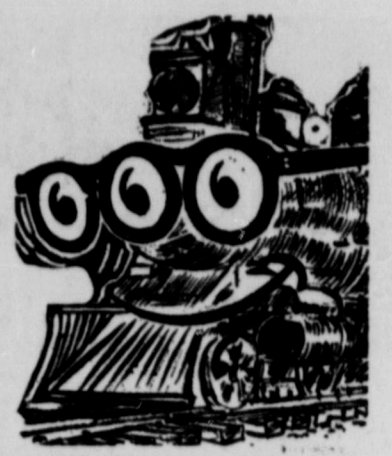
Girls present were Susan Sadler, Doreen Wilson, Marquetta James, Belinda Hampton, Sue Bradley, Tammy and Rhonda Ross, Carolyn McGowen, Lyn Howell, Connie and Vicki Sageser, Dina Jo Hampton, Deanna Holmans, and Karen Howell.

Several pictures were taken of the groups.

Newspapers are the fifth largest employer in the nation, with 365,700 employed last year, an 0.7 per cent gain over 1968 and a 12.5 per cent gain for the decade.



And direct to you at quality savings! We purchase in large volume from the finest of makers and pass the savings to you. And when the savings are further discounted on sale, then now is the time to purchase.



At the recent Furniture Markets, Jenkins Furniture purchased at most \$800,000 worth of famous make home furnishings. In most cases the purchases were replacement items, or duplicates of our present stock! In other purchases, new and profoundly exciting styles were added. This merchandise is now in our inventory and according to our computer, we are somewhat overstocked! (vastly overstocked would be more accurate!) Shop over \$400,000 worth of famous make furniture priced at near or below dealer cost! It will please you, us, and the computer! **BIG DEAL? (WE THINK SO!)**

**NOTE THE EXAMPLES ON THIS PAGE!**

<p><b>TERMS OF SALE!</b></p> <ul style="list-style-type: none"> <li>All sales final</li> <li>All warranties will be honored</li> <li>Credit terms provided</li> <li>Delivery is free but must be completed within 10 days</li> </ul>	<p><b>DRESS COMFORTABLY</b></p> <p>This sale is being conducted in our showroom at 1801 Broadway. The building is heated and air conditioned. So come dressed as you wish.</p>	<p><b>ABOUT DELIVERY</b></p> <p>We will deliver any purchase of \$25 or more in Texas or New Mexico. Please allow 3 days for local delivery and 10 days for distant localities.</p>	<p><b>TO READERS!</b></p> <p>Shop the finest name brand home furnishings at truly remarkable values! Should quantities of advertised items be limited, it will be so noted in our advertised listings; otherwise you may shop any of our advertised examples with the assurance it is a value, it is in our inventory and will be sold at the advertised price! Shop the Jenkins Way. Serving Texas for over 20 years!</p>					
<p><b>Let's Talk About Financing (Briefly)</b></p> <p>Jenkins monthly revolving charge is carried on G.E.C.C.'s computer for maximum service! With interest rates competitive to present banking notes—see below!</p>	<p><b>Reg. Price \$179 MADDOX CLUB CHAIR Below Cost!</b></p> <p>In blue subdued tweed. Loose cushion seat and back-lined skirt. The plush look! One only!</p> <p><b>\$39</b></p>	<p><b>Reg. \$29 to \$59 Table Lamps</b></p> <p>In a variety of styles, periods and colors! 29 inch to 40 inch height! Now, your choice!</p> <p><b>\$16</b></p>	<p><b>Famous Make Quilted Innerspring Full or Twin MATTRESS &amp; BOX SPRINGS!</b></p> <p>Imagine, both the mattress and box springs at 1/2 price.</p> <p><b>Reg. \$49 SET!</b></p>	<p><b>100-INCH \$419 Crushed Velvet SOFA</b></p> <p>The ultimate in imported gold Transitional styling! Elegant curved pillows! Deep tufting! You can buy this at substantially below cost!</p> <p><b>\$166</b></p>	<p><b>30-in. x 48-in. Framed OIL PAINTINGS!</b></p> <p>Deep lustrous, Mediterranean scenes! From the truly functional "West Coast Artists!" Your Choice!</p> <p><b>Reg. \$60 \$19</b></p>	<p><b>Regular \$59 World-Famous "BEAR" Bean-Bag Chairs!</b></p> <p>Filled with minute urethane pellets to conform to body shape. Easy to carry—handle! Buy the original!</p> <p><b>\$36</b></p>	<p><b>CAMPAIGN-ARM CONTEMPORARY SOFA</b></p> <p>A unique black-type black vinyl sleek contemporary group. Light lined oak trim! Reg. \$139.</p> <p><b>BOTH \$149</b></p>	<p><b>TERMS OF SALE!</b></p> <ul style="list-style-type: none"> <li>Financing available!</li> <li>Free delivery on any purchase of \$25 or more!</li> <li>All sales final!</li> <li>Items normally bearing warranties will be honored!</li> <li>All items all items of publication were in stock in quantity, except as noted!</li> <li>No phone orders—PLEASE!</li> </ul>

# SATURDAY SALE

## 1801-BROADWAY IN LUBBOCK

<p><b>HEAVY DUTY "HOTEL-MOTEL" QUILTED MATTRESSES, INNERSPRINGS!</b></p> <p>Made to strenuous commercial specifications! Covered in quilted heavy duty "tick"!</p> <p><b>Reg. \$50 \$25</b></p>	<p><b>112 Inches Long! Decorator Linens! Outline Quilted! Six Reversible Cushions! Traditional Sofas . . . \$188</b></p> <p><b>Reg. \$399</b></p>	<p><b>DRESSER! TWO MIRRORS! CHEST! NIGHT CHEST! BIG SCROLL KING SIZE BED!</b></p> <p>Imagine a king size Spanish bedroom with 80-inch dresser!</p> <p><b>REG. \$700 \$399</b></p>	<p><b>Reg. \$90 BIG 38-in. RECLINER!</b></p> <p>Plush foam deep tufted washable vinyl! Warranted mechanism! Save \$60 if you hurry to Jenkins!</p> <p><b>\$30</b></p>	<p><b>10 GROUPS ONLY! Spanish "Matador" SPANISH LIVING ROOM!</b></p> <p>The largest selling group in the south! Your Choice! Sofa and Love Seat! OR Sofa, Chair and Ottoman!</p> <p><b>\$257</b></p>
<p><b>41-INCH MAPLE TRIM COLONIAL SWIVEL ROCKER!</b></p> <p>With "T" reversible cushion! Mechanism adjust swivel tension!</p> <p><b>Reg. \$139 \$66</b></p>	<p><b>5-PC. ANTIQUE WHITE KING SIZE FRENCH BEDROOM!</b></p> <p>2" deep heavy dresser with mirrored cabinet! Bed, washstand, chest and chair! Two drawers inside chest!</p> <p><b>Reg. \$749 \$396 Piece</b></p>	<p><b>PECAN TRIM MATELLESE ITALIAN SOFA and CLUB CHAIR</b></p> <p>In tone on tone scroll design fabric! Reversible zippered foam cushions! You can purchase both at 1/2 price!</p> <p><b>Reg. \$399 \$196 BOTH</b></p>	<p><b>112-INCH QUILTED CATHEDRAL BACK SPANISH SOFA</b></p> <p>Reg. \$449! Exposed wood finish on curved back arches! Dacron wrapped cushions! Slight crescent front. Save \$249!</p> <p><b>\$199</b></p>	<p><b>Sealy 11 PIECE! KING SIZE SET!</b></p> <p><b>\$188</b></p> <p>Free Delivery! Convenient Terms!</p> <p>PURCHASE A KNOWN SLEEP PRODUCT! PURCHASE A FAMOUS SEALY!</p> <p>1 KING SIZE QUILTED MATTRESS 2 1/2 KING SIZE BOX SPRINGS 1 KING SIZE HEADBOARD 1 KING SIZE FOOTBOARD 1 KING SIZE PILLOW CASE 1 KING SIZE BED FRAME 1 KING SIZE BED PILLON 2 KING SIZE PILLOW CASE</p> <p><b>REG. \$359</b></p>
<p><b>AUTHENTICALLY STYLED 5-PIECE MAPLE DINING SET!</b></p> <p>Includes: 4 maple chairs! Round extension table with maple grain formica top! One chair for slight scratch!</p> <p><b>Reg. \$199 \$89 5-PIECE</b></p>	<p><b>Maple Bunk Beds with Mattresses</b></p> <p>Includes two twin beds, two mattresses! Guard rail and ladder! Converts to twin beds!</p> <p><b>Reg. \$169 \$91 5-PIECE</b></p>	<p><b>Don't Miss These! 90-in. Chesterfield Sofas on Casters!</b></p> <p>These were a remarkable value at \$319, but if you hurry to Jenkins you can select one of these masterpieces in velvet or heavy textured miracle vinyl!</p> <p><b>\$166</b></p>	<p><b>47 INCHES x 20 INCHES SPANISH SINGLE PEDESTAL DESK!</b></p> <p>Three spacious drawers. Wood grained, Formica® oak top, mar-resistant! Two only floor samples!</p> <p><b>Reg. \$139 \$49</b></p>	

## SALE CONDUCTED ONLY AT 1801 BROADWAY . . . . . LUBBOCK

<p><b>KING-SIZE 41-INCH NAUGAHYDE RECLINER!</b></p> <p>In black, red, or avocado naugahyde. Famous three-position warranted mechanism! DEEP FOAM, DIAMOND TUFTED BACK! Remember, this is a 41-inch back MAN-SIZE CHAIR! This simply has to be the finest recliner for the money ever offered! And you can buy on terms with FREE delivery!</p> <p><b>Reg. \$139 \$59</b></p>	<p><b>Can be used in "L" shape as shown, or separated on opposite walls!!!!</b></p> <p><b>Three Sets Only!</b></p> <p>Massive tone on tone 18 foot velvet Spanish Sectional. Ten reversible cushions! Slate inset tables. Oak wood turnings! Left seat cushion can be removed and expose extra slate table, or, pulled into position for cocktail table! Hurry to Jenkins for this truly premier sofa purchase! And you can buy on easy terms . . . . .</p> <p>Regular \$700 <b>NOW \$349</b></p>	<p><b>"ONE-ONLY" QUILTED PRINT SOFA!</b></p> <p>With correlating velvet walls! Coil spring comfort! Self-decked! Skirted! \$80 Below Cost!</p> <p><b>Reg. Price \$300 \$97</b></p>	<p><b>The Finest "Scotchguard" Outline Quilted Maple Trim COLONIAL SWIVEL ROCKERS!</b></p> <p>1/2 PRICE! Reg. \$169</p> <p><b>\$69</b></p> <p>In Choice of Colors.</p>
--	---	--	--

**Jenkins FURNITURE CENTER**  
1801 BROADWAY LUBBOCK (806-PO3-6487)

**NO RED TAPE!**  
We sell direct to the public!

**Simply Beautiful (Furniture) at Fantastic Values!**

**Support Your Team... Go to the Games**  
**October 30 - Hart - There - Game Time 7:30 P.M.**

# FOOTBALL CONTEST

**Nothing to subscribe to - Nothing to buy**  
**- No obligation -**

**JUST FILL OUT AND SEND IN YOUR ENTRY**

## 3 Big Prizes

**GIVEN AWAY WEEKLY**

**First Prize - \$5<sup>00</sup> Second Prize - \$3<sup>00</sup>**  
**Third Prize - \$2<sup>00</sup>**

### CONTEST RULES

The teams that are playing in this week's contest games are listed side by side in the official entry blank on this page.

Use the handy entry and mark out the teams you predict to lose. Print the scores you predict in the tie-breaker game in the spaces provided.

Each week's entry must be turned in or mailed to the Earth News-Sun office. Contestants are given a week to prepare and turn in their entries.

Entries must be in by 4:00 p.m. Friday or postmarked on that date. All late entries will be discarded.

In case of ties, a coin will be flipped to determine the winners.

Each week the number of games correctly predicted will count toward each contestant's season total. The person picking the most games correctly for the entire season will receive the grand prize. In the event of a tie on the season total, a coin will be flipped to determine the winner.

The weekly prizes will be given to the persons picking the most number of games for that week. The tie-breaker will count as one of the games picked, and the predicted score will be used to determine the top three places in that week's contest, if necessary.

Only one entry per person is allowed.



ENTRIES MUST BE TURNED IN BEFORE 4PM  
 FRIDAY, NOVEMBER 6

### OFFICIAL ENTRY BLANK

NOVEMBER 6-7-8

TEAM	TEAM
DALLAS COWBOYS	N. Y. GIANTS
SUDAN	FARWELL
TEXAS A & M	SMU
DIMMITT	ABERNATHY
VEGA	BOVINA
MORTON	FRIONA
HART	HAPPY
TEXAS TECH	TUC
LOCKNEY	OLTON
FLOYDADA	LITTLEFIELD

TIE BREAKER Indicate Score  
 WOLVERINES.....KRESS.....

Name \_\_\_\_\_  
 Address \_\_\_\_\_  
 City \_\_\_\_\_ State \_\_\_\_\_



<b>EARTH AUTO PARTS</b> "Home Owned & Home Operated" Phone 257-3305 - Earth	<b>Flagg Grain Co. - Dodd Elevator</b> George Blanton, Mgr. - Flagg Carl Gregory, Mgr. - Dodd	<b>SAWYER FERTILIZER and CHEMICAL</b> EARTH
<b>EARTH CO-OP GIN</b> Earth	<b>EARTH NEWS SUN</b> Ross and Polly EARTH	<b>LAYMAN BROS. Butane &amp; Garage</b> Earth
<b>FARM CHEMICAL CO.</b> Earth-Springlake	<b>EARTH OIL &amp; GAS CO., INC. SPRINGLAKE MOTOR SUPPLY</b> Earth Springlake	<b>JIM WILLIAMS Ford Tractor, Inc.</b> Plainview
<b>THOMPSON Chevrolet Co.</b> Phone 285-2646 - Olton	<b>BROWND - JORDAN Equipment Co.</b> Phone 257-3484 - Earth	<b>FARMERS GRAIN</b> Sunnyside
<b>HOWELL'S 216 FLORAL</b> "Football Mums" Gid & Mildred Howell, Owners 257-2051 - Earth	<b>EARTH GIN CO.</b> Phone 257-3371 - Earth	<b>LOWE SPRAYING SERVICE</b> Lazbuddie Pho. 965-2289
<b>PARSON - ELLIS - SINGLETON Funeral Home</b> Phone 257-3350 - Earth	<b>BARTON BROS. Gin Co., Inc.</b> Phone 257-3911 - Earth	<b>EL NUEVO LEALS</b> Muleshoe
<b>Bailey County Electric Cooperative</b> Phone 272-4504 - Muleshoe	<b>CENTRAL COMPRESS</b> Sudan	<b>HAYDON TRUCKING CO.</b> Rt. 2 Hart
<b>EARTH ELEVATOR</b> "Your Purina Dealer" Phone 257-3301 Earth	<b>DON'S SHAMROCK</b> Don Taylor, Owner Earth	<b>STATELINE IRRIGATION CO.</b> Littlefield
<b>PATTERSON PAY &amp; SAVE</b> Raiford Daniels Mgr. We give Gunn Bros. stamps	<b>CITIZENS STATE BANK</b> Member F.D.I.C. Earth	<b>MILLS MACHINERY</b> Muleshoe
<b>NICKELS GIN</b> Pleasant Valley Earth	<b>HARVEY BASS Appliance</b> "Your Frigidaire Dealer" Phone 272-3030 - Muleshoe	<b>OLTON PUMP &amp; MACHINE</b> Bill and Gene Chaney Olton
<b>Wayne Rutherford "66" Station</b> Zella Mae & Wayne Rutherford Phone 257-3375 - Earth	<b>FULFER GULF STATION</b> Phone 257-3355 Earth	<b>CHOW TEX FEEDLOTS, INC.</b> Lazbuddie Pho. 965-2900
		<b>CORRAL RESTAURANT</b> Muleshoe

# Seven Constitutional Amendments Which Will Be Voted On At The General Election November 3, 1970

The proposed amendments are discussed in the order in which they appear on the official ballot. The wording which will appear on the ballot is quoted at the beginning of each discussion. It is not the purpose of these analyses to indicate how anyone should vote but to present facts which will be helpful in determining whether these amendments are desirable - and for the best interests of our people as a whole.

Because our Constitution is the instrument guaranteeing our liberties and since it is not simple or easy to revise it, citizens have a great responsibility in voting to adopt or reject proposals such as the seven which are separately analyzed in the article.

**PROPOSITION 1**  
**REMOVAL, RETIREMENT OR CENSURE OF JUSTICES, JUDGES AND JUSTICES OF THE PEACE**  
At the election you will be asked to vote FOR or AGAINST: "The Constitutional Amendment relating to the removal, retirement, or censure of Justices, Judges, and Justices of the Peace under prescribed circumstances."

In 1965 Texas voters adopted a constitutional provision setting a mandatory retirement date for district and appellate judges and creating a State Judicial Qualifications Commission which would make a continuing study of judicial conduct and disabilities. The Commission was instructed to recommend to the Supreme Court of Texas removal from office of a judge, before retirement age, for willful or persistent conduct which is clearly inconsistent with the proper performance of his duties, or casts public discredit on the judiciary or administration of justice. It was further authorized to recommend involuntary retirement for disability seriously interfering with the performance of a judge's duties which is, or likely to become, permanent in nature.

The proposed amendment of Article 5, Sec. 1-A would extend the Commission's duties to include: "Any county judge, any judge of a county court at law, a court of domestic relations, a juvenile court, a probate court, or a corporation or municipal court, and any justice of the peace, and any judge or presiding officer of any special court created by the Legislature as provided in Sec. 1, Article V" of our State Constitution.

It would add two new lesser forms of penalty: (1) A private reprimand from the Commission, and (2) Public censure from either the Commission or the State Supreme Court. Under this proposed amendment any of these members of the judiciary could be removed from office or censured in lieu of removal, for willful or persistent conduct which is clearly inconsistent with the proper performance of his duties or which casts public discredit upon the judiciary or the administration of justice.

For a permanent disability seriously interfering with the performance of his duties, or a disability likely to become permanent, a person could be removed from office. If he is eligible for benefits under state laws for judicial retirement, such removal would take the form of involuntary retirement. No judges have been removed from office since the current constitutional revisions were adopted in 1965, but it is generally believed that the availability of a procedure for removal from office has had a beneficial effect on the administration of justice. The opportunity for reprimand and public censure would add further pressure that should be highly effective, especially so long as we have an elective judiciary.

**PROPOSITION 2**  
**LOCAL OPTION MIXED DRINKS**  
You will be asked to vote FOR or AGAINST the: "Repeal of the prohibition against open saloons found in Sec. 20, Article XVI of the Constitution of the State of Texas."

The Legislature would have the power under this proposed amendment to enact a mixed beverage law regulating the sale of mixed alcoholic beverages on a local option basis. There has been a long time debate on whether or not the constitutional prohibition against "open saloons" would permit any sort of a "mixed drink" statute. The last Regular Session of the Legislature resolved the debate by submitting that decision to the State voters. The Legislature has broad powers to regulate the manufacture, sale, possession and transportation of intoxicating liquors, including the power to establish a state monopoly on the sale of distilled liquors. These powers are also subject to local option elections.

When our State Constitution was adopted in 1876, it provided for submitting to the people of any locality the question of whether they would license or prohibit saloons. During World War I both the nation and the state adopted prohibition. The Federal Constitutional Amendment was repealed in 1933. The present provisions of our State Constitution allowing sale of liquor on local option basis were adopted in 1935.

This Amendment would apply to only Subsection (a) of Sec. 20, Article XVI, which prohibits the "open saloon", but it would still require local election permission to adopt any new law providing for mixed drinks.

Under local option there are 129 counties in Texas which allow the sale of distilled liquor by the bottle in part or all of the county. In 31 of these, sales are legal throughout the county. Texas is one of the six states which prohibit liquor by the drink in saloons open to the public. The arguments for and against sale of liquor by the drink are too well known to require listing here. The major issues in most discussions are concerned with which method is most enforceable and most likely to result in temperance and respect for law.

**PROPOSITION 3**  
**SPECIAL TAX PROVISIONS FOR RANCH, FARM AND FOREST LANDS**  
You will be asked to vote FOR or AGAINST: "The Constitutional Amendment to authorize the Legislature to provide by law for the establishment of a uniform method of assessment of ranch, farm and forest lands, which shall be based upon the capability of such lands to support the raising of livestock and/or to produce farm and forest crops."

Four years ago a Constitutional Amendment was adopted which provided that land designated by its owner for agricultural use shall be assessed for tax purposes on the basis of its agricultural use only, though it might be more valuable for other purposes. This means that land near a city, for example, can continue to be taxed on its value as ranch or farm land so long as the owner wants to use it that way, regardless of its worth for present or future development as residential or industrial property.

To get this lower assessment, a number of provisions must be met. The land must be owned by natural persons. Products of the soil must be grown under natural conditions, and as a business venture for profit. This must be the primary occupation and source of income of the owner. The requirements for eligibility, filing, etc., are lengthy and detailed.

Under the proposed amendment, the legislature could do by law what the present wording of this section guarantees expressly and minutely. However, it would change the impact from the owner applying for a different consideration to requiring the taxing authority to establish a uniform assessment on land meeting the statutory definitions.

The purpose of the amendment is to recognize the problems in inequities under the present assessing practices, particularly as applied to crops which take longer than one year to mature. Its terms are so broad, however, the Legislature may find it difficult to define and limit their application. Capability is capacity of being used or developed. It is having the ability or qualities necessary for a purpose, in this instance for raising livestock or producing crops. The full potential of a piece of land, and of neighboring property, might be affected by intensity of development, fertilizers, the kind of crops grown, or the breed of livestock raised.

The Legislature apparently could define what constitutes farm or forest land. It might find such a definition necessary in order to distinguish property near enough a city, or an oil well, or other development which it determines should be assessed on its speculative value.

While the amendment would allow the Legislature to adopt a new assessment method, it does require it. If the amendment passes, and the Legislature does not act, assessing the policies will revert to those in effect prior to November, 1966. If and when it does adopt legislation, the method of assessment will have to be uniform, apparently in all cases and throughout the State. If the Legislature should feel it was necessary, this could include con-

solidation or assessing authorities within certain areas, or some sort of state agency to insure uniform statewide application of the law, or both. If either approach is reasonably successful and accepted, pressure may be generated for uniform methods of assessing all other ad valorem taxes.

The powers are broad enough and the problems are big enough to spur some new thinking and some new approaches to tax problems, and to other relations between local governments and the State.

**PROPOSITION 4**  
**RECONSTITUTION STATE BUILDING COMMISSION**  
At the election you will be asked to vote FOR or AGAINST: "The Constitutional Amendment reconstituting the State Building Commission as a three-member appointive commission."

This is a proposal to change the membership of the State Building Commission from state officials, ex-officio, to three citizens appointed by the Governor with the advice and consent of the Senate. At present the Commission requires that the Commission be composed of the Governor, the Attorney General and either the Chairman of the State Board of Control or another official designated by the Legislature.

If adopted, the first appointment will be a member named for a two-year term, one for four years and one for six years. Thereafter the Governor will appoint a new member every two years, for a six-year term. He will designate one member as Chairman and also fill the vacancy of any unexpired term.

This section of the Constitution creating a State Building Commission was adopted in November, 1954. The commission was authorized to acquire property and construct and equip buildings for state purposes. The first structure was required to be the State Supreme Court Building. Land has been acquired and several buildings constructed in the development of a capitol complex stretching northward from the main Capitol building.

The Commission has had available the revenues remaining and unused each year from a two-cent ad valorem tax for confederate pensions. A 1968 Constitutional Amendment prohibits levy of this tax after 1976. The proposed amendment would not change the financing provisions. After 1976 the Commission would have available to it only the money the Legislature appropriates from the General Revenue Fund. The Amendment would be self-enacting.

**PROPOSITION 5**  
**COUNTY ROAD BONDS ON MAJORITY VOTE**  
You will be asked to vote FOR or AGAINST: "The Constitutional Amendment authorizing any county, on the vote of a majority of its qualified property tax paying electors, to issue road bonds in an amount not to exceed one-fourth of the assessed valuation of the real property in the county."

Section 52, Article III of our Constitution allows counties, cities and other political subdivisions of the State to issue bonds for roads and turnpikes, and certain other public improvements, when authorized by two-thirds majority vote of the resident property taxpayers voting thereon who are qualified electors. The total bonds issued may not exceed one-fourth of the assessed value of real property of the issuing authority.

The proposed amendment would rewrite this section to allow any county in the State to issue bonds for roads and turnpikes on the approval of a simple majority of those voting in an election, rather than the two-thirds majority presently required. The election would still be restricted to qualified electors who are resident property taxpayers.

In 1968 a new Section 52e applying only to Dallas County was adopted. It will not be affected by this proposed amendment. The '68 amendment allows road bonds to be issued by Dallas County without being subject to the debt limit prescribed in Section 52, and on the approval of a simple majority of the qualified voters taking part in the election.

The proposal to be voted on in November does not go this far. It would make only the one change allowing county bonds for construction, maintenance and operation of macadamized, gravelled or paved roads or turnpikes to be adopted by a vote of a simple majority, rather than the two-thirds now required. The amendment would be self-enacting.

**PROPOSITION 6**  
**RAISING HOMESTEAD EXEMPTION FROM \$5000 TO \$10,000**  
You will be asked to vote FOR or AGAINST: "The Constitutional Amendment increasing the value of the homestead which is exempt from forced sale."

This is a proposal to increase the maximum value of a town or city block or lot which may be claimed as a homestead from \$5000 to \$10,000. This limit applies to the value of the real property without reference to any improvements on it. It applies to value at the time the property was designated a homestead, regardless of later increases in value.

A homestead must be used for the purposes of a home, or as a place to exercise the calling or business of the head of the family. The rural homestead not in a town or city would remain at 200 acres of land, which may be in one or more parcels, and includes the improvements on the land.

The homestead exemption originated in Texas. While governed by a Spanish Colonial law, Texas became familiar with exemptions for family clothing, a minimum amount of furniture and the implements of the breadwinner, none of which could be taken for forced payment of debts. In an agricultural community it was natural that this concept should be extended to the family home and land.

The earliest homestead exemption law was adopted by the Republic of Texas in 1839. It was written into the Constitution when Texas became a State in 1845. Originally, the dollar value exemption for urban lots was \$2000. It was increased to \$5000 in the Constitution of 1869. The Constitution of 1876, which is our present Constitution, continued the same exemption in its Article XVI, Sec. 51, which this proposal would amend.

The increase in the dollar amount of the exemption is urged as recognition of changing economic conditions and increased land costs. Without going back to 1876, the lot which could be bought several years ago for \$5000, and which may be still exempt as a homestead, could not in most instances be purchased today for the \$10,000 proposed as the new maximum. However, the exemption operates only as a floor under the welfare and fortunes of a family, and the question is whether the floor should be raised.

**PROPOSITION 7**  
**CONSOLIDATING SOME FUNCTIONS OF LOCAL GOVERNMENT**  
You will be asked to vote FOR or AGAINST: "The Constitutional Amendment authorizing the Legislature to provide for consolidating governmental offices and functions and allowing political subdivisions to contract for performance of governmental functions in any county."

This proposal would authorize the Legislature to provide by special statute for consolidation of government offices and functions of government within any county in the State. It would allow a special law to be tailored to the requests and desires of the people of any one county.

It would also allow a county government, or any political subdivision within the county, to contract one with another for performance of any governmental functions either required or authorized by the Constitution or laws of Texas under such terms and conditions which the Legislature may prescribe. The term "governmental functions" is defined to include all duties, activities, or operations of statewide importance in which the county acts for the State, as well as functions of local importance.

An amendment was adopted in 1933 providing for county home rule charters. It is long and detailed and has never been used. In 1966 a constitutional provision very similar to this proposal was approved, applicable only to Harris County. In 1968 an amendment applicable to El Paso and Tarrant Counties was adopted. Neither of these has been used, but the last one is the basis of the present proposal which would make its procedures available to all counties.

The impact of this amendment, if adopted, would in a large part depend on the extent to which the Legislature implemented it with legislation. Should the implementation be broad, it might produce economies in some counties that would set a statewide pattern for the combining of many of the functions of local government either by contract or by actual consolidations. It is a fertile field for experiment.

## Steers Down The Wolverines 14-8

The Springlake-Earth Wolverines lost a heartbreaker Friday night to the Farwell Steers. The final score was the Steers 14-Wolverines 8.

The Steers did their scoring in the second quarter and the Wolverines in the fourth quarter. Both teams were bothered with fumbles throughout the entire game. The Wolverines had four fumbles and recovered three and the Steers had three and recovered four.

Farwell's scoring was from 13 yards on a pass from Gene Sheets to Randy Chandler for their first TD. Larry Erwin kicked the extra point.

Their second touchdown was a pass for the same distance from Sheets to Erwin. Erwin again kicked the extra point, making the score 14-0 at half-time in their favor.

The Wolverines scoring was in the fourth quarter on a 20-yard pass play from Hoyt Glasscock to Carl Sulser. Guy Davis took a pass from Glasscock over for the two point conversion for both teams.

Tony Barton, who has been on the injury list since the first game of the season, was played sparingly during the game. He carried the ball 11 times for an average of a fraction over five yards per carry.

George Nance carried the ball six times for a total of 39 yards and received a pass for another 13 yards.

Eddie Alair carried the ball six times for a total of ten yards and caught a pass from Glasscock to add another 16 yards.

In the passing department, Glasscock connected four times in 11 attempts for a total of 79 yards and the two point conversion.

The Wolverines had a total of 105 yards on the ground and 79 yards in the air and 14 first downs.

Gary Erwin was the top ball carrier for the Steers, with 92 yards in 17 carries. Barry Williams was next with 83 yards, carrying the ball 22 times.

In passing, Sheets connected seven times out of 14 tries for a total of 48 yards.

The Steers had a total of 187 yards on the ground and 48 yards in the air and 19 first downs. The Steers are leading in district play with four wins and no losses. The Wolverines are 3 and 1 in district play. Play will start at 7:30 p. m. this Friday night. The Wolverines meet Hart there.

### Travis Jaquess Hospitalized In Medical Arts

Travis Jaquess was admitted to the Medical Arts Hospital in Littlefield last Tuesday night in a weakened condition.

A report Wednesday morning indicated his condition to be improved. He had begun to eat a little and could retain his food.

Jaquess was dismissed from the Methodist Hospital in Lubbock only four days when he was admitted in Littlefield. Jaquess was injured several weeks ago in a fall from a ladder while at work as school custodian.

Jaquess was presented with an \$880.00 check from the Earth-Springlake Lions as a gesture of brotherly love. The money was derived from a Benefit Dinner sponsored by the two clubs.

### Party Line

Several days visiting their daughter and family. Mr. and Mrs. Myers Ogletree.

Mr. and Mrs. Irvin Ott spent last weekend in Pecos visiting her father, John Davis, and her brother, Wayne Davis and family. Before returning home, they went to El Paso where they spent

The water used by 90 percent of the population in the developing world is either unsafe or inadequate, or both. UNICEF projects help provide abundant, unpolluted water.

**WINTER IS TOUGH ON ANY CAR!**

**AN ACCIDENT CAN BE TRULY COSTLY TO YOU**

Your car can't put its best foot forward when the front-end is out of line. Steer in for the expert care that will keep your car rolling right.

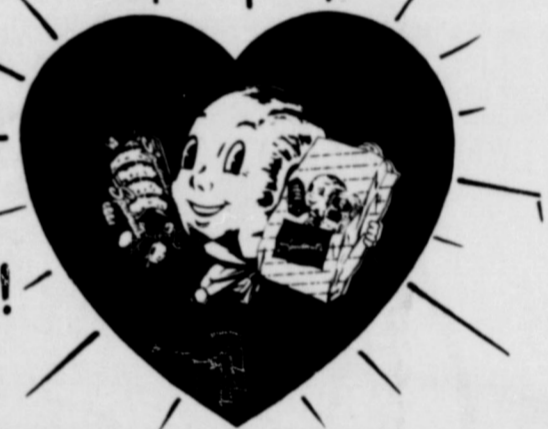
**Plains AUTO PARTS**  
P. O. Box 586  
MULESHOE, TEXAS 79547

**South Main MULESHOE Phone 272-4576**

### The Spudnut Shop

J. D. & Leona Evans  
Muleshoe  
Phone 272-3542

LIKE DOUGHNUTS?  
YOU'LL LOVE Spudnuts!



# Why Preston Smith?

Preston Smith believes in working hard. For you. And that's why he's doing such a good job as Governor of Texas.

When Preston Smith entered public service, he didn't start by asking Texans to elect him Governor. That would have been foolish, because being Governor carries great responsibilities. And it demands the clear, steady judgement that comes only from experience.

Preston Smith had the good common sense to work his way up—gaining insight into how our state government functions.

He served six years each—as State Representative . . . as State Senator . . . and as Lieutenant Governor. Only then, when he felt fully qualified, did he seek the Office of Governor.

Now, after two years he has expanded the duties of the Governor's Office to better serve all the people of our State.

Yes, Preston Smith believes in hard work. For 20 years, he's been working for Texas—doing a good job. You can help keep him as Governor. Vote. Vote for Preston Smith on Tuesday, Nov. 3.

# Preston Smith



is doing a good job. Let's keep him working for Texas.



**IF YOU  
DON'T CARE  
ABOUT  
YOURSELF**

**WHAT ABOUT THEM?**



★ **DRINKING DRIVERS WILL KILL  
OVER 1700 PEOPLE IN TEXAS THIS  
YEAR.**

**WHAT CAN TEXANS  
EXPECT FROM  
OPEN SALOONS?**

★ **ALCOHOL PUT OVER 3,000 TEXANS  
IN MENTAL HOSPITALS IN 1969**

★ **ALCOHOL CONTRIBUTED TO MORE  
THAN 113,000 CRIMES IN TEXAS  
IN 1969.**

★ **ALCOHOL CONTRIBUTED TO MORE  
THAN 25,000 DIVORCES IN TEXAS  
IN 1969.**

★ **TEXAS ALREADY HAS 400,000  
ALCOHOLICS.**

• **OPEN SALOONS  
MEAN ...**

- MORE DRINKING DRIVERS
- MORE MENTAL PATIENTS
- MORE CRIME
- MORE DIVORCES
- MORE ALCOHOLICS

**SAVE A LIFE!!!  
YOURS**

**VOTE  
NO**

PROPOSITION 2

**NOVEMBER 3  
TO LIQUOR  
BY THE DRINK**

This Ad Sponsored In Public Interest By:

**FIRST BAPTIST CHURCH    UNITED METHODIST CHURCH**

Earth

Earth

And Individuals Who Care

**Earth Insurance    Earth Elevator    Earth Super Save**

## Do You Know About Drugs?

A major effort toward drug abuse education and prevention has been launched by the Texas State Department of Health.

The Department's Division of Food and Drugs and Public Health Education Division are cooperating in the development of new programs and services for the citizens of Texas.

The State Health Department is planning a series of 10 regional seminars on drug abuse and its community health implications. The first one is scheduled November 17 in State Health Department Region 7, headquartered in Tyler. Health professionals and community officials from the 26 county East Texas region will be eligible to attend the one-day seminar in the auditorium of the East Texas TB Hospital Annex.

The seminar will focus on the health aspects of drug abuse, detail current programs underway, and examine possible future directions a local and state campaign against drug abuse may take. The course content will include a history of drug traffic, the problem today, current state attack, and how communities can be organized. State Health Commissioner Dr. James E. Peavy will keynote the program.

The faculty will include a nationally-known drug abuse expert, Dr. Joe Schooler of the Texas Research Institute, a unit of the Texas Department of Mental Health and Mental Retardation. The health aspects of drug use and abuse, and current research, will be emphasized.

Also on the program will be Curtis Dickson, health information specialist with the State Health Department. He was a recent participant in the Western Institute of Drug Problems held in Portland, Oregon. Allan Schurr, assistant director of the Food and Drug Division of the State Health Department, and Hunter Brush, the Tyler district attorney, also will participate.

The State Health Department also is deeply involved in other drug abuse programs. Department personnel, working in the Governor's Task Force on Drug Abuse, are involved in the planning and development of a coordinated statewide, inter-agency attack on drug problems. They will be participants on Inter-agency Community Assistance Teams.

With the assistance of KUHT and the University of Houston, the State Health Department



WHERE'S SMOKEY? The flames rose high and so did the school spirit when Miss Flame ignited the student bonfire Thursday night. Drums beat and cheers rang out as enthusiastic students, parents, and faculty joined in a oneness of spirit for S-E School.



## RE-ELECT BEN BARNES LT. GOVERNOR



**PROVEN LEADER FOR TEXAS!**

Political advertisement paid for by Committee to Re-Elect Lt. Governor Ben Barnes, Ralph Wayne, Chairman.

has produced a one-hour film that will be released to statewide television this fall. The film vividly portrays the scope of the problem in Texas and the reaction of parents and students to the use, misuse and abuse of legal and illegal drugs. Purpose of the film is to stimulate communities and organizations to action. For years the State Health Department has conducted statewide drug abuse education programs, mostly to school audiences. Emphasis now is informing the adult community.

"The publisher is not granted the privilege of independence simply to provide him with a favored position in the community than is accorded to other citizens. He enjoys an explicitly defined independence because it is the only condition under which he can fulfill his role, which is to inform fully, fairly and comprehensively. The crux is not the publisher's 'freedom to print'; it is rather the citizen's right to know." — Arthur Hays Sulzberger.

DON'T FORGET TO VOTE ON TUESDAY!

# GEORGE BUSH DOESN'T BELIEVE IN HIDING BEHIND A PARTY LABEL. HE BELIEVES IN TELLING YOU EXACTLY WHERE HE STANDS ON THE ISSUES.



## HERE'S WHERE HE STANDS ON AGRICULTURE AND RURAL DEVELOPMENT.

"History has proven that no country is strong unless its farm economy is healthy. During the voting on the 1970 Farm bill, I voted against the proposed \$20,000 limitation on farm subsidies. Without a drastic revision of our Agricultural legislation, I believe such limitations will cause more problems than they will solve. We also need to develop attractive opportunities for young people in rural areas. This is why, for the past two years, I have fought for passage of the Rural Job Development Act. It provides tax incentives for industries locating in rural areas.

I do not pretend to know all the answers to the problem of building a sound rural economy. But, I do know this — economic stability for rural America is vital to this nation."

*George Bush*

Vote for the man, not the party. George Bush has done more to pass effective farm legislation.

## GEORGE BUSH. HE CAN DO MORE.

Political Advertising—Paid For By Committee To Re-elect George Bush To U. S. Congress, Jim Davidson, Campaign Chairman, Lamb County



## CHILDREN LEARN WHAT THEY LIVE

IF A CHILD LIVES WITH CRITICISM, HE LEARNS TO CONDEMN.  
 IF A CHILD LIVES WITH HOSTILITY, HE LEARNS TO FIGHT.  
 IF A CHILD LIVES WITH RIDICULE, HE LEARNS TO BE SHY.  
 IF A CHILD LIVES WITH SHAME, HE LEARNS TO FEEL GUILTY.  
 IF A CHILD LIVES WITH TOLERANCE, HE LEARNS TO BE PATIENT.  
 IF A CHILD LIVES WITH ENCOURAGEMENT, HE LEARNS CONFIDENCE.  
 IF A CHILD LIVES WITH PRAISE, HE LEARNS TO APPRECIATE.  
 IF A CHILD LIVES WITH FAIRNESS, HE LEARNS JUSTICE.  
 IF A CHILD LIVES WITH SECURITY, HE LEARNS TO HAVE FAITH.  
 IF A CHILD LIVES WITH APPROVAL, HE LEARNS TO LIKE HIMSELF.  
 IF A CHILD LIVES WITH ACCEPTANCE AND FRIENDSHIP, HE LEARNS TO FIND LOVE IN THE WORLD.  
 Dorothy Law Nottle

Visit Your Schools! Support Them!  
 AMERICAN EDUCATION WEEK

October 25-31

Watch For Children On Halloween Night And Drive With Caution.



**BAILEY COUNTY ELECTRIC COOPERATIVE**

Muleshoe

# Sunnyside News...

By Tenny Bowden.

Mrs. Lowell Westmoreland spent the day Monday with Mr. and Mrs. Alton Louder.

The Lions Club met at the community meeting Monday night for an enchilada supper for their regular meeting. It was ladies night.

Mrs. E. R. Sadler and M. H. Fowlkes visited in Littlefield last Tuesday with his sister-in-law, Mrs. Mit Fowlkes and Mrs. Melvin Meers and daughters.

Lillian Carson took her car and a load of Dimmitt 7th grade girls to Amarillo last Saturday to a basketball game. Cindy Sadler and Resa Carson were two of the girls going.

A charter meeting of the new Girl's in Action Organization was conducted Tuesday afternoon at the church. The Mission Friends, Crusaders and Baptist Young Women also had their meetings Tuesday afternoon.

Bill Morgan returned from Oklahoma after a visit with his mother Tuesday.

The Baptist Men met for their monthly meeting Tuesday night at the church.

Mrs. Mack Turner conducted the mission prayer group and executive committee meeting Wednesday night.

Morrison Gin here received its first bale of cotton Wednesday afternoon. Roy Lilly brought in the first bale which weighed 630 pounds.

Larry Duke received the Flag 4-H plaque for outstanding boy of the year at a family night covered-dish supper last week. The club won first place in the county and won a first place blue ribbon in the district. Larry won a certificate award in gardening, leadership, methods demonstration, swine and sheep production, and field crops.

The Springlake - Earth High School honor roll for the first 6 weeks included David Bradley and Denise Morgan on the Senior "B" roll, Marlan Dawson on the junior "A" roll and Eddie Alair on the junior "B" roll. Darrell Carr and Renee Jones on the "B" roll for sophomores. Lisa Orr was on the Freshman "B" roll.

On the Springlake-Earth 8th grade "B" honor roll was Freddy James, Steve Morgan, David Carr and Don Holman. There were no "A" students. Kelly Hayden was on the 7th grade "B" honor roll.

Lee Brown is on the Springlake-Earth 7th grade team going undefeated all season. Their game with Farwell Thursday night was 6-0. Kelly Hayden is one of the cheerleaders. The 8th grade won their game 24-8.

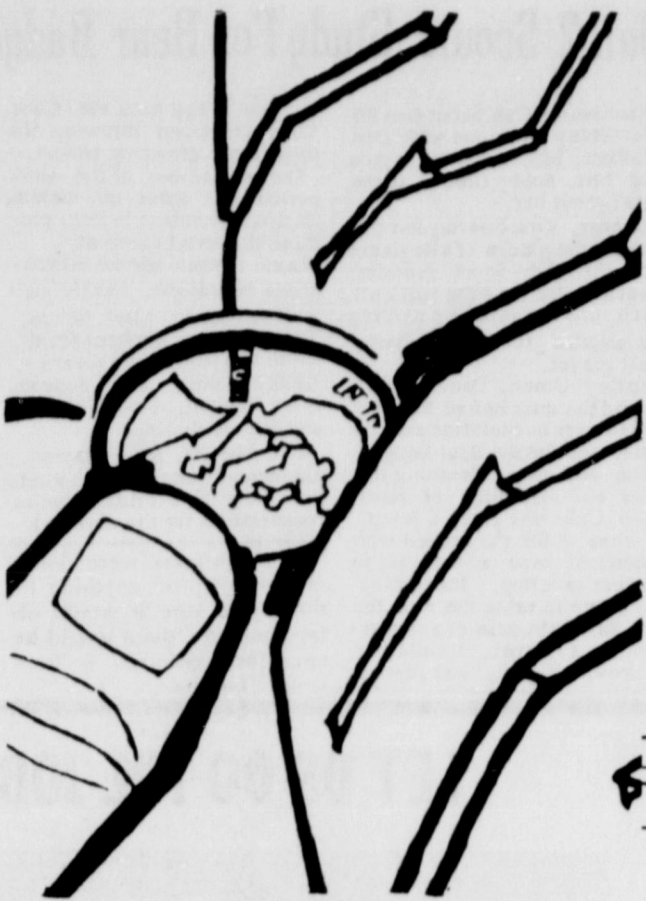
Belinda and Diana Jo Hampton opened the meeting of Girl Scout troop 309 Friday afternoon. Kay Howell and Sue Bradley also attended.

Lee Bradley left for Vietnam Wednesday morning. Mr. and Mrs. Weldon Bradley, and Mr. and Mrs. Carl Bradley, Kent and Kelly saw him off at Lubbock while Kyle stayed with his grandparents, the Jess Matlocks of Springlake. Lee flew to Dallas, California, Alaska, Japan, and arrived in Vietnam Saturday.

France's "Legion of Honor" was instituted in 1802.

Milton sold the copyright to Paradise Lost in 1667.

SEWING CLASSES on knit and lingerie taught by Daisy Castleberry from Fabulous Fabrics in Lubbock. Contact Mrs. L. G. Layman, Phone 965-2298. 10/29/70c



ONE-CENT PIECE MAKES GOOD TREAD DEPTH INDICATOR --If you can see the top of Lincoln's head after turning a penny upside down and inserting it into the tread groove of your tire, you are in need of a new tire. The distance from the edge of the penny to the top of Lincoln's head is 1/16th of an inch. Safety experts warn that tires should be considered bald and replaced when the tread depth reaches 1/16th of an inch or less.

day night. Mrs. J. Paul Waggoner visited with her Friday and Saturday. Mrs. Hubert Lilly visited with her Sunday.

Mr. and Mrs. M. L. Jackson of Comanche arrived Friday. Mrs. Noah Spencer and other members of the family. Mr. and Mrs. Chuck Lay of Level-land came in Friday night. Mr. and Mrs. Clyde Akers, of Lubbock, who spent Saturday and Sunday with Mr. and Mrs. John Spencer and the John Spencers were supper guests of the Noah Spencers and their guests Saturday night.

Ann Golding and the exchange student from France, Claire Tennillon of Dimmitt spent Saturday night with Dolores Waggoner.

Mrs. Winston Waggoner attended the shower in Dimmitt Friday afternoon honoring Mrs. Charles Nutt. Mrs. Eules Waggoner kept the children.

Mrs. Floyd Ivey, Mrs. Eules Waggoner and Dolores attended the play "You Can't Take It With You" in Dimmitt High School Sunday afternoon.

Floyd and Moley Ivey left last Thursday and came in Tuesday from a deer hunt in Montana. They brought back deer and antelope. Mrs. Moley Ivey and

Susie went as far as Boulder, Colorado and visited with relatives while they were gone. Mrs. Floyd Ivey spent last Friday through Wednesday in Lamesa with her daughter, Mr. and Mrs. Curtis Pruitt who is ill. Mrs. Pruitt was to enter Methodist Hospital Monday for tests.

Eighty attended Sunday School with 18 in Training Union, and many more for the G. A. Coronation which followed and the baptismal service. Dancin' Wilson was recognized as a Maiden, Marquette James as a Lady-In-Waiting and Debbie Wilson as a Queen-With-Scupper. Kevin Epperson served as the scup-

# Savings Bond Sales InLamb Reaches 71% Of Goal

September sales of Series E and H United States Savings Bonds in Lamb County totaled \$4,577, according to a report from C. O. Stone, Chairman of the Lamb County Savings Bonds Committee. A total of \$91,879 has been purchased in this county since January 1. This figure represents 71 per cent of the 1970 goal of \$130,000.

In Castro County \$4,829 was spent in September on Bonds. The total for the nine months period was only \$29,588 which is 49 per cent of the \$60,000 annual goal.

Texas purchased \$15,033,393 in Savings Bonds during the month compared to \$14,480,583 for the same period a year ago--an increase of 3.8 per cent. Sales for the nine-month period were \$136,303,218 for 76 per cent of the yearly goal of \$179.9 million.

Nationally, new purchases of Series E and H Bonds totaled \$351 million, 9.4 per cent above 1969 sales of \$321 million. The first nine month sales were \$3,501 million--3.9 per cent above a year earlier. Exchanges of Series E for new Series H Bonds amounting to \$182 million were

reported for the first nine months --a 29 per cent increase over the \$141 million exchanged during 1969.

World's largest cemetery is in Leningrad, U. S. S. R.

Only ape known to make tools is the Chimpanzee.

ter bearer and Stacy Sadler as the flower girl. Mrs. Mack Turner had charge of the service with Mrs. Gele with Mrs. Gale Sadler at the organ. After this service, Susan and Rory Jones were baptized.

On November 22, at 7:00p. m., Mark Wysong will direct the young people of the Sunnyside church and community in a program of music which is called "A New Kind of Dream". It is a musical program which displays the reformation of life, and it has a Christian emphasis. It will take the place of the worship hour that Sunday night. Mark it on your calendar and try to attend.

# Party Line

Mrs. Virginia Duncan of Lubbock visited Mrs. Jim Robbins, Mrs. Pattie Parker and daughters Kerri and Bobbie Monday. Mrs. Robbins had a birthday get-together at her home. Monday evening. Cake and Ice Cream were served to her sons Jimmy and Johnny, Mr. and Mrs. Wayne Robbins, Rudy and Gilbert, her daughter, Mrs. Pattie Parker, Bobbie and Kerri, Wilma Meeks, and Elaine Hanson.

# 78 New & Used Cars TO CHOOSE FROM

- Such As These
- 1969 Plymouth Fury III 2 Door Blue \$2570.
- 1969 Dodge Polara, 4 Door sedan Dark Brown/Tan \$2595
- 1968 Chrysler New Yorker, 4 Door-Beige \$2495.
- 1968 Plymouth Fury III, 4 Door sedan-White \$2195.
- 1968 Chrysler Newport Custom 4 Door Sedan \$2195.
- 1967 Mercury Parkland 4 Door White/Black \$1990.
- 1966 Chrysler Newport, 2 Door Gray/Black \$1495.
- 1966 Chrysler 300, 4 Door, HT White/Black \$1795.
- 1966 Ford Mustang, 2 Door HT Maroon \$950.
- 1965 Chrysler New Yorker, 4 Door-Turq. \$1365.
- 2-1965 Buick Elect. 225, 4 Door White \$995
- 1964 Chevrolet Impala, 2 Door HT Blue/White \$795.
- 1965 Chevrolet El Camino, Pick-up-White \$795.
- 1964 Mercury Parklane, 4 Door Turq. \$895.
- 1962 Mercury Meteor, 4 Door sedan-Beige \$495.

Also just traded for these extra clean one owner cars on 1971 Chrysler products.

1968 Plymouth Fury II, 4 Door Sedan, Blue, One Owner, low miles, fully equipped. \$1895.

1965 Dodge Coronet 440, 2 Door Hardtop, One Owner, Excellent student car, 361-V8 and standard shift, air conditioning. A top car, at a bottom price! \$1095.

Call **FORREST** for your Building Supplies

- PAINTS
- HARDWARE
- ROOF TRUSSES
- PLUMBING SUPPLIES
- FREE ESTIMATES
- FINANCING

VISIT YOUR SCHOOLS! SUPPORT THEM!  
AMERICAN EDUCATION WEEK  
OCTOBER 25-31

DIAL 763-4335 FOR MATERIALS AND INSTALLATION.

1300 4th Street Lubbock

Halloween Harvest Sale

BLEND and COTTONS 1/2 PRICE

DOUBLE KNITS \$3.98 Yard

Sale Starts Wednesday, October 28  
Last Thru Saturday, October 31

Dot's Shop 209 E. Ave. B.  
272-4635-Muleshoe

# BUY SELL CLASSIFIED ADS

TELEX Hearing Aids

Clovis Hearing Aid Center

Batteries & Molds. Free Tests. Service All Makes.

416 Mitchell Phone 763-6900  
Clovis, N.M.

STATE LINE IRRIGATION CO. Inc.

IRRIGATION SYSTEMS

385-4487-Littlefield 272-3450-Muleshoe

CARPET CLEARANCE SALE

Group One ALL NYLON FACE \$5.95 Per Sq. Yd. Installed Over Sponge Rubber Pad

Group Two ALL NYLON FACE \$6.95 Per Sq. Yd. Installed Over Sponge Rubber Pad

Many Outstanding Value Throughout Store

**Son Carpet Center**

Plainview's Oldest Carpet Speciality Store

805 Broadway Plainview 296-2761

WE DO Commercial AND Residential WORK

Cox Tin and Plumbing Shop

Littlefield

Home-Farm-Auto-Life

Office Phone 385-3444  
Home Phone 385-5012  
Littlefield

ED JENNINGS

BUY & SELL USED FURNITURE

257-3937

T-BAR WESTERN STORE

EARTH, TEXAS

10/8/70c

HOUSE FOR RENT: Contact Mrs. Lottie Orteg. Phone 965-2440. 10/25/70c

FOR SALE or lease 2 bedroom, attached garage, carpet, electric built-in kitchen, \$80 per month. Call 296-9494 in Plainview. Jim Williams 10/15/70c

FOR SALE--Zenith stereo reg. \$489 now \$299, 140 watts, 8 speakers, walnut cabinet, slightly waterdamaged. Gordon Wilson Appliance, Muleshoe. Ph. 272-3138. 10/29/70c

FOR SALE--Sewing Machines. We are franchise dealers for Singer, Necchi, Neclo and Good Housekeeper. We repair any make. Scissors and pinkingshears sharpened. Call 272-3030 in Muleshoe, Texas. Harvey Bass Appliance. 6/1/tfc

HOUSE FOR SALE: in Hite Park, 5 1/2% interest. Phone 806-258-7655. 2/12/tfc

John Hancock has GOOD hospitalization insurance!! Skeeter Brock, representative, 257-3351, Earth. 9/10/tfc

FOR SALE MISCELLANEOUS: "Take over payments on 1968 Singer sewing machine in walnut console. Will zig-zag, blindhem, fancy patterns, ect. Assume 3 payments at \$7.96. Write Credit Manager, 1114 19th Street, Lubbock, Texas." 2/19/tfc

FOR RENT--Two bedroom house, carport, utility room. \$50 per month. Phone 257-3821. 6/8/tfc

FOREXPERT REPAIRS ON EVAPORATIVE AND REFRIGERATED AIR CONDITIONERS.

LOVELESS APPLIANCE

Olton 285-2000 or 285-3366 We Are As Close As Your Telephone... Sales And Service On Air Conditioning Units.

GOOD MAN OVER 40

For short trips

Surrounding Earth. Contact customers. We Train. Air Mail A. S. Dickerson, Pres., Southwestern Petroleum Corp., Ft. Forth, Texas

QUICKBALL PRYOR CO. INC.

Automobile Parts Supplies & Equip. P.O. Box 567 Earth Texas

The job of the newspaper is to comfort the afflicted and afflict the comfortable. -- F. P. Dunne (Mr. Dooley)

"When the press is free and every man able to read, all is safe. -- Thomas Jefferson.

FOR SALE: Nine City lots south of Earth Elevator, contact Citizens State Bank in Earth. 1/18/tfc

FOR LEASE: New 4 row shredder, Contact W. B. Huels at Springlake Phone 986-2221. 10/22/70c

FOR RENT: Rooms by day, week or month with or without board. Earth Hotel. 9/24/tfc

Earth Lodge

No. 1277

A. F. & A. M.

Regular Meeting Night

Second Thursday

Each Month

L. K. Anderson - W. M. Don Clayton - Secretary

AREA'S BIGGEST FURNITURE & APPLIANCE CENTER. Selling Famous Brand Furniture, General Electric Appliances direct to you. Free Delivery. We Service. TAYLOR'S FURNITURE & APPLIANCE CENTER, 603 Park Ave., Hereford, Tex. Phone 364-1561. 4/2/tfc

# BUSINESS and INDUSTRIAL DIRECTORY

FEEDERS GRAIN, INC. DAILY BUYERS FOR CATTLE FEEDERS

Federal Storage License 3-4451

We Can Use Your Grain

SUDAN LIVESTOCK and FEEDING CO. Phone 227-5321 Sudan

your BUICK OLDSMOBILE DEALER

BROCK MOTOR Muleshoe, Texas

To Rest Assured use SAFETY DEPOSIT BOX Protection

FIRST STATE BANK Dimmitt, Texas

TRUCK SEATS EXCHANGED 15 MINUTE SERVICE

McCORMICK'S AUTO SUPPLY AND TRIM SHOP

PHONE 385-4555 LITTLEFIELD

JOB PRINTING

EARTH NEWS

HAMMONS FUNERAL HOME

Ambulance Service

Phone 385-5121 LITTLEFIELD TEXAS

Social PRINTING

Earth News-Sun

MONUMENTS

Winnboro Blue Granite White Georgia Marble and others including Bronze for Memorial Park Specifications

See or Call Collect Percy Parson, Olton Phone 285-2621 or 285-2767 Frank Ellis, Muleshoe 272-4572

TEXAS PRESS ASSOCIATION MEMBER

## Knowledge Of New Tax Law Could Save Farmers Money

A good knowledge of new Federal income tax laws could save a farmer many dollars in the next two months.

Farmers prefiguring their final tax bill for 1970 shouldn't overlook those 1969 revisions in the Federal tax code, many of which went into effect for the first time this year. Jack E. Jenkins, area farm management specialist with the Texas A&M University Agricultural Extension Service, says.

The Tax Reform Act of 1969 contains nine provisions that deal specifically with reporting income from the farm, as well as numerous other changes that affect all taxpayers.

"Producers would do well to consult the new regulations before deciding whether to buy or sell a particular item between now and December--or whether it would be more advantageous taxwise to wait until 1971," Jenkins said. "The goal of tax management isn't to avoid taxes, but rather, it is to minimize taxes paid, by taking advantage of all the provisions of the tax laws, as they apply to the farmer's particular operation."

Two of the Act's provisions affect the reporting of income from sales of livestock purchased for draft, breeding, sporting or dairy purposes. James I. Mallett, farm management specialist at Texas A&M, said. Formerly, all such income could be treated as capital gains, which are taxable at the lower capital gains rate he explained.

"Previously, livestock used in the farm business were specifically exempted from depreciation," he said. "Depreciation claimed in the past could then be deducted from ordinary income that is taxed at the usual rates."

"Under the new law, the gain on the sale of livestock is to be treated as ordinary income, rather than a capital gain, up to the full value of previous depreciation deductions. This applies to depreciation taken after 1969."

The purpose of this change was to put livestock on the same tax base as other property used in business, depreciation on which is normally recaptured at time of sale, Mallett said. "A second provision affecting livestock used for draft, breeding, sporting or dairy purposes extends the holding period for certain animals before they can be sold and qualify for capital gains treatments," he said.

"The old law allowed a 1-year holding period. The new retention period for horses and cattle in these categories is two years for stock acquired after December 31, 1969. The holding period for other livestock remains unchanged."

According to Mallett, the objective of the 2-year provision is to assure that cattle and horses are in fact being held for the purposes specified, rather than for sale in the ordinary course of business.



BONFIRE ABLAZE.... Jerry Barden, senior, Student Council President, and Susie Adrian, senior, Miss Flame, light the bonfire at Barton Bros. Gin Thursday night to spark up the spirit at Springlake-Earth School.

Another revision in the tax law has to do with taxation of indemnities paid to farmers for crop damage or loss, Mallett said. The old law required farmers who used the cash accounting method to include crop insurance proceeds as a part of the year's income, even though the crop itself might not have been sold until the following year, he explained, adding that in effect, the farmer who customarily marketed his crop in the year following harvest was paying taxes on two crops in one year.

"The 1969 Tax Reform Act eliminates this hardship by allowing farmers to defer the reporting of indemnities until the year following the loss, if they establish that under their usual practice, income from the damaged or destroyed crops would have been reported in the year following the year of the loss," Mallett said. "This provision was effective for 1969 and subsequent years."

Other sections of the revised tax law that affect only farmers deal with limitation of farm losses, hobby losses, tax free exchange of livestock of different sexes, recapture of soil and water conservation expenses and extension of the date for filing tax returns by farmers who do not file tax estimations.

"Year-end tax moves should be aimed at leveling out income between tax years and avoiding the wide income swings into the higher brackets," he said. "You

do this by deferring or accelerating income and deferring or prepaying expenses to fit your particular income situation."

"Take a look at your total sales of both ordinary and capital items to date, then subtract all production expenses incurred to date plus all personal exemptions and allowed expenses plus amount of depreciation taken last year from total income to determine your taxable income picture, he said.

"The amount of taxable income will tell you whether you should sell some more products before year end and hold off on buying next year's supply of seed, fertilizer, feed and other production items, or if you should do just the opposite," Mallett said. Most farmers are busy with harvesting at the present and their thoughts are a long way from income taxes, but decisions made during the remainder of 1970 can affect that final tax bill, Mallett noted.

## Well, What Do You Know? fun, games and knowledge

by MARTHA GLAUBER SHAPP, Editor, The New Book of Knowledge

What do you know about Halloween?

The Halloween customs that we observe on October 31 originated long ago in the beliefs of the druids--priests of ancient Gaul and Britain. The druids believed that witches and demons roamed the earth on the eve of November 1. Bonfires were lit to drive the bad spirits away. The druids also disguised themselves so the spirits would think the

druids belonged to their own evil company. And thus we celebrate Halloween by playing trick or treat, dressing up, and wearing masks.

Much later the Roman Catholic Church set aside November 1 as All Saints', or All Hallows', Day. The night before was called All Hallows' Even. The two festivals gradually became one, and All Hallows' Even was shortened to Halloween.



Do you know how bells are made?

Bells are made from bronze, an alloy of approximately three parts copper and one part tin. In bell casting, two molds of baked clay are constructed. One forms the interior of the bell, and the

other forms the curved shape of the outside surface. Molten bronze is poured between the two molds. When the metal has cooled and hardened, the molds are removed. Bells are tuned by filing or shaving strips of metal from their inside surfaces.

## Cub Scouts Den 3 Work On Achievements For Wolf Badge

Cub Scouts of Den #3 met Wednesday afternoon at the local scout hut.

Denner, Lonnie Neinst, led the Cubs in the Pledge of Allegiance and the roll call.

The first achievement of the Wolf Badge were passed by the Cubs as they learned the safety rules of using a knife and the proper way to pass an open knife. After learning the safety rules, the Cubs were given a bar of soap to carve objects of their choice.

The remainder of the meeting was spent making posters to advertise the Halloween Carnival to be held at the show barn on October 31.

Jimmy Robbins and Mike Wimberly served orange juice and chips to Ricky Higgins, Kyle Kelley, Lonnie Neinst, Cory Hopping, Glen Hausmann, Rudy De Leon, Rodney Davis, Mrs. Phil Neinst and Mrs. Don Taylor, Den Mothers, and Brian Taylor, Den Chief.

★★★★★★★★★  
★ Our Boys ★  
★ In Service ★

Sergeant Michael E. Tree, son of Mr. and Mrs. Carl F. Tree, Pine, Colorado, has received the U. S. Air Force Commendation Medal for meritorious service while assigned in Thailand.

Sergeant Tree distinguished himself as a member of the munitions accountable supply branch of the 355th Munitions Maintenance Squadron at Takhli Royal Thai Air Force Base.

He was presented the medal at Reese AFB, Texas, where he now serves as a fuel specialist with a unit of the Air Training Command.

The sergeant is a 1966 graduate of Platte Canyon High School, Belle, Colorado. His wife, La Donna, is the daughter of Mr. and Mrs. Wesley Hawkins of Rt. 3, Muleshoe.

## Den 2 Scouts Study For Bear Badge

Members of Cub Scout Den #2 met Friday afternoon with Den Mothers, Mrs. Donnie Clayton and Mrs. Bobby Green, at the local scout hut.

Denner, Kyle Cearley led the Cubs in the pledge of allegiance and the Cub Scout Promise. Cearley also read the roll call, each cub answered by naming his favorite football or baseball player.

Kelley Green, Denner, collected the dues before the Cubs began work on their first achievement step for the Bear Badge.

The first step is learning the care and handling of ropes. Each Cub was given a length of rope which they taped with electrical tape at the ends to prevent unraveling. Instructing the group in using the rope for Life Saving in case of an emergency, a target, simulating a drowning man, was placed

20 feet away from the Cubs. They practiced throwing the rope to the drowning person.

The remainder of the work period was spent on making Halloween posters to help promote the local carnival.

Lexie Pennell served refreshments of oranges, bubble gum and candy to Allen Moore, Timmy Craft, Michael Smith, Keith Clayton, Kyle Cearley, Kelley Green, Stan Runyon, Brian Vaughn, Kerry Sawyer, and Johnny Smith.

Den Mother, Mrs. Clayton, announced that the group would not meet this Friday due to preparations for the carnival.

If all printers were determined not print anything till they were sure it would offend nobody, there would be very little printed. — Benjamin Franklin.

"The organization of our press has truly been a success. Our law concerning the press is such that divergencies of opinion between members of the government are no longer an occasion for public exhibitions, which are not the newspapers' business. We've eliminated that conception of political freedom which holds that everybody has the right to say whatever comes into his head." — Adolf Hitler.

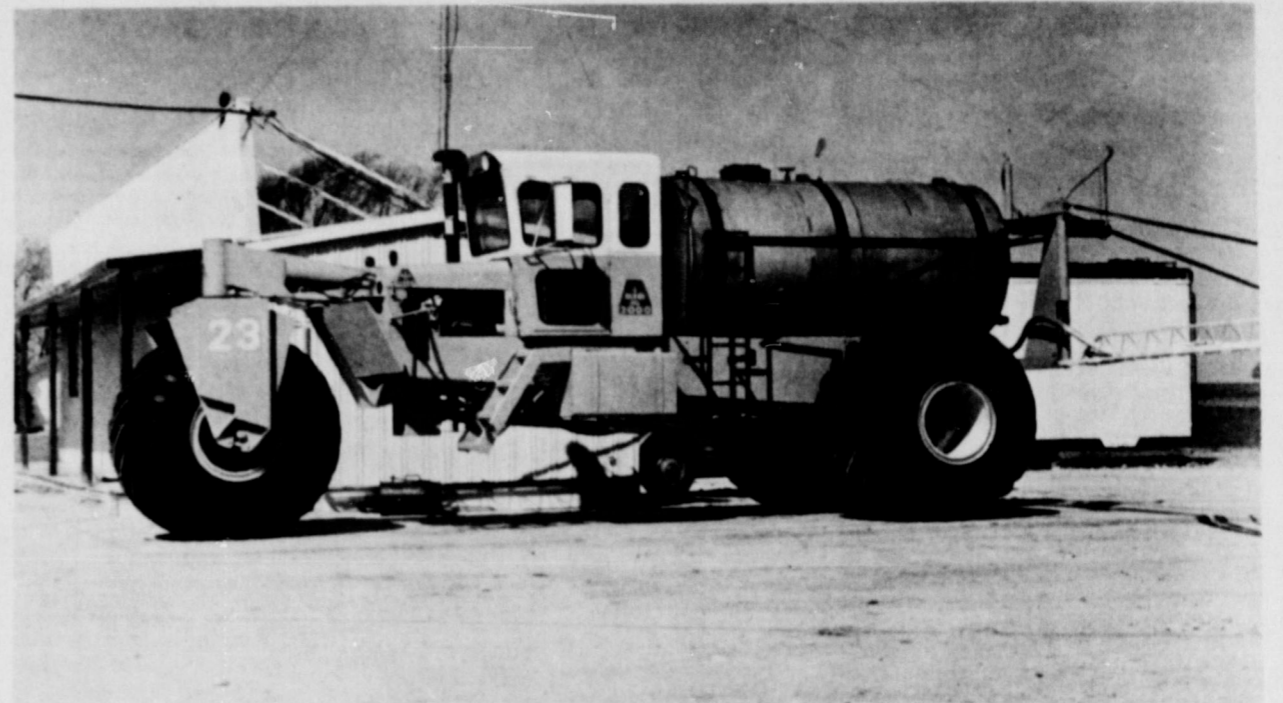
SEE OR CALL  
**BUSTER SMITH**  
For The  
Best Deal To Be Found  
On A  
New or Used Car  
Pontiac-Cadillac-Toyota



**Non Rierson Pontiac-Cadillac, Inc.**  
1110 Olton Road-Plainview

Bus. Phone 296-2788  
Res. Phone 293-1733

## LET US DO THE JOB FOR YOU WITH OUR



# BIG A

ON-TIME APPLICATION-REGARDLESS OF WEATHER OR SOIL CONDITIONS...

MINIMUM SOIL COMPACTION - HIGH FLOTATION TERRA-TIRES WON'T COMPACT SOIL, WON'T RUT WET FIELDS...

FAST, ACCURATE APPLICATION - EVEN DISTRIBUTION AT RATES UP TO 40-50 ACRES AN HOUR...

# Now Is The Time To PLOW DOWN FERTILIZER

For The Decomposition Of Corn or Maize Stubble

# Check With Us About OUR TERMS

We Are Now Booking

EXCEL - PIONEER - NIAGARA - FUNKS

NORTHRUP-KING - ASGROW - GOLDE ACRES

MAIZE and CORN SEEDS

Book Yours Now To Insure Having Plenty Of Seed At Planting Time

# SAWYER FERTILIZER and CHEMICAL

EARTH-Phone 257-2085

## Choice Quality Beef

Open 6 Days A Week

Pork Steak	Lb.	49¢
Pork Chops	Lb.	89¢
1/4 Pork Loin	Lb.	59¢
Carl's Pork Sausage	Lb.	59¢
Carl's Bacon Sliced	Lb.	69¢
1/2 Beef Cut & Wrapped (No Extra Charge)	Lb.	57¢
Hind Quarter Cut & Wrapped (No Extra Charge)	Lb.	65¢

## CARL'S MEAT CO.

8 a.m. to 6:30 p.m. Muleshoe Ph. 272-4361

## Pay Cash - Receive Discount - On Mobile Homes

**\$1,500 Discount** On 14 x 70, 3 Bedroom Mobile Home, Spanish Decor

**\$1,200 Discount** On 14 x 65, 3 Bedroom New Mobile Home

**\$700 Discount** On Any Other New Mobile Home On Our Lot

## DISCOUNT MOBILE SALES CO.

1111 E. First St.

Phone 763-7353

Clovis, New Mexico