

NOSIN... with Pat

I saw this little ditty in the Grain Producers News, it may remind you gals of the torture husbands sometimes put us femme's through.

The wife now has a problem. It might be wise for we gals to keep this in mind especially since it's getting pretty close to Christmas.

NOSIN!

It went like this: Not all methods of torture have been outlawed. A husband in Amarillo, Texas was annoyed with his prying, overly-inquisitive wife. One day he let her notice him folding a slip of paper, then stealthily went upstairs. She followed and watched him put the paper under his sock in a bureau drawer. "What is that?" she demanded. "Nothing, he shrugged. When he left the room, she pounced on the drawer, and quickly found the piece of paper that read, "I will get you a diamond ring if you are able to resist poking into my things."

We certainly appreciate all the prayers, calls and concern over Ros's condition, while he was hospitalized in Plainview for five days. He was dismissed Monday evening and is back on the job. We want you to know that your love and concern means so much to both of us. It makes a dark day burst with sunshine to know others share your moments of sadness and sorrow. May God richly bless each of you in a very special way.

LAING, MCGOWAN AND HIGGINS WINNERS

White AutoStore Opening Termed a Big Success

The grand opening celebration at White Auto Store in Earth Thursday, Friday and Saturday was a huge success. Folks from Earth, Springlake, Pleasant Valley, Sunnyside and Olton

his appreciation to all the folks in the area for making the grand opening a huge success. He said everyone in the area had been so gracious and expressed their gladness at the firm opening in Earth, and had made their job of serving the area a sincere joy.

came in to help celebrate the big event.

Winners of the three free prizes were, Mrs. John Laing, first place. She was presented a sweeper. Gerene McGowan, Springlake was second place winner and was presented a popcorn popper. Bruce Higgins was third place winner of a 36 month battery. Little Miss Jena Kay Baucum, lovely 4 year old daughter of Mr. and Mrs. Edell Baucum of Springlake drew the names. She was presented a dollar for her willingness to help with the drawing.

Deadline for Santa Letters Near

Hey Kiddo's, It's high time for you to write your letters to Santa and get them in the mail in time for him to fill your orders.

Just mail them in care of the Earth News-Sun, Box 568 and we will get them in the newspaper and on to Santa.

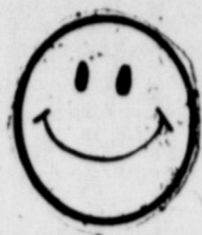
Please don't put it off. We must have them in within the week in order to get them to him.

Bookmobile Schedule

The High Plains Bookmobile will be in your area on the following dates. Thursday, December 19 Springlake #1 11:00-11:45

Springlake #2 12:00-1:00 Earth 1:15-3:45 Friday, December 20 Pleasant Valley 10:00-11:00

The NEWSpaper Dedicated to the Development of the World's Richest Irrigation Area



The Earth News-Sun



"A CONSOLIDATION OF THE EARTH NEWS & EARTH SUN, OCTOBER 12, 1966"

VOLUME 21

15¢ Including Tax

EARTH, LAMB COUNTY, TEXAS, THURSDAY, DECEMBER 12, 1974

12 PAGES

NUMBER 18

Christmas Cantata Sunday 6 P.M.

Voices from the choirs of the United Methodist Church and the First Baptist Church will combine to present "A Christmas Cantata of Seven Lessons" under the direction of Bill Surface, Methodist choir director. The candlelight service will be at 6:00 p.m. Sunday, December 15 in the sanctuary of the United Methodist Church. Accompanists for the program will be Mary Kate Belew, organist and Terri Tina White, pianist. Narrator will be Bill Anderson. Along with original music by the composer, David N. Johnson, will be familiar carols and concluding with the "Hallelujah Chorus." Everyone is cordially invited to attend this program of Christmas music.

Savings Bond Sales Lag

United States Savings Bond sales in Lamb County totaled \$6,045. during the month of October. Sales for the ten-month period were \$83,842.00 which represents 64% of the 1974 sales goal for the county, according to County Bond Chairman James T. Lee. October sales in Texas totaled \$21,154,479 compared to sales of \$16,634,914 during the same period of 1973, an increase of 27%. Total sales for the January-October 1974 period were \$195,016,443, representing 82% of the \$236.8 million goal for the year.

Wolverines Place Six on All-District Teams

The Springlake-Earth Wolverines and Vega Longhorns dominated the 1974 3A All-district teams selected last week.

The Wolverines placed five boys on the offensive team and three on the defensive team.

Vega had five boys on the offensive team and three on the defensive team.

Randy Latham and Del Davis won places on both offense and defense teams.

3A ALL DISTRICT OFFENSE

Larry Richardson, Vega, Jr., 5-9, 140 pounds, quarterback. Running backs, Terry Hill, Hart, Jr., 6', 190 pounds; Doug Jones, S-E, senior, 6', 180 lbs. Jake Miller, S-E, senior, 6', 170 lbs.; Leo Ramos, Vega, senior, 5-10, 180 lbs. and Mike Woods, senior, 5-9, 150 lbs. Ends-Junior Saucedo, S-E, senior, 5-10, 180 lbs. and Mark Howell, Vega, senior, 6-1, 190 lbs.

Tackles-Gerald Berry, Vega, junior, 6-2, 235 lbs. and Del Davis, S-E, senior, 5-11, 215 lbs. Guards-Jim Davis, Vega, senior 6', 190 lbs. and Randy Latham, S-E, junior, 5-10, 190 lbs. Center-Kent Irons, Hart, senior, 6', 177 lbs.

Receiving honorable mention from Springlake-Earth were, Brad Bridges, tackle; Randy Bills, guard and Lee Brown, quarterback.

DEFENSE

Ends-Brad Bridges, S-F, junior, 6', 170 lbs. and Jim Davis, Vega, senior, 6', 190 lbs. Linemen-John Lopez, Kress, junior, 6', 190 lbs., Gerald Berry, Vega, junior, 6-2, 235 lbs. and Del Davis, S-E, senior, 5-11, 215 lbs.

Linebackers-Kent Irons, Hart, senior, 6', 177 lbs. and Randy Latham, S-E, junior, 5-11, 190 lbs.

Defensive backs-Barry Street, Kress, senior, 6-1, 160 lbs., Barry George, Hart, junior, 6', 175 lbs., Ken Willard, Bovina, junior, 6-2, 165 lbs. and Rust Hulbert, Vega, junior, 5-8, 140 lbs.

HONORABLE MENTION

Mike Bosquez, end; Randy Bills, lineman; Brad Barden, linebacker, Junior Saucedo, back and Larry Dear, back.

OPEN HOUSE HOSPITALITY SUNDAY

An open house hospitality is scheduled in the Fellowship Hall of the First United Methodist Church Sunday night, following the Christmas Cantata. The event is to honor members of the Chancel Choir.

Families, other than choir families are invited to bring sandwiches and cookies to be served during the hospitality hour.

Serving on the committee for the event are Mrs. J. J. Coker, Mrs. Orville Cleavinger and Mrs. Mary Meinsoe.

BULLETIN

Little Dee Stiles of Amarillo, son of Mrs. Linda Pat McCormick and grandson of Mr. and Mrs. Bob Ussery of Earth, was reported to be in serious condition Tuesday afternoon.

Dee has been a victim of Leukemia for the past three years. Tuesday Doctors in Amarillo said his condition worsened and he was in weakened condition.



RANDY LATHAM

DEL DAVIS

DOUG JONES

JUNIOR SAUCEDO



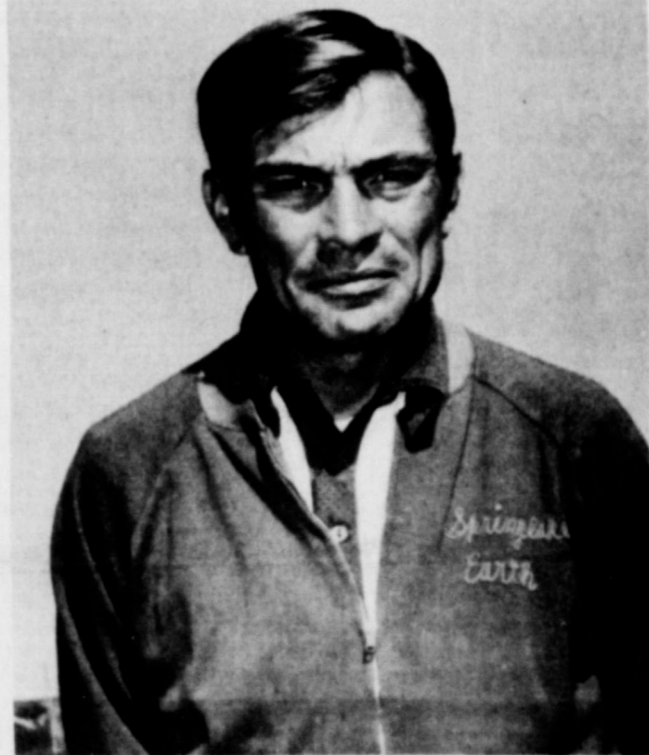
JAKE MILLER



LEE BROWN



LARRY DEAR



TOM PHELPS-Class A Coach of the Year

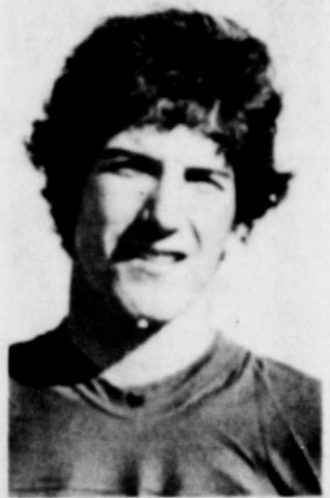
Tom Phelps Named Class A Coach of the Year

Tom Phelps, head coach of Springlake-Earth school has been selected as the Avalanche-Journal Class A South Plains Coach of the Year.

The Wolverines who were predicted to end the season in fourth place, ended the season 6-4 and tied for first place in Class 3-A.

Randy Latham, 190 pound junior made the All-South Plains Class A offensive and defensive team.

Jacob Miller, 170 pound senior, made honorable mention as a running back and Del Davis, 210 pound senior made honorable



BRAD BRIDGES



RANDY BILLS



BRAD BARDEN



MIKE BOSQUEZ

School Board Approves Plan "A" Co-op Program

All members of the Springlake-Earth school board were present for a regular monthly session Monday night at the school.

Minutes of the previous meeting were approved and currently bills were approved for payment. The enrollment figures were reviewed. The total enrollment was 770 which was the same number as that of last month.

The board approved application to enter a plan "A" Co-op program for special education. Included in the co-op would be the following schools, Littlefield, Springlake-Earth, Sudan, Amherst, Spade and Cotton Center, with a total of 34,030 A, D, A. (average daily attendance.) The minimum number required for this type cluster of schools is 3,000 A, D, A.

State officials have stated that by the '76-'77 school year, all schools will have to offer this

type of program, either as an individual school with a minimum of 3,000 A, D, A. or by forming a co-op with a total in excess of 3,000 A, D, A.

In this type of program all special education students are required to spend at least 50% of the school day in a regular classroom setting.

The group studied tax collections and delinquent tax accounts. They instructed an attorney to begin filing suits for collection of these delinquent accounts.

The board discussed items relative to school maintenance. Ray Joe Riley, president of the board, led in a review of the proposed legislation relative to restructuring the educational program in Texas. The board was extremely concerned about the shift in paying for these programs from cities to the rural districts.

It was recognized that passage of some of this legislation would be very expensive to local taxpayers and place an unusual heavy load on the property tax. The board accepted the resignation of Mrs. Bertha Howell, Social Studies teacher in Junior High School. They approved the employment of Mrs. Susan Chisum as teacher for the remainder of the '74-'75 school year.

The group studied evaluation sheets that were submitted on each teacher by the school principals.

School insurance coverage was discussed, and the board agreed to get additional coverage on the following buildings. On the High School building they decided to add \$50,000, to the Junior High building \$25,000 and to the junior high gymnasium \$15,000 was added.

City Christmas Decoration to be Erected This Week

Officers and directors of the Earth Chamber of Commerce and Agriculture met Friday morning for a regular monthly breakfast.

They discussed various items of business and voted to have

the Christmas decorations erected on Main Street in Earth this week.

All directors, officers and the secretary were present.

ATTEND THE CANTATA



JENA KAY BAUCUM-reaches for the names of lucky winners to assist Virgil Gray with the grand opening free gift.

School Taxes May Skyrocket in S-E

A new state plan to restructure the financing of public education throughout the state is likely to cause major tax increases in the Springlake-Earth school district as well as other rural districts in Northwest Texas.

The EARTH NEWS-SUN



Published at Earth, Texas 79031 every Thursday except the first Thursday following Christmas.

Second Class Postage paid at Earth, Texas 79031

SUBSCRIPTION RATE

Earth and Trade Territory, per year..... \$5.00 plus tax
Elsewhere in United States, per year..... \$6.00 plus tax

CLASSIFIED RATES

10¢ per word, first insertion, 8¢ per word thereafter,....
\$1.00 minimum.

ADVERTISING RATES GIVEN ON REQUEST

ROSS AND POLLY MIDDLETON,.....Publishers

Local school trustees and officials are quite concerned over the proposed public school financing plan after meeting last week with members of the Governor's Office of Educational Research and Planning in Lubbock.

Ray Joe Riley, president of the Springlake-Earth school board and Superintendent Bill Mann attended the meeting.

Two of the areas that met resistance from a large part of the people attending the Lubbock meeting were the area of allocating state funds and taxes to support the program. Under the Governor's proposed plan there would be an amount of money for each school, based on the weighted pupil approach. This plan would allow a certain amount of money for each elementary student, so much for each junior high student and so much for each high school student. Varying amounts would be allowed also for those in Vocational Agriculture and special education classes.

Basically, the new plan would throw out the present evaluation, assessment system now being carried out by local school districts, and would replace it with a new assessment system on tangible property, with state agents doing the evaluating.

The new plan would pump more money into the state's urban and poorer school districts, at the expense of school districts that are comparatively richer and less impacted, especially those in agricultural Northwest Texas.

State Aid under this new plan would be allocated on the basis of market value of property with the exception that farm and ranch land would be based on productivity.

"School taxes in the large majority of the schools in West Texas could double within a five year period, and in some cases, forced consolidation because of the excessive costs," Supt. Bill Mann said.

Ray Joe Riley submitted to the group, in a discussion period that this was highly unfair to rural districts, in that intangible properties, which would be the most logical investment for the urban residents would be untouched while farm land would carry an even heavier burden.

The state however feels that the rural school districts in this part of the state are not paying our fair share of the statewide educational costs.

School board trustees, superintendents, PTA members and interested laypeople from throughout heard members of the state agency describe the new plan in a series of meetings in Lubbock last week.

The "financial restructuring plan," the result of a research program authorized by Gov. Dolph Briscoe, will be submitted to the governor's office and will form the basis of a bill which Gov. Briscoe will submit to the Texas Legislature early next year. The school financing issue is expected to be one of the hottest in the legislature next year. If the plan appeals to enough urban representatives rural legislators wouldn't have the voting power to stop it.

People attending the meeting urged educational leaders and all other citizens to inform themselves on this school financing matter and to become actively involved in securing passage of legislation that would provide a good educational program and ensure that all tax payers carry a fair share of the tax load.

SHOW EACH CHILD that you value him for himself as a unique individual for the special qualities that make him "him," and not for what he does that may give the family status in the community, like winning a contest, making the honor roll or being a football hero.

50% of Cotton Harvest Completed on Plains

The High Plains cotton harvest passed the half way point during the first week in December, according to Paul R. Dickson in charge of the USDA's Cotton Classing Office in Lubbock. "Curiously enough," he added, "the half way mark was the first week in December last year."

The USDA's Agricultural Marketing Service reported Lubbock, Brownfield, Lamesa and Levelland classed 206,000 samples during the week ending Friday, December 6. This brought the season's total to 342,000. On this same date last year the total was 1,181,000.

At Lubbock predominant grades this week were 41 and 51. Grade 41 accounted for 28 percent

while grade 51 was assigned to 27 percent of the cotton samples. Twenty-four percent of these samples were reduced one grade because of bark, the same as the previous week.

The predominant staples were 31 and 32. Staple 31 amounted to 29 percent and staple 32 was 28 percent of the samples this week.

Micronaire readings in the premium range of 3.5 to 4.9 accounted for 27 percent of the samples. This compares to 36 percent the week before. Micronaire readings below 3.5 accounted for the other 73 percent this week.

Pressley Strength tests averaged 82,000 pounds per square inch. Prices quoted by the Lubbock

Cotton Exchange for the most predominant qualities in the 3.5 to 4.9 micronaire range were: Grade 41, Staple 31-34, 45, 15 cents per pound. For Grade 51, Staple 31-32, 05, 140 per ton.

Staple 32-32, 60 cents per pound. Mixed lots of cotton brought 29,00 to 35, 50 cents per pound. Prices paid to farmers for their cottonseed ranged from \$120 to \$140 per ton.

Christmas Gifts Are So Much Nicer When You Make Them!

You Give More For Christmas When You SEW 'N SAVE!

- *You save the cost of someone else's work
- *You get finer fabrics for better wear
- *You get personalized styling and fit
- *You receive satisfaction of your own accomplishment

SEE US NOW FOR THE FINEST IN FABRICS AND MATERIALS



Brand New OMEGA KIRBY Vacuum Sweepers

\$179⁹⁵

WE ALSO REPAIR KIRBY CLEANERS

HARVEY BASS APPLIANCE

MULESHOE

IDEAL GIFTS THAT

ARE SURE TO PLEASE



THESE GIFTS AND MORE CAN BE FOUND AT
WESTERN DRUG
MULESHOE

IF it's only money that's keeping you from putting them on top of their Christmas world... then put on a happy face and smile all the way to our bank. We have a Personal Loan that's custom-made for your needs. Stop in and talk it over. That way we can both play Santa Claus.

CITIZENS STATE BANK

MEMBER F.D.I.C. - EARTH



JACOB MILLER-No. 23 was high point man 21 points Saturday night in the Kress tournament championship game. The Wolverines downed LCHS 58-51



JUNIOR SAUCEDA-No. 21 pumps in a basket for the Wolverines Saturday night to help down LCHS.

Wolverines Make Clean Sweep of Kress Tourney

The Springlake-Earth Wolverines traveled to Kress for their annual basketball tournament Thursday, Friday and Saturday and came home winner. In their first game they defeated the Dimmitt junior varsity 55-41. In the second game they defeated Happy 52-42 to go into

the finals against Lubbock Christian high school Saturday night. After a bad first half the Wolverines with a good defense and a hot shooting streak in the third quarter took the tournament championship 58-51. **SCORES BY QUARTERS**
S-E 11 23 42 55
DJV 8 16 28 41

High scorers were John Cleav-inger 19 and Jacob Miller for the Wolverines. Dimmitt Dennis Crum 14. **SECOND GAME**
S-E 9 22 37 52
Happy 12 20 28 42
Top scorers were Junior Saucedo 13, Doug Jones II and John Cleav-inger 10. Happy Lonnie Tackett 21. **FINAL GAME SCORES**
S-E 9 19 39 58
LCHS 14 27 33 51
High scorers were Jacob Miller 21, Lupe Flores II, Junior Saucedo 10 and Doug Jones 10. LCHS John Crisp 21. **TUESDAY**
S-E 60--SUDAN 48
The Wolverines traveled to Sudan Friday night to take their eighth win of the season defeating

the Hornets 60-48. The Wolverines were in com-mand of the game from the start. **SCORES BY QUARTERS**
S-E 11 27 43 60
Sudan 4 14 26 48
Doug Jones was high point man, dunking 20 points. Others in the double figures were John Cleav-inger 17 and Mark Barton 12. Richard Tamplin scored 14 points for the Hornets. The Wolverines have a perfect record of 8 wins and no losses. **SUDAN 43--WOLVERETTES 38**
The Wolverettes lost to the Sudan femmes Tuesday night 43-38.

S-E Invitational Tournament Thursday, Friday, Saturday

The Springlake-Earth high school Invitational Basketball tournament is scheduled for Thursday (today), Friday and Saturday. The first game is scheduled for today at 10 a.m. with the Farwell and Muleshoe varsity girls pitted against each other. The second game will feature the Farwell and Plains varsity boys.

Other games scheduled for to-day are Hart varsity girls and Springlake-Earth junior varsity girls at 1 p.m. Hart varsity boys and Spring-lake-Earth junior varsity boys at 2:30 p.m. Amherst varsity girls and Dimmitt junior varsity girls at 4 p.m. Amherst varsity boys and Dimmitt junior varsity boys at 5:30 p.m. Springlake-Earth varsity girls and Lazbuddie varsity girls at 7 p.m. Final game of the night will feature the Springlake-Earth varsity boys and Lazbuddie varsity boys at 8:30 p.m. Play will resume Friday morn-ing at 10 a.m. Finals for the tournament will begin at 12:30 p.m. Saturday.

New Cotton Reporting Service Announced

The USDA's Cotton Clasing Office at Lubbock announced a 24 hour Cotton Reporting Service, starting on Monday, December 9. Interested persons may dial 806-763-7870 for the latest cotton market prices and clasing report day or night. A similar report has been avail-able at the Fresno, California Clasing Office. Numerous calls are received daily at Fresno and reports indicate the service is successful. Paul R. Dickson, in charge of the Lubbock Office, invited persons interested in this service to inform him of their needs, as "we want this service to re-lect the needs of the public." **CUFFS ON MEN'S PANTS** were first designed to hold cigar ashes.

Lady Seiko: the Christmas decoration for her wrist.

She'll think of you and your thoughtfulness everytime she looks at the time. 17 jewels, adjustable matching bracelet. Left: No. ZW541M—white top, stainless steel back, blue dial \$110.00. Also in yellow with sienna brown dial. \$110.00.

Right: No. ZW196M—yellow top, stainless steel back, wine red dial. \$85.00. Also in white with wine red dial. \$85.00.

McAnally's Jewelry
DIAMONDS AND FINE GIFTS
323 Phelps Phone 385-5798
LITTLEFIELD, TEXAS 79339

SALE!

TRI-SPORT RT'S

| | | |
|------------|--------------|------------|
| REG. PRICE | | SALE PRICE |
| \$763 | - RT'S-8 - | \$585 |
| \$481 | - TS110 - | \$395 |
| \$801 | - RT'S MAC - | \$339 |
| \$411 | - MTS 30 - | \$339 |

VISTA-VOLKSCYCLE TAKARA BIKES

OPEN 9 A.M. - 8 P.M. - TIL CHRISTMAS

BILL'S Bicycle AND mowers

605 GARLAND • PLAINVIEW, TEXAS 79072 • PHONE 296-7842

HOLIDAY GIFT GUIDE

POWER DRILLS

| | |
|----------------------|--------------------|
| 3/8 Kit | \$22 ⁹⁹ |
| 1/2 COMPACT | \$24 ⁹⁹ |
| 1/2 DELUXE REVERSING | \$59 ⁹⁵ |
| JIG SAWS | \$11 ⁹⁵ |

POWER SAWS

\$22⁹⁵ and \$29⁹⁸

POCKET KNIVES

SHRADE WALDEN \$5⁴⁹ to \$9⁹⁵

TOOL SETS

\$13⁹⁵ to \$61⁰⁰

GUN RACKS

\$4⁹⁹ to \$14⁴⁹

FLASH LIGHTS

\$1¹⁰ to \$4²⁹

ELECTRIC ENGRAVERS

DRIMEL \$13⁹⁵

RADIOS

WITH & WITHOUT CLOCK \$18⁹⁵ to \$59⁹⁵

BATTERY RADIOS

RAGGEDY ANN & ANDY WAS \$8⁹⁵ \$7⁴⁹

PENDANT RADIO

PICTURE FRAME WAS \$7⁹⁵ \$5⁹⁵

STEAM STYLING WAND

CRAZY CURL BY CLAIROL WAS \$17⁹⁸ \$15⁸⁸

HAIR DRYER

SUPER MAX POWER MODEL HD-7 WAS \$19⁹⁴ \$17⁹⁴

PRO MAX

PROFESSIONAL STYLING DRYER BY GILLETTE 1000 WATT WAS \$27⁹⁴ \$25⁹⁴

STICK CURLING WAND

DAZEY BEAUTY CURL WAS \$8⁹⁵ \$6⁹⁵

DRESSER SETS

WAS \$7⁹⁵ \$5⁹⁵

SHAVE CREAM DISPENSER

GE WAS \$16⁹⁴ \$15⁹⁴

BY CLAIROL WAS \$13⁹⁴

THE SKIN MACHINE

AUTOMATIC CLEANING BRUSH FOR PROBLEM SKINS \$11⁹⁴

TRAVEL CLOCKS

WESTCLOX WAS \$6⁹⁸ \$4⁹⁸

ELECTRIC SHAVERS

3 HEAD NORELCO \$26⁹⁴ to \$39⁹⁴

HAIRTRIMMING SETS

\$6⁹⁵ and \$12⁹⁴

SHAVE CREAM DISPENSERS

\$16⁹⁴

FLATWARE

WALLACE STAINLESS 48 PC SET IN CHEST SERVICE FOR 8 WAS \$49⁹⁵ \$35⁰⁰

THERMO

TEFLON LINED SERVING SET WITH COVERS IN WOODEN HOLDER WAS \$23⁰⁰ \$15⁰⁰

SWAG LIGHTS

CRYSTAL, AMBER, OR RED WAS \$9⁹⁵ \$7⁹⁵

CROCK POT

SLOW COOKER-SERVER WAS \$21⁹⁸ \$17⁹⁸

TEXAN TUMBLERS

PLASTIC SET OF 8 IN BLUE, AMBER, OR GREEN WAS \$4⁵⁰ \$3²⁹

CANNISTERS

1 GROUP 1/2 PRICE

SALAD SET

7 PC PLASTIC \$3⁹⁸

SAVE, STORE, & POUR

BY STARLINE \$1⁹⁸

BACON COOKERS

NO SPLATTERING—NO CURLING COOKS BOTH SIDES AT SAME TIME WAS \$3⁹⁸ \$2⁹⁸

MINI BOWL

FOLEY STAINLESS STEEL PLASTIC COVERS \$1²⁹

ELECTRIC ROASTER

HAMILTON BEACH JUST RIGHT FOR A LARGE TURKEY WAS \$38⁹⁵ \$32⁹⁵

ELECTRIC ROASTER

NESCO WAS \$44⁹⁵ \$37⁹⁵

Free Gift Wrap With All Purchases **Consumers** Olton, Texas

Bakers Host Christmas Party for Deacons and Wives

Mr. and Mrs. Ernest Baker of Springlake were hosts Thursday December 5 to a lovely Christmas party for Deacons, and their wives of the First Baptist Church in Springlake.

The menu consisted of baked ham, green beans, corn, potato salad, coconut yam balls, fruit

prayer. Those present were Mr. and Mrs. Hollis Cain, Mr. and Mrs. Delvin Walden, Mr. and Mrs. Bill Lunsford, Mr. and Mrs. F. W. Bearden, Mr. and Mrs. Leslie Watson, Mr. and Mrs. Orville Drake, Rev. and Mrs. Glen Smith, Herbert Miller and son, Harvey Miller and the host and hostess.

Party Line

Thanksgiving Day dinner guests in the home of Mr. and Mrs. J. J. Coker were all of their family. Mr. and Mrs. Mike Burgess and Vanessa of Houston, Mr. and Mrs. Bob Coker and Brent of Victoria, Texas, Kent, Jimmy and JoAnne. Other guests were Mr. and Mrs. J. P. Hill and Brian of Lubbock, Mr. and Mrs. Tim Nix and Mrs. Beula Coker of Earth. Visiting during the evening were Mr. and Mrs. Bill Nix of Sudan.

Mr. and Mrs. Phil Middleton and Keri Denise of Midland spent the week end in Earth and Springlake visiting their parents and friends in the area.



MR. and MRS. W. O. WOOD

Mr. and Mrs. W.O. Wood Honored on Anniversary

Mr. and Mrs. W. O. Wood were honored with a reception on the occasion of their fiftieth wedding anniversary on Sunday, December 8 in the home of their daughter and family, Mr. and Mrs. C. C. Goodwin, Jimmy and Fonda.

The former Miss O. D. Richerson and Wood were married December 7, 1924 in Wellington, Texas. They resided and farmed at Wellington until 1944 when they moved to Earth. He was engaged in farming here until his retirement in 1964.

The honorees were presented with a beautiful gold orchid corsage and yellow rose boutonniere.

The serving table was covered with a white lace cloth over white satin. A beautiful arrangement of gold roses and white mums adorned with greenery centered the table along with two gold tapers. The beautiful three-tiered anniversary cake featured four Roman columns supporting the top tier. A white wedding bell with softly gathered net and the inscription 50 in gold topped the wedding cake. Gold roses and white leaves trimmed the cake.

Refreshments of cake, punch, coffee, mints and nuts were served by Miss Becky Littleton, Miss Camille Haberer, Miss Kathy Winders, Mrs. Truman

Layman, Mrs. Jimmy Smith and Mrs. Jack Wood of Muleshoe.

The 165 guests were registered by Miss Fonda Goodwin, Miss Kim Welch and Mrs. Bob Huckabay of Dimmitt.

Others helping with the hospitalities were Mrs. J. A. Littleton, Jr., Mrs. W. O. Jones, Mrs. Melton Welch, Mrs. J. I. Coker, Mrs. Orville Cleavinger, Mrs. Fred Welch, Mrs. Donald Kelley and Mrs. Wayne Rutherford.

Out of town guests were from Littlefield, Olton, Muleshoe, Lubbock, Anton, Midland, Wellington, Crosbyton, Amarillo, Dimmitt and Amherst.

50th Wedding Reception to Honor Local Couple December 22

The children of Mr. and Mrs. Houston Stephens will host a reception in honor of their parents 50th wedding anniversary on Sunday, December 22. The event will be held in the Church

of Christ Fellowship Hall in Earth. Hours are from 2 to 4 p.m. Friends and relatives of the couple are invited to attend the

reception. The couple were married on December 18, 1924 at Brady, Texas. They moved to Earth in 1954 where they have lived since that time.

Senior Citizens Have Christmas Program and Luncheon

Members of the Senior Citizens Club met Wednesday, December 4 for a covered dish luncheon in the community building. Evangelist Bill Reese presented the invocation. Mrs. Bonnie Haberer presided over the meeting.

The tables were covered with red table cloths with Christmas decorations making the hall a gala setting. Mrs. Norman Sulser presented

the Christmas tradition "The Night Before Christmas." Mrs. Ed Dawson led the group in singing a Christmas Carol. Mrs. Sulser presented a reading entitled "The First Gift." The program continued with Mrs.

Dawson leading in more Christmas carols. Mrs. Sulser concluded the program with a poem called "A Wish For Christmas." Mrs. Jack Hinson presented Mrs. Dean Jones with a gift

from the entire membership. Mrs. Hinson told Mrs. Jones the entire membership appreciated her as she was always doing special nice things for the club.

Mrs. Dean Jones presented each lady with a scarf and the men with handkerchiefs.

The two people who had celebrated a birthday, recently were Jack Hinson and Mrs. Joe Lee Truelock.

Those present were Mrs. Velma Jones, Mr. and Mrs. Homer Sanders, Rev. Walter White, Bill Reese, Mrs. Bonnie Haberer, Mrs. Estelle Bear, Mrs. Ruby Hodge, Mrs. Joe Lee Truelock, Mrs. Almer Barton, Mrs. Lottie Orteg, Mrs. Marie Ross, Mrs. Annie Runyon, Mrs. Dean Jones, Mrs. Carra Morgan and Mrs. R. C. Hyde.

Also Mrs. Florence Gover, Mrs. Adria Welch, Mr. and Mrs. Frank Butter, Pete Shoup of Denver, Colorado, Mrs. Elsie Hawkins, Mr. and Mrs. Jack Hinson, Mrs. Gladys Goodwin, Mrs. Beula Coker, Mrs. Ed Dawson, Mrs. Norman Sulser, Mrs. Bessie Cearley and Mrs. Bonnie Haberer.

Mrs. Melvin Bock Honored Wednesday

Mrs. Melvin Bock was honored with a surprise house warming Wednesday, December 11 at 9:30 a. m. by members of the Eastern Star and Rainbow organizations.

Mrs. Bock was presented a "money Christmas tree" tied with ribbons the color of the Rainbow, with an Eastern Star emblem atop the Christmas tree. Coffee, cookies, cake and candy were served by Mrs. Donald Kelley and Mrs. Mary McInroe.

The two organizations met in the lovely new home of Mrs. Bock for the surprise party. Mrs. Bock has, throughout the years contributed much time and effort to the Rainbow and Eastern Star organizations, and they wanted to in some way show their appreciation for her graciousness and kindness.

KIRBY VACUUM CLEANERS
SALES and SERVICE
DISPOSABLE BAG CONVERTERS
FAST SERVICE
PAT'S RECORD CENTER
LITTLEFIELD

MEMO
BECKY SMITH HAS MADE SELECTIONS HERE

| | |
|--|--|
| KITCHEN SUPPLIES WERE SELECTED AT THE <i>Daisy</i> | LINENS HAVE BEEN SELECTED IN THE <i>Little Gallery</i> |
|--|--|

BEE HIVE MALL EARTH

INCOME TAX DEDUCTIBLE SAVINGS DEPOSITS

LITTLEFIELD FEDERAL'S SELF-EMPLOYED PENSION PLAN

If you're self-employed, the sooner you set up your pension plan, the better.

Join now. New Federal provisions let you set aside 15% of income, tax-deductible, up to \$7,500 annually.

If you're in business for yourself, you can put 15% of income, up to \$7,500 a year, into our Pension Plan, and it's 100% tax-deductible. (You may set aside up to \$750 a year even if this exceeds the 15% limit!)

Your contribution can earn from 5.25 percent to 7.50 percent per annum.

In addition, your contribution is 100% tax-deductible when deposited, and the interest is tax-free when earned. Your funds will not be taxed until withdrawn after retirement, when you'll probably be in a lower tax bracket.

To qualify for the 1974 tax year, your Self-Employed Pension Plan must be opened during this calendar year.

Ask about our Self-Employed Pension Plan. It'll answer a lot of questions about your future.

LITTLEFIELD FEDERAL SAVINGS AND LOAN ASSOCIATION
P.O. Box 791
301 XIT Drive
Phone 806 365-5197
Littlefield, Texas 79330

Thurs., Fri., Sat., and Sun. 1st feature starts at 7:30 and will show 2 times each night.

Tonight

Santa Maria LAS RIMAS
Vicente Ferrer NEGROS

Friday & Saturday

Electric Blue IN BLUE
Color
Robert Blake Billy (Cover) Book

Sunday and Monday
Monday-Feature starts at 8:00 and will show one time only.

11 HARROWHOUSE
PG CHARLES GORDON
CANDICE BERLIN

CARLILE Theatre
Dimmitt, Texas

Gifts From Around The World

Pottery - Brass - Copper
Housewares - Wicker Baskets - Tinware
Jewelry - Ceramic Flower Pots and Hangers - Fire Place Equipment

Evalene's Imports
296-9393 Plainview 1600 S. Columbia

PERFECT FOR CHRISTMAS \$34.95

Sperry-Remington 665

- *Four Function AC
- *12 Digit Capacity Adaptor
- *Carrying Case Optional

A&B Office Supply
Littlefield Christmas Store with Gifts Galore

Gifts that Glow with Christmas Cheer!

FOR HIM

- *Shirts
- *Suits
- *Billfolds
- *Belts
- *Ties
- *Socks
- *Handkerchiefs
- *Shoes
- *Coats
- *Sweaters

FOR HER

- *Long Dresses
- *Street Dresses
- *Hose
- *Lingerie
- *Sweaters
- *Pant Suits
- *Blouses
- *House Shoes
- *Shoes
- *Jewelry
- *Cosmetics

HOUSEWARES

- *Bedspreads
- *Pillows
- *Table Cloths
- *Towels
- *Linens
- *Picture Frames
- *Gifts Of All Types

FOR CHILDREN

- *Coats
- *Dresses
- *Slips
- *Shoes
- *Nightwear
- *Socks
- *Pant Suits
- *Panties
- *Purses
- *Jeans
- *Shirts
- *Pants
- *Shoes
- *Coats
- *Belts
- *Suits
- *Socks
- *Pajamas
- *Billfolds

Call
Of Muleshoe

Bykota S.S. Class Has Christmas Party Monday Night

The Bykota Sunday School Class of the First Baptist Church in Earth met Monday night December 9 at 7 p.m. in the home of Mr. and Mrs. Marvin Sanders for their annual Christmas party.

A delicious dinner of turkey and dressing and various salads were served buffet style.

The table was beautifully decorated with white cutwork linen cloth centered with a basket of white poinsettias accented with red velvet bows. Individual card tables were covered in white and centered with Christmas candles and arrangements.

Mrs. Howard Cummings gave a very beautiful Christmas story before the exchange of gifts.

Attending were: Mrs. Howard Cummings, Mrs. Dean Wendborn, Mrs. L. H. Galloway, Mrs. Zeph Robinett, Mrs. Elsie Detwiler and Mrs. Arnold Shelby.

Also Mrs. Troy Blackburn, Mrs. Lillian Hamilton, Mrs. A. E. Patterson, Mrs. M. G. Kellar, Mrs. Hazel West, Mrs. Modean Clayton, Mrs. Clarence Kelley and Mrs. Earl Walker.

Others attending were Mrs. Opal Lowe, Mrs. Bennie Prather, Mrs. Bud Jones, Mrs. Buddy Adrian, Mrs. W. G. Sanderson, Mrs. Leon Foster, Mrs. Raemon Cole and hostess Mrs. Marvin Sanders.

The event concluded with the group gathering around the piano and singing Christmas Carols.



DAWN BARDEN and ROGER WILLIAMS

Barden-Williams Engagement Told

Mr. and Mrs. Sam Barden of Springlake announce the engagement and approaching marriage of their daughter, Dawn to Roger Williams, the son of Mr. and Mrs. Wayne Williams of Muleshoe.

The couple will exchange vows on Friday, December 27 at 2:00 p.m. in the First Baptist Church in Earth.

All friends and relatives are invited to the wedding ceremony.

Mrs. James Thomas Honored With Shower

Mrs. James Thomas was honored Wednesday, December 4 with a layette shower in the parlor of the First Baptist Church in Earth.

The honoree was presented with a corsage of baby sox, net and pink, blue and yellow ribbon streamers.

The serving table was covered with a white cloth, centered with a pink net baby bassinet with a baby doll. Gifts were concealed in the bassinette.

A pink stork was at the back of the bassinette draped with streamers of blue, pink and yellow ribbon.

Silver and crystal appointments were used to serve hot spiced tea, coffee and rolls.

Guests were registered in a small blue lace trimmed booklet accented with blue, pink and yellow ribbons.

Hostesses for the occasion were Mrs. Bobby D. Green, Mrs. Richard Green, Mrs. Ros

Georgia Bahlman Initiated into Delta Kappa Gamma



GEORGIA BALHMAN

Miss Georgia Bahlman was initiated into the Delta Kappa Gamma Sorority Saturday, December 7 in an impressive initiation ceremony at the First Christian Church in Muleshoe. She was one of fifteen ladies in the area initiated into the sorority.

The ceremony and a delicious banquet dinner was hosted by Muleshoe members of the Delta Kappa Gamma, for the Epsilon Delta Chapter, involving Lamb and Bailey counties, of the Delta Kappa Gamma Society. Initiates were presented by Owetha Finley, chairman of

Middleton, Mrs. Lillian Hamilton, Mrs. A. E. O'Hair, Mrs. Leon Foster, Mrs. Hershel Hulcy, Mrs. Donald Kelley, Mrs. Modean Clayton, Mrs. Royer Haberer, Mrs. John Bridges, Mrs. Guy F. Kelley, Mrs. G. L. Adrian, Mrs. Johnny Murrell, Mrs. Phillip Haberer, Mrs. Gayland Stephens, Mrs. Carol Smith and Mrs. Leta Kelley.

Party Line

Howard Cummings was dismissed from the South Plains Hospital in Amherst Wednesday after two days of hospitalization.

Notice

A bridal shower, carrying out wedding colors of burgundy and pink, will honor Kathy Dudley, bride-elect of Kem Bock, 9:30 to 11:00 a.m. Saturday, December 14 in the home of Mrs. Bob Armstrong on East Highway 70 in Earth.

Co-hostess will be Mrs. K. B. Parish of Springlake.

A bridal shower honoring Miss Becky Smith, bride-elect of Wayne Anderson is scheduled for Saturday, December 14 from 3 to 4:30 p.m. in the home of Mr. and Mrs. Harlon Watson of Springlake.

Anyone wishing to be hostess may contact Mrs. Jimmy Ray Banks at 986-2194 or Mrs. Harlon Watson at 986-2751.

Selections have been made at Howells 216 Floral, H. S. Sanders and the Bee Hive Mail.

PARTY LINE

Mrs. Alma Stockstill attended the Cowboy football game Saturday in Dallas.

WHEN TWO IS COMPANY, QUALITY COUNTS.

'365

'665

ROLEX

Flawless taste, chronometer precision and uncommon durability mark this Rolex pair. Hers: Lady-Date with 14kt. gold bezel, 26-jewel self-winding movement. His: 30-jewel self-winding Datejust with 14kt. gold bezel. Both Oyster cases are guaranteed pressure-proof down to 165 feet.

Holmberg Jewelry

312 MAIN CLOVIS PHONE 763-9376

THE CHRISTMAS PLACE TO SHOP for MOTHERS-TO-BE and INFANTS

free gift wrapping

STORE HOURS 9 to 5:30 P.M.

STORK SHOP

1312 MAIN CLOVIS, N.M.

IT'S BEGINNING TO LOOK A LOT LIKE CHRISTMAS

Stratolounger's new XP Rocker-Recliners and Recliners are perfect for Christmas Giving!!

XP CLASSIC ENGLISH look perfect to every detail with its graceful wings & plush softness **\$19900**

LEFT: MEDITERRANEAN XP Authentic Mediterranean styling soft comfortable lush low seating **\$19900**

CLASSIC XP Reclining chair with diamond tufted back and double welted side for shape retention **\$10900**

COLUMBIAN XP A view of earth moving chair with diamond tufted back and double welted side for shape retention **\$17900**

TRADITIONAL XP Reclining chair with diamond tufted back and double welted side for shape retention **\$16900**

XP TRADITIONAL Big chair built for big men - Diamond tufted back and double welted side for shape retention **\$14900**

Furniture MART inc

115 W. Grand Clovis 763-9681

Christmas Robes

OPEN SUNDAY 1-5 p.m.

The softest, prettiest Holiday Robes are at Lucille's, in many styles and colors. Some have matching gowns. The perfect gift for every woman in your life.

Lucille's Smart Shop

HILLTOP PLAZA CLOVIS 762-7750

Master Charge • BankAmericard

FREE GIFT WRAP

WINTER COATS

FASHION COATS

TOP COATS

COATS

20% OFF

CLOVIS 502 Main

Bob's MR. Shop

Use Your Credit • Bob's Charge

Renay James Honored With Pre-nuptial Shower

Miss Renay James was honored with a pre-nuptial shower on Saturday, December 7 from 3 to 4:30 p. m. in the home of Mr. and Mrs. Harlan Watson. Approximately 50 guests registered in a beautiful brides book with Jennifer Pelham serving at the registry table. The table was enlivened with a small Brandy Sniffer enclosing a miniature bride and groom under an archway. An elegant white dove adorned the top of the Brandy Sniffer.

The serving table was covered with a floor length white lace cloth. The lovely centerpiece was designed with a long white taper encircled with shades of blue carnation, intermingled with white carnations and babies breath. A miniature bride and groom highlighted the centerpiece.

Individual cake squares iced in white and decorated with blue and white was served with sherbert punch, nuts and mints. Crystal and silver appointments were used.

Gifts were opened by the honoree, assisted by her mother Mrs. J. B. James and the mother of the groom-to-be, Mrs. L. M. Bill of Muleshoe.

Many out of town guests were registered.

Hostess gifts included a blender, toaster, coffee maker, electric

skillet, waffle iron and crock pot.

Hostesses included Mrs. W. B. Hucks, Mrs. Johnny Murrell, Mrs. Gayland Stephens, Mrs. James Sanderson, Mrs. Jay Winders, Mrs. Weldon Barton, Mrs. Ross Middleton, Mrs. Phillip Haberer, Mrs. Ernest Green, Mrs. Almon Whitford and Mrs. Myrtle Clayton.

Also Mrs. Kenneth Hinson, Mrs. James Packard, Mrs. Kenny Kindrick, Mrs. Ernest Baker, Mrs. V. O. Busby, Mrs. K. B. Parish, Mrs. Orville Drake, Mrs. David Metcalf, Mrs. Dolan Fennell, Mrs. Leslie Watson and Mrs. Leta Kelly.

Others were Mrs. Frank McNamara, Mrs. Hollis Cain Jr., Mrs. B. V. Padon, Mrs. Thurman Lewis, Mrs. J. W. Lee, Mrs. Fred Thompson, Mrs. Fred Smith, Mrs. Jimmy Banks, Mrs. Roy Byers and hostess Mrs. Harlan Watson.

U. M. W. SPONSOR PARTY FOR LADIES

The United Methodist Women of the First United Methodist Church will sponsor a party for all the women of the church at 7 p. m. on December 16. The event is scheduled in the Fellowship Hall.

The evening will be spent in feasting, fellowship and fun. Every lady in the church is invited to attend the affair.



VIRGIL GRAY and GRANDCHILDREN-manager of White Auto Store Virgil Gray poses in front of a showcase laden with flowers sent for the big formal opening event. Gray proudly holds his great-grandson Tony Durham, while Jacqui Smith granddaughter and Tod Lively grandson pose beside him.

200 Ladies Attend Christmas Coffee in McCarty Home

Two hundred ladies from the Earth-Springle area, along with two guests from Amarillo, two from Lubbock and one from Sudan, attended a lovely Christmas coffee in the home of Mr. and Mrs. Mackey McCarty, Saturday from 9:30 to 11:30 a. m.

The serving table was covered with a lovely white cloth and

highlighted by a gorgeous centerpiece of live holly and red candles intermingled with lovely red carnations arranged in a silver pedestal container. A lovely silver service was used to serve delicious punch, coffee and Christmas breads.

Mrs. McCarty was assisted in hostess duties by Mrs. Donald Clayton and Mrs. Billy Moore.

Cucamonga, California. Paternal grandmother is Mrs. Goldie Drake.

Mr. and Mrs. Randell Crawford of Lubbock are the parents of a son, born at 7:12 p. m. on Wednesday, November 27 in the University Hospital in Lubbock.

The little lad weighed 10 pounds 8 ozs. at birth and was 21 inches tall. He has been named Tony Jay.

Tony Jay has a sister, Kimberly age two. Crawford is an employee of United Postal Service.

Grandparents are Mr. and Mrs. J. D. Phipps of Earth and Mr. and Mrs. Fred Crawford of Monahans.

Plan Holiday Spending Now

Man ahead now for holiday spending, one family resource management specialist suggested this week.

"Most families feel they will need to cut down on the amount of money spent this year. Call a family council and let each family member know the situation," Mrs. Doris Myers, with the Texas Agricultural Extension Service, The Texas A&M University System, said. Start by taking a look at where money is going now. List all expenditures that must be met for the next several months. Then list the amount of money that will be coming in to pay these bills, she advised.

"This provides a realistic picture of how much money is left for gift giving, entertaining and other holiday functions.

"In most families some adjustments will need to be made. Let the family figure out together what can be done," Mrs. Myers said.

She suggested ways to make the season happy for others without spending money. Making gifts instead of buying them, visiting a shut-in, and doing a job such as babysitting for a friend are ideas for bringing joy at no cost.

NEW SHIPMENT
HUMMEL FIGURINES
GENUINE TURQUOISE JEWELRY
LUCIOUS HOME DECORATING ITEMS
AND SCENTED CANDLES
PLUS A WIDE SELECTION OF
GIFTS FOR ALL THE FAMILY
FREE GIFT WRAPPING
Open till 8 P. M., December 14
Thru December 23
TAGRE'S
 Hilltop Shopping Center
 Clovis



Mr. and Mrs. Garland Stovall of Earth are the parents of a lovely daughter born at 8:50 a. m. on Thursday, December 5 in the South Plains Hospital at Amherst.

The little lass weighed 7 pounds and 4 ozs. and measured 19 1/2 inches tall. She has been named Carla Marie.

Carla Marie has 4 brothers and 2 sisters. Maternal grandparents are Mr. and Mrs. John Anderson from

White's Furniture Company GOING OUT OF BUSINESS SALE

Open 9 AM to 5 PM

Everything On Sale!

OUR BUILDING HAS BEEN SOLD!
 We Have Been Ordered To Vacate As Soon As Possible

Every Item Must Go!

WE ARE UNABLE TO CANCEL ORDERS FROM MANUFACTURERS THAT WERE TO BE DELIVERED IN DECEMBER & JANUARY. Furniture Arriving Daily... Must Be Sold Regardless Of Our Loss.

820 Broadway



296-7635

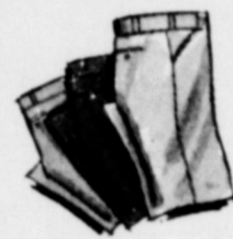


JOHNNY CARSON

S is for SUITS

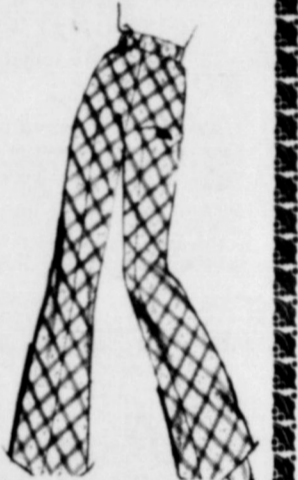


RALPH ORIGINALS



FARAH

S is for SLACKS



CENTER STAGE



MALE CALL

S is for SPORT COATS



BETTY DOS



TRENDS

S is for SWEATERS

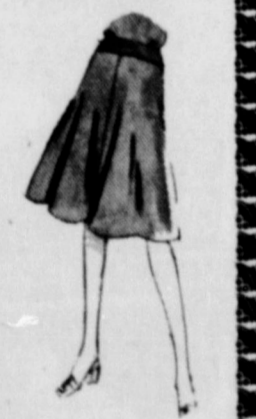


ASPEN



ARROW

S is for SHIRTS & SKIRTS



JO LESTER

BUT MOST OF ALL

for

St. Clairs

MULESHOE

THE STORE THAT HAS EVERYTHING FOR EVERYONE...

Tips on Selecting a Christmas Tree

Usually a major step toward the Christmas season is the purchase of a Christmas tree. And there are several pointers to remember when making your selection and then caring for the tree, says Everett Janne, a landscape horticulturist with the Texas Agricultural Extension Service.

"It's important to get a tree that isn't too large for the allotted space, is well filled-out and has a triangular shape," points out the Texas A&M University System horticulturist. "Check to see if the tree is fresh by shaking it. If only a few needles fall, you can be assured of its freshness and the tree will maintain its appearance longer."

"As soon as you get home, cut off about an inch from the butt end of the tree to facilitate moisture intake. This will help the tree maintain a fresh appearance. Put the butt end of

the tree in a container of water and store it in a cool, shady place until you're ready to bring it indoors."

Before bringing the tree inside, Janne advises finding a location where it will be away from heating vents, radiators, fireplaces, stoves and television sets. Use a tree stand that holds water. Because of the low humidity in most heated homes, the tree will need to be watered every day to keep the foliage fresh.

"It's important," he adds, "to check the condition of electrical cords and lights before putting them on the tree. A short in the wiring could cause a serious fire."

So, proper selection and care of your Christmas tree can help insure a safe Christmas. For safety sake, Janne also advises against leaving the lights turned on when no one is at home or when retiring.

What's Cooking at School

December 16 thru 20

Monday
Flah Krispies with Tarter Sauce
Cheese Grits
Blackeye Peas
Apple Rings
Cornbread and Butter
Pineapple Nut Cake
Milk

Tuesday
Fried Chicken and Gravy
Creamed Potatoes
English Pea Salad
Cherry Cobbler
Wheat Rolls and Butter
Orange Juice
Milk

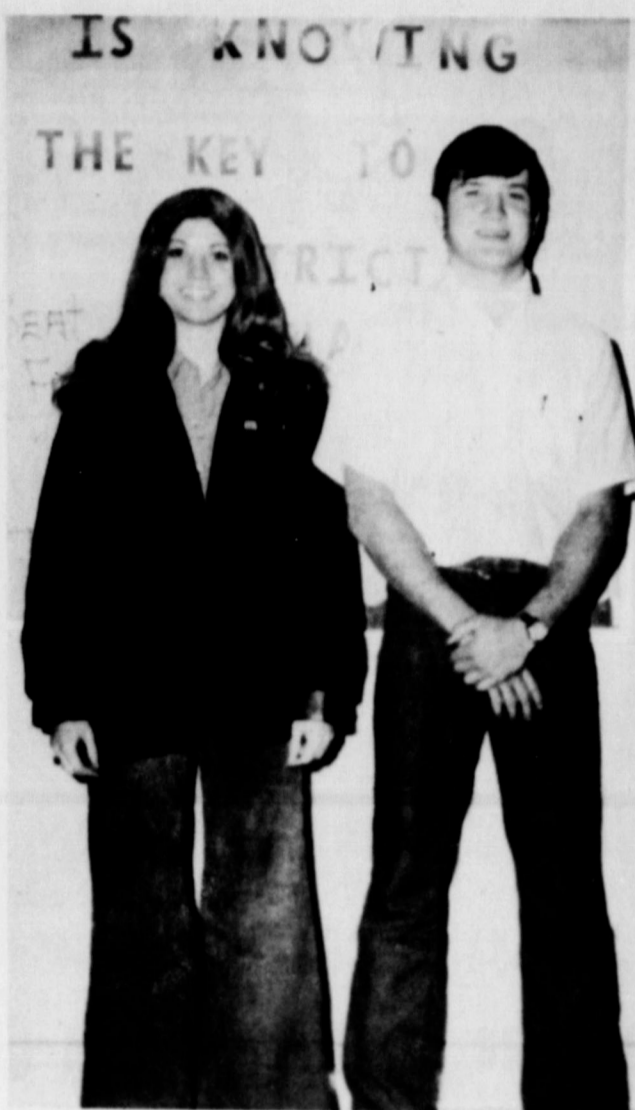
Wednesday
Beef-Macaroni Dinner
Green Beans
Carrot-Coconut Salad
Rolls and Butter
No Bake Cookies
Milk

Thursday
Turkey and Dressing
Giblet Gravy
Cranberry Sauce
Tossed Salad
Candied Yams
Wheat Rolls and Butter
Strawberry Shortcake
Milk

Friday
Hot Dogs with Chili
Onions and Relish
Pinto Beans
Orange Juice
Cornbread and Butter
Brownies
Milk

PARTY LINE

Ross Middleton was dismissed late Monday afternoon from the Central Plains Hospital in Plainview following five days of hospitalization. He was admitted for test and X-rays.



RUTH STREET and LARRY DEAR were selected as high school students of the month for December by the Springlake-Earth F. T. A.

Turkey is Tops in Nutrition

This just may be the year of the turkey. Although the turkey roamed over Texas and Mexico long before Columbus came to our shores, the All-American bird is looking its best this year. Turkeys are plentiful, and, to top it off the price is right. Of course, at any price, turkey is an excellent value, nutrition-wise. But now turkeys are a double value, according to two poultry specialists with the Texas Agricultural Extension Service. "Nutrition is presently the name of the game and turkey wins

this game hands down," contend Dr. David B. Mellor and Dr. William O. Cawley. Turkey is highest in protein and lowest in fats of all our common meats.

It is also a meat that is high in riboflavin and niacin, two of the most important vitamins."

Turkey is a common fare for holiday meals but really deserves more use by most families on a year-round basis, say the two poultry specialists. Size should not be a deterrent, as the raw frozen turkey may be divided, wrapped and refrozen for delicious meals. A publication, "Freezing Poultry for Home Use," provides helpful hints and is available from any county Extension office.

"Turkey also works well when the cooked meat is refrozen for later use," note the Texas A&M University System specialists. "Some families serve turkey for an evening or Sunday dinner and then debone and freeze the remaining turkey for later use, saving just enough for cold turkey a day or so later."

No matter how you cut it, turkey is usually one of the better protein values. Have you ever compared the foods you buy on the cost of the protein they are supplying to your menu? Just use the protein content and price per pound for any food. Your county Extension agent has this information for several foods and can assist you in calculating your own cost of protein in foods.

Turkey meat is naturally low in fat. One would expect to find 125-150 calories in a serving. Of course, if the serving were just white meat, it would be less. Self-basting turkeys are a little higher in calories due to the added basting sauce. But the calorie count is still low when compared with chest-

nut and sausage stuffing or gravy made from pan drippings.

"One of the biggest secrets in roasting turkey is keeping the meat moist," contend Mellor and Cawley. "Since the birds are so young when processed for market, the naturally low-calorie meat has really little fat. Keeping this meat moist requires more care than for meats

having more fat. You can conserve moisture by covering the bird in a roasting pan, placing it in a special plastic bag, or 'tenting' it with foil and cooking at 325 degrees F. The turkey is cooked when a meat thermometer placed in the center of the thickest portion of meat registers 180 degrees F."

SUGAR BEET ACREAGE REQUEST

Growers wanting to grow sugar beets for 1975, must sign a request form at either the Holly agriculture office or with a Holly agriculturist during the period of December 9, 1974, through December 20, 1974.

Holly Sugar Corporation

Hereford, Texas
Phone 364-2593

For Christmas

- ☞ Dresses
- ☞ Pant Suits
- ☞ Coats
- ☞ Lingerie
- ☞ Costume Jewelry

A Good Selection

THE FASHION SHOP

420 Main CLOVIS 763-5431

PUBLIC AUCTION

Monday, December 16, 1974 10:00 A.M. Texas
Owner: MRS. JOHN LAING & Others
Located 3 1/2 Miles West Of Earth, Texas On US, Or 15 1/2 Miles East Of Muleshoe On US 70.

- | | | |
|--|--|--|
| <p>TRACTORS & COMBINES</p> <ul style="list-style-type: none"> 1-1964 806 Diesel, Cab, Radio, Fully Weighted; Good Condition 1-1965 806 Diesel, Cab, Radio, Fully Weighted; Good Condition 2-JD 730s, LP, Excellent, Good Power Steering 1-9-N Ford, LP 1-JD 720, Single Front, Has Front End Loader, Good Power Steering 1-U Moline 1-1969 JD 95, Gasoline, 4-row McEacherns Header, Cab, Extra Nice 1-1969 JD 95, Diesel, 20' Header, Air, Excellent Condition 1-Case 1278, Diesel, 4-wheel drive, 8 Valve Hydraulic, Cab, Air, Power Shift, 800 Hours; Like New 1-Massey Ferguson 180, Diesel, Low Hours, MultiPower Shift 1-1973-7700-J, D, Turbo Hydrastat D, R, 24' Header Cab Air Heat Ben Ext. Real Good <p>MACHINERY</p> <ul style="list-style-type: none"> 2-JD 6-row Lister Planters, w/ Row Bars 1-Double Bar 6-row 185 Flex Planter 22-Rows 185 Flex Planters 2-9-row Sand Fighters 1-JD No. 6 Rotary Hoe, 5x7 Bar 1-Ford Cultivator 1-Ford 2-row Planter 1-Ford 2-bottom Breaking Plow 1-10' Tandem Disc 1-FW Shredder, 4-row 1-JD 7-row Lister, Double Bar 1-Howard Rollivator 1-Liston 6-row Rolling Cultivator, S.Q.B. 1-6-row Seed Packer 2-IHC No. 39 Roll Over 1-J, D, 1610 Grain Drill on Rubber 1-60' Stratford Land Float 14' Bucket Excellent Condition 1-Stock Trailer 1-2 Wheel Trailer | <ul style="list-style-type: none"> 1-J, D, Lister Irrigation Equipment 1-805 M, M, Irrigation Motor 1-JD 3-bottom Breaking Plow, Pull Type 1-JD 2-bottom Breaking Plow, Pull Type 1-4-gang Rotary Hoe 1-3 Point Blade 2-Reynolds 12-yard Hydraulic Scrapers; In Tandem 1-Hesston Swather, Universal Reel; Ideal For Hay Or Grass 1-9-row 4x7 1/2 Toolbar With 2 1/4 Back Bar; Heavy Hitch & Gauge Wheels 1-6-row 4x7 1/2 Toolbar With 2 1/4 Back Bar; Heavy Hitch & Gauge Wheels 1-6-row Toolbar 1-6-row Disc Lister With 2 1/4 Bar; Discs and Bearings In Top Shape 1-IHC 610 Offset; 24" Discs, Notched Front Gang 1-Towner Bordering Discs 1-Mohawk Shredder, 3 Pt, 5' 1-Kneib Pop-up Bale Loader 1-New Holland Baler, Super Hayliner 78, Engine Drive 1-6-row Bed Roller, Sealed Bearings & Hangers 2-Taylor Evans Liquid Feeders, On Skids 1-Liquid Storage Tank, 5000 Gallon 1-Eversman V Ditcher 1-7-section Harrow 1-3 Point Shredder 1-6-row Rod Weeder 3-5-row Stalk Cutters 1-14' Krause Tandem Disc 1-8' Hoeme, New 1-4-row Crust Buster 1-5-row Knifer 1-3 Point Blade 1-6 Gang Rotary Hoe 1-4-section IHC Harrow, New 1-8-section JD Hoe, 3 Point 1-4-section Harrow | <ul style="list-style-type: none"> 3-Clod Busters For 3-bottom Plow 1-Great Ben Front Mount Cotton Loader <p>IRRIGATION EQUIPMENT</p> <ul style="list-style-type: none"> 2-478 GMC Motors, Good 8'-Aluminum Flo Line, Good-800' 6'-Aluminum Flo Line, Good-500' <p>TRUCKS, PICKUP, BOAT</p> <ul style="list-style-type: none"> 1-1968 Chevy, 2-ton, 900 Rubber, 366 Engine, w/ Lift; Real Good 1-1962 Ford F600, Steel Grain Bed w/ Hoist; 2 Speed 1-1/2-ton 1967 Chevy Long-N-Bed 1-1958 Chevy Truck, Good, Grain Bed 1-1961 In-board, Out-board Hydra Dyne, 6 Cylinder Motor, Mercury Drive; also Trailer Equipped With Brakes. Real Good Condition 1-1975 Chevy 18' May Bar Bed Big Twin Haist 900 Rubber 1-1968 Chevy 16' Grain Bed 825 Rubber 1-1964 Chevy Tractor 1000, 80-S-Full Air Good 1-33' Builtwell Tractor With Dollies 1000 Rubber 1-1956 Ford 2 Ton Runs Good <p>MISCELLANEOUS</p> <ul style="list-style-type: none"> 3-500-gallon Propane Tanks 1-1000-gallon Propane Tank 1-100-gallon Gas Tank & Pump 1-4-row Roller 1-2-section Spring Tooth Harrow 1-Old Land Plane, 7' Bucket 3-Sets Of Markers 6-JD Rotary Fenders 1-Lot Sweeps 1-Lot Junk Iron 1-Lot Shanks 1-Lot of Lister and Orchard Shanks M, M, 1-53 Gallon LP Tank Converted to Gasoline 1-Electric Lift Swivel Around for P, V, 1-Air Motor Windmill Complete Has To Be Taken Down |
|--|--|--|

TERMS: CASH BRING YOUR OWN CHECKBOOK.

AUCTIONEER'S NOTE: This is a good clean line of equipment and only a partial list at this time. We are expecting several consignments by sale date.

L. D. Henderson Auction Service

PHONE 806/965-2446 P. O. BOX 125 EARTH, TEXAS 79031
806/385-5813, Mobile

THANK FRIENDS AND NEIGHBORS

FOR YOUR COOPERATION AND KINDNESS...


Our Cup Indeed Runneth Over,
As You Have Been So Kind,
Cooperative And Considerate...

You merchants have cooperated in every way showing your kindness by welcoming us and wishing us success in our new business, by your ads, by word of mouth and by sending flowers for our Grand Opening, for this we thank you sincerely. And to all the folks who have walked through our doors since we opened November 25, we say "Thanks A Million". We want you to know we appreciate each of you and have enjoyed getting acquainted. We ask you to come in often, you will always be welcome at White Auto Store.

1st Place - Sweeper - Mrs. John Laing

2nd Place - Popcorn Popper - Geren McGowan

3rd Place - Battery - Bruce Higgens

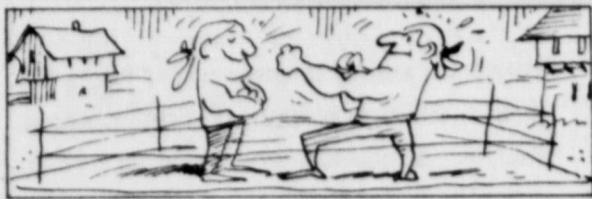


MR. and MRS. VIRGIL GRAY
MR. and MRS. TOM LIVELY
and TERRY

Carrol Chaloupka is Texas Farm Bureau President

DALLAS, Voting delegates of the Texas Farm Bureau elected a new president and two new directors at the organization's 41st annual convention held here this week (Dec. 1-4). They also approved TFB policies for 1975 and recommendations to the American Farm Bureau Federation on national issues. Some 1,074 voting delegates, a record number, from 170 counties participated in the deliberations. Total registration at the convention was nearly 1,500. Elected as president of the

166,216-member organization was Carrol G. Chaloupka of Dalhart. The new directors are Doug James, Lubbock, District 2, and Jack Osborne of Pampa who was selected to replace Chaloupka as director for District 1. Immediately following the convention, the new TFB Board of Directors met to elect a vice president and secretary-treasurer from among their own number. Bill Reid of Lamesa was elected vice president, and W. Reed Lang of Rio Hondo was named secretary-treasurer.



An 18th century English puglist was so insensitive to pain that, for a small sum, he would allow anyone to strike him on the side of the face with all his force.



COTTON BOWL BOUND-Larry Price, winner of the annual football contest was presented his tickets to the Cotton Bowl Game and \$25 check Tuesday afternoon by Polly Middleton.

Give Texas Products for Christmas

Why not give a little of Texas to those on your Christmas list this year?

"Texas boasts an abundance of high quality agricultural products that will make an excellent Christmas gift," points out Dr. William Vastine with the Texas Agricultural Extension Service.

"Giving a choice Texas agricultural product is sure to please anyone on your gift list. Gifts of meat, dairy and poultry products can highlight the table fare during the Christmas season and can lend a special note of cheer and good will during the holidays," adds the economist in marketing and food distribution.

Many grocers are participating in this effort to promote the gift-giving of Texas food products, notes Vastine. Special booths and displays are being set up to attract shoppers' attention to the wide choice of available products. Certificates for food products may be purchased

or the shopper may desire to select a particular product for that someone special on the Christmas list.

"Texas agricultural products offer unique gifts ideas," contends Vastine. "The selections are unlimited, so you're sure to

find items pleasing to everyone. Of course, the gift certificate allows the recipient to make his or her own selections."

What could be a better choice! So, plan now to add Texas agricultural products to your gift list, suggests Vastine.

Lance Louderer in Who's Who in American High Schools

Lance Louderer, a senior at Dimmitt High School was recently notified that he is featured in the Eighth Annual Edition of WHO'S WHO AMONG AMERICAN HIGH SCHOOL STUDENTS, 1973-74, the largest student award publication in the nation.

Students from over 20,000 public, private and parochial high schools throughout the country are recognized for their leadership in academics, athletics, activities or community service in the books. Less than 3% of the junior and senior class students nation-wide are awarded this recognition.

Lance is the son of Mr. and Mrs. Dwayne Louderer of the Sunnyside Community.

He made all district center in football and was honorable mentioned for the AA All South Plains Team. In addition to having his biography published in the book, Lance will also



LANCE LOUDERER

compete for one of tenscholarship awards of \$500 to \$1,000 funded by the publishers and will be invited to participate in the firm's annual "Survey of High Achievers." Lance is the grandson of Mr. and Mrs. Wayne Rutherford of Earth.

January 1, Deadline for V.A. Pension Questionnaires

Persons in Texas who receive Veterans Administration pension checks should remember to complete their annual in-

come questionnaire by January 1, 1975, Jack Coker, Waco VA Regional Office Director, said today.

The January 1 deadline is a change from the customary January 15 date to relieve the bottleneck experienced in the past on preparing January checks for pensioners waiting to mid-January or later in returning questionnaires.

Income questionnaires were included with pension checks for November.

Under the law VA mails questionnaires on nonservice-connected pension rolls, widows of veterans receiving pension based on the nonservice-connected death of a husband, and

certain parents who receive monthly checks because of the service-connected death of a veteran or serviceman.

Coker noted that most pensioners must file questionnaires each year. There are some exceptions, he noted. Those 72 years old or over who have been on pension rolls during the last two consecutive years are exempt from routine reporting; however, they must report income changes when they occur. Coker also pointed out that some beneficiaries who normally are exempt will receive questionnaires this year because of cost of living increases in their annuities.

According to the VA, thousands of beneficiaries missed the former January 15, deadline over the years. Prompt return of questionnaires by the new January 1 deadline will avoid delays in next year's checks, Coker said, stressing that a special effort is needed this year by the late filers to comply with the new deadline.

My Neighbors



"What he lacks in finesse he tries to make up for in volume."

This Christmas GIVE WESTERN BOOTS AND WESTERN WEAR

FREE GIFT WRAPPING FAIR STORE MULESHOE

ALL JEWELRY 50% OFF TILL CHRISTMAS FREE GIFT WRAPPING HOURS 10 A.M. till 6 P.M. THE POW-WOW SHOPPE

BUS. PHONE 385-5263 INDIAN JEWELRY 403 PHELPS AVENUE LITTLEFIELD, TEXAS RES. PHONE 262-4225 HARRELL and SHARON PATTERSON

OLD WORLD ANTIQUES

NEXT TO OSWALD PRINTING

711 BROADWAY -- 293-3118

PLAINVIEW

FURNITURE-CLOCKS-GLASS-PRIMITIVES-COLLECTABLES-PAINTINGS.....

AND MANY MORE INTERESTING ITEMS



No Bones about it!

Folks Who Are

Interested In

Buying -

Selling -

Trading Or Renting

Consult The



EARTH NEWS-SUN

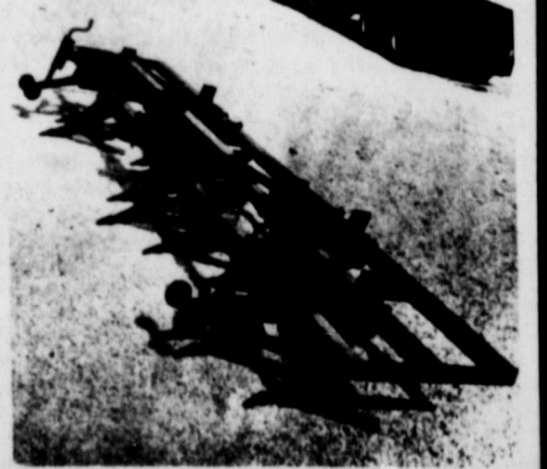
VERTICALLY ADJUSTABLE DEEP RIPPER

ADR Model DEEP RIPPERS will adapt to 2 and 3 bar WF Series frames.

Clamps bars together for extra strength.

1 x 5 Shank with hard surfaced face and forged alloy replaceable point.

Multi-hole brackets for bolt on mulch blades or fertilizer deposit chutes.



A QUALITY PRODUCT OF

ASK YOUR LOCAL DEALER OR CONTACT



SEE THE HAMBY VERTICALLY ADJUSTABLE DEEP RIPPER

NOW AT

DENT FARM SUPPLY

EARTH

Consumers Say Antifreeze Not Doing Job

AUSTIN--The first norther to sweep into Texas this year brought with it a rash of consumer problems about antifreeze.

The Attorney General's Consumer Protection Division has received several complaints from individuals who have purchased and added "antifreeze" to their car radiators, only to discover that what they added didn't perform properly.

As most car owners know, antifreeze is added to water in a car radiator to lower the freezing point. Some types of antifreeze (known as collants) are needed year-round in many late-model cars to protect not only from freezing, but from boil-overs. Without antifreeze, the plain water in a car radiator can freeze when it reaches 32 degrees, cracking the car's block as it expands and necessitating a major, and very expensive, repair job.

The Attorney General's office is the legal representative for the Texas Department of Agriculture, the state agency charged

with registering and testing the antifreeze offered for sale in this State.

Agriculture Department officials tell us that this is an unusual year for antifreeze, a petroleum by-product with a base usually of either ethylene glycol or methylene glycol. While antifreeze prices and suppliers generally are stable from year to year, many persons feel the country's current oil shortage will cause antifreeze to be in short supply. So increasing consumer demand has driven up the price of the product and many new manufacturers are entering the market to meet these demands.

Some of these new manufacturers are unaware that they must have their products tested by the Agriculture Department, pay an annual registration fee of \$20, and label their containers with ingredients of the mixture and a protection chart that gives the freezing points that can be obtained by using differing amounts of antifreeze.

Manufacturers who have registered antifreeze previously but who have altered their formula since the last registration must submit new samples for testing by the Department. Agriculture Department inspectors throughout the State periodically check to see that all antifreeze offered for sale meets these conditions.

The Attorney General's Consumer Protection staff has received reports of some out-of-state manufacturers who have misrepresented a combination of salt water and dyes as antifreeze. Such a mixture wouldn't freeze and crack a block, but it could perhaps do even more damage to a car by corroding vital parts.

While it is not yet known if this product is being marketed in Texas, our Consumer Protection attorneys and the Agriculture Department warn that businessmen, as well as individual consumers, should be wary of itinerant antifreeze salesmen.

Businessmen approached by such salesmen should check first with the Agriculture Department to determine if the product has been properly tested and registered.

Our attorneys also suggest that consumers purchase antifreeze from reputable dealers and check to see that the label contains required information about the formula of the contents and the protection that can be obtained. If it doesn't, call this to the attention of the store manager

Choose Toys That Are Simple, Versatile

Toys will be a big item on Christmas shopping lists again this year, to no one's surprise. Children learn through play, and good toys can aid in that learning.

To help young children get the most out of toys, child development experts advise parents to do their selecting carefully. They say:

1) Choose toys which will be fun for the child.

Educational toys are fine if the child really likes them, but as psychologist Joyce Brothers points out, "If a child isn't interested in a toy, he won't learn anything from it."

Some toys please adults, not children. See if you can look at the plaything from the child's point of view. On the other hand, a parent shouldn't be badgered into buying an item just because it is the most advertised toy on TV.

2) Choose toys which are simple and versatile.

Elaborate toys look good, but actually do less for the child than those of plain design into which he can throw a magic ingredient, his own imagination.

The wind-up or battery operated toy which does a flip or dances a jig is charming for the first few minutes but soon becomes a bore. In general, ignore these 'single purpose' toys and select those with which the child can actually do something, preferably those which will enter into a variety of activities.

Play materials which encourage the most creativity and imagination are often the most commonplace, wood blocks, sand, paints and crayons, dress-up clothes and boxes, says expert E. M. Matterson.

3) Choose a few good toys over many unsatisfactory toys.

"Too many toys for children is not only expensive but may actually be a disservice to them," says Dr. H. Robert Quilitch, director of the department of psychology at the Nevada Mental Health Institute. "Children overwhelmed by too many toys may lose the joy of anticipation."

4) Choose toys geared to a child's individual ability and level of development.

If a child receives toys which are 'too old for him,' requiring or owner.

It's a good idea to check the protection chart on the antifreeze label EACH TIME you buy it, too, since some companies have reduced the amount of the base in their product this past year, and more antifreeze will be needed to obtain the desired result.

Reports have also been received from other states of unconscionable actions regarding price gouging for antifreeze. Although prices for antifreeze generally are up in Texas due to increased demand, our attorneys have received no complaints about price gouging. Questions about any seemingly unreasonable prices for antifreeze should be directed to the Attorney General's Consumer Protection Division.

skill or understanding beyond his years, they could injure his self-confidence and diminish his eagerness to learn.

The following are suggestions for each stage:

Infant to six months, brightly colored, cuddly, large manipulative toys such as crib mobiles, stuffed animals that squeak, teething discs, vinyl rings and bells.

Six months to one year, sturdy toys that can be banged and thrown, bathtub toys, non-glass mirrors, toys that introduce concepts of size and shape such as cubes and cylinders, and surprise toys such as a Jack-in-the-Box.

One year to 18 months, movable toys that can accompany a child as he learns to crawl and walk such as balls, wheeled carts, and push or pull-along toys.

Eighteen months to two years, toys that allow the toddler to fit things together and pull them apart, such as pegboards and rubber beads; toys that show the beginnings of imitation, such as telephones, pots and pans, and collars; sturdy outdoor climbers and slides; and toys requiring more finger and hand coordination, such as wooden blocks, simple construction sets and two or three piece jigsaw puzzles.

Three to five years, toys that can be enjoyed with playmates, such as tricycles, dress-up clothes, housekeeping equipment; creative materials such as clay, crayons and blackboards; and toys that encourage language and music, such as books, picture lotto, records and a record player that the child himself can operate.

Five to six years, tools and crafts; "scientific" objects such as magnets, microscopes and magnifying glasses; miniature cars, dishes and animals; and family games such as checker and croquet.

Early school age, toys which test physical skill and thus establish a child in a group of his peers, such as roller skates, jump ropes, a bicycle, and baseball gear; adventure toys such as frontier forts, flashlights and canteens.

5) Choose toys which are safe. "Safe" is to some extent a personal opinion, but in general toys to be avoided are those which break or shatter easily; those which have sharp points and edges or open, moving mechanism; or those which have tiny, removable parts.

Next: Toy Safety (This series is provided by the Texas Department of Community Affairs, Office of Early Childhood Development.)

MEN IN SERVICE



PVT. MAURICIO M. GONZALES

Marine Pvt. Mauricio M. Gonzales, son of Mr. and Mrs. Trinidad Gonzales of 1126 E. 10th, and whose wife Marie is the daughter of Mr. and Mrs. Ralph Cervantes of Star Route 2, all of Littlefield, Tex., graduated from recruit training at the Marine Corps Recruit Depot, San Diego.

Physical conditioning, discipline and teamwork are emphasized during Marine recruit training.

Classes include instruction in close order drill, Marine Corps history, first aid, uniform regulations and military customs and courtesies.



IRA T. SHOTWELL

Nov. - Navy Seaman apprentice Ira T. Shotwell, son of Mr. and Mrs. I. T. Shotwell Jr. of Littlefield, graduated from recruit training at the Naval Training Center, San Diego.

He is scheduled to report to Personnelman A School, Meridian, Miss.

The training included instruction in seamanship, military regulations, fire fighting, close order drill, first aid and Navy history.

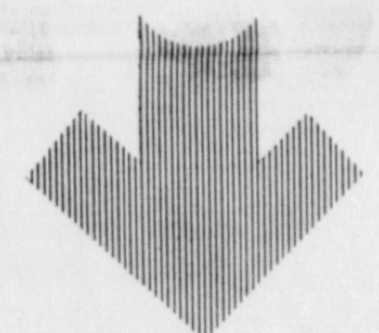
IF YOU USE an electric heater, be sure it has a U.L. listing and the cord in good shape. If necessary to replace the cord, use the same type and quality as the original.

MR. MERCHANT

When You Say You "Can't Afford To Advertise" You Are Really Saying...

- * You Can't Afford To Increase Your Sales.
- * You Can't Afford To Reduce Cost.
- * You Can't Afford To Save Money.
- * You Can't Afford To Expand Your Trade Area.
- * You Can't Afford To Increase Your Profits.

All Of Which Means: You Can't Afford To Stay In Business Or Succeed In Competition.



You Should Advertise in 1974

Earth News - Sun

Santa's gone Western, he's wearin' H-BAR-H duds!

LOOK FOR HIM IN THE PARADE DECEMBER 14!

AND HE'LL BE AT H BAR H ALL DAY DEC. 14 AND DEC. 21st WEEK DAYS FROM 3 P.M. to 6 P.M.

MERRY CHRISTMAS SAVINGS TO YOU FROM US!

WRANGLER and TEXAS COWBOY BOOTS 15% DISCOUNT

ALL JEAN TYPES-NOT DENIM PANTS \$2.00 DISCOUNT Per Pair

ALL MEN and WOMEN'S DOWN COATS and VESTS 10% DISCOUNT

ALL BAILEY and AMERICAN MEN'S and LADIES HATS - \$5.00 OFF

IN ADDITION - OTHER IN STORE SALE ITEMS - PRICES GOOD SAT. DEC. 7 TO SAT. DEC. 14!



BOB HARVEY-Owner---CLOVIS



GIFTS THAT KEEP ON GIVING



LAWN-GLO Black or White

\$79.50 Plus Tax Installed

A READY-LITE KNOWS DAY FROM NIGHT, AUTOMATICALLY



Patio Cart or Patio Stand \$112.50 Plus Tax

There are two Electro-Grills... and each is three cookers in one! Flame barbecue with hood up, roaster or smoker with hood closed. Whether you choose the patio stand model or the patio cart model, you get a large stainless steel cooking grill with burn warming section and storage shelf to keep cooked foods hot. And either model moves easily so there's no need to change your plans to cook out just because the weather changes.

See Electro Grill at The Electric Company office and put it on your electric bill!



Party Line

Mrs. Darrell Friday of Littlefield was admitted to John-Seely Hospital at Galveston for tests and surgery. Mrs. Darrell is the granddaughter of Mrs. Alma Stockstill and the daughter of Mr. and Mrs. C. L. Hammons of Denver City.

PEARLENE'S

2 for 1 Sale Buy 1 - Get 1 Free

| | |
|----------------------------|---------------------------|
| ONE GROUP SLACKS | ONE GROUP SLACK SUITS |
| ONE GROUP SKIRTS | ONE GROUP SWEATERS |
| ONE GROUP TOPS AND BLOUSES | ONE GROUP LADIES' DRESSES |

NO LAYAWAYS OR CHARGES ALL SALES FINAL

PEARLENE'S

308 1/2 MAIN - CLOVIS

Their First Year...



Or Their Last Year

THEY WILL WANT TO WEAR THE LATEST FASHIONS



THIS IS THE PLACE TO SHOP FOR THE LATEST FASHIONS...

PIERCE'S SPECIALTY SHOP

423 PHELPS AVE., LITTLEFIELD 385-3153 OPAL & L. V. PIERCE

Cattle Owners Warned to Watch for Moldy Corn Poisoning

BUSHLAND--In the wet fall and winter of 1972 there was an increase in death losses of cattle grazing harvested corn or milo stubble. After-the-fact investigations in the Dumas area revealed that circumstances surrounding many of the deaths pointed to mold poisoning as the cause, according to a research veterinarian here.

Dr. John Coleman, scientist with the Texas Agricultural Experiment Station, says that similar moisture conditions have existed this year and if they persist into the winter they could pose a threat to cattle owners.

"Moldy poisoning is a name that has been used to describe deaths of cattle and swine that graze harvested corn stubble," says Coleman. "This condition occurs more often during a wet fall that follows a dry summer. The wet fall delays harvest and

increases the number of ears which drop to the ground and become moldy. Deaths of cattle usually occur from 3 to 30 days after being turned on the moldy stubble."

Greedy animals are more likely to get an over-dose of the mycotoxin and die first, but the death losses usually stop when the moldy grain is no longer available, he explains.

"Mycotoxins, at high doses, kill very rapidly," the veterinarian adds. "Cattle eating smaller amounts of mycotoxins may appear depressed, off-feed, with bloody diarrhea, sometimes having a pale yellowish color of the membranes around the eye and mouth. There is no diagnostic change in the body temperature or in the routine blood analysis.

"Post-mortem examination reveals hemorrhages in various

parts of the body. Smaller hemorrhages occur on the heart, liver and intestines as well as under the skin."

In swine, once these hemorrhages develop, the disease is usually fatal, Coleman says. There is no specific treatment for animals suffering from moldy corn poisoning.

He believes the animal's liver probably has the ability to detoxify low levels of mycotoxins, thus the problem could be prevented by not allowing cattle to eat too much mycotoxin at any one time.

"Good managers can do this by making sure that cattle are full when turned on a stubble field, by grazing only small areas at a time to allow cattle to glean only a limited number of ears and by supplemental feeding until most of the ears are picked up," he suggests.

Not all molds produce toxins it is impossible, without extensive animal tests, to determine if a particular moldy field is going to be hazardous. Potentially dangerous fields can be grazed by cattle with a minimum of loss if care is taken, he concludes.



Then & Now
In ancient and medieval times — long before hand pumps were invented — people formed bucket brigades to fight fires.

Monty Price in the Coast Guard

Monty L. Price 19, of Earth, Texas recently entered the United States Coast Guard during ceremonies held at the U. S. Coast Guard Recruiting Office in Lubbock, Texas. Price was sworn in by Chief Petty Officer Jerry Schroeder, Officer in Charge of the Coast Guard Recruiting Office there.

Price, a 1973 graduate of Springlake-Earth High School reported to the U. S. Coast Guard Training Center in Alameda, Calif. for nine weeks of recruit training. While at Alameda, he will receive instruction in seamanship, military drill and Coast Guard customs and traditions after which he will attend school in Governors Island, N. Y.

A former football player for Springlake-Earth High School, Price is the son of Mr. and Mrs.



MONTY PRICE

Larry Price, life-long residents of the Earth area. His address is S. R. Monty L. Price U. S. C. G. Tracen Alameda Government Island Company D-99 Alameda, Calif. 94501

FRESH COCONUTS in the shell retain good quality up to one month in the refrigerator.

"FULLY COOKED" ham can be served reheated or cold, but reheating it to 130 degrees F. will enhance its flavor.

A FILM-FOAM-fabric composite which resembles leather is available on the market. A foam base is laminated to a transparent acrylic film, pre-printed with a photograph or design on its back. The design is visible from the top surface, creating a three-dimensional effect.

TO REMOVE STATIC electricity in clinging garments, run a wet cloth over each one.

IN 1973, AMERICANS spent nearly \$31 billion on food eaten away from home. That's an average of \$145.00 per person, twice as much as 20 years ago. Eating out takes 22 percent of our food dollar.

TWO LOCAL MEN HAVE-

Gilt on Test in National Winter Test

The Poland China Record Assn. has made available to its members facilities to test fall farrowed boars and gilts. These boars and gilts will be tested for average daily gain, days to 240 lbs., backfat and loin eye estimate. Since there are 10 individuals to a test pen, there will only be pen feed efficiency records available from average of each pen.

There are 153 entries, with 77

boars and 76 gilts on test. They are at two locations, Columbus, Ohio and Lovington, Ill. The top indexing boars and gilts will become eligible for the tested classes at the 1975 Spotlight Show and Sale, Cedar Rapids, Iowa on March 6th, when they will be shown and sold. Other shows which will feature tested individuals are the Southeastern Type Conference, Greenville, N. C. and

Louisville Barrow Show. There are 46 Poland China breeders from 12 states that have entries in this National Winter Test.

At Lovington, Illinois Bob and J. D. Phipps of Earth have one gilt on test.

AVOID "BARGAIN" packages of gift wrap paper that are short on paper. Read labels to compare costs per inch.

LOOKING FOR THE LATEST IN FASHION . . .

BUT ON A BUDGET!

ONE RACK OF MISSY COORDINATES AND PANTS GOOD SELECTION TO CHOOSE FROM

25% OFF

Store Hours
10 A.M. to 8 P.M.

THE BUSY CORNER

PLACE AROUND THE CORNER

A HAPPY PLACE TO SHOP

Next Door To Buskin Robbins
Plainview, Texas

ALL '75 VEHICLES IN STOCK



Cars and Trucks

\$100



OVER WHOLESALE DIRECT SALE

(WITH NO TRADE IN)

Dale Fowler Ford Inc.

120 E. Andrews St.

DIMITT

647-2115

SEASON'S GREETINGS

from all of us...
to all of you!



THE FOLLOWING PEOPLE HAVE DONATED TO THE UPKEEP OF THE EARTH MEMORIAL CEMETERY...

- K. B. & Dot Parish & Boys
- Lena D. Hite
- Mr. & Mrs. Ernest Green
- Zou Wilson
- Mrs. L. K. Anderson
- Mr. & Mrs. Gus Parish
- G. S. Armstrong
- Mr. & Mrs. L. Z. Anglin
- Elsie Hawkins
- Barton Brothers Gin Co. Inc.
- Billy & Marte Moore
- The Johnie Haberer Family
- Tibbets Gin Co.
- Abe & Alene Griffin
- Citizens State Bank
- Mr. & Mrs. Macky McCarty & Family
- Earth Gin Co.
- Hershel & Goida Belew
- Mary Kate & Bob Belew & Family
- Mrs. Ida Allen
- Phillip & Jean Haberer & Family
- Doug & Barbara Lewis, Rosie & Sam
- Mr. & Mrs. Perry Martin
- Earth Co-op Gins
- Maude Stout
- Mr. & Mrs. Melton Welch
- Sibyl & L. J. Welch
- Guy & Faye Kelley
- Chem-Tex Farm Supply Inc.
- The Thurman Lewis Family
- City Insurance Agency
- Mrs. Sam Jones
- Marie Parish Ross
- Wood-Jordan Inc.
- The Junior Littletons
- The Zeph Robnett Family
- George & Lottie Kasinger
- Lillian Hamilton
- Mr. & Mrs. Hershell Hulcy, Kareen & Greg
- Keuny Hamilton Family

- Jerry & Diana Carpenter & Cristi
- Layman Bros. Butane-Earth Auto Parts
- Jearl & Linda James, Cretia & Cliff
- Lynn & Juanice Glasscock & Hoyt
- J. D., Nobie & Bob Phipps
- Delbert & Leola Spraberry & Steve
- Gene & Linda Tunnell, Kerri & Kassi
- Raeman & Kathleen Cole & Family
- Wayne & Zella Mae Rutherford
- Ross & Polly Middleton
- Buzzy & Clara Mae Jones
- Mr. & Mrs W. O. Wood
- Carl & Mary Jones & Family
- Ruby & Arnold Shelby
- Mr. & Mrs. John Bridges & Brad
- Larry & Novella Price & Family
- Mr. & Mrs. Frank Butter
- Mrs. V. D. Coker
- Mrs. J. A. Littleton Sr.
- Pete & La Juana O'Hair & Boys
- C. C. & Cecelia Goodwin & Family
- Pay & Save Foods
- Melvin & Fern Bock & Kem
- Mrs. J. W. Kelley
- Dr. H. B. & Anne Johnson
- Johnnie & Fred Nix
- Earl & Emma Miller
- Guy & Jane Kelley & Family
- Marvin & Oetha Sanders
- Earth Oil & Gas
- Lucy Lewis
- Mr. & Mrs. Richard Moore & Boys
- Mr. & Mrs. Bill Freeman & Family
- Mr. & Mrs. Roger Haberer & Camille

EARTH MEMORIAL CEMETERY

- Venona Lee
- Lowell & Billie Walden
- Mr. & Mrs. L. G. Layman
- W. C. & Lillie Belle Maxcey
- Gid & Mildred Howell
- The J. Allen Gover Family
- V. J. & Shirley Sigman
- Farm Chemical, Earth & Springlake
- The Branscum
- The Joel E. Jones Family
- The Richard Bills Family
- Mrs. John Laing
- Orville & Rowena Cleavinger
- The Fred Welch Family
- H. L. Patterson
- Earth Pump & Machine Works Inc.
- Mr. & Mrs. T. L. Free
- Mr. & Mrs. Jack Angeley & Family
- N. Ray & Helen Kelley
- Allen & Theresa Smith & Family
- Skeeter, Betty & Cindy McAlpine
- Dent Farm Supply
- Mr. & Mrs. Fred Clayton
- Earth Ag Supply & Springlake Grain
- Britton '66" Service Station
- G. & Ida Kellar
- The Gene Templeton Family
- Mr. & Mrs. John L. Murrell
- The Carl Taylor Family
- Mrs. Pete Parish
- The Charles Parish Family
- Dwane & Yvonne Jones, Kim, Sue & Bob
- James & Mable Wages, Mike & Gail
- Parson-Ellis-Singleton Funeral Home
- Jack & Viola Hadaway
- Mr. & Mrs. Harlon Watson, Monty & Marty
- Doug & June Parish & Girls
- Jeanette, Danny & Billie O'Hair
- Gladys & Pat McCord
- Mrs. Cecil Parish
- Wolverine Drive In
- H. S. Sanders Lumber
- Earth Elevator
- The Jerry Kelleys
- Mr. & Mrs. Donald K. Clayton & Family
- Leta Teel Kelley

SUNNYSIDE NEWS

By TENEY BOWDEN



The Week of Prayer for Foreign Missions was observed by the church this week. Mrs. John Seiver had charge of the music, Mrs. Cliff Brown was in charge of prayer, and Mrs. Thomas Parson in charge of the programs. Each morning there was a personal testimony on answered prayer.

The Thursday morning program was held in the home of Mrs. Roy Phelan, and the Baptist Men had charge of the program at the church Wednesday night. Average attendance for the week was 10.

Rev. and Mrs. Grady Sorley of Bovina brought special music in the Sunday morning services and their pastor's wife played for them. Rev. Sorley gave his testimony also.

After the Sunday night services a tour was conducted of the rooms decorated during the week and refreshments served to represent each area of work where we have missionaries.

The R. A. 's decorated for Monday a room on the Middle East. The Baptist Women on Europe Tuesday, Baptist Men decorated on Africa, Mission Friends Latin America and G. A. 's Asia.

Announcement was made this

week of the engagement and approaching marriage of Renee Jones and Lonnie Wilson. They will exchange vows in the local church January 10th. Both are students of South Plains College at Levelland, but come home for the week-ends most of the time.

Lee Brown, Junior Saucedo and the Springlake-Earth Wolverines won over Lazbuddie Tuesday night 122-34 and played in the tournament at Kress Thursday, Friday and Saturday. They won over Dimmitts Jr. Varsity Thursday night, over Happy Friday night and won over Lubbock Christian High School Saturday night to win first place in the tournament.

Lynn Brown and the Springlake-Earth 8th grade won over Kress Monday night 33-6 and played in the tournament at Nazareth Thursday, Friday and Saturday nights. They lost Thursday night, won Friday night and won consolation Saturday night.

Robert Calhoun was the high point scorer for the Dimmitt Bobcats in their game Tuesday night. He has also been named to the all-district team for the

South Plains District. They won over Friendship in the Plainview tournament Thursday, over Falls Friday night and over Abernathy Saturday night to bring home the first place trophy.

Mrs. John Gilbreath attended the auxiliary workshop at the hospital Monday. Mrs. L. B. Bowden worked with auxiliary duties in the hospital in the afternoon. They and Mrs. Winston Waggoner and Mrs. Embree Roy Sadler helped with the annual bazaar Thursday and Friday afternoons in the First United Methodist church in Dimmitt.

Mrs. Earl Phelan of Fieldton visited with Mr. and Mrs. Roy Phelan Friday. They took her back to Amarillo for a check-up Friday afternoon and her hip is healing satisfactorily. She can begin to walk more now and put more weight on her leg.

Susan Sadler was confined this week with mononucleosis which will keep her out of school for some time.

Mr. and Mrs. Ezell Sadler and Mr. and Mrs. L. B. Bowden left for Breckenridge Friday evening after receiving word of the death

of Mrs. Guy Baggett Friday morning. Mr. and Mrs. David Sadler and girls and Larry Sadler left Saturday morning for the services which were held Saturday afternoon. All came home Sunday night except Mr. and Mrs. Ezell Sadler who will stay a few days. Mrs. Baggett's husband passed away less than two weeks before her death.

Jeanne Haydon was on the Springlake-Earth 6th grade "A&B" honor roll. Kevin Riley, Kim Haydon and Michael Graham on the 7th grade roll and Lynn Brown and Arjilia Saucedo on the 8th grade roll.

Mrs. Ila Haydon spent the Thanksgiving holidays in Belen, New Mexico with Merna Hitchcock and her family.

The Day Bible study group met Thursday afternoon for their monthly meeting with the group leader, Mrs. L. B. Bowden in charge.

Mrs. David Sadler and Karla visited in Hereford Friday with Mr. and Mrs. Jake King.

Rev. Weldon Drake of Lubbock filled the pulpit for Rev. Mack Turner Sunday and was a guest of Mr. and Mrs. Milburn Haydon for dinner. Rev. Turner and Mrs. Turner were in Lubbock Sunday where he preached at Skyline Drive Baptist Church in view of a call.

A Christmas Pageant will be

HAMMONS FUNERAL HOME

Ambulance Service
Phone 385-5121

LITTLEFIELD TEXAS

MONUMENTS

Winnboro Blue Granite White Georgie Marble and others, including Bronze for Memorial Park Specifications.
See or Call Collect
Percy Parson, Olton
Phone 286-2621 or Frank Ellis Muleshoe, Phone 272-4674.

FOR SALE: Two 13" boys bicycles, like new. Call Art Karger 257-2060.
12-12-2tc

ATTEND CHURCH

FOR SALE: Fieldrun peanuts, Call Billy Barlow at 965-2713 or Shorty Barlow at 965-2719.
12/5/3tp

FOR SALE: Two 22" girl's bicycles. \$15.00 each. Doug Parish 257-3740
12-12tp

THE RANCH HOUSE

has coin jewelry mountings - coin cut out jewelry - antiques calvary saddle and other western relics. Located in the Plainview Mini Mall - 3010 Olton Road, Plainview 2 t.p.

WE ARE STILL HERE and STILL WANT TO HELP YOU WITH YOUR IRRIGATION PROBLEM
STATE LINE IRRIGATION CO., INC.
Littlefield-Muleshoe

QUICKBALL PRYOR CO., INC.
Automobile Parts Supplies & Equip.
P. O. Box 567
Earth Texas

To Rest Assured use SAFETY DEPOSIT BOX
Protection
FIRST STATE BANK
Dimmitt, Texas

DEAD STOCK REMOVAL
7-DAYS A WEEK SERVICE
Please Call As Soon As Possible
MULESHOE BI-PRODUCTS
Phone 965-2429 LAZBUDDIE

presented at the church Sunday night the 15 at the regular worship hour with Mrs. Mack Turner in charge.

Gerald Graham was back in Amarillo Monday for a check-up. The bones seem to be knitting back satisfactorily but it will be some time before he can go into braces and begin putting some weight on his feet.

Quint Waggoner was back in Lubbock Monday for his check-up. He got a good report.

Mrs. Eules Waggoner spent the week-end in Lubbock with Delores Waggoner. They attended the Carol of Lights ceremony at Tech Friday night and toured the Tech Museum Sunday afternoon and saw the Planetarium of Stars which will through December feature the Star of Bethlehem. Both were very impressive ceremonies.

Mr. and Mrs. Lloyd Morrow of Brownwood arrived Saturday to spend a week with her sister, Mr. and Mrs. Noble Armstrong.

Mrs. J. C. Holbrooks returned home Wednesday from Colorado Springs after her daughter, Mrs. Ronald Henderson was dismissed from the hospital on Tuesday following major surgery.

Mrs. Jerry Hampton was dismissed from Plains Memorial Hospital in Dimmitt Friday after a confinement of almost two weeks.

Mr. and Mrs. Russell Ramey and children of North Carolina arrived Saturday to spend a few days with her parents, Mr. and Mrs. J. C. Holbrooks.



Medieval legend talks of a monster who had no head, the eyes and mouth being placed elsewhere.

Bill Angel, Bill Owens, Tarrest Martin, Otis Witcher and Tarrest Moore of Littlefield came Sunday afternoon and played music for residents of the Manor. Everyone enjoyed it very much.

Mrs. Craig Wilkerson of Brownfield took her mother Mary Ford to Sudan Saturday to spend the day.

Mrs. John Adams and Myrtle Bennett of Olton visited Effie Veach this week.

Mrs. Alva Sturdivant of Sudan arranged a lovely Terrarium and gave it to the residents at the Manor to enjoy.

Visiting Ruby White was her father Frank White of Sudan.

Rosie Sanders, Hattie Doss and Flora Davis went to Littlefield shopping Monday with Bobbie Carpenter.

Mr. and Mrs. Alex Berry visited Susie Lindsey Friday.

Mrs. John Enloe of Amherst visited Daisy Brock, Effie Veach, Lela Coffer and Winford Clayton Wednesday.

Stella Thomas was a new resident when she had to return to the hospital. While at the Manor visiting her was her daughter Mrs. Wayman Gordan, her grandson and great granddaughter Kay Lynn Gordan all of Sudan.

Visiting Flora Davis was her daughter Mr. and Mrs. R. O. Dickerson of Earth.

Marie Ross visited Goldie Drake and Nannie Ginn recently.

Clyde Brock visited his wife Daisy Brock.

Visiting Mrs. Goldie Drake on Saturday were her son, Mr. and Mrs. Garland Stovall, Garland Jr., Dusty and brand new granddaughter Carla Marie.

MANOR NEWS

Dorothy Abbott visited her mother Etta Jones and Aunt Ora Smith Ray Black of Spade also visited them.

Visiting Winford Clayton Sunday were Bob Clayton of Amherst, Mr. and Mrs. John Clayton of Littlefield, and Mr. and Mrs. W. H. Clayton of Earth.

Chester Baker of Lubbock visited his father Willie Baker Monday.

Visiting Everett Nix Sunday was his brother Rayman and Guy Walden of Sudan. Also visiting him recently was his brother Mr. and Mrs. John Nix of Texline.

Visiting Rosie Sanders Friday was her daughter Mary Sutton and grandson Larry of Farwell.

Mr. and Mrs. N. H. Harlan and John of Bula visited Lula Harlan recently.

Stanley Doss visited Hattie Doss Saturday.

Dave Britt's sister Mrs. V. L. Yarbrough from Plainview visited him recently.

Mrs. Royce Goyne visited Sara Goyne and Homer Hukill Wednesday. Homer's wife visited him Sunday.

Mrs. James Dutton of Earth visited her mother-in-law Della Dutton Tuesday.

Visiting Essie Griggs Tuesday were her son, Mr. C. H. Griggs of Floydada, her daughter Mrs. H. T. Necley of Amherst and Mrs. O. L. Floyd.

Birtie Black and Mrs. Ray Black visited Ora Smith. Mrs. Ray Black took Ora out for awhile.

Others visiting the Manor were: Mrs. C. F. Thompson, Bula B. Humphreys of Amherst, Elmer Houston of Olton, J. T. Henderson of Sudan, Albert Usellan of Amherst; Carrie Rogers and Lee Payne of Amherst.

THEY'RE ALL IN CLASSIFIED

WANTED TO BUY: 1/4 or 1/2 section of land on pavement in Earth area. Also interested in rent land. Call Olton 285-2423 9-26-tfc

HELP WANTED-Cashier for Bailey County Electric Cooperative-Morton office-Excellent fringe benefits-Pickup application at Morton or Muleshoe office or write Drawer N Muleshoe. Application deadline December 15, 1974. An equal opportunity employer.
12-5-2tc

HAVE BUYER for 1/2 section choice land in Earth vicinity. Also for rent modern 3 bedroom house. Contact Johnnie M. Haber, Real Estate Rt. 4, Muleshoe, Texas 79347 965-2206.
11-21-tfc

FOR SALE: Upright piano Call Mrs. Modean Clayton 257-3841 12-5-2tnc

FOR SALE: 1972 Honda SL350 motorcycle. 2000 actual miles. Good condition. See or call Davey Haber, phone 257-3886.
12-5-2tc

FOR SALE: 3/4" thru 10" PVC Plastic pipe, new and used aluminum pipe and side-rolls. STATE LINE IRRIGATION-Littlefield 385-4487-Muleshoe 272-3450.
11-28-tfc

TEXAS OIL COMPANY needs mature person for short trips surrounding Earth. Contact customers. We train. Air Mail G. E. Dick, Pres., Southwestern Petroleum. Ft. Worth, Tex.

GRAZING WANTED KEMP FARMS
BOX 139 DIMMITT
PHONE 647-5566
NIGHT 647-3496
OR 647-5102

MISSOURI BEEF PACKERS INC.
Is Now Accepting Applications For Kill Floor Personnel. We Offer Your Round Employment Paid Vacations Paid Holidays Company Paid Group Hospital Insurance, Good Wages And No Experience Necessary. Apply At Personal Office.
MISSOURI BEEF PACKERS INC.
FRIONA, TEXAS
Four Miles West Of Friona
On HWY 60
Equal Opportunity Employer

ALL TYPES ROOFING -- HOME REPAIR
Don's Roofing Company
FREE ESTIMATES
806-272-3756 MULESHOE, TEXAS

IRRIGATION SELF PROPELLED
AVI VALLEY INC.
BOX 631, MULESHOE, TEXAS 79347
PHONE 806 272-3565

MCCORMICK'S Upholstery
TRUCK SEATS Also furniture
EXCHANGE Re-upholstered
15 Minute Service
CHARLES OWNED PHONE 385-4965
POWELL LITTLEFIELD

TELEX Hearing Aids
Clovis Hearing Aid Center
Batteries & Molds. Free Tests.
Service All Makes.
416 Mitchell Phone 763-6900
Clovis, N.M.

WE Will CUSTOM PROCESS YOUR BEEF TO YOUR SPECIFICATIONS
WE'RE READY NOW!
CALL OR COME IN TODAY!
CROW MEAT CO.
So. Hwy. 214 Friona, Texas Phone 247-3333

Utilities Association Begins Campaign To Improve Image

The Texas Water Utilities Association is launching an advertising campaign to improve the image and upgrade the salary levels of municipal water and wastewater personnel.

A series of full page ads in Texas Town & City, the official publication of the Texas Municipal League, began in November with a page headlined, "How To Protect Your Most Valuable Asset," illustrated by a line drawing of a young girl drinking from a water fountain.

C. H. Scherer, president of the 8200-member association, said that "a purpose of the campaign is to inform municipal leaders of the necessity for retaining and attracting qualified personnel, to keep pace with advanced water and wastewater technology."

The Hal Copeland Co., Dallas-based public relations and advertising agency, is producing the campaign.

Image Improvement Committee co-chairman are Bob Derrington, manager, Waste Water Systems, North Texas Municipal Water District, Wylie; and Clois Whitley, manager of water

systems, Harlingen, Texas.

Noting that Texas ranks 40th in the nation in average salaries paid to wastewater treatment plant personnel, Scherer stated that "Regardless of technical achievements in water treatment, the quality of water in Texas is still directly related to the skill of wastewater technicians."

A study conducted by the Texas Water Quality Board reported that in 1972, 30% of Texas' wastewater technicians left the field, with the majority resigning because of low salary.

"In private industry, a position requiring comparable skills," the association president observed, "often pays as much as 50% more than wastewater utilities."

"The turnover," he declared, "is a costly matter for the municipalities and their taxpayers. Several cities have determined a loss of at least \$2000 in training, plus several years training time to replace each wastewater technician."

Identifying "safe, clean water" as a city's "most valuable asset," the initial ad states that "salary



KAREN SMITH and JIMMY FURR—F. T. A. high school students of the month for November.

levels in municipal water utilities are often inadequate. So the industry faces a serious shortage of highly skilled, trained personnel."

"As a municipal leader today,"

Most Gas Stations Independently Owned

Only 3.5 per cent of this country's service stations are directly operated by 22 of the nation's leading oil companies, according to a survey conducted by the American Petroleum Institute.

The companies surveyed reported that as of June 30 they directly operated 7,375 of the nation's estimated 212,000

service stations. The survey encompassed all stations, including branded, unbranded and secondary branded, operated by the reporting companies.

In a direct operation, the station personnel either are on the company payroll or receive a commission on sales. Other stations, even though they may carry a major brand name, are operated by independent dealers on a "lessee dealer" basis.

IT COSTS LESS to Shop Here AND We Guarantee the Quality

TENDERCRUST BREAD

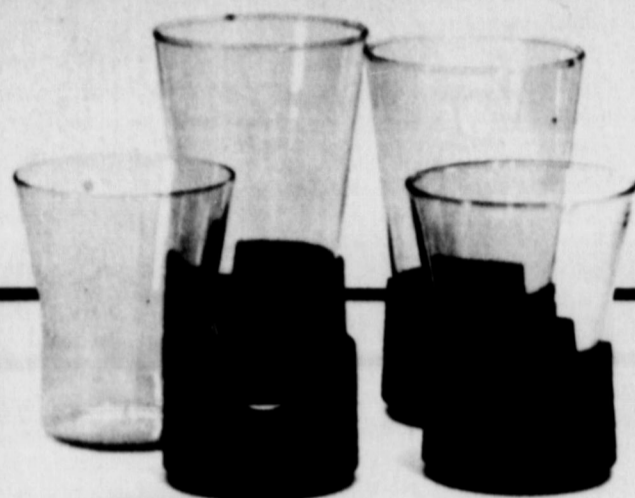
1 1/2 Lb. Loaf
2 For 89¢

TENDERCRUST COOKIES
Assorted Flavors

3 Pkgs. \$1

GOLD MEDAL FLOUR

5 Lb. Sack
89¢



CORNING Snap-on Coaster Tumblers
*Heat Proof *8 Oz. Beverage *Smoke Tinted *12 Oz. Juice
MIX OR MATCH
4 \$1

FOOD KING FLOUR

25 Lb. Sack
\$3.99

DORITOS

Regular 79¢ Pkg.
59¢

FRITOS

Regular 79¢ Pkg.
59¢

SHURFINE RIPE OLIVES

300 Size Can
49¢

TIDE KING SIZE-25¢ Off **\$1.79** FAMILY SIZE **\$3.79**

DISHWASHER CASCADE

35 ozs. **89¢**

NABISCO PREMIUM CRACKERS

1 Lb. Box
49¢

1 Box of Assorted Sizes and Colors

PANTY HOSE

1/2 PRICE

AIM TOOTH PASTE

FAMILY SIZE **99¢**

DREAM WHIP

3 1/2 oz. Box. **45¢**

TEA BAGS

SHURFRESH-48 Count Box **65¢**

HOLIDAY GIFT WRAP

Reg. \$1.39 217 Sq. Ft. **99¢**

CLOVER LAKE ICE CREAM

1/2 Gallon **\$1.09**

SHURFRESH COTTAGE CHEESE

12 oz. Carton
49¢

HOT IRON-Print Your Own T-Shirt

TRANSFER

Reg. 98¢ **49¢**

SHURFRESH HALF and HALF

Pint Carton **49¢**

OCEAN SPRAY CRANBERRIES

1 Lb. Cello Bag **35¢**

TEXAS ORANGES Pound **19¢**

Roasted In Shell 2 Lb. Sack
PEANUTS **99¢**

GREEN ONIONS Bunch **10¢**

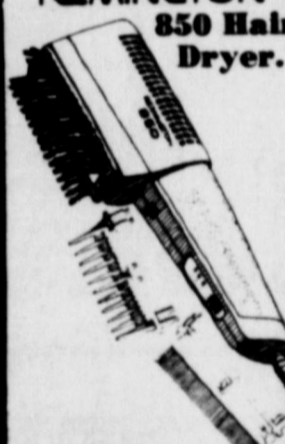
ROUND STEAK Pound **\$1.49**

T-BONE STEAK Pound **\$1.49**

BEEF LIVER Pound **59¢**

GOOCH GERMAN 12 oz. Pkg.
SAUSAGE **89¢**

The REMINGTON™ 850 Hair Dryer.



A powerful family hand-held hair dryer!

With 850 watts of power, the Remington 850 Hair Dryer offers a powerful combination of heat and air flow to dry hair fast. It features two speeds and heats for effective drying and styling. Attachments include styling brush, wide and fine toothed combs... all in a lightweight blue contemporary design.

\$17.88

SPERRY-REMINGTON

The REMINGTON™ MARK I™ Economy Cord Shaver.



A close, comfortable shave at an economical price.

An economy priced cord shaver featuring the COMFORT HEAD SHAVING SYSTEM with super-sharp replaceable blades. The comfort dial adjusts to 4 individual shave positions - plus sideburn trimmer and power cleaning settings. Handsomely packaged in functional compact travel case. Coupon good for free set of replacement blades included.

\$23.88

SPERRY-REMINGTON

SHOP EARTH FIRST

SHOP OUR TUESDAY and WEDNESDAY SIZZLER



Affiliated Foods Inc.



QUICK GUNN BROS. STAMPS TUESDAY & WEDNESDAY WITH \$2.50 PURCHASE OR MORE



EARTH, TEXAS

Payroll Checks™ Cash-
Free Delivery
We Sell Travelers Express Money Orders
We Reserve The Right To Limit



Christmas Savings



AT the Village

3310 OLTON RD. PLAINVIEW, TEXAS

LAYAWAY'S WELCOME

Clothing Gifts

THANKS FOR JOINING IN



You've Planned These Profits Now... WATCH PLAINVIEW GROW

FOR THE ENTIRE FAMILY

Mr. Corn Producer:

LOOK!



We Now Offer You

★ **Corn Dryers**

(Three types—Recirculating Batch, In Bin, or Continuous Flow)

★ **Storage or Holding Bins**

★ **Farm Shops or Barns**

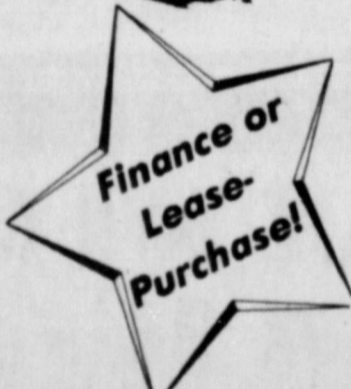
★ **Elevating Legs**

★ **Dump Pits**

Hays Implement Co.

DIMMIT PHONE 647-2157

Your Butler Farm Building Agent, in cooperation with Panhandle Steel Buildings



SPECIALS GOOD DECEMBER 12 THRU DECEMBER 18